

# THE SPEARMAN REPORTER

TWELVTH YEAR

Successor to  
HANSFORD HEADLIGHT

Spearman, Hansford County, Texas, October 8, 1920

Number 43

## We are Farmers and Stockgrowers

For your convenience we have arranged to get a daily cattle market report by wire. Call and avail yourself of this added service of the First National Bank.

A bank in any community is occupied in industries which its patrons are engaged in. We are therefore farmers and stockgrowers and recognize a distinct partnership relation with our depositors, for we succeed only as they succeed. It is to our interest to further their success by every legitimate cooperation we can offer, and by reason of our ample resources and connections, we are exceptionally equipped for that purpose. If you are not our customer now, we respectfully solicit your patronage, assuring you that your business will be appreciated and given our careful attention.

## First National Bank of SPEARMAN

### SPEARMAN'S FIRST REAL FIRE

The residence of Jim Tower in east Spearman, together with all contents, was totally destroyed by fire on Wednesday morning at about 8 o'clock. The fire was caused by the explosion of a can of Effetto Enamel, which had been placed on a kerosene stove. The can burst and the contents were scattered over the room, causing the entire building to be enveloped in flames before anyone could reach the scene. Mr. Tower had just left his home, coming up town on a business matter, leaving his little five-year-old daughter Colleen there in charge of his helper in the painting business, Grant Phillips. Mr. Phillips succeeded in carrying the child to safety, burning his hands and face considerably in doing so, but none of the contents of the building were saved. A purse containing \$120 was lost, as was also all of Mr. Tower's paintings, books, etc., which can never be replaced. The loss is indeed a serious one. A liberal cash donation was made up among the Spearman business men and friends of Mr. Tower, but this cannot replace the old keepsakes, paintings, books, etc. This is the second time Mr. and Mrs. Tower have had their

home destroyed by fire, the first occurring about six years ago at the Manney Wilbanks farm, east of town. Mrs. Tower is at the L. C. Bishop hospital near Wichita, where she is recovering from a recent serious illness and was intending to come home at an early date. Their eldest daughter is making her home with her grandparents, Mr. and Mrs. Manney Wilbanks, in Spearman, and attending school. Their many friends deeply sympathize with Mr. and Mrs. Tower in this great loss.

Bladder twine, 18 1/2 cents per pound at the Spearman Equity Exchange.

One nearly new two-ton Nash truck for sale or trade. See R. P. Kern.

Mr. and Mrs. B. G. Penick were here from Texhoma Tuesday looking after business matters.

Ticked to death. And you cease to be tired when you trade with P. Monkey Maize & Co.

Rulers for school children. Call at the Ford garage and get a ruler before you go to school Monday.

Born to Mr. and Mrs. Leon Thomas at their home in south Spearman on Sunday morning, October 3, a fine girl.

Those Dodge and Ford curtains are still at the Reporter office. Will the owners please call, pay charges and take the same away.

Fred Lowe, who has been employed at the Jay Wilbanks farm the past several months, left Wednesday morning for his home at Lou, Texas.

E. H. and W. W. Wise left Wednesday morning for Ashland, Kansas, their old home, where they will spend a week visiting with relatives and old time friends.

W. F. Moore, the bustling young representative of the Horne Grain Co. at this place, went to Beaver Wednesday morning to visit until Monday with home folks.

Ben B. Archer is advertising a mule and horse sale to take place at Perryton on the 16th inst. Ben has some good work stock and will doubtless have a splendid sale. Ed Littleton will do the auctioneering.

The new bank at Texhoma, the Farmers State, under new management, has grown to about three times its size of a year ago. Your account will be appreciated and your business handled to suit you.

## A. F. BARKLEY'S Insurance Agency

Grain burns occasionally before or while being cut. Let us write you a policy on your grain while standing. Then, the same policy will cover in the shock or stack and in the grainary when threshed. Let us explain it to you.

Our business is conducted on principles of honesty, fair dealing and dependable service. If you are not already a customer, we invite you to become one with the confidence that you will find the above to be true.

## BARKLEY SPEARMAN Phone 37

## CATTLEMEN

Vaccinate your calves against Blackleg. Do it now.

We have secured the agency for

## "CONTINENTAL SERUM"

Calves insured against loss—with tag in ear—at a saving of almost half the old price.

## Hale Drug Company SPEARMAN

The Store with the Up-Town Service

### SPEARMAN HIGH SCHOOL OPENED MONDAY MORNING

Enrollment First Morning Far Above Expectations—Will Soon Reach Two Hundred Mark

The Spearman High School opened Monday morning, October 4, under most auspicious circumstances. The attendance at the opening was much above what had been expected by Superintendent Clark and the board of trustees, and it has increased steadily all the week. The faculty, as elected by the board of trustees and Superintendent Clark is as follows:

Prof. W. A. Clark, Science; Miss Ethel Deakin, Mathematics and Latin. (The principal elected will take these classes, and will also be the instructor in athletics, but has not arrived up to this writing, and Miss Deakin is substituting.)

Miss Nannie Holland, Sixth and Seventh grades and Spanish.

Miss Alleen Beck, Third, Fourth and Fifth grades.

Miss Joyce Holland, Primary department.

The new desks and window shades have arrived and the school building is now in first class condition. Workmen will add to the appearance of the building, also to the convenience and comfortableness of the same from time to time, but the teachers and students will be able to do good work from the beginning. Spearman and the Spearman country are indebted to these tireless workers, A. F. Barkley, H. E. James, Hicks Wilbanks, J. H. Buchanan and D. W. Hazelwood, the school board, for this splendid high school in Spearman. Students will no longer be obliged to go away from home to receive instruction in the high school branches. Spearman has a school of which the entire country is justly proud.

### A NATIONAL DISGRACE

Who would ever have thought that Eddie Cicotte and big Joe Jackson would stoop so low as to let a gang of tin-horn gamblers tempt them to "throw" a ball game? The recent disgraceful disclosures in regard to the fixing of ball games by the big league players will only have a tendency to make the great game cleaner in every respect. It will put a stop to or at least check the gambling on the games. Baseball is the greatest and cleanest sport in the world and every American boy is a fan. The sympathy of fandom right now is with Chas. Comiskey, the old Roman, whose team went to the land. He had a chance at the pennant when the trouble arose, but since tying a can to eight of his star players, of course he has fallen behind. But Comiskey will come back with a better team than the White Sox ever had before. These weaklings will be forgotten in a day and big husky boys from the forks of the creek will take their places and the old game will go on and on. The great lesson to be learned by the downfall of these ball players is that you cannot associate with crooks without getting crooked. The gamblers who are responsible for the fall of these young men should be sentenced to the penitentiary for life. They are not fit to live among free Americans, where even a gambler has always got a run for his money. But what we started out to say is that baseball will not be hurt by the untimely end of the great White Sox machine. Cleveland and Brooklyn are this week playing the world's championship series, Cleveland taking the first game on Tuesday by a score of 3 to 1.

Mrs. Sallie Clark moved to a residence in east Spearman the first of the week, where she will make her home during the winter and send her son, Volney Grant, to school.

Rev. John Wright Holsapple of Sherman, Texas, state evangelist of the Christian church, was here Monday to confer with Contractor R. B. Price in regard to the building of a church at Booker. Rev. Holsapple is an old friend of Pastor John A. Travis of Spearman.

E. R. Jones, solicitor for Dunkard, Sager & Emmert, live stock commission men of St. Joe, spent several days in Spearman and vicinity the past week. Mr. Jones is an old time friend of Joe Welsh, the two having played on the same ball team back in Iowa in their younger days.

J. B. Fitzsimmons is a guest at the Joe Welsh home eight miles east of town this week. Mr. Fitzsimmons is making his home in California, but has recently made a trip through Indiana, Illinois and Iowa. He says politics is not causing the excitement usually stirred up in presidential elections. People are more interested in the h.c.l.

### MEETING OF CHAMBER OF COMMERCE

An important, interesting and enthusiastic meeting of the Chamber of Commerce of Spearman was held at the offices of the Panhandle Lumber Company on Tuesday night, October 5th. This meeting was well attended and much business was disposed of. It was the time for the regular annual election of officers, and the following gentlemen will serve in the positions named for the ensuing year:

S. B. Hale, President.  
Lyman J. Hillhouse, Secretary.  
R. J. McCaslin, Treasurer.

The matter of the incorporation of the town of Spearman was discussed by the membership. This matter is in the hands of Attorney Fred Hill, who is taking the initial steps toward the incorporation of the town. A census of the population of the town will be taken by Henry Waldrop and the preparation of the notice of election, etc., will be attended to by Mr. Hill.

H. E. James, secretary of the board of trustees of the Spearman Independent school board, read a financial statement of the district, which shows that more money must be raised at once. The committee in charge of this work were out bright and early Wednesday morning, collecting and soliciting donations and at the last report was meeting with considerable success. The Chamber of Commerce intends to see that this school business is attended to promptly.

The Chamber of Commerce decided to buy a fire fighting equipment and H. E. James, manager of the volunteer fire company, was instructed to order a chemical outfit of 50-gallon capacity and 200 feet of hose as a starter. This equipment will make a good start and will help out wonderfully in case of fire, especially when the conflagration originates indoors and can be reached before it has spread to the outside.

The Chamber of Commerce is up and going strong at the present and the new officers propose to do all in their power to keep the good work up. If you are not a member you should join at once. Don't wait for a solicitor. Every resident of Spearman is interested in the work this organization is doing and should help what they can.

### A CORRECTION

In an article in last week's paper I was made to say that the Spearman charge had paid out in full on salary. Two churches only have paid out and the Spearman church is behind over \$200. I make this correction in justice to the stewards, who may have more trouble in raising this money after seeing over my signature that the amount has been paid. Services at the church Sunday, October 10, at 11 a. m. and 7 p. m.

JOHN A. TRAVIS, Pastor.

### HAPPILY MARRIED

Jack Farnham and Miss Stella Webb stole away to Shattuck on Monday, October 4, and were united in the bonds of holy wedlock, returning to Spearman Wednesday, to receive the hearty congratulations and best wishes of their many friends. Mr. Farnham is an American Express Company employee, running from Spearman to Shattuck, and Miss Webb is the popular daughter of Mr. and Mrs. G. G. Webb of Spearman. Mr. Webb is section foreman at this place, so this wedding may properly be termed a railway romance. The Reporter wishes Mr. and Mrs. Farnham much happiness and prosperity.

### BETTER TELEGRAPH SERVICE

C. W. Carson Jr., acting for the Hansford County Chamber of Commerce, recently made complaint to the telegraph department of the Atchison, Topeka & Santa Fe railway system, regarding the poor service given Spearman in this line. He was favored by a quick and favorable reply, as will be seen by the following letter from H. C. Chase, superintendent of telegraph, Topeka: "I have just been advised by General Manager Parker that the hours of service at Spearman have been rearranged so that that office is now open from 7 a. m. to 5 p. m., which will, I believe, result in satisfactory service for your community. I wish to thank you for your letter and will ask that you write me again should there be occasion for further complaint." Before Mr. Carson took this matter up and secured the better service the telegraph office here opened at 8 a. m. and closed at 3 p. m.

Satisfaction when you trade with P. Monkey Maize & Co. Our prices are so low—we give until it hurts.

## Surprise Yourself

Keep an accurate account of all the money you spend in a month and what you spend it for. It will surprise you.

Then resolve to bank the amount you have heretofore been spending unwisely.

You will never regret the resolution if you act.

## Guaranty State Bank

SPEARMAN, TEX.

When in Perryton and need anything in diamonds, watches or jewelry see W. H. DUNLAVY.

Fortunately we have the merchandise to fill your wants and satisfaction is guaranteed when you trade with P. Monkey Maize & Co.

Ben Clifton was taken Wednesday morning to Miami, where he will entertain for Geary, Oklahoma, to be treated by a specialist for stomach trouble. Mr. Clifton has been a real sick man for several weeks.

Dr. John Dreesen has purchased the lot immediately north of the Reporter office and a little later on will erect a fine building on the same, which he will use as offices and for rental purposes. Dr. Dreesen has decided to locate in Spearman for the practice of ophthalmology, and will open offices in the near future.

John L. Hays and daughter Miss Alta went last Saturday to Amarillo, where they met Mrs. Hays, who was returning from a sanitarium at Geary. On reaching Amarillo Mrs. Hays decided to return to Geary for further treatment. She was getting along nicely at the last report from Geary, but did not know when she could return home.

J. P. Gouddy came from Wildorado Wednesday to look over the situation here with a view of purchasing a farm or home in town. Mr. Gouddy recently sold a place in Oldham county and intends to buy another nearer a good school. The Spearman country offers just what Mr. Gouddy and thousands of other young men are looking for.

Ross Hays is hobbling about on crutches this week, the result of an injury received in a ball game at Texhoma last week, wherein he and Happy Hillhouse materially aided the Texhoma Reds in trimming the Dalhart team. Ross pitched one game and played left field in the other. Mr. Hillhouse played center field in both games. The Reds took both games.

Dr. R. S. Tanner, representing the Continental Laboratories Serum Co., has spent the past two weeks in Spearman and vicinity, interviewing our stockmen in regard to vaccinating their fine calves. The Doctor is loud in his praises of this wonderful vaccine and is finding a good business in this country. He is also finding a few cases of contagious abortion, which he is treating.

## Farm and Ranch

### LOANS

Any size tracts and at prices and terms to suit. Spearman town lots and acreage—desirable locations.

### Oil Leases

I am in the market for Oil Leases.

### Money

Unlimited amount of money to loan on Farms and Ranches in Hansford, Hutchinson and Ochiltree counties. Interest rate and settlement options very attractive.

J. R. COLLARD  
Write for information SPEARMAN, TEXAS



### JACK DEMPSEY IN THE MOVIES

Jack Dempsey in "Daredevil Jack" at the Arcade theater Thursday night was most highly enjoyed by Spearman show-goers. This serial will run for fifteen weeks and the initial presentation bespeaks an interesting story from beginning to end. It features Jack Dempsey, heavyweight champion of the world, in a series of fifteen episodes of exciting and daring adventure. In Pathe's "Foreword" meant this screen scream we find the remarkable statement that Jack Dempsey is a gentleman. In the trial of his case wherein the champion was accused of draft evasion it was proven that he is everything but a gentleman. However, this cuts no figure with the show, which is good and intensely interesting.

S. M. Kier arrived from Denver, Colorado, Monday and will make Spearman his home. Mr. Kier has formed a partnership with his grandfather, N. R. Fletcher, and they have put in a vulcanizing plant, which will be a great convenience and money-saver to car owners of this part of the country. They have a fine plant and do good work.

## Why Experiment

O. M. Franklin's vaccine has been your standard protection against loss from Blackleg for years. It has never failed you and never will.

This vaccine is guaranteed protection and is administered free

## HILLHOUSE DRUG CO.

The People With the Goods  
SPEARMAN, - TEXAS



**RISK NOTHING—GAIN EVERYTHING**  
Trade with P. Monkey Maize & Co.

## Announcement

The Perfectly New line of Fall and Winter goods is arriving daily. Our new ready-to-wear department will be complete with new Coats, Ladies' Suits, Dresses, Middies, Etc.

The ladies are cordially invited to call and inspect this High Class Stock.

The pleasure will all be ours to show the goods.

The finest quality in High Class

### GROCERIES

is none too good for our customers  
WE HAVE 'EM.

**SALT SALT SALT**

One Price to all

**P. Monkey Maize & Co.**  
SPEARMAN.

## WINDMILLS

at Less Than Wholesale Price.

One New 14-Foot Eclipse Mill at . \$135.00  
One New 16-Foot Eclipse Mill at . 251.50

**Peoples Supply Company**  
PERRYTON

## Hobbs Auto Co.

Dealers In

**DODGE BROTHERS**  
**MOTOR CARS**

We are making deliveries now.  
Get one while you can.

**Perryton, - - Texas**

### .. C. D. WORKS ..

Attorney-at-Law

Will practice in all courts. Special attention given to Land Practice and Probate matter. Abstracts prepared. Titles examined and perfected.

**Real Estate. Farm and Ranch Loans.**

Notary Public **HANSFORD**

## MAJOR & RANEY

Commercial and Live Stock Auctioneers  
Make dates at Reporter Office

## M. C. HEAD

**FRESH CORN MEAL—Ground on an old-fashioned stone burr mill—the best meal in the world.**

Re-cleaned seeds, mixed and ground feed, black or crushed salt. I will buy your cream.

**West Side SPEARMAN**

## Today's Geography



### BATUM: CENTER OF CRUDE OIL AND CLASSIC STORY

Mingle an all-pervading odor of petroleum with the aroma of 1,000 years of history; picture the physical aspects of a Texas town of the gusher region, including puffing trains lumbering through the principal street amid a swarthy human content of Turk, Armenian, Georgian and Greek, and you get an idea of the incongruity of Batum.

Batum has grown like a mushroom within a generation because a pipe line poured precious oil through its Black sea port. It nestles at the foothills of a stream of history that parallels the pipe line and the 550-mile course of the railway to Baku, which links the Black sea to the Caspian, and passes such peaks of legend as the 18,000-foot Mt. Elburz, where Prometheus was bound to a rock as the vultures consumed his flesh.

From 1907 to 1911, inclusive, nearly one-fifth of the world's oil supply came from the Caucasus region, and in normal times Batum was credited with exporting more petroleum than any other port in the world. Batum won this boon by the natural advantage of a harbor ranked as one of the best in the world, despite the occasional storms that render its shelter treacherous.

The city came to its industrial own when it passed from Turkish dominion to Russian hands in 1878; but political troubles, even before the war bolts of 1914, affected its commerce. Before the World war a movement had been launched to boom Batum as a health resort. In that field it had some assets, despite its get-rich-quick anomalies and unkempt appearance, such as a climate where the foliage was thick in mid-winter, and its boulevards, shaded by palms, acacias and banana trees.

In 1903 Batum had an economic experience that affected it more deeply, perhaps, than political disturbances. It never recovered from the general strike of that year, which spread over the entire South Russia, and, in Batum, brought paralysis to business, suffering to citizens and palsy to progress.

Batum is built in a sort of amphitheater facing a beautiful bay. Wine was produced in the vineyards in its vicinity; and in the spring tons of strawberries were grown in the fields nearby. Both products were exported before the war. In those days automobiles, sewing machines, fireless cookers and writing materials passed its custom house on their way to the Caucasus or Persia.

### WHAT'S IN SOME GEOGRAPHIC NAMES

Names of such women as Joan of Arc and Edith Cavell are written indelibly upon the hearts of people for all ages. Generous and well deserved tributes have been paid lastingly to others, but so much have their names become a part of our daily lives that many who frequently pronounce them are unmindful of their significance. Cities, rivers, provinces and islands bear the names of women of distinction.

Lady Franklin Island, near Baffin Island, in the arctic circle, is named for the wife of Sir John Franklin, the explorer who lost his life in first finding the Northwest passage through the great ice of the polar regions. There is perhaps no more beautiful story of untiring devotion and persistent effort than that of Lady Jane Franklin who, after the failure of many attempts, fitted out a ship which, though it brought back to her the definite proof of the loss of her husband's expedition, established his achievement of his object.

The picturesque stories of the little Indian princess Pocahontas always will hold a loved place in the hearts of American childhood. Counties in Iowa and West Virginia, villages in Bond county, Illinois, and Cape Girardeau county, Missouri, and in the Rocky mountains in Alberta, Canada, are named for her.

Queen Victoria's name is wrapped around the British empire from the capital of British Columbia, over the heart of Africa at Victoria Nyanza and Victoria falls, and beyond into the Queensland and Victoria in far-away Australia.

America, too, in its early days of colonization paid its tribute to the queens of the mother country and to the gracious ladies who braved the dangers of untried shores with their lords. Elizabeth, a cape in Maine, and Elizabeth City in Virginia, as well as the state itself, together with some 25 other places in the United States, bear the name of the clever, witty, versatile coquette, who took the dissension-torn England and whipped it into a place as a world power. Elizabeth Carteret, the charming wife of one of the aristocratic proprietors of New Jersey, shares with Queen Elizabeth some of the honors of the name. Elizabethtown, in North

# AUCTION SALE

I WILL SELL FOR

## BEN B. ARCHER

On the Streets of  
**PERRYTON, TEXAS**

# Saturday, Oct. 16

Beginning at 2:00 O'Clock P. M., the following property.

### Six Head of Good Work Mules

One pair black mules, 5 years old, weight 850 pounds each.  
One pair mare mules, 5 years old, weight 875.  
One brown horse mule, 7 years old, weight 925 pounds.  
One bay mare mule, 2 years old, over 15 hands high.  
This is one of the very best mules in the country.

### Two Good Horses

One bay saddle horse, eight years old; an extra good cow horse; well trained and dependable.  
One black horse 6 years old; has been used as a kid pony; sleek fat and a good looker.

A bunch of good, young horses will be in this sale. Come and buy a team.

**TERMS**---On amounts under \$10 cash. On amounts of more than \$10 a credit of 3 months' time will be given; purchaser to give note with approved security and notes to draw ten per cent interest from date; five per cent discount for cash. All property must be settled for before being removed from the premises.

## ED LITTLETON

AUCTIONEER

Perryton National Bank, Clerk

Make Sale Dates and have Sale Bills printed at the Spearman Reporter Office

Caroline, in England, and Jersey, are named for her.

The name of Clara Barton is perpetuated in Barton county Kansas, and the wife of George Washington who before her first marriage was Martha Dandridge, is honored in the town of Dandridge, Tenn.

Maryland and Virginia are fairly bespattered with the names of the queens and princesses of England, the state name of the former being taken from that of Queen Henrietta Maria, the wife of Charles I. Then, too, there are Annapolis, named for the wife of James I of England; and Anne Arundel and Caroline counties, in Maryland, called after the wives of two of the Calverts; Fluvanna county and the North Anna river in Virginia, named for Queen Anne; and Charlotte, Amelia and Caroline counties and Charlottesville, the home of the University of Virginia, all called for the wives and daughters of English kings.

Marietta, O., was named for the haughty, charming Antoinette. The Aleutian Islands, off the coast of Alaska, when that territory was Russian, were known as Catherine archipelago, in honor of Catherine the Great. Ekaterinburg was named for the Russian Catherine who ruled Russia through her husband, Peter the Great.

### CLETRAC TRACTOR FOR SALE

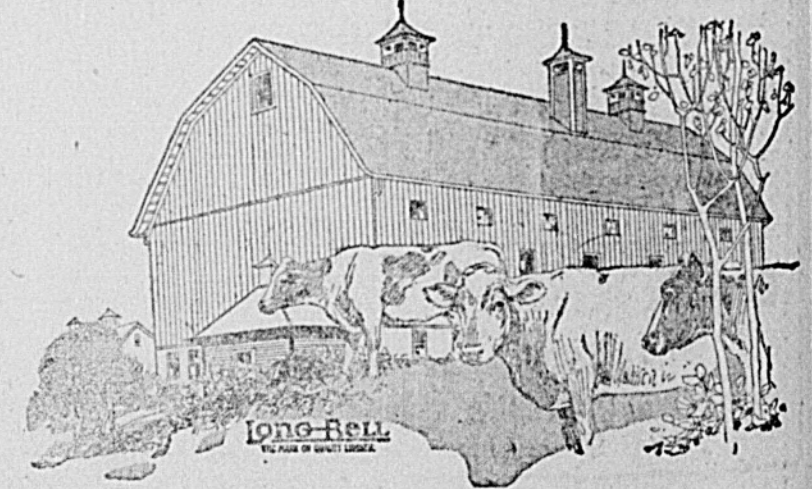
Having finished plowing and seeding, I now have one Cletrac tractor and 5-disc plow for sale. Cash or good note. This tractor and plow are in first class condition. See Shorty Short or J. R. Collard, Spearman, Texas. 4013\*

BUD BENNETT.

### LOANS AND INSURANCE

Straight loans on farms; prompt examinations and settlements. Fire, lightning and tornado insurance on city and farm houses.

McLain and McLain Realty Co.  
Spearman, Texas.



### It's a Money-Saver Every Time

That's exactly what a good barn is. It keeps the cattle in good condition, thus saving waste from loss in weight, and death due to exposure. Besides, it takes less feed to give more weight when cattle are properly sheltered.

Invest in a good barn. Don't rush in and build it just any old way, for you will surely regret it. Plan for the future. Build so you can enlarge or add to your buildings as you need more room.

Whenever you are in town, come in and we will be glad to talk over different barn plans. Or, we will come out to see you, if you wish.

## Panhandle Lumber Co.

R. J. McCASLIN, Mgr.  
Phone 17

Spearman  
Texas



STORAGE BATTERY  
**Willard**  
TRADE MARK REGISTERED

**T**HERE is one thing about our business that interests you all the time—that is the matter of getting *top-notch service and long life out of the battery on your car.* That means a job for you and a job for us. Even batteries with Threaded Rubber Insulation must be kept charged and must have water put in once in a while.

**BATTERIES**  
Recharged and Repaired

VULCANIZING—Bring us your old Tires and Tubes. We will make them new.

**Spearman Battery Station**

DAVIS & SMITH North Main St.



L. S. CATOR, President BUSTER CATOR, Manager

**Monroe Garage**

L. S. CATOR & SON

Goodrich and Portage Tires and Tubes.

High grade Gas Oils and Greases.

Good mechanics always on the job to look after your car troubles.

We usually have a bargain in a second hand car. Come to see us when in need of anything in the automobile line.

New Home of

**The "Monroe"**

The Latest and best in a Moderate Priced Car

**L. S. CATOR & SON**  
SPEARMAN

**Groceries!**

What to eat is a puzzling question these hot days.

We keep only the freshest and best groceries and our store is clean and sanitary.

Come in and let us help you solve the problem of what to fix for that big dinner.

**Jno. L. Hays Mercantile Co.**  
Spearman

**TACNA AND ARICA: SIAMESE TWINS OF GEOGRAPHY**

Tacna and Arica! The words are fast becoming as inseparable as the Gold Dust Twins, the Dolly Sisters, or Mutt and Jeff.

The regions form a territorial bone of contention among Chile, Peru and Bolivia. The province of Tacna, composed of the department of Tacna and Arica, is shown on maps made in Chile as the northernmost province of that country, and on maps made in Peru as the southernmost province of Peru, bordered on the north by the Rio Sama and on the east by Bolivia. Its broad uplands are rich in nitrate, and on the Bay of Arica, at the terminus of one railroad leading to La Paz and the Interior of Bolivia, and of another running to ports to the south, the delightful city of Arica is situated, giving the possessor of the territory a great advantage in South American affairs from both political and commercial standpoints. Here is ample reason why these two South American republics want it, and why Bolivia hopes that, in the adjustment, she will have an outlet to the sea accorded her.

The trouble over this region arose originally from the fact that, in the days of the early Spanish settlers, the country was so vast that a few hundred square miles more or less made no difference in the affairs of the colony, and when the colonies organized themselves into republics they still were too busy with their internal problems to bother about where their boundaries began and where they ended. This condition was true not only of Peru, Chile and Bolivia, but of most of the other South American republics, as indicated by the numerous boundary questions which have been in dispute during the last decade.

So matters drifted until the middle of the nineteenth century, when guano and nitrate were discovered in this formerly ignored region. The guano alone was then hastily estimated as worth \$20,000,000, not to mention the nitrate. What friends could be expected to remain friendly with such a mountain of dollars between them? Since that time the Peru-Chile-Bolivia story has been one of controversies, treaties, counter-charges and plebiscites never taken.

**THE MAIL MAN: COURIER OF CIVILIZATION**

Did it ever occur to you that your city letter carrier, your village postmaster or your rural route carrier has a past?

He is the agent by which the long arm of Uncle Sam taps your shoulder one, two, maybe three times a day, yet he is so unobtrusive that you probably do not know him half so well as most other agents of your government, the school teacher or the policeman, for example.

But he not only is an essential, but a historic figure. The history of the postal service and its employees extends to the days of the Romans when the earliest known means of transmitting a message was by carrier. These admirable organizers, the Romans, marked by a "post" the place in the road where the relay of one runner by another was effected; thus they named our system long before it was born.

The first letter post seems to have existed in the Hanse towns in the thirteenth century in order to facilitate relations between the merchants of the various members of the Hanseatic League.

The British post office had its beginning in the sixteenth century, and our own colonial methods of handling mail were inherited from our British forefathers. Long before the people had any means of exchanging either personal or official letters, the king had established a system of conveying his personal messages and official documents by royal messengers. In the reign of King John that petulant monarch paid out a large sum for a postal service and charged it to the household and wardrobe accounts. Messengers who were thus entrusted with matters of state had to be above suspicion. They went the whole distance and were paid according to the length and danger of their journeys.

In 1638 New England proposed to the British sovereign that a postoffice system be established in the colonies, as it was "so useful and absolutely necessary." His majesty paid no attention to the plea, but Richard Fairbanks, in the same year, set up an office in Boston to receive letters from ships. He undertook to deliver the letters received and charged a penny for each letter. He also received mail for out-going ships, but no one was forced to send mail through his office.

A thrilling story of the devotion of mail men to their duties is that of the pony express, the first rapid transit mail line across the 1,908 miles of prairie, desert, snow-capped mountain peaks, and alkali wastes between the Missouri river and the Pacific coast. It was inaugurated early in 1860 in order that the West might be kept more closely in touch with the North in view of the trouble brewing from the slavery question, and, though it had an existence of only sixteen months, it made the East and West only ten days apart at a time of crisis.

The date of starting was to be March 26, 1860, and Forts Kearney, Laramie, Bridger, Great Salt Lake City, Camp Floyd, Carson City, the Washoe Silver mines, Placerville and Sacramento were to be the points of delivery of mail. In St. Joseph, Mo., eager and excited crowds gathered in the streets to see the first courier, the wiry, twenty-year-old Johnnie Fry,

**Announcing the Opening of the**

**Spearman TAILOR SHOP**

Fall and winter lines of samples are now on display. Call and make your selections. I represent four of the best tailoring establishments in the country: Lamm & Company, Royal Tailoring Company, J. L. Taylor and the National Tailoring Company. Let me order you a suit today.

**Cleaning and Pressing**

I have just installed a brand new Hoffman Triple A steam press and am prepared to do your cleaning and pressing as it should be done. Ladies, your garments will not be "shiny" when they come from this press.

**SID CLARK, Manager**

North Main : : : : Spearman

Laundry Basket is Closed Monday Afternoon

as he dashed away on his jet black steed for the first lap of the race of flesh, blood and determination against the desolate spaces of an unpeopled country.

These riders were clad in buckskin shirts, ordinary trousers, high boots and soft slouch hats, and were armed with sheath knives, Colt's revolvers and Spencer carbines. The best time they made across the trackless waste was in carrying President Lincoln's inaugural speech to San Francisco—seven days and seventeen hours.

**MONEY TO LOAN**

on Texas and Oklahoma farms. Will loan one-half on intrinsic or true value of land. Write or call on us. McLain and McLain Realty Co., East side of Main street, Spearman, Texas.

**Notice to the Public**

I will sell wood for \$5.00 per four-horse load. It will be necessary to either phone or come to headquarters before getting the wood, otherwise you will be treated as trespassers. Positively no hunting allowed. W. T. COBLE, Owner of the Turkey Track ranch.

**Notice**

No hunting or fishing will be allowed in the Diamond C pastures, on the headwaters of the Palo Duro. These lands are posted and trespassers will be prosecuted. JAMES H. CATOR & SON.

**TO THE PUBLIC**

Having posted my ranch, lying in the northeast corner of Hansford county, along the Palo Duro creek, as required by the law of Texas, this is to specially

call attention to any one fishing, hunting or trespassing in any way therein, that they will be prosecuted to the full extent of the law.

GUS B. COOTS, 36152<sup>d</sup> Owner of Palo Duro Ranch



Brands: Diamond C on left side slash \ on left hip. Ear Marks: Crop on left & under half crop on right. Range on headwaters of the Palo Duro. J. H. Cator & Son, Spearman

**SEE ME BEFORE YOU DIE**

**LIFE INSURANCE**

Is a guaranteed indemnity against what isn't LIKELY to happen, and what you will do your very best to prevent, but which MAY OCCUR in spite of everything you or your friends can do.

**State Life Insurance Company**  
Indianapolis

MISS EVA ALEXANDER

Spearman



# STOVES



"Stove time" is again upon us. The little oil stove will no longer fill the bill. We have what you want in

Good Heating Stoves and Cook Stoves

The coal-saving kind. Come in and look them over.

We have also something new in

Oil Burning Heating Stoves. See them.

Get your order in early if you want a Van Brundt Wheat Drill.

McCormick Twine Cream Separators

**J. M. FORSHEE**  
HARDWARE and IMPLEMENTS

South Main

Spearman

## Royal CAFE

### Home Made Pies

Everything in the Short Order Line

at

ALL HOURS

Prices Right

Good Eats for Folks who have Good Taste.

D. J. Puterbaugh, Mgr.  
Spearman

## Farm Loans

QUICK MONEY

Inspector out once a week from Woodward, Oklahoma.

Attractive Terms

**McLAIN & McLAIN**

Spearman

### ATTENTION! COW MEN

You have been losing calves from contagious and infectious abortion for years. Some of you have lost as high as 50 per cent in a year. This means a heavy loss and a great many young animals have gone to market on that account. Why let this dreaded disease continue when it can be stopped with two injections of Continental Serum? This great Serum is past the experimental stage and we have proven wherever it has been used that a cure is absolutely possible. We guarantee to immunize 94 per cent of your cows.

DR. R. S. TANNER,  
Field Manager.

For further information see S. B. Hale at the Hale Drug Co., Spearman.

List your ranch, farm or raw prairie land with me. Or if you want to buy, see or write me. GEO. M. TOCKEY, Booker, Texas. 36tf

### NEW BUICKS

Shipment of Buicks just received. Better come quick if you want one of these best of all automobiles. L. W. Booth, Guymon, Oklahoma.

Send me your watch and jewelry repair work by mail. All work guaranteed. W. H. DUNLAVY, Perryton, Texas.

### FARM LOANS

Inspector here every week. Attractive terms. We are now ready. Come to see us. McLAIN & McLAIN, 35to Spearman, Texas.

The new bank at Texoma, the Farmers State, are now representing the Oklahoma Farm Mortgage Co. over all this territory, having direct charge of seven counties in the Panhandle. If you need a farm loan quick, see us.

State of Ohio, City of Toledo, Lucas County, ss.

Frank J. Cheney makes oath that he is senior partner of the firm of F. J. Cheney & Co., doing business in the City of Toledo, County and State aforesaid, and that said firm will pay the sum of ONE HUNDRED DOLLARS for each and every case of Catarrh that cannot be cured by the use of HALL'S CATARRH MEDICINE. FRANK J. CHENEY.

Sworn to before me and subscribed in my presence, this 8th day of December, A. D. 1935. A. W. GLEASON, Notary Public.

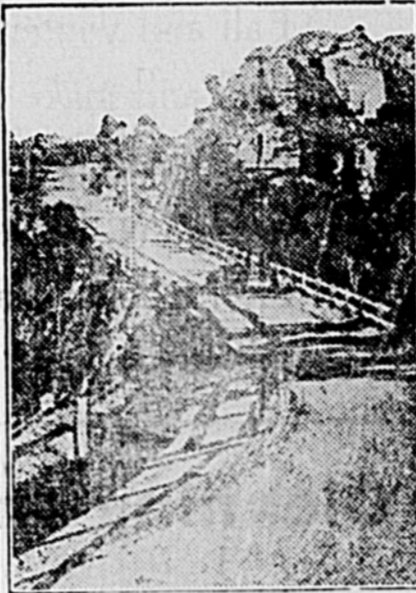
Hall's Catarrh Medicine is taken internally and acts through the blood on the mucous surfaces of the system. Send for testimonials free. F. J. CHENEY & CO., Toledo, O. Sold by all druggists. 75c. Hall's Family Pills for constipation.

### PRESERVING A "WHITE AUSTRALIA"

Declaration by the prime minister of Australia that his country was determined to maintain its traditional policy of a "White Australia," a policy as firmly grounded there as is the Monroe doctrine in the United States, again turned the attention of the world toward that remote and unique continent.

"It is not that Australia despises immigration," explains a communication to the National Geographic society from Herbert E. Gregory. "It is rather that she has clung to her ideal of a homogeneous people of British origin."

"Australia is disappointed that of the four large areas which offer congenial homes for people of European blood—namely, Australia, Canada, United States and Argentina—Australia alone is passed by, while the other three favored regions have received Europeans by hundreds of thousands. She saw the United States receiving in one year (1913) 1,197,892 people from abroad, more than the



Mt. Victoria Pass, New South Wales.

entire net immigration to Australia for the preceding fifty-three years, and in another year (1910) enrolling four times as many people born in the United States Kingdom as were living in Australia.

"The traveler in search of duplicates of the Canadian Rockies, the Yosemite, the Grand Canyon, of Norwegian fjords and Alpine scenery, need not visit Australia. Its mountain scenery is that of the southern Appalachians, the White mountains and the low ranges of Arizona. Its plains and plateaus are comparable with those of the Rocky mountain foothills and the arid expanses of Utah, Idaho and Oregon. The blunt granite cap of Mt. Kosciuszko, 7,328 feet above sea, is the culminating point of land. A half dozen peaks reach the height of Mt. Washington, and something like one per cent of the entire land area rises as high as the Catskills.

"That the size and form of a land-mass nearly as large as Europe should have remained unknown until 1770 is most remarkable.

"Curiously enough, the establishment of the first colony on the new-found continent is an episode in the history of the United States. It was proposed by the British government to utilize the land as a home for the 'Loyalists' (Tories) who found life in the American colonies uncomfortable at the close of the Revolutionary war. They were to be supplied with land and money, and Malay slaves or English convicts were to be provided as laborers.

"Fear of the French fleet and the removal of many Tories to Canada led to the abandonment of this scheme, but another use for Botany Bay was soon discovered. Place must be found for undesirable citizens, who, before the Revolution, had been sent to America at the rate of one thousand a year, and New South Wales met the requirements. The history of Australia begins with the year 1788, when ten hundred and thirty-five convicts under military escort landed at Sydney Cove."



## REDUCTION IN PRICES OF FORD PRODUCTS

The war is over and war prices must go.

Effective at once Ford Cars, Trucks and Tractors will be sold f. o. b. Detroit at the following prices:

Touring, regular	- - \$440	Coupe with starter and demountable rims	- - 745
Touring, with starter	- - 510	Sedan with starter and demountable rims	- - 795
Runabout, regular	- - 395	Truck with pneumatic tires	- - 545
Runabout with starter	- - 465		
Chasis	- - 360		
Tractor	- - 790		

THE FORD MOTOR COMPANY makes this reduction in the face of the fact that they have on hand immediate orders for 146,065 cars and tractors. The Company will suffer a temporary loss while using up the material bought at high prices. They are willing to make the sacrifice in order to bring business back to normal conditions as quickly as possible and maintain the momentum of the buying power of the country.

Henry Ford says: "The war is over and it is time war prices were over. There is no sense or wisdom in trying to maintain an artificial standard of values. For the best interests of all it is time a real practical effort was made to bring the business of the country and the life of the country down to regular pre-war standards."

We are at your command with regular Ford efficiency in service and eagerness to fill your orders.

**R. W. MORTON**

Authorized Ford Sales and Service.

Spearman

Dumas

### Vulcanizing of the better kind

Just take a moment and let us go over those tires, Mr. Auto Owner. We may save you some trouble. Are you sure they will last the trip out? You may have a blow-out or flat-out.

If the fabric is sound, our skillful repairing will make it good for many a mile, and we build up the fabric just the same as we build up the rubber.

Don't junk your old casings. Bring them to us to be repaired.

Spearman Auto Tire Works

GAS and OILS

KIER & FLETCHER, Proprietors  
Back of Forshee Hardware

## Farm and Ranch LOANS

I make Farm and Ranch loans at a rate of interest to meet competition at all times.

I make a specialty of buying and taking up and extending Texas vendor's lien notes.

No loan too large or too small for us. We guarantee satisfaction.

**WILL CROW**

Canadian - - - Texas

Twine! .. Twine! .. Twine!

## McCORMICK TWINE

Machine Oil, - Binder Repairs  
Furniture, - Queensware

Wicks Perfection Oil Stoves Wicks

Full line of Linoleums in 12-ft. Lengths .. Complete line of Hardware to select from. ..

**Andrews Hwd. Co.**

Implements - Furniture - Queensware

East Side Main

-:-

SPEARMAN

# LUMBER

WE HAVE anything and everything you need in the building line. Come to our offices and talk over your building problems. Our books of plans and specifications, prepared by the most expert builders of the world, are at your disposal.

Wire, Posts, Builder's Hardware

**SPEARMAN LUMBER CO.**

L. D. COATE, Manager

SPEARMAN



# REDUCTION SALE

at the .. ..

## Surprise Store

\$25.00 Tricotine wool dresses at	\$18.50
45.00 Serge dresses at	36.25
17.50 Serge dresses at	12.50
18.50 Serge and Panama Skirts	14.50
10.00 Skirts at	7.50
7.50 Mohair Skirts at	4.95

### Extra Special

ZEPHYR  
GINGHAM

35c per yd.

#### Real Bargains

A few pairs of Ladies High Heel Shoes, all colors

Special Sale price \$7.50

#### Real Bargains

Peters' Special shoes for ladies, in Black and Brown Kid,

Special prices, \$8.75, 9.85 and \$11.10

Complete line of Ladies' Coats--fur trimmed--at prices that will astonish you. Come early and get your choice.

All Silk Stockings at Twenty-five per cent Discount.

Complete line of Ladies' and Children's Underwear for the winter.

BLANKETS AND QUILTS.  
LEATHER VESTS AND SHEEPLINED COATS.

Buy your winter wearing apparel at .. ..

## The Surprise Store

WALK A BLOCK AND SAVE A DOLLAR

Spearman,

Texas

# HIGH PRICES

ON all commodities seem to be a thing of the past, and in line with the general price-cutting rage of the country, we have lowered our prices from fifteen to thirty per cent since August first.

We can now make you some mighty good prices on lumber and other building material, so when you need anything in this line don't fail to come to see us.

## Don't Hesitate

to ask favors of this yard. We are dependent upon you for financial support, and in return we offer service. If it is to be had you will find it at our yard.

## You Need a Fine Barn on Your Farm

### New arrivals:

Car load of Catalpa Fence Posts.  
Sheet Rock Wall Board.

Car of Coal in transit since Sept. 24

## White House Lumber Co.

Spearman

### The Clark Barber Shop

East Side Main - - - SPEARMAN

First class barbers and a clean, sanitary shop. Three chairs; you seldom have to wait.

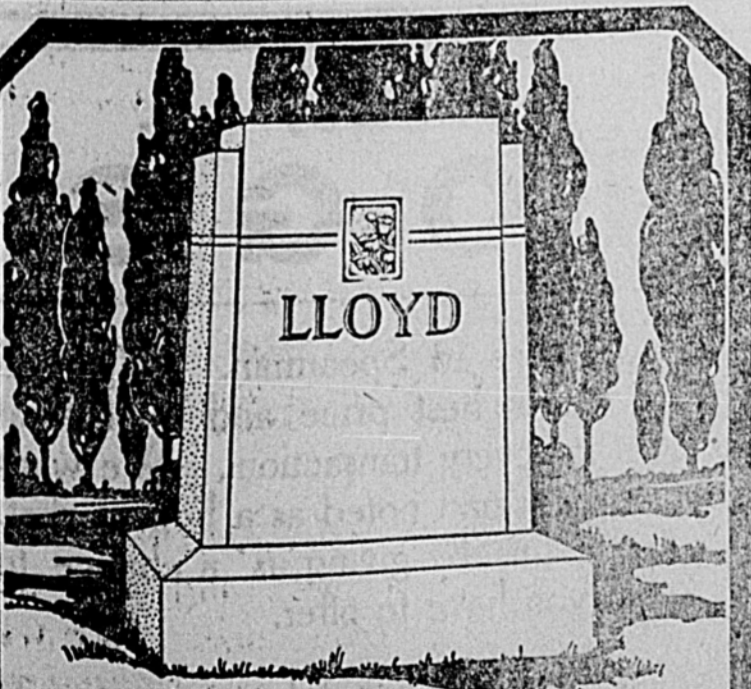
FRED WINTERS, Manager.

### SPEARMAN DOES THINGS

Help Spearman Win  
GET IN.

The Spearman Chamber of Commerce

### Pay Your Subscription.



There is no more fitting expression of your love to those honored dead—Mothers, Sisters, Fathers, Brothers, Cousins—than a monument of eternal stone of rare beauty. I am direct representative of one of the largest monument manufacturers in America, whose marbles, quality of workmanship, and general service are unexcelled.

ORAN KELLY

Representing Great Western Monument Co., Dallas, Texas

### THE AMERICAN RED CROSS IN PEACE TIME Disease Prevention



Through its Health Service the American Red Cross has begun a nationwide concentrated effort in co-operation with established organizations to reduce greatly the amount of preventable disease and physical defects found among the country's 108,000,000 population. Education is its most powerful tool. Special attention is devoted to children, and this picture shows a typical Red Cross welfare clinic where little ones are treated and mothers instructed.

### THE AMERICAN RED CROSS IN PEACE TIME Aiding Poland



But for the work of American Red Cross agents in all regions of Poland during the last twelve months, hundreds of thousands of people in that tragic country today would be under the sod, victims of hunger, disease and exposure. The job in Poland is one of tremendous proportions and cannot be abandoned for many months to come. Here is a typical scene: A Red Cross worker "at the throttle" of a soup kitchen where hundreds of undernourished women and children are fed daily.

**Hearing of Butterflies.**  
The hearing of certain butterflies, the moths and the spiders has been a subject of much study by F. Eggers, whose results have been reported in a Berlin zoological annual. The seat of hearing is found to be the "tympal organ" of the last ring of the thorax. The air-filled vesicle or bladder of this organ adjoins two very thin spots in the external chitin, and one of these is the true drumhead, connected with a nerve strand having two sensory cells, while the other, the so-called opposite drumhead, seems to serve as a sounding board to re-enforce vibrations. Experiments with crickets have shown that the chirping of the male is heard only by females having the tympal organ intact. The organ of the butterflies, which is more sensitive, cannot be tested in the same way, but response has been had to very high, shrill tones, such as that made by rubbing a cork against a wet glass, and in one species to a clattering sound made by the wings of the male. Butterflies flying by day seem to have hearing organs more generally than those that are active at night.

**Snaps Eruption Ten Yards Away.**  
An unnerving but fruitful incident occurred recently as the volcano of Kilauea, H. I., described as the most continuously active in the world, was being examined by scientists of the Hawaiian Volcano Research association. At the climax of this expedition they had determined to photograph a towering crag of solidified lava that rises, Gibraltarlike, from the surface of a swelling, overcrusted lava lake, declares an illustrated article in Popular Mechanics Magazine. But at the instant the cameraman was squeezing the bulb, an explosion within the uneasy mass threw into the air, not ten yards from the party, and directly before the lens of the camera, a tumbling mass of white hot lava. Crashing back, and so breaking the surface crust, these erupted fragments roused the entire lake into a "scething bellowing mass of fountains."

WALTER R. ALLEN JACK ALLEN  
**ALLEN & ALLEN**  
LAWYERS  
Perryton, Texas

FRANK M. TATUM W. C. STRONG  
**Tatum & Strong**  
ATTORNEYS - AT - LAW  
Dalhart, Texas

**WALLACE G. HUGHES**  
.. Lawyer ..  
Suites 3 and 4 First National Bank Building  
Guymon, Oklahoma

**FRED HILL**  
Attorney-at-Law  
Spearman, Texas

**R. T. CORRELL**  
Lawyer  
Perryton, Texas

**DR. JARVIS**  
DENTIST  
Perryton, Texas

**STRAY CATTLE**  
Cattle branded D on left hip strayed from pasture 4 miles south and 2 miles east of Spearman, belong to undersigned, who will appreciate information as to their whereabouts.  
C. O. DOGGETT, Spearman.

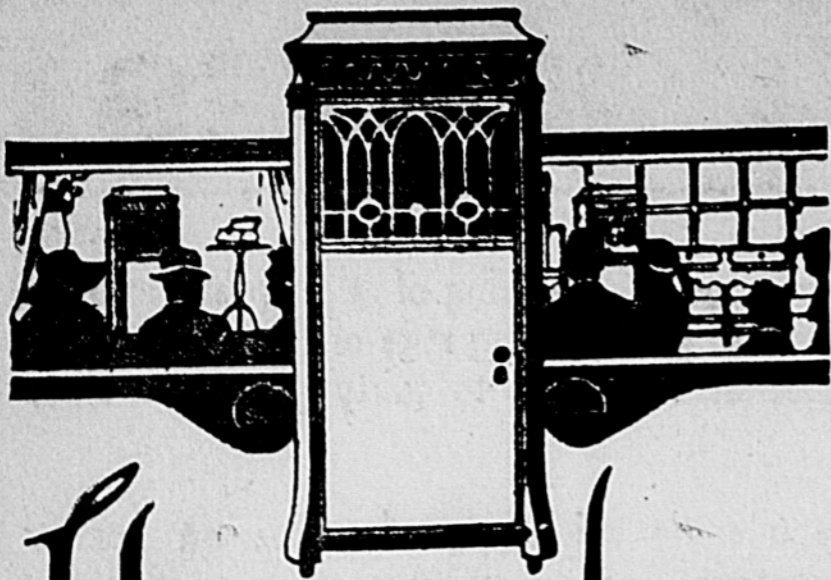
## Why

Pay 75 cents for a meal when you can walk a block and get your coffee for a nickel.

Soup and Chili always hot at **JOE'S CAFE**

DON'T LEAVE SPEARMAN HUNGRY





## Yes you can have such a phonograph

LET us show you the certificate of authenticity which Mme. Sokoloff has signed. This is the outstanding fact which comes to you out of the memorable tone test recital given Monday night, September 6, at the Arcade Theater in Spearman. A new era in music is here. Mr. Edison has lifted the Phonograph to the dignity of a new art.

You can no longer be satisfied with a phonograph that imitates. Now, you want a phonograph that equals the human voice.

You know there is such a phonograph. Mr. Edison made an astounding test with the Official Laboratory Model of the New Edison to prove it. Spearman heard the New Edison re-create Mme. Sokoloff's violin music in direct comparison with the artist's own performance. So realistic was the New Edison's performance that no one in the entire audience could distinguish it from Mme. Sokoloff's own performance.

## The New Edison

THE PHONOGRAPH WITH A SOUL

You yourself can have such a phonograph. Let us show you exact duplicates of the Official Laboratory Model, which triumphed in the tone test. Let us show you the certificate of authenticity which Mme. Sokoloff signed, after inspecting these instruments, and in which the great violinist declares that these instruments are the equals in every respect of the instrument used in the tone test.

You can buy your New Edison on a Budget Plan which so distributes the payments that you'll hardly feel them.

## Hale Drug Co.

SPEARMAN

Attend the box supper at the Methodist church, Spearman, on Friday night, October 15. Benefit of school.

About twenty-five good shoats for sale. See Joe Welch, Spearman.

Two iron bedsteads, in good condition, for sale at Star Meat Market, Spearman.

Walter P. Jones of Wichita is a recent addition to the clerical force at the First National bank.

Edgar E. Coons, prominent attorney of Texhoma, was looking after business matters here Tuesday.

For quick service send me your jewelry for repair.

W. H. DUNLAVY, Perryton.

See our fall and winter line of samples before ordering your up-to-date suit.

P. MONKEY MAIZE & CO.

## Save! Save! Save!

time, trouble and expense by buying your GAS and OILS from us. Not because our prices are so much lower, but because we handle the best to be had.

You will not be disappointed when you give our goods a trial.

## Goodwill Oil Co.

Spearman, Texas  
H. G. SMITH, Mgr.

## Lone Star Hotel

TOM SILAS, Manager

Conveniently located.  
Popular rates.

Table supplied with the best the market affords.

Don't forget our Sunday dinners.

Clean and comfortable rooms and beds.

East Side Main  
Spearman, - Texas

shall expend for their public schools, when every right and liberty they possess depends upon public education. They who control the schools control the liberties of the people, and the man or woman who votes against this Amendment because it does not limit him in the amount he may expend for education is, at the same time, voting for voluntary servitude.

The wealthy property holder who is able to educate his children in private schools and is unwilling to help educate the children of his neighbor may, in a way, consistently vote against this Amendment, but the common man who votes against it is voting against himself. However, if the wealthy property owner has vision enough, he will see that the value of his property depends upon public education, and there is not a far-sighted man of wealth in the country who would not give nine-tenths of all his possessions to avoid the conditions of such countries as Mexico, Persia, Turkey, Russia and China, where they have no public schools.

4. If the Amendment carries, the Legislature will, at the next session, enact a law making it effective. Then it is up to the people of each district to say whether they will raise the school tax rate in their own particular district or not. As conditions now are, the only way to get more money for the schools is by increasing property valuations and, as a result, such valuations have been increased, in many cases, beyond what property is actually worth and wholly out of proportion to the valuations of the state and county. If we raise the rate, we can lower valuations to where they will not be out of proportion to what they are in the state and county. However, the ratification of the Amendment in itself will in no way affect the present school tax rate in any district. That rate will remain what it is until the people of the district change it by a majority vote.

5. If the Amendment should fail to be ratified by the people, the schools of Texas would be completely demoralized. The four million dollar appropriation made by the Legislature last spring was a temporary expedient to tide us over until the ratification of this Amendment and should the Amendment fail of ratification this fall, the people thus expressing themselves as opposed to more money for the schools, the Legislature certainly would not go contrary to the will of the people and make another appropriation. The schools would thus be without funds, the best teachers would continue to leave the State and soon only the poorest teachers would remain. Even last year (1919-20) 50,000 children in the State did not attend school because no teacher of any

SEE

## C. W. KING

If you wish to buy or sell

## Farm and Ranch Lands

In Hansford, Hutchinson, Ochiltree and Wheeler counties, Texas.

Terms to suit. Any size tracts.

Spearman, - Texas

## PRICES

are going down, and the Equity will lead.

Prices are tumbling. This includes wheat, hogs, petroleum, silver and rubber. Rice, beans, paper, apples, lumber and pig iron are selling above normal. Cotton has fallen from 42 to 22 cents per pound. This is the period of readjustment and reconstruction. There is no dodging it. Those who dance must pay the fiddler, says the Fort Worth Record. The Spearman Equity Exchange will meet every decline in price on commodities sold by us.

Light's Best Flour, per cwt. . \$6.50

Extra grade coffee, per lb. . .35

Meat and Lard, Potatoes, Canned Goods—everything in the grocery line is declining in value, and we intend to stay in the lead in this price cutting crusade.

Car Load of

APPLES,  
POTATOES and  
CABBAGE

in transit. The price will be right.

## The Spearman Equity Exchange

R. L. McCLELLAN, Manager

## Spearman Rooming House

Nice, comfortable Rooms.

Clean Beds.

Rates reasonable.

West Side Main  
Spearman

T. H. Taylor  
Proprietor

## The Auto Service Co.

Spearman  
Successors to Larkin & Son

## Automobile Repair Work

of the very best. Satisfaction or no pay.

Tires, Tubes, Accessories  
GAS and OILS

## MIZAR & PAUL, Props.

Near the Equity Exchange

Call and get acquainted

## .. We Buy .. H O G S

Bring your hogs to Spearman. We will pay you the highest price and will treat you right in every transaction. We want to make Spearman noted as a hog market. Help us do this by giving us a chance to buy what you have to offer.

We have pens and can take care of any number of hogs. Bring them in.

Raney & Wilbanks  
SPEARMAN

kind could be found for them, and more than 400,000 children the State were taught by incompetent, untrained and inexperienced teachers. Such a situation is a disgrace to the State and the people who love education will do all in their power to wipe out such disgrace by working and voting for this Amendment.

6. Texas now stands 39th among the states of the Union in the amount she expends for public education. Only one other state has as low a tax rate—Virginia. Nearly every state is increasing its expenditures for education and, if Texas does not do so, she will soon stand 48th among the states instead of 39th. It would certainly be a disgrace for that State that stands first in size, first in agricultural products, third in oil, and seventh in wealth, to stand last in education.

Mr. Farmers: You market in Texhoma, what about your banking? Texhoma has now a new bank, a service institution, the Farmers State. The present owners also own the Oklahoma Farm Mortgage company, Oklahoma City, and twenty-five more of the oldest banks of the state. Your account is solicited with the assurance we are fully able to take care of your needs both in banking and farm loans. 291f