

# THE SPEARMAN REPORTER

THIRTEENTH YEAR

Spearmen, Hansford County, Texas, February 11, 1921

Spearmen, Hansford County, Texas, February 11, 1921

Number 9

## Know Where You Stand

January first is the time for the merchant to take inventory of stock. Do you make a reckoning the first of each year?

Know just where you stand financially. Make a list of the amounts you owe. Set down in detail the money owed you, and make a list of what you own.

DO THIS, ALSO. Make an inventory of your opportunities. At The First National Bank you can build a cash capital; keep your funds in a safe place, always ready for immediate use. You can build a credit for yourself here. All through the year you can regulate your money matters safely and conveniently through a personal checking account. Keep in mind that we are here to serve your personal, business and financial interests.

## First National Bank of SPEARMAN

### THE GROUND HOG KNEW HIS BUSINESS

The ground hog evidently knew his business this time. Wednesday, February 2, was Ground Hog day and the sun shone brightly all day, thereby ending this old time weather forecaster's shadow. He went back into his hole to stay six weeks, we suppose, as on the following Sunday night this section was visited by the heaviest snow storm of the season. Snow began falling Sunday night and continued throughout most of the following day. The fall is estimated at six inches, though it is drifted badly and it is hard to make an accurate estimate. It will be of inestimable benefit to wheat, but is causing cattlemen, mail carriers, railroad men and others considerable inconvenience.

Will pay for itself in a short time—**SMROSE CREAM SEPARATOR.**  
**ANDREWS HARDWARE CO.**  
G. Tension was here from Glad Saturday, attending to business. Mr. Tension reports everything in the Glazier country; plenty of rain and outlook fine for a wheat crop.

### A. F. BARKLEY'S Insurance Agency

In our agency will be found the strongest Insurance Companies in the world. We write fire, lightning, tornado and wind-storm insurance in town and in the country. We write hail insurance in the old, permanent, established Companies that we know and that you know. We write all kinds of surety bonds in companies that are acceptable to the U. S. Government, to State and to the County or of the courts thereof.

**BARKLEY**  
SPEARMAN  
Phone 37

### CATTLEMEN

Vaccinate your calves against Blackleg. Do it now.

We have secured the agency for

### "CONTINENTAL SERUM"

Calves insured against loss—with tag in ear—at a saving of almost half the old price.

### Hale Drug Company SPEARMAN

In-Town Service

### SPEARMAN LADIES WILL ENTERTAIN

The Ladies' Home Missionary Society of the Spearman Methodist church will present a forty-minute play at the Arcade Theatre on Wednesday night, February 16, entitled "Sewing for the Heavens." The ladies have rehearsed with great patience and have learned their parts thoroughly. It will be something worth while, as these good ladies are competent and know how to go about anything they undertake.

The cast of characters follows:  
Mrs. Judd, the hostess—Mrs. McClure  
Mrs. Chesty, the president—Mrs. Andrews  
Mrs. R. B. Powers, the stranger—Mrs. Pirtle  
Grandma Gibbs, deaf but persistent—Mrs. McMurry  
Miss Luella Higgins, so sentimental—Mrs. Gibner  
Mrs. Strong, a suffragette—Mrs. King  
Mrs. Meeker, gentle and good—Mrs. Jordan  
Mrs. Day, a bride—Mrs. McSpadden  
Meely, the hired girl—Mrs. Fraser

### PLANT A TREE

Next month is tree planting time. Are you making arrangements to set out a few shade and fruit trees? If not, why not? Trees are growing at almost all the old farms and ranch houses scattered over the country and they never saw a drop of water except that which fell from heaven. You will lose a few, but if you put them out right many of them will grow fine without one bit of irrigation. He who plants a tree plants hope.

### STORRS TO SPEARMAN

Wm. Storrs and family are preparing to move to Spearman the latter part of this week. They will reside 6 miles south of Spearman. Friends of the good family very much regret to lose them from our city but the best wishes of all will go with them in their new home. Mr. Storrs has been employed with the Langston Hardware Company of this city since moving from the Spearman community.—Texoma Times.

An Old Trusty Incubator will increase the hatch. Andrews Hardware Co.

Sell your eggs at the Spearman Equity Exchange. Highest market price.

Your Ford will crank easier by attaching a HOT SHOT battery. Andrews Hardware Co.

N. Celsor was in from the Grand Plains community Saturday looking after business matters.

For quick service send me your jewelry for repair.  
W. E. DUNLAVY Perryton

Pure bred S. C. White Leghorn eggs, \$1.00 per setting of 15. See or phone 94 MRS. SID LACKEY, Spearman.

We have several cases of the celebrated Barstow honey for sale. SPEARMAN EQUITY EXCHANGE.

Mr. and Mrs. John Spivey were in from the Lakeside community Saturday attending to business matters and shopping.

J. H. Cooper and son, Daniel, were in from Grand Plains Saturday, trading and attending to business matters. They report everything in good shape up that way, with an above the average outlook for a wheat crop.

C. C. Beck and family were in from their home on the north flats Saturday, trading and looking after business matters. Mrs. Beck has just returned from Liberal where she spent a month in a sanitarium and reports that she was greatly benefitted by the treatments received there.

Earl Callaway, manager of the White House Lumber Company's yards in Spearman, reports the recent sale to E. H. Barbour of the lumber and other building material necessary to construct a fine large residence. This residence will be located in south Spearman, near the J. M. Glover home.

J. M. Blodgett was in from his Horse creek ranch Saturday, visiting with friends and looking after business matters. Mr. Blodgett reports considerable excitement down on the main line of the Santa Fe over the oil well at Higgins. The drillers have reached a depth of 3,000 feet and the indications for oil are growing more and more pronounced. If they should strike the pay dirt at Higgins, oil leases in this section would go sky-high in thirty minutes. Keep one eye on the indicator and the other on the Coble-Heywood.

### DONLEY COUNTY GETS NEW HIGHWAY TO NORTH

The action of the State Highway Commission the past week in granting the proposed highway north from Clarendon to Spearman, means that Clarendon, Jerecho, Pampa and Spearman will be connected up on a state designated road, bringing her citizens nearer and making it possible for united action for the further progress.

The credit for this newly designated road is due to the indomitable will and energy of our friend F. P. Reid, mayor of Pampa.

A few short years ago the Panhandle had no state highways. Now there is a dozen or more. We need more and they will come if the right men get behind the movement.

Work on this new highway north will begin early in the spring if present plans do not miscarry. There would be no better time in which to get the work done right when men need the employment. At any rate, Mr. Reid will not let the matter lag until he sees the consumption of his project that means thousands of dollars to the Panhandle of Texas.—Pampa News.

The Spearman Chamber of Commerce should get behind this highway and push it through. We are not giving the highways proper attention.

To secure the best results in setting out trees, loosen the subsoil. A small charge of dynamite will do it. We have the dynamite.

### ANDREWS HARDWARE CO.

Ben Archer was in from his ranch on the Canadian Saturday, transacting business. Ben, like most of the cattlemen, is delighted with the weather we have been having, and also the prospects for early grass.

S. H. Haile and family arrived from Amarillo Saturday and will make Spearman their home. They occupy the new McSpadden residence in the south part of town. Mr. Haile represents the Kansas City Life Insurance Company and intends to work the entire Spearman country.

### SNOW ON COUNTRY HIGHWAYS

Removal Problem of Greatest Importance Because of Greater Use of Motortrucks.

The snow removal problem is of increasing importance because of the greater use of autos and motortrucks which find it very difficult to travel through drifts and deep snow. In most states it is the duty of the county or local road officials to remove obstructions on the highways and snow drifts certainly are obstructions, says Farm and Home. Excellent advice on this matter is given by the Iowa highway commission as follows:

Just how much money can be used for this class of road maintenance is entirely up to the individual road official to decide. He must also decide whether it is necessary to keep the road open at all times for automobiles on only for team traffic. In deciding just what to do about snow removal, the character of the road and the nature and importance of the traffic to the general public must be a determining factor.

Road officials should not be stampeded in the case of heavy snows by insistent and angry demands that all roads be immediately opened for traffic. Sometimes an attempt to open all roads for immediate use by automobiles after exceptional snow storms, might cripple the county or township road funds for the entire year. It costs money and lots of it to remove snow, so the road official must use the best judgment as to just how far he can go, always keeping in mind, however, that no road should be allowed to remain entirely closed to traffic for any undue length of time.

Should Build Stronger. Now that the motortruck has been developed it is nothing less than a crime for highway engineers to design and build and spend the state's money for anything other than a substantial road. Delaware, New Jersey, Pennsylvania, Connecticut and other progressive states are realizing this fact and are building more concrete roads or roads with a concrete base.

Bumps Injure Car. Your car will last longer if the bumps in the road are eliminated.

Three Feet Make a Yard. "How much is pork a yard?" asked an undergraduate jokingly. "Ten shillings," promptly replied the pork butcher. "Then I'll take a yard." "Where's your money?" Half a sovereign was laid down. The old man quickly pocketed the coin and then produced three pig's feet with the quiet remark, "Three feet make a yard."

## The Difference

between the man who has learned to save and bank his money and the man who has not learned, is the difference, ten years hence, between the man flourishing in business and man looking for a job.

Form the habit of saving and bank with

## Guaranty State Bank SPEARMAN, TEX.

### ARRESTED TWO PROWLERS

John Marron from Colorado and C. L. Garms from New Mexico, arrived in Spearman some time the latter part of last week. They spent their first night here in a box car in the Santa Fe yards, leaving a fire burning in the car which was fortunately discovered by Agent Bumpus, and extinguished before any damage was done. They next showed up in the Lackey community, a few miles south of town, where they made an unsuccessful attempt to get away with an automobile belonging to Max Lackey. They also attempted to get away with E. F. Dennis' car but again made a failure in getting the car to run, as parts had been removed by the owners. Sheriff Wilbanks was notified of their presence in the community, and Sunday afternoon he and Marshal Chas. Riley went out, rounded the gentlemen up and brought them to town. Monday morning a charge of theft of tools from Max Lackey's car was lodged against them and they were given a hearing in Judge Storr's court. Marron drew 90 days and Garms 60 days in the Canadian jail. It would seem by the hasty manner in which these night prowlers were disposed of, that our peace officers intend to see that the much-tooted crime wave does not reach Hansford county to any great extent. Their presence here also brings forcibly to mind the fact that Spearman should have some sort of a jail or calaboose in which to incarcerate the undesirable. Their visits are few and far between, but when they do show up they cause our sheriff much trouble. Sheriff Wilbanks and Marshal Riley had three prisoners to guard on Monday night. Marron and Garms were taken to the Canadian jail Tuesday morning.

### A POULTRY FARM TO ADJOIN GUYMON

Roy McComas, who recently came to Guymon from Hansford county, Texas, has purchased the Vandemark eighty-acre tract east of Guymon on the cemetery road, one-half mile from town, and is arranging to establish a large modern poultry farm, and stock it with several thousand fowls. We understand that Mr. McComas has plans prepared for quite an extensive system of housing for his farm.—Guymon Herald.

### THE MAN OF MANY FACES—EUGENE KNOX

Laughs predominate in Eugene Knox's program. Knox is a humorist. He tells stories, one after the other, as fast as you can assimilate them. No wigs or make-up are necessary for Knox. His face, hair and hands are all the "fixin" needed.

There is nothing of the clown in Knox. His work, funny or serious, all has a purpose and is done with a high degree of artistry and finesse. No entertainer on the platform today more versatile or able to effect change of facial expression and character more rapidly.

You will be delightfully and helpfully entertained. Stories you hear that night will be retold and laughed over many times in the weeks to follow. Like every other Lyceum and Chautauqua town he has visited, you will vote Eugene Knox a superlative entertainer and a delightful gentleman.

On Spearman Lyceum course, at Arcade Theatre Saturday, February 26, 1921.

W. C. Nollner and family were in from Kimbal Saturday.

To  
Make a  
Good  
Record  
Great,  
Play it on  
A Columbia

Let us show you this machine as well as several other models now in stock. Get one for your home.

**HILLHOUSE  
DRUG CO.**  
The People With the Goods  
SPEARMAN, - TEXAS

## Farm and Ranch LANDS

Any size tracts and at prices and terms to suit. Spearman town lots and acreage—desirable locations

### Oil Leases

I am in the market for Oil Leases.

### Money

Unlimited amount of money to loan on Farms and ranches in Hansford, Hutchinson and Ochiltree counties. Interest rate and settlement options very attractive.

**J. R. COLLARD**  
Write for Information  
SPEARMAN, TEXAS

# Another Big REDUCTION IN PRICES

## Dry Goods

Percale, 36 inches wide, all colors . . . 25c per yd  
Percale, 24 inches wide, all colors . . . 15c per yd  
Toile Du Nord gingham . . . 30c per yd  
Fancy Dress Gingham . . . 25c per yd  
Apron gingham . . . 20c per yd  
Cheviot shirting, book fold, all colors . . . 20c per yd  
Bleached muslin . . . 18 1-2 to 22 1-2c per yd  
Hope bleached muslin, the old reliable . . . 25c per yd  
Peppera 9x4 sheeting . . . 80c per yd  
Outings, white, fancy and dark colors . . . 20c per yd

## Dresses

Ladies' gingham dresses, \$5.00 value, only . . . \$2.50  
Ladies' gingham dresses, \$2.75 value, only . . . 1.40  
Ladies' gingham dresses, \$5.40 value, only . . . 2.70  
Ladies' gingham dresses, \$6.00 value, only . . . 3.00

**All Other Ladies' and Children's  
Dresses at One-Half Price**

## Children's and Misses Hose

Children's and Misses' hose, 45c value now . . . 30c  
Children's and Misses' hose, 50c value now . . . 35c  
Children's and Misses' hose, 55 to 65c value . . . 40c  
Children's and Misses' hose, 70 to 80c value . . . 50c  
Children's high grade black hose . . . 25c  
Ladies' Burson black hose . . . 50c  
Ladies' hose, black, brown and white . . . 45c  
Ladies' silk hose, white and black . . . \$1.00  
Ladies' silk drop stitch hose . . . 1.00  
Ladies' silk hose, brown and black \$2.55 value . . . 1.50

## Men's and Boy's Clothing

Men's best work shirts . . . \$1.00  
Men's best overalls and jumpers, each . . . 1.85  
Men's unionalls, regular sizes . . . 3.50  
Boy's unionalls, sizes 6 to 18, \$2.00 to . . . 2.65  
Boy's overalls, sizes 3 to 16, 75c to . . . 1.40  
Men's shirts, \$4.10 values now only . . . 2.25  
Men's shirts, \$3.50 values now only . . . 2.00  
Men's shirts, \$2.50 values now only . . . 1.70  
Men's Leather Vests, \$16.50 values, now . . . 8.25  
Men's Leather Vests, \$16.00 values, now . . . 8.00  
Men's Leather Vests, \$19.00 values, now . . . 9.50  
Men's Leather Vests, \$12.75 values, now . . . 6.40  
Men's Mackinaw coats, \$18.00 value . . . 9.00  
Men's Mackinaw coats, \$15.00 value . . . 7.50  
Men's Mackinaw coats, \$12.50 value . . . 6.25  
Boy's Mackinaw coats, \$8.00 value . . . 4.00  
Boy's Mackinaw coats, \$8.50 value . . . 4.25  
Boy's Mackinaw coats, \$12.50 value . . . 6.25  
Boy's Mackinaw coats, \$13.50 value . . . 6.75  
Men's Duck coats, \$6.00 value . . . 3.00  
Men's Duck coats, \$12.00 value . . . 6.00  
Men's wool hose, 75c value . . . .50  
Men's black cotton hose, 50c value . . . .35  
Men's hose, black, white and brown, 40c value, now . . . .30  
Men's Rockford hose, 3 pair for . . . .50  
Men's Corduroy pants, \$7.50 value at . . . 5.65  
Men's Molekin pants, \$6.50 value at . . . 4.25  
Men's Kahki pants, \$4.00 value at . . . 3.00

**You Will Also Find Some Very  
Attractive Prices in Our  
Grocery Department**

SALE NOW ON

January 28, 1921

# P. M. MAIZE & CO.

ONE PRICE  
TO ALL.

# SPEARMAN

The new bank at Texhoma, the Farmers State, are now representing the Oklahoma Farm Mortgage Co. over all this territory, having direct charge of seven counties in the Panhandle. If you need a farm loan quick, see us.

## HOUSEING THE FIRE WAGON

The city council has had erected on the lot north of the Reporter office a small but substantial building in which will be kept the chemical fire engine. The building is constructed in a way that will admit of its being moved with very little trouble, so that when the owner of the lot on which it is now located is ready to build, it may be slid away to another location. The fire company is trying hard to keep this fire fighting apparatus in shape for instant use at all times, but on last Saturday night someone thoughtlessly dumped the acid container without releasing the pressure, and when it was discovered Sunday morning the container was considerably damaged. The leaks were repaired and it is again in perfect order, but a few such tricks as this will put us again without fire protection of any sort. Surely this was done unthoughtfully and with no intention or desire to do the engine an injury. If there is a person in the town who would stoop so low as to intentionally do such a meanly trick, he should be sought out and dealt with as fiends are usually dealt with.

## SURPRISE STORE CLOSED

D. W. Wertheimer finished packing and shipping the remainder of the stock of the Surprise Store, and left Wednesday morning for his home in Amarillo. The owner of the Surprise, A. Isenberg, owns stores at Amarillo and Clovis, so decided to quit here, although he was enjoying a splendid business. His many friends regret that Mr. Wertheimer left Spearman. He is a capable, energetic young fellow and will be missed from business and social circles of the town.

Earl Andrews returned Monday from Canyon, where he has been attending school and intends to enroll as a student in Spearman Hi.

A ladies' gold ring, large opal setting, was lost last week somewhere in Spearman. Finder please leave at Reporter office and receive liberal reward.

C. F. Barnett returned Wednesday afternoon from an extended trip thru the west. He visited in California and Old Mexico, reports an enjoyable trip, but is glad to be back in Spearman.

## Seed Oats

Texas Red rust proof seed oats for sale. See or phone, ROY HOLTON, 10 miles south of Spearman, on Carr place.

## TREES BEAUTIFY OUR ROADS

Enthusiasm Displayed All Over Country in Campaign for "Roads of Remembrance."

Motor travelers all over the country have stimulated a contagious interest in planting trees by the roadsides. The Federation of Women's Clubs, which was one of the first national organizations to assist in this work, has planted many trees along sections of the Lincoln highway, writes Victoria Falter Stevenson in Sinclair's Magazine. Today it is beautifying many roads by planting trees in memory of the men who served in the World war. In fact, enthusiasm for roadside tree planting is evident all over the country in the widespread interest which is taken in "Roads of Remembrance."

Patriotic and civic organizations, women's clubs and boy scouts' units are providing miles of roadway with young oaks and elms. These sturdy trees, which will perpetuate the memory of the men who took up arms for America are also giving the roads beauty and individuality.

Perhaps the most unique work of this character which is reported by the American Forestry association is being done in Georgia around the city of Macon. There the woman's auxiliary of the chamber of commerce is planting a huge cross of trees in honor of the men and women who went to war from their vicinity.

Block salt, 60 cents per block, at Spearman Equity Exchange.

**Save! Save!  
Save!**

time, trouble and expense by buying your  
**GAS and OILS**

from us. Not because our prices are so much lower, but because we handle the best to be had.

You will not be disappointed when you give our goods a trial.

**Goodwill  
Oil Co.**

Spearman, Texas  
Floyd Hays, Mgr.

## Improved Roads

### MUCH MONEY FOR IMPROVING

Over \$400,000,000 Expended on Rural Roads and Bridges During Calendar Year of 1919.

(Prepared by the United States Department of Agriculture.)

During the calendar year 1919, 46 States of the Union expended over \$400,000,000 on their rural roads and bridges, the bureau of public roads of the United States Department of Agriculture recently announced. This total is made up of the actual cash expenditures for such items as labor, materials, supervision and administration, amounting to \$389,455,931, and



Cedar Creek Concrete Bridge at Louisville, Ky.

convict labor and statute labor, the value of which, not definitely known, is estimated at about \$132,000,000. So far as possible, all expenditures on city streets within incorporated towns and cities and all items of sinking-fund payments or the redemption and interest payments on road and bridge bonds have been excluded.

The road and bridge expenditures for 1919 show an increase of approximately 33.13 per cent over those of 1918 and 70 per cent over those of 1914. More striking, however, is the increase in the proportion of the total funds supervised by the several state highway departments. In 1918 the expenditures by or under the supervision of the state highway departments amounted to \$117,285,268, while the local road funds, over which they exercised no control whatever, amounted to \$168,812,925. In 1919, however, the state highway departments supervised the expenditure of \$200,232,684 as against the total of \$180,183,237 expended by the local road and bridge authorities.

Read the Reporter

WE THANK YOU for the interest manifested in our proposition to save

**\$262.50**

on the TRACTOR you are going to buy.

From the numerous inquiries we have received from the farmers of this section, everyone in the county must have answered our ad., but for the benefit of the stray one who did not, we are going to give him another opportunity. Let's make it unanimous.

**Answer This Ad To-Day—Next July Will Be Too Late**

## The Standard Farm Tractor 15-30

made in Amarillo. All working parts running in oil. No grease cups or oil holes. Four cylinder engine. Many other advantages too numerous to mention. The price will surprise you. Our supply for this year is limited. We will accept a conditional order that will insure you delivery with no obligation on your part.

ANSWER THIS AD NOW. If you haven't a two cent stamp borrow one from the editor of this paper.

Name \_\_\_\_\_ Address \_\_\_\_\_  
Renter or Owner \_\_\_\_\_ No. A. Cul \_\_\_\_\_  
Crops Raised \_\_\_\_\_  
Make of Tractor Used, if any \_\_\_\_\_

**Standard Farm Tractor Co.**  
309 Polk Street -:- Amarillo

## NOTICE TO LAND OWNERS

To E. J. Engel, 1015 Railway Exchange Building, Chicago, Ill., W. M. Glover, Electra, Texas; William W. Trigg, Boonville, Missouri; Robert E. Meek, Wellington, Kansas; Estate J. M. Thompson, J. T. Thompson, Conservator, in care Elks' Home, Denver, Colo; J. M. Blodgett, Canadian, Texas; and W. Y. Williams, Spearman, Texas; Thomas C. Spearman, 1015 Railway Exchange Bldg., Chicago, Ill.

You are hereby notified that the undersigned jury of freeholders, acting under and by virtue of an order of the Commissioners' Court of Hansford County, will on the 12th day of March, 1921, proceed to lay out a First Class Public Road, commencing at the Northeast Corner of Section No. 86, in Block No. 4T, Grantee T. & M. O. R. Co., Hansford County. Thence South three miles on Section lines to the Southeast Corner of Section No. 116, in same block and grant. Thence East one mile on Section lines to the S. E. Corner of Section No. 115, same block and grant. Thence South five miles on Section lines to the S. E. Corner of Section No. 28, in Block R, Grantee Brooks - Burleson. Thence East

along the North Section lines of Sections No. 44, 45 and 46, Block R, to the Hansford and Ochiltree Counties line and which road may run along the Section lines of certain lands owned by you, and will at the same time assess the damages incident to the opening of said road, when you may pay to us a statement in writing of damages, if any, claimed by you.

Witness our hands this 5th day of February, A. D. 1921.

A. F. GARNER,  
H. R. WALDROP,  
H. W. DOUGLAS,  
E. H. BARBOUR,  
T. S. McMURRY

## SEED BARLEY AND OATS

Good 1919 seed barley and Texas Red rust-proof seed oats for sale. See or phone

D. B. KIRK  
14 miles southwest of Spearman

When in position and need nothing in diamonds, watches or jewelry. See H. DUNLAVY.

# COAL

We received four cars of Colorado Coal last week, and the price is right. Lump and Nut---take your choice.

## Feed - Cottonseed Meal - Cake

Let us supply your needs in this line. We have what you need---come and see.

Sugar, 100 pounds  
for  
**\$10.50**

Car Load of  
**STOCK SALT**  
Just Received

## We Need You and You Need Us

Potatoes, 100 lbs.  
**\$3.25**

Extra Grade Coffee  
per lb.  
**20 cts.**

Light's Best Flour, PER HUNDRED **\$5.70**

Groceries are still going down. Come and see.

**The Spearman Equity Exchange**

R. L. McCLELLAN, Manager

## Auto Service Company

Successors to Larkin & Son

Automobile repair work of the very best. Satisfaction or no pay.

Automobile Accessories Gas and Oils

We sell Chevrolet and Dodge cars and the Nash Truck.

Mansfield, Hartford and "K-K." Tires and Willard Batteries.

**Mizar & Paul**

Near the Equity Exchange

# .. Spearman Tailor Shop ..

Orders taken for Tailor Made Clothing.  
Cleaning and Pressing for Ladies and  
Gentlemen.

## BARBER SHOP IN CONNECTION

Clean, sanitary shop and good barbers.  
We guarantee satisfaction.

LAUNDRY AGENCY. Basket is closed Monday.

West Side  
Main

**SID CLARK, Manager**

# ROAD BUILDING

## CAUSE OF DAMAGE TO ROADS

Pernicious Practice of Overloading  
Small Trucks With Narrow Tires  
is Responsible.

With the rapid increase in the number of motortrucks operated over our highways, it has been found that many of what are called "improved" roads have failed to withstand the additional traffic imposed by the new form of local freight transport. This has given rise to new problems of road construction and maintenance, and in some states has led to the enactment of laws prohibiting the use of the large capacity truck, on the assumption that it is the heavy truck that does most of the damage to the road. The first result of this legislation has been to encourage the pernicious practice of overloading, under which trucks designed to carry safely a limited weight are forced to carry a large additional load. The tires of the various sizes of truck are made of a sufficient width to prevent their breaking or cutting the road surface when loaded to their proper full capacity, but when an overload is added the tire width is necessarily too narrow, and the danger of injury to the road becomes manifest. The tire width required for certain loads has been carefully worked out after many years' experience, and most states have laws fixing the weight that is borne by an inch of tire width. In all standard types of truck the width of the tire corresponds to the load that can be safely carried, and truck manufacturers warn their customers against carrying a greater weight than that for which each size of truck is designed.

The enactment of a law prohibiting the use of large capacity trucks leaves the same tonnage of freight to be moved, and with the heavy truck barred resort must be had to the smaller sizes. This means in many cases less economical and efficient service, and prompts the manufacturer or merchant to try to make up for loss in load capacity by increasing the size of the load. With this additional load the gross weight on the tire exceeds the factor of safety, and thereby increases the danger of breaking the road surface. It is self-evident that a truck designed to carry two tons with corresponding width of tires,

# GROCERIES

of the  
Better Kind

Our goods are the Freshest and Prices  
the lowest. You are always welcome;  
come to see us.

**The John L. Hays Store**  
SPEARMAN

## VAN C. WHITTET

AUCTIONEER

Will cry sales anywhere at any time. Make dates at the Reporter  
office, Spearman.

LIVE STOCK SALES A SPECIALTY

## M. C. HEAD

FRESH CORN MEAL—Ground on an old-  
fashioned stone burr mill—the best meal  
in the world.

Re-cleaned seeds, mixed and ground feed, block  
or crushed salt. I will buy your cream.

West Side

SPEARMAN

## .. C. D. WORKS ..

Attorney-at-Law

Will practice in all courts. Special attention given to Land Practices  
and Probate matter. Abstracts prepared. Titles examined and per-  
fected.

Real Estate. Farm and Ranch Loans.

Notary Public

HANSFORD

## MAJOR & RANEY

COMMERCIAL AND LIVE STOCK  
AUCTIONEERS

MAKE DATES AT REPORTER OFFICE

E. L. BYRD

BUSTER CATOR

# MONROE GARAGE

BYRD & CATOR

The Famous Goodyear Tires and Tubes  
High grade Gas  
Oils and Greases.

Good mechanics always on the job to look  
after your car troubles.

Usually have a bargain in a second  
hand car. Come to see us when in need  
of anything in the automobile line.

New Home of

# The "Monroe"

The Latest and best in a  
Moderate Priced Car

**BYRD & CATOR, Props.**  
SPEARMAN



Overloaded Truck Increases Danger  
of Cutting Surface of Improved  
Roads.

must do more damage to the road  
when it carries a ton or so more of load  
than its tires were intended for.

A striking example of the relation  
of overloading to impact is given in  
the preliminary report of the United  
States bureau of public roads, in  
which it is stated that a three-ton  
truck, with a load of five tons, run-  
ning at a speed of 15 miles per hour  
over a two-inch rut, had an impact of  
slightly over 17 tons, while a 5½-ton  
truck with a load of 5½ tons, under  
the same conditions had an impact of  
only 12 tons. The fact that the over-  
loaded truck had a heavier "unsprung"  
weight; that is, weight not sustained  
by springs, accounted to some extent  
for its greater impact, but there can  
be no question that the overloading  
was a material factor in causing the  
greatly increased wheel pressure on  
the road.

Against this danger truck owners  
are constantly being warned by truck  
manufacturers, who strongly advise  
that no truck should be made to carry  
a greater load than the weight de-  
fined by its classification. Some states  
have enacted laws imposing fines for  
truck overloading, but it will prob-  
ably be found that enlightened self-in-  
terest will prove to be the best check  
on a practice that has been shown to  
be dangerous both to truck owners  
and drivers and the general public;  
and a source of injury to our roads  
that materially limits the benefits  
from the motortruck as a new agency  
for local freight transport.

### Market Roads First.

"Transcontinental highways fill a  
useful place in our national life, but  
the really important road is the one  
from the farmer's gate to his market  
town," said President J. R. Howard  
of the American Farm Bureau Federa-  
tion recently in addressing the Na-  
tional Association of Vehicle and Im-  
plement Manufacturers.

Insist on Permanent Roads.  
Insist upon permanent roads in your  
county. They are cheaper in the long  
run.

### STRAY COW

One big red white-face cow, about  
five years old, crop off each ear,  
branded—on left hip; is at my farm  
seven miles southwest of Spearman.  
Owner will please call, pay charges and  
take this cow away, as she is fat and  
will make good beef.

J. G. B. SPARKS,  
Spearman, Texas.

Found—Several weeks ago, a neck-  
lace. Owner may recover same by  
calling at the Reporter office.

### R. T. CORRELL Lawyer

Perryton, Texas

### DR. JARVIS DENTIST

Perryton, - - Texas

### FRED HILL Attorney-at-Law Spearman, - Texas

WALTER R. ALLEN JACK ALLEN  
**ALLEN & ALLEN**  
LAWYERS

Perryton, . . . Texas

FRANK M. TATUM W. C. STRONG  
**Tatum & Strong**  
ATTORNEYS - AT - LAW

Dalhart, . . . Texu

### WALLACE G. HUGHES Lawyer

605 and 4 First National Bank  
Building  
Guymon, Oklahoma

### NOTICE

Will the party who swiped the gas  
and oil line from my Avery tractor  
please return the same, or come and  
get the remainder of the tractor.

PERRY R. LUTZ,  
Spearman, Texa.

### FOR SALE

Rhode Island Red eggs, 75c per set-  
ting of 17; \$4.00 per 100.

MRS. J. M. GLOVER,  
St2pd Spearman, Texas.

### HIDES TANNED

I represent the Globe Tanning Com-  
pany. Can have hides tanned and  
made into coats, robes, muffs, etc., at  
reasonable prices. See me when you  
want work of this kind, or will furnish  
tags free of charge and you may send  
hides yourself.

HENRY RALSTON,  
St18 Spearman, Texas.

### NOTICE FOR BIDS

Bids will be received by the commis-  
sioners court of Hansford county for  
County Depository of said county, at  
the next regular term of said court,  
which convenes at Hansford on the  
13th day of February, 1921.

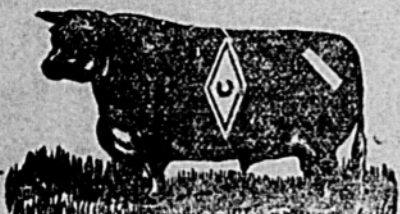
A. H. STORRS, County Judge.

### NOTICE FOR BIDS

The State of Texas,  
County of Hutchinson.

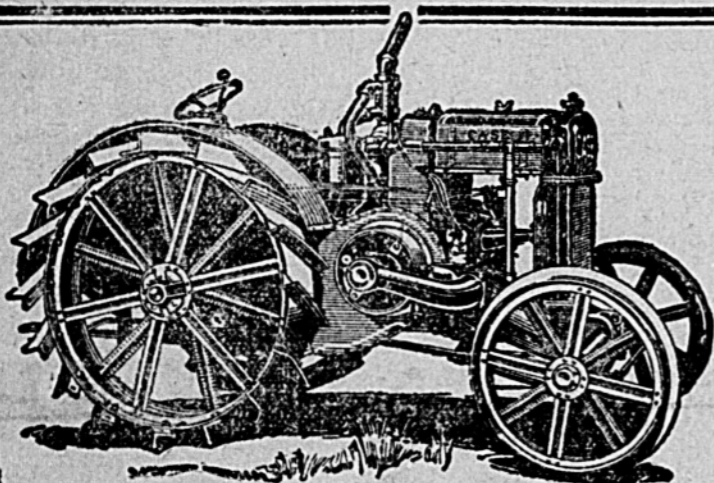
Notice is hereby given that the Com-  
missioner's Court of Hutchinson Coun-  
ty, Texas, will receive bids from any  
banking corporation, association, or in-  
dividual banker of any of the adjoining  
counties who may desire to bid for  
the privilege of acting as County De-  
pository for said county for the ensu-  
ing two years; such bids to be made  
not later than Feb. 14th, A. D., 1921,  
at 10:00 A. M., and in the manner pro-  
vided by law. The Court reserves the  
right to reject any and all bids.

Witness my hand at Plemons, Texas,  
this 16th day of Jan., A. D., 1921.  
M. G. MATHIS, County Judge,  
St4 Hutchinson County, Texas.



Brands: Diamond C on left side  
slash on left hip.  
Ear Marks: Crop on left & under  
half crop on right.

The new change on head-waters of the Palo-  
J. H. Cator & Son, Spearman



## The Latest and Best

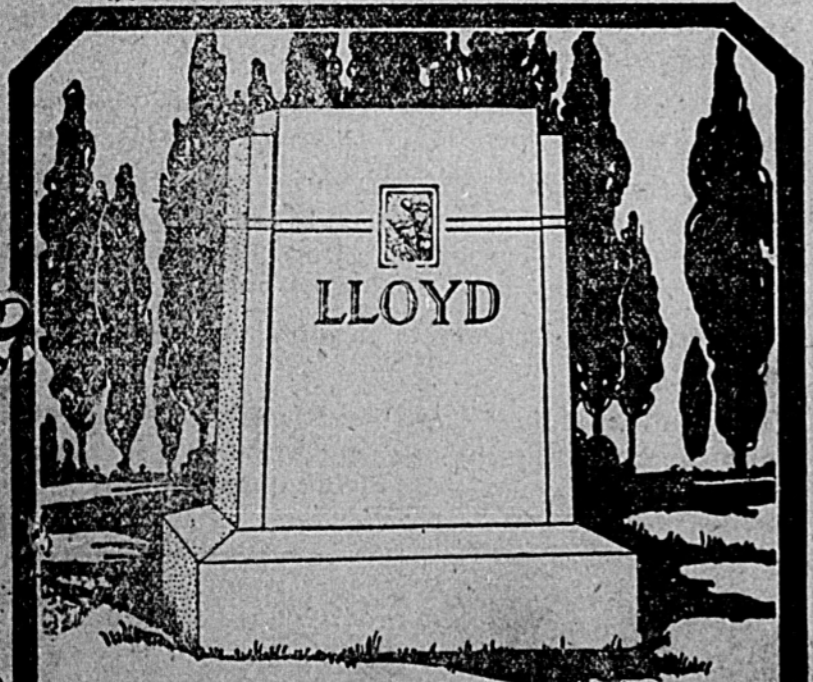
We offer the Case 15-27 Kerosene Tractor as the king of  
them all. It is creating a sensation all over the country. It is  
the result of 78 years of experience of the famous J. I. Case  
Threshing Machine Company.

It pulls three plows in hard plowing—four plows under  
favorable conditions. It has abundant reserve power. It  
burns kerosene successfully and economically.

This sturdy tractor is adaptable for all kinds of drawbar and  
belt work. It drives a 26x46 Case Thresher with Feeder and  
Wind Stack. Its pulley is properly placed for convenient  
"lining up."

It is small and compact and built for accessibility. No trac-  
tor is finer. You should become acquainted with its many  
superiorities, which we will be glad to explain. Don't buy  
before you see this better tractor.

Spearman Equity Exchange



There is no more fitting expression of your love to those  
honored dead—Mothers, Sisters, Fathers, Brothers,  
Cousins—than a monument of eternal stone of rare beauty.  
I am a direct representative of one of the largest monument  
manufacturers in the world, whose marbles, quality of workmanship,  
and general reputation are unequalled.

C. L. Y, Spearman.

**Kelly's Famous Flour  
Going Strong at ..  
\$5.50 Per Hundred**

<b>BRAN PER HUNDRED \$2.15</b>	<b>SHORTS PER HUNDRED \$2.35</b>
--	--

**We will beat the above prices  
on large quantities.**

**We want your business. Come  
to see us.**

**Bolin-Hall Grain Co.**

**JACK THOMAS, Mgr. Spearman**

**THE BIG TYPE  
POLAND CHINA**



I have the registered Poland China Hogs, with absolutely as good blood lines as can be found. They are the real Big Type Poland Chinas. Have both sex for sale.

Also, 18 head of bred sows.

Come and make your selections now. Papers furnished with every animal.

Located 20 miles northwest of Spearman, on Lura Spivey place, Lakeside community.

**E. C. SPIVEY,**

**ADDRESS, TEXHOMA, OKLAHOMA**

**Spearman  
Rooming  
House**

**Nice, comfortable  
Rooms.**

**Clean Beds.**

**Rates reasonable.**

**West Side Main  
Spearman**

**T. H. Taylor  
Proprietor**

**TO THE PUBLIC**

Having posted my ranch, lying in the northeast corner of Hansford county, along the Palo Duro creek, as required by the law of Texas, this is to specially call attention to any one fishing, hunting or trespassing in any way therein, that they will be prosecuted to the full extent of the law.

**GUS B. COOTS,**  
36152\* Owner of Palo Duro Ranch

**Notice to the Public**

I will sell wood for \$5.00 per four-horse load. It will be necessary to either phone or come to headquarters before getting the wood, otherwise you will be treated as trespassers. Positively no hunting allowed.

**W. T. COBLE,**  
Owner of the Turkey Track ranch.

**Notice**

No hunting or fishing will be allowed in the Diamond C pastures, on the headwaters of the Palo Duro. These lands are posted and trespassers will be prosecuted.

**JAMES H. CATOR & SON.**

Rulers for school children. Call at the Ford garage and get a ruler before you go to school Monday.



**EUGENE KNOX**

Ten years ago two Redpath managers heard Eugene Knox in one of his character programs. They invited him then to become a member of the Redpath Family, but his school duties (he was head of the Department of Expression at Whittier College) prevented him from accepting at the time. However, in the past ten years he has devoted a large share of his time to platform work and is now giving his full time to Redpath.

His work consists chiefly of characterizations. He is an artist in this line, he is a splendid story teller, a delightful humorist, a sympathetic impersonator. He is different from the ordinary impersonator because his study of his characters is much more thorough and the types he assays to portray are distinct, likeable American types. He believes that the chief qualifications of Americans are humor, honesty, loyalty and sincerity and it is these characteristics which he reveals, and in a measure his program is a lesson in Americanism.

He does not use make-up, but his changes of character are the more startling. He calls his program "An evening with American Authors." He uses a wide range of dialect, in all of which he excels, and his versatility, his humor, which is irresistible, all go to make the program distinctly individual. Each part of the program has a purpose and bears distinctly upon the rest of the program. You may well look forward to an evening spent with this entertainer in hearing some typical American sketches that have not been attempted by any other artist.

Those who have heard him write as follows:

Eugene Knox is a genius in his profession. He makes every word leap with life. Behind his expressive face and gifted tongue is the character of a whole-hearted, cultured gentleman, and I recommend him to those who want a good reader.—Col. Geo. Bain.

Unsolicited, I am anxious to express my deep appreciation of your services last evening. A leading business man said this morning "here is ten dollars towards the expenses of Mr. Knox's recital. It is the best I've ever heard. His one number, 'The First Settlers' Story,' was worth the admission and equalled a dozen sermons." Can sell fifty tickets when he returns.—A. J. Brace, Secretary Y. M. C. A.

The impersonations given by Mr. Knox during the day were fully up to the high standard demanded by Chautauqua goers. Mr. Knox is the master of the art of elocution and by facial expression, the shadings of voice and by the use of well placed gestures he loses himself in the characters which he impersonates and carries his audience with him wherever he may desire.—Madison Courier, Madison, Ia.

**At Arcade Theater  
Spearman  
Saturday, February 26**

**CHINESE WEDDING IS  
GORGEOUS CELEBRATION**

**Merchant Outshines the Splendors of the Old Empire in Settings.**

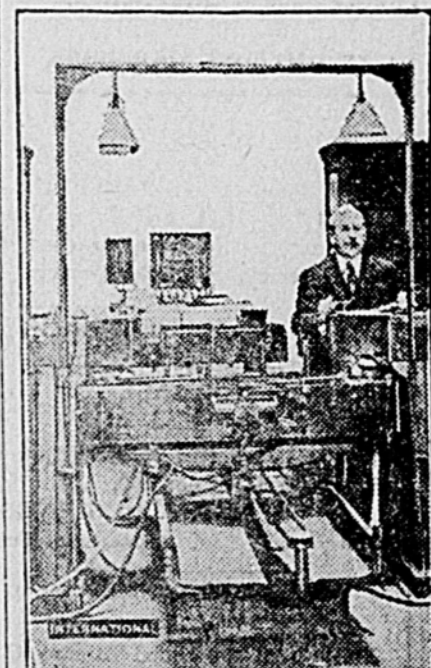
An unusual and most elaborate Chinese wedding ceremony which took place in Rangoon recently was that of the daughter of Liu Chin Tsong, Chinese merchant and ship owner, which is described in the London Daily Mail by one of the wedding guests.

The palace of the Chinese merchant is known as "Dreamland." Here, according to the article, he lives with all his sons and daughters and brothers and other relatives who can show rightful claim to relationship. There are so many of them, in fact, that he maintains twelve motor cars for their use.

When the guests arrived in "Dreamland" they found the bride alone at an altar engaged in a religious ceremony. She was dressed in magnificent robes and on her head she wore a gold crown eight inches high, which even in the palest king and queen days was considered to be some height for a crown. But this particular crown extended in both directions, as it were, for all around it hung long ornaments, which hid the face of the little bride, blushing under her careful makeup, to a point just a bit below the mouth. She wore enough diamonds to outshine an American opera singer, and not one of her fingers lacked the adornment of a ring.

When the happy and doubtless also fortunate bride-room arrived, six Chinese musicians began working over, weird looking instruments and produced what they called a song of welcome to the bride-room, who was attired in a robe of blue and gold. After the two principals had advanced to greet each other, the bride retired to an ante-chamber, where all the guests filed by to congratulate her. After this was over everybody went into the bridal chamber, which contained a bed enveloped in pale pink silk and lace, looped back on each side with silver embroidered curtain loops. A bolster of the same material divided the bed. On the bridegroom's side was a silver salver filled with tobacco. To look at him nobody would have thought that he was such a heavy smoker as that. After the guests had examined the bridal chamber a number of Chinese girls skipped in and entertained the guests with dancing.

**FIXING STANDARDS FOR  
WEIGHTS AND MEASURES**



A very important, though little known to the general public, international institution is the international bureau of weights and measures located at Sevres, near Paris, France. It is there that the standards of weights and measures for nearly all the important countries of the world are determined. The bureau was established in 1875 by a group of leading nations including the United States. Delicate instruments invented by famous scientists are used in the determination of the standards and years have been spent in research in connection with this very important work, without the knowledge of which international intercourse, as we know it today, could not exist. The metric system is used in the work of the bureau and though the United States has not adopted the metric system, this government has adopted many of the standards issued by the bureau.

Prof. Charles Edward Guillaume, one of the world's foremost authorities on weights and measures and winner of the 1920 Nobel prize for physics, is director of the bureau.

The picture shows Professor Guillaume making a difficult experiment with a menometer, an instrument which can determine accurately a millionth part of a meter by means of electric rays invisible to the naked eye.

U. S. Gave \$30,000,000 to Near East. American organizations expended more than \$30,000,000 last year in relief work in the Near East. This sum included money spent by the government for flour and foodstuffs, distributed under the supervision of Herbert Hoover.

**AMERICAN PEERESS TO  
EXPLORE DARKEST AFRICA**



Viscountess Maidstone of England, the former Miss Margaretta Armstrong Drexel of Philadelphia, who, according to cables from London, is planning to accompany her husband, Viscount Maidstone, the Marquis and Marchioness Fitchfield and the Duke and Duchess of Sutherland on an exploration trip to the Blue Nile into that part of Africa never before penetrated by a white woman.

**VILLA DIGGING UP GOLD**

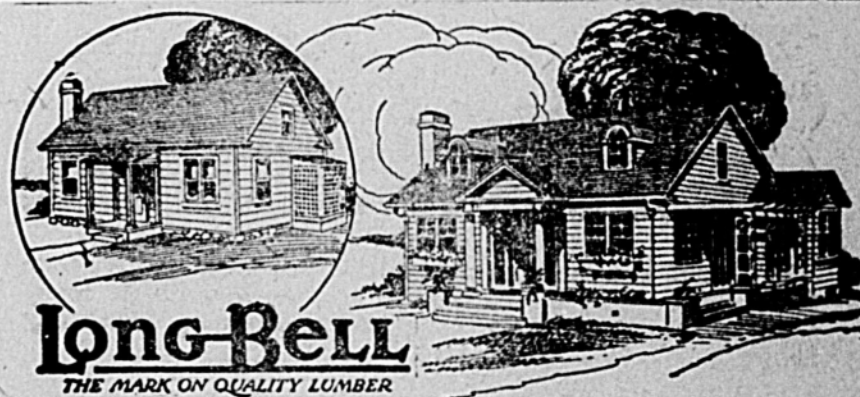
**Former Bandit Chief Stripping Caches of Buried Treasure.**

For several weeks past Francisco Villa, former king of bandits in Mexico, now living the quiet life of a farmer on a ranch given to him by the government, has been going about from point to point in the state of Chihuahua, Mexico, on mysterious visits. Friends of Villa in El Paso, Tex., declare he is collecting loot which he buried during the balmy days of his banditry.

During his years of raiding Villa stole millions of pesos. Much of this, particularly when it was in gold coin, he buried in isolated parts of Chihuahua.

Now that he has become a "gentleman farmer" he is said to be visiting his caches one by one and removing his treasure. His friends say he has recovered many thousands of pesos and that he intends giving it back to his victims.

Read the Reporter



**Long-Bell**  
THE MARK ON QUALITY LUMBER

**Give Us a Chance to Nail  
These Rumors of High  
Building Costs**

**WITHOUT** a doubt there are a number of families in this town who would be building a home of their own if they had not been misled by talk about the high cost of building. And it is "talk", these cost-of-building rumors, for like most rumors, it is gross exaggeration.

Here's a straight common sense tip to all you men and women who long for a home of your very own—

Come to our lumber yard and let us show you some plans and pictures of various types of homes. We have them to fit any purse. You pick out a home that suits you and we'll tell you what it will cost.

Then you'll have the facts to guide you and not go sip.

You owe it to yourself and your family to obtain this definite information before you throw up your hands and say, "Oh, a home is out of the question now. We can't afford it."



**EARL CALLAWAY Mgr. Exchange**

**Get Your "Titan"  
Tractor NOW ..**



We give you a year to pay and positively protect you against loss in case of a decline in price.

Come in at once and let us explain our new plan.

The Titan 10-20 has led the three-plow tractor field for the past five years. Farmers have bought over \$70,000,000 worth of Titans.

**Andrews Hwd. Co.**

Implements - Furniture - Queensware

**East Side Main**

-:-

**SPEARMAN**

# Ford

THE UNIVERSAL CAR

## Attention Ford Owners

When you have your Ford repaired insist on getting  
.. Genuine Ford Parts ..

When you go out on the road you require of your car good, hard, faithful service. Your car cannot deliver the service required unless it is equipped with the best. Our stock of Ford parts is complete and we are at your service either to repair your car, or sell you the genuine Ford parts. Don't merely insist on this but be sure you get the genuine parts.

.. **R. W. MORTON** ..

Authorized Ford Sales and Service  
SPEARMAN, TEXAS



Let Us Help You  
PLAN

### Your Trip to California

You may stop over at the Grand Canyon Arizona on your way.

For particulars as to train service, fares, etc., see the local agent or write

**T. B. GALLAHER**  
General Passenger Agent  
AMARILLO, - TEX.

#### NOTICE

Dr. Tanner, D. V. S., has a preventative as well as a guaranteed cure for distemper. See or call him at the Taylor rooming house or the Reporter office. 501f

#### JERSEY COW

for sale. Fresh now and a splendid milker. See George W. McMurry, Spearman, Texas. 61f

## The OilPull Is Made of the Right Stuff

With a tractor, as with a man, it's the stuff it's made of that counts.

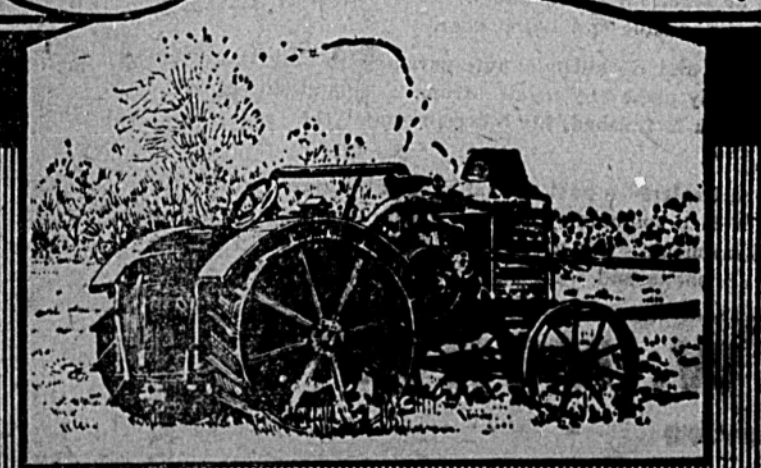
The OilPull Tractor has demonstrated that it has the right kind of stuff to stand the gaff of consistent service. This is proved by the first ones built over 12 years ago, which are still running today—giving tireless service to their owners, with prospects of years of service to come.

The first OilPulls built have withstood the acid test of pioneer agriculture, for they were sent to the virgin prairies of the Northwest and Canada where they encountered and overcame the tough prairie sod. They were called upon to pull stumps, plow through underbrush, and other real jobs incident to the preparation of virgin land for seed.

and they are still turning over this same land into which they first introduced the cold steel of the plow—still threshing the grain from this land—still giving the same dependable service they gave when fresh from the factory.

Come in and let us show you the four sizes, 12-30, 16-30, 20-40, and 30-60 H. P.

**WILL A. JOHNSON, AGENT**  
SPEARMAN OR TEXHOMA



#### NOTICE

Pan Handle and Santa Fe Railway Company.

hereby gives notice that on the 17th day of January, 1921, it filed with the Interstate Commerce Commission at Washington, its application for a certificate of public convenience and necessity to operate a line of railroad in the States of Oklahoma and Texas. Pursuant to the requirements of the Commission, said application is now published, as follows:

Before the Interstate Commerce Commission

In the matter of the application of Pan Handle and Santa Fe Railway Company (hereinafter called "Applicant"), for a certificate that the present and future public convenience and necessity require the operation by Applicant of a certain line of railroad situated in the States of Oklahoma and Texas heretofore leased to Applicant by North Texas and Santa Fe Railway Company (hereinafter called the "North Texas Company"), said application being made pursuant to the provisions of paragraphs 18 to 22, inclusive, of Section 1 of the Interstate Commerce Act, as amended by Section 402 of the Transportation Act, 1920, and pursuant to the provisions of a certain order made by the Interstate Commerce Commission, Division 4, on the 24th day of June, 1920.

Finance Docket  
No. 1211  
Application  
No. IAC-61

To the Honorable, the Interstate Commerce Commission:

Applicant respectfully states and shows the following:

1. The full name of applicant is Panhandle and Santa Fe Railway Company.

The post office address of its principal office is Amarillo, Texas.

The name of its president is W. B. Storey, whose post office address is 80 East Jackson Boulevard, Chicago, Illinois.

The name of its secretary is J. N. Freeman, whose post office address is Amarillo, Texas.

The name of its attorney in this behalf is Lee F. English, whose post office address is 80 East Jackson Boulevard, Chicago, Illinois.

2. Applicant was organized under the laws of the State of Texas.

3. The making and filing of this application has been approved at a meeting of the board of directors of Applicant held at Amarillo, in the State of Texas, on the 3rd day of January, 1921.

4. The names of each state and of each county in which said line of railroad is proposed to be operated are:

States of Oklahoma and Texas;

County of Ellis, State of Oklahoma;

Counties of Liscomb, Ochiltree and Hansford, State of Texas.

5. The line of railroad of the North Texas Company is located in Ellis County, Oklahoma, and in Liscomb, Ochiltree and Hansford Counties, Texas, and is approximately 84 3/4 miles in length. Said line of railroad extends from a connection with the railroad of the Atchison, Topeka and Santa Fe Railway Company (hereinafter called "Atchison Company"), at Shattuck, Ellis County, Oklahoma, a distance of approximately 9-56-100 miles to the Oklahoma-Texas state line, thence in a general westerly and southwesterly direction through Liscomb, Ochiltree and Hansford Counties, Texas, to Spearman in said Hansford County. The termini of said line of railway are Shattuck, Oklahoma, and Spearman, Texas.

6. A brief statement of the reasons relied upon to show that the public convenience and necessity require the operation of said line of railroad of North Texas Company by Applicant is as follows:

The North Texas Company was incorporated July 25th, 1916, under the laws of the State of Texas. All of its issued capital stock, being one thousand shares, except seven shares held by directors, is owned by the Atchison Company, a corporation, organized under the laws of the State of Kansas. Said line of railway of the North Texas Company was substantially completed prior to July 1, 1920.

Applicant is a corporation, organized and existing under the laws of the State of Texas, whose issued capital stock, namely 32,780 shares, is held as follows:

Central Trust Company of New York, as Trustee for the Atchison Company ..... 5,955 shares  
Atchison Company ..... 26,735 shares  
Directors of Applicant ..... 90 shares

Applicant and the North Texas Company are both embraced in what is known as The Atchison, Topeka and Santa Fe Railway Company System. Applicant owns and operates a line of railroad extending from the New Mexico-Texas state line to the Texas-Oklahoma state line and there connecting with a line of railroad of the Atchison Company which extends to Shattuck, Oklahoma, and beyond.

Pursuant to a special act of the Legislature of the State of Texas, effective March 7, 1917, and pursuant to the laws of the State of Oklahoma and under the express authority of the Corporation Commission thereof, the said North Texas Company by indenture of lease dated March 1, 1920, leased its entire railroad and property to Applicant for the term of ten years. Said lease was duly executed and delivered prior to May 28, 1920.

Applicant further states that if Applicant shall be permitted to operate said line of railroad of North Texas Company under said lease dated March 1, 1920, the result will be to avoid the necessity of maintaining a separate force of operating officials for each of said companies, parties to said lease, and will by unity of operation effect economy for the carriers and better transportation service for the public. North Texas Company does not possess the necessary rolling stock and equipment which would be required for the operation of its line of railroad. The operation of said line of railroad as a branch of the railroad of Applicant will be more economical and more

## .. COMING BACK ..

**HAZEL B. HURD**  
**STOCK COMPANY**

### Three Nights

Thursday, Friday and Saturday, Feb. 17-19

Arcade Theater, Spearman

The same old Company

with  
All New Plays

New Music

New Songs

and

New Vaudeville Acts

Four - Piece Jazz Orchestra that will make you want to step.



A Twenty - minute Overture each evening.

Remember the date

Three Nights

Beginning

Thursday, Feb. 17

You know this company and know they they are good.

Hear them again.

Don't Miss the Opening Play

.. Thursday, February 17 ..

## "Rough and Reddy"

A four-act Western comedy with a Jew comedy that will make you laugh. This is one of our best plays and we feel assured it will meet with your approval. Don't miss this one.

Big Masquerade Ball on Saturday Night. Four-Piece Jazz Orchestra

advantageous to the public than any other method of operation.

7. Applicant on its own account is not desirous of any hearing in this matter, but if the Interstate Commerce Commission desires such hearing it is respectfully urged that the same be set for a date as early as will meet the convenience of the Commission.

Wherefore, Applicant respectfully prays the Interstate Commerce Commission to grant to Applicant a certificate that the present and future public convenience and necessity require and will require Applicant to operate said line of railroad of the North Texas and Santa Fe Railway Company hereinabove described and to engage in transportation under the Interstate Com-

merce Act over and by means of said line of railroad.

Dated, this 10th day of January, 1921.

Panhandle and Santa Fe Railway Company.  
By W. B. STOREY,  
Its President.

LEE F. ENGLISH,

Attorney for Applicant,  
80 East Jackson Boulevard,  
Chicago, Illinois.  
State of Illinois,  
County of Cook,  
ss.

W. B. Storey, being first duly sworn, on oath says that he is the president of the Panhandle and Santa Fe Railway Company, the Applicant named in

the foregoing application, that as such officer he has been designated and authorized by applicant to make the said application in its behalf, that he has read said application and knows the matters therein set forth, and that such matters are true in substance and in fact.

Subscribed and sworn to before me this 10th day of January, 1921.

NELSON W. WILLARD,  
(Notarial Seal) Notary Public.

Chickens plus cheap feed will help to defeat the high cost of living. The Old Trusty Incubator will supply the chickens. Andrews Hardware Co.

# Ford

THE UNIVERSAL CAR

## Genuine Ford Service and Parts

Insist on genuine Ford parts for your Ford car. Mail order houses, stores and many garages sell imitation—counterfeit parts which have not the quality of the genuine Ford parts, but the Authorized Ford Dealers, as well as the authorized Sales and Service Dealers, sell only the genuine Ford-made Ford parts. You are safe with them, while your car is mighty unsafe if repaired with imitation parts. The real Ford parts are made from the same properly heat-treated steel as their counter-parts in the Ford car. Every part is heat-treated according to its use. Depending upon the service they perform, Ford parts are tempered to insure the longest life. Tested after almost every operation while being manufactured, these parts present a vast difference from those not manufactured under Ford supervision. Counterfeit parts range from thirty to seventy-five per cent below the quality of the Ford standard. Don't take chances, demand Ford parts, they're safer. Bring your Ford to us and thus make "assurance doubly sure." If you want a Ford car, truck or Fordson tractor, leave your order without delay, as now we can make fairly prompt delivery—Touring Cars, Coupes, Sedans, Runabouts, Trucks and Fordson Tractors. Why not drop in and talk over your wants?

.. **R. W. MORTON** ..

Ford Sales and Service

SPEARMAN

# The BOTTOM HAS DROPPED OUT of the LUMBER MARKET

Prices have declined and we have cut our prices in line with the market, giving the public the advantage of this big reduction.

The saw mills claim that they are selling at less than cost and a great many of them have closed down on that account.

If you have anything in our line to buy, we feel that now is your chance.

We will take pleasure in giving you an estimate on your wants.



## Panhandle Lumber Co.

PHONE 2 - - - SPEARMAN

### CITY ORDINANCES

Passed by the Aldermen of the Town of Spearman, Texas, in Regular Session Assembled.

In the interest of better government and the general welfare of the community, it is necessary that the Board of Aldermen of the Town of Spearman, Texas, establish a set of rules or ordinances suitable for the proper administration of the Community affairs.

Therefore, be it ordained, by the Board of Aldermen of the Town of Spearman, Texas, that the following set of rules or ordinances be enacted, published and spread on the minute book of the said Town of Spearman, Texas:

#### Ordinance No. 1

An Ordinance pertaining to and establishing an occupation tax on the various occupations on which an occupation tax is fixed by the statutes:

Art. 1. Itinerant Merchants—From every merchant who may remove from place to place and offer for sale bankrupt stock of goods, or advertise fire sales or water damaged sales for a limited period of time, there shall be collected the sum of Fifty Dollars per month, for the first month or less than a month, and for each additional month the sum of ten dollars per month, provided that where they remain in town for a period of six months they shall be required to pay only five dollars per month in addition to the first fifty dollars.

Art. 2. Traveling vendors of patent

medicines—From every person selling patent or other medicines, a tax of twenty-five dollars per annum shall be charged; provided that this article does not apply to wholesale men soliciting trade from merchants doing a legal drug business in this town.

Art. 3. Auctioneers—From every auctioneer an annual tax of five dollars.

Art. 4. From every person selling on commission five dollars.

Art. 5. Itinerant physicians, etc.—From itinerant physicians, surgeons, oculists, or medical or other specialists of any kind, traveling from place to place in the practice of his profession, except dentists, an annual tax of twenty-five dollars.

Art. 6. Shooting Gallery—From every person or firm operating a shooting gallery at which a fee is paid or demanded, an annual tax of fifteen dollars.

Art. 7. Foot Peddlers—From every peddler five dollars per annum, provided that nothing herein shall be construed to include vendors of literature, or vendors of any kind of country produce.

Art. 8. Circus—For every circus, wild west show, where rough riding or acrobatic feats are performed or exhibited for pay the sum of seventy-five dollars per day.

Art. 9. Menagerie, or Carnivals—For every menagerie, side show or carnival, five dollars for every performance, or in case of a carnival five dollars per day for each stall.

Art. 10. Acrobatic performances—From every exhibition where acrobatic feats are performed and an admission fee charged, five dollars for each performance.

Art. 11. Sleight of hand performances—From every sleight of hand performance or exhibition of ledger-main, not connected with theatre or circus, twelve dollars and fifty cents.

Art. 12. Moving picture shows—From each owner or keeper of a motion picture show, used for profit, an annual tax of twelve dollars and fifty cents.

#### Ordinance No. 2

An Ordinance pertaining to and establishing an occupation tax on such occupations as are not specifically provided for in the statutes:

Art. 1. Drygoodsmen—Each person or firm engaged in the dry goods business shall be required to pay an occupation tax of the sum of twenty dollars annually.

Art. 2. Furnishings—Each person or firm engaged in the business of selling ladies and (or) gents furnishings shall pay an occupation tax of the sum of twenty dollars annually.

Art. 3. Groceries—Each person or firm engaged in the business of retailing groceries, shall pay a tax of the sum of twenty dollars annually.

Art. 4. Druggists—Each person or firm engaged in the business of running a drug or notion store, shall pay an occupation tax of the sum of twenty-five dollars annually.

Art. 5. Hardwaremen—Each person or firm engaged in the hardware

business shall pay an occupation tax of the sum of twenty dollars annually.

Art. 6. Hotels—Each person or firm engaged in the business of operating a hotel shall pay an occupation tax of the sum of fifteen dollars annually.

Art. 7. Barbershops—Each person or firm engaged in the business of running a barbershop shall pay an occupation tax of the sum of ten dollars annually.

Art. 8. Garages—Each person or firm engaged in the business of operating a public garage, shall pay an occupation tax of the sum of twenty-five dollars annually.

Art. 9. Lumberyards—Each person or firm engaged in the business of operating a retail lumber yard shall pay an occupation tax of the sum of twenty-five dollars annually.

Art. 10. Grain Elevators—Each person or firm engaged in the business of buying, selling grain and operating elevators, shall pay an occupation tax of the sum of twenty-five dollars annually.

Art. 11. Real Estate Dealers—Each person or firm engaged in the business of buying or selling or brokering real estate, shall pay an occupation tax of the sum of twenty dollars annually.

Art. 12. Oil and Gas Stations—Each person or firm engaged in the business of selling oils and gas at wholesale shall pay an occupation tax of the sum of twenty-five dollars annually.

Art. 13. Professional—Each person or firm engaged in the practice of law or of medicine, or of any profession for which a fee is charged, shall pay

an occupation tax of the sum of ten dollars annually.

Art. 14. Draymen—Each person or firm engaged in the business of draying or transferring or running a livery business, shall pay an occupation tax of the sum of fifteen dollars annually.

Art. 15. General Merchandise—Each person or firm engaged in the business of general merchandise shall pay an occupation tax of the sum of twenty-five dollars annually.

Art. 16. Restaurants—Each person or firm engaged in the business of running a restaurant or eating house, shall pay an occupation tax of the sum of ten dollars annually.

Art. 17. Banks—Each person or corporation engaged in the general banking business, shall pay an occupation tax of twenty-five dollars annually.

Art. 18. Printers—Each person or firm engaged in the business of running a printing shop shall pay an occupation tax of twenty dollars annually.

Art. 19. Blacksmiths—Each person or firm engaged in the business of running a blacksmith shop shall pay an occupation tax of fifteen dollars annually.

Art. 20. Telephone Cos.—Each person or firm engaged in the telephone business shall pay an occupation tax of the sum of twenty dollars annually.

Art. 21. Abstractors—Each person or firm engaged in the business of making abstracts, shall pay an occupation tax of fifteen dollars annually.

Art. 22. Shoe Shops—Each person or firm engaged in the business of making or repairing shoes shall pay an occupation tax of the sum of five dollars annually.

Art. 23. Produce—Each person or firm engaged in the general produce business shall pay an occupation tax in the sum of fifteen dollars annually.

Art. 24. Meat Market—Each person or firm engaged in the business of running a retail meat market, shall pay an occupation tax in the sum of ten dollars annually.

Art. 25. Wagon Yards—Each person or firm engaged in the business of running a wagon yard shall pay an occupation tax of ten dollars annually.

Art. 26. Feed Stores—Mill—Each person or firm engaged in the business of running a feed store or mill shall pay an occupation tax of ten dollars annually.

Art. 27. Filling Stations—Each person or firm engaged in the business of running an independent filling station shall pay an occupation tax of the sum of five dollars annually.

Art. 28. Contractors—Each person or firm engaged in the general contracting business, shall pay an occupation tax of the sum of fifteen dollars annually.

an occupation tax of the sum of ten dollars annually.

Art. 14. Draymen—Each person or firm engaged in the business of draying or transferring or running a livery business, shall pay an occupation tax of the sum of fifteen dollars annually.

Art. 15. General Merchandise—Each person or firm engaged in the business of general merchandise shall pay an occupation tax of the sum of twenty-five dollars annually.

Art. 16. Restaurants—Each person or firm engaged in the business of running a restaurant or eating house, shall pay an occupation tax of the sum of ten dollars annually.

Art. 17. Banks—Each person or corporation engaged in the general banking business, shall pay an occupation tax of twenty-five dollars annually.

Art. 18. Printers—Each person or firm engaged in the business of running a printing shop shall pay an occupation tax of twenty dollars annually.

Art. 19. Blacksmiths—Each person or firm engaged in the business of running a blacksmith shop shall pay an occupation tax of fifteen dollars annually.

Art. 20. Telephone Cos.—Each person or firm engaged in the telephone business shall pay an occupation tax of the sum of twenty dollars annually.

Art. 21. Abstractors—Each person or firm engaged in the business of making abstracts, shall pay an occupation tax of fifteen dollars annually.

Art. 22. Shoe Shops—Each person or firm engaged in the business of making or repairing shoes shall pay an occupation tax of the sum of five dollars annually.

Art. 23. Produce—Each person or firm engaged in the general produce business shall pay an occupation tax in the sum of fifteen dollars annually.

Art. 24. Meat Market—Each person or firm engaged in the business of running a retail meat market, shall pay an occupation tax in the sum of ten dollars annually.

Art. 25. Wagon Yards—Each person or firm engaged in the business of running a wagon yard shall pay an occupation tax of ten dollars annually.

Art. 26. Feed Stores—Mill—Each person or firm engaged in the business of running a feed store or mill shall pay an occupation tax of ten dollars annually.

Art. 27. Filling Stations—Each person or firm engaged in the business of running an independent filling station shall pay an occupation tax of the sum of five dollars annually.

Art. 28. Contractors—Each person or firm engaged in the general contracting business, shall pay an occupation tax of the sum of fifteen dollars annually.

Art. 29. Street Closures—Each person or firm engaged in the business of closing a street for a purpose other than that of a public utility, shall pay an occupation tax of the sum of five dollars annually.

Art. 30. Street Closures—Each person or firm engaged in the business of closing a street for a purpose other than that of a public utility, shall pay an occupation tax of the sum of five dollars annually.

Art. 31. Street Closures—Each person or firm engaged in the business of closing a street for a purpose other than that of a public utility, shall pay an occupation tax of the sum of five dollars annually.

Art. 32. Street Closures—Each person or firm engaged in the business of closing a street for a purpose other than that of a public utility, shall pay an occupation tax of the sum of five dollars annually.

Art. 33. Street Closures—Each person or firm engaged in the business of closing a street for a purpose other than that of a public utility, shall pay an occupation tax of the sum of five dollars annually.

Art. 34. Street Closures—Each person or firm engaged in the business of closing a street for a purpose other than that of a public utility, shall pay an occupation tax of the sum of five dollars annually.

Art. 35. Street Closures—Each person or firm engaged in the business of closing a street for a purpose other than that of a public utility, shall pay an occupation tax of the sum of five dollars annually.

Art. 36. Street Closures—Each person or firm engaged in the business of closing a street for a purpose other than that of a public utility, shall pay an occupation tax of the sum of five dollars annually.

Art. 37. Street Closures—Each person or firm engaged in the business of closing a street for a purpose other than that of a public utility, shall pay an occupation tax of the sum of five dollars annually.

Art. 38. Street Closures—Each person or firm engaged in the business of closing a street for a purpose other than that of a public utility, shall pay an occupation tax of the sum of five dollars annually.

Art. 39. Street Closures—Each person or firm engaged in the business of closing a street for a purpose other than that of a public utility, shall pay an occupation tax of the sum of five dollars annually.

Art. 40. Street Closures—Each person or firm engaged in the business of closing a street for a purpose other than that of a public utility, shall pay an occupation tax of the sum of five dollars annually.

Art. 41. Street Closures—Each person or firm engaged in the business of closing a street for a purpose other than that of a public utility, shall pay an occupation tax of the sum of five dollars annually.

Art. 42. Street Closures—Each person or firm engaged in the business of closing a street for a purpose other than that of a public utility, shall pay an occupation tax of the sum of five dollars annually.

Art. 43. Street Closures—Each person or firm engaged in the business of closing a street for a purpose other than that of a public utility, shall pay an occupation tax of the sum of five dollars annually.

Art. 44. Street Closures—Each person or firm engaged in the business of closing a street for a purpose other than that of a public utility, shall pay an occupation tax of the sum of five dollars annually.

Art. 45. Street Closures—Each person or firm engaged in the business of closing a street for a purpose other than that of a public utility, shall pay an occupation tax of the sum of five dollars annually.

Art. 46. Street Closures—Each person or firm engaged in the business of closing a street for a purpose other than that of a public utility, shall pay an occupation tax of the sum of five dollars annually.

Art. 47. Street Closures—Each person or firm engaged in the business of closing a street for a purpose other than that of a public utility, shall pay an occupation tax of the sum of five dollars annually.

Art. 48. Street Closures—Each person or firm engaged in the business of closing a street for a purpose other than that of a public utility, shall pay an occupation tax of the sum of five dollars annually.

in the center of the street crossings on all streets of the town where markers are erected. It shall be unlawful to drive any motor vehicle on the streets of Spearman, Texas, exceeding a speed of ten miles per hour, and be unlawful to drive at night without proper lights. All cars shall be parked in the center of the streets on all business streets, and when starting the driver shall back his car to the side of the street from which he turned in and continue on the right side of the street.

#### Ordinance No. 5.

An Ordinance providing a penalty for the violation of the provisions contained in Ordinance No. 4.

Be it ordained by the Board of Aldermen of the town of Spearman, Texas, that persons violating any of the provisions contained in Ordinance No. 4, shall be fined in any sum not less than Five Dollars and not more than One Hundred Dollars, and such fines may be payable either in money or in labor upon the streets of Spearman, Texas, at the rate of One Dollar per day.

#### Ordinance No. 6.

An Ordinance defining what shall be termed misdemeanors, and prescribing penalty for the same.

Be it ordained by the Board of Aldermen of the town of Spearman, Texas, that it shall be unlawful for any person to engage in fights or affrays within the town of Spearman, Texas, and it shall be unlawful to use vulgar, profane or obscene language in any public place in such town, or to commit any act which by the statutes of Texas constitute a misdemeanor. The penalty for which shall be a fine in the sum of not more than One Hundred Dollars.

#### Ordinance No. 7.

An Ordinance prescribing the duties of town Marshal.

Be it ordained by the Board of Aldermen of the town of Spearman, Texas, that it shall be the duty of the City Marshal, in addition to the regular duties prescribed by the statutes; to take care of the city well and water works and he shall have the authority of street overseer, being empowered thereby to warn out persons to work on the streets and to collect the street taxes from such persons who prefer to pay cash. It will also be his duty to assess and collect occupation tax from the various businesses on which an Occupation Tax has been levied.

#### Ordinance No. 8.

An Ordinance prohibiting tampering with fire equipment, and providing a penalty for violation thereof.

Be it ordained by the Board of Aldermen of the town of Spearman, Texas, that it shall be unlawful for any person to tamper with, molest or otherwise misuse any fire equipment used by the town of Spearman, Texas, for fire protection, and any one convicted of so-doing shall be fined in any sum of not more than One Hundred Dollars; provided, however, that nothing in this Ordinance shall prevent the regular appointed volunteer firemen from using such equipment as they see fit.

#### BIG OLD TEXAS

With the opening of the base ball season by the Texas League, the first game announced in this city will be with Beaumont, April 15. The visiting team will remain here four days, and a game is billed for each day.—San Antonio Republic.

And here in Spearman we are wading around in snow waist deep to a tall nigger. We haven't begun to think of base ball yet; still worrying with the price of coal. It is nine hundred miles from the Reporter man's home to the home of his father and mother, yet we are all residents of Texas. Texas is a whopper.

High Grade  
Petroleum Products

Gas and Oils

MAGNOLENE

The Dependable  
Lubricant

Tractor Oils

A grade for each condition—all Magnolia refined.

It will pay to investigate our prices

Magnolia  
Petroleum Co.  
R. E. LEITNER, Agent  
SPEARMAN

THE  
Palo Duro  
Hotel

I. F. DACUS, Prop.

Good meals; clean, comfortable rooms and beds

Reasonable Rates.

Headquarters for Traveling Salesmen.

Try Our  
Sunday  
Dinners

#### TEAM FOR SALE

A No. 1 team, mare and horse, being seven years old, perfectly weight about 3,000 pounds.  
C. W. CLEARSON,  
Spearman, Texas

State of Ohio, City of Toledo, Lucas County, ss.  
Frank J. Cheney makes oath that he is senior partner of the firm of F. J. Cheney & Co., doing business in the City of Toledo, County and State aforesaid, and that said firm will pay the sum of ONE HUNDRED DOLLARS for each and every case of Catarrh that cannot be cured by the use of HALL'S CATARRH MEDICINE. FRANK J. CHENEY.  
Sworn to before me and subscribed in my presence, this 8th day of December, A. D. 1935.  
A. W. CLEARSON,  
(Seal) Notary Public.  
Hall's Catarrh Medicine is taken internally and acts through the Blood on the Mucous Surfaces of the System. Send for testimonials, free.  
F. J. CHENEY & CO., Toledo, O.  
Sold by all druggists. Beware of cheap imitations.  
Hall's Family Pills for constipation.

The  
T-Bone  
Cafe

JESSE E. HAYS, Prop.

The very best  
the market affords  
to eat.

Cooked like you  
want it.

Popular  
Prices

Royal  
CAFE

Home Made  
Pies

Everything in the  
Short Order Line  
at

ALL HOURS  
Prices Right

Good Eats for Folks  
who have Good  
Taste.

JOE DAVIS, Manager  
Spearman

Ford  
THE UNIVERSAL CAR

Every Ford Owner  
Should Know

Just what Ford Service is, and why it is different from ordinary garage service, and why it is more profitable to patronize the Authorized Ford Dealer?—The Ford Dealer is a part of the Big Ford Family. He carries a large stock of genuine Ford parts for repairs and replacements so you don't have to wait while he sends for them, and he uses only genuine parts because he knows the imitation parts aren't dependable and don't wear.

He has a thoroughly equipped and up-to-the-minute garage with tools that enable his Ford Mechanics to efficiently and properly make any repair—from a minor adjustment to a complete overhaul. And when the work is finished, his bill represents the reasonable, standard Ford prices.

Now, we are authorized Ford Dealers—a part of that great Ford Service organization which was formed chiefly to put within each community a dealer who would have more than a passing interest in Ford repairs and adjustments. We are prepared and equipped to render prompt, careful Ford service—drive in or 'phone and we'll come after your car.

R. W. MORTON

Ford Sales and Service

SPEARMAN

Excl.  
Manager