

# BI-DISTRICT CHAMPIONSHIP Childress Clips Spearman, 73-62

Playing before a sell-out crowd at Canyon's WT gym, the Spearman Lynx lost to the quick, talented Childress Bobcats 73-62. The Cats lead the Lynx from the word "go" and the Lynx got into the worst foul trouble of the year, as Jones picked up 3 fouls in less than 4 minutes, in the torrid ball game. The victory was a repeat of last years contest, when the Bobcats nudged the Lynx 58-54 in the bi-district contest. The Lynx just can't get ready for the Bobcats, it seems.

Both of the teams hit a fantastic percentage of shots, as the Bobcats canned 58 percent and the Lynx 56.5 percent from the floor. Childress hit 30 of 52, and Spearman hit 26 of 46. Childress started out ahead of the Lynx, and the Lynx never could head the smooth, quick, jumping blue team from Childress. However, the Lynx were in the ball game until the fading minutes of the fourth quarter; they never did quit trying, even in the face of their stars being in

foul trouble; and this was a definite advantage for Childress. William Porter 6 - 4 senior, lead the Lynx with 16 points scoring; teammate Roger Brown netted 13, Terrill Brummett tallied 11 points. Roger Jones scored 7, Timmy Harper 9, David McMullen 6 to round out the scoring for the Lynx. Needless to say, we are proud of this years District 1-AA champions. They were just great, and their sportsmanship at the play-off game Tuesday night

was terrific. Members of this years District 1-AA championship team include the following: 10 David Lesly, 12 Timmy Harper, 14 Tommy Haner, 20 Roger Brown, 22 Greg Wilson, 24 Mike Pack, 30 Terrill Brummett, 32 Roger Jones, 34 Raymie Porter, 40 David McMullen, 42 Leon Hagerman, 45 William Porter. Managers for this years district champions are Kenneth Rosser, David Rosser, and Paul Garza. Coach Allen Simpson, assisted by Don Drummond

## March of Dimes Rescheduled

The March of Dimes campaign which was scheduled for Sunday, Feb. 23 was canceled because of the snow and has been rescheduled for March 9. All volunteers are asked to meet at the First Christian Church at 2:30 p.m. to receive envelopes and material for the door to door campaign, according to County Chairman, Joe Dan Bryan.

There is much to be said  
Of the team of which you've read  
The Champions of district 1AA

They're a hustling bunch  
With a winning touch  
The Champions of district 1AA

They're a team with a heart  
Who give their all from the start  
The champions of district 1AA

They will fight to the end  
For their bi-word is win  
The champions of district 1AA

# The Spearman Reporter

VOLUME 66, NO. 15

THE SPEARMAN REPORTER, SPEARMAN, TEXAS 79081

THURSDAY, FEBRUARY 27, 1975

## Texas Public Schools Week, March 3-7

The annual TEXAS PUBLIC SCHOOLS WEEK will be held March 3-7, according to Superintendent James Cunningham. Cunningham stressed the need for widespread community participation in examining the complex and changing problems faced by our education system. All parents and concerned citizens are urged to visit schools during this week and talk to students, faculty and administrative personnel about our system of education. All grades-elementary through high school-will be open for public visitation and inspection during the week.

Tuesday, March 4 open house will be held at the schools from 7 to 9 p.m. The elementary school, grades kindergarten through 4th grade, will have classroom visitation from 7 to 8, and a musical program in the junior high auditorium from 8 to 8:30. Mrs. Wilma Clark, music teacher, and 3rd and 4th grade students will be demonstrating some of the different activities, such as folk dancing, rhythmic work, etc. during the musical program.

ation students will be demonstrating what they do in their PE classes in the gym during the open house. Parents may stop by and see these activities as they attend classrooms and view their child's work and visit with the teachers.

High school instructors will be in the classrooms also from 7 to 9 for visitation with parents and interested citizens. Hansford County Shriners and Hansford Lodge #1040 will be serving refreshments in the Junior High cafeteria beginning at 8:30.

Parents are encouraged to attend the open house and also to attend classes during the day and to eat lunch with their children in the cafeteria if they so desire. Parents wishing to eat lunch at the cafeteria should notify their children's teacher the day before so that necessary arrangements can be made.

The observance of Texas Public Schools Week marks the 21st year of the public school system in Texas. School officials, board members, and faculties throughout the State believe that active and community participation in

education will help to maintain the highest standards of achievement on the parts of the students and the faculty.

"Our schools today face growing problems unique in our history," said Supt. Cunningham. "Energy shortages and inflation pose questions which must be answered and dealt with, and action must begin on the community level. I cannot overemphasize the importance of concern and participation on the part of every citizen, both parent and non-parent, in this matter. The continuing quality of life in Texas and the nation will depend on our maintaining and improving the level of education of our children."

**NOTICE:** Martin Steak Gardens will begin serving breakfast Monday morning at 6:30 a. m. Also, the showing of special Indian turquoise and silver will be held this Sunday at the Steak Garden.

## Council Has Lengthy Meeting

The city Council had a long session at their regular meeting Monday evening at the city hall.

The council, after reviewing letters from the Chamber of Commerce, the Citizens Advisory Committee, and the Planning and Zoning Commission authorized the pre-application for HUD Community Development Block Grant Program. The grant would be used to revamp the community building for an all around center, to include facilities for a day care center, senior citizens, youth, as well as the grounds surrounding the building.

Wayne Ellsworth appeared before the council concerning the remaining of the 11th ave. Ellsworth has contacted residents on the street and had found no objections to renaming the street. The council voted to give the honorary name "Purple Pride Avenue" to the street and to erect signs at both ends of the

street and at the high school.

A discussion was held concerning meter deposits requirements by the city. The council instructed the assistant city manager to make a study and give recommendations at the next meeting.

The council authorized the City Manager to look into the purchase of 6 more solid waste containers and authorized the purchase of the containers. Growth of the city requires more containers.

City Manager Thompson discussed the solid waste permit that must be filed with the Environmental Protection Agency by April 15 with the council. The council voted to use the most economical means of getting utility bills to customers and to notify citizens and the general public of gas and water prices and safety regulations.

Thompson reported to the council the status of the

Railroad Commission hearing set for March 17 at Austin on the proposed rate increase being asked by High Plains Gas Company. The gas company presented their side of the increase they are asking for in Jan. and the City will present their case March 17.

The discussion of the dog pound and fees and personnel hiring was taken off the agenda.

Thompson told the council that he had informed Paul Farrar, General Telephone Co. manager; that no action could be taken on their request for a rate increase until the city has concluded the Railroad Commission hearings.

He also requested permission for Water & Sewer Supt Ted Scroggs and another employee to attend the sewer and treatment school at Pampa March 10-14. Permission was granted. Meeting dates were set for March 10 and 24 with the time set at 8 p.m. The council went into

executive session to discuss personnel only. No action was taken.

The city manager recommended that the assistant city manager, Mark Neff, be given a \$75 mth. raise. The council approved the raise and also gave the city manager Ed Thompson and assistant city manager Mark Neff a vote of confidence for the work they have done for the City of Spearman during their administration.

## To Re-Open

Chicken Express is planning a big re-opening on Saturday, March 1. They have been closed for the past few months but are ready to begin serving that delicious fried chicken and all the trimmings, and a variety of sandwiches and drinks.

Mrs. Mike Hergert and the staff at Chicken Express invites everyone to drop by and try some of their delicious meals.

## 2 Men File For City Council

Two men have filed for positions on the city Council. They are incumbents J. K. Hicks and Don Denham. Terms expire this year for J. K. Hicks, Alton Ellsworth and Dan Desimone.

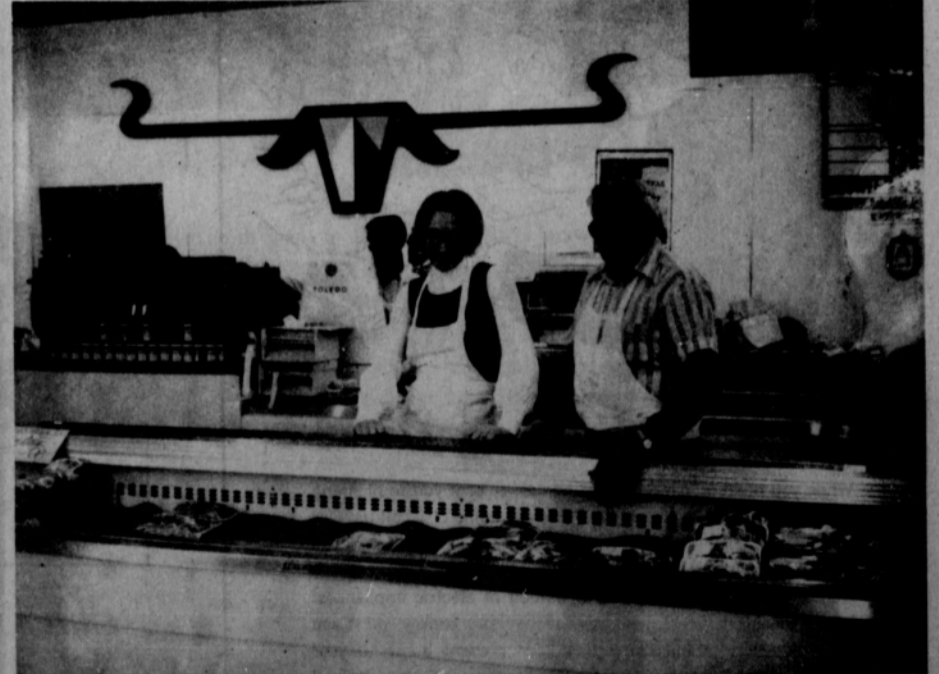
The election will be held April 5 at the high school in conjunction with the school election.

Deadline for filing in both elections is Wednesday, March 5, at 5 p.m. Filing for city offices should be done at the city hall and those filing for the school board should do so at the high school business office.

At news time no one has filed for positions on the school board. Terms expire for George Jackson and Bill Partridge this yr.



Lending Mayor Palmer a hand this week in cleaning the snow off of main street was Victor Miller. Miller also cleaned up in front of the news office! Thanks Victor!



Linda Roberts and Butch Butler take a look at their meat market display, at the Thriftway Grocery in Spearman. They remind the public that meat is a great buy!

# CONGRATULATIONS SPEARMAN HIGH

## DISTRICT CHAMPIONS

We are proud, you are right  
Of the purple and white  
Lynx... the champions of district 1AA

# Recording Trip To Kentucky

By Archie Burress  
 We left Spearman on January 7th at 6 o'clock in the evening headed for Madisonville, Kentucky where we would record our second record album. We drove to Elk City, Oklahoma, where we got on Interstate 40 Highway and started east. We drove all night, just stopping for gas and food. When daylight came, we were in the eastern part of Arkansas. We crossed the Mississippi into Memphis, Tennessee about 8 o'clock and ate breakfast there in Memphis. We pulled into Madisonville, Kentucky about 2:00 in the afternoon, hungry again and tired. The Colonel's Fried Chicken sure was good there in his home state. We checked in at a brand new motel that was very nice with color T.V. phones, carpet and lovely new beds that sure felt good after the 1,000 miles on the road. We went by and let the Goodmans know we were in town and ready to record the next day. As night time came near, the group wanted to go shopping in town, so they took me to Life Temple Church, where the Goodmans attend. The Wednesday night crowd was small because of sickness, but the service was rich with singing and testimonies

from the congregation. Howard Goodman gave a testimony of "How Precious Christian Friends Are In These Days". Bobby Rich preached and sang the resitation he had composed of "Jimmie". The next day was preparation for our recording session, which would start about 4 o'clock. We rested and tried to prepare for the important hours that lay ahead. Our recording session started at 5 o'clock in the evening and we recorded two songs before the musicians stopped for their meal break. An hour later, we started again for a five hour span that would capture the sound and excitement to be reproduced many times when we were recording the fifth song on the record, which is entitled, "It Won't Be Long". The engineer asked for one of the records. He made this comment, "This is a classic and I would like to have one to play in my home". Before the recording session was over all the musicians ordered a record. We felt this was a big compliment. Here is a list of the songs on the record. 1. "He Lives", which is the title song of the record. 2. "Let Him Be There". 3. "Just Call Upon the Lord", written by Lonnie Burress. 4. "I've Got Con-



fidence", and 5. "It Won't Be Long. SIDE 2:  
 1. "Get all Excited",  
 2. "New Jerusalem",  
 3. "I Don't Know Why Jesus Loves Me", 4. "Just A Little Talk With Jesus", and 5. "Meeting in the Air".  
 We concluded our recording session at 15 min. till midnight with a glorious note of victory. Our trip home was lovely through the hills of

Kentucky and Missouri. We stopped and spent the night with my sister at Granby, Mo. and also visited an hour or so with my mother, who was 88 years old on Jan. 24th, 1975. The next day we drove through to Find Okla. where we always stop at the Sizzlin Siroin and eat a steak for the noon meal. Abe Cornelison is the owner and manager of this lovely restaurant and he and Harley Cornelison, who works at Ideal Grocery are second cousins. Abe sings bass in a trio and we hope to have them some time in the future at Union Church. We arrived back in Spearman about 5:00 on Jan. 14th tired but excited. Our record should be out about the middle of March "The Singing Burress Family".

Mr. and Mrs. Joe Dan Bryan and Mr. and Mrs. Ray Phelps enjoyed a trip to Mexico City last week. While there they met Willis & Nelda Sheets, former city residents, now living at Lake Buchanan.

## Lee Phillips Sister Buried

Services were held at 2 p.m. Tuesday in the First Baptist Church in Dumas for Mrs. Betty June Baker, 44. Mrs. Baker, died Friday at Northwest Texas Hospital in Amarillo, and had been a Dumas resident for 11 years. She was a native of Adrian and a member of the First Baptist Church in Dumas. She was the sister of Lee Phillips of Spearman. Officiating was the Rev. Edward Rogers, pastor, and burial was in the Dumas Cemetery by Morrison Funeral Directors. Surviving are the widower Wayne; a son, Howard Wayne, Jr. of Dumas; a daughter, Mrs. Kem Ghigo of Guymon, Okla.; her father, W.D. Phillips of Fort Worth; a brother Lee Phillips of Spearman, and two sisters, Mrs. H.C. Laton of State Line, Miss. and Mrs. J.C. Tolly of Fort Worth.

## Nelle's News By HD Agent Nelle Evans

Let's talk about spring fashions again this week. The dominant trends for spring '75 are: Skirts: big, bias, loose, dirndl, wrapped, pleated, below the knee. Tops: lacey t-tops, camisoles, loose smocks, big. Blouses: sheer, ruffles, lace, fagg otting. Dresses: big, belted, shirtdresses, yoked sophisticated chemise, peasant, Lelsure: fatigues safari suits, shirt-jackets, blazers, big loose jacket. And fabrics play a vital role as well. We'll see fabric coordinations - two weights of fabric with the same printed pattern for tops and bottoms, quilted and plain, especially calico; printed woven fabric with matching or coordinating single knit; large scale and small scale identical prints on two fabrics all over design with same design plus border stripes. Art form prints - inspired by great paintings - Impressionists, pointillists and post-impressionists; pointillism seen in dots from pin dot to nickel-

sized dots; Impressionistic florals with emphasis on color play rather than form pointillism florals formed by dots of varying intensity. Americana or Bicentennial - early American looks - patchwork, Pennsylvania Dutch hex signs, and samples stitches; revolutionary motifs - stars and stripes, eagles, and Liberty Bells; colonial looks - calico, crewel embroidery prints, and florals.

Naturals - handwoven or handcrafted looks and fabrics that are or appear to be natural fibers; cheese cloth, gauzes, and muslins are the lighter weights; denim, homespun and cotton or linen damask are medium to heavy weights. Florals - the major print for spring, from small and neat to big and abstract; one color plus black and white for dignified control old fashioned chintz-type and wallpaper florals; in the frontier manner sense and textured in appearance.

Fun fabrics - scenes with all the details perfect; wild and wonderful animal prints - from barnyard figures to tropical birds; fruits, trees, and flower pots of petuntas - fun for the young and young at heart.

### Market

Wheat	\$3.50
Milk	4.00
Corn	2.45



Pvt. Roe D. Clark Graduates

February 13--Marine Pvt. Roe D. Clark, son of Mr. and Mrs. R.L. Clark of Spearman, Tex., graduated from recruit training at the Marine Corps Recruit Depot, San Diego. Physical conditioning, discipline and teamwork are emphasized during Marine recruit training. Classes include instruction in close order drill, Marine Corps history, first aid, uniform regulations and military customs and courtesies.

### GREETINGS TO ALL CATTLE PRODUCERS

FRIDAY, February 21, was the regular day for the cattle auction with "Action" in Texhoma. The selling began at 10 AM (CST) and was completed at 6:40 P.M. 3908 cattle and calves were sold through the arena during that period.

We are expecting 3500 to 4000 cattle of various classes for FRIDAY, February 28. Arrange your consignment -- whether large or small -- in advance for any FRIDAY in March.

We are now having from 120 to 150 different consignors weekly -- Buyers in attendance from several states. Send you next cattle to the Auction Market Where the "Action" is.

### Texhoma Livestock Commission Company, Inc.

TEXHOMA, OKLA. 73949

Cattle Dept.

Chf. Augustine - Raymond Choate - Wayne Roberts

P.O. Box 70

# Get wheeling with a Big Wheel Auto Loan.



Everybody's Bank revolves around you when you need new-car money. You're a big wheel here, regardless of the size of car you want: buy a subcompact or a limousine, and we offer terms that won't drive you into the ground. In fact, a Big Wheel Auto Loan is as big on economy as it is on personalized service. You'll find the wheels of Everybody's Bank are turning your way in a great big way!



SPEARMAN, TEXAS 79081



# GOOD NEWS!!

You've Been Crowing For Some Good Fried Chicken & Fixins. So, Saturday The 1st Of March

We'll Be Up With The Chickens Preparing Just That...

Golden Brown Mouth Watering Chicken, Cold Slaw, French Fries and Hot Buttered Rolls...

And..Don't Forget About Our Delicious Hot Sandwiches And Drinks.

COME BY, STARTING SATURDAY AND HAVE ANOTHER DELICIOUS MEAL...

## Chicken Express

659-2310 Spearman, Texas 107 N. Main

## Allied Has Continuous Quality

LIVONIA, Mich., Jan. 31—Ever wonder how food manufacturers and processors can claim preferred "United States Grade A" or "U. S. Fancy" ratings for their products?

The answer is that grade is issued by the U. S. Department of Agriculture to designate different levels of quality for the voluntary use of producers and buyers and consumers. Suppliers of private and nationally advertised brands must conform to the same quality standards for any particular rating they pick for their foods.

Each level of quality has a different rating, "U. S. Grade A," "U. S. Grade B" and "U. S. Grade C" down to Substandard and Grade Not Certified (GNC). These levels provide a convenient basis for selling at a different price, for establishing quality control programs, and as a basis for Federal inspection for a commodity.

Allied Supermarkets operates Wrigley, K Mart, Humpty and Ideal stores in 25 states.

Allied chose the mid to high "U. S. Grade A" route

for its food products under the Camelot and Meadowdale labels. Suppliers are held to strict accountability for the quality; if their products are below mid to high "U. S. Grade A" quality, back they go at the suppliers expense.

Suppliers include a number of nationally known manufacturers and processors.

As a part of Allied's quality assurance program, samples of the food products as they are received prior to being sent to the chain's stores and after they are in the stores are inspected to see if the quality measures up to the mid to high "U. S. Grade A" rating.

Allied is among the few supermarket chains in the U. S. to maintain its own quality assurance program and test kitchen thus demonstrating concern for consumer satisfaction with its private label products.

The test kitchen in the Livonia complex is where the action is. Recently Francis Langevin, quality assurance manager; his chief assistant Judy Zeh, and Chris Kirk, laboratory technician, used the kitchen to test 104 samples of 27 frozen fruit,

vegetable and concentrated juices, Camelot and Meadowdale products. Floyd Emer, USDA agricultural commodity grader, aided Allied in verifying the quality of samples.

Imagine yourself in this kitchen, opening containers of frozen green peas, whole strawberries, whole kernel corn, corn on the cob, french fried potatoes, etc. You made purchases in Wrigley stores selected at random in order to get a representative sampling of products on store shelves.

Spread side-by-side on a large laboratory table are pairs in which you put frozen green peas. These are to be graded according to color, defects, tenderness and maturity. Mr. Langevin, clipboard in hand, puts down the "score" made by Mr. Emer for each grading. Allied's specifications for green peas read: "In part. Color--The frozen peas shall possess a bright, practically uniform, good green color that is typical of the variety.

Defects-- For each 60 ounces of net weight, there may be present not more than 1 piece of harmless extraneous material or 1 seriously blemished pea. Tenderness and Maturity--No more than 3 peas, with the skins removed, in a sample of 75 peas, may sink in a solution containing 13 percent by weight of salt; and the frozen peas after cooking according to label directions, shall be very tender.

Flavor and odor--The peas shall possess a good characteristic flavor and odor, and are free from objectional flavors and odors of any kind.

The specifications for each of the products being tested conforms with the "U. S. Grade A" standard. In connection with canned whole kernel corn, the grading is for net weight, drained weight, vacuum, fill of containers, cut, and nutrition as well as the other classifications. Allied's specifications state: "The Supplier is responsible for the nutritional information printed on Allied Supermarkets, Inc., Camelot canned corn labels and must perform

adequate nutritional analyses at a frequency necessary to substantiate the claims made on the label.

Mr. Langevin informs you that "We can do virtually any testing except the test for bacteria in our kitchen. Bacteria tests are performed constantly by our suppliers. We also send those products that are susceptible to bacteria to a qualified outside laboratory for testing on a regular basis.

"We prepare products from our formulated items such as cake mixes as they should be consumed in the housewife's kitchen. We use measuring charts and visual aids for almost all items, such as a color swipe or stick on frozen lima beans, and peanut butter, and constant flow sheets for applesauce or cream style corn.

You will find the quality assurance staff busy testing one product or another on any work day. It's a continuous process, Mr. Langevin says.

"A week ago we had the services of another expert to help verify the quality of store-purchased Camelot dairy products. Tests were made in our kitchen of cottage cheese; Colby cheese; mild, medium, and sharp Pinconning cheese; brick, Swiss, Muenster, cheddar, and processed-American cheese; low fat, skimmed, homogenized and chocolate-flavored milk, and ice cream.

"We're testing items that are sent to us by new suppliers. For other than seasonal items such as canned and frozen vegetables, the supplier sends production samples for testing," he said.

Mr. Langevin stressed that "Every lot of all canned groceries, all frozen foods, and all cheese products from suppliers is tested within 24 hours of its receipt in our Livonia warehouse."

He noted that "We estimate that each year we evaluate 15,000 to 20,000 samples that are under the Camelot and Meadowdale labels."

Among the suppliers of Allied's private brands are the following (in alphabetical order): American Beauty-macaroni; American Milk Producers Institute-butter;

Anderson-Clayton-margarine; Brenner Biscuit Co.-cookies; crackers; Conzadina Foods-some tomato products; Diamond Crystal-salt; General Mills-quick oats; Green Giant-some frozen vegetables; Heinz-soups; Hormel-gelatin desserts, pudding and pie fillings; Indian Trails-cranberry products; Nestle-instant coffee and tea; Pet milk-instant and evaporated milk; Swift, and Wilson-shortening; Tille Lewis Foods-canned fruits; Velvet Foods-peanut butter.

## NWIT & All-Star Game Tickets On Sale

AMARILLO--Tickets for the annual National Women's Invitational Basketball Tournament and the Golden Spread Girls High School All-Star game are on sale at the Amarillo Chamber of Commerce office.

The 7th NWIT, a three-day affair, begins March 13. The 5th all-star game pitting most of the best seniors from Texas Panhandle high schools against each other on East vs. West teams, will be played March 15, preceding the NWIT championship contest.

Ed Mills, NWIT finance committee chairman, said ticket prices are \$2 for adults and \$1 for students for the March 13 and 14 games. A ticket is good for all four games each day.

On the final day, March 15, the six center sections of the Amarillo Civic Center Coliseum will be sold as reserved seats with tickets costing \$2.50, Mills said. Seats outside the reserved area will be \$2.

Mills said tickets purchased in advance will be sold at a discount, being priced at \$1.50 for adults and 75 cents for students. This applies only to the March 13-14 games, he said.

Deadline for advance ticket sales is March 6. Tickets may be bought at the Chamber of Commerce office in downtown Amari-

llo or by mailing a check or money order to NWIT, Amarillo Chamber of Commerce, Amarillo Building, Amarillo 79101

Texas ranks 20th in the nation in the money it spends on public welfare services for children. Source: "The Darker Side of Childhood," published in 1974 by the Texas Department of Community Affairs, Office of Early Childhood Development.

Bed jackets seem destined to return to popularity this fall, possibly as one answer to how to keep warm during the continuing energy problem this winter, Margret Ann Vanderpoorten, clothing specialist with the Texas Agricultural Extension Service, The Texas A&M University System, notes.

Approximately 32,000 Texas children under six are left to care for themselves while their mothers work. Another 33,000 Texas children under six may not be receiving care while their parents work. Source: "The Darker Side of Childhood" published in 1974 by the Texas Department of Community Affairs, Office of Early Childhood Development.

The Hansford County Stock Show Committee wishes to thank the following businesses and individuals who purchased animals at the 1974 stock show and helped to make it a success.

- Adobe Walls
- John Armes
- Mrs. George Buzzard
- Bernice Brown
- Lloyd Buzzard
- Continental Grain
- Caprock Industries
- Davis Oil Co.
- First State Bank
- Farmers & Ranchers Supply
- Tommy Gumfory
- Gruver Farm Supply
- Gruver State Bank
- Hansford Feedyard
- Harris & Pool Spraying
- Gruver John Deere
- J.C. Harris
- Dr. D.E. Hackley
- Hi Plains Motor Parts
- Round Up Cattle Co.
- Sparks Bros. Aerial Spraying
- Don Smith
- Spearman Super Service
- Traeco Builders
- Kiff White
- Geo. Jackson
- Livestock Specialties
- Jett Mason
- Morse Oil Co.
- Willard McCloy
- Neuberger Cattle Co.
- Pittman & Sons
- R.C.Porter
- Rommel Cattle Co.
- Gruver Lumber Co.

- Dee Allen
- Bunkhouse
- Beedy Furniture
- T.J. Bergin
- Chunky Blackburn
- C.H. Clawson
- Double D Ag Center
- Equity
- Duane Fulfer
- First National Bank-Borger
- Gruver Insurance Agency
- Golden Spread Sales
- Gruver Tractor & Equip.
- Hi Plains Conoco
- Hansford Implement
- Hansford Parts & Supply
- Pat Holt
- H & H Well Service
- Hi Plains Supply
- S&P Oil Co.
- A.D. Sparks
- Sanders Farms
- Troy Sloan
- R.L. Uptergrove
- Boots Williams
- Lady Fair
- The Lot
- Morse Implement
- Elsie Mathews
- North Plains Truck & Imp.
- Palo Duro Feeders
- Mrs. Maudine Patterson
- Palo Duro Grain
- Aubrey Rasor

## BRING YOUR WHEAT PASTURE CATTLE TO SOONER BEEF FEED YARDS

PART OF THE STRONG CUSTOM FEEDER

PROCHEMCO. INC.

Assets More Than \$16 Million

Working Capital Over \$5 Million

WE CAN

Finance Your Feed Bills  
Guarantee Price of Grain  
& Silage into Your Rations  
Advise on Hedging Your Cattle

Call Sooner Beef Feed Yards

James McCarty

405-545-3311



## Questions on Energy Efficiency?



### Call our Customer Services Representative

When you build or remodel your home . . . or if you're planning to install new appliances in your present home . . . call us. Our trained customer services representatives can give you ideas on the efficient use of electricity through design and construction of your home, as well as operation of electric appliances. These ideas could help you save money and energy, or if you have questions about converting your present home to year around electric heating and air conditioning . . . our trained customer services representatives can give you the answers. Call Community Public Service Company today.

COMMUNITY PUBLIC SERVICE

Your Electric Light & Power Company

An Equal Opportunity Employer

## Good Morning!

We will begin serving Breakfast Monday Morning at Martins Steak Garden

### Eggs

TWO EGGS, Any Style .....	1.50
with Ham, Bacon or Sausage .....	2.25
ONE EGG, Any Style .....	.85
TWO POACHED EGGS on Toast with Bacon or Sausage .....	2.50
ONE POACHED EGG on Toast .....	1.00

Above Served with Hash Brown Potatoes, Buttered Toast, Jelly and Coffee

### Omelettes

SPANISH .....	2.35	PLAIN .....	1.45
HAM .....	2.35	CHEESE .....	2.35

Served with Hash Brown Potatoes, Buttered Toast, Jelly and Coffee



### HORSEMAN SPECIAL

Two Eggs, Any Style, Breakfast Steak, Hash Brown Potatoes, Buttered Toast, Jelly and Coffee

3.25

### TEXAN LATE RISER

Two Eggs, Sunny Side Up, Ham Steak, Buttered Toast, Jelly and Coffee

2.95

### Hot Cakes & Waffles

FULL STACK (3) .....	1.35
with Ham, Bacon or Sausage .....	2.00
SHORT STACK (2) .....	1.00
with Ham, Bacon or Sausage .....	1.75
PLAIN WAFFLES .....	1.00
with Ham, Bacon or Sausage .....	2.00
FRENCH TOAST, Thick Sliced French Bread .....	1.50

The Above Served with Syrup, Whipped Butter and Coffee



BISCUITS AND COUNTRY GRAVY  
1.15

### Side Orders

BACON .....	1.25
HAM .....	1.25
SAUSAGE .....	1.25
HASH BROWN POTATOES .....	.50
TOAST AND JELLY .....	.40
CINNAMON TOAST .....	.45

### Cereals

CEREAL with Milk or Half and Half .....	.75
CREAM OF WHEAT with Toast ..	1.00

### Rolls

BREAKFAST ROLL .....	.45
----------------------	-----

### Beverages

COFFEE .....	.20
SANKA .....	.30
HOT TEA .....	.20
TOMATO JUICE .....	.35
HOT CHOCOLATE .....	.25
GLASS OF MILK .....	.35
ORANGE JUICE .....	.35

## MARTIN'S STEAK GARDEN

SPEARMAN, TEXAS

# Tax Deductions Average \$2960 Locally

NEW YORK, Feb. 22--How closely do the tax deductions claimed by Hansford County residents, in filing their federal income tax reports, compare with those taken by people in other parts of the country?

Such information, useful to taxpayers who are compiling their income and expense figures for the April 15th deadline, is supplied in a study made by the Commerce Clearing House, specialist in taxes and business law, on the basis of data obtained from the Treasury Department.

It shows that, in general, families throughout the country that have earnings

equal to the Hansford County average have been listing deductions of about \$2,960, which is equivalent to 24 percent of their adjusted gross income.

Among families whose earnings are lower than the local average, the amounts that are deductible represent a larger percentage of their income. For those in higher brackets on the other hand, the deductions are lower, percent-wise.

The range is from 39 percent of gross income, for those with very small earnings, to 18 percent for those at the upper end.

Families in the local area with incomes of \$10,000, for example, will have deductions of about \$2,550 if they conform with the norm. Those at the \$15,000 level will have \$3,100 to deduct and

those earning \$8,000, approximately \$2,350, according to the Commerce Clearing House report.

A breakdown of the deductions ordinarily taken by families with incomes equal to the Hansford County average are: for contributions, \$370, for interest on loans and installment debt, \$1,069, for local taxes, \$1,103, and for medical and dental expenses, \$418.

These figures are merely a guide to what most people are listing as tax deductions, notes the CCH, and are not automatically accepted by the Internal Revenue Service.

Some families may have legitimate deductions far in excess of the average. In all instances, the taxpayer must be able to substantiate them with proper records.

## Panhandle Paintings

AUSTIN, Texas (Sp.)--The Longhorns and the Aggies are cooperating! What has brought together the talents of a University of Texas artist and the publishing plans of the Texas A&M University Press is the flavor of the Texas Panhandle.

Prof. Michael Frary, noted artist on the UT Austin Art Department faculty, is busy preparing between 150 and 200 watercolor paintings that attempt to capture the "mood and essence" of the Panhandle. More than 70 of those paintings will be selected for publication in early 1977 in the A&M Press' new series on Texas art.

If it will mark the second time that artist Frary has

collaborated with bookman Frank Wardlaw, who became the A&M Press director last fall.

Mr. Frary illustrated "Impressions of the Big Thicket" for the University of Texas Press in 1973 when Mr. Wardlaw, was still director of the UT Press.

Mr. Frary reports he "zigzagged" about 3,000 miles through the Panhandle last August, painting and sketching from the side of a small van. He returned there for several days after Christmas to continue his work.

When he completes his paintings at the end of this year, he hopes to have painted Panhandle scenes at all seasons of the year. Before beginning his in-

tense study of the Panhandle, the UT artist said he had thought of the area as being "either dusty or icy" Now that he has brought the trained eye of the artists to bear on the region, he says he is impressed more and more by the interesting things to see.

One of the biggest challenges he faces, he says, is how to convey the special "flatness" of the Panhandle.

The Frary paintings will delineate crops, oil and cattle and will range in style from a detailed almost photo-like depiction of a yellow oil-drilling rig to a subtly shaded expanse of sky over a ribbon of flat plains.

He sometimes gives a facetious answer when asked how long it takes him to paint a picture on the heavy 22-by-30-inch hand made watercolor paper he uses.

"Oh, about 40 years," he grins, or maybe "three generations."

But, the UT artist usually completes a painting on the spot. He sometimes sets a timer so he will spend no more than 30 minutes per painting, thus insuring more spontaneity in the picture.

Examples of the paintings Mr. Frary has completed include:--Scenes of the Palo Duro Canyon.--A Landscape looking toward the Cap Rock Escarpment.--A weathered fence post surrounded by brush.--Grain elevators etched against a darkened sky.--Cattle huddled together in a storm.--A field of grain sorghum.--Borger at night, with the lights of industrial plants twinkling almost like the stars overhead.--The railroad station at Panhandle.--Silos.--A typical small ranch house with windmill and grazing horse.--Close-up of a barbed-wire fence.

Mr. Frary says he is "not trying to reproduce scenes as they actually are but to convey the feel of the place and its variety."

## Easter Seal Services Stepped Up

Because of the steady growth in numbers of crippled children and adults in Texas, the Easter Seal Society for Crippled Children and Adults for Texas has stepped up its rehabilitation services.

Freeman Barkley, who is the Easter Seal Representative for the County, said 20,152 handicapped Texans received Easter Seal treatments during 1974. "Despite medical scientific advances," Barkley explained, "the rank of the crippled are growing. This is because of population growth, increased number of accidents and medical treatment which saves victims of crippling diseases who might not have lived in past years."

Quoting the annual report of the Easter Seal Society for Crippled Children and Adults of Texas, affiliated treatment centers in Texas provide treatment and rehabilitation, speech and hearing and educational programs, and many other services required by the physically disabled to live normal lives.

The largest group served includes those with major deformities of bones and joints, severe speech defects, cerebral palsy, arthritis, muscular dystrophy and multiple sclerosis and stroke. The Easter Seal Campaign, which provides funds for continuation of these services, begins Feb. 24, and continues through March 30, Easter Sunday.

# FIGHTERS!

"FEATURING UNITED'S PROTEN BEEF"



<b>STEW</b>	BONELESS EXTRA LEAN CUBES OF BEEF	LB.	<b>98¢</b>
<b>RIBS</b>	THICK & MEATY	LB.	<b>58¢</b>
<b>STEAK</b>	T-BONE	LB.	<b>\$1.38</b>
<b>STEAK</b>	CLUB	LB.	<b>\$1.38</b>



TSTI Registration In Progress

AMARILLO, February 20, 1975--Registration for the Spring Quarter at Texas State Technical Institute, Mid-Cininent Campus, is in progress and will continue through March 3.

Classes will begin at 7:30 AM Tuesday, March 4. New students will be accepted in the following three quarter skill development programs: Auto Body Repair, Meat Processing and Slaughter, Saddle and Tack Making, Technical Office Training and Welding and Fabrication. Technical Office Training offers individualized instruction which allows students to begin at any time and complete the work at their own pace. Six-quarter technology programs now registering new students are Aircraft Mechanics, Automotive, Commercial Art in Advertising, Drafting and Design, Electronic Systems, and Printing.

Students may enroll in any of the five Cosmetology schools through State Tech. Registration fee for all programs is \$85 per quarter. Laboratory fees and supplies vary. Housing and dining facilities are also available for single, as well as for married, students. Financial aid programs exist at State Tech for those who qualify, in addition to veterans benefits.

Mid-Cininent Campus is located about 9 miles east of Amarillo, Address is Box 11035, Amarillo, Texas 79111.

**RUMP ROAST**  
**88¢** LB.

**RIB STEAK**  
**88¢** LB.

**ROUND STEAK**  
**88¢** LB.

## "FROZEN FOODS"

MORTON ECONOMY DINNERS	MAC. & CHEESE MAC. & BEEF SPAG. & MEAT BALLS	37¢
GORTON FISH STICKS	LARGE 21oz. CARTON (32 SMALL STICKS)	\$1.39
FOOD KING CRINKLE CUT POTATOES	2 LB. PKG.	39¢



FOLGER'S COFFEE  
LIMIT ONE  
**3** LB. CAN **2.89**  
REG. DRIP ELECTRIC

Poage Replaced By Foley

The Democratic Caucus recently voted to remove Congressman Bob Poage, Democrat from Texas, who had headed the powerful House Agriculture Committee for the past eight years. Poage "had championed a healthy agricultural economy and his leadership, experience, and knowledge will be missed" according to a statement released January 17 from the Texas Farm Bureau President Carol Chaloupka of Dalhart.

Chaloupka expressed hope that this turn of events would not indicate that the House Agriculture Committee would be dominated by urban Congressmen who will try to squeeze cheap food out of American agriculture.

Representative Thomas S. Foley, Democrat from the State of Washington was appointed last week to serve as Chairman of the House Agriculture Committee. It has been hinted that Poage might become head of the Subcommittee on Livestock and Game, considered the position closest to the chairmanship line, according to a report in the Texas Cattle Feeders Report for January 24.

Miracle Whip  
**SALAD DRESSING**  
**98**  
32 Oz. Jar  
With \$10 Purchase Or More Excluding Cigarettes

COLONIAL FROZEN  
**CAKE**  
GERMAN CHOC.  
CHOC. FUDGE  
COCONUT  
REG. \$1.49  
**98¢**

KRAFT MACARONI DINNER 7 1/2 OZ. BOX **4 FOR \$1**  
AFFILIATED U PRICES GOOD THRU MARCH 1ST  
**UNITED**  
PERRYTON, TEXAS  
**SUPER MARKETS**  
WE GIVE 3/4 GREEN STAMPS QUANTITY RIGHTS RESERVED

# Enroll Your Kindergarten Age Child

Allen Alford, elementary school principal, is issuing an appeal for all parents with children who will be eligible for kindergarten next year to please register their child. A registration blank in this paper may be filled out and returned to the Spearman Elementary School, 511 S. Townsend.

It is important that you register your child now, so that you may be given information on immunizations and other planning which is necessary.

The following students have been registered to date: Gina Leann Bartz, Alan Ray Beeson, William Davin Black, Sara Paige Blackburn, Tina Louise Breeden, Stephen Wade Browning, Ricky Lee Burch, Diana Canzu, Jeanette Don Cates, Clifton Duane Coleman, Carroo L. Cook, Jr., William Michael Counts, Christy Dart, Joy Loren Dean, Cynthia Elaine Downdy, Ray Duma-way, Lori Ann Eaton, James Randall Everson, Anita Flores, Jamie Garcia, Wade Allen Gray, Shannon Kay Groves, Julie Denise Godfrey, Ronald Tex Hargrove, Justin Wayne Harris, Eliza Dawn Hoover, Martin David Karr, Michael Ray Leatherman, Christine Marie Martin, James Shawn Martin, Tommy Dale Miller, Rodney Eugene Montandon, Jody Wm. Moyer, Gerald D. McBride, Kristie Lynn McCain, Thomas Kevin Nelson, Paige Erin Pittman, Annette Alice Pope, Tamara Lynn Raucher, Jerry Lee Ring, Rhonda Kay Ross, Kelley Raymond Raucher, Melanie Lynn Rogers, Scott Russell, Virginia Sandoval, Karoline Louise Schneider, Norman Carrington Scroggs, Angela Mae Siras, Bradley Matthew Spann, Adrienne Dawn Speck, Karmin Denise Stowers, Sheron Michelle Sumner, Kirby Willmont Taylor, Shirley Mae Thomas, Vernon Lee Tindell, Deana Renee Turner, Laura Garnett Umpluss, Carl Dean Urban, Tania Joan Vernon, James Joe Villalobos, Wanda Denise Wagner, Doris Lynn Whitefield, Lori Lynette Williams, Jan Ann Wirsdorf, Eva Zamora, Kristan Daylynn Vandell, Margaret Jean Wagner, Connie Sue Woolley.

The Spearman Elementary School is starting the 1975-76 kindergarten students list. It is important that next years' students be known now in order that they may be given information on the immunizations and other planning which is necessary.

If you have a child or know of any child whose birthdate was prior to September 1, 1970, and who will be 5 years old before or as of Sept. 1, 1975, please complete the form and return it to the Spearman Elementary School, 511 S. Townsend.

REGISTRATION FORM FOR 1975-76 KINDERGARTEN

Full Name of Child	Parent's Names	Address & Phone	Birthdate

will be competing in El Paso in June against the other major Shrine Corps from Houston, Dallas, Fort Worth, Austin, and San Antonio. Later, in the first week of July, they will be traveling to Toronto, Canada, to compete in the two parades of all the Shrine Temples in North America. Toronto has a metro population of 2 million, and there will be a quarter of a million Shriners representing 174 cities throughout Canada, Mexico, and the United States.

The 4th Annual Rodeo will be held in Amarillo Fair Park Coliseum with performances on Friday, Feb. 28, at 8:00 p.m. Sat. March 1, at 2:00 p.m. and 8:00 p.m.; and Sunday, March 2, at 2:00 p.m. Advance tickets are on sale for \$2 general admission. Tickets at the door will be \$2 for students, \$3 for adults, and \$3.50 for box seats.



Brownie Troop #65 met Friday, Feb. 21st in the Girl Scout House with leader, Mrs. Monty Black.

The girls cooked Mallow Squares.

Refreshments were served by Teresa Tindell to members, Cristie Black, Ruth Ann Dennis, Stephanie Hays, Janice Kyler, Jeanne Laird, Jo Anne Odegaard, Tisha Pearce, Rosa Pierce, Angie Thompson, Genny Womble, Kelly Rinker, Joanna Jarvis, Lorrie Morris, Stephanie Friemel and Kelly Groves.

Next meeting will be Feb. 28th at the Scout House with Rosa Pierce as hostess.

Junior Troop #76 met Monday, Feb. 24th in the Girl Scout House with leaders, Mrs. Jim Davis, Mrs. Tommy White and Rhonda Morrison.

The girls worked on the "Sign of the Arrow" and learned foreign greetings. Also the girls received World Friendship Pins in observance of Thinking Day.

Refreshments of ice cream cones were served by Yvonda Scroggs to members, Cindy Burton, Debbie Burton, Penny Cummings, Jeri Darnell, Jan Davis, Jean Davis, Lori White, Sonya Cooley, Lana Paul, Janet Reed, Debbie Fittler, Teri Thomas, Janna Harris, Angela McCain, and LaTonia Phelps.

Next meeting will be March 3rd in the Scout House with Angela McCain as hostess.

PRICES GOOD THRU MARCH 1ST

PERRYTON, TEXAS

WE GIVE S&H GREEN STAMPS

PLAY BONUS "BLACK-OUT" BINGO

GET 1000 EXTRA S&H GREEN STAMPS

QUANTITY RIGHTS RESERVED

# PRICE

"FEATURING UNITED'S PROTEN BEEF"

ROAST BONELESS SHOULDER	WASTE FREE	98¢
ROAST ARM	ROUND BONE ARM CUT	98¢
STEAK BONELESS ROUND	WASTE FREE	\$1 08
STEAK CUBED	WASTE FREE	\$1 58

GROUND BEEF 100% ALL BEEF FAMILY PACK

## 58¢

LB.

RANCH STEAK CENTER CUT 7-BONE CHUCK

## 88¢

LB.

CHUCK STEAK BLADE CUT

## 68¢

LB.

BRITANNICA JUNIOR ENCYCLOPEDIA VOLUME FIVE \$2.99 WITH A \$5 PURCHASE

CHILI PLAIN GEBHARDT'S 19oz. CAN 59¢

TAMALES GEBHARDT'S JUMBO NO. 2 1/2 CAN 49¢

HONEY BOY CHUM SALMON TALL CAN \$1 39

DOG FOOD BOW-WOW 25 LB. BAG \$3 98

PORK 'n BEANS VANCAMP 4 300 CANS \$1

UNITED EGGS EXTRA LARGE 55¢ 1 DOZ.

RUSSET ALL PURPOSE POTATOES 20 LB. BAG \$1 19

NAVEL SUNKIST LARGE SIZE ORANGES 19¢ LB.

FRESH VINE RIPE 4 CT. PLASTIC CARTON TOMATOES 39¢

WASH. D'ANJOU PEARS 29¢ LB.

FRESH GREEN PASCAL CELERY LARGE STALK EACH 25¢

## County Rodeo

### Clubs To Compete

Members of the Spearman High School Rodeo Club and the Gruver High School Rodeo Club will be competing in the 4th Annual Tri-State High School Rodeo sponsored by the Khiva Shrine Drum & Bugle Corps in Amarillo Feb. 28, March 1 and 2. The Rodeo is sanctioned by the Tri-State High School Rodeo Association. Young men and women belonging to the Association will be competing from a five-state area and fifteen high school clubs. They will be earning points to qualify for the Finals to be held this summer. Amarillo business establishments have donated the prizes which include silver trophy buckles and hand-tooled trophy saddles.

The Rodeo to be held indoors at the Fair Park Coliseum will include eleven events. Boys will compete in bull riding, steer wrestling, calf roping, ribbon roping, team roping, and bareback bronc riding. Girls will compete in barrel racing, pole bending, goat typing, breakaway calf roping, and steer riding. The stock producers are Bill Hilday from Elda, New Mexico; D. Thorpe from Gruver, and Mayo Castle Co. from Panhandle. The rodeo clown is Bill Thorpe from Dumas, and the announcer will be Colonel Jim Tucker from Herford.

Young cowboys and cowgirls from the five-state area will be in Amarillo for the weekend. Contestants from Colorado, New Mexico, Kansas, Texas and Okla. include 580 entries on record Feb. 18, 1975. In addition to individual trophies, each girl's and each boy's high school club will be competing for team trophies.

The Khiva Shrine Drum & Bugle Corps sponsors and produces this rodeo every year. It is made up of forty businessmen who are working for the benefit of the crippled children's hospitals and burn institutes. You have probably seen these men marching through out the Park.

In addition to the...



### Couple To Be Honored On 50th Anniversary

Rev. and Mrs. Newton Daniel, Merkel, formerly of Phillips, will be honored at a reception acknowledging their 50th wedding anniversary, from 2 p.m. to 4 p.m. March 2 in the fellowship hall of the United Methodist Church in Merkel.

Hosting the event will be the couple's sons and their families: the Rev. and Mrs. Wesley Daniel, Littlefield; the Rev. and Mrs. Hugh Daniel, Lockney; Mr. and Mrs. Sam Daniel, Seward, Alaska; and Phil Daniel, Juneau, Alaska.

### Renewal Services At Waka

Pastor John Mummert of Cushing, Okla., will hold renewal services at the Waka Church of the Brethren Monday, Feb. 24 through March 2.

### Arts & Craft Guild News

The Arts and Crafts Guild met Friday, Feb. 21st in the home of Mrs. Garrett Allen.

Refreshments were served by Mrs. Allen to members, Mesdames: Ned Turner, Pope Gibner, Clay Gibner, P.A. Lyon, F.J. Daily, and Deta Blodgett.

Next meeting will be Feb. 28th in the home of Mrs. Ned Turner.

### BRIDGE CLUBS

The Blue Monday Bridge Club met Monday, Feb. 17th in the home of Mrs. Sam Graves.

High score was won by Mrs. Vester Hill. Refreshments were served by Mrs. Graves to members, Mesdames: Deta Blodgett, F.J. Daily, Bill Gandy, Pope Gibner, Vester Hill, Major Lackey, L.S. McLain, and Roy Russell.

Next meeting will be March 3rd in the home of Mrs. Pope Gibner.

The Saturday Night Bridge Club met Sat., Feb. 22nd in the home of Mrs. Chalmers Porter.

### Births

Mr. & Mrs. Rick Holt of Hugoton, Kansas are the proud parents of a baby girl born Thursday, Feb. 20th at 3:47 P.M. in Liberal Kansas Memorial Hospital.

Melissa Dawn weighed 6 lbs., 12 oz. at birth. The proud maternal grandparents are Mr. and Mrs. Bob Burke of Spearman.

The proud paternal grandparents are Mr. and Mrs. Hugh Holt of Hugoton, Kan. The maternal great-grandfather is Amos C. Burke of Spearman.

The paternal great-grandfather is W.E. Hamilton of Hugoton, Kansas.

### Dahlia Flower Club Opens Year

The Dahlia Flower Club met Monday, Feb. 24th in the home of new President Mrs. F.J. Hoskins for their first meeting of the year.

Mrs. Hoskins presided over the meeting. Minutes of the last meeting were read and approved and year books were distributed to members.

The President welcomed one new member, Mrs. Ned Turner to the Club. Roll Call was answered by "Telling of a Famous Person with a Birthday in February".

Delicious refreshments were served by Mrs. Hoskins to members, Mesdames: Ned Turner, C.W. Smith, Earl Riley, Guy Remy, Olin Sheets, John Bishop, H.M. Shedeck, J.W. Walker, Mable Edwards, Deta Blodgett, A.F. Loftin, Garrett Allen, Virgil Floyd and Lowell Demman.

Next meeting will be March 10th in the home of Mrs. A.F. Loftin.

Actress Jane Wyatt is both a trustee of the Church of Dimes, and National Chairman of Volunteer Services for the voluntary health organization's campaign to prevent birth defects.

You are cordially invited to a

going away party

honoring

Lucy Mundy

on Thursday, Feb. 27, 1975

from 6:30 to 8:00 p.m.

in the home of Dr. and Mrs. Novak

718 Gibner Drive, Spearman

No gifts please

14s-2tc

### Our Heritage of Faith

notes from Faith Lutheran Church

Confirmation Sunday for our eighth graders will be on Sunday, March 23 at the morning worship. Those to be confirmed are: Barbara Oltman, Shellye Barnes, Tammy Bynum, Laura Nelson, and John Renau.

On Tuesday, March 25, we will have the Overseas Pastor from Nigeria with us at an evening program. We will have a congregational covered dish supper prior to the program.

We hope that you plan to come and hear this speaker. A special offering to help cover the expenses of these Churchmen in the Southern District will be taken that evening.

Lenten services are held each Tuesday evening at Faith beginning at 7:30. Our consideration is centered in the suffering of our Lord and what it means to me today. Come and take part in this study with us.

Dart Ball is rapidly drawing to a close for this season. Last Monday evening, Faith hosted the team from Oslo. After the dust had settled and following the first home run of the season by Mike Stedje, Oslo; it was found that Oslo had won all three

of the games. The season record for Faith is 5 wins and 10 losses. Sunday afternoon, March 2 will see the Faith men at Guymon to meet the men from Boise City in six games. They are to begin at 2 pm at the Trinity Lutheran Church. The next evening, March 3 will see the Faith men back at Trinity, but this time to meet the men of Trinity in the final series of the year. Trinity Lutheran at present is leading the league.

The Dart Ball tournament will be held at Trinity, Guymon, on March 23 at 2:30. Five teams are entered in this double elimination event.

Oslo Lutheran approved the application for an interim at their congregational meeting last week. We should be hearing from the Seminary very shortly on this.

Flash Lutheran, Ith and Berwick, a congregation of the American Lutheran Church invites you to attend. If you have no church home, or wish to know of the Lutheran Church, we have worship at 9:30 with Sunday School at 10:30. We welcome you!

### BITS OF THIS AND THAT

By Nita Stewart  
Cala Hester left Sat. for Stillwater, Okla. to take care of her Grandchildren while her daughter Pauledd is in the hospital for tests. Husband Jimmy Hester drove Cala to Stillwater. He returned home Sunday. "Get well soon, Pauledd"

Visiting in the home of his parents Mr. and Mrs. Tom Rauscher is their son Jerry Rauscher of Oregon. Hope your stay will be a pleasant one while you are in Spearman. Jerry also has two brothers in Spearman Larry and Gene--and of course the younger boys are still at home.

If the lady who was by that wanted information about a Camper will stop back by, I have the information she wanted. Like I told her I'd try to get for her.

Anyone who needs a baby sitter can call 3391 or 3678. Both are good sitters.

Marilyn Groves' gave her husband Fred Groves a surprise birthday party Feb. 22nd sharing in the surprise were their friends: Tommy and Sandy Russell, Henry and Peggy Herring and Joe and Nita Bynum. A belated Happy Birthday Fred.

Sorry if any of my customers needed gas Sat., but we couldn't get our due to drifts. North James and East Second had a big drift blocking that end of East second street then another good size drift was across the road in the middle of the block. Joe Bynum broke through it and Sun. morning we were able to get out and open the station. Bill Hopper and son, Buddy got out the snow plow and did Bill's A-W and my station. Both places had some drifts. Buddy Hopper really worked hard to clear both places. We really appreciated it. A big thank to Brad Gutrie also for using our snow shovel and doing our walk, and Edna Hays' and Verla Hendrix, then sitting them for us. Brad is the grandson of Edna Hays. Boy! The blizzard of '75 was really something.

Our sympathy to Chief Lee Phillips on the passing away Feb. 22nd of his sister Betty Baker of Dumas, Texas. God be with you in your time of sorrow.

Sorry to hear Mrs. W.H. Forrest "Tex" is ill in Hansford Hospital. Get Well soon Mrs. Forrest.

Nice to see Hattie Bynum and her daughter Beth from Pampa today. They visited with the Ralph Bynum and Joe Bynum families of Spearman.

Come back soon!  
Don E. Windsor Jr. and brother Nicky visit for awhile with us Sunday. We sure enjoy the young folks visiting. Don E. and Nicky are the sons of Dora and Faye Windsor. Don is minister of First Christian Church where we belong.

Beulah Burger and Agnes Thomas spent Sunday in Berger.

Beulah Ashon was telling us Monday morning when we saw her at the drive in window at First State Bank that she and her hubby were in the tornado, last weekend in Okla. We're so glad Beulah and her husband weren't hurt. Glad you Got Home Safe.

God be with you.



### BOWLING NEWS

FRIDAY MORNING PIN BENDER'S 2-21-75		
Won	Lost	
Brock Ins.	64	24
Golden Thim.	58	30
Farm Bur.	57	31
McClellan Gr.	44	49
Bowl Mor	41	46
BWM	30	58
Vernon's	27	65
Baker & Tay.	34	54
HIGH TEAM GAMES		
Golden Thimble	1492	
Brock Ins.	1444	
McClellan Grain	1394	
HIGH SERIES		
Virginia Head	515	
Patty Spoonmoss	514	
McClellan Grain	511	
HIGH IND. GAME		
Patty Spoonmoss	107	
Joyce Frost	106	
Virginia Head	101	
Juni Lee	101	

Practical care for a pregnant woman is many things, says the March of Dimes--good nutrition, the right balance of exercise and relaxation, good personal hygiene, and seeing a doctor regularly.

# Win Up To \$1000!

Pick Up Your Playing Ticket On Each Visit!

#### ODDS CHART as of Feb. 19, 1975

PRIZE	NO OF PRIZES	ODDS FOR ONE STORE VISIT	ODDS FOR 5 STORE VISITS	ODDS FOR 15 STORE VISITS
\$1000.00	1	1:10,000	1:2,000	1:200
100.00	10	1:1,000	1:200	1:20
50.00	50	1:200	1:40	1:4
25.00	250	1:40	1:8	1:1
10.00	1000	1:10	1:2	1:1
5.00	5000	1:2	1:1	1:1
2.00	20000	1:1	1:1	1:1
1.00	100000	1:1	1:1	1:1
TOTAL	26471	1:1	1:1	1:1

**FARM-FRESH FRYER PARTS**

## Box-O-Chicken 39<sup>c</sup>

CONTAINS 3 Breast QUARTERS, 2 LEG QUARTERS, 2 WINGS AND 2 GIBLETS ...

3 TO 4-LB. AVERAGE PER BOX

RIBS ATTACHED, FRESH

**Fryer Breasts**..... 89<sup>c</sup>

FRESH FRYER THIGHS OR

**Drumsticks**..... 69<sup>c</sup>

BLUE MORROW COOKED BEEF OR

**Pork Fritters**..... 89<sup>c</sup>

WILSON'S VARIETY PACK

**Luncheon Meat**..... \$1<sup>29</sup>

WILSON'S, BY THE PIECE

**Braunschweiger**..... 79<sup>c</sup>

BEEF CHUCK, LEAN CUBES

**Boneless Stew**..... 99<sup>c</sup>

EXTRA LEAN

**Ground Chuck**..... 89<sup>c</sup>

**BAR-S MEAT OR BEEF**

## Skinless Franks 58<sup>c</sup>

12-OZ. PKG.

WILSON'S

**Skinless Franks**..... 69<sup>c</sup>

ROBEO

**Skinless Franks**..... 69<sup>c</sup>

ROBEO ASSORTED

**Lunch Meats**..... 89<sup>c</sup>

ROBEO HICKORY SMOKED

**Sliced Bacon**..... \$2<sup>59</sup>

ROBEO FULLY COOKED, SMOKED

**Nugget Hams**..... \$2<sup>19</sup>

HICKORY SMOKED, HALF OR WHOLE

**Sliced Picnics**..... 68<sup>c</sup>

MEADOWDALE HICKORY SMOKED

**Boneless Hams**..... \$1<sup>29</sup>

HERE ARE SOME RECENT WINNERS . . .

## \$1,000<sup>00</sup> CASH TO:

- EDITH M. JONES
- JERRY E. THOMPSON

BOX 184 CLAYTON, N. MEX.  
501 PEAR DUMAS, TEXAS

\$100.00 WINNERS . . .

\$20.00 WINNERS:

MRS. DENNIS R. ECKHOFF, Meade, Ks. — LEONA BARLEY, Dumas, Tex. — LOUISE BENNETT, Guymon, Okla. — CONNIE STEPHENS, Dumas, Tex. — NORMA WILLARD, Pampa, Tex. — PAMELA RANDALL, Liberal, Ks. — JERRY TURNER, Pampa, Tex. — MRS. CLAUDE COOK, Perryton, Tex. — WYNOTA CAMP, Liberal, Ks. — JERRY LOCKE, Spearman, Tex. — DON L. WRIGHT, Berger, Tex. — CORNELIA MAYNARD, Hooker, Okla. — R. E. MUSCHE, Alva, Okla. — MARCELLE HUEBNER, Turpin, Okla. — ROSA MARISOAL, Dalhart, Tex. — SAM LLEWELLYN, Liberal, Ks. — SHELMA M. BENNET, Garden City, Ks. — JEANNE HEIDELBERG, Berger, Tex. — GERALDINE BRIER, Liberal, Ks. — BEVERLY PETERSON, Liberal, Ks. — OLIVIA ESQUEDA, Hereford, Tex. — JOYCE ROBINSON, Manter, Ks. — Idella Randall, Spearman, Tex.

DERYL HOLLOWAY, Liberal, Ks. — E. T. DEMENT, Canyon, Tex. — REBECCA HARTMAN, Canyon, Tex. — LESLIE FREDERICK, Liberal, Ks. — CLEO ALCON, Liberal, Ks. — MARY COUNTS, Pampa, Tex. — WANDA BEESON, Shattuck, Okla. — JIM CASADOS, Garden City, Ks. — M. G. LEE, Guymon, Okla. — ALINET ELDREDGE, Ulysses, Ks. — RALPH E. MORGAN, Liberal, Ks. — LULA HUGGINS, Pampa, Tex. — LOAN CLINE, Hugoton, Ks. — IDELLA MORGAN, Pampa, Tex.

FOR WHITER, BRIGHTER WASHES . . .

**OXYDOL KING SIZE DETERGENT**..... \$1<sup>88</sup>

FOR SPARKLING DISHES . . .

**IVORY LIQUID**..... 62<sup>c</sup>

Thrif-T Health & Beauty

KOTEX REGULAR OR SUPER

**Sanitary Napkins**..... \$1<sup>58</sup>

CAMELOT

**Buffered Aspirin**..... 64<sup>c</sup>

CAMELOT

**Liquid Antacid**..... 77<sup>c</sup>

COLORADO

## RUSSET POTATOES

10 -LB. BAG

# 69<sup>c</sup>

CALIFORNIA

## Avocados 4 FOR \$1

FLORIDA RED ROSE

## Radishes 2 6-OZ. BAGS 29<sup>c</sup>

EXTRA FANCY GOLDEN DELICIOUS

**Apples**..... 4 lbs. \$1

PEACOCK

**Watermelon**..... 19<sup>c</sup>

NORTHERN

**Rutabagas**..... 19<sup>c</sup>

IMPORTED

**Red Onions**..... 29<sup>c</sup>



### Couple United In Double Ring Ceremony

The marriage of Darrell Gene Tope and Rhonda Gayle Leatherman was solemnized in the Edna Ellis Chapel of the First Christian Church in Perryton on Saturday afternoon, February 8, at 2 o'clock.

E.C. Delozier of the Northside Church of Christ performed the double-ring ceremony.

Parents of the couple are Mr. and Mrs. Lester Leatherman, 1001 Northwest, Perryton, and Mrs. Avo Tope, 209 Lonita Drive Spearman.

Candelabra on either side of the altar were ornamented with greenery and large pink bows. The candles were lighted by Chris Leatherman of Ponca City, Oklahoma, nephew of the bride.

Mrs. Clinton Unruh played the organ prelude and the traditional wedding processional and recessional marches.

Gary and Jerry Leatherman of Canyon, cousins of the bride, sang "Twelfth of Never."

The bride was escorted to the altar and given in marriage by her father. Her attendants were Carla Hall, maid of honor, and Karen Tope, sister of the groom, bridesmaid.

The groom was attended by Tommy Reger of Spearman as best man, and

his brother, Jerry Tope, as groomsman. Jimmy Tope also brother of the groom served as usher.

The bride wore a white chiffon lace-trimmed floor-length gown in Victorian design over white satin. The pleated chiffon empire waist and yoke were trimmed with lace insertion and white satin. The full sheer pleated sleeves were finished with lace insertion and covered buttons and with extended ruffles halfway over the hands. The skirt extended into a chapel-length train. The elbow-length veil was held by a tiara of white beaded flowers.

The bride carried a bouquet of white carnations and pink rosebuds with asparagus fern on a white ribbon, which was a gift of the groom.

"Something old" was a hairpin lace-edged linen handkerchief made by the bride's grandmother, Mrs. Frank Wallin. "Something new" was the bride's wedding dress; "Something borrowed," diamond ear rings belonging to Carla Hall, and "Something blue" was the traditional garter.

The bride's attendants wore deep pink princess style floor-length dresses of Mexican rope lace cotton fashioned with stand

up collars and full sleeves with long fitted cuffs. Their hair pieces were deep pink chiffon flowers with long streamers ending with chiffon flowers. Each carried a bouquet of long-stemmed white carnations.

The groom wore a black tuxedo with white shirt and black tie and white carnation boutonniere. His attendants and the candle-lighter were similarly dressed and wore pink carnation boutonniere.

Mothers of the couple wore floor-length dacron knit dresses and had corsages of white carnations. The bride's mother wore a pink shirtwaist dress with long cuffed sleeves with covered buttons. The mother of the groom wore a green A-line dress with rolled collar and gold accessories.

Grandparents of the couple were unable to attend. The bride's grandparents are Mr. and Mrs. Frank Wallin of Canyon and Mrs. Bell Leatherman of Senior Village. The groom's grandparents are C.H. Tope of Clinton, Missouri, and Mrs. John Leverton of Scottsdale, Arizona.

Reception held at the Fellowship Hall of the Church, where Mrs. C. D. Good, Mrs. Aubrey Spear, Barbara Kile, Debbie Langolf and Tom Pond.

The table was covered with an ecru lace cloth over deep pink centered with a bouquet of pink roses and pink candles.

The four-tiered white wedding cake, made by Mrs. Tom Reger of Spearman, was trimmed with hot pink roses and topped

with miniature bride and groom. The table appointments were of crystal and silver. The cake was served with punch and mixed nuts.

Mrs. Dennis Scott registered the guests at a small square table covered with lace cloth and ornamented with a centerpiece of pink roses.

The bride's going-away attire was a street-length suit of pink, brown and beige knit with beige accessories. Her corsage was of pink rosebuds lifted from the bride's bouquet.

Living In Amarillo After a short wedding trip the couple will be at home at 172 Van Buren Amarillo. Both young people are employed in Amarillo.

The bride is a 1974 graduate of Perryton High school and the groom is a 1970 graduate of Spearman High school. He attended West Texas State University at Canyon for two and 1/2 years.

Out-Of-Town Guests Out-of-town guests present for the wedding and reception included Mrs. Hank Friesen and daughters and Mrs. Fred Cowan of Balke, Okla; Mr. and Mrs. Hershel Jones, Jim and Roger, Mrs. Henry Cornelius and Edwin, Mr. and Mrs. Terry Delozier, Mr. and Mrs. E.C. Delozier and Mrs. Sharon Mauk of Spearman.

Also, Mr. and Mrs. Paul Boothe of Lubbock, Mr. and Mrs. Larry Leatherman, Chris and Kerl of Ponca, City, Okla; Mr. and Mrs. George Tritschler and Lance of Enid, Okla; Mr. and Mrs. True Leatherman of

Gruver; Mrs. Gene Bryant and girls, and Mrs. George Caudell and Amanda of Guymon, Okla.

Rehearsal Dinner The rehearsal dinner was hosted by the groom's mother, Mrs. Avo Tope, at the Red Room of the Dutch Inn Restaurant on Friday evening, Feb. 7. The table was covered with a white cloth and held a centerpiece of pink roses.

Present were the bridal couple, Darrell and Rhonda, Jerry Tope, Mr. and Mrs. Tommy Reger, Karen Tope, Carla Hall, Jimmy Tope, Jerry and Gary Leatherman, Mrs. Clinton Unruh, Mr. and Mrs. Larry Leatherman, and Chris, Mr. and Mrs. E.C. Delozier and the parents of the couple.

Mr. and Mrs. Lester Leatherman and Mrs. Avo Tope.

### CowBelles Plan For Ag Day

Local CowBelle chapters throughout Texas are planning events for "Agriculture Day," 1975, March 24 with proclamations being signed by city mayors to add to the interest of the event. This date corresponds with the CowBelles State Convention scheduled for Austin.

National Ag Day is being sponsored by National Agricultural Marketing Association (NAMA). Theme for Ag Day 1975 is "Almost Everything Starts on a Farm".

### "Sweetheart Friendship Night Held"

Spearman Chapter #721, O. E. S., held its annual "Sweetheart Friendship Night" Sat., Feb. 15th at the Hansford Lodge Hall.

The dining hall was decorated in the valentine motif with place mats being used for individual settings accented by red hearts, cupid, nut cups and red candles. A lovely dinner of turkey and dressing with all the trimmings was served to approximately 90 members and guests.

Following the supper, all adjourned to the meeting hall where Worthy Matron, Millie Craig recognized guests and a "Sweetheart Contest" was held. Seven contestants were entered with the winner being a tie between a lovely little lady from Berger and our own "Sweetheart," who was Roy Lee Upstergrove dressed in a glamorous red evening gown with the most stunning red hairdo.

The Berger winner was awarded a large box of valentine candy with all other contestants receiving a large valentine sucker. The traditional Happy Birthday Greeting was sang by the group to our Deputy Grand Matron, Mrs. Leta Adams of Miami, whose birthday was February 15th.

The Worthy Matron, Millie Craig, then introduced the "Singing Burlesque Family" who entertained with a lovely tribute to our Lord through their

You are cordially invited to a baby shower honoring Mrs. Phillip Renner March 3 at 7:30 p.m. in the home of Mrs. Louis Schnell 1015 Barkley 15-2c

beautiful music. Those area chapters being represented included: Perryton, Sisseton, Berger, Guymon, Canadian, Miami and Spearman.

### Boy Scout News

Den #1 met Monday, Feb 24th in the home of Mrs. Burton Schubert.

The boys worked on their Golden Arrow points and on their Den Skit for next week.

Refreshments were served by Raymond Flores to members, Lee Schubert, Pat Tucker, David Turner, Shawn English and Den Mother, Mrs. Burton Schubert.

Next meeting will be March 3rd in the home of Mrs. Schubert.

Hansford Lodge #1040 A.F. & A.M. met Mon. Feb. 24th in the Hansford Lodge Hall with Britt Jarvis, Worshipful Master presiding. Discussion was held on the Master Mason's Degree to be held March 18th at 8:00 P.M. in the Hansford Lodge Hall.

Also discussed was the book shelves display case donated to the Hansford Lodge Hall by the TG&Y. Host, Jack Whitson served hot dogs and ice cream to one guest from A'bert Pike Lodge #1369, San Antonio, Texas and to members present.

Next meeting will be March 10th at 7:30 in the Lodge Hall.

### PUBLIC NOTICE

SUMMARY OF PROPOSED CONSTITUTIONAL AMENDMENTS SPECIAL ELECTION APRIL 22, 1975

#### NUMBER ONE ON THE BALLOT (S.J.R. No. 3)

Repealing Sections 48a, 48b, 51e, and 51f of Article III and Sections 62 and 63 of Article XVI of the Texas Constitution, Article XVI of the Texas Constitution is amended to:

Provide for the revision and consolidation of provisions relating to state and local retirement systems and programs and to provide that all general laws that have established retirement systems and optional retirement programs for public employees and officers in effect at the time of the adoption of this constitutional amendment will remain in effect, subject to the general powers of the Legislature.

#### NUMBER TWO ON THE BALLOT (H.J.R. No. 8)

Amending Article III, Section 54 of the Texas Constitution to:

Provide an increase in salary for members of the Legislature from \$400 per month to \$600 per month.

Provide an increase in the per diem rate for members of the Legislature from \$12 to \$30 for each day during each Regular and Special Session of the Legislature.

Provide an increase in the transportation allowance for members from \$10 per mile to the rate prescribed by law for employees of the State of Texas.

The wording of the proposed amendment as it will appear on the ballot is as follows: "The constitutional amendment setting the salaries of members of the legislature at \$600 per month and setting a per diem of \$30 per day during legislative sessions and a mileage allowance at the same rate provided by law for state employees."

to further provide that a state-wide system of benefits shall be provided for officers and employees of cities which may voluntarily participate.

The wording of the proposed amendment as it will appear on the ballot is as follows:

"The constitutional amendment revising and consolidating provisions relating to state and local retirement systems and programs and providing for a maximum state contribution to state systems of 10 percent of the aggregate compensation paid to individuals."

#### NUMBER TWO ON THE BALLOT (H.J.R. No. 8)

Amending Article III, Section 54 of the Texas Constitution to:

Provide an increase in salary for members of the Legislature from \$400 per month to \$600 per month.

Provide an increase in the per diem rate for members of the Legislature from \$12 to \$30 for each day during each Regular and Special Session of the Legislature.

Provide an increase in the transportation allowance for members from \$10 per mile to the rate prescribed by law for employees of the State of Texas.

The wording of the proposed amendment as it will appear on the ballot is as follows: "The constitutional amendment setting the salaries of members of the legislature at \$600 per month and setting a per diem of \$30 per day during legislative sessions and a mileage allowance at the same rate provided by law for state employees."

**IDEAL FOOD STORES**

PRICES EFFECTIVE THRU SUNDAY, MARCH 1, 1975. NONE SOLD TO DEALERS. LIMIT RIGHTS RESERVED.

SUNDAY 9:00 - 8:00  
MON. - SAT. 8:00 - 10:00

VOL. 7 ON SALE NOW... The Charlie Brown Dictionary VOL. NO. 1 ONLY... 79c VOL. 2... \$1.49

CHINESE NEW YEAR Chun-King Specials!

CHUN-KING BEEF, CHICKEN, SHRIMP OR PEPPER ORIENTAL CHOW MEIN \$1.29 (12-OZ. CAN)

CHUN-KING FROZEN CHICKEN Chow Mein 96c (12-OZ. CANS) Noodles 2 (12-OZ. CANS) Soy Sauce... 59c (10-OZ. BTL) CHUN-KING Chow Mein 99c (12-OZ. PKG.) CHUN-KING CHICKEN OR SHRIMP Egg Rolls... 85c (12-OZ. PKG.)

BUTCHER BLOCK BEEF Boneless Roast 78c (LB.)

BUTCHER BLOCK BEEF Boneless CHUCK Steaks 86c (LB.)

HICKORY SMOKED, WHOLE Smoked Picnics 58c (6 TO 8 LB. AVG.)

MACARONI & CHEESE Camelot Dinners 4 (7-1/2 OZ. BOXES) 89c

MEADOWDALE WHITE OR GOLDEN HOMINY 5 (12-OZ. CANS) \$1

MEADOWDALE SWEET PEAS 4 (12-OZ. CANS) \$1

SPAM LUNCHEON MEAT 12-OZ. CAN 92c

PURE SHORTENING Bake-Rite 3-LB. CAN \$1.38

LIMIT 1 CAN WITH \$10.00 MORE PURCHASE

ALL GRINDS Camelot Coffee 94c (1-LB. CAN)

CAMELOT WHOLE KERNEL Golden Corn 3 (12-OZ. CANS) \$1

CAMELOT WHOLE White Potatoes 4 (12-OZ. CANS) \$1

HUSHAND-PLEASEING Ranch-Style Beans 3 (12-OZ. CANS) \$1

MEADOWDALE Blackeye Peas 4 (12-OZ. CANS) \$1

CAMELOT WHOLE Sweet Potatoes 12-OZ. CAN 59c

NABISCO Triscuit Wafers... 68c (12-OZ. BOX)

SUCARYL Liquid Sweetener... \$1.33 (12-OZ. BTL)

ENRICHED Camelot Flour... \$3.56 (25-LB. BAG)

CAMELOT LAYER Cake Mixes... 58c (12-OZ. BOX)

DINTY MOORE Beef Stew... 84c (24-OZ. CAN)

DELSEY Bath Tissue... 42c (3-ROLL PKG.)

CAMELOT APPLE Apple Sauce... 35c (12-OZ. CANS)

BAMA Apple Jelly... 71c (12-OZ. JAR)

BAMA Grape Jam... 95c (12-OZ. JAR)

IMITATION CHEESE SPREAD Kraft's Velveeta 3-LB. LOAF \$1.36

QUARTERED MARGARINE Kraft's Parkay 58c (1-LB. CTN.)

COUNTRY STYLE OR BUTTERMILK Pillsbury Biscuits 10 (12-OZ. CANS) \$1

CAMELOT AMERICAN American Slices... 99c (12-OZ. PKG.)

PAID-OFF Whipping Cream... 97c (12-OZ. CTN.)

CAMELOT FRESH GRADE A Medium Eggs 59c (DOZ.)

CAMELOT GRADE A Large Eggs... 65c (DOZ.)

IDEAL BUTTERMILK OR Chocolate Milk... 77c (2-1/2 LIT. CTN.)

ALL FLAVORS Fairmont Yogurt 2 (12-OZ. CTN.) 69c

CAMELOT, ALL FLAVORS Ice Cream 89c (1/2-GAL. CTN.)

CAMELOT FRESH FROZEN FLORIDA Orange Juice 58c (12-OZ. CAN)

BANQUET, ALL FLAVORS CREAM PIES 53c (14-OZ. PKG.)

ALL VARIETIES Swanson Entrees 58c (12-OZ. PKG.)

SARA LEE Coffee Cake... \$1.14 (12-OZ. PKG.)

WELCH'S CONCENTRATED Grape Juice... 74c (12-OZ. CAN)

ORE-IDA POTATOES Hash Browns... 64c (3-LB. BAG)

ORE-IDA Onion Rings... 99c (8-OZ. PKG.)

TRUMP-T PRICED Roames Dumplings... 63c (12-OZ. PKG.)

**I-AA  
District  
Champs**




- 10 DAVID LESLY
  - 12 TIMMY HARPER
  - 14 TOMMY HANER
  - 20 ROGER BROWN
  - 22 GREG WILSON
  - 24 MIKE PACK
  - 30 TERRIL BRUMMETT
  - 32 ROGER JONES
  - 34 RAYMIE PORTER
  - 40 DAVID McMULLAN
  - 42 LEON HAGERMAN
  - 45 WILLIAM PORTER
- MANAGERS:**  
 KENNETH ROSSER  
 DAVID ROSSER  
 PAUL GARZA  
**COACH**  
 ALLEN SIMPSON  
 ASST. COACH  
 DON DRUMMOND



**We congratulate the  
Spearman Lynx on**

**their successful season**

- ALL DISTRICT PLAYERS**  
 ROGER JONES  
 TERRIL BRUMMETT  
 WILLIAM PORTER  
 ROGER BROWN  
 TIMMY HARPER (Hon. Mention)

<p><b>Bakers Department Store</b></p>	<p><i>Gordon's Drug</i></p>	<p><i>Daco Lease And Well Service</i> Spearman, Texas</p>	<p><b>Cates Men &amp; Boys Wear</b></p>
<p><i>Equity Elevators</i></p>	<p><b>Martin's Steak Garden</b></p>	<p><i>Dairy Queen</i></p>	<p>Anthony Electric</p>
<p> <b>North Plains Truck &amp; Implement, Inc.</b></p>	<p><i>Boxwell Brother's Flower Shop</i></p>	<p><i>Gifford Hill and Co.</i></p>	<p> <b>FIRST STATE BANK</b></p>
<p><i>Lil' Lynx Shoppe</i></p>	<p><b>Booster Ag Chem. Inc.</b> Burl Buchanan, Manager</p>	<p>NOTICE: There will be a rodeo meeting, at B. and B. Farm Industries, Wed. Feb. 26. Everyone invited. THE HANSFORD RODEO ASSOCIATION THE SPEARMAN ROPING CLUB The meeting will begin at 7:29 p. m.</p>	<p><b>Alton's</b>  <b>Service</b></p>



# WANTED

**Boxwell Bros.**  
Funeral Home  
and  
Flower Shop  
Day-Night Phone 659-2212  
Spearmán, Texas

Listen To  
**Harvest Time**

9:00 A.M.  
SUNDAY  
KBMF

United Pentecostal Church  
Sponsor

**Cummings**

Refrigeration  
And  
Air Conditioning  
Phone 659-2721  
GORDON CUMMINGS

**Hansford Lodge**  
1040  
A.F.&A.M.

2nd & 4th Mondays  
MM Degrees  
March 18, 1975  
8:00 P.M.

Britt Jarvis, W.M.  
Cecil Batton, Secy.

## SERVICES

YOUR LOCAL USED COW  
DEALER: Spearman B-  
Products. Seven days a  
week dead stock removal.  
Please call as soon as  
possible. 659-3544.  
8-rtm

KIRBY SALES & SERVICE  
of Spearman, 912 E. Ber-  
nice, 659-2797.  
30-rtm-T

Alcoholics Anonymous  
Meeting every Tuesday,  
8:00 p.m. at the Girl  
Scout Little House, 22 S.  
Endicot. Call 3394 or  
2762 for information.  
45-rtm

Hansford County  
Planned Parenthood  
26 S. Haney  
659-2483  
Spearman  
Mon.-Fri.  
8:00 A.M. to 12 Noon  
30S-rtm

MARY KAY COSMETICS.  
Call 659-2119. Malolah  
Fullbright.  
92S-rtm

Custom Farming Wanted.  
Jack McWhirter, 659-2249  
or 3308.  
4-rtm

PART time furniture re-  
finishing. Will strip, sand  
reglue, and refinish. An-  
tiques preferred. No reup-  
holstering. Ken Reeves,  
659-2457.  
14-2rtm

Custom fertilizing and  
any type of farming.  
W. B. BARNES  
659-3638

NURSERY--Shade Trees,  
Fruit trees, evergreens,  
shrubs, house plants,  
hanging baskets, spring  
bedding plants, fertilizers  
and insecticides. Ochil-  
me Growers, 8 miles S.  
of Peeryton.  
12-4rtmTony

Your domestic well go  
dry? Have casing pulled  
equipment. Drill new  
gravel pack wells. Plastic  
and steel pipe. Call  
overings. W. V. Block,  
936-4086, Dumas, 115  
Cherry St.  
25-rtm

## PORTABLE DISC ROLLING

Phone 435-5587  
PEERYTON, TEXAS  
79078  
RICHARD CAMPBELL

INCOME TAX SERVICE -  
Call 659-3175 after five  
and weekends.  
11S-rtm

For Sarah Coventry Parties  
and orders call Sharon Hall,  
435-2089.  
13S-8tp

Portable Disc Rolling  
Kenneth Pearson, Farns-  
worth 435-5653  
MS-8tp

## FOR RENT

FOR RENT: One trailer  
court lot in Crawford Ad-  
dition - any size trailer.  
Contact Buster's Dusters.  
Nights call Steve or Randy  
Hendrickson, 659-3648.  
12-4tp

Furnished Apartment, cen-  
tral air conditioning and  
heating, 303 Davis 659-  
3792.  
13-rtm

FOR RENT: LBL Trailer  
Park spaces on N. James  
Call 659-2257.  
14-rtm

## FOR SALE

FOR SALE: Trailer, 10x  
66, Call 659-3349.  
8-rtm

FOR SALE: 3 Rooms used  
carpet, green shag & red  
plush. Call 659-2429.  
13-rtm

FOR SALE: Fire wood.  
Corner Service Station in  
Spearman, Texas.  
51S-rtm

FOR SALE: 32 Feeder  
Pigs, call 659-9979 or  
after 7:00 call 659-3633.  
14S-2tc

FOR SALE: Tony Lama  
Ladies Gold Tone Boots,  
bought on sale--too small,  
\$25. 659-3038.  
Reduce safe & fax with  
GoBese capsules & E-Vap  
"water pills" Spearman  
Drug.  
17-6tp

FOR SALE: Fancy Gup-  
pies. Call Jean Byrd.  
3530.  
15-2tc

FOR SALE: CL 100 1173  
Model Honda \$200 Call  
2327 or 2506.  
14-4tc

FOR SALE: 8 x 35' Con-  
cord trailer. 69 number.  
Call 659-2105  
15-2tc

FOR SALE: Aluminum  
Storm Doors, 2 - 2'8" -  
6'8" x 1", Self Storing  
window, complete. 806-  
733-2818, Gruver.  
15-3tc

FOR SALE: 1973 Vintage  
14 x 72 3 Bedroom Trailer  
Low Equity, take up pay-  
ments. Call 659-2405  
14S-2tr

## REAL ESTATE

FOR SALE-3 bedroom home,  
1105 Townsend, fully car-  
peted, central heat and  
air, patio, storm wind-  
ows, outside metal stor-  
age building, completely  
fenced, west front, nicest  
part of town. Maximum  
financing available. Call  
659-3438 or 435-5020.  
52-rtm

FOR SALE: 5 room house  
on 50 foot lot. 29 South  
Endicot. Call 733-2508  
25-rtm

FOR SALE: Nice Brick home  
near elementary school, 1,7  
rooms plus utility and double  
garage. 2 baths, carpets,  
central heat and air. Re-  
place, lots of storage, tool  
shed, patio, fenced yard,  
100 ft. lot. Shown by appoint-  
ment. 659-2309.  
50-rtm

## HELP WANTED

HELP WANTED: For in-  
side workers and machinist.  
Apply in person at Roger's  
Sales and Service, Waka,  
Texas.  
14-rtm

Operator Needed.  
Cinderella Beauty Shop.  
Call 659-3413  
10S-rtm

HELP WANTED for shift  
work. Apply at Allsup's  
7-11, Spearman, Texas.  
8-rtm

Offered By  
EMMETT R. SANDERS  
REALTOR



FOR SALE: Don't over-  
look this Nice 2 bedroom  
home with cozy fireplace,  
fenced yard and attached  
garage in good residential  
area.  
LOCATION PLUS!  
Custom built 3 bed-room  
brick home with 2 baths,  
spacious living-den  
combination, built-in  
bookshelves and desk,  
dream kitchen with  
breakfast bar, self-cleaning  
oven, dishwasher, disposal,  
carpets and drapes included.  
Central heat and air.  
Double garage with floored  
attic storage above. Fenced  
yard and tool house. Shown  
by appointment only.

FOR SALE: 3 bedroom home  
on 100 ft. lot, carport,  
storm doors and windows,  
fenced yard, hardwood  
floors, some carpet, elec-  
tric cooktop, oven, vent-  
hood.

FOR SALE: 3 bedroom  
house in excellent con-  
dition; fenced yard, 100'  
lot, central heat, nice  
kitchen with gas cook-  
top and oven, vent hood,  
hardwood floors, storm  
windows. Now vacant  
and ready for you.

FOR SALE: Corner lot  
East Third and James,  
zoned for mobile home.  
325 ft. highway front-  
age on East Kenneth St.  
385 ft. on South Brandt  
St., 162 ft. depth.  
552 ft. on South James  
St., 162 ft. depth.

Nice residential lot SW  
Spearman.  
Tracts facing paved  
county road south of 12th  
St.  
3 acre tract, residential  
zone, SW Spearman.

Land is the basis  
of all wealth.  
EMMETT R. SANDERS  
REALTOR



Phone 659-2516  
Night 659-2601  
Weekends call  
806/874-2663

Wanted - Electrician.  
York Electric, Gruver  
Highway. 659-3265.  
8S-rtm

## TO GIVE AWAY

TO Give Away-Male  
Siamese 6 Mo. old kitten  
717 Gibnet. Phone 2363.  
14S-2tc

## CARD OF THANKS

I would like to express  
my appreciation for all  
the cards, calls and ex-  
pressions of kindness while  
I was in the hospital and  
since I've been home. It's  
nice to have friends.  
Wesley Jenkins.

## LEGAL NOTICE

NOTICE TO ALL PERSONS  
HAVING CLAIMS AGAINST  
THE ESTATE OF GERTRUDE  
OGLE GRUVER.

NOTICE IS HEREBY GI-  
VEN, that original letters  
Testamentary, upon the  
Estate of Gertrude Ogle  
Gruver, were issued to us  
Lola Gertrude Reynolds  
and Ila Jo Hart, on the  
23rd day of January, 1975,  
in the above entitled and  
numbered cause, which  
estate is still pending,  
and that we now hold such  
letters. All persons hav-  
ing claims against said  
estate, which is being ad-  
ministered in the County  
Court of Hansford County,  
Texas, are hereby required  
to present the same to us  
respectively, at the ad-  
dress below given, before  
suit upon same are barred  
by the general statutes of  
limitation, before such  
estate is closed, and with-  
in the time prescribed by  
law. Our residence and  
post office address is Box  
566, Gruver, Hansford  
County, Texas.  
Dated this 19th day of  
February, 1975.  
Ila Jo Hart, Independent  
Executrix of the Estate of  
Gertrude Ogle Gruver  
Lola Gertrude Reynolds,  
Independent Executrix of  
the Estate of Gertrude  
Ogle Gruver.

FOR SALE: 3 Bedroom  
Brick, Central Heat and Air,  
1 3/4 baths, garage, fenced,  
extra nice.

In Hitchland - 3 Bedroom  
Brick, 1 3/4 baths, central  
air, garage.

Trailer House: 14x65,  
Central air and heat, Ex-  
tremely nice, ready to  
move in.

ED WHEELER  
REAL ESTATE  
Phone 659-2613 (day) or  
659 2951 (nite)!

## Texas State Watts No. Noted

A toll-free telephone  
line is now open to anyone  
who needs assistance or in-  
formation on matters in-  
volving Texas state govern-  
ment according to infor-  
mation from the office of Gov-  
ernor Dolph Briscoe.

The Governor's Citizens  
Assistance Line - TEX HELP  
TOLL-Free Watts number is  
1-800-292-9600. The  
phones are staffed from  
8:00 A.M. to 5:00 P.M.  
Monday through Friday  
except on state holidays.

In setting up TEX HELP,  
Governor Dolph Briscoe  
said, "With the growth of  
government in both size  
and scope of responsibilities,  
public officials are faced  
with the problems of en-  
suring that our citizens have  
free access to the services  
of state government. Many  
Texans today need the as-  
sistance of state government,  
but do not know where to  
receive help.

"To eliminate some of  
the confusion and make  
government more rapidly  
available to all the people  
of Texas, I have estab-  
lished the Governor's Citizens As-  
sistance Line".

B. L. Parker has been ap-  
pointed as the director of  
the new assistance office.

## Hospital News

Patients in Hansford Hospi-  
tal are Walter Tyler,  
Clarence Pettitt, Fuller  
Boyd, Vera Wroten, Irene  
Close, Elvira Tomlinson,  
Robert Howenter, Asbury  
Cookston, Ethel Cookston,  
Blanche Fuller, Vic Kyle,  
Shirleen Dennis, Leon  
Burch, Randall Gordon,  
Ella Parks, Grace Bennett,  
Reba Bennett, and Georgia  
Holt.

Dismissed were Ken  
Dibbern, Linda Wilcox,  
Martha Rosales and daugh-  
ter, Ann Rasor, Joy Hen-  
derson, Chelly Rigdon,  
R.T. Farris, Clebe Walker  
Ora Vanlandingham  
Mattie Forester, Cecelia  
Randall, Zady Walker,  
Vance Collier, Emma  
McGulrk, and Fred Tout.

## Attend School Administrators Meeting

Supt. James Cunningham  
and high school principal  
Kenneth McKay were in  
Dallas over the weekend  
to attend the 107th National  
Association of School  
Administrators. They  
went down Friday and  
returned Monday.

A person normally has  
twelve pair of ribs.

IS ALCOHOL A PROBLEM  
IN YOUR FAMILY?  
AL-ANON  
FOR FAMILIES OF PROB-  
LEM DRINKERS  
In this Fellowship  
you can:  
..Meet others who  
share your problem  
..Learn about alco-  
holism as an illness  
..Encourage the al-  
coholic to seek help  
..Replace despair with  
hope  
..Improve the family  
atmosphere  
..Rebuild your self-  
confidence  
For further information  
write to:  
Spearman AL-ANON  
22 So. Endicot  
Or Call:  
659-3394, 2762, 3181  
Every Tuesday & Sat-  
urday - 8:00 p.m.

## Souvenir Pages Available By Subscription

Souvenir Pages, offered  
by subscription from the  
U.S. Postal Service's  
Philatelic Sales Division  
in Washington, are a con-  
venient way for collectors  
to receive first day can-  
cellations automatically  
for each new U.S. stamp  
issue.

Each new stamp, or com-  
bination of stamps in a  
new issue, is mounted on  
an 8 x 10 1/2-inch page suit-  
able for framing or inser-  
tion in an album. A first-  
day cancellation is then  
affixed to the page, which  
has philatelic data and  
other information about  
the stamp and the stamp  
subject.

The pages are offered  
only through subscription.  
A deposit of \$10.00 or  
more for each set of pages  
desired is required with  
the initial order. Subscri-  
bers will begin receiving  
Souvenir Pages for stamps  
issued after the date the  
order is received at the  
Sales Division.

Subscribers are assigned  
an account number which  
is sent to them in their  
first mailing. Approx-  
imately every two months,  
subscribers receive the  
pages for the previous two  
months and the cost is  
automatically deducted  
from the subscription ac-  
count. Delivery schedules  
for the pages will vary  
depending upon the num-  
ber of stamps issued each  
month.

A renewal notice is sent  
to the subscriber when  
the deposit amount is low.  
There is also a guaranteed  
refund policy which per-  
mits a subscriber to can-  
cel a subscription with  
30 days' notice. The  
unused portion of the  
amount on deposit is  
then refunded.

The pages are printed  
in two colors and are  
similar in format to the  
stamp announcement pos-  
ters displayed in most  
post offices.

Since the limited quan-  
tities, back issues are  
not available for new

subscribers.  
The Sales Division also  
provides gift subscriptions,  
with a card announcing  
the gift sent to the reci-  
pient in the name of the  
giver.

Orders should be ad-  
dressed to "Souvenir Pages,  
Philatelic Sales Division,  
Washington, DC 20265."  
A check or Postal Money  
Order in the amount of  
\$10.00 or more, payable  
to the Philatelic Sales  
Division, should accom-  
pany the order.

Cash will not be accep-  
ted.

## News For Veterans

It's a good idea to peri-  
odically check the type of  
pay-off plan for your bene-  
ficiary, the Veterans Ad-  
ministration today advised  
veterans holding government  
life insurance policies.

"All too often," Jack Coker,  
VA Regional Director, stress-  
ed, "widows of GI policy-  
holders have been penalized  
following deaths of husbands  
who have selected small  
monthly payments."

In some cases, veterans  
choose smaller payments  
for life more than 25 years  
ago, and never updated  
their policies, Coker noted.

Veterans who now wish to  
switch to lump sum payments  
should request Form 29-336  
from VA and select option  
#1. This would allow wi-  
dows to select monthly pay-  
ments should they deem it  
necessary.

Veterans should mail com-  
pleted forms to the VA in-  
surance center where they  
pay premiums, Coker said.

## A COMPLETE PRINTING SERVICE

We Print It the Way  
You Want It... Exactly

Whatever your printing needs, you can  
confidently bring the job to us. The  
bigger, the better we like it!

## Problem?

DIAL  
1-800-692-4458  
(TOLL FREE)

WE  
CARE

Suicide Prevention-Crisis Intervention  
Operation Drug Alert

## Area Cage Playoffs

### FRIDAY

Region 1-AA Boys' Basketball Tournament, Municipal  
Coliseum, Lubbock. Semifinals 11:30 a.m. and 1 p.m. Finals  
at 8:30 p.m.

Region 1-A Boys' Basketball Tournament, Municipal  
Coliseum, Lubbock. Semifinals at 8:30 a.m. and 10 a.m.  
Finals at 7 p.m.

State Girls' Basketball Tournament, Austin:  
Class AAA Semifinals at 7 p.m. (Canyon, 34-0 vs.  
Calallen, 27-9) and 8:30 p.m. (Waco Midway, 33-0 vs. West  
Orange, 26-6).

Class AA Semifinals at 1 p.m. (Comanche, 31-2 vs.  
Bellville, 20-1) and 2:30 p.m. (George West, 30-3 vs.  
Phillips, 29-6).

Class A Semifinals at 8:30 a.m. (Vega, 33-2 vs. Cayuga,  
27-5) and 10 a.m. (Southlake Carroll, 27-7 vs. Rogers, 27-7).

### SATURDAY

State Girls' Basketball Tournament, Austin:  
Class B Semifinals at 8:30 a.m. (Klondike, 30-2 vs. Craw-  
ford, 38-5) and 10 a.m. (Neches, 38-0 vs. Brock, 38-6).  
Class A finals at 1:30 p.m.; Class AA finals at 3 p.m.;  
Class AAA finals at 7 p.m.; Class B finals at 8:30 p.m.

Prices good Thurs., Fri., & Sat. Feb. 27-28 & March 1

BurrITOS  
Corn Dogs  
Fresh Daily  
Pop Corn

JIF  
**Peanut Butter**

ANTI-FREEZE  
**Prestone**

SHURFRESH  
**Biscuits**

S.F.  
**Canned Hams**

Barbecue  
Chicken  
Ribs  
Hot Links  
Mild Links  
Polish Sausage

1 GAL. \$4.99

12 FOR \$1

59c

3 LB. CAN \$1.79

ALL HATS 1/2 OFF

SHURFINE

**Coffee**

1 LB. CAN

**69c**

ASS'T. 1/2 OFF

S.F. Bologna 59c

Dips 8 OZ. 62c

## Farm Census Returns Pouring In

More than half of the 4 million 1974 Census of Agriculture report forms mailed to farms and ranches nationwide have a ready been completed and returned, the Bureau of the Census reports. The Bureau, part of the Department of Commerce's Social and Economic Statistics Administration, mailed the forms right after Christmas and this rate of return is well ahead of the rate in 1969 when the farm census was first taken by mail.

Bureau officials say that the quality of the reporting is good. Farmers who have not mailed in their completed forms can save time if they will read the instructions carefully before filling out the form. Particular attention is called to the "skip" questions at the beginning of the sections on crops and the sections on livestock, as well as for many of the individual sections. A check in the "No" box at the head of the crops section, if no

crops were raised, or at the head of the livestock section, if there were no livestock or poultry operations, enables the farmer to skip individual questions in that section. Every farmer's report form is confidential by law. No other Government agency can ever obtain or use the report made by any farmer. Only sworn Census Bureau Employees who check and process the completed forms ever see them. And sworn census em-

ployees are subject to two years imprisonment or \$1,000 fine, or both for disclosure of information furnished on individual report forms.

The U. S. House of Representatives Subcommittee on Census and Statistics had this to say about Census Bureau confidentiality: "There has never been a single claim substantiated that the Bureau of the Census has made individual information available outside the Bureau or that the Bureau has ever used any information received other than for authorized purposes."

The only authorized purposes are for statistical purposes. Even here, the census law on confidentiality holds. Statistical tables must be published in such a way that no individual farm, no business can be identified. For example, suppose there is one large ranch that spreads over most of a county. No data will be published for the county that would make it possible for an informed reader to figure out confidential information about the big ranch.

The same public law that imposes confidentiality on the Census Bureau makes response by farm operators mandatory. The completed forms are to be mailed back in the postpaid, addressed return envelope enclosed with the form. The '74 Farm Census cannot be closed out until every form mailed out is accounted for; thus, the sooner the forms are returned, the sooner results can be made available. Census by mail allows operators to fill out their reports at their convenience and use their farm business records. Estimates are acceptable and should be reported in the absence of records.

Among Texas children under age six, one in three is in a child care arrangement -- in a nursery school, in a child care center, or with a babysitter. Source: "The Darker Side of Childhood," published in 1974 by the Texas Department of Community Affairs, Office of Early Childhood Development.

## Farmers, Ranchers Advised Of Tax Deductions

With the March 3 income tax deadline for farmers and ranchers rapidly approaching, particular attention should be given to various deductible expenses.

"Each year agricultural producers pay extra income taxes because they fail to deduct certain legitimate business expenses," points out Dr. Wayne Hayenga, economist for the Texas Agricultural Extension Service. "Every dollar of business expense not deducted will result in a higher income tax bill."

The Texas A&M University System specialist lists a number of commonly overlooked expense items:

1. Allowance for space in the home used as an office
2. Items in the home used for business--calculator, typewriter, paper and recordbooks, to name a few.
3. Postage.
4. Meals for hired labor.
5. Bank charges and interest on charge accounts.

6. Tax preparation fees.
7. Bookkeeping fees.
8. Cost of purchased livestock that was lost, stolen or died during the year.
9. Auto and truck expenses, such as licenses and insurance, according to the proportion used for business.
10. Cost of utilities, telephone service and other service charges that pertain to the farming and ranching business.
11. Subscriptions to farm and ranch and related magazines.
12. Farm organization dues.
13. Expenses incurred on business trips, and that portion of vacation travel that related to business.

"The key to preparing an income tax return that most correctly reflects your farming and ranching operation is to have a good record-keeping system," emphasizes Hayenga. "Such records should indicate all items purchased for business.

These items should be paid by check whenever possible to have a record of payment.

**QUALITY SEED IMPORTANT FOR COTTON CROP**  
The first step to a good cotton crop is planting quality seed, emphasizes a cotton specialist for the Texas Agricultural Extension Service. But good seed may be in short supply this year due to unfavorable harvesting weather in many parts of the state last fall. Cotton exposed to weather damage or stored in trailers, ricks or modules when it exceeds 12 per cent moisture will suffer a reduction in seed quality. High quality planting seed tolerates cold, wet soil conditions that cause seedling disease. Good seed also means more rapid seedling emergence and growth. If lower quality seed must be used, delay planting until the soil has warmed, avoid planting too deep, and increase seeding rates.

Drone bees cannot sting.

## A&M Man Heads ANCA Council

Beef group from around the country including the Texas Cattle Feeders Association have been successful in establishing a Council of Economic Advisors for the American National Cattle Association. The Council was appointed to serve by president Gordon Van Vleck and is to be chaired by Dr. John Hopkin, ag economist at Texas A&M.

The Council will analyze the total economic and industry situation, project the outlook, and suggest industry courses of action. Other Council members include Dr. Harold F. Briemeyer, ag economist from the University of Missouri; Dr. Harrell DeGraff, retired president of the American Meat Institute; Dr. L. M. Elgruber, ag economist from Oregon State; and James W. Riley who is an economist for Merck & Company.

### TO ALL CITIZENS OF SPEARMAN:

Recently a comprehensive and detailed Engineering Study of your city-owned utility systems was made by McMorris & Burns Engineering Co. Copies of this report are available to all interested citizens as a matter of public record. Your City Council studied this report in detail and necessary decisions were then made to meet the ever increasing cost of supplying the citizens of Spearman with necessary utilities. In order to provide for future water and gas needs and to retire previous systems indebtedness, a sizeable increase in water and gas rates became imperative.

The cost of all energy has been increasing at a pace of more than 50% a year for natural gas on an industry-wide basis. Regardless of reports to the contrary, the gas supplies in Texas are decreasing at an alarming rate each year. The efforts of Water Inc. and the water conservation districts has given us the message that we too must do our utmost to conserve water at all times.

#### NEW RATES:

Gas - \$4.00 min. for first 3000 CF  
1.25 for each additional 1000 CF

Water - \$3.60 min. for first 3000 gal.  
.60 for each additional 1000 gal.

Respectfully,

City of Spearman

# TG&Y FABRIC SHOPS

521 S. Hwy 207 Spearman, Texas Store Hours: 9 A.M. to 9:00 P.M. Monday Thru Saturday

# FABULOUS FEBRUARY ABRICS



McCall's Pattern 4389

# AS SEEN ON T.V.

Prices Good Wed., Thurs., Fri., & Saturday

Feb. 26, 27, 28 & March 1st.



McCall's Pattern 4400

100% Polyester  
**DOUBLE KNIT**

58-60" Wide. Huge selection of fashion's latest colors. Perfect for sportswear, dresses—just about anything! Machine wash warm, tumble dry, remove promptly. Never iron.

Reg. \$2<sup>97</sup>

\$1<sup>97</sup>

YARD

100% Polyester  
**DOUBLE KNIT**

58-60" Wide. Huge selection of fashion's latest colors. Perfect for sportswear, dresses—just about anything! Machine wash warm, tumble dry, remove promptly. Never iron.

Reg. \$1<sup>97</sup>

\$1<sup>57</sup>

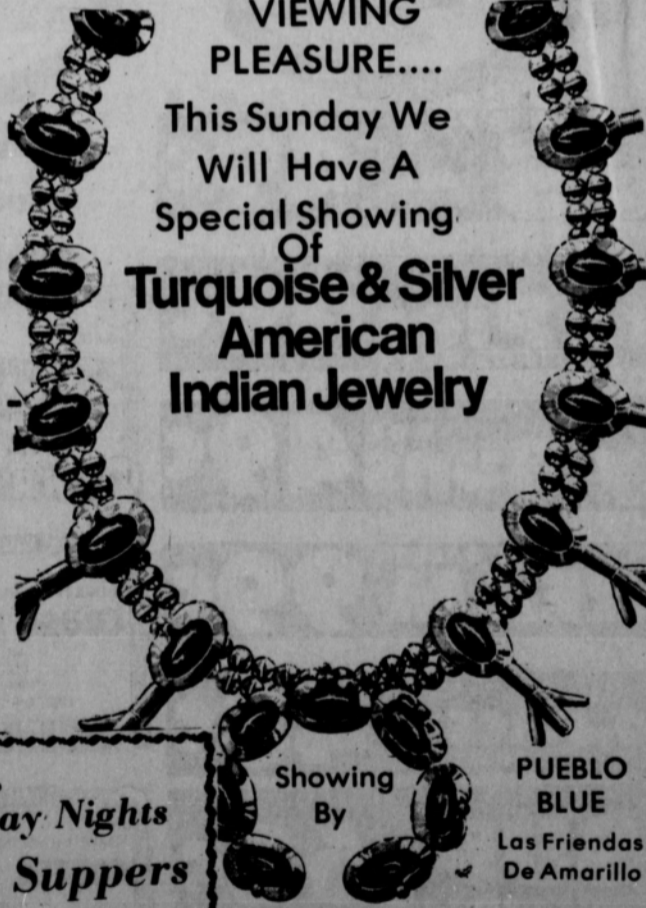
YARD

YOU ARE INVITED TO Try OUR

**BUFFET - EACH SUNDAY 11:30 till 2:30**

FOR YOUR VIEWING PLEASURE....

This Sunday We Will Have A Special Showing Of **Turquoise & Silver American Indian Jewelry**



Special... Wednesday Nights Mexican Suppers Starting At 5:00 P.M.

Showing By **PUEBLO BLUE** Las Friendas De Amarillo

Jim & Jo Moreland

## Martin's Steak Garden

659-2664

Borger Hiway

SPEARMAN, TEXAS



THIS 1966 STATE CHAMPION LYNXETTE TEAM will be recognized at the 1975 State Basketball Tournament February 27-March 1 at the Gregory gym in Austin. Coach Dean Weese, now at Wayland Baptist College, will be introduced and then will introduce all the 1966 team members. The team has scheduled a reunion for Friday night, February 28 at the Villa Capri in Austin. Members of the team are Judy (Jones) Everson, Kay (Schroder) Loomis, Cathi (Mackie) McCoy, Cecilia (Wilson) Mason, Robbie (Ownbey) Butt, Cindy (Cochran) Wright, Jeanette (McAdams) Hugas, Bethany (Donnell) Hagg, Phyllis (Davis) Collins, Susan (Holt) Kidder, Marcia (White) Knight, Susan (Guthrie) Ownbey, Nancy (McCullough) Babbs, Barbara (Wilde) Whitefield, Catherine (Lyon) Lusby, Linn Ann (Robinson) Riley, Karen (Gibson) Cargill, and Kathi Pattison.

**New Seats For Pioneer Amphitheatre**

Canyon, Texas, Feb. 14, 1975... There will be new seats in the Pioneer Amphitheatre in the Palo Duro

Canyon State Park for the 1975 season. This was one of the actions passed at the Annual Meeting of the

Texas Panhandle Heritage Foundation at the Amarillo Country Club on Thursday noon, February 13.

all others in every way. New dates for 1975 are June 18 through August 23. For information and tickets call 806-655-2182 or write "Texas", Box 268, Canyon Texas 79015. Guy Fuller of Spearman is entering on his second year of a two year term as a board member.

**Farm Taxes Affected By "Operating Loss"**

COLLEGE STATION--- Because the bottom dropped out of the cattle and cotton markets in 1974, farmers and ranchers who suffered a "net operating loss" may be able to get some income tax relief on income previously earned.

According to Dr. Wayne Hayenga, economist for the Texas Agricultural Extension Service, the Internal Revenue Service has special provisions that deal with "net operating losses."

"The loss must first be carried back three years and applied against the taxable income of that year," he points out. "If the taxable income of that year was not sufficient to offset the operating loss, the remaining loss is applied against the income of the second preceding year and then to the immediate past year."

"If there is still a remaining loss over the total taxable income of the prior years, the loss is carried forward to each of the next five years until all is used to offset income."

"When a net operating loss occurs, a claim for refund must be filed to recover taxes paid in prior years, points out Hayenga. This claim is also necessary to establish the amount of loss, if any, to be carried forward to offset future income. Some adjustments of taxable income of prior years may be required.

Due to some of the unusual features of the "net operating loss" provisions, Hayenga suggests the assistance of a qualified tax consultant or an IRS agent. A claim regarding net operating losses can be filed at any time within three years after the return was due for the year loss occurred.

The Deadline for filing

farm and ranch income tax returns is Mar. 3 unless an estimated return was filed. In that case the deadline for the final return is Apr. 15.

TAX DEDUCTIONS FOR FARMERS, RANCHERS-- Each year agricultural producers pay extra income taxes because they fail to deduct certain legitimate expenses, says an economist for the Texas Agricultural Extension Service. Commonly overlooked business expenses include allowances for home space used as an office, items used for record keeping such as calculators and recordbooks, postage, meals for hired labor, bank charges and

the **REPORTER**  
Spearman, Texas 79081  
213 Main Box 458 659-3434  
Published Weekly at 213 Main Street Spearman, Texas 79081  
Owner-Publisher . . . . . William M. Miller  
Second Class Postage Paid at Spearman, Tex  
Any erroneous reflection upon the character of any persons or firm appearing in these columns will be gladly and promptly corrected upon being brought to the attention of the management.  
SUBSCRIPTION RATE--Hansford, adjoining counties, in combination with the Hansford Plainman, \$7.00 yr. Other points in combination with the Hansford Plainman, \$9.00 yr.

Interest on charge accounts, tax preparation and book-keeping fees, auto and truck expenses, magazine subscriptions, farm organization dues, business trips, and costs of utilities and other services.

**MESCO marketing begins with you...what your building needs are and how to supply them.** From that point on you have the coordinated efforts of one of the finest building and construction organizations in the country. All are dedicated to the ideal that you, the customer, want more with your new building than just versatility, economy and low maintenance. You want service. People interested in people. And nobody is more interested in solving your building needs than Mesco and your local Mesco builder, Sims Metal Building Co.

See Dean Sims today, at his office in the LaMaster Agency, at 209 1/2 S. Main, or call 435-2625 or 435-2449. Be surprised at the quality of buildings and service offered by this new business in progressive Perryton and the High Plains area of Texas.

**Getting started in a career means getting started for life. Start with a good plan. And a good planner.**

**A professional.**

**Southwestern Life**  
Happiness is what we sell

DON R. KNOX  
Box 1016 - Spearman, Texas - Phone 659-3294

**SPECIAL February 28 Day SALE**

Check These Examples Of Savings

FRAM OIL FILTERS	List Price	Sale Price	
PH 8A Oil Filters Fits Buick, Pontiac & Olds.	5 18	2 07	3 11
PH30 Oil Filters Fits Chev. Cars & Trucks	5 73	2 29	3 44
PH25 Oil Filters Fits Ford, Chrysler & Dodge	5 68	2 27	3 41

**ALL FRAM FILTERS**  
★ Oil Filters  
★ Gas Filters  
★ Air Filters  
Are Priced at Jobbers Price for this 28 day Sale  
**SALE GOOD THRU FEB. 28th**

**Bonney Tools 25 % Off**  
Come In Today and Check With Us On Your Parts-We Have One Of The Most Complete Parts Shops In The Area.

**HI-PLAINS AUTO SUPPLY**  
P. O. BOX 116  
AUTOMOTIVE WHOLESALE MACHINE SHOP  
SPEARMAN, TEXAS 79081  
PHONE 659-2213  
SERVICE CENTER IRRIGATION REPAIRS

**GOOD MUSIC!**

**Symphony Orchestra To Return**

The Oklahoma City Symphony Orchestra which proved so very popular last year has scheduled a return performance to Panhandle State University for March 4, in Hughes-Strong Auditorium. The Orchestra will perform two youth concerts the first at 1:15 and the second at 2:30, admission for each is 50c. At 8:00 p.m. the orchestra will perform the adult concert, admission \$2.00.

The orchestra is under the leadership of Mr. Ainslee Gos, new this year. Co-sponsoring the Panhandle State this year are the Oklahoma Arts and Humanities Council.

Ticket information may be had by writing Music Department, PSU, or calling 405-349-2611 ext. 260.

**Gruver State Bank**  
Gruver, Texas Member F. D. I. C.

**Helping You Change Things For The Better**

On October 28, 1974, the President approved an amendment to the Federal Deposit Insurance Act. Among other things, this legislation increases insurance on deposits from \$20,000 to \$40,000 for each depositor, effective on November 27, 1974. It also provides insurance of public unit funds in some circumstances not to exceed \$100,000 per account.



# THRIFTWAY

**A BETTER WAY TO SAVE**

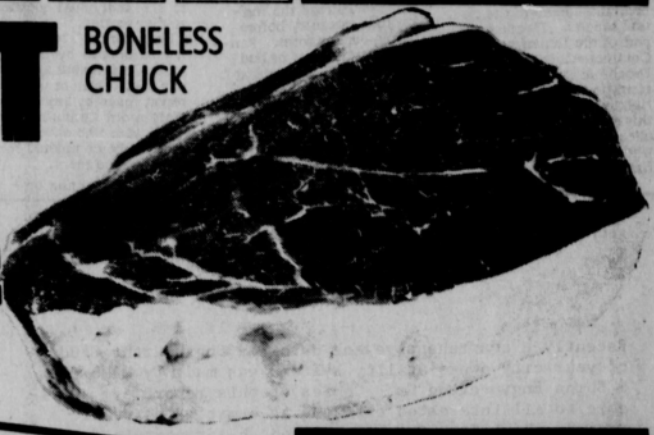
**BEANS 'N FRANKS DAYS**  
*One great pleasure deserves another.*

**Van Camp's**  
 PORK AND BEANS  
**3 89¢**  
 NO. 300 CANS

**shurfresh**  
 FRANKS  
**12 59¢**  
 12 OZ. VAC PAC PKG.

**ROAST BONELESS CHUCK**

GRAIN FED BEEF  
**88¢**  
 LB.



PURE GROUND BEEF  
**68¢**  
 3 LBS. OR MORE PKG. LB.

**MORE MEAT ITEMS**

- BONELESS Chuck Steak ... LB. **98¢**
- FOR CHICKEN FRY Beef Cutlets ... LB. **\$1.48**
- EXTRA LEAN Stew Meat ... LB. **98¢**
- WILSON CERTIFIED Sliced Bacon ... LB. PKG. **\$1.29**
- WILSON Sliced Bologna ... 12 OZ. PKG. **79¢**
- WILSON SMOKED Pork Chops ... LB. **\$1.59**

SHURFINE FROZEN  
**Orange Juice 5 1.00**  
 6 OZ. CANS

COUNTRY STYLE OR BUTTERMILK SHURFRESH  
**Biscuits 2 25¢**  
 8 OZ. CANS

ALL PURPOSE **GLADIOLA FLOUR**  
**5 69¢**  
 5 LB. BAG

MARYLAND CLUB **COFFEE**  
**98¢**  
 LB. CAN

**CRISCO**  
**3 1.69**  
 3 LB. CAN  
 "LIMIT 1 CAN WITH \$5.00 PURCHASE OR OVER"

10¢ OFF LABEL DETERGENT **IVORY LIQUID**  
**49¢**  
 22 OZ. BTL.

GILLETTE SUPER STAINLESS **Steel Blades** ... 10 CT. PKG. **\$1.49**  
 SPRAY DISINFECTANT **Listerol** ... 14 OZ. CAN **\$1.39**

PEPSODENT FAMILY SIZE **Tooth Paste** ... 7 OZ. **68¢**  
 ONE-SIZE FITS-ALL NYLON **Panty Hose** ... **39¢**

SHURFRESH GRADE A MEDIUM **EGGS** DOZ. **49¢**

"IN JUICE" DEL MONTE **Pineapple** ... 15 OZ. **35¢**  
 DEL MONTE **Spinach** ... 303 CAN **24¢**  
 DEL MONTE WHOLE DILL **Pickles** ... 22 OZ. **59¢**

HOUSEHOLD **Clorox Bleach** ... 1/2 GAL. JUG **46¢**

BANQUET FROZEN **Cream Pies** ... 14 OZ. ASS'T **49¢**

MORTONS FROZEN **Honey Buns** ... 9 OZ. **49¢**

SWIFTS ASS'T HALF GALLON **ICE CREAM** ... **99¢**

DEL MONTE **TOMATO JUICE** ... 46 OZ. CAN **48¢**

DEL MONTE **CATSUP** ... QUART JUG **68¢**

12¢ VALUABLE COUPON NO. 122436  
 CEREAL **BUC-WHEATS** ... 15 OZ. BOX **79¢**  
 WITH THIS COUPON VOID MARCH 1, 1975  
 THRIFTWAY FOOD STORES  
 LIMIT ONE COUPON PER CUSTOMER

20¢ VALUABLE COUPON NO. 51.G.-75-A  
 SILENCE IS GOLDEN **COUGH SYRUP** ... 3 OZ. BTL. **99¢**  
 WITH THIS COUPON VOID MARCH 1, 1975  
 THRIFTWAY FOOD STORES  
 LIMIT ONE COUPON PER CUSTOMER

50¢ VALUABLE COUPON NO. 5337-E  
 MAXWELL HOUSE INSTANT **COFFEE** ... 10 OZ. JAR **\$1.79**  
 WITH THIS COUPON VOID MARCH 1, 1975  
 THRIFTWAY FOOD STORES  
 LIMIT ONE COUPON PER CUSTOMER

TEXAS RUBY RED **GRAPEFRUIT**  
**5 69¢**  
 5 LB. POLY BAG

RED MALAGA **Grapes** ... LB. **39¢**  
 BULL NOSE BELL **Peppers** ... LB. **49¢**  
 SNO-BALL **CAULIFLOWER** ... HEAD **59¢**  
 ICEBERG CRISP SOLID HEAD **Lettuce** ... LB. **19¢**

CONTADINA **TOMATO SAUCE**  
**8 8-oz. CANS \$1**

CASSEROLE **PINTO BEANS**  
 2 LB. BAG **73¢**

GERBERS STRAINED **Baby Food** ... 3 FOR **35¢**  
 CORONET PRINTS **Paper Towels** ... **39¢**

KING SIZE **COCA-COLA** PLUS DEPOSIT  
 6-BTL. CTN. **79¢**

"LIMIT RIGHTS RESERVED"  
**THRIFTWAY**  
 Friendliest Store In The Panhandle  
 Plains Shopping Center  
 PHONE 659-2522  
 SPEARMAN, TEXAS  
**CLOSED SUNDAYS**  
 SPECIALS GOOD FEB. 27-MARCH 1, 1975

19¢ VALUABLE COUPON NO. 2306-S  
 ORANGE **TANG** ... 27 OZ. JAR **\$1.79**  
 WITH THIS COUPON VOID MARCH 1, 1975  
 THRIFTWAY FOOD STORES  
 LIMIT ONE COUPON PER CUSTOMER