

# The Spearman Reporter

NOTICE: The Women's Aglo Fellowship meeting will be held Thursday at 10 a. m. at the H. D. Club Room 10 a. m. Ellen Winters of Arnett, Okla., will be the speaker. A nursery will be provided.

VOLUME 66, NO. 17

THE SPEARMAN REPORTER, SPEARMAN, TEXAS 79081

THURSDAY, MARCH 13, 1975

## No Girls Track Program This Year!



This group of farmers enjoyed a free Bar-B-Q and Cultural Meeting on corn and Sorghum production held Monday evening at the County Barn in Spearman. The meeting was sponsored by DeKalb Ag. research, Celha-Gelgy, Davis Oil Co., Sparks Brother, Buster's Dusters and Tom Pena Inc.



Athletic director Greg Sherwood is pictured above as he discusses the girls track program with the school board. The Spearman school board system decided to wait until next year to implement the new program as they have neither the money, or the man-power (or woman-power) to start a good program this year.

The Spearman School Board met in regular session Monday night at the school house. Top priority on the agenda, was taxes, girls track, and an executive session of discuss school personnel.

The athletic director Greg Sherwood, and girls basketball coach along with the principals were on hand at the meeting. The school board voted to wait until next year to consider the girls track program, as the school doesn't have the money or facilities this year to launch into the program.

Also, this program was not put into the budget for this year, and the money just isn't available.

In other business the teaching personnel of the school was all hired for the coming year; the school board called an executive session to discuss personnel Monday night.

Also on the agenda was a discussion of taxes for the coming year. It is very obvious that the school must raise taxes for next year, to meet the increasing cost of operating the local school system. Complete details on the tax increase will be given in the near future.

## Nigerian Pastor To Speak Here



PASTOR DAVID WINDIBIZIRI

### Good Friday Services Planned

The Spearman Ministerial Fellowship Meeting was held Tuesday, March 4th at the First Baptist Church.

Rev. Archie Burress presided over the meeting. The group worked on plans for Good Friday. Services will be held Mar. 28th at 7:30 P. M. at the First Baptist Church with Rev. H. O. Abbott directing the service.

Also discussed was plans for the Bi-centennial service Sunday, July 4th, 1976. The group agreed to work with the Bi-centennial Committee of Hansford County in promoting the service.

Members present were Rev. H. O. Abbot, Bob Sifrit, Don Wirsdorfer, C. E. Anderson, Archie Burress, and Russell Pogue.

Next meeting will be April 1st at the Faith Lutheran Church.

### Local Man's Father Dies

Funeral mass for Leonard Leon Hagerman, 63, was read at 11 a. m. Monday at the St. Vincent de Paul Catholic Church in Pampa with the Rev. Wendell Duncker, C. M. officiating. Rosary was said at 7:30 p. m. Sunday at the Carmichael-Whitley Colonial Chapel in Pampa with graveside rites at 3 p. m. Monday in the Calvary Cemetery at Elk City, Okla.

Mr. Hagerman died Friday in Highland General Hospital in Pampa. He was born at St. John's Kan., moving to Pampa in 1964 from Sweetwater, Okla. He was a member of the St. Vincent de Paul Catholic Church of Pampa.

Survivors are the widow, a daughter, five sons, including Verlin of Spearman, a brother, 31 grandchildren and a great-grandchild.

### Hansford Lodge Meeting

Hansford Lodge #1040 A. F. & A. M. met Monday, March 10th at 7:30 in the Hansford Lodge Hall. Britt Jarvis, Worshipful Master presided over the meeting.

Discussion was held on Tuesday night's Open House at Spearman Public Schools. There will be two Master Mason's Degrees Friday, March 14th at the Lodge Hall. The first will begin at 7:30 and the second, after 9:00.

Refreshments were served by Ceril Barton to approximately 12 members present. Next regular meeting will be March 24th in the Lodge Hall.

## Manor To Close

Pioneer Manor, a nursing home that has been operating in this city since the early 1960's, will close its doors Saturday, Mar. 15.

Mr. Jeston Byrd, who has operated the facility since December, announced last week that he would close March 15.

The Chamber of Commerce sponsored a town hall meeting Friday evening at the Spearman High School in an effort to see what could be done to keep the nursing home open.

Some 80 people attended the meeting Friday evening.

A committee was appointed to investigate possibilities that might be available to reopen and operate the nursing home in the future. Members of the committee are Pat Sutterfield, Fortella McKee, Ray Phelps,

Bob Farr and legal counsel John Hutchison. At the time of the announcement of Byrd that he would close the Manor, there were 20 residents living there. The home has a capacity of 36.

Mr. Byrd has improved the home in many ways since he began operation. He owns and operates Magic Plains Nursing Home in Borger. He cited unavailability of help, rising costs, and needed repairs as some of the problems he has faced in the operation of the home.

Some of the residents are being transferred to other homes in the area and some are going to homes of relatives. A list of where these patients are going will be published next week.

This is a bad situation for these people and it is hoped that some solution can be found to the pro-

blem and that Pioneer Manor will be reopened sometime in the future, to provide nursing care for people in Spearman and Hansford county that have need of such care.

### Bake Sale

A Bake Sale will be held Wednesday, March 26th at Cut Rate Thriftway by the Sacred Heart Women's Guild.

Anyone wishing to make telephone orders for baked goods can do so by calling Mrs. Gus Renner at 659-2335 or Mrs. Don Schmehr at 659-2858.

DATE	HI	LO	PREC.
Mar. 4	67	29	
Mar. 5	75	39	
Mar. 6	76	50	
Mar. 7	75	26	
Mar. 8	47	27	
Mar. 9	45	32	
Mar. 10		24	.25

### BAKER'S GRAND OPENING SET

Baker's Department Store on main street has scheduled their grand opening for March 17 and 18 and are offering many bargains in their final winter clearance.

The new owners of the store, Butch and Irene Baker, are offering floor prizes along with the special bargains, and invite everyone to come and visit them during their grand opening.

### Jenny Massad Show Canceled

Jenny Lynn Massad notified the newspaper late Tuesday that she has had to cancel her one-woman show at West Texas State University due to the illness of her accompanist. The performance was to have been March 15 at 8 p. m.

## McCurdy Madrigal Singers To Perform



The First United Methodist Church will present the McCurdy Madrigal Singers of Espanola, New Mexico at 8:00 p. m. on Monday, March 17th. The McCurdy Madrigal Singers are a select group of high school students from grades 9 - 12. Their repertoire

consists of a variety of sacred music, classical to contemporary, spiritual to ballad. This group was formed to represent McCurdy Schools and to give the students an opportunity to witness and to express themselves through music. Everyone is invited to come hear this special group.

# Cancer Crusade Chairman Named

Come among the well-known signs of Spring, the annual announcement of the Cancer Society fund-raising and educational crusade—the 1975 version to follow the theme "We Want to Wipe Out Cancer in Your Lifetime."

Recently named Chairman of the Hansford County 1975 Crusade by the Hansford Unit president Judge Johnny Lee is Mrs. James Stedje of Gruver who has served in this important capacity for many years, each Crusade, a record-setting event. Assisting

Mr. Stedje will be representatives from all areas of the County.

According to the Crusade Chairman, "The promise of research is so great that the 1975 Crusade will be one of the most important ever. The dedicated people in the laboratories: the men, women, and children suffering from cancer today; and our hopes for the future all depend on our willingness to support the fight against cancer.

Many volunteers throughout the County will visit friends and neighbors and

businesses in Hansford County. These willing workers will distribute this year's Crusade leaflet, a cancer quiz, testing the public's awareness of ways to protect themselves against cancer.

These local volunteers are part of an army of 2,300,000 American Cancer Society volunteers mobilized for the 1975 Crusade

throughout the Country. This might well be one of the greatest volunteer forces in history.

Mrs. Stedje concluded by saying that "we want to take cancer out of the medical books and put it into the history books as something that afflicted people a long time ago!"—a tremendously worthy goal for the 1975 Crusade.

## Boating Safety Course At Frank Phillips

AN EVENING COURSE, which will run for eight weeks, on boating safety will start Thursday, March 20, at Frank Phillips College in Borger.

"Safe Boating is Fun" is the title of the course, which will be taught by Loyd Bowman, Public Relations Officer of Flotilla 52, Coast Guard Auxiliary. The 8 hour course will be taught in the Fine Arts Building, Room 20 from 7:30-9:30 p.m. weekly.

The only charge for the course will be for the textbook, course work books and examinations, which is \$3.50. No tuition fees will be charged.

Boat owners and their spouses desiring to enroll for the course may register under the Community Service program at Frank Phillips College. Persons may also enroll by simply attending the first night's class.

Bowman, long time boating safety leader in the Panhandle, was instrumental in organizing the Panhandle Boat and Sled Club in 1958 and was one of the originators of the Amarillo Boat Show held annually in the Civic Center.

According to Bowman, approximately 5,000 boats utilize Lake Meredith annually and boating safety is becoming increasingly important. Topics to be covered by means of text, discussion, and slide presentations include Boat Handling, Sailors Language Aids to Navigation, Legal Requirements, Sailboats, and Weather.

### Seminar Set

Facing what promises to be a summer of higher vegetable costs in the Panhandle area, a Home Vegetable Gardening seminar is scheduled for Thursday, March 27, in Library Room 30, on the Frank Phillips College campus. Sponsored jointly by FPC and the Texas Agricultural Extension Service of Texas A&M, the seminar will feature top area specialists during the 7:30 to 10:00 p.m. session.

Dennis Newton, Hutchinson County Extension Agent will coordinate the event which will offer discussion of all areas of vegetable gardening. Also featured will be Dr. Bill Clymer, area Entomologist, from Amarillo, and Dr. Robert Berry, Area Plant Pathologist, from Lubbock. Both are specialists with the Texas Agricultural Extension Service.

Newton's topics will include planning a garden, variety selection, seed selection, fertilization, and cultural practices. Dr. Clymer will discuss insect control and pesticides, and Dr. Berry will cover plant diseases and their control. Slide presentations will accompany the discussions and gardening literature will be available for all who participate.

Persons interested in registering for the seminar should contact the Office of Continuing Education, Registrar's Office, Frank Phillips College, or call 274-5311. There is no charge for the course.



FFA STUDENTS are busy this time of the year getting their animals ready for showing at the Hansford Junior Livestock Show set for March 14 and 15. Also some of the animals will be shown at the upcoming Houston Livestock Show.

## SAVE ON \$EED

here are some excellent PIONEER brand hybrids that can cut your seed cost

You don't have to go to an off brand seed to save some money. We're making these famous Pioneer brand sorghums available at a substantial savings. They are varieties that fit our growing conditions... products of the exhaustive research program of Pioneer Hi-Bred, high production standards and seed quality that pay off for the farmer. It doesn't happen often but right now you can have both... the top yield and the bottom price. Come in or call to reserve your supply.



### PIONEER brand 8417

This versatile yellow endosperm sorghum is a champion yielder in the medium-late maturity class, for irrigated or non-irrigated land. It has large open heads, uniform head height, strong stalks for easy threshing, good tolerance to smut.

### PIONEER brand 820

This top notch full season hybrid is a consistently high yielder. Excellent drought resistance and standability plus good roots and stalks make it a good choice for irrigated or non-irrigated farming on the Plains.

### PIONEER brand 833

Excellent roots and stalks, uniform head height, and exceptionally long heads of dark red grain give 833 outstanding threshing quality and excellent appearance in the field.

SAVE AS MUCH AS \$3 PER BAG



PIONEER SEEDS

B & B Farm Industries Inc. 703 Collard 659-2551

Performance of seeds or the crop produced therefrom may be adversely affected by factors beyond our control including environmental conditions, insects and diseases. The limitation of warranty and remedy attached to each bag of Pioneer brand seed is a part of the terms and conditions of the sale thereof.

# GRAND OPENING

## Final Winter Clearance

# Door Prizes

MEN & WOMEN'S Shoes

March 17th-18th

1/2 Price

\$200

# HALF PRICE RACKS

TABLE

\$500

# TABLE

MANY MORE BARGAINS

Bargains Galore

# 'Baker's Department Store

MAIN

SPEARMAN

# Cash crops



## Farming Loans

Cash Crops farming loans cover the field—and the barns, the livestock, the machinery. Whatever farming need you have, we'll raise the money for you and arrange convenient terms. What's more, our farming-loan expert may be able to give you some new information on the agricultural scene. Our farmhand has a very green thumb. Get yourself a Cash Crops loan. 'N that ain't hay!



TEXAS 79081

Shaffer Galtick Adv. Inc.

# WANTED

**Boxwell Bros. Funeral Home and Flower Shop**  
Day-Night Phone 659-2212  
Spearman, Texas

FOR SALE: Tony Lama Ladies Gold Tone Boots, bought on sale--too small, \$25. 659-3038.

FOR SALE: Windmill with or without tower. Dick O'orman. 878-3034  
11-2tc

### FOR RENT

FOR RENT: Trailer Space any size trailer 32 N. James 659-3349  
15-3tc

FOR RENT: IBL Trailer Park spaces on N. James Call 659-2257.  
14-rtt

FOR RENT- 2 room furnished apartment. Call 659-3239, Edna Briley.  
17-1tc

### REAL ESTATE

FOR SALE: Nice brick home near elementary school, 3 bedrooms, utility, double garages, 2 baths, den and living room, carpets, central heat and air, fireplace, lots of storage, tool shed, patio, fenced yard, 100 ft. lot. Shown by appointment. 659-2309.  
15-rtt

FOR SALE: 3 room house on 50 foot lot. 29 South Endicott. Call 733-2508  
15-rtt

### HELP WANTED

HELP WANTED: For inside workers and machinist. Apply in person at Roger's Sales and Service, Waka, Texas.  
16-rtt

Operator Needed. Cinderella Beauty Shop. Call 659-3413.  
10-5-rtt

Wanted - Electrician. York Electric, Gruver Highway. 659-3625  
8-5-rtt

WANTED- Someone to live in with elderly couple in rural area. Good salary. For further information Call 659-2192.  
17-rtt

Daytime Fountain help wanted Please apply in person at the Chicken Express.  
17-4tc

### LOST

LOST: Small black dog with white, half poodle and terrier, answers to Amos. Call 659-3559 after 3:00.  
17-2tc

LOST: From around Farnsworth, Steers weighing from 700-800 lbs. Branded C or D on left hip. Call Roy Devers Booker 658-2267  
18-2tc

### CARD OF THANKS

We would like to thank our friends who sent cards and flowers, and all the calls, visits and best wishes while I was in the hospital. God Bless all of You.  
Reese & Thelma Nowlin.

FOR SALE: 3 Bedroom Brick, Central Heat and Air, 1 3/4 baths, garage, fenced, extra nice.  
18-rtt

Country home, 3 acres, 2924 sq. feet, 4 bedrooms, 2 3/4 baths, living room, large den, office, shale roof, central heat and air, paved circle drive, barn, sheds, ssks, steel pens, 4 miles from Spearman. Must see to appreciate.

1567 sq. feet, single garage, 1 1/2 bath, 15 ft. lot, brick, carpet, beautiful home.

Trailer House: 14x55, Central air and heat, extremely nice, ready to move in.

### ED WHEELER REAL ESTATE

Phone 659-2613 (day) or 659-2261 (night)

Offered By  
EMMETT R. SANDERS  
REALTOR



FOR SALE: Don't overlook this Nice 2 bedroom home with cozy fireplace, fenced yard and attached garage in good residential area.

NICE 3 bedroom, 2 bath brick home with attached garage in Hitchland, Tex. Central heat and air, Quality carpet throughout, electric kitchen including dishwasher and disposal, built-in oven and cooktop, breakfast bar, roomy dining area. Shown by appointment.

FOR SALE: Corner lot East Third and James, zoned for mobile home. 325 ft. highway frontage on East Kenneth St. 385 ft. on South Brandt St., 162 ft. depth. 552 1/2 ft. on South James St., 162 ft. depth.

Nice residential lot SW Spearman. Tracts facing paved county road south of 12th St. 3 acre tract, residential lot, SW Spearman.

Land is the basis of all wealth.. EMMETT R. SANDERS REALTOR



Phone 659-2516  
Night 659-2601  
Weekends call 806-874-2663

### IS ALCOHOL A PROBLEM IN YOUR FAMILY? AL-ANON FOR FAMILIES OF PROBLEM DRINKERS

In this Fellowship you can:  
.. Meet others who share your problem  
.. Learn about alcoholism as an illness  
.. Encourage the alcoholic to seek help  
.. Replace despair with hope  
.. Improve the family atmosphere  
.. Rebuild your self-confidence  
For Further Information write to:  
Spearman AL-ANON  
22 So. Endicott  
Or Call:  
659-3394, 2762, 3181  
Every Tuesday & Saturday - 8:00 p.m.

### LEGAL NOTICE

All facilities and services of Hamford Hospital will be available to all patients and employees, on a non-discriminatory basis. Waiting rooms, public restrooms, dining facilities, recreation rooms, therapeutic rooms and room accommodations will be available without regard to race, color or national origin as we continue our mission of serving the ill or our community. Signed/ John L. Brown, Board Chairman, Hamford Hospital 7075, Roland, Spearman, Texas.  
18-1tc.

TOO LATE TO CLASSIFY FOR SALE-good large refrigerator. Come by 212 Deesen.  
17-2tc

Love Thy Neighbor

Send cookies and books to a neighbor's son in the service.

The National Council on Alcoholism, 2 Park Avenue, New York, N.Y. 10016, reveals that 6,500,000 Americans are now victims of this tragic condition. Support the council in its nation-wide fight on alcoholism.



## The Consumer Alert

by John L. Hill  
Attorney General

AUSTIN—"Special early-bird Easter Sale! One-third off regular price!" Many businessmen agree that there's nothing like such a sale to draw potential buyers to a store.

And most merchants feature a variety of special sales during the year. There may be mark-down sales, holiday sales, pre- or post-season sales, discontinued merchandise sales, or a host of others.

All of these sales could result in savings for bargain-minded consumers, too. But there is a small minority of businessmen who may attempt to attract consumers with deceptively advertised or misleading sales, according to lawyers in the Attorney General's Consumer Protection Division.

They warn that a few merchants advertise "sales" almost continuously and that such "sales" may not offer prices that are any lower than regular prices.

The term "sale" generally should be used only to advertise significant reductions from a merchant's usual and customary price for the merchandise, and should continue for a reasonable period of time, not continuously.

Special "limited time" sales should be carefully observed by merchants. For example, a "one-day only" sale should be just that. Prices for goods should go back to regular prices immediately after expiration of the stated time.

"Introductory" sales should be for a limited time only, too, and the price should be increased to advertised regular

price after such a period is over.

"Emergency," "fire," or other "distress" sales, or "going out of business" or "liquidation" sales should not be advertised unless the stated or implied condition is true. And these sales also should continue for only a specified time. A few merchants are reported to have been "going out of business" for several years. Consumer Protection attorneys note.

General claims by some stores that their prices are "guaranteed lowest in town," that they are "never under-sold," or that they offer the "highest trade-in allowances" should be taken with a grain of salt. It's highly unlikely that a merchant could have accurate, up-to-date knowledge of all prices at all stores.

However, some careful merchants who strive to make valid "lowest price" or similar claims advertise that they will refund the difference in price if a customer can bring proof that an item could have been purchased elsewhere in town for less.

Advertised savings of "up to 40 per cent off" for a group of items offered at a range of reduced prices could be misleading if only a few items in the group sold at such savings. Advertisements in such cases should note maximum and minimum savings to avoid confusion, such as "savings from 10 to 40 per cent off on advertised items."

If you have a consumer complaint about misleading or

deceptive advertising, contact the Attorney General's Consumer Protection Division, your county or district attorney, or your local Better Business Bureau.



by Ann D. Allen

Do you waste your money when you shop? You do if you don't plan ahead and buy wisely, particularly when you're food shopping.

For example, are you aware of what you've been doing to drive store prices up? Handling



the fresh fruits and vegetables hastens spoilage, increases the costs of the store, and so increases prices.

Do you buy better things than you should? Things that are going to be mixed or chopped or hidden don't have to look as good as otherwise. A can of ragged tomatoes is a better investment for spaghetti sauce than a can of whole fancy ones.

Do you go food shopping at the wrong times? If you're hungry or hurried, you're more susceptible to more expensive, impulse buying.

Do you buy the right foods? Some homemakers make their families go almost entirely without the benefits of butter, an important food in today's diet. Butter is a rich source of vitamin A, vitamin D, aids in the absorption of A, D, E and K, and can make practically anything, even inexpensive meals, taste better!

Shopping properly can go a long way toward helping you spread your money around!



Some people have said that a lion's heart buried in the house would protect it from lightning.

## World Ag Production Levels Off

During the past two years, the upward trend of world agricultural products began to level off after enjoying an unprecedented two decade climb. Prime cause of the new figures was attributed to decreased output in the United States, Canada, the Soviet Union, and in South-east Asia.

Depressed economic conditions, high unemployment rates, along with the oil crisis, strikes, and inflation have hit most of the developed countries while in the world's under-developed areas agricultural production climbed in 1974 but per capita production declined.

Asia's rice crop is estimated at 101 million tons, a decline of more than five percent. Africa's output is estimated up four percent while agricultural production in Eastern Europe remains the same as 1973. The USSR has had a per capita decline in total production--her grain crop is estimated at 200 million tons with imports at about one million tons.

Production of world grain including rice now is marked at 1,126 million metric tons or about four percent below last year's level. Rice production dropped a disappointing four million tons below the normal. Demand for meat fell in 1974. High feeding costs threaten the incomes of producers and some of the larger meat consuming countries have established meat import quotas to provide relief.

Tobacco production is expected to increase slightly along with sugar production while world wide cotton production continues steadily to increase (From "Foreign Agriculture", December, 1974.)

Older people need about the same amount of vitamins as young adults. However, calorie needs are less due to a slower metabolic rate and decreased activity, according to Sally Springer, foods and nutrition specialist with the Texas Agricultural Extension Service, The Texas A&M University System.

### FOR SALE

320 acres of Beaver County, Oklahoma farm land located close to Bryan's Corner, Oklahoma on state highway No. 3. Three bedroom house and other improvements, some minerals, priced to sell.

### REMEL REAL ESTATE

214 W. Fifth  
Guymon, Okla. 73942  
405/338-7771 and 405/338-7674

# NOTICE

Plan now to attend  
**CONSUMERS ANNUAL MEETING**

NOTICE OF THE 47TH ANNUAL STOCKHOLDERS MEETING OF CONSUMERS SALES COMPANY

In accordance with the provisions of the by-laws of CONSUMERS SALES COMPANY of Spearman, Texas you are hereby notified that the 47th ANNUAL STOCKHOLDERS MEETING of the Consumers Sales Company will be held at the Jr. High Cafeteria in Spearman on March 25, 1975 at 7:30 P.M. The meal will be served by the Jr. High Cafeteria Ladies. Meeting will be held after the meal. MEMBERS AND WIVES ARE URGED TO ATTEND.

Purpose of the meeting is to hear the report of business to date; and to elect one member to the Board of Directors for a 3 year term. Term will expire for Ray Phelps.

Present Board members are: Mike Garnett, Ray Phelps, John Trindle, Newell Allen and C. J. Renner.

Dated this 19th. Day of February 1975.

Mike Garnett, President  
John Trindle, Secretary



YOUR LOCAL USED COW DEALER: Spearman B-Products. Seven days a week dead stock removal. Please call as soon as possible. 659-3544.  
8-rtt

Hansford Lodge  
1040  
A.F.&A.M.  
2nd & 4th Mondays  
MM Degrees  
MARCH 14, 1975  
8:00 P.M.

Britt Jarvis, W.M.  
Curtl Barron, Secy.

SERVICES  
Hamford County  
Planned Parenthood  
26 S. Haney  
659-2483  
Spearman  
Mon.-Fri.  
8:00 A.M. to 12 Noon  
305-rtt

KIRBY SALES & SERVICE  
of Spearman, 312 E. Bernice, 659-2797.  
30-rtt-T

Alcoholics Anonymous  
Meeting every Tuesday,  
8:00 p.m. at the Girl  
Scout Little House, 22 S.  
Endicott. Call 3394 or  
2762 for information.  
45-rtt

For Sarah Coventry Parties  
and orders call Sharon Hall,  
435-2089,  
135-8tp

Portable Disc Rolling  
Kenneth Pearson, Farnsworth  
435-5653  
145-8tc

INCOME TAX SERVICE -  
Call 659-3175 after five  
and weekends.  
113-rtt

MARY KAY COSMETICS.  
Call 659-2119, Malolah,  
Fullbright.  
325-rtt

Custom Farming Wanted.  
Jack McWhirter, 659-2249  
or 3308,  
4-rtt

Have Awill Will Travel--  
Custom Horseshoeing  
and corrective shoeing.  
Call 659-2415 after 6 p.m.  
E-rtt

Custom fertilizing and  
any type of farming.  
W. D. BARNES  
659-3638

SAWBLADES  
Call Jack Kneeland,  
659-3381 after 6.  
10-5tc

FOR SALE  
FOR SALE: Caring  
people out of Area. Can  
be used by border coffee.  
Call 659-3380 or 659-3417.  
17-1tp

FOR SALE: 1974 Honda  
500 cc. Honda 500 cc. with  
new oil. Call 659-3380,  
message in after 7 p.m.  
10-rtt

# Cancer Crusade Chairman Named

Count among the welcome signs of Spring, the annual announcement of the Cancer Society fund-raising and educational crusade--the 1975 version to follow the theme "We Want to Wipe Out Cancer in Your Lifetime."

Recently named Chairman of the Hansford County 1975 Crusade by the Hansford Unit president Judge Johnny Lee is Mrs. James Stedje of Gruver who has served in this important capacity for many years, each Crusade, a record-setting event, assisting

Mr. Stedje will be representatives from all areas of the County.

According to the Crusade Chairman, "The promise of research is so great that the 1975 Crusade will be one of the most important ever. The dedicated people in the laboratories; the men, women, and children suffering from cancer today; and our hopes for the future all depend on our willingness to support the fight against cancer.

Many volunteers throughout the County will visit friends and neighbors and

businesses in Hansford County. These willing workers will distribute this year's Crusade leaflet, a cancer quiz, testing the public's awareness of ways to protect themselves against cancer.

These local volunteers are part of an army of 2,360,000 American Cancer Society volunteers mobilized for the 1975 Crusade

throughout the Country. This might well be one of the greatest volunteer forces in history.

Mrs. Stedje concluded by saying that "we want to take cancer out of the medical books and put it into the history books as something that afflicted people a long time ago!"--a tremendously worthy goal for the 1975 Crusade.

## Boating Safety Course At Frank Phillips

AN EVENING COURSE, which will run for eight weeks, on boating safety will start Thursday, March 20, at Frank Phillips College in Borger.

"Safe Boating is Fun" is the title of the course, which will be taught by Loyd Bowman, Public Relations Officer of Flotilla 52, Coast Guard Auxiliary. The 8 hour course will be taught in the Fine Arts Building, Room 20 from 7:30-9:30 p.m. weekly.

The only charge for the course will be for the textbook, course work books and examinations, which is \$3.50. No tuition fees will be charged.

Boat owners and their spouses desiring to enroll for the course may register under the Community Service program at Frank Phillips College. Persons may also enroll by simply attending the first night's class.

Bowman, long time boating safety leader in the Panhandle, was instrumental in organizing the Panhandle Boat and Sled Club in 1958 and was one of the originators of the Amarillo Boat Show held annually in the Civic Center.

According to Bowman, approximately 5,000 boats utilize Lake Meredith annually and boating safety is becoming increasingly important. Topics to be covered by means of text, discussion, and slide presentations include Boat Handling, Sailors Language Aids to Navigation, Legal Requirements, Sailboats, and Weather.

### Seminar Set

Facing what promises to be a summer of higher vegetable costs in the Panhandle area, a Home Vegetable Gardening seminar is scheduled for Thursday, March 27, in Library Room 30, on the Frank Phillips College campus. Sponsored jointly by FFC and the Texas Agricultural Extension Service of Texas A&M, the seminar will feature top area specialists during the 7:30 to 10:00 p.m. session.

Dennis Newton, Hutchinson County Extension Agent will coordinate the event which will offer discussion of all areas of vegetable gardening. Also featured will be Dr. Bill Clymer, area Entomologist, from Amarillo, and Dr. Robert Berry, Area Plant Pathologist, from Lubbock. Both are specialists with the Texas Agricultural Extension Service.

Newton's topics will include planning a garden, variety selection, seed selection, fertilization, and cultural practices. Dr. Clymer will discuss insect control and pesticides, and Dr. Berry will cover plant diseases and their control. Slide presentations will accompany the discussions and gardening literature will be available for all who participate.

Persons interested in registering for the seminar should contact the Office of Continuing Education, Registrar's Office, Frank Phillips College, or call 274-5311. There is no charge for the course.



FFA STUDENTS are busy this time of the year getting their animals ready for showing at the Hansford Junior Livestock Show set for March 14 and 15. Also some of the animals will be shown at the upcoming Houston Livestock Show.

## SAVE ON \$EED

here are some excellent PIONEER brand hybrids that can cut your seed cost

You don't have to go to an off brand seed to save some money. We're making these famous Pioneer brand sorghums available at a substantial savings. They are varieties that fit our growing conditions--products of the exhaustive research program of Pioneer Hi-Bred, high production standards and seed quality that pay off for the farmer. It doesn't happen often but right now you can have both--the top seed and the bottom price. Come in or call to reserve your supply.



### PIONEER brand 8417

This versatile yellow endosperm sorghum is a champion yielder in the medium-late maturity class, for irrigated or non-irrigated land. It has large open heads, uniform head height, strong stalks for easy threshing, good tolerance to smut.

PIONEER brand 820  
This top north full season hybrid is a consistently high yielder. Excellent drought resistance and standability plus good roots and stalks make it a good choice for irrigated or non-irrigated farming on the Plains.

PIONEER brand 833  
Excellent roots and stalks, uniform head height, and exceptionally long heads of dark red grain give 833 outstanding threshing quality and excellent appearance in the field.

SAVE AS MUCH AS \$3 PER BAG



**B & B Farm Industries Inc.**  
703 Collard 659-2551

Performance of seeds or the crop produced therefrom may be adversely affected by factors beyond our control including environmental conditions, insects and diseases. The limitation of warranty and remedy attached to each bag of Pioneer brand seed is a part of the terms and conditions of the sale thereof.

# Cash crops



## Farming Loans

Cash Crops farming loans cover the field--and the barns, the livestock, the machinery. Whatever farming need you have, we'll raise the money for you and arrange convenient terms. What's more, our farming-loan expert may be able to give you some new information on the agricultural scene. Our farmhand has a very green thumb. Get yourself a Cash Crops loan. 'N that ain't hay!



SPEARMAN, TEXAS 79081



SM © 1974 Leon Shaffer Golnick Adv. Inc.

**GRAND OPENING**  
Final Winter Clearance

Door Prizes

MEN & WOMEN'S Shoes

March 17th-18th

1/2 Price

HALF PRICE RACKS

\$2.00

TABLE

\$5.00

TABLE

MANY MORE BARGAINS

Bargains Galore

'Baker's Department Store

MAIN

SPEARMAN

# WANT ADS

**Boxwell Bros.**  
Funeral Home  
and  
Flower Shop

Day-Night Phone 659-2212  
Spearman, Texas

Listen To  
**Harvest Time**

9:00 A.M.  
SUNDAY  
KBMF

United Pentecostal Church  
Sponsor

**YOUR LOCAL USED COW DEALER:** Spearman B-Products. Seven days a week dead stock removal. Please call as soon as possible. 659-3544. 8-rtm

**Hansford Lodge**  
1040  
A.F.&A.M.

2nd & 4th Mondays  
MM Degrees  
MARCH 14, 1975  
8:00 P.M.

Britt Jarvis, W.M.  
Cecil Batton, Secy.

## SERVICES

Hansford County  
Planned Parenthood  
26 S. Haney  
659-2483  
Spearman  
Mon.-Fri.  
8:00 A.M. to 12 Noon  
305-rtm

**KIRBY SALES & SERVICE**  
of Spearman, 912 E. Bernice, 659-2797.  
30-rtm-T

Alcoholics Anonymous  
Meeting every Tuesday,  
8:00 p.m. at the Girl  
Scout Little House, 22 S.  
Endicott. Call 3394 or  
2762 for information.  
45-rtm

For Sarah Coventry Parties  
and orders call Sharon Hall,  
435-2089.

135-8tp  
Portable Disc Rolling  
Kenneth Pearson, Farms-  
worth 435-5653  
145-8tp

**INCOME TAX SERVICE** -  
Call 659-3175 after five  
and weekends.  
115-rtm

**MARY KAY COSMETICS.**  
Call 659-2119. Malolah  
Fulbright.  
325-rtm

Custom Farming wanted,  
Jack McWhirter, 659-2249  
or 3306.  
4-rtm

Have Awill Will Travel -  
Custom Horseshoeing  
and corrective shoeing.  
Call 659-2415 after 5 p.m.  
15-rtm

Custom fertilizing and  
any type of farming.  
W. B. BARNES  
659-3638

**RAWLINS PRODUCTS**  
Call Janki Kusselman,  
659-2931 after 5.  
15-6tc

## FOR SALE

**FOR SALE:** Cowdog  
puppies out of Amsco. See  
Richard by Snyder on 11a.  
Call 659-3110 or 659-2217.  
17-tp

**FOR SALE:** 1974 Honda  
250 Shovel MX will take  
best offer. Call 659-2888,  
monday to saturday 1 p.m.  
15-rtm

**FOR SALE:** Tony Lama  
Ladies Gold Tone Boots,  
bought on sale - too small,  
\$25. 659-3038.

**FOR SALE:** Windmill  
with or without tower.  
Dick O'orman, 878-3034  
16-2tc

## FOR RENT

**FOR RENT:** Trailer Space  
any size trailer 32 N.  
James 659-3349  
15S-3tp

**FOR RENT:** LBL Trailer  
Park spaces on N. James  
Call 659-2257.  
14-rtm

**FOR RENT:** 2 room fur-  
nished apartment. Call  
659-3239, Edna Britley.  
17-1c

## REAL ESTATE

**FOR SALE:** Nice brick  
home near elementary  
school, 3 bedrooms, util-  
ity, double garages, 2  
baths, den and living  
room, carpets, central  
heat and air, fireplace,  
lots of storage, tool shed,  
patio, fenced yard, 100 ft.  
lot. Shown by appoint-  
ment. 659-2309.  
16-rtm

**FOR SALE:** 3 room house  
on 50 foot lot, 29 South  
Endicott. Call 733-2508  
12S-rtm

## HELP WANTED

**HELP WANTED:** For in-  
side workers and machinist.  
Apply in person at Roger's  
Sales and Service, Waka,  
Texas.  
16-rtm

**Operator Needed.**  
Cinderella Beauty Shop.  
Call 659-3413.  
10S-rtm

**Wanted - Electrician.**  
York Electric, Gruver  
Highway, 659-3625  
8S-rtm

**WANTED:** Someone to  
live in with elderly couple  
in rural area. Good  
salary. For further in-  
formation Call 659-2192.  
17-rtm

**Daytime Fountain help**  
wanted. Please apply in  
person at the Chicken  
Express.  
17-4tc

## LOST

**LOST:** Small black dog  
with white, half poodle  
and terrier, answers to  
Amos. Call 659-3559  
after 3:00.  
17-2tp

**LOST:** From around  
Farnsworth. Steers weighing  
from 700-800 lbs.  
Branded C or D on left  
hip. Call Roy Devers  
Booker 658-2267  
18-2tc

## CARD OF THANKS

We would like to thank our  
friends who sent cards and  
flowers, and all the calls,  
visits and best wishes  
while I was in the hospital.  
God Bless all of You.  
Reese & Thelma Nowlin.

**FOR SALE:** 3 Bedroom  
Brick, Central Heat and Air,  
1 3/4 baths, garage, fenced,  
extra nice.

Countryside home, 3 acres,  
2924 sq. feet, 4 bed-  
rooms, 2 3/4 baths,  
living room, large  
den, office, shake  
roof, central heat  
and air, paved cir-  
cle drive, barn, sheds,  
stalls, steel pens,  
4 miles from Spear-  
man. Must see to  
appreciate.

1567 sq. feet, single  
garage, 1 1/2 bath,  
75 ft. lot, brick,  
carpet, beautiful  
home.

Trailer House: 14x65,  
Central air and heat, Ex-  
tremely nice, ready to  
move in.

## ED WHEELER REAL ESTATE

Phone 659-2613 (day) or  
659 2961 (nites)

Offered By  
EMMETT R. SANDERS  
REALTOR



**FOR SALE:** Don't over-  
look this Nice 2 bedroom  
home with cozy fireplace,  
fenced yard and attached  
garage in good residential  
area.

NICE 3 bedroom, 2 bath  
brick home with attached  
garage in Hitchland, Tex.  
Central heat and air.  
Quality carpet throughout,  
electric kitchen including  
dishwasher and disposal,  
built-in oven and cook-  
top, breakfast bar, roomy  
dining area. Shown by  
appointment.

**FOR SALE:** Corner lot  
East Third and James,  
zoned for mobile home.

325 ft. highway front-  
age on East Kenneth St.  
385 ft. on South Brandt  
St., 162 ft. depth.  
552 ft. on South James  
St., 162 ft. depth.

Nice residential lot SW  
Spearman.  
Tracts facing paved  
county road south of 12th  
St.

3 acre tract, residential  
zone, SW Spearman.

Land is the basis  
of all wealth..  
EMMETT R. SANDERS  
REALTOR



Phone 659-2516  
Night 659-2601  
Weekends call  
806-874-2663

## IS ALCOHOL A PROBLEM IN YOUR FAMILY? AL-ANON FOR FAMILIES OF PROBLEM DRINKERS

In this Fellowship you can:

- ..Meet others who share your problem
  - ..Learn about alcoholism as an illness
  - ..Encourage the alcoholic to seek help
  - ..Replace despair with hope
  - ..Improve the family atmosphere
  - ..Rebuild your self-confidence
- For Further Information Write to:  
Spearman AL-ANON  
22 So. Endicott  
Or Call:  
659-3394, 2762, 3181  
Every Tuesday & Saturday - 8:00 p.m.

## LEGAL NOTICE

All facilities and services of Hansford Hospital will be available to all patients and employees, on a non-discriminatory basis. Waiting rooms, public toilets, dining facilities, recreation rooms and room accommodations will be available without regard to race, color or national origin as we continue our mission of serving the ill or our community.  
Signed/ John L. Brown,  
Board Chairman,  
Hansford Hospital  
707S. Roland, Spearman,  
Texas.  
18-1c.

**TOO LATE TO CLASSIFY**  
FOR SALE-good large re-  
frigerator. Come by 212  
Dressen.  
17-2tp



Send cookies and books to a neighbor's son in the service.

The National Council on Alcoholism, 2 Park Avenue, New York, N.Y. 10016, reveals that 8,500,000 Americans are now victims of this tragic condition. Support the council in its nation-wide fight on alcoholism.



Volunteer to read for an hour or more a week at a home for the elderly, the blind or in a hospital children's ward.



## The Consumer Alert

by John L. Hill  
Attorney General

AUSTIN—Special early-bird Easter Sale! One-third off regular price! Many businessmen agree that there's nothing like such a sale to draw potential buyers to a store.

And most merchants feature a variety of special sales during the year. There may be mark-down sales, holiday sales, pre- or post-season sales, discontinued merchandise sales, or a host of others.

All of these sales could result in savings for bargain-minded consumers, too. But there is a small minority of businessmen who may attempt to attract consumers with deceptively advertised or misleading sales, according to lawyers in the Attorney General's Consumer Protection Division.

They warn that a few merchants advertise "sales" almost continuously and that such "sales" may not offer prices that are any lower than regular prices.

The term "sale" generally should be used only to advertise significant reductions from a merchant's usual and customary price for the merchandise, and should continue for a reasonable period of time, not continuously.

Special "limited time" sales should be carefully observed by merchants. For example, a "one-day only" sale should be just that. Prices for goods should go back to regular prices immediately after expiration of the stated time.

"Introductory" sales should be for a limited time only, too, and the price should be increased to advertised regular

price after such a period is over.

"Emergency," "fire," or other "distress" sales, or "going out of business" or "liquidation" sales should not be advertised unless the stated or implied condition is true. And these sales also should continue for only a specified time. A few merchants are reported to have been "going out of business" for several years, Consumer Protection attorneys note.

General claims by some stores that their prices are "guaranteed lowest in town," that they are "never under-sold," or that they offer the "highest trade-in allowances" should be taken with a grain of salt. It's highly unlikely that a merchant could have accurate, up-to-date knowledge of all prices at all stores.

However, some careful merchants who strive to make valid "lowest price" or similar claims advertise that they will refund the difference in price if a customer can bring proof that an item could have been purchased elsewhere in town for less.

Advertised savings of 10 to 40 per cent off "a group of items offered at a range of reduced prices could be misleading if only a few items in the group sold at such a savings. Advertisements in such cases should note maximum and minimum savings to avoid confusion, such as "savings from 10 to 40 per cent off on advertised items."

If you have a consumer complaint about misleading or

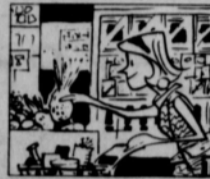
deceptive advertising, contact the Attorney General's Consumer Protection Division, your county or district attorney, or your local Better Business Bureau.



by Ann D. Allen

Do you waste your money when you shop? You do if you don't plan ahead and buy wisely, particularly when you're food shopping.

For example, are you aware of what you've been doing to drive store prices up? Handling



the fresh fruits and vegetables hastens spoilage, increases the costs of the store, and so increases prices.

Do you buy better things than you should? Things that are going to be mixed or chopped or hidden don't have to look as good as otherwise. A can of ragged tomatoes is a better investment for spaghetti sauce than a can of whole fancy ones.

Do you go food shopping at the wrong times? If you're hungry or hurried, you're more susceptible to more expensive, impulse buying.

Do you buy the right foods? Some homemakers make their families go almost entirely without the benefits of butter, an important food in today's diet. Butter is a rich source of vitamin A, vitamin D, aids in the absorption of A, D, E and K, and can make practically anything, even inexpensive meals, taste better!

Shopping properly can go a long way toward helping you spread your money around!



Some people have said that a lion's heart buried in the house would protect it from lightning.

## World Ag Production Levels Off

During the past two years, the upward trend of world agricultural products began to level off after enjoying an unprecedented two decade climb. Prime cause of the new figures was attributed to decreased output in the United States, Canada, the Soviet Union, and in South-east Asia.

Depressed economic conditions, high unemployment rates, along with the oil crisis, strikes, and inflation have hit most of the developed countries while in the world's under-developed areas agricultural production climbed in 1974 but per capita production declined.

Asia's rice crop is estimated at 101 million tons, a decline of more than five percent. Africa's output is estimated up four percent while agricultural production in Eastern Europe remains the same as 1973. The USSR has had a per capita decline in total production--her grain crop is estimated at 200 million tons with imports at about one mil-

lion tons. Production of world grain including rice now is marked at 1,126 million metric tons or about four percent below last year's level. Rice production dropped a disappointing four million tons below the normal. Demand for meat fell in 1974. High feeding costs threaten the incomes of producers and some of the larger meat consuming countries have established meat import quotas to provide relief.

Tobacco production is expected to increase slightly along with sugar production while world wide cotton production continues steadily to increase (From "Foreign Agriculture", December, 1974.)

Older people need about the same amount of vitamins as young adults. However, calorie needs are less due to a slower metabolic rate and decreased activity, according to Sally Springer, foods and nutrition specialist with the Texas Agricultural Extension Service, The Texas A&M University System.

## FOR SALE

320 acres of Beaver County, Oklahoma farm land located close to Bryan's Corner, Oklahoma on state highway No. 3. Three bedroom house and other improvements, some minerals, priced to sell.

## REMMEL REAL ESTATE

214 W. Fifth  
Guyton, Okla. 73942  
405/338-7771 and 405/338-7674

# NOTICE

## Plan now to attend CONSUMERS ANNUAL MEETING

NOTICE OF THE 47TH ANNUAL STOCKHOLDERS MEETING  
OF  
CONSUMERS SALES COMPANY

In accordance with the provisions of the by-laws of CONSUMERS SALES COMPANY of Spearman, Texas you are hereby notified that the 47th ANNUAL STOCKHOLDERS MEETING of the Consumers Sales Company will be held at the Jr. High Cafeteria in Spearman on March 25, 1975 at 7:30 P.M. The meal will be served by the Jr. High Cafeteria Ladies. Meeting will be held after the meal. MEMBERS AND WIVES ARE URGED TO ATTEND.

Purpose of the meeting is to hear the report of business to date; and to elect one member to the Board of Directors for a 3 year term. Term will expire for Ray Phelps.

Present Board members are: Mike Garnett, Ray Phelps, John Trindle, Newell Allen and C.J. Renner.

Dated this 19th. Day of February 1975.

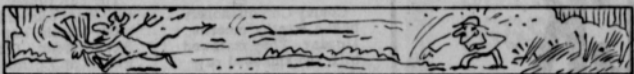
Mike Garnett, President  
John Trindle, Secretary





Baseball, hot dogs, apple pie, and Tornado's!

Whether you need a new Tornado, car, or pickup, you can find an outstanding selection at Excel Chevrolet Olds, in Spearman. Owner Jimmie Shieldknight stated that they have their best selection in years at the local lot in Spearman. Drop by and have a cup of coffee with the boys at Excel, and take a look at this big selection of cars, trucks and pickups.



In Brittany, if a worker in the fields sees the hay lifted by the wind, he throws a knife or a haying fork at it, otherwise, the Devil will make away with it.

### Lynx Place Four On All-District 1-AA Cage Club

Spearman, which advanced to the post-season playoffs for the second straight year, placed four starters on the All-District 1-AA Basketball Squad selected by coaches for the 1974-75 season.

Lynx selected to the 10-member squad include Roger Jones, a 6-3 junior also named a football all-stater at linebacker earlier in the year; Terril Brunnett, a 6-1 senior; Roger Brown, a 5-9 senior and Willie Porter, a 6-4 senior.

Also named to the squad were Boys Ranch's Agilo McClain, a 6-2 senior; Butch Bawcom, a 5-10 junior and Kenneth Davis, a 6-0 senior; Phillips' Denny Beach, a 6-9 junior; Panhandle's Dale Gabel, a 6-2 junior, and Dalbart's Jason Robertson, a 6-2 senior.

Spearman was eliminated in its bi-district game by Childress for the second straight year.

#### Warning Signal

The woman over 40, the woman in her change of life, should be alert to unusual bleeding or discharge. It's probably not, but could be a sign of uterine cancer — but only a physician can make the diagnosis. Give him a chance, urges the American Cancer Society. It could save your life.

# County Livestock Show Is Scheduled

The annual Hansford County Livestock Show will be held March 14 and 15, 1975 at the Hansford County Agricultural-Recreation Building in Spearman.

The show schedule is as follows: Friday, March 14 at 2 p.m., lamb show followed by the hog show. Saturday, March 15 at 10 a.m. will be the steer show followed by the heifer show.

The auction sale will begin at 6 p.m. Saturday.

The Hansford County Stock Show Board would like to welcome everyone to the two day show and sale and would also like to thank all the businesses and individuals who have supported it over the past years by buying animals, trophies and in other areas and to invite them to attend again this year. They urge other businessmen, and individuals to come out and watch the show and support our young people in any manner they might chose.

Members of the Hansford County Stock Show Board of Directors are Chairman

Dr. Tom Latta, Vice-Chairman, Bob Ferguson, Secretary-Treasurer, Joe VanZandt, and John Armes, Carl Cooper, Lynn Davis, Ed Dear, Mike Garnett, Jimmy Greene, Monty Harbour, J.C. Harris, Buddy Murrell, Sonny Patterson, Frank Pittman, Charles Reid, Phillip Renner, Troy Sloan, Raymond Walker and Jerry Williams.

Advisors to the board include Herman Boone, Joe VanZandt, Burt Williams of Spearman and Oran Burton of Gruver. Boone, Williams and Burton are ag teachers and VanZandt is the county agent.

1975 Hansford County Stock Show trophy donors were Grand Champion Lamb-Dairy Queen; Reserve Grand Champion Lamb-J.L. Brock Ins. Agency; Reserve Grand Champion Hog-Spearhead Pork Producers; Showmanship Steer-First State Bank; Champion Gilk-Davis Oil Co.; Reserve Champion Gilk-Equity Elevators; Grand Champion Steer-Gruver State Bank; Reserve Grand Champion Steer-Caprock Industries, Inc.; Grand Champion Hog-Hansford Co. Parts & Supply; Showmanship-Lamb-Double D Ag Center; Showmanship-Hog-Gruver Lumber Co.; Champion Heifer-Gruver Tractor & Equip.; Reserve Champion Heifer-Gruver Farm Supply.

Sunday Dinner guests in the home of Mr. and Mrs. Jeff Hawkins and Jana Jo was Mrs. E.N. Wilbanks of Spearman, Mrs. Loretta Boyd and Mrs. Joyce Shockley, both of Amarillo and Marcia Larson and Vicki Crawford, both of Canyon.

## Larger Number In Local Govt. Employ

NEW YORK, Mar. 8—The number of Hansford County residents on local government payrolls appears to

be relatively large. Compared with other communities across the country, the proportion

of local people so-employed is above average. This is brought out in

the latest survey of public employment, conducted by the Department of Commerce and entitled "Compendium of Public Employment." Such studies are made every five years.

The figures for local areas, recently released, include all persons on the payrolls of counties, townships, municipalities, school districts and special districts. Federal and state employees are excluded.

Special interest attaches to the findings because public employment, at all levels, has been playing an ever-increasing role in the economy, due to its growth and its rising cost. The report lists a total of 297 full-time workers or their equivalent on local payrolls in Hansford County at the time the survey was made. Part-time workers were converted to their full-time equivalent to permit comparison with other communities.

In terms of population, this total amount to 45 employees for every 1,000 local residents.

This is more, proportionately, than is reported for most parts of the United States, the average being 32 employees per 1,000 population. In the State of Texas the ration is 33 per 1,000.

As for the payroll costs in Hansford County, they are somewhat higher, relatively, than they are in most localities. They come in approximately \$27.42 per local resident per month.

This compares with \$25.16 per capita at the national level and with \$20.24 in the State of Texas.

According to reports from the Department of Labor and the Census Bureau, public employment has been zooming in the United States in the last ten years. Most of it has been at the state and local levels. The Federal job force has not changed significantly.

The total number of government employees rose from 9.7 million to 14.1 million in the ten years. More than half of the rise was in the field of education.

cycle show.

Tommy Roach spent the weekend visiting his mother Jamie Roach of Amarillo.

Claude Taylor spent Sat. in Amarillo just fooling around.

Francis and Ruby Tyler spent Saturday visiting friends in Electric City.

Jim Jackson spent Saturday night in Spearman visiting his parents Mr. and Mrs. Bill K. Jackson also his sister Ann Nickles. Besides going to school, Jim also works nights for the Sheriff's Dept. in Guymon, Okla.

Visiting over the weekend in Spearman were Mr. and Mrs. Bill Weaver and children, Roger, Greg and Tammy from Childress, Tex.

Agnes Thomas along with Charles Long and Beulah Burger with Charles friend from Oklahoma went to Guymon Saturday evening for a evening of dancing and fun.

Mr. and Mrs. Pete Vera Sr. and sons, Rubin and Willie spent Sunday visiting their daughter Isabel in Canyon.

Visiting us Saturday afternoon for a while was Phil and Rae Rogers, Carla Ruseil, Frankie Dursey, Jaunita Pierce and Hazel Stump. Ruby and Rosa In Oregon. Jaunita is going to be writing you real soon. We enjoy visiting with Customer.

Let's remember in our prayers those folks in the hospitals.

Javier Salinas family are spending a few days visiting in Nex Mexico, Javier works for Slater Body Shop.

Edna Hays along with her daughter Delorise, spent Monday in Amarillo. Hope you had fun.

The Joe Hutchinson family are now living in Spearman. They moved from New Mexico. Joe is going to be working for his father. Welcome to Spearman.

Larry and Kathy Rauscher and son Rusty Warren went to Amarillo Sunday to visit with Gene and Vee Rauscher.

Robert Wright called me Monday to say he's looking for a dish washer 9 a.m. -2 p.m. and some evening work at times. If you are interested call Wright's diner.

Barbara Miller and Beth Bales spent Tuesday in Amarillo.

There's a construction company by looking for men. They are going to be back in a few days, so if you are looking for work drop by here and leave your name and address and I'll see that he gets all the names.

Remember the Lord helps those who help themselves.

God Bless You all.

# Win Up To \$1,000!

## Pick Up Your Playing Ticket On Each Visit!

PRIZE VALUE	NO. OF TICKETS	ODDS FOR ONE \$1000 VISIT	ODDS FOR 10 \$1000 VISITS	ODDS FOR 100 \$1000 VISITS
\$1,000.00	1	1:1,000	1:100	1:10
500.00	5	1:200	1:20	1:2
100.00	25	1:40	1:4	1:0.4
50.00	50	1:20	1:2	1:0.2
25.00	100	1:10	1:1	1:0.1
10.00	250	1:4	1:0.4	1:0.04
5.00	500	1:2	1:0.2	1:0.02
2.50	1000	1:1	1:0.1	1:0.01
1.00	2500	1:1	1:0.1	1:0.01
TOTAL	5000	1:1	1:0.1	1:0.01

**THRIF-T BABY BEEF**

### Round Steak

CENTER SLICES OF BEEF ROUND

WHY PAY MORE? **79¢** LB.

THRIF-T BABY BEEF

**Rib Steak** LARGE END OF BEEF RIB **79¢** LB.

THRIF-T BABY BEEF

**Round Tips Steaks** BONELESS ROUND **\$1.09** LB.

THRIF-T BABY BEEF

**T-Bone Steak** BEEF LOIN **\$1.09** LB.

WILSON'S

**Skinless Franks** 12-OZ PKG **69¢**

BAR-S MEAT OR BEEF 12-OZ PKG **58¢**

**THRIF-T BABY BEEF**

### Sirloin Steak

CENTER SLICES OF BEEF LOIN

WHY PAY MORE? **79¢** LB.

THRIF-T BABY BEEF

**Chuck Roast** BLADE CUTS OF BEEF CHUCK **54¢** LB.

THRIF-T BABY BEEF

**Rump Roast** BEEF ROUND **89¢** LB.

THRIF-T BABY BEEF

**Arm Pot Roast** BEEF CHUCK **79¢** LB.

MEADOWDALE HICKORY SMOKED

**Sliced Bacon** 2-LB PKG **\$2.17**

MEADOWDALE HICKORY SMOKED 1-LB PKG **\$1.09**

**100 PERCENT PURE BEEF**

### Ground Beef

FRESH... 3-LB. PKGS. OR MORE

WHY PAY MORE? **59¢** LB.

THRIF-T BABY BEEF

**Chuck Steak** 7-BONE CUTS OF CHUCK **64¢** LB.

THRIF-T BABY BEEF

**Beef Short Ribs** BEEF PLATE **49¢** LB.

BLUE MORROW PORK OR

**Beef Fritters** BULK PACK **89¢** LB.

WINCHESTER IMITATION

**Chunk Bologna** **59¢** LB.

BRISKET... MOUNTVIEW BRAND 2 TO 1 LB. AVERAGE **\$1.19** LB.

**Corned Beef** **\$1.19** LB.

### \$1,000 Winners...

**JERRY THOMPSON**  
561 Pear  
Dumas, Texas

**BETTY DAVIDSON**  
1212 1/2 St.  
Alva, Okla.

**MRS. A. NEIHART**  
5875 W. 1st.  
Laverne, Okla.

**EDITH M. JONES**  
Box 184  
Clayton, N. Mex.

**EDGAR B. VENABLE**  
**HOOKEE, OKLA.**

**JAMES WARE**  
2030 PARKER,  
**AMARILLO, TEX.**

### \$1000 Winners...

ERNA HUBBEL, Ulysses, Ks. — MRS. MAY HOFFMAN, Canyon, Tex. — CARL KAMMERZELL, Woodward, Okla. — LOUISE VAUGHN, Scott City, Ks. — WANDA HABERTHRU, Perryton, Tex. — ZELLA MAYBERRY, Borger, Tex. — CYNTHIA BAY, Shattuck, Okla. — ORPHA HAYS, Shattuck, Okla. — HELEN HENSHAW, Guymon, Okla. — GAYLEEN MUNN, Scott City, Ks. — DIANNE CHESSER, Pampa, Tex. — CHARLES ALLEN, Scott City, Ks. — LAVERNE CRUSHA, Liberal, Ks. — PAUL STEVENSON, Canyon, Tex. — VESTA HAMPSTEEN, Hooker, Okla. — CLARA RATLIFF, Borger, Tex. — CHAROLD WRIGHT, Ulysses, Ks. — PAM WILSON, Amarillo, Tex. — TRAVIS BARNES, Dumas, Tex. — MRS. DENNIS ECKHOFF, Meade, Ks. — LEONA BARLEY, Dumas, Tex. — PLUS MANY, MANY MORE!!

ENRICHED

### Pillsbury Flour

3-LB. BAG **84¢**

CAMELOT FAMILY SIZE

### Tomato Catsup

32-OZ. BTL. **72¢**

MEADOWDALE CUT

### Green Beans

3 16-OZ CANS **83¢**

GREEN GIANT GOLDEN

**Niblets** 3 15-OZ CANS **88¢**

**Corn** 3 15-OZ CANS **\$1.00**

GREEN GIANT

**Lindy Peas** 3 15-OZ CANS **\$1.00**

PILLSBURY HUNGRY JACK

**Pancake Mix** 1-LB. BOX **82¢**

ALL FLAVORS

**Jell-O Gelatin** 4 3-OZ. PKGS. **88¢**

DESSERT TOPPING

**Dream Whip** 4-OZ. BOX **\$1.10**

HOTT'S

**Applesauce** 4-OZ. JAR **\$1.25**

KEEBLEP

**Saltine Crackers** 1-LB. BOX **67¢**

KEEBLER TORN HOUSE

**Club Crackers** 11-OZ. BOX **61¢**

ALL FLAVORS

**Hawaiian Punch** 46-OZ. CAN **58¢**

SUNSWET

**Prune Juice** 46-OZ. BTL. **84¢**

LITTER GREEN

**Cat Litter** 4-LB. BAG **77¢**

DELSEY ASSORTED

**Bath Tissue** PKG. OF 3 **42¢**

KLEENEX ASSORTED

**Facial Tissue** BOX OF 30 **42¢**

REGULAR OR UNSCENTED

**Sure Deodorant** 14-OZ. CAN **\$1.86**

AHM

**Toothpaste** 4-OZ. TUBE **84¢**

MISS BRICK ALL VARIETIES

**Hair Spray** 11-OZ. CAN **\$2.39**

COLORADO RUSSET

### Potatoes

10-lb. bag **69¢**

FRESH... SOLID GREEN HEADS

### Cabbage

CALIFORNIA **11¢** LB.

### Tangelos

FRESNO **4** **\$1** LBS.

FRESNO **HOT PEPPERS** LB. **59¢**

ARIZONA FRESH **GREEN ONIONS** 2 BUNCHES **29¢**

SEE US FOR A FINE SELECTION OF FRUIT AND SHADE TREES AT THRIF-T PRICES.

### BITS OF THIS AND THAT

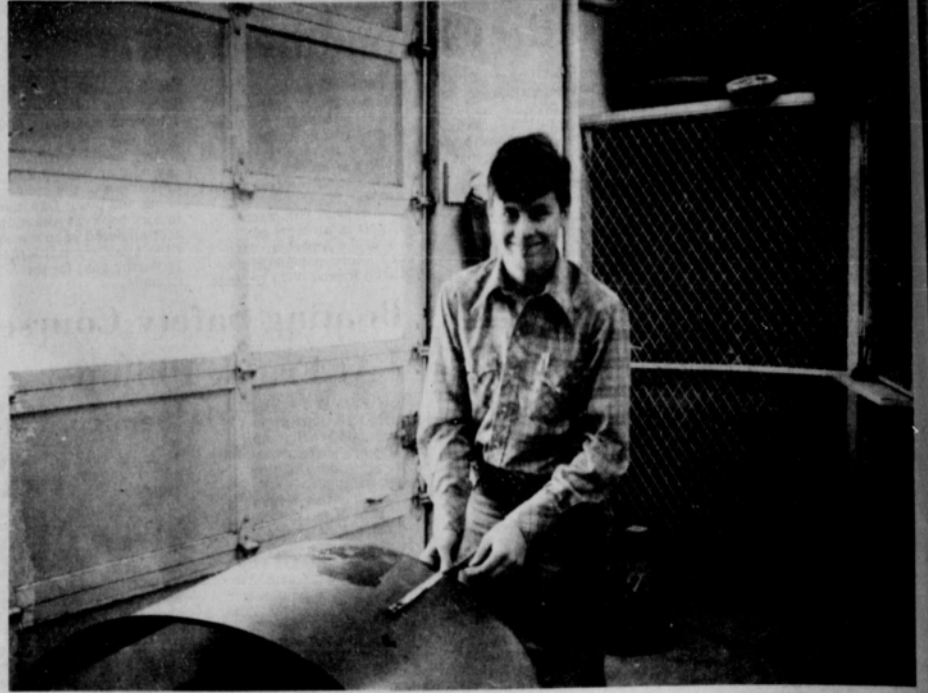
By Nita Stewart

I'm a great believer in the Lord, doing everything for a reason, when I got up last Sunday and saw it snowing, I felt for some reason once again the Lord didn't want the Spearman scrambles to be run just yet, maybe he felt someone would be hurt badly, but anyway with the Lord's help and a beautiful day they will be held next Sunday March 16th. I also feel the Lord's not to mad at us for being open Sunday's as he's given us a good business and believe me both Dave and I thank the Lord for it. Also our good customers. Thank you all.

Verlin Behne and Earl Goodheart went to Amarillo Sunday to see the motor-



THIS VO AG I CLASS is studying samples in preparation for the judging contest this April.



VO AG III STUDENT Dennis DeArmond is measuring metal for the motorcycle trailer he is working on for a shop project.



"Early attention can mean prevention," Dr. Willard Krehl, Chairman of the Department of Community Health and Preventive Medicine, Jefferson Medical College, Philadelphia, made that statement during a 1967 visit to the midwestern area where an early warning signs public education project, now under way, was being planned.

The quote has become a theme for the project, financed by a state affiliate of the American Heart Association and operated with continuous collaboration of AHA experts.

"Heart attacks don't just happen," said Dr. Krehl at that time, "they develop."

How well is the Early Warning Signs Program working? How well is it heading off heart attack before they develop into disabling or fatal episodes?

Surveys of 159 heart patients at one hospital, before and after the program began, show that reaction time has been almost halved. Average time from onset of symptoms to starting to the hospital dropped from 13-3/4 hours to 7-3/5 hours.

At the same hospital, the number of heart patients increased significantly after the program started compared to a similar period before the program.

These factors - shortened patient reaction time, more patients and a greater number who arrive at a hospital before the heart attack fully develops - must surely mean that many lives have been saved. In just this 18-county area, said a member of the Early Warning Signs Committee.

Modest cost of the program, the Committee member said, is more than offset by savings for society through the earning power of patients saved from a disabling or fatal heart attack.

How is the program being received by physicians and hospital officials?

Of doctors who responded to a questionnaire after the project had been in operation a month, 94 percent did not find the program had overloaded them or their staffs.

More than half of the hospitals in the project area responded and of these 97 percent said facilities had not been overloaded. Even though the project had been in effect for only 30 days, a number of hospitals were noting increased heart admissions.

"It is obvious the program is working," commented one emergency room nurse in answering the questionnaire, included -

"They feel that the message is helpful and educational."

"Observed heart program, need a checkup."

"I wouldn't have known the paid could be so extensive."

results as a tribute to the power of the press and radio and TV. A survey of 91 heart patients at one hospital five months after the program began showed that up to 25 percent were prompted by the news media to seek medical aid. Later, interviews indicated an even higher percentage.

One physician recalled a 1967 newspaper story, quoting a speech he had made that mentioned heart attack warning signs. He feared colleagues would scold him for seeking publicity or scaring the public. Instead, he encountered four persons on the subsequent weekend who had read the warning signs and wondered if they were experiencing them. It turned out that they were having attacks, and quick treatment prevented heart damage in two.

A three-year statistical study of the continuing education program is trying to come up with answers to a number of questions touching on the amount and quality of care that heart patients can expect to receive. One question is, what public education program works best with persons of varying ages and levels of schooling? Another asks how doctors can best handle telephone calls to expedite care of patients and to ensure priority for emergencies. Other queries include the best methods of patient transportation; the safe distance heart victims can travel; where initial care can best be given; and whether the decision time of doctors and patients can be shortened by education on early warning signs.

The study has already shown that the education program has had a number of beneficial results.

Improvement of ambulance service; more prompt and effective emergency room treatment; better facilities for subsequent care; improved ability of health professionals to recognize early warning signs, so that nurses and receptionist, for instance, can expedite emergency calls.

The project lists the warning signs as pressure, fullness, squeezing or aching in the center of the chest, where the heart is located; in the arms, neck, jaw, back or upper abdomen, with possible shortness of breath, sweating, nausea or vomiting.

Recognition of, and reaction to, these symptoms can fulfill Dr. Krehl's 1967 slogan: "Early attention can mean prevention."

Mrs. George Buzzard was houseguest of Mr. and Mrs. Roy Baze of Houston last week. Mr. Baze is a Senior Vice President of Exxon and has visited his uncle, Jimmy Hester of Spearman several times.

**Make It A Habit**

Once a month, during a bath or shower, every woman should begin a quick breast self-examination. The American Cancer Society has a leaflet of instructions about this simple, but lifesaving procedure.

Most men, when they think they are thinking, are more responsible

**WE SALUTE...** Our FFA and 4-H People See The Great Job They Are Doing...  
Attend The Livestock Show And Sale.  
**AT THE COUNTY SHOW BARN SPEARMAN, TEXAS**

**It's Free...Play Gameraama...**  
It's Fun & Exciting...No Purchase Required...

**IDEAL FOOD STORES**  
the home of THRIFF-1-Prices

PRICES EFFECTIVE THRU SATURDAY, MARCH 15, 1975. NONE SOLD TO DEALERS. LIMIT RIGHTS RESERVED.

**SUNDAY**  
9:00 - 8:00  
**MON. - SAT.**  
8:00 - 10:00

**SAVE UP TO \$4.15 WITH THESE COUPONS:**

**VALUABLE COUPON**  
GOOD FOR \$1.00 OFF ON 5-LB. SIZE OR LARGER  
**All Canned Hams**  
LIMIT 1 EXPIRES 3-15-75

**VALUABLE COUPON**  
GOOD FOR 50¢ OFF ON 1-LB. PKG. OR MORE  
**Fresh Frozen Gulf Shrimp**  
LIMIT 1 EXPIRES 3-15-75

**VALUABLE COUPON**  
GOOD FOR 50¢ OFF ON 48-LB. BAG OF  
**Northern Peat Moss**  
LIMIT 1 EXPIRES 3-15-75

**VALUABLE COUPON**  
GOOD FOR 50¢ OFF ON 15-LB. BAG OF  
**Purina Dog Chow**  
LIMIT 1 WITH COUPON AND \$5 OR MORE PURCHASE EXPIRES 3-15-75

**VALUABLE COUPON**  
GOOD FOR 30¢ OFF ON 22-OZ. JAR OF  
**Kraft Miracle Whip**  
LIMIT 1 WITH COUPON AND \$5 OR MORE PURCHASE EXPIRES 3-15-75

**FRESH FRYER PARTS**  
**Box-O-Chicken**  
34 LB. AVG.  
2 BREAST QUARTERS,  
2 LEG QUARTERS,  
2 WINGS  
2 GIBLETS.  
**39¢ LB.**

**ARMOUR'S CUT-UP**  
**Stewing Chickens** 3 TO 4 LB. AVG. **39¢ LB.**

**SHANK PORTION**  
**Smoked Hams**  
7 TO 9-LB. AVERAGE  
WHY PAY MORE?  
**79¢ LB.**

**PORK SHOULDER PICNIC**  
**Pork Roast**  
FRESH, WHOLE... 64 LB. AVG.  
WHY PAY MORE?  
**59¢ LB.**

**PORK SHOULDER PICNIC**  
**Pork Roast** CENTER CUT, WHOLE... 6 TO 8-LB. AVG. **69¢ LB.**

**BANQUET ALL VARIETIES**  
**Pot Pies**  
6 8-OZ. PKGS. **\$1**

**CHASE & SANBORN**  
**Fresh Coffee**  
ALL GRINDS  
1-LB. BAG **78¢** LIMIT TWO PLEASE

**KRAFT PHILADELPHIA BRAND**  
**Cream Cheese** 8-OZ. PKG. **41¢**

**FAIRMONT NICE 'N LITE**  
**Cottage Cheese** 16-OZ. CTN. **85¢**

**FAIRMONT**  
**Half and Half** QUART CTN. **59¢**

**IDEAL**  
**Chocolate Milk** 2 QUART CTNS. **75¢**

**HUNT'S HALVES OR SLICES**  
**Cling Peaches** 15-OZ. CAN **48¢**

**HUNT'S**  
**Whole Tomatoes** 15-OZ. CANS **3 \$1**

**HUNT'S**  
**Tomato Sauce** 8-OZ. CANS **21¢**

**HUNT'S**  
**Fruit Cocktail** 15-OZ. CANS **47¢**

**CAMELOT GRADE A**  
**Medium Eggs** 1-DOZ. CTN. **65¢**

**CAMELOT GRADE A**  
**Large Eggs** 1-DOZ. **71¢**

**PILLSBURY BAKE-OFF SPECIALS!**

**Pillsbury Biscuits** REG. OR BUTTERMILK 7 8-OZ. CANS **\$1**

**Pillsbury Crescent Dinner Rolls** 8-OZ. CTN. **52¢**

**HUNGRY JACK BUTTERMILK OR Flaky Biscuits** 16-OZ. CAN **38¢**

**Pillsbury Cinnamon Rolls** 14-OZ. CAN **54¢**

GET FREE \$25,000 WINNING BAKE-OFF RECIPE AT OUR DAIRY DEPARTMENT!

# Farm-facts

A Weekly Report Of Agri-Business News

Compiled From Sources  
Of The Texas Department of Agriculture  
John C. White, Commissioner

**Spring Planting Underway... March 17 Important Date... Census Forms Still Needed.**

Texas generally enters the 1975 planting season with one of its best moisture supplies in years. There are exceptions of course, but good amounts of sub-soil moisture are reported over most of Texas.

And while farmers in the northern reaches of the state shiver from cold temperatures, planters are rolling in fields in South and Central Texas.

Grain sorghum planting for the state is already about 10 per cent complete which is well ahead of last year. Planting of sorghum has been reported as far north as the central Blacklands. Rapid progress will be seen in the coming weeks as temperatures begin to rise.

Cotton planting is underway in South Texas and will soon pick up momentum in other parts of the state in the coming weeks. Indications as of Jan. 1 project a 23 per cent cut in acreages for Texas this year.

Corn planting is now about 10 per cent complete, and is also well ahead of a year ago. Rice seeding is in progress along the Upper Gulf Coast.

Meanwhile, wheat continues to make good growth on the High and Low Plains. Livestock have been moved off fields where a grain crop is expected. Prospects at this time are described as excellent.

Peach trees have been blooming from Central Texas south. Pecan trees are budding in most southern areas. Citrus harvest is virtually complete. Vegetable harvest is underway in the Valley and Winter Garden areas.

All in all, farmers are either busy planting, or preparing to plant for the 1975 season.

**WHILE ALL THIS ACTIVITY** is going on, farmers are also waiting—as are others—for March 17. That's the date for the March 1 planting intentions report which should provide a good insight into the anticipated acreages for major crops this year.

That report will be read more closely than ever because of renewed interest in food and fiber production.

**CONDITION OF LIVESTOCK**, particularly in the eastern half of the state, is poor. This is due to malnutrition as well as an increase in internal parasites. Low cattle prices are also causing many livestock producers to follow less than normal animal husbandry practices.

**HALF AND HALF.** That's about the situation regarding the 1974 agriculture census. About half the forms have been returned; about half have yet to be returned.

Officials of the Census Bureau are urging farmers to complete the forms as soon as possible and return them. Farm owners are required to answer the questions which apply to their particular operation.

Census officials again emphasize the returns will be treated in strictest confidence. No other government agency will have access to the report. Individual reports will be compiled into county, state and national totals.

Farmers who have difficulty in answering any question should contact the county Agricultural Stabilization and Conservation Service office with which they do business. ASCS is the "answer man" for this project.

Information obtained in the census is used for a host of agriculture programs, and is the basis of information on which to project the nation's agriculture production as well as other important data on farms and ranches.

# TG & Y



## family centers

PRICES GOOD THURSDAY, MARCH 13 THRU SATURDAY, MARCH 15  
— WHILE QUANTITIES LAST!

### PLASTIC HOUSEWARES

16 Qt. ROUND UTILITY PAIL

24 Qt. Round or Rectangular Wastebasket.

1-1/4 BU ROUND LAUNDRY BASKET

15 Qt. RECTANGULAR DISH PAN

**YOUR CHOICE**

**\$1.97** Each

### Mr. Muscle

#### OVEN CLEANER

Scours oven while you sleep. 8 Oz. Limit 2

**87¢** Ea.

### 1/2 GAL. CLOROX

64 ounces of cleaning power!

Limit 2

**47¢** Ea.

### 6-CT. HERSHEY-REESE PEANUT BUTTER EGGS

EASTER SPECIAL

Now **88¢** PKG.

### ROOM SIZE RUGS

"Ultra Dot" by the Lawtex Corp. 8 1/2 x 11 1/2. 100% polypropylene cut pile in 3 tone shadow dot pattern.

**\$27.88** Each

### CLOCKS

Left: Hourglass Wheel. Right: Walnut Oval Burst. Both models by Rockhill include a 7" brass dial and genuine walnut carved spears. Both are 22" in diameter.

**\$15.88** Ea.

### HAMSTER LITTER

HARTZ Chlorophyll treated wood shavings. Net weight 5 oz.

**57¢** Pkg.

### GYM-DANDY GYM SET

A dazzler for kids! Comes in shades of grape, this compact 4-leg gym in the bubbly new soda-pop pattern features 6 1/2 ft. slide, 2 plastic swings and exciting pumper action Sky-Skooter\* for two. Topbar 8 ft. 8 in. overall.

**\$47.88** Set

### GYM-DANDY GYM SET

Everyday fun place in lollipop colors of grape-lime-orange. 2-gal Sky Skooter\*, 2 plastic swings, a special flying trapeze and a peek-thru climbing swinger, plus giant 6-1/2 ft. slide for endless enjoyment. 12 ft. 2 in. overall topbar length.

**\$59.88** Set

#513167

**Gabriel**

### WD-40

SPRAY LUBRICANT 11 Oz. Spray Can

Buy Now and Save!

**\$1.27** Ea.

### 2 TON KEYBAR AXLE JACK

Professional quality one piece cold headed unit with maximum strength. All main steel parts are heat treated including the housing. Baked enamel finish. No special hydraulic oil required. Uses standard motor oil.

**\$8.88** Each

We Will Be Happy To Refund Your Money if You Are Not Satisfied With Your Purchase

### PLAY YARD

Country Gingham pattern, 36" x 36" double drop sides padded legs, 4" draft guard, includes teething rails.

OUR LOW PRICE! **\$22.77** Each

### COMMUTER STROLLER

Country Gingham pattern, lightweight folds flat. Includes shopping bag holder.

OUR LOW PRICE! **\$13.77** Ea.

### STEEL CRAFT 21-Pc. Socket Wrench SET

14, 1/4 & 3/8" drive sockets. Reversible ratchet, extensions.

#9821 **\$7.77** SET

### SPARKOMATIC MECHANICS CREEPER

Hardwood with lacquer finish, vinyl headrest, nylon casters.

SPECIAL PRICE! **\$6.66** Each

### GUNK ENGINE CLEANER

The original self-emulsifying degreaser. 20 oz. aerosol. Quickly removes grease and grime from engines.

SAVE NOW! **99¢** Can

Tues., March 18

KING SIZE WALLET CREATIVE COLOR PORTRAITS FOR ONLY

**9.99¢**

Extra Charge for GROUPS

NO LIMIT

GET PICTURES MADE OF GRANDPA, GRANDMA, DAD, MOM AND ALL THE LITTLE ONES AT THESE SAME LOW PRICES!

ASK About Our FREE 8 x 10 OFFER

**SHUGART COLOR PHOTOS**

TG & Y

521 Hwy 207 South Plains Shopping Center

### DU PONT GREAT PAINT REBATE

DuPont's **\$2.00** per gal. brings the cost of painting down

Here's all you do to collect your \$2.00/gallon rebate...

- Buy any number of LUCITE gallons March 9th - March 31st. We'll give you a Great Paint Rebate coupon. Quarts do not qualify.
- Send DuPont the rebate coupon, your cash register receipt, and the words "DuPont LUCITE" from the front of each label, as shown on the coupon. Rebate claims must be postmarked by April 30th.
- DuPont will mail you a check worth \$2.00 for every gallon you purchased!

Big Values On Other LUCITE Paints, Too. DuPont's \$2.00 Great Paint Rebate Applies To All LUCITE Gallons!

LUCITE Wall Paint **\$6.99** gal.

LUCITE House Paint **\$7.99** gal.

COUPON

### DROP CLOTH

9' x 12' Clear Plastic

WITH COUPON

4 FOR **\$1.00**

COUPON

### Golden T CAULK COMPOUND

Grade 1 - White 1 # 3 Oz. dispenser cartridge

WITH COUPON

3 FOR **87¢**

521 S. Hwy. 207  
Spearman Plains Shopping Center

Open Mon Thru Sat 9 AM - 9 PM



# Little League

## Signup and Tryout Dates Set

Boys and girls age 8 thru 12 must sign up between March 17 and 22 at Cates Men & Boys Wear on Main Street. Tryouts will be held March 24 & 25 at 4:30 at Little League Park. Practice will begin on April 7th with the first

games scheduled for April 21. The Little League season will end June 13. Anyone (men and women) interested in coaching a Little League team is asked to call the president Trudy Goodheart. Several teams are without coaches at the

present time. Teams needing coaches are the Yankees, Sox, Cardinals, and Pirates. Those team who have coaches include Jets-Bob Speck and Albert Clark; Indians-Calvin Bodey; Astros-Eugene Yarbrough; Dodgers-James Umphress; and Braves-Kent Guthrie.

men to people of Texas. This is one of the factors in the absence of rabies from humans. Health authorities are happy to point out that the last documented death due to natural exposure to rabies in Texas was in 1962. During 1972 one human death was attributed to the rabies virus but exposure was in a laboratory.

Of some 400 cases of rabies reported last year, over 200 cases were confirmed in Texas wildlife, nearly 100 cases were in pets and over 40 cases were in livestock.

In wildlife, which showed a 24.3 per cent increase, skunks accounted for 132 cases, bats 76 cases, foxes 35 cases and raccoons 10 cases. In addition, rabies was found in a bobcat, opossum and ringtail. The opossum diagnosed as rabid was the first case of rabies found in that species since 1965 when one case was diagnosed.

Here's something to consider about wildlife. Often an animal with the disease may lose its fear of humans and come right up to them. Anyone outdoors--on a hike or picnicking should avoid any wild animal which acts strangely. It could be rabid.

The 42 cases of rabies confirmed in livestock last year showed this breakdown: cattle 26 cases, horses 12 cases, sheep two cases and

goats two cases. Rabies in livestock can be a rather dangerous situation for both farmers and ranchers and for veterinarians. Some of the early symptoms of rabies may mimic other diseases. Often in attempting to diagnose an animal's illness, a person will expose himself to rabies.

During 1974, rabies cases were reported in 105 counties of the state, denoting its wide range from north to south and east to west.

Largest number of cases was reported in El Paso County, where a large outbreak was reported in canines. Of the 81 confirmed cases, 75 were in dogs, three in bats and one each in a skunk, horse, and goat. El Paso at one time had an enviable record for the lack of rabies in dogs and cats. But that record was shattered last year despite a continuing program of picking up stray animals.

During 1974 an average of 1500 unwanted animals per month were removed from the streets. Rabies may be of little concern to the average person these days, but to your State Health Department, local health departments and veterinarians it still remains as a serious matter. You can do your part to insure the

safety of your family and friends by having all pets vaccinated against this disease.

## Gruver Invites Spearman To Parade Bar-b-que

Gruver has requested, that if it is at all possible, they would like Spearman to enter their floats for the parade in their Bi-Centennial Parade on May 10, 1975. They should be in Gruver on the bridge on the south side of town by 10:00. There will be 1st, 2nd and 3rd place trophies given as awards. They are also asked to stay and enjoy the Bar-B-que at the Rodeo Arena at 12:00 on the same day as the parade.

## Hospital News

Patients in Hansford Hospital are Clarence Pettit, Walker Tyler, Ella Parks, Minnie Jones, Maggie Forrest, Blanche Fuller, Marilyn Groves, Gene Brillhart, Florene Devers, Leo Garcia,

and Patti Vallery. Dismissed were Joe Garcia, Jackie Sparks, Maurine Cowan and son, Rex Cook, Opal Stockdale, Anna Marie Stodje, Lucky Lundergreen and Willis Sheets.

## Mrs. Sheets Gives Program

The Dahlia Flower Club met Monday, March 10th in the home of Mrs. A.F. Loftin. Mrs. F. J. Hoskins presided over the meeting. Minutes of the previous meeting were read and approved. A report was given by Mrs. Olin Sheets on the Hansford County Museum. Roll Call was answered with "An Irish Joke."

Mrs. Olin Sheets gave the program on "Growing Your own Vegetables." Refreshments were served by Mrs. Loftin to members, Mesdames: Roy Russell, Ned Turner, Lowell Denman, Deta Blodgett, John Bishop, Bob Bailey, Virgil Floyd, J.W. Walker, C. W. Smith, F. J. Hoskins, Mable Edwards, and Garrett Allen. Next meeting will be March 24th with Mrs. J. W. Walker as hostess.

Discussion was held on the budget for the upcoming year and on the delinquent tax roll.

## Collard Awarded Diploma

John R. Collard, Jr. Continental Fidelity Insurance Co. has successfully completed the required examinations after a two-year course of study in personal and business life insurance and has been awarded the Life Underwriter Training Council Diploma in Life Insurance Marketing according to an announcement of the Board of Trustees of the Life Underwriter Training Council.

## MARKET

Wheat	\$3.51
Milk	4.05
Corn	2.57

## Calendar Note

The American Cancer Society wants to intrude on your calendar once a year like this: Memo--have an annual check-up including cancer tests.

## Board Of Equalization Meeting Set

County Commissioners held a lengthy meeting Monday. They reviewed bills and approved payment. The commissioners purchased a used tractor to be used to pull a roller for Prec. 2. The Board of Equalization hearing has been set for May 28, 1975.

## FGBMF Plans Meet

The Full Gospel Business Mens Fellowship will meet March 17 at Martin's Steak Garden. Dinner will be at 7 p.m. and the meeting will be at 8 p.m. The speaker for the evening will be Jerry Phillip who is the youth minister of the Trinity Church in Lubbock. Cancer Society.

A weekly public service feature from the Texas State Department of Health

# Accent on Health

J.E. PEAVY, M.D., Commissioner of Health

You don't hear much about rabies in man because it doesn't occur too often. But, says the State Health Department, the possibility of rabies is a continuing threat. One reason is the existence of rabies in wild animals. Another is the unvaccinated pets which live with us and about us--and the strays which are free

to roam around. Last year's rabies report, tabulated by the State Health Department's Bureau of Veterinary Public Health, showed a marked increase in the state's rabies totals. During 1974 there were nearly 400 laboratory confirmed animal rabies cases in Texas. This represents an increase of 125 cases--or a 46 per cent rise--over

the cases which occurred in 1973. One big increase was in the number of dogs with rabies. While only seven dogs were found with rabies in 1973, this number jumped to nearly 90 during 1974. In addition, nine cats were found to be rabid. With all the human exposure associated with pets, it is easy to understand why State Health Department officials are concerned about having all pets protected against rabies. Last year, to protect persons who may have come in contact with a rabid animal, the State Health Department Laboratories supplied well over 1,000 series of antirabies treat-

# HANSFORD COUNTY STOCK SHOW



A SHOW WITH A REAL \*G RATING FOR THE ENTIRE FAMILY \*G for Great

March 14th & 15th

AT THE COUNTY SHOW BARN SPEARMAN, TEXAS

Sale Time is 6:00 P.M. Saturday

Order of Sale is Lambs Swine Steers & Heifers

PIONEER SEED---CUSTOM DIPPING  
CORN SEED NOW AVAILABLE



We invite you to join us and attend this show and back the 4-H and FFA youth of Hansford County.



# Vance Morris & Sons

PRE-CONDITIONING AND FINISHING

## Gordon's Specials

PRICES GOOD THURSDAY FRIDAY & SATURDAY

**\$4.50 VALUE**  
**AYDS**  
REDUCING CANDY  
Assorted Flavors  
**\$2.99**  
24 oz.

**\$3.50 VALUE**  
**GRECIAN FORMULA 16**  
Changes grey hair to natural color.  
For Men or Women  
**\$1.99**  
4 oz.

**SCOPE**  
Mouthwash And Gargle  
Reg. \$3.00  
**\$1.89**  
SPECIAL

**MAALOX LIQUID**  
12-OZ.  
**\$1.19**

**Secret**  
DRY  
with PERSPIRANT  
**\$1.29**  
Reg. \$2.50

**GLEEM**  
SPECIAL  
**2 FOR \$1.29**

**Gordon's Drug**  
Spearman



### Boy And Girl Of The Month

The Spearman Study Club is proud to announce that Lydia Avila and Dean Byrd have been selected as the Boy & Girl of the Month for February.

Lydia is the daughter of Mr. and Mrs. Joe Avila.

Lydia is in Spanish II and is a member of the Spanish Club. She is realizing a dream come true when the Spanish Club goes to Mexico City on March 26. They will return April 2.

Lydia works at TG&Y. After graduation, she

plans to go to Frank Phillips College at Borger, and take a 2 year secretarial curriculum.

Dean is the son of Mr. and Mrs. Preston Byrd. His twin brother Gene was the Boy of the Month for January.

Dean has been in ICT two years and is employed by Earl's TV.

He plans on joining the Navy after graduating from Spearman High School.

Lydia and Dean were chosen for this honor because they are fine citizens at SHS.

# Junior High Boys Invitational Meet Held

An extremely cold morning saw prelims slowed a and difficult at the Gruver Junior High Boys Invitational Meet held Friday, but the finals were a different story proceeding during hours of sunlight and a bit brisk very successful.

Teams from fourteen schools participated in the now annual event at the Greyhound Track with Spearman garnering 150 points to be acclaimed winners in the 8th Grade Division and Dalhart with 89 points, the winner in the 7th Grade Division. Gruver placed 9th in the 8th Grade Division with 12 points and the 7th Grade Gruver boys placed 4th with 52 points.

In the various events, Gruver Relay placed 4th in the 7th grade 440 relay (Cates Mills, Davis, Yanke) with 57.2 and the Spearman team (Jackson, Reneau, Sellers, Newton) placing 1st in the 8th grade 440 relay with a time of 48.7. Gruver did not qualify for this race.

In the 7th grade 880 yard run, Groteg of Gruver came in 6th at 2:34.2 and

Spearman took three places in the 8th grade 880 yard run, Sellers, 1st, 2:23.3; Snider 3rd, 2:25.5; Gibner, 4th, 2:26.5.

York of Gruver placed 4th in the 7th 440 yard dash with 65.1 and in the 8th grade 440 yard dash, Spearman's Reneau took 1st with 57.8; Newton 3rd with 61.0; and Brock, 6th with 63.8.

Gruver's Mills took the 7th grade 60 yard high hurdles with 10.0, Spearman's Beedy placing 4th (10.6) and Bodey, 6th (11.6). Shearwood, Spearman, 1st in the 8th grade 60 yard high hurdles with 8.5 and Martin, 4th, 9.0. Yanke of Gruver came in 2nd in the 7th grade 100 yard dash with 12.1. Reneau, Spearman placed 2nd in the 8th grade 100 yard dash division with 10.9 and Jackson, Spearman, 5th place with 11.3.

Gruver picked up a 6th place in the 100 yard, 7th grade, low hurdles with Mills turning in a 14.9; Beedy of Spearman placed 3rd with 14.6. In the 8th grade 100 yard hurdles Spearman took

three places, Shearwood, 1st, 12.5; Sellers, 2nd, 12.6; and Martin, 6th, 13.4.

Spearman placed 6th in the 7th grade 50 yard dash and in the 8th grade 50, Jackson, Spearman placed 2nd, 6.1; Kenny, 3rd 6.2; and Garza, Spearman, 6.3 for 4th. Spearman's 880 yard relay team (Avila, Beedy, Ware, Bodey placed 2nd in the 7th grade division with 1:58.0 and 2nd in the 8th grade division (Boone, Shearwood, Kenny, Martin) with a time of 1:45.3 and Gruver (Tour, Straw, Womack) 4th place with 1:49.2.

In the Field Events: Bodey, Spearman, 7th grade, 5th in Long Jump with 14' 3 1/2"; 8th grade long jump, Spearman's Newton, 3rd, 12' 4"; Martin, Spearman, 4th 11' 0"; Shearwood Spearman, 5th, 15' 2".

In the Pole Vault, 7th grade, Ammons, Gruver, 2nd, 6' 6" (tie with Stinner) and neither Gruver nor Spearman placed in the 8th grade pole vault. Dorman, 7th grade, Gruver placed 4th in discus with 91' 7" and Fairbanks,

Gruver, 8th grade, 4th with 93' 2". Dorman, also placed 2nd in 7th grade shot put with a heave of 31' 6 3/4".

Garza, Spearman placed 5th in 8th grade shot put with 37' 1" and Newton, Spearman placed 6th, 37' 0 1/2". Martin of Spearman placed 6th in high jump with 4' 10".

Team trophies which were presented at 3:45 included in the 7th grade team champs, donated by the El Vaquero To Dalhart; 8th grade team Champion ship trophy donated by the North Plains Chemical to Spearman; 7th grade 440, donated by Corvells, to Dalhart; 7th grade 880 Relay, donated by DeAnn's, also to Dalhart; 8th grade 440 relay team trophy, donated by M&M Grocery, went to Spearman; and the 8th grade 880 relay team Trophy donated by the Gruver Drug went to Stratford.

Personnel assisting with the Meet included Bill Duncan, Public Address; Connie Wilson, Typist; Larry Haynes, Score Ke-

eper; Coach Lamberson, Clerk of Course; Doak Runberg, Finish Clerk; Dee Dorman and Gracie Holquin, Ribbon Clerks.

Timers were Leon Bagwell, Carl Cooper, Bobby Hicks, Melvin Bradley, Rex Shapley, and Mikon Jochetz; Relay Judges, Fred Tout and Jack Straw; Pickers, Gregg Carroll, Brad Hart, Clint Irwin, Tim Weldon, Garland Dahl, Monty Chuck, Gerald Moore; Finish Line Flag and Radio, Paul Breland; Runners Rick Cazares and Scott Gross.

For the Shot Put, 7th grade, Brian McMillan, Steve Bevil, Rusty Gibson; 8th grade, Coach Murphy, David Bergin, David Groteg. Discus, Billy Brooks Robert Crawford, Sam Pleeson; 8th grade, Mr. Dorman, Larry Ross, Rusty Scarborough; Long Jump, 7th David Bevil, Monty Casady, Scott Barkley; 8th grade, Coach Steelman, Jim Griffin, Brad Hardesty.

Those helping at the Pole vault for both 7th and 8th grade Coach May, Tim Peddy, David Remmill and for the high jump, 7th

grade, Jim Brandvik, Ronnie and Johnnie Williams; 8th grade, Coach May, Jim Curlee, Jerry Curlee.

#### Latest Methods

Mammography, thermography, xeroradiography, these long words spell fast methods for detecting breast cancer in its earliest stages when it is most curable. The American Cancer Society wants every woman to know about them.

#### Any Age

Cancer doesn't respect birth-days, it can strike young and old. But, explains the American Cancer Society, folks over 40 should especially remember to have an annual checkup including cancer tests. One of the important tests is called a "procto" and it's used to detect a very common form of cancer, colon-rectal cancer.

#### What We Could Do

Right now, without learning a new thing from the research laboratories we could save over 100,000 additional lives this year from cancer, if everyone got the American Cancer Society's message about the importance of early diagnosis and prompt, proper treatment, and had regular health checkups.

## Early Detection of Breast Cancer

In a recent article appearing in "TODAY", from the Methodist Hospital in Lubbock, Texas, the reaction from recent mastectomies of First Lady Mrs. Betty Ford and Mrs. Happy Rockefeller, wife of the then vice-president designate, indicates that possibly women everywhere are paying more attention to self-examination of the breasts and are beginning to make appointments for delayed physical check-ups.

Physicians are cautiously hopeful that the new emphasis on prevention and early detection of all kinds of disease will have an affect on breast cancer. Statistics by the American Cancer Society show one woman out of 15 is stricken with breast cancer; 90,000 new cases every year; 33,000 deaths in the United States.

Breast cancer, the leading cancer killer in women and the leading cause of death among women in their forties, presently strikes between 5% and 10% of American women. And it has been stubbornly resistant to treatment which doctors feel maybe because by the time breast cancer is detected, in more than half the cases, it has already spread beyond the breast.

When breast cancer can be detected while it is still

confined to the breast, studies show 75% to 90% of the patients who have been surgically treated are "well" (physicians do not say "cured") 10 years later.

Breast self-examination takes very little time--about two minutes a month. When a woman reaches 40 years of age, or when she knows she is in a high-risk cancer group, she should ask her physician about other more precise examination techniques.

Physicians define high-risk breast cancer patients as those women who: (1) have a known lesion in one breast, (2) have a family incidence of cancer of the breast, (3) have no children, (4) have symptomatic breasts.

Writing in the Journal of the American Cancer Society of Emory University Clinic Dr. Robert L. Eagan, says, "I know of no medical procedure more tested and re-tested than mammography. It is the one reliable means of detection of breast cancer prior to visible signs and symptoms as long as 2 years prior to clinical recognition".

In other words, a mammograph can show a cancer long before the patient can detect it during self-examination or the physician can feel it during examination.

### Latham & Martin Place At Borger Tourney

In the Borger Tennis Tournament held last week Spearman High School had two winners. Terry Latham won 1st place in the C division, singles, and Rajan Martin won 2nd place in the B division singles.

In winning his first place, Latham defeated Fisher of Phillips 6-2, 6-4; Latham of Canadian 7-6, 6-3; and Keel of Dalhart 5-7, 6-3, 6-1.

Martin defeated Kirby of Perryton, 6-3, 3-6, 6-4; Hoffman of Hereford 6-4, 6-2; Kerr of Booker, 7-5, 5-7, 6-2 and lost to a Borger girl 1-6, 1-6.

In the B division singles, boys, William Porter lost to Replogle of Perryton, 1-6, 4-6; and Jimmy Vernon lost to Knowles of Borger, 6-4, 3-6, 4-6.

Glenda Cook lost to McWhorter of Hereford 3-6, 5-7.

In the B division doubles boys, Terill Brummett and Carl Robinson lost to Ledbetter & Ramirez of Dalhart 6-2, 1-6, 3-6. Mark Cunniff and Jeff Beedy lost to Stanley & Cook of Amarillo High, 5-7, 7-6, 4-6.

In the B division doubles girls, Michele Schumann and Janyth Lackey lost to a Hereford team, 2-6, 3-6.

In the C division boys singles, Ramie Porter lost to Cook of Canadian 6-4, 2-6, 5-7.

In the C division girls singles, Brenda Cook lost to Canadian 6-8, 4-6 and Susan McKay lost to Dalhart 6-3, 4-6, 6-2.

Junior Troop #76 met Monday, March 10th in the Girl Scout House with leaders Mrs. Jim Davis and Rhonda Morrison.

The girls divided into two new patrols and elected Patrol Leaders, and Assistant Patrol Leaders. Patrol leaders are Penny Cummings and Sonya Ooley and Assistant Patrol Leaders are Angela McCain and Lara Paul.

The girls finished work on their hanger and yarn craft.

Refreshments of ice cream bars were served by Teri Thomas to members, Cindy Burton, Debbie Burton, Penny Cummings, Jan Davis, Jean Davis, Sonya Ooley, Lana Paul, Janet Reed, Yvonda Scroggs, Janna Harris, Angela McCain, and Latonia Phelps.

Next meeting will be March 17th in the Scout House with LaTonia Phelps as hostess.

### GIRL SCOUT NEWS

Brownie Troop #65 met Friday, March 7th in the Girl Scout House with leaders, Mrs. Morry Black and Mrs. Ronnie Beck.

The girls made pinwheels and popped popcorn. Refreshments were served by Kelly Rinker to members, Cristie Black, Ruth Ann Dennis, Stephanie Hays, Janice Kyle, Jeannie Laird, Karla Latta, Donna Martin, Tammy Miller, JoAnne Odagaard, Tisha Pearce, Rosa Pierce, Angie Thompson, Teresa Tindell, Genny Womble, Joanna Jarvis, Stephanie Friemel, Kelly Groves and Jo Dean Lacher.

Next meeting will be March 14th in the Scout House with Genny Womble as hostess.



TALK ABOUT A SHOOT-UP

# COME

TO THE LARGEST

## IN Hansford County



Friday, March 14 & Saturday, March 15

### Hansford County Livestock Show

at the COUNTY SHOW BARN Spearman, Texas

The Future Of Our Nation Rests With Our Youth. Support The 4-H And FFA In This Endeavor.

# EQUITY

# REMEMBERING...

By BILL D. BROOKS

## THE TREE HOUSE

I remember the big elm trees in the back yard at the home place. One tree in particular was just like a huge friend, it helped us with so many things. It was a shade for hot summer days, protection from a sudden shower of rain, a landmark we could see from far away. It could be a quiet place, a happy place, a place to go and think. I remember how happy I was the day I finally climbed up into it without a boost from someone bigger.

We regarded that tree as a special place even before we built the house but the house added a bit to its character I always thought. The boards came from here, there, and yonder. The nails were old rusty bent ones pulled from the boards, straightened and driven in again. The tools were borrowed from Dad's workshop, sometimes without his direct permission. To this day he swears he never saw his best Disston handsaw again after

it was used on that tree house and to this day I swear that saw was one tool we didn't use.

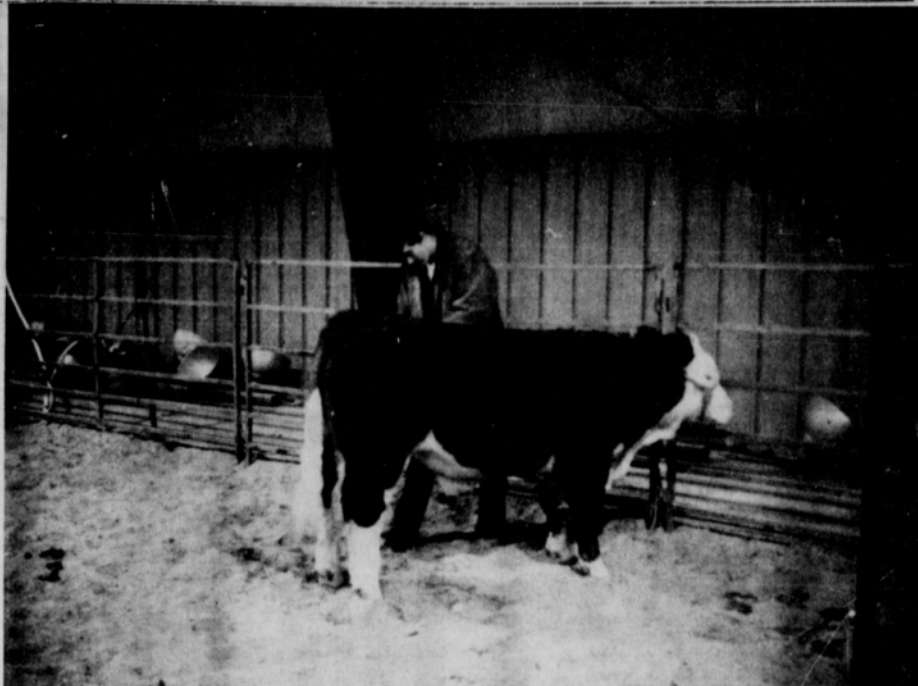
My big brother was in charge of the first part of the construction while the rest of us were assigned to the tasks of pulling and straightening nails and fetching the necessary tools and materials. He nailed the heavier boards in place for the main framework and after that we all had a hand in doing some of the building.

It was no great feat of engineering but, how proud we were when we all climbed inside and shut the door. I can remember peering out through the cracks and how safe I felt, safe from what I don't know but it did seem like a place of refuge.

The tree house was used for several years then torn down I suppose, I really don't know, we moved away from there. As I think of it now it seems that what made it so special was that it was something we thought of and then did, it was ours.



© Lyle 1974 TREE HOUSE



STUDY OF CONCENTRATION: This Future Farmer is busy concentrating on his calf...He, and many of the 4-H and FFA boys will show their calves this week-end.

## Texas Share Of Federal Budget

Texas taxpayers will be required to pay our approximately \$17, 819, 400, 000 in Federal taxes as their share of the cost of the Federal spending budget of \$349.4 billion proposed by President Ford for the 1976 Federal fiscal year beginning July 1, 1975, according to an estimate today by the West Texas Chamber of Commerce.

This estimate was based on the Chamber's calculations that Texas taxpayers bear 5.10 per cent of all Federal taxes.

The West Texas Chamber of Commerce pointed out that any change which Congress may make in this budget will reduce or increase the amount that Texas taxpayers will have to bear depending on whether Congress cuts or spends more.

The \$17.8 billion share which would be borne by

Texas taxpayers to support the President's proposed budget is 4 1/2 times the total Texas state spending in 1972.

"The average citizen of Texas has a hard time relating to a \$349.4 billion national budget," J. Fike Godfrey, Executive Vice President of the WTCC said. "In fact, the average person can't relate to 5% of that amount, the \$17.8 billion that Texas taxpayers will pay."

"How much is the \$17.8 billion of Federal taxes that Texas will pay?" Godfrey asks. "Well, let's look at it in terms we can all understand."

The Federal Taxes Texas will pay on a \$349.4 billion budget would amount to \$1,590 for every man, woman and child in Texas or to \$8,360.00 for an average

family of four. "Put another way, Texas' Federal tax bill would build nearly a half a million \$30,000 homes, or if the inhabitants of Fort Worth would get about \$23,382.00 each.

"If all the farmers and ranchers in Texas had to pay for the 1976 Federal tax load for Texas, it would take all the cash receipts for all the farms and ranches in Texas nearly five years to pay up. The \$17.8 billion Federal tax load on Texas is nearly 17 times larger than all the effective buying income of all El Pasoans in 1972."

The number of illegitimate births in Texas has increased 25 percent from 1968 to 1972. In 1972, illegitimate births numbered nearly 25,000, or one out of eight Texas live births. Source "The Darker Side of Childhood," published in 1974 by the Texas Department of Community Affairs, Office of Early Childhood Development.

## Under The Hood

Now more than ever since World War II, Americans are concerned not only about miles per gallon but also about making their cars last longer. Since an important factor on both scores is proper car maintenance, and since proper attention to a car's filter is vital, we offer a series of informative columns on this subject.

Filters: there are about half a dozen of them on your car, most of which are unfamiliar to the typical owner. An awareness of the function and service requirements of each can save you a great deal of money and inconvenience.

The six filters to which we refer are:

- 1) The oil filter: removes dirt particles and other contaminants from the engine oil.
- 2) The air filter: protects your engine from grit and dust that would have been inhaled through the carburetor.
- 3) The transmission filter:



Fairchild

## Be Sure To Attend. . .

### HANSFORD COUNTY JUNIOR LIVESTOCK SHOW



March 14th & 15th  
At Spearman In  
The County  
Show Barn.

Our Best Wishes On The Best Stock Show Ever!



The Future Of Our Nation Rests With Our Youth.  
Support The 4-H And FFA In This Endeavor.



Sale Time Is 6:00 P.M. Saturday

## H & H Water Well Service

659-2242

SPEARMAN

## Hansford County Livestock Show

To Be Held  
In Spearman  
At The  
County Show Barn



March 14th & 15th

Sale Time Is 6:00 P.M. SATURDAY

We hope each of you will come out and help the F.F.A. & 4-H Youth of Hansford County make this the biggest show ever

## Golden Spread Sales Co.

Your Phillips Jobber  
Tires-Batteries-Accessories



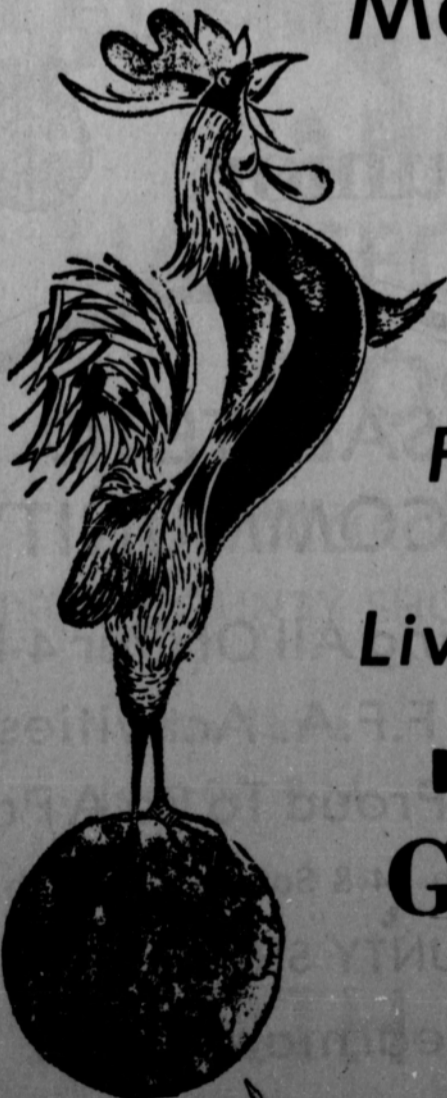
659-3141

# HANSFORD COUNTY STOCK SHOW

**SOMETHING... TO Crow About!**

At The New  
County  
Show Barn  
Spearman, Texas

**Fri & Sat  
March 14th  
& 15th**



*Support the Future  
Farmers of America  
and 4-H Clubs  
Livestock Show and Sale*

**Helping You Change Things For The Better  
GRUVER STATE BANK**

On October 28, 1974, the President approved an amendment to the Federal Deposit Insurance Act. Among other things, this legislation increases insurance on deposits from \$20,000 to \$40,000 for each depositor, effective on November 27, 1974. It also provides insurance of public unit funds in some circumstances not to exceed \$100,000 per account.

Gruver, Texas

Member F. D. I. C.

# Lulu Days Shur Fine

## SPECIALS

VAC PAK  
REG.-DRIP-ELECT. PERK  
**SHURFINE  
COFFEE**

LB.  
CAN

# 89¢



SHURFINE  
QUALITY

**PORK &  
BEANS**

# 41¢



16 OZ.  
CANS

ENRICHED  
**SHURFINE  
FLOUR**



# 65¢

5 LB.  
BAG



SHURFINE  
3 SV. CUT

**GREEN  
BEANS**

# 89¢

16 OZ.  
CANS

YELLOW CLING  
HALVES OR SLICED

**SHURFINE  
PEACHES**

# 49¢

29 OZ.  
CAN



- SHURFINE VIENNA Sausage 3 4 OZ. CANS \$1.00
- SHURFINE Sauerkraut 3 16 OZ. CANS 89¢
- SHURFINE WHOLE PEELED Tomatoes 3 16 OZ. CANS 89¢
- SHURFINE TOMATO Soup 6 10 1/2 OZ. CANS \$1.00

# THRIFTWAY

## Hawaiian Luau MEATS

# Shurfresh BONELESS CANNED HAMS 3 LB. CAN \$3.99



# Baking HENS

GRADE "A"  
4 TO 6 LB.  
AVERAGE  
LB.

# 59¢

# Pure Ground BEEF

LB.

# 68¢

SHURFRESH FRANKS 12 OZ. PKG. 59¢

SHURFRESH CHEESE PIMENTO OR JALAPENO SPREAD 7 1/2 OZ. SIZE 69¢

SHURFRESH BOLOGNA 12 OZ. PKG. 59¢

SHURFRESH SLICED BACON VAC PAK LB. PKG. \$1.19

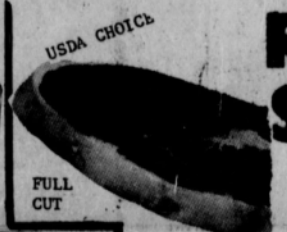
**LUNCH MEATS**

3 6 OZ. PKGS. \$1.00

# ROUND STEAK

# 89¢

16 OZ. LB.



USA CHOICE

FULL CUT

SHURFINE FROZEN Porch Fillets 16 OZ. PKG. 79¢

ALL VEGETABLE SHORTENING / WITH \$5.00 PURCHASE OR MORE 1ST CAN

**Crisco** 3 LB. CAN \$1.69

CHEESE FOOD Kraft Velveeta 2 1/2 LB. BOX \$1.39

SHURFINE CUT GREEN Asparagus Spears 14 1/2 OZ. CAN 49¢

BREVONI ONE SIZE FITS ALL Panty Hose 3 PRS. \$1.00

**SHURFINE FROZEN AND DAIRY ITEMS**

SHURFINE Apple Butter 28 OZ. JAR 59¢

SHURFINE ORANGE JUICE FROZEN 5 6 OZ. CANS \$1.00

SHURFINE Strawberry Preserves 18 OZ. JAR 79¢

SHURFINE FROZEN CRINKLE CUT Potatoes 32 OZ. BAG 49¢

SHURFINE NATURAL PINK TX. PK. Grapefruit Juice 46 OZ. CANS 89¢

FROZEN SHURFINE BROCCOLI SPEARS CAULIFLOWER MIXED VEGETABLES 3 10 OZ. PKG. \$1.00

SHURFINE Peanut Butter CREAMY OR CRUNCHY 12 OZ. JAR 59¢

SHURFRESH OLEO 1 LB. IN QUARTERS 49¢

SHURFINE FRESH PK. Cucumber Chips 16 OZ. JAR 39¢

SHURFINE MARGARINE BUTTERMILK OR SWEETMILK 8 8 OZ. CANS \$1.00

**Biscuits** 8 8 OZ. CANS \$1.00

SHURFRESH LONGHORN HALFMOON Colby Cheese 10 OZ. PKG. 79¢



## Fabulous FOODS & Fantastic VALUES

- SHURFINE BLUE OR ALL PURPOSE Detergent 49 OZ. BOX 89¢
- SHURFINE-FREE RUNNING Salt OR IODIZED 2 26 OZ. BOXES 25¢
- ROXEY RATION Dog Food 7 15 OZ. CANS \$1.00
- SHURFINE Coffee Creamer 11 OZ. JAR 69¢
- SHURFINE Pancake Mix 32 OZ. BOX 59¢
- SHURFINE MACARONI-CHEESE Dinner 4 7 1/4 OZ. PKGS. \$1.00
- SHURFINE Applesauce 3 16 OZ. CANS \$1.00
- SHURFINE MANDARIN Oranges 3 11 OZ. CANS \$1.00
- SHURFINE FRUIT Cocktail 2 16 OZ. CANS 79¢
- SHURFINE HALVES BARTLETT Pears 2 16 OZ. CANS 89¢
- SHURFINE FANCY Tomato Juice 46 OZ. CAN 59¢
- SHURFINE C.S. OR W.K. Corn GOLDEN 3 17 OZ. CANS \$1.00
- SHURFINE Spinach 4 15 OZ. CANS \$1.00
- SHURFINE FRESH SHELLLED Blackeyes 4 15 OZ. CANS \$1.00
- SHURFINE WHOLE IRISH Potatoes 3 16 OZ. CANS 89¢

MEAT SPECIALS  
GOOD MARCH  
10-15, 1975

2 PLY BATHROOM  
WHITE-AQUA-  
PINK-YELLOW  
**SOFLIN  
TISSUE**

# 99¢

8 ROLL  
PKG.

6 OZ. HASH  
7 OZ. BEEF NOODLE  
8 OZ. CHILI TOMATO  
8 OZ. CHEESE BURGER  
**SHURFINE  
DINNERS**

# 49¢

EACH

## Hawaiian Luau PRODUCE

ALL PURPOSE PRODUCE SPECIALS  
GOOD MARCH 10-15, 1975

**RUSSET  
POTATOES**

# 59¢

10 LB. BAG



NATURALLY SWEET  
**PINEAPPLE**

# 49¢

EA.

**HONDURAS  
COCONUTS**

# 49¢

EA.

- CALIFORNIA TANGERINES JUMBO SIZE LB. 29¢
- GIFT OF THE TROPICS PAPAYAS EA. 59¢
- HIGH ENERGY AVOCADOS FOR 3 59¢
- UNUSUAL FLAVOR MANGOS EA. 59¢

SHURFINE LUAU SPECIALS GOOD MARCH 10-22, 1975



**THRIFTWAY**  
Friendliest Store In The Panhandle  
Plains Shopping Center  
PHONE 659-2522  
SPEARMAN, TEXAS

**CLOSED SUNDAYS**

SPECIALS GOOD MARCH 10-15, 1975

# Leadership and Knowledge FFA Programs Mean Growth for Students

He grows taller to reach new goals in life.

She can see over the horizon to her career in agriculture.

They are members of the FFA - a national student organization of young men and women enrolled in 8,000 local high school vocational agricultural education departments. They are over 450 thousand strong.

In Spearman, March 14 members of the FFA will continue a long tradition when they parade their animals into the ring at the county agricultural barn for the annual Hansford County Junior Livestock Show. Herman Boone, and Burt Williams, school agriculture teachers, said this week that Spearman high school has recognized the importance of education in agriculture since 1930 when the department was founded.

More than the education of the young men and women, the FFA provides youth in agriculture a chance to grow personally and professionally. The program created the atmosphere in which they can grow and become responsible leaders for agriculture. FFA is an integral part of the educational system; and the FFA is built around the principle of learning by doing. Professional growth in a selected agri-career is the objective of the agricultural education effort.

ilify and knowledge.

But more, FFA and vo-ag provides youth in agriculture a chance to grow personally and professionally. The program created the atmosphere in which they can grow and become responsible leaders for agriculture. FFA is an integral part of the educational system; and the FFA is built around the principle of learning by doing. Professional growth in a selected agri-career is the objective of the agricultural education effort.

The FFA student organization also offers an atmosphere of opportunities for the individual to grow. He faces competition. He serves as an elected officer. Or works hard as a member of a chapter committee. He is responsible for the project. The other are depending on him. Personal development occurs.

The other important stimulus of student-member growth is the vocational agricultural instructor. He guides the student through the vo-ag program and advises the member in FFA. This advisor is the impor-

tant catalyst in the growing process.

Students emerge from this time-proven growth program trained and prepared for a career serving America's agriculture. They have developed themselves as effective makers, creative personalities, morally straight citizens, and confident individuals ready for life.

Observe their enthusiasm, sparkle and pride for FFA, for themselves, and for our America.

**Nelle's  
News  
By HD Agent  
Nelle Evans**

In these days of rising prices, you may feel there's not much you can do to ease the strain on the budget. By being a better buyer,

you can make the most of the money you spend.

Here are some guidelines for buying.

-Think and plan carefully. Every purchase involves balancing three factors--personal preference, need, affordability.

-Avoid browsing, it usually results in an unnecessary purchase.

-When a mistake in buying is made, recognize it and avoid repeating it.

-Patronize reliable, reputable merchants.

-Compare prices in several different stores, especially when making a large purchase such as a refrigerator or color television.

-Plan ahead, avoid buying unnecessary items.

-Become a "sales watcher" Know the meaning of the different kinds of sales. Become aware of price so you will know when an advertised price is a real savings.

The homemaker who considers her family's likes and dislikes when she's at the market is the one who can make her food budget stretch farthest.

There's no saving in buying what the family won't eat.

At the produce section, take time to look around and see what items are freshest. Price wise, consider cabbage, carrots, broccoli, dry yellow onions, rutabagas, turnips, hard shell squash, potatoes and cooking greens.

Some processed fruits and vegetables are being featured at better than usual prices and if the family enjoys them buy extra quantities.

Cold weather is hot beverage time. Hot chocolate makes a tempting addition to any meal, between meals, or for a bedtime treat.

Eggs and cheese both make inexpensive meat alternates.

The following are about equal to one serving of meat: Two or three eggs; two ounces of cheddar or process cheese; or one-half cup of cottage cheese.

Courts on casseroles made with cheese, milk, rice, macaroni or noodles to help keep the food budget within bounds.

Today's shoppers are looking for longer-wearing clothing to help beat higher prices of that clothing. Clothing requiring a

minimum of care to keep it clean and fresh will give the best service. This means the consumer will get more for his money through longer-wearing clothes and reduced cost of upkeep.

A recent consumer survey found that the most common cause for washing or dry cleaning a garment was perspiration odor. But removing this from a garment is one of the most difficult cleaning tasks--even for a professional dry cleaner.

One way to protect clothing from perspiration odor and give it longer life is by buying apparel made of fabric treated with a durable "built-in deodorant."

The bacteriostatic chemicals are added to the fibers while in the wet bath or dye bath--before the clothing manufacturer even sees the fabric--and is locked in for protection through many washings or dry cleanings.

If the garment isn't made of treated fabric, similar protection can be obtained with an aerosol product that can be sprayed directly on the clothing. This isn't as durable as the fiber treatment, but it is a valuable aid to longer-wearing clothing.

## Boy Scout

Den #5 met Thursday, March 6th in the home of Mrs. Earl Hillock.

The boys worked on a project and played games. Refreshments were served by Timmy Rouscher to members, Mark Guthrie, Dirk Umphress, Greg Meek, Eddie Hillock, Teddy Hillock, and Den Mother, Mrs. Earl Hillock.

Next meeting will be Thursday, March 13th in the home of Mrs. Hillock.

Den #4 met Friday, Mar. 7th in the home of Mrs. Larry Cross.

The boys made soap carvings. Refreshments were served by Donnie Cross to members, Ross Bulls, Mac McLain, Jamie McKay, Steven Burke, and Den Mother, Mrs. Larry Cross.

Next meeting will be March 14th in the home of Mrs. Cross.

# Sure 'N 'Tis A Touch of The Green

The fun-sharing, happy, lolling Irish people are generous in having extended to the rest of the earth-bound people an invitation to participate in the observance of St. Patrick's Day, ordinarily marked for March 17 but in this day of hurry and scurry, to be noted this year (at least in Shamrock, Texas) and other fair cities the 15th of March.

St. Patrick's Day is a many-faceted holiday, a religious, political, and fun-loving affair full of the events tending toward good fellowship and conviviality. As for St. Patrick, the patron saint of Ireland, his birthdate and birthplace are matters of great confusion with the date of his birth sometimes being noted in the fifth century and sometimes A. D. 373, 386.

One Irish legend has it that he died at the age of one hundred and twenty and his birthplace varies with the teller from England, to France and Wales but apparently not Ireland!

Though St. Patrick never claimed the performance of a miracle in his own writing, tales of his miraculous exploits against the troublesome ruling Druids abound. His persistence and final victory over them won him the right to preach Christianity throughout the land.

One of the stories about St. Patrick which is often judged authentic (no doubt due to its simplicity and basis in human ingenuity) is the tale of the shamrock and the Trinity. The doc-

trine of Three Gods in One, each separate and distinct, yet each totally God, is claimed by Christians to be a mystery and is accepted on faith. St. Patrick, in trying to teach his people about the Trinity, held up a shamrock explaining that the three leaves represented the Father, the Son, and the Holy Spirit while the stem was the Godhead itself from which they proceeded. This is the origin supposedly of the use of the shamrock which is worn on St. Patrick's Day for good fortune!

The expulsion of all the snakes from Ireland is a most popular story told about St. Patrick. According to one story told about the last snake in Ireland which was an old troublesome serpent who lived in Lake Dilveen and every Monday he comes to the surface, searches the area with his beady eyes and says, "It's been a long Monday, Patrick".

St. Patrick's Day in Ireland is not the great holiday it is in New York and other spots throughout the United States. It is primarily a religious observance. Today, it is celebrated wherever there are Irishmen or descendants of Irishmen... and not even limited to Irishmen... for

according to an Americanism, "Everybody's a little bit Irish on St. Patrick's Day."

In America, the first secular celebration of St. Patrick's Day appears to have been in 1737 when the charitable Irish Society of Bos-

ton was founded. This was a Protestant organization. The Friendly Sons of St. Patrick in Philadelphia celebrated the day in 1780 and in 1784 the New York branch of that society was formed by Irish veterans of the Revolutionary War, composed of both Catholics and Presbyterians and its first president was a Presbyterian. Today, businesses and factories take on a green hue as employees shamrock and green clothing and parades are staged in many cities, towns, and hamlets with the biggest parade being in New York City.

Whatever the background, enjoy the wearing of the green (else you might be pinched) and assume some of the luck of Irish on St. Patrick's Day 1975 (when-ever it might be!)

## Arts & Craft Guild News

The Arts and Crafts Guild met Friday, March 7th in the home of Mrs. Deta Blodgett.

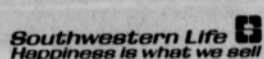
Delicious refreshments were served by Mrs. Blodgett to members, Mesdames F. J. Daily, F. A. Lyon, Pope Gibner, Clay Gibner, Garrett Allen, Ned Turner, Nolan Holt, Joe Traylor, F. J. Hoskins and Bill Gandy.

Next meeting will be March 14th in the home of Mrs. W. L. Russell.

Respect for a person's ideas and feelings, even if you disagree with what he is saying, helps improve communications. Mrs. Irene Miller, family life education specialist with the Texas Agricultural Extension Service, The Texas A&M University System, reminds.



A teacher we know defers taxes on money going into a guaranteed retirement plan. It's dollar-stretching. She's glad she contacted us.



Box 1016 - Spearman, Texas - Phone 659-3294

# That's Right . . . We're Tootin' Our Horn ABOUT THE HANSFORD COUNTY STOCK SHOW

## March 14th & 15th

AT THE COUNTY SHOW BARN SPEARMAN, TEXAS

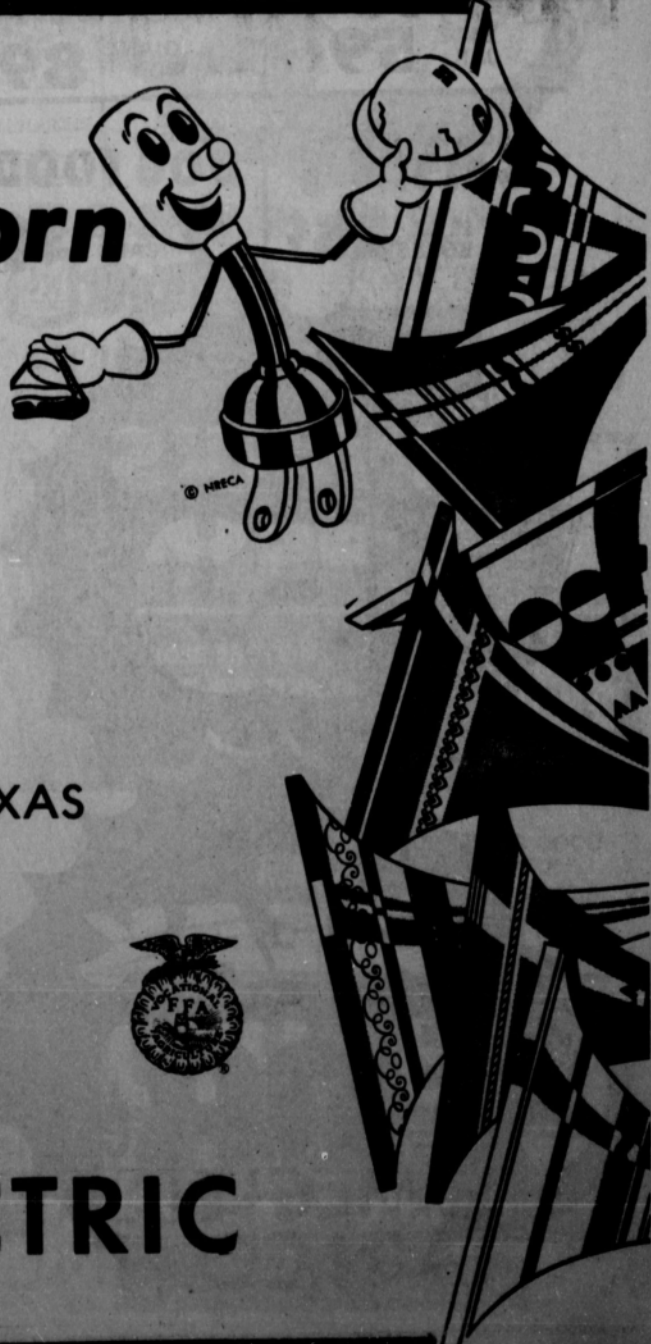
**WE SALUTE...**  
Our FFA and 4-H People  
See The Great Job  
They Are Doing...  
Attend The  
Livestock Show And Sale.

Sale Time  
Is 6:00 P.M.



# NORTH PLAINS ELECTRIC

PERRYTON, TEXAS  
SERVING THE NORTH PLAINS



## Livestock Show Preparations Last Year-Round

Spearman High School vocational instructors, Herman Boone and Burt Williams, and Gruver High School instructor, Oran Burton started in June of last year keeping track of the progress of each student who will be showing animals in the annual county livestock show next weekend, along with their regular teaching duties and field trips on agriculture seminars. These men often help the students who know they want to be in the program to find their animals as well as oversee their care and treatment.

They try to get good animals nearby and take the students and look over the animals to see if they want to buy them. They also keep notebooks full of names of students who want animals and what they want, and often buy several when they are out of town if they see some good ones, bringing them back for students who have asked them to "keep their eyes open."

Attendance at many of the area livestock sales is a must for ag teachers, as is keeping track of other stock shows and making sure the students are taking care of their animals.

At the start of the year the teachers hand out a list of instructions on the feeding and general care of the animals the students have acquired, but as the year goes on he works with each one to determine the best combinations of feed and different types of care, both in surroundings and medication, that will keep the animals healthy.

In preparing the animals for the show, ag teachers receive help from local veterinarians.

For student who live in town and have no facilities for taking care of their animals the Spearman School has an area west of town where they can be kept, and cared for. This offers students who live in

town a chance to take part in the agricultural program that they might not have otherwise. Experience in agriculture can be a benefit to students no matter what line of work they go into later.

The high school agriculture programs offer leadership training and experience in using and repairing farm tools and implements, all of which is of value in any line of work. Knowledge about animal science, crops and plants are valuable to almost anyone who lives in a rural community, whether they be a banker, lawyer, doctor or other type of businessmen.

The ag teachers all say that without the help and cooperation of parents their jobs would be a lot harder. Keeping track of the students and animals as well as other duties could be an overwhelming job if not for their help.

### Eastern Star Has Meeting

Spearman Chapter #721, Order of the Eastern Star held its regular meeting on Friday, March 7th in the Hansford Lodge Hall with Worthy Matron, Millie Craig and Worthy Patron Pro-tem, R.L. Uptergrove presiding. A special guest, Mrs. Bobbie Malmon, who is Worthy Matron of San Antonio Chapter #553 in Bell, California, was introduced. Invitations were read from Miami Chapter and Canadian Chapter, who will hold their Friendship Nights on April 5th at 6:30 and April 12th at 7:30 respectively. All members are invited to attend.

A special meeting concerning the future of our Chapter will be held in the Lodge Hall Thursday, March 20th at 7:30. All members will be contacted and are urged to attend.

A total of 17 members, officers and visitors were in attendance.



## Jenny Massad To Present Show

WTSU--"A Bit Of Broadway" will be presented by West Texas State University graduate student Miss Jenny Lynn Massad in a one-woman show March 15 at 8 p.m. in the Intimate Theatre of the WTSU Fine Arts Building.

Miss Massad will open her performance with "Villkommen" from the musical "Cabaret", followed by "People" and "Funny Girl" from the Barbara Streisand hit musical "Funny Girl".

She will also sing "Give My Regards to Broadway", "Diamonds are a Girl's Best Friend", and, with WTSU Drama Instructor Neva Chowning, "Bosom Buddies" from the musical "Mame". "The Hands of Time" from the television

movie "Bryan's Song" will feature Renita Richardson, pianist.

Also assisting Miss Massad are Mark Ryan, lights, John Schmidt, props, D'Lynn Hudson, drums, and Mary Cunningham, publicity. Miss Massad is holding the show as her student directing project for WTSU Professor William Moore. She is presently working on her master's degree in theatre.

Miss Massad will bring to the Intimate Theatre stage a wide range of experience. She has appeared in the musicals "Guys and Dolls," "Show Boat," "Kismet" and "My Fair Lady", as well as in the recent WTSU production "I remember Mama". While in Chicago,

Miss Massad worked in radio with her own show.

She is the daughter of Mr. and Mrs. Frank Massad of 214 S. Main, Spearman, and the granddaughter of Mr. and Mrs. Max Saied, Sr. of Route 2, Wellington.

Dressed in a cap and gown on graduation day, the young man handed his diploma to his mother and father. "Well, he said, 'I finished law school and got my law degree like you and Mom always wanted... Now, I'm going to join the police force and become a motorcycle cop like I always wanted.'"

## FFA Prepares Members For Ag Career Guar Day & Barbecue Set

What's ahead for tomorrow's agriculture? Over 450,000 members of the Future Farmers of America are confident that agriculture has a bright future. They're preparing for careers in this vital industry that provides food, fiber and a better environment for the nation and the world.

In over 8,000 high schools across the nation, students in the vocational agriculture instruction program are learning the skills and gaining the technical knowhow that will prepare them for careers in production agriculture, agribusiness or natural resources.

Their goal is to become employed in one of the thousands of occupations that serve consumers by supplying and servicing the nation's farmers, by producing an abundant supply of food and fiber and by maintaining and carefully using precious natural resources.

The optimism of these young people comes from the realization that they will be part of the nation's largest and most vital industry. Today two out of every five jobs are related to agriculture. They know that food produced by the nation's farmers is the backbone in our successful free enterprise system. They know too the pride and accomplishment of working in one of the most modern and efficient agriculture production plants in the world.

Through their membership in the FFA, vocational agriculture students are preparing themselves for the challenges of tomorrow's agriculture. As officers, committee participants, and in chapter business and community service ventures, FFA members learn to set goals, work together and take a leadership role to achieve their goals. It is this training that helps prepare for tomorrow's agriculture and gives members a chance for GROWTH.

VERNON, TEXAS--Congressman Jack Hightower, of Texas' 13th Congressional District, will be the guest speaker at the Guar Day and Barbecue, co-sponsored by the Vernon Chamber of Commerce and Stein, Hall & Co., Inc., to be held Saturday, March 22, at the Wilbarger County Auditorium, Vernon.

Several hundred farmers and their wives from the North Texas-Southwestern Oklahoma area are expected to attend the Guar Day ceremonies, which will start with a barbecue at 12 noon. Also expected are county agricultural agents, soil conservationists, agronomists and specialists from the two states' agricultural extension services, university officials and local bankers.

Recent developments in Guar agronomy and guar economics will be reviewed by Orbie C. Cannedy, Stein, Hall's agronomy manager at Vernon, and William P. Mastrolia, vice president of Celanese Coatings & Specialties Company, Louisville, Ky. Stein, Hall is a wholly-owned subsidiary of Celanese Corporation.

Mayor Hamp Naylor, of Vernon, will welcome the Guar Day visitors to Vernon and C.L. Glazener, vice president of the Herring National Bank, Vernon, will serve as master of ceremonies.

Paul Hawkins, executive vice president of the Vernon Chamber of Commerce, has announced that all North Texas-Southern Oklahoma farmers (and their wives) who are interested in guar's potential are invited to attend. Tickets are available--without charge--at the office of the County Agricultural Agents in some 50 counties extending approximately from Wichita Falls west to the New Mexico border and from Abilene north to Amarillo, as well as the southwestern counties of Oklahoma. These counties are generally regarded as "guar country".

Guar, a warm weather crop, can be planted as a primary crop in a double cropping program or in rotation with cotton, sorghum, corn and vegetables. It will stand long periods of dry weather, resting when the soil is dry, then springing into growth and bloom again after rain or irrigation. Planting time in North Central Texas and Southwestern Oklahoma ranges from May 15 to July 1.

Guar products are used by the food and dairy industries as a stabilizing agent (guar helps distribute the moisture in ice cream and prevents the formation of large crystals in frozen desserts); by the paper industry to improve the strength of paper; by the textile industry as printing compounds for fabrics; by the pharmaceutical industry as an aid in the disintegration of pills and tablets; and by the oil industry to reduce friction, improve viscosity and control fluid loss.

Stein, Hall's guar processing operations in Texas started in 1964 at Chillicothe and were shifted to Vernon two years later. Originally, the plant site covered 11 acres of the Vernon Industrial Foundation land but this later was expanded to 35 acres.

Stein, Hall became part of Celanese in 1970. In addition to the Vernon processing plant, Stein, Hall has guar plants in Charleston, S.C., Long Island City, N.Y., Clifton, N.J., Holland, Switzerland, and South Africa.

Celanese has been in Texas since 1940, when it built a chemical plant at Bishop. That was followed by a chemical technical center at Corpus Christi, and plants at Pampa, Bay City and Clear Lake.

You heard about the scientist who crossed a carrier pigeon with a woodpecker so when he delivers the message he can knock on the door?

# BUILDING A BETTER TOMORROW...

## WITH THE YOUTH OF TODAY



### Support the 1975 Junior



## Livestock Show and Our Youth by your Attendance

### A SALUTE TO OUR COMMUNITY.

In Backing All Of Our 4-H and F.F.A. Activities!  
We Are Proud To Be A Part.  
Friday, March 14 & Saturday, March 15

COUNTY SHOW BARN  
Spearman, Texas

LIVESTOCK SALE  
SATURDAY AT  
6:00 P.M.

R. L. McCLELLAN  
GRAIN CO., INC.

# Luaui Days

Fantastic VALUES!



**SAVE WITH SHURFINE!**

**PORK 'N BEANS** 300 CAN  
FRESH SHELLED

**PEAS** BLACK EYED 300 CAN

TENDER LEAFY  
**SPINACH** 303 CAN

**MACARONI & CHEESE DINNERS** 7 1/4 OZ. BOX

**FRUIT COCKTAIL** 303 CAN

MIX OR MATCH  
FOR \$ **4.11**  
2 FOR **79¢**

Be sure to watch...  
*Polynesia*  
...for the FUN of it!  
FROM BEAUTIFUL HAWAII  
Vic Damone  
Nancy Wilson  
Ferrante & Teicher

ONE HOUR TELEVISION SPECTACULAR

SHURFINE  
**FLOUR**  
5 LB. BAG  
**69¢**

SHURFINE FRESH PAK  
CUCUMBER  
**CHIPS**  
16 OZ. JAR  
**39¢**

SHURFINE  
Y. C. SLICE OR HALVES  
**PEACHES**  
NO. 2 1/2 CAN  
**49¢**

SHURFINE  
**COFFEE**  
• DRIP • ELECT.  
• PERK • REGULAR  
LB. CAN  
**89¢**



SOFLIN 2-PLY  
**BATHROOM TISSUE**  
8 ROLL PKG.  
WHITE OR COLORS  
**99¢**

"SHURFINE SAVIN'S"

<b>BEANS</b> CUT GREEN	3 SV	<b>3</b>	303 CANS
<b>POTATOES</b> WHOLE IRISH		<b>3</b>	303 CANS
<b>SAUERKRAUT</b>		<b>3</b>	303 CANS
<b>TOMATOES</b> WHOLE PEELED		<b>3</b>	303 CANS
<b>PEARS</b> BARTLETT HALVES		<b>2</b>	303 CANS
<b>JUICE</b> NATURAL PINK GRAPEFRUIT		<b>2</b>	46 OZ. CANS

**89¢**

PLAY  
**BONUS**  
"BLACK-OUT"  
**BINGO**  
GET 1000 EXTRA S&H GREEN STAMPS

BRITANNICA  
JUNIOR  
ENCYCLOPEDIA  
THIS WEEK VOLUME SEVEN  
WITH A \$5 PURCHASE **\$2.99**

UNITED  
Proten  
BEEF

**CAT FISH**  
FARM RAISED GRAIN FED  
LB. **\$1.29**

"FEATURING UNITED'S PROTEN BEEF"

**STEW** BONELESS EXTRA LEAN CUBES OF BEEF LB. **98¢**

**RIBS** BEEF THICK & MEATY LB. **58¢**

**STEAK** RANCH CENTER CUT 7-BONE LB. **88¢**

**ROAST** BONELESS SHOULDER WASTE FREE LB. **98¢**

BREVONI PANTY  
**HOSE** 3 PAIR  
ONE SIZE FITS ALL

MELROSE PROTEIN  
**SHAMPOO** LARGE 16 OZ. BOTTLE **19¢**

SHURFRESH BONELESS • FULLY COOKED  
**HAMS**  
3 LB. CAN  
**\$3.99**

SHURFRESH  
12 OZ. PKG.  
**BOLOGNA**  
**59¢**

UNITED AFFILIATED

**U**

PRICES GOOD THRU' MARCH 15th

**UNITED**  
PERRYTON, TEXAS  
SUPER MARKETS  
WE GIVE S&H GREEN STAMPS





# Hawaiian

PRICES GOOD THRU' MARCH 15th



WE RESERVE THE RIGHT TO LIMIT QUANTITIES



## Fabulous Foods

**UNITED**  
 PERRYTON, TEXAS  
**SUPER MARKETS**  
 WE GIVE *S&W* GREEN STAMPS

SHURFINE FROZEN **ORANGE JUICE** ..... **51**  
 6 OZ. CANS

"MORTON'S FROZEN SPECIALS"  
 MINI **DONUTS** 10oz. REG. 79¢ **69¢**  
 JELLY **DONUTS** 11oz. REG. 89¢ **79¢**  
 GLAZED **DONUTS** 9oz. REG. 89¢ **79¢**  
**HONEY BUNS** 9oz. REG. 69¢ **59¢**

SHURFRESH **BISCUITS**  
 BUTTERMILK or SWEETMILK  
**8** 8 OZ. CANS **\$1**

SHURFINE **STRAWBERRY PRESERVES**  
**79** 18 OZ. JAR

SHURFRESH **OLEO**  
 1 LB. CRTNS REG. QTR'D **49**

SHURFINE **ASPARAGUS SPEARS** 14 1/2 OZ. CAN CUT **49¢**  
 SHURFINE **TOMATO SOUP** 10 3/4 OZ. CANS **6 \$1**  
 SHURFINE **TOMATO JUICE** 46 OZ. CAN **59¢**



SHURFINE **APPLEBUTTER** 28 OZ. JAR **59¢**

SHURFINE ALL PURPOSE **DETERGENT** GIANT BOX **89¢**

DEL MONTE **PINEAPPLE** NAT'L NO. 1 1/2 CAN JUICE •SLICE •CHUNK •CRUSHED **39¢**

**APPLE SAUCE** 303 CAN  
**MANDARIN ORANGES** 1 1/2 OZ. CAN  
**CORN** GOLDEN CREAM STYLE OR WHOLE KERNEL 303 CAN

**3** FOR **\$1**  
 "MIX OR MATCH"

SHURFINE **SALT** PLAIN OR IODIZED 2 26 OZ. BOXES **25¢**

ROXEY **DOG FOOD** 15 1/2 OZ. CANS **\$1.07**

RUSSET ALL PURPOSE **POTATOES** 10 LB. BAG **69**

**NAVEL SUNKIST ORANGES** LARGE SIZE **19¢**  
 DRY YELLOW **ONIONS** ..... LB. **9¢**  
 FRESH GREEN **CABBAGE** ..... LB. **9¢**  
 GOLDEN DELICIOUS **APPLES** WASH EXTRA FANCY ..... LB. **29¢**

SHURFRESH **FRANKS** 12 OZ. PKG. **59**

SHURFRESH **LUNCH MEAT** SALAMI • BOLOGNA • OLIVE • PICKLE • SPICED LUNCHEON **3** MIX OR MATCH 6 OZ. PKGS. **\$1**

SHURFINE **VACUUM SEALED BACON** LB. PKG. **\$1.19**

**RIB STEAK** **88** LB.

**CHUCK ROAST** BLADE CUT **68** LB.

**GROUND BEEF** 100% ALL BEEF FAMILY PACK **58** LB.

## Texas Legislative Report

By Bob Close

This past week some controversial matters have been acted upon by the House of Representatives. The Presidential Preference Primary Bill by Schieffer sometimes referred as the Bensen bill was the subject of two days of debate on the House floor during this past week. The bill, as amended, was finally passed. This bill provides for the election of 75% of the delegates to the National Party Convention, the delegates being committed to certain candidates listed on the ballots. The balance of the delegates to the National Party Convention would be elected at the State Convention of the Party. This was basically a fight between the conservative Democrats and the liberal Democrats. Some old wounds and existing animosities were exposed. In the midst of all of the debate, Representative Agnich, Republican of Dallas, got up and stated, "This is the first time I ever attended a Democratic Convention." The Presidential Preference Primary Bill is now being debated by the Senate. A surprise development was

the passage of an amendment which would require the designation of party preference by each voter at the time of registration to vote. This effort to "purge" and "purify" the Democratic Party will be reconsidered today and the vote on this matter could well be changed.

The other most controversial matter to come up before the House of Representatives this past week has been House Bill 528 by Laney, which was passed by a vote of 70 to 69 on second reading. House Bill 139 by Representative Newton extends the 55 mph speed limit to April 1, 1977. This bill was to make Texas eligible for some \$303 million in Federal funds for Texas highways. The Laney bill does not change the speed limit but provided that the fine including court costs shall be \$25 for violation of the speed limit by speeds in excess of 55 mph but less than 70 mph. The Laney bill also provided that such conviction would not be charged against the driver's record for suspension of license purposes not used by the insurance companies to increase automobile insurance premiums. I have received mail both ways on this issue. Some of my very good friends are very much in favor of the Laney bill. I was persuaded to vote against the bill however, because of the startling statistics from the Department of Public Safety.

For example, the 1974 traffic death toll was down by 650 lives over the 1973 death toll. It is estimated that the 55 mph speed limit during 1974 saved over 400 million gallons of gasoline in Texas. The statistics show that 1974 was the safest year on the highways in a decade. The traffic death per 100 million miles traveled made 1974 the safest year on record. Rural deaths decreased by almost 20% in 1974 and the total traffic accidents of all kinds were down some 6%. The number of licensed drivers and registered vehicles was up in

1974 over the previous year although the total miles traveled in the state by all drivers was less in 1974 than in 1973. These traffic statistics probably resulted from the reduction in the amount of driving plus the reduced speed limit, especially on rural highways. The purposes of the Federal law requiring a 55 mph speed limit was primarily to conserve energy. The incidental effect of this was to reveal the startling statistics on the Texas highways. It is for these and other reasons that I opposed the Laney bill and voted against it.

Visitors during this week included the following: Mr. and Mrs. Richard Boxwell, Perryton; Mr. Wayne Martin, Sequim; Mr. Mike Metcalf, Dumas; Mr. Ed Weber, Amarillo; Mr. Fred Parkey, Wichita Falls; Mr. E.T. Manning, Amarillo; Mr. John M. Helet, Amarillo; Mr. Ford McIntyre, Spearman; Mr. and Mrs. Blackburn and family, Spearman; Mr. and Mrs. Robert Thompson, Hartley; Mr. Mike Meredith, Dumas.

### Mrs. Lyon Is Club Hostess

The Twentieth Century Club met Thursday, March 6th in the home of Mrs. P.A. Lyon.

President, Mrs. Harold Shaver presided over the meeting.

The program was a lecture with slides by Home Economics Teacher, Mrs. Francis Hudson and Randy Janzen from the Home and Family Living Class of Spearman High School.

Refreshments were served by hostesses, Mrs. P.A. Lyon and Mrs. Fred Holt to guests, Mrs. Hudson and Randy Janzen and to members, Mesdames: Harold Shaver, C.A. Kleiberger, John Bishop, Frank Davis, Bobby Smith, John Shell, Coy Palmer, D.E. Spoonmore, L.L. Anthony, George Buzzard, C.U. Pope, Olin Sheets, Woodville Jarvis, J.F. Stump, John Trindle and Ed Garner.

Next meeting will be March 20th in the Home Demonstration Club Room.

### Shower Honors Bride-Elect

Miss Karen Kunselman, bride-elect of Larry Clawson, was honored with a bridal shower Saturday, March 8th from 2:30 till 4:00 P.M. in the Fellowship Hall of the First Christian Church.

The registration table was laid with a white linen cloth and was accented by an arrangement of daisies with blue baby's breath in a crystal vase. Guests were registered by LaVon Kunselman, sister of the bride.

The serving table was laid with a white cutwork linen cloth and was accented with an arrangement of white daisies with blue baby's breath in a crystal bowl. The table was set with a silver coffee service and crystal appointments. Refreshments of cookies, punch, coffee, mints and nuts were served to those present by Tracy Bulls.

Miss Kunselman was presented a corsage of white daisies and blue baby's breath tied with a blue ribbon.

Mrs. Claude Jackson, grandmother of the bride assisted Miss Kunselman with her gifts, with Mrs. Carl Kunselman recording the gifts in the bride's book.

Hostesses for Miss Kunselman were Mesdames: Allen Pierce, R.C. Fisher, Aton Ellsworth, Max Baggerly, Irvin Davis, Bill K. Jackson, J.P. Vernon, Don E. Smith, E.J. Callaway, T.C. Kitchens and Bill Hurger.

Special guests present were Mrs. Ivan Clawson, mother of the groom from Sudan, Texas and Mrs. Claude Jackson, Grandmother of the bride from Spearman.

Other out of town guests were Mrs. Iva Noble, sister of the groom from Muleshoe, Mrs. Everett Hensen of Dumas, Mrs. Dayton Barkley and Callie and Mrs. Rick Barkley, all of Gruver, and Mrs. Danny Jackson of Hunzville, Arkansas.

Note found in a Dallas household, penciled by an eight-year-old girl after an argument: "Good-bye, family. You all hate me. I love you anyhow. Bless you! P.S. In case of fire, I'm in the attic."

### Notes Higher Project Costs

## County Agent Says Kids Own Best Teachers

Joe VanZandt, Hansford county extension agent in agriculture for the Texas A&M Extension Service, has a busy job with responsibilities to 4-H members as well as to county farmers and ranchers.

Starting in March and April of each year, VanZandt helps the 4-H members pick the animals they will use for the next year's stock show. He notes that calves have to be picked between March and Sept. while lambs are picked between August and Oct. and barrows are generally selected between Sept. and Nov.

While VanZandt does occasionally pick an animal for a member if they are not available, he urges that each 4-Her and their family look over the animals and make their own selection.

"Beware of status symbols," warns an executive in an article in Nation's Business. "Put an expensive carpet in your office and pretty soon you'll begin to think you're as good as the carpet."

"The members learn a lot more this way than if someone else tells them what they should or should not do," he says.

He adds that the entire process of taking part in the annual stock shows is a learning experience for the 4-H member. When they buy their own animal and pay for it themselves it means more to them and reflects in the work they put into their project.

The county agent said the students get a lot of help and advice on the care of the animals they are raising from local veterinarians who help with the 4-H members all they can and assist with almost all of the projects.

Since VanZandt does not have the young men and women in class everyday where he can talk with them about the progress of their projects it means a lot of travel on country roads to see each student and their animals during the year. "I try to get around to see each student and their project at least twice during the course of the year," Wood said.

While he keeps track of the progress of the animals

during the year, he also does a lot of work on them in the weeks before the annual show, grooming and trimming the animals and getting them ready for the show.

VanZandt feels that the stock show is very important for all of the young men and women who take part in it, both as a learning and maturing experience. They learn a lot of responsibility in taking care of the animals, feeding them and getting them ready for the show.

He noted that in preparing for the annual stock show the students learn a lot about finance.

"While they hope to make a little money, it is still a risky business and if their animal gets sick and dies or can't be shown in the show then they have to take a big loss," he says. The effect of losing money is also educational and something everyone has to learn sooner or later.

In the show itself the members learn about sportsmanship and citizenship in showing their animals, he said, pointing out that they have to accept that there can only be one grand champion and all the rest must

fall somewhere below that. "There are always first year members who become attached to their animals," VanZandt notes. He says in these cases selling the animals can be a heart-breaking experience, almost like losing a part of the family.

Costs of the annual events are going up each year for the 4-H and FFA members, the county agent says. Just for the show, higher and higher prices are seen for judges, tags and trophies.

For the showmen however, prices for livestock alone have become a very important factor. Many of the steers to be shown were bought when prices were pretty high in comparison to today, and the youths have more money invested in all the animals than in the past. Also, they have had to spend more this year for feed and medicines than in the past because of inflation.

Many of the student take the money they get for their animals at the stock show sale and put it in a special account to be used for the project next year. This gives them some experience in operating a small business.

### CATTLE BUYERS NEEDED NOW

No buying experience necessary. Train to buy cattle, hogs and sheep. The growing livestock industry needs qualified buyers. A good aptitude is required for today's competitive markets.

You should have a farm or agricultural background. Must enjoy working with livestock. Good earnings... secure future... for those who qualify. Write today with your personal background and qualifications. Include: name, age, address & phone number. We will arrange an interview for you, near your home town. No phone calls, please.

NATIONAL LIVESTOCK CO.  
5105 North 40th Street  
Phoenix, Arizona 85018

# TOM PENN INC.

## Aerial Spraying

(Serving The Area Over 20 Years)

IT IS TIME TO START SPRAYING

Call 659-3539

WEED SPRAYING

\$2<sup>45</sup> ACRE

GREEN BUGS

\$2<sup>45</sup> ACRE

OWNERS

Jack Terhune  
Harry Langolf

**G-164**  
**4 ROW ROTARY SHREDDER**

Wheel spacing adjustable for any row width. Three free-swinging blades add momentum - swing back from obstacles.

Has rear hitch, slip clutches on side gear box, rubber element drive at main gear box absorbs starting and surging shocks.

Here's the four row cutter with all the features.

Cut end shred a full four rows (40" rows) with Caldwell's G-164. There are many 160" cutters on the market, but they just won't clean the middles like Caldwell's G-164.

Here's a durable machine with 3/16" steel plate, heavy cross bracing to cut the heaviest materials. It's built to last.

Adjustable cutting height lets you adjust for cutting with deep middles.

## DISC-BEDDER



Throws up a fine uniform bed. Renews old beds - Rebeds 6-row and 4-row models

- Disc gangs attach securely to 4 x 7 tool bar. 3 point hitch is bolted to tool bar.
- Disc gangs have on 16" disc and one 18" disc with tri-ply sealed double ball bearings permanently lubricated.
- Disc blades are heat-treated heavy gauge steel.
- Heavy duty gauge wheels with screw jack... adaptable for hydraulic cylinders available as option.
- Heat treated bolts throughout.
- Fits tractors with three point hitch category II and III.

BE SURE AND ATTEND THE ANNUAL HANSFORD COUNTY JR. LIVESTOCK SHOW AND SALE MARCH 14th & 15th. AT THE COUNTY BARN IN SPEARMAN.....

**R L McCLELLAN & SONS**

"Your Farm Equipment Dealer"

659-2343

Spearman

### Hawaiian Trip Is Topic

The Spearman Study Club met Monday, March 3rd in the home of Mrs. Phillip Turner.

President, Mrs. Terry Schneider presided over the meeting.

Minutes of the previous meeting were read and approved and the treasury report was given.

The discussion was held on the Girl Scout Drive.

The Nominating Committee presented a list of the present officers to serve a second term. Motion was made and carried to accept the officers as is.

Mrs. Jimmy Shieldknight gave a slide presentation of her trip to Hawaii.

March Boy and Girl of the Month are Dean Byrd and Lydia Avila.

Hostesses for the meeting were Mrs. Don DeArmond,

George Young and Phillip Turner.

Members present were Mesdames: Kenneth Friemel, Joe Close, Roy Flowers, David Wilson, Phillip Turner, Dan True-love, George Young, Bert Sheppard, Jimmy Shieldknight and Terry Schneider.

Next meeting will be April 7th with Mrs. Vic Kyler and Mrs. Johnny Crawford as hostesses.

Before the middle of the 19th century when metal needles were first introduced, needles were made of wood, thorns, fishbones or splintered animal bones. Beverly Rhoades, clothing specialists with the Texas Agricultural Extension Service, The Texas A&M University System, says.

### Annual St. Patrick's Celebration Set

**By Bill Howe**

"Despite inflation, deflation and the energy crunch, the Shamrock Irish will stage their 29th Annual St. Patrick's Celebration on schedule," General Chairman Robert O'Adams said today.

Billed as an "Irish Pilgrimage," indications are upwards of 25,000 sons of the auld sod—and their relatives from the hamlets, the cities and the forks of the creek—will make it to this year's whirling.

As the great day approaches things are turning green. The Kiwanians have strung their green and white streamers over the top of Main Street and placed the green welcome banners throughout the city.

The weekly Shamrock Texan's special edition of March 13 commemorating the occasion will be printed on green newsprint; even Editor Bill Howe's beard has turned green. It is rumored he takes authentic green Irish chlorophyll tablets to accomplish this feat.

"Most of our events are scheduled Saturday, March 15, although St. Patrick's Day doesn't arrive officially until the following Monday," Adams said.

"We will have our usual pre-St. Patrick's Celebration Banquet on Friday night, March 14. We've found over the years we have a better turnout on weekends than trying to hold the event during the week.

Irish celebrations began in Shamrock, current population 3086, when the late Glen Truax, bandmaster of Shamrock High School, talked the town into the event in 1938, since the senior play for that year had to be cancelled.

The celebration was cancelled from 1942 through 1949 because of World War II, was revived in 1950, cancelled in 1961 account the Korean Conflict, but has been staged every year since.

The Duke of Paducah, who will be featured at the pre-celebration banquet, along with the popular Booker Bank Notes had this to say when accepting his invitation to appear at the Irish Festival.

"I am not of Irish descent but if I am ever born again, I will be Irish and I will have it happen in Shamrock, Texas. I am going to Shamrock for a couple of days. If you see me on the street and recognize me, stop and talk to me, and if you don't recognize me and somebody introduces me, I'm a very friendly fellow and I like to talk about fishing and you can ask me about my big, fat wife if you want to. Well, in fact, it has been said that I know less about more things than anybody so just talk to me. I'll be happy to talk to you. I'm going to the wagon, these shoes are killin' me."

Truly making a pilgrimage to Shamrock to march in the hour-long street parade will be the famous Kittie (all girls) Band of Oklahoma City. The Kittie group appeared in the first four celebration parades, and came again in 1950 and 1952. Their appearance this year will add much to the parade.

Also appearing in the parade will be the Ft. Sill, Oklahoma Half Section, a 75 millimeter cannon drawn by eight horses, with accompanying personnel dressed in the uniforms of the various wars fought by the United States.

The Khiva Shrine group—band, drum and bugle corps, and klowns—also will be making their traditional pilgrimage to march in the big parade.

Some 15 decorated floats, plus many riding clubs, comic entries, and a Kiddie Parade Section, will add color to the passing parade scene.

A celebration highlight at National Guard Armory in the afternoon will be the crowning of Miss Irish Rose of 1975, the winner to receive a \$300 scholarship, first runner-up \$150, second runner-up \$100 and Miss Congeniality \$50.

Following the Irish Rose coronation, the Donegal Beard Contest will take front stage center under the direction of Chief Puzzer Junior Vinyard.

One of the judges will be Miss Irish Rose herself. The winners will receive cash awards.

Meanwhile, back at Clark Auditorium, the Old Fiddlers will be putting it on for some \$400 in prize money. This popular annual event is directed by Mr. and Mrs. Bill King.

At eight o'clock at High School Auditorium, Shamrock's Ministerial Alliance will please the crowds with presentation of a program by the Bob Willis Inspirationalists.

The day's events will come to a close with the annual St. Patrick's Dance at National Guard Armory. The dance will start at 9 o'clock and end at 1 a. m. Music will be furnished by R. T. "Windy" Wood and New Sons of the West.

Capping the evening for the teen age set will be a dance beginning at 8 o'clock and ending at midnight at Junior High Gymnasium. Billy and the Kids, a band from Amarillo, will furnish the music.

**Getting It All Together**

A complete checkup once a year—including important cancer tests—is the best way to protect your health, says the American Cancer Society.

When selecting a new kitchen gas range, look for one with control knobs that are difficult for children to turn on—yet placed so that the knobs can be reached without stretching over burners, advises Mrs. Doris Myers, family resource management specialist with the Texas Agricultural Extension Service, the Texas A&M University System.

### City Meeting Minutes

The City Council of Spearman, Texas met in regular session in the Council Chamber of City Hall at 8:00 p. m. February 24, 1975. PRESENT: Mayor Protem Roscoe Nelson - presiding. ALDERMAN: Hicks, Ellsworth, Desimone, Kiser. ALSO PRESENT: City Manager - Ed Thompson, City Secretary - Mark Neff, City Attorney - J. E. Blackburn. VISITORS: Don Denham, Wayne Ellsworth, Dennis Stowers, Denise Hutton, J.L. Brock, Mary Lou Wyszog, Joyce Lackey, Jim Miller.

**PLEDGE AND INVOCATION:** The Pledge of Allegiance to our Flag was led by Dan Desimone, followed by the invocation given by Bob Kiser.

**MINUTES:** Motion by Hicks, second by Desimone, to approve the minutes of the February 10, 1975 Regular City Council Meeting, as read. Motion carried.

**PRE-APPLICATION FOR COMMUNITY BLOCK GRANT:** Discussion between the Chamber of Commerce Youth Committee, Planning and Zoning Commission, Citizens Advisory Committee, and the Council over the Community Block Grant pre-application. Motion by Hicks, second by Ellsworth, to approve pre-application for the Community Development Block Grant. Motion carried.

**RE-NAMING OF ELEVENTH AVENUE:** Motion by Desimone, second by Ellsworth, to approve the honorary name change of Eleventh Avenue to "Purple Pride Avenue", as requested by Wayne Ellsworth, with four signs being placed on Eleventh at each end of the school and one at each end of Eleventh. Motion carried.

**METER DEPOSITS:** Council and city administrators discussed current policy on Meter Deposits. Assistant City Manager, Mark Neff, was asked to work up a recommendation for the Council regarding policy of Meter Deposits. No further action taken.

**SOLID WASTE CONTAINERS:** City manager, Ed Thompson, explained that due to growth, the City needs six (6) new solid waste containers. Motion by Desimone, second by Hicks, that the City manager look into buying (6) new containers. Motion carried.

**SOLID WASTE PERMIT:** City manager, Ed Thompson, gave a report to the Council on the Approval Permit to operate the dump grounds. No action was taken.

**POLICY OF UTILITY MAILINGS:** Motion by Ellsworth, second by Hicks, to continue in the most economical way with our utility mailings. Motion carried.

**STATUS OF RAILROAD COMMISSION HEARING:** City manager, Ed Thompson, discussed with the Council the data that had been gathered by Bill McMorris, Wayne Browning, and Bob Wilson regarding the Railroad Commission Hearing of March 17, 1975.

**OTHER:** Motion by Hicks, second by Desimone, to send Ted Scroggs and one (1) other man, to be chosen by Mr. Thompson, to the Water and Sewer School in Pampa, March 10 thru 14, 1975. Motion carried.

Motion by Hicks, second by Desimone, that regular Council meeting dates for the month of March be the 10th and 24th at 8:00 p.m. Motion carried.

**EXECUTIVE SESSION:** Mayor Pro-Tem Nelson called for and Executive Session of the Council. Nelson called the meeting back into order, stating that no action had been taken, only personnel matters were discussed.

**ASSISTANT CITY MANAGER RAISE:** Motion by Kiser, second by Desimone, that on the recommendation of City manager, Ed Thompson, the Assistant City Manager, Mark Neff, be granted a \$75.00 per month pay raise. Motion carried.

**VOTE OF CONFIDENCE:** Motion by Hicks, second by Desimone, that a vote of Confidence from the Council be given to the City Manager and Assistant City Manager for the work and progress that has been done. Motion carried unanimously.

**ADJOURNMENT:** Motion by Desimone, second by Hicks, that there being no further business, the meeting be adjourned. Motion carried.

### editor's letters

Dear Editor:

Here we go again--we have Jeubala, Jeubalo and Jeubalum; seemingly all concerned about conserving energy by cutting taxes and increasing deficit spending to save the economy by calling for a \$100,000,000,000 budget for the next fiscal year. A classical example of spending our way to riches! All by DESIGN.

What is not generally known is that these three gentlemen are and have been associated with the Bilderberger Gangsters for years and that they would have a very hard time convincing any well informed person as to the real concern they might have for the Economic Welfare of our nation. All were appointed!

From their Zionist Affiliations, it would appear that they are dedicated to the One World Government and the total welfare of Israel. They keep saying, something about not ruling out the use of force in the Middle East (just which side are they on? When I say, They, I mean the Traitors who are directing our National and Foreign Policies.

It is very plain to see that the Zionist interests which fomented W.W.I and W.W.II, are determined to bring about W.W.III, in order to destroy our own Economies and to annex the Arab Nations to Israel, which they seemingly plan to Annex to Wall Street Babylon, as the 51st State!

This W.W.III, of course we would lose as we did the Korean and Viet Nam wars. The Bilderberger (Trilateral Commission) Groups, are determined to bring on a total World Conflagration, regardless of human sufferings, in order to further the British-Israel Movement, commensurate with a One World Government, based upon the Talmudian Standards--The

Standards of Sodom and Gomorrah!

These World Ringmasters divided the world into East-West Zion, prior to W.W.II and they have used Communism (English Fabianism) to turn one nation against another, they have stired up Minority Groups against their own Governments, they have set up Regional Governments to destroy National Governments thus liquidating State, County and Local Governing bodies. They see to it that the minds of men are divided between Left and Right Groupings.

They are using the Communication System to twist and to confuse the minds of men. They are using distortion and lies to destroy both the minds and the morals of the young during their school days. They are attempting to outlaw Christian Religion and bring about total equality of sexes and ownership or symbolism of Property Rights and Private Rights!

The One World Government was conceived by Satan and His Ringmasters are calling the shots. In Revelations 2:9, we are warned about the people who are of the Synagogue of Satan and those Talmudian Pharisees are being used to enslave the remaining 97% of the world's Freedom loving people today!

When and IF the people ever find out the TRUTH, they will rise up and totally DESTROY these World Conspirators because of the CHAOS they have wrought! It is fact that the evil of man (666) sets the fires of APOSTASY. Today we see Nations falling because of Corruption from within. By--Raymond Jarvis, 411 N. Hedgecote St. Borger, Texas 79007



## PLANTING CORN THIS YEAR?

### CONSIDER THIS:

Last year Pioneer brand seed corn was planted on more acres in the Texas Panhandle than all other brands combined. Why? Because the farmers of this area have had consistently better yields with Pioneer than with other brands. It's that simple. The big Pioneer varieties are 3306 and 3369A and 3368 is coming on strong. If you haven't booked the seed you intend to plant this spring, better call us right away. The demand for Pioneer corn may exceed the supply so don't put it off. Call or stop by today. Come harvest time you'll know you made the right move.



**PIONEER BRAND SEEDS**

**B & B Farm Industries Inc.**

659-2551 703 Collard

Performance of seeds of the crop produced therefrom may be adversely affected by factors beyond our control including environmental conditions, insects and diseases. The limitation of warranty and remedy attached to each bag of Pioneer brand seed is a part of the terms and conditions of the sale thereof.

### New Radio Program

A new radio program presented by the Perryton congregation of Jehovah's Witnesses will make its debut in Spearman Sunday, Mar. 16 on station KBFM-FM. It should be good listening for the entire family. That is because the purpose of the program is to stand by the Bible as a practical guide for our modern world. If it is a family-situation type program that covers just about every aspect of human relations and conduct: Parent and child relations, drug addiction, cheating in school, lying, alcoholism, honesty in business, marriage relations, vandalism and similar areas of social conduct and relationships that involve people in all walks of life. The program will be presented every Sunday afternoon at 1:00 on station KBFM-FM, 98.3 on the FM radio dial.

### SHUGART COUPON

Tues., March 18

521 Hwy 207 South  
Plains Shopping Center

**TG & Y**

9 WALLET SIZE COLOR PORTRAITS 99¢

ASK About Our FREE 8 x 10 OFFER

Extra charge for GROUPS

# Electricity... Still a good bargain

Sure, your total electric service bill may be higher today than it was in 1944, 1954 or 1964, but that's because you probably use electricity to operate many more household appliances than you did in those years. Actually the average annual residential rate per kilowatt hour has decreased. Just compare that to price increases of other items and you'll see electricity is a tremendous bargain today. With other household prices rapidly rising, you can quickly recognize electricity as one of the best buys in your budget. Wouldn't you like to be buying round steak, sugar, bread, coffee, eggs, milk, butter, U. S. Postage stamps and gasoline at 1944, 1954 or 1964 prices?

Year	Round Steak (1 lb.)	Sugar (5 lb. bag)	Bread (loaf)	Coffee (1 lb.)	Eggs (1 doz.)	Milk (half gallon)	Butter (1 lb.)	Electricity (1 KWH)*	Stamp (1st class mail)	Gasoline (1 gal.)
1944	\$ .45	.34	.09	.30	.64	.29	.50	.049	.03	.21
1954	.92	.52	.17	1.10	.60	.45	.72	.036	.03	.29
1964	1.07	.59	.21	.82	.57	.48	.76	.026	.05	.30
1974	1.78	2.08	.36	1.31	.84	.78	.95	.024	.10	.53

SOURCE: U. S. BUREAU OF LABOR STATISTICS, CONSUMER DIVISION  
\*Average annual residential rate per KWH of Community Public Service Company



Buy a delicious Texas-style Hungr-buster™ and get a cup of ice-cold Coca-Cola free Thursday, Friday, Saturday and Sunday at "Dairy Queen."

Hungr-buster™ A tender meat patty grilled to order, on a golden bun with your choice of lettuce, tomato, onions and mustard. Buy a Hungr-buster, get a cup of Coke free, at participating stores. March 13 through 16.

**Dairy Queen**

## New Edition Of Ice Capades Set For Amarillo

Ice Capades has presented the talents of many of the world's top skaters throughout its history, and this year is no exception, as you'll discover when the all-new edition opens at the AMARILLO CIVIC CENTER COLISEUM on Wednesday, March 19 for 6 performances through Sunday, March 23.

Swedish and Scandinavian Champion Ann-Margret Frei presents a deeply emotional solo in the spiritual number, "Celebration". The vivacious blonde shows the more carefree side of her skating personality in

the nostalgic production, "Sentimental Journey".

The elegant opening number, "S Wonderful", introduces lovely Adelle Boucher, a peaches-and-cream young lady from Boston with a captivating way on the ice. Stunning Sheri Thrapp, a California native, shows her winning ways in the production "Ding-a-Ling".

"Ding-a-Ling" also introduces the beautiful team of Dan & Lisa, an enchanting duo who present both adagio and traditional pair skating stylings. The elegant pair, Monta-

igne & Blake, thrill with the beauty of synchronized adagio moves in "S Wonderful" and "Sentimental Journey".

The men are also well represented in the spectacular new Ice Capades. Handsome Glenn Parriott performs a powerful solo to the sounds of Broadway music, and dynamic Rick Eathart is an electrifying highlight of the awe-inspiring production, "Atlantis".

Ken Shook, an acrobat on ice, portrays the role of "Mark" in the children's production, "Lidville".

Just for your funnybone, Ice Capades presents trapeze-diving expert Vic Zoble, the zany sailors, Stock & McDonald, and the hilarious team of Wes & Chris. A special attraction are the five Fenton children, who will amaze you with their acrobatic and skating skills.

For exciting entertainment filled with something for everyone, be sure to see Ice Capades for 1975.

Tickets are priced at \$3-\$4.00 - \$5.00 - for Adults, Youths, 16 years & under, 1/2 the regular adult price for Thursday

8 PM, Saturday 2PM and Sunday 2 PM. Performance times are Wednesday through Saturday 8 PM, matinees on

Saturday and Sunday at 2 PM. For Group and Ticket Information, Call Area Code 806, 372-4211.



ANN-MARGRET FREI  
CTL-75-B

# NOW!

## 8% - 28% REDUCTIONS on steel building orders entered before **April 2!**

These reductions are offered to you now ... in anticipation of a general increase in steel prices. We want to pass this information on to you ... hoping it might be helpful in a pending decision.

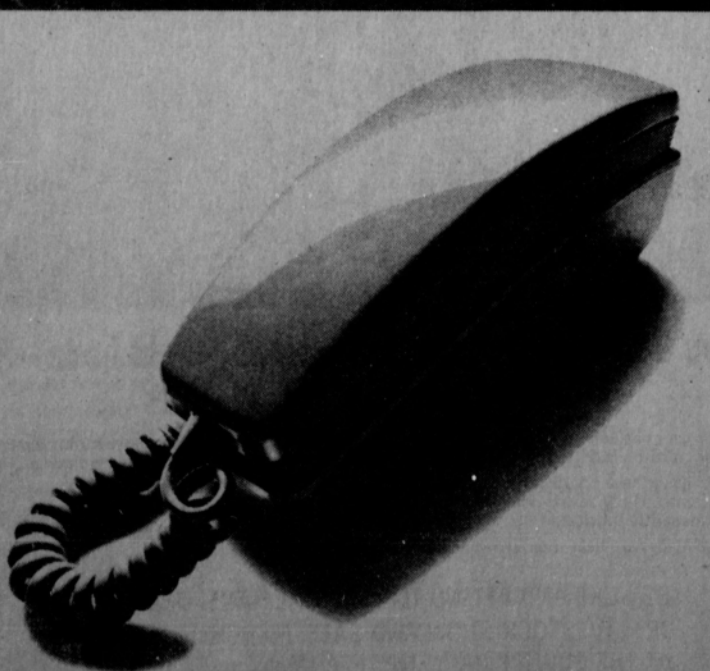
We would like to supply your building needs with MESCO'S versatility, economy and low maintenance.



See Dean Sims today, at his office in the LaMaster Agency, at 209 1/2 S. Main, or call 435-2625 or 435-2449. Be surprised at the quality of buildings and service offered by this new business in progressive Perryton and the High Plains area of Texas.

**MINIMUM DELIVERY TIME**  
on our steel buildings!  
Construction (weather permitting) can start with the date your order is entered.

## Use it anywhere. It doesn't yell "telephone!"



Show off your good taste with our sleek Styleline® phone. It puts everything in your hand: handset, dial and recall button—so you can make call after call without hanging up.

Wall and tabletop models, in your choice of eight tasteful colors. Call our business office today. Isn't it time you had a Styleline phone of your own?

Telephones aren't just to talk with.

**GTE**  
GENERAL TELEPHONE

### Our Heritage of Faith

notes from Faith Lutheran Church

We are looking forward to a very full week the last of March. Sunday, March 23 which is Palm Sunday will be Confirmation at Faith Lutheran. Five of our youths who have been going to class for two years will be received into full membership. They are, Tammy Bynum, Barbara Okman, Laura Nelson, Shellye Barnes, & John Reneau. This class will be honored at a congregational covered dish supper on

Tuesday evening, March 25 beginning at 7 pm.

On Sunday afternoon, March 23, the men of Faith will travel to Trinity Lutheran, Guyton, in order to take part in a double elimination dart ball tourney. The games begin at 2:30 and will last most of the afternoon. Trophies will be given to the winner of the season games; as well as to the winner in the tourney.

Tuesday, March 25, Pastor David Windbizini,

native pastor from Nigeria will be in the Spearman community. He has been made available to the school as they wish to use him during the afternoon. In the evening, he will be the guest of the Faith congregation at a covered dish supper beginning at 7 pm., with a program to follow the supper. We invite you to come and take part in this. The program will begin about 8 pm.

Good Friday, March 28, the congregation will gather for the Lenten Tenebrae with Holy Communion at 7:30. This is a solemn service of darkness which seeks to emphasize to us the depth of the suffering which our Lord endured on our behalf.

Easter Morn Worship will be Sunday, March 30 beginning at 9:30.

If you have no church home, we invite you to worship & study with us at Faith Lutheran. Morning Worship is at 9:30 with Sunday School at 10:30. There is no greater privilege that will ever be ours than to gather with the People of God in worship and study.

### Upward Trend Noted In Beef Consumption

Beef consumption for 1974 at 116 pounds per person appears to be just a shade above the previous 1972 record, according to the "Western Livestock Round-Up." Consumption in the first two quarters of 1974 was under the 1972 figures but the last two quarters were above both 1973 and the record 1972.

Per capita consumption for pork for 1974 appears to be a little over 66 pounds per person with supplies exceeding 1973 in each quarter of this past year notes the Round-Up.

Per capita consumption

of lamb and mutton is about 2 1/2 pounds per person, down slightly from 1973; and veal consumption is a little over two pounds per person.

Noted also was the fact that consumer disposable income at the end of 1974 was 8 to 8 1/2 percent more than a year ago. Even though unemployment is up, average and total incomes are higher. Increased food stamp programs also helped demand during 1974.

Consumers continue to spend a record amount of dollars for beef and for all meat. It appears that spending as percent of disposable income is close also to a record level. In the third quarter of 1974, 2.6 percent of disposable income per person was spent for beef and 4.1 percent for all red meat, the Round-Up concludes.

### Yarbroughs Host Social

The Young Married Class of the First Baptist Church held a social Friday night, March 7th in the home of Mr. and Mrs. Eugene Yarbrough for members and prospects.

Table games, cards and dominoes were played by those present.

Refreshments of sandwiches, chips, desserts, coles and coffee were served to: Mr. and Mrs. Ben Durham, Mr. and Mrs. Clayton Cochran, Mr. and Mrs. Jimmy Kunkel, Mr. and Mrs. Ronald Dunaway, Mr. and Mrs. Gary Gurfory, Mr. and Mrs. Rick Harrison, Mr. and Mrs. Lule Stewart, Mr. and Mrs. Bruce Wornble, Mr. and Mrs. Jerry Stafford, Mr. and Mrs. Boyd Dean, Mr. and Mrs. Buford Baker, Mr. and Mrs. Bobby Vallery, Rev. and Mrs. Russell Pogue, Mrs. Glen Gray, Mrs. Sonny Vann, Preston Graham and hosts, Mr. and Mrs. Eugene Yarbrough.

I WONDER who will win Grand  
Champion with their stock in the

## Hansford County Jr. Livestock Show Friday & Saturday

At The County Show Barn  
SPEARMAN, TEXAS

Sale time is 6:00 P.M.  
Saturday

## Hansford Implement

GRUVER  
JOHN DEERE  
SERVICE CENTER  
Spearman  
Texas

