









# BICENTENNIAL BONUS BONANZA

# 1000 EXTRA



An American way of thrift Since 1896

## ★ BICENTENNIAL BONUS BONANZA ★

### 1000 EXTRA



To our founding fathers, being thrifty was a way of life. It had to be. And for 80 of our country's 200 years, American shoppers have been following in that tradition by enjoying the extra value and valuable extra gifts of S&H Green Stamps. All...at no extra cost! And thrifter than that, you just can't get. So, for 1,000 Extra Stamps come on in and join our salute to America! To American shoppers! And to an American way of thrift! Pick up your BiCentennial Bonus Bonanza Sticker Card the next time you shop and start saving. You get a sticker with every \$10.00 purchase. Save any 24 stickers and be 1,000 Extra S&H Green Stamps thrifter...as many times as you can. Start today!

**JENO'S FROZEN PIZZA**

- PEPPERONI
- HAMBURGER
- CHEESE
- SAUSAGE

**78¢**

REG. 99¢

**GIBSON'S LOW FAT MILK**

GALLON CARTON

**\$1.39**

PLUS DEPOSIT



## GET 1000 EXTRA STAMPS WITH EACH FILLED CARD!

**U**

**UNITED**

PERRYTON, TEXAS

**SUPER MARKETS**

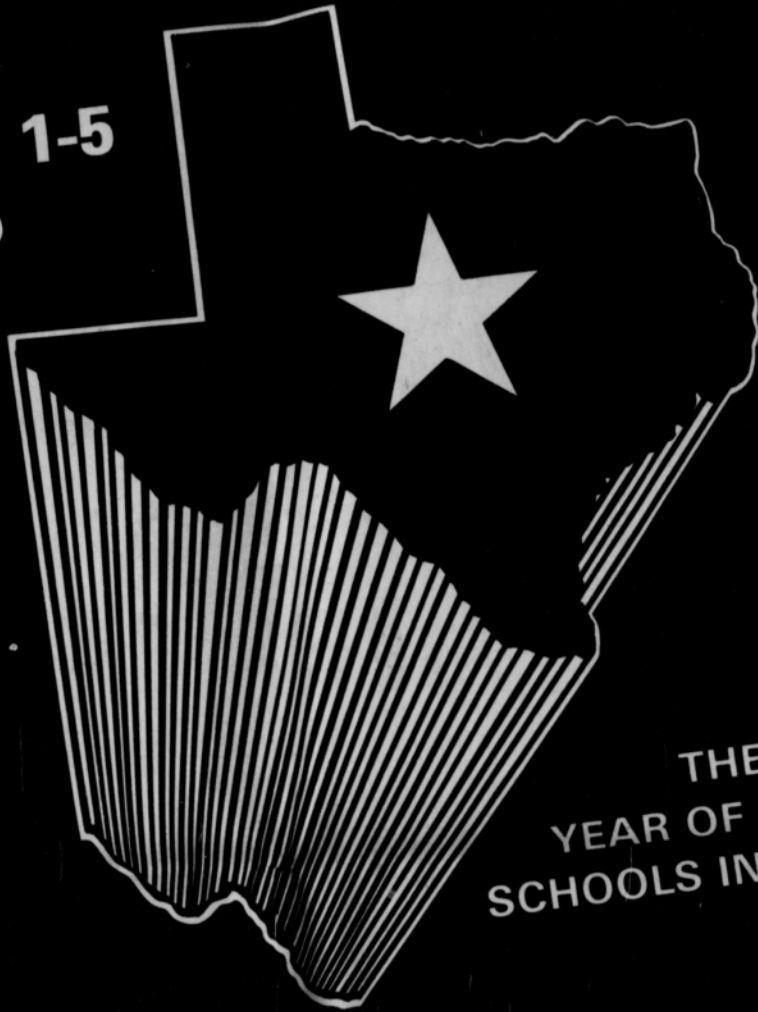
WE GIVE S&H GREEN STAMPS









# TEXAS ANNUAL PUBLIC SCHOOLS WEEK

MARCH 1-5  
1976



THE 122ND  
YEAR OF PUBLIC  
SCHOOLS IN TEXAS

<p><b>ALLSUPS</b> CONVENIENCE STORE OPEN 24 HOURS</p>	<p><b>Chambers</b> <i>Spearman, Texas</i></p>	<p><b>Martin's Steak Garden</b> <i>Spearman, Texas</i></p>	<p> <b>Hansford Implement</b> <i>Spearman, Texas</i></p>
<p><b>CONSUMERS SALES</b> </p>	<p><b>Hi-Plains Conoco</b> <i>Spearman, Texas</i></p>	<p><b>White House Lumber Co.</b> <i>of Spearman</i> </p>	<p><b>Booster Ag Chem. Inc.</b> Burl Buchanan, Manager <i>Spearman, Texas</i></p>
<p><b>Speartex Grain Co.</b> <i>Spearman, Texas</i></p>	<p><b>Jr. Lusby "Cats"</b> <i>Spearman, Texas</i></p>	<p><b>York Electric</b> <i>Spearman, Texas</i></p>	<p><b>Four Sevens Tractor Inc.</b>  MASSEY-FERGUSON SALES AND SERVICE TRACTORS-COMBINES COMPLETE LINE OF EQUIPMENT 659-2546</p>
<p><b>Gruver State Bank</b></p>	<p><b>R. L. McClellan &amp; Sons</b> <i>Spearman, Texas</i> <b>CASE</b></p>	<p><b>Daco Lease &amp; Well Service</b> <i>Spearman, Texas</i></p>	<p><b>EXCEL CHEVROLET-OLDS</b> CHEVROLET — OLDSMOBILE — JEEP <i>Spearman, Texas</i> Sales and Service Genuine Parts and Accessories</p>



### Still No County Agent

Hansford County still does not have a county agent, according to Judge John Lee. He stated that the former agent, Joe VanZandt was going to help with the upcoming Hansford County Livestock Show March 19 and 20, which will be held at the Agricultural Building in Gruver.

Judge Lee said that they had hired a man from Big Springs but he decided not to move here.

### SPORTS BULLETIN

23 teams will play at the community building this Sat. with games getting started at 10 a. m., and will play until 8 p. m. You are invited to see our local "kids" in action Sat.

**REPORTING HOUSE PLANTS**---Reporting house plants prepares them for the winter months as well as improves their overall performance. And now is a good time to take care of this task, says a landscape horticulturist for the Texas Agricultural Extension Service. Use a good soil mix of two parts each of garden loam and peat moss and one part of sand. Heat the mix in a preheated oven at 200 degrees F. for 30 minutes to kill disease organisms, insects and weed seeds.

### Nayoma Dozier Services Held

Services were held at 2:30 p.m. Wednesday at the First Christian Church of Gruver for Mrs. Nayoma Hoff Dozier, 65, who died Sunday in Liberal, Kansas. The Rev. J. W. Doke officiated and burial was in the Gruver Cemetery by Minton Mortuary. Mrs. Dozier was born in Texoma. She moved to Berger in 1936, and then to Gruver in 1960. Survivors include one son, Billy Ed of Salida, Colo.; one daughter, LaDora McPetters of Upton, Wyo.; a stepdaughter, Mrs. Sue Hinson of Gruver; her father, N. S. Jasper of Gruver; two brothers, S. E. Jasper of Beaver, Okla. and Ernal Jasper of Alpine, Calif.; one sister, Mrs. DeEtta Sharp of Alpine, Calif.; eight grandchildren and one greatgrandchild.

**NOTICE TO CB'ERS!**  
The Hansford Sheriff's dept will be running a CB call channel on 9 for your emergency calls etc. The Sheriff's dept. will monitor this channel at all times. Remember, Channel 9 if you need the Sheriff Dept.

## ATTENTION

Farmers Stockmen  
**PANHANDLE LIVESTOCK COMMISSION CO.**

Would like to announce a change in sale date. Auction will be held every Friday, starting March 5th, 11:00 A.M. C.S.T. If you have any consignments or need information on special sales, contact Bill Blackmore, 338-3378, H.W.Y. 54 NE Guymon. Home phone 349-2583.

# TG&Y

## FABRIC SHOPS

100% Polyester  
Lightweight

# double knit

58/60 Inches Wide

Beautiful prints on a lightweight, slinky 7 to 8 Oz. Doubleknit. Lovely combinations of spring colors for carefree, never iron fashions!

FULL BOLTS!

Reg. \$267

SAVE 30%

# \$187

YARD  
521 S. Hwy. 207  
Spearman

OPEN 9 TILL 9  
MON THRU SAT

OPEN 24 HOURS

# ALLSUP'S

## CONVENIENCE STORES

OPEN 24 HOURS

PRICES GOOD  
MARCH 1-13,  
1976

JOIN THE  
BIGGEST  
SALE OF  
THE YEAR!



SAVINGS STREET  
DAYS

QUALITY & VALUE  
thru-out our store



SHURFRESH SLICED  
**BACON**  
1 LB. PKG.

\$1.29

VACUUM  
PACKED



SHURFRESH FRANKS OR  
**BOLOGNA**  
12 OZ. PKG.

69¢

YOUR  
CHOICE

### SPECIAL GROCERY SAVINGS

### ALLSUP'S DAIRY FAVORITES

SHURFINE DINNER MACARONI & CHEESE 4 PKGS. \$1.00  
HAMBURGER SLICED PICKLES 32 OZ. JAR 59¢  
SHURFRESH SALTINES 2 16 OZ. BOXES 89¢  
SOFLIN PAPER TOWELS 2 JUMBO ROLLS 89¢

HALFMOON LONGHORN COLBY CHEESE 10 OZ. PKG. 89¢  
SWEETMILK OR BUTTERMILK BISCUITS 9 CANS \$1.00  
BORDEN COTTAGE CHEESE 24 OZ. CTN. 79¢  
SHURFRESH MARGARINE 3 LBS. 89¢



SHURFINE  
**FLOUR**  
5 LB. BAG

44¢

1st Bag With Coupon From Any Affiliated Foods Circular And An Additional \$7.50 Purchase Excluding Cigarettes - Thereafter Or Without Coupon 69¢



SHURFINE  
**SUGAR**  
5 LB. BAG

84¢

1st Bag With Coupon From Any Affiliated Foods Circular And An Additional \$7.50 Purchase Excluding Cigarettes - Thereafter Or Without Coupon \$1.09



SHURFINE  
**GREEN BEANS**

5 16 OZ. CANS \$1.00



SHURFINE  
**LIQUID BLEACH**

49¢ GAL. BTL.



SHURFINE  
**SHORTENING**  
3 LB. CAN

84¢

1st Can With Coupon From Any Affiliated Foods Circular And An Additional \$7.50 Purchase Excluding Cigarettes - Thereafter Or Without Coupon \$1.09



SHURFINE ALL GRINDS  
**COFFEE**  
1 LB. CAN

84¢

1st Can With Coupon From Any Affiliated Foods Circular And An Additional \$7.50 Purchase Excluding Cigarettes - Thereafter Or Without Coupon \$1.09

### FROZEN FOOD & GROCERY

ORANGE JUICE 4 6 OZ. CANS \$1.00

CRINKLE POTATOES 32 OZ. BAG 59¢

SHURFINE EVAPORATED MILK 3 CANS 89¢

SHURFINE FRUIT COCKTAIL 3 CANS \$1.00

SHURFINE CORN WHOLE KERNEL OR CREAM STYLE 4 16 OZ. CANS \$1.00

### HOT COOKED FOODS

- BBQ CHICKEN
- BBQ RIBS
- HOT LINKS
- MILD LINKS
- GERMAN SAUSAGE
- BURRITOS
- CORN DOGS

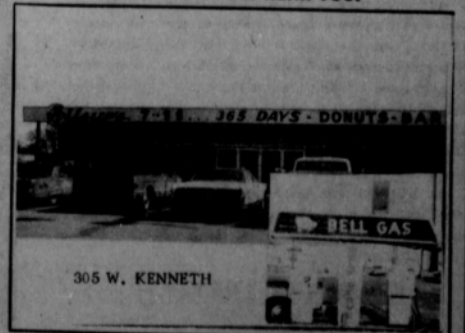
### FRESH PRODUCE SAVINGS



WASH. RED DEL. APPLES OR CALIF. NAVAL ORANGES  
MIX 'N MATCH 4 LBS. 79¢

GARDEN FRESH UTILITY POTATOES 10 LB. BAG 69¢

SHOP THE FRIENDLY, CONVENIENT ALLSUP'S STORE NEAR YOU!



305 W. KENNETH

STORE ADDRESS

# World Day Of Prayer Is Friday

Persons of all religious faiths are invited to participate in the observance and fellowship of World Day of Prayer which will be celebrated at 9:30 A.M., Friday, March 5 at First Christian Church, 29 S. Bernice. The worldwide service is sponsored by the International Committee for World Day of Prayer which has appointed Church Women United as the official sponsor of the Celebration in this country.

Those participating in this fellowship will be joining in a chain of prayer with millions of people in 169 countries. Members of nine local churches including Apostolic Faith, Assembly of God, Catholic, First Christian, Lutheran, Presbyterian, Seventh Day Adventist, Union, and United Methodist, will be leading the services prepared by women in Latin America reflecting their concern for "Education for All of Life". The narrow bonds surrounding the word "education" have been released, and the definition spills out into every area of life. Concrete situations, common to the lives of some Latin American women, form an integral part of the worship experience. The adult service offers a unique opportunity for a cross-cultural experience.

Women in local units of Church Women United in thousands of communities across the country will prepare in advance for the World Day of Prayer service. Part of their preparation will be dedicated to an inquiry into the true meaning of liberation in a world in which millions starve each year, millions live under repressive governments, and millions are deprived of a fair share of the earth's resources.

This will be the nineteenth year of the ever-widening ecumenical celebration of World Day of Prayer. On this day Protestant, Catholic and Orthodox women of many races and languages seek to make visible their unity in Christ and to share in an offering that will bring hope and aid to thousands around the globe.

Here in the United States the offerings go into a fund administered by the Intercontinental Mission Committee of Church Women United. Education has been a concern of participants in the World Day of Prayer from its beginning. Two dynamic church women established a day of united prayer after a visit to the Orient where they saw the great need of educating women and for Christian literature. In the early 1900's they raised \$3 million to strengthen existing Christian colleges and to found new ones for women in the Orient. Women's colleges in Asia and the Middle East continue to receive an annual grant from World Day of Prayer offerings. The Committee on Christian Literature for Women and Children, founded with World Day of Prayer gifts, also receives

an annual grant. In recent years emphasis has been placed on writers' workshops where women are trained to prepare literature related to their special needs in the areas of faith, family life, nutrition and development.

Annual gifts from the offerings are also made for a Christian ministry in our national parks; for scholarships for women through the World Council of Churches and to the International Committee for the World Day of Prayer for leadership training.

Offerings also make possible gifts for short-term projects often related to the Celebration theme. This year gifts are being made through Church World Service and UNICEF for projects in Niger, Malagasy Republic, and Bolivia to provide a safe and accessible water supply and a source of protein. Contributions are being made for legal defense and family assistance for political prisoners under repressive regimes; for political refugees from Latin America who need physical, psychological, and economic rehabilitation; and to projects helping women make their full contribution in their communities and nations, through programs such as the one in Goa, India, which enables rural women to articulate their needs, to seek and suggest solutions, and to receive training which will help them earn a living.

### Notice

The next Spearhead CB meeting will be Friday night, March 5 at 8 p.m. at the Boy Scout Hall.

### Arts & Crafts Guild News

The Arts and Crafts Guild met Friday, February 27th in the home of Mrs. F. J. Daily. Delicious refreshments were served by Mrs. Daily to members, Mesdames: Guy Fuller, Bill Gandy, Clay Gibner, F. J. Hawkins, P. A. Lyon, Joe Trayler and Ned Turner. Next meeting will be March 5th in the home of Mrs. Guy Fuller.

### BRIDGE CLUB

Mrs. Vi Whitson was hostess for the Hi-Lo Bridge Club Thursday evening in her home.

Mrs. Bill Gandy had high score and Mrs. Woodrow Gibner had low. Attending were three guests, Mmes. Gibner, Vema Gail Keim and W. B. Seitz. Members present were Mmes. Gandy, John Berry, Leonard Jameson, Gertrude Archer and the hostess.

## HD Club News

The Spearman Home Demonstration Club met Friday, February 27th in the home of Mrs. Tommy Reger.

Vice President, Mrs. A. D. Reed presided over the meeting in the absence of President, Altha Groves. Roll Call was answered to "A Favorite Gift I Received". Minutes of the previous meeting were read and approved.

Mrs. Frank Davis gave a Council Report. The club decided to help with the sandwiches for the Junior Stock Show.

Discussion was held on the baby shower for Agent, Nelle Evans, which was sponsored by the Hansford County Home Demonstration Clubs and the Home Demonstration Council.

Mrs. Frank Davis gave an interesting briefing on Big Thicket, a park in east Texas near Beaumont.

Refreshments of cake, tea and lemonade were served by Mrs. Reger to members, Mesdames: B. J. Gamett, Frank Davis, A. D. Reed, Colleen Shedeck, W. H. Tarbox and Virgil Hull.

Next meeting will be March 12th in the home of Miss Altha Groves.

### UMW NEWS

The United Methodist Women met Wednesday, February 25th at 12:00 noon in the Fellowship

Hall of the First United Methodist Church for a luncheon and business meeting.

Mrs. Dick Counts presided over the business. Rev. H. O. Abbott presented the program. He spoke on the upcoming Missionary Conference and General Annual Conference.

Mrs. Jock Lee read a poem entitled "Praying Hands".

Guests present were Mrs. Carl Reed and Ajith Fernando.

Members present were Rev. H. O. Abbott and Mesdames: H. O. Abbot, Dick Counts, Roy Jones, J. B. Buchanan, H. M. Shedeck, L. W. Rosenbaum, T. D. Sanning, George Buzzard, Russell Townsend, Jim Eakin, Jock Lee, Eldon Vemon, Sid Beck, Dennis Nelson, P. A. Lyon, Kent Guthrie, Garland Head and Ed Gamer.

Next general meeting will be March 24th at the church.

### Spearman Study Club Meets

The Spearman Study Club met Monday, March 1st in the B & B Friendship Room with Mrs. David Wilson and Mrs. James Jackson as hostesses.

J. D. Wilbanks presented a very interesting program on turquoise jewelry and displayed some jewelry he had made and purchased.

Mrs. Terry Schneider presided over the business meeting.

Discussion was held on the District meeting in Dalhart on April 2nd and

3rd. Registration will be from 9:00 A. M. till 1:00 P. M. on Friday, April 2nd.

Discussion was held on the Style Show and plans were made to meet April 2nd at 6:30 P. M. in the High School Cafeteria to decorate for the Style Show. Saturday, everyone is responsible for three dishes to be at the cafeteria by 11:30 A. M. The Style Show will begin at 12:30 P. M. on Saturday, April 3rd.

Dues need to be paid before May 1st. Guests present were Mrs. Bob Parker and J. D. Wilbanks.

Members present were Mesdames: George Young, Terry Schneider, Joe Close, Chester Martin, Clark Mites, Dan Truelove, Jerry Gee, David Wilson, Bob Collier, Bert Sheppard and James Jackson.

Next meeting will be April 5th with Mrs. Dan Truelove as hostess.



The Spearman Rotary Club met Monday, March 1st at Martin's Steak Garden.

President, Roy Bulls presided over the meeting. Guest, Mary Lou Wysong gave the program on the Labor Survey. She told why it was essential to take a labor survey since

Industries are now interested in small communities. Members present at the meeting were: Carrie Marie Berry, Roy Bulls, Archie Burress, E. J.

Copeland, Pete Fisher, Ed Gamer, Don Hergert, John Hutchison, Eddie Limbucker, Junior Lusby, James Lyon, Mark Neff, Coy Palmer, Bob Peason,

Don Wirsdorfer, John Lynn, and L. E. Thomas. Next meeting will be March 8th at Martin's Steak Garden.

# Congratulations TO THE LYNX & LYNXETTES

## We are proud of you and your fine record.

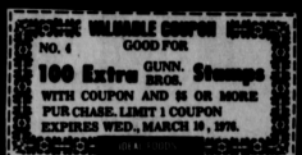
## from all of us at ELLSWORTH OIL CO.



## ALTON GULF SERVICE

WEEK NO. 4 OF OUR BONUS STAMP COUPONS JUST FOR SHOPPING AT IDEAL FOODS!

# 200 Bonus Gunn Bros. Stamps... With These Coupons



**IDEAL FOOD STORES**

THE HOME OF THIRTY-1 PRICES

CORN KING FULLY COOKED

# BONELESS HAMS

WHOLE ... 14 TO 17-LB. AVERAGE

## \$1.39

LB.

CORN KING FULLY COOKED

# Boneless Hams

HALVES

## \$1.49

LB.

---

**DON'T FORGET TO ...**

SEE OUR 12-PG. COLOR INSERT. IF YOU MISSED IT IN MONDAYS PAPER OR MAIL YOU CAN SEE IT IN YOUR NEARBY IDEAL FOOD STORE.

PRICES IN OUR 12-PG. SPECIAL CIRCULAR AND THIS AD ARE EFFECTIVE THRU SAT. MARCH 6, 1976. NONE SOLD TO DEALERS. LIMIT RIGHTS RESERVED.

**FARM-FRESH**

## Box-O-Chicken

RODEO MEAT OR BEEF

CONTAINS: 2-BREASTS QUARTERS, 2-LEG QUARTERS, 2-WINGS, 2-GIBLETS, 3 TO 4-LB. AVG.

**39¢** LB.

HEAVY MATURE BUTCHER BLOCK BEEF

## Boneless Chuck Roast

HEAVY MATURE BUTCHER BLOCK BEEF

**\$1.19** LB.

---

GORTON'S ROUND OR FANTAIL

**Breaded Shrimp** 1-LB. PKG. **\$3.39**

**Skinless Franks** 12-OZ. PKG. **68¢**

**Rodeo Assorted Luncheon Meats** 12-OZ. PKG. **99¢**

OSCAR MAYER MEAT OR BEEF

**Sliced Bologna** 8-OZ. PKG. **79¢**

OSCAR MAYER LIVER CHEESE OR **Luncheon Loaf** 8-OZ. PKG. **89¢**

---

**Del Monte Mix or Match Sale!**

- CUT GREEN BEANS
- FRENCH GREEN BEANS
- SEASONED GREEN BEANS

**4** 14-OZ. CANS **\$1**

**DEL MONTE LIGHT MEAT**

**Chunk Tuna** 6 1/2-OZ. CANS **2.95**

**DEL MONTE**

**Tomato Catsup** 12-OZ. BTL. **68¢**

---

DEL MONTE CREAM OR KERNEL

**Golden Corn** 3 14-OZ. CANS **89¢**

DEL MONTE

**Sweet Peas** 3 14-OZ. CANS **\$1**

DEL MONTE

**Tomato Juice** 48-OZ. CAN **48¢**

DEL MONTE

**Garden Spinach** 4 14-OZ. CANS **\$1**

DEL MONTE

**Fruit Cocktail** 3 14-OZ. CANS **\$1**

---

MACARONI AND CHEESE

**Kraft Dinner** 4 7 1/2-OZ. BOXES **\$1**

NORTHERN WHITE OR ASSORTED

**BATHROOM TISSUE** 4-ROLL PKG. **72¢**

MEAWNY ASSORTED

**Paper Towels** 48. JUMBO ROLL.

KRAFT SALAD DRESSING

**Miracle Whip** 12-OZ. JAR **88¢**

MEADOWDALE

**Shortening** 1-LB. CAN **94¢**

MEADOWDALE ENRICHED

**Flour** 5-LB. BAG **62¢**

ALL GRADES ... LIMIT-1 WITH \$1.50 OR MORE PURCHASE.

**Camelot Coffee** 1-LB. CAN **\$1.08**

# FAB

LAUNDRY DETERGENT

68-OZ. BOX **\$1.18**

"NIGHT BLOSSOM" FINE CHINA FEATURED THIS WEEK!

**Tea Saucer** 39¢ WITH EVERY FAB PURCHASE.

WE GLADLY ACCEPT U.S.D.A. FOOD STAMPS

SHOP IDEAL FOR SUPERLATIVE SAVINGS 7 DAYS A WEEK.

MEADOWDALE, ALL FLAVORS

**Ice Cream** 1/2-GAL. CTN. **82¢**

Thrift-1 Dairy Foods

SOFT MARGARINE

**Kraft Parkey** 1-LB. TWIN TUB **58¢**

KRAFT

**VELVERTA** 1-LB. TWIN TUB **\$1.68**

LIMIT-1 WITH \$1.50 OR MORE PURCHASE.

CAMELOT LARGE OR SMALL CURD

**Cottage Cheese** 4 8-OZ. CTN. **87¢**

---

FRESH CALIFORNIA NAVEL

**ORANGES** 5 LBS. **\$1.00**

FANCY RED DELICIOUS

**APPLES** 4 LBS. **\$1.00**

TEXAS RUBY RED

**GRAPEFRUIT** 5 FOR **\$1.00**

FRESH, CRISP FLORIDA RED

**RADISHES** 2 6-OZ. BAGS **33¢**

FRESH CRISP

Coll. Carrots 3 1/2-LB. BAG 39¢

TENDER, CRISP

Pascal Celery 1 1/2-LB. BAG 39¢

FRESH FLORIDA

Orange Juice 64-LB. JUG **\$1.19**

FRESH FLORIDA

Orange Juice 97.5-LB. CTN. **63¢**

PEAT MOSS 66-LB. BAG **\$1.69**

MEADOWDALE, ALL VARIETIES

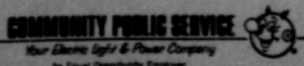
**Pot Pies** 4 8-OZ. PEGS **\$1**

## Got Spring Home Buying Fever?



## Cure it with a new Energy Checked Efficiency Home

Spring is the time when many families begin looking for their dream home. If you are thinking about buying, building or remodeling your present home, check into the advantages of an Energy Checked Efficiency Home. Any home which has passed Community Public Service Company's rigid energy inspection and displays the Energy Checked symbol can offer years of comfort, convenience, economical operation and lasting value. To qualify a home for this new Energy Checked Efficiency Home program, Community Public Service Company inspects the entire house, including insulation, attic ventilation, windows, doors and roof, plus the hot water system, installation of appliances, chimneys and the heating and cooling systems. The new Energy Checked Efficiency Home program assures the buyer that a house is constructed to utilize energy wisely and efficiently. If a new home is in your future ... put an Energy Checked Efficiency Home in your plans today. Multi-family residences, apartment complexes and existing residences may also qualify as Energy Checked Efficiency Homes.



Community Public Service  
Your Electric Light & Power Company  
An Equal Opportunity Employer