

'76 America's 200th - '76 Hansford County's 100th



The Spearman Reporter

VOLUME 67, NO. 12

THE SPEARMAN REPORTER, SPEARMAN, TEXAS 79081

THURSDAY, FEBRUARY 5, 1976

J.L. Brock named citizen of the year!



The "Citizen of the year" award was presented to J. L. Brock by Mark Neff. J. L. has done a great job for our community... we are all proud of this fine Spearman citizen!



All eyes were on Clark Mires at the annual Chamber banquet held in Spearman Saturday night. Mrs. Mires on the left, Clark, Mrs. John Hutchison and new President of the C. of C. John Hutchison.



This was the group that entertained for the Chamber of Commerce banquet Sat. nite. Judge Countiss, Karen, and Eddie Martin. They were all great.

Spearman is a very fortunate town. We have our own master of ceremonies in Clark Mires and our own entertainment in Karen Countiss, Eddie Gall Martin and Richard Countiss. These four, along with members of the Chamber of Commerce and the Women's Division of the Chamber of Commerce, hosted the finest banquet in the Chamber's history last Saturday night.

A full house was on hand for the annual Chamber of Commerce banquet which was served in the high school cafeteria. Rev. Don Windsorer gave the invocation, and the steaks were prepared by John Sutterfield and his committee. The cafeteria staff assisted with the meal and the serving was done by the FHA girls.

Hostesses were members of the Women's Division of the Chamber of Commerce and the decorations were made by Dorothy Roden and her committees.

Skits were presented by the Spearman High School Drama Club and their sponsor is Becky Stockdale.

Coy Palmer, Mayor of Spearman, introduced the 1975 Chamber president, C. D. Riggins introduced the 1975 directors and officers.

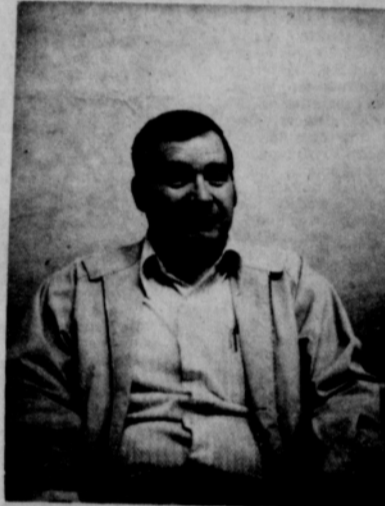
The presentation by the Rotary Club of the "employee of the year" was made to Mrs. Dickie Allen, school nurse, by Rotary President Roy Bills.

The 1975 Women's Division president, Elvanna Davis, presented the gavel to the incoming president, Mrs. John Sutterfield.

Entertainment by soloist Karen Countiss, and her husband Dick Countiss, narrated a historical review of our nation with Eddie Martin accompanying on the piano. The entertainment was outstanding and enjoyed by everyone.

Highlighting the evening was the awarding of the "Citizen Of The Year" plaque to J. L. Brock. He was given the award for his unselfish service to our community and this newspaper joins with the Chamber in congratulating them for picking this fine Spearman citizen for this award.

Lee Phillips Enters Sheriff's Race



Lee Phillips has authorized the Reporter-Plainman to announce his candidacy for the office of Sheriff of Hansford County, subject to the action of the voters in the May Democratic Primary.

Lee says in announcing for Sheriff "I am proud to say that I have served the people of Spearman and Hansford County as a public servant for the past thirteen years." Mr. Phillips began his public service on the Spearman Volunteer Fire Department where he has served as Fire Chief and Fire Marshall and is a certified fireman.

Chief Phillips began his law enforcement career with the City of Spearman as a patrolman. He was then employed by the late J. B. Cooke, Sheriff of Hansford County, as a deputy and had the honor of serving under him until his death in 1973. He is certified by the State of Texas in law enforcement.

He was appointed Chief of Police for the City of Spearman two years ago and presently holds this position.

Lee and his wife Nancy have two sons, Toby age 11 and Terry, age 8. They reside at 707 Collier Drive in Spearman.

He served in the service of his country in the U. S. Army and received an honorable discharge with the rank of Sgt.

Lee is a member of the Spearman Lion's Club, Spearman Volunteer Fire Department, International Association of the Chief of Police's, Texas Sheriff's Office Association, Texas Peace Officers Association, Texas Narcotics Officers Association.

Locally Chief Phillips works with the Spearman Little League, the newly formed K. I. D. S. of Spearman and the Boy Scouts of America.

In seeking the office as Sheriff of Hansford County Lee states, "I feel with my experience, training, and with my prior service in this department I am qualified to hold this office. I intend to make a sincere effort to visit with each voter in Hansford County your vote and support will be appreciated in this election."

Sheriff's Report

Sheriff R. L. McFarlin reported that the following suspects were tried in County Court before County Judge Johnny Lee and received the following sentences. For possession of marijuana, Randy Curtis Yunker received a \$175.00 fine, \$30.80 court cost and six months probation. Rob Blackwell for possession of marijuana received a \$200.00 fine and \$30.80 court cost, Ricardo Quintanilla received a \$200.00 fine, \$30.80 court cost and six months probation for possession of marijuana. Marilyn Hughes was released on \$1,000.00 bond while she is awaiting action by the Grand Jury for felony possession of marijuana. Alfred J. Burgdorf received a \$500.00 fine, \$30.80 court cost and six months probation for possession of marijuana. Norman Wayne Fredricks received a \$200.00 fine, \$30.80 court cost and six months probation for driving under the influence of drugs. Steven Lee Switzer, white male nineteen years old, and Daniel Emmitt True-love, white male eighteen years old, have both been released on \$3,000.00 bond each. At this time they are charged with breaking and entering the narcotics cabinet at the Hansford County Hospital. Charges have been dropped against Henry Flores for possession of Marijuana. Also charges have been dropped against a juvenile who was released to her parents. Ernie Richard Sandoval has been charged with felony theft and probation violation. Bond has been set at \$2,000.00 by Judge Johnny Pete Vernon. Sandoval is being held in Hansford County Jail awaiting action of the Grand Jury. Sandoval's charges stemmed from a C. B. radio taken from a car parked at Hergert Motor Company in the early part of January 1976.

Maude Rosson Services Held

Services were held at 2:30 p.m. Wednesday at the First Baptist Church for Mrs. Maude Valera Rosson, 70, who died Monday in an Amarillo hospital.

Rev. Russell Pogue, pastor, and the Rev. Don Windsorer, pastor of the First Christian Church, officiated. Burial was in the Holt Cemetery by Boxwell Brothers Funeral Home.

Mrs. Rosson was a native of Comanche, and had lived in this area since 1913. She resided in the Holt Community, south of Spearman.

Mrs. Rosson had written "The Holt News" for this newspaper for many years, keeping everyone informed of activities in that community.

She was a member of the First Baptist Church of Spearman.

She is survived by a sister, Mrs. Babe Pendergraft and a brother, Cecil Kirk, both of the Holt Community.

Homecoming Is Friday Night

Homecoming will be Friday, Feb. 6 at Spearman High School. The crowning of the king and queen will be between the girls and boys varsity games.

The SHS cheerleaders are sponsoring the activities. Mums may be purchased at Blackbum's Flower Shop for \$4.25.

A dance will be held at the high school cafeteria following the games. Cost is \$2.50 per couple, and \$1.50 stag.

Hospital News

Patients in Hansford Hospital are Clarence Pettit, Cynthia Floyd, L. F. Cook, Mae Rupprecht, Rose Beck, Myra Wilson, Margaret Shedeck, Hoise Renner, Ruth Skinner, Carolyn Gressett, James Ferguson, Kim Joyner, Clara Jackson, Bertie Lewis, Milton Brown, Albert Bakehouse, Shannon Canada, Debra Soapes and George Rupprecht.

Dismissed were Gene Cudd, Mae Floyd, Suste Spencer, Glen Mackie, J. E. Taylor, Carmen Ortiz and daughter, J. D. Faulkner, Claude Newell, Marjorie Evans, Doris Pyle, Vera Wroten, Michael Messer and Rae Butler.

Two More Men File For Commissioner's Race

More filings for county races were made before the deadline Monday, Feb. 2 at 6 p.m.

Two men filed for commissioner's in Precinct 1 and 3. James Kenney filed for Commissioner

Precinct 1 and L. M. Womble filed for Commissioner Precinct 3.

Voters in these two precincts will have the following candidates to choose from: James Kenney, Garland Head, Roscoe Nelson, Ray

Phelps in Precinct 1, and in Precinct 3, candidates are B. J. Renner, Robert Ferguson, Dan Desimone and L. M. Womble.

The sheriff's race has two candidates, incumbent R. L. McFarlin and Lee Phillips.

County Attorney J. E. Blackbum and County Tax Assessor-Collector, Helen Dry, both incumbents are running unopposed.

Willard McCloy, Tommy Gunfory, and W. L. Johnson have filed for precinct chairmen.

Carl Archer, filed for County Democratic Chairman.

Date for the primary election is May 1.

In the 64th District State Representative race, Democrats Mrs. Leo (Daisy) Moore of Dalhart and William C. Jackson of Canadian have filed and incumbent Republican G. R. (Bob) Close has filed for re-election.

In the 19th District House of Representatives race, incumbent Jack Hightower, Democrat has filed for re-election and he is opposed by Republican Bob Price, who he defeated for this post two years ago.

K.I.D.S. Board Meeting Held

The K. I. D. S. board meeting was held Monday night, Feb. 2 in the city hall. Board members and officers discussed the renovation of the Community Building for the K. I. D. S. basketball program.

Sixty-six young people were in attendance the first night. The program is open to both boys and girls kindergarten age and up.

Coaches have been named for each team but more coaches are needed for these teams. Interested persons should contact Charles Littlejohn for time, etc.

The group also discussed the success of the recent K. I. D. S. wrestling program which had approximately 70 boys competing in various age groups.

A pancake supper is in the planning stage by the group in an effort to raise money to fund the different activities of K. I. D. S.

MARKETS

WHEAT	\$3.47
MELO	3.95
CORN	2.52

Book Available For Tole Painters Arts & Crafts Bi-Centennial Plans For Our County



For the many tole and decorative painters in the area who are interested in learning how to decorate wood or tin in the method of early painters, there is a new book on the market. This is a very informative book on Early American country tin painting only.

To those in search of an interest to relieve minds of present tension and teach something of our country's past, there is no pastime which offers more opportunity than learning to paint in this method.

A few in this community have already ordered and received this book, but for those who have not seen one, nor heard about it, a description follows:

This large 9 x 12 profusely illustrated book is an excellent manual for the teacher as well as the student. A history of Tinmith and Peddler introduces the text. Then follows instruction on how to be a good teacher, set up lesson plans and how to conduct classes. Chapters are titled: The design, Color and Paints, Brushes and Their Care, The All Important Brush Stroke, Preparation of Wood and Tin, and many more. In fact all the hints and necessary information to produce the finished article are discussed in detail.

The work section includes a line drawing of a pattern with color-

keyed lettering, a description of the original from which the pattern was taken, step-by-step painting directions with a half page color picture of the original. In all, there are 34 patterns with instructions and color pictures, all from antique originals. This makes the book outstanding for both teachers and students.

The title of the book is A QUARTER CENTURY OF DECORATING AND TEACHING COUNTRY PAINTING and is by Dorothy Dean Hutchings. The author, a member of The Historical Society of Early American Decoration, has for the past 25 years, spent time teaching, lecturing and exhibiting for various historical societies. She has worked diligently over the years to meet the requirements to become a master craftsman. She has faithfully recorded over 3,000 authentic patterns and has in her collection over 200 pieces of original decorated ware. She has achieved the ultimate goal--that of the master teacher. Her home is in New York state, but she spends the long winter months at her home and studio in Tucson, Ariz.

She has just published what probably is the best, and only, book on country tin painting now available. This book may be purchased from the author Mrs. Dorothy D. Hutchings, 1509 West Delano Drive, Tucson, Arizona 85705 for \$12.95.

Arts & Crafts Guild News

The Arts and Crafts Guild met Friday, January 30th in the home of Mrs. Joe Traylor.

Delicious refreshments were served by Mrs. Traylor to members, Mesdames: Clay Gibner, W. L. Russell, F. J. Dally, P. A. Lyon, Garrett Allen, Deta Blodgett, Guy Fuller, Ned Turner and Pope Gibner.

Next meeting will be February 6th in the home of Mrs. W. L. Russell.

Citizens of our community along with many others throughout this great country have made and are making plans for our bi-centennial celebration.

The theme of the Hansford County Bi-centennial is "Tascosa Dodge City Trail". General Chairman is C. A. Gibner. There are three divisions which include Heritage '76, chairman, John Hutchison. Organizations under the chairmanship of Hutchison include the Historical Society, Spearman Study Club, Spear-

man F. H. A., Gladola Flower Club, City of Spearman, and Baker & Taylor Women's Auxiliary.

Festival '76 chairman is Mary Brock and organizations under her supervision are Xi Zeta, Women's Division of the Chamber of Commerce, Dahlia Flower Club, Home Demonstration Clubs, Earl Riley (Wagon Train), Spearman Choir, Band, Grade School Music Departments, Spearman Music Club, all school principals and Girl Scouts.

Horizons '76 Chairman is Ruth Shaver and organizations in this category are the Historical Society, Rho Rho, Twentieth Century Club, Spearman Jaycees, Rotary, Lions Club, Hansford County, Chamber of Commerce and the Boy Scouts.

The project of Heritage '76 are the oral recording of pioneer citizens of Hansford County; compiling picture albums of the people and places of Hansford County, to go with the oral tapes. These will be placed in the Hansford County, to go with the oral tapes. These will be placed in the Hansford County Library. Publishing a book on the History of Hansford County and its pioneer families, to be completed in the fall of 1976 is another project and updating the Hansford County Historical Map is also on the agenda.

Horizons '76 plans to work with the Hansford Historical Society on the Museum which will be completed in 1976; construct dioramas on the last Battle of Adobe Walls and Zulu Stockade in the new museum and to piece his-

torical paintings of the County in the museum and library, emphasizing the stages of our County from the buffalo hunters to the oil boom, irrigation and feed lots.

Festival, U. S. A. projects include having all clubs to have patriotic

programs; the Rolling Plains Mule Train will travel to Philadelphia, arriving on July 4, 1976; the Dahlia Flower Club's annual Arts and Crafts show will display articles pertaining to our heritage in the fall of 1976; the Hansford Roundup, June, 1976, will encourage

area citizens to attend and celebrate the birth of the Panhandle area; on July 4, 1976, our Nation's 200th birthday, we will celebrate by having church services, community singing, family picnics, and the grand finale will be the annual fireworks display; on Veteran's Day the schools will present a patriotic program; compile a history of the county churches.

Our Heritage of Faith... notes from Faith Lutheran Church

February 6-7 the Panhandle Conference Retreat is being held in Amarillo. This is an opportunity for clergy and lay leaders to share in the ministry of Christ. We hope that many can attend even if it is only Saturday. It is important to represent Faith and to grow in awareness of the larger church organizations.

February 8th at 5:30 Faith is having a Congregational Potluck Supper. This is a time for fellowship and sharing. Please everyone come and bring the family. There will be some sort of program presented. Also bring food to share.

On the 9th the men will again challenge Oslo in dartsball. This could be the most important game of the year for the championship is at stake. The game will be at Oslo at 8:00. Remember all men are welcomed to join in this activity.

7:30 Wednesday the 11th the Faith Lutheran Church Women will have their monthly meeting. Leader is Josephine Schneider, devotion Selma Reneau, and Hostess Linda Loewenhagen.

This past week Pastor Andersen and Intem Bruce Loewenhagen went to a theological conference in Sequin, Texas at Texas Lutheran College. We found the conference to be rewarding even though the trip down and back was quite long. The topic of the conference was "Ministry" and almost all of the Pastors and Intems in Texas were there, probably over 200 of them. The topic included such areas as renewal, support, theological foundations, self study etc. Many times Pastors find themselves in a rut depressed and discouraged about the ministry. The conference gave support, ideas to help, and goals to set for. Pastors are very human and have the same needs and desires as other people. For instance, "fair pay for a fair days work", "to consider oneself as a Pastor but also as a professional person."

Another problem if the congregation or the Pastor himself has a low image or esteem for the Pastor then low or poor work and ministry will occur. These and other areas were discussed with many different opinions expressed. It was a worthwhile experience. If you have no home of worship we invite you to attend Faith. Worship is at 9:30 and Sunday School at 10:30.

Swallow your pride occasionally, it's non-fattening.

Progress walks Indian file behind the guy willing to stick his neck out.

Slave Sale Planned

The United Methodist Youth has scheduled a Slave Sale on Feb. 7 from 9 to 5. The young people say they will do any jobs that they are called on to do. If you want to hire one of these "Slaves" call the Methodist Church or Western Auto.

Your wheat may be hungry for sulfur.

Soil tests are showing an ever increasing need for sulfur when growing wheat. This important building block of protein is essential for protein formation in wheat. Sulfur shortage can also reduce yields. And while sulfur is one of the least recognized deficiencies, it is one of the most prevalent problems in wheat today. In fact, the pale appearance that is often suspected as nitrogen deficiency in wheat, may actually be sulfur deficiency.

If sulfur is a problem in your wheat, it's no problem supplying it with ARCADIAN liquid. Just see us. We can add sulfur to a complete preplant liquid fertilizer made the SLF way. Or we can add sulfur to URAN nitrogen solution for topdressing.

And when the sulfur goes on in liquid fertilizer, you'll get the accurate, uniform distribution that only liquids can give. So for all your wheat fertilizing needs, including sulfur, see us for fast, efficient, effective fertilizing the ARCADIAN liquid way.



Booster Ag. Chem., Inc.

435-3546

Burl Buchanan Manager

659-3159 or 659-3367

Prices good Thurs., Feb. 5 thru Sat., Feb. 7, 1976

BIG FOOD VALUES

Compare Our Prices!

LOIN TIP ROAST \$1.09 LB

BEEF RIBS LB 39c

STEW MEAT LB 79c

ROUND STEAK ROAST \$1.09 LB

ROUND STEAK \$1.19 LB

PIKES PEAK ROAST

\$1.09

RUMP ROAST

93c

Sirloin STEAK

\$1.39

T-Bone Steak

\$1.39

GROUND CHUCK

2 Lbs. \$1.48

Apples

59c

3# BAG

Lettuce

17c

LB.

POTATO CHIPS

Morton's Twin Pak

69c

CORN

Food King Golden 303 Can

3 For 89c

Tenderized STEAK

\$1.29

LB

Loin Tip STEAK

\$1.39

LB

Saltines Shurfresh

57c

1 Lb.

Bathroom Tissue

99c

8 rolls

Tide

\$4.29

Family Size Only

COLD POWER

\$1.19

Giant

Fried CHICKEN

\$2.39

Whole

BEANS

Quart \$1.09

Pea Salad

Pint 79c

HUNTS TOMATO JUICE

46 OZ. CAN

59c

M & M Grocery

No. 1
202 N. Bernice Spearman, Texas
659-3234



Boxwell Bros.
Funeral Home and Flower Shop
Day-Night Phone 659-2212
Spearman, Texas

Listen To
Harvest Time
9:00 A.M. SUNDAY KBMF
United Pentecostal Church Sponsor

YOUR LOCAL USED COW DEALER: Spearman Bi-Products. Seven days a week dead stock removal. Please call as soon as possible. 659-3644. 8-rm

Hansford Lodge
1040 A.F. & A.M.
EA Degree Monday, Jan. 19 7:30 p.m.

SERVICES
Hansford County Planned Parenthood 28 S. Haney 659-2483
Spearman Mon. - Fri. 8 A.M. to 12 Noon 305-rm

Custom fertilizing and any type of farming. W. B. Barnes 659-3493

Alcoholics Anonymous Meeting every Tuesday, 8:00 P.M., at the Girl Scout Little House, 22 S. Endicott. Call 3394 or 2762 for information. 4S-rtn

KIRBY SALES & SERVICE of Spearman, 912 S. Bernice. 659-2797. 30-rtn

MARY KAY COSMETICS, Call 659-2119. Malolah Fullbright. 32S-rtn

GRADER, Dozier, and Drag Line work. Call Lee Roy Mitchell, Gruver, 733-2384. 28-rtn

Moonlight Janitorial Service. Call for free estimate. 659-2067. 7-rtn

PORTABLE DISC ROLLING. BALLARD'S, 935-8229, Dumas, Texas. 48-rtn

For your Shaklee Products call Eileen Sutherland at 659-2082 after 5:00.

FOR SALE: 1968 Winchster trailer, 10x55, 3 bedrooms. Reasonable. Call 733-2370, Gruver, after 6:00 P.M. 11S-1tc

FOR SALE: 1965 Chevrolet dual axle tandem truck. Call 435-2575, Perryton. 11-4tp

Bare root shade and fruit trees now arriving-plant now while dormant for early spring growth. House plants, hanging baskets & pottery. Ochlireo Growers, 8 miles south of Perryton on Hwy 70. Phone 435-3545. 1-8tc

WANTED: Experienced electrician. Apply at Anthony Electric. 8S-rm

Legal Notice
1969 Ford Bus for sale. Taking sealed bids. Supt. office Morse ISD Box 109 Morse, TX 79062. We reserve the right to reject all bids. 10S-4tc

Political Announcements
The Reporter-Plainman is authorized to announce the candidacy of the following candidates for public office, subject to the action of the voters in the May Primary Elections.
FOR COUNTY COMMISSIONER
PRECINCT 1
Garland Head
Roscoe Nelson
PRECINCT 3
B. J. Renner
Dan Deslmon
FOR SHERIFF
R. L. McFarlin
Lee Phillips
FOR STATE REPRESENTATIVE 64th DISTRICT
G. R. (Bob) Close
Mrs. Leo (Daisy) Moore
Bill Jackson

FOR SALE: Nice 3 bedroom home, many extras including carpets, drapes, dishwasher, central heat and air, large storm shelter, fenced yard. Shown by appointment. Emmett R. Sanden, Realtor. 659-2516, nights 659-2601. 4S-rm

FOR SALE: An older 3 bedroom home. Carpeted. Dishwasher. 659-3272. 5-rm

FOR SALE: 3 Bedroom House on corner lot. 907 S. Archer. Call Wayman Edwards 659-3292 for appointment. 8S-rm

Card of Thanks
We wish to express our deep and grateful appreciation for all the prayers, cards, flowers, food and kindness shown to us during the illness and passing of our loved one.
We are especially grateful to Dr. Kleeberger and the nurses at Hansford Hospital.
The family of Dr. D. E. Hackley

CUSTOM FARMING WANTED
Tommie White
Phone 659-2208
Spearman, Texas

ELECTROLUX VACUUM CLEANERS
Authorized Dealer
Parts, Service & Supplies
For free demonstration call
659-2415
or see at 408 E. Kenneth.

FOR SALE Used T.V.'s
Call 659-2663 or 659-3363
Color or B&W

SEWING MACHINE SALES AND SERVICE
AUTHORIZED DEALER
NECCHI-ALCO
For FREE Demonstration
Call 659-2415 or see at
408 E. Kenneth
Parts and Service on all makes

FOR RENT
FOR RENT: Furnished apartment, 303 Davis. Phone 659-3792. 51S-rtn

FOR RENT: Trailer spaces. Call 3529. 7-rtn

LBL Trailer Spaces - \$40 Monthly. 50' x 150' Lots. Call Manager 659-2817. 48S-rtn T only

Trailer Space. \$30.00 monthly. Call 2404. 7S-rm

WANTED
Large international company doing business in United States and Canada is in need of District Sales Managers, Distributors, as well as part time or full time Sales Representatives in Texas. Do not answer unless you have recent agricultural background, are honest, ambitious and want to go ahead with a fast growing company and earn the top dollar. Should you qualify, interview will be arranged. Apply at once to the Nations Plant Food Company, 421 Leader Street, Box 500 Marion, Ohio 43052. Attention: Robert Knight 12-9RT

Bowling News

FRIDAY MORNING PIN BENDERS 1-30-76

Cinderella	W L
Brock Ins	53 23
McClellan Gm.	48 28
Sprmm. Spr. Ser.	44 32
Farm Bureau	36 40
Dairy Queen	29 47
Bowl Mor	28 48
Vernon's	24 52

HIGH TEAM GAMES
Cinderella 1487
Brock Ins. 1465
Sprmm Spr. Ser. 1441

HIGH SERIES
Patty Spoonemore 566
Pat Hamilton 538
Joyce Frost 516

HIGH IND. GAME
Pat Hamilton 217
Joyce Frost 206
Penny Thomas 202

THURSDAY NIGHT MIXED LEAGUE 1-29-76

Merchants	W L
Hogan & Villines	14 2
Spiman, Ind. E.	9 7
Kenda & Gray	9 7
Anthony Elec.	8 8
Hans. Imp.	7 8
Kelp & Woolley	5 10
Spearman Rex.	2 4

HIGH TEAM SERIES
Anthony Elec. 1726
Spearman Ind. En. 1723

HIGH IND. GAME
Anthony Elec. 623
Sprmm. End. Eng. 586
Merchants 584

HIGH SERIES MEN
Tommy Reger 526
Verlin Behne 523
Tony Villines 485

HIGH GAME MEN
Verlin Behne 196
Verlin Behne 189
Tommy Reger 188

HIGH SERIES WOMEN
Judy Evenson 506
Anita Falkner 438
Sharion Cook 430

HIGH GAME WOMEN
Judy Evenson 190
Anita Falkner 179
Sharion Cook 167

MONDAY NITE SCATTER PINS 2-2-76

Equity	W L
Co-op	70 14
Anthony Elec.	61 22
Baker & Taylor	45 38
Martins	40 44
Excel	30 54
Evelyn's	29 55
Shelton's Gulf	22 62

HIGH TEAM GAME
Equity 1866
Co-op 1803
Evelyn's 1775

HIGH SERIES
Patty Spoonemore 578
Joyce Frost 490
Rita Reed 461

HIGH IND. GAME
Patty Spoonemore 202
Patty Spoonemore 193
Patty Spoonemore 183

Girl Scout News
Junior Troop #78 met Monday, February 2nd in the Girl Scout House with leaders, Mrs. Jim Davis, Mrs. Tommy White and Mrs. Ralph Bynum.
The girls worked on their Valentine Sweetheart Banquet decorations and discussed the cookie sales.
Refreshments were served by Angela McCain to members, Cindy Burton, Debbie Burns, Penny Cummings, Jan Davis, Jean Davis, Lori White, Sonya Ooley, Lana Paul, Yvonda Scroggs, Myra Briscoe, Janet Reed, Rebecca Evans and Karen Tarwater.
Next meeting will be February 9th at the Scout House with Janet Reed as hostess.

O. J. ROOK
PHONE 274-4968
PAINTING-INDUSTRIAL RESIDENTIAL
FREE ESTIMATES
ACOUSTICAL CEILING
CARS AND TRUCKS

Junior Troop #120 met Friday, January 30th in the Girl Scout House with leaders, Ms. Junior Hansen and Mrs. Raymond Flores.
Discussion was held on the Sweetheart Banquet February 13th in the Junior High Cafeteria.
The girls worked on their Hospitality Badges and Nita Baker and Shenell Phelps completed work on their badges by preparing and serving refreshments and setting the table.
Members present were Ima Flores, Cynthia Hendrick, Teresa Myster, Shenell Phelps, Tonya Sexton, Tammy Welch, Sandra Younger, Nita Baker, Traci Stewart and Christi Dossert.
Next meeting will be February 6th at the Scout House.

HAPPY BIRTHDAY
We would like to say "Happy Birthday" to the following people who will be celebrating their birthday in the month of February.
They are: Ann White, Michael T. Davis, Don Bell, Tim Spoonemore, Baffle Lynne Blodgett, Pip Craig, Todd Ware, Gretchen Thompson, Doris Kitchens, Crystal Carson, Cody Pipkin, Dorothy Cator, Larry Irbeck, Cindi Creamer, Dennis Cline, Mike Countiss, Dorothy Kams, Verlin Beck, Al Tucker, Harold Shaver, Doris Breden, Paul Garza.

Jackie Peaton, Butch Butler, Tammy Robertson, J. Travis Garnett, Kari Schumann, Craig Schumann, Jo McAdams, Denise Benton, Mrs. Velma Roden, James Hargis, Mae Hargis, Jana Jo Hawkins Allen Pierce, Shelly Strawn, Christy Collier, Mary Dixon, Carroll Cook, Kristi Wright, Shirley McCoy, Valerie Hagerman, Leslie Alexander, Nick Nelson, Laura Umphress, Ti Harbour, Laura Nelson, Sha'rie McCoy, Lynda Owens, Lea Ann Gibner, Mark Guthrie, Ed Pogue, Carla Jo Higgins, Jack Oakes, John Eldon Antalek, Edd Mayfield, Raul Ortega, J. C. Hickerson, Tony Davis, Deanna Baker, Paul Reimer, Seth Ralston, Daniel Truelove, Mark Largent, Delinda Scroggs, Adam Holladay, Mike Brown, Leslie Sue Platt, Don Schmehr, Lynna Renner, Shane Swenn, Billy Boatwright, Margie Schubert, Carroll Harper, Cynthia Jenkins, Sharon Sutton, Sammy Don Jones, Rae Butler, Jan Fowler and Karen Countiss.
Those celebrating their anniversary are: Mr. and Mrs. Paul Garza, Mr. and Mrs. Jerry Floyd, Mr. and Mrs. Darrell Tope, Mr. and Mrs. Travis Davis, Mr. and Mrs. Vancil Hill, Mr. and Mrs. Perry Dixon, Mr. and Mrs. Omar Sutton, Mr. and Mrs. Hoyt Biles, Mr. and Mrs. Dick Hudson, Mr. and Mrs. Harold Shaver and Mr. and Mrs. Gilbert Salgado.

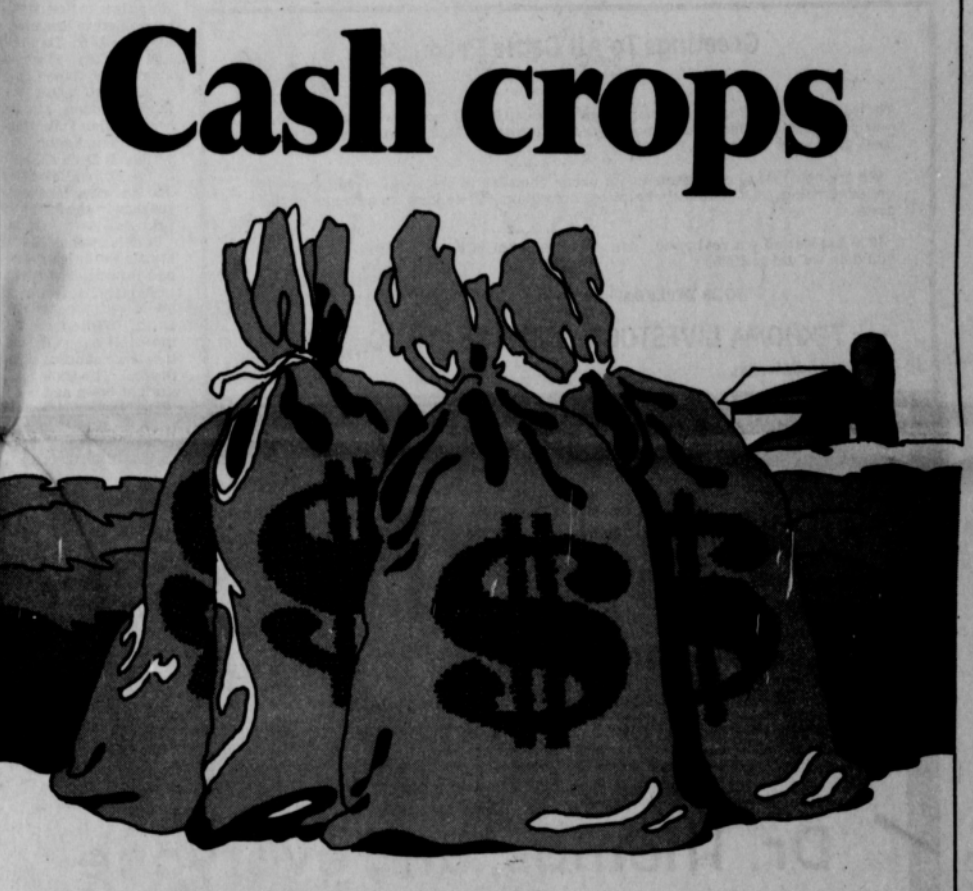
★ **TEXAS PRESS ASSOCIATION**
MEMBER 1975

Spearman REPORTER
213 Main Spearman, Texas 79081 Box 458 659-3434
Published Weekly at 213 Main Street Spearman, Texas 79081
Owner-Publisher.....William M. Miller Second Class Postage Paid at Spearman, Tex.

Any erroneous reflection upon the character of any persons or firm appearing in these columns will be gladly and promptly corrected upon being brought to the attention of the management.
SUBSCRIPTION RATE -- Hansford, adjoining counties, combination with the Hansford Plainman, \$10.92 Tax included. Other points \$15.12 Tax included.

FOR THE ULTIMATE IN STORM DOORS
CUSTOM BUILT, DESIGNED, AND IN COLORS TO FIT YOUR HOME. . . .
CONTACT **HOWARD MOYER AT ONLY ALUMINUM INDUSTRIES**
405 338-6966 or 338-6170
P. O. BOX 471
GUYMON, OKLA. 73942

France was the first country to recognize the United States of America. The worst cliques are those which consist of one man.



Cash crops Farming Loans

Cash Crops farming loans cover the field—and the barns, the livestock, the machinery. Whatever farming need you have, we'll raise the money for you and arrange convenient terms. What's more, our farming-loan expert may be able to give you some new information on the agricultural scene. Our farmhand has a very green thumb. Get yourself a Cash Crops loan. 'N that ain't hay!

EVERYBODY'S BANK
IN A GREAT BIG WAY

FIRST STATE BANK

SPEARMAN, TEXAS 79081

FDIC

SM—© 1974 Leon Shaffer Goinick Adv. Inc.

YORK ELECTRIC
PHONE 659-3625
WE DO ALL TYPES OF ELECTRICAL WIRING...
WE WANT YOUR BUSINESS...
Downtown Spearman
SPEARMAN, TEXAS



Dickie Allen received the employee of the year award from Roy Bulls. Karen Countiss is pictured on the right.

foot in depth. The next morning the sun came out early and snow lay up on limbs and fences 12" deep.

They had dinner one evening at The Heritage House with a Bi-Centennial Atmosphere, overlooking the Atlantic Ocean. It was quite different for them and enjoyable.

Holt News

Denise Bemer, student at W. T. S. U. at Canyon spent the week end at home with her parents Mr. and Mrs. Wallace Bemer and Ed.

Dot Jenkins who has been with her sister Norma McCarty in Wichita Falls during her sickness returned home Monday. Norma is doing well.

Doyle and June Jackson and son Terry drove to Amarillo Saturday afternoon and had supper with Mr. and Mrs. James Christopher.

Mrs. Wayne Porter from Canyon is a house guest of her son and wife Mr. and Mrs. Larry Porter.

Mrs. D. W. (Dan) Jackson is in the Hansford Hospital yet and is doing as well as can be expected at this time. We hope she is able to go home soon. Mrs. Jackson appreciates cards from her friends.

Mr. and Mrs. Jerrell Harris from Olatha, Colorado visited over the week end with her mother Mrs. Fronye Close in Spearman. They also visited her brother Joe and Linda Close and family and the Harris's daughter Mike and Susan Innis at Canadian before returning home.

A group of people gathered at the Holt School house Saturday evening for a get-together and "42" Party. Those attending were: Phil and Marguerite Jenkins, Wesley Jenkins, Raymond and Grace Kirk, Loyd and Virginia Poole, Doyle and June Jackson, O. C. and Louise Holt, Waymon and June Edwards, Richard and Karen Kirk, Nolan and Georgia Holt, Britt and Linda Jarvis, Jon and Johnnie Jarvis, Marvin and Ruth Ann Jones, Larry and Gail Porter, Verlin and Audine Beck, Mike and Sue Holt, Wally and Myra Bemer, Randy and Teresa Kirk, J. B. and Ila Mae Buchanan, Denise Bemer, Ned Davis, Mabel Edwards and Mildred Chamberlain and Lee Porter from Canyon. There were seventeen children. Each one brought covered dishes from which a sumptuous meal was spread. The evening was spent either visiting or playing "42" or both. Everyone had a real good time.

To get maximum attention, it's hard to beat a good, big mistake.

Mrs. Lyon Presents County History Ground Hog Supper Feb. 6

Alpha Delta Kappa met Friday night, January 23, in the home of Mrs. Mathilde Enteklin.

Following the business meeting, Mrs. Grace Lyon, a pioneer of this county, read a history of the county which she had written in 1965. As well as having lived here since childhood, she put much research of records and facts into the document.

Of special interest to the teachers was the first schools and teachers of the county, most of whom are well remembered by the "old time"ers. One of these early teachers was Miss Gertrude Lyon, a sister of Mrs. Lyon's late husband, who later married Mr. A. F. Barkley.

Mrs. Lyon's history includes highlights of early

buffalo hunters, homes, towns, post offices, churches, schools, mail routes, railroads, world wars and the coming of modern ways and means to Hansford County.

Refreshments were served to Lena Nivens, Marilyn Lewis, Ruth Mary Whitson, Elva Lee Barkley, the hostess, and the guest, Mrs. Grace Lyon.

Library Receiving Journal

Hansford County Librarian Celestine Thompson reported this week that the library is now receiving the Wall Street Journal to go along with other books and publications in the Stocks & Bonds Analysis section.

The annual Ground Hog Supper of the First United Methodist Church will be held Friday, Feb. 6 from 6:30 to 7:30 in Fellowship Hall. Tickets are \$3.00 for adults, and \$2.00 for children age 6 and over. Children under 6 may eat free of charge.

Tickets will be available at the door or from any member of the UMW.

The menu will include baked ribs, baked pork chops, sausage, sweet potatoes, green beans, cole slaw, hot biscuits, gravy and home made pie for dessert.

Pipkins Return From Canada

Mr. and Mrs. Johnnie Pipkin have just returned from a trip to Woodstock, Ontario Canada. Their

little grandson Brad Clifford had been with them the past two weeks while his parents, Mr.

and Mrs. Bert Clifford vacationed on the Hawaiian Islands. The Pipkins and Brad flew from Amarillo and the flight was beautiful. The

temperature was 20 below on Sunday though it did not seem so. Snow was piled in 6' heaps. The highways were clean and lovely.

After their visit here they flew to Boston to visit another daughter, Mr. and Mrs. Tom Mayes and children, Tracy and Tommy on Cape Cod.

They also visited Edith's brother, Mr. and Mrs. Wilbur Fullbright who live in Boston. Wilbur is Dean of Music at the Boston University and his wife, Lorraine, teaches in the Public Schools.

Edith's mother, Ms. Myrtle Fullbright, who had flown to Boston early in January, returned home with Johnnie and Edith. While there a snow fell one night and it was a beautiful sight to see. The snow fell straight down and was 1

Greetings To All Cattle Producers

Thursday, January 29, we sold a total of 3830 cattle and calves. January, 1976, is now past history. During that month we sold a total of 21,898 cattle and calves for a total gross sales of \$4,329,086.26.

We are now taking consignments for every Thursday in February. It helps us with our advertising, and indirectly helps our consignors, if we know in advance of their plans.

1976 has started out real good. We are all hopeful of doing a better job for all of you than we did in 1975.

YOUR DEPENDABLE CATTLE AUCTION WITH "ACTION"

TEXHOMA LIVESTOCK COMMISSION CO., INC.

Phone 405-423-3251

P. O. Box 70

A Big Thanks

To all of the nurses,
Dr. Thomas, and everyone
connected with the
HANSFORD HOSPITAL

You gave me the very finest care
available to any person
while I was confined to
Room 104, Hansford Hospital

J.D. FAULKNER
Room 104 - Hansford Hospital

"THANKS AGAIN, TO ALL OF
YOU AT HANSFORD HOSPITAL"

If your cornfields have been a jungle of wild cane or sandbur, you need help. The best help is Eradicane herbicide applied in your center-pivot irrigation system. How do you do it? With Herbigation™ weed control service. It's simple enough. You meter Eradicane into your center-pivot irrigation line from a supply tank. Water does the work of application, either just before or just after corn planting.

Eradicane controls wild cane and sandbur and many other weeds as the weeds sprout.

That's Herbigation weed control service with Eradicane. It works so well performance is guaranteed when used as the label directs, or Stauffer will replace the Eradicane. Verify purchase, leave a check strip and notify Stauffer promptly.

This season, grow corn not wild cane or sandbur. Use Eradicane. Always follow label directions carefully. See your Stauffer supplier for Eradicane.

Eradicane from Stauffer

STAUFFER CHEMICAL COMPANY
Agricultural Chemical Division
P.O. Box 1381
Houston, Texas 77001

AN EQUALIZATION PROGRAM FOR THE CITY OF SPEARMAN AND SPEARMAN INDEPENDENT SCHOOL DISTRICT

After careful consideration and study, your Spearman School Trustees and City Council have employed the Southwestern Appraisal Company, Inc., to make an appraisal of the taxable property within the City limits of the City of Spearman.

Why is this program necessary? In the past decade, rapid changes in property values have come about and these changes have brought about inequities in the tax structure. The proper way to correct this situation is to have all property appraised. When this is done, the current market value is determined and this will provide information that will allow the Board of Trustees and the City Council to apply a percentage of this value for tax purposes, thus bringing about uniform and equal assessments for all property.

Soon our field men will be calling on you to ask permission to inspect your property and we respectfully request your cooperation.

The Constitutional requirement that taxes shall be uniform and equal and based on current market value is of prime importance to everyone.

Let's all work for equalization. We assure you that this program will lead to more equal sharing of the cost of your school and city services.

Respectfully,

SOUTHWESTERN APPRAISAL COMPANY, INC.
D. C. Hamilton, Jr.
President and General Manager

BICENTENNIAL BONUS BONANZA

1000 EXTRA



An American way of thrift Since 1896

★ BICENTENNIAL BONUS BONANZA ★

1000 EXTRA



To our founding fathers, being thrifty was a way of life. It had to be. And for 80 of our country's 200 years, American shoppers have been following in that tradition by enjoying the extra value and valuable extra gifts of S&H Green Stamps. All... at no extra cost! And thrifter than that, you just can't get. So, for 1,000 Extra Stamps come on in and join our salute to America! To American shoppers! And to an American way of thrift! Pick up your Bicentennial Bonus Bonanza Sticker Card the next time you shop and start saving. You get a sticker with every \$10.00 purchase. Save any 24 stickers and be 1,000 Extra S&H Green Stamps thrifter... as many times as you can. Start today!

32 OZ. BTLs.

6 BOTTLE CRTN.

COKES \$ **1.59** PLUS DEPOSIT



UNITED HAMBURGER OR CONEY

3 8 CT. PKGS. \$ **1**




GET 1000 EXTRA STAMPS WITH EACH FILLED CARD!

U

UNITED

PERRYTON, TEXAS

SUPER MARKETS

WE GIVE S&H GREEN STAMPS

FARM AND RANCH NEWS

by Joe VanZandt

This is my last farewell since I will already be busy at work as the Gray County Extension Agent as you read this column. My family and I have made a lot of good friends in Hansford County. It is hard to say "Good-Bye" - just so-long until we see you again. We would welcome your visit whenever you are in Pampa at 1916 Holly Lane.

I hear that natural gas prices are going up and this is going to make it even more difficult for profitable farming. Rather than worry about running out of water to irrigate with, we may need to worry about paying for the fuel to run our farm equipment, including the irrigation wells.

I sincerely believe that marketing of our farm produce is the most important part of managing a farm enterprise. If you can't sell what you produce at a profit then everything else has been done for nothing. As I see it, farmers are going to have to get together like other groups have and get well organized. - give up a little individual freedom that has long been enjoyed. Give a little to gain a profitable price on farm and ranch products. Some of you may decide to do things that are very distasteful to your way of doing business.

Inflation and the cost of running a farm business are also very distasteful. If you can't whip them, then join them and do a better job than what they have been doing. Beat some of these "organized groups" at their own game.

Due to the mild winter we have had, I suggest that wheat farmers keep a watch out for greenbugs. However, don't spray at the sight of the first greenbug. Give some time for beneficial insect populations to increase and hopefully control the greenbugs.

NELLE'S NEWS
by Nelle Evans

Today parents worry and wonder about sending their children to college. Meeting today's college costs stretches the family budget almost impossibly tight. And parents are caught in the double bind of feeling obligated to "give" their children an education--and the knowledge that they cannot afford all the costs without help from the student or grants-in-aid.

A rule of thumb is that any family earning \$20,000 or less can qualify for most educational grants or loans.

Parents or students who need help should ask early in the high school career for sources of scholarships, grants or low-interest repayable loans. The third year of high school isn't too late to start. It may or may not be necessary to compromise educational and career goals by selecting a school according to price.

Guidance counselors, college advisers or department chairmen often can give clues for financial assistance. If the student is ambitious and scholastically strong, work-study programs offer money plus experience. And most new college graduates find employers like employees who have had work-study experiences.

Often overlooked are the grants or scholarships provided by large companies to children of their employees.

Parents might check with personnel services, their supervisors or watch for information in the company bulletins.

Minority students or handicapped students should check with public and private organizations that can help them.

Parents often pressure their children into reaching a college major choice too early for fear of losing "all that money." But most high school students have only a vague notion of what they want as their life's work. Many college students need to adjust for a couple of years, and they can still select a major without too much trouble by their third year.

NELLE'S NEWS

February 5 - Family Living Committee; Happy

Homes HDC; 6 - Gruver HDC; 9 - Busy Bees 4-H; 10 - Agent Training - TST; 11 - Agent Training - TST; 12 - Happy Hearts HDC; 13 - H, D, Yearbook Committee; Spearman HDC; 16 - Gruver Cloverettes; 17 - Town & Country HDC; 19 - Agent Training - Amarillo; 23 - Busy Bees 4-H; 24 - H, D, Council.

Interest has been shown in organizing a new H, D, Club to meet nights in Spearman. We will meet at 7 p. m. on Tuesday, February 3 at the H, D, Clubroom to organize. If you are interested plan to come.

The Family Living subcommittee of the County Program Building Committee will meet on February 5 to discuss needs in the

county and suggest programs for the next year. These are in addition to the programs for H, D, Clubs.

The H, D, Yearbook Committee will meet on Friday, February 13 at 10 A. M. in the Courthouse. They will make plans for the remainder of this year and the next calendar year. If you have suggestions tell your club program chairman so they may be included. The yearbooks will not be printed until the end of 1976 so club officers can be correct.

The Club programs for February are on Italian foods. If you wish to visit a club to get the recipes and sample you are welcome.

If you need pecans the home demonstration ladies still have some for sale.

The museum will be opening soon. There is a gift shop planned to help it become self supporting. One of the H, D, projects is to make items to donate to the shop. Anyone is welcome to make and donate items. Begin working now so we can keep them supplied. This is a county museum and everyone is encouraged to help.

For a Valentine treat make the elegant, but easy Coeur A' La Creme - "heart of Cream".

1. Line a 7" heart shaped wicker basket with a double thickness of cheesecloth, allowing a 4" overhang.

2. Press 1 lb. large curd, cream style cottage cheese through sieve into bowl.

Beat in 2 (8 oz. each) packages softened cream cheese,

2 T. powdered sugar, dash of salt and 1 c. whipping cream, until smooth.

3. Spoon into lined basket; press cheesecloth over top. Set on rack in 9" pan; allow to drain overnight in refrigerator.

4. Open cloth; cover basket with serving plate. Gripping both firmly, invert mold onto plate; carefully remove basket and cloth. Surround with 4 c. raspberries or strawberries. (Thawed frozen is probably what we'd have available.) Makes 8-10 servings.

WHAT IS A FRIEND? A friend is somebody who knows you and likes you Exactly the way that you are -

Somebody who's special and so close in thought That no distance can ever

seem far - A friend is that someone whose cheerful "Hello" Always brings a bright smile to your face -

Whose thoughtfulness makes you feel really "at home" Whatever the time or the place -

A friend is somebody who shares all your secrets And laughs at the same things you do

Who helps you make plans and is happy to hear When something nice happens to you -

A friend understands you without any words Stands by you when nothing goes right

And willingly talks over problems with you Till they somehow just vanish from sight -

And whether you're neigh-

bors or live miles apart A word from a friend gives a lift

To your heart and your spirit that show you once more

Why true friendship is life's dearest gift!

Elizabeth M. Gerus

Sacred Heart Women's Guild Met

The Sacred Heart Women's Guild met Monday, February 2nd in the Sacred Heart Parish Hall.

The meeting was opened with prayer by President, Helen Blain.

Minutes of the previous meeting were read and approved and the treasury report was given.

Discussion was held about having a pot luck dinner in the Parish Hall March 14th at 12:00 Noon for

Parish members. Scriptural reading, with group participation, was led by Father Rusch.

Father Rusch gave a film presentation on the Holy Land.

Refreshments were served by hostesses, Maria Pacheco and Elva Sullivan to guest, Mrs. Peralta and to members, Mary Allen, Helen Blain, Mary Torres, Fanny Venneman, Francis Ortega, Maria Ayala, Clemmentine Renner, Stella Arjona, Adela Lopez and Father Rusch.

Next meeting will be March 1st in the Parish Hall.

If you knew how to tune up the engine of your car, chances are you'd tune it more often, and that can save on gasoline. Many school systems or community colleges have courses in how to maintain your own car. Why not enroll in one this year?

QUANTITY RIGHTS RESERVED



UNITED

PERRYTON, TEXAS

SUPER MARKETS

WE GIVE *8x* GREEN STAMPS

PRICES GOOD THRU' FEB. 7TH

COME CELEBRATE OUR BICENTENNIAL BONUS BONANZA



SNOWDRIFT ALL VEGETABLE SHORTENING

3 LB. CAN

\$1.19



CORN JOAN OF ARC GOLDEN CREAM STYLE. **4** 303 CANS

PEAS JOAN OF ARC EARLY GARDEN. **4** 303 CANS


"FINE FARE MIX OR MATCH"

WHOLE NEW **POTATOES** **4** 303 CANS

SPINACH **4** 303 CANS

WHITE **HOMINY** **5** 303 CANS





WAGNER FRUIT DRINK

ASSORTED FLAVORS

32 OZ. BOTTLES

3

SUPER SUDS GIANT BOX

58¢

SOFTENER GAL. JUG **89¢**

BISCUITS SWEET OR BUTTERMILK **10** 8 OZ. CANS **\$1**

OLEO 1 LB. CRTN. **3 FOR 88¢**

EGGS UNITED CAGED DOZ. **69¢**

58¢

RUSSET POTATOES ALL PURPOSE

FREE BONUS STICKER

\$1.29

U.S.D.A. NO. 1

6 FOR \$1

"MIX OR MATCH"

FRESH LONG GREEN SLICERS **CUCUMBERS**

FRESH SWEET BELL **PEPPER** LARGE PODS

FRESH CRISP **RADISHES** BAG

FRESH GREEN **ONIONS** BUNCH

CRISP **CARROTS** 16 OZ. BAG

CALIF. ICE BERG **LETTUCE** **3** LARGE HEADS **\$1**

APPLES FRESH FANCY **4** LB. BAG **\$1**

Book Sale Set At Morse

The Morse PTA will sponsor a Book Sale on Feb. 13 from 3 to 6 p.m. and on Feb. 14 from 9 a.m. to 2 p.m. in the school cafeteria.

The books to be sold are from the school library, some are old and some new. If anyone is interested in old books, some date back to 1928, all are on the high school level in all classifications.

You are welcome to come and browse.

this Saturday at the Amarillo Hilton with registration to begin at 9:00 A.M. to be followed by group sessions covering various aspects of the Crusade as well as a session on Public Information.

This is a most important meeting as it is the key to the success of the 1976 Crusade, monies from which are used in the war waged against Cancer.



ACS Plans Crusade Kickoff

The 1976 Kickoff meeting of the American Cancer Society for the 1976 Crusade has been planned for

DATE	H I	L O
JANUARY 27	58	17
JANUARY 28	61	29
JANUARY 29	70	25
JANUARY 30	68	26
JANUARY 31	59	27
FEBRUARY 1	63	38
FEBRUARY 2	58	32
Total Prec. for January = .06 inch.		

Morse PTA Meet Held

The Morse PTA met in regular session Feb. 2 at 7:30 p.m. in the school auditorium.

A play was given by the kindergarten and 1st and 2nd grade students called "A Surprise Party For Mother Hubbard."

The meeting was called to order and opened by the officer's report.

The executive committee recommended to the association that it take on the cleaning up of the school library as a PTA project this year. The library now consists of some high school material which is far above the use of the junior high students.

The recommendation was accepted by the association and they decided to have a book sale on Feb. 13 from 3 to 6 p.m. and 14 from 9 a.m. to 2 p.m.

in the school cafeteria. Three people were nominated to serve on the nominating committee. They are Mmes. Roy Harris, Danny Brogdon and Greg Stork.

The meeting was adjourned and refreshments were served in the school cafeteria by Mrs. Frank Pittman.

Bond Sales

Sales of Series E and H United States Savings Bonds amounting to \$7,723.00 in Hansford county were reported today by County Bond Chairman C. A. Gibner. Sales for the twelve-month period totaled \$70,382.00 for 78% of the 1975 sales goal of \$90,000.00.

Sales in Texas during the month amounted to \$20,069,965, while year-to-date sales totaled \$240,610,031 for 103% of the yearly sales goal of \$234.3 million.

84th District Probation Dept. Activity Reported

Eighty-fourth Judicial District Judge Richard N. Counts has released year-end totals of activity for the District Probation Department for 1975. The Department, headed by Chief Probation Officer H. L. Wilbanks of Stinnett, supervised 333 felony probation cases, 165 misdemeanor probation cases and 59 juvenile probation cases during 1975. The Department collected \$70,923.24 from probationers during the year, and the sum was disbursed to the counties in the District, Hansford, Hutchinson and Ochiltree, and to persons injured because of the offenses committed by the probationers. A total of \$52,109.89 was paid to the counties and \$18,813.35 was paid to the individuals.

The Probation Department is under the supervision of

the District Court and employs five persons, including Chief Wilbanks, Assistant Probation Officers E. J. Counts and Michael Blackmon and two secretaries.

WEATHER BULLETIN

Snow was beginning to fall in the county at 8:30 a. m. Wed. morning. It was heavier towards the Perryton area, and beginning to stick on the road in the Waka area.

Early childhood awareness program...

The "Texas Panhandle Early Childhood Awareness Campaign" was kicked off recently with a dinner in Amarillo featuring U. S. Congressman Jack Hightower and Director of the Texas Office of Early Childhood Development Jeannette Watson, as keynote and resource speakers. Judge Johnny C. Lee from Spearman represented Hansford County as well as over 160 other interested persons from throughout the 25-county Panhandle region. Those in attendance consisted of State Representatives, County Judges and Commissioners, and other elected officials as well as school and county officials, Texas Employment Commission, Texas Rehabilitation, Department of Public Welfare, Kilgore

Children's Center, Texas Panhandle Emergency Shelter, Planned Parenthood, West Texas State University, Amarillo College, child care center directors and workers, Community Action, P. T. A., the news media, as well as representatives from over 20 organizations and agencies interested in children.

According to David Duncan, Director of Texas Panhandle Community Action Corporation's Department of Children and Youth, "The purpose of this ongoing Texas Panhandle Early Childhood Awareness Campaign is to bring awareness to and receive support from the general public concerning the problems affecting all of us in early childhood, especially in the areas of child abuse, neglect, and the kinds of help needed from every community in the support of quality child care for working mothers."

Many activities are being planned for this ongoing campaign and if you, your club, or organization wish to participate, contact Judge Lee in Spearman for further information or David Duncan, Director, Department of Children and Youth, Texas Panhandle Community Action Corporation, 1605 West 7th Street, Amarillo, Texas 79102, Phone (806) 372-2531.

AND GET 1000 EXTRA

"UNITED'S TRU-TENDR GRAIN FED STEER BEEF!"

• ROUND • RIB • SIRLOIN

STEAKLB.	98¢
BONELESS SHOULDER ROASTLB.	\$1.09
GROUND BEEF	FRESH FAMILY PACK	69¢

FARMLAND BONELESS FULLY COOKED

\$5.69

HAMS 3 LB. CAN

GLOVER'S LUNCH MEAT

• SPICED LUNCHEON
• BOLOGNA
• SALAMI • PICKLE
"MIX OR MATCH" & PIMENTO

2 89¢

6 OZ. PKGS.

CHUCK ROAST

BLADE CUT

69¢

LB.

SMOKED HAMS

WATER ADDED

FULLY COOKED

SHANK PORTIONLB. **88¢**

BUTT PORTIONLB. **98¢**

BATHROOM ORCHID TISSUE	4 ROLL PACK	58¢
SOFT PLY TOWELS	JUMBO ROLLS 2 FOR	88¢
FACIAL SOFT PLY TISSUE	200 CT. BOX 2 FOR	78¢
MAC. & CHEESE DINNERS	FINE FARE 3 FOR	88¢

NEW STORE HOURS

OPEN 8 A.M.

CLOSE 9 P.M.

SUNDAY 9 A.M. - 8 P.M.

BORDEN'S Ice Cream 1/2 GAL. CTN. ASSORTED FLAVORS LIMIT 3 **99¢**

DR. PEPPER OR COKES 6 BTL. CTN. 32 OZ. LIMIT 3 **\$1.59**

FROZEN FOODS

ORANGE JUICE

FINE FARE 12 OZ. CAN

2 FOR 88¢

BANQUET FROZEN REG 59¢

ALL VARIETIES EXCEPT BEEF AND HAM

DINNERS

EACH **48¢**

SHOP 'N SAVE!

WE RESERVE THE RIGHT TO LIMIT QUANTITIES

U

PRICES GOOD THRU FEB. 7TH

UNITED

PERRYTON, TEXAS

SUPER MARKETS

WE GIVE GREEN STAMPS

Voter

Helen Dry, County Tax Assessor-Collector and Voting Registrar, said today that her office will mail new voter certificates to all persons registered as of January 31, 1976. This certificate will be good for the voting years 1976 - 1978.

Included with the new certificates will be a request for information to up-date current voter lists, in compliance with the new voter registration law. Ms. Dry said, "Although you do not have to return this information request, you are urged to do so, making sure all blanks are complete. This information will assist us in having a more complete and correct list of voters for the election judges and less confusion at the polls."

After March 1, 1976, only the BLUE certificates will be valid for voting.

If you DO NOT receive a new voter certificate in the mail during February, you need to come to the Hansford County Tax Office. Persons who have had a change of address, or name change since they last voted will be among those who will not receive a certificate by mail. Any person who is new in the county must register to vote at least 30 days prior to any election, NOTICIA AL PUBLICO VOTANTE

Helen Dry, Registradora Votante y Colectadora de las Taxes, del condado dice que ahora su oficina les mandara nuevas certificados para votar a todas las personas registradas del 31 de Enero, 1976. Este certificado sera bueno para votar los anos 1976, 1977, y 1978.

Incluido con el nuevo certificado se le enviara una informacion de los corrientes votos asta orita, en compliance con la nueva ley de registracion para votar. Mra. Dry dice que aunque no tienen

do que debolver esta informacion se requiere que si lodebuelva estando seguros que todos los blancos sean completos. Esta informacion nos asistira a nosotros a tener mas correcta y completa la lista de votantes para la eleccion de jueces y menos confusos en las castas.

Despues del dia primero de Marzo 1976 nada mas los certificados aules son buenos para votar.

Si usted no recibe un certificado nuevo para votar en la estafeta durante Febrero entonces es necesario que balla a la oficina de Texas del condado de Hansford. Personas que hayan cambiado su direccion o su

nombre la ultima vez que voto seran unas de las personas que no reciben el certificado por correo.

Toda persona que sea nueva en este condado se debe registrar para votar a lo menos 30 dias antes de cualquier eleccion.

Lynxettes lose heartbreaker ; Lynx romp past Blackhawks

BY GARET VON NETZER
Sports Editor

SPEARMAN—The site Tuesday night easily could have been Austin, and the event could have been the state basketball tournament, that's how well both teams played.

And in state-tournament style, Phillips' Jill Rankin, under heavy double-team pressure, dropped in a 12-foot jumper with eight seconds left, lifting the Blackhawk girls to a 36-35 win over Spearman and to the school's second straight District 1-AA girls' title.

In the boys game, Roger Jones led Spearman to a 73-74 rout over the Blackhawks. Jones scored 35 points and pulled down 24 rebounds in strengthening the Lynx' chances for the playoffs. They tied with Panhandle for the first-half title.

In the girls' game, Miss Rankin's bucket—despite shadowy defensive pressure from Letitia Platt and Rajan Martin—finally ended a classic contest slowed down throughout by Spearman in its last effort to reach the playoffs it used to dominate. Phillips beat Spearman, 70-61, en route to the first-half title.

With only 26 seconds left, Spearman's Carla Harper sank an eight-foot jumper (the last two of five straight points) to give the Lynxettes a 37-36 edge. It was their fifth lead of the night during a game in which the score was tied nine times, in which Spearman led by as many as four and Phillips by up to seven.

But Phillips' guards, better ball-handlers than a year ago when the team reached the state tournament in the school's first girls post-season appearance, successfully advanced the ball, and it went to Miss Rankin who responded with the last two of her 26 points.

Miss Harper's 25-footer at the buzzer was off to the left, nullifying a near-flawless Lynxette performance in which they committed only nine turnovers despite the emotional nature of the game.

The one flaw, however, was free-throw shooting. Both teams sank 17 of 33 field-goal tries, but Phillips hit four of eight charity shots, while Spearman hit only three of 11.

The Lynxette's four times missed the

PHILLIPS (girls)
SPEARMAN — Jill Rankin 19-24, Doris Denny 14-17, Betty Harris 12-14, Letitia Platt 12-14, Tammy Arrington 9-11, TOTALS — 73-74. GUARDS — Jan Lamm, Kay White, Kim Arrington, Betty Harris.
SPEARMAN — Michelle Schumann 19-21, Carla Harper 14-17, Janyth Lackey 14-17, TOTALS — 73-74. GUARDS — Rajan Martin, Letitia Platt, Debbie Greena, Milana Popey, Lori McKeown.
TOTAL FOULS — Phillips 14, Spearman 9.
FOULS OUT — None.
PHILLIPS (boys)
SPEARMAN — Kim Gipson 24-31, Derrill Downey 14-17, Denny Kuhrt 12-14, Morris Kuhlert 12-14, Andy Murry 6-11, Mark Young 6-8, Jeff Yarbrough 3-4, Randy Kay 4-6, Trevor Cross 2-3, TOTALS — 73-74.
SPEARMAN — Roger Jones 16-23, Jim Jones 9-12, Jeff Beedy 12-17, David Blaine 9-12, Randy Reid 12-17, Zane Newton 9-11, Mark Cunningham 6-8, Leon Haggaman 6-8, Raymie Porter 1-1, Calvin Beady 6-8, Paul Comery 1-1, David Lacy 4-6, Carl Johnson 4-6, TOTALS — 36-73.
TOTAL FOULS — Phillips 24, Spearman 24.
FOULS OUT — Gipson, Phillips; Beedy and Jim Jones, Spearman.

first shot of one-and-one free-throw situations in the first half.

Miss Rankin, though held to 15 points below her 41-point average, again did what she's done for the last two years—made the decisive play. Although she was double-teamed all night long, she shot almost whenever she wanted to and canned 12 of 25 for 48 per cent from the field (her average is 56 per cent).

Michelle Schumann also turned in an eye-opening performance on a Spearman forward end without a starter taller than 5-6. The 5-5 Miss Schumann sank 12 of 22 field-goal tries (54.5 per cent) and 25 points.

Teammates Miss Harper and Janyth Lackey hit eight and four points respectively, and all three put on an impressive ball-handling show in their delay game while waiting for the easy bucket.

"I wasn't expecting a delay game," said a flushed Bill Clemmons, after his Phillips girls had gone to the showers.

"Spearman has a fine bunch of kids, if their forwards had any height, they'd be something else. I don't think you'll ever find a better coach than Ralph Newton.

"We went into a delay game of our own in the last quarter. At that point, we only wanted to take the two-footer with Jill. Overall, our kids held their poise real well," said Clemmons, whose club now is 19-4 while Spearman now is 14-10.

"I think that's about as close as we can get to Phillips," said Newton, whose team orced Phillips into an extra-game playoff for the 1-AA title last year.

"We decided to slow the game down, because we wanted to control the tempo throughout. That way, maybe we would have a chance to win it at the end, and I guess we had that chance.

"I'm sure not upset at the way these kids played. I think these kids have gotten nearer to their potential than any group I've coached in 14 years. I was hoping we'd play well, and we did."

In the boys' game, Jones sank 21 points and grabbed 18 rebounds in the first half to break the game open as the Lynx led 38-20. Denny Roark was the only Blackhawk in double figures with 14 points.

Phillips now is 11-11 overall and 0-2 in secondround play, while Spearman now is 13-9 and 2-0. The Lynx host Panhandle Friday night.

Valentine Queen

Xi Zeta Xi Zeta Upsilon Chapter



Mrs. Coda Zschiesche

VALENTINE QUEEN—Mrs. Edward Z. (Coda) Zschiesche will represent Xi Zeta Upsilon Chapter of Beta Sigma Phi at the annual Beta Sigma Phi Valentine Ball scheduled for February 7 at the Perryton Country Club.

Rho Rho Chapter



Mrs. Hazel Shieldknight

Hazel Shieldknight has been chosen as the 1976 Queen for Rho Rho Chapter of Beta Sigma Phi. She is the wife of Charles Shieldknight and they have two daughters, Carley, age five and Haley, age three. Her hobbies are playing the organ, oil painting and gardening. Hazel has been in Rho Rho for three years and has served as Corresponding Secretary and 2nd Vice President. She will be crowned at the Valentine Ball on Saturday, February 7 and she will also be recognized at the Perryton Chapters' Valentine Ball on Saturday, February 14.

LYNXETTE STATISTICS

	Fg	Ftm	Pts.
S. Schumann	12	1	25
J. Lackey	2	0	4
C. Harper	3	2	8
D. Greene			
R. Martin			
T. Platt			
TOTALS	17	3	37

BLACKHAWK STATISTICS

J. Rankin	12	2	26
D. Rankin	3	6	6
T. Arrington	2	2	6
J. Lawson			
K. White			
K. Arrington			
B. Graves			
TOTALS	17	4	38

SCORE BY QUARTERS:

SPEARMAN	14	20	27	37
PHILLIPS	12	20	32	38

Fire Department Answers Calls

The Spearman Volunteer Fire Department has been busy the past few days. Sunday they answered two calls, one at the Brad Lemons residence on Coble

St. and the other at the Bus Boxford residence on Evans. Flames were coming out the front door onto the porch when firemen arrived at the Lemons home Sunday afternoon with the apparent cause of the fire coming from a sofa in the living room. The fire at Boxford's was a minor one in the kitchen of the home. Firemen also answered a call Tuesday afternoon outside the city limits. Details on this fire were not available at press time.

Why not use the stairway instead of an elevator if you're going only a flight or two? You'll get some healthful exercise...and save electricity.



NITE-LITER... The Burglar Bungler



Burglars, prowlers and vandals prefer darkness for their dirty work. You can discourage these undesirable visitors with a wide area mercury vapor Nite-Liter. The Nite-Liter can provide safety and security around your home, farm or business by keeping away unwanted intruders and helping to prevent personal accidents and injuries. The Nite-Liter turns itself on at dusk to provide convenient lighting over an area up to 100 yards in diameter. At dawn it automatically turns itself off to save money and energy. Community Public Service Company will install the Nite-Liter on a tall pole, maintain it year around and furnish the electricity it uses... all for just pennies a night. No investment necessary. Check into the advantages of a mercury vapor Nite-Liter soon.

COMMUNITY PUBLIC SERVICE

Your Electric Light & Power Company
An Equal Opportunity Employer

ESA-76



A BIG MAN, with a BIG HEART-
Jr. Lusby is leveling the old football field for Kids organization of Spearman. The new field will feature 2 full size Little League baseball fields, and 2 oval tracks. Lusby is donating the work on the new fields. A big thanks to all of us to Junior Lusby, one of our finest citizens...

DRESSES

BUY ONE DRESS AT REGULAR PRICE AND GET ANOTHER FOR ONLY 1 CENT

2 FOR THE PRICE OF 1

PLUS A PENNY

Blouses and Slacks

1/2 PRICE

TWO RACKS

Sportswears REDUCED TO REDICULOUSLY LOW PRICES WELL BELOW 1/2

ONE LINGERIE TABLE ON SPECIAL

All Robes \$500 EACH

COATS REG. \$65 COATS GOING FOR ONLY

\$2000 EACH

SALE STARTING THURSDAY FEB. 5th
LADY FAIR
OPENING AT 8 A.M.

Be sure and attend
HOMECOMING
Lynx & Lynxettes
VS.
Panhandle


Friday, February 6th

Games Starting at 4:00 P.M.

In Spearman
 Varsity and Jr. Varsity
 Will Be Playing

Let's all be sure and attend
 and back our teams on to
 the District Championship



<p>ALLSUPS CONVENIENCE STORE "THE HABITAT OF THE LYNX CAT" OPEN 24 HOURS</p>	<p>Four Sevens Tractor Inc. "Go Lynx & Lynxettes" MASSEY-FERGUSON SALES AND SERVICE TRACTORS - COMBINES COMPLETE LINE OF EQUIPMENT PHONE 659-2546 SPEARMAN, TEXAS</p>	<p>659-3625 YORK ELECTRIC DOWNTOWN SPEARMAN WE DO ALL TYPES OF ELECTRICAL WIRING</p>	<p>"Go Lynx & Lynxettes" R. L. McClellan & Sons Spearman, Texas</p>
<p>"HOME OF THE STATE GOLF CHAMPS" Speartex Grain Co. Spearman Texas</p>	<p>BOOSTING THE LYNX Gruver State Bank</p>	<p>Boxwell Brothers Spearman, Texas</p>	<p>"GO LYNX CATS" Daco Lease and Well Service Spearman, Texas "We are proud of the Women's Division of the C. of C."</p>
<p>CONSUMERS SALES "GET EM LYNX-LYNXETTES" (COOP)</p>	<p>"We are proud of our city" Alton's Gulf  Service</p>	<p>Lil' Lynx Shoppe We are proud of our Lynx</p>	<p>GO PURPLE PRIDE Spearman Redi-Mix Spearman, Texas "We are growing with Spearman"</p>

Roscoe Nelson Seeks Commissioner Post



ROSCOE NELSON

Roscoe Nelson has authorized the Reporter-Plainsman to announce his candidacy for the office of County Commissioner, Precinct 1, subject to the action of the voters in the May Democratic Primary.

In making his announcement, Mr. Nelson said that he was very interested in running for this office, he believes that Hansford County is one of the most progressive areas in our United States and is the golden spot of Texas. Mr. Nelson has lived in Hansford County for some 16 years, he is a local building contractor, interested in development and the preservation of our hard earned resources here. He has previously served on the City Commission. He is experienced and qualified in the field of construction and road work and is

sincere in his desire to work and serve the interest of Hansford County as commissioner.

Roscoe and Marguerite Nelson are members of the First Baptist Church of Spearman and live 1 1/2 miles West of Spearman, their family joins them in this announcement: Mr. and Mrs. Charles Eaton (Joanne Nelson Eaton), Chuck, Johnnie and Cayla of Spearman; Mr. & Mrs. Jack Vanderburg (Donna Nelson Vanderburg), Troy, Tim and Nan of Plano, Texas and Mr. & Mrs. Jeff Burress (Rhonda Nelson Burress) of Spearman.

Mr. Nelson wants to make it known that he has revised his personal business and will devote full attention to the maintenance of Precinct #1. Your vote and support will be appreciated in this election.

Marilyn Groves Named Cystic Fibrosis Chairman

Mrs. Marilyn Groves of Spearman, Texas has been named chairman of the Cystic Fibrosis Spring Breath of Life Campaign to fight children's lung diseases, according to Chuck Laurent, President of the Lone Star Chapter, Cystic Fibrosis Foundation.

This Spring, Mrs. Groves will lead local volunteers to support research and care programs for children affected by lung-damaging diseases like cystic fibrosis, severe asthma, chronic bronchitis, bronchiectasis, and a condition called "childhood emphysema".

Cystic Fibrosis, an incurable genetic disease for C/F. It is believed that one in twenty persons or 10 million Americans may carry the C/F gene, usually without Fibrosis Foundation is seeking a practical test to identify these carriers.

Because of improved therapy and constant research, many C/F patients are living longer and hoping for the future. This kind of therapy is relieving and often curing children suffering from other respiratory afflictions whose symptoms resemble those of C/F.

Through campaigns all over Texas the goals of education, research and patient care are reached. The Breath of Life Campaign supports not only research but over 100 C/F Centers for diagnosis and treatment across the country, five of which are located within Texas.

Marriage is like the Army. Everybody complains, but you'd be surprised at how many re-enlist.

Letter To The Editor

Dear Mr. Miller: On behalf of the UMY, we would like to express our thanks for the advertising during our Dunkin Munchkin sale. Without advertising our sale would have been impossible.

We appreciate the support that you and the other adults have given us.

Thanks again, United Methodist Youth

Offices: Gary Collier, Janyth Lackey, Terry Latham, Rajan Martin

Boy Scout News

Den #3 met Friday, January 30th in the home of Mrs. Jim Davis.

The boys worked on the banquet table decorations and practiced folding the flag.

The boys welcomed their new Den Chief, Toby Phillips.

Refreshments were enjoyed by members, Doug Murrow, Terry Phillips, Steve Womble, James Davis, Jeff Vanlandingham, Chad Guthrie, Den Chief Toby Phillips and Den Mother, Mrs. Jim Davis and Mrs. Bruce Womble.

Next meeting will be February 6th in the home of Mrs. Davis with Jeff Vanlandingham as host.

Spearman Study Club Met

The Spearman Study Club met Monday, February 2nd in the home of Mrs. Phillip Turner for a Mexican Supper with Mrs. Chester Martin, Mrs. Bill Hamilton and Mrs. Turner as hostesses.

Following the supper, a short business meeting was held with President, Mrs. Terry Schneider presiding.

Discussion was held on the style show and a tentative date of April 3rd was set.

A flower was presented to Mrs. Bob Collier for Outstanding Program of the Year, which was a talk on the ways of life in Viet Nam, and a flower was presented to Mrs. Terry Schneider for Outstanding Club Woman of the Year. Books were also placed in the Hansford Library in their honor.

Election of officers was held for 1976. Those elected were: President - Mrs. Clark Mires; Vice President - Mrs. Greg Sherwood; Secretary - Mrs. Bill Hamilton; Treasurer - Mrs. Ted Godfrey and Parliamentarian - Mrs. Terry Schneider.

Members present were Mesdames: Johnny Crawford, Clark Mires, Chester Martin, Bill Hamilton, Ted Godfrey, Greg Sherwood, James Jackson, Phillip Turner, Terry Schneider, Joe Close, George Young, Jerry Gee, Jimmy Shield-knight, Bob Collier, Bert Sheppard, Dan Truelove and David Wilson.

K.I.D.S. Needs Donations

Next meeting will be March 1st in the B & B Friendship Room with Mrs. David Wilson and Mrs. James Jackson as hostesses.

Many people have expressed an interest in wanting to help. "How can I help," they ask. "If you need anything, let me know," or "I'd like to help in any way possible."

Well, according to Captain Littlejohn, they are going to modify the Community Building ceiling to make it adaptable for basketball, so, if you truly want to purchase stock in the future of Spearman, make out a donation now to K. I. D. S. and send it to Chuck Rigdon, President, c/o Spearman Cable TV or Jim Evans, Treasurer, c/o Gordon's Drug.

The following businesses and individuals have already donated to the K. I. D. S. Program: Baker & Taylor, Tim Woodington, J. G. Parrish and Gordon Drug.

Rotary Club News

The Spearman Rotary Club met Monday, February 2nd at Martin's Steak Garden with President, Roy Bulls presiding over the meeting.

Wes Phillips, National Park Ranger of Fritch gave the program with a bi-centennial film entitled "Minute Man - To Keep Our Liberty", which depicted the events leading up to the Revolutionary War. He also answered questions on the Alabates National Park.

Visitors present were Wes Phillips of Fritch, Doyle Alexander and M. E. Griffin, both of Borger. Members present were Carrie Marie Berry, Roy Bulls, Junior Lusby, Ed Garner, Bob Pearson, Don Windsorfer, Jack McWhirter, Don Hergert, Pete Fisher, John Hutchison, J. L. Brock, E. J. Copeland, Peyton Gibner, Ellzey Vanderburg, Coy Palmer, James Lyon, John Lynn, and Jim Brown.

Next meeting will be February 9th at Mardin's Steak Garden.

Earn a little, and spend a little -- less.

Hats with brims are gaining popularity as the weather cools. They provide balance for the longer, fuller skirts being worn now, Margaret Ann Vanderpoorten, clothing specialist with the Texas Agricultural Extension Service, The Texas A&M University System, says.



The Ladies Auxillary of the Chamber of Commerce presents the outstanding Ladies award to Dorothy Roden. The award was made by Mrs. Russell Townsend.

BIG ANTIQUE AUCTION
 Sunday, Feb. 8, 1 PM
 Seward County Fairgrounds
 Agricultural Building
 Liberal, Kansas

TONTINE ANTIQUES
 of AMARILLO

Auctioneers: Dean Hawbaker, TX # GC-76-0335

Merchandise may be inspected
 Saturday, Feb. 7, 11 AM-5 PM

Here's the Ideal Place to

IDEAL FOOD STORES

Save Food Dollars!

CORN KING FULLY COOKED BONELESS HAMS
 WHOLE ... 14 TO 17-LB. AVERAGE. \$139
 CORN KING HALVES Boneless Hams... \$149
 CENTER CUT BONELESS Ham Slices... \$109

GROUND CHUCK
 BUTCHER BLOCK BEEF \$99
 BONELESS CHUCK ROASTS... \$119
 ROCKY MOUNTAIN PRIDE Hen Turkeys... 49¢
 HICKORY SMOKED SLAB CUT Sliced Bacon... \$129

Beef Bundle
 5-LB. ROUND STEAK ... 7-LB. CHUCK ROAST ... 5-LB. SHORT RIBS ... 7-LB. GROUND BEEF ... 5-LB. RIB STEAKS.
 ALL 5-LB. FOR ONLY... \$22.99

ADD TO YOUR SET THIS WEEK: "NIGHT BLOSSOM"
FINE CHINA
 FEATURED THIS WEEK:
BREAD AND BUTTER DISH
 WITH EVERY \$5.00 PURCH. REG. \$6. ONLY **39¢**
 AVAILABLE IN ALL STORES EXCEPT PLAINS, KANSAS.

LIBBY'S
 Sweet Peas... 3 18-OZ. CANS 89¢
 Garden Spinach... 3 18-OZ. CANS 88¢
 Cling Peaches... 2 18-OZ. CANS 99¢
 Fruit Cocktail... 2 18-OZ. CANS 78¢

THE IDEAL PLACE TO SAVE ON
 Libby's for your Table
 Libby's for your Table
 Libby's for your Table

LIBBY'S CUT Green Beans 4 18-OZ. CANS 96¢
LIBBY'S KERNEL OR CREAM Golden Corn 3 18-OZ. CANS 89¢
LIBBY'S Tomato Juice 4 48-OZ. CAN 52¢

CAMELOT TOMATO CATSUP 32-OZ. BTL. 72¢
CHICKEN OF THE SEA, LIGHT CHUNK TUNA 6 1/2-OZ. CAN 52¢
MEADOWDALE, ALL FLAVORS ICE CREAM 1/2-GAL. CTN. 82¢

CAMELOT CHICKEN NOODLE OR Tomato Soup 5 18-OZ. CANS 89¢
CAMELOT Saltine Crackers 18-OZ. BOX 44¢
LADY CAMELOT WHITE OR ASSORTED BATH TISSUE 3 3-ROLL PEGS. \$1.00
 LIMIT-3 WITH \$7.50 OR MORE PURCH.

ENRICHED Camelot Flour 5-LB. BAG 62¢
CAMELOT ALL GRINDS Camelot Coffee 1-LB. CAN \$1.12
PUFFS FACIAL TISSUES BOX OF 50 48¢

MACARONI AND CHEESE Camelot Dinner 4 7 1/2-OZ. BOXES 96¢
SKIPPY DRY Dog Food 25-LB. BAG \$2.99
BETTY CROCKER LAYER Cake Mixes 18-OZ. BOX 54¢

QUARTERED MARGARINE Kraft Parkay 1-LB. CTN. 43¢
IDEAL LARGE OR SMALL CURD Cottage Cheese 16-OZ. CTN. 89¢
PELLERBURY CANNED BISCUITS 7 5-OZ. CANS 76¢
CAMELOT GRADE 'A' Medium Eggs DOZ. 79¢ Large Eggs DOZ. 83¢

CAMELOT WRAPPED American Slices 16-OZ. PEG. \$1.28
KRAFT COLBY OR CHEDDAR MILDST HORNS 16-OZ. PEG. \$1.48
CAMELOT GRADE 'A' Large Eggs DOZ. 83¢

MEADOWDALE FROZEN FLORIDA Orange Juice 5 5-OZ. CANS \$1.11
BANQUET, ALL VARIETIES Pot Pies 5-OZ. CTN. 4 \$1
MEADOWDALE Crinkle Cut Potatoes 2 5-OZ. PEG. \$1

STORE HOURS
 Mon. - Sat. 8:00 - 8:00
 Sundays 10:00 - 7:00

SHOP IDEAL FOR SUPERLATIVE SAVINGS 7 DAYS A WEEK... WE WELCOME FOOD STAMP CUSTOMERS.