

## DON'T NAME IT

By HONEST BILL

Lynx—you can hardly believe I really did enjoy that last Saturday.

It was Panhandle's face red third quarter, when the old town team of Panhandle did a single yard—not only they lost seven yards.

Plain to me why in the common sense you did not make you did that first half? You could have beaten the Panhandle Panther's two touch-downs.

You are at least that much better than the Panthers. Is it possible you wuz letting me down? simply can't believe that I you had an inferiority complex folks had told you you had a tough time of it.

My next time you are along with a team that whip them the last half—just me know about it. I am telling you the truth—I could have raised the city indebtedness that last Saturday.

Had of know how you in laying. That no-account under I told you about last trying to bet the stand company on Panhandle, I could do was walk away and let him crow. He is a big oil man, and did he shake the filthy here at me during the half. He even offered to bet me and give me three touch-downs.

—And that last half? You did. He is a good friend of Mr. and Mrs. A. H. Word—which is the only thing I have again overprint.

Schools—and I had home for a sandwich and put some coffee but Ruth was not a gona open at her house.

I hit him in the ax if I could get streets. He knew a word about the act or real civilized.

My prediction for the Lynx team. Lynx players have been for the last time this till they play McLean for a Championship of all.

Will win from Follett Perryton and will have as or Dalhart. We are in this game and then to play Panhandle it is Panhandle I did a three touch-downs.

The last game of will be with McLean, and the truth, we may get the defeat of last year. not as tough as they are. McLean did not year. Panhandle beat a week before the

Public will the football in this fellow struck me the other day and couldn't write about sides football. I felt until the noon hour, home at noon my could

she told the school kids had been passing football and someone had discovered something about the game that was not recorded in the Reporter. Elizabeth said "that crazy R. L. McClellan said old Bill Miller never would write up our team and give them all the credit" entitled too.

I had rather please during the football season to write about some of other folks are interested.

It's long now until the son is officially open. We at the ducks will all be to South Texas by that time, here's hoping.

We re-charge batteries for 50c. Consumers Sales Company

### Red Cross Clothing

The Hansford County Chapter American Red Cross has received another shipment of clothing for distribution.

The committee in charge will take applications for clothing needed, before distributing this allotment, as stated this county has distributing points.

Over, Morse and Spearman those who are to receive clothing from the Spearman office are requested to call at Spearman Thursday at

## MORSE ITEMS

P. T. A. MEETS

The Morse Parent-Teacher Association held its second regular meeting of the year Tuesday evening. An interesting program was presented, featuring an address by Miss Martha Buttrill, Home Demonstration Agent of Hutchinson County, on the subject, "Nutrition and Growth." Mrs. D. M. Womble gave a short history of the Mother's clubs in Texas. Mrs. E. J. Norman was elected as social vice president to fill the vacancy left by Mrs. T. O. McKay. It was decided to hold a Halloween carnival. The next regular meeting will be held November 13.

## BRIEF MENTION

Messrs. Ingham, Green and Fogleson land appraisers, were in Morse on business Tuesday. Mrs. Keahey and family moved away from Morse Thursday.

The third and fourth grades of the school entertained in chapel at the school house Friday.

Rev. W. P. McMicken, Methodist pastor of Gruver, filled the appointment here Sunday.

Mr. and Mrs. A. J. Spate went to Texhoma Sunday. Mrs. Spate's mother, Mrs. A. Moore, returned with them.

E. J. Norman and family moved into Mrs. Parker's house Monday. Mr. and Mrs. J. B. Speer and family and Miss Lorna Stock went to Canyon Sunday.

Horace Tompkins was in Berger Sunday.

Among those who attended the football game at Berger Friday night were: Roy Stevenson, Desmond Kelly, T. C. Cooke, H. I. Gay, Clyde Miller and Bub Durham.

Mr. and Mrs. Roy Womble and family were in Berger Sunday.

Among those from Morse who attended the singing convention at Stinnett Sunday were: Mr. and Mrs. Alva Henderson and family, Mrs. Charles White, Frederick Forester, Mrs. Walter Forester and Stanley Kelly.

Desmond Kelly spent the weekend with Roberta Kelly.

### BASKETBALL PRACTICE.

The Morse High school boys have been practicing basketball the past week with Supt. J. B. Speer as Coach.

### HOME DEMONSTRATION CLUB

Miss Martha Buttrill, Home Demonstration Agent of Hutchinson County, demonstrated cheese making to her club at Pringle Wednesday. Those from Morse attending: Mrs. Bill Boney and Mrs. H. N. Kelly.

### BOY SCOUTS MEET

The local Boy Scout troop met Wednesday night and passed some tests, played games and initiated a new member, Lewis Harbour.

### GIRL SCOUTS GO ON HIKE

The local Girl Scout, under the leadership of Mrs. Anson Ward, new scout leader, went on a hike Friday afternoon.

### SLUMBER PARTY

The following attended a Slumber party given by Dorothy Ann and Virginia Sue Cooke: Roberta Kelly, Joyce Womble, Marciel Womble, Edith and Ruby Battie, and Willa Rae Tompkins. It was reported that no slumbering was done.

### BICYCLE TRIP

Wayne Kelly and M. C. Riemschneider sweated up and down the hills between Morse and Berger Sunday on a pair of rickety bicycles.

### Wayne Kelly, Reporter.

### Virgil Floyd Buys Store At Miami, Texas

Virgil Floyd, an employee in the F. W. Brandt and Company Grocery and Dry Goods store of Spearman for the past several years, left early Thursday morning for Miami, Texas where he has purchased a grocery business, and will operate it in the future.

### IMPORTANT NOTICE

In a letter from the Extension Service dated October 5th, it makes no difference which plan is used by a county, the production figures must be turned in on form W-9.

We are anxious that these reports be turned in as fast as possible, so that the County Allotment Committee can proceed with their work. Will you please cooperate with us.

In the last meeting of the board of directors a vote was cast for the county average plan, with the alternate of exception No. 4. The county average was voted for in all organization meetings held by the county agent, and with only one exception, every wheat grower attending these meetings voted for the county average. There has been some doubt among the wheat growers as to what plan we were going to use. I believe this will enlighten every one on the subject.

Please hurry your bushel and acreage reports to us.

E. C. GREENE, Secretary Production Control Association, Hansford County.

Mrs. Bob Archer was rushed to St. Anthony hospital in Amarillo Monday night where she was operated on for a hernia.

## Panthers Win From Lynx In Saturday's Game, 14 To 12 Score

### HOME TEAM STAGES LAST HALF RALLY TO SCORE TWO TOUCHDOWNS—OUT-PLAY RIVALVS FOR PERIOD.

Panhandle Panther's came over to Spearman Saturday determined to avenge two outstanding defeats suffered by the team last year and when the last whistle of the game sounded they had made good, but had suffered a crushing reverse of the contest in the last half of the play.

Starting from the kick-off with plenty of pep and a smooth running offensive machine the visitors whipped thru the Lynx line, and skirted the ends for gain after gain. The visitors kept possession of the ball from the first kick-off until they had registered their first counter some four minutes after the game started. Twice more during the first quarter the Panther's penetrated, and just a few minutes before the end of the first quarter, the Lynx held the Panthers for downs on their own one yard line.

The second quarter was largely a repetition of the first, with the exception that the Lynx line was strengthened a few minutes before the half ended. Spearman also received two bad breaks of the game in this quarter when they were penalized 30 yards for talking as substitutes were sent into the game. The second Panther counter came when Eggleston skirted the right end for an eight yard gain.

It was an enraged and ferocious Lynx that came back into the game at the half, and striking right and left, the Panther was forced to give ground to the attack. In the third quarter the Panther's did not have possession of the ball but two times, and on these occasions they lost seven yards, being forced to kick each time. The Lynx started their real aggressiveness just before the end of the third quarter and walked down the field from their own 20 yard line to the Panther's 6 yard line as the quarter ended. The 1st Lynx touchdown came in the first few seconds of the fourth quarter when Robinson carried the ball on a spiner play thru the center of the line, making the touchdown standing up.

The Lynx registered two penetrations and two counters in the last quarter of the game. On two occasions the Lynx had the ball on the one yard line only to lose on downs. Final score of the game came when Vernie Black tossed a 23 yard pass to Patterson, who scored the touchdown.

Black Robinson, Patterson and Captain Bob Howard starred for the Lynx players with Gibson, Pittman and Engle showing up best for Panhandle. Vernie Black made one kick that rolled ninety three yards before it went out of bounds on the three yard line. This play was called back and was not officially recorded. However the official record shows Black averaged 43 yards on his punts as compared to 30 yard average by Panhandle. Spearman gained 243 yards during the game as against 222 by Panhandle. The home team made 17 first downs against Panhandle's 15. Spearman attempted 12 passes, completing 6, two being intercepted. Panhandle attempted 7 passes, 1 being intercepted, 2 completed.

## Lion John R. Collard Provides Excellent Tuesday Lion Program

Lion John R. Collard provided one of the best and most interesting programs held at the Lion Club this year, at the noon luncheon of the organization held at Burt's Cafe Tuesday.

Lion Lee McClellan gave an interesting and instructive talk on the work of the Red Cross, national, state and Hansford County. Of the many interesting facts brought out in the talk, it was learned that the state of Texas had received several hundred thousand dollars more in relief the past year than had been paid in membership fees. Hansford County relief in the form of Red Cross flour and clothing was handled thru the local Red Cross assisted by relief organizations.

Mrs. H. A. Nichols gave two humorous musical readings, "I Don't Think You Would," and "The Dog's Life". She was accompanied at the piano by the "club sweetheart" Mrs. A. H. Word.

## INTERMEDIATE LEAGUE

Subject, "Superstition." Leader, Craig Davidson. "The Beginning of Superstition" Robert Douglas. "Some Evidence of Modern Superstition" L. M. Womble. "The Opposite of Superstition—Scientific Method" Catherine Lyon. "Benediction, Helen Anderson. All young people between the ages of twelve and sixteen are welcome to join the league.

## JURY LIST FOR DISTRICT COURT

Jurors for the regular term of District court which opens in Spearman October 30th, are:

### GRAND JURY LIST

Homer Allen, E. P. Close, A. L. Jackson, Homer Cluck, Harley Alexander, H. B. Hart, Emil Knutson, W. A. Gillispie, F. W. Brandt, P. F. Hawkins, V. H. Ogle, L. W. Ayers, J. A. Ward, A. L. Thoreson, R. F. Wallin and Henry Reed.

### PETIT JURY LIST TO APPEAR OCTOBER 31

E. C. Barnes, G. K. Wilmoth, Clyde Hazlewood, E. S. Uptergrove, Joe Miller, L. G. Noble, J. D. Hester, W. S. Thomas, K. Hill, Carl E. Hutchison, J. D. McGuiney, W. Q. Thorne, D. O. Reynolds, K. F. Womble, G. W. Stewart, Foster Hughes, Paul Roach, W. R. Parks, Litch Sparks, R. C. Chase, E. K. Snider, John Dillow, M. C. Sanders, D. B. Kimes, E. C. Greene, Frank Allen, R. B. Archer, J. H. Davis, W. A. Van Cleave, E. C. Harmon, Jay Jones, Jack Hancock, J. H. Shapley, E. T. Rafferty, Coy Holt, E. C. Womble, W. H. Neilson, Virgil Wilbanks, Geo. Mitts and Fred Hoskins.

### PETIT JURY LIST TO APPEAR NOVEMBER 6th.

Ben D. Beck, Homer Martin, F. M. Lyon, R. E. Lee, Frank Fleck, Mose Lamb, C. E. Kiker, H. H. Jones, T. A. Cooke, W. U. Cook, Bert Briley, L. M. Buckner, Tom Carruth, R. M. Crawford, A. H. Frazier, E. H. Wright, G. H. Gay, J. C. Dye, R. M. Grandon, L. E. Morrison, W. H. Forrester, P. H. Westerfield, R. W. Brownlee, Guy Cooper, Robert Shapley, W. E. Trostle, R. E. Leitner, Ernest Johnson, Chas. Rosenbaum, Bertie Cator, Tom Graham, M. F. Barkley, A. E. Ferguson, Geo. Buzzard, W. L. Harris, E. D. Church, E. M. McClellan and John Douglas.

### Singing Convention Sunday October 15th

The regular annual meeting of the Plateau Singing Convention was held at the District Court room of the Hutchinson County courthouse last Sunday.

In the afternoon a business session was called and the following officers were elected for the Hutchinson County Club:

Bob Stratton, Sr., reelected as President.

Ivan Bolles, Vice President.

Miss Iris Lieb, Secretary.

Advisory Board, W. B. Lackey, of Holt, R. F. Groves of Pringle; J. E. Early of Stinnett; R. G. Stratton of Berger, and J. C. Carter of Phillips.

Everyone is invited to attend the Hutchinson County Choral Club singing, Sunday Oct. 22nd, at 2:00 p. m. at the Pringle school auditorium.

### Lion Club Members To Hold "Ladies Night" Tuesday, October 31st

Charman of the program committee for the Lion Club Ladies Night, which will be held at the Legion Hall, Tuesday, October 31, has announced that the committee will have a REAL program for the coming event.

Rev. H. A. Nichols is chairman and Sam Gillispie and Lee McClellan are program committeemen.

### Mrs. O. G. Collins Entertains T. E. L. Class With Social

Members of the T. E. L. Class of the First Baptist Church were delightfully entertained Thursday afternoon of last week by Mrs. O. G. Collins. In the short business meeting the class elected its officers which are: Mrs. A. F. Loftin, Teacher; Mrs. O. G. Collins, President; Mrs. Rex Sander, First Vice President; Mrs. H. B. Towe, Second Vice President; Mrs. Parker, Third Vice President. Mrs. Marvin Lee, Secretary. Mrs. Dave Dice, Treasurer and Mrs. O. J. Williams, Reporter.

The class is divided into three groups which work under three different group captains who are: Mesdames, Rex Sanders, Bennie Crow and Marion Glover.

After the short business meeting various games were played by those present, followed by dainty refreshments served to those present. Everyone seemed to have a splendid time and the class especially urges every member of the group to be present next Sunday. The lesson will be found in Acts 13:1-5, 14:19-23.

Mr. and Mrs. Jess Womble returned Monday from a week end trip to Solano, N. M., where they visited with Mr. Womble's mother, Mrs. A. B. Short. Mrs. Short returned with the Womble's to make a short visit with her son.

Mr. and Mrs. D. H. Powers under the

## Spearman Lynx Will Play College "B" Team Here Friday

### OKLAHOMA COLLEGE TEAM HAS GOOD RECORD WITH HIGH SCHOOL TEAMS IN THIS SECTION

Coach Elmer Gunn's Lynx team will play Goodwell College "B" team in Spearman at 3:30 p. m. Friday of this week for the last home game scheduled so far this season.

In view of the fact that this may be the last opportunity some of the fans will have to see the Lynx in action, the school officials are anxious to have a big turnout to the Friday afternoon game.

The Goodwell College "B" team has made rather a successful record with high schools in this section, having been defeated only by the Perryton team by a score of 6 to 0. However scouts report the team in much better shape at this time than they were earlier in the season, and a real battle is expected.

Following the Friday game the Lynx have their first conference game with Follett. The game will be played at Follett, and it is scheduled to be rather a hard contest. Follett beat the Canadian team 20 to 0, after that team had hardened into the season grind. Spearman only defeated the Canadian team 19 to 0, early in the season.

### Tom Thumb Wedding Attended By Many

A large audience gathered at the High School Auditorium on Tuesday evening of this week to attend the "Tom Thumb Wedding" staged by Spearman children from 3 to 6 years old, under the Society of the Methodist Missionary auspices of the Mary Martha Circle.

The program was varied and well worth the small 10c admission price charged. The children did exceptionally well and the parts were cleverly acted, some thirty children participating. It was a success from every standpoint and netted approximately \$31. to the club. Members of the club voiced their thanks especially to the mothers of the children for their cooperation and to the local people who attended.

### MISS ADA JOHNSON DIES AT GRUVER

Miss Ada Johnson died in Gruver on Friday of last week, from what a coroner's jury pronounced suicide. She was living at her home in that city with her father and two brothers, Will and Geo. About 11 a. m. that day the father of the girl left her alone at the house and went to town. When he returned at 1 p. m. he missed the daughter and looking for her he found her in a closet hanging.

She was hanging from the top of the closet with a bed sheet that had been torn in strips and wet and a trunk was near which she probably used to jump off.

Miss Johnson had been in very ill health the past several years and it is thought that the agony she suffered and the weakness of her mental condition prompted her to end it in this way.

Funeral services conducted by Rev. W. H. Forbes, were held at the Community Church in Gruver Saturday afternoon, October 14th, followed by burial in the Gruver Cemetery.

Aside from immediate relatives and loved ones she leaves to mourn her loss a host of friends and acquaintances.

### Dahlia Unit Is Beautifying Park

Members of the Dahlia Unit are working in conjunction with men on the relief work in Spearman to make the vacant park lot just north of Consumers Sales Co. a spot of beauty. In the past several weeks the ground has been freed of weeds, cultivated and irrigated, in preparation for sowing grass.

Early this week the plot was seeded with grass seed. In this section grass sown in the Fall does better than in the Spring as it is not bothered with weeds which are killed by frost.

### HAPPY HOUR CLUB

Members of the Happy Hour Club spent a very enjoyable afternoon at the home of Mrs. G. C. Newcomb on Thursday Oct. 12. At the close of the busy meeting, refreshments were served to these ladies: Mesdames, Vanee Close, L. M. Buchner, H. M. Shedeck, R. C. Bennett, W. A. Van Cleave, Cecil Crawford, Johnnie Close, Clara Clark, Tom Allen, Archa Morse, Bert Keith and the hostess, also Misses Ota Fern Clark, Ruth Jane Van Cleave, Marcella Newcomb, and a number of children.

## GRUVER NEWS

The Gruver community was saddened last Friday October 13th, when the news spread of the death of Miss Ada Johnson. Sincere sympathy for the bereaved ones is extended by the entire community.

Mr. and Mrs. George Westmoreland, Mr. and Mrs. C. A. Hitch and daughter Mary were dinner guests in the R. C. Brooks home Sunday.

Rev. and Mrs. Forbes attended the revival meeting at Dalhart Sunday night.

Mr. Loran Culpepper of Arzhearst came in Monday inspecting his cotton crop here and visiting in the home of his sister, Mrs. Darnell Cooper.

Mr. and Mrs. R. Broadhurst will leave Wednesday for Chicago where they will visit relatives and attend the Century of Progress.

Mr. Guy and Darrel Cooper transacted business in Perryton Monday. While there they were dinner guests in the G. R. Wilson home.

Mr. and Mrs. W. L. Gruver and Jr. Mr. and Mrs. Guy Gruver spent Sunday evening in the R. D. McClellan home.

Mrs. Mildred Sephens of Bovina is visiting in the home of her parents, Mr. and Mrs. J. A. Word.

George Deitrich received a message Wednesday that his sister-in-law had passed away at Appache, Oklahoma.

Mrs. Alice Wilson and Helen Lyle spent Wednesday night with Mary Alexander.

Ted McClellan had a new radio installed in his Chevrolet car last week.

Miss Lola Faye Smith of Berger is visiting with friends here.

Miss Charlene Sullins spent Saturday night and Sunday with Mrs. Kely Garrett.

Mr. and Mrs. Dave McClellan and daughter, Lucile and Anna Ruth, Mr. Abe Green of Perryton and Mrs. Daisy Celsor and Mr. Lewis Berry visited in the M. F. Barkley home last Sunday evening.

Mr. and Mrs. George Deitrich and Elene visited in the Ben Harris home Wednesday.

Mr. Fred Cooper visited Wednesday with Pete Cluck who is ill with appendicitis. He is getting along very nicely.

Mrs. J. H. Spivey and son Hicks spent Tuesday with her sister, Mrs. Durwood Cluck.

Mr. and Mrs. Earl Reynolds and family, Mr. and Mrs. J. H. Spivey and family and Mr. and Mrs. Durwood Cluck and son spent Sunday in the home of their parents Mr. and Mrs. Boston Eubanks.

Mr. and Mrs. Perry Brooks and family left last Monday for Tennessee to visit with relatives.

Mr. and Mrs. Art Stavolo took her father to Hot Springs, New Mexico last week for the benefit of Mr. Brown's health.

Mr. Edwin Stavolo made a business trip to Oklahoma City last week.

### BIRTHDAY PARTY AT HE W. L. GRUVER HOME

The W. L. Gruver home was a scene of happiness last Wednesday night Oct. 11th, when they entertained with a surprise party honoring Miss Mary Jo, with Miss Charlene Sullins and Mrs. Guy Gruver as hostesses. The evening was spent in singing and playing lively games. The honoree received many useful gifts. At a late hour delicious refreshments were served to the following: Misses Earnestine Spivey, Shirley Howard, Mary Alice Wilson, Mary Alexander, Helen Lyle and Mary Jo Gruver, Messrs. J. W. Garrett, Judson Forbes, Ross Walker, Leo Moore and Ermile Jasper.

### Three Spearman Boys Leave For C. C. C. Camp

Three Spearman Citizens left for the Citizen's Conservation Corp training by the Federal Government at Ft. Collins, Colorado, Monday.

Mrs. Archa Morse, Mrs. Johnnie Close and family, Willard Benningfield and Charles Newcomb were Sunday dinner guests in the Marshall Lambert home.

Mr. and Mrs. H. M. Shedeck and family visited Saturday night with R. C. Bennett's.

Mr. and Mrs. Henry Keith visited relatives at Lamar, Colorado, for a few days last week.

Mr. and Mrs. F. K. Bennett and son, Pat, Mr. and Mrs. Cec Crawford and Mrs. A. J. Bennett's.

## Red Cross Chapter Chairman Urges Roll Call Support

### SUPT. A. H. WORD CALLS FOR AID OF ENLARGED POPULATION IN ANNUAL DRIVE FOR RED CROSS MEMBERS.

The American Red Cross, local and National, operates entirely on the income derived from memberships of the people. This statement was made today by A. H. Word, chairman of the Hansford county chapter of the American Red Cross in outlining plans for the coming year. This chapter is able to serve the community as much as possible because of the response of our people in the past years made it possible for Red Cross to conduct the immediate distribution of farm board wheat and cotton. This single operation cost the National organization \$685,000. Acts of Congress making these farm board commodities available for distribution did not provide funds for means of paying overhead costs. The problem was met and handled by the Red Cross taking eighty five million bushels of wheat and eight hundred thousand bales of cotton in storage at hundreds of points in the United States, converting them into flour, cloth and other goods and distributing them to the needy and distressed in the country.

"In its far reaching disaster relief work, the Red Cross is entitled to give necessary help only cause it has the confidence of the American people."

Without a public thru membership meet each year, the work of relief would necessarily be limited to what it is possible with funds voluntarily contributed for the disaster.

"Our roll call in county will be launched Monday, and during the next few weeks every adult in the county will be invited to join the Red Cross. I am confident that the count of the service in the community during the coming year and the continuing need ahead, a larger membership ever before will be enrolled."

chapter, R. L. McClellan accepted the post of Red Cross man and will be in charge of conducting the campaign.

Mr. and Mrs. W. J. attended the show in Berger last evening.

### Local Tots To Vie In B. T. S. C.

Little Sadie Ruth Howard Dean Kelly, Craig Hutchison of Spearman entered in the "Contest", sponsored by the Training Schools District, to be held in Ca as Friday evening.

Sadie Ruth and Howard will enter the contest. The winner of the contest will then be District Contest some member at Pampa, and from there will go to Wells, to be entered in contest.

Much is expected from local youngsters as they heard in a contest reported by the local when Howard Dean first honors. He placed in the county in the schools last year.

### In This Issue

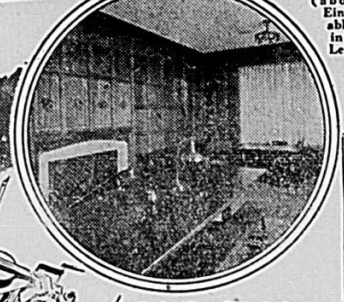
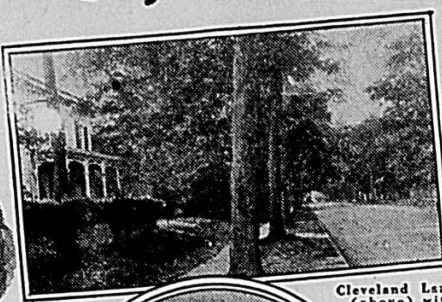
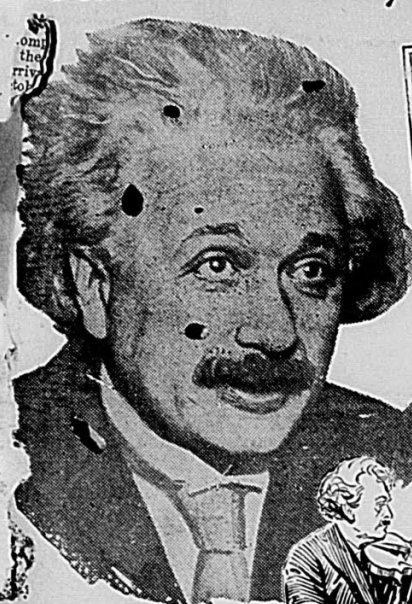
In this week's issue of the reporter will be found a most interesting and instructive report on Washington Events. This is furnished this paper by a Syndicate located at Washington and we feel that it will be beneficial to the readers that is making an effort to post on the activities of national administration.

### In Next Week's Issue

In next week's issue of the reporter, a complete legal report approximately 1000 applicants for wheat allotments will be filed. The information in this lengthy report is of importance to the farmer county, and the local committee board for the wheat allotment are mailing a letter urging that the report carefully and correcting any error per.

Merchants of this county are making an effort to take advantage of the active invitations to

# Peace and Security Assured Einstein at Princeton



Cleveland Lane (above) with Einstein's probable residence in foreground. Left, his office in Fine Hall.

Dr. Abraham Flexner (above), head of the Institute of Advanced Study, Below, Dr. Harold Willis Dodds, Princeton president.

Prof. Albert Einstein is to have peace and safety at Princeton for his scientific studies and his beloved violin.

Princeton University is the haven for Prof. Albert Einstein and his work.

When Professor Albert Einstein, famous scientist, takes up his duties at the Institute for Advanced Study of Princeton University, he will be free of all worry from enemies who dogged his footsteps abroad, as a result of his flight from Germany. Every measure has been provided to assure his personal safety and give him the peace he needs for his work. Just what special problems he will devote himself to are not disclosed, but it is that he will seek further solutions in his relativity theory.

## SPEARMAN REPORTER

Successor to The Hansford Headlight  
 Published Thursday Morning of Each Week  
 PANHANDLE PUBLISHING COMPANY, INC.  
 BILL MILLER, Editor and Manager  
 Wm. A. WILBANKS, Assistant Editor

Second class matter on November 21, 1919, at the post office at Spearman, Texas, under the act of March 3, 1879

Subscription Rates  
 Year—\$2.00 Six Months—\$1.25 Three Months—75c  
 All subscriptions must be paid in advance

THE PUBLIC—Any erroneous reflection upon the reputation of any individual, firm or corporation that may appear in the columns of the Spearman Reporter will be corrected when the attention of the management.

responsibility of a news to its readers goes farther than simply printing the news as it comes. It is being challenged by the public, and it is our duty to know better. We would maintain the confidence of his readers to it that in the columns of his newspaper appears which has a detrimental effect on his home town folks.

Those days are gone forever, and we are glad of it. But we are resentful of the representations made by those who should know better, that such practices still prevail. We can see no good in restrictions which might easily result in great injury to reputable business and no real benefit to anybody. Many of the provisions of the proposed law savor of oppression rather than of regulation.

And we resent Professor Tugwell's charge that the small town newspapers of America are negligent or culpable in their attitude in the matter of such advertising. Let him turn his attention to the radio, the billboards and the cheap fiction magazines, which habitually carry advertising of a character which no self-respecting newspaper, certainly not this one, would think of laying before its readers.

## This Week In Washington

If it were not for a few other little things which happen to be occupying the public's attention at the moment, the situation which is rapidly developing as state after state records its ratification of the repeal amendment would make first page headlines in all the newspapers. For repeal presents problems which the Federal Government will have to face with little delay, and only a comparatively few of those who are running the government today have given much attention to it.

The few who are studying the situation are faced with the problems to which only Congress can give the final answer, and nobody can predict what Congress will do.

The new liquor problems might be listed somewhat like this:

1. What shall the tax be on hard liquors distilled in the United States?
2. What shall be the tariff duty on imported liquors?
3. What means shall be used to prevent the shipment of liquor from "wet" states into "dry" states?
4. What ought the Federal Government do about protecting the drinking public against impure or falsely labeled whiskey and other spirits?

### More Farm Help Too

While industry and the cities are benefitting by such partly developed plans, the farmers are not going to be overlooked. It may be set down as pretty definite that a much broader policy on farm mortgages will be announced before long, making it possible for the government to take over any existing farm mortgage at a lower rate of interest, whether the mortgagor is in distress or not, and to make new mortgage loans direct to individuals who are in need of funds for any legitimate purpose.

All of such projects are in the nature of an answer to the demand for currency inflation. The

belief gets stronger here that any direct inflation of the currency would be merely a temporary stop-gap. The money troubles of the world are due largely to the scarcity of gold and its susceptibility to hoarding. Measures to penalize the private holding of gold by international agreement may come out of conferences to be held with European representatives next month. If all the gold in the world were held by the central banks of the different nations, and used only as a basis for currency and credit, there would be no need whatever for any monetary inflation, the President's financial advisers are now telling him.

### Problem Upon Us

In short, the United States is once more facing a whiskey problem that is as old as the nation itself. For the first serious revolt against the authority of the new nation was the "Whiskey Rebellion" of 1793, a rising of the farmers of the Ohio River headwaters against the imposition of the first Federal tax on whiskey.

It wasn't that the farmers wanted their liquor, so far as the records go they were as sober as anyone else in their day. But the only way they could get their grain to market profitably, before there were railroads and canals, or even highways, to the seacoast towns, was by converting it into whiskey, and they were afraid a tax on whiskey would cut down the price of grain and reduce its consumption. Ever since Washington's Administration the government has had a farm problem and a liquor problem on its hands, neither of them never settled satisfactorily; and the whiskey distilling business has continued to be centered along the Ohio River and its tributaries.

Mr. and Mrs. Dan Shroder and son and Mr. Aubrey Peddy transacted business in Amarillo last Friday.

Mr. Grady Browder of Amarillo visited with relatives in Gruver last week end.

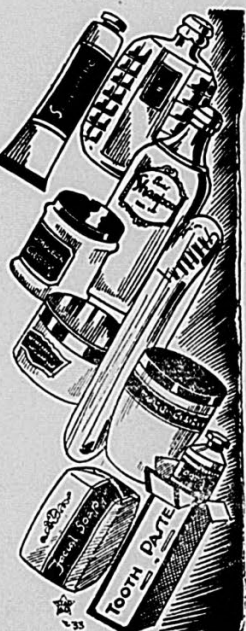
DO YOU NEED BATTERIES?  
**BATTERIES**  
 FLUOR  
 COUNTED BALANCED BATTERIES  
 Are Built for Service, 1 to 3 years Guarantee

Jimmie Davis

Mr. and Mrs. Verne Sebastopol, Calif., and visited last week with winter here. Mrs. Miller and Moore are sister and brother of Mrs. Spivey.

**THE OLD CORNER DRUG STORE**  
 J. D. TUMLINSON  
 —Did you ever stop to think that as a fact most colds and other ailments that spring from colds could be prevented, and a lot of suffering avoided by just a little timely precaution on your part? Come in and let us tell you about the effectiveness of Merrell's Thymoline in its action upon respiratory tracts in the prevention of many winter weather ailments.  
 —WE FILL ANY PRESCRIPTION—  
 "EVERYTHING IN DRUGS"

## What You Expect Of A Drug Store



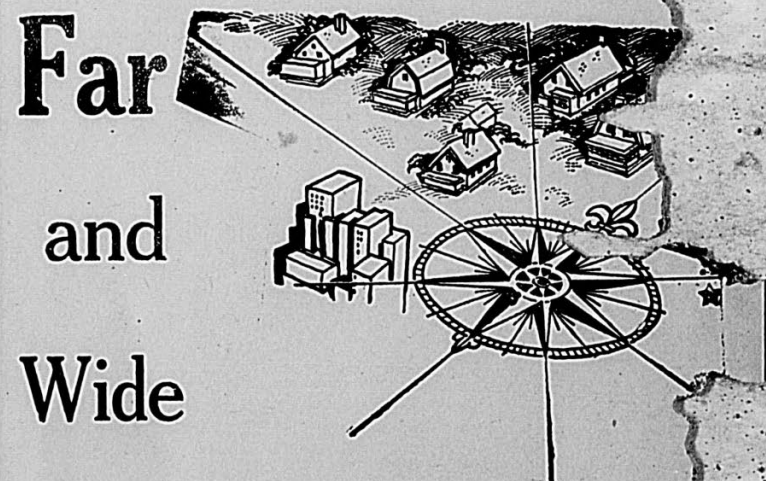
... LONG ago this firm learned that the obligation of the management to the customer was much greater than the loyalty of "Trading Home." While we sincerely believe that you should patronize "Home Business", we do not deserve your patronage if we cannot stock the merchandise you want at the price you can see on the open retail market.

... It is on the basis of having, up-to-the-minute, fresh merchandise at prices that compete with the retail market of the state that we are now soliciting your continued patronage.

YOU WILL SELDOM HEAR THE REMARK "We are just out" in this store. It is our obligation to keep the merchandise that a STORE should stock . . . AND WE DO JUST THAT.

TRY OUR READER'S LIBRARY FOR THE LATEST BOOKS IN FICTION AND SCIENCE. RENTAL ONLY 3c. PER DAY.

## Spearman Drug Co.



## The Use of Natural Gas---

—Has been accepted as the most economical, Cleanest, most convenient fuel on the American market today.

—You will find the inhabitants of Maine using this convenient fuel with the same relish and appreciation as those in Texas living on the extreme Southern Sea coast.

—In Spearman an investment that is probably much larger than any independent business in the city limits, brings you this clean convenient fuel.

## at Allotment Record, Precinct No. 5, Hitchland, Texas, Continued From Page No. 3, Section A

James C.; Shelton J. M.	14-15-22	960	900	13000	900	9000	900	6000	900	9666	900
Davidson, Oscar H.	15	525	510	4080	510	4080	255	2040	425	2733	255
Lewis, Henry D.; Mrs. Cora Lee	49	646	600	11100	600	12000	600	2100	600	8400	600
Kephart, J. T.	38	160	158	2400	158	3800	158	500	158	2233	158
Shelton, Dale F.; Shelton, J. M.	41	140	140	2100	140	1400	000	000	93	1166	140
Shelton, J. M.	42	400	400	4400	400	2000	000	000	266	2133	400
Shelton, J. M.	34-41	340	340	3400	340	6120	160	480	280	3333	340
Beatty, J. G.	24	320	315	5670	315	3150	315	1890	315	3570	315
Shelton, J. M.	40	646	536	2250	536	5080	380	2260	517	3197	547
Keenan, M. H.	13	370	256	1300	256	8448	256	350	256	3366	256
Davidson, E. E.	13	357	357	2056	357	2056	357	2056	357	2056	357
Jackson Bros.	44	646	334	2566	500	5368	500	2563	445	3499	500
Jackson Bros.	52	646	500	1835	500	5520	500	2285	500	3213	500
Shelton, J. M.	39	646	630	11500	630	8500	630	2340	630	7447	630
Jackson Bros.	45-50-21-2	2176	2088	8528	2088	28218	2088	7168	2088	14638	920
Arnold L.	60 61 1 48 27 29 31 49	2701	2231	27504	2531	37539	2531	15594	2431	26879	2531
L. and L. C.	12	756	730	2958	730	17433	730	1148	730	7178	730
John and Joe	2-43	1979	785	11775	785	7850	865	4325	811	7993	865
Jackson, R. L.	22	640	440	3080	440	3080	440	3080	440	3080	600
Shelton, J. M.	36-33-34	719	719	8628	719	561	2244	666	6020	719	
C. O.	62	640	634	6400	634	6900	634	6900	634	6900	634
	28	320	317	6106	317	4804	317	4804	317	4804	317
	30	320	317	6106	317	4804	317	4804	317	4804	317
	19	290	19	280	30	31	31	31	31	31	31

anhandle

		J. R. Renner											
		100	200	1000	300	100	200	1000	300	100	200	1000	300
Lawrie E. Fletcher, Wm. Lange	2238	746	13277	746	1492	746	13277	746	1492	746	13277	746	
Augustus G.; Gross, Otto	320	160	316	2528	316	316	316	316	316	316	316	316	
Brandvik, Gilbert J.; Brandvik, Mary J.	24	640	2500	270	1800	270	250	270	1517	280			
Bernstein, Arthur; Bernstein, J.	1600	697	800	652	7200	655	6000	608	4667	645			
Dilley, Don C.; Hulit, C. W.	27	640	600	10800	600	8400	600	600	600	6533	600		
Etling, William F. C.	28-32-33-34	59	3200	1604	9624	2460	59040	2460	14760	2174	27808	2460	
Fletcher, Gay H.; Fletcher, W. N.	55	320	300	3900	300	2400	300	900	300	2400	300		
Fletcher, Gay H.	55	313	300	3900	300	2400	300	900	300	2400	300		
Harris, Will L. and Ben M.; Chipperfield, B. M.	29	640	000	000	440	9966	440	2552	293	4173	440		
Hemphill, Shirley A.; Hitch, H. C.	57	160	157	1600	157	2200	157	600	157	1467	157		
Langston, James B. and W. N. Fletcher	35-56	640	550	1650	550	8250	550	1100	550	3667	550		
Logsdon, Joe; Hitch, C. A.	10-11	736	227	681	227	4767	227	454	227	1967	227		
Lening, Oscar H.; Hitch, C. A.	58	640	545	2725	545	8720	410	1230	500	4225	545		
Mulkin, Ray	57-18	480	250	1000	400	6000	400	675	350	2558	350		
Renner, John R.	296	530	500	6000	500	5000	470	2000	490	4333	502		
Renner, Boyd W.; Renner, J. R.	296	110	98	1000	80	900	108	240	98	713	108		
Roper, John W.	6	480	400	1200	400	6000	180	540	327	2580	332		
Roper, Henry H.; Roark, J. L.	36	640	450	3200	450	4800	450	3600	450	3867	450		
Scott, Albert; Hitch, C. A.	11	580	570	1710	570	11970	570	1140	570	4940	570		
Shapley, Willard A.; Wilmeth, Sallie C.	53	319	298	4470	298	2980	298	1490	298	2980	298		
Smith, Raymond C.; Jackson, S. P.	25	480	464	4701	464	6780	464	2900	464	4794	464		
Smith, James T.	24-25-7	640	380	2660	325	3900	275	1100	327	2553	255		
Smith, James T.; Jackson Bros	37	640	521	3105	521	5556	651	2401	621	5176	621		
Wall, Raymond C.; Peterson, Stella B.	295	320	250	2000	250	3750	210	300	237	2017	250		
Wallen, Arthur P.; Wilkes, J. T.	5-26	1280	1070	6000	1070	20000	1070	6084	1070	10655	1070		
Wallen, Frank R.; Langston, J. B.	6	160	154	1232	154	2772	154	770	154	1591	154		
Wallen, Frank R.	294	640	400	3200	400	7200	400	2000	400	4173	400		

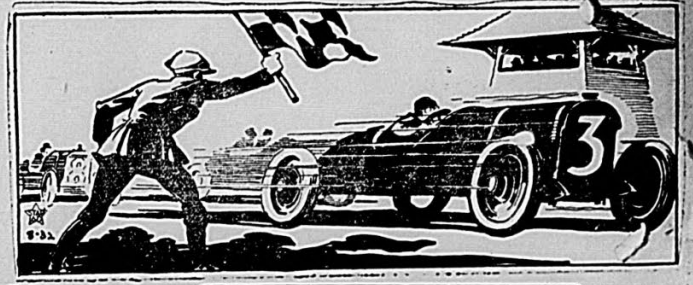
### Morse District; Precinct 9

MORSE DISTRICT, PRECINCT NO. 9—Community Committee— Walter A. Gillispie, R. F. Womble, and D. J. McGuiney.

Amend, Jas. D. Babbit, Mrs. Jennie	4	600	415	5000	649	4500	649	2600	571	4033	649
Barkley, Wm. L.; Barkley, Albert E.	32	510	150	1800	150	1050	150	000	150	950	125
Calvin, John A.	216	640	600	9000	570	1260	530	1645	567	6968	600
Clay, [unclear]	21	640	320	3200	320	2880	320	000	320	2027	320
Corn, [unclear]	17	640	490	9310	490	6860	490	2100	490	6090	490
Corn, [unclear]	8	649	600	10800	600	6900	600	1500	600	6400	600
[unclear]	32	514	214	2568	214	1712	214	642	214	1641	214
Davis, Henry T.; Balentine, Mrs. Ola	17	320	250	2000	250	300	250	000	250	767	250
Davis, John H.	185	304	265	1325	265	800	265	000	265	708	265
Davis, John H.; Jarvis, Oscar W.	17	320	265	864	237	1135	265	000	265	666	265
Davis, Mrs. Oliver C.	5-28-29	1920	585	5850	590	1770	590	2320	588	3313	100
Davis, Henry, Jarvis, Mrs. R. A.	176	400	396	5400	396	1500	396	700	396	2533	396
Gillispie, Walter A.	187	640	600	6500	550	4400	507	3000	552	4633	507
Graves, Sam H.; Noel, John L.	188	642	579	6300	559	5000	559	000	566	3667	559
Henry J.	1-2	1280	1100	6600	1000	7000	1200	1025	1100	4875	1100
Hour, Thomas L.; Medlin, L. L. Estate	20	480	000	000	300	6000	300	200	200	2067	300
Hour, Thomas, I.	22	150	147	1700	147	1176	147	1150	147	1342	124
Clifford L.; Noel, Jess G.	181	640	550	6325	550	1470	400	943	500	2913	400
John Mr. Hoke, John P., Hart, Haden	177-198	800	600	6000	500	4000	400	1200	495	3733	560
Robert B.; Hays, Josephine	174-175	960	490	7350	450	4500	450	2700	463	4850	450
Martin, Thom, Robert L.	2	320	000	000	320	3414	320	3414	213	2276	320
Mrs. Roberta May	197	640	320	5120	596	4000	570	1000	495	3373	560
Mrs. James C.; Jarvis, Oscar W.	183	320	308	3420	308	2100	308	760	308	2093	308
Chas. C.; Allison, A.	10	640	550	3300	550	2200	450	1200	517	2567	450
Chesler, A.	178	320	270	2700	270	000	270	000	270	900	270
[unclear]; King, Frank H.	194	640	540	7020	540	4320	500	000	527	3780	500
Mrs. Laura C.; Clyde F.	70	240	100	910	100	625	100	350	100	628	100
[unclear]; Robert H.; Moon, Mrs. Laura	70	200	200	3640	200	2480	200	1410	200	2510	200
[unclear]; Robert H.; Price, Leslie M.	72	160	160	2880	160	1600	160	1600	160	2027	160
[unclear]; Joseph R.; Moon, Mrs. Laura	70	200	200	3640	200	2880	200	1410	200	2510	200
[unclear]; Price, Leslie M.	72	160	160	3200	160	2880	160	800	160	2295	160
Morris, Walter V.; Pritchard, Mrs. Sallie	35	640	560	7840	560	5600	560	2240	560	5227	560
Morris, Walter V.; Sangster, John C.	33	560	400	6000	400	4400	400	1600	400	4000	400
McGuiney, Daniel J.	186	640	450	4500	450	2700	450	600	450	2600	455
McNulty, James A.	195	320	315	000	300	000	300	000	305	000	300
McNulty, James A.; Hoover, H. E.	192	320	190	1140	190	000	190	000	190	380	190
McNulty, James A.; Noel, John L.	193	320	290	2610	290	1160	220	100	267	1290	220
Neilson, Howard and John W.; Hudson, Miss Nina	121	640	000	000	497	4970	597	5970	367	3647	597
Noel, Lewis F.; Hamroe, John J.	16	640	550	3500	450	107	550	000	517	1202	550
Noel, Cecil M.; Kenny, Mrs. Birdie	171	320	316	2528	316	000	316	000	316	843	316
Noel, Gerald G.; Noel, John L.	193	320	282	2820	226	1582	262	300	257	1567	237
Noel, Gerald G.; Noel, Walter H.	189	160	156	1400	156	1092	156	000	156	833	156
Pierce, Clem.; Jarvis, Mrs. R. A.	176	240	220	3300	220	2000	220	1400	220	2233	220
Pittman, Erlis E.	11	160	150	2400	150	1050	150	700	150	1383	150
Pittman, Erlis E.; Whittington, C. W.	26	320	115	1840	125	1000	125	750	122	1197	125
Riggs, Clyde D.	192	320	145	1812	185	1350	190	000	173	1054	145
Ryan, John E.; Amarillo Livestock Loan Co.	16	160	158	1600	140	1120	158	640	152	1120	130
Ryan, John E.; Murphy, Edith M.	1	183	000	000	183	1830	183	915	122	915	183
Ryan, John E.; McCloy, McLeod W.	6	640	600	6000	600	4800	600	000	600	3600	600
Ryan, John E.; Williams, Wayne J.	11	350	000	000	350	3500	350	1400	233	1633	350
Sangster, Chris	10	480	180	2520	140	1260	180	1080	167	1620	160
Scott, Charles J.; Johnson, T. W.	183	320	216	1806	216	823	216	125	216	935	216
Seitz, Mrs. Virgie	182	320	260	3000	260	1600	260	1200	260	1700	260
Seitz, Willie B.; Seitz, Mrs. Virgie	182	320	270	3500	270	2700	250	1620	263	2607	307
Womble, Arthur J.	15	640	200	1800	200	1800	200	1200	200	1200	200
Womble, Roscoe C.	27	640	375	750	350	4500	370	1850	365	4520	350
	21-22	640	600	600	600	6000	600	600	600	600	600

Chevrolet leads the Field in Passenger Car and Truck Sales By Larger Margin than Ever Before in History

With 230,433 Cars, 40,417 Trucks For First 6 Months of 1933



Chevrolet, America's No. 1 Car—47.99 per cent of All Low Priced Cars Sold. No. 2 Car—26.74 per cent.

In Oklahoma and the Panhandle of Texas District the Ratio is More Pronounced.

Passenger Car Reg.	Truck Registration
(As Furnished Us By Dealers) Oklahoma City Zone—Sept. 1933	(As Furnished Us By Dealers) Oklahoma City Zone—Sept. 1933
Chevrolet, 62.5	Chevrolet, 61.4
Ford, 22.0	Ford, 19.2
Plym., 14.2	Dodge, 10.7
	Int., 8.3

—True enough, it isn't news any more to say that Chevrolet leads the in automobile sales. People have come to take that for granted. But year there is an important difference. In the face of the keenest competition the industry has ever known, Chevrolet has INCREASED margin of leadership. In fact according to the latest available figures let alone has sold almost as many cars this year as all the rest of the price field combined!

—When a car looms above its field like that, there can't be an about it. It MUST be an all-round BETTER BUY. And that's exactly CHEVROLET offers you.

**FREE**

—With every new Chevrolet sold on or December 1st, 1933 the McClellan Chevrolet will give FREE a new Chevrolet Heater

—We will GIVE you as much in USED CAR as any legitimate dealer.

Sales—**MCCLELLAN CHEVROLET**

**Instant Lighting Coleman Iron**

**NEW LOW PRICE \$5.95**

This latest improved Coleman Iron will save you many times its cost in work saved, in clothes saved and in money saved! It will help you do your ironing better, quicker, easier.

Model No. 4A is Instant Lighting. No preheating necessary. Has Roto-Type Generator with cleaning needles which can be operated while burning. Tapered sole-plate makes it easy to iron around buttons, under plates and along seams. Use it anywhere—no cords or tubes. Makes and burns its own gas. Beautifully finished in blue porcelain enamel and highly polished nickel.

THE COLEMAN LAMP & STOVE CO.  
Wichita, Kans. Philadelphia, Pa. Los Angeles, Calif.  
Chicago, Ill.

**ASK YOUR DEALER**

**Why YOU Should Have TELEPHONE**

Midnight... the smell of smoke, the angry crackle and fierce glow of crimson flames... No time to run, distant neighbor's or to plow through rain or snow to a fire alarm box.

But a telephone in your home enables you instantly to summon help in case of urgent need. Day by day, too, the telephone saves in securing supplies or repairs for home or farm.

Stop in soon and find how little it costs to have a telephone in your home.

**THE WESTERN TELEPHONE CORP.**  
"Use the Low Rate Toll to Other Cities"

at Allotment Record, Precinct No. 1, Spe

Continued From Page No. 1, Section A

Table with multiple columns listing names and numerical values. Includes names like M., H.; Collard, J. R.; Endicott Georgia L., etc.

BU Everything Better Price

Note the Comparison of Markets for October 10th, 1932 with October 10th, 1933

Table comparing market prices for Wheat, Barley, Oats, Shelled Corn, Ear Corn, Peanuts, and Cotton Seed in 1932 and 1933.

THE AVERAGE INCREASE IN PRICES ON THESE STAPLE COMMODITIES IS ABOUT 120 PERCENT. ALSO in October 1932 there was no public work in prospect.

IN VIEW OF THESE FACTS WE SHOULD EXPERIENCE A RETURN OF CONFIDENCE IF WE FALL IN LINE WITH THE N. R. A. PROGRAM AND BUY NOW!

BANISH THE FEAR OF BLOWOUTS



Advertisement for Firestone tires featuring an illustration of a tire and text describing 'Gum Dipped High Stretch Cords' and '58% GREATER PROTECTION'.

EVERY FIBER • EVERY CORD IN EVERY IS BLOWOUT PROTECTED BY GUM-DIPPED

Advertisement for Firestone tires showing three different tire models (Oldfield, Sentinel, Courier) with their respective prices.

Advertisement for Firestone Spark Plugs and Batteries, highlighting '58¢' for spark plugs and '575' for batteries.

Advertisement for Firestone Aquapuf Brake Lining, showing a price of '\$2.40' per set.

When Winter comes you change your summer underwear for "heavies" --- Why not change your differential grease and gear grease in your automobile also.

Consumers Sales