

THE SPEARMAN REPORTER

28 No. 38 Spearman Reporter, Spearman, Texas, Thursday August 15 1935

BRALLEY ELECTED SUPERINTENDENT OF SCHOOLS

Bralley, formerly Superintendent of the Thalia High School, Texas, has been elected Superintendent of the school system, according to an announcement of the School Board. Bralley has an excellent record as an educator in this and other states. He holds both a Bachelor's and a Master's degree from the University of Texas. He has spent four years as an educator in the Muskogee, Oklahoma school, three years in the Texas High school, and two years in the Lubbock, Texas school. The new Superintendent will be in charge of the school system for the past three years. Bralley is an outstanding, not only as a teacher but as an organizer also. The school district represents a large area, and has been a schoolastic enrollment of nearly 400 students. Bralley is an accomplished and has carried off the school work, and glee organizations for the past two years. Bralley is an instructor and organized a band at Thalia. At the present time is located in Vernon, Texas, where he is teaching piano and band organ.

Slam Team Wins Softball Tourney.

The Slam team won the tournament officially closed when they defeated Bill Whit-

time the paper goes to the printer. The Slam team was not informed as to the plans. The announcement in last weeks paper stated for the new tournament open until Saturday of the Slam team. Since nearly one player has been resigned, the Slam team will be reorganizing, and starting the tournament Thursday evening.

Document Makes Record of Hansford checks

who are inclined to compare the Federal government of delay in receiving their records note this record. In Hansford county the records of the allotment board were forwarded to Washington on July 19. The benefit payment received August 3, just fifteen days after the papers had been forwarded. A good record.

Prohibition Speaker To Be Here Saturday

Announcement was made this week by Chairman Lee McClellan of Hansford County Prohibition committee that an out of town speaker will be here on the coming election. The speaker will be held in front of the Reporter Saturday afternoon at 4:20 p. m. and will discuss the drawing.

PROHIBITION RALLY AT DISTRICT COURT TOMORROW SUNDAY 18TH

Hansford Citizens interested in the cause of Prohibition, are invited to attend the prohibition laws, are urged to attend a Prohibition rally at the District Court in Spearman, Sunday August 18th at 3 p. m. Plans for a Prohibition campaign before the election, will be for at the rally out of town will be present to talk about the prohibition laws. The rally will be held at the District Court in Spearman, Sunday August 18th at 3 p. m. Plans for a Prohibition campaign before the election, will be for at the rally out of town will be present to talk about the prohibition laws. The rally will be held at the District Court in Spearman, Sunday August 18th at 3 p. m. Plans for a Prohibition campaign before the election, will be for at the rally out of town will be present to talk about the prohibition laws.

Loftin, Wren, Altha Ois and Vera Beth Levertown re- Wna, Texas Saturday from a Baptist

GAME OF SEASON TO BE STAGED FRIDAY

The outstanding recreation event of the season will be presented to the people of Spearman and outlying communities Friday August 16.

Playground ball the game that has been taking the whole nation as a form of sport and entertainment will be played on the local diamond as it has never been played before. The women under the management of Mrs. Lloyd Campbell have been working out for several days and they believe that the men will have to take another crushing defeat in the matter of Mens Rights. On the other hand Mayor Cooke and his cohorts have been limbering up the old reumatic joints and are getting into shape the last week. The men say that the age limit of 50 years young or over will make the game about even.

The game is to be played for the benefit of the football boys who are planning their annual trip to the mountains about the 28th of this month.

The game will be called at 8 o'clock Friday night, and the admission price will be 10-15 cents. Come out folks and get that real fun and entertainment that only a game of playground ball between the Women and the Men past fifty can provide.

In addition to the line-up of men as printed in last week's paper, Mayor Cooke announces Mr. Retus as pinch hitter, Grandpa Sanders, Mr. McClellan, (the daddy McClellan, not Lee), Mr. James and George Reed as substitute players.

The ladies will likely depend on the following members of the team to win their game. Vern Campbell, Pauline Johnson, Hollie Riley, Tetot McCleod, Darlene Howell, Viola Whitson, Margaret Gibner, Ruth McNabb, Gwenfred Lackey, Lucy Mitts, Bessie Mitts, Mrs. Bruce Sheets and Virginia Vernon.

The revised list of players of the Ladies softball teams as brought to this office just before press time is as follows: Mesdames, Whitson, Chester Mitts, Floyd Mitts, Brittan, Lester Howell, Jimmie Jackson, Tom Allen, John Allen, Earl Riley, Tom Johnson, Lloyd Campbell, Max Lackey, Pete Vernon, Carver, Schell, Jess Wright, Roy Russell, Carl Donnelly, Jack Hancock, Warran McNabb, Pone Gibner, Cap Richardson, C. W. Smith, Dick Kiker, Preach Richards, Angus McKay, Geo. Buzzard Bill Hutton and Lynn Pack.

Will Equip Two Canneries In Hansford County

Work will begin in the near future on equipping a community cannery at Spearman and Gruver. Both canneries are relief projects applied for several months ago, and are needed badly in the respective communities. We are informed the canneries will be equipped with pressure canners and sealers, and have all the conveniences necessary for efficient work along this line. The building next door to the Bakery, known as the George Reed building, has been secured for the Spearman cannery.

PAMPA MAN TO SPEAK ON REPEAL MONDAY EVE.

H. D. Tucker of Pampa, Texas, will speak at the ball park East of the court house on Monday evening August 19th at 8 p. m. in the interest of prohibition.

BUSINESS CHANGES MADE IN SPEARMAN

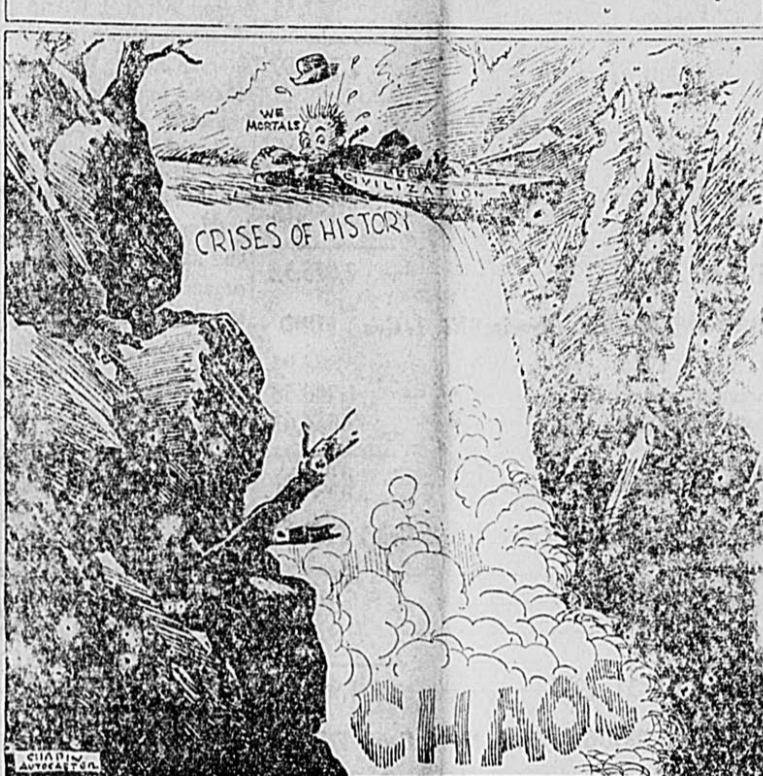
Seems as though managers of retail gasoline stations in Spearman decided to choose up and shift around considerably. As result, Clyde Windom, manager of the Phillips 66 station has been promoted to the position of manager of a large Phillips Station at Pampa. Ike Vernon former employee at the local station, who has been connected with a Phillips station at Pampa, returns to Spearman in charge of the Spearman station.

Jack Hancock who has been employed with the R. E. Lee Oil Co. took charge of the Conoco station in Spearman, this week, and was replaced at the R. E. Lee Oil Co. by John Elliott, formerly of Denver Colo. Charles Chambers who has been in charge of the Conoco station has accepted a position with the McClellan Chev. Garage.

Hugh Hazelwood formerly employed at the McClellan Chev. is now employed by the R. E. Lee Oil Co., working with John Elliott.

Mr. Wright Hale local picture show man is in Oklahoma City this week buying pictures for the Lyric Theatre. He will return Wednesday of this week.

BUT SOMEHOW, WE NEVER GO OVER



SOIL CONSERVATION TALKS SCHEDULED FOR COMING WEEK

Announcement was made of a series of meetings in Hansford county to be held in a program of education on soil erosion. A group of speakers headed by D. E. Autry, head of the Perryton CCC camp, will explain the work to be accomplished in Hansford county by the CCC camp. H. A. Daniels, head of the agricultural experiment station of Goodwell College will deliver his famous lantern lecture on soil and moisture conservation. Where electricity is available pictures will illustrate this lecture.

The schedule of meetings are as follows: NEW HOPE school house, the meeting to be held in Ochiltree county, beginning at 8 p. m. Friday August 16th. BLACK SCHOOL house beginning at 8 p. m. Monday night August 19th. DISTRICT COURT room at Spearman, Texas Friday night August 23. KIMBALL SCHOOL house at 8 p. m. Wednesday night August 28th.

COMMISSIONERS HOLD LENGTHY SESSION TO COMPLETE BACK WORK

Members of the Hansford county Commissioners Court held a two day session Monday & Tuesday of this week. Taking care of the work that had piled up during the month. Several differences in purchase prices of highway right of way were ironed out, and both the court and land owners satisfied. The purchase of a grader and tractor for Precinct 1 of the county was perfected at the meeting and an election ordered for the purpose of creating Hansford county in the soil erosion district of the state. One half the state taxes will be refunded to Hansford county during the next two years if the vote carries to include Hansford County as one of the soil erosion districts of the state. In addition to the state taxes it is anticipated that Federal funds will be available to carry on this class of work. The coming election will be held September 14th.

H. H. Finnell and County Court Will Be Lion Club Guests Tuesday Noon.

H. H. Finnell, Dalhart, Texas, Regional Director of the soil conservation work in Texas, Oklahoma, Colorado and New Mexico, and the membership of the Hansford County Commissioners court will be guests of the Spearman Lions club at the noon luncheon next Tuesday noon. Mr. Finnell is to make a talk on the work of soil

Frances Brockus and Gwen Yount were shopping in Amarillo Saturday.

MAIL ORDER SERVICE NOT ONLY PROMPT BUT EFFICIENT.

Bobbie Hazelwood, son of Mr. and Mrs. Clyde Hazelwood, rushed into the Reporter office Saturday afternoon just before the drawing and said "What do you think Bill! I was looking over the catalogue a few days ago and ordered me a little black headed sister. —And she came in today and he is just like I ordered her." Bobbie was well pleased with his little sister and agreed to name her Mary Sue. The little lady weighed 8 pounds, and with the one exception that Bobbie figured he would have to divide his nickles and his candy with sister, everybody was well pleased. Papa Clyde informed Bobbie that by the time Mary Sue was big enough to share his candy and spending money, Bobbie would be big enough to earn her spending money.

New Associate With R. E. Lee Oil Company Takes Retail Sales.

John Elliott, experienced service station operator of Graham, Texas, who comes to Spearman from Denver, Colo. where he had charge of a large Service station located at Broadway and Author has become associated with the R. E. Lee Oil Co. as operator and manager of the retail sales of the local Magnolia distribution plant.

Mr. Elliott, a nephew of Perry Hawkins of Spearman comes to this city well recommended, both as to ability in his chosen line of business, and as to character and possibilities as a useful citizen.

The new citizen has made several changes in the arrangement of the business, and plans to give the public the very best of services that can be had in his retail sales of gasoline oils, Good-year tires and tubes and auto accessories. Elliott states he will feature greasing, washing and cleaning of cars.

Hugh Hazelwood, has accepted a position with the retail sales organization, and will be glad to greet his friends at his new location.

BROTHERHOOD MEET.

The regular meeting of the Brotherhood of the First Baptist church will be held at the church building Friday evening of this week beginning at 7:45 p. m. The program will include music to be furnished by Dick Tice, and a short outline of plans for future activities, by members of the Boys Committee. An effort will be made to make the meeting brief so that members may attend the Softball game between the Ladies and men past 50 years old.

DR. POWELL, Eye Ear, Nose and Throat specialist will be at Dr. Gowers office Wed. August 21st Glasses fitted, Tonsils and adenoids removed. Get the kiddies ready for school.

IMPORTANT NOTICE HOG ALLOTMENT CONTRACT SIGNERS OF 1935

The Texas Corn-Hog Advisory Sneed camp Committee, being the duly elected representatives of about 38, having his Texas Corn-Hog producers in sixteen counties, while in session at the Farmers Short Course at Texie Confederation, A. and M. College, issued the following statement.

We wish to go on record commending the National Administration for its untiring effort to give the farmer an opportunity to receive parity prices for the commodities he produces and markets and to give the producers of agricultural commodities a protection similar to that which has been given manufacturers and other commercial interests. Texas farmers are aware of the fact that this is an unprecedented consideration given them.

We insist upon the continuation of Agricultural Adjustment programs and processing taxes, without which Texas farmers and Texas business would suffer. We express the determination of Texas farmers to hold our adjustment programs regardless of attacks made on them, and serve notice that we shall insist upon some kind of farm program no matter what legal difficulties may arise in connection with the present one.

We heartily endorse and are ready to assist the Texas Agricultural Association in its effort to expose the unconstitutionality of high protective industrial tariffs which have been of great damage to the majority of farmers, and we call on all the people of Texas to assist us in our struggle for a fair deal which is of great importance to the people in all occupations just as well as to those engaged in farming.

We wish to commend and endorse the Corn and Hogs Section of the Agricultural Adjustment Administration in Washington for the splendid way they have carried out the program in Texas and the manner in which they helped the Corn-Hog contract signers of Texas to meet each program that has come up in carrying out the program.

We want to express the appreciation of the farmers we represent to the Extension Service of the Texas A. and M. College for the capable way the program has been handled and the fair impartial decisions that have come from the officials in charge.

We endorse the actions of the members of the present Corn-Hog Review Board and the way they have handled the job of allotment that has been their duty. The all its decisions and rulings, and contract signers appreciate its Board has been fair and just in impartial allotments. This committee feels that the Corn-Hog program has been efficiently and fairly carried on in Texas. The County Agents, all Corn-Hog Committeemen and others connected with the program have worked hard in putting it over. The contract signers have been harmonious and have cooperated with officials and this committee wants to express its appreciation to all connected with the program for the manner in which

RACES AT PANHANDLE ANNOUNCED FOR AUG. TO INCLUDE SEP. 7



Continued interest is being shown in the Southwest Race and Agricultural Fair to be August 31 to September 7, five at Panhandle. A telegram was received Wednesday from Auga Caliente, Mexico offering a carload of horses. Being recently banned that part of Mexico, which is three miles from the ban will not be believed that the ban will be permanent, but horse owners considering other tracks temporarily.

Whether the offer to bring a load, which would be about 1000 horses will be accepted or not is not known yesterday. Offers like this coming to Panhandle, it is evident that this is becoming widely known racing circles throughout the United States. B. Davidson superintendent of the races last spring did not expect that horses would arrive in Panhandle in time. The fall meet has all brought out a large attendance and entries usually are to the capacity of the stables. The meet begins on Saturday August 31 and runs through the Saturday, Sept 7 it is expected that more people will be able to attend than last spring. The meet also will have Labor Day September 2.

I. K. Renner of Chandler is visiting at the home of Mr. and Mrs. A. W. Evans on a Saturday or a holiday day. Mr. and Mrs. A. W. Evans were four of the five days were Amarillo visitors by the races in comfort. Mr. and Mrs. Aubrey have moved to Hitchland and Mrs. Aubrey is in charge of the Phillips wholesale station. Mrs. L. L. Renner had herer misfortune of tearing the country it has been pointed in her right wrist out that is is always up to cranking a car, Wednesday city to conduct a good meet. last week.

Official Information from AAA Headquarters in Washington

Official information from AAA headquarters in Washington announces that the AAA reduced from 15 per cent to 5 per cent the acreage reduction required in wheat control contracts for 1936. In this county this will mean a reduction of 13 per cent acreage, instead of 23 as during the last contract. Hansford Wheat Allotment officials hope to get a better rating or increase in base bushels per acre, before the new contracts are signed.

Grocery Merchants Will Close Stores at 7 p. m.

Advertisement carried in this issue of the Reporter informs the public that Grocery merchants of Spearman will close their doors each evening at 7 p. m. The merchants feel that the public can cooperate with them in this movement and allow the help a few hours of pleasure without working a hardship on anyone. Any customer who desires to make a purchase after the store are closed may call their regular groceryman on the phone and the need will be taken care of.

WHEAT ALLOTMENT RECORD

In this day of Government spending and billion dollar appropriations it is sure cheerful to find someone that has pinched down on the purse strings. That is the case with President of the Wheat Allotment Board, Arnold Ferguson, and the officials of this organization. The working personnel cut the estimated cost of operations in Hansford county 1-8 of a cent per bushel and turned back to the treasurer approximately one thousand dollars that is to be added to the benefit payments of Hansford county wheat producers.

Miss Evelyn Roach, former teacher in the Spearman school system, and a sister of Paul Roach of Spearman, has accepted a position with the school board and will have charge of the work formerly carried on by Mrs. Bill McClellan, who resigned recently.

Miss Evelyn Roach Will Teach in Local Schools

Miss Evelyn Roach, former teacher in the Spearman school system, and a sister of Paul Roach of Spearman, has accepted a position with the school board and will have charge of the work formerly carried on by Mrs. Bill McClellan, who resigned recently.

Perryton Birthday Celebration Aug 16.

Perryton, Texas, August 14—Perryton is making plans for entertaining thousands of people on Thursday, August 22. No reason at all to have a big party except that we're going to be 16 years of age on that day. If it wasn't for the fact that we're going to have a birthday party we might call it a NO celebration. No crops, no feed, no money, no rain no business, no wheat, etc. This is the statement that was made the other day by E. Whippo division manager of the Community Public Service Corporation and general manager of the 16th annual Perryton Celebration. Mr. Whippo and his committees from the C of C have arranged a wonderful program for the FREE entertainment of the many friends of this little city. Undaunted by crop failures, the celebration is going on this year. Just the same as in years of plenty. Band concerts, foot races horse shoe contests, and games for the kiddies in the afternoon a free ballgame between Perryton and Sunray, a free horse race program, and a gigantic fire works display in the evening. A dance will be held in the spacious Donley Hall, seven thousand feet of dancing space, on Wednesday and Thursday nights, with the Manila Seranaders, a Filipino orchestra. An admission will be made for the dance, it is not under the management of the celebration committee. Citizens and business men of this city join in bidding the people of this great Southwest country to be their guests on August 22, at their Sweet Sixteen birthday party.

Assembly of God

Rev. A. A. Langen of Borgeville will preach at the Assembly of God Mission Friday night, Sunday and Sunday night. Sunday school 10: a. m. C. A. 7:30 p. m. We invite you to come.

Bakeryman Jesse Wright is on a vacation and business trip to Fresno, California this week.

Bakeryman Jesse Wright is on a vacation and business trip to Fresno, California this week. It has been handled. Signed. J. P. Strader, Canadian, Texas chairman, J. S. Sharp, Pris, Texas, chairman, S. M. Ainsworth, Gonzales, Texas, Sec. Tres. O. J. Eder, Crosbytop, Texas, R. E. Lee, Mason, Texas, George Slaughter, Wharton Texas, Otha Morris, Llanville, Texas, Judson Wood, Sherman, Texas.

The Spearman Reporter

Successors to The Hansford Headlight
Published Thursday Morning of Each Week
PANHANDLE PUBLISHING COMPANY, INC.
BILL MILLER, Editor and Manager
PAUL LOFTIN, Mechanical Superintendent

Entered as second class mail
NOTICE TO THE PUBLIC
Publication or standing of any
appear in the columns of this
when called to the attention

Office at Spearman, Texas
One Year—\$2.00 Six
All Subscriptions



THINKING AHEAD

There has never been a county that called for more than the present time for Hansford County a Works Progress funds entirely the very thing that this county, may jeopardize. We learn that the every section of the county to get advantage of the

The writer doubts the problem properly. The working projects for the of the most important, Hansford County Commission effort to get the best possible to road building, in the the possibilities of small streams in Hansford county this county have a reputation under direction Work Progress of Amaillo, to the department would not receive for Hansford but would dams for the two streams feels that we should take push a program of small

We are not informed of just what procedure should be made to secure irrigation rights along the Palo Duro, but if this could be arranged, and at the time dams are being built, a series of dykes constructed to protect fertile land from overflow, thousands of acres of the Palo Duro could be placed under irrigation at a very nominal cost.

It is really an engineering problem that this writer is not familiar with, but we believe that if 20 to 40 small dams were constructed along the Palo Duro and Horse creek, the overflow would be eliminated, and adjacent land could be placed under cultivation. The water that is wasted could be used for irrigation.

Most everyone in Hansford county who know of the vast amount of water that flows down the Palo Duro are sold on some measure of control that will benefit the citizens of the county. Undoubtedly this is a number one project for the county. The big problem is to sell the Federal government.

Just as an object lesson in what to do, the writer will relate some observations made recently. In scanning over the Clarendon News some two weeks ago we noted that a committee of three Clarendon men, armed with briefs, and all the available information, had visited the District office at Amarillo and the Division office at Ft. Worth. This weeks Clarendon News carry's the information that Donley County has a hundred thousand dollars worth of WPA applications submitted. It further states that the State Engineer of the WPA is highly pleased—which means that the progressive citizenship of Donley County will be the very first in the State to enjoy the benefits of WPA.

This will be true because the citizens cooperated. The most advantageous, and most practical projects for the entire county were chosen, before any were submitted. The citizens went down in their pockets and provided funds to prepare proper briefs of the various projects. When the proposed work was in shape to submit, influential citizens got in their cars and presented the plan to the proper officials. They will get results.

Hansford County has the chance to secure a number of worth while projects. Why should we not get together, pick out the ones that will 'click' spend a little money to prepare them in shape that will make

TREASURERS QUARTERLY REPORT OF HANSFORD COUNTY, TEXAS

JURY FUND

Bal. May 1, 1935	\$7,787.29
Amount Received	19.23
Amount Paid out	77.83

Balance July 31, 1935 7,728.69

GENERAL FUND

Bal. May 1, 1935	4,043.24
Amount Received	1,830.46
Amount Paid out	3,198.18

Balance July 31, 1935 2,675.52

ROAD AND BRIDGE, (Precinct No. 1. Gen.) FUND

Bal. May 1, 1935	6,886.95
Amount Received	1,286.58
Amount Paid out	3,684.62

Balance July 31, 1935 4,488.91

ROAD AND BRIDGE (Prec. No. 2 Gen.) FUND

Bal. May 1, 1935	2,402.78
Amount Received	512.41
Amount Paid out	923.14

Balance July 31, 1935 1,995.05

ROAD AND BRIDGE (Prec. No. 3 Gen.) FUND

Bal. May 1, 1935	2,546.96
Amount Received	761.93
Amount Paid out	686.28

Balance July 31, 1935 2,622.61

ROAD AND BRIDGE, (Prec. No. 4. Gen.) FUND

Bal. May 1, 1935	3,326.31
Amount Received	767.78
Amount Paid out	2,258.69

Balance July 31, 1935 1,835.40

COURT HOUSE AND JAIL FUND

Bal. May 1, 1935	2,180.10
Amount Received	369.25
Amount Paid out	776.00

Balance July 31, 1935 1,773.35

CONTINGENT FUND

Bal. May 1, 1935	12,712.86
Amount Received	1,125.91
Amount Paid out	78.81

Balance July 31, 1935 13,759.96

ROAD AND BRIDGE, (Prec. No. 1 Sinking) FUND

Bal. May 1, 1935	337.70
Amount Received	68.06
Amount Paid out	4.29

Balance July 31, 1935 401.47

ROAD AND BRIDGE (Prec. No. 2 Sinking) FUND

Bal. May 1, 1935	324.49
Amount Received	50.00
Amount Paid out	3.97

Balance July 31, 1935 370.52

ROAD AND BRIDGE, (Prec. No. 3 Sinking) FUND

Bal. May 1, 1935	326.61
Amount Received	51.91
Amount Paid out	4.01

Balance July 31, 1935 374.06

ROAD AND BRIDGE, (Prec. No. 4 Sinking) FUND

Bal. May 1, 1935	329.44
Amount Received	56.97
Amount Paid out	4.09

them attractive to government officials, place a committee of local citizens in charge, and fight the battle to a successful termination?

DON'T NAME IT

By HONEST BILL

A letter coming from Congressman Marvin Jones informs his friends in Hansford County that he will be glad to join them in an effort to secure a soil conservation camp for our county. It is an acknowledged fact that Marvin Jones has more power in the Agricultural department of our nation than any other man outside the department. This writer knew that Marvin Jones would not throw down the people of our county. It looks mighty good for this needed Federal aid at this time.

Mayor Cooke slipped down to my neighborhood, took one look at my garden and came back to town and organized a softball team. Now that you have admitted defeat in the garden contest Mayor. I'll bet you a gallon of black-eyed-peas against 10 ears of roasting ears that your team of ancients get beat by the ladies.

To John Collard—thanks for that advice you gave me about using two mitts when I attempt to catch in softball games. If you wasn't one year under the age limit I would insist on you demonstrating tomorrow evening in the fifty years old contest.

Deputy Sheriff Fred Lynn wants citizens of the city to join him in an effort to arrange for play grounds for children of Spearman. Fred says that if a park will be provided the stealing and petty meanness of children will stop. He wants to get the boys off the street, and enjoying wholesome amusements.

A movement is under way to secure a project to light a football field and build seats for spectators. If you can aid in any way volunteer your services to Bill McClellan.

Balance July 31, 1935 382.32

PERMANENT IMPROVEMENT SINKING FUND

Bal. May 1, 1935	601.85
Amount Received	1,824.85
Amount Paid out	254.75

Balance July 31, 1935 2,171.95

Spearman Ind. Road District No. 1 Sinking Fund

Balance May 1, 1935	524.82
Amount Received	652.10
Amount Paid out	70.95

Bal. July 31, 1935 1,105.97

MRS. S. E. HARBISON, County Treasurer,

Witness our hands, officially, this 13th. day of August, A. D. 1935.

- J. H. BROADHURST, County Judge
- F. W. MAIZE, Commissioner Precinct No. 1.
- V. H. OGLE, Commissioner, Precinct No. 2.
- GUS OLSEN, Commissioner Precinct No. 3.
- HOMER CLUCK, Commissioner Precinct No. 4.

Sworn to and subscribed before me, by J. H. Broadhurst, County Judge, and F. W. Maize, V. H. Ogle, Gus Olsen and Homer Cluck, County Commissioners of said Hansford County, each respectively on this 13th day of August, A. D. 1935.

FRED HOSKINS,

(Seal) Clerk, County Court, Hansford Co., Texas

SEE

The Spearman Reporter
For
Rubber Stamps

Bedlington Terrier

Friendly and Good
The Bedlington Terrier is one of the many good things from Northumberland, the Mitford Breeze in America. He was originally the (the Dandie Dinmont short-legged), covering the stock that owed much to rier influence.
The difference in these not even remotely approx the difference existing those two breeds today, probably being nothing but puppies that were "on the side"; nevertheless, the ples and the low-to-ground found separate admirers, these beginnings two distinct were evolved.

Although the Bedlington name was conferred upon 1825) is recognized as a boasts many points that terriers would be smaller feet, instead of being long and pointed like the hare; while his back, being short and straight, long and arched.

But in origin, general tion, and character, the is essentially a terrier. He is obviously unfitted for ground, he is an exceptional dog; and he is game. This little dog with the coat, firm yet soft in recommended as a loyal and an effective guard.

Monte Cristo's Prisoner

Is Paying In
Although Edmund Dumas' count of Monte Cristo existed except in the imagination of his creator, Dumas, the dark and gloomy D'Artagnan is real—as real as the rocky, forbidding island spot it stands, asserts a writer Washington Post. It is to bring good hard cash coffers of the French in the form of rent paid privilege of conducting as an attraction point.

The Chateau d'If had and-blood prisoners in its it is the Imaginary Monte who brings sightseers to island, two miles south Marseilles, France. To visitors Dantes is real, as at on visiting the cell who supposed to have languished want to set foot on the which the future Monte C fabulous wealth was tossed sea tied up in a sack supposed contain the dead body of the Farina—and obliging point out these Imaginary

Elk Similar to Cattle

"In feeding habits, the similar to domestic cattle they prefer to graze on and a variety of other vegetation when they are notes a writer in the Detroit "In winter, however, when gets deep in the north covering the ground vegetation snowy mantle, the elk some other food supply. They may be found in the localities they can find browse, the buds of trees. The preferences of browse are for the hardwood trees—maple, birch, ash, basswood—and a tude of shrubs which grow with the hardwood trees also like to paw the snow to obtain such tasty morsels and mossy growths.

Not Much Like Grape

Grape fruit are nice to eat they aren't a bit like grapes belong to the same family oranges and lemons. Just would expect. At one time they were called shaddock, after Captain Shaddock, who carried them of the tree from Florida. But that name, thought attractive enough, growers sought another picked on grape fruit because fruit hang in large bunches—unlike oranges and which grow single. There is end that the grape fruit was bidden fruit of the Garden of—Pearson's Weekly.

Where Gray Hair Is

In the Far East patriarch and white hairs are associated dignity and honor. Possessing a mustache of magnificent merely adds to the éclat of seniors. To this it may that a beardless chin does not command respect. In fact, a has lost either his mustache beard seems to lose his respect. Not so, with the hair, for a bald man sure of his place in society honor in the Orient.

Most Intelligent

The chimpanzee leads the ten most intelligent animals by Dr. W. Reid Blinn of the New York zoo. The list, based on test animals have been subjected to biological laboratories orang-utan second, gorilla fourth, domestic beaver sixth, domestic sealion eighth, domestic cat tenth.

Classified Ads

Classified Ads 2c per word first insertion, and 1c per word per issue thereafter. Spearman Reporter, Phone No. 10

HOT WEATHER COMFORTS

Perfection oil burning cooking ranges, Hotoven China, a real efficient dish for baking, refrigerators, Crosley electric refrigerators, ice tea glasses, ice containers, ice picks, ect.

SPEARMAN HARDWARE

SEE US FIRST FOR

Your magazines, cigars, patent medicines, fountain service and accurate prescription service. We endeavor to give the best of service in every department of this store.

OLD CORNER DRUG STORE
J. D. TUMLINSON, Prop

CHEAPER PAINT

We have a variety of enamels and paints in 25c. size up. We list guaranteed paint at \$1.85 per gallon.

WHITE HOUSE LMBR. CO.

OUR SERVICE AND PRODUCTS ARE AS HOT AS THE WEATHER

Using the slang term 'hot' as it is often used to indicate the same of efficiency, we feel our service whether wholesale direct to large consumers or retail through the pumps at the Jack Hancock station, is just as hot as the weather. Naf Said.

R. E. LEE OIL COMPANY
MAGNOLIA PRODUCTS

IF YOU CAN'T TAKE A REGULAR VACATION TO THE MOUNTAINS

—or visit with some of the relatives, take a vacation from the hot cooking during the month of August. We believe we can suggest a number of items, and give you a few hints that will lighten the work in the kitchen during AUGUST. Whether it is cool as icicles, or hot as blazes, you will find us ready to serve you with reliable nationally advertised groceries, at reasonable prices.

BURRAN BROS. Groc.
We deliver Phone 71

MAKE NEEDED REPAIRS NOW

If you have been neglecting the home or out houses about the place, now is the time to make needed repairs. We have a complete line of plumbing fixtures and fittings, paint, varnishes, wall paper, and everything you could need in lumber, lime and cement.

FOXWORTH - GALBRAITH
LUMBER COMPANY

SUMMER TIME IS HERE. . .

—and its really too hot to suggest lawn mowers, hose for the garden rakes for the yard, and various items that come in so handy in keeping the home so attractive. We are not suggesting these items, but if you just simply have to work in this hot weather we will sell em to you. For the madam we suggest a number of labor saving items for her kitchen, refrigerators and other items that make house work more pleasant during the summer weather.

WOMBLE HARDWARE CO.

TIME TO PLANT FALL GARDENS

Quite the best results are obtained in the Panhandle Country with fall gardens. We have a complete line of seed for fall gardens. Be prepared to plant at any time.

E. K. SNIDER PRODUCE

—WRITE OR PHONE

—For delivered prices on gasoline, Fuel and oils.
C. DEET, Panhandle, Texas
Phone 100 - P. O. Box 266

GLASS— All kinds, all sizes, for automobiles, houses, stores, show cases, mirrors. Auto window regulators, handles, felt channels, rubber headers, ect. Let us re-align your old mirror or make new ones.

DALEY GLASS SHOP
Perryton, Texas

OUR BUSINESS IS TWO-FOLD

Do not forget that we carry a line of Dry Goods, Clothing, men's hats, boys caps, ten-shoes, piece goods and the items you are needing at this time. Our price is REASONABLE

W. BRAND and Co.
Goods and Groceries
Phone 3—We Deliver

WE CALL YOUR ATTENTION TO THE FACT . . .

Consumers Sales, One Stop Service Station featuring the Firestone Tires, Tubes, Batteries, Spark Plugs and other accessories, not only leads the parade of values in this line but holds FIRST PLACE in supplying fuel for motor driven machinery in Hansford County.

We buy our products in bulk in the best grades and do not require large purchases to secure advantageous prices. Our business is a retail outlet for merchandise that has stood the test of many years, and has lead the parade of values in Hansford County. Do not be deceived — when value is paramount, CONSUMERS SALES CORPORATION will serve you to the best advantage.

CREAM - SEED - GROCERIES

Just to remind you that it will pay you to bring us your cream and milk products. Highest market price paid for milk products and eggs. When you bring in the products of your farm take back your groceries at prices that lead the parade of economy in Hansford County.

SPEARMAN EQUITY EXCHANGE.

WE WANT TO SERVE YOU!

With the very best quality of groceries and vegetables, fruits and grocery merchandise the market affords, at the very lowest price a small margin of profit will allow. Let us buy your milk and cream products at the highest market price.

J. M. CATES & SON
Grocery and Produce

FARMERS AND JOBBERS ATTENTION.

We have handled the Famous McQuay Norris line of auto supplies and tractor replacement parts for a number of years. We do not stock a few of the popular parts but we keep a complete stock so that you can secure just what you want, and when you want it. Come in today and ask for your needs in this line.

DELOX KIRK BATTERY SHOP

WE BELIEVE WE HAVE EARNED AN

—enviable reputation with our car washing, greasing and ELO-TROLUX vacuum cleaning the upholstery and interior of cars. Ask any one who has tried our service. IT MUST BE SATISFACTORY OR YOUR MONEY REFUNDED.

SLIM WINDOM
Phillip's 66 Station Phone 66

WE CAN'T TELL YOU AS WE CAN SHOW YOU

About washing, greasing and servicing your car with Magnolia products. Come in today and give us an opportunity to convince you.

MAGNOLIA SERVICE STATION
JACK HANCOCK, Man.

HANSFORD LODGE NO. 1040

Regular Communications
Second Monday of each Month at 8:30
Visitors Welcome.

CHAS. C. CHAMBERS W. M.
E. K. SNIDER, Secretary

J. E. GOWER, M. D.

Room 205
McLain Building

Phones: Residence, 98; Office 53

PHONE 2

MEN'S HATS

CLEANED, 50c. Pressing
While You Wait.

WARDROBE CLEANERS

SPEARMAN ABSTRACT COMPANY

Complete Abstracts of
Hansford County Lands
Accuracy - Promptness
Reasonable
McLain Building—Phone 88

SPEARMAN-AMARILLO FRED M. MIZAR Truck Line

SPEARMAN PHONE 112
AMARILLO PHONE P351

Sold at the Spearman Drug Store.

DR. F. J. DAILY
DENTIST
X-RAY
McLain Building Phone 156
SPEARMAN, TEXAS

SEED WHEAT — Winter Barley for pasture— New crop oats — Car freshly made Quaker Fulopep poultry feeds at carlot prices, Fulopep grower broiler, fattener, egg mashers screened cracked mixtures and whose grain variety feeds for aying hens.

Sugared Schumacher and Horse Cubes, yellow corn and corn shops Ask your grocer for Aunt Jemima Cornmeal.

You will be delighted with the quality of any Quaker products.

R. L. PORTER GRAIN & SEED COMPANY



DR. J. P. POWELL
Eye, Ear, Nose and Throat SPECIALIST
Glasses Fitted, Tonsils and Adenoids Removed.
in Spearman Wed. August 21.
Office Dr. J. E. Gower

DR. E. R. JARVIS
DENTIST
Stump and Rogers Bld.
PERRYTON, TEXAS
Phones:—Res. 72; Office 48

A COMPLETE STORE

The City Drug Store endeavors to have a complete Drug Store. This store has a standard policy of carrying an ample stock enabling us to give the best of service to this community. Our sanitary fountain is Spearman's meeting place. Meet your friends there.

CITY DRUG STORE

LET US QUOTE YOU PRICES ON YOUR GAS AND LUBRICANTS

We have endeavored to keep up the high standard of service of the Champlin company, and believe we can quote just as cheap prices on gasoline and lubricating oil as you can secure in Hansford county. GET THE HIGH CHAMPLIN STANDARD. IT COST NO MORE.

J. D. RIGGS
Champlin Wholesale, Spearman

Eat, Drink and Be Merry at BURL'S CAFE

COOK, SWEAT AND BE WEARY AT YOUR OWN HOME Do You Get The Idea?

SHINE SHINE SHINE

Regular Shine 10c
White Shoes 25c
Two-tone 20c
Dyed Shoes 30c

SHINE HAINES

* CLARK'S Barber Shop*

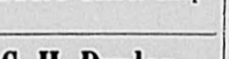
C. H. Dunlap

Registered Optometrist
Have Your Eyes Tested
106 E. 5th St. Borger, Texas

Carver Funeral Chapel

Telephone 500 109 N. Main
AMBULANCE SERVICE
Dignified & Sympathetic Service
BORGER TEXAS

IMPORTANT



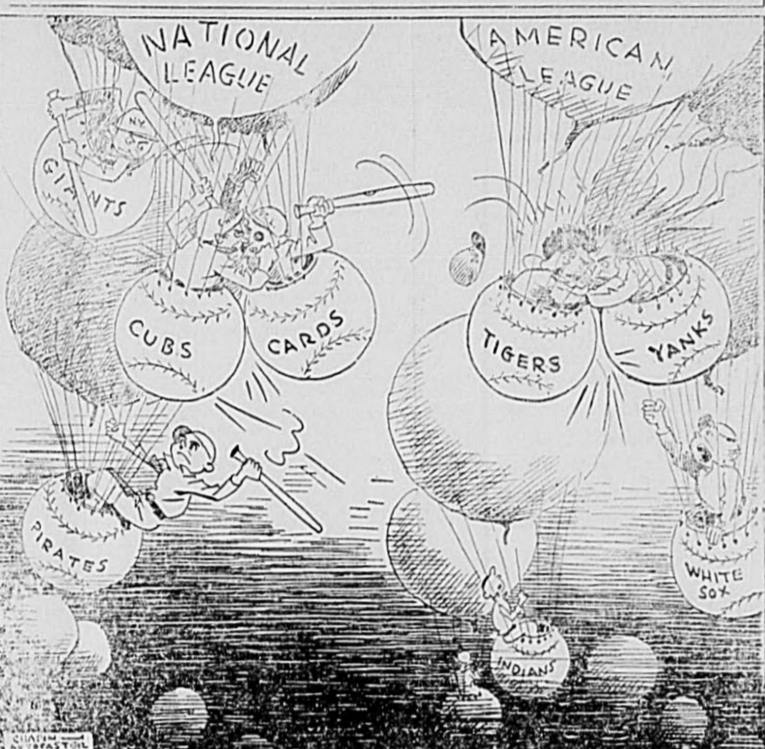
Your Perfection-made stove will not give you the satisfaction for which it is intended unless it is equipped with genuine Perfection wicks which are especially designed for Perfection-made burners.

Genuine Perfection wicks are carried in stock at all times by us. When it is necessary to re-wick your stove be sure that you get genuine Perfection wicks, identified by the red triangle.

SIGNED

BURRAN BROS. GROCERY
BAGGERLY GROCERY
W. L. RUSSELL GROCERY
SPEARMAN EQUITY EXCHANGE
F. W. BRANDT and CO.
R. H. HOLTON
DICK KIKER GROC. and MARKET
CATES GROC. and PRODUCE

STRATOSPHERE BATTLE — by A. B. Chapin



GRUVER NEWS

Mr. and Mrs. John Dillow and daughter and Miss Mary Smith visited Mrs. Sallie McGee at the Shattuck hospital Sunday.

Miss Vera Beth McClellan of Spearman visited last week with her cousin Miss Rose Higgs.

Mr. and Mrs. Walter Weems of Pittsburg Texas visited last week with Mr. Weems sister, Mrs. E. G. Garrett and family.

Mr. and Mrs. Dillow and family had as their guests over the week end her father, B. Smith of

NOTICE TO BIDDERS

Bids will be received by Hansford county, at the Court House at Spearman, Texas, until 10 o'clock a. m. on September 2, 1935 for the purchase of One 50 horse Power Crawler road tractor, Diesel Motor, also one 12 ft. leaning wheel grader of approximate 10,000 lbs. weight, and a used 35 H. P. Allis Chalmers to be taken as part payment, and notice is given that warrants will be issued in the maximum sum of \$6,300.00, payable serially, last maturity not later than April 15 1941 bearing interest at the rate of 6 per cent per annum, interest payable semiannually.

The right is reserved to reject all bids.
J. H. BROADHURST,
County Judge.

RUGS

Armstrong Quaker Rugs and Gold Seal Congoleum Rugs. The latest patterns, large assortment, for choice selections.

Best Grade 9 - 12 —9.50
Second Grade 9 - 12 —8.50
Sizes 6-9 to 9-15.

MAIN FURNITURE COMPANY

*BALD? Give Your Scalp a Chance

Japanese Oil is the name of the remarkably successful preparation that thousands are using to get rid of loose dandruff, stop scalp itching and grow strong, healthy hair on thin and partially bald spots where hair roots are not dead. This famous antiseptic counter-irritant stimulates circulation in the scalp, brings an abundant supply of blood to nourish and feed starved hair roots—one of the chief causes of baldness. Get a bottle today at any drugist. The cost is trifling. (Economy size, \$1). You have little to lose and much to gain. FREE, valuable booklet "The Truth About the Hair," if you write to National Remedy Co., 54 W. 45th St., N. Y.

JAPANESE OIL

*This advertisement was reviewed and approved by a registered physician.



Miss Agnes Reppler, dean American essayists and prominent biographer, who was given the honorary degree of doctor of letters Princeton university. She is second woman to be so honored Princeton in its existence of near 200 years.



Gibson girl sailor and bow scarf to match, worn by Patti Fens, of the singing Ploken's, of the radio. The crown, there is of it, is navy blue str the taffeta checked in gray, and red. It was designed by G. I. ard Hodge.

Miss Mary Smith of Color is visiting at the John Dillow home and with other relatives while here

GROCERY STORES CLOSE at 7 P.M.

The general public is informed that the grocery stores of Spearman are closing each evening at 7 p. m. during the summer months. We do not want to work any hardships on our customers, but under existing conditions we feel justified in closing earlier. Emergency orders may be filled by getting in touch with your grocer over the phone.

BURRAN BROS. GROCERY
BAGGERLY GROCERY
W. L. RUSSELL GROCERY
SPEARMAN EQUITY EXCHANGE
F. W. BRANDT and CO.
R. H. HOLTON
DICK KIKER GROC. and MARKET
CATES GROC. and PRODUCE

Four Billion For W P A Work PROHIBITION INFORMATION

The Dorcus Class met with Mrs. D. W. Holland Tuesday in their regular social meeting. The following officers were elected: President, Mrs. Lester Howell. Membership president, Mrs. W. M. Glover. Fellowship president, Mrs. J. H. Broadhurst. Stewardship president, Mrs. Hall. Ministry president, Mrs. Jack Taylor. Secretary, Mrs. Jess Edwards. Reporter, Mrs. Robert Wilbanks. Group captains, Mrs. D. W. Holland, and Mrs. J. B. Cooke. After

the business meeting the class presented Mrs. Clyde Hazelwood with a handkerchief shower refreshments were served to the following members. Mesdames; Bill Gaudy, D. W. Holland, Fred Hoskins, Sam Gillsy, Hall, L. Dearmond, Lester Howell, W. M. Glover, Robert Wilbanks, A. G. Brant, Jack Taylor, O. Parker, Clyde Windom, Hubert Reed, and Mrs. J. H. Richards our guest who is visiting her daughter here Mrs. J. B. Cooke.

Expressing My Sincere Thanks To Hansford County Folks

I want to thank the many customers and friends of the Phillips 66 station in this county for their liberal patronage and the kind consideration they have given me as manager of the station. A home boy, Ike Vernon will replace me as manager of the station, and I would like to ask all the customers to give him the same consideration they awarded me in the past.

CLYDE (SLIM) WINDOM

GREETINGS

This will inform the public that I will be back at my work at the Phillips 66 Station, coming to the station as Agent in charge of the station. I certainly appreciate the trade that has been accorded this station in the past, and wish to ask for a continuation of your patronage in the future. I will endeavor to earn your patronage with a service that is second to none in this section of the state.

IKE VERNON

People of this community who have been wondering just how the new Works Progress Administration program, with a fund of four billion dollars behind it, would effect this community?

Harry L. Hopkins, WPA head says; that the drive to employ the country's able workers on government jobs and direct them to available private employment will not miss the country areas and small towns.

That there is urgent necessity to care for the rural and small town unemployment is shown by the fact that approximately 40 per cent of the five million families on relief are to be found in the open country and towns under 5,000 population.

The city used to be a giant magnet drawing unemployed labor from the country, but this is no longer true. For a while after the beginning of the depression the flow was reversed, going from city to country. Now even this movement has slowed down. Unemployment needy people are in both city and country.

Work is largely the answer for both areas, he said.

This is borne out by the fact that contrary to the general belief in the open country are those whose economic heads, whether men or women, are not farm operators, they comprise a group of workers who maintained themselves in the past by working at a great variety of trades and jobs.

It is plain that the country and small town problem is not predominantly a farm-operator problem but essentially one of finding work for non-agricultural workers, just as it is in the city, Mr. Hopkins declared.

Plans are being made under the WPA program to take care of the rural rolls as of May 35, he continued. One of the main features of this program will be an extensive secondary road building program. A substantial sum will be spent by the WPA for this purpose.

About two-thirds of the roads in the United States are not state highways subject to Federal loans. It is these roads which will come under the WPA.

In addition to the secondary road program other measures designed to alleviate the unemployment problem in the rural areas include the following. Construction projects of various kinds, such as small dams levee building

SPECIAL ELECTION NOTICE

PURSUANT TO AN ORDER issued by Hansford County Commissioners Court, notice is hereby given that a Special Election will be held on Saturday the 14th day of September, A. D. 1935, at each voting box in Hansford County, Texas, for the following purpose, viz: of determining whether a majority of the legally qualified property, tax paying voters of the county favor the creation and incorporation of the area of the county into a wind erosion conservation district.

J. H. BROADHURST
County Judge, Hansford County, Texas.

rebuilding streets waterworks and sewage disposal, extension of lighting systems, community sanitation projects, recreational projects, stream pollution control, and sanitary surveys. The Resettlement Administration will also have a program for rural areas to aid farm families.

Mr. Hopkins pointed out that attempts were being made to provide employment for as many types of skill as possible.

We have found that to meet the employment needs of the rural relief population, the WPA must provide a wide range of occupational skills. That is we must as nearly as possible put people to doing the work they have been used to do. This is important to keep human talent and abilities from deteriorating.

When they get opportunities to resume employment we don't want them to be demoralized from the dole. Our people don't want a hand-out, but something to help them hold their heads up. That is what the WPA is attempting to do for them.

Figures from the research studies of the WPA shows that there are nearly 2,100,000 rural and small town houses receiving relief. Of this number, a total of 1,500,000 families or 71 per cent, are families with other than farm operator heads. This number includes farm laborer families.

About 600,000 households, or 29 per cent of the total, were families whose heads were classed as farm operators. Of this number about 48 per cent were tenant families, 38 per cent were farm owners, and 14 per cent were families of farm croppers living in the southern states.

The great majority of the 1,500,000 non-farmer heads of rural and town households on relief are unskilled laborers. One third of them are unskilled industrial workers, while more than 350,000 are farm laborers. Another 350,000 are skilled and semi-skilled industrial workers. White collar workers including professional, proprietary, and clerical workers, include 100,000 heads. There are 60,000 servants included in the group.

Noted Runner Catches a Bride



William A. Bonthron, former Princeton track captain and one of the outstanding middle distance runners of the century, and his bride, who was Marion McLennan Lineaweaver of Montreal, Quebec. They were married at Princeton.

INFORMATION FOR THE VOTERS FOR AUGUST 24th REPEAL ELECTION

In voting on the proposal to legalize whiskey in Texas the voter is entitled to know the facts. The newspapers lately have been filled with Wet claims that legalizing whiskey will bring the State Treasury from a deficit of ten million dollars in 1935 to a surplus of ten million dollars in 1936. It is not difficult to ascertain with reasonable certainty what such taxes would yield. Burke was right in saying the best way to judge the future is by the past.

The records in the Comptroller's office at Austin show that while whiskey was legalized in Texas the largest revenue ever derived by the State from whiskey traffic was for the year 1908 when a total sum of \$1,475,000 was paid to the State. In addition the State collected \$129,392 in this record breaking year from malt liquor duty which could lawfully be levied only. These are not involved in the coming election.

But these figures apply to a banner year in whiskey sales the history of the State and the sales were reduced by local option elections substantially every year thereafter until prohibition became effective. The Comptroller's office records show that for the year ending March 31, 1934 the last year before prohibition became effective, all but 62 of the 254 counties were wholly dry, and others were partly dry.

During both of these years the rate of tax on retail liquor dealers was the highest ever imposed in the State.

Nothing can be more certain than that the State and the people will lose enormously from a fiscal standpoint by legalizing whiskey; for undoubtedly the States costs in criminal cases arising out of drunken murders and other crimes will substantially exceed the revenue that will be brought into the State Treasury by the legalized whiskey traffic. It is nothing of the enormous increase of automobile fatalities and other accidents.

The latest published statistics of the very dependable Travelers Insurance Company covering the first half of the year, with repeal in full force show that in the nation as a whole there was an increase of almost 13 per cent in the number of drivers under the influence of liquor involved in automobile accidents, and an increase of 10 per cent in the number of pedestrians under the influence of liquor involved in accidents.

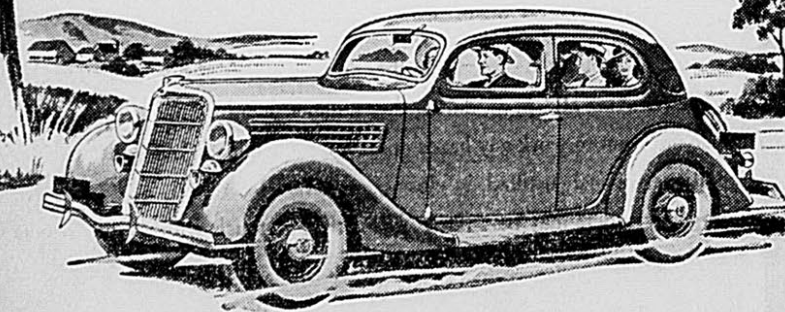
Whatever may be said for repeal, it cannot yield financial profit to the people of Texas. Legalized whiskey was never a money maker for the people of the State and never will be.

Win Agricultural Scholarships



Here are Ruth Lohmann of Zumbrota, Minn., and James W. Potts of Aspermont, Texas, winners of the Payne Fund fellowships for 1935-36. The award consists of \$1,000 each with which they are to study for nine months at the Department of Agriculture in Washington. These fellowships are awarded each year for outstanding 4-H club achievements.

YOU DON'T HAVE TO "BREAK IN" THE FORD V-8



You can drive it 50 miles an hour the day you buy it

THE FORD V-8 is ready for normal driving when you buy it. There is no tedious period of breaking-in for 500 or 1000 miles. You can drive it up to 50 miles an hour the first day. And after the first hundred miles you can drive it as fast as you desire.

That means greater motoring enjoyment for every motorist. It is especially important to motorists who are thinking about a new car for a vacation trip — to physicians, salesmen and all those who use a car for business. Instead of dragging along at slow speeds for days, you can make good time from the start.

The reason for this is as important as the result. The Ford V-8 needs no breaking-in because of unusual accuracy in the manufacture of moving parts and the smoothness of bearing surfaces. Clearances are correct when you buy the car. It is not necessary to depend on a long wearing-in period to eliminate tightness and insure smooth running. Longer life, greater economy and better performance are bound to result from such precision methods. The Ford V-8 gives you fine-car construction, along with fine-car performance, comfort, safety and beauty.

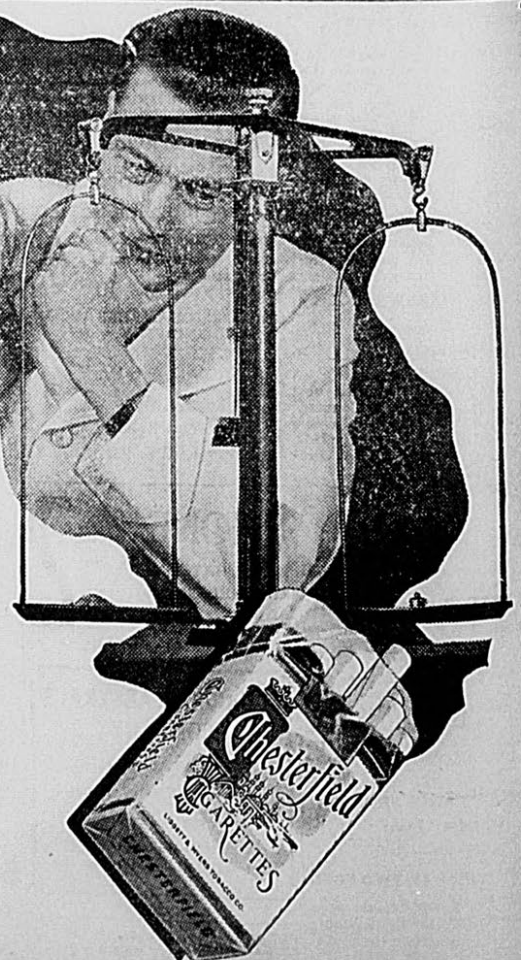
FORD V-8

A good cigarette, too needs Balance—

And that's why the tobaccos in Chesterfield are carefully balanced one against the other... not too much of one—not too little of another.

We take the right amounts of the right kinds of four types of tobacco — Bright, Burley, Maryland and Turkish.

It is this balancing of tobaccos that makes Chesterfields milder and makes them taste better.



Chesterfield... the cigarette that's MILDER
Chesterfield... the cigarette that TASTES BETTER

HOLT NEWS

Day school and church was attended Sunday. H. A. Nichols pastor of Methodist church in Spearman filled his regular appointment at Holt Sunday afternoon.

Large crowd attended the Sunday night. Everyone took a good interest and took part with the singing. We had several special, two quartets, Mrs. Johnnie Lackey, W. E. and sons. The Junior quartet was by Nolan Holt, Kaster Marvin Lackey and Miss E. Smith, a song by the little of the Holt class another by the junior class, Miss E. Smith sang two splendid and led several songs, we had the best singing and the largest crowd that we have ever had.

Singing convention will be at Holt school house on Sunday afternoon in which will be the last of September. Singing will be promptly at 1:30 and last afternoon. Mr. Charlie Rosson presided one of the best conventions ever held in Hansford. Everyone has a special plan to come and take part help out with the program. Be sure and come and see some one with you. You will find this splendid program.

Miss Danny Burleson, sister of Mr. and Mrs. Dan Jones, who has been under treatment of a specialist in Dallas is showing improvement in a writing. The specialist has put her on a special diet and her to stay in bed most of time and is trying to build up so he can remove her in three weeks. Everyone in the community hopes that Dan will get well.

Christian Science News

SOU is the subject of the Lesson Sermon which will be read in all churches of Christ Scientist, on Sunday, August, 18.

The Golden Text is, I will set my tabernacle among you and my soul shall not abhor you. And I will walk among you, and will be your God, and ye shall be my people.

Among the citations which comprise the Lesson Sermon is the following from the Bible. The Lord is my portion, saith my soul therefore will I hope in him.

The Lesson-Sermon includes also the following passages from the Christian Science textbook, Science and Health with Key to the Scriptures by Mary Baker Eddy: Soul or Spirit, a God unchangeable and eternal; and man coexists with and reflects, Soul, God, for man is God's image.

There are 6 pounds of potatoes in a bushel. Drop a dish of vitales and you will hear bad news. A man who is perfectly harmless isn't interesting to other men.

C. G. Daugherty and wife are visiting with his parents, Mr. and Mrs. Daugherty, of Spearman. Adalin Daugherty is visiting in Plainview this week.

Mr. and Mrs. R. B. Archer Jr. returned from their honeymoon last week. They have been visiting in Colo. and Yellow Stone Nat. Park.

Mr. and Mrs. Swain and family will leave Spearman Wednesday for N. M. and other points for a ten days vacation.

Mr. and Mrs. Ferrel Lee and children were shopping in Spearman Saturday afternoon. Mr. Dan Jackson and daughter were shopping in Spearman Saturday afternoon.

Mr. Mose Lamb and daughter and Mrs. M. C. Scott were shopping in Spearman Saturday afternoon. Mr. and Mrs. B. Jones returned back home last Saturday from a two weeks vacation in points in Colo.

Mrs. P. H. Jamerson Mrs. Bill Jones and Mrs. Leonard Jamerson were shopping in Spearman Saturday afternoon. Mr. and Mrs. Clyde Thompson and daughter were shopping in Spearman Saturday afternoon.

SHOWER FOR MRS. EARNEST ARCHER. A bridal shower was given at the Kimball school house by the Helpful Hannas club for Mrs. E. Archer on Thursday August 8.

form tied to an umbrella. These verses were read aloud and after the gifts were found they were opened by the bride. Many useful gifts were received by the bride. Ice cream and cake were served to the guests present.

HOLT CLUB NEWS

The Holt Farm Womens club met Friday afternoon at the school house with Mrs. H. Jamerson president in the chair, Mrs. Dan Burleson was assistant Sec. and Treas. in absence of Mrs. H. H. Stephens. The lesson on gardening was discussed by all present after the business meeting Mrs. H. Jamerson, read a letter from Miss L. Chance Borger Home D. Agent asking each member to write any question they wanted to ask on gardening and a special would be in Stinnett soon and would answer all of the questions.

Each member present discussed the products they would have ready for the Budget for the Fair. Members present were, Mrs. H. Jamerson, Bill Jones, M. C. Scott, Dan Burleson and Mose Lamb, the next meeting will be held at the school house on Friday afternoon August 23rd. Each club member is to have their canned products and other things for the Fair at the next meeting so that the Exhibit Com. can get it together to enter it in the county Fair at Borger. Each club member is urged to bring all the can products you possibly can, so the Holt Club will have the budget for the booth. An all day meeting will be held at Stinnett on Saturday August 24th everyone is to take cake and sandwiches. Miss Chance will furnish the cold drinks, everyone is urged to attend this meeting.

Mr. and Mrs. R. B. Archer Jr. returned from their honeymoon last week. They have been visiting in Colo. and Yellow Stone Nat. Park.

Mr. and Mrs. Swain and family will leave Spearman Wednesday for N. M. and other points for a ten days vacation.

Mr. and Mrs. Ferrel Lee and children were shopping in Spearman Saturday afternoon. Mr. Dan Jackson and daughter were shopping in Spearman Saturday afternoon.

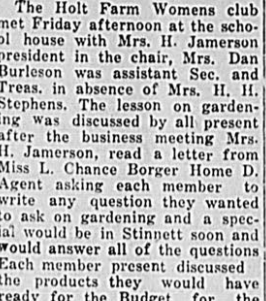
Mr. Mose Lamb and daughter and Mrs. M. C. Scott were shopping in Spearman Saturday afternoon. Mr. and Mrs. B. Jones returned back home last Saturday from a two weeks vacation in points in Colo.

Mrs. P. H. Jamerson Mrs. Bill Jones and Mrs. Leonard Jamerson were shopping in Spearman Saturday afternoon. Mr. and Mrs. Clyde Thompson and daughter were shopping in Spearman Saturday afternoon.

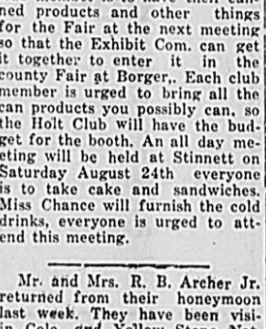
SHOWER FOR MRS. EARNEST ARCHER. A bridal shower was given at the Kimball school house by the Helpful Hannas club for Mrs. E. Archer on Thursday August 8.

form tied to an umbrella. These verses were read aloud and after the gifts were found they were opened by the bride. Many useful gifts were received by the bride. Ice cream and cake were served to the guests present.

GIRLIGAGS



"It's getting to a point," says ironic Irene, "when a mere thread will determine whether we're a nudist or not a nudist." WNU Service.



"Judging by the slimmness of the weekly pay envelope," says typing Tillie, "too many bosses think that all they need to pay a stenographer is compliments." WNU Service.

The Annual Battle Is Raging



Paper Making Progresses

From Art to an Industry. The early process of paper making consisted of beating or grinding cellulose material in water until the fibers were completely separated and then straining the fibers out of the water by means of a flat screen. The resulting felt of cellulose fibers was then pressed out and dried. As a raw material the only one source of fairly pure cellulose available then was linen—and later cotton—in the form of old rags or textile waste. And since each sheet of the paper had to be hand made, it was expensive according to modern standards, although much cheaper than anything previously used.

The development of newspapers, observes a writer in the Chicago Tribune, has been attributed to many things, such as the human thirst for knowledge and the spread of literacy. In all probability, however, it was due to none of these, but to the invention by Fourdrinier in 1804 of machinery which made paper much cheaper by changing its manufacture from an art to an industry. Until then a newspaper was a luxury of the intelligentsia. With the advent of cheaper paper it became every man's necessity.

As subscription lists expanded during the Nineteenth century, a paper shortage threatened. Men could not wear out their shirts fast enough to supply the rags necessary for paper making. But the profession of journalism was saved by the scientists who invented the process of making paper from the cellulose of wood.

Whole Ship Crews Wiped Out by Bubonic Plague

Rats like the warm holds and abundant food of ships so well they are constantly trying to stow away when a ship is docked, says a writer in the Washington Post. To discourage them much money is spent rat-proofing modern liners, and when the vessel is tied up at a wharf rat-guardians are slipped over the hawsers to keep them from climbing on board.

A rat is an unwelcome visitor anywhere, and especially on ships, for he makes his nest in precious silks and other valuable cargo and carries one of man's most deadly diseases—bubonic plague. Whole crews of ships have been wiped out by this dread scourge, the vessel being unmanned, a helpless derelict, until wrecked on some rocky coast or found by a passing ship.

Bubonic plague has been one of the worst curses of mankind since before the time of written history. Repeatedly it swept across medieval Europe, killing millions, one of the greatest epidemics occurring in London in 1664. Although two-thirds of the 460,000 inhabitants fled to escape it, 75,000 died in a short time. It is found on all seas.

The Mythical Blacksmith

An example of the persistence of legends is that of the Cave of Wayland the Smith in Berkshire, England. Wayland was a mythical blacksmith, yet for centuries and to within living memory, hundreds of men, feeling he was there invisibly, have left their horses at the cave's entrance, with twopenny on a rock, in the belief that if they withdrew for an hour, the animal would be found shod and the money gone upon their return.—Collier's Weekly.

Sport Seasons Reversed

In Darwin, Australia, the climate brings about a reversal of the usual sports season. The town is the northernmost of the continent and right in the heart of the tropics. There summer is the rainy season and the ground becomes completely saturated, whereas in winter it is dry and as hard as concrete. For this reason football players, preferring spongy ground, choose summer, while cricket enthusiasts, finding hard ground more suitable, play their game in winter.

Really "Beautiful" Men

On Mindanao island in the Philippines live a Malayan tribe called the Bagobo, the men of which are remarkable for their effeminate faces, it being difficult to distinguish them from the women. In fact, many of the men are far more beautiful than their wives. Incidentally this happens to be one of those tribes in which the women are allowed to have several husbands.—Collier's Weekly.

A Bonnet Piece

A bonnet piece is a gold coin of James V of Scotland, so called on account of the king's head being decorated with a bonnet instead of a crown. James V was the first Scottish sovereign who placed dates on money and the first who diminished the size of the gold coins by increasing their thickness. In beauty of workmanship they approach the Roman coins. These bonnet pieces are among the most valued curiosities of the antiquary.

Oleander Used as Poison

The fruits of what is known as "Yellow Oleander," a dwarf shrub from the West Indies, Thesvetia nereifolia, were once used to poison enemies by mixing it in food, in its native islands.

Big Lake and Salt Bed Combined in Australia

Although several water courses, frequently swollen by tropical rains, pour their waters into Lake Buchanan, Central Queensland, the lake empties itself almost as quickly as it is filled and is often a vast white field containing millions of tons of salt. The glare of the sun on this 100-mile-round field is intense.

A circle of hills forms a natural basin for Lake Buchanan, from which there is apparently no outlet for its waters. Scientists, however, declare that the contents find their way to the Great Artesian basin, which lies under a part of Central Queensland and Northern New South Wales.

Explosions resembling heavy artillery frequently boom forth from within one of the lake's surrounding hills, earning for it the name of Rumble Hill. Their origin is unexplained, as is the fact that a vapor continuously sprays up from a cavern there, drifting to earth as a fine salt. Ranch owners in the district obtain their salt supplies from the deposits left by this vapor. Owing to the lake's remoteness, no attempt has been made to use its salt supply commercially.—New York Times.

Town in Spain Demands Comedy With Bullfights

Comic opera bullfights are frequently staged in San Sebastian, matadors masquerading as clowns. The bull selected for the sport must young and without much courage, while the matador himself makes a better comedian than bullfighter. Two great woolen balls cover the bull's horns to protect the fighter, who dresses in bizarre costume. Sometimes he masquerades, keeping the bull off with a bamboo cane instead of a regular sword. The fight itself is rough-and-tumble sport, the matador jabbing wildly at the bull, and the animal repeatedly knocking him down.

When the Attention of the Audience Begins to Lag

When the attention of the audience begins to lag, the matador leaps upon the bulls back. If this does not provoke laughter, he lets the bull catch him on its horns, and goes hurtling wildly through the air. Eventually, however, the crowd, wearies of the fight, and then occurs the only tragedy of the day. People call for the death of the bull, a sword is brought and the unfortunate beast killed in the ring.

Burial Place of Norse Gods

In Old Uppsala, north of Stockholm, are three huge mounds beneath which, ancient legend says, the old Norse gods—Odin, Thor and Freya—were buried when they died on the introduction of Christianity. Modern scholarship, however, contends that they are ceremonial mounds. From the highest the ancient kings addressed their people when the tribes assembled for what the Scandinavians called a "thing". Near the mounds is the sacred grove where, on festival days, thousands of victims were slaughtered in Odin's name. The castle in modern Uppsala, incidentally, was the favorite home of Queen Kristine. Here she abdicated the Swedish throne.

Getting Out of Crime

Most American courts still consider pleas of insanity from the standpoint of moral responsibility instead of mental derangement, writes J. W. McKenna, Milwaukee, Wis., in Collier's Weekly. In 29 states a person is not liable for a crime when he proves that he did not know that the act was wrong. In 17 states, even when knowing the difference between right and wrong, he is immune from punishment when his crime was committed under "an irresistible impulse" due to a mental disease.

When the Earth Rumbles

An earthquake sounds like the rumble of a heavy freight train, and the noise apparently precedes the actual shock by a few seconds. It has been reported in Science by Prof. Alvin L. Lugo, associate professor of geology at the University of Nebraska, who heard and experienced a shock. The true sound of earthquakes is seldom detected because it is often masked by the crashing of masonry and glass, and cries of victims.—Literary Digest.

"Thumbs Down," "Thumbs Up"

Webster gives the meaning of "thumbs down" as a gesture of condemnation, and of "thumbs up" as erroneously in English usage as a gesture to signify approval. There is some controversy among authorities as to how these signals were used, some claiming that "thumbs down" meant the gladiator's life was spared while "thumbs up" meant death.

Farmers Do Not Live on Farms

The people of the Bahamas do not live on their farms, as is customary in America, but in small settlements by the sea. On the majority of farms there are no buildings at all save occasional thatched palmetto leaf huts. As a matter of fact, excepting the island of Eleuthera, agriculture can hardly be considered a major industry in the islands.

Advertisement for Goodyear tires featuring 'See the Mileage in These Footprints' and 'See the Economy in These Prices' with various tire models and prices.

Advertisement for Dick Kiker Grocery Market featuring 'We Speak With Authority' and 'When We Say We Can Please YOU' with images of Del Monte corn and coffee.

Advertisement for Dick Kiker Grocery Market featuring 'We Speak With Authority' and 'When We Say We Can Please YOU' with images of Del Monte corn and coffee.

Mary Martha Society

The regular meeting of the Mary Martha Missionary Society of the Methodist church met Wednesday afternoon at the home of Mrs. Marvin Chambers. Mrs. R. E. Douglas led the devotional, taken from the 6th chapter of Daniels. Mrs. George Buzzard, study superintendent was in charge of the lesson, taken from the book of Daniels. She was assisted by Mrs. Pope Gibner.

Announcement was made at the meeting that the zone meeting of the organization would be held at Gruver August 28th. At this meeting a special feature of the program will be an address by Miss Flora Foreman, Foreign missionary to Africa, who is in the United States on a furlough. Miss Foreman represents this area of Texas as a missionary, and has been in the foreign field for the past fourteen years.

BLODGETT NEWS

Mr. E. C. Hooper and Abe Davis were callers in the Blodgett home Thursday.

Mrs. Ralph and Mrs. J. Blodgett were Wednesday evening visitors of Mr. and Mrs. Sims.

Mr. C. Hooper returned to his farm at Sunray Thursday morning.

Clyde Harbour and Ben Archer were dinner guests in the Blodgett home Friday.

Mearl Beck attended business in Spearman Friday morning.

Mrs. Ralph Blodgett and son took Mearl Beck to Canadian Saturday evening for medical treatment for a lame hip.

Mr. and Mrs. Hollis Garrett were called to Stinnett Saturday morning. His brother in law Edd Cession was seriously injured by being run over by a car.

Mr. and Mrs. Earl Church visited Wednesday with Mrs. Churches brother Ed. McDougal at Moreland Okla.

Mrs. Ralph Blodgett and Mrs. J. M. spent Sunday afternoon in the E. S. Uptergrove home.

Dean Church spent Sunday evening with Roy Lee Uptergrove.

Mr. and Mrs. Wadley of Weonoka Okla. are week end visitors of Mr. and Mrs. Ray Converse.

First Christian Church

The Ladies Missionary Society of the Christian Church met at the home of Mrs. Richardson, Thursday August 8th in regular session a very educational lesson was conducted by Mrs. Alvino Richardson, she was assisted by Mesdames, H. Allen, Fred Hutchings and W. Cone. The lesson was on Tibet and some of the missionaries were personally known by the ladies which made the lesson doubly interesting. After the lesson lovely refreshments of iced tea and sandwiches were served by Mesdames Hanners and Hutchings.

All ladies are urged to come to these meetings which are very interesting and beneficial to all.

Needam and Bill Steed, nephews of Van Earl Steed who have been visiting with Mr. and Mrs. Steed for several weeks returned to Dallas to enter school this week.

Mrs. Mildred Miller and her grandson Shirley R. Palmer who have been visiting in the home of Mr. and Mrs. Bill Miller returned Sunday to her home at Walters, Oklahoma.

Mr. and Mrs. B. W. Seitz have returned to their home, South West of Spearman after spending 2 months in Cloudercroft, and Ruidoso, New Mexico.

Mrs. Susan McGreevey of Carmen Oklahoma is spending the week end with Mr. and Mrs. E. Church disposing of her wheat while here.

R. C. Bennett and E. S. Uptergrove attended the sale at Liberal Kansas Thursday.

Hubert Uptergrove helped Olin Williams cultivate feed the past week.

Mr. and Mrs. A. Reed and Margaret Alline were Spearman visitors Sat. evening.

L. W. Austin was up from Mangum Oklahoma Sunday transacting business and visiting with friends Sunday night. He reports dry hot weather there also.

Cecil Crawford and family attended the show in Spearman Sunday evening.

Mr. and Mrs. Don Bennett are happy over the arrival of a new daughter.

Mr. and Mrs. Archa Morse Mr. and Mrs. Benningfield visited in the Cecil Crawford home Sunday night.

Buster Bannister and Mr. and Mrs. Frank Kirkman, Crowell, Texas were callers of Cecil Crawford Monday night.

Church of Christ

Revival services each evening beginning at 8:30. All regular services of the church will be conducted as usual on Lord's day.

The revival is getting off to a very good start Brother England is doing excellent preaching. If you are among those who have intended to come and learn more of God's will, yet have been putting it off from night to night, delay no longer because you will be missing something each night you do that.

Scriptural singing, gospel preaching, Christian fellowship, and prayer are features of this series of services.

Come and be with us. The following subjects will be discussed from night to night.

Friday evening, 8:30 p. m.

"Two Laws of Paul."

Saturday eve.—"The Thief on the Cross."

Sunday Morning, 11:00 a. m.

"Vowing."

Sunday Evening—"The Name"

Monday Evening—"The Precious Invitation."

Tuesday eve. Why Do You Wait?"

Wednesday eve—"The Conversion of the Eunuch."

This meeting began August 11- interest and attendance are growing from night to night. The church of Christ welcomes one and all

HOLT 4H CLUB ACTIVITIES

Ruby Mae Lee, Reporter

The Holt 4H club met Friday at the Holt school house with our sponsor, Mrs. H. H. Stephens.

Mrs. Stephens and Mrs. Kible Lackey reports a very nice time, and they made interesting talks of a recent trip to Houston and Galveston, Texas.

Each member of the club has decided to give Mrs. Lackey some quilt scraps to let her make a quilt for the club to sell. The money will be used to send delegates of the club to the short course next year.

Miss Chance will not meet with this month. We will meet Aug. 23, 1935.

MRS. VAN EARL STEED ENTERTAINS GUEST WITH BREAKFAST BRIDGE.

Mrs. Van Earl Steed gave a breakfast bridge at her home near Waka last Thursday Aug. 9. She was assisted by her sister-in-law Mrs. Mrs. Harris from Sedalia, Mo., who has been visiting her, and at Groom for several weeks. Three tables were laid for the

ON VACATION TRIP

Mr. and Mrs. Cap Richardson are on a vacation trip in the mountains this week.

Very appetizing two course breakfast, and appointments and decorations were in keeping with the early hour.

Bridge was played by the following: Mesdames. Hutton, Lee, Whitson, Campbell, Lackey, Miller, Sheets, and Mesdames. Tom Johnson, Ewing, Williams, McConnell of Pampa and Mildred Miller of Walters, Okla and Parker of Waka.

Prizes went to Mesdames. Williams and Campbell.

LYRIC

THURS. FRI. SATURDAY
'Without Regret'

—Elissa Londi - Kent Taylor.

SAT. PREVIEW - SUN. MON.
'Shanghai'

—Loretta Young, Chas Boyer

TUESDAY - WEDNESDAY
'Front Page Woman'

—Betty Davis and George Brent.

Ride The Bus

For safety, convenience and comfort. Modern Passenger and Express Service
ROUND TRIP DAILY
From Amarillo to Liberal Kansas. Cheap rates
PANHANDLE STAGES INCORPORATED
Station at OLD CORNER DRUG STORE

OUR SINCERE THANKS

To the friends and customers who have awarded us patronage during the time we have had charge of the Continental Oil Co. Service Station in Spearman. We surely appreciate your patronage.

CONTINENTAL SERVICE STATION

Charles Chambers, former manager.

DELPHINUM FLOWER CLUB
The Delphinum Flower Club entertained about forty members and guests, Monday afternoon at the Lyric Theatre, with an illustrated lecture on Through Out the Year With Bulbs, Mrs. Sid Clark and Mrs. R. W. Morton presented the Lecture. G. Pope Gibner operated the Stereoptical, and slides. The next meeting of the Delphinum will be August 26 with Mrs. Adrain Moore.

MISS OPAL CLINE NOW EMPLOYED IN PAMPA
Miss Opal Cline spent week end with home folks in Spearman, she is now employed in the District Office at Pampa, the Texas Relief Commission, is the private secretary to Mr. H. Haile, District Administrator. This is district 16A and covers ten counties of which Pampa is included.

Courteous and Conscientious Service at all Times
Wilson Funeral Home
AND FLOWER SHOP
Phones—Day, 44; Night 62
Spearman

I've changed my home address, but I'm still doing up all the motorist that want attention. You will find the same efficient courteous service that you have been accustomed to receive at stations under my management. You know what to expect at a CONOCO STATION
—I'm expecting you—
Jack Hancock
—in charge Conoco Service Station—

Announcing !

The retail sales of the R. E. Lee Oil Company featuring Magnolia Products, Goodyear Tires and tubes, greasing, washing and servicing cars, has been taken over by John Elliott, a very capable and experienced Service Station man, who comes to Spearman from Denver Colorado, where he was formerly in charge of a large Service station.

I take this opportunity to recommend this young man to the trade and to guarantee the customers of the R. E. LEE OIL COMPANY, that they will receive service second to none, as result of the new associate member of our firm.

I am extremely interested in seeing that the customers using Magnolia Petroleum Company products and Goodyear tires receive the very best of service. I feel that we are in a position to render the very best service we have ever offered the customers of our company, and the entire public.

Give us a chance to prove to you that we have an organization worthy of your patronage.—

R. E. Lee Oil Co.
by **R. E. Lee**

It Pay To Buy The Best

Pan Tree Good Quality		Santa Fe Large Fruit	
SWEET CORN 3 No. 2 Tins	29c	ITALIAN PRUNES	No. 10 Tin
Santa Fe Better Quality Red, Ripe		Ranney's Finest "The World Over"	
TOMATOES 3 Number 2 cans	29c	BLACKBERRIES	No. 2 Tins
Wholegrain Shoepeg or Baby kernel style		Santa Fe Black In syrup	
FANCY CORN Ranney's finest 2 No. 2 tins	29c	RASPBERRIES	Number 2 Tins
Santa Fe Better Quality (They stay crisp)		Santa Fe Gelatine All true flavors	
CORN FLAKES 2 Large Packages	19c	DESSERT POWDER	4 Packages
GRAPE NUTS	OXYDOL	CERTO	
Large Package 18c	Large Package 21c	Makes Jelly Jell. Bottle 27c	
COFFEE new low price pound Vac. tins	28c	PEAS Green Giant Medium Tins	
MALT Blue Ribbon 3 lb. can	57c	PLUMBS Santa Fe Mammoth No. 10 tin	
Pan Tree Brand Cut Stringless			
GREEN BEANS	3 No. 2 Tins	23c	

HOME TOWN GROCERS
SPEARMAN EQUITY EXCHANGE—OF MORSE, TEXAS, and SPEARMAN, TEXAS