

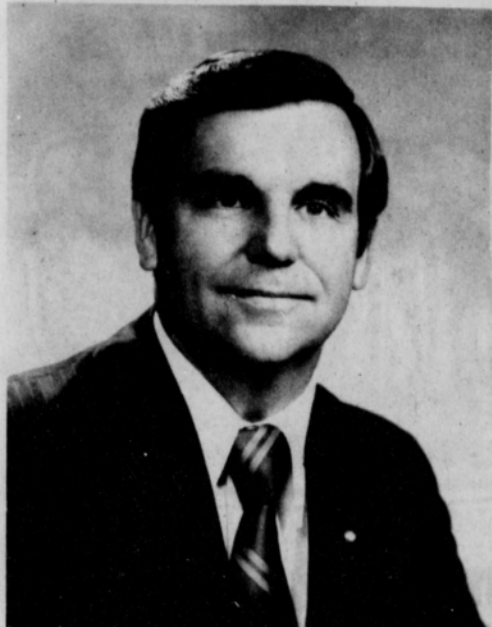
New alderman for city of Spearman!

Remember School Starts August 23, 1976.

The Spearman Reporter

VOLUME 67, NO. 37 THE SPEARMAN REPORTER, SPEARMAN, TEXAS 79081 THURSDAY, JULY 29, 1976

Rotary District Governor To Visit



John Tyler

ROTARY District Governor John Tyler of Midland will make his official visit to the Spearman Rotary Club, holding a Club Assembly meeting on August 1, 1976 and speaking at the regular Rotary Club meeting August 2, 1976, 12:00 noon.

Tyler will discuss the program of the coming year for the 45 clubs in this 573rd District of Rotary International, which covers most of Northwest Texas.

Tyler is a native of Southern California. He received a B.S. degree in Petroleum Engineering from the University of Oklahoma in 1957 and moved to Midland in 1967 where he is the District Production Superintendent for Union Oil Company of California.

Tyler has been an active Rotarian since early 1966 and is a Past President of the Midland Downtown Rotary Club. He and his wife, Dede, recently returned from Rotary's International Assembly in Boca Raton, Florida, and the International Convention in New Orleans.

In civic and industrial work, he has been active in a host of affairs. He is a past president of the City of Midland Swim Team, was Organizational Chairman of the Texas Swimming Association, is a member of the Southwest Football and Basketball Officials Association, is active in the Midland Community Theater, and is chairman of a national committee of the American Petroleum Institute. He is a Mason and active in his church.

The Tyler's have two daughters and two sons. Debra, the eldest, is a student at Midland College; John, Jr., is a senior at Robert E. Lee High School in Midland. Their two younger children, Rena and Brian, are both still in elementary school.

HOSPITAL MEETING
A special meeting of Hansford County Hospital Board of Directors. Agenda: 1. Staff members and board meet with Vietnamese doctors. 2. Discussion of administrator. Meeting will be held July 29, 7:30 p.m., Hansford Hospital.

Swim Team Closes

The Spearman Swim Team traveled to Guyton, Oklahoma for the West Kansas Swim League Championships on Friday and Saturday. There were 14 teams entered in the meet. The Spearman scored a total of 13 points for the two day meet. These points came from a team of 23 members. Individual results are as follows: Carey Bridges, 13-14, Boys, 200 Free, 6th; Gary Thomas, 11-12, Boys, 200 Free, 6th; Dawn Bridges, 13-14, Girls, 400 Free, 6th; Christy West, 15-18, Girls, 200 Free, 4th; Christy West, 1518, Girls, 400 Free, 3rd; Donna Wirsdorfer, 15-18, Girls, Breaststroke, 6th; Kelli Bynum, 13-14, Girls Breaststroke, 6th.

This has been good season for the swim team and we are proud of what they have done. There has been a total of 28 young people in the program this summer. They have represented this community

well wherever they have gone. We look for even a better season next summer.

We want to thank the community for its support. Through the Swim-a-Thon we have been able to purchase warm-ups for the whole team. Also we have purchased other equipment for the program and have been able to pay the entry fees for the team at all meets. Without your support this program would not go. Also a thanks to the city for use of the pool. All in all we can say it has been a good year.

We closed the year with a party and swim on Sunday evening. Certificates were given to those who took part in the Swim-a-Thon. Ribbons were given to those who took part in the Championship meet in Guyton. Those who made Missouri Valley AAU "B" times were given patches, these were Gary Thomas, Carey Bridges, Tuwana Byrd and Todd Brock.

REMEMBERING...

By BILL D. BROOKS



SOAP MAKING

LYE SOAP

I believe it was in the spring of the year when we made soap. Grease was saved from when we killed hogs in the winter. (It was the main ingredient for soap.)

My brother and I would go to the pasture and gather dead mesquite wood. We would make a big pile of it out near the old black wash pot. You had to have plenty of dry wood on hand when you made soap because the fire had to be real hot and stay that way for quite a while.

A good fire was built and mother would measure out the right amounts of everything to be put in the pot. Plain water and lye were put in first, so much water for each can of lye. We used store-bought lye but way back before then, folks made their own by dripping water through stove ashes.

While being heated the water and lye were stirred so they would mix good. Next the grease was added. How much grease you used depended on how much lye water you had. When the mixture was added the mixture had to be stirred constantly for about an half hour so we took turns

stirring and putting more wood on the fire.

We would stir it with wooden paddles until mother would check it and say, "That's enough." I suppose there were a lot of different recipes for making soap but mother just kept hers in her head. She could tell if it was right just by looking at it. She would watch how it dripped off the paddle to judge if it was done or not.

We would let it set for a little while then we'd stir it a little more and let it set overnight right in the pot. Next day it would be fairly hard and mother would take a butcher knife and cut it into chunks, just the right size for rub board use. Some people poured the hot mixture into flat pans, let it harden and cut it into small square bars for hand and bathing soap but we used bought soap for that. Lye soap could also be made soft. If it was made this way it was sort of jelly-like and was stored in crock jars until used.

We made soap this way up until we got our wringer washing machine, a gasoline powered Maytag. It smoked and made a terrible noise but it put us up there in style with all our neighbors.

"OPERATION '76"



THROUGH WHICH LENS DO YOU SEE OUR TOWN?

Abbott To Conduct Revival



Rev. Abbott

Rev. Merriel H. Abbott will be the preacher for a Revival at the First United Methodist Church on August 8-11. The Sunday services will be at the regular hours, with the services on Monday through Wednesday at 7:00 am and 8:00 pm. Rev. Merriel Abbott is the father of the local youth worker, Mark, and the brother of the local pastor. He is serving the First United Methodist Church in Brownfield, Texas. Before going to Brownfield he has served church in Slaton, Idalou, Amarillo, Crowell, Lorraine, and Lubbock. He is a graduate of Texas Tech and attended Perkins School of Theology at S.M.U.

Rev. Abbott has four children. Mark Abbott, the local youth worker will be a student in Spain this fall and then will come back to O.R.U. at Tulsa to graduate. The oldest son, Kenneth, is a senior at McMurry and daughter, Paula Nell, just graduated from High School in Brownfield and will be attending college this fall. They have one daughter at home, Melinda, who will be in the third grade in school at Brownfield.

Everyone is invited and welcomed to all services.

Bloodmobile Here Aug. 12

If you or a member of your family should need a blood transfusion, will blood be available? Help assure that blood will be available by giving at the Sacred Heart Parish Hall, August 12th, 1976, 10:00 A.M. to 3:15 P.M. You are encouraged to call 659-2271 to make your appointment today.

Commissioners Make Donation

All commissioners were present for the regular meeting, Monday, July 26th. The court approved the minutes of the July 12th meeting, and made payment of claims for the month. The court received the Treasurer's report, and reviewed the report. The Historical Society made a request for funds from the Commissioners, and they granted the Society \$500.00.

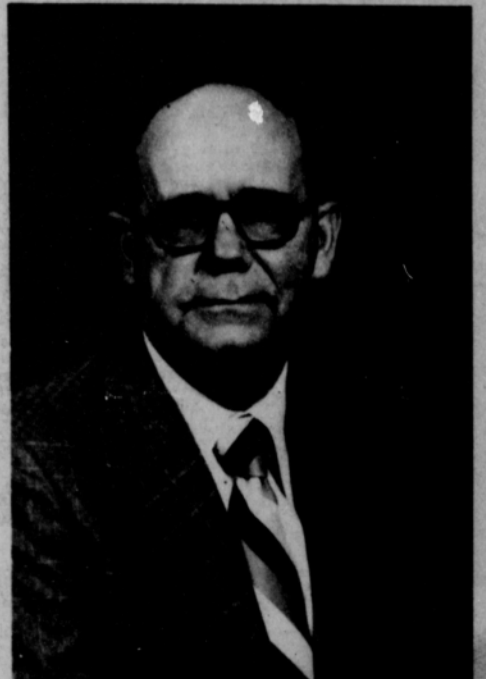
In other work at the court, the court met with the city aldermen, to discuss the merging of the Sheriff's Dept., with the city policemen. This will be decided, also, at a later date.

Hospital News

Patients in Hansford Hospital are Sherlene Dennis, Elizabeth Simms, Rennie Cowan and son, Maureen Cowan and son, Donna Yarbrough, Alameda Urban, Catalina Hernandez, Elwanna Eaton, Clara Jackson, Ethel Cookston, Clarence Mitchell, Gifford Kessler, baby girl Ramey. Dismissed were Catalina Rios, Antonio Pacheco, Jr., Dora Garrett, baby Jose Ter-cero, Susie Gobeau, Jeanie Ramey, and Dot Jenkins. Elizabeth Beck was transferred.

Immunization Clinic Aug. 2

An immunization clinic offering protection against several childhood diseases will be at the elementary school, 511 S. Townsend on Aug. 2, from 2-4 p.m. Protection is against Polio, diphtheria, lock jaw, whooping cough, measles and rubella. There is no charge.



GENE CUDD

The city held their regular meeting, Monday night, July 26, 1976 at 8 p.m., with the entire city council and Mayor present. Mayor Ralph Blodgett lead the pledge of allegiance to the flag, then also lead the prayer. The minutes of the regular city council meeting of July 12, 1976, were approved. The consolidation of the police department with the Hansford County Sheriff's Dept. was then discussed. The city aldermen met with the commissioners court earlier in the day, and the court has promised to "look into" the merger proposition, and give a yes or no report by August 9th.

The "Operation '76" project was discussed at the meeting. This is another clean-up campaign for the city; main theme of the Operation '76, is to remove all of the old cars off of the streets, and raise all of the old unsafe buildings in the city limits. This operation will begin on the South Bernice Street, and go East. The council commented that the Northeast part of the town has done such an outstanding job of cleaning up their lots, and mowing weeds, that now other parts of the town must do the same thing!

Mayor Blodgett and the council adopted a resolution to support the Palo Duro Dam Project 100 percent! Attorney Blackburn will draw up the resolution in the near future.

Highlight of the evening, was the appointment of a new Alderman. The council went into executive session, just before 9 p.m., and after a 45-minute deliberation, they appointed Gene Cudd, local John Deere dealer as the new councilman to take James Jackson's place. Mr. Jackson has moved from Spearman. Mr. Cudd is also a director in the First State Bank, Spearman.

Printed below are the minutes of the July 12 meeting: The City Council of Spearman, Texas met in regular session in the Council Chamber of City Hall, July 12, 1976 at 8:00 P.M. Present: Mayor C. Ralph Blodgett - Presiding. Aldermen present: Pittman, Nicholson, Ellsworth. Aldermen absent: Jackson, Beedy. Also present: City Manager Mark Neff, Attorney for the City Blackburn, City Secretary Amelia Johnson. Visitors: Chuck Rigdon, Ron Antalek Billy Miller, Edwin Limbocker. Pledge and Invocation: The Pledge of Allegiance to our Flag was led by Alderman Pittman, followed by the Invocation by Attorney for the City Blackburn.

Minutes of Regular City Council Meeting of June 28, 1976: Motion by Nicholson, second by Ellsworth, to approve the minutes of the Regular City Council Meeting of June 28, 1976, as written. Motion carried.

Ordinance receiving and accepting the improving of 9th Street and authorizing and directing issuance of special assessment certificates in connecting therewith: Attorney for the City Blackburn read an ordinance providing for receiving and accepting the im-

4-H Dress Revue Scheduled

4-H girls across the county are busy as bees completing clothing projects and preparing for the Hansford County 4-H Dress Revue, to be held at 8:00 p.m. Saturday, July 31, 1976 at the Home Demonstration Clubroom in Spearman.

Judging of the clothing projects will begin at 9:30 a.m. at the clubroom, followed that evening at 8:00 p.m. by a public revue of Creative Stitches exhibits and today's 4-H fashion fads.

Entertainment is planned, special awards will be presented, and delicious refreshments will be served.

4-H programs are open to anyone between the ages of 9-19 and all who wish to support 4-H activities. Make plans now to come to the Dress Revue and observe the 4-H members in their version of Betsy Ross patriotism as the present "Stars, Stripes, and Stitches!"

RAINFALL WEDNESDAY
Spearman received .48 moisture, at about 2:00 a. m. Wednesday morning. Loss of lightning, and thunder accompanied the storm, which came in from the Northwest.

proving of 9th Street and authorizing and directing issuance of special assessment certificates in connecting therewith. Motion by Ellsworth, second by Nicholson to approve the ordinance as read. Motion carried.

Consideration of appointment of replacement for Alderman James Jackson: No action was taken.

Monthly fire, police and ambulance reports: The monthly fire, police and ambulance reports were presented in written form.

Bills Payable: Motion by Nicholson, second by Pittman to approve payment of the bills payable as presented, as monies become available. Motion carried.

Discussion of Budget priorities for the upcoming Fiscal Year: City Manager Neff discussed with council various items to be included in the budget for next year.

City Manager's Report on systems, taxes and cash position: City Manager Neff presented to the council a bill from Holloway Construction Company for the water transmission line from water well No. 8. Motion by Nicholson, second by Ellsworth to approve payment of the bill as presented.

Other: No action was taken. Adjournment: Motion by Nicholson to adjourn. Mayor Blodgett pronounced the meeting adjourned.

Mayor C. Ralph Blodgett
Attest:
Amelia Johnson,
City Secretary

Railroad Commission Forms Available Here

Jim Eubanks, a representative of the Railroad Commission, stationed in Amarillo has placed Railroad Commission Forms in the local Chamber of Commerce office for the convenience of persons who might be in need of such.

The forms are available at the Chamber of Commerce offices in Borger, Perryton, Shamrock, Canadlan and Amarillo.

A list of forms in Alphabetical order follows:

1. G-1 Gas Well Back Pressure Test and/or Completion and Recompletion Report and Log.
2. G-5 Gas Well Classification Report.
3. G-10 Gas Well Status Report.
4. GWT-10 Multi-Point Back Pressure Test for Gas Wells (West & East Panhandle Fld.)
5. GWT-11 One-Point Back Pressure Test (West Panhandle Fld.)
6. P-1 Monthly Producer's Report for Oil and Casing-head Gas.
7. P-2 Monthly Producer's Report for Gas Wells.
8. P-1A & 2A Producer's Monthly Report of Gas Distribution.
9. P-4 Authorization for Transport of Oil and Gas From Leases.
10. P-8 Request for Clearance.
11. Unlabeled Area for Permit to Drill or Deepen a well or for establishing Allowable.

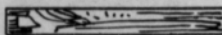
12. P-15 Statement of Productivity Assigned to Proration Units.
13. W-1 Application to drill.
14. W-1-A Affidavit for an Operator Seeking a Permit to Drill on a Basic Lease where less than Standard Acreage is Contained.
15. W-2 Oil Potential and/or Completion and Well Record.
16. W-3 Plugging Report
17. W-10 Oil Well Status Report.
18. W-15 Cementing Affidavit.

MARKETS

Wheat \$3.40
Milo \$4.50
Corn \$2.82



For a different taste in baked potatoes, push two or three caraway seeds into the center or mix in a little saffron butter just before eating.



Contour sheets will go on the mattress more easily if you put the diagonally opposite corners on first.

Easter can occur anytime between March 22 and April 25.

Advance AC Registration

Approximately 674 students have taken advantage of advance registration for the fall semester at Amarillo College, which began June 14 and continues through Aug. 13.

"Advance registration is a wonderful opportunity for the student to know ahead of time what his classes will be so that if he has to work, he can plan his work around his classes," said J. Fred Balderson, registrar.

This registration also provides the student the opportunity to register at his own convenience and help him to avoid long registration lines, said Balderson.

Payment of tuition and fees for the fall semester may be deferred until Aug. 18.

Currently enrolled students, day and evening, will report to their academic advisers for scheduling of classes. Students whose academic advisers are not on campus during this period may report to the Counseling and Testing center located in Ordway Hall.

New students will report to the registrar's office in the Washington Street Administration Building for admission clearance.

Students unable to take part in advance registration will be able to register in the College Union Building Aug. 25 and 26. Fall classes begin Aug. 30. A complete listing of the courses offered by the College

of Arts and Sciences, School of Technology, and School of Biomedical Arts and Sciences is available in the registrar's office.

Microfilm helps schoolchildren, too. One of the first public schools to use microfilm as a teaching aid was in Keene, New Hampshire. Now it is used in schools and libraries all across the United States.

Everyday, business, government, educational institutions and libraries are using micrographics as a more efficient and less costly means for storing, indexing and retrieving vast amounts of information required to conduct our daily lives.



The Liberty Bell was rung when the East and West were linked by railroad in 1869.

FOR SALE: Suburban home, close to high school, 3 bedroom, 3 1/2 bath, and basement. 3,400 sq. feet. Craig Hutchison, Phone 659-3089. rtc-m

T-Bone Club Plans Meet

The Southwestern T-Bone Club has planned a meeting for Thursday, July 29, 1976, at the Hilton Inn of Amarillo. Rex McAnelly, president announced today.

The ATTITUDE ADJUSTMENT HOUR begins at 6:30 p.m. followed by a Beafalo Sirloin dinner at 7:30 p.m. Tickets will be \$7.50 each.

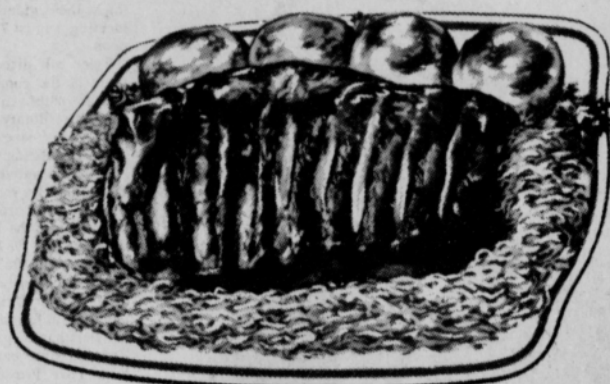
Featured speaker for the meeting will be Dr. Bart Cardon who received his Ph.D. from the University of California. Dr. Cardon is one of the leading beef cattle nutritionist in the country and is Chairman of the Board for Arizona Feeds of Tucson, Arizona. His honors include President of American Feed Manufacturers, Chairman of the ANCA Environmental Science Committee, President of the Council on Agriculture Science and Technology and is noted as being one of the top speakers on feeds and nutrition.

Reservations for the meeting can be made through the Amarillo Chamber of Commerce.

WE WILL BE CLOSED ON MONDAYS

In order to let our
Employees rest one day!

"Featuring PRIME RIBS
This Sunday!"



Plains Restaurant

"Plains Shopping Center"

ATTENTION---CATTLE PRODUCERS

THURSDAY, JULY 22, WE SOLD A TOTAL OF 1507 CATTLE AND CALVES THROUGH THE ARENA, WITH THESELLING BEGINNING AT 10 A.M.

WE ARE TAKING CONSIGNMENTS FOR JULY AND AUGUST. LET US KNOW AS EARLY AS POSSIBLE WHEN YOU HAVE CATTLE TO SELL.

GEN. MGR. --LLOYD GOODNER (RES. PHONE 405-423-6601)
CATTLE DEPARTMENT--LLOYD GOODNER & RAYMOND CHOATE

TEXHOMA LIVESTOCK COMMISSION CO., INC.

P.O. BOX 70, TEXHOMA OKLAHOMA 73949
Phone 405-423-3251 or 405-423-3241 or 405-423-2031.

Bloodmobile Here Aug. 12

The Red Cross Bloodmobile will be in Spearman August 12, at the Catholic Parish Hall from 10 until 3:15.

Hansford County did not meet its quota of blood donated last year. According to Joy McCormack, the need for blood in this region has increased due to more population which leads to more accidents and other cases needing blood.

The procedure for donating will be the same as that used last year. For an appointment to donate blood you may contact Joy McCormack, 659-2271 or Terrye Womble, 659-3272.

The quota for Hansford County for this year is 150 pints so you are urged to donate blood if you are physically able to do so, so that others may live and people in this area will have a blood bank when the necessity arises for blood transfusions.

BALLERINA DISHES GIVEN AWAY WITH COUPONS

SPECIALS FOR: THURS., JULY 29 THRU SAT., JULY 31, 1976

SIRLOIN
STEAK

LB. \$1.59

ARM
ROAST

LB. 89¢

T-BONE
STEAK

LB. \$1.59

CHUCK
ROAST

LB. 79¢

LOIN TIP
STEAK

LB. \$1.59

the neighborly store that gives you

QUALITY SERVICE SAVINGS

CRISCO  TIDE 
FAMILY SIZE
3 LB. CAN \$1.29 \$2.99

MORTON'S 32 OZ J.R. Salad Dressing 59¢ Tuna Twist 2 FOR 99¢

POTATOES
10 LB. BAG
UTILITY RUSSETS 89¢
GREEN TIP JUMBO YELLOW
BANANAS Onions
17¢ LB. 11¢ LB.

M & M Grocery

No. 1

202 N. Bernice Spearman, Texas
659-3234

AUNT MARTHA'S
BREAD HOT DOG 3 FOR \$1
HAMBURGER, BROWN-SERVE

PRINGLES
Potato Chips 79¢
2 PKG.

AMERKAN BEAUTY
DINNERS 4 FOR \$1
MACARONI & CHEESE DUMPLETS

2
CB RADIOS
23 CHANNEL \$99.95 EACH

FROM THE DELICATESSEN

Potato Salad \$1.29 QT.

COLE SLAW 79¢ PT.

B-B-Q Chickens \$2.29

WANTED

Boxwell Bros.
Funeral Home and Flower Shop
Day-Night Phone 659-2212
Spearman, Texas

O. J. ROOK
PHONE 274-4968
PAINTING-INDUSTRIAL RESIDENTIAL
FREE ESTIMATES
ACOUSTICAL CEILINGS
CARS AND TRUCKS

YOUR LOCAL USED COW DEALER: Spearman Bi-Products, Spearman Bi-Products. Seven days a week dead stock removal. Please call as soon as possible 659-3544
8-rtn

Hansford Lodge
1040 A.F.&A.M.
W.M. George Young
Sec. Cecil Biggers
2nd & 4th Mondays

SERVICES

Hansford County Planned Parenthood
26 S. Haney
659-2483
Spearman
Mon. - Fri.
8 A.M. to 12 noon
30s-rtn

Custom fertilizing and any type of farming.
W. B. Barnes
659-3493

For Sand Free Domestic Wells call W. V. Block,
935-4088 at nights, Dumas.
24-rtn

CUSTOM FRAMING, any size. Over 100 samples, moulding, also mat cut.
C&S STUDIO
206 Main
Spearman
23-rtn

PORTABLE DISC ROLLING call
DAVID MCINTYRE
659-3782
1181 N. James
Spearman, Texas 79081
19-rtn

KIRBY SALES & SERVICE of Spearman, 912 S. Bemice, 659-2797
30-rtn

GRADER, Dozier, and Drag line work. Call Lee Roy Mitchell, Gruver, 735-2384.
28-rtn

Custom Farming. Reasonable rates. Call Jack McWhirter, Phone 659-2249 or 659-3308.
19-rtn

JACK'S TRENCHING SERVICE-6-8-12 inch, experienced, dependable, anywhere, anytime day or night, call 935-3136 or 935-2539.
36-8tc

NEED MARY KAY COSMETICS. Call 2761 after 5 p.m.
30s-rtn

Miscellaneous For Sale

FOR SALE '65 Chevrolet 2 1/2 ton truck, 5000 miles on new 327 engine. Four speed with 2 speed single axle, dual saddle tanks. Call Canadian 323-5233 or 323-6375 after 5.
36-rtn

FOR SALE: Tenor Sax, good condition, call 659-2621.
37-8tp

FOR SALE: Clean 1962 Chevrolet, 1/2 ton pickup, \$450.00
659-2169
36s-6tc

Empster Shovel Drills Repairs and Improvements. Rebuilt Drills. Wilson Imp-lement Company - Vega, Texas 79092. 806-267-2181.
33-20tp

FOR SALE: Back hoe, new re-built transmission and rear end. In good shape. Jim Eller, 659-3169 or 3533.
31-rtn

Reduce safe & fast with Gobeste capsules & F-Vap "water pills" Spearman Drug.
33-8tp

FOR SALE: Model 22, 14 cu. ft., 8.2 freezer, Amana Refrigerator, harvest gold, call 659-3416.
37-2tc

FOR SALE

FOR SALE: Nice 3 bedroom 2 bath brick home on Barkley St. Attached garage, fenced yard, central heat and air, carpeted throughout, electric kitchen, dishwasher & disposal. Vacant and ready for you. Emmett R. Sanders, Realtor, 659-2516, nights 659-2601.
34-rtn

REDUCED

708 S. Townsend, 3 bedrooms, 2 full baths, 1732 sq. ft. Carpeted, drapes, central heat and air, two water heaters, disposal, built-in dishwasher and stove. Phone 372-3790 or write: Ila Kibler, 4405 West 2nd, Amarillo.
36-rtn

FOR SALE: 100 ft. Crawford Addition lot on the Spearman-Gruver Highway, utilities in, includes small office building, priced for quick sale. Emmett R. Sanders, Realtor, 659-2516, nights 659-2601.
35s-rtn

FOR SALE: Charming 3 bedroom 2 bath home; attractive carpet throughout; large living-den area; electric kitchen; double attached garage; concrete patio; fenced yard; shown by appointment only. Emmett R. Sanders, Realtor, 659-2516; nights 659-2601
35-rtn

FOR SALE: three bedroom brick home, large living room, den with fireplace, extra large fenced yard. Call 3374 for appointment.
28-rtn

FOR SALE: 160 acres SE of Spearman about 125 acres cultivated. Emmett R. Sanders, Realtor, 659-2516, nights 659-2601.

FOR SALE: 3 bedroom house in Gruver, 801 Richardson, 1 bath, corner lot. Marvin Wilson 806-384-2333 or 806-249-4870.

FOR SALE: Price reduced, on 3 bedroom home near school, attached garage, fenced yard, carpets. Shown by appointment. Emmett R. Sanders, Realtor, 659-2516, nights 659-2601. 31rtn

FOR SALE: Brick office building, central heat & air, large lot, plenty of parking, ideal for doctor's clinic, located just west of hospital at 7th & Roland. Emmett R. Sanders, Realtor, 659-2516, nights 659-2601.
29-rtn

FOR SALE: 3 bedroom house, garage. 659-3304
30-rtn

FOR SALE-3 Bedroom house, plus large basement, has nice fruit trees on 100 ft. lot, plenty of space for low-budget living. Emmett R. Sanders, Realtor, 659-2516 nights 659-2601.
36s-rtn

FOR SALE: Large lot at 12th & Archer Streets; choice residential location. Emmett R. Sanders, Realtor, 659-2516; nights 659-2601
26-rtn

REAL ESTATE

302 Bemice House and trailer House.

Lots in Crawford addition, 250 front feet by 180.
Call Ruby Lair-659-2188, Salesperson-Mayfield Real Estate, Perryton, 435-6528.
28s-rtn.

FOR SALE: 3 BR house, 811 S. Roland, Call 659-2736.
33s-rtn

FOR SALE: 3 Bedroom, bath & half home, attached garage, patio, fenced yard, refrigerated air, carpets, dishwasher, disposal, electric cooktop and oven, excellent condition throughout, shown by appointment only. Emmett R. Sanders, Realtor, 659-2516, nights 659-2601.
37-rtn

WANTED

Need a tractor driver? Call the Employment Office 659-3330.

WOULD LIKE TO BUY: 360 or 390 Late Model V-8 Ford Pickup Motor, 659-2822.
36S-2tc

Truck Drivers Needed- Must have commercial license. C. L. Baker, 3642.
34s-rtn

WANTED-Pickup top- per to fit long wide bed. Prefer fiberglass. 659-3134.
37-rtn

HELP WANTED: Young woman between 18 and 35 to work at grain elevator. Call 733-2280.
36-rtn

WANTED: Full time dependable person for Dog Catcher, City of Spearman. Hospitalization, Insurance, and retirement program. Contact Mark Neff, city Hall, Spearman, 659-2524.

Automobiles For Sale

FOR SALE: 1971 Buick Skylark 2 dr. vinyl top, radial tires. 659-3635.
36-4tp

FOR SALE: 1975 Gremlin, 11,000 mi., 6 cylinder engine, factory air, 3 speed. Call 659-2777, or be seen at 412 Townsend.
37-2tc

MOBILE HOMES For Sale

FOR SALE: 14 x 72 unfurnished mobile home. Call 3021 after 6 p.m.
33s-rtn

To Give Away

TO GIVE AWAY: Border Collie Puppies, 659-3334.
37-1tc

TO GIVE AWAY: Cowdog, 659-2883 after 5.
37-rtn

CARD OF THANKS

We want to thank our friends for their thoughtfulness and deep concern shown during Klint's stay in the hospital. The calls, visits, cards and toys were greatly appreciated. A very special thanks for your prayers and to Dr. Thomas for being here to help us when we were so desperately in need.
Joe T. & Linda Venneman

STEAM
CLEANS CARPETS WITHOUT SCRUBBING DIRT IN...
New Steamway cleans carpet from bottom up. No dirt or shampoo left in fabric. Call us today, we'll be happy to show you our new method... Free Estimates.
ROGERS STEAMWAY
616 N. CRUMLEY GUYMON, OKLA. 405-338-7926

Legal Notice

NOTICE
The Texas Department of Health Resources has established, in accordance with the Federal Public Health Act, the current annual level of uncompensated services for Hansford Hospital, Spearman, Texas, to be that the facility does not intend to deny anyone admission to the facility or any of its services because of an inability to pay. The documents upon which the determination was based are available for public inspection at the Texas Department of Health Resources, 1100 West 49th Street, Austin, Texas from 9:00 a.m. to 4:30 p.m. on regular business days. The level of services set out meets the presumptive compliance guidelines of the Federal regulation.
37-1tc

AF&W Storm Shelters
Concrete and Steel
For More Information Call:
659-2952
OR
435-3147
OR
435-5289

Too Late To Classify

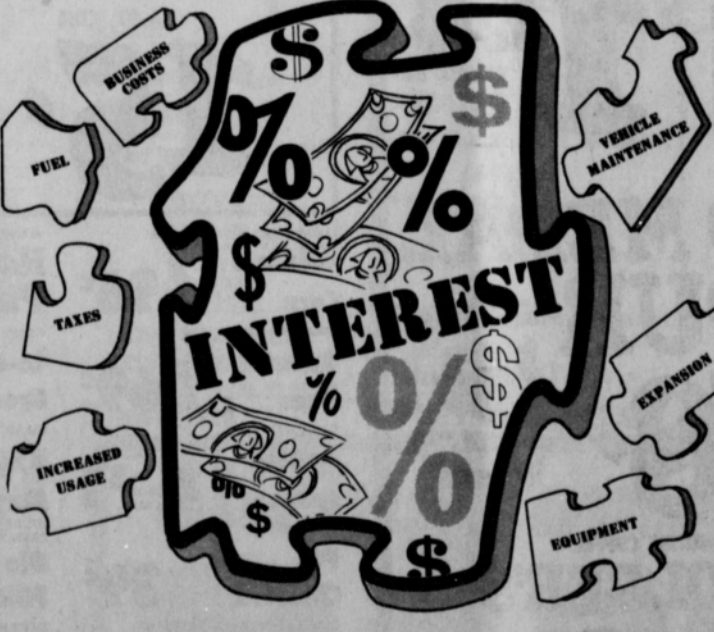
IN THE SPEARMAN AREA SPINET PIANO FOR SALE* CALL Lowrey Music Center, 669-3129 in Pampa & ask for Credit Manager.
37-2tc

TEXAS PRESS
MEMBER 1975 ASSOCIATION
Spearman REPORTER
Spearman, Texas 79081
213 Main Box 458 659-3434
Published Weekly at 213 Main Street Spearman, Texas 79081
Owner-Publisher.....William M. Miller
Second Class Postage Paid at Spearman, Tex.
Any erroneous reflection upon the character of any person or firm appearing in these columns will be gladly and promptly corrected upon being brought to the attention of the management.
SUBSCRIPTION RATE -- Hansford, adjoining counties, combination with the Spearman Reporter, \$10.92 Tax included.
Other points \$15.12, Tax included.

FOR THE ULTIMATE IN STORM DOORS
CUSTOM BUILT, DESIGNED, AND IN COLORS TO FIT YOUR HOME.....
CONTACT
HOWARD MOYER AT ONLY ALUMINUM INDUSTRIES
405 338-6966 or 338-6170
P. O. BOX 471
GUYMON, OKLA. 73942

EXCEL CHEV.-OLDS. CO.
Southern varieties of peas are on the market, including blackeye, purplehull and cream peas. Also, okra, carrots, green peppers, soft shell squash and dry yellow onions generally have lower price tags. Cabbage continues to be one of the better green vegetables from the standpoint of nutrition, value and cost, she said.
Good supplies of fresh peaches are available now. Sizes are large and prices are moderate. Also, look for lots of plums, nectarines, grapes, bananas and sweet cherries.
WATCHWORD: To lower food bills, compare the cost of fish with other protein foods--you'll be surprised at cost-per-serving figures.

Puzzled by increasing utility bills??
Here's part of the answer.



HIGH INTEREST RATES

It takes capital to run a business. It takes a lot of capital to run an electric utility company. Just as most of you must borrow money to buy a home or a car, businesses must often borrow money for things like expansion... things that insure their services will continue. When we have to borrow money, we look for the lowest rate of interest available. High interest rates are just a part of the picture of rising utility bills. We are striving to provide you with the most economical service possible without sacrificing the dependability you've come to expect from us.

COMMUNITY PUBLIC SERVICE
Your Electric Light & Power Company
An Equal Opportunity Employer

What are friends for

EVERYBODY'S BANK
IN A GREAT BIG WAY

To Greet you sincerely, recognizing the differences that make you an individual.
To Share rough going as well as smooth sailing.
To Trust because they tell you what you should know even when you don't want to learn it.
To Lighten your load with help you may not expect.
To Be around when they're needed. As we are always for our Circle of Friends.

FIRST STATE BANK
SPEARMAN, TEXAS 79081

You are cordially invited to a
bridal shower honoring
Rhonda Goodson, bride-elect of
Timmy Cook
July 29, 1976 at 8 p.m.
203 S. Archer
Hostesses: Mmes.
Rita Reed Judy Gordon
Avo Tope Jean Byrd
Gladys Dunaway Louise Hunt



ICE CREAM CAKE

- 1/2 cup butter
- 1 pint (2 cups) vanilla ice cream, softened
- 2 eggs
- 1-1/2 cups all-purpose flour
- 2/3 cup sugar
- 1 tsp. baking powder
- 1/2 tsp. salt
- 1 cup graham cracker crumbs
- 1/2 cup sour cream
- 1 cup caramel ice cream topping
- 1/2 cup chopped pecans
- Whipped cream, if desired

In 3-quart saucepan, melt butter; remove from heat. Add ice cream, eggs, flour, sugar, baking powder, salt and graham cracker crumbs. Mix until smooth. Pour into a greased 13 x 9-inch pan. Bake at 350 degrees for 30 minutes. While cake bakes, combine sour cream and caramel ice cream topping. Pour over warm cake. Top with chopped pecans. Cool cake and cut into squares. If desired, top with whipped cream. Yield: 20 squares.

For additional dairy recipes send a postcard request to Commissioner John C. White, Texas Department of Agriculture, P.O. Box 12847, Austin, Texas 78711.

New Square Dance Club

A new square dance club was formed here July 21. The name of the club is the Spearman Spinners. Officers of the club are Mr. and Mrs. Jerry Hayes, President; Mr. and Mrs. Craig Schuman, Vice-President; Mr. and Mrs. Jerry Holton, Secretary and Reporter; Mr. and Mrs. Wayne Cope, Treasurer; and Mr. and Mrs. Paul Lopez, Delegates.

The dances are scheduled to begin in September on 1st and 3rd Mondays, and will be held in the Community Building. Anyone interested in taking lessons or joining the club are asked to call the Jerry Hayes, 3643; or the Jerry Holtons, 3573.

You are cordially invited to a bridal shower honoring
Debbie Sheppard
bride-elect of Mike Cook
July 31, from 3:30 to 5:00 p.m.
B&B Farm Industries Friendship Room
HOSTESSES: MMES.
T.C. Kitchens John Trindle
Ray Gibson Ed Wheeler
Ray Martin Garland Head
Roscoe Nelson Herman Boone
Bill Strawn F.B. Schubert
Ray Gressett Dick Hudson
Ed Garner

The first panel quiz show was Information Please, which started on May 17, 1938.

from the TAP kitchen



You are cordially invited to a bridal shower honoring
Mrs. Gary Gannaway (nee Paula Higgins)
Saturday, July 31 from 2:30 to 3:30
Church of Christ
121 S. Haney
Hostesses: Mmes.
Don Schumann Vernon Pipkin
Ellzey Vanderburg James Riley
Laurence Dossett I.V. Pierce
H.E. Jenkins

PLAY CASH KING...

180000 IN CASH PRIZES... PICK UP YOUR FREE TICKETS



PRICES EFFECTIVE THRU SATURDAY, JULY 31, 1976. NONE SOLD TO DEALERS. LIMIT RIGHTS RESERVED.
MON. - SAT. 8:00-8:00
SUNDAY 10:00-7:00
123 W. KFNETH

OUR CHECKERS DON'T HAVE TO "REMEMBER" EVERY ADVERTISED PRICE! ALL REDUCED ITEMS ARE... "SPECIALLY MARKED" FOR YOUR PROTECTION.

GROUND BEEF

IN 3-LB. PACKAGES OR MORE



69¢



U.S.D.A. CHOICE BUTCHER BLOCK BEEF

Chuck Steaks

1-BONE CUTS, BEEF CHUCK

79¢

U.S.D.A. CHOICE BUTCHER BLOCK BEEF

Cube Steaks..... \$1.00

U.S.D.A. CHOICE BUTCHER BLOCK BEEF

Rib Roast..... \$1.39

Junior Bull Riding At Canadian

Junior Bull Riding for 18-year olds and under will be held at the Canadian Rodeo Arena Friday and Saturday evenings, August 6 and 7 starting at 8:30. Sponsors of the event are Robert Carr and Bob Burris. Judges will be Freddie Otis and Jim Martin. R. T. Smith will be the announcer and Bobby Adcock will be the bull-fighter.

Stock will be furnished by Bill Hext. Entry fee will be \$25 and the stock charge \$6. Books will open on Monday morning, August 2 at 8 o'clock and close on Wednesday evening, August 4 at 6 o'clock. The rodeo secretary's phone is 323-5088. Admission for each evening of the bull riding will be \$2 for adults and \$1 for students.

CRISCO SHORTENING



3-LB. CAN \$1.28

GOLD MEDAL FLOUR



78¢

FOLGER'S



3.48

TOP O' TEXAS RODEO



Starring the world's greatest cowboys and cowgirls

PAMPA August 4-7 8:00 P.M.

\$3465.00 Added

Permits SB, BB Only - Trade-Outs Allowed

Saddle Bronc Riding	Entrance Fee \$25.00	\$630.00
Bareback Riding	Entrance Fee \$25.00	\$630.00
Bull Riding	Entrance Fee \$25.00	\$630.00
Steer Wrestling	Entrance Fee \$30.00 #1	\$630.00
	\$40.00 #2	
Calf Roping	Entrance Fee \$30.00 #1	\$630.00
	\$40.00 #2	

G. R. A. Approved

Cowgirls' Barrel Race Entrance Fee \$25.00 \$315.00
Permits Accepted

ENTRIES CLOSE JULY 30 - 5:00 P.M.

DANCING NIGHTLY ... NATIONAL GUARD ARMORY BLDG.

STOCK FURNISHED BY... ELRA BEUTLER AND SON

FOR RESERVED SEATS Call 669-3241 or Write Box 1942, Pampa, Texas 79065

GREEN BEANS

16-OZ. CAN 15¢

Ranch Style BEANS

15 1/2-OZ. CANS 4 FOR \$1

- KOUNTY KIST WHOLE KERNEL Golden Corn..... 4 96¢
- MEADOWDALE Sweet Peas..... 3 69¢
- CAMELOT Apple-sauce..... 4 \$1
- CAMELOT R.S.P. Pie Cherries..... 39¢
- CAMELOT CRUSHED, CHUNK OR Sliced Pineapple..... 2 \$1
- SPAM, REGULAR Luncheon Meat..... 13-OZ. \$1.29
- BETTY CROCKER ANGEL FOOD Cake Mix..... 14-OZ. \$1.09

- ALL FLAVORS Hawaiian Punch..... 48-OZ. \$1.00
- KRAFT ITALIAN, CATALINA OR RUSSIAN Le-Cal Dressing..... 16-OZ. 38¢
- SALAD DRESSING Kraft Mayonaise..... 16-OZ. 96¢
- WILDERNESS, APPLE, LEMON, RAISIN, FRENCH APPLE Pie Filling..... 14-OZ. 59¢
- CAT'S PRIDE Cat Litter..... 16-LB. 88¢
- PURINA MEOW MIX Cat Food..... 14-OZ. 69¢
- RAID SOLID Insect Killer..... 3.7-OZ. \$1.98

- RAGU, ALL FLAVORS Spaghetti Sauce..... 2 15 1/2-OZ. \$1
- KRAFT MINIATURE Marsh-mallows..... 3 18 1/2-OZ. \$1
- NORTHERN Facial Tissues..... CTN. OF 38¢
- FONDA 4-INCH WHITE Paper Plates..... CTN. OF \$1.18
- KEEBLER COOKIES Rich 'n Chips..... 14-OZ. PKG. 79¢
- KEEBLER Pecan Sandies..... 14-OZ. PKG. 79¢

Colgate MFP Thrif-T Health & Beauty

Colgate Dental Cream..... 4 1/2-OZ. TUBE 79¢

Johnson's Baby Powder..... 14-OZ. CAN \$1.09

CAMELOT Bath Oil..... 4 1/2-OZ. JTL. 89¢

JOY LIQUID DISH DETERGENT 22-OZ. BOTTLE 72¢

TIDE FAMILY SIZE DETERGENT 171-OZ. BOX \$4.38

ERA LIQUID DETERGENT GALLON \$4.39

Vows Exchanged In Garden Ceremony



Mr. and Mrs. David Wayne Lewis

Vows were exchanged in the Botanic Gardens in Fort Worth July 30, 1976, by Cheryl Elizabeth Gibson, and David Wayne Lewis. The Rev. James Finley officiated at the ceremony before an archway and benches surrounded with bushes and yellow, red, and pink roses, and lovely green grass.

Parents of the couple are Mr. and Mrs. Raye Gibson and Mr. and Mrs. Loye Randall, all of Spearman.

"Hawaiian Love Song" was played as the bride entered and "Wedding Song" after the couple were pronounced man and wife. The music was played on guitars and sang by Paula Buford and Marsha Ellis, of Fort Worth.

Attendants were Leslei Alexander, bridesmaid, and Johnny Kenney, best man, both of Spearman.

Mrs. Kim White registered guests.

The bride was given away by Mr. Herman Boone. Her gown was a three-tiered white silk chiffon trimmed in embossed, imported lace with a scoop neck fashioned with three layer sleeves with a lace waist. She carried an open parasol made of white eyelet trimmed with same lace as her dress. She wore a white hat with baby blue lace, all made by the bride's mother, Mrs. Raye Gibson. For something old she wore a penny in her shoe; borrowed a necklace from the maid of honor, something blue was a baby blue garter trimmed with lace, and something new was her dress.

The bride walked out from under a tunnel of greenery out into the lower rose garden under an archway to the spot selected. The double ring ceremony was performed here with many roses, greenery, and grass.

Leslei Alexander, bridesmaid wore a white with blue floral silk dress with neck and caplet sleeves matching the bride's. She wore a blue and white cation corsage.

The groom wore a baby blue gabardine suit with a white shirt and baby blue tie and a

white carnation boutonniere. The best man wore a baby blue knit suit with white suit with blue bow tie and wore a blue and white boutonniere.

The reception was held in the honeymoon suite of the Sheraton Inn of Fort Worth of the bride and groom.

The serving featured a two layer white cake decorated with blue bells and doves, and blue and white candles.

After the wedding trip, the couple will be at home at 806 Haney, Spearman, where the groom is employed by Baker & Taylor.

Mrs. Linda Hoffman, daughter of Mrs. Ruby McCullough of Spearman, along with many standing throughout the garden watching the ceremony.

4-H'ers Prepare For Dress Revue

The Spearman 7th & 8th Grade 4-H Clothing Project Group had 4 meetings in July in the home of Mrs. Kenneth Friemel, their leaders.

The meetings concluded July 22 with modeling instruction given by Teresa Hargis, a swimming party and a picnic.

Members include Shelly Friemel, Karen Kenny, Cathy West, Julie Farr, Tamara Scroggs and Angela Francis.

Apple lovers still get fruit from the trees planted in the 18th and early 19th centuries!

Charter Bus Planned To See "Texas"

Mrs. Sam Graves, Continental Bus Agent here, announced this week that a charter bus is being reserved to go to "Texas" in the Palo Duro Canyon for Aug 13.

The cost is \$13.90 which

includes tickets for the performance and busfare.

The bus will leave Spearman at 3 p.m., giving enough time for dinner in Amarillo.

For further information or for reservations call 3446.

Rev. and Mrs. Horace Oscar Abbott Jr.

request the honour of your presence

at the marriage of their daughter

Shirley Mae

to

Mr. Terry Quinn Bates

on Saturday, the seventh of August

nineteen hundred and seventy-six

at half after seven o'clock

First United Methodist Church

North Second and Avenue F.

Haskell, Texas

Reception following

No Invitations Being Sent

WIN UP TO \$1,000!!!

NOW...NO PURCHASE NECESSARY!

ODDS CHART

WEEK	WED	THUR	FRI	SAT	SUN
1	100	100	100	100	100
2	100	100	100	100	100
3	100	100	100	100	100
4	100	100	100	100	100
5	100	100	100	100	100
6	100	100	100	100	100
7	100	100	100	100	100
8	100	100	100	100	100
9	100	100	100	100	100
10	100	100	100	100	100
11	100	100	100	100	100
12	100	100	100	100	100
13	100	100	100	100	100
14	100	100	100	100	100
15	100	100	100	100	100
16	100	100	100	100	100
17	100	100	100	100	100
18	100	100	100	100	100
19	100	100	100	100	100
20	100	100	100	100	100

FRESH, EXTRA LEAN

Ground Chuck

IN 1-LB. PACKAGES OR MORE

99¢

LB.

MEADOWDALE

Sliced Bacon

HICKORY SMOKED

\$1.49

1-LB. PKG.

U.S.D.A. GRADE A

Honeysuckle Turkeys

ALL SIZES

69¢

LB.

\$1,000 WINNERS:

- BARBARA CAMPBELL HUGOTON, KANSAS
- JOSE S. BARRERA HEREFORD, TEXAS
- LUELLA MONGOLD GUYMON, OKLAHOMA
- MARY MAE McJILLIAN FAIRVIEW, OKLAHOMA
- PAULA GARZA SATANTA, KANSAS
- MRS. TED GODFREY SPEARMAN, TEXAS
- FORREST C. MORRIS LIBERAL, KANSAS
- LOLA ARMENTROUT GARDEN CITY, KANSAS

U.S.D.A. CHOICE BUTCHER BLOCK BEEF

Boneless Beef Stew

EXTRA LEAN

\$1.19

1-LB. PKG.

MEADOWDALE HICKORY SMOKED

Sliced Bacon

U.S.D.A. CHOICE BUTCHER BLOCK BEEF

\$1.49

1-LB. PKG.

SWIFT'S ROCK CORNISH U.S.D.A. GRADE A

Game Hens

5-OZ. SIZE EACH

\$1.29

LISTED BELOW ARE THE NEWEST \$100 WINNERS OUT OF 82, \$100 WINNERS:

- MARILYN McENTIRE ... WOODWARD, OKLA.
- MARY CHAT ... PAMPA, TEXAS
- RALPH ROSE ... WOODWARD, OKLAHOMA
- SANDRA THOMPSON ... ELKHART, KANSAS
- MERRY WEDEL ... LIBERAL, KANSAS
- RITA WADE ... PAMPA, TEXAS
- LINDA ZUMWALT ... GUYMON, OKLAHOMA

Thrift-7 Dairy Foods

CAMELOT INDIVIDUALLY WRAPPED

American Slices

\$1.32

16-OZ. PKG.

FAIRMONT DAIRY FAIR

ICE MILK

ALL FLAVORS

75¢

1/2-GAL. CTN.

WE GLADLY ACCEPT U.S.D.A. FOOD STAMPS

Smoked Sausage

WILSON'S POLISH OR REG.

\$1.19

1-LB. PKG.

FAIRMONT LO-FAT

Cottage Cheese

89¢

16-OZ. CTN.

Thrift-7 Freeze Foods

PATIO, ALL VARIETIES

MEXICAN DINNERS

56¢

11-OZ. PKG.

Slicing Tomatoes

RED-RIPE, AND TASTY

39¢

LB.

FAIRMONT

Orange Drink

39¢

2 QT. CTN.

MEADOWDALE

Hash Browns

42¢

12-OZ. PKG.

PEACHES

CALIFORNIA

39¢

LB.

NECTARINES

CALIFORNIA

39¢

LB.

FAIRMONT

Buttermilk Biscuits

79¢

12-OZ. CANS

FAIRMONT

Strawberries

38¢

12-OZ. PKG.

ONIONS

CALIFORNIA, RED SWEET

25¢

LB.

APRICOTS

WASHINGTON

59¢

LB.

PLAY CASH KING

YOU COULD BE NEXT!

\$52,286

STILL TO BE WON!

YOU COULD BE THE NEXT BIG WINNER!

ORANGES

CALIFORNIA, VALENCIA

4 -LB. BAG 69¢

Celery

CALIFORNIA, CRISP

39¢

LB.

Tour Students Visit London

Foreign Study League students from the Panhandle Area arrived in London about 7:00 A.M. Thursday after an airplane trip of thirteen (13) hours from Denver.

Lodging was at King's College in the southeast section of London so it was not too far that everyone quickly learned to use the tube, double decker buses, and taxis (when absolutely necessary).

Students and advisors admit they could become addicted to theater going. Most or all attended ROMEO AND JULIET* NO SEX PLEASE-WE'RE BRITISH, and THE BALLET WITH NUREYEV.

London buildings are very black but recently a clean air act was passed and the air is very clean. Many public buildings are in the process of being sand-blasted to clean them.

The people seem to be always in a hurry even running up and down the escalators.

Sunday nearly everyone took a box lunch containing

sandwiches, potato chips, an orange, cucumbers, tomatoes, and a cup of orange drink and were off to services at West Minister Abby, St. Pauls, or the Brompton Oratory.

Some of the places visited in free time were Hyde Park, Tate Galleries, Tower of London, Big Ben, boat ride down the Thames, Windsor Castle, Portico Lane, and several shopping.

Everyone made a mad dash to do laundry Sunday night to be off to London at 4:00 A.M. Monday morning -By the way the dryers decided not to work so clothes were hung in the windows.

A wonderful time was had by all -no one lost for long and only a few blistered feet and a little motion sickness.

Rajan Martin & Crystal Carson, both of Spearman, along with sponsor, Miss Dorothy Roden are on this tour. Two Perryton youth, Patsy Jewell & Terry Shafer are on the tour, also.

United Presbyterian News

Lay Renewal Prayer Group will meet at the manse, 1100 S. Barkley, Thursday, July 25th at 8: p.m.

Rev. Ed Freeman will be interviewed on Radio Station KBMF on Friday, July 30 at 9:30 a.m.

There is a Sunday Church School class for every age group from nursery through adults every Sunday at 9:45 a.m. at the First Presbyterian Church.

Rev. Ed Freeman will preach Sunday, August 1 at the service for the public worship of God at 11:00 a.m.

A warm welcome awaits everyone who attends any of the services or activities of the First Presbyterian Church.

Dahlia Flower Club Met

The Dahlia Flower Club met Monday, July 19th at 9:30 a.m. at Martin's Steak Garden with Mrs. John Bishop as hostess.

Mrs. Earl Riley presided over the meeting in the absence of the president.

The club was glad to welcome Mrs. Bishop back after surgery a few weeks ago.

Mrs. A. F. Loftin was in charge of the program and presented Mrs. J. L. Denman who played a tape of the filling of the capsule at the First Baptist Church on July 4, 1976, to be opened July 4th, 2076. It was a very interesting program and enjoyed by all.

Refreshments were served to guest, Mrs. Oclea Cooksey, and to members, Mesdames: Guy Remy, H. M. Shodeck, Ned Turner, Earl Riley, C. W. Smith, F. J. Hoskins, Garrett Allen, Virgil Hull, J. W. Walker, A. F. Loftin, and J. L. Denman.

Roll call was answered by telling of our favorite hat.

Mrs. C. W. Smith won first with her marigold arrangement and Mrs. J. L. Denman won first with her gladiola specimen.

Next meeting will be a 1:00 o'clock luncheon August 2nd at Martin's Steak Garden. All honorary members are invited to attend.

Arts & Crafts Guild News

The Arts & Craft Guild met Friday, July 23, in the home of Georgia Holt.

Attending were Sada Hoskins, Allene White, Athalee Traylor, Grace Lyon, Blance Fuller, Margaret Gibner, Hazel Gibner, Annie Allen and Jewel Turner.

The next meeting will be Friday, July 30 in the home of Sada Hoskins.

Legends have it that the last word uttered before tongues were confused at the Tower of Babel.

healthy amount is more like 38 to 40 percent while some experts say 35 percent.

TG&Y[®]

family centers

PRICES GOOD IN ALL T.G.&Y. FAMILY CENTERS
THURSDAY-SATURDAY July 29-31
while quantities last

favorite values



LAWN CHAIR

This deluxe model folding chair features aluminum frame, woven web, plastic arms. Yellow or orange. **\$5⁸⁸** Each

MOD4
#8286
CORDLESS GRASS SHEAR

- Scissor like cutting action
- Blades easily resharpened
- No cord to hamper movement

\$21⁸⁸ EA.

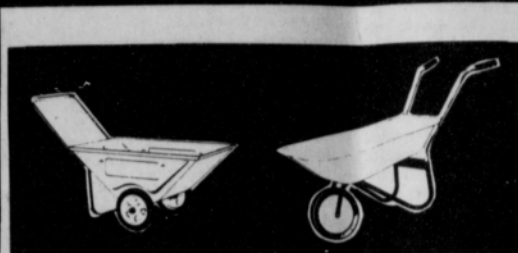
36" Plastic Covered CHAIN LOCK
With combination lock.

LAWN CHAISE
Aluminum frame, woven web and plastic arms. Adjustable positions.

\$10⁸⁸ Each

Oblong CHROME MIRROR
With two reflectors on back.

\$1⁴⁷ EACH



RADIO. GARDEN CART

- TRAY - 30 x 19 x 11"
- 3 CU. FT. CAPACITY
- WHEELS & TIRES - 8.5 x 1.25"
- SEMI-PNEUMATIC TIRES

\$14⁴⁴ EA.

RADIO. Wheelbarrow

- TRAY - 32 x 25 x 6"
- 3 CU. FT. CAPACITY
- WIDE TREAD, SEMI-PNEUMATIC 10 x 1.75" WHEEL
- BALANCED DESIGN

\$14⁴⁴ EA.



T.G.&Y.'s ADVERTISED MERCHANDISE POLICY
Our company's policy is to always have advertised merchandise in adequate supply in our stores. In the event the advertised merchandise is not available due to unforeseen reasons, T.G.&Y. will provide a Rain Check, upon request, in order that the merchandise may be purchased at the sale price when it becomes available, or you may purchase similar quality merchandise at a similar price reduction. It is the policy of T.G.&Y. to see that you are happy with your purchases.

COUPON

WD-40
11 OZ.

\$1⁰⁹ EACH
Limit 2 WITH COUPON
*****TG&Y*****

COUPON

GOLDEN "T" LIGHT BULBS 60, 75 or 100 Watt

4⁷⁶ BULBS
LIMIT 8 WITH COUPON 4 PER PKG.
*****TG&Y*****

COUPON

7 INCH PAPER PLATES
50 ct. 7" Plates, White.

37¢ PKG. LIMIT 6
WITH COUPON
*****TG&Y*****

COUPON

SKIN CARE
16 oz.

77¢
WITH COUPON
*****TG&Y*****

COUPON

MAALOX[®] ANTACID
LIMIT 2

12 oz. **\$1²⁷** EA.
WITH COUPON
*****TG&Y*****

COUPON

T.G.&Y. AIR FRESHNER
7 oz. aerosol.

50¢
WITH COUPON
*****TG&Y*****

COUPON

NP-27[®] ANTI-FUNGAL AEROSOL

4 oz. **\$1⁰⁹** EA. Limit 2
WITH COUPON
*****TG&Y*****

COUPON

GOODY BRUSH

75¢
WITH COUPON
*****TG&Y*****

COUPON

DUCT TAPE
1 1/2" x 10 yards. Cloth backed.

75¢
WITH COUPON
*****TG&Y*****

COUPON

Comes in assorted colors. A great buy!

BATH SPRAY
\$1⁰⁰
WITH COUPON
*****TG&Y*****

COUPON

DRIP DRY HANGERS 12 per pkg. Ass't. Colors.

97¢ PKG.
WITH COUPON
*****TG&Y*****

COUPON

T.G.&Y. Charcoal BRIQUETS

• Great Flavor!
• 10 Lb. Bag

97¢ BAG
WITH COUPON
*****TG&Y*****

SHRUB TRIMMER

- Double insulated
- Detachable cord
- Virtually vibration free

\$15⁸⁸ #8104 EA.

MOD4 SHRUB TRIMMER CORDLESS

8183

- Lightweight
- 30 mins. or more of cutting time
- Double edge 8 1/4" blade

\$26⁸⁸ EA.

**521 S. HWY. 207
OPEN MONDAY
THRU SATURDAY
9 A.M. TO 9 P.M.
SPEARMAN**

We Will Be Happy To Refund Your Money If You Are Not Satisfied With Your Purchase

TG&Y®

PLAINS SHOPPING CENTER - Spearman, Texas

dollar



521 S. HWY 207 SPEARMAN, TEXAS
OPEN 9 A. M.-9P. M. MONDAY THRU SATURDAY

STEEL GLIDER

Heavy 20 gauge sheet steel with curved edges. Frame is of oversized 1 1/2" O.D. heavy gauge steel tubing. Baked enamel green finish. Seats two. Unassembled.

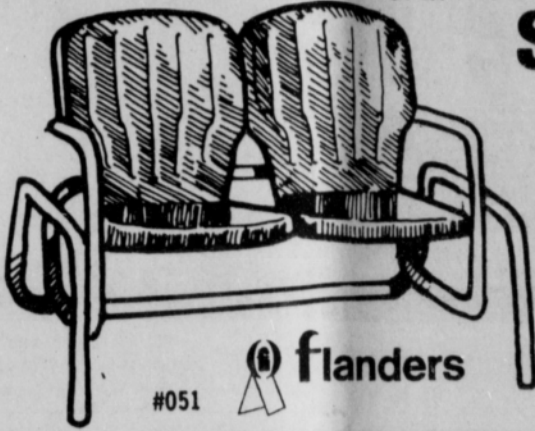
We Will Be Happy To Refund Your Money if You Are Not Satisfied With Your Purchase



STEEL CHAIR

- STRUCTURE SAME AS GLIDER
- SEAT - 14 1/2 x 19"
- BACK - 20 3/4 x 19 1/2"
- GREEN

\$ 6 EA. Reg. 12.88



flanders

\$ 16 EA. Reg. 25.88

TG&Y®

FABRIC SHOPS

go everywhere KNITS

100% Polyester

DOUBLEKNIT

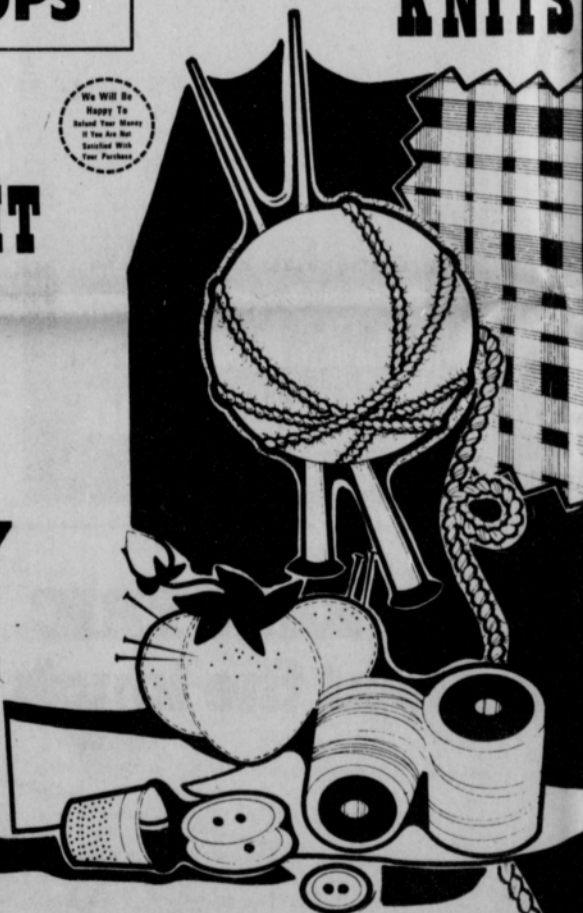
58/60" WIDE

Casual, carefree knits for all occasion. 100% polyester for easy care. Machine wash and dry. Never needs ironing. Many prints & colors.

OUR LOW PRICE ...

\$ 1.97
YARD
REG. \$2.47

We Will Be Happy To Refund Your Money if You Are Not Satisfied With Your Purchase



T.G.&Y. ADVERTISED MERCHANDISE POLICY
Our company's policy is to always have advertised merchandise in adequate supply to our stores. In the event the advertised merchandise is not available due to unforeseen reasons, T.G.&Y. will provide a like check upon request. In order that the merchandise may be purchased at the sale price when it becomes available or the like purchase similar quality merchandise of similar price/production. If the price of T.G.&Y. is to see that you are happy with your purchase.



CALICO AMERICA

Ministrol Paisley

BLUE KNIGHT

DRESS PRINTS

COORDINATES

WASHED-OUT DENIM PLAINS

44/45" WIDE

44/45"

44" 45", 100% Cotton, Machine wash warm, tumble dry remove promptly. Sparkling new dress prints to delight your wardrobe!

Ideal for blouses and shirts. A wide selection of colorful prints. 100% Cotton. Machine wash & dry.

100% Cotton. 14 1/2 oz. 3 shades of blue.

BUY NOW

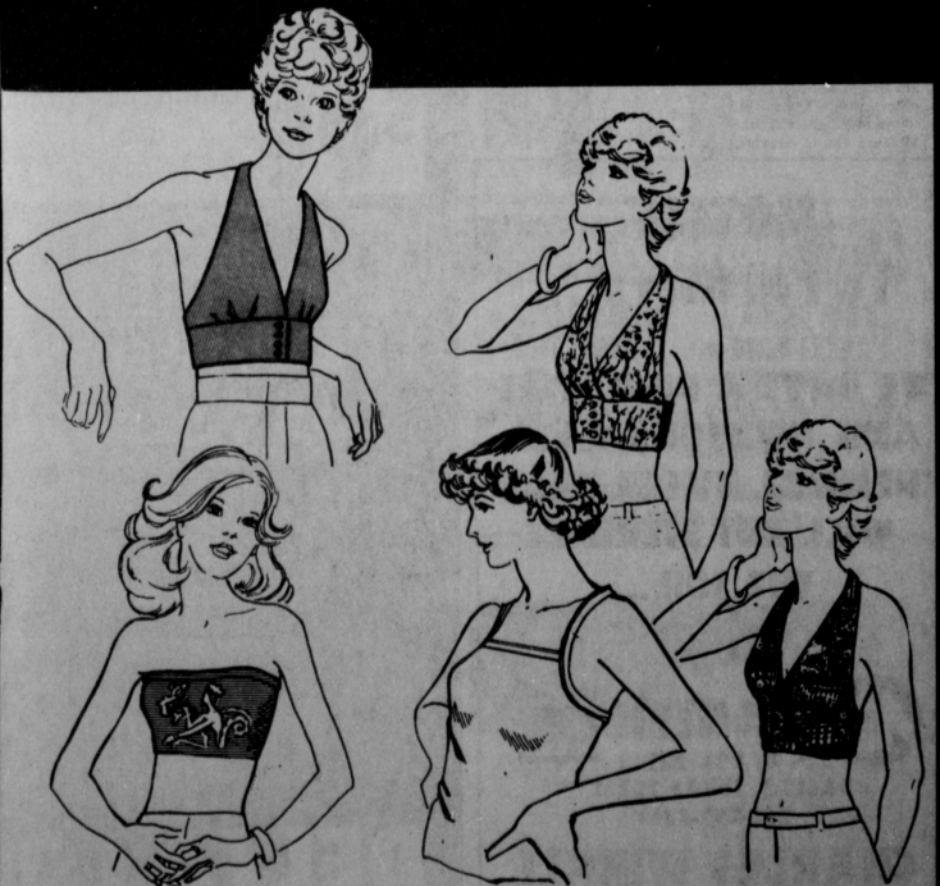
\$ 1.39 YARD

\$ 2.29 YD.

\$ 2.77 Y. D



closeout on Summer Wearables





MRS. PEARL REED, seated in center of picture, surrounded by the forty members of her family at the Reed Reunion, June 26, 1976 in Richmond-Rosenberg, Texas.



MRS. PEARL REED with her eight children at the Reed Reunion, June 26, 1976 in Richmond, Rosenberg, Texas.
Left to right - Larry Reed, Harold Reed, Mrs. Bill Pharies (Clea), Roy L. Reed, Mrs. Pearl Reed, Edwin Reed, Mrs. Jack Berry (Elsie), Francis Reed, and Aln R. Reed.

Reed Family Reunion Held

Saturday and Sunday, June 26, 27, 1976, the eight children of Mrs. Pearl Reed, and their spouses, gathered at Richmond-Rosenberg, Texas for their first reunion in forty years. Mrs. Pearl Reed, now 82, resides in the Autumn Hills Manor, Richmond, Texas. Mrs. Reed has twenty-one grandchildren and nineteen great grandchildren. Forty members of her large family were in attendance at the recent reunion. For many years the Reed family lived in Spearman, Texas. Mrs. Reed's eight children graduated from Spearman High School.

Sharon, of Sandusky, Ohio, and daughter, Beverly of Lyndhurst, Ohio; Mr. and Mrs. Jack Berry (Elsie) and daughters, Pamela and Barbara of Dallas, Texas.

Also, Mr. and Mrs. Edwin R. Reed of Portland, Oregon; Mr. and Mrs. Roy L. Reed of Glenview, Illinois, and daughter, Pamela, of Dallas, Texas; Mr. and Mrs. Bill Pharies (Clea) of Whittier, California; Mr. and Mrs. Benny Pharies of Whittier, California; Mrs. Clewana Mourer of Whittier, California; and Mr. and Mrs. Elroy Coddling of Downey, California.

Also, Mr. and Mrs. Harold M. Reed and daughter, Danna Kay, of Oxon Hill, Maryland, daughter, Mrs. Diana Windsor of Suitland, Md.; Mr. and Mrs. Larry R. Reed and sons, Ray and Jack, of Rosenberg, Texas.

Ethel Baker Services Held

Mrs. Ethel Bell Baker of Waco passed away at 4:30 p.m., July 19, 1976 in a Waco Hospital.

She was the mother of Hansford County Women, Mrs. Harry Stumpf of Spearman and Mrs. Irvin Boyd of Gruver.

Funeral services were held Wednesday, July 21 at the Aderhold Funeral Home Chapel, with Rev. Cecil Taylor officiating with burial in White Rock Cemetery.

Other survivors are a son, Donald Ray Sanders, Amarillo; 4 daughters, Mrs. Stump and Mrs. Boyd, Mrs. John W. Smith of Dallas and Mrs. Lawrence L. Bush, Jr., of Waco; one brother; five sisters; 16 grandchildren and eight great-grandchildren.

Freezing prevents mold growth, but it won't kill what's already present.

All day on Saturday the Reed family enjoyed visiting and recalling their experiences of growing up during the years of the Great Depression. Saturday evening a Barbeque Supper was shared by the family in the Fellowship Hall of the Central Christian Church in Rosenberg. The highlight of the two day gathering was the Morning Worship service at the Central Christian Church in Rosenberg. The worship service was led by Larry Reed (Chairman of the Board of Deacons) the sermon was preached by The Reverend Alan R. Reed (Retired Methodist Minister) and the four other sons participated in the service. Sunday Dinner was served to the Reeds as they sat around a long table in the Texas Grill in Rosenberg.

Those attending the Reed Reunion in addition to Mrs. Pearl Reed were: Rev. and Mrs. Alan R. Reed of Nacogdoches, Texas; Mr. and Mrs. Richard Reed and son, Matthew, of Chicago, Illinois; Mr. and Mrs. Quinn Eudy, daughter, Vonya, and son, Kenny, of Needville, Texas.

Also, Mr. and Mrs. Francis E. Reed of Lyndhurst, Ohio, daughter, Mrs. Teresa McGlashan and daughter Heather of Medina, Ohio, daughter,



1st we introduced center pivot
Since 1953 Valmont has pioneered the center pivot irrigation industry, and over 10,000 center pivots are now in operation. It's the fastest growing part of irrigation.

2nd we made circles square
The Valley® Corner System is a revolutionary new center pivot that irrigates the corners. In a typical square quarter it means you can now get yields from 150 acres instead of 132. You can also irrigate any one corner or all corners.

VALLEY ELECTRIC

Look carefully at the tough one.

WE CAN GIVE PROMPT DELIVERY ON ELECTRIC SYSTEMS.....
2 to 4 WEEKS ON OTHER SYSTEMS.



"Every service man we send to work on your system will be factory trained."

There'll also be a tremendous parts inventory to back him up. Our service trucks are radio controlled for around-the-clock trouble shooting. No more waiting. Valmont is the largest manufacturer of center pivots in the world.

It only makes sense that we'd have the best service organization too. Next time you have a problem—big or small—contact the Center Pivot Center. We can help right now.

VALLEY

Phone (806) 653-3521

DELTA CORPORATION

Follett, Texas

NOTICE To Farmers....

WE HAVE A BIND-WEED AND JOHNSON GRASS CHEMICAL KILLER THAT WILL NOT STERILIZE THE SOIL....



CHARLES WINKLE
RES. PHONE: (806) 355-0477
AMARILLO, TEXAS

Award Given For Highway Beautification

AMARILLO--W. T. Sullivan, maintenance construction supervisor in Claude for the State Department of Highways and Public Transportation, is the Amarillo District nominee for the seventh annual Lady Bird Johnson Award for Highway Beautification.

As supervisor of maintenance in Claude since January 1, 1975, Sullivan is responsible for about 150 miles of paved U.S. state and farm to market highways in Armstrong County.

The Lady Bird Johnson Award, established in 1970 by Mrs. Lyndon B. Johnson, recognizes the department maintenance man who does the best job of highway beautification in his area.

Sullivan's county-wide highway beautification efforts notwithstanding, his major contribution has been the renovation of the scenic overlook on a south rim of Palo Duro Canyon on State Highway 207 in Armstrong County.

Sullivan, a 22-year department veteran, by landscaping greatly improved upon the beauty of this rest area 23 miles south of Claude constructed in 1967. He accomplished this in a time of economic stress on the highway and public transportation agency when beautification takes a lower priority.

Sullivan has always kept the two arbor units at the park in excellent condition and the entire rest area clean and inviting. But he wanted to do more at this rest area.

Over a period of about a year, he pursued and stockpiled the following landscaping materials --black (pre-coated) and white gravel left over and salvaged from various seal coat projects in Armstrong County.

elm trees removed from the right of way on State Highway 207 some 40 miles to the north in Hutchinson County.

hackberry trees from Palo Duro Canyon.

wild yellow roses growing over abundantly at the abandoned junior college in Goodnight.

cactus that was flourishing on the right of way on Farm to Market Road 1151 west of Claude.

huge, elegant boulders from the canyon.

Then Sullivan turned to his maintenance crew for help. First, he asked "resident artist-landscaper" Dee Aduddell to create the concrete-curbed outline of the state of Texas that now beautifully anchors the park.

Sullivan's men planted the roses, cacti, and trees and placed and leveled the black and white gravel. The men also painted the state outline and the curbing across the picnic area as well as the curbing around the trees and plants.

The maintenance crews, who also planted Bermuda grass around the park area, now seldom cross the canyon to perform routine maintenance chores on roads south of there without stopping to water the trees, grass and flowers. An average annual rainfall in Armstrong County of 19.98 inches falls considerable short of acco-nodating much vegetation.

Another of W. T. Sullivan's projects is an historical marker turnoff on State Highway 207 on the floor of Palo Duro Canyon.

He beautified this area by planting trees and iris and adding a red, white and blue trash receptacle for Bicentennial flavor. The Hamblen family pioneered at this site which

marks a dugout that still exists a few feet off the right of way to the west.

Sullivan and his maintenance technicians take special pride in cultivating the growth of wild-flowers along State Highway 207 since the roadway from Claude south to the Briscoe County line is on the Plains Trail. In the spring cut-leaved daisies flourish along the canyon highway.

"In my almost 20 years in highway maintenance, I have seen no other foreman work harder than W. T. does to keep his roads and parks maintained," stated A.L. McKee, Amarillo District Engineer.

"He works hard on not only the roadside park on State Highway 207 but all other highways and parks in his assigned county," McKee added.

Sullivan's highway beautification efforts have gained local attention. A photograph of the scenic overlook on State 207 is scheduled to appear in the Claude High School yearbook.

In addition the president of the First National Bank of Claude, Bert C. Woodriddle, wrote on June 10, 1976, a letter complimentary of the park to Luther DeBerry, Engineer-Director of the State Department of Highways and Public Transportation.

"While we are not tourists, Mrs. Woodriddle and I frequently take our coffee and drive out to this spot to watch the sunrise, view the Palo Duro, look at the fog in the valley, the beautiful cloud formations or enjoy the sunset," the Claude bank executive stated in his letter.

"There is no prettier sight," continued Woodriddle. "Come out and see for your-

self." Sullivan and the Claude public schools have something else in common--a flower bed adjacent to the Claude maintenance warehouse which is located on Trice Street (State 207). In April, students in a special education class planted a variety of flowers in the bed. The youngsters return at various times during the summer to see the progress and end result of their efforts.

Sullivan, who was born in Clarendon, started to work for the department in June 1954 in Claude.

He served as an infantryman in the Army and was stationed in Korea and Germany. He is a former Cub Scout master and a member of Claude Church of Christ. He is a member of Claude Lions Club and teaches first-aid to his fellow department employees.

Sullivan and his wife, Elizabeth have three children. Miss Debbie Sullivan of Claude, and Gregory and Scott of the home.

The 1975 Amarillo District nominee was George Perin, maintenance construction supervisor at Canadian. Last September Mrs. Johnson presented to the 1975 Award winner, Dwain Rogers of Anson, a plaque and her personal check for \$1,000. Runnerup award of a certificate and a \$500 check went to Clay Jameson of Matador.

Department maintenance supervisors are responsible for taking care of all state-maintained highway facilities in their areas. In addition to more than 71,000 miles of highways, these facilities include the roadsides and the 1,100 roadside parks, safety rest areas and scenic turnouts on the Texas highway system.

Texhoma Livestock Commission Report

DEAR CATTLEMEN:

The receipts at the Texhoma Livestock Commission Company, yesterday, July 22, were 1507 cattle and calves. The Auction began at 10:00 a.m. A good representation of Buyers were in attendance. A very sluggish market and lower market on everything across the board. Stocker cattle made up the bulk of the supply. Stocker steers \$2.00 to \$3.00 lower, stocker heifers \$2 to \$3 lower. Not enough feeder steers or feeder heifers for a good market test but sure looked like the market would have been \$1.00 to \$2.00 lower.

Packer cow market \$3.00 to \$5.00 lower, selling from \$23.00 to \$25.00. Bologna Bulls \$3.00 lower, selling from \$30.00 to \$33.00.

Some representative sales as follows: 38 Blk WF Steer Calves - Avg. Wt. 424 lb. at \$42.80 per cwt. 22 WF Steer Calves - Avg. Wt. 412 lbs at \$42.00 per cwt. 15 Blk WF Steer Calves - Avg. Wt. 340 lbs. at \$46.60 per cwt. 10 WF Steer Calves - Avg. Wt. 281 lbs. at \$47.50 per cwt. 9 WF Steer Calves - Avg. Wt. 436 lbs. at \$44.10 per cwt. 21 WF Steer Calves - Avg. Wt. 409 lbs. at \$43.10 per cwt.

29 WF Heifer Calves - Avg. Wt. 395 lbs. at \$35.10 per cwt. 20 Blk WF Heifer Calves - Avg. Wt. 373 lbs. at \$35.10 per cwt. 25 Blk WF Heifer Calves - Avg. Wt. 409 lbs. at \$33.75 per cwt. 27 WF Heifer Calves - Avg. Wt. 419 lbs. at \$33.30 per cwt. 11 WF Heifer Calves - Avg. Wt. 365 lbs. at \$35.00 per cwt. 25 WF Heifer Calves - Avg. Wt. 453 lbs. at \$34.00 per cwt.

60 Mixed Feeder Steers - Avg. Wt. 600 lbs. at \$38.15 per cwt. 13 WF Feeder Steers - Avg. Wt. 572 lbs. at \$39.40 per cwt. 29 WF Feeder Steers - Avg. Wt. 599 lbs. at \$38.20 per cwt. 29 WF Feeder Steers - Avg. Wt. 554 lbs. at \$40.45 per cwt.

14 WF Feeder Heifers - Avg. Wt. 660 lbs. at \$33.10 per cwt. 8 WF Feeder Heifers - Avg. Wt. 725 lbs. at \$32.80 per cwt. 21 WF Feeder Heifers - Avg. Wt. 624 lbs. at \$33.40 per cwt. 19 WF Feeder Heifers - Avg. Wt. 509 lbs. at \$33.70.

For next week, July 29, we are expecting, sure, 2000 cattle and calves of all classes. We have some consignments of good Feeder Cattle for next week.

Listen to your local RADIO STATION FOR A CLOSER LOOK AT WHAT WE WILL BE EXPECTING* STARTING Tuesday afternoon. If you have anything you would like to consign, just call the office here at Texhoma and this way we can get it advertised better, to your advantage. We are, Sincerely, Lloyd Goodner, Gen. Mgr.

Liberty is the only thing you cannot have unless you are willing to give it to others, William Allen White.

Tired of Hi Hi Prices ?? **SAVE! SAVE! SAVE!**

Are You thinking about buying new Furniture ??

Why Not drive out to the Ondracek Country Furniture Store, They have the best brands of furniture Such as Thomasville, Clyde Pearson, Maddox Lazy Boy chairs Come to see us and Compare Our Low Low prices.

Open WeekDays from 9 AM to 6 PM Open Sunday after Church and Monday, Wednesday and Friday Nights (Country Low Prices)

ONDRACEK COUNTRY FURNITURE
Logan, Oklahoma 73849

ALL MAJOR NAME BRANDS

Phone: 837-5325

Directions: North of Darrouzette 7 Miles, 3 Miles East, 1 Mile North.

ATTENTION

Farmers Stockmen

PANHANDLE LIVESTOCK COMMISSION CO.

Would like to announce a change in sale date. Auction will be held every Friday, starting March 5th, 11:00 A.M. C.S.T. If you have any consignments or need information on special sales, contact Bill Blackmore, 338-3378, H.W.Y. 54 NE Guymon. Home phone 349-2583.

RAILROAD COMMISSION OF TEXAS OIL AND GAS DIVISION

OIL AND GAS DOCKET

NO. 10 - 66,335

Austin, Texas
July 21, 1976

IN RE: CONSERVATION AND PREVENTION OF WASTE OF CRUDE PETROLEUM AND NATURAL GAS IN THE HANNAS DRAW (DOUGLAS) FIELD, HANSFORD COUNTY, TEXAS

NOTICE OF HEARING ON THE APPLICATION OF TEXACO INC. FOR THE COMMISSION TO ESTABLISH A POOLED UNIT FOR A GAS WELL IN THE HANNAS DRAW (DOUGLAS) FIELD, HANSFORD COUNTY, TEXAS

NOTICE IS HEREBY GIVEN To the public and all interested persons that under the authority of Title 102, Oil and Gas, and Chapters 21, 22 and 24 of the Texas Water Code, Revised Civil Statutes of Texas, the Railroad Commission of Texas will hold a hearing on Wednesday, SEPTEMBER 1, 1976, at 9 a.m. in its Hearing Room in the Ernest O. Thompson State Building, 10th and Colorado Streets, Austin, Texas, for the following purpose:

To consider the application of Texaco Inc. for the Commission to establish a 653 acre pooled unit for a gas well under the Mineral Interest Pooling Act (Article 6008c, R.C.S.) for certain properties in the Hannas Draw (Douglas) Field, Hansford County, Texas. Such proposed unit would be comprised of the following described properties:

"Section 74, Block 2, GH&H Ry. Co. Survey, Hansford County, Texas, containing 653 acres, the same being embodied in the two tracts, to-wit:

TRACT I: The west one-half (W/2) of the above described section and block, consisting of 326.5 acres, being that certain 326.5 acres of land described in Oil and Gas Lease dated May 2, 1945, recorded in Volume 12, Page 575, Lease and Contract Records of Hansford County, Texas, from H. H. Jones and wife, Georgia M. Jones, as lessor to Phillips Petroleum Company, as lessee.

TRACT II: The east one-half (E/2) of the above described section and block, consisting of 326.5 acres, being that certain 326.5 acres of land described in Mineral Deed dated August 25, 1926, recorded in Volume 31, Page 156, Deed Records of Hansford County, Texas, conveyed by H. H. Jones and wife, Georgia M. Jones, unto the Texas Company (the then name of Texaco Inc.)."

PURSUANT TO SUCH HEARING, the Commission will enter such rules, regulations, and orders as in its judgment the evidence presented may justify.

RAILROAD COMMISSION OF TEXAS

Elizabeth Maragonis
Secretary

/bp

OPEN 24 HOURS **ALLSUP'S CONVENIENCE STORES** **OPEN 24 HOURS**

ALLSUP'S - YOUR SUMMER PICNIC HEADQUARTERS!

BORDEN'S HALF GAL. ROUND CANTON ICE CREAM EA. \$1.09

IMPERIAL SUGAR 5 LB. BAG 99c

WILSON'S CERTIFIED 1 LB. VAC PAK BACON EA. \$1.49

12 OZ. VAC PAK WILSON'S BEEF FRANKS EA. 65c

WILSON'S CERTIFIED OLEO LB. 39c

\$1.00 Cash Refund

ON WILSON'S CERTIFIED BACON & FRANKS and in this pack certificate and four labels from any four packages of Wilson's Certified Bacon and/or Wilson's Certified Beef Vac Pack Bacon to

Wilson's Certified Bacon and Franks Refund P.O. Box 742, Dept. 197-819-3 Chicago, Illinois 60677

Make enclosed form out, fill in, and attach above labels and send to: (No cash refund to anyone over 18.)

Name _____
Address _____
City _____
State _____
Zip _____

Limit one refund per family, group or organization. Void where prohibited. Void if otherwise restricted. Offer expires 8/31/76.

HOT COOKED FOODS

- BBQ CHICKEN
- BBQ RIBS
- HOT LINKS
- MILD LINKS
- BURRITOS
- CORN DOGS
- GERMAN SAUSAGE
- BULK BBQ BEEF
- BBQ BEEF SANDWICHES

SHOP THE FRIENDLY, CONVENIENT ALLSUP'S STORE NEAR YOU!

305 W. KENNETH

305 W. KENNETH

Needs Of Rural Elderly Studied

Problems and needs of the rural elderly are the focus of a Texas Tech University college of home economics project recently funded by a federal grant of more than \$298,000. It is titled "Model Rural Project for Homemaker Service Aide Program to the Elderly." Texas Tech home economics graduate student and administrative assistant Gail House said the program is designed to provide home services to rural persons 60 years of age and older. Mrs. House is the principal investigator and project director.

"Rural elderly persons have long been neglected," said Mrs. House. "In an area like West Texas the large expanse of land and sparse population mean resources are spread over urban areas. This emphasis on aid in rural areas is what captured the attention of the people in Washington."

The Administration on Aging has agreed to provide more than \$148,000 during the project's first year and \$150,000 the second year. The administration is a division of the U.S. Department of Health, Education, and Welfare's Office of Human Development.

Mrs. House said the program has two basic goals. First, project workers will study the needs of elderly persons and attempt to provide care in homes as an alternative to institutional care. The project also will represent an attempt to address the problems of displaced homemakers—persons who have been in their homes most of their lives and lack training or other resources to enter the job market.

Mrs. House and other project workers will attempt to attract displaced homemakers and train them to be homemaker aides. The aides will be responsible for providing the services to elderly persons. Services might include meeting grooming needs and providing personal care, writing letters, running errands, housekeeping, money management assistance or reading books and other materials to elderly persons.

"Providing companionship to the elderly might be the most basic service the aides provide," said Dr. Donald Longworth, dean of the college of home economics. "The aides can be companions and help elderly persons secure other means of making life more comfortable and enjoyable."

The homemaker aides will participate in 80 hours of training that will include a variety of subjects. Aides will study the psychology and sociology of aging, home management and family relations, health and physical fitness, first aid and other topics.

Mrs. House said project workers will begin field work in August. Workers will contact persons 60 years old and older in the 15-county area included in the South Plains Association of Government's jurisdiction. Homemaker aides will participate in training seminars in September. Mrs. House said she hopes the elderly persons can start receiving services by Oct. 1.

Mrs. House stated that project workers will cooperate with all existing programs providing aid to the elderly. She said she hopes the project eventually can be established on a community basis with funding provided from community monies or revenue sharing.

Persons with questions about the project and its services should call the dean's office at 742-3031. Persons interested in working as homemaker aides should call Mrs. House at that number.

not aware a swindle is taking place, but their names are used to draw in other victims. A farmer is told that if he joins, he'll be able to buy equipment, seed, supplies, etc., at reduced prices. In order to join, he must invest in a 20 year savings certificate or promissory note of the co-op, for which he pays about \$350 per year. When the certificate matures in 20 years, he supposedly will get back all the money he's paid in plus a certain rate of interest compounded annually. He's led to believe that his price saving on any big ticket item (such as a tractor or combine) will more than offset the \$350 annual payment. He's also promised

the use of grain elevators and other cooperative facilities.

The promoters and their employees take at least the full first year payment (\$350) as their "commission" for selling the savings certificate to the farmer.

Since the cooperative had no money or assets to begin with, it still has nothing, although \$350 has been paid in by hundreds of farmers. Even if a few farmers elect to pay the full purchase price of the savings certificate in a single payment, the assets of the co-op will still be negligible. The managers of the co-op simply don't have enough money to do anything for the farmers, even if they had intended to do anything in the first place.

Just in case there is any

money remaining after the first huge bite for commissions, the promoters usually will have signed, as representatives of the cooperative, a management or consultant contract for some other company to manage the business of the cooperative. The manager-consultant is usually a "sweetheart" company, i.e., it is run by cohorts of the promoters, and its fee is quite large.

The promoters and the "manager" go through the motions (for awhile) of launching the new enterprise. They show a decided preference for buying things on credit, as opposed to paying cash. When they eventually, but inevitably, leave the scene,

they try to avoid the appearance of having "skipped out" with the money. The hoped-for appearance is that things just didn't work out—they tried but just couldn't quite put it all together. This makes it more difficult to prosecute them.

Farmers are urged to be very careful about turning over money to strangers purporting to organize a new cooperative. There are, of course, many honest and legitimate cooperative associations serving their members well, and other legitimate ones will be formed in the future. But questionable cooperatives have been set up recently in states adjacent to Texas, and the Texas Securities Com-

missioner is concerned that attempts to do the same here are quite likely.

Any farmer approached to invest money in a cooperative with the characteristics described above is asked to contact the State Securities Board office in Austin at P.O. Box 13167, Capitol Station, Austin 78711; telephone (512)475-4561.

ROY W. MOUER
Securities Commissioner

Land Transaction

A Dalhart land agent and a Big Lake, Minnesota potato farmer recently consummated one of the largest farmland sales transactions in this area's recent history.

Mike Justice, principal of

the Dalhart-based land agency, says the famous Corlena Farms (formerly Winroc Farms), consisting of nearly 20,000 acres of irrigated land near Texline, was listed for \$8.5 million. The buyer was Ron Offutt, Jr., head of the nation's largest individual potato farming operation. At 33 years of age, Offutt heads up an agribusiness complex which will gross \$20 million this year.

In addition to vast potato farming acreage in Minnesota, his corporation includes farm machinery sales, a car dealership and, now, irrigated farming in the Texas Panhandle.

According to Justice, representatives of the Winthrop Rockefeller Estate, owners of the property, listed the property with his company, Mike

Justice & Associates, in April of this year.

"We advertised it all over the United States", he said, "and for a couple of months, there were so many private jets flying in here, that our airport looked like an international terminal." The sale was completed in June, he said.

Offutt has already taken control of the farming operations which include 38 irrigated circles of corn and 9 circles of alfalfa, 7 circles of irrigated grass and 54 circles of wheat. Dick Wining, formerly general manager of National Farms, a 17,000-acre corn farming operation near Dalhart, has been named general manager for the Corlena operation. Offutt flies here monthly to supervise the operations, according to Justice.

Prices Good In Perryton's United Super Market!

QUANTITY RIGHTS RESERVED



UNITED

PRICES GOOD THRU' JULY 31ST

ADDITIONAL BONUS BONANZA

COME CELEBRATE OUR BICENTENNIAL BONUS

BONANZA

SUPER MARKETS

PERRYTON, TEXAS

WE GIVE GREEN STAMPS

GIANT BOX

CHEER

\$1.19

10c OFF LABEL

DELTA BATHROOM TISSUE

ASSORTED COLORS

89¢

6 ROLL PACK

SWIFT'S JEWEL

SHORTENING 42 OZ. CAN **98¢**

"SHOP UNITED'S DOLLAR BUYS!"

MEDIUM SWEET PEAS	KOUNTY KIST	4	303 CANS
WHOLE GREEN BEANS	KOUNTY KIST	4	303 CANS
CORN	JOAN OF ARC WHOLE OR CREAM	4	303 CANS
CONTADINA WHOLE PEEL TOMATOES		4	300 CANS
PORK 'N BEANS	FINE FARE	4	300 CANS

PEPSI COLA 32 OZ. BTL. 6 BOTTLE CRTN. **\$1.29** PLUS DEPOSIT

BAMA GRAPE JELLY 2 LB. JAR **79¢**

OLEO BISCUIITS FINE FARE MERICO TEXAS STYLE REG. 1/4'S LB. CRTN. REG. OR BUTTERMILK 12 OZ. CANS **3 FOR \$1** **5 FOR \$1**

EARTH BORN BABY SHAMPOO 8 OZ. **97¢** **MITCHUM SPRAY** 5 OZ. **97¢**
LISTERMINT 12 OZ. **89¢** **JOHNSON'S BABY DEOD.** 9 OZ. **\$1.29**

RUSSET POTATOES NORGOLD'S

79¢

10 LB BAG

"SHOP UNITED'S FARM FRESH PRODUCE"

WASH. WINESAP **APPLES** EXTRA FANCY **4** LBS. **\$1**

CALIF. CRISP **CARROTS** 1 LB. BAG **19¢**

YELLOW **ONIONS** TEXAS GROWN LB. **10¢**

CAL. LARODA **PLUMS** LB. **39¢**

Fake

The Texas State Securities Board today warned farmers and others in the agriculture business to be on the lookout for a possible swindle in newly-formed farmers' cooperative associations. The Board asks that this warning be published in the hope Texas farmers may be spared the loss of sizeable amounts of money.

Beginning this Spring a pattern has emerged, and now farmers in about 20 states in the central United States are discovering that they have been duped. While details of the swindles vary somewhat from state to state, the main characteristics generally are the same. They are as follows:

A new farmers' cooperative is formed, and one or more prominent local citizens are listed as officers or members. These local citizens usually are

Perryton Tennis Tourney Set

The third and final open tourney of the summer comes to Perryton, August 6, 7, and 8th, when the Perryton Club sponsors the First Annual Wheatheart of the Nation Tennis Tournament. Players from the Panhandle of Texas, Oklahoma, and Kansas are expected for the three-day meet which begins at 8:00 on Friday, Aug. 6 with the 14 and under and 18 and under boys and girls events. Action continues Friday night at 5:00 when adult play begins for those adults that can be here. Adult play continues on Saturday beginning at 8:00 and all 14 and under and 18 and under events finals set for 10:00 Saturday morning. Finals for

the adult events will be held Sunday afternoon at 2:00. Besides Singles and Doubles in the 14 and under and 18 and under boys and girls divisions, adult events include singles and doubles in mens open, mens championship, womens, men over 35, women over 35, and A and B Mixed Doubles. Entry Fee is \$3.00 per singles event and \$6.00 per double team. Contestants may enter up to four events. Play will be held on the new Junior and High School Courts, the Country Club Courts and the old High School Courts. Trophies are to be awarded to both First and Second Place finisher in each event. For more info as well as entry blanks, write

"Wheatheart Tennis Tourney", 107 N. Drake, Perryton, Texas, or contact Tourney Director Mike Coggins at 435-5458 days or 435-4342 nites.

Chivalry Alive In Texas

AMARILLO—Chivalry is still alive in Texas, an Albuquerque, New Mexico, woman learned recently.

Miss Lillian Harvey, her sister and a friend were traveling July 1 in a station wagon on Interstate Highway 40 West of Adrain when a tire went flat.

Along came Jerry Blasingame, a maintenance technician for the State Department of Highways and Public Transportation who lives in Vega.

The station wagon was pulled off the road and stopped. "In despair we removed luggage to reach the spare tire," stated Miss Harvey in a thank you letter to James Miller, maintenance supervisor for Odham County and Blasingame's boss.

"Just at that moment Mr. Jerry Blasingame offered his services, took out the spare tire and jacked up the rear wheel with ease—all this in good Texas broiling sun!"

Only three days before the tires had been rotated during a periodic check up in Albuquerque, Miss Harvey said in her letter.

"You may be interested to know that we offered Mr. Blasingame fruit, cake and payment. He refused our offers," according to the Albuquerque woman.

"Incidentally, he had notified the condition of the slowly flattening tire as we had passed him. As we stopped, he passed us. Because of heavy traffic he had to drive far beyond us, then eventually turned back to help us. This seemed far beyond one's 'call of duty'." We had heard vaguely about the services of the Texas Highway Department. Its reality, July 1st, we shall never forget.

"We feel you should know our appreciation. You should be

congratulated and proud to have Mr. Blasingame as a member of your Department."

Blasingame, who was born in Amarillo, started to work for the department on August 9, 1967. He and his wife, Rhonda, have one son, Roudy.

County Agent's Report

Texas farmers and ranchers no longer have to pay sales tax on certain purchases to be used in the production of food and fiber.

Effective July 20, the Texas sales tax law will exempt agricultural producers from sales taxes on such items as baling wire, fencing supplies, and machinery and equipment, points out Don Parks, area economist with the Texas Agricultural Extension Service.

"However, a farmer or rancher does not automatically qualify for exemption from the sales tax," notes Parks.

"Producers must file an exemption certificate with each firm or business with which they deal. These certificates are available from the Comptroller of Public Accounts in Austin or from local branch offices of the Comptroller.

"To qualify for an exemption, the item purchased must

be used exclusively on a farm or ranch. A farm or ranch is defined as land used entirely or partially in the production of crops, livestock, or other agricultural products. Home gardens are not considered a farm," explains the economist.

Certain items are exempt without the use of an exemption certificate. These include feed for farm and ranch animals, fertilizer, seeds and annual plants, and animals.

Items requiring the use of an exemption certificate include fungicides, insecticides, herbicides, defoliant, desiccants, all medications for farm and ranch animals, and machinery and equipment used in food, grass and feed production, including such expendable supplies as hand tools, baling wire, fence wire and posts, gates and storage facilities for bulk commodities.

Natural gas or electricity used on a farm or ranch is also exempt with the appropriate certificate if used for pumps for livestock or irrigation water, dairy barn operations, welding machines, electric fences, and lights for barns, pens and poultry houses.

To request exemption certificates, producers may write or call the Sales Tax Division, Comptroller of Public Accounts, 111 East 7th St., Austin, Texas 78774 (800-292-9687; after Aug. 1, 800-252-5555).

Brock & Porter At Tennis Camp

AMARILLO-CANYON* Texas—Two Spearman area youngsters are currently among more than 250 young tennis players participating in the sixth annual West Texas Tennis Camp this week (July 25-31) on the campus of West Texas State University.

The current camp is one of three scheduled this summer on the Canyon campus. The camp is under the direction of WTSU tennis coach David Kent and Amarillo Town Club pro Roland Ingram.

"We try to do two things in the camp," Kent says. "One, we try to improve each individual's game, and two, we try to have some fun."

Assisting Kent and Ingram are members of WTSU 1976 Missouri Valley Conference championship team. The Buffaloes won their fourth straight league title in the meet held on WTSU's 14 Laykold courts in May. It was WT's fifth MVC championship in six years on competition.

In addition to the great tennis facilities, campers also have the use of the university's \$4 million Student Activities Center.

Todd Brock and Ramie Porter are the two Spearman participants in this week's third camp session.

2nd Annual Junior Rodeo Set

When the Chute Gates open on the second annual junior rodeo championship July 30 and 31 in Amarillo's Will Rogers Range Riders Arena, each contestant will be vying for 13 \$500 belt buckles. A first for any rodeo organization, pro rodeo production company of Amarillo has had the belt buckles designed by Gary Gist.

Action begins nightly at 7:30, and only 20 entrants will compete in each event... ages 15-19 years old as of June 1, 1976.

Events will include Bull Riding, Bareback Bronc, Girl Steer Riding, Goat Tying, Barrel Racing, Pole Bending, Ribbon Roping, Breakaway Roping, Steer Wrestling, Team Roping and Calf Roping.

The first place winner in event will be awarded a \$500 Belt Buckle. Team Roping and Ribbon Roping first place teams will receive two buckles. Another rarity of this particular rodeo will be the two head-go, presenting a better chance for winners seeking top money.

Interested rodeo entrants should contact the Rodeo Headquarters at 112 East Cactus, Amarillo, Texas, 79106, Phone 383-6590.

Stock furnished by Double D Rodeo Company of Raton, New Mexico. Tickets available at Roden Brothers Auto Supply, 4809 River Road, or Stockman's Saddle Shop in Amarillo or write P.O. Box 4143, Amarillo, 79105.

Whether you're a contestant or a rodeo fan, plan now to attend the Second Annual Junior Rodeo Championship in Amarillo July 30 and 31.

Prices Good In Perryton's United Super Market!

1000



EXTRA S&H GREEN Stamps

NOW'S THE TIME TO START SAVING FOR THOSE CHRISTMAS GIFTS!

"UNITED'S TRU-TENDR BEEF!"

ROUND OR RIB STEAK LB. **98¢**

RANCH STEAK LB. **89¢**
CENTER CUT 7-BONE CUTS

SWISS STEAK LB. **98¢**
ROUND BONE ARM CUTS

Owens Country Style Sausage Straight from the farm

REG. OR HOT 2 LB. BAG 1 LB. BAG

SAUSAGE \$2.97 \$1.49

CHEESE SINGLES **98¢**
FINE FARE AMERICAN OR PIMENTO CHEESE FOOD INDIVID. WRAPPED 12 OZ. PKG.

ROAST **98¢**
UNITED'S BONELESS SHOULDER WASTE FREE BEEF

SOUP **5** 10 1/2 OZ. CANS \$1
FINE FARE CHICKEN NOODLE MUSHROOM VEGETABLE

CRACKERS **39¢**
FINE FARE

TEA **98¢**
INSTANT WHITE SWAN 3 OZ. JAR

CHICKEN **\$1.89**
BANQUET FRIED HEAT & EAT 2 LB. BOX

DONUTS **69¢**
WELCH'S GLAZED OR JELLY

POT PIES **6** FOR \$1
SPARE TIME BEEF CHICKEN TURKEY

FRESH WATER CATFISH LB. **98¢**
WHOLE

WRIGHT BRAND SMOKED HAM **89¢**
DRY CURED FULLY COOKED SHANK PORTION LB.

CHUCK ROAST **58¢**
UNITED'S BEEF BLADE CUT LB.

ASSORTED SWANS DOWN LAYER CAKE MIX **49¢**
18 1/2 OZ. BOX

U

UNITED SUPER MARKETS

PERRYTON, TEXAS

WE GIVE S&H GREEN STAMPS

WE RESERVE THE RIGHT TO LIMIT QUANTITIES

PRICES GOOD THRU JULY 31ST

