

THE SPEARMAN REPORTER

THIRTEENTH YEAR

Successor to HANSFORD HEADLIGHT

Spearman, Hansford County, Texas, August 26, 1921

Number 37

HAVE YOU GOOD LUCK

The "Good Luck" that goes hand-in-hand with success does not merely happen, but is the result of sensible plans and well-directed effort.

Thrift brings what the unthinking man calls "good luck." The thrifty man lives within his income always, saves constantly and invests prudently. He puts his surplus to work to earn interest for him. This thrift habit inevitably brings money and wealth.

If you have a savings account now, make it grow. If you have not started an account, do so now. It will be the beginning of better things for you.

First National Bank of SPEARMAN

BOOST FOR THE SPEARMAN HIGH SCHOOL

Did you ever live in a town that refused to grow up with the country; that was not interested in the education and general welfare of the rising generation—in fact, a town that was afraid it would impoverish itself by investing a little money in the best things of life?

I have lived in just such a town and that town was something like a fishing hole after the best fish have all been caught, and nothing is left but a few bony fish, crawdads and snapping turtles.

Along about the last week in August several of the brightest young people, who understood the advantages of a better education than the eighth grade afforded, would leave the home town and go to some town, far or near, to attend a high school. We missed them in all the church services. The best were gone and we had no young people's meetings, no music, and the singing was done by a few faithful elders and a very few of the rough-necked fathers. It was worse than I care to tell. It was nearly as bad as war.

Spearman is doing things different-

ly. We started off the last school year greatly handicapped, and yet had one of the best graded and high schools in the panhandle, and are preparing to have a school the coming term equal to the very best. We have young people in our midst whom any community ought to be proud of, and we intend to keep them at home where they belong, and also prepare to take care of those who will come to our school from outside towns and communities. We will have enough young people to keep up the churches and Sunday schools and also to put on school plays which will be more wholesome entertainment than the common run of vaudeville shows which infest the small towns during the winter season.

Yes, Sir! We are going to have a good school right at home and home is the very best place for the children, or we would be hunting a better place for them.

OLD SUBSCRIBER

"SUNSHINE MAKERS"

The Methodist Intermediate Sunday School Class

Eight of our jolly "sunbeams" met at the hospitable Pirtle home on Wednesday, August 24, to enjoy a combined business and social meeting. The following officers were elected, amidst much enthusiasm:

President . . . Thaddeus McMurry
Vice President . . . Bevin Barkley
Secretary . . . Nell Pirtle
Treasurer . . . Elmo Maize
The "peppy" entertainment committee is: Juanita Haney, Pope Gibner, Elma Buckley, Gertrude Kerr, and Dowling McMurry. Just ask them if we are going to have fun. We also selected, Gold and Green as our colors and Pansy as our flower.

After the business we all went out on the lawn and enjoyed a large red watermelon, then several minutes of play and fun. But duties soon caused us to break up the gay party and all departed with cheery smiles.

Every one please look for our name, "Sunshine Makers," for it will soon appear in a place of much interest.

We earnestly want every girl and boy our size in town not in another Sunday School to come join our "Beaming Band"

TEACHER.

WANTED, party to cut feed on shares or by the acre.

B. V. ANDREWS.

BERT O. CATOR IS DEAD NO CAR SHORTAGE NOW

On last Sunday afternoon the many friends of the family throughout this section were greatly shocked to learn that Bert O. Cator was the victim of a serious accident at his elevator in Stratford and was not expected to recover. The accident was caused by a rope which supported the man-lift breaking, allowing Mr. Cator to fall a distance of thirty-six feet. He lived 38 hours after the accident, but never regained consciousness, passing away at Stratford at 6:00 p. m. Tuesday, August 23, 1921. The remains were brought to his ranch home on the Palo Duro, and from thence to Hansford where they were laid to rest by the I. O. O. F. lodge, of which he was a consistent member.

Bert O. Cator was born on March 5th, 1863, at Hulle, Yorkshire, England and at the time of his death was 58 years, 5 months and 9 days old.

Accompanied by a sister Mrs. Clayton McCrea, now of Bentonville, Ark. he came to America in 1879, to be with his brothers Arthur L. (Bob) and James H. Cator, who were located on their ranch on the headwaters of Palo Duro creek in Hansford county. Bert made his home with his brothers for about a year before going to work and learning the cattle business. His first work as a cow hand was with the A. B. Mathers outfit on the Coldwater and later with the OX outfit on the Beaver. Afterwards he engaged in the business of catching wild horses on the plains. After working for S. C. Tyler and others for a while, he decided to settle down on a ranch of his own, and was elected sheriff of Hansford county, a position which he held for eight years. After the country began to settle up and develop into a wheat country, Mr. Cator formed a partnership with W. H. Douglas and engaged in the elevator business at Texhoma. The firm was very successful but a few years ago sold out at Texhoma and bought an elevator at Stratford, where W. S. Wood became a member of the firm. Although his business interests kept Mr. Cator at Texhoma and Stratford a greater portion of the time, he retained his ranching interests in this county, which are looked after by his sons. Deceased was a brother of James H. and L. S. Cator of this county. The Cators are known throughout the entire southwest and are highly respected people. At the funeral, which was attended by an immense crowd of friends from all sections of the country, were people from all the neighboring towns including Amarillo. Among the Old Fellows present were W. C. Teague, J. S. Hood, D. J. Young, R. H. Stone, H. B. Beach, C. R. Nolan and H. E. Hoover from Canadian; Fred W. Hood, of Perryton; Bill Bratton, Sam Miller, Herman Welch, John McDonald, of Guymon. Deceased leaves to mourn his loss a wife and six children, five boys and one girl, all of whom are living, at their ranch home 15 miles west of Spearman.

Mr. and Mrs. Jesse Womble returned the first of the week from a visit with his brother H. D. Womble at Salona, New Mexico.

I have a few choice pieces of land on which I will accept as first payment Liberty Bonds, cattle, young mules, anything of value Good terms on the balance.

J. R. COLLARD

P. M. Maize returned Monday afternoon from Kansas City and Saint Jo, where he spent ten days in selecting the fall and winter line of goods for the P. M. Maize & Company store at Spearman. Mode says he bought a little heavier than usual and that the markets are considerably steadier and more reliable than last year, but that there is still much room for improvement.

Last week Uncle George Shapley, a brother of Frank and John Shapley, of the north part of the county, happened to a very serious accident. The team which he was plowing became frightened and lunged forward with such force as to throw Mr. Shapley a distance of twenty-one feet before he struck the ground. This jarred him up so that he has been quite ill, but we are glad to announce that he is on his way to recovery.

The final count at the school tax election last Saturday was 96 for and 43 against allowing the board to levy and collect a sum not to exceed one dollar on the one hundred dollars valuation for local maintenance. This certainly shows that the people want and appreciate good schools. It is one thing on which Spearman is united and presents a solid front. We have a good school, and it will continue to grow in usefulness and importance with each succeeding year.

At last the Santa Fe has heard the far-fetched cry of the Spearman business men and is sending us grain cars by the string; in a measure, commensurate with our needs. Assistant Superintendent Briscoe was here Wednesday with the Amarillo Boosters and the matter was put up to him in its true light. And Mr. Briscoe understood and has begun to act. We have been receiving a few cars along all the week, but the climax was reached Thursday afternoon when a monster Mallet engine, drawing a string of cars as long as a homeseekers' wagon track, roared into town. This train was in charge of Conductor C. V. Wood, with F. W. Parvia at the throttle; A. N. Laughry, fireman, and J. A. Pifer and C. N. Stitt, brakemen. This crew has the honor of bringing the first Mallet engine over the North Texas & Santa Fe. Heretofore only the smaller makes of locomotives have been used on the branch line, the company fearing to use the larger ones on a new road bed. But this crew reports the roadbed in fine shape and no trouble whatever. They pulled out of Spearman this morning with over 1,000 tons of freight, expecting to reach the main line at Shattuck with 3,000 tons. This immense outfit was sent out on the Bi Line to "clean up," the regular trains being unable to care for the rapidly increasing business at this end. Over one-third of their entire load originated at Spearman, the remainder to be picked up at the eight or ten stopping places along the line. Yet Spearman is not boasting. We deliver the goods, and leave the vaunting, swaggering, braggadocio stunts to those whose stock in store runs largely to these lines.

Spearman has shipped between seventy and eighty cars of wheat this week, up to Thursday. But this is only the beginning. Business will hum up on grain row for many days to come.

Amarillo Boosters in Spearman

The Amarillo Boosters on their trade extension trip through the north panhandle, reached Spearman as per schedule Wednesday morning at 6:00 o'clock. They were met at the depot by a large crowd of Spearman folks, and escorted to the Arcade Theater building, where a fine breakfast prepared by the Ladies' Missionary Society, awaited them. They were a hungry bunch and seemed to enjoy their breakfast immensely. In fact the Boosters expressed themselves as being highly pleased with the hospitality extended them at Spearman and went away delighted with their visit to the city at the end of the rail. And Spearman was glad of the opportunity to entertain this splendid body of men, and will welcome their return at any time, individually or collectively. Spearman is proud of the fact that she is located in Amarillo territory and glad to be associated with such men as the Amarillo Boosters in the development of the matchless and unbounded resources of the north plains. To the Amarillo Boosters the latch string hangs outside and the door swings both ways.

The Panhandle Trio

The Panhandle Concert Trio, composed of Misses Pirtle, Storey and Clark are coming to Spearman on Monday, August 29, and will give their splendid entertainment at the Arcade theatre, beginning at 8:00 p. m. These young ladies are pleasing their audiences everywhere they have been. They are artists in their respective lines, are home girls and worthy of the patronage of the people of Spearman and vicinity. We hope a good crowd greets them at the Arcade on Monday night, and are sure that no one will go away disappointed. The following mention of their work appeared recently in Amarillo Tribune: "The outstanding musical presentation of the week will be the program to be given Thursday evening at 8:30 o'clock at Park Street Methodist Church by Miss Louise Clark, harpist and pianist; Miss Beatrice Storey, violinist and Miss Ruth Pirtle, reader.

The entertainment is sponsored by the Philathea Class of the church and advance information indicates that the entertainment will prove equal to lyceum presentations of the better class. A program quite similar to lyceum program will be given. Costume numbers and pianologues will be on the program as well as solos, duets and ensemble numbers."

J. L. Harris and family of Grand Plains are guests at the home of his father J. H. Harris of the Grand Plains community.

Opportunity Knocks

at your door when you have accumulated a bank account, even tho it be small.

A small beginning often leads to a big ending.

The man who banks his money and takes care of it, is the man who is in position to take advantage of opportunities which lead to success.

Guaranty State Bank SPEARMAN, TEX.

HUTCHINSON COUNTY WILL CELEBRATE

Hutchinson county is making preparations to celebrate in the old fashioned way on Tuesday, August 30. A big picnic will be held at the Oren Thompson ranch, three miles east of Plemons on Moore's creek, on that date, and everybody and their kin and kin is invited to attend and take a part in the big doings. Billy Christian was here the first of the week making a few preliminary arrangements. Billy says the principal drinks will be sody pop, lemonade, etc. with a little roasting ear wine for the officers in charge. At any rate, this will be a very enjoyable occasion, and one worth traveling miles to attend.

Miss Catherine Harris will return to her home at Guymon today, after spending several days at the Reporter home in Spearman.

Born to Mr. and Mrs. Horace A. Farrell, at their home 15 miles southeast of Spearman on Wednesday, August 24, a fine girl.

Work on the additional building for the school started yesterday. Contractor Otham is pushing it through and from all indications it will be ready for occupancy when school starts.

Mrs. H. E. James and the children returned Monday from a two weeks' visit with her parents, Mr. and Mrs. G. M. Estlack, at Greensburg, Kans. Mr. James met them at Guymon and brought them on out home.

LOST, one red sow pig strayed from my place in Spearman. I will pay a liberal reward for information leading to its recovery.

F. M. MIZAR, Spearman, Texas.

Miss Ethel Deakin arrived from her home near Guymon the first of the week and will visit at the Reporter home until next week, when she expects to return to Emporia, Kansas, to resume her studies at the K. S. N.

The Reporter knows a good boy who will work for a room and board in Spearman, so that he may attend school. A family in town who can use this boy will not only give him a chance to attend school, but will have a good helper about the place on Saturdays and after school hours.

Teachers' Examination

There will be a Teachers' examination for all grades of certificate at the Spearman High School building on Friday and Saturday, September 2nd, and 3rd.

The fees are now four dollars and an applicant must be eighteen years of age before a certificate can be issued.

A list of the books on which questions are based may be found in Bulletin 128 which may be had from the State Department of education at Austin.

W. A. CLARK, Jr.

Chairman County Board of Examiners.

YOUR WAGON IS HERE—ANDREWS HARDWARE CO.

If nothing happens to cause delay, school will begin on Monday September 12th.

The Avery Company of Texas, at Amarillo, is the sole distributor of the Sanders engine plow for Texas.

Brand new cook stove, burns oil or gas, will be given absolutely free to one of our customers. Ask about it. W. L. RUSSELL.

Cattlemen Why Experiment

We are still selling O. M. Franklin Blackleg Serum, made by the Kansas Blackleg Serum Co. It is not one of the best, but the best—ask any stock raiser.

Now 25c Per Dose

HILLHOUSE DRUG CO.

The People With the Goods SPEARMAN, - TEXAS

TRY OUR

Cold Drinks

They satisfy.

Our ice cream is pure and wholesome.

Hale Drug Company SPEARMAN

The Store with the Up-Town Service

Money

is very hard to get at present, but we have it at all times to loan on Farms and Ranches in Hansford, Hutchinson and Ochiltree counties. Interest rate and settlement option very attractive.

Farm and ranch lands in any size tracts and at prices and on terms to suit.

Spearman city property.

J. R. COLLARD

Write for information

SPEARMAN, TEXAS

Coming Next Week

THE MARTIN SISTERS COMPANY

All Next Week

SPEARMAN

ALL NEXT WEEK

All Next Week

That Clean Show. All snappy, Comedy Plays, and Vaudeville Stunts.

In a Big Tent. Twenty People. Band and Orchestra The Best Music Going—the Jazz kind.

A WONDERFUL COMEDY ON OPENING NIGHT---ONE YOU SHOULD NOT FAIL TO SEE

"The MARRIAGE QUESTION"

Don't Miss This Number. There is a Great Lesson and a World of Fun in the Story

Popular Prices

Plenty of Seats

Curtain Rises at 8:30

Going to Need a TRACTOR

You should see the new 17-30 Minneapolis before buying. This is a tractor with a slow speed motor, which insures long life.

When in need of a disc harrow, get one of the Old Reliable John Deere. I have them in stock.

Anything in Shelf Hardware and Furniture.

J. M. FORSHEE
Hardware and Implements

Spearman, Texas

KNOWING HOW TO STOP AN ENGINE

Of More Importance to Driver Than Knowledge of How to Start His Automobile.

GREAT AID IN SAVING TIRES

Applying Brakes Very Hard Will Result in Tread Damage to Both of Rear Tires—Sharp Turns Are Cause of Skidding.

Knowing how to stop when necessary is considered of more importance than a knowledge of how to start the engine. The use of service and emergency brakes is taught to the new car owner early.

Being somewhat nervous and timid the new driver may apply the brakes very hard, with the result that one or both of the rear tires will receive

tread damage. Locking the wheels will not under all conditions bring the car to an immediate stop. The momentum and weight will frequently cause the wheels to slide along for a considerable distance and grind off the tread of the tires in the same manner that street cars receive flat spots.

A Stitch in Time, Etc.

When ground down to the fabric in this way the tread should be given early attention to protect the fabric from decay and weakening effect of moisture and to prevent dirt from working under the rubber with probable separations of other tread portions. It is well to inspect the inside of the case and repair any threads or piles of fabrics broken from strain.

Sharp quick turns or fast driving at curves usually causes rear wheels to slide and skid sideways. This not only wears off the tread rubber quickly, but on account of the unusual strain is particularly harmful to the fabric body of the tire.

It is recommended that the service (foot) brakes be given occasional inspection. Any difference in adjustment in brake drums can be discovered by jacking up rear axle so that neither wheel rests on the ground, then start the engine and engage the clutch. If on application of the foot brakes one rear wheel revolves and the other does not, or if one wheel revolves faster than the other, the tire on the one turning slower receives more strain and under the circumstances excessive wear to the tread rubber may be expected.

Watch the Clutch.

The clutch plays an important part in the efficiency of the car and in the service of the tires. It is essential therefore that the same be kept in good order so that it will take hold smoothly when gears are engaged. Usually the taking up of loose bearings and frequent lubrications will obtain the desired results. Avoid letting in the clutch too quickly while the engine is running fast—such treatment is not good for either the car or tires.

Spinning the drive wheels in mud or on slippery pavements may grind off the tread rubber and some times snag the cover along the entire wheel circumference. It is not unusual for the tread under such treatment to be torn in places from the fabric.

UNIVERSALS ARE NEGLECTED

Because They Are Difficult to Get at Parts Are Slighted—Must Be Lubricated.

The universals are perhaps the most neglected parts of the mechanism, because they are generally the hardest to get at. The universals

must be kept properly lubricated or they will develop intensive wear. When they have worn the universals emit a heavy thump each time the clutch is thrown in.

Stray Mare

A bay pony mare about 5 years old, branded Block B on right shoulder and Triangle on the right jaw, has been at my place about one year. The owner will please call and take this animal away.

W. G. SPIVEY,
21 miles northwest of Spearman.

We Have It Now

North American Health and Accident Insurance. It's good.

HAILE & RANEY.

Catarrh Cannot Be Cured

with LOCAL APPLICATIONS, as they cannot reach the seat of the disease. Catarrh is a local disease, greatly influenced by constitutional conditions, and in order to cure it you must take an internal remedy. Hall's Catarrh Medicine is taken internally and acts thru the blood on the mucous surfaces of the system. Hall's Catarrh Medicine was prescribed by one of the best physicians in this country for years. It is composed of some of the best tonics known, combined with some of the best blood purifiers. The perfect combination of the ingredients in Hall's Catarrh Medicine is what produces such wonderful results in catarrhal conditions. Send for testimonials, free.

F. J. CHENEY & CO., Props., Toledo, O.
All Druggists, 75c.
Hall's Family Pills for constipation.

For Sale or Trade

Fordson tractor and 22-inch Avery separator, complete—one or both—at a bargain.

C. K. WILMETH
Guyton, Oklahoma.

Coal and Feed

Gas and Oils

HOT WEATHER GROCERIES

You want nothing but the freshest and best this hot weather and that is the only kind we handle.

Flour, Meats, Canned Goods and Potatoes

and everything in the grocery line. We make special prices on large bills.

The Spearman Equity Exchange

R. L. McCLELLAN, Mgr.

Red Top Cane Seed, per hundred, \$1.50

Stock Salt per ton, \$22.50

Service

Free Air
Free Water
Night and Day Service.

We Want Your Business

Spearman Motor Co.
SPEARMAN

New DRY GOODS

JUST WHAT YOU HAVE BEEN WAITING FOR

We have just received a large shipment of

Taffetas, Messalines,
Silk Poplins, Serges,
Nice Gingham, Percales,
Silk Hosiery

and everything in the Dry Goods line.

School time will soon be here and now is the time to buy the school dresses and everything you need, while our stock is complete.

Don't buy until you see what we have to offer you.

Yours for better service,

W. L. RUSSELL

GENERAL MERCHANDISE

We are Giving Away a Cook Stove

The KITCHEN CABINET

But who can paint like nature? Can imagination boast? Amid its gay creation, hues like hers? Or can it fix them with that matchless skill? And lose them in each other, as appears In every bud that blows. —Thompson.

SWEETS AND SALADS.

Simple Desserts are the order of the day, during the heated term.



Serve fresh fruit at least twice a week, and other days something easy of preparation.

Fruit Bread Sponge.—Arrange cubes of bread in a bowl and pour over them enough hot fruit juice to be well absorbed. Let stand in a cool place for several hours, then unbind and serve with sugar and cream.

Grape Sago.—Wash a cupful of sago and let it soak over night. Next morning cool until transparent, adding a cupful of grape juice. When cool turn into a glass dish and serve with sweetened cream. Any good flavored juice may be used instead of the grape, adding sugar if unsweetened.

Herring and Potato Salad.—Cook a salt herring in boiling water 15 minutes. Drain, cool and flake. Add an equal quantity of cubes of cooked potato, one-fourth the quantity of hard cooked eggs chopped coarsely. Marinate with a French dressing and serve with the following salad dressing. Beat one-fourth of a cupful of cream until stiff, add two tablespoonfuls of canned red pepper, put through a sieve, then an equal quantity of boiled dressing. Serve on lettuce.

Raspberry Mint.—To one quart of good lemonade add one cupful of raspberry juice and a dozen bruised mint stalks and leaves. Let the mixture chill for two hours then remove the mint, fill the glasses and garnish each glass with a fresh sprig of mint.

Mississippi Chicken.—Put through the meat-chopper one-fourth of a pound each of veal and fresh pork, two slices of bacon and a chicken liver, half a green pepper and two sprigs of parsley, a teaspoonful of scraped onion and a tablespoonful of Worcestershire sauce, half a teaspoonful of salt, paprika to taste; mix well and stuff the chicken. Baste often and cook two hours; serve with sweet potatoes or rice.



"Be consistent in your economy. Don't try to save on the necessities of life. To do so is false economy, but to practice your economy on those things you do not actually need—the luxuries of life."

SUMMER SALADS.

Now that the colorful tomato may be added to the menu at a reasonable price, if they are not picked from the garden, our salad will take on an added note of color. An ordinary potato salad garnished with a few pieces of tomato will add not only to the taste but appeal to the eye.

Pineapple and Orange Salad.—Lay two thin slices of orange from the center of an orange on the heart leaves of head lettuce, on these lay a slice of pineapple, in the center place an inch strip of celery, fringed, and allowed to stand in cold water to curl, then in the center of the celery place a small ball of hard-cooked egg yolk. Serve with a rich mayonnaise dressing.

Delicious Fruit Salad.—Take one cupful of candied cherries cut in quarters, a cupful of fresh marshmallows cut in bits, one-half cupful of shredded almonds that have been blanched. Add a tablespoonful of highly seasoned boiled dressing to a cupful of whipped cream and stir into the fruit mixture. Heap on nests of head lettuce or in orange or apple cups.

Chicken Salad.—Take two cupfuls of finely minced white meat of chicken, add the same amount of celery, one finely diced apple, a tablespoonful of minced green pepper and a cupful or more of good dressing mixed with a cupful of whipped cream. Serve on lettuce leaves.

Cabbage Salad.—Chop two cupfuls of cabbage very fine, add one-half cupful of rolled fresh peanuts, roll on the bread board, with the rolling pin until like coarse crumbs. Add any highly seasoned dressing and garnish with strips of red pepper.

Tomato and Cucumber Salad.—Chop cucumber very fine and mix with a few spoonfuls of minced onion; fill firm ripe tomatoes made into cups with the mixture. Mix with a little dressing before filling, then add a spoonful to the top of each before serving.

Nellie Maxwell

Tired

"I was weak and run-down," relates Mrs. Eula Burnett, of Dalton, Ga. "I was thin and just felt tired, all the time. I didn't rest well. I wasn't ever hungry. I knew, by this, I needed a tonic, and as there is none better than—"

CARDUI

The Woman's Tonic

"... I began using Cardui," continues Mrs. Burnett. "After my first bottle, I slept better and ate better. I took four bottles. Now I'm well, feel just fine, eat and sleep, my skin is clear and I have gained and sure feel that Cardui is the best tonic ever made."

Thousands of other women have found Cardui just as Mrs. Burnett did. It should help you.

At all druggists.

AUTOMOBILE NEWS

The first practical American electric automobile was built by Fred Kimball of Boston in 1888.

Eighty-seven of the more than 130 automobile factories in this country are located in the states of Illinois, Indiana, Michigan and Ohio.

Washington Koss, an Italian chemist in the laboratories at Barcelona claims to have invented artificial rubber, which possesses all the qualities of natural rubber and at one-twentieth of the usual cost.

Of the 3,051 automobiles imported into Belgium during the first ten months of 1920, 1,305 were from the United States, 903 from France, 15 from Italy, 140 from England and 13 from other countries.

The tiniest automobile for every-day utility in the world recently made its appearance in Tokyo. The vehicle fits snugly in the narrow streets of the city as the kurema itself—that being the Japanese name for Jirikshaw.

In cleaning small parts of the chassis, such as the oil holes on brake cross shafts, brake connections, spark and throttle connection, etc., use an oil can filled with kerosene and a stiff brush.

Read the Reporter.

WALLIS

AMERICA'S FOREMOST TRACTOR

is now offered at a price the farmer can afford to pay and on very attractive terms.

Wallis a 15-25

Tractor at

\$1375

For Sale by

MIZAR & BRYAN

SPEARMAN

City Meat Market

Fresh and Cured MEATS

Hamburgers
Chili
Coffee and Pie

T. P. Tackitt

Next Door to Hillhouse Drug Company

Residence Wanted

I want to rent a residence in Spearman; am permanently located and will take care of the property.
J. ZITNY,
At City Bakery, Spearman.

Good Hogs

Get that boar pig for December service now. Cheaper now than he will ever be. 70 head to pick from. Also sows and bred or open gilts for sale. All Registered Big Type Poland Chinas.

E. C. SPIVEY,
Texhoma, Okla.

Notice of Application for Probate of Will

The State of Texas,
To the Sheriff or any Constable of Hansford county, Greeting:

You are hereby commanded to cause the following notice to be published in a newspaper of general circulation which has been continuously and regularly published for a period of not less than one year preceding the date of this notice in the county of Hansford State of Texas, and you shall cause said notice to be printed at least once each week for a period of ten days exclusive of the first day of publication before the return day hereof:

NOTICE OF APPLICATION FOR PROBATE OF WILL

The State of Texas,
To all Persons interested in the Estate of M. B. Wright, Deceased: Atarah E. Wright has filed in the County Court of Hansford County, an application for the probate of the last Will and Testament of said M. B. Wright Deceased, filed with said application and for letters Testamentary of the estate of M. B. Wright, deceased; which will be heard at the next Term of said Court, commencing the 2nd Monday in September A. D. 1921, at the Court House thereof, in the town of Hansford, Texas, at which time all persons interested in said Estate may appear and contest said application should they desire to do so.

Herein fail not, But have you then and there before said Court this Writ, with your return thereon endorsed, showing how you have executed the same.

Given under my hand and seal of said Court at Hansford Texas, this 18th day of July A. D. 1921.

KEESSE C. NESBITT,
Clerk County Court, Hansford County, Texas.

Crawford Hotel

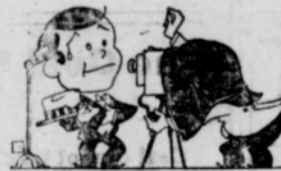
Formerly the Lone Star

I have taken over the management of this place and, with an efficient corps of helpers, am prepared to serve the public in a first class manner.

Our rooms and beds are kept clean and comfortable and our meals will please you.

HENRY CRAWFORD

"I smiled—and he shot me"



AFTER MONTHS and months. MY WIFE persuaded me. TO HAVE it done. SO I went around. TO THE photographer. AND GOT mugged. WHEN THE pictures came. I SHOWED them to a gang. OF AMATEUR art critics. AND PROFESSIONAL crabs. DISGUISED AS friends. WHO FAVORED me. WITH SUCH remarks as. "DOESN'T HE look natural?" "HAS IT got a tall?" "A GREAT resemblance." AND THAT last one. MADE ME sore. SO WHEN friend wife. ADDED HER howl. I TRIED again.

THIS TIME they were great. FOR HERE'S what happened. THE PHOTOGRAPHER said. "LOOK THIS way, please." AND HELD up something. AS HE pushed the button. AND NO one could help. BUT LOOK pleasant. FOR WHAT he held up. WAS A nice full pack. OF THE cigarettes. THAT SATISFY.

LIGHT up a Chesterfield and sense the goodness of those fine Turkish and Domestic tobaccos in that wonderful Chesterfield blend. Taste that flavor! Sniff that aroma! You'll register "They Satisfy." You can't help it.

Did you know about the Chesterfield package of 10?

They Satisfy Chesterfield CIGARETTES

LIGGETT & MYERS TOBACCO CO.

SANDERS PLOWS

The verdict of our community is —

" They Are The Best "

We have a complete line of them. If in need of one get it now.

BIRDSSELL WAGONS

Do your own hauling and receive the full benefits from your crop. Let us show you where it is to your advantage to buy a wagon rather than pay this money to some one else to do your hauling. You will be the wagon ahead.

Andrews Hardware Co.

Agents International Harvester Co.

Snappy, Smart and Stylish Clothes

Made to your measure.
Built to your taste.
Priced to your liking.
and Made to Fit.

We positively give the
highest values.

ALL PRICES! Super-fine at \$50 and \$60, with
a wonderfully big range at the popular prices of
\$30 and \$40.

When you get them here you get them right.

Spearman Tailor Shop

SID CLARK, Manager



PURE WOOL FABRICS
Let Taylor do your Tailoring

C. D. WORKS

Attorney-at-Law

Will practice in all courts. Special attention given to Land Practice
and Probate matter. Abstracts prepared. Titles examined and per-
fected.

Real Estate. Farm and Ranch Loans.

Notary Public

HANSFORD

MEATS

Fresh and
Cured

The place to buy nice fresh meat,
is now open on Main street.

Sanitary Meat Market

REAL SERVICE

Next to First National Bank

Spearman

Blacksmith and Machine Shop

Acetylene welding. Bring your broken
castings and have them welded. Also
do lathe work and truck bed building.

I have the equipment to do your work
right---Lathes, Planers, Disc Rollers,
Welding Machines, etc.

Q. V. WINNINGHAM, Perryton, Texas

the damages incidental to the opening
of said road, when you may present
to us a statement in writing of the
damages, if any are claimed by you.
Witness our hands this the 12th day
of August A. D. 1921.

J. H. COOPER
B. F. WALLIN
J. W. ROPER
WM. F. C. ETLING
FRANK HEMPHILL

Final Account

The State of Texas, to the Sheriff or
any Constable of Hansford County—
Greeting:

George Anderson, executor of the
estate of Bent E. Teland, deceased,
having filed in our county court his
final account of the condition of the
estate of said Bent E. Teland, deceased
together with an application to be dis-
charged from said administration, you
are hereby commanded, that by publi-
cation of this writ for twenty days in
a newspaper regularly published in
the county of Hansford, you give due
notice to all persons interested in the
account for final settlement of said es-
tate, to file their objections thereto, if
any they have, on or before the Sep-
tember Term 1921, of said county
court, commencing and to be holden
at the courthouse of said county in
Hansford, Texas, on the 12th day of
September A. D. 1921, when said ac-
count and application will be consid-
ered by said court.

Witness, Keesee C. Nesbitt, Clerk of
the County Court of Hansford County
Given under my hand and seal of
said court, at my office in Hansford,
Texas, this 18th day of August, A. D.
1921.

Keesee C. Nesbitt, Clerk County
Court, Hansford County, Texas.

Notice

We have leased the Monroe Gar-
age, have taken charge of same and
are now ready to do your work. We
wish to invite our old customers to
come back to see us and we promise
to treat you just as good as we can.

Our terms are cash. By selling for
cash and buying for cash, we will be
able to save you money, as we will
have no losses and, therefore, you do
not have to pay the other man's bill.
Call and see us.

DILLOW & SONS.

DISC PLOWS FOR SALE

One is an Avery Double Disc,
bought last season and broke about
75 acres of land, practically new.
The other is a John Deere two disc,
been run two seasons, in good shape.
Will sell for cash or bankable notes.
See me at the Storrs farm, one mile
north of Ben Holt farm.

C. T. ROGERS,

NOTICE

A two year old red bear, weighing
about 300 pounds, has been causing
much trouble around the streets and
residences of Spearman. I have had
this animal moved to my farm, 2 1/2
miles southeast of town, where the
owner may take possession of him,
after paying all expenses.

H. L. WILBANKS
Sheriff Hansford County, Texas

LOST—Casing and rim for Buick
car, 31x4. Was lost near the Holt
School House. Finder please leave
at Reporter office. Reward.

Notice to Non-Resident Land Owners

To J. S. Strickler, Ramona, Kansas;
Lee Bivins, Amarillo, Texas; Dave
Alexander, Stratford, Texas; S. C.
Prevo, Terre Haute, Indiana; O. L.
Naylor, Altoona, Iowa; Geo. W.
Norton, Executor of the Estate of
Geo. W. Norton, Deceased, Louis-
ville, Kentucky; C. E. Campbell,
Texhoma, Oklahoma; R. C. Fergu-
son, Representative of the Estate of
R. A. Ferguson, Deceased, of Hal-
stead, Kansas; Mrs. Myrtle B.
Grubbs, Wellington, Kansas; W.
M. Crow, Dallas, Texas; and C. O.
French

You are hereby notified that the un-
dersigned Jury of Freeholders, acting
under and by virtue of an order of
the Commissioners' Court, of Hans-
ford County, Texas, will on the 10 day
of September A. D. 1921, proceed to
lay out and survey a first class road,
60 feet wide, commencing at the S.
W. Corner of Section No. 18 in Block
P. H. & G. N. Ry. Co; thence west 2
miles to the S. E. Corner of Survey
No. 276, in block No. 2, G. H. & H.
Ry. Co. Thence north 1 mile to the
N. E. Corner of said Survey No. 276;
Thence west 6 miles on section lines to
the N. E. Corner of survey No. 132,
in said block No. 2; Thence North 1
mile to the N. E. Corner of Survey
No. 133, in said Block No. 2. Thence
due west on section lines to the Hans-
ford and Sherman Counties line in
said county, and which may run along
the section lines of lands owned by
you, and will at the same time assess

COAL COAL

The Coal Situation-- --As We See It

Coal cannot be cheaper with existing mining wages
and freight rates. There is no immediate prospects
of a reduction in either. Coal cannot be stored at the
mines, nor can dealers store enough to protect this
community.

IT IS UP TO YOU TO PROTECT YOURSELF

A small production in summer means increased cost
and a shortage and higher prices later. This follows
the economic law applying to labor, wheat, cotton or
coal. The safe course is to

Order Your Coal Today

Let us file your order now and deliver when the
car arrives.

We handle the best domestic coal coming from
Colorado.

White House Lumber Co.

EARL CALLAWAY, Manager

SPEARMAN

Absolutely Dependable— Winter or Summer

The OilPull tractor gives you a distinct advantage
when weather conditions are unfavorable for ordinary
tractor operation.

Even on extremely cold days, when ordinary tractors
are incapable of working, the OilPull is ready to start
and to stay on the job. For the oil-cooled OilPull
radiator can't freeze, which eliminates the big job of
daily draining and refilling.

This makes it possible for the OilPull owner to saw
wood, grind feed, do hauling, etc., on days that are
too severe for other tractors to operate.

Likewise, when the day is hot, and water-cooled
tractors overheat and boil dry, the oil-cooled OilPull
operates at the proper temperature. Oil doesn't evap-
orate—instead of refilling several times a day, you
fill the OilPull radiator once a season. And unlike
water-cooled tractors, the harder the OilPull works
the cooler it runs.

The distinctive design of the OilPull, with a number
of exclusive features, adapts it for every season.

And four sizes—12-20, 16-30, 20-40 and 30-60
H. P. adapt it for every job.

W. A. JOHNSON,
AGENT
Spearman or Texhoma



VAN C. WHITTET AUCTIONEER

Will cry sales anywhere at any time. Make dates at the Reporter
office, Spearman.

LIVE STOCK SALES A SPECIALTY

MAJOR & RANEY

COMMERCIAL AND LIVE STOCK
AUCTIONEERS

MAKE DATES AT REPORTER OFFICE

The DALLAS NEWS

Newsiest, Best, Most Reliable, That's All

HILLHOUSE DRUG CO., Circulator at Spearman

An Opportunity To Brighten Up

Brightening up the home is
one of the chief pleasures of the
housewife. A bright, cheerful
home makes for contentment
and comfort.

There are marred and scratch-
ed pieces of furniture—the worn
floor and stair treads—the wood-
work, which needs refinishing—
the ice chest—the kitchen cabi-
net and many other places about
the home can be brightened up
with



SHERWIN-WILLIAMS FLOORLAC

a variety stain of unusual wearing qualities, adaptability and
beauty. It stains and varnishes in one operation—is durable
and waterproof.

Floorlac is made in all the popular shades of oak, mahogany,
walnut, etc. It is inexpensive to use and easy to apply.

We are making a special offer in order to introduce Floorlac
quickly to the housewife. Cut the coupon from this ad, bring it
to our store with 10c and we will give you a 30c can of Floorlac
and a 15c varnish brush. Bring in the coupon today.

FREE FLOORLAC SAMPLE

COUPON

Name _____

Address _____

Town _____

This coupon and 10c entitles bearer to 3/4 pint can of Floorlac and
one Varnish Brush. (Only one of each to each purchaser.)

DESIGNED FOR HOME BUILDERS

Comfortable Seven-Room House of Frame Construction.

ATTRACTIVE IN EVERY WAY

Plans Drawn for Those Who Cannot Afford to Put Large Sums into Building in Which They Are to Live.

By WILLIAM A. RADFORD.
Mr. William A. Radford will answer questions and give advice FREE OF COST on all subjects pertaining to the subject of building, for the readers of this paper. On account of his wide experience as Editor, Author and Manufacturer, he is, without doubt, the highest authority on all these subjects. Address all inquiries to William A. Radford, No. 1827 Prairie avenue, Chicago, Ill., and only inclose two-cent stamp for reply.

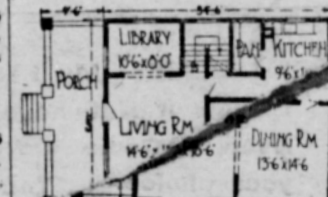
Every man who is the head of a family has somewhere in the back of his mind a desire to own a home of his own for himself and his family. That this desire has not been gratified may be due to any number of things, but the one that prevents most people from owning the house in which they live is that they never really started to acquire a home.

For the average person, buying a home is a considerable undertaking, one that means the taking on of an obligation that will require a number of years to pay. The investment looks large and will probably require some sacrifices, but once a start is made the satisfaction more than repays the effort.

No man, however, should undertake to buy a home that costs more than it is reasonably certain he will be able to pay for. This error is the reason that has caused many to lose their homes after a start toward owning them has been made. Good judgment in picking the site and in erecting a home that meets the needs of the family and at the same time will not require a larger investment than can be handled, are two essentials in successfully acquiring a home.

As a suggestion to those prospective home builders who are determined to have a home, but who are not able to make a very large investment, the accompanying building design is shown. This is not a large house, neither will it cost much to erect. At the same time it is attractive in exterior appearance and contains seven good rooms. It will fit nicely on a 50-foot lot and leave considerable space on either side for light and ventilation.

The design of this home is what makes it so pleasing to the eye. The sharp gables of the roof, together with the long slope makes it a story-and-a-half house, but by putting broad dormers in the roof at both front and back, three large bedrooms are provided on the second floor. These dormers also help to make the exterior attractive. The house is of frame construction, set on a concrete



foundation. Ship-lap siding is used on both the exterior walls and the porch.

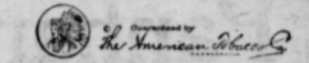
The interior arrangement and the sizes and location of the various rooms are shown on the floor plans that accompany the exterior view. Downstairs there are living and dining rooms, kitchen and library; upstairs are three bedrooms and the bathroom.

The entrance from the porch leads directly into the living room. This room is 14 feet 6 inches by 18 feet 6 inches. Connected with it by a double-cased opening is the library, 10 feet 6 inches by 8 feet. Back of the living room also connected with a double-cased opening is the dining room, 13 feet 6 inches by 14 feet 6 inches, while adjoining the dining room is the kitchen, 9 feet 6 inches by 11 feet 6 inches. All four of these rooms are corner rooms and are so connected that the distance from any one of them to another is the shortest possible.



Cigarette

To seal in the delicious Burley tobacco flavor. It's Toasted

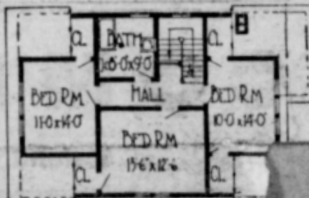


able. It will be noted by the plan that the kitchen may be reached from the living room through a hall out of which run the stairs to the second floor. All the rooms are well provided with windows, making them light and cheery and at the same time well ventilated.

The dormers, front and back, give a great amount of light and air to two of the three bedrooms, while the third is in one gable and the bathroom in the other. The front bedroom is 11 by 14 feet, and the rear bedroom 10 by 14 feet. The third room is larger, 15 feet 6 inches by 12 feet 6 inches. Also the bathroom is larger than usually is found, it being 8 feet wide and 9 feet long. All of the rooms open off a central hall.

A basement extends under the whole of the house proper, which is 34 feet 6 inches deep by 28 feet in width, with a porch projection of 9 feet 6 inches. This basement provides plenty of room for the laundry, the heating plant and fuel storage, and rooms for vegetables and fruit and for the storage of garden and lawn tools and the other articles that usually find their way to the basement.

From this brief description of the interior it will be seen that this

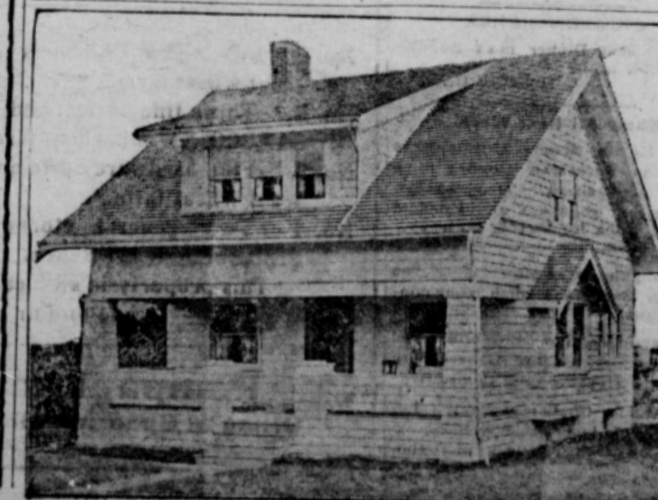


house will provide comfortable accommodations for a good sized family. At the same time it is a comparatively small house and one that will cost a great deal to erect.

Home building costs vary considerably in different towns and are controlled by the cost of labor and the distance from source of supply of building materials. However, the local building contractor and building material dealer can supply pretty accurate figures on this or any other house that a prospective builder may want to erect. Also these men are experts in building materials and can offer valuable suggestions to the home builder.

As has been said, securing a home requires a strong desire to possess one—a desire that makes the family willing to make some sacrifices. But after the home is built and occupied there is no more rent to pay, and a great deal of satisfaction in the knowledge that you have a home of your own.

Mendelism. Mendelism, a branch of the study of heredity, is concerned with the facts and theories centered upon the discoveries made by Gregor Mendel from his experiments in plant hybridization, and announced in 1865. Its importance is due to its bearing on stock breeding, and of its possible bearing on the development of the human race. The essence of Mendelism—of the Mendelian hypothesis—is that certain characteristics in a plant or an animal remain by themselves (unit characters), and will not blend with other unit characters when the two are brought into juxtaposition in breeding.



Hands: Diamond C on left side
A on left hip.
Marks: Crop on left & under
Crop on right.
Range on head-waters of the Palo
Duro.
H. Cator & Son, Spearman

TO THE PUBLIC
Having posted my ranch, lying in the northeast corner of Hansford county, on the Palo Duro creek, as required by the law of Texas, this is to specially call attention to any one fishing, hunting or trespassing in any way therein, and they will be prosecuted to the full extent of the law.
GUS B. COOTS,
Owner of Palo Duro Ranch

Notice to the Public
I will sell wood for \$5.00 per four-foot load. It will be necessary to order by phone or come to headquarters to get the wood, otherwise it will be treated as trespassers. Positively no hunting allowed.
W. T. COBLE,
Owner of the Turkey Track ranch.

No Trespassing
The public will please take notice that I will not allow hunting or fishing in my pasture on the Palo Duro, west of Spearman. Please observe this notice and avoid trouble.
MRS. JOE W. JONES.

Notice to the Public
No hunting or fishing will be allowed in the Diamond C pastures, on the headwaters of the Palo Duro. These lands are posted and trespassers will be prosecuted.
JAMES H. CATOR & SON.

No Fishing or Hunting
The public will please take notice that fishing and hunting, fishing especially, will not be allowed in the Steele pasture on the Palo Duro north of Spearman. The river will be watched closely hereafter and trespassers will be asked to move out.
W. T. COBLE, Lessee.
J. I. STEELE, Owner.

To Trespassing
Trespassing will not be allowed on the Simmons ranch on the Palo Duro. Hunting and fishing is positively for
SAM ARCHER, Owner.

T. CORRELL
Lawyer
Perryton, Texas

JARVIS
DENTIST
Perryton, Texas

ALLEN & ALLEN
LAWYERS
Perryton, Texas

TATUM & STRONG
ATTORNEYS AT LAW
Perryton, Texas

WALLACE G. HUGHES
Lawyer
Suits 3 and 4 First National Bank Building
Guyton, Oklahoma

PHONE CONNECTIONS
DR. J. C. MAY
PHYSICIAN and SURGEON
Perryton, Texas

Spearman
Rooming
House

Nice, comfortable
Rooms.

Clean Beds.

Rates reasonable.

West Side Main
Spearman

T. H. Taylor
Proprietor

BAKERY

We keep good, fresh bread and everything in the bakery line always on hand.

Leave your order a day in advance, when possible, for anything in the pastry line.

Reynolds Brothers
Proprietors
Phone 28 Spearman

Farm Loans

Our rates and Terms are Best

Come in and talk it over any time. We have what you want in the

FARM LOAN Line

McLain & McLain

East Side Main Street
SPEARMAN
Real Estate Loans Insurance

Thrashing Rig for Sale

Reeves 40 tractor; A1 Peerless 36 60 separator. Good condition; running every day 13 miles northwest of Spearman.
D. A. TOMLINSON & SON.

Subscribe for the Reporter.

The Standard

FARM TRACTOR

The best tractor on the market for the money. You can get repairs for the "STANDARD" when you need them, because it is made in Amarillo—right at your door. It is a home product, by home men.

If you are thinking of buying a tractor see

D. W. HAZELWOOD,
SPEARMAN

or write Standard Farm Tractor Co., 309 Polk St., Amarillo, Texas

S. H. HAILE

O. C. RANEY

TOLD YOU SO!

Bargains! - Bargains!

Good buys in ranch and farm lands. For quick sales list your property with.

Spearman Land, Loan and Insurance Co.

East Side Main Spearman

MONDAY NIGHT

at the
ARCADE

Panhandle Concert Trio
MONDAY NIGHT, AUGUST 29, ONLY

- A singing, shouting violin.
- A harpist and pianist---with a harp fall as a man.
- A reader that will make your sides sore laughing.

The feature entertainment of the week.
If you miss this you will miss the best thing of the season.

They are coming from the communities around. Everybody will be there.

COME! - LAUGH!

Mind If You Do Not Shed a Tear

LADIES'

Ready - to - Wear

Fresh from the Eastern markets.
The very latest and prices surprisingly low. Come and see.

Fall and Winter

lines arriving daily. We are better prepared than ever before to supply your wants. Give us a trial.

P. M MAIZE & CO.

Phone 32
Spearman

Protect Spare Casin

Special tire paints designed to protect the spare tire from injury caused by light, air and moisture can now be purchased. These paints are black and give the tire a glossy, smooth finish which greatly enhances its appearance. No special skill is required in the application. The use of a protective coating on the spare tire is desirable, for it is often exposed to the action of the elements for months before it is put into use. During this time it is slowly deteriorating so that its mileage is gradually cut down. A suitable coating, therefore, not only stops deterioration, but also adds to the appearance of the article.

Newly Engaged.

She--Henry, I have something I must confess to you; my teeth are false.

He--My dear, I know that.

She--But I haven't paid for them yet.

Cubersome Thing to Carry.

The watch of Charles V., which was one of the earliest of these timepieces, weighed 27 pounds. It was a good deal like a clock of the present day.

Read the Reporter.

to Tell of A Remarkable Case

Writing from Gillen, proprietor of a large department store at the...
"I have a customer who has been bed for three years... a meal at any time... phycians and they gave her out... One bottle of tanlac got her up, on the second bottle she commenced keeping house and on the third she did all the cooking and housework for a family of eight."

This sounds really incredible, but it comes unsolicited from a highly creditable source and is copied verbatim from the letter.

Tanlac is sold by leading druggists everywhere.

Francis Produce Company

I have bought the Shearer Produce Company in Spearman and will continue the business at the old stand. I buy all kinds of country produce, such as chickens, eggs, cream, hides, etc. and pay all the markets will allow. Come to see me when in Spearman.

C. E. FRANCIS.

LOST

A box of tools, chain jack, pair of truck chains, Ford timer and other articles. These tools were lost on Lieb road about six miles south of Spearman. Finder please leave at Spearman Motor Company and receive reward.

TOM OWEN, Owner.

CHICKEN DINNER

Big Chicken Dinner next Sunday August 21, at the T-BONE CAFE.

Show All Next Week

The Martin Sisters Company is coming to Spearman Monday for a weeks' engagement. They have a good, clean show and are splendid people. Look for the big tent.

Investigate every plow before you buy. A Sanders is worth your consideration.

Mr. and Mrs. Geo. M. Whitson and her sister Mrs. George Grover, are seeing the sights of Cool Colorado.

Mrs. Louis Coate returned the latter part of last week from an extended visit with relatives in Tezoma.

Hats!

LADIES! My Fall and Winter Line of Hats have begun to arrive. Come early and make your choice. You will find in the selection the very latest creations, in a wide range of prices.

You will be pleased with these hats. Come and see.

MRS. PIRTLE

At the Parsonage SPEARMAN

HOW ABOUT THAT GRANARY?

We have been telling you all along to build a granary and get ready for the harvest. It is not too late yet. Let us help you plan it. It is our business to serve you. Don't hang back.

Buy that granary material from

Panhandle Lumber Co.

PHONE 2

SPEARMAN

Four Good Trades

- No. 1 160 Acres Oklahoma alfalfa farm \$16,000 Want wheat farm.
- No. 2 Three fine farms and good home in town \$67,000. Want wheat farm.
- No. 3 Fine hardware store and buildings \$46,000. Want wheat farm.
- No. 4 Two general stores and brick buildings \$108,000. Want Ranch.
This property is all clear, owners will trade on fair basis.

See or Write **Pampa Land Co.** Spearman, Texas
Office at Spearman Rooming House