

THE SPEARMAN REPORTER

FOURTEENTH YEAR

Successor to
HANSFORD HEADLIGHT

Spearman, Hansford County, Texas, February 3, 1922

Number 7

Back of Every Bank are the Men Who Run It

Upon those men depend the service you get and the safety of your deposits.

The men who control the policy of this bank are experienced business men who understand the principles of successful management of financial affairs.

We are ever mindful that it is your money we are guardians of, and we intend to run a bank where your money will be safe.

First National Bank of SPEARMAN

First Class High School

Spearman High School has been classified as a first class high school and the superintendent, W. A. Clark, Jr., has received, in testimony of the fact, the official certificate of the State Department of Education, bearing the signature of the State Superintendent of Public Instruction. While in our city investigating the merits of the school, Miss Katherine Gray, Chief Supervisor of Public High Schools, complimented the citizens of Spearman in high terms on their wonderful accomplishment. She often remarked that she wished that it were possible to bring some of the people from other sections of the state here and show them what could be done where the people were determined to do it.

The latest published directory of Classified and Accredited High Schools in Texas indicates that there are less than 400 first class high schools in the state and that only two of these are north of the Canadian river. Spearman makes the third one

brought about within 18 months, which is very unusual.

Being a first class High School indicates that the school is capable of doing standard accredited work that will be accepted by our State University and other standard colleges and universities for unconditional entrance to their freshman classes. It means that the teachers have had a high standard of professional preparation and are well qualified in other respects. It means that four full years of high school work is being done, in a manner acceptable to the State Department of Education.

Typewriter ribbons and carbon paper at the Reporter office.

The best stoves at less—25 per cent off.

Andrews Hardware Co.

Car salt just arrived Stock salt, 40 cents per block Lots of meat salt.

W. L. RUSSELL

E. L. Anderson, auditor for the Homer P. Lee Oil Company, was here several days this week, visiting with the local agent W. W. Morgan.

Do you need a stove 25 per cent off on stoves and chimneys during January.

ANDREWS HARDWARE CO.

Perry Powers, attorney at law and a friend of Red McHenry, was here from Mangum the latter part of last week looking after some collections and stirring around some stray automobiles.

A good supply of Texas Red seed oats and good barley Oats, 35¢; barley, 40¢. This is good seed stuff. Buy it while the supply lasts. Phone D. H. KIRK, 644-J. Spearman, Plemons Route.

The Record claims to have an ideal subscriber. Recently, he checked himself and found that he owed the paper a year's subscription. So he added ten per cent to that amount, then ten per cent to that amount, and so on, until he had paid the paper ten per cent interest on every cent he had ever paid on the paper. He means that we are compelled to pay the other fellow ten per cent on that amount. The Record claims to have the only ideal subscriber—Canadian Record.

A. F. BARKLEY'S Insurance Agency

We insure grain CUT or UN-CUT, THRESHED or UN-THRESHED, in the SHOCKS, STACKS or ricks, on your premises, against fire and lightning.

A match or cigarette carelessly dropped in your field may mean the loss of your entire grain crop.

A stroke of lightning may mean the loss of several stacks of grain. Rates are reasonable for this class of insurance. Phone us and we will come to see you.

Hansford Abstract Company
Phones: Office, 42; Residence, 64
SPEARMAN

Rexall Cherry Bark

A guaranteed remedy for Coughs, Colds and Hoarseness.

Rexall Aspirin Laxative Tablets for colds.

Hale Drug Company
The Rexall Store SPEARMAN

R'member



SANTA FE MEN VISIT SPEARMAN

Mr. F. P. Cruice, and Mr. A. M. Hove, both of the Agricultural and Industrial Department, of the Santa Fe Ry. Co., were in town Sunday afternoon and through the day Monday. They were interested in getting information as to why the trade territory adjacent to Spearman has not developed and settled up more rapidly than it has. Mr. Cruice, the manager of the development department, said that the company is interested in bringing in a substantial class of settlers and that he felt sure that the information collected while he was here would give them a better understanding of real conditions and make it possible for them to work better for the interest of the town.

Monday morning these gentlemen together with a party of local citizens, visited the school. They, as well as several of our townsmen, addressed the student body of the high school department along lines appropriate to the occasion. The party proceeded from the study hall to the various class rooms, the projection room, laboratory room, text book room, apparatus room, and in fact to every corner of the school plant. Superintendent Clark explained the various phases of the organization. At all times the gentlemen were unreserved in their favorable comment, even on the smallest details. When they started to depart one of them added that the visit had even been an inspiration to him, and all agreed that Spearman's school was one of her most valuable assets.

After leaving the school building the railroad officials went out the highway west of town and to the site of the old town of Hansford for a look at the country in that direction. They spent Monday afternoon in interviewing the several business men of the town and in reviewing the remarkable progress that has been made in a business way since the coming of the railroad. Mr. Cruice is a practical stock-farmer himself and he expressed his opinion as being at the Spearman branch of the P.

& S F Ry traversed the territory of the Panhandle that is capable of the highest development.

A citizens' meeting at which the above gentlemen were present, was held at about 8:00 o'clock Monday evening. Judge Storrs called the meeting to order and asked W. A. Clark Jr., to state the purpose of the meeting and to preside over it. In stating the purpose of the meeting Mr. Clark directed the attention of those present to the great opportunity for development in our section of the country and mentioned some of the things that an Agricultural Demonstration train could do along that line. Several citizens of Spearman made similar talks.

Mr. Cruice, in a very interesting address, told those in attendance that his company appreciated the value of such trains and were always glad to cooperate with the citizens of the territory traversed by their lines in any kind of an undertaking intended to improve or develop it. He also commented on a number of industries that he thought possible to develop in this country.

Mr. Hove, who has visited this section a number of times before the coming of the railroad, recounted some of his earlier experiences and expressed pleasure in having the privilege of meeting his acquaintances again. He said he had always found our people very congenial and willing to cooperate.

The meeting was finally turned into a round-table discussion and the proposition of an ice factory, light plant, and water works, was discussed with a view of getting outside capital to come in. Mr. Cruice said this was within the scope of his department and that he would direct some of his efforts in that direction. The question of a county fair for this fall was discussed but it was decided to postpone action on it, as well as other propositions, until a later date.

The meeting closed with the spirit of "do something" prevailing.

The Political Pot is Now Boiling

Hiram C. Clower
FOR TAX ASSESSOR

Hicks L. Wilbanks
FOR SHERIFF

The local broken and the political pot in Hansford county has begun to boil. Hiram C. Clower authorizes the Reporter to announce to the voters of Hansford county that he is a candidate for the office of tax assessor, subject to the action of the democratic primary election, to be held on July 22, 1922. Mr. Clower has been a resident of this section for about 17 years, and for the past year has resided in Spearman. He followed Old Glory in France with the Fourth Division, and was in the principal battles the outcome of which turned the German troops toward the Rhine. "Hi," as he is commonly known, left a hand in the Argonne Forest, but he says he will not interfere with his work as tax assessor one bit, as he has only a good hand left. Should he be elected to this important office, he promises the county his best efforts to make a satisfactory public servant. Consider the name of Mr. Clower before making your selection as to whom you will support for tax assessor.

Twenty five per cent off on stoves and chimneys during January. ANDREWS HARDWARE CO.

Looking Forward

We all look forward to the time when we shall be more independent.

Old Father Time will some day have his Grip on us.

Let us fortify ourselves against this old gentleman by persistently adding to our bank account so that when he comes he shall not find us on Poverty Street.

Guaranty State Bank

SPEARMAN, TEX.

KEESEE C. NESBITT FOR CLERK

In this issue of the Reporter will be found announcement of Mrs. Keesee C. Nesbitt for re-election to the office of County and District Clerk of Hansford county. Mrs. Nesbitt has served two years in this capacity and we are pleased to say has given highly appreciated service to the people of the county, and to the patrons of that office. She is always courteous and considerate and her records are neat and in good form. During her two years in this office she has familiarized herself with every detail of the work and will, if re-elected, be in a position to give even more efficient service than in the past. Mrs. Nesbitt has been practically raised in Hansford county and is known personally to almost the entire population. We feel that no words of introduction or recommendation are really needed or necessary in placing her name before the public for re-election to this most important office.

A. H. STORRS FOR COUNTY JUDGE

In the proper place in our announcement column this week will be found the name of A. H. Storrs, as a candidate for the office of County Judge of Hansford county. This very important office carries with it the duties of ex officio county superintendent of public schools. Judge Storrs is asking for the second term, having first been elected in November, 1920. He is a democrat of the old school; a staunch, reliable citizen, who is ever looking to the betterment of conditions generally in Hansford county. The Judge's record as presiding officer at the meetings of the commissioners' court and as superintendent of the schools, will bear a close inspection, so please consider his case before casting your ballot for county judge.

MRS. BUCHANAN FOR TREASURER

Seeking re-election to the office of Treasurer of Hansford county, the name of Mrs. J. H. Buchanan will be found in our announcement column this week. Mrs. Buchanan is one of the best known women of this section. Always progressive, alert to every

move that tends to build and improve, she has been a great help to Hansford county, outside filling the office of treasurer with credit to herself and her constituency. Mrs. Buchanan is thoroughly democratic and a thorough business woman. She asks that you investigate her record as treasurer during the past term, and if you find it satisfactory, then consider her claims for re-election.

Revenue Collector Coming

Frank E. Buckingham, deputy internal revenue collector will be in Spearman on March 2nd and 3rd, for the purpose of assisting individual taxpayers in the preparation of their 1921 income tax returns. Readers of the Reporter residing in this vicinity who need information about the income tax laws and assistance in making out their returns, should be in Spearman and see Mr. Buckingham on the above dates. He will be at Perryton on February 28 and March 1, but has no date for Plemons.

Special sale on stationery. See the big values.
HILLHOUSE DRUG CO.

Columbia G R APHOPHONES on easy terms

See us if you are thinking of buying. You had just as well have a Columbia as an inferior machine at the same price.

HILLHOUSE DRUG CO.

The People With the Goods
SPEARMAN, - TEXAS

Money

is very hard to get at present, but we have it at all times to loan on Farms and Ranches in Hansford, Hutchinson and Ochiltree counties. Interest rate and settlement option very attractive.

Farm and ranch lands in any size tracts and at prices and on terms to suit.

Spearman city property.

J. R. COLLARD

Write for information SPEARMAN, TEXAS

A Seventeen Year Reputation for P. M. MAIZE & CO.

Quality first in merchandise. You may ask the question of any customer of ours. Get the opinion of their experience. There is only one answer: "Quality without fail when you buy of P. M. Maize & Company."

The price is no more than you pay elsewhere. Our motto:

**Quality and Service
One Price to All**

MURRAY & SON

now in charge
of the
Munroe Garage

Automobile Accessories

Tires, Tubes,
Gas and Oils

FREE WATER FREE AIR
.. STORAGE ROOM ..

We will appreciate your business and will treat you right.

Call and get acquainted.

W. W. Murray & Son
Spearman

Want to Look Your Best

One of our Made-to-Measure Suits or Overcoats is the Answer

Quality that gives faithful service makes a friend of every man who wears our custom tailored clothes.

You buy satisfaction when you buy our custom-tailored clothes. Their quality never disappoints.

.. **SID CLARK** ..

The Tailor

Cleaning - Pressing Work called for
Phone 86 and Delivered

.. **C. D. WORKS** ..

Attorney-at-Law

Will practice in all courts. Special attention given to Land Practice and Probate matter. Abstracts prepared. Titles examined and perfected.

Real Estate. Farm and Ranch Loans.

Notary Public HANSFORD

Some Aspects of the Farmers' Problems

By BERNARD M. BARUCH

(Reprinted from Atlantic Monthly)

II
Let us, then, consider some of the farmer's grievances, and see how far they are real. In doing so, we should remember that, while there have been, and still are, instances of purposeful abuse, the subject should not be approached with any general imputation to existing distributive agencies of deliberately intentional oppression, but rather with the conception that the marketing of farm products has not been modernized.

An ancient evil, and a persistent one, is the undergrading of farm products, with the result that what the farmers sell as of one quality is resold as of a higher. That this sort of chicanery should persist on any important scale in these days of business integrity would seem almost incredible, but there is much evidence that it does so persist. Even as I write, the newspapers announce the suspension of several firms from the New York Produce Exchange for exporting to Germany as No. 2 wheat a whole shipload of grossly inferior wheat mixed with oats, chaff and the like.

Another evil is that of inaccurate weighing of farm products, which, it is charged, is sometimes a matter of dishonest intention and sometimes of protective policy on the part of the local buyer, who fears that he may "weigh out" more than he "weighs in."

A greater grievance is that at present the field farmer has little or no control over the time and conditions of marketing his products, with the result that he is often underpaid for his products and usually overcharged for marketing service. The difference between what the farmer receives and what the consumer pays often exceeds all possibility of justification. To cite a single illustration: Last year, according to figures attested by the railways and the growers, Georgia watermelon-raisers received on the average 7.5 cents for a melon, the railroads got 12.7 cents for carrying it to Baltimore and the consumer paid one dollar, leaving 79.8 cents for the service of marketing and its risks, as against 20.2 cents for growing and transporting. The hard annals of farm-life are replete with such commentaries on the crudeness of present practices.

Nature prescribes that the farmer's "goods" must be finished within two or three months of the year, while financial and storage limitations generally compel him to sell them at the same time. As a rule, other industries are in a continuous process of finishing goods for the markets; they distribute as they produce, and they can curtail production without too great injury to themselves or the community; but if the farmer restricts his output, it is with disastrous consequences, both to himself and to the community.

The average farmer is busy with production for the major part of the year, and has nothing to sell. The bulk of his output comes on the market at once. Because of lack of storage facilities and of financial support, the farmer cannot carry his goods through the year and dispose of them as they are currently needed. In the great majority of cases, farmers have to entrust storage—in warehouses and elevators—and the financial carrying of their products to others.

Farm products are generally marketed at a time when there is a congestion of both transportation and finance—when cars and money are scarce. The outcome, in many instances, is that the farmer not only sell under pressure, and therefore at a disadvantage, but are compelled to take further reductions in net returns, in order to meet the charges for the service of storing, transporting, financing, and ultimate marketing—which charges they claim, are often excessive, bear heavily on both consumer and producer, and are under the control of those performing the services. It is true that they are relieved of the risks of a changing market by selling at once; but they are quite willing to take the unfavorable chance, if the favorable one also is theirs and they can retain for themselves a part of the service charges that are uniform, in good years and bad, with high prices and low.

While, in the main, the farmer must sell, regardless of market conditions, at the time of the maturity of crops, he cannot suspend production in toto. He must go on producing if he is to go on living, and if the world is to exist. The most he can do is to curtail production a little or alter its form, and that—because he is in the dark as to the probable demand for his goods—may be only to jump from the frying pan into the fire, taking the consumer with him.

Even the dairy farmers, whose output is not seasonal, complain that they find themselves at a disadvantage in the marketing of their products, especially raw milk, because of the high costs of distribution, which must ultimately bear

III
Now that the farmers are stirring, thinking, and uniting as never before to eradicate these inequalities, they are subjected to stern economic lectures, and are met with the accusation that they are demanding, and are the recipients of, special privileges. Let us see what privileges the government has conferred on the farmers. Much has been made of Section 6 of the Clayton Anti-Trust Act, which purports to permit them to combine with immunity, under certain conditions. Admitting that, nominally, this exemption was in the nature of a special privilege,—though I think it was so in appearance rather than in fact,—we find that the courts have nullified it by judicial interpretation. Why should not the farmers be permitted to accomplish by co-operative methods what other businesses are already doing by co-operation in the form of incorporation? If it be proper for men to form, by fusion of existing corporations or otherwise, a corporation that controls the entire production of a commodity, or a large part of it, why is it not proper for a group of farmers to unite for the marketing of their common products, either in one or in several selling agencies? Why should it be right for a hundred thousand corporate shareholders to direct 25 or 30 or 40 per cent of an industry, and wrong for a hundred thousand co-operative farmers to control a no larger proportion of the wheat crop, or cotton, or any other product?

The Department of Agriculture is often spoken of as a special concession to the farmers, but in its commercial results, it is of as much benefit to the buyers and consumers of agricultural products as to the producers, or even more. I do not suppose that anyone opposes the benefits that the farmers derive from the educational and research work of the department, or the help that it gives them in working out improved cultural methods and practices, in developing better yielding varieties through breeding and selection in introducing new varieties from remote parts of the world and adapting them to our climate and economic condition, and in devising practical measures for the elimination or control of dangerous and destructive animal and plant diseases, insect pests, and the like. All these things manifestly tend to stimulate and enlarge production and their general beneficial effects are obvious.

It is complained that, where the law restricts Federal Reserve banks to three months' time for commercial paper, the farmer is allowed the months on his notes. This is not special privilege, but merely such recognition of business conditions as makes it possible for country banks to do business with country people. The crop farmer has only one turnover a year, while the merchant and manufacturer have many. Incidentally, I note that the Federal Reserve Board has just authorized the Federal Reserve banks to discount export paper for a period of six months, to conform to the nature of the business.

The Farm Loan banks are pointed to as an instance of special government favor for farmers. Are they not rather the outcome of laudable effort to equalize rural and urban conditions? And about all the government does there is to help set up an administrative organization and lend a little credit at the start. Eventually the farmers will provide all the capital and carry all the liabilities themselves. It is true that Farm Loan bonds are tax exempt; but are bonds of municipal light and power plants, and new housing, to be exempt from taxation, in New York, for ten years.

On the other hand, the farmer reads of plans for municipal parks, of hundreds of millions spent on the merchant marine, favored by the railroads as being guaranteed increased rates and earnings by the result to him on all that he buys. He hears concern for particular industrial interests. Resting the farmer from insolvency is undoubtedly a benefit of the country, but what can be more than encourage the production of the principal articles of life and their even flow?

While, in the main, the farmer must sell, regardless of market conditions, at the time of the maturity of crops, he cannot suspend production in toto. He must go on producing if he is to go on living, and if the world is to exist. The most he can do is to curtail production a little or alter its form, and that—because he is in the dark as to the probable demand for his goods—may be only to jump from the frying pan into the fire, taking the consumer with him.

Kodak Finishing

We have opened a photograph studio in Perryton, and are prepared to do all kinds of photographic work.

Mail us a roll of six exposures, any size, and twenty-five cents, and we will develop and print one of each and return to you promptly, together with our price list.

.. **PERRYTON STUDIO** ..
J. A. STIRRAT, Photographer
Perryton, Texas

Spring Wheat

Limited supply at elevator in Spearman. Come and get it.

Better take out a load next time you come to town, as you will want it right now when the time comes to put it in the ground.

Liske Grain Co.

J. C. LIVINGSTON,
Manager

essential function of democratic gov...

CITY BAKERY

We keep good, fresh bread and everything in the bakery line always on hand.

Leave your order a day in advance, when possible, for anything in the pastry line.

Reynolds Brothers
Proprietors
Phone 28 Spearman

Spearman Rooming House

Nice, comfortable Rooms.

Clean Beds.
Rates reasonable.

West Side Main Spearman

T. H. Taylor
Proprietor

Hunting will not be a VZ pasture, on the Palo Verde. The hunters will please take notice of trouble, as will positively old all such as trespassers.
RUTLEDGE HENDERS,
S. C. Tyler, Owner.

Registered Herford Bulls

I have a number of extra good registered Herford bulls for sale. Ages ranging from calves up to two year-olds. Prices reasonable. Delivery any time. Coldwater ranch, HENRY C. HITCH, Guymon, Oklahoma.

Registered Hereford Heifers

I have about 25 registered Hereford heifers, from 8 to 12 months old, weight about 600 pounds. If you are interested in this high bred grade of cattle, see me at once, as I have the calves priced to sell.
WALTER WILMETH,
20 miles northwest of Spearman, on Guymon Route.

Texas Vendor's Lien notes bought, Farm and ranch loans made. See or address
WILL CROW,
Capadlan, Texas

Need to raise money on the Farm? We have plenty of money—always ready on good loans. Inspect from here, no waiting.
FARMERS STATE BANK,
Texhoma, Oklahoma

AFTER EVERY MEAL

WRIGLEY'S P-K



This new sugar-coated gum delights young and old. It "melts in your mouth" and the gum in the center remains to aid digestion, brighten teeth and soothe mouth and throat.

There are the other WRIGLEY friends to choose from, too:



C. K. WILMETH & SON

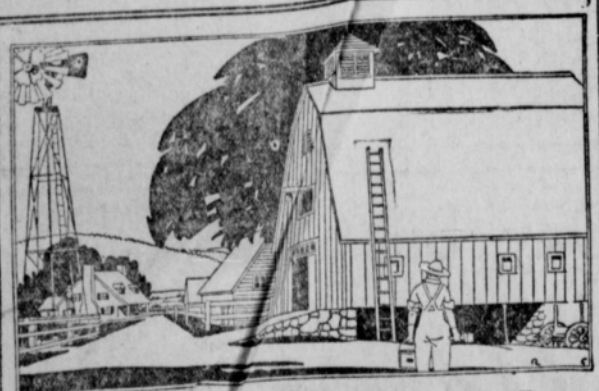
AUCTIONEERS

Doing business at the same old stand. Phone 161. Guymon, Okla.

MAJOR & RANEY

COMMERCIAL AND LIVE STOCK AUCTIONEERS

MAKE DATES AT REPORTER OFFICE



A Barn Worth Keeping Is A Barn Worth Painting

A barn needs protection just as much as a house, in fact more protection, because it is not built as substantially. You can point to your barn with as much pride as you do to your home if it is painted with

SHERWIN-WILLIAMS COMMONWEALTH BARN RED

It is made expressly for barns, corn cribs, silos, fences, etc. It is a durable, weather-resisting paint for rough or smooth lumber. It sinks in sticks tight and saves repairs.

White House Lumber Company

FRIENDS GAVE UP HOPE OF RECOVERY

Wife of San Antonio Man Told She Couldn't Live Six Weeks Longer.

"Just before I started taking medicine my wife was told I couldn't possibly live more than six weeks longer, but here I am, and not only that but I feel pounds heavier than I was when I took my first dose, and I don't forget Tanlac the longest day of my life.

"I had been going on for seven years on account of a trouble and had gotten so bad I could hardly eat anything for solid years I wasn't able to do any work and finally I gave up in despair. Tanlac did for me what I thought was impossible. I feel anything I want now and I feel fine and am back to my old job.

The above statement is given by Ed E. Seffel, 221 Marysville, San Antonio, Texas.

Tanlac is sold by drug stores everywhere.

Citation by

The State of Texas, County of Hansford, do hereby cite to summon Fred Lundy, next regu- mon Fred Lundy, County of pre- unknown, to appear in court, lar term of the county, Texas, cinct No. 1, 1922, then and to be held in the suit of J. W. Texas, on the part of J. H. Cator & Son, and numbered on Chappell court No. 83, the December being as follows: the doer that he worked for Plaintiff in fishing grain and other Plaintiff with defendant's work machine for nineteen and three during July and August at an agreed price of \$4.00 per acre a total of seventy-eight dollars. Plaintiff alleges duly presented said account and more than thirty days us to filing of this suit, and defendant has failed and refused to pay part of said account.

Therefore, plaintiff prays that defendant be cited, and that he have judgment for \$78.00, and \$20.00 additional as attorney's fees, and for all costs of suit, and relief general and special in law and equity to which he may be entitled.

You are further commanded to so summon said defendant and serve this citation once in each week for four consecutive weeks previous to the return day hereof, in some newspaper published in your county, if there be a newspaper published therein, and if not, in some newspaper published in a newspaper published in a county nearest to said county.

Herein fail not, but have you then and there before said court this writ, with your return thereon, showing how you have executed the same.

Given under my hand this 27th day of January, a. d. 1922.

A. J. WILBANKS, Justice of the Peace Precinct No. 1, (Seal) Hansford County, Texas.

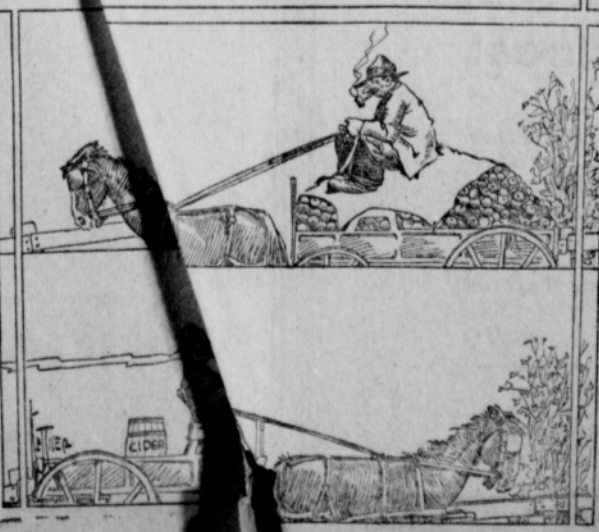
Notice to Creditors

Notice is hereby given that original letters testamentary upon the estate of Bert O. Cator, deceased, were granted to me, the undersigned, on the 12th day of December, 1921, by the County Court of Hansford County, Texas. All persons having claims against said estate are hereby required to present the same to me within the time prescribed by law. My residence and office address is Ideal, Texas.

VINA CATOR, Executor Estate Bert O. Cator, deceased.

Take advantage of the reduction—25 per cent off on stoves and chinaware. News Hardware Company.

To and Fro



... is a matter of tobacco quality. We state it as our honest belief that the tobaccos used in Chesterfield are of finer quality (and hence of better taste) than in any other cigarette at the price.

Liggett & Myers Tobacco Co.

"I like 'em"



Chesterfield CIGARETTES

of Turkish and Domestic tobaccos—blended

"They Satisfy"



Brands: Diamond C on left side slash \ on left hip. Ear Marks: Crop on left & under halfer on right. Range on head-waters of the Palo Duro.

J. H. Cator & Son, Spearman

TO THE PUBLIC

Having posted my ranch, lying in the northeast corner of Hansford county, along the Palo Duro creek, as required by the law of Texas, this is to specially call attention to any one fishing, hunting or trespassing in any way therein, that they will be prosecuted to the full extent of the law.

GUS B. COOTS, Owner of Palo Duro Ranch

Notice to the Public

I will sell wood for \$5.00 per four-horse load. It will be necessary to either phone or come to headquarters before getting the wood, otherwise you will be treated as trespassers. Positively no hunting allowed.

W. T. COBLE, Owner of the Turkey Track ranch.

No Trespassing

The public will please take notice that I will not allow hunting or fishing in my pasture on the Palo Duro, west of Spearman. Please observe this notice and avoid trouble.

20c16p. MRS. JOS. W. JONES.

Notice to the Public

No hunting or fishing will be allowed in the Diamond C pastures, on the headwaters of the Palo Duro. These lands are posted and trespassers will be prosecuted.

JAMES H. CATOR & SON.

No Fishing or Hunting

The public will please take notice that fishing and hunting, fishing especially, will not be allowed in the Steele pasture on the Palo Duro north of Spearman. The river will be watched closely hereafter and trespassers will be asked to move out.

W. T. COBLE, Lessee. J. I. STEELE, Owner.

To Trespassing

Trespassing will not be allowed on the Simmons ranch on the Palo Duro. Fishing and hunting is positively forbidden.

SAM ARCHER, Owner.

FRED HILL

ATTORNEY-AT-LAW
Spearman, Texas

C. D. WORKS

LAWYER
Abstracts, Loans, Insurance
Spearman, Texas

R. T. CORRELL

Lawyer
Perryton, Texas

DR. JARVIS

DENTIST
Perryton, - - Texas

ALLEN & ALLEN

LAWYERS
Perryton, Texas

WALLACE G. HUGHES

Lawyer
Suites 3 and 4 First National Bank Building
Guymon, Oklahoma

DR. J. C. MAY

PHYSICIAN and SURGEON
Perryton, Texas

Tatum & Strong

ATTORNEYS - AT - LAW
Dalhart, Texas

Stray Hog

One red gilt, with small black spots, will weigh 150 to 170 pounds. Strayed from my place about two weeks ago. Please put the pig in a pen and notify me by mail.

R. L. PORTER, Spearman, Texas



Blacksmith

Wagon Work
Acetylene Welding
Expert Repairman

Battery Service

If your storage battery is "a sick child," bring it in and let us walk the floor with it. Our business is to make sick batteries well, and keep them well as long as possible.

Auto Service Company

W. E. MIZAR, Prop.

Catarrh Cannot Be Cured

with LOCAL APPLICATIONS, as they cannot reach the seat of the disease. Catarrh is a local disease, greatly influenced by constitutional conditions, and in order to cure it you must take an internal remedy. Hall's Catarrh Medicine is taken internally and acts through the blood on the mucous surfaces of the system. The perfect combination of ingredients in Hall's Catarrh Medicine is what produces such wonderful results in catarrhal conditions. Send for testimonials, free.

P. J. CHENEY & CO., Props., Toledo, O. All Druggists, Etc.
Hall's Family Pills for constipation.

S. H. HAILE

O. C. RANEY

For Sale

We Sell Anything on Commission

Get our prices on Farms, Ranches and City Property.

Kansas City Life Insurance, with policies that fit you. Health and accident insurance when you need help.

When you want a loan see us.

We can fit you with a trade, any size.

Spearman Land, Loan and Insurance Co.

East Side Main

SPEARMAN

A Better Place to Buy

Groceries

can not be found. Come and see.



Spearman Equity Exchange.

ANNOUNCEMENTS

The Reporter is authorized to announce the following candidates for office, subject to the action of the Democratic Primary, to be held on July 22, 1922.

- For County Judge, A. E. STORRS
- For Sheriff and Tax Collector, E. L. WILBANKS
- For County and District Clerk, KEESSE C. NESBITT
- For Tax Assessor, HIRAM C. CLOWER
- For County Treasurer, MRS. BUCHANAN

The Oil Situation

in the North Panhandle as viewed by Private Citizen.

A few years ago several wells were drilled on both the north and south sides of the Canadian river in Moore and Potter counties, and practically all of them proved heavy gasers. It was found that the gas from the wells in the western part of the district was dry, while the farther east they went the gas was wetter, which seemed to indicate that the oil pool must necessarily lie farther east.

Another fact seemed to prevail, that the farther east the flow of the gas was much stronger. Among the gas wells in this district, two of them proved to be the heaviest gasers in the world.

It is generally conceded that the large oil companies do but little or no wild cat work, but leave that to the fellows who have the nerve to take such risk. We noticed also, that as soon as the wildest wells have demonstrated that there is a good showing for oil, then the large oil companies get to their work and develop it. This seems to be the situation in this locality at the present

time. Several of the largest oil companies are securing very large acreage tracts on both sides of the river in Hutchinson and Roberts counties, for which they have been paying liberal leases or buying the land outright, which indicates that they have confidence in the oil possibilities of this section.

The Gulf Production Company recently made a location in Hutchinson county, some four miles west of Plemons, shipped into Spearman several car loads of drilling material, casing, etc., and started the drill on the 19th of last month. They seem to be pushing the work as rapidly as possible. The well on the Whitsett ranch in Roberts county, located on the north side of the river just east of the Hutchinson county line, is now attracting much attention. They are running a day and night shift, and crowding the work forward very rapidly. The Cobie-Heywood well, located a few miles northwest of the Whitsett well, is already down considerably more than 3,000 feet and is still going strong. Numerous locations have been made south of the river, on which it is expected derricks will be erected and the drill started in the early spring.

It is generally believed that some of these drills, if not all of them, will develop something worth while during the coming summer, in which event it will put the north panhandle on the map as the largest oil field in Texas if not in the world.

The Gulf well No. 3, located west of Plemons, is only about 30 miles from Spearman. The Cobie-Heywood well is something like 15 miles from Spearman, while the Whitsett well, now known as the "Snorty Gobbler," is less than 25 miles southeast of Spearman. This all looks good to Spearman people, since we are the closest railroad point to these wells and in case oil is found, the town of Spearman will be known as the liveliest town in Texas.

LES Show MILLION

Retail Cars and Fordson Year. the millionucks and cording to exceeded by the Ford '21, ac-

The Ford company for 1922 is decidedly fact, concrete evidence in that car and truck December, 1921, exceeded 1920, sales by almost 25 per cent.

Recent reductions in Ford car and truck prices brought them to a new low level. The touring car now sells for \$348, the runabout for \$319, the coupe for \$580, the Sedan for \$645, the chassis for \$285 and the truck for \$430, all f. o. b. Detroit.

This is the fourth price cut in the past sixteen months. During that time the price on the touring car alone has been cut from \$575 to \$348, a reduction of 40 per cent. Reductions on some of the other types have been even greater.

Ford is giving employment at present to approximately 40,000 men in his main plant at Detroit, the importance of which is emphasized when consideration is given to the fact that nearly 20 per cent of the city's population is directly dependent upon the Ford Motor Company.—adv.

Block salt, \$15 per ton, at the Spearman Equity Exchange.

Complete house keeping outfit for sale. See Fred Twyman at the post-office.

Some cotton seed cake and some pea size for sale.

R. P. KERN, Spearman, Texas.

One of our contributions toward normalcy—25 per cent off on all coal shovels and chinaware.

ANDREWS HARDWARE CO.

Mrs. Thomas of Booker will preach at the Union church in Spearman on Saturday night, Sunday at 11 o'clock and Sunday night. All are invited to attend these services.

Indigestion

Many persons, otherwise vigorous and healthy, are bothered occasionally with indigestion. The effects of a disordered stomach on the system are dangerous, and prompt treatment of indigestion is important. "The only medicine I have needed has been something to aid digestion and clean the liver," writes Mr. Fred Ashby, a McKinney, Texas, farmer. "My medicine is

Theford's ACK-DRAUGHT

indigestion and stomach trouble of any kind. I have found nothing that does the trick. I take it in broken pieces after meals. For a long time I tried pills, which griping more responsive and didn't give the good results. Black-Draught liver pills are easy to take, easy to get, and very inexpensive.

package from your drug store. Ask for and get Theford's—the

PUBLICATION

The State of Texas, County of Hutchinson, County Clerk, do hereby certify that the following is a true and correct copy of the original of the same as the same appears in the records of the County Clerk of said County, to-wit: A deed of J. L. Williams to C. T. McMurtry, J. L. McMurtry and L. C. McMurtry, conveying to them an undivided one-half interest in and to the south one-half of said Survey No. 27, Block Y, Original Grantee Arnold and Barrett in Hutchinson County, Texas, recorded in Volume 9, Page 439.



Willard Batteries

Batteries Recharge 50c. Guymon Battery Co. Guymon, Ok.

Buster Brown Shoes

Bring the children to our store and have them fitted out with a pair of these most excellent school shoes.

Blake Dry Goods Co.

The Little Cash Store SPEARMAN

Arthur S. Martin are plaintiffs, and Thomas Terry, the unknown heirs of Thomas Terry and Diana Shaw, a widow, and their heirs or legal representatives, are defendants, and said petition alleges:

1. That the plaintiffs, C. T. McMurtry, J. L. McMurtry and L. C. McMurtry, are the owners of an undivided one-half interest of, in and to the south half of Survey 27, Block Y, Certificate No. 51, Original Grantee Arnold and Barrett in Hutchinson County, Texas, and that the plaintiff, J. L. Williams, is the owner of an undivided half interest in and to said south half of said Survey No. 27 and the owner of the north half of Survey No. 27, Block Y, Certificate No. 51, Original Grantee Arnold and Barrett, in Hutchinson County, Texas, and that the plaintiff, Martin, is the owner of an undivided one-fourth interest of, in and to all of the oil gas and mineral royalty due and to become due, reserved or to be reserved, to the said J. L. Williams in and under any and all oil, gas and mineral leases made or to be made by the said J. L. Williams on the northwest one-fourth of said survey and that the parties own said interests respectively by title in fee simple and that they are in the possession of said premises; C. T. McMurtry, J. L. McMurtry, J. L. Williams their title is as follows:

(1). Patent by the State of Texas, dated June 3, 1876, recorded in Volume Patent No. 517 in the records in General Land Office.

conveying to him by warranty deed all of said Survey No. 27, Block Y, Original Grantee Arnold and Barrett, Certificate No. 51, in Hutchinson County, Texas, recorded in the deed records of Hutchinson County, Texas, Volume 9, Page 439.

(2). Deed of J. L. Williams to C. T. McMurtry, J. L. McMurtry and L. C. McMurtry, conveying to them an undivided one-half interest in and to the south one-half of said Survey No. 27, Block Y, Hutchinson County, recorded in Volume 9, Page 438 of the Deed Records of Hutchinson County.

(3). Royalty contract of the said J. L. Williams with the said Arthur S. Martin, by which the said Williams grants and conveys to the said Martin in undivided one-fourth interest in and to all the oil, gas and mineral royalty due and to become due, reserved or to be reserved to the said J. L. Williams in or under any and all oil, gas and mineral leases made or to be made by said J. L. Williams on said one-quarter section of said land or any part thereof, recorded in Volume 19, Pages 376-7 of the Deed Records of Hutchinson County, Texas.

2. All said plaintiffs further hold and have claim title to their respective rights under and by virtue of the deed of E. B. Johnson, Graham B. Johnson, Neil R. Johnson and Motford T. Johnson to J. L. Williams, dated December 13, 1921, and recorded in Volume 19, Pages 384-5 of the Deed Records of Hutchinson County, Texas.

3. In addition to the foregoing chain

of title, said plaintiffs have, hold and claim their respective rights by virtue of the statute of limitations of three, five and ten years and in this connection, the plaintiffs say that they and those under whom they have and claim title have had peaceable and adverse possession of said Survey 27, Block Y in Hutchinson County, Texas, under title and color of title for more than three years preceding the institution of this suit and that the plaintiffs have had peaceable and adverse possession of said lands, cultivating and enjoying the same and paying taxes thereon and claiming under a deed or deeds duly registered for more than five years before the institution of this suit; and plaintiffs further say that they and those under whom they have title have had peaceable and adverse possession of said lands, cultivating, using and enjoying same for more than ten years before the institution of this suit and that by virtue of said adverse possession, use, cultivation and enjoyment, they have perfected and indefeasible title to said lands and their respective rights thereunder and hereinbefore set forth.

4. Plaintiffs further say that the said Diana Shaw and the said Thomas Terry and his unknown heirs are making some claim to said premises, the full and exact nature of which is unknown to plaintiffs, but is believed by plaintiffs to be the effect that said Thomas Terry was the patentee to said land and that the said Diana Shaw and said unknown heirs are entitled to some

interest in the same premises, but the plaintiffs say that whatever the claims of said defendants may be, they are invalid and inferior to the title of the plaintiffs and the claims of said defendants constitute a cloud on the title of the plaintiffs and prevent them from selling same or making leases thereof to the great injury of plaintiffs, say in the sum of \$10,000.

Premises considered, plaintiffs pray that citation by publication may issue, the names and residences of said Thomas Terry and of his unknown heirs being unknown to plaintiffs, unless the said Diana Shaw be one of said heirs of Thomas Terry and the said Diana Shaw being a non-resident of the State of Texas and not a resident of said state; that upon the hearing the plaintiffs may have judgment confirming and quieting their title and possession to said premises and cancelling and annulling the claims of each and all of the defendants as clouds upon the title of the plaintiffs and plaintiffs further pray for judgment for their cost and for all such other and further relief as they may be entitled to.

Herein fail not but have before said Court, at its aforesaid regular term, this writ with your return thereon, showing how you have executed the same.

Given under my hand and the seal of said Court, at office in Plemons, Texas, this the 30th day of January, A. D. 1922.

M. E. McCORMICK, Clerk District Court, Hutchinson Co.

Not for a Day, but FOREVER

That is the thought that should be in the mind of every home-builder, as you dream of the home that will be a comfort to you in your old age, and your children after you.

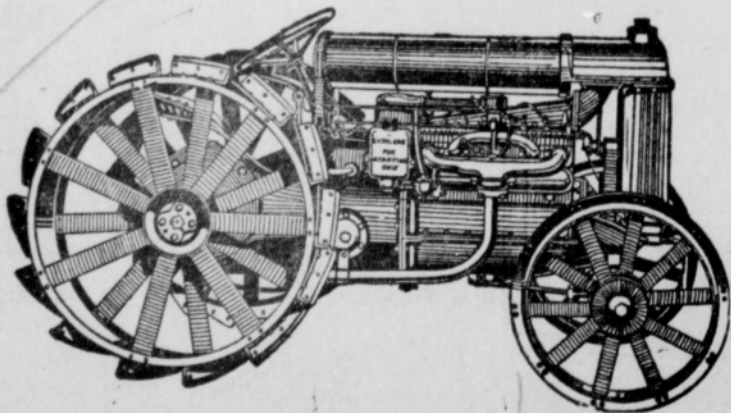
Let us help you realize your dream. We have those convenient and up-to-the minute house plans. Also, the QUALITY of BUILDING MATERIAL that it takes to build a home that will last for generations.

Panhandle Lumber Co.

Anything in Building Material Everything in Service

PHONE 2

SPEARMAN



New Tractor Prices!

EFFECTIVE JAN. 27

With this low price, we don't see how any farmer can be without a tractor, considering the many farm operations they will successfully do. They will do the plowing, discing, harrowing and seeding. When this is all done you can grind your feed, cut ensilage, pump water, haul your crop to market, in fact there is nothing that the Fordson won't do.

New Price, Delivered \$470

R. W. MORTON

Ford Sales and Service

SPEARMAN