

THE SPEARMAN REPORTER

SIXTEENTH YEAR

Spearman, Hansford County, Texas, Friday, May 16, 1924

NUMBER 22

DIVERSIFIED FARMING

When you Diversify in your Farming operations you are giving Hostages to Fortune.

If you have some good milk cows, hogs and chickens and raise some wheat, cotton, barley, oats and maize; you are CERTAIN of making a living and REASONABLY SURE of making some money.

FIRST NATIONAL BANK
SPEARMAN, TEXAS

A LITTLE TROUBLE

A linotype break-down just before the Reporter went to press last week caused us considerable trouble and no little embarrassment. All the type for the Reporter is set the linotype way, except the larger display lines, and when the machine went to the bad last week, just an hour before press time, there was nothing to do but go to press with what was set, leaving out several very important items of news. Several items were phoned in by friends of the paper and we regretted very much our being unable to handle them. The broken piece of the linotype was repaired with a new one which came from New Orleans, arriving Monday, and we are again hitting on four.

RUSSELL, KANSAS IN BIG BOND ISSUE

TOPEKA, May 12.—More than one-fifth of all the municipal bonds registered at the office of N. A. Turner, state auditor, in April were issued by Russell, a little western Kansas county, seat of 1,800 population. Of the state total of \$1,576,347, Russell contributed \$332,151 in two issues—\$246,151 for paving and \$86,000 for sewers.



Why are days longer in summer?—because, as the earth revolves, the sun passes more directly overhead than it does in winter. Therefore it has to cover a greater arch to get from its rise to its setting. Whatever the season.

Puretest EPSOM SALT

is the direct route to a clean, fresh, healthy system.

Puretest Epsom Salt is made by a new process. Puretest Epsom Salt is filtered five times. Ordinary Epsom salt is filtered once. Puretest Epsom Salt, being absolutely pure, is easy to take.

One of 200 Puretest preparations for health and hygiene. Every item the best that skill and care can produce.

Hale Drug Co.

The Rexall Drug Store

Made-To-Measure SUITS

are not a luxury. Our prices make them a necessity.

We also sell made-to-measure shirts, priced as cheap as ready-made, but made to fit.

Spearman Tailor Shop

SID CLARK, Proprietor
Cleaning—Pressing—Repairing



HEALTH HINTS

Don't keep company with the nasty flies. They carry sickness and death on their toes.
Don't leave old tin cans and rubbish scattered about. They are hiding places for death germs.
Don't leave your closet exposed. Make it fly-proof.
Don't let the flies visit your dining table, unless you are sure they have cleaned their feet before they come in.
Don't forget that the Parent-Teacher Association call meeting is for the benefit of you and your children and that you are expected to come and do your bit.

FRIDAY, MAY 16 at 4 p. m., High School Auditorium.

WILL ENTERTAIN THE COUNTRY FOLKS

Commercial Club Will Entertain Farmers and Their Families at High School Auditorium.

A big meeting is planned for Saturday night, May 17, at the High School auditorium in Spearman. The Commercial Club will entertain the farmers of the Spearman country at an old-fashioned get-together meeting, at which matters pertaining to the development of the agricultural, educational and business interests of the town and country will be discussed. And the farmers are supposed to bring their families. The women and children will be entertained and everyone will have a good time. There will be music and refreshments on the side, and the best orators of the town and country will make the welkin ring with the joyful tidings that prosperity has come to Spearman and the Spearman country to stay. Great things are in store for Hansford county. Attend this meeting and hear about it. The Commercial Club wants you to see the fine new school building; the electric light, water and ice plant in operation, and wants to tell you of the \$20,000 gin plant that will be ready to take care of your 1924 cotton crop. Remember that this meeting is not being held for the purpose of raising money. It is strictly a get-together good-fellowship meeting, solely for the purpose of discussing matters for the mutual benefit of all. Come to town early Saturday afternoon and stay until the night meeting at the school house, which begins at 8.00 o'clock.

Miss Ester Cade came from Perryton the first of the week to accept employment at the D. C. D. Cafe.

You get the very best in groceries at the lowest possible price when you trade at Burran Brothers.

Hiram Clower is again in Spearman, after an absence of several months, which he spent in central Texas.

Cecil Lane came from Arnett, Okla., the first of the week and is employed in the White House Lumber Company offices.

PRACTICAL NURSING wanted. Confinement cases a specialty. Mrs. M. A. Moore, Spearman, Texas, Box 664.

Have a good used 16-30 Rumely Oil Pull, priced for quick sale. W. H. ANDERSON, 1912. Spearman, Texas.

MARRIAGE A SURPRISE TO HOSTS OF FRIENDS

Popular Young Hansford County Couple Steal Away to Amarillo and are Quietly Married.

The greatest surprise of the season in society circles, was the announcement early last week of the marriage of Miss Gwenifred Anna Jones to Mr. John Maxwell Lackey, which occurred at Amarillo on Saturday, May 3. The happy young people left immediately for Dallas and Waco on a short visit to relatives and friends, returning early this week to their home, six miles southwest of Spearman. These popular young folks are natives of Hansford county, having spent almost their entire lifetime here. They have been friends since childhood days. The bride is the only daughter of Mrs. Joseph Walter Jones, who owns one of the best cattle ranches on the Palo Duro. She is a accomplished young lady, and a great friend to everyone, especially the ranch people, many of whom have known her since childhood. The groom is a substantial young stock farmer, who is rapidly developing into one of the country's leading citizens. He owns a fine farm and ranch southwest of Spearman, on which he and his new-made bride will make their home. The Reporter extends congratulations to the newly-weds and wishes for them all kinds of happiness and prosperity.

Money to loan on Spearman Town Property. Money to loan on Farm Land. If interested, write, WALTER W. KENNEDY, 2212. Guyton, Okla.

Pocket-book, or bill folder, containing one \$20 bill and two \$1 bills, was lost either in Spearman Motor Company Garage, or on road leading to Holt school house. Finder will be rewarded by returning same to D. M. Jones, Spearman, Texas.

Work of construction of the fine brick residence of Mr. and Mrs. W. F. Russell, in south Spearman, was begun this week. John Beck and C. B. French are the contractors and they are capable of doing a good job. The material is being furnished by the Panhandle Lumber Company.

Ben Beck was brought from Canyon, where he is a student in the W. T. S. T. C., on Monday of this week, suffering from a well developed case of scarlet fever. His father, C. C. Beck, was in Spearman Wednesday and reported that Ben is getting along nicely at this time and will soon recover, without complications arise.

SUCCESSFUL FARMING

The future of our country depends upon the success of the farmer and stockman.

The experience of other localities situated similar to ours is, that diversification along these lines brings in a greater net revenue than the following of a one crop system.

The farmers and stockmen in those localities are making a success of diversified farming and stock raising. With a few hogs, chickens and milk cows an energetic farmer can pay his living expenses.

A diversified crop system will surely prove to be a success in this country as it has in others. Let us give this a fair test this year and prove its merits.

GUARANTY STATE BANK

Spearman, Texas

At the Churches

BAPTIST

Sunday school at 10 a. m.
Preachning at 11 a. m.
B. Y. P. U. at 7.15 p. m.
Preaching at 8.15 p. m.
Bro. C. O. Collard and the scribe drove to Grand Plains Sunday for services. This was our first trip to this fine community but the good people were so kind to us that we want to go back again. We found good Sunday schools at Grand Plains and McBryde. We preached at Grand Plains at the morning hour to a fine crowd. At McBryde we preached at 3.00 p. m. to a very appreciative audience. They asked us to come back again. Preached at Grand Plains again at night.
Will be glad to meet you at the services next Sunday. Don't forget Sunday school and the young people's meeting.
We will preach at Holt next Sunday at 3.00 p. m. Will be glad for every one to come.
W. E. HAND, Pastor.

B. Y. P. U. PROGRAM

May 18, 1924.

Song
Prayer
Business and records
Song
Subject: "What is done for us in preservation."
Introduction Ohas. Collard
"Preservation vs. Apostasy"
Clark
"In the light of illustration"
Myrtle Balentine
Miss Deakin
"Safe because God keeps."
Arnold Wilbanks
"Part of God's Original Plan."
Miss Wiggins
"Expounded by Paul in Romans"
Baby Little
"Two other truths."
Mr. W. W. Coe.
Conclusion.

MISSIONARY SOCIETY

The Missionary Society met with Mrs. Wheeler on Wednesday afternoon, with a good attendance. Jonah was our bible lesson for the afternoon. Our next lesson will be from the "Voice" Arrangements were completed for our chicken dinner to be held Saturday, May 17, at the Hays building. Don't forget this dinner. Come; enjoy a good old-fashioned chicken dinner and all the good things that go with it.

Amarillo Flour sold by the Spearman Equity Exchange.

A nice two-year-old Jersey heifer, with young calf, for sale cheap. See R. E. Burran.

Mrs. W. S. Bradford and son Glenn Ray, are visiting with the A. S. Bradford family at Tulsa, Okla.

Ray Roach of Seagraves, Texas, arrived in Spearman last week and has accepted employment with the Panhandle Lumber Company.

A brown sweater, with red stripe, was found and left at the Reporter office. Owner will please call and take the same away, or the editor will make use of it next winter.

The Bank of Shattuck did not open for business Thursday morning, according to word reaching Spearman Thursday afternoon. Bad loans is supposed to be the cause of the bank's failure.



EVEN IMMUNE SECTIONS have come in the path of destructive windstorms

It's safer to get a windstorm insurance policy before the blow we write it

A. F. BARKLEY
Spearman, Texas

GUN CLUB SCORE

The score made by the Spearman Gun Club is a little better each week. The following score was made at the regular shoot held on Sunday afternoon, May 11:

	sa	h
Warren	25	14
Phillips	25	19
Clark	25	21
Good	25	22
McCarter	25	20
Kelly	25	17
James	25	18
Campfield	25	14

SOME SNAKE

A young gentleman who is engaged in breaking sod for F. M. Bean, at the latter's farm east of town, reports having ran a disc over a snake the first of the week, cutting the snake into twenty pieces and each piece was over a foot long. It was a rattler.

Fresh fruits and vegetables at Burran Brothers.

Regular meals, family style; also short orders. Any kind, any time at the D. C. D. Cafe.

Mrs. R. T. Westerfield left last week for Belton, Texas, where she will visit indefinitely with her mother and friends in her old home town.

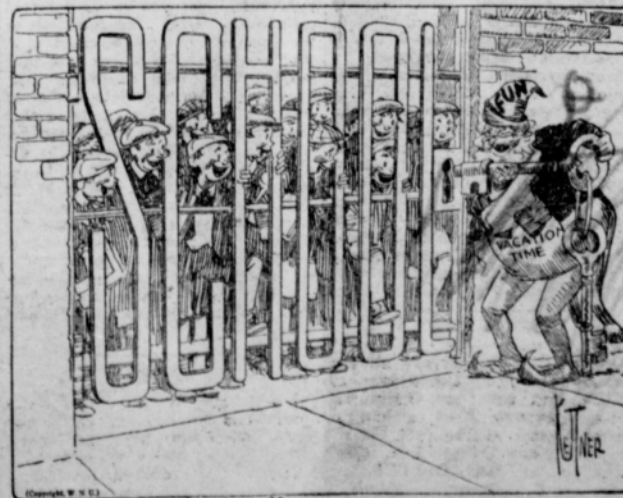
Tax Assessor R. W. Thompson was in the city Thursday and reports the arrival at his home on Wednesday, May 15, of a fine 12-pound boy. The mother and babe are doing nicely.

KEEP AMERICA FOR AMERICANS.

Palo Duro Klan No. 244 will give to public the principles of real Americanism, at Spearman, Saturday, June 7, 1924. Demonstration of big Klan parade. Feed for all Klansmen—Music by Guyton Municipal Band. Lectures to be given at High School Auditorium. Everybody come.

KILGRAPP.

Ready, Boys



PLENTY OF MONEY

To loan on Farms and Ranches in any county north of the Canadian river. Big values, low rate of interest and good settlement options. Also buy and extend vendors lien notes.

THE BEST

That money will buy in Farms and ranches and on terms never offered before in this section of the country. Business and residence lots and acreage. We have just what you want.

J. R. COLLARD

REAL ESTATE, LOANS, INSURANCE.

Write for Information.

SPEARMAN, TEXAS

Fashion's Fondest Wishes for Spring
Delightfully Expressed in These

New Dresses Spring Wraps

So often you will hear the remark: "My, isn't that a smart frock." And the reply: "It is from P. M. Maize & Company."

Dress distinction can only be attained by making your selections at a store which features distinctive modes, and P. M. Maize & Company is such a store.

There are new Spring Frocks and Wraps now awaiting you at this store—a dress which suits your fancy—measures up to your ideal of smartness and beauty.

P. M. MAIZE & COMPANY
EVERYTHING TO EAT and WEAR **SPEARMAN**

THE SPEARMAN REPORTER
BY
ORANKELLY.

\$1.50 PER YEAR IN ADVANCE

Entered as second class matter November 21, 1919, at the post office at Spearman, Texas, under the act of March 9, 1879.

ADVERTISING RATES: — Flat rate for plates, 25 cents per inch. If composition is required, 5 cents per inch additional

Reading notices, 10 cents per line. Recognized agent's commission, 15 per cent; cash discount, 2 per cent.

THE ORDERLY COUNTRY TOWN

The general appearance of a community is a factor in its business progress. If a town is kept in a disorderly manner, many people would be less likely to come there for trade. They would feel that the appearance of inefficiency might extend to the business men of the community, and make the place less desirable as a trading center.

But the people who travel around the country in automobiles so freely now, looking for good chances to buy their supplies, are prepossessed in favor of a neat and clean looking town. They would be inclined to say that such a place looks like a live one, where people work in a systematic and efficient way, and they would be likely to feel that it would be a good trading center.

The same thought applies to the growth of a town as a residence place. A neat and pretty town attracts, a disorderly one repels people. Folks who contemplate settling in some place to carry on business are no doubt somewhat governed by such considerations. They would dislike to locate in a slack looking town, as it would seem to lack prosperity and ambition. One that was full of the spirit of improvement would seem to be one in which any kind of business would grow more variable. So when people work to keep their home and business places looking well, they create an influence that has a far reaching effect for business gains.

Boost for Spearman.

NEW MILLINERY

That is receiving greatest prominence for the new season, at greatly reduced prices.
P. M. MAIZE & CO.

POISON FOR PRAIRIE DOGS

The formula given below is one recommended by the U. S. Department of Agriculture; Farmers Bulletin No. 932.

Mix thoroughly one ounce powdered Strychnine (alkaloid) and one ounce common baking soda (Sodium Bicarbonate). Dissolve one heaping teaspoonful of dry laundry starch in a little cold water and add it to 3/4 pint of boiling water. Boil and stir until thin clear paste is formed, slowly sift the mixture of strychnine and soda into the starch paste, stirring constantly to form a smooth creamy mass. Add 1/4 pint of heavy corn syrup and one table spoon full of glycerine, and stir. Add one tenth ounce of saccharin, and again stir thoroughly. Pour this mixture while hot over 13 quarts of clean oats and mix until all the grain is coated.

If alkaloid strychnine is not available, the sulfate may be used either powder or in crystals, but it is necessary to vary the formula. Dissolve the strychnine in boiling water before adding the cold starch. After the poison starch paste is clear, stir in the soda very slowly. Then add syrup, glycerine, and saccharin as in the above directions, and mix with the grain. Mix with a hoe or spade.

Each quart of prepared grain is sufficient to treat about fifty burrows for prairie dogs. Scatter the grain on clean hard ground near the mounds, never on loose soil or in holes. With reasonable care other live stock on the range will not be endangered.

COUNTY AGENT.

The enthusiastic Booster Clubs of many places are crowing like Rooster Clubs.

The makers of shoe leather will not be likely to oppose the movement to encourage walking.

Some of the people who talk the most claim there is no free speech in this country.

COUNTY AGENT TALKS TO FARMERS AT KIMBALL.

The duties of a county agent were explained, and questions were asked and discussed. "Why do the farmers of this Community not make more money?" If you are satisfied with your present income, the County Agent can not help you. If you are not satisfied with your present income, the County Agent invites you to come to see him; bring your farm problems with you.

The County Agent works under the Extension Service of The Agricultural and Mechanical College of Texas. This College is the largest agricultural college in the Southwest. The Cooperative Extension department of this school is supervised by the U. S. department of Agriculture, which was organized July 1, 1862. The purpose of the Department of Agriculture is two fold; first—Scientific development of every phase of Agriculture; Second, Conveying this knowledge to the people by Experiment station Bulletins, Publicity, and Extension Service.

New Ideas are being developed in Agriculture, Medicine, Electrical and Mechanical Engineering, and other lines. The U. S. Department of Agriculture may have some idea that will help you. You are cordially invited to come to see Mr. Sam W. Martin County Agent, Hansford county.

MORE COTTON ON FEWER ACRES

Win the \$100,000 prize offered by the Chamber of Commerce of Spearman, for the most cotton grown on five acres in Spearman trade territory in 1924.

Win the \$1,000.00 prize offered by the Dallas Morning News and Semi-Weekly Farm News for the most cotton grown on five acres in Texas in 1924.

Campaign to encourage the intensive production of cotton by increasing the acre yields and decreasing the acres planted to cotton. This contest is to encourage Diversified Farming, and is to result in the development of a "Balanced System of Farming for Texas and this country."

This system of farming alone should make this contest have the backing of every thinking man. Every farmer has all to gain by intensive cultivation, and nothing to lose when he enters this contest. Storing soil fertility and lack of insect pests gives Spearman farmers a chance with any other county in Texas to win \$1,100.00. Lateness of the cotton crop in the cotton belt and unfavorable weather also give Hansford county a fine chance to win in the State contest.

Cotton advances 75 to 100 points May 10th because of cold wave and slow growth of cotton. All markets advanced on bad crop reports. The spot cotton market is holding well above thirty cents.

Cut the cotton acreage, and grow a large yield by intensive cultivation, and have a "Balanced System of Farming." Don't wait—Enter NOW—The more cotton on Fewer Acres contest.

Entries to the cotton contest will close June the first, 1924. Those wishing to enter this contest should notify the county agent at once as he has authority to enter you in the Dallas News contest.

Preparations are being made by the A. & M. College of Texas for the Summer Course of the Eight Weeks Gas Engine, Automobile and Tractor Course, on June 18 and 25. These two dates are the ones we have set aside for the opening of this course and boys as young as 16 may enter then. Thousands of dollars are being saved annually as a result of the information by the students of this course. So necessary have the automobile and tractor become to the average farmer that the time has come when he must have a practical working knowledge of these machines, in order to successfully carry on his work. Then, too, these machines are performing great work in enabling the American youth to see the future of agriculture. The Eight Weeks Course is outlined to give intensive training relative to the gas engine, automobile and tractor. Owners or prospective owners will make a profitable investment by attending this course. A special bulletin, which may be had upon request, is being sent out by the Agricultural Engineering Department, A. & M. College Station, Texas.

THE COUNTRY SCHOOL

An expensive school building is not the most vital thing in the equipment for rural education. The main thing is to have a cheerful and healthful building. The building may be odd, but if it is kept sanitary and well painted and cared for, it may serve the purpose very well.

Some shrubs and flowers and trees around a school, and care to keep the grass neatly mowed, would make school life seem more attractive than a costly building that was not beautified. A building that has become dilapidated gives children wrong ideas. In such a school they are more likely to be careless in work and personal appearance. A neat and well kept building teaches a silent lesson in thoroughness every hour of the school session.

STRAY COW

One red muley milk cow strayed from my home in Spearman; branded PK on left side, and O with bar running through it on right side. Liberal reward will be paid for return of this cow to Spearman.

JOE SOLLERS,
Spearman, Texas.

FARMERS

You are most cordially invited to attend a general get-together meeting to be held at

High School Auditorium
SPEARMAN

.. on ..
Saturday, May 17

at 8.00 p. m.

THE purpose of this meeting is to discuss the cotton-growing industry in this section, particularly, and to talk over other matters pertaining to the development of the Spearman country.

FARMERS and THEIR FAMILIES are invited to be the guests of the Chamber of Commerce of Spearman on the above date. It is not a money-raising event. The object is to get together and discuss matters for the benefit of all.

GOOD SPEAKERS

Music and Refreshments

LAND WILL BE SOLD IN SEPTEMBER

The Travis county district court last Saturday accepted the reports of the locating board that selected the lands out of the Capitol Syndicate holdings that revert to the state of Texas and Mr. Dod, a member of the locating board was given the contract to survey and classify the lands for the state.

J. T. Robinson, land commissioner announced Monday that the 57,871 acres of land recovered by the state from the Capitol Syndicate will be surveyed into tracts of 200 acres each and that he will go to the land within the next ten days to make inspection of it preparatory to description and classification for public sale.

While a person is now privileged to acquire eight sections of public land, or 5,120 acres Mr. Robinson is attempting to discourage large purchases, so as to place as many home owners on the land as possible. He says 200 acres is the good average sized farm in that section and that by selling the tracts separately it will tend to prevent monopoly.

Most of the 25,850 acres in Dallam county is average sandy agricultural and probably two-thirds of the 32021 acres in Hartley is tillable. The appraisers averaged the whole 3,000,000 acre tract at \$10 per acre. Mr. Robinson will put a minimum value on the land before offering it for sale and it is expected to be in excess of \$10 per acre.

Purchasers of the land will have forty years to pay for it, with annual interest at 5 per cent on the deferred obligations. Only one-fourth of the purchase price will be required at the time of the purchase and then one-fourth each succeeding year. Surveys will be made with a view of shaping the 200 acre tracts so that farming land will be well apportioned. Persons endeavoring to get larger tracts in solid blocks up to the eight-section limit will have to be the highest bidder on each separate 200 acres. Bids on each 200 acres are separate and stand alone, without relation to any other bids or tracts. Mr. Robinson says he is going to use his best efforts to put the land on the market September 1.—Dalhart Texan.

NOTICE

I will buy butcher cattle and hides, and will pay the highest price. See me before you sell.

KARL RANEY,
Spearman, Texas

NO PLACE FOR QUITTERS

Looking through the "Help Wanted" advertisements in a farm journal the other day, it was interesting to see how many of these farmers included in their notice the statement, "No quitters wanted." Evidently they had had much experience with this class of fellows.

There is an increase number of people who entertain principles against hard work. If asked to put in a real day's work of muscular effort, they get through. The fact that they get tired demonstrates conclusively to their minds that they are unfitted for farm labor.

Yet if an able bodied man gets tired at such work, it may simply be that he needs training. Probably if he will stick to it a few weeks, he will find that his muscular powers will improve, and the experience will help him develop a stronger body.

The time has gone by when a man could expect to get credit merely by jingling the keys in his pocket.

This country has all the swivel chairs it needs, but it could make good use of more milking stools.

WILLIAM F. NIX

ATTORNEY-AT-LAW
ROOM 47 SMITH BUILDING
TELEPHONE 2974
AMARILLO, TEXAS

J. E. GOWER, M. D.

Physician and Surgeon

Phone 98 Spearman

C. O. Collard Produce Co.

Successor to Shearer Produce Co.

Poultry, Eggs, Cream
and Hides.

We pay highest market price for country produce.

WE HANDLE PURINA CHICKEN FEED AND OYSTER SHELL.

Spearman, Texas

Boost for Spearman.

SPRING and SUMMER LINES

Are complete at our store. We are showing the most complete lines in all departments we have ever had.

MEN'S OXFORDS, HATS, CAPS, SHIRTS, TIES

in the very latest styles and the price will delight you.

LADIES' PUMPS, STRAPS, SATIN, and SUEDES

This is the season that every lady likes to be well shod. Come and see the new arrivals.

HILL BROTHERS COFFEE—Try it Once and You'll Use no other.

W. L. RUSSELL

Phone 78 DRY GOODS - GROCERIES Spearman

MUNICIPAL Water, Light and Ice Plant

Phone the office for rates or any other information you desire. The city's workmen are at your service.

Installation on Short Notice.

Use your city's public utilities. The cost is a mere trifle. Help Spearman grow. Be a booster. Why be without this excellent service when it can be had at small cost.

ICE! At the Plant or Delivered

CALL ONE - OH - FOUR

F. C. SUMRALL

City Manager

BIG KU KLUX KLAN DEMONSTRATION

By Palo Duro Klan No. 244

.. at ..

Spearman, Texas

Saturday, June 7

Big feed for all Klansmen and Klanswomen
Music by Big Brass Band
Lectures by Dallas spokesmen
and various other events, all open to the public. Klansmen everywhere are urged to attend.

at

High School Auditorium

A DAY FOR

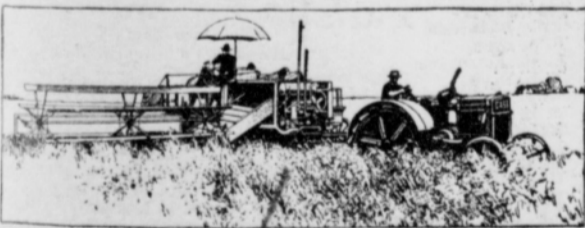
K L A N D O M

"KEEP AMERICA FOR AMERICANS"

The Largest Furniture Store in the Panhandle

CASH CREDIT
Green Bros Co
INSTALLMENT HOUSE FURNISHERS
Amarillo, Texas

Let us furnish your home, cash or credit. Our easy terms are open to all Panhandle people.
We Pay the Freight to all Panhandle Points



From Field to Market in one operation, with an Improved CASE Harvester-Thresher.

R. L. McCLELLAN,
SPEARMAN TEXAS Agent.

FOR SALE

One Fordson engine, been run only about ten days; all up in good shape, and one team of mules, four-years-old this spring; a good team. Will sell engine and team at a bargain. See J. C. LEE. 20t2p.

STRAY HOGS

A red barrow, weighing about 125 pounds, is at my farm one mile north of Equity elevator. Owner will please call, pay charges and take this hog away. W. A. SUTTON, Spearman, Texas. 20t2

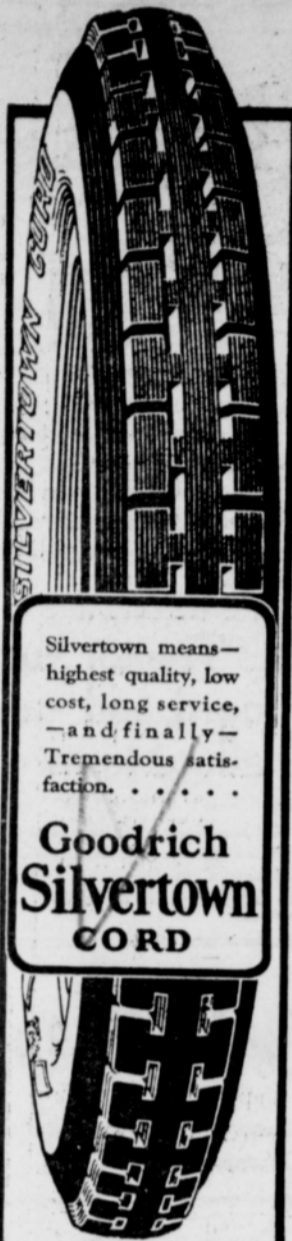
We still have plenty Smico Black-smith coal. You will need it soon, so come and get your supply now, so you will be ready for the spring work. WHITE HOUSE LUMBER COMPANY. 14tf.

NOTICE TO CITIZENS OF SPEARMAN

You want the very best service possible from your water, light and ice plant. You can help wonderfully in securing this service by paying your water and light bill by the 10th of each month. By paying the bill promptly, you avoid the expense of having your service cut off and on again. Remember this, and pay the bill promptly. F. C. SUMRALL, City Manager. 21t2

FOR OVER 40 YEARS

HALL'S CATARRH MEDICINE has been used successfully in the treatment of Catarrh. HALL'S CATARRH MEDICINE consists of an Ointment which quickly Relieves by local application, and the Internal Medicine, a Tonic, which acts through the Blood on the Mucous Surfaces, thus reducing the inflammation. Sold by all druggists. F. J. Cheney & Co., Toledo, Ohio.



Silvertown means—
highest quality, low
cost, long service,
—and finally—
Tremendous satis-
faction.

**Goodrich
Silvertown
CORD**

**D. C. D.
Filling Station**

"BEST IN THE LONG RUN"

POLITICAL ANNOUNCEMENTS

The Reporter is authorized to announce the following candidates, subject to the action of the Democratic Primary election to be held on July 26, 1924:

For State Senator, 31st District,
J. W. REID
of Canyon

HANSFORD COUNTY
For County Judge
A. E. TOWNSEND
For Sheriff and Tax Collector,
GEORGE T. PIERCE
ALVINO RICHARDSON
H. L. WILBANKS

For County and District Clerk,
S. F. POWERS
MES. PEARL S. HAYS
JESSE E. WOMBLE
M. E. WALKER

For Tax Assessor,
J. E. SLAVIN
R. W. THOMPSON
VERNON COMPTON
MRS. L. S. CATOR

For County Treasurer
MARY SPARKS
MRS. J. H. BUCHANAN
For Commissioner Precinct No. 3.
FRED McREE
PAUL HIGGS

HUTCHINSON COUNTY

(Subject to the will of the voters of Hutchinson county at the November, 1924, election.)

For County Judge
W. R. GOODWIN
For County and District Clerk
M. E. McCORMICK
MISS LILLIE WHITTENBURG
For Sheriff and Tax Collector,
JOE OWNBEY
For Tax Assessor
S. B. LASATER

Old Colored Mammy—She wants a ticket for Florence.
Ticket agent (after 10 minutes of weary thumbing over railroad guides—Where is Florence?
Old Colored Mammy—Settin' over dar on de bench.—Princeton Tiger.
A blotter is the thing you look for while your ink is drying.

A charming young singer named Hannah,
Got caught in a flood in Montana;
As she floated away,
Her sister, they say,
Accompanied her on the piano.

ANOTHER CARLOAD

of farm implements was unloaded at our store this week.

We are now ready to take care of your wants in the farm implement line, no matter what you need.

ONE and TWO-ROW LISTERS, ONE and TWO-ROW CULTIVATORS TWO-ROW COTTON PLANTERS anything you need in implements. Come and talk it over.

LADIES, call and see the "EASY" Electric Washing Machine. It makes wash day a holiday.

Womble Hardware Company
Fone Four-Four Spearman

Your Car

Needs proper attention, and GOOD GAS and OIL—both may be had at the

::: MUNROE GARAGE :::

Near the City Power Plant SPEARMAN
Gas, Oils, Greases

Auto Repair Work C. B. LEMOND

We are 90 per cent alike, all we people, and 10 per cent different. The trouble is that we forget the 90 per cent and remember the 10 per cent when we criticize others.—Sir Charles Higham.

Mebane and Truitt Cotton Seed, for sale. SPEARMAN EQUITY EXCHANGE 1stf.

REGISTERED HEREFORD BULLS

Good registered Hereford bulls, yearlings, weigh from 700 to 1,000 pounds, well wintered and ready for service. Priced right. 1844p. WALTER WILMETH.

Tires and Tubes

Cupples Cord and Corduroy Cord tires. The Corduroy Cords have side wall protection to prevent rut cutting. Get prices on these tires before you BUY.

Headquarters for Mobile Oils,
EQUITY FILLING STATION
At Equity Grain Office, Spearman

WHEN HUNGRY

Don't fail to stop at the D. C. D. Cafe, where a good meal or short order is waiting for you.

We will continue to serve the best

Short Orders
and
Regular Meals

The D. C. D. CAFE
GEO. N. REED, Proprietor

Sideache Backache

"I have been taking Cardui," says Mrs. Lillie Bolton, of Lake Providence, La. "I got down in bad health and lost in weight until I only weighed 120 pounds. I had bad pains in my sides and back and my legs hurt me until I couldn't walk. I stayed in bed half the time. I tried all kinds of medicine, but it did me no good. Finally I tried

CARDUI

The Woman's Tonic

"It seems like it did me good from the very first. After I had taken half a bottle I noticed an improvement. I continued its use and I got better and better. The pains in my legs and sides disappeared and I began to gain in weight until now I weigh 155 pounds and feel better than I ever did in my life. I am perfectly well and strong. I have given it to my girls, too."

Cardui has relieved many kinds of pains and distressing symptoms caused by female trouble. It should help you, too, in the same way. Why not give it a fair trial?

Mizar Chevrolet Co.

We have on hand a number of first class Casings, which we are selling at reduced prices. They are all absolutely high class tires of the GOODYEAR and KELLY SPRINGFIELD make. Look them over before you buy a tire. We are always glad to show you what we have. Prompt service and courteous treatment is our motto.

W. E. MIZAR,

Elevator Row

SPEARMAN

BUSINESS IS GOOD

Business has been good with the Spearman Equity Exchange during the past year, as will be seen by the following figures. During the past fiscal year, closing May 1, 1924, we handled in car lots: 304 cars of wheat, 56 cars of barley, 21 cars of oats, 23 cars of cotton oil cake, 25 cars of coal, 6 cars of Flour and Feed, 3 cars of Potatoes, 4 cars of Implements, 4 cars of salt, 1 car of twine 1 car of oil, 1 car of sugar, 1 car of cotton seed. This does not include small, local shipments in all lines. Business is good at the Equity and we expect the coming year to be the largest in our history. Come to see us.

The Spearman Equity Exchange.

Car Load of Bois'darc Posts Enroute.

CITATION IN PROBATE

The State of Texas,
To the Sheriff or any constable of
Hansford county, Greeting:
You are hereby commanded to
cause to be published for twenty
days, exclusive of the day of publi-
cation and of the return day, in
some newspaper which has been regu-
larly and continuously published in
your county for twelve months, the
following notice, to-wit:
To All Persons Interested in the
Estate of Lyman Spencer, deceas-
ed:
Whereas, George Spencer, the ex-
ecutor of the estate of Lyman Spencer
deceased, has filed in the county
court of Hansford county, Texas, his
final report and application for dis-
charge as executor of the said estate,
which will be heard at the regular
June, 1924, term of the said court,
commencing on the second Monday
in June, 1924, being the 9th day of
said month, at the court house of
said county in the town of Hansford,
Texas, at which time all persons in-
terested in said estate may appear
and contest said application if they
desire to do so.
Herein fail not, but have you then
and there before the said court this
writ, with your return thereon, show-
ing how you have executed the same.
Given under my hand and seal of
office, this 13 day of May, 1924.
(Seal) KEESEE C. RICHARDSON,
Clerk county court, Hansford coun-
ty, Texas. 2213.

PLEMONS NEWS

J. E. Pritchard has bought a new
Ford.
Mr. and Mrs. Clayton Mathis were
in town Sunday.
Commissioners court is in session
at Plemons this week.
Mr. and Mrs. W. P. Hedgecoke are
in Amarillo on business.
Mr. and Mrs. Lody McCormick
have moved to Texoma.
Miss Lottie Haralson spent Sun-
day with Billie Christian.
Mr. and Mrs. Jim Whittenburg
left Monday for Amarillo.
Clarence Bates was in town Sun-
day from across the river.
Mrs. Guy Langley arrived in
Plemons Thursday morning.
T. E. Haralson and son R. J. left
for Canadian Saturday evening.
Mr. and Mrs. Hugh Terry and
family were in Plemons Sunday.
Geo. Whittenburg left Monday for
Amarillo to be gone about a week.
Clara Mae, Neil, H. W. and
James Pitts visited in Plemons Sun-
day.
Wade Terry and son Earl opened
up a cold drink stand Saturday
morning.
John Pitts visited home folks at
the Riverside farm over Saturday
and Sunday.
Raymond Bates found Bernice's
lost horse up at Sid Hedgecoke's
camp on the Plains.
Oscar Churchill has the job of
driving Sid Hedgecoke's truck be-
tween Amarillo and Plemons.
Mr. and Mrs. D. A. Potter spent
the week end with Mr. and Mrs.
Morton Kirk south of the river.
Mills Foreman, Jim and Roy Whit-
tenburg arrived Saturday night with
a herd of cattle from the plains.
Fern Jones and Mattie Pearl
Whittenburg ate Sunday dinner and

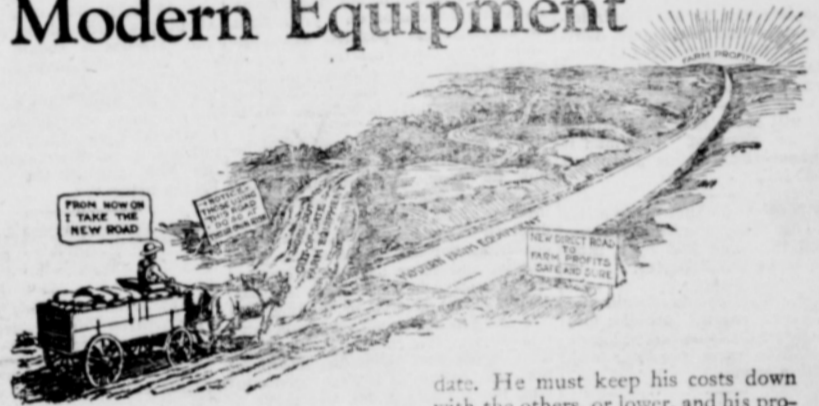
spent Sunday afternoon with Mary
Alice Weaver.

Jno. J. Roach was bitten by a
water moggasin Monday, but no
very serious effects resulted from it.
Miss Myrtle and Irene Sessions
came in from the Dial No. 1 and
spent Sunday at the Christian home.
Miss Lonie Beth Weaver left Sun-
day afternoon with Miss Bates to
spend a week at the Bates home up
on the plains.
Mr. Walter Christian and Miss
Myrtle Sessions were married at the
home of W. R. Goodwin Sunday
evening.
Our Sunday school is progressing
nicely. There seems to be a great
deal of interest taken in the lessons
and the attendance is good.
Last Wednesday class number 4,
of the Plemons Sunday school, with
their teacher, Mrs. S. M. Hedgecoke,
went on a picnic over at the Edge
place.
Mr. and Mrs. S. M. Hedgecoke and
Mrs. D. A. Potter spent four days
shopping in Amarillo last week.
Mrs. Potter consulted an oculist
while there.
Mr. and Mrs. Lasater are in
Amarillo this week. Mrs. Lasater
has been suffering quite a while with
chronic tonsillitis, and will have her
throat treated by a specialist.
Misses Bernice Bates and Georgia
Whittenburg spent Saturday night
with Lonie Beth Weaver. They cook-
ed supper over a camp-fire in the
yard and as usual a sand storm
drove them into shelter.
Sunday, May 11, was Mother's
Day. Appropriate services were held
at the Sunday school hour. Several
touching and tender pieces were
read, and beautiful flowers were
presented to the mothers. The spirit of
love which pervaded the atmosphere
was beautiful to see.

KIMBALL ITEMS

A little rain would be welcome at
present.
Bernice Raney has been out visit-
ing with her father on the farm.
The county agent spoke at the
Kimball school house Friday even-
ing.
Dura, Murrel and Alva Hankla
visited relatives in this neighborhood
this week.
Mrs. D. A. Tomlinson has been
quite sick with a cold but is better
at this writing.
The young people of this commu-
nity attended the dance at the Rig-
gins home Saturday night.
Mrs. S. P. Miller, Mrs. W. R. Han-
kla and Mrs. Lee Blake called at the
D. A. Tomlinson home Thursday.
The sale of the Klink children's
property, held by O. C. Raney, ad-
ministrator of the estate, was well
attended.
Mr. and Mrs. Roma Tomlinson and
Mr. and Mrs. Orville Tomlinson at-
tended the debate at McBride Satur-
day night.
Joe Stafford and daughter An-
dine, of Cordell, Oklahoma, were vis-
iting relatives and old friends in this
neighborhood last week.
Mr. and Mrs. A. H. Williams and
children, Glenna and Wyvel Warren,
of Gray, Oklahoma, spent the week-
end with relatives in this commu-
nity.
Quite a number of the home folks
gathered at the D. A. Tomlinson
home last Sunday. All the children
except Wayne, and all the grand-
children except two were present.
Spearman's crack base ball team
came out and played a game with
the Kimball boys last Sunday after-
noon. A nice, clean game was
played. Although the Kimball boys
were badly beaten, they enjoyed
getting to practice with another
team.

Every Farm Needs Some Modern Equipment



THE continued use of worn-out
and out-of-date equipment is
costing the farmers of the United
States millions of dollars annually.
Carefully prepared statistics show that
many farmers are paying, over and over
again, for improved equipment they do
not own. The United States Depart-
ment of Agriculture says that over-
repaired, inefficient machines and im-
plements are losing their owners more
than the cost of new tools, through
scant yield and loss of labor and time
in preparing seed beds, planting, cul-
tivating, and harvesting the crops.

Mark what efficiency and the scrap-
ping of old methods have done in the
industrial world! American industry
has advanced much faster than agricul-
ture in the past twenty years. Our
manufacturers compete successfully in
world markets because they have kept
production expenses down by an amaz-
ing development of labor-saving fac-
tory machinery. Europe, even with its
low-wage scale, cannot compete with us
because American high-priced labor,
working with modern factory equip-
ment, distributes the manufacturing cost
over large quantity production.

The wise American manufacturer
does not hesitate to replace equipment
the moment such equipment is out of

date. He must keep his costs down
with the others, or lower, and his pro-
duction up with the others, or higher.
If he did not modernize his plant, his
competitors would undersell him and
force him into bankruptcy.

The farmer should think in exactly
such terms regarding his food-factory
and his equipment. He should check
over his farming investment and drop
every old method and every old
machine as soon as he has evidence
that he could save or make more money
with a newer method or an improved
machine. He should learn, as every
successful manufacturer has learned,
that the value of a piece of equipment
should never be measured by its price but
by what it will do for him—by what it
will earn and save and make. If he has
reason to believe that new equipment
costing \$100 would save or make him
an extra \$100 or more in a season or
two, he cannot afford to do without
that equipment.

Help the Farms to Earn More

Greater profit on the farms can be
made possible through careful plan-
ning and management, diversification,
seed testing, fertilization, saving of
labor and time, and increasing yield.
Farm equipment is the big factor con-
cerned in each of these details. It made
agriculture great; it will make agricul-
ture still greater.

There is probably not a farm in this community that could
not be improved from a money-making standpoint by
the purchase of some of the following modern equipment.

Advance Rumely line of
Oil Pull Tractors
Ideal all steel Separators
Combine Harvesters
Worm drive 1 1/2-2 ton trucks
Oliver plows and discs.

.. V. H. ANDERSON ..

NEW MILLINERY

Always Something New.
Ready-to-Wear
Novelties

MRS. R. K. STANHOPE

First Door West of
JOHN L. HAYS Bldg.

Spearman

LOANS LOANS

I represent good companies with plenty of money. Can
give the lowest interest rates and best settlement op-
tions. Also represent The First Texas Joint Stock
Land Bank of Houston.

C. D. WORKS

Phone No. 37

Spearman, Texas

JAMISON & SAULSBURY AUCTIONEERS

We have had twelve years of successful experience with Land, Live
Stock and Farm Sales.

If you contemplate having a sale, write or phone us for particu-
lars. We will give you the very best of service, and at a reasonable price.
Write or phone us for dates at our expense, or make dates at the
office of the Spearman Reporter.

Offices over
First National Bank

PAMPA, TEXAS

SEVERE STOMACH TROUBLE GONE SAYS MRS. RODGERS

Dallas Lady Suffered For Long Time Following Spell of Flu But Tanlac Restored Her Health.

Mrs. J. G. Rodgers, 1601 Royal St., Dallas, Texas, operator of one of the city's largest and most popular boarding houses, is another from whom Tanlac elicits an enthusiastic tribute.

"In 1918," Mrs. Rodgers said recently, "influenza left me in such a weak, exhausted condition that I was almost utterly broken down. My appetite left me, and I could scarcely eat a thing my stomach was so dreadfully disordered. Why, at times, I suffered so badly that I had

to be wrapped in ice and I thought my heart was affected.

"Then we all, here at the boarding house, began taking Tanlac, and the results were simply splendid. I was soon eating and digesting everything and feeling more like myself, and when I finished my third bottle I had been built up so wonderfully that I could attend to my boarding house with the greatest ease. Tanlac deserves all praise."

Tanlac is for sale by all good druggists. Accept no substitute. Over forty million bottles sold.

Tanlac Vegetable Pills for constipation, made and recommended by the manufacturers of Tanlac.

SUNNY SQUIBLET

The kids can hear some thousands of miles over their radio instruments, but many of them are unable to hear Mother when she calls to get up in the morning.

Claimed that the girls of Spearman are not exercising their Leap Year privileges, but they probably feel unable to support a husband.

It was formerly customary to ask a lock of hair from people you loved very much, but now the people demand the scalp of many of the politicians.

It being asked how railroad crossing accidents can be prevented, such inquirers are respectfully informed that they can be avoided by not crossing the tracks ahead of a train.

There is some dispute as to whether the road signs should read "Go slow" or "Go slowly." But the speeders are usually going too fast to notice errors in grammar.

If people desire to have their letters promptly and accurately delivered, it might be a good idea to write them legibly enough so the postal clerks can read them.

There will be no indignant protest among the men of Spearman if spring housecleaning is postponed until next fall.

Many people who have their attics littered up with unused furniture, could sell the same just by a little For Sale ad in The Reporter.

The American people should not spend all their energy probing into the government. They should save a little of it to probe into their back yards with a spade.

Many people claim that some jinx is following them and spoiling their luck. The name of that jinx in many cases is Mr. L. A. Ziness.

The slow pay folks can't see why all this perfectly good paper stock should be wasted in sending them monthly bills.

Among the "Household Hints" now being offered, are the suggestions offered to the Old Man that the back yard needs cleaning up.

Textile materials must be awful short in this country, from the number of women folks who can't seem to find any material for sleeves.

Some people can show calloused hands and furrowed brows as the result of their labors, while others can merely show worn trouser seats.

INTEREST GROWING IN COMING EVENT

Visitors From all Sections of the Panhandle Will be at the Adobe Walls Celebration June 27-28.

Local parties have received several letters of late from Mayor Reed of Pampa, who is one of the head boosters of the Adobe Walls Celebration, to be held on June 27-28. Mr. Reid says that everything is progressing nicely and that the present indications point to the largest attendance ever known at a celebration in these parts. J. W. Reid of Canyon, candidate for state senate and one of the best informed men in the panhandle, J. A. Hill, president of the W. T. S. T. C. at Canyon and other noted speakers will be there. Andrew Johnson, one of the survivors of the battle of Adobe Walls, writes from Dodge City, Kansas, that he will be at the celebration, and with him will be Brick Bond, H. B. Bell, Hank Lora, O. H. Simpson and Tom Smith, all old time plainsmen. Mr. Johnson promises to give some facts about the battle of Adobe Walls that have not been printed. This will be the greatest event of the season in this section of the country. The sports promise to excel anything that we have ever had before. Rodeo, baseball, dancing and other forms of wholesome amusement will be featured.

CLEAN-UP CAMPAIGN WILL BE LAUNCHED

Parent-Teachers Association Will Go Behind a Move to Make Spearman a Cleaner Town.

A meeting is called for Friday afternoon, May 16, (today) to be held at the high school auditorium in Spearman, for the purpose of launching a move to clean up Spearman and to keep it clean. This move is being sponsored by the Parent-Teachers Association, and is deserving of the support of every man, woman and child in the town. Tin cans should be removed from the back alleys; the alleys should be opened up; the unsightly wrecks about town should be hauled away and Spearman should be made to look clean and inviting. The Parent-Teachers Association is taking a step for which they should receive the highest commendation and the heartiest cooperation of the entire citizenship of Spearman. Remember the meeting at 4 o'clock this Friday afternoon.

WILL DEMONSTRATE WITH A TRACTOR

New McCormick-Deering 15-30 Tractor Will Be Put Through the Paces to See Just How Well It Will Work

The Andrews Hardware Company of this city state that on Monday, May 19, on the vacant land north of the Railway near the Spearman depot will take place a demonstration of the New McCormick-Deering 15-30 Tractor. This tractor will be attached to a six-disc plow, and given a thorough test, that the farmer may see just what he is buying when he invests in one of these splendid tractors. F. C. Quarrels, an International Harvester man, will have charge of the demonstration, and will be glad to answer all inquiries about a tractor of this kind. The demonstration will take place between three and four o'clock, and the Andrews Hardware Company invites everyone, especially those who are interested in tractors, to be present.

STOCK LAW EFFECTIVE ON TUESDAY, MAY 22

Many persons are making inquiry as to when the stock law goes into effect in commissioners precinct No. 1, Hansford county. For the information of the public in this matter, I will say: The law requires that a proclamation be issued by the county judge and posted at the door of the court house, declaring the result of the election, and after the expiration of thirty days from date and posting of such proclamation, it shall be unlawful for any stock named in said proclamation to run at large. This proclamation was issued on April 17, 1924, and posted at the court house on April 18th, 1924. Therefore, not counting the day on which it was posted, nor the day of expiration, the law will become effective on the 20th day of May, 1924.

A. E. TOWNSEND,
County Judge.

Purity and Merit bread—fresh every day—at the D. C. D. Cafe.
Dr. Powell, the eye, ear, nose and throat specialist, will be at Hale Drug store in Spearman on Wednesday afternoon and evening, May 28. Glasses fitted; tonsils and adenoids removed. I will be here every two weeks. 1412

Home Grown Plants

Sweet Potatoes—Sweet Pepper	
200, post paid	.90
100, post paid	.50
500, post paid	2.00
1,000, post paid	3.75
5,000, post paid	17.50
Earliana Tomatoes	
50, post paid	.25
100, post paid	.40
200, post paid	.75
500, post paid	1.75
1,000, post paid	3.00

CLAYCOMB SEED STORE,
Guymon, Oklahoma.



A Welcome Member of the Family

A MOTOR car is never more appreciated than in the springtime. Its convenience and enjoyment are shared by all the family—and by speeding up the day's work, it provides more time for recreation.

A Ford Touring Car provides every motor car essential at the lowest price for which a five passenger car has ever sold—a price only made possible by complete manufacture, in tremendous volume, in the largest and most economically operated plants in the automobile industry.

Efficiency of manufacture is accurately reflected in the quality and price of the Ford Touring Car.

FORD MOTOR COMPANY DETROIT, MICHIGAN
Runabout—\$265 Coupe—\$525 Tudor Sedan—\$590
Fordor Sedan—\$685 All prices f. o. b. Detroit

You can buy any model by making a small down-payment arranging easy terms for the balance. Or you can buy on our Weekly Purchase Plan. The Ford dealer in your neighborhood will gladly explain both plans in detail.

SEE THE NEAREST AUTHORIZED FORD DEALER

\$295

F. O. B. Detroit
Demountable Rims
and Starter \$85 Extra.



Boost for Spearman.
We want your business. D. C. D. Cafe. 221f.

Printer ribbons and Carbon paper for sale at the Reporter Office.
Plenty pipe and all kinds pipe fitting. Also all kinds building hardware at WHITE HOUSE LUMBER COMPANY. 9tf

Geo. Coleman and Leonard Records of the White House Lumber Company's general office, were in Spearman a couple of days this week, checking up the business of the yards at this place.

Money to loan on Spearman, Town Property. Money to loan on Farm Land. If interested write, WALTER W. KENNEDY, 2212 Guymon, Okla.

BALL GAMES

The Spearman ball team went to Kimball last Sunday afternoon and played a team of that community, the game resulting in a decided victory for Spearman. The team will go to Guymon Sunday afternoon for a game with that town.

NOTICE

To S. B. Hale, J. F. Andrews, Champlin Refining Company, Oran Kelly, and H. E. Hoover, Agent for the Patten Estate. You and each of you are hereby notified to appear before the Honorable Commissioner's Court of Hansford county, sitting as a board of Equalization, on Saturday, May 24, a. d. 1924, at 9 o'clock a. m., and show cause, if any, why the assessments as rendered by you to the Assessor of Hansford county should not be raised.
KEESE C. RICHARDSON,
Clerk County Court, and Ex-Officio Clerk of the Commissioners Court of Hansford county, Texas.

Our quality, service and prices are right. D. C. D. Cafe. 221f.

J. B. Dulin was in from his ranch thirteen miles northwest Thursday, looking after business matters.

Many voters are willing to get out and support the cause of good government if some one will give them a ride to the polls.

If some folks could be as wide awake in working hours as they are at 1 a. m. when out with the sports, it would promote their prosperity.

STRAY COWS

Two white-faced cows, unbranded, crop in left ear, with nick in middle, one is pale red and the other dark red. These cows have been at my place, 13 miles northwest of Spearman since last October. Owner will please call, pay charges and take them away. 2112 J. B. DULIN.

Our groceries are freshest; our prices are lowest. Burran Brothers, Spearman. 2114

Stop

with the

SPEARMAN MOTOR COMPANY

They handle Accessories
Tires and Tubes
Gas and Oils
Furnish skilled mechanics to do your repair work.
Give the best of service.

Spearman, Texas

Fairbanks-Morse Owners

Clean
Up
and
Paint
Up

A Fairbanks-Morse service man will be in Spearman between the 25th and 31st of May. We will appreciate each and every Fairbanks-Morse engine owner calling or sending in their name to our office in Spearman, that this man may call on you and inspect your engine.

Help the P. T. A.
Keep Spearman Clean.

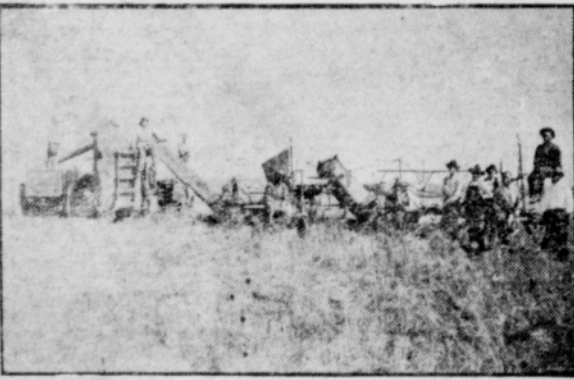
PANHANDLE LUMBER CO.

OUR AIM—COURTESY, QUALITY, SERVICE.

Phone 2
Spearman

Home Builders

R. T. WESTERFIELD,
Manager.



Hail Insurance. Write or Phone Us!

Equipped to Render
Genuine Service

REAL ESTATE, LOANS and INSURANCE

The best in Real Estate to sell or trade.
Money to loan on Farms, Ranches and Homesteads.
At home in the Insurance business.

McLAIN & McLAIN

Phone or Write
Phone 43

SPEARMAN