

# THE SPEARMAN REPORTER

SIXTEENTH YEAR

Spearman, Hansford County, Texas, Friday, November 7, 1924

NUMBER 47

## GOVERNOR NEFF IS COMING HERE

Will Speak in Spearman at 2 O'clock Friday, November 14—Will Speak at Holt School, Noon Same Day

Governor Neff is coming to the north plains. It seems that the Governor at some time or another made the promise that during his term of office he would make a speech in every county in the state, and that he is now fulfilling that promise. Mr. Neff will be in Amarillo on the night of Thursday, November 13. On Friday, the 14th he will go to Dumas and address the people of Moore county at 10 o'clock; at 12 o'clock of the same day he will be at the Holt school house and will address the people of Hutchinson county; and at 2:00 o'clock in the afternoon he will deliver an address at the high school auditorium in Spearman. From here he will go to Perryton, where he will address the people of Ochiltree county at 8:00 p. m. From Perryton Mr. Neff will come back through Spearman and on to Stratford and Dalhart.

Every man, woman and child in the country should hear Governor Neff. He is one of the really big men of the country. As he will be at Holt at the noon hour, it would be well for the good people of Hutchinson county to arrange a basket dinner, with plenty of fried chicken, etc. The Governor is a Baptist but is strong for chicken, anyway. At any rate, everybody is asked to assist the Reporter in spreading the news that the governor is coming to see us, and let's all get out and give him the glad hand.

## WILSON NO. 1 HITS THE PAY

The Wilson No. 1 Whittenberg well, south of section 73 block 46, Hutchinson county, drilled into the pay on Thursday of last week, and oil shot over the derrick.

This well represents an extension of the field several miles to the northwest, and is creating much excitement in the local oil circles.

The pay was received in the Wilson at 2,905 feet, 6-inch pipe is being run in the well, and preparations are under way to give the producer an immediate test.

Since the first oil sand was found in this well 44 feet above where it was discovered in any other well in the field and since oil from this first sand in flowing over the derrick oil men are confident that this will be the biggest producer in the field.

Wilson No. 1 is owned by S. B. Archer of Spearman, H. E. Hoover of Canadian, the Patten estate and J. W. Wilson.

The American Refining Co. has brought in their No. 2 Burnett well as a good producer, it is being estimated a flowing well of 500 barrels now. This well is located in the Southwest corner of Sec. 115, Block 5, of the Burnett ranch, near the Texas Company No. 4 and the American Refining Company's No. 1.

Mr. and Mrs. Geo. Butterbaugh were here from Texhoma a few hours Thursday afternoon. Mr. and Mrs. Butterbaugh recently sold the Texhoma Times to I. D. Divine, and are now engaged in the hotel business at Texhoma. They have many friends and acquaintances in Spearman and vicinity, who are always glad to see them.



**"TILL THE WAR DRUM THROBBED NO LONGER, AND THE BATTLE FLAGS WERE FURLED!"**

## FIRE SCARE AT GIN

The entire town was thrown into wild excitement Thursday at noon when the news spread that the gin was on fire. A small blaze was seen in one of the gin stands, but it was extinguished before any damage was done. The gin has been a great attraction to Spearman folks this week, many of whom witnessed for the first time cotton being ginned and baled.

## GOING GOOD

The foundations for the Tackitt and Womble brick buildings on lower main street and the Homer Allen buildings, on Main, are about completed and the real work of construction has been begun. When these buildings are completed Main street will begin to have the appearance of a real town. But more will follow. Main street is not solid brick yet.

## FIRST BALE COTTON GINNED THURSDAY

Geo. W. Fullbright Brought the First Load of 1924 Cotton to the Spearman Gin—Others Follow Closely

Eight bales of bollies, of the 1923 crop, were ginned at the Spearman gin last week, but Geo. W. Fullbright brought the first bale of real cotton, of the 1924 crop, to the Spearman gin on Wednesday afternoon of this week. He was followed on Thursday by a bale from the D. B. Kirk farm south of town and another from the J. A. Balentine farm, operated by Geo. Wilburn. The gin was fired up Thursday morning and the new cotton ginned and baled. The machinery is in splendid working order and the ginners are ready for the cotton as fast as the farmers will bring it in. The McClellan Grain Company bought the premium bale, paying 21 1/2 cents a pound for same and the P. M. Maize Mercantile Company bought the seed. A cash premium of \$70 was made up among the business men of the town and presented to Mr. Fullbright for bringing the first bale of 1924 cotton to the Spearman market. We did not learn the price paid for the seed, but this bale of cotton, with the cash premium and seed doubtless netted Mr. Fullbright over \$200.

## RAN CARS OVER FIRE HOSE

When the fire alarm was turned in Thursday at noon the boys at the fire station made a run to the fire plug one block south of the Santa Fe Depot, and laid the hose in a straight line to the gin building. No sooner had the hose been laid, when cars began passing over it, as it was laid across main street and on the principal route from the business section to the gin. The section of hose over which these cars passed had just as well be thrown away right now. It is ruined. The leaks may not show up for a while, and again they may show up the next time it is used. At any rate, it is a mighty hard task for the firemen while fighting a fire to have to cut the water off at the plug and take out a bad piece of hose. The city council just as well pass an ordinance right now, imposing a fine on anyone who drives an automobile or other vehicle over a fire hose. It is a bad piece of business.

## HEAVY LIVESTOCK SHIPMENTS

W. T. Coble, owner of the Turkey Track ranch, shipped 19 car load of calves from Spearman to Ohio feeders on Monday of this week, and on the same day John Demmit of Texhoma, sent nine car of heifers to northern feed lots. The stock yards at Spearman are a busy place these days, many cattle and hogs being loaded here for market and the feed lots.

Mrs. C. A. Batton and daughter Miss Erma, from Holt were shopping in the city Thursday morning.

## REPUBLICAN VICTORY IN TUESDAY ELECTION

Coolidge and Dawes Elected by Big Majority—Davis Ran Second, LaFollett a Poor Third.

Returns from Tuesday's election indicate that the republicans were victorious in the nation. Coolidge and Dawes will have more than 300 electoral votes, when only 266 are necessary to elect. The victory is not so sweeping as was that of Harding in the 1920 republican landslide, but the country is still overwhelmingly republican. Davis carried only the solid south, and LaFollett got away with only his home state, Wisconsin.

## MRS. FURGESON, GOVERNOR

Mrs. Miriam A. Furgeson, the regular democratic nominee, was elected governor of Texas over Geo. C. Butte, republican. This was the warmest campaign for governor of Texas, in the general election, that has taken place in many years. Mrs. Furgeson's majority will be in the neighborhood of 100,000.

The democratic nominees were elected all over the state, with the exception of the 14th congressional district, which elected Harry Wurzbach, a republican.

## HANSFORD COUNTY FOR BUTTE

So great was the republican drift throughout the nation, it had its effect in Hansford county. Dr. Rutte, republican candidate for governor, carried this county by a majority of 59 votes over the democratic nominee, Mrs. Furgeson, with the Kimball box not reporting this Friday morning. The vote at the several polling places was as follows:

Spearman, Furgeson, 83, Butte, 125; Grand Plains, Furgeson, 14, Butte, 32; New Hope, Furgeson, 3, Butte, 11; Pleasant Hill, Furgeson, 34, Butte, 6; Oslo, Furgeson, 13, Butte, 8; McBride, Furgeson, 8, Butte, 8; Kimball, not reported.

The democratic county ticket as nominated in the July primaries was elected. The vote was smaller than at the July primary, but there was more interest taken than is usually shown in a general election, as winning in the primary is equivalent to election.

In Hutchinson county Joe Ownbey was reelected sheriff and tax collector; M. E. McCormick was reelected clerk, and W. R. Goodwin was reelected judge.

Jack Walton was defeated for senator in Oklahoma, by Pine, the republican nominee.

Kansas elected a republican governor.

Ben F. Rarick was elected sheriff of Texas county over Chas. A. Lee-man.

Mrs. M. McCauley and daughter Miss Lorena, of Miami, are guests at the W. E. Thomson home, in the Medlin community.

## P. T. A. ENTERTAIN ON TUESDAY NIGHT

Good Size Crowd Hear a Well-Arranged Program at High School Auditorium—Was Great Success

The entertainment directed by Mrs. J. A. Wheeler and Miss Gwinn, under auspices of the Parent-Teachers Association at the High School auditorium on Tuesday night of this week, was a very successful affair. The program was well received and every number was warmly encored. The proceeds, amounting to \$50.40, were applied to the school piano fund. The following program was rendered, which does not include the responses to many encores and a short concert by the Spearman band before the performance began:

- Oh Wondrous Night—Offenbach
- High School Glee Club
- Reading—Tragedy—Henry
- Harrietann Collard
- Piano Solo—The Clock—Cramm
- Nina Mae Gilliam
- Reading—"That's Just the Way With Women"—Dobbs
- Harrell Collard
- Piano Solo—Auld Lang Syne—Thelman Maize
- Pianologue—I Want to be a Janitors Child—Franklin
- Lucille Wheeler
- Reading—Gee Whiz! I'm Gettin Sleepy—Loretta Wilbanks
- Piano Solo—At Sunset—Conte
- Mary Lamb Ownbey
- Vocal Duet—The Quarrel—Filmore
- Lucille Wheeler and Clyde Hand
- Reading—The Difference in Children—Dobbs
- Lois Bailey
- Piano Solo—In an Old Garden—Kern
- Reba Barkley
- Vocal Solo—I Gathered a Rose—Dorothy Lee
- Bonatrice Gibner
- Reading—Trials of School Life—Cody
- Reba Barkley
- Trombone Solo—Spring Song—Mendelssohn
- Mr. Snider
- Reading—Billy the Credulous—Calhoun
- Lois Bailey
- Vocal Solo—Blubbell, Tell Me What You Dream—Petric
- Hazel Lowe
- Reading—Mary Carey—Pauline Endicott
- Saxophone and Piano Duet—Flower Song—Lange
- Blanche and Johnie Archer
- Reading—Baseball—Pauline Endicott
- Vocal Duet—Oh That We Two Were Maying—Nevine
- Beatrice Gibner and Hazel Lowe
- Hick Song—Mr. Savage—Shelly
- De Coppah Moon—Shelly
- High School Glee Club

## CHANGES HANDS

Geo. N. Reed has sold the D. C. D. Cafe to Mrs. Laura Ream and Dick Kiker, and the former is now in charge of the same. They have experienced help employed and intend to run a high class eating establishment. Mr. Reed is at present engaged with John Beck in the building business and has no intention of leaving Spearman. The Reporter wishes the new management much success.

If you are musical  
Do your best  
And Fred R. Kreiger  
Will do the rest.  
—C. D. King.

## CRISLER-THOMAS

Lee Crisler, well known young farmer-stockman of this section, arrived from Clarendon the first of the week, and surprised his many friends here by announcing that he was a married man. Miss Willie Mae Thomas and Mr. Crisler were married on October 5, at Clarendon. Mr. Crisler has been working in the Clarendon country for the past several months, but announces that he and Mrs. Crisler will make their home in the Spearman country.

## A GREAT SUCCESS

The play entitled "Clubbing a Husband" staged by the Ladies Missionary Society of the Methodist church at the school house last night was a success from every angle. The ladies put on a splendid entertainment and the receipts amounted to about \$85. This was one of the most laughable plays that has been staged here this season. Everyone who attended was well pleased.

## THE FARMER'S RELATION TO THIS BANK--

We consider the Farmer the very backbone of this great Empire. It is through his untiring efforts this community is permitted to enjoy its present prosperity.

A large percent of our business comes from the farmer. Several of our directors are farmers. Service to the farmer is our first consideration.

We Invite Your Business, Large or Small

## GUARANTY STATE BANK

Spearman, Texas

## PLENTY OF MONEY

To loan on Farms and Ranches in any county north of the Canadian river. Big values, low rate of interest and good settlement options. Also buy and extend vendors lien notes.

## THE BEST

That money will buy in Farms and ranches and on terms never offered before in this section of the country. Business and residence lots and acreage. We have just what you want.

## J. R. COLLARD

REAL ESTATE, LOANS, INSURANCE.

Write for Information.

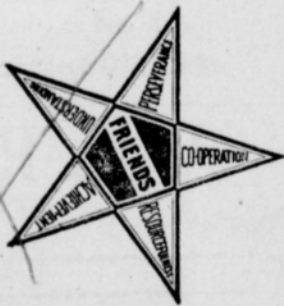
SPEARMAN, TEXAS

## PIONEERS OF PROGRESS

There was a time in the early pioneer days of this state when the services of a bank were used only for occasional important transactions.

Since then, the ever-increasing demands of modern business have made the various functions of the bank a necessary part of everyday life.

Banks are truly Pioneers of Progress in their relation to the up-building and advancement of every community.



## FIRST NATIONAL BANK

SPEARMAN, TEXAS

## EVERY UNDERWEAR NEED


Heavy Underwear days will soon be here—so take time by the forelock and get your now.

Then you'll be ready for the first cold snap.

## SPEARMAN TAILOR SHOP AND MEN'S FURNISHINGS

Sid Clark, Prop.

West Side Main



# Makes You Think of COAL

## NOVEMBER WINDS

Phone us today your order for winter Coal. We will be able to deliver it in time for the first cold snap, so you will be ready for it.

**White House Lumber Company**  
PHONE 22 --- SPEARMAN

**THE SPEARMAN REPORTER**  
BY ORAN KELLY.

**\$1.50 PER YEAR IN ADVANCE**

Entered as second class matter November 21, 1919, at the post office at Spearman, Texas, under the act of March 3, 1879.

ADVERTISING RATES: — Flat rate for plates, 25 cents per inch. If composition is required, 5 cents per inch additional.  
Reading notices, 10 cents per line.  
Recognized agent's commission, 15 per cent; cash discount, 2 per cent.

MEMBER  
TEXAS PRESS ASSOCIATION

NOTICE

To the Patrons of the City Water and Light Plant—  
The City Council has ruled that all water and light accounts must be paid on or before the 10th of each month or the service will be discontinued. Please cooperate with us in this matter as we do not want to discontinue any service.  
34th. H. E. JAMES, Mayor.

**BACK TO SCHOOL**

Just at this time every business man should make it a part of his business to encourage boys and girls in his community to go back to school "one more year at least."

The school is there for him and the youngster who doesn't take advantage of it is sleeping on his rights and will live to rue the day that he decided to leave school to accept a job.

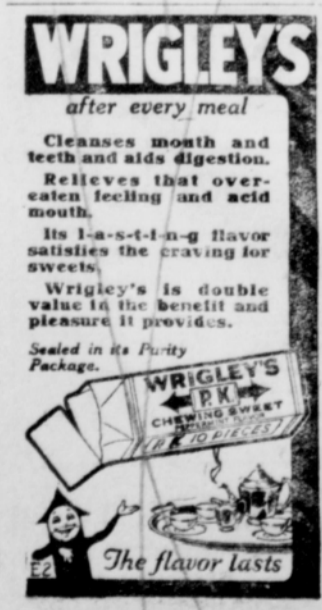
Many surveys have been made in an effort to determine the value of education, and the results have been nothing short of startling.

For instance, in one State, at age of fourteen a certain group of boys quit school to go to work. Another group stayed in school four years longer. When all the boys were twenty-five years old, the boys who had been working eleven years were averaging \$688.00 a year and the boys who went to school four years and had been working seven years, were averaging \$1,550 a year.

At twenty-five the boys who stayed in school four years longer were receiving almost \$900 a year more salary. And, at twenty-five, though the group that went to school had worked four years less time, they had received in total salary \$2,250 more than the boys who quit school at 14 to take "a good job."

Again, it has been shown that the time spent in school is worth \$2.02 a day, minimum, to the student. This has been arrived at over a working period of forty years, for non-high school and high school graduated men.

"Who's Who in America," issue of 1923-'24, recently issued, has the sketches of over 25,000 men and women who have distinguished themselves in America. Over 77 per cent



**WRIGLEY'S**  
after every meal

Cleanses mouth and teeth and aids digestion.  
Relieves that over-eaten feeling and acid mouth.

Its l-a-s-t-i-n-g flavor satisfies the craving for sweets.

Wrigley's is double value in the benefit and pleasure it provides.

Sealed in its Purify Package.

The flavor lasts

of those listed either finished college or had some time in college after finishing high school.

Without education one in every 161,290 achieves distinction; eighth grade education, one in every 40,841; with high school education, one in every 1,606; with college education, one in every 173 achieves distinction.

The man with a college education has more than 900 times the chances of achieving success than the man without education.

All these facts and figures show the dollar and cents value of education. There is another side—the happiness and personal satisfaction side—to education that cannot be estimated by the dollars and cents yardstick. Education is a magic key that opens the door to incalculable realms of happiness and satisfaction.

Some succeed without education, but the odds are against them. Be safe; go back to school.

**COUNTY AGENT COLUMN**

Capons are becoming very popular as well as profitable. Mrs. Pierce and Mr. Sutton had the county agent help them caponize chickens this week.

Five ladies met at Mrs. A. J. Womble's home and learned how to cull the laying hens from the non-layers. The county agent also showed these ladies the type of hen that is a desirable Leghorn type.

The county agent culled Mr. Stetson's chickens Wednesday morning, and Mr. Crumpton's chickens were culled Thursday. Also, Mrs. Andrew's chickens were culled.

The county agent visited the Landers farm Tuesday, and culled his Ancona chickens, and talked with Mr. Sanders about a project of feeding a car of baby beef this winter.

The county agent has been appointed inspector for the Live Stock Sanitary Commission of Texas. The following letter will be self explanatory to those who may be interested in shipping certificates:

To County Demonstrating Agents and Inspectors of the Live Stock Sanitary Commission:

The out-break of a foot-and-mouth disease in this state has caused other states to establish quarantines against Texas, which prohibits the movement of dressed poultry, fruit, vegetables, trees and shrubs from Texas.

This restriction is working a hardship on shippers from this state, and in order to relieve this situation the Live Stock Sanitary Commission of Texas has entered into an agreement with the Extension Service of A. & M. College, whereby the County Agent working for the College will be commissioned as inspector of the Live Stock Sanitary Commission, and in such capacity they are authorized to issue certificates on dressed poultry, fruits, vegetables, trees and shrubs in order to allow these commodities to move into other states.

You are, therefore, advised that this will be your authority to represent the Live Stock Sanitary Commission of Texas and issue certificates on such shipments. These certificates to be issued only after the shipper has filed with you an affidavit, a form of which we are enclosing. This same form to cover shipments of fruit, vegetables and nursery stock—just change the name of commodity in affidavit. After this affidavit has been filed with you, you will issue certificates covering the shipment from point of origin to destination. No Certificate will be issued by you until the shipper has filed this affidavit.

We are enclosing a book of certificates for use in certifying to shipments. If in the future you need more certificates notify this office or Ft. Worth office, 701 Wheat Building and they will be mailed promptly.

Inspectors of the Live Stock Sanitary Commission are also authorized to certify to shipments when handled as stated above. The certificates to be used must be made in triplicate; the original of which is to accompany the way-bill to be delivered to shipper, the duplicate to be delivered to the shipper for his file and the triplicate copy to be attached to shipper's affidavit and retained by you for your file. You will issue these certificates only as an inspector of the Live Stock Sanitary Commission of Texas.

We ask that you give publicity to this arrangement so all shippers in your county will be familiar with this procedure. Any further explanation with reference to making these shipments you may desire will be gladly furnished.

Yours truly,  
**LIVE STOCK SANITARY COMMISSION OF TEXAS.**

**HOLT NEWS**

Rev. Hand preached to a large Sunday school Sunday afternoon. A large crowd attended the singing at Mr. Jackson's Sunday night, and all report a nice time.

Willie Maupin was a visitor at Holt Sunday.

We regret very much to say that Mrs. J. C. Lee and Mrs. Patterson are on the sick list this week.

Mr. and Mrs. C. W. Stowell of Wheeler were present at church and Sunday school Sunday afternoon.

The basket ball teams, both boys and girls went to Plemons last Friday afternoon to play ball and stayed for the Halloween entertainment that night. The girls played a very close game, the score being 6 to 5 in favor of Plemons. The boys played a winning game of 16 to 3.

Don't forget the patrons meeting at the school house Friday afternoon. Also the speaking at 2:00 o'clock by Happy Ingram, the returned Missionary from Brazil. Every one invited.

Dewey Balthrop is visiting his parents Mr. and Mrs. W. P. Balthrop.

**"DEAD MAN COMES TO LIFE; SHOCKS DRIVER"**

Raleigh Erdman, of Cimarron, had a shock when he discovered an overturned Ford car at the side of the road just west of Howell, with a man's leg sticking out from beneath, and the man's face black from suffocation.

Erdman, with the help of two passing tourists, rolled the car off the body, and picked up the supposed corpse, placing the body in the rear of Erdman's truck.

Erdman had another shock while entering Cimarron when he looked back to see how the corpse was riding. To his surprise the "corpse" was on his knees, trying to get up.

"What's the matter? Where you taking me?" demanded the supposedly dead man.

"I thought I was taking you to the undertaker," Erdman replied. "Guess I'll not."

The man proved to be George Williams, a mail carrier of Coldwater, Colorado, when his car slipped over the edge of an embankment and overturned. He had the wind knocked out of him and was slowly suffocating when found by Erdman. But otherwise he was uninjured.—Ex.

**NATHAN HALE AND HIS HEROIC DYING WORDS**

Nathan Hale was a Yale graduate of the class of 1773, and has been called Yale's first patriot. His courageous death on the scaffold at the hands of General Howe was one of the most tragic and inspiring legends of the Revolutionary war.

When the colonial forces after the disastrous Long Island campaign, lay before New York in 1776, Washington saw the imperative need of knowing the plans and formations of the enemy. He determined to send a spy into their camp and called for volunteers, and Hale stepped forward and undertook the mission, says the Detroit News. On an evening in September he left on his perilous journey across the sound of Huntington bay and the enemy's lines, never to be seen again by his comrades.

History says that Hale was not discovered within the enemy's lines, but made the mistake of hailing an enemy boat, thinking it was one that had been sent to bear him back across the sound. A British ship conveyed him to New York. He was taken to General Howe's headquarters, where, to his credit as an officer and a gentleman, he acknowledged the nature of his mission. Hale's dying words were: "I only regret that I have but one life to lose for my country."—Ex.

**SAVING THE HUMAN VOICE**

Probably the greatest service rendered the American people by the universal introduction and use of the radio is the conservation of the human voice.

The decline of public oratory and the tendency to increase the nasal twang in ordinary conversation had almost deprived our country of the nobler uses of the speaking organs in public and private life.

The universal demand for clear-voiced speaking into the transmitter of the radio is restoring the carrying efficiency of the vocal organs.

The same influences are at work among singers, and clear, beautiful tones of the vocal organs are in the highest demand.

For enunciators to large crowds and for the cheapest radio in the poorest home there is universal appreciation of clear speaking and understandable vocal music.

**PICTURE OF A TRUE FRIEND**

Men love dogs because dogs alone meet a friendship need that humans generally haven't the faith, the simplicity and the genuineness to supply.

One philosopher said that a friend is one who incessantly pays us the compliment of expecting great things of us. Another has defined a friend as one who knows our faults and loves us still. A man's dog goes them all one better; he never asks questions, never explains, never apologizes.—Collier's

**FOOT AND MOUTH DISEASE CHECKED**

Reports to the United States Department of Agriculture, from Dr. Marion Imes, in charge of the State and federal forces engaged in eradicating foot-and-mouth disease from southeastern Texas, shows the effectiveness of control measures. Although nearly a month has passed since the announcement on September 27, of the outbreak, the infection has not spread from the area originally mapped out as dangerous territory. The last infected herd was found by veterinary inspectors October 15 and was slaughtered and buried the same day. The toll of the disease thus far has been limited to 6 herds containing about 2,700 animals, and in addition about 4,600 stray cattle rounded up from exposed pastures.

Dr. Imes reports that extraordinary precautions are being taken to guard the quarantined area. The veterinarians engaged in suppressing the disease are making a thorough search of the large quarantined area for stray animals. Part of the country is wooded and swampy, but the inspectors selected for the work are accustomed to all kinds of field conditions. Public officials, railroad officials, stockmen, and the public are giving whole hearted cooperation, and the presence of Texas Rangers is reported to have wholesome influence in obtaining compliance with the necessary regulations.

While a large number of States have promulgated regulations prohibiting entry of livestock and other commodities from Texas, the regulations are more reasonable and more in accordance with carefully drafted Federal restrictions than those promulgated during the California outbreak. Great Britain, which imposed restrictions on livestock and animal products from the United States when the Texas outbreak was reported had modified her regulations. Those in force now restrict, chiefly import shipments originating in the Western and Southwestern States.—Lynn County News.

**A GIFT THAT IS A COMPLIMENT**

In the gift you receive you can sometimes see yourself as others see you and the view is not always flattering. It may be a jazz record, or a gaudy tie, or a book that you would hate to have found on you if an auto bumped you into dreamland. And you can't really blame the giver. Knowing you well he concludes that you crave that sort of thing. On the other hand his gift may convey a public compliment—a gift of the Companion for instance. It is a tribute to your good taste, to a certain idealism he has perceived in your make-up, to the impression you give that life is real and earnest and not merely a game of skittles. You may be sure that anyone who thinks slightly of The Companion as a gift is himself making life a game of skittles—and very little else.

The 52 issues of 1925 will be crowded with serial stories, short stories, editorials, poetry, facts and fun. Subscribe now and receive:

1. The Youth's Companion—52 issues in 1925.
2. All the remaining issues of 1924.
3. The Companion Home Calendar for 1925. (Sent only on request.) All for \$2.50.
4. Or include McCall's Magazine, the monthly authority on fashions. Both publications only \$3.00.

Subscriptions received at this office.

**THE BIBLE IN PUBLIC SCHOOLS**

A movement looking to the compulsory reading of the Bible in the public schools is gathering momentum and bids fair to be a political issue if the opposition, emboldened in late years in the spread of a sort of agnosticism, shall choose deliberately to fight it.

The strength of the opposition seems to lie in the idea that reading the Bible is but a step toward an ultimate introduction of religious teachings, where eventually denominationalism may control. That is another matter. Religious training, beyond the instillation of those truths common to all religions, which go to build up character, is not a function of the public school. Indeed, the effort to proselytize is not religious training at all.

So far as any danger in that respect is to be feared, it must have developed in the early history of public education, if at all, when the reading of a chapter from the New Testament and prayer formed a part of the daily opening service in all schools. That it did not is proved by those reared under such a system.

Men who declare Bible reading and prayer should have no part in school exercises offer no objections that the preliminary of every daily session of both Houses of Congress, of all legislative bodies, and even of political conventions. Yet every argument applicable to the public school is equally applicable to such gatherings.

Who can say there is anything out of the way or harmful in this order of procedure? There was none. Quite the reverse. There was discipline, a daily contact between those under authority, and the inculcation of a respect for all religion.

Where the Bible boosters are in the wrong is in insisting that such practice be made compulsory. It was not then; for parents had but to indicate their desire, and their children were excused from attendance at "chapel exercises." Few went to this extreme, for no sectarian influence was seen.

There should be no legal regulation in the matter. The authorities of each school may well be left free to adopt the plan if the people desire, while opponents of the plan can have their way if in sufficient numbers to rule.—Dearborn Independent.

**BISHOP LAND COMPANY READY FOR BUSINESS**

The Bishop Land Company is ready to bring in buyers for Hansford, Ochiltree and Hutchinson county lands. However before they will bring in the prospective purchasers, they must know they can positively deliver the lands when sold.

Mr. F. Z. Bishop, the head of this great development company, is now on a flying trip in his airplane through a dozen or more states in the north and east making stops at important points, establishing agents and making preparations for bringing in not only car loads, but train loads of purchasers from the northern and central states, including Iowa, Illinois and Indiana. A telegram received at the Amarillo office from Mr. Bishop says: "I am telling the people here of the wonderful opportunities in the Panhandle of Texas." Mr. Bishop does things in a big way and does them now. No hesitating, no dallying on his part. He demands the same energy and quick action of his employees and agents. We can not hope to have him turn his forces loose in soliciting purchasers for lands in Hansford and adjoining counties unless we induce him to operate here. We must have at least one hundred thousand acres in Hansford county. Many are coming into my office making inquiry regarding plans of operation and prices at which he will handle these lands. Permit me to say: He wants choice agricultural land on which he can and will locate actual farmers. Good raw lands preferred. Will handle improved land also, but not at inflated prices. All land is to be listed on an option contract for a reasonable length of time to enable him to get buyers here. As said before he does things in a big way, and without delay. What he does in this locality he expects to do in the next twelve months. I am now very busy getting up a good list of land in Hansford county and have agents working in Hutchinson and Ochiltree counties doing the same thing. The larger the tracts we can block out the better. These larger tracts will be used for colonization purposes. The smaller tracts for general settlers who are not particular about locating in a colony. We can handle any choice land in the county if prices are not inflated. I cordially invite any one having land they want to sell to call at my office where I will gladly make all necessary explanations regarding regarding prices, terms, etc. The important thing right now is to get a sufficient acreage listed; then there will be something doing in a very short time. Let us all pull together in this effort to develop Hansford county.

A. E. TOWNSEND, Local Agent,  
F. Z. Bishop Land Company

Tentative surveys are being made along the Canadian river, which crosses the North Panhandle country from West to East, by a government engineer. The purpose in mind is to build several dams along the river for water conservation, the water to be used for irrigating the rich lands of the plains country. Congress has made a liberal appropriation for this survey and if the engineers find such a project feasible, then in a few years we will see thousands of acres of the Panhandle under the irrigation ditch. The Herald does not undertake to say that a project is not feasible, for do not know, but we do know that if it can be put over it means the growing of abundant crops, just as they are growing big crops under the government ditch along the Rio Grande in the El Paso country. Anyway we believe the survey is worth while and Congress is doing a good deed for the people of New Mexico and the Panhandle of Texas by making the appropriations so we can have a complete engineering report, and if such report is favorable let plans be made for the construction of such dams as the report may recommend. Catson county will be one of the counties to benefit from such dams.—Panhandle Herald.

Herbert Rawlinson in "A Million to Spend" Friday and Saturday at the Lyric.

for water conservation, the water to be used for irrigating the rich lands of the plains country. Congress has made a liberal appropriation for this survey and if the engineers find such a project feasible, then in a few years we will see thousands of acres of the Panhandle under the irrigation ditch. The Herald does not undertake to say that a project is not feasible, for do not know, but we do know that if it can be put over it means the growing of abundant crops, just as they are growing big crops under the government ditch along the Rio Grande in the El Paso country. Anyway we believe the survey is worth while and Congress is doing a good deed for the people of New Mexico and the Panhandle of Texas by making the appropriations so we can have a complete engineering report, and if such report is favorable let plans be made for the construction of such dams as the report may recommend. Catson county will be one of the counties to benefit from such dams.—Panhandle Herald.

Herbert Rawlinson in "A Million to Spend" Friday and Saturday at the Lyric.

# Eggall

**IMPORTANT MESSAGE EGGS GUARANTEED**

to increase your egg production to your own satisfaction, cure Cholera, Limber Neck, Diarrhea, etc.

Eggall is sold on a positive money back question, your money as cheerfully refunded as accepted.

Sold at grocery and drug stores everywhere. Ask your dealer. If he doesn't have it in stock, send \$1.00 direct to us for a prepaid package.

Manufactured and Distributed by  
**Guaranty Products Mfg. Co.**  
1911 Lipscomb Street  
FORT WORTH, TEXAS

# Four-Buckle Protection

When it is really stormy, a low top arctic is but little better than none at all. But a Four Buckle Arctic will keep the feet, ankles and legs dry no matter how severe the storm may be. The cost of this better protection is not great.

These Shoes are made to withstand the grief of long hours out of doors in the roughest kinds of weather—and be ready for the next day, soft and pliable and as comfortable as ever.

**Four-Buckle Overshoes ..... \$3.25**

**W. L. RUSSELL**  
Phone 78 --- SPEARMAN

# MASSEY-HARRIS CREAM SEPARATORS

Skim close under all conditions  
Equipped with or without motor

Disc Harrows, Tractor Plows and  
**JOHN DEERE TRACTORS**  
Everything For the Farmer.

Ladies:—Call and see the electric washing machines we are offering at \$55 to \$155.

**Womble Hardware Company**  
Fone Four-Four --- Spearman

**DOGS HEROISM SAVES INFANT**

The praises of a police dog are being sung to the sky in Hollywood, because of one of the most heroic acts of heroism ever performed by a dog.

The hero is Rintintin, the police dog, champion jumper and screen actor whose almost human intelligence saved the life of a little seven year old tot recently. If not for his endurance and prompt action the little girl, Harriet Stone, would have lost her life in a deep quagmire.

The little girl had made friends with Rintintin in the studios of Warner Brothers, where a picture in which the dog appears was under progress. The two instantly became pals. One day the girl came and asked permission to take Rintintin to the woods. The two went out, little Harriet picking flowers and the dog trotting near her. Suddenly she began to sink in a quagmire. Rintintin ran to her; the girl grasped him. She sank deeper and deeper till she was breast deep. Rintintin stood firm to his task, remaining with his charge till the morning, too exhausted to make a sound.

In the morning a searching party that had failed to locate them the previous night, discovered them. Some flowers dropped by the child proved a clue to their presence.

Besides being a hero in real life, Rintintin, by a curious coincidence plays the role of a hero in his latest picture, "Where the North Begins," a romance of the north; he is the pivot around which swings the characters in the story; Shad Galloway, the tyrannical factor of the Hudson Bay post, whose eyes of long range are cast on young Felice McTavish; Gabriel Dupre, the French Canadian

trapper and Felice's sweetheart who is wounded by a gang of outlaws in Galloway's employ, and left as dead till the arrival of the wolf-dog gives him chance to fight back.

"Where the North Begins" is a Warner Brothers classic of the Lyric Theater next Monday and Tuesday nights.

In the cast are Clarie Adams, Walter McGrail, Pat Harrison, Myrtle Owens, Charles Stephens, Fred Huntley and just but not least, Rintintin. Chester M. Franklin directed the picture.

**YES, YOUR HONOR—WHAT?**

Police Judge Cohen, quizzing John World, accused of assault and battery, asked, "Why d'd you hit this man?"

"Wha', judge," the negro began, "wha' would you all do if some one called ye' a kinky headed loafer?"

"But I haven't got kinky hair," said the judge.

"Well," drawled World, "what would you all done if he called ya da kind of a headed loafer dat you is?"

**THE DIFFERENCE**

This story is told on Joe Choate and Choucey Depew. These two distinguished gentlemen were invited to dinner. Mr. Choate was to speak and it fell the lot of Mr. Depew to introduce him which he did thus:

"Gentlemen, permit me to introduce Mr. Joseph Choate, America's most inveterate after-dinner speaker. All you need to do to get a speech out of Mr. Choate is to open up his mouth, drop in a dinner and up comes yjur speech."

Mr. Choate thanked the Senator

for his compliment and then said:

"Mr. Depew says, if you open my mouth and drop in a dinner up will come a speech, but I warn you that if you open your mouths and drop in one of Senator Depew's speeches up will come your dinners!"

**WHAT BECOMES OF KILLERS?**

Every newspaper reader sees accounts of many murders, but few are able to follow the cases through to learn what really becomes of the killers, excepting in a few notable crimes.

One of America's largest life insurance companies has just finished the records covering 146 cases in which its policy holders were killed by other persons. Here is what it found:

Of the 146 killers, 32 were found to have been justified in killing.

Of the remaining 114, 45 were never indicted, as 22 committed suicide, 15 are still at large and 8 were turned loose for lack of evidence.

Of the 69 who were indicted, 16 were acquitted, 11 were "no trial" cases, 1 was a mistrial, so that only 41 were found guilty.

Of the 41 found guilty, 35 are serving prison sentences, 6 cases have been appealed, 3 have been granted new trials, one was paroled, 1 paid a fine—and ONE PAID THE DEATH PENALTY.

In the light of the above facts—and they are facts—it is a little wonder that the United States has seventeen times as many murders as England and six times as many as our neighbor, Canada, according to population.

**A NEW BRITISH PARLIAMENT**

Mr. Ramsay MacDonald, being no inept politician, chose to bring about a dissolution of Parliament upon an issue of comparative unimportance. When he took office last May it was obvious that the first Labor Government could not be long-lived. The Labor party was not even the largest group in the House of Commons. Mr. MacDonald could remain premier only so long as a majority of the Liberals gave him half-hearted support. A little while ago it became apparent that the Liberals would not vote to ratify Mr. MacDonald's treaty with Soviet Russia. The moment of defeat could not be long delayed. The Premier did not like the idea of going to the voters on the issue of that treaty, which, being neither fish nor fowl nor good red herring, is not really popular with anyone except the Communist wing of the Labor party. So he made an issue of a resolution recently offered the house requiring that a committee investigate the Attorney General's motives in stopping an action for sedition against the editor of a Communist newspaper. The resolution was passed, and the Premier asked for dissolution of parliament and a new election.

The actual question on which the Labor ministry accepted defeat was of minor consequence, and little was heard of it during the brief electoral campaign. The voters were asked to vote for or against the ministry on its general conduct of the national business. On that ground the Labor party was in a stronger position than its opponents hoped to find it. Mr. MacDonald has made a dignified and capable premier. Mr. Snowden's financial budget was highly praised by many eminent men outside the Labor party. The Labor leaders have shown a degree of moderation that has lulled the apprehensions of those who feared all sorts of revolutionary measures and proposals. Finally Mr. MacDonald has repaired the weakening entente with France and added a bringing about settlement of the troublesome reparations problem that at the moment seemed extremely hopeful.

We write before the election has taken place and do not know how successful Mr. MacDonald will be with the voters. The probabilities are that Labor will gain a number of seats and be more powerful in the new Parliament than it was in the one just dissolved. At the same time it does not seem likely that any one party will win an actual majority. That cannot happen unless the Liberal party collapses over night, as it were. It grows weaker with every election but it still has some vitality left. Whom the king will summon to Buckingham Palace when the votes are counted and ask to form a government we cannot predict, but probably the ministry—whatever forms it—will be a coalition made up of members of two parties; otherwise, like the MacDonald cabinet, it can exist only by the sufferance of one of two opposing groups.—Youth's Companion.

**NO DROUTH THERE**

In the showing of a pictorial news weekly in a movie house in San Diego, California, the operator flashed on the screen the picture of two distinguished French Generals riding in an automobile. Crowds lined the pavements, their umbrellas up and water dripping from their hats. Suddenly from the audience came the awed cry:

"My Gawd, it's still rainin' over there!"—American Legion Weekly

**USE MORE ELECTRICITY**

Are you taking advantage of the many convenient and labor-saving devices electricity affords? Electricity is about the only thing that is cheaper now than before the war. This is caused by the practical application of service and economical operation. Both power and light rates will be lowered when enough electricity is used to justify it.

Let Electricity Do Your Work.

**SPEARMAN MUNICIPAL**

**Water, Light and Ice Plant**

COURTESY AND SERVICE

The Largest Furniture Store in the Panhandle

**CASH CREDIT**

**Green Bros Co**

INSTALLMENT HOUSE FURNISHERS

Amarillo, Texas

Let us Furnish you Home, Cash or Credit. Our easy terms are open to all Panhandle people

We Pay the Freight to all Panhandle Points

**FALL PASTURING OF WHEAT**

"Fall pasturing seldom benefits wheat; it usually causes a reduction in yield, but there are times when the benefits will more than offset the damages," says H. M. Bainer, director of the Southwestern Wheat Improvement Association.

"Under ordinary conditions," he says, "the decrease in yield as a result of pasturing will often amount to as much as four bushels per acre. For the farmer who has plenty of feed there is little to induce him to pasture his wheat, and we would be ahead by not doing so, unless it shows excessive growth. On the other hand, the farmer who has a good growth of wheat and is short of feed, especially if he has dairy cows, can often make a profit from pasturing his wheat, providing he does it judiciously."

"At present there are thousands of fields of wheat that are showing entirely too much growth. If weather conditions remain favorable some of this wheat is likely to be damaged by jointing this fall. Under these folks! The editor of the Clayville Clarion states that he borrowed a Winchester rifle recently and started up the street to deliver the weapon to the owner. The delinquent sub-

conditions, pasturing would consume the extra growth and retard jointing, which would be of great benefit to the crop.

"Many cattlemen and wheat growers in the drier part of the southwest consider wheat pasture secured in the fall as just that much clear gain. This, of course, is not true unless the wheat should happen to prove a failure the following summer. A reasonable amount of pasturing may not do much harm but the danger lies in over-doing it—turning the stock onto it before the plant gets a sufficient start, or grazing it too closely, thereby leaving the crop without winter protection and the ground in a condition that is likely to blow. Grazing when the ground is wet will cause more injury than the value of the pasturage. Too much pasturing is sure to give the crop a set-back, causing winter killing, late maturity, more damage from hot and dry weather, and lower yields."

"Aw," said Willie, "you're afraid to fight! That's all it is."

"No, I'm not," protested Jack, "but if I fight my ma'll find it out and lick me."

"How'll she find it out?"

"She'll see the doctor going to your house."

**Public Sale**

I WILL SELL FOR

**R. K. STANHOPE**

at the Old Powers Ranch, on the Palo Duro, 6 Miles Northwest of Spearman on

**Wednesday, Nov. 12th**

Beginning at 10:00 O'clock a. m. the following described property to-wit:



- 20 20 HEAD OF GOOD WORK HORSES 20
- One Span of Mares 8 Years Old, Broke to work anywhere, sound in every way, weight about 1300
- One Span of Horses, weight about 1300, 8 and 9 years old.
- One Mare and one Horse, Weight about 1,000, broke to work anywhere.
- One Span of Mares, 6 and 9 years old, broke to work anywhere.

**MILK STOCK**

- 12 Head of Good Milk Cows. Three or four of them are fresh now. Three are Jerseys and balance are good milk stock.
- 12 Head of Calves, Steers and Heifers.

**HOGS**

- Five Good Shoats, weight about 80 lbs.

**CHICKENS**

- 60 Good chickens and 15 or 20 Turkeys.

**FARM MACHINERY**

- Three good wagons; 2 lists; 3 Go-Devils; one Scraper; one Fresno; two Riding Plows; one Walking Plow; one 3 Lay Harrow; one Garden Plow; one Good 1 1/2 Horse Engine; Single Trees; Double Trees and other things too numerous to Mention.
- One Case Tractor, 15-25, good as new.

**HOUSEHOLD GOODS**

- One Range, white enameled, a good one; two Heating Stoves; two Good Iron Beds; two Iron Cots; one Dresser; one Writing Desk; one wash stand
- Three Sets of Good Harness; Two Good Saddles; ropes, bridles, etc.

TERMS:—On amounts of \$10 and under, cash. On amounts of more than \$10 a credit of 9 months will be given, purchaser to give note with approved security, bearing 10 per cent interest. Five per cent discount for cash.

**M. MAJOR**

AUCTIONEER

Lunch Will be Served at Noon

First National Bank of Spearman, Clerk

**Who owns the Santa Fe?**

More than 67,000 stockholders own this great railway. Several thousand live in the states it traverses. All have a voice in its management.

Every Southwest investor should buy a share in the Santa Fe and thus get a valuable interest in an institution that helps build up that section. Let it be Yours, in ownership as well as in service.

The Santa Fe operates in thirteen states and in these states there reside 7,635 of its stockholders. While this is almost the largest number on record, it is slightly below the year before. We should be very glad to see those residing along the Santa Fe Lines become much more generally interested in its stock, although both the common and preferred shares give a smaller return than many other investments promise. The high price is a deserved tribute to the property. Every investor in the Southwest might well buy one or more shares in the Santa Fe.

Fiduciaries	2,777
Insurance Companies	114
Religious Organizations	91
Hospitals and Charitable Institutions	115
Educational and Scientific Institutions	109
Banks and Trust Companies	251
Estates	1,095
Various Others	1,265

Since the organization of the present company in 1895 it has not failed in any year to earn its full interest, nor since dividends have been declared to earn them in full. The Preferred Stock dividends are limited to 5%. The first payment was made in 1898 at 1% and in 1900 full payments of 5% were begun and have been maintained for the ensuing 25 years without interruption. Common dividends were begun in 1901 at 3 1/2% and have been maintained steadily since that date with gradual increases, 6% having been paid since 1909.

At the beginning of this year, the ownership of the Santa Fe was divided among 67,118 stockholders with an average of 53.1 shares apiece. Twelve months before there were 64,643 stockholders, averaging 55.4 shares apiece. The number of stockholders has increased steadily for many years and the average holdings decreased, resulting in an ever-widening distribution of ownership.

Among the stockholders are found:

Women	30,370
Men	30,931

This joint enterprise of a great body of our citizens is open to all to participate in as stockholders. Why then should any favor government ownership and the certainty of supporting the railroads as taxpayers?

W. B. STOREY, President  
The Atchaca, Topoka and Santa Fe Railway System

**SNIDER PRODUCE CO.**

Highest market price for  
**Cream, Eggs, Poultry  
and Hides**

Will Appreciate  
Your Patronage

**SNIDER PRODUCE CO.**  
Next to City Water Tower

Spearman, -:- Texas.

**GOOD  
COLORADO  
COAL**  
\$13.50  
PER TON  
The SCOTT BROTHERS  
ELEVATOR

**WILLIAM F. NIX**  
ATTORNEY-AT-LAW  
ROOM 47 SMITH BUILDING  
TELEPHONE 2974  
AMARILLO, TEXAS

**J. E. GOWER, M. D.**  
Physician and Surgeon  
CALLS ANSWERED PROMPTLY  
DAY or NIGHT  
Phone 98 Spearman

**COL. ED LITTLETON**  
AUCTIONEER  
FARM AND STOCK SALES  
A SPECIALTY

If you are planning a sale, call me  
on long distance, or make dates at  
Reporter office. Phone No. 11  
PERRYTON, TEXAS

**SIDNEY M. SWEARINGEN**  
LAWYER  
Spearman, -:- Texas

**C. D. WORKS**  
LAWYER  
Abstracts, Loans, Insurance. Spear-  
man, Texas.

**WALLACE G. HUGHES**  
LAWYER  
Suites 3 and 4, First National Bank  
Building, Guymon, Oklahoma.

Walter R. Allen Jack Allen  
**ALLEN & ALLEN**  
LAWYERS  
Perryton, -:- Texas

**R. T. CORRELL**  
LAWYER  
Perryton, -:- Texas

**DR. JARVIS**  
DENTIST  
Perryton, -:- Texas

**YOUNG MEN**—Invest and Save by  
insuring in:  
The Amicable Life Insurance  
Co., of Waco.  
The Missouri State Life Insur-  
ance Co.  
The Standard Accident Co. of  
Detroit.  
**PARENTS**—One of my companies  
insures the lives of children from  
one year up.  
C. D. WORKS, Local Agent.

**C. O. Collard Produce Co.**  
Successor to Shearer Produce Co.  
Poultry, Eggs, Cream  
and Hides.  
We pay highest market price for  
country produce.  
**WE HANDLE PURINA CHICKEN  
FEED AND OYSTER SHELL.**  
Spearman, -:- Texas

**GEO. L. EGBERT**  
AUCTIONEER  
Sales Cried in Any Part of the  
Surrounding Country.  
Make Dates at Reporter office or  
phone Guymon Tribune, or write  
Box 543, Guymon, Oklahoma.

**G. R. WILSON**  
Funeral Director and  
Embalmer  
PHONES:  
Spearman, 35.  
Perryton, 58.  
Calls Answered Day or  
Night.

**NOTICE OF ROAD  
BOND ELECTION**

State of Texas,  
County of Hutchinson:  
To the Resident Property Taxpaying  
Voters of Hutchinson County,  
Texas:

Take notice that an election will  
be held on the 22nd day of Novem-  
ber, 1924, within Hutchinson County,  
Texas, to determine if said County  
shall issue bonds and if a tax shall  
be levied in payment thereof, in  
obedience to an election order enter-  
ed by the Commissioners Court on  
the 17th day of October 1924, which  
is as follows:

On this the 17th day of October,  
1924, the Commissioners Court of  
Hutchinson County, Texas, conven-  
ed in special session at the regular  
meeting place thereof in the court  
house at Plemons, Texas, all mem-  
bers of the court, to-wit:

W. R. Goodwin, County Judge; H.  
B. Terry, Commissioner Precinct No.  
1; J. T. Hedges, Commissioner Pre-  
cinct No. 2; W. C. Womble, Com-  
missioner Precinct No. 3; C. T. Rod-  
gers, Commissioner Precinct No. 4,  
being present, came on to be con-  
sidered the petition of S. M. Hedge-  
cote and 71 other persons, praying  
that bonds be issued by said Hutchin-  
son County in the sum of \$100,000  
bearing 5 1/2 percent rate of interest,  
maturing at such times as may be  
fixed by the Commissioners Court,  
serially or otherwise, not to exceed  
thirty years from date thereof, for  
the purpose of constructing, main-  
taining and operating macadamized,  
graveled or paved roads and turn-  
pikes or in aid thereof, and whether  
or not a tax shall be levied upon the  
property of said county, subject to  
taxation, for the purpose of paying  
the interest on said bonds and to  
provide a sinking fund for the redem-  
ption thereof at maturity; and

It appearing to the court that said  
petition is signed by more than fifty  
of the resident property taxpaying  
voters of said Hutchinson County; and

It further appearing that the  
amount of the bonds to be issued  
will not exceed one-fourth of the  
assessed valuation of the real prop-  
erty of said Hutchinson County;

It is therefore Considered and  
Ordered by the court that an election  
be held in said county, on the  
22nd day of November, 1924, which  
is not less than thirty days from the  
date of this order, to determine  
whether or not the bonds of said  
County shall be issued in the amount  
of \$100,000, bearing 5 1/2 percent  
rate of interest, and maturing at  
such times as may be fixed by the  
Commissioners Court, serially or  
otherwise, not to exceed thirty years  
from the date thereof; and whether  
or not a tax shall be levied upon the  
property of said County, subject  
to taxation, for the purpose of pay-  
ing the interest on said bonds and  
to provide a sinking fund for the redem-  
ption thereof at maturity.

The said election shall be held  
under the provisions of Articles 627  
to 641, inclusive, of Chapter 2, Title  
18, Revised Statutes, 1911, as amend-  
ed by Section 1, Chapter 203, Acts  
of 1917, Regular Session.

All persons who are legally qual-  
ified voters of the State and of this  
County, and who are resident prop-  
erty taxpayers in this County, shall  
be entitled to vote at said election,  
and all voters desiring to support  
the propositions to issue the bonds  
shall have written or printed on their  
ballots the words;

"For the issuance of bonds and  
levying of the tax in payment there-  
of."

And those opposed shall have  
written or printed on their ballots  
the words:

"Against the issuance of bonds  
and levying of the tax in payment  
thereof."

The polling places and presiding  
officers of said election shall be re-  
spectively as follows:

Precinct No. 1—Place, White  
Deer School House; presiding offi-  
cer, R. L. Pond.  
Precinct No. 2—Place, Pantex;  
presiding officer, W. L. Kingsland.  
Precinct No. 3—Place, Plemons;  
presiding officer, W. S. Christian.  
Precinct No. 4—Place, Holt  
School House; presiding officer, J.  
R. Kirk.  
Precinct No. 5—Place, Eiland  
School House; presiding officer, A.  
W. Lugenbyhl.  
Precinct No. 6—Place Lieb School  
House; presiding officer, H. W. For-  
rester.

The manner of holding said elec-  
tion shall be governed by the gen-  
eral laws of the State of Texas, regulat-  
ing general elections, when not in  
conflict with the provisions of the sta-  
tutes herein above referred to.

Notice of said election shall be  
given by publication of a copy of  
this order in the Spearman Reporter,  
a newspaper published in Hansford  
County, there being none in Hutchin-  
son County, for four successive  
weeks before the date of said elec-  
tion, and, in addition thereto, there  
shall be posted other copies of the  
order at three public places in the  
county, one of which shall be at the  
court house door, for three weeks  
prior to said election.

The county judge is hereby direct-  
ed to cause said notices to be pub-  
lished and posted, as herein above  
directed, and further orders are re-  
served until the returns of said elec-  
tion are made by the duly authorized  
election officers and received by this  
court.

Given under my hand, with the  
seal of the Commissioners court af-  
fixed, this the 17th day of October  
1924.

W. R. GOODWIN,  
County Judge.

(Seal)  
Dr. Powell, the eye, ear, nose and  
throat specialist, will be at Hale Drug  
store in Spearman on Wednesday  
afternoon and evening, Nov. 12,  
Glasses fitted; tonsils and adenoids  
removed. I will be here every two  
weeks. 14t2

**NOTICE**

To the Stockholders of the North  
Texas and Santa Fe Railway Com-  
pany:

You are hereby notified that the  
Board of Directors have called a  
meeting of the stockholders to be  
held in the City of Spearman, Coun-  
ty of Hansford, State of Texas, at  
the principal office of the Company  
on the thirteenth day of November,  
1924 between the hours of 10  
o'clock a. m. and 4 o'clock p. m., to  
consider and act upon a proposition  
to authorize the execution by the  
Company of a mortgage or deed of  
trust to be called "first mortgage"  
or by such other name as may be de-  
termined, on all of its railroad prop-  
erties now owned or hereafter ac-  
quired, to secure bonds to be here-  
after issued in series, so much of  
such bonds as may be necessary to  
be used from time to time in pay-  
ing or exchange for the indebted-  
ness of the Company, other bonds to  
be issued to be used for the acqui-  
sition, construction or extension of  
railroads, additions and betterment  
to such railroads and properties now  
or hereafter owned, and for other  
lawful corporate purposes, each  
series of bonds to be issued to ma-  
ture at such time and provide for the  
payment of such lawful rate of in-  
terest, to be tax free or not tax  
free, to be convertible or not con-  
vertible into shares of capital stock  
as may be determined by the Board  
of Directors, and to contain such  
other terms and conditions as may  
be determined or prescribed by said  
Board, and such mortgage to contain  
such terms and conditions as may be  
prescribed or authorized by the  
stockholders at said meeting.

H. E. CAMPFIELD,  
38t11 Secretary.

State of Texas: to the sheriff or any  
constable of Hansford county,  
Greeting:

WHEREAS, It appears from the  
records of the District Court of  
Hansford county that N. W. Willard  
recovered a judgment in said court  
on the 24th day of April, A. D., 1923,  
against the unknown heirs of R. E.  
Clute, deceased, for the sum of  
\$4,328.36, with interest thereon from  
said date at the rate of 6 per cent  
per annum, besides all costs of suit,  
in an action on eight promissory  
notes, executed before that time by  
the said R. E. Clute, fully described  
in said judgment; and,

WHEREAS, It appears from the  
records that said notes were secured  
by a lien on all of the northwest one  
fourth of section 8 in Block No. 1,  
certificate 3-498, H. & G. N. R. R.  
Co., original grantee, containing  
180 acres of land, situated in Hans-  
ford County, Texas, and that said  
lien was duly foreclosed in said  
judgment with an order of sale di-  
recting the sale of said land in sat-  
isfaction of said judgment, and it  
further appears from the records of  
said court that said judgment remains  
wholly unsatisfied, and that exe-  
cution and order of sale has not  
been issued thereon within twelve  
months after the rendition thereof,  
and the said N. W. Willard has ap-  
plied to our said court for a remedy  
in this behalf:

NOW, THEREFORE, you are  
commanded that you summon, as in  
the original suit, the said unknown  
heirs of the said R. E. Clute, De-  
ceased, to appear before the District  
Court of Hansford County, to be  
held at the Court House thereof  
on the 4th Monday in November  
next, being the 24th day of Novem-  
ber, A. D., 1924, then and there to  
show cause, if any they have, why  
the said N. W. Willard, ought not  
to have his execution and order of  
sale against them according to the  
force, form and effect of said re-  
covery; and further, to do and re-  
ceive what our said court shall then  
and there consider of them in this  
behalf.

HEREIN FAIL NOT, and have you  
this writ before said court on the  
said 24th day of November, A. D.,  
1924, with your return thereon,  
showing how you have executed the  
same.

WITNESS, Keesee C. Richardson,  
Clerk of the District Court of Hans-  
ford County.

Given under my hand and seal of  
office, at office in the town of Hans-  
ford, this the 14th day of October,  
A. D., 1924. Keesee C. Richardson,  
Clerk District Court Hansford Co.,  
Texas. 44t4

Application of the science of eu-  
genics, through government agen-  
cies, is not a thing to put much con-  
fidence in. Babies come and go.  
Their coming is something that legis-  
lation has never tried to control, and  
their going by official authority has

never been attempted but by one  
ruler, the infamous despot Herod,  
who ordered the massacre of the in-  
fants of Bethlehem. But when the  
babies come government can do  
much for their welfare, directly  
and indirectly, by keeping pure food  
and in other ways.

But the improvement of babies by  
control of their breeding is difficult,  
in the great majority of cases.  
Attempts to protect the race by sub-  
jecting people to physical examina-  
tions before issuing license for them  
to marry, in order that disease may  
not be inherited, are made in a  
number of states, but they have not  
in view the improvement of human  
stock so much as the protection of  
society from such diseases as epi-  
lepsy, and from the expense of  
feeble minded and criminal charges.  
No such matings as occur to improve  
the breeds of stock and horses and  
dogs would meet approval among a  
free people.

Ycurgus, the ancient lawyer of  
Sparta, went further in control of  
marriages and breeding than any  
other ruler in history, having laws  
for marriage and child-bearing which  
society would not tolerate today.  
His sole purpose in this relation of  
his to his people, was to improve the  
physical stamina of the Spartans and  
make them the bravest people in the  
world. To promote marriage by  
public processions of young women  
before young men in a state of  
nudity, allowed wives to bear child-  
ren by younger men than their  
husbands, and surrounded marriage  
with strict observances which may  
not be set out in detail here. At a  
very early age children were taken  
from their parents and brought up  
by the state. Family life was  
frowned on, the men living, eating  
sleeping apart from the women—  
even those who were married.

Infants welfare work at the pres-  
ent times includes the proper care  
of infants and children, the keeping  
down of the mortality rate by  
nourishing food and protection from  
contagion through vaccination and  
serum injections which render them  
immune from deadly attacks, and so  
giving children fair opportunity to  
develop health, strength and mind.  
Chicago's birth rate was 26.4 in  
1900. In 1923 it was 19.4. Since  
the war the birth rate has been  
dropping one-third faster than be-  
fore it. From May 4 to 10 we are  
to have a "Baby Week", during  
which time the public will be given  
an educational character by the  
Chicago Infant Welfare Society  
(308 North Michigan Avenue), to  
the end that the infant death rate  
may be decreased, and mothers be  
better trained in the care of their  
children.

In the country at large both the  
birth and death rates of babies are  
largely the result of social and liv-  
ing conditions. In the cities there  
are women who grow to maturity,  
marriage and become mothers with-  
out ever having any training in the  
care of babies. A pitiful thing it  
is that so many mothers, loving their  
babies with all the intensity of which  
the heart is capable, lose them  
through sheer ignorance of how to  
care for them. Some day, perhaps,  
government will regard not only the  
mating of men and women, but their  
proper training for the care of their  
babies as a political duty. Surely it  
is almost as necessary as the public  
schooling of children after they have  
survived the perils of infancy.—  
Chicago Journal of Commerce.

**FINE HOME FOR SALE**

One of the best improved homes  
in the Spearman country; 2 1/2 miles  
east of Spearman. Seven-room house  
with bath and basement; shade trees,  
orchard, corral, graineries for 8,000  
bushels of wheat; chicken house;  
garage and blacksmith shop; cement  
cave; elevated water tank with water  
piped to the house and barn. 160  
acres of land. All level, 110 acres in  
cultivation. This farm can be bought  
at \$38.00 per acre by seeing the  
owner. Write or come to see me.  
E. R. WILBANKS, Owner.  
Box 501 Spearman, Texas.  
44t4.

Read the Reporter.



**Housework  
and Headache**

There's relief for you  
housewives who suffer from  
aches and pains.

When lack of fresh air,  
working over a hot stove  
and the odor of cooking  
make your head throb,  
your back ache, your limbs  
tremble, just take 1 or 2  
**DR. MILES'**

**Anti-Pain Pills**

They'll relieve you quickly  
and safely.

Your druggist sells them at  
pre-war prices—25 doses 25  
cents. Economy package, 125  
doses \$1.00.

**When Winter Winds  
Start to Blow**



Then is when you must watch your complexion,  
otherwise you may start the cold weather with it in  
such condition that you will be bothered with chapp-  
ing all winter long

Our line of Ladies Toilet Articles is Complete

**C. L. THOMAS**

Our Store Is Headquarters For School Supplies  
POSTOFFICE BUILDING SPEARMAN

**Fresh FISH  
Every  
FRIDAY!**



We also keep a supply of Fresh  
Fruits and Vegetables on hand at  
all times.

Our line of Fresh and Cured Meats  
is always of First Quality and they  
are priced right.

**STAR MEAT MARKET**

DICK KIKER, Proprietor

**C. W. KING  
REAL ESTATE**

List your property with me and I will endeavor to find  
you a buyer. Homeseekers and investors have their  
eyes on the Spearman country. If you have property  
for sale, list it now.

Write me what you have for sale. DO IT NOW.

C. W. KING, SPEARMAN

**Let Us  
do  
your  
Baking  
Next  
Week**



Our Bread, Pies, Cakes, Buns, and all other prod-  
ucts of a first class bakery, will give perfect satisfac-  
tion.

SEND US A TRIAL ORDER

**The QUALITY BAKERY**

VIRGIL GREEN, Prop.

SPEARMAN -:- TEXAS

**Farm Loans**

I make Farm and Ranch Loans, and will give you prompt service.  
I also buy Texas Vendor's Lien Notes. When you need anything  
in this line, call me on the telephone or write me, and I will give  
you immediate service.

WILL CROW  
Attorney-at-Law  
CANADIAN, TEXAS.

# No Guess-Work Here

Most folks know that getting eggs depends largely upon the hen's feed—Yet with many people feeding is guess-work. Their hen's lay part of the time and usually "board" when eggs are most profitable.

## More Eggs or Money Back

The guarantee behind Purina Hen Chow and Chicken Chowder eliminates all guess-work. These Chows have all the elements that make eggs. That's why they are offered on a money-back guarantee.

Ask for the Checkboard Bag



## Spearman Equity Exchange

PHONE 27. SPEARMAN, TEXAS.

### LOANS LOANS

I represent good companies with plenty of money. Can give the lowest interest rates and best settlement options. Also represent The First Texas Joint Stock Land Bank of Houston.

C. D. WORKS

Phone No. 37

Spearman, Texas



### MILLNERY

Ladies Ready-to-Wear

Notions-Novelties

Mrs. R. K. Stanhope

First Door West Spearman Seward-Hays

## I. S. JAMISON

AUCTIONEER

Fourteen years successful experience in the North Panhandle. Will cry land, livestock and farm sales anywhere and at any time. Make your date at the Spearman Reporter office.

Home Address.

Pampa, Texas.

## Change of Life

"When change of life began on me," says Mrs. Lewis Lisher, of Lamar, Mo., "I suffered so with womanly weakness. I suffered a great deal of pain in my back and sides. My limbs would cramp. I didn't feel like doing my work, and there are so many steps for a woman to take on a farm. I was very anxious to get better. A friend recommended

## CARDUI

The Woman's Tonic

to me and I began using it. I certainly improved. I went through change of life without any trouble. I can highly recommend Cardui." At the age of about 40 to 50 every woman has to pass through a critical time, which is called the Change of Life. At this time, great changes take place in her system, causing various painful and disagreeable symptoms. If you are approaching this period, or are already suffering from any of its troubles or symptoms, take Cardui. It should help you, as it has helped others. Sold by all druggists. E-98

### THELMA GWINN

TEACHER OF

PIANO and VOICE

Studio at School Building TERMS—Fifty-five Minute Lessons for \$1.00

RESIDENCE PHONE 65

SPEARMAN TEXAS

### C. VOLLMERT

DRAYMAN

Phone 55, all kinds of Dray Work and Hauling.

### PICTURES FRAMED

I will frame your pictures. High class, satisfactory work guaranteed. Leave the pictures at the Andrews Hardware store in Spearman, or send them to me at Perryton. I will return them properly framed and in good condition. Send me your work in this line.

G. R. WILSON, 47t4p. Perryton and Spearman.

### STRAY HOG

A black boar, weighing 250 to 300 pounds, both ears marked, is at my place, one-half mile west of Equity Exchange. Owner please call and take this hog away at once. 47t4f R. P. KERN.

Episode 8 of the great detective story, "Into The Net," at the Lyric Theater, next Wednesday and Thursday night, also, Chronicles of America.

Your tubes vulcanized for a quarter, at the D. C. D. filling station.

School supplies, new goods arriving every day. Seward-Hays.

Buy your mill feeds at the R. L. McClellan Grain Co. 40tf

J. W. Rogers of Wawaka was in the city Monday, attending to business matters.

Try our new drink—we try to give you something new every week. Seward-Hays Confectionery.

Full line of Fall Millinery. Come and see them.

P. M. MAIZE & COMPANY.

Students are invited to make our store headquarters. We are glad to see you come in. Seward-Hays.

Try an M. Born suit of clothes made to measure, sold by 32tf. P. M. MAIZE & CO.

Corduroy Cords—a mighty good casing at a low price. EQUITY FILLING STATION 29tf.

The infant babe of Mr. and Mrs. Buck Stanhope was buried at the Hansford cemetery on Tuesday, November 4.

Mrs. Mary Westerfield left the latter part of last week for Nolia, Texas, where she will make her home for a month or more.

"Morning Pep" Coffee guaranteed to be better than the best you ever used before. Sold by 30tf. SPEARMAN EQUITY EXCHANGE

LOST, a ladies' soft gray colored hat on street leading west from First National Bank. Finder please leave at Reporter office. 46tf.

R. W. Morton and Bill Walker attended the meeting of Ford dealers at Amarillo the latter part of last week.

SEED WHEAT—We have a good variety of good clean seed wheat. Better get it right now. 40tf R. L. McClellan Grain Co.

Mr. and Mrs. Norman Walberg of Pampa, were guests at the T. O. Thompson home, just south of town, several days last week.

Mr. and Mrs. Fred Wilbanks are rejoicing over the arrival of a fine little daughter at their home in Spearman, on Saturday, November 1.

Episode 8 of the great detective story, "Into The Net," at the Lyric Theater, next Wednesday and Thursday night, also, Chronicles of America.

Harry Campfield, the good-natured Santa Fe agent at this point, is away on his annual vacation and W. F. Maxwell of Amarillo is holding down the job. Harry will visit at his old home in Centralia, Missouri.

School Supplies—tablets, paper, pencils, pens, erasers, note book paper, drawing paper—anything you want. If it is not in our stock at present, just make your wants known and we will get it for you. LEON THOMAS.

Dr. Powell, the eye, ear, nose and throat specialist, will be at Hale Drug store in Spearman on Wednesday afternoon and evening, Nov. 12. Glasses fitted; tonsils and adenoids removed. I will be here every two weeks. 14t2

T. G. Crowson came from Miami the first of the week and is in charge of the D. C. D. Filling Station, which is owned by Allen King. Mr. Crowson is an energetic young fellow, and patrons of this popular "gassing" place are well pleased with the service.

Albert Burran and E. H. Wall, business men of Booker, passed through Spearman Saturday of last week enroute to Amarillo. Mr. Burran is connected with the White House Lumber Company and Mr. Wall is connected with the Panhandle Lumber Company at Booker.

Miss Gracie L. Cole and pupils of the Maupin school entertained the patrons of the school with a halloween party at the new school house on Friday night, October 31. After the games were played a bountiful supper was spread and enjoyed by all present.

Dr. Gibner was called out west to the home of Mr. and Mrs. Clason on Tuesday of this week, to attend their nine year old son, who was kicked by a horse. The little fellow's jaw bone was broken and he was otherwise bruised about the face and head, but is getting along nicely.

Mr. and Mrs. G. R. Wilson were here from Perryton Tuesday morning, looking after business matters. Wilson is a pleasant fellow and we are always glad when he calls at our shop for a visit, but he is the last man in the world that we care to do business with. He is an undertaker.

The new residence owned by McLain and McLain and erected by John Beck, located across the street from the J. R. Colvard residence, is nearing completion. It will be occupied by Chas. Kiker and family. This residence consists of five rooms and bath and is a mighty nice piece of residence property; well located and well constructed.

### FOR OVER 40 YEARS

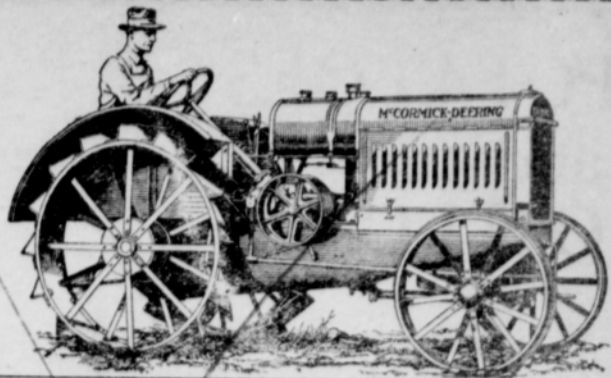
HALL'S CATARRH MEDICINE has been used successfully in the treatment of Catarrh. HALL'S CATARRH MEDICINE consists of an Ointment which quickly Relieves by local application, and the Internal Medicine, a Tonic, which acts through the Blood on the Mucous Surfaces, thus reducing the inflammation. Sold by all druggists. F. J. Conroy & Co., Toledo, Ohio

# Farmers

come to our store on

Nov. 7-8

and see the big demonstration.

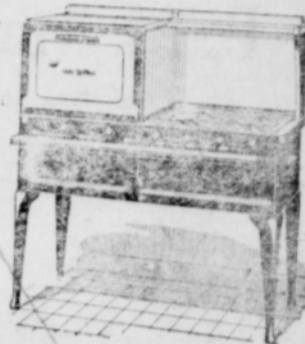


On These Days We Will Put On A Free Demonstration of The

15-30 McCormick-Deering Tractor,

No. 3 Primrose Cream Separator, and

Red Star Detroit Vapor Oil Stoves. Come to see us.



# Andrews Hardware Co.

IMPLEMENTS and FURNITURE

Primrose Cream Separators Sanders Plows

Everything Good in Oil Stoves Phone 35—SPEARMAN

Mr. and Mrs. J. Dan Archer entertained about fifty members of the Presbyterian Sunday school with a Halloween party, at their home on Saturday night, November 1. After playing many Halloween games, refreshments consisting of peanuts, apples, fruit punch and cakes, were served. A most enjoyable time is reported by those in attendance.

Miss Opal Cross, who graduated from the Spearman high school is one of the eighteen students who hold high school scholarships to the West Texas State Teachers College at Canyon this year. Miss Cross is doing her freshman work in a class of about 352 members. There are 985 resident students enrolled in the Teachers College and about 150 correspondence students.

### JERSEYS FOR SALE

I have five well-bred Jersey milk cows for sale at a bargain if taken at once. SAM STEPHENSON, 24 miles northwest of Spearman, on Guymon mail route.

### SCIENCE AND THE COTTON SEED

A great scientist recently declared what the world considers waste is looked upon as wealth by science, and he cited the cotton seed as one of the many outstanding examples of how science has converted nuisance into a gold mine.

The following story from Sherman, Texas, is to the point. Back in the "good old days" the farmer who brought his cotton to town to have it ginned was forced by the ginners to haul the seed away with him. The man that ran the gin didn't intend to have his place made the dumping ground for such worthless trash. The farmer had to clean up his own debris.

C. A. Sanford, president of the Interstate Cotton Oil Refining Company of Sherman, tells a story in this connection—of how in Dallas County years ago a cotton farmer played a "good joke" on old man Jones, the ginmer, by slipping off and leaving his cotton seed at the gin while old man Jones' back was turned.

"But that wouldn't be considered much of a joke today," says Mr. Sanford. "Cotton seed is worth money now. The amount produced in the South this year will probably sell for right around \$250,000,000."

"The value of all diamonds mined in South Africa for the years 1917-21, inclusive, showed a yearly average of \$39,986,567.90. In the same period the cottonseed oil produced in the six states of Texas, Oklahoma, Tennessee, Mississippi, Louisiana and Arkansas, sold for an average of more than \$90,000,000 a year."

"And that isn't all. The cotton seed oil produced in the six states named in 1921 sold for more than twice as much as all the gold produced in the United States, Alaska and the Philippines in the same period."

"This shows how new discoveries change one's idea of humor. No cotton farmer is leaving his seed at the gin these days to plague the gin owner."

Clarence S. Darrow may be a great attorney; he may be very popular with the home folks in the "windy city," but to us he is nothing short of an anarchist or communist

if you please. We respect a "wet" who also respects our constitution and laws, but have the greatest contempt for those who regard them as "scraps of paper." In a recent speech during a banquet in Chicago he not only made light of the 18th amendment, but actually encouraged the people to violate it. There are lots of people who do not believe in the Volstead act, yet believe in its rigid enforcement. These men are patriots and true Americans after our own heart and we respect them. But any man who belittles the least of our laws, whether they be right or wrong, has only our contempt.—Brownfield Herald.

### THE DEFENSE OF OUR LIBERTIES

In a clear statement of the danger involved in tampering with authority of the United States Supreme Court, Liberty Magazine says editorially:

"What would happen if congress or one of the legislatures of a state should pass a law declaring that the Roman Catholic Church, or the Methodist Episcopal Church, or the Baptist or Presbyterian Church is the official church of the United States and that no citizen may hold any other religious belief?"

"That law, as we all know, would be declared unconstitutional by the Supreme Court of the State in which the law passed."

"What would happen if Congress or one of the State legislatures should pass a law providing that no one should criticize any public official; or that no newspaper or book should be published without the consent of a committee of congress on

the legislature; or that citizens should be permitted to assemble, however peacefully, to petition for a redress of any grievance?"

"Such a law would be declared unconstitutional by the Supreme court of the state in which it was passed."

"What would happen if Congress or a state legislature should pass a law declaring that no person charged with crime should have the right to trial by a jury of his fellow citizens, or that he should have no right to counsel?"

"That law would also be declared unconstitutional by the courts and so would a law providing that a citizen's property may be taken for a public use without just compensation established in an impartial proceeding, or law fixing an excessive sum as bail or applying a cruel or unusual punishment."

"But there are political leaders who profess to be friends of human liberty and progress, who propose to deprive the Supreme Court of the power to declare such laws unconstitutional, provided Congress passes them again after they have been declared unconstitutional by the court."

"It is argued that Congress will always respect these rights of the individual asserted in our constitution."

"Experience refutes this argument. That is why the founders of this republic gave the protection of our civil rights to separate and coordinate branches of government. The purpose of the founders was to protect the individual in the enjoyment of his rights as against any agency of government, whether executive or legislative, for they knew from experience that parliament, or legislative body could and would oppress, as well as a monarch or other executive. And subsequent experience proved the founders were right."

"The American system of liberty is founded on the principle that there are certain rights of the individual of which he may not be deprived even by the will of a majority. That principle is the most precious of our possessions as a free people, and the proposal to deprive the Supreme Court of its power to defend it is a proposal to destroy it."



## A ROYAL MEAL

Pancakes and Sausage—pancakes such as mother alone knows how to make, and freshly made Pig Pork Sausage, sage flavored, seasoned to your taste and fried to a delicious, crispy brown.

CITY CAFE

JESSE E. HAYS

East Side Main

Spearman.

SEED RYE—Buy your seed rye now. We have good clean seed rye. 40tf R. L. McClellan Grain Co.

# POTATOES and ONIONS

just arrived in car-load lots. Special prices. Buy a winter's supply now.

## P. M. Maize & Co.

Everything to Eat and Wear

PHONE NO. 3

:-:

SPEARMAN

### OUR TEXAS RESOURCES

(By Phebe K. Warner)

Hello, Boys and Girls of Texas: This is for you. Have you any idea what you want to do and what you want to be when you are a man? How old are you today? We are just guessing you are fifteen years old this year. And that you are in the sixth grade, seventh or eighth grade.

Let's see! If you are you will be about twenty-five years old when the Autumn of 1934 comes around, won't you? But will not make any difference if you are a little younger or a little older. One thing is sure and certain the years will roll around before you scarcely know it and then you will wonder where they have gone and what you did with them. Especially will you feel this way if you do nothing with them but let them roll and you just roll with them.

But we believe in fifteen-year-old boys of Texas. We believe there is power in every one of you to be a fine useful man ready to live a life of real service within the next ten years if you can only make up your mind to be something and somebody by that time. Yes we do believe this. But you must quit your monkeying round and begin to do a little thinking for yourself.

No, you are not too young to think. You are just the right age to begin to cultivate the habit of thinking. Any boy that is old enough to play base ball or foot ball, run an automobile, wear long pants, clean up his neck and ears, doll up his form and has reached the sixth, seventh or eighth grade is old enough to begin to think for himself. In fact, he has already begun to think or he would have never reached this stage in his career. And here is another thing about you boys: We believe YOU do a lot more thinking than most folks ever give you credit for. But never mind the credit. Just go on thinking. Look back through your old history just long enough to see who the boys were that did the things you read about there and then throw your history away if you have a grade in that study and get ready to make new history for some of your school mates to write into a book in about 25 years from now. Maybe it won't be that long if you get to thinking right now.

Now, just to give you a little boost and start your "thinker" to work we are going to suggest one thing for you to think about. Here is something we learned the other day. Our neighboring state of Arkansas is a leader in the production of bauxite. Do you know what that is? I do not and I looked in two dictionaries and could not find the word. So it must be something rather new. And that is about all you know about it. But we know this. It is one form of dirt or soil or clay or something that aluminum is deducted from. And it has not been so very many years since anybody knew there was such a mineral as aluminum in the soil.

But today nearly every child in the country knows what aluminum is. Arkansas is a leader in bauxite. And she sells this bauxite at \$8.00 per ton and then buys it back again in the form of wash pans and dish pans and all sorts of cooking utensils at the rate of \$700 a ton. Now, the thing I want the thing (prompts the thing I want you boys to think about first is who gets all the business and all the profit between \$8.00 worth of aluminum ore and \$700 worth of cooking pans? Who gets

the experience? Who does the scientific and skilled labor that transforms \$8.00 worth of dirt into \$700 worth of something ready to use? Think it over. The next time you sit down on the street corner to talk with other fellows talk about that problem for it is a sure-enough problem.

Now here is the next thing we want about 600,000 school boys to think about: What is potash? What is it used for? Where does the United States get most of her potash and we are wondering WHY the United States ships potash all the way from Germany when geologists tell us there are \$45,000,000 worth of potash in West Texas that has never been touched. Think of it, boys! If the 45 million dollars of wealth is ever developed and placed on the market some of you boys are going to do that big job. There it lies waiting for some boy to prepare himself to handle that great business.

And did you know that away down in Brewster County, Texas, near the Rio Grande river and 60 miles from any railroad was a quicksilver mine that has produced \$10,000,000 of quicksilver since it was discovered and opened for operation in 1899? Wonder where it all goes and what becomes of it and if any of it is made into thermometers and mirrors right here in Texas? One thing that is needed down that way is a new railroad, boys, to help get this quicksilver to market quicker. There is another job for some of you to get ready for.

And did you know that a little farther up the river in Culbertson County, Texas, were located some of the greatest mica mines in the Nation? Do you know what mica is and what it is used for? Is Texas take care of her resources? And how about our millions of bales of cotton? How much of that does Texas take care of? And our other agricultural products. Who works them up ready for use?

And did you know that down in Uvalde County there were asphalt mines that would furnish enough asphalt to pave every road in Texas? And do you boys down in Southern Texas know that there was more gas boiling up from the depths of the earth away out in the Panhandle than any where in the world, just trying to save its power until enough Texas boys can be trained to use it to manufacture all our minerals and agricultural products into something to eat and wear or use? And oil and water. Two of the greatest minerals in all the world flows from beneath our sod like rivers of wealth. All we need in Texas to be the richest and the most balanced State in America is more trained boys. And we have the boys by the million. But how about their training for the great day in which they are to live and serve? Our greatest resource is our growing boys, without them, none of these other mines of wealth would be worth while.

There is a big job waiting for you, BOY, ten years from now if you will only use these ten years to get ready for it.

### LUDEX'S

MENTHOL COUGH DRUGS

for nose and throat

Give Quick Relief

## TEACHERS INSTITUTE HERE THIS WEEK

Teachers of the County Here for the Annual Institute—Good Attendance and Much Interest.

The Hansford County Teachers' Institute convened Monday morning with an enrollment of 29. A. H. Wilcox, superintendent of schools of the Spearman Independent school district, is conducting the institute, assisted by County Superintendent A. E. Townsend. Miss Hibbits, from the West Texas State Teachers College at Canyon, is here and has charge of the primary section. She is giving the teachers many new and helpful devices in primary work. The high school section, under the direction of Prof. Wilcox, is working out problems that will be of much help and benefit to the teachers in their respective fields of work.

A cordial invitation is extended to the citizens of the town and community to visit the institute at any time. It is being held at the Spearman school building and will continue in session until this Friday evening.

The following teachers are in attendance:

- Mrs. Eva Holt.
- Miss Robert Alexander
- Miss Jewell Cantrell
- Miss Nina Sherer.
- Miss Ethel Womble
- Miss Jeanett Combs
- Miss Gracie Cole
- Mrs. E. E. Burrows
- Miss Sammie Jones
- Mrs. R. W. Reed
- Miss Ruby Little
- Miss Mary Hitch
- Miss Vesper Watson
- Miss Opal Jameson
- Mr. Allen King
- Mrs. Allen King
- Mr. Presly Hand
- Mrs. Presly Hand
- Miss Zona Hill
- Miss Zola Mae Hill
- Miss Annie Beck
- Miss Ivy Jewel Bryan
- Miss Nellie Hart
- Miss Virgie Richardson
- Miss Josephine Hart
- Miss Ethel Crawhorn
- Miss Ethel Deakin
- Mr. O. L. Savage
- Mr. A. H. Wilcox

### RESOLUTIONS

WHEREAS, we, the teachers of Hansford County, do hereby wish to express our appreciation for the splendid effort put forth by all to make our institute a success; and whereas, we do wish to especially express our gratitude to Miss Hibbits, who so willingly gave up her work for the week in W. T. S. T. C. in order to be with us, and we wish to extend our thanks to her for the valuable instruction which she has given us;

WHEREAS, we also wish to express our gratitude to County Superintendent A. E. Townsend and Supt. A. H. Wilcox, who have worked so faithfully in our behalf and whose suggestions have been so helpful;

WHEREAS, we value very highly the kind consideration the patrons have shown in caring for the out-of-town teachers;

WHEREAS, we recommend that the Hansford County Institute be joined with the neighboring counties in the consolidated institute at Canyon, Texas, in its next session.

THEREFORE BE IT RESOLVED, that a copy of these resolutions be sent to the County Superintendent for permanent file, and sent to the Spearman Reporter for publication.

ZONA HILL  
MRS. COY HOLT  
ALLEN KING  
Committee on Resolutions.

### HONOR ROLL OF SPEARMAN SCHOOLS

For first six week period. To be an honor student one must make an average of A in their work and have no absences or tardies against them.

- Lois Bailey
- Adeline Clawson
- Lillie Hazelwood
- Alice Sheets
- Nova Schubert
- Lee Womble
- Mildred Ward
- Myrtle Womble

### List of "B" Students:

- Blanche Archer
- Elma Buckley
- Bessie Barkley
- Jaunita Haney
- Hettie Clawson
- Vera Fulbright
- Olivet Hancock
- Alta Hays
- Helen Harvey
- Ruth Livingston
- Nove Mathews
- Marjorie McCloy
- Orene McClellan
- Ruth Prigman
- Frances Roland
- Evelyn Roland
- Elmo Maize
- Robert Fuller
- Pat Barbour
- Edwin Simmons
- Reba Barkley

### CARD OF THANKS

We desire to extend sincere thanks to our friends and neighbors who were so kind to us during our recent bereavement. MR. and MRS. BUCK STANHOPE, and the family.

WANTED—Two men with cars for special work who will be satisfied with \$25.00 per week to start. Prefer married men with Ford cars. Only men of sterling character considered. Write Coleman Duke, at Spearman, Texas. 47t1

"Where the law of majority ceases to be acknowledged there government ends."  
—Thomas Jefferson

# Happiness and Health

Where these are lacking there is little left to make life worth living. And there is nothing more capable of breeding health and happiness than a Home of Your Very Own.

Sunshine, pure air and the wholesome pleasures found in and about your own home are essential to both children and grown-ups who would enjoy real health and happiness.

If you are a renter, you need not be envious. You can have the happiness and health that come with home ownership. You can almost own a home of your own with the money that you now pay out for rent. And we will help you do it.

We will gladly assist you in figuring costs. Our FREE PLANS are ready for your inspection at all times. All our experience and knowledge are at your disposal. ACT NOW!

## PANHANDLE LUMBER COMPANY

OUR AIM—COURTESY, QUALITY, SERVICE. MODERN HOMES

R. T. WESTERFIELD, MANAGER.

PHONE 2—SPEARMAN

### METHODIST END ABILENE MEETING

The fifteenth annual Northwest Texas Conference of the Methodist Episcopal Church, South, came to an end last Sunday night when Bishop James E. Dickey read the assignments for the year. Changes were not numerous.

Appointments for Amarillo District:

W. M. Lane, presiding elder. Amarillo, Polk Street, S. W. Hayne; Amarillo, Polk Street, Everett Gaston Foote, junior preacher; Amarillo, St. Paul's, C. C. Wright; Amarillo, Buchanan Street, G. H. Bryant; Amarillo, Houston Street, Z. B. Pirtle; Amarillo, San Jacinto, V. H. Fisher; Canadian, C. E. Fike; Channing, J. A. Laney; Dalhart, W. P. Garvin; Higgins, J. T. Weems; Miami, I. T. Hucklebee; Panhandle, O. B. Annis; Perryton, J. S. Hucklebee; Spearman, J. A. Wheeler; Stratford, Joseph E. Eldridge; Texline, W. H. Strong; Vega, J. W. Leggett; White Deer, G. H. Gatt's; Booker, J. J. McNeely; Zyback, C. M. Killan; general evangelist, F. M. Neal; Missionary to Africa, Ancil Lynn, and Presbyterian Orphan Home, G. J. Irvin.

### P. T. A. NOTES

The next meeting of the Parent-Teachers Association will be held on Friday, November 14th, at 3:15, in the high school auditorium.

We hope every parent will be present at this meeting, to cooperate with the teachers in doing something for the betterment of the Spearman school and community. The following program will be rendered:

Invocation.  
Song by Glee Club, directed by Miss Gwinn.

Reading, directed by Mrs. J. A. Wheeler.

Effects of bad eyes and tonsils on the advancement of the child, by Dr. G. P. Ginet.  
Business session.

### BUSINESS GOOD ON THE CANADIAN

A. E. Powers and Archie King were in Saturday from their ranches on the Canadian river south, and report a rushing business at the general offices and factory of the Powerful Cool Cream Company. They also report that they recently purchased two dogs, at \$75 per howl which come nearer filling the bill exactly in what they want as hunting dogs, than any yelps yet bought by them. These dogs fill every requirement and measure up to every specification perfectly. The dogs will be used incoon hunting in the Canadian River breaks.

### WALTER SIKES WINS A GOLF TOURNAMENT

Walter Sikes won the one-club golf tournament at Hilcrest yesterday. Mr. Sikes, who was as steady as clock-work, shot 39 and 44 for a total of 83 on the 18 holes. W. W. Woolsey, the champion of Northwest Texas, shot 43-41 for a total of 84. He was second.—Amarillo Globe.

Walter Sikes was at one time cashier of the Guaranty State Bank of Spearman, before that institution was moved from old Hansford to this place. During the time he was connected with this institution, he was regarded as an honorable, capable and well-meaning young man, and his friends in this community regret to learn that he has all up.

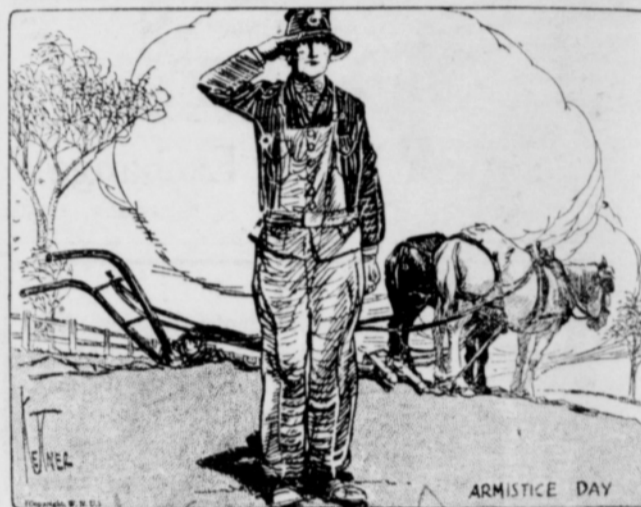
### SHIPPED TWO CAR OF BROOM CORN

The McClellan Grain Company shipped two car of broom corn from Spearman the first of this week. This was the first of the new crop to be shipped from this point this year. The brush is bringing from \$40 to \$75 per ton.

### IT PAYS

Mrs. Dave Hester attended the auction sale at the J. F. Andrews ranch last week, and lost her purse on the trip. A 25-cent local in the Reporter returned the purse to the rightful owner. But what if Mrs. Hester had said, like some business men, "ah, everybody knows me and it will do no good to advertise."

### Eyes to the East



ARMISTICE DAY

R. K. Stanhope has another big auction sale advertised in this issue of the Reporter.

Joe Miller, Kenneth Wilmeth and M. M. Jones were in from the north flats Thursday, attending to business matters.

Your tires changed and tubes patched for a quarter. Cheaper and better than you can do it yourself, at D. C. D. filling station. 44tf

The Presbyterian Auxiliary honored Mrs. Raymond Witt, their president, with a farewell luncheon at the Hotel Crawford on Tuesday afternoon.

Miss Mattie Taylor returned Wednesday afternoon from an extended visit with her friend Miss Exol Taylor at McGregor, Texas, and is again on the job at the Guaranty State bank.

T. K. Winter and Kelly Bennet were in from the west side Thursday, looking after business matters. Mr. Winter informs us that after the 15th of this month he and his family would be residents of Amarillo.

W. S. McNabb and M. G. Graham are looking over the Spearman country, picking out a farm on which Mr. Graham will locate. Mr. McNabb continues to bring home buyers to the Spearman country in ever increasing numbers. He says about all it takes to sell a man a farm in the Spearman country is to get the man to come and take a look at the country, but that people down in the "sticks" are mighty busy with their cotton now and it is difficult to get them to turn loose.

### BOX SUPPER POSTPONED

The entertainment and box supper which was to have taken place at the Lowe school house, the Doyle school, has been postponed until Saturday night, November 15, so we are informed by the teacher of the school, Miss Nina Shere. The school plans to give a nice program and at the close of this the boxes will be sold at auction, the proceeds to be used in purchasing playground equipment and in improving the playgrounds. Everyone is invited to attend the entertainment and box supper and are guaranteed an enjoyable time.

Read the Reporter.

### THE IRISH AGAIN

An Irishman coming out of ether in the ward after an operation exclaimed:

"Thank God! That's over." "Don't be too sure," said the man in the next bed. "They left a sponge in me and had to cut me open again." And the patient on the other side said "Why, they had to open me up to find one of their instruments."

Just then the surgeon who had operated on the Irishman stuck his head in the door and yelled, "Has anybody seen my hat?" Pat sat bolt upright in bed and then fell back in a dead faint.

? ? ?

"A flirt, am I?" exclaimed Mary Ann, under notice to go. "Well, I know them that flirts more than I do, and with less excuse." She shot a spiteful look at her mistress and added:

"I'm better looking than you. More 'andsome. 'Ow do I know? Your husband told me so."

"That will do," said her mistress, frigidly.

"But I ain't finished yet," retorted Mary Ann. "I can give a better kiss than you! Want to know who told me that, mum?"

"If you mean to suggest that my husband—"

"No, it wasn't your husband this time," said Mary Ann. "It was your chauffeur."—London Tit-Bits.

### AN ONERY RATTLER

Insurance man putting questions to a cowboy:

"Ever had any accidents?" "No," was the reply.

"Never had an accident in your life?"

"Nope. A rattler bit me once though."

"Well, don't you call that an accident?"

"Hell, no. He bit me on purpose."

WORTH THE MONEY AT THAT

A young sport who answered an advertisement offering to send wise tips on the horses received for his dollar a card with this advice on it:

Horses to follow—Hearse horses. Horses to back—Hobby horses. Horses to pat something on—Saw horses.

Horses to let alone—Race horses.—Boston Transcript

Hail Insurance. Write or Phone Us!

Equipped to Render Genuine Service

REAL ESTATE, LOANS and INSURANCE

The best in Real Estate to sell or trade. Money to loan on Farms, Ranches and Homesteads. At home in the Insurance business.

McLAIN & McLAIN

Phone or Write  
Phone 43

SPEARMAN

### GENERAL BLACKSMITH-ING and HORSESHOEING

Acetylene Welding a specialty.

We Weld or Braze Anything.

Bring Your Repair Work to Us

J. E. CLOSE  
AUGUST NIHOFF

All Work Guaranteed

