

Christmas
Eats
and
Wears!



...WE HAVE IT...

Fruits, Oranges, Apples, Grapes, Nuts, Walnuts,
Almonds, Filberts, Brazil nuts, and Peanuts.

Christmas Candies Specialties, Special Prices.

SPECIAL PRICE ON ALL CHRISTMAS EATS

We also have a nice line of gifts on display that will
make very desirable gifts for Christmas presents.

P. M. Maize & Co.

Everything to Eat and Wear

PHONE NO. 3

SPEARMAN

P. T. A. WILL ENTERTAIN

The students of the department of the Spearman under Miss Crawhorn, will entertain the Parent-Teachers' Association visitors at the regular of that organization to be the school auditorium this evening, beginning at 7:30 little tots will likely put on a program, to which everyone cordially invited. Besides the program by the little fellows, there will be talks and music by older

I. O. O. F. LODGE

On Thursday night, December 11, the Odd Fellows lodge of Spearman will entertain their families, Rebekahs with a big banquet interesting program and a good time, at the lodge Spearman. All Odd Fellows cordially invited and membership urged to attend this last of 1924. Three Linkers, regulars, will be on hand.

Henry Crawford of the Hotel, is suffering from a case of pneumonia.

Chas. Bradshaw and Frank Las were here from Guymon this Friday morning.

Mrs. Oran Kelly and the Mrs. Essie Smith went to town today to see the dentist.

Try an M. Born suit made to measure, sold by P. M. MAIZE.

A daughter was born to Mrs. Alvah Henderson, southwest of Spearman, on December 8.

Clay Gibner, assistant of the First National bank, makes a business trip to Amarillo, Thursday, and will return today.

I have oval and round frames for moulding to make any frame you want. Come to H. C. EBERHART, Phone 321.

E. N. Nickens, manager of the Lyric Theater, is attending the Hibitor's Convention at Amarillo. Mrs. Nickens is with her parents at Strong City where she attends the convention.

Mr. and Mrs. Millard M. Mr. and Mrs. Mack Martin returned to Spearman from a winter, or at least until the holidays. They have been in Colorado for the past four months.

"Peace hath Her Victory than War" will have a seasonal meaning for all those who attend the FIFTH HORSEMAN High School auditorium on December 29 and 30.

OWN YOUR OWN HOME IN WEST SPEARMAN

Will sell well-built houses and painted, located on blocks from school house down and balance on lot. For further information call the Reporter office.

SHOP EARLY, MAIL EARLY

One of the important features in the Shop Early, Mail Early campaign which is being put on throughout the country by the Post Office Department, is the proper addressing and securely wrapping of Christmas packages. When you wrap your Christmas packages, wrap them securely, put your address in the upper left corner, so, if by any chance, it should go astray, it can be returned to you and not sent to the dead letter office. The good folks of our community last year helped to bring joy and happiness to hundreds of thousands of postmen and clerks. Let's do our shopping early and mailing early again this year, so that we may again enable the postmen and the post office clerks to eat their Christmas dinners home with their families and at the same time assure ourselves of having our Christmas presents delivered to our friends in order that they may be opened on Christmas morning.

Here is a lesson for the citizens of Spearman. Cultivation of the spirit which makes co-operation possible is a great virtue. Co-operation, of course, demands certain surrender on the part of the individual; it is sometimes hard to learn to work with others for the common good; we all cherish notions of individual independence.

Read the Reporter.

REPORT ON COTTON VARIETY TEST IS MADE BY JENNINGS

Cotton variety tests conducted in Randall county under the direction of J. W. Jennings, county agent, showing conclusively that small boll early maturing cotton is the most productive for this country, according to Mr. Jennings, who was here this morning.

The test cotton was planted in a field along the highway beyond Canyon and Amarillo. It was planted on May 20 and replanted on June 11.

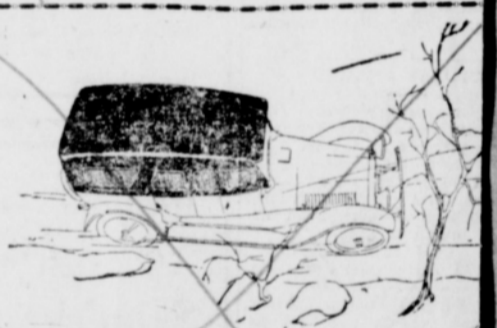
Burnett cotton showed a yield of 179 lint pounds per acre while the next highest variety yielded only 62 pounds, and thence the records ranged down to 14 pounds per acre.

"The cotton variety test will be continued again next year. One year's test might not be accurate. However our test showed the same results as tests by the Lubbock experimental station," declared Mr. Jennings this morning.—Amarillo Daily Globe.

This test will hold good in Hansford and all other north Panhandle counties. Farmers should select their seed for next year from the bolls which open earliest, and by all means should avoid using "bottle" seed.

Mrs. J. P. Winder and Mrs. Kelly Bennett and the children were in Monday from their home out west of town, looking over our merchants' stocks of Christmas goods.

**Attention
Everybody**



Our new up to the minute eight hour battery charging machine is now installed and doing work

Why wait from 36 to 48 hours to get your battery charged when it can be done with all safety and satisfaction in 8 hours. This type of machine is used and recommended by all the largest battery manufacturers, as well as by all the high class battery stations.

No need to send your battery to Amarillo now. You have the same type of machine in your own town as the leading battery stations in Amarillo or any other thriving towns use.

We have an experienced man can build batteries as well as re-charge them.

Come let us inspect your battery before it is too late. We give free inspection. Take advantage of this and don't let your battery freeze for the lack of plenty of acid and charge.

In addition to this our brake riveting machine is here. Also piston and crank shaft straightener installed and ready to do your work.

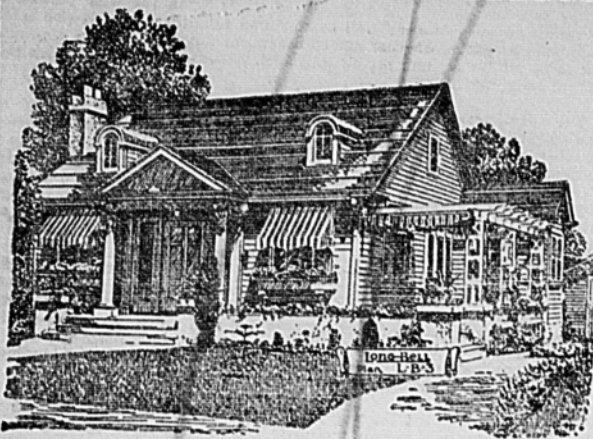
All that is necessary is to give a trial, we have satisfied others, satisfy you.

Lee Sales Co.

FULL LINE OF GENUINE FORD AND CHEVROLET PARTS

Good Year Tires and Tubes
Gas and Oils

Service Car—Phone
Spearman



The Spearman Country

—Promises that we will harvest unusual good crops. This means prosperity for her people. When we are prosperous our thoughts turn to those things which make for comfort and happiness of our family.

One of the first things that contributes to happiness and contentment is a good house for a home. HOME—its environments and influences are the greatest contributing factor to good citizenship.

We would be glad to talk over your needs in any way that we can be helpful in planning your new home. We keep in stock, at all times, a line of best grades of lumber at reasonable price, together with a satisfactory service, and invite you to come in and see us.

WHITE HOUSE Lumber Company

J. ALBERT BURRAN, Manager

LUMBER, WIRE, POSTS, WINDMILLS, PIPING, RIG TIMBERS
BUILDERS HARDWARE

SPEARMAN

TEXAS

LOST
One Ramboulett buck, and two ewes. Please notify
JACK WHITSON,
Spearman.

FURS
I will buy furs; pay highest market price. Two blocks south of D. C. D. Camp ground, Spearman.
D. M. JONES.

IMPORTANT WHEAT FACTORS

(By H. M. Bainer, Director South western Wheat Improvement Association.)

"Good seed costs very little more than poor seed but it insures more bushels per acre.

"A wheat soil that is well equipped with organic matter will retain more moisture than one with a low supply.

"To include summer fallow in a rotation, especially in section of limited rainfall, will often double the yield.

"Where livestock is kept and manure is available, 10 tons per acre as a top dressing to wheat will often double the yield.

"Treating seed wheat for smut may cost a few cents for labor and material but it will make dollars in yield and quality.

"Three things are essential in the production of high protein wheat: (1) favorable climatic conditions, (2) plenty of available soil nitrogen, and (3) a suitable variety.

"Every bushel of wheat and every ton of straw removed from the land, without any provision for returning the fertility represented means just that much loss to the soil.

"It costs no more to raise wheat in rotation, occasionally with a legume, than it does to grow the crop continuously and a good rotation will increase the yield several bushels per acre.

"To diversify at least enough to produce one good cash crop like wheat and plenty of feed for livestock, will not only insure good returns, but will help distribute labor and assist in keeping the land free from weeds, insects and plant diseases.

"While the southwest is noted for its millions of bushels of wheat, the average yield of 13 to 2 bushels per acre is low compared to European farming countries in which Sweden averages 28 bushels per acre, Germany 28.8, Great Britain 32.2 bushels and Denmark 44.7 bushels."

NOTICE TO CONTRACTORS

Bids for the furnishing of material and construction of a 90 foot bridge, to be erected across the Palo Duro creek at the location, will be received by the commissioners of Hansford county, at the county court house. Plans and specifications now on file with the county judge. All bids to be in by 1:00 o'clock, February 10, 1927, and must be accompanied by check for 5 per cent of amount bid. The court reserves the right to receive or reject any or all bids.

C. W. KING,
County Judge, Hansford county,
Texas.

Send The Reporter to a friend.

OAKLAND

Announces the Appointment of

Beck-Maize Motor Company

Spearman, Texas

As Associate Dealer of

Canadian Motor Company

Canadian, Texas

We are pleased to announce the appointment of this new local dealer—a connection which admirably reflects the high standards Oakland has set for selling and servicing its motor cars.

A cordial invitation is extended to you to call on our new dealer and examine the Greater OAKLAND SIX, the car that is everywhere winning and holding increasing good will.

See also its companion car—the PONTIAC SIX, the outstanding new car of the year.

OAKLAND MOTOR CAR COMPANY, PONTIAC, MICHIGAN

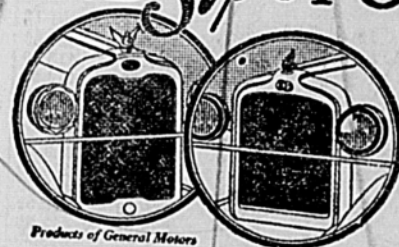
OAKLAND Sixes PONTIAC

\$1025

to

\$1295

at factory



Products of General Motors

\$825

to

\$895

at factory

Building A City

---Where A City Belongs

Three principal elements must converge, so to speak, in the building of a live, aggressive civic center.

Not the least important of these is "Citizenship."

The second great factor is "Natural Resources," and

The third is "Accessibility—Transportation".

The two latter, with the highways and the coming of the railroad, and the unlimited agricultural and oil resources, make the center of Hansford county an ideal location.

It is the province of the townbuilder to so assemble its citizenship by publicity, and judicious selection, that the three essential elements combine naturally, so that the citizenship will take advantage of the two other essential elements, and utilize them in the further and continued up-building and advancement of the municipality and community.

McClellan has two of these necessary elements, and a strong nucleus of the third.

LET'S GO—EVERYBODY WORTH WHILE.

Meet us at the office on the Townsite, or in the office of McLain & McLain, or write us,

Live Representatives wanted everywhere. Write at once to

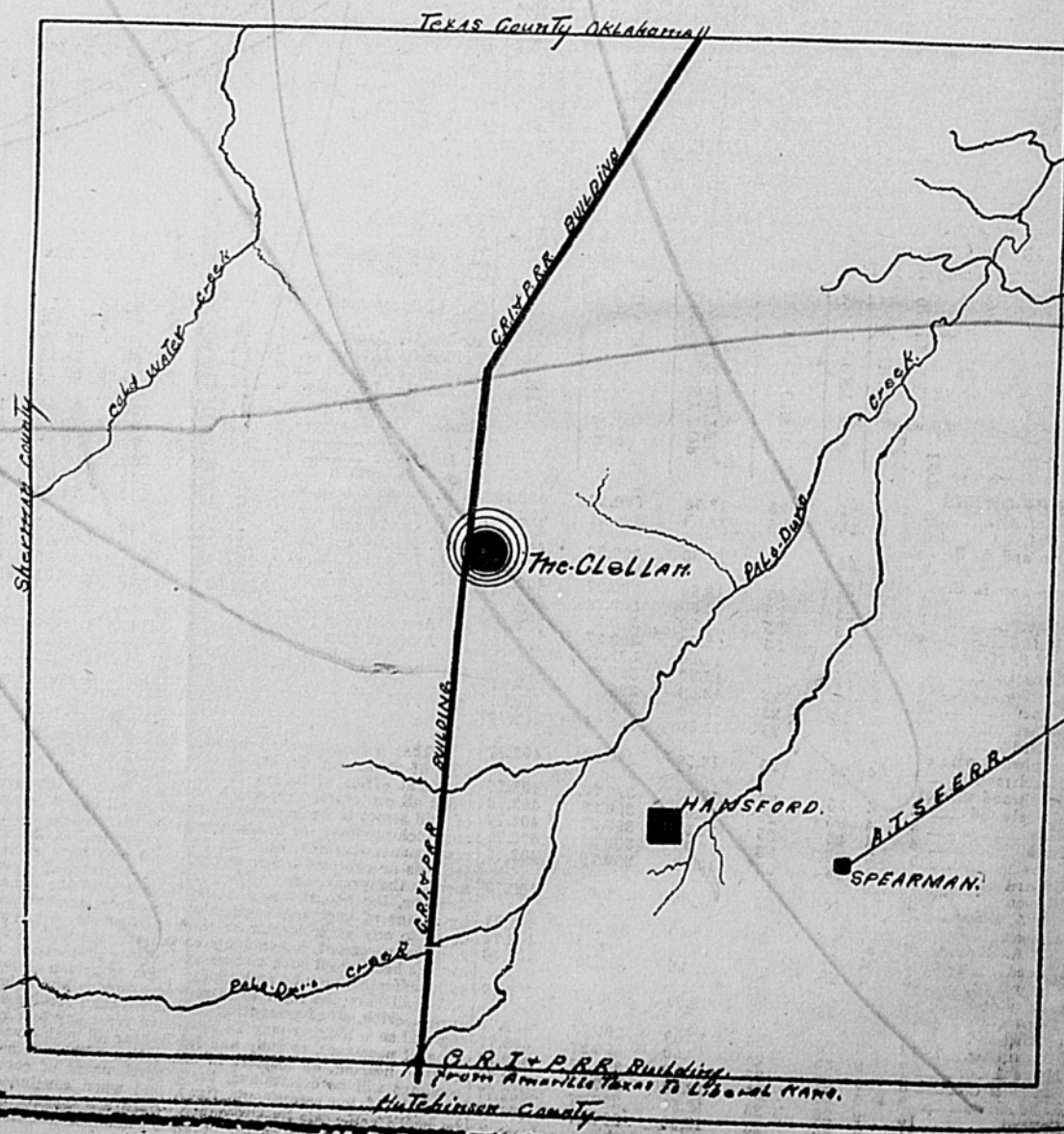
McClellan Townsite Company

Spearman,

Texas

HANSFORD COUNTY

TEXAS



Dr. Powell, Eye, Ear, Nose and Throat Specialist. Will be in Spearman, at offices of Dr. Gower, on Wednesday, February 16th. Glasses fitted and tonsils and adenoids removed.

Wakeman & Swearingen
Lawyers
Offices in Fidelity Bank of Commerce Building.
Spearman

DR. JARVIS
DENTIST
Ferryton, Texas

R. T. CORRELL
LAWYER
Ferryton, Texas

CITY LIGHT
and
POWER
For
COUNTRY FOLKS

KOHLER AUTOMATIC
Power and Light
ROBERT SHAPLEY
Dealer
Spearman, Texas

C. K. WILMETH & SON
Auctioneers
Make dates at Reporter Office

FOR RENT
Neatly furnished room, with both hot and cold water, and all conveniences. Will rent by week or month. One block from business district. See Baptist pastor.

Dairy Cows, Sheep, Hogs and Capons Replace Cattle on Hansford County Ranches

BY BOB ANGLIN
Secretary Spearman C. of C.
SPEARMAN.—Livestock, poultry and dairying are among the leading industries in the Spearman territory, once recognized as a ranchman's paradise, but now the larger ranches are rapidly being cut into small farms and diversified stock farming is coming into prominence.

Sheep raising is becoming very popular in Hansford county, two years ago there were practically no sheep in the county, and now there are more than 9,000 head of sheep here. Many of the farmers have started small flocks and have found them very profitable, as they graze them on the wheat fields during the winter and they pick up the waste about the barns and prove very inexpensive to raise.

With an ideal market with attractive prices in the oil fields south of here many of the dairy herds have been more than doubled during the past year. Milk, eggs, chickens, turkeys, and other like products are carried to the fields in Hutchinson county daily. During the past year dairying has increased practically 150 per cent.

The hog industry is also gaining rapidly two or three progressive farmers kept their herds of hogs and some of them even bought feed for them during the period when there were very few hogs in the state. The increase of these herds have been very influential in stocking the farms with hogs here recently. Several thousand turkeys have been sold in Hutchinson county during the past few weeks and the farmers say they bring the best price they have ever received.

the ordinary chicken. Crawford Brothers, five miles southwest of Spearman have raised 300 capons this season and state before the chamber of commerce officers that they have found nothing more profitable than to grow row crops and feed capons for the market.

Several large ranches have recently been sold out in 160 and 320 acre tracts. One of the most outstanding is the O'Loughlin ranch, handled by the McNabb Land Company. Ten thousand acres were put on the market in September and 7,000 acres have already been sold into farms.—Amarillo News.

NO TARIFF ON FARM EQUIPMENT
There is no tariff on farm equipment, and the American farmer is the only tiller of the soil who has the world's unrestricted trade in farm machines to give him the cheapest product of labor, mass production, material and freight combination, says the research department of the National Association of Farm Equipment Manufacturers. Only cream separators selling for over \$50 carry any tariff. On the other hand, U. S. manufactured farm machines have to climb a tariff wall before getting into any other country of importance. Because of this fact, as well as additional transportation costs and other charges, foreign farmers pay substantially more for American farm equipment than the U. S. farmers.

DEALERS ORGANIZATION GREAT FARM SERVICE

No other farmer in the world is served with such a high class organization for helping him cut labor costs and reduce the drudgery of farm life as is the U. S. agriculturalist. According to Secretary H. J. Hodge of the National Federation of Implement Dealers' Associations, there are close to 20,000 farm equipment dealers in the United States, most of them equipped with trained men and parts to give a farmer instant service at a call by telephone for help. Whether it is an icy windmill tower in zero weather or a combine in the wheat field, where the thermometer registers 110 degrees in the shade, the dealer is at the farmer's beck and call to see that the machines go ahead and the farm job is done.

'SHORT GRASS' FARM BOYS CLEAN UP

Kansas, Oklahoma, Nebraska and Wyoming college and high school judging teams carried off all four national trophies for superiority in judging farm products at the recent International Live Stock and Grain and Hay Show.

Oklahoma won the intercollegiate live stock judging trophy for the second time in succession; Kansas captured the grain judging cup; Nebraska repeated the feat with the meat judging trophy; and the Wyoming lads from the high school ranks of boys' and girls' clubs took the live stock judging trophy in their farms where the highest efficiency in the use of modern man labor saving equipment is used—combines, tractors; sanitary hog, dairy and poultry equipment; water systems, big hitches for both tractors and horses, portable elevators, corn pickers, irrigation farming, threshers, headers, binders, middle busters, grain drills, corn shellers, listers, sheet steel construction, etc.

TELEPHONE PLANTS ARE MORE THAN INSTRUMENTS

It is estimated that less than 3 per cent of the equipment used in telephone service is visible to the telephone user and is represented by the receiver and bell box installed in his home. The remaining 97 per cent is represented in switchboards, pole lines, cables, conduits, buildings and a myriad of other items necessary to make an efficient telephone system. Among these items may be found more than 2,000 buildings owned and 4,000 buildings leased. The land occupied by buildings owned represents an investment of more than \$237,500,000.

Eleven thousand five hundred automobiles—mostly trucks—are used to furnish and maintain service, and 2,000 other cars are hired for the same purpose. Motor trucks fitted for digging and hoisting machinery and operated by a gang of men now do the work of 50 men using the old manual method.

THE LITTLE TOWNS OF TEXAS

The little towns of Texas
That nestle on her plains,
And gather close the inland roads,
The homing trails and lands.
The little towns of Texas,
That sleep the whole night long,
Cooled by a scented southern breeze,
Lulled by its drowsy song.

The little towns of Texas,
Will ever seem to me
Like stars that deck a prairie sky,
Or isles that dot a sea;
Like beads, that sprinkle here and there
On Texas, flowered gown;
Like figures on its rich brocade
O purple, green and brown.

The little towns of Texas
Seen through the prairie haze,
How fair and fresh and free they lie
Beneath the golden days;
Not crowded in deep valleys,
Not buried in tall trees,
But open to the sun and moon,
The starlight and the breeze.

The little towns of Texas,
What pretty names they bear,
There's Echo, Garland, Crystal Springs,
Arcadia, Dawn and Dare,
There's Ingleside and Prairie Home,
And Bells, and Rising Star,
God keep them child like, restful clean
Pure as the prairies are.
Author Unknown.

BRED SOWS AND GILTS
A few extra good registered sows and gilts for sale. Bred to farrow in March and April.
W. A. SUTTON,
Breeder of Duroc Jersey Swine,
Spearman, Texas.

Mrs. James A. Reed and Miss Wilma Huggins were pleasant callers at the Reporter's office on Saturday at the Blodgett school.
Johnny, Miss Blanche and Fancher Archer and Cap Westerfield were here from Amarillo Saturday, visiting with old friends.
Miss Dovie Dixon was in from her home out west of Spearman Monday and was a pleasant caller at this office.

Auction Sale!
I WILL SELL FOR G. M. MADDEN AT THE HUGHES BARN IN SPEARMAN ON
Saturday, Jan. 22nd
SALE STARTS AT 2:00 P. M.
The Following to-wit:
One Bay Horse, 5 years old, wt. 950.
One Pair Horses, Bay and Brown, 9 years old, wt. 1200
One Pair Mules, 3 years old, wt. 750.
One Bay Mare, 4 years old, wt. 900.
One Bay Mare and Colt.
One Bay Horse, wt. 900.
One Black Horse, wt. 1050.
One Black Filly, one year old.
One good wagon.
And other things too numerous to mention.
O. C. RANEY, Auctioneer
Fidelity Bank, Clerk. Spearman, Texas
TERMS: 5 per cent discount for cash over \$10.00;
Six months time will be given on all amounts over \$10 with Bankable Note.

TESTING YOUR TEMPERAMENT
You have a temperament. Everybody has. Old-fashioned folks would call it your disposition. But science is following a more modern style. So you might as well get in line and acknowledge that you, too, are carrying a temperament concealed somewhere about your person.
Very well, then, how about getting acquainted with your temperament? It is the child of your moods and the grandchild of your emotions. Want to test it out? If you can stand living with yourself, do this for a month:
When you get up every morning, scowl at yourself in the mirror. At the end of the month, say psychologists, your facial map and will resemble a sector of no man's land in rainy weather.
Then start smiling at what you see in the mirror on the thirty-first day. You will peep wonderfully. Friends will marvel at the change that's come over you. And you digestion will be better.
But don't keep up the morning smile too persistently. It may degenerate into a simper. Having let your temperament go to both extremes, take control and regulate it. Let the balance hang just a trifle on the side of the smile, and you will be joyous without becoming chronically sanguine.

MEATS...
You Can Relish
Cut from the choicest beef, pork and lambs we can buy, our meats are thoroughly seasoned and handled in a clean, sanitary manner. Order the meat you prefer for today and see how well we handle your order.
Star Market
Phone No. 38 KIKER & FAUS, Prop's.

The Iowa Cream Separator
The World's Best by Actual Test
They cost no more than an ordinary separator, and will get all the butter fat from hot, cold, sweet or sour milk.
Ask the farmer who has one, then take one out and try it.
SNIDER PRODUCE
Cream, Eggs, Poultry and Hides
PHONE 115 SPEARMAN

BIG MATTRESS SALE
Begins Saturday, January 22nd
In order to make room for a Car Load of Spring Furniture, we will sell, as long as they last:
50 pound Felt Mattress, was \$13.00, reduced to \$11.00
45 pound All-Cotton Mattress, was \$8.50, reduced to \$5.50
These Mattresses are made from new sterilized cotton.
Better come early . . . They will not last long
Spearman Hardware
Phone 35 Spearman, Texas

Groceries Fresh, Pure and Clean
—New lines arriving every day . . . We handle only the very best and the price is always a fair one.
Rock Salt—big supply—Car Load of Flour
Coming Soon
Peters Shoes for the ENTIRE FAMILY
W. L. Russell The Famous Phone
Dry Goods and Groceries
Phone 78 SPEARMAN



Ladies' Coats and Dresses

30 Per Cent
Off

Men's and Boy's Overcoats

20 Per Cent
Off

All high-class, quality merchandise—Buy Now—The prices we are making will soon move these Coats, Dresses and Overcoats.

SUGAR SPECIAL:—Buy a bill of \$5.00 or over and we will make you a price on a sack of sugar that will interest you—One sack only to a customer.

RED STAR FLOUR -- NONE BETTER

P. M. Maize & Comp'y

ONE PRICE---A FAIR ONE

30 Years of
Fair Dealing

Phone 3
Spearman

SNAPPY STUFF

Burgess Anthony Kubitzky of West Hazelton, Pa., has ruled that Sunday loafers on the street must go to church or go home until services are over.

Mrs. Marie Bernasconi of Melbourne, Australia, has for a pet a 7-months-old lion which sleeps at the foot of her bed.

Mrs. Sheridan Cooper of St. Louis was awarded \$20,000 damages from a woman who stole her husband's affection, after the other woman had offered her \$7,500 to give him up.

The jar of an automobile collision at Uniontown, Pa., ejected a bone which was stuck in the throat of a child being rushed to a hospital.

When Roy Edelson of Chicago, an unwelcome suitor, hammered repeatedly on her door between midnight and 3 a. m., Miss Clara Stern had him arrested.

After being pinned under her automobile when it was wrecked, Miss Catherine O'Connor of Binghamton, N. Y., crawled out, helped to right the machine and drove off.

COUNTY AGENT COLUMN

The Grand Plains Agricultural Club met Tuesday afternoon with all members present except one. Maize judging was studied by the club, and a good program was rendered by the members. Lloyd Stavlo won the prize box of candy offered, in one of the games.

Herbert McClellan had the county agent help him select a beef calf for a project. Herbert will feed this calf for the Fairs next fall. Willis Wells has found beef calf projects very profitable, and other club members will try beef cattle this year.

County agent visited Woodrow and Lakeside schools Friday. Clubs will be organized at an early date.

Mr. Dozier's farm was visited by the county agent Friday, and he advised Mr. Dozier in regard to his 22 pigs that are on feed.

L. F. Noe asks the county agent to visit his farm, twenty miles southwest of Spearman, and cull his chickens. Mr. Noe has some very nice colored Rhode Island Reds. About thirty hens were culled from Mr. Noe's flock.

W. A. Sutton was in to see the county agent in regard to a project on poultry. Mr. Sutton is installing a new Buck Eye Incubator, 500 chick brooder and house, on his farm north of Spearman.

George Meek is feeding out a carload of beef cattle and the agent worked out a balanced ration which he will use.

Ted Rosenbaum is feeding 161 beef calves a ration of oats, milo, cottonseed meal, and cane hay. The county agent worked out a ration for Mr. Rosenbaum's calves.

Now is the time to get out your incubator, and test it. The large oil development north of the river will furnish a good market for your spring friers, and next winter eggs. Start a few eggs to setting in your incubator early in February, and then have a good brooder to take care of the chicks.

Lieut. Andre Zeringel of Rheims, after serving during the war without being wounded, was recently killed by the explosion of a German shell that he had kept as a souvenir.

When an automobile driven by Ralph Curran of Wilmington, Del., collided with another driven by his sister, six persons were injured.

At Birmingham, Eng., a man named Green married a girl named Brown, who he later had arrested for bigamy, marrying a chap named Black.

To be sure that his bride would be impressed, Alan R. Frazier of Edinburgh, had the clergyman repeat the clause of the marriage ceremony in which she pledged herself to "love, honor and obey."

William Ferrin of New York, paroled by the court on a minor charge robbed a store to secure money with which to pay his fine.



Wire Wheels ... now Optional on Fordor Sedan

Wire wheels are now optional on the Ford Fordor Sedan—at no additional cost!

The wide utility and handsome appearance of the Fordor have long made it a particularly popular car for family use. Now—with the option of wire wheels to add another touch of individuality—it is more desirable than ever.

All Ford cars are now finished in color. If you have not driven one of the later Ford cars, you will be amazed at their new beauty—and the finer performance of the Ford engine. May we send a car for a demonstration?

R. W. Morton

FORD FORDSON LINCOLN
Spearman, Texas

ANNOUNCEMENT

We are open for business and will appreciate your patronage. Try our popular prices on family rough dry wash. Our Motto: Is to please give us a trial.

KILLION LAUNDRY
PHONE 63

Suit Sale



Style Plus Suits and Metcalf Worsteds

Blue Serges, Brown Mix, Gray Patterns and Pin Stripes. Fine tailoring that hold their shape. Sizes 35 to 48. Splendid values at \$28.50 to \$35.00. All sacrificed in this Sale. Choice of entire Stock of Suits, only **\$21.95**

SHOES

We have a big stock of Star Brand Shoes, Work Shoes, Dress Shoes, Boys Shoes and Men's Justin Boots and Bootees. You save \$1.00 on each \$5.00 purchase. Include in pair of good shoes in your purchase. Any \$5.00 pair of Shoes Cost you only **\$4.00**

HATS

Stetson and Beaver Brand Hats. A complete stock of Mens stylish Dress Hats and Men's Staple shapes. Beaver Hats at **\$4.90 to \$6.90**
Stetsons at **\$8.00 to \$17.50**

Dress Sale

NEW DRESSES

Brand new advance Styles for Spring. Made of fine quality heavy flat Silk Crepe. Such values as we have never offered. Beautiful Dresses at regular price \$10.50 to \$24.50. Entire Dress stock, choice **1-3 OFF**

DRY GOODS

Special prices on Muslin's, Outings, Gingham and other goods.
36-inch Outing per yard **18c**
32-inch Amoskeag Dress Gingham per yard **18c**
36-inch Bleached Hope Muslin. Sale price per yard **12c**
You Save **\$1.00** on each **\$5.00** purchase.

Blankets and Comforts

A real opportunity to save money on bed covering for these cold nights. Large Khaki comforts 6 pounds, full size **\$2.50** each
Cotton Blankets, size 64x76 double, gray color, striped Border, weight about 2 1-2 pounds, each **\$1.69**



**\$5-Worth
For \$4.00**

Thomason Brothers
THE QUALITY STORE

Spearman, Texas

Notice
SALE Postively closes
Saturday, Jan. 29