

Lead in Race For Essex Car Is Hotly Contested

CONTESTANTS FIGHT FOR FIRST PLACE AS INTEREST GROWS

All Are Off to a Good Start And It's Anybody's Race at the Present Time

FRIENDS CAN HELP

First Period Closes November 29 and Votes on Five-Year Subscriptions Decrease

Contestants in the Reporter's big campaign for subscriptions are off to a good start. Many names were handed in as a result of the first week's work. Many are giving their subscriptions on first canvases but some have deferred action on first invitation.

Friends of the various candidates are urged to subscribe on first call. Delay on a thing that you will do eventually tends to slow up your favorite candidate as she has to lose time to call on you again. By acting on first call you will assist your candidate greatly in her efforts to win the grand prize.

The new Essex Super-Six purchased from the Spearman Sales and Service is a prize worthy of your best efforts. The \$250.00 diamond ring is a beautiful gift that would be appreciated by anyone. The third and fourth prizes, a \$150 diamond ring and a \$75.00 wrist watch, are also handsome prizes. These three last prizes were purchased from the Berger Jewelry Store.

All contestants are urged to make use of every moment of time during the remainder of the first period which closes November 29 at six o'clock p. m. They are urged to work for five year subscriptions as they count for a total voting strength of 300,000. This strength decreases to 200,000 votes after the date above mentioned. Securing a number of five-year subscriptions during the first period might make an easy finish.

Friends of the candidates can easily see the importance of buying the paper for five years as it counts for a big vote for their favorite contestant. Friends of the Reporter should realize that the paper is backed by a strong corporation and the paper is not here for a short time. The Reporter is the pioneer newspaper of Hansford county. Publication was started when the paper did not pay expenses yet the management has carried on and has shown faith in the future growth and development of Spearman and Hansford county.

Our final word to contestants is to get busy and do not lose a single minute in this work. True, it is work, but the pay is well worth the effort. Contestants who work hard can go through this campaign with the assurance that they will be well paid for their efforts. The cash commissions will assure all of a reasonable pay for their work. The Workers Win. Who will be the winners?

P. T. A. BUNDLE SALE POSTPONED

The P. T. A. Bundle sale, which was to have been last Friday night, was postponed on account of bad weather. As bad weather has continued all week the sale has been postponed indefinitely. A new date will be set as soon as the weather conditions are more favorable and will be announced later. Watch for the new date.

ADVERTISING HOUSEHOLD GOODS; MOVING TO DALHART

E. H. Barbour has a large advertisement in this week's Reporter announcing that he will sell his household goods at auction sale, on Saturday, December 1. Mr. and Mrs. Barbour have sold their fine home in South Spearman to Mr. and Mrs. E. C. Womble, and are making preparations to move to Dalhart, where they will make their future home. Mr. Barbour will handle the famous John Deere line of farming implements in Dalhart. This excellent family has resided in Spearman and vicinity for many years and their many friends will learn of their intention to move away with much regret. The people of Dalhart will find them to be most excellent folks; good neighbors and good citizens. Their auction sale will be conducted by Edd Littleton, and will begin promptly at 1:00 o'clock, at their home in South Spearman.

HANSFORD COUNTY SINGING CONVENTION

President W. W. Grooms writes the Reporter to boost the Hansford County Singing Convention, which meets at Kimball on the first Sunday in December, which is December 2. This will be a great meeting of this very important organization. Remember the date and begin now making preparations.

The only service that some people give to their community consists in furnishing a bad example.

Five Inch Snow Follows Three Day Rain - Looks Like Another Big Wheat Crop

Rain began falling throughout Hansford county and the entire north plains country on Tuesday of last week, and continued almost all week. The ground was already thoroughly soaked, and to make the snow complete, snow began falling on Thursday night and continued until Monday. A total of 2.94 inches of snow has fallen during the past ten days at Spearman, and the snow amounted to about five inches, which is equivalent to one-half inch of rainfall. Prospects for a crop next year were never better at this time in the year. This is a fact. The ground is as wet as water will make it. If we have enough fair weather to enable farmers to get in the fields to complete their job of sowing wheat, next year's crop will surpass, far, any previous record. The great inconvenience at present is the roads. The roads are in a bad way, but a few days fair weather will bring about a great change.

CROSS ROLL CALL POSTPONED-BAD WEATHER

Bob Taylor, director of the local Cross Roll Call, states that this year was again delayed, this time on account of the weather being so unfavorable that it was impossible to get around and see the folks. Mr. Taylor and others interested in the matter, and plans are all completed for a quick disposal of the matter soon as the weather will permit. The weather continues clear, the roll call will likely be made next Saturday, November 24.

RETURNS FROM CONVENTION

Rev. J. H. Richards, pastor of the Methodist church of Spearman arrived at Mineral Wells, where he attended the Baptist general convention, on Tuesday afternoon at 3:00 o'clock. Bro. Richards reports that the roads are in mighty bad shape, all the way down to the Wells. He left Mineral Wells early Saturday morning and arrived in Spearman on Tuesday at 3:00 p. m. The weather, ordinarily, should be made in one day.

LOCATE SOUTH LINE OF COUNTY

The south line of Hansford county, which is the north line of Hutchinson county, has never been definitely located. It cuts through many sections of land, and for the purpose of taxing a part of the taxes are paid in Hutchinson county. The county commissioners courts of Hansford and Hutchinson counties to have this line located and equitably and permanently located. The report that the line was dislocated by high winds is without foundation in fact. It is thought that Joe Close and other residents of the north part of Hutchinson county will become residents of Hansford county by reason of the establishment of the line.

SOLD HORSES

W. Wilmeth recently sold 70 head of horses and mules to Cap. Crockett of Crosbyton. Mr. Wilmeth is making arrangements to ship large loads of cattle to the Kansas and St. Jo markets on Friday this week.

Ray Lyon of Denton, arrived early Monday morning and is a guest in the home of his brother P. A. Lyon.

Blanche Jones, Gruver, has been visiting with friends in Liberal last week.

Valma Hays, Gruver, was attending to business in town Wednesday.

Expect Definite Information In Next Few Days on Denyer Line From Childress

Bob Taylor, of the local chamber of commerce, states that he has received some most encouraging information of late, regarding the extension of the Fort Worth and Denyer lines from Childress to Spearman. Officials have been quiet on the proposition, but general opinion has been for some time, that when the south line is located, Denyer and Lubbock plains towns, were completed, a westerly route would be opened this week, with a celebration at Childress. A committee of manufacturers from all over west Texas, as far as Dalhart, Waco, are on this God Willing week. They doubtless will be with Denyer officials about the route, and they can reasonably expect some sort of definite information soon.

LOCAL REAL ESTATE FIRM BELIEVES IN ADVERTISING

The Reporter job department has turned out an immense amount of printing for the McNabb Land Company this week. The several orders, now almost completed, will run to over 75,000 impressions on a job press. The McNabb Land Company at present has offices here and at Gruver, Pringle, Dalhart and Amarillo. Its principal field of operation is in Hansford county, but at present this firm is selling out a large tract of land in Dallam county and another in Randall county. When this firm takes over a tract of land for the purpose of selling it out in small tracts to actual farmers, the first step taken is to get out a big lot of advertising matter, telling just what the land is, where it is, the price and on what terms it may be purchased. The salesmen then get busy and soon the land is sold. The McNabb Land Company has grown into a tremendously big concern during the past two years, and is still growing.

ELKHART MAN PURCHASES POINT ROCKS RANCH

The old Point Rocks ranch, long renowned in the Southwest, passed into the hands of a new owner early this week when it was purchased by Foster Elliott, one of the biggest livestock operators in this section of the country. Elliott took possession at once and began the job of moving a thousand head of cattle on to the place from his Goff creek pastures. The purchase of the ranch was made from the Inter-State National Bank of Kansas, which took it over some seven or eight years ago when H. L. Stonebraker, former owner, quit the cattle business here. The ranch contains 10,500 acres, mostly grazing land, and borders the Cimarron river. It has a splendid cattle range with plenty of good grass and abundant water. The ranch improvements are on the five near the old crossing and more than a mile west of the state highway bridge between Elkhart and Richland.

The ranch has always figured in the history of the county and inherited historical fame since the famous Point Rocks and crossing are both situated on it, the bluffs having been a favorite rendezvous for prairie tribes of Indians and a camp site for pack trains and wagon trains that followed the cutoff route of the Santa Fe Trail. The Santa Fe Trail marker placed by the Daughters of the American Revolution near the crossing in 1913 stands on the shoulder of the bluff near the ranch house.

The old ranch house was washed away in the big flood a dozen years or more ago when the daughters of Perry Brite, who were in the house, were drowned. The old bridge at the crossing was abandoned when the state highway was routed directly north of Elkhart several years ago.

The acquisition of the Point Rocks ranch increases Elliott's holdings to about 30,000 acres, most of which is situated in Las Animas and Baca counties. His leased ranges are even larger. He grazes from five to seven thousand head of cattle most of the time. Elliott recently broke out a huge field of 7,500 acres in Baca county which has been drilled to wheat, but cattle are still his main interests.—Elkhart News.

SPEARMAN BANKS CLOSE THANKSGIVING, NOV. 29.

The First National and the Fidelity Bank of Commerce of Spearman will not open their doors for business on Thanksgiving Day, next Thursday, December 26. Customers of these institutions should bear this in mind and act accordingly.

SIXTY CENT AD IN REPORTER BRINGS ABOUT A BIG DEAL

L. L. Hughes of Booker is firmly and everlastingly convinced that an ad in the Reporter will bring results. Three weeks ago Mr. Hughes placed a sixty-cent local advertisement in these columns, announcing that he would sell a tract of land, adjoining the townsite of Spearman. Last week he sold this land to R. C. Sampson of Spearman at \$80 per acre. The land is all level, rich agricultural land, and usually produces a good yield of wheat. We understand that Mr. Sampson will improve the land and make his home out there. It is conveniently located and altogether is a very desirable piece of property.

We greatly appreciate the folks who call and tell us about a party they have had or any personal note that would be interesting in the Reporter.

ENCOURAGING CRIME

Carelessness and stupidity on the part of the victims is responsible for much of the thieving and swindling which has reached such alarming proportions in this country, amounting to approximately two billions a year.

Some of the specific weaknesses of our "easy marks" are pointed out by a leading criminologist, who enumerates cashing checks for strangers, leaving automobiles unprotected, carrying unnecessarily large sums of money, buying real estate without seeing it or investigating its title, investing in stocks and schemes without consulting a banker, trying to beat gamblers at their own games, lending money and extending credit to persons of doubtful honesty, and so on.

If people fail to exercise any caution whatever in these matters, no law or officials action can effectively protect them from thieves, swindlers and dead beats.

While the punishment of criminals often occurs, it usually happens too late to do the victim any good, so far as recovering his money or property is concerned.

Honest people have it in their own power to greatly reduce losses from the above mentioned causes, by merely exercising ordinary good judgment, instead of indulging in reckless practices which encourage crime.

USING THE SCHOOL HOUSE

In many country communities it is becoming more and more the custom to make use of school buildings for a variety of helpful purposes, in addition to that for which they are primarily intended.

Where no other building is available, the school house affords a convenient place for pleasant and profitable gatherings, such as men's and women's clubs, boy and girl clubs, debating societies, singings, public speakings, entertainments and the like.

While almost every school house is utilized for some of these purposes, in many communities a complete winter program is planned, so as to make a regular social center, around which all neighborhood activities revolve.

This tends to foster a spirit of co-operation and neighborliness, which is extremely beneficial. With the advent of radio, these gatherings may have music and other features of broadcast programs to enliven the evening, at little expense.

By systematically using these means so readily at hand, the country school house may greatly contribute to the attractiveness of rural life.

"There is a big element of doubt in marrying a young man," writes a woman, "but when a girl picks out a man whose character, reputation and income are established, she knows what she is getting."

RELIEVING THEMSELVES

Practically everybody would be glad to see some practical means of farm relief brought about by legislation, but the wise farmer is not depending too much on politicians for a betterment of his condition.

Some instances in which farmers have successfully sought relief through better methods are related in a recent magazine article which gives food for thought. Here are a few:

John D. Brader of Oswego, Kan., rented out three-fourth of his land seven years ago and devoted the rest to dairy and poultry. From 17 cows and 350 hens he cleared \$2,600 last year. Fifteen years ago he was a renter; now he owns his farm and is president of a bank.

A. E. Nelson of Govick, Minn., found a few dairy cows profitable, so he increased his herd, likewise increasing his monthly milk check to an average of \$308.

Henry Hogeman of Emmet County Iowa, got out of the beaten path by raising 30 acres of beets which brought him \$3,600 last season.

William Molson, another Iowa farmer, raised a big flock of poultry in connection with his other farming operations and made money.

In many sections of the South the "cow, sow and hen" are bringing prosperity to farmers who formerly grew poorer and poorer through depending on cotton alone. In every state many progressive farmers are bettering their condition by similar means.

There is no denying that agriculture is in a bad way generally, but a better planned farm program would enable many farmers to overcome this condition to a great extent.

It is better part of wisdom to laugh when your friends tell a joke, because you may have one to tell someday.

Young men who go into business to learn it from the top down never stay at the top long.

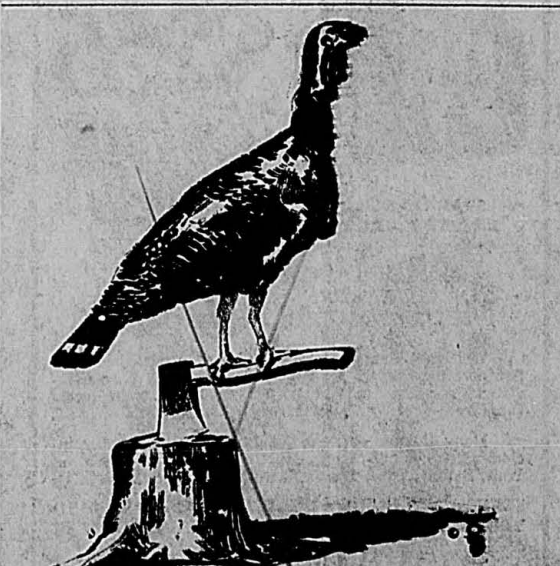
"The working world understands that the only man who knows things is the man who can do things."—Philip Brooks.

The man who used to travel by rail without a timetable is now running around in an automobile without a road map.

When a ball player argues with the umpire, you may put it down he's still single. The married players have forgotten how.

"There is nothing noble in being superior to some other man. The true nobility is in being superior to your previous self."—Hindoo Sayings.

The General Motors Proving Ground where the New Chevrolet was proven and tested, contains 1245 acres and is the first and only one of its kind in the world.



Everyone Should Give Thanks

Surely few communities have greater cause or reason for giving thanks this year than do the people of Spearman and Hansford county, in fact the entire north plains country. Crops were mighty good this year, and prospects for the next year were never better. The country is developing along correct and proper lines. Residents of this section are happy and contented.

The Reporter is thankful for the prosperity it has enjoyed through the kindness of patronage during the past year. Every day in every way we shall continue to let the folks of other communities know just how much we appreciate the splendid possibilities of our own home community.

Pride in the place of one's residence is a birthright that every American citizen can express with certainty.

This is a splendid town—we admit it, because we believe it. And we want the world at large to know just how happy we are to be living in a town where every man, woman and child is a booster.

The more we can tell outsiders about the many benefits to be derived from living in Spearman, the more folks we will get to come here to live, which means a bigger and better town for all. Let's be thankful and continue to boost.

THE NEW OAKLAND

Completely new and original in appearance, with a host of advanced engineering features, the latest Oakland All-American Six will be on display here soon at the showrooms of Chambers Brothers, local Oakland and Pontiac dealers.

Smarter, roomier than a year ago, with bodies of distinctive design, and a chassis said to be the last word in mechanical refinement, the latest All-American model bears only a passing resemblance to its famous predecessor—the first All-American Six brought out by the Oakland Motor Car Company a year ago.

Briefly, the new line offers a bigger, faster, more powerful engine; new Oakland type internal expanding 4-wheel brakes; masterful body creations by Fisher; new Duco color combinations; higher, larger cross-flow radiator with grill front; adjustable driver's seat; chrome plated lamps of new design; sturdy ten-spoke wheels; Lovejoy shock absorbers and spring covers as standard equipment, new steering gears, sturdier frame, and a host of other improvements that are destined to make the car a distinguished addition to the aristocratic motor car family of America.

Many months have been spent in developing the car to a point where it offers everything that a discriminating public has learned to expect in the way of style and performance. Every detail has been subjected to exhaustive tests that the car might represent the crowning achievement of 22 years of successful automobile building by the Oakland Motor Car Company.

Into the perfection of power plant and body lines have gone the pooled resources of Oakland and General Motors engineers, General Motors Research Laboratories, General Motors Proving Ground, and craftsmen of the Fisher Body organization.

Many months have been spent developing and proving every detailed change to bring the finished product up to the rigid standards called for on the specification charts.

Already a million miles have been piled up by test cars on the General Motors Proving Ground. Although brand new to the public, it is a thoroughly seasoned product with the equivalent of many years of owner service already to its credit.

Seven passenger types comprise the line: sport roadster, sport phaeton, coupe, 2-door sedan, 4-door sedan, and a new landaulet sedan, and convertible cabriolet.

Artisans of the Fisher organization with Oakland engineers have achieved a new grace of body lines and a symmetry and proportion exclusive in the Oakland field. The new landaulet sedan, with its fabric covered rear quarter section which may be quickly raised or lowered, has an air of custom-built distinction.

The rear seats of all five passenger models are two inches wider this year to provide increased elbow room and to add to the comfort of passengers. This change has been effected without increasing the tread.

Closed bodies all have adjustable driver's seats, reveals around side windows set off by a narrow bead, single belt moulding starting at radiator and completely encircling the body, smart side cowl ventilators, new type military sun visors, and hardware designed exclusively for Oakland. On individual body types are walnut finished door panels, Axminster carpet in tonneau, embossed leather smoking sets, package space, luggage room in rear decks and many other popular features adding to the luxury of the interiors.

The General Motors Proving Ground where the New Chevrolet was proven and tested, contains 1245 acres and is the first and only one of its kind in the world.

The General Motors Proving Ground where the New Chevrolet was proven and tested, contains 1245 acres and is the first and only one of its kind in the world.

COMMUNITY THANKSGIVING SERVICE AT UNION CHURCH

A Community Thanksgiving service will be held at the Union church in Spearman on Thursday night, November 29, in which the entire community is invited to participate.

Rev. O. M. Addison, pastor of the Methodist church, will deliver the Thanksgiving sermon.

This will be a service of praise and thanksgiving to Almighty God for the many blessings He has so abundantly bestowed upon us during the past year, as well as an earnest plea for the continuance of His favors during the coming year. Let all join in this service, which will begin promptly at 7:30 p. m. Everybody invited.

NOTICE, LEGION MEMBERS

Sullivan R. Spivey Post American Legion and poultry are requested meeting on Wednesday evening, November 28, at the City Hall, Spearman. All members of both the legion and auxiliary are requested to be present. Refreshments will be served.

DON RAWLINGS, Post Commander.

FINALLY GOT OUT OF TOWN

A Laird made two unsuccessful attempts to leave Spearman this week. He was turned back both times by bad roads. This Thursday morning he left on the Santa Fe bound for Chillicothe.

The SPEARMAN REPORTER
 Successor to the Hansford Headlight
 Nunn-Warren Publishing Co., Inc.,
 Publishers
 PUBLISHED EVERY THURSDAY
ORAN KELLY
 Editor and Manager
 Telephone No. 10

\$2.00 PER YEAR IN ADVANCE
 In Texas and Panhandle Strip of
 Oklahoma; \$2.50 per year elsewhere.

Entered as second class matter
 November 21, 1919, at the post office
 at Spearman, Texas, under the act
 of March 3, 1879.

THANKSGIVING

At last the harvest was bountiful,
 the gaunt spectre of starvation no
 longer haunted their daily lives, and
 the little band of hardy and courage-

ous Pilgrims set aside a day to offer
 thanks to the Divine Providence that
 had at last brought them through
 their period of tribulations.

We all learned the story in school,
 the account of that first Thanksgiv-
 ing day, but at times it is well to
 have its details brought back to our
 recollections.

Still facing hardships and dangers
 that would try the patience and soul
 of a modern citizen, these people still
 found much for which to be thankful.
 How much greater, therefore, is our
 cause for offering up thanks at this
 time.

Living in comfortable, well heated
 homes in or near orderly and well
 lighted cities and towns, enjoying as
 necessities things that were even
 beyond the comprehension of the
 past generation, having before us
 opportunities for development, pros-
 perous living, and valuable leisure,
 we may, indeed, regard ourselves as
 highly fortunate human beings liv-

ing in one of the finest and most
 magazine age in the entire history of
 the world.

As citizens of America we may
 well be thankful, living as we do in
 a land affording greater material
 comforts, with more satisfactory op-
 portunities for mental and spiritual
 growth, than any society has ever be-
 fore offered to its citizens.

As a citizen of Spearman and
 Hansford County, we may also feel
 thankful, for the privileges we have
 of enjoying the company and society
 of a fine community of right think-
 ing people, where personal friend-
 ship abounds, and the opportunity
 exists to take part in the delightful
 adventure of making the city the
 finest little community in the world.

THE FARMER'S JOB

The big battle is ended. As the
 smoke rises we can all survey our
 surroundings, and see that none of us
 have lost greatly. The subject of
 farm relief, however, we may all
 realize is not definitely settled, and
 probably will not be disposed of with-
 in the next decade—regardless of
 what governmental action there may
 be in store.

Agriculture as an industry may be
 greatly helped or sadly hindered in
 its progress by favorable or adverse
 governmental action. But regardless
 the prices that the producer gets is
 a right place in the business of the
 nation until the farmers themselves
 tackle some of the vexatious prob-
 lems of distribution.

So long as the consumer in the city
 pays more for a peck of potatoes
 than the farmer gets for a bushel—
 just that long will there be a serious
 problem for the farmers to solve
 themselves.

This great spread between the
 prices that the consumer pays and
 the prices that the producer gets is
 evidence of an inefficient and cum-
 bersome system. It is not necessari-
 ly proof that middle-men are exact-
 ing unfair margins of profits. It
 indicates, rather, that the farmers
 have not given to the task of distri-
 bution the same scientific effort that
 they have devoted to the problems
 of production.

To discuss these matters in detail
 is beyond the scope of a limited
 editorial. Books have been written
 on the subject and it has not yet
 been sounded to its depth. Every
 one of the thirty or more interests
 that make up the whole agricultural
 industry have their specific problems.
 Each of these must have individual
 treatment.

But the machinery for distribution
 of all these different farm products
 is obsolete. Farm produce is dumped
 generally on the market at peak
 production periods. It is not graded
 or packed as the consumer wishes to
 buy it. It is consigned to markets
 without adequate knowledge of the
 existing demand in those markets.

All this means excessive transpor-
 tation, needless handling, and in
 short just waste. This waste, or part
 of it, will be eliminated only when
 the farmer sets up better machinery
 than that now in existence—most of
 which has "just grown."

Chinese girls should have no dif-
 ficulty in learning stenography, there
 being no spelling in that language.

**GIVES ADVICE ON
 CARE OF CALF**

Proper feeding and care in keep-
 ing the quarters clean are absolutely
 essential in the successful raising of
 the dairy calf, according to J. B.
 Shepherd, associate dairy husband-
 man of the United States Depart-
 ment of Agriculture, in Leaflet No.
 20-L "Care of the Dairy Calf," just
 issued by the department.

Unclean pens, bedding, feed pails
 and feed cause many small distur-
 bances of the calf's stomach and di-
 gestive system which hinder growth
 and development. Proper care exer-
 cised in keeping the pens clean and
 well supplied with dry bedding, in
 washing and scalding the pails after
 each feeding and in removing dis-
 carded feed from the feed boxes each
 day will aid materially in giving the
 calf a good start.

The calf should have whole milk,
 preferably from its mother, for the
 first two weeks. Skim milk and calf
 meal gruel may be used after this
 time.

A good meal devised by the bureau
 of dairy industry and known as the
 Beltsville calf meal consists of 50
 parts, by weight, of finely ground
 corn, 15 parts linseed meal, 15 parts
 finely ground rolled oats, 10 parts
 dry skim milk, and one-half part salt.

To prepare it for feeding mix to a
 smooth consistency with an equal
 weight of cold water. Then add 8
 pounds of warm boiling water for
 each pound of dry calf meal used.
 Stir thoroughly until well mixed and
 allow to stand for several hours.
 Warm to 100 degrees Fahrenheit be-
 fore feeding. Mix only enough at
 one time for one or two feedings.

The best results will be obtained
 when this gruel is substituted gradu-
 ally for the whole milk at about the
 time when the calf is four weeks old.
 The change should be very gradual,
 taking about four weeks.

Other factors essential to success
 in raising the dairy calf during the
 first six months of life are discussed
 in this leaflet, a copy of which may
 be procured by writing to the United
 States Department of Agriculture,
 Washington, D. C.

A great deal of speculation is go-
 ing about that report of a railroad to
 be built by the Fort Worth and Den-
 ver from Childress to Spearman. The
 report says the branch line will go
 through the Gray county oil fields.
 And it's a straight line from Child-
 dress to Spearman through McLean,
 LeFors and Tampa. That is some-
 thing for Shamrock people to think
 about. It would not do this city any
 good for a north and south railroad
 to miss it.—Shamrock Texan.

It's usually foolish to give advice
 but not quite so foolish as to accept
 it.

Doctors declare fasting for 15 days
 will restore one's basic metabolic
 rate. If you care for that sort of
 thing.

Prisons are going to be equipped
 with radios, we hear. Evidently the
 campaign to make it hard for crimi-
 nals is getting under way.

Thanksgiving---

Twelve more months have rolled by and again we set
 aside a day to offer thanks for the good things the past
 year has brought.

To our customers we give thanks for the patronage and
 personal contacts that make banking such a delightfully
 human enterprise.

To the citizens of Spearman and the Spearman country
 we extend an expression of gratitude for the kindly co-
 operation with which we have been rewarded in all our
 associations with the community.

FIRST NATIONAL BANK

of Spearman

WE WILL CLOSE THANKSGIVING WAY

**FRUITS AND
 GROCERIES FOR
 Thanksgiving**



Thanksgiving is a day when
 you should have a plentiful
 supply of fruits for your
 guests and family, and a sur-
 plus of groceries to prepare a
 Thanksgiving dinner. Our
 stock is so varied that every
 need may be easily supplied.

BURRAN BROTHERS

Prompt
 Delivery

OUR CANDIES
 ARE BEST

FURS!

Fur season is here again and prices are looking a little
 better than at last season's opening.

I WANT YOUR FURS

and will give you a square deal all the way through.
 Give me a bid before you sell your furs. Trade at
 home, where you can have a "say-so."

D. M. JONES

At North Side Garage

North End of Main

SPEARMAN

**4" ATLAS
 Portland Cement**

The Standard by which all other makes are measured

UNLOADING A CAR OF WOVEN WIRE

—Fine for sheep and hog pastures. See this wire
 will please you.

White House Lumber Co.
 Spearman, Texas



**SPECIAL
 SALE**

ON DRESSES AND HATS
 FRIDAY and SATURDAY

Note These Reductions:

\$10.75 silk dresses \$7.95
 \$16.75 silk dresses \$13.45
 All \$6.00 to \$8.50 hats at
 \$4.95

Assortment of \$4.95 to
 \$5.75 Hats, choice . \$2.95

NEW

BLANKETS—a variety of colors and patterns. Single
 and double.

LINENS These hand embroidered luncheon
NOVELTIES sets and linen, our many new novel-
MEN'S TIES ties and large assortment of ties will
 make ideal gifts for Christmas.

W. L. Russell

PHONE 78

DRY GOODS and GROCERIES



HAROLD LLOYD

"Speedy"
 PRODUCED BY THE HAROLD
 LLOYD CORPORATION

America's Funniest Comedian in his Latest and
 Funniest Comedy. You'll laugh till your side hurts.

FRIDAY and SATURDAY, NOVEMBER 23 and 24

Admission: Children, 20c; Adults 40c.

LYRIC THEATRE

Spearman, Texas



STAR-TELEGRAM
 RECORD-TELEGRAM

Why Not Read a Big
 Metropolitan Newspaper?

The most complete news service ever published by a
 Southern newspaper. Twenty-four hour, Triple Wire Asso-
 ciated Press Service, with editions based on train depart-
 ures from Fort Worth, insuring the LAST NEWS—FIRST.

Many Comics daily and eight full pages Sunday in-
 cluding The Gumps, Biggs, Mutt and Jeff, Winnie Winkle,
 Walt, Smitty, Abie, Crazy Kat, Moon Mullins and others.

SELECT THE NEWSPAPER WHICH MEANS MOST TO
 YOU AND YOUR FAMILY EVERY DAY IN THE YEAR

BARGAIN DAYS ARE HERE!

Daily With Sunday
 (Seven Days a Week)
 Bargain Days Price

\$7.45

Regular Price \$10.00
 You Save \$2.55

Rates
 in
 Texas
 Oklahoma
 and
 New
 Mexico

Daily Only
 (Six Days a Week)
 Bargain Days Price

\$5.95

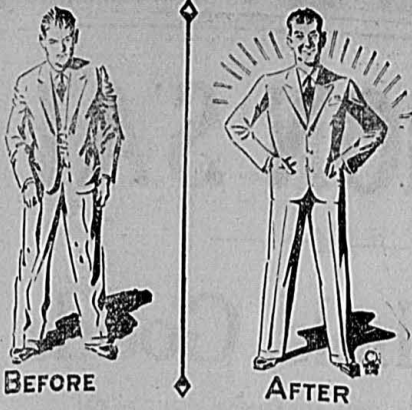
Regular Price \$8.00
 You Save \$2.05

Order at This Office

FORT WORTH STAR-TELEGRAM
 and Fort Worth Record

AMON G. CARTER, President.

Sale!
\$2.55
 Yet have
 the **BEST**



Dry Cleaning
Our Scientific Way
Makes the difference

Many of the suits you see that look so smart and new aren't really new at all. They've been cleaned and pressed by our new scientific method that restores the freshness and resilience of the fabrics. Phone for service. We'll put another season's wear into last year's suit.

C & L Clothiers

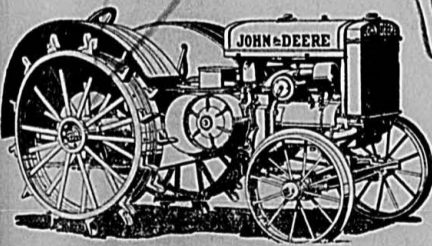
GET IT BETTER WITH
A GREBE

THE BEST RADIO ON THE MARKET for the PRICE
Make long winter evenings pleasant with Good Entertainment brought in from a good station by a good radio. See and Hear them at

Harbison Furniture Company
LOWER MAIN SPEARMAN

Just Arrived!
—A BIG SHIPMENT OF
JOHN DEERE NO. 18
Six Disc Plows

You'll hunt long before you find one that will beat it.



The Old Reliable John Deere Tractor—a big shipment just Received.

You'll want to farm in a hurry when the weather breaks. Let us fit you up for it.

Womble Hardware Company
Buy the Wife a Washing Machine
Lower Main Spearman

CITATION BY PUBLICATION

The State of Texas, No. 113.
To the Sheriff or any Constable of Hansford County, Greeting:
You are hereby commanded to cause to be published once a week for ten days, exclusive of the first day of publication, before the return day hereof, in some newspaper of general circulation, published in said county, which has been continuously and regularly published in said county for a period of not less than one year, the following notice:
The State of Texas,
To all persons interested in the welfare of John Cator and George Cator, minors:
Vina Cator has filed in the County Court of Hansford County, Texas, an application for letters of permanent guardianship upon the persons and estates of John Cator and George Cator, minors, and at the next regular term of said Court, commencing on the first Monday in December A. D. 1928, the same being the 3rd day of December A. D. 1928, at the court house thereof in Hansford, Texas, said application will be heard, at which time and place all persons interested in the welfare of said minors may, and are hereby cited to appear and contest said application, if they so desire, and you, and each of you, who are interested in the welfare of said minors are hereby cited to appear at the next regular term of said County Court to be held at the court house of said county in Hansford, Texas, on the first Monday in December A. D. 1928, the same being the 3rd day of December A. D. 1928, then and there to contest said application should you desire to do so.
Herein fail not, but have you before said Court on the first day of the next term thereof this writ with your return thereon showing how you have executed the same.
Given under my hand and seal of said Court at my office in Hansford, Texas, this 14th day of November A. D. 1928.
J. E. WOMBLE,
County Clerk of Hansford County, Texas.

CITATION

The State of Texas,
To the Sheriff or any Constable of Hansford County, Texas, Greeting:
You are hereby commanded to cause to be published once each week for twenty days, exclusive of the day of first publication, before the return day hereof, in some newspaper of general circulation published in Hansford County, Texas, which has been continuously and regularly published in said county for a period of not less than one year, the following notice:
The State of Texas,
To All Persons Interested in the Estate of James H. Cator, deceased:
Edith Cator has filed in the County Court of Hansford County, Texas, an application for the probating of the last will and testament of James H. Cator, deceased, which said will was filed with said application, praying for an order admitting said will to probate, and for letter testamentary upon the estate of the said James H. Cator, deceased, said application having been filed on November 6, 1928, and which said application will be heard at the next term of said Court, commencing on

the first Monday in December A. D. 1928, the same being the 3rd day of December, 1928, at the court house thereof in Hansford County, Texas, at which time all persons interested in said estate may appear and contest said application should they desire to do so, and they are hereby summoned to appear and contest said application if they desire so to do.
Herein fail not, but have you before said Court on the first day of the next term thereof this writ with your return thereon showing how you have executed the same.
Given under my hand and seal of said court at my office in Hansford, Texas, this 6th day of November A. D. 1928.
J. E. WOMBLE,
(Seal) Clerk of the County Court of Hansford County, Texas.

t Company of Sp

PROVEN DEPENDABILITY OF CHEVROLET MOTOR

As proof of the reliability, the performance, the wearing qualities, of the motor of the 1928 Model Chevrolet, Wm. E. McClellan of the local Chevrolet firm, offers the following data taken from their file of Shop Repair Orders. This file will be gladly placed at the disposal of any individual who wishes to satisfy himself or others in regard to the truth or falsity of the following statement:
Out of the 1928 Model Chevrolet Motors serviced, besides the minor adjustments:
1. The bearings were tightened in only four.
2. New pistons were installed in only one.
3. One new connecting rod was installed.
4. Two timing gears were replaced.
5. No cylinder heads were replaced.
6. No piston rings were installed.
The local Chevrolet service shop has serviced over 200 of the cars they sold this year in addition to the Chevrolets of tourists and travelers. Approximately 400 1928 Model Chevrolet cars have been serviced.

Steve: "I know a man who never has a doctor. He doctors himself by the aid of medical books."
Dr. Nowlin: "Yes, and someday he will die of mis-print."

THE GYM IS FLOORED

At last the ambition of many basketball enthusiasts has been realized. Spearman High school now has a gymnasium that is the pride of the student body, the faculty and the entire community. No longer must the teams play on the rough, uneven dirt floor, and the spectators gasp in the stifling dust. We have a hardwood floor that is the equal of any in this section. With proper care this floor should give satisfactory service for years to come.
The faculty and student body are indeed grateful to those fellows who worked so faithfully during the past two weeks. It was through their assistance that the labor bill was reduced to a minimum. The boys "cran" the concrete for the foundation and laid both the sub-floor and the hardwood.
When the floor is sanded, filled,

and waxed, and the goals are properly adjusted, we hope to see a large group working out daily for the

championship basketball team Spearman HI expects to have this season. —The Lynx.

March Boars For Sale

One litter-mate to the Junior Champion at the Guymon Fair. Others Just as good.

FALL PIG AFTER NOVEMBER 26

Everything registered and Cholera immuned, and are out of litters of from 11 to 16 pigs.

W. A. SUTTON

1 1/2 Miles North of the Equity

Win With Real Estate

The best, the safest, and surest of all long term investments.

Real estate purchased here now is bound to increase in value in the years to come, for we all agree that Spearman is a community with a future.

Furthermore your investment is right here where you can watch it all the time and can liquidate when necessary without loss.

J. R. COLLARD

Real Estate—Loans—Insurance

SPEARMAN

TEXAS

For

High Quality Pianos, Player Pianos, Radios, and Talking Machines, see

B. F. Garst Music Company

before you make your purchase.

PURE MILK



Milk That Is

Pure

Because It Is

Kept Pure

Our milk comes from a herd of well kept cows. And is safeguarded from contamination at every step until delivered to you pure and full of health building goodness. Let the children have plenty to drink. It's good for them, and you too. It builds strong boys and strong girls, too.

Why not patronize the Old Reliable Dairy that stood by and furnished the folk of Spearman with milk when there was no other. We are selling this same kind of pure, rich, sanitary milk that you bought in days of yore, delivered at your door at 8 cents per quart.

Kern's Dairy

PHONE D-7

Open For Inspection

One-Half Mile West of Town

See For Yourself



THIS NEW MODERN HOTEL

Kiowa, Kansas

STEAM HEAT—22 ROOMS—8 BATHS

Will exchange for good farm land. If interested write

J. W. SCOTT, Kiowa, Kansas

Christmas Cards

The Christmas Card time is fast drawing near and no doubt you have already been approached regarding these popular annual tokens.

As in the past the Reporter will handle a complete line of cards, from the cheapest to the most expensive, upon which you may write, print or engrave your name or greeting.

Call us or drop in any time and we will be pleased to show you the latest thing in Christmas cards.

Spearman Reporter

INTEREST

Interest is the prime factor in happiness and intense interest in some one thing is a prime requisite of success. We have never seen a happy person who was not interested in almost everything he came in contact with, nor have we seen a successful man who did not owe his success to an absorbing interest in some phase of business.

The happy person is never bored and to be never bored is to be constantly interested in everything around you. General interest promotes general knowledge, and general knowledge, broad minded tolerance of life. The tolerant are never sad for they have learned the truth of the statement, "to understand all is to forgive all."

The successful, whether in business, in sports, or in life, is the one who has had some absorbing hobby and who has interested himself in that hobby in every phase. He has been happy in the sheer joy of knowledge and has unconsciously prepared himself for success in his chosen field of service.

That which we love we will devote ourselves to. So then let us be interested in a profitable thing if it be only a rainbow across the sky at twilight, and some day we may throw our cultivated interest and happiness into a great poem or a great picture. After all, it is worth trying—isn't it?—The Coyote.

AS A GIRL THINKS, SO IS SHE

Pyle, professor of psychology in the University of Missouri, says that a habit is an act following with more or less regularity upon the presentation of a definite stimulus to which it has become coupled through experience. This applies to all habits either good or bad. Had you ever thought where each little habit is leading—those small, insignificant ones which seem to be nothing now?

Courtesy in one's dormitory seems a little thing that can be practiced or not, yet how different it is when one does nice things for someone else. It takes so little time to be considerate of others and do an occasional good deed for one's roommate, or the girl down the hall. Would it make you feel any better or happier if someone was thoughtful of you and went out of her way to accommodate you?

Not only in dormitory where you are living with a number of other girls and your hostess as one large family, but also in your daily contact with others on the campus. People judge you largely by your habits and actions that they observe from day to day.

Let courtesy become a habit with you. Present this stimulus of kindness and thoughtfulness often enough and long enough so that a repeated occurrence, it will become a fixed habit in your every day life. Be courteous.—L. G. in Exchange.

Some people never have to pay bills. Nobody will trust them.

Turn about is fair play. When you talk about your neighbors, you are sure to be talked about.

Did you ever notice that a knocker is always on the outside.

Some people find it as hard to stay married as it was to stay single.

A secret is what you tell someone not to tell because you promised you wouldn't tell it yourself.

Folks who realize that there is a happy medium always get along in peace and harmony.

"Do you think that because you have tried once and failed you cannot succeed. There is no condition that you cannot overcome.—Margaret Stowe.

SPARE TIME

All of us have some spare time. Some of us have a great deal of it, while others have very little. Usually, the ones who have the most, idle it away instead of using it to their advantage. On the other hand some people go to the other extremity. They labor day and night on something that is absolutely worthless. This foolishness—for it is nothing else—ends with an overworked mind and body and finally brings on the climax—a nervous breakdown. There is nothing so harmful to

ing the present year. It is the seemingly little things that count most in the long run because they happen

more often than the big things and thus make a greater impression upon our character. Let each individual

strive to be here at his post of On Time Every Day. Then our honor roll grow.—The Lynx.

T. O. JAMES

Surveyor and Engineer
Office with McNabb Land Co.
Spearman, Texas

C. D. WORKS
LAWYER

County Attorney, Stinnett, Texas
EXPERIENCED IN ABSTRACTS AND HUTCHINSON COUNTY LAND TITLES
Special attention to Probate and Estate Matters

J. O. HORTON
LAWYER

Spearman, Texas

ALLEN & ALLEN
Attorneys-at-Law

Walter Allen, Jack Allen
Stinnett, Texas, Perryton, Texas
Hutchinson Co., Ochiltree Co.

DR. F. J. DAILY
DENTIST

Offices in Hays Building in rear of Hastings Drug Store.
SPEARMAN, TEXAS

sent marks have been recorded in the past six weeks. No one can do his best work under such conditions. The successful business man is found at his post every day. Let us as students of Spearman High School form habits which will make us more efficient in our future career as well as better students in our classes during the present year.

AUCTION SALE

Household Goods

HAVING SOLD MY HOME IN SOUTH SPEARMAN, I WILL, ON

Saturday, December 1st

beginning at 1:00 o'clock p. m., sell all of my household goods at Auction Sale, to the highest bidder for cash, consisting of the following:

- One Weiler Special Improved Piano, a good one.
- One five-burner New Perfection stove, with built-in oven, new.
- One set, one Duofold and two large chairs.
- One Dining Table
- One Library table.
- One China Cabinet.
- One Chiffoner.
- 12 Dining Chairs.
- Two Dressers.
- All dishes and cooking utensils, a splendid assortment, all good.
- One Book Case with writing Desk.
- One Refrigerator, new.
- Five Rocking Chairs.
- Two heating stoves.
- Three Bed Steads.
- One Lawn Mower.
- Five Sets of Bed Springs.
- Three Mattresses.
- One Sorber De Lux Cabinet Radio, with new tubes and batteries, a good one.
- One J. B. Colt Lighting Plant, complete with fixtures and pipe.
- One extra large Kitchen Cabinet, new.
- Other Articles Too Numerous to Mention.

Other Articles too Numerous to Mention.

E. H. BARBOUR, Owner

LITTLETON & STEFFENS
Auctioneers

FIDELITY BANK OF COMMERCE
of Spearman, Clerk

Sale will be held at my residence in south Spearman, beginning at 1 o'clock, sharp

Specially Trained!

Our mechanics specially schooled by the factory that makes the car!

In order to provide Chevrolet owners with the finest workmanship available, we send our mechanics to special service schools—conducted by the Chevrolet Motor Company.

Here, under expert instructors, they learn the best and quickest methods of performing every Chevrolet service operation—learn how to service your car in the most satisfactory and most economical way.

Furthermore, all our mechanics regularly receive and study the Service Bulletins issued by the Chevrolet factory—keeping them constantly informed as to the latest approved service methods.

Bring your car to us regularly for inspection and servicing—and make sure you enjoy the full benefits of Chevrolet's remarkable performance and operating economy!



We use genuine Chevrolet parts in all our repair work—parts made by the Chevrolet Motor Company, and subjected to the regular factory tests for quality and precision.

We guarantee all O. K. used cars. If not satisfied after driving car for three days return and purchase price may be applied on any used car on our lot.

McClellan Chevrolet Company

Chevrolet Heaters Eveready Prestone Goodyear Tires

QUALITY AT LOW COST

Let Us Help You with your

Grocery List

There is no need for you to puzzle over what to order for your family dinners. We have done that for you. Just come here shopping and see the many delicious viands we have ready for your table.



Groceries, Work Clothing Grain, Coal and Feed

The more you know us the better you'll like us.
Spearman Equity Exchange

NEW CHEVROLET SIX IS ANNOUNCED

By McClellan Chevrolet Company of Spearman

McClellan Chevrolet Company Enjoys a Remarkable Growth In First Two Years

The McClellan Chevrolet Company opened its doors for business in Spearman on October 15th, 1926, in a building now occupied by the agency. The partnership in the beginning was composed of L. McClellan and Wm. E. McClellan, the latter as manager, and has been no change or transfer of interest since the opening day. At the time of the opening the personnel of this concern was composed of only the two gentlemen mentioned above, but at the present time it boasts of thirteen actively employed people. The McClellan Chevrolet Company of Spearman has the largest corps of salesmen and the largest payroll of any business in Spearman.

The management states that they are proud of their employees and their organization as they are of the wonderful product they are selling—the CHEVROLET.

It is their intention at all times to employ only men or women in whom the public can feel confident in placing their trust and confidence. You will find the members of this organization happy, agreeable and will find harmony in and between various departments. They believe that efficient and satisfied employees are responsible for satisfied customers, upon which so strongly depends the success and growth they are enjoying for the current year.

To show more fully the growth of this firm, thirty new cars were sold in the remaining months of the year 1927—in 1927 seventy-four of the most beautiful Chevrolets in Chevrolet History were sold, despite a drought and crop failure—and in 1928 on November 15th, this firm delivered their two hundred and twenty-second "Bigger and Better Chevrolet," and at that time had sold used cars for the year 1928.

From the very beginning the original idea of the Chevrolet was found in size and accommodations. Plans were promptly formulated for a new home. They displayed their Chevrolet product, and their hopes were realized when they moved their new, modern structure on North Main in which they have since been housed. You have not seen or been in this building, you will find a smart front with large display windows, augmented by a big electric Chevrolet sign, and also by a wire mesh sign bearing the firm name in gilded letters. On the inside you will find an active and spacious new car display room backed by efficiently arranged parts department and offices in the central portion of the building. The rear is located one of the most modern, best lighted, clean and up-to-date Chevrolet Service Shops to be found in the North Panhandle. Storage space is also in the rear. At the present time the company is planning for storage and are planning on securing more storage room. Plans are also being taken in the building of a dealership in the new town of Gruver, Texas. Lots have already been purchased in that city and building site.

Sales Force
The McClellan Chevrolet Company has a splendid sales organization composed of three able field salesmen under the supervision of a competent and efficient sales manager, J. Fuller. This year's sales record is a testimony to the ability and dependability of the salesmen and his associates.

Bookkeeping
Leta Bowles is the accountant and general stenographer for this concern. Her efficient work and pleasant manner in meeting the public has won a great part in the success and growth of this company.

Parts
The Parts Department is under the management of Ted McClellan. He has been re-arranging his parts department into a new 9-unit parts system recently installed on account of increasing demand to supply the increasing Chevrolet owners.

Service
The Service Department, of which this company is justly proud, is directed by Harry New, the little guy with the smile, one of the best mechanics in the area. He has under his capable hands some of the best mechanics in the area, some of whom are proudly holding diplomas from the Chevrolet Service School. Harry, and his boys are fortunate in having the best and all the equipment necessary to try to give all customers in servicing a Chevrolet

car. They take a great pride in their honest service and courteous treatment.

Many additions of equipment have been made in the Service Department, such as a Duco Refinishing Shop, and a Storm Re-boring machine. In order to give better service to the public, a new Chevrolet Service Truck mounted with a wrecking Crane has just been added to the department.

Used Cars
Due to the ever increasing demand for dependable used cars for the motor-buying public, more attention has been given to the used car department in recent months. The Chevrolet OK system of used car guarantee has been adopted, and all good used cars of recent models are thoroughly reconditioned by the service department and in many instances refinished in new and attractive Duco colors.

Cooperation
This firm has not overlooked the fact the Chevrolet Motor Company

has made it possible for their growth by giving them at all times a proved, dependable, and an outstanding product to merchandise and, practically, have supplied in every instance the demand for this popular car. The Chevrolet Motor Co. has given the local dealer splendid cooperation in furnishing advertising, helps, suggestions, and efficient plans for the various departments of the business. ~~Two-hundred credit can not be given to Mr. F. A. Smith, Chevrolet representative, for his help in securing cars at needed times and his untiring efforts in helping organize and train the local sales force.~~

In talking with the different members you will find the entire local Chevrolet force more than enthusiastic over the announcement of the "Outstanding Chevrolet in Chevrolet History"—a Six in the Price Class of a Four. They are looking forward to a greater, a more profitable, and a more pleasant year than ever before in the selling and servicing of the New Chevrolet Six.

You, your family, and your friends are invited to come to the local showroom and secure advanced information regarding the "New Chevrolet Six," which will be ready for delivery on January 1, 1929.

Looks as though some husbands also may have been picked out in a blindfold test.

PROVEN DEPENDABILITY OF CHEVROLET MOTOR

As proof of the reliability, the performance, the wearing qualities, of the motor of the 1928 Model Chevrolet, Wm. E. McClellan of the local Chevrolet firm, offers the following data taken from their file of Shop Repair Orders. This file will be gladly placed at the disposal of any individual who wishes to satisfy himself or others in regard to the truth or falsity of the following statement:

- 1. Out of the 1928 Model Chevrolet Motors serviced, besides the minor adjustments:
 1. The bearings were tightened in only four.
 2. New pistons were installed in only one.
 3. One new connecting rod was installed.
 4. Two timing gears were replaced.
 5. No cylinder heads were replaced.
 6. No piston rings were installed.
- The local Chevrolet service shop has serviced over 200 of the cars they sold this year in addition to the Chevrolets of tourists and travelers. Approximately 400 1928 Model Chevrolet cars have been serviced.

When we write the truth it isn't so necessary to keep a carbon copy.

Research Begun 4 Years Ago Produces Nation's Newest Six

More Than 100 Motors Built and Given Exhaustive Tests Before Car Received Approval of Chevrolet Engineers

Passing on to the motoring public the benefits of economies arising out of tremendous volume production, the Chevrolet Motor Company today, introduces "the Outstanding Chevrolet of Chevrolet History—A Six in the Price Range of the Four."

In making this important announcement, W. S. Knudsen, president and general manager points out that the sensational public reception accorded the car in recent years has enabled Chevrolet at this time to offer the added power, speed and smoothness of six cylinder performance at practically the same prices that contributed so much to the world-wide popularity of the four.



W. M. Holland
Writes a New Chapter in Automobile History!
"The New Chevrolet Six"

Preparation for the greatest year in its history are now being made by the Chevrolet Motor Company. Production of the new car was started last week and the company's fifteen giant factories across the country will be turning out cars to be shipped to dealers by December 15. Deliveries to the public will start in January first.

Although no definite schedule has been set for 1929, Knudsen declared that production of the new car would probably exceed 1,250,000 units thereby surpassing all former records.

In its new offering Chevrolet has retained the highly successful valve-in-head principle. The motor is of the high compression type with a non-detonating head and develops 22 per cent more power than its famous predecessor; its acceleration is measurably greater and its speed has been stepped up to satisfy maximum requirements. The piston displacement is 194 cubic inches.

Despite this greatly improved performance standard, thousands of miles of testing under every road and weather condition at the General Motors proving ground in addition to many cross country runs, have shown that the new Chevrolet engine will operate with an economy averaging better than 20 miles to a gallon of gasoline. This is practically the same fuel economy enjoyed by the owners of the previous four cylinder model.

The motor develops 46 horse power at low engine speed and as a result of the automatic lubrication of the valve mechanism the motor is exceptionally quiet throughout the entire speed range.

Seven models of passenger cars and three commercial types comprise the line, which according to General Motors officials, embodies the greatest dollar value ever offered in an automobile. Included in the passenger car line are five closed and two open models. All bodies this year carry the famous Fisher stamp of craftsmanship. The commercial car line embraces a new and larger Utility Truck of one and one half ton capacity, a new light delivery chassis and the sedan delivery.

From an appearance standpoint as well as from inherent design, the car is completely new with a range of attractive colors and fine car appointments formerly found only on the more expensive makes.

Despite the score of advanced features prices remain practically the same chiefly as a result of the influence of tremendous volume production. The passenger car range is from \$525 to \$725 f. o. b. Flint, Michigan. The prices, according to models, are as follows: Roadster \$525; Phaeton \$525; coach \$595; coupe \$595; sedan \$675; sport cabriolet \$695; convertible landau \$725. The commercial car prices are: light delivery chassis \$400; one and one half ton Utility truck chassis \$545; one and one half ton Utility truck chassis with cab \$650 and the sedan delivery \$595. All prices are f. o. b. Flint, Michigan.

Advance showings of the new Chevrolet line will be held in leading

(Continued on Page 8)

PURCHASING ECONOMIES

The steel purchased in a year by General Motors is equal to 258 train loads of 83 freight cars each. The lumber would build homes for 75,000 people. The glass would put windows in the homes for a town of 270,000 inhabitants, the copper wiring used would go 40 times around the world. Purchases of small items run into large items in the General Motors family budget, for in a single year, 500,000,000 lock washers and 250,000,000 screws, and 100,000,000 pins are used. Purchasing economies are passed on to the buyers of Chevrolets in the form of increased value and lowered cost.

There are 10,000 Chevrolet dealers in the United States and Canada, and they are prepared to give quick and efficient service on Chevrolets, and their parts departments from a stock standpoint are backed by 26 Chevrolet Motor Company distributing warehouses located in various cities.

NEW LINE LADIES HATS AT SMITH'S VARIETY STORE

A new shipment of ladies hats arrived today. The metallic trim hats for \$1.95 will surprise you. This class of hats usually sell for much more. Best of all they are new and not old stock marked down. The \$2.49 values include some beautiful hats in large head sizes. If you have been having trouble in getting a hat that fits you, come and see our line, and incidentally you can see the first of our big line of Christmas goods now being unpacked, not so well arranged yet, but oh, what a variety and what value. Christmas is not very far off and while looking over our stock if you see any article that will be just exactly what you will want we will be glad to take care of it until Christmas. Bring your gift goods troubles to us. We would change your troubles into pleasures. Look over our stock and gift buying will be a pleasure. Buy 'em all at the same store, put 'em all in one big box and leave 'em until the day before Christmas and thwart the activities of the youthful detectives that try to catch Santa Claus. Try the Variety Store first, it is a member of the Ben Franklin Chain.

CHRISTMAS SHOPPING DONE AT HOME

"Godness," sighed Mrs. Martin, "I feel like the old woman in the shoe. I have three children of my own to buy presents for, as well as numerous nieces and nephews. My ideas are completely exhausted even before I begin to actually buy."

"Well," said her companion, "I have no horrors at all of Christmas shopping since I heard about the plan the Smith Variety Store is following. They're going to send out a beautiful circular showing all sorts of toys and gift suggestions that they will have on display at their store. I'm going to sit down right at home with that circular and make out my Christmas list. Then I'll go to their 'Toy Town' and do all my buying in a few minutes."

"That sounds marvelous—almost too good to be true. When will this circular be out?"

"Soon, soon. It's to be the first feature in the Smith Variety Store's Christmas program. Then send from this lovely folder they are going to have special decorations to 'dress up' the store and an exclusive line of toys and gifts that will make Christmas shopping a real pleasure. Actually, I'm looking forward to their 'Toy Town' opening and my shopping which is usually such a bugbear."

"Well, you certainly have relieved my mind. I'll follow your plan—wait for the circular and make out my shopping list in my favorite chair at home. That will surely be an improvement on tramping the streets all day in search of suitable gifts."

EDUCATION AND WAR

The editor was discussing war and the influence of education in creating and arousing the martial spirit. History taught so as to present war as a romantic adventure is not only grossly inaccurate but highly dangerous because of the effect upon youthful imaginations. If war is really to be banished from the earth, then there must be a change in education almost everywhere.

Whereupon a companion told this little anecdote:

"A widow with four sons struggled through the years, giving to her boys the best home within her power to offer. Though life seemed hard she always lived for the time when her boys would grow up, settle down in the neighborhood, and comfort and care for her in her declining years.

"But life in the little inland town never appealed to their fancy. One by one they went out into the world, and always they took up life on the sea.

"Finally her youngest left, too, and bemoaning her lot she asked the visiting pastor, 'Why have my boys all gone to sea, brought up as they were here in a little inland community far from sound or sight of it?'

"He gazed up at a picture hanging above the mantle. He had often admired it himself. It was a romantic conception, showing a Yankee clipper ship under heavy sail riding majestically through a surging sea.

"'Madam,' he answered pointing toward the picture, 'they have been seeing that and admiring it since childhood. What else can you expect?'

Never forget that starting something you can't finish is bound to have an end.

THE GREATEST

Achievement

in Automobile History!

Chevrolet Six

in the price range of the four

The World's Most Astounding Automobile Value

ON DISPLAY HERE IN DECEMBER

Deliveries Start January 1, 1929

Place Your Order Now For Early Delivery

for Economical Transportation



NEW CHEVROLET SIX—BRIEF SPECIFICATIONS

- Valve-in-Head High Compression Motor
- 46 Horsepower
- 3 5-16 Inch Bore; 3 3-4 Inch Stroke
- 194 Cubic Inch Piston Displacement
- Improved Combustion Chamber
- Newly Designed Camshaft
- 46-Pound Crankshaft
- Single Plate Dry Disc Clutch
- Semi-Floating Type Rear Axle
- 107-Inch Wheelbase
- 36-inch Front Springs—54-inch Rear Springs
- Dependable Non-locking 4-Wheel Brakes
- New Two-Beam Headlamps
- Handsome New Fisher Bodies

for Economical Transportation



NEW CHEVROLET SIX

Prices f. o. b. Flint, Michigan.

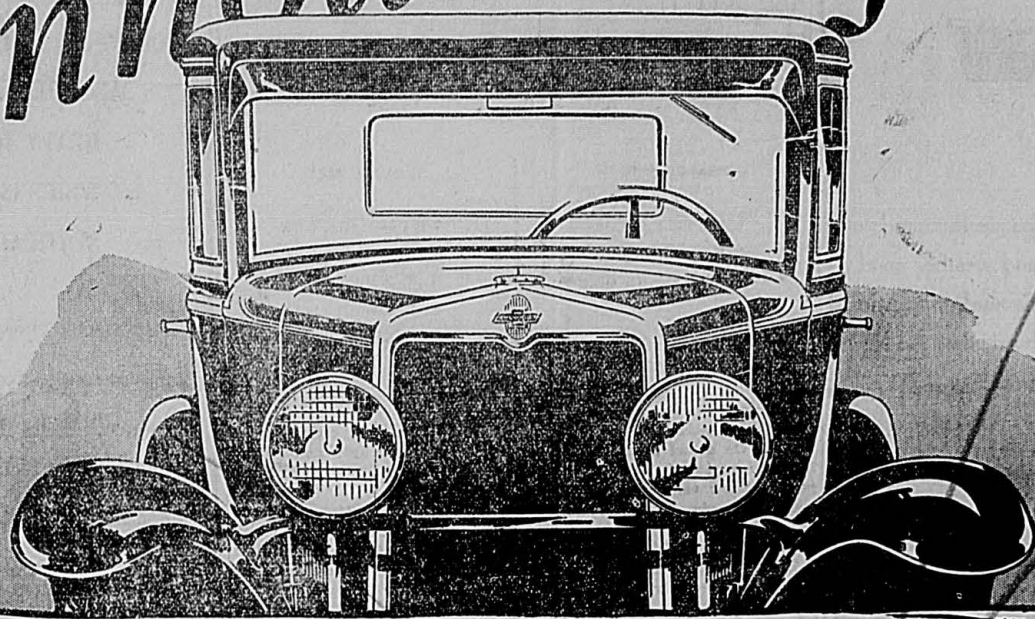
- Roadster \$525
- Phaeton \$525
- Coach \$595
- Coupe \$595
- Sedan \$675
- Sport Cabriolet \$695
- Convertible Landau \$725
- Light Delivery Chassis \$400
- 1 1/2 Ton Utility Truck \$650
- (Chassis and Cab)
- Sedan Delivery \$595

McClellan Chevrolet Company

R. L. McCLELLAN
Wm. E. McCLELLAN

SPEARMAN
TEXAS

Announcing -



The
Outstanding Chevrolet
of Chevrolet History

- a Six in the price range of the four!

MORE POWER

The New Chevrolet's Acceleration is Measurably Greater and Its Speed has been stepped up to satisfy maximum requirements.

A high compression valve-in-head motor with a non-detonating head, and a piston displacement of 194 cubic inches, combine to afford the New Chevrolet Six everything to be desired in acceleration and speed. Highly trained engineers worked almost incessantly for four years with one permanent object uppermost—the desire to build a SIX-CYLINDER motor car that would out-perform every machine in its class and many higher priced and larger cars. Their noble efforts have been rewarded in the Outstanding Chevrolet of Chevrolet History.

McCLELLAN CHEVROLET COMPANY

SPEARMAN

TEXAS

ECONOMY

Is an Important Feature

of the

NEW

for Economical Transportation



SIX

Despite the great improved performance thousands of miles of testing under every road and weather condition at the General Motors Proving Ground, in addition to many cross country runs, have shown that the New Chevrolet engine will operate with economy.

Averaging Better Than
20 MILES
To The Gallon of Gasoline

This is the same mileage that has been enjoyed by the previous owners of the four cylinder model Chevrolets.

20 MILES
To The Gallon of Gasoline
A Record Breaking Six

McClellan Chevrolet Company Spearman, Texas

Personnel

Wm. E. McCLELLAN Manager
R. P. FULLER Sales Manager
LETA BOWLES Accountant
TED McCLELLAN Parts
HARRY NEW Service Manager

SALESMEN

WALTER E. BECK
JOE L. BURNS
DAWSON NICHOLS

SERVICE MEN

WILLIS KASTENER
J. C. BERRY
G. R. WRIGHT
S. A. GILL
JOHN ALLEN

get-away so necessary in modern traffic. On actual dynamometer tests the new engine develops 46 horsepower at low engine speed. At all ordinary speeds it develops from three to four times the amount of power required to drive the car.

Torsional vibration is imperceptible at any speed through the use of a heavy 46 pound crankshaft which is perfectly balanced statically and dynamically. A further contribution to the exceptional quietness of the motor is the automatic lubrication of the entire rocker arm mechanism and of all valve operating parts, which in addition are completely enclosed.

Fuel Pump Is Feature

Another advanced feature is the fuel pump which insures a positive and uniform supply of gasoline to the carburetor under all driving conditions, regardless of engine speed, load or road grade. A gasoline filter, built in as part of the fuel pump insures only clean gasoline reaching

the carburetor. The carburetor is further protected by a new AC air cleaner which prevents grit and dust from entering.

There is a combustion splash and wick flow method of lubrication with the oil supplied through an oil filter at the bottom of the crankcase by means of a newly designed vane type pump. There is an oil pressure gauge incorporated in the new instrument panel.

Assuring maximum cooling efficiency there is a large chromium plated Harrison honeycomb radiator with water pump and fan.

The clutch is of the single plate dry disc type and requires no lubrication. **Semi-Floating Rear Axle**
The new rear axle is similar in design to that used on the most expensive cars. It is of the semi-floating type with a strong, one-piece banjo-type, pressed steel housing. Six heavy duty new departure annular ball-bearings and extra heavy cut

for Economical Transportation



Vibrationless

TORTIONAL VIBRATION IS IMPERCEPTIBLE AT ANY SPEED, THROUGH THE USE OF A HEAVY 46 POUND CRANKSHAFT, WHICH IS PERFECTLY BALANCED STATICALLY AND DYNAMICALLY

The perfected chevrolet six cylinder valve in head motor is so constructed as to almost entirely eliminate vibration, besides the 46 pound crankshaft, a further addition to the sectional quietness of the motor is the automatic lubrication of the entire rocker mechanism and all valve operating parts, which in addition are completely enclosed. The world's best engineers have produced the new Chevrolet, a car that is as practical as it is economical and as dependable as it is beautiful, yet with all its costly improvements Chevrolet at the same Low Price is the world's greatest motor car value.

Place Your Order Now!

Research Begun 4 Years Ago Produces Nation's Greatest Six

(Continued from Page Five.)

cities strategically located throughout the country beginning November 24 and continuing until December 22. First deliveries to purchasers will start January 1. No deliveries will be made prior to that time, officials stated.

Dates and places of the special advance showings are as follows: Detroit, November 24-29, Auditorium General Motors building; New York, November 24-29, Waldorf-Astoria Hotel; and Chevrolet Retail Store, Broadway, at 57 street; Washington, D. C. December 1-4, Mayflower Hotel; Chicago, December 1-6, Pur-Dil Building, Wacker Drive and Wash Avenue; Los Angeles, December 1-6 Auditorium Ambassador Hotel; Cincinnati, December 8-14, Sinton Hotel; San Francisco, December 8-13, Civic Auditorium-Larkin Hall; St. Louis, December 8-14, Arcadia Ballroom, 3515 Olive street; Atlanta, December 18-22, Auditorium-Armory; Dallas, December 18-22, Adolphus Hotel; Portland, Ore., December 18-22, Public Auditorium. All of the foregoing dates are inclusive.

In each of these places the complete passenger car line will be displayed in automobile show style. Elaborate entertainment features have been arranged for the display in each city and in every case provision will be made to accommodate the hundreds of thousands of visitors who will view the new Chevrolet line between November 24 and December 22.

No Deliveries Until January 1
Advance orders will be taken immediately following the announcement with deliveries starting January 1, officials stated. They also pointed out that to insure delivery early next year it would be advisable to place orders as soon as possible.

The plan of introductory showings with deliveries to follow after January 1, was adopted for two reasons, it was explained. In the first place, officials pointed out approximately five weeks will be required to change over the production line from the four to the six in the motor plant at Flint, Michigan. Added to this was the necessity for inventory taking, which is customary at this time each year.

At the same time, H. R. Grant, vice president of the Chevrolet Motor Company, in charge of sales, saw in this necessary five week interval an opportunity to provide the sales or-

ganization of some 30,000 dealers and salesmen with a means of profitable activity during this period when otherwise they would be comparatively idle.

The new Chevrolet, which on its debut November 24, promises to write a new chapter in motor car history, is in every sense a proved product. Four years ago Chevrolet engineers began their research work, engineering, planning and General Motors proving ground testing. Associated with the Chevrolet engineers were the specialized engineers of the General Motors Research Laboratories.

Made Many Tests

Night and day, in doors and out, in good weather and bad, they designed, built and tested every modern type of motor so that no opportunity would be overlooked—so that every desirable feature might be harmoniously incorporated in the new product. Perhaps a thousand ideas were considered and discussed. More than 100 different motors were built up and given exhaustive test bloc and road tests before the cabinet of expert engineers, presided over by O. E. Hunt, Chief Engineer of the Chevrolet Motor Company, finally approved the new Chevrolet valve-in-head six cylinder motor.

Speed, acceleration, power and smoothness, to an unusual degree, are offered in the new motor. It is of the high compression type fully enclosed and with a non-detonating head. It has a three and five sixteenth bore and a three and three-quarter inch stroke with a 194 cubic inch piston displacement.

The motor develops 32 per cent more horse power than its famous predecessor and has an abundant source of reserve power for fast getaways, heavy roads and steep grades. New feature that contribute to this added power are an improved combustion chamber; a newly designed cam shaft and four exhaust and three intake ports.

Greater Speed

The speed has been stepped up to satisfy maximum requirements and in acceleration the new motor is vastly superior to any previous Chevrolet model. This remarkable acceleration is due partly to the use of a new accelerating pump. When the accelerator is suddenly depressed this pump forces a small quantity of gasoline into the manifold of the carburetor, giving the car the instant peak and



Added Power Speed and Smoothness

of Six Cylinder Performance
in the Price of the Four

A tried and proven car presented to you only after four years of exhaustive experimentation, research and planning.

Order Yours Now!

spiral bevel gears make for smooth driving operation.

The steering gear is semi-reversible of the ball bearing full worm and gear type. The new shaft is solid, replacing the tubular type formerly used. It is mounted in a bracket securely riveted to the frame. The beautiful seventeen inch black finish steering wheel has a rubber covered spider.

Dependable non-locking four wheel brakes with rear service brakes in two self-aligning segments contribute to the quiet, safe operating features of the car.

The service brakes on the 11 inch drums on the rear wheels are of the external contracting type and those on the front wheels of the internal expanding style. The emergency brake lever is conveniently located on the drivers right and operates a braking system independent of the service brakes.

Long chrome vanadium shock absorber steel springs of the semi-elliptic type are one of the factors accounting for easy riding qualities of the new car. The springs are set parallel to the frame, assuring safety as well as comfort at all speeds. The front springs are each 36 inches in length and the rear springs 54 inches. The wheelbase is 107 inches.

New Fisher Bodies

Attractive new colors and a new order of beauty in Fisher body design characterizes the entire passenger car line. The high flattened hood and the gleaming chromium radiator shell supply the keynote of unusual smartness and grace. The rakish unbroken lines, emphasized by distinctively grouped hood louvers suggests speed and alertness. The divided body moulding and the concave front pillars reflect the vogue so widely favored by leading custom builders, while the larger, longer lower bodies stand out as tributes to the latest advance in Fisher craftsmanship.

Appointments are the richest and most luxurious ever offered by Chevrolet. The seats are wider and more restful. The drivers seat in all closed models is easily adjustable, forward or back, a feature recently introduced on a few of the high priced cars. The redesigned dash carries an attractive grouping of all control instruments indirectly lighted including the new motor temperature indicator. Rich, long-wearing upholstery and specially design Ternerstedt hardware contribute to the environment of distinction.

Added safety in night driving has been accomplished through the use of a light control switch at the left of the clutch pedal. Instead of dimming the lights the same effect is attained by changing the angle of the new two-beam head lamps by press-

in the floor button with the foot. Both hands meanwhile may remain on the wheel directing the course of the car.

Landau Is Convertible

A new body style takes its place in the new Chevrolet line, supplanting the Imperial Landau sedan which the top rear quarter may be completely folded down. The car finished in Crockett brown with Mistino gray belt and striped in Shamrock orange. Window mouldings are in Mistino gray with upholstery in rich mohair.

The new coach is finished in Norgray with Helmet gray belt and striped in Tusk ivory. Window mouldings are in blue corduroy. Small Coolie blue with Buddha blue belt has been selected as the finish for the coupe. It is striped in Mountain a scarlet and has window mouldings Buddha blue. It is upholstered taupe corduroy.

The sedan is finished in Huntington green with Como green belt and striped with Odessey ivory. Window mouldings are in Como green and upholstery in green corduroy. The convertible cabriolet is finished in Trianon blue with Delphine blue belt and striping in Tusk ivory. Window mouldings are Delphine blue. The cabriolet is quickly convertible into a sport roadster by lowering the top.

Phaeton Supplants Touring

The new phaeton, which has taken the place of the touring car is finished in Lusk green with Zanzibar green belt. It is striped in Tusk ivory and has mouldings in Zanzibar green. The roadster is finished in Mistina gray with Estes Park gray belt. Striped in Vincennes red, it mouldings are in Estes Park gray. The top is easily and quickly lowered. A boot for the top is provided.

All models are equipped with parabolic type headlamps, with parking bulbs, operating from the light switch. A theft proof electro-lock also standard. There is a storage battery with composite case; motor driven Klaxon horn; complete tool kit; weatherproof pedal enclosure; automatic spotlight and rear view mirror.

Both open cars have curtains that open with the doors, and a full view windshield with weather strip and wiper. Coach, coupe, sedan, cabriolet and convertible landau are equipped with military sun visors, a Fish VV type windshield with automatic type wiper and narrow windshield posts which eliminate blind spots. There are adjustable driver's seats. All closed models and cowl lamps of the cabriolet and convertible landau. Balloon tires, 4:50 by 20 are standard on all passenger models.

Dr. G. E. GOWER, M. D.
 Ophthalmologist, Eye, Ear, Nose and Throat Specialist.
 Offices of Dr. Gower, on Broadway, Dec. 5, 1928. Glasses and tonsils and adenoids removed.

R. T. CORRELL, LAWYER
 Texas

C. P. GIBNER, B. S., M. D.
 Health Officer. Local Surgeon Santa Fe R. R. Only doctor in Hansford county who is a graduate of a Class A Medical College. Office in rear of Hastings Drug Store. Spearman, Texas

The Panhandle's Largest Furniture Store
Green Bros. Co.
 20 MONTHS TO PAY
 Amarillo, Texas

CITATION ON APPLICATION FOR LETTERS OF ADMINISTRATION

The State of Texas.
 To the Sheriff or any constable of Hansford County, Greeting:
 You are hereby commanded to cause to be published once each week for a period of ten days before the return day hereof, in a newspaper of general circulation, which has been continuously and regularly published for a period of not less than one year in said Hansford County, a copy of the following notice:
 The State of Texas,
 To all persons interested in the estate of Thomas Rafferty, deceased, E. T. Rafferty has filed in the County Court of Hansford County, an application for Letters of Testamentary upon the Estate of said Thomas Rafferty, deceased, and for the probate of the last will and testament of the said Thomas Rafferty, deceased, filed with said application, which will be heard at the next term of said court, commencing on the 3rd day of December A. D. 1928, at the Court House thereof, in Hansford, at which time all persons interested in said Estate may appear and contest said application, should they desire to do so.
 Herein fall not, but have you before said Court on the said first day of the next term thereof this Writ, with your return thereon, showing how you have executed the same.
 Given under my hand and the seal of said Court, at office in Hansford this the 8th day of November A. D. 1928.
 (Seal) J. E. WOMBLE,
 Clerk County Court, Hansford County, Texas.

CITATION ON APPLICATION FOR LETTERS OF ADMINISTRATION

The State of Texas.
 To the Sheriff or any Constable of Hansford County, Greeting:
 You are hereby commanded to cause to be published once each week for a period of ten days before the return day hereof, in a newspaper of general circulation, which has been continuously and regularly published for a period of not less than one year in said Hansford county, a copy of the following notice:
 The State of Texas,
 To all persons interested in the Estate of L. S. Cator, deceased, Vina

Hays has filed in the County Court of Hansford county, an application for Letters of Testamentary upon the Estate of said L. S. Cator, deceased, and for the probate of the last will and testament of the said L. S. Cator, deceased, filed with said application which will be heard at the next term of said court, commencing on the first Monday in December, A. D. 1928, the same being the 3rd day of December A. D. 1928, at the Court House thereof, in Hansford, at which time all persons interested in said Estate may appear and contest said application, should they desire to do so.
 Herein fall not, but have you before said Court on the said first day of the next term thereof this Writ, with your return thereon, showing how you have executed the same.
 Given under my hand and the seal of said Court, at office in Hansford this the 8th day of November A. D. 1928.
 (Seal) J. E. WOMBLE,
 Clerk County Court, Hansford County, Texas.

BELIEVE IN YOURSELF

The person who has the strength of loyalty to himself is, in my mind, a brave warrior. There are streaks of hard-pan in the characters of each of us which are blended in with the pure ore so that the pure ore is almost imperceptible. Few of us have the ability to distinguish between the hard-pan, that which should be blasted out, and the real ore, that which is to be cultivated. But to those few, these words are dedicated. You are the heroes without a loss of charm. You believe in certain ideals; you, without fear, consecrate your life to the fulfillment of those ideals. Often it takes more courage to be true to one's self than to let matters slide as our friends tell us it should. It may be slightly uncomfortable at times but we love best those things for which we sacrifice most. You who do know and are true to yourself are able to lead others and to help plant ideals. Your personalities have the strength to believe in your dreams.—Exchange.

Some of our friends are such good fellows that we can almost forgive them for having such fool notions about religion and politics.

A Maine woman, 106 year old, attributes her long life to the fact that she has always minded her own business. Reformers will say she has paid a terrible price.

Johnson Wright of Missouri bequeathed 120 acres of land to the Almighty, who was designated in the deed as the "party of the second part."

SMALL TOWN INDUSTRY

It appears that the smaller cities and towns of the country are rapidly coming into their own in an industrial way. Many industrial plants are seeking location, not in the congested centers of population, but in smaller communities advantageously located with respect to raw materials, transportation, electric power and a dependable labor supply.

One of the most striking examples of this movement is seen in the installation of 100,000 new cotton spindles by a single manufacturing corporation in Alabama this year. Instead of placing all these spindles in one locality, they are being distributed among ten small towns, 10,000 spindles going to each.

This is only one of many similar movements of industrial establishments toward the smaller communities, but it is the largest single movement of its kind so far announced. It should give encouragement to any town, regardless of its size, where favorable conditions exist for carrying on a manufactured enterprise.

An industrial payroll is a valuable asset in supplementing the resources of agricultural sections by giving employment to surplus labor, creating a better market for products of the farm and otherwise stimulating growth and progress. Every community should make the most of its opportunities for securing payrolls.

Lady Astor says Americans do not understand Europeans. She might have added that Americans do not understand one another, either.

GETTING INTO A RUT

Owing to the growing tendency toward specialization in every department of human activity, it is becoming more difficult for the average man to keep in touch with what is going on outside his own immediate interests. He becomes engrossed with his special line of work that he runs a great risk of getting into a rut.

While the exactions of modern business and professional life lead necessarily to a high degree of specialization, they should not be permitted to unduly restrict one's mental horizon. Everyone should take sufficient time to keep abreast with important developments in the world about him. By doing so he will often encounter ideals which will be of practical benefit in his own sphere of effort.

Above all, he should lay aside routine duties frequently for the purpose of indulging in systematic thinking. Many men are able to evolve their best ideas in some quiet spot away from the scene of their daily labors.

Whatever may be the details of

any method adopted, a portion of one's time should be devoted to reading covering varied subjects. Otherwise he will inevitably get into a rut. And getting into a rut is for his intellect and bad for his health.

THE DEAD HAND

"Government operation of news lacks imagination and originality. It never creates anything except jobs. It is a dead hand on the people."

So reads a paragraph by Thorpe, quoted in the Public Auxiliary. Local publishers and printers can also testify that government in the envelope business for half a century has had them of millions of dollars of work which would have helped them to better serve communities.

This sort of competition of part of the government is utterly defensible particularly for the reason that by doing this work at less cost the deficit must be made up by taxpayers, including the printer whose business is injured by the practice.

Since the earliest word of the industry and achievement have inseparably linked—and they will till the end of time—why more thought and effort try to beat an unbeatable game than necessary to write your name high place on the world's list of mortals.

Wool Socks
 and Boot Socks that will keep your feet warm during the bad weather.
 50c to \$1.00

Boots
 men's and children's rubber boots every member of the family. cold feet when you can get

1 1/4"
 3.50

2.50 up
Johnson Brothers
 Spearman, Texas

Gifts in Leather

Are always smart and practical—and Thanksgiving is a very appropriate time to give someone a gift.

We have a fine line of "Amity" purses, bags, bill folds, cigarette and Card cases and others which excel in appearance, durability and in every other particular.

Take Special Notice of Our Low Prices

SPARKS DRUG STORE
 PRICES ARE RIGHT
 Soft Drinks—Curb Service Postoffice Building—Spearman

Snider's Laying Mash
 \$2.75

This ration is recommended by the Agricultural Experiment Station of Texas, and has been fed satisfactorily in this community.

We also sell Tankage, Linseed Oil Meal, Meat Scraps, Blachford's Calf Meal, Bran, Shorts, Oyster Shell, and home grown feeds.

Let us grind a load of feed for you.

SNIDER PRODUCE
 Iowa Cream Separators

Letel A
 Guaranteed not to boil cooler than water and One filling lasts all winter. Base. Do not wait until it in NOW!

Chambers
 North Living Candies

planning to give her a box why not give her the of saying you should give delicious King's candies. As for, as you prefer.

W W
 es for American Queens

Feed
 ngs Drug

KILL SMUT
 TREAT THE SEED WITH
Corona Coppercarb

Corona Coppercarb speaks for itself. Briefly, Corona means something different—the touch of distinction—the best on the market.

Thousands of wheat growers use it and become convinced—they render the verdict in its favor.

Its tremendous distribution has built up a prestige and confidence in its qualities to bring results that cannot be doubted.

These are plain statements of fact, that need not be taken on trust. The safest way is to try out Corona Coppercarb.

McClellan Grain Company
 GRAIN—COAL—FEED
 Elevator Row Spearman

Modern Homes Our Hobby—Estimates Cheerfully Furnished

See the modern poultry home now under construction at our Spearman yards.

Let's talk over the matter of a new poultry house, new garage, improvements around the home, etc.

Panhandle Lumber Company

The Grinnell HAND
 Powerful, bl... in...
 your W-W Fe... COUNTY, TEXAS
 only do a quick...
 there are no...
 work loose, o...
 best in the Panhandle

Call and Select the best corn land in Northwest Texas.

20 Per Acre

Spearman—See
 Hardware, Implement
 Furniture
Land Co.
 in or Dalhart, Texas

WARNING!

November 29 at 6:00 o'clock p. m. is the last minute for the big bonus vote to count on five year subscriptions. Candidates and their friends are urged to make use of the time from now until closing date of the first period. Some extra effort on the part of candidates and their friends might mean that the car could be cinched during the next few days.

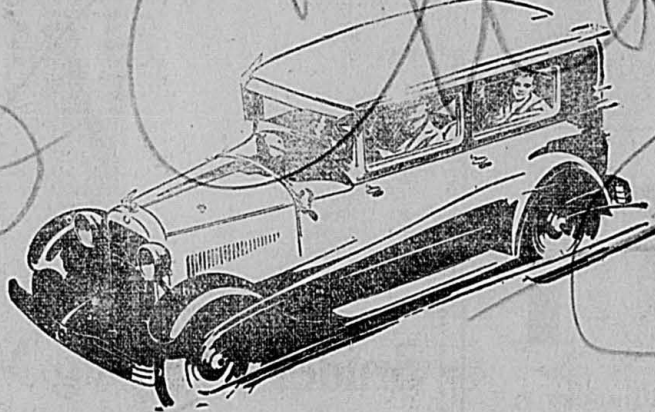
December 22--the Campaign Closes Just Four More Weeks

It behooves every person in this race to make use of every moment of spare time and then throw in a few extra hours. The value of the first prize demands your best efforts. Think of the pleasure that would be yours when the campaign closes and you are announced the winner. A fine Essex Super-Six Two-Door Sedan, costing \$905. A prize of this value is worthy of your best effort during the remaining days of the Campaign. The \$250 diamond ring is a beauty and is worth your best effort. The \$150 diamond ring would be good pay for the few weeks work if you are the third prize winner. In other words the Reporter management has tried to make this campaign worth your while and is conducting the contest along lines fair to all who enter.

Pick Out Your Favorite in this List and Get Busy

MRS. C. O. COLLARD, Spearman
MRS. J. E. GERBER, Spearman
MISS NELLIE COX, Spearman
MRS. EVERETT TOMLINSON, Gruver.
MISS IRENE WOMBLE, Stinnett

The above are the ones who are active in the race and all of them deserve the support of their friends. Friends really count in a campaign of this nature. Friends of the candidates are urged to give their subscriptions on first approach. When you put your candidate friend off another day you just handicap her that much for she could be seeing another prospective subscriber while she is hunting you up the second or third time.



FIRST GRAND PRIZE

2-Door Essex Automobile
Purchased from Spearman Sales and Service



SECOND GRAND PRIZE

\$250

Diamond Ring

Will Be Placed on Display Soon

Bought from Borger Jewelry Store



THIRD GRAND PRIZE

\$150

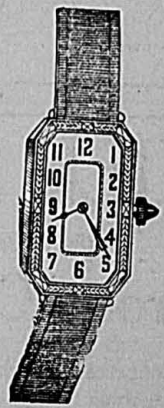
Diamond Ring

Will be Placed on Display Soon

Bought from Borger Jewelry Store

For further information, subscription books and rules of the contest, call, wire or write the

Contest Manager,
Spearman Reporter,
Spearman, Texas



FOURTH GRAND PRIZE

\$75 Wrist Watch

Will be Placed on

Display Soon

Bought From Borger Jewelry Store

A WINNER NEVER QUILTS AND A QUITTER NEVER WINS. IF YOU HAVE NOT MADE UP YOUR MIND TO BE A WINNER THERE IS NO USE TO START. ACT TODAY!

THE SPEARMAN REPORTER

SPEARMAN,

TEXAS

COMMUNITY BUILDING

are not greatly interested in community boosting editorials," a friend of ours the other day. Spearman and thousands of small cities are merely trying to imitate the great metropolitan centers. When we learn that government, the crime, the abandoned social life, and the problems that seem to grow from an increasing population, the question: "Why should we strive to make our city larger?" are in a mental agreement. Perhaps the fault lies, however, in failing to define the meaning of community building. In this world many are the source of the pleasure because of the buildings that are built with which every detail is considered. There are also great houses, that are of no interest to their sheer enormity. This is also true of community building. Efforts along the line of community building are initiated for the purpose of making a better building rather than the ugly structure. Along the lines of improving agencies of education in order the life of the town may arrive at a higher and better intellectual order that our boys and girls may be better equipped to meet the emergencies of life. By community building we mean work to our city more beautiful, more attractive to visitors and more pleasing to its residents. The purpose is really to make a finer and more friendly town with greater prosperity for the new living here rather than a larger city.

TREE ORNAMENTS MADE FOR CHRISTMAS DECORATION

Because people are always curious about "how things are made," Mr. Smith of the Smith Variety Store told us interestingly of the manufacture of the gay Christmas tree ornaments with which we trim our trees. For generations in the little village of Lauscha in Germany, whole families have labored the year around to make the gay, shining balls that make our Christmas trees such gorgeous splashes of splendor. With one or two minor exceptions, the Christmas ornaments for the entire world are made in the one village of Lauscha by its three or four thousand inhabitants. From silver-haired grandfathers to rosy-cheeked youngsters, all work to make our Christmas colorful and gay.

All Work
"You see," explained Mr. Smith, "it's sort of a family affair. The father blows the glass to a thinness that resembles fragile, transparent soap bubbles, that reflect a myriad of rainbows, and then, as if to imprison these glorious colors, the children dip the balls into paint. As soon as this coating is dry the ball is ready to be decorated. This task usually falls upon the mother and older girls of the family. With infinite patience and skill make the delicate tracings and designs that transform the balls into a glittering jewel. Then after the ornaments are completed they are packed in great bundles and carried to the exporting headquarters at Sonneburg, from where they are shipped to America."

Every member of every family in Lauscha works to make these ornaments, for that is the sole occupation of the people of that town. Each family devotes itself to making just one type of ball taking great pride in turning out perfect goods. But they are constantly on the alert for a new design that will be quickly popular and catch the eye of the foreign buyers. Picture, if you will, the typical Lauscha household. The stalwart father and older sons blowing glass into thing translucent balls. The younger children, standing on tip-toe to dip the globes into great kettles of dye, and the mother and older sister painstakingly painting delicate tracings on the gay colored ornaments. "American manufacturers," stated

Mr. Smith, "have never been able to duplicate or approach the quality of the workmanship of the inhabitants of Lauscha, so the manufacture of the Christmas tree ornaments for practically the entire world is left to this one town in Germany. There are perhaps one or two other small villages that make balls but their contribution toward the production is minute."

The products of this unique industry, as well as toys and gifts of every description are to be shown in a beautifully illustrated circular that is to be distributed by the Smith Variety Store as a feature of an unusual Christmas program. This attractive "Toy Town" folder will picture a miniature town of toys on the cover, and on the inside show Santa's best dolls and gifts, mechanical toys for lots of fun, books, games and many other articles reflecting the Christmas spirit.

FOR SALE

One almost new, extra large size Hoosier kitchen cabinet; priced to sell at a bargain.
One shoe machine, \$40 value for \$10. Mr. Farmer, this machine is worth the price for one day only, in repairing your harness, shoes, etc. First check gets it.
Many other bargains in second hand and new Singers. Buy that new electric Singer for your wife's Christmas present. \$5.00 down; \$5.00 per month.
5011p. V. L. NICHOLS, Agent.

BUILD ROADS TO LAST

In this remarkable era of good road building, much discussion of methods and materials to be employed in construction, has been heard. Various types of roads have their advocates and claims are made for the superiority of each.

As a matter of fact, so far as material is concerned, local conditions may be permitted to govern to a great extent, provided any one of the well-tested kinds that may be available is used. It would seem to be inadvisable to ship road materials great distances when an equally good product might be secured close at hand.

But regardless of the surfacing material to be used, the grading and foundations should be of a permanent nature. Every interest of economy demands that before any great sum is spent on improvement of a road the final surveys and establishments of grades should be made, so that fills may be allowed to settle and become compact before surfacing is done. A firm foundation is highly desirable in any undertaking, and nowhere is this more strikingly true than in road building.

USE HOME PRODUCTS

Lessons of the war have taught us that the more nearly self-sustaining a nation becomes the more advantageously it will be situated should war unhappily come again.

The same principle applies in peace times as well, and the more we are able to substitute home products for those usually imported the better off we shall be from an economic standpoint.

With this principle in mind, the Southwide Cotton Council is urging new and wider uses of cotton, as well as better methods of marketing that staple. It is estimated that the use of cotton bagging alone, instead of imported jute, might easily absorb from one-half million to a million bales of cotton annually.

The idea of giving preference to home products is applicable to states and local communities as well as to nations. Home producers of both raw and manufactured products should be given every possible encouragement and patronage. Aside from keeping money at home, such

a policy would often make possible large savings in transportation charges give more employment to local labor and enhance local prosperity generally.

Goiter is said to be becoming more prevalent among young women. Perhaps another argument against necking parties.

Praising the town ladies for having the cemetery cleaned up, an exchange declares that "the grave yard looks most inviting."

Remember towns loyal to their local merchants always have the best stores.

DRESSMAKING; REMODELING

As I now have almost completed a Dressmaking and Fashion course, I am ready to accept work in these lines. I will do dressmaking, remodeling, relining coats, etc. During your Christmas work now.
Call and get prices. (Hand one-half blocks south of Smith Produce. MRS. M. P. JACKSON, Spearman.

CHRISTMAS CENTER NOT ALASKA

Columbus proved definitely that the world was not flat. The Wright brothers showed a skeptical world that men could fly. Henry Ford made the automobile the world's most popular means of locomotion, and now the modern child is discovering that Santa Claus doesn't have his main toy headquarters in Alaska but instead he has his workers spread out over the entire world.

From Czechoslovakia come many of the musical toys that children love so. Noisy drums and tinkling pianos and xylophones. Saxophones, violins, flutes, cornets, and even miniature phonographs that will produce real tunes. To most children, Christmas without an musical toy of some kind would be quite incomplete.

Delightful fuzzy animals that are just meant for tiny tots are made in Germany. There are floppy-eared rabbits, naughty little fox terriers and aristocratic cows. Soft, furry kittens and ever-faithful teddy bears. Germany still leads in the production of toy animals because they are able to produce the most life-like looking ones.

Twin sisters in Michigan are the originators and manufacturers of amusing toys for tiny children. There are saucy looking dogs and cuddly kittens—solemn soldiers and laughing baby-dolls—all soft pliable and washable. There is a whimsical charm about these toys, due perhaps to the fact that they are designed and made by girls who themselves are only a little past the age of dolls and toys.

The most attractive, popular and best made dolls are United States' products. Some of the dolls are so amazingly life-like that you almost expect them to laugh or cry—due to the fact that many of the best dolls are actually designed after real babies. The imported dolls are made to satisfy passing fads; consequently they are likely to be less substantially made or elaborately dressed. They do, however, meet the popular demand for less expensive or popular priced dolls.

Toys from nearly every country in the world are, we are told, to be pictured in a "Toy Town" circular which is to be distributed by the Smith Variety Store. This attractive folder is to show a veritable town of toys, dolls, doll houses, automobiles and bridges on its cover, and the inside is to be full of pictures of holiday toys that will delight the children and offer many valuable buying suggestions to the grown-ups.



Wool Socks
and Boot Socks that will keep your feet warm during the bad weather.
50c to \$1.00

Boots, Boots

Shipment of men's, ladies' and children's rubber boots just in. Light and heavy weight, fleeced lined. Priced From \$2.95 to \$4.45

Red Ball Overshoes for every member of the family. No need to have wet or cold feet when you can get them at our low price.



Thanksgiving Candies

Of course you are planning to give her a box for Thanksgiving, so why not give her the best—another way of saying you should give her a box of our delicious King's candies. Assorted or solid flavors, as you prefer.

King's Chocolates for American Queens

Hastings Drug

COATS AND DRESSES FOR SCHOOL MISSES



One group girls coats full lined and fur trimmed, colors red, blue, and tan. Sizes 2 to 8, Sale price \$3.95
One group girls coats, fur trimmed, full and inner lined, sizes 2 to 8, Sale \$5.85
Childrens all wool crepe and velvet dresses to \$5.95, sale price \$2.95 and \$3.95.
Choice of ladies coats to \$110.00, sale price \$55.00
Women's pure silk-to-the-top hose, Sale 89c
Ladies and children's hats, \$1 to \$5.95
Big shipment of dresses and metallic hats received this week.

New line house and street dresses . . . \$1.95 to \$2.95
Boy's wool suits, \$1.50, Friday and Saturday only, \$1.

Spearman Dry Goods Co.

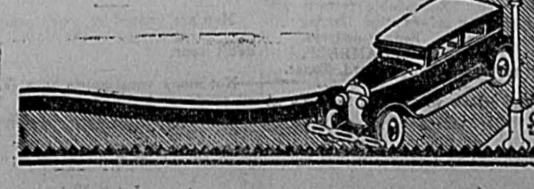
The Store of Greater Value
Spearman, Texas



Auto Tops
Glass
Upholstry

Replaced or Repaired
ALL WORK GUARANTEED

SPEARMAN SALES AND SERVICE
Phone 134



Special Order Your Thanksgiving Baking

This Thanksgiving instead of spending hours doing your baking, let us do it for you. Our regular line of Thanksgiving baked goods is very complete, but if you have a special cake you wish, we will be glad to bake it for you.

CAKES ON SALE TUESDAY, NOVEMBER 27
R & S BAKERY

LAND

DALLAM COUNTY, TEXAS

\$10 to \$20 Per Acre

Terms, the best in the Panhandle

Wheat land and the best corn land in Northwest Texas.

McNabb Land Co.

Spearman or Dalhart, Texas

It is Our Constant Aim

To give our customers Standard Merchandise at the Lowest Possible Price. To substantiate our claim, we merely ask that you check over the following list:

Cranberries, quart	20c	Bed Sheets 81x90	97c
Bacon, Choice	28c	Men's Hunter Overalls	\$1.58
Purity Lard, 8 lbs.	\$1.25	Men's Whizit Boot	35
Coffee, fancy Peaberry	40c	Trousers	35
Tinsley Tobacco	85c	Children's wool sweaters	\$1.79
Gallon Preserves	49c	Lumber Jacks, \$7.35 to \$11.50	
70 pounds meat salt	\$1.05	Quality and Lower Prices when	
35 pounds meat salt	60c	You Hitch Your Dollars Here.	
This special meat salt will cover your meat.			

P. M. Maize and Company

Quality and Lowest Prices

It Pays to Pay Cash

FOR SALE

Two Jersey cows, one fresh now; other fresh in February. Good milk cows. See J. E. GERBER, Spearman. 4913.

FOR SALE

Two sections of very fine wheat land, unimproved, located near Texhoma, in Sherman county, Texas. For a quick sale we are offering this land at \$20 per acre. Reasonable cash payment; balance in six annual payments, 6 per cent interest. Write for further information to ENNIS & AYCOCK, Guymon, Oklahoma. 4912.

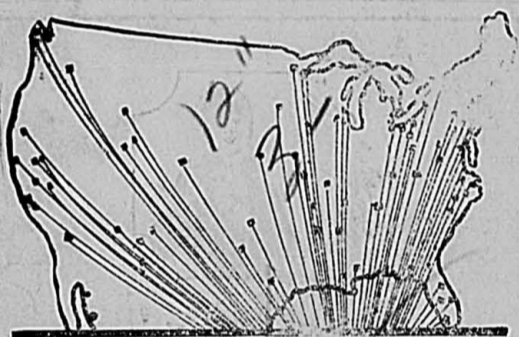
WYANDOTTE COCKERELS

Pure-bred Wyandotte cockerels for sale. They are from a fine laying strain; no better can be found. See 5044p. I. R. TOMPKINS.

Stationery, toilet preparations, water bottles, at the one cent sale at the Hale Drug Store.

George Brown and his father are here from Lindsay, Oklahoma, this week attending to business matters. Mr. Brown is a brother-in-law of E. B. Dodson.

Don't forget the big one cent sale next Thursday, Friday and Saturday at the Hale Drug Store.



Have Your Radio Tuned Up

We Service all Kind of Radios

Phone 134

Spearman Sales & Service



Home Building

—Is the Order of the Day in Spearman

We will take great pleasure in assisting you with plans. And, we sell only the best in Building Material.

TRUE TAGG PAINT—100 PER CENT PURE

Pickering Lumber Company

Harry Dumas, Manager

Spearman

Church and Society

CHRISTIAN

Rev. Jasper Bogue will preach at the Christian church in Spearman on Sunday morning at 11 o'clock and 7:30 in the evening. Everyone is invited to attend the services.

BAPTIST CHURCH

As the pastor was out of town no church services were held at this church last Sunday. The Sunday school met, but on account of the snow storm the attendance was greatly reduced. Sunday, November 25, we will have the regular services. Sunday school, morning and evening services. Let's make up for last Sunday and have a record breaking attendance.

Miss Vernon Entertained

Miss Bernyce Vernon delightfully entertained a number of her friends and school mates at her home in south Spearman last Thursday evening with a party. The young people spent a very enjoyable evening until eleven o'clock when delicious refreshments were served to the following guests: Misses Daphne Hazelwood, Hester Webb, Lucille Robertson, Joyce Wilbanks, Genevieve Chamness, Loretta Wilbanks, Mac Richards and Ruth Cecil and Noel Womble, J. D. Wright, William Smith, Gene Cline, Horace Hays Jr., Charles Devore, Mike Balentine, Hugh Hazelwood, Chester Lieb, Dick Vernon and Ike Vernon.

Save money at the Rexall one cent sale. Starts Thursday, November 29.

Help make the Reporter as interesting paper; phone us the news.

Mr. and Mrs. Bob Taylor attended to business in Dalhart the latter part of last week.

R. A. McCrory has been quite ill with pneumonia the past week but is reported improved at this time.

Mr. and Mrs. J. D. Hester returned Wednesday from a two weeks visit with his father at Robert Lee, Texas.

One cent sale next Thursday, Friday and Saturday. Rexall Drug Store.

M. W. Regier left the first of the week for Halstead, Kansas, where he will receive medical treatment.

George W. McMurry, who has been seriously ill for the past ten days, is slightly improved at this writing.

Another big shipment of ladies hats arrived today. Come early and get your choice. Smith Variety Store.

Mr. and Mrs. C. A. Gibber left this Thursday morning for Amarillo, where they will visit and attend to business matters.

A chance to buy your winter's drug supply at a big saving. Rexall sale next Thursday, Friday and Saturday.

Turtles Electric Studio of Liberal, Kansas, have new frames, films and mounts for the Christmas photos. 5012.

Mr. and Mrs. Dave Wilburn of this city are the parents of a baby daughter, weighing 10 pounds, born Sunday, November 18. The little miss has been named Betty Jo.

Mr. and Mrs. Paul Thompson of this city are the proud parents of a baby daughter born Tuesday, November 20. The little lady has been named Delia Carolyn.

Mr. and Mrs. Albert Burran and son Jimmie were here from Chickasha, Oklahoma, several days this week visiting in the home of his parents, Mr. and Mrs. R. E. Burran, and attending to business matters.

Mr. and Mrs. Frank Glover left on Thursday morning for Channing where they will make their home. Mr. Glover will be employed on one of the Bivins ranches near Channing.

Turtles Electric Studio of Liberal, Kansas, will make one extra photo in new folder FREE with one dozen photos made from now till December 15. 5012.

We are not trying to be inquisitive but we would like to know where those visitors are at your house, where you are going and where you have been. Phone 10.

Mrs. E. B. Dodson and daughter Lora Anne went to Texhoma Wednesday to meet Mr. Dodson who was returning from a week's hunting trip in Colorado and New Mexico.

The greatest line of Gift Goods ever offered to the people of Spearman will soon be on display at the Smith Variety Store. This store is a member of the country-wide Ben Franklin Chain.

Go to Turtles Electric Studio, Liberal, Kansas, and have your photo made, and get one extra one free with every dozen photos made. December 15. 5012.

STRAYED

Two cows, or heifers, branded A1 on left hip, strayed from the H. H. Jones pasture, 2 1/2 miles west of Spearman. Reasonable reward will be paid for information leading to their recovery. See or address, W. B. CHAMBERS, Record, Texas. 5012p.

The fellow who wants to begin at the top should become a well drilled.

You could not count in an hour's time all the items suitable for Christmas presents, which may be found at Smith's Variety Store, Spearman. Come in and see for yourself. Your visit will be appreciated. Everyone is invited to attend the services.

"Save with Safety" at the Rexall one cent sale. Hale Drug Store.

An editor gets many an idea from folks who suggest how to run the paper. Most frequently it is the idea that he'd like to shoot the suggester.

SIDELIGHTS

By Barclay B. Darnall
Humane education is compulsory in Kentucky schools and many animal pets are used to demonstrate the effects of kindness upon dumb brutes. Which shows that Mary and her little lamb were merely ahead of their day and generation.

Bachelors of Damascus complain bitterly of the exorbitant prices charged by fathers of comely prospective brides and some suitors have been obliged to arrange installment payments. Really it would be tough to see wifey pick up and leave with half the installments unpaid.

A Kansas City telegraph clerk automatically proceeded to count the words of a message presented by a stranger. There was no signature, so the clerk read the message, which said: "I am holding this place up." Confirmation was evidenced by the muzzle of a revolver, which also indicated that the message was "collected." And the customer collected \$42.35; all the money in the till.

Alexander Szbo, Hungarian actor, has just taken his twelfth wife, saying that the other 11 were nice girls and "if at the time I thought some of them treated me badly I have forgiven them and have forgotten what it was all about."

Dancing contests of the coming season will be devoted to illustrations of a new series of gyrations called the "bendola" according to a press dispatch. The new dance is said to combine the worst features of the cake-walk, the charleston and the St. Vitus.

John Gildea, New York bridegroom, was disillusioned early. Immediately after his marriage to Rose-land Stanford he attempted to kiss his bride, but she objected, finally submitting to a formal caress on the cheek. John said, "I didn't know they got that way for a year or so."

Miss Rosemary Lytton, daughter of a millionaire Chicago merchant, tried society life for a while but it bored her. She got her father's consent to work in his men's clothing store. She likes that better and hopes to make good.

Everything comes to him that waits, it is said. Captain W. P. Scott of the United States Navy was just received a medal awarded to him by the then Sultan of Turkey 27 years ago "for sinking the Spanish Navy, assisted by Admiral Dewey."

THE REMEMBERED GIFT

"Remember it? I should say I do!" The big man's face beamed with happy recollection.

Someone had, in more or less a business way, spoken of the Youth's Companion. And just the mention of the Companion's name—so far as business was concerned—broke up that meeting. But what fun those busy men had swapping recollections of the days when the arrival of The Youth's Companion was the high spot of the whole week.

Rare, indeed are the pleasures that we remember so warmly over half a century of years. But The Youth's Companion is still among them.

Isn't there some boy or girl whom you would like to make happy with a gift subscription?

In its new enlarged and improved form as a monthly magazine, The Companion has more to offer its young readers than ever before—a full book-length novel complete in each issue; short stories and serials so thrilling they will never even suspect them of being a "good influence" or the "right kind of reading"—articles by outstanding men and women that will fire their young ambition—comment on current affairs—puzzles, poems, guides to the best in books and moving pictures—special departments for both boys and girls covering their own favorite activities.

You may give some boy or girl a truly fine gift by accepting the following offer:

1. The Youth's Companion, 12 big monthly numbers, and
2. Two extra numbers to new subscribers ordering within 30 days, and
3. A copy of "WE" in 12 colors, framing size 18 x 24 inches. All for only \$2.

THE YOUTH'S COMPANION
S. N. Dept., Boston, Mass.
Subscriptions Received at this Office

Folks who demand the most service are generally the slowest pay.

Men are known by the company they keep; women by the clothes they don't wear.

Not many vacationists have changed much, and none of them have much change.

UNITED STATES LEADS IN MAKING DOLLS

Give a doll manufacturer a new idea for a doll head and he'll be profoundly grateful and will reward you materially, for the success of any doll depends, not on its size, or shape, but on the head. If it looks so real that you think that it's going to laugh or cry at any minute, it will sell. But if it looks artificial it won't.

The manufacture of dolls requires less machinery than almost any other toy industry, with the exception of two or three large doll manufacturers, most of the dolls in this country are made in small rooms or lofts by a force of as few as a half a dozen workers.

When the doll heads first reach the maker they are a dull shade of gray. They have to be painted and tinted before they show any signs of realism. Then the heads are attached to the bodies, the legs and arms fitted and the doll is ready for dressing.

Dolls of every size and description are to be shown in the attractive "Toy Town" Christmas folder that is to be distributed exclusively by Smith's Variety Store as a feature of their unusually interesting holiday program. There are saucy dolls and others crying—all shown in this attractively colored folder which is to be distributed soon.

FOR SALE

Early spring Giant Bronze turkeys at \$6 and \$8 each. MRS. BOB HAYS. 501f.

JES' KEEP ON KEEPIN' ON

If the day looks kinder gloomy,
An' your chances kinder slim
If the situation's puzzlin'
An' the prospects awful grim;
An' perplexities pressin'
'Till all hope is nearly gone,
Jes' bristle up an' grit your teeth,
An' keep on keepin' on.

Fumin' never wins a fight
An' frettin' ne'er pays;
There ain't no good in broodin' in
These pessimistic ways
Smile je's kinder cheerfully
When hope is nearly gone,
An' bristle up an' grit your teeth,
An' keep on keepin' on.

There ain't no use in growlin'
An' grumblin' all the time,
When music's ringin' everywhere
An' everything's a rhyme;
Jes' keep on smilin' cheerfully,
If hope is nearly gone,
An' bristle up an' grit your teeth,
An' keep on keepin' on.

MY HARVESTS

I thought to have gathered many a bloom
From a rose tree I planted one sweet spring day;
Ah me! I forgot
And watered it not
And the soft buds withered away.

I thought as I looked at my heaped up corn,
"I will sow it broadcast—this rich golden grain!"
Ah me! I let it lay
And it withered away,
And harvest time reaps me no grain.

I thought that my friend would be mine always;
That his hand to my hand would cling close and fast,
Ah me! I loosed hold
On our friendship old,
And his fingers slipped at last.

I still wish for roses—my rose tree is dead;
I still wish for harvest—and hunger for bread;
I cry for the old love—the old love is fled;
I sowed not—I reaped not—God's judgment is said.

—Heneward.

LOST BULL

One four-year-old Hereford, branded either E1344 or F on left hip, strayed from Edd Rafferty place about four weeks ago. If you know of his whereabouts please notify, 491f. WALTER WILMETT

How Did Your Car Stand the Season?

Little signs of age and wear creeping in. It pumps oil, lacks pep, and has developed many new noises and rattles.

But all it may have done is to give you several years of good service left, if these minor repairs are given prompt attention.

Bring it in to us now. Have us check it over carefully, and give you a price on a complete overhauling job. Then give us plenty of time to do the work right. It will pay you in the long run.

Spearman Motor Company

Always on the Jump

It keeps us hustling to give the people of Spearman the kind of plumbing service we are determined to extend and they have a right to expect.

And right now we're especially busy repairing the water systems of our prudent friends—who know it is better to have them put in first class shape before cold, freezing weather sets in.

Main Plumbing Co.

Headquarters at Pickering Lumber Co. Spearman, Phone 126

They're Special Underwear

We put over a recent "ten strike" by obtaining the Underwear at a price concession that was surprising even to us. In turn we pass the savings to you. And it's some saving!

\$1.35 to \$2.50

Offered in fine combed cotton—just the weight for fall and early winter. Presented with the short and long sleeves in Union Suits.

They're to be had in Plain White or Ecru



Thomason Brothers
Spearman, Texas