

THE SPEARMAN REPORTER

TWENTY-FIRST YEAR

Spearm, Hansford County, Texas, Thursday, January 3, 1929

NUMBER 4

Subscriptions Begin With This Issue

The work of revising the Reporter's subscription list was completed this week. All new subscribers should now be properly listed, and both new and old subscribers should have the proper credit for whatever amount was paid on subscription during the past eight weeks. This has been quite a job as the subscription campaign which closed on December 22, caused a change to be made in the credit of practically all of our old subscribers and the addition of many new names.

No doubt we have made errors, but we have tried hard to avoid this. Look now at the little yellow slip on the front of your paper. See that your name is spelled correctly, and that you have proper credit. Also, see that the address is correct. And if there is any other mistake don't fail to call our attention to it. We will be glad to correct any errors which may have been made and the quicker you call our attention to it, the better it is for all concerned. If you are getting two Reporters each week don't fail to call our attention to it. This mistake is often made by two members of the same family subscribing for the paper, or a person is often known by two or more names, such as "Bill Jones," "Wm. Jones," "W. D. Jones," etc. Just call our attention to these little errors and we will gladly correct them.

Leonard Jordan has been quite seriously ill the past two weeks, but is improved at this writing.

Misses Lorene and Lois Morton, Virginia and Reba Barkley and Lois Bailey left Wednesday for Denton to resume work at the College of Industrial Arts after a ten days visit with their parents here.



Boy Scouts Hold Court of Honor

The first Court of Honor to be held by Troop number 1 of Spearman, Texas will be held on the night of January 4, 1929. At this Court all of the boys who are ready to receive the Second Class Badge and have successfully met all of the Second Class requirements will appear before a group of business men of Spearman and make application for their Second Class Badge.

There are four boys now ready and a few others are expected to be ready by Friday night. The boys are Al Reed, "Spokesman," Harry Haines, Albert Thorne, Eugene Cline, and Frances Reed. All of these boys have successfully met all of the Second Class requirements.

A. F. Barkley will act as chairman of the Court of Honor, and R. L. Caskey, Boy Scout Executive, will act as secretary of the Court.

Everyone is invited to attend this Court, more especially the fathers and mothers of all the Boy Scouts. The Court of Honor will be held in the high school auditorium at 8:00 p. m. We would like for all the business men of Spearman to attend this court of honor because during the session the boys who are to receive their badges will give a free demonstration of the requirements and just what the Boy Scouts stand for.

In addition to the above mentioned boys we think that Freeman Barkley, Hugh Hazelwood and E. M. Maize will have most of their requirements passed. If they work hard enough they will be ready to appear before the Court of Honor. Don't forget the Court of Honor at the high school auditorium on Friday night at 8:00 p. m.—Reporter.

District Officials of P. T. A. To Speak To Local Organization

The district president of the Parent-Teachers Association, Mrs. J. M. Crain, the Corresponding Secretary, Mrs. J. T. Page; Mrs. Williams of Amarillo and Mrs. Westboy of Amarillo will be here on the evening of January 17, to speak to the local organization, at the high school auditorium. Mrs. Crain will speak on the subject, "Why a Parent-Teachers Association?" Mrs. Page on "Publicity and Correspondence Course." Mrs. Williams on "Study Circles" and Mrs. Westboy on "Sacred Obligations of Parenthood." These talks will be a real treat. Come and bring someone with you. After the meeting there will be a social hour. Refreshments will be served.

P. T. A. MEETS TODAY

The first meeting of the Spearman Parents Teachers Association for the year 1929 takes place at the high school auditorium today, January 3, at 3:00 o'clock. The fifth grade will favor us with a short program. The subject to be discussed at this meeting will be "Thrifty." Mr. H. Kelly will be the principal speaker, while Mr. Kelly and others will make short talks. These meetings are your meetings; come and contribute your part. Mothers, bring your little folks. They will be cared while you take a part with the program. Roll call will be answered by a New Year's resolution for the children of the community.

Let's boost the P. T. A.—Reporter.

DANCER FLEES BELGIUM DURING TERROUR WAR

Renee Adoree was dancing in Brussels when the Germans invaded Belgium during the war. Escaping to France by night trips on freight trains, she finally reached London. From there she came to the United States, where motion pictures and Broadway and a successful actress that she was chosen for many important parts, the latest of which is the leading role opposite Thomas Meighan in "The Ming Call."

"The Ming Call" was made from the story by Rex Beach and was directed by James Cruze for the Caddo Company. Miss Adoree is cast in a screen role which allows her to exercise her rare talent to the limit. She is presented as a Russian immigrant girl.

This picture will be shown at Lyric Theatre, Spearman, Texas, Friday and Saturday, January 4 and 5. Admission 15 cent and 30 cents.

CHAMBER OF COMMERCE MEETING TONIGHT

Tonight, Thursday, is regular chamber of commerce night. This is the first meeting for the new year. President C. J. and Secretary Taylor urge every member and all others who are interested in Spearman and the Spearman country, to be present at this meeting. Important matters will be discussed and acted upon. The year's work will be outlined in so far as possible. This is your chamber of commerce; working to your interest, and is deserving of your most hearty cooperation and support.

J. R. Collard was a business visitor to Amarillo the first of the week.

DAVIDSON-WHITSON

On Sunday afternoon, December 30, in the auditorium of the Christian church at Perryton, occurred the wedding of Mrs. Viola Davidson to Wm. J. Whitson, the Rev. Pope, pastor of that church, officiating. Mr. and Mrs. Whitson are at home to their many friends in suburban Spearman.

The marriage of this excellent young couple came as quite a surprise to a majority of their friends in this section. They are both well known throughout this entire section. The bride is the daughter of Mr. and Mrs. W. S. McNabb, residents of Hansford county for the past quarter of a century. The groom is a son of Mayor and Mrs. Geo. M. Whitson of Spearman. He at present is connected with his father in the Spearman Equity Exchange and in farming, stock-raising and various other activities. Their hosts of friends wish for Mr. and Mrs. Whitson a full share of life's richest blessings.

RIG AT BIG COACH BURNED

The rig at the Big Coach Oil Company's test, block Y2, Hutchinson county, burned on the night of December 31. The rig was totally destroyed, but the loss to the company will not be serious, as it was covered by insurance. One man was quite painfully but not seriously injured, while attempting to extinguish the flames or remove some tools and personal effects from near the blaze. It is thought that the fire originated from the gas escaping from the well. The Big Coach will rebuild the rig at once and complete the well, which now is nearing the pay sand. Many local people are interested in the progress of the Big Coach company, among them being Woodville and Billy Jarvis.

HART-WINDER

Miss Nellie Hart and Mr. Clarence Winder were quietly married in the home of the bride's mother, Mrs. W. B. Hart, in Spearman, on last Sunday morning, December 30, at 10:30 a. m. The ring ceremony was used, the Rev. O. M. Addison, pastor of the Spearman Methodist church, officiating. The only persons to witness the nuptials were Mr. and Mrs. J. P. Winder, father and mother of the groom; and the bride's mother, Mrs. W. B. Hart, and Mrs. Evans, sister to the bride.

Immediately after a bounteous luncheon the happy couple started on a bridal tour which will take them to San Antonio, Galveston, Brownsville and many other interesting places of the southland.

These happy young people are both almost Hansford county products and come from two of our most prominent families. Miss Nellie has taught in our public schools in Spearman for the past two years and numbers her friends by her acquaintances. Mr. Winder has been engaged in farming and stock-raising with his father, J. P. Winder, on their ranch on the Palo Duro, but is building a home in Gruver where he soon will engage in business, and where he and his charming bride will be at home to their many friends after February 15.

"Thus ended a perfect day."

SANTA WAS GOOD TO BARKLEY FAMILY

Old Santa Claus certainly was in a joyful mood when he got to the A. F. Barkley home in this city. The old fellow left a brand new Ford, with all modern conveniences—gassed and oiled to the nth degree—at the front door. This is what the Reporter would call a really practical gift.

County Officials Take Oath of Office And Begin New Terms Tuesday

The commissioners court of Hansford county met on Tuesday morning, January 2, for the purpose of approving the bonds of the county officials elected at the last November election. There is no change in our county court house bunch, with the exception of sheriff and tax collector and one commissioner. H. L. Wilbanks takes the place of Alvin Richardson as sheriff and tax collector and J. P. Winder takes the place of Homer Cluck as commissioner, precinct No. 4. But the old officials, those who were re-elected, go through the same process of being sworn in and make new bonds, the same as the newly elected ones. All bonds were approved, the oaths were taken and the business of the county proceeded along routine lines, and there was very little ado about the entire procedure. Our county officials now are:

County judge—C. W. King, County and District Clerk—J. E. Womble, County Assessor—Mrs. Bessie Cator, Sheriff and Tax Collector—H. L. Wilbanks, County Treasurer—Barney Sparks, Commissioners: Precinct No. 1, J. G. B. Sparks; precinct No. 2, Chas. C. Beck; precinct No. 3, Fred McRee; precinct No. 4, J. P. Winder.

SPEARMAN SCHOOLS OPEN FOR SECOND SEMESTER

The Spearman schools opened on Wednesday morning, January 2, for the final work of the 1928-29 term. The slight epidemic of influenza now prevalent, cut down the attendance somewhat, but the interest manifested is up to normal, states Prof. Wilcox. By the end of the week Christmas holidays will have been forgotten and everyone will be down to hard work again. Several of the teachers are unable to be at their post, on account of illness, and substitutes have been secured.

SPEARMAN'S NEW CAFE

Joe's Cafe, Spearman's newest eating place, was opened for business on last Friday morning, December 28. J. D. Magness is the proprietor. He is an experienced restaurant man and has the Takitt boys, well known here as mighty good restaurant folks, as helpers. Joe's Cafe is located in the Jackson building, next door to the postoffice confectionery, in a nice, clean, roomy place, and we predict for it a splendid business from the beginning.

Carbon paper at Reporter office.

First Showing of New Chevrolet Six Attracted Large Crowds Saturday

CAMPFIRE GIRLS WILL ENTERTAIN

Six members of the Hashat-u-aya Camp Fire group will take the first rank at a Grand Council meeting Saturday evening at 7:30 in the high school auditorium. Those who have completed the various requirements and are eligible for the rank of Wood Gatherers are Helen Buchanan, Thelma Maize, Emma Reeves, Louise Buchanan, Chloe Oldham and Roberta Addison.

In order to become Wood Gatherers the girls have done some rather hard work, though this is the easiest part of all to acquire.

Membership in the organization for four months and an attendance at twelve weekly meetings are two prerequisites. Applicants for the rank must have selected a name and symbol and have completed headbands with a symbol as the design. In addition they are required to do many other things such as keep a health chart for one month, learn memory work pertaining to Camp Fire work, and earn a certain number of honor beads.

This is the first Camp Fire program that has been open to the public and all members of the organization wish to extend to everyone a cordial invitation to attend the Grand Council. They want the people of Spearman to become acquainted with the Camp Fire and are taking this means of making an exhibition of their work. No admission will be charged. The program is as follows: Woblo.

Fire lighting ceremony. History of Camp Fire Work—Thelma Maize. Requirements for membership—Louise Buchanan. "Work Song"—Group. Reading, "Trees"—Roberta Addison. Why I Enjoy Winning Honors?—Chloe Oldham. Awarding Honor Heads. Record of Local Chapter Happenings—President. Solo, "My Task"—Emma Reeves. Awarding Prize. Requirements for Taking First Rank—Helen Buchanan. Awarding Ranks. "Mammy Moon" Song—Group.

JACK TUNNEY WIGGINS

The news of the death of little Jack Tunney Wiggins came as a distinct shock to the people of Spearman and vicinity on last Saturday night, December 29, at 9:30 p. m. Death was caused by membranous croup, and the little fellow was ill only about 28 hours. Jack Tunney was the son of Mr. and Mrs. Lloyd C. Wiggins. Mr. Wiggins is local manager of the White House Lumber Company, coming here from Stinnett only a few weeks ago. The little fellow was only 24 months old, but had a wide circle of friends who will miss him. The remains were laid to rest in the Hansford cemetery on Monday afternoon, December 31, after funeral services were conducted at the home in west Spearman by Rev. J. H. Richards.

If you are judged by the way you judge other folks, how will you end up?

Large crowds attended the first showing of the New Chevrolet Six in Spearman last Saturday. The McClellan Chevrolet Company had made ready for the coming of this outstanding Chevrolet of Chevrolet history—a six in the price range of the four. The show rooms at the company's plant were decorated, and the new-come was given a very prominent place. All day long the management and sales force were kept busy answering questions and setting forth the many excellent features of the new production. Wm. E. McClellan, manager of the McClellan Chevrolet Company, and Bob Fuller, manager of the sales department, state that they are mighty well pleased with the way the public turned out to see the new car, and with the interest manifested in this showing. They have booked many orders and expect to begin making delivery of the new product next week.

'29 WHEAT CROP MAY MOVE OVER NEW R. I. LINE

The new Rock Island line through Stinnett to Liberal, Kansas, seems assured of completion in time to move the 1929 wheat crop from the north plains country.

Liberal voted bonds for the terminal facilities, steel arriving there by trainloads, and contracts have been let for the ground work between Gruver and Liberal. An additional work train between Stinnett and Gruver has been placed in service and plans call for work to progress south from Liberal and north from Gruver.

When completed the new line will give Stinnett through service to all eastern and southwestern points, with freight and passenger service direct to Los Angeles and Kansas City and Chicago.—Stinnett Herald.

RIG RE-BUILT ON HITCH RANCH—TO SPUD IN SOON

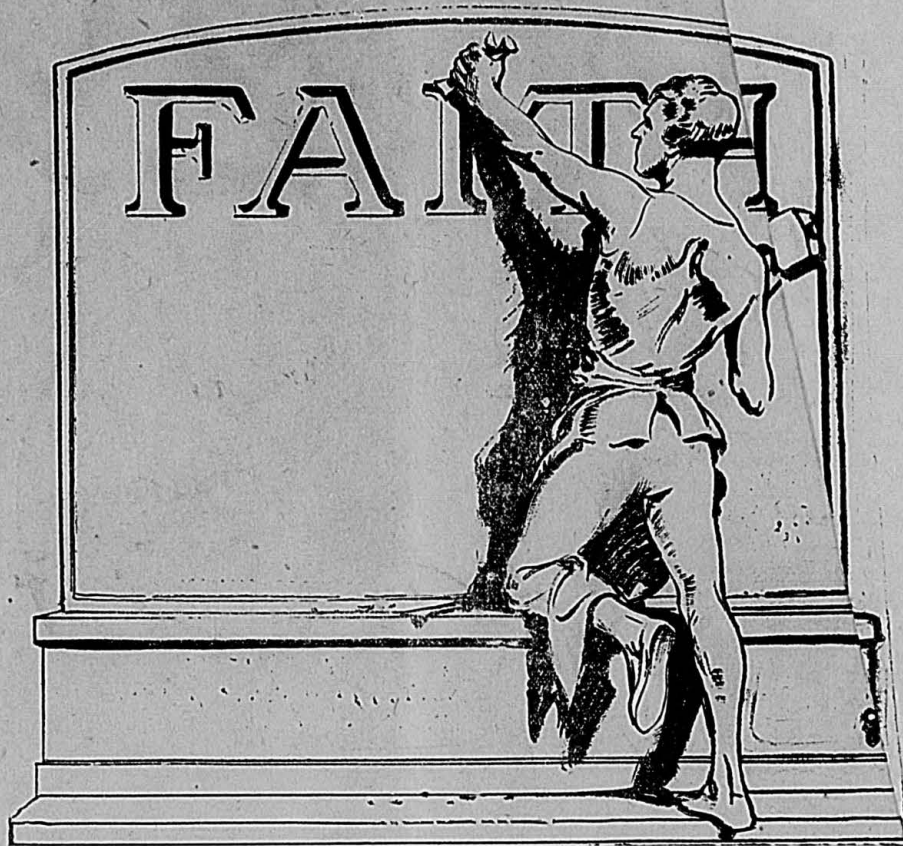
A. J. Skaer and Associates, who have obtained the leases on the C. A. Hitch ranch and vicinity, found the old derrick in such shape that it could not be skidded a short distance south on to a new location, and so it was torn down and rebuilt. Mr. Skaer tells us that he hopes to have the machinery all assembled and in position for spudding in along about January 15th.

Mr. Skaer feels greatly encouraged by the recent oil discoveries in Moore County, which he says tends to prove that the Hitch properties are in the big oil trend that leads up this way from the Berger field.—Guymon Herald.

BASKET BALL FRIDAY NIGHT

There will be a basketball game in the high school gymnasium on Friday evening, beginning at 7:30, between the Spearman town team and the Lyric school team. This event will be followed by a box supper in the auditorium. The proceeds from both will be used in paying for the new gymnasium floor. Everybody invited.

Mr. and Mrs. Lex Board were in from the north Hutchinson county country Monday, trading and attending to business matters.



FAITH An Emblem of Trust That Is Always Kept

Faith in our fellowmen is an outstanding factor in the Community Life of Spearman.

Its practical application is best exemplified in our business activities wherein each worthy member of the community is extended unquestioned credit by business and banking firms.

It is a community where it pays big returns on the investment to maintain a credit rating inviolate by paying all obligations promptly when due.

Faith---A trust fulfilled---A credit obligation promptly met.

Scott Brothers, Grain and Coal
 Smith Variety Store
 Hastings Drug
 Floyd Hays Barber Shop
 Womble Hardware
 J. R. Collard, Real Estate and Loans
 Burran Brothers
 Spearman Hardware
 McClellan Chevrolet Co.
 Hansford Abstract Company
 W. L. Russell
 Beck Motor Company
 Harbison Furniture Company

Home Telephone Company
~~Thomason Brothers~~
 R. W. Morton
 R. L. McClellan Grain Company
 Spearman Equity Exchange
 Snider Produce
 Jackson Tire Shop
 Dr. J. E. Cower
 Pickering Lumber Company
 Wilson Funeral Homes
 Jot Horton, Lawyer
 The Inland Utilities Company of Texas
 Panhandle Lumber Company

Fidelity Bank of Commerce
 First National Bank
 Spearman Motor Company
 Spearman Dry Goods Company
 McNabb Land Co.
 C. & L. Clothiers
 Star Meat Market
 Chambers Service Station
 Equity Filling Station
 R. & S. Bakery
 White House Lumber Company
 Spearman Sales and Service
 Sparks Confectionery

Now on Display in our Showroom!

Today you can see the most sensational automobile ever introduced—The Outstanding Chevrolet of Chevrolet History, a Six in the price range of the four!

This amazing new automobile is now on display in our showrooms and we cordially invite you to come in for a personal inspection!

Judging by the tremendous interest which it has excited wherever shown—

—judging by the unqualified approval it has won from everybody, everywhere—

—the Outstanding Chevrolet will instantly impress you as the greatest dollar-for-dollar value ever offered in any automobile!

New 6-Cylinder Valve-in-Head Engine

When you lift the hood and see the new six-cylinder valve-in-head engine you will realize that a new era has dawned for the buyers of low-priced automobiles. Representing four years' development and testing by Chevrolet and General Motors engineers, embodying the discoveries of General Motors Research Staff, this new power plant is a marvel of advanced design. At every speed it operates with that delightful smoothness which everyone demands today in a modern automobile. It develops approximately 32% more power than any previous Chevrolet engine. It displays sensationally greater speed and faster acceleration. And yet, despite this brilliantly improved performance, it maintains Chevrolet's worldwide reputation for economical transportation by delivering better than an average of twenty miles to the gallon of gasoline!

Great Array of New Features

Matching this spectacular advance in performance is the greatest array of new features Chevrolet has ever announced—and the most outstanding appearance ever achieved in any car of comparable price!

The new four-wheel brakes not only assure positive safety, but are exceedingly quiet in operation. The new heavier, finer quality transmission and rear axle gears contribute to longer life and greater stamina. The new two-beam headlamps with foot control dimming device were never before available in Chevrolet's price class. The new AC gasoline pump with filter assures constant fuel supply no matter how steep the hill. And so on throughout the entire chassis, you will find feature after feature previously demanded in the finest of automobiles and now offered on the Outstanding Chevrolet in keeping with Chevrolet's policy of constant progress!

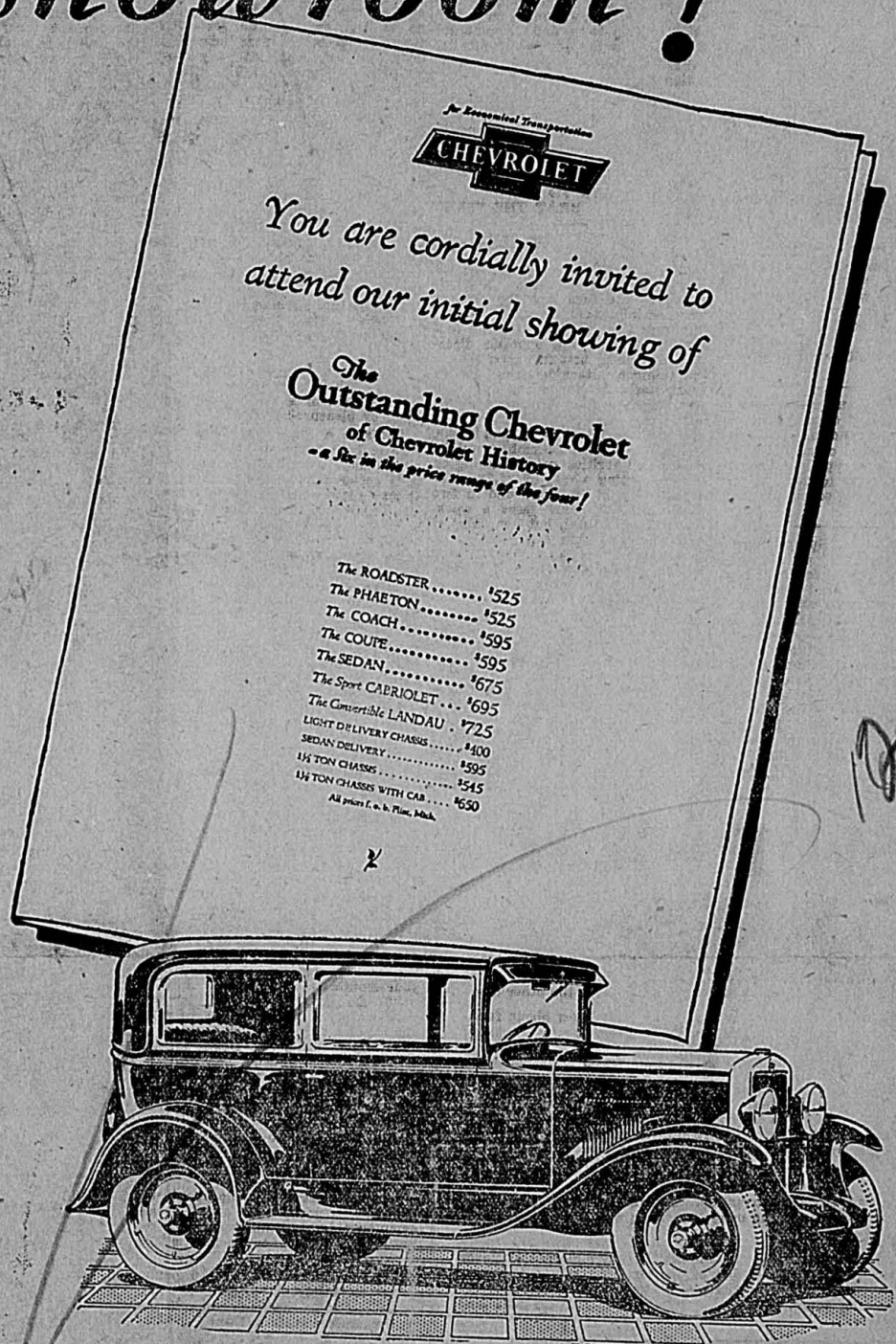
Distinctive New Beauty

But, however impressed you may be by the mechanical superiority of the Outstanding Chevrolet, your admiration will reach even greater heights when you study the car's distinctive beauty.

Here the whole effect is one of ultra-smartness, luxury and style. Introducing modish, concave front pillars and divided moulding, embodying the comfort advantages of greater width and length, finished in smart new lustrous colors— the marvelous new Fisher bodies represent a masterful example of artistic coachwork. Never in Fisher's long and illustrious service to the automotive industry has Fisher style supremacy been more clearly revealed! Never have beauty, comfort, convenience and staunch construction been more skillfully combined in the bodies of any automobile!

Come In and See For Yourself

So we urge you to come in today and inspect the Outstanding Chevrolet! See for yourself what distinctive beauty and thrilling performance are now available at prices so amazingly low! Learn how Chevrolet has again established an entirely new standard of motor car value!



A Complete Array of Outstanding Features

New Smoothness— 32% More Power

1. Smooth 6-cylinder valve-in-head motor
2. Motor fully enclosed
3. Rugged balanced crankshaft
4. Fabric camshaft gear

New Beauty

1. Beautiful new Fisher bodies
2. Beautiful new colors
3. Chromium plated radiator
4. Headlamps with chromium plated rims
5. Chromium plated headlamp standards
6. New hood with narrow louvers
7. One-piece full-crown beaded fenders
8. Rubber covered steel running boards

New Economy and Dependability

1. Better than 20 miles per gallon
2. AC gasoline pump and filter
3. Positive lubrication to all motor bearings
4. Automatic lubrication to valves
5. Self-adjusting dry-disc clutch
6. Stronger rear axle gears

Faster Getaway— Greater Speed

1. Advanced combustion chamber design
2. High speed gear ratio, 3.8 to 1
3. Accelerating pump on carburetor
4. Hot-spot intake manifold
5. Smooth sliding gear transmission

New Comfort and Convenience

1. Longer, roomier Fisher bodies

2. Adjustable driver's seat in all closed bodies
3. Cadet type sun visor
4. Fisher VV windshield
5. Deep comfortable cushions
6. Indirectly lighted instrument panel
7. Water temperature indicator on dash
8. Semi-elliptic shock-absorbing springs
9. 107-inch wheelbase

New Safety

1. Separate emergency brakes
2. Foot control two-beam type headlamps
3. Theft proof Ele-trolock
4. Ball bearing worm-and-gear steering
5. Safety gasoline tank in rear
6. New 4-wheel brakes, safe—positive—quiet

Come in and see these Beautiful New Cars on display in our showrooms



Q U A L I T Y A T L O W C O S T

ORAN KELLY
 Editor and Manager
 Telephone No. 10

\$2.00 PER YEAR IN ADVANCE
 In Texas and Panhandle Strip of
 Oklahoma; \$2.50 per year elsewhere.

Entered as second class matter
 November 21, 1919, at the post office
 at Spearman, Texas, under the act
 of March 3, 1879.

Write it 1929 now.

The unholy trinity: Dishonesty,
 disloyalty and laziness.

Another good way to start the
 New Year right is to join the cham-
 ber of commerce.

If Spearman is to have that new
 school plant in time for the 1929-30
 term the ball must begin to roll
 soon.

Spearman business concerns are
 invoicing this week. Some have
 finished the job while others are just
 beginning. It is a safe bet that the
 last half of the good year 1928 was
 quite satisfactory to all of them,
 while the first half was not so bad;
 not so bad.

1929 brings to us indications of
 the greatest era of development this
 section has ever known. Spearman
 is growing, but the country back of
 it is growing more rapidly. And this
 fact brings strongly to mind the im-
 portance of a new school plant in
 this good town.

Many residents of Spearman have
 a bad cold, the "flu" or a general
 run-down, no good feeling these
 days. In fact a light epidemic of
 "flu" is prevalent, and with a
 genuine case of influenza a person
 doesn't care whether they get well
 or "pass on." In addition to all
 the remedies and directions as pre-
 scribed by the family doctor, we re-
 commend a drive over the entire
 town. Look it over from north to
 south and east to west. The build-
 ing operations and general develop-
 ment will make you feel better. Af-

ter you come to a full realization of
 what a splendid little city you are
 calling your home, you won't want to
 go to heaven—now. In fact, you
 will want to wait awhile, just to see
 what will happen here. You will
 want to wait and watch Spearman
 grow.

AN EMBLEM OF TRUST

To encourage a more practical,
 everyday application of faith in our
 fellowmen—our neighbors and every-
 day associates, is the message borne
 by the full-page community adver-
 tisement found elsewhere in this
 paper. We believe that a sincere in-
 terpretation and application of this
 message for every man, woman and
 child in this town and community
 will make for the betterment of all.

Faith—a trust fulfilled—an obli-
 gation promptly met.

Faith in our neighbors and associ-
 ates; faith in our town and commu-
 nity, will build a little city of Spear-
 man and will make of it a better
 place in which to live.

ELEVEN WAYS TO
 BEAT THE "FLU"

Take the "Flu" lying down, com-
 mands the United States Public
 Health Service, in the battle against
 this mysterious epidemic. News is
 found in the fact that the current
 wave of influenza, instead of spread-
 ing from East to West, for the first
 time spreads in the opposite direc-
 tion, appearing first in Japan late in
 the summer, attacking the Pacific
 coast states in November, and then
 advancing to Southern and Middle
 Western states before reaching East-
 ern Atlantic and New England states.
 By the middle of December, public-
 health authorities at Washington
 were reporting a rate of 21,238 new
 cases a day in 25 states and in two
 states 403,185 new cases a week,
 15.2 per cent fatal, but generally of
 a milder type than ten years ago.
 Universities, colleges and high
 schools in Kansas, Missouri, Illinois,
 Iowa, Tennessee and the Carolinas
 led in closing down early for the
 holidays as a precautionary measure.
 In several Southern states health-
 board policy included shutting down
 public schools and closing theaters.
 Surgeon-General Cumming, at Wash-
 ington, however, advised against closing
 city schools, declaring that:

"Close contacts in the cities are
 unavoidable whether the individual is
 in school or not, and we believe it is

better for the children to be in
 school under supervision. The sur-
 est single means of preventing seri-
 ous cases of influenza is to go to bed
 the moment colds and feverishness
 develop, both to protect the individ-
 ual from pneumonia and other com-
 plications, and to protect communi-
 ties from spread of the epidemic."

"Public-health authorities, anx-
 iously at work, are forced to place
 their main reliance upon a working
 alliance between nature and individ-
 ual common sense. Nature will do
 its part, anyhow, and it is a grand
 fighter; but humans can help by
 avoiding infection as a first step and,
 when necessary by not requiring na-
 ture to attend to business and disease
 at the same time. That is, they can
 go to bed and let the restorative
 forces of the body center their action
 on a conflict with the organisms
 which are trying to multiply within it.
 Fever is one sign, and a sure one,
 that the conflict is on.

"Can not the average man take
 some pride in his own capacity to
 safeguard himself? He should re-
 cognize that soreness and fever are
 nature's method not of annoying but
 of warning, and cooperate with its
 mysterious power of recuperation,
 which in accuracy of diagnosis and
 immediacy of action far surpasses the
 best that science can show."

In Chicago, where local health au-
 thorities reported 10 per cent of the
 population affected by "colds" or
 the "flu," The Evening Post put
 "flup" into health-board warnings,
 thus:

"Flu hits overtired people. It
 strikes where resistance is low
 through lack of sleep and too much
 work or pleasure-seeking.

"This is a season of extra pres-
 sure in both spheres of life. It may
 not be easy to cut down on work, but
 it is easier than suffering from flu.
 It may require self-denial to cut out
 late indulgence in amusement, but it
 is a self-denial that pays. Go to bed
 early in a room with the windows
 open, but protected from draft. Take
 things quietly. Neither drive your-
 self nor let others drive you. You
 owe it to your own health, to the
 health of your family, to the health
 of the community.

"An incipient cold is an invitation
 to flu. Take care of it. Use a good
 nasal and oral disinfectant. Colds
 and flu are easily communicable to
 others. Your shop, your office should
 feel indebted to you if you stay at
 home and go to bed."

Thus it appears that the news-
 papers all over the country press
 home point after point in recommen-
 dations of the "board of strategy"
 organized by Surgeon-General Cum-
 ming, which issued eleven rules to
 combat the spread of the "flu":

- "1—Avoid needless crowding.
 Walk to work when possible.
- "2—Take advantage of sunshine.
- "3—Sleep with windows open.
- "4—Avoid people who are cough-
 ing, sneezing or snuffing.
- "5—Wash your hands before eat-
 ing, and do not put your fingers in
 your mouth.
- "6—Do not use napkins, towels,
 spoons, forks, knives and drinking-
 cups unless they are clean.
- "7—Use plenty of clean water,
 both inside and outside. Eat whole-
 some food. Sleep at least seven
 hours.
- "8—Keep away from houses with
 influenza.
- "9—Avoid undue chilling of the
 body.
- "10—Avoid dust and overheated
 rooms.
- "11—In case you do contract
 the disease, go to bed as soon as
 symptoms develop and remain there
 until thoroughly recovered. Call a
 physician at once."

"The mystery of "flu," 10 years
 after the disastrous epidemic of 1918
 remains despite thorough research in-
 to the cause," reports Owen L. Scott,
 Consolidated Press correspondent,
 who quotes authorities of the Ameri-
 can Medical Association as follows:
 "The present epidemic is the sec-
 ond mild cycle following the major
 cycle of the disease which struck in
 1918. In itself it is not fatal and
 with proper care no complications
 arise. Deaths, due to complications
 which follow in extreme cases, due
 to the lowered resistance, have been
 considerably less than one per cent.
 Influenza occurs in cycles. The ma-
 jor cycles come each 30 years. There
 are minors every five years. One
 occurred in 1928, and another occur-
 ing now."—Amarillo Daily News.

ADAM AND EVE RETURN

Adam and Eve came back to earth
 To see the latest designs of worth.
 Said Eve to Adam: "Adam, dear,
 There's not much change since we
 were here."

SOME STUFF

They tell a story about a tiny ant
 who gazed longingly, but helplessly
 at the body of a dead horse. Just
 then a bootlegger's truck rattled by
 and a case of stuff fell over the tail
 gate and crashed to the ground. A
 puddle formed and the ant took on
 sip. Then he seized the dead horse
 by the tail and shouted: "Come on
 big boy, we're going home."

Mary had a little cram-
 ming in her math to do
 And everywhere that Mary went
 Her algebra went too.

She carried it to class the day
 Exams in progress were,
 And since the teacher found it there
 We haven't heard from her.

JERSEYS FOR SALE

A car load of Jerseys for sale.
 Thirty head of pure bred Jerseys,
 heavy boned, three to five years
 old, some with calves at foot.
 Priced to sell. See Paul McMeans,
 phone 94, Canadian, Texas.

THEFT PROOF IGNITION LOCK
 ON NEW MODEL "A" FORD

One of the features of the new
 Model A Ford car which is typical
 of the care that has been devoted to de-
 tails of design, is the theft-proof igni-
 tion lock with which it is equipped.

Many automobile ignition locks,
 designed to lock the switch against
 theft of the car, have been little or
 no safeguard against the clever thief
 with some knowledge of automobile
 ignition systems. The thief could
 simply reach behind the instrument
 board, cut the wires back of the
 switch and make a new circuit on
 which the ignition system would
 operate perfectly.

This cannot be done on the Ford,
 because the wires run direct from
 the switch into an armored conduit
 which is integral with the dash. In
 order to tamper with the switch the
 thief would either have to take the
 instrument board to pieces or cut the
 steel dash or armored conduit.

Except under the most extraordi-
 nary circumstances, no thief would
 have the tools, the time or the free-
 dom from possible interruption
 necessary to the completion of such
 a difficult and tedious task.

This new Ford lock performs two
 operations at once. It opens the
 ignition circuit and grounds the dis-
 tributor at the same time. Another
 advantage is that, being concerned
 entirely with the ignition system, it
 provides protection against theft
 without in any manner interfering
 with the mechanical car controls,
 such as transmission or steering.

A COMMUNITY IS DEFENSELESS

The citizens of a community can
 mistreat it and deny it their good will
 and their trade. They can go to the
 larger city and do their shopping and
 deprive their local merchants of the
 trade necessary to make their busi-
 ness prosper and thrive until it is
 necessary to reduce stock carried and
 employ less help.

Every citizen of the town can
 carry on this sort of warfare against
 home institutions and the community
 can not resist it. It can not plead its
 own case—it is defenseless.

But the time comes when everyone
 knows that the community is losing
 out. The stores look a little more
 shabby and a little more ragged.
 Stocks aren't so good or so large.
 Less clerks are employed, less taxes
 paid, less income earned, and still the
 community does not rebel—it goes
 down and down until the people wake
 up and realize that this thing called
 "Our Community" is after all their
 community and the only way to build
 it up and keep its institutions pros-
 perous and thriving is to be loyal to
 them and support them generously
 and whole heartedly.

Carbon paper at Reporter office.

Thank You--

—for the fine business you have
 given this firm during 1928.

We shall appreciate a continu-
 ance of the same.

Beck Motor Company

Spearman

Gas With Us

Tires—Tubes

Handiest Place in Town

Accessories

Joe's Cafe

—Spearman's Newest Eating Place, is now
 open and ready for business.

We are well pleased with our business so far, and new
 customers are coming every Day.

Drop in and lunch with us.

J. D. MAGNESS, Prop.

In Jackson Building, Next Door to Postoffice

HARDWARE
 TALKS

"Of course the farmer has to work hard in the summer but he has it
 pretty soft these days," said a customer in our store the other day.

"That gives one an idea of how much you don't know about farm-
 ing," we answered. "Why they're busy as beavers these days, fixing
 things up around the farm, repairing machinery and taking care of
 hundreds of small jobs that they haven't time for in the summer."

This is emphasized to us almost daily by the calls we are now getting
 for parts for farm machinery, tools, bolts and a thousand and one
 other items. We've got to keep our stock in good shape to supply
 these demands and live up to our reputation as the store where the
 farmer can get what he needs when he needs it.

HANDY GADGETS

This is certainly an age of invention. This fact is driven home as we
 read our newspapers, but no more than when we look at some of the
 new items in our stock.

On our shelves and counters you will find literally hundreds of clever
 little devices for making the work of the home easier. Little things,
 all of them, but you'll be surprised at the way they'll shorten up
 your work of keeping house. Come in and look them over the next time
 you're in town.

Womble Hardware
 Company

John Deere Tractors—Implements
 Stores at Spearman and Morse

EPIDEMICS

They need not hold terrors for you if you give due
 thought and attention to your health.

If you treat the first symptoms of a cold intelligently
 with some of our old, time tested home remedies.

We thank you for your generous patronage during
 1928. Let us continue to serve you during 1929.

Hastings Drug

Prescriptions a Specialty
 Spearman

A CLEARANCE
 FOR THE FAMILY!

Women's
 SHOES

So important is the quality of this
 Footwear and so interestingly low
 are the prices that immediate
 Clearance is certain.

choice \$2.50

All Winter Dresses

at
 20% 25% 50%

1-2 price

Come early and make your selec-
 tion from a good line of stock.
 We have some real bargains.

All Winter Coats
 Ladies' and Childrens'

at

1-2
 price

Choice of any Ladies
 Hat in the Store

for

\$1.95

W. L. RUSSELL

Dry Goods and Groceries

To
 int
 tor
 Th
 sh
 so
 Ju
 wl
 —
 es
 —
 th
 a
 V
 it
 d
 y
 h
 e
 f
 :

150

Any
 Chamber
 Records

CARD OF THANKS

We wish to thank our friends everywhere for the assistance rendered, for the beautiful floral offerings and for the many kindnesses shown in numerous ways, during the illness and at the death and burial of our loved one, Mrs. Rowena Dellynn Dellbrugge.

F. W. Dellbrugge and Children.
Mr. and Mrs. R. B. Archer.
Mr. and Mrs. Erwin Heister.
Mr. and Mrs. Eldrez Sheets.
Mr. and Mrs. Roy Sheets.
Mr. and Mrs. Leonard Sheets.
William and Riley Sheets.

FARM LAND WANTED

I want to lease two or three sections of land, located near Spearman possible. This land must be suitable for farming. See or write A. L. SAGLEY, Spearman, Texas.

HEAT ACRES ANNOUNCED

The department of agriculture last Wednesday announced the area sown to winter wheat and the condition of the crop in the principal producing states as follows:

Pennsylvania, 1,137,000 acres and 0 per cent of normal.
Ohio, 1,873,000 and 84.
Indiana, 1,496,000 and 88.
Illinois, 2,588,000 and 92.
Michigan, 92,000 and 91.
Missouri, 2,016 and 91.
Nebraska, 3,688,000 and 89.
Kansas, 12,173,000 and 82.
Oklahoma, 4,608,000 and 73.
Texas, 2,576,000 and 87.
Montana, 543,000 and 80.
Iowa, 618,000 and 86.
Colorado, 1,307,000 and 70.
Washington, 1,318,000 and 70.
Oregon, 889,000 and 85.
California, 857,000 and 91.

FATHER OF HOMER AND W. D. ALLEN DIES

Mr. J. M. Allen, one of the county's substantial and highly respected citizens, died at his home on Asheboro, Star Route, today at one o'clock following several years of declining health. On Tuesday night he suffered a stroke of paralysis from which his condition had grown more serious as the hours passed by.

Mr. Allen was the son of the late Alvis Allen, and was sixty-five years of age. He has been a leading citizen of the county, serving as legislator for one term, having been elected on the Republican ticket, and two terms as county surveyor. For many years he has been secretary of the Farmers Mutual Fire Insurance Company, and upon the organization of a Farmers Alliance Store Co. in the county he was made manager, the store being located on North street in Asheboro. The store was opened about 22 years ago, and Mr. Allen moved to Asheboro at that time and remained during the time the store was in operation, and then returning to his farm when it closed five years later.

He was a lifelong member of the Flag Springs Methodist Protestant church. Mr. Allen was married to Miss Antemelia Cox, daughter of the late Franklin Cox, around forty years ago. To this union there are four sons, W. D. and Garrett Allen, wheat growers of Miami, Texas; Homer Allen, also a wheat farmer, of Spearman, Texas; and Ben Allen who has for a number of years held a responsible position with the Standard Oil Co. at Charleston, S. C. All are living. He is also survived by his wife; four sisters, Mrs. John Reynolds, Troy; Mrs. Emma Lowdermilk, Asheboro; Mrs. Wiley Holt, Stary; and Mrs. J. R. Comer, Seagrove.

The happy, genial nature of Mr. Allen made many friends for him throughout the county, and his dependability, honesty and consideration for his fellowmen were characteristics worthy of enumeration.

The funeral will be conducted at the Flag Springs church, but on account of the failure of the two sons, W. D. and Homer Allen, to arrive before the death of their father, the hour of the funeral is undetermined. They left Texas immediately after news of the illness of their father, but up to date have not arrived.—Asheboro (N.C.), Exchange.

REPORT OF VITAL STATISTICS FOR 1928

The report of Vital Statistics for 1928 in and for precincts number one and two, Hansford County, Texas, as reported to the Registrar:

Births: male 23 female 24; total 47.
Deaths: Matured and aged, 5; youths, 1; infants, 3; still born, 2; total, 11.

includes the births and deaths that deaths occurring out of the county in hospitals and sanitariums and only includes the birth and death that actually occurred in precincts 1 and two. I hope to be able at next report to give all deaths and births that occur to Hansford county people. This is a report that all people should be interested in, and aid in its keeping as much as possible.

W. L. DAVIS, Registrar,
Precincts, Nos. 1 and 2.

RAYMOND JARVIS IS CALLED VERY BEST HUNTER IN COUNTY

Raymond Jarvis, son of O. W. Jarvis, old time rancher of Hutchinson county, is either the luckiest man in the county or else the best hunter.

This is the view of Joe Close county commissioner, who says Raymond the other day killed three geese on one hunt. "Its hard enough to get one goose on a hunt as they are scared so quickly and it is difficult to get near them," Close said. "But Raymond killed three."

The ducks, according to Close, are living off the fat of the land on the old Lucas farm northwest of Stinnett. Roy Holden, who has a farm on the land, has 600 acres of maize and the birds are making this their headquarters.

"A lot of us fellows from around Stinnett have tried to get ducks this winter but nobody has been able to get more than one at a time," the commissioner said. "How Raymond got three, I don't know, but I know he shot all three on one trip.—Borger News.

HAD A FINE VISIT

Mr. and Mrs. Paul Higgs and the children returned the latter part of last week from Mercedes, in the Rio Grande Valley, where they spent several days with his parents, Mr. and Mrs. S. H. Higgs. They report a most pleasant visit to the southland; say the weather is warm down there, but there was indication of frost several nights while they were there.

HOW TO PREVENT FLU

Although the influenza epidemic has passed its crisis, there are still scores of cases and the public is warned by physicians to exercise extreme precaution in guarding against further spread of the disease.

Influenza is spread from person to person through secretions of the nose and mouth. Sneezing, coughing, promiscuous spitting and other practices that broadcast the secretions are a menace to health. It may also be transmitted thru cups, glasses, forks, spoons and other utensils not properly cleaned and sterilized—this applies more particularly to public eating places.

The public can very definitely safeguard their own health and protect others by observing the simple laws of health and hygiene. Influenza is one of those epidemic diseases in which universal interest and cooperation is the most effective means of control. There are certain health habits that should be cultivated and practiced continuously, but more particularly during an influenza epidemic.

1. Selection of the right kind of variety of foods to insure a diet containing all the necessary vitamins, as well as the chemical and mineral elements.

2. Long hours of restful sleep, preferably in a cool room with plenty of outdoor air.

3. Temperature in the home, schoolroom, workshop and office should be kept cool. It should be maintained preferably at 68 degrees F.

4. Dress should be moderately warm, determined by the temperature to which the worker is exposed. Light dress is better for indoor employment where the rooms are heated than heavy dress.

who have contracted a severe cold during an influenza epidemic should go to bed and stay there until they have completely recovered. A large majority of fatal cases even in mild epidemics results from failure to observe this very simple rule. Complete rest in bed for several days and then a gradual return to work and physical strain is an important safeguard against a recurrence of an extension of the infection.

5. A thorough washing of the hands before eating, using plenty of soap and water.
6. Plenty of outdoor life and moderate exercise.
7. Avoid public gatherings and crowds as much as possible.
8. Do not visit houses where there is influenza.
9. People sick with influenza or

Not First Cost --but-- Cost Per Month

What does your overcoat or suit cost per month? This question and not the original price should determine the worth of what you got for your money.

The cheapest is usually the most expensive—especially when it comes to men's clothes.

The high-quality line of clothing we sell is the greatest value for your money on the market today.



C & L Clothiers
ON MAIN SPEARMAN

The Purina Plan FOR Dairy Farmers

Used Profitably By 40,000

1. Raise all the feed you can. Legume hay when possible.
2. Use just enough Purina to supply what your own feed lacks. Read the directions in the bag.
3. Take a few moments to figure out your present milk and feed costs before you start on Purina.
4. Sixty days later, figure your costs again, and use the feed that makes you the most money.

McClellan Grain Co.
PURINA

Elevator Row Spearman

First Class Decorating

BY A HOME MAN

I bring samples and designs of 500 of the newest and finest American wall papers directly to your home, and help you make selections that will match your furnishings. Don't guess.

First class wallpaper hanging, and a clean job guaranteed. The newest and most satisfactory decorating for the home is the 1929 new wall papers. See them.

My work may be seen in most all parts of town. I do painting and enameling, both inside and outside.

W. L. DAVIS

Phone No. 9 Spearman

You Buy Not For a DAY

When You Buy Furniture

The original purchase price is not the measure of a true bargain in furniture.

Quality furniture, furniture that retains its original beauty after years of usage, is the cheapest furniture in the end.

Consider not the purchase price but the cost per year's service, and you will at once see that our fine stock of **High Quality Furniture** offers amazing opportunities to furnish the home at low cost.

We appreciate your patronage of the past, and solicit the same in the future.

Come to see us and let's talk over the matter of

FURNITURE AND HOME FURNISHINGS

Harbison Furniture Company

South Main—East Side SPEARMAN

Exact Weight



Meat purchased here is weighed upon scales that assure your receiving full weight, all the time. This fact, plus the knowledge that the meat we sell is the finest procurable, makes this the place where you should buy your meats.

We are beginning the year 1929 with a most complete line of staple and Fancy Groceries; Fresh and Cured Meats—Come to see us.

HILL BROTHERS
Grocery and Market

Phone 103—We Deliver

Lower Main Spearman

3 Eggs Per Day or 64 Eggs Per Day

A prominent farmer living near Spearman, was getting three eggs per day from his flock of hens.

He began feeding them on

"SNIDER'S LAYING MASH"

and increased their production to sixty-four eggs per day. If your hens are not "working" as they should, come in and let's talk it over.

SNIDER PRODUCE

Phone 115 West Spearman

Mr. and Mrs. Milton Henderson of Dumas were Sunday guests in the R. W. Morton home.

Volney Fisher and Arnold Wilbanks made a business trip to Borger Saturday.

New Industries for 1929

We're all wishing for new industries for Spearman. We want to see our community forge to the front as a live, up-and-coming city.

Let's support in every possible way all home business—let's keep our dollars circulating in the community, and thereby improve its business life and add materially to the value of the property we own here.

FIRST NATIONAL BANK of Spearman

For

High Quality Pianos, Player Pianos, Radios, and Talking Machines, see

B. F. Garst Music Company

before you make your purchase.

Win With Real Estate

The best, the safest, and surest of all long term investments.

Real estate purchased here now is bound to increase in value in the years to come, for we all agree that Spearman is a community with a future.

Furthermore your investment is right here where you can watch it all the time and can liquidate when necessary without loss.

J. R. COLLARD

Real Estate—Loans—Insurance

SPEARMAN

TEXAS

ATTENTION! Real Estate Bargain

653 acres four miles from Gruver, all fenced and cross-fenced, with new four-room house, granary, chicken-house, shed, corral, windmill, 500 acres in wheat, 153 acres pasture. one-fourth wheat goes to purchaser, at \$30 per acre.

5 acres located in Spearman, 4 room house, garage, hen-house, cow barn, four water hydrants, electric lights, 36 fruit trees, nine shade trees, rose bushes, all fenced, with good posts, \$1350.

640 acres 8 miles west of new railroad, with new well and windmill, chicken house, cow barn, woven wire corral, with small lake, price \$22.50 per acre.

640 acres 10 miles west of new railroad, without lake or break, with 60 acres broke. This is a perfect section, price \$22.50 per acre.

All the above described lands and property can be purchased on good terms. Please call and let us show them to you.

Stout and McLain

Spearman, Texas

Wheat Wanted

Morse and Pringle

These towns now have the Railroad and we are ready to buy wheat at top prices.

Roberts Grain & Seed Co.

Morse, Texas

Pringle, Texas

LANDOWNERS ASK CHANGE IN LAND LAWS

Asserting that the attorney general's office is almost an open house to those seeking to get possession of Texas land for nothing, over 300 landowners of the Panhandle met at the Amarillo hotel, Saturday and adopted resolutions demanding drastic changes in the existing laws and will carry their fight to the floor of the legislature.

"We want every chamber of commerce and civic organization in the Panhandle to adopt resolutions favoring the enactment of new legislation to protect the landowners and send them to us so that we may use them in our fight before the legislature," said Will O'Brien, member of the oil and gas bureau of the West Texas Chamber of Commerce.

"The Kiwanis club of Amarillo has already adopted a resolution similar to the one adopted at the landowners meeting on Saturday.

"Every citizen of Texas should be vitally interested in the fight which we are making that the landowners of the state receive the protection due them.

"The hope to have a law enacted that will force the state to file suits affecting land titles in the county where the land is located; another law to give the original owner the prior right to purchase or file on land where vacancies or excess has been established and a law to prevent drilling for oil or gas in river-beds.

"Resolutions favoring these proposed laws from the chambers of commerce and other civic organizations in the Panhandle will aid us materially in our fight."

Mr. and Mrs. Gay Fletcher of Gruver are happy over the arrival of a fine son at their home, born on Friday, December 28.

STRAYED

A white faced Hereford cow and a white faced two year old heifer strayed from a pasture near old Hansford. Both branded a half circle H on the left hip. \$10 reward each is offered for the return of this stock. Notify

HENRY RALSTON, Spearman, Texas.

NOTICE OF APPLICATION FOR LETTERS—GUARDIANSHIP

The State of Texas, To the Sheriff or any Constable of Hansford County—Greeting.

You are hereby commanded to cause the following notice to be published in a newspaper of general circulation which has been continuously and regularly published for a period of not less than one year preceding the date of the notice in the County of Hansford, State of Texas, and you shall cause said notice to be printed at least once each week for the period of ten days exclusive of the first day of publication before the return day hereof:

Notice of Application For Letters—Guardianship

The State of Texas, To all persons interested in the welfare of Helen May Branthaver, and Charles Branthaver, Jr., minors.

Whereas, P. A. Lyon, of Hansford County, Texas, has filed in the County Court of Hansford County, an application for Letters of Guardianship of the estates of Helen May Branthaver and Charles Branthaver, Jr., minors, whom he alleges are residents of Rock County, Wisconsin, are the owners of an estate in Hansford County, Texas, consisting of an undivided 2-6 interest in SW 3/4 of Sec. 7, Blk P. H. & G. N. Ry Co. Grant, and have no lawful guardian of their estate within the State of Texas, and that applicant is a proper person to act as such guardian, which will be heard at the next Term of said Court, commencing the first Monday in March, 1929, being March 4th, A. D. 1929, at the Court House thereof, in the town of Hansford, Texas, at which time all persons interested in the welfare of such minors may appear and contest such application should they desire to do so.

Herein fail not, but have you then and there before said Court this writ, with your return thereon endorsed, showing how you have executed the same.

Given under my hand and the seal of said Court, in Hansford, Texas, December 6th A. D. 1928.

(Seal) J. E. WOMBLE, Clerk County Court, Hansford County, Texas.



DELON KIRK'S

ELECTRICAL SHOP

Spearman—Phone 141

Storage Batteries—Radio Batteries and Tubes

Bring your Battery Troubles to me

BEST IN FORTY YEARS

B. F. Tepe, president of the White House Lumber Company, which operates yards in a score or more towns in this part of the state, was in Spearman Tuesday looking after business matters. Mr. Tepe is mighty well pleased with the business outlook for his yards everywhere. He states that he believes the country is in better shape at the present time than it has been at any time during the forty years he has known it. From every source this same encouraging news is heard. Bankers, big business and professional men say the country is in better shape than ever before and that an era of unprecedented prosperity and tremendous development is just around the corner.

STUDY NEW TRAFFIC SIGNALS

The last legislature changed the rules for drivers and it is well for everyone to study the new signals: An arm protruding from the car ahead means the driver is: (1) Knocking ashes off a cigarette; (2) Going to turn to the left; (3) Pointing to a scenic spot; (4) Going to turn to the right; (5) Telling small son to keep still or dad will buy no red pop; (6) Going to stop; (7) Feeling for rain; (8) Going straight ahead; (9) Saying to his wife: "Hell yes, I turned off the water"; (10) Going to slow down; (11) Waving to a girl friend on the sidewalk; (12) Going to back up.

EPOCHAL WAR FILM SHOWN HERE SOON

"The World War," a motion picture utilizing a great portion of the world as a set, with entire nations playing minor parts and with eleven twelfth of the world's population in the cast, will have its initial appearance at the Lyric Theater January 11 and 12.

This unusual picture, which is being shown in this city under the auspices of Sullivan R. Spivey Post of the American Legion, has been described as "at once the most thrilling and authentic history of the World War that has ever been told in pictures."

The story of this picture's creation, the lives lost in "shooting" its scenes, the months of delving into the archives of the governments of the United States, Great Britain, France, Italy, Russia and Germany to obtain official data and pictures, the years devoted to its careful preparation, and the official seals of the United States Navy and Army Departments stamped on the film (the first time in the history of motion pictures that those great seals have appeared on films), all these unusual elements in this picture's preparation make it what it is—"the first big historical motion picture of the World War."

Its action covers the greatest drama in the history of the world over a period of four years. Therein lies the remarkable feature of this unusual picture; it has successfully brought to the screen in comprehensive and graphic form, the most gigantic war in the history of the world. This has been done by careful compilation of scenes that are revealing, impressive and authentic.

War in all its phases is seen in this

film. There are no picked scenes. The lumbering tanks, the murderous machine guns sweeping No-Man's Land, the poisonous gas, the smoke screens, the depth bombs, sinking of ships by submarines, the flare of star-shells, the recoil of gigantic guns, gouging the earth in angry protest, the wire entanglements, the falling planes, the falling men—all the elements of war are seen in this great picture.

"The title of the picture, 'The World War,' is no misnomer," one critic said. "It is just that. When you have seen it you will know."

We're Not Satisfied

In spite of the excellent business showing we have made during the past year, we're determined to make notable increases for the coming year.

To accomplish this we're going to give:

Quality Groceries—Unexcelled Service

Reasonable Prices

BURRAN BROTHERS

GROCERIES

PHONE 71

LAND

DALLAM COUNTY, TEXAS

\$10 to \$20 Per Acre

Terms, the best in the Panhandle

Wheat land and the best corn land in Northwest Texas.

McNabb Land Co.

Spearman or Dalhart, Texas

The Lumber For the New Home you are Planning



When it comes to selecting the lumber for your new home, you need not even think about it—

just tell us what you would like and leave the selection up to us. We will guarantee your satisfaction with the results.

Panhandle Lumber Company

Modern Homes

Spearman—Gruver—Morse—Pringle—Stinnett

International Sunday School

Lesson BY DR. J. E. NUNN

FOR JANUARY 6, 1928.

General Topic:—Our Heavenly Father—Exodus 34:1-7; Psalm 103:1 to 5, 10-14; Isaiah 40:27-31; Matthew 6:24-34; John 3:3-6; 4:20-24; 8:40-47; Romans 8:2-11; 8:14-17; 1 John 4:7-16.
Scripture Lesson:—Matt. 6:24-34.



-AND THEN THE DELUGE

Not only water and smoke, but MILLS, EXPENSES, FINANCIAL LOSS—unless you have adequate Fire Insurance that PROTECTS. See us.

A. F. BARKLEY
Spearman, Texas

-MILK-

Pure, rich, sanitary milk, delivered at your door at

8 Cents Per Quart

Nice, Rich Cream, also PHONE D-7

KERN'S DAIRY

One-Half Mile West of Town

JOS. H. AYNESWORTH

Attorney

General Practice—Civil and Criminal 6652p. Phone 24, Stinnett, Texas.

G. P. GIBNER, B. S. M. D.

County Health Officer. Local Surgeon Santa Fe R. R. Only doctor in Mansford county who is a graduate from a Class A Medical College. Office in rear of Hastings Drug Store. Phone 39 Spearman, Texas

T. O. JAMES

Surveyor and Engineer

Office with McNabb Land Co.

Spearman, Texas

C. D. WORKS

LAWYER

County Attorney, Stinnett, Texas ABSTRACTS Experienced in abstracts and Hutchinson County land titles Special attention to Probate and Petate Matters

J. O. HORTON

LAWYER

Spearman, Texas

ALLEN & ALLEN

Attorneys-at-Law

Walter Allen, Jack Allen Stinnett, Texas Perryton, Texas Robinson Co. Ochiltree Co.

DR. F. J. DAILY

DENTIST

Office in Hays Building in rear of Hastings Drug Store. SPEARMAN, TEXAS



Powell, Eye, Ear, Nose and Throat Specialist. Will be in Spearman at office of Dr. Gower, on Wednesday, Jan. 9, 1928. Glasses and tonsils and adenoids reduced.

R. T. CORRELL

LAWYER

Perryton, Texas

J. E. GOWER, M. D.

Physician and Surgeon

PHONES

Residence 98 Office 38

X-Ray Service

OFFICE IN REPORTER BUILDING SPEARMAN, TEXAS

24. No man can serve two masters: for either he will hate the one, and love the other; or else he will hold to one, and despise the other. Ye cannot serve God and mammon.

25. Therefore I say unto you, Be not anxious for your life, what ye shall eat, or what ye shall drink; nor for your body, what ye shall put on. Is not the life more than the food, and the body than the raiment?

26. Behold the birds of the heaven, that they sow not, neither do they reap, nor gather into barns; and yet your heavenly Father feedeth them. Are not ye of much more value than they?

27. And which of you by being anxious can add one cubit unto the measure of his life?

28. And why are ye anxious concerning raiment? Consider the lilies of the field, how they grow; they toil not, neither do they spin:

29. Yet I say unto you, that even Solomon in all his glory was not arrayed like one of these.

30. But if God doth so clothe the grass of the field, which today is, and tomorrow is cast into the oven, shall he not much more clothe you, O ye of little faith?

31. Be not therefore anxious saying, What shall we eat? or What shall we drink? or Wherewithal shall we be clothed?

32. For after all these things do the Gentiles seek; for your heavenly Father knoweth that ye have need of all these things.

33. But seek ye first his kingdom, and his righteousness; and all these things shall be added unto you.

34. Be not therefore anxious for the morrow: for the morrow will be anxious for itself. Sufficient unto the day is the evil thereof.

Time:—The Sermon on the Mount (Matt. 5-7) was spoken in mid-summer of A. D. 28, in the second year of Christ's ministry.

Place:—The tradition is that the Sermon was delivered on the Horns of Hattin, or Mount of Beatitudes, a square-shaped hill about sixty feet high, with two tops, about seven miles southwest of Capernaum.

Golden Text:—Like as a father pitieth his children, So Jehovah pitieth them that fear him.—Ps. 103:13.

Introduction

The Scripture material for this lesson, only a portion of which is printed, includes ten different teachings about God. Three of them are from the Old Testament; four, in the words of Jesus; two from Paul, and one from the First Epistle of John.

God, Our Father

When you pray, say, 'Father.' That was Jesus' unique contribution to men's thinking about God. They had been saying very different words, true, no doubt, but omitting the most glorious aspect of the total truth about God. Jesus said, 'Say Father.' And when Jesus undertook to make that idea current in human thinking he did more for religious than he could have done by presenting the most perfect ethical code.—John M. Moore.

Good in the Old Testament

Here is the Eternal, making himself known in the awfulness of Sinai, and the word that he says about himself is more beautiful and blessed than any man could have imagined or formulated: "merciful and gracious, slow to anger, abundant in loving-kindness and truth" ("pitiful and kind, rich in love and loyalty," Moffatt). What a fine preparation this should have been for Jesus' revelation of the Father! And then, he "keeps," that is, "proves," his love, in many, many ways. A God, also, who forgives sin. The God of the Old Testament is sometimes referred to as hard and heartless, far removed from Jesus' conception of him as Father. But how false such a suggestion, in fact of Old Testament words like these!

God in the New Testament

In Jesus' application of the name Father to God we find his particular contribution to our knowledge of the Divine Being. In his interchange of the pronouns my and our, as applied to God, he assures us also of the child relationship: his Father, mine; as he is my Great Elder Brother. The Prayer of Prayers makes us never forget this—and the name. Jesus took those Old Testament conceptions of God, one might say, brought them out of their mere implications, and shot them through with his understanding of the love of God which was his and who he is.

Jehovah Wise and Strong

Our three passages from the Old Testament, descriptive of God have brought us into touch with the three greatest of the Old Testament writers—Moses, David, and now Isaiah. Especially do these matchless verses from Isaiah reach the very summit of inspired eloquence. They picture "the everlasting God, the Creator of the ends of the earth," the unwearied Jehovah, that "giveth power to the faint." "There is no searching of his understanding." It is beyond human imagining. There is no limit to his power, and it is all available for his children: "They that wait for Jehovah shall renew their strength; they shall mount up with winds as eagles; they shall run, and not be weary; they shall walk, and not faint."

God the Holy Spirit. John 3:16-6 "Our Lord's conversation with Nicodemus, the member of the Sanhedrin who came to Jesus by night to learn what doctrines the new teacher was setting forth, goes to the basal principles of Christ's gospel, the most profound truths of revelation.

John alone reports the wonderful discourse, probably because he was present, an eager listener. Christ discloses to the Senator the truths of the Holy Trinity, of the new birth, and of baptism. "Christ says that the ideal character is one that is born of God, and that it is by the power of the Divine Spirit that we are to come into it, and that we cannot come into it by any other instrumentality."—Rev. Frank L. Norton, D. D.

God's Constant Tender Watchcare

"Be not therefore anxious, saying, What shall we eat? or, What shall we drink, or Wherewithal shall we be clothed?" This is a command, as binding as any in the Decalogue: "Be not anxious"; "Let not your heart be troubled."

"For after all these things do the Gentiles seek." Seek eagerly, as the Greek implies. "Gentiles" were the men of the heathen world, greatly despised by the Jews. "Christ's followers, he hints, might just as well be Gentiles if they are to exhaust their energies upon such cares as these."—Canon H. P. Liddon.

Be Not Anxious For the Morrow

"Be not therefore anxious for the morrow: for the morrow will be anxious for itself." The morrow will have its own anxieties, which may not be at all such as you imagine they will be; so why bear the load twice? "Sufficient unto the day is the evil thereof." "Yes; and sufficient for the day is the good thereof, likewise." Let a man throw his whole soul into the thing which he is about, and leave the rest to God.—Charles Kingsley.

"That man is blest Who does his best And leaves the rest; Then do not worry."

God is Love. 1 John 4:7-16 In these words the beloved disciple has defined God perfectly and completely. Christ came to earth to disclose a God who is love. The Holy Spirit enforces that revelation through ages. Knowing that God is love, we do not fear his final judgment. Knowing that God is love, we worship him in spirit and in truth. "All the unsearchable mysteries of the personality and doings of God are the mysteries of love."—Rev. Louis Albert Banks, D. D. This teaching is the climax of this wonderful lesson.

"God is love! his mercy brightens All the path in which he roves; Bliss he wakes, and woe he lightens: God is wisdom, God is love."

"He with earthly cares entwinedeth Hope and comfort from above; Everywhere his glory shineth: God is wisdom, God is love." —John Bowring.

FOR SALE

Two acre tract in West Spearman. Improvements consist of small residence, large basement, barn, cow shed, garage, fruit and shade trees. Fenced three sides with heavy thick-wire, one-half acre sowed to wheat for cow pasture. Will take as part trade late model truck, balance suitable terms.

422. BOB CHESTER, Spearman, Texas. Box 554

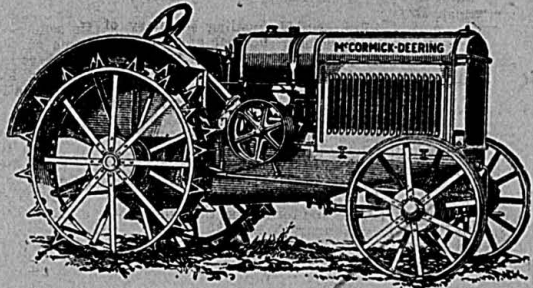
Second Anniversary SALE!!

Dresses - Sweaters - Jackets
Shoes - Hats - Shirts

Ladies \$35.00 Coats for \$16.75	\$5.50 Sport skirts for \$3.50
Ladies \$24.75 Coats for \$12.50	Boy's \$3.50 reversible lumber jackets for \$2.00
Ladies \$16.50 Coats for \$10.00	Ladies shoes to \$5.50 for \$3.50
Children's Coats 1/2 Price	Ladies shoes to \$7.50 for \$5.50
A group of \$20 dresses \$6.86	Boys and Girls shoes, sizes to 2 for \$2.00
A group of wool and wash dresses for \$1.98	Five dozen ladies and childrens hats, each \$1.00
\$6.75 Jersey Dresses \$4.75	
\$7.50 Coat Sweaters \$5.50	

Spearman Dry Goods Co.
The Store of Greater Value

A Good Resolution



Resolve Now In the Beginning

of the good year 1929, to equip your farm with the very best of tools and machinery. Good Equipment Makes a Good Farmer a Better Farmer. You probably are a good farmer; why not be a better farmer.

We handle the International Line of farming implements and machinery. No better is built. We are glad to talk over the matter of farm equipment with you at any time.

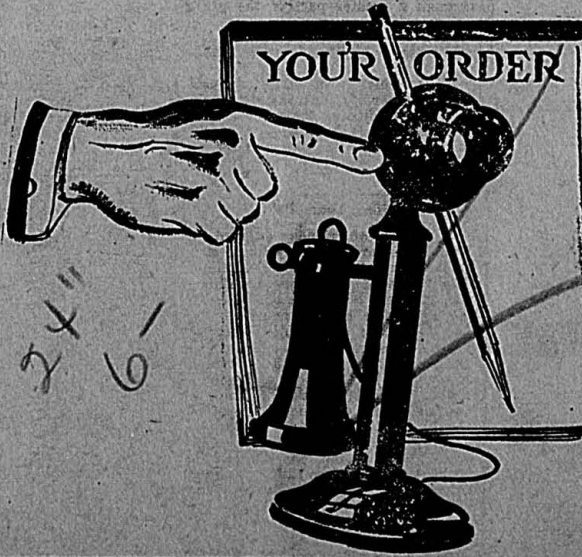
We want to thank you for your most generous business during 1928, and to respectfully solicit a continuance of same during the year 1929. We are opening our store at Gruver that we may better serve.

Spearman Hardware

Hardware

Implements

Furniture



Phone 27
for
Groceries
This Year!

A splendid plan to start this year is phoning us each day your order for groceries. It will assure you the finest quality groceries at the least possible cost. Our entire force awaits the opportunity to serve you promptly and carefully.

Spearman Equity Exchange

The Better You Know Us

The Better You'll Like Us

On Elevator Row

Spearman

Bargain Sale

GROCERIES

25 pound box raisins	--- \$1.69
4 pound package raisins	--- 29c
2 pound package raisins	--- 16c
1 lb. raisins, puffed	--- 10c
24 lbs. cream meal	--- 75c
10 lbs. Cream meal	--- 35c
8 oz. white clover honey	--- 20c
16 oz. white clover honey	--- 35c

HOSIERY

This hosiery value is hard to beat and is rarely duplicated. All silk hose for less than one dollar! Extra care has been given to the fitting of these hose and you can be assured of perfect fitting stockings that will always retain their shape. All the popular shades. At this low price it is economical to buy three or four pair at a time. Per Pair --- 99c

SWEATERS

Very popular with the boys are these V necked pull-over sweaters. These are some of the most attractive sweaters ever offered. Our special price

\$4.35

P. M. Maize and Company

Quality and Lowest Prices
It Pays to Pay Cash

LOCALS

Miss Orene McClanahan, Lubbock, visited several days this week in Spearman with relatives.

The newest arrivals in ladies and childrens hats at the Spearman Dry Goods Company.

Miss Hattie Smoot was here from White Deer several days this week visiting with her brother, R. F. Smoot of the Santa Fe force.

Miss Elizabeth and Wesley Hancock came from Lubbock the first of the week and visited with relatives and friends.

Geo. Coleman, secretary-treasurer of the White House Lumber Company, was attending to business matters here Wednesday.

Allen King was here from Perryton the first of the week attending to business matters and visiting with his parents, Judge and Mrs. C. W. King.

Mr. and Mrs. Murl Jackson visited the first of the week in Amarillo.

H. C. Eberhart is here from his home in Hammond, Oklahoma, this week, looking after business matters.

Boy's \$2.50 long pants for \$2.00. Boy's \$3.50 long pants for \$2.50, at the Spearman Dry Goods Company.

Bob Taylor, hustling secretary of the Spearman Chamber of Commerce, has not hustled much this week. He has tussled with the flu.

Misses Blanche and Hazel Groves were in from their north Hutchinson county home Saturday, shopping and visiting with friends.

Don't forget the Grand Council of the Camp Fire Girls at the High School auditorium on Saturday evening, January 5, at 7:30 o'clock.

Billy, son of Mr. and Mrs. T. B. Finley, is seriously sick with pneumonia and other troubles. At this writing he is not resting well, but it is hoped that the most dangerous period will pass soon and that Billy will begin to make progress.

Lester Howell has been having a rather severe case of the flu but is reported better this Thursday morning.

Miss Willa Thorne came from Canyon last week, where she is attending West Texas State Teachers College, to spend Christmas with home folks.

Dr. Powell, eye, ear, nose and throat specialist, will be at the offices of Dr. Gower in Spearman on Wednesday, January 3. Glasses fitted; tonsils and adenoids removed.

Mr. and Mrs. Warner Davis returned to their home at Sherman Saturday after a week's visit in the home of his parents, Mr. and Mrs. W. L. Davis.

Dr. G. P. Gibner and son Woodrow were among the indisposed the first of the week, suffering with bad colds, but both are able to be up and about at this writing.

Mrs. A. C. Knudsen of north Hutchinson county is a patient in the City hospital suffering with the flu. Her condition is greatly improved at this writing.

Miss Helen Harvey spent the Christmas vacation in town with her parents, Mr. and Mrs. T. C. Harvey. Miss Harvey is a teacher in the Woodrow school in Hansford county.

John D. Duncan has been absent from the Chevrolet force of the McClellan Chevrolet Company the past week as he has been entertaining the flu.

Randolph Dennman, one of the Rock Island Engineers, was called to Amarillo the first of the week on account of the severe illness of his sister. No word has been received at this writing of her condition.

Mr. and Mrs. Joe Combs and little son returned Wednesday to their home at Hollis after a several days visit here in the home of her parents, Mr. and Mrs. Dave Tice, and with other relatives.

Mrs. I. A. Shannon, sister of Mrs. L. C. Wiggins, came from her home in Ponca City to attend the funeral of little Jack Turney Wiggins. Mrs. Wiggins returned home with her sister on Wednesday of this week, for a short visit.

Miss Naoloma Word on her return to Spearman from her home at Bonham from the Christmas holiday, was taken ill on the road and was forced to remain at Wellington with her grandmother until her condition became better.

Mrs. W. O. Seward and son Jake and Mrs. Hays Pate and little daughter Billy Jane, visited Tuesday in the home of their daughter and sister, Mrs. John L. Hays. They were enroute to their home at Dalhart from a visit with relatives at Hutchinson, Kansas.

Chas. Darnell of the First national bank, is fighting back a second attack of the influenza. Chas. made the mistake of leaving his room before he had fully recovered, which is one of the most important things to guard against in combating influenza.

Mrs. James Reed, who lives southeast of town, was taken to Canadian Wednesday by her son Dennis, to receive treatment at the hospital there. Mrs. Reed's health has not been the best for several months but it is hoped that her condition will begin to improve.

Tom Rosson was in from the Holt community Tuesday attending to business matters. Tom reports that his 1400 acres of wheat is all up and looking good. Wheat sown in September and October, over the entire country, is looking fine now, and the great rains and snows of December will carry it far along towards a good yield. Quite a few farmers have not yet finished the work of sowing wheat, and if the weather will permit, this work will be continued through a greater part of the present month.

ATTENDED MOTHER'S FUNERAL

T. B. Finley attended the funeral of his mother at Chickasha last week. Mrs. Finley died at the home of her youngest son, R. L. Finley. She was the mother of six children, all of whom were present at the funeral except one.

Enjoyable New Years Party

A number of friends enjoyed a New Years party at the home of Mrs. C. B. Reeves Sr. in Reeves addition, Tuesday evening, January 1. Bunco was the main attraction of the evening and after several hours at the amusing game a delightful refreshment course was served. Music was furnished throughout the evening alternately by the radio and phonograph. At a late hour the fun was concluded and the guests departed thanking their hostess for a very enjoyable evening. Those present were Miss Glendia Tutwiler, Miss Kuba Norman, Miss Ruth Murphy, Misses Loren and Lois Morton, Miss Ollie Beck, Mrs. Opal Miller, Miss Emma Reeves, A. H. Word, Ralph Bort, Bill Jarvis, Bill Gandy, Bill McClellan, C. B. and Dimer Reeves.

Camp Fire Girls Enjoy Party

Progressive forty-two, was the chief amusement of the evening at a Camp Fire Girls party in the club room at the City Hall Tuesday night, January 1. Ten minute playing periods in which to make the highest scores caused much excitement and hilarity.

Other games played were "Lindy," "Rook" and "I Doubt It." All pres-

ent received new ideas from the New Year's resolutions, serious or otherwise, made by each for some one else in the group.

Louise Buchanan had the most original costume representative of the month in which she was born. She came attired in a bathing suit, since her birthday is in August.

Refreshments of pie, whipped cream and cocoa were served to the following: Chas. Oldham, Thelma Maize, Louise Buchanan, Rhoda Towers, Helen Buchanan, Anna Lee Morton, Margaret Harvey, Louise Harvey, Lucille Buchanan, Roberta Addison, Juanita Heiner, and Bernie Addison.

Bride Elect Receives Shower

A beautiful shower was held at the home of Mrs. W. N. Fletcher, Womble Avenue, Gruver, Texas, on Saturday afternoon, December 22, for Miss Nellie Hart, the announcement of whose approaching wedding to Mr. Clarence Winder on December 30, had just been received. The guests were disappointed when the news was announced that Miss Hart would be unable to attend on account of illness. Her sister, Mrs. Evans, came as her representative and graciously received the many lovely gifts for her. Those present were: Mrs. J. P. Winder, Mrs. J. D. McClure, Mrs. Cecil Winder, Mrs. F. A. Shapley, Mrs. Robert Alexander, Mrs. Everette Tomlinson, Mrs. Carl Hughes, Mrs. W. E. Maupin, Mrs. Fairbanks, Mrs. Clarence Broadhorse, Mrs. C. C. Beck, Mrs. J. M. Ayers, Mrs. Gay Fletcher, Miss Elenor Beck, Miss Edith Ayers, Miss Mary Hitch.

DAIRY FARMERS FIND PROFITS IN BETTER FEEDING

Greater Production Per Cow Is Aim Of Modern, Businesslike Dairyman

It is the extra two or three inches of milk at the top of the pail, which can be added by feeding well balanced rations, that determines the difference between profit and loss to the dairy farmer, agricultural authorities agree.

Making money in dairying is essentially a business problem. The farmer, like the storekeeper or manufacturer, has certain fixed charges or overhead expenses such as taxes and interest on investment in land, buildings, and livestock. If the production per cow is not sufficiently high, then almost the entire amount of the milk check may be required merely to meet these unavoidable expenses. If, however, production per cow can be increased only fifteen or twenty per cent then profits begin to put in an appearance.

These increases in production per cow can be effected on many farms by giving a little more attention to the feeding of well balanced rations. As a guide to dairymen for the present year, the Wisconsin College of Agriculture recommends the following scale for mixing dairy feeds:

Where timothy hay is fed good results may be secured with a mixture of 200 pounds of wheat bran and 300 pounds of linseed meal.

With mixed hay, the grain mixture should consist of equal parts of ground corn, ground oats, wheat bran and linseed meal.

With clover hay the ration recommended is 200 pounds of ground corn, 200 pounds of ground oats, 100 pounds of wheat bran and 100 pounds of linseed meal.

With alfalfa hay, the mixture consists of 200 pounds of ground corn, 300 pounds of ground oats, 200 pounds of wheat bran, and 100 pounds of linseed meal.

Ground barley or hominy feed may be substituted for corn in any of the above rations. In feeding, one pound of grain mixture is recommended for each three pounds of milk for Jerseys and Guernseys and a pound of grain mixture for every three and one-half to four pounds of milk for Holsteins, Ayrshires and Brown Swiss.

TWO "MAIN STREETS"

The point often has been made that Main Street is whatever the observer sees in it. We have just had an illuminating example of this fact.

Sauk Center, Minn., was the boyhood home of Sinclair Lewis. West Branch, Ia., was the boyhood home of Herbert Hoover. Probably there is no vital difference between the two towns. Sauk Center is a little larger, a little more "civilized," as its residents doubtless say.

Mr. Lewis looked at Sauk Center and found it drab (dull, uncultured, intolerable). Mr. Hoover, telling of his boyhood in West Branch when he was left an orphan expresses his appreciation of this "kindly, sympathetic folk who, taking a boy to their hearts, wiped away the one grief of childhood." There was no talk, he says, of the orphan boy as a burden; it was simply who should take him as a member of their own flock.

Another word of affectionate appreciation he gives to his old teacher, Mrs. Molly Curran—she must have been known as "Miss Molly" in the old days—to whom he had sent his photograph inscribed "To a real founder of character."

Sinclair Lewis is in active revolt against his boyhood home. Herbert Hoover sees in the same sort of people the substantial qualities and virtues on which American life is founded. What is America? It all depends on the person who looks at it.—Star.

The new stenog looked like a million dollars. "Class" was written all over her. The office force in accord acclaimed her, "Some dame."

Then she opened her velvet lips and said to the office boy, "Say, Bozo, ain't there no carbon paper around this dump?"

Goodrich Silvertown

America's First CORD TIRE



No better tires are made
We have all sizes and
low prices will appeal
to you.

Let us re-tire your car--your old tires are worth something too--ask us.

Champlin Filling Station

JIMMY DAVIS
West Spearman

WHEAT IS LOOKING GOOD

A. L. Thoreson and sons Arthur and R. B., were in the city Wednesday afternoon from their fine farm home on the north line of the county. They report that wheat in their community is coming along at a very satisfactory pace. They have 2100 acres, which is up and looking good. Mr. Thoreson raises wheat on an extensive scale, and last year erected an elevator on his farm, to help along with the work of loading. His farm elevator of 25,000 to 30,000 bushels capacity, is perhaps the only individual farm elevator in Hansford county, though they are common in the old wheat raising districts of Kansas and Nebraska.

J. B. COOKE SERIOUSLY ILL

J. B. Cooke was taken seriously ill the latter part of last week, with a severe cold, which threatened to run into pneumonia. He is resting well at this time, and it is thought will soon be up and around again.

LAUNDRY

All kinds of laundry work at factory prices. One block east Spearman Hotel. We call for and deliver.

MRS. ELIKA SCHULTZ

CARD OF THANKS

We wish to extend thanks to friends for the many kindne shown us in our recent great bereavement.

Mr. and Mrs. Lloyd C. Wiggins

NOTICE OF REMOVAL

I am moving my offices from present location to the second floor of the Reporter building. I expect to have the new offices property ranged by Monday, January 7. The needed dental work will please this change, and all are invited to call and inspect my new office equipment.

FRED. J. DAILY, D. D.

Baby Chicks

Custom Hatching

Announcement

This is the Opening Week of the

Big Electric Hatchery

It's the Early Chicks that Pay Later. Write for Prices

Guymon Poultry Farm Hatchery

Phone L-151

Guymon, Oklahoma

PAINT-- Inside and Out

No better combination may be found than a good painter and Sherwin-Williams Paint.

White House Lumber Co.
SPEARMAN

As Advertised in
Rotogravure
Sections



Smithson

Are You the Man?

If you look well in Blue, then you're the man whose favorite suit will be Smithson. Made of sunfast, long-wearing NAVAL SERGE, tailored on Fifth Avenue by an organization whose entire business is Serge Suits—Plain Blue, also attractive patterns in Gray and Brown such as you find at the better custom tailors.

Choose from more than twenty single and double-breasted models in please your individual taste. Every Smithson suit is guaranteed to wear or your dealer will replace it. Write us for the name and a Style Booklet with sketches of the fabric.

Modern Specialization brings you custom quality at an unusual price—
\$39.50

Tailored by SMITHSON SERGE CO., Fifth Avenue, New York

NAVAL SERGE SUITS
at the leading stores throughout
the United States

Thomason Brothers
THE QUALITY STORE
EST. 1904