

WHAT IT MEANS TO THE FARMER

"For sale—80 acre farm, on concrete highway three miles from good town. Good markets and good grade and high schools within short distance. Inquire."
We picked the above advertisement from the columns of an exchange, and found therein information

R. T. CORRELL
LAWYER
Perryton Texas

JOT HORTON
LAWYER
Spearman Texas

JOS. H. AYNESWORTH
Attorney
General Practice—Civil and Criminal
Phone 24, Stinnett, Texas

J. E. GOWER, M. D.
Physician and Surgeon
PHONES: Residence, 98; Office, 33
X-Ray Service
Office in Reporter Building
Spearman, Texas

DR. F. J. DAILY
DENTIST
Offices on Second Floor Reporter Building, Phone 156
SPEARMAN, TEXAS

C. K. WILMETH & SONS
(Better Known as Rabbit Foot Bill)
General Auctioneers
Make sale dates at Reporter Office Spearman, or Herald office at Guymon.
Farm Sales a Specialty

tion suitable for editorial treatment. No doubt this farm has been sold, and sold at a good price. But what sold it? Soil fertility, condition of buildings, machinery, livestock, equipment? No doubt these factors had some influence, but they were not principal sales points. The farm's proximity to a good, live town seems to be the chief advantage cited by the seller.

And this matter of location always will be of vital importance in determining the value of a farm. A good town, offering good markets and good schooling, together with other economic and social advantages contributes to the financial well being of the farmer and adds appreciably to the value of his farm.

Thus we come to the point emphasized by this publication again and again. The town of Spearman profits as the farmers of our region benefit as the town grows and prospers. The boundary line separating the city and the country is largely imaginary, or political at most. In reality Spearman and the country for many miles around is all a single community, in which all the people have a common set of interests.

Let us keep this in mind at all times, and contribute everything we have to the benefit of the entire community. Let us maintain a broad gauged policy both in the city proper and the surrounding area with reference to our community, recognizing that we all prosper as the town and country develop.

UNDERMANNED TRADES

An ex-convict writes interestingly on the crime problem in a recent issue of a national magazine. Part of the trouble, he contends, is due to the undermanned trades and the overcrowded professions.

A call once went out in a prison for accountants, he tells. The office was swamped with applications of convicts who were well qualified for any kind of accounting work, many of them being college and university graduates. A little later a call went out for bricklayers to repair a damaged chimney. Many prison favors were promised to the man or men qualified to do the work, but none appeared. The only man in the least

fitted for such work had served as a bricklayer's helper for a few years.

Good tradesmen, the writer asserts, do not fall into ways of crime. The problem of crime and its solution are, without doubt, much more complex and the simple explanation given above, but unquestionably we are overlooking the trades these days and oversupervising the demand for white collar workers. Our schools and colleges are crowded with young men who might better be learning to work with their hands.

A good trade, in the writer's opinion, is as valuable and dignified as the average profession. It takes as good a mind to erect a complex piece of machinery as to deal with the intricacies of the laws. It is just as important to society to have plenty of intelligent carpenters and bricklayers and plumbers as it is to have well trained accountants and salesmen.

The man who is qualified for a good trade but not suited to the practice of a profession, is apt to become a social problem or a criminal unless he is prepared for his proper station in life.

It is far better to make your boy a good tradesman than a shyster lawyer or a crooked accountant.

PRESENTS LIFE

Sherwood Anderson, well known novelist and country editor, has just published a new book. According to reviews that have come to the editor's attention, it must be an interesting and unusual contribution to the nation's literature.

It is entitled "Helo Town" and made up entirely of articles, feature stories, news reports, and editorials that have been published during the past year in the Marion Democrat, the author's own paper.

Editor Anderson has done something unique, but it differs from the average editor's contribution only in the literary style in which it is written and in the book form of its publication.

In the files of the Reporter, or of any other paper of this character, one may find the equivalent of an interesting book. It is made up of a great diversity of material, but practically all of it is significant in that it helps present a picture of American life as it is lived and enjoyed in a community such as this.

For example one may find such a diversity of interesting reading matter as the following. An account of the successful rise in the business world of a local citizen, a story on how some local farmer has solved the problem of farm relief for himself, an article that gives a true insight into the educational system as one will find it in the typical small town of America, and so on the list grows as one thinks on this subject.

Your weekly paper is part of an interesting book—a picture of the pagentry of life in Spearman, an agency that helps keep you in touch with a rapidly moving world.

MASON AND DIXON LINE

Nearly two centuries after the trouble began, which caused this survey to be made, Louis F. Hart recently visited the border line between Maryland and Pennsylvania, in a pilgrimage to the original Mason and Dixon's line. Mr. Hart not only visited the actual spot where Charles Mason and Jeremiah Dixon started their famous survey but spent a great deal of time gathering data and illustrations around which to build the story of the famous piece of engineering.

Using Holland's, The Magazine of the South, as his vehicle, Mr. Hart says, "Time changes all things. Old hatreds die and new loyalties are born, but the demarcation between peoples—especially when it goes back

as this one does, to the Round-heads and Cavaliers of Cromwell's day—cannot be wiped out in an hour. Customs and modes of thinking remain when material landmarks have crumbled and vanished. Thus it is that in setting out to relocate Mason and Dixon's Line after so many years, we must take into account not only the bench marks which took from the estate of Charles, Lord Baltimore, three thousand square miles or so, but also those which give double unity to some forty million people in the South today.

"Opinion may differ as to where the line should run, but no one can deny that it is there. Nor would anyone go so far as to say that on one side dwells the practical, and on the other the ideal. Humanity is too imperfect to achieve the absolute in either direction, were that result desired. The fact remains that the home of romance is the South, her threshold guarded with uncompromising loyalty by her sons."

PREVENT FOREST FIRES

Not many years ago a forest fire broke out in Northern Minnesota. Propelled by a high wind it swept on and on, far into country that is quite highly developed. One city, Clouquet by name, which is as large as Spearman and located at a considerable distance from the forests disappeared in smoke and flames, and with it went the lives of many hundred men, women and children.

On the flames road, up to the very outskirts of the great city of Duluth, and then they turned back only because of a sudden change in the wind.

Thus may a forest fire become the most vicious demon with which we are familiar. When it rides on the wings of a powerful wind and travels over the dry country, the extent of its terrible power is almost beyond the comprehension of even a vivid imagination.

Fires such as the one described above are rare, but fires that cause heavy property damage are common in all the playground regions of the United States. And the sad part of it all lies in the fact that nine out of ten forest fires are caused by human carelessness.

An unwatched campfire, a discarded cigarette stub, a burning match—of such trivial things do great fires come. Much is said upon this subject every season, but public carelessness beyond the comprehension of even a child is not yet stamped out and therefore much more remains to be said.

When you go into the woods this year please keep the fire menace in mind. Use common sense and extreme caution. Fires destroy the beauty of the out-doors you so enjoy. Why not do your part toward preserving the trees and flowers and wild life of the woods.

If the shoes hurt the face shows it.

WICKED "TRUSTS" NO MORE

Instead of fighting the big corporations, the people now own them and enjoy the fruits of their growth.—Farm and Fireside.

IT TAKES TWO

As the individual is incomplete without the home, so is home incomplete without the community.—Farm and Fireside.

Its value is making every owner an Oakland enthusiast



Among owners of the New Oakland All-American Six . . . especially among those who have been driving this greatest of all Oaklands for a period of several months . . . enthusiasm is growing with every passing week. Talk with a number of these owners about All-American value. Then come in and let us demonstrate this remarkable car.

Prices, \$1145 to \$1375, f. o. b. Pontiac, Michigan, plus delivery charges. Spring covers and Loofer Hydraulic Shock Absorbers included in list prices. Bumpers and rear fender guards extra. General Motors Time Payment Plan available at minimum rate.

Consider the delivered price as well as the list price when comparing automobile values. . . . Oakland-Pontiac delivered prices include only reasonable charges for handling and for financing when the Time Payment Plan is used.

D. B. KIRK & SON
Spearman, Texas

The New OAKLAND ALL-AMERICAN SIX
PRODUCT OF GENERAL MOTORS

A GOOD HABIT TO EAT AT

JOE'S CAFE
NEARLY EVERYONE ELSE DOES
GOOD COFFEE

Win With Real Estate

The best, the safest, and surest of all long term investments.

Real estate purchased here now is bound to increase in value in the years to come, for we all agree that Spearman is a community with a future.

Furthermore your investment is right here where you can watch it all the time and can liquidate when necessary without loss.

J. R. COLLARD
Real Estate—Loans—Insurance

EVERY FARM IMPLEMENTS



EVERY and the modern farmer

The name of B. F. Avery & Sons has come to take a definite place in the buying vocabulary of every up-to-date farmer who realizes that Avery Implements mean Better Crops. Over 100 years of manufacturing America's finest implements has given Avery an unrivaled reputation and this reputation stands back of every Avery Implement you buy.

Come into our store today and see this famous line.

Spearman Motor Co.
Spearman, Texas

START THE DAY OFF RIGHT
—With—



Rich flavor and pleasing aroma: Roasted and packed fresh every day in Amarillo by the Jular Coffee Company — yet costs no more. Order a pound can today and learn how good it is!

At **BURRAN BROTHERS**
Spearman, Texas

Auction Sale of Lots

-----IN-----

The Reaves Addition
Spearman, Texas

-----STARTING-----

Wed., June 19, 1929

We are going to have the biggest sale ever conducted in Spearman and we want every man and woman within a 100 miles distance to be here and attend this sale. The St. Louis Townsite Company will have as auctioneer on this sale Col. E. Walters of Oklahoma one of the foremost auctioneers of America. Watch next weeks issue of this paper for further particulars.

Fiddlers Contest

On Friday night, June 21st, 1929 there will be held in the High School Auditorium a FIDDLERS CONTEST and prizes to the amount of \$150 or better will be offered to the winners in the contest. We are going to have some of the best known fiddlers in the country and will tell you some of the names in next weeks issue of this paper.

First prize money will be not less than \$50 and second prize not less than \$25. By offering such big prizes we are assured of having the best fiddlers in this section of the country.

Watch this paper for next weeks announcements in regard to the lot sale and fiddlers contest.

St. Louis Townsite Co.
J. B. COURIC, General Manager

ORDINANCE NO. 42

AN ORDINANCE PRESCRIBING RULES FOR THE DISTRIBUTION OF GAS AND RULES FOR GAS FITTINGS; AND DECLARING A VIOLATION OF ANY OF THE PROVISIONS OF SUCH ORDINANCE TO BE A MISDEMEANOR AND PROVIDING A PENALTY THEREFOR;

Section 1; (Rule 1). In piping new houses the gas company will decide where gas meter shall be located and the fitter shall erect a meter loop 18 inches square at the proposed location of meter.

Section 2; (Rule 2). Provisions must be made to place meter on a solid support where it can be conveniently read and protected from the weather. Meters shall not be located under sidewalks, or show windows, near furnaces or ovens, locked in compartments, or placed in other positions where they will be inaccessible to adjust. Under no conditions shall plumbers, fitters or other parties disconnect any meter, connect to, or disturb piping or inlet side of meter after once set.

Section 3; (Rule 3). To accommodate different tenants the company will set as many meters as there are separate consumers in a given building connecting the meter to one service pipe, providing the service is large enough to provide an ample supply, and that the loops or pipes leading to the different tenants are extended to the proposed locations of the meters.

Section 4; (Rule 4). Risers must

not be scattered but must be dropped together in alignment to the room where meters are set. They must be kept at least three inches apart and extended not less than twenty inches from the floor.

Section 5; (Rule 5). Elbows, street ells, and not tees, shall be used on all meter inlet connections. All connections or disconnections of meter for any purpose will be made by employees of the gas company only.

Section 6; (Rule 6). All gas pipes must be graded from meter to riser, free from traps or sags and properly supported with screws and gas pipe hook or hangers. When it is impossible to prevent a trapped gas pipe, a suitable drip shall be provided, consisting of a nipple and cap located in an accessible place.

Section 7; (Rule 7). In no case shall valves or unions be placed between ceiling and floor or in an inaccessible place so that the stuffing box of the valves cannot be replaced. All unions shall be of an approved ground type.

Section 8; (Rule 8). Where globe valves are used on fire connections, the stems must be packed with asbestos packing. Soft seat valves must not be used.

Section 9; (Rule 9). In running a line through a flue great care must be taken to see that pipe and fittings are free from defect.

Section 10; (Rule 10). Lead pipes must not be used under any circumstances.

Section 11; (Rule 11). Use as few elbows as possible. Elbows not absolutely necessary will be condemned.

When impossible to get through an obstruction such as a beam, offset the pipe rather than use an elbow.

Section 12; (Rule 12). Air mixer must not be placed in airtight ash boxes, but where a free flow of air can reach them at all times. Use adjustable mixers.

Section 13; (Rule 13). The burr left on inside of gas pipe, must in every case be reamed out.

Section 14; (Rule 14). All outlets or risers where fixtures are not placed must be securely capped.

Section 15; (Rule 15). All drops and openings for lights must project at least one inch beyond plaster of walls or ceiling, and must be securely fastened to joists or studs or to notched or cross pieces fastened to joists, or upright studding.

Section 16; (Rule 16). Unions and reducers, not bushings, shall be used except to connect stoves or fires.

Section 17; (Rule 17). All gas pipes must be tested with air pressure on a mercury or spring gauge showing ten pounds by the City Plumbing Inspector or Gas Inspector, or other duly authorized representative of the City. This pressure shall be maintained for 15 minutes without falling. Gas will be turned on by an authorized agent of the company only, after such test has been properly made and report of same filed with the gas company. If meter stop is closed, do not open under any circumstances. Application must be made to the Company for gas to be turned on.

Section 18; (Rule 18). Where pipe runs through a stone or brick wall, opening around the pipe must be cemented.

Section 19; (Rule 19). Place a damper in all stove pipes or chimney throats. The table following shall govern the sizes of pipe to be used for fuel and illuminating purposes:

No Fires	Maximum length in feet	Size in in.
1	30	3/4
1	100	1
1	300	1 1/4
2	20	3/4
2	60	1
2	169	1 1/4
3	40	1
3	120	1 1/4
4	20	1
4	90	1 1/4
5	125	1 1/2
6	40	1 1/4
6	90	1 1/2

Greatest length of pipe of various sizes allowed for fires:

No Fires	Maximum length in feet	Size in in.
For one stove 1"	30	3/4
For two stoves 1"	60	1
For three stoves 1"	90	1 1/4
For four stoves 1 1/4"	120	1 1/4
For five stoves 1 1/4"	150	1 1/4
For six stoves 1 1/4"	180	1 1/4
For seven stoves 1 1/4"	210	1 1/4
For eight stoves 1 1/4"	240	1 1/4
For nine stoves 1 1/4"	270	1 1/4
For ten stoves 1 1/4"	300	1 1/4

Hot Air Furnaces:
For hot air furnaces, boilers, etc., using burners, having 2 or less air mixers, use one and one-fourth inch pipe. For the same with four mixers, use one and one-half inch pipe. For the same with five or more mixers, use two inch pipe.

No service pipe from company's main line to meter shall be less than one and one-fourth inch. All main lines from meter to lead lines must not be less than one inch to the first opening.

Gas Lighting:
The distance is the greatest length allowed in each instance. 3 1-8 inch pipe 1 burner 15 feet; four burners 10 feet; half inch pipe, six burners 25 feet; 3/4 inch pipe, 15 burners, 40 feet; 1 inch pipe 35 burners, 70 feet.

Section 20; All joints shall be painted with orange shellac. White lead shall not be permitted.

Section 21; (Rule 21). Contractors desiring to do gas fitting may qualify by complying with the requirements of this ordinance and of the Inspector, and license will be issued to said contractor upon paying to the City Clerk of the City of Spearman, the sum of \$35.00 (Thirty Five Dollars) license fee for the first year or any part thereof, and a renewal fee of \$5.00 (Five Dollars) for each year or any part thereof, thereafter, as long as this ordinance is enforced and in effect.

Section 22; (Rule 22). Property owners or contractors shall pay to the inspector a Fee of One (\$1.00) Dollar for inspection of connections of not more than five (5) openings, and Ten (10c) Cents for each additional opening. Fee to be paid to inspector when inspection is made.

Section 23; Before engaging in the business of gasfitting every person, firm or corporation shall give to the City of Spearman a bond in the sum of One Thousand Dollars (\$1,000.00) to be approved by the Mayor and the City Council, conditioned that such party will faithfully comply with the terms and provisions of this ordinance and all the rules and regulations made in pursuance thereof, and will indemnify and hold said City harmless against all cost, expenses, damages and injuries sustained by said City by reason of carelessness or neglect of said gasfitter in operating under this ordinance and the rules and regulations made in pursuance thereof; such bond shall be executed to cover a period of one year and shall remain in full force and effect as to each piece of work done for two years after the same has been completed; provided, however, that any party having given the bond as a plumber under and pursuant to the ordinances of said City regulating the business of plumbing, shall not be required to give the bond herein provided for.

Section 24; Copper tubing must not be used under any circumstances

except in connecting built-in heating stoves.

Any person or persons violating any provisions of this ordinance shall be punished by a fine of not to exceed \$25.00.

Passed and approved this 7th day of May, A. D. 1929.

FRED J. HOSKINS,
Mayor of the City of
Spearman, Texas.
Attest: S. E. HARBISON,
City Secretary.

WHY THEY GET BIG MONEY

There are many advertising writers in this country who command salaries of \$50,000 an even more.

Why? Because national advertisers recognize the importance and value of having the message properly presented. They know that advertising pays if it is properly handled.

How different is this attitude toward advertising than that of many local business men. To our local friends advertising comes in for a thought only when there is nothing else to do.

Ads are prepared hastily, specials are selected with but little thought, and then if the advertisement fails to produce satisfactory results, doubts arise as to the efficacy of advertising.

When an ad fails to pull the fault is nine times out of ten in the character of the ad, in the indifferent way in which it is prepared.

Remember, those who study advertising know that it pays to have every ad carefully prepared.

If you will live within your income you can live without worry.

Obsolete Saying: "Howdy stranger; want a ride?"

Necessity supplies courage to the most timid.



**7th Annual
Anvil Park
Rodeo**

June 13, 14 and 15

Canadian, Texas

LEONARD STROUD'S SPECIALTY ACTS



W. C. ROUNTREE, M. D.

If you have any of the following symptoms, I have the remedy no matter what your trouble has been diagnosed: Nervousness, stomach trouble, loss of weight, loss of sleep, sore mouth, pains in the back and shoulders, peculiar swimming in the head, frothy like phlegm in throat, passing mucus from the bowels, especially after taking purgative, burning feet, brown, rough or yellow skin, burning or itching skin, rash on the hands, face and arms resembling sunburn, habitual constipation, (sometimes alternating with diarrhoea) copper or metallic taste, skin sensitive to sunheat, forgetfulness, despondency and thoughts that you might lose your mind, gums a fiery red and falling away from the teeth, general weakness with loss of energy.



MRS. J. B. MASSEY

If you have these symptoms and have taken all kinds of medicine and still sick, I especially want you to write for my booklet. Mrs. J. B. Massey of Odessa, Texas, Box 112, whose picture appears here writes: I wish to thank you very much for restoring my health from one of the most dreadful, miserable diseases that anyone can have. I was in bad health for several years, under care of Doctors for three years. I do not think I could have lived much longer. I am in better health today than for several years weigh more than I ever did in my life. I believe I am rid of an awful disease that the other Doctors failed to cure. FOR FREE DIAGNOSIS AND LITERATURE WRITE: W. C. ROUNTREE, M.D. AUSTIN, TEXAS

**A BETTER
JOB of
SEED BED PREPARATION**



at less than
Half
the
Cost

THOUSANDS of farmers the country over are making big savings in seed bed preparation by using the Case E-B Great Plains Disk Plow.

These new-type plows are ideal for preparing seed beds for small grains and are practical for preparing ground for many other crops. Plow 6 inches deep if you like, and leave the field in prime condition for seeding. In many soils you get a better seed bed than with mold-board plowing—at less than half the cost and in less than half the time—with the same power.

Use it to cut up cornstalks and see what a thorough job you get. Set to skim the surface, it is ideal for summer fallowing.

We'll gladly show you this money-making plow and give you illustrated pamphlets. Write or come in. Best of service.



- Tractors
- Thrashers
- Combines
- Hay Balers
- Silo Fillers
- Plows
- Disk
- Harrows
- Cultivators
- Grain Drills
- Grain
- Binders
- Corn
- Binders
- Mowers
- Hay Rakes
- Hay Loaders
- Corn and Cotton
- Planters

R. L. McCLELLAN GRAIN CO.
Spearman, Morse, Gruver, Bernstein

CASE

Full line now includes
E-B OSBORNE GRAND DETOUR

HUNGRY WORLD

The whole world is hungry for romance—not just the young and flighty but the sober middle-aged as well.—The American Magazine.

Of these things was Utopia built: Individual liberty, economic efficiency and social justice.



**Stop at any
MARLAND PUMP
for a
new hi-test
GAS**

no increase in cost

Now, wherever you see the Red Triangle, you'll know there's a new and finer gasoline, just one kind at just one price. The name is New Marland Gasoline and the Marland attendant rouses your interest with "Ask Me!" on his cap. Let him tell you what's back of the production of this modern day motor fuel.

**only 1
MARLAND
gasoline**

it had to come changing motor cars, changing engineering, a new and more critical expectancy on the part of you motorists fairly shouted: "give us a new and finer motor fuel" so here it is! a gasoline produced in the spirit of the times and naturally we are making no other kind. We are concentrating on just one kind, a one price gasoline.

**it's
hi-test**

and with that, this gasoline is strikingly different from all other kinds, for it costs no more!

One price! one gasoline! hi-test! in this wonder day of high values, we present this unbeatable combination for your consideration. Go now, therefore, and seek the sign of the Red Triangle.



**Marland Companies Are
in Step With America's
Industrial Advance**

The SPEARMAN REPORTER

Successor to the Hansford Headlight Nunn-Warren Publishing Co., Inc. Publishers

PUBLISHED EVERY THURSDAY ORAN KELLY Editor and Manager Telephone No. 10

\$2.00 PER YEAR IN ADVANCE In Texas and Panhandle Strip of Oklahoma; \$2.50 per year elsewhere.

Entered as second class matter November 21, 1919, at the post office at Spearman, Texas, under the act of March 3, 1879.



AN AIR PORT FOR OUR TOWN

(An Editorial)

At the hazard of being called visionary, we assert here that one great need before Spearman at present is a modern airport. And we most respectfully call the attention of the Chamber of Commerce, the American Legion and the Lions Club to this great need.

Aviation has passed the stage when it was the occupation of a few dare devils, who thrilled us at county fairs, rodeos and trades day. It has definitely found its place in the commercial life of our nation. Today many large corporations maintain aeroplane service for their high salaried executives. Transportation of mail by plane is becoming commonplace, and passenger travel via the air ways would become far more common if this country had an adequate system of air ports, modern landing

fields that would serve in all seasons. "But what's all this to do with a small town like Spearman," we can hear some scoffers remark. "Where do the fanciful ideas come from?" We answer by asserting that towns grow where transportation systems converge. Most great cities owe their development to railroad and water born transportation. Fine metropolitan centers of the future may be indebted to modern air ports.

We will not be so foolish as to assert that Spearman may become a Chicago or a Detroit by virtue of the establishment of an air port here, but we do believe that a good landing field will attract some air transportation to our city which in time may lead to some worth while business and industrial development.

The progress of our race has been marked by the development of transportation. The advancement of civilization gives time greater and greater importance and value. Today we are entering the period when travel at a rate of 100 miles per hour will be the accepted standard. The airplane will soon become as common as the railroad train or the motor bus. Time may prove that it is far from visionary to advocate the establishment of an air port in Spearman.

BARUCH SEES RICH WORLD WITH WAR DEBT SETTLED

An unprecedented wave of prosperity throughout the whole world is seen by Bernard M. Baruch, leading New York financier and former chairman of the War Industries Board, as soon as the war debts are settled.

He expresses the utmost hope, in an interview in The American Magazine for June, that present negotiations will continue until a settlement is finally agreed upon.

The settlement of the debt and reparations problem would bring such a revival of industry in the whole world and the demand for things

would be so great that it would result in what we might call an "industrial renaissance," he declares. "If the reparation is settled by fixing Germany's indebtedness definitely at a sum that she can pay and is willing to pay, so the Allies can get money sufficient to meet their requirements and their debt to America, and if America will take some of this cash as a settlement, the whole international financial question would change immediately for the better.

The higher standards of living which we enjoy here, the construction of railroad terminals, airports, roads, bridges and tunnels, which have contributed so much to our progress, would be duplicated in other countries. The automobile and the airplane, the moving picture, television and the radio would carry to the farthest corners of the earth accurate pictures of the standards of living of the better countries, creating desires to emulate them the world over—the irresistible urge to do, to achieve and to have.

Incidentally, the fair and proper settlement of this question will do more for agriculture than anything that could be done politically. We are in a much better position now to know what Germany can really afford to pay."

HELPING THE YOUNGSTER

With the children lining up for their long summer vacation, when school books will be the least of their worries, it would be a good idea for Littlefield parents to remember that there's a lot of truth in the old maxim that "an idle brain is the devil's workshop."

Nobody wants the boys and girls of the community to be cast into slavery, of course. But seeing to it that they are provided with something to keep them busy at least a part of the time during the summer vacation is to their own interest, even though they probably will not look at it that way.

Encouraging the girl to learn more about cooking and housekeeping; persuading the boy to earn a few dollars while resting between school terms should be the aim of every parent who has the future welfare of his child at heart.

It may be a difficult job, in some cases, but the reward that will come to the child later on will more than repay for such trouble as may be occasioned now in persuading it to see things as you see them.—Lamb County News.

A certain woman resident, shocked at the language heard between two men who were busily occupied in mending a telephone cable, wrote to the company about the matter. The foreman was asked to make an official report of the incident. He did and in the following way: "He did and in the job, I was up a and Bill was on the pole and he accidentally dropped some pole and it hit Bill's neck. Then Bill said to me 'you really must be more careful, Harry.'"—Hamilton Herald-Record.

This is a good time to put up eggs for use next fall and winter, when they will be worth about twice what they are now. Lime water preserves eggs about as well as water glass, says the U. S. Department of Agriculture, and is more readily available on the farm. Dissolve 2 or 3 pounds of unslaked lime in 5 gallons of boiled water allow it to settle, drain it off, and use the clear liquid. Put the eggs and lime water in earthenware crocks, and not in galvanized pails or cans, and keep in a cool place but not in freezing temperatures.

Spearman's young folks returning from school; wheat crop doing good; watch Spearman grow.

BUY YOUR HARVEST Groceries HERE

WE WILL SAVE YOU MONEY ON YOUR BILL FRUITS AND VEGETABLES

BURRAN BROTHERS

Phone 71—We Deliver

This space is the exact size of the new paper currency which will be issued with the following portraits:

- \$1.00—Washington 2.00—Jefferson 5.00—Lincoln 10.00—Hamilton 20.00—Jackson 50.00—Grant 100.00—Franklin 500.00—McKinley 1,000.00—Cleveland 5,000.00—Madison 10,000.00—Chase

For the first time in 66 years our currency is to be changed. This is the size of the new currency you will carry after July.

We have specimens of new currency on display.

First National Bank of Spearman

An Investment In Contentment

The man who owns his own home is "set." Gone is the worry of monthly rentals. Gone is the want of privacy that the apartment-house dweller submits to. You've your own roof over your head forever—a homestead for your family—always. Our list shows improved homesites in almost every section of town—all sizes and types of homes.

Pickering Lumber Company

TRUE TAGG PAINT—100 PER CENT PURE

H. L. Dumas Manager

Spearman, Texas

Sheer Weight Silk and Lisle Hosiery



This new sheer weight hosiery will give you a heaping measure of foot comfort during the summer heat. An ample selection of new patterns and colors from which to choose.

Campbells' Men's Store

Gents Furnishings

Cleaning and Pressing

BEST BARGAINS

BEGINS SATURDAY, JUNE 8

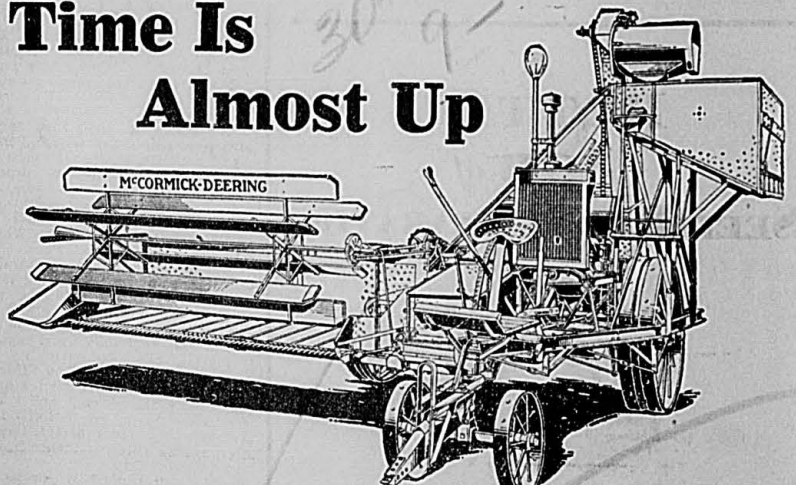
ENDS SATURDAY, JUNE 15

Watch for big circulars giving partial list of Bargains offered. Several Bargains now on display in our windows.

We are offering several Specials good only for certain hours—study your circular and watch your clock—it will pay you.

SMITH VARIETY STORE

Time Is Almost Up



Order Your Harvester-Thresher now--shipping date is almost up.

Repairs SHOULD BE ORDERED Early

Avoid confusion and loss. Place your orders today. We are always glad to help you. Come in and talk it over.

Spearman Hardware

At Gruver Also

Cow Testing Points Way To More Profits

The average cow of the 300,000 in the United States cow-testing associations is a "star-boarder," and not just a "boarder cow," according to the chief of the Bureau of Dairy Industry, United States Department of Agriculture. She produces an average of 7,500 pounds of milk per year as compared with 4,500 pounds of other cows, and returns an income over the cost of her feed of approximately twice that of the average cow of the country. In outlining a program for increased production of milk at reduced costs he stated it would solve the national problem of providing an adequate milk supply.

Although the annual consumption of milk per person grew from 43 gallons in 1920 to 55.3 gallons in 1926, Americans still are almost 50 per cent below the minimum consumption declared desirable by those who know, according to the chief.



Dr. Powell, Eye, Ear, Nose and Throat Specialist. Will be in Spearman, at offices of Dr. Gower, on Wednesday, June 26, 1929. Glasses fitted and tonsils and adenoids removed.

G. P. GIBNER, B. S. M. D.

County Health Officer. Local Surgeon Santa Fe R. R. Only doctor in Hansford county who is a graduate from a Class A Medical College. Office in rear of Hastings Drug Store. Phone 39 Spearman, Texas

T. O. JAMES

Surveyor and Engineer
Office with McNabb Land Co.
Spearman, Texas

C. D. WORKS

LAWYER
ABSTRACTS
Experienced in Abstracts and Hutchinson County Land Titles
Special Attention to Probate and Estate Matters

Thus, a need is shown for more high producing dairy cows.

High producing cows are economical in use of feed. A tabulation of more than 100,000 individual cow records shows that cows producing 2,000 pounds of milk per year ate approximately 40 per cent more feed in dollars worth of feed per cow to produce twice as much milk and butter fat.

Successful dairymen everywhere resort to correctly compounded feeding mixtures to obtain the high milk yield. For cows on pasture a much-used ratio is ground oats and barley or hominy, 200 pounds each, and wheat bran and linseed meal, 100 pounds each. One pound fed for each 4 or 5 pounds of milk. Another popular ration is ground oats, 400 pounds, barley or hominy, 300 pounds and wheat bran and linseed meal 200 pounds each, fed in the same way.

MARRIED, WENT TO COLLEGE, BECAME RICH ON 50 CENTS

How John Wuetrich, born in Switzerland, came to Wisconsin and after he was grown, married, went to college, and became a rich land owner, all on fifty cents original capital, was the story unfolded recently when this year's valuation of \$75,000 was placed upon Wuetrich's holdings near Greenwood.

Wuetrich's first venture as a young man was to start a butter and cheese factory valued at \$1,000. Telling Farm and Fireside of his ventures, Wuetrich said that he had 50 cents when he induced farmers to back him in the business. Illness ran him into debt \$4,000 on his first factory, but he paid it off and with a balance of \$38 embarked in matrimony. Pooling their resources, Mr. and Mrs. Wuetrich bought uncleared land. With the money he received from timber, he went to the agricultural school at Madison. It was his college training that enabled him to develop a profitable dairy herd, but illness overtook him again and he faced ruin through a bank failure.

Undiscouraged, he went to work again and last year, after agreeing to pay off \$25,000 in two years, succeeded in paying off \$17,000 in the first. His net profits from milk alone were \$4,000 and he sold \$6,000 worth of cattle and \$3,000 worth of peas. The proceeds of his clover seed sales brought his annual earnings up to the \$10,000 mark, besides which he paid off some old stock. Wuetrich attributes his success to the knowledge of farming he gained from going to agricultural college.

A journalist friend of ours says that if reporters on power owned papers are paid on a kilowatt hour basis he wants a job on one.

New Ration For Calves Widely Used

Reports show that the New Jersey dry-mixed calf formula which appeared during March 1929 has been tried out successfully in many parts of the country.

Recently, according to Professor I. R. Jones of the dairy department, the Oregon Agricultural Experiment Station started 18 calves on the New Jersey ration with very satisfactory results.

Whole milk was fed for only about the first 30 days, according to Mr. Jones, and when about seven days old, the calf was accustomed to a grain mixture of 100 lbs. yellow corn meal, 150 wheat bran, linseed meal and soluble blood flour, and 4 lbs. each of finely pulverized limestone, finely pulverized steamed bone meal and salt.

"A good quality clover or alfalfa hay is also placed before the week-old calf," he continued. "When the calf is three weeks old the milk is reduced so that at 30 days the calf is receiving nothing but the dry grain mixtures, hay and water. The calves should be consuming between one and two pounds of grain daily when 30 days old.

"When calves are five months old they should be consuming about five pounds of grain per day. The need for an abundant supply of clean, fresh water can not be too strongly emphasized, especially where the calf received no liquid food.

"To date the results have been very satisfactory. The calves are growing very well and are noticeably free from intestinal disorders. There is a saving of \$2.00 per month per calf in feed cost in comparison with calves raised on skim milk. Later results of this experiment will be published by the Oregon Agricultural experiment station at a later date."

IN PICKING WIVES

The girl who earns her own living, because her self respect demands that she be worth a living wage makes a far better wife and mother than she would if she had never had this experience.—Woman's Home Companion.

TO TRADE

What have you in Hansford county that you will trade for property in Clovis, New Mexico. Address box 56, Spearman, or see me at my farm seven miles northeast of Spearman. 243p. E. C. GREENE.

Read the Reporter every week.

SHOWING FOREHEAD RISKY, SAYS STYLIST OF NEW HATS

Showing the forehead beneath the pushed-back type of hat that has appeared for town wear this summer is a risky business, chapeau stylists of Paris have warned their clients. But they continue to produce the models just the same.

"Not ever type of beauty can survive the exposed forehead," declares Woman's Home Companion's Paris correspondent, "for, like the little girl in the nursery rhyme, when it is smart it is very very smart and when it is bad it's horrid."

One of the modish creations of this type is snugly fitting with a shallow crown and novelty-braided straw side flares, turning up sharply over the forehead. It is bicorne in shape, somewhat newer than the tricorne.

As a general rule hats have taken to feminine lines, and soft drooping brims are necessary when printed chiffon enters the picture as it does so often in afternoon modes. Paris is creating these shady, afternoon hats with wide brims, of pliable straw such as paillasson, linen, lace, and the rougher weaves with velvet or grosgrain for trimming. One model seen by the correspondent in Paris was of beige crin, with felt to bordering the brim and to form the band and an easy bow.

Straw for the sports hat is a favorite choice for summer, and again in these models the drooping brim arches in front enough to show more or less of the forehead, as is becoming. Straw is being handled with as much intricacy as felt this season, pleats and other effects being achieved as with fabric. Natural color in straws is favored and trimmings are almost invariably of grosgrain. Brims are usually the same width all around.

NOTICE TO PUBLIC

I take this method to inform the public generally that there positively will be no hunting, fishing, picnicing or trespassing of any kind on the J. I. Steel ranch lands, on the Palo Duro creek north of Spearman. These lands are under lease by J. A. Whittenberg Jr., and all trespassing is strictly forbidden. 2012p. DEE DAVIS, Foreman.

In spite of the appearance of the deadly citrus fly we may be sure that it will have no effect upon the orange drinks served nowadays.

Acquire a reputation for dependability first, and add the decorations afterward.

In handling their women folk all men appear equally talented and equally stupid.

If you're meeting your obligations to yourself and your creditors you're doing more than some people.

Every man is sure of death and taxes and that he'll have to shave when he wakes up in the morning.

Next to receiving a present from her husband nothing pleases a woman more than to boast of it to her friends.

At a show, concert or lecture your chair seems uncomfortable if a sign that the entertainment is low standard.

OWNER ENTHUSIASM

THE SIX-SIXTY

The good things owners say about the Durant Six-Sixty constitute the most powerful single influence in the present record-breaking sales.

Owner enthusiasm is readily understood when you find Six-Sixty specifications combine advanced engineering features usually found only in cars much higher priced.

THE SIX-SIXTY—109 in. wheelbase—\$685 TO \$750
All prices at Factory—Lansing, Michigan

AND—FROM \$595 TO \$815—THE DURABLE DURANT
FOUR-FORTY—A CAR WITH AN IMPRESSIVE RECORD

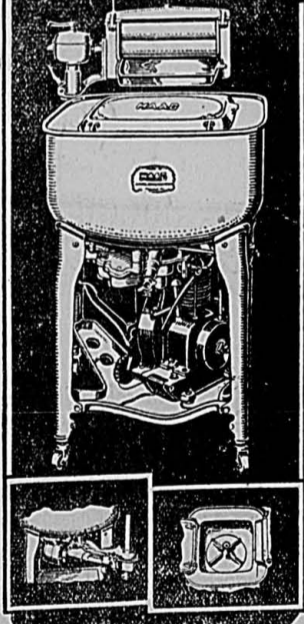
DURANT

A GOOD CAR

Spearman Motor Co.

Every Farm Home

Should Have One



IT'S new—new in style, design, beauty, and efficiency! The Haag 75 washer, equipped with the built-in 4-cycle gasoline motor, is the latest and finest labor-saving device you can have in your home.

A tubful of clothes washed snow-white in 4 to 7 minutes—without boiling, soaking or hand-rubbing—and without damaging a single thread or button! Tubful after tubful, week after week, for a whole life-time! The new Haag 75 will save you endless work and worry.

You'll change your ideas of what a washer can be when you see the Haag 75 in operation. It cannot be compared with the average washer. Words and pictures are insufficient to explain it—you must see it.

There is a Haag dealer near you who will gladly give you a free demonstration—in his store or in your home, as you prefer. And he will outline an easy purchase plan to suit your own desires. Phone or see him tomorrow. Start enjoying comfortable washdays now.

The Haag direct drive is simple and durable. Crank shaft cannot get out of line. Looking down into the self draining pressed aluminum tub, you see the Haag safety agitator and the wide splash rim.

HAAG

VORTEX

MODEL 75

Harbison Furniture Co.

EXTRA! EXTRA!



GOOD news! That's the only kind of news your speedometer records these days if you use Conoco Gasoline. Every click seems to whisper "Extra! Extra!"—and that means extra miles because Conoco Gasoline is packed with them.

The Conoco Gasoline supplied to you today is refined especially for summer driving. Summer is the season of long trips and continuous use of your motor. Consequently you want a fuel which is good in every particular—but with special emphasis on mileage. And that's exactly what Conoco offers you.

Keep your motoring costs down by filling always at the sign of extra miles—Conoco.

CONTINENTAL OIL COMPANY

Producers, Refiners and Marketers of high-grade petroleum products in Arizona, Arkansas, Colorado, Idaho, Kansas, Missouri, Montana, Nebraska, New Mexico, Oklahoma, Oregon, South Dakota, Texas, Utah, Washington, Wyoming.

Packed with **CONOCO** miles
with **SUMMER**
extra **GASOLINE**

THE COMBINE BRINGS MANY NEW PROBLEMS

The combine is revolutionizing wheat farming. It is reducing labor, cutting down on harvesting costs and saving grain.

"Too Much Wheat All At Once" The combine method of today is making as much grain available in six to eight weeks.

Attention Before the days of the combine, when all wheat was cut with a binder or header and was shocked or stacked, the grain had time to cure before being threshed.

To Insure Dry Combine Wheat Wait until the crop is matured before beginning to harvest it or cut it with a binder or swather.

Friends of our remarks that wool come down any day now with the lambs are being shorn in street.

MANY SUCCEED, MANY FAIL

In the course of twenty-five years spent in earning a living I have observed many young men succeed and many fail.

Successful men are developed from those who have the intelligence to understand what is going on around them.

In five years one man will be in charge of an important branch, and the other will be making \$175 a month which will be \$75 more than his initial salary.

The man who went forward got it into his head right at the start that making entries in passbooks and counting money was not the way banks made money.

In short, this man, although working as a teller, became a banker. His promotion to an important position was as certain as the rising sun.

That's about the way it works out in all lines. Some men never master anything other than the details of a job.

LINE MEN MEET WITH TRYING EXPERIENCES DOING REPAIR WORK IN CREEK BOTTOM

The proverbial tenacity of public utilities men was again daringly illustrated last Monday after the poles of the T. L. P. across Buck Creek between here and Tioga were washed out by the flood waters about 5:30 that morning.

perilous position while A. F. Banke, Mr. Dixon, the Tioga power man, and a crowd of others, who had gathered, tried again and again to get a line to him.

With characteristic purpose the men set about finishing the job in hand and had electric service to Tioga re-established by 6:00 p. m.

Mr. Conner is suffering a severe sunburn and lacerations on body and limbs that would be considered quite sufficient for a layoff of some days but has gone on about his duties without interruptions.

VOTE ON TWO AMENDMENTS TO CONSTITUTION IN JULY

Senate Concurrent Resolution No. 13 WHEREAS, the 41st Legislature of Texas, at its regular session, submitted to a vote of the people a Constitutional Amendment providing for a Supreme Court to be composed of nine members, instead of the present Supreme Court of three members, assisted by six Commissioners, drawing substantially the pay of Supreme Court Judges, but whose work must be reviewed and approved by the Supreme Court; and,

Whereas, the adoption of said amendment would not materially increase the cost of our Supreme Court, and would largely reduce the injustice resulting from the laws' delay under the present system; and,

Whereas, the said amendment would also provide that the Supreme Court shall be open for the transaction of business throughout the year, instead of for only nine months, as required by the present provision of the constitution; and,

Whereas, the 41st Legislature has also submitted to a vote of the people another Constitutional Amendment, providing that the Governor of Texas shall receive a salary of Ten Thousand Dollars per year, and no more, and,

Whereas, the adoption of this Constitutional Amendment is necessary in order to provide a living wage for the Governor of Texas, and to make it practical for a citizen, not possessed of great wealth, to serve as Chief Executive without ruinous sacrifice; and,

Whereas, both of said Constitutional Amendments are to be voted upon at a special election to be held in every voting precinct in Texas on Tuesday, the 16th day of July, 1929, and,

Whereas, regardless of the merits of the proposals involved in said constitutional Amendments, respectively, it is highly desirable and important that as nearly as possible, every qualified voter shall go to the polls on said date, Tuesday, July 16, 1929, and vote upon both amendments, now, therefore, be it resolved, by the Senate of Texas, the House of Representatives concurring therein:

That the newspapers of Texas, including both the daily and weekly papers of the State, are urgently requested to improve all reasonable opportunities, through their columns, to call attention of the people to the importance of these Constitutional said election, and to urge the voters Amendments, and to the date of to attend the same, and, be it further resolved,

That the Radio Broadcasting stations in Texas be and are hereby, requested to use their facilities from time to time, for similarly calling the attention of the people to the importance of these Constitutional Amendments and to the importance of all qualified voters attending and voting at said election, and, be it further

Resolved that the Secretary of the Senate, and the Chief Clerk of the House be directed to join in sending a copy of this resolution to the daily and weekly newspapers of the State, and to each Radio Broadcasting station.

Signed: BARRY MILLER, President of the Senate.

Signed: W. S. BARRON, Speaker of the House of Representatives.

I hereby certify that Senate Concurrent Resolution number 13 was adopted by the Senate on May 20th, 1929.

Signed: BOB BARKER, Secretary of the Senate.

I hereby certify that Senate Concurrent Resolution Number 13 was adopted by the House of Representatives on May 20th, 1929.

Signed: LOUISE SNOW PHINNEY, Chief Clerk of the House of Representatives.

Approved: DAN MOODY, Governor.

LACK OF TECHNIQUE

Sally Bender is up in arms as a result of Jennie Jenks claiming to be knitting champion of Pumphandle Hollow. Sally says Jennie don't even know how to knit her brows.—Farm and Fireside.

OR A SITUATION

Marriage has always been a job, a profession if you want to give it a higher sounding name.—Woman's Home Companion.

NOTICE

There will be a meeting of the members of the Union Church Association, to be held at the Union Church, on Saturday, June 15th at two o'clock p. m., for the purpose of electing a trustee to fill the vacancy occasioned by E. H. Barbour having moved away, and for the transaction of any other matters of interest that may come before this meeting.

A full attendance of the members of the association is urgently requested. G. W. FULLBRIGHT, President of the Association.

RESTAURANT SLANG

"Scrambled eggs," ordered a customer in a city market restaurant. "Milk toast," murmured his companion, who was not feeling well.

"Here," corrected the second man. "I want milk toast."

"You'll get it buddy," replied the girl. "That's what they call milk toast in Chicago where I was working."

Next time the two customers held a conference and decided to "put one over" on the "fresh young thing" from Chicago. The first one wanted a glass of milk and the second one a cup of coffee.

When the restaurant girl appeared to put a "set up" of the restaurant gallery in front of the men, the second man gave the following order: "A bottle of lactical fluid for my friend and a scuttle of Java with no sea foam for me."

"Chalk one and a dipper of ink,"

GOOD COSMETICS LURK IN KITCHEN CABINETS

Despite the rapid development of beauty preparations, many excellent cosmetics lurk right in the kitchen cabinet and the ice box, according to Hazel Rawson Cades, beauty expert.

A solution of table salt is excellent for soothing and beautifying the eyes, she declares in Farm and Fireside, and adds that salt solution is also an excellent mouth wash.

"Some people," says Miss Cades, "rub salt on their scalps as an invigorating massage. A salt solution is fine to put new life into hair brushes. Bath towels, dipped in strong salt water and dried are excellent for body massage."

Among the other uses of things from the kitchen include baking soda in the bath for hot weather and patting under the arms as a deodorant.

Vinegar can be used in a shampoo rinse and vinegar and water is both a preventive and soothing after application for sunburn. Milk makes a good face bath and buttermilk acts as a mild bleach. A corn meal and buttermilk mask is recommended for sal-low skins. Corn meal and water may be used as a cleanser for the face and is good for blackheads. Lemon is a fine bleach for hands, elbows and necks and lemon juice put into the shampoo rinse is supposed to benefit blonde hair.

Beaten eggs, adds Miss Cades, can be well used after soap as a shampoo; whites of eggs give an excellent dry shampoo and make a stimulating face mask.

Jack Allen Walter Allen ALLEN & ALLEN Attorneys-at-Law Perryton Texas

ANNOUNCING the opening of Stone-Merritt & COMPANY Spearman's Newest Dry Goods Store About July 10th, 1929 In the McClellan Building that is being erected on Lower Main Street WATCH REPORTER FOR FURTHER ANOUNCEMENTS OF THE OPENING.

THE IDEAL PLOW for summer fallowing ROCK ISLAND SANDERS CYLINDER DISC PLOW Land may lie fallow for eighteen months, it may be grown solid with quack grass, sunflowers and weeds, and yet a Rock Island "Sanders" Cylinder Disc Plow will put it in shape for seed. These "Sanders" Cylinder Disc Plows are changing tillage methods, reducing plants cost and raising profits in the wheat belt. The special curvature of the disc blades—the Sanders cup shape—and the vertical set of the disc, which revolve together, reduce friction and move the soil in the same direction but about one-third as far as the regular disc plow. The discs cut off the vegetation the complete width of the ground. Sizes to cut from 6 to 12 feet wide, 2 to 6 inches deep, creating the seed bed that holds moisture. You'll notice the difference between the work of a Sanders and others. The construction of Rock Island "Sanders" Cylinder Disc Plows is rugged. They not only do hard work, but stand up under it. Notice the frame—it looks like a railway rail—its strong, but simple. Come in and look over this plow that is working 25 to 40 acres per day for your Neighbors. ARTHUR OWEN Spearman Dealer In the W. L. Russell Old Building—Across the Street South of Panhandle Lumber Co.



A LEAKY GAS TANK

cause more trouble than the loss of a few gallons of gasoline. Liberated gas sometimes causes terrible explosions. The leaking tank always presents an ever present menace. Let us repair your leaky tank. Our work will give the tank new life.

OK. RADIATOR AND FENDER SERVICE

IOWA SEPARATORS THE WORLD'S CLEANEST SKIMMER GUARANTEE THEM TO:—Get more butter-fat; be easier to wash; easier to turn; easier to pay for; and cost no more than ordinary separator. WE ALSO SELL:—Tankage, Linseed Oil Meal, Bone Meal, Bran, Shorts, Alfalfa Meal and Hay, Oyster Shell, Snider's Chick Starter Mash and Laying Mash, Bulk Rolled Oats, Bulk Garden Seed and Plants. Snider Produce IN SPEARMAN

Complete Funeral Service For a Moderate Charge When bereavement comes, cost need not enter into consideration of an impressive burial service. Wilson Funeral Homes offer complete distinctive funerals efficiently executed at most reasonable rates. Automobile ambulance service; Lady attendant. Telephone 44. Wilson Funeral Homes Spearman

A WORD FOR THE AD WRITER

Advertising plays a greater part in our lives than many of us realize. There is so much of it all about us that it has penetrated deeply. We have achieved a national trade-mark celebration. We eat, drink, sleep, think, come into the world and leave it by slogans. We have acquired a tooth-paste consciousness, a fountain pen complex and film-on-the-teeth exhibitions. We have shaving soap brushes, face cream desires and safety razor predilections.

And so advertising serves a noble purpose. We see the girl in the tooth brush ads, and oh, how we long to be sweet and beautiful and forever smiling. Some of us who are short and stout yearn to look like the underwear gladiators, and we put ourselves on a sweets, starchless fatless diet that lasts until we get so hungry we don't care how we look.

But for those of us who have never

been hosiery or lingerie Lulus, there is consolation in knowing that, after all, there never was a girl really as beautiful as the blonde on the magazine cover nor any man as dashing and handsome as the one that uses his neck as a model for the collar announcements.

Ah, yes! Life is never just what it seems, regardless of the ad writers. We all live behind masks. Many a toothpaste smile covers an aching heart.

And who can say that it is not better so? Life would be dull if we saw things only as they really are.

So, on with the ads! Let the copy writers glorify this dull old world for us and we shall all live longer, smile oftener, and never, no never, have knots in our motors, acidity in our stomach or fountain pens that won't squirt.—Harry Daniel in Thrift Magazine.

Read the Reporter every week.

9c
SALE

BEGINS SAT., JUNE 8
ENDS SAT., JUNE 15
Watch For Big Circulars
SMITH VARIETY STORE

TOOK NO CHANCES BUT—

He brushed his teeth twice a day —with a nationally advertised tooth-paste.
He wore rubbers when it rained.
He slept with the window open.
He stuck to a diet with plenty of fresh vegetables.
He relinquished his tonsils and traded in several worn-out glands.
He golfed—but never more than 18 holes at a time.
He got at least eight hours sleep every night.
He never smoke, drank or lost his temper.
He did his daily dozen daily.
He was all set to live to be a hundred.
The funeral will be held next Wednesday. He is survived by 18 specialists, four health institutes, six gymnasiums and numerous manufacturers of health foods and antiseptics.
He had forgotten about trains at grade crossings.—Pullman Magazine.

Just Received!

—a beautiful line of mid-summer wash flannel coats, in pastel shades, at POPULAR PRICES.
Also, a lovely line of silk dresses in crepes, georgettes and chiffons, both long and short sleeve.
Ladies Hats, \$6.00 to \$12.50 value, choice \$5.00
Children's Hats, up to \$3.50 value, choice \$1.00

If It's New We Have It

SPEARMAN DRY GOODS CO.

Stock Up On Harvest Goods

With harvest almost here when cooking is oftentimes uncomfortable, you may step to your well filled shelves of canned goods and groceries and prepare a good meal without much trouble.

CANNED GOODS WHEN ORDERED BY THE CASE COST MUCH LESS.

Come in and let us figure your harvest bill—We can save you money.

SPECIALS EVERY SATURDAY



HILL BROTHERS
Grocery and Market

NOTICE

See us for sweet pickles; the best in Hansford county.
RAINE & LINDY.

FOR SALE

One National cash register; large size, perfect condition. Quite reasonable.
26tf.
Spearman Dry Goods Company.

E. M. BARBER
Attorney at Law
Abstracts Examined
Office at rear of Hastings Drug on Davis Street
Spearman, Texas

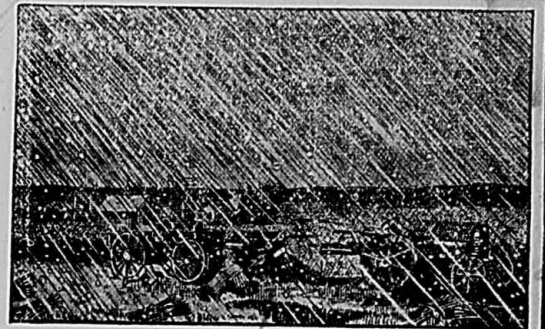


WITHOUT adequate insurance property owners are in constant jeopardy because financial safety can only be obtained with careful preparation against loss by fire.

There are many forms of stock insurance—perhaps you are without one of the most important. Consult us and make sure.

P. A. LYON

HANSFORD ABSTRACT COMPANY
Phone 42 Spearman



WE DID NOT ORIGINATE THE GOLDEN RULE

But we try to treat our policy holders as we would like to be treated
LET US PROVE IT

FIFTEEN YEARS steadily growing in volume and number of patrons served on the good will created by service rendered.

Every dollar of our assets is invested in Texas or deposited in Texas banks.

The best Hail Insurance obtainable at the lowest practical cost. The cost is so small that it is far better to have it and not need it than to need it and not have it.

We write hail insurance only. Our business is confined to that of insuring growing crops against damage caused by hail storms.

The Groom Mutual Hail Association is licensed and under the Supervision of the Insurance Department of Texas. It is an incorporated Association and was chartered by the State of Texas, June 16, 1915.

For further information, see or write

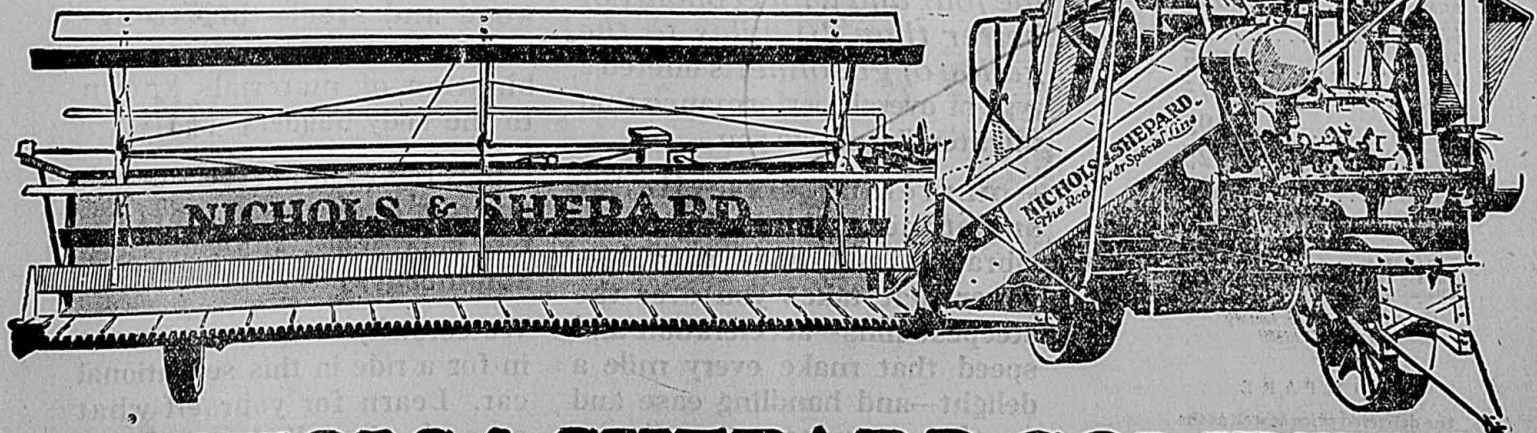
THE GROOM MUTUAL HAIL ASSOCIATION
GROOM, TEXAS

Or see our local agents, J. D. HESTER, or Wm. J. WHITSON
At the Spearman Equity Exchange

\$2,000 Stock of

REPAIRS now in Spearman

More at Our Command



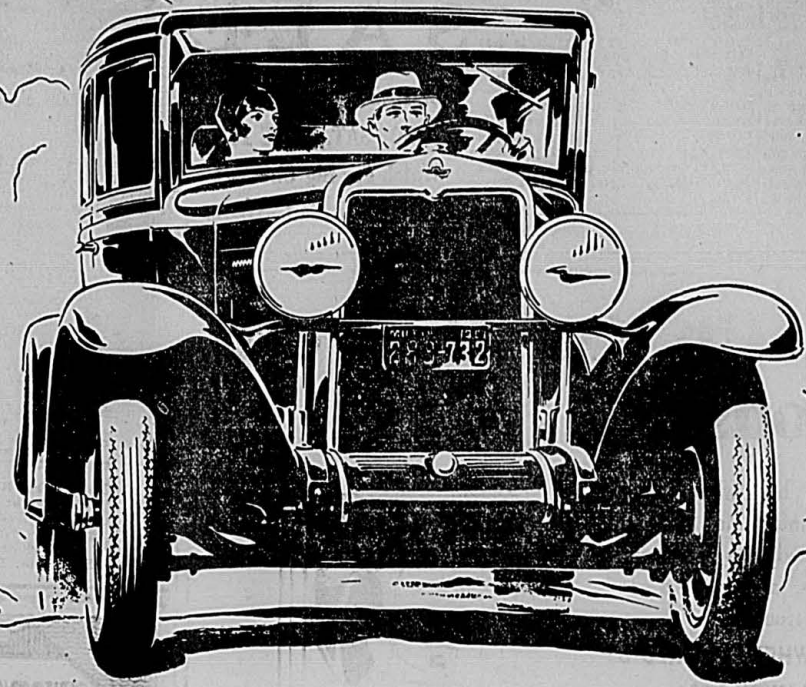
NICHOLS & SHEPARD COMPANY COMBINE

SOLD BY

RANEY & CRAWFORD, Spearman, Texas

The Greatest Grain Saving Combine Built

Come In and Look Our Stock of Combines Over



Drive the Chevrolet Six

-and learn what marvelous performance you can get in a low-priced car

for Economical Transportation



The COACH
\$595

- The ROADSTER.....\$525
- The PHAETON.....\$525
- The COUPE.....\$595
- The SEDAN.....\$675
- The Sport CABRIOLET.....\$695
- The Convertible LANDAU.....\$725
- The Sedan Delivery.....\$595
- The Light Delivery Chassis.....\$400
- The 1½ Ton Chassis.....\$545
- The 1½ Ton Chassis with Cab.....\$650

All prices f. o. b. factory
Flint, Michigan

COMPARE

the delivered price as well as the list price in considering automobile values. Chevrolet's delivered prices include only reasonable charges for delivery and financing.

If you are one who has always believed that truly fine car performance can only be had in a high-priced automobile—come take the wheel of a Chevrolet Six and go for a ride!

Here, in the price range of the four and with economy of better than 20 miles to the gallon of gasoline, is offered a type of overall performance that will literally amaze you—

—marvelous six-cylinder smoothness that eliminates vibration and body rumble—power that takes you over the steepest hills—acceleration and speed that make every mile a delight—and handling ease and restful comfort that leave you refreshed at the end of the longest drive!

Emphasizing this outstanding six-cylinder performance are the beauty and safety of smart new bodies by Fisher. Styled by master designers whose art has lent distinction to some of the world's finest motor cars...and built of selected hardwood and steel—the strongest, safest and quietest combination of materials known to the body builders' craft—

—they represent, in every detail, an order of coachcraft never before approached in a low-priced automobile.

We cordially invite you to come in for a ride in this sensational car. Learn for yourself what smooth six-cylinder performance can now be secured in the price range of the four!

McCLELLAN CHEVROLET COMPANY

A SIX IN THE PRICE RANGE OF THE FOUR



LOYALTY

*The Unbeatable Union
of Spirit and Action*

*LOYALTY---the giant force that will accomplish with ease un-
dreamed of heights in building this community.*

*LOYALTY---the vibrant cooperation of every member of this
community in forcing into the foreground the best that is in
us, urging ever onward the impulse for greater development
of home activities.*

*IT is the community that is loyal to home activities that al-
ways has the best activities.*

*Our interest in the welfare of this community prompts us to
sponsor this message to the people of Spearman and vicinity.*

Spearman Dry Goods Company
 Smider Produce
 Spearman Motor Company
 Dr. J. E. Gower
 Fidelity Bank of Commerce
 Panhandle Lumber Company
 Pickering Lumber Company
 Wilson Funeral Homes
 Jot Horton, Lawyer
 First National Bank
 Jackson Tire Shop
 McNabb Land Co.
 Hill Brothers Grocery & Market

Campbells Men's Store.
 Jitney Jungle
 Chambers Service Station
 Spearman Bakery
 White House Lumber Company
 Sparks Confectionery
 Scott Brothers, Grain and Coal
 Smith Variety Store
 Hastings Drug
 Floyd Hays Barber Shop
 Womble Hardware
 Mizar Truck Line
 J. R. Collard, Real Estate and Loans

Burran Brothers
 Spearman Hardware
 McClellan Chevrolet Co.
 Hansford Abstract Company
 W. L. Russell
 Beck Motor Company
 Harbison Furniture Company
 Home Telephone Company
 Thomason Brothers
 R. W. Morton
 R. L. McClellan Grain Company
 Spearman Equity Exchange

P. M. Maize and Company

"Paying Cash Pays"

EXTRA SPECIALS SUGAR, BACON and FLOUR	GALLON APPLES	42c
LADIES Wash Dresses Snappy Models	Peaches, No. 2 1/2, extra quality, syrup packed	22c
LADIES Full Fashion Silk Hose, big bargain	SALT PORK Best Quality	19c
LADIES Rayon Bloomers—Why pay more	RAISINS, 25 lbs. Thompson Seedless	\$1.35
FLORSHEIM SHOES	CALUMET Baking Powder, lb. can	26c
Men's Furnishing, Stetson Hats, Shoes, Underwear and Work Clothing		

See Our Extra Special Big Values—Many Not Mentioned.

Church and Society

Ooley-Buckley.

Saturday afternoon, June 1, Miss Helen Ooley and Charlie Buckley, accompanied by Miss Elma Buckley and Fred Branham, quietly left town without arousing suspicion, drove to Stinnett, secured a marriage license at the courthouse, motored around to the Methodist parsonage and in a very short time were setting sail on the sea of matrimony, the ceremony being performed by Rev. Harold F. Brawley, pastor of the Methodist church of Stinnett. Their marriage was immediately announced upon their return to Spearman and then Charlie was buying cigars. Mrs. Mrs. B. F. Ooley, who are the proprietors of the Ooley rooming house. Buckley is the daughter of Mr. and Spearman has been her name the past four years and she has been a student in the Spearman schools since coming here. Mr. Buckley, son of Mr. and Mrs. Ira Buckley, has lived here practically all his life and is well known in the town and community. Their friends are offering congratulations and wishing for them happiness and prosperity.

Sunrise Breakfast

If anyone had been up at the early hour of 3:30 last Friday morning,

they would have seen thirteen gay spirited and laughing girls with their chaperon starting to hike to old Hansford. Due to various reasons a large number of the Camp Fire girls could not go. They were missed as most of them were old members and experienced in camp. A bunch of new members that had never been camping before went and showed beyond doubt that they were regular Camp Fire girls. After hiking out to the creek below Cranes, they sat down to a good breakfast which they had prepared, just as the sun rose. They hiked around a few hours, then returned to town all reporting a dandy time. Plans are being made for a week-end camp sometime in the near future.

The next regular meeting will be held at Lucille Robinson's home. All members, old and new, are urged to be present as this will be an important business meeting.

Missionary Society Enjoys Social Event

The members of the Missionary Society enjoyed a very pleasant social afternoon at the meeting last Wednesday afternoon. The social was held at the home of Mrs. D. B. Kirk in the Reeves addition. A very pleas-

ant time was had playing various table games and contests after which a delightful refreshment course was served. The meeting this Wednesday afternoon was held at the home of Mr. and Mrs. G. P. Gibner. The regular study lesson was had. The meeting next week will be with Mrs. Cecil Foote.

Mrs. W. S. McNabb Honors Mrs. Deacon With Party

Mrs. W. S. McNabb, assisted by Mrs. Wm. J. Whitson, delightfully entertained a number of friends Wednesday evening honoring Mrs. J. T. Deacon of Plainview. Four tables of bunco furnished the amusement for the evening along with much chatting and talking of the days when Mrs. Deacon was a resident of this country. The evening was concluded with the serving of a refreshing two course luncheon to the following guests: Mrs. J. T. Deacon, honoree, Mrs. H. P. Bailey, Mrs. A. E. Barkley, Mrs. John L. Hays, Mrs. P. M. Maize, Mrs. Jess Riley, Mrs. J. H. Buchanan, Mrs. Walter Jackson, Mrs. D. W. Holland, Mrs. M. B. Wright, Mrs. Fred Brandt, Mrs. Tom McMurry, Mrs. R. W. Morton, Mrs. Floyd Wilbanks and Mrs. Ike Klutz.

American Legion Auxiliary Sponsoring Red Cross Work

The American Legion Auxiliary of the Sullivan R. Spivey Post No. 154 is sponsoring the Red Cross work of Spearman and wish to inform all ladies who care to contribute to this work, whether they belong to the Auxiliary or not, that the first meeting will be held at the home of Mrs. H. E. Campfield on June 14 at 2 p. m. Sewing will be done at this meeting.

W. M. U.

The ladies of the W. M. U. met with Mrs. Fred Brandt Wednesday afternoon with nine members present. A very interesting lesson was read and discussed from the Bible lesson of the Royal service. The meeting place for Wednesday, June 19, will be announced Sunday morning.

A marriage license was issued Saturday by county clerk Womble to Miss Velma C. Christopher and Roby B. Ballinger, both of Perryton.

Mrs. W. L. Russell and the children are visiting in the home of her parents at Liberal this week.

Mrs. P. H. Walker and children returned Sunday from a visit with relatives at Beaver, Oklahoma. Miss Maryola Montgomery came from Shattuck the first of the week and is visiting with her aunt, Mrs. Johnnie King.

Miss Elizabeth Hancock came from Lubbock the first of the week where she has been a student in Texas Tech. the past term and is spending the vacation with her parents, Mr. and Mrs. J. C. Hancock.

Miss Ruby Ruth Kelly is visiting in the home of her aunt, Mrs. Dillard Eastwood at Guyman. She accompanied Miss Helen Eastwood home. Helen had been visiting the past two weeks in the Oran Kelly home.

Mrs. J. T. Deacon and daughters Miss Dorothy and Miss Madeline are here this week visiting with old time residents of this section of the country. They have been visiting with relatives at Enid and are enroute to their home at Plainview.

Mrs. G. Ray Shouse of Los Angeles, California, is visiting in the home of her sister, Mrs. H. E. Campfield. Mrs. Shouse visited in Canyon before coming here. She intends to spend the summer with relatives in this part of the country.

LYRIC THEATRE

WHERE BREEZES BLOW

FRIDAY and SATURDAY

"THE WOLF OF WALL STREET"

Watch out Wolf! You know how to handle men but you're not so clever with women! Watch for "The Wolf" and the woman he loves. A thrilling story featuring George Bancroft. Also two reel comedy and Tarzan.

Admission 15c and 30c Saturday Matinee 10c and 25c

MONDAY ONLY

Hazel Hurd Players present their last play of the current season. A red headed "Toby" play with laughs from start to finish. Two shows.

TUESDAY ONLY

"THE GATE CRASHER"

A neat little picture from Universal. Also a good comedy.

Admission 15c and 30c

WEDNESDAY and THURSDAY

"THE DUKE STEPS OUT"

Starring William Haines and Joan Crawford. Bill Haines was never funnier or more attractive than as a prize fighter who takes it on the chin from Dan Cupid.

Comedy and News
Admission 15c and 30c

See "The Mystery Rider" June 14-15

Mr. and Mrs. Fred Miller of Texoma were Spearman visitors Sunday.

Miss Maxine Bennett has accepted a position as stenographer with McLain and McLain, real estate firm.

Bob Duncan came from Forgan, Oklahoma, Wednesday and was a guest in the home of his brother, Mr. and Mrs. John D. Duncan, until Thursday.

Allen King was here from Perryton Monday visiting with his parents, Mr. and Mrs. C. W. King and attending to business matters.

Mrs. C. A. Gibner visited Friday and Saturday with relatives at Stratford. She returned home Sunday, accompanied by Mr. and Mrs. Joe Billington and little daughter Joyce Ann, and Mrs. Harmon Lowe who visited here Sunday. They returned to Stratford the same evening.

Mrs. G. Kelly Stout and daughter Miss Cecilia and son La. Verdon from Enid, Oklahoma, the latter of last week to make Spearman their future home. Mr. Stout, who is the real estate business, and who has been here almost a year, has a fine frame residence in south town, which he and his family occupy.

YOUR HARVEST GROCERIES

Will be the least of your worries, if you will come to us for estimates on the bill.

We Have the Goods

—and know how to put up the same.

ECONOMICAL DISTRIBUTION is our middle name

YOURS FOR A BIG HARVEST

Spearman Equity Exchange

The Better You Know Us The More You Will Like Us

On Elevator Row

Spearman

Special Hosiery Sale

- \$2.50 CHIFFON HOSE FOR \$1.79
- \$1.95 AND \$2.00 HOSE FOR \$1.59
- ATTRACTIVE WASH SILK DRESSES IN PASTEL SHADES \$10.75

Grocery Specials FOR FRIDAY AND SATURDAY

- Swan down Cake Flour, box 29c
- 8 Pound Purity Shortening \$1.08
- Pork & Beans, Morris Supreme, medium can 9c
- No. 2 Mustard Greens, can 12c
- New State Jello Powder, box 6c
- Milk, Borden's and Carnation, large can 10c; Small 5c
- Lipton's Coffee, every can Guaranteed, pound 48c
- Cookies, fancy assorted, 2 pound box 53c
- No. 2 1/2 cans Fruit, assorted, Peaches, Pears, Plums, 3 cans 59c
- Pure Pork Sausage pound, 20c
- Pure Lard, pound 15c

Car of canned goods just unloaded. We will be in better position than ever before to supply your harvest wants. Come in and get our prices before you place your order

W. L. Russell

DRY GOODS—GROCERIES—MARKET

Phone 78 Spearman

Work Clothing that Is Made Right, Fits Right and STANDS THE WEAR

Big Smith Overalls



Big Smith overalls are made from heavy selected denim, known for its strength and wear. Cut extra full and roomy, all suspender button—set in heavy duck. Suspenders have the new improved shield which keeps them from sliding off your shoulders. Hip pockets are doubled, improved watch and pencil pocket on bib. Ask to see a pair and compare with any overall you ever saw. Sizes 30 to 50; jackets 34 to 50. Our special price

Per Garment \$1.49

A "Chip off the old block" Like father—like son! The Big Smith Junior overalls are made like the men's "Big Smith" except in smaller sizes. You may expect the same service and satisfaction from the boy's overalls as from the men's sizes. Try to duplicate this overall anywhere at our price—one pair will convince you. Sizes 3 to 16—all one price. Per Pair \$1.49



BUSTERALLS

Big Smith Busteralls are made to look well on the kiddies and to stand rough wear. Fast color materials, drop seat style, 5 buttons across back, contrast collars and cuffs, blue striped, pin checks, gray striped and solid light blue chevrot materials. Sizes 1 to 8 years. 95c and \$1.25

BIG SMITH

Men's work shirts that fit and give continued service. Made from Denance chambray, coat style, two large bellows pockets, cut full and roomy and extra well made. These shirts are superior to many shirts selling at \$1.15 to \$1.25. Men's sizes 14 1/2 to 20. Color, blue or gray. Each \$1.25



Thomason Brothers THE QUALITY STORE

EST. 1904