

Are Southern States the "Shame of the Nation"

In a scathing reply to the editorial of a Chicago newspaper, quoted as pointing the finger of shame at the South, Holland's, The Magazine of the South, in the current issue says: Utter and amazing ignorance, not only of the South but of our country as a whole, is revealed in a recent editorial in the Chicago Daily Tribune entitled "Public Life in the Sticks States," which takes note of Louisiana and her political problems, of Oklahoma's impeachment trials, of the 'Ma' Ferguson episode in Texas, and the Bilbo of Mississippi—but which does not mention, oddly enough, Al Capone or Len Small of Illinois—and goes on to say that the Southern States are remote from centers of commercial activity, culture, and learning, and are the 'shame of the Nation.'

"After the first wave of surprise at a so gross display of sheer ignorance, we are amused at being termed the 'shame' of anything by a newspaper in such an abstruse Chicago, with its putrid politics, its guarded elections, its gangster-ruled streets, its St. Valentine's Day slaughters, its beer 'barons,' and its neighboring Herrins and Ciceros. Political disputes in the Southern States at least are settled in courts of law, and not with machine guns. The Southern States have no unseated U. S. senators, nor does any of their senators send a floral offering and his personal card to a gangster's funeral.

"The South, in six years, increased its manufactured-products values \$567,000,000. In those same six years, manufacturing values in the rest of the country decreased \$279,509,000. Southern ports handled 42 per cent of the country's water-borne tonnage. Over 91 per cent of all active cotton spindles in the Nation are in the South. Such facts as these are endless. If this be remoteness from commercial activity make the most of it.

"The South was steeped in culture and learning, and its cities were the sites of recognized colleges and universities, more than three-quarters of a century before Chicago came into existence. Its first college was founded over 140 years before Chicago. In fact, when Chicago was founded, there already were 40 universities and colleges in the South—as against 20 in the Middle West and 36 in the remaining states. Two of these Southern colleges were in Louisiana and Mississippi.

"The second college founded on American soil was in a Southern state—the College of William and Mary, at Williamsburg, Virginia, in 1693. Only one other university was founded in America during that century—Harvard, in 1636, located in Massachusetts, which is not a Middle West state.

"In the eighteenth century, beginning with the founding of Washington and Lee University at Lexington, Virginia, in 1749, the South saw 13 colleges and universities founded within its borders, and 14 founded in the rest of the country. No college or university was founded in the Middle West during that century.

"The first American college established in the nineteenth century was the University of South Carolina, at Columbia, in 1801—the fifteenth Southern university to be founded prior to the establishment of any such institution in the Middle West. Before the founding of Chicago's first universities, the South had 58 colleges and universities. Of these three were in Texas, two in Louisiana, and one in Mississippi—states, according to the learned Tribune, 'remote from culture and learning.'

"Of the two score Southern universities founded while Chicago was still but an idea in a trader's mind, one was Wesleyan, in Macon, Georgia, the oldest woman's college in the world, and the first to award a degree to a woman. Subsequent Southern colleges, preceding Chicago's first, included the famous Baylor in Texas, in 1845—Baylor College for women and Baylor University.

"Today, there are in the Southern

States 189 recognized colleges and universities. The Middle West has only 116. The remainder of the country has 275.

"In justice to the Middle West, the North, and East, it should be understood and stated that this ridiculous editorial in the Tribune does not reflect the attitude and opinion of the public in this section toward and regarding the Southern States, but is actuated probably by jealousy and is indicative of a narrow policy that has characterized the Tribune's attitude toward the South for many years. Business men in Chicago and the Middle West know its utter falseness, and it is to the interest of those same business men—many of whom seek Southern patronage—to see that such misstatements are not circulated in the future.

"If the editorial writers for the Tribune are weary of recording murders, gang fights, and boot legging in Chicago—as they have reason to be—and are merely seeking a new subject, we suggest that they choose one on which they have more information. A little knowledge is a dangerous thing, but none at all is gross ignorance."

SENTIMENT FOR HIGHWAY BEAUTIFICATION

The Wisconsin state legislature has before it two bills that pertain to the subject of highway beautification. One seeks to restrict the vandalism of telephone and power lines which cut and slash trees that may interfere with the stretching of their lines. The other provides for highway beautification, particularly the planting of trees, as part of the duties of the various county highway commissions.

This is a fair indication of the extent to which sentiment throughout the country is growing in favor of making high ways things of beauty as well as of utility. There is no reason why a highway should be nothing more than a hard surface that one may use to ride upon from one point to another with the least possible expenditure of time. Motor car travel is, for great numbers of people, a source of pleasure. They like to ride along leisurely and enjoy the beauties of the country through which they are passing. But unfortunately there is all too often little beauty in sight. Little thought has been given for years to the matter of making roadsides attractive. Ugly sign boards, rubbish dumps, and dreary open spaces greet the eye of the traveler.

That this condition is changing is well. We trust that the citizens of our country and state will all become ardent agitators in favor of making highways attractive as well as useful.

HAD A REAL RADIO

A group of traveling men were swapping lies about their radios in a Smith Center drug store, as Tom Kiene tells it. And old man had been listening silently.

"Got a radio, old man?" asked one of the drummers.

"Yeah," replied the old fellow, "I got a little two tube affair. It's a pretty good one, though."

"Can you tune out these little stations with it?"

"Well, I was listening to a quartet the other night, an' I didn't like the tenor, so I just tuned him out and listened to the three of 'em."

TIME TO CHANGE

It is a frightful blunder to choose youthful and inexperienced lawyers to dominate our legislatures to commit wholly to them the duty of grappling with these problems. Surely the costly experience of the past has taught that the time has come to change our method of selecting candidates for the legislature and to conscript the ablest, the wisest and best men we have to conserve the interests of society in the passage of laws.

—E. G. Senter, Dallas.

FOR SALE

One National cash register; large size, perfect condition. Quite reasonable.

26tf. Spearman Dry Goods Company.

Model "A" Fords

Win Unique Contest

Under conditions more difficult than those which confronted Joffre's immortal "taxicab army" in its frantic dash to the Marne in 1914, Model A Fords swept to victory in a specially arranged contest based on war emergencies staged by the military first aid section of the General Finnish Automobile Association.

Competing against fourteen different makes of automobiles manufactured in the United States and one Italian-made car, the sturdy Fords captured 18 out of 29 prizes. Ten of the fourteen "honor prizes" went to the Fords. Every Ford which entered the contest finished the 400 kilometer route. One was driven by a woman.

The purpose of the Finnish Automobile Association is to promote all-around driving training of its members in order that they may be able to take an active part in war maneuvers in a sudden emergency. Drivers received instructions regarding the route, parking places, and average speed required two minutes before the start of the race. No restrictions were placed on the size of the car or cylinder volume, which brought the

Fords into competition with the more expensive and larger cars.

The race started from Helsingfors, and the cars were started at intervals of a few minutes in different directions. "Control Stations" were located at various points along the course to check the speed and other requirements. Reports of the outcome of the competition have just been received in this country.

ANOTHER EDISON?

Governors of many states are cooperating with Thomas A. Edison to help him find his successor. The great inventor, after half a century of work in which he revolutionized modern life, is seeking a youth of unusual capabilities who may perhaps be able to continue the work he has so well started.

To the high school boy who gives the best answers to one of his questionnaires, Edison offers a free college scholarship. One boy from each state, the one considered the possessor of the highest ability in scientific subjects, will be given a free trip in August to Mr. Edison's Orange, N. J. laboratories, where the questionnaires will be presented to him. Each of these boys will be entertained and made a gift of an Edison radio-phonograph.

We doubt that another Edison will be found. This miracle worker is

unique. Yet we have no doubt much rare talent will be discovered in the search, and several promising youths will be given an impetus that may result in new benefits to humanity.

Therefore this enterprise is more than commendable, it is a particularly lovely gesture of a man much beloved, revered and admired—"another" of whom, however, we fear cannot be found so easily.

Self government is predicated upon the fact that every responsible citizen will take his part in the creation of law and that he will also take his part in the obedience to law and selection of officials and methods for its enforcement.—President Hoover.

NOTICE

There will be a meeting of members of the Union Church on Saturday, June 15th, at two o'clock p. m., for the purpose of electing a trustee to fill the vacancy occasioned by E. H. Baskin's having moved away, and for the transaction of any other matters of interest that may come before the meeting.

A full attendance of the members of the association is urged and requested.

26t2p. G. W. FULLBRIGHT, President of the Association.

A GOOD HABIT TO EAT AT

JOE'S CAFE

NEARLY EVERYONE ELSE DOES

GOOD COFFEE

BIGGER than the rain!



The Standard of POWER For all Purposes Ask the Man That Owns a CATERPILLAR TRACTOR

The "Caterpillar" Tractor is bigger than the weather—bigger than the rains that delay farming—bigger than bad field conditions.

Balanced power and traction—sure, non-slipping traction that gets the power out to the draw-bar where it does useful work. Weight spread over the broad, flat tracks in such a way that the "Caterpillar," big or small, rides the surface.

When the sun comes out and dries the crop you are harvesting—and your neighbors are waiting for the ground to dry—you will be out there getting it in with your "Caterpillar" track-type tractor.

Day after day, year after year, you will find your "Caterpillar" ready to serve you at a moment's notice—bigger than rain—or snow—or mud!

A "Caterpillar" Tractor and a "Holt" Harvester is the best insurance for saving grain—one that will pay you a dividend instead of costing a premium.

Ten thousand hours of service is not unusual for a "Caterpillar" Tractor and "Holt" Harvesters have run more than 25 years and are still going.

Local Representative J. B. Nicholas Spearman, Texas

40 years of experience 'combine experience' are back of the HOLT

Plains Tractor and Equipment Co.

CATERPILLAR Holt Harvesters Russell Graders Caterpillar Tractors

Second Hand COMBINES

In Good Condition

For

Sale or Trade

Reasonable Terms

Raney & Crawford

The RED RIVER SPECIAL Line

ORDINANCE NO. 42

ORDINANCE PRESCRIBING RULES FOR THE DISTRIBUTION OF GAS AND RULES FOR GAS FITTINGS; AND DECLARING A VIOLATION OF ANY OF THE PROVISIONS OF SUCH ORDINANCE TO BE A MISDEMEANOR AND PROVIDING A PENALTY THEREFOR:

Section 1; (Rule 1). In piping new houses the gas company will decide where gas meter shall be located and the fitter shall erect a meter loop 18 inches square at the proposed location of meter.

Section 2; (Rule 2). Provisions must be made to place meter on a solid support where it can be conveniently read and protected from the weather. Meters shall not be located under sidewalks, or show windows, near furnaces or ovens, locked in compartments, or placed in other positions where they will be inaccessible to adjust. Under no conditions shall plumbers, fitters or other parties disconnect any meter, connect to or disturb piping or inlet side of meter after once set.

Section 3; (Rule 3). To accommodate different tenants the company will set as many meters as there are separate consumers in a given build-

ing connecting the meter to one service pipe, providing the service is large enough to provide an ample supply, and that the loops or pipes leading to the different tenants are extended to the proposed locations of the meters.

Section 4; (Rule 4). Risers must not be scattered but must be dropped together in alignment to the room where meters are set. They must be kept at least three inches apart and extended not less than twenty inches from the floor.

Section 5; (Rule 5). Elbows, street ells, and not tees, shall be used on all meter inlet connections. All connections or disconnections of meter for any purpose will be made by employees of the gas company only.

Section 6; (Rule 6). All gas pipes must be graded from meter to riser, free from traps or sags and properly supported with screws and gas pipe hook or hangers. When it is impossible to prevent a trapped gas pipe, a suitable drip shall be provided, consisting of a nipple and cap located in an accessible place.

Section 7; (Rule 7). In no case shall valves or unions be placed between ceiling and floor or in an inaccessible place so that the stuffing box of the valves cannot be replaced.

All unions shall be of an approved ground type.

Section 8; (Rule 8). Where globe valves are used on fire connections, the stems must be packed with asbestos packing. Soft seat valves must not be used.

Section 9; (Rule 9). In running a line through a fire great care must be taken to see that pipe and fittings are free from defect.

Section 10; (Rule 10). Lead pipes must not be used under any circumstances.

Section 11; (Rule 11). Use as few elbows as possible. Elbows not absolutely necessary will be condemned. When impossible to get through an obstruction such as a beam, offset the pipe rather than use an elbow.

Section 12; (Rule 12). Air mixer must not be placed in airtight ash boxes, but where a free flow of air can reach them at all times. Use adjustable mixers.

Section 13; (Rule 13). The burr left on inside of gas pipe, must in every case be reamed out.

Section 14; (Rule 14). All outlets or risers where fixtures are not placed must be securely capped.

Section 15; (Rule 15). All drops and openings for lights must project at least one inch beyond plaster of walls or ceiling, and must be securely fastened to joists or studding or to notched or cross pieces fastened to joists, or upright studding.

Section 16; (Rule 16). Unions and reducers, not bushings, shall be used except to connect stoves or fires.

Section 17; (Rule 17). All gas pipes must be tested with air pressure on a mercury or spring gauge showing ten pounds by the City Plumbing Inspector or Gas Inspector, or other duly authorized representative of the City. This pressure shall be maintained for 15 minutes without falling. Gas will be turned on by an authorized agent of the company only, after such test has been properly made and report of same filed with the gas company. If meter stop is closed, do not open under any circumstances. Application must be made to the Company for gas to be turned on.

Section 18; (Rule 18). Where pipe runs through a stone or brick wall, opening around the pipe must be cemented.

Section 19; (Rule 19). Place a damper in all stove pipes or chimney throats. The table following shall govern the sizes of pipe to be used for fuel and illuminating purposes:

No Fires	Maximum length in feet	Size in in.
1	30	1/4
1	100	1
1	300	1 1/4
2	20	3/4
2	60	1
2	100	1 1/4
3	40	1
3	120	1 1/4
4	20	1
4	90	1 1/4
5	70	1 1/4
5	125	1 1/2
6	40	1 1/4
6	90	1 1/2

Hot Air Furnaces:
For hot air furnaces, boilers, etc., using burners, having 2 or less air mixers, use one and one-fourth inch pipe. For the same with four mixers, use one and one-half inch pipe. For the same with five or more mixers, use two inch pipe.

No service pipe from company's main line to meter shall be less than one and one-fourth inch. All main lines from meter to lead lines must not be less than one inch to the first opening.

Gas Lighting:
The distance is the greatest length allowed in each instance. 3-1/8 inch pipe 1 burner; 1 1/2 inch pipe, 4 burners; 1 1/4 inch pipe, 6 burners; 1 1/2 inch pipe, 15 burners; 1 1/4 inch pipe, 35 burners, 70 feet.

Section 20; All joints shall be painted with orange shellac. White lead shall not be permitted.

Section 21; (Rule 21). Contractors desiring to do gas fitting may qualify by complying with the requirements of this ordinance and of the inspector, and license will be issued to said contractor upon paying to the City Clerk of the City of Spearman, the sum of \$35.00 (Thirty Five Dollars) license fee for the first year or any part thereof, and a renewal fee of \$5.00 (Five Dollars) for each year or any part thereof, thereafter, as long as this ordinance is enforced and in effect.

Section 22; (Rule 22). Property owners or contractors shall pay to the inspector a Fee of One (\$1.00) Dollar for inspection of connections of not more than five (5) openings, and Ten (10c) Cents for each additional opening. Fee to be paid to inspector when inspection is made.

Section 23; Before engaging in the business of gasfitting every person, firm or corporation shall give to the City of Spearman a bond in the sum of One Thousand Dollars (\$1,000.00) to be approved by the Mayor and the City Council, conditioned that such party will faithfully comply with the terms and provisions of this ordinance and all the rules and regulations made in pursuance thereof, and will indemnify and hold said City harmless against all cost, expenses, damages and injuries sustained by said City by reason of carelessness or neglect of said gasfitter in operating under this ordinance and the rules and regulations made in pursuance thereof; such bond shall be executed to cover a period of one year and shall remain in full force and effect as to each piece of work done for two years after the same has been completed, provided however, that any party having given the bond as a plumber under and pursuant to the ordinances of said City regulating the business of plumbing, shall not be required to give the bond herein provided for.

Section 24; Copper tubing must not be used under any circumstances except in connecting built-in heating stoves.

Any person or persons violating any provisions of this ordinance shall be punished by a fine of not to exceed \$25.00.

Passed and approved this 7th day of May, A. D. 1929.

FRED J. HOSKINS,
Mayor of the City of Spearman, Texas.

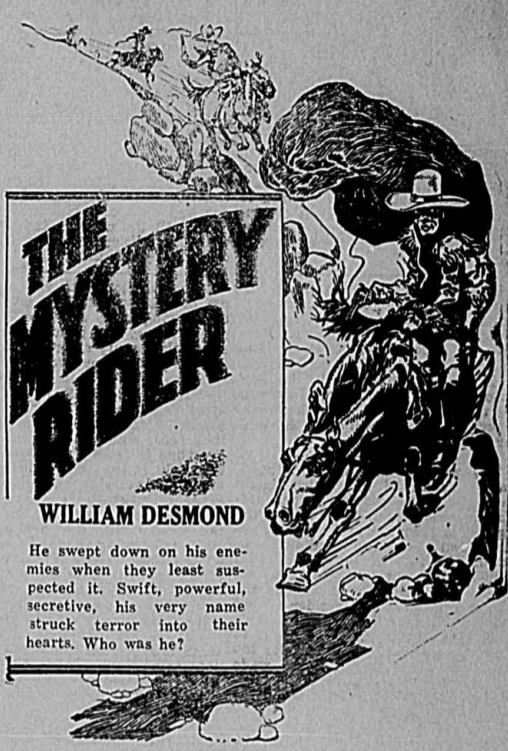
Attest: S. E. HARBISON,
City Secretary.

A friend of ours agrees that prohibition is the cause of the violation of liquor laws. Marriage, he adds, is also the cause of most divorce.

They're trying to break an \$80,000,000 will in Louisville. There's a prosperity note for members of the legal profession.

Lyric Theatre

"WHERE BREEZES BLOW"



This Super Chapter Play will begin at the Lyric Theatre Friday and Saturday, June 14 and 15. Last chapter of "Tarzan The Mighty" will be shown also.

All children turning in to us ten different Tarzan pins will be admitted free.

A Feature Comedy "The Carnation Kid" will make you laugh.

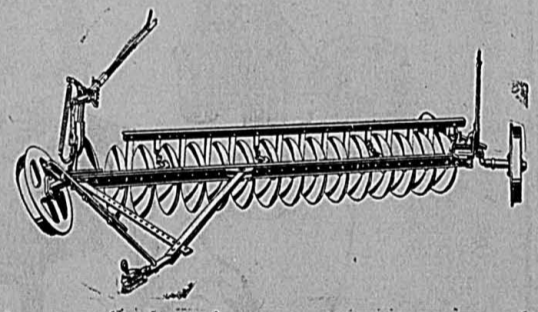
7th Annual Anvil Park Rodeo

June 13, 14 and 15
Canadian, Texas
LEONARD STROUD'S SPECIALTY ACTS



THE IDEAL PLOW
for summer fallowing
ROCK ISLAND

SANDERS
CYLINDER
DISC
PLOW



Land may lie fallow for eighteen months, it may be grown solid with quack grass, sunflowers and weeds, and yet a Rock Island "Sanders" Cylinder Disc Plow will put it in shape for seed.

These "Sanders" Cylinder Disc Plows are changing tillage methods, reducing plants cost and raising profits in the wheat belt.

The special curvature of the disc blades—the Sanders cup shape—and the vertical set of the disc, which revolve together, reduce friction and move the soil in the same direction but about one-third as far as the regular disc plow. The discs cut off the vegetation the complete width of the ground. Sizes to cut from 6 to 12 feet wide, 2 to 6 inches deep, creating the seed bed that holds moisture. You'll notice the difference between the work of a Sanders and others.

The construction of Rock Island "Sanders" Cylinder Disc Plows is rugged. They not only do hard work, but stand up under it. Notice the frame—it looks like a railway rail—its strong, but simple.

Come in and look over this plow that is working 25 to 40 acres per day for your Neighbors.

ARTHUR OWEN
Spearman Dealer
In the W. L. Russell Old Building—Across the Street
South of Panhandle Lumber Co.

C. K. WILMETH & SONS
(Better Known as Rabbit Foot Bill)
General Auctioneers
Make sale dates at Reporter Office Spearman, or Herald office at Guymon.
Farm Sales a Specialty

Jack Allen Walter Allen
ALLEN & ALLEN
Attorneys-at-Law
Perryton Texas

R. T. CORRELL
LAWYER
Perryton Texas

JOT HORTON
LAWYER
Spearman Texas

JOS. H. AYNESWORTH
Attorney
General Practice—Civil and Criminal
Phone 24, Stinnett, Texas

J. E. GOWER, M. D.
Physician and Surgeon
PHONES: Residence, 98; Office, 33
X-Ray Service
Office in Reporter Building
Spearman, Texas

DR. F. J. DAILY
DENTIST
Offices on Second Floor Reporter Building, Phone 156
SPEARMAN, TEXAS

OWNERS MULTIPLY THE SIX-SIXTY

The enthusiastic loyalty of Six-Sixty owners is the important reason for the increase in Six-Sixty sales.

The good things they say about the car are persuading thousands to enjoy a demonstration.

And a demonstration usually leads to a sale, so impressively do these features affect performance:

Continental Red Seal Motor . . . quiet L-head . . . 4-bearing crankshaft . . . silent timing chain . . . Bohnalite Invar steel strut pistons . . . forced feed lubrication . . . four-wheel Bendix brakes . . . long semi-elliptic springs . . . shock absorbers . . . perfect balance throughout . . . 109 inch wheelbase . . . quiet roomy bodies . . . modish upholstery . . . up-to-date lines and colors . . . chromium plating on all ornamental fittings.

THE SIX-SIXTY—109 in. wheelbase—\$685 TO \$875
All prices at factory—Lansing, Michigan

AND—FROM \$595 TO \$815—THE DURABLE DURANT
FOUR-FORTY—A CAR WITH AN IMPRESSIVE RECORD

DURANT
A GOOD CAR
Spearman Motor Co.

Big American Legion dance at N. N. Park, Monday night, June 17.

Mr. and Mrs. J. F. McCleskey of Hart were Sunday guests in the home of Mr. and Mrs. A. F. Barkley.

Misses Margaret and Louise Harvey of the Kimball community visited day and Saturday in the home of Mrs. Chloe Oldham.

Miss Waurika Haney was here last week from Lubbock, visiting with friends and relatives.

Miss Emma Reeves and Ralph Winsworth motored to Borger and attended the show Sunday.

Mr. and Mrs. M. L. McLain and Miss Louise Buchanan were Borger visitors last Thursday.

Cy Dotterer was here from Manter, Kansas, the first of the week, attending to business matters.

Don't miss the big American Legion dance at N. T. N. Park, Monday night, June 17.

Clarence Wilhite of Mangum, Oklahoma, has accepted a position in the Sid Clark Barber Shop.

Mrs. J. E. Gower and the children left this Thursday morning for Culp, Arkansas, to visit with her parents.

Mr. and Mrs. Bryan Wilbanks of Butler, Oklahoma, are guests in the Floyd Wilbanks home.

Mr. and Mrs. Ernest Miller are the proud parents of an eight pound baby girl, born on Tuesday, June 11.

Mrs. J. P. Richards came from Borger Wednesday and visited a few days here with friends and relatives.

Mr. and Mrs. Doss Wright were attending to business and trading in town Wednesday.

Cap Richardson was here from Amarillo this week attending to business matters.

Mr. and Mrs. Robert Clogston left last Friday for a few days trip to the Carlsbad Caverns at Carlsbad, New Mexico, and at El Paso.

Mr. and Mrs. E. R. Wilbanks and son Arnold spent Saturday and Sunday visiting with relatives and friends at Hollis, Oklahoma.

Dance for everybody, sponsored by American Legion, at N. T. N. Park, 20 miles west of Spearman, Monday night, June 17.

F. A. Gochour is here from Freeport, Ill., this week attending to business matters and visiting with A. E. Townsend.

J. D. Hester returned Tuesday from Robert Lee, Texas, where he has been the past week visiting with his father.

Mrs. Lillian Barnard, District Deputy Grand Matron of the Order Eastern Star was here from Pampa last Wednesday evening, making her official visit to the local chapter.

Mr. and Mrs. W. L. Motley came from Hollis, Oklahoma, Tuesday and will visit a week or ten days in the W. G. Lee home three miles east of town.

Mrs. J. A. Tabor arrived here about two weeks ago from Green Castle, Indiana, for a six weeks visit in the home of her daughter, Mrs. Lloyd Neeley.

Mr. and Mrs. A. G. Brandt and daughter, little Miss Bobby Jean, returned from a visit with relatives at Post Wednesday. They were accompanied home by Mrs. Brandt's brother, Fred Cravey, who will spend the summer here with them.

Don Richard Cooke was an interesting visitor to the Reporter shop on Tuesday afternoon.

Miss Beatrice Gibner and Miss Vera Campbell came from Amarillo and spent the day here with their parents and with friends.

The little babe of Mr. and Mrs. Milton Hughes, living in the east part of town, was taken seriously ill on Sunday last, but is much better at this writing.

Mr. and Mrs. Lloyd Neeley are rejoicing over the arrival of a fine baby daughter, born Tuesday, June 11. The little lady has been named Dorothy Marilyn.

Mrs. W. E. Pittman and daughter Miss Virginia and Mrs. C. R. Oldham and daughters, Chloe and Ruth, motored to Perryton Sunday and spent the day visiting with friends.

Mr. and Mrs. Sid Burran and daughters Miss Oneta and Miss Lola came from Booker Sunday and spent the day visiting in the home of his brother, Mr. and Mrs. R. E. Burran.

Mr. and Mrs. O. C. Broyles arrived from Canyon Tuesday noon, and will make their home here for a while. Mr. Broyles is the contractor on the job of building sidewalks for Spearman.

Mrs. C. H. Ging and Miss Rogers went to Higgins Sunday morning to visit with friends and were accompanied home on Monday by Ila Mae Pierce, a sister of Mrs. Ging, who will visit here indefinitely.

Mr. and Mrs. H. E. James and the children will arrive in Spearman today for a visit with old friends. They are coming from Greensburg, Kansas, where they visited in the home of her parents, Mr. and Mrs. J. M. Estlack.

Mr. and Mrs. Curtis Lowe had as their guests the past week end Miss Lena Bratton of Guymon. On Sunday Mr. and Mrs. Leonard Grossman came from Guymon and spent the day with them, returning the same afternoon. Miss Bratton accompanied them back to Guymon.

Mr. and Mrs. E. K. Snider and the children will leave this Thursday morning for Cantonment, Oklahoma, where they will visit several days in the home of her parents. They will also visit in Oklahoma City, and expect to be away about a week.

Mr. and Mrs. Chas. Prutsman and little son returned Sunday from Moline, Ill., where they have been the past eight months. They are now at the home of his parents, Mr. and Mrs. W. E. Prutsman, east of town, and will be there during the summer to take care of their wheat crop.

Bob Bundy, efficient employee of First National Bank, returned last Thursday from a two weeks vacation spent at Ottawa and Wichita, Kansas, with his folks and friends. His mother, Mrs. S. L. Bundy and sister, Miss Ruth Bundy accompanied him back to Spearman for a ten days visit.

Sheriff and Mrs. Wilbanks and their daughter Miss Mary returned on Monday afternoon from Temple, where Mr. Wilbanks had his ears examined by a specialist. They visited with friends going and coming, especially at Abilene, where Miss Mary is thinking some of entering College.

Mrs. J. A. Buchanan came from her home in Laverne, Oklahoma, Sunday for a visit in the home of her son J. H. Buchanan. Mrs. Buchanan is 85 years old, but stood the trip over from Laverne well and is enjoying her visit here immensely. She has planned to visit her daughter, Mrs. R. A. Brown in San Angelo, and to continue her journey out to California to visit other relatives during the summer.

Mr. and Mrs. N. L. Beck greatly enjoyed a visit from their son E. W., who came from his home in Los Angeles, with his wife and baby Virginia, and spent a week in the parental home. They left Sunday for their home, promising to come often or hereafter. Mr. and Mrs. Beck had not seen their son for ten years.

Mrs. E. W. Surratt arrived from Conway, Arkansas, on Wednesday of last week for a visit in the home of her nephew W. M. Glover. Mrs. Surratt, who is an elderly lady, enjoyed this her first visit to the plains country immensely, noticing especially the cool, delightful nights. Mr. and Mrs. Glover and Mrs. Surratt left on Wednesday for Bethany, Oklahoma, for a visit in the home of his parents Mr. and Mrs. J. M. Glover.

WATCH LOST

A large, silver, open-faced Wall-tham watch was lost somewhere in Spearman. Owner will pay a liberal reward for its return to the Reporter office.

IN THE MARKET FOR CATTLE

I have several orders for cattle to feed, for both immediate and fall delivery. Also, still buying shipping cattle. If you have anything for sale, call me. I am trying to pay top price.

25th.

BOB ARCHER,
Phone 128, Spearman.

CUTTING

To the great relief of the neighbors, the snobbish and unpopular Jones family were moving. While the furniture was being brought out some difficulty was experienced in removing a pianoforte from an upper room, and some one proposed getting it through a large window and sliding it down. Then came a suggestion from the Jones's next-door neighbor, who had long fostered the deepest enmity toward them, tho until now she had attempted to conceal it. "No," she said acidly, all her pent-up bitterness at last showing itself in her tone, "let it come out as it went in—on the installment system!"

Saves Your Damp Grain

"Saved His Crop"

"We had a bin of rye 500 bu. which heated and moulded until we could not stand getting into the bin to scoop but by taking it out with the Blower and ReCleaner, it was cleaned, aired and cooled so the grain buyer took it without dockage, otherwise it would have been a total loss." —Crockett, Miss.



STANDARD STEEL WORKS
With Kansas City, Mo.
(LUB. MFG. CO.)

SPEARMAN HARDWARE
Spearman, Texas

You stop heating and moulding of damp grain—greatly increase its value when you elevate, aerate and condition it with the

Liberty Grain Blower

No matter how damp your grain, the Liberty will thoroughly air and cool it in one simple, inexpensive operation. This efficient Blower also removes dirt, smut, weevil, etc.—sharply reduces dockage losses. Users have increased the value of their grain as much as 7¢ a bushel.

One man handles 3000 to 5000 bushels threshed or shelled grain a day with the Liberty. Does away with all expense for inside scooping.

Store Your Grain
In A - - -
Red Top
Columbia
Grain Bin

CAPACITY:—500 bushels, 1,000 bushels and larger.

FIRE PROOF—WEATHER TIGHT

NEW PATENT ROOF

you will want to store a portion of your grain. Use this economical, safe and convenient method.

READY FOR IMMEDIATE DELIVERY

Womble Hardware
Company

Spearman and Morse

MORSE

Located in the southwest corner of Hansford county, Texas, half-way between Amarillo and Liberal on the new Rock Island railway now building.

Has the largest trade territory of any town on the line.

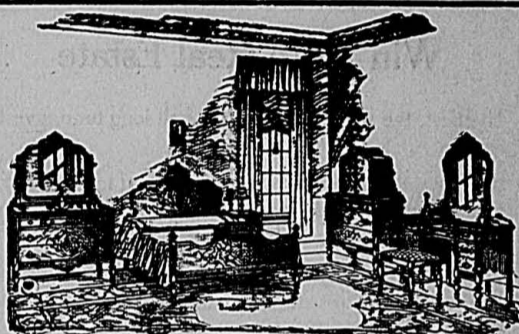
Estimated 750 to 1000 cars 1929 wheat will be shipped from Morse. Everything is new. This is your opportunity to get into or near the coming town on the Rock Island line

Farm lands cheap; town lots in reach of all. Churches, bank and consolidated independent school district in the making.

Come, let us show you the future possibilities of a small investment, in either town or farm property, if you are not afraid of your own judgment. We had rather show you than tell you.

A good list of farm and ranch lands at all times, and exclusive handlers of Morse Townsite.

Morse Townsite Co.
Morse, Texas



Choose Your Furniture
Carefully - - -

BEST OF ALL—buy it here—for here you are certain of obtaining just the furniture you want at just the price you want to pay. Our low prices, our high quality and our liberal terms will interest you.

JUST UNLOADED A CAR OF NEW FURNITURE

Any kind of combination you desire, for living room, bed room and kitchen.

Receiving Shipment of 1929 Victor Phonographs this week.

Harbison Furniture Company
ON SOUTH MAIN SPEARMAN



An Investment
In Contentment

The man who owns his own home is "set." Gone is the worry of monthly rentals. Gone is the want of privacy that the apartment-house dweller submits to. You've your own roof over your head forever—a homestead for your family—always. Our list shows improved homesites in almost every section of town—all sizes and types of homes.

Pickering Lumber Company
TRUE TAGG PAINT—100 PER CENT PURE

H. L. Dumas Manager Spearman, Texas

Chevrolet Reports

May a Big Month

Detroit, June 12.—May was the biggest month in the history of the Chevrolet Motor Company. Production for the month totalled 161,214 cars and trucks, breaking all records.

Under the pressure of the greatest demand in Chevrolet history, its 16 plants, factories in May experienced the busiest period the company has ever enjoyed. Factory wheels turned with all the speed consistent with Chevrolet's precision manufacturing methods to accommodate the demand for cars that poured in from Maine to California and from Washington to Florida.

May was the third consecutive month to set a new all-time monthly production mark. It far surpassed the March record of 147,273 units and topped the April achievement of 157,522 units.

To accomplish this record performance Chevrolet plants averaged 7,000 cars and trucks daily; an average of 777 cars and trucks were built every hour; an average of 13 were built every minute—and one was built every 4.6 seconds!

From present indications the same relatively high level of production will be maintained in June to keep pace with the demand, which officials report, continues unabated. Dealers stocks are still below normal due to the necessity of filling orders as fast as cars are received. Unfilled orders are over 300 per cent ahead of this same period last year. It was announced definitely that June production would break all records for the month.

The sixteen plants that contributed

to the record May performance are located in the following cities: Detroit, Flint, Mich., Bay City, Mich., Saginaw, Mich., Toledo, Ohio, Atlanta, Ga., Buffalo, N. Y., Tarrytown, N. Y., Norwood, O., Kansas City, Mo., Jonesville, Wisc., and Oakland, Cal.

NO UNINTERESTING SUBJECTS

Out of a group of hazy recollections the editor selects this little anecdote. It came originally from one of the leading advertising men of the country.

Li Sing belonged to a family of Chinese weavers. For two thousand years they had woven such beautiful rugs that they were entitled to use the symbol showing the favor of the Emperor. Recently Li Sing completed work on a rug that he regarded as his masterpiece.

In this rug went the experience of his whole line in the tying of knots, in the selection of colors, in making of novel design. The whole was embellished with dragons, bats and various other symbols designed to win the favor of the goddess of good fortune. These were set in a background of blue—a wonderful blue that rivals the beauty of the deep sea, or of a June sky, or of haze on the horizon. And the border was of gold, throwing on a glint such as one may get from the golden hair of a beautiful woman.

In time this masterpiece of all rugs found its way to America and along with many other Chinese rugs went into the rug section of a department store. The man who prepares the advertising came through taking notes. "Very nice," he said as he inspected the new assortment of rugs, "but it is hard to find any thing interesting

to say in the ad. A rug is merely a rug."

And the next day the following item appeared in an ad: "Starting tomorrow—a special selling of Chinese rugs, prices from \$300 to \$400."

The purpose of this little anecdote is merely to indicate that the expenditure of a little imagination may make a commonplace object a highly interesting subject. Don't scribble your ad off in a hurry. Think about it a little and you will win some of the rewards that go to those with original ideas.

No matter how common a thing may be, it may have a highly interesting history. G. K. Chesterton has said: "There are no uninteresting subjects—there are only uninteresting people."

54TH ANNIVERSARY OF FORT ELLIOTT TO BE CELEBRATED

The fifty-fourth anniversary of the establishment of Fort Elliott will be celebrated at Mobeetie with a picnic and fun festival, starting Wednesday and lasting through Saturday. A carnival has been secured and there will be baseball games every day and dances at night. Preparations are being made for several hundred visitors.

This year many visitors will make the trip by rail for the first time and the arrival in Mobeetie Wednesday of a locomotive will recall to old-timers the hard horseback ride of Captain Bankhead and several companies of government troops made to the same site on June 5, 1875 when a cantonment was established, 13 miles west of the present Mobeetie.

Fort Elliott was established on Sweetwater creek, one mile west of the present Mobeetie, in an effort to end Indian troubles on the Plains. It was situated on a raised plateau overlooking Sweetwater and gave a commanding view of the surrounding country. And there was no trouble with the Indians after its establishment.

In 1894 the Fort was abandoned and in 1900 it was sold at public auction, the site being parcelled in farms. The 20-room white pine house formerly occupied by the Commandant brought \$50 under the hammer. Now only the low ridges formed by crumbling adobe walls of the mule corral mark the former group of buildings.

Mobeetie is the oldest town in the Panhandle. The first court was held there, the first school established there, the first tax money ever paid to a county treasurer was paid there, the first furrow of Panhandle land to be plowed was broken there.

There were 11 saloons at Mobeetie at one time. It was a town of 1,200 people on May 1, 1898 when a cyclone killed eight persons and destroyed thirty principle business buildings. Since then the town has been unable to beat back. The recent completion of the Santa Fe railroad from Pampa to Clinton is the turning point in Mobeetie's history and the new Mobeetie, located one mile north of Old Mobeetie on the railroad, is destined to be a big trading center. Many business firms plan to move their stores to the new town and already several buildings are in process of construction.

SIGNS OF IMPROVEMENT

Workmen were digging a new subway tunnel in Paris. Suddenly they came upon a number of large, underground chambers in which there were skeletons and cadavers. Some of these sat upright with heavy blocks of stone about their necks, while others were tangled in chains and all showed that death had come only after hours and weeks of extreme agony.

Archeologists replaced the workmen in the excavations, and soon determined that these vaults were the torture chambers of the Petite Chatelet, a medieval prison and fortress. In the debris they found thumb-screws, eye-gaugers, nostril tearers, tongs for tearing out tongues, racks, pulleys, finger chopper and many other examples of all the fiendish devices of torture that the ingenuity of a brutal and savage age could invent.

To most of us this is of significance chiefly in showing that men have become much more humane and civilized in the past four or five centuries. Some times we see the evils of the present and come to conclude that people have improved but little during the past ages, but a discovery such as the one just made in Paris serves as a sort of opportunity to look back and see how far the race actually has traveled.

RODDAM INDICTED IN JAIL BREAK

Indictment was returned by the grand jury at 2 o'clock Wednesday against R. L. Roddam, charged with unlawfully conveying and causing to be conveyed into the Hutchinson county jail saw blades, same being instruments useful in escaping with intent then and there to facilitate the escape of Al Bowles, being held on accusation of a felony.

Roddam was indicted in connection with the attempt last Friday night of a wholesale jail delivery from the county prison, when saw blades were distributed among prisoners and one iron bar sawed.

Officers, working on a tip, checked all hardware stores in the territory, and were informed at the Thompson Hardware in Borger, that a man positively identified as Roddam, had purchased saw blades at that place. It was stated that Roddam could be remembered because he argued with employees over the price of the blades.

Roddam is said to have cashed a check given by W. R. Goodwin, former county judge, which was one of several given to his wife for her support while Roddam was in jail charged with swindling. The man was out on bond at the time the alleged attempt was made. Roddam is being held in the county jail.

Other indictments returned Wednesday afternoon were against M. Stapleton, charged with burglary of the home of Harry Hess in Borger on

June 2; and against L. A. Hendrickson, charged with burglary, theft and concealment of stolen property in connection with burglary of a copper still valued at \$350 from the home of R. T. Macey on Dec. 15, 1927. Hendrickson had been indicted by a former grand jury, but was re-indicted because of a flaw in the former charge.—Borger Daily Herald.

Read the Reporter every week.

Jack Dempsey announces that he might fight again for a million dollars. That strikes us as just another way of announcing a permanent retirement from the ring.

New Advantages

- 1 Smoother Operation at High Speeds
- 2 Rapid Acceleration — a New Silence and Swiftess in Traffic and Up Steep Hills
- 3 Easier and Less Frequent Gear Shifting
- 4 Reduced Wear on Moving Parts—Longer Life
- 5 Easier Handling—Restful Relaxation After Long Drives

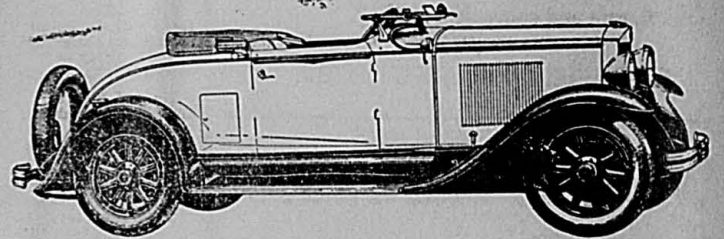
—with Two Quiet High Speeds

With two quiet high speeds at their instant disposal, Graham-Paige owners possess advantages in traffic, on hills and the open highway that materially increase motoring ease and enjoyment. You are cordially invited to drive a four speed Graham-Paige and discover the real importance of these advantages.



FIVE CHASSIS—SIXES AND EIGHTS \$895 to \$2495 All prices at factory—special equipment extra on all models.

Joseph B. Graham Robert C. Graham Ray A. Graham



A Car is Ready for You to Drive

Beck Motor Company, Spearman, Texas

Win With Real Estate

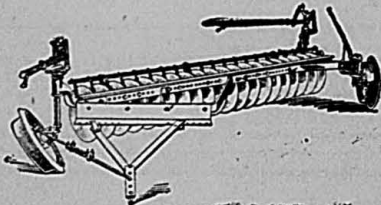
The best, the safest, and surest of all long term investments.

Real estate purchased here now is bound to increase in value in the years to come, for we all agree that Spearman is a community with a future.

Furthermore your investment is right here where you can watch it all the time and can liquidate when necessary without loss.

J. R. COLLARD Real Estate—Loans—Insurance

Puts Extra Money in Your Pocket



THE CASE E-B Great Plains Disk Plow has long ago proved its money and time-saving ability and is cutting costs and increasing profits for thousands of enthusiastic users. It prepares the seed bed at one-third to one-half the former cost and often increases the yield.

Its 20-inch electrically heat-treated disks, mounted on a horizontal shaft, penetrate to a depth of 6 inches if desired and thoroughly pulverize the soil, leaving some surface trash to stop blowing and hold snow. Hard ground is no obstacle—three heavy, flanged wheels hold the disks down to their work and assure uniform penetration.

This great plow is available in a variety of sizes. Depth is positively regulated by convenient, easy-working hand levers. The smaller sizes are equipped with power lift devices that save time and labor. Main frame is strongly braced. Pressure lubrication on all bearings.

You'll want to see this Case Great Plains Disk Plow. Come in and let us show you how it will put extra money in your pocket. Good, fast service—always.

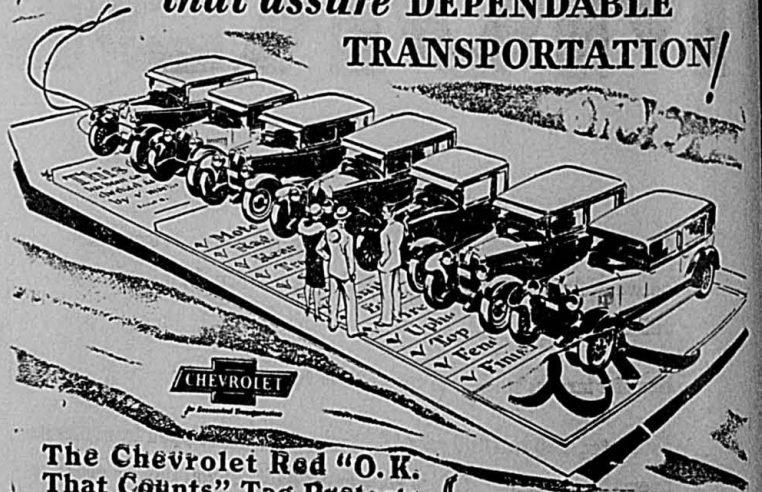
R. L. McCLELLAN GRAIN CO. Spearman, Morse, Gruver, Bernstein

CASE

Full line now includes E-B OSBORNE GRAND DETOUR

Honest Values

that assure DEPENDABLE TRANSPORTATION!



The Chevrolet Red "O.K. That Counts" Tag Protects Your Used Car Purchase.

Every reconditioned car we offer for sale is identified by means of the Chevrolet red "O.K. that Counts" tag. This tag is the purchaser's assurance that the car to which it is attached has been gone over carefully by expert mechanics—that it has been thoroughly reconditioned—and that the price is based on the car's actual ability to render service.

Due to the overwhelming popularity of the new Chevrolet Six, we have on hand at this time an unusually large group of these "O.K.'d" cars. Come in! You are certain to find the car you want—at a price that will save you money. Make a small down payment and drive your car away!

LOOK

at these Outstanding Used Car Values

1928 CHEVROLET TRUCK Motor in dandy shape, cab and tires in number one condition. This truck has been driven only a few thousand miles and is a real bargain. Be sure to see it before you buy.

With An O. K. That Counts 1928 CHEVROLET SEDAN The cheapest and best used Chevrolet in our history. This is a hundred dollar bargain. If you need a good sedan, don't fail to see this one.

With An O. K. That Counts We will have several good used Ford and Chevrolet trucks from now until harvest. We can make easy terms. Satisfaction guaranteed. Buy O. K. used cars and you will buy with confidence.

McClellan Chevrolet Co.

USED CARS with an O.K. that counts

National Sunday School

Lesson BY DR. J. E. NUNN

JUNE 16, 1929

Judah Taken Captive—Paying the Price of Sin.
Lesson—2 Kings 25:1-12.
It came to pass in the tenth year of his reign, in the tenth day of the month, Nebuchadnezzar king of Babylon and all his army, against him and encamped against it: and built forts against it round about.

The city was besieged unto the year of King Zedekiah, the ninth day of the fourth month, there was no bread for the land.

Breach was made in the wall of the men of war fled by place. The army was stretched completely around the walls so that the food supply and the water supply was cut off completely. Then followed a period of eighteen months during which the overcrowded city was forced to live on the food and water stored up in the city. It was a long, hard siege that could end in but one way. There was no hope for the doomed city.

The Famine in Jerusalem
"The famine was sore in the city, so that there was no bread for the people of the land."
Jeremiah's Lamentations, written probably soon after the capture of Jerusalem, is a terribly vivid account in exalted poetry of the horrors of this siege, and of the famine and resulting pestilence which compelled the Jews to surrender. Further particulars may be gleaned from the prophecies of Jeremiah and Ezekiel and the history by Josephus.

"The complexions of the men grew black with famine (Lam. 4:8; 5:10); their skin was shrunk and parched (Lam. 4:); the rich and the noble women searched the dunghills for scraps of offal (Lam. 4:5); the children perished for want, or were even devoured by their parents (Lam. 2:20; 4:3; 4, 10; 7zek. 5:10); water was scarce, as well as food and was sold at a price (Lam. 4:5); a third part of the inhabitants died of the famine and the plague which grew out of it (Ezek. 5:12).—Speakers Bible.

King Zedekiah Captured
"But the army of the Chaldeans pursued after the king, and overtook him in the plains of Jericho." The king had made preparations for his own safety and when the news came that the enemy was on the point of breaking into the city he gathered together his household and made his escape by way of a secret passage toward the plains. It was only a brief moment of liberty, however, for the pursuers overtook them and his guards were scattered from him. They captured the king and his sons and took them before the great king at Riblah. Zedekiah was guilty of a serious offense and could expect no mercy. He had broken his vow of allegiance to the king who had set him upon the throne and had led in a rebellion against his master, the king of Babylon. His sons were brought before the assembly and cruelly put to death while the frantic father looked on. The next step was to burn out the eyes of Zedekiah the traitor king. Thus the last scene of the destruction of the kingdom of

Judah by Nebuchadnezzar, in 586 B. C., terminates a period of 534 years of kindly rule in Hebrew history. Zedekiah was the twenty-third ruler, beginning with Sargon, the twentieth king of Judah, beginning with Rehoboam (937-920 B. C.).

The Siege of the City
Nebuchadnezzar had been in control of the city for a number of years and tribute was paid regularly by Zedekiah. The great monarch was busy in a distant part of his empire and Zedekiah decided to break away from Babylon and turn to Egypt for support. As soon as this was attempted the rebellious city was doomed. Nebuchadnezzar came with a mighty army and pitched his camp before the city. He had come to stay until the city was taken. Forts were built and engines of war were brought into place. The army was stretched completely around the walls so that the food supply and the water supply was cut off completely. Then followed a period of eighteen months during which the overcrowded city was forced to live on the food and water stored up in the city. It was a long, hard siege that could end in but one way. There was no hope for the doomed city.

The Fate of the Inhabitants
"But the captain of the guard left the poorest of the land to be vine-dressers and husbandmen." We have already seen the fate of Zedekiah and his sons. Many other nobles were put to death at the command of Nebuchadnezzar at Riblah. The most of the people were taken into captivity to spend their days in a strange land. This had been God's prophecy concerning them. God not only wanted to punish them but his greatest desire was to see them purged through this period of exile so that they could be fit subjects of his after return. The poor of the land were left in the home country to till the soil and care for the olive groves and the vineyards. The rich and powerful Jews who had been so oppressive during the past years were taken away to suffer while the poor who had been ground down under the heel of the oppressor came into possession of all the good things of the land. Gedaliah was appointed Governor of this handful of poor strag-

glers. They are not to have a king again. The kingdom is ended. The finest of these treasurers had already been taken away in the former raids of Nebuchadnezzar and other invaders. Sennacherib had received his rich harvest as a bribe from Hezekiah. There were still a great many articles of value which were seized and taken to Babylon. The two famous columns of brass, Jachin and Boaz, which signified the strength and stability of the house of God, were broken to pieces so that they might be carried away for the sake of material. All vessels of the temple were taken. It must have been a vast amount of metal that was placed in the holy places by Solomon are now taken away and started on a long journey to the land of exile.

The Certain Penalty of Sin
"As for repelling the law of retribution, we might as well undertake to repeal the law of gravitation." "Sin can never be judge by its immediate effects, for it is a seed sown

and you have yet to learn what it will yield in the reaping time."—Marcus Dods.
"Though the mills of God grind slowly, Yet they grind exceedingly small; Though with patience He stands waiting, With exactness grinds He all."

and you have yet to learn what it will yield in the reaping time."— Marcus Dods.
"Though the mills of God grind slowly, Yet they grind exceedingly small; Though with patience He stands waiting, With exactness grinds He all."

CARD OF THANKS
We desire to thank most sincerely for the kindness shown us during great bereavement.
Mr. and Mrs. Elmer

EVERY FARM IMPLEMENT



The symbol of better farm implements

The Avery trade-mark is universally recognized as the symbol of America's finest implements.

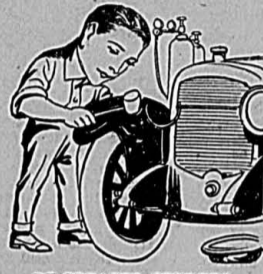
Over 100 years have passed since Benjamin Franklin Avery hammered out his first plow and in this past century his motto, "To build well—to deal square" has been the watchword of all who have succeeded him.

When you see the Avery trade-mark on a farm implement you are assured of more than its genuineness—you are given positive promise of unfailing service and lasting satisfaction.

Visit our store today!

Spearman Motor Co.

Spearman, Texas



RE-CREATED FENDERS

are just as good looking and as serviceable as brand new ones if they are re-created by us. Our work is the product of ability, plus experience and a desire to render satisfying service. We can weld your broken fenders into strong units and give them the proper shape at a small cost.

OK. RADIATOR AND FENDER SERVICE

A T

W

At 2

Local

be just the right distributor and you will enjoy every

We invite you to drive this. This sale will be conducted by foremost auctioneers. It is well worth your time.

The restrictions believe that this reasonably low price to get in and purchase fellow reap the

IOWA SEPARATORS

THE WORLD'S CLEANEST SKIMMER

GUARANTEE THEM TO:—Get more butter-fat; be easier to wash; easier to turn; easier to pay for; and cost no more than ordinary separator.

Our neighbor who has one. Over 65 sold in 30 months around an.

SO SELL:—Tankage, Linsed Oil Meal, Bone Meal, Bran, Alfalfa Meal and Hay, Oyster Shell, Snider's Chick Starter, Layer Mash, Bulk Rolled Oats, Bulk Garden Seed and

Order Produce

IN SPEARMAN

In Case of

Complete Funeral Service Moderate Charge

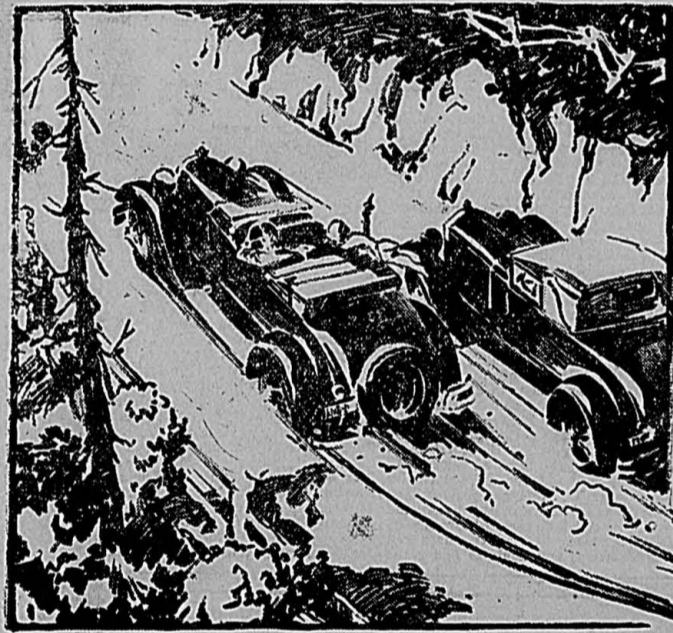
We Guarantee

When bereavement comes, cost need not enter consideration of an impressive burial service. Wilson Funeral Homes offer complete effective funerals efficiently executed at most reasonable rates. Automobile ambulance service. Lady attendant. Telephone 44.

St. Wilson Funeral Homes Spearman

J. B. COURIC, General

Phillips '66'



MOTOR PERFORMANCE THE MAKER INTENDED

Easy starting; quick get-away on a light throttle; flexibility at all engine speeds; smoothness of operation; power, mileage! This is the motor performance the maker intended you should have in your car. Phillips "66" makes it possible.

Easy starting and quick acceleration is obtained through a scientific Control of Volatility. The well balanced heavier parts insure extra power and extra mileage. The result!—a motor fuel that goes far beyond the needs presented by today's fast and merciless driving of high compression motors—a vigorous, able-bodied gasoline—a Phillips achievement. Worth a premium yet sold at regular prices.



Phill-up with Phillips

Copyright 1929 Phillips Petroleum Co.

W. M. GLOVER, Local Agent

AUCTION SALE

OF LOTS IN

The Reaves Addition

SPEARMAN, TEXAS

Sale Begins

Wed., June 19, 1929

At 2 O'clock and Continued Each Day Until the Lots are Sold

Location:

THIS ADDITION is ideally located for your home as all homes will be new and modern. Some of the best homes in Spearman are in this addition and more are being built. You will be proud to say that you live in the Reaves addition. You will be just the right distance from the city to enjoy the quiet life of the suburbs. This addition is located just two blocks from your beautiful high school building and you will enjoy every convenience of the city. Some of your leading citizens have already purchased lots and have built beautiful homes.

We invite you to drive through this addition and see the prettiest home in Spearman. The streets have just been put in shape and the lots are all staked and marked. This sale will be conducted right on the addition, and you see the lot you are buying. We will have on this sale Col. E. Walters of Oklahoma, one of America's foremost auctioneers. Col. Walters has been a Federal officer for years and has sold millions of dollars worth of property for the United States Government. It will be well worth your time to hear Colonel Walters on this sale.

Restrictions---Protective But Not Prohibitive

The restrictions in the Reaves Addition will be protective but not prohibitive. This will be the only restricted section in Spearman and in the next few years we believe that this addition will be the beauty spot of the north plains. We are going to offer you a golden opportunity to purchase these choice building sites at reasonably low prices and on easy terms. It will surprise you what these lots will be selling for in the next few years. Spearman is growing and now is the time to get in and purchase some of these choice building sites while they are offered you at this sale. Will you profit by the history of the past or will you let the other fellow reap the harvest?

FIDDLERS CONTEST

On Friday Night, June 21st, at the High School Auditorium there will be held a Fiddlers Contest at which over \$150 in prizes will be awarded the winners. The first prize will be not less than \$50 and the second not less than \$25. There will be about 10 prizes awarded to the winners. We will have all of the best known fiddlers in this section of the plains country and will also have some from Oklahoma. Anyone wishing to enter the contest please notify D. P. TICE, Spearman, Texas

In Case of Rain this Sale will be Continued Until the Following Day

Terms:--- We are going to sell these lots at reasonable prices and on easy terms. One-Third cash; balance in 6 and 12 months with 8 per cent interest. A 5 per cent discount will be allowed for cash on the deferred payments.

We Guarantee a good time for all who attend this sale. Don't forget the Time, Place and Hour

St. LOUIS TOWNSITE COMPANY

J. B. COURIC, General Manager

COL. E. WALTERS, of Oklahoma, Auctioneer
A Government Auctioneer

P. A. LYON, Clerk

P. M. Maize and Company "Paying Cash Pays"

Boys oxfords 10 1/2 to 2	\$2.45
Boys oxford sizes 6 to 10	\$2.10
Youth, 2 1/2 to 6 at	\$2.95
Men's leather work gloves Extra quality	\$1
STRAW HATS For Harvest, 50c to Men's and Boys	75c
MENS Work Shoes All Sizes	\$2.10
FLORSHEIM SHOES	\$10.00
Men's Furnishing, Stetson Hats, Shoes, Underwear and Work Clothing	SEE OUR EXTRA SPECIALS AT ALL TIMES—MANY NOT MENTIONED
TOBACCO, Tuxedo, 3 cans for	25c
CIGARETTES any kind 2 packages for	25c
GALLON APPLES	42c
RAISINS, 4 lbs 29c; 2 pounds for	16c
PEACHES, No. 2 1/2 Extra Quality Syrup Packed	22c

Gruver-McClellan

On Friday evening, May 31, at the home of Rev. and Mrs. J. H. Richards in Spearman, occurred the marriage of Miss Glenn Lee Gruver to Randolph McClellan. Rev. Richards performed the ceremony. The happy young couple were accompanied to town from their homes in the Grand Plains community by Mrs. W. L. Gruver, Mrs. Dave McClellan, Herbert McClellan, J. C. Harris and Misses Edith Ayres and Ada Johnson, all of whom were present at the wedding. The bride is the popular daughter of Mr. and Mrs. W. L. Gruver and the groom is a son of Mr. and Mrs. Dave McClellan. Both families are well known and highly respected stock-farmers of the vicinity of Gruver. The groom attended Spearman schools during the session just closed, being a member of the junior class. The newly-weds will continue to reside in Gruver and vicinity.

Main-Beeson

On Saturday afternoon at 3:00 p. m., at the Methodist parsonage in Spearman, occurred the wedding of Miss Grace Main to Bud Beeson, Rev. Addison performing the ceremony. The wedding of these most estimable young people came as quite a surprise to many of their best friends. The bride is the charming daughter of Mr. and Mrs. C. V. Main, and is

one of the town's most popular young ladies. The groom is a well-known, honest, hard-working young man, who has been a member of R. W. Morton's Ford organization here for the past two years. Mr. and Mrs. Beeson will continue to make Spearman their home, having taken a lease on the James residence in west Spearman.

REMINGTON PORTABLE TYPEWRITERS

The Reporter

Model "L" The Hit of Texas Dealer's Spring Opening

Wherever it is shown, the Case Model "L" Tractor is an instant hit. Many dealers have used the arrival of their first Model "L" tractor as the drawing card for their formal Spring Opening or Case Day.

Such a day was staged by the R. L. McClellan Grain Company at Spearman, Texas. As at other openings all over the country, the big attraction was the new tractor. There was a large crowd of interested farmers present.

Some 200 customers interested in new machinery accepted Dealer McClellan's invitation to spend the day with him and inspect the machinery on display. Lunch was served at noon and everyone seemed to have an enjoyable time. They were all very favorably impressed with the new tractor and combine. In addition the Great Plains and Wheatland Plows, the Case E-B Clod Crusher, three-row listers and Case Grain Drills, were also exhibited. Branch Manager W. F. Bartruff of Amarillo, Salesmen J. M. Vernon and N. W. Cayton were on hand to assist the dealer stage this most successful opening.

Much of the success of the Case Day was due to the manner in which it was advertised throughout the territory. We have before us a full page advertisement announcing the day. It appeared in the Spearman Reporter, and is a splendid example of very good advertising. It was profusely illustrated with line drawings of the Model "L", Wheatland Disk Plow and combine.

Among the interested visitors to Dealer McClellan's Opening Day was Milo Blodgett, extensive wheat grower of the Spearman country. This customer is the happy owner of several Case products, having an 18-32 tractor, two Model "P" combine, a 20-40 tractor and 28-50 thresher. He has always had good service from his Case machinery and is a booster for all "Old Abe" products.

Branch Manager Bartruff never counts his list of good dealers complete without listing "R. L." pretty well up among the top notchers. Dealer McClellan employs three salesmen to help him cover his territory. Last year, this dealer sold nearly fifty combines, as well as much other goods. Like many other dealers, he is very well pleased with the results of his spring opening.—The Case Eagle, June 1929.

Raising Calves Without Milk Is Profitable

Rations now recommended to raise calves without milk or milk substitutes, meet the requirements of economy and ease of handling, and over a period of years have produced excellent results under varying conditions, according to recent reports from the New Jersey Experiment Station where \$28 was the average cost of raising calves to the age of 6 months.

These rations, which contain 100 pounds of yellow corn meals, 150 pounds of ground oats, 50 pounds each of wheat bran, linseed meal and soluble blood flour, and 12 pounds of minerals consisting of equal parts of limestone, steamed bonemeal, and salt, were fed to various types and breeds of calves, 40 in all, over a period of several years, with the results that they attained an average normality of height and weight in a relatively short period of time.

Spring and fall calves, scouring calves, weak calves, strong calves and calves of various breeds were used. There was no scouring, no deaths, and an average of 100 per cent normality in weight was reached at the age of 6 months.

Using these rations the calf is taken away from the cow when 36 to 48 hours old and put into a pen. It is fed whole milk 3 times a day until approximately one month old.

Place the dry grain in front of the calf at one week of age and after each milk feeding accustom the calf to the mixture by smearing a little on its nose. Keep some good alfalfa hay in the pen and the calf will soon be nibbling at the hay and eating the dry grain mixture of its own accord. From the time the calf is 3 weeks of age until one month old the amount of milk should be gradually reduced, either in the total amount of liquid or by substituting water for the milk, so that when the calf is 30 days old it should be getting nothing but the dry grain mixture, good alfalfa hay and water.

At the age of one month the calf should be consuming from one to two pounds of dry grain mixture daily, and gaining an average of one pound a day, even though it may look a little thin for a few weeks after the milk feeding is stopped.

IT'S CHEAPER TO LIVE

A live man pays 25 cents for a shave while it costs a dead one \$5.00. A wool coat costs \$25; a wooden one \$100.

Taxi for the theatre is \$1.50; to the cemetery \$5.50.

A hired man plants corn for 25 cents per hour, but for planting you, he gets four times as much.

For 50 cents you can fill your hide with home brew; but the embalmer gets \$15.

CARD OF THANKS

We desire to thank our friends most sincerely for the many kindnesses shown us during our recent great bereavement.

Mr. and Mrs. Elmer Carnes.

Self government is predicated upon the fact that every responsible citizen will take his part in the creation of law and that he will also take his part in the obedience to law and selection of officials and methods for its enforcement.—President Hoover.

START THE DAY OFF RIGHT —With



Rich flavor and pleasing aroma. Roasted and packed fresh every day in Amarillo by the Junior Coffee Company — yet costs no more. Order a pound can today and learn how good it is!

At
BURRAN BROTHERS
Spearman, Texas

THE D. C. D. CAFE
Invites Mr. and Mrs.
B. G. Yarborough
as their guests
Sunday, June 16

The Mire of Debt

There is one certain way to get out of the mire of debt, to rid yourself of a handicap that will, sooner or later, overcome your hardest struggles to get on in the world. You must start to save a part of your earnings. Then as you accumulate a balance, clear up your debts and continue to save.

First National Bank

Spearman, Texas

BASEBALL

LIONS vs. LEGION

Friday, June 14, 5:30

SPEARMAN vs. MOUSER

Sunday Afternoon 2:30

Spearman played at Mouser winning the game 10-4. See your team play them Sunday

Free! Free!

With each \$10.00 purchase of dry goods at this store Saturday, June 15, we will give absolutely FREE your choice of our stock of ladies and childrens spring hats. Shop Early Saturday and get your pick of these Hats

Grocery Specials

FOR FRIDAY AND SATURDAY

No. 2 1/2 Peaches Heavy Syrup, can	24c
No. 2 Blackberries, can	13c
Peanut Butter, Louis Brand, 1 lb jar	21c
No. 2 Sweet Potatoes, can	12c
No. 2 Lima Beans, can	12c
Jersey Corn Flakes, box	10c
Raisin Cookies, fresh, pound	20c
Oranges, small size, dozen	12c
Pure Lard, bulk	pound, 15c
Boiling Beef, 2 pounds	35c

Car of canned goods just unloaded. We will be in better position than ever before to supply your harvest wants. Come in and get our prices before you place your order

W. L. Russell

DRY GOODS—GROCERIES—MARKET

Phone 78 Spearman

NEVER BEFORE A SALE LIKE THIS!!

JOYDAY

LINETTE ---FROCKS

for All-Day and All-Sports Wear

\$2.65

2 for \$5.00

It is important that you call at our store and see these dresses because it is not possible for illustrations to show their true style and quality value.



Charming Youthful Smart Chic

No Lovelier or More Wearable

dresses were ever offered at \$2.65. They are distinctly new creations in styles and fabric.

Made of Linette, a wonderful, cool and practical material developed by Marshall Field & Company, Wholesale, stylists. As neat and durable as Linex. We know of nothing similar to it. Guaranteed fast colors. White with various blues, greens, reds, gold, etc. Sizes 16 to 44.

On Sale Starting Saturday

Thomason Brothers

THE QUALITY STORE EST. 1904
Spearman, Texas