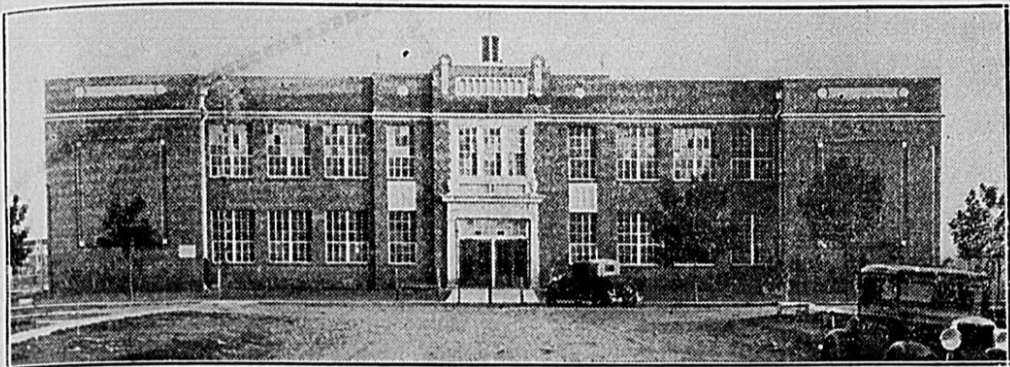


BACK TO SCHOOL



Buy Now

WINTERIZE YOUR HOME

The Nationally known COLEMAN FLOOR FURNACE installed in your home with a five year guarantee and paid for on easy payments. The cost is small, interest and payments under government loan makes this low operating cost furnace the choice of most American homes.

Congratulations to Students and instructors of Hansford County Schools.

Main Furniture Co.

Sept

most out- of the nation. the editors of noted all over Mr. Molyneux of the few men DO direct the ght of Ameri- Molyneux pick- recently publish- man Reporter icle a page and his outstanding itors of large a-out the nation apliment when lication sees fit comment. Most riefed: For the tion to carry a entirety is the makes the thrill y editor more

at the "lead" Texas Weekly

Miller, editor Reporter, ex- ould do if he nted with a it. A column try newspaper.

hundreds of s. Some are re small, and m are good all the commu- ey are publish- ers publish people and t than many

and the editors of a good many of these weekly newspapers of Texas are columnists in their own right preparing and publishing personal columns in which they sound off freely about any subject they choose. Some of the clearest thinking to be found in Texas gets into many of these columns.

We came across an interest- ing column of this kind recently in the Spearman Reporter, pub- lished in Hansford county. Editor of the Reporter is W. J. Miller, better known as "Honest Will" and he writes a column every week under the standing head, "Don't Name It". Mr. Miller disregards that injunction, for he does "name it" in forth- right language. He says what he thinks, and his thinking is back- ed up by common sense. Right now he is looking for a good juicy deficit for use in Spear- man, and he knows exactly how he will use that deficit if he runs onto it—but let him tell it:

R. V. CONVERSE SAYS:

'And he shall confirm the covenant with many for one week and in the midst of the week he shall cause the sacrifice and the obligation to cease, and for the overspreading of abomina- tions he shall make it desolate, even until the the consumation, and that determined shall be poured upon the desolate.'" Daniel 9-27. Was Daniel seeing Hitler when he spoke the above, a search would rather indicate that

ates. No w. against Roosevelt.

A young lady, ber of the Bund l Bund leaders her ed with the Hit and that spies each German sa this country, she immoral practice girls (membes and told about h pected to take o States through ti of Germans who country, we may with a minority

What is to b WPA worker who has no job? This tion for the nex with the admini- tion to say I told probably hurry a bonus for the bo been deprived. Wo will deliver to th have starved to d

Saddest of all is Big Business sees e money should com- ing and seek new it- To really posse must fight for it —Goethe.

Yours, R. V. Conve

SHERIFF'S SA

A Citizen and a taxpayer

CONGRATULATIONS

School children and teachers of Hansford County.—We are 100 percent for the schools of this county, which have proven in the past that they are one of the most attractive features of living in this area.

SPEARMAN RECREATIONAL PARLOUR

HOWDY SCHOOL CHILDREN

You probably know that it takes lots of study, plenty of time, and just a bit of native ability to make the honor roll in school.—It has taken years of constant study, research and experiment- ing to produce a Leader in gas and oil for the American market.

— THE LEADER IS CONOCO PRODUCTS —

Just as one pal to another we are going to tell you that Leadership is worth the effort. — Be a leader in school and tell Dad and Mom to use the gas and oil that has established leadership.

— Raymond Kirk, Owner



We are proud of our schools, our teachers and our school board. We are proud also, of the home pro- ducts that help make growing children more al- ert and healthy.

Tell Father and Mother that you want your HOME BAKERY bread, cakes and pies in the noon lunch and at every meal at home.

HOME BAKERY



Consumers Sales Co.
OF SPEARMAN

Extends Congratulations and Greetings to all students and teachers of Hansford County Schools. Give us an opportunity to serve you with Firestone Tires, Tubes and other products.



Womble Hardware

—Extends greetings and congratulations to the school children and teachers of Hansford County upon the advent of a new school term.

FRANK MORGAN
WEARS AS THE WIZARD OF OZ TO BE ONE ONCE OWNED BY L. FRANK BAUM, AUTHOR OF "THE WIZARD OF OZ" JUDY GARLAND PRESENTED IT TO MR. BAUM'S WIDOW)

JUDY GARLAND
AS DOROTHY in MGM's "The WIZARD OF OZ"

JACK HALEY
AS THE TIN WOODMAN WORE SO- WORTH OF POWDERED

LEE OIL CO.
Wholesale Retail

BACK TO SCHOOL

Sept. 11th

Congratulations

Students of Hansford County Schools, and the fine instructors who have made it possible for this county to earn an enviable reputation for educational work. We wish both the students and instructors the best of success during the coming school year.

Foxworth-Galbraith Lumber Company
Roy Jones, Mgr.



September 11—and when Mother suggests lunch—you suggest Cates Grocery and Produce. Always fresh staple and fancy groceries.

—We congratulate the school children on having so fine a school house and school faculty.

Cates & Son Gro. and Market

NOTICE OF SHERIFF'S SALE (Real Estate)

BY VIRTUE OF AN ORDER OF SALE issued out of the Honorable District Court of Hansford County, 84 Judicial District of Texas, on the 4 day of August 1939, in the case of Realty Trust Company, a corporation, plaintiff, versus Hazel Davis, et al, defendants, No. 202, and to me, as sheriff, directed and delivered, I have on this 4 day of August, A. D. 1939, levied upon and will between the hours of 10:00 o'clock A. M. and 4:00 o'clock P. M., on the first Tuesday in September, A. D. 1939, it being the 5th day of said month at the courthouse door of Hansford County, in the City of Spearman, Texas, proceed to sell at public auction to the highest bidder, for cash in hand, all right, title and interest which Hazel Davis, C. F. Davis and L. L. Davis, or either of them, had on the 25th day of April, 1931, or at any time thereafter, of, in and to the following described property, to wit:

All that certain lot or parcel of land situated in Hansford County, Texas, being Lot No. 7 in Block No. 35, Original Town Addition, City of Spearman, Texas, fronting 140 feet on the South side of Kenneth Street in said City.

Said property levied on will be sold to satisfy a judgement amounting to \$1,871.23, together with

mixed... your neigh... the quality... ed feeds. T... flour. A rea... ple.
SPEARMAN P.

Quick! And-S With Give



YOU good!

"I'LL TAKE THE JOB"

Says **KATIE KILOWATT**

Katie Kilowatt, your electric servant, never shirks and never asks for a day off. She's on the job 24 hours a day, 365 days a year. She does the hard work of housework. She makes home life more enjoyable. She works long hours at low pay. Give her more jobs to do and enjoy.

11c A AVER
Katie Kilowatt, age horn Public Se

First State Bank

Member: Federal Reserve System and Federal Deposit Insurance Corporation

"NICKLE AND DIME YOU TO DEATH"

SOME CARS BUT NOT A CHEVROLET

cost is low, payments are easy and gas and oil consumption is the lowest of any car you can buy. And that's not all. The Chevrolet is so soundly built and so well engineered that it seldom needs attention throughout its long life. No need for constant fusing. No need for frequent adjustments and repairs. Most Chevrolets are practically strangers to service stations. What's more are the lowest in the industry. You will find that Chevrolet changes every day you drive Chevrolet protects your pocketbook all the way round. First

SAVE WITH A CHEVROLET SIX

McCLELLAN CHEVROLET CO.
GRUVER MOTOR CO.

Congratulations

To the efficient corps of Teachers and school officials upon the opening of Hansford county schools on **SEPTEMBER 11TH.**

We believe you students will have good mental training during the coming school year as you have had in the past.—Let us aid you in your health training by selling you wholesome fresh merchandise at reasonable prices.

- CHOICE BEEF ROAST** 18c lb.
- Melrose Slab or Sliced Bacon** 19c lb.
- ARMOUR'S STAR Sliced Bacon** 29c
- White Rose Pure Lard 9c lb. or 3 lbs.** 25c
- No. 2 Can Perfection APRICOTS** 15c
- 2 Packages HUSKIES,** 15c

Burran Bros

BACK TO SCHOOL

Sept. 11th

Congratulations

Students of Hansford County Schools, and the fine instructors who have made it possible for this county to earn an enviable reputation for educational work. We wish both the students and instructors the best of success during the coming school year.

Foxworth-Galbraith Lumber Company
Roy Jones, Mgr.



September 11—and when Mother suggests lunch—you suggest Cates Grocery and Produce. Always fresh staple and fancy groceries.

—We congratulate the school children on having so fine a school house and school faculty.

Cates & Son Gro. and Market

... visited Martin in Berger soon they also attending song meet at the God church in Bor-

Mrs Leonard Schroeder have returned from a several days trip to the home of his Schroeder and Mrs. and children.

Mrs Mason Scott and E. N. Scott returned Saturday night from a visit with relatives in

NOTICE OF SHERIFF'S SALE (Real Estate)

BY VIRTUE OF AN ORDER OF SALE issued out of the Honorable District Court of Hansford County, 84 Judicial District of Texas, on the 4 day of August 1939, in the case of Realty Trust Company, a corporation, plaintiff, versus Hazel Davis, et al, defendants, No. 202, and to me, as sheriff, directed and delivered, I have on this 4 day of August, A. D. 1939, levied upon and will between the hours of 10:00 o'clock A. M. and 4:00 o'clock P. M., on the first Tuesday in September, A. D. 1939, it being the 5th day of said month at the courthouse door of Hansford County, in the City of Spearman, Texas, proceed to sell at public auction to the highest bidder, for cash in hand, all right, title and interest which Hazel Davis, C. F. Davis and L. L. Davis, or either of them, had on the 25th day of April, 1931, or at any time thereafter, of, in and to the following described property, to wit:

All that certain lot or parcel of land situated in Hansford County, Texas, being Lot No. 7 in Block No. 35, Original Town Addition, City of Spearman, Texas, fronting 140 feet on the South side of Kenneth Street in said City.

Said property levied on will be sold to satisfy a judgement amounting to \$1,871.23, together with

mixed with your neighbor the quality of feeds. T flour. A real ple.

SPEARMAN P.

Quick! And-S With Give



YOU good!

"I'LL TAKE THE JOB"

Says KATIE KILOWATT

Katie Kilowatt, your electric servant, never shirks and never asks for a day off. She's on the job 24 hours a day, 365 days a year. She does the hard work of housework. She makes home life more enjoyable. She works long hours at low pay. Give her more jobs to do and enjoy.

11c A
AVER
Katie Kilowatt
age home
Public Se

First State Bank

Member: Federal Reserve System and Federal Deposit Insurance Corporation

"NICKLE AND DIME YOU TO DEATH" BUT NOT A CHEVROLET

SOME CARS cost is low, payments are easy and gas and oil consumption is the lowest of any car you can buy. And that's not all. The Chevrolet is so soundly built and so well engineered that it seldom needs attention throughout its long life. No need for constant fussing. No need for frequent adjustments and repairs. Most Chevrolets need for frequent adjustments and repairs. What's more on the rare occasions when you need service you will find that Chevrolet charges are the lowest in the industry. You save with a Chevrolet every day you drive Chevrolet protects your pocketbook all the way round. First SAVE WITH A CHEVROLET SIX

McCLELLAN CHEVROLET CO.
GRUVER MOTOR CO.

Congratulations

To the efficient corps of Teachers and school officials upon the opening of Hansford county schools on SEPTEMBER 11TH.

We believe you students will have good mental training during the coming school year as you have had in the past.—Let us aid you in your health training by selling you wholesome fresh merchandise at reasonable prices.

- CHOICE BEEF ROAST 18c lb.
- Melrose Slab or Sliced Bacon 19c lb.
- ARMOUR'S STAR Sliced Bacon 29c
- White Rose Pure Lard 9c lb. or 3 lbs. 25c
- No. 2 Can Perfection APRICOTS 15c
- 2 Packages HUSKIES, 15c

Burrans Bros

School Bus Regulations

County Superintendents of Public Instruction throughout the State are calling attention to the provision in the rural aid bill eliminating all children residing within a radius of 2 1/2 miles of the school from the privilege of using the free bus transportation. This has been a feature of the Texas equalization legislation for a number of years, but was just another of those bologna provisions no one took very seriously.

But in the 46th regular session the economy bloc in the executive session of the free conference committee succeeded in putting teeth into the proposition by making it not only possible but mandatory upon the legislative joint advisory committee to withhold funds where infractions occur.

This asinine arrangement will force thousands of rural school children to walk on the highways—a practice condemned by safety experts as the greatest traffic hazard in the transportation decalogue. It originated with representatives from metropolitan areas who contended that if city children could walk two and a half miles to school, country

youngsters should not object to the exercise.

They overlooked an important factor. Urban children have sidewalks, or esplanades, to travel upon, with traffic lights to protect them at crossings. But on the highway it is a drainage ditch or sloping shoulder.

Enforcement of this economy requisite is certain to increase traffic accidents, and with the death of one Texas school child because of it the joint legislative advisory committee, those who

served on the free conference committee, the economy bloc members, and every legislator who let this iniquitous requirement slip through, will have the blood of that little one upon their hands. They might as well face that fact beforehand—for the people will rise up and let them know about it when the mangled, lifeless form of a youngster is hurled from the highway.

—Tulia Herald

FALL SEEDS—Pure beardless Blackhull, super dark hard variety. Beardless sand bearded winter barley and pasture rye.

Large stock highest quality imported twine. This is Prima brand long fiber, double treated white twine, and will give you better satisfaction and cost no more. Ask those who have used it.

R. L. PORTER GRAIN AND SEED COMPANY

BUY HOME grown cantaloupes and watermelons from home grocers stores. All stores in Gruver and Spearman handle Coy Holt's products.

Need RUBBER STAMP? Call 10—3 day service.

THE WORLD'S GOOD NEWS
will come to your home every day through
THE CHRISTIAN SCIENCE MONITOR
An International Daily Newspaper

It records for you the world's clean, constructive doings. The Monitor does not exploit crime or sensation; neither does it ignore them, but deals correctively with them. Features for busy men and all the family, including the Weekly Magazine Section.

The Christian Science Publishing Society
One, Norway Street, Boston, Massachusetts

Please enter my subscription to The Christian Science Monitor for a period of:
1 year \$12.00 6 months \$6.00 3 months \$3.00 1 month \$1.00
Saturday issue, including Magazine Section: 1 year \$2.60, 6 issues 25c

Name _____
Address _____
Sample Copy on Request

State Certified Seed Wheat, germination 95 per cent. Grown on the Emil Knutson farm. This wheat is re-cleaned and sacked in 2 bushel sacks.

Sold at: Gruver and Sons, Gruver; Kimball Milling Co., Gruver; Spearman Grain Growers and R. L. McClellan, Spearman.

\$1.00 PER BUSHEL

Hold Your Grain for Highest Price



Get a **DEMPSTER ALL STEEL GRAIN BIN** and have grain storage for to come. Pay for first season with profits from your grain for the price.

DEMPSTER ALL STEEL GRAIN BIN

FIRE-PROOF • LIGHTNING-PROOF • RODENT-PROOF

Easy to assemble because of its distinct design. Portable—move it anywhere.

PROVED VENTILATION—The oversize 18-inch ventilator and special construction of roof provide equal ventilation—dries grain while in storage.

EXTRA STURDY—ply ribs every two height—joined by corner for added strength.

COME IN and see the unusual features of which cost you nothing.

R. L. McClellan Grain Co.



We can't afford to sell the Spearman Reporter for \$1.00 a year, but we are going to do it for **ONE DAY ONLY**, Saturday Sept 2. Bring your dollar bill to the Reporter office and get the Reporter at half price, if you are a Hansford County resident.

Just think of getting 52 issues of The Reporter for less than two cents a copy—with all the important county news. The information from the court house, published exclusively in The Reporter is alone worth many times the price of a subscription.

Some say that times have been slow and the Reporter has decided to make this contribution to our subscribers. Our many farmer friends have found it difficult this season because of the low price of wheat. Well, we are just going to double the price of your wheat for one day.

This bargain offer is positively for one day only. The Hansford county rate the day before and the day after will be \$2.00 per year. Please don't come to us later and say that you just couldn't get around to taking advantage of the offer. You would not ask a retail store to sell you merchandise at a lower rate after the sale closed. Frankly, we would rather sell you the paper at \$2.00 a year, but we are making this one day bargain offer to our friends.

SPEARMAN REPORTER



SUBSCRIPTION OFFER

Name _____

Box or R.F.D. _____

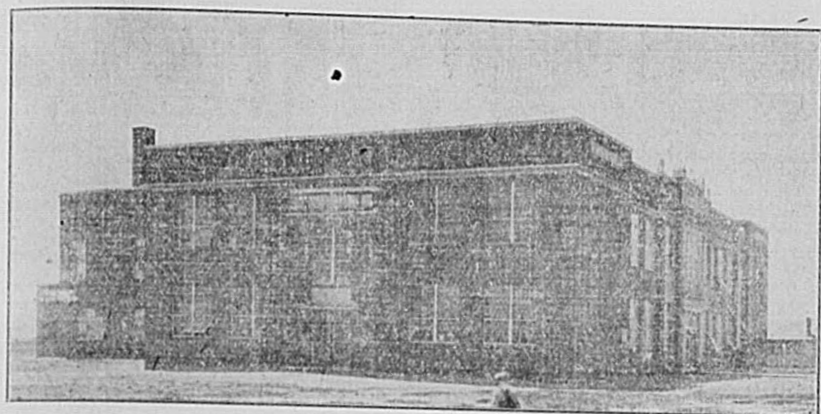
City _____

New or Old _____

Years Wish to Subscribe _____ Amount Cash _____

The Spearman Reporter

BACK TO SCHOOL



Sept. 11th



STUDENTS
 THERE is no gift that will please more than your photograph. They are the most personal of all gifts. Everyone will welcome a really good picture of you to be kept among their prized possessions.
 Phone 905F12 for an early appointment
J.D.'s Studio

**Extending
 Congratulations
 to STUDENTS
 and TEACHERS**

This firm is proud of the representative student body attending the schools of Hansford county. We feel that you are fortunate in having a splendid Board of Trustees that provide a very capable teaching staff, and arrange for the exceptionally good equipment of our schools.

WE ARE JUST AS PROUD OF THE SERVICE

We are able to render wheat producers in this county in the capacity of dealers for the 77 Case Farming Units. Let us also talk Dempster Grain Drills to the wheat producers of this county.

**R. L. McClellan
 Grain Company**



To The School Children
 And Parents Of Hansford County

We plan to carry many items you will need in your school work, and believe we can sell to you as reasonable as you can buy in this section of the state.

PENCILS, PENS, PEN STAFFS, FOUNTAIN PENS, LIBRARY PASTE, INK, ERASERS, WATER COLORS, CRAYOLAS, NOTE BOOK PAPER, NOTE BOOK BINDERS, RULERS AND MANY OTHER ITEMS.

Your Spearman Drug Store is here to stay and will cooperate with the parents of Hansford County students in making any advantageous purchase of supplies. **THIS STORE HAS always cooperated with the school faculty.**

We are proud of our schools in the county and the effective corps of instructors who have made an enviable reputation for Hansford County schools.

**Spearman
 Drug Co.**

Home Owned Rexall Store Phone 12

BRUCE SHEETS

Congratulations . . .
 —To Spearman School children and the excellent corp of teachers and instructors.



CHILDREN—
 Tell mother that she can save much time, work and worry by depending on the Helpy Selfy Laundry dry service for the family wash.

Helpy Selfy Laundry

BACK TO SCHOOL

Sept. 11

We wish all the students and teachers a pleasant and profitable school year.
 See us at any time for **FHA repairs for your home.**

Right now we have one nice 5 room modern home recently repaired and redecorated inside and out that we will sell at an attractive price and on monthly plan.

White House Lmb.

**Be PREPARED
 FOR A HEALTHY SCHOOL YEAR**



Dr. Powell, Eye, Ear, Nose and Throat specialist, of Dalhart, will be at the office of Dr. J. E. Gower Wed. Sept. 13. Children of school age who are suffering with bad tonsils and adenoids are retarded in healthy growth and advancement in their studies.

