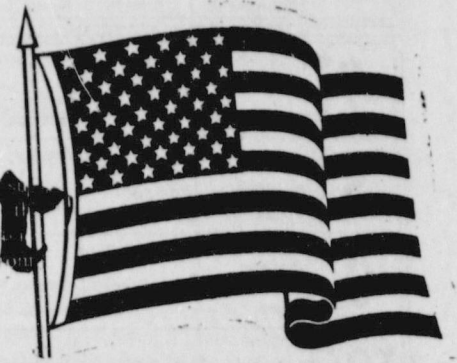




# The Spearman Reporter



VOL. 73 NO. 9

THE SPEARMAN REPORTER, SPEARMAN, TEXAS 79081

THURSDAY, JANUARY 7, 1982

## Thieves rustle herd valued at \$35,000

The Hansford County Sheriff's Department, assisted by law enforcement agencies in two states, is investigating the \$35-thousand theft of fattened cattle from the Hansford Feed Yard Christmas Eve.

Some time the night of Dec. 24, thieves cut the chain on the front gate of the feed facility and made off with 53 head of cattle bearing two different brands and two different ear tags.

Some of the beeves wore a D-BAR -- a D with a bar under-scoring it burned on the left shoulder of the animals. Stock wearing this brand will also have red ear tags bearing the name of Dan Archer, Perryton, Texas.

Also among the missing animals are some wearing an SA on the left shoulder and yellow ear tags bearing the name Scott Archer, Perryton, Texas.

Hansford County Sheriff R. L. McFarlin and his deputies are being assisted by Texas Ranger Jim Gillespie who works with Hansford County when Ranger assistance is needed and Gary Davis of the Oklahoma Bureau of Investigation (OBI). Also involved in the search for the missing livestock is a representative of the Texas-Southwest Cattle Raisers Association.

Initially, the search for the missing herd was a sweep of four states to the north hoping to discover the animals either in transit or in "holding" awaiting the next stage of such a theft: marketing or disposal.

"Fifty three head of cattle could be hidden from now on," Sheriff McFarlin pointed out. "But there is no profit in stealing, hiding and feeding this many animals even for a few weeks. They must go up for sale sometime and if first search efforts are fruitless, such stolen animals are almost always recovered the moment they go on the market or are

otherwise disposed of by transaction."

The sheriff said that, fortunately, the holiday period for his office was very quiet allowing him and his staff to give full attention to the cattle theft investigation.

This is a theft as old as the history of the West. Practically all such cases are successfully solved. The tragedy is the cost to the taxpayer through investigation and "due process."

As the case was discussed across the county at conventions of the coffee-cup crowd, one Oldtimer observed:

"Time was when 'due process' cost the price of a rope and that was often donated."

### To Host Ranger Teams

The Spearman Lynx and Lynxettes will be in action against the Perryton Rangers and Rangerettes.

The Rangers are the defending District 1-AAA Champions, and the Lynx have got a very experienced and matured team for the 1981-82 season. This will be the first District game for both. Go on out and check out the local talent at the Lynx Varsity Gym, because one thing for sure this will be a great game, as usual!

The Lynxettes and the Rangerettes will begin play at 6:00 p.m. The Lynxettes are very young, yet they have been playing long enough to be able to defend their crown. The Lynxettes are the defending District 1-AAA Champions, and the Rangerettes have lots of talent on their side. Every time that the Lynxettes and

SEE Lynx p. 2

### C Of C Elects Officers



RAY INGLE

Newly elected Chamber of Commerce officers for 1982 are Ray Ingle, President; Monty Blackman, First Vice President; Robert Elliot, Second Vice President; and Judy Nelson, Treasurer. The newly elected directors serving a three year term are: Mike Schnell, Elbre Hickerson and Robert Elliot. Frances Loftin has been appointed by the City to serve a three year term on the board of directors.

These newly elected officers and directors will begin their duties in January. The elected out-going directors are: Kim Brock, Bobbie Novak and Dick Elbert. The

City appointed out-going director is Robert Elliot. The hold-over directors are Jr. Lusby, Doug Steger, Butch Baker, Robert Queen and Jim McLain.

Out-going Chamber of Commerce officers were Dick Elbert, President; Ray Ingle, First Vice President; Monty Blackman, Second Vice President; and Judy Nelson, Treasurer. General manager is Mary Lou Wysonog.

These officers and directors have done an excellent job and should be commended for the work that they have done for the good of the community this year.

Cornelius is still listed as "missing in action" after being lost somewhere in Cambodia, June 15, 1973.

JUNE

A tragic truck-car collision near Canadian took the lives of Mr. and Mrs. William McBroom and severely injured their 14 year old son, Bill.

Area dryland wheat crop gives up, with approximately 95 percent of the wheat not good enough to harvest.

1981 Roundup acclaimed best ever. Mrs. Deta Blodgett was named Roundup Days Queen.

Rev. Frank Oglesby, pastor of the First United Methodist Church here, for the past four years, moved to Lubbock to pastor Forest Heights Methodist Church.

Jimmy Haden and Jeff Lackey go to Boys State.

Angela Lesly named Miss Hansford County at the annual Beauty Pageant.

The temperature soared to 112 degrees Tuesday, June 9, continuing a heat wave that hit the county in early June.

Groundbreaking was held for the future home of North Plains Implement on the Gruver highway.

Rev. Albert Lindley and his family arrive in Spearman, where he will pastor the First United Methodist Church.

June papers were full of news about the first all-school reunion to be held July 3 and 4 with class pictures, football and basketball pictures drawing the most interest.

Hansford County ranks 2nd in state in beef producing area.

Construction work on the extended care facility is reported on schedule.

### Accidents Up In '81

In 1981, the Spearman Police Department investigated 99 traffic accidents compared to a total of 86 for 1980.

This was an increase of 13 percent.

Twenty three of those accidents resulted in injuries to 33 persons and death to a 13-year old boy, the result of a mishap Dec. 23.

There seems--according to the statistics--to be no safe days in Spearman...only those

that are less hazardous than others. These are Thursday with an average of 14 accidents and Saturday and Sunday with an average of 12 mishaps each.

Monday, Tuesday, Wednesday and Friday averaged 15 accidents each during the year.

December was the high incident month with 14 followed by May and July with 12 each. March was the safest month with only 3 accidents reported. Other statistics were

February, August and November with 9 each; April and June with 8 each; October with 6; January with 5 and September with 4.

There were 74 accidents involving two motor vehicles. There were 11 mishaps involving a motor vehicle and a fixed object. There were three one-car accidents. There were two accidents involving three motor vehicles. There were three motor vehicle-bicycle acci-

dents. A total of eight hit-and-run accidents were reported. Nineteen of the accidents investigated involved parked vehicles.

There was also one incident involving a car and a piece of farm machinery.

Spearman Police Chief Ron Robinson urged Spearman residents to exercise greatest care and obey safety and traffic rules so these figures can be much less at the end of 1982.

### Kindergarten Students Need To Register

The Spearman Elementary School is starting the 1982-83 kindergarten students list. It is important that next year's students be known now in order that they may be given information on the immunizations and other planning which is necessary.

If you have a child or know of any child whose birthdate was prior to September 1, 1977, and who will be 5 years old before or as of Sept. 1, 1982, please complete the form and return it to the Spearman Elementary School, 511 S. Townsend. This should be done before January 25, 1982.

#### REGISTRATION FORM FOR 1982-83 KINDERGARTEN

Full name of child	Parents' names	Address & Phone	Birthdate	Sex

Please check whether the child will be a town student or bus students. ( ) Town ( ) Bus

Allen Alford, elementary school principal, announces that the school is starting the 1982-83 kindergarten students list. It is important that next

year's students be known now in order that they may be given information on the immunizations and other planning which is necessary.

If you have a child or know of any child whose birthdate was prior to September 1, 1977, and who will be 5 years old before or as of Sept. 1,

1982, please complete the form and return it to the Spearman Elementary School, 511 S. Townsend. This should be done before January 25, 1982.

## 1981 in review -

Reflections of 1981 in Spearman and Hansford County are capped month by month.

**JANUARY**-The Hansford Hospital held ground breaking ceremonies for the Extended Care Facility on Friday, January 9, at 10 a.m. at the location directly behind the hospital.

Mrs. Juliet Boyd observed her 100th birthday Jan. 4 at an

open house held in the Fellowship Hall of the First Christian Church in Gruver.

Bank deposits in the two banks in Hansford County were up \$4 million over 1979.

The City of Spearman employed Ronald Robinson, 28, as the new chief of police.

Rev. Lealand Grimmer of Perryton accepted the pastorate of the Apostolic Faith Church here.

The first baby of the year, Clancy Joe Vanderburg, was born to Joe and Kim Vanderburg on Jan. 3.

Pastor Bruno F. Gaskamp became the first ordained minister at Faith Lutheran Church on a full time basis.

Orvil Brummett was named "Man of the Year" at the annual Chamber of Commerce banquet. Duane Smith was voted Rotary Employee of the Year. Judy Nelson, was elected as Women's Division Member of the Year award. Dick Elbert takes over as president of the Chamber of Commerce.

A party for the visiting

director for the Fruitcake Review, Too was held.

**FEBRUARY**-Fruitcake Review Too played two nights to almost full houses and realized about \$3500 for the YMCA and \$3500 for the Chamber of Commerce.

All teachers were re-hired for the upcoming school year.

Spearman Lynxettes won the District 1-AAA Title. Spearman-Gruver boxing team win "Team Trophy" at Lions Golden Glove Regional Tournament in Amarillo.

A full time Department of Public Safety officer, Max Gunn, comes to the county.

**MARCH**-Tracy Vernon shows Champion Angus steer at Houston Livestock Show and Eadie Clemmons shows Reserve Champion Barrow, also at Houston.

Dr. Mario Manese, popular Spearman physician, returns to Phillipines.

City finances reported in good order at the first city council meeting of the month.

Rev. Ed Freeman, pastor of First Presbyterian Church here, announces that he will retire after 41 years in the gospel ministry. The Freeman's will make their home in Dimmitt.

The 1981 Hansford County Livestock Show was held March 20 and 21 with a total sale of \$89,479.15. Todd Williams shows Grand Champion Steer.

City workers get 5% cost of living increase. Council passes

resolution expressing gratitude to Baker and Taylor Drilling Co. for its presentation of a "Jaws of Life" unit to the city's volunteer department.

**APRIL**-Hansford County lost 138 people since last census 1970, according to preliminary 1980 census figures released by the U.S. Department of Commerce.

New aldermen for Spearman city council were sworn in. They were Bob Pearson, Jim Mercer and Gerald Heinrich.

County prepares for tornado season with safety program and a tornado warning Test.

YMCA-Rotary Auction raises \$10,000.

A 12 year old boy crashes into Equity building after high speed chase.

Theme for Hansford Round-up to be "Sharing The Wealth Of The Land".

MAY

April Peary is Valedictorian for the 1981 Class with a 97.171 grade average. Tamera Scroggs is Salutatorian with a grade point average of 94.00

Seventy-three Seniors graduate from Spearman High School.

Area Wide Larry Jones Crusade held at Gruver May 29-31.

Union Church marks 60th anniversary.

On Memorial Day the name of Major Samuel B. Cornelius was added to the memorial stone on the courthouse lawn along with area men who lost their lives in wars beginning with World War I. Major

### Filing Dates Are Here

It's time to begin thinking about local politics. Offices are opening in each of the governing entities, county government, city council and school board.

Coming up for election in November (with party primaries being held in May) are the county offices of county judge, county and district clerk, commissioners in precincts 2 and 4, county treasurer, and justice of the peace of precinct 1.

Many or perhaps all of the incumbents plan to seek another term of office. The Reporter made no attempt to contact the incumbents about their plans. Principals include judge Roy Lee McClellan, county and district clerk, Amelia Johnson, commissioners Joe Venneman, precinct 2; and George Lowe, precinct 4; Treasurer, Verna Gail Keim and

justice of the peace, Johnny Vernon.

Deadline for filing for county office is February 1.

In the city government, mayor Ralph Blodgett and councilmen Ed Garner and Ray Ingle will be looking at re-election decisions. The city election will be held April 3, with deadline for filing March 3.

The filing deadline for the school board election is March 3, 30 days before the April 3 election. Terms are expiring for Kent Guthrie and Mike Garnett.

To file county office, one must file with either the Democrat or Republican party chairmen, Carl Archer and Lola Reynolds, respectively. Filing for city and school elections is done at the city hall and school business office.

AUGUST

Edwards and Curtis Harbour homes.

The YMCA Fun Run was held July 4 with 40 participating.

The 1980 wheat harvest was defined as good, with 40 to 50 bushel irrigated wheat being harvested and what dryland wheat that was harvested ran from four to 16 bushels.

The First State Bank of Spearman observed its 64th anniversary July 10, 1981.

Palo Duro River Authority Director Johnnie Lee proclaims local water project alive and well.

Dr. Darrell Duke opens chiropractic clinic here.

Hansford County farmer

### Annual C Of C Banquet Set

The annual Chamber of Commerce banquet will be held January 23 at the high school cafeteria.

Ray Stone of Dallas, syndicated daily radio broadcaster for the Dallas Cowboy Football Report, will be the guest

speaker. He will bring with him an autographed Dallas Cowboy football which will be given away as a door prize that night.

More details on the upcoming banquet will be forthcoming soon.

### Services Held For

#### Former Commissioner

Memorial services for Joe L. Day, 69, a Hansford County Commissioner from 1953 to 1977, were held at 2 p.m. Saturday in the First United Methodist Church here. Burial was in Hansford Cemetery by Boxwell Funeral Directors.

Mr. Day died Thursday, Dec. 31, while visiting his daughter in Walters, Okla.

He married Neva Prater in 1935. They moved to Spearman in 1945. They moved to Truth or Consequences, N.M. in 1977.

Survivors include his wife, of Truth or Consequences, a daughter, Connie Vardell of Randlett, Okla.; and two brothers, Pat Day of Odessa and James Day of Textline.

Marvin L. Jones named to fill a six-year term as a member of the State Property Tax Board.

Two new doctors, Dave Muthali and Chris Gunasekera arrived. Staff members at Hansford Clinic are Carol Hall, Rosetta Tindell, Mary Martinez, and Linda Brown.

Sheriff R.L. McFarlin named director of the Texas State Sheriff's Association.

County employees received a 10 percent salary increase and commissioners approve a \$1,557,600 budget for the coming year.

Spearman schools enroll 851 students.

A spray plane crash August

25 critically injured the pilot Kim Cluck, 29 of Gruver and Londa Barber, 18, also of Gruver. The crash was about 18 miles west of Gruver.

SEPTEMBER

Don and Faye Wirsdorfer were honored with a "Going Away Get Together" at the First Christian Church which he has pastored for the past several years.

Storm dumps 2.73 inches of rain Thursday, Sept. 3.

Labor Day Telethon Raises \$5,146.86 here.

Arts & Crafts show sale held with some 37 dealers showing

see review p. 2



**SATURDAY**

1/7/82-1/13/82

CABLE	[3]	[4]	[5]	[7]	[8]	[9]	[10]	[11]	[12]
AM	OETA	KAMR	TMC	KVII	CBN	WGN	KFDA	WTBS	CNN
	Oklahoma City	Amarillo	Movie Channel	Amarillo	Christian Network	Chicago	Amarillo	Atlanta	Cable News Netw.
7:00	Flintstones Comedy Show	Prog Cont'd	Super Fun Hour	Contact Lesson	U.S. Farm Report	Popeye/Olive Comedy Show	Fight Against Slavery	News/Sports/Weather Inside Business	
8:00	Once Upon a Classic	Express	Fonz/Laverne & Shirley Hour	Financial Inquiry Weekend Gardener	Rex Humbard Issues Unlimited	Adventure Hour Bugs Bunny Road Runner	Against the Wind	Money Week	
9:00	Sneak Previews This Old House	with Shazam Space Stars	Richie Rich Scooby & Scrappy Doo Show	Do it Yourself This Week on Wall Street	Chariando Abbott and Costello	Show	Movie: 'Behold a Pale Horse'	Special Report Style	
10:00	Creative Crafts	Spiderman & His Friends	Movie: 'Elephant Man'	Goldie Gold-Thundarr Comedy Hour	Home Dynamics To Be Announced	Voyage to the Bottom of	Blackstar	News/Sports/Weather Moscow Live	
11:00	Magic of Oil Painting Victory Garden	Duffy/Speedy Show Bullwinkle	ABC Weekend Special American Bandstand	Westerners Wild Bill Hickcock	the Sea Twilight Zone	Tom and Jerry Comedy Show	Movie: 'The New Interns'	Sports Week Newsmakers	
12:00	Oklahoma Gardening Market to Market	NCAA Basketball: Virginia at North	Movie: 'Street Gangs of Hong Kong'	To Be Announced	Movie: 'In Old Sacramento'	One Step Beyond NCAA Basketball: San Francisco	NCAA Basketball: San Francisco	News/Sports/Weather	
1:00	Soundstage	Carolina	Professional Bowlers	De Paul at Dayton	at South Carolina			People Now	
2:00	Heath Brothers In Concert	NCAA Basketball: Teams to be Announced	Movie: 'Wise Blood'	Tour	Movie: 'Ridin' Fool'	Sea Hunt	CBS Sports Saturday: The East-West Shrine	Movie: 'Carrie'	News/Sports/Weather Style
3:00	Sneak Previews Perspectives		Wide World of Sports: The Hula Bowl	Sun City Golf Challenge	America's Top Ten Soul Train	Game		Best of Take Two	
4:00	Soccer Made in Germany	Wild Kingdom Cowboy Weekly	Movie: 'First Family'		You Asked For It		Last of the Wild	News/Sports/Weather Week in Review	
5:00	Mattines at the Bijou	Weekend Journal News		This Week on Wall Street Weekend Gardener	Little House on the Prairie	Championship Wrestling	Championship Wrestling	Press Box	

People who are ailing all the time sometimes have too little to occupy their minds.

continued from page 1

**1981 Review**

their wares. Show is sponsored by Spearman Study Club. Marie Gould resigns as district and county clerk effective Sept. 25. 30 man seismic crew brings \$141,000 to local economy. Nolan Holt of Spearman was elected president of the Perryton Equity Exchange at their annual meeting. Commissioners name Amelia Johnson county and district clerk. She will serve as county clerk until the office comes up for election, filling out the term of Marie Gould who resigned earlier in the month. Publication of second Hansford history announced.

**OCTOBER**

City council announces gas rates, water rates, sewer rates and garbage collection goes up. Good yields reported for milo and corn crop. Crime wave of bbs, and graffiti damages businesses. 19 year old Christopher Swenn hanged himself in Hansford County jail with a pair of prison-issue trousers. He had been arrested and arraigned on a charge of theft by check. This is the first prisoner suicide in the county. Spearman High School has homecoming. Halloween is different in Spearman, being held on Oct. 24 instead of Oct. 31. Beneficial rains near four inches October 16, halting milo harvest. Santa Fe announces plans to close local depot and establishing a regional freight office at Perryton. Hansford Hospital manager Mark Hardin resigns. Dr. R.L. Kleeberger cited for 30 years service to American Cancer Society. County banks host Wheat Pasture-Cattle Clinic featuring specialists from the Texas Agricultural Extension Service and local veterinarians.

**NOVEMBER**

Mayor named VP of Texas cities league. Chamber of Commerce hosts doctors and wives at a reception. Members of First United Methodist Church celebrate 80th anniversary. Connie Steger was named Homemaker of the Year and Dorsey Schad was named Outstanding Conservativist at the twenty first annual Hansford Bankers Awards Banquet. J.C. Harris of Gruver is 'Top Hand' nominee at the annual Golden Spread Agri-Business Seminar. Community Thanksgiving service is well attended. Kids' Stuff and Lady Fair open for business at their new

building at Plains Shopping Center. 352.4 million tax roll approved for Hansford County. Hansford County Historical Society begins "dig" at Zulu Stockade, with plans to reconstruct this historical first trading post on Stationmaster's House museum grounds. Anthropologists from Panhandle - Plains Historical Museum are doing the excavation.

Kidnap suspects caught in Gruver after kidnapping a 21-year old girl in Hereford. School tax payments are behind from last year. Albert La Rochelle assumed his duties Nov. 23 as the new administrator of the Hansford Hospital District. Formal opening of the Extended Care Center scheduled for a date between Jan. 14 and Feb. 1, 1982 with patient occupancy planned to begin between Feb. 1 and Feb. 15.

**DECEMBER** Spearman Retail Merchants plan Christmas Drawings, with \$1500 to be given away. Hansford County Appraisal District has open house. Deputy Shirley Pate leaves Sheriff's Dept. to move. Pheasant hunters from out-of-town swell population. Final deadline for 2nd history book set for Dec. 15. GTE opens Customer Service Booth in Chamber of Commerce building allowing residents to pay bills, pick out telephones, etc.

Reception honors Rev. and Mrs. Russell Pogue who will be leaving Spearman to spend a year as volunteer missionaries to Uganda, Africa, after which he will retire near Waco. He has been pastor of the First Baptist Church here for several years. Operation Christmas Greetings gets underway with citizens donating to the fund in lieu of Christmas cards, sponsored by the Hansford Hospital Auxiliary. The money is used for various projects and improvements at Hansford Hospital. The first mini-blizzard hit the Spearman-Gruver area early Tuesday morning, Dec. 22 with blowing snow and cold temperature. About one or two inches of snow fell, but the sun came out at noon, melting most of the snow.

Various committees for Fruitcake Revue 1982 were pictured in this newspaper. Also the winners of the Spearman Bucks have been pictured since the drawings began Dec. 3. 1981 ended on a tragic note with the death of a local youth, 13 year old Nabor De La Rosa dying after being involved in a pedestrian-motor vehicle accident Wednesday night, Dec. 23. Investigation continues in the death.

**SMILES**

**Barbaric Yell**  
Tourist (in Yellowstone Park)-"Those Indians have a bloodcurdling yell."  
Guide-"Yes, Ma'am; every one of them is a college graduate."

**In A Hurry**  
A young man came tearing down the ferry slip, made a tremendous leap over the water and landed with a crash on the deck of the boat. As he got up and dusted himself off, one of the deck hands sauntered over and said: "You didn't have to rush, buddy, this boat is coming in."

**Non Compass Mentis**  
Leaving a Washington cocktail party, one guest went the wrong way on a one-way street and was policeman who inquired: "Where do you think you're going?"  
"I donno," he replied, "but I must be late. Everyone's coming back."

Reformers are always willing to do good at someone else's expense.

It's not necessary for a good politician to be a liar, but many are.

The span of life is too short for anyone to learn enough to brag about.

continued from page 1

**Lynx**

the Rangerettes get together, the game is always played as a Championship game. The game will be played at the Lynx Varsity Gym, so don't miss it. All four of these teams have players that are friends of off the court-like one very unique tennis player put it--...on the court friends play to win, off the court they are very good friends." That is a very true statement, because there are some Perryton guys and gals that have friends at Spearman and vice versa. When they get on the court to play basketball, they play basketball but after the game is over, friends get together and have a good time. By the way, in case no one has mentioned it, the District 1-AAA Tournament will be played at Stratford--as ya'll recall, this very same tournament was played at Spearman last year. The tournament will begin February 18 and terminate February 20. We will have more details in future additions of the paper--be watching.

**U.S.A., 1982**

The year 1982 may produce a turning point in the political and economic fortunes of the nation. The turning point, economically, should be a major one, and should occur in mid-year.

Recovery from the present recession should be evident by that time. From then on, if Reagan Administration economics work, people will save more, invest more, earn more and the private economy will expand while government does not.

Politically, Democrats may gain in off year congressional elections (off year meaning there's no presidential race). The turning point would be major if Democrats gain twenty-five or more seats in the House and hold their own in the Senate.

Most adults forget that boys and girls look at things with juvenile minds.

You can't get along with people by saying, or thinking, "I'm the captain, follow me."

There's a vast difference between the person of importance and the person who thinks himself to be important.

Peace would automatically descend upon the earth if every individual and every nation would stop trying to secure unearned advantages.

The Spearman Music Boosters will sponsor a **Chill Supper, including dessert, at the Junior High Cafeteria, this Tuesday, January 12, from 5 to 7 p.m. before the Spearman-Perryton games. Tickets are \$3.50 for Adults and \$1.50 for children 8 years and under.**

**ONE MINUTE SPORTS QUIZ**

1. Moses Malone played basketball originally for what pro team?
2. Who won the N.Y. Jets, Buffalo Bills clash?
3. Which boxer holds the record for most consecutive knockouts?
4. Who won the N.Y. Giants, Philadelphia Eagles game?
5. Which NHL defenseman holds the record for most goals scored in one game?

**Answers To Sport Quiz**

1. Buffalo.
2. Bills 31, Jets 27.
3. Lamar Clark
4. Giants 27, Eagles 21.
5. Ian Turnbull.

**SMILES**

**Very Clear**  
Two women were standing in the snow discussing the fuel shortage. "Yes, that's it," said one. "If we'd have got the cold winter in the summer when it's warmer instead of in the winter, we'd be able to do without a fire and save fuel."

**Explained**  
Two young women were chatting when one noticed something odd and said to the other. "You're wearing your wedding ring on the wrong finger."  
"Yes, I know," was the reply. "I married the wrong man."

**ABOUT YOUR HOME**

Put a little petroleum jelly on zippers; it will help keep them from sticking and catching.

If you have narrow windows and want to make them look larger, put up shades or curtains that overlap the moldering.

Iron cookware should never be immersed in water, wipe clean with a damp cloth while the utensil is still hot.

A good friend is one who doesn't care how much money you have.

Do your nails break or split regularly? A glass of plain gelatin or a gelatin capsule may help your nails become stronger.

Store delicate white linens wrapped in blue tissue paper. It will prevent them from turning yellow when stored.

Success that is permanent comes slowly, if at all.



Mabel Edwards is shown here receiving \$100 Spearman Bucks by Dale Oltman, manager of Consumer Sales Company. Mrs. Edwards name was drawn on the last day of the drawing along with five others.

There are always people who believe in hard work and low pay for other people.

**your IRA**

**Individual Retirement Account**

**Good news!** Now ALL working people are eligible to open a tax-sheltered Individual Retirement Account (I.R.A.) starting January 1, 1982. Regardless of Social Security or your company retirement plan, you can shelter up to \$4,000 from taxes next year while earning a substantial retirement income.

**I.R.A. Growth for Working People Sheltering \$2,000**

IRA Account Opened At Age:	Total Principal Deposits at age 65 (at \$2,000/yr)	10%** Value at age 65	12%** Value at age 65	14%** Value at age 65
25	80,000	973,703	1,718,284	3,059,817
35	60,000	361,886	540,585	813,474
45	40,000	126,005	161,397	207,536
55	20,000	35,062	39,306	44,089
60	10,000	13,431	14,230	15,071

**How you could be worth a million!** A working couple aged 35, making the maximum \$4,000 I.R.A. deposit each year could retire at age 65 with over one million dollars. Chart your I.R.A. growth potential in the tables below.

**I.R.A. Growth for Working Couples Sheltering \$4,000**

IRA Account Opened At Age:	Total Principal Deposits at age 65 (at \$4,000/yr)	10%** Value at age 65	12%** Value at age 65	14%** Value at age 65
25	160,000	1,947,407	3,436,569	6,119,634
35	120,000	723,773	1,081,170	1,626,948
45	80,000	252,010	322,794	415,073
55	40,000	70,124	78,618	88,178
60	20,000	26,862	28,460	30,142

You may withdraw funds starting in the year you reach 59½ years. If you withdraw funds prior to that time, you will have include the amount withdrawn as part of your regular income for that year, pay a 10% penalty tax on the amount withdrawn, and additionally pay a substantial interest penalty for early withdrawal. There is no penalty for withdrawals because of disability or death.

\*\* Rates used are examples only, not a forecast or projection of future rates.

Your 1982 IRA deposit is now paying 12.782% at the Gruver State Bank...

Our IRA interest rates are based on the Money Market Certificate Rate in effect the first Tuesday of each month. Future IRA interest rates on your 1982 IRA deposit will change the first Tuesday of each month.



**GRUVER STATE BANK**  
GRUVER, TEXAS 79040  
PHONE (806) 733-5061





# WANTED ADS

## CAPROCK MONUMENT CO.

Dealers of Georgia Granite, Georgia Marble, Colored Granite, & Bronze.

represented by **BOXWELL BROS. FUNERAL HOME**

519 S. EVANS  
659-3802

Hansford County Planned Parenthood  
26 S. Haney  
659-2483  
Spearman Mon.-Fri.  
8:30-12:30

**NOTICE**  
Wallace Monument Co.  
Monuments, Curbings,  
Grave Covers  
Local Representative  
**LEONARD JAMESON**  
Spearman, Texas  
20-rtm

**STEAM RINSE & VAC**  
Steam Rinse-and-Vac Shampooers; \$10.95 for up to 24 hrs, available at Gordon's Drug; also at Freddie Largent's 716 Cotter, Dr. after 4 p.m. and Saturdays and Sundays.

**Monuments**  
Save Agents and Undertakers Profits  
If it is inconvenient for you to visit our large display, please phone collect (405) 327-0626 or write and we will call on you.

**Alva Monument Works, Inc.**  
Alva, OK 73717

## SERVICES

Business window washing service. Call 1-435-3585. 7-rtm

**SERVICE:** Pits cleaned, wet or dry. Dragline or loader. Also, dozer, grader, carry-all service. Lee Roy Mitchell, 806-733-2384, Gruver, Texas 79040. 12-rtm

**SNOOPY'S DAY SCHOOL**  
Open from 7:00 A.M. to 6:00 P.M. We serve morning snack, hot lunch, and afternoon snacks. Van runs to and from school, dancing, piano, ect.  
Call 659-3328 or Come by 620 1/2 S. Bernice for more information.  
Receive (W)estern gift stamps for your bill -- and double on Friday.  
Licensed for ages 18 months to 12 years.

**DAVE'S LANDSCAPE SERVICE** -- Full yard maintenance, tree-topping, shrubbery trimming. Call 1-435-3585. 7-rtm

If you are looking for a steel building to meet your specific needs, and want to be assured of the finest quality materials and workmanship. Or if you are thinking of building a new home or commercial type building. Then call 659-3854 and ask for Charles Elliott, your local contractor. 8-4tp

## FOR SALE

**WONDERFUL BUY:**  
Wurlitzer Organ. Call after 5:30 p. m. week days or any time week ends. Good condition. A/c 806 355-6791, rtn-all 3-c

**FOR SALE**-Extra nice good condition customized mobile home, 2 bedroom, 2 bath. Large living area, also good location. For more information call 659-2763. 6-rtm

**FOR SALE:** 1974 Dodge Monaco Custom. Nice interior. Good school or work car. Call 659-3984 or come by 17 S. Brandt. 8-4tp

**FOR SALE:** Hegari bales. Ted Godfrey - 659-2738. 5-rtm

**JEEPS, CARS, TRUCKS** Many sell for under \$200.00 at local gov't sales. For purchasing information call our Surplus Sales Center 602-998-0575 Ext. 518 8-4tp

**FOR SALE:** Full size Box-spring and mattress--\$50; and Divan--SOFA--\$30. Phone 659-2687. 9-3tc

**FOR SALE:** 1978 GMC 1/2 ton. 1975 Chevy 1/2 ton. Phone 659-2677. 9-1tc

New buildings at factory. All parts accounted for. All structural steel carries full factory guarantee. Buildings 10,000 square feet to the smallest 1,200 square feet. Must sell immediately. Will sell cheap. Call toll free 1-800-248-0065 or 1-800-248-0321. Ext. 777. 9-1tp

**FOR SALE:** House to be moved. Built by Bob's Ready Built. Lubbock. 6 years old. 3 bedrooms. 2 bath, utility, free standing fireplace, central heat/air, lots of storage. \$35,000. Larry Holt 659-2640. 1-rtm

3 Bedroom, 2 bath brick home, detached double garage, sprinkler system. Blankenship Real Estate, 659-3052. 4-rtm

## REAL ESTATE FOR SALE

**FOR SALE:** 1965 12' x 67' Trailer House on 80' x 200' lot in Crawford Addition. Call 659-2288 or 733-2293. 15-rtm

**FOR SALE:** New 3 bedroom, 2 bath home, attached 2 car garage, energy efficient fireplace, shown by appointment only. Emmett R. Sanders, Realtor, 659-2516, nights 659-2601. 9-rtm T ONLY

**FOR SALE:** 3 bedroom house by owner. Recently remodeled. Will consider lease with option to buy when interest rates go down to qualified party or will consider trade for land. Call J. W. Whitaker, 733-2129. 8-4tc

**FOR SALE:** Faith Lutheran Parsonage, 205 Lonita Drive. Call: Cecil Biggers - 659-3505; Steve Krug - 659-3901; or Charles Elliott - 659-3854. 495-rtm

## HELP WANTED

**NEEDED IMMEDIATELY:** Cooks, waiters, waitresses, & dishwashers. Apply in person at the new Brittany's Restaurant in the Plains Shopping Center Mall. 85-rtm

**OFFICE CLERK-PART TIME**  
Perryton, Texas  
Part-time clerk needed for office work. Experience in customer contact, cash transactions, posting, filing and reports necessary. Call (806) 435-4077 for interview appointment.  
Texas-New Mexico Power Co. An Equal Opportunity Employer 9-1tc

## WANTED

**TRUCKS NEEDED:** I need to lease trucks for OIL FIELD Hauling. Shirley Ladd, Ladd Trucking Co. Canadian, Tx. Phone 806-323-8142. 85-rtm

## CARD OF THANKS

We want to express our thanks to the fine people of our community for your concern and interest in the well being of Lemmie's long stay in the hospital. Thank each of you for the many cards, flowers, phone calls, visits and above all for your many, many prayers.

A special thanks to Dr. McClellan and our hospital staff for the wonderful care of Lemmie before being transferred to Amarillo.  
May our DEAR LORD Bless each of you in a very special way.

Sincerely,  
Bill and Lemmie

Urban development programs spared from ax.

Watt cuts back coastal drilling.

## LEGAL NOTICE

### STATEMENT OF INTENT TO CHANGE RATES

GENERAL TELEPHONE COMPANY OF THE SOUTHWEST hereby gives notice in accordance with TEX REV CIV ST AT ANN art. 1446c §43(a) of its intent to implement a new schedule of rates for those customers residing in the State of Texas but who are served out of the Company's Guymon and Texhoma Oklahoma exchanges.

The proposed changes, which were implemented on an interim basis in October 1981, will affect all customer classes and are designed to increase revenue from affected customers by approximately 37 percent.

A complete set of revised rate schedules has been filed with the Public Utility Commission of Austin, Texas, and is available for public inspection in the Company's Guymon and Texhoma, Oklahoma Business Offices.



### Too Late To Classify

**FOR SALE:** Bedroom suit, including dresser and chest-of-drawers, bunk beds, 7 pc. living room suit, stereo, washer, dryer, stove and refrigerator. \$500 equity and assume loan of \$131.30 a month for 2 years. To see come by 308 South Brandt anytime. 9-2tp

### ON COAL LEASING

Interior Secretary James Watt announced recently proposed rules he said would streamline the government's coal leasing program and speed up the offering of land for leasing.

### ON AIR TRAFFIC

It will be at least May 1984 before the nation's air traffic is back to normal, several months later than the administration earlier estimated, federal officials said recently.

**MARY KAY COSMETICS**  
JAN DUNN  
Independent Beauty Consultant  
FOR FREE FACIAL  
CALL: 806-659-5052

### REAL ESTATE FOR SALE

Nice Brick, 3 bedroom home with attached Garage. 717 Steele Dr. \*\*\*\*\*

If interested call (THE LAND MAN) Jimmy Greene Real Estate Agent Phone: 659-3196

Offered Exclusively By **EMMETT R. SANDERS, REALTOR**

100' by 140' commercial zoned with 26' by 32' concrete block shop building, close to downtown on Dressen Street.

Two bedroom home, attached garage, corner lot with storm cellar. Curtains, drapes, refrigerator and kitchen range included. Large rooms, good condition.

Choice commercial location fronting 140 ft. on West Kenneth Street.

**EMMETT R. SANDERS**  
REALTOR  
659-2516  
659-2601 (nights)  
26-rtm tonly

# Santa Fe Seeks Closure Of 18 Agencies

AUSTIN, Tex., Dec. 30--The Atchison, Topeka, and Santa Fe Railway Co. has asked the Railroad Commission for permission to close agency stations serving 18 cities across the state. The company proposes to serve the affected cities through three regional freight agencies.

Santa Fe proposes to discontinue its agency in Anthony and serve that city through a regional agency in El Paso.

The agencies serving Fallet-Booker-Darrouzett and Spearman will be discontinued and the cities served through Santa Fe's Perryton agency.

The railroad also asked permission to close agencies in Beaumont, Beckville-Tatum, Carthage, Center, Cleveland, Contee, Jasper, Longview, Pineland, San Augustine, Tenaha, and Winnie and serve those cities through a regional freight agency in Silsbee.

Before a railroad can close its agency in a particular town, the Railroad Commission must determine that the public will not be adversely affected by transfer of the agency's functions to another location.

Cities or members of the public who wish to protest the proposed agency discontinuances may do so by letter to the director of the Commission's Transportation Division. Protests must be received by the Commission not later than January 13.

If an agency discontinuance is protested, a public hearing will be set in the affected area. If no protest is received, the Commission will consider the application at a hearing in Austin.

In addition to the agency closures, Santa Fe has also asked permission to dismantle its depot buildings in Booker, Spearman, Tatum, Pineland, and Winnie.

Army reports shortage in reserve units.

Farm exports to Iran increasing.

## New Taxes

Americans familiar with the federal budget realize there must be new sources of revenue to reduce the size of upcoming deficits.

A windfall profits tax on natural gas, higher alcohol, tobacco or gasoline taxes, and other increased tax rates have been suggested. (President Reagan refuses to rescind part of income tax reductions and it's not possible to cut spending enough to meet already legislated obligations of the federal government.)

Thus withholding taxes on dividends, a limit on the amount of interest which can be deducted, taxing of health program deductions, and other new taxes are also being suggested.

Budget Director David Stockman is predicting a budget deficit rising to 147 billion in 1983 and to over 100 billion in 1982. Mr. Reagan is reported ready to accept the big deficit in 1982, but wants it reduced substantially in 1983 and 1984.

One area where significant spending relief could be forthcoming is in defense spending. If real progress is achieved in nuclear arms limitation talks in Geneva, this might brighten the picture.

The American people would understand the need for new taxes on non-essential items like tobacco and alcohol, and also a windfall profits tax on natural gas, when and if deregulated. Objections might be raised if withholding taxes on interest and dividends are levied but a limit on deductions for interest would probably enlist broad public sympathy.

The Reagan Administration would, meanwhile, do well to keep the record straight. It's not true that Mr. Reagan never pledged to balance the budget. He did--and he should admit it and repeat his pledge, with the condition that it will take a little longer.

Likewise, Mr. Reagan and his economic advisors shouldn't now say big deficits aren't inflationary. Of course they are, generally speaking. What should be said is that they are temporarily inevitable but they will be reduced as soon as possible, so that inflation can be lowered still further.

### JAPAN & DEFENSE

Defense Secretary Caspar Weinberger warned recently of a possible U.S. backlash if the American people believe Japan is contributing too little to mutual security in the Far East.

### VACATIONS IN U.S.

West Germany Chancellor Helmut Schmidt arrived in the United States recently for a three-week Florida vacation and a meeting with President Reagan. Schmidt and Reagan planned to discuss the military takeover in Poland and other issues of common concern.

### SIGNS FARM BILL

President Reagan signed into law a four-year, \$11-billion farm support bill, then gave poor Americans a holiday slice of the 560 million-pound cheese surplus piled in government warehouses.

### REVOKES PASSPORT

The State Department said recently it has invalidated the visa of Ian Paisley, the Northern Ireland Protestant leader, because of the "divisive tone" of his recent actions and statements.

For The Ultimate In  
**STORM DOORS & WINDOWS**  
Custom Built, Designed, And In Colors To Fit Your Home....  
Contact Howard Moyer at  
**Only Aluminum Industries**  
Guymon, Okla. 114 W. 1st 405-338-6966 or 73942 338-6170 AFTER 6 P.M.

**VIRGINIA WHITE**  
REALTOR 806-659-3841



"A MUST-SEE" - 3 bedrooms, 4 1/2 baths, BRAND NEW GAS BURNACE, corner lot, storage bldg., fenced, full sprinkler system. CALL NOW to see!



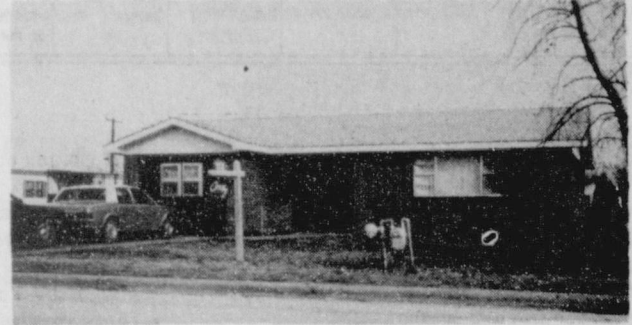
**BEAUTIFUL 3 bedroom** brick home with fireplace, central/heat, NEW cookstove with microwave. On corner lot. Call and see today!

**EXCELLENT STARTER HOME OR INVESTMENT PROPERTY** at 908 S. Haney. Two bedrooms, CLEAN. CALL NOW!

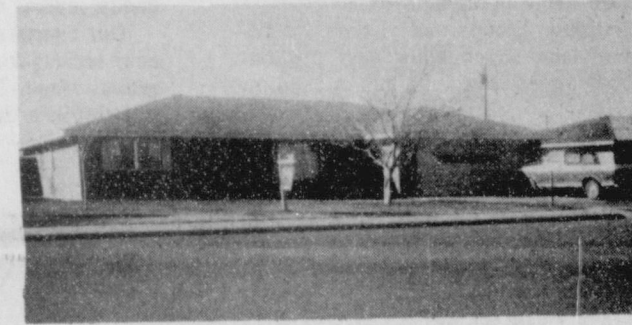
**TIRED OF PAYING RENT?** Then let me show you this 2 bedroom home at 217 N. Brandt. Really pretty inside with new carpet, panelling, dishwasher. Detached 14 x 28 garage. Call today.

**VIRGINIA WHITE, BROKER**

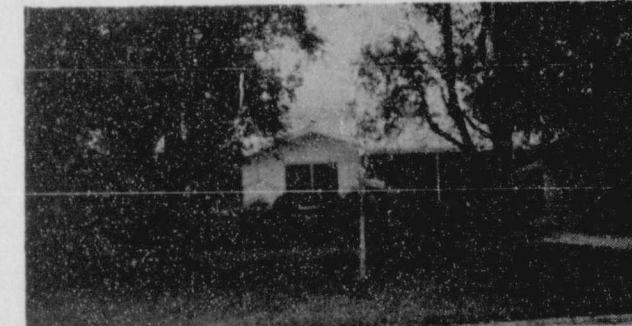
**TEXAS PRESS ASSOCIATION**  
MEMBER 1981  
**The Spearman Reporter**  
PUBLICATION (USPS 509-660)  
SPEARMAN, TEXAS 79081  
213 Main Box 458 659-3434  
Published Weekly at 213 Main Street  
Spearman, Texas 79081  
Owner-Publisher.....William M. Miller  
Editor.....Faye Lynch  
Second Class postage paid at Spearman, Texas 79081  
Any erroneous reflection upon the character of any person or firm appearing in these columns will be gladly and promptly corrected upon being brought to the attention of the management.  
POSTMASTER: Send address changes to Spearman Reporter, Box 458, Spearman, Tx. 79081.  
SUBSCRIPTION RATE: Hansford, adjoining counties, combination with the Hansford Plainsman \$15.00.  
Other points, \$20.00.



Start the New Year out with this lovely home!



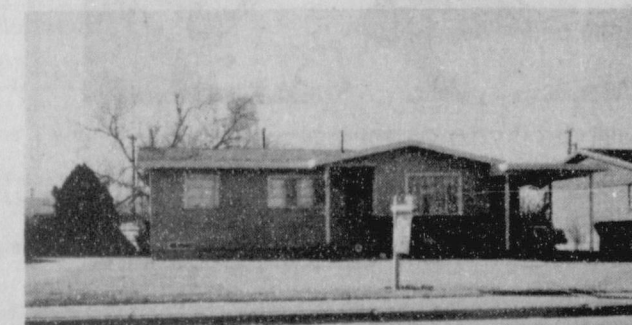
Must see this beautiful home to appreciate. Has assumable loan.



This beautiful home at 908 Dressen in Spearman.



This beautiful home at 1114 S. Haney.



This home at 1026 S. Dressen is the latest listing. Call for details.



JERRY GEE ALLEN ALFORD  
659-3664 659-3034

LARRY TROSPER  
659-3491

**GOLDEN SPREAD REALTY** Daryl Wynn, Broker  
658-4528

We'll give our word to you.

1980 Century 21 Real Estate Corporate Registered Trademark of Century 21 Real Estate Corporation. Printed in U.S.A. Each office is independently owned and operated. Equal Housing Opportunity.



SUNDAY		[4]	[5]	[7]	[8]	[9]	[10]	[11]	[12]
AM		KAMR CH.4 Amarillo	TMC Movie Channel	KVII CH.7 Amarillo	CBN Christian Network	WGN CH.9 Chicago	KFDA CH.10 Amarillo	WTBS CH.17 Atlanta	CNN Cable News Netw
7:00	James Robison Amazing Grace Bible Class	Prog Cont'd	Gospel Jubilee	Lesson	Day of 3-Score	Faith for Today	Three Stooges	News/Sports/ Weather Style	
8:00	Outdoor Oklahoma	Day of Discovery Larry Jones Ministry	Movie: 'The Club'	Kidsworld Rainbow Patch	Kenneth Copeland	Mass for Shut-ins Chicagoland Church Hour	Religious Townhall First Baptist Church	Lost in Space	People Now
9:00	Odyssey	Rex Humbar Oral Roberts		Big Blue Marble Kids Are People Too	Changed Lives Words of Hope	Robert Schuller Sgt. Preston	Lighter Side of the News Movie: 'To Sir, With Love'	News/Sports/ Weather Real Pictures	Newsmaker Sunday
10:00	Camera Three	Baptist Church	Movie: 'Rio Bravo'	Grizzly Adams	In Touch	Tarzan	Love	News/Sports/ Weather Real Pictures	
11:00	Nova	Jimmy Swagart NFL Football: AFC		This Week with David	NewSight American Forum	Cisco Kid Lone Ranger	Tom Landry Show NFL Football: NFC	Sports Week	Inside Business
12:00	Washington Week: Review Wall Street Week	Championship or Local Programming	Movie: 'Salem's Lot'	Brinkley News	James Kennedy	Movie: 'Sherlock Holmes in Dressed to Kill'	Championship Game/or Local Programming	Money Week News/Sports/ Weather	
1:00	Over Easy		Movie: 'The Alamo'	Ever Increasing Faith	Kill			Moscow Live	Special Report
2:00	Great Performances	NFL Football: AFC	Movie: 'Nine to Five'	Chris Panos	Melody Of 1940'	NFL Football: NFC	Movie: 'Hollywood Or Bust'	News/Sports/ Weather Best of Fred Saxon	
3:00	Jack London/ Will Devane	Championship or Local Programming		Your New Image Lahayes	Movie: 'Journey to the Center of the Earth'		Championship Game/or Local Programming	Freeman Reports	
4:00	Julia Child and Company Candid Campus		Movie: 'Pete's Dragon'	It Takes a Thief	Jewish Voice Jimmy Houston		Championship Wrestling	News/Sports/ Weather Week in Review	
5:00	Firing Line		ABC News News	American Trail George	Little House on the Prairie	CBS News	Nice People	Inside Business	

SUNDAY CONT.		[3]	[4]	[5]	[7]	[8]	[9]	[10]	[11]	[12]
PM		OETA Oklahoma City	KAMR CH.4 Amarillo	TMC Movie Channel	KVII CH.7 Amarillo	CBN Christian Network	WGN CH.9 Chicago	KFDA CH.10 Amarillo	WTBS CH.17 Atlanta	CNN Cable News Netw
6:00	Soundstage	Here's Boomer	Prog Cont'd	Code Red	Priority One Internat'l Larry Jones Ministry	Prog Cont'd	60 Minutes	Movie: 'Elephant Boy'	Sports Sunday	
7:00	Nova	CHiPs		Today's FBI	In Touch	In Search of... People to People	Archie Bun- ker's Place One Day At a Time		News/Sports/ Weather	
8:00	Masterpiece Theatre	Movie: 'Will G. Gordon Liddy'		Movie: 'Diamonds Are Forever'	American Trail Heritage Singers	Lawrence Welk	Alice Jeffersons	Atlantic City Alive	News/Sports/ Weather	
9:00	Legislative Week in Review		Movie: 'Impror Channels'		Come On Along	News	Trapper John, M.D.	TBS Evening News	News/Sports/ Weather	
10:00	News				The King Is Coming Contact	Kung Fu	News	Caribbean Nights Open Up	Sports	
10:30	Sign Off	Movie: 'The Gangster'	Movie: 'Salem's Lot'	News			700 Club		Inside Business	
11:00		Chronicles Part 1		ABC News Movie: 'Hot Millions'	Children on the Run	Movie: 'Across The Pacific'			Best of Take Two	
12:00								Five Women'	News/Sports/ Weather Moscow Live	

**About Bail**

If rising crime is to be checked in the U.S., some reform of present-day bail laws is necessary. In cities especially, criminals are committing serious crimes and being freed on relatively small bail bonds, or even on their own recognizance, almost immediately. Many--one recent study in Washington, D.C. found the percentage to be above fifteen percent--commit other crimes before being brought to trial. Today many citizens' groups and victims are demanding reform of laws which allow easy pre-trial release. Some have suggested when a gun is used, or

when victims are physically assaulted, bail should not be allowed.

One of today's new and unique problems is bail jumping by drug offenders. The Drug Enforcement Administration says almost 3,000 fugitives are currently being sought for prosecution on drug-related matters after having jumped bail. This far-too-easy bail jumping has become an out for drug dealers, who make enough on one load of drugs, or one big sale, to pay bail bonds several times.

Our courts should take into consideration today's more serious crime situation in freeing those accused of serious crime. This greater protection is the right of a majority in a democratic society.

**VIETNAM VETERANS**

NEW YORK -- The first four American Vietnam War veterans to visit there since the war ended returned home recently, saying that now, for them, the war is finally over.

**MILITARY SUPERIORITY**

MOSCOW -- A Soviet general said recently the United States was seeking outright military superiority at the Geneva nuclear arms talks and dismissed Western comments that Moscow was taking an unconstructive stance in the negotiations.

**TO VISIT CHINA**

LONDON -- The Archbishop of Canterbury, leader of the world's Anglicans, will pay an unofficial, three-day visit to China in January for private talks with Chinese church leaders, his office announced recently.

**PLANS SUIT**

PORTLAND, ORE. -- The couple who helped Patricia Hearst Shaw elude a nationwide FBI hunt said recently they will file a \$6.9 million libel suit alleging that her memoirs defamed them.

**POLL TAKEN**

NEW YORK -- Three of four Americans say it is likely the United States will become involved in a war during the next few years, according to the latest Associated Press-NBC News poll.

**DAILY NEWS FOR SALE**

NEW YORK -- The New York Daily News, the nation's second-largest daily newspaper, is up for sale, the parent Tribune Co. announced recently.

Canada converting to metric system.

**NUCLEAR WEAPONS**

PARIS -- Shrugging off growing concern throughout the South Pacific, France exploded two nuclear weapons underground in early December at the South Pacific atoll of Mururoa.

**ON TEXTILE TRADE**

GENEVA, SWITZERLAND -- Textile importing and exporting states agreed recently to extend a trading agreement that calls for a slowing in the growth of imports into the European Economic Community.

**WILL SEPARATE**

NEW YORK -- Elizabeth Taylor and her husband, Sen. John Warner, have decided to separate after five years of marriage, it was disclosed recently.

Some miners in Poland still on strike.

**EXERCISE & HEART**

BOSTON -- For the first time, doctors have direct scientific evidence that moderate exercise a few times a week will protect monkeys, and possibly people, against heart disease.

**\$4.5 MILLION BURGLARY**

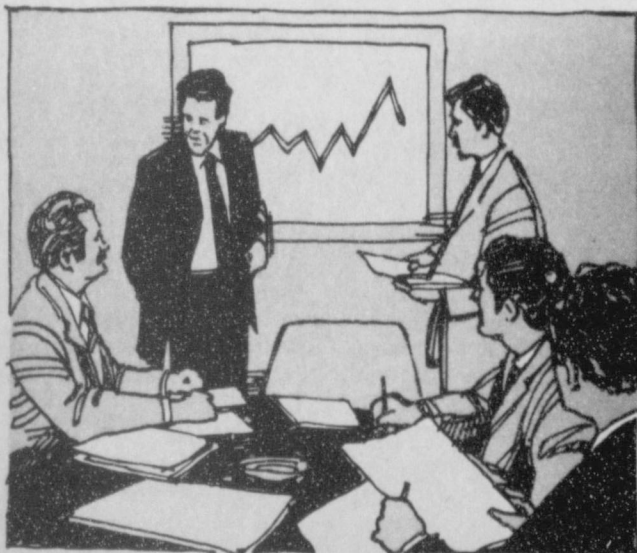
LOS ANGELES -- Thieves foiled an elaborate alarm system and took an estimated \$4.5 million worth of statues, jewels and cash from a Bel-Air estate in the city's biggest burglary in memory, police said recently.

**LAYOFFS**

DETROIT -- The Big Three U.S. automakers announced temporary layoffs of 71,100 workers recently, with Chrysler Corp. saying it would close all its domestic assembly plants during the first week of the new year.

**Business Owners ...**

Bring safety and security up and vandalism down, with Leased Floodlighting.



As a business owner or manager, you're concerned with the safety and security of your employees, customers and property. Accidents and vandalism are costly, and interrupt business efficiency. Leased Floodlighting can give added safety and security by illuminating parking lots, stairways, entrances or other areas in which accidents could occur due to poor visibility. And brightly lighted property and equipment is less subject to vandalism. Leased Floodlighting is automatic, on-at-dusk, off-at-dawn, and gives more illumination per watt than conventional incandescent lighting. To get Leased Floodlighting for your business, just give us a call.



Is it true that clouds are much higher at the equator than in the polar areas?

Yes, clouds extend about twice as high at the equator as they do at the poles. And this is caused by the rotation of the earth.

At the poles, or at the top and bottom of the earth's axis, there is relatively little centrifugal force. But at the equator, where the earth is thickest, the centrifugal force is great and the layer of gases around the center of the earth is literally thrown outward by the greater force, and turning speed.

It is estimated that clouds at the equator extend as high as 50,000 feet or slightly higher above the surface of the earth. But at the poles clouds rarely reach up more than 25,000 feet into the troposphere.

**Criminal District Court Set**

Jury selection is scheduled Jan. 11, for subsequent cases to be tried in criminal district court.

Among those scheduled is that of Leroy Cata for possession of a prohibited weapon.

During the course of an investigation into the weekend death of a young woman at her home near Gruver some months ago, Cata was arrested with a sawed-off shotgun in his possession that was believed to be the death weapon.

While one of the suspects during the investigation, Cata was charged only with the felony possession in an indictment handed down by the grand jury.

This session of criminal court will not be preceded by "plea day" but Hansford County Sheriff R.L. McFarlin said he felt there would be some plea-bargaining on the opening day of the session.

**HOT, FRESH ALLSUP'S COFFEE**

**LARGE 12 OZ. CUP 25¢**

**ALLSUP'S CONVENIENCE STORES**

**"THERE'S ONE NEAR YOU"**

**CRISCO SHORTNING 3 LB. CAN \$1.79**

<b>BORDEN'S NUTTY BUDDYS 6 CT. PKG. 99¢</b>	<b>CHICKEN OF THE SEA TUNA 6 1/2 OZ. CAN 69¢</b>
<b>SHURFINE SUGAR 5 LB. BAG \$1.10</b>	<b>DELICIOUS BORDEN'S BUTTERMILK 1/2 GAL. CTN. \$1.09</b>
<b>SHURFINE HONEY BUNS 4 PAK. PKG. 49¢</b>	<b>KRAFT MIRACLE WHIP 32 OZ. JAR \$1.09</b>

**KRAFT GRAPE JELLY 32 OZ. JAR 99¢**

**BORDEN'S ICE CREAM SANDWICHES 6 CT. PKG. 99¢**

**HOT DOGS 39¢ EACH**

**PRICES EFFECTIVE JANUARY 7-9, 1982 WHILE SUPPLIES LAST**



# If supportive proof lacking IRS plans fines for tax 'helpers'

Hold on to your income tax receipts and proofs because Washington has risen again!

The latest cataclysm in Panhandle is at the Bureau of Internal Revenue. There, an edict says any taxpayer, upon being audited and found to lack receipts and proofs for deduction claims made in his or her tax return, shall not only be held accountable but the person-attorney, professional tax consultant or seasonal tax preparer-who compiled the return shall be fined for including the claim without the proofs.

The Papers talked with Raymond Dietz, senior member of Dietz and Sons, a Borger tax consulting firm, who has successfully jostled with the IRS concerning other edicts in the past.

"It is a highly unsubtle move on the part of the IRS to force us into policing the returns for the bureau," Dietz said referring to himself and others across the nation who make the bulk of their livelihood preparing income tax forms.

Raymond Dietz is no stranger to Panhandle readers of Amarillo and Borger newspapers where his pithy, pungent articles and letters-to-the-editors have attacked many issues of the day-many of them with no little success.

Many of these readers-with the appearance of each article or letter-expect to read in the next issue that Raymond Dietz is "headed for the bureaucratic cross". If they think his published prose are strong, they should read the text of some of his letters to the IRS at Washington.

"Here is a bureau of the federal government duly authorized to collect taxes but within defined-by-law parameters of structure, function and conduct," Dietz commented. "They come up with these edicts from time to time and some of them have been allowed to stand purely from lack of opposition."

"If you are honest in your dealings with the IRS, they have no strange and awesome power over you. You have only to fear their mistakes which are many while not allowing the taxpayer any," Dietz concluded.

He cited an example of the defeat of an edict and an IRS error that was almost tragic for an area man a few years ago.

The IRS ruled that duplicated copies-Zerox, others-of forms bearing required signatures were not acceptable.

"This made it impossible to charge our clients enough to pay for the man hours required for the signing of the many forms one at a time instead of duplicating them," Dietz explained.

He received a letter from the IRS in Washington and then a phone call because he had not answered the letter.

"Mr. Director, the letter was a duplicated copy including your signature and thus, by your own edict, not admissible in any dealings between us. So, I ignored it," was Dietz' end of the conversation.

Within days the ban on duplicated forms was lifted. A few years ago Dietz had a client, an employee of a major

oil company in the Panhandle. Completion of the client's return left him owing IRS \$516-which he did not have.

Dietz advised him to pay \$116 in cash and ask for permission to pay the remainder at \$100 per month.

IRS permission was granted IN WRITING.

Only a few weeks after final

payment was made, the IRS attached his salary for \$516. The company had a rule that any employee having his wages attached would be summarily fired.

This man had only one year to go before retirement after more than 30 years of service.

Raymond Dietz went to bat for him. The company reinsta-

ted him pending final settlement which was made with IRS paying interest on the \$516 that should not have been attached. In his letter to the IRS at the conclusion of this matter, Dietz pointed out that he had, on numerous occasions, interceded in behalf of the IRS when a client was mistaken.

"Each time I have questioned their action, I have felt as I do now--a voice crying in the wilderness-and I have gone as far as I can go," Dietz concluded. "I think this might be contested in the courts and at that time, I think the laws will bear out the fact that the IRS cannot arbitrarily but we tax consultants or attorneys

serving long-standing clients as such, in jeopardy and levy a fine.

"In the meantime, the vast army that is our profession will have to abide by the ruling and will require you, the taxpayer, to provide proof of every claim you want included in your return." This is not a "plug" for

Dietz and Sons. The firm has so much business now it had to go computer.

Rather, it is the story of that "voice crying in the wilderness" without the locusts and wild honey. Well, locusts maybe. Raymond Dietz does "bug" the IRS from time to time-but more likely than not, the "sweetin'" is left out!

## Appraisal For Ad Valorem Tax

The appraisal office will have application forms readily available to each individual at no charge to the individual. 1982 is the first year that open space land valuation will be beneficial to the land owners in the Hansford County Appraisal District. This is due to the results of the reappraisal of all properties in the appraisal district including farm land.

The appraisal district will make every effort to mail applications to all land owners before February 1. Mrs. Peddy indicated it would be mid-January before the prescribed form would be received in her office from the State Property Tax Board and once the form is in her hands, it will be immediately available to the individuals. If any person does not receive his application by February 1, he needs to contact the appraisal district.

Mrs. Alice Peddy, Chief Appraiser of the Hansford County Appraisal District would like to inform the land owners of specific details concerning the process of receiving agricultural use appraised values for ad valorem tax purposes. An individual claiming that his land is eligible for appraisal as agricultural land must file a valid application with the chief appraiser. Once an application is filed and open space land values are granted, the land is eligible for open space land values in subsequent years without a new application unless the ownership of the land changes or its eligibility ends.

The application must be filed before May 1. If a person fails to file a valid application on time, the land is ineligible for open space land valuation.

## Hansford County Appraisal District Accepting Exemption Applications

Mrs. Alice Peddy, Chief Appraiser of the Hansford County Appraisal District announces that applications for the following exemptions are now available at the offices of the appraisal district located at 13 West Kenneth Avenue, Spearman, Texas:

1. Residence Homestead a. \$5,000 for School Tax Purposes b. \$10,000 for Over-65 for School Tax Purposes c. Over-65 for Cities and County d. \$10,000 for Disabled Citizens under a disability for purposes of payment
2. Disabled Veterans
3. Implements of Farming or Ranching
4. Cemeteries
5. Charitable Organizations
6. Youth Spiritual, Mental, and Physical Development Associations
7. Religious Organizations
8. Schools
9. Veterans Organizations
10. Community Service Clubs

of disability benefits under Federal Old-Age, Survivors, and Disability Insurance for School Tax Purposes. Each individual is encouraged to come by the office or call if they have not received these forms by February 1. To receive any of the above exemptions, a person claiming the exemption must apply for it. To apply for an exemption a person must file an application form with the chief appraiser for each appraisal district in which the property subject to the claimed exemption is located. The exemption applica-

tion must be filed before May 1 and must furnish the information required by the form to be valid.

After 1982, annual applications for residence homesteads, charitable organizations, youth spiritual, mental, and physical development associations, religious organizations and schools, are no longer necessary. Once these exemptions are allowed they need not be claimed again unless the property changes ownership or the person's qualification for the exemption changes.

Letters and letter packages (packages paid at the First-Class letter rate of postage) will be subject to a four-pound limit.

In order to facilitate the mailing of printed matter above four pounds, the Postal Service also has established an air "other articles" rate schedule. "Other articles" mail generally includes printed matter (regular printed matter, books and sheet music and publishers' periodicals), matter for the blind and small packets. Rates for "other articles" mail in excess of four pounds range from \$6.05 to \$31.32.

## Tax Exemption Of Farming & Ranching Implements

Effective January 1, 1982, implements of farming and ranching are exempt from ad valorem taxation if owned by an individual who uses them in the production of farm or ranch products. The property must be individually owned; corporate or partnership ownership will not qualify. This exemption must be applied for annually with the chief appraiser of the Hansford County Appraisal District.

The attorney general has been asked to issue an opinion on several points concerning these exemptions, some of them being:

- (1) Should the term "implements" be construed so as to include any and all types of equipment or machinery that could be used in an agricultural environment?
- (2) Would vehicles utilized in agricultural products, such as trucks and trailers, be included in the exemption?
- (3) Would equipment used to obtain water from wells or for irrigation be exempt?
- (4) Would the term "individual" as used in the amendment be limited or defined to include only persons in single person who has incorporated be entitled to the agricultural business that have sole or complete ownership of all the property necessary for pursuit of said business?
- (5) Would an individual or

When the attorney general issues his opinion clarifying the intentions of the legislature to exempt implements of farming and ranching, the chief appraiser will then allow all exemptions, according to law, on all valid applications. Individuals need to render their implements to the chief ap-

### BIBLE VERSE

"It was revealed unto him by the Holy Ghost that he should not see death before he had seen the Lord's Christ."

1. To whom does this verse refer?
2. Where was he at the time?
3. Upon what occasion?
4. Where may this verse be found?

### Answer to Bible Verse

1. Simeon.
2. In the Temple at Jerusalem.
3. When Mary and Joseph brought the Baby Jesus to the Temple, according to Jewish custom.
4. Luke 2:26.

The big 3 automakers announce layoffs.

No word on U.S. General's kidnapping.

## MARKETS

MILO	\$4.05
WHEAT	\$3.58
CORN	\$2.78
BARLEY	\$1.94

## Comegys Completes Training

December 30 [FHINC]-Navy Seaman Recruit Jay G. Comegys, son of Mrs. Charles D. Perry of 906 Haney, Spearman, Texas, has completed recruit training at the Naval Training Center, Great Lakes, Ill.

During the eight-week training cycle, trainees studied general military subjects designed to prepare them for further academic and on-the-job training in one of the

Navy's 85 basic occupational fields.

Included in their studies were seamanship, close order drill, Naval history and first aid. Personnel who complete this course of instruction are eligible for three hours of college credit in Physical Education and Hygiene.

A 1980 graduate of Spearman High School, he joined the Navy in August 1981.

Poland: reports of torturing reported.

# 53rd annual tournament January 7-8-9

The Canadian high school Wildcats will be hosts to the school's 53rd annual Invitational Basketball Tournament on January 7-8-9.

Boys and girls varsity basketball teams from eight area high schools will be entered in the competition. Heading the list are the defending champions,

winners of the 1981 tournament, the Childress Bobcat boys and the Follett Pantherette girls teams.

The Bobcats defeated the

Canadian Wildcats in a blistering championship game last January, winning by two points in a double-overtime.

The Follett Pantherettes won the girls division, defeating the Canadian Wildcat girls in the championship finals.

Paired for opening rounds of the tournament in each division are Miami and Shamrock, Gruver and Follett, Childress and Spearman, and Wheeler and Canadian.

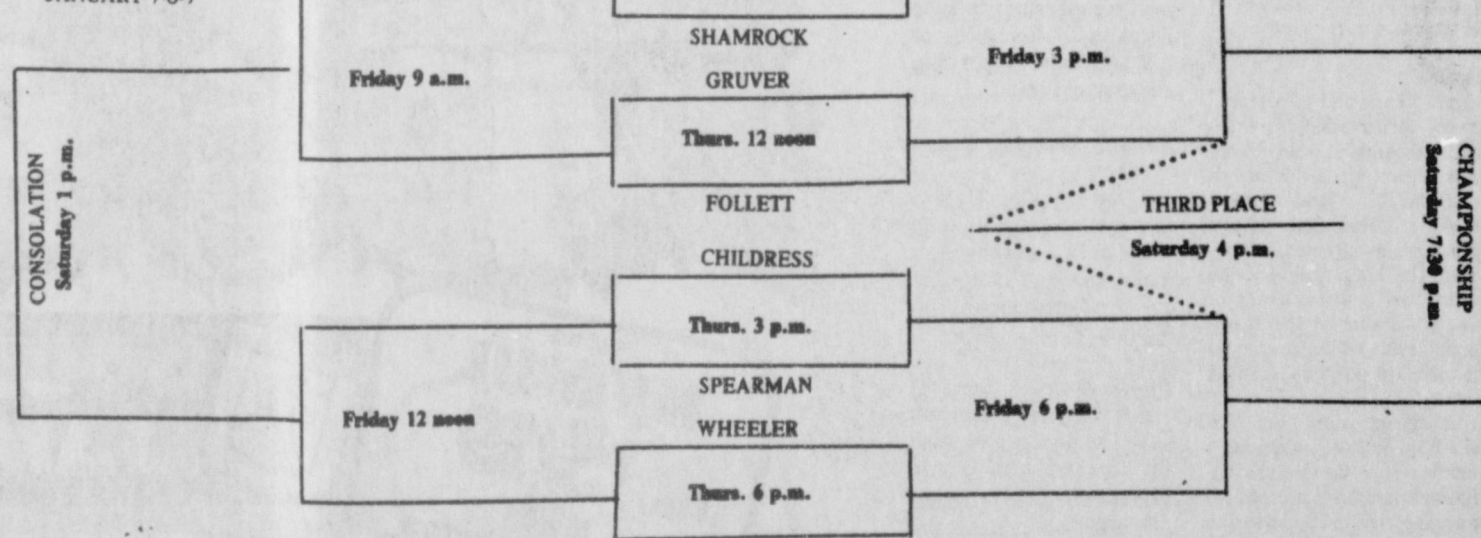
The tournament will open on Thursday morning, January 7, with first-round matches sche-

duled throughout the day. Consolation semifinals will be played on Friday morning, and championship bracket semifinals will be played on Friday morning, and championship bracket semifinals on Friday afternoon and evening. Consolation finals and third-place matches are scheduled for Saturday afternoon, and the championship games for Saturday night.

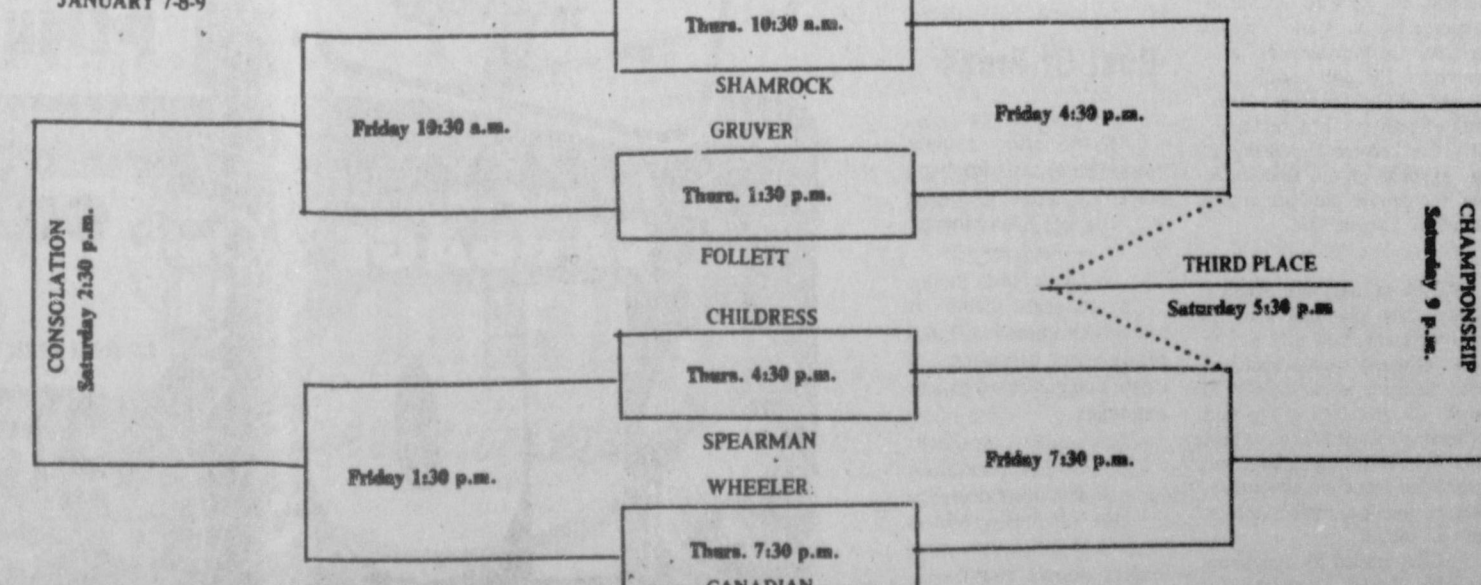
The Canadian tournament, one of the oldest in the Panhandle, has traditionally been one of the top basketball events of the season since the 1920's.

## Lynx & Lynxettes to attend Canadian tournament

### GIRLS DIVISION JANUARY 7-8-9



### BOYS DIVISION JANUARY 7-8-9



## PUBLIC NOTICE

In accordance with the regulations of the Public Utility Commission of Texas, Texas-New Mexico Power Company announces the Company's intent to change rates for its entire Texas operations. The effective date of such change is January 26, 1982. All classes of customers will be affected by said proposed changes. It is estimated that the rate change will produce an increase in gross revenues to the Company of \$18,245,753, or a 7.46% increase over present rates.

A complete copy of the requested rate schedule is on file with the Public Utility Commission of Texas in Austin, and with all cities which have retained original rate jurisdiction served by Texas-New Mexico Power Company. You may inspect a copy of the filing during normal business hours at each business office of Texas-New Mexico Power Company in your area.





# Hit-and-run case goes to DA!

District Attorney Steve Cross told the REPORTER just at press time his office was now in the final phase of an investigation into the Dec. 23 hit-and-run death of a 13-year old Spearman youth and the injury of his 13-year old companion.

At present, no charges have been filed.

However, District Attorney Cross said the case would go to the grand jury in the very near future.

The Spearman Police Department completed its phase of the investigation and placed the findings in the hands of Cross who said an exhaustive study of the mishap by his office is nearing completion.

At that time, all work on the case will be correlated into a comprehensive presentation for the grand jury.

The accident came on the very doorstep of the holidays and District Attorney Cross was not available in the first hours following the mishap. At the request of Spearman Police Officer Stevens and DPS Officer Max Gunn—both working on the case—the REPORTER published only the basic details of the tragedy.

Cross said the REPORTER would be apprised of the facts developed by his investigation and subsequent grand jury action in the matter.

## 78th Annual Farmers Union Convention Set

WACO, TX; December 29, 1981—"Family Farms for the Future" will be the theme and the topic of concern when members of the Texas Farmers Union gather for their 78th annual convention in Fort Worth on January 7-9. Delegates and members of the 10,000 member family farm organization will gather for the 78th annual convention of the Texas Farmers Union at the Kahler Green Oaks Inn for setting the annual policy and listening to important speakers.

TFU President Mike Moeller said "At a time when a real economic crisis is facing American agriculture, it is essential that the problems and needs of family farmers be recognized. Because of the passage of the 1981 Farm Bill in December, we feel this will be an excellent time for legitimate farmers and ranchers to air their complaints and plan a course of action for 1982."

In addition to confronting problems on the national level, state issues will also be addressed by the TFU convention delegates and members. Scheduled to speak are Texas Agriculture Commissioner

Reagan Brown and his challenger for the position, Jim Hightower. Both men are well known statewide and their remarks to the convention will kick off the 1982 campaign year for the agriculture commissioner's seat.

National Farmers Union President George Stone will deliver the banquet address on Saturday to the convention. Stone has been outspoken in his opposition to the 1981 Farm Bill and other moves by

Trade at home. It pays me, you and everyone.

It's too late to be careful after an accident occurs.

It's too bad that sincerity is such a rare virtue these days.

The only way to get anything done is to start doing it.

Hard work, mixed with a little intelligence, usually reaps a reward.

the Reagan Administration to weaken the family farm system in the U.S.

Delegates will also hear remarks on the growing impact of foreign investment in the U.S. and the rights of landowners with mineral rights and leases.

The convention opens Thursday, January 7, at 8:00 p.m. at the Green Oaks Inn. The final gavel will fall Saturday at the conclusion of the banquet.

The choice of clothes is important but not all-important.

It's now time to start saving up for another Christmas.

A good rule for highway travel—let the other car get there first.

Nations, like individuals, must stand for honor, fair play and law.

Isn't it funny how little value other people put on your time?

A Chili Supper, including dessert, will be served from 5 to 7 p.m. this Tuesday, January 12, before the Spearman-Perryton games. It will be at the Junior High Cafeteria. The cost is \$3.50 for Adults and \$1.50 for children 8 yrs. and under. Sponsored by the Spearman Music Boosters.

They Do  
Old salesmen never die—they just get out of commission.  
-Record, Columbia, S.C.

### THURSDAY

CABLE	(3)	(4)	(5)	(7)	(8)	(9)	(10)	(11)	(12)
PM	OETA	KAMR	TMC	KVII	CBN	WGN	KFDA	WTBS	CNN
	Oklahoma City	Amarillo	Movie Channel	Amarillo	Christian Netwk	Chicago	Amarillo	Atlanta	Cable News Netwk
6:00	MacNeil-Lehrer Report	News	Movie: 'Wise Blood'	News	Weekend Gardener	Barney Miller	News	Carol Burnett and Friends	Moneyline
6:30	Oklahoma Report	M*A*S*H	"	You Asked For It	Another Life	Laverne & Shirley & Co.	All In the Family	Sanford and Son	Sports Tonight
7:00	All Creatures Great and Small	Fame PREMIERE	"	Mork and Mindy	National Geographic Special	Movie: 'Friendly Persuasion'	Magnum, P.I.	Movie: 'Hombre'	PrimeTime Live
7:30	"	"	"	Best of the West	"	"	"	"	"
8:00	Sneak Previews	Diff'rent Strokes	Movie: 'Up the Academy'	Barney Miller	700 Club	"	Knots Landing	"	"
8:30	Billy Smart's Circus	Gimme A Break	"	Taxi	"	"	"	"	"
9:00	Ben Wattenburg/Large Photo Show	Hill Street Blues	"	20/20	"	News	Nurse	TBS Evening News	Freeman Reports
9:30	"	"	Movie: 'Rio Bravo'	"	Sing out America	"	"	"	"
10:00	Dick Cavett	News	"	News	Nashville RFD	Twilight Zone	News	All In the Family	Sports Tonight
10:30	Best of Porter Wagoner	Tonight Show	"	Nightline	Another Life	Saturday Night	Quincy	Movie: 'Night Gallery'	Newsdesk
11:00	Sign Off	"	"	Vegas	Sun City Golf Challenge	"	"	"	"
11:30	"	Tomorrow Coast-to-	"	"	"	Movie: 'Darby's'	Saint	"	West Coast Report
12:00	"	"	Movie: 'Stay Hungry'	Sign Off	"	"	"	"	"
12:30	"	"	"	"	"	"	Sign Off	Movie:	"

## Cattle Raisers Challenge New USDA Conservation Proposals

FORT WORTH, TEXAS, Dec. 29, 1981--In a sharply worded critique, Texas and Southwestern Cattle Raisers Association has come out in opposition to new soil and water conservation proposals made by U.S. Department of Agriculture. TSCRA, a 14,000-member livestock producer organization, found that "none of the three proposed program alternatives addresses U.S. soil and water conservation problems in the most effective fashion."

John S. Cargile, TSCRA president from San Angelo, Texas, said USDA's "Preferred Program" exceeds the legislated authority of the Soil and Water Resources Conservation Act (RCA) of 1977 to the extent that this group is asking Congress for an oversight hearing to assure compliance with existing legislation.

USDA, through its Soil Conservation Service (SCS), has asked all persons and groups interested in soil and water conservation to respond by Jan. 15 to USDA's revised draft through a widely-circulated questionnaire.

TSCRA claims the response form is so blatantly based in favor of the USDA's "Preferred Program" that portions of the questionnaire should not be used in judging public response.

The "Preferred Program" ignores conservation of rangeland, pastureland and woodlands that comprise the majority of the U.S. land surface. Instead, it redirects efforts from them to targeted priority areas. The latest proposals do nothing but add another layer of administration at the Washington level, while downgrading technical positions, TSCRA asserts.

"In recent years, the SCS has become so increasingly preoccupied with internal administration and peripheral programs that SCS personnel at the state level and above constitute 31 per cent of total personnel. The result has been to reduce the field force needed to provide technical conservation assistance on the ground to landowners and operators through locally governed soil and water conservation districts. In a sentence, SCS has become top-heavy at the expense of the field force and the people they are trying to help," Cargile said.

Block and the Soil Conservation Service.

For more information, interested persons may contact the local SCS and ASCS offices. In Texas, public comments should be sent to George C. Marks, State Conservationist, Soil Conservation Service, Box 648, Temple, Texas 76503 by Jan. 15.

### NEWS VIEWS

Howard Baker, Senate Majority Leader, on recovery plan: "I believe we're on the right path and I believe the country is determined to go the distance."

Romuald Spasowski, former ambassador from Poland: "I am defecting to the United States because a state of war has been imposed upon Poland and I cannot be silent."

James A. Baker III, White House Chief of Staff: "I think it's fair to say this president has compiled the best legislative record since maybe Franklin D. Roosevelt or L.B. Johnson, depending on your outlook."

Ronald Reagan, President: "The Soviet Union, through its threats and pressures, deserves a major share of blame for the development in Poland..."

Bob Dole, Senator (R-Kan), on farm bill: "The plan is a windfall for farmers that could prompt them to encourage embargoes."

### Best Of Press

A Conscience  
All too often a clear conscience is nothing more than a poor memory.  
-Barker, Des Moines.

Explained  
A moderate income is one which comes within a moderate distance of covering moderate expenses.  
-Grit.

Geometry  
One of life's saddest facts is that a square meal makes people round.  
-Herald, Austin, Ia.

PRICES GOOD THRU JAN. 9TH



WIN CASH...WIN STAMPS...

# CASINO

QUANTITY RIGHTS RESERVED

3 OZ. JELLO ALL FLAVORS

**4 FOR \$1**

REG. OR DIET SHASTA DRINKS

12 OZ. **6 FOR 99¢**

FINE FARE FACIAL TISSUE

200 CT. ALL COLORS **49¢**

ODDS CHART

Game	1	2	3	4	5	6	7	8	9	10	11	12	13	14	15	16	17	18	19	20
1-12	1.00	1.00	1.00	1.00	1.00	1.00	1.00	1.00	1.00	1.00	1.00	1.00	1.00	1.00	1.00	1.00	1.00	1.00	1.00	1.00
1-11	1.00	1.00	1.00	1.00	1.00	1.00	1.00	1.00	1.00	1.00	1.00	1.00	1.00	1.00	1.00	1.00	1.00	1.00	1.00	1.00
1-10	1.00	1.00	1.00	1.00	1.00	1.00	1.00	1.00	1.00	1.00	1.00	1.00	1.00	1.00	1.00	1.00	1.00	1.00	1.00	1.00
1-9	1.00	1.00	1.00	1.00	1.00	1.00	1.00	1.00	1.00	1.00	1.00	1.00	1.00	1.00	1.00	1.00	1.00	1.00	1.00	1.00
1-8	1.00	1.00	1.00	1.00	1.00	1.00	1.00	1.00	1.00	1.00	1.00	1.00	1.00	1.00	1.00	1.00	1.00	1.00	1.00	1.00
1-7	1.00	1.00	1.00	1.00	1.00	1.00	1.00	1.00	1.00	1.00	1.00	1.00	1.00	1.00	1.00	1.00	1.00	1.00	1.00	1.00
1-6	1.00	1.00	1.00	1.00	1.00	1.00	1.00	1.00	1.00	1.00	1.00	1.00	1.00	1.00	1.00	1.00	1.00	1.00	1.00	1.00
1-5	1.00	1.00	1.00	1.00	1.00	1.00	1.00	1.00	1.00	1.00	1.00	1.00	1.00	1.00	1.00	1.00	1.00	1.00	1.00	1.00
1-4	1.00	1.00	1.00	1.00	1.00	1.00	1.00	1.00	1.00	1.00	1.00	1.00	1.00	1.00	1.00	1.00	1.00	1.00	1.00	1.00
1-3	1.00	1.00	1.00	1.00	1.00	1.00	1.00	1.00	1.00	1.00	1.00	1.00	1.00	1.00	1.00	1.00	1.00	1.00	1.00	1.00
1-2	1.00	1.00	1.00	1.00	1.00	1.00	1.00	1.00	1.00	1.00	1.00	1.00	1.00	1.00	1.00	1.00	1.00	1.00	1.00	1.00
1-1	1.00	1.00	1.00	1.00	1.00	1.00	1.00	1.00	1.00	1.00	1.00	1.00	1.00	1.00	1.00	1.00	1.00	1.00	1.00	1.00

WOLF TAMALES

15 OZ. **69¢**

WOLF PLAIN CHILI

19 OZ. **98¢**

CRISCO OIL

48 OZ. 25' OFF LABEL **\$1.89**

1 LB. BOX FINE FARE CRACKERS

**49¢**

VICKS NYQUIL

10 OZ. **\$3.19**

JOHNSON & JOHNSON BABY POWDER

9 OZ. **\$1.49**

DOUBLE STAMPS

WITH A \$2.50 PURCHASE OR MORE EXCLUDING CIGARETTES

**SAT !**

FINE FARE CHICKEN NOODLE SOUP

10 1/2 OZ. **3 FOR \$1**

DEL MONTE PINEAPPLE

ALL VARIETIES 8 OZ. **39¢**

"GARDEN FRESH PRODUCE"

CRISP GREEN CABBAGE

**10** C

TEXAS RUBY RED GRAPEFRUIT

LARGE SIZE **4 FOR \$1**

RED DELICIOUS EXTRA FANCY APPLES

**3 LB. BAG FOR \$1**

NO. 1 RUSSET POTATOES

10 LB. BAG **\$1.29**

GREEN ONIONS

BUNCH **19¢**



# New Sales Tax Requirements

AUSTIN, Tex.—State Comptroller Bob Bullock said Wednesday that about 1,000 Texas merchants need to be aware of new sales tax requirements on credit sales which go into effect January 1.

The new law affects merchants who make installment sales of taxable items, the amount of sales tax due in the outstanding balance and keep their books on the "cash" basis of accounting.

According to the new law, a part of the interest paid on the sales tax portion of credit sales will be taxable. This additional amount is to be reported and remitted when the regular sales tax return is filed.

If the interest on the sales tax and the unpaid balance are the same—and the rate is 18 percent or less—the state gets half the interest on the sales tax portion of the total amount being financed.

If the interest charged on the sales tax portion of the bill is different from the rate charged on the rest of the unpaid balance, the merchant must remit all of the interest paid on the sales tax portion to the state.

Taxpayers with questions about their new responsibilities should contact the Comptroller's local office nearest them or the Comptroller's Sales Tax division at 1-800-252-5555, a toll-free from anywhere in Texas.

A Chill Supper, including dessert, will be served from 5 to 7 p.m. this Tuesday, January 12, before the Spearman-Perryton games. It will be at the Junior High Cafeteria. The cost is \$3.50 for Adults and \$1.50 for children 8 years and under. Sponsored by the Spearman Music Boosters.

## FRIDAY

1/7/82-1/13/82

PM	OETA	KAMR	TMC	KVII	CBN	WGN	KFDA	WTBS	CNN
	Oklahoma City	CH.4 Amarillo	Movie Channel	CH.7 Amarillo	Christian Network	CH.9 Chicago	CH.10 Amarillo	CH.17 Atlanta	Cable News Ntwrk
6:00	MachNeil-Leher Report	News	Prog Cont'd	News	Good News	Barney Miller	News	Winners	Moneyline
6:30	Oklahoma Report	M*A*S*H		You Asked For It	Another Life	Laverne & Shirley & Co.	All In the Family	Sanford and Son	Sports
7:00	Washington Week/Review	NBC Magazine		Benson	National Geographic Special	Movie: 'The Reluctant Astronaut'	Dukes of Hazzard	All In the Family Up Close With Isaac Asimov	Primenews/120
7:30	Wall Street Week			Bosom Buddies					
8:00	Oklahoma Week in Review	McClains Law	Movie: 'Howling'	Darkroom	700 Club		Dallas	NBA Basketball: Atlanta vs. Milwaukee	
8:30	Lawmakers								
9:00	Frosty Troy & Co.	Palms		Strike Force		News	Falcon Crest		Freeman Reports
9:30			Movie: 'Malvin and'		Sing out America				
10:00	Dick Cavett	News	Howard	News	Nashville RFD	Twilight Zone	News	TBS Evening News	Sports Tonight Newsdesk
10:30	Masterpiece Theatre	Tonight Show		Virginian	Another Life	Saturday Night	Behind the Screen		
11:00					Sun City Golf Challenge		Movie: 'Night Cries'	Movie: 'Pepe'	
11:30	Sign Off	SCTV Comedy Network	Movie: 'Salem's'	Nightline			Movie: 'In Like Flint'		West Coast Report
12:00			Lot	Friday's					People Tonight
12:30									

## SATURDAY CONT.

1/7/82-1/13/82

CABLE	[3]	[4]	[5]	[7]	[8]	[9]	[10]	[11]	[12]
PM	OETA	KAMR	TMC	KVII	CBN	WGN	KFDA	WTBS	CNN
	Oklahoma City	CH.4 Amarillo	Movie Channel	CH.7 Amarillo	Christian Network	CH.9 Chicago	CH.10 Amarillo	CH.17 Atlanta	Cable News Ntwrk
6:00	Prog Cont'd	Teletthon: West Texas Rehabilitation	Movie: 'Elephant Man'	Hee Haw	Blackwood Brothers Hi Doug	Muppets	Amarillo Observer Look at Us	Prog Cont'd	Sports Saturday
6:30	Outdoor Oklahoma					Rhoda			
7:00	Paper Chase			Open All Night Making A Living	Movie: To Be Announced	Liberty Mutual Special	Walt Disney	Nashville Alive	News/Sports/Weather
7:30									
8:00	Nova		Movie: 'Caddyshack'	Love Boat		Grizzly Adams	Movie: 'Foul Play'	Football Saturday	News/Weather
8:30									
9:00	Mysteries of the Great Pyramid			Fantasy Island		News		TBS Evening News	News/Sports/Weather
9:30					Rock Church				
10:00	Dr. Who		Movie: 'First Family'	ABC News		Solid Gold		World at War	Sports
10:30				News: To Be Announced	Pre-season Football		News		Press Box
11:00	Sign Off			Announced	New England vs. Philadelphia JIP	Movie: 'They Came to Cordura'	Entertainment Tonight	Movie: 'Fail Safe'	Freeman Reports
11:30									
12:00			Movie: 'Elephant Man'		To Be Announced		Movie: To Be Announced		News/Sports/Weather Best of Fred Saxon
12:30									

...HAVE FUN PLAY UNITED'S

# BINGO

---

WILSON CERTIFIED BACON

**\$1.29**

1 LB. PKG.

WILSON CERTIFIED MEAT FRANKS

12 OZ. PKG.

**78¢**

WILSON CERTIFIED BOLOGNA

1 LB. PKG.

**\$1.39**

---

WILSON SMOKED PORK CHOPS

**\$1.98**

LB.

UNITED TRU TENDR RANCH STEAK

7-BONE CENTER CUT LB.

**\$1.59**

KRAFT VELVEETA

1 LB. PKG.

**\$1.79**

---

UNITED TRU TENDR OR CHOICE SHOULDER ROAST

BONELESS

**\$1.58**

LB.

UNITED TRU TENDR OR CHOICE ARM ROAST

BONELESS

**\$1.88**

LB.

KRAFT VELVEETA SINGLES

NEW

12 OZ. PKG.

**\$1.39**

---

**DOUBLE STAMPS** WITH A \$2.50 PURCHASE OR MORE EXCLUDING CIGARETTES

**WED.!**

PILLSBURY CINNAMON ROLLS

9 1/2 OZ.

**89¢**

COUNTRY STYLE OLEO

1 LB. SOLIDS

**3 FOR \$1**

---

PILLSBURY YOPLAIT YOGURT

ALL FLAVORS

**39¢**

MINUTE MAID ORANGE JUICE

6 OZ.

**2 FOR 89¢**

SWANSON'S CHICKEN POT PIES

8 OZ.

**39¢**

---

BIRDSEYE CAULIFLOWER

10 OZ.

**59¢**

BIRDSEYE "QUICK THAW" STRAWBERRIES

10 OZ.

**79¢**

**UNITED Supermarkets**

Perryton, Texas

QUANTITY RIGHTS RESERVED

PRICES GOOD THRU JAN. 9TH

## Macho Good Or Macho Bad?

For centuries strong men have been the accepted ideal. The winner is knight's competition in athletic competition, combat, etc., has been universally admired. Songs have been written about them and nations have made heroes out of them.

In recent decades in the United States, some have begun to criticize anything with "macho" connotation. The question in the U.S. has become—is macho good or is macho bad? Advertisers appeal to this instinct in males by suggesting they give their wives diamonds, that they buy big insurance policies to protect them.

Courts often accept the philosophy that males are the traditional backbone of their families by saddling them, in divorce cases, with tougher financial obligations than females in similar circumstances. (One divorced husband, hailed into court for back alimony payments, recently shot himself in a North Carolina courtroom.)

Women are regularly meted out lighter court sentences for killing and other crimes, on the theory that they are the weaker sex, that they are physically weaker and threatened, etc.

There are advantages, therefore, in being the weaker sex, and modern society gives women equal rights plus special considerations. That's not to say discrimination doesn't still exist in places.

It's to say males have a problem in today's super-modern world. How much macho, then, is too much macho? From chauvinistic pig to he-man-hero is only a step.

## On Oil Heaters

Attractive kerosene heaters are on today's market and the public is buying them this winter as a way to save on heating bills, for backup heating and for a primary heating device.

A few words of caution are in order. Though modern oil heaters are fancy in appearance, they still are, basically, kerosene heaters like Dad used forty or fifty years ago. Although they have an automatic cutoff device, if overturned, and automatic lighting, the vital consideration to keep in mind in using combustible fuel in the home is that fires and asphyxiation are possible.

Such heaters must not be put within three feet of walls. A door to another room should be open, and if used over a period of hours, a door or window should be, at regular intervals, cracked. Manufacturers tell buyers in new-owner instruction books not to leave them on in a room and go to sleep.

Kerosene, while not as volatile as gasoline, is nevertheless a fire threat. If spilled on rug or floor, the surface becomes dangerously flammable. Owner manuals suggest filling oil heaters only when thoroughly cool, and out of doors.

The outside of oil heaters becomes very hot and can burn. If placed too near furniture, drapes or cloth material, fires can occur.

Thus kerosene heaters are not the safest thing. They may be the cheapest means to heat. And they are coming back into fashion, understandably. But care should be exercised in using them, and in storing fuel used in them.

## Insurance Companies & Inflation

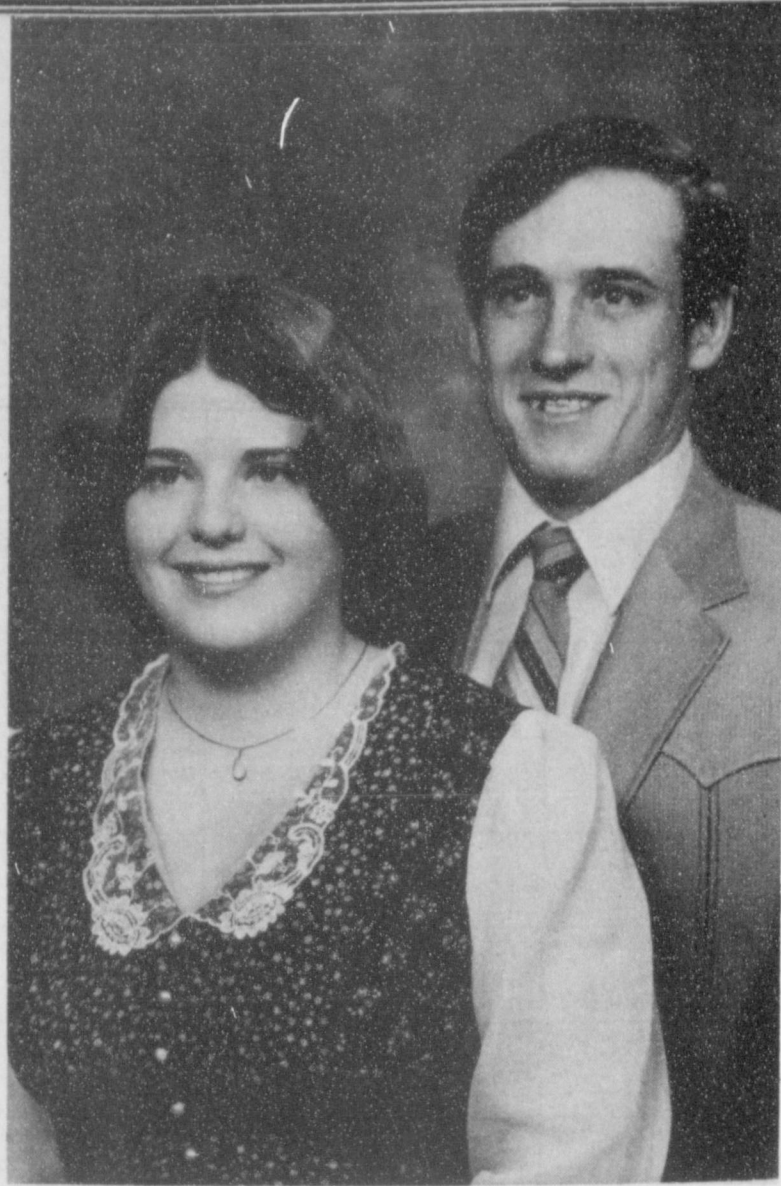
The favorite innovation of many insurance companies recently has been to increase policy premiums annually—without query or approval from policy holders.

This tactic is justified, the companies claim, because inflation is increasing the cost of replacement of almost anything. So, if they can get by with it, the companies add what they consider an inflationary adjustment increase when billing the homeowners, office building owner, etc.

The objection to this gimmick is that the policy holder is no longer the one making the decisions on his policy—how much he can afford to pay, for one thing. Also, some policy holders might be content to insure their homes for slightly less than full replacement value, whether or not they can afford a higher premium.

The psychology of the companies' latest automatic premium hike is bad; it assumes continued high inflation and in itself adds to inflationary pressure in its small way. The worst feature of this new trend, however, is that it allows a billing clerk to raise everyone's premium without proper consultation and consent.





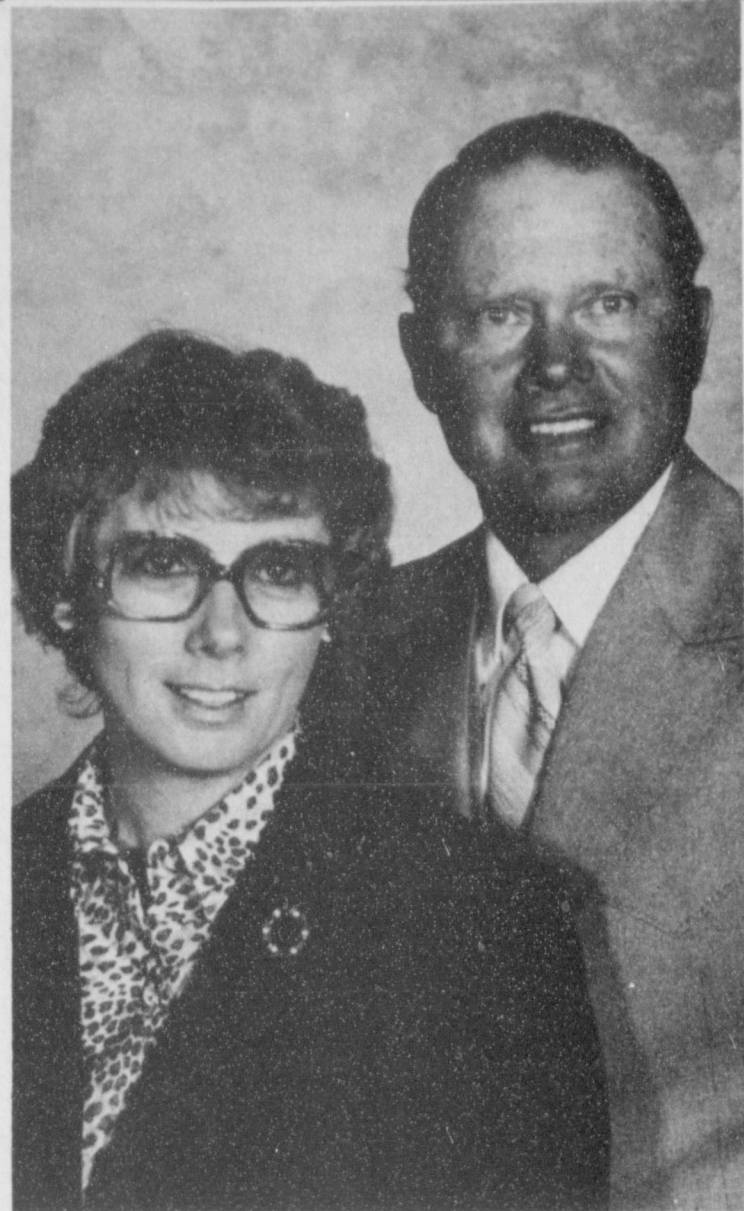
### Engagement Announced

Mr and Mrs. Sammy Don Jones are very proud to announce the engagement and approaching marriage of their daughter, Wanda Kay to Jimmie Adams, Jr., son of Mr. and Mrs. Jimmie Adams, Sr., of Clarendon, Texas. A February 6th wedding is planned at the First Baptist Church, Spearman, at 4:00 p.m. The couple will reside at Pampa, Texas, where Jimmie is employed by Ingersoll-Rand Oilfield Products.

You are invited to a Bridal Shower honoring  
**KELLIANNE BYNUM**  
 Bride-elect of David Oakley  
 Saturday, January 9  
 3:00 - 4:30 P.M.  
 at the  
 First Christian Church

HOSTESSES  
 Mary Brock  
 Nikki Sween  
 Sandy Russell  
 Sharon Russell  
 Elaine Janzen  
 Gwen Smith  
 8S-2tc

Janie Kunselman  
 Bonita Reimer  
 Stephanie Brock  
 Pat Sutterfield  
 Beth Puckett  
 Beverly Trimmell



### To Celebrate Anniversary

Mr. and Mrs. David L. Wilson of Waka, Texas, will celebrate their 25th wedding anniversary January 10, 1982. There will be a reception in their home from 2:00 to 4:00 p.m. in their home. Friends and neighbors are cordially invited. David Wilson and Marilyn Allen were married January 6, 1957 in Guymon, Okla. The event will be hosted by their children, Nancy Wilson, Mr. and Mrs. Greg Wilson, and Mr. and Mrs. Lyndel Schiffner.

### Bridge Club, 4 students to area choir

The Blue Monday Bridge Club met Jan. 4 in the home of Mrs. Alice Lackey. Members present were Emma Seitz, Viola Graves, Deta Blodgett and Alice Lackey. Guests attending were Opal Jones, Ruth Baker, Ora Sanders and Vi Whitson. Viola Graves had high score and Ora Sanders had second high. The next meeting will be in the home of Deta Blodgett on Jan. 18.

Four Spearman High School choral students will be going to Lubbock Saturday for the Area Choir Contest at Coronado High School. While they are there, they will audition for the All State Choir to be held in the spring in Austin.

Students qualifying for the Area Choir are Denise Blackburn and Lisa Scroggs. Greg Meek is the first alternate and Jeannie Lair is second alternate. Travis Angel is the choir director of Spearman schools.

Under the Public Telecommunications Act of 1978, state and local governments are eligible for federal grants to plan and construct telecommunications facilities.

# "Homestead Can Make You Money" Take Stock

I hope this finds you and your family doing well as we approach the Holiday Season.

Interest rates are dropping! We've seen this happen in recent weeks. However, you can still take advantage of rates while they're high if you bring your savings to Homestead.

Saving money is easy at Homestead and your money stays right here at home, where you can see it working for you. That's why we have almost 13,000 savings accounts in this part of the country. We've been out here for 62 years and we'll be here for a long time to come.



**Deloris Montgomery**  
Guymon Branch Manager

Don't miss out on the Best Time in U.S. History to save money. We can fix you up with money market certificates, checking accounts that pay interest, passbook savings accounts, tax-free savings accounts, retirement plans that pay interest, and the list goes on and on. Just like a bank, our accounts are all insured.

If you don't have an account with Homestead, Get One! We're the only financial institution in town authorized to give S & H Green Stamps. We'll give you 600 green stamps (up to 6,000) for each brand new \$1,000 you deposit or add to your account. Bank on us and Take Stock in Homestead.

Sincerely,  
*Deloris Montgomery*

Deloris Montgomery  
Branch Manager  
HOMESTEAD SAVINGS AND LOAN

Home Office  
1518 Oklahoma Avenue  
Woodward, Oklahoma  
(405) 254-3301

Guymon  
Northridge Shopping Center  
Guymon, Oklahoma  
(405) 338-8461



**SALE!**

**--up to 40% OFF!**

**on Fall and Winter MERCHANDISE at KIDS' STUFF**

**Now in progress**

**Boys' sizes: infant through 14**

**Girls' sizes: infant through pre-teens**

**Fall maternity fashions also reduced!**

**KIDS' STUFF** At our new location on West Seventh St. next to Hickerson Jewelers



You are cordially invited to a  
bridal shower honoring  
Lois Marie Cook  
bride-elect of Daniel Alvin Brown  
on January 9  
from 2 to 4 p.m.  
Assembly of God Church Annex

**Hostesses:**  
Kay Snider  
Rita Archer  
Elwana Eaton  
Gale Vanlandingham  
Mrs. David Nuckels

Becky Brown  
Joe Brown  
Ann Pearson  
Rosa Richeson

9-1tc

You are cordially invited to a  
baby shower honoring  
Justin Isaac Pipkin,  
son of Scott & Teresa Pipkin  
Friday, January 8  
from 7:30 to 9 p.m.  
Family Life Center  
Union Church

**Hostesses:**  
Wilma Francis  
Sue Ann Fiel  
Rhonda Bynum  
Helen Dry

Sherry Shields  
Carolyn McLeod  
Charmain Gross

9-1tc

**Chili Supper Set  
For Jan. 12**



A chili supper, including dessert will be served at the junior high cafeteria Tuesday, Jan. 12, from 5 to 7 p.m. before the Spearman-Perryton games. The supper is sponsored by Spearman Music Boosters.

Cost of the meal is \$3.50 for adults and \$1.50 for children 8 years and under.

**Christian Sons  
To Present  
Concert Here**

The Christian Sons, a vocal group from western Colorado, will be presented in sacred concert at the Union Church on January 10th. The concert will begin at 6:30 p.m.

The Christian sons, consisting of three brothers, Dan, Wendel and Van Christenson will be remembered by many in this area from when their father, Ray Christenson pastored the Union Church. They have been traveling full time since 1976 presenting concerts all over the United States of America and Canada and have recorded three record albums as well as appearing on numerous radio and television programs. The concert will feature a wide variety of musical stylings that can be enjoyed by all ages. The public is invited. A Nursery is provided and there will be no admission charge.

**Hospital News**

Patients in Hansford Hospital are R.R. Vanlandingham, Jeremy McLoud, Dan Shrader, A.D. Sparks, Keesee Richardson, Patsy Barrera and daughter, Robert Greever, Ruby Lair, Samuel Jones, Ella Hull, Pauline Johnson, Dave McClellan and Emma Lopez.

Dismissed were Molly Blackman, Kami Adams, David Ochoa, Dorothy Welch, Charlotte Elliot, Ella Garnett.

Reagan signs farm bill.

**PLAN PROPOSED**

Chief Justice Warren E. Burger says converting the nation's prisons into "factories with fences" could help rehabilitate inmates while taking soaring prison costs "off the backs of the American taxpayers." But American business and labor must accept and aid such prison industries if they are to succeed, he adds.

**Lose Weight**

The experts tell us colder weather means our bodies burn more calories keeping us warm, that the change of a colder season is therefore a good time to lose weight.

During the Christmas holidays many of us were tempted and ate too much of the traditional good things. Now is therefore an appropriate time to limit one's diet to non-fattening food and to get the exercise which takes off extra pounds.

Walking, bicycling, skiing, hunting, jogging, or even ten minutes of exercise each day at home will do much to make the average individual look better and feel better—and live longer. Nothing else in life offers better dividends than this.

Israel's Sharon berates U.S. Mideast policy.

Pope wants religious, civil freedoms.

Special prosecutor appointed to check Donovan.

**Brezhnev's Logic**

The latest argument from Leonid Brezhnev, Russian president, on the subject of nuclear arms reduction is highly interesting. Brezhnev sounds like a man genuinely seeking co-survival and prevention of war.

What he says about different measurements of total weapons strength, that each side has a different yardstick, is true. And it's also true that hard, sincere bargaining is needed to adjust inflated or distorted figures to more realistic totals.

It may be that the Russians, now with a decided edge, will not compromise and that Brezhnev is talking only for propaganda purposes. But it may also be that the Russians now realize the U.S. is rearming in earnest, and that they will compromise.

From Washington's viewpoint, a compromise which limits the buildup, and improves the odds, would be better than no

limitation agreement. It may be expecting too much to expect the Russians to dismantle all the weapons which have given them a nuclear edge in Europe in recent years.

**PROPOSES TESTS**

A Nuclear Regulatory Commission licensing board proposed recently to allow testing to lead to a restart of the Three Mile Island atomic reactor that was not damaged in the 1979 accident at the Pennsylvania power plant. But a decision by the full NRC will be required before the tests can begin.

**SIGNS BILL**

President Reagan recently signed a \$413 billion federal funding bill to keep the government running through the end of March and hailed the measure as meaning "substantial savings for taxpayers."

1981 inflation rate lowest in 3 years.

Government to give away surplus cheese.

Polish clergy negotiating with government?

**Fruitcake Review  
1982 Baby Contest**

The two previous Fruitcake Reviews starred local and area talent. We have been lucky enough to secure baby pictures from ten members of our past casts. The Reporter will be running these pictures from now until February. Study them and make your guess as to their identity. The first five people to correctly name all ten will receive two free tickets to the 1982 Fruitcake Revue as well as area recognition for their outstanding ability to recognize faces!

Hey! No fair telling, if this is YOUR picture. Please mail guesses to: Chamber of Commerce, % Name the Baby Contest, Box 161, Spearman, Tx. or drop by the Chamber office after you have seen all ten pictures. All ten pictures will run again late in January.



#5 (CLUE)—She grew up to be such a multi-talented person.



#6 (CLUE)—She was responsible for several members of the cast.

Williams' Abscam conviction upheld.

Justice Department ends investigation of Allen.

Poland's ambassador defects to U.S.

High blood pressure may begin in childhood.

**HOW TO GET YOUR PLACE IN THE SUN WITHOUT MOONLIGHTING:**



It's safe to assume you don't want to work every day for the rest of your life.

So what do you do? You plan ahead. And the place to discuss those plans is in our FULL SERVICE BANK.® Our banking professionals can help you set up a retirement account—from Individual Retirement to Keogh Plans—that can help take the sting out of inflation.

They'll also show you how the tax advantages of each plan can help you right now. Today. How you can deduct payments into your retirement account from your present income.

While you're visiting with us look over our other financial services. Checking, savings, loans, direct deposit, the works. That way we can coordinate all your financial needs.

And give you a smooth head start on a bright, lazy future.

**GOOD CUSTOMERS COUNT AT A FULL SERVICE BANK.**



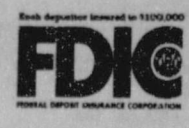
© 1981 American Bankers Association

**FIRST STATE BANK**

SPEARMAN - - - TEXAS  
659-2526 - PHONES - 659-2688

1917 — "Our Sixty-Fifth Year" — 1982

MEMBER F.D.I.C.





### 7th Lynxettes In Waka Tourney

The 7th grade Lynxettes will be entering and participating in one of the toughest tournaments of the season--the Waka School Tournament. There are four little schools that are very tough, mainly because they have all been playing since the 3rd grade!

The teams to watch--all of these teams are very exciting--are the host team, the Waka Cubs, the Plemons Indians, the Pringle-Morse Cougars, the Springcreek Crawdads. All of these teams are very good. Players that have come from some of these schools that played Varsity ball and did a great job include, Gwenna Wilson--Waka, Nancy Wilson--Waka, Susan Davis--Pringle-Morse--there are a few more, but all of these players were great players, why? Because they had what it takes to become an athlete, start very early in life. So the 7th Lynxettes will have a hard time, but like I said before, in an earlier issue, the 7th Lynxettes are a team that works together. If one person, can't do what her friend can, they work at it until they can both do really well. They have the potential of becoming a championship team, and they will probably have to "fight" for varsity position against a few girls from Waka, Pringle-

Morse, Plemons or Springcreek. So this tournament will be a challenge, and the 7th grade Lynxettes love challenges!

Waka isn't that far away, why not make the trip to watch the 7th Lynxettes in action against a very tough team--the Pringle-Morse Cougars. The 7th Lynxettes will play at 2:20 at the Waka Gym. The tournament will be from Thursday thru Saturday--January 7 thru 9. While, there, just take a peak at the other small schools and see that experience is the key to success!! The 7th Lynxettes do have some experience--playing during the season. How will they do? Will they win a trophy? Over which team? All the questions and more will be answered this weekend, make sure and attend, it will be a very good tournament player wise!! The Waka Tournament is always a very tough tournament, a tournament that usually gets the 7th Lynxettes ready for their own tournament--the Spearman Jr. High Tournament--which will be January 14, 15 and 16--Thursday thru Saturday. The 7th Lynxettes have a chance of winning a trophy, don't be surprised if they win the First Place Trophy!!

### 7th, 8th & 9th Lynxettes To Travel To River Road

The 7th, 8th and 9th grade Lynxettes will travel to River Road to meet up with the River Road 7th, 8th and 9th Wildcats.

The 7th Lynxettes, coached by Coach Terry Crocker, will be playing first at 4:30--the game is for this Monday, January 11. The 7th Lynxettes have been having a terrific basketball season. Their game will begin at 4:30.

The 8th Lynxettes, also coached by Coach Terry Crocker, will be playing right after the 7th grade game. The

8th Lynxettes want to have a great 1982, by winning lots of games, one game that will be early is this one against River Road.

The final game of the night will be between the Freshman Lynxettes and the Freshman Wildcats. Coach Robin Travis has done a fine job with the Freshman Lynxettes, they plan on having a great 1982.

These should all be good and exciting games, so don't miss them. The 7th, 8th and 9th Lynxettes appreciate the support they get from their fans.

### JV Lynx Lose To Borger

The Jr. Varsity Lynx played on Monday, January 4, against a tough opponent--the Jr. Varsity Borger Bulldogs. The Bulldogs came into the Lynx Little Gym to play for one reason--to win!!!

The Bulldogs started off on the right foot when the first quarter buzzer sounded to end it--the JV Lynx found themselves trailing by 8 points--16 to 8. The second quarter was a very Offensive quarter--the Bulldogs scored 21 points and the JV Lynx scored 11. The halftime score was 37 to 19 in favor of the Bulldogs. The Borger Bulldogs were playing very good. They were in high gear in the first half. They had an 18 point lead.

The Jr. Varsity Lynx are a very good team--they hustle, have a great pressure Defense, they have a great second half team.

The second half started with Byron Sutterfield scoring the first bucket of the second half. This seemed like a good sign at the time, that the JV Lynx would make an outstanding comeback--the Bulldogs called timeout so that the JV Lynx

would lose some of their momentum. That was a very smart play, the JV Lynx couldn't get back into high gear and only scored 6 points in that quarter--the Bulldogs scored 12--this upped their lead to 24--49 to 25. The JV Lynx starting pressuring the Bulldogs once again in the final quarter. They knew they had to stop the Bulldogs and they had to score themselves. Both teams would be running up and down the court, with the ball dropping in every once in-a-while for a score. The JV Lynx did outscore the Bulldogs 16 to 13, but at the final buzzer, the JV Lynx saw themselves lose the game--62 to 41--by 21 points.

There were three Freshman that played on the JV for the first time this year--Steve Burke, Mark Pearson and Ross Donahue.

The next game for the JV Lynx will be tonight against the Follett Panthers. Then on Friday, January 15, the Jr. Varsity Lynx will take on the Jr. Varsity Boys Ranch Rough Riders at Boys Ranch.

### 7th Lynx 'Bow' To Sunray

The 7th Lynx traveled to Sunray to play the Sunray 7th Bobcats. When the game was over, the 7th Lynx saw themselves behind 43 to 16.

The 7th Lynx, coached by Dan Shaver, played together very well. They did lose the game, but they plan on getting back on the right foot as time progresses. They know they have some rusty parts and will be working on them during this week.

The 7th Lynx will be hosting the 7th River Road Wildcats. This should be a good game, so go on out and watch the action.

The game will begin at 4:00 p.m. and will be played at the Lynx Little Gym. This is the first game of the night with 2 others. The games finish early. There are, lots of times, lots of fans in the stands.

The Spearman Music Boosters will sponsor a Chill Supper, including dessert, at the Junior High Cafeteria, this Tuesday, January 12, from 5 to 7 p.m. before the Spearman-Perryton games. Tickets are \$3.50 for Adults and \$1.50 for children 8 years and under.

#### Gone

The trouble with resisting temptation is that it may never come again. -Airman, Norman. Okla.

#### So They Say

American women are the best-yessed women in the world. -Punch.

#### Good Advice

The best way to break a bad habit is to drop it. -Spotlight, San Diego.

The Spearman Music Boosters will sponsor a Chill Supper, including dessert, at the Junior High Cafeteria, this Tuesday, January 12, from 5 to 7 p.m. before the Spearman-Perryton games. Tickets are \$3.50 for Adults and \$1.50 for children 8 years and under.

#### Hopeless

No matter how much you nurse a grudge, it won't get better. -Journal, Petersburg.

WACO--Texas is sending 19 voting delegates to the 63rd annual meeting of the American Farm Bureau Federation Jan. 10-14 in San Diego.

Voting delegates from across the nation, representing the AFBF's 3.1 million member families, will adopt policies to guide the nation's largest general farm organization in 1982.

Heading the Texas Farm Bureau delegation will be TFB President Carrol Chaloupka, cattle and grain producer from Dalhart. The rest of the delegates will be comprised of members of the 13-member

TFB board of directors, plus five former state directors.

Main convention speakers will include Robert Delano, Warsaw, Va., grain farmer and president of the American Farm Bureau Federation; Secretary of Interior James Watt; and Senator Walter Huddleston of Kentucky, ranking minority member of Senate Agriculture Committee.

Conferences are scheduled for cotton, dairy, livestock, horticultural crops, grains, natural and environmental resources, and poultry and aquaculture.

The business session where policies for 1982 will be

adopted will be the final two days of the meeting. Election of directors and officers will be on the final day, Jan. 14.

Steve and Pat Bearden of Santa Rosa, Cameron County, TFB's "Outstanding Young Farm Couple," will compete with other state finalists for the national title in Farm Bureau. Mr. and Mrs. Bearden are members of a family corporation which farms approximately 4,300 acres in the Rio Grande Valley.

Marcey Langridge of San Patricio County, chosen as TFB Queen at the organization's recent state meeting in Corpus Christi, will be intro-

duced at a general session of the San Diego meeting along with other state queens. She is the daughter of Mr. and Mrs. Bobby G. Langridge Sr. of Sinton.

Representing Texas in the national talent find program will be Pianist John Dujka of Fort Bend County. John, the son of Mr. and Mrs. William Dujka of Rosenberg, won the state talent find competition in Corpus Christi Nov. 30.

Voting delegates from Texas, in addition to Chaloupka, include 13 members of the TFB Board of Directors. They are: Paul T. Macina, Shamrock; S.M. True, Jr., Plainview; Leonard Schaffner, Hen-

rietta; Joe F. Fisher, McKinney; A. Wayne Cranfill, Hooks; Vester Smith, Loop; and Roy Johnson, Desdemona.

Also, Calvin Rueter, Clifton; Henry Burton, Lufkin; J.R. "Bubba" Day, Uvalde; David Fochner, Boiling; George O. White, Harwood; and James R. Adams, Odem.

The five former Board members who are serving as voting delegates are: Bill Guidry, Nacadoches; Jack Osborne, Pampa; Marvin Phemister, Weinert; Donald Hebert, Waller; and Doyle Condra, Talpa. Serving as alternate delegates are past state directors John A. Smith, Camer and T.L. Roberts, Willis Point.



PRICES EFFECTIVE THRU JAN. 13, 1982. QUANTITY RIGHTS RESERVED.

**RANDOM WEIGHTS... SMOKED Sliced Slab Bacon \$1.29**



**PORK LOIN... ASSORTED Pork Chops \$1.49**

**BUTCHER BLOCK BEEF Center Slices Chuck Steaks \$1.39**

**BUTCHER BLOCK BEEF Blade Cuts Chuck Roast 98¢**

**BUTCHER BLOCK BEEF Chuck Roast \$1.39**

**BUTCHER BLOCK BEEF Arm Pot Roast \$1.79**

**EXTRA LEAN BONELESS Beef Stew \$1.98**

**U.S.D.A. GRADE 'A' FRESH Fryer Breasts \$1.19**

### SAVE & SAVE WITH SAV-A-CHEK

**CAMELOT GRADE 'A' Medium Eggs DOZEN 1¢**

**BAR-S BRAND Sliced Bacon 1-LB. PKG. 9¢**

**HOLLY BRAND Beet Sugar 5-LB. BAG 8¢**

**BRAWNEY Paper Towels JUMBO ROLL 2¢**

**FRESH PRODUCE FROM GREEN MARKET STREET Golden Ripe Bananas 29¢**

**Miracle Whip SALAD DRESSING \$1.28**

**CHARMIN Bath Tissue 498¢**

**FRESH Crisp Carrots 31¢**

**U.S. NO. 2 Russet Potatoes \$ .89**

**FRESH CRISP Tender Broccoli 79¢**

**TENDER CRISP Celery 29¢**

**DEL MONTE SLICED OR HALVES Peaches 64¢**

**STA-PUF CONCENTRATE FABRIC Softener \$2.78**

**Oreo Cookies \$1.53**

**ECONOMY FROZEN FOODS Morton Meat Pies 32¢**

**Orange Juice \$1.12**

**Mixed Vegetables 58¢**

**Hash Browns 87¢**

### SHOP IDEAL... WHERE THERE'S MORE VALUE IN

**DOUBLE GUNN BROS. STAMPS EVERY WED.**



## 7th Lynxettes 'Run Past' Sunray

The 7th grade Lynxettes traveled to Sunray to meet up with the Sunray 7th Bobcats. The 7th Lynxettes looked terrific with the final score being 32 to 11.

The 7th Lynxettes coached by Terry Crocker, played really well against the Bobcats. The 7th Lynxettes, even though they won by 21, still missed some shots that would have gone in before the 2-week vacation. The 7th Lynxettes have to have a great team, mainly because they are very

competitive in all sports--Summer and Spring as well as Fall and Winter sports.

The 7th Lynxettes will have their hands full though this weekend, because they will be in a tournament--the Waka Tournament. In this tournament, there are teams like the host team--Waka, Pringle-Morse, Plemons and Spring-creek--that are very tough. They start playing basketball since they are in the 3rd grade, which gives them an "experience" edge, sort of

speaking. The 7th Lynxettes will have their hands full, playing teams with that much experience, but they will do their best. They will play at 2:20 against a very tough Pringle-Morse team. The game will be played this Thursday, January 7. The tournament will be January 7, 8 and 9, Thursday, Friday and Saturday. Go on over to Waka, it isn't that far, and cheer on the 7th Lynxettes on to victory. Then on Monday, January 11, the 7th Lynxettes will travel to

River Road to meet up with the tough River Road Wildcats.

The Spearman Music Boosters will sponsor a Chill Supper, including dessert, at the Junior High Cafeteria, this Tuesday, January 12, from 5 to 7 p.m. before the Spearman-Perryton games. Tickets are \$3.50 for Adults and \$1.50 for children 8 years and under.

## Fort Worth Fat Stock Show Expects Record Year

A record number of livestock entries are expected at the 1982 Southwestern Exposition and Fat Stock Show which begins its annual 12-day run Jan. 27 and concludes Feb. 7 at the Will Rogers Memorial Complex in Fort Worth.

Based on the number of entries counted thus far, W.R. Watt, Jr., show president-manager, said, "It appears we will exceed our last year's record entry of 15,215 head of livestock." He said office per-

sonnel continues to process entries, and exhibitors of poultry, rabbits and pigeons have until Jan. 15 to enter.

Premiums for the livestock show and accompanying World's Original Indoor Rodeo will be more than \$440,000, another record. Rodeo entries, expected to be near 900 cowboys, will be taken by the Professional Rodeo Cowboys Association ProCom office in early January.

Riding clubs, bands and

sponsors of horse-drawn vehicles are invited to participate in the All-Western Parade, scheduled to begin at 2 p.m. Friday, Jan. 29, in downtown. Parade applications, available at the Stock Show Office, P.O. Box 150, Fort Worth, TX 76101, should be returned by Jan. 15.

Neal Gay of Mesquite, Texas, has been named rodeo production manager for the Fort Worth Rodeo. He has organized a production syndicate that includes six outstanding stock contracting firms, owned by Bernis Johnson, Cleburne, Texas; Dell Hall, Hulbert, Okla.; Harry Vold, Fowler, Colo.; Bradford Ivy, Fairfield, Texas, and Jim

Shoulders, Henryetta, Okla. The Rodeo ticket office in the lobby of Will Rogers Coliseum is open daily, including Sunday, from 9 a.m. until 5 p.m. Mail orders are being taken at P.O. Box 150, Fort Worth, TX 76101. Tickets are \$7 each for night and weekend performances, and \$5 for Monday through Friday 2 p.m. matinees.

When ordering by mail, send cashier or money order, state performance desired and include \$1 extra per order for return postage and handling. Rodeo performances are scheduled at 8 p.m. Jan. 27 through Feb. 7; at 2 p.m. Jan. 30 through Feb. 7; and a special performance at 10 a.m. Saturday, Jan. 30.

## Comment On Sports

FOOTBALL \* \* \* \*

By Pete Fritchle

WASHINGTON, D. C. -- The most disappointing team of the 1981 pro football season had to be the Atlanta Falcons. They were picked by many to win it all and had great talent.

But--in this reporter's view--the team didn't get the leadership from coach and coaching personnel that should have been forthcoming. Time after time, in game after game, the Falcons played--there's no other word for it--dumb football.

Everyone likes Leaman Bennett and he's probably a fine person but he didn't seem to have it between the ears, or his assistant coaches didn't, and you can't win in

the NFL with tactics and play everyone knows and expects.

The team didn't adjust quickly enough to win--and in some games never did properly adjust to the defenses. Two great runners, Andrews and Cain, and a great passer, don't add up to number-one unless there is an element of variety in calls, the unexpected and diversification.

Since all other teams knew Atlanta's strengths and prospects, a little more innovative strategy and play-calling and the use of surprise, was necessary. It was painful to watch the Falcons' poor play calling and missed chances game after game.

A Chill Supper, including dessert, will be served from 5 to 7 p.m. this Tuesday, January 12, before the Spearman-Perryton games. It will be at the Junior High Cafeteria. The cost is \$3.50 for Adults and \$1.50 for children 8 years and under. Sponsored by the Spearman Music Boosters.

## 8th Lynx Beat Sunray

The 8th grade Lynx traveled to Sunray to play against the tough 8th grade Sunray Bobcats. With the vacation lay-off, the 8th grade Lynx did a good job on beating the Sunray Bobcats--27 to 18.

The fans could tell that the players had had a vacation--there were some shots that just didn't go in, that would have before the vacation time. Coach May said that his team had 47 rebounds--the best for the 8th Lynx in this basketball season. Both teams were the same height, so the 8th Lynx could get in the inside and have a chance to get some rebounds. The 8th Lynx had a good enough Defense to stop the Bobcats from winning the game.

As far as the freethrows--which usually win the game--didn't win the game this time. The Sunray 8th Bobcats shot an amazing 43% of their Free Throws, and the 8th Lynx shot 23% of their shots. In most games, the freethrows would have won the game, but the

8th Lynx made sure that the Sunray Bobcats didn't score more than 18 points in the game. The 8th Lynx also hit 20 percent from the field--that is pretty good.

Jeff Vanlandingham was high point with 10 points. On both sides, there were shots that wouldn't fall in that would have before the vacation. Considering the 2-week vacation, the 8th Lynx did a very good job.

So the 8th Lynx have started off the New Year in very good style. The next "victims" for the 8th Lynx will be the River Road Wildcats. The game will be played this Monday, January 11, beginning at 4:30 or so. Coach May said that the person to stop will be their big inside man. He is really tall, towering over both teams. If they can get him into foul trouble that would be perfect. How will this be done? Coach May and his team have ways of surprising opponents. The game will be played at the Little Gym, so don't miss it.

## 7th, 8th & 9th Lynx To Host River Road

The 7th, 8th and 9th Lynx will be hosting the River Road 7th, 8th and 9th Wildcats at the Little Gym this Monday, January 11.

The 7th grade Lynx, coached by Dan Shaver, will be playing first--beginning at 4:30. The 7th Lynx will want their 1982 part of their basketball season to be a success--by winning lots of games--and they have the talent to do it.

The 8th grade Lynx, coached by Coach Tom May, have a lot of talent and will want to beat

the River Road Wildcats and start off the New Year with a win over the Wildcats.

The Freshman Lynx, coached by Coach Ricky Smith, have been having a terrific 1st half--the 1981 part of their 1981-82 basketball season. The Freshman Lynx plan on having another terrific half of basketball. They, also, have lots of talent--each one can do 2 or more positions when needed.

Go on out to the Little Gym and check out the action.

## 8th Lynxettes Lose In Thriller

The 8th Lynxettes planned on starting the New Year with a new look--beating every opponent in sight. Well, this week--Monday, January 4--that almost came true, but almost doesn't count in basketball. The final score was 23 to 22.

Coach Crocker said that the 8th Lynxettes played very well, considering the time off they had. They played a very good game Offensively and Defensively. Anytime a team loses

by a point, that is very heartbreaking. But the 8th Lynxettes are tough, they did lose by 1 single point to the Sunray Bobcats, but they will be getting ready for the 8th River Road Wildcats.

The 8th Lynxettes will travel to River Road to meet up with the Wildcats. The game will be played this Monday, January 11. This is a very tough team, but the 8th Lynxettes will be ready and in shape for this game.

**FAMILY PACK**  
3 TO 4 LB. AVG.  
**Fresh Ground Beef**

**\$ .87**  
LB.

GRADE 'A' FRESH FRYER  
Thighs or Drumsticks.....**\$1.09**  
USDA

TASTE-O-SEA  
**Cod Fillets**  
**\$1.89**  
1-LB. PKG.



TASTE-O-SEA  
Perch Fillets.....**\$1.98**  
1-LB. PKG.

FREE

up to 60 extra SAV-A-CHEK coupons

When you present this valuable coupon with your purchase!

20 EXTRA SAV-A-CHEK COUPONS WITH PURCHASE OF \$15.00 TO \$19.99

40 EXTRA SAV-A-CHEK COUPONS WITH PURCHASE OF \$30.00 TO \$39.99

60 EXTRA SAV-A-CHEK COUPONS WITH PURCHASE OF \$50.00 OR MORE

Ideal

FOOD STORES "SHOW YOU HOW"

Good thru 1-13-82

LIMIT ONE COUPON PER CUSTOMER

## SAVE & SAVE WITH SAV-A-CHEK

<p><b>Parkay Margarine</b> 16-OZ. STICKS</p> <p style="font-size: 2em; font-weight: bold;">1¢</p> <p>WITH 1-FILLED SAV-A-CHEK</p>	<p><b>HUNT'S BRAND Tomato Ketchup</b> 24-OZ. BTL.</p> <p style="font-size: 2em; font-weight: bold;">9¢</p> <p>WITH 1-FILLED SAV-A-CHEK</p>	<p><b>BETTY CROCKER Cake Mix</b> 18½-OZ. BOX</p> <p style="font-size: 2em; font-weight: bold;">8¢</p> <p>WITH 1-FILLED SAV-A-CHEK</p>	<p><b>Fresh Carrots</b> 2-LB. BAG</p> <p style="font-size: 2em; font-weight: bold;">2¢</p> <p>WITH 1-FILLED SAV-A-CHEK</p>
<p><b>GREEN GIANT WHOLE OR CREAM STYLE Golden Corn</b> 17-OZ. CANS</p> <p style="font-size: 2em; font-weight: bold;">279¢</p>	<p><b>Wesson Oil</b> 48-OZ. BTL.</p> <p style="font-size: 2em; font-weight: bold;">\$2.18</p>	<p><b>BETTY CROCKER ALL FLAVORS Layer Cake Mix</b> 18½-OZ. BOX</p> <p style="font-size: 2em; font-weight: bold;">78¢</p>	<p><b>ALL GRINDS COFFEE Maxwell House</b> 1-LB. CAN</p> <p style="font-size: 2em; font-weight: bold;">\$2.08</p>

<p>ASSORTED KLEENEX <b>Facial Tissue</b> 280-CT. BOX</p> <p style="font-size: 2em; font-weight: bold;">99¢</p>	<p><b>Glad Wrap</b> 100' ROLL</p> <p style="font-size: 2em; font-weight: bold;">67¢</p>	<p>LAUNDRY DETERGENT <b>ERA Liquid</b> 64-OZ. SIZE</p> <p style="font-size: 2em; font-weight: bold;">\$3.56</p>	<p>LIPTON <b>Tea Bags</b> 100-CT. PKG.</p> <p style="font-size: 2em; font-weight: bold;">\$2.39</p>
		<p>LIPTON <b>P-Nut Butter</b> 28-OZ. JAR</p> <p style="font-size: 2em; font-weight: bold;">\$2.56</p>	

<p style="text-align: center; font-weight: bold;">FRESH DAIRY FOODS</p> <p><b>Camelot American Singles</b>..... 12-OZ. PKG. <b>\$1.38</b></p> <p><b>Grated Cheese</b>..... 8-OZ. CAN <b>\$1.89</b></p> <p><b>Cottage Cheese</b>..... 24-OZ. CTN <b>\$1.14</b></p> <p><b>Steffen's Yogurt</b>..... 3 8-OZ. CTNS <b>\$1</b></p>	<p style="text-align: center; font-weight: bold;">HEALTH and BEAUTY AIDS SPECIALS</p> <p style="text-align: center; font-size: 0.8em;">REGULAR OR WINTERGREEN</p> <p><b>Colgate Colgate Tooth Paste</b>..... 6.5-OZ. TUBE <b>\$1.66</b></p> <p><b>Security Kotex Tampons</b>..... 30-CT. BOX <b>\$2.66</b></p> <p><b>Bronz Deodorant</b>..... 3-OZ. STICK <b>\$1.43</b></p>
---	---

STORE FOR YOU!... **Ideal** FOOD STORES **Food Stamps Buy More At Ideal...**



DOUBLE



GUNN BROS. STAMPS EVERY WED.





# STOREWIDE CLEARANCE

**ALL AREA RUGS BY MILLIKEN & REGAL REDUCED ... 40%**

**BEGINS 8:30 A.M. THURSDAY, JANUARY 7!**

**Every Item In Store Reduced! Nothing Held Back!**

**ALL BEDSPREADS 25% OFF**

**ALL CARPET IN STOCK SALE PRICED!**

## OPENING HOUR DOOR BUSTERS:

	REG.	SALE
Beige & Brown Plaid Velvet Sofa by International	795.00	308.50
One Pair Bamboo Arm Chairs by Thomasville Imports — Each	199.95	98.50
One White with Yellow Trim Nite Stand by Lea	139.50	70.00
Oval Oak Pedestal Dining Table by American Drew	649.50	195.00
One Pair Oak Dining Chairs by Riverside — Each	114.50	75.00
Brown Vinyl Sleeper by Futorian (as is)	549.50	298.50
Beige, Blue & Red Print Chair by Highland House	319.50	150.00
French Provincial Nite Stand by Thomasville	239.50	140.00

### SIMMONS BEDDING

	REG.	SALE
One Only Full Size Deluxe Beautyrest Mattress	249.50	129.95
One Only Full Size Beautyrest Boxspring (Disc Tick)	269.50	129.50
Full Size Golden Value I Mattress or Boxspring — Each	149.95	129.50
Queen Size Golden Value I Set — Set	379.95	329.50
King Size Golden Value I Set — Set	479.95	409.50

**ALL OTHER SIMMONS BEDDING SALE PRICED**

### BEDROOM

	REG.	SALE
One Only Full or Queen Size Headboard by American Drew	198.50	100.00
Oak Triple Dresser, Mirror & Queen or Full Size Headboard by American Drew	789.50	598.50
Triple Dresser, Hutch Mirror, Lingerie Chest, Queen Size Bed & 1 Nite Stand by Thomasville — Set	2399.50	1695.00
Triple Dresser, Twin Mirrors, Queen Size Bed, Chest & 1 Nite Stand by Thomasville — Set	1895.00	1295.00
Triple Dresser, Twin Mirrors, Chest, Queen Size Bed & 2 Nite Stands by Thomasville — Set	3995.00	2850.00
Armoire, Queen Size Bed & 2 Nite Stands by Thomasville — Set	1911.50	1395.00
Triple Dresser, Tri-Fold Mirror, Armoire, Thomasville — Set	3610.00	2550.00
Triple Dresser, Queen Size Bed & 2 Nite Stands by Lea	498.50	379.50
King Size Bed with St-Canopy Frame by Harrison	419.50	319.50
Full Size Canopy Bed with St-Canopy Frame by Harrison	569.00	439.50
Oak Captains Bed with St-Canopy Frame by Harrison	569.00	439.50

### DINING ROOM

	REG.	SALE
Rectangular Oak Formica Top Table & 6 Chairs by Keller — Set	1195.00	895.00
Oak Round Pedestal Table & 6 Chairs by Tell City — Set	1396.50	1050.00
Maple Round Pedestal Table & 6 Benches by Tell City — Set	1246.50	935.00
Maple Round Table & 4 Chairs by Tell City — Set	1149.50	860.00
Maple Round Table & Buffet by Tell City	847.50	635.00
Maple Glass China & Buffet by Broyhill	1095.00	820.00
Pine Glass China, Rectangular Table & 6 Chairs by Broyhill — gp	798.50	598.50
Pine Glass China, Rectangular Table & 4 Chairs on Casters by Broyhill — Set	1395.00	1050.00
Oak Round Pedestal Table & Buffet by Broyhill	1150.00	865.00
Oak Glass China & Buffet, Oval Table & 6 Chairs by Broyhill — gp	895.00	675.00
Oak Glass China & Buffet, Oval Table & 6 Chairs by Broyhill — gp	1750.00	1298.50
42" Round Table & 4 Chairs on Casters by Cal-Style — Set	1035.00	775.00

**ALL LA-Z-BOYS & STRATOLOUNGERS REDUCED ... 25% TO 30%**

**ALL TABLE LAMPS, FLOOR LAMPS, WALL & TABLE ACCESSORIES REDUCED FROM ... 20% TO 50% ONE TABLE OF ACCESSORIES REDUCED ... 80%**

### LIVING ROOM

	REG.	SALE
Brown & Beige Striped Herculon Sofa & Loveseat by Highland House — 2-Piece	1350.00	950.00
Beige Woven Print Sofa by International	498.50	349.50
Beige & Brown Printed Velvet Sofa by Highland House	895.00	559.50
Rust Velvet Sofa & Loveseat by Kroehler — 2 Piece	1350.00	950.00
Dark Brown Velvet Sofa & Loveseat by Futorian — 2 Piece	1195.00	839.50
Wood Arm Velvet Print Sofa & Loveseat by Ayers — 2 Piece	1550.00	1095.00
Hi-Back Rust Velvet Sleeper & Loveseat by Kroehler — 2 Piece	1525.00	1075.00
Traditional Printed Brown Velvet Chair by Kroehler	389.50	275.00
Beige & Brown Striped Velvet Rocker by Futorian	249.50	175.00
One Pair Blue Print Wing Back Chairs by Futorian — Each	289.50	199.95
One Pair Beige Velvet Wing Back Chairs by Futorian — Each	298.50	199.95
One Pair Rust Velvet Barrel Back Swivel Chairs by Futorian — Each	239.50	169.50
One Pair Mint green Velvet Tufted Back Chairs by Highland House — Each	329.50	239.50

### HIDE-A-BEDS & SLEEPERS

	REG.	SALE
Blue Print Sleeper with Matching Ottoman (Coffee Table) by Futorian	849.50	598.50
Bamboo Arm, Beige Herculon Sleeper by Ayers	709.50	529.50
Beige Woven Print Sleeper by Futorian	598.50	450.00
Beige, Blue, Rust Print Hide-A-Bed by Simmons	825.00	619.50
Green & Beige Stripe Sleeper by Clayton Marcus	1195.00	898.50
Rust, Blue & Beige Stripe Hide-A-Bed by Simmons	799.50	598.50
Rust Pin Dot Velvet Hide-A-Bed by Simmons	850.00	640.00
Brown Velvet with Scatter Cushion Hide-A-Bed by Simmons	759.50	569.50
Beige Plaid Herculon Hide-A-Bed by Simmons	850.00	640.00
Rust Corduroy Hide-A-Bed by Simmons	850.00	640.00
Blue, Beige Stripe Sleeper by FMI	899.50	675.00
Beige Herculon Sleeper by Futorian	698.50	525.00
Brown & Beige Plaid Hide-A-Bed by Simmons	740.00	560.00
Wheat Woven Print Hide-A-Bed by Simmons	859.50	645.00

**TERMS ARRANGED WITH CREDIT APPROVAL.**

**Broyhill FURNITURE CO.**  
plains shopping center  
Spearman, Texas

659-3701

723 W. 7th

8:30 - 5:30

659-3701

NO APPROVALS

NO EXCHANGES

NO RETURNS.

