

DPS Warns 48 May Die In Labor Day Traffic

AUSTIN--The director of the Texas Department of Public Safety has warned that as many as 48 persons may die in traffic accidents this Labor Day weekend on the state's streets and highways unless drivers are especially cautious.

"Otherwise," said Colonel Jim Adams, "the 78-hour period could be a repeat of the most recent holiday. Traffic accidents during the last July 4th weekend took a total of 60 lives, 16 more than had been estimated," he said.

Drunk driving and excessive speed were the major contributing factors in the fatal accidents recorded over the July 4th holiday, according to data furnished by the DPS Statistical Services Division.

None of the drivers or passengers killed during the July

4th holiday were wearing seatbelts. In addition, 35 percent of these fatalities resulted from the person being ejected from the vehicle.

Adams urged motorists to wear their seatbelts to minimize the hazard posed by careless

drivers. He said safety belts should be used during city driving as well as long distance trips.

Adams has instructed DPS Regional Commanders to utilize additional Troopers during the three-day holiday and he said "Operation Motorcade" would

be placed into effect.

"DPS patrol officers will be enforcing the laws and assisting motorists by watching for drivers who exceed the speed limit and those impaired by alcohol or drugs," Adams said. They will also be on the lookout for vehicle defects.

Adams said Operation Motorcade would be in effect from 6:00 p.m. Friday, September 4 through midnight Monday, September 7, 1981.

During the Fourth of July holiday, 73 per cent of the fatal accidents occurred between 8:00 p.m. and 4:00 a.m.

Center For MD Telethon At Fire Station

The center for the Muscular Dystrophy Telethon this year will be located at the Spearman Fire Station on S. Hazelwood. Volunteers are needed to help out with the Telethon, anyone interested contact Ed Williamson or Ronnie Bullard, the Coordinators for this year's Muscular Dystrophy Telethon.

Also any clubs or organizations that would be interested in

having a cake walk or bake sale or something on this order can contact Ed or Ronnie.

Volunteers are out seeking donations for food and drinks from local businesses. The Telethon is strictly volunteer and most of the Volunteers are working at getting things going for weeks ahead of the Telethon but during the Telethon the

workers need food and drink to get them through 28-30 hours. If you are interested in donating food or supplies contact Juanita Pierce or Nina Hendricks.

Kids that would like to go door-to-door need to come to the Fire Station Monday, Sept. 7, NOT BEFORE 8 a.m.! The door-to-door campaign will not start before then. But you must

come to the station to receive your official badge and cannister.

Every year Spearman raises a great deal of money for MDA, but it is not just one or two it's everyone pulling together for a great cause. This year will be the greatest year of all, because that is the kind of town we live in!!!

In Texas, 98.5% of all the people killed in passenger cars, trucks, and buses in 1980 were not wearing their seat belts.



(A message from this newspaper and the Texas Department of Public Safety)



VOL 72, NO. 43



The Spearman Reporter

THE SPEARMAN REPORTER, SPEARMAN, TEXAS 79081

THURSDAY, SEPTEMBER 3, 1981

Purple Lynx Will Entertain Stratford Elks Here Friday

Stratford has been picked by most Texas sports writers to win the district and go to the state playoffs in District 1-AA this year.

Coach Jack Needham does not find fault with the predictions, but feels there are still many questions about this year's Elk team because of the squads lack of experience.

We are going to have a good team, he commented, but I feel like it will be a tight race between the top four teams in the district; including Panhandle, Gruver and Stinnett. And, the Lynx will play Gruver two weeks from Friday at Gruver in their homecoming game.

But, for the time at hand, local football fans will have a chance to see two of the finest teams in the area play here Friday night, when the Lynx and Elks tangle. Coach Needham stated, that "Even though we won it last year, I think Spearman is going to have experience at all the skill positions and the game might be one of our toughest of the season."

Defensively the Elks line up in a 5-2 and offensively the team runs out of the Houston veer. Needham thinks that the overall team quickness is one of the big pluses for the squad with the weakness coming from lack of experience. We lost some key starters last year, commented the Elk Coach. With only three back on offense and four back on defense we have had to fill the quarterback and receiver spots. The decision has been made to go with Dean Mitts, a 6-4, 165 pound senior as field general.

He doesn't have the speed to be a top veer quarterback, said Needham, but he does run the offense adequately and we will not be running a strictly veer offense.

Mitts will be passing to Lane Roberson, a 6-5, 141 pound senior who started last year and Chris Stanley, a 6-0, 180 pound right end. This will probably be the tallest ends and quarterbacks in the upper Panhandle. Also adding to the Elks talent this year, will be Buddy Schertler, who missed most of last year with a broken collar bone, and he is expected to show the Lynx a clean pair of heels from the backfield, here Friday night. Defensive players to watch will be Obidio Gomez at noseguard and Chris Stanley at tide end. At defensive end, Robbie Roberson and Dario Garza will get a starting nod. A new addition to the Elk Coaching staff is Mark Reasor from Perryton, Texas. He will be heading the junior varsity team this year. So, it looks like the Lynx work will be "cut out"

for them in their big opener here Friday night.

On the plus side this Friday night, the Lynx will have some players back at skill positions. "Our linemen are inexperienced and we will have to fill in a few skill spots, but if our young linemen come through for us we will be able to compete", says Jim Duncan, Head Spearman mentor.

Defensively the secondary will be strong and the defensive ends would be tough but the strong tackles and linebackers are inexperienced. Offensively, the lynx backs and skill positions of ends and flankers all look good but again the linemen are inexperienced.

Quarterback Steven Tindell is back and will be out to see that the Lynx win the District race, or at least "do their best" to win. Coach Duncan considers Dalhart and Perryton as the toughest opponents they will face in the district, however River Road and Boys Ranch could prove to be "a thorn in the Lynx' side".

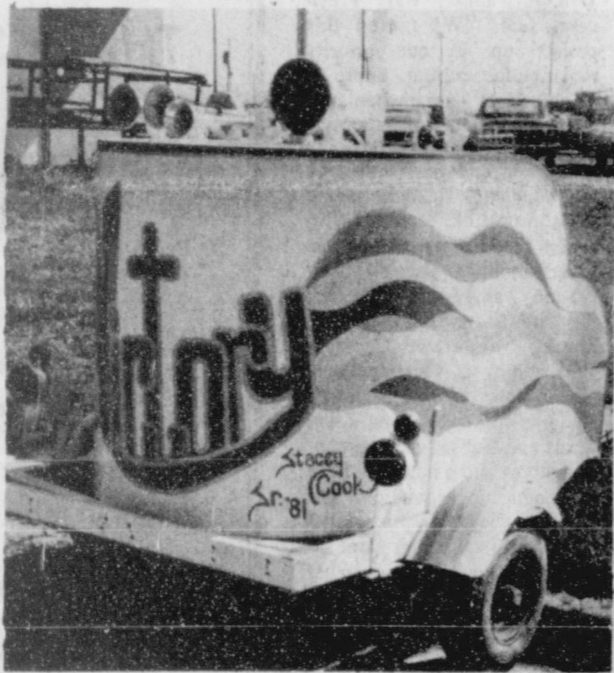
Of course, this Friday night the Stratford-Lynx game could be the "game of the year" for local sports fans. Stratford has won the last three battles so the Lynx look for a barn burner in this confrontation.

Besides Stratford here this Friday night, other non-district foes include Sanford-Fritch, Gruver, Boise City, Canadian and Guymon. And, sports fans, every one of these games should be thrillers.

Strength of the Lynx lies in the skill positions and the weakness seems to be in the lack of experience in both lines. The team lost 21 Seniors to graduation and it seems as all of them played in the line. Jimmy Haden at defensive end should be a stand out. At 6-1 and 200 pounds, Duncan thinks Haden is going to be one of the better ends in the District.

Duncan considers Monte George at Split End to be the offensive standout. He stands 6-1 and weighs 170 pounds. Although the backs don't have a great deal of speed they are strong and quick. Average size of the team is about 175 pounds.

With 17 Seniors on the team, the coach is looking for all of them to provide the leadership. Fine new coaches dot the Lynx gridiron landscape. Terry Coffee will be coaching defensive ends. He coached dpreviously at Henrietta. Ricky Smith from Ralls, Texas is coaching the tackles. Dan Shaver, in his finest coaching job since graduation from Texas Tech will be guiding the Junior Varsity. Robin Travis from Silverton, Texas will be coaching the Freshman and F.G. Crofford who came from Gruver will be lending support to the JV.



Stacy Cook, who graduated in 1981, painted "Victory" on the spirit wagon.

In their scrimmage last Friday night at Sunray, almost the entire sports staff of the Reporter was on hand to view the Bobcat-Lynx scrimmage. The JV's from Spearman were very impressive as were the varsity. The JV Lynx scored several touchdowns, and held the Bobcats on several drives to win by about 4 to 1 on touchdowns. The Varsity Lynx were equally as

impressive as they scored about 5-2 margin over Sunray. It was impossible to tell who was running with the ball, or who caught the passes or even who was playing for the Lynx teams, as they played in white jerseys, had no numbers. But, the staff of the local newspapers and all fans enjoyed the scrimmage. See you at Lynx Stadium Friday nite.

Wirsdorfer's To Be Honored

A "Going Away Get Together" for Don and Fay Wirsdorfer will be held Thursday evening at 7:30 p.m. at the First Christian Church. The Community is invited to attend to wish the Wirsdorfer's well.

Thank You

To all of those who assisted in the search for Kim Cluck in the plane crash; we thank you. We especially appreciate the efforts of Jerry and Dean Sparks.

The Cluck Family

Field Tour Tuesday

All farmers are invited to attend a field tour Tuesday, September 8, at 9 a.m. Growers will see the different sorghum hybrids growing in our area at one big plot. Each variety contains 2.24 acres so that growers can better evaluate the different hybrids. Also farmers will get to look at several different corn varieties. Farmers are asked to meet at Aubrey Rasor's shop on Main Street of

Gruver, 410 Main (West Side) at 9 a.m. for coffee. After coffee, the tour will start. The tour will terminate with a free lunch at the El Vaquero Cafe in Gruver.

Dr. Frank Petr, Area Extension Agronomist and Dr. Carl Patrick, Area Extension Entomologist will be available for discussion on production and insect problems in the area.

Griffin Services Held Monday

Memorial services for Michael Patrick Griffin, 27, of 709 S. Florida, Amarillo, who was killed in a one-car accident Saturday, were held at 11 a.m. Monday in the Gruver United Methodist Church with the Rev. Tom Fuller, pastor, and the Rev. Milo Steffen II, pastor of the First Christian Church, officiating. Burial was in Gruver Cemetery by Boxwell Brothers Funeral Home of Spearman.

The accident occurred about three miles south of Stinnett on Farm Road 687 at about 3 a.m. Saturday.

Griffin's wife, Vickie Lee, 20, was driving the vehicle at the time of the accident, officials said. She apparently fell asleep at the wheel and the car swerved into a ditch.

Griffin apparently grabbed the wheel of the car to correct the error and the car slid into an embankment and overturned. Griffin apparently was thrown from the car, officials said.

Griffin was pronounced dead at the scene of the accident.

Mrs. Griffin was treated and released from North Plains Hospital in Borger.

Mr. Griffin was born in Ballston Spa, N.Y. He had lived in Gruver for 13 years, recently moving to Amarillo. He was a plant operator at the Phillips Petroleum Co. plant in Phillips. He also was a student at West Texas State University.

He was a veteran of the U.S. Air Force. He was a member of the Church of Jesus Christ of Latter-Day Saints in Perryton. He graduated from Gruver High School in 1972.

He married Vickie Lee Morley of Gruver on July 10 in Gruver.

Survivors include his wife; a son, Aaron Paul Griffin of Oceanside, Calif.; his stepfather and mother, Chuck and Florence Kruse of Gruver; five brothers, Frank Griffin, Robert Griffin, James Griffin and Wayne Kruse, all of Gruver, and William Griffin of Dumas; his grandparents, Mr. and Mrs. James Martin of Middle Grove, N.Y., and Mr. and Mrs. Warren Coryell of Texoma, Okla.; a great-grandmother, Mrs. Eva Martin of Scotia, N.Y.

Crash Victims Remain Critical

According to a spokesman for Cluck Cattle Co., Kim Cluck and Londa Barber who were seriously injured in an airplane crash last Tuesday remain in extremely critical condition in Amarillo hospitals.

MARKETS

Barley	\$1.90
Corn	2.93
Wheat	3.59
Milo	4.00



Spearman Native Is Artist Of The Month

The Hansford County Library Artist of the Month for September is Mary Louise Thompson, daughter of Mr. and Mrs. Carter Crawford of Spearman.

Mary Louise's paintings are predominantly oils, her favorite medium, and her subject matter follows the western and wildlife themes.

Mary Louise grew up on a farm/ranch near Spearman and attended the Spearman schools through her high school graduation. She began drawing before she started school, and her love of art has never faltered. She gives the people of Hansford County and their genuine interest in art, credit for her talents in art at an early age.

Ruth Hutton, one of Mary Louise's first art teachers, was a tremendous influence on her, giving her warm and steady encouragement.

She was also greatly influenced by her mother, Marie Crawford and by her Grandfather, D.A. Jackson. Jackson,

a farmer, loved music and art. Mary Louise's first memories of art were of the gorgeous script birds he drew.

Mary Louise Thompson has studied art under Ruth Hutton, William Henry Earle, Ramon Forman, Irvy Brown and has attended art courses at the

Hospital news

Patients in Hansford Hospital are Jessie Cole, Harriet Collard, Jan Dunn, Carla Terry, Tammy Bradley, Candi Delozier and twins, Jackie Smith, Lorrie Ritchie, Lorene Kunselman, Alex Vela, Andy Rhodes, Albert Prachar, Lilly Cox and Tony Henry.

Dismissed were Martin Vela, Mark Hardin, Frank Baca, Donna Davis, Brenda East and daughter, Pope Gibner, Edith Roper, Ruth Skinner, Patricia Coleman, J.T. Pond and Hattie Mackie.

University of Denver, Murray State College and Paris Junior College.

She has shown her art work in Texas and Oklahoma and was accepted into the National Western Art Show and Auction in Ellensburg, Washington. She was the featured artist this summer at the Cowgirl Hall of Fame in Hereford, Tx, and will show her art at the Western Art Show and Auction in Kallispell, Montana in September, 1981.

Mary Louise has seven years of teaching experience and is now devoting all her time to painting in her studio near Brownwood, Tx.

Some of her work on display at the library during September is for sale. Collectors and critics recommend Mary Louise Thompson's painting on canvas for pure pleasure and an appreciable investment.

The Hansford County Library is honored to have this fine artist as September's Artist of the Month.

Open Letter To The President

So you say we'll have a free market

Ronald Reagan
cc Marvin Meek

Dear Mr. President:

You say you want to get the government out of agriculture. That would be fine, if you would get the government completely out of agriculture.

When you pen up a cow, you either have to bring her food and water or watch her suffer and die.

Mr. President, you can't leave the pen up and simply say to the cow "You're free now," and expect her to survive. You have to first take the pen down so she can get to the pasture.

Before you knock the supports out from under agriculture, there are a few things you need to do to dismantle the pen that the government has built around America's largest industry.

If you want agriculture to function on the free market, then there has to be a free market. We do not have one.

A free market is when you can sell to anyone who wishes to buy - like Russia, for instance. A free market is not embargoes, trade tariffs, and letting the State Department and Alexander Haig use agriculture as a political tool in foreign policy.

A free market doesn't exist here at home when commodities exchanges manipulate the market so prices stay below the cost of production. A free market isn't when someone who doesn't even own the commodities can sell them, create millions of paper bushels, and profit when the price falls.

A free market isn't when foreign countries can use our own commodities exchanges to beat down prices before they take delivery of the actual goods.

A free market isn't when international conglomerates are allowed to operate untouched by the anti-trust laws.

A free market isn't when the government monitors crop production by satellite and puts out periodic crop reports which benefit mostly speculators, since the farmer is already committed and the speculators are not.

A free market isn't when the government bans certain pesticides in the US, but allows foreign countries to buy those same pesticides from US companies, then ship them back in clinging to the skins of fruits and vegetables.

A free market isn't when a private concern, the Federal Reserve, controls the country's money supply and can order up fiat money or shut it off completely at will.

A free market isn't when a few foreign-owned grain companies have a monopoly on the world grain trade.

A free market isn't when we import expensive OPEC energy and export our natural resources at below the cost of production in the form of grain.

There are a few more planks in the pen imprisoning agriculture.

There is a string of broken contracts with the American farmer. For instance, the CCC is selling corn and sorghum that our government pledged would be

isolated from the market to offset the effects of the government grain embargo. Your administration has impounded money that congress appropriated for alcohol plant loan guarantees. And need we remind you again that you personally promised a Board of Producers to advise on agricultural policy before the farm bill was formulated?

Mr. President, if you would have us believe that you are really going to take the government controls off something as important as agriculture, then let's see the controls go before the food and water is cut off. When the above mentioned situations are corrected, then agriculture can hold her own on the free market, but not until then.

You have the opportunity of going down in history as the president who spurred America to pull herself up by the bootstraps, or as the president who presided over a depression worse than the Hoover days which still haunt the Republican party.

Please think about this carefully, Mr. President, for the future of the nation depends on it. Rural America is dying. What will the cities do when Rural America goes?

This is more crucial than "sending the wrong signals." It's a matter of life and death for America's largest industry, for Rural America, and the men and women who have traditionally carried on America's highest standards.

Sincerely,
Micki Nellis
Iredell, Texas

Thinking usually means less talking.

Selfishness is the main cause of bad manners.

A pretty girl makes a lot of men feel younger.

The best way to earn a rest is to complete your work.

No human beings agree upon the meaning of happiness.

A conversationalist will talk whether anyone is listening, or not.

PSU Implements New BS Degree

Panhandle State University has been authorized by the Oklahoma State Regents for Higher Education to implement a new Bachelor of Science Degree in Vocational Home Economics Education. This program had been conditionally approved by the regents in November of 1980 and was given final approval at a recent meeting.

The university must now proceed to gain the approval of vocational education and professional standards before implementing the program. Dr. Robert Griffin, Dean of Academics and Administration at Panhandle State University, said, "The persons in the home economics department must do a study and present a program of general education and degree requirements. This proposal will go to the vocational education people and the certification area in the State Department of Education." Griffin continued, "Both of those groups will come to our campus, meet with those involved, and inspect the facilities. If their recommendation is favorable, it will then go to the professional standards board. With their approval and continued funding by the Oklahoma State Regents for Higher Education, the program should be a reality in July of next year."

The university will soon begin a search for an individual with at least a Masters Degree and certification in vocational home economics. That person will be hired contingent upon total approval of the program. The additional courses necessary for the vocational certificate would then begin being offered in the fall semester of 1982.

Panhandle State University will soon be making the selection of an architectural firm to handle the renovation of Hesper Hall, the home economics building. The university has been allocated \$194,455 for capital improvements to the building. The home economics living room and laboratories will be modernized, windows replaced and a new roof added. Dr. Thomas Palmer, PSU President, said, "We moved this project up in our priority ranking for capital improvements last year when we received conditional approval for the new major. I believe the renovation and remodeling we will be doing will help assure the approval of vocational education, certification, and professional standards boards."

Sandy Latham of the Panhandle State University home economics department said, "Everything is vocational oriented now. We are losing students that we'll now keep. Texas and Kansas are vocationalized now and a number of the Oklahoma high schools are there or in the process of going." Mrs. Latham went on to say, "Our girls now must complete a home economics degree and then must get vocational certification at Oklahoma State, Kansas State or Texas Tech. Soon we'll be

offering that same vocational certification."

"We get lots of calls about home economics from prospective students; and, when we tell them we don't have vocational education certification, they frequently look elsewhere," commented Mrs. Latham. She also said, "It is a financial benefit to a high school to offer vocational home economics. It's a more rigid program and there is more paper work but the high schools are doing it for the state subsidies."

The department will need to

add only a couple of new courses to the curriculum to make it comparable with vocational certification programs at the other universities. The university will need to hire additional faculty to be considered for the certification.

Dr. James Satterfield, Head of Teacher Education and Chairperson of the Division of Education said, "It certainly will enhance the job opportunities for home economics majors to have the vocational education certification. This will be particularly true in the states surrounding us."

Work has already begun

preparing the materials that will be sent to vocational education and teacher certification in support of the new major. The program in Vocational Home Economics Education will be similar in its function to home economics as Panhandle State University's new Vocational Agriculture Education program for students wishing to be vo-ag instructors.

The educated individual who ceases to study soon becomes uneducated.

12% FEED FINANCE AVAILABLE

Palo Duro Feeders is making available to its customers 12% feed finance. The 1981 tax law has made cattle feeding an attractive means of lowering your tax bill.

Come by and visit with JOE MAXWELL and see what kind of job we have been doing.

Wheat pasture is going to be good this year. We will precondition your calves for pasture.

THANKS FOR YOUR SUPPORT



PALO DURO FEEDERS

BOX 866

Phone: 806-733-2416

7 miles south of

JOE MAXWELL-MANAGER

GRUVER, TEXAS

No more high electric bills?



With the Average Billing Plan, you pay about the same amount each month.

Say goodbye to unexpectedly high electric bills. The Average Billing Plan eliminates the highs and lows in the billing cycle, by giving you an "average" amount to pay each month. The Plan makes bill paying and budgeting easier, since you'll know about how much of a bill to expect. And by the end of the year, you'll find you've paid the same amount for electricity as if you were on the regular billing plan.

Here's how it works:

FIRST MONTH		*16% of accumulated difference is added when prior to the current bill, the calculated amount for electricity used is more than the accumulated amount billed under the Average Billing Plan.
MOST RECENT 12 MONTHS + 12 = BILLING ACTUAL USE	AVERAGE AMOUNT	
EACH MONTH THEREAFTER		
MOST RECENT 12 MONTHS + 12 + ACCUMULATED = BILLING ACTUAL USE	15% OF DIFFERENCE* AVERAGE BILLING AMOUNT	

NOTE: If you have less than 12 months history at your present address, the "average" will be based on the number of months available.



E32-81

THE MONEY MAKERS

Money Market Certificates

RATE

15.896%

\$10,000

Minimum Deposit

182 DAY MATURITY

Effective September 1, 1981
Through September 7, 1981
Regulation Prohibits
Compounding of Earnings

Jumbo Certificates

TERM

RATE

ANNUAL YIELD
(Compounded Daily)

30 DAY

18.00%

19.72%

90 DAY

18.00%

19.72%

180 DAY

17.75%

19.42%

1 YEAR

16.00%

17.35%

\$100,000

Minimum Deposit

Rates Subject to
Change Without Notice

30 Month Certificates

RATE

16.25%

ANNUAL
YIELD*

17.64%

\$1,000

Minimum Deposit

Rates Change Bi-Weekly
* Compounded Daily

NOTICE: As Required By Law, All Certificates Are Subject To Substantial Penalty For Early Withdrawal.



... more than just a bank

First Bank & Trust Co. Booker, Texas (806) 658-4551



ALL DEPOSITS INSURED
UP TO \$100,000 by F.D.I.C.

WANTED ADS

CAPROCK MONUMENT CO.

Dealers of Georgia Granite, Georgia Marble, Colorado Granite, & Bronze.

represented by **BOXWELL BROS. FUNERAL HOME**

519 S. EVANS
659-3802

Hansford County Planned Parenthood
26 S. Haney
659-2483
Spearman Mon.-Fri.
8:30-12:30

NOTICE
Wallace Monument Co.
Monuments, Curbing,
Grave Covers
Local Representative
LEONARD JAMESON
Spearman, Texas
20-rtn

STEAM RINSE & VAC
Steam Rinse-and-Vac Shampooers; \$8.95 for up to 24 hrs, available at Gordon's Drug; also at Freddie Largent's 716 Cotter Dr. after 4 p.m. and Saturdays and Sundays.

MONUMENTS
Save 20% to 30%
Agents and Undertakers
Commission
ALVA MONUMENT CO.
Alva, Okla.
51-rtn tonly

Town & Country
all Steel Bldg.
70'x80'x14'
Colored Walls; Galv. Roof
2-20'x14' Framed Openings
1-30'x6'8" Steel Walk Door
513,680.00
1-806-435-3107
35-rtn

Pee Wee's Plumbing Service
Roto-rooter, Acoustical Ceilings, Blown Insulation in walls and ceilings. Appliance Service, used appliances for sale. 659-2811 or 659-3781.
20-rtn

SERVICES

Will decorate cakes all occasions. Also cookies and cupcakes. Call Nelda 659-3984.
51-rtn

Carpet & upholstery cleaning
Rogers Steam Way, Guymon, 405-338-7926
55-rtn

CALL S&H REMODELING for your painting or papering needs-659-3328.
32-rtn

SERVICE: Pits cleaned, wet or dry. Dragline or loader. Also, dozer, grader, carry-all service.
Lee Roy Mitchell, 806-733-2384
Gruver, Texas 79040.

SNOOPY'S DAY SCHOOL
Open from 7 a.m. to 6 p.m., we have Hot Lunches and Snacks Morning and Afternoon. Our van takes kids to and from Track-Swimming Lessons, etc. Call 659-3328 or come by 620 1/2 Bernice and ask about our Swimming Program on Monday, Wednesday and Friday. Receive Western gift stamps for your bill-and double on Friday. Licensed for ages 18 months to 12 years.
32-rtn

PATTY B'S WORK SHOP, Furniture stripping, re-finishing, repair. 700 South Main, Burger, Texas. Phone 806-273-3916. Open Tuesday, thru Saturday, 9:30 A.M. to 5 P.M.
41s-8tp

FOR SALE

FOR SALE: 1976 Century Buick, good condition. Phone 659-2763
43-1tc

FOR SALE: Registered Hamp-Ram for sale. Call 733-2517.
NC

MISCELLANEOUS FOR SALE

SAVE! Free Delivery---HEAVY SHAKES, 65.00 per square. Light medium Shakes \$57.00 per square. All other Cedar roofing--Cedar Beams--Plywood, Rough Cedar, Cedar Fencing materials or turn-key fencing--Composition Shingles, and felt. **LAKESIDE FENCE MFG. AND WHOLESALE INC.** DRAWER L FRITCH, TEX. 79036 Phone 806-857-2411.

FOR SALE: House to be moved, 6 years old. Built by Bob's Ready Built, Lubbock. 1,400 sq. ft., 3 bedroom, 2 bath, utility, central heat and air, \$37,000. Larry Holt, 659-2640.
42-4tc

BUILDING SALE
Dealer Price Available on selected sizes, due to customer cancellations for financial reasons. 32' wide & 50' wide Grain Storage Curvettes; 40' wide & 60' wide Straightwalls. Call for size and special pricing; Joe 800-525-9926.
42-4tc

A new six piece Sloppy Jo set, \$499. A new plaid Herculon sofa and chair, \$279. A new plaid sofa, \$159. A new recliner, \$139. A three piece coffee and end table set, \$199. A new love seat, \$299. New and used dinette sets, \$89 to \$199. New and used bedroom sets. Several nice chest of drawers. Good selections of used sofas. A Kenmore sewing machine, and many more bargains. Linda's Furniture, 12 E. Brillhart, Perryton.
42s-2tc

FOR SALE: AKC Labrador retriever puppies. 659-3962.
42s-rtn

FOR SALE: regular size mattress and box spring set, like new. 659-3250.
43-1tc

FOR SALE: Good gas range. Call: 9-3446
42-rtn

FOR SALE: Red Chief Seed Wheat. Call Rosa Lee Hill, 659-2277.
43-rtn

FOR SALE: Six-row John Deere Corn header, new, cut less than 150 acres. Call Rosa Lee Hill, 659-2277.
43-rtn

AUTOMOBILES FOR SALE

SURPLUS JEEPS, CARS, TRUCKS CAR-inv. value \$2143 sold for \$100. For information on purchasing similar bargains, Call 602-941-8014 Ext. 518. Phone Call Refundable.
39-4tc

FOR SALE: 1971 olds 98 motor & trans. good. Cheap-659-2105
40-rtn

REAL ESTATE FOR SALE

FOR SALE: 3 bedroom, 2 bath, brick home 1 block from elementary and junior high. Central heat and air, carpeted. Call 659-2201.
42s-4tc

HELP WANTED

SENIOR VILLAGE NURSING HOME NEEDS nurses aides. No experience necessary, we will train. Call 435-5403, Highway 83, Perryton.
43-rtn

DAIRY QUEEN IS TAKING Applications for counter help. Apply to Russell Bland at Spearman Dairy Queen.
42s-2tc

HELP WANTED: Truck driver position available. Apply between the hours of 8 a.m. to 5 p.m. at the office of Spearman Super Service, Inc. Hwy 207 South.
41-8tc

ELECTRIC SERVICEMAN PERRYTON
Qualified Electric Serviceman needed in Perryton, Texas. Electric distribution experience in maintenance and restoration of service, meter reading and troubleshooting necessary. Call 806-435-4077 for interview appointment.
Texas-New Mexico Power Company An Equal Opportunity Employer
43-2tc

WANTED

WILL DO BABYSITTING in my home Monday thru Friday from 8:00 a.m. to 6:00 p.m. Call Beth Brown 9-3949.
42s-2tc

WANT TO BUY small, good condition, used refrigerator, 659-3250.
43-1tc

LOST

LOST-REWARD: Small male white and tan Chihuahua. Blue collar, white flea collar. Answers to Poncho. 659-2288.
43-2tp

LEGAL NOTICE

IMPORTANT NOTICE REGARDING RE-REGISTERING OF BRANDS
Beginning August 31, 1981 the office of the County Clerk, Marie H. Gould, will be re-registering brands and will continue through February of 1982. By renewing your registration during this six months period you will protect your right to the ownership of your brand for another ten year period. If you have a brand registered but do not care to continue ownership, the brand will be released after March 1, 1982. The fee for registering brands is \$5.00 for each location.
42-4tc **T ONLY**

CARD OF THANKS

Thank you for caring, Thank you for sharing, for your expressions of Love in so many, many, many ways.
J.C. & Billy Bob Harris

MYSTIC JT-8 USERS

JT-8 15W = \$50
55 gal. = \$192.50
+ exchange drum
Kent Rimmel
806-733-5017

Offered Exclusively By
EMMETT R. SANDERS, REALTOR

RE
303 acres NE of Morse, on paved road about 2 1/2 miles cultivated, balance in grass, no minerals, principals only.

Choice commercial location fronting 140 ft. on West Kenneth Street.

Immaculate 3 bedroom home, preferred southwest location, corner lot, large storm shelter, new central heat and air, new carpet throughout, fresh paint, ready for you to move in.

New 3 bedroom, bath & 3/4, home near high school. Very nice home at an affordable price. Shown by appointment only.

EMMETT R. SANDERS, REALTOR
659-2516
659-2601 (nights)
26-rtn tonly

TEXAS PRESS ASSOCIATION
MEMBER 1981

The Spearman Reporter

PUBLICATION [USPS 509-660]
SPEARMAN, TEXAS 79081

213 Main Box 458 659-3434
Published Weekly at 213 Main Street
Spearman, Texas 79081

Owner-Publisher.....William M. Miller
Editor.....Faye Lynch
Second Class postage paid at Spearman, Texas 79081

Any erroneous reflection upon the character of any person or firm appearing in these columns will be gladly and promptly corrected upon being brought to the attention of the management.

POSTMASTER: Send address changes to Spearman Reporter, Box 458, Spearman, Tx. 79081.

SUBSCRIPTION RATE: Hansford, adjoining counties, combination with the Hansford Plainsman \$15.00.
Other points, \$20.00.

Mr. and Mrs. Ray Ralston of Gruver, and Mr. and Mrs. Billy Miller of Spearman, enjoyed ice cream and pizza supper at the home of Mr. and Mrs. Flavil Ayres, of Gruver the past week. The Ayres have moved to Gruver from North Dakota, where he is an employee of Gruver Ford.

Mr. and Mrs. Jerry Morris, formerly of Spearman, visited with the Millers recently. Jerry and Mrs. Morris will be missed this year. He was a wonderful community minded person, and was an EMT ambulance driver for the Spearman ambulance. Mrs. Morris worked at the school lunch room. They have moved to Great Bend, Kansas, after 26 yrs. in Spearman.

PUBLIC NOTICE

Texas-New Mexico Power Company(TNP) has filed a proposed replacement tariff for its current Purchased Power Cost Adjustment tariff. The tariff does not constitute a rate increase to any class and provides no increased rate revenue to TNP. The tariff, as proposed, affects only the timing of purchased power cost recovery and not the total dollar amount of recovery.



VIRGINIA WHITE
Realtor 806-659-3841

CLEAN & NEAT, 3 bedroom, almost new carpet and kitchen cabinets. Central heat, fenced. \$24,500. Call for appointment.

Corner lot in Blodgett-Linn Add. 100x120 and price is right. CALL!

CORRECTION

I, Helen Dry, Tax Assessor-Collector for the Palo Duro River Authority, in accordance with the provisions of Article 7-44c, Sec. 1, VTCS, have calculated the tax rate which may not be exceeded by more than three percent by the governing body of the Palo Duro River Authority without holding a public hearing as required by Art. 7-44c, Sec. 2, VTCS. That rate is as follows:

.02 per 100 of value

9-1-81
Date
Helen Dry
Tax Assessor-Collector

Few people have sense enough to appreciate constructive criticism.

When it comes down to the dollar, there are few gracious humans.

Women who insist upon their rights don't always get their rewards.

Studying the Bible may not end warfare but it will improve human beings.

The greatest effort made by many workers is to look busy while doing nothing.

Century 21 Presenting

This beautiful home at 715 S Steele Drive in Spearman.

This beautiful home at 908 Dressen in Spearman.

This beautiful home at 1114 S. Haney.

Century 21

JERRY GEE 659-3664 ALLEN ALFORD 659-3034
LARRY TROSPER 659-3491
Daryl Wynn, Broker
658-4528

GOLDEN SPREAD REALTY

We'll give our word to you.

1980 Century 21 Real Estate Corporate Registered Trademark of Century 21 Real Estate Corporation. Printed in U.S.A. Each office is independently owned and operated. Equal Housing Opportunity.

1106 Wilmeth

FOR SALE - 2285 square feet, ranch style home, 3 bedrooms, 2 1/2 baths, double car garage. Exceptionally nice home, in the nicest part of town.

Call **MAYFIELD**
Real Estate - 435-6528
Perryton,
for appointment.



WE EXPECT THE BEST!

Hansford Abstract Co.

16 S. Haney 659-2516

KICK-OFF



Spearman Lynx

VS

Stratford Elks

Here Friday Nite

KickOff 8:00

TG & Y Stores Company

We Support The Team And Coaches In Their Upcoming Season.

FAMILY CENTER 521 HWY. 207 S. 659-3741



Your local used cow dealer is

SPEARMAN BI-PRODUCTS



1 800 692-4043

Nursanickel Motel

GO GET 'EM



HWY. 207 S. 659-3737

Clark Aerial Spraying



GO TEAM GO!

HWY. 207 S. 659-2344

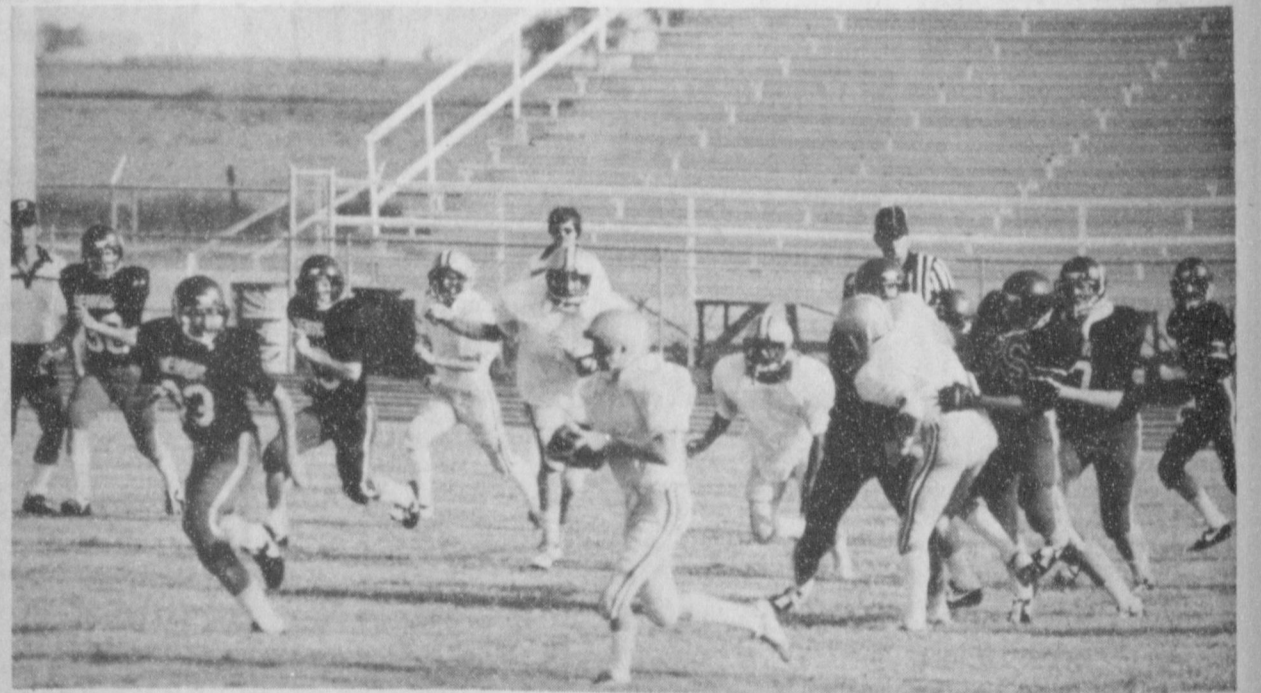
Keep On Trucking For A Touchdown!



John R. Collard, Jr.

Real Estate & Insurance

Kick Off to a Super Season Palo Duro Feeders



Charolette Ford Antique Trunks



GO! FIGHT! WIN!

511 J S. HWY. 207 659-3027

Buster's Aerial Dusters

We Wish You A Super Season



Baker & Taylor Drilling Co.

WE EXPECT THE BEST!

GRUVER HWY. 659-2503



Break Through To A Winning Season

Daco

DACO



DACO INC 1700 S Main Borger 273-7321 DACO INC Spmn 659-2290

CHEERLEADERS

Johnny Eaton Angie Francis
Janet Reed
Kim Elbert Kayla Russell
Teresa Tindell Loree Morris

1981 SPEARMAN LYNX FOOTBALL SCHEDULE

DATE	OPPONENT	PLACE
September 4	STRATFORD	HERE
September 11	Sanford-Fritch	There
September 18	Gruver	There
September 25	BOISE CITY	HERE
October 2	Canadian	There
October 9	**GUYMON	**HERE
October 16	*River Road	*HERE
October 23	*Perryton	*HERE
November 6	*Boys Ranch	*HERE
November 13	*Dalhart	*There

*--District Games **--Homecoming Game

LYNX

1981 JUNIOR VARSITY FOOTBALL SCHEDULE

Sept. 10	River Road	There
Sept. 17	PERRYTON	HERE
Sept. 24	Guymon	There
Oct. 1	BOYS RANCH	HERE
Oct. 8	Dalhart	There
Oct. 15	RIVER ROAD	HERE
Oct. 22	Perryton	There
Oct. 29	OPEN	
Nov. 5	Boys Ranch	There
Nov. 12	DALHART	HERE

1981 FRESHMAN FOOTBALL SCHEDULE

Sept. 10	River Road	There
Sept. 17	PERRYTON	HERE
Sept. 24	Guymon	There
Oct. 8	Dalhart	There
Oct. 15	RIVER ROAD	HERE
Oct. 22	Perryton	There
Oct. 29	OPEN	
Nov. 5	OPEN	
Nov. 12	DALHART	HERE

1981 7th & 8th GRADE FOOTBALL SCHEDULE

Sept. 10	RIVER ROAD	HERE
Sept. 17	Perryton	There
Sept. 24	GUYMON	HERE
Oct. 1	Boys Ranch	There
Oct. 8	DALHART	HERE
Oct. 15	River Road	There
Oct. 22	PERRYTON	HERE
Oct. 29	OPEN	
Nov. 5	BOYS RANCH	HERE
Nov. 12	Dalhart	There



**Our Team's
A Winner!**

306 DAVIS
659-3792

**White House
Lumber Co.**



**GO
TEAM
GO!**

Sack's 3rd Ave.

**Dairy
Queen**

**GO
GET
'EM**

Dairy Queen

Spearman Gruver



GO! GO!

**Lindsey
Furniture**

Borger



**Speartex
Grain Co.**

**GOOD
LUCK**

514 COLLARD
659-3711



**Keep On
Trucking For A
Touchdown!**

**Cattlemen's
Restaurant**



**We Wish You
A Super
Season**

**Brystr's
Young Fashions
Guymon, Okla.**



**GO!
FIGHT!
WIN!**

**Hansford
Insurance
Agency**



**VICTORY
To You,**

**Spearman
Redi-Mix**

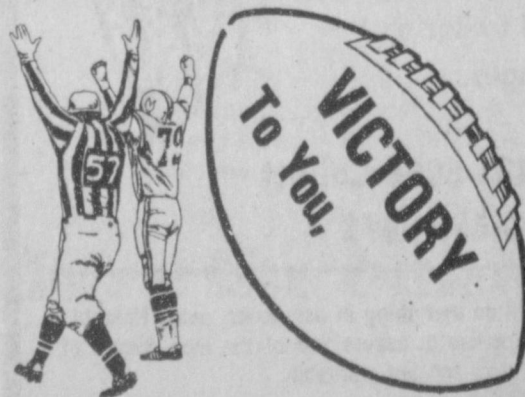


**We know we can count
on 100% effort and a
winning season.**



**Nelson's
Builders Supply**

309 Main - P.O. Box 993
Phone 659-3668
Spearman, Texas 79081
Paint and Carpet Center



Boyd's Shoes

The Big Game is NOW!

**Lawrence Ward
Trucking**

HAULING:
Feed & Grain
Sand & Gravel
733-5025
West of Gruver

Labor Day

The first man to suggest a day be set aside in honor of labor--the working man and the spirit of industry in the nation--was probably Peter McGuire. He was President of the United Brotherhood of Carpenters and Joiners of America in 1882 when his suggestion was adopted by the Central Labor Union in New York.

The first Labor Day, then, was observed in 1882. In 1884 the Federation of Organized Trades and Labor Unions, which

later became the American Federation of Labor, adopted the suggestion and states (Oregon was the first) began to declare the first Monday in September a holiday. McGuire had chosen September because it was about midway between July 4 and Thanksgiving.

By 1894, when Congress declared the day a holiday in all federal offices and territories, some thirty states had already acted to make Labor Day a legal holiday. After Oregon, Colorado, Massachusetts, New Jersey and New York

were the next to declare the holiday.

This year Labor Day is on the 7th. As on other holidays, there will be many accidents. In observing it this year take care to see that you live to observe other Labor Days.

That's Life

"Mother," said little John, bursting into the house, "there's going to be trouble at the chemist's. His wife has got a baby girl and he's had a 'Boy Wanted' sign in his window for a week."

Football Fever

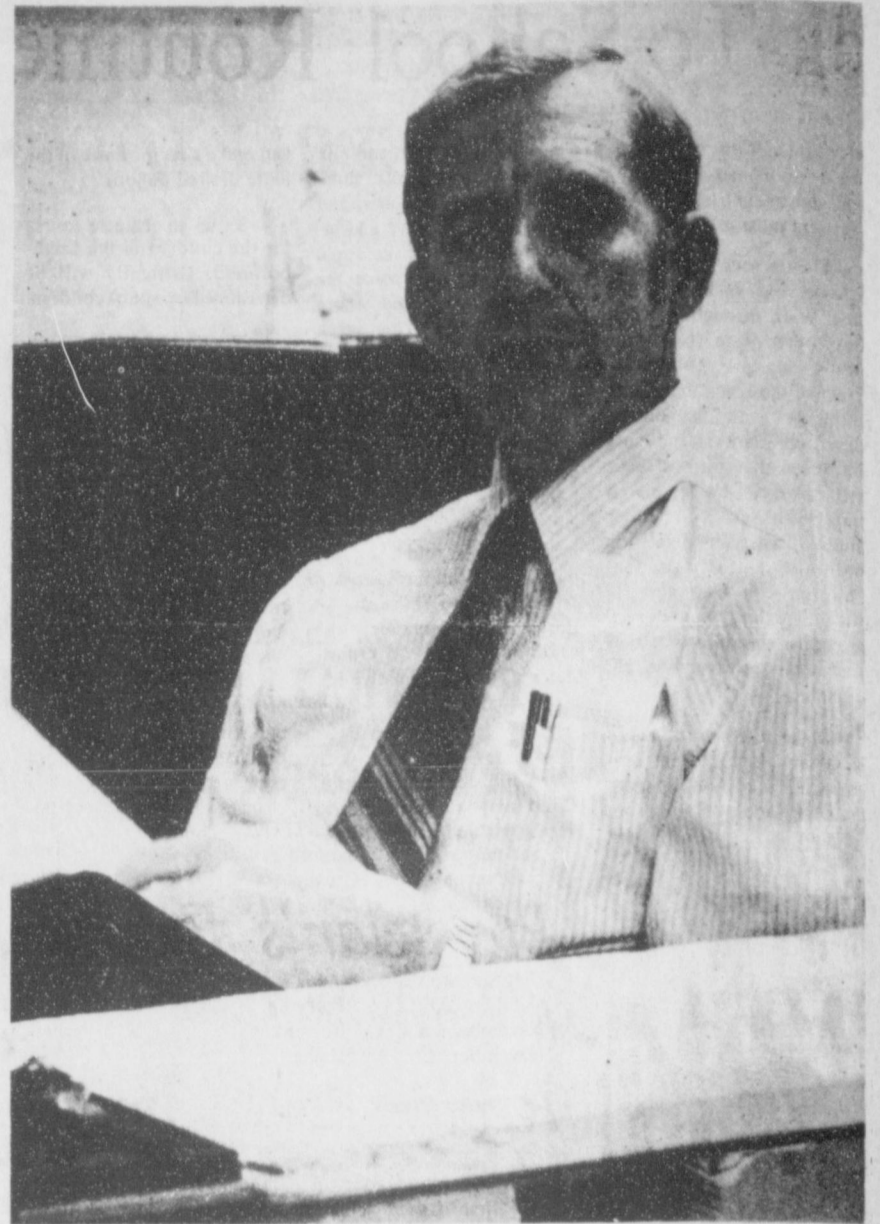
American football fever is unique. That's because, unlike football (which we call soccer) in other countries, U.S. football is also college football--teams which are trained and spotlighted as if professional. Yet they are educational institution teams.

We also have professional football, and soccer. Though soccer is now growing fast, college and pro football still exert a greater pull among U.S. fans. And the fever which grips the U.S. football addict this time of year is singular.

Former graduates utilize football games to return to their alma mater. Parties abound around stadiums, often from the tailgates of station wagons. Students use the games as a highlight of weekend socials. Other fans view college games almost as they would professional sports--and football stadiums are very often sold out long in advance of games.

Saturdays have been more or less reserved for college games and Sundays for pro games with exceptions, and on most football weekends a dedicated fan may see several games. The college season lasts only ten or eleven weeks but the pro sports carry over into January.

At the end of it all, millions of fans have watched the most violent physical contest in existence between teams, and too many players have been left with bad knees, backs, necks, arms, etc. A few have died and a few have been paralyzed. But the excitement of U.S. football, the color and drama of this brutal physical struggle, is unmatched in any other sport--for better or worse.



New Man At The Helm

Robert Spoonmore will be at the helm of the Pflugerville school district. Spoonmore spent nine years in the Texas Panhandle before coming to the superintendent's job at Pflugerville.

At his previous job as superintendent the only thing that grew was cotton. Now he has a 10 per cent increase in student population per year. (Staff Photo)

Spoonmore Is Superintendent At Pflugerville

Robert Spoonmore is the new superintendent for the Pflugerville school district. Spoonmore is the son of Mr. and Mrs. D.E. Spoonmore of Spearman and is a 1958 graduate of Spearman High School.

Before taking over the Pflugerville job he was superintendent at Ralls for the past nine years and was assistant superintendent at Grapevine, a suburb of Dallas, before going to Ralls.

**EDITORIALS
New-Car Season**

September is the beginning of the new-car season in the United States, a unique event which occurs only in this country.

Hundreds of millions are spent by U.S. manufacturers in the annual competition and advertising of various models. John Q. Public is told this is the best model yet. Glowing descriptions of new features (and so-called new features) follow.

Many Americans react to the big push, their appetite for a new car whetted. There's also an element of keeping up with the Joneses in American society.

Obliging

Bus Conductor (calling from upper deck)--Is there a mackintosh down there big enough to keep young ladies warm?

Voice from Below--No, but there's a MacPherson that's willing to try.

LABOR DAY

Let's take this Labor Day to pay tribute to our working force. And to show our pride, respect and appreciation for a job well done....

WE WILL BE CLOSED MON., SEPT. 7
IN OBSERVANCE OF LABOR DAY

Interstate Savings
& Loan Association

SPEARMAN, TEXAS
322 MAIN
659-2559

**Everybody's Asking...
HOW DO WE DO IT?**



Economic uncertainties are now creating substantial investment opportunities for you in the commodity futures market.

Contact the pros at:

C & C COMMODITIES

Agent of Heinold Commodities, Inc.

for the latest quotes and trades on all commodity exchanges.

Call 806-435-6886 Collect
Nights 806-435-2892



We assure you that we will do everything in our power, using Heinold Commodities Research expertise to assure you of the high degree of service necessary to make your account profitable.

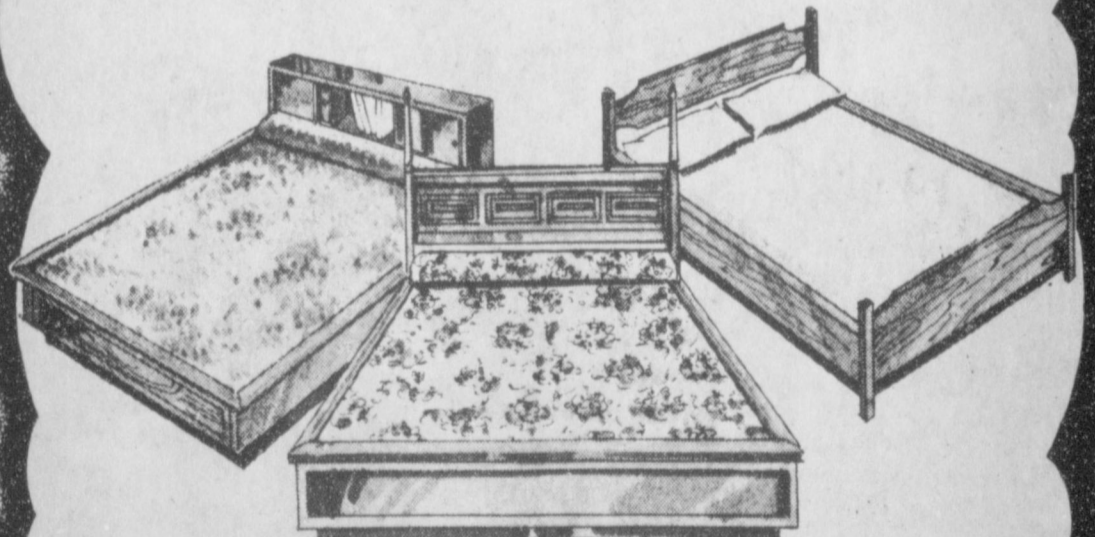
Open Monday Thru Friday — 8:30 a.m. - 3 p.m.
415 S. Main • Perryton, Texas

WE'RE NEW IN TOWN ...

and to celebrate our arrival, we're having a truckload MARKET TEST SALE of

WATERBEDS

20% OFF September 3-4-5



Full line of waterbeds and accessories.

Watch for Grand Opening Soon

Waterbeds 'n' Things

308 S. Main
(Formerly Western Auto)
Perryton, Texas

102 S. Main
Guymon, Okla.

The CBTV Boycott

Television viewers are soon to be able to judge for themselves—in the new television season—whether the threat of a boycott of certain TV advertisers by the Coalition For Better Television has produced results. The Coalition, made up primarily of church groups

and others alarmed at the low moral level of commercial television, threatened to boycott offensive shows' sponsors a few months ago. Many advertisers responded immediately by agreeing to clean up their TV productions—that is, force the film industry types who produce them to clean them up.

The Rev. Donald Wildmon, CBTV chairman, said

recently that some ninety-five percent of TV's sponsors had responded positively to the boycott threat—the boycott being held in abeyance because of this response. But he noted that the networks didn't respond positively.

"The only thing that matters to them is money...our values, our principles, our morals—those things which are very dear and meaningful to us—have been ridiculed, belittled, mocked and insulted by the networks," he said.

That's true because so many of the film types and New York and Hollywood producers are not typical or traditional Americans, and many of them do not really know what average life in a small city or community in America is like. So many are minority citizens, often with a first loyalty to another country, they tend to take a despairing look at the Midwestern, Southern or Western cultures they only know about through smart ridicule in metropolitan publications.

The threatened TV boycott by CBTV was timely and constructive. If commercial television doesn't clean up its act, in the interest of the nation and its people, the boycott should be initiated—and supported widely.

It's comparatively easy to find an excuse for not doing what you don't want to do.

It's very difficult to persuade a smoker that smoking is bad for his health.

Close-out Sale

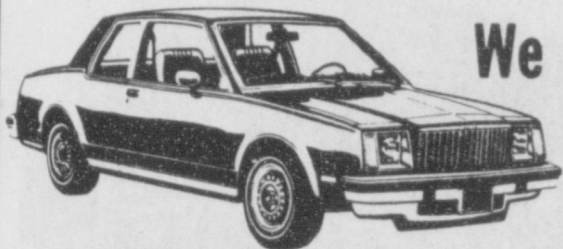
on all

'81 Models

Terrific Year End Savings PLUS
13.80% Interest Rate that has
been extended till September 23.



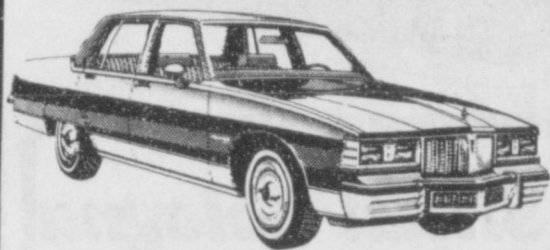
(Applies to '81 Passenger Cars & Pickups)



We Still Have 65 New Units
in Stock ...

40 Pontiacs & Buicks

25 G.M.C.'s



GMAC Financing Available on any '81 model

Up to 48 month financing available thru **GMAC** with approved customer credit.

"... where SERVICE is the KEY!"



HERGERT



SOUTH HWY 207

[806]659-3721

SPEARMAN, TEXAS

Panhandle-Plains

PEOPLE

"Why are they like that?"

FREE SERIES: 6 FILMS

WITH

MUSEUM EXHIBITS

and

DISCUSSION

"GREAT PLAINS EXPERIENCE"



BEGINNING:

Spearman Public Library

7 p.m. Thursdays, September 10

INFORMATION:

SPEARMAN PUBLIC LIBRARY

659-2231

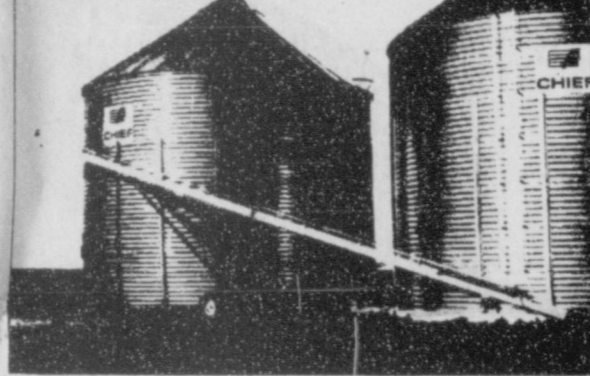
Funded by a Grant from The National Endowment for the Humanities

Save now during CHIEF'S Pre-Harvest Special!

Manufactured by **CHIEF**
CHIEF INDUSTRIES, INC.

Agri-Tech Services, Inc.

Box 161
Guyton, Oklahoma 73942
405-338-2610



Chief Drying or Storage Bins

Model 8-6: 24' 9" diameter

7,526 maximum bushel capacity

SALE PRICE: \$2779.00

Model 9-7: 27' 10" diameter

10,929 maximum bushel capacity

SALE PRICE: \$3711.00

Chief bins feature extra strength vertical stiffeners, built in door, roof ladder and roof manhole. Come in and save today! Now more than ever Chief gives you your money's worth.

IRS To Pay?

A Florida G.O.P. Congressman, Bill McCollum, would change the nature of things in the relationship between the Internal Revenue Service and taxpayers who are forced to defend themselves in court.

If the IRS won its case, the taxpayer would have to bear the burden of his court costs. But if the taxpayer won his case, the government would have to pay court costs of the exonerated taxpayer.

That seems fair. Too often in the past the cost of fighting a case in court dissuaded accused taxpayers. They often gave in. IRS agents know they have this intimidating advantage. Most IRS agents are fine public servants and most of them are careful (and often more than fair) in their findings.

But if a taxpayer is wronged, he should fairly be reimbursed the considerable sum—to lawyers—he has obligated himself to pay, in his defense. That still doesn't compensate the taxpayer for his time and worry and the effort of a court struggle.

Now Open..

Regional Chiropractic Center of Spearman

Monday: 4-8 p.m.

Tuesday: 4-8 p.m.

Wednesday: 9-5

Thursday: Closed

Friday: 2-5 p.m.

For appointment:

659-5585

Pittman-Shieldknight Bldg.

511 SW 11th

When You're Ready To Invest \$100,000.

Call Us First.

We'll Pay 19.119% **

When you're ready to invest \$100,000, call us. Tell us what you think your money is worth. We're confident we can offer the high rate your \$100,000 deserves with a Large Certificate of Deposit.

Look at the chart of dates and rates. By compounding your interest daily, we can give you a very attractive annual yield. Maybe the highest in the region.

We realize you don't ordinarily expect to see offers like this from a bank. But it's this kind of willingness to respond that makes us one of the strongest and fastest growing banks in the Texas-Oklahoma area.

If this offer sounds good, see John Cluck, our President, or Larry Orman, Senior Vice President. Or call (806) 435-3676 and ask for our Money Market Advisor. We'll talk by phone, or we can come to visit you. We think we're the only bankers around who will give you what your money is worth.

Term	Rate	Annual**
30 days	17.25%	18.822%
90 days	17.50%	19.119%
120 days	17.50%	19.119%
180 days	17.50%	19.119%
1 year	16.00%	17.346%

* Minimum deposit \$100,000. Limited offer. Rates subject to change without notice.
** Annual yield based on daily compounding. As required by law, all certificates are subject to substantial interest penalty for early withdrawal. All deposits are insured to \$100,000.

We're the bank you call First.



First National Bank
Perryton, Texas
806/435-3676
Member FDIC

IRS Considers Ground Water Depletion Allowance

Robert D. Lemon, Perryton attorney, acting in behalf of the North Plains Water Conservation District at Dumas, Texas, has been working for some time to obtain the ground water depletion allowance for the counties north of the Canadian River in Texas.

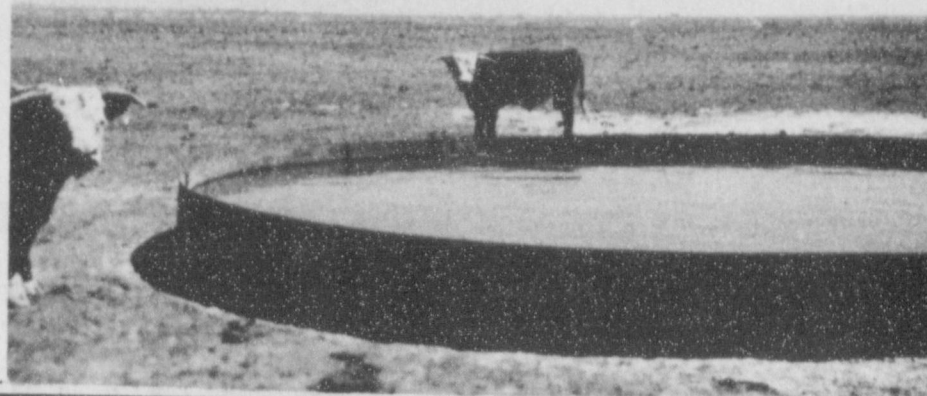
Lemon states that he has recently received a letter from the Internal Revenue Service which states the first favorable attitude that the IRS has expressed to date.

The ground water depletion allowance has been available to irrigation farmers south of the Canadian River in Texas since 1965 as a result of a lawsuit styled United States v. Marvin Shurbet. Just a year ago, a case styled Gigot v. United States was disposed of by the United States District Court in Wichita, Kansas. In that case, the Gigot family, who irrigate in the Garden City, Kansas area prevailed and were granted the same depletion allowance that

had previously been given only to irrigation farmers with land in the Southern High Plains of Texas and New Mexico.

In correspondence from the IRS the chief, Engineering and Valuation Branch said he wanted to assure the District that the consideration of the ground water depletion issue is receiving a very high priority and they hope to publish the IRS position on this matter very shortly.

Ranchers in the Hansford Soil and Water Conservation District are utilizing livestock water storage facilities shown above, to improve their grazing management plans. These storage facilities are designed to provide a week's supply of water for the number of livestock in the pasture or pastures being grazed. These facilities allow the ranchers to get a more even grazing distribution of their rangeland. For further information on the design and installation of water storage facilities contact the SCS Office in Spearman.



Research Field Day, Sept. 8

LUBBOCK--Declining water tables on the High Plains, are of real concern for agriculture. One way of combatting the problem is to develop new varieties of profitable crops which can thrive in this climate and require less water than current varieties.

Research efforts to develop such plants have been going on for several years at the Texas A&M Agricultural Research and Extension Center at Lubbock. This work will be featured Tuesday, Sept. 8, during the 72nd annual field day of the Texas Agricultural Experiment Station (TAES) at the center, on FM 1294 just east of I-27 at the Shallowater exit.

Tours of the center will begin at 1 p.m. and conclude at 5 p.m.

The drought research is focusing upon cotton and grain sorghum, said Dr. Charles W. Wendt, TAES professor of soil physics at the Lubbock center. It involves scientists of the USDA Agricultural Research Service and TAES in a program which combines genetics, plant breeding and soil and water utilization. It is under the leadership of Wendt; Dr. Jerry Quisenberry, USDA cotton geneticist and director of the USDA cotton research laboratory; Dr. Darrel T. Rosenow, TAES professor and grain sorghum breeder, and Dr. Dan Kreig, professor associated with the TAES-Texas Tech cooperative research unit.

"What we are essentially doing is providing an environment in which we can assure drought every year on crops, to try to save some time in the breeding programs," Wendt said.

This is achieved, he explained, by the use of "rainout shelters," which can be placed over test plots to eliminate rainfall and control the water available to the plants. The shelters also enable the scientists to control the daylight hours to which the plants are exposed.

Four shelters are in use this year, Wendt said.

"In one shelter we're comparing the irrigation of an exotic line of cotton with a fruit load—the T-25 line—with a common to see how the lines respond to an irrigation or a rain in the late season," the researcher said. Preliminary work last year and this year indicates the exotic line would hold up better, going ahead to fruit after a late rain instead of starting regrowth, he noted.

Exotic lines, Wendt explained, are ones which are not native to this area. The exotic cottons being studied at the Lubbock station come from Mexico and don't fruit under the long days of this environment. The rainout shelters create a short day period of 10 hours or less so the exotics will

reproduce.

In another shelter, Wendt said, scientists are studying two exotic lines, one which wilts readily and one which doesn't. What they're interested in is whether these lines use the stored soil water more efficiently than existing current varieties, he said.

"We have found that the T-25 line has a much deeper root system than current commercial varieties, and is able to withstand (drought) stress much better," Wendt said. Current varieties send roots down from four to six feet, depending upon soil types, he said. The T-25 sends roots down nine feet.

Wendt said that Quisenberry "is quite far along" in backcrossing this line to eliminate its short-day habit and get into day-neutral lines that can be crossed into current cultivars.

Quisenberry will discuss this and other work with visitors to the field day.

The rainout shelters also are being used, Wendt and Rosenow said, in research on early season and late season drought tolerance in grain sorghum. Seventy-seven lines are being studied in one shelter.

Field day visitors will hear Rosenow report on this and other aspects of the sorghum breeding program. Sorghum research at the Lubbock facility dates almost to the station's beginning in 1909.

Other major points on the motorized tours of the center will include grape research, bollworm research, cotton breeding and development program, weed control, insect control, soil fertility and research with other High Plains crops, said Dr. Thomas Archer, TAES assistant professor of entomology and field day chairman. Research scientists and Extension specialists will be present to answer questions and discuss production practices. New farm equipment and machinery also will be on display.

The field day alternates annually between the facilities at Lubbock and Halfway. The main station at Lubbock is host this year, Dr. Bill Ott, resident director of research, said.

It is a cooperative presentation of TAES, the High Plains Research Foundation, the Texas Agricultural Extension Service and USDA-ARS.

It's surprising what some people will do in the expectation of monetary gain.

The man or woman without faith in anything or anyone gives evidence against themselves.

ATTENTION LIVESTOCK PRODUCERS
CATTLEMEN'S LIVESTOCK COMMISSION CO.
 Box 50, Dalhart, TX 79022
 4 miles West of Dalhart on HWY 54. Brand new facilities. Auction every Friday. Start 9:30 a.m. on Hogs.
 Phone (806) 249-5505
 Nite Phone (806) 249-6297
 Larry Wing Manager

MARKET REPORT
FRIDAY, AUGUST 28
 Sold 2601 cattle, 358 hogs. Top Hots \$49.00 to \$50.50; Sows \$43 to \$46; Boars \$32. to \$36.

Butcher Cows and Bulls \$3 to \$5 higher--Cows \$42 to \$53; Bulls \$54.00 to \$62.50. Steers 50 cents to \$1.00 higher--\$50 to 650 lbs.--\$65 to \$68; 650 to 750 lbs.--\$65 to \$68; 750 to 850 lbs.--\$64 to \$67. Heifers steady to \$1 higher--\$50 to 650 lbs.--\$59 to \$62.50; 650 to 750 lbs.--\$59 to \$61.50.

CALF MARKET
 Calf Market steady on choice, lower on plain kind. Steers, 250 to 300 lbs.--\$75 to \$85, with a few at \$90; 300 to 400 lbs.--\$70 to \$80; 400 to 500 lbs.--\$68 to \$75. Heifers, 250 to 300 lbs.--\$65 to \$75; 300 to 400 lbs.--\$65 to \$75; 400 to 500 lbs.--\$58 to \$65.

WELCOME ALL TO OUR NEW FACILITIES.



PRICES EFFECTIVE THRU SEPTEMBER 9, 1981. QUANTITY RIGHTS RESERVED.

BAR-S
Boneless Hams
 3 TO 4 LBS. HALVES
\$1.89
 LB.

BUTCHER BLOCK BEEF BONELESS
Top Sirloin Steaks
\$3.49
 LB.

LOOK TO IDEAL FOR QUALITY IN MEAT AND ECONOMY IN PRICE SALE

FRESH DAIRY FOODS

KRAFT
Velveeta
\$2.78
 2-LB. LOAF LIMIT 1

KRAFT - CHEDDAR OR COLBY
 1/2 Moon Longhorn..... 10-OZ. CAN \$1.38
 STEFFEN'S REG. CHIVE JALAPENO
 Sour Cream..... 2 8-OZ. CTNS. \$1.09
 PARKAY SOFT MAXI CUP
 Margarine..... 16-OZ. CTN. 83¢

FROZEN FOODS

ALL FLAVORS
Jeno's Pizza
96¢
 10-INCH 12-OZ. PIZZA LIMIT 4

MEADOWDALE
 Orange Juice..... 12-OZ. CAN \$1.78
 MEADOWDALE
 French Fries..... 1-LB. BAG \$1.76
 STILWELL
 Breaded Okra..... 12-OZ. PKG. \$1.72

FULLY COOKED WATER ADDED BAR'S WHOLE
Boneless Hams
 5 TO 8 LB. AVG.
\$1.79
 LB.

FAMILY PACK 3 TO 5-LB. PKG. FRESH
Ground Beef
 3 TO 5 LB. PKG.
\$1.19
 LB.

BUTCHER BLOCK BEEF BONELESS
Rib Eye Steaks
\$3.98
 LB.

BAR-S MEAT
Sliced Bologna
\$1.19
 12-OZ. PKG.

12-OZ. CANS
Coca Cola
\$1.99
 LIMIT 2

ALL FLAVORS KRAFT
Bar-B-Q Sauce
66¢
 18-OZ. BTL. LIMIT 2

DEL MONTE
 CUT OR FRENCH
Green Beans
 WHOLE OR CREAM STYLE
Golden Corn
 DEL MONTE
Sweet Peas
2.81¢
 18-OZ. CANS LIMIT 4

DEL MONTE
 Leaf Spinach..... 2 5-OZ. CANS \$1.85
 VLASIC
 Hamburger Dills..... 32-OZ. JAR \$1.92
 ALL FLAVORS - BETTY CROCKER
 Layer Cake Mix..... 10 1/2-OZ. BOX \$1.68
 DEL MONTE
 Tomato Catsup..... 32-OZ. BTL. \$1.92

ALL FLAVORS DAIRY BELLE
Ice Cream
\$1.38
 1/2-GAL. CTN.

STEFFEN'S
Popsicles, Fudgesicles, Trim Ice Milk Bars
\$1.43
 12-CT. PKG.

SHOP IDEAL...WHERE THERE'S MORE VALUE IN

DOUBLE **GUNN BROS. STAMPS EVERY WED.**

Christmas In September???

If you need something bronzed, like baby shoes, we have a man from Guyton who does a beautiful job. An Oklahoma woman is bringing her machine and will do hat monogramming, name patches, and anything you can think of.

Beautiful silk flowers will brighten any home or business and we have some original floral arrangements for sale. Every child loves toys and we have some hand made wooden toys

any youngster would cherish. Antique dealers are bringing a little bit of everything including some furniture. If you have been looking for a certain item, you are sure to find it among these antiques.

There will be some really rare items for people who collect ancient coins. We also have guns, knives, and beautiful rocks.

Jewelry is something every woman enjoys and we will have

a man here that does his own settings and stone polishing.

Some of the art work being sold at the show includes oils, water colors, limited edition prints, sculptures, and some really beautiful photographs of our surrounding countryside.

Food will be served in the back for people who wish to come and shop all day. Remember September 12th and 13th at the old Beedy Furniture Store. It will be a great weekend for

shopping and having fun.

If you would like to get some of your Christmas shopping done early this year, we have the perfect place to do it. Spearman Study Club's Antique and Arts & Craft Sale. We have something for everyone.

In keeping with their standards of excellent entertainment, Ice Capades this year presents the hottest show on ice, "LET'S CELEBRATE", which brings to the ice some of the most innovative concepts in years.

Ice Capades opens Thursday, September 24 through Sunday, September 27, at the Amarillo Civic Center for six performan-

Ice Capades To Appear At Amarillo Civic Center

Combining the yesteryear classics of George Gershwin, Irving Berlin, and George M. Cohan with the explosion of today's music scene, Ice Capades audiences will be introduced to a brilliantly choreographed musical on ice.

The show's opening number, "LET'S CELEBRATE", illuminates the ice with scenery and

costumes of silver and pink, while performers Lori Benton and Bill Tilghman skate to music from the famed stage play, "THE WIZ".

For the young and young-at-heart, Ice Capades will have on hand television's most popular cartoon characters including Fred Flintstone, Yogi Bear, Scooby Doo, and introducing the new blue shark Jabber Jaws. In "THE MAGIC MACHINE", these characters and more will watch in amazement as a mad professor transforms Raggedy Ann and Andy dolls into living figure skaters.

As in years past, Ice Capades contains strong comedy acts. The unforgettable antics of Bob Mac and Company along with the stylized humor of Brad Doud and Tommy Miller add to the show's depth in this area. For novelty, Don Dunfield performs some incredible feats of acrobatics in his high flying trampoline act.

"LATIN FIRE", considered by many critics to be one of the Ice Capades most progressive numbers, interprets Latin America's popular tradition of Flamenco dancing. Soloists Michael Tokar and Valerie McBroom are presented as well as the new and daring adagio team, Chuch and Sue Shaul. This colorful number also showcases the highly acclaimed flying ballet.

Fans of Gershwin, Berlin, and Cohan will appreciate the

musical recreations of that era in "MUSIC A LA CARTE". Highlighted are solos by new stars, 1980 National Ladies Bronze Medalist Sandy Lenz, Bill Tilghman and Valerie McBroom, along with a captivating performance by the pair extraordinary, U.S. Silver Medalists Gail Hamula and Frank Sweiding.

"CENTENNIAL OF LIGHT" is a rousing tribute to Thomas Edison and brings the entire cast back to the spotlight, lit by over 9,000 tiny light bulbs in a memorable farewell.

It's the hottest show on ice, so come celebrate with Ice Capades!!

There will be 6 shows presented September 24 through September 27. Three night performances, Thurs., Fri., Sat., at 7:30 p.m.; 3 matinees, Saturday at 2 p.m. and Sunday at 2 & 6 p.m.

Prices are \$5.50, \$6.50 and \$7.50, all seats reserved.

Youths 16 and under and senior citizens, 65 and over receive a \$2.00 discount on all tickets for the Saturday 2 p.m. and Sunday 6 p.m. performance.

Opening night sponsor is KVII-TV with All Tickets Half-Price.

Tickets may be obtained at Amarillo Civic Center Box Office, 3rd & Buchanan and Sears Roebuck & Co., Sunset Plaza Shopping Center.

'CATTLEX' Now Bigger, Better

COLLEGE STATION--"CATTLEX," the computerized cattle marketing system launched by Texas A&M University last fall, is now bigger and better.

The system is a joint project of the Texas Agricultural Extension Service, Texas Agricultural Experiment Station, and the Texas and U.S. Departments of Agriculture.

CATTLEX has added 11 more cooperators to its network, making a total of 29 computer terminal locations in the state-wide system. Thus CATTLEX now includes 11 feedyards, 13 auction markets, four order buyer firms and one producer marketing corporation.

"With these additional cooperators and the fact that feeder-stockers are starting to move off summer pastures, we expect listings and sales to increase substantially this fall," points out Dr. Ernie Davis, Extension livestock marketing specialist and one of the initiators of the system.

In addition to handling an increase volume of cattle, CATTLEX should also operate more effectively in the future. Graders, the eyes of the system, are certified at Texas A&M University. Fifty-five have been certified to list and grade cattle over the CATTLEX network.

"Graders are the most important segment of the system," contends Davis. "It can't run successfully without qualified people to accurately evaluate cattle."

The CATTLEX system has now been operating one year. The accurate description of cattle provided by CATTLEX graders has enhanced the confidence buyers have in the system. In fact, buyers on the CATTLEX network feel they have more information and description than otherwise provided, notes the specialist. There have been no surprises nor dissatisfaction of cattle delivered to buyers.

The grader's role is to list and describe cattle that someone has to sell. The description includes such things as sex of the cattle, age, grade, breed, weight and flesh condition. This information is then fed into the

computer and is made available to buyers at all terminals in the system. Buyers can view listings on a cathode ray tube (CRT), a television-like screen which is part of the computer terminal, or they can obtain a printout.

Each day before the sale begins, buyers gather at the terminal site to review the day's listings of lots of cattle offered for auction. When a sale is made, a printout at both the buying and selling terminals will present a confirmation of sale.

Both buyer and seller also receive a copy of the individual description of the lot, notes Davis. Title transfer is at the time of official weighing for ranch cattle and after the sale for delivered cattle.

"With CATTLEX, buyers still bid competitively and sellers still seek the highest possible price," explains Davis. "However, the system expands the scope of trading and reduces transportation and stress through more direct movement. Sellers have the advantage of more purchasers while buyers have more lots of cattle from which to choose without scurrying over the countryside."

Recent trends toward more local auction sales as well as direct selling on farms and ranches have resulted in more dispersed, low-volume markets too small to attract large numbers of buyers. However, CATTLEX centralizes the price negotiation process in marketing livestock without the costs involved in physically centralizing buyers, sellers and livestock, the specialist points out.

An added benefit of CATTLEX is that it provides fast, up-to-date market information. Interested parties can watch the market as it occurs over the state or nation by simply viewing the CRT at the terminal site. CATTLEX Cooperators in our area are J.R. Taylor, Amarillo LS Auction Co.; Bill Thorne, XIT Feeders, Dalhart; Paul Engler, Cactus Feeders, Inc. Dumas; Zay Gilbreath, Caprock Industries, Gruver. Feel free to contact them for more information about the CATTLEX system.

WT Slow-Pitch Tournament Set

The West Texas Slow-Pitch Softball Tournament will be held at Canyon, Sept. 12 and 13 at the West Texas State University Softball Field, Southeast City Park Field.

Men's Class D/16 team double elimination with consolation with an entry fee of \$80.00. Entry deadline is 5 p.m., Sept. 8.

Team trophies will be presented to the 1st, 2nd, 3rd, 4th,

and consolation winners, individual trophies to 1st place team, best hitter trophy, best defensive players trophy and sportsmanship team trophy.

For more information contact David Self, Canyon Creek, #38, Canyon, Tx. 79015. Office: 655-2523 8-6 p.m., home 655-9668 or Jack R. Barnes, Box 401 W.T. Station, Canyon, Tx. 79016, Office 374-3541 8 to 4 p.m.

There's no rule that applies to every human being and no human being that obeys all the rules.

BUTCHER BLOCK BEEF - WHOLE

Boneless Beef Briskets

PACKER TRIM

8 TO 10 LB. AVG.

\$1.19

LB.

BAR-S MEAT OR BEEF

Skinless Franks

12-OZ. PKG.

89¢



61 ST. ANNIVERSARY

OPEN LABOR DAY

BAR-S SLICED

Meat Bologna

1-LB.

\$1.49

FRESH WATER

Catfish Steaks

LB.

\$1.39

FRESH PORK

Country Style Rib

LB.

\$1.49

BAR-S

Sliced Bacon

1-LB. PKG.

\$1.59

FARM FRESH PRODUCE




PLUMP & JUICY

Prune Plums 4\$1

4 LBS.

CAMELOT

Hamburger Or Hot Dog Buns

8-CT. PKG.

32¢

LIMIT 3

ALL FLAVORS

Lay's Potato Chips

REG. \$1.09 SIZE

78¢

LIMIT 2



APPLES CRISP JONATHAN 1-LB. 29¢

GRAPES JUICY SWEET THOMPSON SEEDLESS 1-LB. 63¢

CARROTS CRISP AND TENDER 1-LB. 29¢

ONIONS U.S. NO. 1 YELLOW 4 LBS. \$1.00

CANTALOUPE VINE RIPE ROCKY FORD 1-LB. 25¢

HI-DRI Bath Tissue..... 4-ROLL PKG. 74¢

ALL GRINDS Folger's Coffee..... 7-LB CAN \$4.48

ALL FLAVORS Jello Gelatin..... 3-3 OZ BOXES 91¢

POWDER Cheer Detergent..... 171-OZ BOX \$6.74

DEL MONTE SLICED, CRUSHED, CHUNK

Pineapple In Juice

15 1/4-OZ. CAN

53¢

LIMIT 3

UTILITY GRADE NORGOLD

Russet Potatoes

20-LB. BAG

\$2.89



Gold Medal Flour

5-LB. BAG

86¢

LIMIT 1

Kingsford Charcoal

10-LB. BAG

\$1.99

LIMIT 1

STORE FOR YOU!..



Food Stamps Buy More At Ideal...



DRAWINGS EVERY WED. AT 2:00 P.M.

Winsday FOOD GIVEAWAY

IDEALS GREAT INFLATION FIGHTER WINSDAY GIVEAWAY

3 CERTIFICATE AWARDS

1. \$1.00 IN MERCHANDISE
2. \$50 IN MERCHANDISE
3. \$25 IN MERCHANDISE

CERTIFICATES MUST BE REDEEMED WITHIN 3 DAYS

1. YOU MUST BE 18 OR OLDER
2. NEED NOT BE PRESENT TO WIN
3. REGISTER BLANKS AT CHECK STANDS

All Star Cast Gears Up For Jerry Lewis Telethon

Celebrity guests from all realms of the entertainment world will once again take part in the fight against neuromuscular diseases when they join Jerry Lewis for the 16th annual Labor Day Telethon to benefit the Muscular Dystrophy Association. According to Ed Williamson and Ronnie Bullard, Spearman Pledge Center Coordinators, the Telethon will be carried by KFDD-TV, Channel 10 in Amarillo beginning 8:00 p.m. Sunday, September 6, and continuing through 6:30 p.m. Monday, September 7.

Some 50 superstars will appear on the 1981 show, including Sammy Davis, Jr., Tony Bennett, Johnny Cash, Bill Cosby, Crystal Gayle, Larry Gatlin and the Gatlin Brothers, Ben Vereen, Don Rickles, Pearl Bailey, Wayne Newton, and Tony Orlando. The show will be

broadcasted live from the Space Center of Del Webb's Hotel Sahara in Las Vegas for the ninth consecutive year. Many performances will also be telecast from cities around the country such as Dallas, Nashville, New York, and Atlantic City.

Jerry's anchormen during the 21½-hour marathon will be Ed McMahon, David Hartman and Chad Everett. The show will be carried by some 200 "Love Network" stations in the United States as well as by stations in Canada.

"We're really putting on the Rolls Royce of gala specials this year," commented national Telethon producer Bob Considine. "There'll be something for everyone, from country music to French cancan. With apologies to Barnum and Bailey, I'd say we've got the 'greatest show on

earth.'"

The legendary soul star Smokey Robinson will host Telethon rock segments along with singer/songwriter Rick Springfield. Additional celebrities performing will be Charo, Norm Crosby, Jack Jones, B.J. Thomas, Mel Torme and impressionist Bob Anderson. Stars of NBC Comedy series "Facts of Life" will be featured in a roller skating sequence, a 1981 Telethon first.

From the sports arena, World Boxing Association welter weight champion Tommy Hearn and World Boxing Commission welter weight champion Sugar Ray Leonard will appear on the Telethon just days before their scheduled fight for the undisputed welter weight championship title of the world.

"A lot of people don't know that many of our terrific Tele-

thon stars are also Corporate Members and Vice Presidents of MDA," noted the Association's National Chairman, Jerry Lewis. "They're part of the MDA team, devoting their energies, great talents, and love to 'my kids' throughout the year." Among them are MDA Corporate Members Chad Everett and Virginia Capers; and Vice Presidents David Hartman, Pearl Bailey, Mel Torme, Larry Gatlin, Julius LaRosa, and Ed McMahon.

This year's Telethon set is designed to create a night club ambience, using red as the predominant color, with highlights of blue and gold. According to Mr. Considine, the sophisticated look complements this year's up-beat performances.

Throughout the Telethon, MDA patients and members of their families will tell their stories of trial, independence, courage and hope. Panhandle area patients and families will also be featured. The Telethon format incorporates 45 minutes of national programming and 15 minutes of local programming in each of the show's nearly 22 hours on the air.

In 1980, the Telethon raised \$31,103,787 in pledges, which according to the Guinness Book of Records was the "greatest number of dollars pledged to a televised charitable event in history." A record 94 million people watched the show, and A.C. Nielsen ratings showed that, in the U.S. alone, it was viewed in 36,960,000 homes—47% of all American homes with television sets.

The money raised by the Telethon supports MDA's goal research effort and free medical service program for patients with any of the 40 neuromuscular diseases. MDA currently sponsors 10 research/clinical centers in the U.S. and England and more than 750 individual research projects worldwide. It also supports more than 230 outpatient clinics in the U.S., where MDA patients receive medical care and orthopedic appliances completely free of charge. The MDA clinic serving the Panhandle area is located at the Medi Park Medical Plaza in Amarillo.

MDA's programs are funded almost entirely by individual private contributions. The Association receives no government grants and does not seek or receive fees from patients or their families.

DR. M.H. NEWMAN SERVICES HELD

Dr. M.H. Newman, of Shattuck, Okla. died Sunday. He was 73 years old.

Services were held at 2 p.m. Tuesday in the Shattuck High school auditorium with the Rev. Richard Cato, pastor of the First United Methodist Church, and the Rev. J. Noble Attins, officiated. Burial was in Shattuck Memorial Cemetery by Mason Funeral Home.

He attended Shattuck schools, Baylor University, West Minister College in Fulton, Mo., and graduated from the University of Tennessee Medical Center in 1932.

He returned to Shattuck and was associated with his father and two brothers in the Newman Memorial Hospital and Clinic.

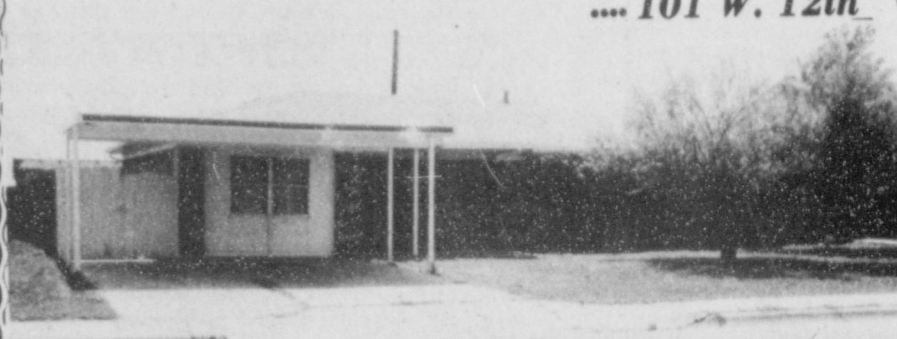
He was a member of the American College of Surgeons, Internal College of Surgeons, United Methodist Church, Masonic Lodge, Elks Lodge, Beta Pi Social Fraternity and Phi Chi Medical Fraternity.

He married Cornelia Bridges in 1929 in Mississippi. Survivors include his wife; a son, Dr. M. Haskell Newman Jr., of Ann Arbor, Mich.; a daughter, Jo Ann McLane of Houston and six grandsons.

Alexander M. Haig Jr., Secretary of State, on ban of F-16s to Israel: "We are satisfied that the circumstances under which the suspension was imposed in the first instance have been sufficiently complete..."

We're proud to offer....

.... 101 W. 12th



3 bedroom, lovely home with lots of extra's.
Central heat & air, 1½ baths, 2 living areas.

Hoover & Hoover Realty

435-6873 601 S. Main
Perryton, Texas

Rex Hoover & B.J. Hoover Brokers

EXPECTING WHEAT PASTURE?

Let the Professionals start your cattle.

McGuire Feedlot
Is Now Taking Fall Calves.

Call us For Pricing & Scheduling
405-837-5276

After 7 P.M. Call: Orville Robison, 405-837-5523
or Mike Matthews, 405-837-5256

CONNECTION

I, Helen Dry, Tax Assessor-Collector for Hensford County, in accordance with the provisions of Art. 7-44c, Sec. 1, VCS, have calculated the tax rate which may not be exceeded by more than three percent by the Commissioner's Court of Hensford County without holding a public hearing as required by Art. 7-44c, Sec. 2, VCS. That rate is as follows:

- .07 per 100 for farm to market/flood control tax rate;
- .19 per 100 for the general fund, permanent improvement fund, jury fund, and road & bridge fund tax rate;
- .04 per 100 for public road maintenance tax rate; thus
- .30 per 100 total county tax rate

Date

Tax Assessor-Collector

FRANCIS BUGNER
is now associated with Teel Equipment Co.
Stop in anytime and let him help you with any farm equipment need you may have!



YOU KNOW FARMING... WE KNOW FARM EQUIPMENT.....

Let's get together. Put us to work, we make it our business to know your special farming problems. We offer sound advice and service year in and year out.

TEEL EQUIPMENT CO.
106 S. Quinn 338-2546
Case and Kubota Sales and Service

LABOR DAY SALE

ALLSUP'S WILL BE OPEN LABOR DAY

BUY DELICIOUS ALLSUP'S CORNDOGS 2 \$1.19 AND GET ONE 24 OZ. COCA-COLA FREE

ALLSUP'S SPARKLING ICE LARGE BAG 99¢

BORDEN'S BUTTER MILK 1/2 GAL. CTN. \$1.19

BORDEN'S ASSORTED FLAVORS ICE CREAM 1/2 GAL. RD. CTN. \$1.69

REFRESHING COCA-COLA SIX PACK 12 OZ. CANS \$1.89 SINGLE CAN 45¢

PRICES EFFECTIVE SEPT. 3-5, 1981 SPECIALS GOOD WHILE SUPPLIES LAST

ALLSUP'S CONVENIENCE STORES

WE RESERVE THE RIGHT TO LIMIT LIMITED SUPPLY

ALLSUP'S DELICIOUS COOKED FOODS MENU

BURRITOS	TAMALES	1/4 LB. HAM SANDWICH	BBQ CHICKENS
TACO ROLLS	CHILI RELLENOS	POCHITO	BBQ BRISKET
CORN DOGS	BBQ SANDWICH	BEER BATTERED COD	SANDWICH
GERMAN SAUSAGE	1/4 LB. HOT DOGS	FISH SANDWICH	BBQ SPARE RIBS
HOT LINKS	FRIED CHICKEN QUARTERS	CHICKEN FRIED STEAK SANDWICH	SOUTHERN FRIED PIES
MILD LINKS			TACQUITAS

'The Great Plains Experience' Film To Be Shown Here

Hansford County Library, together with Stationmaster's House Museum of Spearman, is one of the 4 area libraries and museums chosen by Amarillo Public Library to implement a series of 6 films, museum exhibits and discussions on "The Great Plains Experience". Spearman programs begin Sept. 10, 7 p.m., at Hansford County Library and continue on successive Thursdays.

The cooperative project involving libraries, museums and various historical societies, university professors, and other humanities scholars is funded by the National Endowment for the Humanities through the University of Mid-America at Lincoln, Neb. The Amarillo Public Library was named as one of nine libraries nationwide

to participate in a programming project on "The Great Plains Experience". UMA has been awarded \$486,148 by NEH to carry out the project in the nine areas from Georgia to Montana. The Amarillo area project is the only one in Texas, and will be implemented at 7 Panhandle sites.

The Panhandle-Plains Museum at Canyon has participated in planning exhibits at each program. Also cooperating as discussion leaders for the 6 films in the program series will be Dr. Fred W. Rathjen, Dr. Garry Nall, and Dr. P.L. Petersen, professors of history,

WTSU; Bobby Weaver, PPH Museum curator of ethnology, William C. Griggs, museum director; and Roberta D. Speer of Amarillo, anthropologist. Byron Price, PPH Museum curator of history, was assisted by Carol Daffern in exhibits consultation by the area museums. Mary Louise Loyd of the Amarillo library is project director, with Anite G. Pitts assistant. Dr. Joe F. Taylor, retired, Amarillo College history department, is evaluator for the project.

EMS Plans Spice Sale

The Spearman Emergency Services, which is the Fire Department, Ambulance and Rescue Service will soon be starting another spice sale. The last one was a huge success and helped a great deal in paying on the building but more money is needed to finish paying off the loan and to finish paying the bills and to finish the rooms and furnish them. Since the spice sale was so good we decided to offer another set in addition to the original one. Those of you that purchased the sets last time know what a great gift they are and they are coming just in time for Christmas this year.

The original set was sneeze-proof pepper, cryless onions, bacon bits, and seasonall salt, the second set is cheese bits, salad crisps, garlic salt and oregano. The sets are selling for \$8.00 or individual bottles can be ordered for \$2.00.

Prizes will be awarded for those taking orders. And the prizes are super! For taking orders on only 75 sets, you can win a 12" black and white TV, for taking orders on 50 sets the prize is an AM/FM cassette player, for 35 sets you can have your choice of a pleaser camera or a pair of Walkie Talkies, for 25 sets - a pocket camera, for 20 sets - AM/FM headphone set, 15 sets - an electronic calculator or a Nimbus 4 sailplane, for 10 orders an AM pocket radio and for taking orders for 6 sets, an astrolite. Prizes will be awarded when the orders have been delivered and the money turned in. You don't have to be a kid to help sell spices so everyone come on down to the Fire Station Sept. 22 at 7:30 P.M.

Anyone wishing to help take orders for the Spearman Emergency Services is invited to come to the fire station at 7:30 P.M. September 22, which is the date which has been designated as the kick off for the sale. The sale will last until October 3.

Ever Since Eve
When misfortune comes along, take it like a man--blame it on your wife.
-Record, Columbia, S.C.



TO ALL FARMERS:

You are invited to a field tour Tuesday, September 8 at 9 A.M.

We will look at 13 different company's sorghum and some corn also. There will be 26 different sorghum hybrids shown. These are big plots so you can really get a meaningful and objective look at all the different hybrids.

We will meet at Aubrey Rasor's shop on main street of Gruver, 410 Main Street (west side of street) at 9 A.M. for coffee. We will then convoy up and caravan out to the different plot locations. We will terminate the tour with a free lunch at El Vaquero Cafe on main street of Gruver at approximately 12 Noon.

Plan to be with us.

Remember:

- What: Grain Tour
- When: September 8, 1981
- Time: 9 A.M. Till Noon
- Where: Gruver, Texas
- Starts at: Aubrey Rasor's Shop, 410 Main Street (West side, across the street north of El Vaquero Cafe)
- Free Lunch

See you at Aubrey Rasor's shop for a super good educational grain tour. Come see how these hybrid perform in your own area.

The one-year project is a "library community outreach program for adults to promote study and appreciation of Great Plains history", according to the University of Mid-America. Libraries, museums, historical societies and humanities scholars will carry out the programs, which will center on films from UMA's television course, "The Great Plains

Eternity bids thee to forget.
-Byron.



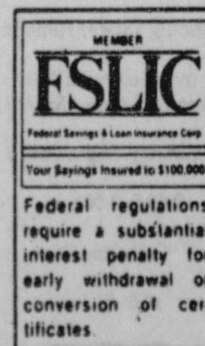
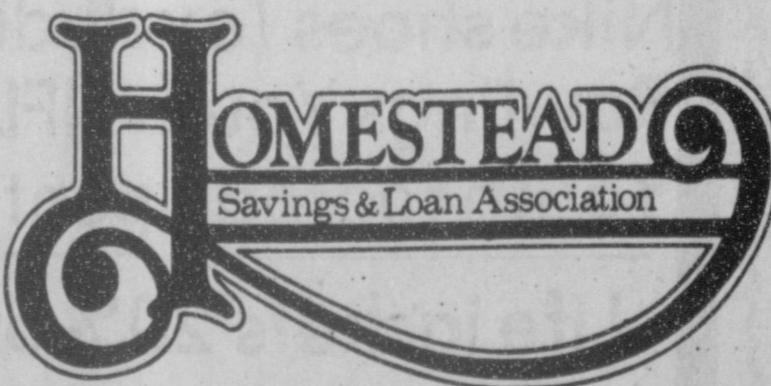
NOW
15.900%
INTEREST

MONEY SALE

THE NEW 30 MONTH CERTIFICATE

INTEREST RATE EQUAL TO 2-1/2 YEAR TREASURY BILLS
1/4% HIGHER THAN COMMERCIAL BANKS
COMPOUNDED DAILY PAID QUARTERLY
\$100.00 MINIMUM

SEE US FOR DETAILS



Home Office: 1518 Oklahoma Ave. 405/254-3301
Downs Branch: 1623 Downs Ave. 405/256-7000
Guymon: Northridge Shopping Center 405/338-8461
Cordell: 110 East First Street 405/832-3831

1981 September 21-26
AMARILLO TRI-STATE FAIR
Show Tickets \$7 - \$8 - \$9
Tear out and mail this entire coupon along with your check or money order (plus \$1 per order for postage & handling) to:
TRI-STATE FAIR
BOX 31087
AMARILLO, TEXAS 79120

<p>Mon., Sept. 21 RONNIE MILSAP / ALABAMA</p> <p>5:30 PM SHOW No. of Tickets _____ Ticket Price _____</p> <p>8:30 PM SHOW No. of Tickets _____ Ticket Price _____</p>	<p>Tues., Sept. 22 OAK RIDGE BOYS / BONNIE NELSON</p> <p>5:30 PM SHOW No. of Tickets _____ Ticket Price _____</p> <p>8:30 PM SHOW No. of Tickets _____ Ticket Price _____</p>	<p>Weds., Sept. 23 MICKEY GILLEY / JOHNNY LEE & THE URBAN COWBOY BAND</p> <p>5:30 PM SHOW No. of Tickets _____ Ticket Price _____</p> <p>8:30 PM SHOW No. of Tickets _____ Ticket Price _____</p>
<p>Thurs., Sept. 24 DON WILLIAMS / JOHN HARTFORD</p> <p>5:30 PM SHOW No. of Tickets _____ Ticket Price _____</p> <p>8:30 PM SHOW No. of Tickets _____ Ticket Price _____</p>	<p>Fri., Sept. 25 MEL TILLIS / JANA JAE</p> <p>5:30 PM SHOW No. of Tickets _____ Ticket Price _____</p> <p>8:30 PM SHOW No. of Tickets _____ Ticket Price _____</p>	<p>Sat., Sept. 26 MOE BANDY & JOE STAMPLEY</p> <p>5:30 PM SHOW No. of Tickets _____ Ticket Price _____</p> <p>8:30 PM SHOW No. of Tickets _____ Ticket Price _____</p>

Enclosed is a check or money order (no cash) made payable to: TRI-STATE FAIR. Please send Ticket(s) for the Show(s) indicated to:
Name _____
Address _____
City/State/Zip _____
New Cooling System in Coliseum. For Ticket Information call 352-4885

More Than A High School Ring...

A Piece of Fine Jewelry... With the Dazzle of Diamonds.

\$150.00

Special Introductory Price... (for 2 Weeks Only).

We invite you to take advantage of this special introductory price.

Choose from 3 elegantly crafted rings, all with 2 genuine diamonds plus a simulated gemstone. Available in 10K yellow or white gold.

Don't miss this opportunity to own what will be one of your most treasured possessions.

Bring in this ad to be eligible for this special price.



South of Plains Shopping Center
721 W. Seventh • Spearman, Texas 79081
Phone 659-3566



You are cordially invited to a baby shower honoring Cheryl Whitefield and son Teddie Lynn Thursday, Sept. 3 from 5 to 6:30 p.m. First United Methodist Church parlor

Hostesses:
Shelly Mitchell, Sherry Womble, Kathy Hagerman, Denice Blackburn, Dena Baker, Shelley Friemel, Stacey Thomas

43-1tc

Amusements & Rides At Tri-State Fair

Take a ride on the Loop-O-Plane or try a jump from the Paratrooper. Or how about a whip-cracking ride on the Tilt-a-Whirl? Try it all with a foot-long hot dog in one hand and a stick of cotton candy in the other. You will find all this and more at the Bill Hames Show during the Amarillo Tri State Fair, September 21-26. There are the traditional rides for the kiddies such as the Ferris Wheel, Merry-Go-Round and Pony Ride. And then there are the super rides for the brave of heart like the Twister, Toboggan, Coaster, Zipper or the Scrambler. Buster Brown, owner of Bill Hames Shows, is constantly bringing in the newest, most thrilling rides to the fair midway each year.

Ambition
The modern girl's ambition is just what her mother's was--to make some man a good husband.
-Courant, Hartford.

Dave Bait
Landing a man is like catching fish, you have to wiggle the bait a little.
-Tiger, U.S.S. Barry.

Most Will
Most any man will love his neighbor as himself--if she's pretty enough.
-Tribune, Chicago.

Our Heritage of Faith...

Greetings from Faith Lutheran Church! We are pleased to be partners with so many of you in the Lord's vineyard. This Sunday the sermon theme is: THE GOSPEL IS FOR ALL PEOPLE.--Matthew 15:21-28. Sunday School is at 9:45 a.m. Worship is at 10:45 a.m. A cordial welcome awaits each worshiper.
Bruno Gaskamp, Pastor

Mrs. Miller Observes Birthday

Mrs. Eddie Faye Miller was one of two residents of Senior Village in Perryton who were honored by volunteers of the American Red Cross at a party Tuesday, August 25. Mrs. Miller, a native Texan and mother of Billy Miller of Spearman, observed her birthday on August 31 and enjoyed a visit with her son and daughter-in-law, Billy and Sybil Miller of Spearman.

Arts & Crafts Guild Met

The Arts and Crafts Guild met Friday, August 28, in the home of Mrs. W.L. Russell. After an afternoon of painting, Mrs. Russell served delicious refreshments to two guests, Mrs. Carrie Marie Berry and Mrs. Mary Lee, and to members--Mmes: Guy Fuller, Joe Trayler, Ned Turner, Deta Blodgett, Bruce Sheets, Nolan Holt and Garrett Allen. Next meeting will be Sept. 4 in the home of Mrs. Bruce Sheets.

Pringle 4-H Meeting

On Monday, August 17, at the home of Mrs. Neal Pack, the Pringle 4-H met at 4:00 p.m. The newly elected officers are: President--Jay Pack, Vice-President--James Lieb, Secretary-Treasurer--Julie Jones, Reporter--Cindy Womble, Co., Council Del.--Jerry Crowl, Co. Council Alt. Del.--Julie Jones, Adult Horse Board Del.--John Jarvis and Karen McCloy, Adult Horse Board Alt. Del.--Jeannie Jones. James Lieb and Jay Pack attended State 4-H Congress in San Antonio. They reported about their trip to the club. Jay Pack reported on Pop Horse activities and announced the finals. The finals are in Pampa on Sept. 7. The public is invited. A "GOING AWAY" Ice Cream Supper honoring Mark Pritchard, the Hutchinson Co. Extension Agent, was hosted by Pringle 4-H and Horse Club. It was held on the 18th of Aug. at 7:30 at the home of John Jarvis. Mark was presented with a desk set. Everyone enjoyed the fellowship and the refreshments. The meeting was dismissed at 5:00.

Cystic Fibrosis Needs Help

What is the greatest non-monetary gift you can give to help in the fight against an incurable disease? YOUR TIME!! In this year of financial unrest and uncertainty, the Cystic Fibrosis foundation stresses the value of volunteers who donate their time freely to help in the fight against Cystic Fibrosis. The 1981 Breath of Life Campaign will be held during National Cystic Fibrosis Week, September 21-27, in the Spearman area, and Chairman Gaye Woolley is asking volunteers to donate their time to fund raising activities. According to the CF Foundation, "A gift of time is especially meaningful to the families who are living each day knowing that a child with Cystic Fibrosis, time is running out. Only 50 percent of the children born today with CF can be expected to live past their 19th birthday. By donating time, volunteers are helping to buy time for these kids." In addition to raising desperately needed funds to support research, clinical care and education programs, the Breath of Life Campaign is aimed towards alerting the public to the signs and symptoms of Cystic Fibrosis. Residents of Spearman who can give time as volunteers to the Breath of Life Campaign are urged to contact Gaye Woolley at 659-3550.

Annual Book & Author Dinner Set

The 13th annual Book and Author Dinner, sponsored by the Friends of the Amarillo Library, has been set for Saturday, Oct. 24, 7 p.m. Amarillo Civic Center. New this year will be the first Friends' Book Fair, also at the Civic Center and beginning at noon Friday, October 23, closing late Saturday evening, to be called "A Festival Of Books". Authors, publishers, or book store may rent booths for book sales. Autographing by authors is encouraged. Dan True, the weatherman you all remember, author of A FAMILY OF EAGLES on this year's list, will be the dinner speaker. Bob (Pappy) Watson will be master of ceremonies. Added to the week's festivities will be free programs and workshops arranged by the Texas Circuit and underwritten by the Friends. These events are open to everyone, not Friends' members alone. Some authors who have written books since March 8, 1980 include Martha Kay Renfro, Jack Williamson, Leona P. Carver, Al Dewlen, Dinnie Dinsmore, Elvin Dick, Marilyn Dyer, Eunice King, Lynn Wieck, John Erickson, Don Essary, Arthur G. Garner, Hansford County and Hutchinson County Historical Commissions, Harold King, Sister Nellie Rooney, D.J. Day Stubben, Lee Templeton, and Dan True.

Mc-Clellan-Langston Marriage Announced

Cindy Steele McClellan and Lloyd Lee Langston announce their marriage Saturday, the fifteenth of August, 1981 in Amarillo.

You are invited to a Wedding Shower Honoring Mrs. Scotty DeWitt (nee Jerilyn Gay Smith) Thursday, September 3 7:00 to 9:00 p.m. Come and Go at Bulls Inn

HOSTESSES
Sara Dossett, June Kelp, Reta Reed, Donna Coates, Betty Thomas, Carol Stumpf, Avo Tope, Frankie Duryee, Francis Scroggs, Jody Robertson

42s-2tp

BANK WILL BE CLOSED

MONDAY

SEPTEMBER

7TH

LABOR DAY

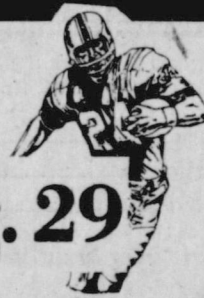


SPEARMAN, TEXAS 79081
MEMBER FEDERAL DEPOSIT INSURANCE CORPORATION

Sports Tally

Fall Kick-Off

Starting Saturday, Aug. 29



- Men's Levi long sleeved shirts----- 50% off
- Selected group of warm-ups----- 50% off
- Selected group of T-shirts as low as----- 60% off
- Nike shoes (excluding football)----- 40% off
- Rawlings Youth NFL jerseys & Helmets----- 20% off
- Youth football pants and pads----- 20% off

Life jackets 20% off

All footballs 20% off

Men, ladies & childrens shorts & tops----- 75% off

Sports Tally

659-3878

