

# "Claw" meets "paw" across the draw, Friday!



## The Spearman Reporter

VOL. 72 NO. 45

THE SPEARMAN REPORTER, SPEARMAN, TEXAS 79081

THURSDAY, SEPTEMBER 17, 1981



NOLAN HOLT, of Spearman...

### Equity reports great earnings for year

Approximately 700 members of the Perryton Equity Exchange met Thursday night at the Perryton high school auditorium to elect new directors, hand out door prizes, and to hear an outstanding annual financial report from general manager Kenneth Allen.

The Equity had net earnings this year, ending March 31, 1981, of \$2,297,635.12 as compared to \$683,224.36 a year ago.

This was the fifth year in the 62 year Equity history that net earnings had passed the million dollar mark. The first million dollar earnings year was 1974 with 3.3 million, followed by a succession of three more years through 1977 when net earnings were in excess of one million dollars.

The earnings report presented to the members at the annual meeting did not reflect the 1981 crop year, generally a failure in the Equity area, as the books closed on March 31 of this year.

Nolan Holt, a long time member of the Equity board and first vice president, was elevated to the presidency of the Equity by the board of directors immediately following the annual meeting.

Holt, a Hansford county farmer of the Holt community south of Spearman, succeeds Bill Gray of Perryton who has been president of the Equity for the past four years.

Other officers elected by the board include Don Williams of Balko, first vice president; Dale McLain of Perryton, second vice president; L. M. Womble of Spearman, secretary; and Kenneth Allen, treasurer.

The members elected incumbent directors, who were without opponents, from the following areas: No. 3, Don Williams of Balko; No. 7, Jim Latham of Twichell; No. 13, Jimmy Brown of Hardesty; No. 14, Dean Leignor of Waka; No. 18, Thane McCloy of Pringle; No. 24, Ron Englebrecht of Stratford.

In the other elections with more than one candidate, the following directors were named: No. 1, Ray Osborne; No. 5, Larry Don Smith; No. 8, Doug Mitchell; No. 9, Paul Barby; No. 12, Lesley Lynch.

A number of door prizes were given away, including a couple of television sets, propane barbecue grill, food processor,

microwave oven, binoculars, tool shed and other prizes. In addition, every Equity member at the meeting received a set of coffee mugs as an attendance gift.

Retiring president Bill Gray, in his report to the membership, called for cooperation between the various farm organizations, stating that if the farmers of this country ever spoke with a unified voice they would be heard much more clearly in Washington.

He told the membership that he had enjoyed serving as president and praised the Equity employees and general manager Kenneth Allen for a job well done.

Manager Allen, in his report to the membership, cited the substantial dividends which are being paid this year on equity earnings and called for continued support of Equity facilities.

He told the members that despite the publicized stories about various grain elevators going bankrupt and warehouse receipts becoming worthless, the Equity is proud to maintain a strong financial position and he pledged to the members that the Equity will continue to offer a safe and secure storage place for grain.

In looking into the future, Allen said there is cause for some optimism over farm income and prices, but "there are a few pot holes in the road to better prices." He cited an article in Forbes magazine which indicates that world population is outrunning arable soil and that eventually there will be food shortages. Food prices will have to rise when this occurs, he said.

Equity members will receive approximately \$432,000 in cash dividends this year and the remainder of the net earnings will be placed in reserve, will be used to retire all capital stock older than 20 years, and approximately \$800,000 will be used to improve various Equity facilities.

Prior to the meeting in the school auditorium, the members enjoyed a barbecue meal in the cafeteria prepared by Dyers Barbecue of Pampa.

There was no speaker on the Equity program this year. Musical entertainment was provided by Roy and Bev Wiebe of Waka.

### County Championship

The County Championship will be decided this Friday night between the tough ole boys from Spearman and Gruver. The Spearman Lynx will travel to Gruver to meet the Greyhounds. This will be Gruver's Homecoming game, so the 'Hounds will be "up in arms" and ready for the Lynx. The game will be played at Greyhound Stadium at 8:00 p.m.

In the past couple of weeks, both teams have had everyone in their home town, just about, to go and cheer them on to victory or just cheer them on!! The 'Hounds are 1-1 and the Lynx are 0-2 for the Season so far. This game will be like the Superbowl game or the Cotton Bowl game for these two teams,

they will "fight" until the final gun of the final quarter.

Players from the Lynx team that will be outstanding include Dennis Randall, Jeff Lackey, Eddie Whitefield, Charlie Salgado, Ricky Torres, Billy Pat Underwood, Monte George. For the 'Hounds they have players like Bubba Gammon, Ricky Finley, Greg Ammons, and Ricky Renteria.

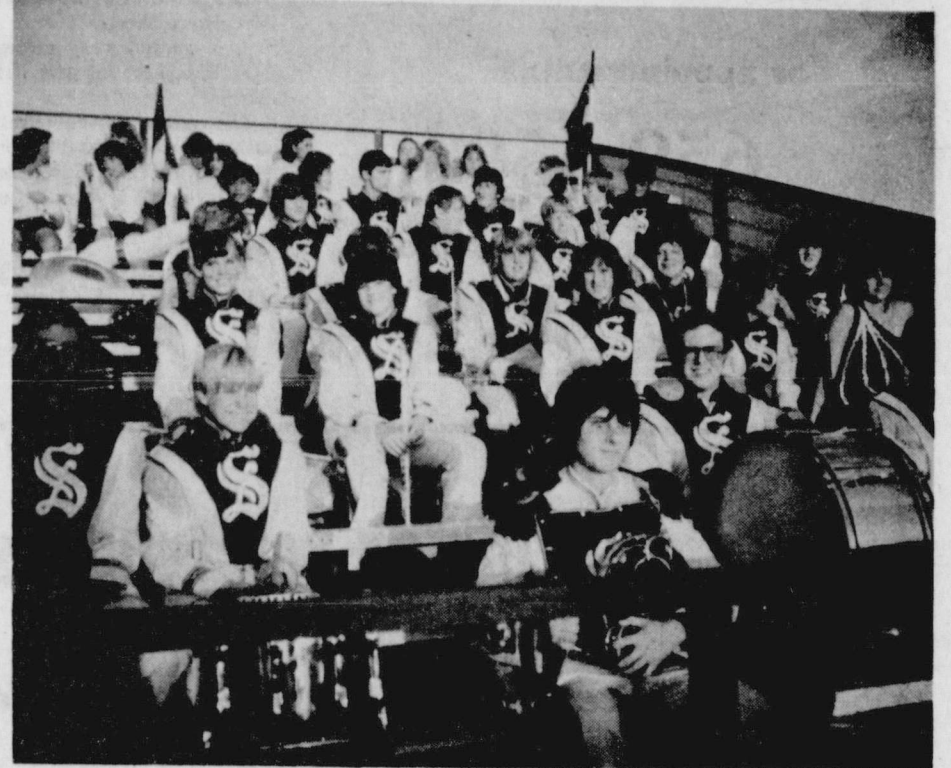
The "Paws" of the Hounds and the "Claws" of the Lynx will all be getting their tools sharpened up for the game.

Who will be the "King of Hansford Hill"? Which team will be the "County Champion"? Both of these questions and more will be answered at the game Friday night, September 18, at Greyhound Stadium beginning at 8:00. There will be lots of action on the field, and especially when the Football Queen is crowned.

#### HOSPITAL NEWS

Patients at Hansford Hospital are Ester Einck, E.W. Dickson, Elaine Janzen, Robert Crawford, Roberta Burger, Jessie Cole, Vida Jones, Pat Coleman and son, Harriett Collard, Gwenfred Lackey, Marvin Byers, Carl Archer, Susan Thompson, and Lilly Cox.

Dismissed were Robert Neel, Bonnie Bonham, Robert Zamora, William McBroom, Mary Nava and Debra Deeds.



PRIDE OF LYNXLAND---The Spearman Band is improving and will be on hand at Gruver's Homecoming Friday night!

### Board Employs New Teacher

The Spearman Independent School Board met Monday, Sept. 14 with all members present.

The minutes of the previous meeting were approved and bills were ordered paid.

The board approved contract with City of Spearman for collection of taxes.

A teacher, Terri Sue Burke, was hired to teach third grade. Approval was given for the preliminary application for state foundation funds for 1981-1982.

The tuition charge for foreign exchange students was waived. The board accepted the low bid of Oklahoma Scenic Company for replacement of auditorium curtains.

### MARKETS

MARKETS	
Barley	\$1.92
Corn	2.86
Wheat	3.67
Milo	4.00



Jettie Davis, Ruth Bryan and Beth Phelps examine an old wooden bowl at the recent antique show---last Sunday!



A real Spearman cowboy examines western art at the antique show and sale here Saturday and Sunday. Left to right is Karen Reimer and Homer Bagley. The cowboy is G. C. Brillhart!

### Arts & Craft Show Huge Success

The Spearman Study Club's Antique, Arts & Crafts Show this weekend was a huge success. The dealers were all set up by Saturday morning and it looked bright and beautiful as you walked through the front door. There were many smiles on the peoples faces for they were not expecting anything quite as grand as what they saw Saturday morning.

The dealers displayed everything from beautiful art works, shining brass, antiques, silk

flowers, to Christmas stockings. The people enjoyed looking most of both days and went home with something special they had picked out after many hours of deliberation.

The dealers were pleased with the club members and the friendly public reception. They said everyone was so kind, friendly and polite. Many of these dealers have requested to come back next year for the sale.

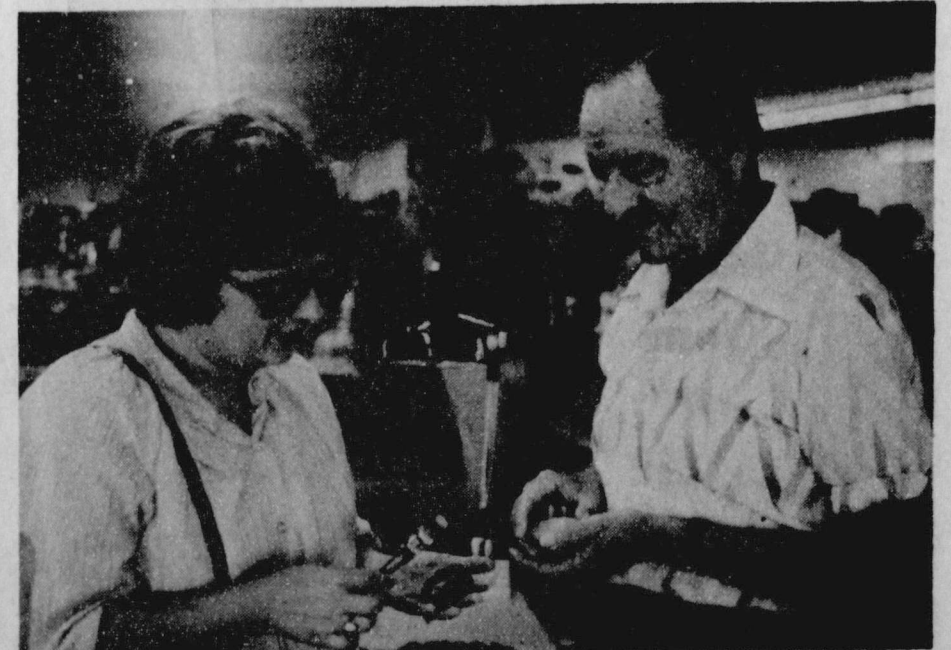
The delicious concession in back was also a success. Everyone enjoyed waiting while eating lunch or snacking on fresh home-made pies.

The Spearman Study Club will host another sale next year with hopes that more of Spearman's talented artists will display their work.

The success of this show took a lot of back stage work. We can all be proud of these fine women and their dedication to making things happen for a better community project.



Cindy Patterson, Hester Crawford, Trudy Schneider, and Nell Patterson "pose" for the camera at the art and antique show and sale. Hester and Trudy were responsible for the excellent show and sale!



Carolyn Cummings and Earnest Newcomb examine some of the coins displayed here at the antique show and sale Saturday and Sunday! Both are from Spearman!

# Regional Chiropractic Center of Spearman

Monday: 4-8 p.m.

Tuesday: 4-8 p.m.

Wednesday: 9 a.m.-5 p.m.

Thursday: Closed

Friday: 2-5 p.m.

For appointment:

**659-5585**

Pittman-Shieldknight Bldg.  
511 SW 11th

## Blue Monday Bridge Club

The Blue Monday Bridge Club held its first meeting of the year September 14th in the home of Mrs. Lester McLain.

Delicious refreshments were served to guest, Mrs. Johnny Lackey and to members, Mmes. Bill Seitz, Sam Graves, Pope Gibner, Fred Daily, Deta Blodgett, Major Lackey, Vester Hill and the hostess.

Next meeting will be September 28 in the home of Mrs. Deta Blodgett.

## Arts & Crafts

### Guild Met

The Arts and Craft Guild met Friday, Sept. 11 in the home of Mrs. Bruce Sheets.

Two guests were present, Mrs. R. E. Lee, and Mrs. John Berry.

The hostess served refreshments to guests and members, Mmes. Kiff White, Guy Fuller, Joe Traylor, W. L. Russell, Deta Blodgett, Pope Gibner and Garrett Allen.

The September 18 meeting will be with Mrs. Joe Traylor.

AMA warns against intentional bypass surgery.



## Story Hour Express Off To Great Start

CONDUCTORS: LAURA MACKIE AND DEBBIE BENTON

Servitors Story Hour Express departed as scheduled on Monday, September 14, 1981 at the Library.

DEPARTURE TIME: 10:15 a.m. DESTINATION: upstairs to Story Hour Land PASSENGER LOAD: 33 children, ages 3 and 4.

ADVENTURES: Sang "Do Your Ears Hang Low", "Left Side, Right Side", "Little Cabin In the Woods". Read the story THE THREE BEARS. We all colored pictures and after picking up the crayons and putting up the carpet squares, we all returned to our moms.

DESTINATION: downstairs. ARRIVAL TIME: 11:00 A.M. PASSENGERS ABOARD: Ronda Renner, Salina Benton, Josh Winegarner, Mandi Porter, Heather Vinson, Dennis Rojas, Misti Dawn Vera, Summer Riggins, Stuart Riggins, Lyndee Cook, Mel McRee, Schane Schneider, Wendy Woolley, Courtney Hen-

ton, Reagan Boxwell, Kelly Shieldknight, Ashly Sheidknight, Jill Clements, Derrick Burnett, Cameron Kunselman, Jason Holton, Brent Collins, Scott Sims, Andy Sims, Julie Felder, Petie Vera, Christy Brewer, Mika Pipkin, Martin Sanders, Phillip Sanders, Susan Burger, Michael Cook, and Cody McLeod.

## Ballard Family

### In Concert Here

The Ballard Family from Kenefic, Okla., will be in concert at the Apostolic Faith Church, located at the corner of 9th and Dressen, Thursday night, September 17th, at 7:30 p.m. The Ballard's have been traveling nationally for some time. Everyone is invited to come and enjoy their ministry in music with our Church Family.

Lealand Grimmer  
Pastor

Begin, Reagan talks establish friendship?

Missile fired at U.S. plane near S. Korea.

## WOMEN'S C OF C HOSTING SUPPER

Civic-minded women are invited to attend a salad supper at 7:30 p.m., Sept. 22 at the Hospitality Room of the First State Bank to learn about the work of the Women's Division of the Spearman Chamber of Commerce. What is the Women's Division? Its bylaws explain. The Women's Division of the Spearman Chamber of Commerce is formed for the following: To compliment the plans and activities of the Spearman Chamber of Commerce for the benefit of the community. To further the effectiveness of the women's activities in the community by promoting and stimulating the interests of business, professional and civic-minded women. To honor outstanding women in leadership and accomplishments of our community either as a WDSOC or by submitting a woman's name to the C of C when the Annual Citizen Award is being selected. In general, to do such things and promote such measures as are calculated to elevate the character and dignity of the Spearman Chamber of Commerce.

The bylaws state that membership may be acquired by any civic minded woman upon payment of dues of \$5 per year.

The governing board is designated as the executive committee which is comprised of the president, vice president, secretary, treasurer, Parliamentarian, and the immediate past president. All members meet at 12 noon on the third Wednesday of each month. Each member pays for her own luncheon. Meetings are usually held at Cattleman's. The First meeting this year, the salad supper, is an exception. It is set at 7:30 p.m. on Tuesday, Sept. 22nd, in order to provide more time for prospective members to become acquainted with the women who have given dedication to community betterment.

Each year the Women's Division sponsors Civic-minded programs to keep you updated on events, on personal Development & on Health & Safety programs that concern you. It sponsors fund raisers for certain charities. It sets up & decorates for the annual

Chamber of Commerce Banquet and generally support your local Chamber of Commerce.

We cordially invite you to attend our meeting, Sept. 22 at 7:30 P.M. We know that there are many home making career women &

business women with ideas for a better community life & to increase the advantages in living in Spearman.

Ladies, Take Pride in Spearman! See you at the Women's Division Meeting.

## Tri-State Fair Photography Show

The 1981 Amarillo Tri-State Fair, scheduled for September 21-26, will feature displays of photographs by some of the top professional photographers in the Texas and Oklahoma Panhandle, according to Ray Wagner, Superintendent of the Show.

"Better lighting and physical space will enhance the prospects for the best display ever of this fast-growing department of the Fair," says Wagner.

The Panhandle Photographers Association, which sanctions the Show, is affiliated with the Professional Photographers of America. The Panhandle group is one of the oldest in the State of Texas.

For additional information about the Photography Show, contact Ray Wagner, 1921 S. Washington, Amarillo, Texas, or call 806/374/5942.

## NOTICE OF TAX INCREASE

The Spearman Independent School District proposes to increase your property taxes by 11.4 percent.

A public hearing on the increase will be held on September 24, 1981, 8:00 P. M.

at the High School Building, 403 East 11th Street, Spearman, Texas.

The Board of Trustees has considered the proposal and voted in a meeting of the Board of Trustees as follows:

### FOR the proposal:

Jim O. Davis, President

Tom Latta, member

Kent Guthrie, member

Charles Shieldknight, member

Mike Garnett, member

Dennis Nelson, member

Tommie White, member

### AGAINST the proposal:

None

### ABSENT and not voting:

None

## Second Program In Film Series Thursday

Roberta D. Speer, consulting archaeologist for Killgore Research Center, will lead a discussion at the HANSFORD COUNTY LIBRARY Thurs., Sept. 17, 7 p.m., following a presentation of a film on Indians, the first settlers on the Great Plains. Speer says, "Like the white men who finally drove home off the Plains, the Indian experienced his own problems with the environment?"

THE LAKOTA: ONE NATION ON THE PLAINS, is the second program in "The Great Plains Experience" series of 6 programs to be shown in the Panhandle in 1981. The series is administered by Amarillo Public Library in Texas, and is the only site in the state where the series will be shown. It is a cooperative effort with Panhandle-Plains Historical Museum and cooperating libraries and museums of Dalhart, Hereford, Shamrock, and Spearman, and with historical societies, university professors, and other humanities scholars. The series is a community outreach project funded by the National Endowment for the Humanities implemented at 9 sites nationwide, and originates at the University of Mid-America, Lincoln, Nebraska.

Byron Price, curator of history at PPH Museum, and Carol Daffern, curator of exhibits, have been consultants in preparation of exhibits by the local

museum. Exhibits accompanying each of the programs are centered around various themes of the series. Book displays by the library will offer books for further reading on the subjects, which are all related to the experience of the people with land and are localized in the discussions.

Other program topics are "The Land", "Clash of Cultures", "Settling of the Plains", "Heirs to No Man's Land (Dust Bowl Days)", and "Four Portraits: Challenges and Changes".

Enthusiastic reception of the series of audiences at 3 Amarillo and Canyon locations was reported by Dr. Joe F. Taylor of Amarillo, project evaluator. Sarah Rosenberg of UMA is the national project director.

Roberta D. Speer has served in a succession of projects as field or laboratory supervisor, investigator of historic sites, instructor of historic sites, instructor of anthropology, and in related roles. The Plainview Bison Kill Site, Mackenzie Reservoir Project, Red Deer Testing, Briscoe County Survey, Truscott Reservoir Project, Crowell Reservoir Project and numerous others have made use of her experience in archaeological research.

"No blessing lasts forever." Plautus

## Potpourri Of Budget

### Trimming Ideas

The Ochiltree County Family Living Committee is sponsoring a program entitled "Potpourri of Budget Trimming Ideas" on Thursday, September 17th beginning at 10:00 a.m. in the Community Room of the First National Bank. The program is designed to share a variety of ideas of ways to budget and use money wisely and utilize human skills at the same time according to Ochiltree County Extension Agent, Cheryl Brewer.

The day's agenda begins at 9:45 a.m. for registration and coffee. At 10:00 a.m. Bonnie Piernot, Family resource Management Specialist from the Texas Agricultural Extension Service in College Station, will give a program on "Exercises for Financial Fitness". Claudette Mitchell, Lipscomb County Extension Agent will then present "You Can Make It". She will share home furnishing ideas that can be made at home. She will also emphasize energy conservation features. Instructions for these projects will be provided. Helen Gheen will conclude the morning with information on how to

put together a home educational file system.

Employed homemakers are invited to come in during the noon hour when the morning sessions will be presented to them in brief.

We do regret that due to the flooding in Amarillo, Quilts Etc. will not be present.

EDUCATIONAL PROGRAMS CONDUCTED BY THE TEXAS AGRICULTURAL EXTENSION SERVICE SERVE PEOPLE OF ALL AGES, REGARDLESS OF SOCIOECONOMIC LEVEL, RACE, COLOR, SEX, RELIGION, OR ORIGIN.

### Who's New

Mr. and Mrs. Andy Watley are the proud parents of a baby girl, Jill Janae was born at 1:45 A.M. Friday, September 11 at North Plains Hospital in Borger and weighed 8 lbs. 2 oz. and measured 21 inches long.

Maternal grandparents are Mr. and Mrs. Sam Patterson and paternal grandparents are Mr. and Mrs. Glen Watley, all of Spearman.

"Acquaintance: A degree of friendship called slight when its object is poor and obscure, and intimate when he is rich and famous." Ambrose Bierce

## American Cancer Society To Meet

The American Cancer Society will meet Sept. 22 in the coffee room upstairs at the courthouse to discuss and plan activities for the 1981-82 programs. Your continued support is needed.

The '81 Crusade raised \$3,716.15 from our county. Many thanks to all who helped make it a success last year. Memorials and legacies are accepted at First State Bank at any time, Arbeta Nobles, chairperson.

See you Sept. 22-9:30 at the Courthouse.

We appreciate your business ----

# TAYLOR PETROLEUM KRAZY KORNER DIAMOND SHAMROCK

FERTILIZE YOUR LAWN FOR FALL AND WINTER WITH SHAMROCK LUSH LAWN FERTILIZER 40 lb. bag.....each....\$5.75

MAJOR brand of oil Transmission Fluid Anti-Freeze and Summer Coolant

We are more than a GAS STATION...

We have snack items

Kelly Milk Sandwiches Fountain Cokes - .30 .40 .50 Slush puppies - .30 .55 .65

ALL CIGARETTES 75¢ pkg. ICE -- Everyday Low Price.....89¢ TEXAS -T-SHIRTS Adults..... \$3.79 Kids..... \$3.39

R. C. COLA R. C. 100 DIET RITE.....6 pkg. choice \$1.59

FRESH COFFEE AND DONUTS

OPEN 5 a. m. --- 9 p. m. weekdays 8 a. m. --- 8 p. m. Sundays

DOT KARNS MANAGER

PA Fu ing Bu 273 Sat 41s Carj Rog 405-55-rt SER dry. doze Dec.1 Griv - SN Op P.M. hot snack schoe Cal 620 1/2 infort Re stamp doubl Lic to 12 Chew Total Crofft after 4 44-2tp F FOR S cycle. S 5047 af 46-3tc SURPL TRUCK sold for on purc Call 64 Phone 4 44-tp FOR SA Corn he 150 acrt 659-227 43-rtn

# WANTED ADS

### CAPROCK MONUMENT CO.

Dealers of Georgia Granite, Georgia Marble, Colorado Granite, & Bronze.

represented by **BOXWELL BROS. FUNERAL HOME**

519 S. EVANS  
659-3802

Hansford County Planned Parenthood  
26 S. Haney  
659-2483  
Spearman Mon.-Fri.  
8:30-12:30

**NOTICE**  
Wallace Monument Co.  
Monuments, Curbing, Grave Covers  
Local Representative  
**LEONARD JAMESON**  
Spearman, Texas  
20-rtm

**STEAM RINSE & VAC**  
Steam Rinse-and-Vac Shampooers: \$8.95 for up to 24 hrs., available at Gordon's Drug; also at Freddie Largent's 716 Cotter Dr. after 4 p.m. and Saturdays and Sundays.

**Monuments**  
Save Agents and Undertakers Profits  
If it is inconvenient for you to visit our large display, please phone collect (405) 327-0626 or write and we will call on you.

**Alva Monument Works, Inc.**  
Alva, OK 73717

Town & Country all Steel Bldg. 70'x80'x14'  
Colored Walls; Galv. Roof 2-20'x14' Framed Openings 1-30'x6'8" Steel Walk Door \$13,680.00  
1-806-435-3107  
35-rtm

### SERVICES

**PATTY B'S WORK SHOP.** Furniture stripping, re-finishing, repair. 700 South Main, Berger, Texas. Phone 806 273-3916. Open Tuesday, thru Saturday, 9:30 A.M. to 5 P.M. 41s-8tp

**Carpet & upholstery cleaning Rogers Steam Way, Guymon, 405-338-7926**  
5s-rtm

**SERVICE:** Pits cleaned, wet or dry. Dragline or loader. Also, dozer, grader, carry-all service. Lee Roy Mitchell, 806-733-2384, Gruver, Texas 79040.

**SNOOPY'S DAY SCHOOL**  
Open from 7:00 A.M. to 6:00 P.M. We serve morning snack, hot lunch, and afternoon snacks. Van runs to and from school, dancing, piano, ect.  
Call 659-3328 or Come by 620 1/2 S. Bernice for more information.

Receive (W)estern gift stamps for your bill -- and double on Friday.  
Licensed for ages 18 months to 12 years.

Chew away a pound a day with Total Tabs. Ask me, Bonnie Crofford--call 806-659-5010 after 4:00 p.m.  
44-2tp

### FOR SALE

**FOR SALE:** 1978 Suzuki motorcycle. See at 309 W. 12th or call 5047 after 6.  
46-3tc

**SURPLUS JEEPS, CARS, TRUCKS** Car-inv. value \$2143 sold for \$100. For information on purchasing similar bargains, Call 602-941-8014 Ext. 518. Phone Call Refundable.  
44-tp

**FOR SALE:** Six-row John Deere Corn header, new, cut less than 150 acres. Call Rosa Lee Hill, 659-2277.  
43-rtm

### Miscellaneous For Sale

**SAVE! Free Delivery--HEAVY SHAKES,** 65.00 per square. Light medium Shakes \$57.00 per square. All other Cedar roofing--Cedar Beams--Plywood, Rough Cedar, Cedar Fencing materials or turn-key fencing--Composition Shingles, and felt. **LAKESIDE FENCE MFG. AND WHOLESALE INC. DRAWER L FRITCH, TEY 79036** Phone 806-857-2411.

**FOR SALE:** 3 bedroom, 2 bath, brick home 1 block from elementary and junior high. Central heat and air, carpeted. Call 659-2201 or 2155.  
45-rtm

**BUILDING SALE**  
Dealer Price Available on selected sizes, due to customer cancellations for financial reasons. 32' wide & 50' wide Grain Storage Curvettes; 40' wide & 60' wide Straight walls. Call for size and special pricing; Joe 800-525-9926.  
42-4tc

**FOR SALE:** Good used early American Lazy-Boy Recliner. Brown tweed cover. 1016 S. Haney or phone 659-2917.  
44-4tc

### REAL ESTATE FOR SALE

**HOUSE FOR SALE IN GRUVER:** 3 bedroom, 2 bath, cathedral ceiling den with fireplace, formal dining room, wet bar, kitchen with center work counter. 1876 square feet. 12 x 28 storage house. Priced to sell. 806-733-2049 after 5.  
46-2tc

**FOR SALE:** 2 bedroom house, storm cellar. Good Buy. 14 N. Hazelwood. 659-2660 or 659-2493.  
43s-rtm

**LOOKING FOR GOOD INCOME PROPERTY?** We have a duplex located on a 90' X 140' corner lot. Lot is zoned for commercial use. Priced in the upper teens. Call 659-3089 or 659-3703.  
45s-rtm

### HELP WANTED

**SENIOR VILLAGE NURSING HOME NEEDS** nurses aides. No experience necessary, we will train. Call 435-5403, Highway 83, Perryton.  
43-rtm

**HELP WANTED:** General Farm Helper. Call Lewis Henderson at 733-2517.  
45s-rtm NC

### MOBILE HOMES FOR SALE

**FOR SALE:** Extra nice customized built mobilehome, 2 bedroom, 2 bath and large living area. 210 S. Snider. 659-2763.  
43s-rtm

### GARAGE SALES

**GARAGE SALE:** 22 N. James, Thursday and Friday--Sept. 17 & 18, from 9:30 to 5.  
45-1tp

**GARAGE SALE:** Sept. 18, 209 W. 12th, Lots of nice kids clothes. 9 to 4.  
46-1tc

### WANTED

**WILL DO BABYSITTING** in my home. Call 9-5048  
45-2tp

**WANT TO BUY:** Good, firm used mattress or mattress and box springs for double bed. Call 659-3471.  
44s-rtm

Join us at Story Hour Time each Monday, at 10:15 a.m. in the Hansford County Library. All 3 & 4 year old children. Welcome.

### MYSTIC JT-8 USERS

**JT-8 15W = \$50**  
55 gal. = \$192.50  
+ exchange drum

**Kent Rimmel**  
806-733-5017

### Legal Notice

#### LEGAL NOTICE

The final hearing for the 1981-1982 proposed budget will be held on September 29, 1981 at 8:00 P.M. for all interested citizens of the City of Spearman. The meeting will be held at City Hall, 221 Sanders, Spearman, Texas. The proposed budget may be examined on weekdays at City Hall between the hours of 8:30 A.M. to 5:00 P.M. All interested citizens will have the opportunity to give written and oral comment.

Donna Thomas  
Deputy City Secretary  
45-1tc

### CARD OF THANKS

I would like to thank all of my members for their time and effort in making our first Antique, Arts & Craft Show a SUCCESS!!

Club Members include: Frances Biles, Pam Cates, Edith Chandler, Linda Close, Barbara Collier, Tommy Duncan, Trudie Schneider, Pat Sutterfield, Patty Sheppard, Marilyn Wilson, Virginia Young, Kay Crocker, Mary Jane DeArmond, and Eulia Blankenship

Thanks, again  
President Hester Sue Crawford  
Spearman Study Club would like to thank the following for their support and items borrowed during their Antique, Arts & Crafts Show and Sale:

Spearman Chamber of Commerce, Citizens of Spearman, Gruver and surrounding towns, First Baptist Church, First Christian Church, Methodist Church, Moose Lodge, Hansford County Sheriff's Dept., Eastern Star, Hansford Implement, Cary Collier, Burt Williams and Spearman FFA Boys, Girls FCA members and Lynettes.

A very special "Thank You" to all husbands of club members and to Mr. Bob Skinner for the use of his building.

Spearman Study Club

### Land Bank Raises Interest

**HOUSTON** - Interest rates on all Land Bank variable rate loans will be increased to 11 percent on farm loans and 11-1/2 percent on rural residence and farm-related business loans, Robert R. Williams, Jr. President of the Spearman-Pampa Federal Land Bank Association of Pampa announced today.

These rates become effective October 1, 1981.

"There continues to be substantial upward pressure in the bond market with no relief from the record high interest rates anticipated in the near future," Williams said.

"The September bond issue carries a face rate of 17.85 percent on nine-month bonds and 17 percent on 2 1/2 year bonds," he continued.

"The Bank's average cost of funds prior to the issue was in excess of 11 percent."

He said that marketing conditions and a ceiling cost earnings spread prompted the increase in the variable interest rate.

"Certainly we regret this action is necessary," he said. "However even with the increase, our rate remains substantially below market."

Offered Exclusively By **EMMETT R. SANDERS, REALTOR**

Choice commercial location, fronting 140 ft. on West Kenneth Street.

Immaculate 3 bedroom home, preferred southwest location, corner lot, large storm shelter, new central heat and air, new carpet throughout, fresh paint, ready for you to move in.

New 3 bedroom, bath & 1/2, home near high school. Very nice home at an affordable price. Shown by appointment only.

**EMMETT R. SANDERS REALTOR**  
659-2516  
659-2601 [nights]  
26-rtm tonly

## The Great Plains Experience Film To Be Shown Here

Hansford County Library, together with Stationmaster's House Museum of Spearman, is one of the 4 area libraries and museums chosen by Amarillo Public Library to implement a series of 6 films, museum exhibits and discussions on "The Great Plains Experience". Spearman programs begin Sept. 10, 7 p.m., at Hansford County Library and continue on successive Thursdays.

Dr. Frederick W. Rathjen as program leader for the first film, "The Land", will also be on hand to lead a discussion on the Texas Panhandle as part of the Great Plains region. Second program in the series, "The Lakota: One Nation on the Plains", will be conducted by Roberta D. Speer, area archaeologist, and deals with cultures preceding the coming of the Anglo-American to this area.

The cooperative project involving libraries, museums and various historical societies, university professors, and other humanities scholars is funded by the National Endowment for the Humanities through the University of Mid-America at Lincoln, Neb. The Amarillo Public Library was named as one of nine libraries nationwide to participate in a programming project on "The Great Plains Experience".

UMA has been awarded \$486,148 by NEH to carry out the project in the nine areas from Georgia to Montana. The Amarillo area project is the only one in Texas, and will be implemented at 7 Panhandle sites.

The Panhandle-Plains Museum at Canyon has participated in planning exhibits at each program. Also cooperating as discussion leaders for the 6 films in the program series will be Dr. Fred W. Rathjen, Dr. Garry Nall, and Dr. P.L. Petersen, professors of history,

WTSU; Bobby Weaver, PPH Museum curator of ethnology, William C. Griggs, museum director; and Roberta D. Speer of Amarillo, anthropologist. Byron Price, PPH Museum curator of history, was assisted by Carol Daffern in exhibits consultation by the area museums. Mary Louise Loyd of the Amarillo library is project director, with Anite G. Pitts assistant. Dr. Joe F. Taylor, retired, Amarillo College history department, is evaluator for the project.

The one-year project is a library community outreach program for adults to promote study and appreciation of Great Plains history", according to the University of Mid-America. Libraries, museums, historical societies and humanities scholars will carry out the programs, which will center on films from UMA's television course, "The Great Plains

Study: no less abortions since funding cuts.

Experience", produced in 1978. The localized programs will also use the libraries' humanities resources, relevant art, artifact and other special collections.

Participating libraries are Tucson Public Library, Tucson, Ariz.; Tri-County Regional Library, Rome, Ga.; Wichita Public Library, Wichita, Kan.; Great Falls Public Library, Great Falls, Mont.; Durham County Public Library, Durham, N.C.; AMARILLO PUBLIC LIBRARY, AMARILLO, TEX.; Racine Public Library, Racine, Wis.; Sheridan County Fulmer Public Library, Sheridan, Wyo.

UMA is a consortium of 11 universities in 7 midwestern states created in 1974 to develop and experiment with nontraditional programs for adults.

Brady visits home for first time in 5 months.

### VICTIMS LIVE LONGER

**CHICAGO** -- The five-year survival rate for patients with the 10 most common forms of cancer showed a marked improvement between 1969 and 1979 in the United States, says an American College of Surgeons study.

### VALVE & RETARDATION

**CHICAGO** -- A tiny valve surgically implanted in the skull of monkey fetuses suffering from hydrocephalus offers hope of saving many human infants from retardation and early death, medical researchers report.

### U.S., China signs accord.

The 7th and 8th grade Lynx will travel to Perryton to meet Perryton.

Study finds victims of some cancer living longer.

Walesa vows to fight for solidarity in Poland.

Canadian officials: U.S. air system "safe".

Sadat cracks down on opposition.

U.S. China signs accord.

Walesa vows to fight for solidarity in Poland.

Canadian officials: U.S. air system "safe".

Sadat cracks down on opposition.

U.S. China signs accord.

Walesa vows to fight for solidarity in Poland.

Canadian officials: U.S. air system "safe".

Sadat cracks down on opposition.

U.S. China signs accord.

Walesa vows to fight for solidarity in Poland.

Canadian officials: U.S. air system "safe".

Sadat cracks down on opposition.

U.S. China signs accord.

Walesa vows to fight for solidarity in Poland.

Canadian officials: U.S. air system "safe".

Sadat cracks down on opposition.

U.S. China signs accord.

Walesa vows to fight for solidarity in Poland.

Canadian officials: U.S. air system "safe".

Sadat cracks down on opposition.

## TEXAS PRESS ASSOCIATION

### The Spearman Reporter

**PUBLICATION [USPS 509-660] SPEARMAN, TEXAS 79081**  
213 Main Box 458 659-3434  
Published Weekly at 213 Main Street Spearman, Texas 79081  
Owner-Publisher.....William M. Miller  
Editor.....Faye Lynch  
Second Class postage paid at Spearman, Texas 79081

Any erroneous reflection upon the character of any person or firm appearing in these columns will be gladly and promptly corrected upon being brought to the attention of the management.

POSTMASTER: Send address changes to Spearman Reporter, Box 458, Spearman, Tx. 79081.

SUBSCRIPTION RATE: Hansford, adjoining counties, combination with the Hansford Plainsman \$15.00.  
Other points, \$20.00.

## 9th & JV Lynx Host Perryton

The Freshman and Jr. Varsity Lynx will battle the Perryton Freshman and Jr. Varsity in their first home-opener. One thing for sure, both the Freshman and the Jr. Varsity will want to win, mainly because this is their first game at home, and they want to show their fans, just how good of a team they really have.

The Freshman did a SUPERB job last week against the River Road Wildcats, this Thursday, September 17, the Freshman Lynx will begin at 5:00 p.m. The Perryton Freshman beat the Dalhart Freshman--Dalhart was the best team in the League last year--so they are undefeated and the Freshman Lynx are undefeated, now the Freshman Lynx need to beat the Perryton Freshman and cool them off for a while. They are going to be fired up, since they did beat

U.S., China signs accord.

Walesa vows to fight for solidarity in Poland.

Canadian officials: U.S. air system "safe".

Sadat cracks down on opposition.

U.S. China signs accord.

Walesa vows to fight for solidarity in Poland.

Canadian officials: U.S. air system "safe".

Sadat cracks down on opposition.

U.S. China signs accord.

Walesa vows to fight for solidarity in Poland.

Canadian officials: U.S. air system "safe".

Sadat cracks down on opposition.

U.S. China signs accord.

Walesa vows to fight for solidarity in Poland.

Canadian officials: U.S. air system "safe".

Sadat cracks down on opposition.

U.S. China signs accord.

Walesa vows to fight for solidarity in Poland.

Canadian officials: U.S. air system "safe".

Sadat cracks down on opposition.

U.S. China signs accord.

Walesa vows to fight for solidarity in Poland.

Dalhart, the Freshman Lynx will be no exception, they too are fired up and ready to beat the daylight out of the Perryton Freshman.

The Jr. Varsity Lynx will play better this week against Perryton. The game will be played at Lynx Stadium, and begin at 7:00 p.m. or right after the Freshman Lynx cool the Perryton Freshman. This will be a very exciting game!!

The Freshman and Jr. Varsity Lynx will be playing at Lynx Stadium beginning at 5:00 p.m. Go on out to Lynx Stadium and cheer on the Freshman and JV Lynx to victory over Perryton.

### 7th & 8th Lynx To Meet Perryton

The 7th and 8th grade Lynx will travel to Perryton to meet Perryton.

Study finds victims of some cancer living longer.

Walesa vows to fight for solidarity in Poland.

Canadian officials: U.S. air system "safe".

Sadat cracks down on opposition.

U.S. China signs accord.

Walesa vows to fight for solidarity in Poland.

Canadian officials: U.S. air system "safe".

Sadat cracks down on opposition.

U.S. China signs accord.

Walesa vows to fight for solidarity in Poland.

Canadian officials: U.S. air system "safe".

Sadat cracks down on opposition.

U.S. China signs accord.

Walesa vows to fight for solidarity in Poland.

Canadian officials: U.S. air system "safe".

Sadat cracks down on opposition.

U.S. China signs accord.

Walesa vows to fight for solidarity in Poland.

Canadian officials: U.S. air system "safe".

Sadat cracks down on opposition.

This beautiful home at 715 S Steele Drive in Spearman.

This beautiful home at 908 Dressen in Spearman.

This beautiful home at 1114 S. Haney.

**Century 21**

JERRY GEE 659-3664 ALLEN ALFORD 659-3034  
LARRY TROSPER 659-3491

**Daryl Wynn, Broker**  
658-4528

**GOLDEN SPREAD REALTY**

We'll give our word to you.

1980 Century 21 Real Estate Corporate Registered Trademark of Century 21 Real Estate Corporation. Printed in U.S.A. Each office is independently owned and operated. Equal Housing Opportunity.

**FOR SALE**  
**Registered TAM-101**  
**Cleaned, treated and bagged**  
**call: SCOTT ARCHER**  
**435-2484 Perryton, Texas**

**VANCE HALL SPORTING GOODS**  
**PARKING LOT SKI SALE!**  
**FABULOUS SAVINGS ON SKIS, BOOTS, POLES, COATS, PANTS, GLOVES AND ACCESSORIES**  
THURSDAY-SEPT. 17 - 6p.m. to 10 p.m.  
FRIDAY - SEPT. 18 - 8a.m. to 10 p.m.  
SATURDAY - SEPT. 19 - 8a.m. to 6p.m.  
**10th AT POLK LOCATION ONLY**  
**VANCE HALL SPORTING GOODS**  
376-4186 AMARILLO

**Virginia White Realtor** 806-659-3841

Good location! Clean! Price is right! Two bedrooms, 1 bath. Call to see.

CLEAN & NEAT - 3 bedroom, almost new carpet and kitchen cabinets. Central heat, fenced. \$24,500. Call for appointment.

Corner lot in Blodgett-Linn Add. 100x120 and price is right. CALL!

# Pride Of The Panhandle 4-H Horse Awards Banquet Held

The Second Annual Pride of the Panhandle Horse Show Association Awards Banquet was held Saturday night, September 12 at the Spearman High School Cafeteria.

Mike Garnett was Master of Ceremonies. Invocation was given by Jon Garnett. Will Jarvis welcomed the guests. Tammy Savage and Andrea Archer gave the Pledge of Allegiance and the 4-H Pledge. Travis Patterson introduced County Agent Jimmy Walker of Vega and John Gilter, County Judge from Oldham County. They entertained the 225 P.O.P. members, parents, leaders and guests.

Hansford County 4-H'ers walked away with most of the trophies. Deana Turner was High Point in the 9-11 year. Travis Patterson was high point in the 12-14 year group. Will Jarvis was high point for the 15-19 year group.

The following are the final placings for the six county Pride of the Panhandle 4-H Horse Show.

**HIGH POINT:** 9-11 year group - Deana Turner - 351 pts.; Mark Garnett - 313 pts. 12-14 year group - Travis Patterson - 408 pts.; Laura Horne - 286½ pts. 15-19 year group - Will Jarvis - 298 pts.; Jon Garnett - 292 pts.

**SHOWMANSHIP 9-11:** 1st Marjory Ekleberry and High Society Man; 2nd - Cindy Kile and Miss White Socks; 3rd - Mark Garnett and Two Fox Shannon; 4th - Deanna Turner and Nips Good Bar; and 5th Stacy Justice and Espejo Skip.

**SHOWMANSHIP 12-14:** 1st - Robby Kile and Jay's First Lady; 2nd - Laura Horne and The Big Investor; 3rd - Andrea Archer and Red Tyler Dee; 4th - Stacy Fiel and Wee Wee Sun; and 5th - Travis Patterson and Teger's Agent.

**SHOWMANSHIP 15-19:** 1st Will Jarvis and Lightning Seven; 2nd - Teresa Martin and Joe Bar Pardon; 3rd - Russ Savage and Wild Gambler; 4th - Ann Rogers and Sis's Top Three; and 5th - Jon Garnett and Haley's Pattern.

**REG. MARES UNDER 5:** 1st - Shelley Dunnihoo and Alabama Lady Dee; 2nd - Mark Garnett and Two Fox Shannon; 3rd - Angie Francis and Deal Hawk Anna; Tied for 4th - Leslie Jo Fuson and Harmonds Flicker and Danette Raper and Specks Bunny Bee; and 5th - Lee Ann Gentry and Day Z Cap.

**REG. MARES OVER 5:** Tied for 1st - Robby Kile and Jay's First Lady and Cindy Kile and Miss White Socks; 2nd - Stacy Fiel and Little Silver Lace; 3rd - Misty Sanders and Ola's May; 4th - Leslie Jo Fuson and Ola's Pee Wee; 5th - Non-qualified.

**GRADE MARES:** 1st - Teresa Martin and Sandy; 2nd - Lisa Maddox and Rosey; 3rd - Ronda Bozeman and Dolly; 4th - Patty Pilcher and Missy; and 5th - Lorrie Enochs and Boots.

**REGISTERED GELDINGS UNDER 5:** 1st - Andrea Archer and Red Tyler Dee; 2nd - Stacy Justice and Chant Dell; 3rd - D'Lynn Orr and Mr. Jumping Jack; 4th - Jodie Yake and Mac's Three Bars; and 5th - Marjory Ekleberry and High Society Man.

**REGISTERED GELDINGS OVER 5:** 1st - Stacy Fiel and Wee Wee Sun; 2nd - Laura Horne and The Big Investor; 3rd - Travis Patterson and Reger's Agent; 4th - Anne Marie Jarvis and Jac Bar Dee; and 5th - Andrea Archer and Poco Manoso.

**GRADE GELDINGS:** 1st - Melissa Yake and Gray Man; 2nd - La Jona Taylor and Whiey; 3rd - Kyle Dudley and Little Red; 4th - Dawn Boedeker and Red; and 5th - Brandy Mathews and Jiggs.

**BRIDLE PATH HACK:** 1st - Jon Garnett and Holey's Pattern; 2nd - Will Jarvis and Lightning Seven; 3rd - Mark Garnett and Two Fox Shannon; 4th - Andrea Archer and Red Tyler Dee; and 5th - Deanna Turner and Nips Good Bar.

**WESTERN PLEASURE 9 - 11:** 1st - Deanna Turner and Nips Good Bar; 2nd - Mark Garnett and Two Fox Shannon; 3rd - Marjory Ekleberry and High Society Man; 4th - Stacy Justice and Espejo Skip; and 5th - J Garnett and Just Otee.

**WESTERN PLEASURE 12 - 14:** 1st - D'Lynn Orr and Mr. Jumping Jack; 2nd - Travis Patterson and Reger's Agent; 3rd - Tammy Savage and Sierra Red Chief; 4th - Laura Horne and The Big Investor; and 5th -

Andrea Archer and Red Tyler Dee.

**WESTERN PLEASURE 15 - 19:** 1st - Jon Garnett and Holey's Pattern; 2nd - Ann Rogers and Sis's Top Three; 3rd - Russ Savage and Wild Gambler; 4th - Will Jarvis and Lightning Seven; and 5th - Jo Lynne Wright and Sea Go Man.

**WESTERN HORSEMANSHIP 9 - 11:** 1st - Mark Garnett and Two Fox Shannon; 2nd - Deanna Turner and Nips Good Bar; 3rd - Clint Patterson and Spears Whizaway; 4th - J Garnett and Just Otee; and 5th - Stacy Justice and Espejo Skip.

**WESTERN HORSEMANSHIP 12-14:** 1st - Travis Patterson and Reger's Agent; 2nd - Danette Raper and Specks Bunny Bee; 3rd - Laura Horne and The Big Investor; 4th - Andrea Archer and Red Tyler Dee; and 5th - Tammy Savage and Sierra Red Chief.

**WESTERN HORSEMANSHIP 15 - 19:** 1st - Jon Garnett and Holey's Pattern; 2nd - Ann Rogers and Sis's Top Three; 3rd - Will Jarvis and Lightning Seven; 4th - Russ Savage and Wild Gambler; and tied for 5th - Teresa Martin and Joe Bar's Pardon and Jo Lynne Wright and Sea Go Man.

**TRAIL 9 - 11:** 1st - Deanna Turner and Nips Good Bar; 2nd - Stacy Justice and Espejo Skip; 3rd - Tammy Greene and Hingo; 4th - Mark Garnett and Two Fox Shannon; and 5th Leslie Jo Fuson and Harmond's Flicker.

**TRAIL 12-14:** 1st - Laura Horne and The Big Investor; 2nd - Danette Raper and Specks Bunny Bee; 3rd - James Holley and Golden Dusk; 4th - Travis Patterson and Reger's Agent; and 5th - Lorrie Enochs and Boots.

**TRAIL 15-19:** 1st - Jon Garnett and Holey's Pattern; 2nd - Russ Savage and Wild Gambler; 3rd - Jo Lynne Wright and Sea Go Man; 4th - Shayne Sanders and Tyree's Quickie; and 5th - Will Jarvis and Lightning Seven.

**REINING 9 - 11:** 1st - Deanna Turner and Nips Good Bar; 2nd - Clint Patterson and Spears Whizaway; 3rd - Stacy Justice and Espejo Skip; 4th - J Garnett and Just Otee; and 5th - Brandy Mathews and Handy Nite.

**REINING 12 - 14:** 1st - Andrea Archer and Poco Manoso; 2nd - Lorrie Enochs and Boots; 3rd - Travis Patterson and Reger's Agent; 4th - Laura Horne and The Big Investor; and 5th - James Holley and Jeep's Mico.

**REINING 15 - 19:** 1st - Will Jarvis and Lightning Seven; 2nd - Russ Savage and Wild Gambler; 3rd - Jay Pack and Hesa Bee Jack; 4th - Jon Garnett and Holey's Pattern; and 5th - Jo Lynne Wright and Sonny Sand Bar.

**POLES 9 - 11:** 1st - Marjory Ekleberry and Dynamite; 2nd - Cydaey Morris and Baldy; 3rd - Clint Patterson and Spears Whizaway; 4th - Cindy Coleman and Babe; and 5th - J Garnett and Spotter.

**POLES 12 - 14:** 1st - Andrea Archer and Poco Manoso; 2nd - Sabrina Parker and Joe; 3rd - Robyn Coleman and Rowdy Rawhide; 4th - Lorrie Enochs and Boots; and 5th - Lisa Maddox and Rosey.

**POLES 15 - 19:** 1st - La Jona Taylor and Whitey; 2nd - Teresa Martin and B.W. Domino; 3rd - Will Jarvis and Lightning Seven; 4th - Patty Pilcher and Missy; and 5th - Nan Cook and Big Hal.

**BARRELS 9 - 11:** 1st - Lindsey McCasland and Hy Fleet Dolly; 2nd - Marjory Ekleberry and Dytamite; 3rd - Clint Patterson and Spear's Whizaway; 4th - Cydney Morris and Baldy; and 5th - Leslie Jo Fuson and Ola's Pee Wee.

**BARRELS 12-14:** 1st - Robyn Coleman and Grits; 2nd - Andrea Archer and Poco Manoso; Tied for 3rd - Lorrie Enochs and Boots and Lisa Maddox and Rosey; 4th - Travis Patterson and Reger's Agent; and 5th - Leccrecia Schieskedanz and Buddy.

**BARRELS 15 - 19:** 1st - La Jona Taylor and Whitey; 2nd - Teresa Martin and B. W. Domino; 3rd - Patty Pilcher and Missy; 4th - William Jarvis and Lightning Seven; and 5th - Ann Rogers and Sis's Top Three.

Home-making may be a lost art, but there's much to be said for the ancient custom.

## Our Heritage of Faith...

On Sunday, Faith Lutheran Church gathers to study the Word of God at 9:45 a.m. and worship is at 10:45 a.m. The sermon theme is: Two Ledgers. The text is Matthew 16:21-26.

At 6:30 p.m. we are undertaking a study of the Augsburg Confession which consists of the common doctrines in the Bible. This document was written in 1529 at the request of Emperor Charles V.

All are cordially invited to worship and study with us.

Bruno Gaskamp, Pastor

At the end of this happy life, the man with the most money will find it means very little.

Every minority has a tendency to blame the majority for its own mistakes.

The Hansford Golf Club Championship will be held. The deadline is Tuesday, September 22. It will be Match Play.

It will have Flighted Handicaps. For Members ONLY!!! It will be held at the Golf Course.

## ABOUT YOUR HOME

By April Rhodes

Keep a squeeze-type plastic bottle filled with water for a quick clean-up for sticky fingers while traveling.

If your child bites his or her fingernails, a little petroleum jelly helps prevent further chipping and splitting.

With Fire Prevention Week in October, play it safe, get your home heating system checked.

Save hours of cleaning children's (and sometimes adult) finger smudges from painted frames if you put a good coat of wax on your door frames.



PRICES EFFECTIVE THRU SEPTEMBER 23, 1981. QUANTITY RIGHTS RESERVED. NO SALES TO DEALERS.

Just When You Thought It Was IMPOSSIBLE

THIS WEEK'S SUPER SAVING FEATURE

**SilverStone Cookware**

10½" SAUTE SKILLET

FEATURE WEEK PRICE \$9.49 OFF WEEK PRICE \$10.49

REDEEM ANNIVERSARY COUPONS FOR UP TO \$750 IN SAVINGS THIS WEEK

50¢ OFF TWO 2-LITER BTL'S Coca Cola or Tab

50¢ OFF ANY PKG. - BAR-S Bacon, Franks, Bologna

50¢ OFF ON ONE 12½-OZ. TO 22-OZ. BOX SARA LEE Dessert Cakes

\$1.00 OFF 2-LB. BOX - MORTON Fried Chicken

50¢ OFF SIX 15-OZ. CANS - SHOWBOAT Pork and Beans

\$1.50 OFF 60-CT. BTL. OF Stresstabs 600

50¢ OFF TWO 32-OZ. BAGS CRINKLE CUT OR FEG Golden Fries

\$2.00 OFF RUG DOCTOR - RENTAL Steam Cleaner

COUPONS REDEEMABLE THRU SEPT. 19, 1981

BUTCHER BLOCK BEEF CENTER SLICES

**Round Steak \$1.89**

RANDOM WEIGHTS FRESH FROZEN

**Turkey Drumsticks 43¢**

RANDOM WEIGHTS SMOKED

**Sliced Slab Bacon \$1.29**

ALL FLAVOR'S LAY'S

**Potato Chips 86¢**

MEADOWDALE

**Flour 78¢**

5-LB. BAG LIMIT 1

KRAFT

**Macaroni & Cheese Dinner 69¢**

14½ LIMIT 3

Farm Fresh Produce FROM GREEN MARKET STREET

U.S. NO. 1

**Red Potatoes \$1.29**

10-LB. BAG

Cauliflower FRESH CRISP 89¢

Jonathan Apples NEW CRISP 3 100

Crisp Cabbage FRESH TENDER 15¢

Yellow Onions U.S. NO. 1 5 100

PLUMP & JUICY

**Tokay \$1.00**

PRUNES 3 lb.

FRESH DAIRY FOODS

CHEESE FOOD

**Kraft Velveeta... \$2.84**

2-LB. BOX LIMIT 1

Rhodes Frozen Breads 2 loaf pkg. 49¢

CAMELOT Cottage Cheese... 24-OZ. CTR. \$1.18

FLAKY OR BUTTERMILK Hungry Jack Biscuits... 10-CT. TUBES 94¢

CAMELOT OR STEFFEN'S Buttermilk 1/2-GAL. CTR. 86¢

SHOP IDEAL... WHERE THERE'S MORE VALUE IN

DOUBLE GUNN BROS. STAMPS EVERY WED.

# Doctor Talk

By Harold B. Ligon, M.D.

We've written quite a number of articles in recent months about the tiniest of microbes—the virus.

We mentioned that there are hundreds of strain and serotypes (probably many more unidentified) which produce many varied diseases and syndromes.

Today, however, we want to present three specific little fellows to our reading world. These viruses are called A/Bangkok/1/79, A/Brazil/11/78, and B/Singapore/222/79.

All the letters and numbers comprise laboratory

rhetoric and dates, but the names indicate the source of these viruses. The reason we're talking about these three strains is that they make up the "flu shot"—or influenza vaccine many of us take every year.

The reason we're talking about it now is that now is the time to take it! From early September to latter October we give most of our influenza vaccinations. Right now, it's before the flu season, and it takes 4-6 weeks to develop peak immunity for protection from these strains.

Most vaccine manufacturers say that a single injection is sufficient (it's twice as strong this year). The official name is Influenza Virus Vaccine, Trivalent, Types A and B, 1981-1982 formula. There are some who should break it up into 2 or 3 injections—and if you are allergic to chick embryo or egg protein, you should be advised by your doctor.

We advise those who are influenza prone, exposed to large crowds, senior citizens, and people who are chronically ill to take the influenza vaccine.

## Collins Named Cashier At Texas Bank

Danny Collins has been promoted to cashier at Texas Bank of Amarillo, it was announced this week. Collins joined the Texas Bank staff as assistant vice president and loan officer in September of 1980. He has 13 years of banking experience, all in Amarillo.

A graduate of Spearman High School and an alumnus of both Amarillo College and West

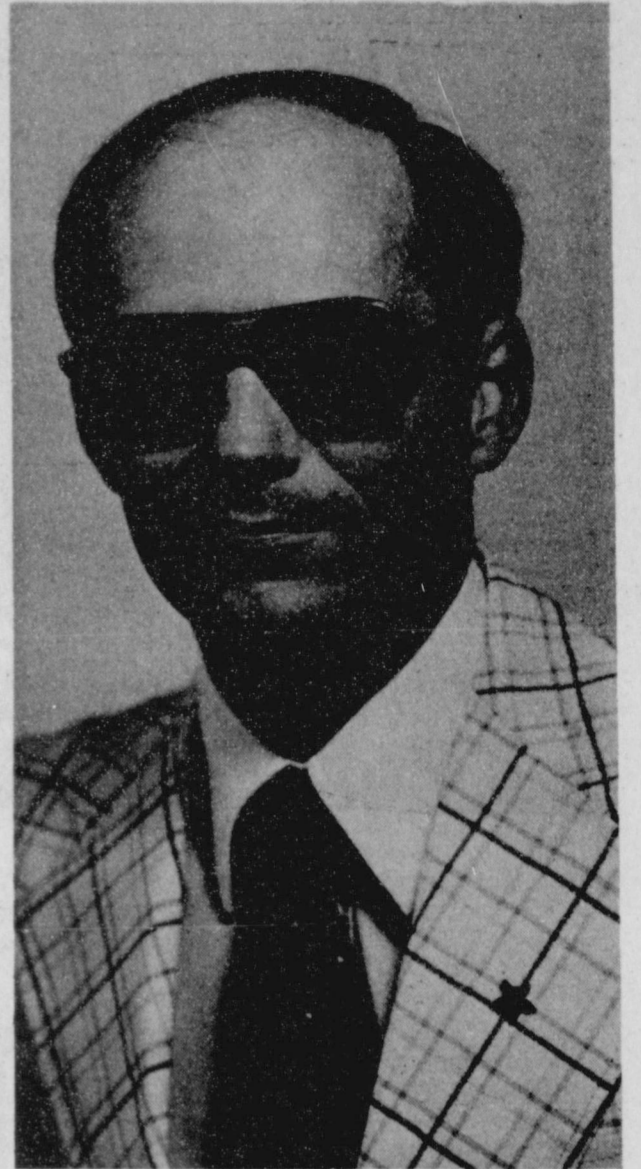
Texas State University, he has also completed a number of courses offered by the American Institute of Banking.

Collins, his wife, Linda, and their two children, Curtis and Cindy, live at 2823 John Drive.

### His Weakest Moment

A man is never so weak as when a pretty girl is telling him how strong he is.

-Coast Guard Magazine.



### The Rock

In the last few years when the United States was being hard-pressed by tiny Panama to turn over title to the Panama Canal Zone—which the U.S. had bought and paid for—Britain was also being pressed by Spain to return Gibraltar.

Britain had won Gibraltar in a treaty dating back far longer than the treaty turning over the Panama Canal to the United States. But Britain stood firm—in the face of threats, ugly incidents and even the closing of the border between the Spanish mainland and the narrow neck of land stretching out to the great rock.

President Carter decided to sign a treaty giving control of the canal in the future to Panama and giving title of the Zone to Panama much sooner. It was a controversial decision but there were financial angles and other considerations which enabled the former president to get congressional approval for his decision. Carter had Democratic Party majorities in both chambers.

Voting for that treaty cost some members of the Senate their seats, and helped create the dissatisfaction which overwhelmingly defeated Carter in the 1980 presidential election.

And now, from Spain, comes word that the Spanish Government is ready to more or less accept the state of things at Gibraltar as they are. After seeing that Britain will not be intimidated or stampeded into giving away title to the rock, it's either that or war, and war is out of the question. So, too would it have been for Panama.

### President Taft

The 15th is the anniversary of the birth of President William H. Taft (Cincinnati, 1857), the nation's chief executive from 1908 to 1912. Just as his son and his grandson were to serve in high public offices, so too had President Taft's father, as attorney general in the 1870's.

Taft is the only president who also served as Chief Justice; his career was remarkable from many viewpoints, one being the number and diversification of his public and private offices. After graduation first in law school (Yale and Cincinnati College), he became a newspaper reporter—in 1880. Then he became a prosecuting attorney; next, collector of internal revenue.

He practiced law for two years after which he became a solicitor, then judge. President Harrison in 1890 appointed him Solicitor General. He was named a federal judge and also served as dean and professor of law at the University of Cincinnati. President McKinley made him president of the Philippine Commission and he later became Governor General. It was Taft who negotiated with Pope Leo XIII the financial settlement which turned vast Catholic Church land holdings back to the poor country after the U.S. had freed the islands from Spanish rule (Washington paid the church over \$7,000,000 for these vast land holdings making them again tax-paying property.)

He served as Secretary of War under President Theodore Roosevelt and was elected president (as Roosevelt's choice) in 1908. But progressives led by Roosevelt broke with Taft, refusing to support him for reelection in 1912; this party split enabled Woodrow Wilson, the Democrat, to be elected in 1912.

Taft then became a professor of law at Yale and also resumed his newspaper career with the Philadelphia Public Ledger. President Harding named him Chief Justice in 1921. After nine years in this, his last public office, he died in 1930.

**Menachem Begin**, Prime Minister, Israel, before leaving for talks with President Reagan:

"We shall speak with open hearts, as friend to friend and allies to allies."

**Raymond Donovan**, Labor Secretary:

"...this is a nation of laws and we cannot pick and choose those we will keep and those we will get rid of."

Most people are fogged by figures, one kind or another.

**IDEAL SHOWS YOU HOW**

**POULTRY PRIZE BRAND**  
**Chicken Franks**  
**69¢**  
12-OZ. PKG.

**CAMPBELL'S**  
**Tomato Soup**  
**21¢**  
10 3/4-OZ. CAN  
LIMIT 5

**PURINA DOG FOOD**  
**\$7.99**  
25-LB. BAG

**CASCADE Dish Detergent**  
**\$2.09**  
50-OZ. KING SIZE

**ECONOMY FROZEN FOODS**

**Hodowdale FRENCH FRIES** 2.19  
5 lb. bag  
LIMIT 3

**BIRDSEYE Cauliflower** 67¢  
10-OZ. PKG.

**BANQUET Fried Chicken** \$2.77  
2-LB. PKG.

**GREEN GIANT Corn On Cob** \$1.22  
4-EAR PKG.

**ALL FLAVORS MRS. SMITH'S Carrot Cake** 1.79  
13-OZ. PKG.

**MEATS FROM IDEAL**  
**QUALITY • VARIETY • ECONOMY**

**BUTCHER BLOCK RFFF — BONELESS Round Steak** \$2.19  
.....LB.

**BUTCHER BLOCK BEEF — BONELESS Sirloin Tip Steak** \$2.79  
.....LB.

**BUTCHER BLOCK BEEF — BONELESS Rump Roast** \$2.49  
.....LB.

**EXTRA LEAN — BONELESS Beef Stew** \$1.98  
.....LB.

**BUTCHER BLOCK BEEF — BONELESS Rib Eye Steaks** \$3.98  
.....LB.

**BUTCHER BLOCK BEEF 8-10-LB. AVG. Whole Rib Eyes** \$3.89  
.....LB.

**RODEO BY THE PIECE Braunschweiger** 89¢  
.....LB.

**OSCAR MAYER — MEAT OR BEEF Sliced Bologna** \$1.09  
8-OZ. PKG.

**OSCAR MAYER Chopped Ham** \$1.79  
8-OZ. PKG.

**RANDOM WEIGHTS SMOKED Sliced Slab Bacon** \$1.29  
LB.

**3 TO 4-OZ. EACH FRESH WATER Catfish Steaks** \$1.39  
LB.

**KRAFT Mayo-nnaise** \$1.58  
32-OZ. JAR

**NABISCO COOKIES Chips Ahoy** \$1.56  
18-OZ. PKG.

**CRUNCHY OR CREAMY JIF Peanut Butter** \$1.83  
18-OZ. JAR  
LIMIT 2

**AUNT JEMIMA ORIGINAL Pancake Mix** 94¢  
2-LB. BOX

**Aunt Jemima Syrup** \$1.68  
24-OZ. BTL.

**STEFFEN'S ALL FLAVORS Ice Cream** \$1.58  
1 1/2-GAL. CTN.

**STEFFEN'S Heath Bars** \$1.29  
6-CT. PKG.

**HEALTH and BEAUTY AIDS SPECIALS**

**AGREE ALL VARIETIES Shampoo Or Cream Rinse** \$1.51  
8-OZ. BTL.

**EDGE Shave Cream** \$1.54  
7-OZ. CAN.

**JOHNSON & JOHNSON Large Strip BAND-AID** \$1.47  
30-CT. BOX.

**STORE FOR YOU!...**



**Food Stamps Buy More At Ideal...**

**DRAWINGS EVERY WED. AT 2:00 P.M.**

**Winsday FOOD GIVEAWAY**

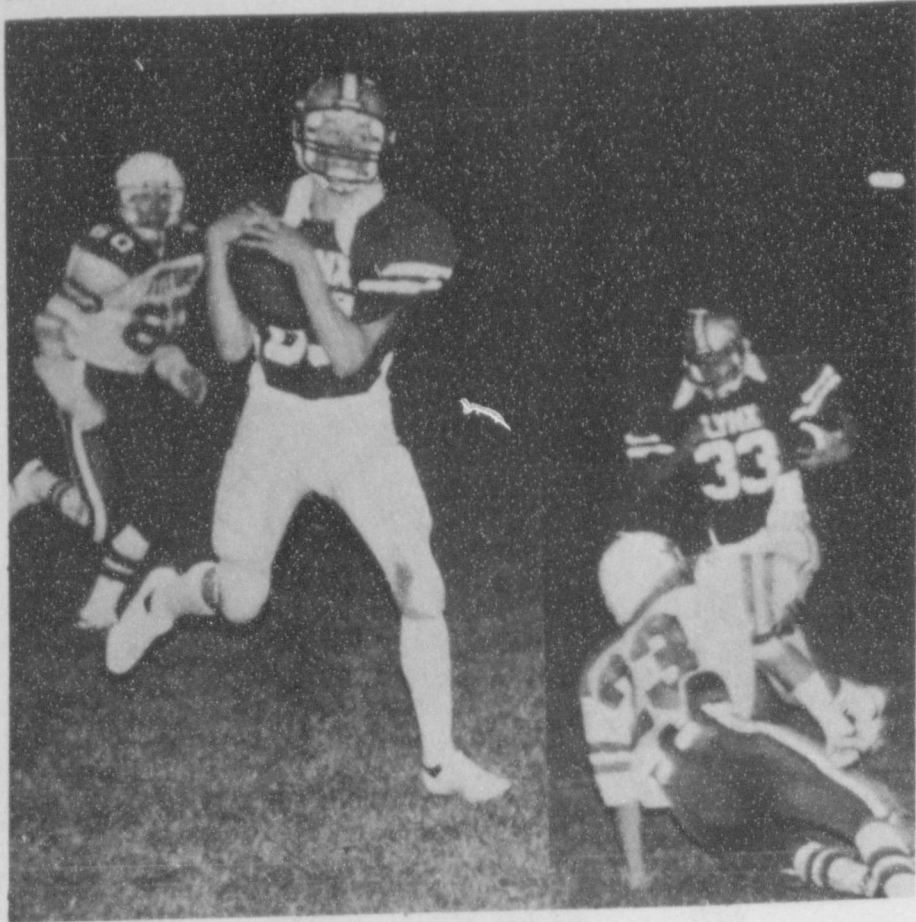
**IDEALS GREAT INFLATION FIGHTER WINSDAY GIVEAWAY**

**3 CERTIFICATE AWARDS**

- \$1.00 IN MERCHANDISE
- \$.50 IN MERCHANDISE
- \$.25 IN MERCHANDISE

**CERTIFICATES MUST BE REDEEMED WITHIN 3 DAYS**

- YOU MUST BE 18 OR OLDER
- NEED NOT BE PRESENT TO WIN
- REGISTER BLANKS AT CHECK STANDS



KYLE BRACK (83) and DENNIS RANDALL (33) are two of the Spearman Big Guns who will "cross the draw" this Friday for Gruver's Homecoming game!

# Amelia Johnson is named clerk



Marie Gould

Amelia Johnson will be the county-district clerk starting Sept. 28. She has been serving as chief deputy to Marie Gould whose

resignation becomes effective Sept. 25.

Her appointment came Monday night following an executive session of the county commissioners court. The commissioners recessed their regular meeting, Monday, to resume the executive session at 6 p.m. to interview candidates for the appointment.

Since it is a combined post, County Judge R.L. McClellan said the commissioners court consulted with the district judge in the matter.

This is an interim appointment until the next pertinent election. At that time, Amelia Johnson can become a regular candidate campaigning for the post on a full tenure basis.

Marie Gould ends seven years of service in the combined clerks office winning election first in 1975. She will be moving to Oklahoma City where she will be employed by law firms. She assumes the new position Oct. 5.

The commissioners court made one other appointment in the regular session, Monday.

Dr. Christopher L. Gunasekera was named county health officer, according to Judge McClellan.

## Selenium-Do You Get Enough?

COLLEGE STATION--Selenium--do you get enough? It's an "unfair" question to many who haven't yet heard of selenium, but it's one way to call a bit more realistic attention to this latest trace mineral which is already receiving a great deal of attention in some quarters, says Dr. Cass Ryan-Crowe, a food and nutrition specialist.

Selenium functions a lot like vitamin E--as an antioxidant in the body. Simply put, that means that a selenium-containing enzyme is believed to protect the cell membrane and the hemoglobin in red blood cells from oxidative changes (like a car rusting) or from breakdown, the specialist explains.

No Recommended Dietary Allowance has been established for selenium because researchers need more information about how selenium functions

ATTENTION LIVESTOCK PRODUCERS  
CATTLEMEN'S LIVESTOCK COMMISSION CO.  
Box 50, Dalhart, TX 79022  
4 miles West of Dalhart on HWY 54. Brand new facilities. Auction every Friday. Start 9:30 a.m. on Hogs.  
Phone (806) 249-5505  
Nite Phone (806) 249-6297  
Larry Wing Manager

MARKET REPORT  
FRIDAY, SEPTEMBER 11  
Sold 2824 Cattle, 538 Hogs. Top Hogs \$49 to \$50.60--this price is 10 cents a hundred over Omaha's Extreme Tops; Sows \$46 to \$48; Boars \$38 to \$41.

Butcher Cows and Bulls \$1 to \$2 higher--Cows \$38 to \$46; Bulls \$50 to \$55. Steers steady--\$50 to \$60 lbs.--\$65 to \$68; 650 to 750 lbs.--\$65 to \$68; 750 to 850 lbs.--\$64 to \$66. Heifers steady--\$50 to 650 lbs.--\$58 to \$62.

CALF MARKET  
Calf Market steady. Steers 250 to 300 lbs.--\$75 to \$85; 300 to 400 lbs.--\$70 to \$80; 400 to 500 lbs.--\$68 to \$75. Heifers 250 to 300 lbs.--\$65 to \$70; 300 to 400 lbs.--\$62 to \$68; 400 to 500 lbs.--\$58 to \$62.

WELCOME ALL TO OUR NEW FACILITIES.

## RECIPE

By Sarah Anne Sheridan

Autumn means pear time--succulent sweet pears have a place at almost any fall meal. There are many ways to serve them. These recipes are enjoyed in our home.

### Pear Marmalade

- 1 peck of pears, grated
- 5 lbs. sugar
- 1 qt. grated pineapple
- 1 qt. marischino cherries.

Mix pears and sugar. Let boil 3 hours. Add pineapple and cherries which have been cut fine. Let cook 5 minutes. Pour into sterilized glasses and seal.

### Pearl Salad

- 2 c diced, pared pears or 1 cup each diced pears and unpared apples
- 2 T lemon juice
- 1 t sugar
- 1/2 c mayonnaise
- 1 c thinly sliced celery
- 1/2 c broken walnuts or flaked coconut
- lettuce
- French dressing

Toss fruits with lemon juice, sugar, 1 tablespoon mayonnaise. Just before serving, add celery, walnuts, rest of mayonnaise; toss. Serve on lettuce; top with French dressing. Makes 4 servings.

## EMG THAT



THE FIRST COMPUTERS, BUILT IN THE LATE 1940'S, WERE VERY LARGE, OFTEN OCCUPYING A GOOD-SIZED ROOM!

THE SOLDIER OF THE FUTURE MAY PACK UP A COMPUTER TERMINAL IN HIS KIT BAG. FORWARD OBSERVERS USING THE U.S. ARMY'S NEW TACFIRE SYSTEM CARRY LIGHTWEIGHT COMPUTER TERMINALS. THEY PUNCH IN INFORMATION ON ENEMY TROOP MOVEMENTS AND RELAY IT TO A "MOBILE DATA PROCESSING CENTER" RIGHT ON THE BATTLEFIELD!

# MONEYSAVER SALE



AUTO PARTS STORES

Fall Fix-up Time

CONSUMER GUIDE AUTO REPAIR MANUAL FREE

with minimum \$35 purchase or buy for \$8.95. Covers US cars, imports, new front wheel drives. 384 pages with many illustrations and easy to follow instructions. Sug. List \$8.95. LIMIT ONE BOOK PER VISIT.



LIMITED QUANTITIES

CARQUEST DISC BRAKE PADS

For most popular US cars, imports, light trucks. Some applications slightly higher.



8.88 per axle

DUPLI-COLOR SPRAY ENAMEL

For metal or wood. Interior or exterior. Fast drying. 13 oz. #DA

ENGINE ENAMEL Oil & Heat resistant. Dries in minutes. 13 oz. #DE

1.99 YOUR CHOICE



VALVOLINE SUPER HPO MOTOR OIL

30 wt. #159

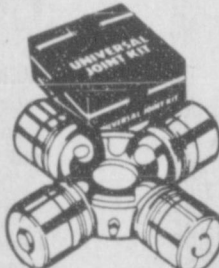


98¢ qt.

CARQUEST U-JOINTS

Superior quality. For most rear wheel drive vehicles.

8.88 ea.



STANDARD BLUE STREAK POINT SETS

High performance for standard ignitions.

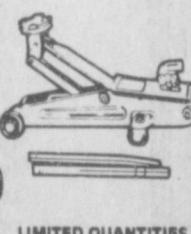
2.65 Chrysler products 3.55 GM & Ford



2-TON HYDRAULIC FLOOR JACK

Designed for do-it-yourselfers! 5" to 15" lift range. #649N

59.99



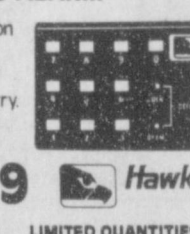
LIMITED QUANTITIES

HAWK AUTO ALARM

4-digit code deactivates ignition lock. Selective override included. Horn sounds on unauthorized entry #950

Sug. List \$34.95

23.49



LIMITED QUANTITIES

COUPON

CARQUEST THERMOSTATS

Sale price \$2.95 - SAVE \$1.00 with this coupon. For most US cars, imports, trucks. #30206, 30208, 30209, 30236, 30238, 30239. Good thru Oct. 11, 1981.

1.95 WITH COUPON

LIMIT 1 PER CUSTOMER

COUPON

CARQUEST RAINCHECK POLICY Every CARQUEST special is a bona fide offer. If we sell out of an advertised item or fail to receive the merchandise, we will issue a "Raincheck" entitling you to the sale price. Rainchecks do not apply to items stated as being in limited quantity. We reserve the right to substitute items of equal or better value in the event that our stocks of advertised specials become depleted.



AUTO PARTS STORES

Sale prices good at participating CARQUEST Auto Parts Stores through Oct. 11, 1981.



AT MOST LOCATIONS

HI-PLAINS AUTO SUPPLY, INC.

118 N. Main Spearman - 659-2506

CARQUEST: the Right Place to buy auto parts. RIGHT PRICE • RIGHT PARTS • RIGHT ADVICE

## Country & Western

### Dance Classes

Six Hour Course Starting Sept. 24 For More information or to Sign Up, Please Call 659-2944. Instructor is Teresa Hargis



## EXPECTING WHEAT PASTURE?

Let the Professionals start your cattle.

McGuire Feedlot Is Now Taking Fall Calves.

Call us For Pricing & Scheduling

405-837-5276

After 7 P.M. Call: Orville Robison, 405-837-5573 or Mike Matthews, 405-837-5256

# When You're Ready To Invest \$100,000. Call Us First. We'll Pay 18.822%\*

When you're ready to invest \$100,000, call us. Tell us what you think your money is worth. We're confident we can offer the high rate your \$100,000 deserves with a Large Certificate of Deposit.

Look at the chart of dates and rates. By compounding your interest daily, we can give you a very attractive annual yield. Maybe the highest in the region.

We realize you don't ordinarily expect to see offers like this from a bank. But it's this kind of willingness to respond that makes us one of the strongest and fastest growing banks in the Texas-Oklahoma area.

If this offer sounds good, see John Cluck, our President, or Larry Orman, Senior Vice President. Or call (806) 435-3676 and ask for our Money Market Advisor. We'll talk by phone, or we can come to visit you. We think we're the only bankers around who will give you what your money is worth.

Term	Rate	Annual**
30 days	16.75%	18.230%
90 days	17.00%	18.525%
120 days	17.00%	18.525%
180 days	17.25%	18.822%
1 year	16.25%	17.640%

\* Minimum deposit \$100,000. Limited offer. Rates subject to change without notice.  
\*\* Annual yield based on daily compounding. As required by law, all certificates are subject to substantial interest penalties for early withdrawal. All deposits are insured to \$100,000.

We're the bank you call First.



First National Bank  
Perryton, Texas  
806-435-3676  
Member FDIC

# Everybody's Asking HOW DO WE DO IT?



Economic uncertainties are now creating substantial investment opportunities for you in the commodity futures market.

Contact the pros at:

## C & C COMMODITIES

Agent of Heindol Commodities, Inc.

for the latest quotes and trades on all commodity exchanges.



Call 806-435-6886 Collect  
Nights 806-435-2892



We assure you that we will do everything in our power, using Heindol Commodities Research expertise to assure you of the high degree of service necessary to make your account profitable.

Open Monday Thru Friday — 8:30 a.m. - 3 p.m.  
415 S. Main • Perryton, Texas

## GRIDIRON GRABBERS



Brian Sipe, Joe Namath, and Dan Fouts are the only quarterbacks in the history of the National Football League to pass for more than 4,000 yards in a single season.

Former Green Bay quarterback Bart Starr holds the record for most consecutive passes thrown without an interception—294 straight during the 1964-1965 season.



Archie Griffin is the only player to win the Heisman Trophy two consecutive years. The former Ohio State star won the award in 1974 and 1975.



Ken Stabler is the most accurate quarterback in the history of the NFL. According to Figgie International's Rawlings Sporting Goods Company, Stabler's completion percentage is 60.7.

## STAMPS & STORIES



By Stanley James

A new 17-cent coil stamp, issued recently by the U.S. Postal Service, features an electric auto in the design. The 17-cent denomination meets the rate for the second ounce of First-Class mail.

The stamp designer, artist Chuck Jacquays, based his pen and ink drawing on a photograph of an actual 1971 Detroit Electric Coupe. The auto depicted in the photograph is still used on a regular basis by its owner who restored the vehicle.

The electric auto issue is the first stamp designed by Mr. Jacquays.

Earlier this year the Postal Service launched a new Transportation Series of coil stamps. The first stamp in the series featured an English Whitechapel surrey cart, the four-wheeled carriage which caught the public's fancy during the late 1800s.

Other stamps to be issued as part of this series will highlight a bicycle of the 1870s and a mail wagon of the 1880s.

The electric auto stamp was issued on June 25, 1981 at Greenfield Village in Dearborn, Mich.

## PARENTHOOD GUIDEBOOK

By Nancy Moore Thurmond (author, *Mother's Medicine*, Pub. by Wm. Morrow, N.Y.)

Some babies earn the reputation of being the town criers or screaming meemies from the day they move in and take over. They cry their heads off for no reason at all—to the point where you too could scream. Others merely whimper to themselves when they are in pain or in need of something.

Some babies are born happy, laughing, and jocular. Others seem shy, holding back their smile. Some are relaxed and will fall asleep in your arms or the minute they are put to bed. Others seem tense, ill at ease, and will fall asleep only when rocked or walked by Daddy.

Some babies are with it, responding happily and quickly from the start to every stimulus to which they are exposed. Others respond at a slow, tortoise pace, seemingly oblivious to the pitter-patter of sibling footsteps, slamming doors, and ringing telephones. Some can eat and sleep through anything without uttering a peep or batting an eye.

Most babies have sunny dispositions if their needs are properly cared for and if their parents are relatively happy. Others are born grouchy grumps, even in the happiest of homes. Nothing pacifies them. They gain a reputation even before leaving the hospital.

In short, a baby's behavior is as unpredictable and variable as Old Man Weather. Once you understand your baby's behavior pattern, and temperament, accept it as his own.

## Football Trips

Brisk autumn weather will soon be here—the time for happy football weekends.

We warn local citizens of the dangers encountered on football trips. Not only does fall bring the first winter weather, but the nights are growing longer until December 21.

Moreover, the crowds who travel to football games constitute a menace of their own variety. Some are prone to celebrate and others are in too much of a hurry to get to the game for the opening kickoff—having started late.

Some who have celebrated football victories too much will lose their lives returning from the game, in darkness and bad weather, and perhaps take the lives of others.

This editorial is a request for mature behavior by all drivers this football season.



When does fall arrive this year? Does fall have any weather signs which tell whether the coming winter will be severe?

Fall arrives on the 23rd of September this year, rather late. From the 23rd on, until December 21, the days will continue to grow shorter and there will be more darkness than daylight every twenty-four hours.

Nature provides a few clues as to the winter ahead. Birds usually pull out for the south with an uncanny knowledge of approaching

cold weather. The caterpillar known as the Woolly Bear is a clue believed in by many.

If one will take a look at him in the fall and note the width of his brown band in the center, that will forecast the winter, it is said. A wide brown band means a mild winter. Others say animals tend to grow a thicker coat before a severe winter, especially outdoor farm animals. It might be interesting to try to prove one or more of these theories.

No community will grow and develop when its people are envious of each other.

It is surprising how much work our friends think we can, and should do.

## GIRL SCOUT ENTRY FORM

Girls interested in Girl Scouts should fill out the following form and return it to Margarettte Evans or their teachers as soon as possible.

Name \_\_\_\_\_ Grade \_\_\_\_\_

Yes No Can your mother help with Girl Scouts?

## Sixth Annual

# COIN, GUNS, ANTIQUE & HOBBY SHOW

Buy — Sell — Trade

SATURDAY & SUNDAY

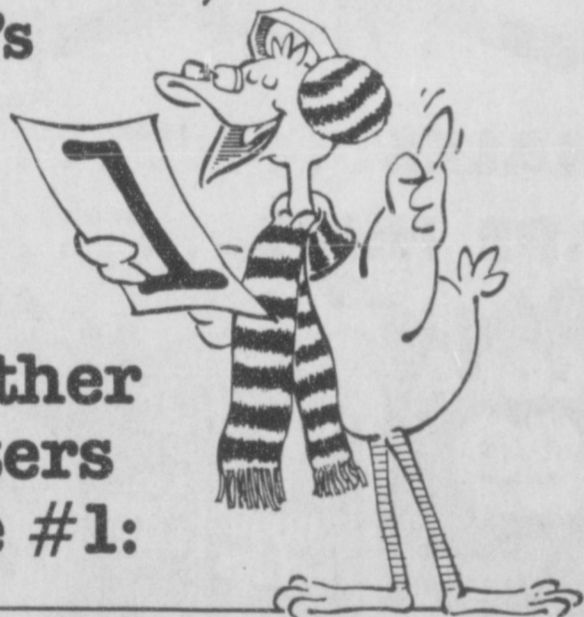
SEPT. 19 & 20, 1981

No Admission Charge

Activity Building — Texas County Fair Grounds  
Guymon, Oklahoma

Doors open Saturday, 8:30 a.m. — Close at 7:00 p.m.  
Sunday 8:30 a.m. — 5:00 p.m.

For lower heating bills this winter, here's



Weather Beaters Rule #1:

## INSULATION

Installing insulation in your attic is the single most important step you can take towards lowering your heating bill. Insulation helps hold in heat, so your heating unit doesn't have to work overtime. Installing insulation can be a do-it-yourself project, or be handled by a professional. Either way, be sure the insulation materials meet the R-value requirements for your area. Insulation can help cut heating costs by as much as 50% easily paying for itself in utility savings. Don't wait for winter, install insulation now!



	<b>SHURFINE COFFEE</b>	<b>BUY A</b>	<b>DETERGENT GIANT TIDE</b>	
<b>\$1.89</b>	<b>16 OZ.</b>	<b>CHIPPED BBQ SANDWICH FOR \$1.49 AND RECEIVE A</b>	<b>\$1.89</b>	<b>BOX</b>
<b>FREE 24 OZ. COCA-COLA</b>				
<b>SHURFINE MACARONI DINNERS</b>	<b>5 FOR \$1.00</b>	<b>RITZ CRACKERS</b>	<b>16 OZ. PKG.</b>	<b>\$1.29</b>
<b>GLADIOLA FLOUR</b>	<b>5 LB. BAG \$1.29</b>	<b>BORDEN'S FRUIT DRINK</b>	<b>1 GAL.</b>	<b>99¢</b>
<b>LIPTON FAMILY SIZE TEA BAGS</b>	<b>PKG. \$1.69</b>	<b>SUNSHINE COOKIES CHIP-A-ROO'S</b>	<b>12 OZ. PKG.</b>	<b>\$1.29</b>
<b>SHURFINE CATSUP</b>	<b>32 OZ. BOTTLE 49¢</b>	<b>KRAFT PARKAY MARGARINE</b>	<b>1 LB. QTRS.</b>	<b>39¢</b>
<b>PRICES EFFECTIVE SEPTEMBER 17-19, 1981</b>				
<b>ALLSUP'S CONVENIENCE STORES</b>				
<b>"THERE'S ONE NEAR YOU"</b>				
<b>OPEN 24 HOURS 365 DAYS A YEAR</b>				
<b>PLUS DEPOSIT</b>				
	<b>SIX PACK COCA-COLA \$1.99</b>	<b>ASSORTED BORDEN'S SHERBET</b>		
				<b>1/2 GAL. RD. CTN. \$1.49</b>

## Reduced Acreage Program For 1982 Wheat Program

Secretary of Agriculture John R. Block today announced his intentions to implement a 15 percent "reduced acreage" program for the 1982 wheat crop to offset the effects of record supplies and depressed wheat prices.

Program operating procedures will be issued after pending farm legislation is enacted into law.

"Wheat supplies in the United States are 14 percent above last year," Block said. "The carryover next June is expected to exceed 1 billion bushels, the highest level since 1977-78. The reduced acreage program will strengthen prices

## Financing Major Problem For Livestock Industry

LUBBOCK--The major problem facing the livestock industry today can be summed up in one word - financing.

Dr. Robert C. Albin, associate dean of agricultural sciences at Texas Tech University, said the availability of capital and the interest rates when that money is found are major concerns of ranchers.

Addressing those and other problems will be representatives of the U.S. Department of Agriculture, the Federal Reserve Bank and various livestock associations at the Livestock and Money Symposium, 9:30 A.M. to 2:30 P.M. Friday (Sept. 18) at the Ranching Heritage Center of The Museum of Texas Tech University.

Program participants will include Richard E. Lyng, deputy secretary for the United States Department of Agriculture, Washington, who will speak at 12:30 P.M. Dr. Joe E. Burns, senior vice-president for the Federal Reserve Bank of Dallas, and Dr. Jim Riley, economist for the National Cattlemen's Association in Denver, Colo., will take part in a panel discussion at 10:40 A.M. on money and interest rates.

"Products and services are going up faster than the profit base," Albin said. Ranchers are having increasing difficulty finding affordable financing for the various livestock operations. Economists, with the prime rate fluctuating between 20 and 20 1/2 percent, are not predicting any change in interest rates. "Ranchers say there is not enough thinking going into agricultural financing," Albin said. "Financing we have now doesn't work for them, according to the ranchers. They want

## Quit-Smoking Contest Set

Larry Hagman, star of TV's "Dallas" series, is asking people this month to write to him describing original ideas on how to quit smoking cigarettes as part of the American Cancer Society's Great American Smokeout.

The Larry Hagman Quit-Smoking Letter Writing Contest is an advance buildup to the Society's fifth annual Smokeout, set for November 19th this year.

According to Penny Reeves, Austin radio personality and chairperson of the Smokeout in Texas, the contest will be held nationwide September 14-27 and will be conducted primarily by radio stations in cooperation with participating units of the American Cancer Society. In some communities, TV stations and newspapers will also be involved.

Some 40 ACS units in Texas have already begun contest preparations whereby participants may write--in letters of 100 words or less--their original ideas on how to quit smoking. Judging will then be done on a local, state and national level based on these criteria: Originality, Practicality and Clarity. The contest is open to residents of the United States except employees and Board and Committee members of the American Cancer Society.

Texas judges for the contest are Elbert D. Glover, Ph.D., chairman of the Health Education Department at TCU; Penny Reeves, Smokeout chairperson; and Leon Hale, columnist for the Houston Post. These judges will review the five finalist letters from each participating ACS unit and select from these the three state finalist letters for national competition.

As an added incentive to all Texas participants, the Larry Mahan Boot Collection in El

reducing the 1982-83 marketing year supplies."

Block said the increase in supplies and decrease in prices is the result of two successive record U.S. wheat crops and a record-setting 1981 world harvest.

The program will be voluntary so producers can decide for themselves, based on market conditions, whether they want to participate. Program benefits, however, will be tied to participation.

"Soil conservation will be strongly stressed in this program," Block said. "The reduced acreage will have to be devoted to conservation uses."

money at a lower rate."

Although small ranches do exist throughout the country, increased oil, gas, transportation and equipment costs are driving some ranchers to other jobs. More and more small operators are using their ranches as an income supplement, rather than the main source.

This year's symposium with its theme "National Policy and the Livestock Industry" will address costs in purchasing cattle, sheep predator control and fuel for transporting all livestock.

Presidents' Panel members addressing the symposium's theme at 1:30 P.M. will be Bob Bliss, president, Texas Cattle Feeders Association, Friona; John S. Cargile, president, Texas and Southwestern Cattle Raisers, San Angelo; Burton Eller, vice-president, National Cattlemen's Association, Washington; Ann Woolley, president, American National CowBelles, Ada, Okla.; Robert Norris, first vice-president, American Quarter Horse Association, Colorado Springs, Colo.; and I.W. Terry, president, Texas Sheep and Goat Raisers Association, Sterling City.

Sponsors of the Livestock and Money Symposium are Texas Tech College of Agricultural Sciences, American National CowBelles and the American Quarter Horse, National Cattlemen's National Wool Growers, Ranching Heritage, Texas and Southwestern Cattle Raisers, the Texas Sheep and Goat Raisers and the Texas Cattle Feeders associations.

Tickets for the symposium and lunch can be purchased at the Ranching Heritage Center and also will be available at the door for \$17.50.

Paso has arranged to present each of the three Texas finalists a pair of western boots made from exotic leathers.

The national prize features an all-expense paid three-day trip for two to Hollywood to have dinner with Hagman, which has been underwritten by a national sponsor. The national judges are William G. Cahan, M.D., of the Memorial Sloan-Kettering Cancer Center; Camille McMemamin of the McCaffrey and McCall, Inc. advertising agency; and John Mack Carter, editor-in-chief of Good Housekeeping magazine, all of New York City.

Both state and national contest winners will be announced prior to the Smokeout.

Hagman's involvement with the Smokeout is only part of his interest in the anti-smoking activities of the ACS. According to Ms. Reeves, Hagman plans to take an active leadership role all year long. He has already made a number of anti-smoking TV and radio spots and will be the Society's media spokesman for its quit-smoking programs.

## Golden Gleams

Honesty is but an art to seem so.

---John Marston.

His words are bonds, his oaths are oracles.

---Shakespeare.

A man never surfeits of too much honesty.

---John Ray.

Honesty is a fine jewel, but much out of fashion.

---Thomas Fuller.

## TFU Launching Membership Drive

WACO, TX, Sept. 10, 1981 -- In order to aid and strengthen the family farm system in Texas, the Texas Farmers Union is launching a statewide membership drive the week of September 21-25. Texas Farmers Union President Mike Moeller called on all family farmers and ranchers in Texas "to work together in protecting their livelihood and preserving agriculture as the backbone of America."

The Texas Farmers Union, now 79 years old, was founded in Point, Texas in 1902 as the Farmers Educational and Cooperative Union of America. The TFU now has 10,000 family members involving all commodity groups while the National Farmers Union has over 250,000 members in agricultural states.

The Farmers Union represents farmers and ranchers in legislative activities in both Washington, D.C. and Austin. The association also provides educational materials and promotes cooperation among producers. The TFU also is involved in rural development programs which include senior citizens programs - Green Thumb and the Senior Texans Employment Program (STEP).

Among the national issues the Farmers Union is currently working on are: the 1981 Farm Bill, preservation of disaster loans, reduction of interest rates, maintaining the social

security system, changes in estate and gift tax law, assistance for beginning farmers, protection against grain elevator bankruptcies and other.

On the state level, the Texas Farmers Union worked for the tax exemption for gasohol, prohibition of foreign purchases of agricultural land, reform of property tax laws and establishment of the Farm and Ranch security program. The TFU also plans to have introduced a bill which will set minimum prices for commodities in Texas in the 1983 legislature.

In addition to legislative activities, the Farmers Union also has group health, life and property insurance programs for the farm and the family, a

tire and battery program and other special membership services.

Persons interested in joining the Farmers Union and supporting the family farm system may contact their local county Farmers Union president. Also, persons interested in membership may call toll free 1-800-792-3277.

## CARTER, NEUTRON BOMB

OSAKA, JAPAN -- Former President Jimmy Carter, who rejected the neutron weapon during his administration, said recently that he did "not disagree" with the decision of his successor, Ronald Reagan, to manufacture it.

## Hunter Safety Education Course

SPEARMAN--A complete course in hunter education has been scheduled for 9:00 a.m. on September 26 in Spearman, according to Dwight Sumner, hunter safety instructor.

"The course is open to adults and youngsters and will include instructions in rifle, shotgun and bowhunting safety, outdoor ethics, conservation, survival, game identification and wilderness first aid," said Mr. Sumner.

Those students successfully completing the course will be issued a hunter safety card from

the Texas Parks and Wildlife Department. The course fee is \$1.00 per student to cover registration and materials.

More than 80,000 Texans have already been certified as safe hunters. Even though this course is not mandatory to hunt in Texas, it is mandatory in 29 states before a hunting license can be purchased.

For more information, contact Dwight Sumner--659-3469, Jim Beeson--659-3665, or Wayne Cummings--659-2106, Spearman, Texas, NOW!!!

## Drilling Report

AUSTIN, Tex., Sept. 9 -- Texas operators reported 130 gas and 37 oil discoveries in August 1981, the Railroad Commission's Oil and Gas Division announced today.

In the year-earlier month, 135 gas and 65 oil discoveries were filed with the state's energy regulatory agency.

Gas discoveries in the eighth month of the year included 33 in the San Antonio area, 28 each in deep South Texas and the Refugio area, 14 in West Central Texas, 13 in Southeast Texas, five in East Texas, four in North Texas, three in East Central Texas and two in the Midland area.

Oil discoveries included 10 in Southeast Texas, nine in West Central Texas, five in the Refugio area, four in the San Antonio area, two each in the San Angelo, Midland and Lubbock areas and one each in deep South Texas, East Texas and North Texas.

In August, operators reported 421 exploratory and field tests wound up as dry holes. New applications for permits to drill oil and gas tests totaled 3,388 in August compared with 2,612 in the same period of 1980.

Applications to drill, deepen, plug back and for service wells in August amounted to 3,724 against 2,806 a year earlier.

## Western Art Exhibit Set

LUBBOCK--A three-day western art exhibit featuring works by some of the nation's widely known western artists will be on display Sept. 18-20 at the Ranching Heritage Center of The Museum of Texas Tech University.

Complementing the activities of the National Golden Spur weekend, the exhibit will include paintings, drawings, bronze sculptures and wood carvings. The works will be displayed throughout the David M. Devitt and Mallet Ranch Building.

Works represent members of the National Academy of Western Artists and the Cowboy Artists of America as well as other prominent artists.

Artists include Peter Hurd, a native of Roswell, N.M., well-known for his realistic paintings of western scenes and for his illustrations; Wilson Hurley of Albuquerque; Kenneth Wyatt of Tulsa; sculptors George B. Marks, Robert Summers and Clark Bronson; Robert Wood; and Porfirio Salinas, an artist highly regarded by Lyndon B. Johnson.

Other artists are Wayne Baize, Glenna Goodacre, Tom Ryan, Harry Jackson, Mondel Rogers, Gerald Farm, Gordon Snidow, Jodie Boren, Juan Dell, Paul Wylie, George Kovach, John Free, G. Harvey, James Boren, Gary Niblett, Joe Beeler, Lincoln Fox and Neil Boyle.

Also, Bob Lee, Nicholas Firfires, Grant Speed, Ronald

Thomason, Jim Hamilton, Morris Rippel, Ray Swanson, Pat Mathieson, John Kittelson, Carl J. Smith, Jim Ward, Fred Harman, Melvin Warren, R. C. Gorman, V. Stiha, Dalhart Windberg, Donald M. Yena, A. Kellie Pruitt and Joe Belt.

The artworks are on loan by area residents, including Mac Taylor, R. C. Douglas, Jerry and Gail House, John T. Montford, Bill and Betty Price, Harold Chapman, Larry Corbin, M. J. Thomas, David Hess, James and Darlene Gamble, Don and June Slaughter and E. E. Lokey, all of Lubbock.

Others lending art include Danny Fenton of Snyder, Fred Martin of Aspermont, Mrs. Frances Camp of Post and Carl Hagin of Spur.

Bronze sculptures featuring the American Indian, all done by artist/sculptor Adrien Voisin, will be on display through the weekend at The Museum. The sculpture exhibit, made available by Bill Harmsen and the Jolly Rancher Candy Co. of Wheat Ridge, Colo., also includes sculptures of buffalo, bears, cougars, horses and cows.

Voisin is regarded as one of the great sculptors of the American Indian. He lived among the Blackfeet Indians in Montana and had Indian models from the Cayuse, Nez Perce and Umatilla tribes. Many of his works are on display at the Museum of Native American Culture at Spokane, Wash.

**PRICES GOOD THROUGH SEPT. 19TH**

**UNITED**  
Supermarkets  
Perryton, Texas

**FREE!**

FREE 5 PC. Place Settings in your choice of patterns--consists of: Dinner Plate, Cup, Saucer, Dessert, Bread & Butter.

*DeVille Designer Collection by Jon Paul*

**The Ultimate in Quality, Styling and Design**

**HAND PAINTED STONEWARE**  
on our plan

---

**NABISCO PREMIUM CRACKERS**  
1 LB. BOX  
**69c**

**WOLF CHILI**  
19 OZ.  
**\$1.09**

**S&H GREEN STAMPS TOO**

**PACE PICANTE SAUCE**  
16 OZ. MILD OR MEDIUM  
**98c**

---

**OCTOBER 3RD IS YOUR LAST DAY TO REDEEM BLACKOUT BINGO CARDS AT UNITED**

**WOLF TAMALES** 15 OZ. **\$1.49**

**POST GRAPE NUTS** 24 OZ. **\$1.49**

---

**UNITED GRADE A LARGE EGGS**  
DOZEN  
**75c**

**COCA-COLA**  
6 PAK 32 OZ. + DEPOSIT  
**\$1.89**

**UNITED POTATO CHIPS**  
8 OZ. "TWIN PACK"  
**69c**

---

**FLEX SHAMPOO & CONDITIONER**  
16 OZ. ALL TYPES 20' OFF LABEL...  
**\$1.69**

**DOUBLE STAMPS**

**WITH A \$2.50 PURCHASE OR MORE EXCLUDING CIGARETTES**

**SAT!**

---

**CONTACT COLD CAPSULES**  
10 CT. ....  
**\$1.59**

**IVORY LIQUID** 22 OZ. **\$1.09**

**BIG TEX GRAPEFRUIT JUICE** 46 OZ. **79c**

---

**"GARDEN FRESH PRODUCE"**

**CRISP GREEN CABBAGE**  
**10c**

**GOLDEN DELICIOUS APPLES**  
NEW CROP WASH. **39c** LB.

**WASH. BARTLETT PEARS**  
**39c** LB.

**TOMATOES**  
NO. 1 RUSSET **39c**

**POTATOES**  
4 PACK CARTON **39c**  
5 LB. BAG **79c**



### String Quartet Begins Rehearsals

WTSU—Four specially selected international musicians will form the Harrington String Quartet at West Texas State University which will be one of few such ensembles in the United States.

Teaching as studio instructors at WTSU and performing as a string quartet will be John Sumerlin, who has been assistant professor of music at WTSU since 1978; Matthew A. Lad of Chicago; David K. Edge, Evanston, Ill.; and Ted Allred of Montreal, Quebec, Canada.

The Harrington String Quartet became possible last February when Don and Sybil Harrington Foundation of Amarillo donated a \$500,000 endowment to the WTSU School of Fine Arts' Opus '80 endowment fund drive. Additional funding was received when the Amarillo Symphony decided to share a \$400,000 Harrington grant to fund the quartet.

The two violinists, a cellist and a violist will instruct individual WTSU music students in a studio atmosphere, perform in 55 Amarillo Symphony performances and travel to perform in Panhandle area communities.

Fifteen hours of each week will involve rehearsals. The quartet, whose members have yet to play as a group, will begin when the fall semester begins on Thursday, Aug. 27.

Sumerlin, as first violinist, will serve as concertmaster with the Amarillo Symphony; Edge,

second violinist, will be assistant concertmaster; Allred will play principal viola; and Lad will be principal cellist.

Following the announcement of the Harrington endowment in February, an international search began for the musicians.

Dr. Harry Haines, head of the WTSU Department of Music, said applications were received from 50 cellists, 50 violinists, 30 violists and 20 organized quartets. All applicants sent performance tapes and applications were received from as far away as Tokyo, Japan.

The selection committee, which included Haines and Thomas Conlin, conductor of the Amarillo Symphony, selected 25 finalists and interviewed members of two quartets in addition to four violinists, five violists and eight cellists.

"They will join a handful of top-notch professional groups in the world," said Conlin. "This is the first time that a quartet has been put together in this way. We know they're all matched and take the same approach to their music."

Conlin said that the nation has experienced a revival of string quartets in the past several years.

"There's the advantage of nobody feeling like, pardon the expression, second fiddle because there is a perfect combination of the instruments and they are all equally important," he said. "The string section of a symphony is just an extension

of the quartet."

Haines said he does not know of any other similar situation where studio teachers and principal symphony players join and take time off to practice and perform as a regular chamber ensemble.

He said the world's great composers have written works for string quartets and for three centuries the musical arrangements have been historically unique.

"The quartet has such a wonderful variety of musical possibilities," he said.

Conlin said the combined Harrington grant of \$900,000 is the largest grant given to any symphony orchestra relative to the size of the annual operating budget. The \$900,000 is twice as large as the Amarillo Symphony budget, he said.

The members of the quartet bring a variety of musical experiences and expertise to WTSU.

Before he joined the WTSU faculty in 1978, Sumerlin received a master's degree and was a graduate teaching assistant at the College-Conservatory of Music at Cincinnati, Ohio.

He has been an instructor at the State University of New York at Purchase and was first violinist with the Cincinnati Symphony Orchestra, Santa Fe Opera, Dallas Symphony Orchestra and the American Symphony Orchestra.

For the past year, Lad has

played cello with the San Antonio Symphony Orchestra, Galiard String Quartet at San Antonio, George Winters Chamber Orchestra, San Antonio Chamber Players, Shreveport Music Festival Orchestra, the Chicago String Ensemble and Chicago Civic Orchestra.

Lad received a Bachelor of Music degree from Northwestern University and has played solo recitals at Chicago, Cleveland and San Antonio.

Violinist Edge received a Master of Music degree in violin performance from Northwestern University. He has played principal second violin with the Lyric Opera of Chicago and has played with the Grant Park Symphony of Chicago, one season with the Montreal Symphony Orchestra and has privately instructed advanced students.

He also has worked with the New York City Ballet, San Francisco Ballet, Chicago Pops Orchestra, American Chamber Symphony and was selected as one of two finalists from 52 contestants in the November 1980 Chicago Symphony Orchestra auditions.

Allred will come to WTSU from Montreal where he has played violin with the Montreal Symphony.

### Las Pumas Ganan Otraves!



the team members of the Spearman Pumas—the local Soccer Team. Team Members include Mark Avila, Andres Vargas, Arturo Vargas, Jose Israel Vargas, Joe Vargas, Benito Vargas, Sergio Vargas, Pedro Vargas, Emunio Martinez, Justavo Matihuala, Leo

Aramis, Ricardo Lopez, Pedro Hernandez, and Mauricio Perez. The Mascots are Oscar Dennes Rojas, Arturo Vargas Jr., Alberto Vargas and Bertita Vargas. The Head Coach for the Pumas is Juan Avila. (Este es el equipo, las Pumas, con su Coach y las Mascotas.)

El equipo de soccer de aqui de Spearman se llama los Spearman Pumas. Ellos an jugado muy bien pelota todo este ano, y no an perdido niuno juego!! Eso si que es bien suave!!

En un juego con los Jaliscos de Amarillo, nadien gano—era un empate en 0 a 0. El Domingo que paso, las Pumas fueron para Amarillo para jugarle a los Jaliscos de Amarillo otraves mas. Las Pumas ganaron, 2 a 0. Marcos Antonio Avila iso un gol, y Jose Vargas iso el otro gol. Pedro Vargas no deajo que el equipo de los Jaliscos isieran un gol y las Pumas ganaron.

Las Pumas tienen 5 ganadas, no an perdido niuna, y tienen 1 empate—nadien gana ni pierde.

El Jefe del equipo es el Señor Juan Avila, y el me dijo que cuando vallan a jugar las Pumas, me va decir, yo deupes lo voy a poner en el pedriodico para que todos se den cuenta y vallan a verlos jugar.



A group of frogs is known as an army.

### September

One of the most nostalgic things about September is the Harvest Moon. This is the moon which rises nearest to the autumnal equinox which comes on September 23 at 10:05 p.m. this year.

The Harvest Moon, September 14, in earlier years before the time of lighted tractors, and harvesters, afforded farmers extra time at the end of the day to gather their crops.

Historically, September has fewer historical anniversaries than most of the other months. President McKinley was shot on September 6, 1901, and died eight days later.

Hitler marched into Poland, September 1, 1939 and began World War II. In 1940 on September 7, the Rome-Berlin-Tokyo Axis was announced in the Berlin Chancellery.

### BIBLE VERSE

"As ye abound in every thing, in faith, and utterance, and knowledge, and in all diligence, and in your love to us, see that ye abound in this grace also."

1. Who was the author of the above statement?
2. To whom was he writing?
3. What "grace" was he talking about?
4. Where is this statement found?

#### Answers to Bible Verse

1. Paul the Apostle.
2. The Christians at Corinth.
3. The grace of giving.
4. II Corinthians 8:7.

Work may be a great blessing to man, but there are times when we have doubts.

If you have a real friend, never let him go.

### Impossible?

The distinguished president of Notre Dame, Theodore Hesburgh, former head of the U.S. Civil Rights Commission and more recently a member of the commission studying immigration, recently called for a change in immigration policy to legally admit more aliens.

The Rev. Hesburgh also called for more aid to poor and developing countries, as a means of lessening the immigrant pressure from those poverty-stricken Latin lands to the south of us (and elsewhere).

Many agree with Hesburgh on his suggestion for tighter controls to keep out illegal immigrants and, perhaps, to then increase the number of legal admissions slightly, though the U.S. is no longer a nation with plentiful jobs and land for all.

But Protestants—still the majority, if a shrinking majority, in this country—have a right to ask how living standards in all those poverty-stricken countries to the south of us are to be raised as long as effective birth control is discouraged by Catholic Church pronouncements from Rome.

It is a legitimate question, and a majority of Americans of the Catholic faith have been shown by polls to agree with American Protestants on this. The hard fact seems to be that unless all these Catholic lands to the south control their population growth, no amount of American dollars sent there to subsidize living standards will be of much help. For years such efforts, from one administration after another, have been, in effect, like throwing a bucket of water on a burning house.

Until there is limitation of population growth to the south, the U.S. taxpayer can't be expected to undertake an aid program which seems to many impossible.

### Fall Memory

September brings with it (in most parts of the country) the first cool winds, school, football, burning leaves and nostalgia.

Why is it autumn produces such a tug on memories? Perhaps it's because growth, and a summer, is dying and the end of a life cycle is so visible. It's a beautiful death—red and yellow, brown and orange, in fields and forests.

But colder weather is coming on, the end of a year as well as a season, and naturally one looks back. All of which is good in our fast-moving world, when so few of us take time to remember the old days, the good friends, the good moments and the dear ones gone or far away.

### ONE MINUTE SPORTS QUIZ

1. Who pitched the first no-hit game in World Series history?
2. Who won the B. C. Open golf tournament?
3. Who won the LPGA Rail Charity Golf Classic?
4. Name the winner of the Southern 500 stock car race.
5. Who did Muhammad Ali (Cassius Clay) beat for the heavyweight boxing championship?

#### Answers To Sport Quiz

5. Sonny Liston.
  4. Neil Bonnett.
  3. JoAnne Carner.
  2. Jay Haas.
  1. Don Larsen, in 1956, of the New York Yankees.
- Ronald Reagan, President:
- "I can guarantee you that this administration will not fight inflation by attacking the sacred rights of American workers to negotiate their wages..."

**SPRING SONG:**  
Delicate yellow floral design  
a lovely touch

**ELEGANCE:**  
Crisp white for elegant  
simplicity—perfect for  
casual or formal dining

**FALL FLOWERS:**  
A soft earth-tone bouquet  
fresh and beautiful

**5 WAYS TO SAVE ON 5 PC. PLACE SETTINGS**

(1) 2 Filled Cards **FREE**

(2) 1 Filled Card Plus Cash **\$2.49**

(3) 1 Filled Card Plus Cash **\$4.99**

(4) 1 Filled Card Plus Cash **\$7.49**

(5) Price Without Cards **\$9.99**

**BIG SAVINGS ON ELEGANT SERVING PIECES!**

2 Sided Bamboo Plates	\$5.99	Salt & Pepper Shakers	\$5.99
2 Sided Ceramic Bowls	5.99	Covered Butter Dish	5.99
2 Sided Melon	4.99	Gravy Boat w/ Lid	6.99
Covered Sugar Bowl	5.99	12 Chop Plate	7.99
Creamer	5.99	Coffee Server	13.99
Salt Vegetable Bowl	5.99	Covered Casserole	13.99
Large Vegetable Bowl	6.99		

---

**SWIFT TENDER LEAN COUNTRY STYLE BACKBONE**  
**\$1.29** LB.

**OWENS COUNTRY STYLE SAUSAGE**  
**\$2.97** LB.  
2 LB. REG., HOT, OR MILD  
1 LB. \$1.79

**SWIFT TENDER LEAN PORK STEAK**  
**\$1.29** LB.

**SWIFT TENDER LEAN BONELESS PORK CHOPS**  
**\$3.29** LB.

**SWIFT TENDER LEAN BONELESS PORK LOIN ROAST**  
**\$3.29** LB.

**SWIFT TENDER LEAN BOSTON BUTT ROAST**  
**\$1.19** LB.

**SWIFT TENDER LEAN QUARTER LOIN PORK CHOPS**  
**\$1.29** LB.

**SWIFT TENDER LEAN CENTER CUT PORK CHOPS**  
**\$1.79** LB.

---

**DOUBLE GREEN STAMPS**

**COUNTRY STYLE SOLID OLEO** 1 LB.

**UNITED BUTTERMILK** 1/2 GAL.

**WITH A \$2.50 PURCHASE OR MORE EXCLUDING CIGARETTES**

**WED.!**

**3 FOR \$1.89**

**KRAFT ORANGE JUICE**  
**\$1.59** 1/2 GAL.

---

**"FROZEN FOOD"**

**MORTON HONEYBUNS** 9 OZ. **59c**

**BANQUET DINNERS** **59c**

ALL FLAVORS EXCEPT BEEF & HAM

**FINE FARE CUT BROCCOLI** 16 OZ. **89c**

**FINE FARE TATERS** 2 LB. BAG **98c**

**UNITED Supermarkets**  
Perryton, Texas

**QUANTITY RIGHTS RESERVED**



## Lile-Ralston Vows Exchanged

Shannon Elayne Lile and Michael Earl Ralston exchanged wedding vows Sept. 12 at 3 p.m. in the First United Methodist Church of Lubbock with the Rev. Dr. Sam Nader, senior minister at First Methodist assisted by Rev. Fr. William Hanley, Pastor at St. Elizabeth's Catholic Church in Lubbock officiating at the double ring ceremony.

The bride's parents are Mr. and Mrs. James Robert Lile, of 5705 77th, Lubbock, and the groom's parents are Mr. and Mrs. Cecil Earl Ralston of Gruver.

Grandparents of the bride are Mr. and Mrs. Frank Stephens of Shamrock, Texas and Mr. and Mrs. Glenn Lile of Vernon. The chancel area was decorated with 8 large brass candelabras and large brass urns holding white gladioli. On the altar were smaller brass urns containing white carnations and greenery. White satin bows decorated the pews.

Gordon McMillan was the organist. Debra Clawson of Gruver sang "The Lord's Prayer", and "Join Us Now". The bride, given in marriage by her father, wore a white organza and Chantilly lace gown designed by Mi Deb of New York. The moulded bodice featured a Victorian neckline of Chantilly lace. Illusion, trimmed with seed pearls, covered the bodice and a "V" shape outlined with a wide band of Chantilly lace formed the front and back bodice. Another wide band of Chantilly lace outlined the dropped empire

waistline and fell to a natural waistline in the back. Split bishop sleeves gathered to a wide cuff of Chantilly lace. Outlining the split sleeve was Chantilly lace on organza. Beneath each split bishop sleeve was a candlestick organza sleeve with Chantilly lace appliques centered in each sleeve to be exposed between each split bishop sleeve. The full organza skirt fell to a "pick up" front which was adorned with Chantilly lace appliques. Outlining the "Pick up" front was a band of Chantilly lace which extended in scallops to the back skirt. Falling beneath the "pick up" was an all-over Chantilly lace flounce which also extended to the back. Draping from the natural waistline in the back, was an all-over Chantilly lace insert which met the lace flounce that extended from the front skirt and formed a chapel length grain. This truly elegant gown was complemented with an organza bow at the back waistline.

To complete her ensemble, the bride wore a silk illusion veil designed by Juliet. The beaded capulet was covered in Chantilly lace and seed pearl. A wide edge of Chantilly lace extended around the chapel length veiling to give the bride the "total bride look." The bridal bouquet was a nosegay of white gladioli with pink roses. The bride wore matinee length pearls with matching pearl earrings.

Maid of honor was Shavonne Lile, sister of the bride of Lubbock. Bridal attendants were Anne Elliot, Austin; Lynn Geneaux, Midland; Linda Lawson, Dallas; and Tracy McMillan, Lubbock. The attendants wore identical gown of J Blush knit and chiffon, designed by Jordan Gowns of New York. The criss-cross bodice featured double spaghetti straps. From an empire waistline, the accordion pleated skirt swept to floor length. A matching chiffon capelet topped the gown. Self-fabric bows adorned each shoulder. They carried long stemmed pink roses with baby's breath, greenery tied with pink satin streamers. Candlelighters were Lane Preston of College Station and

Hadley Reed of Spearman. Rex Ralston and Tisha Ralston of Gruver, niece and nephew of groom were ring and flower bearers. Steven Griffith of Hurst was best man. Groomsman were Cecil Ralston and Dan Ralston of Gruver, Alfred Ralston of Amarillo, and Perry Shy of Florence, Ala. Ushers were Jerry Hale of Lubbock; Lane Preston, College Station, Hadley Reed, Spearman, and Otto Schroeder, Dallas.

The bride's mother wore a floor length gown of shell pink crepe accented by hand applique cutwork on shoulders and sleeves with matching evening bag and shoes. Her corsage was of white cymbidium orchids. The groom's mother wore a pastel blue crepe gown featuring chiffon back and sheer sleeves. Her corsage was of pink roses.

The reception followed the ceremony in the parlor of the First United Methodist Church. The table was laid with a floor length antique lace cloth over white satin. The centerpiece was an arrangement of dusty rose and mauve silk cymbidium orchids, flanked by silver candelabras holding dusty rose candles. A silver punch bowl graced one end of the table. The wedding cake was four tiers, all white decorations topped by three white satin bells. The wedding toast was drunk from silver goblets that had been used at the 25th anniversary of the bride's parents.

The groom's table was covered with a dark green cloth centered with a silk arrangement in a brass container flanked by brass candelabras. His cake was chocolate, topped with pine cones of frosting. A silver coffee service completed the groom's table. Serving were Mrs. Kiek Schmitz, Borger; Mrs. Mickey Sims, Lubbock; Shawn Stephens, Waco; cousins of the bride, and Halee Reed, Spearman; Mrs. Otto Schroeder, Dallas; cousins of the groom.

Other members of the house party were Susan Whiteside, Arlington; Shannon Hargrove, Fort Worth; Loren Tate, Wichita Falls; Mrs. Luguig Teinert, Mrs. Edward R. Smith, Mrs. Joe H. Nagy, all of Lubbock. The bride traveled in a dusty rose ultra suede suite accented with burgundy silk blouse completed with a matching ultra suede bag and shoes of the same color on the honeymoon to New Orleans.

After Sept. 19 the couple will be at home at 1016 Lakeview Drive, Auburn, Ala. The bride graduated from Texas Tech University with a B.S. in Community Health. She was a member of Pi Beta Phi social sorority, a president's hostess, Rho Lambda and Student Foundation. She has been employed at the Lubbock City Health Department.

The groom graduated from Texas Tech with a B.A. and M.A. in English and was a member of Beta Theta Phi fraternity, and Omicron Delta Kappa. He is currently teaching at Auburn University and pursuing his Ph. D in English. He was recently selected as one of the Outstanding Young Men in America for 1981 by the United State Jaycees.

**No Help Here**  
Jones was sitting with his wife behind a palm on a hotel veranda late one night when a young man and a girl came and sat down on a bench near them.

Hidden behind the palm, Mrs. Jones whispered to her husband: "Oh, John, he doesn't know we're here and he's going to propose. Whistle to warn him."  
"What for?" said Jones. "Nobody whistled to warn me."

**Checking A Mate**  
Any man who thinks he's more intelligent than his wife is married to a smart woman.  
-Wall Street Journal.

## Ice Capades' Comedy Still The Best

Ice Capades, the hottest show on ice, continues to combine the finest skating talents with the most hilarious funny men for their all new iced musical revue, "LET'S CELEBRATE", opening Thursday, September 24 through Sunday, September 27, at the AMARILLO CIVIC CENTER for six performances.

Highlighting the barrage of comedy antics this year is the unpredictable Bob Mac & Company. Through the years, Mac has proven to be one of the Ice Capades sure fire hits and always guarantees to crack a smile.

Don Dunfield, better known as the "Diving Fool", will be on hand to demonstrate his world renowned trampoline act on ice. This routine must be seen in order to appreciate the many talents of this crazy fool. Brad Doud is a welcome addition to this year's show as he surprises audiences with his sophistication and clumsiness, while Tommy Miller generates laughter posing as a sailor in the navy.

Kids of all ages will glow in amazement as they witness a made professor transforming Raggedy Ann and Andy dolls into real live skaters. Yogi Bear, Fred Flintstone, Scooby-Doo, plus many more of television's most popular cartoon characters will add to the excitement of this never before performed experiment.

Audiences this year will be introduced to a brilliantly choreographed musical on ice, and headlining the array of skating stars is 1980 National Ladies Bronze Medalist Sandy Lenz, U.S. Silver Pair Medalists Gail

Hamula and Frank Sweiding, and World Professional Silver Medalist Michael Tokar. Other talented performers include lovely Lori Benton and debonair Bill Tighman.

Performances are scheduled for 7:30 p.m. Thursday through Saturday with 2:00 p.m. matinees on Saturday and Sunday.

A late afternoon show will be given at 6:00 p.m. Sunday. Special prices are available for youths and senior citizens at 2:00 p.m. on Saturday and 6:00 p.m. on Sunday. Tickets are now on sale at the Amarillo Civic Center Box Office and Sears. For further ticket information call the Civic Center Box Office (806) 378-3096.

**Good Ones Too!**  
"I represent the Mountain Wool Company, madam. Would you be interested in some coarse yarns?"  
"Gosh, yes. Come in and tell me a couple."

**What's The Use?**  
If a man runs after money, he's money-mad; if he keeps it, he's a capitalist; if he spends it, he's a playboy; if he doesn't get it, he's a ne'er-do-well; if he doesn't try to get it, he lacks ambition; and if he accumulates it after a lifetime of hard work, people call him a fool who never got anything out of life.

**Equal**  
When atomic war comes, the chances are, all men will be cremated equal.  
-Star, Elberton, Ga.

### PUBLIC NOTICE BRIEF EXPLANATORY STATEMENTS OF PROPOSED CONSTITUTIONAL AMENDMENTS SPECIAL ELECTION NOVEMBER 3, 1981

#### PROPOSITION NO. 1 ON THE BALLOT

Senate Joint Resolution 8 proposes a constitutional amendment that would allow the legislature to authorize cities, towns and other taxing units to grant exemptions from an ad valorem tax on unproductive, undeveloped or blighted area in order to encourage its development. The amendment would also allow the legislature to authorize a city or town to issue bonds or notes to finance this development and to pledge future increases in ad valorem tax revenues from the property in such areas to repay these bonds or notes.

The proposed amendment will appear on the ballot as follows: "The constitutional amendment to authorize cities, towns, and other taxing units to encourage the improvement, development, or redevelopment of certain areas through property tax relief and the issuance of bonds and notes."

#### PROPOSITION NO. 2 ON THE BALLOT

House Joint Resolution 117 proposes a constitutional amendment that would authorize a person to receive a patent to land from the Commissioner of the General Land Office under certain conditions. Application for the patent must be made within five years from approval of the amendment. The land must be surveyed, public free school land not previously patentable. The person must have a properly recorded deed to the land, which he acquired without knowledge of the patent defect and which title he and his predecessors in interest have held for at least 50 years. The person and his predecessors in interest must have continuously claimed the land and paid the taxes for at least 50 years. This amendment does not apply to beach land, submerged land, or islands. An applicant may not use this provision to

resolve a boundary dispute. This amendment will not apply to land which has been determined to be state-owned by a court of competent jurisdiction or that has a productive state mineral lease on the effective date of the amendment.

The proposed amendment will appear on the ballot as follows: "The constitutional amendment authorizing the commissioner of the General Land Office to issue patents for certain public free school fund land held in good faith under color of title for at least 50 years as of November 15, 1981."

#### PROPOSITION NO. 3 ON THE BALLOT

House Joint Resolution 38 proposes a constitutional amendment that would enable the legislature to grant to a state finance management committee the authority to manage state funds. Funds constitutionally dedicated to specific purposes would not be subject to committee management. The committee would be composed of the Governor, Lieutenant Governor, Speaker of the House of Representatives, Chairman of the Senate Finance Committee, Chairman of the House Appropriations Committee, Chairman of the Senate State Affairs Committee, and the Chairman of the House of Representatives Ways and Means Committee.

The proposed amendment will appear on the ballot as follows: "The constitutional amendment to allow the legislature to grant to a state finance management committee the power to manage the expenditure of certain appropriated funds."

#### PROPOSITION NO. 4 ON THE BALLOT

House Joint Resolution 6 proposes a constitutional amendment that would provide that one-half of the surplus tax revenues

above the spending limit provided by Article VIII, Section 22, of the Texas Constitution would be placed in a Water Assistance Fund to be used as provided by law, including projects for water development and conservation, water quality enhancement, and flood control purposes or any combination of these purposes.

The amendment also provides \$500,000,000 of the general credit of the state to guarantee bonds issued in commercial markets by local political subdivisions, including cities, counties, and special districts. The amendment allows amounts to be established to decrease or retire state debt, which is defined as that debt secured by the full faith and credit of the state. The amendment would raise the interest that could be paid on authorized, but unissued, bonds guaranteed by the full faith and credit of the state from 6% to 12%.

The proposed amendment will appear on the ballot as follows: "The constitutional amendment authorizing the use of a portion of the excess revenues of the state for water development, water conservation, water quality enhancement, and flood control purposes; authorizing the use of the state's credit, not to exceed five hundred million dollars, to guarantee the bonds of cities, counties, towns, and other units of local government in the financing of projects for such purposes; increasing the interest rate that may be paid on previously approved, but unissued, state bonds; and authorizing a program to retire state bonds."

#### PROPOSITION NO. 5 ON THE BALLOT

House Joint Resolution 49 proposes a constitutional amendment that would exempt livestock and poultry from taxation. Currently, farm products in the hands of the producer and family supplies for home and farm use are exempt.

The proposed amendment will appear on the ballot as follows: "The constitutional amendment to provide for the inclusion of livestock and poultry with farm products as exempt from taxation."

#### PROPOSITION NO. 6 ON THE BALLOT

House Joint Resolution 81 authorizes the governing body of a county, city, school district or other political subdivisions to exempt from taxation a portion of the market value of a residence homestead. The portion exempted may be as much as 40% for 1982-1984; 30% for 1985-1987; and 20% for 1988 and after. The amount of an exemption may not be less than \$5,000 unless the legislature by general law prescribes other monetary restrictions on the amount of the exemption. An eligible adult is allowed to receive other applicable exemptions provided by law. An exception is made where ad valorem tax has previously been pledged for the payment of debt.

The amendment further directs the legislature to require that notice be given to property owners of a reasonable estimate of tax on their property in certain situations.

The proposed amendment will appear on the ballot as follows: "The constitutional amendment authorizing a political subdivision to provide property tax relief for owners of residence homesteads and changing certain property tax administrative procedures."

#### PROPOSITION NO. 7 ON THE BALLOT

House Joint Resolution 4 proposes a constitutional amendment that would authorize the Veterans' Land Board to issue and sell an additional \$250,000,000 in bonds increasing the Veterans' Land Fund's total bond issuance authorization from \$700,000,000 to \$950,000,000. The amendment would increase the maximum interest payable by the state on these bonds from 6% to 10%, and permit an even higher rate, if specified by the legislature.

The proposed amendment will appear on the ballot as follows: "The constitutional amendment authorizing the issuance of additional bonds to finance the veterans' land program and to increase the maximum interest rate allowable on veterans' land fund bonds."

### AVISO PUBLICO Breves Declaraciones Explicativas De Las ENMIENDAS CONSTITUCIONALES PROPUESTAS ELECCION ESPECIAL 3 DE NOVIEMBRE DE 1981

#### PROPOSICION NO. 1 EN LA BOLETA

Resolución Conjunta No. 8 del Senado propone una enmienda constitucional que permita a la legislatura autorizar a ciudades, pueblos y otras entidades fiscales conceder exenciones de impuestos por avalúo en una área no productiva, subdesarrollada o deteriorada para estimular su desarrollo. La enmienda también permitiría a la legislatura autorizar a una ciudad o a un pueblo emitir bonos o notes para financiar este desarrollo y empujar futuros aumentos en los ingresos de impuestos por avalúo sobre la propiedad en dichas áreas para pagar estos bonos o notes.

#### PROPOSICION NO. 2 EN LA BOLETA

Resolución Conjunta No. 117 de la Cámara de Representantes propone una enmienda constitucional que autorice a una persona a recibir título de terreno del Comisionado de la Oficina General de Terrenos bajo ciertas condiciones. La solicitud para el título se tiene que hacer dentro de cinco años a partir de la aprobación de la enmienda. El terreno tiene que ser terreno de las escuelas públicas libres, medido, y no previamente titulado. La persona tiene que tener una escritura del terreno propiamente registrada, que adquirió su saber del defecto de título y que él y sus antepasados interesados han tenido por lo menos durante 50 años. La persona y sus antepasados interesados tienen que haber reclamado el terreno continuamente y pagado los impuestos por lo menos durante 50 años.

#### PROPOSICION NO. 3 EN LA BOLETA

Resolución Conjunta No. 38 de la Cámara de Representantes propone una enmienda constitucional que autorice a un comité estatal de administración financiera la autoridad de administrar fondos estatales. Los fondos destinados por la constitución a fines específicos no estarían sujetos a la administración del comité. El comité estaría compuesto del Gobernador, el Gobernador Teniente, el Presidente del Comité de Finanzas del Senado, el Presidente del Comité de Asignaciones de la Cámara de Representantes, el Presidente del Comité de Asuntos de Estado y el Presidente del Comité de Medios y Arbitrios de la Cámara de Representantes.

#### PROPOSICION NO. 4 EN LA BOLETA

Resolución Conjunta No. 49 de la Cámara de Representantes propone una enmienda constitucional que permita a la legislatura conceder a un comité estatal de administración financiera la autoridad de administrar el gasto de ciertos fondos apropiados.

para resolver una disputa de límites de terrenos. Esta enmienda no se aplica a terrenos que hayan sido declarados propiedad del estado por una corte de jurisdicción competente ni a los que tienen un arrendamiento estatal de minerales, los cuales están produciendo en la fecha efectiva de la enmienda.

La enmienda propuesta aparecerá en la boleta como sigue: "La enmienda constitucional que autoriza al comisionado de la Oficina General de Terrenos a dar títulos para ciertos terrenos del fondo para escuelas públicas libres tenidos en buena fe bajo título aparente durante (50) años antes del 15 de noviembre de 1981."

#### PROPOSICION NO. 5 EN LA BOLETA

Resolución Conjunta No. 49 de la Cámara de Representantes propone una enmienda constitucional que permitiría a la legislatura conceder a un comité estatal de administración financiera la autoridad de administrar el gasto de ciertos fondos apropiados.

#### PROPOSICION NO. 6 EN LA BOLETA

Resolución Conjunta No. 81 de la Cámara de Representantes autoriza al cuerpo gobernante de un condado, una ciudad, un distrito escolar u otras subdivisiones políticas declarar libre de impuestos una porción del valor de mercado de un hogar de residencia. La porción libre de impuestos puede ser hasta 40% para el periodo 1982-1984; 30% para 1985-1987; y 20% para 1988 y los años siguientes. La cantidad de la exención no puede ser menos de \$5,000 a menos que la legislatura por ley general prescriba otras restricciones monetarias de la cantidad de exención. A un adulto elegible se le permite recibir otras exenciones aplicables previstas por la ley. Se hace excepción en caso de que los impuestos por avalúo hayan sido comprometidos previamente para el pago de deudas.

La enmienda también provee \$500,000,000 del crédito general del estado para garantizar bonos emitidos en mercados comerciales por subdivisiones políticas locales, incluidos condados y distritos especiales. La enmienda permite que se establezcan cantidades para disminuir o para retirar deudas del estado, las cuales se definen como deudas garantizadas por la plena fe y el crédito del estado. La enmienda aumentaría el interés que se pueda pagar en bonos autorizados pero no emitidos, garantizados por la plena fe y el crédito del estado, de 6% a 12%.

La enmienda propuesta aparecerá en la boleta como sigue: "La enmienda constitucional que autoriza el uso de una porción de los ingresos sobrantes del estado para el desarrollo, la conservación y la mejoría de la calidad del agua y para el control de inundaciones; que autoriza el uso del crédito del estado, no en exceso de quinientos millones de dólares, para garantizar los bonos de ciudades, condados, pueblos, y otras entidades de gobierno local en la financiación de proyectos dedicados a tales fines; que aumenta la tasa de interés que se puede pagar por bonos estatales previamente aprobados pero no emitidos; y que autoriza un programa para pagar bonos."

#### PROPOSICION NO. 7 EN LA BOLETA

Resolución Conjunta No. 4 de la Cámara de Representantes propone una enmienda que autorice a la Junta de Terrenos para Veteranos poner en circulación y vender bonos adicionales en la cantidad de \$250,000,000 la cual aumentaría de \$700,000,000 a \$950,000,000 la autorización total de circulación de bonos del Fondo de Terrenos para Veteranos. La enmienda aumentaría el interés máximo pagable por el estado por estos bonos de 6% a 10%; y permitiría una tarifa aun más alta si fuera especificada por la legislatura.

#### PROPOSICION NO. 8 EN LA BOLETA

Resolución Conjunta No. 49 de la Cámara de Representantes propone una enmienda constitucional que permitiría a la legislatura conceder a un comité estatal de administración financiera la autoridad de administrar el gasto de ciertos fondos apropiados.

#### PROPOSICION NO. 9 EN LA BOLETA

Resolución Conjunta No. 49 de la Cámara de Representantes propone una enmienda que permitiría a la legislatura conceder a un comité estatal de administración financiera la autoridad de administrar el gasto de ciertos fondos apropiados.

#### PROPOSICION NO. 10 EN LA BOLETA

Resolución Conjunta No. 49 de la Cámara de Representantes propone una enmienda que permitiría a la legislatura conceder a un comité estatal de administración financiera la autoridad de administrar el gasto de ciertos fondos apropiados.

#### PROPOSICION NO. 11 EN LA BOLETA

Resolución Conjunta No. 49 de la Cámara de Representantes propone una enmienda que permitiría a la legislatura conceder a un comité estatal de administración financiera la autoridad de administrar el gasto de ciertos fondos apropiados.

#### PROPOSICION NO. 12 EN LA BOLETA

Resolución Conjunta No. 49 de la Cámara de Representantes propone una enmienda que permitiría a la legislatura conceder a un comité estatal de administración financiera la autoridad de administrar el gasto de ciertos fondos apropiados.

**WHO KNOWS?**

1. When it is fall in the Northern Hemisphere, what is it in the Southern Hemisphere?
2. What do you call a group of ants?
3. How large is the island of Hong Kong?
4. What is the designation given to a declining Stock Market?
5. Do dragonflies sting?
6. What useful item was invented September 30, 1854?
7. Who wrote the song, *Of Thee I Sing*?
8. Translate "Suaviter in modo, fortiter in re."
9. Who had the above as his motto?
10. By what other name is the state of New York known?

**Answers To Who Knows**

1. Spring.
2. A colony of ants.
3. Thirty-two square miles.
4. A Bear Market.
5. No, they are perfectly harmless.
6. The safety pin, by Walter Hunt.
7. George Gershwin.
8. "Gentle in manner, strong in deed."
9. President Dwight Eisenhower.
10. The Empire State.

*In Fashion*

Shops are showing a variety of garments in Tartan plaids. The high school and college Miss is choosing these plaids in skirts, blazers, vests and pants.

An attractive ensemble for early fall is a grey, polyester shantung dress with a long sleeve burgundy jacket.

**Spearman Pumas**

**Undefeated**

The Soccer Team of Spearman, known as the Spearman Pumas, have a **GREAT** team this year, they are undefeated with one tie. The guys have really come a long way, and they seem to be ready to play a Championship game against the **BEST** team in Texas.

About three Sundays ago, the Pumas played the Amarillo Jalisco. It was a real close game and ended in a tie-0 to 0. The Pumas Goalie-Pedro Vargas--and the Jalisco Goalie did an

**outstanding** job of stopping or blocking all the shots tried for a goal!

This past Sunday, these two teams--the Pumas and the Jalisco--met one more time. The game was once again, a **GREAT** game, but this time the Pumas scored two goals and Pedro Vargas, the Pumas Goalie, had another great day blocking shots and not letting the Jalisco score!! Mark Anthony Avila scored one goal, and Jose Vargas scored the other goal. The final score was Pumas 2 and the Jalisco 0.

There are usually lots of fans out there cheering on the Pumas. The Pumas wouldn't mind having more support from their local fans. Mr. Juan Avila, Head Coach of the Pumas, said that he would tell the **REPORTER** when the next game will be. The Pumas have lots of trophies from their previous wins, but in the picture in this paper, their trophies aren't with them, mainly because the picture was taken right after the Pumas/Jalisco game, so they didn't have their trophies with them at the field.



Jose Isabel Vargas steals the ball from one of the Amarillo Jalisco and gets ready to go on Offense. (Chavelo Vargas le quito la pelota a un Jalisco y se la dio a sus amigos de su equipo.)

**Friemel: back on defense**



**'A person has to have a certain amount of self-discipline in life and football will give you that. You'll learn fast if you don't pay the price that you won't get anything out of it.'**

**WT defensive tackle Twane Friemel**

You've heard of the game "Musical Chairs."

That's where you jump from spot to spot, but there's always one more person than chairs. So someone is left without a spot each time.

West Texas State senior Twane Friemel has been through the same sort of "Musical Chairs" routine for the last three years as a football lineman, but there's been a difference...he's never wanted for a spot.

The problem, though, is that the spots kept changing, and changing, and changing. He was moved from defense to offense to defense to offense, then back to defense.

"He's probably as versatile as anyone we've had here in ability to go back and forth," says Buff football boss Bill Yung.

"Had he played defense all his career, he would be with (Elvin) Keller (WT's All-America defensive lineman) in reading and movement, or even better."

Quite a compliment for the Spearman product who left his high school alma mater a trim 6-4, 190 pounds with 4.7 speed in the 40 and now checks in at 255 with 4.8 quickness.

WT coaches envisioned Friemel as a Buff defensive tackle, but switched him to tight end during his freshman season. It was back to defensive tackle as a sophomore, then back to offense, at guard. Last season, Friemel started out at offensive guard but was moved back to defensive tackle after Baylor pounded the Buffs physically, sending a bunch of players to the sidelines with injuries.

Friemel has played a lot for the Buffs since his freshman year.

He started Saturday night against Louisiana Tech at defensive tackle and appears destined to keep on that side of the trenches all season.

"I hope I'm there to stay this year," says the son of a former WT football player and now a high school football coach (Ken Friemel).

"I would rather not have moved so much at WT. It has hurt me I think. If I'd played the same position, I could have been better. I think I could have done best at offensive guard."

"But I like defense better, you have more freedom, it's less controlled."

Friemel, who says he lifts weights but isn't real big on lifting except that strength is needed to avoid injuries, sees himself as more of a finesse player in college.

"Elvin (Keller) relies on his strength before his speed, but I'd rather outkick people than try to out-muscle them."

For a guy with aspirations to gain All-Missouri Valley Conference laurels—"I think I have a pretty fair chance"—Friemel took to football as a WT freshman about like oil to water.

"Yeah, I would have quit two-a-days as a freshman if somebody (Milton Smith, another WT squadman) hadn't seen me going out the door."

**Garet von Netzer**

Globe-News Sports Editor



"He said, 'you're not going anywhere,' and he threw my suitcase back across the room. I owe him, no doubt about it. I'd gone home otherwise, and it'd been rough to face dad. My dad coached the first football game I ever played in (a fifth-grade affair while an elementary student at Groom)."

Now, the physical-education major can look back on a career already in its final season.

He can look back on playing for coach Greg Sherwood at Spearman.

"I think Greg Sherwood is the greatest coach. He has the ability to get people to do better than their physical abilities, better than their best. He's a great motivator, it might just be one word. But he always does the right thing at the right time."

He looks back on football in college compared to the game in high school.

"Football is just a game at all times in high school, but here, it's only a game during the game. It's very important in college to be real intense during practice, and I had to learn that, it's still hard."

The value of football?

"A person has to have a certain amount of self-discipline in life, and football will give you that. You'll learn fast if you don't pay the price that you won't get anything out of it."

"You gotta have your concentration, you gotta control your mind and keep it off the guy hollering at you from the stands or from across the line. If you let somebody get you mad, you won't perform as well."

What about WT's defense in '81 after a year in which opponents ripped WT with big offensive plays?

"Our defense will have a wild quality. We're going to jump on them before they jump on us, we're not gonna sit back and wait. I think this reflects the players' personalities a lot. We're much sounder in our secondary."

Hopes for your final season?

"There's no doubt we'll win conference. The key is that we don't get anybody hurt."

In case WT does sustain injuries, however, guess who would be the first lineman to move?

You guessed it, Mr. Versatility, Twane Friemel.

**HUGE SHIPMENT OF**

**NEW!**



**Sensational CARPETS**

**YOU REALLY SHOULD SEE!**

- New Earth-Tones
- Bright Shades
- New Lovely Textures, Too

**They're Beautiful**  
and they're

**PRICED VERY AFFORDABLY!**

**BUY ON LINDSEY'S OWN EASY CREDIT, TOO**

Come, Browse, Enjoy

All the New Home Decor at

**LINDSEY FURNITURE CO.**

910 N. Main

Borger

## TFU Critizes Foreign Purchases of U.S. Companies

WACO, TX; Sept. 10, 1981-- Following the takeover of Texasgulf, Inc. by the French owned Elf Aquitaine, Texas Farmers Union President Mike Moeller warned that "foreign governments and corporations are increasing their takeovers of key mineral resources and prime agricultural land in this country while our government is turning its back."

Texasgulf accounts for 15 percent of the U.S. output of sulfur, a key ingredient in fertilizer, sulfuric acid, pulp and paper production and drugs and pharmaceuticals. Since the takeover of Texasgulf this summer by Elf Aquitaine, an oil company owned 67 percent by the French government, the company has announced a seven percent increase in sulphur prices. The increase has also drawn criticism from other chemical and fertilizer businesses in the United States.

In addition to the purchase of Texasgulf by Elf Aquitaine, Moeller provided several other examples of foreign purchases of key resources in the U.S. Standard Oil of Ohio, which is 53 percent owned by British Petroleum, bought Kennecott Corporation, the largest U.S. copper producer, earlier this year. Sunshine Mining Company, which owns the largest silver mine in the U.S. now is 22 percent owned by Arabs. Seagram Company of Montreal, which attempted to buy out Conoco Oil this summer, ended up owning 20 percent of Dupont Company which bought Conoco. Japanese trading companies, which have been buying large shares of American grain, are also buying grain elevators.

"While the Japanese are paying good prices for our grain, in the event of worldwide food shortages this could pose serious problems," Moeller said. The Japanese have bought grain elevators throughout the farm belt and have moved in on the world trade market of American grain.

"The American people should be greatly concerned about foreign corporations which are buying up our precious resources. Farmers in the United States are having enough problems battling inflation and high interest rates and now we are letting another foreign country move in on our resources. It's like pouring more salt into the wound."

Moeller declared. Moeller criticized those who defend the foreign investments as part of international free trade. "Foreign investment in the give and take of free trade is one thing, but foreign investment of our national resources is another," Moeller said. "Because the United States really has no law which controls foreign investment, anyone, including the Soviet Union or Libya could take over a company with valuable natural resources. It's bad enough having to buy oil from countries like Libya, but how many American motorists would like to pull up to a Libyan owned gas station at the corner."

Moeller said if purchases like the one of Texasgulf are not prevented, Congress should propose a moratorium on foreign purchases of more than five percent of any U.S. company that has mineral leases on any federal lands. Also, other restrictions on borrowing can be imposed on foreign investors who are looking at companies which own natural resources. Both of these provisions are currently pending before Congress.

In Texas, State Representative Pete Patterson (D-Brookston) has sponsored bills the last two sessions which would have prohibited the future purchases of agricultural land by foreign corporations or individuals. The measure has yet to be voted on in the Texas legislature. "Our state government is just as guilty as our national government in overlooking this problem. Maybe the next time an Arab Sheikh makes an offer for the Alamo or the San Jacinto battleground someone may take them seriously," Moeller said.

"Foreigners are looking to buy natural resources and also prime farmland in the U.S. because we have the most stable government and the best investment regulations of any nation in the world," Moeller said. "Yet while our government is doing little to hinder this trend, other nations in the world are doing their best to keep American companies from retaining their possessions abroad," Moeller noted. "Our government is busier counting illegal aliens who are swimming the Rio Grande than they are the dollars and resources which are going into foreign banks," Moeller concluded.

### Today's Mortgages

Homebuyers today should more than ever carefully shop for the best mortgage available when buying a home partly on credit. That's because the mortgage business is currently in a state of change. Many types are now available, although interest rates on all are high.

Some mortgages provide that the interest fluctuate with the market. But how often is the rate adjusted? This can vary from six months to five years. And what is the change tied to--treasury bills, home-loan rates or one of the national indexes?

It's estimated that about thirty to forty percent of all home mortgages written today are adjustable, which is a considerable change in mortgage practice as measured with that of only a year ago. Some have maximum change limitations for any one adjustment, or for the length of the mortgage, and other restrictions.

Therefore, the buyer of a home today must spend considerable time and effort studying what's available in the mortgage field if he or she is not to sacrifice thousands of dollars. For a difference, which may sound minor in terms and limitations, is often considerable.

A thirty-year mortgage at 17 percent, for example, if unchanged, could cost the home buyer many more thousands of dollars--measured against a variable rate mortgage. As one example, suppose mortgage rates five years from now are down to ten percent. One with a \$50,000 loan who paid at a rate of 10 percent for the remaining twenty-five years, as against one who continued to pay at 17 percent for those remaining 25 years, would pay three thousand dollars a year less! That could continue for 25 years, or make a difference of more than the original amount of the mortgage!

### Children & Discipline

In recent years, much has been heard about the danger in saying "no" to junior, of crushing junior's spirit, of not allowing junior to freely develop and express himself.

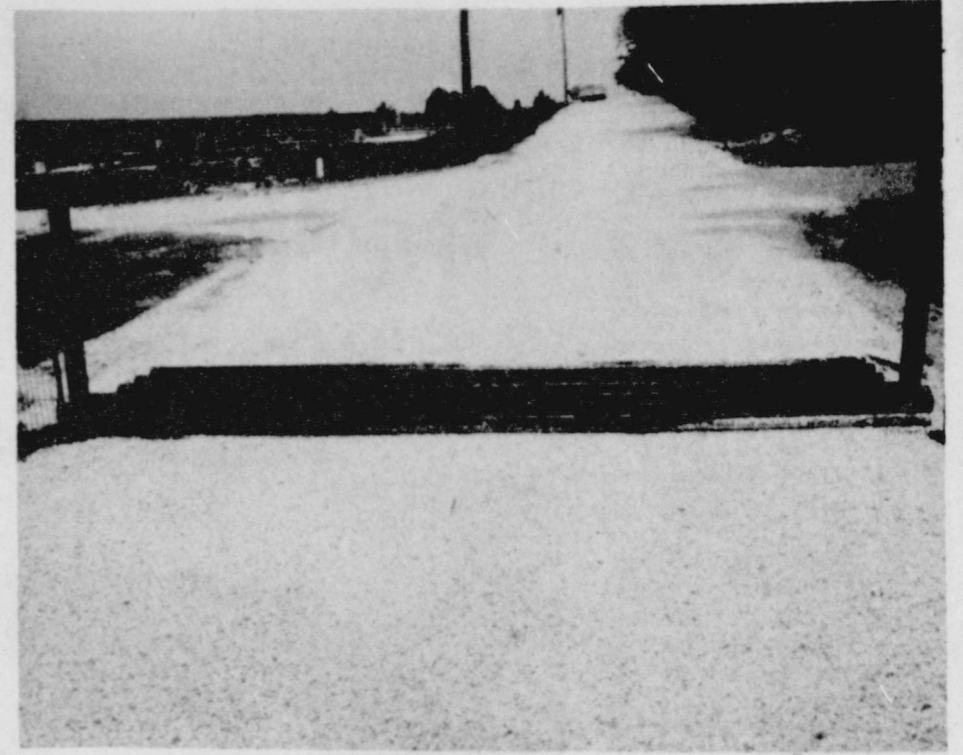
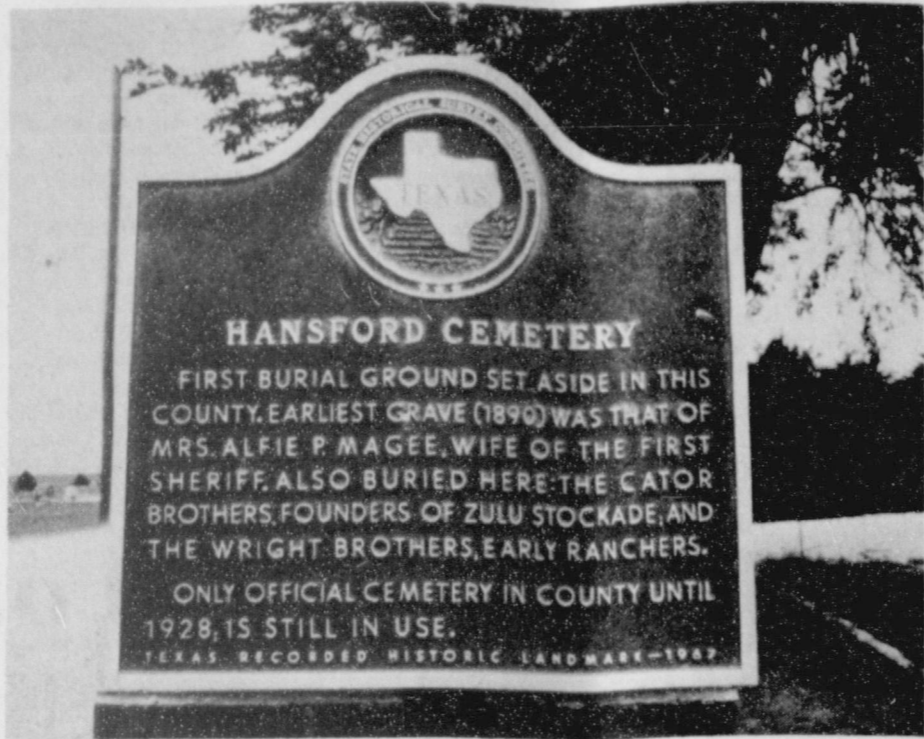
A generation or more of mothers and fathers, to a degree, accepted this well-meaning advice--often with practical application.

One result has been that, beginning in the sixties, junior turned out to be disinclined to accept the restraints and "no's" imposed by our society's laws.

This has caused all kinds of problems, for junior (and daughters), and for society. In an over-reaction from the Victorian patriarch, who once maintained discipline in the home, some have abandoned practically all discipline.

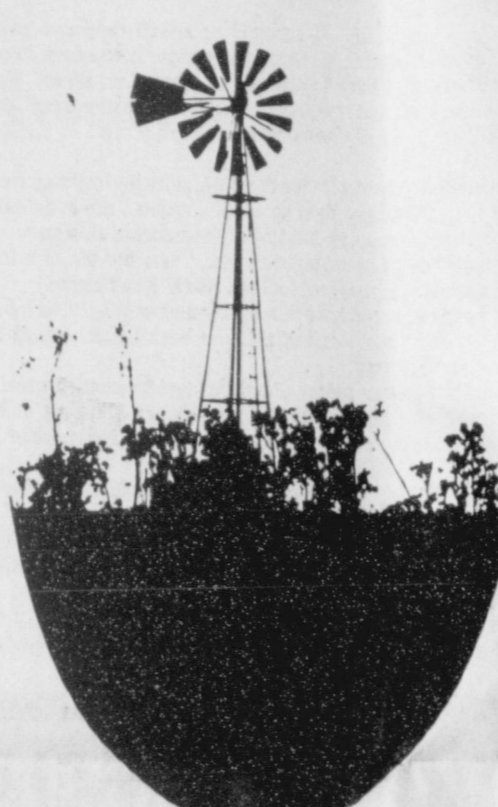
Looking back at earlier generations of children, we can see that in spite of discipline, sometimes strong, the system was not bad, and that there is still, today, a very real need for father's or mother's discipline in the home.

This translates positively in later life into business, government and general social behavior--and is a much needed quality today.



COUNTY COMMISSIONERS TEND HALLOWED GROUND--Pictured is one juncture of the all-weather avenues commissioners have created throughout historic Hansford Cemetery. Hans-

ford residents count it a very thoughtful and practical way to perpetuate the memory of those at rest here.



# This Week's Money Market Certificates

This Weeks Rate

# 14.907%

\*10,000 Minimum with 182 day term effective September 15th thru the 21st. Interest penalty for early redemption.

"...a good neighbor to know!"

## HOMESTEAD

Savings & Loan Association

MEMBER

FSLIC

Federal Savings & Loan Insurance Corp.

Your Savings Insured to \$100,000

WOODWARD

1518 Oklahoma Avenue  
405/254-3301

GUYMON

Northridge Shopping Center  
405/338-8461

CORDELL

110 East First Street  
405/832-3831