

## Election To Be Saturday

The Spearman political scene this election season has taken on different-than-average aspects and coffee-cup campaigners maintain this means major changes in city administration.

Actually, this will be decided at the polls rather than at various coffee pot pouring places around town but the competitive developments at a time when the city seems to be moving smoothly on a path of growth and progress, merits a comprehensive, unbiased look at incumbents and challengers themselves, leaving issues to be decided by the voters.

Terms are ending for Spearman Mayor Ralph Blodgett and City Councilmen Ed Garner and Ray Ingle.

Blodgett is being challenged in his re-election bid by Bob Breeden, a former city employee in the Sanitation Department and Wilson McClellan, member of a pioneer Hansford County family.

The incumbent mayor, also a member of one of the first families of the area, is an agri-businessman and an extensive land owner. Even his most voluble opponents recognize that he has given much of his private business time over to city affairs along with large outlays of his personal funds to underwrite certain efforts for the city.

This has led many to misunderstand the actual administrative power of the mayor

whoever he may be. At council meetings, he cannot make motions and cannot vote. He does have the right to voice his opinion in an issue at hand but members of the council can -- and have in the past -- overridden his opinion.

Thus far, his opponents have not castigated him on any given point of performance or results. They say they just feel the city should be led in a different direction.

Councilman Garner, an executive with Baker & Taylor Drilling Co., made it there as a hard worker. He has served the city with the same energy. It has been said that he is largely instrumental in making a perfect honeymoon following the

marriage of a previously all agriculture oriented community and incoming industry.

Councilman Ingle, an officer of Spearman's banking house, has been an important link between city leadership and the medical community.

Breeden has not, thus far, engaged in an active campaign for the post of mayor. His strongest statements in his own behalf point out he has been a plain working man all of his life -- some 20 years of it in Spearman -- and he feels he will be the choice of the city's laboring class to head city government.

He presently is standing on his experience as a working man and his acquaintanceship

with others and has raised no particular issue in his campaign for the mayor's chair.

--Nor has the other mayorality candidate, Wilson McClellan, raised any controversial issues. To this point, he has conducted what campaigning he has done along the lines of his experience and qualifications and the fact he feels the city should be "pointed in another direction".

The lone challenger for a seat on the city council is Spearman businesswoman Dorothy Karns. Her late husband, Louis Karns, was the long-time head of one of the city's service departments and Mrs. Karns feels she is eminently aware of most of the problems that beset a city at the service-to-the-people level and

capable of weighing solutions at hand to select the best one.

She has spent her life in Spearman and feels she has an added incentive of love and loyalty for the city and its people.

In the race for mayor, the candidate polling a majority of the votes wins the office. An outcome based on a simple majority precludes the necessity and expense of a run-off election.

There are no specific seats on the city council. All members are "at-large" representative of the people. With two places open, the two candidates polling the highest number of votes will be seated on the council.

In this particular race, that

assures that at least one of the incumbents seeking re-election will be returned to the panel.

The entire campaign on the part of every candidate has been low key and almost devoid of any controversial issues to this point. Campaign speech-making has virtually been nil.

There has been some criticism of all candidates because of this. The man-in-the-street consensus seems to be that candidates are resorting to two extremes: either the force of personality or a one-on-one or small-group airing of personal criticisms of opponents.

Since at the outset of this in-depth look at the city campaign, an unbiased approach was promised, it should be

emphasized that not any of the gossip-type circulation of criticisms have come from constituents and not from any of the candidates themselves to our knowledge.

So, it has become a political contest in which the voting citizen of the city will have to define issues rather than the candidates. This simply means an assessment of what a citizen expects from the leadership of the city -- what has been provided to date -- and an individual appraisal of candidates both personally and from the standpoint of experience.

By way of emphasizing that you should vote in this election regardless of your candidate choice, we would like to point out that the best person for the office does not necessarily win, but -- the most votes always do!



# The Spearman Reporter

Chamber of Commerce new telephone number - 659-5555.



# New Coach, A.D. Hired For Spearman

Larry Lanier was named as the new football coach and athletic director for Spearman High School, at a special meeting, held by the school board and school officials last night (Monday) in Spearman.

Larry is married and has three children. He graduated from Paschal High School in Fort Worth, 1962, and from Baylor University in 1971. He received his M.S. from Baylor, in 1973.

Some background on Larry includes the following:

His Teaching Fields include Secondary English, Physical Education, Health and Recreation, and Driver Education.

This is how Larry recalls his Athletic Experience: "Paschal High School--enrollment, 3500, in 1962--was the largest high school in Texas. I was All-District for three years at Paschal, and High School Honorable Mention All-American. I was the first player ever to have started as a Sophomore at Paschal; plus the first, in the history of Fort Worth, to be elected as All-District as a Sophomore. My Junior and Senior years our team advanced to the 4A Semi-finals playoffs. I participated in football, baseball, basketball and track. Also, I was voted Most Valuable Player in Fort Worth and received scholarship offers from all over Texas, Notre Dame, Stanford and Arkansas. I attended Texas A&M, but due to a severe shoulder injury, was unable to continue playing football."

Larry's first Coaching Experience was with University High at Waco, Texas from 1973 to '75 in Class 5A. He was Head Junior Varsity Coach--there were 45 players on that team. Larry comments, "As the ONLY Junior Varsity Coach, I was responsible for Offense and Defense, Line and Secondary." University High's Record was 3-6 and 5-4-1. Second assignment was the Junior Varsity Basketball Team--their record was 21-9 and 17-14.

His second Coaching Experience was at Western Hills of Fort Worth, Texas--1976-'78, in Class 5A. He was First Assistant and Defensive Coordinator. Freshman Baseball was his Second Assignment.

Then it was off to Crowley High School--1978 thru '79--in Class 11-4A. The District opponents included: Brownwood, Cleburne, Everman, Stephenville and Granbury. Larry's responsibilities included [1], Varsity assistant, responsible for Defensive Secondary and assisted with the Offensive Line. "It was also my responsibility to supervise the Secondary coaching techniques of the Junior Varsity and Freshman coaches," says Larry. Responsibility #2 was Off-Season--Larry was responsible for organizing and developing an Off-Season program beneficial to all athletes. This included a well rounded weight program

and agility-flexibility program. Larry comments on his results: "The first year in Class 11-4A with Cleburne, Brownwood and Stephenville as our primary hurdles; we finished in a tie with Stephenville for Second Place behind Brownwood. Our Secondary intercepted fourteen passes, and our Offensive Line helped our team average 16.2 points per game." Crowley's Season record was 6-4 and their District record was 3-2.

The latest Coaching Experience for Larry Lanier was at Grandview High School from 1979 to '82 in Class 2A. District Opponents included Whitney, Glen Rose, Clifton, Hamilton, Hico, and Itasca. Larry's responsibilities are, as Larry recalls: "Head Football Coach--this being responsible for ALL football activities from Junior High thru High School. All purchases of equipment for our Athletic program. And for Assistant Coaches' assignments, performance and duties and for the recommending of hiring for new coaches. Our 1979 Results included having the best record in the last twenty-five years at Grandview this 1979 season. We were District Co-Champs for the first time in nineteen years. In the eighth game of the year we defeated Glen Rose, the third ranked team in the state at that time, 28 to 20. Our Season Record was 8-2, our District Record was 4-1." Grandview High was District Co-Champs in 1979.

"Our 1980 Results were--Season Record of 9-1, and a District Record of 5-1--our only loss was to Clifton, the pre-season pick in Class 2A to win the State Championship." Larry went on, "In the Harris poll high school ratings, we began the 1979 season ranked 179th out of 213 schools. We finished the 1979 season in 59th position. During the 1980 season ranked as high as 12th in the sixth week of the season, we ended the 1980 season 24th in the State. Our 1980 Stats. showed that we scored 262 points, and allowed our opponents to score 89."

Going on with his career at Grandview High, Larry said, "Our 1981 Results were--Season Record at 10-1 and our District Record at 6-0--this of course, made us the DISTRICT CHAMPIONS. The ONLY loss in 1981 was in the Bi-District game against Temple Academy. The score was Temple Academy 14, and Grandview 6. Our 1981 Statistics were--we scored 325 points, allowing our opponents to score 80. We were ranked 6th in the State by the Associated Press in the last week of the Season."

Larry's Complete Head Football Coaching Record is 27 Wins and 4 Losses, with 2 District Championships and 1 Runner-Up under his belt.

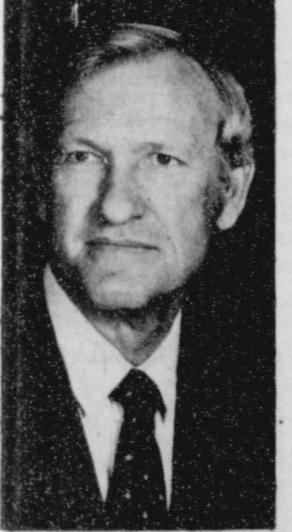
We would like to welcome Larry Lanier and his family to Spearman!!

The extended care facility of Hansford Hospital will open in April 1982.

Funds are needed in order to refurbish and complete the hospital kitchen which will serve both the hospital and the new facility. Items needed are: a range, walk in cooler and freezer, ice makers, and smaller appliances. Donations to this charitable institution are tax deductible.

Send your contributions to HANSFORD KITCHEN FUND, FIRST STATE BANK, Spearman, Texas, attention Verna Lee Shirley.

## R. C. Porter announces candidacy



R.C. Porter

will insist on it. I believe that development of this issue will illustrate an almost totally ineffective record in the 1981 Legislative session. I know of no bills passed or even introduced by him.

"Our Panhandle area, with special problems needs better representation than this. It needs it very much.

"I will work positively, and diligently, in Austin and over the district to do an important job that needs doing," he declares.

A Hansford county farmer for all his adult life, Porter, 58, is a Navy veteran of World War II. He served 12 years on the Spearman school board, six years of this time as board president.

He presently is a director of the Panhandle Education Service Center, a state agency that serves the Texas area north of Lubbock and that provides a number of aids to schools.

"It is important that a legislator bring business experience, a business outlook, to his job, and I pledge to do this from

a background of being an independent agribusinessman most of my life. I have worked to this purpose as a school trustee, in other public service, and will continue to do so positively," he declares, and adds:

"I favor a return of government to near at home and will work for this in Austin. Government works better close to the people it serves, without the expense and lost motion of bureaus that fatten and grow each year."

"With the people of the 88th district, I see the need for practical business management in state government -- and I believe that a Panhandle farmer, who every year meets business problems, can make a positive contribution to state government and to the people he represents. It would be entirely appropriate for this district, which produces one-tenth of all agricultural gross revenue in the state, to be represented by a farmer.

"As a school trustee I have been alarmed at a trend to centralize our Texas schools and

to dilute local control. I have opposed this unhealthy trend and will do so as your State Representative.

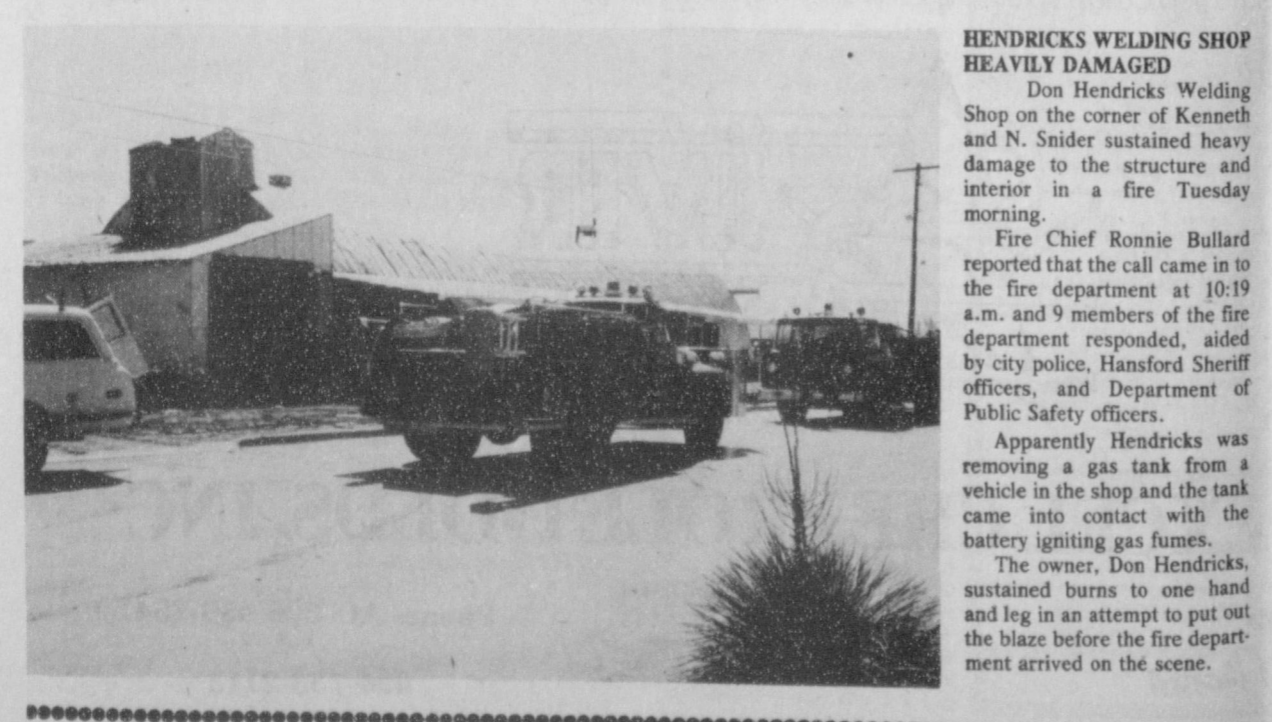
"Because I do not believe anyone should hold an office for life, I make another special pledge: I will not seek more than six years in this office, if you elect me, and would refuse any pension benefits. I want to work for the office, not have the office work for me.

"On this premise, this simple platform, I ask for your support and your vote in the 1982 election. And I pledge to serve you fully, to be responsive to your wishes, and to carry out the office of State Representative, District 88, seriously and effectively."

"And I thank you for your good wishes and your help."

Porter has no opponent in the Republican primary in May but will face the Democratic party nominee in the general election in November.

(Pol. adv. paid for by the R.C. Porter Campaign Fund, R.C. Porter, Treas., Rt. 2, Box 5, Spearman, Texas 79081)



HENDRICKS WELDING SHOP HEAVILY DAMAGED

Don Hendricks Welding Shop on the corner of Kenneth and N. Snider sustained heavy damage to the structure and interior in a fire Tuesday morning.

Fire Chief Ronnie Bullard reported that the call came in to the fire department at 10:19 a.m. and 9 members of the fire department responded, aided by city police, Hansford Sheriff officers, and Department of Public Safety officers.

Apparently Hendricks was removing a gas tank from a vehicle in the shop and the tank came into contact with the battery igniting gas fumes.

The owner, Don Hendricks, sustained burns to one hand and leg in an attempt to put out the blaze before the fire department arrived on the scene.

## Election Saturday

The county-wide bingo election which will be held Saturday, April 3 is one of 120 such elections being held in Texas. The election to legalize bingo in Hansford County is not stirring up much interest and probably will draw only a token turnout of voters unless something changes.

Voting in the election will be held at the regular voting precincts in the county.

The bingo election is to allow the Texas law that authorizes bingo but with some tight regulations.

Games can be held only by non-commercial organizations and a license is required for the organization from the State Comptroller's office. The li-

censes requires only a nominal fee but State Comptroller Bob Bullock has given wide notice that his office will enforce the licensing requirement.

The limitation is more on organizations that can be licensed for the games. All must be non-profit and then are limited to: churches or religious societies, veterans organizations that are chartered by Congress, fraternal organizations that have been formally organized for at least three years and have established governing bodies, and volunteer fire organizations whose members receive only nominal compensation for their duties.

The net proceeds of the legalized bingo must "be exclusively devoted to the charitable purposes of the organization permitted to conduct the game" the enabling law for bingo declares.

The local Moose Lodge which has held bingo games in the past is urging voters to make bingo legal in Hansford County. Bingo has also been played at the Golden Spread Senior Center, as well as at carnivals and other fund-raising activities.

The following is a list of the polling places to be used for the County-wide Bingo election which will be held Saturday, April 3, 1982.

Precinct #1 - County Court House, Spearman.

District #1 - La Casa de corte de Spearman.

Precinct #2 - Renner Ranch.

District #2 - El rancho de los Renner.

Precinct #3 - Gruver Elevator.

District #3 - El elevador de

- granos de Gruver
- Precinct #4 - Gruver County Agri. Bldg.
- District #4 - El edificio agri. del condado de Gruver
- Precinct #5 - Spearman Co. Agri. Bldg.
- District #5 - El edificio agri. del condado de Spearman
- Precinct #6 - Spearman High School
- District #6 - La escuela secundaria de Spearman
- Precinct #7 - Oslo Church
- District #7 - La iglesia de Oslo
- Precinct #8 - Absentee Voting, Courthouse
- District #8 - El lugar para votar si va a estar ausente esedía, El tribunal de justicia de condado, La oficina del archivo del condado
- Precinct #9 - Morse Community Building
- District #9 - el edificio de Comunidad de Morse

# Spearman U.I.L. Competes At WTSU Wilson McClellan, Candidate For Mayor

The Spearman High School traveled to West Texas State University to compete in the University Interscholastic League Literary Academic Contest. There were lots of students that competed and lots that placed. The winner in the District 3-AAA was Dalhart High School with 164 points!

In the Informative Speaking Category the winner in the District 3-AAA was Rod Duffy of Boys Ranch. Cinda Novak was 2nd. Cinda is a Sophomore at Spearman High School. Third was Leslie Sinclair of River Road.

There was not one that placed in the top 3 spots in the Debate Category with Karl Graff and Jeff Chism winning 1st Place, KEvin Gottshall and Dean Stoneclpher winning second and Jimmy Baughman and Randall Kloppling winning third—all these Debate students were from the same school—Dalhart. Another category that a Spearman student did not place in was Persuasive Speaking. The winner was Rodney Ruthart winning first, Wayne Beardsley won second—both from Boys Ranch, and Deavor McMurphy of Dalhart won 3rd. In the Poetry Interpretation, there was not

one SHS student to place—the winner was Heather Gallo of Dalhart, Gaye Russell of River Road was second and Cheryl Easley was third.

The Prose Interpretation was won by Staci Finch of Dalhart, Scott Thompson, also of Dalhart, won second. Denae Baker won Third Place. Denae is a Senior at Spearman High. Denae did a fine job.

In the News Writing Category, not one Spearman student placed. The winner in New Writing was Paul Cross of River Road, Tommy Horodnyckyl was second and Cory Hammonds was third. In the Feature Writing Category, once again, there was not a Spearman placer. The winner was Darrell Renfro of Boys Ranch, Tiffany Powell of River Road was second and Kenneth Larmon of Perryton High School was third. The Editorial Awards went to Perryton's Kevin Hardison—first place, Teresa Jenkins was second and Cory Hammonds was third. Ruth Warmelink of Perryton was first in Headline Writing, Andy Johnson, also of Perryton, was second and Paul Cross of River Road was third.

In the Number Sense, the winner was Nathan Ellzey of

Perryton. Jimmy Haden was Second. Jimmy is a Senior at Spearman High School. Jimmy did a fine job. Darendra Romans was third.

The Ready Writing winner was Laura Preston of River Road, Tom Maynard of Boys Ranch was second and Brenda Rice of Dalhart was third.

Bryce Shutt of River Road won the Secece Category 1st Place, Chris Neufeld of Perryton was second and Greg Davis of River Road was third.

Two Spearman High School Students did a tremendous and finished 1 and 2 in the Short-hand Competition. First Place went to Oralia Ochoa, a Sophomore at SHS. Following Oralia was Susan Davis. Susan is a Junior. Susan won 2nd Place. Both Oralia and Susan did a fabulous job.

Oralia wasn't finished yet. She competed in the Spelling and passed everyone by winning First Place in that competition. Bonny Jackson of River Road was second and Barbara Verwey was Third.

In the Typewriting Competition, the winner was Renee Rhodes of Dalhart with Shawn Clayton, also of Dalhart winning

second. Spearman's Lana Paul won Third Place. Lana is a Junior. Lana did a tremendous job.

In the final U.I.L. Contest—the Calculator Applications Contest, Curtis Thompson of River Road won first. Theron Jones of Perryton was second and Chris Neufeld, also of Perryton was third.

Congratulations to all the Spearman High School students that placed and better luck to those that didn't.

There were many persons of different interests who influenced my decision to seek the position of Mayor of the City of Spearman. During these discussions the main thought seemed to be that these persons were concerned with only fair and equal representation.

As to my qualifications, I am part owner of a local business and am a local home owner. This also makes me a taxpayer. I have received experience as a public servant on the Spearman

School Board. I am a farmer with business experiences that I believe help me to identify myself with the general public.

We have a good municipal government; however, I believe our city government should be continually improved as I believe everything in our community should be continually improved, while at the same time, keeping the costs down as low as practicable.

Our community deserves a

well balanced municipal government with adequate planning for each department. To do this I feel we must have our salary schedule at or at least near the top and provide a pleasant working atmosphere to assure our citizens the best possible services they can receive.

It is my feeling that our goal should be to strive for the best possible community in the state, or at the least, we should

actually be among the best communities of the state.

In summary, if elected, I will try to do my best in consideration of all the citizens and taxpayers of our town. I will work to keep our city government in the best of condition and I will listen to all sides of any issue.

Thank you for your consideration. I will appreciate your vote for me in the city election, April 3rd.

Wilson McClellan

BASEBALL \*\*\*\*

By Pete Fritchle

WASHINGTON, D. C. -- The Los Angeles Dodgers, owned by Walter O'Malley, don't plunk out stupid sums of money to greedy baseball players. Yet they are world champions. That says something.

Nor did the Dodgers change their act for Fernando Valenzuela, their former holdout upstart from Mexico—who wanted to hold them up. And good for them.

One of the things that's turning veteran fans off from baseball—so far television is compensating—is the attitude of so many twenty-year-olds about their pay. They want the moon and don't propose to offer any guarantees that they will perform at peak

efficiency each year in a multi-year contract. But they want pay guaranteed.

Fans earning fifteen, twenty, twenty-five or thirty-five thousand dollars a year, and living on it, resent these young squirts' greed and conceit. They especially resent it when they see the errors, mental and physical, which one sees on Major League fields today.

Scorers in recent years have covered up for the players in this era. Players have also become much more pampered, and sit out games, often with only the slightest of physical disabilities. That's also turning off fans.

BIBLE VERSE

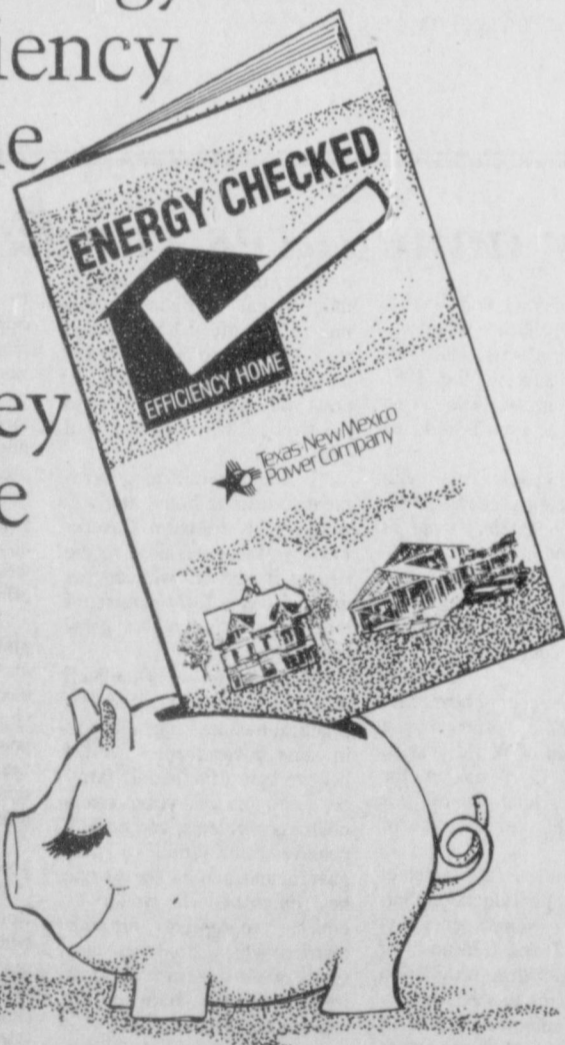
"Let your speech be always with grace, seasoned with salt."

1. What is the above verse warning against?
2. Who was the author of the above warning?
3. To whom was he writing?
4. Where may it be found?

Answer to Bible Verse

1. A warning against unclean speech, swearing or profanity.
2. Paul the Apostle.
3. The Christians at Colosse.
4. Colossians 4:6.

An Energy Checked Efficiency Home is like money in the bank



Saving energy is saving money. One wise way to use energy efficiently is to be sure your home is energy efficient. Proper insulation, weatherstripping, caulking and the use of appliances that have high efficiency ratings can all be a big help in holding down your utility bills... now and for years to come. Before you buy or build... or if you want to update your present home, drop by our office and pick up a free copy of the Energy Checked Efficiency Home booklet.



## NO. 1 SELLER CUTLASS SUPREME!

Over the past seven years, more new car buyers chose Cutlass than any other car. Total value is why. The ride. The room. The comfort. The fine Olds quality. The traditionally high resale value. Cutlass

Supreme offers all of this—plus standard features like power steering, power front disc brakes, automatic transmission and extensive anti-corrosion measures. Engines? A 4.3-liter diesel V6, popular

5.7-liter diesel V8 and a new 5.0-liter gasoline V8 are now available. Isn't it time you traded for the solid value of a Cutlass Supreme? Drive one today at your Olds dealers.

### ANNOUNCING FIRENZA!



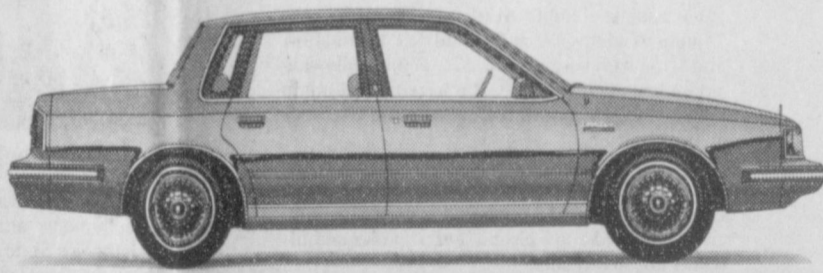
This is what a small car can be...when it's an Oldsmobile! This newest, smallest Oldsmobile shows impressive quality throughout. Front-wheel drive, MacPherson strut front suspension. The fun-to-drive Firenza is ready for your test drive.

### PRESENTING OMEGA ES!



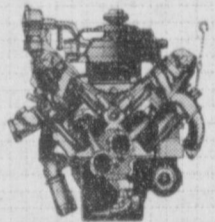
That smart, sophisticated ES package that gave Omega sedans the grand-touring look inside and out is now available on Olds Omega coupes!

### INTRODUCING CUTLASS CIERA!



Cutlass Ciera. It's the first Cutlass with front-wheel drive. With all that Cutlass style, plus impressive traction. A 2.5-liter L4 engine with electronic fuel injection is standard. Cutlass Ciera, a new Cutlass up with the latest automotive technology.

### INTRODUCING NEW DIESEL V6!



A brand-new 4.3-liter diesel V6 joins America's best-selling diesel family. Available on all Cutlass Supreme and Cutlass Ciera coupes and sedans.



## EXCEL CHEVROLET-OLDS, INC.



HIGHWAY 207 SOUTH  
P. O. BOX 516  
SPEARMAN, TEXAS 79081

Phones AC 806 659-2541

806 733-2113



# GEBO'S

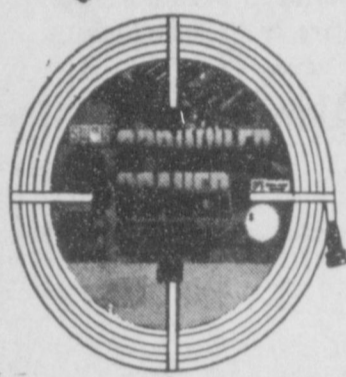
## CYCLONE SEEDER

Spreads Fertilizer, Seed, Granular Pesticides, Granular Limestone, Ice Melting Compounds & Rock Salt, Soil Conditioners, Etc.



MODEL B1 is top rated in the industry. Hopper is made of galvanized steel. Heavy weight tubular steel frame. Coated overall in baked on epoxy enamel. Has 8" plastic wheels.

#245-015  
Reg. 39.99... **\$34<sup>99</sup>**



**swan**  
Sprinkler Soaker Hose 25'  
Reg. 3.98 **\$2<sup>49</sup>**  
SPECIAL.....

- Stripes up for gentle sprinkling
- Stripes down for deep soaking action
- Ideal for vegetable and flower gardens

## LAWN & GARDEN SALE

DUMAS  
501 N. Dumas 935-7403  
8:00-6:00—Monday-Friday  
8:00-1:00—Saturday

## GEBO'S

COLORADO STEEL  
6 FOOT  
T-POSTS

210010 1.25 LB. PER FT.  
REG. 2.37

**Special \$2<sup>19</sup>**



**Rear Discharge Power Propelled**  
WHEELS — 8.00"x1.75" steel wheels. Ball bearing front wheels. Fortiflex rear wheel bearings. Poly hub caps. 5-position quick extend height adjustment: 1" to 3 1/4". DECK HANDLE — 14 gauge steel deck with patented single-door rear discharge. Snap-Lock grass catcher attachment. (Pat. Pend.) Full deck baffles. Folding 7/8" chrome steel adjustable handle. ENGINE/DRIVE — 3 1/2 HP B&S engine, 9.02 cu. in. Vertical pull start. Remote throttle. Super lo-tone muffler. Extended oil fill and dipstick. Handle-mounted, variable-speed clutch. Rear-wheel belt to chain drive. Rear grasscatcher included.

Reg. 296.29

**\$279<sup>88</sup>**

#620-342

## GEBO'S



## MTD EVERSHARP DELUXE 22" 3 1/2 HP LAWN MOWER

- 22" blade • 14 gauge steel deck • Full deck baffles • Welded wheel pads • 7.00"x1.75" steel wheels • Fortiflex wheel bearings • 5-position quick external wheel adjustment 3/4" to 3 1/2" • Folding 7/8" chrome steel handle • 3 1/2 HP B&S engine, 9.02 cu. in. • Vertical pull start, remote throttle.

#620-082

Reg. 159.95



**\$145<sup>95</sup>**

## Green Thumb

MADE IN AMERICA



LONG HANDLE ROUND POINT SHOVEL

#914-104  
Reg. 7.47

**\$4<sup>98</sup>**



YARD & GARDEN BOW RAKE

#914-702  
Reg. 7.67

**\$4<sup>98</sup>**



LEAF & LAWN RAKE  
20 TINES! Picks up leaves and grass quickly. Makes your raking tasks easier.

#914-712  
Reg. 5.60

**\$3<sup>99</sup>**



Gilmore

- PISTOL-GRIP WATER NOZZLE**
- Heavy duty all zinc metallized body
  - Clip locks any spray pattern
  - Easy squeeze on-off lever
  - All brass valve and adjustable nut

#573-C #406-010

Reg. 2.58... **\$1<sup>97</sup>**



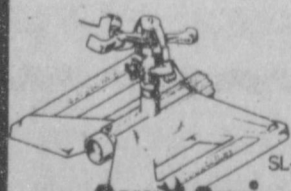
Square Pattern Sprinkler  
• Covers up to 32' x 32'

No. 720-021 — Regular 3.24

Circle Pattern Sprinkler  
• Covers up to 47' diameter.

No. 720-019 — Regular 3.24

**YOUR CHOICE..... \$2<sup>99</sup>**



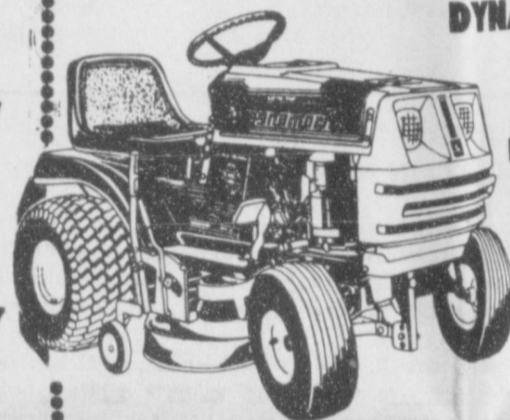
Look over our entire selection of garden supplies at Gebo's and SAVE!

Impulse Sprinkler

- Solid brass and stainless steel head. (25 PJ DA head.)
- Full circle or part circle coverage up to 85' diameter.
- Adjustable deflector controls distance and fineness of spray.
- Precision Jet PJ spray guide eliminates annoying side and back-splash—conserves water.
- Polypropylene sled base with In-Series connection.
- Fully assembled.

#720-007

Regular 16.25... **\$13<sup>99</sup>**



**DYNAMARK**  
11 H.P.  
6 SPEEDS  
FORWARD

Plus Reverse With

36" Mower

- Key ignition starting
- Heavy Duty DIRECT DRIVE TRANSAXLE with disc brake & automotive differential section • 6 forward speeds, 1 reverse
- REAR DISCHARGE cutting deck
- Twin blades for full 36" cut
- Synchro-balanced engine
- Modern hood and grille design

SAVE \$100.00!

Reg. 1,079.45... **\$979<sup>45</sup>**



**DYNAMARK**  
16 H.P.  
GROUND ENGAGING TRACTOR With 42" MOWER (Not Pictured)

#289-181

SAVE \$50.00!

- Key ignition starting • Twin Cylinder engine for smoother operation
- Heavy Duty DIRECT DRIVE TRANSAXLE with cut, heat treated steel gears, disc brake and automotive type bevel gears in differential section
- Axle housing is cast iron. Axle housing supports are cast iron with ball bearings
- 4 speeds forward, 1 reverse • Triple blades for full 42" cut
- One piece drawn frame construction, brace reinforced
- Deluxe Extra Hi-Back molded seat
- E-x-l-r-a w-l-d-e 23 x 10.50" rear tires for unrivaled traction
- Battery located under seat for easy access
- New deluxe wrap around fender assembly

Regular 1,549.95

**\$1,499<sup>95</sup>**

Attachments Available



**NEW! VARI-TORQUE CONTROL DRIVE**

Gear box coupled with input variator provides an infinitely variable range of travelling speeds. The further forward you move the torque control lever, the faster you go, without touching clutch or throttle. Drive control actuator has lock-out button to prevent accidental engagement of drive mechanism. Single pedal clutch and brake.

## MAGNA CHAIN-DRIVE 5-H.P. TILLERS

WITH FULL POWER REVERSE DTRS W/DOUBLE TINES

564-001

REG. 399.95

**299<sup>95</sup>**

SAVE \$100.

SORRY NO RAINCHECKS



- ENGINE: 5 H.P. Briggs and Stratton. Easy-Spin Recoil Starter. Oil Foam Air Cleaner.
- DRIVE: Efficient Three (3) Step Chain Drive.
- REVERSE: Full Power Reverse from Engine Auxiliary Power Take Off - No Twisted Belts.
- TRANSMISSION: Heavy Stamped Steel.
- STABILIZER: Swinging or Fixed Position with Fold-Up Adjustable Stake.
- CONTROLS: Rod Type with Stick Shift on the Handle Panel for Easy of Operation.
- THROTTLE: Remote Throttle on Handle Panel.

## REAR DUMP SWEEPER

GALAXY Model MS-310

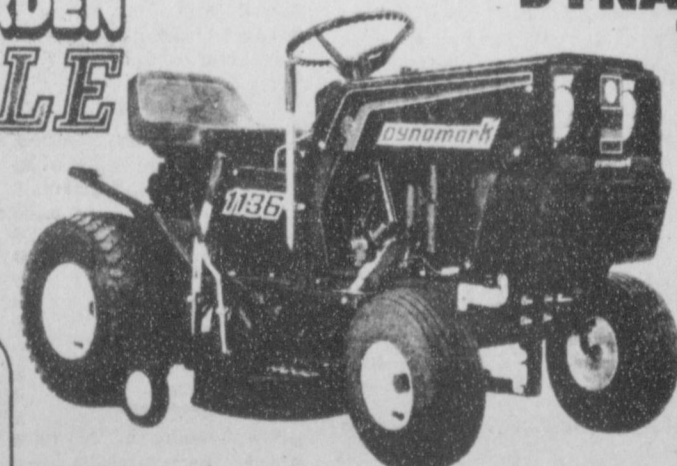
Rear dump sweeper has single control brush/shield adjustment. Tubular hitch. 12 bushel capacity.

#530-025

Reg. 195.35 **\$179<sup>77</sup>**



## LAWN & GARDEN SALE



**DYNAMARK**  
11 H.P.

**VARI-TORQUE CONTROL DRIVE W/36" MOWER**

#289-040

Reg. 999.95

**\$899<sup>95</sup>**

SAVE \$100.00!

11 H.P. — FULL ELECTRIC START VARI-TORQUE CONTROL DRIVE with disc brake and automotive-type differential

- Twin blades for full 36" cut
- Synchro-Balanced engine
- Fully pneumatic tires: 18" rear, 15" front
- NEW! HI-IMPACT, HI-STRESS NEWLY DESIGNED GRILLE

THURSDAY 4/1/82		4/1/82-4/7/82									
CABLE	[3]	[4]	[5]	[7]	[8]	[9]	[10]	[11]	[12]		
PM	OETA	KAMR	TMC	KVII	CBN	WGN	KFDA	WTBS	CNN		
	Oklahoma City	Amarillo	Movie Channel	Amarillo	Christian Network	Chicago	Amarillo	Atlanta	Cable News Net		
6:00	MacNeil-Lehrer Report Oklahoma Report	News M*A*S*H	Movie: 'Str Crazy'	News: 'You Asked For It'	Weekend Gardener Another Life	Barney Miller Laverne & Shirley & Co.	News: 'Entertainment Tonight'	Carol Burnett and Friends Sanford and Son	Moneyline		
7:00	All Creatures Great and Small	Fame		Police Squad! Bosom Buddies	National Geographic Special	Movie: 'Victory at Sea'	Magnum, P.I.	All in the Family NBA Basketball	Primerews/120		
8:00	Sneek Previews Debut	Diff'rent Strokes Gimme a Break	Movie: 'Nude Bomb'	9 to 5 Taxi	700 Club		Cagney & Lacey	Atlanta at Milwaukee			
9:00	Family Treats	Hill Street Blues		20/20		News	Knots Landing		Freeman Reports		
10:00	MacNeil-Lehrer Report Business Report	News: 'Tonight Show'	Movie: 'Cheech and Chong's Next Movie'	News: 'Nightline'	Nashville RFD	Barney Miller	News: 'Quincy'	News: 'Movie: 'Blindfold'	Sports Tonight Newsdesk		
11:00	Sign Off	Late Night with David		Vegas	Burns & Allen	Jack Benny Show	Movie: 'The Bastard'	Movie: 'McMillan &'	West Coast Report		

### SEEDS FROM THE SOWER

By Michael A. Guido, Metter, Georgia

An old man was watching the construction of a building. A workman came along and said, "Move on, you! You're blocking the sidewalk." The elderly man hesitated, but walked away. "Who's that old duffer?" asked the foreman. "John D. Rockefeller," said a bystander. "This is his building." The Lord Jesus, the Master Planner and Builder is interested in you. He is always watching everything that concerns you, and He is always thinking about you. The Lord loves you. You will never meet anyone whom He loves more than you. He has enough love for anything you need. It is the only way you will find abundant life here, and eternal life hereafter. When He offers you His unlimited, saving, transforming, merciful love, do not tell Him to move on. Open your heart, your mind, your will, your spirit to Him. Trust Him to direct you in right ways. He knows best. Resign yourself to His will; not arguing, debating, or fighting, but saying, "I surrender." As you receive His presence and plan, He will reward you with His peace and prosperity.

### Children expect to get 'ripped off'

COLLEGE STATION — A Texas A&M University marketing professor wanting to learn more about young consumers has found youngsters are disenchanted with the business world. After surveying 45 third-graders and 54 fifth-graders, Dr. James McNeal of Texas A&M's College of Business Administration and C. J. Anderson, a former doctoral student, said many children expect to get "ripped off" or misled by stores, packaging, advertising and salespeople. "Half the children felt scared or uneasy while shopping, particularly when they shopped alone," McNeal said. "They said they felt like they were being neglected by store personnel, and that it was sometimes difficult to get people to sell them things." McNeal suggests one problem leading to a mistrust of the business community is a child's uncertainty when making purchase decisions. "The kids have difficulty in ascertaining product quality," said McNeal, "and they have problems relating prices to a product's worth. They also have concerns about product performance — whether the product would break, how well it would work and if it would be safe." "Some complained they bought things that broke before they were even used. They said things they buy just don't last," he continued. A result of these problems and lacking competencies by this group of young consumers is substantial product dissatisfaction, McNeal stated.

Leonid Brezhnev, Soviet President, freeing nuclear weapons. "We are freezing, in both quantitative and qualitative respects, the armaments of this kind already stationed here (European sector)..."

## Ag Weather Service Loss Could Cost Farmers, Consumers

COLLEGE STATION -- The Agricultural Weather Service, which has proved a valuable ally of farmers and ranchers in Texas as well as throughout the nation, is about to fall victim to proposed budget cuts. Loss of the service could cost agricultural producers dearly at a time when they are already struggling for survival. And it could also add to the price consumers pay for food.

What's at stake is \$1.2 million in the budget of the Department of Commerce which oversees the National Oceanic and Atmospheric Administration, the parent organization of the Agricultural Weather Service. The degree day 50 program in the Rio Grande Valley, the degree day 50 program in the Rice Belt, soil temperature monitoring in all areas, and livestock and poultry weather alert services, notes the meteorologist. "Alerting fruit growers in the Valley to impending cold weather is critical to their operations," says Flynn. "With sufficient warning, growers can take steps to prevent a considerable amount of frost and freeze damage."

In the Rice Belt, the degree day 50 program has helped rice farmers time mid-season fertilizer applications based on certain temperature levels to get optimum results and boost production. "An excellent example of where timely weather information rescued farmers occurred in 1978 in the Coastal Bend area," points out Flynn. "It's estimated that farmers saved some \$5 million by delaying spring planting of corn, grain sorghum and cotton because of low soil temperatures. Not only will farmers and ranchers lose an ally if the Agricultural Weather Service is eliminated but many Texas Agricultural Experiment Station and Texas Agricultural Extension Service programs will be jeopardized, says Flynn.

"Both the Experiment Station and the Extension Service rely heavily on Agricultural Weather Service data as a base for their programs," he points out. "Without such data the efficiency of many agricultural research and educational programs will be reduced." For instance, the many computer models now being used by these agencies to predict populations and peak buildup periods of such damaging pests as pecan nut casebearers, alfalfa weevils, cotton bollworms and tobacco budworms, to name a few, rely heavily on accurate weather information, notes the meteorologist. Crop production models and programs keyed to irrigation efficiency, crop breeding and many other areas all are based on accurate weather data.

Particularly critical to Texas

LYNX GOLF SCHEDULE	
April 1	at River Road
April 5	at Dalhart
April 17	at Spearman
April 24	at Perryton

LYNKETTES GOLF SCHEDULE	
April 2 & 3	at Amarillo Relays
April 5	at Dalhart

1982 Tennis Schedule	
APRIL 2 & 3	Amarillo Relays--Tennis Tourney
APRIL 5	GIRLS DISTRICT HERE
APRIL 15	Stratford THERE 4:15
APRIL 24	BOYS DISTRICT

7th, 8th & VARSITY LYNX TRACK SCHEDULE	
7th, 8th & V	March 13 at Gruver
7th, 8th & V	March 26 & 27 Spearman Meet
7th, 8th & V	April 2 & 3 at Stinnett
7th, 8th & V	April 16 at Stratford
7th, 8th & V	April 24 District Meet at Perryton

# BEST VALUES IN TOWN

QUANTITY RIGHTS RESERVED

**BIC DISPOSABLE LIGHTERS**  
2 PK. **79¢**

FINE FARE COSMETIC PUFFS 300 CT. **59¢**

PONDS COLD CREAM 3 1/2 OZ. **1.49**

Q-TIPS 300 CT. **1.49**

**BIC DISPOSABLE SHIVERS**  
5 CT. **59¢**

**JERGEN'S LOTION**  
10 OZ. **1.19** REG. & EXTRA DRY

FINE FARE ALCOHOL 16 OZ. **2.19**

**SIGNAL MOUTHWASH**  
24 OZ. **1.69** 40% OFF LABEL

**DOUBLE WED. & SAT. STAMPS**

WITH A \$2.50 PURCHASE OR MORE EXCLUDING CIGARETTES

**AQUA NET HAIR SPRAY**  
9 OZ. ALL TYPES **88¢**

**REG. & MINT TOOTHPASTE AIM**  
6.4 OZ. 25¢ OFF LABEL **88¢**

**MR. COFFEE FILTERS**  
100 CT. **48¢**

**PERT SHAMPOO**  
NORMAL/DRY AND OILY  
11 OZ. 40% OFF LABEL **1.19**

**DURACELL BATTERIES**

2 PK. D'S ..... **\$1.29**

2 PK. C'S ..... **\$1.29**

2 PK. AA'S ..... **\$1.29**

1 PK. 9V ..... **\$1.89**

4 PK. AA'S ..... **\$2.29**

2 PK. 9V ..... **\$2.29**

**GILLETTE RIGHT GUARD**  
3 OZ. DEODORANT  
2 1/2 OZ. ANTI-PERSPIRANT  
REG. & UNSCENTED **98¢**

**JOHNSON'S BABY SHAMPOO**  
11 OZ. **1.98**

**JOHNSON'S BABY POWDER**  
24 OZ. **2.49**

**JOHNSON'S BABY OIL**  
4 OZ. **1.79**

**JOHNSON'S BABY LOTION**  
9 OZ. **1.69**

QUANTITY RIGHTS RESERVED

FRIDAY 4/2/82		4/1/82-4/7/82								
CABLE	[3]	[4]	[5]	[7]	[8]	[9]	[10]	[11]	[12]	
PM	OETA	KAMR	TMC	KVII	CBN	WGN	KFDA	WTBS	CNN	
	Oklahoma City	CH.4 Amarillo	Movie Channel	CH.7 Amarillo	Christian Network	CH.9 Chicago	CH.10 Amarillo	CH.17 Atlanta	Cable News Ntwr	
6:00	MacNeil-Lehrer Report	News	Movie: 'Chapter Two'	News	Good News	Barney Miller	News	Winners	Moneyline	
6:30	Oklahoma Report	M*A*S*H	"	You Asked For It	Another Life	Laverne and Shirley	Entertainment Tonight	Sanford and Son	Sports	
7:00	Washington Week	NBC Magazine	"	Barney Miller	National Geographic Special	Movie: 'Fear Strikes Out'	Dukes of Hazard	Movie: 'And Now Miguel'	Primernews/120	
7:30	Wall Street Week	"	"	"	"	"	"	"	"	
8:00	Oklahoma Week	Movie: 'Let's Do It Again'	Movie: 'Last Married Couple in America'	Phoenix	700 Club	"	Dallas	"	"	
8:30	Review Lawmakers	"	"	"	"	"	"	"	"	
9:00	Frosty Troy & Company	"	"	Strike Force	"	News	Falcon Crest	TBS Evening News	Freeman Reports	
9:30	"	"	"	"	"	"	"	"	"	
10:00	MacNeil-Lehrer Report	News	Movie: 'Lenny'	News	Nashville RFD	Barney Miller	News	All in the Family	Sports Tonight	
10:30	Masterpiece Theatre	Tonight Show	"	Virginian	Another Life	Saturday Night	NBA Basketball	Movie: 'Sergeant'	Newsdesk	
11:00	"	"	"	"	Burns & Allen	"	Teams To Be Announced	Ryker	"	
11:30	Sign Off	SCTV Comedy Network	"	Nightline	Jack Benny Show	Movie: 'Mr. Hobbs Takes A'	"	"	West Coast Report	

### Breakdown of ACS Funds Noted

"The breakdown of how American Cancer Society funds are spent in Texas represents one of the best returns on the dollar that I know of," said Mrs. Pat Holt, Chairman of the 1982 educational and fund raising Crusade in Hansford County.

In preparing for the April Crusade Mrs. Holt feels that it is important for the community to realize ACS expenditures. "It is one part of the ACS we're most proud of and I think our friends and neighbors will be more willing to give to cancer control if they know how well their money is being spent."

The following represents the breakdown of how each dollar raised last year by the ACS is being spent this fiscal year (September 1, 1981 -- to August 31, 1982) in Texas:

Cancer Research	\$ .26
Professional Education	.12
Public Education	.25
Service and Rehabilitation	.22
Program Development and Administrative	.06
Crusade	.11
	\$1.02

This 102 percent expenditure reflects increased research allocations to Texas by our National ACS.

"The ACS is currently sponsoring research investigations in 13 major Texas Hospitals, medical schools, and universities totaling over \$4 million," said Chairman Holt. "Because Texas has so many research institutions, the national society allocates additional funds here."

"In spite of severe inflationary trends, we were able to keep tight control over our administrative costs and keep them within acceptable limits as this breakdown indicates."

ACS programs such as patient services and rehabilitation (Reach-to-Recovery, esopha-

geal speech lessons, etc.) public education (film, pamphlets, exhibits, the Great American Smokeout) and professional education for the medical community are mainly administered through the Society's volunteer system. Volunteer power helps maintain these impressive figures," said Mrs. Holt.

Plan now to give as much as you can for as many as you can, including yourself, when this year's American Cancer Crusade Block-walker comes to your home -- April 4th through April 7th.

Robert Dole, Senate, on budget:  
"Time is running out on negotiations for a budget compromise."

James Edwards, Energy Secretary:  
"The OPEC countries are getting a lesson in supply and demand economics."

COLLEGE STATION — Texas A&M University plant scientists say vast quantities of land in semi-arid regions of West Texas may be used for mass cultivation of plants to provide additional sources of fuel.

After screening more than 2,900 Texas plants for biomass energy potential, the researchers say at least four and perhaps as many as 12 varieties of weeds that grow in the Southwest promise potential as sources of fuel.

"We're primarily looking at crops that could have multiple uses," says Dr. Ron Newton, a researcher with the Texas Agricultural Experiment Station at Texas A&M assessing the kinds of plants that would be best suited for energy conversion.

Among the plants found as good candidates for energy conversion are koehia, Johnson grass, saltbush and mesquite.

### Grain embargo unfair to American farmer

COLLEGE STATION — Each time the president declares a grain embargo against an unfriendly government, American farmers — who already can't meet their expenses — are pushed even further into the red, says a Texas A&M University agricultural economist.

A professor of agricultural economics and an economist with the Texas Agricultural Extension Service, Dr. William Black says not only have other countries "emptied their pantries," but left the United States with all the world's food reserves.

"We're the only ones left with a full pantry," Black said. "Sure, the embargo was one cause for current low prices since it increased inventories,

which has acted to keep farm prices low," he added. "But there was another reason. Last year was a big crop year. There was record production in cotton, corn, wheat, rice and grain sorghum, and near-record production in soybeans."

Black said American farmers must begin to market their products on a collective basis, rather than bargain as individual competitors.

"It cost 52-65 cents to make a pound of dryland cotton last year and 72-85 cents to make a pound of irrigated cotton. But farmers only got 35-40 cents a pound," he said. "That tells the whole story right there. Farmers are on the brink of disaster."

**7th, 8th & VARSITY LYNCHETTES**  
TRACK SCHEDULE  
7th, 8th & V April 2&3 at Stinnett  
April 6 District Meet  
at Spearman

**1982 YMCA WOMEN'S VOLLEYBALL SCHEDULE**

April 5 \*7:00 Ago vs. First State Bank  
7:45 Busters vs. Bulls Inn  
8:30 Thriftway vs. First State Bank  
9:15 J.G.'s vs. Sparks Bros.

\*Instead of a BYE—Game will not count!!!  
1. Must have 2 players to call the net/lines after your team plays.  
If your team plays at 9:15, you will call at 7:00  
If your team plays at 7:00, you will call at 7:45  
If your team plays at 7:45, you will call at 8:30.  
If your team plays at 8:30, you will call at 9:15.

2. Best two out of three SETS determines winner of the GAME. Must win by 2 points.  
3. Two time outs per SET  
4. Sponsor fee: \$50.00  
If there are any problems let's discuss them, but most of all let's have FUN!!!

PRICES GOOD THRU APRIL 3RD

**UNITED Supermarkets**  
Perryton, Texas

CASINO BINGO

**PEOPLE PLEASIN'**

QUANTITY RIGHTS RESERVED

WIN CASH... WIN STAMPS... HAVE FUN...

**LAUNDRY DETERGENT CHEER**  
\$1.79  
15' OFF LABEL 49 OZ.

**CLOROX BLEACH GAL. JUG**  
88¢

**PURINA DOG CHOW**  
\$5.98  
25-LB. BAG

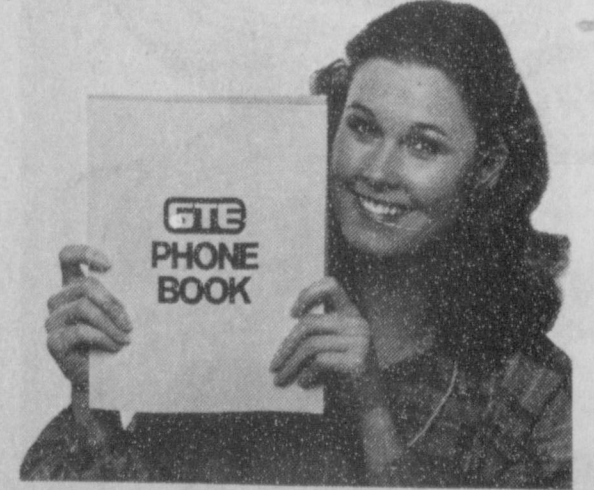
**ENCYCLOPEDIA of the ANIMAL WORLD**  
FEATURED THIS WEEK  
VOL. 7  
\$1.99 EACH  
WITH THIS COUPON WITH EACH \$3 FOOD PURCHASE  
6000 MAR. 28 THRU APRIL 3

**FINE FARE**  
APPLE JUICE 32 OZ. 79¢  
KELLOGG'S RICE KRISPIES 13-OZ. 98¢  
WESSON OIL 24-OZ. 98¢

**HUNT'S WHOLE TOMATOES**  
14 1/2 OZ. 3 FOR \$1

**HUNT'S TOMATO SAUCE**  
8 OZ. 6 FOR \$1

**HUNT'S KETCHUP**  
32 OZ. 88¢



**Help us write the book again.**

Your new telephone directory is going to press very soon. So now's the time to make any changes you'd like in the way you're listed.

Is your name shown the way you want it to be?  
Would you like a listing for another member of your household (your spouse or kids or relatives or in-laws)?  
If you'd like to make any changes or add a dual name listing, now's the time to do it.

Just call our business office and find out what the charges are, if any.

**GTE GENERAL TELEPHONE**

**DOUBLE STAMPS SAT.**

WITH A \$2.50 PURCHASE OR MORE EXCLUDING CIGARETTES

**FABRIC SOFTENER BOUNCE** 35' OFF LABEL 60 CT. \$2.49

**CLOVER CLUB TORTILLA CHIPS** 8 OZ. OLD MEXICO STYLE, 7 OZ. TACO & NACHO 98¢

**FINE FARE SOUPS**  
•TOMATO •CREAM MUSHROOM  
•CHICKEN NOODLE •CREAM OF CHICKEN 10 1/2-OZ. 4 \$1

**"GARDEN FRESH PRODUCE"**

**CALIFORNIA FUERTE AVOCADOES** \$1.29

**ALL PURPOSE POTATOES** 10 LB. BAG 29¢

**TEXAS RUBY RED GRAPEFRUIT** EACH 49¢

**GREEN PASCAL CELERY** STALK 49¢

**RED RIPE SLICER TOMATOES** LB. 49¢

SATURDAY 4/3/82

4/1/82-4/7/82

Table with columns for CABLE (PM, OETA, KAMR, TMC, KVII, CBN, WGN, KFDA, WTBS, CNN) and rows for time slots (6:00, 7:00, 8:00, 9:00, 10:00, 11:00) listing various TV programs and channels.

Gear Up For Spring Gardening

It's time to gear up for that spring vegetable garden. And two major steps are getting the right varieties and planting at the right time.

Proper planting time is important if maximum quality and production are expected, points out Jim Smith, county agent with the Texas Agricultural Extension Service, Texas A&M University System.

Since such warm-season crops as tomatoes, peppers, corn, eggplants, beans, squash, cucumbers, okra, watermelon, sweet potatoes, pumpkins and cantaloupes are sensitive to cold temperatures and can be killed by even the lightest frost, gardeners must be aware of the average date of the last frost for their particular areas.

According to the National Weather Service, the average dates of last frosts for the Panhandle is as follows: South Texas, Feb. 1; Coastal Bend,

Feb. 17; Panhandle, Apr. 22. Remember, these dates are average which only means there is a 50 percent chance a frost may occur at a later date.

It's also wise to wait until the soil has warmed before planting seeds of warm-season crops, says Smith. Soil temperature at planting depth should be in the upper 60s or into the 70s to increase seed germination and insure a good stand.

Some vegetable crops are cold-hardy and can tolerate light frosts or freezes. These include beets, broccoli, cabbage, carrots, peas, lettuce, onions, parsley, radishes, spinach, cauliflower, collards, mustard, kale and turnips. These can be planted in late winter or early spring.

Smith suggests planting some warm-season crops in late spring as they will produce more high-quality produce. During the hot summer such

heat-tolerant crops as southern peas, okra, eggplant, sweet potatoes, squash and small-fruited tomatoes do best.

Smith advises planting the best adapted varieties that are available as this can mean the difference between gardening success and failure. Some of the current vegetable variety recommendations by the Extension Service are as follows:

- Bean, Bush -- Contender, Topcrop, Greencrop, Tendercrop
--Bean, Pole -- Stringless Blue Lake, Kentucky Wonder, Dade, Romano
--Bean, Lima bush -- Jackson Wonder, Henderson Bush, Fordhook 242
--Beets -- Detroit Dark Red, Green Top Bunching, Asgrow Wonder
--Broccoli -- Green Comet, Bravo
--Cantaloupe -- Perlita, TAM Uvalde, Golden Perfection, Magnum 45
--Carrot -- Emperor, Danvers 126, Nantes, Red Core Chantenay
--Corn, Sweet -- Calumet, Bonanza, Merit (white) Silver Queen, Florida Staysweet
--Cucumbers (Pickling) -- National Pickling, Liberty, Crispy, Salty
--Eggplant -- Florida Market, Black Beauty, Highbush
--Lettuce (Head) -- Great Lakes strains, Valverde
--Lettuce (Leaf) -- Black Seeded Simpson, Salad Bowl, Ruby, Oakleaf
--Lettuce (Butterhead) -- Summer Bibb, Tendercrisp
--Okra -- Clemson Spineless, Louisiana Green Velvet, Emerald

- Peas, Southern -- Blackeye No. 5, Burgundy, Cream 40, Knuckle Purple Hull
--Pepper, Sweet -- Yolo Wonder, Keystone Giant, Valley Giant
--Squash -- Early Prolific Straghtneck, Goldneck, Dixie, Hylific, Bush Scallop, Zucco, Zucchini, Goldrush
--Tomato -- Spring Giant, Floramerica, (nematode resistant) Terrific, Better Boy, Bonus, Big Set, Jack Pot
--Turnip -- Purple Top White Globe, Royal Globe

Navy beans may be new flour source

COLLEGE STATION -- The newest food ingredient for cookies, frankfurters or even pancakes may come from navy beans, as a result of joint research by Texas A&M University and Michigan State University.

Under a \$100,000 USDA grant, two teams of researchers are studying new methods of processing the beans and are developing five new prototype food ingredients to add convenience and functional features which should encourage their use in new products both here and abroad.

Texas A&M's research is being coordinated by Dr. Jose Aguilera of the Food Protein Research and Development Center, a division of the Texas Engineering Experiment Station.

Already, Aguilera and his staff have produced a light-textured snack from the starch flour, but they haven't yet begun work on the taste factors. The researchers also will start looking at pinto and black beans this coming year.

Track Boys Win 3rd

The Spearman Varsity Track Lynx-competed at the White-deer Buck Relays. There was lots of competition, other than Spearman and White Deer, there were Alamo Catholic, Higgins, Phillips and Clarendon. The Lynx came home with 3rd Place by scoring 94 points. The JV boys also won 3rd with a total of 52 points.

In the 400 RELAY, Clarendon won the event with a time of 45.63, White Deer came in second with a time of 46.02. The Lynx did a fabulous job and finished in 3rd with a time of 47.40. [We only have the results of who all managed to place in the top 3 positions!]

Not one Lynx placed in the top three positions in the 110 HIGH HURDLES Event, the 400 METER DASH, the 330 INTERMEDIATE HURDLES, the 220 METER DASH, the MILE RELAY, the 3200, the LONG JUMP and the SHOT PUT. The winner in the 110 HIGH HURDLES was Barnett of White Deer with a time of 16.52, Crump of Clarendon with a time of 16.54 and McKee of Phillips was third with a time of 16.55. Weatheron of Clarendon won the 400 METER DASH with a time of 53.74, D. Weatheron, also of Clarendon was second with a time of 54.00 and Jenkins of Higgins was third with a time of 54.88.

Clarendon swept the 330 INTERMEDIATE HURDLES--Wright was first with a time of 44.05, Crump was 2nd with a time of 44.65 and Hill was third with a time of 44.95. In the 220 METER DASH, B. Weatheron of Clarendon was first with a time of 23.97, second was D. Weatheron, also of Clarendon, with a time of 24.50 and Prock of Phillips was third with a time of 24.54. The MILE RELAY was won by Clarendon with a time of 3:38.47, 2nd went to White Deer with a time of 3:46.24 and 3rd went to Phillips with a time of 3:47.29. The 3200 EVENT Barnaz J. Barnaz of Alamo Catholic won the event with a time of 10:33.1, Bartell of Phillips was 2nd with a time of 11:28.95 and Martin of White Deer with a time of 11:44.52.

Bennett of White Deer won the LONG JUMP with a jump of 20-3 1/2, D. Weatheron of Clarendon was 2nd with a jump of 19-3 1/2 and Bartell of Phillips was 3rd with a jump of 18-3. McGuire of Clarendon won the SHOT PUT with a throw of 47-11 1/2, Newcomb of Phillips was 2nd with a throw of 44-11 and Thomas of Clarendon was 3rd with a throw of 43-7. Those were all the events that the Lynx did not have one qualify for the top 3 places.

The 800 EVENT was a good Event for the Lynx, first of all Saldavay of Alamo Catholic won the event with a time of 2:02.68, and then it was Sugar and Honey as the Lynx placed 2nd and 3rd, respectively. LUIS NAVA, Lynx Trackster, was 2nd with a time of 2:08.54, Paul Lopez was 3rd with a time of 2:09.73. Luis and Paul are both Sophomores and very fast ones, I might add.

One of the fastest and most closest race would have to be the 100 METER DASH. The winner was J. Dupy of White Deer with a time of 10.27, Weatheron of Clarendon was 2nd with a time of 10.45. Mike Caldwell of the Lynx Track Team was 3rd with a time of 10.68. Mike did a GREAT job and he is a JUNIOR at SHS.

There are two "gru-some" races--the MILE and the 3200, in this case it is the MILE RACE. Abernathy of White Deer won the event with a time of 4:59.48. Dell Brandt, of the Lynx Track Team, did a fabulous job and finished 2nd with a time of 4:59.65. Dell is a SOPHOMORE at SHS. Winning 3rd was Watson of Phillips with pretty good time--losing by a hair, as Dell did.

The HIGH JUMP was won by Prock of Phillips with a jump of 6-2. Scott Dunlap, a Lynx Trackster, was 2nd with a jump of 6-2. Scott is a Junior at SHS and has been doing a whole of a job with the Lynx Track Team. Steve Boyke did a fabulous job on the Jr. Varsity that he was "promoted" to the Varsity, and he didn't let Coach Jimmy Dunc down at all. Steve is a FRESHMAN at SHS. His event is the DISCUS. Steve won the DISCUS event at White Deer with a toss of 132-0--Steve did a terrific job!! In 2nd place was McGuire of Clarendon with a toss of 129-4. Jimmy Haden, a Lynx Trackster, did a fine job staying up with the pack and winning 3rd Place. Jimmy's distance was 122-3. Jimmy is a SENIOR at SHS.

The final event of the day was the POLE VAULT. The winner was a Lynx Trackster--Billy Pat Underwood. He jumped 11-6. Billy Pat is a JUNIOR at SHS. Coming in 2nd was G. Weatheron of Clarendon with a jump of 10-6 and R. Galus was 3rd with a jump of 10-6.

All in all the Lynx did a fabulous job--all of the competitors. As ya'll know by now, the Lynx and Lynxettes Relays were cancelled due to the weather. As I am informed, the Track Meet is cancelled, there is no turning back. The main reason is that all the teams that participated have their schedules filled up, so there is no way that all the teams could participate at the same day. The winner of the Spearman Track Meet was "Old Man Winter-Weather" and "Frosty, the Snowman". The Lynx will travel to Stinnett to compete at the Rattlers Relays, this week--April 2 & 3.

NEIGHBORHOOD WINNERS OPEN 1 HOUR EARLIER FOR YOUR SHOPPING CONVENIENCE! NOW OPEN AT 8 A.M. PRICES AT UNITED \$1,000 PERRYTON BINGO WINNERS! • Maria Depaz • Kent Buell

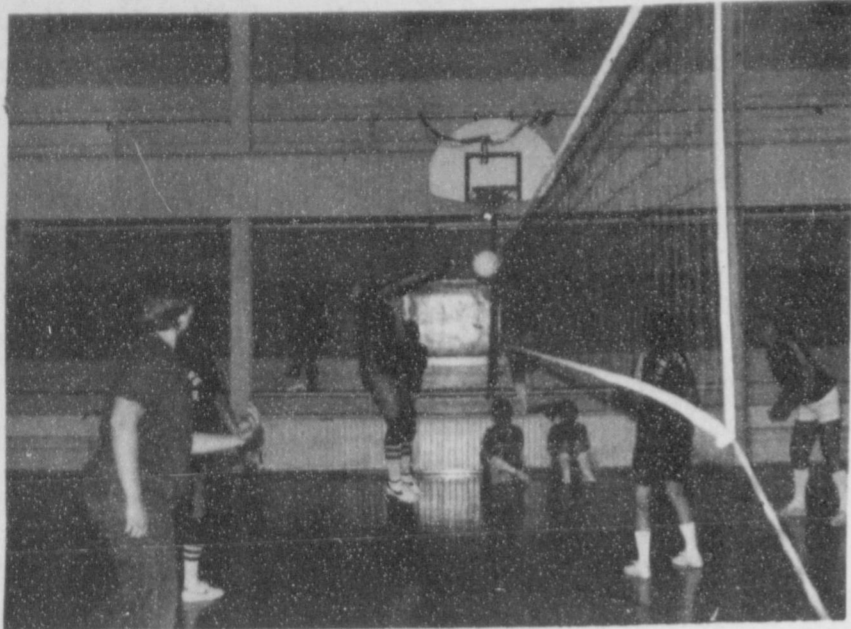
ODDS CHART as of March 24, 1982. Table with columns for PRIZE, NUMBER, ODDS WITH, ODDS WITH, ODDS WITH. Includes values for prizes like \$1,000, \$500, \$100, \$50, \$10, \$5, \$1 Instant, Stamp Books.

EXTRA LEAN GROUND BEEF \$1.98 LB. CUBE STEAK \$2.49 LB. STEW MEAT LEAN CUBES OF BEEF \$1.88 LB. HORMEL CUREMASTER HAMS \$3.29 LB. HORMEL CURE 81 HALF HAMS \$2.89 LB. DECKER QUALITY BACON 1 LB. \$1.59 UNITED TRU TENDR OR CHOICE BOTTOM ROUND STEAK \$1.59 LB. UNITED TRU TENDR OR CHOICE SIRLOIN TIP ROAST \$1.89 LB.

DOUBLE STAMPS WED.! FINE FARE CINNAMON ROLLS 9 1/2 OZ. 68c UNITED BUTTERMILK 1/2 GAL. 88c UNITED COTTAGE CHEESE 24 OZ. \$1.18 'FROZEN FOOD' FINE FARE CRINKLE CUT POTATOES 2 LB. BAG 79c BANQUET FRIED CHICKEN 2 LB. BOX \$2.29 FINE FARE CORN ON THE COB 8 CT. \$1.29 PATIO MEXICAN DINNERS MEXICAN STYLE, BEEF CHEESE SMICHILADA, COMBINATION DINNER & FIESTA 98c KRAFT ORANGE JUICE 32 OZ. JAR 88c UNITED Supermarkets Perryton, Texas

Agco Wins Final Game

# Busters Dusters 'On Top Of The World'



"WOOPS, THE NET WAS IN THE WAY!"—Cynthia DeArmond of Busters Dusters Spiked the ball, but mis-calculated her jump and missed a point as Melyn

Johnson, her Gruver teammate watches. Busters Dusters still won the game against First State Bank and are now undefeated for the season with one more game to go.

All four Volleyball games played on Monday were just as exciting as they had been said they would be. The Championship game between First State Bank and Busters Dusters had a very exciting first set. The game between Thriftway and J.G.'s was a very good game also—it broke the tie between the two teams.

The first game was a "practice game" between Bulls Inn and Sparks Bros. The players for Bulls Inn was Suzanne Edwards, Beth Stauffer, Gina Davis, Peggy Varnon, Klity Edwards and Sharon Whitefield. The players for Sparks Bros. were Cathy Peters, Clady Crooks, Dixie Burch, Leslie Needham, Melinda Sasser and Janet Yancey. This was just a practice game, but both teams played with intensity and Sparks Bros. surprised the daylight out of Bulls Inn, at least in the first set. Sparks Bros. had finally won a set—15

to 11, BUT, it didn't count, on the Season Record. The first set definitely belonged to Sparks Bros.—15 to 11. All of a sudden, they lost their "plizzazz" and lost the following two sets—15 to 3 and 15 to 7. They did a wonderful job, though, while it lasted.

The first game that counted and the second game of the night was between Agco and Sparks Bros. Were Sparks Bros. players pooped? They played pretty well in the first set. The players for Agco included Cindy Schneider, Martha McRee, Denise Donnell, Brenda Shieldknight, Scarlotte Jackson and Linda Wilkerson. The same players showed up for Sparks Bros. The first set was a close one—15 to 11, but the second set—being the 5th for Sparks Bros., probably was too much to handle and Sparks Bros. lost 15-3. Agco was now 1-5 and Sparks Bros. was still winless.

To lots of folks, the game played between Busters Dusters and First State Bank was the "Championship" Game. Why, well in the Fall League and now, they are in a way sort of equal. Well, first of all, one of First State's main players—Ann Donnell—was home sick, they recruited Tina Woolley, who did a pretty good job. Others that played were Debbie Benton, Edith Cage, Ginger Coffee, Sheila Watley and Becky Kelp. The players for Busters Dusters were Melyn Johnson, Connie Davis, Merry Davis, Sandra Mills—all of Gruver, Cynthia DeArmond and Mollie Holton—both of Spearman. Both teams were 4-0, both tied for 1st Place. The first set was a very close set—15 to 11, Busters Dusters winning. By the way, if YOU weren't there, there were lots of times when volleying back and forth took at

least 5 minutes a point—that's fifteen points—you can surely imagine just how long the games were. The final set was won by Busters with a score of 15 to 5.

The final game of the night was between the 3rd Place teams—both tied, of course—Thriftway and J.G.'s. The players on Thriftway were Mary Schumann, Debbie Schumann, Kim Vanderburg, Marsha Pipkin, Peggy Winegarner and Tina Woolley. J.G.'s didn't have all of their players with them—Leslie Platt, Karl Schumann, Sharon Cook, Donita Lusby and Hazel Shieldknight did show up and they recruited Debbie Benton. The first set was won by J.G.'s 15 to 15. It was a tough set. The second set, a little tougher, was won by Thriftway, 15 to 7. The final set, both teams wanted to win—the winner was Thriftway 15 to 12. Thriftway is now 3-2 and J.G.'s is 2-3.

The schedule for the final Monday, April 5th, shows that the "Practice Game" will be between Agco and First State Bank. Agco ends their season with a record of 1-5. The second game of the night will be between Busters Dusters and Bulls Inn. Bulls Inn has been playing GREAT, they could make a lot of trouble for Busters, if they play like they did against the other teams. The 8:30 game will be between Thriftway and First State Bank. Thriftway could very well play a tough game and make First State work extra hard. The final game of the night will be at 9:15 between J.G.'s and Sparks Bros.

Ya'll go on over to the Little Gym and check out the action for the final week of play.

Caspar Weinberger, Defense Secretary:  
"The United States would do whatever was necessary to keep Russian missiles out of Cuba."



UP, UP AND AWAY!—Marsha Pipkin jumps HIGH in the air to spike the Volleyball. Marsha and her Thriftway teammates defeated J.G.'s to break the 3rd Place tie.

**Reason For Thanks**  
"Thankful! What have I to be thankful for? I can't pay my bills!"  
"Then, man alive, be thankful you aren't one of your creditors."

**Captive**  
Jane—I'd like to be a stewardess on a plane. You meet so many men that way.  
Jill—But there are so many other jobs where you can meet men.  
Jane—Maybe so. But not strapped down.

on doing terrific job at Stinnett and then at the District Meet.

The Varsity Lynxettes Track Team has been doing a GREAT job! They've won 3rd and 2nd and at the tough Canyon Meet, they won 7th. They will now be participating in the Stinnett Relays—April 2nd and 3rd. That meet should get them ready for the District Meet to be held at Spearman—hopefully the weather will be beautiful! Coach Ralph Newton is the Varsity's coach.

The 7th grade Lynx have been doing fine so far, and could have done really well at the Spearman Meet, but due to unnecessary circumstances, it was cancelled, so now the 7th Lynx will have to show everyone that they can win lots of events, and will plan on doing so at the Stinnett Meet. The 7th grade coach is Dan Shaver.

The 8th graders haven't been doing they way they planned, but I'm sure that this coming April 2nd and 3rd, they will do a terrific job. The 8th graders coach is Tom May.

The Varsity Lynx has been doing a very fine JOB!! They have placed 3rd in all their Track Meets so far, and plan to do better at the Stinnett Track Meet, and then at the Stratford Meet to get ready for the District Meet to be held at Perryton. Their Coach, Jimmy Duncan, is planning on taking the Track Meets—"One Meet at a Time!!"

## 7th, 8th & Varsity Teams To Compete At Stinnett

The Spearman 7th, 8th and Varsity Lynxettes and 7th, 8th and Varsity Lynx will travel to Stinnett to compete in the Stinnett Relays.

The 7th grade girls have been having a GREAT year in Track.

The 7th Lynxettes are coached by Coach Terry Crocker. They have won 1st Place at their first two Track Meets, and probably could have won 1st Place at the Spearman Meet, but it was cancelled due to the weather.

I'm sure they have no other different plans except to bring home the 1st Place Trophy from Stinnett.

The 8th grade Lynxettes have been having a fine Track Season. Their coach is Coach Crocker, also. The 8th grade Lynxettes have a great bunch of girls and they can do a GREAT job at any Track Meet, they plan

## MASSAD'S LADIES SHOP SPEARMAN, TEXAS

# IS QUITTING BUSINESS

CONTINUES WITH FURTHER DRASTIC REDUCTIONS

DOORS OPEN  
THURSDAY, APRIL 1  
9:00 A.M.

DOWN—DOWN—DOWN GO THE PRICES  
AN OPPORTUNE TIME TO BUY YOUR NEEDS

POSITIVELY  
No Exchanges—No Refunds  
No Layaways—No Charges  
PLEASE SHOP CAREFULLY

ENTIRE STOCK SACRIFICED FROM 50% TO 75% OFF SAVINGS DUE TO SPACE MANY ITEMS NOT LISTED

WE CARRY ONLY NATIONALLY ADVERTISED BRANDS

Shadow Line Panties <b>50% OFF</b>	Playtex Vassarette Bra's Girdles <b>50% OFF</b>	Shadow Line Munsing Wear Gowns - Robes Slips - Pajamas <b>50% OFF</b>	Hanes Panty Hose <b>50% OFF</b>
Dresses Spring & Summer <b>50% OFF</b>	Sports Wear Spring & Summer <b>50% OFF</b>	ALL Handbags <b>75% OFF</b>	Hanes Regular Hose: <b>75° PR.</b> Support Hose: <b>\$1.50 PR.</b>
SPECIAL RACKS Ladies Wear <b>75% OFF</b>	Infants Wear <b>50% OFF</b>	Strapless Bra's <b>50% OFF</b>	Jewelry - Belts <b>75% OFF</b>
Levi Jeans <b>50% OFF</b>	Slacks One Rack Reduced TO <b>75% OFF</b>	Bargain Table Ladies Glovess Values to \$1.00 Choice <b>\$1.00</b> or \$1.00 per dozen	Bargain Table Ladies House Shoes <b>\$1.00</b>
Childrens Canvas Shoes <b>\$2.00</b>	Bargain Table Ladies Boots Values to \$20.00 choice <b>\$2.00</b>	All Headwear and Gloves <b>75% off</b>	Daniel Green House Shoes and Slippers <b>75% off</b>

### HOMETOWN AUTO PARTS

48 VILLAGE PLAZA PHONE: (316) 624-4946 LIBERAL, KANSAS 67901

PHONE: 733-2428

Dale Gable Representative Gruver, Texas

## SPECIAL OFFER !!



### Bower/BCA Bearings

**50% off**

Shock Absorbers



Trail Blazer—Reg. \$16.75  
Now **\$9.87 Each**  
Husky—Reg. \$23.50  
Now **\$13.87**  
Save 41%

For appointments for installation notify Rocky's Automotive, Gruver.

### Wagner Super Heavy Duty Brake Fluid

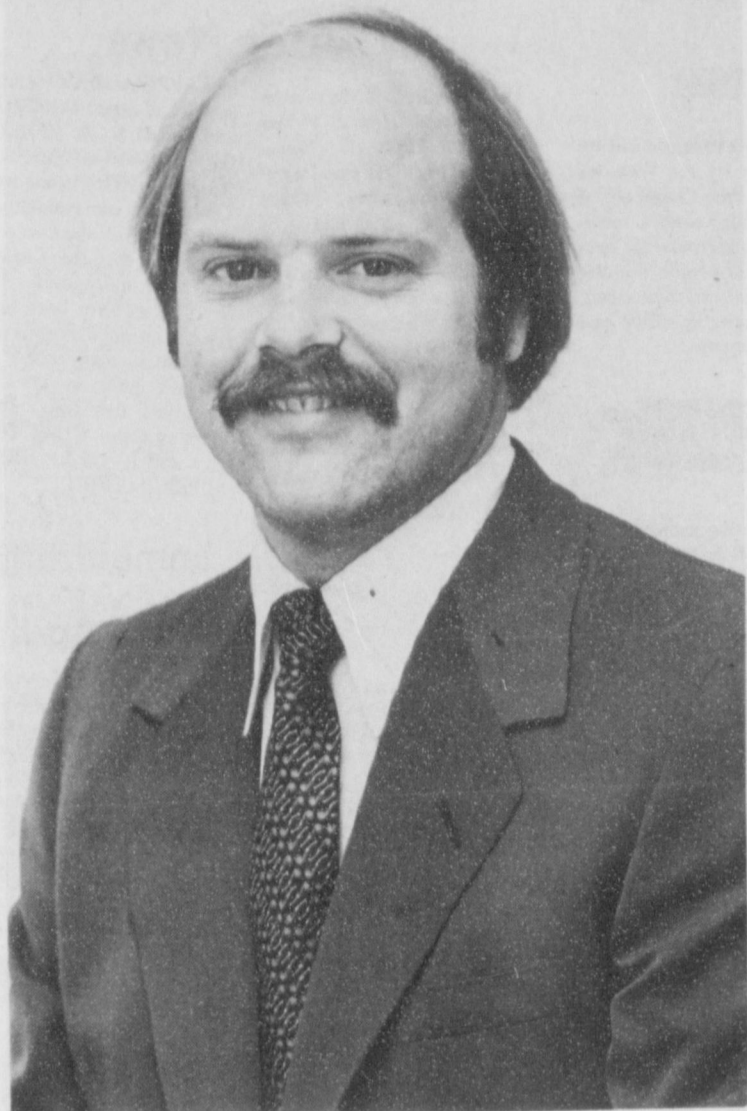
Now **\$13.25**  
1 gal. can  
FC-9314

Sale Good Thru April 15<sup>th</sup>

Dale Gable Representative 733-2428 Gruver, Texas

Dale Gable Representative 733-2428 Gruver, Texas





**Rex Linn**

REX LINN ELECTED ASSISTANT VICE PRESIDENT/ENERGY LENDING at the Penn Square Bank, Oklahoma City. Linn is the son of former resident, James P. Linn of

Oklahoma City, and the grandson of Mrs. Ruth Caro of Spearman. Linn, a resident of Edmond, Okla. has two years of experience in banking in the area of lending. He was formerly with Lakeshore Bank. He attended OSU, receiving his degree in broadcast journalism.

**Competition**  
"I suppose the little wife will win all the arguments in your house?"  
"No; she'll only win half of them."  
"Oh, you expect to win the other half?"  
"No; but my mother-in-law will."

**Number Two**  
"Let me see," said the minister who was filling out the marriage certificate and was uncertain as to the date.  
"This is the fifth, isn't it?"  
"No, sir," returned the bride indignantly, "this is only my second."

**Togetherness**  
Bride -- Something's worrying you, darling. Please tell me what. You know, your worries are our worries, now.  
Groom--Well, some gal in Toledo is suing us for breach of promise.

## Keep Your Eyes Out For Greenbugs

The Texas Panhandle wheat crop has thus far escaped heavy greenbug infestations, but wheat producers need to keep a close eye on the crop. "Even though infestations are currently low, farmers should not become complacent about checking their wheat for greenbugs," cautioned Jim Smith.

Smith said the most recent survey conducted by Dr. Jerry Michels, research entomologist, and Louis Chedester, research associate, with the Texas Agricultural Experiment Station, indicates infestations are below the levels reported in December and January.

Most fields checked in the northern Panhandle indicate no greenbugs, they reported. Greenbug infestations in the southeastern Panhandle are running generally less than 20 per row foot of wheat.

"But March has historically been the month of peak infestations in the Texas Panhandle," Smith cautioned. As the weather warms, populations of the insects can increase dramatically, he said.

Greenbugs are about 1/16 inch long, light green with a dark green area down the back. They should not be mistaken for other aphids that can be on wheat this time of the year.

One of those is the oak bird-cherry aphid, which is very common on Texas wheat but rarely requires control with insecticides. Smith said it can be distinguished from the greenbug by a reddish-orange spot which surrounds the bases of the cornicles, which are two small tubes at the rear of the body.

The English grain aphid can also infest wheat at about the same time as the greenbug, the agent noted. He said it can be distinguished from the greenbug by entirely black cornicles and the lack of a dark green area down the back. Insecticide applications are seldom justified for for English grain aphid control, he said.

All three aphids feed in the same manner, but the greenbug is by far the most damaging. It not only sucks juices from the plant, but at the same time injects a toxin which causes

discoloration and tissue destruction.

Greenbug damage usually appears as localized yellow spots within the field. As greenbug infestations increase, the yellow spots become larger. Sometimes, general infestations affect entire fields.

Smith said estimates of the greenbug infestations can be made by walking diagonally across a field and making five random counts for each 20 acres of field area. Each random count should consist of a linear foot of row.

"Make counts during the warmest part of the day when greenbugs are most likely to be exposed on the above-ground part of the plant," the agent advised.

During inclement weather, greenbugs may congregate deep in the crown of the wheat plant, he noted. If the soil is loose or cracked around the base of the wheat plants, greenbugs may actually be below the soil line.

"Under these conditions, infestation estimates will be difficult to make and control will be much less effective," Smith noted.

The need for an insecticide application to control greenbugs should be based on the size of the plants and number of

greenbugs present. The accompanying table provides a general guide in determining need for treatment.

"Many times, less than satisfactory control of greenbugs is achieved with insecticides," Smith said. "This may be due to several factors, such as temperature, wind, coverage, and possible resistant greenbugs."

Insecticides work most effectively when applied at temperatures above 55 degrees Fahrenheit, he said. Wind conditions should be low and spray volume high to achieve best coverage for the most effective greenbug control.

TABLE I  
GUIDE FOR TREATMENT OF GREENBUGS

Plant Height (inches)	Number of Greenbugs per Linear Foot
3-6	100-300
4-8	200-400
6-16	300-800

## Tennis Teams To Participate In Amarillo Relays

The Spearman Tennis Teams will travel to Amarillo on April 2 and April 3 to participate in a very important Tourney--the Amarillo Relays.

The Tennis Coach is Robin Travis. Coach Travis has a fine group of athletes. He believes that the Amarillo Relays will be tough enough competition to get his girls ready for the District Meet to be held at

Spearman. Another reason, is that his teams have been doing so well against other teams, and at the Amarillo Relays, the Tennis Teams will have more competition and the kind that can get any team ready for a Championship!

If at all possible, try and make it to Amarillo and drop by the Tennis Courts and check out the action!!

### Meaning What?

Most men don't love what a girl stands for but what she falls for.  
-Gosport, Pensacola, Fla.

### Explanation

Some girls think the current style swim suits are immodest, and others have beautiful figures.  
-Journal, Atlanta.

### Needed

What Uncle Sam's scientists need to perfect is a non-leaking type of atomic secrecy.  
-Herald, Miami.

### No Worry

Live within your income and you'll live without worry--and a lot of other things.  
-Record, Columbia, S. C.

## Double "C" Feed Pen Service

Check our prices first for your manure hauling needs.

Clois L. Baker

659-5642

Dennis Baker

659-2634

### ONE MINUTE SPORTS QUIZ

- Who won the Tournament Players Golf Championship?
- Who won the LPGA J & B Pro Am?
- George Brett plays pro baseball for what team?
- Artis Gilmore plays pro basketball for what team?
- Sandy Koufax won his first Cy Young Award in what year?

- Nancy Lopez-Melton.
- Jerry Pate.
- Chicago Bulls.
- Kansas City Royals.
- 1963 with the Dodgers.

Answers To Sport Quiz

# THREE-DAY SPECIALS from M & M GROCERY AND DELI...

1/2 LB. SIZE  
**Dorritos** REG. \$1.29 SALE **89¢**

## Produce SPECIALS ...

CALIFORNIA FRESH  
**Mushrooms** CTN **89¢**

WHITE RUSSET  
**Potatoes** 10 LB. BAG **\$1.09**

SUNKIST  
**Oranges** LB. **29¢**

**Cabbage** LB. **15¢**

PRICES GOOD  
APRIL 1-2-3

## SPECIALS from the Deli ...

**Steak Sandwiches** EACH **99¢**

**Burritos** OR **Corn Dogs** 3 FOR **\$1**

**Broccoli Salad** PINT **\$1.89**

**Cole Slaw** OR **Potato Salad** PINT **99¢**

M & M GROCERY

## Market SPECIALS ...

BONELESS ROUND  
**Steak** LB. **\$2.09**

PIKE'S PEAK BONELESS  
**Roast** LB. **\$1.89**

RUMP  
**Roast** LB. **\$1.79**

SIRLOIN TIP  
**Steak** LB. **\$1.59**

SIRLOIN TIP  
**Steak** LB. **\$2.59**

SIRLOIN  
**Steak** LB. **\$2.89**

CENTER SLICED  
**Ham** LB. **\$1.98**

You are invited to a

**Baby Shower**

Lella Bynum

Saturday, April 3

2:00 - 3:30

First Christian Church Fellowship Hall

HOSTESSES

Janie Kunselman Sandy Russell  
Jean West Fern Porter  
Betty Davis Dorothy Haner  
Cheryl Blankenship

21-1tc

## Cancer Crusade April 4-7

Cancer is a group of diseases characterized by the uncontrolled growth and spread of abnormal cells. Many cancers can be cured if detected early before they've spread and treated promptly.

"Recognizing this fact, volunteers from the Hansford Unit of the American Cancer Society are promoting an all-out campaign against cancer called C-Days on April 4th through April 7th," declared Mrs. Pat Holt, chairman of the 1982 educational and fund raising Cancer Crusade in our area.

On C-Days volunteers will go door-to-door calling on their neighbors and friends with information about cancer's seven warning signals and the importance of regular health checkups.

"Since thousands of lives can be saved if cancer is diagnosed early and treated promptly, no one can afford to be without this knowledge", Chairman Holt said. "That is why ACS volunteers will try to see that everyone in Hansford County will have that information."

In our local Unit, the American Cancer Society sponsors educational programs under the direction of Education and Health Chairman Mrs. Elmo McClellan which include school programs and distribution of literature for young people; Adult Education through distribution of educational material through the two Libraries, Doctors' offices and the Hansford Hospital; Service program under the direction of Mrs. N.F. Renner for the Spearman area and Mrs. Comfort Winders for the Gruver area which includes replacement of blood used during treatment, distribution of equipment such as hospital beds, mattresses and covers, wheelchairs, walkers, and bedside commodes and when necessary, dressing and comfort items such as unsterile dressings of all sizes, rolled bandages, pillows, expendable items such as bed pans, baby powder,

urinals, etc. and a program of post laryngectomy speech lessons. "reach-to-recovery for Mastectomy patients -- all available through our Hansford American Cancer Unit.

"When an American Cancer Society volunteer visits you on the C-Days, we urge you to find out about cancer's seven warning signals," Mrs. Holt advised. "And please, give generously so that more lives can be saved."

## Hospital

Patients at Hansford Hospital are Ann Thom, Keesee Richardson, Colleen Johnson, Flossie Boyd, Margie Schanhose and son, L.L. Finley, Dee Jackson, Cora Monroe, Paul Moore, Gwenfred Lackey, Sharla Diffe, Guy Remy, Derrick King and Milton Brown.

Dismissed from Hansford Hospital were Larry Dunn, George Ford, Magdalena Garcia, Anna McGary, Crista Urban and Michele Savage.

## Career Day Clinic Set

The third annual Career Day Clinic will be held Thursday, April 1, at Spearman High School. This is a project that is co-sponsored by the Spearman Chamber of Commerce and the Spearman Rotary Club.

James Cunningham is Chairman of the Free Enterprise Committee of the Chamber and John R. Collard, Jr. is Chairman for the Spearman Rotary Club. Over forty consultants

will be available to tell the students of Spearman High School about the careers they are interested in.

Mr. Maxie Davie, Vice President Public Affairs, Texas-New Mexico Power Company, will be the Keynote Speaker. Mr.

## C of C To Have Open House

The Board of Directors, Ambassadors and Womens Division of the Spearman Chamber of Commerce invite you to attend the OPEN HOUSE of their new office facilities, Wednesday--April 7, from 9:00 a.m. - 5:00 p.m.

Ribbon cutting will be held at

9:30 a.m. Refreshments will be served all day by the Womens Division of the Chamber of Commerce. This beautiful facility has been made possible by a lot of dedicated people working to make a dream come true. Stop by and see the office and visit with everyone.

## Our Heritage of Faith

Peace and joy to all, especially the anxious and troubled. On this Palm Sunday it is good to see a positive crowd, especially children, sing and shout praises to Jesus who was so disliked by the political--ecclesiastical powers of the day.

The sermon theme is: Join the Palm Sunday Throng, Zechariah 9:9-10.

Sunday School is at 9:45 a.m.

Worship is at 10:45 a.m.

Evening worship--study is at 6:30 o'clock.

Palm Lapel crosses will be given to all worshippers.

A gracious welcome awaits all who join us in prayer, praise and thanksgiving this Sunday, the Lord's Day.

Bruno Gaskamp, Pastor

## Golden Spread Center News

The members of the Center have finished around 40 lap robes for Hansford Manor (Nursing Home). It was lots of fun and I want to say, "Thank You", to all members who helped. Craft days have been extended to include Monday's from 9:30 a.m. till 5:00 p.m. Thursday's, please bring a covered dish and come at 9:30 and have a day of work on your favorite craft. The bazaar will be held in the last of May, and we need lots of items to sell. APRIL 15th\* 1982 is going to

be a SPECIAL DAY for ALL the people of the COMMUNITY and what is so SPECIAL!! OUR "RADIO-A-THON". This RADIO-A-THON is one way our Center asks our residents what they can do for the Center--give money so that the Center can stay open and operate. We, of the Center, have been lucky to have such good people to give and like so many other things we will have to have more donations this year. Just be thinking about WHAT YOU can give and it will be GREATLY APPRECIATED!!

## In Fashion

The fashion conscious woman can choose her dress length and still be in high fashion. This spring, whatever length you choose, be sure the lines of your costume complement the length you have chosen.

## Immunization

### Clinic April 5

A clinic offering vaccines that give protection against several childhood diseases will be held at the Spearman Elementary School, 511 S. Townsend on April 5 from 2 to 4 P.M.

Protection is against polio, diphtheria, lock jaw, whooping cough, measles, rubella and mumps.

There will be no charge.

## Baby Photo

### Contest Slated

A baby photo contest will be held on April 24th.

Categories will be boys and girls newborn to 9 months; 10 months to 18 months; 19 months to 2 years; and 3 years to 5 years.

There will be 8 first place winners who will receive a \$10.00 merchandise certificate and certificate of award, the 8 2nd place and 8 3rd place winners will receive certificates of awards.

The cost is \$2.00 per picture. You may enter as many pictures as you want to at \$2.00 a picture, but a self addressed stamped envelope must accompany each picture.

Pictures larger than a 5 x 7 will not be accepted. Snapshots will be accepted.

Judges will be from Borger. Entry form deadline will be April 20th. You may pick up entry forms at Kid's Stuff in Spearman; La Petite, Leprechaun, Rocking Horse and Beehive in Perryton and Suzanne's, Booker.

## New Arrivals

Terry and DeNelda Burke of Pampa are the proud parents of a boy, James Michael, who was born March 22 in Coronado General Hospital in Pampa. He weighed 7 lbs. 2 oz.

Maternal grandparents are N.H. and Dorothy Jones of Pampa, and maternal grandfather is John W. Jones of Fort Worth.

Paternal grandparents are Bob and Wanda Burke of Spearman and paternal grandfather is Amos C. Burke, also of Spearman.

## Bridge Club

The Friday Senior Bridge Club met March 26 at Golden Spread Center with Viola Graves as hostess.

Delicious refreshments were served to members, Ruth Baker, Mabel Edwards, Opal Jones, Mathilde Entekin, Alice Lackey, Ora Sanders and Vi Whitson.

Alice Lackey had high score and Mabel Edwards had second high.

Opal Jones will be the hostess for the Friday, April 2 meeting.

# VOTE YES for BINGO APRIL 3rd

If passed this will enable churches, schools, fire departments, non-profit fraternal organizations and other like organizations to play bingo legally after obtaining a license.

## Vote for Bingo

Pd. for by supporters for legal bingo  
Charles Elliott, 902 S. Hwy 207, Spearman, Tx.

## VOTE Saturday Bingo School City

It takes so little to make a little child happy that adults could well afford to take the time and effort.

## Hey Kids!!

### 2nd Annual Easter Egg Hunt

Sponsored by:

### Moose Lodge

Sat. - April 10th - 10:00 a.m.

Rain date - Sun. April 11th - 2 p.m.

## 3 age groups

Pre-school-6

7-10

11 & over

3 prizes for each group  
East of High School

## WILL YOU STILL BE WORKING LIKE YOU ARE TODAY WHEN YOU'RE 80 YEARS OLD?



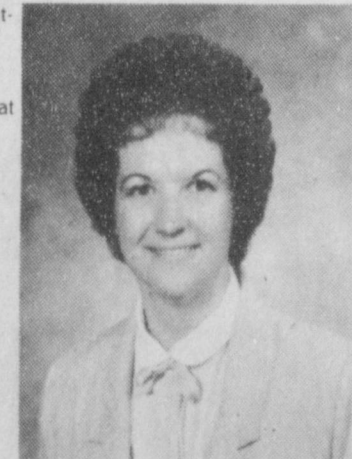
If you farm, work in the oil field, if you're self-employed, or if you work for someone else, you may not have a choice!

You see, for years, we've all thought that Uncle Sam or our company or someone would take care of us after we retired. That's not so likely anymore. Besides, inflation soon eats up those retirement plans. Don't forget the dollar you had just 7 years ago is only worth 50¢ today.

Beginning January 1, 1982, you can set up your own tax-deferred retirement plan -- even if you participate in a company plan, too. You can put up to \$4,000 in it annually if you and your spouse both work, and it's fully insured just like the rest of our accounts. Remember, a \$2,000 annual contribution, assuming it earned 12% interest, would amount to 1 million dollars in just 35 years. You may even be able to set up an IRA today for last year, contribute \$1,500 and deduct it from last year's taxable income, providing you do it soon.

Don't put yourself in a position where you're still working for your money after you should have retired. Have your money already working for you so you can retire by starting today, with an IRA at Homestead. Lots of financial institutions will offer them, but look out for unnecessary fees and lack of experience. We charge no fees and we've been setting up IRA's for years.

Talk to your tax accountant or call any of our experts at Homestead.



Deloris Montgomery Guymon  
Branch Manager

Guymon  
Northridge Shopping Center  
(405) 338-8461



J  
C  
w  
J  
ct  
th  
ln  
tw  
At  
Sh  
Tu  
Su  
Bo  
Hi  
Sh  
Ma  
ing  
pa  
Me  
be  
Ap  
1  
als  
Ap  
Th  
which  
and l  
O  
Germ  
mona  
Hitler  
was fr  
as the  
Or  
surre  
the m  
tox, V  
birthd  
Army,  
Th  
indepe  
influen  
which  
greater  
preside  
Virgini  
The  
the sig  
perspect  
signed  
and Pr  
ON STE  
The  
ably wi  
fighter-b  
ing high  
technolo  
virtually  
radar, P  
dicated r

## 4-H Judging Teams Are Champions

The Hansford County 4-H Judging Team did a fabulous job and brought home the Championship Trophy this past weekend as they competed in Judging competition.

There were two groups that competed—the Jr. Division and the Sr. Division, two competed in an Individual Divisions and two adults competed in the Adults Individuals.

The Jr. Division consisted of Shelly Dunnihoo, Deana Turner, D'Lynn Orr, Amy Smith, Anne Marie Jarvis and Bonnie Jarvis. Deana won 1st High, D'Lynn was 2nd High, Shelly won 3rd High and Anne Marie won 5th High. Competing in the Individuals were Amy

Smith and Bonnie Jarvis. Those on the Sr. Division Judging Team were Will Jarvis, Andrea Archer and Dean Greene. Dean won 2nd High, Andrea won 3rd High and Will won 5th High.

In the Adult Individuals Division, Joan Brown won 2nd High and Jim Smith won 5th High.

The coaches for both Divisions are Billy and Joan Brown. There are 3 other members that did not compete because of school commitments, but worked just as hard—J and Mark Garnett and Tammy Savage.

We congratulate each and everyone of the 4-H Judging Team for doing a fabulous job!!



Junior Division

JUNIOR DIVISION 4-H JUDGING TEAM:  
[L to R] Coach Joan Brown [2nd High--Adult Ind.], Anne Marie Jarvis--5th High, Deana Turner--1st High, D'Lynn Orr--2nd High and Shelly Dunnihoo--3rd High. Front Row [L to R] Amy Smith--Ind. and Bonnie Jarvis--Ind. [Not pictured--Coach Billy Brown]



Senior Division

SENIOR DIVISION 4-H JUDGING TEAM:  
[L to R] Will Jarvis--5th High, Andrea Archer--3rd High, Dean Greene--2nd High and Coach Joan Brown [2nd High--Adult Ind.] [Not pictured--Coach Billy Brown]

### Boys Golf Begins

The 1982 Boys Golf Team will participate in their first Golf Meet. The Meet is scheduled to be at River Road this Thursday, April 1.

Their Coach is Gary Rambo, also. They haven't been compe-

ting, but they seem to be ready for all newcomers. The Golf team has a tough schedule ahead of it, but they will do a fine job. They have been practicing alot and will be doing a good job, better than last year.

### Girls Golf Team To Compete In Amarillo

The Girls Golf Team will be participating in the Amarillo Relays--Golf.

The Golf girls are coached by Gary Rambo. Coach Rambo believes that this Meet will be a very tough won indeed. At press time, the Golf girls were

competing in their own Golf Meet. In their First Meet, the Girls won 1st. There will be alot of tougher competition at the Amarillo Relays and it will be tough, but I'm sure the girls will pull together and do very, very WELL!!

CORN \$2.76  
WHEAT 3.70  
MILO 4.15

### MARKETS WEATHER

The snow Friday evening and Saturday in Spearman brought approximately .15 moisture and the thundershower and pea size hail Monday afternoon produced another .30 moisture. This is an unofficial measurement.

The love of music, it seems, varies as individuals differ as to what is music.

SATURDAY 4/3/82

4/1/82-4/7/82

CABLE	(3)	(4)	(5)	(7)	(8)	(9)	(10)	(11)	(12)
AM	OETA	KAMR	TMC	KVII	CBN	WGN	KFDA	WTBS	CNN
	Oklahoma City	Amarillo	Movie Channel	Amarillo	Christian Network	Chicago	Amarillo	Atlanta	Cable News Ntwr
7	00	Flintstones Comedy Show	Prog Cont'd	Super Friends	Contact	U.S. Farm Report	Popeye/Olive Comedy Show	Baseball Bunch	News/Sports/Weather
7	30	Smurfs	Thundarr/ Goldie Gold/	World Tomorrow	Lesson	World Tomorrow	Tarzan/Lone Ranger/Zorro	3 Stooges/Rascals	Inside Business
8	00	Once Upon a Classic	Movie: '1941'	Action Jack Comedy Hour	Financial Inquiry	Rex Humbard	Adventure Hour	War and Peace	Money Week
8	30	Kid Super Power Hour	''	Laverne & Shirley	Weekend Gardener	Issues Unlimited	Bugs Bunny Road Runner	''	Style
9	00	Sneak Previews This Old House	with Shazam	Richie Rich/ Scooby & Scrappy Doo	Jimmy Houston	Charlando	Show	Movie: 'Beau Geste'	Special Report
9	30	Spiderman & His Friends	''	''	This Week on Wall Street	Car Care Central	''	''	News
10	00	Woodwright's Shop	Space Stars	Movie: 'Hollywood Knights'	Fonz/Happy Days	Superman	''	''	Special Report
10	30	Creative Crafts	''	''	Heathcliff/ Marmaduke	Rodale's Home Dynamics	Voyage to the Bottom of	Bleekstar	''
11	00	Magic of Oil Painting	Daffy/Speedy Show	''	ABC Weekend Specials	Westerners	the Sea	Trollkins	Movie: 'Moment to Moment'
11	30	Victory Garden	Bullwinkle	Movie: 'Xanadu'	American Bandstand	Wild Bill Hickcock	Movie: 'The World Of	Tom and Jerry	Sports Week
12	00	Oklahoma Gardening	Movie: 'Moving Violation'	''	''	Movie: 'Perilous Journey'	Abbott And Costello	Kwicky Koala	News/Sports/Weather
12	30	Market to Market	''	''	Pop! Goes the Country	''	''	Six Million Dollar Man	''
1	00	Over Easy	''	''	That Nashville Music	''	Exhibition Baseball: White Sox vs. Cubs	Pizza Hut College	Movie: 'Come September'
1	30	Over Easy	''	Movie: 'The Postman'	Wild, Wild West	''	''	''	People Now
2	00	Austin City Limits	Wild Kingdom	Always Rings Twice	''	Movie: 'Blazing Justice'	''	All-Star Basketball Classic	News/Sports/Weather
2	30	''	Baseball Preview	Pro Bowler's Tour	''	''	''	''	Style
3	00	Sneak Previews To Be Announced	Special	''	''	Wyatt Earp	''	''	Best of Take Two
3	30	''	Nebisco Dinah Shore	Movie: '1941'	''	Wagon Train	''	CBS Sports Saturday	''
4	00	Soccer Made in Germany	Invitational	''	Wide World of Sports	''	Soul Train	''	This Week in Baseball
4	30	''	''	''	''	''	''	Motorweek	News/Sports/Weather
5	00	Matinee at the Bijou	Shopping Smart News	Movie: 'Xanadu'	News	Treveler's World Stan Hitchcock	Little House on the Prairie	National Crime and Violence Test	Championship Wrestling
5	30	''	''	''	''	''	''	''	Week in Review Press Box

### April, 1982

You are the hope of beauty and the birth of life and death--come, welcome home again!  
Anne Lawler

The second quarter of the year begins with April, which also contains April Fool's Day, Easter (April 11) and happy tax-paying day on the 15th.

On the 6th in 1917, Congress declared war on Germany, which doomed the Kaiser and the German monarchy and eventually, indirectly, produced Adolf Hitler. On the same day in 1830, the Mormon Church was founded. (The Greeks in America celebrate the 6th as the Anniversary of the Greek war for independence.)

On the 9th in 1865, General Robert E. Lee finally surrendered his Army of Northern Virginia, perhaps the most ably-led in the nation's history. At Appomattox, Virginia, to a generous U.S. Grant. The 10th is the birthday anniversary of the founder of the Salvation Army, William Booth.

The famed Halifax (N.C.) resolutions, calling for independence, date from the 12th in 1776, and largely influenced the Continental Congress later that year, which followed the Halifax example. One of the greatest Americans and for eight years (1801-1809) president, Thomas Jefferson, was born at Shadwell, Virginia, on the 13th in 1743.

The Huguenot Society observes the 13th, the day of the signing of the Edict of Nantes, halting the persecution of Protestants in France in 1598. Henry IV signed this act of freedom; Louis XIV revoked it in 1685, and Protestants were again persecuted.

#### ON STEALTH JET

The United States probably will start producing fighter-bombers this year using highly-secret "Stealth" technology that makes them virtually invisible to Soviet radar, Pentagon sources indicated recently.

#### ON TAX FRAUD

An increase in tax fraud and unintentional errors may be costing the Treasury more than \$70 billion a year, an all-time high, but the odds that cheaters will be caught in an IRS audit will fall to a record low this year, government officials told Congress recently.



### The Vietnam Memorial

A controversial and dubious design for a memorial to Vietnam War veterans was proposed and initially accepted--until veterans themselves protested that the dark, sunken memorial seemed to them to be more of a tribute to the spirit of the Vietnam anti-war movement in the United States than to those who fought for their country and did their duty.

Thus the "funerary" black, and black ditch memorial, has been, as it should have been, altered. Now the proposal includes an American flag and a white marble statue of an American soldier--towering above the black sunken wall.

Any memorial about the Vietnam war should honor and recognize those who obeyed the law and their government. The anti-war movement already has its monument--a communist Southeast Asia with its millions of dead, dying and imprisoned. They created that monument by domestic political action which forced the U.S. out of the area after military victory in South Vietnam had been won. (That's often forgotten.)

Those who accepted orders, obeyed their country's laws and went to a distant land to fight for freedom served their nation with courage and honor. They are the people who must be pleased by any memorial. The Jane Fondas and others who aided the enemy have theirs in Asia, and should go there and enjoy it.

#### MONEY SUPPLY

The chairman of the Joint Economic Committee said recently that Congress should order the independent Federal Reserve Board to loosen its grip on the nation's money supply to produce lower interest rates.

#### CHARGES DROPPED

The Reagan administration agreed recently to surrender subpoenaed documents to a House subcommittee under some restrictions, forestalling a contempt of Congress vote against Interior Secretary James G. Watt.

SAMPLE

SAMPLE

SAMPLE

City and school elections will be held at the high school--

CITY ELECTION  
CITY OF SPEARMAN, TEXAS  
(ELECCION DE LA CIUDAD)  
(CIUDAD DE SPEARMAN, TEXAS)  
April 3, 1982  
(3 de abril de 1982)

**BALLOT**  
(BOLETA EL-SAMPLE)

INSTRUCTION NOTE (Nota de instruccion): Vote for the candidate of your choice in each race by placing an "x" in the square beside the candidate's name. (Vote por el candidato de su preferencia en cada candidatura poniendo una "x" en el cuadro al lado del nombre del candidato):

For MAYOR--Vote for one (1):

(Para Alcalde--Vote por uno (1):

- Bobby Breedon
- G. Ralph Blodgett
- Wilson McClellan
- 

For ALDERMAN--Vote for two (2):

(Para Concejal--Vote por dos (2):

- Ed Garner
- Ray Ingie
- Dorothy Karns
- 
- 

This sample ballot compliments of--



SPEARMAN, TEXAS 79081

\$100,000  
Maximum insurance  
for each depositor  
as of 3/31/82

