



**"TEXAS" Opens 17th Season June 16**



Calvin and Elsie on the bluff which overlooks the theatre where the musical drama "TEXAS" plays. The 1000 foot drop beneath their feet makes the backdrop behind the stage. Performances are mid-June through late August. For tickets and information please write "TEXAS", Box 268, Canyon, Texas. 79015. Bill Rhew photographer.

"TEXAS," the musical drama of the Panhandle Plains and the Palo Duro Canyon, will open June 16, 1982 and run through August 21, Mondays through Saturdays, and Sunday, July 4th.

For the seventeenth summer season, travelers will drive across the flat plains near Amarillo and Canyon, Texas till the great gash of the Palo Duro Canyon opens at their feet.

For the seventeenth season, they will follow the paved road down into the great abyss as it leads to the theatre nestled in the curve of the cliff.

For the seventeenth summer they will prepare for the show by exploring the Canyon which is 1000 feet deep and a hundred miles long, by riding horses, seeing the formations up close from the Sad Monkey Railroad and by eating barbeque dinner

at the theatre.

For the seventeenth summer they will see the story of the Panhandle start in daylight with the festive overture of singing and dancing. Then as the shadows lengthen and the colors change on the magnificent cliffs surrounding the theatre, they will see the lights begin to glow and finally see the great Indian Chief, Quannah Parker, revealed on a rock high above

**Regional History**

**Fair To Be April 17**

Trade and Industry in History is the theme for the 1982 Regional History Fair to be held on April 17 at the Panhandle-Plains Historical Museum, Canyon, in celebration of National History Day. This year's second annual Regional History Fair will represent 27 counties in the Panhandle region, according to Suzanne Hewitt, Director of Education at the Museum and regional chairman of the Fair. Assisting her is co-chairman Nan Arthur, education department volunteer.

Students in grades six through eight, the junior division, and grades nine through twelve, the senior division, may enter. There are six contest categories, including individual projects; group project with a limit of five students; and individual historical papers. Other categories consist of individual performance; group performance; and media presentations (group or individual).

More specifically, projects such as charts, displays, re-

liefs, or historical papers can be entered. Other projects that may be entered include fictional accounts and poetry, reconstructions, models, explanatory texts with photographic displays, and live presentations. Media entries may consist of slide-type, motion picture or video tape. Each student may enter in one category.

Out-of-town judges will evaluate projects on the basis of historical quality, quality of presentation, and adherence to theme and rules. Trophies, ribbons and school plaques for winners are awards to be presented. Projects will be placed on display for public viewing April 18 through April 23 at the Museum.

Winners in the Regional Fair will compete in San Antonio in the State History Fair on May 1 against winners from twenty other Regional Fairs conducted state-wide. The state competition will be held at the Institute for Texas Cultures. Winners of the State Fair will go on to compete in the National finals at the University of Maryland-College Park in June.

the stage, bathed in radiance, the unexpected guest at a party. The scenes of the conflicts and struggles between man and man and man and weather, mixed with their hopes and joys, play out against the tall background. Finally the massive lights bring it to blazing color at the end and six horses race by with the flags which have flown over Texas.

When he wrote the script of "TEXAS" in the early 1960's, the author, Paul Green, gave the Canyon a voice, and it was welcomed audiences with this voice ever since.

For tickets and information write "TEXAS", Box 268, Canyon, Texas 79015. Prices range from \$4 to \$7 and there are half price tickets for children in most sections. It is well to make reservations in advance by writing or calling 806-655-2181. Show time is 8:30 p.m.

Four hundred area students participated in the 1981 Regional History Fair, Hewitt said. It was one of the largest history fairs in the state. The competition is made possible through a grant from the National Endowment for the Humanities, which provides funds to purchase awards and certificates.

"Because of the success of last year's History Fair, the NEH increase the amount of grant money for this particular Regional Fair," Hewitt said. She expects about the same number of students to participate in this year's Fair as last year's.

There is no registration fee to enter. Registration forms, student and teacher guide manuals, and other information may be obtained by contacting Suzanne Hewitt at the Museum in Canyon.

The Hansford-Hutchinson County Farmers Union will hold a Farm Sale Meeting on Friday, March 12, at Brittany's Restaurant in Spearman beginning at 7:30 a.m. The meeting is open to the public.

**c'mon home to Country Basket**



Sizzling chicken-fried meat strips, golden fries, Texas toast and creamy country gravy. Come 'n get it at a special sale price!

**Dairy Queen**

**This Monday March 15 thru Sunday March 21 only.**

**SALE \$1.69**  
Only at participating stores.

**DK-42y**

**Proven yield performance with tolerance to Biotype E greenbugs**

Get your share while supplies last. See your DEKALB dealer today.



**WELCOME**

To The

**Hansford County Livestock Show**

*Congratulations*

To Our Young Exhibitors

**LET'S ALL ATTEND!**

To be held in Gruver

Friday, March 19

Saturday, March 20

**NORTH PLAINS ELECTRIC CO-OP**

435-5482 Hwy

83 N, Perryton, Tx.

**For out-of-town business, picking up a phone can cost less than dropping a line.**



The stamp on a letter is only a small part of the cost of doing business by mail. You have to include the cost of secretarial time, materials, mail handling and overhead. That adds up to something like \$6.63\* You can do a lot of business with long distance for that amount, take care of orders faster, and save time and energy as well.

Plus you never have to lick stamps.



St  
po  
hr  
Dr  
ge  
p.  
Su  
  
yc  
di  
ce  
wi  
yo  
  
SE  
dry  
doz  
Lee  
Gru  
12-  
  
SI  
O  
P.M  
hot  
nac  
scho  
Ct  
620  
infor  
Re  
stam  
doub  
Lic  
to 12  
  
You  
Ser  
410  
Spe  
115  
  
Now  
till 6  
Cour  
Addi  
years  
come  
Open  
659-3  
14-8t  
  
17:  
  
S &  
Ca  
cc  
  
P  
W  
Dra  
  
145-



You are cordially invited to attend

a Wedding Shower

Honoring

Mrs. Ken McClellan (nee Sharon Sheets)

on Saturday, March 20, 1982

from 2:00 - 3:30

Fellowship Hall of the

First Christian Church

HOSTESSES

Irene Baker, Betty Davis, Frankie Sloan, Velma Sanders, Penny Ralston, Lorene Kunselman, Lo Ree Booth, Dorothy Haner, Gwen Smith, Bernice Brown, Bonita Reimer, Ruth Bryan, Jean West, Dorothy Haner

18-2tp T ONLY

Join the 1982 Cancer Crusade

Can people help protect themselves against cancer? The American Cancer Society will answer a resounding YES during its 1982 educational and fund-raising 1982 cancer Crusade beginning in Hansford County April 4.

'We'll be bringing our neighbors and friends in our County life-saving information that will show them how cancer can be beaten,' declared Mrs. Patsy Hunt of Spearman, Chairman of the Hansford Unit of the Society.

'Governor Clemmons and President Reagan have proclaimed April as 'Cancer Control Month', and we will ask that everyone give generously to support programs of cancer research, education, and patient services', she said.

She pointed out that more than three million Americans are alive today thanks to advances in the diagnosis and treatment of cancer. Low-dose X-rays can now find breast cancers too small to be felt, and the five year survival rate for early breast cancer has risen to 85 percent.

Simple slide tests for hidden blood in the stool help find colon and rectal cancer. The five year survival rate for these cancers is now 71 percent.

'Most lung cancer could be prevented if people would stop smoking,' she continued. Better chemotherapy now controls some forms of childhood leukemia, and better radiotherapy means Hodgkin's disease is no longer fatal when treated early.

The Pringle-Morse Choir will present TEEN, a pop/rock musical for young people. It will be presented Thursday, March 11, at the Pringle-Morse Auditorium beginning at 7:30 p.m.

This will be for the public. A Special Audience consisted of Spearman and Plemons students will view the musical at 1:30 prior to the public performance. The musical is under the direction of Carol Pack. Everyone is invited to attend the presentation of TEEN, there will be NO admission charge.

portable TV with an am/fm radio. The perfect thing to take on a trip, you can plug the TV into the lighter of the car. Your support and cooperation will be greatly appreciated as this is a voluntary program that will benefit our fire department and our community in many ways.

Cigarette smoking blamed for 30% of all cancer deaths. Cancer is predicted to claim 430,000 lives in 1982.

'When cancer touches one out of every four American families, is it any wonder that the Cancer Crusade has a special meaning to people?' she asked.

'Today we're saving the lives of one out of three cancer patients. With our present knowledge and know-how we could save one out of two-if only people were more alert to cancer's warning signals and the safeguards against cancer. The emphasis of this year's Cancer Crusade is action. Early detection is the key to improving the cancer picture and it's something that each of us can help bring about.'

Dahlia Flower Club Met

The Dahlia Flower Club met in the home of Mrs. Ned Turner. Roll call was a 'Texas Laugh'.

Program was given by Hollie Riley. It consisted of events of Texas History.

Refreshments were served to: Louise Archer, Martha Batton, Sammie Bishop, Deta Blodgett, Mabel Edwards, Nelle Evans, Hazel Loftin, Hollie Riley, Ora Sanders, Margaret Shedeck, Cora Smith, Ruth Mary Whitsom and hostess, Jewel Turner.

The Hansford-Hutchinson County Farmers Union will hold a Farm Sale Meeting on Friday, March 12, at Brittain's Restaurant in Spearman beginning at 7:30 a.m.

The meeting is open to the public. Members of the book committee will be upstairs at Hansford County Library from

You are invited to attend a Bridal Shower Honoring MRS. JOHN L. SCHAFFER (Nee: Tammy Dockins) Saturday, March 13 2:00 - 3:30 P.M. In the home of Mrs. Lawrence Anthony 14 Glover Place Hostesses: JoElla Jones, Anita Anthony, Wanda Archer, Virginia Fowler, June Day. Gift selections: Gift Box, Sacks, Western Stamp Store 17S-2tp

Singles Mixer Scheduled Saturday

A social mixer party has been planned for Saturday, March 13, for single men and women at the B&B Farm Industry Hospitality Room beginning at 8:00 p.m. It is for anyone who is single, by divorce, loss of spouse, by never marrying. Age is not a factor either. For those with children a babysitting service is available at the First Presbyterian Church, beginning at 7:45 p.m.

The first event on Saturday night will be conversation, card games, table games, refreshments and fellowship.

The Singles Events developed by the planning committee are two-pronged. Regular social events, like the one Saturday night, is a larger group concept, which might include suppers, outings, sports events and the like. The second prong, for those who are interested, might include small group events focusing on discussion and information.

We encourage all of you to come to the Singles Mixer on Saturday, March 13, at the B&B Industries Building at 8:00 p.m.

At General Telephone... We're Not Simply Talking About Service Improvements We're Making Them In Spearman

At General Telephone, better service isn't just a goal, it's a solid commitment. General Telephone spent over 354 million dollars in 1981 on capital expenditure projects (i.e. new electronic switches, expanded cable projects, modernization), and GTE will spend over 410 million dollars in 1982 to provide you the best telecommunications available.

For Spearman this investment in service improvement is working as shown below. General Telephone is working hard to continually provide you with the best of service.

The Texas Public Utilities Commission (PUC) has established certain standards in public hearings, and our service results are listed against those standards.

Table with 4 columns: Texas PUC Standards, January 1981, Most Current Figure. Rows include: % customer calls answered promptly, % service order commitments met as promised, % local calls completed on 1st try, % direct dialed long distance calls completed on 1st try, % out-of-service trouble cleared within 8 working hours.

New York: Koch to run for governor. Answers To Sport Quiz: 1. Andy Bean, 2. Ayako Okamoto, 3. Maryland 47, Virginia 46 in overtime, 4. 195, 5. Heans in first round KO.

You are cordially invited to a bridal shower honoring Julie Farr bride-elect of Dedric Brockman March 13 from 2 to 4 p.m. B & B Hospitality Room Hostesses: Anita Sumner, Gayle Porter, Linda Beeson, Linda Venneman, Lynn Renner, Rose Cummings, Donnie Mitchell, Peggy Winegarner, Geri Davis, Laura Bridges

Volunteer Fire Department To Sell Suncatchers

The Spearman Vol. Fire Department thanks you for your continuous support and interest. Because of members and friends of the Spearman Vol. Fire Department, we have been able to provide our station with many extras to improve the quality of it, due to previous selling of spice sets. Your usual cooperation and support for this worthwhile program will be appreciated. This year we plan to build a kitchen at the station.

To make the project more fun, we have awards for the achievers. For those selling at least 12 suncatchers, they will receive a glow-in-the-dark frisbee. The prizes range from the frisbee to an electronic football game, to a 5" black and white

We have chosen a special product to sell in order to raise the required funds. Saturday, March 13th will be the kickoff day for the sale. Any children that would like to help the department by selling the suncatchers needs to come by the fire station at 10:00 a.m. Saturday. We will send with the children a special set of sun catchers and literature on how the program works.

It is our belief that the children should not sell door-to-door. Your parents and friends are the key, so we are asking you to show the product and/or information to your friends, relatives, and co-workers. They make ideal gifts, and many businesses have placed orders to give as gifts to employees and customers. Mother's Day is coming up shortly and they would make ideal Mother's Day gifts.

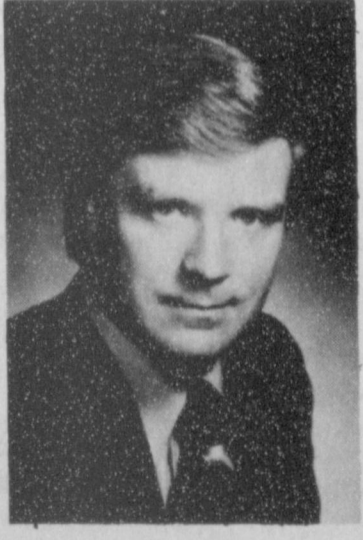
ON DEFICIT The top economist in Congress dismissed President Reagan's budget forecast as far too optimistic and warned of 'the very grim outlook' for rising deficits well above \$100 billion for each year into the foreseeable future.

SHIPS MONITOR COAST U.S. destroyers have been dispatched to waters off El Salvador and Nicaragua on intelligence-gathering missions for the past two months, administration officials and intelligence sources said recently.

COSTS-CONSERVATION The federal government no longer needs to spend money to encourage energy conservation because soaring utility rates are forcing people to conserve, Energy Secretary James B. Edwards told Congress recently.

True Value Hardware Stores NEW Egg Art Easter Egg Wrappers \$1.49 GRUVER True Value Hardware Stores 502 Main 733-5082

Noted Hypnotists In Spearman To Help Smokers & The Overweight



dedicated to helping Americans solve these and other problems that have kept them from enjoying their lives to the fullest.

The subject of numerous newspaper and magazine articles as well as television appearances, Mr. Genthner and his staff have been conducting these seminars throughout the country. In a comprehensive and fascinating three hour program, those who attend the seminar experience the relaxing and beneficial effects of clinical hypnosis. Not only do people permanently lose weight and stop smoking as a result of the seminar, they also report that they sleep better, feel more energetic, and generally enjoy life more than they had previously.

Mr. Genthner's skill in clinical hypnosis was noted by Dan Rather of CBS' '60 Minutes', who referred to him in a nationally televised report as a well-trained and highly experienced hypnotist.

'Clinical hypnosis is the easiest way there is to solve these problems', Genthner says. 'Simply put, it helps to eliminate these types of problems permanently.'

Genthner says that the reason clinical hypnosis is so successful is that 'it removes the causes of problems, not just the symptoms'. For example, he explains: 'People who are overweight go on diets. A diet is only good for as long as you can follow it. Once you stop the diet you re-gain the weight. Hypnosis is permanent because it eliminates the causes of over-eating, not just the symptoms.' The same holds true for smokers where the need to prevent cravings for cigarettes or weight gain is just as important. Both problems are covered at the seminar, and each seminar leader is personally trained by Mr. Genthner. Further information can be obtained by calling, toll free 1-800-645-5454.

Are you overweight or a cigarette smoker? Have you tried to lose weight or stop smoking, only to fail time and time again? If you find yourself answering 'yes' to either of these questions then the Techniques For Living Seminar, under the direction of Wade M. Genthner F.A.I.H. at the Extension Home Makers Club Room, 319 North Bernice Street will be the place for you to be on Wednesday, March 17. Techniques For Living will be conducting their famous Lose Weight - Stop Smoking Seminar which has helped thousands of people throughout the United States. Techniques For Living is a national organization

APRIL calendar graphic. APPLY FOR TAX EXEMPTIONS. If you pay property tax in the State of Texas, there is one important date to remember. April 30 is the last day to file applications for exemptions and to render your property. Several types of tax relief measures are available to Texas taxpayers, but they do not go into effect automatically. Applications must be made to your new county appraisal district, or to local tax offices in appraisal districts which have postponed implementation. Check with the appraisal district or local tax office to find out where to file renditions and applications for tax relief. School districts offer a residence homestead exemption to all homeowners and additional exemptions to persons who are 65 or over or disabled. Counties offer homestead exemptions on their farm-to-market road or flood control tax rate, and may offer optional exemptions to the disabled and elderly. Cities and other jurisdictions may offer optional exemptions for the disabled and elderly. All jurisdictions offer an exemption for certain disabled veterans on one designated property. All may offer an additional exemption of a percentage of the value of your homestead. Productivity valuation is available in all jurisdictions to qualified farmers and ranchers.

HANSFORD COUNTY APPRAISAL DISTRICT P.O. BOX 567 13 WEST KENNETH AVENUE SPEARMAN, TEXAS 79081-0567

The Conce... present... McNeil... American... p.m. S... Borge... Auditor... Adm... by me... The perfor... will progra... musica... cluding... Highlan... drum... duleim... monica... rhythm... around... Their include... Colonia... America... Between... 19th cen... tury, th... and the c... In add...



RUSTY AND KEITH McNEIL, nationally-known folksingers, will perform at 2:30 p.m. March 14 in Borger High School Auditorium. Admission is by showing membership cards of the Tri-City Community Concert Association.

## Folksingers To Give Concert

The Tri-City Community Concert Association will present Keith and Rusty McNeil in a celebration of American folksong at 2:30 p.m. Sunday, March 14 in the Borger High School Auditorium.

Admission to the concert is by membership card.

The McNeils, folk singers, performers and historians, will present a unique program, playing over 30 musical instruments, including 5-string banjo, guitar, Highland bagpipes, African drums, Appalachian dulcimer, clarinet, harmonica, and a collection of rhythm instruments from around the world.

Their areas of expertise include folk music from Colonial America, the American Revolution, the War Between the States, the late 19th century, the turn of the century, the "Roaring Twenties", the Great Depression and the contemporary period.

In addition to the scores of

folksongs, inherited from generations of their own family tradition, the McNeils have carefully researched the folk music of the many immigrant groups which enriches the American cultural "Salad Bowl", the songs which reflect America's major social movements during the past two hundred years and America's religious history through folksong.

For the past 15 years, Keith and Rusty have been bringing America's rich historical and multi-cultural heritage to life through folk music. Their more than 2,000 concerts, their recordings and their work on Public Broadcasting Television have enchanted audiences throughout the United States and Canada.

Between concert appearances they teach five different graduate level courses on American history through folksong at universities across the United States

and Britain, and they continue their extensive research on American history and lifestyles as expressed through traditional and contemporary folk music.

A graduate of Stanford University, Keith McNeil worked as an administrator for the Pacific Telephone Company for 15 years until steadily increasing demands for public performances required Keith and Rusty to devote full time to pioneer this fresh approach to folk music and history.

Keith and Rusty have five children, ranging in age from twelve to twenty-eight, who often join them as they tour the United States and Canada in their thirty-five foot bus-home. When not on tour, the McNeils reside in Riverside, Calif.

## Little League Baseball Summer Camp Program

Little League Baseball takes pride in announcing the opening date for its tenth Annual Summer Camp Program on the beautiful and historic Baylor University Campus.

The first of three two-week sessions begins on June 20. Applicants will be accepted for all three sessions on a first come basis until they are full.

Each camp offers a variety of activities including swimming, boating and volleyball; but with special emphasis on baseball. All of the latest equipment and techniques for training in the skills of baseball will be used, including daily use of batting cages, pitching machines and other items approved by the Research Department of Little League. Basic and advance training is given in all baseball skills, for boys ages 9 through 15 years, in Junior and Senior Divisions. Little League membership is not required.

Additional information can be obtained by calling 817-756-1816, or by writing Little League Baseball, 1612 South University-Parks Drive, Waco, Texas 76706, for brochures/applications.

## Cancer's 7 Warning Signals

1. Change in bowel or bladder habits.
2. A sore that does not heal.
3. Unusual bleeding or discharge.
4. Thickening of lumps in breast or elsewhere.
5. Indigestion or difficulty in swallowing.
6. Obvious change in wart or mole.
7. Nagging cough or hoarseness.

**IF YOU HAVE A WARNING SIGNAL, SEE YOUR DOCTOR NOW!!!**

## Jettie Davis Undergoes Surgery

Mrs. Willard (Jettie) Davis of Spearman underwent surgery at Newman Memorial Hospital in Shattuck, Okla. Tuesday, March 2. She is doing fine and is in room 310. Drop her a card today.

NBC news president Small resigns.

## Mobile Homes No Longer Subject To Vehicle Tax

State Comptroller Bob Bullock has good news for mobile home dwellers -- their homes are no longer considered motor vehicles under Texas tax law.

"Mobile homes have been considered motor vehicles and subject to registration and the 4 percent motor vehicle sales tax since 1941," Bullock said. "The last legislature changed that law and beginning March 1, we will no longer collect motor vehicle taxes on these homes."

Bullock said people who buy a mobile home will obtain a "document of title" from the Texas Department of Labor and Standards instead of registering it as a motor vehicle and obtaining a "certificate of title" from the Department of Highways and Public Transportation.

The new law basically defines a mobile home as a structure providing at least 320 square feet of living area.

"This means travel trailers will still be taxed as motor

vehicles and portable buildings will still be taxed under the sales tax law," Bullock said.

"There will still be a tax on mobile homes which will be collected by the manufacturer," Bullock explained. "During the first year the new law is in effect, the rate will be 4.225 percent of the manufacturer's selling price. After September 1, 1983, the rate drops to 3.25 percent."

"And, there's a use tax provision in the new law," he continued. "This means that anyone who buys a mobile home from an out-of-state dealer is responsible for paying the tax -- which will be administered by the Comptroller's Office."

Under the new law, mobile homes will no longer need to have current motor vehicle registration papers when they are sold, but they will need the "document of title" from the Department of Labor and Standards.

## SATELLITE TELEVISION

Receive up to 60 channels via Satellite

- ★ Christian Networks
- ★ Movie Channels
- ★ Educational Shows
- ★ News Channels
- ★ Sports Channels
- ★ Better Reception

Complete systems ranging from \$4300.00 up plus installation. For more information or demonstration contact:

**Robert Diffie**  
101 E. 12th  
Spearman, Texas  
859-3894

## State honors Lowell B. Robertson

Lowell B. Robertson of Perryton, was recognized for 35 years of service with the Texas State Department of Highways and Public Transportation.

A maintenance supervisor with the highway department, Robertson was presented a service certificate and pin at a ceremony in Amarillo by James N. Moss, Amarillo district maintenance engineer.

Robertson directs maintenance operations on 340 miles of U.S. and state highways and Texas farm roads in Ochiltree County, half of Lipscomb County and part of Roberts County.

He went to work for the state in 1946 as a truck driver in Spearman. He was transferred to Perryton in 1950 and three-years later became assistant maintenance foreman. He became maintenance supervisor in July 1968.

In 1974 Robertson was the Amarillo district nominee for the Lady Bird Johnson Award for Highway Beautification.

Robertson is the son of Mr. and Mrs. S.W. Robertson of Spearman and also a graduate of Spearman High School.

## Girl Scouts-- Going & Growing

It's only fitting that in celebration of Girl Scouting's 70th Anniversary a special effort be made to show appreciation for those who keep Girl Scouts -- "Going and Growing".

The motivating force in Girl Scouting is a spiritual one, and an integral part of every Girl Scout's life is her promise to serve God, her country and mankind. Helping girls become strong members of their own faith, religious groups and Girl Scouting have been partners inspiring girls with the highest ideals of character, conduct, patriotism and service.

The religious community has always been supportive of the goals of Girl Scouting by sponsoring troops, sharing resources and encouraging girls and adults to be active members.

**GIRL SCOUT WEEK**  
MARCH 7-13, 1982

**IMPOSE SANCTIONS**  
Applying further pressure to oppose martial law in Poland, Japan and Canada imposed sanctions recently against Poland and the Soviet Union. The European Economic Community, meanwhile, tightened its restrictions on trade with the Soviet Union.



## NOTICE OF TRUSTEE ELECTION<sup>1</sup> (AVISO DE ELECCION DE REGENTES<sup>1</sup>)

The \_\_\_\_\_ Spearman \_\_\_\_\_ Independent School District Board of Trustees hereby gives notice of an election to be held on \_\_\_\_\_ April 3rd \_\_\_\_\_, 1982, for the purpose of<sup>2</sup> \_\_\_\_\_ electing two trustees for a full three year term \_\_\_\_\_

(Por la presente la junta de regentes del distrito escolar independiente da aviso que se llevara a cabo una eleccion el dia \_\_\_\_\_ April 3 \_\_\_\_\_ de 1982 con el proposito de<sup>2</sup> \_\_\_\_\_ elegiendo dos depositarios por un plazo de tres anos. \_\_\_\_\_

ABSENTEE VOTING by personal appearance will begin on \_\_\_\_\_ Monday \_\_\_\_\_ (day) \_\_\_\_\_ March 30 \_\_\_\_\_ (date) \_\_\_\_\_ and continue through \_\_\_\_\_ Tuesday \_\_\_\_\_ March 30 \_\_\_\_\_ (date) \_\_\_\_\_ 1982, from 8:00 a.m. to 5:00 p.m. on each day which is not a Saturday, Sunday, or an official state holiday.<sup>3</sup> (VOTACION POR AUSENCIA en persona comencera el \_\_\_\_\_ lunesel 15 \_\_\_\_\_ de Marzo \_\_\_\_\_ (dia) \_\_\_\_\_ (fecha) \_\_\_\_\_ de 1982 y continuara hasta el \_\_\_\_\_ Martes el 30 \_\_\_\_\_ de Mar 20 \_\_\_\_\_ de 1982 desde las 8:00 a.m. hasta las 5:00 p.m. en todos los dias que no sean sabado, domingo, o dia oficial de vacaciones estatales.)

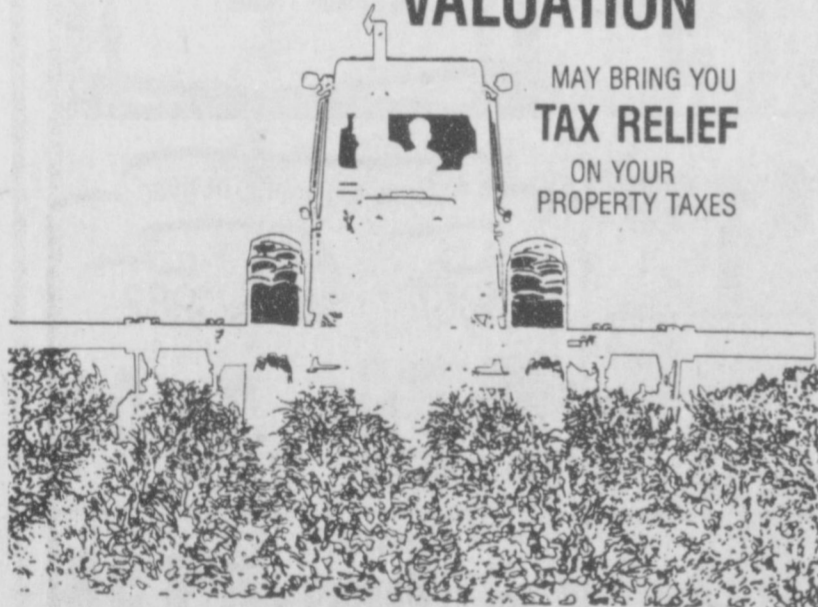
Absentee voting in person shall be conducted at \_\_\_\_\_ School Business Office, \_\_\_\_\_ 403 E. 11th Street, Spearman, Texas \_\_\_\_\_ Applications for absentee ballots by mail should be mailed to \_\_\_\_\_ School Business Office \_\_\_\_\_ 403 East 11th Street, Spearman, Texas 79081 \_\_\_\_\_ (Votando por ausencia personal va ser conducido acerca de \_\_\_\_\_ oficio de negocios de \_\_\_\_\_ la escuela 403 este 11, Spearman, Texas \_\_\_\_\_ Solicitudes para una boleta de ausencia por correo deben dar vuelta por correo al \_\_\_\_\_ oficio de \_\_\_\_\_ negocios de la escuela, 403 este 11, Spearman, Texas \_\_\_\_\_

The POLLING PLACE(S)<sup>4</sup> designated below will be open from 7:00 a.m. to 7:00 p.m. on the day of the election. (Los sitios de votacion indicados abajo se abriran desde las 7:00 a.m. to 7:00 p.m. el dia de la eleccion.)

Pct. No. (Núm. de precinto) \_\_\_\_\_ Location (Colocación) \_\_\_\_\_ High School Building \_\_\_\_\_ el edificio de la escuela secundaria \_\_\_\_\_

## LAND PRODUCTIVITY VALUATION

MAY BRING YOU  
**TAX RELIEF**  
ON YOUR  
PROPERTY TAXES



Under the Texas Property Tax Code, farmers and ranchers who qualify may have their land taxed on the basis of Productivity rather than Market Value. Productivity valuation may lower the taxes on your agricultural or open-space land, but you must apply for the special valuation this year before May 1.

To find out if you qualify and where you should file applications, contact your new county appraisal district, or local tax offices in appraisal districts which have postponed implementation.

While there, ask for your free copy of our pamphlet, *Taxpayers' Rights, Remedies, Responsibilities!* Or write to us and we will send you a copy.

**P.O. BOX 567**

**13 WEST**

**KENNETH AVENUE**

**HANSFORD COUNTY**  
**APPRAISAL DISTRICT**  
SPEARMAN, TEXAS 79081-0567

### Johanna Kleeberger Services Held

Rosary services for Mrs. Johanna M. Kleeberger, 86, mother of Dr. R.L. Kleeberger, were read at Borwell Brothers Funeral Home Chapel Sunday, March 7, at 7 p.m. Funeral services were held at 10 a.m. Monday, March 8th, at the Sacred Heart Catholic Church with the Rev. Fr. Raymond Crosier, Pastor, officiating. Burial was Wednesday in St. Mary Magdalene Cemetery in Omaha, Neb.

Mrs. Kleeberger died last Thursday.

She had been a resident of

Spearman since 1955. She was a member of the Sacred Heart Catholic Church, the Ladies Altar Society, the Hansford Hospital Auxiliary, the 20th Century Club and the Spearman Music Club.

She married Clarence A. Kleeberger in 1917 in Omaha, Neb. He died in 1957.

Survivors other than her son include three brothers, George Schneider of Omaha, James Schneider of San Diego, Calif. and Arthur Schneider of San Diego; and two sisters, Clara Archer and Mildred Anderson, both of San Diego.

## Cattlemen Ready To Meet Consumer Demand For Leaner Beef

FORT WORTH, TEXAS, March 1, 1982 -- The cattle industry stands ready to meet the growing consumer demand for leaner beef. It supports efforts of the U.S. Department of Agriculture to update grading standards to reflect leaner grades of beef, says John S. Cargile, president of Texas and Southwestern Cattle Raisers Association, based here.

"We feel our industry has a mandate from consumers for a flavorful and tender product that is not wasteful or overly

fat," Cargile said in testimony before USDA in Dallas February 25.

Cargile, representing 14,000 cattlemen in Texas, Oklahoma and surrounding states, was one of several spokesmen for cattle, packing, retail and food service industries commenting on USDA's proposed beef grading changes.

USDA was asked by Cargile to make five revisions in its proposals to more adequately assure that beef quality be

fully maintained. The TSCRA revisions would require that palatability within each grade be more uniform and dependable than under present or proposed standards.

Cargile cited both scientific research and industry experience to show that the eating quality of Choice beef under TSCRA's proposals would be equal to that under present standards. And, furthermore, beef available under the new standards generally would

have more edible meat per pound or dollar. Consumers would get more for their money.

Marbling, the tiny flecks of fat in the meat tissue, has been overemphasized in predicting beef's palatability under present and proposed USDA standards, Cargile said.

This has caused cattlemen to over-feed cattle with expensive grains to get them to grade Choice. That extra fat ends up

with the packer and on the consumer's dinner plate.

Other carcass traits, like fat cover, should be used in addition to marbling to guarantee the desired taste, tenderness and juiciness in beef, Cargile said. USDA should require about three-tenths of an inch of external fat over the 12th rib of the carcass on an adjusted basis before young cattle can grade Choice. Carcasses should have fat that is white in color, an indication that the beef received some

finishing on grains. Yellow fat color denotes forage finishing and beef finished on forage generally lacks the desired flavor and tenderness.

TSCRA also asked USDA to retain the Standard grade in its standards.

Cargile said the proposed system could readily provide highly marbled beef for certain types of restaurants that insist on it as well as leaner beef for other parts of the food service industry and the retail store trade.



Den, Pack 578 toured Stationmaster's Museum recently. Shown above left to right are Stephen Reynard, Mark Brown, Jeff Hutchison, Eugene Brown, Mac Sheppard, Steve Davis, Scott Slater, Brandon Baker, Chris Williamson at top, and Kim Williamson assistant leader. Jo Linda Hutchison is the den leader.

Domenici budget plan said interesting.

Watt cited for contempt of Congress.

Soviets repeat proposal-massive nuclear reduction.

Israel may strike against PLO arms buildup.

Inflation rate smallest increase since July, 1980.

Savings & loan industry may get new powers.

Kansas City: Hyatt walkways didn't comply with code.

Senate liberals end anti-busing bill fight.

Government will sell unneeded lands.

### Sloan to instruct tax appraisal courses

Troy Sloan has been selected by the Education Division of the State Property Tax Board, Austin, Texas to instruct courses in property taxation. Sloan was also approved by the Texas Education Agency for Adult Continuing Education Courses at Amarillo College. Mr. Clair Mays in charge of Adult Education for Amarillo College has scheduled State Property Tax Board Course #315, entitled "The Valuation of Oil and Gas

Properties" for Sloan to teach beginning March 29 at the college. The Texas Association of Assessing Officers notified Sloan last week of teaching assignments in Austin, in April and September. Instructing AAO Course #420, entitled "The Valuation of Open Space Land".

Sloan has 30 years experience in the property tax appraisal field. He holds the TAAO designation of Certified Texas Assessor and the Board

of Tax Assessor Examiners Designation of Registered Professional Appraiser. Sloan completed the state property tax board's instructor training course in November 1981 at Austin, Texas. Sloan is a past president of the Region I Chapter of the TAAO and has taken an active role in promoting education and understanding of the many new tax laws passed by the Texas Legislature in the last two congressional sessions.

### Dormant Oils-Effective Insecticides

This is the season to apply dormant oils for controlling some of the hard-to-kill insects on trees and shrubs. Properly prepared petroleum oils are effective for controlling pests as scale insects, mites, insect eggs and some hibernating caterpillars, according to Jim Smith, Hansford County Extension agent. Oils kill insects and mites by suffocation or by

penetrating the breathing tubes. Insect eggs are killed because of interference with the gas exchange through the shell.

When compared to insecticides, oils have the advantage of being less expensive, give good covering action, residues of oils on fruit and nut trees are exempt from tolerance and oils are safe to handle. However, oils are toxic to most leaves, have low toxicity to many insects and are relatively unstable in solutions.

Dormant oils can be applied any time trees and shrubs are in the dormant stage. However, oil is most effective if applied in late winter or early spring just before the buds start to crack. Application should be made when temperatures are between 40 and 65 degrees Fahrenheit. Freezing weather within 48 hours of treatment may cause the oil to be less effective.

When mixing and applying dormant oils, extreme care should be taken to use only the amounts recommended by the manufacturer. Tree trunks and insect infested limbs should be thoroughly covered with the application. Some trees tolerant to normal applications of oil may be damaged if oil is applied in excessive amounts. Strict attention should be given to getting thorough coverage, yet avoiding excessive application of the oils.

## Treasure In 2002

Travel with us into the future to the year 2002. Events which happened this year have become memories. Look, there's your child or your grandchild--perhaps, it's a great-grandchild turning the pages of a book, handsome but old. One story is especially appealing to the reader. Look over their shoulders, learn what has their interest. It's your story--your family history.

This glimpse in the future can come true. Hansford's family history book will not be complete unless it includes a biographical account of each and every family. You have a second chance to be included in Hansford's Volume II. Remember that you are doing it for them.

It's not too late! However the time is now. We are closing the family story section on March 16. We are finishing the work on the stories that we now have and after the 16th of March they will be sent to the publisher. Members of the book committee will be upstairs at the Hansford County Library building on March 15 and March 16 to help you finish the stories that you are working on. Please, let us help you. We want your family to be included.

On March 15 and 16 upstairs at Hansford County Library we will be accepting the pictures that you want included in the stories that you have already submitted.

### Our Heritage of Faith

Peace and joy are found in the Savior Jesus Christ. This we wish for everyone. The Lord makes us whole and keeps us strong who trust Him. This message we are determined to declare.

This Sunday the sermon theme is: Laws and Rules Are Meant to Direct Us to Jesus. The text is Exodus 20:1-7.

Sunday School is at 9:45 a.m.

Worship with Holy Communion is at 10:45 a.m.

Sunday evening study and worship is at 6:30 o'clock. A dramatic monologue will be presented entitled: "I Condemned Him, Pilate Speaks".

A cordial welcome awaits members and visitors--especially those without a church home.

Bruno Gaskamp, Pastor

The Pringle-Morse Choir will present TEEN, a pop/rock musical for young people, on Thursday, March 11, at the Pringle-Morse Auditorium beginning at 7:30 p.m. The choir will be under the direction of Carol Pack. The choir students will give a special performance beginning at 1:30 p.m. prior to the public performance on Thursday at Spearman and Plemons school kids. Everyone is invited to attend. There will be NO Admission Charge.

## TAX RELIEF?

If you are 65 or over and are paying school taxes on your residence homestead, you are eligible for an additional homestead exemption and a tax freeze.

Texas law provides for a standard \$5,000 exemption off the market value of a residence homestead for school tax purposes. If you are 65 or over, you are entitled to an additional \$10,000 exemption off the market value of your homestead. And, if you are entitled to the 65 or over exemption, the school taxes on your residence homestead cannot increase after you apply and qualify for this exemption, unless you make improvements to your homestead.

It is important to remember that these tax relief measures do not go into effect automatically. You must file for the exemptions this year before May 1. Contact your new county appraisal district or local tax office for more information and a copy of our pamphlet, *Taxpayers' Rights, Remedies, Responsibilities!* Or write to us and we will send you a free copy.

### HANSFORD COUNTY APPRAISAL DISTRICT

13 WEST KENNETH AVENUE  
P.O. BOX 567 SPEARMAN, TEXAS 79081-0567

### RECIPE

By Sarah Anne Sheridan

Chocolate has a universal appeal to appetites young and old. The recipe that follows can be prepared several hours before serving.

#### Chocolate Cream Pudding

- 1 1/2 c milk scalded
- 2 T cocoa
- 1/4 t salt
- 4 T sugar
- 1 1/2 T cornstarch
- 1 egg, well beaten
- 1/4 c cold milk
- 1/8 t almond flavoring
- 1/2 t vanilla extract
- 1/2 c cream, whipped

Combine cocoa, 2 tablespoons sugar and cornstarch. Mix smooth with 1/4 cup cold milk.

Add to scalded milk, stirring constantly. Cook over boiling water, stirring, until smooth and thickened. Combine beaten egg and 2 tablespoons sugar; slowly add cocoa mixture. Return to double boiler and cook, stirring all the time--about 3 minutes. Cool. Add flavorings, then half of whipped cream. Turn into serving dish. Top with remaining cream. Chill until serving time.

The Pringle-Morse Choir will present TEEN, a pop/rock musical for young people. It will be presented Thursday, March 11, at the Pringle-Morse Auditorium beginning at 7:30 p.m.--this will be for the public. A Special Audience consisted of Spearman and Plemons students will view the musical at 1:30 prior to the public performance. The musical is under the direction of Carol Pack. Everyone is invited to attend the presentation of TEEN, there will be NO admission charge.

#### U.S. OIL PRODUCTION

Crude oil production in the United States increased as crude imports continued to decline in January 1982. The American Petroleum Institute reported recently.

	ALL GRINDS <b>FOLGER'S COFFEE</b> 1 LB. CAN	<b>\$2.19</b>		REAL TEXAS	REAL TEXAS STYLE
	ALL PURPOSE <b>GLADIOLA FLOUR</b> 5 LB. BAG	<b>\$1.19</b>		<b>BBQ SANDWICH</b>	
	SUNSHINE <b>KRISPY CRACKERS</b> 1 LB. BOX	<b>79¢</b>		<b>99¢ ONLY</b>	
	DETERGENT <b>KING TIDE</b> BOX	<b>\$1.99</b>		If it's Borden, it's got to be good	
	SLANT <b>BROOMS</b>	REG. 2.99 <b>\$1.79</b>	1857  1982		
	TEXAS CATTLE CO. <b>BARBEQUE SAUCE</b> 16 OZ. jar	<b>49¢</b>	 <b>BORDEN'S HI-PRO MILK</b> 1/2 GAL. CTN. <b>\$1.09</b>		
	JOHNSTONS GRAHAM CRACKER <b>READY CRUST</b>	<b>59¢</b>	 <b>BORDEN'S ASSORTED SHERBET</b> 1/2 GAL. <b>\$1.59</b>		
			PRICES EFFECTIVE MARCH 11-13, 1982 WHILE SUPPLIES LAST		
			 <b>ALLSUP'S CONVENIENCE STORES</b>		
			"THERE'S ONE NEAR YOU"		

# Pringle-Morse Choir Rotary Club News Lose Weight/Stop Smoking Program March 17

## to present TEEN

TEEN, a pop/rock musical for young people, will be presented Thursday, March 11, in the Pringle-Morse Auditorium in Morse, at 7:30 p.m. The Pringle-Morse Junior High Choir, under the direction of Carol Pack, will give the musical for a special audience of school students from Spearman and Plemons at 1:30 prior to the public performance Thursday evening.

The musical, written by Roger Emerson and Richard Derwinson, has eleven musical selections and several special dances. The special dances were choreographed by Mrs. Shari Wilkinson. The story is a slice of a teenager's life from Friday to Monday. It encompasses many of those incidents associated with becoming a teenager; first love, dances, teenage birthday parties, teenage rebellion, and the change of attitude towards greater independence which earmarks the teenage years. It is handled in a light-hearted style and reflects a positive approach to the joys and disappointments of becoming a teen.

The CAST members include-TEACHER--John Lieb, MARY--ShaLynna Harris; RYAN--Jason Rodgers; LISA--Julie Jones; SCOTT--Thad Reid; JENNEY--Cindy Womble, MICHAEL--Marvin Ziegelgruber, 1st BOY--Robert Stewart; 1st GIRL--Patty Southerland; 2nd BOY--Matt Jones; 2nd GIRL--Tammy Crawford; 3rd BOY--Brian Ralph; 3rd GIRL--Angela Boutista; 4th GIRL--Cami Ralph and 4th BOY--Charles Roper.

The CHORUS consists of Sharon Hutchinson, Fred Wetsel, Delwin Russell, Carol Poole, Carson Womble, Kyle Crawford, Kathy Poole, Michael Farmer, Billy Joe Thompson, Martha Stewart, Slaid Jones, Danny Redwine and Pat Shields.

Everyone is cordially invited to attend the presentation of TEEN. There is no admission charge.

The Pringle-Morse Choir will present TEEN, a pop/rock musical for young people, on Thursday, March 11, at the Pringle-Morse Auditorium beginning at 7:30 p.m. The choir will be under the direction of Carol Pack. The choir students will give a special performance beginning at 1:30 p.m. prior to the public performance on Thursday for Spearman and Plemons school kids. Everyone is invited to attend. There will be NO Admission CHARGE.

\*\*\*\*  
The human race will be greatly improved when men attend to the business of improving themselves.

-----  
Federal study of smoking marijuana inconclusive.  
-----  
Reagan to ban oil imports and sales with Libya.

### ED GARNER RECOGNIZED

Ed Garner was recognized by John R. Collard as one of the elite in Rotary International by becoming a Paul Harris Fellow. Paul Harris, the founder of Rotary International, is memorialized through the Rotary Foundation Award to men and women in whose name \$1,000 has been donated to the Rotary Foundation. Garner was recognized and given a certificate, lapel pin and medal designating him as a Fellow of the Foundation.

The Rotary Foundation, among other things, provides scholarships for young adults to continue education in a foreign country. In 1981-82 there were 1,221 Rotary Scholars, 634 men and 587 women, who studied in 65 countries. These students study in the country and upon returning to their home country share the culture and customs and experience of the study at local Rotary Clubs. They truly become ambassadors of peace and goodwill.

### FOUNDATION RECIPIENT TO SPEAK MARCH 15

Adra Gregg of Amarillo and student at Lubbock will be speaking to the Spearman Rotary Club on Monday, March 15. Miss Gregg was a Rotary Foundation recipient in 1981 and studied at the University of Costa Rica as a Spanish linguist. She will be sharing her educational and cultural experiences during her year in Costa Rica.

### MARY LOU WYSONG SHARES CHAMBER SERVICES

Mary Lou Wysong, Spearman Chamber of Commerce manager, was the guest lecturer at the March 8 Rotary Club meeting. Mrs. Wysong who has led the local Chamber for many years, shared with the club the services available to Spearman through the Chamber.

Local chambers of commerce are independent autonomous entities, serving the business and professional men and women in each community.

The Spearman Chamber, by choice is a member of the West Texas Chamber and the United States Chamber. The reason for the membership in these two chamber groups is that the work each of these chambers does contributes greatly to the work of the local chamber.

The West Texas Chamber, for example, serves a large geographic section of Texas. El Paso to Kirville, Irving to Abilene and the combined input from these individual chambers and the organization of the West Texas Chamber combines to offer a great amount of expertise and leadership. This larger Chamber is able to provide a liaison to Austin and legislation pending, community development ideas sharing, professional training of professional chamber personnel and businessmen and sharing of ideas in industry.

The United States Chamber of Commerce helps provide good materials for the local chambers through publications, media interpretation for slide and audio presentations, magazines, like Nations Business or a newspaper "Washington Report". Congressional Handbook for communicating with congressmen, booklets for interpretation of chamber work and the like.

Membership in the local Spearman Chamber of Commerce then ties the individual or businessman to Spearman, Texas and the United States through organization that can keep that person involved and informed on issues important to that businessman or professional. The total organization also provides expertise and forums for development in the legislative, community development and industrial sectors of the community, state and nation. A bargain indeed.

Mary Lou invites everyone to come by the new office and use the services available including: The Phone Mart, rental information, gift certificates and job referrals. Also, come by and join.

### THE MAN WHO HYPNOTIZES PEOPLE

He gazes intently into the woman's eyes as he softly speaks a few words. Within seconds, her eyes close, her body sags and all of her muscles go comfortable slack and relaxed. Especially startling is the change in her features as she slumps forward - twenty years of age seem to melt away from her face. After a few more moments of listening to his deep, yet velvety soft voice, the woman begins to smile. And then, as suddenly as it began, it is over - a snap of his fingers awakens her. She feels as good as she would after a full night's rest. In fact, she has been hypnotized for scarcely three minutes.

Who is this man? A modern day Merlin? A scientific Svengali? Who has this kind of power? The answer is Wade M. Genthner, a hypnotist who has helped well over a hundred thousand people solve problems from obesity and nail-biting to cigarette smoking and migraine headaches. Beginning with a small private practice in suburban New York, Mr. Genthner eventually began traveling throughout the entire United States, bringing his unique program of clinical hypnosis to communities where such help never existed before.

Author, lecturer, teacher, and counselor, Mr. Genthner often flies his own plane to many areas, where his seminars consistently draw standing room only audiences. His lose weight/stop smoking seminars are particularly popular; audiences are held spellbound by his dynamic, energetic presentations. But why are people so suddenly obsessed with losing weight through hypnosis?

"Because they're tired of not being all that they're capable of!" Genthner will answer. "Everyone who attends the seminars has tried to lose weight or stop smoking before, most of them fairly recently. Years ago, however,

we were much more willing to accept being overweight as a family problem, or a thyroid problem, or some other type of problem. What we were really doing, of course, was making excuses for ourselves." Genthner goes on to say that our youth-and-beauty oriented society has forced people to re-examine themselves. "And they don't like what they see. People are tired of being fat. Even more than that, they're beginning to realize that they don't have to be this way. We all have the right to look good and feel good about ourselves. And unless we do - life just isn't as much fun."

In these group seminars Genthner uses clinical hypnosis to help people lose weight and stop smoking. "Hypnosis is effective", he says, "because it takes away the causes of these problems as well as the habits."

"Getting rid of these problems is very much like pulling weeds from a lawn.", Genthner smiles. "Going on a diet or taking pills to lose weight would be like pulling those weeds up by the top - it goes away for a while, but comes right back again. Hypnosis produces permanent weight loss - it's like digging up those weeds by the root. Since the cause of the problem is gone, it never returns."

Ever since he appeared on a CBS documentary on hypnosis with Dan Rather, the demand for Mr. Genthner's services has been overwhelming. Letters and telegrams arrive daily from around the world requesting appearances at hospitals, universities, and law enforcement conferences. He also lectures at medical and psychological conventions as well as at major universities throughout the United States.

Mr. Genthner's lose weight/stop smoking program will be held at the Extension Home-maker's Club Room, 319 No. Bernice St., Wednesday, March 17. Further information and reservations can be obtained by calling toll free, 1-800-

645-5454. The interested public is invited to attend. Genthner is particular to stress the meaning of the word "interested". "We perform no magic show", he stresses. "I will work only with those who have a sincere desire to lose weight or stop smoking. If you don't fit into either one of these categories - please don't waste

your time. I'm only interested in those people who really want to be successful because those are the only people who will lose weight and stop smoking."

If history repeats itself, dozens of people in the Spearman area will find those very things happening to them.

## Air Injection For Water Wells

LUBBOCK--A technique long used to extend the life of an oil field may be able to prolong the life of the Ogallala Aquifer.

Secondary recovery methods, which have squeezed additional barrels of oil from old fields, are being applied to test water wells and the results are being reviewed by Texas Tech University civil engineers.

Texas Tech Civil Engineering Professor B.J. Claborn said conventional pumping techniques in both oil and water wells only extract approximately a fourth of the liquid in an underground formation. The remainder of the liquid is held by capillarity, or surface tension, among the grains of sand in the aquifer.

Oil companies have for years pumped water or air into the ground to break the bonds of capillarity and to herd the crude oil toward a well where it can be recovered. A. Wayne Wyatt, general manager of the High Plains Underground Water Conservation District No. 1, which is overseeing the project, originated the idea of secondary water recovery.

"Everyone's first reaction," Claborn said, "was to laugh. But the more everybody thought about it, the more we began to say 'Why not? I don't think any of us are totally convinced it is going to work, but we hope it will.'"

By summer's end, Claborn said some answers on the feasibility should be known because of information being gathered at a 140-foot-deep test well near Slaton. Analysis of the old well has shown that in each cubic foot of sand from aquifer

60 percent of the space is occupied by the sand itself, 30 percent by water and 10 percent by air.

After an oil well is drilled, normal production methods will bring to the surface about 25 percent of the oil. Another 25 percent is retrievable with secondary recovery techniques, Claborn said.

"We are discovering we have done about the same thing in our water wells--recovered only a fraction of what is down there," Claborn said.

But Claborn cautioned that this preliminary finding is based on only one well. From other reports, Claborn indicated the amount of water remaining in an old well may vary widely depending on the well's location and the characteristics of the aquifer.

One prerequisite for employing secondary water recovery is some type of "cap" over the aquifer, Claborn said. The cap is a formation through which air or water will not readily pass. When air is pumped under great pressure into a well, the water is forced to move away from the air source between the cap and the impenetrable bedrock. In this way water can be pushed toward another well.

At least that's the theory that is being tested.

"We will have a much better idea about air injection before the summer is over," Claborn said. "We should know if it is technically feasible and, if not, why."

Should the process prove technically feasible, the study will be extended to examine economic feasibility Claborn said.

## The Future of This Nation Rests on ... Youth in Agriculture

We Salute Today's Youth ...Tomorrow's 'Agri-Leaders'!

THE 4H CLUBS AND FUTURE FARMERS OF AMERICA NEED YOUR SUPPORT!

ATTEND...

The Hansford County Junior Livestock Show and Sale Friday & Saturday March 19-20

Gruver, Texas

The Spotlight Is On The Annual

Junior Livestock

Show & Sale



FIRST STATE BANK

\$100,000 maximum insurance for each depositor

SPEARMAN, TEXAS 79081

### Busters Dusters, First State Bank & J.G.'s

# Undefeated After 3 Weeks

As the third week of volleyball competition ended, it seemed that all the new faces were just beginning to get to know the experienced players that they were playing with or playing against. There are seven teams competing in the 1982 Spring Volleyball League of the YMCA-women, of course. So far, the standings show that 3 teams are undefeated--the Busters Dusters, 4 Gruver players, 2 Spearman, First State Bank and J.G.'s--all are 2-0. Two have not as yet won a game--Agco and Sparks Bros., both at 0-3. Thriftway is 2-1 and Bulls Inn is 1-2. All of these seven teams have at least 1 new face in the bunch.

The first game of the night was between Busters Dusters and Thriftway. Those playing on the Busters Dusters were Melyn Johnson, Sandra Mills, Merry Shelton, Connie Davis--all of Gruver, Mollie Holton and Cynthia DeArmond--both of Spearman--now who says that Spearman and Gruver can't play together? This Busters bunch gets along fine, play well together and were undefeated in the Winter League, that they plan on repeating so in the Spring League, by defeating all their opponents. Those that played last night, Monday night--March 8, for Thriftway were Marsha Pipkin, Debbie Schumann, Kim Vanderburg, Mary Schumann, Peggy Winegarner and Tina Woolley. The new players included from Busters, Connie Davis, from Thriftway Peggy Winegarner and Tina Woolley. The Busters Dusters won both sets, the first with some trouble--15 to 5, but the second with ease--15 to 1. Thriftway will play Agco next Monday night beginning at 9:15, while Busters will take on J.G.'s beginning at 8:30 p.m.

The second game of the night consisted of First State Bank taking on Agco. Once again the teams had new faces. Familiar faces of First State Bank included Ann Donnell, Debbie Benton, Edith Cage. One of the new faces was Ginger Coffee. As far as the familiar faces of the Agco team, Cindy Schneider, Carla Riggins, Denise Donnell were familiar, with some help from Hazel Shieldknight and Donita Lusby--of J.G.'s. Although both teams had two "new" players--sort of speak, First State Bank prevailed by winning in two sets--15 to 5 and then more easily--15 to 2. Next Monday, First State Bank will play Bulls Inn at 7:45 p.m. and then Agco will take on Thriftway in the "night-cap" beginning at 9:15. In the Winter League, First State Bank had been second only to Busters Dusters, their preme goal is to be better and be second to none, by eliminating all their opponents and then Busters. Can it be done? As Ricardo M. puts it, "Anything is possible" especially in volleyball.

Sparks Bros. took on Bulls Inn in the 3rd and final game--that counts, I might add. The game started at 8:30. New faces, yes, indeed. Those that had played together in the Winter League included Peggy Varmon, Beth Stauffer, Sharon Whitefield, Kitty Edwards and Gina Davis--these being from the Bulls Inn team. Their new "recruit" happens is Suzanne Lane. Since Bulls Inn did have 6 players, they told Sparks Bros. to get another player, who happened to be from Thriftway,

Mary Schumann. Others playing included Cindy Crooks, Leslie Needham, Melinda Sasser and Glee Rea. Sparks Bros. couldn't get it together enough and lost the first set 15 to 3. Then they started playing as a team and got closer 15 to 6. Next Monday, Sparks Bros. will be the team that will be in the "practice game" at 7:00 p.m. against Agco. Bulls Inn will have their hands full because they will be facing First State Bank in what will probably be a GREAT game.

J.G.'s went up against Thriftway in what is called in the Spring League a "Practice Game", that way the team that would have had a BYE, in this case J.G.'s will show up and play as if it is a real game just to stay in shape for the real competition. The way this game was played, it seemed both teams wanted to win for some reason and win awful badly. It went into 3 sets--this probably being a foreshadowing of what will happen when these two teams do meet in real competition to determine a Place--1st, 2nd, 3rd, 4th, or so on. The first thing is that J.G.'s didn't exactly have new players, but had a player that had not played during the Winter League--that being Verna Strawn. Others that had played included Sharon Cook, Hazel Shieldknight, Donita Lusby, Glenda Guthrie and Kari Schumann. Of course, Thriftway had 2 new players--Peggy Winegarner and Tina Woolley, along with the regulars, Marsha Pipkin, Debbie G. Schumann, Mary Schumann, and Kim Vanderburg. The first set was won by J.G.'s 15 to 13, J.G.'s had to come from behind because they were behind by 5 points at one time. Thriftway players got on their toes and just swept passed J.G.'s without looking back for their tracks--15 to 1. So now it was set, two sets had been played, both teams winning won. Which team would win the last one. It seemed that both teams wanted the game badly, although both knew it would not count for or against their record. In this final set, both teams were having great serves, terrific set-ups for spikes, some terrific spikes and people hustling so much that if one was on the floor, no one would be surprised--because they were trying to save a point against them. During that final set, one of the J.G.'s players bended her Pinky backwards, getting out of place, joint or something or other--that player being Verna Strawn. Now it was

6 against 5. Of course, Thriftway was not gonna want to play with 6 and their opponents with 5, so Debbie Benton, coordinator of the Volleyball League was asked. All players agreed, play resumed. J.G.'s went up by as many as 8 points. Thriftway started making their move. They tied the game at 14, one team had to win by 2. J.G.'s finally did 16 to 14. Now, don't forget, this game does not count or go against the record Thriftway will be playing against Agco beginning at 9:15 for the final game of the night. J.G.'s will go up against Busters at 8:30 p.m.

So 3 teams are tied for 1st and 2 for last.

The next volleyball games will have in the 7:00 p.m. game on March 15, Sparks Bros. going up against Agco. This

game will not count--in other words, this will be the "practice game" for the night. Don't forget the game will begin at 7 p.m.

At 7:45, Bulls Inn will take on First State Bank. This could be a very good game, it could go either way.

Beginning at 8:30, J.G.'s will tackle Busters Dusters--this too, should be an interesting game.

The final game of the night will begin at 9:15. It will be between Agco and Thriftway. Some of the 3 undefeated teams could get defeated, a couple could or one could. There will not be 3 undefeated teams after Monday, March 15. Why? Well, two undefeated teams are going up against each other--Busters Dusters and J.G.'s.

All the games are played at the Little Gym.

There are 4 very important rules that every team must abide by: 1. Must have 2 players to call the net/lines after your team plays!

If your team plays at 7:00, you will call at 7:45.

If your team plays at 7:45, you will call at 8:30.

If your team plays at 8:30, you will call at 9:15.

And if your team plays at 9:15, you will call at 7:00.

Rule #2--Best two out of three games determines--this meaning a game will be won by a team winning 2 out of 3 sets. Must win by 2 points. A game where there are two equal teams, a game could go on forever--and that's a long, long time.

Rule #3--There will be Two time outs per SET.

Rule #4--the Sponsor Fee is \$50.00.

7th, 8th & V	March 12	at Sunray
7th, 8th & V	March 19	at Stratford
VARSITY	March 20	at Canyon
7th, 8th & V	March 26 & 27	Spearman Meet at Stinnett
7th, 8th & V	April 2&3	District Meet at Spearman
	April 6	

### Tennis Teams To Participate

#### In Stratford Tourney

The Spearman High School Tennis teams--boys and girls--will be competing in the Stratford Tourney. Their coach for this year is Robin Travis. Coach Travis has a feeling, he has a boys and girls team.

The Tournament--Stratford--is scheduled for this Friday and Saturday, March 12 and 13. The tennis players, like the tracksters, basketball and football players, appreciate all the

support their local fans give them. Some of the guys, with the support of their local fans, could be another Bjorn Borg, or even Chris Evert-Lloyd.

With the track girls going to Sunray and the boys going to Gruver, some of the local fans might be able to squeeze in the Stratford Tennis Tournament in their "supporting the school teams" Moto.

### Track Boys To Travel To Gruver

The 7th, 8th and VARSITY Lynx--those in Track--will be participating in the Gruver Greyhounds Relays. The coaches are Coach Jimmy Duncan, Coach Dan Shaver and Coach Tom May.

The guys have been practicing during school and some after school. Coach Duncan is optimistic of this year's group of tracksters. The Greyhound Relays are really tough--having lots of other teams, tough in fact. The VARSITY Lynx will be planning on winning some of the Trophies at the Greyhound Relays, possibly the

team Trophy. The Meet is scheduled for this Saturday, March 13. Don't forget that those that will compete will be the 7th, 8th and VARSITY "Track" Lynx, at the Greyhound Relays this Saturday, March 13. Try and see if you can possibly make it, these bunch of guys would appreciate all the support that they can get at Gruver.

The Hansford-Hutchinson County Farmers Union will hold a Farm Sale Meeting on Friday, March 12, at Brittany's Restaurant in Spearman beginning at 7:30 a.m. The meeting is open to the public.

7th, 8th & V	March 13	at Gruver
VARSITY	March 20	at Whitedeer
7th, 8th & V	March 26 & 27	Spearman Meet at Stinnett
7th, 8th & V	April 2 & 3	at Stratford
VARSITY	April 16	District Meet at Perryton
	April 24	

The Hansford-Hutchinson County Farmers Union will hold a Farm Sale Meeting on Friday, March 12, at Brittany's Restaurant in Spearman beginning at 7:30 a.m. The meeting is open to the public.

PRICES GOOD THRU MARCH 14TH

PLAY CASINO BINGO

# CASINO BINGO - HAVE YOU SUPER PROMOTION

QUANTITY RIGHTS RESERVED

NABISCO PREMIUM CRACKERS

**69¢**

1 LB. BOX

RANCH STYLE CHILI NO BEANS 19 OZ.

**98¢**

DORITOS

**\$1.39**

REG. \$1.89 ALL TYPES

ENCYCLOPEDIA of the ANIMAL WORLD

FEATURED THIS WEEK

VOL. 4

**\$1.99**

WITH 200 SAH GREEN STAMPS

WITH THIS COUPON EACH

GOOD MAR. 7 THRU MAR. 13

REGULAR DR. PEPPER DEODORANT

**6 PK. 32 OZ. \$1.89**

+ DEPOSIT

22 OZ. 4 BAR PACK **\$1.39**

PLAINS RED RING ICE CREAM

**\$1.39**

1/2 GAL.

UNITED BREAD

**2 FOR 89¢**

1 1/2 LB. LOAF

FOLGER'S COFFEE

**\$2.29**

1 LB. CAN

DOUBLE STAMPS WITH A \$2.50 PURCHASE OR MORE EXCLUDING CIGARETTES

**SAT.**

PEPSODENT TOOTHPASTE

**98¢**

6.5 OZ. LABEL

FLINTSTONE VITAMINS

**\$2.29**

60 CT. REG. & PLUS IRON

KELLOGG'S RICE KRISPIES

13 OZ. **\$1.29**

CHOCOLATE NESTLE'S QUIK

2 LB. CAN **\$2.39**

### Track Girls To Compete At Sunray

The 7th, 8th and Varsity Lynxettes will travel to Sunray to compete in their first track meet of 1982. Their coaches seem to be optimistic for this year's squad. Last year there were lots of Lynxettes that went to Regionals--this year is another year, with fresh new players.

The Track Meet is planned for this Friday, March 12. Coach Ralph Newton is the coach and Coach Terry Crocker also. The athletes--any kind of

athlete--appreciates all the support they get from their local folks. Of course, it is hard for lots of folks to go to some of the track meets, but just being there in mind would be fine, too. See if some of y'all can go over to Sunray and boost the 7th, 8th and VARSITY "Track" Lynxettes to lots of victories.

Don't forget, the track meet is set for this Friday, March 12. Those competing are the 7th, 8th and Varsity Lynxettes.

April 1	at River Road
April 5	at Dalhart
April 17	at Spearman
April 24	at Perryton

March 22	at Booker
March 30	at Spearman
April 2 & 3	at Amarillo Relays
April 5	at Dalhart

"GARDEN FRESH PRODUCE"

RED RIPE CALIFORNIA STRAWBERRIES PINT

**59¢**

CALIFORNIA ZIPPERSKIN TANGERINES LB.

**39¢**

CRYSTAL WAX WHITE ONIONS LB.

**49¢**

ZUCCHINI SQUASH LB.

**49¢**

RUSSET 10 LB. BAG POTATOES

**\$1.29**



# 16 feet higher than year ago . . .

## Lake Meredith at 83 feet

Lake Meredith is wintering well and waiting for spring rains to bring its depth up from the present 83-foot level at the Meredith dam near Sanford.

The Canadian River lake, which cuts across the southeast edge of Moore county, is well above the critical low of 67 feet and dropping this time a year ago.

"We're just rocking along now waiting for the spring rains," declares John Williams, manager of the Canadian River Municipal Water Authority.

The authority provides lake water for municipal use to 11 member cities, from Borger and Pampa south 180 miles to Lamesa.

This winter's healthy water

supply is in sharp contrast to the lake situation a year ago, which Williams and National Park Service officials declared was "critical".

Not only was the dipping lake level threatening water supplies, but was closing off recreational facilities to Panhandle sportsmen.

All but one of the lake's major boat ramps were closed by the receding lake level by early summer when the Meredith depth bottomed at 64.12 feet.

A record 30-day rise, last August and September, brought the lake depth up to almost 85 feet.

"We have only lost 1 1/4 feet of depth in the last two to three months

to use and evaporation," Williams reports.

He adds that the cities are only taking an 80 percent water allocation now.

"The board of directors and the cities wanted to continue conserving water so the lake won't be drawn down rapidly to a critical level," he explains.

"If spring rains are good, there could be an increase in water allocations," the CRMWA manager adds.

This week, Lake Meredith has 318,000 acre feet of water in storage and a surface area of 9,150 acres. An acre foot of water is equal to 326,000 gallons approximately.

The Pringle-Morse Choir will present TEEN, a pop/rock musical for young people, on Thursday, March 11, at the Pringle-Morse Auditorium beginning at 7:30 p.m. The choir will be under the direction of Carol Pack. The choir students will give a special performance beginning at 1:30 p.m. prior to the public performance on Thursday for Spearman and Plemons school kids. Everyone is invited to attend. There will be No admission CHARGE.

### SRA Tests Given Here

In March the SRA Achievement Series will be administered to all Junior High School Students. The SRA Achievement Series is designed to provide information about student achievement through a battery of subtests in the following areas of Reading, Mathematics, Language Arts, Reference Materials, Social Studies and Science.

The dates are as follows:  
 5th Grade--March 2, 3 & 4  
 6th Grade--March 8, 9 & 10  
 7th Grade--March 16, 17 & 18  
 8th Grade--March 23, 24 & 25  
 Parents, may I encourage you to make every effort for your child to be in attendance on these dates. It is much easier to take the tests with the group than individually.

Thank you, Mrs. Alfrod

## MARCH EVENTS

The Spearman High School has been busy and will continue to be busy for the rest of the month of March. If there aren't any Track Meets, Tennis Tourneys, Stock Shows, Choir Concerts then there are installations, cake decoration classes and even trips--the vacation-type of trips. The first week of the SHS activities has already been completed, a rundown of the activities show that on March 1, there was a Cake Decoration class, beginning at 7 p.m., during the whole week--March 1-6, the Houston Stock Show took place, and also the schools--all the schools--recognized Public School Week by having an open house on Tuesday, March 2, from 6:00 to 7:30 p.m. Another cake decoration class began at 7:30 p.m. March 3, the students were on the Alternate Bell Plan with 2 2nd hours--the Student Council met. The Speech and Drama Club traveled to Tulia to the Speech Tournament on Thursday, March 4 and finally, the D.E.C.A. members traveled to Lubbock on March 5 and 6 for the Area 6 Contest. Kevin Rook brought home 1st Place in Service Station Retailing, Becky Byers won 3rd Place in Food Marketing and Shawn English brought home 3rd Place in Pre-Employment Lab Contest. The rest of the activities are as follows:

- MARCH 8--A combined Choir Concert at Perryton. And a Cake Decoration Class will begin at 7 p.m.
- MARCH 9--"Mrs. Uselton HERE". A Cake Decoration Class to begin at 7 p.m.
- MARCH 10--Choir Concert--Sight Reading Contest
- MARCH 12 & 13--Tennis Tournament at Stratford, both boys and girls.
- MARCH 12--7th, 8th and VARSITY girls Track Meet at Sunray.
- MARCH 13--7th, 8th and VARSITY boys Track Meet at Gruver.
- MARCH 15--Cake Decoration Class beginning at 7 p.m. The NHS--National Honor Society will install new members beginning at 10:00 a.m., it will be Alternate Bell Plan Day.
- MARCH 16--Cake Decoration Class beginning at 7 p.m.
- MARCH 15--Student Council Trip.
- MARCH 18--Band Contest
- MARCH 19--7th, 8th and Varsity girls Track Meet at Stratford.
- MARCH 20--VARSITY Girls Track Meet at Canyon. VARSITY Boys Track Meet at White Deer
- MARCH 19 & 20--The Hansford County Stock Show to be held at Gruver.
- MARCH 22--Cake Decoration Class beginning at 7 p.m.
- MARCH 23--Cake Decoration Class beginning at 7 p.m.
- MARCH 24--Choir Concert--Jr. High and Mors.
- MARCH 25--One-Act Play Contest at River Road.
- MARCH 26 & 27--The Spearman Tennis Meet. The Spearman Track and Field Meet.
- MARCH 27--The Jr./Sr. Prom to be held. And the District Literary Events.
- MARCH 29--Cake Decoration Class beginning at 7 p.m.
- MARCH 30--Cake Decoration Class beginning at 7 p.m. The Choir Spring Variety Show beginning at 7:30 p.m.
- MARCH 31--Career Day.

The Hansford-Hutchinson County Farmers Union will hold a Farm Sale Meeting on Friday, March 12, at Britany's Restaurant in Spearman beginning at 7:30 a.m. The meeting is open to the public.

## Peliculas Mexicanas

### 'Picardia Mexicana,

#### Numero Dos'

La Pelicula Mexicana para este Domingo el 14 de Marzo se llama "Picardia Mexicana, Numero Dos". Esta Pelicula va estar bien buena porque va salir Vicente Fernandez. Cuando sale Vicente Fernandez en una Pelicula, lo unico que puede ser BUENA!!

Los actores y actrices que van a salir con Vicente son Hector Suarez, Lalo--"El Mimo", Marcela Delgado.

Actores invitados--Delia Magana, Merle Uribe, Arsenio Campos, Carlos Riquelme, Pedro Weber--"Chatanuga", Mario Zebadna--"Colocho", Leandro Espinoza, Lina De Mur, Judith Velazco, Ana Maria De Panama, Irma Porter y Polo Salaz.

La Pelicula Americana para el 10 hasta el 16 de Marzo se llama "Sharky's Machine"--esta Pelicula se trata de un hombre y su pistola. En esta Pelicula hay mucha jente que se pelelian y hay mucha sangre.

Cuando ballan para el cine en los Domingos en la tarde o por la noche; el Miercoles por la noche; el Jueves por la noche; el Viernes por la noche or el Sabado por la noche, los "Gran"--Adultos--los que tienen 60 hasta los que tienen 100--pagan \$2.50; los Adultos--los que tienen 13 hasta los que tienen 59--pagan \$3.50 y los Jovenes--los que tienen 6 hasta los que tienen 12--pagan \$2.00.

Juan Avila o la Senora Maria Antonia Avila le va decrietes de que se trata la Pelicula Mexicana que viene para el 21 de Marzo.

Mucha jente va a ver una Pelicula Americana que les gusta en los Lunes y Martes por la noche, porque nomas pagan \$2.00.

La Oficina del triato Lirico de Spearman se abre a la 1:30--este es solamente para las Peliculas Mexicanas cada Domingo en la tarde--La Pelicula se comienza a las 2:00 de la tarde. Por la semana en la noche, la Oficina del Triato Lirico de Spearman se abre a las 7:00 de la noche y la Pelicula se comienza a las 7:30 de la noche.

La Pelicula Mexicana para la semana que viene--el 21 de Marzo--se llama "El Fantasma Del Lago". Esta Pelicula va estar buena tambien.

Hugo Stiglitz, Aparece, desaparece, atraviesamos...Y se enamora de la que fue su esposa tres siglos atras!!

Los actores y actrices que van a salir en "El Fantasma Del Lago", son Monica Prado, Rene Casados, Tito Junco, Delia Magana, Antonio Bravo, Paco Hopis, Regino Herrera y Ramiro Ramirez.

Si quieren saber mas de la Pelicula que viene--"El Fantasma Del Lago"--prendan sus radios a KRDF-FM 98 en Spearman, y pongan el Senor Pero, si van pa el cine el Lunes o Martes por la noche todos--Los "Gran"--Adultos, Adultos y los Jovenes--pagan

# RICHEST, EASIEST YET WON YET?

## PLUS SUPER SPECIALS

**ANNOUNCING PERRYTON WINNERS:**



Lee Ann Garland   Shirley Hill   Tom Toohey

**\$100 WINNER**   **\$100 WINNER**   **\$50 WINNER**

350 WINNERS  
Tim Ruber  
N.T. Berryhill  
Randell Payton

510 WINNERS  
Colleen Ondrusko  
Virginia Koch  
Penny Scibner

**WILSON SMOKED SAUSAGE**

MEAT OR BEEF

**\$1.78**

1 LB.

**WILSON CERTIFIED MEAT BOLOGNA**

**\$1.39**

1 LB. PKG.

**SWIFT TENDR LEAN PORK CHOPS**

**\$2.98**

1 LB.

**WILSON CERTIFIED MEAT FRANKS**

**78c**

12 OZ. PKG.

**WILSON SMOKED PORK CHOPS**

**\$1.98**

1 LB.

**SWIFT TENDR LEAN PORK CRY-O-VAC TENDERLOINS**

**\$2.49**

1 LB.

**SWIFT TENDR LEAN PORK LOIN CENTER CUT**

**\$2.88**

1 LB.

**WILSON HALF HAMS**

WATER ADDED

**\$1.79**

1 LB.

**WILSON CERTIFIED BACON**

**\$1.59**

1 LB. PKG.

REDEEM YOUR DEVILLE STONEWARE COUPONS THRU MARCH 13TH

**DOUBLE STAMPS**

WITH A \$2.50 PURCHASE OR MORE EXCLUDING CIGARETTES

**WED.!**



**"MAXI-CUP" PARKAY** . . . . . **79c**

1 LB. TUB

**KRAFT ORANGE JUICE**

64 OZ.

**\$1.69**

**PILLSBURY CRESCENT ROLLS**

8 OZ.

**79c**

**"FROZEN FOOD"**

**GREEN GIANT CORN ON THE COB**

4 CT. PKG.

**98c**

**BANQUET DINNERS**

ALL TYPES EXCEPT BEEF & HAM

**59c**

**FLEISCHMANN'S EGG BEATERS**

16 OZ.

**\$1.29**

**COLONIAL GERMAN CHOCOLATE CAKE**

24 OZ.

**\$1.69**



THURSDAY 3/11/82

CABLE	[3]	[4]	[5]	[7]	[8]	[9]	[10]	[11]	[12]
PM	OETA	KAMR	TMC	KVII	CBN	WGN	KFDA	WTBS	CNN
	Oklahoma City	Amarillo	Movie Channel	CH.7	Christian Netwrk	CH.9	CH.10	CH.17	Cable News Netwrk
6:00	MacNeil-Lehrer Report	News	Prog Cont'd	News	Weekend Gardener	Barney Miller	News	Carol Burnett and Friends	Moneyline
6:30	Oklahoma Report	M*A*S*H		You Asked For It	Another Life	Laverne & Shirley	Entertainment Tonight	NBA Basketball	Sports Tonight
7:00	All Creatures Great and Small	Fame		Police Squad: Buson Buddies	National Geographic Special	Movie: 'The Killers'	Magnum, P.I.	Utah at Atlanta	Primenevs/120
7:30			Movie: 'Resurrection'						
8:00	Movie: 'South Pacific'	Diff'rent Strokes		Barney Miller	700 Club		Knots Landing		
8:30		Gimme A Break		Taxi				TBS Evening	
9:00		Hill Street Blues		20/20		News	Nurse	News	Freeman Reports
9:30			Movie: 'Four Assassins'		Sing out America				
10:00		News		News	Nashville RFD	Barney Miller	News	All In the Family	Sports Tonight
10:30		Tonight Show		Nightline	Another Life	Saturday Night	NCAA Basketball	Movie: 'That Man in'	Newsdesk
11:00	Sign Off			Vegas	Burns & Allen		First Round Tournament	Istanbul'	
11:30		Late Night with David	Movie: 'Valentino'		Jack Benny Show	Movie: 'Under the Yum-yum'			West Coast Report
12:00		Letterman		Sign Off	Married Joan	Tree'			People Tonight
12:30		Sign Off							

THURSDAY

FRIDAY 3/12/82

CABLE	[3]	[4]	[5]	[7]	[8]	[9]	[10]	[11]	[12]
PM	OETA	KAMR	TMC	KVII	CBN	WGN	KFDA	WTBS	CNN
	Oklahoma City	Amarillo	Movie Channel	CH.7	Christian Netwrk	CH.9	CH.10	CH.17	Cable News Netwrk
6:00	MacNeil-Lehrer Report	News	Prog Cont'd	News	Good News	Barney Miller	News	Winners	Moneyline
6:30	Oklahoma Report	M*A*S*H	Movie: 'Toby and the'	You Asked For It	Another Life	Laverne and Shirley	Entertainment Tonight	Sanford and Son	Sports
7:00	Washington Week/Review	NBC Magazine	Koala Bear'	Benson	National Geographic Special	Movie: 'Clambake'	Dukes of Hazzard	Movie: 'Big Bob Johnson and His Fantastic'	Primenevs/120
7:30				Movie: 'Hot Stuff'					
8:00	Movie: 'Auntie Mame'	Movie: 'The Great American Traffic Jam'	Movie: 'Any Which Way You Can'		700 Club		Dallas	Speed Circus	
8:30									
9:00				Strike Force		News	Falcon Crest	TBS Evening News	Freeman Reports
9:30					Sing out America				
10:00		News	Movie: 'Foxes'	News	Nashville RFD	Barney Miller	News	All In the Family	Sports Tonight
10:30		Tonight Show		Virginian	Another Life	NBA Basketball	NCAA Basketball	Movie: 'My Sister'	Newsdesk
11:00	Bennett and Basie Together	SCTV Comedy Network		Nightline	Burns & Allen	Chicago at Los Angeles	First Round Tournament	Eileen'	West Coast Report
11:30					Jack Benny Show				
12:00			Movie: 'The Hand'	Fridays	I Married Joan	Saturday Night			People Tonight
12:30					My Little Margie		Sign Off	Movie: 'The Frozen Dead'	

FRIDAY

March Presidents

Four early American presidents were born in March.

James Madison, fourth U.S. president, was born at Port Conway, Virginia, on the 16th in 1751. Madison steered the nation through the War of 1812 with England successfully (having been secretary of state before becoming president) and helped found the University of Virginia.

Andrew Jackson, seventh president and known as Old Hickory, was born near the South Carolina-North Carolina border March 15, 1767. He once threatened to use force if one or more states seceded. He was the hero of the victory at New Orleans over the British and when he took office a herd of common people moved into Washington, and some into the White House. He was a controversial (especially in financial affairs) but successful president.

Grover Cleveland, the only president to serve two terms interspaced with four years out of office, was the 22nd and 24th president, being born on the 18th in Caldwell, New Jersey, in 1837. Cleveland was a man of character and a statesman. Having opposed the free coinage of silver, he left office in 1897 somewhat unpopular but time vindicated his wisdom.

John Tyler, 10th U.S. president, was born at Greenway, Virginia, on the 29th in 1790. Tyler was the first Vice President to move into the White House because of the death of a president, William Henry Harrison, in 1841. He broke with the Whigs, however, and was not renominated by them in 1844. He voted for secession years later when Virginia seceded from the Union and was elected to the Confederate House but died before he took his seat, in 1862.

\*\*\*\*  
If you want to be happy, never set your mind upon anything which is in the power of others to withhold.

\*\*\*\*  
It's always easy to stand on the sidelines and criticize the players.

\*\*\*\*  
People who reach the end of their road are often surprised by what is not there.

\*\*\*\*  
The best course to follow in most political conversations is the silent one.

\*\*\*\*  
People are curious. If they were not, there would be little progress in the world.

\*\*\*\*  
Every man, woman and child should continue to study throughout life; there is no saturation point for knowledge.

ABOUT YOUR HOME

HOME

Try one of the new short-hair styles for spring and summer. They should be easier to keep and more comfortable.

By April Rhodes

Now is pruning time for American holly, evergreens, foundation shrubs and boxwoods.

Even if you are a city or urban resident, you can boast of a spring garden if you have room for flowers. Select one or several tomato or pepper plants, etc., to try first.

Beds for planting spring annuals should be prepared early enough to allow the fertilizer and soil to become well blended.

**KITE FLYING SAFETY RULES**

- FLY SAFE
- A child with a kite can generate hours of fun. Make sure it's safe by teaching your child the flying safety rules before hand. Check the kite before flying and go with your child if possible. Safe kite flying is fun for any age.
- USE ONLY WOOD, PAPER STRING and never use metal or any kind of wire for kite string.
- FLY YOUR KITE ON BRIGHT, SUNNY DAYS. Never fly a kite on a rainy day. A wet string can become a conductor of electricity.
- STAY AWAY FROM POWER LINES AND ANTENNAS. Choose an open field away from power lines and poles. If your kite should become tangled in a power line, don't try to pull it down. Call us and we'll get the kite down for you.

Texas-New Mexico Power Company  
#E10-82

Now that's First Convenience

- 1 Mini Bank** Like a bank within a bank. Choose the convenience of our Motor Bank. 24 hour depository, or indoor walk-up teller windows. You may open new accounts or transact other banking business quickly and easily.
- 2 Motor Bank** Six lanes of fast, easy banking. Easy in, easy out access, and you never have to leave the comfort of your car. Open Monday through Thursday from 9 a.m. to 3 p.m., Friday until 6 p.m.
- 3 Extended Hours Of Motor Bank** Open 33 hours a week for your convenience. Open Fridays until 6 p.m. to help you handle those last minute banking details before the weekend. Plus our after hours depository gives you 24 hour access, seven days a week.
- 4 Automatic Savings & Automatic Payments** Make payments or deposits to your savings without ever lifting a finger. We do it for you — automatically. You may authorize us to transfer money from checking or savings regularly to pay loans or to build a savings nestegg.
- 5 Location** We're located in the heart of downtown Perryton, convenient to the entire northeast Texas Panhandle. You can get to us easily and quickly from just about anywhere.
- 6 Convenience Of A Full-Service Bank** We offer added convenience by allowing you complete "one stop" banking. From checking to savings. Loans for business, personal or real estate use, trust services to NOW accounts, we can do it all for you.

**First National Bank**  
Perryton, Texas  
806/435-3676  
Member FDIC

We're The Bank You Call "First"

SATURDAY

SATURDAY 3/13/82		[5]	[7]	[8]	[9]	[10]	[11]	[12]	
AM	OETA	KAMR CH.4 Amarillo	TMC Movie Channel	KVII CH.7 Amarillo	CBN Christian Network	WGN CH.9 Chicago	KFDA CH.10 Amarillo	WTBS CH.17 Atlanta	CNN Cable News Ntwrk
7:00	Flintstones Comedy Show Smurfs	Prog Cont'd	Super Friends Thundarr/ Goldie Gold!	Contact Lesson	U.S. Farm Report Tomorrow	Popeye/Olive Comedy Show Tarzan/Lone Ranger/Zorro	Commanders	News/Sports/Weather Inside Business	
8:00	Once Upon a Classic	Kid Super Power Hour	Movie: Thief	Action Jack Comedy Hour Laverne & Shirley	Financial Inquiry Weekend Gardener	Rex Humbard Issues Unlimited	Adventure Hour Bugs Bunny Road Runner	Against the Wind	Money Week Style
9:00	Sneak Previews This Old House	with Shazam Space Stars	Richie Rich/Scooby & Scrappy Doo Show	Jimmy Houston To Be Announced	Charlando Car Care Central	Superman	Movie: 'Rebecca'	Special Report News	
10:00	Woodwright's Shop Profiles in American Art	Spiderman & His Friends	Movie: 'Caveman'	Fonz/Happy Days Heathcliff/Marmaduke	Fresh Idea Rodale's Home Dynamics	Superman Gentle Ben	Blackstar	Moscow Live	
11:00	Magic of Oil Painting Victory Garden	Duffy/Speedy Show Bullwinkle	Movie: 'A Fistful of'	ABC Weekend Specials American Bandstand	Westerners Wild Bill Hickcock	ISHA Class 'A' Basketball Semi Finals	NCAA Basketball Second Round Tournament	Sports Week Newsmakers	
12:00	Dream Called Public Television	To Be Announced	Dynamite	Movie: 'California Passage'	Movie: 'California Passage'	Movie: 'Man with the Golden Arm'	Movie: 'Man with the Golden Arm'	News/Sports/Weather	
1:00	Swinging Over the Rainbow W/Willie Nelson	NBC Sports: Ringside	That Nashville Music Wild, Wild West	Movie: 'In Old Santa Fe'	Gilligan's Island	Movie: 'Games'	Movie: 'Games'	People Now	
2:00		Movie: 'Underground Aces'	Pro Bowler's Tour	Wyatt Earp	America's Top Ten Soul Train	NCAA Basketball: Second Round Tournament	Best of Take Two	News/Sports/Weather Style	
3:00	Movie: 'South Pacific'	Honda Inventory	Movie: 'Death in Venice'	Wagon Train					

SATURDAY CONT.

4:00	Classic	Wide World of Sports	Pink Panther Show	Motorweek	News/Sports/Weather
4:30	Wild Kingdom				
5:00	Shopping Smart News	News	This Week on Wall Street Stan Hitchcock	Solid Gold	Championship Wrestling
5:30					Championship Wrestling
6:00	4 Girls 4	Lawrence Welk	Movie: 'Somewhere in Time'	Hee Haw	Blackwood Brothers Hi Doug
6:30					ISHA Class 'A' Basketball Finals
7:00	Kennedy Center Tonight	One Of The Boys Chicago Story	T. J. Hooker (PREMIERE)	Movie: 'Ships With Wings'	Walt Disney
7:30					Nashville Alive
8:00					Movie: 'The Champ'
8:30					Undersea World of Jacques Cousteau
9:00		McClain's Law			
9:30				Rock Church	TBS Evening News
10:00	News	Movie: 'Underground Aces'	ABC News	News	News
10:30	Dance Fever		News Movie: Heritage Singers		Entertainment This Week
11:00	Sign Off	Solid Gold	'Play It Again, Sam'	American Trail Weekend Gardener	Movie: 'The Front Page'
11:30			Movie: 'Death in Venice'		Movie: 'To Be Announced'
12:00	Sign Off		Movie: 'Kansas City Bomber'	This Week on Wall Street Westbrook Hospital	
12:30					Kravitz
					News/Sports/Weather Best of Fred Saxon

## Hightower Urges USDA To Use Stored Commodities

Congressman Jack Hightower has urged the representatives of two key agencies within the agriculture department to be creative in solving the costly problem of surplus commodities stored in the Texas Panhandle. The commodities are technically owned by the Commodity Credit Corporation (CCC), an arm of the U.S. Department of Agriculture.

In hearings before the agriculture subcommittee of the House Appropriations Committee, Hightower pressed Seeley Lodwick, assistant secretary for commodity programs, and Mary Jarrett, assistant secretary for food and consumer services. The two officials were appearing before Hightower's committee representing the agricultural stabilization and conservation service and the food and nutrition service respectively. The congressman argued that their agencies should be making use of stored commodities instead of merely "sitting on them." Hightower said this would save tax dollars and get rid of reserves that are depressing market prices. Under the present system, the federal government must pay storage on these stored commodities such as corn, wheat, cheese, etc.; if they spoil, the losses are total and the gov-

ernment must cover the cost. "Corn can be used, for example, in both the food for peace program and used as corn meal in many of the programs under the jurisdiction of Food and Nutrition services," Hightower explained to U.S.D.A. officials. "There are some 30 million bushels of #1 to #3-grade corn stored in Texas that could be used for export under public law 480. Or, they could be ground into corn meal for use in the commodity supplemental feeding program."

Hightower went on to say that "These huge national stocks are costing the farmers a great deal in terms of depressing market prices for their products. The taxpayers are paying in terms of storage costs. The corn from the last grain embargo has been in storage for over a year and the U.S.D.A. ought to be doing more than just sitting around waiting for a crop failure from bad weather before moving that excess supply," Hightower commented.

"If you need help from congress, tell me," Hightower said to Lodwick and Jarrett. "I want to help. I will work with you until we start seeing some results."

The Hansford-Hutchinson County Farmers Union will hold a Farm Sale Meeting on Friday, March 12, at Brittany's Restaurant in Spearman beginning at 7:30 a.m. The meeting is open to the public.



The best way to guard against breast cancer is right in your hands. It's called breast self-examination. Ask your doctor to teach you how to do it. And while you're at it, ask him about mammography—a low dose breast x-ray.

For more information, call your local ACS office.

American Cancer Society

This space contributed as a public service.

**Mid-Day Danger**  
Avoid the sun between 10 a.m. and 3 p.m. when ultraviolet rays are strongest, advises the American Cancer Society. Most skin cancer is caused by overexposure to these rays.

Pursuant to a Petition presented to the Court, Hansford County Commissioners Court has authorized an election to be held April 3, 1982 to legalize Bingo in Hansford County for charitable purposes. All voting places will be open. Absentee voting will begin March 15, 1982 and continue through March 30, 1982. An example of an official ballot follows:

Sample

LOCAL OPTION BINGO ELECTION  
HANSFORD COUNTY, TEXAS  
(ELECCION DE OPCION LOCAL DE BINGO  
DEL CONDADO DE HANSFORD, TEXAS)

April 3, 1982 (3 de abril de 1982)

OFFICIAL BALLOT  
BOLETA OFICIAL

Instruction Note: (Nota de Instrucción)  
Place an "X" in the square beside the statement indicating the way you wish to vote. (Marque con una "X" el cuadro al lado de la frase que indica la manera en que quiere usted votar.)

- FOR (A FAVOR DE)
- AGAINST (EN CONTRA DE)

"Legalizing bingo games for charitable purposes as authorized by the Bingo Enabling Act in Hansford County, Texas." ("Legalizar juegos de bingo con propósitos caritativos como autorizado por el Acto Permitiendo Juegos de Bingo en el Condado de Hansford, Texas.")

**EVERYTHING IS REDUCED  
SO MUCH WE'RE PRACTICALLY  
GOING TO GIVE IT AWAY!**

# WALL TO WALL

## Going Out of Business

# SALE

**NOW IN PROGRESS**

Everything in the store, now

# 15% to 25% off

# 30% to 50% off

**YOU MUST SEE IT  
TO BELIEVE IT!**

— NO LAYAWAYS —

**The Fig Leaf**

PERRYTON, TEXAS 814 S. Main

CABLE	[3]	[4]	[5]	[7]	[8]	[9]	[10]	[11]	[12]
AM	OETA	KAMR	TMC	KVII	CBN	WGN	KFDA	WTBS	CNN
	Oklahoma City	Amarillo	Movie Channel	CH.7	Christian Network	CH.9	CH.10	CH.17	Cable News Network
7:00		James Robison Amazing Grace Bible Class	Prog Cont'd	Gospel Jubilee	Lesson Heritage Singers	Discovery 3-Score Calendar What's New	Faith for Today Robert Schuller	Three Stooges Cartoon Festival	News/Sports/ Weather Style
8:00	Candid Campus Norman Rockwell	Day of Discovery Larry Jones Ministry		Kidsworld Rainbow Patch	Kenneth Copeland	Mass for Shut-Ins Chicago Church Hour	Religious Townhall First Baptist Church	Lost in Space	People Now
9:00	National Geographic Special	Rex Humbard Oral Roberts	Movie: 'This is Elvis'	Big Blue Marble Kids Are People Too	Changed Lives Words of Hope	Robert Schuller Sgt. Preston	Sunday Morning	Lighter Side of the News Movie: 'Spartacus'	Newsmaker Sunday
10:00	Life On Earth	Baptist Church		Grizzly Adams	In Touch	Tarzan			News/Sports/ Weather Real Pictures
11:00	Nova	Jimmy Swaggart	Movie: 'I Sent A Letter to My Love'	This Week with David	Newsight '82 American Forum	Cleo Kid Lone Ranger	NBA Basketball Phoenix at Boston		Sports Week Inside Business
12:00	Washington Week/Review Wall Street Week	SportsWorld		Brinkley News	Dr. James Kennedy Religion	Movie: 'Dangerous Money'			Money Week News/Sports/ Weather
1:00	Kennedy Center Tonight		Movie: 'Happy Birthday, Gemin'	SportsBeat Superstars	Words of Hope	Wild Kingdom	NCAA Basketball Championship	Movie: 'Indiscreet'	Little Miseries
2:00		Honda Inverrary Classic		Olympic Sports: USA	Chris Panos Zola Levitt	Exhibition Basketball: Chicago vs. Milwaukee	Game		News/Sports/ Weather Best of Fred Saxon
3:00			Movie: 'North Avenue Irregulars'	vs. the World Wide World of Sports	Special		NCAA Basketball Championship	Mission Impossible	Moscow Live
4:00	Bennett and Basie Together	SportsWorld			Messianic Jewish Voice Jimmy Houston		Game	Championship Wrestling	News/Sports/ Weather
5:00		News	Movie: 'Final Conflict'	ABC News	Lively Country Stan Hitchcock	Movie: 'Sink the Bismarck'		CBS News	Week in Review Inside Business
6:00	Austin City Limits	Father Murphy	Prog Cont'd	Code Red	Judy Lynn Show Blackwood Brothers	Prog Cont'd	60 Minutes	Movie: 'World Without Sun'	Sports Sunday
7:00	Nova	CHIPS		Today's F.B.I.	In Touch	In Search of... People to People	Archie's Place One Day at a Time		News/Sports/ Weather
8:00	Masterpiece Theatre	Movie: 'Wild Geese'		Movie: 'Coma'	American Trail Agony in East Africa	Lawrence Welk	Alice Jeffersons	Week in Review	Newsmaker Sunday
9:00	Rhapsody and Song Tribute to Gershwin				John Ankerberg	News	Trapper John, M.D.	TBS Evening News	News/Sports/ Weather
10:00			Movie: 'I Sent A Letter to My Love'	News	The King Is Coming Contact	Kung Fu	News	Caribbean Nights Open Up	Sports Inside Business

### Financial Aid Available

Financial aid is available to you from a variety of sources to help you meet post secondary education costs. To receive any type of aid, you must make application to the proper source or sources and meet all deadlines which are imposed.

Financial aid may be in the form of a grant, a loan, a scholarship or a job. Many college financial aid officers will assist you with a package which may contain a combination of the above.

Most financial aid is handled by the financial aid office of the college, therefore, an application for financial aid must be filed with the financial aid director. Certain aid is based solely on need, therefore requirements must be looked at very carefully. Most colleges require that the (FAF) Financial Aid Form, be filed with the appropriate company to qualify for some scholarships. All colleges require that the form be filed in order to qualify for any type of federal financial aid. The guaranteed student loan through the bank does not require these forms. The FAF form is available in the counselors office.

CHECK THE FOLLOWING SOURCES FOR POSSIBLE SCHOLARSHIPS:

Local organizations  
Company where your parent is employed

COLLEGE Financial aid director  
Department heads (art, music, athletics, ag, etc.)  
Clubs (look at the catalog)

Basic Education Opportunity Grant (Federal)  
Nursing Schools  
Veterans Administration

SOURCES FOR LOANS:

Guaranteed student loan-bank  
National Defense Student Loan (Apply through the college financial aid office)

Texas Student loan (Apply through the college financial aid office)

Aid is also available through College Work-Study  
QUESTION? WHEN SHOULD I FILL OUT AN APPLICATION?  
Check the college catalog for deadline dates.  
Fill out and mail the FAF after January 1.

### Texas Student Aid Applications

FROM: TEXAS ASSOCIATION OF STUDENT FINANCIAL AID ADMINISTRATORS TO: STUDENTS WHO WANT TO APPLY FOR FINANCIAL AID

As Federal funds begin to dwindle, it is important that a student applying for funds fill out the correct forms as early as legally possible. There are some real potential problems with incorrect applications for aid. It is therefore imperative that the student contact the school he or she is applying to and ask which are the correct forms for financial aid applicants. May I encourage you to do this as soon as possible.

The Pringle-Morse Choir will present TEEN, a pop/rock musical for young people. It will be presented Thursday, March 11, at the Pringle-Morse Auditorium beginning at 7:30 p.m.--this will be for the public. A Special Audience consisted of Spearman and Plemons students will view the musical at 1:30 prior to the public performance. The musical is under the direction of Carol Pack. Everyone is invited to attend the presentation of TEEN, there will be NO admission charge.

The Hansford-Hutchinson County Farmers Union will hold a Farm Sale Meeting on Friday, March 12, at Brittany's Restaurant in Spearman beginning at 7:30 a.m. The meeting is open to the public.

WE WANT TO WIPE OUT CANCER IN YOUR LIFETIME  
AMERICAN CANCER SOCIETY

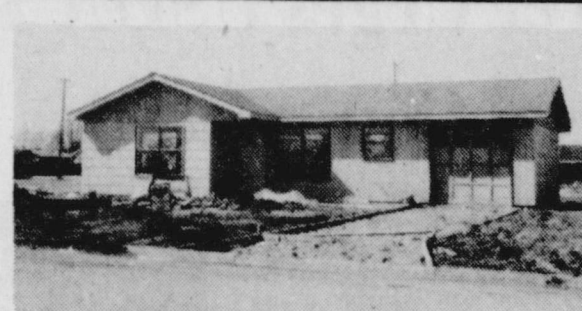
FIGHT CANCER  
WITH A CHECKUP AND A CHECK.  
AMERICAN CANCER SOCIETY

# You can't afford to wait!!!



### 1111 Townsend

Beautiful three bedroom bi-level home in excellent condition. Two living areas, fireplace and lots of extras. Assumable loan with 9.25% interest.



### 20 James Street

Nearing completion -- Two bedroom home has excellent floor plan. Dishwasher, garbage disposal, range venthood. New owner can select colors and floor coverings.



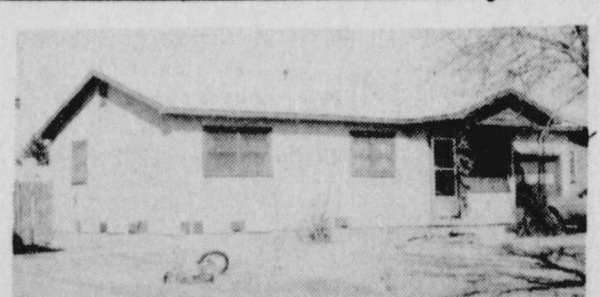
### 211 Lonita

Extremely nice three bedroom home. New carpet. Lots of fruit trees. Immaculately clean home located on corner lot.



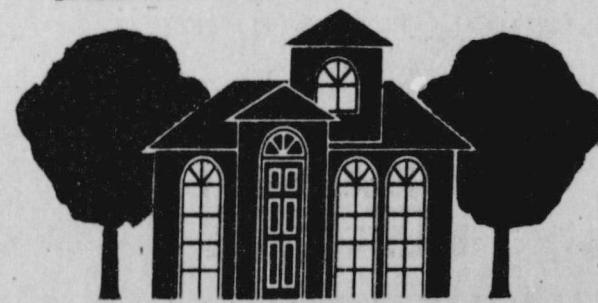
### 210 Bernice

Three bedroom older home with basement and detached garage. Also, extra lot included.



### 1114 S. Haney

Three bedroom home in excellent location. \$29,000. This one won't last long!



## Hoover & Hoover REALTY

601 S. Main • Perryton — 435-6873

David Fronk 658-4450 Margie Dermanelian 438-6023 Blanche Clack 438-6884 Rex Hoover 658-4863 B.J. Hoover 658-4863

SUNDAY

SUNDAY CONT.

**REBATES! REBATES! REBATES! REBATES!**

General Motors and its salaried employees, suppliers and participating dealers have teamed together in an unprecedented program to pass along cost savings from \$500 to \$2,000 to retail car and truck buyers.

**Pontiac**  
J2000 \$750.00  
Phoenix \$750.00  
T-1000 \$500.00

**Buick**  
Skyhawk \$750.00  
Skylark \$750.00  
Century \$500.00

**GMC**  
Pick-ups \$750.00  
Jimmys \$750.00  
Suburban \$750.00  
Vans \$750.00  
S-15 \$500.00

Any '81 or '82 T1000, Phoenix, Skylark or J2000 will be sold at Dealer Invoice, PLUS qualifying for G-M rebate!

The "Let's Get Moving" program is for a limited time only. To qualify you have to take delivery by March 31!

"... where SERVICE is the KEY!"

PONTIAC BUICK GMC TRUCKS

SOUTH HWY 207 (906) 658-3721 SPEARMAN, TEXAS