

C of C feasts; fetes honorees, guests



A.E. "Jr." Lusby is shown with his 'Citizen Of The Year' award received at the Chamber of Commerce Banquet Saturday night. Shown with him are his wife, Dorothy and son, Ronnie.



C of C guest Speaker Ray Stone of Dallas is shown giving the door prize, an autographed Dallas Cowboy football to Irene Baker, the winner. Also shown is Darlene Howell named Rotary Employee Of The Year at the annual banquet.

The aggregate members and guests of the Spearman Chamber of Commerce feasted and feted special honorees at the annual banquet, Saturday evening, moving Dick Elbert out and Ray Ingle in -- and climaxing the affair with the naming of the "Citizen of the Year."

Resident wit Worley Smith, as master of ceremonies, moved the program from invocation to climax with enough banquet barbs and buffoonery to pave the way home with afterglow smiles.

Out-of-town guests were introduced by the Chamber Ambassadors, those fellows usually bedecked in gold blazers with oratory to match.

Then came the ceremonial "passing-of-the-handle" (with gavel head attached) from outgoing President Dick Elbert to incoming Chief Executive Ray Ingle.

The general theme of this part of the program was soon repeated as Carolyn Cummings, 1981 President of the Women's Division of the Chamber of Commerce (WDCC) turned title to the office over to Janet Trospier.

Members recognized the work Carolyn had accomplished by naming her "WDCC Member of the Year."

Other special recognition went to the Spearman Volunteer Fire Department, H&S Ambulance Service, Darlene Howell as Rotary Employee of the Year and a very special presentation to the YMCA's Jim Benson.

Irene Baker won the door prize which was an autographed Dallas Cowboy football.

One cultural aspect of the program -- original poetry by Orvil Brummett -- was moved to nearer the conclusion of the banquet along with the "Citizen of the Year" award and special guest speaker Ray Stone was introduced for his address of the evening.

With his wit and wisdom indelibly ingrained in their Thinking, members and guests moved to the edge of their seats to finally learn the hitherto secret recipient of the climactic honor.

Orvil Brummett, previous recipient of the Citizen of the Year award (he reportedly received it solely on the quality of his original poetry!) revealed by rhyme and meter that the top honor this year would go to ...

A. E. "Junior" Lusby!

ODE TO JR.
"... Got a little ditty to lay in your ear
To honor one of our own...as Spearman's
Citizen of the Year."

It's with much pleasure and pride we present this award
To a person whose efforts have taken this
community forward.

Birth came in the year of 1930, November 2,
the day.
Oklahoma was the state...near Elk City they
say.

High school came with baseball and basketball.
He weighed in at 140 pounds. --Th' t's all!
Now, I don't know if he was head of his class,
But I know he went on to marry a lovely
lass.

The wedding was in 1949, January 24.
You may know who he is but wait! There's
more!
Now a strong desire to be a farmer and work
the land

Caused this lad rapidly to become a man.
With four hungry children to clothe and to feed
And provide all those odds-and-ends that

children need. . .
From Pampa to Spearman the family came --
1956 was the year--to stake his claim.
The earth still seemed to call,
So, with determination to get on the ball
He began his business -- from a one-man stand
To 50 employees -- just to work with the
land.

His company grew -- and grew -- and grew
Until now, he's the best boss his employees
ever knew.
High school for his kids and all the activities
that prevail.

Following all the athletic games, this man
would never fail.
As a Lynx supporter and number-one fan
Win, lose or draw, to him they are grand.
Love of community stirred always in the heart
of this winner

From Red Cross, Salvation Army, Boy
Scouts to Golden Spread Center;
From the YMCA, Union and Baptist churches,
The Chamber of Commerce with all its
searches . . .

To better our community for one, for all,
He has donated his men and machines for
whatever the call:
The airport, the city cleanup -- just to mention a
few --

And, by the way, the M.K. Brown Boy
Scout Camp, too.
Past-president of our Spearman Rotary Club,
He enjoys the fellowship, service and lots of
good grub.

He loves the land though a farmer he became
not.
He leveled a plenty and cleared many a lot.
Dirt by the tons has been moved by force
Because this man is a man of resource.

He is quiet, unassuming, unselfish and caring.
With miles and miles of heart, he's always
sharing.
His love of God and community are reasons
two.

I proudly present a "Junior" to you ...
Mr. A. E. Lusby, stand and take a bow!
--Then come forward and receive our
heartfelt thanks right now."

A Monday morning wag emphasized the
honor and esteem with which the community
holds Junior Lusby when he remarked that folks
must sure enough think a lot of the guy when
they name him Citizen of the Year mostly for
"doin' them dirt!"

With this annual affair -- and others like it --
there is a group that usually does get more
attention than mention and no account of
Saturday at the High School Cafeteria would do
justice to the occasion without a certain special
emphasis.

As C of C members and guests entered the
hall, they were struck by the decorations -- the
work of the WDCC under Chairman Cecelia
Hill.

While the program was coming into meld,
those in attendance were treated to the music of
the Celebrate Singers, an outstanding example
of the talent and its use found in Spearman
High School.

Doris Wilde and the SHS Cafeteria staff had
charge of the meal with John Sutterfield, Fred
Groves, Sam Wysong and Pete Vera tending
steaks with Pat Sutterfield and the Spearman
FHA girls serving them with trimmin's of baked
potato, salad and hot bread.

Many in attendance, Saturday night, have
said in retrospect that one recognition was
lacking: "Most Taken for Granted." It was also
noted this probably was never scheduled
because of possible unavoidable repetition.
Chamber Manager Mary Lou Wysong would
always be far out in front in that competition!
So, from their praise of her made late but in
profusion, we'd like to make informal inclusion
by stealing some thunder from a poetic wonder
... (Don't worry, Orvil, your title of "Poet
Lariat" of Spearman is safe!)

"Ode to Mary Lou"
Here is a woman whose name should be
changed,
So far have her accomplishments ranged.
Getting members to work is really her task
And theory is: only to ask.
But theory seldom works she often has found
Viewing jobs not yet off the ground.
Watching, you'll see this is often the drill:
"Don't do it now. Maybe Mary Lou will."
Watching, you'll find this often is true:
When others don't, Mary do.

To persuade often needs humming bird finesse
Plus the gentleness (?) of a "Too-Tall"
Jones express!
Rather than push -- that's why she's so nice --
She'll take the task and put it on ice.
So, next awards coming through ...
Work up a biggy for little "Mary Do."

4-H'ers Win At Stock Show

Hansford County 4-H'ers exhibited fifteen barrows, fifteen lambs, five steers and three horses at the 1982 Amarillo Stock Show this past week.

Winners were as follows:
Travis Patterson-13th place medium Duroc; Roy Don Gammon, 11th place Medium Duroc; Donnie Hartranft, 4th place Medium Hamp; Trevor Williams, 5th place Medium Cross. In the lamb division-Lynette Williams, 2nd Heavy Hamp; Karla Latta, 4th medium Heavy Suffolk, 9th medium Suffolk; Julie Latta-10th Light Heavy Hamp, 13th Medium Suffolk; Kyla Nelson, 4th place Medium Dorset. In the steer division, Ty Williams, Champion Angus, 7th Heavy Cross; Roy Don Gammon, 2nd Medium-heavy Cross; Trevor Williams, 12th Heavy Cross;

Rex Shook-18th Light Cross. In the horse division, Deana Turner won 4th in Halter, 4th in Showmanship, 1st in Western Horsemanship, 1st in Trail, 5th in Open Trail, 5th in Reining, 6th in Barrels and 5th in Poles. Deana tied for Reserve All Around.

Andrea Archer placed 1st in Reining, 2nd in Poles and 2nd in Barrels.

Jon Garnett entered Showmanship and Halter. D'Lynn Orr won 3rd place in Western Pleasure in year end award for Golden Spread Quarter Horse Association. Andrea Archer was elected secretary for the Golden Spread Quarter Horse Association.

Filing For County Office

County offices coming up for election in November (with party primaries being held in May) are the county offices of county judge, county and district clerk, commissioners in precincts 2 and 4, county treasurer, and justice of the peace of precinct 1.

As of Monday, Jan. 25, the Democratic chairman reported the following had filed: Joe T. Venneman for re-election as County Commissioner Precinct 2; Amelia Johnson for County and district clerk, and W. L. Johnson as precinct chairman, Precinct #7.

Commissioner George Lowe, precinct 4 announced earlier this month that he would not seek re-election to the post he has held for 24 years. Deadline for filing is 5 P.M. February 1.

Spokesman for the Republican party indicates that they have no filings as to date.

Student Council Seeks Help

The Student Council of SHS is asking donations for the Boys' State and Girls' State delegates. Money is needed for their trip and the Student Council is sponsoring them this year. The awards are given to two boys and two girls, usually juniors going into their senior year, who are chosen for their academic skills.

Anyone wishing to help the Council with this project may contact any of these members,

Scott Alford, Kyle Brack, Denae Baker, Shelly Mitchell, Scott Strawn, Lea Ann Gibner, Susan Davis, Nikki Rylant, Nita Baker, Kim Elbert, Mark Guthrie, Cinda Novak, Donna Martin, JoAnne Odegaard, Tammy Savage or Tiki Jackson.



Dana Schnell, Kathye Archer and Mae Reger are the committee in charge of

"Walk On Ads" for the 1982 Fruitcake Revue.

You are cordially invited to a
come and go baby shower honoring
Brenda Fanning Wall and baby girl, Kristi Jan
at the B&B Hospitality Room
703 Collard
Hostesses:
Mary Ooley
Grade McDade
Debbie Benton
Ronda Bynum
Laura Bridges
Edith Cage
Terry King
B.J. Parker
12-2tc

Linns give Baptist \$1.5 mil; new tower to be named for Jim

Fridaylanders Jim and Ann Linn have donated \$1.5 million to Baptist Medical Center to help finance the hospital's new special care tower addition due to open this month.

The contribution is the largest individual gift to BMC in its history and one of the largest ever made to an Oklahoma City hospital, officials said.

Linn, 55, has practiced law here since 1970 and was previously in private practice in Texas. He is a member of the Oklahoma and American Bar Associations and is president of the Oklahoma Symphony board of directors.

The three-floor addition to the tower will bring its height to 10 stories. The addition will be named the James Paul Linn Tower, in recognition of the Linns' gift, with the name mounted on the north side of the building facing Northwest Highway.

A bronze etching of the attorney by Oklahoma artist Paul Lefebvre will be placed in the main floor lobby of the tower area.

Linn, a senior partner in the firm of Linn, Helms, Kirk & Burkett, said he has always had an interest in medicine.

"I'm proud of the medical community in Oklahoma City," he said. "And, I particularly admire the work of the cardiovascular surgeons at Baptist Medical Center. With

their skill and the facilities in that tower, they can save a lot of lives."

Each of the three floors will have 12 beds surrounding a central monitoring station. The two lower floors — eight and nine — will open first. The tenth has been shelved in for future expansion.

BMC has had the city's largest number of critical care beds — 36 — and will double that number with the tower completion. Total cost of the expansion is \$3.5 million.

The original special tower opened in 1974 with three floors of 12-bed units. Each floor has a special designation — coronary care, intensive care and intensive thoracic care.

Because of its leadership in cardiology, Baptist performs more open heart surgery procedures than any other state hospital. The volume has greatly increased the use of intensive care units.

"We had to expand to reduce the strain on our existing facilities," said James L. Henry, BMC president.

"The Linns' generous gift will help us keep pace with the growing demand for critical care services."

The practice of aggregating patients who require extraordinary life support measures was born in the polio epidemics of the 1950s.

Oklahoma City's first intensive care facility of 19 beds was provided by BMC in 1966.

TSTI Rep To Visit Here

Becky Kennan, Admissions Representative, for Texas State Technical Institute in Amarillo, will be in Spearman on Monday, February 22, from 8:15 a.m. until 10:30 a.m., then on to Gruver from 12:30 p.m. until 2:00 p.m., she will be located at the high schools. Kennan will talk to high school students about the programs and training offered at TSTI-Amarillo.

Those programs include: Auto Body Repair, Aircraft Mechanics, Auto Mechanics, Boot and Shoe Operations, Commercial Art, Computer Science, Construction, Cosmetology, Drafting and Design, Diesel Mechanics, Electronics, Interior Design, Industrial Maintenance, Machine Shop Operations, Meat Processing, Printing, Professional Truck Operations, Saddle and Tack Making, Technical Office Training, Transport Refrigeration Mechanics, and Welding and Fabrication.

Kennan will give her presentations in TSTI's Mobile Career Center which seats 25 students comfortably and is equipped with a video tape playback unit and screen.

Annual Groundhog Dinner Set

The United Methodist Women will be serving their annual groundhog meal Saturday, Jan. 30 from 5:30 to 7:30 P.M. in the Fellowship Hall of the church.

Cost of the meal is \$5.00 for adults, \$3.00 for 10 years and under.

The ladies always serve a delicious meal of sausage, pork chops, ribs, biscuits, vegetables, home-made desserts, coffee and tea, with the annual meal looked forward to by Spearman and area residents.

A Pity

The poor man is probably better morally than the rich man, as nearly all sins are expensive.
-Courier, Bristol, Va.

Why

Why is it that whispering a story seems to add authenticity to it.
-Christian Sci. Monitor.

Bridge Club News NEW ARRIVALS

The Senior Bridge Club met Friday, Jan. 22 with Ora Sanders.

Delicious refreshments were served to members, Mathilda Entekin, Mabel Edwards, Ruth Baker, Viola Whitson, Viola Graves, Opal Jones and Alice Lackey.

High score was held by Mabel Edwards, with 2nd high going to Viola Graves.

Next meeting will be Jan. 29 with Viola Whitson as hostess.

Mr. and Mrs. Glen Ray Mackie and their daughter Leah Jo welcomes to their family Jeremy Glen. He arrived at Hansford Hospital January 20, 1982, at 3:47 P.M. He weighed 6 lbs. 10 1/2 lbs., and was 18 inches long.

Grandparents are Adalyn Barnes, and Mr. and Mrs. Glen Mackie. Paternal great-grandmothers are Mrs. Hattie Mackie and Mrs. Viola Hutton.

Catholic Ladies

To Sell

Enchiladas

The ladies of the Sacred Heart Catholic Church will be selling homemade enchiladas Saturday, Feb. 6, at the Parish Hall, 901 S. Roland.

The enchiladas will sell at \$7.00 a dozen.

Pre-orders will be taken. To order call Anita Sumner at 659-3469 or Frances Ortega at 659-3688. The pre-orders will be ready between 11:30 a.m. and 3:30 p.m. on Feb. 6 at the Parish Hall, 901 S. Roland.

Good Question

Trying to rest after an exceedingly hard day, poor father was being bedeviled by an endless stream of unanswerable questions from little Willie.

"What do you do down at the office?" queried the youngster.

"Nothing," shouted the father.

It looked as if the boy had been shut up for a while, but not for long. After a thoughtful pause, Willie asked, "Pop, how do you know when you're through?"

Town and Country Extension Homemakers Club Meet

The Town and Country Extension Homemakers Club met January 19, 1982, in the home of Julie Adams. President Cora Queener called the meeting to order. Roll call was answered by "Your favorite way to relax". Minutes of the previous meeting were read and approved. One communication from Norma Jean Mackie was read. A treasurer's report was given by Cora Queener.

Jim Benson, Director of the Hansford County YMCA, gave an explanatory talk on the Y, followed by an entertaining slide presentation.

Committee Reports: Party Committee - Connie Steger reported that the day of the Valentine Social had been changed from February 12 to February 5. We will have a Mexican food supper for members and their husbands in the home of Dan and Penny Ralston.

Lisa Pipkin reported that the Blood Drive will be February 10 at 10:00. Delinda McLaughlin will be contacting members to bring sandwiches.

Business: Leader training for "Bread in a Bag" will be January 28th. Kay Crocker will attend this.

Council meets Tuesday, January 26.

The next meeting will be February 2 in the home of Debi Rogers.

An informative program was given by County Extension Agent, Karen Harruff on Relaxation Techniques.

Members present were Jie Adams, Pat Cudd, Janie Kesselman, Lisa Pipkin, Cora Queener, Penny Ralston, Lynna Renner, Dixie Smith, Connie Steger and guest, Karen Harruff.

Mate Makes Right

If a man gives in when he is wrong, he is wise. If he gives in when he is right, he is married.
-News, Dawson, Ga.

Our Heritage of Faith

Faith Lutheran Church is pleased to help preserve and declare the wonderful works of God in this community. We share Christ with you.

In the gospel reading this Sunday Jesus was teaching and the audience was "astonished at his teaching", he taught them as one who had authority", people "were amazed", and an unclean spirit was cast out. This was a powerful revelation of who Jesus is. It was Jesus' epiphany, that is, being revealed as Divine.

Moses in Deuteronomy 18:15-20 looked forward to this day. The sermon theme is: God Stoops To Our Level.

Sunday School is at 9:45 A.M.

Worship is at 10:45 A.M.

Evening study is at 6:00 P.M.

A cordial welcome awaits visitor and member.

Bruno Gaskamp, Pastor

Groundhogs And Candlemas

February 2 is known as Candlemas in Roman, Greek and Episcopal churches, and in others, and relates to the legendary visit of Mary to the temple in Jerusalem, for so-called purification.

This is said to have occurred forty days after the birth of Jesus, according to the second chapter of Luke. It, to some, has in the past been a day when candles lit in the church become blessed and afford protection from harm in their homes thereafter.

February 2 is also Groundhog Day in America—a custom which came from England and Germany. The theory is that if the groundhog (or woodchuck) comes out of his winter quarters on this day and sees his shadow there will be six more weeks of winter.

A check on the accuracy of this forecast, however, shows the groundhog is often wrong. Actually, except for the extreme southerly states, winter seldom disappears anywhere as early as February 2, shadow or no shadow.

ATTENTION ALL LIVESTOCK PRODUCERS

Panhandle Livestock Commission Company of Guymon, Oklahoma is now under the New Management of Rod DeWitt.

The Livestock Auction will be held every Saturday beginning Saturday, January 30th with starting time being 12:00 A.M.

If you have cattle or hogs to sell, contact Rod DeWitt at the Panhandle Livestock Yards about your consignment in advance so buyers can be contacted early.

If you are in the market to buy or sell cattle or hogs, contact Panhandle Livestock Commission Company in Guymon, Oklahoma.

Rod DeWitt will make every effort to see that your livestock will be sold at the best possible market. Give him a call at 405-338-3378 or his home phone 405-338-3127.

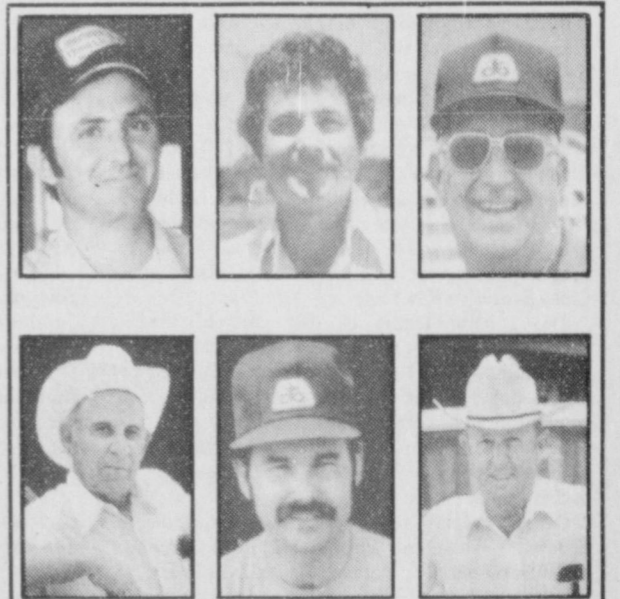
THERE WILL BE NO SALE ON TUESDAY, JANUARY 26th.

SALE EVERY SATURDAY AT 12:00 A.M.

11S-2tc

Clearance Sale
2 for 1
Ladies Winter Shoes
1/2 price Ladies Purses
Boyd's Family Shoes
209 Main Spearman, Texas

SAVE on your heating costs this winter with:
Carrier
Super efficient gas-fired furnace —
•Pilotless Ignition
•Optional chimney lock flue damper accessory seals heat in
•Economy
•Safety
•Convenience
WALLER PLUMBING, HEATING & AIR CONDITIONING
701 E. Brillhart Perryton 435-5226



Ask a neighbor about
Pioneer brand 3311
then come see us!

- Proven performance - nearly 800 lbs./acre yield advantage in over 170 on-farm tests
- Excellent heat tolerance and head smut resistance
- Excellent MDMV and head smut resistance

We're convinced this variety can give you a performance advantage in this area. And we can show you field data to back us up.

First chance you get, come on by and let's talk about your seed needs for the coming year. Together we'll select the right combination of Pioneer brand seeds to give you the advantage you need.

Morris Brothers Seed
Rt. 3 - Box 31
Gruver, Tex. 79040

Phone 733-2132 or 733-2203



*Pioneer is a brand name. Numbers identify varieties. Registered trademark of Pioneer Hi-Bred International, Inc.

WANTED ADS

CAPROCK MONUMENT CO.

Dealers of Georgia Granite, Georgia Marble, Colorado Granite, & Bronze.

Represented by **BOXWELL BROS. FUNERAL HOME**

519 S. EVANS
659-3802

Hansford County Planned Parenthood
26 S. Haney
659-2483
Spearman
Mon.-Fri.
8:30-12:30

NOTICE
Wallace Monument Co.
Monuments, Curbing,
Grave Covers
Local Representative
LEONARD JAMESON
Spearman, Texas
20-rtn

STEAM RINSE & VAC
Steam Rinse-and-Vac Shampooers; \$10.95 for up to 24 hrs, available at Gordon's Drug; also at Freddie Largent's 716 Cotter Dr. after 4 p.m. and Saturdays and Sundays.

Monuments
Save Agents and Undertakers Profits
If it is inconvenient for you to visit our large display, please phone collect (405) 327-0626 or write and we will call on you.
Alva Monument Works, Inc.
Alva, OK 73717

SERVICE: Pits cleaned, wet or dry. Dragline or loader. Also, dozer, grader, carry-all service. Lee Roy Mitchell, 806-733-2384, Gruver, Texas 79040.
12-rtn

SNOOPY'S DAY SCHOOL
Open from 7:00 A.M. to 6:00 P.M. We serve morning snack, hot lunch, and afternoon snacks. Van runs to and from school, dancing, piano, ect.
Call 659-3328 or Come by 620 1/2 S. Bernice for more information.
Receive (Western) gift stamps for your bill and double on Friday.
Licensed for ages 18 months to 12 years.

FOUNDATION REPAIRS: Shimming and leveling, cracked slabs repaired GUARANTEE BUILDERS, 435-3247, Pampa, Texas.
10S-8tc

Although Spearman Bi-Products plant is closed, we still pick up your dead cattle. Call 659-3544 or 800-692-4043 as soon as possible.
10-8tp

Your new Kirby Sales & Serviceman, John Schaffer, 410 S. Hoskins, Ph. 9-2415, Spearman, Texas.
11S-rtm

SUTPHEN'S
We would like to cater Barbecue Briskets and all the trimmings or Barbecue Chunk Beef, for \$4 per person to groups of 50 or more. For smaller groups, we will prepare and package food for your pickup. Phone 273-6442.
SUTPHEN'S
10S-8tc

Will do carpenter work. Call 659-2845.
11-2tp

SUNSHINE DAY CARE CENTER
Opening February 1, 1982. Hours - 6:30 A.M. till 6:00 P.M. Located at 212 County Road in the Crawford Addition. Infants up to 12 years of age. Drop-ins welcome. Planned activities. Operated by Teresa Madison. 659-3959.
11-3tp

For your painting, remodeling, and small carpentry jobs, Call Aaron Love, 659-3471.
Over 20 years experience.
11S-rtm

FOR SALE

FOR SALE: Couch, earth-tone design. Good condition. Asking \$125. Call 9-5071 after 4:00 P.M.
11-4tp

WONDERFUL BUY:
Wurlitzer Organ. Call after 5:30 p. m. week days or any time week ends. Good condition. A/c 806 355-6791.
rtm-all 3-c

FOR SALE: 2 AKC Registered Golden Retriever puppies, 2 months old. Contact Duane Pittman, Stratford, 396-5831 after 5.
10S-4tc

FOR SALE: 1977 3 bedroom 1 1/2 bath mobile home. 659-3826 after 5 and weekends.
12-4tc

FOR SALE: 1978 G.M.C. 1/2 ton Sierra Grande Rust Metallic with Off white trim. Long wide bed. H/AC power str. Auto 350 V8
1975 Chev. light green and white Scotsdale 1/2 ton H/AC Power brakes and steering. Auto 350 V8 Long wide bed tilt steering. Call R.L. Uptergrove after 6 p.m. 649-2677
11S-2tc

FOR SALE: 1980 Chevy LUV MIKADO. Air conditioner. Less than 3,000 miles. Phone 659-2430.
11S-rtm

Motocycle for sale: 1981 Yamaha Maxim 650. 4,000 miles. Call 659-3918 after 6 P.M.
12-2tc

FOR SALE: '77 Model Odyssey. Phone 659-2764.
10S-4tc

PIANO IN STORAGE
Beautiful spinet-console stored locally. Reported like new. Responsible party can take at big savings on low payment balance. Write Joplin Piano, Inc., Joplin, Missouri 64801. Include home phone number.
12-1tp

FOR SALE: '79 Trans Van. Sleeps 4, stove and refrigerator, furnished, air conditioned. 22,000 miles. Call 9-2054 after 4 P.M.
12-3tc

Lose weight with a safe diet pill. Amazing - high protein Spirulina. Spearman Durg.
12-3tp

FOR SALE: 1978 Cobra Mustang. Fully loaded, New tires, Excellent condition, 37,500 miles. \$4000.00 Call 733-2764.
12-1tp

REAL ESTATE FOR SALE

FOR SALE BY OWNER: 2 Bedroom house Central heat and air, large corner lot, small house in rear 422 S. Dressen. Shown by Appt. only. Garland Hale, 806-373-3920.
11S-8tc

FOR SALE: 3 bedroom brick home, near elementary school, shown by appointment only, Emmett R. Sanders, Realtor, 659-2516, nights 659-2601.
11-rtm T only

REAL ESTATE FOR SALE

Nice Brick, 3 bedroom home with attached Garage. 717 Steele Dr.

If interested call (THE LAND MAN) Jimmy Greene Real Estate Agent Phone: 659-3196

FOR SALE: 3 Bedroom home, nice apartment-both with central heating and air, large 2 car garage with storage space, brick fence, large storage building, 9% assumable loan. Shown by appointment only. 733-2539
11-4tc

FOR SALE: Faith Lutheran Parsonage, 205 Lonita Drive. Call: Cecil Biggers - 659-3505; Steve Krug - 659-3901; or Charles Elliott - 659-3854.
49S-rtm

FOR SALE: New 3 bedroom, 2 bath home, attached 2 car garage, energy efficient fireplace, shown by appointment only, Emmett R. Sanders, Realtor, 659-2516, nights 659-2601.
9-rtm T ONLY

3 Bedroom, 2 bath brick home, detached double garage, sprinkler system. Blankenship Real Estate, 659-3052.
4-rtm

HELP WANTED

OFFICE CLERK-PART TIME
Spearman, Texas
Part-time clerk needed for office work. Experience in customer contact, cash transactions, posting, filing and report necessary. Call 659-2336 for interview appointment.
Texas-New Mexico Power Company An Equal Opportunity Employer
11S-2tc

NEEDED IMMEDIATELY:
Cooks, waiters, waitresses, & dishwashers. Apply in person at the new Britany's Restaurant in the Plains Shopping Center Mall.
8S-rtm

MOBILE HOMES FOR SALE

FOR SALE: 1965 12' x 67' Trailer House on 80' x 200' lot in Crawford Addition. Call 659-2288 or 733-2293.
1S-rtm

WANTED

Will do babysitting in my home weekdays. Call 659-3673.
12-1tp

Wanted to buy farm tractors, farm equipment. Call 806 / 358-3530 After 6 P.M. Frank Husse.
12-4tp

BUSINESS OPPORTUNITIES

RAISE PUPPIES FOR PROFITS
HIGHEST NATIONWIDE PRICES ASSURED THROUGH COMPUTERIZED MARKETING. SEE HOW AND WHY RAISING QUALITY PUPPIES CAN BE AN EXCELLENT PART-TIME BUSINESS FOR YOU ON YOUR ACREAGE OR FARM IF YOU LIKE PUPPIES AND WOULD LIKE AN EXTRA INCOME FROM MARKETING THEM AT 8 WEEKS OF AGE - THIS KNOW WE ASSIST ALL NEW BREEDERS IF QUALIFIED FOR INFORMATION CALL 800-867-9191 OR WRITE KENNELS P. O. BOX 8 TWO HARBORS, MINN. 55016 (INCLUDE PHONE NUMBER)
PROFITS

NOTICE

Beginner and intermediate dance lessons beginning at Perryton, Feb. 16 & 17 at 7:30 P.M. Frank and Luetta Shaffer, instructors. Call 435-4121.
11-8tc

FOR RENT

FOR LEASE: Available Feb. 1st. 3 bedroom, 1 bath house. References required. Inquire at 659-2105 evenings or weekends.
10S-rtm

FOR RENT: 50 x 185 Trailer lot. Inquire at 659-2105 evenings or weekends.
10S-rtm

LOST

LOST: Dog- 8 week old red chow. Lost in the area of the 400 block of Bernice. Reward. Call 9-2431 or 9-2670.
11-2tc

Those who depend not upon others will not be disappointed.

Publicity explains many wonder-boys and their achievements.

Doing favors for people is habit-forming in both directions.

The true believer in the merit, or honor system, will accept nothing that he hasn't earned.

Ex-Student

Association Needs Names Addresses
Judy Martin, of the Ex-Student Association, asks that persons in charge of the different classes at the reunion last year or those that have names and addresses of their classmates to send her a list at 716 Gibner Drive. These names and addresses are needed for the registry.

LEGAL NOTICE

NOTICE TO BIDDERS
CITY OF SPEARMAN, TEXAS
SEALED PROPOSALS addressed to Mr. Jim Murray, City Manager, City of Spearman, Texas, will be received until 7:30 o'clock p.m. on the 9th day of February, 1982, at the Office of the City Manager, City Hall, 211 N. Sanders, Spearman, Texas, for a contract to be let for furnishing all necessary materials, machinery, equipment, superintendence and labor for municipal airport improvements (construction of 1400 foot runway and medium intensity runway lighting. All bids received will be publicly opened, read aloud at such time and place and thereafter referred to the City's Engineer for tabulation and checking. Should an acceptable bid be submitted, the City Council proposes to award the contract for which bids are being taken during a meeting of the Council to be held at 7:30 o'clock p.m. on 9th day of February, 1982 at its regular meeting place in the City Hall. Plans, specifications, bidding instructions and contract documents (including a schedule of the general prevailing rates of per diem wages in the locality for each craft or type of workmanship needed to execute the contract and the prevailing rates for legal holidays and overtime work) may be examined without charge in the office of the City Manager, Spearman, Texas, or may be obtained from the City's Engineer, McMorries and Burns, Inc., P.O. Box 142, Dumas, Texas 79029 (806/935-6421) upon a proper deposit being made therefor.
A cashier's check, certified check or acceptable bidder's bond made payable without recourse to the City of Spearman, Texas, in the amount of five percent (5%) of the largest possible total for the bid submitted, must accompany each bid as a guarantee if awarded the contract the bidder will promptly enter into a contract and execute such bonds as are required.
The successful bidder will be required to furnish a performance bond and a payment bond each in the full amount of the contract price, written by a responsible surety company authorized to do business in the State of Texas and satisfactory to the City Council, as required by Article 5160, V.A.T.C.S.
No bid may be withdrawn for any reason for at least thirty (30) days after the scheduled closing time for the receipt of bids.
The proposal in this contract is broken into two sections. Section A contains those items related to the runway construction and Section B contains those items related to the lighting. The contractor will have the option to bid either or both sections.
The City of Spearman, Texas reserves the right to reject any and all bids and to waive any formality or irregularity in any bid received.
Jim Murray
City Manager, City of Spearman, Texas
11-2tc T ONLY

LEGAL NOTICE

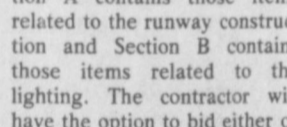
Hansford County Commissioners Court will receive bids until 4:00 p.m. on Friday, February 5, 1982 on one, 1981 or 1982 heavy duty, 1 ton truck. Bids will be opened on Monday, February 8, 1982 at the regular Commissioners Court meeting.
Specifications are available at the County Judge's office or the Court Auditor's office in Hansford County Courthouse. The Court Reserves the right to accept or reject any or all bids.
Roy L. McClellan,
County Judge
11-2tc T ONLY

LEGAL NOTICE

Hansford County Commissioners Court will receive bids until 4:00 p.m. on Friday, February 5, 1982 on one, 1981 or 1982 heavy duty, 2 ton truck. Bids will be opened on Monday, February 8, 1982 at the regular Commissioners Court meeting.
Specifications are available at the County Judge's office or the County Auditor's office in Hansford County Courthouse. The Court reserves the right to accept or reject any or all bids.
Roy L. McClellan,
County Judge
11-2tc T ONLY

STATEMENT OF INTENT TO CHANGE RATES

GENERAL TELEPHONE COMPANY OF THE SOUTHWEST hereby gives notice, in accordance with TEX. REV. CIV. STAT. ANN. art. 1446c, §43(a), of its intent to implement a new schedule of rates for those customers residing in the State of Texas but who are served out of the Company's Guymon and Oklahoma Oklahoma exchanges.
The proposed changes, which were implemented on an interim basis in October 1981, will affect all customer classes and are designed to increase revenue from affected customers by approximately 37 percent.
A complete set of revised rate schedules has been filed with the Public Utility Commission of Austin, Texas, and is available for public inspection in the Company's Guymon and Oklahoma, Oklahoma Business Offices.



Markets

WHEAT	\$3.60
MILO	\$4.10
CORN	\$2.82
BARLEY	\$1.97
SOYBEANS	\$5.36

VIRGINIA WHITE REALTOR



BARKLEY ST. BEAUTY - This home offers large family room, formal living room, well arranged kitchen with lots of beautiful cabinets, and much more. WHY WAIT? SHOWN BY APPOINTMENT ONLY to qualified buyers.
BEAUTIFUL 3 bedroom brick home with fireplace, central air, NEW cookstove with microwave. On corner lot. Call and see today!
ON BERNICE STREET - this older home has been redecorated and has a beautiful woodburning fireplace, Central Heat and Air/Cond., big, big kitchen with lots of new cabinets, fenced yard, detached garage, and if that isn't enough - there is a LOW INTEREST ASSUMABLE LOAN ON THIS ONE SHOWN BY APPOINTMENT ONLY. CALL TO SEE!
TIRED OF PAYING RENT? Then let me show you this 2 bedroom home at 217 N. Brandt. Really pretty inside with new carpet, panelling, dishwasher. Detached 14 x 28 garage. Call today.
VIRGINIA WHITE, BROKER

LEGAL NOTICE

Hansford County Commissioners Court will receive bids until 4:00 p.m. on Friday, February 5, 1982 on one, 1981 or 1982 heavy duty, 1 ton truck. Bids will be opened on Monday, February 8, 1982 at the regular Commissioners Court meeting.
Specifications are available at the County Judge's office or the Court Auditor's office in Hansford County Courthouse. The Court Reserves the right to accept or reject any or all bids.
Roy L. McClellan,
County Judge
11-2tc T ONLY

LEGAL NOTICE

Hansford County Commissioners Court will receive bids until 4:00 p.m. on Friday, February 5, 1982 on one, 1981 or 1982 heavy duty, 2 ton truck. Bids will be opened on Monday, February 8, 1982 at the regular Commissioners Court meeting.
Specifications are available at the County Judge's office or the County Auditor's office in Hansford County Courthouse. The Court reserves the right to accept or reject any or all bids.
Roy L. McClellan,
County Judge
11-2tc T ONLY

STATEMENT OF INTENT TO CHANGE RATES

GENERAL TELEPHONE COMPANY OF THE SOUTHWEST hereby gives notice, in accordance with TEX. REV. CIV. STAT. ANN. art. 1446c, §43(a), of its intent to implement a new schedule of rates for those customers residing in the State of Texas but who are served out of the Company's Guymon and Oklahoma Oklahoma exchanges.
The proposed changes, which were implemented on an interim basis in October 1981, will affect all customer classes and are designed to increase revenue from affected customers by approximately 37 percent.
A complete set of revised rate schedules has been filed with the Public Utility Commission of Austin, Texas, and is available for public inspection in the Company's Guymon and Oklahoma, Oklahoma Business Offices.

STATEMENT OF INTENT TO CHANGE RATES

GENERAL TELEPHONE COMPANY OF THE SOUTHWEST hereby gives notice, in accordance with TEX. REV. CIV. STAT. ANN. art. 1446c, §43(a), of its intent to implement a new schedule of rates for those customers residing in the State of Texas but who are served out of the Company's Guymon and Oklahoma Oklahoma exchanges.
The proposed changes, which were implemented on an interim basis in October 1981, will affect all customer classes and are designed to increase revenue from affected customers by approximately 37 percent.
A complete set of revised rate schedules has been filed with the Public Utility Commission of Austin, Texas, and is available for public inspection in the Company's Guymon and Oklahoma, Oklahoma Business Offices.



Markets

WHEAT	\$3.60
MILO	\$4.10
CORN	\$2.82
BARLEY	\$1.97
SOYBEANS	\$5.36

NOTICE TO CREDITORS OF THE ESTATE OF JEWELL McCLELLAN, DECEASED

Notice is hereby given that original letters testamentary upon the Estate of Jewell McClellan, Deceased, were granted to us, the undersigned, on the 11 day of January, 1982, by the County Court of Hansford County, Texas, Cause No. 1672. All persons having claims against the estate are hereby required to present the same to us within the time prescribed by law. The post office address for the Estate of Jewell McClellan, C/O Billy Lee McClellan, Sunray, Texas, 79086.
Billy Lee McClellan
Melba Lou McClellan Chapman
INDEPENDENT EXECUTORS
12-1tc

Big words don't always convey big thoughts.

It's surprising how many people do little work.

Spring gardens will soon begin to stir the hopes of mankind.

NOTICE TO CREDITORS OF THE ESTATE OF JEWELL McCLELLAN, DECEASED

Notice is hereby given that original letters testamentary upon the Estate of Jewell McClellan, Deceased, were granted to us, the undersigned, on the 11 day of January, 1982, by the County Court of Hansford County, Texas, Cause No. 1672. All persons having claims against the estate are hereby required to present the same to us within the time prescribed by law. The post office address for the Estate of Jewell McClellan, C/O Billy Lee McClellan, Sunray, Texas, 79086.
Billy Lee McClellan
Melba Lou McClellan Chapman
INDEPENDENT EXECUTORS
12-1tc

Big words don't always convey big thoughts.

It's surprising how many people do little work.

Spring gardens will soon begin to stir the hopes of mankind.

CECIL R. BIGGERS
ATTORNEY AT LAW
Announces the opening
of his office
at 307 Davis P.O. Box 342
Farm Bureau Building
New Phone number (806) 659-5531
12-4tc

TEXAS PRESS ASSOCIATION

The Spearman Reporter

PUBLICATION (USPS 509-660)
SPEARMAN, TEXAS 79081
213 Main Box 458 659-3434
Published Weekly at 213 Main Street
Spearman, Texas 79081
Owner-Publisher.....William M. Miller
Editor.....Faye Lynch
Second Class postage paid at Spearman, Texas 79081
Any erroneous reflection upon the character of any person or firm appearing in these columns will be gladly and promptly corrected upon being brought to the attention of the management.
POSTMASTER: Send address changes to Spearman Reporter, Box 458, Spearman, Tx. 79081.
SUBSCRIPTION RATE: Hansford, adjoining counties, combination with the Hansford Plainsman \$15.00.
Other points, \$20.00.

The great producer of real work is necessity.

A compliment a day keeps the quarrel away.

Political Announcements
DEMOCRATIC PARTY
For U.S. Congressman
13th District
JACK HIGHTOWER
State Representative
88th District
J.W. "BUCK" BUCHANAN
REPUBLICAN PARTY
For U.S. Congressman
13th District
RON SLOVER
BEAU BOULTER

STOP and LOOK...

Wolf Creek Ranch Land

FOR SALE... Four sections of prime grassland. Located in the Wolf Creek area, 36 miles north of Canadian, 15 miles southeast of Perryton. This land will be sold with complete surface rights, and 30% of the minerals. This is a once-in-a-lifetime opportunity! Excellent ranch land, water on each section, a great location in the Texas panhandle.
Contact (806) 435-3496
Or Write: 1702 Fordham Perryton, TX. 79070

For The Ultimate In
STORM DOORS & WINDOWS
Custom Built, Designed, And In Colors To Fit Your Home....
Contact Howard Moyer at
Only Aluminum Industries
Guymon, Okla. 114 W. 1st 405-338-6966 or 73942 338-6170
AFTER 6 P.M.

FOR PUBLIC AUCTION
Tuesday, February 2
10:00 A.M. till 4:00 P.M.
640 acres irrigated farm land
22 Miles Southwest of Gruver
4 irrigation wells
2 tailwater pits
Large 4 bdrm Brick Home with basement.
Tenant House
Shop
Barn
For information call after 6 P.M. 806 733-2634.
11-4tc

JAMES H. PERKINS AND ASSOCIATES AUCTIONEERS
The Professional Auctioneers
Call us for "Full Service" of your Auction Sale...
Moving - Cleaning - Arrangement & Line-up of your Equipment is just part of this "Full Service".
Call us before you make a decision as to who handles your Auction
IF WE CAN BE OF SERVICE TO YOU - CALL OUR IN TEXAS TOLL FREE NUMBER:
1-800-792-0027
DANNY J. PERKINS-806-935-4210 Dumas, Texas, 79029
OR OUT OF STATE CALL OUR REGULAR NUMBERS
JAMES H. PERKINS-806-249-6366 Dalhart, Texas 79022



Congressman Hightower Announces For Re-Election

Washington—Congressman Jack Hightower (D-Vernon), who has represented the 13th District since 1975, has announced he will seek a fifth two-year term.

He has filed officially as a candidate in the Democratic Primary.

"I believe my conservative philosophy and common-sense approach to the complex national problems we face represent the views of the vast majority of the people of this area," Hightower said.

Hightower was a founding member of the Conservative Democratic Forum in the House, which advocates conservative tax and budget policies. He joined other conservative Democrats in supporting the major elements of the Administration's budget and tax reduction program in 1981.

"President Reagan received a nationwide mandate to reverse spending policies which have driven the nation into excessive debt while imposing

high taxation on the people," he said. "This is a bipartisan program and I believe it is imperative that Democrats and Republicans work together to restore our economic strength."

At the same time, Hightower pointed out that "I disagree with the disastrous agricultural policies of the Reagan Administration just as I disagreed with the Carter Administration." He also said he will continue to oppose any effort by the administration to reduce Social Security retirement benefits.

He added: "This indicates how important it is to have a Congressman who is independent from partisan pressures. I've never asked the President how to vote and I've never asked Speaker O'Neill how to vote. I make up my own mind based on what is good for this district and the nation. I do not think the people of our district want a rubber-stamp Congressman for any President or

any political party." Hightower said his experience in local, state and national government, his seniority in Congress and his key committee assignments have enabled him to effectively influence decisions in Washington. He is a ranking member of the powerful House Appropriations Committee which played a central role in reducing government spending this year. He also serves on the appropriations subcommittees for the Agriculture, Commerce, Justice and State Departments and the Judiciary.

Hightower listed interest rates, crime, immigration, social security and farm problems among his 1982 priorities.

"One of the keys to bringing down interest rates is to reduce the impending budget deficit in the next few years," he said.

Hightower pledged he "will continue to fight to make the government serve the people and not the other way around."

Red Cross Bloodmobile Coming

The Red Cross Bloodmobile is coming to Spearman on Feb. 10 to the Sacred Heart Parish Hall. Hours will be from 9:30 a.m. to 2:30 p.m. The goal is 100 pints for the only blood drive in Hansford County this year.

For appointment call Buena Lyon, 9-3462.

The day of the visit you may call the Hall for an appointment, 9-2166.

Hospital News

Patients in Hansford Hospital are Dan Shrader, Keese Richardson, Laura Mackie and son, Rita Kohl, Anne Sanchez and son.

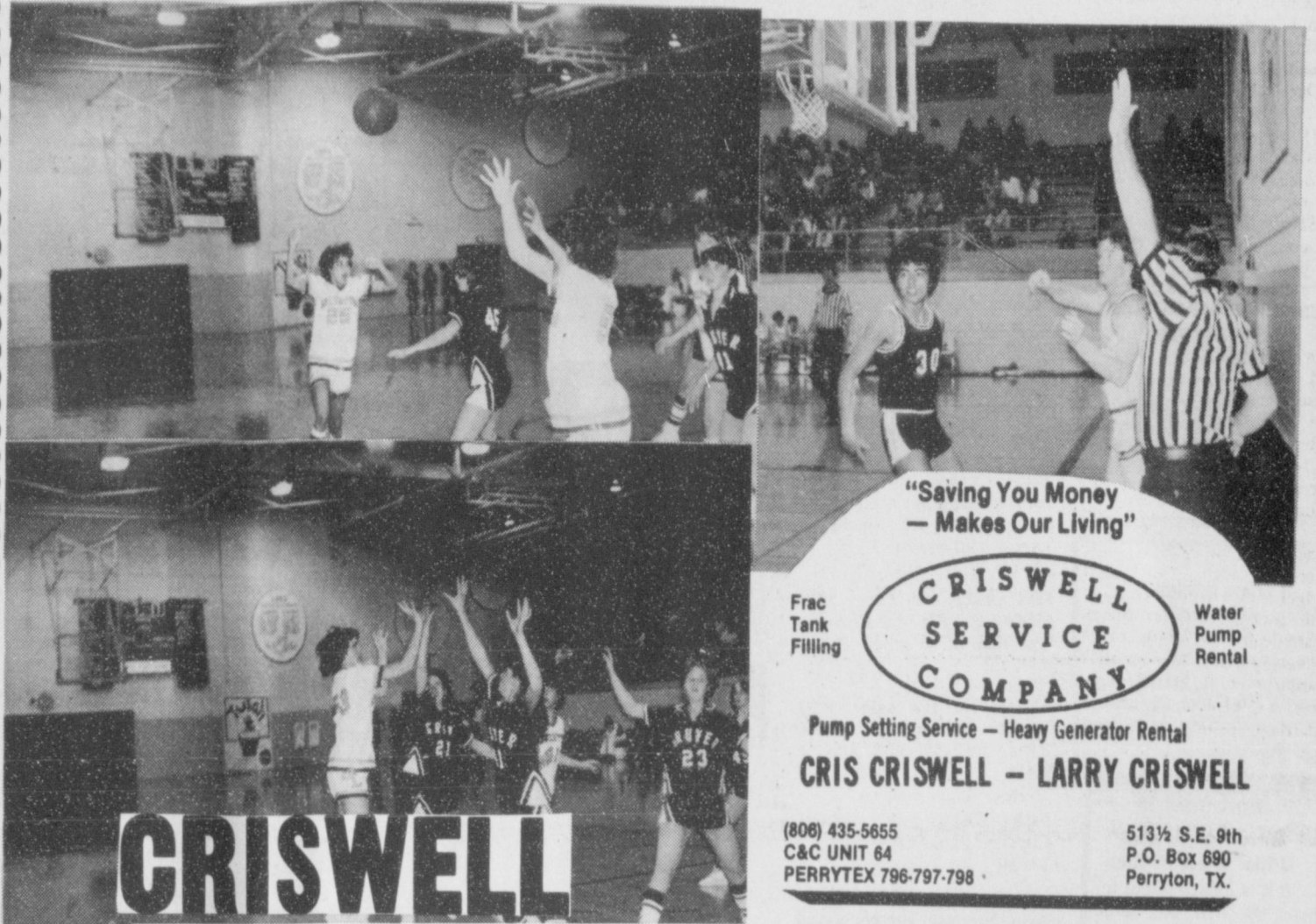
Dismissed were Reba Bennett, Ike Richeson, Maurine Etling, Linda Lujan, Stacy East, Vicki Miller and Robert Martin.

Good advice: Losers should never bet.

Welcome LYNX fans --

9th and JV Perryton tournament -

Thursday, Friday and Saturday



"Saving You Money - Makes Our Living"



Frac Tank Filling

Water Pump Rental

Pump Setting Service - Heavy Generator Rental

CRIS CRISWELL - LARRY CRISWELL

(808) 435-5655
C&C UNIT 64
PERRYTEX 796-797-798

513 1/2 S.E. 9th
P.O. Box 690
Perryton, TX.

CRISWELL

Oil Field and Domestic Water Well Service

Consistent, High Yielding HORIZON CORNS

Horizon brand seeds perform because at Horizon Seeds we are dedicated to providing the agri-businessman with the most complete line of quality seed. Planting top quality Horizon brand seeds has helped increase our customer's confidence in attaining high yields

and good standability, which is crucial in today's farming operations. Below are 1981 farm yield results with Horizon corn varieties in different areas of Texas. See for yourself the yield potential of Horizon products.

	Acres	Horizon	Moisture Corrected Yield
John Gilbreath, Hart, TX	20	870	12,030 lbs
Irvin Lee, Hale Center, TX	420	870	10,700 lbs
J.D. Lee, Hale Center, TX	150	870	11,680 lbs
Dan Petty, Dimmitt, TX	7	212	10,900 lbs
Bill Smith, Olton, TX	170	870	10,740 lbs
James Wall, Hale Center, TX	50	870	10,700 lbs
Webb Farms, Dimmitt, TX	230	870	11,326 lbs

Below is a list of the Horizon Seeds product mix, for more information about Horizon product

performance or a specific segment of product mix clip and mail the coupon below.

Horizon Seeds Products Mix

- 1) Horizon Brand Seed Corn & Grain Sorghum
- 2) Horizon Brand Forage Sorghums
- 3) Horizon Brand Grasses & Pasture Mixes
- 4) Native Grasses & Cool Season Grasses
- 5) Horizon Brand Alfalfa & Various Legumes
- 6) Horizon Brand Soybeans
- 7) Horizon Grass & Grain Drill



Check below for information you would like to receive

- FREE Five Year Yield Book _____
- Corn and Sorghum Data _____
- Grasses and Legume Information _____
- Dealership Information _____
- Other _____

Name _____ Phone _____

Address _____

City _____ State _____ Zip _____

Horizon Seeds, Inc., P.O. Box 886, Hereford, TX 79045

GENUINE TEXAS STYLE
CHOPPED BBQ SANDWICHES
ONLY **99c**

REGULAR / DRIP OR ELECTRIC PERK
FOLGER'S COFFEE
\$2.99
1 LB. CAN

BORDEN'S 1/2 GAL. BUTTERMILK CTN. **\$1.09**

ALLSUP'S ASSORTED ICE CREAM 1/2 GAL. RD. CTN. **\$1.49**

LAY'S ALL FLAVORS REG. \$1.29
POTATO CHIPS PKG. 99c

GOLD MEDAL FLOUR 5 lb. **.79**

SHURFRESH Margarine in Quarters 1 LB. PKG. **.39**

SHURFINE SUGAR 5 LB. BAG **.89**

SHURFINE HONEYBUNS 4 to pkg. **.29**

RATH WEINERS 1 lb. pkg. **.59**

RATH BREAKFAST SAUSAGE 1 lb. roll **.69**
RATH BACON 1 lb. **.99**

ALLSUP'S CONVENIENCE STORES
"THERE'S ONE NEAR YOU"
PRICES EFFECTIVE JANUARY 28-30, 1982 WHILE SUPPLIES LAST

Hightower Comments On National Issues

Since coming to Congress in 1975, my guiding principle has been to represent the best interests of the 13th Congressional District first and foremost, within the context of what is best for the nation. There have been and will be times when I may disagree with my party or my President in representing those best interests. That is inevitable and healthy in our system of representative government.

The people of this district deserve intelligent, informed representation. They deserve representation with integrity. This is the kind of representation I have sought to provide during three Presidential administrations.

Our national problems require bipartisan solutions. In 1981 we made some progress in working together and we are moving in a direction I have advocated since 1975. I think 1982 can be another year of progress if we can lower our partisan voices and again roll up our sleeves.

BUDGET AND TAX CUTS
I supported President Reagan's budget and tax cuts, as did most other conservative Democrats. We have slowed the rate of growth in the federal budget from a level of 12-14 percent a year to 6-9 percent. Last year we cut \$35 billion in spending. This is only a start. More must be done and I support a continued effort to reduce the federal budget, squeeze out waste and limit government spending to clearly legitimate functions.

I voted for a 25% across-the-board cut in personal income taxes, for elimination of the "marriage penalty", and to raise the inheritance tax exemption rate so that the small farmer, rancher or business-

man or woman could keep inherited land or businesses without having to sell to pay taxes. In addition, I played a role in eliminating the so-called "windfall profits tax" on oil for the small royalty owner so unfairly penalized by the tax. It is my hope that these tax cuts will help us achieve economic recovery.

PROTECTING SOCIAL SECURITY
I opposed the Reagan Administration's initial proposal to cut social security benefits to present recipients and eliminate the minimum benefit level entirely. I voted to restore the latter and I will work for a bipartisan, long-term solution that will preserve the system but not at the expense of our current elderly or disabled. The bipartisan commission appointed by the President, the Senate Majority Leader and the Speaker will report their recommendations at the end of the year.

REBUILDING NATIONAL DEFENSE

Last session, I voted for the \$199.7 billion defense appropriations bill that begins the process of restoring our national defense structure. We ought to be "second to none" because that is the only way to deter aggression by potential enemies. It is also the only way to successfully negotiate real nuclear arms reduction with the Soviets. At the same time we are having to spend record amounts to rebuild our strength, we must be sure we are putting those dollars into men, training, supplies and effective equipment and not merely flashy, highly-technical weapons systems that will break down in battlefield conditions.

Continued on Pg. 13

Welcome to the Perryton 9th and J.V. Tourney

Gyms: 9 Boys
H.S. - HIGH SCHOOL
R. - RAIDER (JR. HIGH)
K. - KELLEY (JR. HIGH)

**Thursday, Friday & Saturday
Jan. 28, 29 & 30**

Consolation (9)

Bottom team is HOME TEAM

BRORGER
Thurs. - R 4:00
①

HARTLEY
Fri. - R 2:00
⑤

SPEARMAN
Thurs. - K 1:00
②

Boys Ranch

DALHART
Thurs. - H.S. 1:00
③

FOLLETT
Fri. - R 9:30
⑥

STINNETT
Thurs. - K 7:00
④

PERRYTON

W1
Fri. - R 11:30
⑦

W2
Sat. - H.S. 2:30

W3
Fri. - H.S. 12:30
⑧

W4

W5
Sat. - K 2:30

W6

W7
Sat. - H.S. 2:30

W8

W9

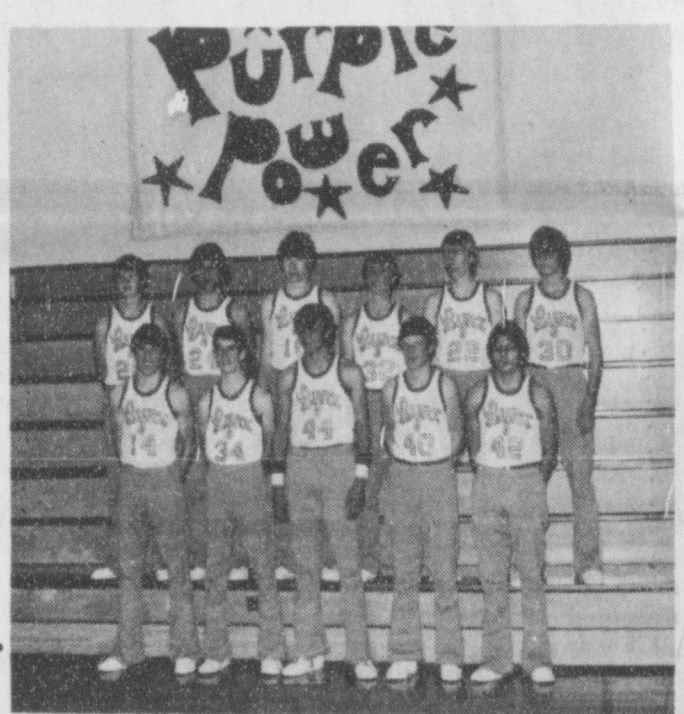
3RD PLACE (10)

CHAMPIONSHIP (11)

EASLEY FORD, INC.
AMC - JEEP
2322 S. Main
Perryton, Texas

MERCURY LINCOLN

Welcome to the Perryton 9th and J.V. Tourney



The 1981-82 Jr. Varsity Lynx Back Row (L to R): Jeff Pool, Byron Sutterfield, Billy Pat Underwood, Steven Francis, Mike Caldwell, Dell Brandt; Front Row (L to R): Jeff Laird, Pat Tucker, Jan Hartzel, Jerry Crowl and Julio Vasquez. Gary Rambo is the JV Lynx Coach.

**Thursday, Friday & Saturday
Jan. 28, 29 & 30**

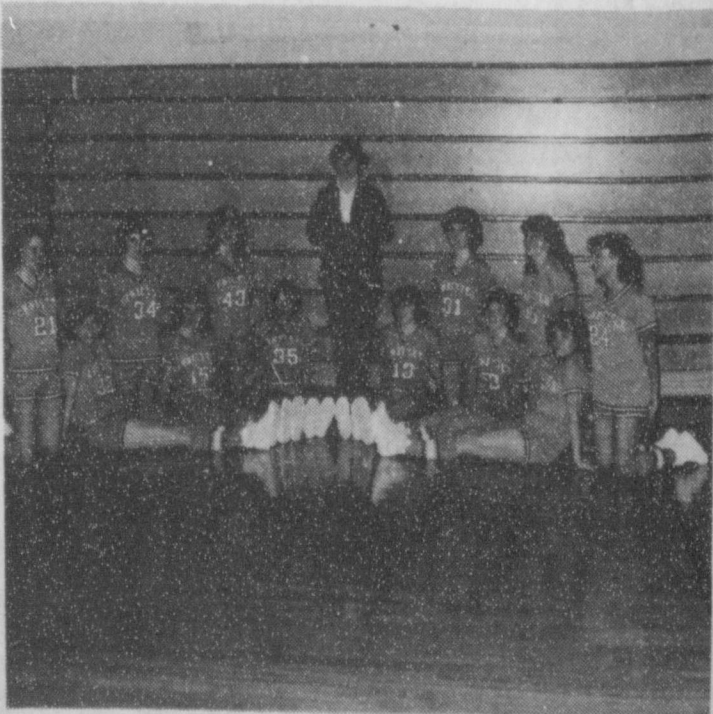
Drop by and see us ...



The home of delicious fast foods is

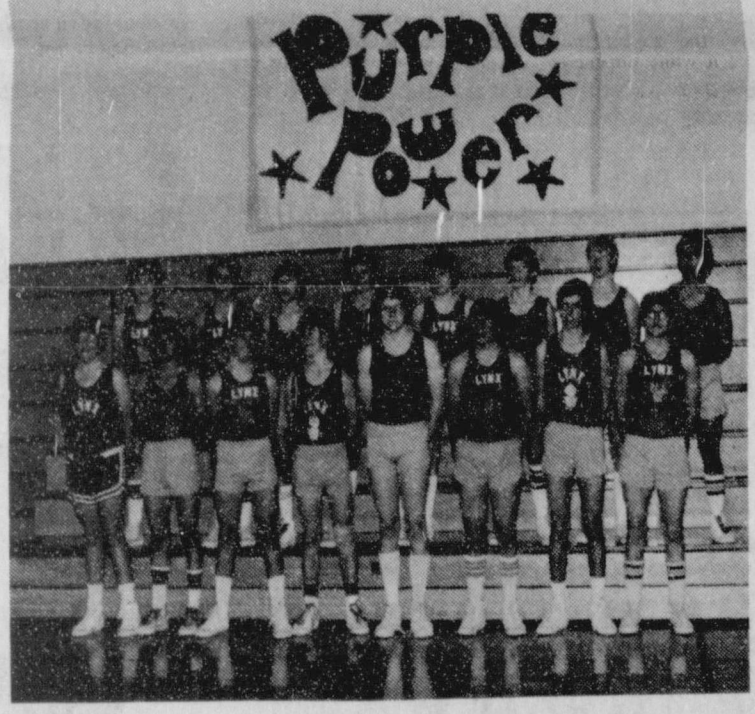
BACKING BASKETBALL '81 - '82!

DIXIE DOG DRIVE-IN
1610 S. Main 435-3512



1981-82 Jr. Varsity Lynxettes Kneeling (L to R): Shelly Cook, Kelli Crawford, Carol Ross, Mgr. Tashia Duncan, Kim Nelson, Cinda Novak, Robbie Heinrich; Sitting (L to R): Nita Baker, Sonya Ooley, Tina Woolley, Kim Elbert, Andrea Mires and Denise Brewer. The JV Lynxettes Coach is Terry Crocker.

Welcome to the Perryton 9th and JV Tourney



The 1981-82 Freshman Lynx Back Row (L to R): Jerry Garcia, Damon Herndon, Bob Cook, Mack McLain, Cole Ivey, Brian Davis, Brian Paul, Peach Boutista; Front Row (L to R): Jeff Gressett, Rudy Saldivar, Ross Donahue, Jeff Graves, Steve Burke, Karl Bynum, Mark Pearson and Teddy Vela. Coach Ricky Smith is in charge of the Freshman Lynx.

Thursday, Friday & Saturday

Jan. 28, 29 & 30

NOW IN 2 LOCATIONS TO SERVE YOU: Drop by ...



1981-82 Freshman Lynxettes Back Row (L to R): Mgr. Connie Gibson, Stephanie Friemel, Teresa Tindell, JoAnne Odegaard, Stacy Pool, Tiki Jackson, Andi Hager; Front Row (L to R): Tammy Garcia, Ann Barnes, Karla Latta, Shanna Reed, Lee Barnes and Ciria Vela. The Freshman Lynxettes Coach is Robin Travis.

Perryton's Home-Owned Convenience Stores
at
1400 S. Main and 19 N. Main
435-2334 435-9196

Slover Again Seeks Election

A former congressional candidate, Ron Slover of Amarillo, announced today that he will again seek election to Congress. Slover, in a press conference at 9 A.M. today in Amarillo, called for committed and predictable conservative leadership for the 13th Congressional District of Texas. Slover will enter the Republican primary.

The Amarillo resident, who received 45 per cent of the vote in the 1980 General Election against Jack Hightower, stated that Hightower's support of the liberal House leadership is deplorable and a slap in the face to conservatives and those who are independents of both political parties. Slover said the people of this area deserve a representative they can believe in and be proud to support.

Slover cited three problem areas for the Republican party in 1982. They were social

security, the windfall profits tax bill, and the farm program.

Regarding those issues, he remarked that social security must remain solvent in order to meet the retirement and disability needs of those who actually contributed taxes to it. Slover said social security funds should not be used to prop up the welfare system, or be diverted to wasteful programs.

He said the "Windfall Profits Tax" bill, which he described as the "worst piece of legislation ever passed by Congress", must be totally repealed.

Concerning agriculture, Slover stated that "as producing state Republicans, we must relate to the Republican Administration the realities of agriculture. We cannot continue to pay high costs to produce valuable commodities, in demand throughout the world, then treat farm pro-

ducts as throw aways".

Slover said the Economic Recovery Act of 1981, if given an opportunity to work, can turn the economy around, leave local and state governments some money to work with, eliminate deficit spending, help the small businessman, and give people an opportunity to save some money and eventually buy a home.

Slover is employed by a promotion company based in Amarillo. He also owns Ron Slover & Company, a financial planning firm, as well as Amarillo Broker Service. He is 44 years of age and resides at 3614 Royal Road.

The Freshman Lynx have been having a GREAT basketball season-1981-82-losing ONLY 3 games--that is a very impressive record. They hosted the Perryton 9th graders at the Lynx Little Gym, and completely went right thru them. The final score was 56 to 45.

The Freshman Lynx started off really fast, but then the Perryton guys started coming back. The starters for the Freshman Lynx were Steve Burke, Mark Pearson, Ross Donahue, Jerry Garcia and Peach Boutista. Steve and Mark would grab rebounds, Ross, Jerry and Peach would all do their share in stealing,

and having ball control. As the first quarter ended, it seemed to some of the Perryton fans, that the Perryton teams would win all three games--don't ever estimate the Freshman Lynx power--they have a lot of it. The first quarter ended with Perryton up in front 13 to 12. The Freshman Lynx put their act together, under Coach Ricky Smith. They stopped the Perryton boys from scoring more than 4 points, while they--the Freshman Lynx--put up 15 points. At the half, the Freshman Lynx were ahead 27 to 17--a ten point lead.

The halftime stats showed that the leading scorer--was

really the leading scorers--both Steve Burke and Mark Pearson had 10 points--both had made 2 of 2 free shots and both had 4 field goals. Ross Donahue had 5 points--1 field goal and 3 of 4 from the line, and Peach Boutista had 2 and was 0 of 2 from the line. The Perryton guys had had 2 free throws only--making 1. They had fouled 8 times in the half. They would try to cut-down on the fouls and try and make the Freshman Lynx foul more. The Freshman Lynx had other plans, they would press for the rest of the game, keep on stealing the ball and scoring on fast-breaks.

The second half began and

as quickly as it started, that quickly points were on the board. The Freshman Lynx scored 14 points, Perryton scored 13. The score after 3 was 41 to 30, in favor of the Freshman Lynx. Mark Pearson fouled out on a "called" charging foul. He left the game as the Lynx leading scorer with 22 points--being 4 of 5 and shooting 9 field goals. That was a plus for the Freshman Lynx. The Freshman Lynx scored 15 points in the final quarter and Perryton stayed with them by scoring 15 points also. The final score was 56 to 45, in favor of the home team--the Spearman Freshman Lynx.

The Freshman Lynx will be participating in the Perryton Jr. Varsity and Freshman boys and girls Tournament. The Freshman Lynx will be playing against Boys Ranch on Thursday, January 28, beginning at 1:00 p.m. If the Freshman Lynx win, they will play against the winner of the Borger/Hartley game at 12:30 p.m. on Friday, January 29. If the Freshman Lynx lose, they will play at 2:00 p.m. against the Loser of the Borger/Hartley game on Friday, January 29.

Then on Monday, the Freshman Lynx will go over to Dalhart and face the Dalhart Freshman Lynx. This should be a very close game, and should go down to the last second. The game is scheduled for Monday, February 1.

Spearman Boys Teams In Annual Tourney

The Freshman and Jr. Varsity Lynx will be entering the Perryton Jr. Varsity and Freshman boys and girls Tournament this weekend--January 28, 29 and 30.

Action will be taking place in three gyms--the High School Gym, The Raider Gym--Jr. High, and the Kelley Gym--Jr. High.

The Freshman Lynx will be facing the tough Boys Ranch Rough Riders in the first game of the tourney. The game will begin at 1:00 p.m. on Thursday, January 28, in the Kelley Gym--Jr. High. If the Fresh-

man Lynx win, they will play at 12:30 on Friday, January 29, in the Raider Gym--Jr. High against the winner of the Borger/Hartley game. If the Freshman Lynx lose, they will play at 2:00 p.m. in the Raider Gym--Jr. High, against the loser of the Borger/Hartley game--on Friday, January 29. The Consolation game will be played at 2:30 p.m. in the Kelley Gym--Jr. High. The 3rd Place game will be played at 2:30 on Saturday, January 30, at the Raider Gym. The Championship game will be played at 2:30 at the High

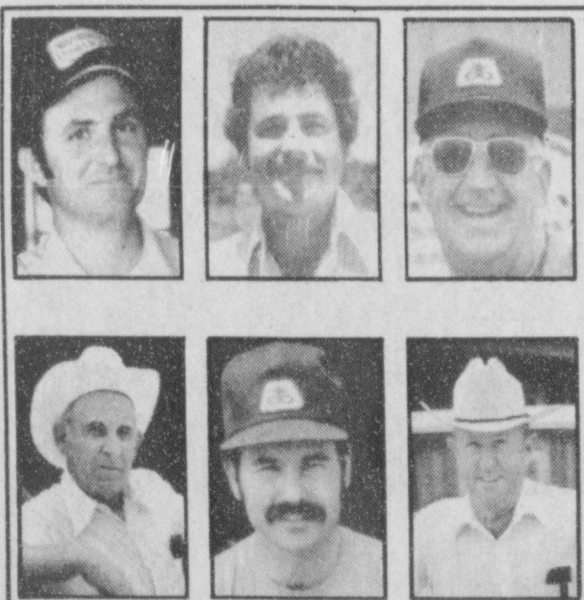
School Gym. The Jr. Varsity Lynx will face the tough Borger team beginning at 1:00 p.m. in the Raider Gym--Jr. High. If the JV Lynx win, they will play at 12:30 in the Kelley Gym--Jr. High against the winner of the Canadian/Dalhart game. If the JV Lynx lose, they will play at 5:00 in the Raider Gym--Jr. High against the Loser of the Canadian/Dalhart game. The Consolation for the JV boys will be played at 5:30 p.m. on Saturday, January 30, at the Kelley Gym--Jr. High. The 3rd Place game will be

played at 5:30 p.m. on Saturday, January 30, at the Raider Gym--Jr. High. The Championship game for the JV boys will be played at 5:30 p.m. in the High School Gym on Saturday, January 30.

HOUSING SALES UP
WASHINGTON -- In a modest late-year gain, sales in November of new single-family houses rose by 11.3 percent from a month earlier, the second straight monthly gain of 10 percent or more, the government reported recently.

BRIEFS

- Cold wave claims many lives across U.S.
- Decision to sell Taiwan planes receives criticism.
- China protest Taiwan plane sale.
- Cold weather deals blow to England.
- Polish authorities may end martial law.



Ask a neighbor about Pioneer® brand 8451 then come see us!

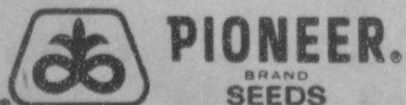
- Excellent record under limited moisture conditions
- Very good drought tolerance, plant vigor, and head exertion
- Excellent quality, high test weight grain

We're convinced this variety can give you a performance advantage in this area. And we can show you field data to back us up.

First chance you get, come on by and let's talk about your seed needs for the coming year. Together we'll select the right combination of Pioneer® brand seeds to give you the advantage you need.

Morris Brothers Seed
Rt. 3 - Box 31
Gruver, Tex. 79040

Phone 733-2132 or 733-2203



*Pioneer is a brand name. Numbers identify varieties. Registered trademark of Pioneer Hi-Bred International, Inc.

PRICES GOOD THRU JAN. 30TH

WIN CASH...WIN STAMPS...

UNITED CASINO

Supermarkets Perryton, Texas

QUANTITY RIGHTS RESERVED

GLADIOLA FLOUR

69¢ 5 LB. BAG

CHEER LAUNDRY DETERGENT

171 OZ. 70% OFF LABEL

\$5.98

ALPO DOG FOOD

23 1/2 OZ. CAN ALL FLAVORS

2 FOR \$1.98

WOLF PLAIN CHILI SOUP 15 OZ. **98¢**

CAMPBELL'S CHICKEN NOODLE SOUP 10% OFF LABEL **3 FOR \$1**

SPILLMATE TOWELS

59¢

PLAINS ICE CREAM

\$1.39 1/2 GAL.

REGULAR DR. PEPPER

\$1.89 6 PK. 32 OZ. + DEPOSIT

CONTACT COLD CAPSULES 10 CT. **\$1.69**

STYLE HAIR SPRAY 8 OZ. ALL TYPES **\$1.19**

DOUBLE STAMPS WITH A \$2.50 PURCHASE OR MORE EXCLUDING CIGARETTES

SAT

LA SUEUR PEAS 17-OZ. CANS **2/89¢**

IVORY "PERSONAL SIZE" BAR SOAP 9" OFF LABEL 4 BAR PACK **79¢**

"GARDEN FRESH PRODUCE"

GOLDEN RIPE BANANAS

3.99 LBS. FOR

NO. 1 RUSSET POTATOES

\$1.49 10 LB. BAG

TEXAS FULL O' JUICE ORANGES

3.99 LBS. FOR

LARGE CRISP PODS BELL PEPPERS

3 FOR 99¢

YELLOW NO. 1 ONIONS

3 LBS. 99¢

JV Lynxettes Beat Dalhart

The Spearman Jr. Varsity Lynxettes hosted and practically roasted the Dalhart Jr. Varsity Wolverines at the Lynx Varsity Gym on Friday, January 22. The final score was 36 to 30.

It was a very hard fought game, with both teams wanting to win, but only one team would win--although both deserved to win. Andrea Mires had a hot hand since the beginning of the game. Not one Jr. Varsity Lynx fouled out of the game. They all did a wonderful job, each one doing their job. The JV Lynxettes took an early commanding 8 point lead--14 to 6. The JV Lynxettes Defense was doing a great job against a tough and exploding Dalhart Offense. Both teams, did their job on Defense, letting their opponent score 6 points. The score after 3 quarters of play showed that the JV Lynxettes' 8 point lead had been cut down--narrowly--to 4 points--24 to 20. The final quarter approached, the JV Lynxettes got out on the court and did their thing. They scored 12 points, but Dalhart scored 10--not enough to overcome the 6 point lead, and the JV Lynxettes won in a very close (last half) game.

The stats showed that Andrea Mires had scored 14 big points--making 6 of 12 free throws and had 1 foul; Nita Baker, followed her teammate with 8 points--being 6 of 8 from the free throw line and

having 2 fouls, Kelli Crawford scored 6 points--was 2 of 3 from the charity stripe and had 2 fouls, Sonya Ooley had 1 foul, Robbie Heinrich and Carol Ross both had 2 points--both getting theirs from the field. The other girls that played, Denise Brewer, Kim Nelson, Kim Elbert and Shelly Cook, didn't score but they did their job. Shelly, Kim and Denise all did a great job, bringing the ball down the court against tremendous pressure, setting up a play, and assisting their teammates in scoring, while Kim (Nelson) did her job of rebounding under the boards and blocking out her girl.

The Jr. Varsity Lynxettes are competing in the annual Perryton Jr. Varsity and Freshman boys and girls Tournament, scheduled for January 28, 29 and 30. The JV Lynxettes will be playing against Perryton beginning at 5:30 p.m. on Thursday, January 28. If the JV Lynxettes win, they will play at 11:00 a.m. on Friday, January 29, against Dalhart. If the JV Lynxettes lose, they will play against an "unknown" opponent on Friday, January 29, beginning at 3:30 p.m.

Then on Friday, February 5, the JV Lynxettes will be hosting the River Road JV Wildcats.

The Freshman and Jr. Varsity Lynxettes will participate in the annual Perryton 9th & JV boys and girls Tournament which will be held Thursday - Saturday-January 28 - 30. First of all, there will be

three gyms in use--the High School Gym, the Jr. High-Raider Gym, and the Jr. High, Kelley Gym.

The Freshman Lynxettes, coached by Robin Travis, will

play against Liberal, Kansas beginning at 2:30 on Thursday, January 28, at the Raider Gym in the Jr. High. IF the Freshman Lynxettes win, they will take on Dalhart at 9:30 a.m. in the High School Gym

on Friday, January 29. IF the Freshman Lynxettes lose, they will play at 3:30 at the Kelley Gym at the Jr. High. Then the Consolation game will be played at Saturday, Jan. 30, at 1:00 at the Kelley Gym, Jr. High. The 9th grade girls Third Place game will be played at 1:00 p.m. at the Raider Gym, Jr. High, beginning at 1:00 p.m. And then the Championship game will be played at 1:00 p.m. on Saturday, January 30, at the High School Gym.

The JV Lynxettes will be playing against Perryton in their opening game on Thursday, January 28, at 5:30 p.m. IF the JV Lynxettes win, they will play against Dalhart on

Friday beginning at 11:00 in the High School Gym. Incidentally, the game against Perryton will be played at the Raider Gym, Jr. High. IF the JV Lynxettes lose they will play at 3:30 p.m. on Friday at the High School Gym. The Consolation game for the JV girls will be played at Saturday, January 30, beginning at 4:00 at the Kelley Gym, Jr. High. The 3rd Place game will be played at 4:00 p.m. in the Raider Gym, Jr. High, on Saturday. The JV girls Championship game will be played at 4:00 p.m. at the High School Gym.

Go on over to Perryton and cheer the Freshman and JV Lynxettes to VICTORY!!

9th & JV Lynxettes To Participate In Perryton Tourney

7th Lynxettes 'Do-Away-With' Perryton Again

The 7th grade Lynxettes traveled to Perryton to have a rematch with a very tough team of Perryton girls. The game ended with a 23 - 17 score--the 7th Lynxettes beating Perryton for 2nd time in a row!!

The starters for the 7th grade Lynxettes were Ronda Gibson, Michele Savage, Kerri Holt, Carrie Ann Guthrie and Jennifer Yarbrough. The 7th Lynxettes saw a lot of "improvement" on the Perryton girls side, and I'm sure that Perryton thought the 7th Lynxettes had improved since last Monday. The game was played on Monday, January 25. The 7th Lynxettes had a "hot" first quarter scoring 12 points and stopping Perryton at 7. The second quarter was mostly Defense. It was a very hard quarter for both teams to score on, but mainly for the

7th Lynxettes, as they didn't get any kind of score, but the Perryton girls scored 4. The score at the half was 12 to 11.

It seemed that the Perryton girls were getting their act together, but not necessarily--the 7th Lynxettes Defense came back in the third quarter and really took care of the rebounding, as well as stealing and scoring. As the Perryton girls had done in the second quarter--not letting the 7th Lynxettes score and they, themselves scored 4 points--the 7th Lynxettes didn't let Perryton get any kind of score--not from the free throw line or the field--and they--the 7th Lynxettes--scored 4 points. The score after 3 quarters of play had the 7th Lynxettes ahead by the score of 16 to 11. The 4th quarter is always tough. The Perryton girls wanted to win, because they

were playing at home. The 7th Lynxettes wanted to beat their opponent, for two reasons--1, they were playing Perryton, and 2, they wanted to prove to those at the game, that they could beat a team at the Lynx Little Gym and also at their opponent's gym. Cayla Eaton fouled out in the fourth quarter, that left the other 7th Lynxettes to do a fine job against this tough Perryton squad. The 7th Lynxettes scored 7 points to the 6 of Perryton, ending the game at 23 to 17--the 7th Lynxettes winning once again.

The next game for the 7th Lynxettes will be against a very tough Dalhart team. The game is planned for February 1, on a Monday, at the Lynx Little Gym, with the 7th grade girls beginning at 4:30 p.m. It should be a very good game.



Neighborly
1st neighbor: "How did that naughty little boy of yours get hurt?"
2nd neighbor: "That good little boy of yours hit him with a brick."

Ah, But The Flavor
"Your husband gets a lot of sentiment out of his pipe, doesn't he?"
"Indeed he does. It's perfectly disgusting to see him clean it."

Swell Comparison
Asking a woman her age is like buying a second hand car;
The speedometer's been set back.
But you can't tell just how far.

Well Told
"So Fred has given up smoking?"
"Yes. On the advice of his doctor, at the request of his wife, and by command of his mother-in-law."

...HAVE FUN PLAY UNITED'S BINGO

\$275,000 IN CASH GAME PRIZES
OVER 88,000 POSSIBLE WINNERS
OVER 40,000,000 S&H STAMPS TO WIN
WIN UP TO \$2,000

UNITED TRU TENDER RUMP ROAST BONE-IN LB. \$1.79	EXTRA LEAN GROUND BEEF LB. \$1.88	BONELESS STEW MEAT LB. \$1.88
DECKER QUALITY 1/2 HAM BONELESS WATER ADDED LB. \$1.98	DECKER QUALITY JUMBO FRANKS MEAT 1 LB. PKG. \$1.19	DECKER QUALITY BOLOGNA MEAT LB. \$1.29
FINE FARE CHEDDAR OR COLBY CHEESE 8 OZ. HALF MOON \$1.19	DECKER QUALITY BACON 1 LB. PKG. \$1.49	DECKER QUALITY MEAT OR BEEF FRANKS 12 OZ. PKG. 88¢

DOUBLE STAMPS WED.!

WITH A \$2.50 PURCHASE OR MORE EXCLUDING CIGARETTES

KRAFT "MAXI CUP" PARKAY 16 OZ. 79¢	PILLSBURY'S PARKERHOUSE ROLLS 8 OZ. 69¢
--	---

MINUTE MAID CHILLED ORANGE JUICE
64 OZ.
\$1.49

PRICES GOOD THRU JAN. 30TH

"FROZEN FOOD"

JENO'S PARTY SIZE PIZZA ALL FLAVORS 98¢	KITCHEN TREAT POT PIES 6 OZ. ALL FLAVORS 4 FOR \$1.00
---	---

BIRDSEYE CORN ON THE COB
4 CT. PKG.
\$1.29

MORTON "FAMILY PACK" DONUTS
14 OZ.
\$1.19

UNITED Supermarkets
Perryton, Texas
QUANTITY RIGHTS RESERVED

LOOK! Here's a fantastic engine

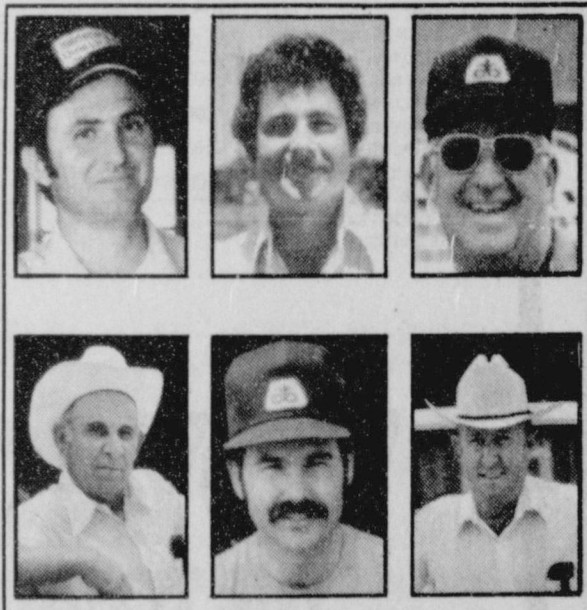
SPECIAL

PRICED BELOW DEALER COST!

Deutz Diesel Engine 31 h.p.	\$2,570.
W44D Wisconsin Gas Engine 37 h.p.	\$2,290.
W44D Wisconsin Gas Engine 30 h.p.	\$1,730.

*Brand new engines with full factory warranty
*Many farm & industrial uses
Prices will never be so low again

NEW HOLLAND SPERRY NEW HOLLAND
Perryton, Texas 806-435-5473
Guyton, Oklahoma 405-338-5404



Ask a neighbor about **Pioneer® brand 8501** then come see us!

- Outstanding drought tolerance
- Produces hard textured grain with very heavy test weight
- Consistent record of outstanding performance

We're convinced this variety can give you a performance advantage in this area. And we can show you field data to back us up. First chance you get, come on by and let's talk about your seed needs for the coming year. Together we'll select the right combination of Pioneer® brand seeds to give you the advantage you need.

Morris Brothers Seed
Rt. 3 - Box 31
Gruver, Tex. 79040
Phone 733-2132 or 733-2203

PIONEER BRAND SEEDS

*Pioneer is a brand name. Numbers identify varieties. Registered trademark of Pioneer Hi-Bred International, Inc.

Freshman Lynxettes Beat Perryton For 2nd Time

The Freshman Lynxettes, under the guidance of Coach Robin Travis, have been having a SUPER 1982 or second half of the basketball season. They were undefeated for the second half of the 1982 part of the 1981-82 basketball season going into the game against Perryton. The 9th Lynxettes plan on being undefeated for the rest of the season, and first had to go thru this tough Perryton team. The Freshman Lynxettes succeeded with their main goal--beat Perryton at Perryton--by the score of 32 to 26. It was a close game at times.

The starters for the 9th Lynxettes were Tammy Garcia, Tiki Jackson, Shanna Reid, Stephanie Friemel and JoAnne Odegaard. All the other Fresh-

man Lynxettes got to play at one time or another. The fans in the stands from both sides, could tell that the Freshman Lynxettes and Perryton girls had come to play and to win. The first quarter was a very, very close quarter, with the Freshman Lynxettes edging the score at 7 to 6 after 1. Then in the 2nd quarter, the Freshman Lynxettes' Defense did a marvelous job, holding the Perryton girls at 6 points once again, while their Offense scored 8 points putting the score at 15 to 12, in favor of the 9th Lynxettes.

The Freshman Lynxettes had been doing a fine job lately in the second half as they had in the first. The 9th Lynxettes came out in the 3rd quarter "steaming"--you might say--they stopped Perryton at 3

points for the quarter, and then put up 9 points for the Freshman Lynxettes side--the score at this point was 24 to 15. In the final quarter the Perryton girls finally started putting some meaningful points on the board, by outscoring the 9th Lynxettes 11 to 8. It was a tough quarter for the Freshman Lynxettes, particularly on the Offense, because JoAnne Odegaard fouled out of the game. JoAnne has a really good sense of direction when it comes to scoring for her team!!! The Freshman Lynxettes still scored 8 points--enough to win the game, 32 to 26!! It was a well played game. As the 9th Lynxettes keep on working hard after hour after hour to stay in shape, to improve on shooting abilities, especially from the

free throw line.

The Freshman Lynxettes will be participating in the Perryton Jr. Varsity and Freshman girls and boys tournament. It is a tough tournament, and the Freshman Lynxettes will face an "unknown" opponent--that being the team from Liberal, Kansas. NOTE: This tournament isn't like most tournaments, it's different in some ways. One of those ways is--if the Freshman Lynxettes win on Thursday, January 28, then they will be facing the tough Dalhart Wolverines at 9:30 a.m., but if they lose to Liberal on Thursday, then they 9th Lynxettes will be facing an "unknown" opponent at 3:30 p.m.--so right there you can see some of the differences between the Perryton tournament and some other tourna-

ment. The Freshman Lynxettes and Liberal will begin playing at 2:30 p.m. on Thursday, January 28. The tournament is scheduled for three days--28, 29 and 30. Other teams entered, other than Spearman, Liberal and Dalhart, are Berger, Stinnett and the host team, Perryton.

Then on Monday, February 1, the Freshman Lynxettes will host the Dalhart Wolverines. It should be a very tough game.

In Fashion

White is big in fashion news this spring. The metallic look is still good, but silver will be more prominent than gold.

SMILES

Safety Last
"What's making you look so angry?"
"Nothing much. I cut myself with the safety razor, burned myself with a safety match, and nearly got run over while reading a safety first notice."

Depreciation
"I need a holiday," said the pretty restaurant cashier. "I'm not looking my best."
The manager looked annoyed. "Nonsense," he said. "It isn't nonsense," she said, "the men are beginning to count their change."

Lynx Look Good Against Dalhart

The Dalhart "Golden" Wolves came into town for one reason, and that was to beat the Lynx and then that way the Lynx would be 2 games behind the leader of the District and the "Golden" Wolves would be only 1 game behind. The Lynx played a great game. Back-to-back great games is something else. The Lynx wanted to win so that they could be 1 game back, and the "Golden" Wolves would be 2 games back of the District leader--the Perryton Rangers. Well, it was a very well fought game, with the Lynx being behind by 2 in the 3rd quarter, but losing 60 to 54. The Lynx are now 2 and 2 in District play. This Friday, will be "countdown" for the District play-offs, the Lynx still have a good chance.

The Dalhart Wolves were predicted to "devour" the Lynx in a District game. The only thing is that the Lynx almost "massacred" the Wolves, before the Wolves could get their jaws into high power for the "devouring" of a Lynx. When the first quarter was over--14-7, in favor of the Wolves--it seemed that the Lynx were going to be "devoured" in their own front yard--Lynx Varsity Gym. Well, anyone that knows anything of a LYNX should know that they usually sneak up on their prey--this being the Dalhart Wolves. The Lynx did have a "sneak-attack" going, but time ran out. The Lynx did outscore the Wolves 19 to 16 in the second quarter--the score at the half was 30 to 26, the Lynx behind by 4.

The Lynx play pretty well in the second half, the Wolves would try to keep Kyle Brack,

the Lynx leading scorer in many important games. The Lynx, on the other hand, would see if they could get their 6'3" Senior--Stephen Tindell--open for inside as well as baseline shots. There was one thing that concerned the Lynx, they knew that the "Golden" Wolves loved the 4th quarter--it was known as "Wolves' Quarter" in some areas, the Lynx would get to know why.

The Wolves did control Kyle, but could not stop the big-man--Stephen Tindell. Stephen was having a "Whale" of a game--that is a very big game Offensively as well as Defensively. The Lynx scored 14 big points and stopped the Wolves with 12. The "Golden" Wolves were losing some color after that 3rd quarter, but they still owned a slim 2-point lead. Like I said before, the 4th quarter was Wolf quarter and they were going to do their best to pull this game out of the "quicksand". The Lynx put on a tremendous surge by scoring 14 points, but the Wolves scored 18 points, winning the game with 6 points--60 to 54. It was a very hard-fought game.

The Lynx will start the "District Circle" once again against the Perryton Rangers at Perryton this coming Friday, January 29. The Lynx will be planning on play a tougher game than before, mainly because the game will be played at Perryton. The Rangers will be expecting a tough game, because the Lynx will be vastly improved, especially since the Lynx lost by 6 to Dalhart--very impressive.

Harrington Foundation, Others Give Texas Main Street Grants

AUSTIN--The Don and Sybil Harrington Foundation of Amarillo has awarded a \$47,500 grant to the Texas Historical Commission and its Texas Main Street Center. Additional grants totalling \$180,000 will be contributed to the Main Street downtown revitalization program over the next three years by The Brown Foundation of Houston and the Sid W. Richardson Foundation of Fort Worth.

These are the largest of a growing number of grants allocated by private groups, individuals, and commercial organizations in support of THC preservation projects. The Main Street Project is an attempt to stimulate local reinvestment in and revitalization of historic central business in our small Texas towns.

The Texas Main Street Project currently involves 10 towns: Eagle Pass, Hillsboro, Navasota, Plainview, and Seguin were the original 1981 pilot communities, with Gainesville, Georgetown, Kingsville, Marshall and McKinney joining the network this year. In each of these small cities resident project managers work directly with local businessmen, financial institutions, and city officials in efforts to reinvigorate economic and social life in the central business district. Major emphasis is placed on rehabilitating and adapting existing structures, with a tasteful development of the unique historical character of each town.

Other Main Street contributors to date are H.E.B. Food Stores, based in Corpus Christi; Southwestern Bell; Exxon Corporation; Read-Poland, Inc., an Austin public relations firm; the Gifford-Hill Company of Dallas; the Anchorage Foundation of Houston; Mr. and Mrs. Menton Murray of Harlingen; the Rockwell Fund of Houston; the LBJ Family Foundation; Lone Star Gas Company; the Herman Bennett Company of Brownwood, and the Western Company of North America, Fort Worth.

A large portion of the Harrington grant will be used to fund a series of technical workshops for architects, architectural students, and other professionals in the construction industry. The workshops will be organized by the Texas Historical Commission and Texas Society of Architects, and will emphasize the preservation and reuse of older and historic buildings in Texas. Among the specific topics to be studied are cleaning older

buildings, masonry repair, basic historical research, tax incentives for preservation, historical archeology and the Interior Department's guidelines for restoration.

These workshops will be held this year in Dallas, Houston, San Antonio and Amarillo.

The Harrington grant will also be used by the Texas Historical Commission to print and distribute preservation information, and to support architectural consultation and design assistance for the 10 Main Street Project cities.

For more information about the Texas Main Street Project, contact the Main Street Center, Texas Historical Commission, P.O. Box 12276, Austin, Tx. 78711, 512/475-3092.

IRS News

Never pay income tax again! That's a very tempting idea. Proponents of this notion are making speeches and offering seminars around the country on the "how-to's" of tax evasion. Taxpayer, beware, the Internal Revenue Service cautions.

Working toward tax reform certainly is not illegal, the IRS points out. For example, contacting a member of Congress and urging changes in the tax laws is the right of every individual. Neither is arranging one's affairs to pay the lowest possible tax against the law. If you hold securities so as to have a long-term instead of a short-term capital gain, the law supports your move.

On the other hand, illegal tax protest, such as advocating or participating in a scheme that results in the illegal underpayment or non-payment of taxes, or the non-filing or required tax returns, is illegal.

The IRS has the duty, given by Congress, to enforce the Federal tax laws. When some individuals remove themselves from the law, the burden of taxes is greater for those who willingly comply.

In the interest of fairness for all taxpayers, the IRS will continue to enforce all Federal tax laws, including laws governing those who place themselves above the law by illegally refusing to pay their just share of tax.

The best ideas germinate in honest, idealistic minds, and are not the result of self-seeking thoughts.



DUMAS
501 N. Dumas 935-7403
8:00-6:00--Monday-Friday
8:00-1:00--Saturday

GEBO'S

... the kind of store you remember.

THE REGISTERED SUPER STEEL R-T

With Rugged Tread Design for Light Trucks and RVs

\$92⁹⁹

Size LR78-15LT
Plus \$3.89 F.E.T.



- Polyester cord body plies provide smooth riding comfort.
- Get traction and straight line stopping in wet weather with five ribs and deep, wide, multi-angled grooves with lateral notches that let water and slush spin off to improve roadability.
- Two steel belts hold tread design open for effective starts and stops.

Gebo's #	Size	Reg.	Special	F.E.T.
500-827	LR78-15LT 6 Ply	108.50	92.99	3.89
500-832	7.50R16 8 Ply	106.00	89.99	4.20
500-837	8.75R-16.5 8 Ply	118.99	102.99	4.29
500-838	9.50R-16.5 8 Ply	134.50	114.99	4.79

VOYAGER THE TOTAL TIRE

\$49⁹⁹

Size P155/80R13
Plus \$1.51 F.E.T.



- All-Season tread pattern designed with the aid of computer graphics.
- Radial construction of polyester cord and Aramid fiber belts for strength and flexibility.
- Tread rubber compound that remains pliable under winter conditions to give your car superior traction.

Gebo's #	Size	Reg.	Special	F.E.T.
500-008	P155/80R13	59.59	49.99	1.51
500-009	P165/80R13	59.99	51.99	1.60
500-010	P185/80R13	67.99	55.99	1.81
500-011	P195/75R14	70.99	59.99	2.08
500-012	P205/75R14	75.49	62.99	2.23
500-013	P215/75R14	79.39	66.99	2.40
500-015	P205/75R15	77.09	64.99	2.39
500-016	P215/75R15	81.49	67.99	2.54
500-017	P225/75R15	85.49	70.99	2.68
500-018	P235/75R15	93.49	77.99	2.80



PRICES GOOD THRU JANUARY 30.

GEBO'S

SAFARI RVR ALL-POSITION RV RADIAL

\$74⁹⁹

Size 27x8.50R14
Plus \$3.06 F.E.T.



- Distinctive, raised white outline lettering on the sidewall.
- Deep, sturdy tread design to bite and grip even on soft or slippery surfaces. Three rows of isolated elements provide directional control.
- Radial construction gives you a big, flat footprint for traction.
- Flexible polyester cord radial plies for ride comfort plus steel belts for stability, strength and puncture resistance.

POPULAR PRICES IN YOUR SIZE

Gebo's #	Size	Reg.	Special	F.E.T.
500-200	27X8.50R14	87.50	74.99	3.06
500-202	30X9.50R15	110.00	93.99	4.04
500-203	31X10.50R15	124.00	103.99	4.60

THE SAFARI MINI THE ALL-POSITION MINI TRUCK TIRE



ONE SIZE ONLY
Size 26x8.50-14
Plus \$2.93 F.E.T.

\$63⁹⁹

- Raised outline white letters
- Designed to handle the requirements of the mini pickup
- Closed shoulder for better tire wear for front wheel application
- A tread depth between a rib and traction tire
- Strong yet flexible polyester cord body for a smooth ride

Gebo's #	Size	Reg.	Special	F.E.T.
500-890	26X8.50-14	73.99	63.99	2.93

EXTRA MILEAGE

The Extra Mileage is built throughout to Kelly Springfield's rigid quality standards. Full size, wide flat tread with excellent traction. High quality construction, tension-tempered Nylon cord and tread compound.

Gebo's #	Size	Reg.	Special	F.E.T.
500-120	7.00-14	46.50	39.99	2.38

7th Lynx 'Surprise' Perryton

The Spearman 7th Lynx hosted the Perryton 7th graders and almost buried them alive! The 7th Lynx did lose the game 39 to 25, but they fought "gallantly"!

The 7th Perryton guys had already beaten the 7th Lynx before in the year—as a matter of fact, it was just last Monday, and really put the beating to them. The 7th Lynx found themselves losing by 13 in the 3rd quarter—that really hurt the 7th Lynx and their coach—Dan Shaver, because they were playing at home. The 7th Lynx started doing their thing. Mike Pearson stole the ball and the 7th Lynx scored, then Mike stole the ball once again and it was a "repeat performance". With 2:21 in the 3rd quarter, the 7th Lynx were now behind by 9. The 7th Lynx had a lot of pressure on those talented Perryton boys. Then, all of a sudden, Perryton saw that they were starting to lose their "precious" 13 point lead—it was now down to 6 with 47 seconds left. Mike Pearson stole the ball once again and the 7th Lynx scored once again, the 7th Lynx were now down by 4 with 10 seconds left in the 3rd quarter. One of the 7th Lynx got too excited that he fouled a Perryton player, putting the Perryton player on the line to try for two. Well, he missed the 1st, but did his best and made the second. The buzzer rang, before the 7th Lynx could do a thing, and the 7th Lynx fans started cheering, for the 7th Lynx had made a tremendous come-back—from a 13 point deficit to a 5-point deficit—26 to 31. The final quarter was really won by free throws. Both teams were over the limit, on the fouls, so if one person fouled, that sent his opponent to the charity stripe for a 1 & 1. Everyone was playing tough. Allen Mires kept getting Defensive rebounds and then the 7th Lynx would start on a fast break. Allen made 3 of 4 free throws in that final quarter, as Mark Garnett made 1 of 3, and Dusty Hill made 1 of 2. Mark Garnett fouled out with 2:56 left in the game. He had done a great job on the 7th Lynx come-back. The Perryton guys had 9 chances to make free throws—they made 5, the 7th Lynx had 11, making 5. The 7th Lynx did outscore the Perryton guys 9 to 7, but to no avail. They lost the game 35 to 39. An interesting note is that out of the 9 points for the 7th Lynx, 5 of them came from the free throw line, as for Perryton 5 of their 7 final quarter points came from the free throw line. It was a very well fought game, the 7th Lynx might not have noticed, but they got a really good "hand" from their fans.

The 7th Lynx will now travel to Dalhart on Monday, February 1, to play against the tough 7th Wolves. This should be a good game, and it will begin at 4:30—the 7th graders will play at this time.

BIBLE VERSE

"Rebellion is as the sin of witchcraft, and stubbornness is as iniquity and idolatry."

1. Who made this statement?
2. To whom was he speaking?
3. Upon what occasion?
4. Where may this statement be found?

Answer to Bible Verse

1. The Prophet Samuel.
2. To King Saul, and through him to the Israelites.
3. Upon the occasion of Saul's sin in not destroying Agag, the king of the Amelkites.
4. I Samuel 15, part of the 23rd verse.

Golden Gleams

It is the mark of a superior man that he will take no harmful ease.

-Confucius.

Itch and ease can no man please.

-John Heywood.

Honor and ease are seldom bedfellows.

-John Clarke.

ATTENTION

ATTENTION, SPORTS FANS!! The 7th grade Lynxettes that participated in the Waka Tournament were left out in an earlier issue, but here they are. Tammy Nollner, Crista Urban, Shari Vernon, Cindy Medley, Margaret Espinosa, Tammy Thomas, Kristi

Writh, Charlotte Brandt, Denise Rojas, Vicci Elbert, Tammy Goodson, Lynette Dunaway, Tammy Shields, Anne Marie Jarvis, Pam Stumpf and April Abston. These girls will also play in other games, you can be sure of!!

Dalhart Defeats JV Lynx

The JV Lynx did a great job against a team that was tougher than tough. The JV Lynx couldn't get themselves in gear until it was too late. The final score was 30 to 23.

The starters for the JV Lynx were Byron Sutterfield, Julio Vasquez, Jan Hartzel, Billy Pat Underwood and Steven Francis. Although, they played hard, the JV Lynx didn't score a point, but the JV Wolves scored 4. So the score after the 1st quarter was 4 to 0, in favor of the Wolves. Then the JV Lynx other team—Jerry Crowl, Mike Caldwell, Pat Tucker, Dell Brandt and Jeff Pool—put the JV Lynx on the board. They started the scoring. The Wolves put 12 points in the second quarter as the JV Lynx put up 8. The score at the half was 16 to 8.

The halftime stats showed that Jerry Crowl, Mike Caldwell, Pat Tucker and Jeff Pool, all had 2 points for the JV Lynx—Jeff got his from the free throw line. It also showed that Byron, had missed an opportunity from the free throw line.

The JV Lynx came out in the 3rd quarter and scored lots of points—10 to be exact, but so did the Wolves. The score at

this time was 26 to 18, in favor of the JV Wolves. The final quarter would be something else. Indeed it was! It was a Defensive show at first, and then the JV Lynx scored 5 points to the 4 for Dalhart—making the Wolves win by the score of 30 to 23.

The final stats showed that the leading scorer was Jan Hartzel with 5 points—was 1 of 4 from the line, Julio Vasquez and Steven Francis both had 4 points—from the field, Byron Sutterfield, Jerry Crowl, Mike Caldwell, Pat Tucker and Jeff Pool, all had 2 points a piece. None of the JV Lynx fouled out.

The Jr. Varsity Lynx will be entering the Perryton JV and 9th tournament. They will play Berger beginning at 1:00 p.m. on Friday, January 28. If the JV Lynx win, they will play the winner of the Canadian/Dalhart game at 12:30 on Friday, January 29. If the JV Lynx lose, they will play at 5:00 p.m. against the loser of the Canadian/Dalhart game.

Then on Tuesday, February 2, the JV Lynx will entertain the Boys Ranch Rough Riders. The game will begin at 6:00 p.m. at the Lynx Varsity Gym.

Lynx & Lynxettes Ready For Perryton

The Lynx and Lynxettes will be traveling to Perryton to meet up with the tough Perryton Rangers, the defending District 1-AAA Champions, and the tough Rangerettes.

As far as the Lynxettes are concerned, the District hasn't been decided yet. The Rangerettes are very tough, the Lynxettes know that because of the first time that they met—on January 12, at the Lynx Gym, the Lynxettes winning by 2. But, the Lynxettes must play tougher at Perryton, because it is so good to play at home, but not away from home. The Lynxettes squad consists of Mary Ann Martin, Johnnie Eaton—both Seniors, Susan Davis, Lea Ann Gibner, Janet Reed, Jean Davis, Lana Paul, Jan Davis, Cindy Young, Sonya Ooley—all Juniors, Nita Baker, Andrea Mires, Robbie Heinrich and Kelli Crawford—all Sophomores!! Their coach is Ralph Newton. Coach Newton is assisted by Coach Terry Crocker and Coach Robin Travis. The Lynxettes

are 2-1 in District Play, and plan to make it 3-1, while the Rangerettes will be trying to up their record to 3-1. One team will be 3-1 and the other will be 2-2. Go on over to Ranger Gym on Friday, January 29, and help the Lynxettes win another District Game. This will be a very important game for both teams. The Lynxettes and the tough Rangerettes will begin play at 6:00 p.m.

The Lynx and the defending District 1-AAA Champions, the Perryton Rangers, will be playing after the girls game. The Rangers go into this game with the record of 4-0, the Lynx are 2-2 in District Competition—1 of those losses was against Perryton, the other against Dalhart. The Lynx did beat the Boys Ranch Rough Riders and the River Road Wildcats. This will be a very important game for the Lynx, if they can defeat the Rangers, they have a very good chance at the title, if they lose they'll still have a chance when they

8th Lynx Lose in Tough Game

The 8th Lynx were looking for revenge—against a tough Perryton team. The game was close for the first 2 quarters, but the last 2, Perryton had control. Two 8th Lynx fouled out of the game, making a win even tougher. Coach May had worked his 8th Lynx enough to scare the Perryton boys—that they did. The final score was 30 to 21—Perryton winning.

The starters for the 8th Lynx included Dean Greene, Damon Goodheart, Timmy Willis, Jeff Vanlandingham and Monte Morris. The first quarter was a little "hairy", neither team could score, as there were lots of steals and blocks and especially rebounds. As the first quarter ended, the 8th Lynx and Perryton found themselves tied at 4. The second quarter was just as close, but Perryton had a point more and at the half held the lead—11 to 10.

The halftime stats showed that Damon Goodheart was the leading scorer for the 8th Lynx with 6 points, while Timmy Willis and Monte Morris both had 2 points. The Perryton 8th grade guys had 8 tries for free throws, and made 3 of them; the 8th Lynx, on the other hand, were having a tough time from the charity stripe—they had 5 tries, and none went in. Dean Greene, one of the best Defensive guys on the 8th Lynx, had 3 fouls already, Damon Goodheart had 2 fouls, Timmy Willis and Monte Morris both had 1 foul a piece. The Perryton guys had committed 6 fouls. The second half

would be a tougher half.

In the 3rd quarter, it seemed that the 8th Lynx Offense hadn't come out of the locker room, as the 8th Lynx scored 3 points—the lowest all night. Perryton, on the other hand, scored 9. The score after 3 quarters of play was 20 to 13. The final quarter was really tough for the 8th Lynx, because they lost two starters—first Damon Goodheart, he finished the game with 12 points in the game—was 2 of 2 from the charity stripe, this really helped the 8th Lynx. Monte Morris was the other, he left with 2 points, an absolute low for Monte. Then the 8th Lynx relied on Timmy Willis, Jeff Vanlandingham, Dean Greene, Michael Lopez and Trevor Pool. The Perryton guys scored 10 points, while the 8th Lynx scored 8. The final score was 10 to 8.

The final stats showed that the 8th Lynx' leading scorer was Damon Goodheart with 12, was 2 of 3 from the free throw line, Timmy Willis had 5 points—was 1 of 4 from the charity stripe; Dean Greene and Monte Morris both had 2 points—Dean got his from the free throw line, being 2 of 6 and Monte got his from the field, the biggest story of the night had to have been that one of the best 8th Lynx player—Jeff Vanlandingham—didn't score a single point!!

The 8th Lynx will go over to Dalhart to meet their rivals—the Dalhart 8th Wolves. The game is for this Monday, February 1.

participate in the District 1-AAA Tournament which will be held February 18-20 at Stratford—(More on the tournament in a later issue). Those that participate in the Lynx ball play are Stephen Tindell, Monte George, David Brandt, Kyle Brack, Cam Collinsworth, Scott Alford—all Seniors, Darren Goodheart, Jay Pack, Scott Dunlap—all Juniors, and Buddy Pool—Sophomore. Their coach is F.G. Crofford. Coach Crofford is assisted by Coach Gary Rambo and Coach Ricky Smith—the Jr. Varsity coach and the Freshman coach, respectively. The Lynx will have to play their best ever to be able to defeat the Rangers. It will be a very tough game. The Lynx will want to dominate in all four or at least the last 3 quarters. In the game before, the Lynx had played an excellent first half, being behind by 2 at one time. This will be a very hard-fought game. Go on out to Perryton, it isn't that far, and the main thing is the Lynx will want lots

of support in this game.

Roger Davis named acting state forester

Roger Davis has been named Oklahoma's acting state forester following resignation of Jim Riley, head of the Oklahoma Department of Agriculture's forestry division since 1978.

Davis, 42, has been on the forestry division's staff since 1972 and has served as management chief, chief of resources management and assistant state forester.

Riley, whose resignation was effective Jan. 9, is forming a consulting partnership with Dr. Bob Latham, a forest economist at Oklahoma State University, to be called Duck Creek Associates.

Davis is a 1964 forestry graduate of OSU and has worked for the U.S. Forest Service and in the private forestry sector before joining the state forestry division in 1972.

He resigned from the U.S. Forest Service in 1967 after serving as a forester in the Kootenai National Forest in Montana, joining Dierks forest group as an assistant district forester in the DeQueen district in southwestern Arkansas.

Later, after Weyerhaeuser purchased the holdings of Dierks, Davis became district forester for the DeQueen and Grannis districts, with responsibilities of management over timberlands exceeding some 200,000 acres.

He is a member of the Society of American Foresters, has served as chairman of the Oklahoma chapter of the Ozark Section of the Society of American Foresters and is currently secretary of

the State Board of Registration for Foresters.

Davis is also on the board of directors of the Oklahoma Forestry Association and is a member of the Oklahoma Chapter of the Wildlife Society, the American Forestry Association and the Oklahoma Wildlife Federation.

He and his wife, Joyce, have a daughter, Laurel, 14, a freshman at John Marshall High School.

Roger is the son of Mrs. Raymond Kirk of Spearman and the late Woodie Davis.

Water District Holds Election

The North Plains Water Conservation District held its annual election Saturday, Jan. 16, 1982. The following Directors were elected for a two year term:

Precinct 1: Roy Stollings; Precinct 2: N.F. Renner; and Precinct 3: Luther Browder.

The two holdover Directors are Gaston Wells and Robert Thompson.

The County Committeemen were elected for the following counties for a four year term:

Lipscomb County: Gene Born and Victor Miller.

Ochiltree County: Dan Manning, Bill Pletcher and Dean Slaughter.

Hansford County: Robert C. Ferguson, Dee Jackson and Everett Vanderburg.

Hutchinson County: Buster Kirk, Thane McCloy and Noble Watson.

Sherman County: H.H. Casaway, Walter Lasley and Duane Schaffer.

Acquisition

Some men are born with a will of their own. Others marry one.

-Spotlight, San Diego.

Definition

The money the other fellow has is capital. Getting it away from him is labor.

-Coast Guard Magazine.

Words On Play

All men are not homeless, but some are homeless than others.

-News, Jacksonville, Fla.

"Homestead Can Make You Money"

Take Stock

I hope this finds you and your family doing well as we approach the Holiday Season.

Interest rates are dropping! We've seen this happen in recent weeks. However, you can still take advantage of rates while they're high if you bring your savings to Homestead.

Saving money is easy at Homestead and your money stays right here at home, where you can see it working for you. That's why we have almost 13,000 savings accounts in this part of the country. We've been out here for 62 years and we'll be here for a long time to come.

Don't miss out on the Best Time in U.S. History to save money. We can fix you up with money market certificates, checking accounts that pay interest, passbook savings accounts, tax-free savings accounts, retirement plans that pay interest, and the list goes on and on. Just like a bank, our accounts are all insured.

If you don't have an account with Homestead, Get One! We're the only financial institution in town authorized to give S & H Green Stamps. We'll give you 600 green stamps (up to 6,000) for each brand new \$1,000 you deposit or add to your account. Bank on us and Take Stock in Homestead.

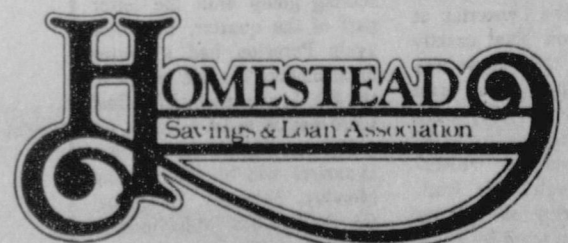


Deloris Montgomery
Guymon Branch Manager

Sincerely,
Deloris Montgomery
Deloris Montgomery
Branch Manager
HOMESTEAD SAVINGS AND LOAN

Home Office
1518 Oklahoma Avenue
Woodward, Oklahoma
(405) 254-3301

Guymon
Northridge Shopping Center
Guymon, Oklahoma
(405) 338-8461



J.G.'s 300 Main
Phone 659-3424
Spearman, Texas

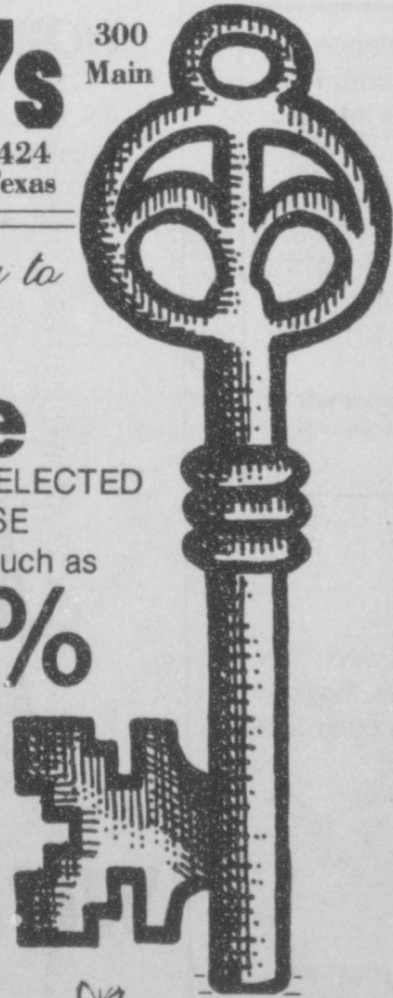
Your Key to Savings!

Sale
SPECIALLY SELECTED
MERCHANDISE
Reduced as much as

50%

Begins
Thursday

Jan. 28
1982



J.G.'s
Judy Nelson
Glenda Guthrie

Lynxettes Lose By A 'Whisker'

The Spearman Lynxettes played in one of the toughest games and closest in a long, long time. The game was played at the Lynx Varsity Gym on January 22. It was against the Dalhart Wolverines who happened to be like the Lynxettes--undefeated after 2 District games--both beating Perryton and River Road. As a few "people" put it, the Lynxettes were to lose by 10, at least. The Lynxettes are very young, but they have been playing long enough to know when a teammate is making a break for it or where a teammate will be when another has the ball. The Wolverines have a lot of respect for the Lynxettes and vice-versa. Between the two teams it was expected to be a very close game, but no one expected two Lynxette starters to foul out. The Wolverines won 56 to 55.

In the first quarter, the Lynxettes had a three-point lead, but then Margo Colquitt, of the Dalhart Wolverines--#22, started shooting from the outside, and she also rebounded plenty of times, that after the first quarter buzzer rang, the Wolverines had captured the lead--11 to 10. The starters for the Lynxettes were Senior, Mary Ann Martin; Junior, Lea Ann Gibner; Junior, Susan Davis; Junior, Janet Reed and Junior, Lana Paul. Margo Colquitt is an extraordinary player, she will either assist on a score, score herself, rebound, make someone foul her and knows when and how to foul. Meanwhile, on the Lynxettes side of the court, Mary Ann (Martin) was having a great time, by scoring almost all the time she had the ball. Mary Ann can shoot from the outside, from the inside, rebound, and she also knows just when to foul, and in this game, she would get caught for reaching in. Don't get me wrong, I'm not saying that she did wrong, just that her final foul was a reaching in on Miss Colquitt. Janet Reed, the other Lynxette that fouled out--she also is a very good player, shooting from the inside, rebounding, putting up an offensive rebound for a score, and can foul. Janet averages about 8 or so points a game, but she has a higher average rebounding. Mary Ann averages 10 or so points a game--could be higher--both of these girls are quality players, the kind that a coach wants for the whole game. I'm sure that they will be getting ready for their rematch with the Wolverines, but mainly to stay in the game and that could make a difference. Mary Ann and the Lynxettes came out in the second quarter and put up 16 points, holding Margo and her teammates to 13. The score at the half was 26 to 24, in favor of the Lynxettes.

The halftime stats, showed that Mary Ann lead the Lynxettes with 8 points, Lea Ann Gibner was second in command with 6 points, then Susan Davis, Janet Reed, Jan Davis, Lana Paul, Nita Baker and Cindy Young all had 2 points--Susan, Janet, Jan, Lana and Cindy getting theirs from the field, as Nita got hers from the freethrow line--making her 2 of 2. Susan had one try at the free throw line and missed, Lea Ann had 2 chances and missed both times. This meant that the Lynxettes were 2 of 5 from the times they got to go to the Free Throw line. The Wolverines had 13 tries to make free throws and made 6. The Lynxettes would be getting ready to fight in the second half, the Wolverines, on the other hand, already knew the Lynxettes loved the 2nd half of a basketball game, they knew that they had to get out and score, score, score, to be able to have a chance in the 4th quarter. They would be keying on Mary Ann Martin, and would not try to foul too many times, for the Lynxettes are also known for their Free Throw Shooting!!

The Wolverines came out in the third quarter and played really good. The Lynxettes at first didn't know what exactly hit them. All they knew was that the third quarter had been and gone, and now they were behind 40 to 35. The Lynxettes knew that when the Wolverines had a comfortable lead, they would keep on scoring until they beat a team by 10 or more points. Another thing

was that the Lynxettes have been winning in the last seconds of the game--sort of like the Cardiac Kids from Dallas. So the Wolverines weren't taking nothing away from the Lynxettes, except that they--the Wolverines--would play cautiously and shoot on occasion, if necessary. Then in the fourth quarter, Mary Ann fouled out. Janet Reed, who had 4 fouls to her credit at this point, went in. Just when Janet went up for a lay-up, she was called for over-the-back foul, and she also fouled out of the game. The ones playing now, were Cindy Young, who had 4 fouls, Lana Paul, who had 4 fouls, Lea Ann Gibner, also with 4 fouls, Susan Davis with 2 and Jean Davis with 2 fouls, also. The Wolverines were having lots of opportunities for free throws--equaling to 1 point, and making most of them. Lea Ann was having a great 2nd half of play. The Lynxettes were down by 1 point. Miss Colquitt had the ball, she had to be fouled with 20-some seconds to go. Lea Ann fouled Miss Colquitt, which gave her two shots, because it was an obvious foul. Miss Colquitt made both free throws and the Lynxettes were again behind by 3. Somehow the Lynxettes broke the press and Cindy made two points. With about 5 seconds left, Lea Ann stole the ball, she tried to throw it to the open Lynxette, but the buzzer rang to end the game at 56 to 55, in favor of the Wolverines.

The Wolverines are now 3-0 in District play, leaving the Lynxettes at 2-1, this doesn't mean that the Wolverines are the District Champs for the 1981-82 basketball season, all it means is that the Lynxettes are one game behind. The Lynxettes now, must beat Dalhart at Dalhart on February 9, but first must face the Rangerettes at Ranger Gym and then the Wildcats of River Road, at the Lynx Gym. It is still a long way for District to be decided.

The Lynxettes will be taking on the tough Perryton Rangerettes this coming Friday, January 29, at the Ranger Gym. This will be a very tough game and a "must-win" for the Lynxettes, in order to be right behind the Wolverines.

Then on Friday, January 8, they will meet up with the tough River Road Wildcats. Go on over to Perryton and cheer on the Lynxettes to victory!!!

8th Lynxettes 'Ambushed'

The 8th Perryton girls were waiting in the "bushes", sort of speak, for the 8th Lynxettes. As y'all recall, on Monday, January 18, the 8th Lynxettes had "clobbered" the Perryton girls at the Lynx Little Gym, well, the 8th Perryton girls planned on doing the same thing to the 8th Lynxettes at Perryton on Monday, January 25. The final score was 30 to 19, in favor of the Perryton girls.

Those starting for the 8th Lynxettes were Diana Martin, Tracie White, Shelly Dunnihoo Carlee Dixon and Linda Evans. All the 8th Lynxettes played at one time or another. The 8th Lynxettes had an early 3-0 lead, until the Perryton girls started grabbing rebounds from both boards and went up by the score of 8 to 3 after the first quarter was over. So the 8th Lynxettes had to work harder in order to rebound from this sort of come-back in the first quarter by the Perryton girls. The 8th Lynxettes did outscore the Perryton girls, 6 to 4, but still found themselves behind at the half--12 to 9.

Both teams came out in the third quarter with a hot hand on scoring, the Perryton girls had left them (their hands) on the grill longer, because they scored 3 more points than did the 8th Lynxettes--8 to 11. The score after the 3rd quarter was over was 22 to 15--Perryton by 7. Neither team could get their scoring going until the latter part of the quarter, but once again Perryton had a hotter hand making 8 more points to the 8th Lynxettes 4. The final score was 30 to 19.

The next game for the 8th Lynxettes will be this coming Monday, February 1, against the Dalhart 8th Wolverines at the Lynx Little Gym. Try and make it.

Social Security

News

The annual earnings base--the maximum amount of annual earnings that counts for Social Security--will increase to \$32,400 for 1982, up from \$29,700, the 1981 base, Larry Mayo, Social Security Branch Manager in Pampa, Texas, said recently.

The increase is based on the change in average earnings levels from 1980 to 1981.

Also scheduled to increase in 1982 is the Social Security tax rate, Mr. Mayo said. The 1982 tax rate will be 6.7 percent, an increase of 0.05 percent over the 1981 rate of 6.65 percent. The increase will amount to just 50 cents a month for a person earning

\$1,000 a month.

Other Social Security figures are scheduled to increase in 1982 as well. The annual exempt amount used in the annual earnings test will increase. The annual earnings test is the measure used to determine whether a person will receive benefits during a year. A person whose earnings do not exceed the annual exempt amount will receive all benefits due for the year. A

person's benefits are reduced \$1 for each \$2 of earnings above the exempt amount.

In 1982, the annual exempt amount for people 65-72 will be \$6,000. For people under 65 all of 1982, the exempt amount will be \$4,440.

There is also some important news concerning the age at which the earnings test no longer applies, Mr. Mayo said. Under the law in effect before 1981 the age at which the earnings test no longer applies

was scheduled to drop from 72 to 70 in 1982. A 1981 law delayed the change to 1983.

More information about Social Security taxes and benefits can be obtained at the Pampa, Texas Social Security Office at 125 S. Gillespie, Pampa, Texas 79065.

Call our toll-free telephone number 1-800-392-1603 for any Social Security information. Call 1-800-442-2620 for Medicare information and help with your claims.

Judy Martin, of the Ex-Student Association, would like the people in charge of their classes at the reunion last year or those that have their classmates addresses to send her a copy of that list at 716 Gibner Dr. These names and addresses are needed for the registry.

Presenting The First Individual Retirement Account

How To Retire As A Millionaire On \$5.48 A Day

You are eligible to open an individual retirement account no matter where you work or whom you work for. It's a tax-sheltered investment fund that gives you tax protection today and income protection when you retire.

HOW DOES IT WORK?

You can put up to \$2000 a year (that's only \$5.48 a day or \$167 a month) into a First IRA. A working couple can put in \$4000 a year. That money is deducted straight from your taxable income. The interest earned is tax-sheltered as well. For a worker in the 30% tax bracket that means \$600 in taxes that don't have to be paid right away. You only pay taxes on it as you withdraw, at retirement time, usually in a much lower tax bracket.

HOW CAN \$5.48 A DAY BUILD UP TO \$1,000,000

If, for example, at age 30, you open up an IRA with \$2000 and continue to deposit \$2000 annually until you're 65, at 12% interest, your account would grow to \$1,161,000! The interest alone will be over \$1,000,000! Judge for yourself by the chart.

Retirement Growth For Working Persons Sheltering \$2000

At End Of Year	Total Amount Deposited	Balance In Account At 12% Interest
5	\$10,000	\$ 14,541
10	\$20,000	\$ 41,035
20	\$40,000	\$ 177,277
30	\$60,000	\$ 629,614
35	\$70,000	\$1,161,772
40	\$80,000	\$2,131,427

Based on \$2000 deposited at first of each year at a rate of 12% interest compounded. Tax and interest penalties for early withdrawal.

HOW DOES IT WORK FOR COUPLES?

A married couple, when both parties work, may set up separate IRA accounts. Together, they can tax-shelter up to \$4000 a year. If your spouse does not work, you may increase your annual contribution to \$2250 to cover both of you.

DO I HAVE TO PUT IN \$2000?

No. You can contribute whatever you like. You can put in a little each month, or every quarter, or as you choose. Better yet, you can authorize us to transfer automatically from your checking account or savings account at First National to the IRA.

WHAT ELSE

DO I NEED TO KNOW?

Here are three things you should know:

1. IT'S FREE.

There is no set-up fee, no annual charge, to have a retirement account. It's open to everyone without cost.

2. IT PAYS MONEY MARKET RATES.

We offer you a choice of two plans -- each one pays money market rates. With one plan we'll pay you a fixed rate on your investments. With the other plan we'll pay you at the current week's money market certificate rate so that your fund is at variable rates.

3. IT'S ABSOLUTELY SAFE.

Because your account will accumulate over many years, you want a place that's strong, secure and experienced. At First National your fund is backed by the capital of the strongest bank around. Plus, we guarantee your money to be absolutely safe, protected by the maximum insurance under law.

HOW DO I GET STARTED?

Call or come see First National Bank right away. Ask for Bruce Julian. Let him answer your questions and set up your Individual Retirement Account. Start now to retire with a million dollars in the bank.



First National Bank
Perryton, Texas
806/435-3676
Member FDIC

We're The Bank You Call "First".

Storewide CLEARANCE



20% TO 60% OFF REGULAR PRICE

Everything In Store Reduced. Check the Sale Tags for Fantastic Savings!

Monday thru Saturday, January 25-30

BEDROOM

Lane Bedroom Suite
Headboard, Triple Dresser, Door Chest, 2 Night Stands. Reg. \$2570.00

\$1799.

Dixie Bedroom Suite

Light Bridge & Tall Cabinets, Door Chest, Dresser. Reg. \$2495.00

\$1700.

American Drew Bedroom Suite
Solid Oak, King Size Headboard, Door Chest, Triple Dresser, Deck Mirror, 2 Night Stands. Reg. \$2295.00.

\$1800.

Athens Cedar Chest \$150.
Reg. \$209.00

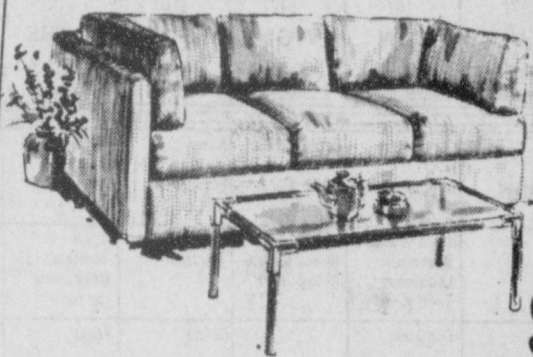
Athens Curio Cabinet \$150.
Reg. \$329.95



- LIVING ROOM -

Stratford Sofa & Love Seat

\$900 Reg. \$1795.00
Belge Velvet



Kenline Sofa & Love Seat

Reg. \$1599.00
Floral Velvet

\$799.50

Charles Schneider Swivel Rockers

Reg. \$549.95. Assorted Colors — Velvet Color — 25-Year Guarantee.

\$350

Charles Schneider Sofa

Floral Tapestry
Reg. \$1199.00

\$918

Brown Tapestry
Reg. \$1349.00

\$925

FMI Sleeper Sofa

Country Look — Plaid Color.
Reg. \$899.95

\$539.40

Queen Size Sofa Sleeper

Reg. \$749.00
Floral Velvet

\$500

- DINING ROOM -

Lane Oriental Dining Room Suite

Table, 6 chairs and Hutch

Reg. \$3195.00 Now ...

\$2000.



Broyhill Dining Room Suite

Table, 6 Chairs and Hutch. Reg. \$1649.00

\$1100.00

American Drew Dining Room

Solid Oak. Discontinued Style. Table and 5 Chairs. Reg. \$1400.00

\$700.00

LANE

Recliners



25% OFF

Action
INCLUDES
Lane

Regular Store Hours:
10 a.m. - 5:30 p.m.
Monday - Saturday

Only a few of the many items on sale!

ALL SALES FINAL

No Refunds or Exchanges

Lay-A-Way Available

THE FURNITURE TREE

3rd & Ash • 435-4808
Perryton, Texas

Wicker Items **50% OFF**
Accessories **30% OFF**
ONE GROUP Pictures **50% OFF**
Lamps **30% OFF**

THURSDAY

THURSDAY 1/28/82

CABLE	[3]	[4]	[5]	[7]	[8]	[9]	[10]	[11]	[12]
PM	OETA	KAMR	TMC	KVII	CBN	WGN	KFDA	WTBS	CNN
	Oklahoma City	Amarillo	Movie Channel	Amarillo	Christian Network	Chicago	Amarillo	Atlanta	Cable News Network
6:00	MacNeil-Lehrer Report	News	Movie: 'Sphinx'	News	Weekend Gardener	Barney Miller	News	Carol Burnett and Friends	Moneyline
6:30	Oklahoma Report	M*A*S*H		You Asked For It	Another Life	Laverne & Shirley & Co.	Entertainment Tonight	Sanford and Son	Sports Tonight
7:00	All Creatures Great and Small	Fame		Mork and Mindy	National Geographic Special	Avon Tennis Tournament	Magnum, P.I.	Movie: 'The War Between Men and Women'	Primetime Live
7:30				Best of the West					
8:00	Sneak Previews	Diff'rent Strokes	Movie: 'Coal Miner's Daughter'	Barney Miller	700 Club		Knots Landing		
8:30	Billy Smart's Circus	Gimme A Break		Taxi					
9:00	Family Treats	Hill Street Blues		20/20		News	Nurse	TBS Evening News	Freeman Reports
9:30									
10:00	Dick Cavett	News		News	Nashville RFD	Barney Miller	News	All In the Family	Sports Tonight
10:30	Best of Porter Wagoner	Tonight Show	Movie: 'Pete's'	Nightline	Another Life	Saturday Night	Quincy	Movie: 'Johnny'	Newsdesk
11:00	Sign Off		Dragon	Vegas	Burns & Allen			Guitar	
11:30		Tomorrow Coast-to-			Jack Benny Show	Movie: 'A Walk on'	Saint		West Coast Report
12:00		Coast		Sign Off	I Married Joan	The Wild Side			People Tonight
12:30					My Little Margie		Sign Off	Movie:	

FRIDAY

FRIDAY 1/29/82

CABLE	[3]	[4]	[5]	[7]	[8]	[9]	[10]	[11]	[12]
PM	OETA	KAMR	TMC	KVII	CBN	WGN	KFDA	WTBS	CNN
	Oklahoma City	Amarillo	Movie Channel	Amarillo	Christian Network	Chicago	Amarillo	Atlanta	Cable News Network
6:00	MacNeil-Lehrer Report	News	Movie: 'Up River'	News	Good News	Barney Miller	News	Winners	Moneyline
6:30	Oklahoma Report	M*A*S*H		You Asked For It	Another Life	Laverne & Shirley & Co.	Entertainment Tonight	Sanford and Son	Sports
7:00	Washington Week/Review	NBC Magazine		FDR	NCAA Women's Basketball	Movie: 'The Shakiest Gun in the West'	Dukes of Hazzard	Movie: 'McHale's Navy Joins the Air'	Primetime Live
7:30	Wall Street Week		Movie: 'The Apple'		Louisiana Tech at Old				
8:00	Oklahoma Week in Review	McClain's Law			Dominion		Dallas	Force	
8:30	Lawmakers								
9:00	Inside Story	Cassie & Co. (PREMIERE)			700 Club	News	Falcon Crest	TBS Evening News	Freeman Reports
9:30	Inside Story		Movie: 'Howling'						
10:00	Dick Cavett	News		News		Barney Miller	News	All In the Family	Sports Tonight
10:30	Masterpiece Theatre	Tonight Show		Virginian	Another Life	Saturday Night	Movie: 'Prom-union'	Movie: 'Ship of Fools'	Newsdesk
11:00			Movie: 'Nine to Five'		Burns & Allen				
11:30	Sign Off	SCTV Comedy Network		Nightline	Jack Benny Show	Movie: 'Assault on'			West Coast Report

SATURDAY

SATURDAY 1/30/82

CABLE	[3]	[4]	[5]	[7]	[8]	[9]	[10]	[11]	[12]
AM	OETA	KAMR	TMC	KVII	CBN	WGN	KFDA	WTBS	CNN
	Oklahoma City	Amarillo	Movie Channel	Amarillo	Christian Network	Chicago	Amarillo	Atlanta	Cable News Network
7:00		Flintstones Comedy Show	Prog Cont'd	Super Fun Hour	Contact	U.S. Farm Report	Popeye/Olive	Fight Against	News/Sports/
7:30		Smurfs		Heathcliff/Marmaduke	Lesson	World Tomorrow	Comedy Show	Slavery	Weather
8:00			Movie: 'Sphinx'	Fonz/Laverne & Shirley Hour	Financial Inquiry	Rax Humbar	Adventure Hour	Against the	Money Week
8:30	Once Upon a Classic	Kid Super Power Hour			Weekend Gardener	Issues Unlimited	Bugs Bunny Road Runner	Wind	Business
9:00	Sneak Previews	with Shazam		Richie Rich/Scooby & Scrappy Doo Show	Do It Yourself This Week on Wall Street	Charlando	Show	Movie: 'Phantom of the Opera'	Special Report
9:30	Billy Smart's Circus	Space Stars				Abbott and Costello			Style
10:00	Woodwright's Shop		Movie: 'The Parallax View'	Goldie Gold-Thunder	Home Dynamics	Superman			News/Sports/
10:30	Crafts	Spiderman & His Friends		Comedy Hour	To Be Announced	Voyage to the Bottom of	Blackstar		Moscow Live
11:00	Magic of Oil Painting	Daffy/Speedy Show		ABC Weekend Special	Westar	the Sea	Trolkins	Movie: 'Twilight of the Gods'	Sports Week
11:30	Victory Garden	Bullwinkle		American Bandstand	Wild Bill Hickcock	Movie: 'Rio Grande'	Tom and Jerry Comedy Show		Newsmakers
12:00	Oklahoma Gardening	NCAA Basketball: Teams To Be Announced	Movie: 'Breaker Morant'		Movie: To Be Announced		Kwicky Koala		
12:30	Market to Market			Pop! Goes the Country			30 Minutes		News/Sports/
1:00	Over Easy			That Nashville Music					Weather
1:30	Over Easy			Wild, Wild West		Movie: 'The Naughty'	To Be Announced	Movie: 'Naked Maja'	People Now
2:00	Austin City Limits	NCAA Basketball: Teams To Be Announced	Movie: 'Sphinx'		Western Classics	Nineties			News/Sports/
2:30				Pro Bowler's Tour					Weather
3:00	Sneak Previews				Wyatt Earp	America's Top Ten			Best of Take
3:30	Perspectives				Wagon Train	Soul Train			Two
4:00	Soccer Made in Germany	Wicks-Andy Williams San Diego Open	Movie: 'Melvin and Howard'	Wide World of Sports		Pink Panther Show		Last of the Wild	News/Sports/
4:30								Motorweek	Weather
5:00	Matinee at the Bijou	Weekend Journal		News	This Week on Wall Street	Little House on the Prairie	Championship Wrestling	Championship Wrestling	Week in Review
5:30					Weekend Gardener				Press Box

Green Re-Elected Farmers Union Director

WACO, TX, January 21, 1982 -- Robert Green of Hartley was re-elected director of district 1 of the Texas Farmers Union during the 1982 convention held in Fort Worth. As a district director, he will serve along with eight other family farmers from across Texas on the TFU executive board of directors.

At the TFU convention in Fort Worth, members of the organization called on the Congress and the Reagan Administration to provide a responsible farm program which will benefit both producers and consumers.

Following the convention theme "Family Farms for the Future," delegates approved a 1982 policy calling on the federal government to restore farm price support levels geared to the historically proven full parity concept. Commodity prices are sliding and the current parity level is at the lowest stage since 1932. With this in mind, TFU members urged a program of supply management and support levels to restore profitability to the number one industry in America - agriculture.

Included in the national policy are provisions calling for stronger bargaining power for producers, methods for improving farm income, establishing a stronger strategic reserve and a mandatory reduction in interest rates.

Also, the TFU policy calls for prohibition of purchases of farmland by aliens, improving soil and water conservation programs, developing alternate energy and providing more protection for landowners with mineral rights, leases and in cases of eminent domain.

Lady Fair & Kid's Stuff

will open at 10:00 a.m. Monday, Jan. 25th.

All Fall and Winter merchandise will be further reduced.

Lady Fair

Fall & Winter merchandise



Kid's Stuff

Fall & Winter merchandise

1/2 off

719 W. 7th

1/3 - 1/2 off

Sale starts 10:00 a.m. Monday, Jan. 25th.

SATURDAY CONT.

SATURDAY 1/30/82

CABLE PM	[3] OETA Oklahoma City	[4] KAMR CH.4 Amarillo	[5] TMC Movie Channel	[7] KVII CH.7 Amarillo	[8] CBN Christian Network	[9] WGN CH.9 Chicago	[10] KFDA CH.10 Amarillo	[11] WTBS CH.17 Atlanta	[12] CNN Cable News Ntwrk
6:00	Prog Cont'd	Lawrence Walk	Movie: 'Breaker Morant'	Hee Hew	Blackwood Brothers Hi Doug	Muppets	Amarillo Observer Look at Us	Prog Cont'd	Sports Saturday
6:30	Outdoor Oklahoma								
7:00	Paper Chase	One of the Boys Harper Valley		King's Crossing	Movie: 'Private Affairs of Bel Ami'	NCAA Basketball: Marquette at Notre	Walt Disney	Nashville Alive	News/Sports/Weather
7:30									
8:00	Nova	Barbara Mandrell & the Mandrell Sisters	Movie: 'Sphinx'	Love Boat		Dame	39th Annual Golden Globe Awards Cousteau	Undersaw World of Jacques	Newsmakers
8:30					American Trail				
9:00	Life On Earth	Billy Crystal Hour (PREMIERE)		Fantasy Island		News		TBS Evening News	News/Sports/Weather
9:30					Rock Church				
10:00	Dr. Who	News	Movie: 'The Parallax View'	ABC News		Solid Gold	News	World at War	Sports
10:30		Dance Fever		News Movie	NCAA Hockey: Boston		Entertainment This Week		Press Box
11:00	Sign Off	Solid Gold		'Ryan's Daughter'	College vs. Dartmouth	Movie: 'Von Ryan's Express'	Movie: 'To Be Announced'	Movie: 'A Walk on the Wild Side'	Freeman Reports
11:30									
12:00		Sign Off	Movie: 'Incredible Shrinking Woman'		American Trail				News/Sports/Weather Best of Fred Saxon
12:30									

Hightower's Views on Issues Continued from pg. 5.

SAVING THE FARMER

The 1981 Farm Bill was an inadequate response to the problems facing our people who produce food and fiber. The bill was passed with the Administration's support and over the strong objections of many of us who felt it would become the "Farm Bankruptcy Act of 1981." Farmers need higher commodity loan rates, protection against political embargoes, but above all, some help in getting a fair price for their commodities.

With a number of other farm-state congressmen, I have written a letter to President Reagan requesting an urgent meeting to help him understand more directly the problems of farmers in the 13th District. I have raised the issue of impending farm foreclosures with Agriculture Secretary Block and the Farmers Home Administration. I won

their commitment to go slow on foreclosures in 1982 and give our farmers every possible opportunity to either pay off their loans or get a temporary extension.

When a number of cotton farmers in our district requested help on the issue of possible unfair grading in the Altus, Oklahoma office, I immediately visited the office and also the headquarters in Memphis, Tennessee, to discuss these concerns and to ensure that they were not being given artificially low grades.

REDUCING EXCESSIVE GOVERNMENT PAPERWORK AND REGULATION

I have introduced the "Limitation on Government Recordkeeping and Actions Act" to provide some significant relief to our businessmen and women in this area. The bill would limit to no more than four years the length of time an individual or business would be required to keep records for the government. It

would also prohibit a regulatory agency from prosecuting a person for an alleged violation of some federal guideline later than the four-year limit. My bill has over 150 co-sponsors in the House, more than one-third of the entire membership, and is supported enthusiastically by the National Federation of Independent Businesses. We already have held two successful days of committee hearings.

I voted for the paperwork Reduction Act whose impact is beginning to be felt within the federal government. This legislation should reduce the amount of reporting agencies now require of citizens and it should help reduce the duplication of report requirements and report forms. But this is not enough. I will be seeking Administration support, particularly from Vice-President Bush's Task Force on Regulation, in passing this legislation.

LOWER INTEREST RATES & BALANCED BUDGET

The Federal Reserve Board is the independent body that has the greatest impact on interest rates. I am very dissatisfied at their reluctance to help bring down rates through their regulation of the money supply. We in Congress can do our part to encourage the board by continuing our efforts to reduce the projected budget deficits for 1982 and 1983. It will not be easy to achieve a balanced budget before 1984 but I will be supporting measures to help close the gap between income and outgo. We absolutely must balance the budget at the earliest possible date.

FIGHTING CRIME

I am supporting several bills in Congress to make it easier to prosecute the criminal and keep him in jail once he is there. I am disgusted by the rate of repeat offenders and it is past time that our judiciary got tougher. Bills that

SUNDAY

SUNDAY 1/31/82

CABLE AM	[3] OETA Oklahoma City	[4] KAMR CH.4 Amarillo	[5] TMC Movie Channel	[7] KVII CH.7 Amarillo	[8] CBN Christian Network	[9] WGN CH.9 Chicago	[10] KFDA CH.10 Amarillo	[11] WTBS CH.17 Atlanta	[12] CNN Cable News Ntwrk
7:00		James Robison Amazing Grace Bible Class	Prog Cont'd Movie: 'The Apple'	Gospel Jubilee	Lesson Heritage Singers	Discovery 3-Score Calendar What's New	Faith for Today Robert Schuller	Three Stooges	News/Sports/Weather Style
7:30									
8:00	Outdoor Oklahoma	Day of Discovery Larry Jones Ministry		Kidsworld Rainbow Patch	Kenneth Copeland	Mass for Shut-Ins Chicagoland Church Hour	Religious Townhall First Baptist Church	Lost in Space	People Now
8:30									
9:00	What's Left of the Left?	Rex Humbard		Big Blue Marble Kids Are People Too	Changed Lives Words of Hope	Robert Schuller Sgt. Preston	To Be Announced	Lighter Side of the News Movie: 'Casablanca'	Newsmaker Sunday
9:30		Oral Roberts	Movie: 'Caddyshack'						
10:00	Life On Earth	Baptist Church			In Touch	Tarzan	Super Memories of the Superbowl		News/Sports/Weather Real Pictures
10:30				Grizzly Adams					
11:00	Nova	Jimmy Swaggart			Newsight '82	Cisco Kid Lone Ranger	To Be Announced		Sports Week
11:30			Movie: 'Fiendish'	This Week with David	American Forum				Inside Business
12:00	Washington Week/Review Wall Street Week	SportsWorld	Plot of Dr. Fu Manchu	Brinkley News	Dr. James Kennedy Religion	Movie: 'Charlie Chan in the Trap'	NBA Basketball: All Star Game	Movie: 'Giant'	Money Week News/Sports/Weather
12:30									
1:00	Over Easy	NCAA Basketball: Wake Forest at Arkansas		The Superstars	Child to Remember				TBA
1:30			Movie: 'Howling'			Movie: 'Laura'			
2:00	Great Performances			Olympic Sports: USA vs. the World	Chris Panos		NCAA Basketball: South		News/Sports/Weather Best of Fred Saxon
2:30					Zola Levitt				
3:00	Bernstein/Beethoven	Wicks-Andy Williams Open	Movie: 'The Apple'	Pro Bowl: The AFL vs. The NFL	Your New Image Laheyas	Movie: 'When Worlds Collide'	Alabama at West Virginia/or Cincinnati		Freeman Reports
3:30									
4:00	Profiles in American Art Candid Campus				Jewish Voice Jimmy Houston		at Virginia Tech	Championship Wrestling	News/Sports/Weather
4:30									
5:00	Firing Line	News NBC News	Movie: 'Fiendish Plot of Dr. Fu Manchu'		American Forum George		News CBS News	Nice People	Week in Review Inside Business
5:30						Avon Tennis Tournament			

I am supporting would do several important things.

First, one bill would deny bail to repeat offenders. It would also stiffen penalties for jumping bail, for not showing up in court. A second would impose mandatory prison sentences for those who use a handgun in the commission of a crime. A third would modify the "exclusionary rule" so that relevant evidence against a criminal could be used in court and not thrown out or barred through procedural maneuvering.

RESTORING IMMIGRATION POLICIES THAT WORK

In my opinion, the United

States does not have an effective immigration policy. We must end that confusion. As much as some may want to, we cannot leave our doors wide open in the midst of economic recession and high unemployment. The immigration problem is a complex one that compounds many other problems. Americans, and Texans, are compassionate people but we must also be realistic.

I recently made an unannounced personal inspection of some of our South Texas border patrol stations. I accompanied border patrol personnel

on river patrol and visited detention facilities. The chief problems are the lack of a workable policy and underfunding. I will be supporting legislation to help resolve these problems.

How's this for a definition? College-bred--a four-year loaf of father's dough!

Life can be very simple for those who have sense enough to go in for the simple life.

Someone has rightly said that a bigamist is one who loves not wisely, but two well!

Most people can give good excuses for failing to do what they don't want to do.

Few of us know our real friends until we meet with misfortune or difficulty.

The Cattleman's Restaurant

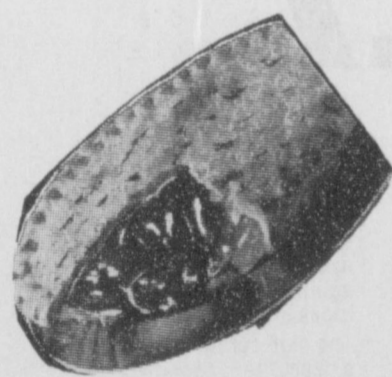
would like to invite all their friends
and customers to try our fantastic

Mexican Food prepared by Charlene Hamilton

and Jackie Reed,

every Wednesday night 5 p.m. to 9 p.m.

Featuring live entertainment by Mary Rae Lamb, Gruver,
on the fun machine.





Amarillo Art Center Opens New Exhibition

The Amarillo Art Center has opened a new show titled "An Overview: Collecting in Amarillo and the Texas Panhandle", which celebrates the quality of area art collections. This exhibition reveals the work of distinguished twentieth-century artists including Marc Chagall, Salvador Dali, Giorgio De Chirico, Henri Matisse, Lawrence Calcagno, Pablo Picasso, Elaine DeKooning and more. Organized by the Amarillo Art Center, the show is comprised both of Amarillo and area town art objects, which were found to be of extremely high quality. Prints, drawings, paintings, collages, watercolors and photos are in the exhibition. The Texas Panhandle is known, generally, for its interest in art prior to the twentieth century. This show affords a revealing look at local interest in the art ideas of this century.

Also showing with "An Overview" is the "Moving Image: Animation Art". This

exhibition presents a balanced sampling of art used in the making of animated films produced from 1914 to present. The museum visitor will see familiar characters such as Mickey Mouse, Betty Boop, and Gertie, the Trained Dinosaur; besides the aesthetic qualities of the exhibition a more lucid understanding of animation processes occurs.

Granite Sculpture by Jesus Bautista Moroles will be displayed on the first floor of the Art Center. Mr. Moroles, a Dallas resident, hand chisels generally vertical pieces, and the pieces seem to hold the primitive power of Stonehenge-type forms, but show concern for contemporary formal ideas.

These new exhibitions will be shown through February 28th. The Amarillo Art Center is open free to the public Tuesdays through Fridays from 10 to 5, Wednesday evenings from 7 to 9:30 and on Saturdays and Sundays from 1 to 5, located on the Amarillo College Campus at 2200 Van Buren.

Boulter Files For Congress

Beau Boulter, Amarillo attorney and City commissioner, announced for U.S. Congress Wednesday, January 27, 1982. In news conferences in Amarillo and Wichita Falls, Boulter said he felt that the people of the 13th District deserve a representative who reflects their conservative views.

"Hightower claims he is a conservative, but a close look at his voting record reveals some alarmingly liberal tendencies. This District needs a Congressman who doesn't have to be pressured by his constituents to vote their convictions. Hightower's party ties prevent him from being able to vote as conservatively as this District mandates. While no one wants a Congressman who will just be a rubber stamp, we do need input and influence with the Reagan administration and Hightower just doesn't have it!"

Boulter said he had no intentions of running for Congress until friends and supporters began coming to him and asking him to run. "At first, it was just my close friends and supporters who talked to me about it. Then, after Mr. Hightower had to be pressured by his constituents to support the tax cut bill, party leaders began to approach me about it. Next, volunteers I had worked with in the Reagan campaign and in the city election began calling me. It was a snowballing movement. Rosemary and I discussed it at length. We

decided that I would wait and possibly run in 1984; but as more and more people came to me I realized that this District is in crucial need of effective representation and I owe it to my family, my supporters, my fellow Texans, and my country to start fighting for the principles we believe in and to do it now."

"Everybody knows that Jack Hightower is a nice guy. But when times are tough, we need more than a 'good ol' boy'. The facts are that Jack Hightower is more pragmatic than philosophical; he is more a man of compromise than of conviction. He is personable but he is not a fighter for principles. Mr. Hightower claims he is a conservative, but he is a part of an outmoded Democratic machinery led by Tip O'Neil, Ted Kennedy and the liberal establishment. This machine has brought the country to near economic, military and political disaster. Hightower's Democrat party ties often make it difficult to vote his District and his party at the same time. When put to the test, he votes the party line. The President's tax cut got Mr. Hightower's approval only at the 'eleventh hour' after heavy pressure from his constituents. Until then he was committed to the Democrat's bill and for years has called any substantial tax cuts 'irresponsible'."

"The 13th Congressional District is one of the most

conservative in the nation and we deserve a Congressman who will fight for what we believe in. I am a conservative first and a Republican second. I supported Ronald Reagan in the Presidential Primary in 1980, served as Reagan-Bush Chairman for Randall County, worked as Co-Chairman of the Panhandle Presidential Inaugural Committee, and organized a door-to-door voter registration effort for Commitment '80. I can make the needs and convictions of this District known to the Reagan administration.

"I am running for this office because I have the desire to serve and can gain broad-based support as evidenced by the more than 500 petition signatures obtained in just three weeks. I think I am the best candidate because I have the will and the ability to win. I believe that I can further the principles that made America great and made us the leader of the free world. I believe that the only source of real power and justice, at home or abroad, lies in these principles. They alone attract the minds of freedom-loving people and provide a rallying point in troubled times for people everywhere."

Be sure the information you get is not misinformation.

SUNDAY 1/31/82

SUNDAY CONT.

CABLE	(3)	(4)	(5)	(7)	(8)	(9)	(10)	(11)	(12)
PM	OETA	KAMR	TMC	KVII	CBN	WGN	KFDA	WTBS	CNN
	Oklahoma City	CH.4 Amarillo	Movie Channel	CH.7 Amarillo	Christian Netw.	CH.9 Chicago	CH.10 Amarillo	CH.17 Atlanta	Cable News Netw.
6:00	Austin City Limits	Peacock Showcase	Prog. Cont'd	Code Red	Priority One Interm'l Larry Jones Ministry	Prog. Cont'd	60 Minutes	Movie: 'Glory'	Sports Sunday
7:00	Novo	CHIPS	Movie: 'Back Roads'	Today's FBI	In Touch	Know Your Heritage	Archie Bunker's Place One Day at a Time		News/Sports/Weather
8:00	Masterpiece Theatre	Movie: 'World War III Part 1'		Movie: 'Slapshot'	American Trail Heritage Singers	Lawrence Welk	Alice Jeffersons	Week in Review	News/Sports/Weather
9:00	Legislative Week in Review		Movie: 'Altered States'		C'mon Along John Ankerberg	News	Trapper John, M.D.	TBS Evening News	News/Sports/Weather
10:00	Sign Off	News		News ABC News Movie	The King Is Coming Contact	Kung Fu	News 700 Club	Caribbean Nights Open Up	Sports Inside Business
11:00	Chronicles Part 4	Movie: 'The Apple'	Movie: 'More Than a Miracle'		Sign Off	Movie: 'Three Strangers'		Movie: 'Sea of Lost'	Best of Take Two
12:00	Sign Off			Sign Off				Ships	News/Sports/Weather Special Report

Aerial Applicator Training & Testing

To be licensed to apply pesticides in 1982, aerial applicators must participate in a training program and complete a test. The training program is being conducted by the Texas Agricultural Extension Service and the test by the Texas Department of Agriculture

(TDA). Pesticide applicator training for aerial applicators who were unable to take the training at the TAAA Meeting in San Antonio on January 9, will be conducted at the Texas A&M Research and Extension Center, 6500 Amarillo Blvd. West,

Amarillo, on January 20 at 1:30 p.m. Testing will be conducted by the TDA following the training program. To register call Norma Young or Carl Patrick at 806/359-5401. Training and testing will also be conducted at the Research and Extension Cen-

ters at Stephenville on January 20, Chillicothe-Vernon on January 21 and at Dallas on January 18. All training programs start at 1:30 p.m. If an applicator is unable to attend one of these programs, training on an individual basis is available at each of the twelve Texas A&M Research and Extension Centers. Individual testing is available at

each of the TDA district offices. To make arrangements for individual training and testing, telephone the Research and Extension Center and the TDA office. Your County Extension Agent can provide you with the telephone numbers. A politicians's paradise is a campaign without opposition.



GEBOS

... the kind of store you remember.

NYLON SUPER HI-RIB

A Front Tractor Tire That Performs

AS LOW AS

\$27.39

Size 4.00-19 Plus S.66 F.E.T.

Gebos #	Size	Reg.	Special	F.E.T.
500-711	4.00-19 4 Ply	31.10	27.39	.66
500-725	6.00-16 4 Ply	37.99	33.29	.96
500-726	6.00-16 6 Ply	43.00	37.69	1.03
500-731	6.50-16 6 Ply	46.50	40.69	1.20
500-738	7.50-16 6 Ply	59.00	51.59	1.53
500-743	7.50-18 6 Ply	72.50	61.99	1.73
500-768	10.00-16 6 Ply	85.29	69.99	2.39
500-770	10.00-16 8 Ply	87.00	75.99	2.74
500-769	7.5L-15 6 Ply	51.89	45.49	1.33
500-779	11.00-16 6 Ply	111.98	92.49	3.28
500-788	11.00-16 8 Ply	114.95	94.99	3.49
500-780	11.00-16 8 Ply (Tubeless)	122.98	108.49	3.70
500-786	11L-15 8 Ply	86.89	75.49	2.63
500-794	14L-16 1 6 Ply	210.00	184.99	4.28

MULTI-RIB IMPLEMENT

\$35.99

Size 6.00-16 Plus S.90 F.E.T.

- Rounded shoulder design and continuous ribs extending down the sidewall makes this tire ideal for use where hi-flotation is not required.
- Sturdy, rugged nylon cord body means dependable service for wagons and rolling stock implements.

Gebos #	Size	Reg.	Special	F.E.T.
500-626	6.00-16 6 Ply	41.00	35.99	.90
500-631	6.50-16 6 Ply	46.25	39.99	.98

MULTI-RIB IMPLEMENT HI-FLOTATION

\$49.99

Size 9.5L-14 Plus S.1.36 F.E.T.

- Designed wide enough to 'float' across difficult, wet fields and capable of distributing the load over a wide area so that it operates with minimum ground compaction.

Gebos #	Size	Reg.	Special	F.E.T.
500-475	9.5L-14 6 Ply	56.99	49.99	1.36
500-476	9.5L-14 8 Ply	60.29	53.99	1.29
500-477	9.5L-15 6 Ply	56.29	49.49	1.46
500-478	9.5L-15 8 Ply	63.00	54.99	1.38
500-481	11L-14 6 Ply	68.39	59.69	1.47
500-485	11L-15 6 Ply	57.25	50.49	1.58
500-486	11L-15 8 Ply	62.50	54.69	1.54
500-487	11L-16 6 Ply	74.00	64.59	1.65
500-488	11L-16 8 Ply	76.25	66.79	1.75

PRICES GOOD THRU JAN. 30.

Check Our Field Hazard Warranty. Check Our Closeout Prices on Discontinued Tires.



Grand Opening

of

The Headquarters

— Hair Styling For The Entire Family —

16 S.E. 3rd Perryton


Z and Kim Allen

Specializing in:

- Perms
- Long & Short Cuts & Styles
- Beard Trimming and Shaping
- Coloring • Braiding • Weaving

ALSO — RedKen Hair Care Products Hair Reconstructors

Call: 435-9133





Amarillo Art Center Opens New Exhibition

The Amarillo Art Center has opened a new show titled "An Overview: Collecting in Amarillo and the Texas Panhandle", which celebrates the quality of area art collections. This exhibition reveals the work of distinguished twentieth-century artists including Marc Chagall, Salvador Dali, Giorgio De Chirico, Henri Matisse, Lawrence Calcagno, Pablo Picasso, Elaine DeKooning and more. Organized by the Amarillo Art Center, the show is comprised both of Amarillo and area town art objects, which were found to be of extremely high quality. Prints, drawings, paintings, collages, watercolors and photos are in the exhibition. The Texas Panhandle is known, generally, for its interest in art prior to the twentieth century. This show affords a revealing look at local interest in the art ideas of this century.

Also showing with "An Overview" is the "Moving Image: Animation Art". This

exhibition presents a balanced sampling of art used in the making of animated films produced from 1914 to present. The museum visitor will see familiar characters such as Mickey Mouse, Betty Boop, and Gertie, the Trained Dinosaur; besides the aesthetic qualities of the exhibition a more lucid understanding of animation processes occurs.

Granite Sculpture by Jesus Bautista Moroles will be displayed on the first floor of the Art Center. Mr. Moroles, a Dallas resident, hand chisels generally vertical pieces, and the pieces seem to hold the primitive power of Stonehenge-type forms, but show concern for contemporary formal ideas.

These new exhibitions will be shown through February 28th. The Amarillo Art Center is open free to the public Tuesdays through Fridays from 10 to 5, Saturdays and Sundays from 1 to 5, located on the Amarillo College Campus at 2200 Van Buren.

Boulter Files For Congress

Beau Boulter, Amarillo attorney and City commissioner, announced for U.S. Congress Wednesday, January 27, 1982. In news conferences in Amarillo and Wichita Falls, Boulter said he felt that the people of the 13th District deserve a representative who reflects their conservative views.

"Hightower claims he is a conservative, but a close look at his voting record reveals some alarmingly liberal tendencies. This District needs a Congressman who doesn't have to be pressured by his constituents to vote their convictions. Hightower's party ties prevent him from being able to vote as conservatively as this District mandates. While no one wants a Congressman who will just be a rubber stamp, we do need input and influence with the Reagan administration and Hightower just doesn't have it!"

Boulter said he had no intentions of running for Congress until friends and supporters began coming to him and asking him to run. "At first, it was just my close friends and supporters who talked to me about it. Then, after Mr. Hightower had to be pressured by his constituents to support the tax cut bill, party leaders began to approach me about it. Next, volunteers I had worked with in the Reagan campaign and in the city election began calling me. It was a snowballing movement. Rosemary and I discussed it at length. We

decided that I would wait and possibly run in 1984; but as more and more people came to me I realized that this District is in crucial need of effective representation and I owe it to my family, my supporters, my fellow Texans, and my country to start fighting for the principles we believe in and to do it now."

"Everybody knows that Jack Hightower is a nice guy. But when times are tough, we need more than a 'good ol' boy'. The facts are that Jack Hightower is more pragmatic than philosophical; he is more a man of compromise than of conviction. He is personable but he is not a fighter for principles. Mr. Hightower claims he is a conservative, but he is a part of an outmoded Democratic machinery led by Tip O'Neil, Ted Kennedy and the liberal establishment. This machine has brought the country to near economic, military and political disaster. Hightower's Democrat party ties often make it difficult to vote his District and his party at the same time. When put to the test, he votes the party line. The President's tax cut got Mr. Hightower's approval only at the 'eleventh hour' after heavy pressure from his constituents. Until then he was committed to the Democrat's bill and for years has called any substantial tax cuts 'irresponsible'."

"The 13th Congressional District is one of the most

conservative in the nation and we deserve a Congressman who will fight for what we believe in. I am a conservative first and a Republican second. I supported Ronald Reagan in the Presidential Primary in 1980, served as Reagan-Bush Chairman for Randall County, worked as Co-Chairman of the Panhandle Presidential Inaugural Committee, and organized a door-to-door voter registration effort for Commitment '80. I can make the needs and convictions of this District known to the Reagan administration.

"I am running for this office because I have the desire to serve and can gain broad-based support as evidenced by the more than 500 petition signatures obtained in just three weeks. I think I am the best candidate because I have the will and the ability to win. I believe that I can further the principles that made America great and made us the leader of the free world. I believe that the only source of real power and justice, at home or abroad, lies in these principles. They alone attract the minds of freedom-loving people and provide a rallying point in troubled times for people everywhere."

Be sure the information you get is not misinformation.

SUNDAY 1/31/82

SUNDAY CONT.

CABLE	[3]	[4]	[5]	[7]	[8]	[9]	[10]	[11]	[12]
PM	OETA	KAMR	TMC	KVII	CBN	WGN	KFDA	WTBS	CNN
	Oklahoma City	Amarillo	Movie Channel	CH. 7 Amarillo	Christian Netw	CH. 9 Chicago	CH. 10 Amarillo	CH. 17 Atlanta	Cable News Netw
6:00	Austin City Limits	Peacock Showcase	Prog Cont'd	Code Red	Priority One Internet Larry Jones Ministry	Prog Cont'd	80 Minutes	Movie: Glory	Sports Sunday
7:00	Nova	CHiPs	Movie: 'Back Roads'	Today's FBI	In Touch	Know Your Heritage	Archie Bunker's Place One Day at a Time		News/Sports/Weather
8:00	Masterpiece Theatre	Movie: 'World War III' Part 1		Movie: 'Slapshot'	American Trail Heritage Singers	Lawrence Welk	Alice Jeffersons	Week in Review	Newsmaker Sunday
9:00	Legislative Week in Review		Movie: 'Altered States'		C'mon Along John Ankerberg	News	Trapper John, M.D.	TBS Evening News	News/Sports/Weather
10:00	Sign Off	News		News ABC News Movie: 'Gangster'	The King Is Coming Contact	Kung Fu	News 700 Club	Caribbean Nights Open Up	Sports Inside Business
11:00		Chronicles Part 4	Movie: 'The Apple'	'More Than a Miracle'	Sign Off	Movie: 'Three Strangers'			Best of Take Two
12:00		Sign Off						Ships	News/Sports/Weather Special Report

Aerial Applicator Training & Testing

To be licensed to apply pesticides in 1982, aerial applicators must participate in a training program and complete a test. The training program is being conducted by the Texas Agricultural Extension Service and the test by the Texas Department of Agriculture

(TDA). Pesticide applicator training for aerial applicators who were unable to take the training at the TAAA Meeting in San Antonio on January 9, will be conducted at the Texas A&M Research and Extension Center, 6500 Amarillo Blvd. West,

Amarillo, on January 20 at 1:30 p.m. Testing will be conducted by the TDA following the training program. To register call Norma Young or Carl Patrick at 806/359-5401.

Training and testing will also be conducted at the Research and Extension Cen-

ters at Stephenville on January 20, Chillicothe-Vernon on January 21 and at Dallas at January 18. All training programs start at 1:30 p.m.

If an applicator is unable to attend one of these programs, training on an individual basis is available at each of the twelve Texas A&M Research and Extension Centers. Individual testing is available at

each of the TDA district offices.

To make arrangements for individual training and testing, telephone the Research and Extension Center and the TDA office. Your County Extension Agent can provide you with the telephone numbers.

A politicians' paradise is a campaign without opposition.

GEBO'S

... the kind of store you remember.

NYLON SUPER HI-RIB

A Front Tractor Tire That Performs

AS LOW AS **\$27.39** Size 4.00-19 Plus \$6.66 F.E.T.

Gebos #	Size	Reg.	Special	F.E.T.
500-711	4.00-19 4 Ply	31.10	27.39	.66
500-725	6.00-16 4 Ply	37.99	33.29	.96
500-726	6.00-16 6 Ply	43.00	37.69	1.03
500-731	6.50-16 6 Ply	46.50	40.69	1.20
500-738	7.50-16 6 Ply	59.00	51.59	1.53
500-743	7.50-18 6 Ply	72.50	61.99	1.73
500-768	10.00-16 6 Ply	85.29	69.99	2.39
500-770	10.00-16 8 Ply	87.00	75.99	2.74
500-769	7.5L-15 6 Ply	51.89	45.49	1.33
500-779	11.00-16 6 Ply	111.98	92.49	3.28
500-788	11.00-16 8 Ply	114.95	94.99	3.49
500-780	11.00-16 8 Ply (Tubeless)	122.98	108.49	3.70
500-786	11L-15 8 Ply	86.89	75.49	2.63
500-794	14L-16.1 6 Ply	210.00	184.99	4.28

\$35.99 Size 6.00-16 Plus \$9.00 F.E.T.

MULTI-RIB IMPLEMENT

• Rounded shoulder design and continuous ribs extending down the sidewall makes this tire ideal for use where flotation is not required.

• Sturdy, rugged nylon cord body means dependable service for wagons and rolling stock implements.

\$49.99 Size 9.5L-14 Plus \$1.36 F.E.T.

MULTI-RIB IMPLEMENT HI-FLOTATION

• Designed wide enough to 'float' across difficult, wet fields and capable of distributing the load over a wide area so that it operates with minimum ground compaction.

Gebos #	Size	Reg.	Special	F.E.T.
500-475	9.5L-14 6 Ply	56.99	49.99	1.36
500-476	9.5L-14 8 Ply	60.29	53.99	1.29
500-477	9.5L-15 6 Ply	56.29	49.49	1.46
500-478	9.5L-15 8 Ply	63.00	54.99	1.38
500-481	11L-14 6 Ply	68.39	59.69	1.47
500-485	11L-15 6 Ply	57.25	50.49	1.58
500-486	11L-15 8 Ply	62.50	54.69	1.54
500-487	11L-16 6 Ply	74.00	64.59	1.65
500-488	11L-16 8 Ply	76.25	66.79	1.75

Check Our Field Hazard Warranty.

Check Our Closeout Prices on Discontinued Tires.

GEBO'S

Grand Opening

of

The Headquarters

— Hair Styling For The Entire Family —

16 S.E. 3rd Perryton

Z and Kim Allen

Specializing in:

- Perms
- Long & Short Cuts & Styles
- Beard Trimming and Shaping
- Coloring • Braiding • Weaving

ALSO — RedKen Hair Care Products Hair Reconstructors

Call: 435-9133