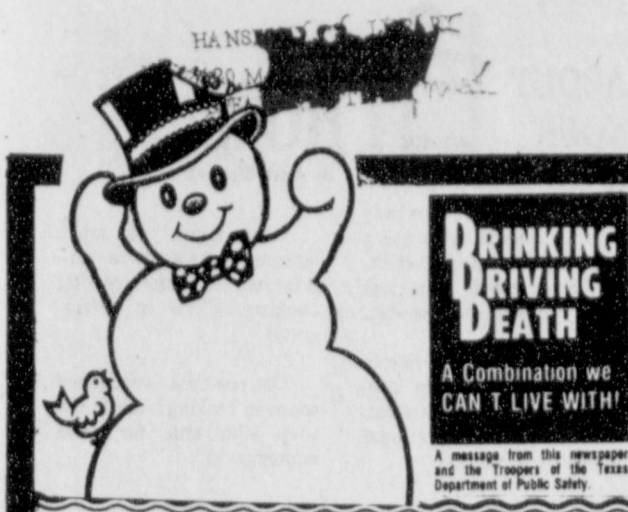


**ATTENTION SPORTS FANS!!**  
 The Spearman Lynettes will meet the winner of the Abernathy/Littlefield game, possibly this Friday, February 18, possibly at the Amarillo Civic Center. There is a probability of a double-header at the Civic Center????????????????!!!!!!



# The Spearman Reporter

VOL. 74 NO. 15

THE SPEARMAN REPORTER, SPEARMAN, TEXAS 79081

THURSDAY, FEBRUARY 17, 1983

## Open house for YMCA | Busy week for police



### INCIDENT REPORT

On Thursday, February 10, 1983, at approximately 10:00 p.m., this office received a complaint on a vehicle that was driving around a residence and turning off its lights. An officer was dispatched to investigate and upon arrival at the residence observed the vehicle and stopped the vehicle. Upon further investigation, the officer ascertained that the driver of the vehicle was driving while his license were suspended. The subject was arrested and processed and booked into the Hansford County Jail pending judicial action with Hansford County Court.

At approximately 9:55 a.m., on February 11, 1983, a complainant came by the Police Department to relate that person(s) unknown had struck his vehicle while it was parked on a Spearman street. The complainant advised this office that the vehicle had been parked about 10:00 p.m.,

February 10, 1983, and left parked overnight. When the complainant returned to the vehicle at 6:00 a.m., February 11, 1983, he discovered a piece of chrome lying in the street and the right rear quarter panel had been struck by an unknown vehicle. An officer was dispatched to observe the damage. At this time, there is no further information to report.

On Sunday, February 13, 1983, at approximately 3:00 a.m., while on routine patrol, an officer observed an individual walking South on Highway 207. Further observance showed that the subject was weaving and very unsteady. After stopping the subject and speaking with the subject, the officer transported the subject to the Police Department for further questioning. It was determined that the subject was a juvenile and the parents were contacted in reference release to them. The subject was transported to the Hansford County Sheriff's Office

pending the arrival of the parent(s).

### ACCIDENT REPORT

On February 7, 1983, this office received a report of a minor accident involving two vehicles, with no reported injuries. An officer was dispatched to investigate the accident. The individuals involved in the accident related to the officer that one vehicle was attempting to pull out of a parking lot, but was unable to turn sharp enough to avoid a snowbank. That vehicle then proceeded to back up to complete the turn. At the same time, the other vehicle was approaching and was unable to stop due to slight drainage and snow on the road. No citations were issued.

On Thursday, February 10, 1983, at 12:30 p.m., this office received a report of an accident on Highway 207 South and it was unknown if there were any injuries. An officer and an ambulance were dispatched to the scene. Upon arrival at the scene, the officer

observed the two vehicles involved in the accident. The drivers related that one vehicle was stopped in a parking lot waiting to pull out on Highway 207. As the vehicle pulled out on Highway 207, it pulled out in front of a northbound vehicle on Highway 207. The ambulance was not needed and returned to the station. One citation was issued for failure to have motor vehicle liability.

In last week's Police Report, it was reported that an accident had occurred on February 4, 1983, as a result of two vehicles trying to stop on the icy/snow-packed road. This should be corrected to read that one vehicle had stopped on the street (Westbound) to allow an Eastbound vehicle to pass. The vehicle that was travelling East slowed and started sliding toward the stopped vehicle and was unable to stop before colliding with the vehicle in the West bound lane.

D.J. Alberts, Chief of Police

## Commissioners receive Valentine!



**FEBRUARY 14, 1983 VALENTINES DAY**--Members of the Rho Rho Sorority were out in force around town Monday with their "Singing Valentines". This was a money making project for the group. They delivered over 100 "Singing Valentines".

Members of the YMCA Board of Directors were hosts and hostesses for the Annual Open House. The highlight of the day was the grand opening of the new racquetball court at 1:30 p.m. Youth and adults together participated in a number of demonstrations and exhibitions of various programs offered during this season. The Rainbows and Rangers Square Dance Club, with Rick Riggins and Fred Shieldknight calling, performed a number of their routines to the enjoyment of onlookers. Wanda Archer and several of her students danced and exercised, demonstrating the fun one can have doing aerobic dances while gaining and cardiovascular strength and excellent toning of the body. Wanda and her class invited and had many from the audience go through one of the dance/exercise routines.

**Y.  
M.  
C.  
A.**



Youth demonstrations included the award winning Boxing Club, under the guidance of Eugene Yarbrough, Butch Lasater, Bobby Archer and Rick Riggins. Several of the members of the club boxed to demonstrate the art of the sport. Following the boxing exhibition, youth from the basketball program played several games of basketball for the enjoyment of the spectators and themselves.

An organizational meeting was held to form a YMCA-CHURCH CO-ED VOLLEYBALL League on February 14 at the YMCA. Seven churches were represented: Union, First Christian, United Methodist, Assembly of God, Faith Lutheran, First Baptist and Church of Christ.

Basic plans were outlined, with team play to be on Monday evenings. A clinic for all teams participating will be on Monday, February 28 at 7:30 p.m. at the high school cafeteria. League play is to begin on Monday, March 7th.

If you are interested in playing co-ed recreational (fun type) volleyball please contact your church and get on the team. More details will follow in the weeks ahead.

Men interested in playing and teams who are to play in the Winter Men's Basketball League will meet at the junior high school gym tonight, Thursday, at 8:00 p.m. League play will begin on Thursday, February 24 and continue each Thursday night. Team registration is \$50 per team.

The board of directors had a short meeting to outline the rules for racquetball usage. They are: YMCA members may reserve the court for an hour at a \$2.00 per hour court fee. Hours are from 8:15 a.m. weekdays each quarter hour, with the last hour ending at 9:15 p.m. Weekend court hours are Saturday beginning at 12:15 ending at 6:15 and Sunday 1:15 ending at 5:15. Reservations are necessary and players are asked to call the YMCA at 659-2591. Non-members of the YMCA may play racquetball by paying the daily guest fee of \$1 for those 17 and under or \$2.50 for adults, plus the \$2 court fee.

If you missed the Open House you are invited to come by anytime the Y is open.

### These are scenes from the YMCA Open House held this past Sunday.

### Mrs. Blackburn sells shop

Mrs. Ora Lee Blackburn, owner and operator of Blackburn's Flowers here for many years, announced this week that she has sold her business to her daughter, Bodil Stackhouse.

Bodil has been operating the shop since the first of the year from the old location at 322 S. Dressen but will move it downtown to the old Kon-Tiki building when it is remodeled.

In announcing the sale of

### Hospital News

Patients at Hansford Hospital are Minnie Jones, Elsie Matthews, Harold Thornton, Charles Matin and Georgia Holt.

Dismissed were Anna McGary, Roda Hart, Arron Derington, Mario Hermosillo and Relda Smallwood.

her shop, Ms. Blackburn said she wanted to thank all her customers for their support these many years, and that she could not have made the flower shop a success without their help.

Mrs. Blackburn has been noted for her beautiful floral arrangements, her weddings, and her beautiful Christmas arrangements, etc. for many years.

The organizational meeting of the Winter Women's Volleyball League was held last Monday and league play is to begin Monday, February 21 at 7:45 p.m. If anyone is interested in playing on a team but missed the organizational meeting please call the YMCA and we will get you into contact with a team needing players.

A short agenda provided a long day for the Hansford County commissioners court in regular statutory session, Monday, but every item received due consideration from selection of a bank depository through bids on a loader to the routine business of running the county...

--Save one. The man due for consultation on the county barn never did make the meeting.

The depository matter took much of the day. It was considered first following the formal opening of the court with reading of the minutes and other due ceremony.

Representatives of both banks were present and George Odom, one of the administrative officers of Gruver State Bank announced early on that his bank was bidding only on 100 percent of deposits of the county.

Commissioners had not expected this although it was perfectly in order.

Odom explained that distribution of deposit funds had not been equitable in the past, handicapping what his bank might otherwise do to the benefit of the county treasury on the bidding on certificates

of deposit (CDs.) He pointed out that a bank without a fair share of the "demand" accounts could not make a competitive bid on CDs.

Gruver Bank representatives were pressed by commissioners to reconsider their "all or nothing" policy with the commissioner from the Gruver precinct in the vanguard. Commissioners pledged, in turn, to review the entire situation from their standpoint.

One of the strong points of the discussion was the convenience of banking in Spearman versus the inconvenience of banking in Gruver.

Immediately after lunch, heads of county departments gathered in the commissioners court meeting room to discuss various problems in the matter. The "convenience" argument held sway throughout this meeting despite the fact that "Exhibit A" of the Gruver Bank's 100-percent-of-deposits would have meant more money for the county in the interest rate quoted on various monies such as CDs.

During the conference of county leaders following lunch, a fund came to light that had never been consider-

ed in an equitable division of deposits. The fund presently is considerably swollen with some \$600-thousand-plus but through the year 1982, it averaged \$135,000 a month.

Gruver Precinct Commissioner Val Winger then courteously but succinctly told the court he had, until this point, felt the Gruver Bank a bit unfair in its claims of inequity in distribution of deposits but he felt the withholding of this account was extremely unfair to the Gruver Bank.

He had just been assured this was not a premeditated thing--that, generally, the commissioners did not know this account existed or was not included in deposit distribution when Gruver bank representatives appeared for the agreed upon 3 p.m. continuation.

George Odom told the court they had reconsidered and would participate in a divided depository plan provided the court had seriously considered some accounts it could assign to bring an equitable balance.

The court also pledged Gruver Bank representatives that, if dissatisfaction arose, they would review together the situation and the accord before

the two-year depository contract expired.

Thus a situation that could have caused a rift in certain sectors of the county came to an agreeable conclusion with only the loss of some interest that was bid on the total bid. County Judge R.L. McClellan was pleased with this, saying: "...Sometimes it is better to give up some money for convenience."

In the midst of these lengthy negotiations, members of the court still managed to purchase a loader, pass some resolutions and consider and approve such routine county business matters as paying the bills due.

There were three bids submitted for the loader for precinct three. Commissioners voted to purchase a Caterpillar machine from West Texas Equipment Co. Though it was not the low bid they felt it was the best investment.

The next regular session of the court will be the fourth Monday in the month, Feb. 28. All sessions of the commissioners court are open to the public.



**Senator Bill Sarpalius Reports**



**Reports**



**FIRE AT CAPITOL**

AUSTIN -- No matter what steps you take to prevent a tragedy, there's always a chance something will happen.

Most of you know by now that our State Capitol building in Austin caught fire on Feb. 6. During the 3-hour fight to bring it under control, 23-year-old Matthew Hansen of New Caney lost his life and six others were injured.

As earlier reported, the young man that died was extremely intoxicated at the time of the fire. This is not surprising, as 80% of all fire deaths are related to alcohol. We feel this fact shows the need for legislation that will increase Texas' awareness and knowledge of the dangers of alcohol. Perhaps in this way, the state can prevent similar untimely deaths in the future.

The fire started in Lt. Gov. Bill Hobby's apartment on the second floor of the East Wing. He has never lived in the Capitol apartment, but used it as guest quarters for visiting friends and dignitaries who stay overnight.

The fire started shortly before 6 a.m., and after it was over, officials began assessing the loss.

Personally, we were heartbroken that several of the beautiful composite pictures of the Texas Senate from the early 1900's were destroyed in the blaze. A number of other irreplaceable paintings and artifacts were lost, although Capitol officials praised the Austin Fire Department for saving many items.

Firemen speculated that

had they arrived even 15 minutes later, the fire probably would have engulfed the entire building. As it was, heaviest damage was confined to the East Wing of the Capitol, which houses the Senate offices.

In Hobby's apartment, also on the East Wing, dining room walls were charred. An antique crystal chandelier acquired in New Orleans during the early 1950's fell 20 feet from its gold chain onto the dining room table, a Chippendale reproduction. The hand-carved wooden door and window casements in the second floor hallway were reduced to ash.

Damage estimates have climbed into the millions. Surely this is a tragic loss for the people of Texas. For nine members of the Senate, including myself, it means an office outside the Capitol for the duration of the session, because repairs will take months and possibly even years.

But we think Gov. Hobby summed it up well when he said that the firefighters prevented a tragedy from becoming a catastrophe. As is characteristic of the good people of Texas, we'll simply "pick ourselves up, dust ourselves off, and start all over again."

Also, don't forget to keep in touch by writing Sen. Bill Sarpalius, P. O. Box 12068, Austin, Texas 78711. Although we are now temporarily located in room 1010 of the Sam Houston building on the Capitol Complex, our mailing address is the same. We can be reached by telephone at 512/475-3222.

**Texas Baptists record gains**

DALLAS--Texas Baptists recorded gains in 1982 in all major church organizations and increased baptisms by 11 percent over the previous year.

The total of 67,692 baptisms was the second greatest for one year in the denomination's history and is the highest mark since 1955.

Total membership of the 4,800 churches and missions rose more than 33,000 to a total of 2,288,218.

Sunday School enrollment also increased more than 33,000 to a new all-time high of 1,210,418.

"This is an excellent report and reflects the growing concern Texas Baptists have for missions and evangelism," said William M. Pinson, Jr., executive director of the Baptist General Convention of Texas.

Texas Baptists continued to set new records in giving with more than 4,800 churches and missions reporting \$593,811,095 in church offerings.

Missions gifts set an all-time record too as the churches contributed \$95.4 million. More than \$45.4 million of the total was through the Cooperative Program, Southern Baptists regular lifeline of support for state mission causes for the more than 6,200 missionaries in the United States and almost 100 nations.

Membership of all major church organizations increased. Church training had a 6 percent gain raising their enrollment by 14,188 over the 1981 total of 234,114.

Church music enrollment increased by 7,315 to a 1982 total of 220,631.

Woman's Missionary Union increased statewide to 131,611 members, and Texas Baptist Men raised its total membership to 64,968.

Careful habits will often save someone's life, and the interesting part of it is that it might be your own life.

One of the great lessons of life is to learn to face the facts as they are without being confused by what we might prefer.

**PELICULAS MEXICANAS 'Mexicana Nacional'**

La Pelicula Mexicana para este Domingo, el 20 de Febrero se llama "Mexicana Nacional". Esta pelicula va ser de los mexicanos de Mexico.

Los actores son Manolo Fabregas, Lucha Villa y Hector Suarez. Otros actores y actoras son Sara Garcia, Pancho Cordova, Alma Muriel, Fernando Casanova, Aurora Clavel, Alejandro Ciangherotti, Jr., Actuacion especial de Pili Bayona.

La oficina del Triato Lirico de Spearman se abre en los Domingos para las Peliculas Mexicanas a las 1:30 para que compren sus tickets. La pelicula despues se comienza a las 2 de la tarde en punto. La Oficina se abre a las 7 de la noche para las Peliculas Americanas. Despues la Pelicula Americana se comienza a las 7:30 de la noche.

Los Adultos-los que tienen 12 a 100 anos-pagan \$3.50 cada quien, los jovenes-los que tienen 6 hasta 11 anos-

pagan \$2.50 cada quien, y los chiquitos-los que tienen 1 mes hasta los que tienen 5 anos-pagan nada. Esto es lo que pagan cuando van para las Peliculas Mexicanas en los Domingos, y para las Peliculas Americanas, todos los Jueves, Viernes, Sabados y Domingos.

Si van a ver una Pelicula Americana en los Lunes y Martes, todos-desde los que tienen 6 anos hasta los que tienen 100, nomas pagan \$2.00 cada quien. El Triato Lirico de Spearman esta sierado todos los Miercoles, porque los trabajadores y los patrones tambien les gusta tener un dia de descanso.

La Pelicula Americana para la semana el 17 de Febrero hasta el 22 de Febrero se llama "If Looks Could Kill". Esta Pelicula va ser misteriosa, y en unas partes gente que mira esta Pelicula van a tener miedo.

La Pelicula Mexicana para el Domingo que viene-el 27 de Febrero se llama "El Vuelvo De La Ciguena". Si quieren saber mas de que se va tratar esta Pelicula, este Domingo, el 20 de Febrero, prendan su radio en 98 FM en Spearman, y pongan muy buen cuidado porque el Senor y Senora Juan y Maria Antonia Avila les van a decir de que se va tratar la Pelicula del 27 de Febrero.

**February Dates**

Few months are as filled with as many memorable dates as February. Washington's birthday is remembered on Monday the 21st instead of the 22nd, the date of his birth in 1732.

On the 23rd, in 1847, General Zachary Taylor defeated a larger force of Mexicans at Buena Vista, forcing Santa Anna to retreat southward, thus helped to win the Mexican War. (General Winfield Scott was simultaneously advancing with an army near Mexico City.)

Chester Nimitz, the great naval commander-in-chief of the Pacific fleet in the Second World War, was born on the 24th in 1885, at Fredericksburg, Texas, a German-American settlement.

William F. Cody was born on the 26th in 1846, in Scott County, Iowa. Henry Wadsworth Longfellow was born on the 27th in Portland, Maine.

Ann Lee, founder of the Shakers in America, was born on the 29th, in 1736, in England.

**ABOUT YOUR HOME**

During cold windy weather remember to use a medicated chap stick, petroleum jelly or a lip gloss many times during the day.

Next time you make lasagna, make an extra pan-it freezes well before or after cooking. Thaw in refrigerator.

Add orange, tangerine or grapefruit sections to cabbage slaw for a taste treat. Citrus fruits are also a great source of vitamin C.

Do you use condensed soups in cooking? Dilute the soup with milk for extra nourishment.

**THE ACTION AUCTION**

ALWAYS AN ABUNDANCE OF BUYING POWER

TEXHOMA LIVESTOCK COMMISSION CO. INC.

BOX 449 TEXHOMA, OKLA.

PACKER COWS - \$34.50-\$49.50

PACKER BULLS - \$48.00-\$54.50

STOCKER COWS - none offered

PAIRS - none offered

STEER CALVES 300-400# \$74.00-\$83.50

400-500# \$72.00-\$78.00

HEIFER CALVES 300-400# \$62.00-\$68.00

400-500# \$60.00-\$65.00

FEEDER STEERS 525-600# 467.00-\$72.50

600-700# \$66.00-\$68.50

700-800# \$66.00-\$67.50

800-900# none offered

FEEDER HFRS. 525-600# \$60.00-\$64.10

600-700# \$58.00-\$63.50

405-423-7511 Sale Every Thursday

KEITH LAUER, MGR. 405-423-7009

\*\*FIELD REPRESENTATIVES\*\*

JIM NICHOLS

TEXHOMA, OKLA.

405-423-7011

**REPORT OIL FIELD THIEVES**

**1-800-OIL-COPS**

TOLL FREE • REWARD

**Baker & Taylor**

Drilling

Company

I want to say thank you to all my customers for their support while I had my florist shop.

Without your patronage I could not have had a successful business.

I have sold my shop to my daughter, Bodil Stackhouse, and hope you will give her the same support that you have given me.

Ora Lee Blackburn

**Windmills?**

Disappointing initial experiments with giant windmills in this country have not discouraged everyone. (All five giant U.S. windmills built with considerable hope in recent years have been shut down.)

John Wright, who heads the technology branch of Britain's Central Electric Planning Board, sees "good" prospects in wind power.

The Board has commissioned a 200-kilowatt wind turbine as part of a ten-year research project into wind power. Meanwhile, the Scottish hydroelectric board is building a much larger (3 megawatt) windmill in the Orkneys.

They believe that while some portions of the U.S. might more profitably utilize solar power, the climate in England lends itself readily to wind power. And, so, perhaps, the mother country will find a way, as mothers do.

**Garden Hopes**

Winter is the time of year for visions of grandeur looking through seed catalogues. The pictures of fruits and vegetables make the mouth water.

Great expectations come down to earth as the season gets underway and insects, weather and weeds do their thing. When we are amply rewarded with the fruits of our labor (and financial outlay), these are memorable years.

Growing flowers or vegetables is a science. Scientific knowledge and know-how are necessary and gardens are fun, if not too large (on the basis of spring enthusiasm).

Democratic leaders to push relief program.

City in El Salvador seized by guerrillas.

**FIRST STATE BANK**

Spearman, Texas 79081

**FIRST STATE BANK CERTIFICATE RATES**

<b>7 Day Certificate</b> \$2500 minimum <b>8.50</b>	<b>91 Day Certificate</b> \$2500 minimum <b>8.256</b>
<b>6 Mon. M.M. Certificate</b> \$2500 minimum <b>8.639</b>	<b>2 1/2 Year Certificate</b> \$1000 minimum <b>9.85</b>
<b>\$100,000 Certificates</b>	<b>30 Days--8.75</b> <b>90 Days--9.00</b> <b>180 Days--9.25</b>

**SUPER NOW ACCOUNT**

**\$2500 minimum weekly rate for individuals**

Call **659-2526**

FDIC

**Take Aim On Energy Waste With Wise Energy Management**

You can help keep your household budget on target when you practice wise energy management. Zero in on areas that can be wasting energy dollars. Air leaks around windows and doors can drain that precious heated air from your home while it lets cold air in the other side of your home. Storm doors and windows along with proper insulation can help prevent heat loss through walls, ceilings and glass areas. To help you, we have a free energy management booklet. Just drop by our office and pick up your copy.

**Texas-New Mexico Power Company**

E 7-83



**Call  
659-3434**

**BUY, SELL, TRADE OR RENT THROUGH THE  
CLASSIFIED ADS**

**SERVICES**

**Behlen Bins  
& Buildings  
MASTER CRAFT  
BUILDERS**  
Guymon, Okla.  
2224 Hwy 64 N.  
405-338-8561

Hansford County  
Planned Parenthood  
26 S. Haney  
659-2483  
Spearman  
Mon.-Fri.  
8:30-12:30

**NOTICE**  
Wallace Monument Co.  
Monuments, Curbing,  
Grave Covers  
Local Representative  
**LEONARD JAMESON**  
Spearman, Texas  
35sRTN

**STEAM RINSE & VAC**  
Steam Rinse-and-vac Sham-  
poers; \$10.95 for up to 24  
hrs. available at Gordon's  
Drug; also at Freddie Lar-  
gent's 716 Cotter Dr. after 4  
p.m. and Saturdays and  
Sundays.

**SERVICE:** Pits cleaned, wet  
or dry. Dragline or loader.  
Also, dozer, grader, carry-  
all service. Lee Roy Mitch-  
ell, 806-733-2384, Gruver,  
Texas 79040.  
12-rtm

New to area?  
Give us a try  
Call your local  
**USED COW DEALER**  
As soon as Possible.  
659-3544  
659-3545  
1-800-692-4043  
175-rtm

**MONUMENTS**  
Save Agents and  
Undertakers Profits  
If it is inconvenient for  
you to visit our large  
display, please phone col-  
lect (405) 327-0626 or write  
and we will call on you.  
**ALVA MONUMENT  
WORKS, INC.**  
Alva OK 73717

**SPEARMAN ELECTRIC**  
Licensed and Bonded  
New work and rework  
Phone 659-2636  
11-rtm

**OSGOOD  
MONUMENT CO.**  
Amarillo, Texas  
Dealers of Rock of Ages  
Granitem as well as all  
colored granites, marble  
and bronze memorials.  
represented by  
**BOXWELL BROS.  
FUNERAL HOME**  
519 S. EVANS  
659-3802

**HELP WANTED**  
HELP WANTED: Nursery  
worker, must be dependable.  
Call Union Church 9-2644.  
14-4tc

**MISCELLANEOUS  
FOR SALE**

Steel building inventory reduction. 40 x 100 with doors. List \$14,151.00. Now until March 1, \$9,912.00 plus freight. Call Mike at 405-338-5831.  
14-6tc

Jeeps, Cars, Trucks under \$100 available at local gov't sales in your area. Call (refundable) 1-619-569-0241 ext. 7916 for your 1983 directory. 24 hrs. 12-3tp-T only  
Steel building inventory reduction. 60 x 100 with doors. List \$23,668.00. Now until March 1, \$16,579.00 plus freight. Call Mike at 405-338-5831.  
14-6tc

**FOR SALE:** 12' X 24' Cen-Tex portable office building. Small equity-----assume low monthly payments. 659-3821.  
14-rtm  
1979 4840 JD Tractor, 42" duals, fully weighted, quick hitch, has 1,000 on new engine, has 2,000 total. \$31,500. Andy Watley-659-3970.  
14S-4tc

**REGISTERED Schnauzer Puppies** for sale. Call 659-2204 after 5:30.  
15-4tp  
**FOR SALE:** Golden Red Finnish Spitz puppies--highly intelligent--good hunters--good natured with children--\$75.  
733-2707.  
14S-2tc

**FOR SALE:** used refrigerator \$75. Call Joy Henderson, 733-2517.  
14S-rtm-nc

**FOR RENT**

**FOR RENT:** 3 Bedroom, 2 Bath, Mobilehome, Refrigerator-Freezer-Ice-Maker. Dishwasher, Garbage Disposal. Carpeted throughout. Call 806-383-9314.  
14-rtm

**FOR RENT:** 3 bedroom home-1114 S. Haney, Spearman, TX. \$400.00 per month, 6 mo. lease, and 1 mo. rent deposit, in advance. Available March 1st. References required. Call 214-596-9222.  
12-rtm

**FOR RENT:** Furnished one bedroom apartment, furnished 2 bedroom mobilehome. Call 2770 or 3017.  
15-2tc

**MOBILE HOMES  
FOR SALE**

**FOR SALE:** 1969 12' x 56' 2 bedroom trailer house, furnished.  
10' x 20' portable office, wired, insulated and paneled. Call 659-3642 or 659-3402 after 6:00 p.m.  
11S-rtm

**DEALER REPO**  
3 bedroom mobile home, excellent condition. Wood siding, storm windows, air, etc. Assume payments of \$267.57 with approved credit.

**FIRST QUALITY  
MOBILE HOMES**  
Hwy. 60 West  
665-0715  
Pampa, Texas  
14S-8tc

**\$1,000 FACTORY REBATE**  
Name brand 2 or 3 bedroom northern built mobile homes. If down payment has been your problem, we can help. Easy bank rate terms, large selections.

**FIRST QUALITY  
MOBILE HOMES**  
Hwy. 60 West  
665-0715  
Pampa, Texas  
14S-8tc

**FOR SALE:** 1968 12 X 60 American Westwood Mobile Home. Interested Parties write Box 642, Spearman, or phone Bill Pettitt 214-341-1243.  
13-6tc

**WANTED**

**I WILL DO Babysitting** in my home, infants to 5 years. Call 659-3947.  
14-4tp

Want to buy for resale, used corn headers, JD, I-H, and AC adjustable. Wood-Jordan, Earth, Tx. 806-257-3484, nights 806-285-3334, Jim Smith. 13-8tc

Would like to buy house to be moved, interested in any size. Contact Wayne Garrett, Gruver, 733-2005.  
15-4tc

**AUTOMOBILES  
FOR SALE**

**FOR SALE:** '74 Olds Station Wagon, \$800. 659-3526.  
4s-rtm-nc

**FOR SALE:** '78 Chevy Luv pickup. Call 733-2639.  
9S-rtm-nc

**Business  
Opportunities**

Own your own Jean-Sports-wear, Infant-Preteen or Ladies Apparel Store. Offering all nationally known brands such as Jordache, Chic, Lee, Levi, Vanderbilt, Calvin Klein, Wrangler over 200 other brands. \$7,900 to \$16,900 includes beginning inventory, airfare for one to Fashion Center, training, fixtures, grand opening promotions. Call Mr. Loughlin at (612) 888-6555.  
15-1tp

**Legal Notice**

**NOTICE TO BIDDERS**  
Sealed bids for the sale of the following real property--Lot 9, Block 2, Original Town--will be received by the City of Spearman, Texas, at the office of the City Manager up until Monday, March 7, 1983, at 2:00 p.m. and then publicly opened and read.  
The City reserves the right to reject any or all bids, to waive formalities and to accept the bid deemed to be the most advantageous to the City. All bids received after the above closing hour will be returned unopened.

Further information and bidding documents may be secured from the office of the City Manager, P.O. Box 37, Spearman, Texas 79081.  
Donna Thomas  
City Secretary  
15-2tc

Notice is hereby given by the Parks and Wildlife Department that a public hearing will be held at 7 p.m. on March 23, 1983 at the County Courthouse at Spearman for the purpose of gathering information concerning proposed hunting and fishing regulations for Hansford County.

As the result of action by the Texas Legislature, the Texas Parks and Wildlife Commission, under the authority of the Uniform Wildlife Regulatory Act, Chapter 61, Texas Parks and Wildlife Code, is responsible for the setting of seasons, bag limits, means, and methods for taking the wildlife resources in Hansford County. All interested persons are urged to attend and comment upon the proposed regulations.

Additional information concerning the public hearing may be obtained by calling our Toll Free Number 1-800-792-1112 or 512-479-4974.  
15-1tc

**Card Of Thanks**

I want to thank everyone from the bottom of my heart for the prayers, visits, flowers, cards and food during my sickness and surgery.  
To my many friends who came to be with my family during surgery may God Bless each one for their love and kindness.  
Maudine Patterson

**HERGERT PONTIAC, BUICK & GMC, INC.**  
SPEARMAN, TEXAS 79081

**JERALD SCRIBNER**  
NEW & USED CAR SALES



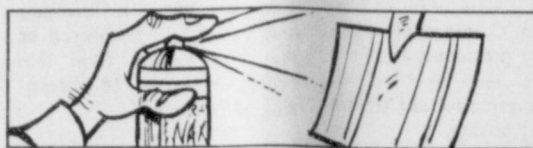
RES. PHONE 659-3449

BUS. PHONE (806) 659-3721

**TEXAS PRESS  
ASSOCIATION**  
The Spearman Reporter  
PUBLICATION [USPS 5096-6000]  
SPEARMAN, TEXAS 79081  
213 Main Box 458 659-3434  
Published Weekly at 213 Main Street,  
Spearman, Texas 79081  
Owner-Publisher.....William M. Miller  
Editor.....Faye Lynch  
Second Class postage paid at Spearman, Texas  
79081  
Any erroneous reflection upon the character of any person or firm appearing in these columns will be gladly and promptly corrected upon being brought to the attention of the management.  
POSTMASTER: Send address changes to Spearman Reporter, Box 458, Spearman, Tx. 79081.  
SUBSCRIPTION RATE: Hansford, adjoining counties, combination with the Hansford Plainsman \$15.00.  
Other points, \$20.00

**TO GIVE AWAY**

**TO GIVE AWAY:** 3 Small puppies. Call 659-2068.  
14-3tc



To keep snow from sticking to the shovel, first cover the shovel with spray wax.



Spiders breathe underwater by carrying a bubble of air between their legs.

Instead of Flowers  
send balloons  
from...  
**"BALLOONS GALORE"**  
For parties, birthdays,  
anniversaries or  
"just because"  
733-5154  
WE DELIVER

**FARMERS UNION ANNUAL  
CONSIGNMENT SALE**  
April 8, 1983  
CONTACT:  
Joe Morris  
733-2132  
Burton Shubert  
659-2667  
Jessee Francis  
659-2454  
11S-16tc

**VIRGINIA WHITE  
Realtor  
659-3841**  
ASSUME LOW INTEREST  
LOAN on this IMMACU-  
LATE 3 bdrm. home with  
1 1/2 baths, nearly new  
carpet, 14 X 22 sunroom,  
storm cellar and much  
more. Call for appointment.

**NOT JUST A HOUSE BUT  
A HOME** 3 bdrms., 1 bath,  
large living area with fire-  
place, corner lot, fenced,  
excellent location. Low 30's.  
CALL NOW TO SEE THIS  
SPECIAL HOME!

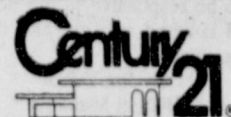
**TWO ROOM House** with  
bath and big closet. Nice for  
bachelor. PRICE REDUCED.

**CORNER LOT** completely  
fenced with double car  
garage AND oversized sin-  
gle car garage AND storm  
cellar.

Southwest location--RESI-  
DENTIAL LOTS FOR SALE.

**COMMERCIAL** - 1.96  
acres. Call for details.

**EMMETT R. SANDERS  
REALTOR**  
659-2516  
659-2601 [nights]  
52-rtm T ONLY



Daryl Wynn, Broker  
659-4358

"We'll Give Our Word To You"

Allen Alford  
659-3034

Larry Trospier  
659-3491

**GOLDEN SPREAD REALTY**

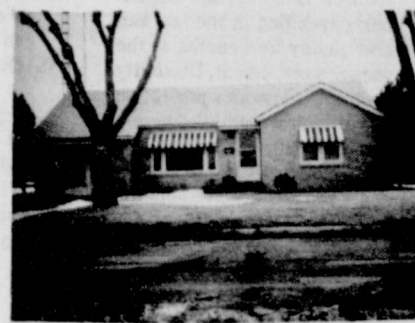
Corporate Registered Trademark of  
Century 21 Real Estate Corpora-  
tion. Printed in U.S.A. Each office is  
independently owned and operated.  
Equal Housing Opportunity.

**WE WANT  
YOUR  
LISTINGS!  
CALL  
TODAY!!**

**Several Lots  
FOR SALE**



Good location--excellent buy. Down Town Spearman.



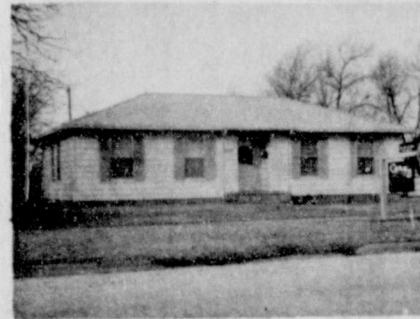
819 S. Archer--nice starter home.



109 S. Barkley--You must see this 2 bedroom newly renovated home.



504 S. Roland--Must see this house and apartment setting on 3 lots.



212 Haney--Close in to town: Not far to do your shopping.



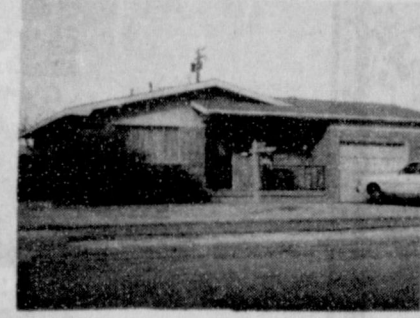
This 3 bedroom, 2 bath home at 720 Barkley has a basement, new carpeting, paneling, and a fireplace. It is located on a corner lot with a detached garage.



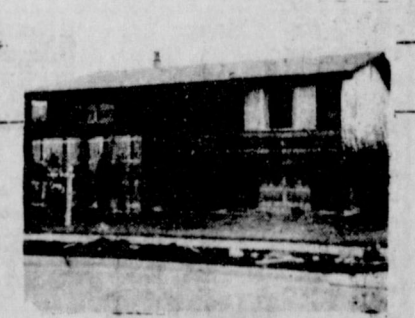
This home at 1008 Townsend has 2 bedrooms, 1 1/2 baths, 1400 sq. ft. of living area and central heat and air. Assumable loan.



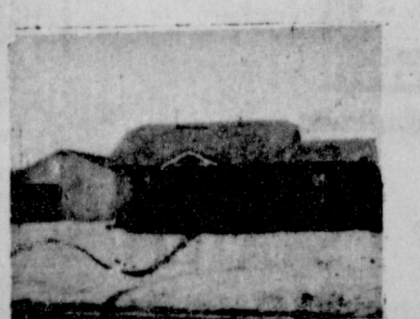
A new listing at 1014 Dressen. This house has central heat and air and is close to school.



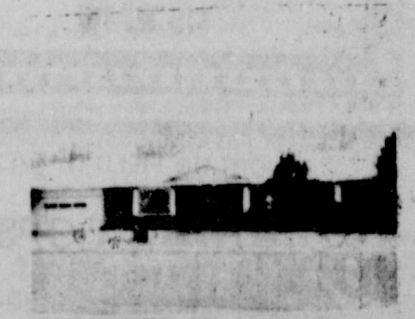
1108 Dressen--an ideal home for anyone. Ready to go!



1141 Townsend. 2 story home with approximately 2,000 sq. ft., 3 bedrooms, and garage.



Priced for Sale. 3 bedroom, central air and heat, double garage with studio apartment. 118 N. James.



1106 S. Bernice. 3 bedroom, brick office, 1 1/2 bath, sprinkler system, fence, ceiling fans, central air and heat.



## Area-Wide meeting set for PIK program

TWO AREA-WIDE MEETINGS SET TO DISCUSS ECONOMICS OF PIK PROGRAM Extension Service, Texas Wheat Producers and ASCS Co-sponsor joint sessions.

In order that farmers might have information to help them maximize income, minimize cost and make the most rational marketing decisions when participating in the newly announced USDA P-I-K program, two area-wide meetings have been set.

Paul Gross and Mrs. Sue Farris, District I Extension Directors, Sam Cook ASCS District Director and Otis Harman, Texas Wheat Producers Association President indicated that the two sessions have been scheduled as follows:

**WEDNESDAY, FEBRUARY 23, 1983-10:00 a.m. to 12:00 NOON, Dumas, Moore County Community Building 16th and Maddox (S.E. Near the Stadium)**

2:00 p.m. to 4:00 p.m., Amarillo, Texas A&M Research and Extension Center 6500 Amarillo Blvd. West.

**DUPLICATE PROGRAM: Program Moderator and Commentator--Bill Nelson, Exec. V.P., Texas Wheat Producers Assn.**

**The Current Grain Situation, P-I-K program considerations and farmers participation worksheet, Dr. Ed Smith, Extension Grain Marketing Economist, College Station.**

**Managing Wheat P-I-K Grazeout Acres, Dr. John McNeill, Extension Area Beef Cattle Specialist, Amarillo.**

**Managing P-I-K and RAP RAP Diversion Acres, Dr. Wyatt Harman, Research Economist, Texas Agricultural Experiment Station, Amarillo.**

**Response to P-I-K program operation questions, ASCS Representative, Farmers and attendees participation.**

Otis Harman, TWPA president, said, "We know that ASCS County Directors and County Extension Agents have held or will be holding local meetings dealing with the nuts and bolts of operations of the P-I-K program. We have

been pleased, however, with the producer response to the broader overview of the economics of the program which may lead to wider participation and effectiveness." Similar area meetings have been held in Paris, Krum, Belton, Waxahachie and Abilene.

All the sessions are open to the public and interested individuals are urged to attend.

## Social Security News

The protection offered by Social Security provides much more than just retirement benefits. The comprehensive insurance coverage provides covered workers with a package of protection that would be hard to duplicate, according to Jim Talbot, district manager of the Amarillo Social Security Office.

Social Security is actually four insurance "policies" in one package offering protection in these areas: **Retirement Insurance**--provides a monthly income at retirement. Benefits are payable as early as 62 at a reduced rate. Certain dependents specified in the law can also qualify for benefits at the worker's retirement. **Disability Insurance**--provides protection if a worker becomes severely disabled and cannot work for a year or more. Certain dependents can also receive benefits if a worker qualifies for disability benefits. **Survivors Insurance**--provides valuable protection to dependents in the event of a worker's death. The most common protection being monthly payments to widow's and children and may be quite substantial. **Medicare**--provides both hospital insurance and medical insurance that can help pay medical costs after a worker becomes 65. It also provides health coverage if a worker becomes entitled to disability benefits for 24 consecutive months.

The protection outlined above shows how Social Security has evolved into the nation's primary income maintenance program that is both flexible and responsive to the needs of the American family.

**QUESTION:** I am 67 years old and plan to get my Social Security in 1983. How much money can I make and still get all of my check?

**ANSWER:** In 1983, persons age 65 through 69, can earn \$6,600.00 and still receive all of their Social Security checks. For each \$2,000 you earn over the \$6,600.00 you must pay back \$1.00.

**QUESTION:** I have worked 50 years and have paid into Social Security since it started, just as my husband did. Will I be able to collect both as a worker and as a wife?

**ANSWER:** No. You can only get the highest benefit. Social Security will figure out which benefit is higher.

**QUESTION:** My wife died last month, leaving me with two small children to

support. I'm currently unemployed and my savings are going fast. Can Social Security help?

**ANSWER:** If your wife worked long enough under Social Security to be insured--in this case, as little as 1 1/2 years of work credits out of the past 3 years is required--payments can be made to you and your children. Should you return to work, let Social Security know promptly and find out how your earnings may affect your benefits.

**QUESTION:** I divorced my husband in 1969 after 17 years of marriage and he remarried in 1974. I'm now 61 and haven't worked enough to get Social Security on my own record. Am I eligible for any benefits on his record?

**ANSWER:** As long as your marriage lasted at least 10 years, you would be eligible for payments as a divorced spouse at 62 (provided he has retired) or as a surviving divorced spouse should he die. This is true even though his current wife is also eligible for benefits.

**PEACE RACE BRUSSELS, BELGIUM**--Vice President George Bush, challenging Moscow to a "peace race", said he would bring to the Geneva arms talks the Reagan administration's message that the superpowers must reduce their nuclear weapons arsenals.

Sen. Cranston announces bid for presidency.

Congress to take another look at boxing.

Program financing has frequently been in the news recently. The entire program has been under the scrutiny of the National Commission on Social Security Reform whose recommendations will be considered by the Congress in formulating changes to assure that Social Security continues to be responsive to the needs of covered workers and their families.

By Jim Talbot  
District Manager  
Amarillo Social Security Office

[Have you a question about Social Security? Address it to Jim Talbot, Manager of the Amarillo Social Security, 205 East 5th Street, Federal Building, Room 112, Amarillo, Texas 79101. You will receive an answer in this column or by mail.]

## AGCO "Winter Fair"

You've had the snow. Now you've got...

The Show! --"Winter Fair" staged by Agco of Spearman Inc. with prizes, fantastic noon fish fry...

And a "mid-way" lined by more than 16 companies with sales representatives on hand to answer all questions about YOUR problems and THEIR products.

The Fair opens at 10 a.m., Thursday, Feb. 17 and closes at 2 p.m. Winter Fair will be located in the County Barn at Spearman.

At noon, Punkin's Fish Trap of Borger will serve up some of the most succulent fish you will ever lap a lip over!

Then there are the door prizes--almost too many to list all of them but we will give you a teaser: a Remington Model 1100 12-gauge shotgun--a pair of boots from the Bunkhouse

## Follett to meet Channing at Lynx Varsity Gym Friday

ATTENTION, SPORTS FANS! This Friday, February 18, at 7:30 p.m. the Lynx Varsity Gym will be "occupied". The reason being that Channing, with a record of 20-4, will go up against the Follett Panthers with a record of 15-11. This game between Channing and Follett will be played at the Lynx Varsity Gym this Friday, February 18, beginning at 7:30 p.m.

## TSTI Spring Quarter Registration

AMARILLO--TSTI-Amarillo will register students for the spring quarter on Tuesday, March 1, 1983, from 8:30 a.m. to 7:30 p.m., at the Resource Center on the Amarillo campus.

Programs excepting new students are: Auto Body Repair, Aircraft Mechanics, Auto Mechanics Technology, Boot and Shoe Operations, Commercial Art in Advertising, Construction Technology, Computer Science Technology, Cosmetology, Diesel Mechanics Technology, Drafting

and Design Technology, Electronic Systems Technology, Mechanical Electrical Technology, Interior Design Technology, Industrial Instrumentation Technology, Meat Processing and Marketing, Machine Shop Operations, Printing Technology, Saddle and Tack Making, Professional Truck Operations, Transport Refrigeration Mechanics, Technical Office Training, and Welding and Fabrication.

For more information please contact Admission (806) 335-2316, extension 269.

ANNOUNCING THE 31st ANNUAL PANHANDLE STATE UNIVERSITY PERFORMANCE TESTED BULL SALE

Wednesday, February 23, 1983  
1:00 p.m. C.S.T.

University Farm, Goodwell, OK

### SELLING

Angus Charolais Herefords  
Brangus P Shorthorn P Herefords

Predictable Performance - Information on

ADG	Frame Score	ADG Ratio
WDA	Fat Thickness	WDA Ratio
WnWt	Scrotal Size	Fertility

For Catalog Call

Jerry Martin  
Box 430, Goodwell OK 73939  
Ph 405-349-2611 ext. 262

PRICES GOOD FEB. 16 THROUGH FEB. 19

QUANTITY RIGHTS RESERVED NO SALES TO DEALER

FEB. 19 LAST DAY TO RECEIVE BONUS CERTIFICATES

# UNITED HAS CO THE BEST BA

BLEACH  
**CLOROX**  
1/2 GAL. 4' OFF LABEL  
**58c**

NICE 'N SOFT  
6 ROLL TISSUE  
**\$1.28**

FACIAL TISSUE  
NICE 'N SOFT  
200 CT.  
**58c**

FABRIC SOFTENER  
BOUNCE  
30 CT.  
15' OFF LABEL  
**98c**

PURINA  
**TENDER VITTLES**  
24 OZ. **\$1.49**  
PURINA  
**DOG CHOW**  
30 LB. BONUS BAG **\$7.78**

MARS CANDIES  
M & M'S MILK WAY SNICKERS CLASS BARS 3-MUSKETEERS  
10 PK. **\$1.98**

LAND-O-LAKES  
**OLEO**  
1 LB. QTRS  
**3 \$1**

BANQUET  
**DINNERS**  
11 OZ.  
ALL FLAVORS EXCEPT HAM, BEEF & FISH  
**2 \$1**

HILLS BROS.  
**COFFEE**  
1 LB. CAN  
**\$1.88**

PILLSBURY  
"HUNGRY JACK"  
**BISCUITS**  
10 OZ. ALL TYPES  
**2 FOR 88c**

PLUS DOUBLE **S&H GREEN STAMPS**  
WITH A \$2.50 PURCHASE OR MORE EXC

PILLSBURY 8 OZ.  
**CRESCENT ROLLS** **88c**  
FILTRES  
**MR. COFFEE** 100 CT. **59c**

**COKE**  
6 PK. 16 OZ.  
**\$1.98**  
NON-REFURABLE BOTTLES

RED DELICIOUS  
**APPLIS**  
3 LB. BAG  
**ORANGES**  
4 LB. BAG  
**88c**

**GREEN ONIONS**  
**2-38c**

NO. 1 RED  
**POTATOES**  
5 LB.  
**\$1**

**19 Mon. Feb. 21**

KING SIZE WALLET CREATIVE COLOR PORTRAITS FOR ONLY **99c**

Kodak paper. For a Good Look at the Times of Your Life.

Extra Charge for GROUPS

NO LIMIT

WE USE KODAK PAPER

GET PICTURES MADE IN GEORGETOWN, GEORGETOWN, OAS. NOW AND ALL THE LITTLE ONES AT THESE SAME LOW PRICES!

**Shugart's inc.**

ASK About Our **FREE 8 x 10 OFFER**

**COLOR PHOTOS**

**Kid's Stuff**

719 W. 7th

REPORT OIL FIELD THIEVES CALL  
1-800-OIL-COPS  
1-800-645-2677  
TOLL FREE.....REWARD

**Baker & Taylor Drilling Company**



# Perryton girls secure playoff berth

CANADIAN — Stacy Blasingame scored 22 points and Kenda Watkins added 12 last night and the Perryton Rangerettes are in the state basketball playoffs for the first time since 1958.

Perryton exploded in the fourth quarter here, breaking open an expected close game and roaring to a 56-41 District 1-3A playoff win over Spearman before 450 neutral-site fans.

The teams were forced to play after tying for second-place in the 1-3A round-robin race. Canadian's girls won the league title, and Perryton will now go into the playoffs as the district's runner-up under the University Interscholastic League's format which allows the top two teams in each district to advance into post-season play.

In bi-district play Perryton is scheduled to meet District 2-3A champion Abertath at 6:30 p.m. Friday in the Amarillo Civic Center Coliseum. Canadian is scheduled to play 2-3A runner-up Littlefield at 8 Friday night in the Civic Center.

Spearman won both regular-season clashes with Perryton — 55-43 on Jan. 22 and 62-61 in triple overtime on Feb. 8. But the Lynxettes, who finished the season with a 20-6 record, and Perryton (now 16-9 overall) both went 5-3 in district play.

And last night, Perryton broke the tie by breaking Spearman's press in the fourth quarter, winning the battle of the boards (according to Perryton coach Don Ewing) and hitting its free throws, especially in the final period.

"It was very close the first three

and-a-half quarters," said Ewing. "It was another excellent ball game."

Then Spearman lost three players to fouls in the final stanza and Perryton's Rangerettes took control.

"We just started getting the ball inside and our shots started falling," said Ewing. "And Spearman's shots didn't seem to fall for them. Turnovers hurt us until the fourth quarter. Then in the fourth quarter, we didn't have much trouble breaking their press. We just began to make a little sharper passes and tried to slow ourselves down."

Free throws got the blame for Perryton's triple-overtime loss to Spearman (the Rangerettes were 21 of 44 from the line). Perryton wasn't much better from the line last night

(14 of 27 overall), but hit 5 of 7 fourth-quarter free-throw tries.

"We had a little lead, and making those sure did help," said Ewing.

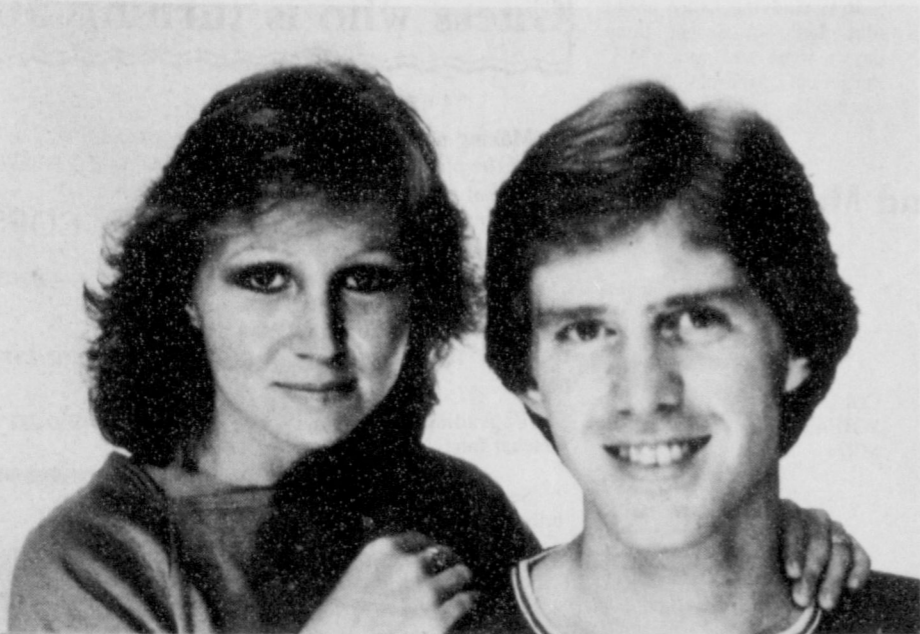
Spearman's loss means it will miss the state playoffs for the second season in a row. The Lynxettes reached post-season play each year from 1977 through 1981, winning the state championship in 1977.

Over the same period, Perryton has not been so fortunate. The Rangerettes' first playoff appearance came in 1953 and its second, and last, came in 1958.

Besides Misses Blasingame and Watkins, Lececia Schickedanz scored 10 points for Perryton.

Janet Reed was the only Spearman player to finish in double figures. She had 12 points.

## Lutz to perform at Union Church



U.S. Marine turns back Israelis tanks.

Look into the heart of any man, and you always find at least one black spot.

-Henrik Ibsen.

The heart dreams not of what the eye sees not.

-Thomas Shelton.

The heart is the most noble of all the members of our body.

-St. John Chrysostom.

Whatever comes from the heart carries the heat and color of its birthplace.

-O.W. Holmes.

This Sunday night, February 20th, John Lutz, a talented musician, singer and former trumpet player with the Imperials will be ministering at the Spearman Union Church. He and his wife Debi have a tremendous testimony that you won't want to miss. Pastor Steve Rogers invites the public to attend.



### WHO KNOWS

1. Locate Kilimanjaro.
2. How many tablespoons in one cup?
3. Whose portrait is on the \$1,000 bill?
4. What famous poet was born on February 27, 1807?
5. What is the nickname for the state of Maine?
6. What is the nation's highest civilian award?
7. When was the Republican Party founded?
8. Locate the Ozark Mountains.
9. Define altruism.
10. Name the Secretary of Defense.

1. The highest mountain in Africa.
2. Sixteen.
3. President Cleveland.
4. Longfellow.
5. The Pine Tree State.
6. The Presidential Medal of Freedom.
7. February 28, 1854.
8. They're in Arkansas, Missouri and Oklahoma.
9. Unselfish concern for the welfare of others.
10. Caspar Weinberger.

Answers to Who Knows

There's nothing like increased income to make a man, or woman, feel as if the world is really getting better.

## AS CORRALLED AT BARGAINS

12 VOLUME SET  
VOLUME 1  
**69¢**  
VOLUMES 2-12 ONLY  
**\$2.69 EACH**  
THE CHILDREN'S BIBLE  
THIS WEEK'S FEATURE  
VOLUME 3  
**76¢**

**U**  
**UNITED**  
Supermarkets  
Perryton, Texas

SWIFT TENDR LEAN FAMILY PAK PORK STEAK  
**\$1.47**  
LB. SEMI-BONELESS

SWIFT TENDR LEAN PORK ROAST  
**\$1.47**  
LB. BOSTON BUTT

SWIFT TENDR LEAN COUNTRY STYLE BACKBONE  
**\$1.57**  
LB.

FRESH COUNTRY STYLE PORK SAUSAGE  
MARKET MADE  
**97¢**  
LB.

SWIFT TENDR LEAN PORK CHOPS...  
**3.27**  
BONELESS LB.

SWIFT TENDR LEAN PORK CHOPS...  
**2.27**  
THICK CUT CENTERS LB.

WILSON SMOKED PORK CHOPS  
CENTER CUT  
**2.17**  
LB.

SWIFT TENDR LEAN QUARTERLOIN PORK CHOPS  
**\$1.47**  
LB. ASSORTED ENDS AND CENTER CHOPS

DECKER QUALITY BACON  
1 LB. PKG.  
**\$1.88**

SWIFT TENDR LEAN FAMILY PAK PORK CHOPS  
CENTER CUT  
**\$2.17**  
LB.

## STAMPS WED. & SAT. USE OR MORE EXCLUDING CIGARETTES

TURBOY BONELESS FILLETS  
**\$1.98**  
LB.

LENT SPECIALS  
KRAFT TARTER SAUCE 10 OZ. **.88¢**  
DEL MONTE SEAFOOD COCKTAIL SAUCE 12 OZ. **.88¢**

FARM FRESH WHOLE CATFISH  
**\$1.98**  
LB. GRAIN FED POND RAISED

BOOTH BREADED FANTAIL SHRIMP 1 LB. PKG.  
**\$4.98**

VAN DE KAMP'S FISH STICKS 13 1/2 OZ. FISH FILLETS 14 OZ.  
**\$1.88**

BOOTH FILLETS FLOUNDER OR SOLE 14 OZ.  
**\$2.68**

The LEGISLATIVE REPORT  
by Gib Lewis, Speaker  
Texas House Of Representatives

AUSTIN — Although the 68th Legislature has barely begun it's already apparent several major areas of concern to Texans, ranging from transportation and government spending to public education and wildlife preservation, will be considered.

These issues will require careful study and hard decisions by your elected representatives.

Some of the major issues and related legislation expected to be discussed during this session include:

**Government Spending:** The Comptroller has estimated there will be a \$780 million shortfall in state revenues available to the Legislature from what was initially expected to be on hand for spending recommendations of the Legislative Budget Board for the next two years.

This shortfall will require all members of the Legislature to exercise careful judgement to ensure no necessary services are curtailed in the state budget for 1984-85 which will be written this session.

**Driving While Intoxicated:** Our state is part of a nationwide effort to stop the unnecessary and senseless carnage caused by the drunken driver on our highways and streets.

As a result, several bills to toughen the legal drinking age, ban open alcoholic beverage containers from motor vehicles, force prosecutors to try DWI cases and make DWI suspects' medical records available to courts have been filed.

These bills can be expected to receive much attention from lawmakers and certainly, new and tougher laws affecting the DWI should result.

**Higher Education:** Texas colleges and universities continue to be one of the major assets guaranteeing our children's futures will be both satisfying and productive.

During the time between sessions, much attention was given to the creation of funding programs for the various institutions of higher education.

At least some of these areas appear to have been addressed, but exactly how much money the various institutions of higher education will finally receive still remains to be determined in the appropriate process.

Since available funds will be limited, the different colleges and universities may, unfortunately, find themselves competing against each other for the available funds.

**Public Education:** As it has always been in the past, the issue of educating our children -- both from a standpoint of a quality education and an equal education -- will be given much serious attention in this session.

At the forefront is the matter of teacher salaries.

The State Board of Education has requested a 22 percent average teacher pay increase, the Legislative Budget Board has recommended a 20 percent increase, and Gov. Mark White has called for a 24 percent hike.

Other proposals affecting public education include:

A group health insurance plan for teachers funded out of state revenues.

Changes in the methods for adopting textbooks for classroom use.

It's a good idea to take some time off for recreation, provided you don't take so much time off you overlook your work.

ATTENTION LIVESTOCK PRODUCERS:  
**CATTLEMAN'S LIVESTOCK COMMISSION CO.**  
Box 50, Dalhart, TX 79022  
Phone (806) 249-5505  
4 miles West of Dalhart on HWY 54  
• Hog Sale every Wednesday  
• Starts at 10:00 a.m.  
• Cattle Sale every Friday at NOON

**MARKET REPORT**  
**HOG MARKET**  
WEDNESDAY, FEBRUARY 9

Top Hogs	\$56 to \$57
Sows	\$44 to \$48
Boars	\$38 to \$41

**CATTLE MARKET**  
FRIDAY, FEBRUARY 11

Butcher Cows	\$33 to \$44
Butcher Bulls	\$47 to \$54.50
Heiferettes	\$42 to \$54
Cutting Bulls	\$50 to \$61
Feeder Steers	600 to 700 lbs. \$65 to \$68.50
	700 to 800 lbs. \$63 to \$66
	800 to 900 lbs. \$61 to \$64.50
Feeder Heifers	500 to 700 lbs. \$57 to \$63
Steer Calves	300 to 400 lbs. \$70 to \$80
	400 to 500 lbs. \$65 to \$75
Heifer Calves	300 to 400 lbs. \$57 to \$65
	400 to 500 lbs. \$57 to \$62

**NOW CONTRACTING CATTLE FOR SPRING DELIVERY.**

**WE NEED YOUR COWS & BULLS IN THE DAY BEFORE THE AUCTION IN ORDER TO COMPLY WITH FEDERAL AND STATE REGULATIONS AS TO BLOOD TESTING. THE STATE OF TEXAS PAYS FOR THIS TESTING.**

**WE ARE NOW OFFERING A SELL & BUY BACK PLAN FOR CATTLE.**

**WE ARE THE DEALERS FOR THE NECKOVER TRAILERS.**

**NEW TOLL FREE NUMBER 1-800-858-4013**  
LARRY WING, MANAGER, RES. 806-249-2402  
Kenneth Knight, Asst. Manager 806-384-2136  
Craig Lawrence, Yd. Foreman 806-384-2153

**FIELD REPRESENTATIVES:**  
BOB PAYNE, DALHART, TX 806-249-5894  
George Wall, Clayton, N.M. 505-374-9550  
Greg Wade, Canyon, TX 806-655-3318

REPORT OIL FIELD THEVES  
CALL 1-800-OIL-COPS  
TOLL FREE  
EARN UP TO  
**\$5000 REWARD**  
PETROLEUM INDUSTRY SECURITY COUNCIL

**Baker & Taylor Drilling Company.**





You are cordially invited to attend a

Baby Shower honoring

Jeannie Laughlin

&

Baby Girl, Michelle Marie

on Saturday, Feb. 19th

at 2:00 p.m.

1001 S. Haney

HOSTESSES:

Bonita Reimer  
Elaine Morris  
Sandy Russell

Mary Brock  
Betty Jean Davis  
Lorene Kunselman  
Stephanie Brock

16-1tc

### Mothers of Twins Club meeting set

The meeting of the area Mothers of Twins Club, otherwise known as Tri-state Twosomes, will be Thursday, Feb. 24 at 7:30 p.m. in the Reddy Room, 501 N. Ellison, Guymon.

Officers will also be elected at this meeting. Anyone desiring more information may contact Jeanette Zabin, 659-2272 or Melyn Johnson, 339-7109.

The program this month will feature a panel of twins for discussion.



"Oh dear! I knew I should've insured my cattle before that storm hit!"

### Brock Insurance Agency

206 Main

Spearman, Texas 79081

Phone 806/659-2514

### For The Ultimate In STORM DOORS & WINDOWS

Custom Built, Designed And In

Colors To Fit Your Home

Contact Howard Moyer at

### Only Aluminum Industries

Guymon, Okla. 73942

114 W. 1st

405-338-6966 or  
405-338-6170  
AFTER 6 P.M.

### On Your Payroll

State Representative

J.W. (Buck) Buchanan  
Dumas, Texas 79029  
Phone: 935-5067

Austin Address:  
House of Representatives  
Austin, Texas 78711  
Phone: 512-475-3127

State Senator

Bill Serpallus  
1980 Canyon Drive  
Amarillo, Texas 79118  
Phone: 622-2502

Austin Phone:

512-475-3222

U.S. Senators

Senator John G. Tower  
Washington Office:  
Russell Senate Office Bldg. #142  
Washington, D.C. 20510  
Phone: 202-224-2604

Texas Office:  
Federal Bldg., 300 E. 8th St. #881  
Austin, Texas 78701  
Phone: 512-387-5922

Dallas Office:  
1114 Commerce #1711  
Dallas, Texas 75202  
Phone: 214-749-7526

Senator Lloyd Benson  
Washington Office:  
Russell Senate Bldg. #240  
Washington, D.C. 20515  
Phone: 202-224-5922

Texas Office:  
515 Rush  
Houston, Texas 77002  
Phone: 713-226-5496

U.S. Congressman

Congressman Jack Highower  
U.S. Congress, 12th District  
130 Cannon Building  
Washington, D.C. 20515

Amarillo Office:  
205 E. Fifth  
Amarillo, Texas 79101  
Phone: 279-2281

REPORT OIL FIELD THIEVES

CALL

1-800-OIL-COPS

1-800-645-2677

TOLL FREE.....REWARD

Baker & Taylor

Drilling

Company



Happy Belated 28th!

### 20th Century Club Meets

The 20th Century Club met Feb. 10 in the home of Mrs. Don Hergert with Mrs. John Brown as co-hostess.

The meeting was called to order by Pres. Mrs. Cecil Biggers. Minutes of previous meeting were read and approved. We are pleased to have a new member, Mrs. F.W. Thomas.

Roll call was answered with a tip to help fight inflation.

The program was given by Mrs. O.C. Holt "An Inflation Quiz" with members participating.

Refreshments were served by Mrs. Hergert and Mrs. Brown to Meses. Cecil Biggers, F.W. Thomas, L.L. Anthony, Frank Hefner, J.R. Stump, O.C. Holt, Coy Palmer, John Bishop, Tom Sutton, Fern Pope and Jane Meek.

The 20th Century Club met at the home of Mrs. O.C. Holt recently. Volunteers for the library reading program were reminded to arrive a few minutes early so they can be acquainted with their duties.

Roll call of an international trip was answered.

Mrs. J.R. Stump gave a very interesting program on the Voyage of the Queen Mary.

Delicious refreshments were served to Meses: L.L. Anthony, John Bishop, B.F. Gaskamp, Frank Hefner, Lorene Hutchison, Don Hergert, Jane Meek, Fern Pope, Tom Sutton and guest Deta Blodgett and hostess O.C. Holt.

THE SPEARMAN REPORTER,

The 20th Century Club met Jan. 27 at the home of Mrs. L.L. Anthony.

Kou call was "A Home Energy Saving Tip."

Mr. Richard Melton, guest speaker, gave a very interesting and informative talk on "Home Energy Check."

Members present were Meses. Cecil Biggers, Fern Pope, J.R. Stump, O.C. Holt, Lorene Hutchison, L.L. Anthony, Frank Hefner, Jane Meek, Woodville Jarvis, and John Trindle.

### Senior Bridge Club Meets

The Friday Senior Bridge Club met Feb. 11 in the home of Addie Novak.

Members present were Ora Sanders, Mathilde Entekin, Willie Wallis, Alice Lackey, Viola Graves, Ruth Baker, Emma Seitz, Mabel Edwards and a guest, Ruth Hill.

Emma Seitz had high score and Ruth Hill had second high.

### Arts & Craft Guild Meets

The Arts & Craft Guild met Feb. 11 at Cattleman's Restaurant with Margaret Gibner as hostess.

Attending were members, Athalee Traylor, Blanche Fuller, Lemmie Russell, Mildred Daily, Annie Allen, Jewel Turner and the hostess.

The meeting Friday, Feb. 18 will be in the home of Blanche Fuller.

SPEARMAN, TEXAS 79081

### Our Heritage of Faith

This Sunday morning we will consider the three temptations that the devil dangled before Jesus. From this event we are to learn how to handle temptations that plague us.

the sermon theme is: TEMPTATION--Luke 4:1-13.

Sunday School is at 9:45 a.m. Worship is at 10:45 a.m. and Sunday evening Bible Study is at 6:30 o'clock.

A cordial welcome awaits all visitors.  
Bruno Gaskamp, Pastor

### Billie Jo wins again

Billie Jo Moore, 8 year old daughter of Terry and Sherry Moore, competed Saturday night, Feb. 11, at Clarendon College's Tumbleweed Talent Contest. She was a winner in the K-through 10th grade age group. There were three winners in each age group. She competed with 15 others. Billie Jo won this last year.

Jo danced a jazz number to Cher's "Halfbreed". It was made up especially for her by her private jazz teacher Lori Berger of Amarillo. Her Indian costume was very unique. The

skirt-vest came from the Cherokee Indian Village at Clinton, Okla. and were fringed and made of tanned leather, her grandmother from Clarendon, then spent 2 months sewing the millions of sequins on them and designing the Indian bird on the front of the skirt out of colored rhinestone and sequins.

Jo is studying dance under Mrs. Little of Borger three days a week and under Mrs. Berger of Amarillo on the weekends.

### Behne will attend Moose School

Verlin Behne, secretary of Spearman Moose Lodge 2212, will attend the Moose Administration School to be held at the Holiday Inn in North Aurora, Ill. on February 26 and 27.

Serving as instructors will be the Staff of the Supreme Secretary's Office. Purpose of the school is to better acquaint secretaries with their duties and responsibilities.

### MARKETS

CORN \$3.19  
WHEAT 3.44  
MILO 4.65

### PUBLIC NOTICE

In accordance with the regulations of the Public Utility Commission of Texas, Texas-New Mexico Power Company announces the Company's intent to change rates for its entire Texas operations. The effective date of such change is March 4, 1983. All classes of customers will be affected by said proposed changes. It is estimated that the rate change will produce an increase in gross revenues to the Company of \$13,032,225, or a 4.24% increase over present rates.

A complete copy of the requested rate schedule is on file with the Public Utility Commission of Texas in Austin, and with all cities which have retained original rate jurisdiction served by Texas-New Mexico Power Company. You may inspect a copy of the filing during normal business hours at each business office of Texas-New Mexico Power Company in your area.



### ELLSWORTH OIL COMPANY

ALTON'S GULF SERVICE

This great system has been in operation for over one year....

### FUEL-MASTER FUEL MANAGEMENT SYSTEM

The FUEL-MASTER SYSTEM will offer to you:

- \* A 24 Hour Card Lock for your fuel needs.
- \* Elimination of costly inventory and storage.
- \* Complete control over your costly fuel use.
- \* 4 Digit Security Code for each card you need.
- \* Knowledge of who fueled, date and what fuel.
- \* Odometer reading when vehicle fueled.
- \* Leaded Regular, Unleaded and Diesel Fuel.
- \* High Speed Pump for diesel fuel for larger tanks.
- \* Lock Out of fuel not authorized on any card or cards.

So for complete Fuel Dispensing Security, Convenience and Transaction Accountability... Come and Visit with Us!

"A Complete Line of Gulf Oil Products"

### Ellsworth Oil Company

Spearman Texas

PRICES GOOD FEB. 17-19, 1983

WHILE SUPPLY LASTS



COOKED FOOD SPECIALS OF THE WEEK

HAM-EGGS-CHEESE \$1.79 VALUE \$1.29  
ON A MUFFIN WITH SMALL ALLSUP'S COFFEE

CANADIAN BACON-CHEESE \$1.29  
ON A ROLL WITH SMALL ALLSUP'S COFFEE EACH

FRESH COOKED

ALLSUP'S BURRITOS 2 FOR 99¢

BORDEN'S

HOMO MILK

\$2.59 GAL.

BORDEN'S ASSTD. FLAVORS

ICE CREAM

\$1.59 1/2 GAL. RD. CTN.



ALL GRINDS FOLGER'S COFFEE

\$2.59 1 LB. CAN

ALPO BEEF FLAVORED DOG FOOD 5 LB. BAG \$1.99

MIRACLE WHIP SALAD DRESSING 1.29 KRAFT PARKAY MARGARINE 49¢

MINUTE MAID LEMONADE 29¢ CAN

INSTANT QUAKER OATMEAL 10 OZ. BOX 99¢

DR. PEPPER

COCA COLA

12 OZ. CAN 6 PACK

Coke \$1.69 ONLY

FOR YOUR CONVENIENCE

MONEY ORDERS

19¢ EACH



### Illegal Immigration

Today it's difficult for the descendants of the people who founded this country to gain legal entry. Waiting lists of thousands are commonplace in England, Germany, Ireland, etc.

Many of these hopefuls are people of means. Business men who would bring wealth to our shores and who long for security (from communism) and their families are included. But it's so difficult today for these people to get permanent entry, or multiple entry visas, most of them give up.

On the other hand, everyone agrees illegal immigration is out of control. Richard Strout, of the *Christian Science Monitor* wrote recently that the lack of protection of our borders, and adequate patrolling, is unique the world over. No other country accepts largely uncontrolled and illegal immigration on such a scale.

It's estimated there are now twelve million illegals in this country—about the same number as are unemployed. President Reagan in January asked Congress for over \$240 billion for defense, but not even a tenth of one billion for the U.S. border patrol.

Mr. Reagan does recognize the problem. He appointed a commission to study it. It proposed legislation last year. The bill roared through the Senate only to be road-blocked by Peter Rodino (D-N.J.) and others in the House, where it was never allowed to come to a vote. (The Senate vote was 80-19.)

Former Immigration Commissioner Leonard Chapman estimated that only one in every three or four persons trying to enter the country illegally are apprehended.

The increasing danger, in fact, lies in Mexico—a country always in the throes of poverty. Mexico's rate of population increase is three times that in the U.S. and the country is broke.

Confronted with this crisis, the House last year couldn't act responsibly and pass an immigration reform and control bill. Democrats must accept this grim responsibility, Democrats who are concerned about the high number of unemployed.

If we had properly controlled illegal immigration in recent years, the unemployment program today would be minor.

### George Washington

In modern times when old virtues such as duty, patriotism and service to one's country meet with a certain cynicism, it's good to remember the birthday of George Washington—"first in war, first in peace and first in the hearts of his countrymen."

Washington was born February 22, 1732, in Westmoreland County, Virginia—one of five children of a family which had for three generations lived in America. Because his father, a well-to-do planter, died when he was twelve, he was not sent to England like his older brothers for an education.

He became a surveyor and took his place in the militia when his brother became ill. As a major, he was sent on two expeditions against the French, and on the second he was defeated. On a third, led by General Braddock, the British and Americans were again defeated.

From this start, Washington rose to become the commander in later years of American forces in a successful, long, hard-fought revolution against Britain. He then became the nation's first president.

For fifteen years, seven in war and eight as president, Washington founded and guided a new nation to manhood and, as the father of the country, bequeathed a precious heritage to all of us.

### Abortion Dilemma

The Supreme Court is again studying the abortion issue and Congress annually is caught up in the struggle between dedicated forces on each side of the issue. With so many good people holding moral and emotional convictions on this subject, editors can't speak for others.

All editors can do is offer some interpretation or perhaps light, and discuss options and philosophical viewpoints, recognizing that good and sincere people hold different views.

The protest that all abortion is murder is soul-stirring and often effective. When does life actually begin? Can one accept the Supreme Court ruling of a few years back as a guide, life begins after 3 months? Only then, can we assume, the fetus a living individual? That proposition is increasingly hard to accept—for indeed, how does one ever get agreement on a time?

On the other hand, there will be abortions, whether legal or not. It is certainly true that abortions in proper, clean facilities, when to be performed in any event, are preferable to back street clinics which so long existed all over the country.

The Archbishop of Canterbury said, when the question was put to him on a visit to this country, that of course, the church is against abortions. But he added that sometimes abortion is the lesser of two evils. Other churches support this view. The Catholic church, and others, generally oppose abortions.

Yet abortions are accepted by the majority. Polls repeatedly show the majority of Americans agree abortions should be legal. But there is less support for the movement of recent decades that this is a "right" of every prospective mother—to decide whether or not to have her baby.

Americans will likely continue proscribing conditions under which abortions are the lesser of two evils. It's difficult for anti-abortionists to oppose something seen as the lesser of two evils. It's difficult too to make an effective defense for abortion on demand. Anti-abortion forces have carried this point in the minds of millions in recent years.

Whatever the outcome, the issue is surely one of the great emotional, moral and social upheavals of our time.

### Understanding Your Insurance

Facts From Experts At American Insurance Association

#### We Want You To Know

Q. Why should I wear my seat belt? I'm not going to have an accident.

A. Most of us feel the way Jack Burnett did before his auto accident 20 years ago. Granted, most auto trips are made safely. But consider: each year about 50,000 people die and nearly two million others suffer disabling injury in motor vehicle accidents. That's the equivalent of a death every ten minutes and a disabling injury every 16 seconds.



By far the largest number of those deaths and injuries are suffered by young people 15-24 years of age. That's why Jack Burnett talks to teenagers and tells them how costly carelessness behind the wheel can be.

Jack's message, of course, is much about what *not* to do. Don't speed. Don't

*Karen's Rogy Corner*  
By Karen Haruff  
Hartford County Extension Agent  
Home Economics

#### BE A SUPERMARKET 'SUPER SUCCESS'—BUY HIGH PROTEIN AT LOW COST

Buy high protein at low cost. These high-protein values make the biggest impact on your family's nutrition levels—and on the food budget.

HOW TO BUY How to buy goes hand-in-hand with what to buy—and how to buy starts with a quick lesson in "amounts".

First, notice "cost per unit" when you buy—such as cost per pound or cost per ounce. But that's only the start.

Next, look at cost per serving. Remember, you get four servings from a pound of ground meat, but you only get one or two servings from a pound of ribs.

How much does each serving of your special favorite cost? Now look at the protein value.

It's no bargain if the protein value is low, and it's not a bargain if the price is high.

WHAT TO BUY So what is high protein at low cost?

Poultry and eggs are a high-protein food, and when they have reasonable prices,

they are high protein at low cost. In Texas this summer, they have reasonable prices.

Pork loin and ham are currently high-protein, low-cost items, too.

So are beef liver, hamburgers, chuck cuts, rump roast and sirloin—they have high protein, and with their little waste, the cost per serving is reasonable.

EDUCATIONAL PROGRAMS CONDUCTED BY TEXAS AGRICULTURAL EXTENSION SERVICE SERVE PEOPLE OF ALL AGES REGARDLESS OF SOCIO-ECONOMIC LEVEL, COLOR, SEX, RACE, RELIGION, HANDICAPPED OR NATIONAL ORIGIN.



#### Some Wise Words For Sports Enthusiasts

If you're a sports enthusiast—whether it be basketball, baseball, jogging, tennis or roller skating—it's important to be physically prepared for activity. Your body is especially vulnerable after a period of inactivity, whatever the reason. Therefore, it's important to begin slowly with a routine of warm-up exercise.



Don't forget your skin when it comes to sports. It will need extra protection when exposed to sunlight so use a sunscreen. For the inevitable scrapes and cuts, keep an ample supply of bandages and first-aid products on hand. Many families prefer the new Curad Flexible bandage, a good high-action bandage for active people.

Sports enthusiasts especially like the way the new flexible fabric bandages move with you and adhere over bendable areas. They're available in a variety of sizes including pads large enough to cover elbows and knees. Since many cuts and bruises occur over joints, you might try using the pads as protection on vulnerable areas to help prevent injury. Whatever favorite pastime lures you out of doors, take the time to learn the risks involved. Take adequate protection before starting and carry a supply of bandages in your backpack or pocket.

TAKE A VACATION ... YOU DESERVE IT!

For a trouble free holiday around the corner or around the world contact:

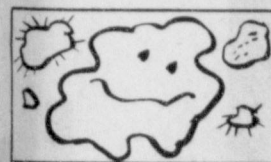
**WHEATHEART TRAVEL, INC.**  
7 S.W. 3rd. Perryton Office Plaza Perryton, TX

435-9646

Whether you travel by air, land or sea — Remember — Our Services Are

**FREE**

race. Don't treat a car like a toy. But one piece of advice is positive...something teenagers can do. Something all of us should do. Use seat belts—always.



Protein is the basic substance of every cell in the body.

# Shop at ... Jan's Nearly-new Fashions

(Across from M & M Grocery) Spearman Texas

Outfit the entire family: Dads, Moms, Brothers and Sisters! Make Daddy's dollars go much further and still get the best for much, much less!

Everything **50% OFF** 659-2414

We now have a -- **half-price room.** Talk about **BARGAINS!** Come in and see what all we have. --Then you will see why we say, "... the best for **LESS!**"

Lots of gift items **SALE ENDS ??** Everything must go... **Monday thru Saturday 10 a. m. - 6 p. m.** Closed Sunday

## First Money Market Report

**7 Day Certificate** 8.256% Thru February 22, 1983  
\$20,000 Minimum

**3 Month Certificate** 8.256% Thru February 22, 1983  
\$7500 Minimum for 91 Days

**6 Month Certificate** 8.639% Thru February 22, 1983  
\$10,000 Minimum for 182 Days

**30 Month Certificate** 9.65% Thru February 28, 1983  
\$500 Minimum

\$100,000 Certificates		
	Rate	Yield *
30 Days	8.75%	9.143%
90 Days	8.75%	9.143%
180 Days	9.00%	9.416%
1 Year	9.00%	9.416%

Thru February 22, 1983  
\*Annual Yield Based on Daily Compounding

**First Place Fund** Weekly Rate For Businesses and Individuals  
\$2500 Minimum

**Super-Now Account** Weekly Rate For Individuals  
\$2500 Minimum



Call the Money Market Advisor at 435-3676

All Deposits Insured to \$100,000. Substantial Penalty for Early Withdrawal.



# Lynx play great, lose by 3



**WHAT A WAY TO FAKE HIM OUT--**Jay Pack, #30, gave a head-and-shoulder fake to his Perryton opponent, made him commit and then went around him for an easy layup. Ross Donahue, #34, running in for assistance, watches the action!! The Lynx finished their season with a 3-point loss to the Dalhart Wolves. The Lynx had a very exciting District Season!!

The Spearman Lynx played their hearts out in front of a very large crowd at the Dalhart Gym. The Lynx were ready for the tough ole Dalhart Wolves. But the first half belonged to the Wolves, while the Lynx would get their chance in the second half. The final score was 67 to 64, in favor of the Wolves.

The team members of the Lynx for the 1982-1983 season include Seniors Darren Goodheart, Jay Pack, Mike Caldwell, Jan Hartsell and Scott Dunlap. **NOTE FROM SPORTS DESK:** Since the Lynx aren't going to go to the Play-offs, this was the last game for these great Seniors, Darren, Jay, Mike, Jan and Scott--all these Lynx Seniors have had a great career with the Lynx. We are all proud of you Seniors!! The rest of the Lynx squad include Juniors Buddy Pool, Byron Sutterfield and Sophomores Ross Donahue, Steve Burke and Mark Pearson. Their coach is F.G. Crofford. Coach Crofford has done a great job with his Lynx. The Wolves, via Kirk Farris and Mr. Torres, really opened up the game at the half time buzzer. The Lynx were trailing 41 to 30. The Lynx have enough talent to defeat the Wolves, and in the first half, the talent would not shine thru the Wolves Defense.

So the halftime talks consisted of how to get thru the Wolves Defense, how to attack it, surprising the Wolves and shocking them long enough for the Lynx to win by a point. Well, the 3rd quarter started off slowly, but then the explosion started, like one of those nuclear ones that spreads like a forest fire, first its not that much damage, but then millions of dollars are lost. In this case, half-a-dozen points were the ones that were the cause of the win. The Lynx

## RECIPE

By Sarah Anne Sheridan

A bowl of hot soup, corn bread, and dessert has popular appeal for most families.

### Vegetable Soup

- 1 medium sized soup bone
- 2 onions sliced thin
- 3 carrots sliced thin
- 1 c celery diced
- 2 turnips diced
- 1 can string beans
- 1 can butter beans
- 2 c okra sliced
- 1 2 cans tomatoes
- 1 can corn
- Salt and pepper to taste
- Sugar to taste

Place soup bone in 2 quarts of water, add onions, carrots, celery, turnips and butter beans and string beans. Cook about 2 hours. Add okra, tomatoes and corn. Cook 30 minutes or until vegetables are tender. Season with salt, pepper and sugar. Add water if needed.

Address Inquiries To:  
Editor's Copy Syndicate  
Box 532, Orangeburg, S.C.  
29115 Tel.: 803-534-1110

College of Cardinals receive 18 new priests.

# JV Lynx Teams lose final game of season

The Spearman Jr. Varsity Lynx and Lynxettes went to Dalhart to play their final game of the season, some will be playing their final game as a JV player, for the following year they will be on the Varsity. Both JV Lynx and Lynxettes lost their games to Dalhart.

The JV Lynxettes are coached by John Roller. Coach Roller has done a fine job with the JV Lynxettes. The JV Lynxettes played a fine game, the first half belonged to Dalhart and the second to the JV Lynxettes. Had the JV Lynxettes played the first half, the way they played in the second half, they could have won the game!! The team members include Junior, Denise Brewer, Sophomores--Ciria Vela, Lee Barnes, Genne Womble, Andi Hager, Stacey Poole, Freshmen--Shelly Dunniho, Julie Jones, Trai White, Mary Anne Evans, Linda Evans, Dana Iribeck, Carlee Dixon and Heather McRee. Ciria scored 8 points, in the second half. She played one of the best halves she has played all year. Of course, the JV Lynxettes started playing the way the fans know they can play in the second half. Had they played great in both halves, the JV Lynxettes would have won by about 5 or 6 points. But the final score was 38 to 13 in favor of Dalhart.

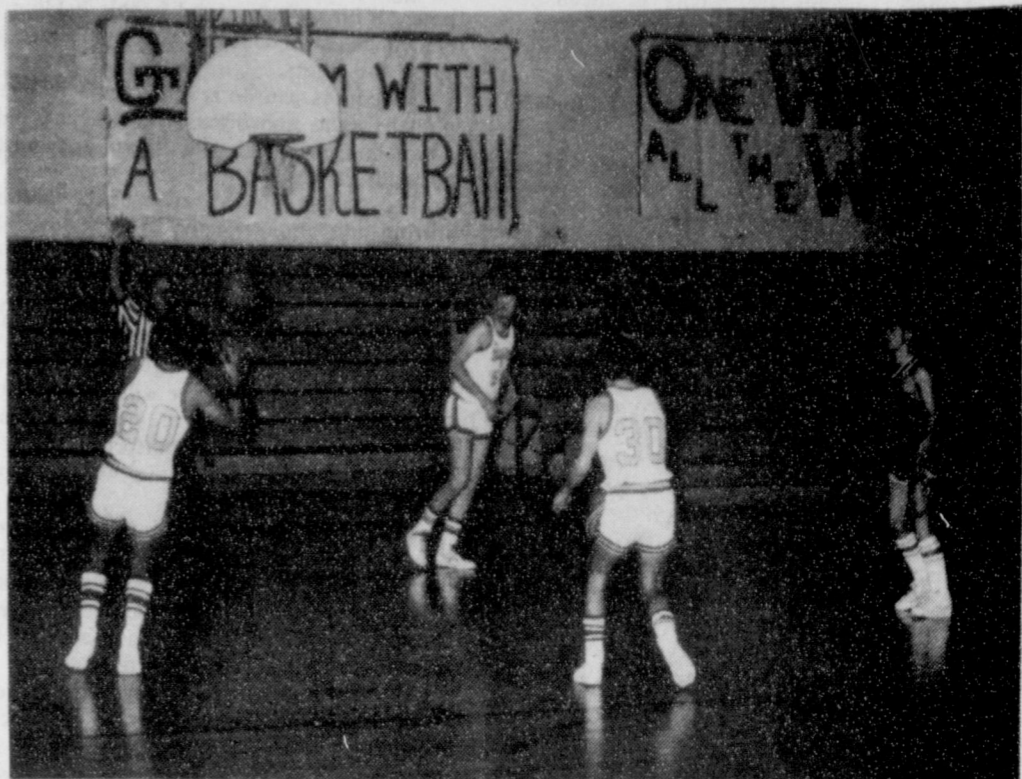
The JV Lynx played a very tough game, but by committing 3 fouls in the last five seconds, the JV Lynx lost their game by one point. Their coach is Gary Rambo. The members include Juniors Julio Vasquez, Billy Ray Haden,

Johnny Rodgers, Pat Tucker, Sophomores Mack McLain, Jeff Graves, Bob Cook and Jerry Garcia. The JV Lynx lost two of their prime ball-handlers in Jerry Garcia and Julio Vasquez in the last five seconds of the game. The

Dalhart team had been behind in the last few seconds, but then the fouls plagued the JV Lynx, and the Dalhart team just completely took over in the free throw line, winning the game from the free throw line. Some of these JV Lynx

will be on the Varsity next year, so they played their final game as a JV Lynx.

We would like to congratulate both the JV Lynx and JV Lynxettes for having fine seasons, to their coaches, Gary Rambo and John Roller, for coaching very well this year.



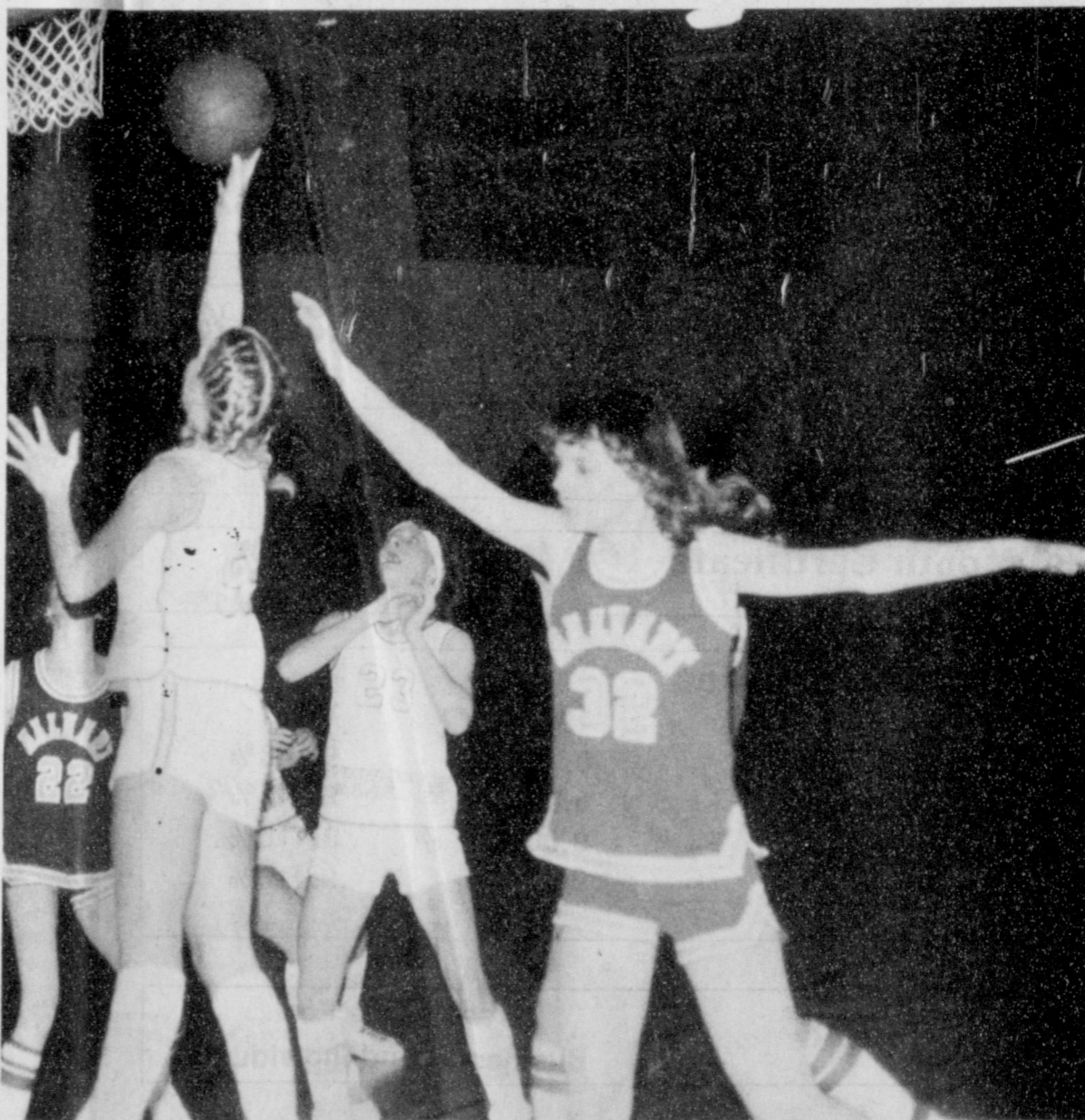
**DO THROW THE BALL TO ONE OF YOUR TEAMMATES--**Billy Ray Haden throws the ball from out-of-bounds, to Julio

Vasquez #20, while #30, Bob Cook gets ready to help Julio take the ball downcourt if necessary

## Congratulations.....

# Lynx and Lynxettes

for such a fine basketball season ....



LANA PAUL (BLONDIE)

WE ARE PROUD OF YOU



When you decide to lose weight, COMPARE!

There are hundreds of fad diets, formal weight-loss programs and so-called miracle cures for the problem of excess weight. The problem with most of them is that they concentrate solely upon losing weight. If you rely upon prepackaged foods, shots, drugs or a severely reduced food intake to lose weight, what will you do once that weight is lost? The vast majority of people revert to the old eating habits that caused the problem in the first place, and excess weight soon returns. Not so at Diet Center!

### OUR PROGRAM WORKS AND IT'S TOTALLY NATURAL

At Diet Center, weight is lost quickly and safely, but what's even more important, dieters are taught how to maintain ideal weight for a lifetime. Through private, daily counseling sessions and weekly classes in nutrition and behavior modification, Diet Center will teach you how satisfying a nutritionally balanced diet can be.

### LOSE 17 TO 25 POUNDS IN JUST 6 WEEKS!

And, if necessary, that rate of reduction can be sustained until you have lost 50, 75 or even 100 pounds and more... without hunger, nervousness or loss of energy.

### AND WE'LL TEACH YOU HOW TO KEEP IT OFF!

### CALL TODAY

FOR A FREE INTRODUCTORY CONSULTATION IT COULD CHANGE YOUR LIFE

— 435-2200 —

415 Amherst — 7:30 a.m. - 4:30 p.m.

Joyce Foster, Counselor



Playoffs next on list as...

# Lynxettes 'Demolish' Dalhart

The Spearman Lynxettes played in their final regular season game--this one was against the Dalhart Wolverines. The Wolverines had surprised the Lynxettes at the Lynx Varsity Gym, but the Lynxettes had fire in their eyes, they wanted to go to the State Playoffs, and not a Wolverine in the Gym, could stand in their way. The Lynxettes had a tough first half, scoring 14 points--(1 in the second quarter), while they had 27 in the second half.

The team members include Seniors Lea Ann Gibner, Susan Davis, Jean Davis, Jan Davis, Janet Reed, Cindy Young, Lana Paul, Juniors, Andrea Mires, Kelli Crawford, Denise Brewer, Nita Baker, Robbie Heinrich and Sophomore, Tiki Jackson. They are coached by Ralph Newton. The Lynxettes had a very tough 2nd quarter. The Wolverines used their "North Carolina Spread Stall Offense", and in the second quarter used it almost to perfection. The Lynxettes came out in the 1st quarter fired up and ready. The starters included 5'6" Lea Ann Gibner, 5'3" Susan Davis, 5'8" Janet Reed, 5'8" Lana Paul, and 5'5" Jan Davis. These girls went out and played an excellent game. Of course, the ones on the bench, 5'8" Cindy Young, 5'5" Jean Davis, 5'6" Kelli Crawford, 5'6" Andrea Mires, 5'5" Robbie Heinrich, 5'3" Denise Brewer, 5'7" Nita Baker and 5'5" Tiki Jackson, all have done an excellent job, and Coach Newton has not had the "same" 5 starting in all the games--in each game there is a change somewhere. In the first quarter, the Lynxettes weren't going to get "psyched" out because of this so-called "Offense". No sir, they went out and really put the "metal to the pedal" and won the 1st quarter stats, 13 to 9. The Lynxettes full-court pressure

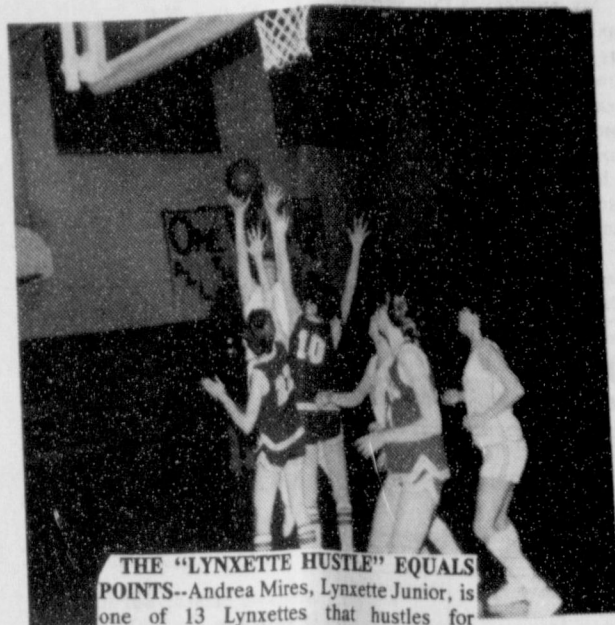
was confusing the Dalhart Wolverines, the out-of-bounds pressure was keeping the ball from coming in-bounds before five-seconds. The Wolverines were the ones in "awe" after the first quarter. But, boy did the basket change sides. All the Lynxette fans could not believe what was happening in the 2nd quarter. They were all shocked. The Lynxettes were fouled 9 times in the second quarter, in which they only scored 1 free throw. At the other end of the court, the Wolverines, actually Stacey Reynolds, was scoring all the free throws except for 1 for Dalhart. The Lynxettes were outscored, 7 to 1 in the 2nd quarter, which gave the Wolverines the lead right back, 16 to 14, going into intermission.

Coach Newton was telling his Lynxettes that, sure this was the most important game, because it was the last one on the schedule, because it was at Dalhart, and mainly because if the Lynxettes won they would have a chance for the playoffs. Of course, the Lynxettes were all thumbs, just thinking about the play-off game against Perryton after they won this game. So Coach Newton talked to his Lynxettes calmly but firmly and told them not to think about the play-offs or Perryton, just concentrate on the game at hand. **NOTE FROM SPORTS DESK:** Whatever, Coach Newton did tell his Lynxettes, they came out in the second half and almost scored, in one half, as many points as the Wolverines had in 4!

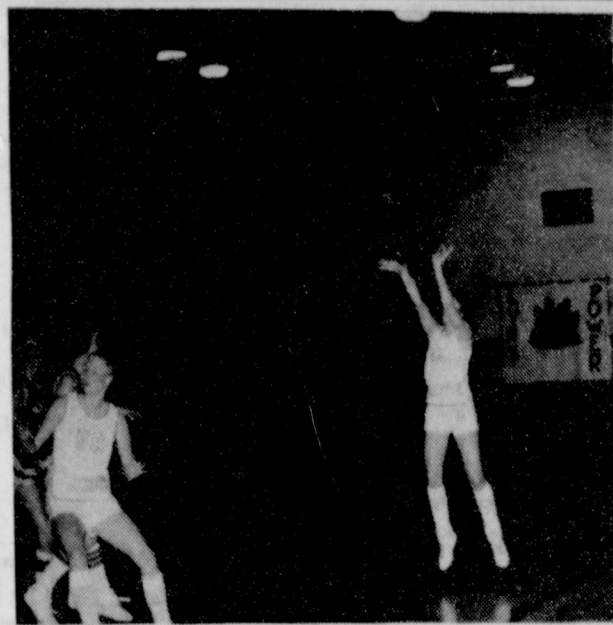
The Lynxettes came out, and this time were not going to be intimidated by any kind of "Offense" or what have you. They came out in the 3rd quarter, and they meant business. The Lynxettes Defense became the stingiest Defense in the second half than any Defense in the District that night. As a matter

of fact, the Lynxettes Susan Davis was stealing the ball, either going up for the fast-break herself, or assisting one of her teammates. Andrea Mires didn't exactly play like the Andrea many folks knew in the 1st half, but in the second half, Andrea played with a lot of intensity. While Susan was stealing the ball, Andrea was hustling up and down the court for the easy lay-up. Andrea really hustled in the 2nd half. The Lynxettes put their act together, right when they came back in the 3rd quarter and outscored the Wolverines 13 to 3 in the 3rd quarter, and were ready for all the teams in the District. With the final quarter coming up, the Lady Lynx had regained the lead, 27 to 23. When the final quarter began, the Lynxettes--all of them--played like the Champions that they are. The pressure Defense had already held the Wolverines pretty well. The Lynxettes were doing a lot better from the free throw line. **NOTE FROM SPORTS DESK:** The Lynxettes were 2 of 9 in the first half, they came back and made 9 of 12 in the second half! In the final quarter, the Lynxettes scored their points with fine style, they stole the ball, went up for the fast breaks they wanted and really took control of the game, the tempo, the control of everything in the game. The Lynxettes outscored the Wolverines, 14 to 6 to take the win, 41 to 29 and the chance to go to the playoffs.

The leading scorers were Lea Ann Gibner and Andrea Mires with 8 points, they both also had 2 fouls; Janet Reed had 6 points, and 3 fouls, Robbie Heinrich had 5 points, Susan Davis had 4 points, 1 foul and 7 steals, Cindy Young and Lana Paul both had 3 points, Cindy had 4 fouls and Lana had 2, Jan Davis and Tiki Jackson both had 2 points, Jan had 3 fouls. The Lynxettes



**THE "LYNXETTE HUSTLE" EQUALS POINTS--**Andrea Mires, Lynxette Junior, is one of 13 Lynxettes that hustles for rebounds and steals balls which turn to points for the Lynxettes. Here Andrea scores 2 of her 8 points against Dalhart, as Lea Ann Gibner--Lynxette Senior, awaits the outcome!!



**WHAT A GRACEFUL MOVE--**Robbie Heinrich, #21, really faked out her Dalhart opponents as she made as if she was going for a lay-up, she then stopped, set herself from the free throw line and "swished" 2 more points. #55, Lana Paul, is getting ready for a rebound, just in case. The Lynxettes defeated Dalhart at Dalhart, are to play Perryton tonight--Tuesday, Feb. 15, at Canadian beginning at 7, to see which one will advance to the State Play-offs, and which will go home for the season.

out-of-bounds-pressure held the Wolverines and the basketball to where they would get a 5-second count and a turnover, this happened 4 times in the game!! That was great pressure.

The Lynxettes are getting ready for the playoff game against the Perryton Rangerettes. The play-off game has been set for tonight--Tuesday, February 15--at Canadian beginning at 7 p.m. The home team will be the Lynxettes. This will be another barn-burner, so don't y'all miss it.

\*\*\*\*  
Learn to get along with people; you'll have to associate with them until you die.



**J&G**  
300 Main  
Spearman, Texas

**FINAL**  
**WINTER CLEARANCE**




**70% off Sportswear**

**1/2 of 1/2 off Winter Dresses**

**2 Days Only**  
**Saturday, February 19 & Monday, February 21**

## CARPET CLEARANCE

**ALL CARPET IN STOCK NOW ON SALE**

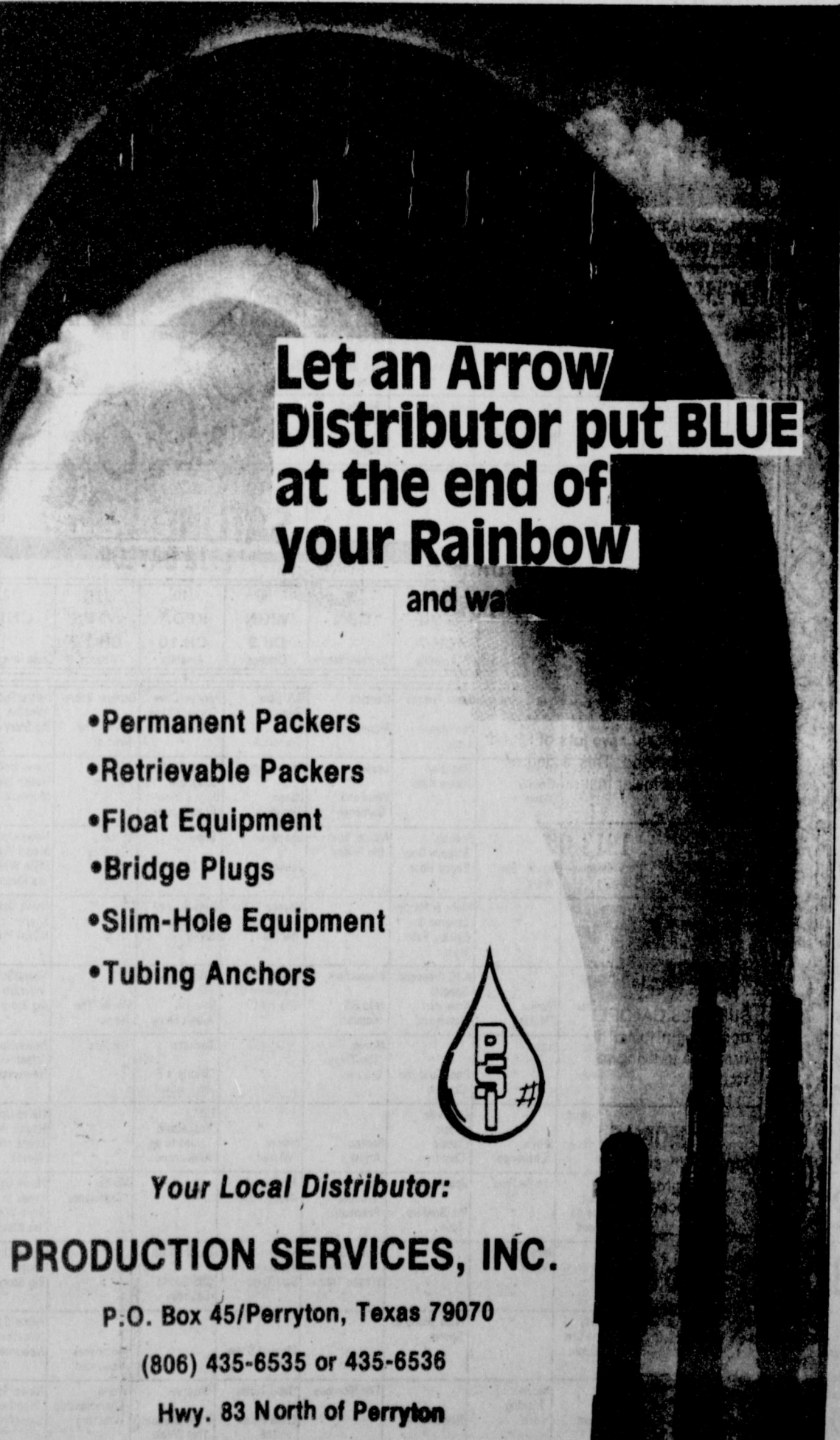


**INcredible CARPETS NOW AT UNHEARD-OF PRICES!**

**IN STOCK CLEARANCE**

## Nelson Builders Supply


309 Main Box 993 Spearman, Texas 79081 859-3888



Let an Arrow Distributor put **BLUE** at the end of your Rainbow

and wa

- Permanent Packers
- Retrievable Packers
- Float Equipment
- Bridge Plugs
- Slim-Hole Equipment
- Tubing Anchors



**Your Local Distributor:**

**PRODUCTION SERVICES, INC.**

P.O. Box 45/Perryton, Texas 79070

(806) 435-6535 or 435-6536

Hwy. 83 North of Perryton



# EATING OUT

By Rose Hughes

ONE of the nice eating spots in Washington is the Capitol Hill Club. That's where Republicans hang out when Congress is in session--and to a lesser degree even when it isn't.

OPENED just a few years ago, the restaurant is a former four-story town house on C Street SE, just behind one of the House Office Buildings.

IT'S done in style and there are dining rooms in the

basement and on the second floor (American style). There are also a few private rooms for private parties.

WHEN one enters there are pictures of President Reagan and Vice President Bush and others on the walls of the reception room. Waiters are dressed in formal attire and the atmosphere is high tone.

HOUSE Republican Congressmen are seen here in droves and so are other influential Republicans and their guests. The food is very good but it's always crowded.

ALSO in Washington the once-famous Sans Souci has

opened again under new management. It was for a long time a hangout of Democratic stalwarts, many from the White House.

IT'S being patronized again by White House staffers--Republicans.

## DEATH OF SHARKS

SAN DIEGO -- Some sharks in Sea World's viewing tanks have died in the recently and the displays have been closed while baffled officials search for a cause.

# LOUISA'S LETTER



Dear Louisa,

My problem is this. My husband doesn't make a large salary and we have three young children. This means that I have to stay home a great deal and am unable to take a part time job to help out with expenses. It also means that our children cannot have the nice clothes or toys that many of our friends' children have. This worries me.

Is there some answer to a problem such as mine?  
-Mother--N.C.

Answer:

The most important things in young children's lives are not expensive clothes or toys. If a child has love and a sense of security in his home and in his parents he is a lucky child. If that child is able to come to his mother when something goes wrong or something happens that frightens him, he has a very good start in life.

From experience, I have seen a small child turn from an expensive toy in order to play with tin pans or an old pot.

Stop worrying--by giving your children time and love

Address: Louisa, Box 532, Orangeburg, S. C. 29115

you are doing a good job. Later on, when they go to school, you can get a part time job and help out with finances if it is agreeable with you and your husband.  
Louisa

# Know THE Weather

In what direction does a tornado usually travel? How fast does it move and why does it sometimes skip from place to place over the face of the earth?

Most of the experts agree that tornadoes usually form along a line squall, traveling in an easterly direction. They often move slowly as a frontal system, just twenty or thirty miles an hour, though the whirling of the circular winds may measure up to 100 m.p.h. or more.

Therefore, as a general rule, if you are west of a suddenly sighted tornado funnel, chances are it won't pass over you.

Because the tornado forms from a low cloud, it touches the earth only when

it extends far enough to come in contact with the land below. Winds in the area are usually highly erratic and may shift the height of the cloud frequently, thus moving the end of the funnel up and down--causing it to skip about the countryside, coming to earth at various places, miles apart.

## ARREST MADE

NEW YORK -- The guard on duty during an \$11 million robbery at an armored car company warehouse was arrested recently in Puerto Rico, the FBI announced. A second man was arrested in New York.

## U.S.-CHINA

PEKING -- Secretary of State George P. Shultz said recently that friction in U.S.-Chinese relations should not obscure "how far we have come in so brief a time." But Chinese foreign Minister Wu Xueqian said obstacles still exist.

# THURSDAY

THURSDAY 2/17/83

CABLE	[2]	[3]	[4]	[5]	[7]	[8]	[9]	[10]	[11]	[12]
PM	ESPN	OETA	KAMR	TMC	KVII	CBN	WGN	KFDA	WTBS	CNN
	Sports Network	Oklahoma City	CH.4 Amarillo	Movie Channel	CH.7 Amarillo	Christian Network	CH.9 Chicago	CH.10 Amarillo	CH.17 Atlanta	Cable News Ntwr
6:00	ESPN's Sportsforum	MacNeil-Lehrer Report	News	Prog Cont'd	News	Prog Cont'd	Barney Miller	News	Gomer Pyle	Moneyline
6:30	ESPN SportsCenter	Report	M*A*S*H		Family Feud		Jeffersons	Entertainment Tonight	Andy Griffith	Sports Tonight
7:00	NFL Theatre: Best Ever Runners	Sneak Previews Enterprise	Fame	Movie: 'Malachi's Cove'	Condo	I Spy	Virgina Slims Tennis Tournament	Magnum, P.I.	Movie: 'Pueblo'	Prime News
8:00	NCAA Basketball: Kansas at Missouri	All Creatures Great and Small	Gimme A Break	Movie: 'Bustin'	Too Close for Comfort	700 Club		Simon & Simon		
9:00		Mystery	Hill Street Blues	Loose	20/20		News	Knots Landing	TBS Evening News	Freeman Reports
10:00	ESPN SportsCenter	MacNeil-Lehrer Report	News	Movie: 'Pretty Baby'	News		Soap	News	All In the Family	Sports Tonight
11:00	Top Rank Boxing from Las Vegas, NV	Sign Off			Nightline	Burns & Allen	Jack Benny Show	Movie: 'Operation'	Movie: 'McCloud'	Moneyline Update
12:00			Letterman	Movie: 'Pacific Inferno'	Last Word	I Married Joan	Mad Ball	The 42nd St. Cavalry		People Now With Bill Tush

# FRIDAY

FRIDAY 2/18/83

CABLE	[2]	[3]	[4]	[5]	[7]	[8]	[9]	[10]	[11]	[12]
PM	ESPN	OETA	KAMR	TMC	KVII	CBN	WGN	KFDA	WTBS	CNN
	Sports Network	Oklahoma City	CH.4 Amarillo	Movie Channel	CH.7 Amarillo	Christian Network	CH.9 Chicago	CH.10 Amarillo	CH.17 Atlanta	Cable News Ntwr
6:00	NCAA Basketball Report	MacNeil-Lehrer Report	News	Prog Cont'd	News	Prog Cont'd	Barney Miller	News	Winners	Moneyline
7:00	Winterworld Series	Washington Week/Review	Powers of Matthew Star	Movie: 'Dragon-slayer'	Benson	I Spy	Movie: 'Silver Streak'	Dukes of Hazzard	Movie: 'Spiderman: Deadly Dust'	Prime News
8:00	Atlantic City, NJ	Oklahoma Week in Review	Knight Rider		Movie: 'First Family'	700 Club		Dallas		
9:00		Frosty Troy & Company	Remington Steele	Movie: 'A Stranger is Watching'			News	Falcon Crest	TBS Evening News	Freeman Reports
10:00	ESPN SportsCenter	MacNeil-Lehrer Report	News		News		Soap	News	All In the Family	Sports Tonight
11:00	Gymnastics: USGF Single Elimination Championship	Sign Off	SCTV Network	Machine		Burns & Allen	Jack Benny Show	Saturday Night	in Badham County	Down
12:00	F. A. Soccer: Road to Wembley				Last Word	I Married Joan	My Little Margie	Twilight Zone	Sign Off	Movie: 'Moby Dick'

# SATURDAY

SATURDAY 2/19/83

CABLE	[2]	[3]	[4]	[5]	[7]	[8]	[9]	[10]	[11]	[12]
AM	ESPN	OETA	KAMR	TMC	KVII	CBN	WGN	KFDA	WTBS	CNN
	Sports Network	Oklahoma City	CH.4 Amarillo	Movie Channel	CH.7 Amarillo	Christian Network	CH.9 Chicago	CH.10 Amarillo	CH.17 Atlanta	Cable News Ntwr
7:00	ESPN SportsCenter	Flintstone Funnies	Prog Cont'd	Super Friends	Contact	U.S. Farm Report	Popeye/Olive Comedy Show	Romper Room	News/Sports/Weather	Big Story
8:00	NCAA Instruct	Smurfs	Movie: 'Silent Movie'	Rascals/Richie Rich	Lesson	Rex Humbard	Meatballs & Spaghetti	Bagdad	News Update	Health Week
9:00	McDon. Teen Sports Scene	French Chef		Scooby: Scrapy-Doo!	Movie: 'His Girl Friday'	Charlando	Show	Movie: 'Ganghis Khan'	News Update	Media Watch
10:00	Future Sport	Mystery	Incredible Hulk and Spiderman	Mork & Mindy/Laverne & Shirley/Fonz Hour		Voyage to the Bottom of the Sea	Bugs Bunny/Road Runner Show		News Update	Sports
11:00	Winterworld Series	Alfred Hitchcock	The Jetsons	ABC Weekend Special	Wild Bill Hickcock	Movie: 'The Shepherd Of The Hills'	Gilligan's Planet	Movie: 'The Horse'	News/Sports/Weather	Big Story
12:00	Duke at Maryland	Oklahoma Gardening Market to Market	So You Got Troubles	Love	Movie: 'The Three Outlaws'		Blackstar	Soldiers	News/Sports/Weather	Newsmakers
1:00	NCAA Basketball	Over Easy	Wild Kingdom	Nashville Music Classic	Broken Arrow	Movie: 'Wistful'	NCAA Basketball: Teams to be Announced		News Update	Health Week
2:00	North Carolina at North Carolina	Nature of Things	NCAA Basketball: Teams to be Announced	To Be Free	Sportsbeat	Movie: 'Frontier Phantom'	Widow of Wagon Gap		News Update	Style With E. I. Klenisch
3:00	State	Nova	Movie: 'Star Wars'	Wyatt Earp	Know Your Heritage	Soul Train	Bush Clash		News Update	Sports
4:00	Clemson at Maryland	Life on Earth	Isuzu-Andy Williams San Diego Open	Wide World of Sports		Muppet Show			News/Sports/Weather	Newsmakers
5:00	Winterworld Series	3-2-1, Contact Undersea World	News	Movie: 'Making Love'		The Monroes	Good Times	Observer	World Championship Wrestling	News/Sports/Weather

# SUNDAY

SUNDAY 2/20/83

CABLE	[2]	[3]	[4]	[5]	[7]	[8]	[9]	[10]	[11]	[12]
AM	ESPN	OETA	KAMR	TMC	KVII	CBN	WGN	KFDA	WTBS	CNN
	Sports Network	Oklahoma City	CH.4 Amarillo	Movie Channel	Amarillo	Christian Network	Chicago	CH.10 Amarillo	CH.17 Atlanta	Cable News Ntwr
7:00	ESPN SportsCenter		James Robison Amazing Grace Bible Class	Prog Cont'd	Gospel Jubilee	Zola Levitt	3-Scors What's Nu? Robert Schuller	Faith for Today Dr. Robert Schuller	Cartoon Carnival	News/Sports/Weather
8:00	Future Sport		Day of Discovery Larry Jones Ministry	Movie: 'Chu Chu and the Philly Flash'	Big Blue Marble Kidsworld	Kenneth Copeland	Mass for Shut-Ins Chicago Land Church Hour	Herald of Truth First Baptist Church	Lost In Space	News/Sports/Weather
9:00	Wisconsin at Minnesota	Life on Earth	World Tomorrow Oral Roberts	Movie: 'Malachi's Cove'	Grizzly Adams	Let God Love You Larry Jones Ministry	Tarzan		Lighter Side	News Update
10:00	Fishin' Hole	Nature of Things	Baptist Church	Cove	Tarzan	Jimmy Swaggart	Rawhide		Express	News Update
11:00	ESPN's SportsWomen FIS World Cup Skiing	Nova	Jimmy Swaggart	Movie: 'Diner'		This Week with David Brinkley	Dr. James Kennedy Religion	Cisco Kid Lone Ranger	Daytona 500	News/Sports/Weather
12:00	Men's Giant Slalom	Washington Week/Review	NCAA Basketball: DePaul vs. St. John's		Jack Anderson Confidential	Sing out America	Movie: 'Charlie Chan at the Opera'		Portrait of America: Nevada	News/Sports/Weather
1:00	Top Rank Boxing	Firing Line		Movie: 'Cannery Row'	Superstars	Beyond the Horizon			Movie: 'To Sir With Love'	News Update
2:00		Masterpiece Theatre	SportsWorld						Girls	News Update
3:00		Six Great Ideas		Movie: 'Rollover'	Amateur Boxing	Wide World of Sports	Movie: 'The War of the Worlds'		Basketball: Missouri vs. Virginia	News Update
4:00	NCAA Basketball: North Carolina--	French Chef	Diego Open			Movie: 'The Gay Ranchero'			Jacques Cousteau	News/Sports/Weather
5:00	Charlotte at Jacksonville	Tony Brown's Journal	Candid Campus	Movie: 'Barbarella'	ABC News	Travelers World American Trail		To Be Announced	Nice People	News/Sports/Weather
6:00	ESPN SportsCenter	Austin City Limits	Voyagers!	Prog Cont'd	Ripley's Believe It Or Not	Flying House Swiss Family Robinson	Prog Cont'd	60 Minutes	Best of World Championship Wrestling	News Update
7:00	NBA Basketball: Dallas at Chicago	Life On Earth	CHIPS	Movie: 'Diner'	Matt Houston	Meet Mr. Washington	Virginia Slims Finals	Archie Bunker's Place	Nashville Alive	News/Sports/Weather
8:00		Masterpiece Theatre	Movie: 'Sidney Sheldon's Rage of'		Movie: 'Star Trek - the Motion Picture'	In Touch		Jeffersons	Week In Review	News
9:00		Legislative Week in Review	Angels' Part 1	Movie: 'Cannery Row'		Changed Lives	News	Trapper John, M.D.	TBS Weekend News	News/Sports/Weather
10:00	Washington at Portland	Sign Off	Movie: 'Casey's'			The King Is Coming	Twilight Zone	News	700 Club	Sports
11:00		Shadow	Movie: 'Rollover'		News	Larry Jones Ministry	Movie: 'Uncertain'			News/Sports/Weather
12:00	FIS World Cup Skiing: Men's Giant Slalom	Sign Off			'Winning'	Zola Levitt	Glory	Entertainment This Week	Movie: 'Desire Under the Elms'	News Update



### Perinatal association plans sixth annual seminar

"AWARENESS...BELIEFS...CHALLENGES...BUILDING BLOCKS FOR THE FUTURE" is the theme for the High Plains Perinatal Association's Sixth Annual Seminar, to be held at Texas Tech University Regional Academic Health Center, 1400 Wallace Blvd.

The High Plains Perinatal Association, Texas Tech University Health Sciences Center, Amarillo, Department of Pediatrics, Amarillo College, Department of Continuing Education, and Golden Spread Chapter, March of Dimes are all co-sponsoring the seminar.

The purpose of the seminar is to present ideas and practices of a few of the most innovative and authoritative individuals in the fields of child development, breastfeeding, and cultural influences on childbearing and child-rearing. The presentations will be of interest to expectant parents, parents, educators and health care providers.

The informative activities will begin Friday, March 4, 1983 with registration at 8:00 a.m. The seminar will continue until approximately 5:00 p.m. on Friday. The activities on Friday will conclude with a banquet from 7:00 to 10:00 p.m. at the Tascosa Country Club. The cost for the banquet will be \$13.00 per person. Saturday, March 5, 1983 will bring registration at 8:00 a.m. and end at approximately 1:00 p.m. Guest speakers will present a lecture and a workshop on both days.

Mary Cerreto, Ph.D. is an Associate Professor of Pediatrics, Child Development Division at the University of Texas Medical Branch in Galveston, Texas. On Friday, Dr. Cerreto will lecture on the topic of "Cultural Influences on the Parent-To-Be". Her workshop on Friday will address "Family Adaptation to the Handicapped Child". She will also be the guest speaker at the banquet that evening with a presentation entitled, "How to Get Your Kids to do What You Want Them to do and Like It". Dr. Cerreto's topic on Satur-

day will be "Cultural Influences During the Childbearing Years - Implications for Health Care Providers". Dr. Cerreto has extensive training and experience relating to cultural influences and working with handicapped children.

Dr. W. Daniel Williamson is another renowned expert speaking at the seminar. Dr. Williamson is an Assistant Professor of Pediatrics at Baylor College of Medicine. Dr. Williamson's lecture on Friday is entitled, "The High Risk Infant-Development, Follow-up, and Outcome". His workshop on Friday will address "Developmental Issues: Preschool and Early School Age Children". On Saturday, Dr. Williamson will speak on "The Role of the Health Care Provider in Managing the Child With a Disability".

"The Art of Breastfeeding" will be the topic of the workshop presented by Kittie Frantz, R.M., C.P.N.P. Mrs. Frantz brings to Amarillo 18 years experience in assisting nursing mothers and babies. She is the Director of the Breastfeeding Infant Clinic for Los Angeles County and a clinical instructor in Pediatrics for U.S.C. School of Medicine. Mrs. Frantz will address the audience with two informative lectures. Friday's lecture topic will be "Breastfeeding the Special Infant" and Saturday's presentation will be "Breastfeeding the Healthy Infant".

Another interesting workshop to be presented on both days will be entitled "Developmental Screening: Assessment and Referral". This particular workshop will be facilitated by two local resources. Leaders of this workshop are Suzanne Clarke, R.P.T. and Debbie Hubanks, M.S. Mrs. Clarke is employed by Northwest Texas Hospital, Department of Physical Therapy in the Neonatal Intensive Care Unit. She is also a consultant for Texas Tech University Health Sciences Center at the Development Clinic. Debbie Hubanks is the Behavioral Sciences Coordina-

tor at Texas Tech University Health Sciences Center in the Department of Pediatrics. Mrs. Hubanks also works with the Developmental Clinic.

The seminar is open to the public. The topics and speakers were selected to provide a wide variety of interests and reach professionals as well as consumers.

The High Plains Perinatal

### Solar Workshop Rescheduled

AMARILLO—A solar collector workshop which will offer farmers and homeowners ideas and training in applying solar power to their energy needs has been rescheduled for Friday and Saturday, Feb. 18-19. The workshop, sponsored by the community development committee of the Oldham County Extension Program Building Committee, was originally scheduled for Jan. 21-22, but was postponed because of heavy snow.

It will begin at 5:30 p.m. Feb. 18 with registration at the Texas A&M University Agricultural Research and Extension Center, 6500 Amarillo Blvd. West. Instruction will begin at 6 p.m. and continue until 10 p.m.

Saturday, Feb. 19, participants will assemble at 9 a.m. and go to a lumber yard. There they will select materials and work in teams to construct solar collectors.

Leading the workshop will be Bob Dunsmore of the San Luis Valley (Colo.) Solar Energy Assn. Also on the pro-

gram will be Weedon Echols of Lubbock, energy specialist with the Texas Agricultural Extension Service.

"Because of the great interest, with 237 persons registered in advance before we had to postpone the program in January, the rescheduled program will be limited to the first 300 to register," said Jimmie D. Walker, Oldham County Extension agent.

Each participant must pay a \$15 fee which helps cover instructional and construction materials. Advance registration can be completed by mailing the \$15 fee with your name, address and telephone number to County Extension Office, Box 380, Vega, 79092. Checks should be made payable to Oldham County Program Building Committee.

"If you wait until the night of the conference to register, we may already have reached our limit," cautioned Kay Wells, Oldham County Extension agent for home economics.

### West Texas Parkinsonism Society meeting set

A meeting of the West Texas Parkinsonism Society is planned for 7:00 p.m., Friday, February 18th in Room 4A-100 of the Texas Tech University Health Science Center, Lubbock, Texas.

Dr. Gustavo C. Roman, Neurologist, recently affiliated with the Department of

Medical and Surgical Neurology at the Texas Tech University Health Science Center, Lubbock, Texas will present a lecture and film on Parkinson's Disease.

For further information call Fred McGarrett, President, West Texas Parkinson's Society, (806) 797-1149.

## Gadget-Gifts-Gourmet



You're invited to the start of something exciting for your kitchen... a whole store devoted to interesting cooking tools and gourmet foods.

- ★ Gourmet coffee beans, teas and spices
- ★ Cookbooks
- ★ Pots and pans
- ★ Woks and accessories
- ★ Kitchen linens
- ★ Cutlery
- ★ Plus much more!

From Noted Suppliers Including:

Asta Designs ★ Le Creuset ★ Sabatier ★ Wheaton Fine Glass

Show your gourmet taste with a Valentine gift...

Something just right for your sweetheart, husband, wife, boss, secretary or the friend next door.

— Free Gift Wrap —



219 South Main  
Perryton, Texas  
435-9427

Theresa Brillhart, Owner

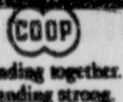


#### Farmland Redi-Start Battery

Warranted for 42 months  
• Semi-dry to assure freshness and maximum power  
• Farmland quality built in

As low as **\$28<sup>35</sup>** Exchange Group 22F

	REG.	SALE
RS-22F	37.80	28.35
RS-24	44.85	33.65
RS-24F	44.85	33.65
RS-27	49.80	37.35
RS-27F	49.80	37.35
RS-56	47.25	35.45
RS-71	40.20	30.15
RS-72	40.40	30.30
RS-74	47.80	35.85



Battery sale extended one more week.

You don't have to be a member. Everyone welcome.

**Consumers Sales Co.**

421 W. Kenneth

Spearman, Texas

659-2012

## DOUBLE-CIRCLE DOUBLE VALUE SALE



#### Farmland Super Start Battery

More power to you...  
• Larger cells, more plates  
• Epoxy-sealed case  
• Warranted five years

As low as **\$34<sup>90</sup>** Exchange Group 22F

	REG.	SALE
SS-22F	46.50	34.90
SS-24	53.25	39.95
SS-24F	53.25	39.95
SS-27	59.60	44.70
SS-27F	59.60	44.70
SS-72	47.85	35.90
SS-74	55.30	48.88

## HIGHWAY READY TIRE SALE



#### CO-OP Director Steel Belted Radial Tire

Designed to hold tread on the road  
• 2 Polyester cord body plies  
• 2 full-width steel belts  
• P-metric sizing

As low as **\$46<sup>80</sup>** Size 175/80R-13 plus \$1.83 F.E.T. and trade-in tire

#### DIRECTOR RADIALS

	REG.	SALE	FET
175/80R-13	59.45	46.80	1.83
185/80R-13	63.60	50.06	1.90
185/75R-14	66.15	52.09	2.00
195/75R-14	69.10	54.39	2.13
205/75R-14	71.25	56.08	2.34
215/75R-14	73.80	58.11	2.49
225/75R-14	77.75	61.20	2.67
205/75R-15	75.65	59.57	2.44
215/75R-15	79.75	62.77	2.59
225/75R-15	83.50	65.76	2.74
235/75R-15	86.30	67.95	2.96



#### CO-OP Mark 74 Car Tire

Design insures extra traction  
• 2 full-steel belts  
• Seven-row tread  
• Resists cuts, bruises  
• Extra large footprint

As low as **\$60<sup>41</sup>** Size 185/80R-13 plus \$1.90 F.E.T. and trade-in tire.

#### MARK 74

	REG.	SALE	FET
185/80R13	76.75	60.41	1.90
195/75R14	83.75	65.92	2.13
205/75R14	87.60	68.96	2.34
215/75R14	92.15	72.56	2.49
225/75R14	96.45	75.94	2.67
205/75R15	88.15	69.41	2.44
215/75R15	93.60	73.69	2.59
225/75R15	100.75	79.31	2.74
235/75R15	106.90	84.15	2.96

Top of the Line Steel Belted Radial



You don't have to be a member. Everyone welcome.

**Consumers Sales Co.**

421 W. Kenneth

Spearman, Texas

659-2012



## Support group formed for Alzheimer's Disease

Alzheimer's Disease is a disorder of the brain causing forgetfulness, lack of self confidence, dependence on someone—usually the companion, personality change and general mental disorientation.

The trails from doctor to doctor, to doctor to doctor, month after month, year after year, searching for help and understanding and some answers were really long, lonesome, disheartening, and discouraging. One never gives up as long as there is hope. Much of the time the answer was, "Sorry, I can't find anything wrong. Maybe this medication will help." One time the remark was "What have you done to this man. He has lost his self confidence." The answer was, "Nothing, just love him and take care of him."

Finally the diagnosis was Alzheimer's Disease. At that time, 1965, he was a charted number (11) eleven in medical history in the United States and the first live patient seen have Alzheimer's Disease. Many tests were run and the physical body was in good condition but the brain showed deterioration or shrinkage.

Through prayer and tears and searching, a research doctor was found that is still in the field of Alzheimer research.

Much has been learned in the last few years with many doctors and researchers becoming interested who are scattered all across the United States and some foreign countries. Now it is estimated that 500,000 to 1.5 million middle aged and older American's are affected with Alzheimer's Disease.

The development and slow course of the disease are a source of deep frustration for those afflicted and their loved ones.

At present the cause, prevention, or cure of the disease is not known.

The National Alzheimer's Disease and Related Disorders

Association has been formed out of concern by people who deal directly or indirectly with those who have Alzheimer's Disease. There is an active chapter located in Amarillo.

I have felt the need to form a support group here in Beaver County and surrounding area for several years. After visiting with the chapter in Amarillo, I would like to accept their offer to become a satellite chapter. Materials and other assistance would come through the president, Mrs. Becky McGee.

Perhaps you could offer suggestions to help in forming a local group. This group includes all interested citizens along with the families who have an affected loved one.

Write or call: Ester May Reising, P.O. Box 1194, Beaver, Okla. 73932, Phone 405-625-3616; or Elsa Ferne Durkee, Rt. E., Box 1, Beaver, Okla. 73932, Phone 405-625-3364, or Mr. Kim Gourley P.O. Box 1013 Beaver, Okla. 73932 Phone 405-625-3641.

The Amarillo, Tx. group has a film entitled "Living With A Nightmare" that we can borrow. Chapter President Mrs. Becky McGee plans to come show it to us weather permitting. Local Meeting date—Monday, February 28, 1983; Time—7:00 p.m.; Place—Beaver School Auditorium, 807 Ave. G Beaver, Okla.

Everyone interested in Alzheimer's Disease, including doctors, nurses and relatives, is invited.

The program will be a film, "Living With A Nightmare." Following the film, there will be a question and answer session with discussion about forming a satellite chapter with the Amarillo, Tx. group with Mrs. Becky McGee, President. We will be looking forward to meeting you. Donations accepted.

## Another Reagan

There's logic to the complaints of fiscal conservatives over the new economic approach taken by President Reagan. In his State of the Union speech and proposed budget, Mr. Reagan has changed course.

Whether this is necessary, even late, and in the best interests of the majority of Americans, which many think it is, the change should be recognized for what it is.

The biggest reverse by the president concerns budget deficits. Dedicated to eliminating them when elected, Mr. Reagan in his new approach proposes what almost certainly will be deficits all through this decade—and huge deficits.

Why this philosophical turnaround? Why is the danger of these huge deficits less today than in the past? The answer is that Mr. Reagan has come to the conclusion (or been convinced) that the danger of not stimulating the economy at once is greater than the evil of deficit financing.

The danger is both economic and political. Without recovery soon, too many corporations and businesses, and farms and homes, will be lost. Too many will remain without work. With the economy in that state, Mr. Reagan and the Republicans in general would likely suffer defeat in next year's elections.

Mr. Reagan also seems convinced that unless the U.S. shows the way, the world economic situation will grow increasingly perilous.

The president still seeks to reduce domestic spending, and holds firmly to the income tax cut scheduled for July (which Congress may seek to postpone). But in accepting enormous deficits year after year, with no end in sight—because Congress isn't likely to vote all the domestic spending cuts he asks—Reagan has reversed course 180 degrees and is practicing Keynesian economics.

President Ford, whose record was a good one generally, vetoed more spending bills than any other president in many years. Yet his deficits were records at the time. Mr. Reagan's deficits make Ford's look mild by comparison.

Ford's sixty-billion dollar deficit was a shocker in the mid-seventies. Only eight years later Reagan is about to preside over a \$208 billion deficit (for the current fiscal year)! And deficits in the next two years may be just as bad, though projected as slightly lower.

Denials to the contrary, Reagan's present program is one of economic stimulation, record deficit spending, and, perhaps, somewhere down the line, more inflation. The president obviously sees this is his only choice. He may be right. It's nevertheless disappointing. It's the same old thing—in bigger figures.

### He Did

One sweet thing to another: "I like men who make things. Like Mr. Potter. He made \$50,000 last year."

—Topnotcher.

### It's Time

Too bad the meek don't hurry up and inherit the earth because the unmeek are certainly making a mess of it.

—Record, Columbia, S.C.

# WARNING:

10% OF THE MONEY YOU EARN IN INTEREST IS GOING TO

# DISAPPEAR

Recently, Congress quietly passed a withholding law that will cost American savers and investors the use of 10% of their interest and dividends.

In simple terms, effective July 1st, 1983, this new law requires banks and other financial institutions to deduct 10% of the interest or dividends you earn on your savings and investments. That money then goes to the Internal Revenue Service in much the same way as payroll deductions are now handled.

The sponsors of this law have told us it was designed to catch a small minority of Americans who evade taxes on their interest and dividends. But the truth is the law penalizes the great majority of America's savers and investors who pay their taxes faithfully. What's more, the federal government is now receiving all the necessary information to curtail

tax cheating.

Though the law does include exemptions for some low income and elderly Americans, if they go through the red tape of filing an application, most savers and investors will forfeit some of the money they could earn in compounded interest.

We urge you to join our efforts by writing letters to your representative in Congress and to the two senators from this state. Tell them you want the 10% withholding tax repealed, because it would impose an unfair penalty on savers like yourself.

For assistance in contacting your representative and senators please ask any of our bankers. If we all act now, Congress will get a clear message from the voters back home, and they will work to repeal this needless law.

**Final**  
Kids' Stuff  
Lady Fair

CLEARANCE

Appreciation



SALE

up to

70%

off

Now in progress

All Sales Final.  
No Approvals.  
No Returns.

Kids' Stuff & Lady Fair

719 W. 7th

Spearman, Texas





AUSTIN--State Rep. J.W. "Buck" Buchanan, D-Dumas (right), accepts the gavel of Vice Chairman of the House County Affairs Committee for the 68th Legislature from Speaker Gib Lewis in recent ceremonies. Rep. Buchanan, who is serving his fourth term in the House, was also appointed to

the House Committees on Natural Resources and House Administration.

The County Affairs Committee is a new committee created by the House this session with jurisdiction over all proposed legislation bearing on local units of government at the county level.

"Rep. Buchanan, in his seven years as a state legislator, has demonstrated his

leadership abilities and should prove a valuable asset in helping to direct the activities of the committee," Lewis stated in announcing the appointment.

### PSU plans Winter Festival

Plans are underway for the Student Senate sponsored Winter Festival at Panhandle State University. Letters have been mailed to parents of current students outlining the activities for what has become a basketball homecoming celebration. February 26 is the date that has been selected for '83 Winter Festival.

Activities begin at 2:00 p.m. when the Music Department will present the musical "Snoopy" in Hughes-Strong Auditorium. Ralph Vines, Director of the Student Union, and his staff will begin serving a Candlelight Buffet in the PSU Student Union Building at 5:00 p.m. Serving will continue until 6:30.

An alumni girls basketball game will be played in the Oscar Williams Field House at 5:30 p.m. The girls from previous PSU teams will be matched against the current squad. Parent and Alumni registration will begin at 6:00 p.m. in the "Red Room" in the Oscar Williams Field House. Following the girls game, the PSU Aggies tangle with College of Santa Fe, one of the more potent teams the Aggies will face.

The crowning of the Winter Festival Queen will take place at halftime of the PSU-College of Santa Fe game. Two dances, one rock and one country, will be held in the Student Union following the basketball action.

Additional information con-

cerning '83 Winter Festival may be obtained from the PSU Student Senate. Contact Troy Morris, Student Senate President, or Janet Eggleston, Student Association President, at the senate office by calling (405) 349-2611 EXT 268.

### Journalism scholarships available

Students wanting to study journalism on the college level are invited to apply for scholarships to Midland College, it was announced this week by Ralph L. Sellmeyer, Allison Professor of Journalism at Midland College.

The scholarships will pay for books, fees and tuition at MC, Sellmeyer said, and are provided through an endowment fund left the school by the James Allison family, former publishers of the Midland Reporter Telegram.

Midland College's journalism program can provide a student an Associate of Arts degree in journalism which will enable him/her to transfer to any four-year journalism program around the state, or equip him to work on community or mid-size daily newspapers, Sellmeyer said.

In addition to the Allison scholarships, students may also apply for paid staff posi-

tions on the Midland College weekly newspaper and/or magazine (published each semester) and also for the college-work study program. Those who participate in the paid staff and work-study programs can earn much of their room and board cost, the MC journalism instructor said.

Those interested should write for applications to: Ralph L. Sellmeyer, Journalism, Department, Midland College, 3600 North Garfield, Midland, Texas 79701. Applications should be received by June 1, 1983.

### Need help with your tax return?

Can't do your own tax return? Rita Curtis, Librarian of the Hansford County Library thinks maybe you can.

The library might have just what you need, according to Rita. A magic wand? A crystal ball? An extraterrestrial robot? Not quite. But the library does have audio cassettes you can borrow, and she almost guarantees success.

The cassettes are put out by the Internal Revenue Service, and contain line-by-line instructions on how to do federal tax Form 1040, Schedule A and B, Form 1040A and Form 1040EZ. The 1040EZ is the one that's new for '82 tax returns.

To use these cassettes, all you need is a cassette player, IRS forms and instruction books, a good sharp pencil or two, some scratch paper, maybe a calculator, and last but not least, confidence. "I can do it; yes, I can," you say to yourself, then give it a try.

The tax package you received in the mail may have all the forms you need, but if not, the library has reproducible forms you can copy there for 10 cents a copy. Pencils and paper are easy to come by and you might not need a calculator. The real ingredient you have to supply is confidence.

Without a doubt, some people must turn to others to do their taxes. But on the other hand, millions of people do their own. Go ahead, try. Maybe the tax cassettes are all you need. You may spend a little time and save a little money. That time spent just might be a good investment. Borrow a cassette and give it a try. The library will be open 10-12; 2-6 weekdays and 9-1 Saturdays.

### Truckers Shot

The strike, in the long history of labor-management relations, has often been justified and successful. As a weapon, however, it has also been abused--as are all weapons by some.

In Pennsylvania, a state education association may have misused the weapon in the town of California. In the strike by truckers, some have abused the weapon by using guns to intimidate non-strikers (a driver was killed on the first day of the strike in North Carolina).

In other violence or intimidation in recent years, property has been destroyed, homes burned, cars vandalized, etc.

No one (including strikers) should wield power irresponsibly, least of all public employe unions. Union membership has declined in America in recent years, partly because of such behavior which has produced a negative image among many.

In strikes, if it comes to that, everyone loses in the short run. Reasonable men and women prefer to avoid drastic action. In the truckers' strike, much public sympathy was forfeited by strikers with a good cause when the first driver was killed. One can understand the strike, but not the killing.

**Pleasant Age**  
The age of discretion is when you learn that nothing is as important as you once thought it was.  
-Star, Minneapolis.

**Right There**  
A crank is seldom found in an automobile these days--except under the steering wheel.  
-Observer, Fayetteville.

### SMILES

**Not Fair**  
Minister: And when I get through with my sermon I'll ask those of the congregation who want to contribute \$5 toward the mortgage on the church to stand up. In the meantime you play appropriate music.  
Organist: What do you mean, appropriate music?  
Minister: You play the Star-Spangled Banner.

**That Sort**  
"Your husband told my husband that his word at home was law."  
"Oh, yes? Well, it's one of those laws that are never enforced."

**Courage**  
He who fears to venture as far as his heart urges and his reason permits is a coward.  
-Grit.

**Mother Darling**  
The possibility of a landslide so intimidated the inhabitants of a little village that one couple decided to send their son, aged 9, to an uncle until the danger had passed. Three days later they received a telegram. "Am returning boy. Please send landslide instead."

**Great Relief**  
Caller (moralizing)-You know we take nothing with us into the next world.  
Mrs. Rounds-Thank heaven for that. It will be a novelty to go somewhere without having to pack.

**Must Choose**  
Man's destiny is never determined by chance. It's determined by his choices all through life.  
-Grit.

## CONGRESS WANTS A PIECE OF YOUR SAVINGS.

Recently, Congress quietly passed a withholding law that will cost American savers and investors the use of 10% of their interest and dividends.

In simple terms, effective July 1st, 1983, this new law requires banks and other financial institutions to deduct 10% of the interest or dividends you earn on your savings and investments. That money then goes to the Internal Revenue Service in much the same way as payroll deductions are now handled.

The sponsors of this law have told us it was designed to catch a small minority of Americans who evade taxes on their interest and dividends. But the truth is the law penalizes the great majority of America's savers and investors who pay their taxes faithfully. What's more, the federal government is now receiving all the necessary information to curtail tax cheating.

Though the law does include exemptions for some low income and elderly Americans, if they go through the red tape of filing an application, most savers and investors will forfeit some of the money they could earn in compounded interest.

We urge you to join our efforts by writing letters to your representative in Congress and to the two senators from this state. Tell them you want the 10% withholding tax repealed, because it would impose an unfair penalty on savers like yourself.

For assistance in contacting your representative and senators please ask any of our bankers. If we all act now, Congress will get a clear message from the voters back home, and they will work to repeal this needless law.

#### PLEASE WRITE:

U. S. Sen. John G. Tower, 142 Russell Senate Office Building, Capitol, Washington, D. C. 20510.

U. S. Sen. Lloyd Bentsen, 240 Russell Senate Office Building, Capitol, Washington D. C. 20510.

U. S. Cong. Jack Hightower, 13th District, 2348 Hayburn Building, Capitol, Washington D. C. 20515.

#### SAMPLE LETTER:

Dear Senator:

As a taxpaying citizen, I am adamantly opposed to the provisions in the new tax legislation requiring my bank to withhold 10% of the interest earned on my deposits and dividends.

I feel that this is completely unnecessary, because I already pay taxes on my savings interest each year when I file my Federal Income Tax return. I also feel it's unfair, because it reduces my compounded savings growth. It is respectfully requested that you work for an immediate repeal of this legislation. Thank You.

Name \_\_\_\_\_  
Address \_\_\_\_\_  
City \_\_\_\_\_ State \_\_\_\_\_ Zip \_\_\_\_\_

### Jean E. Shotts

Attorney at Law

Announces the opening of his office  
at

209 1/2 S. Main  
Perryton, Texas 79070

Telephone

806-435-5900



We're the First Place you call.



**THE FINAL 6 HOURS**

**OF BEEDY'S**

**WINTER**

**Clearance Sale**

**OF**

**QUALITY FURNITURE**

**SAVINGS UP TO ...**

**80%**

**STORE CLOSED TIL 12 NOON SATURDAY FOR FINAL MARKDOWNS**

**STORE HOURS: SATURDAY, FEB. 19 — 12 Noon - 6 P.M.**

**• ALL SALES FINAL**

**• NO HOLDS • NO LAY-A-WAYS • NO PHONE ORDERS • NO REFUNDS • NO SPECIAL ORDERS**

**OPENING HOUR SPECIAL!**  
12:00 Noon Saturday  
Maple Magazine Rack by Tell City  
**\$82.50** **NOW \$16.50** **SAVE 80%**  
One Only — Cash & Carry — All Sales Final

**OPENING HOUR SPECIAL!**  
12:00 Noon Saturday  
Bamboo Frame, Beige Herculon Chairs by Ayers  
**\$279.50** **NOW \$83.50** **SAVE 70%**  
One Only — Cash & Carry — All Sales Final

**OPENING HOUR SPECIAL!**  
12:00 Noon Saturday  
Blue Velvet Stratolounger  
**\$459.50** **NOW \$137.50** **SAVE 70%**  
One Only — Cash & Carry — All Sales Final

**OPENING HOUR SPECIAL!**  
12:00 Noon Saturday  
Brown Velvet Stratolounger  
**\$439.50** **NOW \$131.50** **SAVE 70%**  
One Only — Cash & Carry — All Sales Final

**OPENING HOUR SPECIAL!**  
12:00 Noon Saturday  
Early American Printed Velvet, Wood Frame Sofa & Loveseat by Ayers  
**\$1550.00** <sup>2</sup> **NOW \$620.00** <sup>2</sup> **SAVE 60%**  
One Only — Cash & Carry — All Sales Final

**OPENING HOUR SPECIAL!**  
12:00 Noon Saturday  
Oak and Pecan Queen Headboard and One Night Stand by Thomasville  
**\$628.00** **NOW \$188.50** **SAVE 70%**  
One Only — Cash & Carry — All Sales Final

**OPENING HOUR SPECIAL!**  
12:00 Noon Saturday  
Wood Frame, Quilted Print Sofa by Ayers  
**\$850.00** **NOW \$340.00** **SAVE 60%**  
One Only — Cash & Carry — All Sales Final

**OPENING HOUR SPECIAL!**  
12:00 Noon Saturday  
Cotton Print Hide-A-Bed by Simmons  
**\$825.00** **NOW \$330.00** **SAVE 60%**  
One Only — Cash & Carry — All Sales Final

**OPENING HOUR SPECIAL!**  
12:00 Noon Saturday  
Woven Green Print Sofa by International  
**\$749.50** **NOW \$299.50** **SAVE 60%**  
One Only — Cash & Carry — All Sales Final

**OPENING HOUR SPECIAL!**  
12:00 Noon Saturday  
Beige and Blue Print Sofa and Loveseat by FMI  
**\$1150.00** <sup>2</sup> **NOW \$460.00** <sup>2</sup> **SAVE 60%**  
One Only — Cash & Carry — All Sales Final

**OPENING HOUR SPECIAL!**  
12:00 Noon Saturday  
Rust and Beige Velvet Sofa and Loveseat by FMI  
**\$1195.00** <sup>2</sup> **NOW \$478.00** <sup>2</sup> **SAVE 60%**  
One Only — Cash & Carry — All Sales Final

- 3 Groups of Thomasville Bedroom Furniture Reduced ..... **60%**
- 1 Group of Table Lamps Reduced ..... **80%**
- 1 Group of Table and Wall Accessories Reduced ..... **80%**
- 1 Group of Occasional Tables by Ayers, Gordon and Stratford Reduced ..... **80%**
- All Simmons Mattress and Boxsprings Reduced ..... **30%**
- All Sofas and Loveseats, Chairs and Rockers Reduced up to ..... **50%**
- All La-Z-Boys and Lane Action Chairs Reduced ..... **30%**
- All Dining Room, Dinettes and Game Sets Reduced up to ..... **40%**
- All Merchandise Excluding Carpet Reduced ..... **25%**



**BANK RATE FINANCING AVAILABLE**

**NO 90-DAY TERMS ON THESE PRICES**