

All Hansford County Schools have been closed due to the weather. We do not have official word as to when they will open again for students.



The Spearman Reporter

VOL. 74 NO. 13

THE SPEARMAN REPORTER, SPEARMAN, TEXAS 79081

THURSDAY, FEBRUARY 3, 1983

Blizzard hits Hansford County area

It began raining lightly in the county of Hansford, early Monday morning, and began snowing sometime before noon. By midnight Monday night, the county was in a blizzard situation that has prevailed through all of Tuesday, and made the roads near impossible. In a call to radio station KRDF we learned that Coy Palmer was stranded in Amarillo with a part for the transformer for the radio station, and several other cars are stranded in the Panhandle area.

It was impossible for people to travel in the county without 4 wheel drives, and many of them became stuck by noon Tuesday. On main street, if you can get down there, about all you can see is a snowmobile in front of Gordons Drug, apparently standing by to deliver medicine. Two large drifts, one at the intersection of Cates, and another large drift at the library. Both of these were tall, and the city tried to keep main street cleared, but it would snow shut as fast as they could clear the streets. At 2 p. m. Tuesday, the snow came back, after almost completely stopping by noon. It surprised everyone but the weather man, who calls for more snow Tuesday, and another on the way maybe by Thursday. In a talk with police dispatchers at 2:30 Tuesday afternoon, Stratford called and reported blizzard conditions, as well as all other roads out of Spearman.

Here at the news office, we can still see across the street at 3 p. m. Tuesday, but it is definitely a blizzard situation... city and county officials warn everyone to stay home today... We will not have much of our usual news copy as all of our news desk is snow bound, and we told them to stay home and enjoy the good life... We will mention that the entire police report will be in the Sunday paper, as soon as D. J. can get the report made out. The police have much more important things to do than turn in their news copy today... they are standing by for emergency service to our community, and we appreciate them. We saw Deputy Billy Hawkins in the Weasel, a special snow vehicle touring the town after dinner. This is a caterpillar type tractor and goes good in the snow. Also

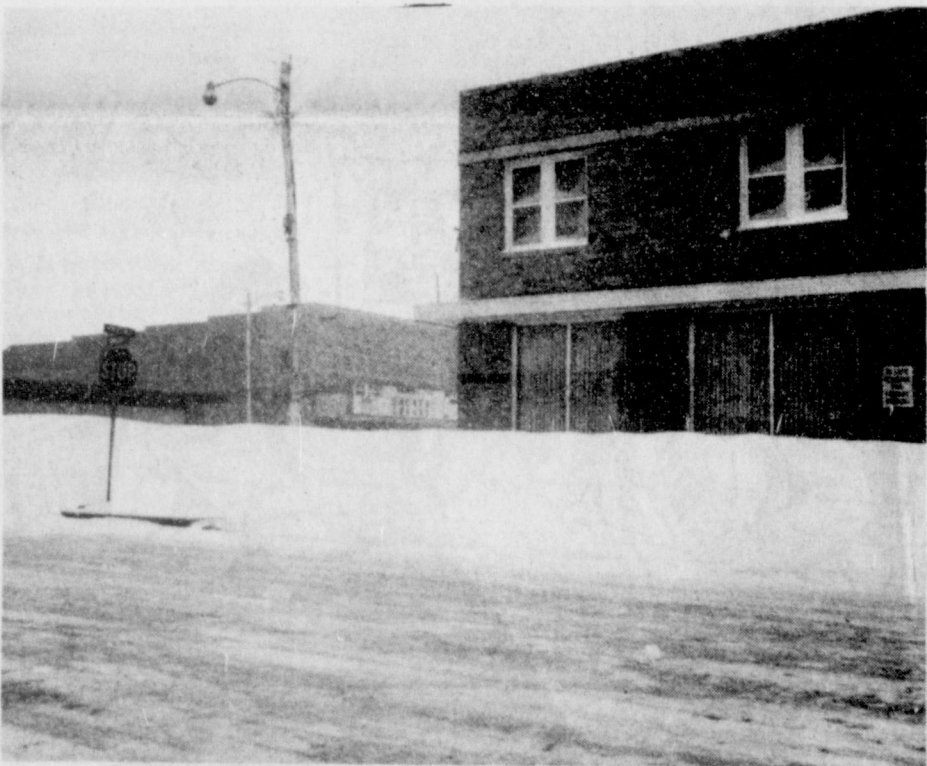
in a talk with highway officials in Gruver, we learned that the road to Gruver is now open, in spite of the fact that most all of the snow plows were stuck at one time or another Tuesday: that is right, the snow plows were about all stuck because of the severe blizzard Tuesday. Our special thanks to the highway guys who did such a good job. Also special thanks to the phone company, the Robert Elliot at the light co., and all city and county employees.

ATTENTION SPORTS FANS

The game that was to be played on Tuesday, February 1st, against the Canadian Wildcat teams, is going to be played on Thursday, February 3. Coach Ralph Newton said IF everything looked alright, and there was no more precipitation, the game is scheduled for the same time, the Lynxettes and Wildkittens to play at 6:00, the Lynx and Wildcats to begin playing at 8:00 or 8:30, at the Lynx Varsity Gym. He said they are taking it one day at a time, to see about the weather and so far, Wednesday, Feb. 2nd, the day has been set for Thursday, Feb. 3rd. Don't miss this game. For the Lynxettes it is the Game of the Year.



1983 snow scene - main street Spearman ---



1983 snow scenes - main street, Spearman



STUCK ON MAIN STREET: Vance Snider gets a pull from his buddy McLeod, as he became stuck in a snow drift on main street--Jimmie McLeod pull Vance right out of the deep drift--It is hard to believe that a pickup with chains could be stuck on main street but this one was.

Gene Cudd is citizen of the year



Gene Cudd is pictured above with his wife Frances after he received the Citizen of the Year Award.



Rita Curtis is presented the Rotary Employee Award of the Year by Steve Rodgers.

The Celebrate Singers of SHS under the direction of Travis Angel presented the entertainment for the C of C Banquet held Sat. night.



Sheriffs report

According to Hansford County Sheriff R.L. McFarlin, the four cases his department had in the current term of court ended in convictions and an arrest made during the weekend may clear up the burglary of the local YMCA.

Members of the sheriff's department arrested Kenny Slaton and he was arraigned for aggravated assault with a deadly weapon. Peace Justice Pete Vernon fixed bond at \$5,000.

Sheriff McFarlin said his department turned over to the Spearman Police Department all the information they had about Slaton's alleged implication in the recent burglary of the YMCA since that offense was within police jurisdiction.

In court action, Jackie Cathey was fined \$700, ordered to make restitution and given a four-year probated sentence for his part in the theft of a water truck belonging to R.E. Sanders.

The other three cases involved charges of driving while intoxicated, one of them a felony offense.

That involved J.D. Cruse who was sentenced to two years in the Texas Department of Corrections.

Kent Sparks was given a one-year probated sentence and fined \$240 for DWI.

Juan de Santiago also drew a one-year probated sentence for DWI and his fine was fixed at \$140.

The sheriff noted that the department -- as usual -- had a number of on-going investigation but currently the weather seemed to have even the "evil-doers" holed up.



If milk or cream spills on furniture, wipe it up quickly. Dairy foods act as mild paint and varnish remover. If spots show, clean with white liquid wax.

AN INVITATION

THE HANSFORD COUNTY YMCA BOARD OF DIRECTORS CORDIALLY INVITES YOU AND YOUR FAMILY TO PARTICIPATE IN THE YMCA OPEN HOUSE TO BE HELD ON SUNDAY, FEBRUARY 6, 1983 FROM 1:30 TO 5:30 P.M. REFRESHMENTS WILL BE SERVED AND SOME PROGRAM DEMONSTRATIONS HELD, TOGETHER WITH THE GRAND OPENING OF THE NEWLY COMPLETED RACQUETBALL COURT.

DEMONSTRATION/EXHIBITION SCHEDULE

1:30 p.m.	GRAND OPENING OF RACQUETBALL COURT
2:00 p.m.	SQUARE DANCING - RAINBOWS & WRANGLERS
3:00 p.m.	AEROBICS DANCING - WANDA ARCHER'S STUDENTS
4:00 p.m.	BOXING EXHIBITION - BOXING CLUB
5:00 p.m.	YOUTH BASKETBALL DEMONSTRATION
5:30 p.m.	AWARDS FOR GAMES CHAMPIONS

Throughout the afternoon there will be opportunities to visit with the Board of Directors, who will serve as hosts and hostesses. If you haven't seen the fitness center, pre-school, aerobics classroom, new racquetball court this will be a great time to have a grand tour. Come on over on Sunday, meet your fellow members, taste of refreshments, meet the board and staff and watch the demonstrations and exhibitions. Bring along a friend.



During the ice ages, the Sahara Desert was a rich grassland.



It was once believed that if a person dreams of a river, it means that something stands between him and his wishes.

"Nothing shows a man's character more than what he laughs at." Goethe



The Latin Quarter in Paris is so named because the area is the home of the Sorbonne, where the Latin language was taught.

PUBLIC NOTICE

In accordance with the regulations of the Public Utility Commission of Texas, Texas-New Mexico Power Company announces the Company's intent to change rates for its entire Texas operations. The effective date of such change is March 4, 1983. All classes of customers will be affected by said proposed changes. It is estimated that the rate change will produce an increase in gross revenues to the Company of \$13,032,225, or a 4.24% increase over present rates.

A complete copy of the requested rate schedule is on file with the Public Utility Commission of Texas in Austin, and with all cities which have retained original rate jurisdiction served by Texas-New Mexico Power Company. You may inspect a copy of the filing during normal business hours at each business office of Texas-New Mexico Power Company in your area.



REPORT OIL FIELD THIEVES
CALL
1-800-OIL-COPS
1-800-645-2677
TOLL FREE.....REWARD

Baker & Taylor Drilling Company

We Have An Interest in YOU!



Today's tight money situation hasn't affected our personal loan department. If you need money, be sure to see us ... because we have money to lend! Maybe you'd like to buy a new car ... a boat ... take a vacation ... pay bills ... help your youngsters with college costs ... or just meet an emergency. Whatever it is, if it's important to you, it's important to us. Give us a call or visit our office, and let a helpful loan officer arrange the details. We keep interest rates at the lowest possible level, too. That's why we're in a position to make you a loan you can afford, and live with!

Contact Roger Monzingo or Quentin Rizely for personal loans for you and your family.



We're the First Place you call.

On Your Payroll
State Representative

J.W. (Buck) Buchanan
Dumas, Texas 79029
Phone: 935-5087

Austin Address:
House of Representatives
Austin, Texas 78711
Phone: 512-475-3127

State Senator

Bill Serapian
10800 Canyon Drive
Amarillo, Texas 79118
Phone: 822-2502

Austin Phone:
512-475-3222

U.S. Senators

Senator John G. Tower
Washington Office:
Russell Senate Office Bldg #142
Washington, D.C. 20515
Phone: 202-224-2924

Texas Office:
Federal Bldg, 200 E. 8th St. #981
Austin, Texas 78701
Phone: 512-387-5932

Dallas Office:
1114 Commerce #1711
Dallas, Texas 75202
Phone: 214-746-1525

Senator Lloyd Benion
Washington Office:
Russell Senate Bldg #240
Washington, D.C. 20515
Phone: 202-224-9022

Texas Office:
515 Park
Houston, Texas 77002
Phone: 713-226-5468

U.S. Congressman

Congressman Jack Highmower
U.S. Congress, 13th District
120 Cannon Building
Washington, D.C. 20515

Amarillo Office:
205 E. Fifth
Amarillo, Texas 79101
Phone: 378-2381

Sell Herefords

13th Annual Production Sale

12:30 P.M. WEDNESDAY

FEB. 16, 1983

SELLING 70 BULLS

27 BRED AND OPEN HEIFERS

CALL OR WRITE FOR TOTAL PERFORMANCE CATALOG

SELL HEREFORDS

BOOKER, TEXAS

Route 2, Phone 806/658-2253

Located 1 1/2 miles north on Highway 23

Color I Wardrobe Workshop
by Keiko Couch
The Perryton Club
Sat., Feb. 5, 1983 2-4 P.M.

If you plan to attend return coupon to:

Ochiltree County Chamber of Commerce
Box 789
Perryton, Texas 79070

Enclose \$15.00 Registration Fee

I Plan to Attend the Color I Wardrobe Workshop

Name: _____

Address: _____

Tickets Will Be \$20.00 At The Door.

SE
dry
do
Le
Gr
12-

Joe
\$10
sale
(ref
ext.
dire
12-3

FOR
Good
singl
109!
12-3!

RED
Burn
Glu
Drug
12-4t

FOR
Melo
equit
ment
11s-4

Bail
659-
125-



Mrs. Janet Trosper was the president of the WDC of 1982. Dana Schnell, Vice-president on the left presents the award for her outstanding service.

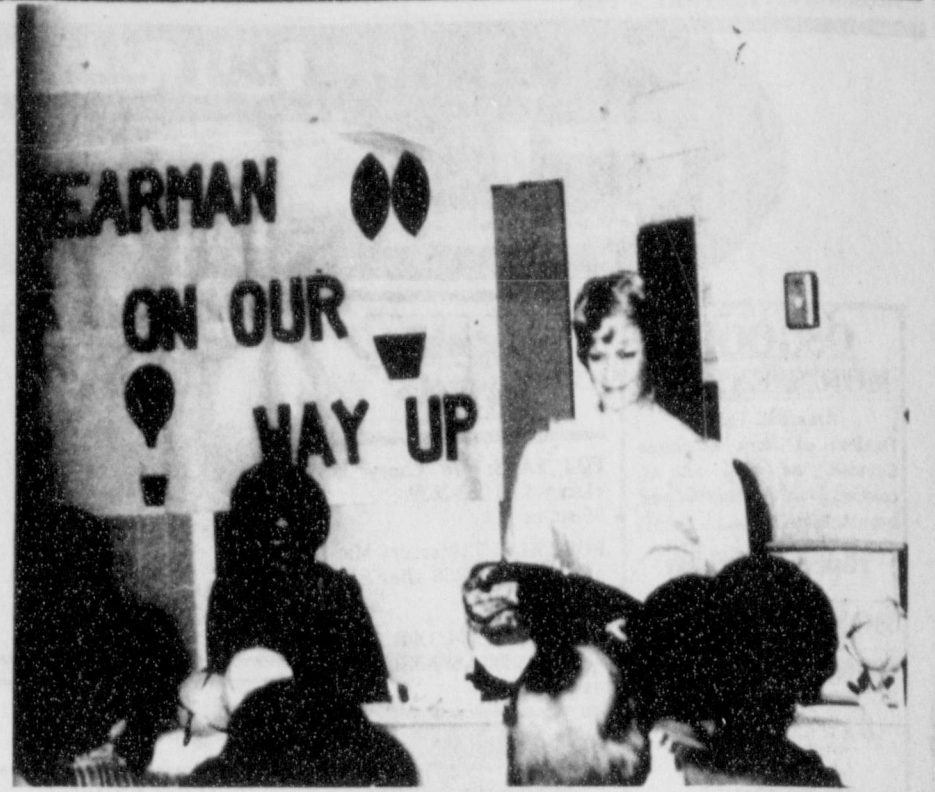
Paige Mitchell named to Who's Who

Paige Mitchell, food and nutrition senior at Texas Tech is among the forty-eight students from the university that have been selected to "Who's Who Among Students in American Universities and Colleges."

These students were chosen from among all the junior, senior, graduate, law and medical students at Texas Tech University and the Texas Tech University Health Sciences Center.

In order to be selected, nominees were required to present evidence of outstanding achievement in each of the three areas—scholarships, leadership and service—while students at Texas Tech. Selections were made by a representative committee of faculty, staff and students.

Paige is the daughter of Mr. and Mrs. Dwayne Mitchell of Spearman and is a 1979 graduate of Spearman High School.



Nancy Graves was named the outstanding member of the WDC for the year.

Conservation Tillage Seminar at Hereford, Feb. 9-10

High Plains farmers who are interested in learning more about cutting operating expenses, increasing profits, and reducing soil and water erosion are invited to attend a Conservation Tillage Seminar at Hereford, Texas, February 9-10, 1983.

Monnie Edwards, district conservationist for the USDA Soil Conservation Service at Spearman, said the meeting will be held at the Bull Barn in Hereford starting at 9:00 A.M. both days. Attendance is free.

"The meeting will feature farmers who are using conservation tillage farming systems

as well as speakers who will discuss the use of herbicides, computers, and other related technology," said Edwards. "Several kinds of conservation tillage equipment, including planters, sweeps, and chisels, will also be on display."

On the afternoon of February 10, there will be a demonstration of conservation District. The Golden Spread Chapter of the Soil Conservation Society of America, The USDA Agricultural Research Service, and the Soil Conservation Service.

For further information on this workshop contact Edwards at 659-2330 or come by the SCS Office located in the Pittman-Shieldknight Building.

REPORT OIL FIELD THIEVES CALL
1-800-OIL-COPS
1-800-645-2677
TOLL FREE.....REWARD

Baker & Taylor
Drilling Company

Spearman depot to close Feb. 7

The Railroad Commission of Texas has granted Santa Fe Railway authority to make Perryton a regional freight office (RFO) and close the agencies at Follett-Darrouzett-Booker and Spearman and consolidate their work at the RFO. Implementation will take effect Feb. 7.

The Perryton RFO will have jurisdiction over all operating and accounting functions for shippers in the affected area.

R.E. Day, assistant agent at Amarillo, has been named

manager of the RFO.

Customers in the affected area may call a toll-free number, 1-800-692-4175, for assistance.

"The change is designed to improve service to Santa Fe customers," D.P. Valentine, general manager-Western Lines, Amarillo, said. "The implementation of a system-wide computer system has made the RFO concept feasible. Improvement in service will come through the use of computers at the Perryton

office," he explained. "The Perryton RFO has direct access to Santa Fe's central processing unit at Topeka, Kans. This will enable the customer service representative to respond quickly to customers' needs."

The railroad has already made the shift to regional offices in California, Kansas, and parts of Texas, creating regional freight offices across the railroad's 13-state system. Commission is interested in obtaining the Santa Fe Depot

Free Clinic

Immunization clinics offering vaccines that give protection against several childhood diseases are scheduled for February. Protection is against Polio, Diphtheria, Lock Jaw (Tetanus), Whooping Cough (Pertussis), Measles, Rubella and Mumps.

This Free Clinic will be held at the Spearman Elementary School, 511 S. Townsend, on Monday, February 7, from 2 to 4 p.m.

There will be no charge.

Tackle Valentines Day With A Song in Your Heart!

Rho Rho Sorority will be offering your special one or ones "Singing Valentines" on Valentines Day, February 14.

For \$5.00 members of the sorority will personally deliver a "beautiful" singing Valentine to the person of your choice.

Do something unique and special for your Valentine this year - order a singing Valentine - now! Order from any member of the sorority or call Shelly Beedy 659-3847, Sheila Watley 659-3970, or Stephanie Brock 659-3933.

The last day to order a "Singing Valentine" is Friday, February 11 - so call now and take your \$5.00 to Shelly Beedy 1008 S. Barkley, or Sheila Watley 727 Wilbanks.

13-3tc

WIN THE RACE AGAINST SUNDOWN WITH THE NITE-LITER

Why rush through your day's activities to beat the sunset when you can have the extra light you need thanks to the Nite-Liter. The mercury vapor unit gives you up to a 100 yard diameter of light with more illumination per watt than conventional incandescent lighting, so you get more light for your money. And the Nite-Liter conveniently turns itself on at dusk and off at dawn automatically too. Call our office today and get all the details.

Texas New Mexico Power Company

PRICES GOOD FEB. 2 THROUGH FEB. 5

UNITED Supermarkets
Perryton, Texas

*NO SALES TO DEALERS *QUANTITY RIGHTS RESERVED

FINE FARE
BISCUITS
SWEETMILK & BUTTERMILK
18c

CRISCO SHORTENING
3 LB. CAN 20" OFF LABEL
\$1.88

FREE CLAREMONT CHINA
3 PIECE PLACE SETTING WITH ONE COMPLETELY SAVED CUPS 100 BONUS CERTIFICATE

GROUND HOG DAY
FEBRUARY 2ND!

PLAINS 1/2-GAL. BUTTERMILK .. **98c**

PLAINS COTTAGE CHEESE 24 OZ. **\$1.39**

PLAINS DIPS & SOUR CREAM 8 OZ. **2 for \$1**

PLAINS HALF & HALF 1/2 GAL. **59c**

GOLD MEDAL FLOUR
5 LB. BAG
88c

COME RAIN OR SHINE WITH SUPER SPECIALS

SHAVING GEL EDGE ALL TYPES 7 OZ. **\$1.59**

SHAMPOO & CONDITIONER ENHANCE ALL TYPES 8 OZ. **\$1.69**

GELATIN JELL-O
3 OZ. PKG.
4 for \$1

UNITED EGGS
EXTRA LARGE 1 DOZEN
68c

DUNCAN HINES CAKE MIX
ALL FLAVORS
78c

CARNATION EVAPORATED MILK
13 OZ.
2 for 88c

COKE
6 PK. 32 OZ.
\$1.88
PLUS DEPOSIT

FINE FARE CRINKLE CUT POTATOES 2 LB. BAG **98c**

FINE FARE MIXED VEGETABLES 16 OZ. **89c**

FINE FARE 16 OZ. CUT BROCCOLI **89c**

VAN DE KAMP'S FISH FILLETS 12 OZ. **\$1.69**

WASHINGTON EXTRA FANCY RED DELICIOUS APPLES **38c**

SUNKIST NAVEL ORANGES **38c**

HOT JALAPENO PEPPERS **48c**

Audra Mae Burke shows grand champion



Audra Mae Burke, age 13, daughter of Donald and Carol Burke of Route 1, Tulia showed the grand champion and breed champion with her heavy Suffolk lamb at the Tulia stock show held Jan. 15. She came in second to the grand champion in the Swisher stock show on Jan. 17, and also she received second in showmanship and earned a belt buckle for her hard

work. She is the granddaughter of Harold and Flossie Boyd of Gruver and Nell Burke of Spearman. She is the great-granddaughter of Mrs. H.L. Boyd of Gruver and Amos Burke of Spearman. She is a 8th grader at Tulia Junior High.

Donald Shannon Burke places in stock show



Donald Shannon Burke, 10 year old son of Donald and Carol Burke of Rt. 1, Tulia, received third place with his southdown lamb in the Tulia Stock Show on Jan. 15 and received fourth place in the Swisher Stock Show Jan. 17. He is the grandson of Harold and

Flossie Boyd of Gruver and Nell Burke of Spearman, and the great-grandson of Mrs. H.L. Boyd of Gruver and Amos Burke of Spearman. Shannon is a 4th grader at Highland School in Tulia.



The sun contains 99.8 percent of the total mass of the solar system.



Halley's Comet's spectacular tail is about 37 million miles long.

THE ACTION AUCTION
 ALWAYS AN ABUNDANCE OF BUYING POWER
 TEXHOMA LIVESTOCK COMMISSION CO. INC.
 BOX 449 TEXHOMA, OKLA.
 JANUARY 27, 1983
 CATTLE SOLD: 1899
 PACKER COWS - \$30.00-\$42.50
 PACKER BULLS - \$45.00-\$53.00
 STOCKER COWS - \$36.00-\$49.50
 PAIRS - none offered
 STEER CALVES 300-400# - \$76.00-\$87.00
 400-500# - \$69.00-\$82.00
 HEIFER CALVES 300-400# - \$61.00-\$70.00
 400-500# - \$59.00-\$66.50
 FEEDER STEERS 525-600# - \$66.00-\$74.50
 600-700# - \$65.00-\$69.50
 700-800# - \$64.00-\$68.50
 800-900# - \$61.00-\$65.00
 FEEDER HFRS. 525-600# - \$59.00-\$62.50
 600-700# - \$60.00-\$63.00
 405-423-7511 Sale Every Thursday
 KEITH LAUER, MGR. 405-423-7009
 FIELD REPRESENTATIVES
 JIM NICHOLS
 TEXHOMA, OKLA.
 405-423-7011

RAIN OR SHINE SPECIAL SERVICE

The Children's BIBLE
 12 VOLUME SET
 THIS WEEK'S FEATURE
 VOL. 1
 SPECIALLY LOW PRICED
 ONCE A VOLUME GOES ON SALE IT REMAINS AT SALE PRICE THROUGHOUT PROMOTION
 69¢

UNITED Supermarkets
 Perryton, Texas
 QUANTITY RIGHTS RESERVED
 NO SALES TO DEALERS

Francis Scroggs invites all her old customers and friends to visit her at the
Cinderella Beauty Salon
 Plains Shopping Center
 659-3413

LEAN GROUND BEEF \$1.68
 DOUBLE S & H CHAIN STANDS WED. & SAT. WITH A 20.3R MORE PURCH. SEE EXCLUSION CIGARETTES

UNITED TRU TENDER OR CHOICE BONELESS ARM ROAST \$1.88

UNITED TRU TENDER OR CHOICE RUMP ROAST BONE-IN LB. \$1.78

UNITED TRU TENDER OR CHOICE RANCH STEAK CENTER CUT 7 BONE LB. \$1.68

BONELESS STEW MEAT LEAN CUBES OF BEEF LB. \$1.88

COARSE GROUND CHILI MEAT LEAN LB. \$1.68

WILSON JUMBO MEAT FRANKS
 1 LB. PKG. \$0.98

UNITED TRU TENDER OR CHOICE BONELESS SHOULDER ROAST \$1.58

UNITED TRU TENDER OR CHOICE BONELESS RIB EYE STEAK \$3.78

UNITED TRU TENDER OR CHOICE BONELESS TOP SIRLOIN STRIP STEAK \$2.18

UNITED PREMIUM QUALITY BACON \$1.28
 12 OZ. PKG.

OWEN'S COUNTRY PORK SAUSAGE \$3.48
 2 LB. 1 LB. PKG. \$1.79
 REG. HOT MILD

UNITED PREMIUM QUALITY BONELESS HALF HAMS \$1.88
 BUFFET STYLE WATER ADDED

NO. 1 RUSSET POTATOES \$0.58
 5 LB. BAG

TOMATOES \$0.48
 1 PK. CARTON

RAGU SPAGHETTI SAUCE ALL TYPES 15 1/2 OZ. \$0.88

SKINNERS SPAGHETTI LONG OR THIN 24 OZ. \$0.88

DEL MONTE DILL PICKLES 22 OZ. \$0.98

BETTY CROCKER HAMBURGER HELPER ALL FLAVORS \$0.98

HEINZ KETCHUP 32 OZ. \$0.98

TG&Y

THANKS FOR THE MEMORIES
 Mom, Dad, Grandmas, Grandpa... all the special relatives and friends will treasure the memories beautiful professional portraits create.

14 COLOR PORTRAITS 9.99
 DEPOSIT 99¢ BALANCE \$9.00

TWO POSES: TWO 8X10, TWO 5X7, 10 WALLET SIZE
 Scenic backgrounds available. Fast delivery. Complete package orders only. Additional portraits available at reasonable prices. Poses our selection, special effects poses extra. Minors must be accompanied by an adult. Always friendly, professional service. Limit One portrait package per subject. Satisfaction guaranteed. BABIES • CHILDREN • ADULTS • FAMILIES

PROFESSIONAL COLOR PORTRAITS BY **TRU**

50% OFF BONUS HANDSOME WOODGRAINED PLAQUE
 Mount your 8 x 10 portrait into this sturdy plaque in minutes and you have the perfect gift.
6.45
 (with purchase of \$9.99 portrait package) REG \$12.95

3 DAYS ONLY!
 Thur, Fri, Sat;
 Feb. 3, 4, 5
 Daily & Sat 10-8

**S
A
L
E**

**It's Our
Mid-Winter
Extravaganza!**

— ACCENT PIECES —

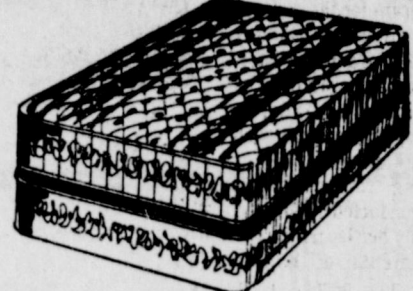
- | | | | |
|--|---|-------------------------------------|---|
| All Unfinished Furniture..... | 30% OFF | Artificial Flowers & Plants..... | 30% OFF |
| Decorative Pillows..... | 25% OFF | Doored Chest by DeSoto..... | \$495⁰⁰
Reg. \$695.00 — Now..... |
| 2 Flat Top Desks by Riverside..... | \$299⁹⁵
Reg. \$399.95 — Now..... | Wall Mirrors..... | 20% OFF |
| Set of 3 Living Room Tables by DeSoto..... | \$650⁰⁰
Reg. \$859.85 — Now..... | All American Tourister Luggage..... | 30% OFF |
| Wall Clocks..... | 15% OFF | Grandfather Clocks..... | 25% OFF |
| | | All Curio Cabinets..... | 30% OFF |



**Starts
Wednesday,
February 2**

**9 A.M.
Closed Monday &
Tuesday For
Preparations**

— BEDDING —



- | | |
|---|---------------------------|
| 1 King Size Set Mattress & Box Springs
by Spring Air — Reg. \$539.95
— Now..... | \$450⁰⁰ |
| 3 Sets Regular Size Mattress & Box
Springs by Spring Air —
Reg. \$449.95 — Now..... | \$375⁰⁰ |
| 2 Sets Queen Size Mattress &
Box Springs by Spring Air —
Reg. \$549.95 — Now..... | \$450⁰⁰ |
| 2 Sets Regular Size Mattress
Box Springs by Spring Air —
Reg. \$419.95 — Now..... | \$350⁰⁰ |
| Sets Queen Size Mattress
Box Springs by Spring Air
Reg. \$499.95 — Now..... | \$399⁹⁵ |

— BEDROOM —

- | | |
|--|----------------------------|
| 6-Piece Bedroom Suite by Ranch Oak Reg. \$1695.00 — Now..... | \$995⁰⁰ |
| 7-Piece Queen Bedroom Suite by DeSoto Reg. \$2500.00 — Now..... | \$1895⁰⁰ |
| 7-Piece King Bedroom Suite by DeSoto Reg. \$2650.00 — Now..... | \$1995⁰⁰ |
| 5-Piece Queen Bedroom Suite by Riverside Reg. \$1250.00 — Now..... | \$950⁰⁰ |
| 5-Piece Bedroom Suite by Thomasville Reg. \$1995.00 — Now..... | \$1495⁰⁰ |
| Pine Dresser, Mirror, and Headboard by Riverside. Reg. \$839.90 — Now..... | \$500⁰⁰ |
| 5-Piece Queen Bedroom Suite by Thomasville Reg. \$1550.00 — Now..... | \$1195⁰⁰ |
| 6-Piece Queen Bedroom Suite by Lane Reg. \$2795.00 — Now..... | \$1995⁰⁰ |
| All Cedar Chests by Lane..... | 30% TO 40% OFF |

— LIVING ROOM —

- | | | | |
|--|-------------------------------|--|----------------------------|
| One Group of Lamps..... | 50% Off | One Rattan End Table by Ayers —
Reg. \$239.95 — Now..... | \$175⁰⁰ |
| Charles Custom Sofa, Reg. \$1095.00 — Now..... | \$825⁰⁰ | One Rattan Spot Chair by Ayers —
Reg. \$299.95 — Now..... | \$225⁰⁰ |
| All Pictures & Wall Hangings..... | 50% off | One Rattan Occasional Chair by Ayers —
Reg. \$319.95 — Now..... | \$250⁰⁰ |
| Six Piece Den Group by DeSoto
Regular \$2150.00 — Now..... | \$1595⁰⁰ | Beige Sofa & Loveseat by Clyde Pearson —
Reg. \$2290.00 — Now..... | \$1595⁰⁰ |
| Charles Custom Sofa, Reg. \$1395.00 — Now..... | \$995⁰⁰ | Charles Custom Sofa — Reg. \$1350.00 — Now..... | \$995⁰⁰ |
| Sofa Sleeper by Riverside, Reg. \$695.00 — Now..... | \$495⁰⁰ | Brown Print Sofa by Clyde Pearson —
Reg. \$1295.00 — Now..... | \$895⁰⁰ |
| Two Rattan Wing Chairs by Ayers —
Reg. \$239.95 Each — Now..... | 2 FOR 1 | Set of Three Living Room Tables by Mersman —
Reg. \$929.85 — Now..... | \$695⁰⁰ |
| Two Rattan Poe Tables by Ayers —
Reg. \$149.95 Each — Now..... | 2 FOR 1 | Sofa, Chair & Ottoman by International —
Reg. \$995.00 — Now..... | \$750⁰⁰ |
| Set of Three Rattan Tables by Ayers —
Reg. \$1050.00 Set — Now..... | \$750⁰⁰ Set | Brown & Tan Velvet Sofa by International —
Reg. \$695.00 — Now..... | \$495⁰⁰ |
| One Rattan Trunk by Ayers. Reg. \$299.95 — Now..... | \$225⁰⁰ | Ten Piece Pit Group by International —
Reg. \$3000.00 — Now..... | \$2495⁰⁰ |

— DINING ROOM —

- | | |
|--|----------------------------|
| Two 5-Piece Chrome & Wicker Dinettes — Reg. \$995.00 — Now..... | \$749⁰⁰ |
| Glass & Wicker Game Set by Ayers — Reg. \$1095.000 — Now..... | \$795⁰⁰ |
| 7-Piece Dining Room Suite by DeSoto — Reg. \$2895.00 — Now..... | \$2195⁰⁰ |
| 7-Piece Dining Room Suite by American of Martinsville —
Reg. \$3495.00 — Now..... | \$2500⁰⁰ |
| 7-Piece Dining Room Suite by Thomasville — Reg. \$3595.00 — Now..... | \$2500⁰⁰ |

**Be sure to visit our bargain balcony for
even greater savings on discontinued and
slightly damaged items!**

Perryton

FURNITURE CO.

Phone
435-5131

206 SO. MAIN • PERRYTON, TEXAS