



WEATHER

August 21	93	61	.01
August 22	96	63	
August 23	101	68	
August 24	103	61	.59

BAILEY COUNTY JOURNAL

'The Community Of Opportunity-Where Water Makes the Difference'

Vol. 23 No. 36

10 Pages Today

Published Every Sunday at Muleshoe, Bailey County, Texas 79347

Sunday, August 25, 1985

Moderate To Heavy Rain Is Recorded

Around Muleshoe

Wayland Ethridge, principal at Muleshoe High School, said high school students may pick up 1985-86 schedules promptly at 8 a.m. the first day of school, September 3.

Senior schedules will be available in Room 11; Juniors in Room 14; Sophomores in the library and Freshmen at the office. Classes start at 8:20 a.m.

The Anchor Brothers Band, a gospel-music group based in Sudan, have been notified that for the second consecutive year, they have been nominated as "Gospel Music Group of the Year," by the Southern Gospel Music Association.

One of the five finalists, which includes The Anchor Brothers Band, will be tabbed with the prestigious top SGMA award during their annual meeting in Arlington on the second weekend in September.

Members of the group include Reydon Stanford, Kenneth Richards, Dean Richards, W.T. Watson and Jerry Howard.

Lazbuddie ISD will hold a special called meeting at 8 p.m. on Tuesday, August 27, in the board room at the school. This meeting will be a public hearing on the 1985 tax rate.

The Lazbuddie ISD proposed rate will be 95 cents, which is the same rate at 1983 and 1984. However, the effective tax rate as published, is less than 95 cents, explained a school official.

On Monday, September 9, at 7:30 p.m., the first Muleshoe 4-H meeting for the fall will be held at the Bailey County Civic Center.

Deana Finck, Bailey County Home Extension Agent said enrollment forms will be available and programs and projects will be discussed.

Saturday night, August 24, the Muleshoe Youth Center adults hosted a "Back to School" youth dance at the old Gibson building on West American Blvd.

This time, instead of an area Cont. Page 6, Col. 2



GETTING READY FOR SCHOOL--City workers have been very busy the past several days, striping crosswalks around the local schools, especially the two elementary schools, where hundreds of students will be crossing in the next couple of weeks when school starts again, September 3. Law enforcement officers and school officials are asking all motorists to be very aware that school time is near.

School Starting Soon : Driver Safety Is Asked

H. John Fuller, superintendent and Tom Jinks, assistant superintendent of business for the Muleshoe Independent School District, are issuing cautions to each and every motorist in the upcoming months.

The caution is urged to watch out for, and protect, children riding school buses and also children walking to school.

They said all drivers of school buses have completed a 20-hour refresher course taught by David Gray, a high school instructor, and therefore, the drivers are certified by the Texas Education Agency.

Muleshoe City Police Chief Les Irvin has added a word of caution from the law enforcement point of view, regarding busing and school children.

"We will be enforcing all the laws to protect kids going to school," he said, "and will be especially patrolling very closely

around the schools the first few days of school.

"Also, effective September 1, the fine for speeding in a school zone has changed from \$1-\$200 to a minimum of \$50. The speed laws will be strictly enforced. At this time, the speed limit between Junior High and High

Cattle Breeders Asked To Attend Embryo Meeting

Beef cattle producers in the Muleshoe area are invited to attend an educational meeting on Monday, August 26, at 8 p.m. at the Bailey County Coliseum, says Spencer Tanksley, County Extension Agent. The main item to be discussed will be embryo transfer and nutritional management of the beef herd. He said the purpose of the meeting is to acquaint beef cattle producers with the economic feasibility of this reproduction process that is receiving emphasis.

There will be two speakers for the evening, including, Dr. John McNeil, area livestock specialist from Amarillo, who will discuss beef herd management and nutrition, body condition related to breeding, herd vaccination and health program and economic feasibility.

Dr. Barry Cowart, DVM, Muleshoe, will speak on procedures for synchronizing cows, techniques used in collecting and transferring embryos, use of frozen eggs and success of new procedures at the Muleshoe Embryo Genetics Center.

Tanksley said, "Embryo transfer, simply stated, involves collection of multiple embryos from donor cows and their transfer to eligible recipient cows. However, the process involves many critical intermediary steps, including donor selection, superovulation, artificial insemination, estrous synchronization, ova and embryo collection, classification of embryo and transfer of suitable embryos to prepared recipients."

"Although embryo transfer has been studied for 25 years, it still remains an exciting new technology and has grown to a multimillion dollar business within the last decade. While the genetic gain from embryo transfer is small compared to artificial insemination (AI) and the use of superior sires, it offers many other unique opportunities.

"An average rancher's life span may cover only six to seven generations of cows. Therefore, the chances of obtaining a truly superior calf

School is still 10 mph, while the speed around the other schools is 20 mph."

In general, these are the laws that should be obeyed to assure protection of all students: (1) obey speed limits, especially in the school zones; (2) drivers must stop completely for unloading students when red flashing lights on the bus are in operation; (3) watch out for small children on their way to and from school; and (4) make complete stops, especially where crosswalks are painted.

Also, (5) drive as if your child were a pedestrian or a school bus rider; (6) parents should have their children at the assigned pick-up points on time or a little ahead of time; (7) parents of Dillman Elementary students need to help supervise your children at loading or unloading zones and at your pick-up or drop-off points; and please don't let these children

Cont. Page 6, Col. 2

Wind, Dust Accompany Friday Thunderstorms

And -- the rains came, but they were very spotty on a hit-and-miss style.

After teasing skies for most of the week failed to produce much

Lazbuddie Registration Is Planned

On Thursday and Friday, August 29-30, at 9 a.m., pre-kindergarten, kindergarten and all new students at Lazbuddie Elementary School will register for the coming school year.

To be eligible for enrollment in a pre-kindergarten class, a child must be at least four years of age by September 1, 1985, and:

- (1) be unable to speak and comprehend the English language; or (2) be from a family where income, according to standard set by the State Board of Education, is at or below subsistence level (free and reduced price lunch); and
- (3) students will be given Pre-LAS to help determine eligibility.

Pre-kindergarten classes will be operated on a half day basis. Transportation will be provided in the morning, but parents will be responsible for picking up students at noon. If a substantial number of students are not identified, then the program will not be offered for the 1985-86 school term.

To be eligible for kindergarten, a child must be at least five years of age by September 1, 1985. Kindergarten class will be operated on a full-day basis.

All Lazbuddie ISD seniors are asked to register between 9-11 a.m. on Thursday, August 29. The juniors will register between 1:30-3:30 p.m.

All sophomores will register between 9-11 a.m. on Friday, August 30 and freshmen will register between 1:30-3:30 p.m. that same day.

High school students will complete registration cards, and be given student handbooks, annuals, locker assignments, books and class schedules.

more than brilliant lightning and booming thunder, rains skipped around the area on Friday night and early Saturday morning, playing havoc with outside activities, including the football scrimmage.

Although Friday afternoon rain deposited very little in the way of moisture, lightning kept players off the field at Benny Douglass Stadium and threatened the scrimmage for the Muleshoe Mule Junior Varsity and Varsity teams.

The varsity finally got to take to the field, following the passage of a thunderstorm that produced very little rainfall.

Early Saturday morning, a thunderstorm blasted through, with very high wind, and heavy lightning, left up to two inches of rain in the Fairview area.

Several reports came in about nearly two inches of rain around eight miles south and one to two miles east of Muleshoe.

Also, Robert Hunt, in the Lariat/West Camp area, said he received one and a half to two inches of rain, and had, in fact, cut his wells off.

Near the New Mexico line on the Arch highway, Mrs. Floyd Davis said they recorded 1.1 inches of rain at their farm, the first they had received in some time.

Jodie Barrett, one mile south of Needmore said they received only very light rain there, not enough to even get the roads muddy.

The same report was received from Charleta Treider at Lazbuddie. The operator of Charleta's Kitchen, Mrs. Treider said from the early morning talk at the restaurant, very little rain was received throughout the Lazbuddie community.

In the Y-L community, Mrs. Cont. Page 6, Col. 5

Pre-Kindergarten Registration Set At Local School

Mrs. Barbara Finney, principal at Dillman Elementary School, reminds parents of the pre-kindergarten class which will be provided this fall.

To be eligible for enrollment, a child must be at least four years of age, and from a family whose income, according to standards set by the State Board of Education, is at or below subsistence level. The child does not necessarily have to be a bilingual student.

The pre-kindergarten class will operate on a half-day basis from 12:15 to 3:15 p.m. and parents also will have to provide transportation.

If you have an eligible four year old, you may register now at Dillman Elementary. Please bring the child's birth certificate and immunization records, said Mrs. Barbara Finney. You may call Dillman at 272-4313.

Stress Management Meet Scheduled Very Soon

Somewhere between the slow-paced lifestyles of the 1930's and the complex lifestyles of today, every Texas family experiences the stress and pressures of everyday living, said Deana Finck, County Extension Agent, Home Economics, Bailey County. She added, rapidly changing lifestyles have created increased amounts of stress and stress-related diseases among farm and ranch families. Studies have shown that farmers and ranchers ranked in the top 10 percent of high stress occupations.

Ranching and farming as an occupation has changed from physical labor to one that requires greater mental input. Ranchers are confronted with such decisions as marketing, herd maintenance, breeding, feeding, expansion, or reduction

of their operations -- all at a "good" time when profits are most likely and families can be best provided for and the rancher can stay in business another year. Managing money is a highly stressful part of everyday living. To compound farmers' and ranchers' stress, their families are responding to different stresses in their own ways.

Three major factors about the changing farm and ranch family that are identified as stressors, according to Ms. Finck, are: (1) the evolution of the farm and ranch from a physical occupation to a mental occupation; (2) current economic conditions that are causing farmers and ranchers to manage large sums of money or can force him out altogether within the same year; and (3) the modern family that has broadened the role and responsibility of women to include more decision-making about the operation.

The Bailey County Extension Advisory Committee is sponsoring a stress management seminar on Tuesday, September 3, 7:30-9:30 p.m. at the Bailey County Coliseum. Program topics will include stress sources, why farm and ranch stress is different from other stress, symptoms of stress, causes of stress, stress consequences, what you can do about stress, affects on the family, and stress and disease.

Dorothy Taylor, Family Life Specialist with the Texas Agricultural Extension Service, will

Cont. Page 6, Col. 1



DOROTHY TAYLOR

Heritage Foundation Funding Growing

Monday night, following a Community Party, hosted by the Muleshoe Heritage Foundation; memberships poured in from the large crowd attending the meeting and party. More than \$7,000 in cash and pledges were received.

Members of the Muleshoe Heritage Foundation have released the following charter memberships and contributions made the Foundation during the meeting, and immediately prior to the meeting:

GOLDEN MULESHOE (Lifetime)

Gilbert P. Lamb, G.E. Free, the Martin Oliver family, the Knights of Columbus, the Muleshoe Lions Club and the Muleshoe High School SCAC.

HOMESTEADER (Lifetime)

The Jennyslippers, Mr. and Mrs. T.R. White, Mr. and Mrs. Harold Allison and Mr. and Mrs. Bob Cumpsten.

Both the above memberships will be displayed on appropriate plaques and hung in one of the buildings.

SESQUICENTENNIAL (For 1985-1986)

Mr. and Mrs. J.D. Cage, Mr. and Mrs. Roy Whitt, Mr. and Mrs. Buck Ragsdale, Mr. and Mrs. R.A. Bradley, Mr. and Mrs. Jack Rennels, Mr. and Mrs. James T. Lee, Mr. and Mrs. Winston Allison, Mr. and Mrs. J.E. McVicker, Mr. and Mrs. Rudolph Moraw, Elizabeth Watson, Chuck Smith, Ann Camp, Ruth Hall, Kathryn Taylor and the American As-

sociation of Retired Persons (AARP)

The above membership will appear on a large plaque in the shape of TEXAS to commemorate the Sesquicentennial Year, and will hang in the depot or ranch house.

MULESKINNER (One Year)

Mr. and Mrs. W.T. Hutton, Cont. Page 6, Col. 3



ALL 'SCRUNCHED-UP'--This is what a late model car looked like after it was struck from behind by a pickup truck approximately 8-9 miles west of Muleshoe on Highway 84. The 4 a.m. accident left the driver of the pickup hospitalized for treatment of injuries received in the crash.

Did You Know?

From The
Muleshoe Heritage
Foundation

DID YOU KNOW???

The first Post Offices in Bailey Co. were located in general stores and run by the store owner. Whoever happened to be at the closest post office picked up the mail and brought it back to the community or to their neighbor. By 1930 post offices were widely available all over the county, and rural routes had been established.

The first post office in Bailey Co. was established at Old Hurley. John Metsker was the postmaster. The office was in Metskers general store. The mail was picked up at Bovina & carried to Old Hurley 3 times a week by Josh Blocker. His first means of carrying the mail was by bicycle. Later he used a cart. This early mail service probably began in 1908.

Sometime later, Mrs. Ed Brunk carried the mail from Bovina to Old Hurley. She carried it 3 times a week using a horse & buggy. While carrying the mail in winter, Mrs. Brunk would stop at the T.L. Snyder place and pick up a hot soapstone which she could reheat at Bovina for the return

**Letter
To The
Editor**

Dear Editor,

We are deeply grateful to the news media of Muleshoe for the excellent publicity given us during our drive to set up a Muleshoe Area Heritage Complex. Without the fine support given by the Journal, KMUL, and Channel 6, we might not now be realizing the successful launching of this ambitious endeavor.

The Muleshoe Heritage Foundation Community Party held at the Bailey County Community Center last Monday night was resoundingly successful, and much of this success was due to the coverage given by your newspaper, by the radio, and by cable television. We deeply appreciate each one.

It was indeed gratifying to see the response of the public through their generous donations and offers of help. We are now confident that we have something unique going and we are excited to think about all the possibilities for activities for the Muleshoe and Bailey County area to use and enjoy.

Gratefully,
The Muleshoe Heritage Foundation Board

Bailey County Journal
Established March 31, 1883. Published by Muleshoe Publishing Co., Inc. Every Sunday at 304 W. Second, Box 440, Muleshoe, Texas, 79452. Second Class Postage paid at Muleshoe, Texas, 79452.

MEMBER 1985
TEXAS PRESS ASSOCIATION

L.B. Hall-President
James Woods-Vice President
Clara Williams-News
Evelyn Harris-Society
Hilda Millsap-Advertising
Little Nims-Circulation Classified
Sammye Hall-Bookkeeper

SUBSCRIPTIONS:
Muleshoe Journal and Bailey County Journal Bailey and surrounding counties \$12.95
Muleshoe Journal and Bailey County Journal Elsewhere in Texas \$12.95
Muleshoe Journal and Bailey County Journal Outside of Texas \$13.95
Yearly by Carrier \$11.50
Advertising rate card on application.

trip to Old Hurley. When a post office first came to Muleshoe, it was established in a variety of buildings such as general stores, barber shops, hotels, then finally a move to a separate building where M.P. Smith ran a groc. and dry goods store. The post office was located in the front of the store. From 1916-1918 M.P. Smith was post master of Muleshoe; from 1919-1920, E.E. Hagler; 1920, Beulah W. Carles became the post mistress & served until 1935.

In 1926 M.P. Smith closed his groc. store in which the post office was located. A new post office was located at approx. where the Western Auto building is. The post office remained in that bldg. until the brick bldg. was built east of Main on Ave. B where Terry Field Insurance is located now.

In 1919 there came a new means of communication to Bailey Co. It was a newspaper called

THE BOOSTER, the first in Bailey Co. and its publisher was Turner Smith. The paper, about 3 columns wide & containing 4 pages was published every month. **THE BOOSTER** was printed on a hand press.

Later about 1923 the **BAILEY COUNTY BUGLE** was published, being printed in Farwell by M/M Stanley Sigler, and later purchased by Captain E.E. Hull of Clovis, N.M. where it was then printed.

The Muleshoe Journal of Dec. 13, 1925 stated that Levi Prissely established the paper on Mar. 22, 1924 and was published in Clovis once a week. In 1925, Prissely gave up his job as publisher of Mlsh

Journal to become Bailey Co. Attorney.

R.B. Boyle put the first printing plant in Mlsh. in 1924-the name of the paper was the **MULESHOE JOURNAL** & contained 8 pages-4 pages printed by Mr. Boyle & 4 were printed elsewhere & sent to Mlsh. Boyle ran his machines on gasoline. After him, came C.S. Holland who installed linotype machines & elec. motors.

In 1930 Jess Mitchell bought the **MULESHOE JOURNAL**.

In 1924 telephones came to Mlsh. with the Hendricks operating the telephone system in Littlefield & Muleshoe. By 1926, the Hendricks operated as Panhandle Telephone Co. & provided service to several area towns such as Littlefield, Anton, Shallowater, Bledsoe, Amherst, Sudan, Lehman & Mlsh.

**Three Way
News**

by Mrs H.W. Garvin

Mr. and Mrs. John Flinn from Phoenix, Arizona spent Sunday and Monday with their mother Mrs. H.W. Garvin.

Mr. and Mrs. Rayford Masten were in Seymour Tuesday until Thursday on business.

Several familys from the community are on vacation this week.

Mr. and Mrs. W.E. Latimer spent the weekend in Dallas visiting his sister.

Mr. and Mrs. S.G. Long are in Amarillo to be with her sister

who is a patient in Saint Anthonys Hospital.

Mr. and Mrs. Joe Sowder spent the week end in Little Rock Arkansas to attend the wedding of their son Mike to Elizabeth Bradley who were married Saturday.

Rev. and Mrs. James Gillentine from Lubbock spent Monday and Tuesday with their mother Mrs. H.W. Garvin.

Mr. and Mrs. Hubert Dolle and Mr. and Mrs. J.T. Dolle and children from Littlefield and Mr. and Mrs. Don Dolle and family from Canyon and Belinda Dolle from Lubbock were guests in the Bill Dolle home Saturday.

Rev. and Mrs. John Cockrell and children and Mr. and Mrs. C.W. Williams and boys were dinner guests in the Adolph Wittner home Sunday.

"Muleshoe Fitness Center"
Now Registering
For Fall Classes

MFC

Offering classes in Karate, women's Self-defense, Tumbling & trampoline, men & womens weight training & exercise programs.

Owned & Operated By
Danny & Ricki Kelley
403 S. Main
806-272-4992

**Wheat
Seed**

TAM 105
other varieties available

\$775 bu.

Double Treated & Sacked
Contact:
Curby Brantley
272-4109 or 925-6458

Whites **Autocenter** **PLUS**
All you need to know about cars is us!

Quantity limit rights reserved, except where prohibited by law.

GREAT OUTDOOR SALE

\$199 Winchester Ranger Semiautomatic Shotgun Reg 239.95
Chambered for 2 3/4" standard or 2 1/4" magnum shotshells. A quick shooter with minimum recoil! 28" ventilated rib barrel with Winchester features. Front site. Choice .12 or .20 gauge. 063-6262.6263

59.95 H&R Single Shot Shotgun Reg 64.95
Your choice of .12-, .20- or .410-gauge models. A consistent best-selling shotgun that's precision made in the USA for many years of reliable performance. Great "first" shotgun for the young shooter. Save with our sale price! 063-6655.6659.6663

348 .12- or .20-Gauge Dove & Quail Shotshells Reg 3.99
For dove, quail and all small birds. #8 shot. Box of 25. Stock up now! 063-9620.9621

Super-X 22 Long Rifle High-Velocity 22 Cartridges
119 Reg 1.59
Cartridges that offer you quality and dependability. Custom brass case for smooth chambering and ejection. Non-corrosive priming mixture gives clean, reliable ignition. Box of 50. STOCK UP! 063-9600

Ensign 7x35 Binoculars by Bushnell
24.88 Reg 34.95
Bring it right before your eyes—great for hunting, sports, sightseeing! INSTA-FOCUS feature for quick, accurate focusing with a twist of your fingers. 375-ft field of view. 1-year warranty. 063-7519

Shop Whites for all hunting accessories!

8.99 Camouflage Gun Case **Save \$3** Reg 11.99
Comes in 48" and 52" sizes to fit most rifles and shotguns. Protects your firearms with 1/2" Tufflex padding and soft, no-lint flannel lining. Wraparound reinforced handle. 063-7734.7735

3.99 Camouflaged T-Shirt **Save 2.50** Reg 6.49
Made of soft, cool 50% polyester/50% cotton. Short sleeve has knit collar and chest pocket. Comfort in the field or anywhere! S-M-L-XL sizes. Pick 'em up at savings now. 063-8469 to 8472

5.99 Camouflage Hunting Vest **Save \$3** Reg 8.99
Cool mesh back, two large bellows-style expanding front pockets, expanding game bag and elastic ammo loops. 100% cotton duck with nylon mesh. S-M-L-XL sizes. 063-7540 to 7543

True Value HARDWARE STORES

HARDWARE VALUE OF THE MONTH

Master
Made in U.S.A.

6.99 While Supplies Last
Resettable Combination Padlock lets you choose the 4-digit sequence. Hardened shackle, brass case. 175-0
QUANTITIES LIMITED

Fry & Cox, Inc.
410 S. 1st 272-4511

Apply Now For Your Whites Credit Card

Whites MasterCard VISA AMERICAN EXPRESS

P O Y N O R S

103 Main White Stores, Inc. 272-4552

Courthouse News

MARRIAGE LICENSE
Dennis John Chamberlain and Susan Michele Bedient, Oneonta, N.Y.
Jose Rafael Lopez and Lucila Rubie, Sudan
Aldo Herrera Almanza and

Florinda Mendoza, Muleshoe
Robert Stephen Pace, Lazbuddie and Lisa Nichole Newsom, Sudan
Johnnie Alvise Miller, Clovis, N.M. and Verlene Jo Garth, Muleshoe
Martin Lopez Mendoza, Jacksonville, North Carolina and Rebecca Perez, Muleshoe
WARRANTY DEEDS
Higginbotham - Bartlett Company to Thursie Reid--All of lot (9), in Block (1), of the Hillcrest Addition to the City of



BIRTHDAY PARTY--Five residents of the Muleshoe Nursing Home celebrated their birthdays during the month of August and were honored with a birthday party Thursday afternoon. Hosting the party was the Needmore Community Club with Odessa Shanks providing the music and Decorators providing flowers. Edith Bruns, left, was born August 1, 1889; and Edith Goucher was born on August 8, 1906.

Muleshoe, Bailey County, Texas.
Ginger K. Bales to Kem E. Bales--The (NW/4) of Section (44), Block Y, WD&FW Johnson Subdivision Number (2), Bailey County, Texas.
Kem E. Bales to Wilma Faye Nowell--The (SW/4) of Section (44), Block Y, WD&FW Johnson

New Arrivals



Wyndolyn Michelle Allison

Mr. and Mrs. Jim Allison are the proud parents of a daughter born at 8:25 a.m. Tuesday, August 20 in West Texas Hospital in Lubbock.
The young lady weighed six pounds and six ounces and has been named Wyndolyn Michelle.
Grandparents are Mr. and Mrs. Daniel Webster of Lubbock and Mr. and Mrs. Harold Allison of Muleshoe.
Great grandparents are Mr. and Mrs. Bob Cumpsten of Muleshoe and Hayes Webster of Indiana.

Valentin Colunga

Mr. and Mrs. Valentin Colunga are the proud parents of a son born at 6:38 a.m. August 19 in West Plains Medical Center.
The young man weighed six pounds and 12 ounces and has been named Valentin. He is the first child for the couple.
Grandparents are Mr. and Mrs. Roberts Gonzalez of Muleshoe and Mr. and Mrs. Victor Colunga of Mexico.
Great grandparents are Mr. and Mrs. Severo Gonzalez of Mexico and Mrs. Petra Palafex of Mexico.

Anna Alicia Vidaurri

Mr. and Mrs. Francisco Vidaurri of Farwell are the proud parents of a daughter, Anna Alicia, born at 1:36 p.m. August 16 in West Plains Medical Center.
Anna Alicia weighed six pounds and 14 ounces. The couple have three other children, Veronica, eight; Jessica, five; and Wesley, one year of age.
Grandparents are Mr. and Mrs. Agripino Vidaurri of Farwell and Mr. and Mrs. Rogelio Jaime of San Ygnico.

Shauna Renee Kitchens

Mr. and Mrs. Larry Kitchens are the proud parents of a daughter, Shauna Renee, born at 5:21 a.m. Wednesday, August 21 in West Plains Medical Center.
Shauna Renee weighed eight pounds and one half ounces. The couple have two other children, Joshua, four; and Toby, three years of age.
Grandparents are Mr. and Mrs. Raymond Treider of Lazbuddie and Mr. and Mrs. I.L. Kitchens of Muleshoe.
Great grandparents are Mr. and Mrs. Charles Neely of Lazbuddie and Nola Treider of Lazbuddie.

Subdivision Number (2), in Bailey County, Texas.
Kem E. Bales to Norma Lou Wright--The (NW/4) of Section (44), Block Y, WD&FW Johnson Subdivision Number (2), in Bailey County, Texas.
Martha Susan Bush to Dennis Lee Bush--A track of land 75 feet out of Labor 21, in League 186, Swisher County School Land, in Bailey County, Texas.
Charles L. Pummill and wife, Rhonda Sue Pummill to Aurelio Cuevas, Sr. and wife, Maria del Refugio Cuevas--All of the Southwesterly twenty-four and one-half feet of Lot (12), and all of Lots (13) and (14), in Block Number (4), Original Town of Muleshoe, Bailey County, Texas.

COUNTY COURT
Charles Manuel Martin DWI \$400 Fine 15 Days Jail
Charles Manuel Martin Work Release
Irvin Andrew Smith DWI \$250. Fine 2 Years Probation
Josefina Carrion Sale of Alcoholic Beverage in Dry Area \$1,000 Fine
Rodolfo Romo Morin Judgment NISI
Armando Alaniz Theft \$250 Fine 1 Year Probation
Ross Anthony Feagley Unlawfully Carrying Weapon \$50 Fine
Edward H. Brantley Judgment NISI

DISTRICT COURT
Big Green Farm Supply Company Vs Tom Flowers Joint Motion To Dismiss
Dorenda Sue Feagley and Ross Anthony Feagley DV
Carolyn Kay Wales and Charles Joseph Wales DV
Reynolds and Young, Inc. Vs. Vernon Lott Motion To Dismiss
Alicia Isabel Janas and Paul Janas DV
Muleshoe State Bank, Muleshoe, Texas Vs Aurelio Cuevas, Sr. \$6,341.56 Default Judgment

Angels Of Mercy Of West Plains Medical Center

After growing up in Muleshoe, Jackie Collins RN married and left home at age eighteen only to return again to her roots fifteen years later. Jackie is an associate degree Registered Nurse who graduated from Central Texas College at Killeen in 1979. She is a single parent who is responsible for the care and concern of three children ages 14, 12, and 10. Of nursing she says, "Nursing is not just a job, it is a profession of service. It is such a good feeling to know you've lessened the pain of another human being. Whether that pain is physical or emotional, the feeling of accomplishment is the same".

Almost every borrower can give you a good reason why the money you lend will be safe.



JACKIE COLLINS, RN

A&M
Hi-Protein
Dog Food
50 Lb. Bag **\$8.49**

Baby Shoe BRONZING SALE! 25% OFF
DURING AUGUST ONLY
FINAL WEEK!
Style 51 Unmounted Shoe - Bright Bronze
NOW **\$12.38** each
Reg. \$16.50

Now is the time to save on bronzing baby's precious shoes. With every adorable scuff and crease preserved forever in solid metal... they make priceless gifts for your family to cherish through the years.

Style 31 Walnut Paperweight Bright Bronze NOW \$20.21 Reg. \$26.95
Style 62 Oval Miniature Bright Bronze NOW \$41.21 Reg. \$54.95
Style 45 Portrait Stand (with 8x10 or 5x7 Frame) Bright Bronze NOW ONLY Reg. \$62.95 **\$47.21**

SPECIAL--Baby's name, birthdate engraved--only 25¢ per letter.

Many of your favorite mementos can be bronzed. Baseball Gloves, Cowboy Boots, Hats... or that old beat up pair of Tennis Shoes. All at SALE PRICES!

All styles in Bright Bronze, Antique Bronze, "Pewter", Silver, Gold and Porcelainize... at SALE PRICES--25% OFF!

SALE ENDS AUGUST 31
Lindsey Jewelry
202 Main 272-9355

Ben Franklin Crafts
Better quality for less
2104 WEST AMERICAN BLVD.
MULESHOE PH. 272-3855
STORE HOURS: 8 a.m. - 8 p.m. Sunday 12-5 p.m.

Prices Good Sunday Aug. 25 To Monday Sept. 2

Labor Day Sale!

Gum Drop Gang Soft Sculpture Doll Kits Reg. 4.88 **\$2.44** 50% Off Original Price

Borg Furry Animal Kits Reg. 9.99 **\$4.99** 50% Off Original Price

Cabbage Patch Afghan Stenciling Kits Reg. 9.88 **\$4.94** 50% Off Original Price

Cabbage Patch Cut & Sew Stuffedables Reg. 3.67 **\$1.84** 50% Off Original Price

Cuddle Kids Soft Sculpture Kits Reg. 8.00 **\$3.99** 50% Off Original Price

Fibre Craft Country Hoop Soft Sculpture Animals Reg. 5.97 **\$2.94** 50% Off Original Price

Lily Canvas Darning Kits Reg. 5.97 **\$2.99** 50% Off Original Price

Stencil Decor Stenciling Kits Reg. 9.97 **\$4.99** 50% Off Original Price

Cuddly T-Bear Kit Reg. 5.88 **\$1.99**

Creative Moments Hoop-To-Stitch Kits Reg. 6.00 **\$3.00** 50% Off Original Price

Cathy Shadow Quilting Kits Reg. 10.00 **\$4.99** Reg. 14.00 **\$6.99** 25% Off Original Price

Paragon Candlewicking Plus 4 Scented Sachet Kit Reg. 9.00 **\$4.50** 25% Off Original Price

Vogart Net Darning Pillow Kits Reg. 6.27 **\$3.14** 50% Off Original Price

Ray-Mar Benny Bear Or Penny Panda Kits Reg. 8.88 **\$4.44** 50% Off Original Price

Metal Punch Kits Reg. 9.88 **\$4.94** 50% Off Original Price
Reg. 5.88 **\$2.94**
Reg. 4.88 **\$2.44**

Just Ducks Carved Decoy Painting Kits Reg. 24.99 **\$12.49** 50% Off Original Price

Creative Moments Candlewicking Pillow Reg. 8.50 **\$4.25**
Reg. 7.20 **\$3.60**

Golden Bee Stamped Cross Stitch Kits 25% Off Original Price
Reg. 10.00 **\$5.00**
Reg. 5.46 **\$2.73**

Violas Is Now Open

Violas Has Been Closed Due To The Opening Of Casa Madrid In Plainview.

Sorry If There Has Been Any Inconvenience!!

Viola & Noe Anzaldúa

Casa Madrid Mexican Restaurant

ALFREDO & MARIANN ANZALDUJA 3105 OLTON ROAD PLAINVIEW, TEXAS 79072 (806) 296-9222

Candlelight Ceremony Unites Miss Dee Kinard, Grumbles

Miss Dee Ann Kinard became the bride of Bobby Harold Grumbles, Jr. in a candlelight ceremony Saturday, July 27 at 3 p.m. in the New Covenant Church. The Rev. Jimmy Low read the double ring vows. Parents of the couple are Hattie Kinard and Mr. and Mrs. Bobby Grumbles, all of Muleshoe.

Debra Lackey and Rick Zomora sang "Our Love." Jana Grumbles, sister of the groom, of Muleshoe served as maid of honor and Michelle Lane of Goodland was bridesmaid. Flower girl was Jennifer Hill of Dumas.

David Low of Muleshoe served as best man and Zeke Contreras of Muleshoe was groomsman. Ring bearer was Gary Joe Graves of Dumas.

Justin Helton of Muleshoe and Derek Prater of Dimmitt served as candlelighters and ushers.

Following the ceremony a

reception was held at the church. Dayna Bradford registered the guests. Servers were Connie James and Kay Lynn Brantley.

After a wedding trip to Dallas, the couple are making their home in Muleshoe.

Out of town wedding guests included: LaVaner Kinard of Floydada, grandmother of the bride; Roy Kinard, uncle of the bride, of Floydada; Danee Priddy of Floydada, aunt of the bride; Mr. and Mrs. James Kinard, Mr. and Mrs. Johnny Bradford, and Mr. and Mrs. L.J. McLaughlin.



MR. AND MRS. BOBBY HAROLD GRUMBLES
(nee Dee Ann Kinard)

Alpha Beta Pi Sorority Begins

Fall Meetings

Alpha Beta Pi held their first meeting in the home of Annette Bonds. The theme was "Old Mexico" and members attended dressed in clothes bought in Mexico.

A meal of chicken enchalada casserole, guacamole salad, taco salad, chips, hot sauce and homemade sopapillas, was served. As everyone arrived margaritas were served.

Business reports were given and discussed and committee chairman gave their reports. A money making project was discussed and was voted on by members. Further details will be given at a later date.

Pledges names and their sponsors were given. They will be joining the group on Tuesday, August 27 for Girls Rush.

It was reported that the couple's party is to be held on Saturday, August 31 at the Country Club swimming pool and a show of hands on those attending was counted.

Members attending were Rayniel Bamert, Annette Bonds, Debbie Cowley, Marilyn Crittenden, Roxie Johnson, Paula McMeans, Rhonda Myers, Sue Rogers, Susan Wedel and Barbara Young.

Fit?

It must be said that the taxpayer is numbered about the fittest. Under the toughest conditions, he manages somehow to survive.

-Grit.

Rebekah Lodge

Fourteen members of the Muleshoe Rebekah Lodge No. 114 traveled to Friona Tuesday night, August 20 to meet Johnnie Hefner, President of the Rebekah Assembly of Texas.

Mrs. Hefner, from Gilmer, Tex., was on her official visit to District 5, composed of Friona, Muleshoe, Dimmitt, and Hereford. All of these lodges were represented along with several from the Amarillo lodge.

Supper was served to 41 members prior to the meeting.

Mrs. Hefner made a speech which included activities of the Childrens Home in Corsicana and the Old Folks Home in Ennis.

The group was reminded that on September 7 and 8 the Rebekahs and Odd Fellows of Texas will be celebrating the 10th anniversary of the Childrens Home in Corsicana.

Individual gifts were presented to Mrs. Hefner by all the lodges in the District. Muleshoe lodge presented a friendship skit for Mrs. Hefner and at the conclusion a monetary gift, shaped as an oil well, was presented to her. Her motto being "Be A Good Driller For Rebekah-Oddfellowship."

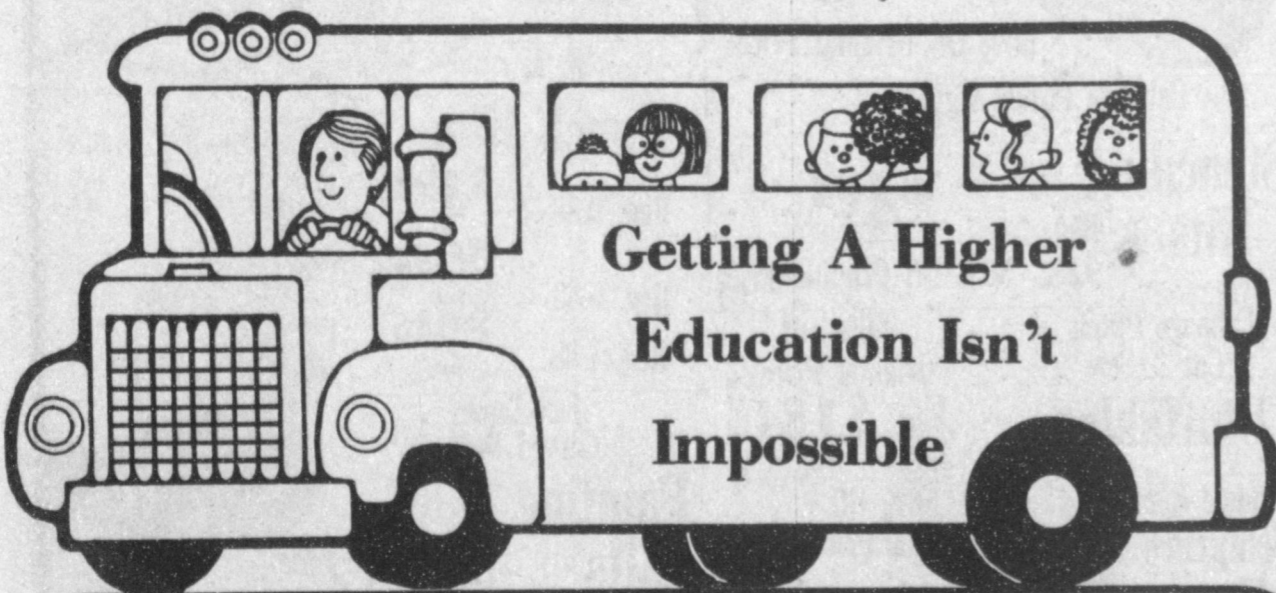
ANNOUNCEMENT

H & R Block is offering a Basic Income Tax Course starting September 5th. There will be a choice of morning or evening classes held at the H & R Block office at 224 W. 2nd St. The twelve week course is taught by experienced personnel and certificates are awarded to all graduates. While thousands of job opportunities are available, graduates are under no obligation to accept employment with H & R BLOCK. Registration forms, brochures and a schedule of classes may be obtained by contacting the H & R BLOCK office at 224 W. 2nd 272-3332.

In Fashion

The big shirt is much in the fashion scene. It is seen with skirts, pants and swimsuits.

The big shirt is usually belted when worn with skirts and pants. It gives a layered look when worn over blouses or tank tops.



Getting A Higher
Education Isn't
Impossible

We Can Take Care Of Those Financial
Worries, & Help You Achieve That Dream...

How?

With A Student Loan!

- Maximum \$2500 per year
- Flexible
- Low Interest
- Application, Easy & Fast
- Convenient Repayment Terms
- Opportunity Available To All Regardless Of Race, Color, Religion, Sex, Age or Marital Status.

Only At

MULESHOE STATE BANK

MEMBER FDIC

101 West American Blvd.

Phone 806/272-4561

Miniature Golf Proceeds Donated To Girl Scout Fund

On Thursday afternoon, a number of people were out enjoying the evening at the miniature golf course. Proceeds from the evenings' games were donated by Wayne and Joyce Holmes, Managers of the Mule Putt Golf Course, to the repair fund for the Girl Scout Little Hut.

Troop Leader, Betty Ashford, joined by Girl Scouts, Amanda Ashford, Robin Hovland, Shawna Delaney, Larissa Henderson and Melinda Tucker greeted the guests and handed out Thank You notes and a pamphlet telling why they enjoy being a Girl Scout. Guests were also served refreshments of chocolate cake and cookies.

Nelda Merriott, Coordinator for the Girl Scout Little Hut Repair Project was also on hand to greet the golfers.

Proceeds from golfing were

\$58.00 plus a donation of \$20.00 by Ronald Ashford. Nelda remarked: "This \$78.00 is certainly appreciated-as we are finding that renovating an old building can be a very expensive and time-consuming project! And this building needs a lot of TLC! (tender loving care) It is really getting a face-lift from the new roof to the plumbing under the floor. Some flooring is being replaced and some walls need new sheetrock. It is so much more than painting walls and it seems a little slow, but we sincerely appreciate the work being done by the Kiwanis and other interested individuals.

"We are still hoping for a September Open House when everyone can come out and see the building which will serve many uses in the future."

Despite what some people say, most of us want to do the right thing, even though we don't do it.

Allsup Stores' 1985 Roadrace Is Scheduled

Plans have been announced for the Eleventh Annual Allsup's Roadraces to be held in Clovis, New Mexico.

The date for this years events is Saturday, September 14th. As always, the Annual Allsup's Roadraces promise a well planned day of racing for the serious runner as well as the weekend jogger. Entrants have a choice of the 26.2 mile full marathon, 13.1 mile half marathon, the 10,000 meter- 6 mile race, or the one mile event. Races will all begin at 7 AM sharp Saturday morning, and they will finish in traditional olympic style on the Clovis High School stadium track. The courses are flat, asphalt paved loops with temperatures traditionally ranging from 50 to 75 degrees.

Quality trophies will be awarded at noon at C.H.S stadium plus commemorative Allsup's Roadrace long-sleeve

tee shirts will be awarded to all finishers.

The activities begin with pre-registration Friday, September 13th at the Clovis Family YMCA-1700 E. 7th Street. Check-in time from 5 to 9 PM. Entry fee for all races is \$7.00 before September 2 and \$9.00 after September 2, 1985. All proceeds go to the Clovis Roadrunners Club.

Runners of all ages and distances are invited to participate in what has come to be known as one of the friendliest races in the Southwest: Allsup's Annual Roadraces in Clovis, N.M.

LOWEST PRICES THIS YEAR
H.S. CLASS RINGS

1 WEEK ONLY!
August 31 through September 7

Reg. \$93.50
Now
\$69.95

All Boys and Girls
Stadium® H.S. Rings

Special Introductory Price
\$129.00

10K Gold
Fanfare Style

Plus up to \$36 worth of custom features FREE!

Reg. \$179.00
Now
\$159.00

10K Gold Champion
or Intrepid Styles

ARTCARVED
CLASS RINGS

Lindsay Jewelry

870 869 1238272-9355

202 Main

BACK-TO-SCHOOL BASICS

<p>Entire Stock Men, Ladies & Childrens Shoes 20% off</p>	<p>Mens Boot Cut Wranglers \$14⁹⁷ 2 For \$29 Reg. 16.99</p>	<p>Student Wrangler \$14⁹⁷ 2 For \$29 Reg. 17.99</p>
<p>Boys Wrangler 8-14 \$12.97 4-7 \$8.97</p>	<p>Mens By Javelin Fashion Briefs 2 For \$5⁰⁰</p>	<p>Mens Hanes Underwear Brief \$5.50 Reg. 7.99 T-Shirt \$7.50 Reg. 10.49</p>
<p>Girls Lee & Chic Jeans Sizes 7-14 \$14⁹⁷ 2 For \$29⁰⁰</p>	<p>Girls 4 - 6x ATB Jeans \$12⁹⁹ 2 For \$25⁰⁰</p>	<p>Girls Panties By Wundies 77¢ a pair</p>
<p>Entire Stock Danskin Leotard & Tights 20% off</p>	<p>Entire Stock Ladies Playtex Bras \$3⁰⁰ Off Any Reg. Price</p>	<p>Womens Lorraine Panties \$2⁷⁷ 2 For \$5</p>
<p>Special Group Of Junior ATB Jeans Reg. \$22 - \$30 \$15.97</p>	<p>Junior Tops By Genesis \$12⁹⁷</p>	<p>Entire Stock Of Our Solid Color Percale Sheets 20% Off</p>
<p>Bed Pillow By Hollander Reg. 3.99 2 For \$7⁰⁰</p>	<p>Comforter By Dan River Values To \$55.00 \$16⁹⁷</p>	<p>3 Piece Towel Set By Supreme \$9⁹⁷</p>

ANTHONY'S

321 Main

272-3478

Mon - Fri 8-6 Sat 8-7



GOLDEN ANNIVERSARY--Mr. and Mrs. Boyd Killingsworth will be honored with a reception in the Longview Baptist Church from 2 to 4 p.m. Sunday, September 1 in celebration of their 50th wedding anniversary. Hosting the event will be their children and grandchildren. Killingsworth and the former Pearl Gardner were married on Sept. 2, 1935, in Hitchita, Okla. The couple have two children, Wilma Polson of Vernon, and Bill Killingsworth of Muleshoe, and six grandchildren.

West Plains Hospital Report

PATIENTS IN WEST PLAINS MEDICAL CENTER

August 20 -Gene Meador, Muleshoe, Leonardo Saucedo, Muleshoe, Darla Valdez, Muleshoe, Cindy McCarty, Muleshoe, Frances King, Muleshoe, Hector Arzola, Muleshoe, Esther Contreras, Muleshoe, Lynn Roberts, Farwell, Christi Edwards, Texico, N.M., Johnny Gonzales, Clovis, N.M., Carol Perez, Friona, George Goodwin, Earth, Sylvia Colunga--Baby Boy Colunga, Muleshoe and Maria Vidaurri--Baby Girl Vidaurri, Farwell

August 21 -Raymond Gonzales, Muleshoe, Frances King, Muleshoe, Hector Arzola, Muleshoe, Esther Contreras, Muleshoe, Rhonda Kitchens, Baby Girl Kitchens, Muleshoe, Lynn Roberts, Farwell, Raymond Serna, Farwell, George Goodwin, Earth, Elva Teague, Bovina, Gwen Clements, Bovina and Christi Edwards,

Texico, N.M.

August 22 -Lynn Roberts, Farwell, Raymond Serna, Farwell, Christie Edwards, Texico, N.M., Elva Teague, Bovina, Gwen Clements, Bovina, Sidney Key, Muleshoe, Christene Howard, Muleshoe, Frances King, Muleshoe, Hector Arzola, Muleshoe, Rhonda Kitchens, Baby Girl Kitchens, Muleshoe, Margarito Hernandez, Muleshoe and Don Williams, Muleshoe.

TIPS TO SAVE... ENERGY... MONEY

Keeping Your Cool— And Your Cold Cash

There are ways that consumers can control their electricity bills during the air conditioning season advise home economists from Whirlpool Corporation.

- Weather-strip doors and windows and keep tightly closed.
- Close all unnecessary openings such as fireplace dampers.
- Turn off electrical lights and appliances when they are not needed.
- Don't use heat producing appliances, such as irons and ovens, simultaneously.



AUGUST BIRTHDAYS CELEBRATED--The Needmore Community Club hosted a birthday party for five residents of the Muleshoe Nursing Home Thursday afternoon in the day room of the nursing home. Odessa Shanks provided the music and Decorators presented the honorees with flowers. Among those celebrating birthdays in August were: Fred Peat, left, who was born August 24, 1891; Morris Douglass, right, born August 19, 1912; and Lois Ethridge, standing, born August 22, 1917.

WMU Weekly Meeting Held

WMU of the Trinity Baptist Church met Tuesday afternoon, August 20 at the church for Bible Study. The lesson for the day was taken from Hebrews 9:1-14 with Pearl Dunlap doing the reading. She also led the group in a prayer for the missionaries.

All of those present took part in the Royal Service and the lesson was on "Laser At Work Reaching Ethnics."

Those present included: Pearl Dunlap, Dora Barber, Eva Ashford, Clara Coffman and

TOPS CLUB

Muleshoe TOPS chapter No. 34 met at 6:30 p.m. Thursday, August 15 in the meeting room of Bailey County Electric.

Clara Lou Jones, leader, called the meeting to order. The TOPS pledge was recited and the fellowship song sung.

Jewel Peeler, weight recorder, called the roll with eight members and two visitors, June Arnold and Wendy Sain, present. Linda Wimberley read the minutes of the previous meeting and they were approved as read.

Mrs. Peeler was named best loser for the week.

The meeting was closed with the singing of the goodnight song.

Wenona Spears. The meeting was dismissed with a prayer by Eva Ashford.

Hard To Swallow

Honor graduate of the waiters' course in courtesy will be the one who learns how to pick up a nickle tip gracefully.

-Globe, Boston.

Yogurt Not Necessarily Low Calorie

Yogurt can be a dieter's delight--or downfall.

According to a Texas A&M University Agricultural Extension Service nutritionist, it all depends on the type of yogurt you eat.

"Yogurt's calorie count depends on the butterfat content of the milk from which it is made," says Dr. Alice Hunt. "The more butterfat, the higher the calories."

One cup of nonfat plain yogurt contains about 90 calories, while the low-fat type has about 150 calories and the whole milk product can have 180 to 210 calories.

Many of the new custard-style or creamy style yogurts use whole milk, Hunt observes. The fat from the whole milk adds flavor and creaminess, but also makes some of these products almost equal to ice cream in calories.

"Dieters should also consider the serving size on yogurt products," says the nutritionist, "since more manufacturers are

using six-ounce containers instead of eight-ounce containers for the higher calorie yogurt."

She cautions consumers to note the serving size when comparing calories among yogurt products. "A six ounce container of a higher-fat yogurt may have the same number of calories as an eight-ounce cup of low-fat yogurt because the serving size is reduced."

Flavoring in yogurts is another source of calories a dieter may want to avoid, says the nutritionist.

Flavored yogurts contain two to three times more calories than plain yogurt, with the extra calories coming from fruit and sugars such as sucrose, fructose, corn sweetener or honey.

Whether you eat high-calorie or low-calorie yogurt, both have one big plus, says Hunt. Most yogurts contain about 350 milligrams of calcium per serving which is about 35 percent of the U.S. Recommended Daily Allowance.

Thank You

I would like to thank everyone for the cards, flowers, phone calls & prayers during my illness.

May the Lord Bless you real good.

Elmo & Naomi Owens

Ben Franklin
Better quality for less

2104 W. Amer. Blvd. 272-3855 Muleshoe
Open Mon. - Sat. 8 a.m. - 8 p.m. Sunday 12-5 p.m.

LABOR DAY SALE! Prices Good Sunday Aug 25 Thur Monday Sept. 2
While Quantities Last

Girls Bubble & Tube Tops 2.27 - 1.44 1/2 price	Ladies Bubble & Tube Tops Values From 2.77 to 88¢ 1/2 price	Ladies Shorts & Top 1/2 price
Ladies & Girls Bathing Suits 1/2 price	Junior Girls Tops Reg. \$2.67 4.00	Boys & Girls Shorts Values From 5.44 to 1.77 1/2 price
Boys & Girls 2 Pc. Short Sets Reg. \$4 & \$5 1/2 price	Infants & Toddlers Playwear Reg. \$1.50 3.00	Boys & Girls Summer Tops Values From 11.47 to 3.88 1/2 price
Toddlers Boys & Girls Summer Tops Values From 5.96 to 2.97 1/2 price	Boys & Mens Bathing Suits Values From 9.66 to 2.97 1/2 price	Cotton & Poly Fabrics Reg. 1.77.....1.33 Reg. 1.79.....1.34 Reg. 1.99.....1.49 Reg. 1.88.....1.41 Reg. 1.39.....1.04
6 Pk 12 Oz. Cans Pepsi \$1.19	Galaxy 20" 3 Speed Breeze Box Fan Reg. 23.97 \$18.88	Galaxy 20" 3 Speed Wind Machine Reg. 25.97 \$19.88
Sunbeam Patio Master Portable Gas BBQ Grill Reg. 39.97 \$28.97	Snapset 5' 10" Deep Swimming Pool Reg. 8.44 \$6.88	6x15 Splash & Stash Swimming Pool Reg. 12.97 \$9.47
Kleenix Huggies Disposable Diapers Newborn to 14 lb 66 ct. Med 12-24 lb 48 ct Lg 23 & over 33 ct \$8.99	Wire Grid Almond Choc. White Chairs Reg. 8.97 \$4.47	Vinyl Tube Lounge & Chair Reg. 9.97 \$6.97
Happy Cooker Round w/Lock Top Lid Travelling Grill Reg. 23.97 \$19.88	22" Mower Side Discharge Lawn Mower Reg. 179.99 \$129.99	4 Gal. Coleman Oscar Ice Chest Reg. 13.97 \$10.97
		Foam Ice Chest Reg. 1.27 77¢

Now Registering For Fall Classes

Muleshoe Dance & Gymnastics
219 E. Ave. B 272-4017

Sign up Now For Fall Classes
Starting Tues. Sept. 3

Class Schedule!

- | | |
|---------------------------------------|------------------|
| 3&4 year old girls | 2-3 p.m. |
| 3&4 year old boys | 3-4 p.m. |
| 4-5-6 year old (advanced 4yr. olds) | 4:15 - 5:15 p.m. |
| 5-6-7-8 year old (advanced 5yr. olds) | 5:15 - 6:15 p.m. |
| 9 year old & over - Advanced girls | 7:15 - 7:15 p.m. |
| Team | 6:45 - 8:45 p.m. |

- ★ 10 Years Experience
- ★ Member USGF
- ★ Member USAIGC
- ★ USGF Insurance Program
- ★ All Aspect Of Gymnastics For Boys & Girls
- ★ Gymstrade Skill Test Program
- ★ Boys & Girls Competitive Teams
- ★ Pre-School Thru Advanced Classes

Come In Friday -August 30
Pre-Enrollment & Open Gym 12-4 p.m.



15. Misc.

If you make unusual, quality "craft" items and want to sell on consignment, contact Boxholder, Box 12014, Lubbock, 79452 or 806-745-3059 evenings and weekends. 115-34s-1tc

15. Misc.

SLIGHT PAINT DAMAGE. Flashing arrow sign \$259 complete. (3 left). Lighted no arrow, \$237. Non-lighted \$189. Local. Factory: 1 (800) 423-0163, anytime. 15-34s-1tpts

"The crisis of yesterday is the joke of tomorrow." -H.G. Wells

11. For Sale Or Trade

CARPORTS & AWNINGS
On Sale thru August at a 25% Discount.
806-293-1720 Days
293-7665 Nites
p11-31s-tfcts


"Admonish your friends in private; praise them in public."
Publius Syrus

11. For Sale Or Trade

SHOP AROUND FOR THE BEST PRICE THEN SEE OUR PRICES 60% OFF 14K GOLD&DIAMONDS EVERY DAY
BI-WIZE HEALTH MART
902 Main Friona, Texas 247-3010
b15-23s-tfc

3. Help Wanted

3. Help Wanted



Career opportunities available now with this rapidly growing convenience food store operation. Applications are being accepted now for Store Manager, Asst. Manager, full time and part time clerk positions, experience a plus but not required. Benefits include above average starting salaries, paid vacations, sick leave, group insurance and performance based bonus plan. Apply at the Town & Country Food Store at 1900 W. American, in Muleshoe. t3-27s-tfc

"Flattery is telling the other guy what he already thinks of himself."
Hal Wilshire

17. Seed & Feed

COMBINE RUN, Rye Seed 7 cents a pound. Ernest Martin 925-6742 in evenings. m17-34s-6tc

17. Seed & Feed

EXPERIENCED SUNFLOWER DRYING
and cutting. Call Jim Crawford 925-6439, 272-5105 or 272-4086 for details. c17-34s-tfc

18. Legal Notice

NOTICE TO ALL PERSONS HAVING CLAIMS AGAINST THE ESTATE OF SAM BLACKWELL, DECEASED
Notice is hereby given that original letters testamentary upon the Estate of Sam Blackwell, Deceased, were issued to me, the undersigned, on the 22nd day of August, 1985, in the proceedings indicated below my signature hereto, which is still pending, and that I now hold such letters. All persons having claims against said estate, which is being administered, in the County Court below named, are hereby required to present the same to me at the address below given, before suit upon the same are barred by the general statutes of limitations, before such estate is closed, and within the time prescribed by law.

Round-up applications cotton, soybeans, maize, layout, tipe-wick mounted on highboy 30 inch or 40 inch rows. Call Roy O'Brian 265-3247. o17-26s-tfc

18. Legal Notice

NO. 1646

IN RE THE ESTATE OF SARAH KELTON, DECEASED

IN THE COUNTY COURT OF BAILEY COUNTY, TEXAS
NOTICE TO ALL PERSONS HAVING CLAIMS AGAINST THE ESTATE OF

NOTICE TO ALL PERSONS HAVING CLAIMS AGAINST THE ESTATE OF SARAH KELTON, DECEASED

Notice is hereby given that original Letters of Administration for the Estate of Sarah Kelton were issued on August 9, 1985, in Cause No. 1646, pending in the County Court of Bailey County, Texas, to-wit: Mamie Province.

The residence of such Administratrix is 604 Yucca Street, Clovis, New Mexico 88101. The post office address is the same.

All persons having claims against this estate which is currently being administered are required to present them within the time and in the manner prescribed by law.

DATED the 20th day of August, 1985.
Mamie Province, Administratrix of the Estate of Sarah Kelton, Deceased

My post office address is Route 12, Box 251, Waco, Texas 76710.

Dated this 22nd day of August, 1985.

David Evetts, Executor of the Estate of Sam Blackwell, Deceased, No. 1648, in the County Court, Bailey County, Texas.

w18-34s-1tp

DAIRY SALE
Sat., Aug. 31 11:00 a.m.
Portales Livestock Co.

Expecting 100 to 150 Heavy Springer Holstein Heifers and 400 250 Lb. to 800 Lb. Open Holstein Heifers.

- Early Consignments Include:**
- 40-1100 to 1200 Lb. Heavy Springer Holstein Heifers
 - 12-1150 lb. heavy Springer Holstein Heifers
 - 10-1000 to 1150 Lb. heavy Springer Holstein Heifers
 - 9-1050 to 1200 Lb. Springer Holstein Heifers
 - 50-250 to 350 Lb. Holstein Heifers - A.I.
 - 70-225 to 400 Lb. Holstein Heifers
 - 35-600 to 800 Lb. Holstein Heifers
 - 23-900 to 1100 Lb. Short Bred Holstein Heifers
 - 6-300 Lb. Holstein Heifers

For More Information Contact
Tommy Bouldin, Owner
505-356-4740
H.K. Carpenter, Sales Mgr.
Call Daily 806-655-2300
Canyon, Tex.

The Following Businesses & Individuals Are Members Of The Muleshoe Chamber Of Commerce & Agriculture.
They Believe Enough In Our Town To Actively Support Growth In Muleshoe Through The Chamber.

Shouldn't Your Name Be On This List?

Chamber Members

- ADMINISTRATION AND SCHOOL BOARD**
ADRIAN PHOTOGRAPHY
ALBERTSON'S SHOP FOR MEN
ALEX'S TIRE SERVICE
AMERICAN HERITAGE COMPANY
C.R. ANTHONY'S
AMERICAN VALLEY INVESTMENTS
- BAKER FARM SUPPLY**
BAMERT SEED COMPANY
BARRETT PRODUCE CO.
BASS APPLIANCE
BEN FRANKLIN'S
BLACK WATER VALLEY SOIL CONSERVATION
BINGHAM & NIEMAN REALTY
BOBO INSURANCE
ROMER ELECTRIC
BRATCHER MOTOR SUPPLY
TOM K. BONDS DDS
ALTON BURTON SERVICE CENTER
- CHICK-N-DUCK**
JAMES CRANE TIRE CO.
- DAIRY QUEEN**
DALE OIL CO.
DENT-REMPE IMPLEMENT
- EL HAUSTECO CAFE**
ELLIS FUNERAL HOME
ENERGAS
FAIR STORE
FAMOUS FASHIONS
FARMER'S COOP ELEVATOR
FARMER'S SPRAYING SERVICE
FEDERAL LAND BANK
FIVE AREA TELEPHONE
FIRST NATIONAL BANK
FRY & COX
- GENERAL TELEPHONE CO.**
ROBERT D. GREEN
RAY GRIFFITHS & SONS
DR. JOHN HAMBLEN
HENRY INSURANCE
HIGGINBOTHAM-BARTLETT
HIGH PLAINS COMMODITIES
HOME INTERIOR ACCESSORY & GIFTS
- JAMES ROYS MEAT MARKET**
- K-BOB'S STEAK HOUSE**
KMUL RADIO STATION
KING GRAIN CO.
- GIL LAMB ADVERTISING**
LAMBERT CLEANERS
LEAL'S RESTAURANT
LEE'S WESTERN WEAR
LENAU LUMBER CO.
LINDSEY JEWELRY
LOOKIN' GOOD
- MCCORMICK SEED CO.**
MOHAWK AUTO PARTS CO.
MORRISON OIL CO.
MULESHOE ANTENNA CO.
MULESHOE AUTO PARTS
MULESHOE COOP GIN
MULESHOE DANCE & GYMNASICS
MULESHOE DIAGNOSTIC LAB
MULESHOE ELECTRIC
MULESHOE FITNESS
MULESHOE GOLF CLUB
MULESHOE JOURNAL
MULESHOE LIVESTOCK AUCTION
MULESHOE MOTOR CO.
MULESHOE STATE BANK
MULESHOE SUPERMARKET
- PAY-N-SAVE**
PERRY'S
PIVOT PRODUCTS DIST., INC.
PIZZA HUT
POYNOR WHITES AUTO STORE
PRODUCTION CREDIT ASSN.
- ROBERT RUIZ, INC.**
- SANITARY BARBER SHOP**
SERV-ALL THRIFTWAY
S&G ANTIQUES
SHAFFER'S BELL STATION
JOE SHIPMAN & SONS
SONIC DRIVE-IN
SOUTHWESTERN GEOTHERMAL SYSTEMS
SOUTHWESTERN PUBLIC SERVICE
- SPURGEON'S MOTOR & SUPPLY**
BOB STOVALL PRINTING
SUDDUTH FIELD & CO.
SUMMIT SAVINGS
- TERRY FIELD INSURANCE**
TEXAS SESAME GROWERS
TOWN & COUNTRY FOOD STORE
- VALLEY GRAIN PRODUCTS**
VIOLA'S
- WEBB SPUDNUT**
WEST PLAINS MEDICAL CENTER
WESTERN DRUG
WESTERN '66' FERTILIZER
WIEDEBUSH & CO.
WILLIAM BROS. OFFICE SUPPLY
WILSON APPLIANCE INC.
WOOLEY INTERNATIONAL, INC.
WRINKLE WELDING
- YOUNG & WALDREP CO.**
JOES BOOT SHOP
MULESHOE BODY SHOP
BOB WHITE INDUSTRIES- BWI

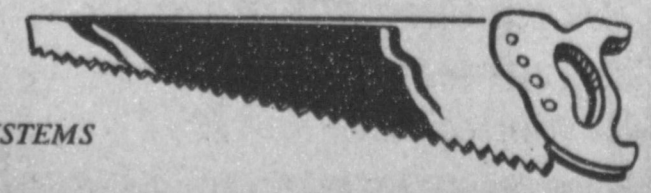
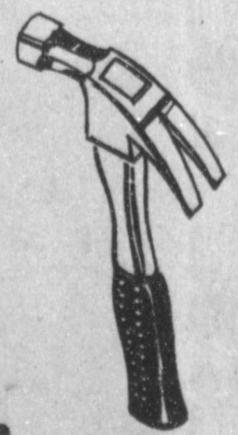
Individual Members

- HAROLD ALLISON FARM
R.D. "TUB" ANGELEY
DOUGLAS BALES
S.D. CLEMENTS
SAM FOX
BOBBY FREE FARMS
GORDON GREEN
JOE HARBIN
HOWARD FAMILY PRESERVATION TRUST
JAMES T. LEE
REV. DARRELL MARTIN
BARBARA MCCAMISH
LONNIE MERRIOTT
NELDA MERRIOTT
KERRY MOORE
CHARLES L. SMITH, JR.
DOROTHY TURNER
DOYCE TURNER
ROY WHITT
JACK TEMPLER
VERN OWEN
TOM OWEN
JAMES GLAZE

Honorary Members

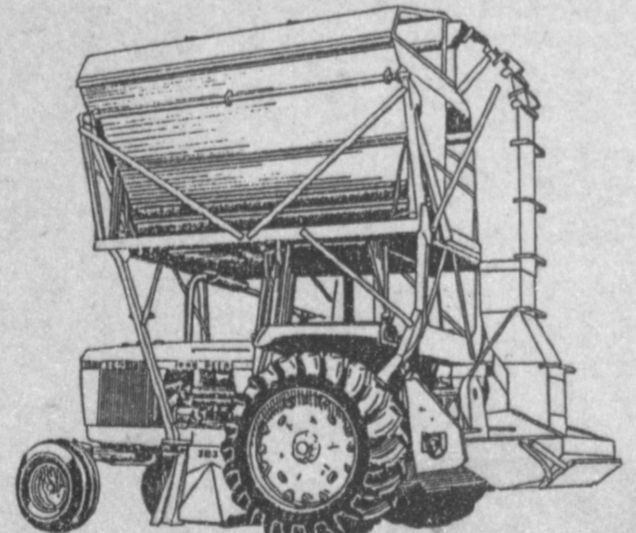
- MULESHOE LION'S CLUB
CLETA WILLIAMS

Coming Alive -- In '85 'To Build A Better Muleshoe'



CLASSIFIED

ECONOMICAL 2-ROW STRIPPER



The field-proven John Deere 283 Tractor-Mounted Stripper can reduce harvest cost

For the month of September you can buy a New 283 cotten stripper for only \$6500.00, in crate. That is right only \$6500.00

DENT - REMPE
W. Hwy 84 Muleshoe
272-4296




LAWN FOOD PLUS DIAZINON

Kills Grubs and feeds your lawn

ferti-lome

Use Oftanol-Also
Kills For 90 Days
Kills Resistant Grubs
Baker Farm Supply
1532 W. Amer. Blvd 272-4613

Bailey County Journal

Classified

Call 272-4536

CLASSIFIED RATES
1st Insertion
Per Word\$15
Minimum Charge.... \$2.30
2nd Insertion
Per Word\$13
Minimum Charge.... \$2.00

CLASSIFIED DISPLAY RATES
\$1.70 per column inch

BLIND AD RATES
50% more

DEADLINES
12 Noon Tues. for Thursday paper
12 Noon Fri. for Sunday paper

WE RESERVE THE RIGHT TO CLASSIFY, REVISE, OR REJECT ANY AD. NOT RESPONSIBLE FOR ANY ERROR AFTER AD HAS RUN ONCE.

1. Personals

MARY KAY COSMETICS in stock. Free facials. 272-3865 Josie Flowers. fl-22t-tfc

DAVIS COMMERCIAL PUMPING SERVICE
Cess pools, Grease pits, Dipping vats, Mud pits, Septic Tanks.
"If it's part liquid and not over 20 foot deep we'll try to drain it."
806-272-4673
806-272-3467
Muleshoe, Texas
1-25s-stfc

3. Help Wanted

GOVERNMENT JOBS \$16,040 - \$59,230/yr. Now Hiring. Call 805-687-6000 Ext. R-6226 for current federal list.
3-32t-8tpts

PERSON SALES WANTED: Experience preferred but not necessary. A&M Farm and Ranch. a3-33t-tfc

EMPLOYMENT (male and female) Outside sales position open for mature individual. Five days a week. Dependable transportation required. Call L.B. Price Co. Tel. 806-795-7625.
p3-35s-3tc

HELP WANTED: Full time year around farm worker. Call 965-2259 daytime or 272-3257 after 6.
t3-28t-tfc

NEED SOMEONE to work at school store. 272-3881
t3-34t-2tc

EXCELLENT IN-COME for part time home assembly work. For info. Call 504-641-8033 Ext. 8911.
3-24t-4tcotpts

8. Real Estate For Sale

FOR SALE: 3 bdrm house, 2 bath, shop 29'x40' just outside city limits. Call 272-4900.
h8-33s-8tc

FOR SALE By Owner Nice Home 3-2-2 Richland Hills Automatic Sprinkler. 272-5629
8-33t-4tp

REPOSSESSED 14 & 16 wide mobile homes from \$99 to \$500 down. Delivery included. 6 month free lot rent. Call 1-800-792-0032.
m8-25t-tfctts

[HONEY MOON SPECIAL] This weekend only! With every new mobile home bought receive a free trip for two to Las Vegas or Cancun Mexico and \$300 cash spending money. Call collect Jean or Alvin 1-800-792-0032 or 806-792-9315.
m8-34s-2tc

NEW 14x56 2 bedroom, 1 bath close out prices. Perfect for lake or mountain retreat. Ask for Shelby 763-5319 collect.
a8-33s-tfc

FOR SALE: 12'x60' mobile home - partially furnished \$6,500.00 272-4900
h8-33t-8tc

1976 Mobile Home For Sale. 14 x 80 "nice" 272-3600.
c8-33s-4tsc

8. Real Estate For Sale

House For Sale - Atop the hill in Muleshoe 3-2-2, Den, Study, Basement, Shop approx. 2500 sq. ft. Living area, many extras, well insulated, 5 1/2 years old, by owner 272-5334.
b8-33s-2tsc

FOR SALE or Rent 3 Bedroom 903 W. 8th Muleshoe call 806-285-2757. Olton, Tx. b8-25t-tfc

9. Automobiles For Sale

FOR SALE: 35' Road-ranger travel trailer or trade for small house 925-6451.
9-34t-2tp

1978 Mercury Cougar XR7 Loaded. Excellent condition. See at 919 Ivy or call 272-4131 after 5:00 p.m.
p9-23t-tfc

1980 Model Ford F250 heavy duty-C-6 automatic transmission, 400 CI engine, heavy duty rear axle, new radial tires, and a service body. Runs on propane or gasoline. Call after 8:00 p.m. 925-6485.
p9-24t-tfc

11. For Sale Or Trade

FOR SALE: Two circle pierce sprinklers. Call First Bank, Muleshoe. fl1-33t-tfc

FOR SALE: Bob White Quail. For eating, taxidermy work, or training dogs. For more information call 272-5295.
w11-34s-2tc

FULL BLOOD britany spaniel puppies for sale. Make good hunting dogs. Call 272-5545 or after 5:00 call 272-5741.
k1-34t-2tc

FOR SALE: Two cemetery lots in Bailey Co. Memorial Park Call 915-388-4635 or write to C.M. King Box 244 Kingsland, Tx 78639.
k11-23t-tfc

WANTED: Green Graze or Wheat Pasture within 20 mile radius of Muleshoe call 965-2963 after 6:00 P.M.

TOMATOES, Okra & Peppers. You pick. B.E. Turner. 385-5980 Littlefield.
t15-34t-1mc

15. Misc.

CALL YOUR LOCAL Used Cow Dealer For 7-day a week free dead stock removal. 806-965-2903 collect 1-800-692-4435.
h-15-33t-tfc

TRAILOR SPACE for rent call 272-3718.
b15-34t-3tc

15. Misc.

BIRDWELL CATTLE Co. Coyote Lake, We are buying wheat & barley 806-946-3321. b15-23t-tfc

CLOVIS FLEE MARKET Open every Sat. and Sunday. Corner of Prince and Brady. g15-32t-1mc

1. Personals

HOME REPAIRS F.M. Saldana Construction Licensed and bonded plumber. Specialized in cement, carpenter work, remodeling, painting, acoustical ceilings. 272-4955.
s1-16s-tfc

FURNITURE Upholstering & repairs. Burrows Upholstery Shop 209 W. 2nd Phone 272-4255 Home Phone 272-5722.
b1-41t-tfc

FOR HIRE Sunflower cutting combines, three John Deeres, four tandum axel trucks. Tom Flowers 272-4159 or 272-4439 or 272-4718. References available.
fl-34t-8tc

HELTON'S - Roofing and Exterior Painting, Mobil Home Roofs our speciality. Also the best in Ag. products. Call Jerry Helton 272-3836, 915 Gum, Muleshoe, Tx. h1-8t-tfc

PAINTING by Hour or Job carpenter work or remodeling Tommy Hall 272-4874 or 272-3617.
l-33s-9tp

OPENINGS FOR pre-school children. Good Christian home. Registered. References available. 272-5822.
+1-32s-4tsc

LICENSED DAY CARE 18 mos. and older. Openings for fall. Call Diane Allison 272-3304.

3. Help Wanted

CONCERNED About Someone's Drinking? HELP IS AVAILABLE through Al-Anon Call 227-2350 or 965-2870 or Call 227-2350 or come to visit Tuesday nights, 8:30 p.m. or Saturday mornings at 10:30 a.m. at 1116 W. American Blv., Muleshoe.

VALLEY GRAIN will have temporary openings for harvest work. Come by the office to pick up applications NO PHONE CALLS PLEASE.
v3-34t-tfc

HELP WANTED: Career minded examiners of party plan woman needed to do color analysis and color coordinated make-up. Five figure income possible for part time. Call Hazel 285-3331 Olton.
w3-35s-2tc

DATA PROCESSING coordinator. Need experienced computer operator. Prefer hospital or medical office experience. College course work in accounting and data processing desired. Call West Plains Medical Center, Muleshoe, Texas for interview. Collect calls accepted. 272-4521 ext. 176.

RECEPTIONIST Drs. Office Need pleasant personality for greeting patients and making appointments. Light bookkeeping and insurance billing. Experience Required. Call West Plains Clinic for interview. 272-7851.

4. Houses For Rent

RUIDOSO CHALET: 4 bedroom for rent by day, weekend, or weekly. Call 505-257-2622 or 915-943-4261. Owner Dr. Albertson. a4-49t-tfc

FOR RENT: small unfurnished house. Call 272-3107.
m4-34t-tfc

5. Apts. For Rent

FOR RENT: 1 large bedroom apt. Call 965-2188 or 272-4754 after 6:00 p.m.
s5-32t-tfc

8. Real Estate For Sale

FOR SALE BY OWNER: 3 bdrm, 3 bath brick home, large fenced yard-lots of storage and storm cellar. Call for appointment 272-3592 located 1810 W. Ave. C.
d8-7t-tfc

354 ac. farm & house, Bula, for sale. Would sell 4 B.R. house & few acres. Call Tom Bogard or Tommie Gaston 915-446-2856, 915-446-3326 (JHS for Tommie).
b8-34s-2tsc

9. Automobiles For Sale

FOR SALE: 35' Road-ranger travel trailer or trade for small house 925-6451.
9-34t-2tp

1978 Mercury Cougar XR7 Loaded. Excellent condition. See at 919 Ivy or call 272-4131 after 5:00 p.m.
p9-23t-tfc

1980 Model Ford F250 heavy duty-C-6 automatic transmission, 400 CI engine, heavy duty rear axle, new radial tires, and a service body. Runs on propane or gasoline. Call after 8:00 p.m. 925-6485.
p9-24t-tfc

8. Real Estate For Sale

J.B. SUDDERTH REALTY INC.
Drawer 887
Farwell, TX 79325
Ph. 806-481-3288

181 acres, one 6 in and one 8 in well, valley sprinkler, west of Progress on highway. Owner financing available.

177 acres with zimmatic sprinkler near Lazbuddie. Good water area. Priced at 875 per acre. Owner says sell.

320 acres irrigated E of Farwell on hwy with circle sprinkler 2-8 in. wells approx. 200 ft of water lays nearly perfect.

155 acres irrigated with circle sprinkler, excellent water area, North East of Muleshoe

320 a, 3-8 in wells, circle sprinkler, 3 mi SE Clays Corner

158 a, 3 good wells, circle sprinkler, elevator and new office building on highway, Progress area.

8. Real Estate For Sale

BINGHAM & NIEMAN REALTY
116 E. Ave. C
272-5285***272-5286

COUNTRY LIVING HOMES

4-2 1/2-2 Brick home on approx. 10 acres, built-ins, fireplace, approx. 30' x 50' insulated shop bldg., 10' satellite dish, orchard, sprinkler system, small barn. \$90,500...

3-1-1 home on 1 acre, close to town, nice workshop-storage bldg. & attached shed. \$30's....

3-2-2 Brick on 2 acres, built-ins, fenced yard, fireplace, on pavement, close to town. \$50's!!!!

HANDYMAN'S DREAM 3-2-2 home on 1 acre, on pavement close to town, Sub. well sprinkler pipe. Owner financing possible. \$20's!!!

RICHLAND HILLS

4-2 1/2-2 Brick, Cent. A&H, built-ins, fireplace, study, basement, fenced yard, & more. \$60!!!!

REDUCED PRICE: 3-1 1/2-2 carport, Brick, Cent. A&H, built-ins, gas log fireplace, fenced yard. \$18,000!!!!

3-3-1 carport Brick, Cent. A&H, built-ins, fireplace, nice large den with built-in bar & gun cabinets, loads of storage, large utility, covered patio, gas grill, & storage bldgs.!!!!

2-1-1 Brick, Cent. heat, storm windows & doors, new roof, built-ins, fenced yard & more. \$40's!!!!

3-1/4-2 Brick, Cent. heat, Evap. air, built-ins, nice earth tone carpets, new vinyl flooring, fenced yard. & lots more!!!! \$60's

3-2-2 Brick, Cent. A&H, built-ins, earth-tone carpets, beautifully decorated & landscaped, fenced yard, storage bldg. & more!!!!

COUNTRY CLUB

PRICED REDUCED 3-1 1/2-2 Brick, Cent. A&H, built-ins, nice.

LENAU ADD.

3-1 1/4-1 home, built-ins, fireplace, Evap. air, enclosed patio, comb. workshop-storage, fenced yard, plus other extras!!!!

3-1-1 home, corner lot, Cent. heat, Evap. air, fenced yard. \$30's....

3-1 1/4-1 carport home, nice carpet, fenced yard, neat. \$30's!!!!

NICE 2-1-1 home, wall furnace, evap. air, storm windows & doors, utility, fenced yard & storage bldg. \$30's!!!!

VERY nice 3-2-2 carport home, Cent. A&H, fireplace, nice carpets, large rooms, loads of storage, fenced yard, & lots more!!!!

"WE APPRECIATE YOUR BUSINESS"
GEORGE NIEMAN, BROKER
DIANNE NIEMAN, BROKER

8. Real Estate For Sale

Whitt - Reid •Homes •Farms
Real Estate & Insurance •Ranches
201 Main - Ph. 272-3611 •Commercial

Just Listed 3-1 1/2-2 Brick, living room, den nice kitchen with lots of cabinet space & bar, dishwasher, range-oven, let's look at this one \$45,000.00. 25-H20

New Listing 3-1 1/2-1 Brick, range-oven, bar, fenced back yard, fruit trees & grape vines. 25-H21

3-1 1/4-Brick dining area with large den, formal living room, fireplace, Dishwasher, range-oven, disposal, close to Dillman School with 6' fence in back. 50H-9

3-1 1/4 steel siding, 2 storage houses & water softener. 25-H17

We have several nice 2 Bedroom houses. reasonably priced.

"If You Want It Sold - See Us"

H.C. Reid Broker
Roy Whitt 272-3058
Thursie Reid 272-5318
Joy Whitt 272-3058

8. Real Estate For Sale

HENRY REALTY
111 W. Ave. B
Muleshoe, Texas
272-4581

JUST COMPLETED 3 bedroom, 2 bath, large living room, kitchen & dining. Excellent condition, near high school. Priced to sell.

320 ACRES with large beautiful 3 Bedroom, 3 bath, 3 car garage, spacious gameroom, central heating and air, underground sprinkler for yard 30'x50' shop for building. 5 wells.

80 ACRES with 6" well and 8" well, underground pipe owner financing available. 7 miles west of Muleshoe.

38 ACRES West of Muleshoe, 6 Inch Well, Sideroll, All Wheat.

ONE ACRE sites for Home Construction. 3 Miles East of Muleshoe on HWY. 3 lots remain.

COMPLETELY remodeled 2 Bedroom home. Ideal first home, must see to appreciate. Nice location with F.H.A. loan.

APARTMENT complex, mobile home park, vacant land for expansion. Terms available.

150 ACRES with 6 inch well and 4 inch well. On highway close to Muleshoe. Underground line connects both wells.

COUNTRY living, close to town. A 3-Bedroom, 2-bath, large den with fireplace, central Air/heat, located on one-acre tract. Carpet through-out, many built-in appliances in kitchen. TV-Cable. See to appreciate.
8-23t-tfc

8. Real Estate For Sale

KREBBS Real Estate and Appraisals
272-3191

JIMMIE CRAWFORD Real Estate & Ins.
1725 W Ave E
Muleshoe, Texas
Phone 272-3666

Smallwood Real Estate
232 Main
272-4838

3 Bdr., 2 bath, storage, stucco, fully carpeted, 30's.

3 Bdr., 2 bath, fireplace, 2 car garage, Brick, lots of extras.

ASBESTOS SIDING, 3 B.R., 1 1/4 bath, 1 car garage, Lenau Addition

8. Real Estate For Sale

BINGHAM & NIEMAN REALTY
116 E. Ave. C
272-5285***272-5286

COUNTRY LIVING HOMES

4-2 1/2-2 Brick home on approx. 10 acres, built-ins, fireplace, approx. 30' x 50' insulated shop bldg., 10' satellite dish, orchard, sprinkler system, small barn. \$90,500...

3-1-1 home on 1 acre, close to town, nice workshop-storage bldg. & attached shed. \$30's....

3-2-2 Brick on 2 acres, built-ins, fenced yard, fireplace, on pavement, close to town. \$50's!!!!

HANDYMAN'S DREAM 3-2-2 home on 1 acre, on pavement close to town, Sub. well sprinkler pipe. Owner financing possible. \$20's!!!

RICHLAND HILLS

4-2 1/2-2 Brick, Cent. A&H, built-ins, fireplace, study, basement, fenced yard, & more. \$60!!!!

REDUCED PRICE: 3-1 1/2-2 carport, Brick, Cent. A&H, built-ins, gas log fireplace, fenced yard. \$18,000!!!!

3-3-1 carport Brick, Cent. A&H, built-ins, fireplace, nice large den with built-in bar & gun cabinets, loads of storage, large utility, covered patio, gas grill, & storage bldgs.!!!!

2-1-1 Brick, Cent. heat, storm windows & doors, new roof, built-ins, fenced yard & more. \$40's!!!!

3-1/4-2 Brick, Cent. heat, Evap. air, built-ins, nice earth tone carpets, new vinyl flooring, fenced yard. & lots more!!!! \$60's

3-2-2 Brick, Cent. A&H, built-ins, earth-tone carpets, beautifully decorated & landscaped, fenced yard, storage bldg. & more!!!!

COUNTRY CLUB

PRICED REDUCED 3-1 1/2-2 Brick, Cent. A&H, built-ins, nice.

LENAU ADD.

3-1 1/4-1 home, built-ins, fireplace, Evap. air, enclosed patio, comb. workshop-storage, fenced yard, plus other extras!!!!

3-1-1 home, corner lot, Cent. heat, Evap. air, fenced yard. \$30's....

3-1 1/4-1 carport home, nice carpet, fenced yard, neat. \$30's!!!!

NICE 2-1-1 home, wall furnace, evap. air, storm windows & doors, utility, fenced yard & storage bldg. \$30's!!!!

VERY nice 3-2-2 carport home, Cent. A&H, fireplace, nice carpets, large rooms, loads of storage, fenced yard, & lots more!!!!

"WE APPRECIATE YOUR BUSINESS"
GEORGE NIEMAN, BROKER
DIANNE NIEMAN, BROKER

8. Real Estate For Sale

BINGHAM & NIEMAN REALTY
116 E. Ave. C
272-5285***272-5286

COUNTRY LIVING HOMES

4-2 1/2-2 Brick home on approx. 10 acres, built-ins, fireplace, approx. 30' x 50' insulated shop bldg., 10' satellite dish, orchard, sprinkler system, small barn. \$90,500...

3-1-1 home on 1 acre, close to town, nice workshop-storage bldg. & attached shed. \$30's....

3-2-2 Brick on 2 acres, built-ins, fenced yard, fireplace, on pavement, close to town. \$50's!!!!

HANDYMAN'S DREAM 3-2-2 home on 1 acre, on pavement close to town, Sub. well sprinkler pipe. Owner financing possible. \$20's!!!

RICHLAND HILLS

4-2 1/2-2 Brick, Cent. A&H, built-ins, fireplace, study, basement, fenced yard, & more. \$60!!!!

REDUCED PRICE: 3-1 1/2-2 carport, Brick, Cent. A&H, built-ins, gas log fireplace, fenced yard. \$18,000!!!!

3-3-1 carport Brick, Cent. A&H, built-ins, fireplace, nice large den with built-in bar & gun cabinets, loads of storage, large utility, covered patio, gas grill, & storage bldgs.!!!!

2-1-1 Brick, Cent. heat, storm windows & doors, new roof, built-ins, fenced yard & more. \$40's!!!!

3-1/4-2 Brick, Cent. heat, Evap. air, built-ins, nice earth tone carpets, new vinyl flooring, fenced yard. & lots more!!!! \$60's

3-2-2 Brick, Cent. A&H, built-ins, earth-tone carpets, beautifully decorated & landscaped, fenced yard, storage bldg. & more!!!!

COUNTRY CLUB

PRICED REDUCED 3-1 1/2-2 Brick, Cent. A&H, built-ins, nice.

LENAU ADD.

3-1 1/4-1 home, built-ins, fireplace, Evap. air, enclosed patio, comb. workshop-storage, fenced yard, plus other extras!!!!

3-1-1 home, corner lot, Cent. heat, Evap. air, fenced yard. \$30's....

3-1 1/4-1 carport home, nice carpet, fenced yard, neat. \$30's!!!!

NICE 2-1-1 home, wall furnace, evap. air, storm windows & doors, utility, fenced yard & storage bldg. \$30's!!!!

VERY nice 3-2-2 carport home, Cent. A&H, fireplace, nice carpets, large rooms, loads of storage, fenced yard, & lots more!!!!

"WE APPRECIATE YOUR BUSINESS"
GEORGE NIEMAN, BROKER
DIANNE NIEMAN, BROKER

8. Real Estate For Sale

BINGHAM & NIEMAN REALTY
116 E. Ave. C
272-5285***272-5286

COUNTRY LIVING HOMES

4-2 1/2-2 Brick home on approx. 10 acres, built-ins, fireplace, approx. 30' x 50' insulated shop bldg., 10' satellite dish, orchard, sprinkler system, small barn. \$90,500...

3-1-1 home on 1 acre, close to town, nice workshop-storage bldg. & attached shed. \$30's....

3-2-2 Brick on 2 acres, built-ins, fenced yard, fireplace, on pavement, close to town. \$50's!!!!

HANDYMAN'S DREAM 3-2-2 home on 1 acre, on pavement close to town, Sub. well sprinkler pipe. Owner financing possible. \$20's!!!

RICHLAND HILLS

4-2 1/2-2 Brick, Cent. A&H, built-ins, fireplace, study, basement, fenced yard, & more. \$60!!!!

REDUCED PRICE: 3-1 1/2-2 carport, Brick, Cent. A&H, built-ins, gas log fireplace, fenced yard. \$18,000!!!!

3-3-1 carport Brick, Cent. A&H, built-ins, fireplace, nice large den with built-in bar & gun cabinets, loads of storage, large utility, covered patio, gas grill, & storage bldgs.!!!!

2-1-1 Brick, Cent. heat, storm windows & doors, new roof, built-ins, fenced yard & more. \$40's!!!!

3-1/4-2 Brick, Cent. heat, Evap. air, built-ins, nice earth tone carpets, new vinyl flooring, fenced yard. & lots more!!!! \$60's

3-2-2 Brick, Cent. A&H, built-ins, earth-tone carpets, beautifully decorated & landscaped, fenced yard, storage bldg. & more!!!!

COUNTRY CLUB

PRICED REDUCED 3-1 1/2-2 Brick, Cent. A&H, built-ins, nice.

LENAU ADD.

3-1 1/4-1 home, built-ins, fireplace, Evap. air, enclosed patio, comb. workshop-storage, fenced yard, plus other extras!!!!

3-1-1 home, corner lot, Cent. heat, Evap. air, fenced yard. \$30's....

3-1 1/4-1 carport home, nice carpet, fenced yard, neat. \$30's!!!!

NICE 2-1-1 home, wall furnace, evap. air, storm windows & doors, utility, fenced yard & storage bldg. \$30's!!!!

VERY nice 3-2-2 carport home, Cent. A&H, fireplace, nice carpets, large rooms, loads of storage, fenced yard, & lots more!!!!

"WE APPRECIATE YOUR BUSINESS"
GEORGE NIEMAN, BROKER
DIANNE NIEMAN, BROKER

8. Real Estate For Sale

BINGHAM & NIEMAN REALTY
116 E. Ave. C
272-5285***272-5286

COUNTRY LIVING HOMES

4-2 1/2-2 Brick home on approx. 10 acres, built-ins, fireplace, approx. 30' x 50' insulated shop bldg., 10' satellite dish, orchard, sprinkler system, small barn. \$90,500...

3-1-1 home on 1 acre, close to town, nice workshop-storage bldg. & attached shed. \$30's....

3-2-2 Brick on 2 acres, built-ins, fenced yard, fireplace, on pavement, close to town. \$50's!!!!

HANDYMAN'S DREAM 3-2-2 home on 1 acre, on pavement close to town, Sub. well sprinkler pipe. Owner financing possible. \$20's!!!

RICHLAND HILLS

4-2 1/2-2 Brick, Cent. A&H, built-ins, fireplace, study, basement, fenced yard, & more. \$60!!!!

REDUCED PRICE: 3-1 1/2-2 carport, Brick, Cent. A&H, built-ins, gas log fireplace, fenced yard. \$18,000!!!!

3-3-1 carport Brick, Cent. A&H, built-ins, fireplace, nice large den with built-in bar & gun cabinets, loads of storage, large utility, covered patio, gas grill, & storage bldgs.!!!!

2-1-1 Brick, Cent. heat, storm windows & doors, new roof, built-ins, fenced yard & more. \$40's!!!!

3-1/4-2 Brick, Cent. heat, Evap. air, built-ins, nice earth tone carpets, new vinyl flooring, fenced yard. & lots more!!!! \$60's

3-2-2 Brick, Cent. A&H, built-ins, earth-tone carpets, beautifully decorated & landscaped, fenced yard, storage bldg. & more!!!!

COUNTRY CLUB

PRICED REDUCED 3-1 1/2-2 Brick, Cent. A&H, built-ins, nice.

LENAU ADD.

3-1 1/4-1 home, built-ins, fireplace, Evap. air, enclosed patio, comb. workshop-storage, fenced yard, plus other extras!!!!

3-1-1 home, corner lot, Cent. heat, Evap. air, fenced yard. \$30's....

3-1 1/4-1 carport home, nice carpet, fenced yard, neat. \$30's!!!!

NICE 2-1-1 home, wall furnace, evap. air, storm windows & doors, utility, fenced yard & storage bldg. \$30's!!!!

VERY nice 3-2-2 carport home, Cent. A&H, fireplace, nice carpets, large rooms, loads of storage, fenced yard, & lots more!!!!

"WE APPRECIATE YOUR BUSINESS"
GEORGE NIEMAN, BROKER
DIANNE NIEMAN, BROKER

8. Real Estate For Sale

BINGHAM & NIEMAN REALTY
116 E. Ave. C
272-5285***272-5286

COUNTRY LIVING HOMES

4-2 1/2-2 Brick home on approx. 10 acres, built-ins, fireplace, approx. 30' x 50' insulated shop bldg., 10' satellite dish, orchard, sprinkler system, small barn. \$90,500...

3-1-1 home on 1 acre, close to town, nice workshop-storage bldg. & attached shed. \$30's....

3-2-2 Brick on 2 acres, built-ins, fenced yard, fireplace, on pavement, close to town. \$50's!!!!

HANDYMAN'S DREAM 3-2-2 home on 1 acre, on pavement close to town, Sub. well sprinkler pipe. Owner financing possible. \$20's!!!

RICHLAND HILLS

4-2 1/2-2 Brick, Cent. A&H, built-ins, fireplace, study, basement, fenced yard, & more. \$60!!!!

REDUCED PRICE: 3-1 1/2-2 carport, Brick, Cent. A&H, built-ins, gas log fireplace, fenced yard. \$18,000!!!!

3-3-1 carport Brick, Cent. A&H, built-ins, fireplace, nice large den with built-in bar & gun cabinets, loads of storage, large utility, covered patio, gas grill, & storage bldgs.!!!!

2-1-1 Brick, Cent. heat, storm windows & doors, new roof, built-ins, fenced yard & more. \$40's!!!!

3-1/4-2 Brick, Cent. heat, Evap. air, built-ins, nice earth tone carpets, new vinyl flooring, fenced yard. & lots more!!!! \$60's

3-2-2 Brick, Cent. A&H, built-ins, earth-tone carpets, beautifully decorated & landscaped, fenced yard, storage bldg. & more!!!!

COUNTRY CLUB

PRICED REDUCED 3-1 1/2-2 Brick, Cent. A&H, built-ins, nice.

LENAU ADD.

3-1 1/4-1 home, built-ins, fireplace, Evap. air, enclosed patio, comb. workshop-storage, fenced yard, plus other extras!!!!

3-1-1 home, corner lot, Cent. heat, Evap. air, fenced yard. \$30's....

3-1 1/4-1 carport home, nice carpet, fenced yard, neat. \$30's!!!!

NICE 2-1-1 home, wall furnace, evap. air, storm windows & doors, utility, fenced yard & storage bldg. \$30's!!!!

VERY nice 3-2-2 carport home, Cent. A&H, fireplace, nice carpets, large rooms, loads of storage, fenced yard, & lots more!!!!

"WE APPRECIATE YOUR BUSINESS"
GEORGE NIEMAN, BROKER
DIANNE NIEMAN, BROKER

8. Real Estate For Sale

BINGHAM & NIEMAN REALTY
116 E. Ave. C
272-5285***272-5286

COUNTRY LIVING HOMES

4-2 1/2-2 Brick home on approx. 10 acres, built-ins, fireplace, approx. 30' x 50' insulated shop bldg., 10' satellite dish, orchard, sprinkler system, small barn. \$90,500...

3-1-1 home on 1 acre, close to town, nice workshop-storage bldg. & attached shed. \$30's....

3-2-2 Brick on 2 acres, built-ins, fenced yard, fireplace, on pavement, close to town. \$50's!!!!

HANDYMAN'S DREAM 3-2-2 home on 1 acre, on pavement close to town, Sub. well sprinkler pipe. Owner financing possible. \$20's!!!

RICHLAND HILLS

4-2 1/2-2 Brick, Cent. A&H, built-ins, fireplace, study, basement, fenced yard, & more. \$60!!!!

REDUCED PRICE: 3-1 1/2-2 carport, Brick, Cent. A&H, built-ins, gas log fireplace, fenced yard. \$18,000!!!!

3-3-1 carport Brick, Cent. A&H, built-ins, fireplace, nice large den with built-in bar & gun cabinets, loads of storage, large utility, covered patio, gas grill, & storage bldgs.!!!!

2-1-1 Brick, Cent. heat, storm windows & doors, new roof, built-ins, fenced yard & more. \$40's!!!!

3-1/4-2 Brick, Cent. heat, Evap. air, built-ins, nice earth tone carpets, new vinyl flooring, fenced yard. & lots more!!!! \$60's

3-2-2 Brick, Cent. A&H, built-ins, earth-tone carpets, beautifully decorated & landscaped, fenced yard, storage bldg. & more!!!!

COUNTRY CLUB

PRICED REDUCED 3-1 1/2-2 Brick, Cent. A&H, built-ins, nice.

LENAU ADD.

3-1 1/4-1 home, built-ins, fireplace, Evap. air, enclosed patio, comb. workshop-storage, fenced yard, plus other extras!!!!

3-1-1 home, corner lot, Cent. heat, Evap. air, fenced yard. \$30's....

3-1 1/4-1 carport home, nice carpet, fenced yard, neat. \$30's!!!!

NICE 2-1-1 home, wall furnace, evap. air, storm windows & doors, utility, fenced yard & storage bldg. \$30's!!!!

VERY nice 3-2-2 carport home, Cent. A&H, fireplace, nice carpets, large rooms, loads of storage, fenced yard, & lots more!!!!

"WE APPRECIATE YOUR BUSINESS"
GEORGE NIEMAN, BROKER
DIANNE NIEMAN, BROKER

8. Real Estate For Sale

BINGHAM & NIEMAN REALTY
116 E. Ave. C
272-5285***272-5286

COUNTRY LIVING HOMES

4-2 1/2-2 Brick home on approx. 10 acres, built-ins, fireplace, approx. 30' x 50' insulated shop bldg., 10' satellite dish, orchard, sprinkler system, small barn. \$90,500...

3-1-1 home on 1 acre, close to town, nice workshop-storage bldg. & attached shed. \$30's....

3-2-2 Brick on 2 acres, built-ins, fenced yard, fireplace, on pavement, close to town. \$50's!!!!

HANDYMAN'S DREAM 3-2-2 home on 1 acre,

BORDEN'S ASSORTED
ICE CREAM

\$3.99

BORDEN

5 QT. BUCKET

LABOR DAY

SUPER SALE!

SHURFRESH BONELESS FULLY COOKED
HALF HAMS

\$1.89

3-4 LB. AVG.

HEAVY GRAIN FED WHOLE IN BAG
BEEF BRISKETS

PACKER TRIM 8-12 LB. AVG. **98¢**

SHURFRESH BNLS. FULLY COOKED

CANNED HAMS	3 LB. CAN	\$5.99
FRESH GUARANTEED 73% LEAN		\$1.19
GROUND BEEF	LB.	\$1.59
FRESH CHUCK QUALITY GUAR. 81% LEAN		\$1.49
GROUND BEEF	LB.	\$1.49
OSCAR MAYER SLICED MEAT		\$1.79
BOLOGNA	12 OZ. PKG.	\$1.79
OSCAR MAYER ALL MEAT		\$1.59
WIENERS	1 LB. PKG.	\$1.59
OSCAR MAYER SLICED BEEF		\$1.49
BOLOGNA	12 OZ. PKG.	\$1.49
ARMOUR PRE-COOKED CHICKEN FRIED		\$1.49
BEEF PATTIES	LB.	\$1.49

- RAID SPRAY
ANT & ROACH 16 OZ. CAN **\$2.29**
- RAID
INDOOR FOGGER 16 OZ. CAN **\$5.99**
- RAID SPRAY
FLYING INSECT 12 1/2 OZ. CAN **\$2.39**

- REFRESHING
NESTEA MIX 26.5 OZ. CAN **\$2.89**
- REG. OR DECAFFEINATED
TASTER'S CHOICE 4 OZ. JAR **\$2.98**
- CHOCOLATE OR STRAWBERRY
NESTLE QUIK 2 LB. BOX **\$2.79**
- NESTLE ASSORTED VARIETIES
CANDY BARS 4 35' BARS **\$1.00**

- BORDEN'S
COTTAGE CHEESE 24 OZ. CTN. **\$1.29**
- BORDEN'S DIPS OR
SOUR CREAM 8 OZ. CTN. **53¢**
- MINUTE MAID FROZEN
ORANGE JUICE 12 OZ. CAN **\$1.19**
- MRS. PAUL'S COMBINATION
PLATTER 9 OZ. PKG. **\$1.49**

- DAIRY AND FROZEN FOODS
- MRS. PAUL'S LIGHT & CRISPY
FISH FILLETS 6 OZ. PKG. **\$2.19**
- MRS. PAUL'S
ONIONS RINGS 9 OZ. PKG. **89¢**
- SHEDD'S COUNTRY CROCK QTRS.
MARGARINE 1 LB. PKG. **59¢**
- ORE IDA
HASH BROWNS 24 OZ. PKG. **99¢**
- DOWNYFLAKE FROZEN
WAFFLES 12 OZ. PKG. **79¢**

ALL GRINDS COFFEE
HILLS BROS.

\$2.19

1 LB. CAN

NEW OR CLASSIC
COCA-COLA

89¢

2 LITER BOTTLE

- SPECIALS FROM THE GROCERY DEPARTMENT
- HONEY BOY
PINK SALMON 15 OZ. CAN **\$1.59**
- CLAUDE'S BARBEQUE
BRISKET SAUCE 16 OZ. BTL. **\$1.39**
- WOLF BRAND
HOT DOG SAUCE 2 10 OZ. CANS **79¢**
- INSTANT TEA
NESTEA 3 OZ. JAR **\$2.29**
- LEMON FLAVORS
INSTANT NESTEA 4 OZ. JAR **\$2.19**
- WITH NUTRA SWEET
INSTANT NESTEA 3.3 OZ. JAR **\$2.89**

OWENS HOT AND REGULAR
SAUSAGE 2 LB **3.99**

VLASIC KOSHER/POLISH-HAM. SLI.
DILL PICKLES

99¢

32 OZ. JAR

- HEALTH AND BEAUTY AIDS
- KOTEX
TAMPONS 16 CT. BOX **\$1.99**
- TOOTH PASTE
CLOSE-UP 2.7 OZ. TUBE **89¢**
- PEPSODENT
TOOTHBRUSHES EA. **49¢**
- STAY FREE DEODORANT
MAXI PADS 12 CT. BOX **\$1.59**
- STAY FREE
MINI PADS 12 CT. BOX **\$1.19**

20 LB. BAG \$4.89

ROYAL OAK CHARCOAL

\$2.49

10 LB. BAG

GULFITE CHARCOAL LIGHTER

16 OZ. BTL. **89¢**

- FLOWER PATCH 10 1/4" **PAPER PLATES** 25 CT. PKG. **\$1.79**
- FLOWER PATCH 9" **PAPER PLATES** 50 CT. PKG. **\$1.49**
- FLOWER PATCH 6" **PAPER BOWLS** 25 CT. PKG. **\$1.19**
- 24 SMALL-12 LARGE EX. ABSORB. **PAMPERS** BOX **\$3.29**
- 48 MEDIUM 32 LARGE **PAMPERS** CONV. PAK **\$7.99**
- SANDWICH SIZE **ZIPLOC BAGS** 50 CT. BOX **98¢**
- SANDWICH SIZE **ZIPLOC BAGS** 100 CT. BOX **\$1.99**
- HEFTY TALL **KITCHEN BAGS** 30 CT. BOX **\$1.69**

APPETITE PLEASIN BEANS
RANCH STYLE

3.99

NO. 300 CANS

TENDERCRUST HAMBURGER OR
CONEY BUNS

3.00

8 CT. PKGS.

CENTRAL AMERICAN
BANANAS

3 \$1

LBS.

- PICKED AT FULL SLIP
CANTALOUPE L.B. **25¢**
- FULL EARS GOLDEN
CORN 6 FOR **89¢**
- SWEET YELLOW
ONIONS 2 LBS. **35¢**

KRAFT ASSORTED
BBQ SAUCE

89¢

18 OZ. BTL.

- FOR THE BATHROOM
CHARMIN TISSUE 6 RL. PKG. **\$1.79**
- ABSORBENT PAPER
BOUNTY TOWELS JUMBO ROLL **79¢**
- KLEENEX FAMILY PAK
NAPKINS 140 CT. PKG. **79¢**
- FLOWER PATCH 50 CT. 7 OZ. HOT/
PAPER CUPS 80 CT. 9 OZ. COLD **\$1.98**
- FLOWER PATCH 14 OZ.
COLD CUPS 20 CT. PKG. **89¢**

Pay-n-Save

QUALITY AND SERVICE

PRICES EFFECTIVE AUGUST 26 THRU 31, 1985
WE RESERVE THE RIGHT TO LIMIT