



The Morse Mustang, Reid no 10, shakes hands with Bodey "the body" after he made a record 87 yard touchdown run for the Lynx Friday night. Reid is considered as one of the top offensive and defensive men in the 1-AA district.



No. 58, line backer Pogue, registers a smile of joy, as he visits with trainer Kennard during the Boys Ranch-Spearman game here Friday night. Spearman won the game 36-6! The Lynx will host Panhandle in Spearman this Friday nite. As a feature of the evening, Baker-Taylor will have a chili supper beginning at 5 p. m. Friday. Get your ticket today!

Two purple powers will meet at Lynx stadium Friday night in a game that will possibly have an important effect on the outcome of the District 1-AA race. The Panthers, for all practical purposes, must win Friday night to stay in the thick of the district race, but the Lynx must also win! So, we have two purple power teams meeting in a big game for both teams!

The purple and gold of Panhandle is one of the teams in the district that traditionally is hard for Spearman to defeat! Last year the Lynx were saved when the wind changed to the north and literally pulled the Lynx from sure defeat at the hands of the classy Panthers. This year will be no exception! Should the Lynx take the Panthers lightly, they can surely lose the game! The Panthers have one of the best defensive units in the district, and they pass very effectively. Most sport fans think that the game here Friday night will feature an aerial circus from the Panthers and another type of circus from the Lynx, complete with everything!

Coach Sherwood is still undefeated in conference play for the past four years. He will not take Panhandle lightly, nor will any of his players! The Lynx could come out of the locker room fired up and ready to play one of their best games of the year against the Panthers.

In last week's game, the entire Lynx team had to be picked as "stars" of the evening! One of the thrills of the night was Bo "Cannon" DeArmond's recovery of a mid-air fumble! The Cannon

almost broke loose for a TD, but was finally tackled after a 4 yard gain! The usual good performance by the offensive and defensive units of both teams was spectacular, and the bands from both Boys Ranch and Spearman performed well!

Fans attending the game this Friday night should get to see a "bunch" of good running backs in action, plus the toughest line play of the year! As we said before, the Panthers scored 22 points Stinnett in the final quarter after trailing them 20-0! And, Stinnett had their entire first team of talent on the field at the time! We predict a much harder game here Friday night than in the Boys Ranch-Spearman game!

One of the highlights of the evening will be the Baker-Taylor chili supper, to begin at 5:00 'til 7:30 Friday evening at the High School cafeteria. Fans may eat at the high school, walk out the door across the street to the game! All fans from Panhandle and Spearman are invited to the supper! The Baker-Taylor women are the most active group of women in the area, and their money from the chili supper will be used to help some worthy cause in Spearman! Let's get out and eat chili Friday night!

The 7th and 8th grade teams will entertain the Panthers at Lynx stadium Thursday night, while the B team and 9th grade play away Saturday! If you haven't watched these future Lynx in action, you have missed the thrill of your life! Come out Thursday and watch these kids play football!

See you at the chili supper Friday evening at 5 p.m.!

Attendance Good At Swine Flu Clinic

The Thursday night Swine Flu Clinic held at the Fellowship Hall of the First Methodist Church in Spearman from 6:00 to 9:00 P.M. indicated that few in this community had had adverse reactions to the recent publicity which had been so apparent concerning these shots.

According to those administering the shots, few side effects (other than normal sore arms, etc.) were noticeable with most of those participating in the Clinic not evidencing any side effects. The "over-65 year" group at which the Clinic was directed were given the Bivalent shot which is the Swine Flu and Asian Flu combination.

The special groups included in the Thursday night Clinic were made up of teachers,

hospital personnel, police and emergency department people who were given the Monovalent or the Swine Flu shot alone. Shots for all those who appeared at the Clinic were given by Dickie Allen, R.N. and Ruth Skinner, R.N., both from Spearman; and Mozelle McClellan, R.N., from Gruver. Drs. Thomas and Kleeburger split the time during the evening so that at all times a doctor was on hand in case of any reaction.

WEATHER	
OCTOBER 19	52 25
OCTOBER 20	67 25
OCTOBER 21	67 31
OCTOBER 22	78 37
OCTOBER 23	78 45
OCTOBER 24	74 34
OCTOBER 25	63 23

You Name It!

The gas situation in Spearman came as a surprise to me! I didn't think that we would come up two times in a row without any gas in the city. This will be remedied by the weekend, I am sure, and I am extremely proud of the way that the city handled the two emergencies. They have been

lines, or whatever they plan to do, I assume that we will not have any more trouble this year.

I had to start up my fireplace Monday, without a gas starter, and it was quite a job to get the Boy Scout Manual out and chip up some dry wood, bark, etc. and prepare to warm up the supper over the old fire, like the Indians did. Fortunately, we have plenty of electric cooking appliances, and after cooking my steaks electrically, my wife tuned up and prepared for night football

Spearman Reporter

VOLUME 67, NO. 50

THE SPEARMAN REPORTER, SPEARMAN, TEXAS 79081

THURSDAY, OCTOBER 28, 1976

Gas Off To Residents Monday

the railroad tracks and other portions of the city last Monday.

City employees worked overtime to relight furnaces, heaters, etc. Monday evening as they were able to resume

the flow of gas into homes. Chuck Rigdon and Keith Hutton worked overtime also to help the city in this emergency.

City gas users are asked to conserve as much gas as possible by turning down thermostats when you are not at home and at night, and using a lower reading even if you are at home. This will not only conserve gas, but will be reflected on gas bills.

Election Judges Appointed

At the regular County Commissioners meeting Monday, all Commissioners were present.

They approved bills for payment.

They appointed an election judge and alternate for Precinct No. 6 (Spearman School). They are Kerry Henton and Elvonna Davis, and also made plans to contact Elsie Mathews to be election judge for Precinct No. 1 (Spearman Court-house).

Commissioners also approved a request of Texhoma, Texas gas users to cross a county road in the Oslo community.

THURSDAY, DECEMBER 12, 1974

Coins On Sale

Mary Lou Wyong, manager of the Spearman Chamber of Commerce, announced this week that she now has the Hansford County Commemorative Coins for sale and that they would make excellent Christmas presents.

The coins are available singly or in sets. The 4 coin set is \$100 and includes a gold, silver,

brushed silver and bronze coin, the 3 coin set is \$35 and includes the silver, brushed silver, and bronze, the 2 coin set is \$10 and includes the brushed silver and bronze coins. Coins may be purchased singly, the gold sells for \$50, silver, \$25, brushed silver \$5, and bronze \$4.50.

Necklaces and key rings are also available. The necklaces sell for \$7.95 and \$10.00 and the key rings for \$5.

The coins are on display at the First State Bank, Interstate Savings & Loan, Spearman Jewelry and the Chamber office.

Spearman boxing club wins 4!

The Spearman Boxing Club journeyed to Lubbock Saturday, and won 4 of 7 matches! The Club was taken to Lubbock by John Sutterfield, Mr. Cator from Gruver, Don McLain, and Mr. Donahue.

Boxers who entered the tournament were Marshal Cator, 59 lbs., decision by Mike Womack of Lubbock. Colby Gambin lost to Jess Luccero. Ross Donahue won over Jr. Givent; Byron Sutterfield lost to Moses Henandez; Durward Cator won over Shelby Womack; Chad Wilson lost to Billy Chitty; Mack McLain won over Donny Kinger. The Spearman team had 4 wins

and 3 losses!

The Spearman Boxing Club is serving boys in the Spearman-Gruver area and will enter tournaments in several towns this winter. Anyone wishing to make donations to the boxing program may call John Sutterfield in Spearman.

Tournaments will be held in Amarillo, Tulia and Olton on October 30, and the November schedule includes tournaments in Olton, Amarillo, Stinnett, Tulia, Lubbock and Plainview.

The Spearman tournament will be held in the month of November; complete details in a later paper!

Art Show Will Be November Event

The 7th Annual Arts, Crafts and Antique Show sponsored by the Dahlia Flower Club of Spearman will be held Saturday and Sunday, November 6 and 7, at the Hansford County Library.

Exhibits will be displayed by many artists, craftsmen and collectors in the area. These will be open for viewing from 1 to 5 p.m. both days.

Refreshments will be provided at the Library and door prizes will be given.

The "Woman of the Year" from the Club will be honored at 3 p.m. Sunday in connection with the event.

Martha Batton is president of the Dahlia Flower Club. For the first time, there will be a Men's Department and she asks all men of the area to bring crafts for display. Jack McWhirter and Major Lackey are head of the department.

Past Spearman

some new developments should be taking place in the near future.

The weather Tuesday played "whaley" with the maize harvest. Most of the harvest is pretty well along, but it might surprise you how much is still left in the fields!

I journeyed to Weatherford, Okla. to watch Southwestern and East Central play at the homecoming affair last Saturday. Earnest and I took the old '62 Ford, and I must say that I never had such an interesting outing! Southwestern State College is the home of Mr. Witherspoon, who founded the Gibson chain of stores! You Gibson people will be thrilled to know that we made a set of pictures, just for this gentleman, if he will start advertising every week in our 3 newspapers! I'm only kidding and we plan to see that he gets a set of them if they are good and they will be!

The most interesting thing about this fine college in Oklahoma is their research in cancer study! I have a sneaking suspicion that one of

these days, some small college like Weatherford will have a "break-through" in this cancer thing! In any event, I am proud that they are trying hard at this college and many others in the Southwest!

West Texas State is having their homecoming this weekend, and I hope that I can attend, but will have to wait and see what comes up! I never make any plans for Saturday, until after the Lynx have played their game on Friday night. If they lose, I go into shock and what-have-you! Also, you Tech fans better contact my wife and see that she takes me to Lubbock Saturday.

We have never seen Lubbock lose to a Southwest conference team! Everytime we go, the Raiders win! This offer will be good until noon Friday!

I sure did enjoy talking to several of my buddies who were combining this harvest! They had CB's on their combines, and I would call them

and talk with them during harvest! It was quite exciting to turn on my CB, call my buddies who were eating dust, suffering from heat and chafe, and I was laying back on my divan sipping cider through a straw, and I didn't even have to worry about the price of wheat and maize and corn! I shut my operation down three years ago when the market crashed! I plan to crank it up as soon as it rains and the price gets better! Thank goodness all of the farmers aren't like me! Wheat would be \$6.00 per bushel and there would be no surplus!

Shultz to mend fences in Canada.

Halley's comet sighted again, last seen in 1910.

C of C Fun Breakfast

The October Chamber of Commerce Breakfast will be held Thursday, October 21, in the Hansford County Barn. Another fun-filled breakfast is planned with games, money, and the KIDS wrestling program, under the direction of Capt. Littlejohn, will give a wrestling demonstration.

Wes Nivens, our local Fiddler, will provide entertainment from 6:30 to 7:00 a.m. Lately Wes has been fiddling up a storm. He has first prizes at Farmington, N. M., at Laveta, Colorado and at San Jon, N. M. He was named Grand Champion in a fiddling contest at Pagosa, Colorado. So be sure and come out and see and hear Wes.

The Breakfast will be from 6:30 to 7:45 a.m. and the tickets are \$2.25 per person. This Breakfast is being sponsored by KBMF-FM Stereo Radio Station of Spearman.



One of the scenes at the Children's Hour for 3 and 4 year olds at the Hansford Library Tuesday morning from 10 to 11. Jeff Hutchison is enthralled with the puppet story Marsha Murphy is telling. The program is under her direction. She is a former teacher of pre-school and kindergarten children. The first session was well attended and thoroughly enjoyed by the children. The weekly "Children's Hour" will be each Tuesday at 10 a.m.

County Residents Will Vote For Hospital Proposition

Only three people have voted absentee for the November 2 General Election according to County Clerk Marie Gould. Absentee voting began Wednesday, October 13, and will be conducted from 8:30 a.m. to 5 p.m. on days the Clerk's office is open. Absentee balloting will continue through October 29 at the close of business.

Along with the General Election ballot, county residents will be voting for or against the proposition "Providing the office of director of the Hansford County Hospital District shall hereafter be an elective office." The directors have been appointed by the County Commissioners since the district was formed several years before and also before the hospital district was formed.

A petition was filed by county taxpayers requesting

that an election be called for the purpose of deciding whether or not the directors should be elected, so now is the time to voice your opinion on this subject.

Races highlighted in this area are the 64th District State Representative between incumbent, Republican Bob Close of Perryton and Dalhart ranchwoman and Democrat, Daisy Moore, and the race for 13th District Congressman between incumbent Democrat Jack Hightower and Republican Bob Price, who was Congressman for this district before being defeated in the last election by Hightower; the senatorial contest with incumbent, Senator Lloyd Bentsen, Democrat, being challenged by a young and fast-rising Republican, Alan Steelman.

The only other contested state races are for State Railroad Commissioner, where Jon

Newton, Democrat, Walter Wendlandt, Republican, and Fred Rodriguez Garza, Raza Unida Party and Pat O'Reilly of the Socialist Workers Party are on the ballot.

Incumbents District Judge, 84th Judicial District, Richard N. Countiss; District Attorney, 84th Judicial District, Stephen Cross; County Attorney, J. E. Blackburn; Sheriff, R. L. McFarlin, and County Tax Assessor-Collector, Helen Dry, are running unopposed as is Garland Head who won the race in the Democratic Primary for Precinct #1 Commissioner.

First on the ballot of course is the presidential race which seems to be very close at this time, if the results of the various polls can be believed.

According to Helen Dry, Tax Assessor-Collector, there are approximately 3,552 registered voters in Hansford County.

Vote as you please, for whatever party or candidate, but do go to the polls or if you are going to be out of the county on November 2, be sure to vote absentee before the deadline October 29.

Locations of polling places in the county are Voting Precinct #1-Spearman Courthouse; Voting Precinct #2-Renner Ranch; Voting Precinct #3-Gruver Elevator; Voting Precinct #4-Gruver-County Agriculture Barn; Voting Precinct #5-Spearman-County Agriculture Barn; Voting Precinct #6-Spearman High School; Voting Precinct #7-Oslo Church; Voting Precinct #8-Absentee-Courthouse; and Voting Precinct #9-Morse Community Building.

If you are not sure which is your voting precinct, look on your voter registration card.



LEFT TO RIGHT: Patty Buzzard, Jr. Attendant, Karen Baggetly, Sr. Attendant, Hazel Lesly, Queen, Liz Hohertz, Soph. Attendant, Sharen Lambert, Fr. Attendant.

City Sales Tax Received

The City of Spearman received its October rebate of the one-cent city sales tax this week. The amount for this period was \$3,432.83.

Comptroller Bob Bullock said Friday that his auditors turned up more than \$9 million in additional local sales taxes owed Texas cities and towns during fiscal 1976, more than double the amount turned up the two previous fiscal years.

Bullock said city sales tax audit production during the fiscal year ending Aug. 31 was \$9,056,072, compared to about \$4.5 million each of the two previous fiscal years.

The Comptroller Friday mailed checks totaling \$9.1 million to 478 cities and towns as their October rebate of the one-cent sales tax.

He added that city sales tax rebates have totaled \$239.1 million so far this year, well ahead of the \$209.2 million rebated during the same period in 1975.

Junior High Honor Students Named



Sabre McCoy Kyle Beedy

Ronald Reagan, President, on steel agreement with Europe:

"It will mean more and lasting jobs in the steel industry, which will translate into good news on the employment front."

Principal G. W. Robinson, of the Spearman Jr. High School, announced Monday of this week, that Sabre McCoy has been named the valedictorian, and Kyle Beedy the Salutatorian of the Spearman 8th grade class this year. The following students,

and their grade points were named Monday: Valedictorian - Sabre McCoy - 95.799; Salutatorian, Kyle Beedy - 94.731; Margie Schubert - 94.625; Brent Ware - 93.642; Kelly Rylant - 93.082; Deanne Baker - 93.016; Brenda Boyd - 92.931;

Valerie Hageman - 92.402; Kelly Shaver - 92.345; Connie Etheredge - 92.296; Jamie Butler - 91.642; Kindra Ivey - 91.431. Spearman Jr. High School graduation will be May 26, 1976 in the High School Auditorium at 6:30 P.M.

Shortage Of Gas Is Alleviated

The City of Spearman had to curtail the gas supply to everything west of the railroad tracks and other portions of the city from 10:30 until about 2:30 Monday due to a shortage of gas. High Plains Gas Company was able to get an emergency supply of gas from Northern Natural Gas Co. and the problem was alleviated about 1:30 p.m. Monday. The shortage was first noted Saturday afternoon and Sunday the pressure was up some but dipped again Sunday night and early Monday morning.

According to city manager, Mark Neff, the city now has an adequate supply with the emergency hook-up, and he is very appreciative of the help of residents in turning down their thermostats and businesses and everyone that was contacted by the city to reduce their gas usage. Neff also said that the shortage was not the fault of the gas company, or the city but is an aftermath of the nation-wide shortage and that this is something that has to be worked on now, not in the future.

City gas users are asked to conserve as much gas as possible by turning down

thermostats when you are not at home and at night, and using a lower reading even if you are at home. This will not only conserve gas, but will be reflected on your gas bills.

Two weeks ago, High Plains Gas Company asked the city officials to work on an agreement with Transwestern for an emergency supply. Their reasoning behind this was that the city could possibly make a better deal with Transwestern because of FPC rules. City manager Mark Neff said they have contacted the FPC, talked with Mr. Sam Ballen of High Plains Gas Company and are currently working to provide additional gas not only for the city's needs now but in the future.

The city does have a contract with High Plains Gas Company stating that the gas company will furnish the city with an adequate supply of gas for its needs.

Xi Zeta Upsilon will be selling purple stadium bags at \$15 prior to home football games...

Spearhead Breakers Meeting

The Spearhead Breakers had their monthly meeting October 7, at 8:00. President Sidewinder called the meeting to order and Penny Candy read the minutes. Lucky Louie gave the treasurer's report. Snowbird was elected chairman of the Ways & Means Committee. A come-as-your-handle party will be October 28, at 7:30 at the Home Demonstration Club Room. Each family will bring a covered dish.

C.B.'ers of the month are Daisy Mae and Wild Willie. Awards were presented to the following: Diddle Stick, Penny Candy, Ratcher Jaw Tape Worm, Channel Peep FUSE Box, Bleed-Over, Screw Driver, Bucket Mouth, Gypsy Mama, Bull Shipper, and Diamond Back.

Hosts and Hostess for the month were Dandelion, Penthouse, and Lady-Arrowhead. The following members were present: Sidewinder - Phillip Stumpf; Daisy Mae - Carol Stumpf; Cave Man - Jim Thomas; Penny Candy - Penny Candy; Lucky Louie - Louis Meisner; Saddle Queen - Mary Meisner; Wild Willie - Bill Crouch, Sr.; Gypsy Mama - Betty Crouch; Screw Driver - Harold Frost; Ginger Snap - Joyce Frost; Piano Player - Charley Phipps; Belt Maker - Donna Phillips; Green Bomp - Chet Phillips; Tapeworm - Harley Murrell; Sawed-off Texan - Kim Murrell; Dandelion - Beth Baker; County Girl

New HD Club Formed

The newly formed home demonstration club "Las Amigos" met Sept. 16 in the Home Demonstration Clubroom.

President Francis Ortega opened the meeting with the roll call which was followed by the devotion given by Maria Pacheco, vice-president, and the minutes of the previous meeting were given by Ema Lopez, treasurer.

Peggy Marrs, County Extension Agent, began the program with "Blender Tricks For Moderns" which was the topic for the meeting.

Delicious refreshments were served by Helen Blain and Juanita Flores to Nancy Garcia, Lydia Rodriguez, Ernestina Salgado, Maria Pacheco, Oliver Renteria, Esmeralda Renteria, Elva Sullivan, Francis Ortega, Ema Lopez and Maria Avila.

The next meeting will be November 18.

Superintendent



MR. JAMES CUNNINGHAM

Choir Members Sell Magazines

On October 21, the Spearman High Chorale will begin their magazine drive.

This magazine program was

developed by the Reader's Digest. The students can renew your present subscriptions or sell you a new one at cheaper rates. There are over 250 different magazines to choose from.

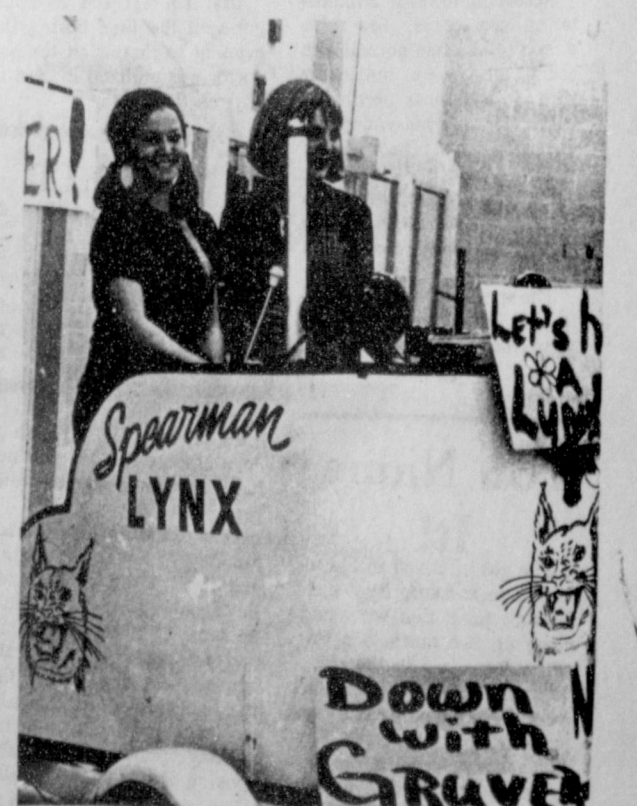
The money raised will be used to purchase uniforms to wear when performing, and help to buy materials for the upcoming musical.

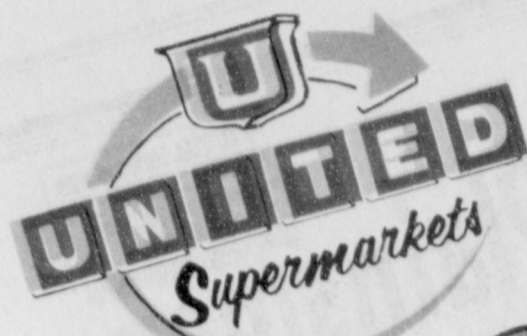
Please support your choir by renewing or buying a new subscription when called upon.

If you want to have someone call on you, contact a choral student or call 659-2584 and leave your name and address for Mr. Angel.

Malcolm Baldrige, Secretary of Commerce:

"You cannot have free trade unless you have some recourse if you are being unfairly traded against..."





WE'RE LOOKING FOR Little Customers To Help

"DECORATE THE CHRISTMAS TREE"

AGE GROUPS
4 & UNDER
5 & 6 YEAR OLDS
7 - 9 YEAR OLDS

ALL CHILDREN FROM AGE 4 AND UNDER ARE ENCOURAGED TO ENTER OUR "DECORATE THE CHRISTMAS TREE" CONTEST.

EACH UNITED SUPERMARKET WILL HAVE 3 WINNERS, ONE CHOSEN FROM EACH AGE GROUP.

EACH WINNER WILL BE CHOSEN BY A JUDGE SELECTED FROM THE LOCAL INDEPENDENT SCHOOL DISTRICT.

CHILDREN, AGE 4 AND UNDER, CAN ENTER AS MANY TIMES AS THEY WISH. COPIES OF BLANK "CHRISTMAS TREES" WILL BE AVAILABLE AT EACH STORE.



This little tree is chilly and bare. It needs the love of a few ones care. Color it red and green and blue... Yellow and purple and orange too! Help us "Decorate The Christmas Tree!"

EACH PICTURE MAY BE COLORED WITH CRAYOLAS, WATER COLORS, PAINTS, OR MARKS-A-LOTS. EACH CHILD MAY ADD ANY DECORATION THEY WISH.

ALL PICTURES WILL BE DISPLAYED IN OUR STORES, SO ALL OUR CUSTOMERS CAN SHARE IN THE COLORFUL EXCITEMENT.

ALL ENTRIES MUST BE RECEIVED NO LATER THAN TUESDAY NIGHT, DECEMBER 14, 1982. ALL WINNERS WILL BE ANNOUNCED WEDNESDAY, DECEMBER 22ND, 1982.

PRIZES FOR AGE GROUPS WILL BE:
4 & UNDER: COLECO SMURF RIDING CYCLE
5 & 6 YR. OLD: FISHER PRICE CASSETTE TAPE RECORDER
7-9 YR. OLD: ENTEx PAC MAN II ELECTRONIC GAMES.

NAME _____ AGE _____
ADDRESS _____ PHONE # _____
CONTEST WILL BE JUDGED BY MRS. JUDY PIERCE OF PERRYTON, TEXAS



The Hansford Plainsman

NATIONAL NEWSPAPER
 Published by
 THE HANSFORD PLAINSMAN
 SPEARMAN, TEXAS

Past

Spearman

SUNDAY, APRIL 23, 1978

North Plains Electric Meeting Held



Some of the real "old-timers" are pictured above as they register at the North Plains Electric banquet in Perryton last week. On the right is Gruver banker, Ralph Bort, and a couple of Perryton men on the left!

More than 350 persons were on hand to hear David Hamil, administrator of the REA, in Perryton Monday night. The occasion was the regular banquet given each year by the organization including the president of the organization, Mr. and Mrs. Ira Harbour of Spearman. Several people from Hansford County attended, including president of the Gruver State Bank Ralph Bort, Bill Maupin and Billy Miller of the local newspapers in Hansford County.

Touching on the energy situation, Hamil stated that the U.S. has got to stop buying oil for \$14 a barrel from foreign countries and then turn around and sell our food for next to nothing and below the cost of production. He pointed out that last year the U.S. imported 46 percent of its oil. We need to spend our money at home, he said, and we have the facilities available.

Optimistic about the future, Hamil also was proud of the past achievements in bringing electrical service to rural America. No one thought back when that electrical service could cover this entire part of the country, he said. Nor did they imagine that electrical demand would be so great, he added.

The REA administrator said that electricity has meant more to the agricultural progress of this country than anything else. I say this in full cognizance of the fact that farmers today are having problems, he said.

But problems have been common with the American people. These are times that try people's souls, he said. But as far as providing electrical service, despite the escalation of cost, Hamil said that the source would be there.

As electrical service gets higher, and the figures now are less than they will be in three or four years, we need to become more careful as to how we use it, Hamil said. He noted that proper insulation of homes and weatherization were "absolute savings" to everyone.

Hamil's speech followed a review of last year's North Plains Electric financial statement. Much of what he said can be seen in the figures.

While the gross revenue the cooperative has taken in has jumped nearly a million dollars in each of the last two years, total expenses have climbed during the same period from \$1.9 million to \$3.4 million. Demand has been on the rise, too. In 1975, the average consumer used 1,900 kwh. In 1977, that had jumped to 2,345. Average bills, during the time period, jumped from \$50.13 to \$86.42.



Pictured, left to right, Donna Lindsey, Austin; Judge Don Joiner, of Littlefield; Mrs. Linda Gale White, wife of Mark White, and Mrs. Pete Fisher of Spearman. The Fishers hosted Mrs. White, and her group in their home in Spearman, on Thursday, April 13th. Mark is a candidate for Attorney General.

Set Run-Off Races Here

The run-off race in Hansford county, will include Garland Head and Roscoe Nelson, for Commissioner of Precinct 1, and Bill Jackson and Daisy Moore as representative for the 3-county area. The local total votes were not available at last time, but both the Republican and Democrat races set new records in the county.

Sheriff R. L. McFarlin was re-elected by a large margin over his opponent Lee Phillips. B. J. Renner was elected Commissioner Precinct 3 in other local races.

SUNDAY, MAY 9, 1976



"Fiddlin' Wes" Album Cut

Local talent, Wes Nivens, has recently cut his first album, entitled "Fiddlin' Wes".

The following instruments are featured on the record: Side 1 - "San Antonio Rose", "Kelly

Waltz", "Brown Ski n' Gal", "Over the Waves", "Land of Jubalo," "Maiden's Prayer", and "Rubber

Dolly". Side #2 - "Lone Star Rag #2", "Goodnight Waltz", "Spanish Two Step", "Beaumont Rag", "Faded Love", "Rag Time Annie", and "Rangers' Waltz".

Wes, on fiddle, is accompanied by Junior Daugherty, New Mexico State Fiddling Champion from Mesilla Park, New Mexico, on Rythum Guitar; Jake Brooks from Las Cruces, New Mexico on Drums; Calvin Turbeville from Las Cruces on Steele Guitar; and Emmitt Brooks, technician of the studio from Mesilla Park, on

Electric Guitar. All the plays are featured on the cover of the record.

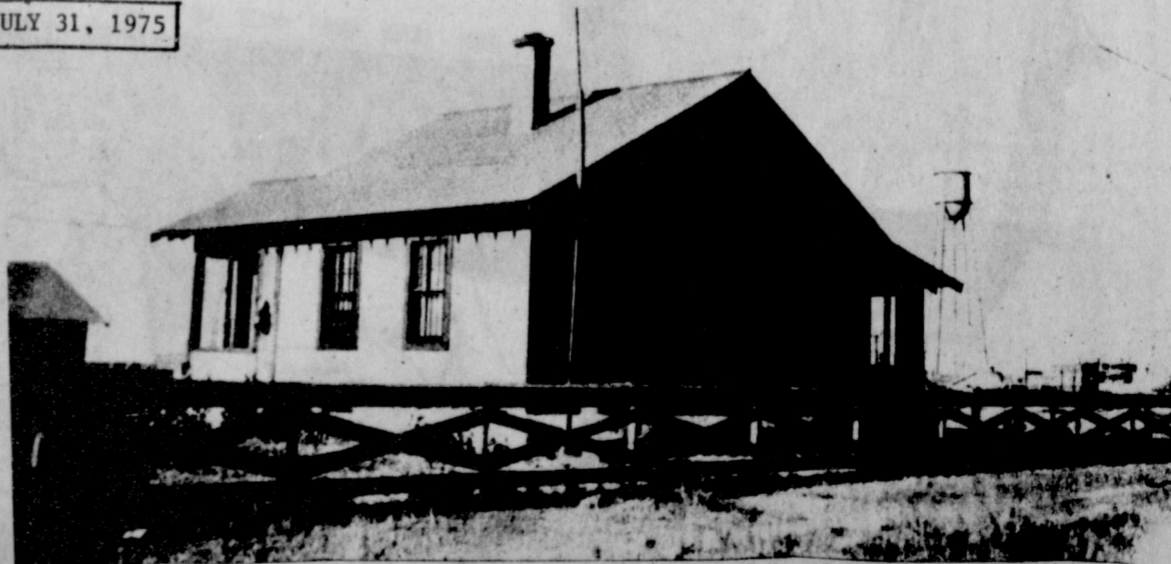
The record was taped at Gold Dust Recording Studios, then the master tapes were sent to Wakefield Manufacturing Company, where they were pressed on discs.

Eight track tapes will be available at a later date. Saturday, May 1st, Wes attended a Fiddler's Contest in San Jon, New Mexico, where ten fiddlers, eight of them from New Mexico and two from Texas, were entered in the contest.

Wes Nivens won first place at this contest. This weekend, May 7th

Wes will be entered in the National and International Fiddlers Contest held in Truth or Consequences, New Mexico. Registration will be held Friday, May 7th between 7:00 and 9:00 A.M., with fiddling all day Friday and Saturday.

JULY 31, 1975



A WORK DAY sponsored by the Spearman Lions Club for Hansford County's Stationmaster's Museum will be held Saturday, August 2, starting at 9 a.m. The county museum is located at 30 South Townsend in Spearman and all of Hansford County is urged to come and participate.

\$16,890.00 Raised For Senior Citizens

The Spearman Chamber of Commerce and the Golden Spread Center, Inc. would like to thank the following for their donation for the Golden Spread Building during the Radio-Thon:
 Tiffany, Steve and Jimmy Womble
 Women's Division of the Chamber of Commerce
 Joy Hansen Troop 120 Girl Scouts
 Young Adult Sun. School Class 1st Bap. Church
 Sandy Morris Beauty Shop

- Gay Dennis
- Kathryn Gidley
- Mildred Chamberlain
- Troy Sloan
- Gladiola Flower Club
- Dan Desimone
- Mae Shaul
- William King
- Mrs. W. L. Mackie
- Spearman Drug
- Ruth Caro
- Ed Garner
- Elsie Mathews
- Pat Underwood
- James Hargis
- Lee McClellan
- Vera Beth and Jimmy Hicks
- Bell Crawford
- Natalie Green
- Collen McCormack
- Jimmy and Cara Hester
- R. L. McFarlin
- Ada and L. S. McLain
- Rev. Frank Oglesby
- Verlin and Audine Beck
- Cinderella Beauty Shop
- Lucille Crossland
- John Vernon
- Rosa Lee and Herb Butt
- Rev. Don Wirsdorfer
- Thelma Scott
- Andy Rhodes
- Tex Davis
- Faye Palmer
- Russell and Altha Townsend
- G. M. Head
- Glen Hiller
- Mary and T. D. Sansing
- Edith Womble
- Jack and Dolly McWhirter
- Gertie Archer
- Ray and Marie Weckesser
- C. F. Bennett
- Mr. and Mrs. Doice Nivens
- Red McCrory
- Jimmy Linn
- J. L. Brock Insurance Agency
- Lorene McGuire
- Preston and Edith Smith
- Ted Widener
- Mary Fern Terry
- Mark and Betsy Neff
- Dwayne Smith
- Mearl Beck
- Nina and Don Hendricks
- Mr. and Mrs. Louise Lemons
- Earline Chambers
- Mrs. F. B. Schubert
- Tom and Helen Etter
- Mark and Claudia Ziemer
- Mr. and Mrs. Worley Smith
- Mrs. Garrett Allen
- Baker and Taylor
- Ronnie Antalek
- Spearman Fire Department
- Mrs. Lora Vernon
- James and Lometa Sparks
- Billy Miller/Spearman Reporter
- James Lair
- Rev. Ed Freeman
- Caroline Murphy
- Ruth Garner
- Mr. and Mrs. R. D. McLaughlin
- Clara Wise
- J. C. Hickerson
- Mrs. Dick Countias
- Evelyn and Albert Mackie
- Louise and Everett Vanderburg

- Ray and Helen Prchar
- Ruth McCoy
- Ann Sanders
- Gene And Frances Cudd
- Mr. and Mrs. Jerry Lovingood
- Eileen Sutherland
- Linda Beeson
- Keesee Richardson
- Altha Groves
- Mrs. A. D. Reed
- Mrs. Max Baggerly
- Gary Sims
- Glenda and Kent Guthrie
- Spearman Super Service
- Mrs. H. M. Shedeck
- Spearman Volunteer Fire-ettes
- Raymond and Virginia Sparks
- Faye Lynch
- Retall Employees
- J. R. and Frances Stump
- Wynne Payne
- Pat and Charlotte Jackson
- Margarette and Kenneth Evans
- Herschel and Mary Ooley
- Herb and Rosa Lee Butt
- Gary and Sue Wooley
- Connie Wooley
- Mike Stewart
- Mr. and Mrs. Claude Owens
- Dairy Queen, Clark Mires
- R. L. McClellan
- Mr. and Mrs. David Arrington
- Hi-Plains Conoco
- Martha Batton
- Mr. and Mrs. Harry Stumpf
- Frances Sims
- Dodie and Brad Beedy
- Rosa Richeson
- Mr. and Mrs. A. D. Sparks
- Kiff White
- Jane Meek
- Irvin Davis
- Mr. and Mrs. Roy Russell
- Mrs. Joe Entrekin
- Claude Sheets
- Travis Davis
- David Knuckles
- A-1 Automotive
- Leonard Jameson
- Mr. and Mrs. Roy Lee Uptergrove
- Kay Ulmer
- Ruthie McCoy
- Myrtle DeArmond
- Mr. and Mrs. Dan Schmeh
- Mr. and Mrs. Harold Howertter
- Mrs. M. W. Walker
- Mr. and Mrs. Milton Brown
- Mr. and Mrs. W. B. Seitz
- Mr. and Mrs. J. C. Harris
- Lawrence and Virus Wilbanks
- Tommy Russell
- R. B. Holton
- R. C. Fisher
- Blackburn and Lyon
- Hansford Implement
- Knox Pipkin
- Jr. Lusby Cats
- P. A. and Buena Lyon
- Addie Novak
- Hansford Broadcasting Co.
- Eddie and Floye Largent
- Debbie Benton
- Jessie Tompkins
- Mrs. W. B. Barnes
- Mason and Henton
- Borwell Brothers
- S C A TV
- K. C. Loftin
- Rex Sanders, Jr.
- Emmett Sanders
- International Savings & Loan
- First State Bank
- Ralph Blodgett
- Rotary Club
- Bill Pittman
- Noreen Sutton
- Jessica Wooley

PRICES GOOD NOV. 17 THROUGH NOV. 20

UNITED Supermarkets

QUANTITY RIGHTS RESERVED

FREE! 3 PIECE PLACE SETTING OF CLAREMONT

SHOP UNITED GOOD FOOD



NO SALES TO DEALERS


FOLGER'S COFFEE
1 LB. CAN
\$1.98



CRISCO OIL
32 OZ.
\$1.38





COKE
6 PK. 12 OZ. CANS
\$1.38



PET EVAPORATED MILK
13 OZ.
2 FOR 88¢



LIBBY'S PUMPKIN 16 OZ. **28¢**
KRAFT MARSHMALLOW CREME 7 OZ. **38¢**
BAKER'S 35' OFF LABEL COCONUT 14 OZ. **88¢**

CRISCO
3 LB. CAN
\$1.88



UNITED EGGS
1 1/2 DOZEN LARGE
88¢



GOLD MEDAL FLOUR
5 LB. BAG
78¢



DURACELL BATTERIES



2 PK. "D's, C's"	\$1.39
1 PK. "9V's"	
2 PK. "AA's & AAA's"	\$1.19



DOUBLE STAMPS

WITH A \$2.50 PURCHASE OR MORE EX

KARO RED LABEL SYRUP 32 OZ.	\$1.28
FISHER'S RAW SPANISH PEANUTS 12 OZ.	98¢
ELLIS HALVES AND PIECES PECANS 6 OZ.	98¢

CALIFORNIA ICEBERG LETTUCE
LB.
38¢



TEXAS RUBY RED GRAPEFRUIT EA. **28¢**
NEW CROP ZIPPERSKINS TANGERINES LB. **58¢**
RED EMPEROR GRAPES LB. **58¢**

NO. 1 RUSSET POTATOES
5 LB. BAG
48¢



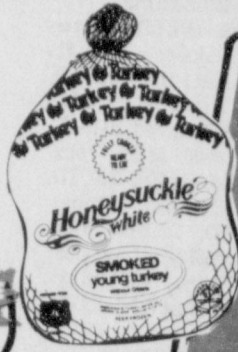
OF CLAREMONT CHINA-WITH ONE FILLED SAVER CARD (40 BONUS CERTIFICATES)

UNITED FOR GOBBLIN' FOOD BARGAINS



TYSON ROCK CORNISH GAME HENS
22 OZ.
GRADE A

\$1.49



HONEYSUCKLE SMOKED TURKEYS
GRADE A

\$1.19 LB.



WILSON BACON
1 LB. PKG.

\$1.98

UNITED TRU TENDER OR CHOICE
ARM ROAST

BONELESS LB. **\$1.88**

BONELESS STEW MEAT

LEAN CUBES OF BEEF LB. **\$1.88**

CUBE STEAK

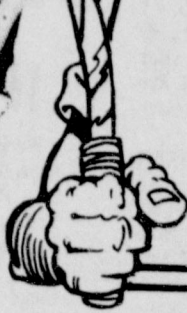
EXCELLENT FOR CHICKEN FRIED LB. **\$2.49**

LEAN GROUND BEEF LB. **\$1.78**



UNITED TRU TENDER OR CHOICE
RIB STEAK

\$1.88 LB.



UNITED TRU TENDER OR CHOICE
SHOULDER ROAST

\$1.58 LB. **BONELESS**



UNITED PREMIUM QUALITY YOUNG HEN TURKEYS
SELF BASTING

\$1.59 C. LB.

GRADE A 10-14 LB. AVG.



UNITED PREMIUM QUALITY WHOLE HAMS
BUFFET STYLE

\$1.88 LB. **BONELESS** WATER ADDED

SAVERS ON WED. & SAT.

BASE OR MORE EXCLUDING CIGARETTES



KRAFT ORANGE JUICE 64 OZ. **\$1.68**



PILLSBURY CINNAMON ROLLS 9 1/2 OZ. **.88**

PLAINS DIPS & SOUR CREAM 8 OZ. **2 FOR 98**

KRAFT PARKAY
1 LB. QTRS.

38

PLAINS SHERBET
1/2 GAL.

\$1.28



PET RITZ DEEP DISH PIE SHELLS
2 CT.

68

QUANTITY RIGHTS RESERVED

PRICES GOOD NOV. 17 THROUGH NOV. 20



NO SALES TO DEALERS

