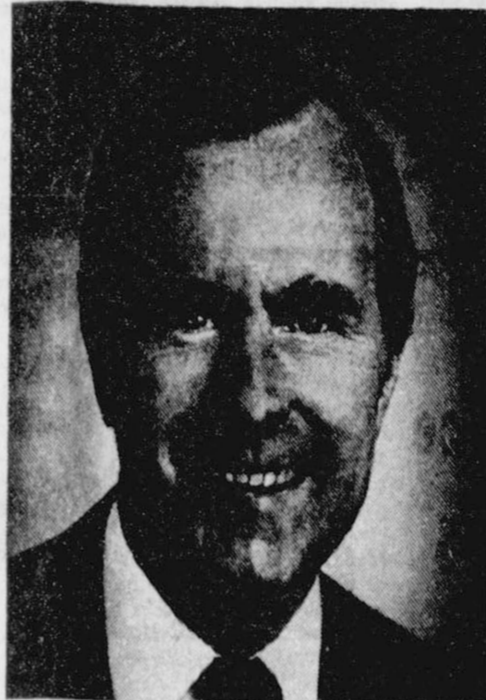


Landslide Puts Reagan In



White House



Reagan - Bush



The Spearman Reporter

VOL. 71, NO. 52

(THE SPEARMAN REPORTER, SPEARMAN, TEXAS 79081

THURSDAY, NOVEMBER 6, 1980

Lynx Meet Boys Ranch Team

The current grid season is shrinking. After an open weekend, the Spearman Lynx will travel, gear and gall, to Boys Ranch for one of two remaining 1-AA contests on the schedule.

Following the upcoming game, Friday, night, the Cats have one more conference clash which will also be a home game--with the Dalhart wolves.

While Lynx title chances go along with the proverbial snowball in August, the team that has been charging all season building up a very respectable win-loss record against some very respectable competition--that Lynx team is not about to slack off now and both players and coaches are promising first rate action on the turf, Friday night.

At press time there was no way to determine officially whether Steve Tindell will get to see some action before season's end. There was an earlier rumor that he might play some against Perryton but it was decided to avoid the risk.

Tindell's injury points up something we have been harking on these pages all season: the Lynx have no "second stringers." They have a squad of performers who bring different talents to the position they fill.

Jamie Bulls brought different field tactics to the role of quarterback when he stepped into the breach made by Tindell's injury--so much so that the Perryton Ranger coach said, in an interview before that game, that he would have as tough a game against Bulls as against Tindell according to the report of that interview by another medium.

--And so it went. The Randall brothers were effective separately in the lineup of working in tandem. The same was true of a veritable corps of kickers that were on tap when one pulled a muscle.

Perhaps the most apt and complimentary comment on the Lynx was made by a veteran visiting sports writer not involved with coverage of our conference but familiar with the

teams and their records: "When you consider that most of the squad this year were on the team last year, you have to believe that something very special and extraordinary passed between coaches and players this year.

"The Lynx may not have a conference crown but they certainly played themselves into the annals of high school football in this part of the state!"

--And there are two more games to see this in action.

The Dalhart game affords a chance at second place and they will settle for that...will fight for it but--every competitor that has faced them will know it is second PLACE, not second rate!

Fall Home Tour

The Spearman Study Club will be hosting a Fall Home Tour on Sunday, November 9th, from 2:00 - 5:00 p.m. The tour will consist of 2 country homes and 3 homes in town.

The two country homes belong to Dr. & Mrs. Glenn Blodgett and Mr. & Mrs. Joe T. Venneman. If you like big spacious rooms, lots of storage places, stone fireplaces, country kitchens and beautiful outdoor views you will surely want to see these homes. Blodgett's home is located on the Gruver highway and Venneman's home is on the Hardesty highway past the golfcourse and will be marked with flags.

The three homes in town belong to Mr. & Mrs. B.T. Shoemaker, 1011 Linn Drive; Mr. & Mrs. L.C. Owens, 1017 Wilmet Drive; Mr. & Mrs. Terry Schneider, 120 Wanda Drive.

Shoemakers' home was built in Lubbock and then moved here before adding the den area on back. It is as beautiful on the inside as it is on the outside. You will enjoy the warmth that

Outstanding 4-H'ers Honored



Forty outstanding members of 4-H Clubs in the Texas Panhandle were honored here Saturday night.

In addition to receiving the Gold Star Award, highest honor presented at the county level, the youths and their guests were challenged by Gray County Judge Carl Kennedy to place service to their fellowman high in their priorities for life.

Joining the youths at the award banquet at The Inn were parents, government officials, Extension leaders, fellow 4-H'ers and other community leaders.

Hosts for the banquet were five member-owned electric cooperatives serving the Panhandle District of the Texas Agricultural Extension Service. The co-ops are Deaf Smith Electric Cooperative, Inc., Hereford; Rita Blanca Electric Cooperative, Inc., Dalhart; North Plains Electric Cooperative, Inc., Perryton; Swisher Electric Cooperative, Inc., Tulia, and Greenbelt Electric Cooperative, Inc., Wellington.

The 4-H youth program in Texas is directed by Extension. Honored from Hansford County were Jon Garnett, son of Mr. & Mrs. Mike Garnett, Spearman and Rodney Dale Clawson, son of Mr. and Mrs. Rodney Clawson, Gruver.

Focusing on the banquet theme, "Expanding Horizons in 4-H," Kennedy urged the audience to analyze what each could do to make their life more meaningful. He urged the youths to make their top priorities an acknowledgement of God and a concern for their fellowman.

"Serving others is one of the greatest joys to be found," he said. He cited county Extension agents as a prime example of "the thrill that comes with serving."

Guests were welcomed by Miss Adelle Elkins, Swisher County Electric Cooperative.

Albin Peters, Moore County, chairman of the District 4-H Council, was master of ceremonies.

Entertainment was by Rhonda Woods, Gray County 4-H delegate and the Googenheim Boys, a country-western band from Oldham, County.

Other 4-H'ers on the program were Teresa Woods, Gray County; Mary Jo Turpin, Randall County; Shannon Batton, Wheeler County; Teresa Martin, Wheeler County; Glenna West, Deaf Smith County; Kimi Collier, Moore County and Flynn Farris, Dallam County.

The Gold Star Awards were presented by Mrs. Sue Farris and Paul Gross, district Extension directors.

Hospital News

Patients in Hansford Hospital are Daniel Ray, Steve George, Roberta Burger, Bonnie Patterson, Beth Brown & son, Lamor Noth, Lena Renner and Sue Ann Fiel & daughter. Dismissed were Pam Caswell, April Fite, Frank Yancy, Jason Vernon, Sherry Moore, Janie Kunselman & baby and Rosalie Harris & baby.

MARKETS

Wheat	\$4.38
Milo	5.90
Corn	3.56

NOTICE: Due to the fact that almost our entire staff in Spearman is down with the flu, and our Gruver editor had to leave because of sickness in N. M., we will have returns in next weeks paper!

There is at least one whole generation of Americans who do not know what a "landslide" victory is in an election -- until Tuesday night when Ronald Reagan headed for the White House at about a 4-to-1 margin over incumbent Jimmie Carter.

Carter conceded at nine o'clock central time and the national election night audience turned to radio in communities across the land because that medium was giving local, grass-roots returns where the tube was not.

Hansford County was no exception. With three "cliffhangers" developing, there was a white-heat excitement both at the courthouse where returns were being tabulated and in hundreds of homes where voters were listening.

This was one election where the majority of voters did not stay at home all of Election Day.

The vote-counting process was slowed at the courthouse because at least 75 percent of the registered voters turned out casting some 605 ballots at that one Hansford County box.

The tight fight developed between "Chunky" Blackburn and John LaGrone for the district judge bench. This involved returns from the three counties comprising the judicial district and Ochiltree County was slow with totals and that left constituents of both candidates gulping a diet of strong coffee and fingernails. At 1 a.m., Wednesday, the trend in the three counties projected Blackburn the winner but that victory definitely was not a landslide.

The two other tight fights were between Ron Slover and Jack Hightower early on and between R. C. Porter and "Buck" Buchanan. The Porter-Buchanan race was hard to mark a trend because it involved returns from 10 Panhandle counties and returns were not moving that fast, Tuesday night.

(The unusually large turn out plus the difficulty in county split tickets was the reason for slow returns all across the nation.)

With two boxes left to be counted in Hansford County, here is the way returns were tabulated at 1:30 a.m., Wednesday morning.

The Reagan -Bush ticket had polled 758 ballots to 289 for the Carter-Mondale ticket.

At that hour of the morning, Ron Slover was trailing incumbent Jack Hightower by a scant 84 votes at 760 to 676.

Bill Sarpalus had established an almost 2-to-1 lead over incumbent Bob Price with 997 to 448 in Hansford boxes.

R. C. Porter had a slim lead over Buchanan, 571 to 559 but this was just one county in the 10-county balliwick the two were seeking to represent.

Blackburn was leading LaGrone in Hansford at that hour, 1104 to 313. At that time, Hutchinson County still had one large box unreported as did Ochiltree County.

Fate of the proposed constitutional amendments was almost lost in the excitement of a landslide nationally and close races nearer to home.

In Hansford, this was the county for the changes sought with the amendment number in parentheses, the pro vote first and the adverse count second.

- (1) 851-478 (2) 420-801 (3) 587-645 (4) 787-516 (5) 430-810 (6) 841-413 (7) 837-431 (8) 502-686 (9) 855-420.

Most significant defeats were the single taxing entity for counties and the right to limited appeal for the state in criminal cases.

While Reagan was making history with one of the rare landslides in presidential election history, Jimmie Carter was also making history as a loser. He is the first elected incumbent since Herbert Hoover to be voted out of office after only one term.

After the concession and victory speeches, the national media was rampant with speculations over the possible makeup of the Reagan cabinet once he assumes the helm of the ship of state, Jan. 20.

It must be remembered that all returns are unofficial at this point but there seems little doubt in the presidential contest with Reagan garnering votes almost 5-to-1 in the determinate electoral college. Here at home it would seem Blackburn is the district judges and due to slow returns across the area, that was the nearest decision at press time.

Bake Sale

The Girl Scouts will have a Bake Sale Wednesday, November 12, at Gordon's Drug & Cut Rate Grocery. Each girl is asked to bring a cake or pies ready to sell. Proceeds will go to pay utilities at Girl Scout Building. Margarette Evans

Colds and Exercise

People with colds may be better off if they forego exercise while they're infected, suggests the American Lung Association of Texas (ALAT). Especially if the air is very cold and dry.

Although the common cold is probably the most frequent infection in human beings, relatively little is known about its exact effect on the respiratory system. Recent research, though, shows a variety of abnormalities in lung function that occur when people suffer from viral upper respiratory tract infections.

A new study shows that exercise in sub-freezing, dry air triggers an irritability in the air passages of cold-sufferers. The study is reported in a recent issue of the *American Review of Respiratory Disease*, published by the American Lung Association.

In the study, the irritability of the air passages was still present three weeks after the onset of the infection, even

though the symptoms of the cold—coughing, nasal congestion, and sneezing—had disappeared. After six weeks, however, exercise no longer triggered irritability of the air passages.

The study reflects the increasing interest of researchers in the effects of cold, dry air on people with lung disease during exercise. Research reported earlier in the same publication showed that exercise-induced asthma occurs most often when the asthmatic inhales cold, dry air through the mouth.

This year the American Lung Association is sponsoring research to find out the effects of cold air on people with chronic lung disease and explore ways to reduce adverse reactions.

To help protect everyone's lungs, answer your Christmas Seal letter today. It's a matter of life and breath. For more information, write ALAT, 7701 N. Lamar, Suite 104, Austin, Texas 78752.

Winter Registration

Winter quarter registration for Amarillo College Vocational/Occupational Programs will take place November 17th at the West Campus, 6222 West 9th in the Administration Building from 8:00 a.m. till 10:00 p.m. Classes will be offered for day and evening students and financial aid and counseling are available.

Amarillo College Vocational Programs are the oldest in the Panhandle and taught by experienced instructors in their fields in well equipped shops. The areas offered are air conditioning and refrigeration, automotive mechanics, commercial electronics, two-way radio repair, diesel mechanics, electrical/instrumentation, and welding. Every effort is made to

insure students well rounded vocational-trade programs that will make them superior tradespeople, sought by industry. Emphasis is placed upon skill development through shop practice and related shop theory classes.

Those students competing the various programs have not had difficulty finding employment in Amarillo and the surrounding area at better than average starting salaries. For more information visit the Amarillo College West Campus or call 358-3639. Enrollment is open to high school graduates and non-graduates. The Vocational programs are classified in an area vocational school; therefore students are not required to pay out-of-district or out-of-state tuition.

Social Security News

"I, Priscilla Mullens, take thee John Alden as my lawful wedded spouse..." Miles Standish was the only one Priscilla had to inform about her impending name change. Nowadays, it's important that the Social Security Administration learn about your name change when it happens, whether the change is due to marriage, divorce, or any other reason.

It's essential that you inform the Social Security office not only because of future benefits, but also because mixups about names and social security numbers account for many of the delays IRS experiences in getting tax refund checks out.

When problems in processing tax returns are attributable to social security number confusion, it turns out that over 50% of them are due to a name change.

When there are no mistakes on the tax return, a taxpayer will receive his or her refund check on an average of within 6-8 weeks of filing. When the

name and social security number on the return do not match, the processing time is often doubled—and some returns may take even longer than that to be processed. Since between 75 and 80% of us receive refunds, this is worth remembering—and worth letting Social Security know about your new name.

No new flu strain is expected this year

COLLEGE STATION — Flu season may come early this year, but the viruses that infect Americans should be familiar types that have been around a few years, says a Texas A&M University microbiologist.

Dr. John Quarles said the Center for Disease Control in Atlanta is telling physicians and researchers not to expect anything dramatically new, but to be prepared for A-Texas varieties or perhaps Russian flu.

Quarles said several isolated influenza cases have already been confirmed this summer and that usually means an early season. Normally, the peak time for Americans is January through March.

NEWS IN PICTURES

CHRISTMAS GIFTS AID NEEDY CHILDREN



For friends who seem able from World Vision. The card carries a Christian humanitarian agency, message and says: "... as World Vision, suggests a special gift to you, a contributing aid to needy children. World Vision to help bring joy to a needy child. ..."

Each card with envelope costs \$10. Write Christmas Cards, World Vision, Box 0, Monrovia, CA. 91016.

Big Celebration

Some of the charter members of our church will be interviewed on radio station KRDF-FM on Thursday, November 6, at 9:30 a.m. This is the actual date of the organization of our church, twenty years ago.

The big celebration of our twentieth anniversary will be held on Sunday, November 9, with Sunday Church School at 9:45 a.m., the service for the public worship of God at 11:00 a.m., and a big family, covered dish dinner following the worship service. Depending upon who comes, people who are and have been members of this church will be used in the service. At the dinner people will be asked to reminisce about the past and to share hopes for the future. Letters will be read from those who could not come. This ought to be a lot of fun.

Come and join our family reunion. Charter members will be honored at the morning service and there will be a brief memorial for those who have been transferred to the Church Eternal.

Agronomist predicts, less sneezing this fall

COLLEGE STATION — A weed control expert at Texas A&M University is predicting a milder-than-normal season statewide for sufferers of hay fever because of the recent dry spell. Some of the areas of the state have still received less than half their normal January-through-August rainfall, according to the State Climatologist's Office at Texas A&M.

Dr. Rupert Palmer, an agronomist, said lack of rain slowed the growth of ragweed.



Going to school can be more fun in a pretty polka-dot dress like this one from Mothercare, retailing specialists for mothers-to-be, babies and children under seven. The dress is machine washable and comes in navy with white dots, a white sailor collar and red tie and trim. It fits children 36 to 40 inches tall.

That's pretty much the situation that's developing in world grain trading circles. Oh, there's grain enough, all right. But, you know how things go when there's a shortage.

Bible Lectures

The Spearman Church of Christ will be holding a special series of Bible lectures during the week of Nov. 9-13.

Brother Richard Williams, Lincoln, Kans., will be doing the lecturing.

Brother Williams, who attended Abilene Christian University, has been preaching the Gospel for more than 30 years. He has served congregations in Texas, Oklahoma, Nebraska and Kansas. In addition, he has preached in more than 100 meetings in 12 states.

This special series of services will begin Nov. 9 with Bible Study at 9:45 a.m. followed by Worship Services at 10:35 a.m. Sunday evening services will begin at 6 p.m. and weekday services begin at 7:30 each evening.

Following the Sunday morning Bible Study and Worship, there will be a fellowship luncheon. This will afford a fine opportunity to enjoy Christian fellowship and to visit with Brother Williams.


Everyone is invited to every service and to the fellowship luncheon.

The Church of Christ in Spearman and Brother Williams extend a cordial invitation to you to come and share the Gospel during these lectures.

A long-term observer of the agriculture scene once remarked that a surplus was one more bushel than you can possibly sell. And, that a shortage was one less bushel than you could sell.

MAINTENANCE PERSON
REGULAR FULL TIME EMPLOYEE

Northern Natural Gas Company will take applications on Friday, November 7, 1980, between the hours of 9 A.M. and 3:00 P.M. for regular full time maintenance person to work at the Spearman Plant. Apply at the Spearman District Office, 8 miles south and 7 miles east of Spearman, Texas. Typical job duties are: facility clean up, assisting with overhauls of large internal combustion gas compressor engines, maintenance of vessels and towers, all phases of pipeline repair and some rotating shift work relieving regular operating crew during vacations or illness, etc. Pre-employment test will be given for the Maintenance Person job on Friday, November 7, 1980 at 7 P.M. and Saturday, November 8, 1980 at 9:00 A.M. at the Spearman High School in Spearman, Texas for all persons that have completed an application. Northern Natural Gas Company is a major diversified energy company offering an attractive salary, and has an excellent benefit program. Equal Opportunity employer.


Northern Natural Gas Company

Public Auction

Saturday November 8th

1:00 p.m.

1 1/2 Miles N.E. of Guymon on Hwy. 54 across from HI-PLAINS IRRIGATION

FARM MACHINERY & EQUIPMENT

- * John Deere 4 sec. rotary hoe
- * 3 sets Hesston head hunter
- * Noble spring tooth harrow
- * Cole 6-row corn planter
- * LYNCH - 20 ft. and 14 ft. Milo pickup reel
- * 20 ft. combine reel
- * 7 point BIG OX
- * Moline 3-bottom turn-over plow 16 inch
- * Oliver 3-bottom turn-over plow 16 inch
- * 550 Gal. Ammonia tank
- * 2-7 ft. stock tanks
- * 1-1968 Dodge 1/2 ton pickup
- * Tire balancer
- * Battery charger
- * parts washer
- * Pipe trailer
- * New 11-L x 16 8 ply tractor tire
- * 2 barrels S. A. E. 30 Weight oil
- * 2 barrels universal torque converter fluid
- * 2 barrels essential lube
- * 2 barrels hydrotex
- * 2 barrels valvoline 10WD - 20WD - 40WD - oil,
- * 5 gal. John Deere transmission and hydraulic oil
- * several quarts automatic transmission fluid
- * 2 saddle mount tanks
- * 2-3 inch tool bars - 21 ft. long
- * New OX- ACT cutting torch

MISCELLANEOUS

- * 1 inch and 1 1/2 inch Siphon irrigation tubes
- * pickup tool boxes
- * Metal Cabinet
- * Tractor Radio
- * 2 elec. fence chargers
- * Air condition gauges
- * 12 volt fan
- * 8 bullet drags
- * 4 G78-14 nearly new tire
- * Barrell pumps
- * Elec. Staple gun
- * Skil Saw 1/3 # P.
- * Black (
- * Black & Decker Skil saw
- * 4 cases new filters
- * roll of spark plug cable

Property of 1st National Bank of Guymon

PRE-HOLIDAY values



Coty's new fragrance SOPHIA
Like the woman who inspired it, always magnificent ... never the same

Discover a new you in this dramatic blend of exquisite florals with subtle overtones of spices and musk. This splendid collection is at our Coty counter now.

Cologne spray, 2 oz.\$11
Cologne spray, 1 oz.6.75
Cologne pour, 2.5 oz.9.50
Soap, 3 oz. each, gift box of 3\$9
Dusting powder, 4 oz.7.50

MATCHABELLI
a distinguished new cologne inspired by his image... created for yours

Men, dare to try this new fragrance! It's subtle yet dramatic and compelling. In cologne, creamy after shave balm, invigorating after shave lotion.

Cologne 3.75 oz.\$9
Cologne 1.8 oz.\$6
After shave lotion 3.75 oz.\$7
After shave lotion 1.8 oz.4.50
After shave balm 1.8 oz.\$5

Gordon's Drug

314 Main

659-2141

Spearman, Tx.

Music Clubs In 20th Convention

Spearman Music Club were hostesses for the First District of the Texas Federation of Music Clubs in their twentieth convention last Saturday, November 1, at the First Baptist Church.

Mrs. Don Ray Knight, district president, had a meeting of board members and local club presidents, at 8:45 a.m. There were eighteen present for this meeting.

Mrs. Mike Schnell and Mrs. Russell Townsend registered people as they arrived at the church. Fifty delegates from eight Panhandle communities registered.

Coffee, tea, and sweet breads were served from a beautifully decorated table in the Fellowship Hall following the registration. Those serving were DeAnn Dunniho, Anne Sanders, Colleen Schaefer, Eddie Largent, and Phyllis Shedeck.

The welcome was given by the City Manager, Jim Murray. The response was given by Miss Verie Fletcher of Amarillo. Altha Townsend led the group in praying the Federation Collect and the Pledge of Allegiance. Bonita Reimer directed the singing of "Texas Our Texas", accompanied by Audrey Leighnor on the organ and Anne Sanders on the piano. The dedication of the Convention was given by Mrs. Ivan Frederickson of Amarillo. Mrs. Mike Schnell presented the guests.

Mrs. Don Ray Knight of Stratford presided at the business session. Reports of district officers were given in the morning and reports of local presidents were given in the afternoon.

Mrs. John Yows of Borger, Junior Counselor, presented musical interludes of five students. Jim Bob Parker of Dawn played "Ballade" by Burmuller, a student of Mrs. Wimber-

ly, Anne Sheets of Spearman, student of Janie Kunselman, played "The Bells of St. Mary's" by A. Emmett Adams, arranged by Edward St. Quentin. Karen Waters of Stratford, student of Mrs. Bob Boardman, played "Toccatino" by Nevin. Keith Hogan of Borger, a student of Mrs. John Bayless, played "Toccatino" by Kaba-lovsky, Pam McKey, of Borger, a student of Mrs. Forney, played "Danze Espanol" by Frank Sanoeci.

Mrs. Paul Reimer conducted the Memorial Service for three Federation members who died during the past year. She closed the service singing the official Federation Invocation.

Luncheon was served in the Fellowship Hall, catered by the Dutch Inn of Perryton. Fran Glass was the toastmistress. The invocation was given by Betty Freeman. "CELEBRATE" of Spearman High School, under the direction of Travis Angel, presented a delightful program. Mrs. Forrest

Stockdale of Amarillo gave the entertaining program of P.D.Q. Bach, interspersed cleverly with piano numbers.

Climax of the day was a varied, quality performing arts program under the direction of Anne Sanders.

Ruth Anne Jones and Anne Sanders played an organ and piano duet, "Fantastic Triophale"-R. Martin.

Bonita Reimer sang a lovely soprano solo, "Seek Ye the Lord" by Humphreys, accompanied by Anne Sanders.

Mrs. Robert Adams of Gruver played an organ solo, "Capriccio" by E. LeMaigre.

Mr. and Mrs. Roy Wiebe of Waka sang two lovely duets. The first Mr. Wiebe accompanied their singing on a guitar. In the second number Mrs. Wiebe accompanied their singing on the piano. They sang "The Gift of Love" by Hal Hapson and "Praise the Lord" by Bannister and Hudson.

Mrs. Peggy Witt of Perryton played a lovely "Violin Concerto in a Minor" by Bach, accompanied by Kathy Allred. Travis and Charlotte Angel sang the lovely vocal duet, "The King of Love" by Shelley, accompanied by Anne Sanders. Charlotte Angel did the entertaining operatic number, "Un Moto di Gioia" (Le Nozze di Figaro) by Mozart, accompanied by Anne Sanders.

Ruth Sunday School

The Ruth Sunday School Class of the First Baptist Church met Monday afternoon, Nov. 3, in the home of Mrs. Sada Hoshins.

Mrs. Addie Novak presided at the business meeting. Opening prayer was led by Mrs. Frances Stump.

The Class Officers were re-elected for the coming year. Plans were made for the noon meal Wednesday during the revival when Adult II Dept. will serve as hostesses.

Ruth Ann Jones furnished lovely orchids and members raised plants as door prizes. Next year's convention will be held in Amarillo.

Mrs. Novak gave the devotional entitled "What's a Granddaughter?" and "Prayer for Those Who Live Alone."

Meeting closed with prayer led by Mrs. Mathilda Entreklin.

Refreshments were served by hostess Mrs. Hoshins to Miss Altha Groves, Mrs. Willic Wallis, Mrs. Addie Novak, Mrs. Myrtis Ball, Mrs. W.L. Russell, Mrs. Mathilda Entreklin, Mrs. J.R. Stump, Mrs. Ora Sanders and Mrs. W. Jarvis.

Mrs. Addie Novak presided at the business meeting.

The Class Officers were re-elected for the coming year. Plans were made for the noon meal Wednesday during the revival when Adult II Dept. will serve as hostesses.

Ruth Ann Jones furnished lovely orchids and members raised plants as door prizes. Next year's convention will be held in Amarillo.

Mrs. Novak gave the devotional entitled "What's a Granddaughter?" and "Prayer for Those Who Live Alone."

Meeting closed with prayer led by Mrs. Mathilda Entreklin.

You are cordially invited to attend a

Bridal Shower for

Aidina Garza

bride elect of

Jose Luis Garcia

Sunday, November 9, 1980 from

2:30 to 5:30 p.m. at

Home Demonstration Building

Hostesses

Maria Villareal
Helen Blain
Ramona Rodriguez
Minda Nunez
Elena Tarango
Pura Perez

Maria Avila
Emma Lopez
Aurora Vela
Belinda Benavidez
Christina Vela
Maria Louisa Lopez

51s-2nc

Rotary Club

Robert Elliott showed a film, "Take Another Look", which was a dramatic presentation of why we need to take another look before doing anything. It was a safety film that illustrated how the least little bit of carelessness or failure to check can produce terrible accidents. This was at Spearman Rotary Club on Monday noon, November 3, in the garden room of the Cattleman's Restaurant.

Ed Freeman led community singing. Eddy Limbocker led in the Pledge of Allegiance. Don Wirsdorfer gave the prayer of invocation. It was Junior Lusby's birthday. It was announced that Robert Elliott was a new grandfather.

Members present were Jim Benson, Carrie Marie Berry, Eschol Blankenship, Roy Bulls, Durane Castleberry, John R. Collard, Jr., Robert Elliott, Ed Freeman, Ed Garner, John Hutchison, Eddy Limbocker, Junior Lusby, Jack McWhirter, Frank Oglesby, Coy Palmer, Steve Rogers, Mike Schnell, Jim Shirley, Gary Sims, and Don Wirsdorfer.

Members absent were Pete Fisher, Kerry Henton, David McClellan, and Jim Murray.

Who's New

Mr. and Mrs. Carl Kunselman are happy to announce the birth of their son, Clifford Dan Kunselman.

He was born Oct. 31 at 1:10 a.m. at Hansford Hospital. He weighed seven pounds, 11 ounces.

He has a sister, Karla Jean, six and a brother, Cameron Don, three years old.

Paternal grandparents are Mr. and Mrs. Don Kunselman, Spearman.

Maternal grandparents are Mr. and Mrs. Clifford Goff, Boise City, Okla.



Bad spots can sometimes be removed from pewter by rubbing them with grade 00 steelwool dipped in olive oil.

"The most useful virtue is patience." John Dewey

You'll want to remember how they look today

AND TAKE A SECOND LOOK FOR TOMORROW



Last Visit Before Christmas

A professional 8x10 color portrait for

88¢ In addition to our Regular Offer, Now You Can Get An Exciting 10x13 Dual-Image Portrait!



Ask photographer for details.

THESE DAYS ONLY
Nov. 5, 6, 7 & 8

Daily: 10 a.m. - 8 p.m.

Hwy. 207 S., Spearman, Tx.



88¢ per sitting. No charge for additional group subjects. One special per person. Backgrounds may occasionally change. Remember, children must be accompanied by parent. Satisfaction always, or your money cheerfully refunded.

PRICES GOOD THRU NOV. 8TH

QUANTITY RIGHTS RESERVED

WIN UP TO \$1000 CASH
• WIN \$100 • 10 • 5
• 1 INSTANT WINNERS
53 WAYS TO WIN!

Supermarkets
Perryton, Texas

PLAY UNITED'S

BINGO

Win cash...

THIS PROMOTION MAY BE REPEATED.

ODDS CHART		ODDS CHART	
Price	Days with	Price	Days with
\$1.00	20	\$2.00	10
1.50	10	3.00	5
2.00	5	4.00	3
3.00	3	5.00	2
4.00	2	6.00	1
5.00	1	7.00	1
6.00	1	8.00	1
7.00	1	9.00	1
8.00	1	10.00	1

COCA-COLA

6 BTL. CRTN. 32 OZ. \$1.59

PLUS DEPOSIT

FINE FARE ALUMINUM FOIL..... 25 SQ. FT. **2 FOR 89¢**

FINE FARE FABRIC SOFTENER..... 40 CT. SHEETS **1.29**

FINE FARE LIQUID DISH DETERGENT..... 32 OZ. **79¢**

FINE FARE CAKE MIX..... ASST. FLAVORS **59¢**

FINE FARE FROSTING MIX..... ASST. FLAVORS **79¢**

DOWNY FABRIC SOFTENER..... 64 OZ. **2.29**

FINE FARE SWEET PEAS..... 17 OZ. CANS **3 FOR \$1**

FINE FARE CORN..... W.K. OR CREAM STYLE 17 OZ. CANS **4 FOR \$1**

FINE FARE FLOUR..... 5 LB. **69¢**

FINE FARE CUT GREEN BEANS..... 16 OZ. CANS **4 FOR \$1**

UNITED EGGS..... EXTRA LARGE GRADE A **75¢ DOZ.**

FINE FARE CHOCOLATE DRINK MIX..... 12 CT. **98¢**

FINE FARE REG. OR IODIZED SALT..... 26 OZ. **25¢**

FINE FARE BLACK PEPPER..... 4 OZ. **69¢**

FINE FARE MUSTARD..... 24 OZ. **49¢**

FINE FARE SOUP..... *CREAM OF CHICKEN *CHICKEN NOODLE *CREAM OF MUSHROOM *VEGETABLE **3 FOR \$1**

FINE FARE SALTINE CRACKERS..... 16 OZ. BOX. **49¢**

FINE FARE PORK 'N BEANS..... 15 OZ. CANS **4 FOR \$1**

FINE FARE TOMATO SAUCE..... 5 8 OZ. CANS **5 FOR \$1**

"PRODUCE"

GOLDEN RIPE BANANAS..... 4 LBS. **\$1**

TEXAS ORANGES..... NEW CROP 4 LBS. **\$1**

YELLOW SWEET CORN..... LARGE FULL EARS 5 EARS **\$1**

LONG GREEN SLICERS CUCUMBERS..... 5 FOR **69¢**

NO. 1 RUSSET POTATOES..... 5 LB. BAG **69¢**

You are invited to attend
 Home Interiors, Christmas Show
 (come and go)
 Sunday, November 8, 1980
 from 1:00 to 4:00 p.m. at
 First State Bank
 (Hospitality Room)
 Given by Debi Baskin and Billie Zinck
 52-1tp

Book Review Club Met

The Book Review Club met with Mrs. Malnor Arthur as guest reviewer of Borger. She reviewed Ethan Frome by Edith Wharton at the home of Mrs. O.C. Holt with a dinner meeting. Those present were Mmes: F.J. Hoskins, Earline Chambers, Carrie Marie Berry, R.E. Lee, Ruth Sheets, Joe Traylor.

Frank Hefner, E.T. Copeland and guest Malnor Arthur and Mrs. O.C. Holt.

The next meeting will be in January in the home of Carrie Marie Berry.



Peaches are a member of the rose family.

Golden Spread Center News

Golden Spread Center is located at 14 S. Haney and is open every day, Monday through Friday, from 9:00 a.m. to 5:00 p.m. It is open to all people, fifty five years of age or older without discrimination as to sex, color, race, religion, politics, or handicap.

Every Thursday is Arts and Crafts Day from 10:00 a.m. to 5:00 p.m. Many people are working on Christmas decorations, others are working on needlepoint. Marv Hendrickson and Martha Batton direct these arts and crafts projects. People are finding that they have skills in this area that they didn't know they had and are enjoying it. There is a warm fellowship between those who come and work at these projects. There is also a bounteous covered dish luncheon at noon.

Table games will be the order of the day on Friday, November 7, and Monday, November 10, from 2:00 to 5:00 p.m.

Rosa Lee Butt will be driving

the Golden Spread Center's van-bus on Wednesday, November 12, from 9:00 a.m. to noon, picking up the sixty-plus bunch and taking them shopping, on errands, and to meet appointments all over town. This service is offered free to all persons who are sixty or older without discrimination. If you need such transportation, call the Golden Spread Center (9-3521) on Tuesday and get your name on the list.

The November birthday party will be held on Tuesday, November 11, at 6:30 p.m. There will be a beautifully decorated birthday cake, the singing of "Happy Birthday", and a pleasant evening of table games.

Those involved within the Golden Spread Center, whether staff, board, or volunteer, act as boosters in the process of creative options "with" older adults rather than "for" older adults to advance independence and promote well-being. The uniqueness of the Golden Spread Center stems from its total concern for older people and its concern for the total older person through proved

expanded alternatives, thereby elevating the quality of life in later years.

Servitors Story Hour

CONDUCTORS: Linda Hiller & Debbie Benton

Servitors Story Hour Express departed as Scheduled on Tuesday, October 28, at the Library. DEPARTURE TIME: 10:15 a.m. DESTINATION: Upstairs to Story Hour Land. PASSENGER LOAD: 34 children age 3 & 4.

ADVENTURES: Everyone colored Mr. Hoot Owl and made masks out of paper sacks for Halloween. As everyone colored we listened to the Chipmunks record. After everyone picked up their crayons and carpet squares, we lined up, with girls first, and received our treats. Then with a big chug-a-lug and a whistling choo-choo we all returned to our moms safely.

DESTINATION: Downstairs. ARRIVAL TIME: 11:00 a.m. PASSENGERS ABOARD: Malissa Baker, Salina Benton, Molly Blackman, Regan Boxwell, Braden Delozier, Loree

Dunn, Matt Eakin, Kara Farris, Anna Felder, Kortney Henton, Audra Holland, Derek Irlbeck, Cameron Kunselman, Mel McCree, McKinzie Mills, Trixie Pearson, Kristina Poole, Ernest Puentas, Tealy O'Quinn, Heather Reimer, Ronda Renner, Stuart Riggins, Schane Schneider, Scott Sims, Toni Scroggs, Ashley Shieldknight, Clair Shedeck, Nikki Strawn, Leslie Swan, Coyt Tigrett, Tammie Trimble, Brandon White, Josh Winegarner, Cory Wright.

Refreshments were provided by Cheryl Gibson for the month of October. The Halloween treat bags were made by Cheryl for the last Tuesday in October.

Thank you to North Plains International and Thriftway for supplies donated.

Double Ring Ceremony Unites Couple



Mrs. Tommy Lynn Cardin

The United Methodist Church of Gruver, Texas was the scene of an October 18 wedding which united in marriage Melissa Marie Mans and Tommy Lynn Carden. Rev. Harold James of Boise City, Okla. read the double-ring ceremony at 7:00 o'clock. Assistant Minister was Rev. Tom Fuller of Gruver.

The wedding united the families of Mr. & Mrs. Fred E. Mans of Spearman and Mr. & Mrs. Roy L. Carden of Guymon, Okla.

Vows were exchanged before the altar which was banked with baskets of white glads, sonie roses and yellow poms. Fifteen-branched candelabra flanked the altar. Pew markers were Hurricane lamps tied with peach colored bows.

Cindy Carden registered guests in the foyer of the church from a table decorated with Sonie roses & poms.

Mrs. Bill Strawn, organist and Mrs. Sandra Kiziar, pianist, presented traditional wedding selections and accompanied Mrs. Shirley Lowe who sang, "You Are My World", "Hand In Hand", and "The Lord's Prayer."

Given in marriage by her father, the bride was attired in a formal gown of white silk organza trimmed with re-embroidered French lace and seed pearls. The neck line featured a shallow scoop edged with Venice lace and the fitted sleeves were applique with lace medallions. The full skirt, Southern Belle inspired, was trimmed in lace. The Redingote effect of the skirt's split panel, swept into a full Chapel train. The veil, set on a Camelot hadpiece, was trimmed with Venice lace. She carried a cascade bouquet of white roses. Her jewelry was an old, borrowed, string of pearls which her mother wore on her wedding day, a gift on that day from her husband. The bride presented each mother with a long stemmed rose as she walked the aisle.

Jacqueline Carden, Guymon, Okla. was Maid of Honor. She wore a formal gown of yellow organza over taffeta trimmed with yellow ribbon. She carried a nosegay of sonia roses & white poms & wore a yellow wide brimmed hat.

Lelia Goodman and Tammy Donahue Cudd were Bridesmaids. They wore floor length peach organza gowns over taffeta. The full hooped skirts fell from basque waist lines and were hemmed with deep, ribbon-trimmed ruffles. They wore wide-brimmed peach colored hats & carried single sonia roses tied with baby's breath.

Tiffany Carden, flower girl, wore a floor length white satin and lace gown trimmed with peach & yellow ribbons. She wore flowers in her hair and scattered sonia poms from a white basket.

Candlelighters were Gina Ottinger & Jennifer Neises. Their creamy white long dresses were designed with scooped, fuffed necklines & waisted with peach & yellow ribbons. Their corsages were poms in shades to match their ribbons. Cindy Carden & Penny Cummings were in charge of the guest book. They were attired like the candlelighters.

For her daughter's wedding, Mrs. Mans chose a pale blue gown with matching coat, decorated with pearls. Mrs. Carden wore a pastel brown gown with matching jacket. Both mothers wore sonia rose corsages.

Ronald Carden served his brother as Best Man. Ushers included Randell McPherson of

Guymon, and Tony Mans, bride's brother, of Spearman. They also served as groomsmen. Ring bearer was Nathan Ross of Texoma, Okla.

The groom wore a white cut-a-way tuxedo with tails. The Best Man wore a brown tuxedo with bron velvet vest, a white & yellow ruffled shirt to match the Maid of Honor's attire. Groomsmen wore brown tuxedos. White shirts were ruffled in apricot.

The reception which followed the ceremony, was catered by Mary Mayfield of Spearman. The serving table was centered with an arrangement of white & yellow poms and sonia roses. A white Chiffon cloth draped the table which held crystal & silver appointments. The three-tiered wedding cake was iced in white and decorated with peach roses and was topped with a miniature bridal couple. Servers were Tammy Walkins, bride's cousin of Guymon, Doris Neises and Beth Longbrake, Aunts of the bride from Cheney, Kansas.

For a short wedding trip to Amarillo, the bride traveled in a magenta colored suit with beige accessories. Her shoulder corsage was white roses. The couple will make their home in the Spearman-Gruver area. Mrs. Carden will be attending school in Spearman. Mr. Carden is engaged in farming.

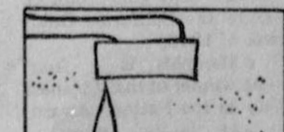
Our of town guests included: the couples grandparents--Mrs. Mildred Ottinger from Stratford, Tex and Mr. & Mrs. Joe I Mans, from Guymon, Okla; Mr. & Mrs. Richard Watkins, Mr. & Mrs. Mark Watkins, Ben Watkins, Mr. & Mrs. Jack Rodman, Mr. Mike Romero, Miss Lisa Asmussen, Mr. & Mrs. John Romero, and Mr. Kurt Fisher all of Guymon, Okla; Mr. & Mrs. Ralph Renner, Mr. & Mrs. Jim Ross, Master Jeremy Ross, Mr. Paul Kenneth Craig, and Mrs. Paul Craig all from Texoma, Okla; Mr. & Mrs. Ted F. Neises and Mr. Joe F. Neises from Cheney, Kansas. Mr. & Mrs. Kenneth Longbrake, Mr. Eric Longbrake, and Mr. Russell Longbrake all from Cushing, Okla; Miss Alma Ottinger from El Dorado, Kansas; Joyce Short from Goodwell, Okla; Mrs. Mary Richards from Garber, Okla; and Mrs. Teddy Ford and daughter from Perryton, Texas.

mothers and babies

LITTLE KNOWN FACTS
 It is not unusual for children just going off to kindergarten or first grade to be too excited or nervous to eat breakfast for the first few days. Doctors suggest they just be given fruit juice and milk and they will probably be calm enough to eat in a week or so. Forcing food can delay recovery.

It's not unusual for a child of around two or three to reject one parent when playing with the other. They usually grow out of it.

A fine assortment of children's clothes is available in the Mothercare catalogue, write Mothercare, P.O. Box 3881, N.Y., N.Y. 10163.



America's first waterworks was built in Boston in 1652.

BONANZA
 Win a shopping spree... Win a free trip!

\$184,740 IN CASH PRIZES!
 THRU WEEK 6 NO. OF WINNERS
 8030 INDIVIDUAL CASH WINNERS

40,000,000 S & H GREEN STAMPS
 THRU 6TH WEEK 7360 BOOKS GIVEN TO 3543 INDIVIDUAL WINNERS

WEEKLY SWEEPSTAKES WINNER
JESSIE HAWK
 1 MINUTE (\$100) WINNER!
 OF PERRYTON SHOPPING SPREE EACH WEEK IN YOUR STORE WEDNESDAY MORNING AT 9 A.M.

HORMEL BLACK LABEL BACON	ROUND BONE CUT SWISS STEAK UNITED TRUTENDR LB. \$1.98
BACON \$1.79	BONE IN RUMP ROAST UNITED TRUTENDR LB. \$1.89
WISCONSIN RED RIND CHEDDAR CHEESE LB. \$1.98	DELUXE BEEF RIBS UNITED TRUTENDR LB. \$1.09
ECKRICH SMOKED SAUSAGE SMOKED BEEF OR POLISH LB. \$2.19	TOP ROUND STEAK UNITED TRUTENDR LB. \$2.79
SHOULDER ROAST UNITED TRUTENDR CENTER CUT 7-BONE LB. \$1.69	BONELESS STEW UNITED TRUTENDR EXTRA LEAN CUBES OF BEEF LB. \$1.98
FINE FARE GRAPEFRUIT JUICE 46 OZ. 69¢	FINE FARE CREAM CHEESE 8 OZ. PKG. 69¢
FINE FARE ORANGE JUICE 46 OZ. 79¢	MANAGER'S SPECIAL PEPSI REGULAR OR DIET 32 OZ. 6-PK \$1.79 PLUS DEPOSIT
FINE FARE PINEAPPLE JUICE 46 OZ. 89¢	DOUBLE STAMPS WEDNESDAY & SATURDAY (WITH \$2.50 PURCHASE EXCLUDING CIGARETTES)
FINE FARE CRANBERRY JUICE COCKTAIL 32 OZ. 89¢	OLEO 1 LB. TUB 49¢
FINE FARE APPLESAUCE 25 OZ. 69¢	UNITED Supermarkets Perryton, Texas QUANTITY RIGHTS RESERVED PRICES GOOD THRU NOV. '80
FINE FARE FROZEN ORANGE JUICE 12 OZ. 59¢	"FROZEN FOOD" FINE FARE WHIP TOPPING 8 OZ. CRTN. 49¢
FINE FARE PINEAPPLE JUICE 300 CT. 59¢	"DAIRY" FINE FARE SWEETMILK OR BUTTERMILK BISCUITS 8 OZ. CAN 69¢
FINE FARE ALCOHOL 43¢	UNITED COTTAGE 24 OZ. \$1.29
RED & WHITE LIGHT BULBS 4 PK. 1.29	CHEESE 89¢
FINE FARE COSMETIC PUFFS 300 CT. 59¢	

Hansford County In Top 10

AUSTIN—Deaf Smith County ranked first in Texas livestock and livestock products cash receipts for 1979 \$198 million, Agriculture Commissioner Reagan V. Brown has reported.

Deaf Smith was also first within the state with its total crops and livestock receipts of \$256 million and among the top 10 counties with government payments of \$5 million. Crops, livestock and government payments increased the total receipts to \$261.8 million.

Brown said, "It's counties like Deaf Smith that made it possible for Texas to become number two in the nation in agriculture."

Texas Crop and Livestock Reporting Service has recently published detailed information on cash receipts of all counties. The booklet, 1979 Texas Agricultural Cash Receipts Statis-

tics, is available from the Texas Department of Agriculture.

Nearby counties were also ranked among the top 10 counties.

Parmer County was third in the state with \$212.7 million total crops and livestock receipts. Parmer also ranked third with \$96 million crop receipts; fourth with \$116.5 million in livestock and livestock products; and among the top ten counties with \$4 million receipts in government payments. Crops, livestock and government payments increase its total receipts to \$217 million.

Castro county was third with \$121 million receipts for livestock and livestock products; fourth with its \$205 million receipts for total crops and livestock; fifth with \$83.7 million crop receipts; and among the top ten counties with \$3.7

million in government payments. Crops, livestock and government payments increased Castro's total receipts to \$208.8 million.

Swisher County ranked fifth for livestock and livestock product receipts with \$112 million and also in crops and livestock with receipts of \$170.8 million. Total crops, livestock and government payments increased its receipts to \$174 million.

Among the top ten Texas counties in livestock and livestock products receipts were: Hartley with \$88.6 million; Hansford with \$82 million; Randall with \$75 million; and Moore with \$73 million.

Hansford County was also among the top 10 counties in total crops and livestock receipts with \$120 million. Crops, livestock and government payments increased Hansford's total to \$122.7 million

Weight Control News

MORE EXERCISE = LESS POUNDS

O.K., you've finally gotten down to that magic weight that is just where you want to be. Staying there is the hard part for most people. One of the best assists in keeping a balance between the calories you take in and the calories you burn up is a proper regimen of exercise.

Exercise is a good way to help lose weight as well as a good way to help you keep the pounds off. Exercise has a lot of other benefits, too. It helps firm up your body, gives you a good restful night's sleep, reduces bore-

dom, and reduces your appetite. Bet you didn't realize that last item. But it will. Try it and see.

Another way to reduce your appetite is using an appetite suppressant such as Diets. It's safe and effective when used with a healthy diet and exercise program to help you lose weight.

Exercise doesn't have to be overly vigorous, tiring, or get you in shape for the Olympics. You don't have to run five miles a day. But try walking instead of taking the car or the bus. Get

on your bike and peddle away some calories. Take up



tennis, golf, or swimming. Do some simple calisthenics at home.

The important thing is to be consistent. A regular routine of moderate exercise will help you lose weight and keep it off.

Here are some activities and the number of calories you can burn up in an hour: gardening—230; walking—250; dancing—400 (yes, dancing. You didn't know dancing was exercise, did you?); tennis—650; bowling—350. Actually, you can burn up 40 calories an hour just by reading. Unfortunately, you might add a few hundred with snacks while you're reading.

For more information about staying in shape, write for a free brochure to: Dietac, P.O. Box 174, Clifton Heights, Pa. 19018.

Statewide production is projected at 3.6 million bales, down 34 percent from last year.



Women and Cancer

Years ago, one of the most famous ads urged women to reach for a special brand of cigarette instead of a sweet. Today, the American Lung Association of Texas encourages women to reach out to life instead.

The myth that smoking and smaller waistlines go together has been swallowed by many women, say the Christmas Seal people.

When some people quit smoking, there may be a temporary weight gain. Changes in the body's metabolism can occur because the body does not consume as much oxygen. But quitting is completely individual experience. A substantial number of people lose weight after kicking the cigarette habit, says the lung association. People who decide to take control of their lives by quitting smoking also determine to alter unhealthy eating habits as well.

Feminists are beginning to look at the fatness issue as a special plague for women, as an example of a double standard that make women, especially, feel being slim and being attractive are forever linked.

Being half starved in an attempt to look thin and thus attractive can be a threat to health. So can being too fat.

Cutting caloric intake and increasing physical exercise after quitting smoking can keep weight gain to a minimum and even eliminate it altogether.

To adopt a healthy, non-smoking, non-fattening lifestyle, the American Lung Association of Texas suggests:

- Cook with herbs and spices, rather than butter or margarine, and avoid gravies and creamy sauces.
- Eat lots of salads with light dressings, such as light oil and vinegar.

The lung association recommends planning meals on a weekly or semi-weekly basis, not improvising. They suggest shopping from a list and preparing a single helping for each person that is garnished in such a way as to look bigger than it is.

Smoking to stay slim is the worst possible method, the Christmas Seal people say. Good looks go with good health habits.

WHAT'S IN IT FOR YOU?

Self-Medication: Cutting Cost, Not Quality

Improving health care and fighting inflation are among the advantages offered by the current do-it-yourself health care phenomenon.

Simon Rottenberg, economics professor at the University of Massachusetts, says self-medication, appropriately used, "releases professional care resources to higher and better uses."

Speaking at a symposium sponsored by The Proprietary Association, a trade association representing the manufacturers of non-prescription medicines, he declared:

"If only two percent of over-the-counter drug consumers in the U.S. chose to visit primary care practitioners, rather than using self-medication, the annual increase in patients' office visits would be 292 million, a 62 percent rise. To maintain the same quality of consultative care, the number of primary care practitioners would have to be increased from the present 91,000 to 147,000."

Only about three percent of the total spent on health care in the U.S. goes to nonprescription medication.

These and other unusual facts are in the 1980 Mobil Travel Guide Major Cities. It lists more than 1,000 hotels and restaurants in 53 U.S. cities and quality rates them on a one-to-five star system. The "Major Cities" Guide also gives sightseeing and conference facility information plus maps of airports or downtown areas. It is available at Mobil Service Stations and bookstores for \$5.95.

Trees

Have you hugged a tree today?

Trees furnish us with shade and shelter, and give character to our homes and boulevards. They purify our air and water, and reduce noise pollution and home energy consumption.

Trees also serve as willing models for budding young artists; their branches as new horizons for small boys to explore.

In honor of the role trees and their products play in our lives, the week of October 19 has been designated as National Forest Products Week.

Texas has additional reasons to participate in this observance. Texas forests produce lumber for our houses and furniture; paper for our newspapers, stationery and packaging materials; and chemicals for our clothing, foodstuffs and a host of industrial uses.

The list of products made or derived from trees is almost endless; but our forest resources are finite and shrinking rapidly.

According to the Texas Forest Service, over half a million acres of Texas forests have been lost to highways, shopping centers, subdivisions and recreational lakes since 1965. This acreage loss puts increased pressure on remaining forest lands.

If everyone will conserve paper and other forest products and encourage others to do the same, our forest resources can be extended; but additional action is needed.

Production on Texas' remaining forest lands must be increased also, if rising demands for forest products are to be met.

Private landowners can get forest management assistance to improve their woodlands from state and company foresters and from private forestry consultants, as well.

Trees provide us with so many benefits, it's only fitting that we salute their contributions to our lives and our economy through observance of Forest Products Week.

Have you hugged a tree today?

- Charlotte, N.C. was the nation's major gold producer before the California Gold-rush of 1848.
- Memphis is a four-time winner of the "Cleanest City in the Nation" Award.
- McCormick Place in Chicago is the largest convention center in the world.

Entertaining Oddities

- The number of conventioners coming to Las Vegas each year exceeds the permanent population of the city.
- The best and cheapest way to see the New York skyline is a 25-cent ride on the Staten Island Ferry.

Women first voted in a national election in Rochester.



Leased Floodlighting

directs light where your business needs added safety and security

With outdoor leased floodlighting, you can help prevent accidents on your business property by directing light where you need it most. No more stumbling in the dark around poorly lighted stairways, loading docks and parking lots! Your employees will appreciate the safety and convenience and, good outdoor lighting also helps discourage vandalism. Leased floodlighting is automatic—on at dusk, off at dawn, protecting your employees and your property for just pennies per night. To get the added safety and security of leased floodlighting for your business, just give us a call.

COMMUNITY PUBLIC SERVICE
Your Electric Light & Power Company

Radio Shack DEALER

GRAND OPENING

Earl's T.V. & App.
106 E. Kenneth Spearman, Tx.
Ph. 806 659-2121

Prices Good Thru Monday at New Store Only!

AM/FM Stereo Receiver at 38% Off!

Great Sound! Great Looks! Great Savings!

STA-800 By Realistic®

Save \$120

199⁹⁵

Reg. 319.95

- Exclusive Auto-Magic® Locks in FM Stations Automatically
- Exclusive Glide-Path® Combined Volume/Balance Controls
- 35 Watts per Channel, minimum RMS into 8 ohms, 20-20,000 Hz. with No More than 0.08% Total Harmonic Distortion

CHARGE IT (MOST STORES) 31-2088

Open all Day Saturday

Half Price Audio Rack!

By Radio Shack

Save \$50

49⁹⁵

Reg. 99.95

- Tempered-Glass Record Door
- 4-Way Adjustable Middle Shelf
- Magnetic Open/Close Latch
- Heavy-Duty No-Mar Casters

Open all Day Saturday

Slim-Line Hi-Fi Speaker

Optimus®-27 by Realistic

Save 50%

74⁹⁵

Each Reg. 149.95

- Slim Design (Only 6" Deep) Cuts Midrange Reflection
- 8" Passive Radiator, 6 1/2" Woofer, 1" Dome Tweeter
- Genuine Walnut Veneer Cabinet 40-2033

Open all Day Saturday

Stereo 8-Track Player/Phono

Clarinette®-42 by Realistic

Save \$60

49⁹⁵

Reg. 109.95

- Now You Can Play Your Car Tapes at Home
- 3-speed Changer Plays Any Size Record
- Matching Speakers Separate Up to 18'

Open all Day Saturday

Ivory Colored Decorator Phone

By Radio Shack

Save 38%

49⁸⁸

Reg. 79.95

- Great to Give or Own • Gold-Tone Fittings
- Continental Buzzer • With Modular Plug

Open all Day Saturday

FREE WITH THIS COUPON

5-Cell Flashlight

Reg. 1.98 Value

First 5-cell flashlight FREE, extras at regular price. Persons under 16 years of age must be accompanied by an adult. 68-1022

Limit one to a customer. Good at new store only. Offer expires

24-Hour Digital Alarm Clock at a Low Price!

By Micronta®

Save 39%

7⁹⁵

Reg. 12.95

- Features Illuminated Digits
- AM, PM and "On" indicators
- Simulated Walnut Finish

Open all Day Saturday

Wall-Hanging Color Organ

By Realistic

Save 50%

19⁹⁵

Reg. 39.95

- Sound Activated—No Wiring
- "Starburst" Color Pattern
- Walnut Vinyl Veneer Finish

Open all Day Saturday

Lotus Formula-One Racecar AM Radio

By Radio Shack

Save 45%

10⁹⁵

Reg. 19.95

- 10" Exact Replica
- "Steering Wheel" Tuning
- Hidden On/Off Volume Control
- Speaker Concealed in Chassis

Open all Day Saturday

International Dates Listed

For those with relatives in the armed services stationed overseas or others living in foreign countries, it's not too early to plan for Christmas mailing, according to Spearman Postmaster Robertson.

MILITARY MAIL cutoff deadlines are:
OCTOBER
 27--Surface parcels to Australia, Far East and South East/Asia.
NOVEMBER
 3--Space Available Mail (SAM) and surface parcels to the Mid East.
 10--Surface parcels to Africa, Central/South America and Europe. Space Available Mail (SAM) to Africa, Australia,

Central/South America and South East/Asia. Parcel Airlift (PAL) mail to Mid East.
 14--Surface parcels to Caribbean/West Indies. Parcel Airlift (PAL) mail to South East/Asia.
 17--Parcel Airlift (PAL) mail to Africa, Australia and Central/South America.
 21--Space Available Mail (SAM) to Europe and Far East.
 24--Surface parcels to Greenland and Iceland. Space Available Mail (SAM) to Caribbean/West Indies, Greenland and Iceland.
 28--Parcel Airlift (PAL) mail to Europe and Far East.
DECEMBER
 1--Surface parcels to Alaska and Hawaii. Space Available

Mail (SAM) to Alaska. Parcel Airlift (PAL) mail to Caribbean/West Indies, Greenland and Iceland. Letters to Australia, Central/South America, South East/Asia. Priority Mail to Australia, Central/South America and South East/Asia.
 5--Letters to Mid East. Priority Mail to Mid East.
 8--Parcel Airlift (PAL) mail to Alaska. Letters to Africa and Greenland. Priority Mail to Africa and Greenland.
 12--Priority Mail to Europe and Far East. Letters to Europe and Far East.
 14--Letters to Iceland. Priority mail to Iceland.
 15--Letters to Alaska, Hawaii and Caribbean/West Indies.

Priority Mail to Alaska, Hawaii and Caribbean/West Indies. **INTERNATIONAL MAIL** cutoff deadlines are:
OCTOBER
 27--Surface parcels to Australia, Far East, Southeast Asia, Southeast Africa and West Africa.
NOVEMBER
 3--Surface parcels to Mid East.
 10--Surface parcels to Central/South America, Europe and North and Northwest Africa.
 14--Surface parcels to Caribbean/West Indies.
 28--Air Parcels to North and Northwest Africa, Australia, Mid East, Southeast Africa and West Africa.
DECEMBER
 1--Air parcels to Central/South America and Southeast

Asia. Airmail letters/cards to Australia, Central/South America and Southeast Asia.
 5--Airmail letters/cards to Mid East.
 8--Air parcels to Europe and Far East. Airmail letters and cards to North and Northwest Africa, Southeast Africa and West Africa.
 12--Air parcels to Caribbean/West Indies. Airmail letters/cards to Europe and Far East.
 15--Airmail letters/cards to Caribbean/West Indies.

Friemel on Buffs' Defense



Special Election
 Governor Bill Clements called for a special election Nov. 22 to fill the seat of State Rep. Mike Ezzell of Snyder, who resigned last month to serve on a health services state agency.

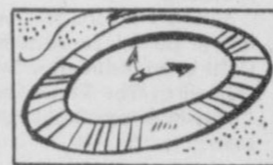
The special election has irked taxpayers in that district, since the winner will serve only until Jan. 12, when the Legislature convenes. At that time Representative-elect Larry Don Shaw will take his seat in the House, and the special election winner will go home.

Clements' move is seen as a ploy to give some Republican a chance to build name identification for a future race against Democrats. Some locals feel it's a big waste of tax money.

Twane Friemel, son of Coach and Mrs. Kenneth Friemel is attending WTSU. Twane graduated from Spearman High School in 1978. Twane was named to the All-State Football Offensive Lineman Second Team his Senior year. Twane is a Junior at WTSU and is a back up defensive tackle for WTSU. He has been asked to play defense due to injuries to the Buffs defensive line. Friemel has 20 tackles, 2 tackles for losses totaling 14 yards.



The male penguin incubates baby penguin eggs between his feet!



It takes twelve hours for cream to rise to the top of fresh milk.

STATE CAPITAL HIGHLIGHTS

By Lyndell Williams
 TEXAS PRESS ASSOCIATION

AUSTIN—House Speaker Bill Clayton, cleared last week of Brilab charges of influence peddling, has indicated he will run again for Speaker.

Clayton said he will make a formal announcement of his candidacy sometime this week. Already the first person to serve an unprecedented three terms as Speaker, Clayton seeks a fourth term against State Rep. John Bryant, D-Dallas.

A third candidate, Gib Lewis, D-Fort Worth, is a top member of Clayton's conservative team in the Legislature. Lewis held the faction together throughout Clayton's legal woes, and has said he will step down if Clayton runs. Observers are waiting now for Lewis to announce otherwise... or withdraw for Clayton.

"I am running. In fact, I have already recontacted enough House members. We already have the election assured," Clayton said last week.

The Lewis Factor
 While Clayton struggled with Brilab, his legislative supporters rallied around the candidacy of Lewis, who did a superb job of preventing a splintering into lesser factions. Lewis reportedly maintained some 90-plus votes (76 votes needed to win), and stood stronger than other an-

nounced candidates who eventually pledged to him or Bryant.

A fourth candidate, Craig Washington, D-Houston, was named speaker pro tem by Clayton last week. Washington, a black who is generally graded among the ablest lawmakers, is a lawyer who aided Clayton's Brilab defense.

Should Clayton win when the Legislature convenes in January, he will owe much to the pair, particularly Lewis. Lewis will no doubt receive a committee plum for his stewardship, unless he challenges Clayton. The conservative lobby reportedly wanted Lewis to continue his bid, but may now have decided Clayton is not as tainted by Brilab as was expected.



An apple tree is in its prime when it is about 50 years old.

STAR SPANGLED BANNER

OPEN 24 HOURS
7 DAYS A WEEK
365 DAYS A YEAR

ALLSUP'S

CONVENIENCE STORES

WE ACCEPT
FOOD
STAMPS

<p>SHURFINE CUT GREEN BEANS 3 \$1.00</p>	<p>"THERE'S ONE NEAR YOU"</p>		<p>Morehead Chicken Salad Spread 99¢</p>
<p>SHURFINE SHELLED BLACKEYED PEAS 3 \$1.00</p>	<p>SHURFINE CHUNKS/CRUSHED, S.L. PINEAPPLE 2 \$1.00</p>	<p>BORDEN'S HI-PROTEIN MILK MILK \$1.09</p>	<p>BORDEN'S HI-PROTEIN MILK MILK \$1.09</p>
<p>SHURFINE BLEACH 1 GAL. JUG 69¢</p>	<p>SHURFINE STRAWBERRY PRESERVES 10 OZ. JAR 99¢</p>	<p>SHURFINE TOMATO SAUCE 6 OZ. CANS \$1.00</p>	
<p>SHURFINE FLOUR 5 LB. BAG 69¢</p>	<p>SHURFRESH BISCUITS 6 CANS \$1.00</p>	<p>SHURFRESH CHEDDAR/COLBY CHEESE 10 OZ. PKG. \$1.19</p>	
<p>SHURFINE CORN CREAM STYLE/WHOLE KERNEL 17 OZ. CANS 3 \$1.00</p>	<p>SHURFINE COFFEE DRIP/ELECTRIC PERK/REGULAR GRIND 1 LB. CAN ONLY \$2.19</p>	<p>Tide GIANT TIDE DETERGENT 7 1/2 oz. \$1.79</p>	
<p>SHURFINE FRUIT COCKTAIL 17 OZ. CAN 59¢</p>	<p>SHURFINE EARLY JUNE PEAS 17 OZ. CANS 2 79¢</p>	<p>SHURFINE FROZEN ORANGE JUICE 12 OZ. CANS 2 99¢</p>	
<p>SHURFRESH SLICED AMERICAN CHEESE 12 OZ. PKG. \$1.39</p>	<p>SHURFINE CATSUP 32 OZ. BTL. 79¢</p>	<p>SHURFINE PINK GRAPEFRUIT JUICE 48 OZ. CAN 79¢</p>	
<p>SHURFINE PORK AND BEANS 16 OZ. CANS 3 \$1.00</p>	<p>SHURFINE SALAD DRESSING 32 OZ. JAR 89¢</p>	<p>SHURFINE DECORATOR PAPER TOWELS JUMBO ROLLS 2 \$1.00</p>	
<p>SYLVANIA 40/60/75/100 WATT LIGHT BULBS 2 CT. PKG. 89¢</p>	<p>SHURFRESH SOFT 16 OZ. TUB MARGARINE 59¢</p>	<p>SHURFINE HALVES/SLICES PEACHES 16 OZ. CANS 2 \$1.00</p>	
<p>SHURFINE PURE VEGETABLE SHORTENING 40 OZ. CAN \$1.69</p>	<p>BORDEN'S SO ASSTD. ICE CREAM 1/2 GAL. NO. CTR. \$1.59</p>	<p>FRESH COOKED Burritos 3 FOR \$1.00</p>	
<p>GLADHOLA WHITE/YELLOW MIX ES CORNBREAD 3 \$1.00</p>	<p>SHURFRESH SELF-BASTING WITH TIMER TURKEYS 8-14 LB. YOUNG TURKEY 89¢</p>	<p>BORDEN'S CHOCOLATE MILK 1 QT. 79¢</p>	

★ ★ PRICES EFFECTIVE NOVEMBER 3-8, 1980 - SUPPLIES LIMITED ★ ★

TEXAS WATER COMMISSION

NOTICE OF HEARING
 BEFORE THE TEXAS WATER COMMISSION
 OF AN APPLICATION TO EXTEND THE TIME TO
 COMMENCE AND COMPLETE
 CONSTRUCTION UNDER PERMIT NO. 2932

Notice is given that PALO DURO RIVER AUTHORITY OF TEXAS
 P. O. Box 1046
 Spearman, Texas 79081

applicant, seeks to extend, pursuant to §11.145, Texas Water Code, and Rule 156.04.25.001-.003, the time for commencement of construction of a dam and 60,900 acre-foot capacity reservoir on Palo Duro Creek, tributary of North Canadian River, tributary of Canadian River, Canadian River Basin, Hansford County, Texas under Permit No. 2932 from June 9, 1980, to June 9, 1986, and the time for completion of the construction from June 9, 1984, to June 9, 1990, all being more fully set out in the application.

The permit was issued on June 10, 1974, and originally required construction to commence on June 10, 1976, and to be completed on June 10, 1979.

The application for an extension of time for Permit No. 2932 was filed on October 14, 1980, and a hearing thereon will be held by the Commission in the Stephen F. Austin State Office Building at 1700 North Congress Avenue in Austin, Texas, on December 4, 1980, at 10 o'clock a.m. Any person who intends to offer prepared testimony at the public hearing shall prefile the testimony with the Chief Clerk of the Commission not less than five days prior to the hearing, and shall serve copies of prepared testimony on the applicant, the Executive Director and Public Interest Advocate of the Department of Water Resources and all other persons who have filed written protests or written requests not less than eight days prior to the hearing. The Commission may authorize the late filing of prepared testimony upon a showing of good cause and extenuating circumstances. Any person who desires to receive prepared testimony shall file a written protest or a written request with the Commission not less than eight days prior to the hearing.

Those opposing the granting of this application may appear at the hearing and/or, not less than eight days before the hearing date, may file written protests with the Commission and serve copies on the applicant with proof of service to be provided to the Commission. Written protests shall contain the name and address of the protestant's interest, location of protestant's diversion point(s) or property, if applicable and any amendments or adjustments to the application which would result in a withdrawal of the protest. The written protest will be noted by the Commission but will not be considered as evidence since the right to cross-examine is absent. No protestant will be admitted as a party to the proceeding unless the protestant complies with Commission Rule 155.04.00.001 which requires a justiciable interest and actual or representative presence at the hearing. Due to the technical nature of the hearing, it may be advisable for the protestant to have an expert witness, such as an engineer, available at the hearing. Persons desiring further information in connection with this application may contact George Basham III, P. O. Box 13087, Capitol Station, Austin, Texas 78711.

Mary Ann Hefner, Chief Clerk
 TEXAS WATER COMMISSION

Date: October 17, 1980

Second Year As Chairman

Job L. (Nick) Hammond, Jr. has recently been selected to serve a second year as chairman of the Public Responsibility Committee (P.R.C.) for the Amarillo State Center for Human Development. Hammond and six others serve as an independent, impartial group who receive and investigate

complaints made on behalf of State Center clients. Recommendations from the P.R.C. go to the State Center director, Harry G. Heyman. The P.R.C.

can appeal further to officials in Austin if necessary.

Hammond, personnel director for the City of Amarillo since 1972, has served on various local boards including Family Service of Amarillo, Amarillo Comprehensive Alcoholism

Treatment Advisory Committee and Panhandle Employment and Training Alliance. He is chairman of the non-profit division of United Way 1980. He serves on the board for the Texas Municipal League, is a member of the International Personnel Management Association and the Governor's Advisory Committee on Inter-Governmental Personnel Act.

Serving with Hammond on the P.R.C. are Gene Bartlett, Employers Insurance; John Galaviz, W.T.S.U.; Cecelia Hayhurst, Amarillo Association for Retarded Citizens; Lewis Dodson, Dodson Engineering Co.; William Postma, retired Boy Scout executive, and Rev. James R. Carroll, First Presbyterian Church.

Any of the members may be contacted personally in regard to complaint or letters may be mailed to the P.R.C., P.O. Box 2490, Amarillo, Texas 79105. The committee's function as established by the Mentally Retarded Persons Act of 1977 (Texas) relates to assuring that the dignity and human rights of the clients of the Amarillo State Center are preserved and safeguarded. Each of the other 26 facilities of the Texas Department of Mental Health Mental Retardation has their own Public Responsibility Committee as required by this law.

Another report shows that prices received by farmers are record high for the third straight month, up nearly 9 percent from a year ago. Soybean prices the highest in more than three years; corn prices at a 5 1/2 year high; wheat, the highest in 10 months!

Air Force News

ANDREWS AFB, MD, Oct. 30—The Air Force will seek Congressional approval to begin an estimated \$202 million project to design and develop alternate power sources for the M-X missile system.

Known as the M-X Renewable Energy Systems (M-X/RES), the project is jointly sponsored by the Defense and Energy Departments. Its goals is to reduce U.S. dependence on fossil fuel by accelerating development of commercial versions of solar, wind, geothermal, and biomass (waste-to-energy) electrical generating plants.

If Congress approves, experts will assess, during 1981 and 1982, renewable energy resources available in the proposed M-X deployment areas. The project will also fund a design competition among approximately 25 contractors to develop systems which can provide the average 108 megawatts needed for all 4,600 M-X shelters and other support facilities.

Besides powering the M-X system, the proposed project will speed up development and demonstration of marketable systems for commercial use.

Plans call for building prototypes of the most promising designs in mid-1982. Prototypes will be tested at Hill AFB, UT; Nellis AFB, NV; and other suitable bases in the Southwest. If successful and approved by Congress, large-scale production for M-X use will start in 1984.

Planners see the proposed system of small generating facilities, collocated with M-X protective structures and integrated into M-X operating base

designs, as better suited to the desert environment. In addition, the system can reduce M-X's life-cycle costs and vulnerability to sabotage.

The successful renewable energy system can be used at other Air Force and Defense Department installations. Project designs will include how the system could be used commercially to help reduce U.S. dependence on imported oil for electrical power.

Employment Standards

DALLAS—Alfred A. Ramsey, U.S. Labor Department assistant regional administrator for Employment Standards, announced filing of a civil action against Asarco, Inc., doing business in Amarillo, Texas.

The complaint alleges Asarco, Inc., violated the Fair Labor Standards Act (FLSA) by failing to pay employees the federal minimum wage and required overtime rate of time-and-a-half for hours after 40 worked in a workweek. The suit also alleges they failed to maintain records required by the FLSA.

The suit seeks judgement ordering compliance with the FLSA and payment to employees of back wages due them plus interest.

The legal action resulted from an investigation conducted by the Labor Department's Wage and Hour Division.

Women enrolled in higher education increased in the '70s

COLLEGE STATION — The number of women in higher education has increased dramatically, according to a Texas A&M University demographer.

Dr. R. L. Skrabanek noted that in 1970 there were only 68 women enrolled in college for every 100 men; but by 1978 the ratio had increased to 92 per 100 men. Nearly one-half of all college degrees granted in 1977 went to women. The number of females receiving doctorates more than doubled between 1970 and 1977.

Skrabanek gathered his information from a new Bureau of Census report, "A Statistical Portrait in the United States: 1978." The report in itself can be viewed as an example of women's progress. It is only the second such volume exclusively about women ever to have been published by the Census Bureau in its almost 200-year history — and the first was in 1976.

NEWS OF SPORTS

Who Will Be The Next World Jr. Frisbee Disc Champion?

If you know a boy or girl 15 years of age or younger, he or she may be eligible to compete in the World Jr. Frisbee Disc Contest leading to a world title.



This champ must excel in eight events designed for the Frisbee disc.

The contest is sponsored by the Wham-O Mfg. Co., makers of the Frisbee disc, and is held annually during the summer months. The contest is conducted by local park and recreation departments. There are five levels of competition: (a) neighborhood/playground, (b) city/county, (c) state, (d) regional, and (e) world finals.

The winner of the World Finals will receive a \$1,000 U.S. Savings Bond; second place a \$500 bond, and third place a \$250 bond. All regional winners receive a \$100 savings bond.

The contest consists of such events as distance-throwing, accuracy-throwing and trick catches. For further information regarding the competition contact your local park and recreation department or Wham-O Mfg. Co., Community Relations, 835 East El Monte Street, San Gabriel, California 91778.

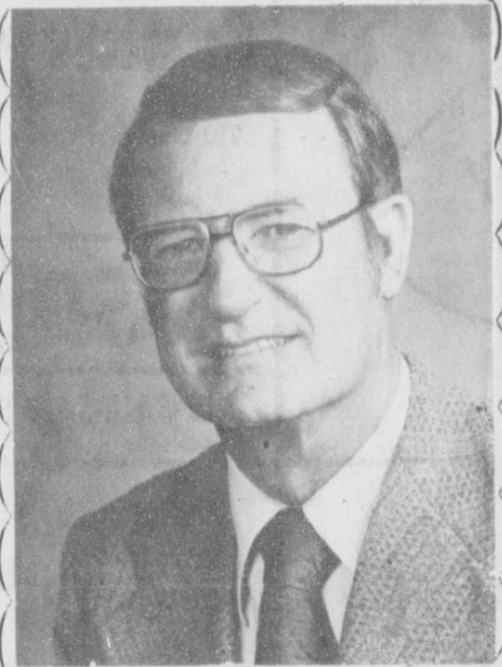
They say that figures don't lie, but some that a couple of Department reports have put out recently sure give the wrong impression. The first set concerns cash receipts from farming. Those for January through June — the first six months of the year — total \$61 billion. That's not only at a record pace, 4 percent above a year earlier, but about the same as cash receipts from farming for all of 1972. And, more than any full year prior to 1972.

The report shows livestock receipts, at \$33.3 billion, off 3 percent from a year earlier, but receipts from crops, at \$27.7 billion, were up 14 percent from the first six months of 1979.

Gospel Meeting

Sunday Services
9:45 a.m.
10:35 a.m.
6:00 p.m.

Weekday Services
7:30 p.m.



Richard M. Williams
Lincoln, Kans.

Church
Of Christ
Spearman,
Texas

November
9-13

Everyone Welcome

DEL MONTE WHOLE
Green Beans
283¢
16-OZ. CANS

KELLOGG
Rice Krispies
\$1.19
13-OZ. BOX

VAN CAMP
Pork and Beans
28¢
16-OZ. CAN
LIMIT 3

FRITO
B-B-Q, REGULAR,
OR KING SIZE
Corn Chips
82¢
10-OZ. BAG
LIMIT 3

AUNT JEMIMA
Lite Syrup
\$1.47
24-OZ. BTL.

RAGU
Pizza Quick
89¢
14-OZ. JAR
ALL FLAVORS

CAMELOT REAL
Chocolate Chips
83¢
12-OZ. PKG.

HAPPY HOUND
Chunk Dog Food
\$4.09
25-LB. BAG

have lower totals

3-5 LB. — FAMILY PACK
Fresh Ground Chuck
\$1.79
LB.

RANDOM WEIGHTS — THICK SLICED
Sliced Slab Bacon
\$1.29
LB.

FRESH DAIRY
KRAFT — PARKAY
Margarine
LIMIT 3
56¢

Elegant
Kensington
English Dinnerware
from the Kilns of
ENOCH WEDGWOOD (TUNSTALL) LTD.

BAR-S SKINLESS
Meat Franks
98¢
12-OZ. PKG.

FROZEN FOODS
ALL VARIETIES
Jeno's Pizza
LIMIT 3
94¢

THIS IS YOUR CHANCE TO OWN THE ENTIRE SET. START YOUR COLLECTION TODAY.

HEALTH & BEAUTY AIDS
COLGATE
Toothpaste
99¢
4.5-OZ. TUBE

NORMAL, DRY, OILY
Pert Shampoo... \$2.09
15-OZ. BTL.

CO-TYLENOL
Cold Tablets... \$2.19
4.5-OZ. TUBE

SARA LEE — GERMAN
MEADOWDALE
Chocolate Cake... \$1.46
12-OZ. PKG.

PET RITZ
Pie Shells... \$1.59
5-OZ. PKG.

This week's feature:
Dinner Plate Only
69¢
WITH EACH \$3.00 PURCHASE

This week's featured accessory pieces:

2 Dinner Soups	3.99
4 Bread & Butter Plates	3.99
4 Cereal Bowls	5.99
2 Luncheon Plates	3.99

IDEAL Food Stamps Buy More At Ideal...
FOOD STORES

Become a
LICENSED VOCATIONAL NURSE
and at the same time,
meet all first year requirements to become a
REGISTERED NURSE

Applications are now being accepted for this innovative
CAREER NURSING PROGRAM

Classes start
Jan. 12, 1981

CLINICAL EXPERIENCE AT
HANSFORD HOSPITAL

For complete details and admission information, call
Frank Phillips College Department of Nursing 273-5311, extension 55 or
Leona Fay at HANSFORD HOSPITAL 659-2535 or
Mackie Wood 733-2880
Deadline for applications
Dec. 7, 1980

GO TEAM GO

FOOTBALL PREVIEW

The Big Game is **NOW**

John s Kawasaki
Right now!
\$200 OFF
 any model
DIRT BIKE
 presently
 in stock

1729 Dumas Ave.
 1-935-4913
 Dumas, Tex.

Clois Baker
1102 Linn Drive
 Break Through To A
 Winning Season.

659-3642

DAVIS OIL CO
 501 W. Kenneth Av.
 Phone 659-2025



Ronnie's Yamaha Country

201 Dumas Ave.
 Dumas
 935-2422

\$50 WILL HOLD YOUR
 BIKE UP TO 400CC
 FOR CHRISTMAS!

SALE-SALE-SALE-SALE-SALE-SALE-SALE

SPEARMAN	7	0	0	0	7
PERRYTON	7	0	0	6	12

P-Robbie Coliums 4 run (Kenny Miller kick)
 S-Rocky Randall 3 run (Monte George kick)
 P-Coliums 44 run (kick failed)

Team	Perryton	Spearman
First Downs	35	14
Net Yards Rushing	239	187
Net Yards Passing	11	52
Total Yards Gained	290	219
Passes Attempted	7	9
Passes Completed	1	4
Passes Intercepted By	1	1
Number of Punts	4	6
Punt Average	38.0	31.6
Opp. Fumbles Recovered	1	2
Number of Penalties	3	2
Yards Penalized	30	27



Lynx

Spearman Lynx

VARSITY Football Schedule 1980

DATE	OPPONENT	PLACE	TIME
Sept. 5	Stratford	There	8:00
Sept. 12	FRITCH	HOME	8:00
Sept. 19	GRUVER	HOME	8:00
Sept. 26	Boise City	There	8:00
Oct. 3	CANADIAN	HOME	8:00
Oct. 10	Guymon	There	8:00
Oct. 17	*RIVER ROAD	HOME	7:30
Oct. 24	*Perryton	There	7:30
Oct. 31	Open		
Nov. 7	*Boys Ranch	There	7:30
Nov. 14	*DALHART	HOME	7:30

*Denotes District 1-AA Games

VS
Boys Ranch

at
Boys Ranch



1980
9th & J.V.

DATE	OPPONENT	PLACE	TIME
Sept. 11	RIVER ROAD	HOME	5:00-7:00
Sept. 18	Perryton	There	5:00-7:00
Sept. 25	GUYMON	HOME	5:00-7:00
Oct. 2	Boys Ranch	There	5:00-7:00
Oct. 9	DALHART	HOME	5:00-7:00
Oct. 16	River Road	There	5:00-7:00
Oct. 23	PERRYTON	HOME	5:00-7:00
Oct. 30	Open		
Nov. 6	BOYS RANCH	HOME	5:00-7:00
Nov. 13	Dalhart	There	5:00-7:00

1980
7th & 8th Grade

DATE	OPPONENT	PLACE	TIME
Sept. 11	River Road	There	5:00-6:30
Sept. 18	PERRYTON	HOME	5:00-6:30
Sept. 25	Guymon	There	5:00-6:30
Oct. 2	BOYS RANCH	HOME	5:00-6:30
Oct. 9	Dalhart	There	5:00-6:30
Oct. 16	River Road	There	5:00-6:30
Oct. 23	Perryton	There	5:00-6:30
Oct. 30	Open		
Nov. 6	Boys Ranch	There	5:00-6:30
Nov. 13	DALHART	HOME	5:00-6:30

Speartex Grain Co.



GOOD LUCK
 514 COLLARD
 659-3711

Our Team's A Winner!



Your local used
 cow dealer is
SPEARMAN BI-PRODUCTS

CALL COLLECT
659-3544
 HWY. 15 - SPEARMAN

HI-PLAINS CONOCO

We know we can count
 on 100% effort and a
 winning season.



415 Collard
659-3555

Nursanickel Motel

GO GET 'EM

HWY. 207 S.
 659-3737

Baker & Taylor Drilling Co.

WE EXPECT THE BEST!

GRUVER HWY.
 659-2503



Buster's Dusters

We Wish You A Super Season

Keep On Trucking For A Touchdown!

PLAINS SHPG. CNTR.
 659-3648

Junior Lusby Cats

Kick Off to a Super Season

W. GRUVER HWY.
 659-3766



GO! FIGHT! WIN!

