

# Commissioners Name Board Member; Table Budget

## The Spearman Reporter

VOL. 71, NO. 36

(THE SPEARMAN REPORTER, SPEARMAN, TEXAS 79061

THURSDAY, JULY 17, 1980

### New Chief Speaks At Lions Club Tuesday!

Spearman's new Chief of Police, Ronald Robinson spoke at the noon lions club in Spearman Tuesday. Ronald comes to Spearman from Seagraves. His family includes his wife Michele, one girl Chantel 8 years old; and 1 boy Ronnie Jr., 4 years old. Ronald holds a Bachelor of Arts degree from Wayland Baptist College in Law Enforcement, and a Masters degree from American Technological University, in Killeen, Texas. Ronnie is 28 years old and was born in Wyoming.

Chief Robinson explained to the Lions present Tuesday that two of his deputies, Bo DeArmond, and Sarah Norton of both resigned from the force. Bo to finish his college, and Sarah to get married. However, he now has 4 full time policemen, and 1 part time policeman. His office now maintains a 24 hour duty watch in Spearman. He still needs one policeman to get to full strength, but the main problem is to find a house for a new man and his family!

The chief explained to the Lions Club that local city policeman can legally assist any law enforcement search, even though it might go "out of the city limits!" He stated that Spearman has one of the lowest crime rates in U.S. However, we do have some problems with drugs in the area, plus traffic in the city could be improved of course!

The club enjoyed the talk by chief Robinson, and welcome him and his fine family to Spearman!



RONALD ROBINSON

### Receives Degree



Pastor Alan Lawrence Miller of the First Baptist Church of Gruver received his Master of Divinity Degree from Southwestern Baptist Theological Seminary July 11 at Fort Worth. Miller's home town in Corona, N.M., and is the son of Rev. and Mrs. A.L. Miller of Corona. He is married to the former Camilly Dutton of Howe, Texas.

### CITY & TOWN NOTES

In a special meeting, preceding the regular session by some seven hours, a quorum of city council members passed a resolution authorizing partial payment to three firms involved in the construction of the new fire station structure and the construction of a new municipal airport.

Payments authorized by passage of the resolution were \$15,253.70 to Traeco Building Systems Inc., Dumas; \$3,500 to M. Howard Ensign, Amarillo architect and \$13,076.82 to McMorries and Burns Inc., engineering consultants, Dumas.

The Traeco payment was made with three of the City of Spearman, Texas Certificates of Obligation, Series 1980 of \$5,000 denomination each plus \$253.70 in cash from current city funds.

The Ensign payment was made with three of the same series certificates of \$1,000 denomination plus \$500 from current city funds.

Eighty five pints of blood were collected at the Red Cross Bloodmobile

Payment to McMorries and Burns Inc., was made with two certificates, one of \$1000 denomination and one of \$5,000 with the notation that \$6,384.51 of the amount due on engineering services rendered in connection with the new airport had already been previously in cash.

A representative of Fred Baker and Associates Inc., Amarillo, financial advisors to the city on the issuance of certificates of obligation, told representatives of firms being tendered payments that the certificates of obligation could be taken directly to First State Bank and exchanged for cashier checks for the face amount of the certificates.

While no such reason was announced for the special 1 p.m. session, it is a reasonable assumption that it was to allow certificate redemption at the bank without requiring a second trip during banking hours.

Among items of business transacted Monday by members of the Hansford County commissioners court were the naming of a hospital board member, election judges and the purchase of copying machine.

The budget for the coming fiscal year beginning Oct. 1, was tabled.

Alton Ellsworth was named to the hospital board. He succeeds Dick Kilgore who resigned.

Election judges are: precinct one, Joe Dan Bryan; precinct two, Etta Beck; precinct three, Faye Dahl; precinct four, Merle Delano; precinct five, J.L. Brock; precinct six, Melba Oakes; precinct seven, Mike Stedje; precinct eight, Muriel Boyd and precinct nine, Willard McCloy.

Only one bid was submitted for the copying machine for the district-county clerk's office. A figure of \$7,425 was accepted and purchase authorized. No service contract is included in

that price. The unit carries a 90-day warranty. It was noted that the salesman for this unit had agreed to include a stand at no extra cost.

A rented machine is currently in use. The contract expires in two months.

Adoption of the new budget was tabled until the next regular session due to a requirement of publication due to the fact that it included salaries. In the budget discussion it was noted that a seven and one-half percent increase in salaries "across the board" be authorized with one exception. Commissioners discussed adjusting salaries of deputy sheriffs to a point of fair ratio to other county employee salaries.

The remainder of the meeting was given to reports and discussions including the information from County Judge R.L. McClellan that there had been no applications for the post of county agent -- now vacant.

### Silhouette Pistol Shoot

The Old Hansford Gun Club will have its first sanctioned Hunter's Pistol Match this Sunday July 20 at the Willie Seitz Caliche pit located half way between Spearman and Gruver near the power station. There will also be a meeting to discuss possible new shoots and variations centered around the Hunter's Pistol course such as an unofficial prone position. The range is rated as equal to that in Amarillo and is drawing contestants from other areas.

The scoring system allows an individual a chance to enter as a beginner and when a trophy or pin in a class separate from the more advanced shooters. Women & teenagers are encouraged to enter and plans are being made to reload ammunition for members in order to avoid the high cost of buying factory ammunition. If there are any questions, call Joe Robinson, Gruver or Ken McClellan in Spearman. Shoot starts at 2 p.m. Practice is encouraged before the shoot begins.

Spearman's own Ralph Newton, President of the Texas High School Girls Coaches Assoc. along with All American Darla Armes of Gruver are in San Antonio this week. See related story!

### MARKETS

Wheat	\$3.58
Milo	\$5.05
Corn	\$3.13
Soybeans	\$6.33

### WEATHER

	LO	HI
7-07-80	69	98
7-08-80	74	100
7-09-80	75	99
7-10-80	70	101
7-11-80	69	102
7-12-80	68	102
7-13-80	75	102
7-14-80	74	103

### Hospital News

Patients in Hansford Hospital are George Graves, Eunice Spivey, Matthew Becker, Joan Kell, Khristi Wright, Jennifer Atchley, Mildred Chamberlain and Anna McGary. Dismissed were Rube Faus, Guy Remy, Melissa Thomas and Rex Cook.

Another hot day in the city for Spearmanites, as the thermometer topped 100 degrees. Be sure your pets have plenty of water in a "wide water pan" so they can not tip the can over!

### Bullock Vacates Position of Gloom

The other shoe didn't drop... city sales taxwise.

In fact, the first one didn't either. In his report of payments last month, State Comptroller Bob Bullock, noting a drop in rebates to Texas cities and towns charging the sales tax, just said it was united.

At that point, Spearman, Gruver and most surrounding High Plains cities and towns had experienced an increase over the same period for 1979. Bullock warned this might be a false sense of economic security; that mid-year figures

would tell the more accurate store.

They have. --And according to Bullock's figures, city sales tax payments to Texas cities are running 20 percent MORE than payments for the first seven months of 1979.

In the current comptroller's report, Spearman posted a 34 percent gain; Gruver, 33 percent; Perryton, 32 percent and Borger, 37 percent.

Dumas had the smallest gain in the area -- nine percent -- but the entity of Cactus had a 147

percent gain. With each publication of the report comes the question: what does it all mean?

The tax payments are the one percent city sales tax charged on across-the-counter retail sales. An increase in payments means there was an increase in

sales, in local business, if you please.

Some 936 cities charge the optional tax and payments to them for the current reporting month total \$25-million compared to \$23.5 million for the same month of 1979.

### Jaycee Projects, Chairman Named

Spearman's new generation of Jaycees undertook a number of projects at their regular meeting Monday night.

Some time in the distant past, somewhere, a group of enthusiastic young men grouped together as an auxiliary to the chamber of commerce of their community which called them the "Junior Chamber of Commerce." The concept caught on like wildfire but...not the name.

America from coast to coast dubbed them "Jaycees" and the name and the young men have "traded out" on honors in every community where there is an active organization.

At one time, Spearman had an active unit but as members grew beyond the Jaycee age, enthusiasm waned. Now, it is there again and current Jaycees are hoping to equal--even surpass--the work of the organization in the past.

Monday night, the current organization undertook, as one community project, helping the city refurbish Rocket Park. Playground equipment there now will be repaired--such as welding teeter-totters...and then some new equipment will be undertaken.

The group present Monday

night took a look at the annual Chamber of Commerce banquet and pledged to help make it bigger and better. This project came as no indictment of the breakfasts in the past. It is intended to help the Chamber reflect, through the breakfast, the progress that is being achieved.

Jaycees also have in the planning stage a breakfast of their own which they feel can become a highly entertaining and a traditional affair. The Jaycee breakfast would be staged on the first day of hunting season each year.

At the meeting this week, Lenis Simpson was named chairman of the membership committee. He will be assisted by co-chairmen Mike Cudd, Kim Brock and Durane Castleberry--as well as the entire roster of the Jaycee membership to date.

Young men between the ages of 18 and 35 can join by seeing one of the membership team or any member of the Jaycee organization.

The organization promises some exciting things can come from the next meeting: 8 p.m. Monday at B and B Farm Industries, Inc.



### STREET TREAT --

Some 60 blocks of city thoroughfares are getting a seal coating at a cost of 52 cents per square yard. Work is being done by Lipham of Aspermont.

Oscar Donnel, of Spearman has donated some 32 pints of blood, to local blood drives in the county.

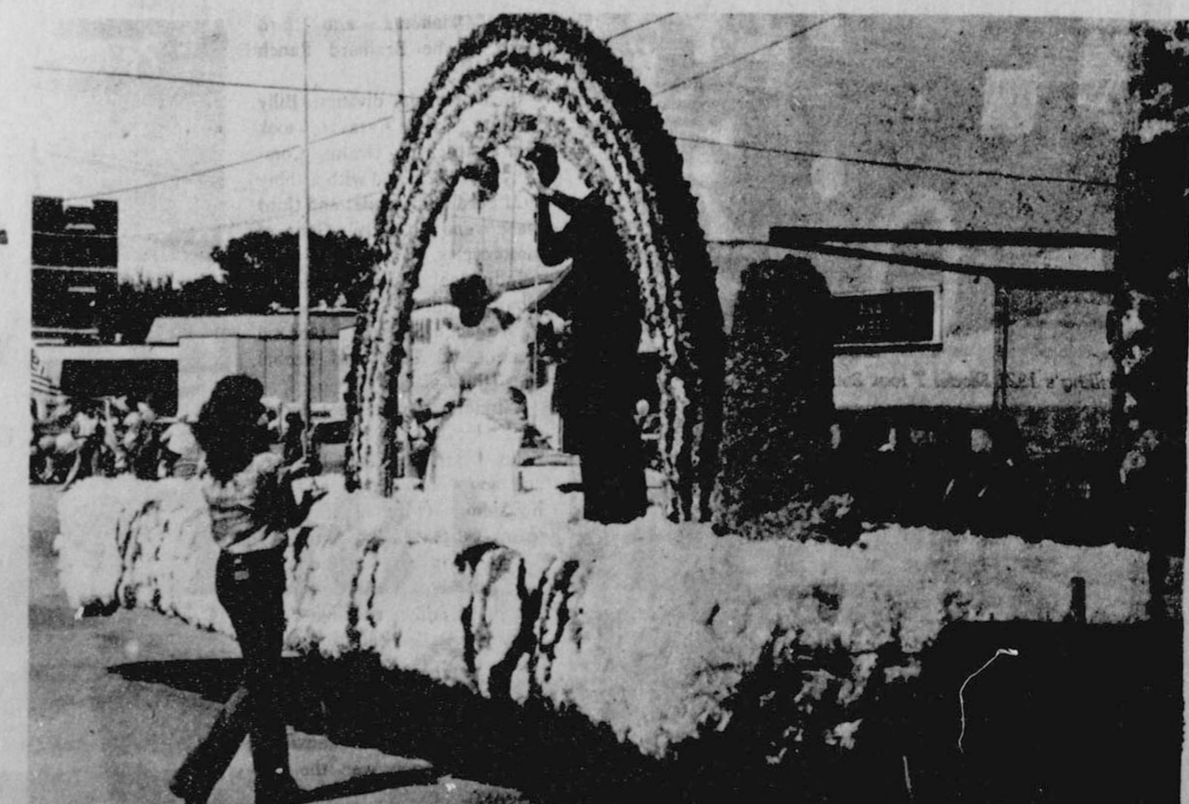
Friday's Fourth of July Parade was one of the biggest and best ever in Canadian, starting on time and with its entries closely spaced, requiring 35 minutes to pass the reviewing stand.

In the division for Floats by Clubs and Organizations, first place went to a beautifully-decorated float entered by the Baker & Taylor Women's organization.



ROTARY OFFICERS--Shown here are the incoming and outgoing presidents of the Spearman and Perryton Rotary Clubs. The men are (from left, Eschol Blankenship, new Spearman president,

John R. Collard, Jr., out-going president in Spearman, Hoss Byerley, out-going Perryton president, and Billy Nowlin, who is to serve the Perryton organization as its new president.



**USDA To Cut Foodstamp Costs**

An estimated 200,000 people, including 150,000 college students, will be dropped from the food stamp program, and food stamp costs will be cut by \$80 million a year under rules published today by the U.S. Department of Agriculture.

Assistant Secretary Carol Tucker Foreman said the new rules, required by 1980 amendments to the Food Stamp Act, will cause most of the 200,000 adult students (over 18 and under 60 years of age) who now receive food stamps to lose their eligibility on September 1. The only exceptions will be low-income students with disabilities, or those who: (1) work more than 20 hours a week, (2) head households with dependents, (3) participate in a federal work-study program, or (4) are enrolled in a work incentive program.

In addition to eliminating most college students from the program, the new rules will cause 50,000 more food stamp recipients to lose their eligibility when a new assets limit takes effect on Oct. 1.

Under the present food stamp law, most food stamp households must have assets worth less than \$1,750. The new law and regulations lower this limit to \$1,500. Households of two or more people, in which at least one person is elderly, will not be affected by the change. The assets limit for these elderly households will remain at \$3,000.

"The rules issued today carry out 1980 amendments to the food stamp law aimed at cutting program costs and tightening management," Foreman said. "Earlier this month, the semi-annual cost-of-food increase was cancelled, and new producers lowering food stamp income limits took effect."

"Together these changes are expected to save \$448 million in the upcoming fiscal year," Foreman said. "With the publication of today's rules, we have implemented all of the savings provisions of the new law that will affect eligibility for food stamps and benefit levels."

The interim final rules publi-

shed in today's Federal Register also exclude the counting of federal, state and local energy assistance payments as income or resources in determining a household's eligibility for food stamps. Vehicles used by handicapped people also will not be counted as a household resource. These latter two provisions become effective Oct. 1, 1980.



Land near mass transit stations is escalating in value—even where the system is a long way from completion.

Answer: Housing is in such short supply that there is no immediate danger that suburban homes will lose their value. Suburban homeowners will fight back with car pooling, public transportation and other forms of conservation.

Higher prices of inner city homes are, however, being fueled by the gas shortage. Proximity of employment and public transportation, added to other economic and cultural advantages, are revitalizing residential living in major cities.

Diamonds in South Africa's Orange River delta are mined by dredging the seabed while huge dikes of sand hold the water back.

**Swim Team Shows Improvement**

The Spearman Swim team traveled to Guymon this past Saturday for a meet with teams from Guymon, Ulysses, Perryton and Pampa. The team seemed to start slow but did well later in the day. There was marked improvement from the previous meets. Individual results: Marietta Davis Girls 15-18 500 Free 3rd, Girls 9-10 Free Relay 2nd, Boys 15-18 Free Relay 3rd, Carly Shieldknight Girls 9-10 50 Free 5th, Jane Wirsdorfer Girls 9-10 50 Free 6th, Teresa Miesner Girls 13-14 50 Free 5th, Stacey Thomas Girls 15-18 100 Free 2nd, Sara Avila Girls 15-18 100 Free 5th, Gary Thomas Boys 15-18 100 Free 3rd, Haley Shieldknight Girls 8 & under Backstroke 4th, Denise Rojas Girls 11-12 Backstroke 6th, Gary Thomas Boys 15-18 Backstroke 3rd, Curt Davis Boys 15-18 Backstroke 4th.

Teresa Miesner Girls 13-14 Butterfly 3rd, Jane Wirsdorfer Girls 9-10 Breaststroke 3rd, Robbie Heinrich Girls 13-14 Breaststroke 6th, Stacey Thomas 15-18 Girls Breaststroke 4th, Marietta Davis Girls 15-18 Breaststroke 6th, Greg Farr Boys 15-18 Breaststroke 5th, Haley Shieldknight 8 & under Girls Breaststroke 4th, Marri Schaffer Girls 9-10 100 Free 4th, Adrienne Speck Girls 9-10 100 Free 5th, Carly Shieldknight Girls 9-10 100 Free 6th, Teresa Miesner Girls 13-14 200 Free 4th, Robbie Heinrich Girls 13-14 200 Free 6th, Ken Bullard Boys 13-14 200 Free 2nd, Marietta Davis Girls 15-18 200 Free 3rd, Gary Thomas Boys 15-18 200 Free 2nd, Curt Davis boys 15-18 200 Free 4th, Greg Farr Boys 15-18 200 Free 5th, Tracey Vernon Boys 15-18 200 Free 6th.

This coming week the team travels to Cimarron, Kansas for the championship meet of the West Kansas Swim League on Friday and Saturday.



The city of Toledo, Ohio, stands on the site of old Fort Industry, built in 1794.

The Delaware River was originally called "South River" by the Dutch settlers in the mid-17th century.

**INTS FOR HOMEOWNERS**

Answers to homeowners' questions are given by J.B. Featherston, MAI, President of the American Institute of Real Estate Appraisers, the nation's oldest appraisal organization, and the only one affiliated with the National Association of Realtors.

Question: How will the specter of gas shortages and increased costs affect the price of homes?

**NOTICE**

The Hansford County Budget for 1980-1981 fiscal year will be adopted at a regular meeting of the Commissioners Court July 28, 1980.

All county employees and elected officials are budgeted to receive a 7½% pay increase beginning October 1, 1980, with specific adjustments to the Sheriff's deputies and County Treasurer salaries.

The total budgeted expenses for the fiscal 1980-1981 year is \$1,176,290.00.

*Roy L. McClellan*  
Roy L. McClellan, County Judge

**Stop spinning your wheels.**



Our phone with pushbuttons is so much faster, so much more efficient, than that old dial phone of yours. And it's available in plenty of styles and colors.

You can order one from our business office. By spinning your wheel just one last time.

**GTB GENERAL TELEPHONE**

Touch Calling now available in most areas.

We're Having A **PAIN T SALE**



Sale Price **\$12.40** per gallon  
Regular Price **\$16.53** per gallon



Sale Price **\$11.03** per gallon  
Regular Price **\$14.71** per gallon

**25% OFF ON ALL PAINT IN STOCK**



**1 day only Friday, July 18th cash and carry**

**White House Lumber Co.**

Phone 659-8792

306 Davis

Spearman, Texas

# WANT ADS

## CAPROCK MONUMENT CO.

Dealers of Georgia Granite, Georgia Marble, Colored Granite, & Bronze.

represented by  
**BOXWELL BROS.**  
**FUNERAL HOME**

519 S. EVANS  
659-3802

**BILL ONG PORTABLE DISC ROLLING SERVICE**  
Ph. 878-2296, Box 116  
Stinnett, Texas 79083

Decorated cakes & cookies for special occasions or just at home. Call Debbie at 3328. 36-rtn

### MISCELLANEOUS FOR SALE

**IRRIGATION ENGINES FOR SALE**-Two 702 GMC's, 1-HT 413 Chrysler, 1 set of twin HT413 Chryslers, 1-534 Ford. All engines completely rebuilt and ready to go. Hi-Plains Auto Supply. 659-2506. 23-rtn

### AUTOS FOR SALE

The following vehicles are available at these prices:

Jeeps-\$59.50  
Cars-\$48.00  
Trucks-\$89.00

Call for information (602) 941-8060, Ext. #518. 33-4tp/Tonly

**FOR SALE**-Hydraulic squeeze chute for small stocker calves in excellent shape. Call 659-2100. 34S-6tc

**FOR SALE:** Starcraft Roll-up Camper. Like new inside and out. Sleeps 8. Double Dinette. Please call after 7:00 p.m. 733-5019. 36-2tp

**FOR SALE**-four 78 x 15 belted white wall tires. \$10 each. Call 659-2082. 36-rtn

**FOR SALE**-Sears 21 inch self propelled reel mower with Briggs Stratton motor. Used approximately 40 hours. Call 659-3134. 36-6tc

**FOR SALE**-77 Toyota Station Wagon, air conditioned, AM Radio, 5 speed. 30 miles to gallon. Call 659-2506 or 659-3268. 35S-rtn

### REAL ESTATE FOR SALE

**FOR SALE:** 3 bedroom brick, 1 1/4 baths, good storage, fenced. Double car garage. Beautifully decorated, plush carpet, matching drapes. 315 S. Endicott. Call 659-3972 after 4:00. 21-rtn

### MAYFIELD REAL ESTATE

For Sale on Stinnett highway, metal commercial building on large lot. \*\*\*\*\*

Three bedroom, 1 bath house for sale in Greene Acres.

John Mayfield - Broker  
435-6528. Salesperson Ruby, Lair 659-3436 or 659-2188

**HOUSE FOR SALE:** 2 Bed room, 1 1/4 bath, large living room, basement, storm cellar, sets on large lot. Good condition. Priced in lower 20's. Call 659-3938. 34-9to

### HELP WANTED

**TRUCK DRIVER NEEDED**  
Must have commercial license. Must have good driving record call after 7:00 Billy Baker 659-3642. 31S-rtn

Experienced mechanic wanted. Established company. Excellent benefits including insurance. Call 405-423-7551. Panhandle Chevrolet & Implement Co., Texhoma, Okla. 35S-2tc

**HELP WANTED:**  
Full and part time help wanted in Alltups in Spearman.

### TO GIVE AWAY

**FREE PUPPIES** to a good home. 659-2468 or 659-2503. 36-rtn

### CARD OF THANKS

We would like to thank all of our friends and relatives who brought food, sent flowers, or contributed to the children's fund in memory of our beloved Bobby & Judy.

With the support of all the people who care; it makes our loss a little easier to bear. May God bless each and everyone of you.

Jim, Anissa & Todd Everson  
Mr. & Mrs. R.J. Everson  
Carolyn & Tommy Hohn  
Marilyn & Rodney Harris  
Joe Bob & Shirley Jones  
Donna Fallwell  
Nikki Jones  
Dalls & Judith Peach

### LEGAL NOTICE

**CITATION BY PUBLICATION THE STATE OF TEXAS TO: CHARLES VERNON PELTER, VERNA LeANNE PELTER, NITA CHARLENE PELTER, BETTY JO PELTER JOBES, CHARLES HOWARD PELTER AND UNBORN CHILDREN OF CHARLES VERNON PELTER, Defendants, Greeting:**

**YOU ARE HEREBY COMMANDED** to appear before the Honorable District Court of Hansford County at the Court-house thereof, in Spearman, Texas, by filing a written answer at or before 10 o'clock A.M. of the first Monday next after the expiration of forty-two days from the date of the issuance of this citation, same being the 1st day of September A.D. 1980, to Plaintiff's Petition filed in said court, on the 15th day of July A.D. 1980, in this cause, numbered 2763 on the docket of said court and styled PHILLIPS PIPE LINE COMPANY, Plaintiff, vs. CHARLES VERNON PELTER, VERNA LeANNE PELTER, NITA CHARLENE PELTER, BETTY JO PELTER JOBES, CHARLES HOWARD PELTER, D.L. SCHUMANN, AND UNBORN CHILDREN OF CHARLES VERNON PELTER Defendants.

A brief statement of the nature of this suit is as follows, to-wit:\*

Statement and Petition for Condemnation, as is more fully shown by Plaintiff's Petition on file in this suit.

If this citation is not served within ninety days after the date of its issuance, it shall be returned unserved.

The officer executing this writ shall promptly serve the same according to requirements of law, and the mandates hereof, and make due return as the law directs.

Issued and given under my hand and the seal of said court at Spearman, Texas, this the 15th day of July A.D. 1980.

Attest: Marie H. Gould Clerk,  
District Court  
Hansford County, Texas.

36-4tc/Tonly

Teddy Roosevelt was the first U.S. President to intervene to settle a strike rather than break it.

Offered Exclusively By  
**EMMETT R. SANDERS,  
REALTOR**



Brick apartment house in top condition; 100% occupancy with waiting list; has four furnished units; great investment. Shown by appointment only, do not disturb occupants. \*\*\*\*\*

Small tract just west of Spearman, surface only, contains 31.7 acres. Call for details. \*\*\*\*\*

Reduced in Price, Dwelling and store building, small detached apartment on wide lot, ideal for professional office dwelling combined. \*\*\*\*\*

4 bedroom, 1 1/2 story stucco home, nice condition, near grade school; storm shelter basement; large corner lot, ideal for large family, low budget. Shown by appointment exclusively. \*\*\*\*\*

**PRICE REDUCED**-Like new 3 bedroom brick, double garage, fenced yard, fire-place, carpets, dishwasher, disposal, self cleaning oven, nice SE location. \*\*\*\*\*

Three bedroom, 2 bath, nice older home with fireplace, large kitchen, storm cellar, attached garage with opener, greenhouse, toolhouse, other outbuildings, plus rental unit at rear, near churches and downtown, shown by appointment. \*\*\*\*\*

**EMMETT R. SANDERS  
REALTOR**  
659-2516  
659-2601 (night)  
34S-rtn

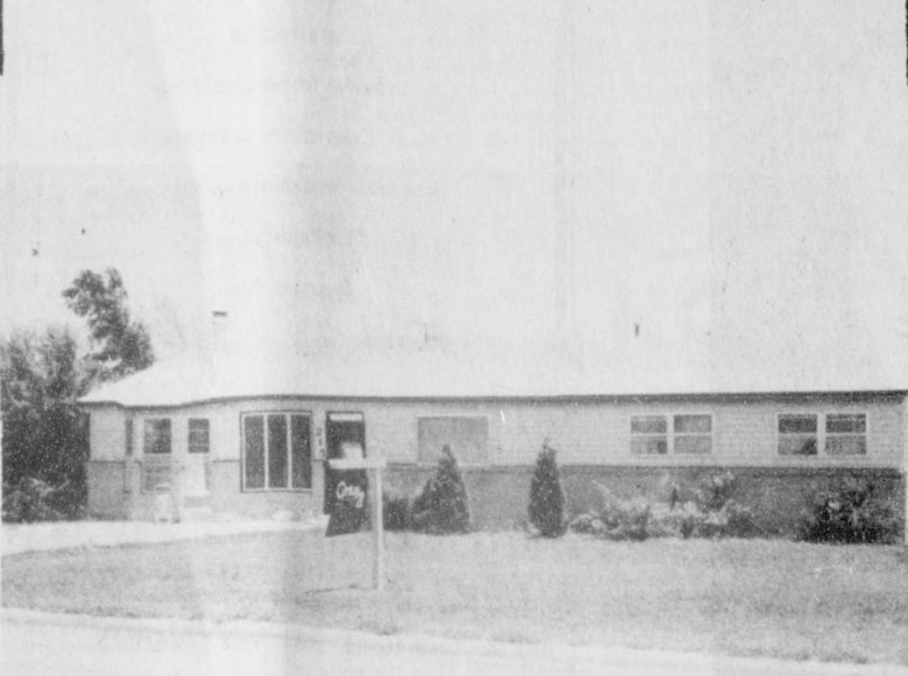


Toads inhabit all the continents except Antarctica.

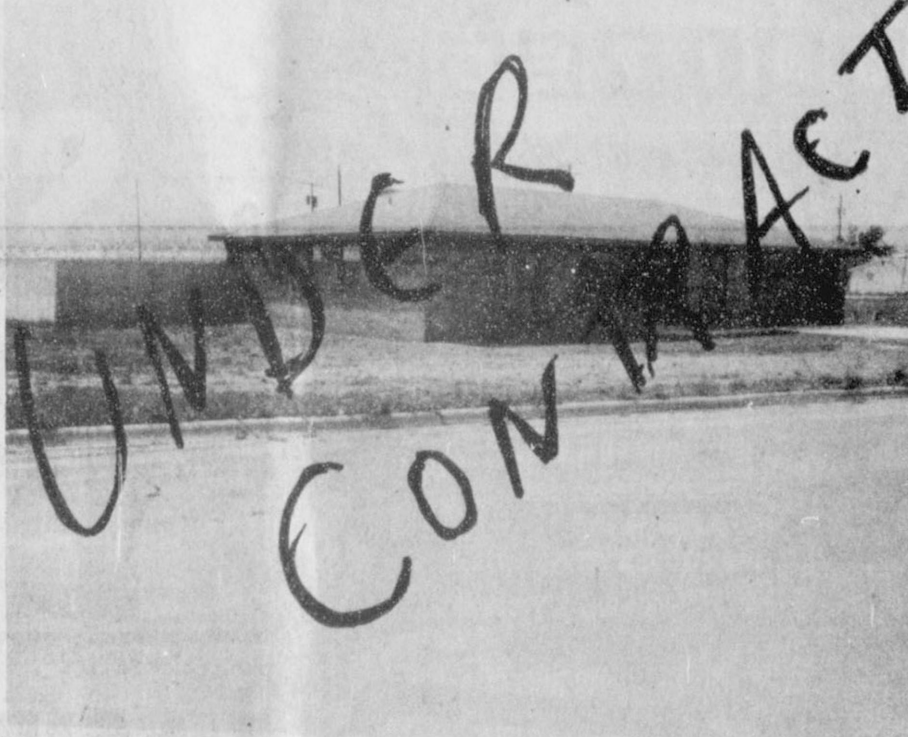
Most people fail to understand other people's problems because they never take time to consider them.

# Century 21

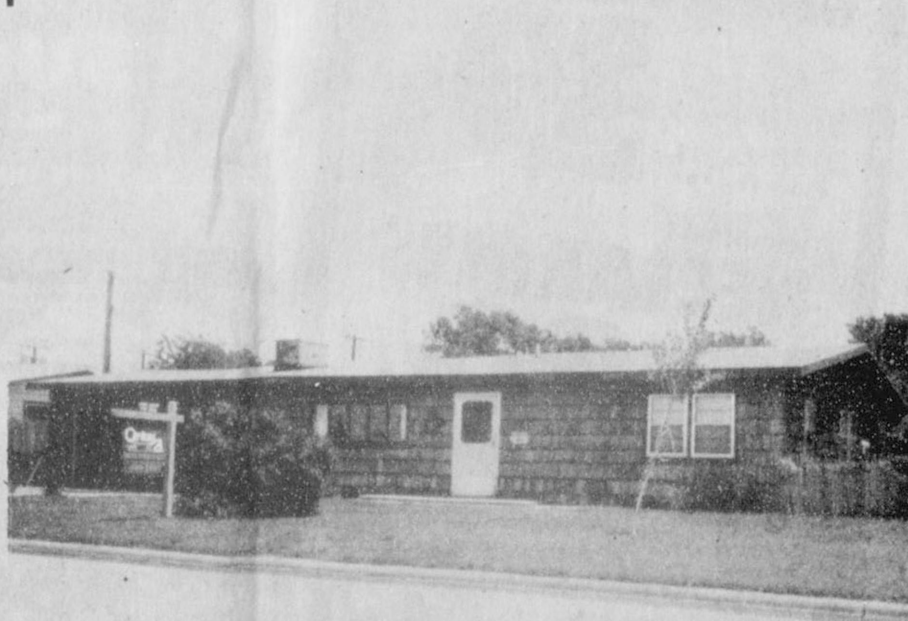
# Presenting



215 S. James 4 Bedroom, Central heat & air, Fenced back yard, storm windows



1108 Archer - 3 bedroom, 2 baths, 2 car garage Fire Place, 6 foot wood fence.



805 Roland - 4 bedroom 2 baths, double garage with fenced back yard.

### GOLDEN SPREAD REALTY

659-3696 or 659-2557  
Ronnie Hoover,  
Spearman-659-3848

DARYL WYNN, Broker 658-4528

# Century 21

## We'll give our word to you.

©1980 Century 21 Real Estate Corporation. Registered Trademark of Century 21 Real Estate Corporation. Printed in U.S.A. Each office is independently owned and operated. Equal Housing Opportunity.

## TEXAS PRESS ASSOCIATION

PUBLICATION (USPS 509-660)

SPEARMAN, TEXAS 79081

213 Main Box 458 659-3434

Published Weekly at 213 Main Street

Spearman, Texas 79081

Owner-Publisher ..... William M. Miller  
Editor ..... Faye Lynch

Second Class postage paid at Spearman, Texas  
**ANY ERRONEOUS REFLECTION UPON THE CHARACTER OF ANY PERSON OR FIRM APPEARING ON THESE COLUMNS WILL BE GLADLY AND PROMPTLY CORRECTED UPON BEING BROUGHT TO THE ATTENTION OF THE MANAGEMENT.**

**SUBSCRIPTION RATE:** Hansford, adjoining counties, combination with the Hansford Plainman \$15.00.

Other points, \$20.00.

### TOO LATE TO CLASSIFY

**TO GIVE AWAY**-2 puppies, two months old, one brown, one cream color, mother is a poodle. Call 733-2059. 36-2tp

**4 FAMILY GARAGE SALE** Furniture, appliances, clothes and miscellaneous. Thursday and Friday, 8 to 5, 901 Townsend. 36-1to

**FOR SALE**-large corner lot w/mobile home hookup. 659-3123 evenings and weekends. 36-1tp



Old World wagtails, birds of a species related to the lark, get their name from their habit of jerking their long tails up and down.

"We always love those who admire us, but we do not always love those whom we admire." La Rochefoucauld

### Blankenship Real Estate

3 Bedroom - 1 Bath  
Single garage-Utility Room  
Central Heat-Built Ins  
Carpeted-Refrigerated Air Units.

Mid 30's  
Eschol Blankenship-Broker  
659-3052



The first co-ed in the U.S. was admitted to Oberlin College, Ohio, in 1833.

## FOR DEAD STOCK REMOVAL

Call your local used cow dealer  
Toll Free 1-800-692-4043  
7 Days a Week Service

## ★ Carports ★ Patio Covers

### ★ Awnings

Write or Call Howard Moyer At  
Only Aluminum Industries  
114 West 1st Guymon  
Call 405-338-6966 or  
338-6170 after 6 p.m.

**VIRGINIA WHITE**  
Realtor 659-3841



**AHOMEYOU'LLNEVEROUTGROW**-spacious 4 bdrm, 2 bath, 2 fireplaces, great storage.

**SPANKING NEW** w/fireplace, 3 bdrm, 2bath double garage, fenced. Call!

**FAMILY LIVING:** 4 bdrm, 2bath, 2 living areas cen./H/Air. See today.

**COMMERCIAL**-on Main-good office, retail, barbershop-equipment included.

For The Ultimate In

## STORM DOORS

Custom Built, Designed, And In Colors To Fit Your Home...

Contact Howard Moyer at

**Only Aluminum Industries**

Guymon, Okla. 114 W. 1st 405-338-6966 or 338-6170

### Mr. and Mrs. Major Lackey To Celebrate 50th Anniversary



1930 1980

In Honour of the  
Fiftieth Wedding Anniversary of  
Mr. and Mrs. Major W. Lackey  
their children and grandchildren  
request the pleasure of your company  
at a reception  
on Sunday, the twentieth of July  
Nineteen hundred and eighty  
from two to five o'clock in the afternoon  
First Baptist Church  
Spearman, Texas

No gifts, please

### Arts & Crafts Guild Meets

Arts & Craft Guild met Friday, July 11 in the home of Mrs. Bruce Sheets. Attending were Meses. Guy Fuller, Ned Turner, P.A. Lyon, Sr., Pope Gibner, C.A. Gibner, Bill Russell, Joe Trayler, and guests, Meses. Mary Lee, Carrie Marie Berry and Marita Gauder. The next meeting will be Friday, July 18 in the home of Mrs. Bill Russell.

### Call 659-3434 With Society News

Call in your society news to Spearman Reporter, 659-3434, and ask for Faye. We do not have a society reporter at this time but are always glad to have news from your clubs and organizations.

Judge orders 31 boats seized in sealift released.

### Completes Officer Basic Course

FORT SILL, Okla. (AHTNC) July 10 --National Guard 2nd Lt. Walter D. Coates of Davidson, Okla., recently completed a field artillery officer basic course at the Army Field Artillery School, Fort Sill, Okla. During the course, students

gain proficiency in artillery techniques and are introduced to new weapons and doctrine. Coates and his wife, Doris, live at 510 S. Vine. His parents, Mr. and Mrs. Walter D. Coates, live in Spearman, Texas.

### La Leche League Meeting Set

If your family is awaiting the arrival of a new member the Spearman La Leche League meeting "The Family In Relation To The Breastfed Baby" may interest you.

An informational discussion will center on how to manage those first hectic weeks with

emphasis on the entire family as well as timely tips for mother and baby.

The meeting is scheduled for July 22 at 10 a.m. at 106 S. Bernice.

For further information you may call 659-2794.

### Presbyterian Church News

You would enjoy the fellowship and fascinating Bible studies at the Presbyterian Sunday Church School every Sunday at 9:45 a.m.

The Rev. Carter McKemy will be preaching at the service for the public worship of God on Sunday, July 20 at 11:00 a.m.

The session will meet on Wednesday, July 23 at 8:00 p.m.

There is a warm, Christian welcome awaiting you at the First Presbyterian Church.

### Cub Scout Activities Planned

Cub Scouts will be treated to a swimming party and weenie roast at the swimming pool park Thursday, July 17. The swimming party will be from 7:30 to 8:30 and the weenie roast will follow.

This is for Cub Scouts and prospective Cub Scout and all their family members. Boys age 8-10 are eligible for the Cub Scout program.

Then on Saturday, July 19 there will be a Lad and Dad Day at M.K. Brown between Canadian and Wheeler. Activities will include canoeing, archery and a rifle range.

In the evening the dad and the Scout will spend the night together in tents.

The group will leave from the First United Methodist Church at 7 a.m. Saturday. There will be rides available or you may travel with the group in your own vehicle.

Boys who want to go on this outing and whose father will be unable to attend are invited to come as their will be foster fathers available.

The cost of the activities for the day will be paid by the pack but there is an overnight fee of \$12.00 which includes meals, drinks, etc.

Those going on the tent will need a tent, sleeping bags. All meals will be prepared at the camp.

On Sunday morning there will be church services before breakfast. Checkout time is 12 noon.

Anyone needing further information may contact Cubmaster Jim Beeson or Judy Tindell.



**A Choice**  
"Which would you rather give up, wine or women?"  
"It depends on the vintage."

**Same Old Song**  
My wife is untidy, nagging all the time, extravagant and doesn't understand me.  
When did you meet this other woman?

**They Can't**  
Judge: "How could you swindle people who trusted you?"  
Prisoner: "But, judge, people who don't trust you can't be swindled."

**Laundry Lesson**  
Chemistry Professor-- Name three articles containing starch.  
Student--Two cuffs and a collar.

## Baby Shower

You are cordially invited to a baby shower honoring

Janice Mayfield

Thursday, July 17, 1980

715 S. Bernice

7:30 p.m.

355-2tp

### Guymon Open Tennis Tourney Set

July 25th, 26th, & 27th 1980

Entry blanks must be in by no later than Wednesday July 23rd. Send entry along with check payable to Guymon Open Tennis to: Becky Moore 2222 N. Beaver, Guymon, Ok 73942.

Matches will begin at 8:00 A.M. Friday July 25th at Northeast Park with the 14 and 18 year old events. Adult competition will start at 6:00 P.M. For out of town entries call Thursday night to see if you need to be here Friday. Competition will continue Saturday at 8:30 A.M. and the finals will be held at 1:00 Sunday. Trophies will be awarded Sunday after the finals to both 1st and 2nd place.

All matches will be the best 2 out of 3 sets, with the Vass 9 point tie breaker used when games become tied at 6 all. Also the no-add will be in effect for the entire tournament. The 30 minute default rule will apply.

Matches will be played at the City courts in Northeast Park, Doubles Partners 2) headquarters.) Fowler Park, and possibly the new High School courts.

For more information, contact Becky Moore at: 405-338-2704. Entry Fees: \$6.00 per singles event. \$12.00 per doubles team.

Please check events entered. You may enter as many as three events, but only two age divisions. IF YOU ENTER THREE EVENTS, BE PREPARED TO PLAY YOUR MATCHES BACK TO BACK.

**14 & Under**

- Boys Singles
- Boys Doubles
- Girls Singles
- Girls Doubles

**18 & Under**

- Boys Singles
- Boys Doubles
- Girls Singles
- Girls Doubles

**Mens**

- Champ. Singles
- Champ. Doubles
- B Singles
- B Doubles

**Womens**

- Champ. Singles
- Champ. Doubles
- B Singles
- B Doubles

**Mens 35 & Over**

- Singles
- Doubles

**Womens C or Novice**

- Singles
- Doubles

**Mixed Doubles**

- A Division
- B Division

If we do not have at least 4 entrants to an event, they will be moved to another division; or the division may be dropped.

Doubles Partners 1) \_\_\_\_\_ 2) \_\_\_\_\_

Highlights of your tennis career for seeding purposes: \_\_\_\_\_

**14 & Under**

**Dahlia Flower Club**

The Dahlia Flower club met Mon. July 14 at K-Bobs for a luncheon. The group were seated at a large table together. Much visiting and good food enjoyed by the following members: Margaret Shedeck, Cora Smith, Sammie Bishop, Hollie Riley, Louise Archer, Jewel Turner, and Ruth Mary Whitson. The arrangement of miniature zinnias won first place was brought by Ruth Mary Whitson.

Lawlessness in Thailand's south creates insecurity.

**New Slant**

Joe: I'm a very funny comedian.  
Becky: What makes you think so?  
Joe: I put some of my jokes in the fire and it just roared.

**UNITED Supermarkets**

EVERYBODY WINS!  
PLAY UNITED'S FULL BOOK  
**BINGO**  
AND WIN!  
1200 EXTRA  
S & H GREEN STAMPS!

**CANTALOUPE** 39¢ LB.  
**SUN GRANDE NECTARINES** 39¢ LB.

**FRESH SPEARS BROCCOLI** 49¢ LB.  
**NEW RED POTATOES** 4 LBS. \$1  
**LARGE FULL EARS CORN** 6 FOR \$1

**DR PEPPER** 6 PK. \$1.59 PLUS DEPOSIT

**SOFT OLEO** 1 LB. TUB 49¢

**EGGS** 49¢ DOZ. GRADE "A"

**TISSUE** 49¢ 200 CT. FINE FARE FACIAL

**SUGAR** 179¢ 5 LB. BAG WITH THIS 36¢ COUPON

**TOASTIES** 59¢ 12 OZ. POST

**KETCHUP** 79¢ 32 OZ. HUNT'S

**PORK RINDS** 69¢ REG., HOT, BAR-B-Q REG. 89¢

**FRUIT DRINKS** 4 FOR \$1 NEW 12 OZ. CAN

**POTATOES** 59¢ 15 OZ. FINE FARE INSTANT

**ROLLS** 69¢ 8 OZ. PILLSBURY CRESCENT

**MILK** 59¢ QT. BELL CHOCOLATE

**COFFEE** 269¢ 1 LB. CAN MARYLAND CLUB

1955 1980

The sons of  
Mr. and Mrs. Elmo J. Dahl  
request the honor of your presence  
at the  
Twenty-fifth Wedding Anniversary  
of their parents  
July twenty-seventh  
nineteen hundred and eighty  
two o'clock to five o'clock  
Oslo Lutheran Church

No gifts please

36-4tc  
40-2tc

### Christian Singles Association Meets

The Christian Singles Association of Spearman met Tuesday July 8th. at the home of Denise Burnett for a hamburger cook-out. Afterwards the group held a meeting to elect officers and to plan the next get together. Elected President was Betty Bridgeman, Kari Schuman was elected Vice-President and Denise Burnett was elected Secretary/Treasurer. After the cookout and meeting, everyone went to the pool for a swimming party.

The next social will be a skiing trip to Lake Meredith on Sunday, July 27th. The group will meet at the bank parking lot at 9:00 A.M. There will be a

worship service at the lake. If you would like to be a part of this organization, contact Betty Bridgeman 659-3577 or Kari Schuman 659-3856.

Those present at the meeting were: Ben Woodington, Donna Falwell, Mike Parker, Rolan Winegarner, Bob Elliott, Charles Elliott & his kids-Tatty & Greg, Larry Poindexter, Regan Baker & his daughter Lacy, Bo DeArmond, Denise Burnett & her son Derrick, Donnie Wirsdorfer, Kari Schuman & her kids-Melody & Melissa, Betty Bridgeman & her daughter Kim, Margie Fite, Don Wirsdorfer.

### Marilyn Cline Named Chairman For Breath Of Life Campaign

The Lone Star Chapter of the Cystic Fibrosis Foundation announces the appointment of Mrs. Marilyn Cline, as Chairman of its 1980 Breath of Life Campaign in Spearman, Texas.

Mrs. Cline will be recruiting volunteers within the community to help plan and carry out a CF Breath of Life Campaign this fall.

The purpose of this Campaign is to provide the community with information about Cystic Fibrosis and to raise funds to support research,

education and care programs for CF patients.

The number one genetic killer of children, Cystic Fibrosis is inherited and incurable. An estimated one in 20 Americans is a symptomless carrier of the recessive CF gene. One in every 1500 babies born in this country is a victim of CF. Currently, half of all children born with CF will die before they leave their teens.

To volunteer for the Breath of Life Campaign, please contact Mrs. Cline.

**Excellent**  
A good way to get rid of unwanted guests is to turn off the air conditioner.

-Tribune, Chicago.

**Definition**  
Charm: A good way of getting the answer yes without having asked any clear questions.

-Busy Bee, Davisville.

**\*\*\*\***  
Bad farm crops add to Moscow Olympic blues.

### Wedding Shower Honors Mrs. Lewis

Mrs. David Lewis, the former Kim Reed, was honored with a wedding shower July 7 from 8 to 9 p.m. in the B & B Friendship Room.

Hostesses for the courtesy were Jean West, Dolly McWhirter, Helen Melton, Patty Spoonemore, Mary Cornelius, Bertha Spoonemore, Nellie Buchanan, Betty Morris, Lu Howerter, Rose Cummings, Virginia Trindle, Ruth Shaver and Wanda Reed.

The honoree's chosen colors of peach and white were carried out in the decorations.

The serving table was laid with a white lace cloth over a peach underlay and centered with a peach and white silk

flower arrangement in a basket which was given to the honoree. Crystal appointments were used. Mrs. Ruth Shaver served the punch and cookies.

The registry table held the bride's book and a bud vase with a peach silk flower.

Sabre McCoy registered guests and assisted Mrs. Lewis with the opening of her gifts.

The hostesses presented her with a Hoover vacuum cleaner. Special guests included Mrs. Lewis Daughy of Amarillo, grandmother of the honoree, Mrs. Eugene Daughy from Norway, aunt of the honoree and Mrs. C.E. Reed of Spearman, mother of the recent bride.

## Spearman Open Tennis Tournament Set

SPEARMAN OPEN  
ENTRY BLANK  
July 31 - Aug. 3

LOCATION: Spearman High School Tennis Courts

DETAILS: Play in the Junior Division will begin Thursday, July 31, at 9:00 a.m. and continue Friday if necessary. If we are unable to play on Thursday because of weather, we will begin on Friday, August 1, at 9:00 a.m. The Adult Division will begin Saturday, August 2, at 9:00, and continue through Sunday. Feel free to call and find out if you are one of the first matches, but do it no earlier than Wednesday. (Sheila Watley 806-659-3970)

ENTRIES: You may enter as many as three events, but only two age divisions. If you enter three events be prepared to play your matches back to back. If there are not enough entries in one age division you will be put in the next division. The tournament director will have the last decision in placing players in "A" or "B" divisions. Please send any seeding information that you might have.

FEE: Entry fee is \$4.50 per person per event.

RULES: No-ad scoring will be used to the Semi-finals. 9 point tie breaker will also be used at 6-6.

PLEASE FILL OUT THE ENTRY BLANK BELOW AND SEND WITH ENTRY FEE NO LATER THAN TUESDAY, JULY 29.

Sheila Watley  
727 Wilbanks  
Spearman, Texas 79081

ENTRY BLANK

NAME \_\_\_\_\_  
BIRTH DATE \_\_\_\_\_  
ADDRESS \_\_\_\_\_  
PHONE \_\_\_\_\_

#### ADULT DIVISION

Singles  
Men "A"  
Men "B"  
Women "A"  
Women "B"  
Men 35 & over  
Women 35 & over

#### Doubles Partner

Men "A"  
Men "B"  
Women "A"  
Women "B"  
Men 35  
Women 35  
Mixed "A"  
Mixed "B"

#### JUNIOR DIVISION

Singles  
Boys 18 under  
Girls 18 under  
Boys 16 under  
Girls 16 under  
Boys 14 under  
Girls 14 under  
Boys 12 under  
Girls 12 under

#### Doubles Partner

B 18  
G 18  
B 16  
G 16  
B 14  
G 14  
B 12  
G 12

PLEASE CHECK THE EVENTS YOU WANT TO ENTER AND FILL IN YOUR PARTNER'S NAME FOR THE DOUBLES. REMEMBER TO GO BY YOUR AGE AS OF SEPT. 1, 1980 TO PLACE YOURSELF IN THE JUNIOR DIVISION!

### CPR Students Need Review

COLLEGE STATION--Follow-up cardiopulmonary resuscitation (CPR) training is essential to keep in practice, advises Mary Ann Shirer, a health education specialist.

It may take more than a four-hour crash course to save a life, she points out.

Dr. Shirer is with the Texas Agricultural Extension Service, The Texas A&M University System.

More than seven million Americans have received training in CPR which, promptly applied, can save the life of a

heart attack victim.

But, CPR students quickly forget what they learned in the basic four-hour course without some follow-up review, the specialist explains.

If CPR certification is more than a year old, take a refresher course to practice the technique again. This is necessary to maintain an adequate performance level.

Also, the CPR students should spend as much time as possible practicing on mannikins, Dr. Shirer adds.

• Microwave Safe  
• Oven-to-table convenience  
• Dishwasher and Freezer Safe

The Capri Stoneware Collection is perfect for any occasion... from family meals to special dinner parties, and yet so practical. Choose one of these elegant patterns, or mix and match, and build a complete set at budget savings prices. Each week a different place setting piece will be offered at only 79c each with every \$5.00 purchase. A beautiful array of matching serving pieces, including a large pedestal Sugar and Creamer, to help you complete your set will be available at very special savings throughout our program. This exclusive saving offer is one way we can say thank you for shopping in our stores.

©1980 Copyright JMP Marketing Inc.

JUST FOLLOW THIS SCHEDULE AND SAVE!

JULY 21-27	DINNER PLATE
JULY 28-AUG. 3	DESSERT DISH
AUG. 4-10	COFFEE CUP
AUG. 11-17	SAUCER
JULY 14-JULY 20	BREAD & BUTTER

BIG SAVINGS ON ELEGANT SERVING PIECES!

2 Stack Sandwich Plates	\$4.99	Set of 8 Pepper Shakers	\$4.99
2 Soup Cereal Bowls	4.99	Covered Butter Dish	5.99
2 Jumbo Mugs	4.99	Grain Boilermix Tray	6.99
Covered Sugar Bowl	4.99	12 Chop Plate	6.99
Creamer	4.99	Coffee Server	11.99
Small Vegetable Bowl	4.99	Covered Casserole	13.99
Large Vegetable Bowl	5.00		

THIS WEEK  
BREAD & BUTTER  
each place setting piece

Only **79c**

WITH EVERY \$5.00 PURCHASE

WE GIVE  
S & H  
GREEN  
STAMPS

**GARY'S CORN DOGS** 26 OZ. \$1.79  
10 CT. PKG.

**RANCHER SUMMER SAUSAGE** LB. \$1.29

**NEW! Sausage Item \$0.00**

LOOK FOR THIS SHIELD OF SAVINGS TEMPORARY PRICE REDUCTIONS!! WE VALUE YOU... OUR CUSTOMER!

**FRESH GROUND BEEF** FAMILY PACK LB. \$1.29

**CENTER CUT UNITED TRUTENDR SIRLOIN STEAK** LB. \$2.39

**ROUND BONE CUT UNITED TRUTENDR SWISS STEAK** LB. \$1.89

**FINE FARE MEAT BOLOGNA** 12 OZ. PKG. 98c

**FINE FARE COOKED SALAMI** 12 OZ. PKG. 98c

**UNITED TRUTENDR BONE-IN RUMP ROAST** LB. \$1.79

**UNITED TRUTENDR PRIME RIB ROAST** LARGE END LB. \$1.98

**MINUTE MAID CHILLED ORANGE JUICE** 64 OZ. \$1.29

**FINE FARE CORN** WHOLE KERNEL OR CREAM STYLE 17 OZ. 4 FOR \$1.00

**FINE FARE 15 OZ. PORK & BEANS** 4 FOR \$1.00

**FINE FARE CUT 16 OZ. GREEN BEANS** 3 FOR \$1.00

**FINE FARE PIZZA** 89c

**MANAGER'S SPECIALS KINGSFORD CHARCOAL** 10 LB. BAG \$1.69

**NO NONSENSE SHEER TO WAIST PANTY HOSE** 99c

**HEALTH & BEAUTY AIDS GILLETTE ATRA RAZOR BLADES** 5 CT. \$1.29

**GILLETTE TRAC II SHAVE CREAM** \$1.39

**FROZEN FOODS FISHER BOY FISH STICKS** 8 OZ. 49c

**FINE FARE DONUTS** 14 OZ. 79c

**MORTON CREAM PIES** 4 FLAVORS 69c

**QUANTITY RIGHTS RESERVED UNITED Supermarkets**

PRICES GOOD THRU JULY 19 TH

## Farm Bureau Seminar Has Been Rescheduled

Believing America has made 5,000 years of progress in one lifetime because of the superior standard that is the Constitution of the United States, the

Hansford County Farm Bureau with the Texas Farm Bureau and the Freeman Institute had scheduled a Constitutional Seminar for area families at the

Hilton Inn at Amarillo. Due to some activities conflicts, new dates for the seminar have been announced: Registration will begin at

Amarillo's Hilton Inn at 5 p.m., Thursday, July 31. Classes will be conducted from 7 - 10 p.m., Thursday and Friday nights (July 31, Aug. 1) and 8 a.m. - 5

p.m., Saturday, Aug. 2.

Saturday, a buffet luncheon will be served at noon and a buffet banquet at 7 p.m. followed by a guest speaker from the national level of events in the U.S., today.

Cost for the buffet luncheon will be \$7.75 per person and the buffet banquet will be \$12 per person.

Basic enrollment cost is \$35 per family which includes text books and workbooks but does not include the luncheon and banquet fees.

Success of the seminar is predicated on having 100 families sign up. Currently, 27 families have registered. So, 73 families still are needed. Registration forms are available at the office of the Hansford County Farm Bureau at Spearman.

Study periods for the seminar are entertaining as well as informative. They are conducted by W. Cleon Clousen and other members of the Freeman Institute faculty.

Farm Bureau leadership feels the seminars are needed urgently in these times of attack on the Constitution to restore faith in the formula of the founding fathers on the part of the average American citizen.

Under close examination, according to various constitutional authorities, most of America's problems today—inflation, growing taxation, federal encroachment in local affairs, loss of states rights, corruption in high places, government waste and other—exist because of abandonment or perversion of some principles laid down by the Founding Fathers.

In the words of the foundation's Dr. Skousen:

"These courses are specifically designed to restore confidence in the Founding Father's unique formula for constitutional government and free enterprise economics which made America the greatest nation on earth."

Cuba making its neighbors edgy.

## Film Available At Library

The following films are available at the library through July 23.

**GOLIATH II.** 15 min.-color-distributed by S.W. Media-primary.

Goliath II, the tiniest elephant in the world, causes his parents great shame and worry until he performs a gigantic deed and proves that size isn't everything.

**LIFE CYCLE OF THE HONEY-BEE.** 16 min.-color-distributed by National Geographic-Jr. Hi. through adult.

This film chronicles the existence of one of nature's most highly organized and highly specialized creatures—the honeybee. Once in the new hive, the workers build the comb, and the queen begins laying eggs. The birth of a new queen completes the cycle.

**THE BIG BUSINESS.** 20 minutes. East b/w-distributed by Eastin-Phelan. For all ages. Starring Laurel & Hardy.

**GRANNY LIVES IN GALWAY.** 25 min.-color-distributed by LCA films-Jr. Hi. through adult.

A pair of orphans, a wicked guardian, and a suspense filled chase that takes us from the north of England across to the channel to Ireland, feature in this almost Dickensian plot in a modern setting.

**LARRY MAHAN.** 22 min.-color-distributed by Paramount-Oxford-Jr. Hi. through adult.

Five-time-all-around Rodeo Champion Larry Mahan sometimes makes \$1,000 in eight seconds. But that eight seconds is on the back of an angry brahma bull. Mahan is a very modern competitor.

\*\*\*\*

The hardest job we know is trying to be impartial.

## Boys Stater's Speak To Rotary

Jamie Bulls and Steve Shields were speakers at the July 14 meeting of the Spearman Rotary Club. The boys recently attended the 40th Annual American Legion Texas Boys State program in Austin. The boys were among 954 boys from throughout the state that spent a week in experiential government, from the city, district and state levels.

According to Bulls, the representative at the conference were alphabetized and formed into cities, counties, districts and all were part of the state. According to Shields, there were 22 cities, with 2 cities per county and 2 counties per district in the mock government organization.

The day began about 5:30 a.m., with the boys arising and going to exercises on the University of Texas campus. After breakfast, the delegates went to a general assembly. The afternoons were spent in sports competition and the evening again in general sessions. The general sessions and the talking after the official closing for the day made for bedtime about 12:00 Midnight to 1:00 in the morning.

According to the boys, the

first several days' general sessions were mostly political speeches, by those running for various city, county, district and state offices. Each delegate had the opportunity to run for an office. Bulls ran for district judge, and was defeated by a narrow margin in the general elections. The delegates ran either on the Nationalist or Federalist ticket. The Nationalists had more delegates. Bulls ran on the Federalist ticket and found most delegates, due to lack of time to get acquainted with each office-seeker, voted a straight party ticket, and lost by 5 votes to election as a judge.

Governor Clements spoke to the boys at one of the General Sessions and impressed the boys in his remarks about Texas.

Bulls and Shields both agreed that the week spent in Austin taught more about the functioning of local, county and state government than any civics classes they had attended. One real highlight was that each delegate and elected youth was able to visit with the office of the real official in the government post corresponding to his Boys State representation.



JAMIE BULLS



STEVE SHIELDS

# SAVE 12¢ on 4 cans of Pillsbury Biscuits.

Right now you can really save on the great taste of Pillsbury Buttermilk\* or Country Style Biscuits. Just buy four of the 10-biscuit size cans and save 12¢.

\*Artificial buttermilk flavor

TO THE CONSUMER: CAUTION: This coupon can be redeemed only with the purchase of the brand specified. Coupon cannot be transferred, sold or exchanged. Any other use constitutes fraud. TO THE RETAILER: We will reimburse you for the face value of this coupon plus 1¢ handling provided this coupon is redeemed by a consumer at the time of purchase of the brand specified and the face value of this coupon is deducted from the retail selling price. By submitting this coupon for reimbursement, you represent that you redeemed it in the manner described above and pursuant to these terms. The consumer must pay any sales tax involved. This coupon is not negotiable, cannot be cashed, and is not redeemable for cash. Reimbursement will be made only to a retailer distributor of our merchandise or to a holder of our certificate of authority acting for him. For redemption of coupons, mail to The Pillsbury Company, Box 802, Minneapolis, Minnesota 55450. Cash redemption value: 1/100th of 1¢. Void where taxed, prohibited or restricted by law. LIMIT: ONE COUPON PER PURCHASE. NO EXPIRATION DATE.

SPECIALS GOOD WHILE SUPPLY LASTS!

WE RESERVE THE RIGHT TO LIMIT

# ALLSUP'S

CONVENIENCE STORES

PRICES EFFECTIVE JULY 17-19, 1980

LIMITED SUPPLY

<p>REFRESHING 32 OZ.</p> <h2>COCA-COLA</h2> <p><b>\$1.69</b></p> <p>6 BTL. CTN.</p>	<p>ALLSUP'S ASSORTED ICE CREAM 1/2 GAL. RD. CTN. <b>\$1.39</b></p> <p>KRAFT DRESSING 28 oz. btl. <b>99¢</b></p> <p>MACARONI AND CHEESE DINNERS 4 boxes <b>99¢</b></p> <p>CHARCOAL 10 lb. BAG <b>\$1.19</b></p> <p>ROXEY DOG FOOD <b>7 FOR \$1</b></p> <p>HOT BUTTER POP CORN BAG <b>25c</b></p>
<p>WALDROF TISSUE BOX <b>39c</b></p> <p>VIENNA SAUSAGES 3 FOR \$1</p> <p>BORDEN'S HI-PRO MILK 1/2 GAL. CTN. <b>\$1.19</b></p> <p>GREEN GIANT CORN 4 FOR \$1</p> <p>BORDEN'S FRUIT DRINK GAL. <b>89¢</b></p> <p>GREEN GIANT BEANS 4 FOR \$1</p>	<p>CLOVER CLUB REG. 99c</p> <h2>POTATO CHIPS</h2> <p><b>69c</b></p> <p>ASSORTED</p>

## Pat Walker's really works for a working woman like me. I lost 51 pounds!

### Ray Barnwell's True Story:

Running an auto supply store means being on the job six days a week, doing everything from selling to handling the books. At home, I have two children and a husband to take care of. So I don't have much time to think about myself. Maybe that's why I hadn't done anything worthwhile about my weight problem. I'm embarrassed to admit that I weighed 167 pounds (I'm 5'5").

A friend of mine—who was always going on fad diets with me—decided to try Pat Walker's. When she began to see results, I thought I'd try it, too. Luckily, I could go before or after work, and I didn't even have to change clothes to use the Symmetricron passive exercise unit.

The counselors at Pat Walker's are so encouraging, and they have a great plan for eating right that's a lot more flexible than those strict diets I'd tried. Within a month, I could see that Pat Walker's was working for me. And now I've lost about 10 inches from my waist, 7 inches from my tummy, and a total of 51 pounds! So you see, even if you're as busy as I am, you can still look as good as you should. Pat Walker's is the secret.

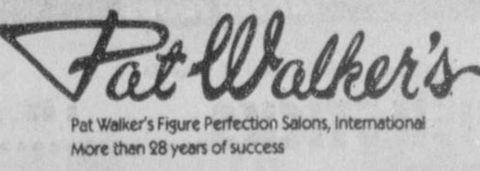


No "Before" picture for me—I was too embarrassed.

### Free Figure Analysis

Make an appointment now for a free, no-obligation consultation at Pat Walker's. We'll explain how our program works, from the no-muss, no-fuss passive exercise treatments to our belief in your right to privacy. We'll tell you how much you need to lose, how long it will take, and the total cost of your complete figure correction, based on four dollars per thirty-minute treatment.

### Call Now!



514 S. MAIN - PERRYTON  
435-3623

111 MAIN - CANADIAN  
323-8391

### Gruver Open Jr. Tennis Tournament Set

GRUVER OPEN JR. TENNIS TOURNAMENT  
AUGUST 3, 9, 10, 1980

LOCATION: Headquarters for all matches will be at high school courts.  
TIME: 7:00 pm Fri. Aug. 8—18 and 14 boys events begin.  
8:00 am Saturday Aug 9  
1:00 pm Sunday Aug. 10

Deadline: Entries will close Wed. Aug. 6 at 8pm. Please mail your entries and fees to Francis Duncan, Box 635, Gruver, Texas 79040. phone- 806-733-2866

FEES: \$5.00 per person per event.  
ENTRY LIMIT- You may enter as many as 3 events, but only in two age divisions. If you enter three events be prepared to play your matches back to back.  
MATCHES: 2 out of 3 sets with 9 point tie breaker at 0 all. Vass No Add scoring through semi-finals. Regular scoring in finals.  
DEFAULTS: 30 minute default rule will be in effect. Non payment of fees will result in a default. Players displaying poor sportsmanship will be defaulted.

NOTE: Events with insufficient entries may be dropped.  
TOURNAMENT DIRECTOR: Francis Duncan

## SUMMER Clearance Sale



MENS  
WOMENS  
CHILDRENS  
SHOES

# 1/2 off!

All Summer Merchandise



## Reed's FAMILY SHOES

Spearman, Tex.

Perryton, Tex.

### Energy Conscious Lawn Care

COLLEGE STATION--Energy-conscious homeowners can take steps to reduce the energy demands of lawn care without lowering lawn benefits.

While lawns offer many aesthetic and recreational benefits, these many be offset by energy requirements of lawn care," says Dr. Richard Duple, turfgrass specialist with the Texas Agricultural Extension Service, Texas A&M University System.

"Mowing, watering, fertilizing, pest control and leaf clipping disposal are all energy-consuming requirements of lawn care. During spring and summer months lawn watering and collection and disposal of grass clippings place a heavy burden on cities for these services. Grass clippings may account for more than 30 percent of total trash collections in cities during spring," notes Duple.

He offers several suggestions to help homeowners reduce these energy demands. Reducing fertilizer applications to maintenance levels—two to three pounds of nitrogen per 1,000 square feet of lawn per year—will go a long way toward reducing energy demands. This will also reduce mowing requirements, water use, insect and disease problems, and grass clippings.

"Excessive fertilization is the single most important factor contributing to high energy demands for lawn care," contends Duple. Other lawn care practices to reduce energy demands include returning or composting grass clippings. Using a mulching mower can be beneficial if grass clippings are not removed, says the specialist. Also, adopting proper watering practices to reduce water use can save energy. Reducing pesticide use to only essential applications to prevent loss of turf is another energy-saving practice.

Duple advises new homeowners to select and plant adapted low-maintenance turfgrasses to reduce energy demands. Centipedegrass is ideally suited to East Texas while buffalograss is adapted to much of West and North Texas. Both of these grasses have low maintenance requirements.

In some situations ground covers such as Asiatic jasmine, English ivy or Liriope can reduce maintenance requirements effectively without sacrificing the benefits of a plant cover, says the specialist.

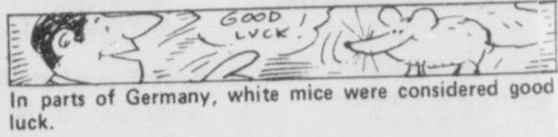
"It is possible to enjoy the luxury of an attractive lawn and landscape," contends Duple, "without excessive energy requirements. In fact, the net energy balance for a lawn can be in favor of energy conservation."

thinking results in scowl lines. Frequent squinting produces crow's feet.

Frequent smoking causes premature wrinkles above your upper lip and around the eyes. Tugging eyes when applying makeup results in drooping eyelids.

If you chew on your upper or lower lip, then you have curved lines surrounding your mouth. Overindulgence in alcohol produces dilated or broken blood vessels.

Yo-yo dieting can wreck your complexion. Too much sun causes leatherized skin. Rapid weight loss results in saggy, baggy skin.



In parts of Germany, white mice were considered good luck.

### CONSOLIDATED REPORT OF CONDITION (Including Domestic Subsidiaries)

#### LEGAL TITLE OF BANK

FIRST STATE BANK			
CITY	COUNTY	STATE	ZIP CODE
Spearman	Hansford	Texas	79084
STATE BANK NO.	FEDERAL RESERVE DIST. NO.	CLOSE OF BUSINESS DATE	
1107	11	June 30, 1980	

ASSETS	Mil.	Thou.	
1. Cash and due from banks	3	726	1
2. Due from other depositories and all cash items in the process of collection	None		2
3. U.S. Treasury securities	1	192	3
4. Obligations of other U.S. Government agencies and corporations	3	688	4
5. Obligations of States and political subdivisions in the United States	7	654	5
6. All other securities	None		6
7. Federal funds sold and securities purchased under agreements to resell	2	500	7
8. Total loans (including overdrafts totaling \$ 12,656.07) (From Schedule A, Item 8)	16	217	8
9. Lease financing receivables	None		9
10. Bank premises, furniture and fixtures, and other assets representing bank premises	225		10
11. Real estate owned other than bank premises	None		11
12. Letters of credit and customers' liability on acceptances outstanding	None		12
13. All other assets	864		13
14. TOTAL ASSETS (sum of items 1 thru 13)	36	066	14
LIABILITIES			
15. Demand deposits of individuals, partnerships, and corporations	11	787	15
16. Time and savings deposits of individuals, partnerships, and corporations	16	245	16
17. Deposits of United States Government	023		17
18. Deposits of States and political subdivisions in the United States	2	279	18
19. Due to banks	None		19
20. All other deposits	None		20
21. Certified and officers' checks	018		21
22. Total Deposits (sum of items 15 thru 21)	30	352	22
a. Total demand deposits	12	577	22a
b. Total time and savings deposits	17	775	22b
23. Federal funds purchased and securities sold under agreements to repurchase	None		23
24. Interest-bearing demand notes issued to the U.S. Treasury and other liabilities for borrowed money	030		24
25. Mortgage indebtedness for which the bank is directly liable	None		25
26. Unearned discount on loans	180		26
27. Letters of credit and acceptances outstanding	None		27
28. All other liabilities	969		28
29. TOTAL LIABILITIES (excluding subordinated notes and debentures) (sum of items 22 thru 28)	31	531	29
30. Subordinated notes and debentures	None		30
31. Allowance for possible loan and investment losses	242		31
EQUITY CAPITAL			
32. Common stock (No. of shares outstanding 200,000)	1	000	32
33. Certified surplus	1	000	33
34. Undivided profits	1	122	34
35. Uncertified surplus, reserve for contingencies, and other capital reserves	1	171	35
36. TOTAL EQUITY CAPITAL (sum of items 32 thru 35)	4	293	36
37. TOTAL LIABILITIES AND EQUITY CAPITAL (sum of items 29, 30, 31 and 36)	36	066	37

NOTE: This report must be signed by an authorized officer and attested by not less than three directors other than the officer signing the report.

I, the undersigned officer, do hereby declare that this Report of Condition (including the supporting schedules) has been prepared in conformance with the instructions and is true to the best of my knowledge and belief.

SIGNATURE OF OFFICER AUTHORIZED TO SIGN REPORT: Felma B. Evans  
AREA CODE/TELEPHONE NO.: 806-659-2526  
DATE SIGNED: July 8, 1980  
NAME AND TITLE OF OFFICER AUTHORIZED TO SIGN REPORT: Felma B. Evans, Cashier

SIGNATURE OF DIRECTOR: [Signatures of three directors]

(MAKE MARK FOR NOTARY'S SEAL) State of Texas, County of Hansford, Sworn to and subscribed before me this 8th day of July, 1980. My commission expires 1-31-81. [Notary Signature]



The first adding-printing machine was invented in 1891 by William S. Burroughs, a bank-clerk who had suffered a breakdown from overwork.



The first toll road is thought to have been a Persian military route between Babylon and Syria in 2,000 B.C.

### STOREWIDE SALE! 20% OFF

This Week Only Celebrating Our 1st Anniversary

- Furniture
- Accessories
- Gifts
- Antique Silver
- Antiques
- Toys
- Stuffed Animals
- Ladies Fashions

Susanne's expressions of elegance  
26th East of Paramount  
Amarillo

# 85 Pints of Blood!!

County residents donated 85 pints of blood Wednesday July 15 when the Red Cross Bloodmobile visited Gruver.

Donations were taken at the Baptist Church Activity Building from 9 a.m. to 2:30 p.m.

Dr. R. L. Kleeberger, M.D., Dr. David McClellan, M.D., Mary Allen, RN and Linda Winegarner, RN and ambulance driver J.C. Harris were on hand.

Hansford County ARC Volunteers included Gwen Smith, Betty Davis, Ruthie McCoy, Maria Avila, Maria Pacheco, Clementine Renner, Maylynn Schubert, Adalyn Barnes, Hazel Stumpf, Doris Ellison, Rosalie Cator and Joyce Duncan.

Present from the Wichita Regional Red Cross Blood Center, Wichita, Kans. were Marty Martinez DeNeri, Mobile Unit Aide; Chelsea Roberts, RN, Charge Nurse, RN's Vicky Welmeyer, Twila Stutzman, Colleen Denker and NT's Darlene Minugh and Kathy Entriken.

Helpers in the kitchen included Rogene Arrington, Corine and Del Virden and Carol Hinton, Chairman.

Typists and registers were Dorothy Cator, Sharon Max-

well, Hershelene Turner, Sharolyn Barkley, Ruth Crawford and Janie Stedje.

EMT's Terry Etling and Floyd Shook were on hand as well as EMT trainees Hershelene Turner, Pat Irwin, Pam Ledbetter and Frances Duncan.

Hansford County American Red Cross Chairman is Mrs. Preston Smith, assistant chairman is Mrs. Bill Maupin and Gruver Chairman is Mrs. LeRoy Mitchell.

Mrs. Vivian Cluck was refreshment committee chairman with sandwiches and cookies donated by the Community Bible Church, United Methodist, Baptist and First Christian churches.

Mrs. Bill Hunter was the nursery chairman.

Mrs. Howard Hinton was the kitchen and canteen chairman assisted by Mrs. Dave Arrington.

Mrs. David Turner was typist chairman, Mrs. Speck Cator, labeler chairman, Mrs. Wayne Shook, EMT chairman and Mrs. Bob Crawford, hospital volunteer chairman.

A big thank you goes out to those 85 of our citizens who donated blood and to all the workers present.



Dr. Kleeberger, and Mr. and Mrs. Burl Buchanan, and a red cross worker from Gruver, visit with the photographer at the Blood Letting in Gruver yesterday! 85 pints were given in the Gruver drive!



Bank Examiner Edith Smith examines the "lady banker" in Gruver yesterday at the Red Cross Drive!



A photographer with a negative attitude will never get positive results.



Washington State Indians are entitled to harvest half the fish in Puget Sound, according to a 1979, U.S. Supreme Court ruling.

## Basketball All-Stars

The only All-American in Texas, Darla Armes, will be one of the performers in the lineup of basketball all-stars who meet for the 24th Annual North-South Texas basketball all-star game at 8:15 p. m. in Blossom Athletic Center, San Antonio.

The game will be the climax of the annual Texas High School Girls Coaches Association summer clinic, which is set to start today (Wednesday).

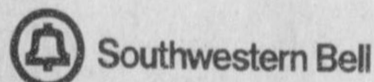
Ralph Newton, coach of the Spearman Lynettes and Texas High School Girls Association president, will deliver the opening address at 9 a. m. today, Thurs. at the San Antonio Convention Center.

### Public Notice

Southwestern Bell, in accordance with the rules of the Public Utility Commission of Texas, hereby gives notice of the company's intent to implement a new schedule of telephone rates in Texas effective August 12, 1980, unless otherwise determined by the Commission.

It is expected that the requested rate schedule will furnish an 11.65 percent increase in the company's intrastate revenues.

A complete copy of the new rate schedule is on file with the Public Utility Commission at Austin, Texas, and with each affected municipality, and is available for inspection in each of the company's public business offices in Texas.



### T.S.O. now open in Pampa

Pampa Mall  
2545 Perryton Parkway  
665-2333

### TEXAS STATE OPTICAL



Reasonable Cost • Convenient Credit

Finest Quality Prescription Eyeglasses Since 1925

## Ideal FOOD STORES

PRICES EFFECTIVE THRU JULY 19, 1980. QUANTITY RIGHTS RESERVED. NO SALES TO DEALERS.

MON. - SAT.  
8 a. m. - 9 p. m.  
SUN.  
10 a. m. - 7 p. m.

GET UP TO **300** GUNN BROS. STAMPS

- 100 FREE STAMPS WITH \$10.00 TO \$19.99 IN PURCHASES
- 200 FREE STAMPS WITH \$20.00 TO \$29.99 IN PURCHASES
- 300 FREE STAMPS WITH \$30.00 OR MORE IN PURCHASES

WITH THIS COUPON

COUPON GOOD THRU JULY 19, 1980. LIMIT ONE COUPON PER CUSTOMER.

HICKORY SMOKED RANDOM WEIGHTS

**Sliced Slab Bacon** **98¢ LB.**

BLADE SLICES

**Fresh Pork Steak** **\$1.19 LB.**

**Long tapes**

**PLUM crates**

**SALE**

ALL PLUMS MIX OR MATCH

**69¢ LB.**

- VINE RIPE **Tomatoes**..... 59¢ LB.
- TREE RIPE **Nectarines**..... 49¢ LB.
- CALIFORNIA CLING **Peaches**..... 49¢ LB.
- VINE RIPE **Cantaloupe**..... 39¢ LB.
- CALIF. SWEET SLICING **Red Onions**..... 3<sup>95</sup> LBS.

REFRESHING DRINK

**Coca Cola**

32-OZ. BTL. **\$1.69**

ASSORTED AND DECORATIVE COLORS... BOUNTY

**Bounty Paper Towels**

JUMBO ROLL **68¢** LIMIT 3

ALL FLAVORS DAIRY BELL

**Ice Cream** 1/2-GAL. CTN. **\$1.28**

**Eskimo Pie Bar** 6-CT. PKG. **88¢**

DEL MONTE CREAM STYLE -OR- WHOLE KERNEL GOLDEN

**Corn**

17-OZ. CAN **29¢** LIMIT 4

### SHOP IDEAL...WHERE THERE'S MORE VALUE IN



# Selective Service Registration

All classified U.S. Post offices in the Panhandle area will have available Monday, July 21, 1980, Selective Service System Registration Forms to hand out to men born in 1960 and 1961.

Men born in 1960 register during the week of July 21, 1980.

Men born in 1961 register during the week of July 28, 1980.

It is suggested the registration schedule be-if registrant was born in: January, February, or March, register on Monday; April, May or June, register on Tuesday; July, August, or September, register on Wednesday; October, November or December, register on Thursday.

Post Offices responsibilities are limited to handing out Registration Forms and pamphlet, "Selective Service and You."

The registrant must PRINT their date of birth; full name; current mailing address; permanent residence address (if different from current address); current phone number; signature of registrant.

The registrant then takes the completed card back to the post office window with his identification (driver's license or social

security, etc.); the postal official will check the card for completeness; post mark the card; and mail it to the Selective Service System for the registrant.

Post offices will not have any other information, such as, draft deferments or how registration will affect them, etc. All inquiries by registrants concerning such questions will have to be answered by the Selective Service and not by the Postal Service. The only role of the Postal Service in this process is to handle the registration itself.

After August 1, 1980, post offices will have available Registration Forms for registrants who were unable to register July 21 through July 31, as well as, Change of Information Forms to report future change of address.

The Selective Service System will correspond with each registrant in due time after they receive the Registration Card.

"It usually takes more than three weeks to prepare a good impromptu speech." Mark Twain

## Hearing Set On Committee On Human Resources

AUSTIN-State Senator Bob Price announces that the Senate Committee on Human Resources will conduct a public hearing on Thursday, July 17, 1980, to review the implementation of alternate care services for the aging. The hearing will be held in the Senate Chamber, State Capitol, beginning at 9:30 a.m. All legislators, appropriate agency personnel, service providers, and other concerned individuals are invited to participate.

Price, a member of the Senate Committee on Human Resources, invited any citizen of the 31st Senatorial District who has a concern regarding nursing home eligibility or alternate care services to feel free to call or write his offices in Pampa or Amarillo if they cannot attend the hearings.

"All views and concerns reaching my office will be greatly appreciated and will assist the Senate Committee on Human Resources in taking initiative in response to this critical situation," Price said.

### In Fashion

Early fall fashion previews are showing silk blouses with ruffled necklines over velvet skirts. The new curved velvet bolero with braided or crocketed edges completes this attractive outfit.

Hemlines of most of the new day-time fashions are a little below the knee. For variety, some calf-length skirts have matching fitted jackets.

## BIBLE VERSE

"Man looketh on the outward appearance, but the Lord looketh on the heart."

1. To whom was this verse spoken?
2. By whom was it spoken?
3. In connection with what incident?
4. Where may the verse be found?

1. To the Prophet Samuel.
2. By Jehovah.
3. The anointing of David, the son of Jesse.
4. I Samuel 16:7b.

It is good that most of us never know what other people think of us.



Red Cross worker on the left, Mrs. Irvin Davis in the background, and Baker and Taylor's own Jack Carrol "give blood" to the Red Cross in the Gruver drive yeste4day. yest4r yesterday!

Applications are being accepted for the position of bookkeeper. This position will be responsible for handling all municipal accounting duties. Familiarity with small computer is desirable. High school education is required. Salary range from \$636.00 to \$866.00 per month. Salary will commensurate with education and experience. For further information come by City Hall at 221 Sanders.

U.S.D.A. CHOICE BUTCHER BLOCK BEEF

BOTTOM ROUND... BONELESS

# Round Steak

## \$2.09

LB.

BONELESS CHOICE BUTCHER BLOCK BEEF	Chuck Steak.....1 LB.	\$1.89
BONELESS CHOICE BUTCHER BLOCK BEEF	Shoulder Roast.....1 LB.	\$1.98
EXTRA LEAN... BONELESS	Beef Stew.....1 LB.	\$1.98
CENTER CUT... SMOKED	Ham Slices.....1 LB.	\$1.89
BAR-S	Sliced Bologna.....12-OZ. PKG.	\$1.19
BAR-S... SKINLESS	Meat Franks.....12-OZ. PKG.	89c
HORMEL... PORK SAUSAGE LINKS	Little Sizzlers.....12-OZ. PKG.	98c
OSCAR MAYER SLICED	Meat Bologna.....8-OZ. PKG.	89c
OSCAR MAYER	Chopped Ham.....8-OZ. PKG.	\$1.29
SMOKED FRANKS - HORMEL	Wranglers.....1 LB.	\$1.89

U.S.D.A. CHOICE BUTCHER BLOCK BEEF BONELESS

# Chuck Roast

## \$1.79

LB.

have lower totals

DEL MONTE... CUT

# Green Beans

16-OZ. CAN

## 32c

LIMIT 3

Purina Dog Chow \$1.23

Hawaiian Punch 68c

DEL MONTE CHUNK, CRUSHED, OR SLICED IN JUICE

# Pineapple

15 1/4-OZ. CAN

## 46c

LIMIT 3

HEALTH AND BEAUTY AIDS SPECIALS

Sure & Natural

MAXI SHIELDS \$2.59

CARYL RICHARDS Balsam Plus \$1.09

BRONZE OR LIME Right Guard \$1.29

Glad Wrap 59c

KRAFT... ALL FLAVORS Bar-B-Q Sauce 99c

KRAFT... CREAMY Cucumber Dressing \$1.09

DEL MONTE... Tomato Catsup 83c

BAMA... Grape Jelly 63c

SPAGHETTI-O's Franco American 3.96c

STA PUF... PINK Fabric Softner 79c

VAN CAMP'S Pork & Beans 98c

### FRESH DAIRY

AMERICAN SLICES

# Camelot Singles

16 12-OZ. PKG. \$1.18

LIMIT 2

Parmesan Cheese KRAFT GRATED 3-OZ. CAN 73c

Half & Half CAMELOT OR STEFFENS 2 PINTS 79c

Margarine FARBEST 1-LB. PKG. 39c

### FROZEN FOODS

MEAT OR FRUIT

# Banquet Pies

CHERRY PIE 8-OZ. PIE 28c

LIMIT 4

Cream Pies BANQUET ALL FLAVORS 14-OZ. PIE 69c

Orange Juice MINUTE MAID 12-OZ. CAN 83c

Tater Tots ORE-IDA 2-LB. BAG 98c

## WANTED

### 8 Homes That Need Painting and Insulation

Eight home owners in this area will be given the opportunity to have their home restyled and rebeautified with the all new wood grained UNITED STATES STEEL siding finished with VYNASOL VINYL U.S. Steel Vynasol siding can be applied to your home with optional decorative work at a very low cost. This amazing new product has captured the interest of home owners throughout the United States who are fed up with constant painting and other maintenance costs. It is maintenance free, virtually indestructible, carries a 40 year guarantee, provides full insulation summer and winter as well as fire protection and is highly hail-resistant. Our new product can be applied to every type of home including frame, concrete block and stucco with amazing beautifying results. It comes in several colors and is now going to be introduced. A few homes will be selected in this area for promotional purposes. Dealer absorbing large portions of cost

Write: SIDING  
P.O. Box 15388 Tulsa, Okla. 74112

Name.....  
Address.....  
Phone.....  
City.....

Best Time to Call  
 Morning  Afternoon  Evening

MAIL COUPON TODAY

## START NOW!

### Beat summer heat and manage energy wisely

Keep cooling thermostat at 78°. Fighting summer heat with air conditioning can amount to as much as 75% of your utility bill. And the lower the setting, the harder the central unit works, and the more it costs you. These hot summer days put an extra burden on your central unit. And with the recent rate increase, your bill will probably be higher this summer. Keeping your thermostat at 78° can help keep your bills under control. Encouraging family members to keep the 78° setting constant will give you a head start on rising energy costs.

For more information call:  
**COMMUNITY PUBLIC SERVICE**  
Your Electric Light & Power Company

STORE FOR YOU!...

**Ideal** Food Stamps Buy More At **Ideal...**

## Factors Influencing Cattle Prices

COLLEGE STATION -- Why the bottom dropped out of the swelling cattle market of late 1979 and early 1980 could be the biggest question of the year for both economists and producers.

Usually consumer demand is related to lower prices and uncertain markets, but this time consumers are not the only factor in the lower-than-anticipated prices. Dr. Edward Uvacek, Jr., economist in livestock marketing for the Texas Agricultural Extension Service, Texas A&M University System, says information from an analysis conducted by Dr. John Ikerd and Dr. Keith Searce with the Oklahoma Cooperative Extension Service may shed some light on the problem.

Uvacek said consumer demand for beef has probably concerned cattlemen as much over the past several months as at any time in recent history. Recurring questions -- such as consumers losing their tastes for beef -- continue to plague plans for future beef production.

Will consumers be able to spend the same portion of their income on beef when higher gasoline and heating oil prices take a greater share of a family budget? Will the recent DES quarantine have a negative impact on consumer acceptance of beef? What about unusually high interest rates for both consumer and producer? How does the grain embargo affect production?

More important than all these fears and questions, said Uvacek, is the undeniable fact of unprofitable and disappointing cattle prices thus far in 1980. He said if lack of demand results in large cattle losses, the question is no longer philosophical, but rather a practical matter of dollars and cents.

He emphasized that demand for beef is not just consumption. It is related to both the price and quantity of beef purchased. A large quantity of beef consumed does not mean the same thing as a strong beef demand.

The quantity consumed in any given year will be whatever is produced. For example, there was a record amount of beef consumed in 1976, almost 130 pounds per person, but that does not mean that 1976 was a great beef demand year.

Neither do high beef prices necessarily mean a strong beef demand. Prices may be high simply because supplies are scarce.

For example, in 1979 beef prices were higher than at any time in recent history. But, beef supplies also were smaller in 1979 than at any time over the past decade.

So, why does beef demand vary from strong to weak and back again on a seemingly random basis? Uvacek said an obvious reason for the variation is related to supplies of competing meats like pork and poultry.

When supplies of other meats are plentiful, their prices are relatively lower than beef and, therefore, consumers shift purchases from beef to competing meats. As a result, he said the quantity of beef purchased at a given price will fall as will prices for a predetermined beef supply.

He said pork supplies so far this year have continued to run well above levels earlier anticipated. Poultry supplies have also persisted at high levels. This, said Uvacek, has somewhat depressed the demand for beef.

Current forecasts indicate that supplies of both pork and poultry are expected to decline later in the year. As the supplies of competing meats fall, he said, there likely will be a strengthening in beef demand, in spite of a continued weakness in the economy.

There may well be some reason to be concerned about the continued strength of beef demand in the long-term future as consumer's attitudes toward beef, and meats in general, change. But, he said, basic attitudes take a long time to change.

According to Uvacek, there is nothing wrong with the demand for beef right now that a little less availability of pork and chicken and a little stronger economy wouldn't cure.

Korea is quiet on 30th anniversary of war's start.

## Texas 4-H Congress To Feature "Agriculture"

LUBBOCK--"4-H and Agriculture, the Growing Scene," will be the theme of the eighth annual Texas 4-H Congress to be held here July 15-17.

Some 550 4-H members and chaperons will be taking part in the three-day event which serves as a major learning experience for older members of the

youth program conducted by the Texas Agricultural Extension Service, Texas A&M University System.

Congress headquarters will be the Wiggins Complex at Texas Tech University, Extension to Preston Sides, Extension 4-H and youth specialist.

Featured at a 7:30 p.m.

opening assembly at the University Theatre the first day will be Texas Tech Dean of Agriculture Sam Curl and Grady Nutt of the television show, "Hee Haw."

Tours of the agricultural industry in the Texas High Plains will highlight the second day. Four different tours will be

featured, including beef, cotton, grain and swine.

Capping the second day will be a visit to Palo Duro Canyon where the 4-H'ers will see the musical drama, "Texas."

A lunch and fashion show by the Robert Spence School of Modeling in Lubbock will begin the final day of congress. That

afternoon 4-H'ers will explore career options in various areas of agriculture, including production, processing, marketing and related fields.

A banquet featuring an address by Extension Director Dr. Daniel C. Pfannstiel and installation of the 1980-81 Texas 4-H

Council members will conclude the congress program. According to Sides, all dele-

gates attending the congress will be sharing the information they have learned with their fellow 4-H'ers and community groups.

The 1981 Texas 4-H Congress will be held in San Antonio.

A man has need of tough ears to hear himself freely judged. -Michel de Montaigne.

The National Safety Council reports Texas deaths for 1979 were 4,175 as compared to 1978's 3,921. Injuries were 184,232 as compared to 175, 228 for 1978. This is an increase of 6 per cent in fatalities.

Traffic Safety Magazine, June 1980 National Safety Council U.S. queries Israeli leaders on office shift.

### Annual SUMMER SALE

**2 China Cabinets**

**1/2 Price**

Savings on all Dining Room Furniture

**Sofa and Sofa Sleepers**

- Mastercraft
- Kroehler
- Bel-mar

from **\$449**

Buy Your Sofa Sleeper Now And Save **\$100 to \$300**

Nylon Sculptured Shag 6 Colors

**CARPET \$13<sup>95</sup>** per sq. yard installed

Heat Set

**Serta Mattress and Box Springs**

Save

**\$40** on Full Size

**\$60** on Queen

**\$80** on King

Mirrors - Lamps Pictures

**10% to 30% off**

**Thursday - Friday - Saturday Only**

**ALL WOOD Bedroom Suites**

Broyhill (dark pine) Reg. \$1495 Now **\$1295**

American Drew (dark pine) Reg. \$1895 Now **\$1495**

Lane Reg. \$1095 Now **\$899**

Dixie All Wood 7 Piece **1/2 price**

**LANE Cedar Chests \$50 off**

Lane and La-Z-Boy

## RECLINERS

priced from

Save from **\$199** to **\$399**

Save from **\$50 to \$100**

# CHARLODAN'S

## Furniture and Carpets

Corner 3rd & Main Perryton, Texas