



# The Spearman Reporter

VOL. 72, NO. 20

THE SPEARMAN REPORTER, SPEARMAN, TEXAS 79081

THURSDAY, MARCH 26, 1981

## Gruver Bank buys Todd Williams' steer for 8,196.50; Total: 89,479.15

### Tops 73,531.81 sale last year



Todd Williams shows Grand Champion Steer.

The 1981 Hansford County Livestock was held this past Friday and Saturday, March 20 and 21, with EXCELLENT results.

Grand Champion Lamb was won by Tracy Logsdon, 4-H. Tracy's lamb weighed 116 lbs., and the purchase price was \$7.00 per lb. The total price was \$812.00 and bought by Hansford Implement. The Grand Champion Swine was won by Curt Porter, 4-H. Curt's Swine weighed 246; the selling price was \$4.00 per pound—the total price was \$984.00. The Grand Champion was purchased by H&H Water Well. The Grand Champion Steer was won by Todd Williams, 4-H. Todd's Steer weighed 1261 pounds, the selling price was \$6.50 per pound and the total price was \$8196.50—was purchased by the Gruver State Bank.

The Reserve Champion Lamb was won by Ron Clark of the Spearman FFA. Ron's Reserve Lamb weighed 117 pounds. The selling price was \$4.50 per pound, the total price was \$526.50—was purchased by the Spearman Equity. The Reserve Champion Swine was won by Susan Davis, 4-H. Susan's Reserve Champion Swine weighed 249—the selling price was \$3.00 per pound, and the total price was \$747.00—was purchased by Jim Shields. The Reserve Champion Steer was won by Roy Don Gammon, 4-H. Roy's Reserve Champion Steer weighed 1281; the selling price was \$2.50 per pound; the total price was \$3202.50; and the purchaser was B&B Farm Ind.

The Champion Dorset Lamb was won by Christie Burton, 4-H. Christie's Champion Dorset Lamb weighed 102 pounds; the selling price was \$3.25; the total price was \$331.50; and the purchaser was Hansford Imp. The Champion Chester Swine was won by Davonna Cator, 4-H. Davonna's Champion Chester Swine weighed 233 pounds, was sold for \$2.75 per pound, total price was \$640.75 and the purchaser was N.P. International. 1st Place Light Weight Steer was won by Ron Clark, Spearman FFA. Ronnie's 1st Place Light Weight Steer weighed 1088 pounds, it was sold for \$1.75 per pound, the total price was \$1904.00, and the purchaser was the Gruver State Bank.

The Reserve Champion Dorsett Lamb was won by Scott Atwood of the Gruver FFA. Scott's Reserve Champion Dorsett weighed 120 pounds and was sold for \$3.75 per pound. The total price was \$450.00 and the purchaser for the Reserve Champion Dorsett Lamb was Leon Hobbs.

Breed Champion Spot Swine was won by Gregg Miesner of the Spearman FFA. Gregg's Breed Champion Spot Swine weighed 250 pounds, was sold for \$3.25, total price for the Breed Champ Spot Swine was \$812.50 and the purchaser was the 1st State Bank. The 1st Place Mediumweight Steer was won by Eadie Clemmons of the Spearman FFA Chapter. Eadie's 1st Place Mediumweight Steer weighed 1150 pounds. The 1st Place Mediumweight Steer's total price was \$1725.00 and was purchased by H&H Water Well. The 1st Place Dorset Lamb was won by Brian Lee DeCamp of the Gruver FFA. Brian's 1st Place Dorset Lamb weighed 92 pounds, total price was \$414.00 and the buyer was Billy Logsdon.

The Breed Champion Yorkshire Swine was won by Charlie Salgado of the Spearman FFA. Charlie's Breed Champion Yorkshire Swine weighed 242 pounds. It was sold for \$2.50 per pound and the total price was \$605.00—was purchased by Baker & Taylor. The 1st Place Medium Heavy Steer was won by Tracy Vernon of the Spearman FFA. Tracy's 1st Place Medium Heavy Steer weighed 1235 pounds, was sold for \$1.00 a pound, the total price was \$1235.00 and

the purchaser was the Outhouse of Waka. The 1st Place Hampshire Lamb was won by Rhonda Jo Boone, 4-H. Rhonda's 1st Place Hampshire Lamb weighed 97 pounds, was sold for \$4.25, the total price was \$412.25 and was purchased by Gruver Equity.

The Breed Champion Cross Swine was won by Eadie Clemmons of the Spearman FFA. Eadie's Breed Champion Cross Swine weighed 241 pounds, was sold for \$2.75 a pound, the total price was \$662.75 and the purchaser was Continental Grain. The 2nd Place Light Weight Steer was won by Don Hartranft, 4-H. Don's 2nd Place Light Weight Steer weighed 1029, was sold for \$1.50 per pound, the total price was \$1543.50 and the purchaser was Gruver Farm Sup. The 1st Place Suffolk Lamb was won by Todd Williams. Todd's 1st Place Suffolk Lamb weighed 109 pounds, was sold for \$4.00 a pound, the total price was \$436.00 and the purchaser was Wayne Shook.

The Reserve Breed Champion Chester Swine was won by Jeff Hand of the Spearman FFA. Jeff's Reserve Breed Champion Chester Swine weighed 249 pounds, was sold for \$2.25, the total price was \$560.25 and the purchaser was Spearman Super Serv. 2nd Place Medium Weight Steer was won by Shelly Strawn of the Spearman FFA. Shelly's 2nd Place Medium Weight Steer weighed 1105 pounds, was sold for \$1.30 a pound, the total price was \$1436.50 and the purchaser was H&H Water Well. The 2nd Place

Dorset Lamb was won by Rae Lynn Barber, 4-H. Rae's 2nd Place Dorset Lamb weighed 95 pounds—was sold for \$4.00 a pound—the total price was \$380.60—was purchased by Caprock.

The Reserve Breed Champion Duroc Swine was won by Angie Francis, 4-H. Angie's Reserve Breed Champion Duroc Swine weighed 250 pounds, was sold for \$2.75 a pound, the total price was \$687.50 and the purchaser was North Plains Int. The 2nd Place Medium Heavy Steer was won by Scott Strawn, Spearman FFA. Scott's 2nd Place Medium Heavy Steer weighed 1198, was sold for \$1.30 per pound, the total price was \$1557.40 and the purchaser was 1st State Bank. The 2nd Place Suffolk Lamb was won by Richard Weakley of the Spearman FFA. Richard's 2nd Place Suffolk Lamb weighed 100 pounds, was sold for \$3.00, the total price was \$300.00 and the purchaser was Hansford Imp.

Reserve Breed Champion Hampshire Swine was won by Jody Bradford of the Gruver FFA. Jody's Reserve Breed Champion Hampshire Swine weighed 245 pounds, was sold for \$1.50 a pound, the total price was \$367.50 and there were two purchasers—Caprock and Spark Bros. The 3rd Place Light Weight Steer was won by Debbie Burton, 4-H. Debbie's 3rd Place Light Weight Steer weighed 1010 pounds, was sold for \$1.50 a pound, the total price was \$1510.00 and the purchaser was Pat Holt. The 2nd Place Hampshire Suffolk Lamb was won by Deana Turner, 4-H. Deana's 2nd Place Hampshire Suffolk Lamb weighed 106 pounds, was sold for \$4.00 per pound, the total price was \$424.00 and the purchaser was Berry Grain of Waka.

The Reserve Breed Champion Spot Swine was won by Jerry Ross of the Spearman FFA. Jerry's Reserve Breed Champion Spot Swine weighed 250 pounds, was sold for \$2.25 a pound, the total price was \$562.00 and the purchaser was Crawford Imp. The 3rd Place Medium Weight Steer was won by Kristi Holt, 4-H. Kristi's 3rd Place Medium Weight Steer weighed 1164 pounds, was sold \$1.30 per pound, the total price

was \$1513.20 and the purchaser was Caprock. The 2nd Place Suffolk Lamb was won by Chad Logsdon, 4-H. Chad's 2nd Place Suffolk Lamb weighed 110 pounds, was sold \$5.50 a pound, the total price was 605.00 and the purchaser was Hitchland Grain Co.

The Reserve Breed Champion Yorkshire Swine was won by Slavin Sparks, 4-H. Slavin's Reserve Breed Champion Yorkshire Swine weighed 250 pounds, was sold \$1.25 a pound, the total price was \$312.50 and the purchaser was George Lowe. The 3rd Place Medium Heavy Steer was won by Sherry Greene of the Spearman FFA. Sherry's 3rd Place Medium Heavy Steer weighed 1194 pounds, was sold at \$1.00 a pound, the total price was \$1194.00 and the purchaser was Agco. The 2nd Place Hampshire Suffolk Lamb was won by Anne Marie Jarvis, 4-H. Anne's 2nd Place Hampshire Suffolk Lamb weighed 120 pounds, was sold at \$4.75 a pound, the total price was \$570.00 and the purchaser was Nolan Holt.

The Reserve Breed Champion Cross Swine was won by Chad Guthrie, 4-H. Chad's Reserve Breed Champion Cross Swine weighed 242 pounds, was sold at \$2.75, the total price was \$665.50 and the purchaser was Perry Dixon. The 3rd Place Heavy Weight Steer was won by Ty Williams, 4-H. Ty's 3rd Place Heavy Weight Steer weighed 1256 pounds, was sold at \$1.20 a pound, the total price was \$1507.20 and the purchaser was Boots Williams. The 3rd Place Dorset Lamb was won by Tamra Stedje, 4-H. Tamra's 3rd Place Dorset Lamb weighed 90 pounds, was sold for \$5.75 per pound, the total price was \$517.50 and the purchaser was James Stedje.

The 1st Place Duroc Swine was won by Stephen Tindell of the Spearman FFA. Stephen's 1st Place Duroc Swine weighed 230 pounds, was sold at \$3.25 a pound, the total price was \$747.50 and the purchaser was Baker & Taylor. The 4th Place Light Weight Steer was won by Kerri Ann Holt, 4-H. Kerri's 4th Place Light Weight Steer weighed 1046 pounds, was sold at \$1.90 (90 cents) per pound, the total price was \$941.40 and the purchaser was Gruver Equity. The 3rd Place Dorset Lamb was won by JoAnne Odegaard, 4-H. JoAnne's 3rd Place Dorset Lamb weighed 104 pounds, was sold at \$4.50 a pound, the total price was \$468.00 and the purchaser was B&B Sales.

The 1st Place Yorkshire Swine was won by Scott Davis of the Spearman FFA. Scott's 1st Place Yorkshire Swine weighed 227 pounds, was sold at \$2.75 per pound, the total price was \$624.25 and the purchaser was Morse Imp. Co. The 4th Place Medium Weight Steer was won by Dean Greene, 4-H. Dean's 4th Place Medium Weight Steer weighed 1176 pounds, was sold at \$1.90 (90 cents) per pound, the total price was \$1028.40 and the purchaser was Texas Co. Feedyard. The 3rd Place Suffolk Lamb was won by Shelly Logsdon, 4-H. Shelly's 3rd Place Suffolk Lamb weighed 98 pounds, was sold at \$4.25 per pound, the total price was \$416.50 and the purchaser was Bill Logsdon.

The 1st Place Cross Swine was won by James Scroggs of the Spearman FFA. James' 1st Place Cross Swine weighed 228 pounds, was sold at \$2.00 per pound, the total price was \$456.00 and the purchaser was the 1st State Bank. The 4th Place Medium Heavy Steer was won by Shelly Lackey of the Gruver FFA. Shelly's 4th Place Medium Heavy Steer weighed 1215 pounds, the 4th Place Medium Heavy Steer was sold at \$1.20 per pound and the total price was \$1458.00. Frontier Feedyard was the purchaser of Shelly's 4th Place Medium Heavy Steer. The 3rd Place Hampshire-Suffolk Lamb was won by Bonnie Jarvis, 4-H. Bonnie's 3rd Place Hampshire-Suffolk Lamb weighed 108 pounds, was sold for \$4.75 per pound, the total price was \$513.00 and the purchaser was Nolan Holt.

The 2nd Place Duroc Swine was won by Lance Sparks, 4-H. Lance's 2nd Place Duroc Swine weighed 238 pounds, was sold at \$4.00 per pound, the total price was \$952.00 and the purchaser was Shirley Lowe. The 4th Place Heavy Weight Steer was won by Shelly Logsdon, 4-H. Shelly's 4th Place Heavy Weight Steer weighed 1289 pounds, was sold at \$1.30 per pound, the total price was \$1675.70 and the purchaser was Jerry Williams. The 3rd Place Suffolk Lamb was won by Greg Odegaard of the Spearman FFA. Greg's 3rd Place Suffolk Lamb weighed 114 pounds, was sold at \$3.75 per pound, the total price was \$427.50 and the purchaser was Sparks Bros.

The 2nd Place Hampshire Swine was won by Pam Porter of the Spearman FFA. Pam's 2nd Place Hampshire Swine weighed 243 pounds, was sold at \$3.25 a pound, the total price was \$789.75 and the purchaser was Sparks Bros. Drilling Co. The 5th Place Light Weight Steer was won by Stacey Cook of the Spearman FFA. Stacey's 5th Place Light Weight Steer weighed 972 pounds. The 5th Place Light Weight Steer was sold at \$1.20 per pound. The total price of Stacey's Steer was \$1166.40 and the Gruver State Bank was the purchaser. The 3rd Place Suffolk Lamb was won by Lynette Williams, 4-H. Lynette's 3rd Place Suffolk Lamb weighed 120 pounds, was sold at \$3.75 per pound, the total price was \$450.00 and the purchaser was Tom Latta.

The 2nd Place Hampshire Swine was won by Don Hartranft, 4-H. Don's 2nd Place Hampshire Swine weighed 247 pounds, was sold at \$2.25 a pound, the total price was \$555.75 and the purchaser was B&B Farm Ind. The 5th Place Medium Weight Steer was won by Rex Shook, 4-H. Rex's 5th Place Medium Weight Steer weighed 1110 pounds, was sold at \$1.40 per pound, the total price was 1554.00 and the purchaser was Continental Grain. The 4th Place Suffolk-Hamp. Lamb was won by Loyd Cator, 4-H. Loyd's 4th Place Suffolk-Hamp. Lamb weighed 97 pounds, was sold at \$3.75 per pound the total price was \$363.75 and the purchaser was Preston Smith.

The 2nd Place Yorkshire Swine was won by Ed Whitefield, Ed's 2nd Place Yorkshire Swine weighed 226 pounds, was sold at \$3.25 per pound the total price was \$734.50 and the purchaser was Baker & Taylor. The 5th Place Medium Heavy Steer was won by Jerry Ross of the Spearman FFA. Jerry's 5th Place Medium Heavy Steer weighed 1220 pounds, was sold at \$1.00 a pound, the total price was \$1220.00 and the purchaser was the Spearman Super Serv. The 4th Place Suffolk Lamb was won by Justin Armes, 4-H. Justin's 4th Place Suffolk Lamb weighed 101 pounds, was sold at \$4.25 per pound, the total price was \$429.25 and the purchaser was Sparks Bros.

The 2nd Place Cross Swine was won by Ladd Sheets, Spearman FFA. Ladd's 2nd Place Cross Swine weighed 219 pounds, was sold at \$3.75 per pound, the total price was \$821.25 and the purchaser was Sheets Enterprise. The 4th Place Heavy Weight Steer was won by Marshall Cator of the Gruver FFA. Marshall's 5th Place Heavy Weight Steer weighed 1293 pounds, was sold at \$1.95 (95 cents) per pound, the total price was \$1228.35 and the purchaser was Caprock Ind. The 4th Place Suffolk Lamb was won by Tiki Jackson, 4-H. Tiki's 4th Place Suffolk Lamb weighed 113 pounds, was sold at \$4.25 per pound, the total price was \$480.25 and the purchaser was the Gruver State Bank.

The 3rd Place Duroc Swine was won by Ricky Renteria of the Gruver FFA. Ricky's 3rd Place Duroc Swine weighed 235 pounds, was sold at \$2.75 per pound, the total price was \$646.25 and the purchaser was Hergert Pontiac Buick. The 4th Place Suffolk Lamb was won by Julie Latta, 4-H. Julie's 4th Place Suffolk Lamb weighed 120 pounds, was sold at \$4.75 per pound, the total price was \$570.00 and the purchaser was Billy Logsdon.

The 3rd Place Duroc Swine was won by Jana McCoy of the Spearman FFA. Jana's 3rd Place Duroc Swine weighed 250 pounds, was sold at \$3.25 per pound, the total price was \$812.50 and the purchaser was J.D. McCoy. The 5th Place Suffolk Lamb was won by Iroy Queen of the Spearman FFA. Iroy's 5th Place Suffolk Lamb weighed 94 pounds. The 5th Place Suffolk Lamb was sold at \$3.50 per pound and the total price was \$329.00. Louis Schnell was the purchaser of the 5th Place Suffolk Lamb.

The 3rd Place Hampshire Swine was won by Lynette Williams, 4-H. Lynette's 3rd Place Hampshire weighed 242 pounds, was sold at \$2.00 per pound, the total price was \$484.00 and the purchaser was Hansford Imp. The 5th Place Suffolk Lamb was won by Clint Veneman, 4-H. Clint's 5th Place Suffolk Lamb weighed 105 pounds. The 5th Place Suffolk Lamb was sold at \$5.25 and the total price was \$551.25. Johnny Veneman was the purchaser for Clint's 5th Place Suffolk Lamb.

The 3rd Place Hampshire Swine was won by Billy Haden of the Spearman FFA. Billy's 3rd Place Hampshire Swine weighed 250 pounds, was sold at \$2.25 per pound, the total price was \$562.50 and the purchaser was Clark Bridges Spraying Sem.

The 5th Place Suffolk Lamb was won by James Scroggs of the Spearman FFA. James' 5th Place Suffolk Lamb weighed 112 pounds; was sold at \$3.50 per pound; the total price was \$392.00 and the purchaser was the 1st State Bank.

The 3rd Place Spot Swine was won by Paul Moore of the Spearman FFA. Paul's 3rd Place Spot Swine weighed 248 pounds, was sold for \$4.00 per pound, the total price was \$992.00 and the purchaser was Baker & Taylor. The 5th Place Hampshire Lamb was won by Mendy Gammon, 4-H. Mendy's 5th Place Hampshire Lamb weighed 117 pounds, was sold at \$6.25 per pound, the total price was \$731.25 and the purchaser was Wayne Shook.

The 3rd Place Yorkshire Barrow was won by Tina Cator, 4-H. Tina's 3rd Place Yorkshire Barrow weighed 230 pounds, was sold at \$2.50 per pound, the total price was \$575.00 and the purchaser was Anthony Electric. The 6th Place Suffolk Lamb was won by Dale Red, 4-H. Dale's 6th Place Suffolk Lamb weighed 92 pounds, was sold at \$4.50 per pound, the total price was \$414.00 and the purchaser was Buddy Etling.

The 3rd Place Yorkshire Swine was won by Tommy Barber, 4-H. Tommy's 3rd Place Yorkshire Swine weighed 249 pounds, was sold at \$2.50 per pound, the total price was \$622.50 and the purchaser was George Jackson. The 6th Place

Suffolk-Hamp., Lamb was won by Rickey Torres of the Spearman FFA. Rickey's 6th Place Suffolk-Hamp., Lamb weighed 108 pounds. The 6th Place Suffolk-Hamp., Lamb was sold for \$4.00 per pound, making the total price be \$432.00. The purchaser for Rickey's 6th Place Suffolk-Hamp., Lamb was Caprock Ind.

The 3rd Place Cross Swine was won by Danny Jones of the Spearman FFA. Danny's 3rd Place Cross Swine weighed 230 pounds, was sold at \$2.50 per pound, the total price was \$575.00 and the purchaser was Jim Shields. The 6th Place Suffolk Lamb was won by Scott Henderson, 4-H. Scott's 6th Place Suffolk Lamb weighed 111 pounds, was sold at \$4.75 per pound, the total price was \$527.25 and the purchaser was the 1st State Bank.

The 3rd Place Cross Swine was won by Rex Shook, 4-H. Rex's 3rd Place Cross Swine weighed 243 pounds, was sold at \$2.75 per pound, the total price was \$668.25 and the purchaser was Sparks Bros. The 6th Place Suffolk Lamb was won by Karla Latta, 4-H. Karla's 6th Place Suffolk Lamb weighed 119 pounds, was sold at \$4.50 per pound, the total price was \$535.50 and the purchaser was Bill Logsdon.

The 4th Place Duroc Swine was won by Shelly Lackey of the Gruver FFA. Shelly's 4th Place Duroc Swine weighed 234 pounds. The 4th Place Duroc Swine was sold at \$2.50 per pound, making the total price be \$585.00. The purchaser for Shelly's 4th Place Duroc Swine was Nollner Bros. The 7th Place Suffolk Lamb was won by Felix Sandoval of the Spearman FFA. Felix's 7th Place Suffolk Lamb weighed 98 pounds and was sold at \$4.50 per pound. Felix's 7th Place Suffolk Lamb's total price was \$441.00 and the purchaser was Baker & Taylor.

The 4th Place Duroc Swine was won by Tracy Vernon of the Spearman FFA. Tracy's 4th Place Duroc Swine weighed 250 pounds, was sold at \$2.00 per pound, the total price was \$500.00 and the purchaser was H&H Water Well. The 7th Place Suffolk Lamb was won by Scott Strawn of the Spearman FFA. Scott's 7th Place Suffolk Lamb weighed 107 pounds, was sold for \$4.25, per pound, the total price was \$454.75 and the purchaser was Dennis Nelson.

The 4th Place Hampshire Swine was won by Mark Gilbreath, 4-H. Mark's 4th Place Hampshire Swine weighed 244 pounds, was sold at \$3.00 per pound, the total price was \$732.00 and the purchaser was Gruver Farm Sup. The 7th Place Suffolk Lamb was won by Danny Close, 4-H. Danny's 7th Place Suffolk Lamb weighed 113 pounds, was sold at \$3.75 per pound, the total price was \$423.75 and the purchaser was Brown Graham Co.

The 4th Place Hampshire Swine was won by Loyd Cator, 4-H. Loyd's 4th Place Hampshire Swine weighed 247 pounds, was sold for \$2.00 per pound, the total price was \$494.00 and the purchaser was Sparks Bros. The 7th Place Suffolk Lamb was won by Russell Tiner of the Gruver FFA. Russell's 7th Place Suffolk Lamb weighed 120 pounds, was sold at \$4.00 per pound, the total price was \$480.00 and the purchaser was Gruver Farm Sup.

The 4th Place Cross Swine was won by Mark Guthrie, 4-H. Mark's 4th Place Cross Swine weighed 250 pounds. The 4th Place Cross Swine was sold at \$2.25 per pound, making the total price be \$562.50. The purchaser of Mark's 4th Place Cross Swine was Ago. The 8th Place Suffolk Lamb was won by Davonna Cator, 4-H. Davonna's 8th Place Suffolk Lamb weighed 95 pounds, was sold at \$4.00 per pound, the total price was \$380.00 and the purchaser was Zah Fisher Insurance.

The 5th Place Duroc Swine was won by Debbie Burton, 4-H. Debbie's 5th Place Duroc Swine weighed 235 pounds, was sold for \$2.75 per pound, the total price was \$646.25 and the purchaser was Holt & Stavlo Trucking. The 8th Place Suffolk Lamb was won by Mark Allen, 4-H. Mark's 8th Place Suffolk Lamb weighed 108 pounds and sold at \$5.75 per pound. The total price for Mark's 8th Place Suffolk Lamb was \$621.25 and the purchaser was Agco.

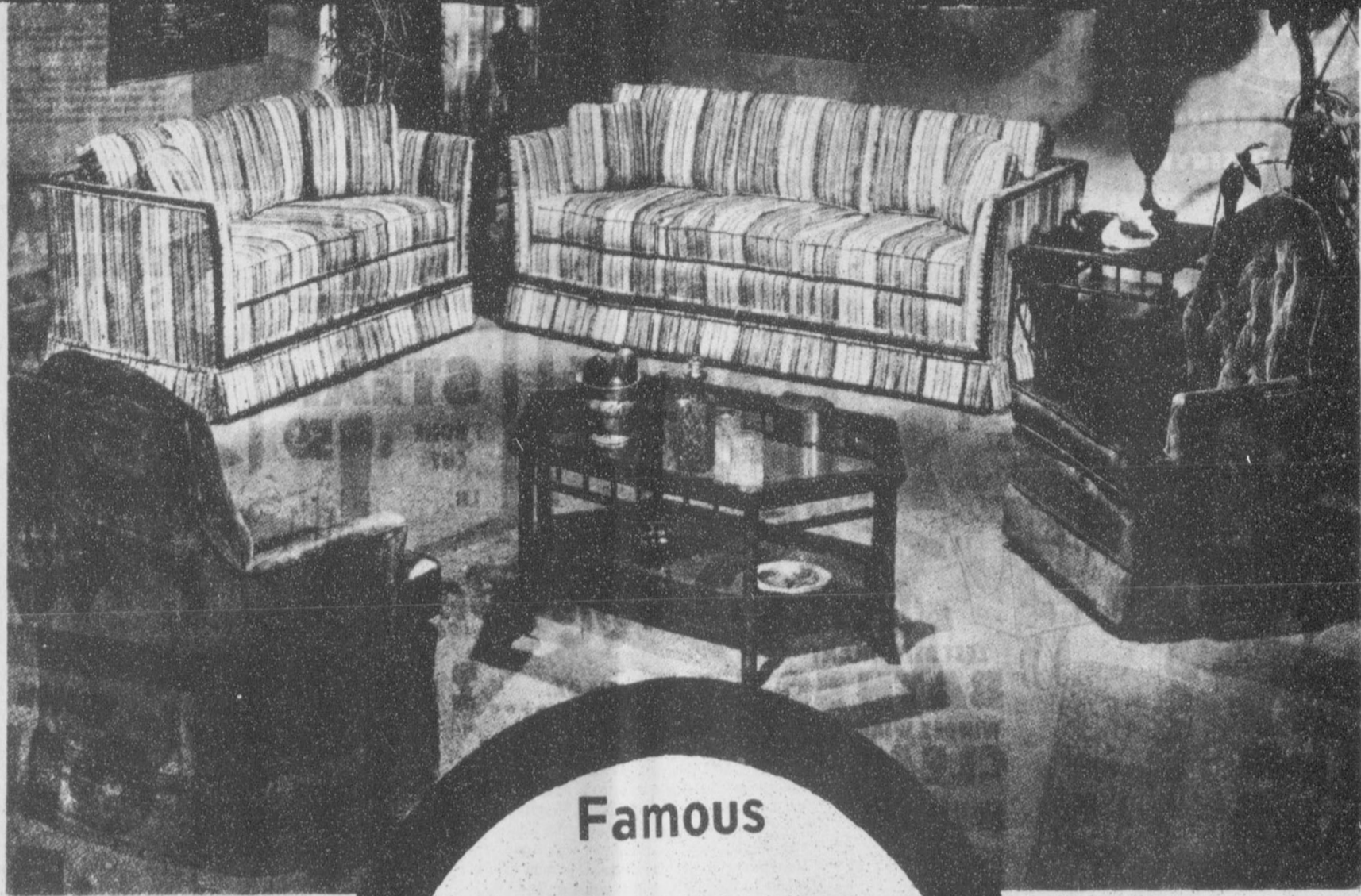
The 5th Place Duroc Swine was won by James Lieb of the Spearman FFA. James' 5th Place Duroc Swine weighed 250 pounds, was sold at \$2.50 per pound, the total price was \$625.00 and the purchaser was Hansford Imp. The 8th Place Suffolk Lamb was won by Shannon Grover, 4-H. Shannon's 8th Place Suffolk Lamb weighed 113 pounds, was sold at \$4.25 per pound, the total price was \$480.25 and the purchaser was 1st State Bank.

The 5th Place Hampshire Swine was won by Robert Renteria of the Gruver FFA. Robert's 5th Place Hampshire Swine weighed 243 pounds. Robert's 5th Place Hampshire Swine was sold at \$2.00 per pound—making the total price \$486.00 and the purchaser was Butt Jarvis. The 8th Place Hampshire Lamb was won by Alicia Thomas, 4-H. Alicia's 8th Place Hampshire Lamb weighed 118 pounds, was sold at \$3.25 per pound, the total price was \$383.50 and the purchaser was 1st State Bank.

The 5th Place Hampshire Swine was won by Johnnie Eaton, 4-H. Johnnie's 5th Place

Continued on IDEAL page

# FINAL WEEK of Lindsey's Sacrifice SALE!



Famous  
BROYHILL SOFAS

As low as

**\$ 298**

Save \$100 to \$300

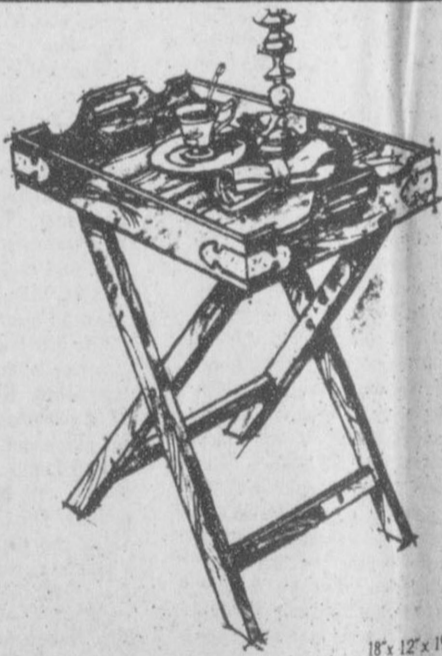
Have You Wanted a  
**Sleeper**  
Every Sleeper  
**REDUCED!**  
Save \$100-\$200

**GORGEOUS!**  
Velvet Occasional  
**CHAIRS**  
**40% OFF**

EVEN AT SACRIFICE PRICES YOU CAN USE LINDSEY'S CREDIT, TOO!

**ENTIRE STOCK GOES:**

- Bedrooms
- Living Rooms
- Dinettes
- Appliances
- Dining Rooms
- Accessories



18" x 12" x 19H

**Folding Tray Table**

The decorative brass corners and the folding stand makes this tray table a really unique and space saving piece. The lovely tray top lifts off for very easy serving. Fits any decor. Available in Old World finish. From Casard

**\$15<sup>99</sup>**

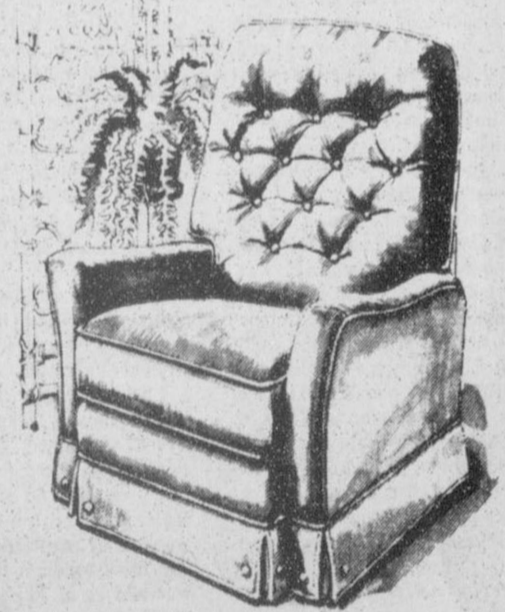
**EVERY RECLINER**

In Stock  
Reduced

**SAVE**

**\$100**

and more  
from our Big Selection!



Outstanding traditional styling for any room. Elegant, yet will give you superb comfort for years of enjoyment. Famous Wallaway® recliner styling. Super value.

**\$299**

AND IT'S A GENUINE....



910 North  
Main St.

**LINDSEY FURNITURE CO.**

Borger  
Texas

# WANT ADS

## CAPROCK MONUMENT CO.

Dealers of Georgia Granite, Georgia Marble, Colored Granite, & Bronze.

represented by  
**BOXWELL BROS. FUNERAL HOME**  
519 S. EVANS  
659-3802

Hansford County  
Planned Parenthood  
26 S. Haney  
659-2483  
Spearman  
Mon.-Fri.  
Call for an appointment.  
305-rtn

## SERVICES

**SERVICE:** Pits cleaned, wet or dry. Dragline or loader. Also, dozer, grader, carry-all service. Lee Roy Mitchell, 806-733-2384, Gruver, Texas 79040.

**KIRBY SALES & SERVICE.** New & reconditioned vacuum cleaners. Claude Newell, 912 S. Bernice.  
8-rtn

**Pee Wee's Plumbing Service**  
Roto-rooter, Acoustical Ceilings, Blown Insulation in walls and ceilings. **Appliance Service**, used appliances for sale. 659-2811 or 659-3781.  
20-rtn

**MONUMENTS**  
Save 20% to 30%  
Agents and Undertakers  
Commission  
**ALVA MONUMENT CO.**  
Alva, Okla.  
51-rtn only

**NOTICE**  
Wallace Monument Co.  
Monuments, Curbing,  
Grave Covers  
Local Representative  
**LEONARD JAMESON**  
Spearman, Texas  
20-rtn

**WINTER RATES**  
The Winter rates are \$6.95 per day for **Stem Rinse & Vac** shampooer. Available at **Gordon's Drug**. Also available at **Freddie Largent's**; 716 Cotter Drive; after 4:00 p.m. and Saturday and Sunday.

**SERVICES**  
A. and A. Gas Leak Survey, Inc.  
Commercial, Residential, and Irrigation.  
**GAS LEAK DETECTION**  
Call: 659-3519 anytime  
659-3019 after 5 p.m.

Will decorate cakes all occasions. Also cookies and cupcakes. Call Nelda 659-3984.  
51-rtn

**TREES & shrubs** trimmed or removed yard work except mowing. Call 659-2787 or 659-2463 after 5:00 p.m.  
20-rtn

## MISCELLANEOUS FOR SALE

**FOR SALE:** 40 ft. X 250 ft. commercial lot--Golden Circle addition. Phone 659-3802.  
12-rtn

**FOR SALE OR LEASE--Service station, cafe & house.** 21 miles south of Perryton. Phone 806-659-3414.  
405-rtn

**FOR SALE:** Weiland T-mel Ram for Small Blk Chevy single 4 BBL. "New" contact: David Stafford 310 S. Hoskins, Phone No. 659-2021. New \$350.00 sell for \$350.00.  
9s-rtn

**FOR SALE:** 3 bedroom house - large den & living room combination - central air & heat woodburning fireplace - Shown by appointment only. Call 659-3327.  
1-rtn

Two bedroom, 2 bath, central heat & air, fireplace, sundeck, extra lot, fenced patio, & built-ins! Call 659-2117.  
415-rtn

**FOR SALE:** Maize butt bales cut before frost, \$1.50 each. Sheets Baling. 659-2085.  
20-4c

**FOR SALE:** 1974 Cadillac Eldorado. Beige over brown. Loaded. Excellent condition. \$1,800. Call Borger 274-6648.  
11s-rtn

**FOR SALE or RENT:** Commercial building--Stinnett HWY. 1800 square feet. Small office and bath. Call 659-3436 or 659-3466.  
13-rtn

**FOR SALE:** 1980 Road Ranger Camping Trailer 19 ft. Loaded. Call 659-2506 or after 6:00 call 659-2327.  
16-rtn

**FOR SALE:** Hearing aids. New. 2 year Warranty. Behind the Ear. Regular \$950.00, will sell for \$700.00 Phone 806-659-2681 after 6:30 p.m.  
19-4tp only

**FOR SALE:** Rebuilt: 454 Chev V-8 pickup motor. 428 V-8 Ford truck motor. 396 V-8 Chev. pickup motor. 702 GMC irrigation motor V-12.  
Hi-Plains Auto Supply Phone 659-2506, Spearman.

**FOR SALE:** Older model portable Lincoln Shield Arc Welder. Perfect for farm use. Call 659-2173 at night.  
19-2c

**FOR SALE:** Brown Sofa and matching chair. Green Swivel Rocker. Walnut Dinette Set. Refrigerator--Freezer. Call 659-3182 or 659-2318.  
20-1tp

House for Sale  
3 bedroom, garage, good location. Blankenship Real Estate 9-3052

3 Bedroom House for sale. Blankenship Real Estate 9-3052  
**PONY FOR SALE** very gentle. Call 733-2322.  
20-2tp

**FOR SALE:** Ken's Tavern in Laverne, Oklahoma. Call 405-921-5424; 405-921-9916 ask for Jean.  
17-rtn NC

**FOR SALE:** Newly New Twin Bed Box Springs and Mattress, and Motorola Color T.V. Call 733-2112.  
2c--18

**FOR SALE:** Used cook stove and used dishwasher. Call 659-2506 or after 6:00 p.m. call 659-2327.  
16-rtn

**FOR SALE:** 3 bedroom, 3 baths, fireplace--landscape. Call 537-5161, if no answer try 733-2731 in Gruver.  
20-2tc

## SERVICES

**TWO FAMILY GARAGE SALE** at 219 Townsend, Saturday from 9 to 5.  
20-1tc

Reduce safe and fast with GoBese capsules and E-Vap "water pills". Spearman Drug. 19s-2tp

**10% overcost!** Pre-fab ready to erect steel buildings, solar, standard or any size for commercial farm or homes. Call Pete Wall at 659-2663 after 5:00 p.m.  
15s-6tc

**Taylor Spraying Service,** Termite & Pest control, tree spraying, pine tree service especially serving the Panhandle for 17 years with personalized service. Home Industry Business. Monthly service available without contract. 669-9992, Pampa.  
10s-rtn

**WILL KEEP CHILDREN** in my home, Susie Slaton--659-2679.  
14-2tc

**Amarillo Newspaper distributorship** available in Spearman. To apply call Amarillo 806-376-5881  
18s-5tp

**OCHILTREE SHADE**  
Shade Trees, Fruit trees, Flowering Shrubs, plus House plants, Spring bedding plants!  
Tomatoes, Pepper plants, Fertilizers, Insecticides, and pos and pottery!  
Your Garden Center Headquarters--  
**OCHILTREE GROWERS**  
8 miles South of Perryton, Texas  
Phone 435-3545  
18-12c

**A Good Bet**  
"My daughter is going to play Beethoven tonight."  
"I hope she wins."

## NEED NURSERY WORKER

for infants and toddlers thru 2 years of age.  
Must enjoy small children. Come by or call Union Church. 19s-2tc

**3rd Annual Farmers Union Consignment Auction--April 24.** To consign items contact Burton Schubert at 659-2667 or Jerry Gee 659-3664.  
16-17tc

**WILL ROTO-TIL**  
Your Garden. Call  
659-2764.  
rtn-c

Home repair and remodeling, roofing and plumbing work, painting and all types home repair. Contact Marvin Broker 878-2962.  
18s-8tc

**WILL KEEP** children in my home, Shirley Tenbush, 659-3232.  
19-1tp

**NEED A WELDER!** Have 18 years experience as a Welder. Have been certified with Mig and Stick. If you need a Welder, come by 106 N. Hazelwood.  
17s-4tp

## HELP WANTED

**ELECTRICIAN WANTED** at Anthony Electric, Call 659-2441. After 6 p. m. call 659-2819.  
rtn-c

**HELP WANTED:** Live-in person to care for elderly lady immediately. Good pay for GOOD help. Call 659-2303 or 659-2384.  
18-2tc

**HELP WANTED:** Need high school girl to help clean house. Call 659-3273.  
18s-2tc

## ELECTRIC SERVICEMAN SPEARMAN

Electric distribution experience in maintenance and restoration of service, meter reading and trouble-shooting necessary. Call Mr. Elliott at 659-2336 for interview appointment. Community Public Service Co. An Equal Opportunity Employer.  
19s-1tc

## FOR RENT

**OFFICE SPACE FOR RENT** 11 West Kenneth - West side two offices, file and storage area receptionist's office and lounge. Call J.E. Blackburn (806) 659-2766 or 659-2719.  
10s-rtn

## WANTED

**WANTED:** Waitresses for Moose Lodge. Call or apply in person to Verlin Behne after 8:00 p.m. at 659-3971 Moose Lodge.  
rtn

## CUSTOM FARMING

**GARY BRELAND**  
806-733-2539

## LOST

**LOST:** An all Black Chihuahua. Answers to "Rastis", has black collar and name-tag leash. Call 659-2833  
18-rtn NC

**HELP WANTED:** Vocational Rehabilitation Counselor for the Texas Rehabilitation Commission-Dumas. Requires either a Bachelor's degree in Behavioral Science with two years related work experience; Master's degree in Behavioral Science with one year related work experience; or a Master of Vocational Rehabilitation. Good fringe benefits. Call Martha at 806-762-0375 for additional information and application.  
EOE  
20-rtn

## CARD OF THANKS

I would like to thank all my friends for cards and letters sent to me. I am convalescing at home now and want you to know I appreciate your concern.  
God Bless You  
Lela Newcomb

**FOR SALE:** 100 acres of Farmland 20 miles North of Spearman. Contact Jimmy Greene, Real Estate, 659-3196.  
20-11tc

**Earn while you learn-- Sell Avon full time or part time.**  
Call collect  
806/274-3606

**HOUSE FOR SALE** -- recently remodeled, 3 bdrm, one bath. Call 659-2397 or 659-2677.

## JEEPS CARS TRUCKS

Available through government agencies. Many sell under \$200. Call: 602-941-8014 Ext: 518 for your directory on how to purchase.

## Political Announcements

The Spearman Reporter is authorized to announce the candidacy of the following candidates for public office, subject to the actions of the votes in the April school board and city elections:  
For School Board  
**JOHNNIE CRAWFORD**  
**CRAIGSCHUMANN**  
**DENNIS NELSON**

Offered Exclusively By  
**EMMETT R. SANDERS,**  
REALTOR  
\*\*\*\*\*

## REALTOR

Three bedroom, 2 bath, nice older home with fireplace, large kitchen, storm cellar, attached garage with opener, greenhouses, poolhouse, other buildings, plus rental unit in rear, near churches and downtown, shown by appointment.  
\*\*\*\*\*  
303 acres NE of Morse, on pavement, about 211 acres cultivated, balance in grass, no minerals, principals only.  
\*\*\*\*\*  
Brick home, nice Southwest location, corner lot, 3 bedrooms, bath and half, den, utility room, carpet throughout, central heat and refrigerated air.  
\*\*\*\*\*  
Choice commercial location fronting 140 ft. on West Kenneth Street.  
**EMMETT R. SANDERS**  
REALTOR  
659-2516  
659-2601 (nights)  
19-rtn only

The problem of living is to find time for the things we would like to do.  
\*\*\*\*  
No community will grow and develop when its people are envious of each other.  
\*\*\*\*  
An open mind is an asset, but don't let your mind become so open that nothing stays in it.  
\*\*\*\*

## NOTICE

### CONTRACTORS NOTICE OF TEXAS HIGHWAY CONSTRUCTION

Sealed proposals for road-side mowing on State Department of Highways and Public Transportation Right-of-Way in Hansford County.

Bids will be received at the District Office of the State Department of Highways and Public Transportation, P.O. Box 2708, Amarillo, Texas 79105, until 3:00 p.m., April 2, 1981, and then publicly opened and read.

Pre-bidders conference will be held in the District Office, 5715 Canyon Drive, Amarillo, Texas at 10:00 a.m., Thursday, April 2, 1981.

The State Department of Highways and Public Transportation, in accordance with the provisions of Title VI of the Civil Rights Act of 1964 (78 C.F.R., Part 8), issued pursuant to such Act, hereby notifies all bidders that it will affirmatively insure that the contract entered into pursuant to this advertisement will be awarded to the lowest bidder without discrimination on the grounds of race, color, or national origin, and further that it will affirmatively insure that

in any contract entered into pursuant to this advertisement, minority business enterprises will be afforded full opportunity to submit bids in response to this invitation and will not be discriminated against on the grounds of race, color, or national origin in consideration for an award. Plans and specifications are available at the office of James N. Moss, District Maintenance Engineer, 5715 Canyon Drive, Amarillo, Texas and at the Maintenance Warehouse office of Johnny C. Stepp, Maintenance Construction Supervisor, located on State Highway 15 in Gruver, Texas.  
Usual rights reserved.  
19-2tc only

## Snider to Speak at Breakfast

Bobby Snider, who is employed at Hi-Plains Auto Supply and an active layman in the Assembly of God, will be the speaker at the interdenominational men's prayer breakfast on Wednesday, April 1 at 6:30 a.m. in the Baker & Taylor room of the Cattleman's Restaurant. This is open to any man of the community.

**For The Ultimate In STORM DOORS**  
Custom Built, Designed, And In Colors To Fit Your Home...  
Contact Howard Moyer at  
**Only Aluminum Industries**  
Guyton, Okla. 114 W. 1st 405-338-6966 or 338-6170  
73942

**ALL STEEL BUILDINGS**  
STRAIGHT WALLS - 40' x 80' x 14'  
COLORED WALLS, GALV. ROOF  
Two 20'x14' dbl. slide doors  
One steel walk door  
**\$12,880 Erected**  
806-435-3107  
Bob Slaughter - Rep.  
1306 S. Grinnell

There's no way of telling how some people got their names or their reputations.  
\*\*\*\*

The doctor may not know what's wrong with you but he's confident, at least.  
\*\*\*\*

An apology often follows an epic inward struggle and should always be accepted.  
\*\*\*\*

## NOTICE

In our March Come see, shop and save Circular, we have advertised Just Love® Tops and Bottoms at 1.67 set. This is in error and should read: 1.67 each. We regret any inconvenience.

**TG&Y family centers**

## Rotary Club Meets

John R. Collard, Jr. gave a multi-media presentation on "Vocational Service" in Rotary Monday noon, March 23, in the Baker & Taylor room at the Cattleman's Restaurant. Ed Freeman led community singing. Roy Bulls led in the pledge of allegiance. Steve Rogers gave the prayer of invocation. George Rook was the onley guest present.

Members present were Jim Benson, Carrie Marie Berry, Eschol Blankenship, Roy Bulls, John R. Collard, Jr., Robert Elliott, Pete Fisher, Ed Freeman, Ed Garner, Kerry Henton, John Hutchison, Junior Lusby, David McClellan, Jack McWhirter, Steve Rogers, Mike Schnell, Jim Shirley, Gary Sims, and Don Wirsdorfer.  
Members absent were Eddy Limbocker and Jim Murray.

It was reported that Eddy Limbocker had a heart attack on Friday over in Arkansas and was in intensive care at Sparks Hospital, Room 443, Fort Smith, Arkansas. Members present all signed a get-well card.

Rotary District 573 Annual Conference is April 2,3,4,5 at Hilton Inn I-40 East, Amarillo. Rotary-YMCA Auction is Sunday afternoon, April 12 at the YMCA at 2:00 p.m.

Next Monday's program, March 30, will include a presentation by Mrs. Susie Morris and the six history students from Spearman high school who attended the president's inauguration in Washington, D. C.

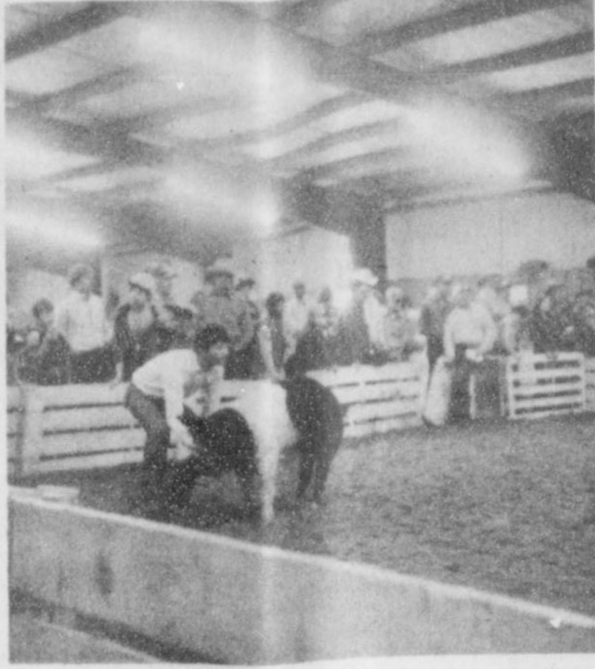
**The Hansford Plainsman**  
PUBLICATION (USPS 243-660)  
SPEARMAN, TEXAS 79081  
213 Main Box 458 659-3434  
Published Weekly at 213 Main Street  
Spearman, Texas 79081  
Owner-Publisher ..... William M. Miller  
Editor ..... Faye Lynch  
Second Class Postage paid at Spearman, Texas 79081  
Any erroneous reflection upon the character of any person or firm appearing in these columns will be gladly and promptly corrected upon being brought to the attention of the management.  
SUBSCRIPTION RATE: Hansford, adjoining counties, combination with the Spearman Reporter, \$15.00.  
Other points, \$20.00.  
MEMBER  
**TEXAS PRESS ASSOCIATION**

*Living Into Spring At*  
**Brent's**  
*For Women...*  
Fresh Spring Merchandise is Here!  
... Skirts, Shirts, Pants, Separates ...  
Always in Good Taste  
**Brent's**  
2819 Civic Circle  
Wolfen-Gorgia

The First Presbyterian Church will host an open house on Sunday, March 29, from 2:00 until 4:00 o'clock, to honor their retiring minister, Ed Freeman and Mrs. Freeman. The Freemans are leaving Spearman on April 1 for Dimmitt, where Mr. Freeman will be a part-time pastor at the First Presbyterian Church.  
The Freemans have been active in community life in Spearman and the Church cordially invites the public to attend.

**VIRGINIA WHITE**  
Realtor 659-3841  
3 bdrm, 1 bath, C/H & A/C, fenced. Call to see.  
3 bdrms, 2 1/2 baths, 2 car garage, fenced, Mfg. plant.  
Spacious & Lovely--4 bdrm, 2 1/2 baths, almost new carpet & draperies. Too much to tell about here. Call! Will show to qualified buyers.  
LOT FOR SALE--Corner Lot in Blodgett Add

**Century 21 Presenting**  
Archer - 3 B/R, 2 Bath, Built in appliances, fireplace, carpet, double garage, fence.  
Jerry Gee 659-3664  
Ronnie Hoover 658-9325  
Larry Trosper 659-3491  
**Daryl Wynn, Broker**  
658-4528  
**Century 21 GOLDEN SPREAD REALTY**  
We'll give our word to you.  
Registered Trademark of Century 21 Real Estate Corporation.  
1980 Century 21 Real Estate Corporate  
Printed in U.S.A. Each office is independently owned and operated. Equal Housing Opportunity.



JODY BRADFORD

**"Draws Quite a Crowd"**

As if Corn Dogs and Burritos at four for a dollar and Hot Dogs at a dime weren't enough, a Coca-Cola robot proved to be quite an attraction. He entertained youngsters and adults alike during the 3-day Grand Opening of Allsup's 200th store, held March 19, 20, and 21st in Clovis, New Mexico. The company, founded in 1956 by Lonnie Allsup, hailed the event as a milestone in the company's history. Allsup's projects future growth to be 50 new outlets per year.

**Thankful?**

Today's world has its troubles, which often seem overwhelming--terrorism, crime, energy shortages, high prices, etc.

But there's also much to be thankful for today. Modern medicine and cures, fast transportation, new forms of communication, a wider variety of foods and frozen foods, better working conditions,

greater equality of opportunity, better highways, more leisure time, and more and better forms of recreation--to name but a few.

Do we enjoy life more? One wonders. If we don't, it's our own fault. A little more attention to human relationships and philosophy and a little less emphasis on fast living might be the answer.

**"It Officially Starts"**

Lonnie Allsup, President of Allsup's Convenience Stores, Inc., cuts the ribbon during the Grand Opening ceremonies for Allsup's 200th store. The Grand Opening turned out to be the "biggest we've ever had", according to a Company spokesman. Special attractions included the Pepsi skywriter, a 40-foot Pepsi can, Coca-Cola's hot air balloon, a Coca-Cola robot, Elsie and Beauregarde from Borden's Twinkie the Kid, and Slush Puppy. Drawings were conducted throughout the three-day event for prizes such as: \$50 Traveler money orders, bags of groceries, Elsie dolls, a Sony stereo system, and the Grand prize--a car filled with groceries.



ALICIA THOMAS 1st year 4-H exhibitor is glad it is all over.

NOTICE:-----  
Big SNO SKI AUCTION.....  
SATURDAY, MARCH 28, 10:00 A. M.  
New and used SKIS.....  
New Clothing and accessories at the Hi-Plains Sports center...  
521 NORTH MAIN -- GUYMON, OKLA.

**HI-PLAINS SPORTS**

521 N. MAIN  
CENTER GUYMON, OKLAHOMA

**BIBLE VERSE**

*"This is the confidence that we have in him: that, if we ask anything according to his will, he heareth us."*

- 1. Of whom is the writer speaking?
- 2. Who is the author of

the above statement?  
3. By what term was he known?

4. Where may this statement be found?

**Answers to Bible Verse**

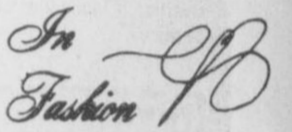
- 1. Of Jesus Christ.
- 2. John the Apostle.
- 3. The "disciple whom Jesus loved."
- 4. I John 5:14.

**Golden Gleams**

What can be hoped for which is not believed?  
-St. Augustine.

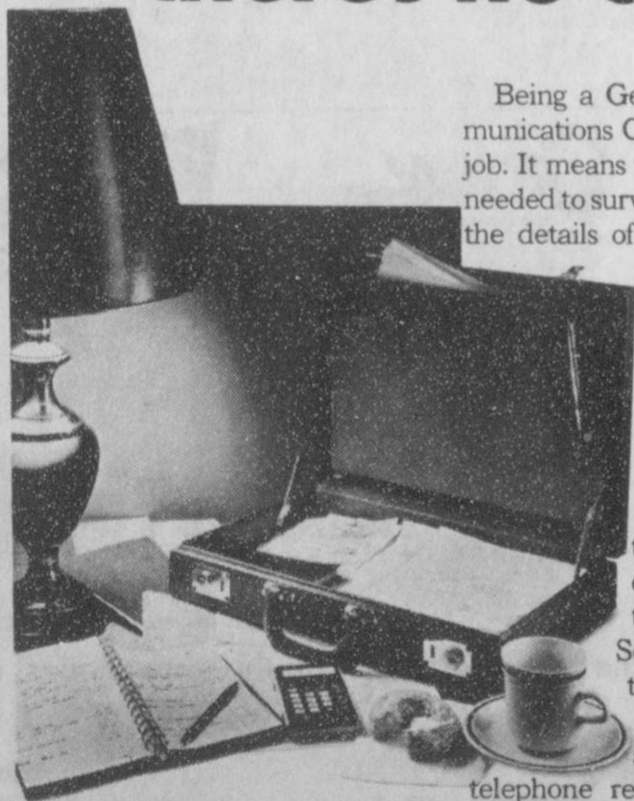
Hope springs exulting on triumphant wing.

-Robert Burns.



The young miss and her little sister weren't forgotten in spring fashions. Blazers in a look-of-linen polyester, in many colors, blend with skirts and pants.

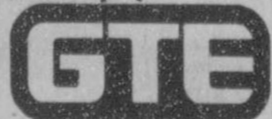
**When you see how hard our consultants work for you, you'll be glad there's no charge.**



Being a General Telephone Communications Consultant is a full-time job. It means taking as much time as needed to survey, plan and discuss all the details of a business customer's phone installation.

But they don't stop there. They are also busy looking for ways to show customers how to use their phones more efficiently. Sometimes they can show them how to save money and maybe even how to make money. Sound like good people to know? They'll be happy to meet you anytime and make a survey of telephone requirements. Call your local General Telephone business office and make an appointment today. And remember there's never an extra charge for their services.

We keep you talking.



**Spearman Track Meet  
March 27, 28**

**ATTENTION, SPORTS' FANS!!!!**

The Annual Spearman Track Meet will be held this weekend--March 27 and 28. Both High School and Jr. High teams will be competing, so go on out to Lynx Stadium and cheer on all the Lynx and Lynxettes.

On March 14, the Jr. Varsity, 7th and 8th grade Lynx competed in the Graver Greyhound Relays and did very well. The JV Lynx won 4th with 40 points to their credit, out of a field of 9. The 8th grade Lynx placed very well--won 3rd Place with 68 points to their credit--out of a field of 11 competitors. The 7th Grade Lynx placed 6th out of a field of 9--with 42 points to their credit.

Go on out to Lynx Stadium during these two days--March 27 and 28. Mark it on your calendar!!

**Junior Lusby  
"CATS"  
DIRT CONTRACTOR**

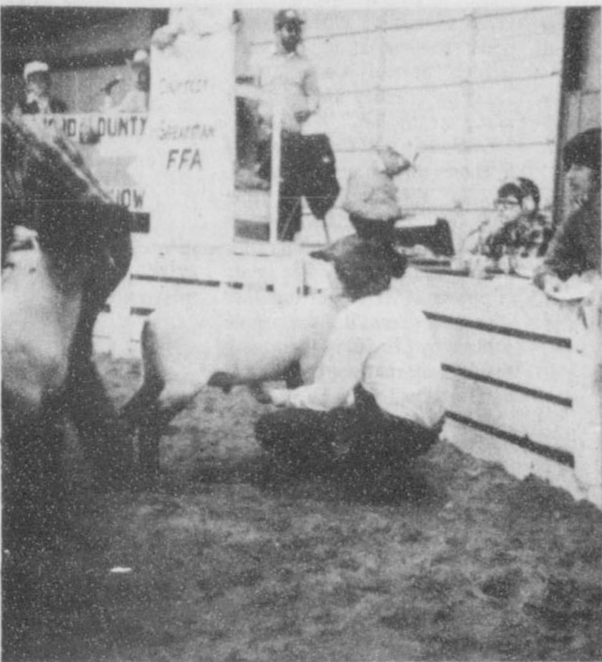
Spearman Phone: 659-3766



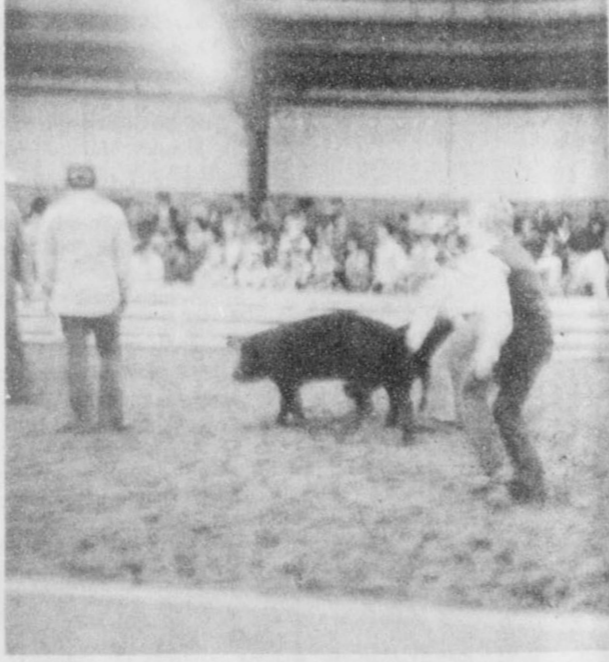
CHAD LOGSDON



SHELLY LACKEY Gruver FFA Sweetheart.



RHONDA JO BOONE with 1st place Lightweight Lamb.



RAYMOND & RAELYNN BARKER.

2 LITER NON-RETURNABLE BOTTLE

# COCA-COLA ONLY \$1.39

PRICES EFFECTIVE MARCH 26-28, 1981  
SPECIALS GOOD WHILE SUPPLY LASTS  
OPEN 24 HOURS A DAY  
OPEN 365 DAYS A YEAR

<b>CHEESE KRISPS</b> 8 OZ. PKG. <b>89¢</b>	<b>BACON</b> RATH HICKORY SMOKED <b>\$1.49</b>	<b>BORDEN'S COTTAGE CHEESE</b> 12 OZ. CTN. <b>69¢</b>
<b>PILLSBURY BISCUITS</b> BUTTER MILK FOR OR SWEET <b>\$1.00</b>	<b>BORDEN'S NUTTY BUDDIES</b> BORDEN'S ICE CREAM SANDWICHES ON <b>99¢</b>	<b>ALLSUP'S FRESH BREWED COFFEE</b> 12 OZ. CUP <b>15¢</b>
<b>SUNSHINE CHIP-A-ROOS</b> 12 OZ. PKG. <b>\$1.29</b>	<b>VELVEETA CHEESE</b> LB BOX <b>\$1.79</b>	<b>GERBER APPLESAUCE PEACHES PEARS</b> JUNIOR SIZE JAR <b>39¢</b>
<b>VELVEETA CHEESE</b> LB BOX <b>\$1.79</b>	<b>CLOVER CLUB PORK REG. \$1.49</b> <b>CRACKLES</b> 4 OZ. PKG. <b>99¢</b>	<b>COOKED FOOD SPECIAL</b> <b>TACO ROLLS</b> 2 for <b>99¢</b>

**ALLSUP'S**  
CONVENIENCE STORES

"THERE'S ONE NEAR YOU"

**AT** AFFILIATED FOODS INC. MEMBER STORE  
We're proud to give you more!

**WHO KNOWS?**

1. Name the stone and flower denoting April.
2. What was the date of the fall of Bataan?
3. Complete this quotation: "A thousand years in thy sight..."
4. Where would you find this quotation?
5. Who succeeded Woodrow Wilson as President of the U.S.?
6. Does man have the same number of primary and permanent teeth?
7. Where is the Petrified Forest National Park?
8. What branch of the Armed Services was abolished in 1950?
9. Where did "America" get its name?
10. Which of the two continents in the Western Hemisphere did he explore?

- Answers To Who Knows
1. Diamond and sweet pea.
  2. April 10, 1942.
  3. "Are but as yesterday when it is past, and as a watch in the night."
  4. The Bible, Psalms 90:4.
  5. Warren G. Harding.
  6. No. Man has 20 primary teeth and 32 permanent teeth.
  7. Arizona.
  8. The cavalry.
  9. From the Italian explorer, Amerigo Vesputi.
  10. South America.

**More Waste**

The Reagan Administration could effect savings running into the billions--by some estimates--by simply ordering all federal agencies to end the recent bureaucratic trend of hiring consulting firms to do special jobs (to do their work?).

This plus an end to all advertising by federal agencies (a new process many are using to build up their client list, often for give-away programs) could effect major savings. It would also end two undesirable trends which should not have begun.

## Overweight?

So were we, but that was before we heard about

# DIET CENTER®

We Lost A Total Of **146 POUNDS** Quickly and Safely

SHARON LYNCH LOST 75 POUNDS IN JUST 39 WEEKS

NORMA COTTINGHAM LOST 43 POUNDS IN JUST 10 WEEKS

LYNDA LEVINE LOST 28 POUNDS IN JUST 8 WEEKS

YOU CAN DO IT TOO!  
LOSE 17 TO 25 POUNDS IN JUST 6 WEEKS

And We'll Teach You How To Keep It Off!

In just 10 years, Diet Center has grown to over 1,000 locations all across the United States and Canada. We've grown this big, this fast, for one basic reason... the Diet Center Program works! You will lose weight quickly and safely, but what's more important, we'll teach you how to keep it off! When you decide to lose weight, call Diet Center, the last weight-loss program you'll ever need.

HOW TO WIN AT THE LOSING GAME

**DIET CENTER®**

CALL TODAY FOR A FREE CONSULTATION!  
NO SHOTS\*NO DRUGS  
NO CONTRACTS

"The Natural Way To Lose Weight!"

415-AMHERST (Kengle Building) Sis Gross, Counselor 435-2200  
7:30 a.m. - 4:30 p.m.

Thanks Rangers - For A Super Season!

## You Are Invited

# ALLIS - CHALMERS COMBINE SCHOOL

## APRIL 1, 1981

FREE: Chili Supper — 6:30 to 7:30  
School Starts at 7:30  
Come Join Us at:

### Calliham Engine Service & Supply

Better by Design

208 N. Main  
Perryton, Texas

ALLIS-CHALMERS

**Hospital news**

Patients at Hansford Hospital are Lawrence Wilbanks, Edna Briley, R.L. McFarlin, Dan Jackson, Kubah Gandy, Cecelia Randall, Loneta Sparks, Gweneford Lackey, Dan Shraeder, George Ford, Will Ella Martin, and Lily Cox.

Dismissed were Cindy Browning, Gus McLain, and James Hoy.

**MARKETS**

Corn	\$3.41
Wheat	3.75
Milo	5.15
Soybeans	5.72

**Commissioners Act**

**Hospital Board Members Set**

The Hansford County commissioners court was in short session, Monday, with only two items of business beyond the routine: the hospital board of managers and the matter of a jail contract.

Appointees to the hospital panel were quickly made since it was a matter of reappointment of the incumbent trio whose terms were expiring. They are Bill Entling, Max Baggerly and Alton Elsworth. The jail contract will be

hardly more than a formality. For a number of years city of Spearman prisoners have been lodged in the Hansford County jail. As County Judge R.L. McClellan explained to the court session, Monday, there have been no problems. However, he pointed out, the Texas Commission on Jails insists that, under such a working arrangement, there must be a contract on file before the commission will part with any of the monies it uses to support

various jail programs about the state.

The county attorney was instructed to draw up the pact for both county and city ratification. A 30-day "escape" clause will be included as a safety measure if other administrations in the years to come encounter problems.

The only other matter discussed was relegated to investigation and remedial action. This was the unauthorized use of the county barn for what one

commissioner termed "inappropriate" activities. Measures will be taken to secure the building and the premises and violators will be duly charged.

The longest "stretch" of the agenda was presentation of the monthly bills which were authorized for payment.

This was the second March session of the commissioners court. Such a session is optional with counties while the first month (the second Mon-

day) is fixed by state statute. The second monthly meeting affords opportunity to handle any emergency measure that might arise and for discussion sessions adding to the time available to peruse county affairs.

**Arts and Crafts Guild Meets**

The Arts and Crafts Guild Met at Mrs. Nolan Holt's—she was the Hostess.

Members present were Mrs. F.J. Daily, Mrs. Deta Blodgett, Mrs. W.L. Russell, Mrs. F.J. Hoskins and Mrs. Guy Fuller.

The next meeting will be March 27 at Kiffie White's.



DALE RED

**Gas Well Production Determinations Filed**

AUSTIN—The Railroad Commission's Natural Gas Policy Act Section reported that as of Feb. 26 Texas oil and gas operators have filed 32,954 applications for determinations of new gas well production categories under the federal Natural Gas Policy Act of 1978.

The Commission initiated the well classification program in December, 1978, pursuant to NGPA mandate and guidelines set forth by the Federal Energy Regulatory Commission.

Under the federal rules and corresponding RRC policies, the section is responsible for processing applications filed by operators requesting gas well determinations under one of the different producing categories of the NGPA.

Operator applications are reviewed through section statistical checklists and are brought before the Commission for action.

Through Feb. 26, the Commission has approved 25,084 applications for the requested NGPA producing categories, according to the section report.

Seven applications have been denied.

A total of 23,838 applications have been transmitted to the FERC. The federal agency has the power to reverse or rescind applications acted on and transmitted by the RRC. Another 753 applications are in a micro-filming status before being sent to the FERC.

**The Idles of March-- Beware!**

The plague of the "common cold" occurs more often during cold weather, but March can be a risky month for persons exposed to colds, according to the American Lung Association of Texas.

Extremes are the norm in March. Temperatures change quickly, and chilling rains often

blow gentle breezes. Weather variety does not cause colds, but it can increase vulnerability to viruses which do cause colds. Viruses are minute infectious agents that can't even be seen with a microscope, but which enter body cells, multiply and then cause disease.

Many different kinds of viruses can cause a cold. Over a hundred have been identified; that is why no vaccine has been successful. There is little anyone can do to avoid infection but hope for the best and stay away from people who have colds. Infants and young children are the most susceptible to colds because they have not yet built up immunity.

When a cold can't be thwarted, grandmother's advice is still good: aspirin, liquids and even

chicken soup may relieve symptoms.

By covering your coughs and sneezes and keeping your distance from people, you can protect others. Germs escape from the mouth even when you speak. Use tissues and dispose of them in a closed paper bag.

The Christmas Seal people can't cure your cold, but ask the American Lung Association of Texas for an authoritative leaflet, "Common Cold, The Facts About Your Lungs." Write the American Lung Association of Texas, 7701 North Lamar Blvd., Suite 104, Austin, Texas 78752. It's a matter of life and breath.

**They Are**

"How do you like my new boxing gloves?"

"They're knock outs!"

IDEAL LATE WEEK W/E MARCH 28th



FOOD STORES

PRICES EFFECTIVE THRU MARCH 28, 1981. QUANTITY RIGHTS RESERVE. NO SALES TO DEALERS.

**"PLAY MARKET BASKET BINGO"**

<p>STARKIST CHUNK LIGHT Tuna 94¢</p> <p>10-oz. CAN LIMIT 3</p>	<p>NABISCO PREMIUM Crackers 68¢</p> <p>10-oz. BOX LIMIT 2</p>	<p>CAMPBELL'S Mushroom Soup 28¢</p> <p>10-oz. CAN LIMIT 4</p>	<p>HEINZ Tomato Ketchup \$1.32</p> <p>44-oz. BTL. LIMIT 1</p>	<p>VAN CAMP'S Pork &amp; Beans 39¢</p> <p>21-oz. CAN LIMIT 3</p>	<p>ALL GRINDS Folger's Coffee \$2.26</p> <p>1-LB. CAN LIMIT 2</p>
--	---	---	---	--	---

**FARM FRESH PRODUCE**

U.S. NO. 2 RUSSET Potatoes \$1.89

10-LB. BAG

Mavel Oranges CALIFORNIA \$1.19

3-1/2 LBS. PER 12

Green Cabbage FRESH \$29¢

3-1/2 LBS. PER 12

Avacadoes LARGE RIPE \$3.19

3 PER 12

Carrots CRISP TENDER \$29¢

1/2 BBL PER 12

FRESH, CRISP, RED DELICIOUS Apples 35¢

1-LB. PER 35

<p>BONELESS CHUCK Roasts \$1.59</p> <p>1-LB. U.S.D.A. CHOICE BUTCHER BLOCK BEEF</p>	<p>FRESH PORK Steak \$1.39</p> <p>1-LB. SHOULDER SLICES</p>	<p>HUDSON'S THRIFTY PACK Fryers 59¢</p> <p>3 TO 4-LB. AVERAGE</p>
<p>Boneless Beef Stew EXTRA LEAN \$1.89</p> <p>1-LB. PER 12</p>	<p>Sliced Bologna BAR-S MEAT \$1.09</p> <p>12-oz. PER 12</p>	<p>Sliced Bologna BAR-S MEAT \$1.39</p> <p>1-LB. PER 12</p>
<p>Whiting Fillets TASTE-O-SEA \$1.39</p> <p>1-LB. PER 12</p>	<p>HEALTH AND BEAUTY AIDS SPECIALS</p>	<p>JOHNSON AND JOHNSON Daytime Diapers \$2.58</p> <p>24-CT. BOX LIMIT 2</p>
<p>STEFFEN'S ALL FLAVORS Ice Cream \$1.53</p> <p>1/2-GAL. CTR.</p>	<p>JERGEN'S Body Lotion... \$1.19</p> <p>10-oz. BTL.</p>	<p>AQUA Fresh Toothpaste \$1.33</p> <p>4-oz. TUBE</p>

**SHOP IDEAL... WHERE THERE'S MORE VALUE IN**

CON, FROM PAGE 1

Hampshire Swine weighed 249 pounds, was sold at \$2.25, making the total price \$560.25 and the purchaser was B&B Farm Ind. The 9th Place Cross Lamb was won by Kenneth Virden, 4-H. Kenneth's 9th Place Cross Lamb weighed 100 pounds, was sold at \$5.25 per pound, the total price was \$525.00 and the purchaser was Gruver State Bank.

The 6th Place Duroc Swine was won by Dough Garrett, 4-H. Dough's 6th Place Duroc Swine weighed 232 pounds, was sold at \$4.50 per pound, the total price was \$1044.00 and the purchaser was Gruver Farm Sup. The 9th Place Medium Wool Lamb was won by Shelly Strawn of the Spearman FFA. Shelly's 9th Place Medium Wool Lamb weighed 117 pounds, was sold at \$4.75 per pound, the total price was \$555.75 and the purchaser was Joe T. Venneman.

The 6th Place Duroc Swine was won by Marshall Cator of the Gruver FFA. Marshall's 6th Place Duroc Swine weighed 247 pounds, was sold at \$2.00 per pound, the total price was \$494.00 and the purchaser was WPS. The 10th Place Suffolk Lamb was won by Connie Red, 4-H. Connie's 10th Place Suffolk Lamb weighed 87 pounds, was sold at \$5.25 per pound, the total price was \$456.75 and the purchaser was Caprock Ind.

The 6th Place Hampshire Swine was won by Cayla Eaton, 4-H. Cayla's 6th Place Hampshire Swine weighed 246 pounds, was sold for \$2.25 per pound, the total price was \$553.50 and the purchaser was Roscoe Nelson. The other 6th Place Hampshire Swine was won by Edward Cook of the Spearman FFA. Edward's 6th Place Hampshire Swine weighed 250 pounds, was sold for \$3.75 per pound, the total price was \$937.50 and the purchaser was Baker & Taylor.

The 7th Place Duroc Swine was won by Steve Widener of the Spearman FFA. Steve's 7th Place Duroc Swine weighed 238 pounds, was sold for \$2.25 per pound, the total price was \$535.50 and the purchaser was B&B Farm Ind. The 7th Place Duroc Gilt Swine was won by Rae Lynn Barber, 4-H. Rae's 7th Place Duroc Gilt Swine weighed 245 pounds, was sold for \$2.25 per pound, the total price was \$551.25 and the purchaser was Panhandle Training Center. The 7th Place Hampshire Barrow was won by Devyn McLain, 4-H. Devyn's 7th Place Hampshire Barrow weighed 235 pounds, was sold for \$2.00 per pound, the total price was \$470.00 and the purchaser was H&H Water Well.

The 8th Place Duroc Swine was won by Trevor Williams, 4-H. Trevor's 8th Place Duroc Swine weighed 233 pounds, was sold at \$4.00 per pound, the total price was \$932.00 and the purchasers were Leon Red, Boots Williams, and Roy Byrd. Raymond Barber of the Spearman FFA also had an 8th Place Duroc Swine. Raymond's 8th Place Duroc Swine weighed 250 pounds, was sold at \$2.25 a pound, the total price was \$562.50 and the purchaser was Hereford Clinic.

The 9th Place Duroc Barrow was won by Hank Sutterfield of the Spearman FFA. Hank's 9th Place Duroc Barrow weighed 218 pounds, was sold for \$3.25 per pound, making the total price to be \$708.50 by the Hansford Inv. who were the purchasers. The 9th Place Duroc Swine was won by Pat Tucker of the Spearman FFA. Pat's 9th Place Duroc Swine weighed 242 pounds, was sold at \$2.50 a pound, the total price was \$605.00 and the purchaser was H&H Water Well.

The 10th Place Duroc Swine was won by Dick Smith, 4-H. Dick's 10th Place Duroc Swine weighed 226 pounds, was sold for \$2.75 per pound, the total price was \$621.50 and the purchaser was Frontier Feedyard. The 11th Place Duroc Swine was won by Mike Dixon of the Spearman FFA. Mike's 11th Place Duroc Swine weighed 250 pounds, was sold for \$4.25 per pound, the total price being \$1062.50 and Mary Dixon was the purchaser.

The Total Price of all the animals sold was \$89,479.15. There lots of people cheering on all of the entrants in the 1981 Hansford County Livestock Show.

Come join us as we celebrate with Robin his 65th year along life's highway, remembering the happy moments you've shared with him--the laughs and the fun.

Open house Sunday, March 29th at the Morse Community Building

3 to 6 p.m.

The Family of Robin Giblin No gifts please

19s-2tp

### Rho Rho Sorority Meets

Rho Rho Sorority met March 12 at the B & F Building with Gayle Smith acting as hostess for the meeting. Marilyn Cline called the meeting to order. The minutes of the previous meeting were read and approved.

A letter was received by Marilyn Cline concerning the West Texas State University Distinguished Service Luncheon.

Susan Pearson gave the Treasurer's Report. Candy Boxwell moved to pay the bills. It was seconded and passed.

Sheri McWhirter, Program Chairman, reported that the next meeting will be March 26th in the home of Ginger McClellan. Linda Sanders will be in charge of the program.

Gina Davis read from the book of Beta Sigma Phi. Membership chairman, Candy Boxwell, said that she will order new pins for all who need them.

Karen Schnell, in charge of Socials, told about the Couples Party which will be held in April. The Easter Egg Hunt will be April 9th.

Ways and Means chairman, Linda Sanders, reminded everyone to sell their raffle tickets and turn the money and tickets in by March 26th if possible.

Kim Vanderburg volunteered to be the chairperson for Rho Rho and attend the Hansford County Round-Up meetings.

Debbie Clement and Brenda Shieldknight will be in charge of the float for the Round-up Parade.

Shelly Beedy volunteered to work on the committee for Founders Day.

Joan Brown gave a very interesting, informative program on "Stained Glass", using some of her beautiful work to illustrate what she said.

Gayle Smith served refreshments to Marilyn Cline, Candy Boxwell, Karen Schnell, Stephanie Brock, Karen Blodgett, Susan Pearson, Michele Beedy, Joan Brown, Linda Brown, Debbie Clement, Gina Davis, Janie Henton, Jolinda Hutchison, Ginger McClellan, Delinda McLaughlin and Brian, Sheri McWhirter, Joy McCormack, Lisa Pipkin, Jody Rex, Linda Sanders, Brenda Shieldknight, Dixie Smith, Kim Vanderburg, and Gaye Woolley.

### Limbocker Rites Held

Services for Edwin Lee Limbocker, 40, were conducted at 2 p.m., Thursday from the Spearman Church of Christ where he was a member.

Bill Osborne officiated.

Mr. Limbocker was stricken with an apparent heart attack while visiting in Arkansas and died Monday at Fort Smith.

He was the executive administrator of the Interstate Savings and Loan Assn. office here and a leader and an influence in many of the affairs of the community.

He is survived by his wife, Joyce; a daughter, Anita and son Tommy, all of Spearman; his parents, Mr. and Mrs. Edwin W. Limbocker, Moore, Okla.; grandparents Mr. and Mrs. Wallace McCubbin, Waldron, Ark.; a sister, Roberta and two brothers, Kenneth and Bobby, Ft. Smith, Ark. and a brother, David, Moore, Okla.

Burial was in Hansford Cemetery with Boxwell Brothers, Funeral Directors.

### Nursing Homes: Good And Bad

Keeping up the good work has paid off for several nursing homes which were cited for having no health deficiencies by Dr. Robert Bernstein, Commissioner of the Texas Department of Health.

Notified that their facilities had been clear of health deficiencies for three years were Ms. Billie Sue Cooper of Holiday Lodge Nursing Home, Longview, and Ms. Mamie Gentry, Jackson Square Nursing Center of Fort Worth.

Taking two-year honors were Ms. Florence Kearby, Resort Lodge, Mineral Wells, and Ms. Dorothy V. Brown, Cartwheel Lodge, Luling.

No health deficiencies were noted by Bureau of Long Term Care inspection teams at facilities administered by: Ruben Goatcher, Palestine Nursing Center, Zettie McLerran, Ret-

ama Manor, Jourdan, Faye Lobert, Leon Valley Lodge, San Antonio, Harold Werning, Colonial Manor, Cleburne, Margaret Brown, Leisure Lodge, Wortham, and Marilyn Collins, Pleasant Manor, Waxahachie.

Open hearings are scheduled at several nursing facilities, according to Dr. Robert Bernstein, Commissioner, Texas Department of Health.

Personnel of the TDH Bureau of Long Term Care will hold hearings at the following: Bronte Nursing Home, Bronte, March 12, 3 p.m.; Lawndale Home for Senior Citizens, Gorman, March 17, 2:30 p.m.; Colonial Manor, Edinburg, March 16, 10 a.m.; Twinbrooke South, McAllen, March 17, 10 a.m.; Retama Manor, Raymondville, March 17, 2 p.m.; Caroline Wheeler Nursing Home, Houston, March 18,

You are cordially invited to attend a Bridal Shower for

Melissa (Robertson) Vasquez bride of Willie Vasquez

at the B & B Building

April 1

from 7:30 to 9:30

Come and Go

**HOSTESSES**

Wanda Stewart  
Norma Jean Mackee  
Joyce Frost  
Stacey Hand  
Rita Reed

Juanita Tucker  
Trevia Cook  
Jewel McCalmon  
Shirley Greenwood  
Frankie Duryee

20-2tp

### Spearman Tennis Teams' Action

The Spearman Team Tennis Tournament was held March 13 & 14 at the Spearman High School Courts. The Spearman Boys won the 2nd place team trophy by compiling 48 points between them. Borger won the 1st place team trophy with 49 total points.

Karey Bodey and Keven Russell were defeated in the doubles finals by the Borger team of Jeff Pirtle and Tom Gray. Wayne Meek was defeated in the semi-finals by the eventual tournament winner from Pampa. Greg Meek was defeated in the semi-finals by Clint Murley from Borger.

Wayne and Greg placed third and fourth out of a field of 16 entries! The match between was not played due to weather conditions. Jay Pack and Darren Goodheart placed 8th from a field of 16 doubles entries. These boys did a great job!

6-3, Jay Pack beat Chad Wilson 7-6, 6-1, and Darren Goodheart defeated Doug Garrett 7-6, 6-2. Karey Bodey was defeated by Greg Ammons 6-2, 4-6, 6-2. Meek & Meek won their doubles match 6-3, 7-6 and Goodheart & Pack won their doubles match 6-1, 6-1. Bodey & Russell were defeated by Ammons. Gilbreath 6-4, 6-1.

In girls action, Spearman won 5-2. Susan Davis beat Lisa Johnson 7-5, 6-4. Andrea Mires beat Cheryl Nelson 6-4, 6-3. LeaAnn Gibner beat Cappi Cooper 6-3, 6-0 and Novak & Bowan beat Riley & Nelson 6-2, 6-3. Kelli Crawford was defeated by Terri Hart 6-3, 6-2 and Crawford & Davis were defeated by Hart & Johnson 6-3, 6-4.

The second time we played Gruver all the boys won except in the doubles match between Meek & Meek against Finley & Castor where Spearman was defeated 6-2, 6-3. Andrea Mires won the only girl match 6-2, 6-1 against Cappi Cooper.

Wayne Meek won first place this past week-end at the Fritch tournament. Greg Meek received second place after being defeated by his brother in the finals of that tournament 6-4, 7-5.

Karey Bodey & Kevin Russell are playing for 3rd place today against Gregg Ammons & Alan Gilbreath from Gruver. That match was postponed because of rain.

Our schedule for the following weeks are: March 23--Higgins HERE March 24--Perryton There March 26--Fritch HERE March 27 & 28--Borger Tournament March 31--Fritch HERE April 3 & 4--Amarillo Tournament April 6--River Road HERE April 7--Gruver There April 10--Girls District at Spearman April 22--Boys District at Spearman

### Presbyterian Church News

The Evangelism Task Group of Palo Duro Presbyterian Church will meet at the Presbyterian office in Lubbock on Friday, March 27 at 11:00 a.m.

All Task Group chairpersons and chair of the Commission on Ministerial Care will meet with members of the Planning and Review Task Group on Friday, March 27 at 2:00 p.m. at the Presbyterian office in Lubbock.

Coordinating Council of Palo Duro Union Presbytery will meet at the presbytery office on Friday, March 27 at 6:00 p.m. and will continue until Saturday, March 28 at 11:00 a.m.

There will be a special meeting of Palo Duro Union Presbytery on Saturday, March 28 at Grace Presbyterian Church in Lubbock at 11:00 a.m.

There is a Sunday Church School class for everyone every Sunday at 9:45 a.m.

"Spiritual Initiative" will be the subject of Pastor Edward D. Freeman's farewell sermon at the service for the public worship of God at 11:00 a.m. on Sunday, March 29. The lecture lessons are II Samuel 5:1-5; John 9:1-11; and Ephesians 5:8-14.

Presbyterian Women will conduct a farewell reception for Pastor and Mrs. Edward D. Freeman for the whole community on Sunday afternoon, March 29, from 2:00 to 4:00 p.m. at the church.

Less  
The housewife whose young daughter was helping her in the kitchen heard a loud crash. "More dishes?" she cried in desperation. "No, Mama, less," was the nonchalant reply.

### Leah Nicole DeArmond Honored

Leah Nicole DeArmond, daughter of Dennis and Cassie DeArmond, was honored with her 1st birthday party celebrated March 22, at 3:00 p.m.

The party was decorated with Raggedy Ann and Andy. Refreshments were a white cake with Raggedy Ann on it and Kool-Aide were served. Guests that attended were Maternal Grandparents, Mr.

and Mrs. Clois L. Baker, Paternal Grandmother Mary Jane DeArmond, Great-grandmother Mary Jane DeArmond, Great-grandmother Myrtle DeArmond, Reagan and Lacie Baker, Mary Lou and Ashley Baker, Pete, Cindy and Candie Owens, Tuwana and Justin Trout, Shorly and Carol Hester, Jim Tope, and Billy, Martha, Jimmy and Billy Ray Haden.

**WIN UP TO \$1,000**

ODDS CHART AS OF MARCH 25, 1981

1:00 PM CASH	25	81-823	27-141	12-870
1:30 PM CASH	254	12-502	4-187	2-083
2:00 PM CASH	447	7-104	2-288	1-184
2:30 PM CASH	544	1-837	1-548	973
3:00 PM CASH	620	5-172	1-707	853
3:30 PM CASH	839	3-336	1-178	589
4:00 PM CASH	1-021	1-863	8-61	330
4:30 PM CASH	2-582	1-230	4-10	209
5:00 PM CASH	58-008	54	18	9
TOTAL	85-791	48	16	8

BETTY CROCKER  
Brownie Supreme..... \$134  
PURINA Dog Chow..... \$13.58  
BORDEN Eagle Brand Milk..... 94c  
NORTHERN Asst. Napkins..... \$126  
BREAKFAST CEREAL Post Grapenuts..... \$143  
ALL FLAVORS HI-C Fruit Drinks..... 73c  
HERSHEY Chocolate Syrup..... 73c

U.S.D.A. CHOICE BUTCHER BLOCK BEEF BONELESS CENTER CUTS  
**Chuck Steaks \$1.69 LB.**

FAMILY PACK -- 3 TO 4-LB. PKG. LEAN FRESH  
**Ground Chuck \$1.79 LB.**

BAR-S Sliced Bacon \$1.29 1-LB. PKG.  
BAR-S MEAT Skinless Franks 89c 12-OZ. PKG.  
TASTE-O-SEA - PRE-COOKED Fish Cakes \$1.29 1 1/2-LB. PKG.

**JOIN THE MORE THAN 16,000 WINNERS**

Audine Zuschek WON \$1,000  
Wanda Deaton WON \$1,000  
Lili Plattner WON \$1,000  
Martha Gragg WON \$1,000  
Mrs. Laura Watson WON \$1,000  
Fern Platt WON \$1,000  
Mary Ann Morris WON \$100  
Johnny Lynch WON \$100

**OTHER WINNERS**

DOROTHY LEE, WON \$100.  
DAVID HILDERBRAN, WON \$100.  
JANICE GOODNER, WON \$100.  
JESSE MCGOWAN, WON \$100.  
ANGELINE HANSON, WON \$100  
J. W. BARRY, WON \$100  
WANDA TALLEY, WON \$100  
HARRY BACKMANN, WON \$100.  
GEORGE TYNER, WON \$100.  
CECIL WATTS, WON \$100.  
ALFRED COLEMAN, WON \$100.

MRS. P. L. JERMAN, WON \$100.  
MARTIN BERGMANN, WON \$100.  
DONNA MICHAU, WON \$100.  
MARIAN TOMPKINS, WON \$100.  
REBECCA HAMILTON, WON \$100.  
PAM BECK, WON \$100.  
PEARL KIRKHAM, WON \$100.  
CHERYL DOVER, WON \$100.  
DENNIS CZAPANSKY, WON \$100.  
BERTHA ABBOTT, WON \$100.  
DONNA THOMAS, WON \$50.

ROSE E. PHILLIPS, WON \$50.  
DON FULLER, WON \$50.  
MARTHA PHELEP, WON \$50.  
DEEDRA FRITSCH, WON \$50.  
MARIE KENYON, WON \$50.  
LENORAH SMITH, WON \$50.  
JIM COOK, WON \$25.  
DAVID WILLIAMS, WON \$25.  
LORIMOR RITSUKO, WON \$25.  
VIRGIL F. JOHNSON, WON \$25.

Gary Stevens Won \$100  
Lisa Gantz Won \$100  
Beverly Robinson Won \$100  
Mrs. Tom Gillmore Won \$100  
C.C. Fitzgerald Won \$100  
Ralph Towers Won \$50

**DAIRY FOODS**

KRAFT - 1/2 MOON CHEDDAR OR COLBY LONGHORN  
**Cheese \$2.28** 16-OZ. PKG. LIMIT 2

KRAFT BRAND 1/2 GAL. CTN. \$1.57  
CAMELOT BRAND 1/2 GAL. CTN. \$1.18  
STEFFEN'S BRAND 2 1/2-GAL. CTN. \$1

**FROZEN FOODS**

MORTON  
**Fried Chicken \$2.18** 2-LB. PKG. LIMIT 2

MRS. SMITH BRAND 48-OZ. PKG. \$1.99  
MEADOWDALE STEAK FRY 24-OZ. BAG 67c  
REAMES BRAND 2 1/2-LB. PKG. \$1

Available at Your Ideal Supermarket  
**GREAT MOMENTS OF MUSIC** AMERICA'S GREAT RECORD VALUE! Starting with ARTHUR FIEDLER and the Boston Pops

Exclusively in supermarkets for only \$3.49  
A new stereo LP record on sale every week  
RCA quality pressings

Special Introductory Offer 99c VOLUME 1

**Ideal Food Stamps Buy More At Ideal...**



Reserve Champion Steer exhibited by ROY DON GAMMON of Gruver.

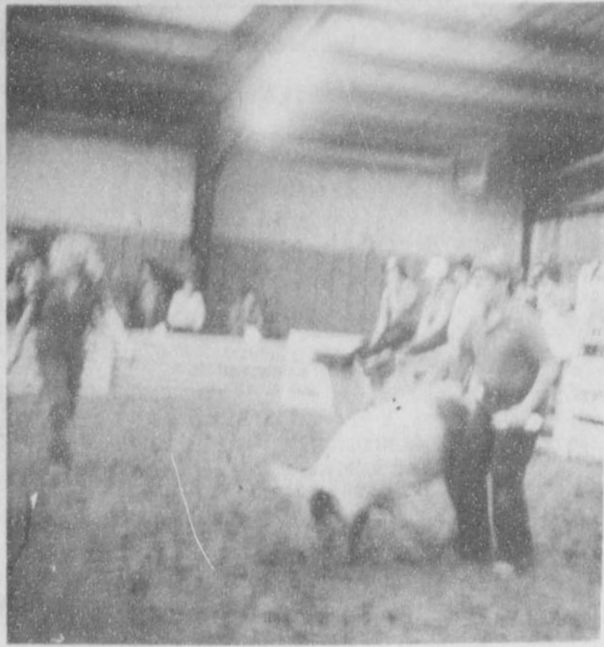
**Our Heritage of Faith**  
notes from Oslo Lutheran Church

We at Faith Lutheran extend to you our invitation to worship and study with us. Sunday School is at 9:45 a.m. and worship is at 10:45 a.m. The sermon theme, based on Matthew 20:17-28 is "Preparation For The Big Game."

This Sunday from 6:00 to 8:30 p.m. we have a special study on Stewardship--managerial responsibility of the earth, the Church and ourselves under God.

Next Wednesday our special midweek Lenten worship is at 7:30 p.m. The sermon theme is: "Freedom From the Dominion of the Devil--Romans 7:21-25 and Ephesians 6:10-13. "A live Gospel demands live spokespersons." Joseph A. Sittler.

**STORE FOR YOU!**



BILLY HARRIS



"Elsie Visits New Mexico"

Although Elsie cannot accept it on her own, Lonnie Allsup helps her out by accepting a certificate from Frank Murray, Mayor of Clovis, proclaiming her an honorary citizen of the community. Ray Dunn of Borden's looks on. Elsie visited nine elementary and pre-schools in the Clovis area in a day and a half in addition to attending the Grand Opening ceremonies and a reception at the community's Country Club. Free photos of area youngsters with Elsie were taken at the store on Saturday from noon until 5:00 p.m.



"Unbelievable Sales"

The Grand Opening of Allsup's Convenience Stores, Inc. 200th store attracted a record number of shoppers from the surrounding area. Sales, although not released, surprised many of the Company's executives. In addition to sales in the store, six semi-trucks were completely sold out. The customers kept coming, even at 7:30 Saturday night, one-half hour before the Grand Opening was over.

*Richard Schweiker.*  
Health and Human Services Secretary, on merging Social Security trust funds:  
"This will not increase anybody's tax. It would help to finance Social Security for the next two, three, four years."

**NEWS VIEWS**

*George Bush.* Vice President, on giving Atlanta \$1.5 million grant for investigation.  
"Our feelings mirror the feelings of this country. I hope the federal assistance will end this trauma."

**STAMPS & STORIES**



By Stanley James

He was feisty and cantankerous, he had little respect and less affection for his Vice President, Thomas Jefferson, and he regarded the White House as virtually unfit for human habitation.

In fact, John Adams, America's first vice president and second president felt pretty much the same about his body.

He once told a friend, who had inquired about his health, "I inhabit a weak, frail, decayed tenement, battered by the winds and broken in upon by the storms, and from all I can learn, the landlord does not intend to repair."

But despite his physical frailties and his temperamental shortcomings, John Adams was one of America's great patriots and most brilliant statesmen.

He served as a delegate to both Continental Congresses, was Commissioner to France during the Revolution, and later Minister to the Court of George III.

He and his wife Abigail were the first to occupy the present White House, where Mrs. Adams strung a clothes line in what's now known as the East Room and used it to dry the family's wash!

The Postal Service honored John Adams with a two cent stamp bearing his likeness, issued June 3, 1938, in Washington, D. C.



Now that spring has arrived, what are its weather characteristics and what causes them?

Spring naturally brings warming weather, for in springtime each day is longer than the night. But it also brings more rainfall in most areas of the country. Usually rainfall builds up until early summer and then tapers off into the dry fall months.

**Every farmer has his own special soil and water problems**

... fortunately ORO has some very special solutions.

When it comes time for planting, every farmer needs to decide what sorghum will perform best under his available soil and water conditions. ORO Hybrids are bred to realize the full growing potential in each growing area.

**ORO XTRA** - A new hybrid that combines all the excellent qualities of ORO XTRA - upright leaves, downy mildew and head smut resistance and high yield potential. Greenbug resistance has been added making it an effective hybrid for areas from Kansas to South Texas.

**ORO G** - This medium-season hybrid is designed for maximum grain production in areas where the greenbug is a pest. Good standability under a variety of conditions make this hybrid a good producer under dryland or irrigated production.

**ORO RECIO** - is adapted to areas with short growing seasons and areas where double-cropping is possible. Recio performs well under drought stress conditions and has tolerance to smut and MDMV. Unlike many other early season hybrids, Recio is tolerant to heat and moisture stress.

**RED TOP KANDY** - is the premier hybrid forage sorghum, possessing high tonnage potential and superior nutritional quality. It's energy efficient, drought tolerant and costs a lot less per acre to plant than corn.

You can depend on ORO for yield and dependability, it's "as good as gold."

See your ORO dealer today!!!

**ORO**  
"as good as gold"

**R. C. YOUNG**  
Seed & Grain Co.  
624 27th Lubbock, Tx. 79404 (806) 744-1408  
Weslaco, Tx. 78596 (512) 968-5508

The Spearman Independent School District tax office is currently accepting applications for residence homestead exemptions. The filing deadline is April 1, 1981.

The general homestead exemption is available to all homeowners, including mobile homes, and exempts the first \$5,000 from appraised value of the homestead.

Any person who was 65 years of age or older on January 1, 1981, or who is disabled under the definition found in the Federal Old-Age, Survivors and Disability Insurance Act under the Social Security Administration can be exempt an additional \$10,000 from appraised value with proof of age or disability.

Application forms were mailed earlier to all homeowners who qualified for an exemption in 1980. If you did not receive an application, call 659-2116, or come to the school tax office, 403 East 11th Street, Spearman.

**T W O B'S BEAUTY SUPPLY**  
Wholesale - Retail

Now open for your convenience!  
LOEL and LOUISE BOX - owners:  
Phone 665-3509  
118 E. Browning Pamaa

**Get The Red Edge And A \$3,900 Red Power Check For Purchasing A 3388 or 3588 or 3788 Thru March 31, 1981.**

**International Harvester**

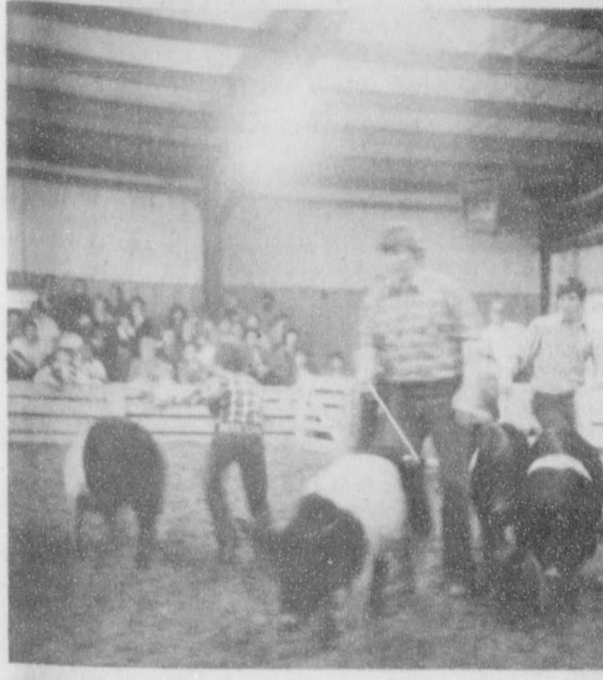
**For Details Contact:**

**VERES INTERNATIONAL, INC.**  
HWY 64 EAST • BOX 1252  
GUYMON, OKLAHOMA 73842  
405-338-2541

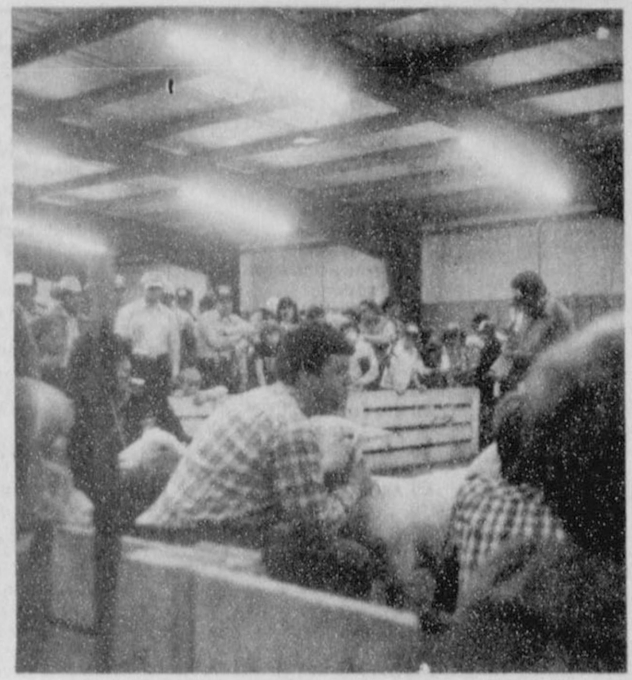




HANSFORD County 4-h teams were winners in the Livestock Judging Contests.



MIKE BURNAM



SCOT DAHL wins Showmanship in the Lamb Division.

**Lots of Times**  
Man is like a lamp wick--trimmed lots of times before he gets the right flame.  
-Journal, Milwaukee.

**Expensive**  
Experience is the best teacher. And it should be, considering what it costs.  
-Beehive, Kodiak, Alaska.

**Definition**  
Retirement: When you wake up in the morning with nothing to do and go to bed with it only half done.  
-Synopsis, York, Pa.

Hope for the best, but prepare for the worst.  
-English Proverb.

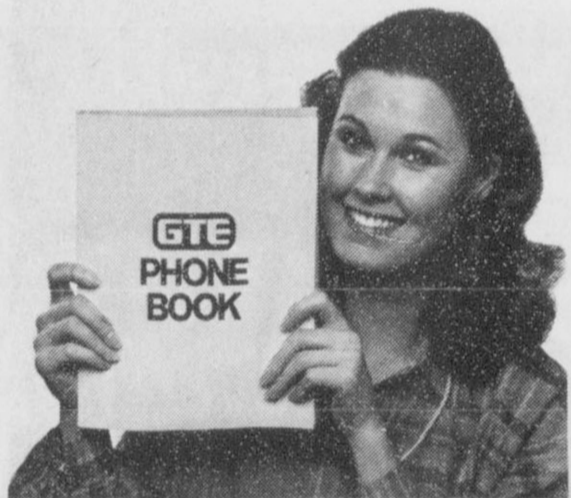
The natural flights of the human mind are not from pleasure to pleasure, but from hope to hope.  
-Samuel Johnson.

Appetite, with an opinion of attaining, is called hope; the same, without such opinions, despair.  
-Thomas Hobbes.

**Robert C. Byrd, Senator (D-WV):**  
"In the area of energy, here is an area which constitutes a gaping hole in Mr. Reagan's economic program..."

**Jim Wright, House Democratic leader of Texas:**  
"...The people want Congress to be cooperative. They do not want it to be supine."

**T. H. Bell, Education Secretary:**  
"The problem with busing is at the end of the bus ride you're still back in that racially isolated neighborhood."



**Help us write the book again.**

Your new telephone directory is going to press very soon. So now's the time to make any changes you'd like in the way you're listed.  
Is your name shown the way you want it to be?  
Would you like a listing for another member of your household (your spouse or kids or relatives or in-laws)?  
If you'd like to make any changes or add a dual name listing, now's the time to do it.  
Just call our business office and find out what the charges are, if any.

**GTE GENERAL TELEPHONE**



**Efficient heating helps**



**make your home Energy Checked for lower utility bills.**

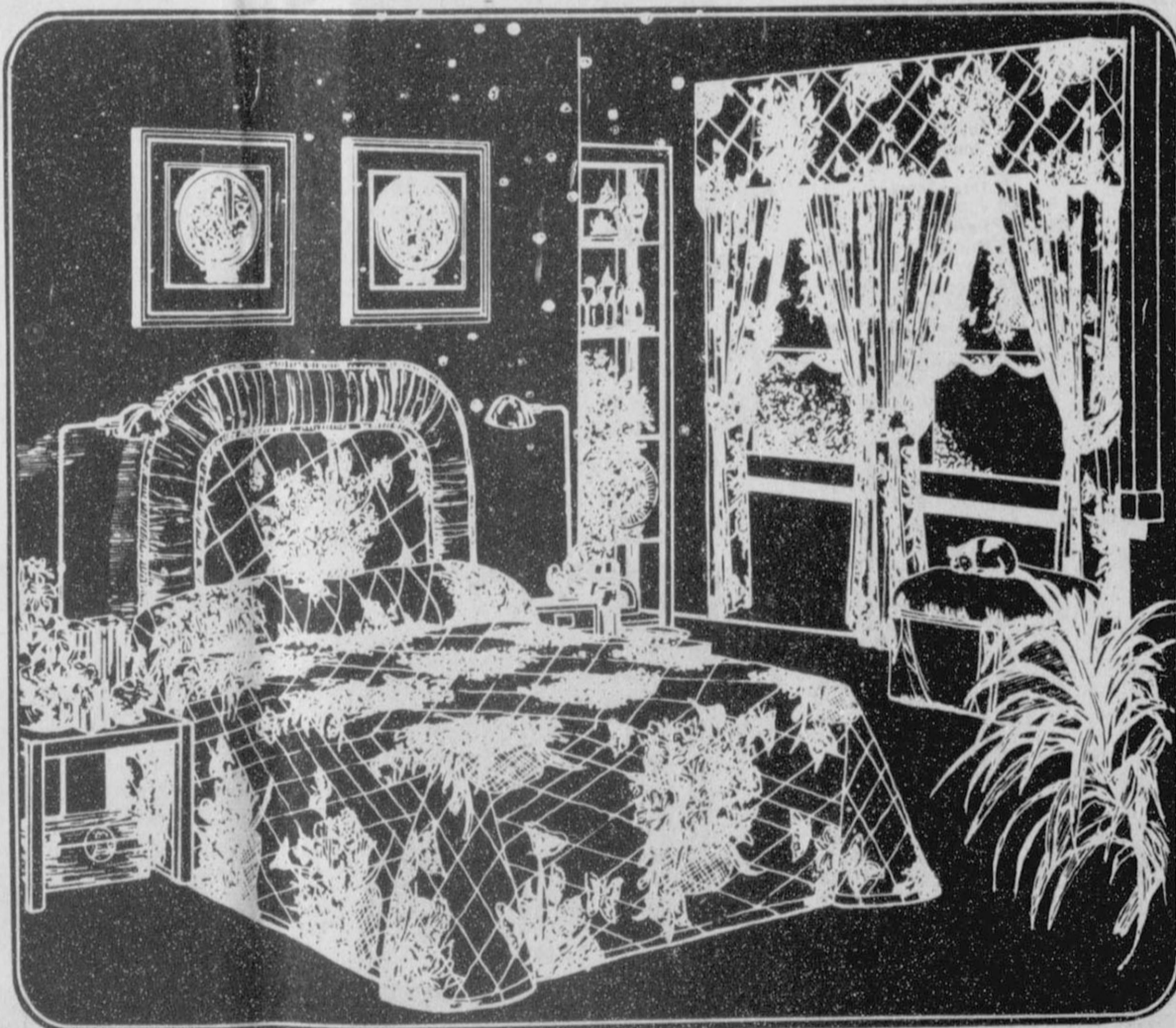
Energy efficient heating systems are just one feature of Energy Checked Homes that can help give you lower utility bills. The central heating unit is selected for maximum operating efficiency. Duct work is wrapped in insulation to prevent heat loss from ducts in unheated attics. Insulation in attics helps slow down heat loss, while caulking and weatherstripping seals cracks to prevent air leakage. Any home, old or new, can qualify as Energy Checked, as long as it meets certain energy efficiency standards. Just look for the Energy Checked sign in new homes, or call us for a qualifying inspection for your present home.

**COMMUNITY PUBLIC SERVICE**  
Your Electric Light & Power Company

# OPENING APRIL 1 ...

## Interior Expressions

922 S. Main (Next Door to Music, Etc.)  
PERRYTON, TEXAS



- Wall Coverings
- Window Coverings
- Bedspreads
- Blanket Covers
- Name Brand Carpets

- Ceiling fans
- Bath Accessories
- Ceiling Tiles
- Hardwood Floor Tiles

### Some of our brands:

- Nettlecreek
- Seabrook
- Sibyl Shepard
- ROSCO
- Bruce Hardwoods
- Carole Fabrics
- Armstrong
- Kirsh

Featuring:  
WOVEN WOODS — VERTICAL BLINDS — MINI-BLINDS

**We'll Decorate:**  
Residential, Commercial, or Anything!

*Norma Terkune and Pat Brown, Consultants*

FRIDAY

MARCH 27, 1981

FRIDAY
MARCH 27, 1981
EVENING
6:00 Macneil Lehrer Report
8:30 The Story
9:30 Barney Show With Tom And Jerry
11:30 What Will They Think Of Next?
6:30 Oklahoma Week In Review
8:30 M.A.S.H.
9:30 Tic Tac Dough
10:30 The Lesson
11:30 Carol Burnett And Friends
12:00 All In The Family
1:30 Barney Show With Spiderman
2:30 Video Comics
3:00 Washington Week In Review
4:30 Harper Valley PTA
7:00 The Incredible Hulk
8:30 The Brady Brides
9:30 The Brady Brides
10:30 The Brady Brides
11:30 The Brady Brides
12:00 The Brady Brides

Resin in an unexpected look behind the scenes at politics, a Cabinet member plots to kill the President. (Rated R) (90 mins.)
8 Jimmy Swaggart
11 News
1:00 30 Thirty Minutes With Father Manning
1:30 51 Movie (Science-Fiction) \*\*\* "Logan's Run" 1976
3:00 700 Club
3:30 5 Movie (Horror) \*\*\* "The Exorcist" 1973
5:00 8 The Blackwood Brothers
5:25 11 All Night At The Movies
5:30 5 Movie (Animated) \*\* "The Sandlot" 1978
8:00 2 Nero Wolfe
9:30 5 Movie (Comedy) \*\* "Up The Academy" 1970
10:30 9 News
11:30 5 Movie (Western) \*\*\* "Rio Lobo" 1970
12:00 9 Prisoner: Cell Block H
1:00 11 Top Of The Hill Set in the breathtaking atmosphere of the 1980 Olympics at Lake Placid...

8 The Lesson
11 Archie Campbell Show
10:00 4 Batman And The Super Seven
11:30 5 All Creators Great And Small
10:45 9 Your Income Tax
11:00 11:00 ABC Weekend Special
11:30 4 The Victory Garden
12:00 3 Oklahoma Gardening
3:00 700 Club
3:30 5 Movie (Western) \*\*\* "The Virginian" 1946
AFTERNOON
12:00 3 Oklahoma Gardening
3:00 700 Club
3:30 5 Movie (Western) \*\*\* "The Virginian" 1946

Joel McCrea, Bill Donlevy, The Virginian finds delight in a gay challenge who turns from him when western justice demands he hang his pal for slaying. (2 hrs.)
12:30 7 Weekend
1:00 3 Austin City Limits
1:30 7 Porter Wagoner Show
2:00 3 Matinee At The Bijou
3:00 5 Movie (Drama) \*\*\* "The Exorcist" 1973
4:00 3 Soccer Made In Germany
5:00 5 Movie (Drama) \*\*\* "Harold and Kumar Go To White Castle" 1973
6:00 3 Sports Spectacular
7:00 5 Movie (Drama) \*\*\* "The Exorcist" 1973
8:00 3 Sports Spectacular
9:00 5 Movie (Drama) \*\*\* "The Exorcist" 1973

True Value Open from Don Carter's Kendall Lanes in Miami, Florida. (90 mins.)
8:30 4 News Souvenir Program
9:30 9 America's Top Ten
10:30 12 Dusty's Treehouse
11:30 4 Families
12:00 4 Monte Carlo Show
1:00 9 Good Times
1:30 10 Championship Wrestling
2:00 11 Movie (Western) \*\*\* "Comancheros" 1961
3:00 8 IHS A Girls' Class A Basketball Championship Game (90 mins.)
4:00 3 Soccer Made In Germany
5:00 5 Movie (Drama) \*\*\* "Harold and Kumar Go To White Castle" 1973
6:00 3 Sports Spectacular
7:00 5 Movie (Drama) \*\*\* "The Exorcist" 1973
8:00 3 Sports Spectacular
9:00 5 Movie (Drama) \*\*\* "The Exorcist" 1973

8:30 8 The Lesson
9:00 4 Hill Street Blues
10:30 12 Fantasy Island A determined young woman travels back in time to pursue a murderous Jack the Ripper, and ends up leading him back to Fantasy Island, where he finds a whole new world of victims; and a shy man runs into romantic trouble when his fantasy of being paid to love women is fulfilled. (Repeat: 60 mins.)
11:30 8 Rock Church
12:00 11 Solid Gold
12:30 5 Special Delivery
1:00 3 Backstage: A Look At Barnaby Jones in a documentary look at the off-camera activities of a popular television series, writers, actors and the producer discuss their roles in getting programs from initial conception to finished broadcast presentation. (Repeat: 60 mins.)
2:00 9 ABC News
3:00 8 Zola Levitt
4:00 11 Movie (Drama) \*\*\* "Ten North Frederick" 1958
5:00 8 Gary Cooper, Diane Varsi: A man allows a romance to overshadow his political ambitions. (2 hrs.)

8:30 8 The Lesson
9:00 4 Hill Street Blues
10:30 12 Fantasy Island A determined young woman travels back in time to pursue a murderous Jack the Ripper, and ends up leading him back to Fantasy Island, where he finds a whole new world of victims; and a shy man runs into romantic trouble when his fantasy of being paid to love women is fulfilled. (Repeat: 60 mins.)
11:30 8 Rock Church
12:00 11 Solid Gold
12:30 5 Special Delivery
1:00 3 Backstage: A Look At Barnaby Jones in a documentary look at the off-camera activities of a popular television series, writers, actors and the producer discuss their roles in getting programs from initial conception to finished broadcast presentation. (Repeat: 60 mins.)
2:00 9 ABC News
3:00 8 Zola Levitt
4:00 11 Movie (Drama) \*\*\* "Ten North Frederick" 1958
5:00 8 Gary Cooper, Diane Varsi: A man allows a romance to overshadow his political ambitions. (2 hrs.)

SATURDAY

MARCH 28, 1981

MORNING
6:00 7 Amarillo College
11:30 5 Movie (Western) \*\* "Jesse James at Bay" 1941
6:15 2 Buyer's Forum
6:30 2 Jonny Quest: Time Out
6:45 9 News
7:00 3 Godzilla-Hong Kong Phooey; Ask NBC News
7:30 2 Superfriends Hour; School Rock
8:00 3 Ever Increasing Faith
9:00 9 Farm Report
10:00 10 Tom And Jerry Comedy Show; In The News
11:30 5 Movie (Comedy) \*\*\* "North Avenue Irregulars" 1979
9:00 4 NBC Magazine With David Brinkley
9:30 9 News
10:00 3 Dallas Discord
10:30 5 Austin City Limits
11:00 3 The Tonight Show
11:30 3 The Tonight Show
12:00 5 Movie (Comedy) \*\* "Hill" Richard Shull, Dan

MORNING
6:00 7 Amarillo College
11:30 5 Movie (Western) \*\* "Jesse James at Bay" 1941
6:15 2 Buyer's Forum
6:30 2 Jonny Quest: Time Out
6:45 9 News
7:00 3 Godzilla-Hong Kong Phooey; Ask NBC News
7:30 2 Superfriends Hour; School Rock
8:00 3 Ever Increasing Faith
9:00 9 Farm Report
10:00 10 Tom And Jerry Comedy Show; In The News
11:30 5 Movie (Comedy) \*\*\* "North Avenue Irregulars" 1979
9:00 4 NBC Magazine With David Brinkley
9:30 9 News
10:00 3 Dallas Discord
10:30 5 Austin City Limits
11:00 3 The Tonight Show
11:30 3 The Tonight Show
12:00 5 Movie (Comedy) \*\* "Hill" Richard Shull, Dan

UNITED Supermarkets
PRICES GOOD THRU MARCH 28TH
WIN UP TO \$1,000 CASH
53 WAYS TO WIN PLAY...
BINGO BONANZA
CASH SAVINGS
GREEN STAMPS
S&H
PLUS FRIENDLY SERVICE
HI-DRI TOWELS 49c
HI-DRI BATH TISSUE 79c
ALPO DOG FOOD \$1.69
RANCH STYLE BEANS 3 15 OZ. CANS
HI-C DRINKS 64-OZ. 89c
7-UP REG. 6 PK. 32 OZ. \$1.89
UNITE BREAD 1 1/2 LB. LOAF 49c
EXTRA ABSORBENT PAMPERS 24 CT. \$2.79
FOLGER'S FLAKED COFFEE 13 OZ. \$1.98
DOUBLE STAMPS WITH A \$2.50 PURCHASE OR MORE EXCLUDING CIGARETTES SAT.
MISS BRECK HAIR SPRAY ALL YAR 1 OZ. \$1.49
MISS BRECK SHAMPOO DRY BILT NORMAL 1 OZ. \$1.19
MENNEN SKIN BRACER 4 OZ. \$1.29
BISQUICK 40 OZ. \$1.39
HEINZ HAMBURGER SLICED DILL PICKLES 16 OZ. 69c
KEEBLER PRETZELS BUTTER BRANDS BUTTER HIBBLERS BUTTER KNOTS 8 1/2 OZ. 69c
STRAWBERRIES PT. 69c
SUNKIST NAVEL LB. 29c
ORANGES LB. 29c
FRESH BUNCH SPINACH EACH 29c
CARROTS 16 OZ. 3 BAGS 99c
POTATOES NO. 1 RUSSET BAKER'S SIZE 3 LBS. 99c
FRESH START LAUNDRY DETERGENT 35% OFF \$2.49
34 1/2 OZ. 2
DERM MASSAGE 32 OZ. LIQUID 20% OFF LABEL \$1.29



## Many Lumber Firms Make Energy Check

Texas homeowners in many communities have discovered a new way to reduce their heating and cooling costs while they conserve energy.

This is accomplished by evaluating every aspect of their home's energy conservation potential through a unique survey called the Lumbermen's Energy Audit.

Available through local lumber and building materials dealers, the audit allows the homeowner to gather energy conservation data concerning their own home and then have that information evaluated by a sophisticated computer program which will tell the homeowner exactly where or in which ways his home is wasting energy, what steps might be taken to correct the problems, and precisely what cost savings might be projected as a result of those improvements.

The Lumbermen's Energy Audit Program was developed for the local lumber and building materials dealers through the Lumbermen's Association of Texas.

The sophisticated computer program was developed by Dr. Bill Stewart of the Texas Agricultural Extension Service at Texas A&M University.

The program allows homeowners to determine how much energy and energy costs might be saved by adding insulation to attics, walls for crawl space, etc. It evaluates the potential impact of other items ranging from window shades to storm windows.

Interested individuals should contact their local participating lumber and building material dealer for additional information or to pick-up the necessary audit forms.

The Lumbermen's Energy Audit Program is unique in that it utilizes information compiled by the homeowner about a specific home rather than using general formulae or estimations.

### Rising Costs

Many men would keep themselves in the best of spirits if prices were lower.

-Sun, Adak, Alaska.

What you don't expect doesn't disappoint you.

The greatest force in chemistry is a pretty girl.

A hard task is eased by the application of immediate energy.

The hard work of some people often explains their success.

A little politeness goes a long way and is usually repaid two-fold.

Usually the victim of gossip has something others are jealous of.

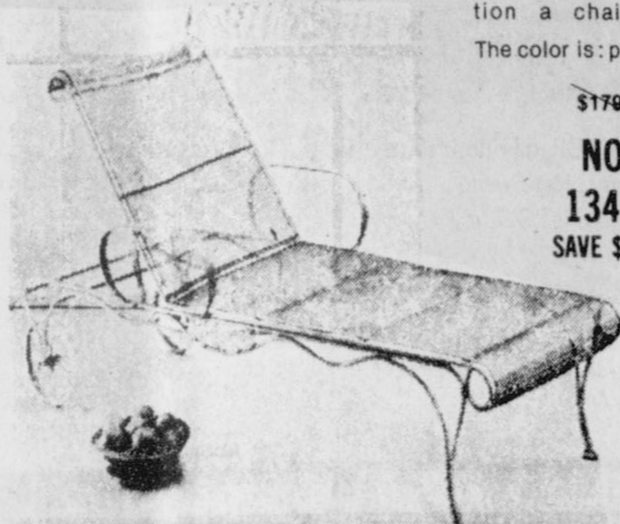


SCOTT HENDERSON

# OOPS!!!

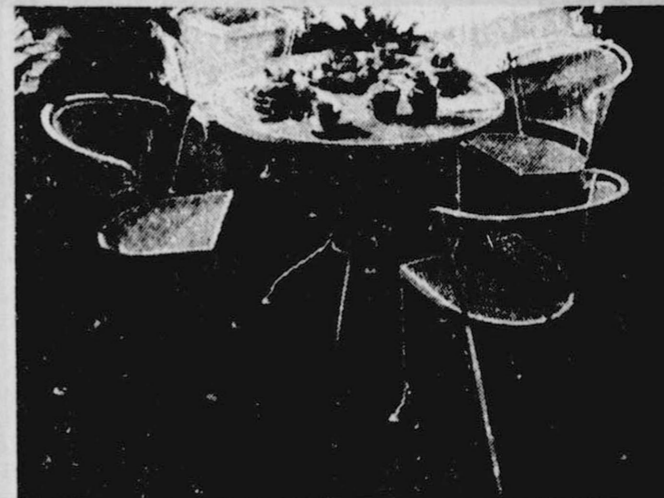
We Goofed On Our Shipping Instructions And Received A Carload Of Woodard Outdoor Furniture One Month Ahead Of The Season ... So You Take Advantage Of Our Oops Mistake And Enjoy Big Discounts On Quality Woodard Outdoor Furniture ... At Savings You Normally Never Get On Woodard.

Pictured below are a few examples:



From the Mayfield Collection a chaise lounge. The color is: pineapple.

~~\$179.50~~  
**NOW**  
**134.50**  
SAVE \$45.00

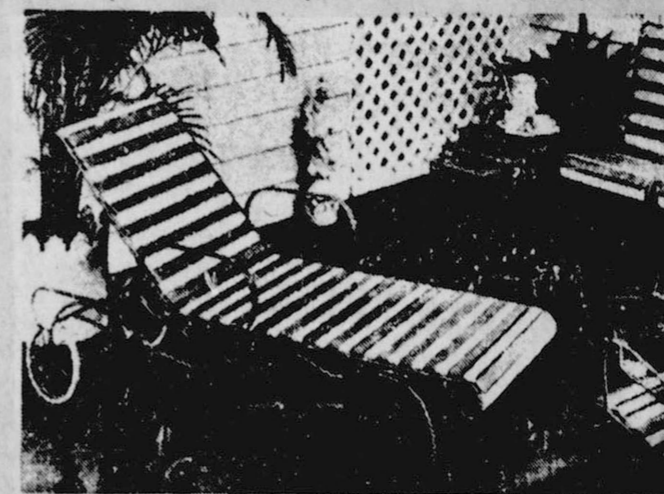


48" round mesh-top table with four matching barrel chairs. Choice of pineapple, white or green.

~~\$399.50~~ **NOW \$299.50** SAVE \$100.00

Springbase-barrel chair. Choice of two colors: White, pompeian green.

~~\$119.95~~  
**NOW**  
**\$89.95**  
SAVE \$30.00



From the Desert Flower Collection ... a chaise lounge reduced from ~~\$259.95~~ **NOW \$179.95** SAVE \$80.00

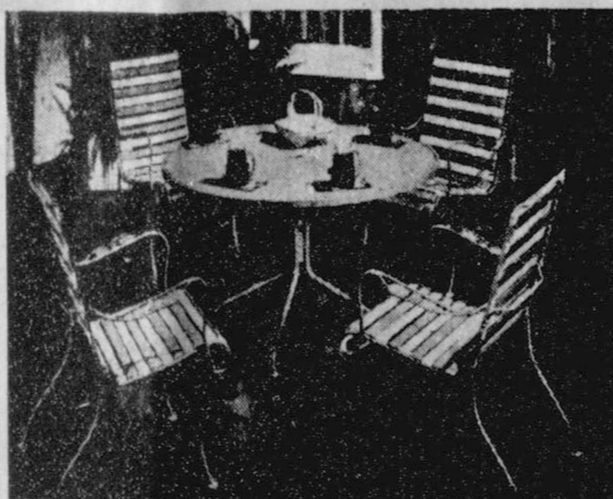


From the Desert Flower Collection, a spring-base chair.

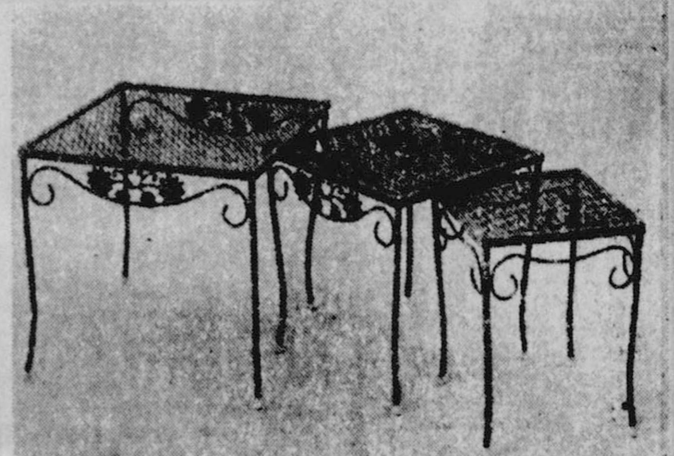
~~\$129.95~~  
**NOW**  
**\$98.50**  
SAVE \$31.00

From the Mayfield Collection ... a spring-base chair. Choice of Pineapple, pompeian green, or white.

~~\$119.95~~  
**NOW**  
**\$89.95**  
SAVE \$30.00



From the Desert Flower collection ... 42" glass table and four matching chairs. ~~\$598.50~~ **NOW \$449.50** SAVE \$149.00



A nest of three tables. Choice of three colors: pompeian green, pineapple, or white. ~~\$125.00~~ **NOW \$94.50** SAVE \$30.00

# WALL TO WALL SALE

## Sports Tally

717 W. 7th Spearman, Texas

Complete Sport equipment and sportwear

Ladies-Mens-Children <b>Shoes</b> Jogging & Tennis		Reg. \$12.99 to \$47.99 Now \$10.39 to \$38.39 Nike-Converse-Puma
Ladies & Mens <b>Sweaters</b> Levi-Jockey & Obermeyer	Blue & Tan 100% Cotton Nike	<b>T Shirts .99</b>
Mens Velour <b>Shirts</b> Reg. \$39.50	Blue & Brown By Jockey	<b>SKI Jackets</b> Pants & Overalls Ladies & Mens 1/2 price limited quantity
Obermeyer <b>Wind Shirt</b> Reg. \$14.50 100% Nylon	Long Sleeve Sport <b>Shirts</b> Levi & Jockey Sizes S to X-Lg.	<b>30% off</b>
All Fishing & Hunting Supplies <b>20% off</b>	<b>NOW!</b> Niki Roller Skates Reg. \$87.99	<b>\$59.00</b>
<b>STORE WIDE CLEARANCE</b>		
<b>ENTIRE STOCK 20 to 50% OFF</b>		

OPEN  
MONDAY THRU SATURDAY  
8:30 - 5:30



**BOON FURNITURE CO.**

plains shopping center  
Spearman, Texas

723 W. 7th  
659-3701

Credit Terms Available  
90 Days Same as Cash  
6 & 36 Month Contracts