

# The Spearman Reporter

Volume XXX

Spearman Reporter, Spearman, Hansford County Thursday, January 28, 1937

SAMPLE COPY

Number 6

## DON'T NAME IT

By HONEST BILL

Hansford County, is joining the remainder of Texas in over-subscribing their Red Cross quota, to relieve suffering among the more than million refugees of the flooded area. This writer is proud of the Hansford County record. We were asked for \$40.00 in our quota and have already sent near two hundred dollars to the National Red Cross. Perhaps this ratio of over-subscription is more outstanding than any in this section.

It is difficult to keep one's mind off the terrible flood situation, perhaps this topic is the uppermost subject on the minds of the entire nation. A statement made by L. S. McClellan covers the situation more satisfactorily than any the writer has heard, he said in effect the flood is more horrible, terrifying and devastating than war.

With the flood and strike, the big item of news, the war in Spain, has become a back number.

The automobile strike, in the opinion of the writer is of greater significance than the average citizen accepts it. While there is not confirmation of the rumor, it persists, to the effect that General Motors dealers are urged to cut expenses and concentrate on sales of used cars, the idea being that distribution of new cars will be a matter of perhaps 30 to 60 days. The fight will be to a finish.

Regardless of the justice in the argument, countless thousands of people must suffer economic losses because of the difference between workers and car manufacturers. This paper loses a revenue from advertisement that is badly needed at this time. And that one is of little significance in comparison to the thousands of employees and dealers over the country that suffer loss of revenue during the time a small (comparatively speaking group) of employees work out their differences with their employers.

Washington, Old Tack, has this newspaper with his corn on prosperity. In effect that is greatest weather prophetic the end of the drought this year, and admits we have a good chance for a wheat crop and feed production in this year. Read his comments and for yourself that the minds of great men travel in the same channel.

This writer would like to see Hansford County build a hospital. This WPA project seems as real and practical as any one item we could select as a basis for working program this year. What do you as a reader think. The Reporter will offer a prize of \$5.00 for the best article submitted next week on this subject. Remember the argument does not necessarily favor the building of a hospital. This newspaper would like to get the thoughts of the people, and an article opposed to the hospital will have the same consideration as one favoring it. Articles will be judged on logic of argument and sincerity of writer. A committee of 3 will be selected to pass on the articles submitted to the paper on or before Tuesday noon of next week.

This is too good to keep. My boy Billie has gone goofy over basketball. Recently he was caught in a bit of mischief at the school and was sentenced to the punishment of staying in for two weeks each afternoon after school. It just about ruined his basketball practice, and he takes it so serious that it was a major problem with him for a couple of days. He finally decided he would go. Mr. Higgins and proposition in his whip him as punishment in the place of staying-in after school. The deal was made, and it was a streak you and me, it was a stroke of good judgment on the part of my offspring. You see Mr. Higgins is the coach for the Junior boys, and although he threatened and threatened the life out of Bill Jr., he hardly poured - it - on hard to raise the dust off the Bill's pants.

Every Hansford citizen should be up to the fact that we must size and show our strength to get any of the needs of this section of the state. The county should have a membership more than 500 in the Hansford County Agricultural Association. It is not a matter of loyalty, it's an absolute necessity.

## BASKETBALL SCHEDULE FOR REMAINDER OF 1937 SEASON

Coach Stowe has completed the revised basketball schedule for the Spearman basketball teams as follows:  
Friday Jan. 29 and 30th, Canadian tournament at Canadian.  
Feb. 2, Canadian at Spearman.  
Feb. 5, Perryton at Spearman.  
Feb. 12 and 13th Stratford tournament at Stratford.  
Feb. 16, Gruver at Spearman.  
Feb. 19 and 20, District tournament at Pampa. Spearman will have to defeat the Gruver basketball teams in order to enter the District tournament at Pampa.

## Rep. Boyer Appointed To Many Committees

Representative Max W. Boyer of the 124th District has been appointed by Speaker Calvert to four committees of the House of Representatives. The committees to which Boyer has been appointed are Insurance; Highways and Motor Vehicles; Oil, Gas, and Mining; and privileges, Suffrage, and Elections. The latter committee: Privileges, Suffrage, and Elections; is engaged at this time in hearing testimony in a contested seat in the House of Representatives.

## BRIDGE TOURNAMENT TO BE HELD AT LEGION HALL

Sponsored by the Spearman Bid a Bit Bridge Club, a tournament will be held at the American Legion Hall Friday afternoon Feb. 12.

The tournament is planned in the nature of a community contest and bridge players from surrounding communities will be invited to contest not only individually, but as representatives of their respective communities. Attractive prizes will be given in the contests.

## Must Pay Poll Taxes To Vote In Feb. 6th Hospital Election

Considerable interest is being manifested in the forthcoming bond election, in which qualified voters must decide whether or not Hansford County shall issue bonds in the amount of \$25,000 to join with the Federal government in building a county hospital. Qualification to vote include assessed tax payers and holders of poll tax or exemption receipts.

## Brother of A. N. Meadows In Flooded City

Mr. and Mrs. A. N. Meadows, stated Thursday that they had not heard from Mr. Meadows brother, W. H. Meadows, who is Supt. of the Post Office at Hyland Park station in Louisville, Kentucky. The local family wrote their brother when first word of the floods was received in this city. Although they have not heard from him, they feel that he is perfectly safe, and being a Federal employee, is probably engaged in the rescue work in the flooded area.

## HANSFORD FDA ASSOC. TO MEET FEB. 4TH

The Hansford County Farm Debt Adjustment Committee will hold its next regular meeting on Thursday Feb. 4 at 10 o'clock a.m. The meeting will be held in the County Court house at Spearman.

Any farmers who have any debt problems which they wish to present to the committee are urged to be present at the above stated meeting.

## The Blacksmith's Gift To Be Shown Here as Free Attraction

E. C. Womble, local implement dealer will hold all day open house and an all day program of See No. 1 on back page

## On the Gasoline Circuit

By A. B. CHAPIN

THE NIGHT YOU SWIPED DAD'S CAR TO TAKE HER TO THE JUNIOR DANCE AND YOU SKIDDED - AND SMACKED A WHEEL - AND IT WAS 2.30 A.M. - AND - AND - OH BOY, WHAT A MESS !!!



## PROSPERITY ISSUE OF REPORTER PRESENTED TO READERS

This issue of the Spearman Reporter going to every home in Hansford county, is the annual Prosperity Issue of the Hansford County newspaper. Each year the management of the paper reprints the record of moisture for the past 1-2 generation now comparisons can be made relative to crop prospects. In view of the fact that all Hansford county prosperity depends wholly upon moisture, this record affords a bit of amusement, and perhaps some solid thought. This year the local paper management bases the idea of prosperity on the fact that our county received 22.47 inches of moisture last year, more than we have received in this county since 1928.

If the truth be known, we do not at this date have the prospects of crop production that we had this time last year. However, it is generally accepted that we have a chance for more sub-soil moisture at this time than last year.

One fact that does not seem favorable is the knowledge that in recent flood years our moisture has been rather limited. However, back in 1884, the record for floods in the East, previous to this year, the Panhandle county enjoyed 33.91 inches of rainfall.

Any reader who wants an additional copy of the rain chart printed in this issue of the paper can secure one by asking for it of any merchant whose advertisement appears in this paper.

## WARDROBE CLEANERS MOVE TO NEW HOME

The Wardrobe Cleaners moved their equipment to the building just north of their former location, Tuesday of this week. The new home is larger than the former quarters, and some improvements are being made in rearrangement of the front office, and repapering the building.

## Legion Members Fail To Act On Request For Deed To Hall

Members of the Hansford County American Legion were requested to deed the American Legion Hall building to mortgage holders, at a meeting held Tuesday of this week. The proposition was to the effect that the Legion deed the Hall to the mortgage holders and let them sell the building and the lot would be cleared of indebtedness. Something like seven hundred dollars and back taxes amounting to near \$200.00 is held against the Legion property. At the Tuesday meeting only a few of the members were present, and no action was taken on the proposal.

## GEORGE IS PAPA

Our next door neighbor, George Schollenbarger, head man at the Campbell's Tailor Shop, may press your pants cross-wise this week. George is going into training with four cornered pants now. It happened last Tuesday when little Phyllis Kay, seven pound daughter, was born at the home of Mr. and Mrs. Geo. Schollenbarger.

## Hutchinson County Has Special Farm Meet

The Hutchinson County Agricultural Association met on Wednesday, January 20th at Stinnett. This being their annual meeting officers were elected for the ensuing year. They were: W. R. Forester, president; Ed King, vice-president; Mrs. P. H. Jameson, sec-treasur.

## HANSFORD COUNTY AGRICULTURAL BODY TO BE REORGANIZED

At a meeting of Hansford county citizens held at the Court house Monday of this week a temporary organization was perfected, and committees appointed to re-organize the land owners and citizens of the county into one of the impressive agricultural associations of the state. A. E. Ferguson, Gruver, was made temporary chairman, and Walter A. Gillespie of Morse temporary secretary-treasurer. The temporary organization mapped out a plan of meetings to enlist membership as follows:

Meeting to be held at Spearman for Saturday Jan. 30, beginning at 1:30 p. m. All business men, farmers and interested citizens are asked to attend this meeting and learn of the importance of the proposed county organization.

A meeting to organize the Morse district agricultural association is called for Monday Feb. 1. The meeting will be held at the Morse school house.

A meeting to organize the Gruver community into a similar organization is called for Tuesday Feb. 2, and will be held at the Gruver school house.

Hitchcock and Osio communities will be organized into agricultural associations Feb. 3 and 4th, with the meeting to be held in the respective school houses.

See No. SIX on back page

DR. POWELL - Eyes, Ear, Nose and throat specialist will be at Dr. Gower's office Wednesday, February 3rd. Glasses fitted, Tonsils and adnoids removed.

## HONEST BILL TO BE MAYOR PRO-TEM FOR TWO DAYS FEB. 3-4

Due to the fact that Mayor C. W. Cooke will not be able to accept an invitation to be the guest of the Amarillo C. of C. on a two days booster trip from that city to Denver, Colorado, Bill Miller will be Mayor Pro-Tem, Feb. 3 and 4th.

Miller will represent Spearman as guest for Hansford county on the first special train to be run over the new Santa Fe line from Boise City, Oklahoma to Las Animas, Colorado.

Colorado and the Gulf Coast will be brought closer together and an outlet for a vast Plains agricultural empire will be established, Feb. 1, when the Santa Fe Railway opens its new line between Boise City, Oklahoma and Las Animas, Colo.

Special trains out of Denver Pueblo and Amarillo will inaugurate rail service over the 116 mile route, and scores of communities will join in celebrating the event. Governors of Texas, Oklahoma New Mexico and Colorado have been asked to participate.

Completion of the new line, longest piece of rail construction in the nation since 1931, will save from 142 to 226 miles in the movement of freight over the Santa Fe to and from Colorado, from and to points in Texas, and on portions of the Santa Fe in Oklahoma and New Mexico.

H. B. Lautz, general manager of the Santa Fe, announces that regular service over the new line starting Feb. 1, will consist of mixed trains which will be operated daily between Amarillo and La Junta.

## POLL TAX DEADLINE IS NEXT SATURDAY

Next Saturday, January 30, is the last day to pay poll tax or get exemption certificates, according to the tax assessors and collectors office, as January 31 falls on a Sunday and the office will not be open that day.

After Saturday also penalties are added to unpaid county, state and school taxes.

Persons eligible for exemptions are those now 21 years of age, who were not 21 on Jan. 1, 1936.

Voters are urged to pay poll taxes or get exemptions as elections of school officials comes this year possibly state amendments and VOTE FOR THE Issuance of Bonds for a COUNTY Hospital.

See No. 2 on back page

As continuous rains and floods in the Ohio and Mississippi river areas send water rising to its highest levels in history, Spearman citizens join other towns in See No. 2 on back page

## BOYKIN RECEIVES WIRE MAY GO ON DUTY IN FLOODED AREA

A wire from the Adjutant Gen. of the United States received by G. L. Boykin today (Thursday) asked him if he could report for duty as a Reserve officer in the flooded area, if called on by the President. Boykin wired back his willingness, but asked that arrangements be made for leave with the Extension Dept. of Agriculture.

## Westmorland Funeral Rites Held At Guymon

Rev. Lewis E. Shankle of Guymon, paid beautiful tribute to the life of pioneer G. C. Westmorland in a funeral service held at Guymon Sunday Jan. 24. Rev. Shankle was assisted in the services by Rev. Geo. C. White. Interment was at the Guymon cemetery following the services.

## HELEN BUCHANAN IS RECOVERING FROM GUN SHOT WOUND

A telegram received in Spearman Wednesday night of this week brought the information that Helen Buchanan, daughter of Mr. and Mrs. J. H. Buchanan, had passed the danger crisis, and was on the road to recovery from injuries sustained from a gunshot wound received Monday of this week.

The accident occurred in the apartment home of Miss Buchanan's uncle, hardware dealer, at Rio Hondo, Texas. The former Spearman girl was unloading a revolver and slipped on a rug losing her balance. The revolver was discharged sending a bullet thru her left lung and shoulder.

Miss Buchanan was rushed to a Sanitarium at Harlingen, Texas. Her father J. H. Buchanan and Miss Edna Buchanan a sister of Temple, Texas rushed to her bed side Tuesday. Mrs. Buchanan left Tuesday morning from Spearman.

Miss Buchanan has been working for her uncle for several months at Rio Hondo, and lived with the family in the apartment home above the hardware store.

## Farm Program Is To Be Broadcast Over KGNC February Twentieth

County Agent Lester Boykin will be responsible for a thirty minute radio broadcast featuring Hansford county agriculture on the morning of February 20. The program is arranged for 7 a. m. to 7:30 a. m.

## Spearman Home Bakery Making Improvements

This week workmen are redecorating the interior of the Spearman Home Bakery. Some new equipment in the form of counters and cabinets are being added. The interior is very attractive. The Home Bakery is housed in the building formerly occupied by the Quality Bakery equipment.

## FDA TO MEET AT STINNETT FRIDAY

The Hutchinson County Farm Debt Adjustment Committee will hold its next regular meeting on Friday Feb. 5th at 10 a. m. The meeting will be held in the Court house at Stinnett in the office of M. E. McCormick.

Any farmers who have any debt problems which they wish to present to the committee are urged to be present.

The FDA committee handles all matters confidentially and strive to help debtor and creditor alike. The Hutchinson committee consists of E. T. Hester, chairman; T. H. Williams, secretary; and C. D. Works.

Blodgett Farmers To Meet At Black School Friday Evening Feb. 5th

Farmers of the Blodgett community will not meet at the Blodgett school house as announced, but at the Black school house Feb. 5. A special speaker on SCS will be present.

## SIDE LIGHTS

By MARVIN JONES

How valuable is a program of soil and water conservation? It is estimated that one dust storm in the western part of the United States in 1934 swept three hundred million tons of topsoil off the wheat plains.

Four hundred million tons of soil are washed into the Gulf of Mexico each year by the Mississippi River. Each year water and wind erosion together remove beyond use three billion tons of soil.

The present annual money loss to owners of the land is estimated at four hundred million dollars.

We are losing value in dollars which dollars cannot replace, once the precious basis of our national wealth is gone. Of course we cannot rearrange nature, but we can do our best to prevent the waste for which man has been largely responsible.

It is important to remember that conservation of soil and conservation of water must be considered together as essential features of any program which seeks to maintain a productive land. Economizing the rainfall and using the water supply in our section in the best possible way is an all-important parallel to the work now being done in soil conservation.

Last fall when the President's Drouth Committee visited the Panhandle, I suggested the following lines of action:

- 1. Building dams and creating small lakes.
  - 2. Small irrigation projects where possible.
  - 3. Simplifying the farm program with a large share of the responsibility in local hands.
  - 4. Low interest rates for farm credit.
  - 5. Provision to encourage ownership of farm homes.
  - 6. An adequate range program.
- Our plains country has numerous draws and small streams that could be adapted very well to water conservation by the building of earthen dams to impound the water. Small streams which often dry could be made valuable in this way. experimental work has been done. I hope such work forward on a large enough scale to reach every county.
- This additional water supply would be invaluable in times of drouth such as our section has experienced during the last several years.
- Trees can be planted around the ponds and lakes and the countryside will be made more beautiful. The water can be stocked with fish and game sanctuaries can be promoted. Picnic grounds swimming pools and other facilities for recreation can all be included.

## EMPLOYERS GRANTED THIRTY MORE DAYS

Texas employers this week were granted an additional thirty days in which to file their 1936 reports and to pay their first contribution under the Texas Unemployment Compensation Act, according to chairman-director R. B. Anderson.

First payments to the Commission, under the new order will be due not later than Feb. 25. The original deadline set by the Commission was Jan. 25.

The Texas Unemployment Compensation Commission granted employers this additional month because of the short time which we have had to explain the duties of the employers under the Act, and to assist employers in complying with the provisions of the law, Anderson declared.

Regulation Four, previously issued by the Commission prescribed penalties for employers who did not pay their first contribution by Jan. 25. This new order, of course, relieves all employers from any penalties until after Feb. 25.

The Commission announced that employers who pay their full 1936 contribution by February 25 will receive the maximum credit on their Federal tax, since the Federal Government has extended its deadline for contributions from Jan. 31 to March 31.

The Commission now has fieldmen stationed in Amarillo. I wish to urge all employers who have problems in connection with the Act to take their problems to the nearest fieldman. All fieldmen may be reached through the C. of C. in Amarillo.

Advertisement for subscription services with contact information for various locations.

Name \_\_\_\_\_ Address \_\_\_\_\_

Houston, Dallas, San Antonio, Austin, El Paso, Fort Worth, Lubbock, Amarillo, Reno, Las Vegas, Sacramento, San Francisco, Portland, Seattle, Chicago, St. Paul, Minneapolis, Kansas City, Omaha, Denver, Salt Lake City, Reno, Carson City, Boise, Idaho, Portland, Oregon, Spokane, Washington, Tacoma, Seattle, Vancouver, British Columbia, Alberta, Saskatchewan, Manitoba, Ontario, Quebec, New Brunswick, Nova Scotia, Prince Edward Island, Newfoundland.



### International Sunday School Lesson

By Dr. J. E. Nunn

General Theme:—The Financial Cost of Alcoholic Beverages

Quarterly Temperance Lesson Proverbs 21:17; 23: 20-21 - Matt. 24: 45-51.

Matthew 24: 45. Who then is a faithful and wise servant...

46. Blessed is that servant, whom his lord when he cometh shall find so doing.

47. Verily I say unto you, that he shall make his ruler over all his goods.

48. But and if that evil servant shall say in his heart, My Lord delayeth his coming;

49. And shall begin to smite his fellow servants, and to eat and drink with the drunken;

50. The lord of that servant shall come in a day when he looketh not for him, and in an hour that he is not aware of.

51. And shall cut him asunder and appoint him his portion with the hypocrites; there shall he weeping and gnashing of teeth.

Golden Text:—Wherefore do ye spend your money for that which is not bread?

God gives us men! A time like this demands Strong minds, great hearts, true faith and ready hands.

Men whom the lust of office does not kill; Men whom the spoils of office Men who possess opinions and a will;

Men who have honor—men who will not lie.—Holland. Drink Brings Poverty

17. "He that loveth pleasure shall be a poor man; He that loveth wine and oil shall not be rich."

18. "He that loveth pleasure shall be a poor man, and if rich shall never be rich. He that loveth pleasure, He is interested and invests in what he calls a good time. He is fond of frivolity. He relishes revelry. He neglects serious duty. He ignores actual expenses. He loveth wine. He likes the taste. He craves the thrill. He alleges he drinks to drown his depression. Alas, he pays in strength. He cannot fight the battle of life. If moneyed, MA) a man will grow poor, and SO) noneless he never grows rich. The Sober Servant:—Matt. 24: 45-47

"Blessed is that servant, when his lord when he cometh shall find so doing. He believed his master was coming again as promised and because continually on duty, he was ready for the reckoning any time. His reward was assured and it would involve promotion to greater responsibility. Learn a lesson here from Abraham Lincoln: Abraham Lincoln was an earnest advocate of temperance. In every way he seems to have tried to help other people to find the "safe waterway of total abstinence," from strong drink. Lincoln's idea of temperance did not mean indulging even moderately in what is dangerous. He often defined temperance as "the moderate use of that which is good, and total abstinence from that which is evil."

temperance. In every way he seems to have tried to help other people to find the "safe waterway of total abstinence," from strong drink. Lincoln's idea of temperance did not mean indulging even moderately in what is dangerous. He often defined temperance as "the moderate use of that which is good, and total abstinence from that which is evil."

The Scottish Servant There shall be weeping and gnashing of teeth. V. 51. Drink, like death, loves a shining mark. For example, two of the greatest poets, English and American Robert Burns and Edgar Allan Poe, were victims of drink. On one occasion Burns went to a party at the Globe Tavern, where he waited late, and on his way home heavy with liquor, he fell asleep in the open air. The result in his weakened state of body, was disastrous. He was attacked by rheumatic fever, his appetite began to fail, his black eyes lost their lustre, his voice became tremulous and hollow. Death came in the following July.

Edgar Allan Poe, the poet, was engaged to marry one of the most brilliant young women of New England. After the manns were published he was seen reeling through the streets of the city which was the lady's home; and in the evening that should have been the evening before the bridal, in his drunkenness, he committed at her house such outrages as made necessary a summons of the police. He was afterwards found and dying and closed his life in the hospital.

Two Views Concerning Whiskey Robert Ingersoll and the Rev. Mr. Buckley were great friends in spite of the fact that Mr. Ingersoll was an unbeliever and the latter a minister of the gospel. Concerning liquor, each had his views, as set forth below:

Dear Mr. Buckley: I am sending you some of the most wonderful whisky that ever drove the skeleton from the feast or painted landscape in the brain of man. In it you will find the sunshine and shadow that chase each other over billowy fields; the breath of June, the carol of the lark, the dew of the night, the wealth of summer and autumn's rich content, all golden with imprisoned light. Drink it and you will hear the voices of men and maidens singing the Harvest Home, mingled with the voices of children. Drink it and you will feel within your blood the starred dawns, the dreamy tawny dusk of perfect days.

Your friend, Robert Ingersoll

Dear Mr. Ingersoll: I am returning to you some of the most wonderful whisky that ever brought a skeleton into the closet or painted scenes of bloodshed and lust in the brain of man. In it you will find a transient sunshine chased by a shadow as cold as an Arctic midnight in which the breath of June grows icy and the carol of the lark gives place to the foreboding cry of the raven. Drink it and you shall have we, sorrow, babbling and wounds without cause. Drink it and you shall hear the voices of demons shrieking, women wailing and orphan children mourning the loss of a drunken father who

yet lives. Drink it deep, and long serpents will hiss in your ears coil themselves about your neck and seize you with their fangs. At the last it biteth like a serpent and stingeth like an adder. I send it to you that you may put an enemy into your mouth to steal your brain, and yet I call myself Your friend, Buckley.

LET'S KNOW TEXAS AND TEXANS WILL-H-MAYES AUSTIN TEXAS

This column is given in answering questions about Texas. If you have any question write W. H. Mayes, Austin, Texas. Be sure Q—What was the most influential early paper in North Texas?

A—The Northern Standard, founded in September, 1842 by Col. C. DeMorse, who came to Texas in 1835, served in the army and navy was adjutant general to Gen. Ross and in 1866 was deposed by Gen. L. S. Ross for the Democratic nomination for governor. DeMorse died in October 87 and his daughter discontinued publication of the Standard in 1888.

Q—For whom was the town of Chapel Hill named? A—For Robert Wooding Chapel who was born in Halifax County, Va., May 14, 1782, and located in Washington County about 1840 and established the town.

Q—Was there ever a town in North Texas known as LaGrange Texas? A—Once a prominent community center it became depopulated soon after it lost in a contest with Clarksville for the county seat of Red river county.

Q—Where was the battle of Brushy Creek? A—It was a fierce fight in 1839 between settlers and Indians about five miles south of Taylor.

Q—List three of the reasons which Texans gave for wanting independence from Mexico? A—1. Need for separate state government; 2. failure to provide trial by jury; 3. failure to establish a system of public education.

Q—Who was the president of the convention that declared for Texas independence? A—Richard Ellis, delegate from Red River.



NOLAN McWHIRTER

Mr. Nolan McWhirter, custodian of the Panhandle A&M museum, a branch of the No-Mans Land Historical Society, has watched this obscure department of 1,000 un-classed specimens grow to a Museum of national importance with more than 15,000 classified and departmentalized specimens.

Unlike other museums this one is being in on the cooperative loan basis. Most of the 15,000 articles contained here have been loaned by residents of this section. The article is entered in the record book, catalogued, the owner given a receipt which entitles him to withdraw his specimen at will, and the specimen is placed on display together with a short written history of the article and the owners name and address. Additional information regarding specimens may be obtained by writing the Custodian.

Q—How many men were shot and how many escaped in the March 27, 1836 massacre at La Bahia (Goliad)? A—Reports vary. Col. Portilla, the Mexican commander reported 330 shot and 27 escaped, about 80 who had just arrived in Texas and had not borne arms against Mexico being released. Some writers give the number as high as 354 shot and 34 escaping.

INEXPENSIVE GIFTS Include in your gifts for children inexpensive but attractive & helpful booklets pertaining to our State. The writer of Let's Know Texas and Texans especially recommends the following for children for either school or home use: Empire Builders of '36 (10c) Texas under Six Flags (25c) Centennial Scrap book (25c) Send all orders to Will H. Mayes, 2610 Salado St. Austin, Tex.

Trotsky Moves But His Money Stays in Norway Leon Trotsky, the communist leader who left his exile in Norway for a more pleasant hide-out from the Russians, will not be a rich man in Mexico. While comparatively wealthy in Norway his flight to Mexico brought down on his head a series of tax suits which have tied up all his money. Exiling is no fun broke.

Q—What untoward condition in the U. S. contributed largely to the colonization of Texas just prior to the revolution? A—The financial depression of 1833 in the United States had practically bankrupted many who sought to recuperate their losses in the bright prospects held to them for acquiring homes and lands in Texas.

Q—What were President Lamars views with reference to relations with the Indians?

MERRILY WE ROLL ALONG! Texas taxpayers have contributed Seven Hundred Million Dollars to enjoy this privilege.

Q—Where did L. Chittenden the Texas Poet live? A—He began ranching in Jones County in 1886 and wrote most of his poems there. He donated a great part of his unusual library to the Anson schools.

Q—When was Jackson county organized and who was the first judge? A—It was organized December 20 1836 with Patrick Usher a San Jacinto soldier as chief justice. It was named for Pres. Andrew Jackson.

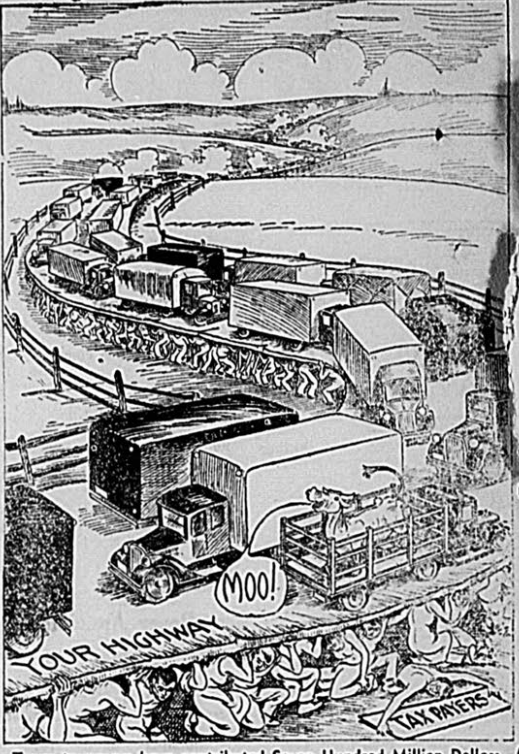
Q—How old is the Menger Hotel at San Antonio? A—It opened for business, Jan 21, 1859. The original building cost \$16,000.

Q—Where was Mound Prairie located? A—Near the present town of Neches, Anderson County. It was an important trading point about 1848 and was the site of a machine shop that made guns for the Confederates during the Civil War.

Q—How much land in now under cultivation in Texas in the Lower Rio Grande Valley? A—About 380,000 acres. Q—When was Van Zandt county organized and for whom was it named? A—Organized in 1843 and named for Isaac Van Zandt.

Q—Where is Zoje Texas? and why named? A—A postoffice in Madison county. The "Jo" was suggested for daughter of a prominent land owner and the postoffice department added "zie".

Q—What governor raised the governor's salary and how much? A—The governor's salary was fixed in the constitution of 1876 at \$4,000 a year and emained at that until in November this year, when it was raised to \$12,000. The governor has no voice in the matter; neither has the Legislature.



Texas taxpayers have contributed Seven Hundred Million Dollars to enjoy this privilege.

Two Planes Crashes Against Same Range Puzzle Air Experts

During the past month two passenger planes have crashed and passengers died in the same pass through the Sierra Madre Mountains which cut Los Angeles off from the north and east. Both times these planes were "flying the beacon" through bad weather toward the airport at Burbank. One crashed 15 miles to one side of the beacon lane and the other 14 miles to the other. Experts are wondering just why. Were the pilots that far off their course when they asked for the beacon beam or was the beam to wide for them to remain within the restricted area of the safe valley by Saugus and Newhall? Whatever the reason, the lives lost in this valley will not be lost in vain for from these crashes will come new safety measures that will prevent more such accidents.

New Spring Hats To Be Varied

Word from the inner sanctums of the leading millinery designers of the nation says that hats to be worn on the streets of our most fashion-conscious cities will range from peasant bonnet shapes to straw visors that look like Dutchmen's caps and have many new trimmings, including real mushrooms. Do you remember 10 days when a hat wasn't in the mode unless its brim carried flowers, fruits and even an odd vegetable or two?

Germany Limits Volunteers To Spain's War

A limit of 25,000 has been placed on the number of German nationals allowed to volunteer and join the Fascist armies fighting against the Spanish government. In all, this looks like a dress rehearsal for one big war.

# NOTICE TAXPAYERS

Your 1936 TAXES are now due and must be paid before the first day of February, 1937, to avoid penalty.

Both men and women are required to pay their poll tax. Unpaid poll taxes are a lien upon any real or personal property you may own, or come into possession of.

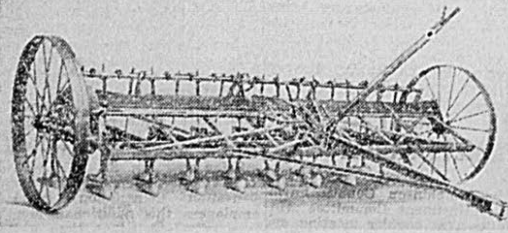
Those who are 60 years of age or more are not required to have an exemption to vote; those who have moved into the county since January 1, 1936, people from another state are required to have an exemption; those who have become 21 years of age since January 1, 1936, or will become of age during 1937 are required to secure an exemption certificate during January, 1937, before they may vote in any of the elections during the year; no charge is made for these exemptions.

1937 automobile license fees cannot be paid before Feb. 1st, 1937 but must be paid between February 1st and April 1st, 1937.

## H. L. Wilbanks

Tax Assessor-Collector Hansford County

## McCORMICK-DEERING Field Cultivators



THE McCormick-Deering Field Cultivator is a remarkably practical tool for summer-fallow cultivation and for killing weeds. And it is unsurpassed for eradicating quack grass and Johnson grass. In summer-fallow it keeps the weeds down, opens the soil to hold rainfall, and maintains a surface mulch which retards evaporation. Alfalfa growers also find it especially effective for cultivation and renovation of alfalfa.

The field cultivator is equipped with stiff-tooth gangs for summer-fallow and with spring-tooth gangs and special quack grass teeth for other work. Four sizes available. Ask us about it.

## Spearman Hardware

**4 Talking Pictures**  
Admission by Ticket Only  
**JOHN DEERE CENTENNIAL DAY**

LYRIC THEATRE FEB. 6  
Admission by ticket Only



MONTE BLUE as John Deere

**"The BLACKSMITH'S GIFT"**  
A new idea in gift giving. A practical gift for the man who works with his hands. A gift that will be used and appreciated every day.

**"HER HUSBAND'S CHOICE"**  
The gift of a boy and a girl. A gift that will be treasured and appreciated every day.

**"FROM ONE ANVIL"**  
A gift that will be treasured and appreciated every day.

Every farmer will want to attend. Bring the boys.

WOMBLE HARDWARE COMPANY

Watch the Paper for complete program of the Big Centennial Day, Feb. 6.





# The Lynx News

FOR THE SENIORS AND FROLIC

For the benefit of the Seniors who are leaving this hope

the seven Mrs. Tuttle room every aft what good work we have doing. been reading about Desert, which we interesting.

VERY LOW CO

Last chance for Bargain Subscription Rate

Vote FOR A Hospital

Spearman Reporter, Spearman, Hansford County Thursday, January 28, 1937

## To Make It A Prosperous Year---Use CLASSIFIED ADS

**ATTORNEY AT LAW**  
**Richard H. Sewell**  
Office in Court House

**TRANSFER**  
**SPEARMAN-AMARILLO**  
**FRED M. MIZAR**  
**Truck Line**  
SPEARMAN PHONE 112  
AMARILLO PHONE P851

**HANSFORD LODGE NO. 1040**  
Regular Communications  
Second Monday of each  
Month at 8:30  
Visitors Welcome.  
**JOHNNIE LACKEY W. M.**  
**E. K. SMIDER, Secretary**

**TAILORING**  
**Campbell**  
**Tailor Shop**  
—Odorless Dry Cleaning—  
Suits Made to Measure  
\$20.00 and up  
**Phone 113**

**DENTIST**  
**DR. F. J. DAILY**  
DENTIST  
X-RAY  
McLain Building Phone 156  
SPEARMAN TEXAS

**FUNERAL SERVICE**  
**CARVER-POWELL**  
**FUNERAL CHAPEL**  
Telephone 500 109 N. Main  
**AMBULANCE SERVICE**  
Dignified, Sympathetic Service  
**BORGER TEXAS**

**C. H. DUNLAP**  
Registered Optometrist  
Have Your Eyes Tested  
106 E. 5th St. Borger, Texas

**MEDICAL**  
**J. E. GOWER M. D.**  
Room 205  
McLain Building  
Phones, res. 98 Office 33

**DR. J. P. POWELL**  
Eye Ear Nose & Throat  
**SPECIALIST**  
Glasses fitted, Tonsils and  
Adenoids Removed  
Wed. February 3  
Office Dr. J. E. Gower

**FOR THE FARMER**  
We are prepared to furnish you  
with the best coal and feeds.  
Corn, Milo, Wheat, Alfalfa, Mol-  
asses, Bran Mill-run dairy and  
poultry feeds, cake and meal,  
corn chop.

**R. L. McCLELLAN GRAIN CO.**  
**ALFALFA BALES**  
Fresh car Quaker products,  
cereal oats, yellow corn, world  
famous Ful-o-Pep Egg Mash,  
wheat barley meal, stock salt,  
tankage, meat scraps, steamed  
bone meal, pulverized limestone,  
Schumacher feeds, dairy ration,  
alfalfa leaf meal, pulverized  
whole oats, milo chop, cake cubes  
and oil meal, nut and fancy lump  
coal. We deliver.  
**R. L. PORTER GRAIN AND  
SEED COMPANY**

**WILL KEEP CHILDREN**  
Mothers, I would like to keep  
small children in my home at any  
time.  
**Mrs. George Reed**

### CAFE

**WHEN GUESTS**  
**DROP IN—**  
Bring them here to eat, they  
will enjoy it thoroughly, and  
so will you!  
Spend your time  
visiting—not cooking!

**Burl's**  
**Cafe**

**BUILD AND IMPROVE**  
During the months while the  
weather is bad and it is difficult  
to do outside work, build for the  
interior of your house. Make  
needed improvements for your  
barn, and above all repair your  
property in order that you may  
maintain a consistent value in  
your holdings.

**FOXWORTH - GALBRAITH**  
**LUMBER COMPANY**  
**HEATERS—ANTI FREEZE**  
Chevrolet Heaters are specially  
designed for Chevrolet cars. Your  
Chevrolet dash is already drilled  
for installation. Super model—  
\$14.95; Outdraft model \$9.95.  
We have Prestone and Chevrolet  
Antifreeze for your radiator.

**McCLELLAN CHEVROLET CO.**  
**INCORPORATED**

**TRY THE SINCLAIR STATION**  
**FOR YOUR NEXT GAS & OIL**  
You can't go wrong with Sin-  
clair products. In Spearman the  
retail service of Sinclair products  
are handled by Walter Sanders,  
at the old Gulf Station and Cone  
Bros., at the location formerly  
Allen Tire Shop. Try Sinclair ser-  
vice this winter months.  
**FRANK HARDIN**

**IT PAYS TO COOPERATE?**  
**ARE YOU CONVICTED THAT**  
The past year dividend checks  
went to owners of the Consumer  
Sales Corporation. This business  
establishment has accumulated a  
very substantial business at a val-  
ue of above \$30,000.00 from an  
original investment of \$5,000.00  
The record this year in the face  
of declining business shows sub-  
stantial dividends paid on the or-  
iginal capital of \$5,000.00  
We call your attention to the  
fact that we have led the parade  
of values this year as we have in  
the past.  
Buy from CONSUMERS. You  
will receive outstanding value  
whether you are a stockholder or not.

Gas, oil, Firestone tires and  
tubes and auto accessories.  
Always anxious to serve you.  
**CONSUMERS SALES CORP.**

### Do THIS FOR A COLD



**Quick Relief with**  
**2 Bayer Aspirin Tablets**  
The modern way to ease a cold is  
this: Two Bayer Aspirin tablets  
the moment you feel a cold coming on.  
Repeat, if necessary, in two hours. If  
you also have a sore throat due to  
the cold, dissolve 3 Bayer tablets in  
1/2 glass of water and gargle with this  
twice. The Bayer Aspirin you take  
internally will act to combat fever,  
aches, pains which usually accompany  
a cold. The gargle will provide almost  
instant relief from soreness and raw-  
ness of your throat. Your doctor, we  
feel sure, will approve this modern  
way. Ask your druggist for genuine  
Bayer Aspirin by its full name—not  
by the name "aspirin" alone.

**15c FOR A DOZEN**  
**2 FULL DOZEN FOR 25c**  
Virtually 1c a Tablet

### HIGH QUALITY GROCERIES

**BEST PRICE FOR PRODUCE**  
Two of the important features  
of our business... servicing you  
high quality groceries at very  
reasonable prices, and purchasing  
your products at the highest mar-  
ket price.

**J. M. CATES & SON**  
**REAL VALUE IN DISTILLATE**  
We have for delivery at our  
plant 40 gravity Distillate for  
burning in stoves, priced at 5c  
per gallon. **GUARANTEED MORE**  
**HEAT PER DOLLAR.**  
Goodyear Tires & Tubes  
**R. E. LEE OIL COMPANY**

**WHY NOT GET THE BEST**  
So long as the best costs no  
more than ordinary grade of gas  
and oil, why not use the CONOCO  
service? Now is the time! Change  
to winter grade of oil and trans-  
mission lubrication. For prompt  
tire service call 133.  
**CONOCO SERVICE STATION**  
Raymond Kirk, agent

**FOR HOLIDAY GROCERIES**  
See our large assortment of  
fruits, candies, ingredients for  
cakes, spices, all kinds of Xmas  
nuts and most everything you will  
need to make your preparations  
of holiday food a pleasure.  
**F. W. BRANDT & CO.**

**GET YOUR MAGNETO REPAIR**  
**WORK NOW**  
We are asking farmers who an-  
ticipate magneto repair work to  
bring in their work at this time,  
and the repairs will be made and  
the magneto delivered later when  
you are ready for it. This will  
help us and it will save delay for  
you.  
**DELON KIRK BATTERY SHOP**

**MAGNOLIA SERVICE**  
For several years I have solicited  
your business and endeavored  
to give you the best quality pro-  
ducts for your car and the most  
conscientious service. Let us con-  
tinue to serve you and may we  
solicit new business with the same  
assurance.  
**MAGNOLIA SERVICE STAT.**  
**R. E. Lee, Prop.**

**BUNDLE FEED**  
Sudan 3c, Hegari 2 1-2c bun-  
dle. Postmaster Waka, Texas.

### GLASS

\*For Your HOUSE or CAR, all kinds, all sizes\*  
Installed while you wait. Fit, finish and quality  
equal to original equipment. Mirrors re-silvered.

**DALEY GLASS SHOP**  
Phone 146 Perryton, Texas

### Ride The Bus

For safety, convenience and comfort. Modern  
Passenger and Express Service  
**ROUND TRIP DAILY**  
From Amarillo to Liberal Kansas. Cheap rates  
**PANHANDLE STAGES INCORPORATED**  
Station at Spearman Drug Co.

Courteous and Conscientious Service at all Times

### Wilson Funeral Home

**AND FLOWER SHOP**  
Phones—Day, 44; Night 62 Spearman

### CLEAN and WHITEN TEETH

with Calox, the Oxygen tooth powder which  
penetrates to the hidden crevices between the  
teeth. Pleasant, Refreshing, Protects the gums  
and is economical to use.  
**TRY CALOX AT OUR EXPENSE**  
What Calox will do for your teeth is easily  
demonstrated by you in your own home at our  
expense. Simply fill in the coupon with your  
name and address and mail it to us. You will  
receive absolutely free a test can of CALOX  
TOOTH POWDER, the powder more and  
more people are using every day.

**FREE TRIAL COUPON**  
McKesson & Robbins, Inc., Fairfield, Conn.  
Send me a 10 day trial of CALOX TOOTH POWDER at no expense to  
me. I will try it.  
Name \_\_\_\_\_  
Address \_\_\_\_\_

### THE NEW 1937 CHEVROLET

**THE LEADER IN THE LOW**  
**PRICED FIELD. SEE US FOR A**  
**RADIO FOR YOUR CAR.**  
Goodrich tires as low as \$5.95.  
Our service department will do  
dependable repair work.  
**McCLELLAN CHEVROLET CO.**

**PRICES ARE ADVANCING**  
Now is the time to secure your  
building materials while the mar-  
ket is at a low ebb. It will cost  
you more in the future.  
**WHITE HOUSE LUMBER CO.**

**LET US BE YOUR GROCER**  
**FOR 1937**

We have made a resolution to  
serve our customers with the  
finest groceries and meats the mar-  
ket affords, during the year of  
1937. If it is possible we will give  
you even better service and value  
than in the past.

**DICK KIKER**  
Market—Vegetables—Groceries

**MANY SMALL ITEMS**  
Are stocked in our store in the  
shelf hardware line, that you  
might overlook as being carried  
by hardware stores. All kinds of  
pipe fittings, a limited supply  
of electrical fixtures, razors, ra-  
zor blades, bill folds, watches and  
etc.

**WOMBLE HARDWARE CO.**  
**GROCERIES, FRUITS VEGET-**  
**ABLES, DRY GOODS—**  
Day in and day out you can se-  
cure real value at our store. We  
buy only the best the market af-  
fords, selling at prices that will  
net us a reasonable profit.  
**F. W. BRANDT & CO.**

**HARDWARE SERVICE FOR**  
**1937**

When we say Hardware we  
simply mean that we carry a  
full line of small and heavy  
hardware, and that we sell to our  
customers at reasonable prices,  
the supplies you need in our  
endeavoring at all times to keep  
line.

**ESTRAY**  
1 Black and white spotted boar  
about 500 pounds. Please call  
and get him. W. L. Harris 8  
miles North West Gruver.

**PHONE "66" for jiffy tire ser-**  
**vice.**  
**USE PHILLIPS "66" for high**  
**test gasoline.**  
**USE PHILLIPS "66" for depend-**  
**able lubrication.**  
**PHILLIPS SERVICE STATION**  
Luther Glover

**Frank E. Buckingham**  
Income Tax Payroll Tax  
Enrolled to practice before U. S.  
Treasury Department  
Estate Tax, Inheritance Tax, Un-  
employment Compensation Tax.  
Room 421 Amarillo Bld.  
Amarillo, Texas

**FOR RENT**  
Four hundred and eighty acre  
farm near Amistad, New Mexico,  
three hundred and twenty acres  
in cultivation, balance pasture  
land. Well improved.  
**W. L. MEEK,**  
Spearman, Texas

**FOR SALE**  
Texas Panhandle Herefords.  
Frank J. Shaller Commission Co.  
Moody Hotel, Canadian, Tex.

**PASTURE WANTED**  
For 15 head of cattle, wheat  
or stock pasture. Write A. K.  
Pierce, Guymon Route 1

**WARNING TO PROPERTY**  
**OWNERS AND ALL OTHER**  
**PERSONS**  
The United States District  
Court for the Northern District  
of Texas, at Amarillo, by an or-  
der entered on the 18th day of  
May, 1936, in the case of Schro-  
der vs. City of Spearman, et al.,  
No. 519 in Equity, pending in  
said Court, assumed jurisdiction:

**FREE! to sufferers of**  
**STOMACH ULCERS**  
**HYPERACIDITY**  
Willard's Message of Relief  
**PRICELESS INFORMATION FOR**  
those suffering from STOMACH OR  
DUODENAL ULCERS; DUE TO HYPER-  
ACIDITY—POOR DIGESTION, ACID  
DYSPEPSIA, SORE STOMACH, GAS-  
TRITIS, HEADACHE, CONSTIPATION,  
BAD BREATH, SLEEPLESSNESS OR  
HEADACHES, DUE TO EXCESS ACID.  
Explains the marvelous Willard Treat-  
ment which is bringing amazing relief.  
Sold on 15 days trial.

Platt Pharmacy

of the City's sinking fund and all  
property rights therein, to bind  
each and every person claiming  
any interest therein.  
This order, subsequent to the  
entry thereof by the Court, was  
published for six consecutive  
weeks in the Spearman Reporter.  
**YOU ARE WARNED HERE**  
BY that the removal from the  
city of any building or other  
property, WITHOUT FIRST  
PAYING THE CURRENT AND  
DELINQUENT TAXES AGAIN-  
ST IT, due to the City, undoubt-  
edly will constitute a violation  
of the federal court order.  
**Robert Douglas**  
**TAX COLLECTOR.**

**PAIN**  
Use JAPANESE OIL (An-ar-co)



### WHEN YOU BUY THE unknown

Why take chances with unknown razor  
blades? Put your money on known quality.  
Probak Jr.—product of the world's largest  
blade maker. This blade is ground, honed  
and stropped by special process. It's made  
to whisk off wiry whiskers without the slight-  
est skin-pull or irritation. Yet it sells at 4  
for 10! Buy a package of Probak Jr. from  
your dealer today and save money on shaves.

**PROBAK** 4 FOR 10  
**JUNIOR BLADES**  
A PRODUCT OF THE WORLD'S LARGEST BLADE MAKERS.



### IN TRUCK LEGISLATION

Any change in existing Texas truck  
laws which will increase the present  
7,000-pound load limit will affect ad-  
versely all communities in the state,  
both rural and urban. This statement  
is proved best by identifying the causes  
and effects upon Texas communities.

1. Increasing truck loads mean cor-  
respondingly increasing the distance  
which the truck can profitably carry its  
load.

2. Increasing the distance of profit-  
able truck haul means bringing the  
small town wholesale houses and indus-  
trial plants, such as wholesale grocers,  
bottling plants, feed mills, oil mills,  
grain elevators, cotton compresses and  
retail lumber yards, into direct com-  
petition with similar establishments in  
large cities.

3. Such competition will inevitably re-  
sult in further drying up the small coun-  
try towns by taking from them the  
payrolls, taxes and local purchases re-  
presented by their present establishments.  
Property values, both residential and  
commercial, will decline; volume of re-  
tail sales will grow smaller and former  
employees will migrate to the cities to  
reinforce the ranks of the unemployed  
and the bread lines.

4. Large cities, at first stimulated by  
increased trade territories, bought at  
the expense of the country towns, will  
be ultimately affected adversely because  
of the resulting unhealthy condition of  
the rural communities forming these  
trade territories.

5. Because of the consequent shrink-  
age of the state's tax revenues from  
country towns, taxes from the cities will  
have to be increased correspondingly.

6. The lower truck load limit of Texas  
now has the effect of acting as a bar-  
rier at Texas borders to the movement  
of the larger truck loads carrying mer-  
chandise from the metropolitan and pro-  
ducing centers of other states. Any  
increase in Texas truck load limits will  
break down that barrier and permit the  
free truck movement into the state of  
many commodities which unquestionably  
would be sold directly to the retailers,  
thus destroying, in a large measure, the  
business of wholesalers and jobbers now  
located in Texas cities.

Conditions which effect adversely the well-being of Texas com-  
munities also effect Texas railroads in identical manner and degree.

### THE TEXAS RAILROADS

Angleton & Baytown  
Borger-Edinburg  
Chico, Texas, Indian and Gulf  
Cotton Belt  
Ft. Worth & Denver City  
Galveston, Houston & Texas  
Gulf Coast Lines

Gulf, Colorado & Santa Fe  
Kansas City Southern  
International & Great Northern  
Lubbock, Amarillo & Texas  
Lubbock, Houston & Gulf  
Shreveport-Kansas-Texas  
Southern Railway Lines  
Waco, Fort Worth & Dallas  
Wichita Falls





# PROSPERITY IN

# 1937

## PROSPERITY IN 1937

**BUT IT MAY TURN OUT LIKE IT HAS FOR THE PAST FEW YEARS, PROSPERITY TO BILL MILLER AND HIS NEWSPAPER ONLY.**

We confess that we are not a bit fooled by the song and dance that Bill Miller is giving his advertisers in Predicting PROSPERITY. His only argument worth considering is the fact that we did have more annual rainfall last year than any year since 1928.

**IT'S DIFFERENT WHEN YOU CONSIDER CONSUMER SALES CO. AND THE VARIOUS MONEY SAVING PRODUCTS WE SELL.**

We could really make the newspaper Prosperous if we used enough space to present our argument on why you should trade at your home owned Service station.

**TAKE FIRESTONE TIRES . . . one could use a whole page advertisement telling of the many advantages of purchasing these NATIONALLY known GUARANTEED PRODUCTS.**

**WHEN WE ARE Headquarters for your CAR . . . A Variable Department Store For Car Supplies, Batteries, Heaters, Spark Plugs, Radiator winter fronts, Fan belts, Weather strips for car doors, and countless other items that make for efficiency in the use of your automobile.**

**AND OUR ROADRUNNER GASOLINE AND LUBRICANTS . . .**

**COMES IN** For another large space, should we attempt to tell the public the wonderful advantages of BUYING the gasoline that leads the parade of value, yet has no superior at any price. This gasoline is housed in overhead tanks and is not subject to accumulation of moisture such as is the case where gasoline is stored in underground tanks. We have not had any complaints from customers this year because of moisture in the gasoline purchased at CONSUMERS.

**THEN WE HAVE ECONOMY AND COMFORT . . .**

**FOR SALE** In Quaker Heaters for the farm home. This heater is guaranteed to give perfect satisfaction, and many of our customers over the county declare it is more economical than any fuel. The heater will burn an inexpensive grade of oil, and gives out an even heat that is conducive to regular temperature and more healthful condition in the home.

**APEX WASHING MACHINES FOR EFFICIENCY AND ECONOMY . . .**

**WE STOCK** The famous APEX washer. Customers over this county tell us this machine has no peer in efficiency and economy.

**CHALLENGE WIND MILLS A PROVEN SUCCESS . . .**

**THE CHALLENGE WINDMILL** Is another product retailed by our sales organization that is meeting with the approval of the citizens of Hansford County. Come in and let us give you money saving prices that will convince you.

**COOP RADIOS . . .**

**WE ARE DELIGHTED** To announce that we have stocked a large shipment of COOP RADIO'S. These standard radios are for both electric and battery power. In the Battery line we have radios with the one battery 6 volt, up to the 32 volt battery set with both AC and DC currents for electric radios. Our price range in this new merchandise is from \$18.00 per set up to \$119.00.

## Consumers Sales Co.

### Your Prescription

Is the doctors written orders to pharmacist for a variety of medicine compounded especially for you.

Back of every prescription is the doctors education and experience. His diagnosis alone is to be relied upon. Don't trust well meaning friends or self doctoring. Health is too important. See your doctor at the first sign of sickness, and should he prescribe for you, bring your prescription to us. Here only a registered pharmacist fills it explicitly as your doctor orders. Be fair with yourself and the doctor, don't trust it to anyone else.

### Platt Pharmacy

In the post office building  
Prescription Specialists

Year	Jan.	Feb.	March	April	May	June	July	Aug.
1880	0.00	0.05	0.40	0.16	4.48	4.50	2.11	1.10
1881	0.47	0.74	0.00	1.26	5.27	0.10	3.28	0.00
1882	0.33	0.16	0.53	0.66	7.48	1.54	5.65	1.10
1883	0.00	0.53	0.04	0.82	4.56	1.66	2.87	6.10
1884	0.61	0.27	0.34	1.08	6.29	6.86	1.29	5.10
1885	0.45	0.87	1.86	4.67	7.23	9.82	3.62	4.10
1886	0.62	1.44	1.49	2.44	3.23	3.41	1.56	3.10
1887	0.01	0.06	0.19	6.06	7.01	2.39	0.92	3.10
1888	0.32	0.61	0.40	2.69	3.19	1.34	2.55	2.10
1889	1.63	0.89	1.28	4.86	0.72	1.64	0.88	1.10
1890	2.40	0.01	0.02	3.94	1.69	1.71	0.88	2.10
1891	0.92	0.00	0.49	0.82	0.82	4.00	3.50	1.10
1892	0.42	0.57	2.10	0.21	2.70	1.49	1.85	1.10
1893	0.09	2.03	0.00	0.16	2.19	2.03	2.05	2.10
1894	0.02	1.15	0.05	0.85	1.30	3.59	1.33	3.10
1895	1.06	1.02	0.16	1.31	1.78	6.84	2.88	3.10
1896	0.76	0.41	0.21	1.95	2.20	2.31	7.04	0.10
1897	2.26	0.65	0.47	1.08	4.44	2.32	2.16	2.10
1898	0.86	0.32	0.35	0.98	3.52	7.81	3.88	4.10
1899	0.29	0.07	0.17	0.23	3.12	4.45	6.96	0.10
1900	0.59	0.47	0.48	5.47	4.53	1.84	3.26	0.10
1901	0.03	0.48	0.02	4.90	5.99	0.92	1.56	0.10
1902	0.04	0.00	0.74	1.83	9.14	2.01	1.45	2.10
1903	0.12	2.93	0.26	0.90	1.79	2.88	3.33	2.10
1904	0.16	0.08	0.00	0.63	2.88	5.53	2.18	2.10
1905	1.00	1.52	2.62	4.52	6.16	2.19	3.76	0.10
1906	0.41	0.51	0.64	3.23	1.18	2.07	2.90	0.10
1907	1.11	0.24	0.02	1.25	0.99	1.97	1.49	0.10
1908	0.26	0.72	0.00	1.90	3.55	1.73	5.40	2.10
1909	0.07	0.28	1.28	0.50	1.08	4.73	3.80	2.10
1910	0.05	0.17	0.34	0.59	2.99	0.00	3.57	2.10
1911	0.13	2.88	0.50	2.76	5.88	0.67	3.85	2.10
1912	0.00	1.94	0.59	1.79	1.41	1.60	1.88	2.10
1913	0.11	0.55	0.59	1.79	1.41	2.32	1.80	0.10
1914	0.06	0.10	0.15	0.95	4.43	0.84	3.07	2.10
1915	0.72	1.60	1.00	5.05	1.70	1.04	4.14	5.10
1916	0.36	0.02	0.57	1.71	0.89	2.18	0.94	3.10
1917	0.69	0.22	0.25	0.71	2.49	0.83	2.68	6.10
1918	1.01	0.26	1.06	0.48	2.38	2.99	2.23	2.10
1919	0.00	0.73	1.73	2.56	2.08	2.94	1.75	3.10
1920	1.11	0.18	0.51	0.64	2.57	2.50	1.89	2.10

RAIN CHART FROM 1921 TO 1937 TAKEN FROM RAIN CHART

Year	Jan.	Feb.	March	April	May	June	July	Aug.
1921	1.78	1.00	0.36	1.36	1.82	8.58	3.11	1.10
1922	0.45	0.84	4.70	4.33	3.30	2.52	1.00	2.10
1923	0.00	0.96	2.58	2.60	4.31	6.32	0.60	0.10
1924	0.00	0.30	2.17	2.56	0.00	0.88	3.67	3.10
1925	0.04	0.20	1.41	1.95	1.22	3.55	3.55	2.10
1926	0.40	0.15	3.02	3.28	5.25	4.27	3.23	2.10
1927	0.15	0.45	0.56	1.55	1.25	4.06	2.95	2.10
1928	0.00	2.21	1.40	1.89	6.08	1.55	2.22	2.10
1929	0.58	0.30	2.30	0.90	1.83	1.80	3.40	0.10
1930	0.25	0.00	1.17	0.44	0.66	0.88	1.50	0.10
1931	0.30	1.53	1.50	1.55	2.70	2.73	2.66	0.10
1932	1.05	0.47	0.90	2.74	6.53	9.41	1.36	1.10
1933	0.00	0.01	0.11	0.96	2.86	0.00	0.73	0.10
1934	1.10	0.90	0.30	0.25	3.12	3.80	0.28	5.10
1935	0.25	0.35	0.72	0.00	4.85	2.75	0.00	2.10
1936	1.70	0.05	0.00	0.13	8.22	5.40	1.28	0.10

## Keep Warm and

**Y**OUR doctor will tell you that coughs, colds, pneumonia and early stages of tuberculosis are caused chiefly by exposure . . . sudden temperature changes . . . cold, damp weather . . .

**Gas . . .** will keep your house warm . . . your children HEALTHY . . . INSTANT heat . . . G A S saves . . . GAS is the most economical and you can possibly use . . .

## GAS is worth more than

. . . you can not afford to risk HEALTH. . . KEEP WARM AND HEALTHY

## Spearman



... IS  
... IN  
... 37

COMING



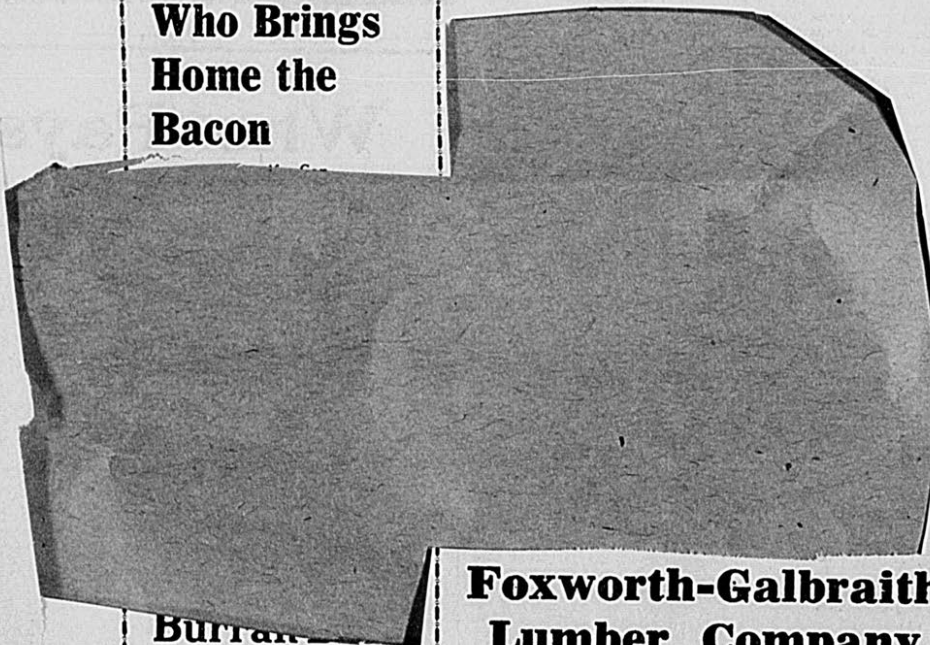
June July Aug. Sept. Oct. Nov. Dec. Total

50	2.11	1.70	0.54	2.40	0.10	0.35	16.79
10	3.28	0.49	3.18	0.69	0.42	0.26	16.16
54	5.65	1.55	3.18	2.32	0.96	0.40	24.76
56	2.87	6.56	4.97	5.32	0.04	0.84	28.21
86	1.29	5.90	0.84	5.54	2.14	3.05	33.91
82	3.62	1.94	0.65	0.60	0.18	2.11	37.07
150	3.57	2.00	5.04	0.25	0.69	23.05	
39	0.92	2.52	1.07	0.69	0.23	0.68	22.83
34	2.35	2.27	0.71	0.85	0.79	0.84	16.51
64	0.88	1.83	1.94	2.99	0.74	0.00	19.40
71	0.88	2.29	0.05	1.10	0.52	0.20	15.41
00	3.50	1.25	2.00	2.25	0.10	1.00	17.15
49	1.85	1.93	0.24	2.85	0.16	1.08	15.60
03	2.05	2.67	5.27	0.03	0.28	0.43	17.23
59	1.21	3.41	2.41	0.39	0.00	0.82	15.81
84	2.88	3.87	0.57	2.26	0.81	0.79	24.79
31	7.04	0.63	2.45	3.09	0.35	2.88	24.28
32	2.16	2.71	0.73	1.03	0.08	0.63	19.16
81	3.88	4.03	0.48	0.41	0.34	2.06	22.54
45	6.96	0.51	6.09	1.15	3.24	1.11	27.39
84	3.21	0.83	5.25	1.58	0.08	0.07	24.40
92	1.56	0.03	2.19	3.26	2.00	0.04	24.42
01	1.45	2.42	0.95	1.74	2.24	0.55	23.11
33	3.33	0.77	0.82	2.58	0.00	0.00	20.28
5	2.18	0.69	3.55	0.44	0.20	0.69	21.33
19	3.76	0.63	3.08	0.30	5.09	1.45	32.32
07	2.90	6.76	1.96	2.49	2.58	0.19	24.92
07	1.49	6.20	4.91	1.79	0.66	1.46	18.00
73	5.40	2.75	1.83	0.40	0.51	0.00	19.05
3	3.57	2.19	1.18	3.25	0.54	1.95	19.59
3	3.57	0.05	0.26	0.28	0.00	11.15	
0	3.85	0.77	0.83	0.84	0.84	0.95	22.73
90	1.88	2.28	2.28	0.92	0.39	0.02	15.08
32	1.80	0.61	4.19	0.81	1.98	2.84	18.97
84	3.07	2.97	1.07	4.46	0.00	1.17	19.27
04	4.14	5.85	4.69	1.55	0.18	0.13	27.65
18	0.94	3.82	1.76	2.90	0.40	0.88	16.43
33	2.68	6.17	2.05	0.34	0.59	0.04	17.06
99	2.23	2.36	0.64	2.47	1.16	2.76	19.80
04	1.75	3.21	4.58	0.67	1.26	0.50	22.01
0	1.85	0.52	3.04	1.87	1.33	0.74	21.92

EN FROM RECORDS OF F. W. Brandt, Spearman

59	3.11	1.85	1.00	0.12	0.00	0.00	20.78
9	1.00	0.70	0.90	0.35	1.18	0.20	20.07
2	0.60	0.83	3.60	8.07	0.65	1.00	31.52
8	3.67	3.27	1.05	1.00	0.50	0.20	15.60
5	3.35	2.06	3.81	0.60	1.33	0.10	16.83
7	3.23	2.98	3.50	0.15	0.00	1.31	27.54
6	2.95	2.94	2.06	0.33	0.05	0.30	16.64
0	2.22	0.2	1.21	2.29	4.38	0.55	26.90
0	3.40	0.70	2.68	3.52	1.13	0.10	19.26
8	1.50	0.20	1.55	0.87	0.12	0.30	7.86
3	2.66	0.40	0.40	1.41	2.48	0.26	20.12
41	1.36	1.09	1.04	0.40	0.15	1.06	19.89
0	0.73	0.95	0.37	0.71	0.50	13.90	
0	0.28	5.67	0.70	0.22	3.15	0.02	13.98
5	0.00	2.07	1.25	1.65	1.50	0.43	15.82
0	1.28	0.75	3.40	0.30	0.00	1.20	22.43

Who Brings Home the Bacon



Burr  
We Deliver — Phone 71

Foxworth-Galbraith Lumber Company

Wet Weather We Hope....

But of course not anything like the flood conditions that are proving so heart-rending and disastrous in the U. S. Despite any weather conditions, we are equipped to handle

YOUR—

CLEANING PROBLEMS

In the most effective manner.

REGARDLESS OF PROSPERITY, we want to impress on you the fact that there is a difference in Dry Cleaning. We have gone to considerable expense to equip our own unit so that the most satisfactory results may be obtained. We believe you cannot obtain better results than we—

GUARANTEE

DRY CLEANING is 'kinda' like your religion... the more you put into it the better results. It stands to reason that a shop equipped with MODERN up-to-date equipment can render better service, with less wear and tear to clothing than the smaller investments, and logically poorer equipped units.

WE GUARANTEE SPOTLESS AND ODORLESS DRY CLEANING....

And we believe that you can find out that our modern equipment will lend life to your clothes.

Campbell Tailor Shop

Suits \$20. and up—CALL 113 We Deliver

and Healthy

YOUR doctor will tell you if you want to keep children healthy... you must keep them warm.

WARM... GAS will keep... HEALTHY... GAS provides... GAS saves doctor bills... economical and satisfactory fuel

more than it costs....

HEALTH... at any price...

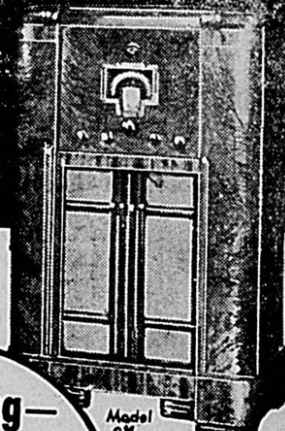
AND HEALTHY

Gas Co.

\*\* GOOD GAS SERVICE MAKES WARM FRIENDS \*\*

1937 RCA VICTOR WITH MAGIC VOICE

MAGIC BRAIN  
MAGIC EYE  
METAL TUBES



No Down Payment Easy Terms

Featuring—

- Brilliant reception of London, Paris, airplanes, police, etc.
- Scientific tuning with no effort.
- Rich, luxurious cabinet.

\$85.00

Superheterodyne with revolutionary MAGIC VOICE, which eliminates "boom" from low notes and allows only desired "controlled" notes to reach the ear. Built for people with expensive tastes but modest pocket-books!

FRANKLIN CONCENTRATED BLACKLEG BACTERIN



Now! 10c a Dose

for Proven Protection Against BLACKLEG LOSS!

WHEN Dr. Franklin perfected Blackleg Bacterin in 1923, he gave to the stockmen of the world a new and vastly improved means of immunizing against Blackleg.

The test of time has proven the unflinching potency of Franklin Concentrated Blackleg Bacterin. Thousands of cattlemen know from personal experience that one dose gives positive life immunity.

Spearman Drug Co.



HOLT NEWS

The Holt Agricultural Association met Friday night, January 22nd at the Holt School house. The meeting was called to order by the president, John F. Lackey, with Mrs. Charles Rosson, secretary and treasurer in absence of Mrs. Owen Pendergraft. A discussion on the \$2. per person membership fee was given by John F. Lackey and Raymond Jarvis of Pringle and Clyde L. Carruth County Agent.

A talk on water conservation was given by Judge Norman Coffee of Stinnett. Ed King gave a talk on the benefit of the Agricultural Association. The new president of the County Agricultural Association, Ralph Forester of Pringle and also a delegate to the Convention at Ft. Worth recently gave a discussion on their trip to Ft. Worth and what he learned at the convention.

Dan Cambern of Stinnett talked on the Farm program and gave the group a plan to estimate the number of people that would attend a dinner at Stinnett Wednesday night.

Visitors present were: Judge and Mrs. Norman Coffee of Stinnett, Mr. and Mrs. Clyde L. Carruth, Miss Lucile Chance, Dan Cambern, Miss Ardith Geoffrey all of Stinnett; Mr. and Mrs. A. L. Parks and daughter, Betty Lou; Ed King, Ralph Forester, Tab Womble, Raymond Jarvis all of Pringle and Billie Tall of Okla. The next Agricultural association will be held at the Holt School house on the 4th Friday night in February.

Miss Valeria Hollingshead had as her Saturday night guests Miss Reba Parker of Spearman.

Ross Payne, Ralls, Texas, conducted services at Holt Sunday afternoon. He was invited to preach by Rev. Loftin pastor of the First Baptist church of Spearman.

Mrs. Henry Francis left Saturday morning for her home in Blair, Oklahoma after a week's visit here in the home of her parents Mr. and Mrs. D. A. Jackson.

Major Lackey returned home Saturday evening from Amarillo where he spent Friday and Saturday with his brother Willis who

underwent an operation for a rupture Friday afternoon. He is doing nicely at this writing. Dec. Jackson left Saturday morning for Blair, Oklahoma to take his sister, Mrs. Francis.

Mr. and Mrs. Bill Miller, editor of the Spearman Reporter and Bro. A. F. Loftin, pastor of the Baptist church in Spearman, Rev. and Mrs. Ross Payne of Ralls, Texas attended Sunday school and church at Holt Sunday afternoon.

Singing was attended by a large crowd Sunday night. There were several specials given.

Mrs. Major Lackey was hostess to the Holt home Demonstration club Friday for an all day meeting in the home of Mrs. Willis Lackey.

The morning was spent quilting on the Holt Girls 4-H Club Quilt.

Mrs. H. H. Stephen presided at the business meeting of the club.

Council representatives, Mrs. Dan Burleson and Mrs. M. C. Scott. The club voted for each member to pay for their year book and the money will be turned back to the council.

A call meeting will be held Friday afternoon in the home of Mrs. H. H. Stephen, January 29 at 2 p. m. to make foundation patterns and check all foundation patterns.

Attending the meeting were: Mesdames: Dan Burleson, P. H. Jamerson, M. C. Scott, Bill Jones, Major Lackey, Dan Terry, H. H. Stephen and Johnie Lackey and Kyble Louise Lackey.

Otis Archer and son Charlie transacted business in Spearman Monday.

Miss Elnora Close was absent from school Monday because of illness.

Mr. and Mrs. Johnie Lackey and daughter Donna Lee and Mrs. M. C. Scott and daughter Jane Delece were shopping in Stinnett and Borger Monday.

Mr. and Mrs. Major Lackey and children took Marvin, Kester and Kyble Louise to Amarillo Monday to visit with their father Willis Lackey who is in the hospital there.

Nancy and Robert Ownbey who have been staying in Stinnett attending school in Stinnett have

HEADLINES News on Parade

Royal Newlyweds Cheered in Poland On Their Honeymoon

Juliana, crown princess of the Netherlands and her husband Prince Bernhard Eu Lippe-Bies-terfeld of Germany are honeymooning in Poland. They were married a few days ago in the Hague and upon their arrival in Poland were greeted with wild confusion. All the world loves a lover, they say, and this seems particularly true of royal lovers, as instance the romance of the ex-King of England and his Mrs. Simpson.

Onion Marketing Hearings Are Set Throughout Texas

Texas producing a large percentage of the onion crop of the United States. With this thought in mind and the co-operative methods of marketing being used the Department of Agriculture has set hearings in Floresville, Raymondville, Big Wells, Laredo and Corpus Christi the latter part of this month. County Agents have full details of the plans for the hearings. It is called an emergency series of hearings and will be of vital interest to all producers.

Wisconsin University President Expelled Solons To Investigate

The ousting of Glenn Frank as the president of the University of Wisconsin has caused a state wide furor with repercussions throughout the nation. Solons in Wisconsin are being prepared to storm the university. Students are being urged to move by the university. Students are being urged to storm the university. Students are being urged to storm the university.

Community Reaches To Live

Leon movers made a big move. He will since he further Russia. "be good government Mexican sure that heavy for times and solid steel mobiles.

Automobile Strikers Seek Settlement After Conference

The internal struggle between two branches of the various labor unions has already paralyzed the motor industry, especially insofar as it affects the General Motors Corporation. The fight is not between employer and employee, as much as it is between the Committee for Industrial Organization and the American Federation of Labor. One unit called the strike and another is trying to break it. The one that is successful will rule the labor world, the leaders believe. While the union fight out their troubles thousands are out of work and are waiting new cars to fill orders which are pouring in at an unprecedented rate.

France Preparing For Occupation Of Spanish Morocco

France has mapped plans for the immediate occupation of the Spanish Morocco territory if the Spanish insurgents do not remove German troops from that region, according to word from Paris. France's experience in the riff and other Moroccan sections makes that nation afraid of possible uprising if other troops are occupied there. It is expected that it will take about 36 hours to move 100,000 French troops into the section if a decision is made.

dramatic field, the fact that they lack native genius without the nursing of their special directors who school them in every grimace and gesture. Despite all this there is no question but that their popularity is general.

Automobile Strike Near Its Close; Plants Evacuated

Efforts to open automobile plants closed because of dissen-sion between two union groups came nearer to a close early this week when "sitter-downer" strikers decided to leave the plants to their owners. This is thought to mark the first real step toward an agreement between workers and employers and to mark the failure of the strikers from the angle of obtaining a victory for either union faction. In the meanwhile automobile dealers throughout the country are anxiously waiting deliveries of cars held up on the production lines.

GOOD VALUES

GOOD values are to be had at this store, when we make bumper crops and when we worry along as we have the past few years.

LEE & POOL WORK CLOTHES Buy them NOW F. W. BRANDT & Co.

VOTE! PICK 3 OF YOUR FAVORITE MAGAZINES AND THIS NEWSPAPER FOR YOUR FAVORITE READING COMBINATION ALL FOUR FOR ONLY \$2.25 YOU SAVE \$1.25

GROUP A PICK 2 GROUP B PICK 1 PICTORIAL REVIEW...1 Yr. American Boy...1 Yr. McCall's Magazine...1 Yr. True Confessions...1 Yr. Pathfinder (Weekly)...1 Yr. Better Homes & Gardens...1 Yr. Christian Herald...6 Mos. Flower Grower...6 Mos. Home Arts...1 Yr. Movie Classic...1 Yr. Romantic Stories...1 Yr. Screen Play...1 Yr. HOUSEHOLD MAG...1 Yr. Gentlewoman Magazine...1 Yr. WOMAN'S WORLD...1 Yr. Breeder's Gazette...1 Yr. Country Home...1 Yr. The Farm Journal...1 Yr. Good Stories...1 Yr. Successful Farming...1 Yr. Southern Agriculturist...1 Yr. Illustrated Mechanics...1 Yr. Progressive Farmer...2 Yr. Dixie Poultry Journal...1 Yr.

THIS OFFER GUARANTEED ACT TODAY MAIL THIS COUPON NOW! Check the three magazines desired and return list with your order. Fill out coupon carefully. Gentlemen: I enclose \$... Please send me the three magazines checked with a year's subscription to your newspaper. NAME: STREET OR R. F. D. TOWN AND STATE.

NOTICE IS HEREBY given that the Commissioners Court of Hansford County will receive sealed proposals until February 8, 1937, from any banking corporation, association or individual banker that may desire to be selected as the depository of the funds of said County, for the term and under the requirements provisions of Articles 2544 and 2545 of the Revised Civil Statutes of Texas. A. F. BARKLEY, County Judge.

NOTICE OF SALE OF REAL ESTATE

The State of Texas: County of Hansford: By virtue of an Order of Sale issued out of the 84th Dist. Court of Hansford County, Texas, on a judgment rendered in said court on the 12th day of November, 1936, in favor of Panhandle Construction Company and against W. H. Douglas, et al., in the case of Panhandle Construction Co., against W. H. Douglas, et al., No. 272 in such court, I did on the 5th day of December, 1936, at 11:00 o'clock A. M., levy upon the following described tracts and parcels of land situated in the County of Hansford State of Texas, as the property of said W. H. Douglas, to wit: All of Lots 10 and 11, block A, town of Spearman in Hansford County, Texas, and on the 2nd day of February 1937, being the first Tuesday of said month, between the hours of 10 o'clock A. M. and 4 o'clock P. M. on said day at the courthouse door of said county, I will offer for sale and sell at public auction for cash, all the right, title and interest of the said H. W. Douglas in and to said property which he owned on the 12th day of November 1936, or at any time thereafter. Dated this 5th day of December 1936. H. L. WILBANKS, Sheriff Hansford County, Texas

NOTICE OF FINAL ACCOUNT AND APPLICATION FOR DISCHARGE OF GUARDIAN

THE STATE OF TEXAS: To the sheriff or any constable of Hansford County, Texas, Greetings: You are hereby commanded to cause to be published for twenty days, exclusive of the date of publishing and before the return day thereof, once a week for three consecutive weeks in a newspaper continuously and regularly published in Hansford County, Texas, for a period of not less than one year, a copy of the following notice: The State of Texas: To All Persons Interested in the Estate Of Rulah May Missildine, a minor, C. A. Gibner, Guardian of said Estate, has filed in the County Court of Hansford County, Texas, a final account of the condition of said Estate and an application for discharge as such Guardian, and said application will be heard at the next term of County Court on the second Monday in February, 1937, the same being February 8th, 1937, at the courthouse of said County, in the City of Spearman, Texas, at which time all persons interested in the Estate of said minor may appear and contest the final account and application for discharge, should they desire to do so. Herein fail not, but you have before said court on, or before, February 8th, 1937, this writ with your return thereon, showing how you have executed same. Witness: Fred J. Hoskins, Clerk of the County Court of Hansford County, Texas. Given under my hand and seal of said court in office at Spearman on this 13th day of January, 1937. F. J. Hoskins, Clerk of the County Court of Hansford County, Texas.

Who Pays Hansford Abstract Co. "INSURANCE OF ALL KINDS"

BEAUTY SMART women know that time and money spent on beauty is an investment well worth while. A facial, a new permanent, or just a manicure and trim can give a "lift" to your spirits not to be measured in dollars and cents. BERTHA BEAUTY SHOP

Pumping Power from Every Breeze! The DEMPSTER NO. 12, BACK GEARED Annu-Oiled WINDMILL Here's the windmill that assures you having plenty of water in every season. Pumps 25% more water in the lighter winds. Runs smooth and easy. Self-adjusting in all winds. The Dempster No. 12 needs oiling but once a year. Has Timken Tapered Bearings, Machine Cut Gears, Positive Brake. Let our experienced windmill and pump man show you a sample on our floor. R. L. McCLELLAN GRAIN CO.

PROSPERITY...Like Charity begins at home And in a limited way this Spearman business firm has enjoyed prosperity for the few years we have been in Spearman. We started out to sell quality merchandise at the lowest possible margin of profit, and as a result we have enlarged our business three times and now employ two hundred per cent more help than we did when we started business in Spearman. THE QUALITY PLUS PRICE is the PROSPERITY we deliver. COME AND GET IT. WE BUY YOUR PRODUCE. Phone 70.

Gates Grocery & Market



The Third Partner IN EVERY successful home there is a third partner to share the problems and burdens of home-making. It takes money to make a home; it takes a keen knowledge of financing and budgeting. Wise home-makers insure their success and happiness by taking a third partner, a silent but potent partner, the First State Bank. Our officials are always ready to advise and consult with you in your home-making problems of saving and budgeting. First State Bank SPEARMAN, TEXAS Member of the Federal Depository Insurance Corp.

Prepare for Prosperity If Prosperity comes you should be dressed just a bit more modish. See our new spring and summer line of samples, and make your selection TODAY while you have a wide range of samples to select from. Wardrobe Cleaners -Phone 2 We Deliver-





# The Lynx News

Edward Larson, Editor  
Edwin Reed, Ass't Editor  
Miss Graham, Sponsor  
R. L. McClellan, Sports

Helen Richardson, Senior  
Ruby Ruth Kelly, Junior  
Nannie Grace Sheets, Soph.  
Verna Gail Allen, Freshmen

## LYNX AND LYNXETTES TO ENTER CANADIAN TOURNEY

The Spearman High School basketball teams will journey to Canada to attend and try to win the Canadian's annual invitational tournament. In this tournament the Lynx and Lynxettes will play against the best teams in the Panhandle. This is the third tournament of the season in which the Spearman teams have played. The Perryton Tournament with the Lynx winning second place—the Spearman tourney with the Lynx first and Lynxettes second. The Lynx schedule for the rest of the season is printed on the front page of the paper.

## RANGERS DEFEAT LYNX IN BATTLE ROYAL

Friday night the Spearman Lynx were defeated on the Perryton court to the tune of 15-19. This was about the roughest basketball game the Lynx have played this season with Robert Perryton fouling out and Bill Slaughter, Spearman and Lilly of Perryton going off for unnecessary roughness. There were more fouls hung up in this game than in any other this season.

Starters for the Lynx were: Close, Neilson, Becker, B. Slaughter, and Womble with Ooley Hitchcock, Sheets, Stanley Slaughter and Robertson being sent into the fray after the first quarter.

## LYNXETTES VANQUISHED BY RANGERETTES

The Lynxettes were defeated by the Perryton Rangerettes at Perryton Friday night, January 22, by a score of 16 to 18.

Richardson, Andrews, Porter, Wilbanks, Maize and Holton started the game for Spearman and Haun were subs.

The Lynxettes made seven field goals and two free tosses out of 12, while the Rangerettes made seven field goals and four charity pitches out of 12.

The Lynxettes have one more game scheduled with Perryton and hope to beat them on the Spearman court, Feb. 5.

## AS S. H. S. STUDENTS SING IT

"I'm an Old Cowhand," croons Paul Robertson as he goes trotting down the football field.

"You turned the tables on me," whimpers J. R. Keims to Doris Jean Russell.

Robert Neilson is crooning "I Just want to make Love, since he kept those three Hartley girls at his house during the tournament.

The other day R. E. Sanders had such a far away expression in his face. At a closer range one could have heard him humming, "South Sea Island Magic. Perhaps he was dreaming of future adventures.

"Its like reaching for the moon Candler Hitchcock, as he leaps for the basketball.

Anna Carol Davidson is quite fond of that delightful tune. When a Lady Meets a Gentleman Down South. Maybe she met some one at the Centennial.

Jack Monroe as he sits with his Geometry book open in study hall I Can't Escape From You.

De Kota Becker softly sings Shoe Shine Boy, as she strolls along the halls. Maybe she is looking for C. D. or could it be Leon?

Ray Converse only knows Me and the Moon. He says he doesn't have time to learn love songs.

Rue Sanders and Floyd Sheets were seen hanging on each others necks trying to get together on I'll Sing 1000 Love Songs in the gym the other day.

Bruce Douglass was singing softly to himself: all I could understand was the phrase "For the benefit of the Ladies."

I noticed Perren Lyons in the library sitting down with his head thrown back, his feet on the desk and his mouth wide open and the tune of "Empty Saddles" coming from his vocal chords.

The Basketball girls have it too; Helen Richardson, Maxine Allen, Julia Wilbanks and Lola Andrews trying to drown each other out. Helen was screaming "Pennies from Heaven; Maxine "You're easy to love"; Julia Love Marches On and Lola Chapel in the Moonlight" on a basketball trip not long ago.

## THE VALUE OF A SCHOOL PAPER

(Editorial)

A school paper is really a benefit to any school. It is a means by which the parents learn of the activities of their boys and girls. Many parents never visit school, but they may learn what the children are doing through the paper.

Too the paper serves as an advertiser for the school. The people of the town and community learn from its columns when athletic contests and entertainments in which they are interested will be held, and how the social activities of the school are carried on. It also serves to let one school know what another is accomplishing or doing.

Often the ranks in grades of the students are given. This should be an incentive to pupils to do their best to have their names appear on the A honor roll from time to time.

Many school papers are now published in the town paper thus being of value to the editor of the newspaper.

## NEW SUBJECTS OFFERED

This last semester four new subjects will be offered to students of Spearman High School. They are Speech, Business Law, Economics and Commercial Geography. Commercial Geography has not been offered in Spearman before, but the others have been offered the last semester for two or three years.

## MANY STUDENTS ABSENT FROM SCHOOL

Fifteen students were absent from high school classes all of last week. Mr. Finley and Miss Hale were also absent.

## HIGH SCHOOL HONOR ROLL

SEMESTER A ROLL ONLY  
Estella Garnett, Verna Gail Allen, Edward Bradford, Eugene Buchner, Betty Morton, Patricia Snider, Janelle Womble, Freshmen; Viola Archer, Ella Jane McMurry, Dennis Kern, Nonnie

## TYPEWRITING TEAM WINS

The Spearman High School typing team went to Perryton last Thursday to engage the Perryton teams in a contest. Spearman was victorious by a margin of six words per minute. Those who are making the Spearman team at present are; Billy Hitchcock, Marie Parker, and Bruce Douglas. Billy ranked first and won over 15 contestants at Perryton. Perryton is going to return the match Thursday of this week.

## CABBAGES AND LILIES

CABBAGES TO:—  
—Mr. Ferguson for changing his mind so often.  
—Wayne H. for not paying off his bets.

LILIES TO:—  
—Nolan Holt: his new years' resolution was not to sit by homely girls (He isn't keeping it I notice).  
—R. L. McClellan for disturbing classes by singing in his bass tone while going down the halls.

—Jack Monroe for picking on a certain dignified Junior girl.

LILLIES TO:—  
—Carl Archer for bearing up so well in Rosa Lee's absence.  
—Martha Delon who actually had a geometry paper last week.

—Mr. Gunn for his everlasting patience.  
—Harlan Terry he combed his hair one last week.

—Dixie Ruth, for being an ambassador of friendliness to Gruber.  
—Junior Campbell for spending one period in geometry without getting called down (congratulations Junior).

## FOURTH GRADE

We are sorry to report the illness of Miss Lois Hale, our teacher, and we are hoping she will soon be back in school.

We have some new readers, and are working on a health poster. We are learning about the different continents. Mrs. Jess Womble is teaching for Miss Hale.

G. Sheets, Billy Hitchcock, Bruce Douglas, Sophomore's; Dixie Ruth Buckner and Robert Satterwhite, Seniors.

## FU AND FROLIC

For the benefit of the Seniors who are leaving us this year (they hope) I want to publish some things that they are supposed to learn in college:

Cassius was a vile, selfish man who was always doing his best to make both ends meet.

Lord Maculey suffered from the gout and wrote all his poems in ambic feet.

Shakespeare wrote tragedies, comedies, and errors.

Tennyson wrote a most beautiful poem called "In Memorandum".

Lady MacBeth dies of the sleeping sickness.

Lancelot arrived at a castle where he asked if he could be put up with for the night.

Poe creates a musical effect by means of alteration and eternal rhymes.

Raleigh died in James I's reign and started smoking.

They gave William IV a lovely funeral, it took six men to carry his beer.

Sienna is famous for being burnt.

The Bastille was a place of refinement for prisoners.

Magna Carta provided that no free man should be hanged twice for the same offense.

Poetry is a thing you make prose of, or is it when every line begins with a capital letter?

I have here a college Prof's version of the nursery rhyme "Blind Mice":

Three rodents with defective eyesight,  
Three rodents with defective sight,  
Perceive the strange manner in which they scamper  
They are pursuing the spouse of the agriculturist.

She severed their extremities with a kitchen utensil  
During the entire span of your living career, have you ever viewed such an unusual spectacle as  
Three rodents with defective eye sight?

Mr. Stowe: "Give one disadvantage of not economizing."  
Bill Russell: "When you take such pains not to wear out your \$4. shoes by taking big steps that you split your \$8. trousers."

THIS WEEK'S LITERAL GEM  
There once was a co-ed quite shy,  
Who said to a student named Cy,  
"If you kiss me, of course  
You will have to use force,  
But, thank heaven, you're stronger than I."

THIRD GRADE  
We are very glad to have 3 new pupils in our room.

We have organized a citizenship club, and every week we select the four pupils that have been the best citizens during the past week. Each gets a gold star.

We have been making posters of ships sailing on the icy seas. In arithmetic we are learning

## the sevens

Mrs. Tuttle has our room every aft sees what good work we have been doing.

We have been reading about the Sahara Desert, which we found very interesting.

Life in New York City has been our topic in geography this week.

## SIXTH GRADE

Our "Live Today Club" met Monday and elected the following officers for this semester. They are: president, Carmen Hitchcock; vice-president, Freddie Mizar; secretary, Zola Mae Sheets; treasurer, Geneva Mackie; news reporter, Viola Jones; sargent-at arms, Cecil Bradford.

The club is making plans for a Valentine party.

## GRADE HONOR ROLL

Third Six Weeks A AVERAGE ONLY  
Seventh Grade:—  
Cass Archer, Gariand Caldwell, J. E. Gerber, Leola Hogsett, Delbert Mizar, Chalmers Porter, Emmett Sanders, Duane Slaughter, Frances Sheets, and Margaret Vaughn.

Sixth Grade:—  
Cecil Bradford, Carmen Dean Hitchcock, Geneva Mackie, Zola Mae Sheets.

Fifth Grade:—  
Wilbur Fullbright, Nadine Hardin, Patricia Hutton, Sada Ruth Hoskins, Louise Kiker, Jimmie Linn, Rita Roach, Elinor Faye Womble.

MEET OUR FRESHMEN  
JULIA KERN  
"Red Head", of the class.  
Type: Rough, Rosy and ringing.  
Study: Algebra  
Sport: Basketball  
Pastime: Plucking Eye-brows.  
Hobby: Cutting figures in algebra.  
Ambition: To be a home Ec. Instructor.

Merle Mizar  
"Bully of the class"  
Type: Big, bad and buxom  
Study: Horses  
Sport: Polo  
Pastime: He dearly loves to groom horses.  
Hobby: Bullying his pets (worms)  
Ambition: To be a horse veterinarian.

FRESHMEN NOTES  
The freshmen are very glad to have completed the first half of this year. Instead of taking occupation this half year most of our class is taking speech or commercial geography.

We are glad to welcome to our class Gene Sanders who came from Arizona.

In English we have taken up literature, while in home ec. we are studying sewing.

## VERY LOW COST

Six hundred and fifty three pounds more grass per acre was produced on the C. V. Burgess pasture due to conservation of moisture by contour furrowing reports O. T. Williams, Manager of the Soil Conservation Service Project at Hereford, Texas.

Mr. Burgess, a Cooperator of the SCS at Hereford, Texas, contour furrowed 65 acres of his pasture in early June, 1936 at a cost of twelve cents per acre, not including running of lines. He removed the wings from a two row lister and cut off the implement made furrows about four inches deep and six inches wide. Every 20 feet he plowed two contour furrows 44 inches apart. No ridges were formed between the furrows which resulted in ver little grass being covered by the soil thrown from the furrows.

Moisture tests made along the furrows in September, 1936, showed wet soil to a depth of 28 inches as compared to ten inches of moisture on an adjacent unfurrowed pasture.

"Conservation of moisture on range and pasture land increases grass growth and grass stands if properly managed, and aids in the control of both wind and water erosion" says H. H. Fennell, Regional Conservator. He also says "The results on the Burgess farm are a fine example of what can be done on a pasture or range lands with very little outlay of cash or labor to the farmer."

Christian Science  
"Love" is the subject of the Lesson-Sermon which will be read in all churches of Christ, Scientist on Sunday, January 31.

The Golden Text is: "The Lord is mighty; he will save he will rejoice over thee with joy; he will rest in his love, he will joy over thee with singing" (Zephaniah 3:17).

Among the citations which comprise the Lesson-Sermon is the following taken from the Bible: "For I know that my redeemer liveth, and that he shall stand at the latter day upon the earth" (Job 19:25).

The Lesson-Sermon includes also the following passages taken from the Christian Science text book: "Science and Health with a Key to the Scriptures by Mary Baker Eddy: The wintry blast of earth may uproot the flowers of affection and scatter them to the winds but this severance of fleshly ties serve to unite though more closely to God, for Love supports the struggling heart until it ceases to sigh over the world and begins to unfold its wings for heaven" (page 57).

# Hansford County Needs A HOSPITAL!!

## IT WILL PROVE AN ECONOMIC RESOURCE FOR HANSFORD COUNTY CITIZENS.

One local doctor has records showing that in a period of fifteen days during the past year he sent patients to hospitals in other towns to amount to 54 days of hospitalization. Without an exception these patients could have received treatments and surgical service in HANSFORD COUNTY at a great saving to the patients.

## A HANSFORD COUNTY HOSPITAL SHOULD AND CAN BE SELF SUSTAINING.

All over the state, county hospitals are proving self sustaining, and in many instances self liquidation. In other words revenue from the county establishments are being used for the purpose of liquidating bonds sold to build the hospitals.

## A HOSPITAL BUILDING WILL FURNISH LABOR FOR WPA EMPLOYEES.

Since the proposed Hansford County hospital is to be a WPA project in which the Federal Government will share dollar for dollar with Hansford county citizens, this will be a means of employing labor in this county.

## A HOSPITAL CAN AND WILL SAVE LIVES OF HANSFORD COUNTY CITIZENS.

Aside from the economic and practical side of a Hansford County hospital, such an institution can and will be the means of saving many lives of citizens of this county. Many cases that are rushed to the Hospitals some hundred miles away, classified as emergency cases, should be cared for without risking the lives of the patients by transporting them over roads when their physical condition does not justify the same. Just recall to your mind the number of lives of Hansford County people that have been lost the past ten years because they were not in physical condition to travel.

## THERE IS NOT A WELL EQUIPPED HOSPITAL ON THE NORTH PLAINS SECTION OF THE PANHANDLE.

We believe that there is not a well equipped hospital available to service the citizens of this section short of some 100 miles. Will not the fact that we can and do have a well equipped hospital, bring money to this county, as well as many favorable comments.

## COST TO TAX PAYERS SHOULD BE APPROXIMATELY 3c PER HUNDRED DOLLAR VALUATION.

The assessed valuation of property in Hansford County is approximately four and a half million dollars. A levy of 3c per hundred dollars valuation would bring in a revenue of near \$1,350 per year. As the bonded indebtedness is to be liquidated at the rate of \$1,000.00 per year this amount should more than suffice to pay Hansford's share of a fifty thousand dollar investment. And if as much as 40 per cent of the hospital cases of this county should take advantage of the service of a county hospital, it is estimated that the income would be sufficient to operate the hospital and provide some surplus to liquidate bonded indebtedness.

**POWERED TO CUT YOUR HAULING COSTS**

**ENGINES TO FIT YOUR JOB**

- 1 An improved 85 h.p. V-8 engine for extra power
- 2 A new 60 h.p. V-8 engine for extra economy

**NEW 1937 FORD V-8 TRUCKS**

FORD brings you trucks with a choice of two great V-8 engines—each designed by Ford engineers specifically for the work you want it to do. The V-8 which established entirely new standards of performance with economy in the low-price truck field has been increased to 85 H.P. and gives even greater gasoline economy than last year's thrifty engine. And there is a new 60 H.P. V-8 engine built to handle lighter jobs with outstanding gasoline economy!

You will also find many other improvements which insure increased economy of operation and upkeep. Every part is ruggedly built to deliver the maximum number of ton-miles at minimum expense.

Let us lend you a 1937 Ford V-8 hauling unit for an "On-the-job" demonstration. Prove to yourself what Ford has done to cut your trucking costs this year!

**AUTHORIZED FORD DEALERS**

**OUTSTANDING FEATURES OF FORD V-8 TRUCKS AND COMMERCIAL CARS:**

- Improved, self-centering brakes that have greater stopping ability with easier pedal action.
- Improved Centri-Force clutch, easier operation, longer life.
- Improved rear axle with optional gear ratios for increased power application and economy.
- Improved cooling system and crankcase ventilation.
- New styling inside and out. More streamlined appearance.
- New driver conveniences and comforts. V-type ventilating windshields. Regrouped instruments and electric gasoline gauge for greater accuracy.
- All models available with or without De Luxe equipment.



# SOCIETY

Elizabeth Ann Miller—Call 10

## LA JEUDI CLUB AT HESTER HOME FRIDAY

Members of the La Jeudi Bridge club were guests at the home of Mrs. Dave Hester, Friday afternoon Jan. 22nd, for the regular social of the club. High score award went to Mrs. Vester Hill. Those playing were Mesdames Pope Gibner, Vester Hill, S. B. Hale, Sr., Bill Gandy, W. S. McNabb, S. B. Hale Jr., H. P. Bailey and the hostess. Lovely refreshments were served during the afternoon social.

## MUSIC CLUB TO ENTERTAIN MAJOR BATON

The Spearman Music Club will entertain the Major Baton and Melody Mads branches of the Music Club Tuesday, Feb. 2nd, in the home of Mrs. R. E. Lee.

Mrs. D. B. Kirk and Mrs. Garnett were shopping in Borger last Thursday eve. Rev. and Mrs. A. F. Loftin, went to Canyon Thursday afternoon. They will bring Miss Fern Gower and Miss Wren Loftin to Spearman for a few days visit. Dr. J. E. Gower visited in Gruver Tuesday.

## SNAPDRAGON FLOWER CLUB AT C. B. RILEY HOME MONDAY JAN. 18TH

Members of the Snapdragon Flower club met at the home of Mrs. C. B. Riley Monday afternoon, January 18th. The Lesson on "Texas History" was presented by the leaders, Mrs. George Buzzard and Mrs. C. C. Crooks. Members attending includes, Mesdames, Geo. Buzzard, W. S. McNabb, Frank Hardin, C. C. Crooks, J. E. Gerber, F. M. Maize, Ike Klutts, Rex Sanders, W. A. Cone and the hostess.

## MUSIC CLUB MEETS

The Spearman Music Club met with the Gruver Music club Tuesday Jan. 26 in the lovely home of Mrs. Gruver. After a very gracious welcome by the president Mrs. Robert Alexander the following program dedicated to Madame Schuman-Heink was presented: Life Story of M. Schuman-Heink by Mrs. Bill Lowe. The High School girls glee club sang "Lullaby" accompanied at the piano by Miss Wilson. Bennett played Serenade by Maszkowski. Vocal solo, The Rosary, Mrs. Ed Rafferty. Vocal Solo, Going Home, by Dvorak. Mrs. Jim Cator. Refreshments were served from a beautifully appointed table. A lighted basket of Snow balls which proved to be small lead cakes formed the unusual centerpiece. Members from Spearman who attended the meeting were Mrs. Campbell, Robt. Douglas, Paul R. E. Lee, C. A. Gibner, L. B. Roach, and H. P. Bailey.

## MARY MARTHA SOCIETY

The Mary Martha's and Belle Bennetts held a joint meeting at the home of Mrs. George Buzzard for the purpose of making their pledge for the coming year. Following is the program lead by Mrs. Chas. Pyles:

Song, Jesus Calls Us, Invocation, Bro Hitchcock, Scripture Mrs. Finley; Meditation, Mrs. P. A. Lyon; Missionary Topic, Our Dollars at Work; (1) Mrs. Clay Gibner, Mountain and Desert Work; (2) Mrs. Whitson, Gulf Coast and Cuban Work; (3) Mrs. Douglas, Workers and Teachers in Religions; (4) Mrs. G. P. Gibner, Education Industrial Work; (5) Mrs. B. and Diligent Girls; (6) Mrs. Bishop, Negro and Rural Work; Responsive reading; Solo, Mrs. Jake Clifton; Solo, Mrs. Clay Gibner, accompanied by Mrs. Lester Boynton violin and Mrs. Clifton at the piano; Sacramento services presided over by Rev. Hitchcock, closed the Program. Refreshments were served to Mesdames: Chas. Pyles, Clay Gibner, Pope Gibner, G. P. Gibner, Ray Platt, Van Earl Steed, Lester Boykin, L. W. Matthews, Perren Lyon, W. R. Finley, H. P. Bailey, W. A. Hitchcock, John Bishop, B. G. Brigrance, Marvin Chambers, Jake Clifton, Bill Miller, Robt. Douglas, R. E. Lee, S. B. Hale, Jr., L. B. Campbell, and Bill Whitson.

## HOLT 4-H GIRLS MEET

The Holt 4-H Girls met in the home Ec. lecture room Friday January 22. Winnell Jackson acted as president in the place of farragrite Stephen. Miss Lucille hance met with the club. After game, a discussion was led by Miss Chance. The discussion was titled "The well Groomed Girl". Miss Chance also manicured se nails of two girls as a demonstration. The following were present: Lora Lee Jackson, Lena Weering, Verna Gall Allen, Virginia Stewart, Jerry Thompson, delaide Shedeck, Georgie Thompson, Martha Delon Kirk, Aileen Davis, Ann Davidson, Maxine Allen, June Peters, Ruby Ruth elly, Winnell Jackson, Mary ern Terry, Elizabeth Miller, rances Hoskins, Merrilyn Sni- r, Colleen Kelly, Dorothy Nell ott, Elva Jean Dixon, Oleta ollingshead, Janell Womble. The following guests were present: Miss Revah McLain, Miss acillee Chance.

## ATTENDS PTA MEETING

Mrs. Sid Clark attended an Executive Board meeting of the 8th District Parent-Teacher Association, Saturday Jan. 23 at the home of Mrs. C. T. Hunkapillar, Pampa. At this meeting plans were made for the District Conference which will be held in Perryton, April 1st and 2nd, following the meeting Mrs. C. P. Buckler and Mrs. Hunkapillar entertained the Board, Principal and Supt. of the Pampa school at a luncheon at the Sam Houston Cafeteria at one o'clock. Mrs. Clark is one of the vice-presidents of the Eight District of Parent-Teachers Associations.

## BOOK REVIEW CLUB

The Book Review Club met Tuesday Jan. 25 at the home of Mrs. Bill Whitson with 11 members and one guest present. "Some Day you will find Tim" by Ursula Parrott, by Mrs. Gene Richardson. "Gone with the Wind" by Margaret Mitchell was given by Mrs. Fred Hoskins, because of the length of the book and the wonderful story only the first part was reviewed and the second part will be reviewed at the next meeting. At noon a lovely luncheon was served to Mesdames: C. A. Gibner, Marvin Chambers, E. N. Richardson, Bill Hutton, Bill Miller, L. B. Campbell, Roy Russell, Chas. Pyles, Bill McClellan, Mrs. McNabb and the hostess Mrs. Whitson.

## HAVE A LAUGH

In an article under the headline, Eggs, and other imports. On page three of the Kansas City Drovers Telegram, January 20, the writer calls attention to the fact that Secretary Wallace has announced he is in possession of \$200,000.00 with which to support the egg market. The same article also recites that the Department of Agriculture has reported that from July, to November in 1936 there was imported into the United States: Eggs in shell, 155,000 dozens; Egg albumen, dried, 1,272,000 pounds; Yolks, dried, 2,321,000 pounds; Other egg products, 600,000 pounds.

During this same period, this article reports that there was 7,070,000 head of hogs imported into the United States and in addition imports of fresh pork, hams, shoulders, and bacon totlaed 16,943,000 and imports of canned beef increased 4,400,000 pounds. The writer also points out that from July, to November the imports of butter were five times as large as in 1935 and the imports of casein (the cured part of milk, which is the important part of cheese), increased ten times; and the imports of milk increased nearly ten times.

It seems to me that we farmers should all get together and have a good laugh. Just look at the work we are pushing over on the foreigners. Yours, R. V. CONVERSE (Editors note:—We will publish any article in interest to the farmer if not more than 200 words and typewritten.)

## ANNOUNCING

We take genuine pleasure in announcing the coming of the Hillbilly boys to Spearman. We think Mr. W. Lee O'Daniel a fine type of American business man. We know that his radio programs on Sunday afternoon are good for us, and we hope that you find his Hillbilly coffee and other products as good, pleasant and refreshing as Mr. O'Daniel and his program on the air.

R. L. PORTER GRAIN AND SEED CO. W. H. Douglas, Texhoma, transacted business in Spearman Monday.

## W. Lee O'Daniel And His Hillbilly Products Are Here

Ask your grocer for that fine high-mountain coffee and good flour. We have their full line of poultry and dairy feeds. The Hillbilly boys are on the air at Ft. Worth, 800 kilocycles, every school day morning at 6:45 A. M., Sunday afternoon on the Texas Quality Network at 3:45 P. M., and at Eagle Pass, 730 kilocycles, every day including Sunday, 7:30 A. M., 12:15 8:45 and 11:30 P. M.

We have a fresh car of Ful-o-Pep and Schumacher feeds and are expecting a carload shipment of potatoes. Come in and see us for seed oats and barley, grain, concentrates, nut and lump coal.

Distributors Dobry's Best, Gold Medal and Hillbilly products.

## R. L. Porter Grain And Seed Co.

## PRINGLE PTA

A. B. Reinertsen, principal of the Morse High School stressed the efficiency of schools was hampered by the crowded conditions in many schools and the lack of sufficient teachers to deal with individual problems in the class rooms in his talk before the Pringle Parent Teacher Association at their January meeting. He further stated that children can not be sacrificed on the alters of dollars and cents; that children carry the scars of such economizing as is practical in schools from necessity. Pupils turned out from such systems can not face the world as capable citizens.

Touching on the Home Side of the subject "value of efficiency training in the school and home" Mr. Reinertsen compared the efficiency of mothers to the short cut systems of the modern home makers. He left this question to be decided by his listeners.

At a business session action and recommendation of two executive committees was ratified wherein Mrs. C. E. Lieb was appointed secretary to fill the vacancy of office when Mrs. C. P. Burns resigned. Weekly readers were to be ordered for last half of school year, requesting parents to pay the 20c per child dues.

A tree planting ceremony was planned by the program committee for observance of Founders Day. Mrs. Chas. King, Mrs. C. E. Lieb a trustee and Mrs. Annie L. Deering were appointed as a committee to purchase a tree. Hot lunches were to be started immediately in the manner previously used. Twenty adults attended. Mrs. C. E. Lieb led the opening song, Mrs. Deering the devotional Mr. King showed slides he took on a educational tour.

## METHODIST CHURCH

The attendance at Sunday School has been holding up fine and the teachers and officers very faithful, all this is greatly appreciated. Be with us next Sunday if at all possible, promptly at 10 o'clock, preaching at 11: subject "Every Man's Life is Will". At the evening hour the subject "Breaking the Alabaster box of Precious Ointment", and the installation of the newly elected officers of the Missionary Societies. Special music by the choir and young people's orchestra. A welcome to all who desire to worship with us.

## BID A BIT CLUB

Mr. and Mrs. Bill Hutton were hosts to a very enjoyable 'pot-luck' supper at their home on Jan. 26 at 7:30 o'clock. High scores were awarded to Mrs. L. B. Campbell and R. E. Lee. Those playing were Mr. and Mrs. Max Lackey, L. B. Campbell, R. E. Lee, Jimmie Jackson, W. L. Russell, Mrs. Bill Whitson, Hayden Hensley and the host and hostess.

## HOUSE FOR SALE

1 three room stucco house for sale. In excellent condition. Priced to sell. Write or see Fred Mizar, Spearman, Texas.

## LOST

1 Black Polandchina sow pig, weight approximately sixty lbs. Phone E. M. GROVES.

Mr. and Mrs. Dwight Holland former City Manager, now of Dodge City, Kansas visited in Spearman last week. Mrs. E. C. Womble is reported doing fine, following a major operation, underwent at the Scott and White Sanatorium, Temple, Texas, Monday of this week. George M. Whitson returned to Spearman the past week end from a 30 day visit with relatives in Misichigan and Massachusetts. Mr. Whitson stated that he had not encountered any uncomfortable weather until he came back to the Panhandle. Mrs. Adrain Moore visited in Sunday last week.

## NUMBER 6

Continued from page one—up before the organization is a concerted action upholding the gas refund law. An effort is being made in the state legislature to repeal this gas refund law. Since there are only two Senators and a proportionate number of Representatives in the state Legislature who would be materially interested in the law, it behooves this section of the state to join in with the state wide organization of famers in order that we can secure their support in keeping this vital law on the statutes. The repeal of this law would entail thousands of dollars losses to our land owners and operators of Hansford County.

The Agricultural association of Ochiltree county is well organized with some 700 members. The similar organization of Hutchinson, Carson and adjoining counties are nearly 100 per cent, and are gaining much recognition thru out the state in affairs of vital importance to the agricultural section. Hansford county must get in the harness and lend the weight of their support to this state wide organization in order that our own interests can and will be protected.

The agricultural organization is not limited to land owners and farm operators, but is open to every citizen of Hansford county interested in the future of agriculture.

Be sure to mark these dates on your calendar and make arrangements to attend some of these meetings during next week

## NUMBER 2

Continued from page one—what was formerly known as the nations "dust bowl" in oversubscribing their original quota of \$40 asked by the American Red Cross.

The exact amount brought into the bank at Spearman from Spearman, Gruver and Morse citizens amounted to \$186.33 at noon Thursday. The original quota has been increased to five times its original amount, so that this county only lack some \$20. of subscribing the new quota.

Chairman Lee McClellan believes Hansford county will more than double a quota of \$200.00 before the emergency relief money is stopped. He stated that not an individual in the county had been solicited for funds, but the entire amount so far had been brought to the various officials over the county.

Donations can be made to R. L. McClellan, P. A. Lyon and C. 100 years ago, will be one of the

## ANNOUNCING

We have added five new tables to our equipment in the McLain Building, and have moved five tables to our annex, opened in the building formerly occupied by the Old Corner Drug Store. It is our intention to furnish wholesome amusement to Hansford county public. We take this opportunity to thank the public for their liberal patronage in the past, and ask continuance of your patronage.

PLEASE HELP US KEEP NEW EQUIPMENT New. We ask our patrons to help us by not abusing the new equipment recently installed.

## Spearman Recreation Club

BEN BECK CARL OWEN

## 1937 Car License Free

With every USED Car sold in the month of FEBRUARY we will give each Purchaser of same an order for 1937 Car License.

Just present this order to the Local Tax Collectors office and secure your license with no cost to you. We are listing herewith a list of our Ok'd cars at Exceptional Values. With each one of these cars we will issue our Regular Used Car GUARANTEE.

- 1-1936 Chevrolet Coupe Pickup
- 1-1935 Chevrolet Master Sport Sedan
- 1-1934 Chevrolet Master 6 Wheel Sedan & Trunk
- 1-1934 Pontiac 8 Coach
- 1-1934 Ford V-8 Tudor
- 1-1932 Chevrolet Coupe
- 1-1931 Chevrolet Coupe
- 1-1930 Chevrolet Sedan

## OTHER SPECIAL USED CAR BARGAINS

- 1-1931 Chevrolet Long Wheel Base Truck with Cab Grain Bed & Dual Wheels
- 1-1930 Chevrolet Sedan
- 2-1929 Chevrolet Sedans
- 2-1929 Chevrolet Coaches
- 1-1929 Chevrolet Coupe
- 1-1929 International Truck With Cab & Grain Bed
- 1-1928 Ford Coupe
- 1-1928 Chevrolet Coach
- 1-1928 Chevrolet Sedan
- 1-1929 Hudson Sedan
- 1-1929 Buick Sedan



## GRUVER NEWS

Mrs. Clinton Wilson was called to the bedside of her grand-mother who is ill at Turkey, Tex. Miss Mary Alexander, assisted by her parents, Mr. and Mrs. H. Alexander, entertained a group of her friends to dinner Sunday. Those present were Misses Willie Mae Wilson, Iva Gene Culwell, Margaret Gross, Mary Jo Gruver, and R. A. Reed, O. V. Walker, Ross Walker, E. H. Taber and Harold Orman of Borger.

Mr. and Mrs. Wm. C. Belcher, Mr. and Mrs. Robt' Alexander, Bobby and Frances and Mr. Stone attended the show in Perryton Sunday afternoon. Mr. and Mrs. W. A. Shapley were Spearman visitors Monday.

## BLODGETT NEWS

Mr. and Mrs. J. F. Sim were Spearman shoppers Tuesday. Earl Church, Mrs. Ralph and J. M. Blodgett helped Mr. J. F. Sim can a beef Wednesday. S. J. Powell was a Wednesday dinner guest of Mr. and Mrs. J. F. Sim.

Thomas Riley was a caller in the Mearl Beck home Sunday. J. F. Sim and wife, A. D. Reed Mr. and Mrs. B. F. Monroe, Mr. and Mrs. Earl Church and family, Mrs. Mearl Beck, Mrs. Ralph Blodgett, Mr. and Mrs. E. C. Hooper and Mrs. J. M. Blodgett were among the Spearman shoppers Saturday.

Mrs. Ralph and J. M. Blodgett were visiting Mr. and Mrs. Mark Blodgett near Range, Oklahoma Sunday and Monday. Mr. and Mrs. A. D. Reed and Margaret Alline visited in the Blodgett home Sunday night. Harvey Morse spent Saturday evening in the Ed Beck's home. Jake Morse called in the Blodgett home Saturday evening.

A. Gibner (or the First State Bank) at Spearman, Henry Reid Womble Hardware Co. Morse and Mr. Gross, Gruver Drug Co., Gruver, Texas. All citizens are urged to make contributions to this emergency fund immediately. Contact any of the men mentioned, or mail contributions to the First State Bank, Spearman, Texas.

## NUMBER 1

Continued from page one—entertainment and educational features on February 6 to commemorate the John Deere Centennial.

"The Blacksmith's Gift", a historic epic of American agriculture L. McClellan, P. A. Lyon and C. 100 years ago, will be one of the

## chance for Bargain Supt ion Rates

outstanding features of the day's program. This remarkable picture is an all-Hollywood production, featuring Monte Blue and that outstanding comedian of "The Trail of the Lonesome Pine," Fuzzy Knight, in a dramatic story of the early settlement of the West. It relates the story of a grave problem that threatened for a time to defeat the advance of the early settlers—and tells how one man met that difficulty with a solution which changed the course of American history.

In its gripping drama there is sentiment aplenty, but the loquacious Fuzzy Knight as a gossipy hanger-on offers a continuous run of comedy. Other leading parts are played by Arthur Aylesworth, Otis Harlan, Anne Hovey, John Marlowe, and Claire McDowell.

In addition to this feature production, three other pictures will be shown including "From One Anvil: Her Husbands Choice and a News Reel", showing the new developments in agricultural methods.

"Her Husband's Choice" is a sequel to "Sheppard & Son," shown last year. You'll see your old friends of former years—Mr. and Mrs. Sheppard; their son, Dick; their daughter Phyllis; her soon-to-be husband, George Barkley, and Jim Brady. It's the story of a modern farm boy and girl

## IN SHATTUCK HOSPITAL

County Treasurer, Mrs. May Jones is in Shattuck, Oklahoma at the bedside of her 8 year old son, Hershel, who underwent an operation for rupture, at the Shattuck Hospital Tuesday. Relative of Mrs. Jones stated Thursday that the operation was successful and the child would be brought home in the near future.

CHEER UP with W. Lee O'Daniel and his Hillbilly boys. Their radio time in our ad this issue.

## R. L. PORTER GRAIN AND SEED CO.

planning to start in farming themselves, their efforts to tore the family farm, their pr for tractors implements and c and how the desire for a tra was satisfied in a very unu way. This picture packed v entertainment is an education modern farming methods as w The open house this year is part of the John Deere Centenn celebration; for it was in 18 just 100 years ago that John Deere gave to the world the steel plow.

Mrs. Ed Wilbanks, Joan and Carl Ed and Mr. and Mrs. Don Shockley of Perryton were visitors in Sunray Sunday. Miss Fran and John Schubert visited in Spearman Friday.

## Use Phillips 66 Gas And Oil For Winter Comfort

INSTANT STARTING—PERFECT LUBRICATION

### W. M. Glover

AGENT, PHILLIPS OIL CO.

## Let Us Be Your Grocer

The High School Grocery has a splendid stock of merchandise to service citizens of South Spearman. Come in at any time. Open most all hours of day and night.

### High School Grocery

ERNEST ARCHER, PROP

## Home Bakery

Has just completed remodeling and repainting the interior of our building.

BUY YOUR BREAD AND BAKERY PRODUCTS FROM THE LOCAL GROCERY STORES

But come in and visit us at any time.

### HOME BAKERY

## Beautiful Started Chicks

Special low prices next 2 weeks on our beautifully Started Chicks—Reds, Buff Orpingtons, White Rocks chiefly, 1 to 2 weeks old. INQUIRE NOW.

WE HAVE TO OFFER:—

	Jan.	Jan.	Feb.	Feb.	Feb.	Feb.
S. C. Reds	25	28	1	4	8	11
Bar. Rocks	100	1500	2300	1500	1900	400
Wh. Rocks	350		130		450	660
Wh. Wrand.	700			750	600	850
Buff. Orps.	200			575	500	425
Buff. Orps.	700	300	950	300	900	400

Order early—get breeds, dates you want, \$1. per 100 books it. Other Breeds Offered, White, Dark Brown, Buff Leghorns; Anconas; Buff Rocks, Speckled Sussex, Light Brahmas (quality limited).

PRICE—Heavies—\$8.50 per 100 Leghorns \$8. Postpaid

3 per cent Discount on all January Chicks, where Full Amount accompanies the order.

### MUNSON HATCHERY

ALVA, OKLAHOMA PHONE 338