



Temperature 112° at bank

Angela Lesly Is Miss Hansford

Angela Lesly was chosen Miss Hansford County at the annual Beauty Pageant which was held on June 6, 1981 at 8 p.m. in the Spearman High School Auditorium.

Angela is the 18 year old daughter of Bobby and Reta Lesly. She was 1st runner-up in last year's pageant.

First runner-up was Paige Holt of Gruver, daughter of Mr. and Mrs. Nick Holt.

Second runner-up was Sharyl Barkley of Gruver, daughter of Mr. and Mrs. Leslie Barkley.

Third runner-up was Karen Kenney, daughter of Mr. and Mrs. Byron Kenney of Spearman.

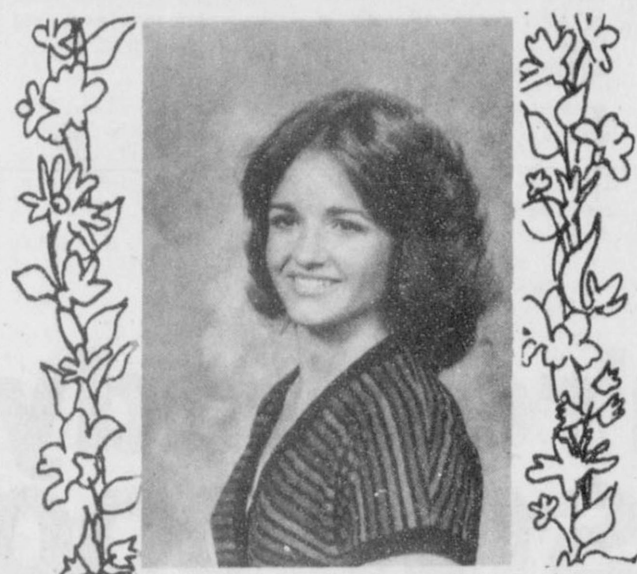
Fourth runner-up was Christi Cuccaro, daughter of Mr. and Mrs. Buck Scroggs of Spearman.

Paige Holt and Sharyl Barkley tied for Miss Congeniality.

Kyle Pearson and Carrie Pearson won the Little Escort contest.

Ralph Maxfield of Booker was the emcee for the pageant that was sponsored by Xi Zeta.

Judges were Betty Phillips of Darrouzette, John Elizey from Perryton, and Joe Mroczka from Guymon.



Judges for the Miss Hansford County escorts were Sharon Elizey of Perryton and Beth Dorch from Morse.

Other contestants in the pageant were Mary Ann Martin, Sue Sheets, Denise Blackburn, Pam Porter, Leslie Platt, Lori Diffie, Johnnie Eaton, Denae Baker, Cindy Young, and Jo Ann Reed.

Other contestants in the Little Escort contest were Schane Schneider and Lyndee Cook, Stuart Riggins and Kristina

Poole, Cass Lasater and Ashley Shieldknight, Shawn Moore and Callie Weaver, Clint Schnell and Lacey Barkley, Matt Archer and Molly Blackman, Chad Wilkerson and Trixie Pearson and Scott Sims and Jill Clements.

The new Miss Hansford County was crowned by the 1980 Miss Hansford County, Eadie Clemmons, daughter of Mr. and Mrs. Eddy Clemmons of Spearman.

Womble, Hendricks Top Tee Scramblers

Duffers and Divot Diggers, Putters and Putzers all added up to 104 golfers forming 52 two-man Scramble Teams--and to the last man, regardless of scores, praised First State Bank, Spearman and Gruver State Bank for sponsoring the finest weekend of absolute fun any participant could remember.

Entry fees went to the Hansford Golf Course to the tune of some \$1,500 by the first unofficial tabulation.

Saturday night, linksters were treated to a fish fry with Pun'kin from Borger serving up the finned feast. Here again, the banks picked up the tab.

Flights were made up according to handicaps and winners were recognized in Flights A, B

and C in addition to the Championship Flight.

The latter found the team of Danny Womble and Dale Hendricks, Spearman, top winners with a combined score of 125. The team of Spearman businessman Ben Woodington and Spearman High School Principal Eddie Clemmons were just four points off the winners at 129 and edged out the third Championship Flight team's score of 130 by one point. This team was Tom Schulz and Roger Mullins, Borger.

A-Flight winners were Bill Holvey and Wayne O'Daniel, Borger, with a score of 136. The father and son team of James and Mark Cunningham, Spearman, tied the other A-Flight Scramblers, Jimmy Morley and

Jeff Beedy, Spearman, with 141 swipes at the ball.

B-Flight was comprised of Billy Logston and Randy Brown, Gruver, 138; Tony and Pete Shapley, Gruver, 144; Mark Irwin and George Odom, Gruver, 145.

C-Flight listed Butch Baker and Steve Holton, Spearman, 144; Joe Barnett and Robert Pierce, Stinnett, 153; Frank Lewis and Sonny Blankenship, Morse, 154.

Odom was not the only banker on the course. The county's two money stores were well represented including First State's Clay Gibner--and in the words of a competitor--"worried the ball and their opponents considerably."



The First State Bank thermometer hit 112 degrees at Tuesday noon! But, the official high on Monday was only 106, and about the same Tuesday!

Hansford Horse Show Winners Reported

The Hansford County Pride of the Panhandle Horse Show drew over 370 entries with Hansford County 4-H'ers with the highest points!

Mark Garnett won All-Around in the 9-11 division with Deana Turner Runner-Up.

Travis Patterson tied for All-Around in the 12-14 year division.

Jon Garnett was Runner-Up in the 15-19 age division.

Others placing are listed under the event they competed in.

In the 9-11 Showmanship competition, Mark Garnett won with Deana Turner coming up in 5th Place, Clint Patterson was in 6th Place, J. Garnett won 8th Place and close behind was Michele Savage winning 9th Place.

As far as the Halter Placings, Michele Savage won 5th and Mark Garnett won 6th.

Deana Turner won the Western Pleasure Event, Michele was close behind and won 2nd Place, Mark Garnett was 4th, Bonnie Jarvis won 6th Place, 7th Place was won by Jean Ann Heikes and J. Garnett won 10th Place.

Mark Garnett won the Horsemanship competition, Deana Turner was 2nd, Michele Savage won 3rd Place, 4th Place was won by Clint Patterson and Kristin Dunnihoo won 8th Place.

The Trail event was won by Deana Turner, Jean Ann Heikes was in 4th Place, Bonnie Jarvis won 7th Place, Mark Garnett won 8th Place and J. Garnett won 10th Place.

In the Poles competition Clint Patterson won 3rd Place, J. Garnett won 4th Place, 5th Place was won by Deana Turner, and 7th Place was won by Mark Garnett.

In the Barrels competition, Clint Patterson won 4th Place, Deana Turner won 5th Place, Amy Smith won 7th Place, Jean Ann Heikes was 8th and J. Garnett won 9th Place.

J. Garnett won the Reining Event, Mark Garnett was in 3rd Place, 4th Place was won by Michele Savage, Deana Turner won 6th Place, Clint Patterson was in 7th Place and Amy Smith won 8th Place.

In the Bridle Path Hack-all ages competed--competition, Andrea Archer was the victor, Mark Garnett was in 3rd, Jon Garnett followed closely behind in 4th Place, Will Jarvis won 6th Place and 8th Place was won by J. Garnett.

In the Pee Wee Pleasure (Walk Trot) competition, Mark Eakin finished in 2nd Place, Mike Smith was in 3rd Place, Misty Savage won 4th Place, Cinda Turner won 7th Place and

8th Place was won by Matt Archer.

Mark Eakin won the Pee Wee Barrels competition, Mike Smith was the closest Hansford County competitor in 3rd Place and Mary Cook won 8th Place.

In the 12-14 Showmanship competition, Anne Marie Jarvis won 6th Place, in 7th Place was Travis Patterson, Shelly Dunnihoo won 9th Place and 10th Place was won by Tammy Savage.

In the Halter competition, there was a tie for 1st Place--by Shelly Dunnihoo and Andrea Archer, 2nd Place went to Travis Patterson, 3rd Place was won by D'Lynn Orr, there was another tie for 4th Place between Diana Martin and Andrea Archer, Anne Marie Jarvis had two horses that tied for 8th Place in the Halter competition, and Dirk Umphress won 10th Place.

In the Western Pleasure competition, Shelly Dunnihoo won the event, D'Lynn Orr was the next closest Hansford County contestant to Shelly--she was in 3rd Place, Andrea Archer won 5th Place, in 6th was Tammy Savage, winning 7th Place was Travis Patterson, and the winner of 10th Place was Diana Martin.

In the Horsemanship event, Travis Patterson won, while D'Lynn Orr was in 2nd Place, Tammy Savage won 8th Place and Andrea Archer was in 9th.

In the Trail competition, Travis Patterson won the highest honor by taking home 4th Place, Tammy Savage followed closely and won the 5th Place, while Shelly Dunnihoo won 7th Place.

In the Poles' Event, Andrea Archer won the event by placing 1st, Donna Martin was in 2nd, Diana Martin was in 6th Place, Travis Patterson won 8th Place and in 9th Place was Tammy Savage.

Donna Martin won the Barrels' competition, in 4th Place was Diana Martin, Travis Patterson won 6th Place, Andrea Archer finished 9th, and in 10th Place was Tammy Savage.

In the Reining competition, Andrea won the event, the one that followed was Anne Marie Jarvis in 5th Place, Tammy Savage finished in 7th Place, and in 10th Place was Travis Patterson.

The final group events were the 15-19 group and the event was the Showmanship event. Will Jarvis finished 3rd, followed closely by Jon Garnett who finished in 4th Place, Angie Francis placed 6th.

In the Halter competition, Jon Garnett won 2nd Place, Angie Francis was right behind Jon to get 3rd Place and Will

Jarvis finished 5th.

Jon Garnett placed 2nd in the Western Pleasure event, Angie Francis was the next Hansford contestant placing 4th and Will Jarvis finished 6th.

In the Horsemanship, Jon Garnett took home another 2nd Place, while Angie Francis, the closest finisher to Jon of all the Hansford County contestants, placed 10th.

In the Trail Event, Jon Garnett finished in 3rd Place, Will Jarvis followed and finished in 6th Place.

Stacey Cook placed 3rd in the Poles.

Stacey came right back, and almost won the Barrels' competition, but missed by a little bit and finished in 2nd Place.

In the Reining Event, Jon Garnett placed 4th and in the 5th position was Will Jarvis.

All these contestants in the Horseshow, did a superb job, and we are all proud of everyone, speaking for all in Hansford County!!

Ralph Pattison Services Held

Services for Ralph L. Pattison, 55, were held at 2 p.m. Tuesday, June 9, in the Full Gospel Church in Perryton with the Rev. Harrol Waterbury, pastor, officiating. Burial was in Ochiltree Cemetery by Boxwell Brothers Funeral Directors.

Mr. Pattison died Thursday. He was born in Beaver County, Okla. and had lived in Perryton area all his life. He was a farmer and rancher. He married Martha Barnes in 1944 in Beaver, Okla. He was a member of the full Gospel Church and a charter member of the Perryton Elks Lodge.

Survivors include his wife; three sons, Glynn Pattison, Lynn Pattison and Terry Pattison all of Perryton; two brothers, Pat Pattison of Balco, Okla., and Charles Pattison of Oklahoma City; a sister, Mrs. LaJanta Nelson of Davis, Okla.; and seven grandchildren.

The family requests donations to the Full Gospel Building Funds or a favorite charity.

Plan Car Wash

A group from the Spearman High School Choir is planning to attend the WTSU All-State Choir Camp July 26th thru 29th. We are going to have a car wash on Saturday, June 20th, at 9:00 a.m. at Cates Car Wash to raise money to pay our fees.

We will charge \$10.00 per car to wash the outside and vacuum. Cont. on Pg. 5, Col. 3



Brother Pogue, First Baptist Church preacher, gave the program at the regular Lions Club meeting here on Tuesday!

Equalization Panel Set By SISD

Action was light at the regular meeting of the Spearman Independent School District board of trustees, Monday night, with three resignations accepted, two new staff members approved, some other appointments and some funds transferred.

The resignations of Susan and Larry Morris and Pam Parrott were accepted.

The employment of Tracy Beville and Freida Ann Donnel for the 1981-82 school year was approved by the panel.

Floyd Cates, Bob Pearson and L.M. Patterson Jr. were appointed to serve as a board of equalization with Monty Harbour named as alternate.

Some \$11,500 in funds were transferred to the cafeteria fund upon approval of the board.

The members in session also approved the 1981-82 Media Service contract.

The remainder of the session was devoted to previous minutes, payment of approved bills and other routine matters of conducting the business of the school system.

James Pierce In Cast of "TEXAS"



One of Spearman's own, James Pierce will be playing 'Abel Tatum' and will also be in the chorus of the production of "TEXAS" this summer in Palo Duro State Park Amphitheatre, south of Amarillo.

James has completed his freshman year at WTSU and has been on the Dean's List and the President's List at that university. He attended Spearman schools all of his life and was a honor student of his graduating class.

He is majoring in Music Therapy and hopes to become a Speech Therapist.

He is the son of Mr. and Mrs. I.V. Pierce.

"TEXAS" opens June 17 and runs thru Aug. 22 except on Sundays. The one exception is an evening performance Sunday, July 5.

This production is always a delight to see and hear and it will be more so this year since James will be in the cast.

Groundbreaking Held



Jim Shirley, Mrs. Dick Elbert, Dick Elbert, and Clay Gibner "break ground" at the new IHC home location West of Spearman. The ground-breaking was held Tuesday morning.



Dick Elbert, on the left, holds a gold shovel while Jr. Lusby signs his name on the shovel. Banker C. A. Gibner is on the right. Dick Elbert broke ground on the new IHC building located on the Gruver hiway, Tuesday.

B

SPEARMAN
659-2514

BROCK
AGENCY

H's

HAIL

INSURANCE
TIME

YMCA Girls Baseball Program

There are usually lots of parents and grandparents that show up to cheer on their kin-folk on to victory in Tee Ball games of Softball. There are 3 Tee Ball teams in Spearman who sometimes meet the Tee Ball teams--this being 2 teams--in Gruver or at the Spearman Little League Park. The three Spearman Tee Ball teams are coached by Cindy Schneider, Linda Butt, and Judy Tindell. The Gruver Tee Ball teams are The Orioles and the Angels.

The Season began June 1 for the Tee Ballers at Spearman.

As far as the rest of the schedule goes, there are lots of games to be played at Spearman as well as Gruver.

June 12, this Friday, the Gruver Orioles will be coming to town to face Judy Tindell's team of classy players. The game that will be played at Gruver--which will be played at 6:30--will be Cindy Schneider's team.

NOTE--All the Tee Ball games will begin at 6:30 p.m.!

Monday, June 15, one game will be played--this being at the Little League Park in Spearman between Judy Tindell's team against Linda Butt's team.

Cindy Schneider's team will be going up against the Orioles June 19, on a Friday, at the Little League Park. The other Tee Ball team will be Linda Butt's team going up against the Gruver Angels at Gruver.

The Gruver Angels will come to the Little League Park here in Spearman and go against Judy Tindell's team.

NOTE: There are two games played on Friday's and one game played every Monday!

On Friday, June 26, Cindy Schneider's team will battle against Judy Tindell's team at the Little League Park. As for the other game, Linda Butt's team will travel to Gruver to meet up against the Orioles.

The Monday, June 29, game will consist of Cindy Schneider's team going up against Linda Butt's team--this game will be played at the Little League Park.

The Orioles will come to Spearman to go up against Judy Tindell's team, while this is going on at the Little League Park--Cindy Schneider's team will travel to Gruver to meet the Angels for the finale of the two teams of the Season--this will be played July 3, on a Friday.

Two local teams--Judy Tindell's and Linda Butt's--will be going at it in the Little League Park.

The last game of the season for all Tee Ball teams will be July 10, Friday. Cindy Schneider's team going up against the Orioles at the Little League Park. Linda Butt's team will travel to Gruver and meet up with the Angels of Gruver at Gruver.

Go cheer on these 'little Tee Ballers--they can be a lot of fun for everyone who likes to see sports, see their kids having fun!!

There are 3 Softball Girl's teams in Spearman and 1 Gruver team. Ray Thomas has a team, Kathy Beck and Sharon Swan coach the Angel's team, Donna Yarbrough coaches the Pink Panther team. The Gruver team is the Gruver Angels.

The Softball season began on a Friday, June 5.

The next Softball game is this Friday, June 12. **NOTICE: All the Softball games are played at 7:45 p.m. at Spearman and Gruver!**

The game that will be played at Spearman's Little League Park will be Ray Thomas' team going up against the Pink Panthers coached by Donna Yarbrough. The Angels, coached by Kathy Beck and Sharon Swan will be going to Gruver to battle the Gruver Angels--the game will be known as the "Battle of the Hansford Angels".

June 19 will be the next battle day--the Angels, coached by Kathy Beck and Sharon Swan will be going up against the Pink Panthers coached by Donna Yarbrough--this game will be played at the Little League Park. Ray Thomas' team will travel to Gruver to meet the Gruver Angels.

Ray Thomas' team will be going up against the Spearman Angels--coached by Kathy Beck and Sharon Swan in the June 26 game--this game will be played at the Little League Park. The Pink Panthers, coached by Donna Yarbrough will be traveling to Gruver to meet up with the Gruver Angels.

July 3--1 day before the July 4th celebration--will be Ray Thomas' team going up against the Pink Panthers, coached by Donna Yarbrough. This will be the last time the 2 Angels' teams will meet for the Season, so it could be a tie--1 game won

for each or one team could win both games and be declared the Angel Champions!! The Spearman Angels will travel to Gruver to meet up with the Gruver Angels.

The last game of the Season is going to be July 10. The Angels, coached by Kathy Beck and Sharon Swan will be going up against the Pink Panthers, coached by Donna Yarbrough--this game will be played at the Little League Park. Ray Thomas' team will travel to Gruver to meet up with the Gruver Angels.

Go on out and cheer on all of these teams--

Stock Show Steers To Be Validated

Steers to be shown in the State of Texas during the Fall of 1981 and Spring of 1982 must be on feed by June 29, 1981.

These steers must be validated by June 29, 1981. This will include weighing, ear tagging, photographing, and nose print-

ing each steer.

All Hansford County steers will be validated on Monday, June 29th, from 9 a.m. until 2 p.m. at Val Winger's pens in Gruver. Val Winger's pens are located 1 mile East of Gruver on the Stratford Highway.

Steers must be validated on this date to be eligible to show anywhere in the State of Texas including our County Show.

If you are planning on showing a steer in 4-H for the 1981-82 season, please call the County Extension office at 659-2136 or 733-2901.

MARKETS

Corn 3.32
Wheat 3.64
Soybeans 4.80
Milo 5.10

Bullock Representative Here June 17

AUSTIN, Tex.--A representative of State Comptroller Bob Bullock will be in Spearman, on June 17, 1981, to assist area taxpayers and answer tax questions.

According to Claudia Stravato, manager of the Comptroller's Amarillo Office, John Lindsey, Enforcement Officer will meet with Spearman taxpayers at Hansford County Court House from 10:00 - 12:00 a.m.

Questions about taxes, the filing of tax returns or assistance on returns can be answered quickly and efficiently in these face-to-face meetings, Bullock said.

Taxpayers who are not able to meet with the Comptroller's representative on June 17, 1981, can still get their tax questions answered quickly by calling, from anywhere in Texas toll-free 1-800-252-5555.

PROCESS OKEYED

The government announced recently its initial approval of a new detoxification process whose developer says can essentially rid the nation of the health and environmental threats posed by common insulating chemicals called PCBs.

Texas swamped by flash floods, some fatalities.

Fourteen die as Navy jet crashes into carrier.

Reagan recalls U.S. envoy from Mideast.

Plenty of gas for motorists this summer.

Dole calls for 25 percent tax-rate cut.

Reagan praises military in commencement speech.

Heavy rains delay planting of crops in Midwest.

**When You're Ready
To Invest \$100,000.
Call Us First.
We'll Pay 17.934%****

When you're ready to invest \$100,000, call us. Tell us what you think your money is worth. We're confident we can offer the high rate your \$100,000 deserves with a Large Certificate of Deposit.

Look at the chart of dates and rates. By compounding your interest daily, we can give you a very attractive annual yield. Maybe the highest in the region.

We realize you don't ordinarily expect to see offers like this from a bank. But it's this kind of willingness to respond that makes us one of the strongest and fastest growing banks in the Texas-Oklahoma area.

If this offer sounds good, see John Cluck, our President, or Larry Orman, Senior Vice President. Or call (806) 435-3676 and ask for our Money Market Advisor. We'll talk by phone, or we can come to visit you. We think we're the only bankers around who will give you what your money is worth.

Term	Rate	Annual**
90 days	16.50%	17.934%
120 days	16.00%	17.342%
180 days	16.00%	17.342%
1 year	15.00%	16.178%

* Minimum deposit \$100,000. Limited offer. Rates subject to change without notice.
** Annual yield based on daily compounding. As required by law, all certificates are subject to substantial interest penalty for early withdrawal. All deposits are insured to \$100,000.

We're the bank you call First.



First National Bank
Perryton, Texas
806/435-3676
Member FDIC

Tue., June 16

9 99¢

KING SIZE
WALLET
CREATIVE
COLOR
PORTRAITS
FOR ONLY

Kodak paper. For a Good Look at the Times of Your Life.

Extra Charge for GROUPS

NO LIMIT

WE USE KODAK PAPER

GET PICTURES MADE OF GRANDMA, GRANDPA, DAD, MOM AND ALL THE LITTLE ONES AT THESE SAME LOW PRICES!

Shugart's inc.

COLOR PHOTOS

White's Home & Auto
200 Main

ASK About Our FREE 8 x 10 OFFER

WANT ADS

CAPROCK MONUMENT CO.

Dealers of Georgia Granite, Georgia Marble, Colored Granite, & Bronze.

represented by

BOXWELL BROS. FUNERAL HOME

519 S. EVANS
659-3802

Hansford County
Planned Parenthood
26 S. Haney
659-2483
Spearman
Mon.-Fri.
Call for an appointment.
30S-rtm

SERVICES

SERVICE: Pits cleaned, wet or dry. Dragline or loader. Also, dozer, grader, carry-all service. Lee Roy Mitchell, 806-733-2384, Gruver, Texas 79040.

KIRBY SALES & SERVICE. New & reconditioned vacuum cleaners. Claude Newell, 912 S. Bernice.
8-rtm

Pee Wee's Plumbing Service Roto-roter, Acoustical Ceilings, Blown Insulation in walls and ceilings. **Appliance Service**, used appliances for sale. 659-2811 or 659-3781.
20-rtm

MONUMENTS Save 20% to 30% Agents and Undertakers Commission **ALVA MONUMENT CO.** Alva, Okla.
51-rtm only

NOTICE Wallace Monument Co. Monuments, Curbings, Grave Covers Local Representative **LEONARD JAMESON** Spearman, Texas
20-rtm

STEAM RINSE & VAC Steam Rinse-and-Vac Shampooers; \$8.95 for up to 24 hrs. available at Gordon's Drug; also at Freddie Largent's 716 Cotter Dr. after 4 p.m. and Saturdays and Sundays.

Will decorate cakes all occasions. Also cookies and cupcakes. Call Nelda 659-3984.
51-rtm

Carpet & upholstery cleaning **Rogers Steam Way**, Guymon, 405-338-7926
5S-rtm

TREES & shrubs trimmed or removed yard work except mowing. Call 659-2787 or 659-2463 after 5:00 p.m.
20-rtm

SNOOPY'S DAY SCHOOL Open Monday-Friday, 7 a.m. to 6 p.m. We have Morning snack, Hot Lunch, and Afternoon snacks. Holiday parties-crafts- and now an added extra for Mom. You receive (Western gift stamps for your payment. Pay on Friday and get double stamps call or come by 620 1/2 Bernice, 659-3328. Ages 18 mo. to 12 yrs.
Call S&H Remodeling for your painting or papering needs- 659-3328.
20S-rtm

Miscellaneous For Sale

GARAGE SALE: June 17 & 18 from 9:30 a.m. - 5 p.m. Clothes & misc. items - 2 families-713 Cotter Dr.
31-3tp

FOR SALE: Three bedroom house located at 906 S. Dressen, close to schools, central air and heat, 1 bath, living room, den combination, fenced back yard. Call for appointment 659-3327.
25S-rtm

FOR SALE: 3 bedroom, garage, good location. Blankenship Real Estate, 9-3052.
27S-rtm

Help Wanted

ELECTRICIAN WANTED: Anthony Electric, Inc. Spearman, Tx. Call 806-659-2441 or after 6 p.m. call 806-659-2819.
30-rtm

Fresh

Strawberries

Sugar Land, Texas-Surely no one could suggest a fruit more delicious and totally refreshing than a plump, juicy, red-ripe strawberry. We've all been beguiled by its appeal just as the New World Colonists were who called it the "wonder of all fruits".

Not only are strawberries scrumptious, but they're also an excellent nutritional source. One cup of strawberries supplies about 150% of the U.S. recommended daily allowance of Vitamin C for the average adult. Surprisingly, the strawberry also adds a significant portion of iron to your diet. But, one of the strawberry's nicest attractions is its low-calorie content. One cup contains only 60 calories. What a delicious way to diet.

Strawberries don't ripen further after they've been picked, so when making your selection, look for strawberries that are bright, fresh, plump, well-shaped and solid in color. And the caps should be attached.

It's a good idea to use strawberries as soon as possible after purchase to ensure the utmost flavor and nutritional value. Unused berries should be stored in the refrigerator.

Be sure you don't wash or remove caps of strawberries until just before serving. Wash gently as washing tends to remove the natural protective outer layer. Never allow strawberries to soak in water. Leaving caps on until serving aids in preserving the flavor, texture and nutrients of strawberries.

Strawberries are normally available in pint baskets. So, to help you determine what quantity to buy, you may wish to refer to this measurement chart:

1 pint basket = about 3 1/4 cups whole berries
1 pint basket = about 2 1/4 cups sliced berries
1 pint basket = about 1 1/2 cups pureed berries

Taste this newest version of Strawberry Shortcake - the beloved classic of the strawberry season. The shortcake and the recipe for Strawberries Imperial are sure to become your standard strawberry favorites. They're absolutely delicious and wonderful now, as the supply of fresh, plump strawberries are in plentiful supply.

STRAWBERRY SHORTCAKE
1/4 cup shortening
1 1/2 cups Imperial Granulated Sugar
3 beaten egg yolks
2 1/4 cups sifted flour
1/2 teaspoon salt
3/4 teaspoon baking powder
1/4 cup cold water
1 cup crushed strawberries
1 teaspoon almond extract
3 egg whites, stiffly beaten
1 cup whipping cream, sweetened with:
2 tablespoons Imperial 10X

STATEMENT OF INTENT TO CHANGE RATES

General Telephone Company of the Southwest, in accordance with the Rules of the Public Utility Commission of Texas, hereby gives notice of the Company's intent to implement a new schedule of rates in Texas effective October 1, 1981.

On April 28, 1981, the Public Utility Commission of Texas issued its order in Docket 3690, creating a separate Docket 3681 to consider the impact and effect of the accounting changes ordered by the Federal Communications Commission (CC Docket 79-105). The Federal Communications Commission has changed the method of accounting for inside wiring costs associated with the one-time station connection, move, or change activity. The new rate schedule will increase the Company's gross annual revenue derived from local service by no more than three percent. The schedule of rates and charges is available for inspection at each Company business office in the State of Texas.

GTE

General Telephone

SS Launches Program To Select Board Members

Selective Service has begun a program to recruit and train civilian volunteers for possible future local boards throughout the nation. This is a part of the Congressionally approved and funded total revitalization of Selective Service. The boards themselves would not be established unless Congress directed a return to the draft. However, pre-selection and training of board members in peacetime will be beneficial in several ways:

(1) It will assure that people selected will be representative of the communities they serve.
(2) It will give Selective Service time, in the relative calm of peacetime, to train the board members in Selective Service policies and procedures. This will assure uniform treatment, should the draft ever be

resumed, of individuals requesting postponements, deferments and exemptions.

By law, local board members are nominated by each state governor and appointed by the President. To be eligible for consideration, an individual must:

--Be a citizen of the United States between the ages of 18 and 60,

--Not be a member of the armed forces (including reserve or retired status, but not excluding veterans of military service),

--Not already have served as a local board member for a total of 15 or more years,

--Be willing to participate in a national training program; and, if the draft is ever resumed, be willing to serve without pay in making difficult but important decisions concerning applica-

tions from local residents for deferment or exemption from the draft.

The law also contemplates that the make-up of each local board be representative of the racial and ethnic backgrounds of the registrant population under its jurisdiction. A major goal of this selection program is to generate sufficient citizen participation to ensure each balance. The full national program to be undertaken over the next few months will bring total appointments to approximately 10,000. Volunteers for Puerto Rico, the Virgin Islands, Guam and Trust Territories are included in this figure.

Interested residents may obtain additional information from:

Paul D. Aikin, P.O. Box 5218, Austin, Tx. 78763.

41st American Legion Boys State To Convene

AUSTIN, JUNE.... 925 Texas high school juniors will converge on Austin and assemble on the Campus of the University of Texas, June 6, 1981, for the 41st session of American Legion Boys State, State Commander, Harry C. Riggs of Plainview announced.

The Boys State delegates will arrive in Austin on Saturday, June 6, and begin registration at 1:30 p.m. in Jester Center. That evening the new citizens of Boys State will attend their first orientation in their assigned mythical Boys State city to start the week long program. A program that teaches responsibilities of citizenship in an actual "do it yourself" type workshop from which comes its motto, "Learn by Doing."

The political caucuses and conventions of Boys State are as exciting as any in real life. The secret ballot of the general election instructs the young citizens in the finer arts of being a gracious winner and a good loser as they learn from their experiences of campaigning.

The 925 boys will be housed in 21 Boys State Cities with each city further divided into two precincts, one for the Federalist and one for the Nationalist political party. They will run for office or work for appointments as they organize city, county, and state governments. Climax

of their effort is the election of a Boys State Governor, a Legislature, Supreme Court, and other state officers.

Jack W. Flynn, II of Lubbock American Legion Post 575 is Chairman/Assistant Director of this year's program.

"Boys State is one of the outstanding youth training programs of the Americanism Commission of The American Legion," Commander Riggs stated. "Not only do the youths learn more about the functions of government but they also see the importance of the role played by each good citizen in discharging his basic citizenship responsibilities in voting. They discover that each individual citizen is an integral part of, and responsible for, the character and success of his government."

On Friday, June 12, the citizens of Boys State will visit the State Capitol and actually sit in chairs of the office to which they were elected and mythically run the state government for a day.

Boys State enrollment for Texas this year brings the total to 24,763 high school Juniors who have attended in the past four decades, since 1940, when Boys State was first inaugurated in Texas.

Powdered Sugar

2 pints fresh strawberries, sweetened with:
1/2 cup Imperial 10X Powdered Sugar

Cream shortening and Imperial Granulated Sugar; add egg yolks, beat well. Add sifted dry ingredients alternately with water, crushed strawberries and almond extract (and few drops red food coloring, if desired). Fold in stiffly beaten egg whites. Bake in 2 waxed-paper-lined 9" round cake pans at 350 degrees F. for about 20 minutes, or until cakes test done. Cool and put together with a layer of whipped, sweetened cream and a layer of sliced, sugared strawberries. Top with more cream and garnish top and sides with whole strawberries. Serves 8 to 10.

A group of the SHS Choir will be having a Car Wash Saturday, June 20th at 9:00 a.m. at the Cates Car Wash. They will charge \$10.00 to wash outside and vacuum inside. Call Denise Blackburn, 659-2719 or Darren Goodheart, 659-3978.

Offered Exclusively By
EMMETT R. SANDERS
REALTOR



303 acres NE of Morse, on pavement, about 211 acres cultivated, balance in grass, no minerals, principals only.

Choice commercial location fronting 140 ft. on West Kenneth Street.

Immaculate 3 bedroom home, preferred southwest location, corner lot, large storm shelter, new central heat and air, new carpet throughout, fresh paint, ready for you to move in.

EMMETT R. SANDERS
REALTOR
659-2516
659-2601 (nights)
26-rtm only



Spacious & Lovely--4 bedrooms, 2 1/2 baths, large closets. Call. Will show to qualified buyers.

JAMES ST.--3 bedroom home with fireplace, gameroom & much more. Call for appointment.

REDUCED TO SELL SOLD TO SELL SOLD TO SELL

FOR SALE--100 X 120 corner lot on Wilmeth.

ASSUME LOW INTEREST loan or get new loan with reduced rate on this IMMACULATE 4 bedroom, 3 bath home with over 2000 sq. ft. in living area. Huge isolated master bdrm with big bath & walk-in closet is NEW 16 X 32 addition to this home. Family room with NEW FIREPLACE. ALL NEW KITCHEN APPLIANCE. Dbl. car garage. Fenced.

TEXAS PRESS ASSOCIATION

The Spearman Reporter

PUBLICATION (USPS 509-660)
SPEARMAN, TEXAS 79081
213 Main Box 458 659-3434
Published Weekly at 213 Main Street
Spearman, Texas 79081
Owner-Publisher.....William M. Miller
Editor.....Faye Lynch
Second Class postage paid at Spearman, Texas 79081

Any erroneous reflection upon the character of any person or firm appearing in these columns will be gladly and promptly corrected upon being brought to the attention of the management.

SUBSCRIPTION RATE: Hansford, adjoining counties, combination with the Hansford Plainsman \$15.00.
Other points, \$20.00.

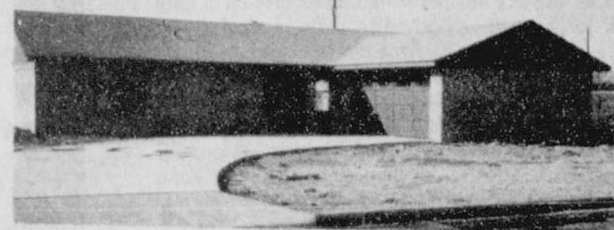
STORM DOORS

Custom Built, Designed, And In Colors To Fit Your Home....

Contact-Howard Moyer at

Only Aluminum Industries

Guymon, Okla. 405-338-6966
73942 114 W. 1st or 338-6170



Archer - 3 B/R, 2 Bath, Built in appliances, fireplace, carpet, double garage, fence.



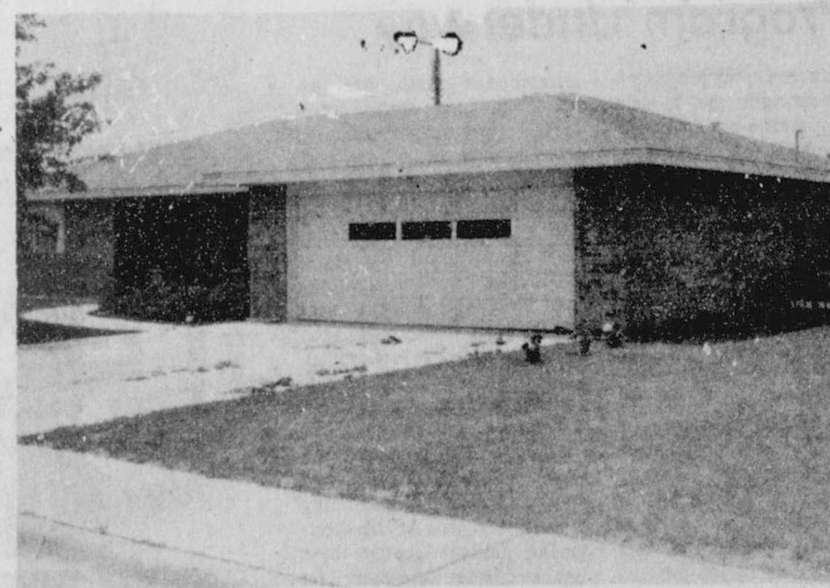
GOLDEN SPREAD REALTY

We'll give our word to you.

Registered Trademark of Century 21 Real Estate Corporation.

1980 Century 21 Real Estate Corporate

Printed in U.S.A. Each office is independently owned and operated. Equal Housing Opportunity.



1106 Wilmeth

FOR SALE - 2285 square feet, ranch style

home, 3 bedrooms, 2 1/2 baths, double car

garage. Exceptionally nice home, in the

nicest part of town.

Call

MAYFIELD

Real Estate - 435-6528

Perryton,

for appointment.

Brucellosis Committee Named

A livestock producer committee has been named for this area to assist in implementation of the Texas brucellosis program. Members are:

Vincent Braddock, Dimmitt; Dr. Dale Barber, Channing; E.H. Brainard, Pampa; Julian Bivins, Amarillo; Jim Finley, Claude; John R. Henard, Wellington; Nolan Henson Jr., Happy; Jake F. Hess, McLean; Clarence Martin, Friona; A.E. Pronger Jr., Stratford; John M. Shelton III, Amarillo; and J.R. Taylor, Amarillo.

Taylor is chairman. The committee is one of 15 throughout Texas. Commissioners of the Texas Animal Health Commission have named one committee for each of the 15 TAHC areas. This group represents TAHC area 1.

"Selection of these committees is a major step forward in the Texas brucellosis program," John Armstrong, Kingsville, chairman, TAHC, said. "All members are actively engaged in livestock production, and their suggestions and recommendations as to how to improve and implement the Texas Plan for brucellosis control will be invaluable to Commissioners and the entire staff

of the TAHC," Armstrong explained.

Brucellosis is a highly contagious disease of livestock. It affects the reproductive organs resulting in abortions, partial loss of milk production, weakened calves, and in some cases sterility in bulls. In humans, brucellosis is known as undulant fever.

Members of the committees were selected from names submitted to the Commissioners by various segments of the livestock industry. "These are not 'rubber stamp' committees. We have members who come from all persuasions. We believe we have committees which will provide us with practical advice, which we will incorporate wherever possible in the Texas brucellosis program," Armstrong said.

More than 600 names were submitted statewide for consideration. A total of 180 producers were selected and have agreed to serve for terms ranging from two to six years. "The entire livestock industry should be grateful to these producers who have volunteered their time in this endeavor," Commissioners said.

Spearman Cheerleaders Enroll For Camp

Limited space remains for cheerleading squads wishing to attend the National Cheerleaders Association Superstars Spirit Camp scheduled for June 28 through July 2 on the Panhandle State University campus. The NCA camp is designed to put emphasis on all aspects of the spirit leaders' responsibility in their complete school spirit program.

Topics to be covered by the camp instructors include setting and achieving goals, planning and carrying out effective activities, and recognizing and solving problems. Throughout the camp day, instructors will offer individual and squad workshops. The NCA instructors are selectively chosen from the nation's top cheerleading squads. There are specialists in tumbling, pom poms, pyramids and partner stunts to provide whatever individual or group attention is necessary.

The National Cheerleaders Association philosophy continues to be one of producing the well rounded cheerleading squad. The Superstar program will emphasize leadership and communication skills along with the physical skills of cheerleading.

Last year three hundred

cheerleaders representing 51 squads were in attendance at the PSU camp. To date, over 250 applications have been received from high school and junior high school squads from four states. Additional squads will be accepted on a first come basis until space is filled or until June 19.

Area towns whose cheerleading squads have already registered include from OKLAHOMA: Balco, Beaver, Boise City, Cherokee, Forgan, Goodwell, Guymon, Hobart, Keyes, Lone Wolf, Medford, Mooreland, Shattuck, Texhoma, Turpin, Weatherford and Yarbrough. Schools enrolled from TEXAS: Amarillo (Palo Duro), Booker, Claude, Darrrouzett, Gruver, Lefors, McLean, Panhandle, Perryton, Phillips, SPEARMAN, Stratford and Texline. Also scheduled to attend are Deerfield and Rolla from Kansas and Springfield and Pritchett, Colorado.

Any sponsor or cheerleading squad member wanting information or registration blanks should contact Candi Kelly, Coordinator of School and University Relations, Panhandle State University, P.O. Box 430, Goodwell, Oklahoma, 73939 or call (405) 349-2611 EXT 212.

Grasshopper Control Program Underway

An airborne spray program is under way right now to save farmers, ranchers and consumers money. The Rangeland Grasshopper Control Program has been initiated as part of an ongoing effort to combat this summer's heavy infestations of grasshoppers in cattle-producing areas.

According to Ron Johnson, staff officer with the U.S. Department of Agriculture's Animal and Plant Health Inspection Service, as many as 30 million acres of rangeland are infested with high levels of grasshoppers. The result is millions of dollars' worth of losses of valuable livestock forages.

Since 10 to 15 percent of infested acreage normally is treated, Johnson says five to seven million acres may have to be treated this summer. More than 5.3 million acres in 1980 and approximately 7.1 million in 1979 were treated as part of this program.

The spray program is organized on a local area basis and is required to meet certain criteria, including: An economic

infestation of grasshoppers (usually eight per square yard) must be present; a proposed spray area must have at least 10,000 acres; everyone in the spray area must participate; and the landowner's money must be on deposit. The key to making the program work on a local level is spraying a large enough block to deter re-infestation of grasshoppers from untreated areas, according to Johnson.

Two insecticides are used in the government-sponsored program: SEVIN 4 OIL carbaryl and ULV Malathion. According to Northwest area APHIS director Dick Jackson, Seattle, these two insecticides were chosen for "their relatively low mammalian toxicity, lack of environmental persistence and excellent grasshopper control capabilities."

For more information about the Cooperative Rangeland Grasshopper Control Program, contact your local county Extension agent, state Department of Agriculture or USDA/APHIS office.

LOUISA'S LETTER

Dear Louisa,

My mother-in-law lives in the same town as we do and she thinks my husband or the children should visit her every day.

Don't you think she is unreasonable? After all we have something else to do besides visiting.

Wife--Mich.

Answer:

I imagine your husband's

mother missed many things when he was small in order to care for him. While it does seem unreasonable to expect a visit from him every day, he should, at least, have a certain time each week to pay her a visit if she is well. If she is an invalid, several times a week would not be too much.

Louisa

Address: Louisa, Box 532, Orangeburg, S. C. 29115

saturday

EVENING

6:00 **Lawrence Welk Show**

Hee Haw Guests: George Jones, John Anderson, Susan Raye, Mary Stuart. (60 mins.)

The Blackwood Brothers

Fish

Amarillo Observer

Solid Gold

Outdoor Oklahoma

Hi Doug

Carol Burnett And Friends

Muppet Show

Live Wire

TV: The Fabulous Fifties A retrospective on the golden years of television, with Lucille Ball, David Janssen, Michael Landon, Mary Martin and Red Skelton. (90 mins.)

Barbara Mandrell And The Mandrell Sisters Guests on tonight's program are T.G. Shepard and Paul Anka. (Repeat: 60 mins.)

Movie (Comedy) * "Smokey and the Bandit"** 1977 Burt Reynolds, Sally Field. Macho C.B. "er known as "Bandit" romances a girl while trying to win a bet by running a truck load of beer from Texas to Georgia with the sheriff in hot pursuit. (PG) (2 hrs.)

Eight Is Enough The Bradford home gets a new crazy twist when Abby's troubled 15 year old nephew comes to live with the family. Joanie becomes Sacramento's first woman sportscaster, but runs into trouble in the men's locker room, and Nicholas turns Mary's anatomy books into a money-making scheme. (Repeat: 60 mins.) (Closed-Captioned: U.S.A.)

CBN Theatre

Wild Kingdom
Enos Two phony policemen burglarize a mansion right under the noses of Enos and Turk and the victim, a wealthy oil and cattle baron, threatens to sue the city for a million dollars. (Repeat: 60 mins.)

Baseball San Francisco Giants vs St. Louis Cardinals (2 hrs., 30 mins.)

Baseball Chicago White Sox vs Milwaukee Brewers (3 hrs.)

What Will They Think Of Next?

BJ And The Bear While trying to help an old couple find a place to live after the evil Rutherford Grant has stolen their house, BJ discovers a pornography operating out of a retirement home. (Repeat: 60 mins.)

The Love Boat

CBS Saturday Night Movie Torn Between Two Lovers' 1979 Stars: Lee Remick, George Peppard. A woman is torn between the love for her husband and family and the thrill of a new romance and a new life. (2 hrs.)

Alpha Repertory Television Service

A Rainy Day TV star, unhappy with her career, spends an afternoon with her mother for the first time in five years when she attends her father's funeral.

Come On Along

Meeting Of Minds Joining host Steve Allen in a heated discussion on the union of church and state are Thomas Jefferson, Bertrand Russell, Saint Augustine and Empress Theodora of the Byzantine Empire. (60 mins.)

Walking Tall A priest who was sworn to secrecy by a dying man is Sheriff Pusser's only hope as he attempts to break up a gun running operation.

Movie (Comedy) * "Smokey And The Bandit II"** 1980 Burt Reynolds, Sally Field. Further adventures of a trucker, his girlfriend and the law. (Rated PG) (2 hrs.)

Fantasy Island A beautiful singer risks her life on a bizarre journey to meet the mysterious, reclusive composer who has written so many songs for her; and a man, accused of cowardice and theft, tries to convince his friends that he did not abandon them after a plane crash. (Repeat: 60 mins.) (Closed-Captioned: U.S.A.)

Rock Church

Love American Style

Doctor Who

ABC News

Heritage Singers

Movie (Comedy) * "Plaza Suite"** 1971 Walter Matthau, Lee Grant. Three humorous tales about people staying in a certain room at a famed New York Hotel. (2 hrs.)

News

Saturday Night Live Host: Buck Henry. Guest: Leon Redbone. (Repeat: 90 mins.)

700 Club

Independent Network News

Movie (Title Unannounced) (2 hrs.)

Music City News Top Country Hits Of 1980

Movie (Drama) * "Willie And Phil"** 1980 Michael Ontkean, Margot Kidder. Three close friends, one of them a girl, develop an odd relationship in the turbulent sixties. (Rated R) (2 hrs.)

News

Alpha Repertory Television Service

Solid Gold

Solid Gold

700 Club (Spanish)

News



Good watering practices usually mean a good harvest.

Movie (Drama) * "Friends Of Eddie Coyle"** 1973 Robert Mitchum, Peter Boyle. A hardened con laborer to supply guns and make a deal with the cops. (105 mins.)

Movie (Mystery) * "Chamber Of Horrors"** 1940 Lilli Palmer, Leslie Banks. Ghoulish and appalling murders take place and the bodies end up in the wax museum. (2 hrs.)

Movie (Thriller) * "I Can, I Have And I Will"**

Friday, The 13th 1980 No Other Information Available. (Rated R) (2 hrs.)

Westbrook Hospital

Dance Fever

The Lesson

Movie (Science-Fiction) * "Creatures Of Destruction"** 1968 Les Tremayne, Aron Kincaid. Hypnotist at a lodge predicts a murder. When it occurs, the owner promotes the mystic's abilities and after several more murders, the Air Force begins to investigate. (2 hrs.)

700 Club

Movie (Suspense) * "Double Indemnity"** 1973 Richard Crenna, Samantha Eggar. The second version of the James Cain's mystery classic. (2 hrs.)

Movie (Drama) * "Honeyuckle Rose"**

Willie Nelson, Dyan Cannon. Story about a singer's life on the road, with after-

midnight bus rides to the next town the only certainty. (Rated PG) (2 hrs.)

Ross Bagley Show

Morecambe And Wise

All Night At The Movies (Joined "In Progress") 1) "Delinquent Parents" 2) "Battle Of Greed"

Movie (Adventure) * "Return From Witch Mountain"** Bette Davis, Christopher Lee. When two children from another planet leave their remote terrestrial home to see what life is like in a big city, their adventures begin. (Rated G) (2 hrs.)

Close-Up

American Catholic

UNITED Supermarkets
Perryton, Texas

PLAY BLACK-OUT BINGO

MAXWELL HOUSE COFFEE 1 LB. CAN \$1.79

JOY LIQUID DETERGENT 13' OFF LABEL 22 OZ. 98¢

PUREX BLEACH GAL JUG 69¢

RITZ CRACKERS 16 OZ. \$1.09

HUNT'S TOMATO JUICE 46 OZ. 69¢

HUNT'S TOMATO SAUCE 8 OZ. CANS 5 \$1

BANANAS LB. 29¢

LIGHT CRUST FLOUR 5 LB. BAG 79¢

UNITED MELLORINE ALL FLAVORS 1/2 GAL. 99¢

DOUBLE STAMPS SAT.!

HEALTH & BEAUTY AIDS
CAPSULE TYLENOL.....\$1.69
NEW SUMMER LEGGS PANTY HOSE.....\$1.29

VLASIC PICKLES 24 OZ. 98¢
RUSH WHITE OR GOLDEN HOMINY.....4 FOR \$1
LARSSEN'S VEG-ALL.....16 OZ. 39¢

KOSHER SPEARS
NO GARLIC SPEARS 24 OZ. 98¢
POLISH SPEARS

RED BEAUTY PLUMS LB. 69¢

RED DELICIOUS WASH. EXTRA-FANCY APPLES 3 LB. BAG 99¢

BELL PEPPERS LARGE PODS 5 FOR \$1

LONG GREEN SLICERS CUCUMBERS 5 FOR \$1

NEW RED POTATOES 4 LBS. FOR \$1

POST GRAPE NUT FLAKES 16 OZ. \$1.09

HUNT'S SNACK PACK PUDDINGS 99¢

You are invited to an anticipation shower
honoring Marsha Murphy
on Saturday, June 13, 1981
from 2:00 - 3:30 p.m.
at the home of Candy Boxwell,
224 Barkley

HOSTESSES
D. Ann Daniel
Holly Simpson
Janie Henton

Peggy Trosper
Colene Brummett
Candy Boxwell

30s-2c

Arts and Crafts Guild Meets

The Arts & Craft Guild met Friday, June 5, in the home of Mrs. F.J. Hoskins.
Present were Mmes. Guy Fuller, W.L. Russell, Bruce Sheets, Deta Blodgett, Kiff White, Garrett Allen, F.J. Daily and the hostess.
The next meeting will be June 12 in the home of Mrs. Kiff White.

WIFE Meet

WIFE MEETING
Monday night
June 15
8:00 P.M.
Bank Hospitality Room

A group of the SHS Choir will be having a Car Wash Saturday, June 20th at 9:00 a.m. at the Cates Car Wash. They will charge \$10.00 to wash outside and vacuum inside. Call Denise Blackburn, 659-2719 or Darren Goodheart, 659-3978.

CONTINUED FROM PG 1
Plan Car Wash Story
cum the inside. We will also be glad to come and pick up your car.

If you are interested call Denise Blackburn at 659-2719 or Darren Goodheart at 659-3978.

Peggy's Pointers

CURB FOOD WASTE, SAVE GROCERY MONEY!

How much food in your home goes to waste?
How many grocery dollars does it stand for?

Most consumers throw away more food than they realize in many cases—leftover vegetables, meats, milk that turns out is the same thing as throwing away pennies, nickels, dimes, quarters and even dollars at meal time.

Try some of these tips to conserve food you spend money for—real savings depend on your storage and preparation habits, as well as on buying.

BUYING

Buy foods in amounts your family will eat for one meal—or amounts you can set aside in the freezer or refrigerator for later without wasting.

Don't get "carried away" buying fresh foods on special if you can't store them properly to prevent spoilage.

Fresh peaches at 49 cents a pound are no bargain if you buy four pounds, eat three pounds and throw one pound away.

STORAGE

Wrap leftovers properly for freezer or refrigerator.

In the refrigerator, always cover foods with wax paper, foil or plastic wrap—or store them in a plastic bag or a container with a tight-fitting lid.

Foods stored uncovered lose moisture and can pick up flavors from other foods.

Foods for the freezer should be packaged in moisture, vapor-resistant packaging such as plastic containers, foil or freezer paper.

Label packages before putting them in the freezer.

Bread needs special storage, too. Store breads in their original container or in an air-tight container.

It's true that breads keep longer in the refrigerator, but they also can become stale there. For toasting later, this is no problem. But for other uses, freeze bread. Freezing is best for long-term storage.

Keep fresh vegetables in the refrigerator crisper or a plastic bag—all except potatoes and dry onions. Potatoes and dry onions need cool, dry storage.

Keep milk fresh by placing it in the refrigerator IMMEDIATELY after shopping.

Don't leave milk sitting on the counter—even during meal-times!

Store flours and grains in containers with tight-fitting lids.

Whole-wheat flour becomes rancid rather quickly, so keep it in the refrigerator for long-term storage.

PREPARATION

If your family doesn't like leftovers, prepare only the amount of food they will eat at one meal.

Involve family members in meal planning. Ask them what and how much they will eat. A

cooperative effort is a definite key to saving money on the food bill.

Here are two food-saving success steps to use in preparation itself:

For "no-like bread crust" families, trim off the crust and save it to toast for croutons or bread crumbs atop casseroles—if the family will accept crust any of those ways.

In buying frozen vegetables, buy the bags, take out only the needed amount and save the rest for later.

Create your own food-saving success steps, and before long, you'll have a long list of ideas that really make an impact on the food budget.

WATCH YOUR HABITS
With rising food costs, economy is more important than ever before—in buying, storing and preparation.

To ensure your family the greatest economy possible, keep a list of foods you throw away for one week. Study the list and decide what changes you can make.

Those changes can mean a big savings on the family food dollar.

Golden Gleams

Harken unto thy father that begat thee.

—Proverbs 23:22.

One father is more than a hundred school-masters.

—George Herbert.

It is impossible to please all the world and also one's father.

—Jean De La Fontaine.

A father, when punishing, is always a father: a slight punishment suffices for his anger.

—Jean Racine.

Father, dear father, come home with me now...

—Henry Clay.

A father is a banker provided by nature.

—French Proverb.

Buchanan adds Oldham to expanded district

State Representative J. W. Buchanan will pick up one new county, Oldham, and part of Potter county under the newly redistricted plan announced in Austin.

Buchanan's district has been the 84th District, consisting of

the top 10 counties of the Texas Panhandle. He will keep these and add Oldham and part of Potter to make his new 87th District have 91,000 population, slightly below the average but acceptable under the plan.

The state legislature has

worked a lot of hours trying to divide up the state's population somewhat equally, and at the same time political considerations have come into the picture and a lot of horse trading has gone on.

Texas is gaining two seats in the U. S. Congress as a result of the redistricting and Rep. Jack Hightower will add some territory in the south part of the district.

The state senate district, served by Senator Bill Sarpalius, will also be enlarged, picking up Hale county, to get the required population figure.

The Panhandle districts, both state and federal, will not see a great deal of change as a result of the redistricting.

The big political infighting is

being done in the major population areas of Houston, Dallas-Fort Worth and San Antonio where minorities are seeking built-in districts that will be served by a minority representative.

Gladiola Flower Club Meets

The Gladiola Flower Club met at 9:30 on June 4 in the home of Lorene Kunselman.

President Betty Jean Davis presiding. Roll was called and answered with-on how our bulbs had done.

Betty Davis reported that our float had placed 2nd in the Parade and we were paid \$75.00.

Virginia Head reminded members about bringing food to the S.C. Party on June the 16th.

Flowers were voted on and the following were the winners: Fay Palmer won Pot Plant; Charlie Baker won Home Grown Arrangement, Dorothy Hanner won Borrowed Arrangement, Dorothy Buzzard's Specimen won.

Lorene Kunselman gave our program on making magnet butterflies also tips to try in the yard.

We had as guest Charlie Bakers' Mother.

Members present were Baker, Brown, Buzzard, Cummings, Davis, Evans, Haner, Ingle, Head, Martin, Newell, Palmer and hostess Kunselman.

Our next meeting will be at Charlie Baker's on July 2nd.

A group of the SHS Choir will be having a Car Wash Saturday, June 20th at 9:00 a.m. at the Cates Car Wash. They will charge \$10.00 to wash outside and vacuum inside. Call Denise Blackburn, 659-2719 or Darren Goodheart, 659-3978.

High supply, low demand may cut gas prices.

Pope sings Polish hymns as breathing exercise.

Thatcher makes surprise visit to Belfast.

Leaked reports: study of U.S.-S. Africa relations.

China's first lady dies at age 90.

Another DC-9 aircraft found to have cracks in wings.

Vets vow to continue fast.

Bangladesh's president assassinated in take-over try.

You are cordially invited to

a baby shower honoring

Mrs. Steve (Denise) Donnell

on June 19, at 2:30 p.m.

1102 S. Bernice

Hostesses: Mmes.

Denton Edwards

Tom Etter

J.W. Gibner

T.H. Davis

YMCA NEWS

SWIMMING POOL NOTES

The swimming pool hours are as follows:

Recreational Swims: Monday-Saturday 1:00-5:00 p.m.; **Recreational Swims:** Sundays 1:30-5:30 p.m.; **Family Swims:** Mondays from 6:00 - 7:30; **Teen Swims:** Wednesdays from 9:00 - 11:00 p.m.; **Ladies Swims:** Monday-Saturday 11:00 - 1:00 p.m.; **Water Exercise Classes:** Monday-Wednesday-Friday 11:00 - 1:00 p.m.; **Water Exercise Classes:** Tuesday & Thursday 6:00 - 7:00; **Pool Rentals** other hours weekdays and weekends at \$25.00 per hour.

LADIES WATER EXERCISE CLASS

Cindy Schneider will conduct a ladies water exercise class each Monday, Wednesday and Friday at the pool from 11:00 a.m. - 12:00 Noon beginning Monday, June 15. Cost for the 6 weeks class is \$10.00 per person. Call the Y for pre-enrollment.

Wanda Archer will be conducting an evening water exercise class on Tuesdays and Thursdays at the pool from 6:00 - 7:00 p.m. Cost for this 6 weeks class is \$10.00. Immediately following the water exercise class there will be a regular aerobics class conducted at the YMCA. Cost for this program for Y members is \$10 with a fitness membership and \$20 for a regular Y membership for the six week program. There will be a third class each Saturday in aerobics at 9:00 a.m. Call the Y for pre-enrollment.

SUMMER BALL PROGRAM SCHEDULES

Thursday, June 11: 6:30 Boys Tee Ball teams for coaches King and Beck will compete: 7:45 **Little League** the Lions and Baker & Taylor teams will vy: 7:00 Men's Softball Ago vs Spearman Auto at the Babe Ruth Field, Crawford Implement vs Hi Plains at the field east of the Y. 8:30 Union Church vs. John Deere at the Babe Ruth field; North Plains International vs Tico east of the Y.

Friday, June 12: 6:30 Girls Tee Ball Gruver Orioles vs Anthony Electric in Spearman. Bunkhouse vs Gruver Angels in Gruver. 7:45 Consumers vs Wy-Tex in Spearman and Anthony Electric vs Gruver Angels in Gruver, for Softball.

Monday, June 15: Girls Tee Ball: 6:30 Anthony Electric vs Berry Cleaners. Girls Softball at 7:45 Anthony Electric vs Wy-Tex.

Women's Softball: 7:00 Red Hots vs Bottoms Up, 8:30 A&L Printing vs Busters Dusters, Monday, June 15.

Tuesday, June 16: Boys Tee Ball: Coaches King vs Latham at 6:30 p.m. Boys Baseball at 7:45 finds Baker & Taylor vs Tucker Water Well.

Men's Softball for June 16: 7:00 Union Church vs North Plains International. 8:30 Super Service vs John Deere. 10:00 Ago vs Tico east of Y. 10:00 Hi Plains vs Speramn Auto at Babe Ruth Field.

Tuesday, June 16 the Junior Babe Ruth Team coached by Mike Turner and Randy Hargis plays a team from Perryton at 7:00 at the Babe Ruth field.

SWIMMING LESSONS

Sign up will be June 13 at the pool from 10 until noon. Lessons will begin June 15. Cost of the two weeks of lessons is \$8.00.

GET 1200 EXTRA S&H GREEN STAMPS

EVERY-BODY WINS

To start you off the first sticker is FREE! HERE'S ALL YOU DO:
For every \$15.00 purchase excluding beer, wine and cigarettes you will receive a Green Stamp. Buy 2 stickers - your purchase totals \$30.00 and you receive 2 stamps. Buy 3 stickers - your purchase totals \$45.00 and you receive 3 stamps. Buy 4 stickers - your purchase totals \$60.00 and you receive 4 stamps. Buy 5 stickers - your purchase totals \$75.00 and you receive 5 stamps. Buy 6 stickers - your purchase totals \$90.00 and you receive 6 stamps. Buy 7 stickers - your purchase totals \$105.00 and you receive 7 stamps. Buy 8 stickers - your purchase totals \$120.00 and you receive 8 stamps. Buy 9 stickers - your purchase totals \$135.00 and you receive 9 stamps. Buy 10 stickers - your purchase totals \$150.00 and you receive 10 stamps. Buy 11 stickers - your purchase totals \$165.00 and you receive 11 stamps. Buy 12 stickers - your purchase totals \$180.00 and you receive 12 stamps. Buy 13 stickers - your purchase totals \$195.00 and you receive 13 stamps. Buy 14 stickers - your purchase totals \$210.00 and you receive 14 stamps. Buy 15 stickers - your purchase totals \$225.00 and you receive 15 stamps. Buy 16 stickers - your purchase totals \$240.00 and you receive 16 stamps. Buy 17 stickers - your purchase totals \$255.00 and you receive 17 stamps. Buy 18 stickers - your purchase totals \$270.00 and you receive 18 stamps. Buy 19 stickers - your purchase totals \$285.00 and you receive 19 stamps. Buy 20 stickers - your purchase totals \$300.00 and you receive 20 stamps. Buy 21 stickers - your purchase totals \$315.00 and you receive 21 stamps. Buy 22 stickers - your purchase totals \$330.00 and you receive 22 stamps. Buy 23 stickers - your purchase totals \$345.00 and you receive 23 stamps. Buy 24 stickers - your purchase totals \$360.00 and you receive 24 stamps. Buy 25 stickers - your purchase totals \$375.00 and you receive 25 stamps. Buy 26 stickers - your purchase totals \$390.00 and you receive 26 stamps. Buy 27 stickers - your purchase totals \$405.00 and you receive 27 stamps. Buy 28 stickers - your purchase totals \$420.00 and you receive 28 stamps. Buy 29 stickers - your purchase totals \$435.00 and you receive 29 stamps. Buy 30 stickers - your purchase totals \$450.00 and you receive 30 stamps. Buy 31 stickers - your purchase totals \$465.00 and you receive 31 stamps. Buy 32 stickers - your purchase totals \$480.00 and you receive 32 stamps. Buy 33 stickers - your purchase totals \$495.00 and you receive 33 stamps. Buy 34 stickers - your purchase totals \$510.00 and you receive 34 stamps. Buy 35 stickers - your purchase totals \$525.00 and you receive 35 stamps. Buy 36 stickers - your purchase totals \$540.00 and you receive 36 stamps. Buy 37 stickers - your purchase totals \$555.00 and you receive 37 stamps. Buy 38 stickers - your purchase totals \$570.00 and you receive 38 stamps. Buy 39 stickers - your purchase totals \$585.00 and you receive 39 stamps. Buy 40 stickers - your purchase totals \$600.00 and you receive 40 stamps. Buy 41 stickers - your purchase totals \$615.00 and you receive 41 stamps. Buy 42 stickers - your purchase totals \$630.00 and you receive 42 stamps. Buy 43 stickers - your purchase totals \$645.00 and you receive 43 stamps. Buy 44 stickers - your purchase totals \$660.00 and you receive 44 stamps. Buy 45 stickers - your purchase totals \$675.00 and you receive 45 stamps. Buy 46 stickers - your purchase totals \$690.00 and you receive 46 stamps. Buy 47 stickers - your purchase totals \$705.00 and you receive 47 stamps. Buy 48 stickers - your purchase totals \$720.00 and you receive 48 stamps. Buy 49 stickers - your purchase totals \$735.00 and you receive 49 stamps. Buy 50 stickers - your purchase totals \$750.00 and you receive 50 stamps. Buy 51 stickers - your purchase totals \$765.00 and you receive 51 stamps. Buy 52 stickers - your purchase totals \$780.00 and you receive 52 stamps. Buy 53 stickers - your purchase totals \$795.00 and you receive 53 stamps. Buy 54 stickers - your purchase totals \$810.00 and you receive 54 stamps. Buy 55 stickers - your purchase totals \$825.00 and you receive 55 stamps. Buy 56 stickers - your purchase totals \$840.00 and you receive 56 stamps. Buy 57 stickers - your purchase totals \$855.00 and you receive 57 stamps. Buy 58 stickers - your purchase totals \$870.00 and you receive 58 stamps. Buy 59 stickers - your purchase totals \$885.00 and you receive 59 stamps. Buy 60 stickers - your purchase totals \$900.00 and you receive 60 stamps. Buy 61 stickers - your purchase totals \$915.00 and you receive 61 stamps. Buy 62 stickers - your purchase totals \$930.00 and you receive 62 stamps. Buy 63 stickers - your purchase totals \$945.00 and you receive 63 stamps. Buy 64 stickers - your purchase totals \$960.00 and you receive 64 stamps. Buy 65 stickers - your purchase totals \$975.00 and you receive 65 stamps. Buy 66 stickers - your purchase totals \$990.00 and you receive 66 stamps. Buy 67 stickers - your purchase totals \$1005.00 and you receive 67 stamps. Buy 68 stickers - your purchase totals \$1020.00 and you receive 68 stamps. Buy 69 stickers - your purchase totals \$1035.00 and you receive 69 stamps. Buy 70 stickers - your purchase totals \$1050.00 and you receive 70 stamps. Buy 71 stickers - your purchase totals \$1065.00 and you receive 71 stamps. Buy 72 stickers - your purchase totals \$1080.00 and you receive 72 stamps. Buy 73 stickers - your purchase totals \$1095.00 and you receive 73 stamps. Buy 74 stickers - your purchase totals \$1110.00 and you receive 74 stamps. Buy 75 stickers - your purchase totals \$1125.00 and you receive 75 stamps. Buy 76 stickers - your purchase totals \$1140.00 and you receive 76 stamps. Buy 77 stickers - your purchase totals \$1155.00 and you receive 77 stamps. Buy 78 stickers - your purchase totals \$1170.00 and you receive 78 stamps. Buy 79 stickers - your purchase totals \$1185.00 and you receive 79 stamps. Buy 80 stickers - your purchase totals \$1200.00 and you receive 80 stamps. Buy 81 stickers - your purchase totals \$1215.00 and you receive 81 stamps. Buy 82 stickers - your purchase totals \$1230.00 and you receive 82 stamps. Buy 83 stickers - your purchase totals \$1245.00 and you receive 83 stamps. Buy 84 stickers - your purchase totals \$1260.00 and you receive 84 stamps. Buy 85 stickers - your purchase totals \$1275.00 and you receive 85 stamps. Buy 86 stickers - your purchase totals \$1290.00 and you receive 86 stamps. Buy 87 stickers - your purchase totals \$1305.00 and you receive 87 stamps. Buy 88 stickers - your purchase totals \$1320.00 and you receive 88 stamps. Buy 89 stickers - your purchase totals \$1335.00 and you receive 89 stamps. Buy 90 stickers - your purchase totals \$1350.00 and you receive 90 stamps. Buy 91 stickers - your purchase totals \$1365.00 and you receive 91 stamps. Buy 92 stickers - your purchase totals \$1380.00 and you receive 92 stamps. Buy 93 stickers - your purchase totals \$1395.00 and you receive 93 stamps. Buy 94 stickers - your purchase totals \$1410.00 and you receive 94 stamps. Buy 95 stickers - your purchase totals \$1425.00 and you receive 95 stamps. Buy 96 stickers - your purchase totals \$1440.00 and you receive 96 stamps. Buy 97 stickers - your purchase totals \$1455.00 and you receive 97 stamps. Buy 98 stickers - your purchase totals \$1470.00 and you receive 98 stamps. Buy 99 stickers - your purchase totals \$1485.00 and you receive 99 stamps. Buy 100 stickers - your purchase totals \$1500.00 and you receive 100 stamps. Buy 101 stickers - your purchase totals \$1515.00 and you receive 101 stamps. Buy 102 stickers - your purchase totals \$1530.00 and you receive 102 stamps. Buy 103 stickers - your purchase totals \$1545.00 and you receive 103 stamps. Buy 104 stickers - your purchase totals \$1560.00 and you receive 104 stamps. Buy 105 stickers - your purchase totals \$1575.00 and you receive 105 stamps. Buy 106 stickers - your purchase totals \$1590.00 and you receive 106 stamps. Buy 107 stickers - your purchase totals \$1605.00 and you receive 107 stamps. Buy 108 stickers - your purchase totals \$1620.00 and you receive 108 stamps. Buy 109 stickers - your purchase totals \$1635.00 and you receive 109 stamps. Buy 110 stickers - your purchase totals \$1650.00 and you receive 110 stamps. Buy 111 stickers - your purchase totals \$1665.00 and you receive 111 stamps. Buy 112 stickers - your purchase totals \$1680.00 and you receive 112 stamps. Buy 113 stickers - your purchase totals \$1695.00 and you receive 113 stamps. Buy 114 stickers - your purchase totals \$1710.00 and you receive 114 stamps. Buy 115 stickers - your purchase totals \$1725.00 and you receive 115 stamps. Buy 116 stickers - your purchase totals \$1740.00 and you receive 116 stamps. Buy 117 stickers - your purchase totals \$1755.00 and you receive 117 stamps. Buy 118 stickers - your purchase totals \$1770.00 and you receive 118 stamps. Buy 119 stickers - your purchase totals \$1785.00 and you receive 119 stamps. Buy 120 stickers - your purchase totals \$1800.00 and you receive 120 stamps. Buy 121 stickers - your purchase totals \$1815.00 and you receive 121 stamps. Buy 122 stickers - your purchase totals \$1830.00 and you receive 122 stamps. Buy 123 stickers - your purchase totals \$1845.00 and you receive 123 stamps. Buy 124 stickers - your purchase totals \$1860.00 and you receive 124 stamps. Buy 125 stickers - your purchase totals \$1875.00 and you receive 125 stamps. Buy 126 stickers - your purchase totals \$1890.00 and you receive 126 stamps. Buy 127 stickers - your purchase totals \$1905.00 and you receive 127 stamps. Buy 128 stickers - your purchase totals \$1920.00 and you receive 128 stamps. Buy 129 stickers - your purchase totals \$1935.00 and you receive 129 stamps. Buy 130 stickers - your purchase totals \$1950.00 and you receive 130 stamps. Buy 131 stickers - your purchase totals \$1965.00 and you receive 131 stamps. Buy 132 stickers - your purchase totals \$1980.00 and you receive 132 stamps. Buy 133 stickers - your purchase totals \$1995.00 and you receive 133 stamps. Buy 134 stickers - your purchase totals \$2010.00 and you receive 134 stamps. Buy 135 stickers - your purchase totals \$2025.00 and you receive 135 stamps. Buy 136 stickers - your purchase totals \$2040.00 and you receive 136 stamps. Buy 137 stickers - your purchase totals \$2055.00 and you receive 137 stamps. Buy 138 stickers - your purchase totals \$2070.00 and you receive 138 stamps. Buy 139 stickers - your purchase totals \$2085.00 and you receive 139 stamps. Buy 140 stickers - your purchase totals \$2100.00 and you receive 140 stamps. Buy 141 stickers - your purchase totals \$2115.00 and you receive 141 stamps. Buy 142 stickers - your purchase totals \$2130.00 and you receive 142 stamps. Buy 143 stickers - your purchase totals \$2145.00 and you receive 143 stamps. Buy 144 stickers - your purchase totals \$2160.00 and you receive 144 stamps. Buy 145 stickers - your purchase totals \$2175.00 and you receive 145 stamps. Buy 146 stickers - your purchase totals \$2190.00 and you receive 146 stamps. Buy 147 stickers - your purchase totals \$2205.00 and you receive 147 stamps. Buy 148 stickers - your purchase totals \$2220.00 and you receive 148 stamps. Buy 149 stickers - your purchase totals \$2235.00 and you receive 149 stamps. Buy 150 stickers - your purchase totals \$2250.00 and you receive 150 stamps. Buy 151 stickers - your purchase totals \$2265.00 and you receive 151 stamps. Buy 152 stickers - your purchase totals \$2280.00 and you receive 152 stamps. Buy 153 stickers - your purchase totals \$2295.00 and you receive 153 stamps. Buy 154 stickers - your purchase totals \$2310.00 and you receive 154 stamps. Buy 155 stickers - your purchase totals \$2325.00 and you receive 155 stamps. Buy 156 stickers - your purchase totals \$2340.00 and you receive 156 stamps. Buy 157 stickers - your purchase totals \$2355.00 and you receive 157 stamps. Buy 158 stickers - your purchase totals \$2370.00 and you receive 158 stamps. Buy 159 stickers - your purchase totals \$2385.00 and you receive 159 stamps. Buy 160 stickers - your purchase totals \$2400.00 and you receive 160 stamps. Buy 161 stickers - your purchase totals \$2415.00 and you receive 161 stamps. Buy 162 stickers - your purchase totals \$2430.00 and you receive 162 stamps. Buy 163 stickers - your purchase totals \$2445.00 and you receive 163 stamps. Buy 164 stickers - your purchase totals \$2460.00 and you receive 164 stamps. Buy 165 stickers - your purchase totals \$2475.00 and you receive 165 stamps. Buy 166 stickers - your purchase totals \$2490.00 and you receive 166 stamps. Buy 167 stickers - your purchase totals \$2505.00 and you receive 167 stamps. Buy 168 stickers - your purchase totals \$2520.00 and you receive 168 stamps. Buy 169 stickers - your purchase totals \$2535.00 and you receive 169 stamps. Buy 170 stickers - your purchase totals \$2550.00 and you receive 170 stamps. Buy 171 stickers - your purchase totals \$2565.00 and you receive 171 stamps. Buy 172 stickers - your purchase totals \$2580.00 and you receive 172 stamps. Buy 173 stickers - your purchase totals \$2595.00 and you receive 173 stamps. Buy 174 stickers - your purchase totals \$2610.00 and you receive 174 stamps. Buy 175 stickers - your purchase totals \$2625.00 and you receive 175 stamps. Buy 176 stickers - your purchase totals \$2640.00 and you receive 176 stamps. Buy 177 stickers - your purchase totals \$2655.00 and you receive 177 stamps. Buy 178 stickers - your purchase totals \$2670.00 and you receive 178 stamps. Buy 179 stickers - your purchase totals \$2685.00 and you receive 179 stamps. Buy 180 stickers - your purchase totals \$2700.00 and you receive 180 stamps. Buy 181 stickers - your purchase totals \$2715.00 and you receive 181 stamps. Buy 182 stickers - your purchase totals \$2730.00 and you receive 182 stamps. Buy 183 stickers - your purchase totals \$2745.00 and you receive 183 stamps. Buy 184 stickers - your purchase totals \$2760.00 and you receive 184 stamps. Buy 185 stickers - your purchase totals \$2775.00 and you receive 185 stamps. Buy 186 stickers - your purchase totals \$2790.00 and you receive 186 stamps. Buy 187 stickers - your purchase totals \$2805.00 and you receive 187 stamps. Buy 188 stickers - your purchase totals \$2820.00 and you receive 188 stamps. Buy 189 stickers - your purchase totals \$2835.00 and you receive 189 stamps. Buy 190 stickers - your purchase totals \$2850.00 and you receive 190 stamps. Buy 191 stickers - your purchase totals \$2865.00 and you receive 191 stamps. Buy 192 stickers - your purchase totals \$2880.00 and you receive 192 stamps. Buy 193 stickers - your purchase totals \$2895.00 and you receive 193 stamps. Buy 194 stickers - your purchase totals \$2910.00 and you receive 194 stamps. Buy 195 stickers - your purchase totals \$2925.00 and you receive 195 stamps. Buy 196 stickers - your purchase totals \$2940.00 and you receive 196 stamps. Buy 197 stickers - your purchase totals \$2955.00 and you receive 197 stamps. Buy 198 stickers - your purchase totals \$2970.00 and you receive 198 stamps. Buy 199 stickers - your purchase totals \$2985.00 and you receive 199 stamps. Buy 200 stickers - your purchase totals \$3000.00 and you receive 200 stamps. Buy 201 stickers - your purchase totals \$3015.00 and you receive 201 stamps. Buy 202 stickers - your purchase totals \$3030.00 and you receive 202 stamps. Buy 203 stickers - your purchase totals \$3045.00 and you receive 203 stamps. Buy 204 stickers - your purchase totals \$3060.00 and you receive 204 stamps. Buy 205 stickers - your purchase totals \$3075.00 and you receive 205 stamps. Buy 206 stickers - your purchase totals \$3090.00

Texas State Library News

Last year Texans who cannot read ordinary printed material because of poor vision or other physical handicap read about 900,000 books and magazines. The 35,000 readers were able to do so because of a cooperative program between the Texas State Library and the Library of Congress that is noting its 50th anniversary this year. Under this program the Library of Congress furnishes recorded and braille materials, and the State Library provides space, staff, and other costs of the program.

When federal legislation creating a national library service for the blind went into effect on July 1, 1931, the Texas State Library was one of the original 19 libraries that agreed to provide service to qualified persons in the regions they served. The State Library had been providing embossed books to blind Texans since early in the 1920's because State Librarian Elizabeth West felt that blind Texans had the same right to library service that other Texans had. Being a part of the national program significantly increased the number of titles available.

At first only embossed books were available; but in 1933 "talking books" were made available. These books are recorded on phonograph records and remain the most popular medium. More recently the Library of Congress has furnished books on cassette tape.

The program remained small until the mid 1960's when legislation that went into effect in 1966 added the physically handicapped to the program. Not being able to turn a page or to hold a book may keep a person from reading just as not being able to see the page.

"Service to the blind and physically handicapped represents effective cooperation between the State Library, the Library of Congress, the Postal Service that carries the materials at no charge, and publishers and authors who 'allow' the publication of their material in special formats without payment of additional royalties," said Dr. Dorman H. Winfrey, director of the Texas State Library.

Like many other library services, service to the blind and physically handicapped has changed in recent years as the result of new technology. The development of cassette tape makes it possible to record titles of which only a limited number

of copies are needed. The State Library's volunteer program and that of the Midland Tape Lending Library are cooperating in an effort to record Texas and Southwestern materials and materials in Spanish. Although these recorded materials may be borrowed by other regional libraries for their readers, they do not have the wide national appeal that materials in the Library of Congress collection must have.

In addition, new technology is making it possible for the State Library to serve readers better. A toll-free number enables readers to make requests and to report problems with the equipment at no charge. The automated circulation that has been used since the early 1970's cuts down on the amount of paperwork at the State Library and also sends books on to readers more rapidly than the old system did.

As the national program ends its first half century, 160 libraries serve as regional libraries for 720,000 readers. Last year a total of 16 million books and magazines were circulated. Texans who cannot read ordinary printed material because of poor vision or a physical handicap can read—thanks to a program that sends books and magazines recorded on disks or tape, embossed in braille, and printed in large type to their homes. The Texas State Library serves as a regional library in the Library of Congress' program to make materials available to persons who cannot read ordinary printed material. For more information write the Texas State Library, Box 12927 Capitol Station, Austin, Texas 78711 or call 1-800-252-9605. This is a toll-free call.

ONE MINUTE SPORTS QUIZ

1. Who was voted NBA's Most Valuable Player?
2. Name the jockey who recently won his 8000th horse race.
3. Who won the Kemper Open golf tournament?
4. Gene Tenace plays pro baseball for what team?
5. Who won the LPGA Golden Lights Championship?

Answers To Sport Quiz

1. Julius Erving.
2. Willie Shoemaker.
3. Craig Stadler.
4. St. Louis Cardinals.
5. Cathy Reynolds.

Hightowers Washington Report

District Hearings on the Farm Bill

The recent House Agriculture Committee hearings held in Amarillo, Abilene and Lubbock were very successful from the standpoint of both participation and quality of testimony. Approximately 100 witnesses told the Committee of inadequate commodity prices, high energy costs, high interest rates and the decreasing availability of FHA and SBA loans. All comments to the Committee were made a part of the official permanent record and will be considered during the drafting of the new omnibus farm bill later this year. It's much too early to say what final form the bill is likely to take but I intend to reaffirm the sentiments expressed by our farmers and ranchers when the Committee takes up consideration of the legislation.

Combating Soviet Terrorism. One of the most potentially dangerous developments facing the Western democracies is the continuing growth of worldwide terrorism. I am glad the President and the Secretary of State are publicly putting some of the blame where it belongs—right at the doorstep of the Soviet Union. The Soviets have helped recruit, train, arm and fund terrorists of all stripes and nationalities. While they have talked "detente" and "peaceful co-existence," they have at the same time purposefully and quietly used these terrorists as yet another weapon in their war against non-communist countries.

So far, Americans have been fairly lucky—the terrorists have concentrated their greatest efforts elsewhere. But we are their ultimate target. The growing minority of civilized and democratic countries under attack must "all hang together or we will all hang separately." This kind of war may be the toughest kind to fight because its source is more invisible. We are going to have to counter these terrorist groups with carefully-targeted foreign assistance and a stronger U.S. intelligence capability. I will support legislation to do that where I think our efforts are necessary and justifiable.

Questionnaire Response. I am very grateful to the tremendous number of you who have responded to my last NEWSLETTER an ISSUES QUESTIONNAIRE. I've received several thousand returns already, many still pouring in, and my Washington staff

is working overtime, in addition to their normally heavy workload, to tabulate each response and to add new respondents who requested it to our district newsletter mailing list. Please bear with us as some of you may receive this newsletter while others who are new may not. We hope to have all new "Subscribers" on the mailing list in time for June's NEWSLETTER.

Wichita Falls: "All America City"

Recently, the National Municipal League named Wichita Falls an "All America City," along with only nine other communities in the whole U.S. This recognition is well deserved in view of the outstanding efforts of everyone to pull together and rebuild a greater Wichita Falls after devastating tornado of 1979. The slogan "Wichita Falls—Coming Back Strong & Fast" really fits well; I am very proud to be representing such a fine Texas city with so many dedicated and public-spirited people. It truly is "The City That Faith Rebuilt."

Legislating Economic Recovery. On May 7th, the House passed the Reagan-backed bipartisan Gramm-Latta budget resolution proposal for the 1982 federal budget by a vote of 253 to 176. This budget limits overall government spending next year to \$688.8 billion, cutting general social programs and boosting defense outlays. I believe it will help us achieve a balanced budget by 1984. Early this year, I committed in principle to support President Reagan's overall economic goals because we must put principle and national welfare above party or on the farm bill. President Reagan called me by phone and I told him I was specifically supporting the bipartisan Gramm-Latta plan. Later, I also received calls from Vice-President Bush and Treasury Secretary Regan. Two days before the vote, I met with the President, Vice-President and four other Democratic Congressmen at the White House to discuss the legislation. It is important to remember that although this important legislation outlining national spending limits for next year, is now the law; it is only the first round of tough fiscal and public policy decisions. There are still tough fights to be won on tax cuts and general funding for specific programs and agencies.

As a member of the House Appropriations Committee, I have been hearing from a number of special-interest lobbyists. I've also received a tremendous amount of mail from you in the district, the only real lobby that counts, either urging support for the President's proposals without exception or general support for the Reagan goals but urging that we not cut particular programs because of serious need. I've also heard from people asking me to oppose the Reagan plan. In fact, the House Postmaster has reported that mail delivery to members of Congress is running behind because of the largest volume in nine years! The challenge for Congress is to make recovery a reality for all Americans while ensuring survival for those in real need of our help.

Cutting Taxes. Tax cuts can now be made. We must try to do this without increasing inflationary trends of ballooning the deficit. I've favored cutting spending first, to get a handle on inflation and the deficit, then cutting taxes as we can. While there is general agreement in Congress that tax cuts should be made, the dispute is over how much and when. There are several problem areas that need to be addressed in addition to general tax relief: repeal or modification of the so-called "windfall profits tax," repeal of the "marriage tax" and adjustment of inheritance tax rates, to name a few. At this point, however, it's a bit early to speculate on just what will be possible to achieve this next year. If OPEC drastically raises oil prices again, that will throw an inflationary monkeywrench into all of our economic considerations.

New Television Show: Report to the District

Starting this month, I will be preparing a special public affairs TV show every two weeks as a regular report to you about what is happening in Congress and Washington. Channels 7 and 4 in Amarillo and Channel 6 in Wichita Falls will run the HIGHTOWER REPORT every two weeks in a time slot of their own choice. Channel 3 in Wichita Falls is presently planning to run one show a month. Some weeks, I will have a special guest on from either the House or Senate, the Administration or from a major agency of government to talk with me about something of concern to the 13th District.

June CLEARANCE Sale

We've got 70 new Pontiacs, Buicks, and GMC'S in stock! We need to move these units. There will be many more units coming in this summer . . . SO WE'RE GOING TO MAKE SOME MIGHTY SLIM TRADES! We are needing many good, clean used cars and trucks on our lot right now!

PONTIACS

23 TO PICK FROM WITH MORE ARRIVING DAILY!

1982 J2000

white 4 dr. - 4 speed/air
light metallic blue 2 dr. aut./air

GRAND PRIX LJ

2 tone metallic brown/beige
white



Phoenix LJ Hatchback

BONNEVILLE BROUGHAM

2 dr. light jadestone-diesel
2 dr. pastel champagne/gold-diesel
4 dr. silver/dark blue-diesel
4 dr. white-diesel
4 dr. dark metallic blue-diesel

PHOENIX LJ

2 dr. dark metallic brown/white
2 dr. light metallic brown/white
5 dr. hatchback white

T1000

metallic brown-4 speed/air

GRAND PRIX BROUGHAM

2 tone jadestone
2 tone metallic brown/beige

BONNEVILLE

2 dr. dark jadestone/white
4 dr. 2 light metallic blue/white
metallic brown/white
dark jadestone/white
dark metallic brown/white
silver/dark blue-diesel
pastel champagne/gold-diesel

LAST 80 MODEL

Firebird Special Edition
Indy 500 TransAm white/silver-T-top



Skylark Sedan

Riviera dark metallic blue

Park Avenue 2 dr. diesel silver, fawn, firemist, and tan
Park Avenue 4 dr. dark metallic blue (2 to pick from)
Park Avenue 4 dr. diesel white
Limited 4 dr. beige
Limited 4 dr. dark metallic brown/tan

BUICKS

11 TO PICK FROM WITH MORE ARRIVING DAILY!

Estate Wagon-diesel white/woodgrain

Regal Sport Coupe white-Turbo V6
Regal Limited Somerset 2 tone metallic brown/gold
Century Limited 4 dr. dark metallic brown/white,
light metallic brown/white
Skylark 4 dr. light metallic blue/white

GMC'S

35 TO PICK FROM WITH MORE ARRIVING DAILY!

4 SIERRA 6 cyl./4 speed tan, light metallic blue, white
SIERRA 305 V8/4 speed medium blue
4 SIERRA 305 V8/aut/air dark metallic blue, medium blue, tan, white
8 SIERRA GRANDE 305 V8/aut/air/tilt & cruise dark metallic blue,
medium blue, red, bronze, dark brown, candy red, tan, tan-diesel



Crew Cab

2 SIERRA GRANDE trailing special red, white

3-SIERRA CLASSICS - loaded - power windows & door locks AM/FM stereo tape 2-red/white, white/medium blue
2-SIERRA GRANDE - 1 ton cab/chassis - 84" 454/4 speed/air tan, white
2 SIERRA GRANDE - 1 tone cab/chassis - 60" 454/4 speed/air white, dark metallic blue
SIERRA GRANDE - 3/4 ton 350/4 speed/air tan
SIERRA GRANDE - 3/4 ton crewcab 454/aut/air metallic brown/tan

GMC MEDIUM DUTY

GRAIN TRUCKS

2-81 GMC Tandems 366.5+2, 22' American bed
81 GMC Tandem 8.2 Detroit diesel turbo, 5+2, 22' American bed plus hoist
80 GMC Tandem - new - 366, 5+2, 22' American Bed & hoist.

CAB/CHASSIS

2-81 GMC 138" CA, 8.2 Detroit diesel turbo, 5+2, air brakes
81 GMC 124" CA, 8.2 Detroit diesel natural, 5+2 trans.
81 GMC 138" CA, 366, 5+2 trans.



1500 Sierra Classic

Attention Farmers

We do straightening and repair of aluminum pipe.

We have irrigation replacement and repair parts of all kinds, gaskets, gates, waterman parts, lids, hydrants, screws, air relief valves, etc.

We do general welding repair, machine work and welding anything aluminum.

C.B.S. Manufacturing, Inc.

Booker

CALL FOR PAUL SHIPMAN, 659-9379

Texas

Optima Lake

Lots FOR SALE



Excellent Lake View
Frontage Lots
Joins Prairie Dog Point

Choice Optima Lake Homesites
Permanent Homesites — Cabin Sites
State Health Dept. Approved
Utility Easements
1 Acre Minimum Lots

* TWO SUB-DIVISIONS NOW OPEN---

NEFF Land & Livestock

BOSS & BUD NEFF
— Owners

P.O. Box 13

Hardesty, OK 73944 405-888-4451

"... where SERVICE is the KEY!"

HERGERT

SOUTH HWY 207 [806] 659-3721 SPEARMAN, TEXAS



WEEK	DESCRIPTION	REGULAR PRICE	PRICE WITH COUPON
1	UTILITY KIT	\$ 4.99	\$ 3.99
2	OPEN TOTE	8.49	7.49
3	BARREL TOTE	9.99	8.99
4	SHOULDER TOTE	11.99	10.99
5	21" CARRY-ON	13.49	12.49

EXCITING Coupon-a-Week MONEY SAVING OFFER

WATCH OUR AD EACH WEEK FOR
\$1 OFF COUPON AND PLAN TO OWN A SET
OF THIS OUTSTANDING FASHIONABLE
EASY-TO-TRAVEL WITH TOTES

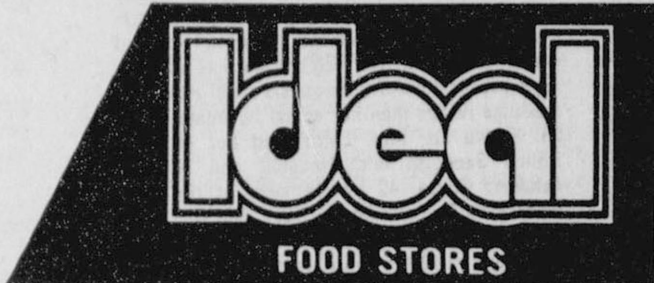
THIS COUPON WORTH \$1.00
TOWARD THE PURCHASE OF ONE

Utility Kit

\$3.99

WITH THIS COUPON REG. \$4.99

COUPON GOOD JUNE 11 THRU JUNE 17, 1981



EXCELLENT CHOICE FOR FATHER'S DAY

SONIC **WATCHES**

ULTRA SLIM

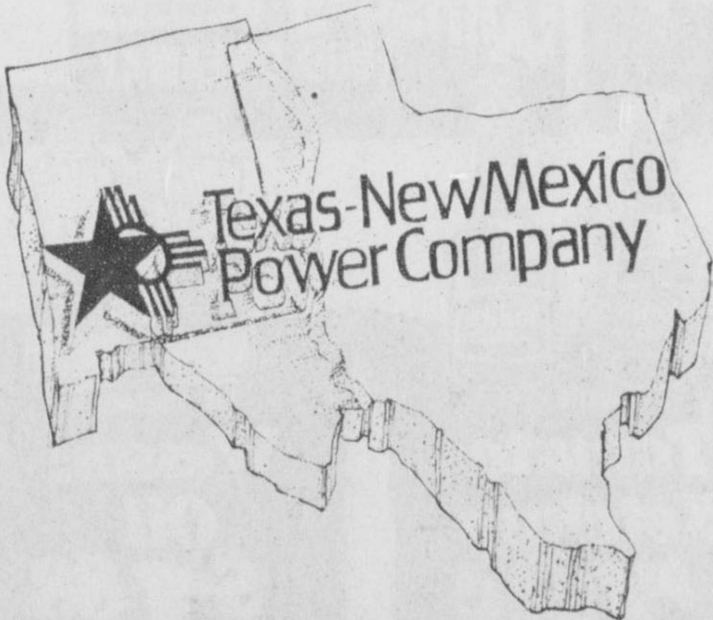
EXCELLENT GRADUATION OR FATHER'S DAY GIFT

QUARTZ CRYSTAL, LCD READOUT, COMPLETE WITH 5-FUNCTION (HOUR, MINUTE, MONTH, SECOND, DATE) MEN'S OR WOMEN'S WATCH, ULTRA THIN, METAL BAND, LIGHTED DIAL FOR EASY READOUT AT NIGHT.

\$39.99 VALUE **14.88** WITH \$10.00 PURCHASE OR MORE.

Lusby Cats and Bottoms Up Win

Carving a new name



for a dependable future.

Changing a name is not easy, but after 45 years of continued growth and service, Community Public Service Company's name just doesn't fit anymore. The new name, Texas-New Mexico Power Company helps you to know more about the company, by knowing the area we serve. You'll still get the same dependable service, and can pay your bills at the same address. Texas-New Mexico Power Company, a new name for old reliable.



NC-4

The women of the Softball League had another night of exciting softball action. The team that had the bye was the First State Bank Red Hots.

The first game was between Busters Dusters going up against the Jr. Lusby Cats. The game began at 7:00 p.m. After a few innings, it looked like Lu Padilla--the Pitcher for Busters Dusters team--had the Lusby Cats number. But lo and behold, Shelly Lackey, Valerie Hagerman, Donna Yarbrough, Kathy Beck--all of the Jr. Lusby Cats started pulling together and before anyone could figure what had happened, the Jr. Lusby Cats won the game by a score of 9-3. The Lusby Cats will have a week off, but the Busters Dusters will be playing A&L Printing on June 15 at 8:30 p.m.

The second game was played between A&L Printing and Speartex Grain Bottoms Up. This game was played at 8:30 p.m. Could Bottoms Up beat a team that was so "put together?" Well, Bottoms Up won the toss and elected to "take the field"--be on the Defensive end. A&L Printing made 4 or 3 points. Bottoms Up had a very good batting team together and a good Defensive team also. Not taking anything away from A&L Printing--they have a great Offense and Defense, themselves. Each team would either be tied or be ahead by 1 after the 3 women were out. A&L Printing had players like Pam Barber, Jeane Close, Jackie and Janet Reed--that could really hit the ball. Bottoms Up had players like Tammy Garcia, Norma and Minerva Vela, Linda Lujan, Criselda Vela and so on that could also hit the ball. It didn't seem like a close game, at first, because most of the regulars had "resigned" for the Bottoms Up team. Bottoms Up is really the "underdog" team in any situation. In the final inning the score was A&L Printing 10 and Bottoms Up 8. Bottoms Up had to get something going. All of a sudden, the Bottoms Up team began to hit and they score 1 run, meaning that with 1 out, they had to get 1 run to tie and 2 to win. Linda Lujan hit the ball, another run came in--Tammy Garcia saw where the ball was and took off for home. That was the only run needed to end the game! The Speartex Grain Bottoms Up won 11-10--winning by 1 point!! That was a very exciting game!

Bottoms Up will play the Red Hots June 15 at 7:00 p.m., and A&L Printing will be going up against Busters Dusters at 8:30 p.m.

The games are being played every Monday night, at 7:00 and 8:30 p.m.--1 team gets a rest week, and then off to the races to see which women's team is the BEST. The games are played at the Old Lynx Stadium--east of the Y.

Getting Ready For "Texas"

CANYON, Texas, June 5, 1981: In preparation for the Gala Opening of the sixteenth season of "TEXAS" on the seventeenth of June--Wednesday, there is excitement and action in every department.

In the office, the box office staff is answering constant phone calls. Bus reservations are higher than for any previous year, and the boxes of tickets for seats already reserved cover four feet of space on the cabinet.

Much of the rest of the staff is working on the Souvenir Program: matching pictures to stories, getting the credits for last minute arrivals, checking the spelling of names, laying out the pages, reading the proof, checking and typing the names on the lists of members, finding pictures for the memorials.

The publicity department is preparing names and pictures of all 140 people in the company so that stories may be sent to each of the Home Town papers involved. They are getting ready to package 250 short videotaped and filmed spots for TV and another 250 for radio which will be delivered Monday and be sent all over the country to stations which have requested them. These are made by Bill Rhew and many stations request them because they are so fine that they help programming of the stations.

There are many calls to the President of the Texas Panhandle Heritage Foundation, George Lokey of Amarillo, concerning the program for the Gala which will honor New Mexico this year. The twelve New Mexicans in the cast will be spurred by the presence of their Governor, Bruce King and his wife in the audience. There will be a short reception for the Kings in the theatre patio at 7:30 and they will be saluted with a drill by six of the honor guard drill team from West Texas State University carrying the flags of New Mexico, Texas and the United States.

Meanwhile in the two fine arts buildings at West Texas State University, and at the Canyon, rehearsals and preparations for the show go on. At 1:00 o'clock and at 6:00 each day, the whole company meets for exercises and warm ups. In three weeks all members of the staff have to develop enough stamina to run a quarter of a mile from the dressing room, down into the passageway behind the stage which the actors call the dipping vat, and back up on the far side ready to sing and dance as they run out on the stage.

After the warm ups and announcements, the company scatters. Dancers go to the studio in the Mary Moody Northern Building for intensive work on their numbers. Orchestra go to the office, or join the singers to accompany them. Actors go through their scenes in the intimate theatre.



OVERTURE TO "TEXAS", the musical drama of the Texas Panhandle, which plays in the Palo Duro Canyon in the summers. Write Box 268, Canyon, Texas 79015 or call 806-655-2181. Bill Rhew Photograph.

And everywhere in the halls people are studying and practicing as they wait their scenes.

Meanwhile in the Canyon, the technical crew is painting, designing and repairing, putting the seats in order and putting them out, cleaning the stages, working on the trail to the top of the cliff with the aid of staff of the Palo Duro Canyon State Park where the theatre lies.

Members of the Sound and Light crew are climbing up and down the face of the 600 foot cliff which backs the stage, stringing lights and putting them where they will bring out the interesting rock features of the wall, checking the path where the cords for the lightning lie, and staying late at night waiting for full darkness to test the lights and work out the various effects.

The manager and his crew spend many evenings getting the souvenir shop ready: cleaning, painting, pricing and arranging merchandise, ordering supplies and carrying them in, testing the ice machines.

The company has already held several rehearsals in the Canyon.

Last, but not least, the staff of the Park is working on the grounds: watering, mowing, thinning, so that the area will be at its best when the show opens.

When the first audience member of this sixteenth season takes his seat, he may know that thousands of hours have been spent getting ready for him.

For tickets and information, call 806-655-2181 or write "TEXAS" Box 268, Canyon, Texas 79015. Tickets are also available in Amarillo at Montgomery Wards, in Canyon at 2010 Fourth Avenue and in several area towns...including Ansaphone in Lubbock.

Season runs through August 22, nightly except Sunday. There will be a single Sunday performance on July 5. It is well to make reservations in advance.

Mark S. Fowler, chairman, Federal Communication Commission: "A principle of my tenure will be that consumer choice and entrepreneurial initiative come before government control."

Lewis Freedman, director, Corporation of Public Broadcasting program funds: "All these cutbacks will cripple what we'll have the capability of doing."

Mrs. Loftin Honored On 90th Birthday



Mrs. A.F. Loftin celebrated her 90th birthday anniversary June 6 at the home of her daughter: Mr. and Mrs. Fred Holt and grandson, Mr. and Mrs. Mike Holt. The celebration was actually early because out-of-town guests could attend on this date rather than her actual birthdate, June 28. Shown are Mrs. Loftin and her brothers Milton Sanders, left, Houston and Norman Sanders, Cuero. 42 people slept at the Holt farmsteads Friday night & Wren said she could have accommodated 47! Mike Holt prepared a sumptuous meal for Saturday noon. He smoked hams, beef and sausage which hung in the smoke barrel for 2 days.

Mrs. A.F. Loftin was honored on her 90th birthday with a family party held in the home of her daughter and husband, Mr. and Mrs. Fred Holt. The Holt's son and his wife, Mike and Sue Holt were also hosts for this joyous family occasion.

Present were Mrs. Loftin's brothers, Rev. Norman Sanders, Cuero, and his wife Peggy Sanders; their daughter, Mrs. Dot Aduddell of Brownwood and her daughter-in-law Mrs. Marcie Aduddell, Katy. Milton Sanders of Houston and his grandson, Jeff, and a cousin, Mrs. Mildred McDonald, Houston.

Also present were her daughter Mrs. Oscilee Cooksey of Austin and her family, except Paul, Diana, Kim & Paul Richard Cooksey who are on Navy duty in Italy. Mr. and Mrs. Stark Royall of Richardson and her children: Mr. and Mrs. Arthur Ray Keeton and son Christopher. Mr. and Mrs. Barney Anderson and children, Sheri and Don of Austin; Mr. and Mrs. David Cooksey,

Georgetown and sons Luke & Joshua; and Mrs. Royall's son, Bobbie of Richardson.

Also attending were Mr. and Mrs. Fred Holt and their family; Mr. and Mrs. (Hazel) Ray Slyter of Augusta, Kansas and their children; Kenneth, Stacey, Mark and Kristy and Mrs. Susan Kidder and son Brian, Amarillo; Mr. and Mrs. Mike Holt and children Kerri and Michael Thomas.

Mrs. Loftin's son and family, Mr. and Mrs. Paul A. Loftin and children, Edward, Theresa and Roudett, all of Austin were also present.

Mrs. Loftin has been a longtime resident of Spearman, with her late husband having pastored the First Baptist Church here at two separate times. Mrs. Loftin has continued to live in Spearman since her husband's death, and is an inspiration to all who know her. She taught private music lessons in her home for many years as well as being very active in church work.



FIVE GENERATIONS: Mrs. Loftin not only celebrated her 90th birthday anniversary June 6; but also was pictured for the first time with her great-great grandchild; Christopher 2 months old son of Mr. and Mrs. Arthur Ray Keeton, (left). His grandmother Lucile Royall, Mrs. Loftin and her great-grandmothers, Mrs. Oscilee Cooksey, complete the family. Mrs. A.F. Loftin is very active in the First Baptist Church. She enjoyed Saturday morning when the family gathered for a devotional period led by her pastor and wife, Rev. and Mrs. Russell Pogue. Family members recalled pleasant and stirring memories concerning Mrs. Loftin through the years.

Policy Concerning "Letters To The Editor"

All "Letters To The Editor" must be signed before we publish them. If you do not wish

your name to appear in the newspaper we will keep it for reference, but we do not publish anonymous letters.



CHILDREN of Mrs. A.F. Loftin helped her celebrate her 90th birthday anniversary June 6. They are: Mrs. Oscilee Cooksey, Austin; Paul A. Loftin, Austin; and Mrs. Wren Holt, Spearman.



Hosts for Mrs. A.F. Loftin's 90th birthday were (l to r) Mrs. Fred Holt, Fred Holt, Sue Holt and Mike Holt. The event was Saturday, June 6, with forty two persons present.

January Bond Sales Listed

Sales of Series EE & HH United States Savings Bonds in Hansford County were reported today by County Bond Chairman C.A. Gibner to be \$5,342.00. Sales for the first month period totaled \$5,342.00 for 8% of the 1981 goal of \$70,000.

Texas sales during the month amounted to \$21,384,204, while sales for the first month of 1981 totaled \$21,384,204 with 8% of the yearly sales goal of \$252.3 million achieved.

Hospital news

Patients in Hansford Hospital are Dot Jenkins, S.T. Dozier, Ramona Torres, Viola Fite, Faye Hickerson, Glen Mackie, Jeff Pool and Ruby Hull.

Dismissed were Elena Salazar, Alta Morse, Jill Odom, Phyllis Cummings, Chris Long, Alice Lackey, Gwenfred Lackey, Donna Merchant and daughter, Hattie Mackie, Bill Etling, Linda Arnold and Kenneth Penny.

More riots at Michigan prison.

Mrs. Barkley's Sister Dies

Mrs. Dell Terry Ferguson, 61, of Eunice, N.M. died June 2 in her home. Death was attributed to a heart attack. She was a member of the Eunice Chapter No. 66 Order of Eastern Star and was a Presbyterian. She was employed by El Paso Natural Gas in the communications department in Jal, N.M. Survivors are a son, John Raye Terry of Hobbs, N.M.; a daughter, Mrs. Shirley Rogers of Nederland, Texas; two sisters, Elva Lee Barkley of Spearman, and Hettie Lou Clark of Oberlin, Ohio; and four grandchildren. Also surviving

in this area are two nephews, Durland Sheets of Spearman and Lowell Sheets of Booker, Texas.

Willie Shoemaker wins 8000th horse race.

Polaroid Corp. introduces most sensitive color film.

Third Neptune moon possibly located.

Saudis stand firm against price hike.

County Show

Competition June 6

Saturday, June 6, the Spearman 4-H Horse Club members competed with each other in the county show.

All Around Buckles went to Andrea Archer and Will Jarvis.

In the Showmanship competition, Ann Marie Jarvis won 1st Place, 2nd Place was won by Will Jarvis, 3rd Place went to D'Lynn Orr, Andrea Archer took 4th Place, 5th Place was won by Tammy Savage, 6th Place went to Travis Patterson, while Clint Patterson was right behind in 7th Place, Shelly Dunnihoo won 8th Place, Diana Turner won 9th Place and Angie Francis won 10th Place. That took care of the Showmanship Championship.

In the Halter Mares competition, Mark Garnett won it all, while Amy Jo Smith won 2nd Place, Angie Francis took 3rd Place home and Dirk Umphress won 4th Place.

After the Halter Mares, the Halter Geldings competition was next. Andrea Archer took the honors by winning 1st Place, Anne Marie Jarvis won 2nd Place, 3rd Place was won by Will Jarvis, 4th Place went to Tammy Savage, D'Lynn Orr won 5th Place, Deana Turner won 6th Place, Jon Garnett won 7th Place while J. Garnett won 8th Place, Travis Patterson won the 9th Place while 10th Place went to his brother, Clint.

The Western Pleasure was the next event on the list. Andrea Archer had back-to-back wins—first she won the Halter Geldings competition and now in this competition, Western Pleasure, Andrea took another 1st Place home with her! Tammy Savage won 2nd Place, Jon Garnett was 3rd, 4th Place went to Will Jarvis, 5th Place was won by D'Lynn Orr, Mark Garnett was 6th. Travis Patterson won 7th Place, Jean Ann Hiekes was 8th, Angie Francis won 9th Place and 10th Place was won by Amy Jo Smith.

As far as the Western Horsemanship competition, Jon Garnett was victorious, with Travis Patterson winning 2nd Place; Andrea Archer was 3rd, in 4th Place was Deana Turner, 5th Place was won by J. Garnett, Amy Jo Smith was 6th, Dirk Umphress won 7th Place, 8th Place was won by Will Jarvis, Angie Francis was 9th, and D'Lynn Orr won 10th Place.

Clint Patterson won the Reining event with J. Garnett being 2nd.

In the Pole Bending, Diana Martin won 1st Place and Donna Martin, Diana's sister, was 2nd. Well, Donna (Martin) came right back and won the Barrel Racing Event while Diana (Martin) was coming up in 2nd Place.

Mark Garnett won the Bridle Path Hack event, Jon Garnett, Mark's brother, was 2nd, Deana Turner came up in 3rd Place, and J. Garnett, Mark and Jon's brother, won 4th Place.

Other Participants in the County Show were Kristin Dunnihoo, Bonnie Jarvis, and Michele Savage.

IDEAL FOOD STORES

PRICES EFFECTIVE THRU JUNE 17, 1981. QUANTITY RIGHTS RESERVED.

Meat Makes The Meal
AND IDEAL HAS THE MEAT...

U.S.D.A. CHOICE — BUTCHER BLOCK BEEF
BLADE CUTS
Chuck Roast... 98¢

U.S.D.A. CHOICE — BUTCHER BLOCK BEEF
LARGE END BEEF RIB
Rib Steaks... \$1.88

DRAWINGS EVERY WED. AT 2:00 P.M.
Winsday FOOD GIVEAWAY

SUGAR
ALL BRANDS CANE OR BEET
\$1.44
5-LB. BAG
LIMIT 2 WITH \$10 PURCHASE

Miracle Whip
KRAFT SALAD DRESSING
\$1.08
32-OZ. JAR
LIMIT 1

Tomato Ketchup
HUNT'S
78¢
32-OZ. BTL.
LIMIT 1

Wesson Oil
PURE VEGETABLE
\$1.88
48-OZ. BTL.
LIMIT 1

Instant Tea
LIPTON
\$1.88
3-OZ. JAR
LIMIT 1

Napkins
SCOTT FAMILY
\$1.48
300-CT. PKG.

Tomato Sauce
HUNT'S
4 89¢
8-OZ. CANS

Cocktail
HUNT'S — FRUIT
2 \$1.09
15-OZ. CANS

Post Toasties
CEREAL
76¢
12-OZ. BOX

FROZEN FOODS

Patio Dinners
ALL VARIETIES MEXICAN
76¢
12-OZ. PKG.
LIMIT 4

Orange Juice
MINUTE MAID
\$1.39
10-OZ. CANS

Pie Shells
PET RITZ DEEP DISH
84¢
9-CT. PKG.

Lemonade
COASTAL BRAND
4 93¢
8-OZ. CANS

DAIRY FOODS

Kraft Velveeta
CHEESE
\$2.88
2-LB. BOX
LIMIT 1

Cheese
KRAFT CRACKER BARREL
\$1.56
10-OZ. PKG.

Margarine
PARKAY SOFT
72¢
TWIN CUP

Fruit Drink
ALL FLAVORS STEPPERS
99¢
6-OZ. GAL.

HEALTH and BEAUTY AIDS

Colgate Toothpaste
COLGATE
\$1.68
8-OZ. TUBE

Kotex Light Pads
REGULAR OR DEODORANT
\$1.88
30-CT. BOX

Sundown Sunscreen
ALL VARIETIES
\$2.99
4-OZ. BTL.

Sarpalius Reports On First Term

AUSTIN--Even with a special session now certain, Senator Bill Sarpalius said today he thought his freshman term was "very successful".

"We introduced 29 bills and 20 of those went to the Governor's desk to become law when he signs them, so we feel like we did what the people sent us here to do," Sarpalius said.

Sarpalius also said he was pleased to be able to keep his pledge to his voters to keep the costs of his office low. His expenses in the Senate were in the bottom one-third during the session.

"Considering how far our district is from Austin, we had to cut a few corners to keep our costs low. But the voters are cutting corners, too," he said.

Sarpalius passed bills to raise

the drinking age, to stiffen the law of criminal trespass and to provide for the voluntary licensing of grain samplers. But his forte this session was agriculture.

Sarpalius passed six agricultural laws he classifies as significant. These included a codification of the agricultural laws into a single code, enlargement of the Produce Recovery Fund from three to six members, establishment of a clearinghouse for gasohol information, and regulation of pesticides and predators.

The Senator from Hereford was chairman of the Senate Agriculture Subcommittee, and Lieutenant Governor Bill Hobby presented him with a special gavel at the end of the session to commemorate his work on agricultural legislation. It was the first time the Lieutenant Governor had made such a presentation.

"Agriculture is very important in our district, and many people in our district thought

the Legislature had ignored agricultural problems in the past. We know the importance of farming and ranching, but our working is not finished yet. We have sponsored three interim studies. One relates to agriculture. It will study pesticides, grain elevator explosions and bonding, family farm security and other subjects.

"We also will study the criminal justice system, particularly the Texas Youth Council. In the third study, we plan to look at the routes and methods of narcotics traffic. So our job did not stop with the end of the session, even without the special session later this summer," Sarpalius said.

The freshman Senator had high praise for the people in the Panhandle district. "We were very pleased with the response we got by mail, telephone calls and visits from the people in our district. We owe our success this session to people who are interested in state government and who want to have a voice in the direction this state is going. They made a big difference for all of us," he said.

One Sarpalius project which did not pass this term is a motor fuels tax exemption for gasohol. "Time ran out on us on that. We had enough support to pass the bill but there was a filibuster against it late in the session. We will push for better tax treatment for gasohol during the special session. If we can't get it then, we plan to try again next time," he said.

Plans are almost complete for the all-school reunion July 3rd and 4th. A list of the activities planned so far is enclosed.

For those of you who will need rooms here are the address of the hotel and motels available:

Baker Hotel, 420 Davis, Telephone No. 659-3446
Patton Motel, Highway 207, Telephone No. 659-2227
Nursanickel Motel, Highway 207, Telephone No. 659-3737

If you need additional help in finding rooms contact Nell Patterson, Rt. 1, Box 41, Spearman, Telephone No. 659-2144.

If you will need baby-sitting on Saturday, please contact Cindy Schneider, 715 S. Steele, Spearman, Telephone No. 659-3025. Plans are being made to keep the children at the "Y"

if there is a need to justify this, so let Cindy know as soon as possible, please.

Tickets to the noon barbeque on the 4th will be \$4.00. You do not need to purchase your tickets now but in order to know how many to plan for, please contact Mary Schumann, Rt. 1, Box 20A, Spearman, Telephone No. 659-2178 and tell her how many in your family plan to attend.

All-School Reunion

The dance Saturday night will be at B&B Farm Industries Building, 703 Collard. Tickets will be \$10.00 per couple and will be purchased at the door.

The High School Library and the Home Making Rooms will be open all day Saturday for relaxing and visiting if your class has no other activities planned.

See you at the reunion!!!!

Schedule For the Spearman All-School Reunion, July 3, 4, 1981

Registration at the High School July 4th at 9:30 a.m.; Assembly in the auditorium at 10:30 a.m.; Barbeque at noon in the cafeteria; Reception at 7:30 p.m. at B&B Farm Industries Bldg., and dance at 9 p.m.

The following individual class activities have been planned:

- Classes of 1922 thru 1934**--The upstairs art room at the Hansford County Library Friday and Saturday afternoon.
- Class of 1931**--The Home Demonstration Club Bldg., Saturday afternoon.
- Class of 1935**--Fellowship Hall of Methodist Church Friday at 7 p.m.
- Classes of 1936 & 1937**--B&B Farm Industries Bldg., Friday at 7:30 p.m.
- Class of 1938**--Hospitality Room of First State Bank Friday at 7:30 p.m.
- Class of 1940**--The P.A. Lyon, Jr. residence Saturday afternoon after the barbeque.
- Class of 1941**--The Tom Sutton home at 7 p.m. Friday evening.
- Classes of 1942 & 1944**--The Lloyd Buzzard home Friday evening at 7:30 p.m. A light buffet will be served.
- Class of 1945**--Saturday afternoon at the Roy L. McClellan home.
- Class of 1946**--The Sheldknight Bldg., Saturday afternoon from 2 - 4.
- Classes of 1948, 1949, 1950 & 1951**--A picnic at the Joel Lee Lackey Ranch Friday at 7:30 p.m.
- Class of 1954**--The Meeting room of the Nursanickel Motel Saturday afternoon from 2 - 5.
- Class of 1955**--Front room upstairs at Hansford Library Friday at 7 p.m.
- Class of 1956**--plans pending
- Classes of 1961, 1962, 1964, 1965 & 1966**--A picnic at the Steve Mathews Ranch Friday evening.
- Class of 1966**--The Loyall Turner farm Saturday afternoon at 3 p.m.
- Class of 1967**--The Glen Blodgett farm Friday evening.
- Class of 1968**--Saturday afternoon at Busters Dusters.
- Class of 1971**--Friday night party at the County Barn.
- Class of 1973**--Picnic at Womble Park Saturday evening at 6 - 8:30 p.m.
- Class of 1974**--At Lynn Sheets barn at 8 p.m. Friday evening for cokes & chips; Saturday afternoon at same place at 5:30 for hamburgers.
- Class of 1975**--The Steve Benton residence, 1103 Townsend at 7 p.m. Saturday.

Rotary Club Meets

Tom Schnepf, manager of radio station KRDF was the speaker at the June 8 meeting of the Spearman Rotary Club. Tom gave a classification speech, as the newest member of the local Rotary Club.

Tom related that he came from a family whose father was a radio industry trouble shooter. His father was called all over the United States by radio stations to work with them on technical and sales troubles. Tom had lived in 22 places by the time he was 18.

His first job with a station was as a disc jockey at age 13. Later he went into management and sales in Nebraska. Then spent eight years ending a stint in intelligence in the U.S. marines.

After completing the eight years in the military he longed for management of a small radio station in a small community and came to KRDF from New York.

Tom outlined his duties as a manager of KRDF as four-fold:

1. His first duty is to balance the needs and desires of the public the station serves through music variety and advertising and news to the abilities of the station to provide those needs and desires.
2. Second, the manager needs to know and understand the interworkings and problems of the local businesses and interpret radio advertising sales.
3. Third, the manager must re-educate the public on what radio advertising is and how it can benefit the community and businesses as the advertising helps the community.
4. Fourth, the manager must keep the station within the guidelines for the Federal Communications Commission. Rules are changing constantly and the radio industry has just recently been deregulated, like other industries in America.

One major problem the local manager must work on is combating the bad image unethical sales personnel have brought to the smaller community market. The unethical sales people come to a small market community and establish a sales promotion campaign.

This campaign seems legitimate and the sales people promote big returns. Then they leave the community and the advertiser receives little if any of the advertising sold. The community merchants are understandably upset. Then when legitimate sales people try to sell that merchant he has a very negative feeling about all advertising.

THOSE PRESENT: Jim Benson, Eschol Blankenship, John R. Collard, Robert Elliott, Pete Fisher, Ed Garner, Kerry Herten, John Hutchison, Junior Lusby, David McClellan, Jack McWhirter, Jim Murray, Coy Palmer, Steve Rogers, Jim Shirley, Mike Schnell, Gary Sims, Tom Schnepf, Marie Carrie Berry, Frank Oglesby.

THOSE ABSENT: Roy Bulls. Norman Crum from Perryton was guest.

ANNOUNCEMENTS: The Installation Banquet scheduled for June 19 at the First United Methodist Church will begin at 7:00 p.m.

A decision to purchase a piano from the Music Club was voted upon. The proceeds from the sale of the piano will go to the Music Club's scholarship fund.

John R. outlined the speakers and activities scheduled for Camp RYLA. Again, anyone who would like to be a counselor at the camp is to contact him. The cost for room and board is \$75. You can, at an added cost take you wife to the camp.

Candid!
Speed Fiend: "It's great speeding along like this. Don't you feel glad you're alive?"

Passenger: "Glad isn't word, I'm amazed."

Wise Woman
Student--To whom was Minerva married?

Professor: My boy, when will you learn Minerva was the goddess of Wisdom? She wasn't married.

No Borrowing
"Your nearest neighbor is 20 miles away?"
"Yes, out here, when a man buys his garden tools, they automatically become his own."



FRESH FAMILY PACK 3 TO 5 LB. PKG.

Ground Beef

\$1.09

LB.



RIB CENTER CUTS - FRESH

Pork Chops

\$1.68

LB.



U.S.D.A. CHOICE BUTCHER BLOCK BEEF CENTER CUTS

Chuck Steak

\$1.39

LB.



FRESH EXTRA LEAN FAMILY PACK

Ground Chuck

\$1.68

LB.



DOUBLE JELL-O STAMPS EVERY WED.

JELL-O gelatin dessert

ALL FLAVORS

Jell-o Gelatin

26¢

3-OZ. BOX LIMIT 4



GUNN BROS. STAMPS EVERY WED.



U.S.D.A. CHOICE BUTCHER BLOCK BEEF - BEEF CHUCK

7-Bone Roast

\$1.39

LB.



CHOICE BUTCHER BLOCK BEEF

Arm Pot Roast

\$1.69

LB.



RODED - SKINNED

Dinner Sausage

\$1.88

1-LB. PKG.



RODED - SKINNED

Meat Franks

89¢

12-OZ. PKG.



NORMEL - BLACK LABEL

Sliced Bacon

\$1.49

1-LB. PKG.



SMOKED - SLICED

Slab Bacon

98¢

1-LB.



GOLD MEDAL

Flour

\$4.63

25-LB. BAG



ICE CREAM

STEFFEN'S TRIM

Ice Milk

\$1.18

1/2-GAL. CTN.



VINE RIPE

Watermelon

15¢

LB.



Cling Peaches

57¢

LB.



VINE RIPE

Slicing Tomatoes

43¢

LB.



VINE RIPE

Cantaloupe

29¢

LB.



Ideal

FOOD STORES

Food Stamps Buy More At Ideal...

Basketball Team of 1927



GIRL'S BASKETBALL TEAM 1927—top row, l to r, Lila Waters, Lucille Buchanan, Lola Mae Bowling, Reba Barkley, Bernice Rainey, Bessie Snowden, Obara Gay.

ON CRASH

JACKSONVILLE, FLA. -- An electronic warfare jet on a night training mission crashed in flames on the deck of the nuclear-powered aircraft carrier USS Nimitz, killing 14 people, injuring 48 and damaging at least 19 other aircraft aboard the world's largest warship Navy officials said recently.

INVITATIONS GO OUT

LONDON -- Invitations of the July 29 royal wedding of Prince Charles and Lady Diana Spencer have been sent to more than 2,500 people around the world, including President Reagan. Buckingham Palace said recently.

REATTACHES FEET

AUGUSTA, GA. -- A 32-year-old longshoreman may regain at least partial use of his feet, which were reattached during 12 hours of surgery after being sliced off by a steel cable, doctors said.

DONNA THE DUCK

LAS VEGAS, NEV. -- A tiny mallard duck with an arrow through her breast was fed bread laced with a barbiturate recently and captured. The duck had eluded would-be rescuers for more than a month. She was flown to a veterinary hospital in nearby Henderson, where Dr. Gary Weddle performed surgery to remove the arrow.



BACK ROW, left to right: Elizabeth Noe Rainwater, Amarillo; Opal Dietrich Brewer, Torrance, Calif.; Dr. Orville Rippey, Stillwater, Okla.; Alda Tompkins Mitts, Stratford; John Schubert, Spearman; Loretta Wilbanks Boyd, Amarillo; Owen Pendergraft, Ollie Kirk Pendergraft, Spearman; Elbert Kesler, Amarillo; Fannie Sparks Venneman, Gruver; Eddie McCauley, Phillips; Garland Thorne, Wentworth, Mo.; John Walker, Midland; Joe Reaves, Morse. **SECOND ROW**: Rhoda Tower Overton, Spearman; Virginia Patterson Sparks, Spearman; Chlor Oldham Baker, Albuquerque, N.M.; Annie Deering

Glover, Pampa; Zelma Gay Bister, Oakland, Calif.; **FACULTY**: Mrs. Woodville Jarvis, Spearman; Billy Jarvis, Stinnett; C.A. Robinson, Plainview, Elma Gunn, Pampa; Cloyd Windom, Morton; Edna McLeod Cunningham, Perryton; Virginia Pittman Wallace, Hereford; Hollie Brown Riley, Spearman; **THIRD ROW**: Eva DeArmond Patterson, Spearman; Walter Broadhurst, Donna Murphy Broadhurst, Friona, Tex.; Emma Reaves Atteberry, Mercedes, Tex.; Frances Noe Perkins, Pampa; Freeman Barkley, Spearman, Clyde Longley, and Earl Riley, Spearman.

1931 Class 'Alive & Well'

The graduating class of Spearman High School in 1931 wants everyone to know they are alive and well and looking forward to the all-school reunion to be held July 3 and 4.

Following is an account of their last reunion held August 14, 1971.

From as far west as the Pacific, as far south as the Gulf and as far east as the Mississippi, they came, this Class of 1931, to attend their 40th reunion. They started gathering Friday evening for the reunion Saturday, August 14, at the Home Demonstration Building.

The afternoon was hilarious as well as emotional as old friends greeted each other. Many papers and pictures, relics of the school days, were examined with interest. Old mysteries were solved. After ascertaining that the Statue of Limitation had run out, identities were revealed in such mysteries as who put the yearling in the auditorium that Halloween, and who high-lifted the dog on the stage during the choir concert.

The evening meal was pre-

ceded by a welcome address by Earl Riley who served as emcee. John Schubert led the invocation.

After the meal, Hollie Riley read names and dates of death of the deceased members and a moment of silence was observed. They were: Louise Douglas Howerton, Faye Files Reed, Pat Bennett, Anna Lee Morton Kirk, Jarvis Witt, and Supt. R.L. Snider.

Each member then introduced each husband or wife and gave a brief summary of their life during the past 40 years, with considerable emphasis being placed on their outstanding grandchildren.

Letters from four members who were unable to be present were read by Hollie Riley—being from Dr. A.H. Word, Denton, Tex.; Rev. Aln Reed, Sweeny, Texas; Loyd Terry, Dallas and Elois Gamble Weber Corvallis, Oregon.

The class will, history and prophecy were read by Walter Broadhurst, Freeman Barkley, Dr. Orville Rippey, Stillwater, Okla., who had been class President, presented the following awards:

Presented to: Zelma Gay Bister in recognition of coming the greatest distance to attend the 40th reunion of the class of 1931. (Zelma came from Oakland, Calif. Opal Dietrich Brewer was runner-up, coming from Torrance, Calif., Emma Reaves Atteberry came from Mercedes, Tex. and Garland Thorne from Wentworth, Missouri).

Presented to: Rhonda Tower Overton in recognition of her devotion to duty, her unselfish efforts, action to detail in producing the most grandchildren by the time of the 40th reunion of the Class of 1931. (Rhoda Alda Tompkins Mitts and Walter and Donna Broadhurst each had 6 grandchildren, but Rhoda had the oldest).

Presented to: Big John Walker for his incredible achievement as exemplified by his having the most hair left on the occasion of the 40th reunion of the Class of 1931. (Big John had considerable competition in Earl Riley, C.A. Robinson, Freeman Barkley, Owen Pendergraft, Walter Broadhurst and Eddie McCauley, but a careful hair count revealed John to be the winner.)

Dr. Rippey, with appropriate ceremony, then made a special award.

Presented to: Clyde Longley, for incredible discretion, fantastic resistance and outstanding achievement in avoiding the bonds of matrimony these 40 years--The Men of the Class of 1931 proudly salute you. (Clyde had no competition).

Many friends and associates called during the afternoon and evening to renew old acquaintances. Out of the 44 living member of the class, 32 were present for the reunion.

In addition to class members, out of town guests who registered were: Mrs. John Walker, Midland, TEX.; Randall Atteberry, Mercedes, Tex.; Mrs. Eddie McCauley, Phillips; Lera Schumacher, Pampa; Joe Baker, Albuquerque, N.M.; Dee Oldham, Albuquerque, N.M.; Mrs. Billy Jarvis, Stinnett; Irene Reaves, Morse; Bill Brewer, Torrance, Calif.; Mrs. O.M. Rippey, Stillwater, Okla.; Buss Mitts, Stratford; Cleve Rainwater, Amarillo; John Venneman, Gruver; L.F. Noe, Pampa; Leota Good, Hereford; and Mrs. Elma Gunn, Pampa.



La-Z-Boy® Reclina-Rocker® chair soothes your body, beautifies your room. At this sale price!

\$279⁵⁰



La-Z-Boy® Reclina-Rocker® chair combines total comfort and sophisticated styling with year-end savings!

\$369⁵⁰



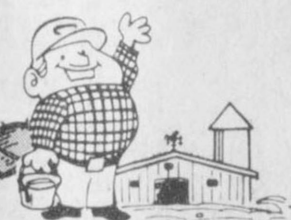
La-Z-Boy® Reclina-Way® wall recliner reclines close to the wall, delivers total comfort all the way!

\$239⁵⁰

GET COMFORT AND SAVINGS THAT FIT YOUR STYLE NOW! AT:



723 W. 7th. • SPEARMAN, TEXAS 79081
Phone (806) 659-3701



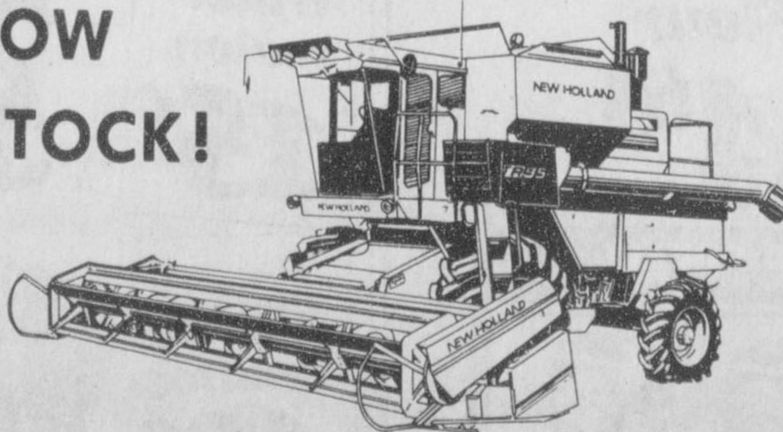
Calling All
FARMERS...

See the **TR™ 85** and **TR™ 95** Twin Rotor
Combines with ...

**NEW 970 Grain Headers —
24 & 30 FT**

• 24" Diameter Auger • Dual Sickle Drive
• Adjustable Cutter Bar • — Plus Many Other Options

**NOW
IN STOCK!**



Come by for an extra special deal!

SPERRY NEW HOLLAND

Hwy. 15 West &
& Loop 143 N.

OF PERRYTON

435-5473

Thoreson-Hicks Vows Exchanged



MRS. JAMES HICKS

Miss Candy Thoreson and James Hicks were united in marriage in a double ring ceremony Saturday June 6th at 7 o'clock p.m. before an altar of brass candleabra forming a house-top centered with an arrangement of silk gladioli, bells of Ireland, roses and

baby's breath in the United Methodist Church with Dick Marcear Minister of Central Church of Christ, Amarillo officiating.

The bride, who was given in marriage by her father, is the daughter of Mr. and Mrs. Donnie Thoreson and grand-

daughter of Mrs. D.G. Cluck of Gruver. The groom is the son of Mr. and Mrs. Wiley Hicks Jr. of Canyon and the grandson of Mrs. Wiley Hicks Sr. and Mrs. R.L. McMurtry of Amarillo. Pre-nuptial music was rendered by Mr. James Dorman, organist and Mrs. Richie Fletcher,

pianist. Selections included "Walk Hand in Hand," "You Decorated My Life," "The Rose," "You'll Never Walk Alone," Theme from "Ice Castles," "Candle on the Water" was presented by Miss Nanette Cluck and Mrs. Jackie Ellis of Lubbock while the candles were being lit. "God, A Woman and A Man," "That's the Way" were presented by Mrs. Donnie Prater as the unity candle was lit. Miss Cluck also sang "Whither thou Goest" following the ceremony.

The candlelighters were Miss Kelly Hampton of Canyon and Miss Marjorie Hill of Amarillo. They wore floor length ivory eyel embroidered dresses accented with satin sashes and spaghetti straps. Waist corsages of ivory roses and brick colored pompoms adorned the waist of the dress.

ATTENDANTS

Mrs. Tim Weldon, cousin of the bride, was matron of honor. Other attendants included Mmes. Bart Thoreson, Tony Harper, Steve Beville of Gruver, Mrs. Jackie Ellis of Lubbock, and Miss Zana Corse, Mobbettie.

The attendants were gowned in brick colored chiffon designed with fitted bodices and off the shoulder ruffles. The skirts fell to floor length. They wore matching open crown hats with sash accents. They carried candle bouquets of pompoms, roses and baby's breath in a glass brandy snifter. The flower girls were Kaysha and Kala Cluck, cousins of the bride, and the ring bearer was Mr. Lee Bob Harper, also cousin of the bride. The flower girls wore identical ivory eyel embroidered dresses with ruffled skirts and capped sleeves. They carried straw baskets filled with pink rose petals. The ring bearer was dressed identical to the groom.

The bride's mother, Mrs. Thoreson wore a gown of pink chiffon with soft ruffled sleeves that fell to elbow length accented with a satin belt. She carried a pearl clutch fashioned with an orchid and rose corsage.

The groom's mother, Mrs. Hicks wore a royal blue silk ankle length gown complimented with black accessories. Gardenias and roses also complimented her clutch.

THE BRIDE

The bride was fashioned in a formal gown of ivory alencon lace. Alencon lace covered the closely fitted bodice and formed a dropped waist. Tiny self fabric buttons accented the back closure of the gown. Her long sheer sleeves were caught up at the waist in deep lace cuffs. Her skirt of chiffon fell unadorned to the hemline which swept to back fullness and extended into a chapel length train. Clusters of pearls enhanced the bodice of the gown. She wore a matching veil with silk illusion veil which was edged in lace and extended past the length of the gown into a cathedral length train. Appliques accented the veiling. The bride carried a white pearlized Bible brought to her by her Grandmother from the Holy Land topped with a bouquet of roses, gardenias and a cascade of pearls and stephanotis. She also carried out the traditional bridal custom with something old—a handkerchief belonging to her Grandmother, the late Mrs. A.L. Thoreson, new—pearls given to her by the groom, borrowed—a gold piece pinned to her garter from her mother, blue-her garter, and a six pence in her shoe given to her by her aunt, Mrs. W.H. Glasgow of Oklahoma City.

The bride's mother, Mrs. Thoreson wore a gown of pink chiffon with soft ruffled sleeves that fell to elbow length accented with a satin belt. She carried a pearl clutch fashioned with an orchid and rose corsage.

The groom's mother, Mrs. Hicks wore a royal blue silk ankle length gown complimented with black accessories. Gardenias and roses also complimented her clutch.

RECEPTION

A reception followed in the fellowship hall of the church. The brides table was covered with a white satin cloth outlined with swags caught up at intervals with bows and baby's breath. The wedding cake was decorated with roses and orchids. The groom's table was covered with a brown knit cloth edged in lace. A chocolate cake

with an open Bible with the marriage certificate encribed was atop the cake, draped to one side with tiger lilies. Another table with all kinds of good things to eat completed the setting. Silver appointments were used throughout the reception room. Member of the house party were Miss Sarah Hicks, sister of the groom, Pilot Point, Mrs. Wiley Hicks III, Amarillo, Mrs. Bob Hicks, San Antonio, Miss Julie Barkley, Paula Carroll, Mrs. Kim Cluck, and Mrs. Monte Cluck, all of Gruver.

The bride traveled in a white silk ensemble accented by pink accessories and a gardenia corsage. Following the wedding trip to Hawaii, the couple will be at home in Amarillo for the summer before returning to Lubbock where they are attending Texas Tech. The bride is majoring in Home Education and is affiliated with Delta Delta Delta Sorority. The groom is majoring in Construction Engineering Technology.

REHEARSAL DINNER

The rehearsal dinner was given by the groom's parents, Mr. and Mrs. Wiley Hicks Jr., on Friday night at Hugo's in Amarillo.

Several courtesies were extended the bride before her marriage. A Christmas tree ornament brunch was given by Mrs. T.J. Bergin at the Borger Country Club. A quilt revealing party given at the home of Mrs. Tony Harper, Gruver, cousin of the bride. A miscellaneous shower was given in the home of Mrs. Randy Brown, Gruver. A lingerie shower was given in the home of Mrs. Carroll Lockett, Lubbock, by Mrs. Jackie Ellis. An open house at the home of Mr. and rs. Wiley Hicks Jr. Canyon.

A miscellaneous shower at the home of Mrs. Clayton Shivers, Amarillo, cohosted by Mrs. Russell Megert, Mrs. R.L. Howard. A recipe luncheon at the home of Mrs. Dean Cluck cohosted by Mrs. Bob Cluck, aunts of the bride. Mrs. Don Hart honored the bride with a bridesmaid luncheon in her home June 6th.

Our joy will be more complete
if you can share in the marriage
of our daughter, Margaret Ellen
to Mr. Danny Paul Schiffner
on Friday, the twelfth of June
Nineteen hundred and eighty-one
at seven o'clock in the evening
at the United Methodist Church
Gruver, Texas
We invite you
to worship with us and witness their vows
If you are unable to attend
we ask you presence in thought and prayer
Mr. and Mrs. Don L. Dillow

Reception following
31-1tc

35-1tc

Our Heritage of Faith... notes from Faith Lutheran Church

Greg Gaskamp, a May graduate of Wartburg Theological Seminary in Dubuque, Iowa, will conduct the worship service at Faith Lutheran Church this Sunday.

Currently Greg is awaiting a CALL to serve a congregation in the American Lutheran Church.

Greg is the son of Pastor Bruno and his wife JoAnn Gaskamp of Spearman.

During the month of June, Greg, his wife Carol and their son Nathan are visiting with the local Gaskamps.

The special emphasis for the worship service on Sunday is that of Trinity Sunday in the

historical Church Year. Sunday School is at 9:45 a.m. and Worship is at 10:45 a.m.

A hearty welcome awaits each visitor.

Bruno Gaskamp, Pastor

SPIDER MAN

CHICAGO -- A 25-year-old acrobat wearing a red-and-blue Spider-Man outfit conquered the world's tallest building recently climbing all the way up the sheer west face of the 1,454-foot-high Sears Tower in a 7½-hour exploit.



OPEN 24 HOURS
365 DAYS A YEAR



"THERE'S ONE NEAR YOU"

BORDEN'S BUTTERMILK 1/2 GAL. CTN. \$1.19

SHURFINE ASSORTED PAPER NAPKINS 60 CT. PKG. 3 \$1.00

SHURFINE MUSTARD 16 OZ. JAR 49¢

SHURFINE EARLY HARVEST SWEET PEAS 17 OZ. CAN 2 89¢

WRATH SAUSAGE 1 lb. 79¢



SHURFRESH SLICED AMERICAN CHEESE 12 OZ. PKG. \$1.39

SHURFINE SLICED HAMB. DILLS 32 OZ. JAN 89¢



SHURFINE BARBEQUE SAUCE 16 OZ. JAR 69¢

SHURFINE MACARONI AND CHEESE DINNERS 7 1/2 OZ. BOXES 3 89¢

SHURFINE PORK AND BEANS 16 OZ. CANS 2 79¢

SHURFINE FROZEN HALVES STRAWBERRIES 16 OZ. CTN. 89¢

COOL WHIP TOPPING 8 OZ. CTN. 59¢

WRATH

WEINERS 12 OZ. PKG. 99¢

SHURFINE ASSORTED FLAVORS POP 12 OZ. CANS 5 \$1.00

SHURFINE SLICED PEACHES 29 OZ. CAN 69¢

SMOKEY FLAVORED 1 lb. \$1.29

BACON WRATH—

SHURFINE CUT GREEN BEANS 16 OZ. CANS 3 \$1.00

SHURFINE EVAPORATED MILK 13 OZ. CANS 2 89¢

SHURFRESH LONGHORN COLBY CHEESE 10 OZ. PKG. \$1.29

SHURFINE PEACH PRESERVES 16 OZ. JAN 99¢

SHURFINE ICELOZED SALT 26 OZ. CTN. 3 89¢

SHURFINE PURE VEGETABLE SHORTENING 48 OZ. CAN \$1.59

SHURFRESH SOFT MARGARINE 2 1/2 OZ. TUBS 49¢



SHURFINE FROZEN LEMONADE 6 OZ. CANS 4 \$1.00

SHURFINE SPINACH 15 OZ. CANS 2 79¢

BORDEN'S ORANGE JUICE 67. FL. OZ. 89¢

SHURFINE TOMATO CATSUP 32 OZ. BTL. 89¢

SHURFINE REGULAR ALUMINUM FOIL 12 x 25 FT. ROLL 2 \$1.00

SHURFRESH 10 BISCUITS 6 1/2 OZ. CAN \$1.00

PRICES EFFECTIVE
JUNE 8-13, 1981

SAVE! RENT RINSE VAC.
the professional, do-it-yourself
carpet cleaning system

\$3 OFF
RINSE VAC
RENTAL RATE

This coupon may be applied to the rental of any model RINSE VAC® Steam Carpet Cleaning System. One coupon per rental only. Coupon may not be reproduced, assigned or transferred. Customer must pay all applicable taxes. Cash value of .10 or one cent. Redeemable only at participating Allsup's Stores. COUPON EXPIRES JULY 31, 1981.

STORE COUPON

Basketball Team of 1930



GIRL'S BASKETBALL TEAM 1930--Eva De-Armond, Virginia Patterson, Mildred Nelson, Lucille Buchanan, Emma Reaves, Chloe Oldham, Obara Gay Darnell, Coach Ozella Hunt.

WHO KNOWS?

1. What state entered the union June 15, 1836?
2. Name the capital of Connecticut.
3. What body of water divides the state of Maryland into two parts?
4. Who said: "More things are wrought by prayer than this world

- dreams of?"
5. What was the Apostle Paul's Hebrew name?
6. What was considered the first U.S. excise tax?
7. Guadalcanal, of World War II fame, is in what group of islands?
8. What historical event occurred on June 22,

- 1941?
9. What state is known as the Sunflower State?
10. To what does anthography refer?

Answers To Who Knows

1. Arkansas.
2. Hartford.
3. The Chesapeake Bay.

4. Alfred Tennyson.
5. Saul.
6. A whiskey tax, levied in 1791.
7. Solomon Islands.
8. The Germans began the invasion of U.S.S.R.
9. Kansas.
10. Description of flowers.



THANKS!

Troop 551 would like to thank the people for *Spearman & Gruver* for making their garage sale the great success that it was by donating items for the sale and those that came to our sale.

Special thanks to *Lusby Cats, Baker & Taylor, Billy Miller, and the Radio Station* for the advertisement.

Mr. Skinner for the use of the building.

Sheriffs' Dept. for the tables.

Cates & Bakers for the use of the racks.

Berrys & Wardrobe Cleaners for hangers.

People like you make Scouting possible.

Thank You
Troop 551



Spearman Phone: 659-3766

Class of 1935



THE CLASS OF 1935 will be among those gathering during the All-School Reunion July 3-4. Pictured top row, Marva Smith, Richard Holton, Lady Marie Archer, J.E. Gunn, Prin., W.H. Word, Supt., Adalyn Daugherty, Willard Davis, Sam Patterson, Velira Hollingshead, Daily Easley, Elsie Reed, Elmon Jacobs, Omar Cotter, Elsie Mackie, Paul Buchanan, Carrie B. Nesbitt, Ruben Deering, Gertrude Barkley, Oran Kelly, Helen Browder, John Cox, Beth Wilbanks, Ruth Wilbanks, J.D. Andrews, Woodie Gibner, Arthur Haines, W.C. Robertson, Robert Douglas, Mary Brandt, H.L. Wilbanks, Jr., Juanita Lamb, Charles Newcomb and Sylvia Harmond.

Grain Sorghum Board Sets Election

Grain sorghum producers in a 29-county area of the Texas High Plains will elect four members to the Texas Grain Sorghum Producers Board on Sept. 15.

Terms of four current board members expire at that time. They are K.B. Parish of Springlake; Larry Witten of Olton; Ralph Mabry of Lubbock; and C.P. Smith of Hale Center. All incumbents are eligible for re-election to the 6-year, non-salaried position as long as they are bona fide grain sorghum producers.

Any person in the 29-county TGSPB area who produces grain sorghum and is subject to the board assessment is eligible to vote, including owners of farms and their tenants and sharecroppers. Any person eligible to vote is also eligible to make nominations for director.

Qualified persons wishing to have their name placed in nomination for membership on the Board may do so by application to the organization, signed by himself and 10 others who are also eligible to vote. All nominations must be filed

by Aug. 15, at the TGSPB office, Box R, Abernathy, Texas 79311 to allow time for adding their name to the ballot. Forms are available at that office.

Ballots will be mailed to voters and must be returned to the TGSPB office by Sept. 15. Any person qualified to vote who does not receive a ballot by Sept. 2, may obtain one at his local County Agent's office.

Counties involved are Armstrong, Bailey, Briscoe, Carson, Castro, Cochran, Crosby, Dallam, Dawson, Deaf Smith, Floyd, Gaines, Hale, HANS-

FORD, Hartley, Hockley, Hutchison, Lamb Lubbock, Lynn, Moore, Oldham, Parmer, Potter, Randall, Sherman, Swisher, Terry and Yoakum.

ON CLEAN AIR

The House, in an effort to help the steel industry modernize its plants, voted overwhelmingly recently to give the industry more time to meet clean air standards. The Senate is expected to give prompt approval.

Charlie's Furniture and Carpet

is having their annual 7 hour

Furniture Sale, Monday, June 15,

from 2:00 till 9:00 p.m.

The Carpet Department
will be closed
during the Sale

Charlie's Furniture and Carpet

1304 N. Banks

Pampa, Texas

79065