



# The Spearman Reporter

Vol. 72, No. 33

THE SPEARMAN REPORTER, SPEARMAN, TEXAS 79081

THURSDAY, JUNE 25, 1981

## Harvest Different, But Good



THESE ARE THE GOOD OL' DAYS! -- As the most unusual harvest in Hansford history neared the end, our intrepid photographer sallied forth for some shots of "Panhandle Gold" being "minted." Soon after this swath was completed, he mounted to the cabin with his camera in his hand and took a turn around the promised land in the air-conditioned comfort of a modern computerized harvesting machine. He ruled it a far cry from the days of the "open" machine and its daily ordeal of chug, chaff and chapping. These and other harvest pictures inside this issue were made on the R. C. Porter farm.

"I don't think there has been another harvest like this in Hansford County . . . not in a couple of generations anyway. There have been the long days extending harvest labors late into the night and yet the wheat coming in looks real good in the face of the elements in which it was grown."

Those were the words of George Cook at Equity in Spearman at press time. --And all the wheat farmers said "Amen!"

The change of pace started when the harvest did. Hardly anyone was expecting any dry land wheat in Hansford County but the real surprise came when harvesters moved into the fields of irrigated wheat and found, beyond that fringe of ripe heads, green growth!

This was in nowise a disaster but it did change the rhythm of

the harvest. As the green stands ripened, harvesters moved in. Instead of the night operations, crews turned in early to let the green stuff dry and turn.

--And the amazing thing is the result: a harvest that is only about two days or less behind schedule and elevators reporting wheat in good to excellent condition.

Except for some last minute "ripe" the harvest is virtually over at Spearman and the southeast part of the county. At the Equity elevator at Gruver, harvest was estimated at 75 percent complete and wheat slowing quality equal to that coming to the graineries at Spearman.

Cook at Spearman's Equity said test weight was running 60

Continued on pg 6



SWIMMERS Leslie Latta, Tommy Latta and Nikki Strawn are shown above receiving instruction from Swim Team Coach Don Wirsdorfer at the local pool.

## Swim Team Competes

The Spearman Swim Team traveled to Cimarron, Kansas, for a meet with ten other teams from the West Kansas Swim League, Saturday, June 20th. The improvement could be seen in each of the swimmers. Times were better by each individual.

Results were as follows: In the Girls 8 & Under Free Relay, consisting of Heidi McRee, Kyla Nelson, Jill Lusby and Haley Shieldknight, did such a GREAT job and won 3rd Place in the event.

In the 8 & Under 25 Free, Haley Shieldknight won 3rd Place. Andi Speck won 5th Place in the 9-10 50 Free, and the other girl that placed in the 9-10 50 Free Event was Carly Shieldknight winning 6th Place. Gary Thomas competed in the Boys 15-18 100 Free and won

2nd Place!!

Carly Shieldknight participated in the Girls 9-10 Backstroke and won 4th Place!

Haley Shieldknight won 4th Place in the Girls 8 & Under Breaststroke. Carly Shieldknight participated in the Girls 9-10 Breaststroke and won 5th Place.

Andi Speck won 4th Place in the Girls 9-10 100 Free. Gary Thomas did such a SUPERB job that he won 1st Place in the Boys 15-18 200 Free!!

Many had fast times and placed 7th or in the top ten. Two made Missouri Standard times, Kim Elbert and Gary Thomas making 'B' times!!

This week the team swims here at home. We want you to come and join us this Saturday June 28, beginning at 9:00 a.m.

## Commissioners Amend Budget

After a busy month sitting as a board of equalization in ad valorem tax matters, Hansford county commissioners--at the last regular court session for June, Monday--amended the operating budget for the current fiscal year by some \$217,500.

The move came on the advice of County Auditor Weldon Greene who explained the money was in hand to make the change--that it was not a matter of going to the taxpayer for more. He reminded that all thought revenue-sharing was a dead issue when the budget was originally ratified, but it was continued another year.

County Judge R.L. McClellan re-emphasized that statutes are strict in the matter of the budget; that the revenue-sharing monies could not just be poured into the "hopper" and added to current operating funds. A budget must be cast for each fiscal year and once adopted, all county business must be transacted within the scope of the budget laid down.

In the current situation, however, there are more funds involved than revenue sharing. The county judge and commissioners ended the past fiscal year with more surplus than had been anticipated at the time of planning the current budget.

It was emphasized that this was not gross error on the part of Auditor Greene but due to sharp money management the past fiscal year and careful allowance for inflation and the ever-present bugaboo of slow tax collections--which did not materialize this year.

So, the money is in hand to cover the amended amount and it should be stressed that this is money that has already been budgeted once and was not spent. The new, amended budget is thus possible without making serious inroads into invested interest-bearing funds and commissioners can proceed with some programs that were in doubt because of a lack of funds.

Now, the best way to understand the action, Monday, in adding \$200-thousand-plus to the current spending plan is to realize it was already there and the amendment requirement to include it in the work program of the current fiscal year is beneficial to all involved.

The remainder of the session, Monday, was given over to routine matters of day-to-day county business.

The next regular convening of commissioners court will be the second Monday in July. Regular sessions are open to the public.

## Sheriff Locates Fugitives

The Hansford County Sheriff's Department investigated two incidents involving vehicles this past weekend that involved total loss in one and loss of a cow in the other.

Saturday night on FM 759, a truck belonging to Hansford Implement Co., Spearman, struck a cow. The animal was killed on impact but there were no other injuries in the mishap.

Sunday afternoon at a location southwest of Gruver, a grain truck belonging to Pete

Maupin was totally destroyed by fire. Firefighters were able to hold damage to surroundings to a minimum.

Bobby White, a fugitive sought by the Sheriff's Department two years, had been located. He is serving a sentence in the Department of Corrections facility at Texarkana. A bench warrant was issued here at Spearman to return White to stand trial on charges pending against him here.

Another man wanted for trial in Hansford County is serving a sentence in the Florida State Prison at Raiford. That term is

drawing to a close and a "hold" has been issued to Florida authorities so he can be picked up and returned here for trial.

In other action, Sheriff R.L. McFarlin said he was holding Alberto Ortega, Jr., 20 for unlawful use of a motor vehicle. He is being held in Hansford County jail in lieu of \$3,000 bond. The incident involves a

## Golf Club Plans July 4 Tourney

The Hansford Golf Club is planning a July 4th handicap tournament. The entry fee is \$10.00 per person, \$3 of the \$10 goes to the club and the remaining \$7 goes to prizes.

There will be 4 man teams, each member on the team gets 1/2 his handicap.

There will be a shotgun start at 2 p.m.

Pick your own team and come out and have a good time.

The tournament is open to members and other golfers in the area who wish to play in the area.

MARKETS	
Corn	\$3.28
Wheat	3.55
Soybeans	4.76
Milo	5.15

## 4th of July

This year's 4th of July will be extra special, according to Ray Ingle, Chairman of the Fireworks Committee. What with the Ex-students Reunion, the Y.M.C.A. activities at the swimming pool park, the free watermelon feed and the gigantic fireworks display, we will have a very memorable day and evening.

The watermelon and fireworks are financed by donations only. The cost will be \$2,800 this year. If you would like to help, please mail or bring your check to the Chamber Office.



Mr. and Mrs. Scott Latham, announce the arrival of a new baby girl, June 18th. The new girl is named Natalee Ruth; she weighed 7 lbs. 9 oz. They live in Wilmore, Kentucky.

Paternal grandparents are Mr. and Mrs. Orville Latham, and Maternal grandparents are Mr. and Mrs. Kenneth Pertel, Brownsfield, Tx.



This is the Second Grade Class of 1926 are as follows: J.D. Andrews, Lady Archer, Mary Brandt, Gertrude Barkley, Wanda Rae Beck, Lometa Buchner, Paul Buchanan, Alvino Caldwell, A.J. Curtis, Willard Davis, J.R. Douglas, Reba Dillow, Woodrow Gibner, Katie Lee Graham, Bernice Sue Graham, Marjorie Haun, Rodney Harmon, Sylvia Harmon, C.D. Haines, Vaughn Hill, Willie Mae Hillard, Leonard Howard, Richard Holton, Sidney Jasper, Paul Jones, Hattie Pearl Karr, Oran Ross Kelly,

Wilson McCloy, Fred Taylor Miller, Carrie B. Nesbitt, Dee Oldham, Elsie Reid, Charley Reaves, Oscar Riemer, Joy Rogers, Jane Rogers, W.C. Robertson, Sylvester Storrs, Margaret Stephens, Bessie Tice, William Tomlinson, Jewel Ward, Elnora Wilcox, Irvin Wilson, Ruth Wilbanks, Beth Wilbanks, H.L. Wilbanks, and Hyron Wilburn. The Principal for the Second, Grade of 1926 was O.L. Savage, the Superintendent was A.H. Wilcox and their teacher was Ann Beck.



LYNXETTES--1935 1 to r, top row, Mary Daugherty, Catherin Lyon, Helen Browder, Eileen Davis, Carol Lee Pratt, Maxine Allen, Geraldine Bolen, Elizabeth White; middle row, Marjorie Haun, Maybelle Horn, Helen McLeod.

Ruth Buchanan, Violet Hanners, Lois Andrews, bottom row, 1 to r, Florence Holton, Elsie Ruth Porter, Juanita Hall, Gertrude Barkley, Elsie Reed, Julia Wilbanks and Helen Richardson.

## Hansford County Ranks 3rd In State

A 4-county area of the North Plains--Hansford, Sherman, Hartley and Moore counties--make up the second largest beef producing area in Texas, according to the Texas Crop and Livestock Reporting Service.

The service has compiled its report from figures available Jan. 1 of this year. The top beef area of the state is on the South Plains, centered in Deaf Smith, Castro, Parmer and Swisher counties.

All four of the North Plains counties are listed among the top 10 in Texas in beef cattle population, cattle on feed, and for fed cattle marketed during the year 1980.

Hansford county ranks third in cattle on feed with 98,000 in

feedyards, Jan. 1, 1981, Hartley is the fifth ranked county with 93,000 head, Moore county had 92,000 and ranked sixth; Sherman had 80,000 head on feed for eighth place.

## Hospital News

Patients in Hansford Hospital are Alice Lackey, Inell Grubbs, Neoma Wilkerson, Claude Newell, Viola Fite and Dorothy McElroy.

Dismissed were Maria Cruz and daughter, S.T. Dozier, Betty Farmer, Barbara Patterson, Gertrude Archer, Bessie Swan and Charles O'Loughlin. Dot Jenkins was transferred.



## Rotarians Hear Student Aide Head

Mr. Clifford Baker, Director of Student Financial Aid at West Texas State University spoke to the Spearman Rotary Club on Monday, June 22nd.

Baker has completed fifteen years with his office at WTSU and has seen many changes in that program. His first experience was when he was a student at the university in 1954 when he experienced financial needs immediately following his father's death. He found Milton "Buff" Morris head of the alumni organization and sought assistance to complete the second half of the year. Mr. Morris, he learned later, borrowed the \$100.00 Baker needed to complete the semester. That, according to Baker was the beginning of an era of assistance to students in need at the university.

There are several types of awards given students through the financial aids department at the university: (1) Scholarships to students for specific talents i.e. athletes, musicians, & the academically astute. (2) Grants from the government which need not be repaid for special needs. (3) Work programs where student are employed to earn money for their education. (4) Loan programs where the students borrow interest free money and pay later. For this latter program counseling is necessary because the amount of the money borrowed should reflect the potential ability of the student to repay after graduating. Those graduating with lucrative careers can handle larger loans than those who will graduate in a less marketable profession.

Historically, the scholarship program began, as did colleges, in church related schools. The majority of colleges were church related and generally for the wealthy. They introduced scholarships to attract a wider variety of students who could benefit from college educations. States began to create colleges and universities and the states subsidized the costs of education through low tuition. More students were able to afford an education on the college level in state supported institutions. Land grant colleges were the next to be subsidized. These were supported by the federal government. They too had lower tuition and afforded more students to attend. Another step by the federal government came after World War II, when the G.I. Bill was enacted, making education available to the veteran.

Another factor in government

loans came in 1958 when the Russians successfully launched the Sputnik. Congress enacted the National Defense Student Loans program to spur the education of students in mathematics, science and teaching. Linden Johnson's Great Society created funds for minority students to provide opportunities for higher education. Other legislation created grants and employment programs for students who were poor and/or minorities. Another milestone came in 1978, when the Carter administration created the Middle Income Student Assistance Program for middle income families. To qualify a family's income level raised from 15 to 25,000 dollars.

A change in the wind under the Reagan administration. Talk is that the administration is looking closely at student loan and work/study programs. There will probably be revisions and changes, like the charging of interest on student loans from inception.

At West Texas State University "Buff" Morris has, since the mid-50's been working to build a scholarship and loan program at the institution. The by-product is an independent program called Opportunity Plan, Incorporated. Capital now is at one and a quarter million dollars. Money comes from private sources and the fund is used as a "safety valve" for those in need, who do not qualify under regular school or government programs. The money is also used for students in high cost fields i.e. medicine and science. This has been a valuable fund throughout the years, as federal programs and projects have not always met the needs of every student. There are also some jobs available in the university community for those who can work and study.

The aids program at the university has grown tremendously. This past year about 2,000,000 dollars has been awarded. So one can see, a great many of the students who attended West Texas State get some financial assistance.

**ANNOUNCEMENTS:** Board Meeting to be held on Thursday, July 2, at 7:00 p.m. in the office of John R. Collard, Jr. John R. Collard, Jack McWhirter and Robert Elliott were present at the District Conference in Amarillo last Saturday. Robert reported that a new logo and motto for the 1981-82 Rotary Year will encompass the theme: "World Understanding and Peace through Rotarv".

## Lung Diseases Deutsches Fest Has Full Schedule Pure Demagoguery

Communities planning observances for the International Year of Disabled Persons (IYDP) are urged by the American Lung Association of Texas to remember those with breathing disabilities.

Chronic lung diseases are a major health problem ranking second among causes of disability in this country, the voluntary health agency noted. But because victims of emphysema and chronic bronchitis often do not have visible handicaps their problems may be overlooked.

According to federal statistics, most of those disabled by lung diseases are men, half of them younger than 65. Thus, many are fathers, husbands and wage earners. Since chronic obstructive lung diseases run a protracted course, not only the victims, but their families suffer incalculable misery.

Disability from crippled lungs ranges from shortness of breath serious enough to limit normal activity to damage so severe the victim requires continuous oxygen. For these individuals even tying a shoelace can be a struggle.

The United Nations designates an "international year" on behalf of a particular group every two years. Previous observances have focused on women and children.

In this country, the US Council for the IYDP--of which the American Lung Association is a national partner--is working with the 50 state governors, more than 1,600 communities and nearly 300 organizations. Goals for the disabled include expanded opportunities in education and employment; greater social and recreational participation; access to housing, buildings and transportation; and accident and disease prevention.

For more information on the control and prevention of lung disease, contact the American Lung Association of Texas, 7701 North Lamar Boulevard, Suite 104, Austin, Texas 78752.

The Eighth Annual Deutsches Fest will blast off in Darrouzett, Texas July 3-4, with a full schedule of events, including German cooking and polka bands.

The festival, commemorating the German pioneers who settled Lipscomb County, is sponsored by Village Improvement Program, composed of the farm village's 450 citizens.

On the 1981 agenda is a baby contest, sausage eating feat, horse shoe tournament, fiars, post hole digging and costume contests, Bierox, butterballs, pork n' kraut, will be featured at the "All German Meal" Saturday noon.

Friday, July 3, Pretty Fraulein from Darrouzett will be

crowned before the first melodrama performance and Citizen of The Year will be recognized Friday activities will begin at 7 p.m. in the Darrouzett High School auditorium.

A parade, down Main Street, at 11 a.m. will highlight Independence Day features, and entertainment will be enjoyed, all day, under the VIP canopy. Visitors may visit a flea market or see the melodrama cast in "Little Nell."

Profits from the event are used to provide necessary community improvements. Recent accomplishments include Senior Citizen's Building, renovating the old theatre, constructing the steel, VIP canopy and adding a baseball diamond and tennis courts.

## Golden Spread Center News

The Golden Spread Center is located at 14 S. Haney, Spearman, TX., and is open from 9 to 5 Monday thru Friday for the residents of the community over 55 years of age. The Center has a very able Director--Pearl Pierce--who would help you get acquainted if a newcomer, also Wilma Reese is temporarily furnished the Center through the Green Thumb, Inc. Two high students--Norma Martinez and Tammy Jordan--are employed by the Center through the CETA Plan provided by our government.

Around 45 people attended the cover dish supper Tuesday, June 16th, at 6:30 p.m. with

the Gladiola Club hosting the supper. The Center hostesses were Adalyn Barnes and Maylynn Schubert. After the delicious meal different games were enjoyed by those who remained to play.

Wednesday, June 24th, at 2:00 p.m. the Center will have a Bingo Game. All people fifty five years of age or older are invited and encouraged to come join in the fun. There will be a small fee of 25 cents for the afternoon for those who are members of the Center and 10 cents a game for non-members. There will be nice prizes to choose from and a "Bonus" game for a very special prize.

## Stratford Artist At Museum

The refreshing color of spring or the somber approach of a winter storm can be felt as you view the exhibit in the Art Gallery of the No Man's Land Historical Museum, Goodwell, during June and July. The artist is Sharon Newsom Harrington of Stratford, Texas.

Mrs. Harrington describes her painting as a part-time hobby. She began working with oils five years ago under the direction of Mary Hill, Stratford, and Jean Green, Alton, Texas. Several of her paintings were shown in 1979 with the Sherman County Art Association.

Since her time is limited, with three active children and other hobbies, she enjoys the faster medium of watercolor. She has studied watercolor under Rod Howard, formerly of Amarillo, Emileo Caballero, Celia Meadors, and Williams Hughes, all of Amarillo. Recently she com-

pleted a workshop under Jon Birdsong.

Having grown up in the Guymon-Gruver area, graduating from Gruver High School, Sharon and husband, Lance, now live in the Stratford area. They have three children, Christy, Kent, and Shelley.

Museum hours are: 9-5 Tuesday thru Friday, 1-5 Saturday and Sunday, CLOSED MONDAYS.

One reason Democratic Party fortunes are so low at the moment is that leaders of the party--in the northeast particularly--haven't come up with new programs which challenge the voter's imagination. Instead, they employ the same old, hackneyed phrases and worn-out liberal cliches.

Few voters are so dim that they were unaware of the economic, trade and foreign affairs mess the nation was in, after years of Democratic congressional rule, in 1980. Congress was almost as much responsible for the disaster which befell the party in 1980 as was Jimmy Carter, who helped the slide significantly.

The vast majority of Americans turned to Ronald Reagan and his new (old-fashioned) approach to the nation's critical problems, greater fiscal responsibility. The Democrats are left with Senator Bob Byrd and Speaker Tip O'Neill as their titular leaders--Mr. Carter having been routed so decisively his political influence is nil.

Senator Byrd of West Virginia has played the role of leader of the loyal opposition (to the president) with grace, generally speaking. But O'Neill has in recent days resorted to the same old demagoguery Democrats have used since the thirties to woo special groups and special blocs of voters.

O'Neill's latest charge was that President Reagan has "no concern, no regard, no care for the little man of America." He further claimed that the president's tax cut proposals were only a windfall for the rich and that Reagan associated only with wealthy, upper class individuals.

Edwin Meese responded to this with the statement that he didn't believe Tip really believed the things he was saying about the president. That's the most charitable light one can put on such partisan rhetoric--and it doesn't speak well for Democrat chances in 1982.

Most Americans know Ronald Reagan came up in life in modest circumstances, worked hard and long, was a union man and finally made it, in the media, film and political worlds. And that included working his way through college, when times were tough.

Thus the same old trite charges from Democrats that their opponent is an insensitive fat cat, charges which in the past have sometimes polarized black and other ethnic voters, and produced divisive resentment, are transparent demagoguery at its worst.

## RECIPE

By Sarah Anne Sheridan

These cornmeal recipes are easy to make and will be a welcome change from plain bread. Always serve them hot with plenty of butter or margarine. They are also tasty served with fresh vegetables or vegetable soup.

### Spoon Bread

- 2 c meal
- 2 c boiling water
- 1 1/2 c milk
- 2 t salt
- 3 T butter or margarine
- 3 large eggs

Sift meal twice and stir in boiling water. Add butter and salt. Add milk and beaten egg yolks. Fold in stiffly beaten egg whites. Place in buttered baking dish and bake 30 to 40 minutes in an oven 325 degrees.

### Corn Meal Muffins

- 2 c corn meal
- 3/4 t salt
- 2 T sugar
- 2 c milk
- 2 T shortening
- 2 eggs

Mix together dry ingredients and stir in milk which has been scalded. Add shortening and cool. Stir in well beaten eggs. Fill greased muffin tins 3/4 full and bake 25 to 30 minutes in an oven 400 degrees.

## NEWS VIEWS

Alexander M. Haig Jr., Secretary of State:

"A substantial violation of the 1952 agreement under which the United States has sold arms to Israel may have occurred."

James McClure, Senator, (R-Idaho) on food stamp cuts:

"There are millions of working Americans who are tired of paying the bills for those who could but will not."

## BIBLE VERSE

Answers to Bible Verse

"The kingdom of heaven is like unto a grain of mustard seed, which a man took, and sowed in his field."

1. Locate this verse.
2. Who spoke these words?
3. Where were they spoken?
4. Is this parable found elsewhere in the Bible?

World progress would move faster if people would talk less and work harder.

# ANNIVERSARY SALE!

At The MAIN STREET Store in Gruver.....

Starts Friday!

All Children's Summer Merchandise TREMENDOUS SAVINGS!

All Women's Summer Clothing DRASTICALLY REDUCED!

Men's short-sleeve SHIRTS

buy one Reg. Price  
buy one Half-Price!

Hi!  
--It has been a short year!  
We've served old friends; made new ones. Best of all, anywhere the Main Street of Gruver is mentioned, folks immediately point out the store. You made it possible. --Thank you!

The Main Street Store  
Gruver, Texas

**Calling All FARMERS...**

See the TR™ 85 and TR™ 95 Twin Rotor  
Combines with ...

**NEW 970 Grain Headers --  
24 & 30 FT**

• 24" Diameter Auger      • Dual Sickle Drive  
• Adjustable Cutter Bar   • -- Plus Many Other Options

**NOW IN STOCK!**



**Come by for an extra special deal!**

**SPERRY NEW HOLLAND**

Hwy. 15 West & Loop 143 N.      OF PERRYTON      435-5473



# WANTED ADS

## CAPROCK MONUMENT CO.

Dealers of Georgia Granite, Georgia Marble, Colored Granite, & Bronze.

represented by **BOXWELL BROS. FUNERAL HOME**

519 S. EVANS  
659-3802

Hansford County Planned Parenthood  
26 S. Haney  
659-2483  
Spearman Mon.-Fri.  
Call for an appointment.  
305-rtn

**NOTICE**  
Wallace Monument Co.  
Monuments, Curbing, Grave Covers  
Local Representative  
**LEONARD JAMESON**  
Spearman, Texas  
20-rtn

**STEAM RINSE & VAC**  
Steam Rinse-and-Vac Shampooers: \$8.95 for up to 24 hrs. available at Gordon's Drug; also at Freddie Largent's 716 Cotter Dr. after 4 p.m. and Saturdays and Sundays.

**MONUMENTS**  
Save 20% to 30% Agents and Undertakers Commission  
**ALVA MONUMENT CO.**  
Alva, Okla.  
51-rtn tonly

**ALL STEEL BUILDINGS**  
STRAIGHT WALLS  
40' x 80' x 14'  
COLORED WALLS  
GALV. ROOF  
Two 20' x 14' dbl. slide doors  
One steel walk door  
**\$13,800 Erected**  
806-435-3107  
Bob Slaughter - Rep.  
1306 S. Grinnell

**Fee Wee's Plumbing Service**  
Roto-rooter, Acoustical Ceilings, Blown Insulation in walls and ceilings. Appliance Service, used appliances for sale. 659-2811 or 659-3781.  
20-rtn

## SERVICES

Will decorate cakes all occasions. Also cookies and cupcakes. Call Nelda 659-3984. 51-rtn

Carpet & upholstery cleaning Rogers Steam Way, Guymon. 405-338-7926 55-rtn

**KIRBY SALES & SERVICE.**  
New & reconditioned vacuum cleaners. Claude Newell, 912 S. Bernice.  
8-rtn

**SERVICE:** Pits cleaned, wet or dry. Dragline or loader. Also, dozer, grader, carry-all service. Lee Roy Mitchell, 806-733-2384, Gruver, Texas 79040.

**TREES & shrubs** trimmed or removed yard work except mowing. Call 659-2787 or 659-2463 after 5:00 p.m. 20-rtn

Will do yard mowing and edging. Call Earl Goodheart at 659-2081 or 659-2121. 29-rtn

**SNOOPY'S DAY SCHOOL**  
Open from 7 a.m. to 6 p.m., we have Hot Lunches and Snacks Morning and Afternoon. Our van takes kids to and from Track - Swimming Lessons, ect. Call 659-3328 or come by 620 1/2 Bernice and ask about our Swimming Program on Monday, Wednesday and Friday.  
Receive Western gift stamps for your bill-and double on Friday. Licensed for ages 18 months to 12 years.  
Call S&H Remodeling for your painting or papering needs-659-3328. 32-rtn

**Miscellaneous For Sale**  
FOR SALE: 3 bedroom, garage, good location. Blankenship Real Estate, 9-3052. 27s-rtn

**SAVE! Free Delivery---HEAVY SHAKES**, 65.00 per square. Light medium Shakes \$57.00 per square. All other Cedar roofing-Cedar Beams-Plywood. Rough Cedar. Cedar Fencing materials or turn-key fencing-Composition Shingles, and felt. **LAKESIDE FENCE MFG. AND WHOLESALE INC. DRAWER 1 FRITCH, TEX. 79036** Phone 806-857-2411.

**FOR SALE:** 1973 Ford Galaxie. \$300. 659-3526. 31-rtn

**FOR SALE:** Riviera sofa-makes queen size bed. Call 659-2015 or 659-3493. 32s-2tp

**FOR SALE BY ESTATE:** 1976 Chevrolet pickup, under 18,000 miles, 350 engine, power, air, automatic transmission. Submit sealed bids c/o John Hutchison, Box 506, Spearman, Texas 79081 until August 1. 33-rtn

**FOR SALE:** 20' Glastron Ski Boat. 302 Ford, 1-0 Drive, Depth Finder-C.B. accessories, Drive-on Tandem Trailer. 659-2497. 32s-2tc

**FOR SALE:** Butane Set-up for pickup or truck \$250. Call 9-2514. 33-rtn

**FOR SALE:** New ovation guitar with new case and amplifier. \$500. Call 733-2783 33-4tc

## Real Estate For Sale

**FOR SALE:** Three bedroom house located at 908 S. Dressen, close to schools, central air and heat. 1 bath, living room, den combination, fenced back yard. Call for appointment 659-3327. 25s-rtn

**FOR SALE:** Brick, 3 bedroom, 2 bath, basement, 2 car garage, fireplace, automatic sprinkling. Near High School. 1010 Blodgett 659-3323. 32-rtn

**FOR SALE:** 320 acres 8" well grain storage, well head gas 5 mile S. Spearman. Call 659-3664. 32-rtn

**FOR SALE:** 2 Bedroom frame house newly painted, clean and carpeted. Located at 908 S. Haney St. Call 659-2335 after 5 o'clock. 33-1tp

**OLDER 3 BEDROOM** rock house for sale, partially remodeled. Small equity and take up payments. Call 806-733-2339, 304 Cluck, Gruver. 33-4tc

## FOR RENT

**FOR RENT:** Trailer Lot 659-2105. 30s-rtn

## Help Wanted

**ELECTRICIAN WANTED:** Anthony Electric, Inc. Spearman, Tx. Call 806-659-2441 or after 6 p.m. call 806-659-2819. 30-rtn

**DIRECTOR OF NURSES** position available. Please call or apply in person between 9 and 5 at the Senior Village Nursing Home, HWY 83 S. Perryton-435-5403. 32s-8tc

## GARAGE SALE

**GARAGE SALE:** 1120 S. Haney, 2-Family June 26 & 27. Clothes, furniture, chairs, trundle beds, bicycle, games, toys, books, comic books, 8-track tape player, etc...9 to 5 p.m. Both days.

**PATIO SALE:** 1101 S. Haney, June 25 & 26, 9 a.m. to 5 p.m. Good clothes, quilt tops, miscellaneous. 33-1tc

**BIG GARAGE SALE** 22 Golden Circle behind Nursanickle Motel Litton Microwave, portacrib, furniture, many knick-knacks, some clothes, antique bar, much more 9-5 Saturday 33-1tp

## WANTED

**WILL SERVICE** appliances in Hansford County. Call Bob Nobles, 733-2415 after 5 p.m. 33-6tc

## LEGAL NOTICE

### NOTICE TO ALL PERSONS HAVING CLAIMS AGAINST THE ESTATE OF WILLIAM JUNIOR McBROOM, DECEASED

Notice is hereby given that original Letters of Administration for the Estate of William Junior McBroom were issued on June 22, 1981, in Cause No. 1655, pending in the County Court of Hansford County, Texas, to Sybil Ruth Cruse. The residence of such independent administrator is Spearman, Hansford County, Texas. The post office address is Box 806, Spearman, Texas 79081. All persons having claims against this Estate which is currently being administered are required to present them within the time and in the manner prescribed by law.

Dated this 22nd day of June, 1981.  
John L. Hutchison, Box 506, Spearman, Texas 79081  
Attorney for the Estate  
33-1tc

### NOTICE TO ALL PERSONS HAVING CLAIMS AGAINST THE ESTATE OF GLADYS LILLIE NELL McBROOM, DECEASED

Notice is hereby given that original Letters of Administration for the Estate of Gladys Lillie Nell McBroom were issued on June 22, 1981, in Cause No. 1656, pending in the County Court of Hansford County, Texas, to Sybil Ruth Cruse. The residence of such independent administrator is Spearman, Hansford County, Texas. The post office address is Box 806, Spearman, Texas 79081. All persons having claims against this Estate which is currently being administered are required to present them within the time and in the manner prescribed by law.

Dated this 22nd day of June, 1981.  
John L. Hutchison

John L. Hutchison, Box 506, Spearman, Texas, 79081  
Attorney for the Estate

### NOTICE TO ALL PERSONS HAVING CLAIMS AGAINST THE GUARDIANSHIP OF CHARLES WILLIAM RAY McBROOM, A MINOR

Notice is hereby given that Letters of Guardianship for the Person and Estate of Charles William Ray McBroom, a minor, were issued on June 22, 1981, in Cause No. 1954, pending in the County Court of Hansford County, Texas, to Lena J. Gurrard and Maureen Gurrard. The residence of such guardians is Spearman, Hansford County, Texas. The post office address is Box 706, Spearman, Texas 79081. All persons having claims against the estate of Charles William Ray McBroom, a minor, are required to present them within the time and in the manner prescribed by law.

Dated this 22nd day of June, 1981.  
John L. Hutchison, Box 506, Spearman, Texas 79081  
Attorney for Guardians  
33-1tc

### NOTICE TO ALL PERSONS HAVING CLAIMS AGAINST THE ESTATE OF D.W. JACKSON, DECEASED

Notice is hereby given that original Letters Testamentary for the Estate of D.W. Jackson, Deceased, were issued on June 8, 1981, in Cause No. 1652, pending in the County Court of Hansford County, Texas, to Doyle Wilson Jackson. The residence of such executor is Hutchinson County, Texas. The post office address is Rt. 1, Box 34, Stinnett, Tx 79083. All persons having claims against this Estate which is currently being administered are required to present them within the time and in the manner prescribed by law.

Dated this 8 day of June, 1981.  
John L. Hutchison, Box 506, Spearman, Texas 79081  
Attorney for Estate  
33-1tc

### POOR WASHING HABITS BOSTON

Doctors and nurses often fail to wash up after handling patients' bandages and tubes, and their dirty hands may be a major contributor to diseases that spread within hospitals, a study concludes. Such hospital-spread illnesses are called nosocomial infections.

# Super Clean!

## Auto & Truck Cleaning

- Interior
- Free Estimates
- Free Pick up and Delivery
- Waxing

Call For Appointment:  
**PERRYTON**  
**435-2801 1401 S. Ash**

## St. John And St. Peter

The feast of St. John the Baptist is one of the oldest in both the Greek and Latin churches, in honor of this towering figure in the Christian religion. No one knows when John was born, but it is known he was about six months older than Jesus. So agreement has been reached to celebrate June 24 as his birthday anniversary.

John, like Jesus, was an early Christian preacher; Jesus, in fact, came to him to be baptized. And while he denied that he was the Messiah, his followers and those of Jesus were often at odds. He at first refused to baptize Jesus.

John was imprisoned by the authorities of his day for denouncing members of the royal family. He was beheaded because Herodias, a consort of Herod, persuaded his daughter, Salome, to ask for the head of John on a dish. Salome, a dancer, had so captivated Herod with her curves that he had promised her anything she wished.

St. Peter's Day (and death) is celebrated three days later, on the 29th. Peter also preached in Jesus' time, and he was a follower of John the Baptist until he became a follower of Jesus. Peter's original name was Simon, a fisherman from Galilee.

It was Peter who saw Jesus as Christ, the Son of God, and after Jesus' crucifixion he continued to preach Jesus' gospel. Many legends abound about him and both Catholics and Protestants assure he came as far west as Rome, near where he was himself crucified on Nero's orders. His remains are thought to lie beneath St. Peter's in Rome to this day.

Nothing short of independence, it appears to me can possibly do.  
-George Washington.

**TEXAS PRESS ASSOCIATION**  
MEMBER 1981

## The Spearman Reporter

PUBLICATION [USPS 509-660]  
SPEARMAN, TEXAS 79081  
213 Main Box 458 659-3434  
Published Weekly at 213 Main Street  
Spearman, Texas 79081  
Owner-Publisher.....William M. Miller  
Editor.....Faye Lynch  
Second Class postage paid at Spearman, Texas 79081

Any erroneous reflection upon the character of any person or firm appearing in these columns will be gladly and promptly corrected upon being brought to the attention of the management.

SUBSCRIPTION RATE: Hansford, adjoining counties, combination with the Hansford Plainsman \$15.00.  
Other points, \$20.00.

## STORM DOORS

Custom Built, Designed, And In Colors To Fit Your Home....  
Contact Howard Moyer at  
**Only Aluminum Industries**  
Guymon, Okla. 405-338-6966  
73942 114 W. 1st or 338-6170



**1106 Wilmeth**

**FOR SALE - 2285 square feet, ranch style home, 3 bedrooms, 2 1/2 baths, double car garage. Exceptionally nice home, in the nicest part of town.**

Call **MAYFIELD**  
**Real Estate - 435-6528**  
Perryton,  
for appointment.

Offered Exclusively By  
**EMMETT R. SANDERS, REALTOR**

**R REALTOR**

303 acres NE of Morse, on pavement, about 211 acres cultivated, balance in grass, no minerals, principals only.

Choice commercial location fronting 140 ft. on West Kenneth Street.

Immaculate 3 bedroom home, preferred southwest location, corner lot, large storm shelter, new central heat and air, new carpet throughout, fresh paint, ready for you to move in.

Very nice 3 bedroom home, den, electric fireplace, enclosed covered patio, fenced yard, large toolhouse, good south location, shown by appointment only, Emmett R. Sanders, Realtor, 659-2516, nights 659-2601.

**EMMETT R. SANDERS REALTOR**  
659-2516  
659-2601 [nights]  
26-rtn tonly

**STATEMENT OF INTENT TO CHANGE RATES**

General Telephone Company of the Southwest, in accordance with the Rules of the Public Utility Commission of Texas, hereby gives notice of the Company's intent to implement a new schedule of rates in Texas effective October 1, 1981.

On April 28, 1981, the Public Utility Commission of Texas issued its order in Docket 3690, creating a separate Docket 3861 to consider the impact and effect of the accounting changes ordered by the Federal Communications Commission (CC Docket 79-105).

The Federal Communications Commission has changed the method of accounting for inside wiring costs associated with the one-time station connection, move, or change activity. The new rate schedule will increase the Company's gross annual revenue derived from local service by no more than three percent.

The schedule of rates and charges is available for inspection at each Company business office in the State of Texas.

**GTE**  
General Telephone

**VIRGINIA WHITE**  
Realtor 106-659-3841

**R REALTOR**

Spacious & Lovely--3 bedrooms, 2 1/2 baths, large closets. Call. Will show to qualified buyers.

**JAMES ST.--3** bedroom home with fireplace, game room & much more. Call for appointment.

**SOLD EDUCATED SOLD TO SEE SOLD BY HAND**  
fenced, central heat & air cono. Call to see **SOLD**

**FOR SALE--100 X 120** corner lot on Wilmeth.

ASSUME LOW INTEREST loan or get new loan with reduced rate on this IMMACULATE 4 bedroom, 3 bath home with over 2000 sq. ft. in living area. Huge isolated master bdrm with big bath & walk-in closet is NEW 16 X 32 addition to this home. Family room with NEW FIREPLACE. ALL NEW KITCHEN APPLIANCE. Dbl. car garage. Fenced.

**Century 21 Presenting**

**Archer - 3 B/R, 2 Bath, Built in appliances, fireplace, carpet, double garage, fence.**

Jerry Gee 659-3664  
Ronnie Hoover 658-3925  
Larry Trospier 659-3491

**Daryl Wynn, Broker**  
**658-4528**

**Century 21 GOLDEN SPREAD REALTY**  
**We'll give our word to you.**

Registered Trademark of Century 21 Real Estate Corporation.  
©1980 Century 21 Real Estate Corporation  
Printed in U.S.A., Each office is independently owned and operated. Equal Housing Opportunity.



thursday

JUNE 25, 1981

EVENING

6:00 Macneil Lehrner Report... 7:00 Evening At Pops... 8:00 Sneak Previews Film critics Gene Siskel and Roger Ebert review the latest films...

9:30 John Ankerberg Show... 10:00 Dick Cavett Show... 10:35 Kung Fu... 11:00 Movie-(Comedy)\*\*\* 'Nude Bomb' 1980...

friday

JUNE 26, 1981

EVENING

6:00 Macneil Lehrner Report... 7:00 Washington Week In Review... 8:00 All Creatures Great And Small...

speech becomes a frantic and funny reality when Marcy breaks down in tears because of a fight with her boyfriend...

he thinks is his brother's reckless running of Ewing Oil... he thinks is his brother's reckless running of Ewing Oil...

ing daughter of a plastic surgeon is left a fortune, her father creates a substitute... ing daughter of a plastic surgeon is left a fortune...

10:35 Kung Fu... 11:00 Movie-(Drama)\*\*\* 'Stunt Man' 1980 Peter O'Toole, Steve Railsback...

1:30 Nightbeat... 2:00 Movie-(Drama)\*\*\* 'Willie And Phil' 1980 Michael Ontkean, Margot Kidder...

4:00 Movie-(Horror)\*\*\* 'Frankenstein-1970' 1958 Boris Karloff, Jana Lund... 5:00 The Blackwood Brothers...

Meat Makes The Meal AND IDEAL HAS THE MEAT... THIS WEEK'S COUPON FEATURE HERCULON CASUAL TOTES... U.S.D.A. CHOICE - BUTCHER BLOCK BEEF FULL CENTER SLICES Round Steaks... \$1.88 LB.

Meat Makes The Meal AND IDEAL HAS THE MEAT... Cane or Beet Sugar \$1.44... Green Beans 36¢... Folgers Coffee \$1.99... Tomato Ketchup 68¢

Can Cokes 6 pack \$1.99... Camelot Dill Polish Style 32 oz 96¢... Thrive Cat Food 84¢... Tomato Sauce 4.83¢... Fruit Cocktail 54¢... Pork and Beans \$1.09

FROZEN FOODS... Party Pizza 94¢... Crinkle Cuts 64¢... Coffee Cake \$1.79... Cool Whip 68¢

DAIRY FOODS... American Singles \$1.27... Cottage Cheese \$1.18... Cheeze Whiz 99¢... Margarine 42¢

HEALTH and BEAUTY AIDS... Johnson Diapers \$2.33... Toothpaste \$1.44... Tylenol \$4.86

Winsday FOOD GIVEAWAY IDEALS GREAT INFLATION FIGHTER WINSDAY GIVEAWAY



and flame who suspects she is being blackmailed. He uncovers a web of tangled affairs and makes a daring escape via water, from his captives (2 hrs.)

Duval. An extra sensory gift called 'The Shining' terrorizes a family man. (Rated R) (2 hrs., 30 mins.)

client is the youngest of three notorious criminal brothers. In court, Judge Presticoid seems more interested in Rumpole's slovenly appearance than the case. (Closed-Captioned; U.S.A.) (60 mins.)

Car Care Central 'Doll Yourself' car care series. (11) America's Black Forum

Knights. Wild antics of golfers and employees of an ultra exclusive golf course. (Rated PG) (2 hrs.)

leader and his band capture a huge cannon from French troops in 1810 Spain. (2 hrs., 30 mins.)

Planet! 1962 John Agar, Greta Thyssen. On Uranus, an evil alien brain causes astronauts to experience their most deadly fears. (90 mins.)

Fantasy Island A mother to be with a short time to live faces a great shock when Roark sends her into the future and she sees what her daughter is to become; and a dedicated art teacher discovers that painting a beautiful woman has its drawbacks. (Repeat; 60 mins.) (Closed-Captioned; U.S.A.)

Saturday

JUNE 27, 1981

MORNING

- 6:00 (9) Cartoons (11) Movie-(Western) \*\* 'Secret Valley' 1936 Richard Arlen, Virginia Gray. Story depicts the value of horse in the old West. (90 mins.)

- 8:00 (7) Fonz And The Happy Days Gang (8) Life In The Spirit (9) Rex Humbard (11) Celebrity (12) Once Upon A Classic 'The Swish of the Curtain' The parents don't want to encourage their children's interest in the theatre, but their first performance is hit. (Closed-Captioned; U.S.A.)

- 10:00 (5) Movie-(Drama) \*\* 'Honeysuckle Rose' Willie Nelson, Dyan Cannon. Story about a singer's life on the road, with after-midnight bus rides to the next tank town the only certainty. (Rated PG) (2 hrs.)

- 11:30 (1) The Victory Garden (2) Flintstones (3) American Bandstand Host: Dick Clark. (60 mins.)

- 12:30 (4) Market To Market (5) Major League Baseball: An Inside Look Host: Bryant Gumbel (6) That Nashville Music (7) This Week In Baseball (8) Young People's Special The World Tomorrow (9) Major League Baseball Game-Of-The-Week Pittsburgh Pirates at Philadelphia Phillies/Detroit Tigers at Boston Red Sox. (Region will determine game to be televised in your area.)

- 2:00 (1) And The Band Played On For many, life in the village of Shillingsbury revolves around the town's brass band, but to some, the band is simply awful. The production stars Trevor Howard, Robin Nedwell, Diane Keene and Jack Douglas. (90 mins.)

- 3:00 (3) Sneak Previews Film critics Gene Siskel and Roger Ebert review the latest films, and show scenes from: 'Raiders of the Lost Ark,' 'Clash of the Titans,' and more.

- 4:00 (1) Soccer Made In Germany Belgium vs England (60 mins.) (2) First Row Features (3) Wide World Of Sports (4) Ross Bagley Show (5) Soul Train (6) Hee Haw Guests: Porter Wagoner, Lacy J. Dalton, Hagers, Joe Memphis. (60 mins.)

FAMILY PACK 3 TO 5-LB. PKG. FRESH Ground Beef \$1.08 LB.

U.S.D.A. CHOICE BUTCHER BLOCK BEEF CENTER CUTS Chuck Steaks \$1.39 LB.

HUDSON'S 3 TO 5 LB. AVG. Thrifty Pack Fryers 57¢ LB.

RANDOM WEIGHTS SMOKED Sliced Slab Bacon \$1.09 LB.

DOUBLE GUNN BROS. STAMPS EVERY WED. U.S.D.A. CHOICE BUTCHER BLOCK BEEF BONELESS Round Steaks... \$2.09 U.S.D.A. CHOICE BUTCHER BLOCK BEEF 7-Bone Roast... \$1.39

ALL FLAVORS BETTY CROCKER LAYER Cake Mix 68¢ 18 1/2-OZ. BOX LIMIT 3

ICE CREAM STEFFEN'S (ALL FLAVORS) Sherbet \$1.56 1/2-GAL. CTN.

Farm Fresh Produce GOLDEN RIPE Bananas LB. 29¢ RED RIPE Watermelon... 13¢

Ideal Food Stamps Buy More At Ideal... FOOD STORES

DOUBLE GUNN BROS. STAMPS EVERY WED.

- 4:30 (1) Let's Go Omnibox (2) Monte Carlo Show (3) Chico And The Man (4) Championship Wrestling (5) The Rookies (6) Matt And Jenny (7) Undersea World Of Jacques Cousteau (8) News (9) Weekend Gardner (10) Hogan's Heroes (11) Adventures In Rainbow Country

EVENING

- 6:00 (4) Lawrence Welk Show (5) Movie-(Drama) \*\* 'Honeysuckle Rose' Willie Nelson, Dyan Cannon. Story about a singer's life on the road, with after-midnight bus rides to the next tank town the only certainty. (Rated PG) (2 hrs.)

- 9:30 (1) News (2) Movie-(Mystery) \*\* 'Drowning Pool' 1976 Paul Newman, Joanne Woodward. A private eye goes to Louisiana to help an old flame who suspects she is being blackmailed.

NEWS

- 10:15 (1) News (2) Saturday Night Live Host: Madeline Kahn. Guest: Carly Simon. (Repeat; 90 mins.) (3) 700 Club (4) Solid Gold (5) Movie-(Title Unannounced) (2 hrs.) (6) Movie-(Drama) \*\* 'Elmer Gantry' 1960 Burt Lancaster, Jean Simmons. Opportunist teams up with travelling evangelist show headed by beautiful girl. When crusading newspaperman tries to expose their indiscretions, he fails, but opportunistic ex-girlfriend almost succeeds. (105 mins.)

CHINA & ARMS SALES PEKING -- Despite official statements strongly opposing U.S. arms sales to Taiwan, China's leaders are expected to take a more flexible stance during Secretary of State Alexander M. Haig's Jr. visit. Sources said China is ready to tolerate continued U.S. weapons sales to Taiwan so long as they do not exceed the sophistication or volume of arms currently sold by the United States to Taiwan.

SOVIETS BUY GRAIN LONDON -- The Soviet Union will be allowed to buy from the United States an additional 6 million metric tons of grain to be shipped before Sept. 30, U.S. officials said recently. They said the Soviets will be able to buy "reasonable" amounts of grain after that date.



Harvest... continued from page 1

"and a little better" and grain was dry. He even reported some shriveled but nothing to establish a trend. The real rowser there was some 70-bushel-per-acre wheat coming in.

"This is an extreme but there is enough of it to make us believe the average is going to be good." Cook said. He noted a lot of 50-bushel-per-acre yields moving to the mills.

Jimmie Hicks at McClellan Grain Co.--Whose early assessment of grain coming in last year was right on the nose at the end of the harvest--said test weight there was 65 and better with moisture running about 10. He was less optimistic about the bushel-per-acre yield for the total gathering in Hansford County but said the harvested grain was good.

At Speartex, wheat was running a good average test weight of 59 and moisture was a steady 10. Here again was the opinion that the harvest this year was going to be a much better yield and quality than growers had been expecting considering the vagaries of the weather at a critical point in the life of this year's crop.

In the Gruver area, the story was just about the same completely across the board: test weight was above 60, moisture was within better bounds than expected and while no per-acre bushel yield was predicted, most said it would be ten percent above what growers expected when the harvest this year took on that different rhythm right at the beginning.

Dry land wheat is a thing apart this harvest. Before the gathering began, Martin Chandler of the local ASCS office predicted that 90 percent of it would not be harvested. That turned out to be almost dead-center.

Those growers who elected to take a stab at harvesting the "poor patches" are experiencing yields ranging from an average six bushels per acre to a spotty 12 to 15 bushels per acre.

The men who plant it, cultivate it and gather it in have some words for the harvest, too. Most growers are happy with irrigated yields. Not one will predict that the irrigated wheat will be enough better to make up the dry land stand loss but the overall economy of the county will suffer the dry land loss less using the grazing it provided and the yield from

those acres harvested even though it was not "a living" by itself.

All growers visited were of the same opinion as George Cook: It was a different and smooth harvest and most believe it proved that harvests in the future just might lean more to the pattern established this season. Of course, one grower was truly realistic: "Hang the hours! That 70 bushel per acre is the best pattern!"

*In Fashion*

Some of the coolest and most popular fabrics for summer are seersucker, cotton-knits and cotton twills. Madras prints are seen in new pastel colors. Other cool colors are shades of periwinkle, rose, mint, pink and, of course, white.

*Way Of Life*  
Somehow it's easier to forgive an enemy after you get even with him. -Times, Marshalltown.

Anwar Sadat, warning Israel: "Your aggression against Iraq holds grave consequences for peace in the Middle East."

\*\*\*\*  
Independence is something that the married man brags about.

Menachem Begin, prime minister, Israel: "We were absolutely sure that Saddam Hussein, the tyrant of Iraq, has an ambition to develop an atomic bomb."

\*\*\*\*  
Trying to please everyone pleases no one.

James B. Edwards, Secretary of Energy: "Nuclear energy is the cheapest, cleanest and safest form of thermal electrical generation known to man."

\*\*\*\*  
Education seems to be an endless affair.

**Golden Gleams**

For twenty years I have worked and struggled in absolute independence, and so it will be to the end.

\*\*\*\*  
The problem of any problem is to find the facts.

**WINS ELECTION**  
DUBLIN, IRELAND -- Prime Minister Charles Haughey said recently he will try to form a government despite his party's apparent failure to win a parliamentary majority and the loss of a seat to an IRA guerrilla jailed in Northern Ireland.

**THE MONEY MAKERS**

**Money Market Certificates**

RATE  
**14.189%**

\$10,000  
Minimum Deposit  
182 DAY MATURITY

Effective June 23, 1981  
Through June 29, 1981  
Regulation Prohibits  
Compounding of Earnings

**Jumbo Certificates**

TERM	RATE	YIELD (Compounded Daily)
30 DAY	17.25%	18.82%
90 DAY	17.00%	18.53%
180 DAY	16.50%	17.94%
1 YEAR	15.25%	16.47%

\$100,000  
Minimum Deposit  
Rates Subject to  
Change Without Notice

**30 Month Certificates**

RATE  
**11.75%**  
  
ANNUAL  
YIELD ★  
**12.47%**  
  
\$1,000

Minimum Deposit  
Rates Change BI-Weekly  
★ Compounded Daily

NOTICE: As Required By Law, All Certificates Are Subject To Substantial Penalty For Early Withdrawal.



... more than just a bank  
**First Bank & Trust Co.** Booker, Texas (806) 658-4551



ALL DEPOSITS INSURED UP TO \$100,000 by F.D.I.C.

**Did You Know**

**We Do ...**

Straightening and repair of aluminum irrigation pipe. Replacement parts of all kinds. Gaskets, Gates, Waterman Parts, Lid, Hydrant, Screws, Air Relief Valves, etc. We do machine work, general welding repairs. Weld anything aluminum. 1 Block South of MacDye Packing in Booker. CBS Manufacturing Inc. Contact Paul Shipman, 658-9379.

**CBS Manufacturing Inc.**

Booker, Texas 658-9379

**MR. FARMER ...**

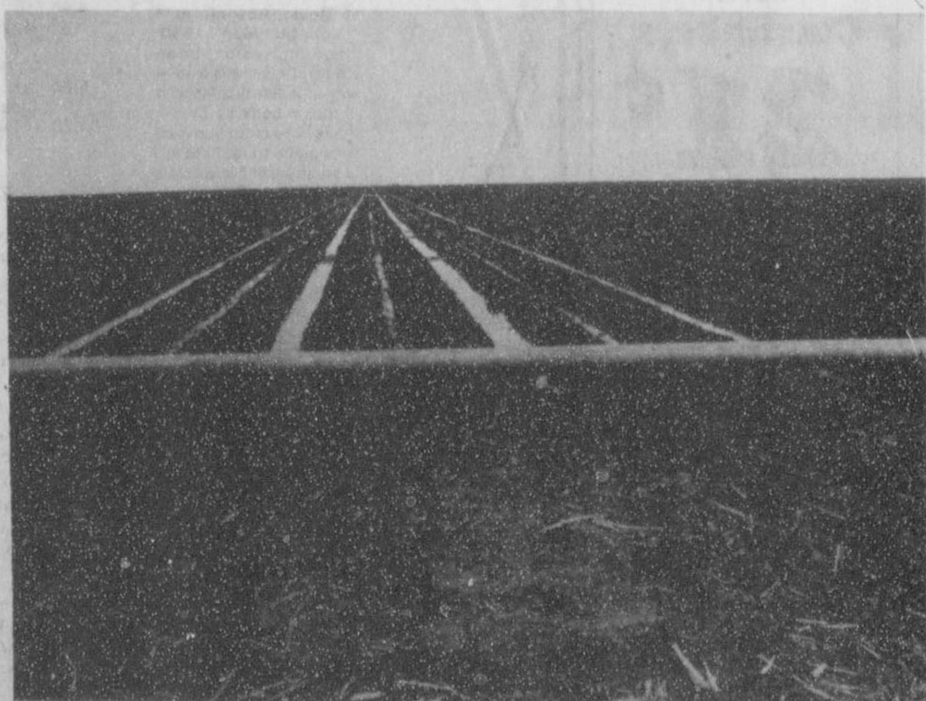
**DO IT IN ONE OPERATION WITH A PENGU 6 ROW 40 PLOW!**

Prepare your maize, or wheat ground in one operation- conserve moisture-increase yield & apply fertilizer or herbicides!

This plow available on lease only!

**\$12.00 per acre**

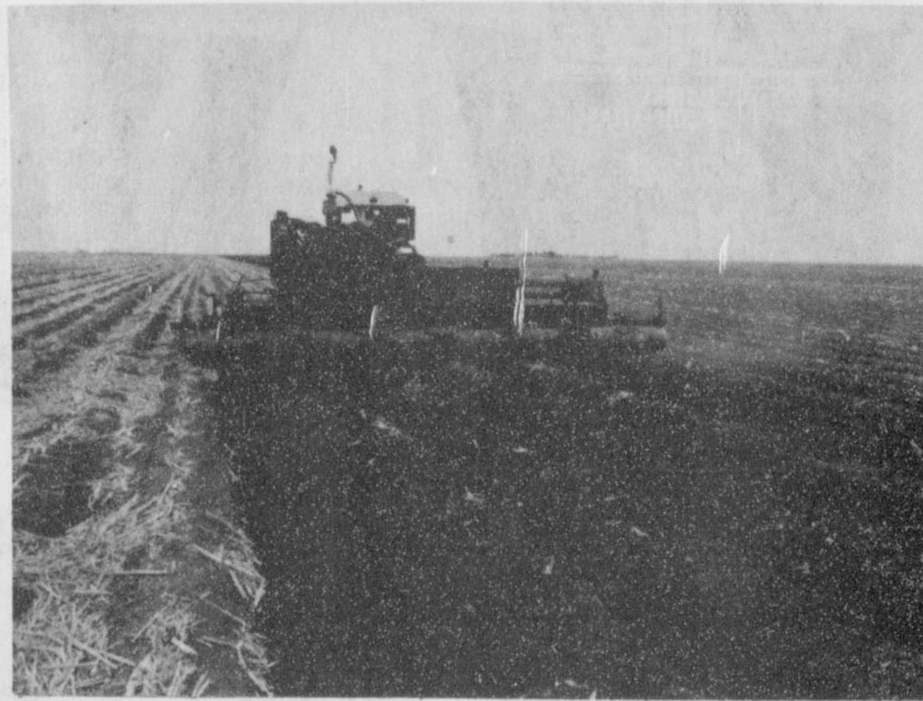
From shred to bed in one operation.



Skip water or row water.



Farm Services



The 6 row 40 in action-Makes a perfect seed bed.



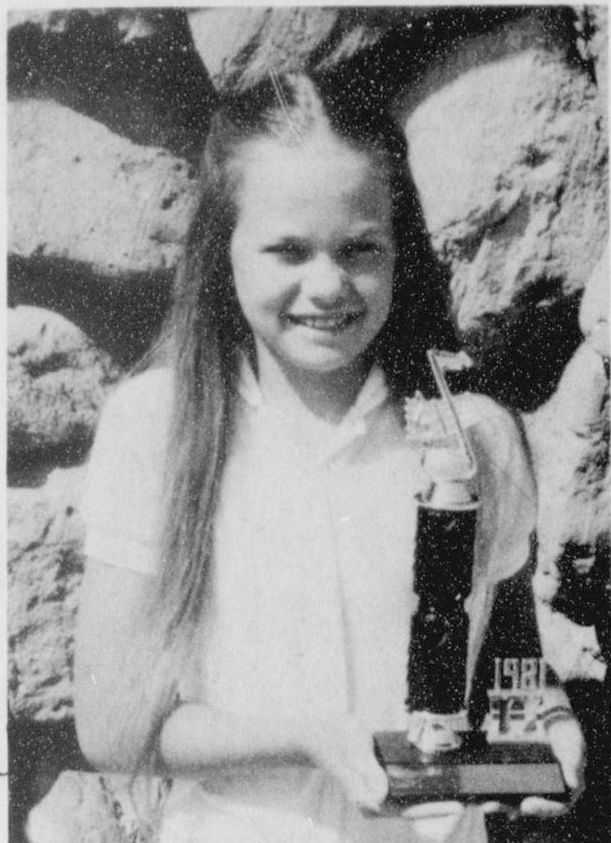
Applying fertilizer or herbicide.

**Contact Bobby Thompson--**

Phone 733-2583  
Gruver, Texas



## Kellie McWhirter Named Outstanding



KELLIE McWHIRTER

Six Spearman students attended the Choral Camp held at West Texas State University June 14th through June 20th. Seventh graders who participated are April Abston, Kellie McWhirter, Rhonda Mathews, and Denise Rojas. Shannon Rylant, an eighth grader, and Jeannie Laird, a Freshman, also attended. Travis and Charlotte Angel were both instructors for the camp.

Two of our local girls were selected for the Junior High Ensemble. Kellie McWhirter and Jeannie Laird were the recipients of this honor.

Each year since the camp's inception in 1970, the faculty

has chosen an outstanding junior high girl and boy and an outstanding high school girl and boy to honor. Kellie McWhirter of Spearman was selected the 1981 Outstanding Junior High Girl. She was also the only junior high student chosen to sing in the talent show on by the participants of the camp.

All of the student who attended the Choral would like to thank the Spearman Music Boosters for the scholarships they provided. This week of intensive musical training is a very beneficial part of each participant's total music education.

\*\*\*\*  
Stop worrying about what your neighbor does and you might be able to take better care of yourself.

## Rail Line Rehabilitation In Panhandle

AUSTIN, Tex., June 16-The Railroad Commission has submitted two grant applications to the Federal Railroad Administration for a total of \$3.48 million to rehabilitate 37.5 miles of railroad track in the Texas Panhandle.

The first application is for \$1.19 million to rehabilitate 13.4 miles of track between Etter and Sunray. However, the application is conditional on the purchase of the track of TeCe Corp. from the trustee of the Rock Island rail line, which went bankrupt and is being liquidated.

Michael Calhoun, director of the Transportation Division's Rail Planning Section, told the Commission that TeCe acquisition of the former Rock Island line will restore vital rail service to an important wheat producing area in the Panhandle.

Nine grain elevators, which had been shipping approximately 425,000 tons of wheat each year by rail, have been without rail service for a year as the result of the Rock Island problem, he said. Consequently, Calhoun explained, the elevators are having to pay higher trucking costs to move wheat. Two elevators will close if the line is permanently abandoned, he added.

Other commodities shipped over the line were petroleum products, carbon black, anhydrous ammonia and livestock feedstuff.

TeCe is negotiating the purchase of a total of 74 miles of former Rock Island track between Etter and Hitchland, but not enough grant money is available to allow the Commission to assist in the rehabilitation of the entire length, Calhoun said.

Therefore, he added, the TeCe application is limited to the cost of fixing the 13.4-mile portion of the line on which 70 percent of the line's traffic begins or ends.

The second application is for \$2.29 million to rehabilitate 24.1 miles of track between Dublin and Gorman now operated by Texas Central Railroad.

Calhoun advised that Texas Central does not now have adequate financial reserves to fully rehabilitate the line, and continued delay of maintenance could result in abandonment.

He said the loss of rail service by Texas Central would cause 135 persons near Gorman to lose their jobs, as one firm would be forced out of business and another would have to cut production by 50 percent. Twelve other shippers on the line would have to pay greatly increased transportation costs, making their businesses non-competitive in the marketplace.

Half of the peanut crop grown in Texas and Oklahoma is processed through facilities on the Texas Central line, Calhoun said.

The Local Rail Service Assistance Act of 1978 allows federal financial assistance for rehabilitating certain rail lines. Under the rail assistance program, each state is required to designate a state agency to prepare and implement a state rail plan. The Railroad Commission, the agency given the responsibility by the governor, completed the Texas State Rail Plan in 1979 and it was approved by the Federal Railroad Administration.

The Act requires each state's plan to focus on light-density branch lines that are being abandoned or are in danger of abandonment. Once the plan is approved by the FRA, the state is eligible to apply for federal grant funds to upgrade the endangered lines.

The Act requires each state's plan to focus on light-density branch lines that are being abandoned or are in danger of abandonment. Once the plan is approved by the FRA, the state is eligible to apply for federal grant funds to upgrade the endangered lines.

The grant applications forwarded by the Commission today mark the third and fourth rehabilitation projects proposed by the Commission since it submitted the Texas Rail Plan. The first project, a \$1.7 million rehabilitation of the Missouri-Kansas-Texas Railroad Company's (MKT) Wichita Falls-Burkburnett line, began in late 1979 and was completed in October 1980. The second project, now underway, is a \$2.6 million upgrade of the MKT's line between Dallas and Carrollton. Benefits from these projects to Texas shippers and consumers are estimated to be \$11.4 million.

### VALUE FORUM ..... realizing the worth of your possessions

#### Are You Sure It's An Antique?

By Dexter D. MacBride, ASA  
Executive Vice President  
American Society of Appraisers

Americans are investing in antiques, fine art, gems and other personal property as never before. Paintings and antiques are being sold at auctions for unprecedented prices. For some, the enjoyment realized by their purchases is exceeded only by

the profit they have made in reselling the items.

Others have not been so lucky. People who would never invest in stocks or bonds without the advice of their brokers, are spending heavily on furniture, paintings, and gems without benefit of prior expert counsel. Many have found, to their chagrin, that the "antique" desk turned out to be a skillfully crafted fake, or the "genuine" emeralds they purchased were, in fact, emeralds, but not of gem quality.

If you are considering making a serious investment in this market, deal only with reliable firms or persons known for their experience and integrity. Further, you should seek the advice of a

professional appraiser before you buy. In that case, select an appraiser who has been tested and certified in the property in which you are interested (antiques, or gems, or fine art, etc.).

For information on how to select a qualified appraiser, write American Society of Appraisers, Dulles Int'l. Airport, P.O. Box 17265, Washington, D.C. 20041.

**Under Control**  
Excited Customer to Druggist--Look here! You gave me morphine instead of quinine this morning.

Druggist--Is that so? Then you owe me another half dollar.

#### NOTICE

The Board of Equalization of the Spearman Independent School District will meet at 10:00 A.M. on Wednesday, July 8, 1981 for the purpose of hearing evidence presented by taxpayers concerning 1981 tax values.

#### NOTICE

The Board of Equalization of the City of Spearman will meet at 3:00 P.M. on Wednesday July 8, 1981 for the purpose of hearing evidence presented by taxpayers concerning 1981 tax values.

#### PUBLIC NOTICE

Pursuant to Section 43a, Public Utility Regulatory Act, High Plains Natural Gas Company hereby expresses its intention to change rates in the unincorporated areas of Hansford, Ochiltree and Lipscomb Counties.

Information concerning the proposed change can be obtained from the High Plains Natural Gas Company office at 109 South Main Street, Canadian, Texas phone (806) 323-6464, or by contacting the Director of Gas Utilities Division, Railroad Commission of Texas, P. O. Drawer 12967, Austin, Texas 78711, phone (512) 445-1146.

HIGH PLAINS NATURAL GAS COMPANY

## Oil Production Down In State

DALLAS--Despite a ninth consecutive year of maximum production schedules (the maximum efficient recovery rate) in nearly all of Texas' fields, the state's annual output of crude oil and condensate last year fell below the one-billion barrel mark for the first time since 1965. Moreover, a downward production trend continued for the eighth consecutive year since Texas' output peaked in 1972.

The total of 960-million barrels included more than 931-million barrels of crude oil. Also produced was 29-million barrels of condensate, according to figures compiled by Tens Mid-Continent Oil & Gas Association.

Last year's production level showed a drop of more than 46.5-million barrels from 1979 output and was more than 330-million barrels below 1972 production of almost 1.3-billion barrels. Nevertheless, production in 1980 pushed the all-time cumulative total since 1889 to almost 45.7-billion barrels of crude oil and condensate.

Edwin L. Cox, president of the Dallas-based Association, noted that despite the drop in output there is a very encouraging trend in one aspect of industry activity: Since President Carter began a gradual phaseout of crude oil price controls on June 1, 1980, a phaseout accelerated by President Reagan, the number of wells drilled in Texas has skyrocketed.

Last year's total of 18,997 wells completed was the largest number since 1957, Cox noted. This compares with 18,149 drilled in 1979 and only 1,728 drilled a decade ago in 1970. At that time, the average price of U.S. crude oil was \$3.48.

"Although exploration costs continue to increase, the industry is committed to a policy of intensive drilling in Texas. It is hoped that successes with these wells will help offset further production declines this year and in the future," Cox said.

Hansford County, which has had recorded production since 1937, last year produced 356,022 barrels of crude oil and condensate at the rate of 975 barrels per day. Production in 1980 boosted Hansford County's production total through the end of the year to 29,915,672 barrels.

#### DIVORCES IN 1979

More American marriages than ever broke up in 1979 as the number of divorces nearly tripled what it was 20 years before, the government reported recently. Some 1.18 million divorces were granted in 1979, 4.5 percent more than the 1.13 million of 1978 and almost three times the 395,000 granted in 1959, according to the National Center for Health Statistics.

#### SALE OF SACCHARIN

The Reagan administration endorsed legislation to allow the sale of saccharin for two more years. An exemption expires June 30 that has allowed the popular artificial sweetener to be sold despite tests indicating it is a weak cancer-causing agent.

## Leased Floodlighting is no accident.

As a businessman, your decision to install leased floodlighting on your business property can mean added safety and security for the entire operation. Well lighted property and equipment is less subject to vandalism. And brightly lighted walkways, stairways, loading docks, and parking lots reduce the chance of accidents due to poor nighttime visibility. Leased floodlighting provides directional lighting, and gives increased illumination per watt over standard incandescent lighting. Make a wise business decision... call us for leased floodlighting, today.



 Texas-New Mexico Power Company

## Vacation Time

We will be closed from

June 29th

to

July 6th

for vacation.

# Berry Cleaners

Phone 9-3122



# Women Play Exciting Games

Last night, Monday-June 22, there was lots of exciting action in the Women's Softball League. There were 2 games played-1 was a normal "we are gonna beat ya" kind of game and the other was the most exciting game ever been played so far this Summer!!

The first game was between the First State Bank Red Hots and A&L Printing. The Red Hots were the home team, so they were on the field-meanwhile A&L got to bat first and they took all the chances that they had. A&L could do no wrong and Red Hots couldn't get a thing started, and when they did it was too late, for A&L had at least 2 points in each inning. That's the name of the game-don't start late, 'cause naturally you won't be able to catch up! It was downhill for the Red Hots and smooth-sailing for A&L Printing. On Monday, June 29, A&L Printing will be battling against the Jr. Lusby Cats at 7:00 p.m. The Red Hots on the other hand will take on Busters Dusters. Now, these 2 games are gonna be very close games so go on out and cheer on Lusby Cats, A&L Printing, Red Hots or Busters Dusters.

The second game was the Jr. Lusby Cats going up against the Speartex Bottoms Up. As far as I'm concerned, this was the best game played-closely between 2 of the best teams-this year!! Bottoms Up were on the field first-meaning that they would bat last. The Cats with Offensive Players like Shelly Lackey, Valerie Hagerman, Kathy Beck, could have gotten more than the 4 or whatever that they got, but Bottoms Up had Defensive Players like Criselda Vela, Ciria Vela, Linda Lujan, Tammy Garcia, etc., that stopped the Cats from making it a runaway. Bottoms Up starting finding their range this week, remember last week no too many could hit the way they are known to hit! This could have easily been a runaway for both teams-

meaning that Bottoms Up and the Cats would have probably gotten 20 points a-piece-this would have then been the highest as well as the most exciting game ever played so far this year. The Defenses were perfect against hard-hitting players!! Now, these two teams were evenly matched as far as hitting and fielding are concerned. The Cats finally won, but not by a long shot as they had been doing to all the other teams. The Jr. Lusby Cats will be playing against A&L Printing. The Speartex Bottoms Up will have the week off and will be back in action the following Monday, July 6, at 7:00 p.m. against Busters Dusters.

Now, there is one thing that the people that went noticed about the teams playing that on the field those that are friends are just opponents, but after the game is over everyone is talking to each other as friends. As Chris Evert-Lloyd put it, "On the field we are just opponent against opponent, but off the field we're close friends." That's the best way to describe the way the teams are during and after a game.

Whenever you find an empty space in your busy schedule, check the Spearman Reporter or the Hansford Plainsman or even the Gruver Statesman and find out what teams are playing at what time and enjoy yourself!!

As far as a few people are concerned, when the Bottoms Up and the Busters Dusters play on Monday, July 6, that which ever team wins SHOULD be declare the winner of the game of June 1st, where all the confusion went on that the game was called off. IF the game is not re-scheduled then, I believe, that the best way to figure would be the winner of the game being played July 6 should also take the credit-win for June 1. I don't see anything wrong with that, both teams should agree and do it that way or play a game on Friday some time and that would also do!!

# Tee Ball - Softball Action

There has been a lot of action 'round the Softball and Tee Ball Leagues! The next Tee Ball game will be this Friday, June 26. The competition will be between the Bunkhouse Babes coached by Cindy Schneider, going up against the Cinderella Cuties, coached by Judy Tindell. The game will begin at 6:30 p.m. and will be played here at the Jaycee Little League Park. The other game will be between the Berry Cleaner Bears, coached by Linda Butt, Bunkhouse Babes, coached by Cindy Schneider, Cinderella Cuties coached by Judy Tindell, the Gruver Orioles and the Gruver Angels.

At Press time the Professional Baseball Players are still on STRIKE, so instead of being bored at home with nothing to do-after you've taken care of your chores-go on out to the ballparks and "Catch the Softball and Tee Ball Fever". There is no admission fee, you can walk if you're close, the players really appreciate all the SUPPORT that their local fans give them, let's face it, a game isn't as exciting as when you see a game in person!!

As far as the Girls Softball teams are concerned there will be plenty of action this Friday. Ray Thomas' team will be battling the Donna Yarbrough's team at the Jaycee Little League Park. The game will begin at 7:45 p.m. or when the Tee Ball game is over. The Anthony Electric Stars, coached by Kathy Beck and Sharon Swan, will travel to Gruver to meet the Gruver Angels-this will be a "heavenly battle"!!

The next Women's Softball game will be this next Monday, June 29. The Speartex Bottoms Up will get a rest for the week. The first game will be played at 7:00 p.m. between the Junior Lusby Cats and A&L Printing. The 8:30 game or the second game will either be played at 8:30 or immediately following the first game-the Busters Dusters will battle the First State Bank Red Hots.

The Men's Softball League, also has lots of exciting and thrilling games. Since this Thursday, June 25, there will be a Babe Ruth game, there will be three games played at the field East of the Y. The 7:00 game will be between Spearman Auto and Super Service. Tico will be battling against John Deere at 8:30 p.m. The 10:00 p.m. game will be between the Union Church team and Crawford Implement-this game will be played on the field East of the Y. The other 10:00 game, will have Hi Plains facing Agco-this game will be played at the Babe Ruth Field.

The most exciting teams, beginning with the Men's Softball, are John Deere, Super Service, Hi Plains, Spearman Auto, Tico, Crawford Implement, Agco, Union Church and North Plains. In the Women's Softball, the most exciting teams would be Jr. Lusby Cats,

Speartex Bottoms Up, A&L Printing, First State Bank Red Hots and Busters Dusters. In the Girls Softball the most exciting teams would be the Anthony Electric Stars, coached by Kathy Beck and Sharon Swan, Pink Panthers, coached by Donna Yarbrough, Ray Thomas' team, and the Gruver Angels. In Tee Ball the most exciting teams are Berry Cleaner Bears, coached by Linda Butt, Bunkhouse Babes, coached by Cindy Schneider, Cinderella Cuties coached by Judy Tindell, the Gruver Orioles and the Gruver Angels.

At Press time the Professional Baseball Players are still on STRIKE, so instead of being bored at home with nothing to do-after you've taken care of your chores-go on out to the ballparks and "Catch the Softball and Tee Ball Fever". There is no admission fee, you can walk if you're close, the players really appreciate all the SUPPORT that their local fans give them, let's face it, a game isn't as exciting as when you see a game in person!!

### ONE MINUTE SPORTS QUIZ

1. Who recently tied Stan Musial's career hits record?
2. How many hits is the record?
3. Who won the Larry Holmes-Leon Spinks bout?
4. Who won the Manufacturers Hanover Westchester Golf Classic?

Name the winner of the LPGA Championship.

### Answers To Sport Quiz

1. Pete Rose.
2. 3,630.
3. Larry Holmes in the 3rd round.
4. Ray Floyd.
5. Donna Caponi.

### FBI & COUPON THIEVES

CHICAGO -- Federal agents said recently they are investigating a nationwide racket, totaling as much as \$250 million, in which grocery stores are redeeming newspaper coupons that have been counterfeited or stolen from printing plants.

# Track Club Competes At Amarillo

The Spearman Track Club participated in the Texas Classic Track and Field Meet in Amarillo, June 20, 1981.

There was a total of 30 participants entered from Spearman these included: Brandt Schneider, Suzanne Sanders, Kathy Vanlandingham, Shanna DeArmond, Laci Lasater, Mendi Lasater, Shea Crawford, Mac Sheppard, Brandon Sutton, Curtis McGill, Jason King, Temp Sheppard, Clint DeArmond, Michael Holt, Chad Riggins, Brandon Rex, Brian Beck, Ginger Pearson, Stacie Swan, Jan Crawford, Kerri Holt, Dusty Hill, Karl Bynum, Jeff Vanlandingham, Jan and Jean Davis, Lana Paul, Tina Woolley, Kelli Crawford and Travis Kling.

These people placed in the meet:

In the Bantam Boys Division, in the 400 Meter Relay, the team consisting of Jason King, Clint DeArmond, Brandon Rex, and Temp Sheppard won 3rd Place, while the team consisting of Curtis McGill, MacSheppard, Brian Beck and Travis King won 4th Place. In the High Jump, Clint DeArmond won 6th Place.

In the Midget Girls 50 Meter Low Hurdles, Stacie Swan won 4th Place and Ginger Pearson placed 6th in the same event. Karl Bynum won 2nd, while Jeff Vanlandingham won 4th in the Youth Boys Division Shot Put Event. Karl Bynum came right back and won 1st Place in the Discus. Jeff Vanlandingham "dashed" his way to 4th place

in the 400 Meter Dash. In the Intermediate Girls Division, the girls 400 Meter Relay won 1st PLACE-this is the team of Kelli Crawford, Lana Paul, Jan and Jean Davis. Jan Davis then went individually to the 100 Meter Dash and won 4th Place. Jean was very successful in the 200 Meter Dash-almost perfect-and won 2nd Place!!

Congratulations boys and girls in the Texas Classic Track and Field Meet in Amarillo. The Spearman Track Club's next meet will be the Junior Olympic Meet June 27, Saturday, in Borger, Texas. Don't miss it!!!

# Arts & Crafts Guild Met

The Arts & Craft Guild met Friday, June 19, in the home of Mrs. W.L. Russell.

Members painting were Mmes. Pope Gibner, Bruce Sheets, Joe Traylor, Ned Turner, Deta Blodgett, Guy Fuller, Garrett Allen.

The hostess served delicious refreshments.

Mrs. Pope Gibner will be hostess Friday, June 26.

# Our Heritage of Faith... notes from Faith Lutheran Church

On Sunday the Biblical emphasis is on the grace of God (unmerited love). God loves sinners! Humankind has a hangup on meritorious worth before God toward salvation. God regards all of us as sinners in need of salvation. The sermon theme is: GRACE UNLIMITED...Matthew 9:9-13.

The congregation will have a picnic at the home of Jewel and Betsy Ward at 5:30 p.m.

A cordial welcome awaits each visitor. Bruno Gaskamp, Pastor

# Rodeo Time In Pampa

Plans are complete for the 35th Annual Top O' Texas Rodeo to be held in Pampa, July 9-11 with performances at 8:00 p.m.

The rodeo parade will be held Saturday, July 11, at 10:30 a.m. featuring entries from all areas of the Panhandle.

An Amateur Jackpot Double Muggin event will be offered, with an entry fee of \$35.00 plus a \$5.00 stock charge. Entry fees will be split 40%, 30%, 20%, and 10%.

The Kid Pony Show, with events for children through age

fifteen, will be held Monday, Tuesday, and Wednesday evenings, July 6, 7, and 8 at 7:00 p.m. Entries will open June 29 at 9:00 a.m. at the Rodeo Headquarters in the Chamber office. Children in that age range are invited to participate.

General Admission tickets for the rodeo performances may be purchased from various Pampa Merchants or the Rodeo Office. Reserved seats may be secured by calling (806) 669-3241 or by writing Box 1942, Pampa, TX 79065.



The Bunkhouse Babes coached by Cindy Schneider and Judy Nelson. From l to r, Back row: Laci Lasater, Kili Campbell, April Graham, Kyla Nelson, Chantel Robinson, Jami Maize, Kathy Brewer, Michelle Cook; First Row l to r: Kim Slater, Shelly Whitefield, Mindy Lasater, Brandt Schneider, Shea Crawford, Mary Cook, Shea Mize, Tracy Tigrett and Nancy Ivey were not shown.

**PRICES GOOD THRU JUNE 27TH**

**U**

**UNITED Supermarkets**

Perryton, Texas

QUANTITY RIGHTS RESERVED

**PLAY BLACK-OUT BINGO**

**S&H GREEN STAMPS**

**PLUS UNBELIEVABLE SERVICE**

**FINE FARE MACARONI & CHEESE DINNERS**

7 1/2 OZ. 4 FOR \$1

**CASH SAVINGS**

**ARMOUR TREET**

1 1/2 OFF LABEL \$1.19

12 OZ.

**S&H GREEN STAMPS TOO**

**HELLMANN'S MAYONNAISE**

\$1.39

QT.

**CLOREX BLEACH**

1 GAL. JUG 5 OFF LABEL

**79¢**

**AMERICAN BEAUTY ELBO RONI**

\*SHELL RONI \*LARGE SHELL RONI 10 OZ.

**39¢**

**WHITE HOUSE APPLE JUICE**

32 OZ.

**69¢**

**PARKAY**

1 LB. QTRS.

2 FOR **89¢**

**PLAINS ICE CREAM**

1/2 GAL. \$1.49

ALL RED RING FLAVORS

**JIF PEANUT BUTTER**

SMOOTH OR CHUNKY

18 OZ. \$1.89

**CRISCO OIL**

38 OZ. 20¢ OFF LABEL

**\$1.59**

**DOUBLE STAMPS SAT!**

WITH A \$2.50 PURCHASE OR MORE EXCLUDING CIGARETTES

**GENERAL ELECTRIC LIGHT 4PK. SOFT BULBS... WHITE 100W**

60W 75W \$1.89

**FINE FARE ALCOHOL 16 OZ. 49¢**

**FINE FARE COSMETIC PUFFS 300 CT. 59¢**

**DUNCAN HINES FUDGE BROWNIE MIX**

23 OZ. \$1.29

**WISHBONE SALAD DRESSING... CREAMY CUCUMBER CREAMY BELL PEPPER... 69¢**

**HEINZ "HAMBURGER DILL" PICKLES SLICED 32 OZ. \$1.09**

**WOOLITE**

32-OZ. \$1.89

**SOFT SOAP 10 1/2 OZ. WHITE, BROWN GOLD \$1.19**

**CALIF. SEEDLESS GRAPES**

LB **99¢**

**16 OZ. CELLO BAG CARROTS 3 BAGS 99¢**

**HONEYDEW MELLONS**

LB. **39¢**

**YELLOW OR ZUCCHINI SQUASH**

LB. **39¢**

**YELLOW ONIONS**

NO. 1 MILD LB. **29¢**



### 4-Hers Bring Home Honors



Pictured above are a Girls Tee Ball team which is participating in the Y's Summer program this year. Front Row (l to r) Anna Pacheco, Debra Martin, Randie Renner, Karen England, Sonya Tindell, Melissa Holt. Back Row (l to r) Cacy McGill, Pamela Ring, Cindy Melton, April Wilkerson, Nora Garcia, Betty Montoya. Coach Judy Tindell and Sponsor Cinderella Beauty Salon. Not Pictured: Jeannie Russell, Suzanne Howerter, Laura Pearson, Kari Moyer, La Dawn Elliot, Wondella Bryant, and Mindy Bryant. This is the Cinderella Cuties' Tee Ball Team.

The 4-H'ers competed in the Canadian POP. Those competing in the 9-11 age group included Michelle Cook, Kristin Dunnihoo, J Garnett, Mark Garnett, Jean Ann Heikes, Bonnie Jarvis, Clint Patterson, Michele Savage, Leana Turner, Laura Umphress and Amy Smith. In the 9-11 Showmanship Event, 4 people placed--Michele Savage won 2nd Place, Mark Garnett was in 3rd Place, J Garnett won 6th Place and in 7th Place was Deana Turner. In the Mares Under (9-11 age group) Mark Garnett won 2nd Place and Michele Savage won 4th Place. J Garnett won 6th Place in the Gelding Over 5 Event, while Deana Turner won 7th Place. Mark Garnett won 5th in the Bridle Path Event, still in the 9-11 age group, J Garnett won 6th Place and Deana Turner won 8th Place. Lots of folks thought that no one would be able to get a 1st in one of the Events, right at that moment, Deana Turner won 1st Place in the Western Pleasure competition. Mark Garnett won 2nd Place, Michele Savage won 5th Place and J Garnett won 10th Place. Another 1st Place was won by the Hansford County Horse riders, this time by Mark Garnett in the Western Horseman Event, Deana Turner won 2nd Place, in 3rd was Michele Savage, Kristin Dunnihoo won 5th Place, in 6th Place was Bonnie Jarvis, J Garnett won 9th Place and Clint Patterson won 10th Place. Mark Garnett came right back and placed 3rd in the Trail Ride Event. Deana Turner won 4th Place, Michele Savage won 5th Place, Clint Patterson was in 8th Place, in 9th Place was J Garnett and in 10th was Bonnie Jarvis. Clint Patterson placed 2nd in the Reining competition, while J Garnett won 4th Place and Michele Savage won 5th Place. Amy Smith finished 6th. In the Pole Bending, Clint Patterson won 4th Place, and J Garnett won 5th Place. In the final Event--the Barrel Race for the 9-11 age group, Clint Patterson won 6th Place and Amy Smith won 10th Place. All in all these kids did a GREAT job for their club. Following the 9-11 age group, was the 12-14 age group--they also did a FANTASTIC job!! Those competing in the 12-14 age group included Andrea Archer, Shelly Cook, Shelly Dunnihoo, Anne Marie Jarvis, Diana Martin, Donna Martin, D'Lynn Orr, Travis Patterson, Tammy Savage, Dick Smith and Dirk Umphress. The first Event was the Showmanship Event, Travis Patterson won 4th Place and Andrea Archer won the 6th Place. In the Mares Under, Shelly Dunnihoo did a great job and won 3rd Place. In the Gelding Under 5 Competition, Andrea won 1st Place and won the Grand Championship, and D'Lynn Orr won 5th Place. Andrea Archer came right back and won another 1st Place in the Gelding Over 5, Travis Patterson won 3rd in the event, while Anne Marie Jarvis won 8th Place. In the Bridle Path Event, Andrea Archer was the lone placer in the event, placing 3rd. Travis Patterson won 3rd Place in the Western Pleasure Event, Tammy Savage was right behind Travis, in 4th Place, D'Lynn Orr followed closely behind Tammy in 5th Place and in 7th Place was Andrea Archer. Travis Patterson had a "field day" in the Western Horseman Event by winning 1st Place in that particular Event, Shelly Dunnihoo was right behind Travis and did such a superb job which she finished 2nd in that Event, Andrea Archer finished in 7th Place and in 9th Place was D'Lynn Orr. The Trail Ride Event had very competitive competition, Travis Patterson did a tremendous job that he won the event with a 1st Place finish, D'Lynn Orr won 5th Place and Andrea Archer won 9th Place. The Reining competition was won by Andrea Archer and Travis Patterson won 4th Place. Andrea Archer came right back in the Pole Bending Event and won it--Travis Patterson finished in 7th Place. The last Event was the Barrel Racing, and Andrea Archer was hot in the last 3 events that she placed 1st in the Barrel Racing also, Travis Patterson won 6th Place. There weren't very many competitors in the 15-19 age group, but those that did compete did a SUPERB job. Those competing included Angie Francis, Jon Garnett and Will Jarvis. The first event was the Showmanship Event, it was a 1, 2 finish for the Hansford 4-H'ers. Will Jarvis won 1st Place and in 2nd Place was Jon Garnett. Angie Francis won 7th Place in the Mares Under 5. In the Geldings Under 5 Will Jarvis won 5th Place and Jon Garnett won 10 Place. In the Bridle Path, Will Jarvis won 4th Place and Jon Garnett won 7th Place. Jon Garnett won 1st Place in the Western Pleasure and Will Jarvis won 5th Place. Will Jarvis came back in the Western Horseman and won it, while Jon Garnett won 8th Place. The Trail Ride had Jon Garnett winning 2nd Place and Will Jarvis being right behind in 3rd Place. Will Jarvis was the only "survivor" in the Reining winning 2nd Place. There was another age group the Pee Wee Group. Those competing in this group were Mike Smith, Cinda Turner, Misty Savage, and Matt Archer. The Pee Wee competitors competed in two events--Western Pleasure and Trail. In the Western Pleasure Misty Savage won 3rd Place, Matt Archer placed 4th, in 5th Place was Cinda Turner and in 10th Place was Mike Smith. The other event--the Trail Event--Misty Savage won 5th Place and Mike Smith won 7th Place. The All-Around for the 9-11 age group was Mark Garnett. Travis Patterson won the All-Around for the 12-14 age group. And in the 15-19 age group, Will Jarvis won the All-Around. Speaking for the County, we are all PROUD of each and everyone of you!!

### Peggy's Pointers

#### STRETCHING YOUR MEAT DOLLAR

Stretch your meat dollar--and make a major impact on your food budget.

During 1981, food-price hikes will be due mainly to upward trends in prices of meat and meat products, forecasters predict.

Since meat costs are usually the largest part of the food budget--25-30 percent, follow several meat-stretching basics and save.

Meat stretching depends on two major steps: buying and preparing.

#### MEAT BUYING TO SAVE

Generally the most economical meats are those that take longer to prepare--including chuck or rump roasts.

These are as nutritious as other meats, providing high-quality protein, iron, B vitamins and some fat.

Let "cost-per-SERVING" be a buying guide. Don't go by "cost-per-pound" only.

To figure according to "cost-per-serving," determine how many servings a pound of various cuts of meat will yield, then look at the price per pound and DIVIDE it by the number of servings. Your answer is the cost-per-serving.

Here's an example of how that works:

Let's say a pound of ground meat costs \$1. It yields four servings. Divide \$1 by four. The answer is 25 cents, so ground meat--in this case--costs 25 cents PER SERVING.

Now let's compare with ribs. Say a pound of ribs costs 60 cents. Ribs only yield about two servings per pound. So divide 60 by two. The answer is 30 cents, so ribs, in this case, cost 30 cents PER SERVING.

Surprisingly to some consumers, the ribs are more expensive than the ground meat in this example.

How can you know the number of servings different cuts of meat will yield?

Use this guideline: meat that is mostly lean with no bone, gristle or fat makes about four or five servings per pound. Round steak and ground beef are examples.

Meat with much fat, bone and gristle, such as short ribs or spare ribs, usually provides only one or two servings per pound.

Finally, in buying meats, consider a variety of meats so you can take advantage of specials. Compare prices of beef, pork, lamb, poultry and fish. Also, the "variety" meats, such as liver, kidney and other organ meats, are usually bargains.

#### 'PREPARE' TO SAVE

"Prepare" to save--that is, prepare menus and food items with savings in mind.

Use more ground meats, since they are economical, versatile and convenient.

Use them in elegant casseroles, pastas, meat loaves, meatball dishes or as simply meat patties.

Stretch the number of servings per pound by adding nonfat dry milk, soy mixtures, rolled oats, cracked wheat, egg and bread crumbs.

Or you can use vegetables as meat extenders--mushrooms, celery or onions are examples. Add a bit of crumbled bacon, garlic, herbs and spices and you have interesting tastes with budget-impacting economy.

To vary the meat selection, grind your own meat and mix less-expensive cuts with more-expensive cuts--half chuck with half sirloin, for example, or half lamb shoulder and half beef round. An interesting combination is white-meat-chicken with veal.

Another argument for grinding your own meat focuses on specials--savings can be significant when a larger cut of less-tender meat is on "special" and you grind it yourself.

Usually pre-packed ground meat at the grocery market is made from less-tender cuts anyway, along with trimmings from the chuck, round and sirloin. Pork and lamb ground meat is from shoulder or shank cuts.

Grinding tenderizes meat and the addition of fat alleviates dryness.

If you choose to grind your own, be sure utensils, equipment and work areas are clean. Grinding exposes more of the meat surface to bacteria.

#### The Bare Facts

BMI--You brag about your ability to judge people by their dress. What about that little blonde over on the beach?

SN--Insufficient evidence.

competitors in the 15-19 age group, but those that did compete did a SUPERB job.

Those competing included Angie Francis, Jon Garnett and Will Jarvis.

The first event was the Showmanship Event, it was a 1, 2 finish for the Hansford 4-H'ers. Will Jarvis won 1st Place and in 2nd Place was Jon Garnett. Angie Francis won 7th Place in the Mares Under 5. In the Geldings Under 5 Will Jarvis won 5th Place and Jon Garnett won 10 Place.

In the Bridle Path, Will Jarvis won 4th Place and Jon Garnett won 7th Place. Jon Garnett won 1st Place in the Western Pleasure and Will Jarvis won 5th Place. Will Jarvis came back in the Western Horseman and won it, while Jon Garnett won 8th Place. The Trail Ride had Jon Garnett winning 2nd Place and Will Jarvis being right behind in 3rd Place. Will Jarvis was the only "survivor" in the Reining winning 2nd Place.

There was another age group the Pee Wee Group. Those competing in this group were Mike Smith, Cinda Turner, Misty Savage, and Matt Archer. The Pee Wee competitors competed in two events--Western Pleasure and Trail.

In the Western Pleasure Misty Savage won 3rd Place, Matt Archer placed 4th, in 5th Place was Cinda Turner and in 10th Place was Mike Smith.

The other event--the Trail Event--Misty Savage won 5th Place and Mike Smith won 7th Place.

The All-Around for the 9-11 age group was Mark Garnett. Travis Patterson won the All-Around for the 12-14 age group. And in the 15-19 age group, Will Jarvis won the All-Around.

Speaking for the County, we are all PROUD of each and everyone of you!!

### Canning Tips Offered

COLLEGE STATION--With gardens flourishing, many consumers are attempting food preservation at home to save on food costs. While home canning may look simple, every detail requires careful attention.

If you do choose to can some vegetables, the Food Quality and Safety Committee of the Texas Agricultural Extension Service, Texas A&M University System, offers these important points:

--Before starting, contact your local county Extension office for the latest information.

--Use only high quality produce for best results.

--Be sure to have the pressure gauge on your pressure canner checked. Your local county Extension office usually has the equipment to provide this service.

--Also check gaskets and seals on your pressure canner.

--Follow directions to every detail; do not use your own times or pressures.

--All low-acid foods such as green beans, corn and potatoes must be processed in a pressure canner. Water bath methods are not adequate for proper preservation of low-acid foods. Firm, fresh tomatoes which are not overripe may be processed in a water bath.

--Use only approved canning techniques; processing in a microwave oven or conventional oven is not an approved method.

--Use only standard canning jars with lids and rings; old mayonnaise or peanut butter jars are not designed for home canning.

--Do not reuse lids.

--Do not use jars that are chipped or cracked.

--Do not overfill jars as this can cause a faulty seal.

--Be sure tops of jars are wiped clean before sealing.

--Avoid sudden pressure drops; wait until the pressure gauge is at zero before opening the lid.

--Be sure to allow for processing adjustments for those elevations over 1000 feet; charts are available in canning guides.

--Avoid placing jars direct from the pressure canner onto cool surfaces; it's best to cool jars by placing them on a rack.

--Be sure to check all lids for a depression which indicates a good seal; products in jars without a good seal may be eaten immediately but should not be stored for later use.

--Elderly & handicapped exempt from food stamp cut.

Jimmy Carter said to be happy with simple life.

Advertisement for S&H Green Stamps featuring various products like Oscar Mayer Bologna, Cooked Ham, Franks, Turkey Breast, and other meats. Includes a '1200 Green Stamps' promotion and a 'WED!' special.

United Supermarkets logo and address: Perryton, Texas. Includes the slogan 'QUANTITY RIGHTS RESERVED'.



**Research News Report**

Bushland, Texas-In the dry Southern Great Plains, every farmer knows a lot of rain and snow makes a big wheat crop.

Water limits yield, but the relationship between yield and amount of precipitation varies from year to year. Dr. Wendell Johnson and Ron Davis, USDA Scientists at the USDA Research Laboratory at Bushland, studied the relationship between crop water use and yield from 1968 to 1977. The scientists used a wheat-fallow cropping sequence which produced one crop in 2 years. Best yields occurred when good rains in the fall prompted early root growth. Then plants could use both moisture stored in the soil and rain that came in the spring. "Without fall rain, wheat plants never could use good spring rains if they came," Johnson said.

The study showed that soil water was stored most efficiently when rains occurred in late spring, late summer and early fall. The greatest water storage occurred from heavy rains or prolonged wet spells with several heavy rains. Storage of water in the soil did not occur during the summer even after large rains. High temperature, causing high evaporation, weeds that transpired water, and tillage caused high water loss in the summer. The study was conducted on flat Pullman clay loam soil. The scientists used two 15 by 180-foot study areas with concrete curbs on the long side. The curbs served as tracks for a rolling platform used to take soil moisture measurements with a neutron meter to a depth of 7 feet.

The platform enabled scientists to take soil measurements weekly in the crop, and monthly during the fallow without disturbing the crop or soil.

The basic tillage treatment during fallow was with sweeps. During the 10 years, this averaged to seven operations in the 15-month fallow period. It took more operations during wet and less during dry years. This was compared to excessive tillage and limited tillage. Excessive tillage was about 10 operations per fallow. Limited tillage was one sweep operation after harvest and another before planting. Between the two sweepings weeds were killed with paraquat, a contact herbicide.

Tillage treatment did not affect wheat yield which varied from 10.5 to 51.4 and averaged 24.9 bushels per acre. This was about 1.25 times the 38-year average yield from another tillage study at Bushland. The high yield occurred even though rain was below average.

Absence of runoff on the level plot area accounts for the above average yields, according to the researchers. "About 94 percent of the yield variations could be explained by total water used by the crop," Johnson said. He defined total water use as soil water and rainfall the crop utilized. Over the 10 years, each inch of water used increased yield 2.4 bushels per acre. Johnson made some calculations and the average increase for one inch of stored soil water was 2.7 bushels. Each additional inch of rainfall during the growing season added 2.2 bushels per acre.

Under ideal conditions, wheat extracted 7 inches of water from the top 6 feet of soil. The crop never used water below that depth, according to Johnson.

In 1970, 1972, 1973, and 1975, good wheat years thanks to generous fall rains, the crops had vigorous root systems and extracted water to at least 5 feet of soil. Conversely, the three poorest wheat crops in 1971, 1976, and 1977, had scanty fall rains and poor root development. These crops were unable to use soil water below a depth of 3 feet. "Actually, the 1977 crop subsisted in water coming from only the top foot of soil," Johnson said.

The record 1973 crop was 51.4 bushels per acre. That year had a snowy winter and a wet spring which caused serious losses of cattle on wheat pasture. This crop produced especially heavy foliage, and dry weather in June caused premature ripening that left 0.8 inch of soil water unused in the lower root zone. The peak water use rate occurring in late May, was 0.3 inch per day, or the same as irrigated wheat. Record yields and soil water extraction by 1972 and 1975 crops occurred after good fall rains and prolonged dry weather in the spring which reduced straw production. Water saved was used later to produce grain. Rain was adequate to heavy in May.

Johnson said, "A good dryland wheat year is not a magical event, rainfall controls yield in the



Enjoyment, flavor and family togetherness—that's what gardening is all about.

Southern Great Plains. Farmers can take advantage of favorable rains by controlling weeds and preventing runoff both during fallow period and in the crop," he concluded.



The Veterans Administration pays disability compensation to veterans for health problems incurred or aggravated while in military service. The amount is based on how serious the condition is. There is no time limit for filing a claim for this service-connected benefit. If you are already receiving compensation and believe your condition has worsened, contact the nearest VA office.

War veterans whose income is below certain limits — as of June 1, \$4,960 for a war vet without dependents, for example — and who are permanently and totally disabled may be eligible for a VA disability pension. Veterans 65 or over are considered totally disabled under this program, and unreimbursed medical expenses are taken into account in figuring the income limitation.

-----  
Mayors criticize Reagan's economic plans.  
-----

Surviving spouses and unmarried children under 18 of deceased veterans who served 90 days or more on active duty during wartime may be eligible for death pension benefits if their annual income is below certain levels.

If a veteran dies of causes found to be service-related, dependency and indemnity compensation may be paid to survivors. These benefits are greater than those paid under the death pension program, and other income is not a factor.

Veterans can get more information and assistance from any American Legion Post or Veterans Administration Office. — Michael J. Kogutek, National Commander.

**ON SINKHOLE**  
WINTERPARK, FLA. — Two men in an aluminum boat, tethered to an overhead cable have sounded the depths of the Great Winter Park Sinkhole and found that it is about 125 feet deep. The finding will help geologists decide whether the sinkhole has stabilized enough to be filled in, and how much material it will take.



Kenneth Brown of Spearman, TX and Ron Pulliman of Stratford, TX were in attendance at a recent freshman enrollment clinic at Panhandle State University in Goodwell, Oklahoma. They are among the nearly 150 freshmen who have

taken advantage of the opportunity to select a class schedule prior to the fall semester. Pictured left to right are Ron Pulliam, Stratford, TX; Virginia Schlitt, PSU Admissions Counselor; and Kenneth Brown, Spearman, TX.

**When You're Ready  
To Invest \$100,000.  
Call Us First.  
We'll Pay 17.934%\*\***

When you're ready to invest \$100,000, call us. Tell us what you think your money is worth. We're confident we can offer the high rate your \$100,000 deserves with a Large Certificate of Deposit.

Look at the chart of dates and rates. By compounding your interest daily, we can give you a very attractive annual yield. Maybe the highest in the region.

We realize you don't ordinarily expect to see offers like this from a bank. But it's this kind of willingness to respond that makes us one of the strongest and fastest growing banks in the Texas-Oklahoma area.

If this offer sounds good, see John Cluck, our President, or Larry Orman, Senior Vice President. Or call (806) 435-3676 and ask for our Money Market Advisor. We'll talk by phone, or we can come to visit you. We think we're the only bankers around who will give you what your money is worth.

Term	Rate	Annual**
90 days	16.50%	17.934%
120 days	16.00%	17.342%
180 days	15.50%	16.761%
1 year	15.00%	16.178%

\* Minimum deposit \$100,000. Limited offer. Rates subject to change without notice.  
\*\* Annual yield based on daily compounding. As required by law, all certificates are subject to substantial interest penalty for early withdrawal. All deposits are insured to \$100,000.

**We're the bank you call First.**



**First National Bank**  
Perryton, Texas  
806/435-3676  
Member FDIC



# All School Reunion Revised Plans

REGISTRATION at the High School July 4th at 9:30 a.m.; GENERAL ASSEMBLY in the Auditorium at 10:30 a.m.; BARBEQUE at noon in the cafeteria; RECEPTION at 7:30 p.m. at the B&B Farm Industries Building and DANCE at 9 p.m.

The following individual class activities have been planned:

**Classes of 1921 - 1930**--The upstairs art room at the Library Friday & Saturday afternoon.

**Class of 1931**--The Home Demonstration Club House Saturday afternoon.

**Classes of 1932 & 1933**--Dinner buffet at the Blodgett & Linn Building Friday evening at 8 o'clock p.m.

**Classes of 1934 & 1935**--Fellowship Hall of the Methodist Church Friday at 7 p.m.

**Classes of 1936 & 1937**--B&B Farm Industries Bldg. Friday evening at 7:30 p.m. a light buffet will be served.

**Classes of 1938 & 1939**--Hospitality Room of the First State Bank Friday at 7:30 p.m.

**Class of 1940**--The P.A. Lyon, Jr. Residence Saturday afternoon after the barbeque.

**Class of 1941**--The Tom Sutton Residence at 7 p.m. Friday evening.

**Classes of 1942 & 1944**--The Lloyd Buzzard home Friday evening at 7:30 p.m. A light buffet will be served.

**Class of 1943**--A meeting Saturday afternoon after the barbeque at the High School.

**Class of 1945**--At the Roy L. McClellan home Friday evening at 8 p.m.

**Class of 1946**--The Shieldknight Building Saturday afternoon from 2 until 4.

**Classes of 1948, 1949, 1950, 1951 & 1952**--A picnic at the Joel Lee Lackey ranch Friday evening at 7:30 p.m.

**Class of 1954**--The meeting room of the Nursanickel Motel Friday afternoon and evening from 2 until 9 o'clock.

**Class of 1955**--Front room upstairs at the Library Friday evening at 7 p.m.

**Classes of 1956 & 1957**--The Home Demonstration Club House Friday evening at 7:30 p.m.

**Class of 1959**--The Jim McLain residence Friday evening at 7:30 p.m. The pool has been rented so bring the children.

**Classes of 1961, 1962, 1963, 1964, 1965 & 1966**--A picnic at the Steve Mathews ranch Friday evening.

**Class of 1962**--Will meet at the High School Saturday afternoon after barbeque.

**Class of 1966**--Will meet at the Loyall Turner farm Saturday afternoon at 3 p.m.

**Class of 1967**--The Glenn Blodgett farm Friday evening at 7 p.m.

**Class of 1968**--Busters' Dusters Building Saturday afternoon.

**Class of 1971**--Friday night party at the County Barn.

**Class of 1973**--Picnic at Womble Park Saturday evening from 6 until 8:30 p.m.

**Class of 1974**--Lynn Sheets barn at 8 p.m. Friday evening for cokes and chips; at the same place Saturday afternoon at 5:30 for hamburgers.

**Class of 1975**--The Steve Benton residence, 1103 Townsend at 7 p.m. Saturday evening.

**Class of 1976**--The L.C. Owens residence, 1017 Wilmeth Drive at 7:30 p.m. Friday.

**Class of 1979**--Roy Flowers' home, 12 Glover Place, Friday at 7:30 p.m.



Featured here are the Freshman Class of 1981, the picture was taken in the Gym of 932-33, the picture was taken in the Gym of Spearman High School. Pictured are: Clyde Maize, Robert Douglass, Richard Holton, Elmon Jacobs, Willard Davis, Jack (Arthur) Jacobs, Oran Ross Kelly, Vaughn Hill, Woodrow Gibner, Ervin Floyd, W.C. Robertson, J.D. Andrews, Charles Newcomb, Miss Deakin, Roscoe Sparks, Shives.

Eddie Vaughn, Vernie Caldwell, Alvino "Daffy" Caldwell, Elsie "Pony" Mackie, Lometa "Dilly" Buchner, Ruben Deering, Dee Oldham, W.E. Sparks, Ohmar Cotter, Lady Maurine Archer, Juanita Lamb, Valerie Hollenshead, Beth Wilbanks, Gertrude Barkley, Ruth Wilbanks, Mary Brandt, Silvia Harmond, Bessie Tice, Marjorie "Midge" Haun, Ruby Delbriggie and Gorgie Shives.



LYNXETTES-1937 are back row l to r, Coach John R. Pool, Elsie Porter, Maxine Allen, Alta Mae Haun, Georgia Maize, Barbara Hawkins, Coach, First Row--Florence Holton, Helen Richardson, Julia Wilbanks and Lola Andrews.

The strength of the nation is no greater than the strength of families within it.

Humor is a rare gift. If you can laugh at the world and at yourself you are lucky.

Nell Patterson of the Housing Committee for the All-School Reunion reports that all motels are full and housing is needed for those coming to reunion. If you can open your home to some of these ex-students, call her at 659-2144.

## THE YMCA AND CHAMBER OF COMMERCE JULY 4th CELEBRATION

The Old Fashioned Fourth of July Celebration will again be held by the Hansford County YMCA and Spearman Chamber of Commerce. Activities will begin on Saturday, July 4th at 8:00 with a marathon and mini-marathon race at the Plains Shopping Center and end with the Fireworks in Lynx Stadium Saturday evening.

TIME	ACTIVITIES
8:00 a.m.	Marathon and Mini-Marathon Run
10:30	Sack Races
11:00	Skillet Toss
11:30	Skillet Toss
11:30	Three-Legged Races
12:00 NOON	Water Balloon Toss
12:30 p.m.	Box Relay Races
1:00	Pool Games & Relays
1:30	Recreational Swimming
4:30	FREE WATERMELON BY RETAIL MERCHANTS ASSOCIATION AT SWIMMING POOL PARK FIREWORKS DISPLAY

9:45 There will also be booths in the park, with various clubs and organizations selling good food and drinks, including Sno Cones, Hot Dogs, Hamburgers, Popcorn, Ice Cream and the like. Do make plans to attend this family fun on Saturday, July 4th.

## YMCA NEWS

### BASEBALL, SOFTBALL (MEN & WOMEN) AND TEE BALL.

#### Thursday, June 25

7:00 Senior Babe Ruth plays Booker at Babe Ruth field

6:30 John Deere vs Slater Body Shop in Boys Tee Ball

7:45 Baker & Taylor vs Tucker Water Well-Boys Baseball

7:00 Spearman Auto vs Super Service east of Y in Men's Softball

8:30 Tico vs John Deere east of the Y

10:00 Union Church vs Crawford Implement at Babe Ruth field

10:00 Hi Plains vs Agco east of the Y

#### Friday, June 26

7:00 Junior Babe Ruth plays Follett at the Babe Ruth field

6:30 Bunkhouse vs the Cinderella Cuties in Girls Tee Ball in Spearman and the Berry Cleaner Bears will travel to Gruver to face the Gruver Orioles

7:45 Consumer Sales vs the Ar Anthony Electric Stars in Girls Softball in Spearman and Wy-Tex vs Gruver Angels in Gruver

#### Sunday, June 28

1:30 Senior Babe Ruth plays Booker at the Babe Ruth field

#### Monday, June 29

6:30 Bunkhouse vs Berry Cleaner Bears in Girls Tee Ball

7:45 Consumer Sales vs Anthony Electric Stars in

### Girls Softball

7:00 Junior Lusby Cats vs A&L Printing in Women's Softball--east of the Y

8:30 Busters Dusters vs First State Bank Red Hots

#### Tuesday, June 30

6:30 General Store vs Slater Body Shop in Boys Tee Ball

7:45 Lions Club vs Tucker Water Well Service Boys Baseball

7:00 Union Church vs Hi Plains at Babe Ruth field & Spearman Auto vs Crawford Implement east of the Y

8:30 Tico vs Super Service Babe Ruth Field

John Deere vs North Plains east of Y

## Stamp & Coin Show Planned

A stamp and coin show and bourse has been planned for Sept. 19-20 in Borger, Texas by the Hutchinson County Stamp and Coin Club.

Site for the event is the Buenavista Community Center, located west of Borger, just off State Highway 136. Admission will be free.

Hours for the show will be from 9 a.m. until 5 p.m. both days. Collectors are invited to exhibit their stamp and coin collections. For additional information, write Eck Spahich, 1512 Lancelot Rd., Borger, Texas 79007. Phone 806-273-7225.

## 9 Students On Dean's Roll

LUBBOCK--More than 5,200 students at Texas Tech University qualified for the dean's honor rolls in the six colleges during the 1981 spring semester.

They include nine Spearman residents. They are: Scot Meek Martin of 716 Gibner, James Mark Fox and Shari D. Fox of 1115 Barkley; Christine R. Collier of 1108 Wilmeth; Steven R. Goff of 1112 Dressen; Paige L. Mitchell; John R. Reneau of 23 N. Hoskins; Kyle S. Beedy of 703 Gibner Drive and Roy A. Uptergrove of 11 Glover Place.

To qualify for a dean's honor roll a student must have a grade point average of 3.0 or more on a 4.0 scale and must have taken at least 12 semester hours of work.

Texas Tech has an enrollment of more than 23,000 students in six colleges: Agricultural Sciences, Arts and Sciences, Business Administration, Education, Engineering and Home Economics.

## EAGLES FunDays SALE

SUMMER JUNE

MX 80G .....	\$ 549.
MX 100G .....	\$ 699.
MX 175G .....	\$ 939.
YT 125G .....	\$ 939.
DT 125G .....	\$ 995.
DT 175G .....	\$1099.
XT 250G .....	\$1379.
TT 500G .....	\$1749.
YZ 250F .....	\$1495.
YZ 400F .....	\$1595.
SR 250G .....	\$1299.
XS1100F .....	\$3295.

**YAMAHA**  
THE WAY IT SHOULD BE.

MANY OTHER SPECIALS ALSO!

## EAGLE CYCLE SHOP

717 S. Main  
435-3594  
Perryton, Texas

## Public Notice

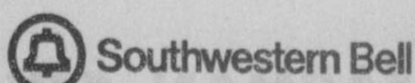
Southwestern Bell, in accordance with the rules of the Public Utility Commission of Texas, hereby gives notice of the company's intent to implement a new schedule of telephone rates in Texas effective July 21, 1981, unless otherwise determined by the Commission.

It is expected that the requested rate schedule will furnish a 15.8 percent increase in the company's intrastate revenues.

A complete copy of the new rate schedule is on file with the Public Utility Commission at Austin, Texas, and with each affected municipality served by Southwestern Bell, and is available for inspection in each of the company's public business offices in Texas.

### Notice to Customers of Other Telephone Companies

The filing includes, but is not limited to, proposals to increase rates for interexchange private line and foreign exchange (FX) service. Changes in such rates would also affect customers of other telephone companies because such companies provide interexchange private line and foreign exchange service in accordance with rates specified in Southwestern Bell's tariffs.



## Aviso Público

Southwestern Bell, en conformidad a las reglas del Public Utility Commission (Comisión de Servicios Públicos) de Texas, por la presente hace saber su intención de establecer un nuevo arancel para servicio de teléfono en Texas con vigencia a partir del 21 de Julio de 1981, a menos que la Comisión haga otra determinación.

Se espera que el nuevo arancel que se ha solicitado tendrá un aumento de 15.8 por ciento en los ingresos intrastatales de la compañía.

Una copia completa del nuevo arancel se ha archivado en las oficinas del Public Utility Commission en Austin, Texas, al igual que en cada municipalidad afectada y servida por Southwestern Bell, y cada una de las oficinas de la compañía para negocios con el público en Texas tiene una copia para lectura pública.

### Aviso a los Clientes de Otras Compañías de Teléfono

El registro incluye, pero no se limita a, propuestas para aumentar las tarifas para servicio de línea privada entre centrales telefónicas (interexchange private line) y servicio de central telefónica extranjera (foreign exchange FX). Cambios en dichas tarifas de servicio también afectarían a clientes de otras compañías de teléfono porque dichas compañías proveen los servicios ya mencionados en conformidad a tarifas especificadas por Southwestern Bell.





**SPEARMAN**  
659-2514

**BROCK**  
**AGENCY**

**H's**  
**HAIL**  
**INSURANCE**  
**TIME**

### Demonstration on Grain Sorghum Conducted

Two separate tests are being conducted in Hansford County. One is located 3 miles West of Gruver and 2 miles North on the Aubrey Rasor Farm and the other location is 4 miles Northeast and 2 miles North of Spearman on the Fred Groves Farm.

**RASOR FARM-26 Hybrids--** Total acres 58.24.

**AGRONOMIC AND CULTURAL INFORMATION**

Soil Type: Pullman Silty Clay Loam, Row Width: 30" on 60" beds, Date Planted: 6-4-81, Lbs. per acre planted: 7.1 lbs., Previous crop: Wheat-summer fallow, Number of rows per plot: 16, Plot size: 2.24 acres, Seed Treatment: Heptachlor, Herbicide: 2.5 lbs. propazine, Fertilizer: 147 lbs. N, Irrigation: pre-watered, Cultural treatment: rod-weeded, rolling cultivated, and Planter type: IHC 500 Cyclo, Acra-runners, convex press wheels.

**AIRBRY RASOR**

1. 623 Funk check, 623 GBR, Lot 195 (2 rounds); 2. Fontanelle F-G5583, Lot WNO39; 3. Prairie Valley 708 G, Lot BL-191; 4. Growers GSA 1310 A, Lot 9c 148; 5. NC+ 172, Lot B-261E; 6. Dekalb DK59, Lot C. 481004; 7. Asgrow-Topay, Lot ATR2092; 8. Pioneer 8311, Lot TXS 127; 9. Funk G-611, Lot GV 181; 10. ACCO Seed Paymaster GR 1138, Lot 027-904; 11. Big Crop BC 172-A, Lot 9-820; 12. Browning Challenger-xx, Lot 0148; 13. Ring Around 733 GB, Lot 621GB; 14. Texas Triumph 64 YG, Lot 919; and 15. Funks G-550 (H), Lot GS928B.

17. Prairie Valley 687G, Lot BL-181; 18. Growers GSA 1212, Lot 09291-2; 19. ACCO Paymaster GR 1089, Lot 827-130; 21. Big Crop BC-162, Lot 9023; 22. Texas Triumph 62 Y, Lot 5175; 23. Funk G 499 GBR, Lot GS 062; 24. Acco Paymaster GR 108, Lot 027-906; 25. Prairie Valley 734 G, Lot WR 481; and 26. ORO G, Lot 1896.

**Fred Groves Farm-17 Hybrids--** Total Acres 18.19.

**AGRONOMIC AND CULTURAL INFORMATION**

Soil Type: Pullman Silty Clay Loam, Row Width: 40" double rowed, Date Planted: 6-5-81, Lbs. per acre planted: 7.6, Previous crop: Milo, Number of rows per plot: 7, Plot size: 1.07 acres, Herbicide: 1.5 lbs. propazine, Fertilizer: 150 lbs. N, Irrigation: Watered up, Cultural Treatment: Listed and fertilized in same operation, and Planter type: JD milo planter-rubber press wheels.

**FRED GROVES**

1. Growers 1310A, Lot 98919-2; 2. Super Star, Lot B469; 3. Big Crop BC 162, Lot 9023; 4. Acco Gr 1089, Lot 827-13; 5. Funk G 522 DR, Lot GS-200; 6. Growers GSA 121, Lot 09291-2; 7. Ring Around 733 GB, Lot 621 GB; 8. Browning Challenger XX, Lot 0148; 9. Big Crop BC 172-A, Lot 9-820; 10. Funk G 6-11, Lot GU181; 11. Pioneer 8311, Lot TX S 127; 12. Asgrow Topay, Lot ATR 2092; 13. Dekalb DK 59, Lot C 481004; 14. NC+ 172, Lot B-261 E; 15. Prairie Valley 708 G, Lot BL-191; 16. Fontanelle F-G5583, Lot WNO39; and 17. Asgrow Corral, Lot ATR 7043.

### DPS Preparing For 'Operation Motorcide'

The Texas Department of Public Safety will be conducting "Operation Motorcide" for this 1981 Fourth of July. The week-end death count will begin at 6 PM July 2 and end at midnight July 5.

Major C.W. Bell, Regional Commander of the Department of Public Safety, said, "During the 78-hour 'Operation Motorcide' period all available troopers will be on the highways. The troopers will be especially aware of drinking drivers and violators of the speed laws. All drivers should be aware of their condition and the condition of their vehicles. If you are planning a trip, you should know your routes and what exits you will need to take. Sudden movements or lane changes can cause accidents and might possibly cost you your life."

The Texas Department of Public Safety challenges each driver to drive defensively and help make this the safest holiday on record.

#### History

Did you know that vending machines date back more than 2,000 years? In 215 B.C. holy water was dispensed at the drop of a drachma coin in Egyptian temples.

In the U.S., vending machines multiplied fast during the 1950's, especially after the invention of the coffee machine. Today the average American buys \$65.59 worth of products from machines every year.

### CCC Says Corn Will Be Sold

Corn that was shipped into the Texas High Plains by Commodity Credit Corporation (CCC), will be sold on a bid basis, starting immediately. This decision was announced to Grain Sorghum Producers Association (GSPA) by USDA officials on June 19. The corn was shipped by the government from northern corn belt states to be sold in competition with grain produced by High Plains farmers.

When informed of CCC's intention to sell the corn, GSPA Executive Director Elbert Harp stated, "We believe this action is totally wrong. It is definitely unfair and we believe it is illegal. It will force many sorghum and corn farmers into bankruptcy this year. This action will most likely cost High Plains sorghum and corn farmers a minimum of fifty cents per hundred-pound farmer--on all grain currently being held or produced in 1981."

GSPA has been seeking a USDA policy to sell this corn for "export use only". USDA has agreed to withhold 25-30 million bushels of the corn in High Plains storage for disaster aid only. The same USDA officials have also stated plans to sell the remainder gradually, however, such decisions can be reversed or changed at any time by the Administration.

CCC shipped over 45 million bushels of corn from Iowa, Minnesota, Wisconsin, and a small amount from Nebraska to Texas after May 1980. This corn was originally sold to Russia before the embargo. When CCC

bought it from the grain companies, following the embargo, it was shipped to storage facilities in Plainview, Texas and other areas within a 75-mile radius of Plainview.

The effect of sales of one million bushels of "sample grade" corn from these stocks earlier in the spring and the anticipation that more would soon be sold has drastically weakened the High Plains grain market. The sale of CCC corn competes with locally grown grains and will affect farmer's prices as far away as Kansas City, Missouri and Lincoln, Nebraska, which are in the normal trading area for High Plains feedlots.

The High Plains is a deficit production area, therefore the price of grain in Kansas and Nebraska plus freight, determines the market price here. Grain produced in the High Plains is irrigated. Producers must receive higher prices to recover cost of production. By paying freight, handling and storage costs on imported grain is, in effect, subsidizing it by that amount--in competition with local producers.

"It couldn't damage High Plains markets much more if the U.S. Government had imported this grain from Argentina," Harp said.

Going to church is a good habit to have along with your bad ones.

### Cut Irrigation Fuel Costs

COLLEGE STATION--A fuel bill of \$10,000 or more to operate an irrigation pumping plant for a crop season is not unusual. It also dramatically illustrates the fact that fuel is a major cost of producing irrigated crops. So cutting irrigation costs can boost profits.

Wayne Keese, an agricultural engineer with the Texas Agricultural Extension Service, Texas A&M University System, recommends several steps to minimize irrigation fuel costs.

"Three main factors affect the amount of fuel used to pump water," Keese says. "These are water management practices, the pressure requirement and efficiency of the application system, and the efficiency of the pumping plant."

"In many cases, irrigation could be reduced without hurting yields or profits," says Keese. "Many crops have critical periods when yields would be drastically cut by lack of water. Then there are other growth periods when the need for water is not as critical."

According to Keese, crops should be irrigated only when yields will be increased enough to pay irrigation costs. "Never apply more water than can be held in the crop's root zone unless excess water is needed for leaching to control soil salinity," he points out.

Keese also suggests considering a low pressure application system. "Higher pressure means higher fuel use. Low pressure sprinklers could reduce fuel consumption, but at the same time, it's important to prevent water runoff," says Keese.

He explains that low pressure sprinklers usually increase the rate of water application. "An application rate that exceeds the soil's absorption rate is self-defeating unless furrow dikes or dams or some other practice is adopted to prevent runoff."

Research and demonstration results indicate the average pumping plant uses about 35 percent more fuel than a plant operating at an accepted, standard level of efficiency. The low efficiency of some pumps costs their owners thousands of dollars every year in excess fuel bill, notes the engineer.

Keese likens the evaluation of a pumping plant to determining the mileage performance of an automobile. However, acre inches of water are calculated instead of miles per gallon. It's a matter of comparing actual fuel use (gallons of diesel, kilowatt hours of electricity or thousand cubic feet of natural gas) per acre inch of water to a standard performance rate.

To follow Keese's evaluation procedures, first determine the plant's pumping rate (gallons per minute), pumping lift (number of feet from ground surface to the well's water level), discharge head or pressure (feet or pounds per square inch), fuel use and operating time (in hours).

Convert the pumping rate to total acre inches pumped by dividing by 450 and multiplying by the operating time.

Determine the fuel use by checking the gas or electric meter or measuring the amount of diesel fuel used from the

storage tank during the operating time.

Divide fuel use by acre inches pumped to determine fuel use per acre inch of water.

Then figure the accepted standard performance rate for your plant and compare it to the plant's actual fuel consumption. Fuel requirements for a plant operating at standard efficiency are:

- for each 100 feet of pumping lift: 1.046 gallons diesel, 12.92 Kwh electricity or 0.171 Mcf natural gas.
  - for each 10 pounds per square inch of discharge pressure: 0.24 gallons diesel, 2.98 Kwh electricity or 0.0396 Mcf natural gas.
- "Repair or replacement of inefficient engines and pumps may cost several thousand dollars, but annual fuel savings may amortize the capital investment in a short time," says Keese. He advises that careful record keeping is an important aspect of evaluating pumping plant efficiency, irrigation system operation and water management practices.

People who sit up late at night rarely ever get up early in the mornings.

People rarely get mad with anyone who says good things about them.

In advertising, as everywhere else, truth pays as does advertising.

The good wife is the one that makes the load a little lighter--not heavier.

**PRICES EFFECTIVE**  
**JUNE 25-27, 1981**  
WHILE SUPPLIES LAST  
WE RESERVE THE RIGHT TO LIMIT

**SHURFINE**  
**Catsup**  
32 oz. bottle **59c**

**BIRDSEYE**  
**Cool Whip** 8 oz. **59c**

**BORDEN'S**  
**FRUIT DRINK** 1 GAL. **99c**

**GLADIOLA**  
**FLOUR** 5 LB. BAG **\$1.29**

**Clover Club**  
**POTATO CHIPS**  
10 OZ. PKG. **\$1.19**

**DIET PEPSI,**  
**PEPSI LIGHT,**  
**MOUNTAIN DEW OR**  
**PEPSI COLA**  
1.79 .29  
8 PACK 12 OZ. CANS SINGLE CAN

**SHURFINE**  
**Napkins** 60 ct. **29c**

**SUNSHINE COOKIES** 12 OZ. PKG. **\$1.29**

**BORDEN'S ASSORTED FLAVORS** 1/2 GAL. CTN. **\$1.59**

**Watermelons**  
**Texas Grown**  
**2.99** Each

**SAVE! RENT RINSEVAC.**  
the professional, do-it-yourself carpet cleaning system

**\$3 OFF**  
**RINSEVAC**  
**RENTAL RATE**

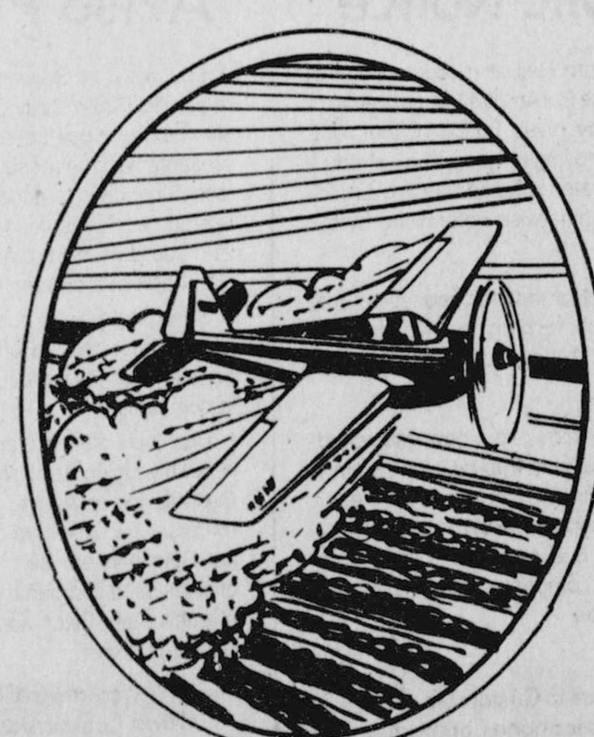
**ALLSUP'S**  
CONVENIENCE STORES

**OPEN 24 HOURS**  
**365 DAYS A YEAR**

**"THERE'S ONE NEAR YOU"**

This coupon may be applied to the rental of any model RINSEVAC® Steam Carpet Cleaning System. Not applicable to RINSEVAC® chemical purchases. One coupon per rental only. Coupon may not be reproduced, assigned or transferred. Customer must pay all applicable taxes. Cash value of 1/20 of one cent. Redeemable only at participating Allsup's Stores. COUPON EXPIRES JULY 31, 1981.

# Buster's Aerial Dusters



**For Your Weed Control**

**(806) 659-3648**

**SPEARMAN, TEXAS**