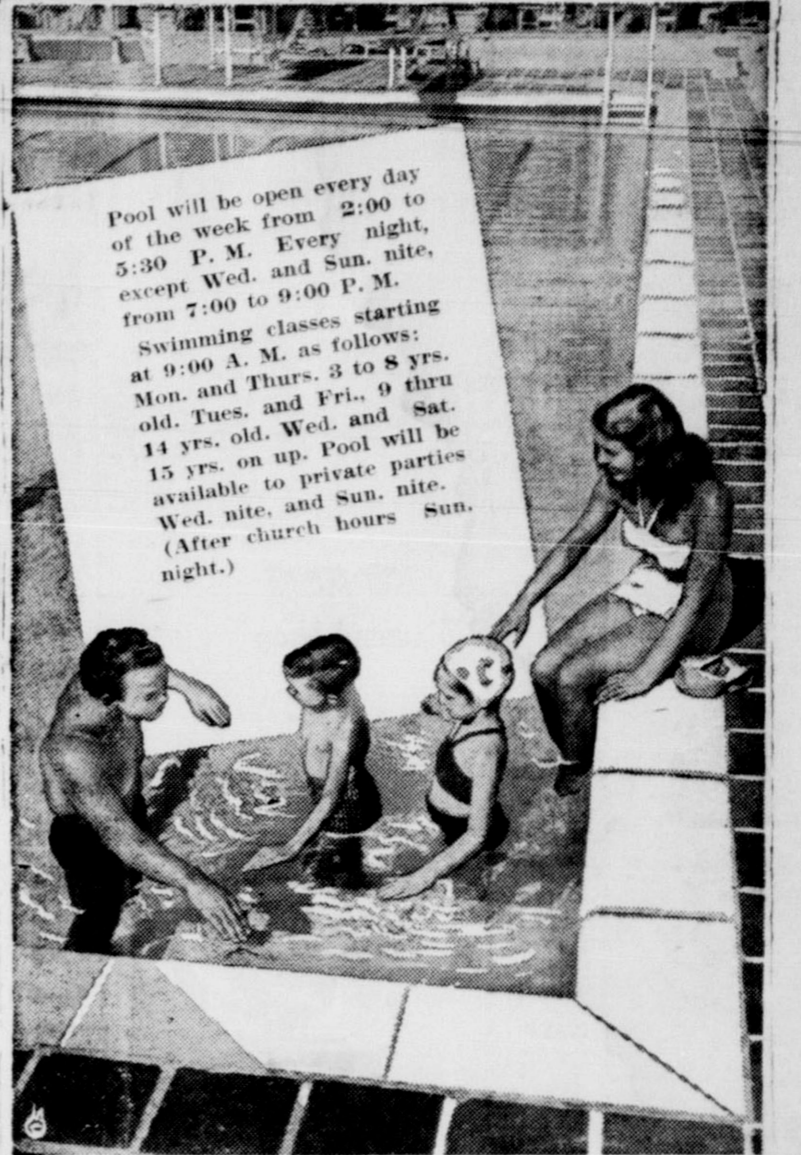


The Spearman Reporter

June 30, 1949 SPEARMAN REPORTER, SPEARMAN, HANSFORD CO., TEXAS Volume 42, No. 30

Spearman's Beautiful New Swimming Pool Has Gala Opening Sunday June 26



Pool will be open every day of the week from 2:00 to 5:30 P. M. Every night, except Wed. and Sun. nite, from 7:00 to 9:00 P. M.

Swimming classes starting at 9:00 A. M. as follows: Mon. and Thurs. 3 to 8 yrs. old. Tues. and Fri. 9 thru 14 yrs. old. Wed. and Sat. 15 yrs. on up. Pool will be available to private parties (Wed. nite, and Sun. nite. After church hours Sun. night.)

Lane Sanders Home Destroyed By Fire

Word was received this week of the loss of the Lane Sanders home, near Hardesty, Oklahoma. The home was destroyed by fire over the last week-end. It was not known how the fire was started.

Sheriff's Dept. Has Busy Harvest

It all happens at once. The Sheriff's department of Hansford County is busier than a one armed paperhanger these days, what with the harvest, carnival, Panhandle murder search, and numerous other smaller crimes.

Hansford Is Invited To Waddy Week

A special invitation for Hansford county to participate in the Amarillo Waddy Week has been received by Pat Ryan. The invitation invites riders of Hansford county to join in the street parades and grand entry at the rodeos. The letter states that an unloading chute at Grant and Third streets will be available to visitors to unload their horses and etc. The invitation included a special invitation to the Spearman band but the band is unorganized.

First 1949 Polio Case Reported At Morse Tuesday

Jack Fry 16 year old son of Mrs. J. W. Fry of Bowie, Texas, who is employed by E. J. Copeland of Morse, Texas, was carried to the Northwest Hospital at Borger Tuesday morning, and pronounced a polio victim. Jack, who was preparing to do some plowing was ill Monday and ran a small temperature. Tuesday morning he lost use of his left arm and ran a high temperature. Mr. and Mrs. Copeland hurried him to the hospital and later Dr. Hansen of Borger said young Fry had already passed the crisis stage of polio. Mr. J. W. Fry, who was working near Morse rushed to Borger and accompanied young Fry to the Polio center at Plainview, Texas.

City Spraying In Effort To Kill Flies And Bugs

The city of Spearman has been fighting a courageous battle against the elements and insects. City manager Leo Dacus stated this week that the city tractor, with spray attached had been up and down the alleys in Spearman for several times this month, but that everytime they sprayed, it would rain an inch or so.

Al Hood Makes Shotgun Fish 'n Proposition

Al Hood, former No. 17 fisherman of Hansford county, comes forward with a shotgun fishing proposition for his many friends of this area. Al, you know, has temporarily left Spearman to become a citizen of Thermopolis, Wyoming. The wild and woolly Wyoming city of 3300 people features hot springs baths, cattle, fishing and hunting. It must be mighty good for fish 'n cause Al authorizes this newspaper to invite any and all Hansfordites to Thermopolis for fishing and if you do not catch one hundred fish (I said 100) per day Al will pay your expenses on the trip to Wyoming up to \$50.00, if you catch the minimum, you will of course pay your own expenses.

Wheat Harvest Completed

Confusing reports from district organizations and Hansford County elevator operators indicate the present wheat harvest as 55 to 75 percent complete. Delays have been many this harvest, and all agree that most of the wheat will be saved before hail or moisture destroys a very great percentage of the harvest.

Mrs. Harris Of Morse Sustains Head Injuries

Mrs. F. W. Harris, co-owner of the hotel at Morse sustained a painful but not serious gash on her forehead early Tuesday morning of this week. Mrs. Harris fell as she was leaving a room in the hotel and her head struck the door facing making a gash on her skull some 7 inches long. She was carried to the hospital, where 7 stitches were taken. She was reported able to return to her home Wednesday morning.

W. T. C. C. Photo Contest To Be Held Over Area

According to information received from Pat Ryan, Secretary of the Spearman Chamber of Commerce, the West Texas organization has announced a West Texas photo contest, with valuable prizes for both amateur and professional photographers.

Weather And Market

Near two and a half inches of rainfall the past week brings the total for June up to 7.36 inches. The record as handed this paper by U. S. Weather observer, F. W. Brandt is as follows:

Date	Hi	Low	Rain
21	97	66	1.25
22	91	69	
23	89	63	
24	91	58	0.84
25	85	58	0.06
26	87	61	
27	93	67	0.29
28	94	64	
Total			2.35
Total for month			7.36

Memorial Services Held At Morse Honoring Memory Of Youngest Pioneer Citizen, Pearl Dixon

Memorial services were held at the Morse Methodist Church Saturday afternoon, June 25, honoring the memory of one of the youngest best loved pioneer settlers of the Morse area, Pearl Montague Dixon. The fifty-three year old rancher-wheat producer who had spent 40 years of his life living some ten miles Northwest of Morse, died early Thursday morning June 23, as result of a heart attack. Pearl had been careful in his activities for the past 3 years after a check-up at Temple, Texas informed him and his family that he had an enlarged heart, and he was forewarned that he should likely have additional trouble.

Meeting With Officials Of One Company Scheduled July 20

A general complaint of a delay of 400 telephone calls to the Spearman area city officials and directors to ask for a high officials of the company at a discussion may be to improvement of meeting will be held Wednesday night.

Clinic Nurse For Hansford Hospital

Miss Mildred Delp, R. N., of San Francisco, California will begin duties Monday morning at Hansford Hospital as the nurse in charge of the Out-Patient Clinic, which has had a wide experience in clinical work, having been in charge of the Industrial Clinic of the Cleveland Railway Company of Cleveland, Ohio. Following this employment, Miss Delp was associated with the out-patient gynecological and obstetrical clinic at Mount Sinai Hospital in Cleveland.

Cornerstone Laying At The Oslo Lutheran Church

The new Oslo Lutheran church are being built on Crawford, Texas, places the building has had to the top of the cornerstone laying will occur close of the 11:00 a.m. hour next Sunday, July 1st, local pastor, J. P. Knudsen assisted on this occasion by Pastor John of Freeborn, Washington Maakestad on at vacation at the Oslo community with the former Louise Knudsen and her husband, Mr. and Mrs. Knudsen.

Basketball Star In Hospital

Kiff White, Jr. was rushed to an Amarillo hospital this week, with acute appendicitis. An appendectomy was performed on Kiff as soon as he arrived, and according to the latest report he is doing fine.

Service Complimented

Mr. Bill Miller, Spearman, Texas, June 19, 1949 Editor of the Spearman Reporter: Dear Sir: Have just read the article concerning the service rendered by our telephone Co. and as a great user of the telephone I would like to express my opinion.

Ants more related to bees than to termites.

Ants more related to bees than to termites.

Ants more related to bees than to termites.

Ants more related to bees than to termites.

Ants more related to bees than to termites.

Ants more related to bees than to termites.

Ants more related to bees than to termites.

Ants more related to bees than to termites.

Ants more related to bees than to termites.

Ants more related to bees than to termites.

Ants more related to bees than to termites.

Ants more related to bees than to termites.

Ants more related to bees than to termites.

Ants more related to bees than to termites.

Ants more related to bees than to termites.

Ants more related to bees than to termites.

Ants more related to bees than to termites.

Ants more related to bees than to termites.

Ants more related to bees than to termites.

Ants more related to bees than to termites.

Ants more related to bees than to termites.

Ants more related to bees than to termites.

Ants more related to bees than to termites.

Ants more related to bees than to termites.

Ants more related to bees than to termites.

Ants more related to bees than to termites.

Ants more related to bees than to termites.

Ants more related to bees than to termites.

Ants more related to bees than to termites.

Ants more related to bees than to termites.

Ants more related to bees than to termites.

Ants more related to bees than to termites.

Ants more related to bees than to termites.

Ants more related to bees than to termites.

Ants more related to bees than to termites.

Ants more related to bees than to termites.

Ants more related to bees than to termites.

Directory

WHERE TO FIND AND BUY IT FROM

RESPONSIBLE BORGER CONCERNS

The Diamond Shop

"Home Of Bonded Diamonds"

THE PANHANDLE'S LEADING JEWELERS

521 North Main

Phone 57

B. R. ANDERSON Company

Since 1926

Norge Refrigerators and Freezers,

Washers, Gas and Electric Ranges, Ironite Ironers

Hamilton Clothes Dryers, Furniture and Sewing Machines

219 North Main

Phone 562

The Hub Clothiers

LEADING STORE FOR MEN AND BOYS

515 N. Main Phone 202



Est. 1928

502 N. Main Phone 597

Molloy's Babyland

Exclusive Children's Wear. Infants To Twelve

616 N. Main Phone 1474

Jackson's Paint and Wallpaper Store

Complete line of the famous PRATT & LAMBERT PAINTS 200 patterns of the latest wallpaper.

813 N. Main Phone 27

Cox And Son

ELECTRICAL SUPPLIES

"Your Electrical Wants, Any where, Any time"

Wholesale, Retail, Industrial, Commercial and Residential Electrical work. Manufacturers Agents for Lighting Fixtures and Air Conditioners.

612 Weatherby F. L. Cox L. L. Cox Ph. 687

Robert J. Benson

DOCTOR OF OPTOMETRY

707 1/2 North Main Ph. 47

Western Cafe

Where Everyone Is Welcome. Sea Foods, Finest Steaks And Dinners

COME AS YOU ARE 525 Deahl St. Phone 2307

NEON

SALES SERVICE COMMERCIAL SIGNS And Out Door Advertising

210 N. Main Ph. 2372 TRI-STATE OF BORGER

Borger Electric Motor Service

3 Phase and Single Phase Motors

Repairing and Rewinding 103 S. Harvey St., Phone 1312

Dr. D. T. Thrower

CHIROPRACTOR

X-RAY - COLON THERAPY 431 Deahl Phone 211

Borger Glass Co.

Window Glass, Auto Glass Plate Glass, Mirrors Store Fronts, Resilvering Furniture Tops

613 Deahl St. Ph. 409

Spores Furniture Company

806 N. Weatherby St. Home of Hotpoint Appliances, Caphart Radios

Phone 1150

Borger Bedding Co.

New mattresses & box springs. Old ones made into inner springs. We Pick-up and deliver. Special attention to out of town customers.

2nd, at Whittenburg - P. 1063

Jeff Wilson

Bear Safety Service

PAINT and BODY SHOP

Wheel Alignment

Cars STUDEBAKER Trucks

117 East 7th St. Phone 802

Rentrow Motor Company

LINCOLN - MERCURY DEALER NO TRADE IN REQUIRED IMMEDIATE DELIVERY

611 South Main Phone 2400

Thrams Furniture Company

Gibson Refrigerators, Coolerators, and A. B. C. Washing Machines

Complete Line of New Furniture Convenient Terms, FREE DELIVERY 805 North Weatherby Phone 653

JERRIE KEITH COMPANY, INC.

PLUMBING, HEATING,

AIR CONDITIONING

200 South Main P. O. Box 324

Phone 227

City Plumbing Company

Plumbing, Air Conditioning Fixtures and Supplies

Estimations Free 800 N. Main Ph. 787

Bradshaw Motor Company

DODGE and PLYMOUTH DODGE JOB RATED TRUCKS DEPENDABLE USED CARS

Phone 2434 828 North Main

E. D. Baker, Contractor

GRADING, EXCAVATING PAVING, BLACK TOP

522 South Main Phone 673

Radio - Phono Shop

We Rent Public Address Systems For Parties and Picnics Radio Service Guaranteed 90 Days, We come and get 'em. 112 1/2 East 5th Ph. 1966

Robinson Glass And Supply Company

Auto Glass Installed While U Wait 601 S. Main St. Ph. 1194

The Grand Hardware

Scott - Atwaters out Board Motors 618 N. Main Phone 2430

Newman Bros.

KAISER - FRAZER DEALERS Immediate Delivery 730 N. Main Ph. 1695

Joy-Youts Motor Co.

CHRYSLER, PLYMOUTH Sales and Service

515 South Main St.

Phone 1155

Western Chemical And Supply Co.

CHEMICALS Sanitary • Industrial • Agric. Weekly deliveries to Spearman

Box 1331 Phone 745

SHEPMON'S

Builders Supply Company Wall paper - Paint and Floor Covering

Harold Orman-Orville Shepherd 708 N. Main Phone 971

Hatcher Carburetor And Electric Service

STARTERS, GENERATORS, FARM AND OILFIELD MAGNETO SERVICE.

114 West 7TH, ST., PH. 1234

R and R Sheetmetal AND MACHINE SHOP

If it's made of sheetmetal we make it.

110 East Grand Phone 444

Finger Motor Company

BUICK, PONTIAC, INTERNATIONAL TRUCK SALES and SERVICE

"We Specialize In Heavy Duty Truck Repairs"

115 South Main

Phone 1850

CLASSIFIED ADS

Notice, classified display advertising and news columns close at noon every Tuesday. Please arrange for advertising early, also bring in your news items promptly.

LADIES: Do you need to add to family income? Fuller Brush Co. offers opportunity to make \$6 to \$10 daily, full or part time, showing our Debutante Cosmetic line. Write P. O. Box 1491, Amarillo, Texas. 28-4t-c

Wheat storage tanks, steamed out oil tanks quonset-type building trusses ideal for wheat storage, heavy timbers, reinforcing and structural steel, Panhandle Pipe and Supply, Phone 63, Borger, Texas. 27 paid 4t

WANTED - Clean Cotton Rags at Reporter. 29-3t-c

FOR RENT - Bed rooms for men, Call 27 RTN

NOTICE: I bake home-made pies, and cakes, to sell. Call 219, Spearman. 29-3t-c

LOST - One 1000 X 20 U. S. Royal Truck Tire mounted on wheel, between Perryton and Morse. Reward, J. A. (Shorty) McClung, Perryton, Texas. 29-2tp

LOST - Midget Dectro Meter, Saturday, June 18 by Telephone Lineman, Across the street from the Equity Elevator. Please return to Spearman telephone office. 29-2tc

WILL do ironing in my home - Mrs. J. B. Tower. 29-2tc

LOST - Billfold with important papers - No money, Reward, return to Spearman Reporter. 29-2tc

LOST - 900 x 20 truck tire and carrier, between 4 miles North and 5 miles East of Spearman. Contact E.A. Clift, care of E.D. Clements, Phone 906P04. 26-11p

Sale

FOR SALE - 16 foot Covered Wagon house trailer. Equipped with permanent bed and new gas range. Cheap. See at Spearman Trailer Sales, ask for Harold's trailer.

FOR SALE - 1 125 Harley Davidson '47 Motorcycle. See Tyson-Elis Hardware. No. 29 2t

Sand for sale at my pit west of Gray Booster Station. Screen Sand, \$1.75 a yard. Pit run sand, \$1.25 a yard. Filler sand, 50 cents a yard. Phone, Perryton, Mr. J. A. (Shorty) McClung. 4t

LOOK USED PIANOS

A few Spinet, Baldwin Acrosomes, Hamilton, Studio, etc. A one cent card will bring information

MYERS MUSIC MART 104 East 10th Amarillo. 28-3t-c

FOR SALE - Five room modern House, on pavement, with attached garage. Has \$4,200.00 FHA Loan. Call 16 or 60. 29-t-c

FOR SALE - Corner business lot on 117 highway at Perryton, Texas. See G. C. Howard at J. M. Beagle Ranch, 10 miles east of Perryton. 29-2tp

LARGE FRIERS for sale at \$1.25 Mrs. W. A. Van Cleave. 2912t-p

FOR RENT of Sale - CONCRETE MIXERS, CONCRETE CARTS, Vibrators and Wheelbarrows. Also Paving Breakers and other Air Tools. Tom W. Carpenter Equipment Co. Phone 2-6578 Amarillo, Texas.

FOR SALE Window cooler. Good condition, also quantity of used lumber, and 3,000 face brick. See T. R. Shirley. 28-2t-c

RANCHES FOR SALE

9000 acres deeded, 1500 State lease at 3c per acre Good improvements. Watered by springs, creek and wells. Winter protection. Heavy sod gamma and bution. Heavy soil. Good for wheat and alfalfa. Will trade for wheat land, terms. Will trade for wheat land, for part of purchase price.

4400 acres deeded, 1725 State lease 150 acres private lease. Modern house. Good barn, sheds and corrals. Watered by spring, creek and wells. Located on pavement close to town.

525 acres deeded, 160 State lease, 140 private lease. Joins the City of Clayton on the South. House is modern. City lights. Telephone. Good barn, sheds and corrals. For one who wants to live on a small ranch and have all city conveniences and the best high school in the state this is it.

640 acres deeded, 1250 State and school land, 1050 private lease. House is modern. On REA. 140 acres in cultivation. Located on pavement close to road town. Good terms.

3000 acres deeded, 3500 State lease. Good modern improvements. Barn sheds and corrals. Watered by two running creeks, springs, and wells. Located on State Highway.

19,000 acres deeded, 10,000 State lease. Some private lease. Good improvements. Watered by springs and creek. Good winter protection. A real cow outfit.

5000 acres deeded, 19,400 State lease. Divided into 6 pastures with branding corrals and leading chutes in each pasture. Fenced with good 5 and 6 wire fences. Good sheds, corrals and scales at headquarters. Good 4 room rock house. Watered by creeks, springs. Not over one half mile to water anywhere on ranch. Lots of vega hay land. 12 miles to shipping point.

McDade-Cook Realty Co., Clayton, New Mexico. 29-3t-c

FOR SALE - Three room modern apartment, 50 x 150 foot lot. Excellent location. Priced to sell. Phone 171. No. 29-1t-c

WANTED: Wheat land to rent. Will consider buying machinery. See Dan Shradar at B and B Grain Co., Spearman, Texas. No. 30-2t-p

FOR RENT - Furnished home. See I. P. Bagzery, Phone 164. No. 30-2t-c

FOR SALE - Modern seven room home, two blocks East, half block North Spearman School. Phone 164. No. 30-2t-c

PLEASE RETURN the lawn mower borrowed from Al Hood several months ago. Will be in Spearman a week. If am out of town return the lawn mower to Don Woodward. No. 30-1t-no charge

FOR SALE - Nearly new '48 Dodge convertible. All extras, only 5,000 miles. Hardly broken in. Owner will sell at sacrifice. See T. R. Atkinson at Church of Christ, Parsonage. No. 30-2t-p

FOR SALE - Miscellaneous household goods. Bedroom suite, dining table and chairs, nearly new lawn mower, lawn hose, boys bike, small boy's desk, metal bed, springs and mattresses. T. R. Atkinson, Church of Christ Parsonage. No. 30-2t-p

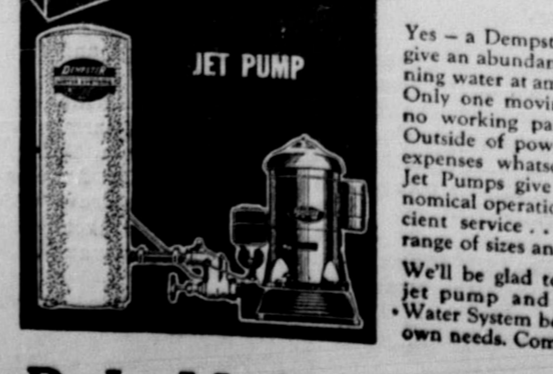
A silkworm is not a worm. Only the female gnat bites. The wasp stings with its tail. Third base is the "hot corner".

Kimball Lester

PIANOS

New Spinet Pianos MEGERT MUSIC CO. 415 N. Main Borger, Texas 27-4t-c

Here's Your Answer For Greater Farm Profits



Yes - a Dempster Jet Pump will give an abundant supply of running water at amazingly low cost. Only one moving part... with no working parts in the well. Outside of power, no operating expenses whatsoever. Dempster Jet Pumps give you quiet, economical operation... longer efficient service... come in wide range of sizes and capacities. We'll be glad to show you this jet pump and any Dempster Water System best suited to your own needs. Come in today!

R. L. McClellan Grain Co.

Professional Directory section with various ads for insurance, dentistry, and medical services.

Advertisements for B.M.A. Insurance and Dr. F. Dentist.

Advertisements for Sanford Hospital and Clinic, and Dr. D. E. Hackley.

Advertisements for Boyer & McConnell and T. D. Sansing.

Advertisement for Osgood Monument Company.

is & That



OUND GRUVER

We have a few more days of weather, harvest will be over. Of course, there will be cutting for a couple of yet, but the bulk of it will r. As far as we can gather, orrison was the first man to up. He reports having real wheat. There does not to have been as many har-cidents this year. Mr. Tru-serman had a hand pretty injured a couple of weeks however, it seemed to clear at Sunday morning it began to him trouble again. We un-d that it is getting well Wade Wright got his hand at in an auger last week, but ck at work again. Another we seem to have missed so are wheat or stubble fires. re thankful that we have had ore mishaps than this.

Dr. F. E. McLean, Dentist, Spearman, Texas. Office in room 4, Spearman Hotel. Hours: 9:00 a.m. to 5:00 p.m. Evenings by appointment. Phone 2-6778.

view, Texas was the week-end visitor in the home of Mr. and Mrs. Ben Harris.

Mr. and Mrs. B. F. Simms spent the week-end visiting at the home of Mr. Simms' parents in Amarillo. Mr. Simms is the cashier of the Gruver State Bank.

Mr. and Mrs. Cy King returned Monday evening from Denver, Colo. The Kings had expected to spend a pleasant vacation in Colorado, but Cy got tied up in business, so there was no fishing. About all they got to do was to go to the movies. Then when they arrived home there was more disappointment for the man who was to care for the business while they were gone had closed up shop and taken off on business of his own. So they did not have much fun.

Mrs. Bill Ething and Mrs. Ted McClellan spent Wednesday at the Newman Clinic at Shattuck, Okla. Mrs. McClellan went for a "check up." Mrs. Ething went trying to determine just what her trouble is. She has not been well for some time. Recently she spent several days in the hospital, but did not receive much relief. We sincerely trust that they find the cause of her trouble and can help her back to good health.

Church attendance fell off last Sunday. The reason, too many combines running. We hope that by now harvest is far enough advanced that everyone can be back in church this coming Sunday. The congregations of the Methodist, Church of Christ, and Baptist will close the series of sermons on the "Battle of the Ages." The for His goodness to you.

Editorial

Requests from two elevator operators of this county and as many as five wheat producers were to the effect that the country editor should blast the state highway department for the new law calling for 60 day license fees to haul wheat from field to elevators.

From a rather hasty investigation we find that wheat producers and perhaps elevators suffer from this law to the extent that organized combine crews from other states with trucks as part of their organization have complained against the law, and in some cases have threatened never to come back to Texas for the harvest season. From the haphazard investigation this paper has made, we learn that the cost of such fees are now being assessed farmers, or that such is the plan in the future. If this is true and farmers are compelled to add the additional cost to their present harvest expenses, then the law defeats its purpose.

A few complaints were registered because the state had sent so many officers into this county to enforce the law.

At the best we can find the new ruling or law does not meet with the hearty approval of the nearly 400 wheat producers of this area. We learn that wheat producers

of Ochiltree county organized and sent protests to the Governor of Texas. We have heard as many as 6 people interested in wheat state that a petition should be circulated, and that Hansford county should go on record as opposed to the law.

On the other side of the question we have the assurance of state highway officials that similar laws are being enforced in states North of Texas. The law was passed at the insistence of the truck owners of Texas, so you are informed. It is a LAW, and is being rigidly enforced. The results from a financial standpoint will provide some \$6,000,000 in funds for Hansford county commissioners to use in improving the roads that are used by these trucks. It is estimated that one out of state trucker in making a harvest season in Hansford county will use the highway as much as a wheat producer will use the same highway over a years time. This new law provides that the out of state trucker pay a sum averaging something near \$20.00 for the 60 day period he has license in this state. Hansford county commis-sioners are so badly in need of money to improve and make pass-able the vast system of roads that intersect our county, that they face the possibility of raising tax rates again for this specific purpose.

These are statements of facts for all concerned.

So far as this newspaper is con-cerned, we string along with the majority of citizens of this county. The editor would like to know from wheat producers if this new law has worked a hardship as of this 1940 harvest. We would like to know from a wheat producer if there has been a single instance where an out of state operator refused to harvest grain in Hans-ford county because of the so called "unjust law."

If the law should be repealed, let's all get behind the necessary effort to repeal it. If it is just a matter of temporary inconveni-ence, let's quit shaking.

Many of the major sports em-ploy the use of a ball. Football, baseball, tennis, and basketball are examples. But none in bad-minton, boxing wrestling, fencing and ice hockey.

Seven presidents of the United States reached the high office through the death of their prede-cessors - Tyler, Fillmore, Ar-thur, Theodore Roosevelt, Cool-idge, and Truman.

Since 1840 every president of the United States elected in a year ending in zero, except the year 1900, has died in office.

An expert can determine the age of fish by markings on the scales, roughly similar to tree-rings.

Six geese are required to pro-vide a pound of goose feathers.

In reciting the forgotten ben-efits, or the municipal economic loss due to inadequate water, the WTCC report sets up the manner

in which multi-city dams could be constructed on the upper reaches of the Brazos, achieving the same results in flood control. At the same time these smaller dams would provide domestic water for most of the 300 municipalities on the watershed. The report says:

"The eight cities with their 28,800 population, if using 120 gallons of water per capita, would use a total of 1,261,000,000 gallons yearly. Assuming that this water were purchased by the cities from nearby government reservoirs at 10 cents per thousand gallons, an annual revenue of \$126,000 would be possible. This amounts to a water sale of round \$4.40 per capita per year. As the government has funding plans ranging from 30 to 50 years with only a minor part bearing interest and less than half of the corpus being paid back, this \$126,000 annual potential revenue over a 40 year period of time, without interest, would fund around \$5,000,000. This \$5,000,000 could build 8 different reservoirs, each with a 12,500 acre feet capacity. Such dams would adequately supply the respective 8 cities with water and are needed to assure the cities of sufficient water for growth and development and for adequate supply through years of dry weather as well as wet years.

"Such dams holding 100,000 acre feet of water on the Brazos upper tributaries would first of all cause a cessation of floods to that

extent in the lower reaches of the Brazos and would accom-plish the general welfare benefits of flood control. Such dams would also accomplish another new bene-fit which is submitted as equal to, if not greater than flood con-trol benefits namely, the benefit of overcoming the economic loss to the cities due to lack of water and the benefit of halting the stagnation and strangulation of the several cities and turning them into healthy growing com-munities. Furthermore, such dams appear to be wholly self-liqui-dating as far as capital corpus is concerned while the Whitney mul-ti-purpose dam is less than 32 per cent self-liquidating."



We're getting closer!

Each passing day serves as an arrow shot nearer our desired "bull's-eye" of telephone service for everyone who wants it. New installations are continuing at a rapid rate. And while demands for service are also continuing, we are making progress. Before long, we expect to hit the bull's-eye dead center—and everyone who wants tele- phone service will be able to have it immediately.

Southwestern Association Telephone Co.

TRACTORS

We have several excellent 60, 80 and 132

Drawbar H. P. Crawler type tractors for sale at very reasonable prices.

The 60 Drawbar tractors will pull 30 feet of plows. The 80's will pull 40 feet, and the 132's will pull 60 feet of plows.

Concrete Mixers for Sale or Rent

Tom W. Carpenter Equipment Co Amarillo, Texas

Phone 2-6578

Night Phone 23807

Our HOLIDAY FOOD SALE IS A WHIZ-BANG FOR SAVINGS

Start your holiday with a BANG by coming to CUT RATES for all your food needs whether you're planning perfect picnics or delightful dinners. We've grand values for gloriously good eating in every department - whiz-bang savings that are cause for holiday celebration. Yes indeed - these buys are the big noise in food values this weekend - a giant salute to the economy we offer you every week.

Cop. Advertisers Exchange Inc. 1940

Flavo-Rite MEATS

Pink Salmon	Nemo - Tall Can	47c
Viennas	Snack Time, 2 cans	27c
Ginger Ale	Canada Dry, Tall Bottles	15c plus deposit
Fruit Cocktail	SHURFINE, Tall Can	21c
Orange Juice	TEXSUN 46 oz. can	35c
Milk	SHURFINE, Tall Can	11c
Tomatoes	ROTEL, New Pack, 2 no. 2 cans	19c
Crackers	Salad Wafers, lb.	23c
Brockels Dressing	It's Delicious, pint	55c
Hot Roll Mix	PILLSBURY, box	27c
Pork and Beans	VAN CAMPS, 2 tall cans	25c

GRADE A Beef T-BONE 69c lb.

Tenderized 1/2 or whole Hams lb. 59c

LONGHORN Cheese lb. 39c

Pork Steak lb. 52c

SPECIALS FOR FRIDAY and SAT.

Pastries Fresh Daily

Choc. or Butterscotch Brownies Doz. 59c

Buttered Pecan Rings lb. 49c

SUMMER DELIGHT

ELECTRIC REFRIGERATION

Low cost, dependable electric refrigeration is truly a summer delight for the entire family... a summertime storehouse of protection to keep salad greens crisp, meats and frozen foods at peak perfection, vitamins intact.

Middle-of-the-summer heat can't keep you from having plenty of frozen goodies always ready, plenty of healthful foods for a daily line-up of growing children and hearty adults.

See your appliance dealer now... he has the latest, right size electric refrigerator for your family.

Whatever the season low cost electric service makes electric refrigeration a real bargain.

SOUTHWESTERN PUBLIC SERVICE COMPANY

24 YEARS OF GOOD CITIZENSHIP AND PUBLIC SERVICE

Self-Service Produce

SQUASH	White or Yellow, lb.	5c
TOMATOES	Firm Ripe, lb.	17c
CORN	Fresh Golden, 6 ears	25c
PLUMS	Santa Rosa, lb.	25c

Plenty of FRESH FRYERS

Apple Turnovers 2 for 15c

PINEAPPLE Upside Down Cake EACH 43c

Cut Rate Grocery & Market SPEARMAN, TEXAS

We pay top prices for poultry and eggs

Jerry Malone Featured In News Story

Printed below is a feature story printed in the Seminole, Texas Sentinel June 16. The story is self explanatory.

One of Seminole's most talented young men and certainly one of the most versatile is Jerry Malone, 18-year-old son of the Rev. and Mrs. Sam Malone, pastor of the South Seminole Baptist Church.

Despite his youth, Jerry already has won recognition as an accomplished pianist, organist, vocalist, and artist. In addition he also has composed two hymns, "He Died for Me," which was used by the Amarillo Junior College and the First Baptist Church in that city, and "I Have Jesus."

Locally, he serves as pianist in his father's church and is in demand as an organist for various programs and ceremonies in other churches.

Although he exhibited outstanding talent in his art classes at the Seminole High School, he doesn't plan to make a career of painting. One of his best works is his own conception of the baptism scene in the background of the baptismal pool at his father's new church.

Jerry was born at Abilene where his father attended Hardin-Simmons College. But he counts Seminole as home and started school here when he was seven years old at the time his father bought the Seminole Sentinel.

He left with the family to live in New Mexico when he was in the fifth grade and returned here when his father started organization of the new Baptist church last September.

Pianist at Three
Jerry's sister, Rosemary, Mrs. Evans of Amarillo, and Dannie, Mrs. Kenneth Nelson of Buckeye, gave him his first lessons and he was only three years old when he first learned to play the popular tune, "When I Grow Too Old to Dream." In the first grade he took piano lessons from Mrs. Grace Wood, who is now located in Brownfield.

Although he had studied piano for some time, he recalls that he started his first "serious" efforts in music when he was in the eighth grade at Spearman, Texas. He already could play well by ear and began organ lessons at Graham under a private instructor.

Only six months later he made his first public appearance as pianist representing the Spearman Drug Company on a talent pro-

gram. He played two difficult numbers, "Rusties of Spring," by Sinding, and Chopin's Polonaise.

Organ in 1947
He began pipe organ lessons in the summer of 1947 under John Casey, organist and choir director of the First Baptist Church, Amarillo. During the past school year, he was a tenor in the high school choral club, frequently giving solo numbers. He also was well received when he sang for the Seminole Study Club in the Negro minstrel presented last fall by the Senior Class, and for the Phi Gamma Gammas at their fall presentation.

In public appearances he has never felt stage fright and he exhibits a modest but completely poised manner whether he is singing or playing. Next fall he plans to pursue a musical career at Hardin-Simmons University. Organ music will be his major subject and art will continue to be a hobby which started with encouragement of his aunt who had an art school at Gallup, N.M., when he was a small boy.

His best paintings, he said, have been given away to friends and members of his family and among these his friends count as outstanding a still life of roses which required more time than other pictures since he painted it a rose at a time as the flowers blossomed. At his home is a delicate china lamp decorated with gold and roses which his mother treasured.

Not Radical Modern
In art, Jerry appreciates most the paintings which have emphasized color and he doesn't go for surrealism as do many young artists. One of his first paintings to win recognition was stage scenery for the Spearman Memorial, titled "Stardust," with a lake, moonlight and stars. He also did a realistic cowboy scene for the Junior-Senior banquet at Spearman. When he was 16, he won first prize for the Spearman exhibit at the state fair. This was a life-size steer on plywood showing the change to steaks. On one side was a painting of wheat, the railroad and bread.

In his art classes the last year, he painted a picture of Christ which won commendation and also did excellent work in metal etching.

Typical Boy
The local boy doesn't follow the set pattern of appearance for artists or musicians. Sturdy in stature rather than slender, he has a typical boyish smile and his jaw has a sterner set than the majority of musicians or artists. Jerry's ambition is to direct a church choir and arrange his own music. He's well aware, he says, that there is much more financial return from commercial art or commercial music but they simply aren't what he wants for a career.

Also just like any American boy he is an enthusiastic baseball fan and likes football second best. He played football in junior high school and would have continued in high school if he could have found the time.

Oddly enough, he had made an A average in all his studies and is especially fond of chemistry which doesn't usually mix too well with music and art. Also, like any wide-awake youngster, he likes popular music and art. Also, like any American youngster, he likes popular music and art.

His parents agree that their talented son has fortunately and inconsistently displayed no splashes of typical artistic temperament but on the contrary is exceptionally even tempered and full of fun.

So far as his social life goes, he is popular at parties and thoroughly enjoys them. And to further bring out the fact that he is unusually talented but a completely average boy, although he does like girls who share his interest in music and art, he doesn't choose one solely for her talent but like most males, "prefers blondes."

His return was a decided addition to Seminole and he, in turn, was glad to come back to what he finds to be an exceptionally friendly and appreciative community.

Cayman Islands' People Make Rope, Catch Turtles

Catching 200-pound sea turtles is big business on the Cayman Islands, south of Cuba. So is making rope of hatch-palm straw and building boats of native hardwoods. In the Caribbean not far south of Grand Cayman, largest of this group of three, the hurricane that lashed southern Florida had his birth. On a reef of Little Cayman, the storm stranded a Cuban-bound freighter.

On Little Cayman's rocky 10 square miles, the revenue officer doubles as school teacher and has time for fishing, too, since less than 70 people inhabit the isle. It is 700 miles north of the Panama Canal, and 300 miles south of Key West, with Cuba intervening, notes the National Geographic society.

Visible close by to the east is slightly larger Cayman Brac, island home for 1,300. These two are said to have been found by Christopher Columbus in May, 1503. He named them "Las Tortugas" on account of their turtles.

Just beyond the horizon to the west, Grand Cayman, with well over 5,000 inhabitants, sprawls over an area larger than the District of Columbia. It contains three-fourths of the land of Jamaica's Cayman Islands Dependency.

Human Brucellosis
About 70 per cent of the human Brucellosis cases come from swine, and most of the rest from cattle and goats.

Television Can Be Used To Sharpen X-Ray Films

An important medical disclosure involving a new use for television has been revealed by the University of Illinois college of medicine.

University investigators disclosed that television can be used to make x-ray films clearer, sharper and of definite assistance in making a diagnosis.

The discovery of new possibilities of television stemmed from studies made by Craig W. Goodwin and Dr. John S. Garvin, in conjunction with television station WKBK, Chicago.

The significance and clinical application of the disclosure was pointed out by Dr. Roger A. Harvey, head of the University's department of radiology. He explained: "X-ray films have been reproduced on television screens in the past in connection with transmission of surgical procedures and clinical conferences. However, their inclusion has been incidental and little has been done to investigate the possibilities."

University researchers found that "an extremely high degree of accuracy" can be obtained in reproducing x-rays on television. By varying the density and contrast controls on the receiver, details and findings on the original film can be brought out much more clearly. For example, questionable shadow can be brought out in great detail, and both over and under-exposed film can be corrected.

Brood Sows
Proper feeding and management of brood sows is doubly important last month before farrowing.

Telephone Numbers
An Ohio court ruling has stated that telephone numbers are the property of the telephone company.

Easy on 2,4-D
Use no more 2,4-D than the minimum need. The compound is powerful. An overdose may seriously injure even tolerant crops.

Goat Milk
The average goat produces one-half gallon of milk daily for eight to ten months.

For Wood Carvers
Ease of cutting sugar pine makes it a basic material for wood carvers.

Plant Diseases
Government scientists have identified 50,000 plant diseases, which cost the American farmer about two billion dollars.

First Railway Express Was Toted in Carpet Bag

From the earliest days of America's railroads, express service has been an important phase of passenger train operations. It was in 1839, when railroads were few and far between and the nation depended mainly upon over-the-road coaches and wagons for transportation, that the first expressman set himself up in the business of carrying packages.

Traveling by early train and Long Island Sound steamer between Boston and New York, he established an express line to provide a means of direct shipping between sender and receiver, using a carpetbag as his "car." This personal element in coordinating the best transportation means available in a single operating agency, proved popular and led to the nationwide express service of today.

As each new railroad was completed, movement of the express business, was transferred to passenger trains, with an express company providing pickup and delivery at points of origin and destination. Thereafter, express transportation became a vital factor in the commercial development of the country, marching in step with railroad progress. During the first world war, the various companies in the field were unified.

Alaska
When the United States purchased Alaska from Russia for \$7,200,000 in 1867, there was a roar of public disapproval and much inspired oratory in congress. Most everyone was convinced that this frozen piece of real estate was good for nothing except the production of snowballs and ice. However, according to information compiled for the new World Book encyclopedia, Alaska produced more than 120 million dollars worth of goods in 1948. The production in this single year alone is more than 16 times the original investment.

Mr. Charles O'Laughlin, son of the late Johnny O'Laughlin, of Long Beach, California, is visiting here this week.

Mrs. W. M. Smart of Borger visited with Elizabeth Miller recently.

NOTICE OF APPLICATION TO EXECUTE OIL, GAS AND MINERAL LEASE GUARDIANSHIP OF ROBERTA HUDSON, A NON COMPOS MENTIS.

No. 135 IN THE COUNTY COURT OF HANSFORD COUNTY, TEXAS To all persons interested in the above non compos mentis or her estate:

You are notified that I have on the 27 day of June, 1949, filed with the County Clerk of Hansford County, Texas, an application under oath for authority to make an oil, gas and mineral lease on terms as the court shall deem appropriate, with pooling or unitization provisions on that certain real estate belonging to the said Roberta Hudson, a non compos mentis, described as follows:

An Undivided One-Third (1/3) Interest in and to All of Section 121, Block 2, GH and H Railroad Company Survey, Hansford County, Texas.

Reference is made to the application to make oil, gas and mineral lease for a more particular and complete description; that Johnnie C. Lee, Judge of the County Court of Hansford County,

such application, and that same was held at open court on the 27 day of June, 1949, at 5 o'clock PM in the County Court Room in the Court House of said Hansford County as the time and place when and where

such application, and that same was held at open court on the 27 day of June, 1949, at 5 o'clock PM in the County Court Room in the Court House of said Hansford County as the time and place when and where

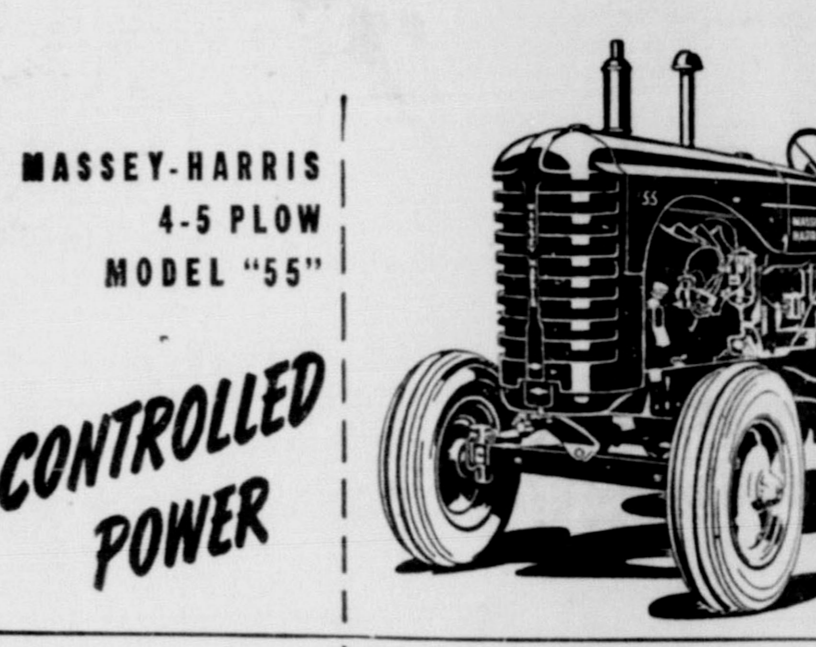
ONE GALLON FLATLUX
The wall paint MADE WITH
will paint
the average room



Covers Wallpaper Paint or Plaster in One Coat, Easier to put on... it's made with OIL... not a water-thinned coating.

White House Property

We Have At This Time
55 Tractors Available



MASSEY-HARRIS 4-5 PLOW MODEL "55"
CONTROLLED POWER
4-5 H.P. Power
382 cubic-inch engine
Built-in governor
Automatic Spark
Self-Starter
Shock resistant steering
Velvet-Ride Seat

GOOD TIMES ARE HERE AGAIN
We have a few of the big 55 tractors left in stock sufficient to handle the fifteen and eighteen h.p. power reserve.
We invite you to come in and let us demonstrate you under operation.
We also have some used tractors and plows in eighteen foot Schaefer Plows.
If you are in need of any farm machinery please see us when you are in Spearman.

Smith & Saunders Imp.

Plumbing . . .
and Service Work

WE HAVE AVAILABLE NOW
● American Standard Bathroom fixtures (Colored and White)
● Pipe and Fittings
● Odin Kitchen Ranges
● Service and Repair Work
● Free Estimates On Plumbing, Building and Cabinet work

Just Arrived, Mountain air Air Conditioners. All sizes.

City Plumbing Co.

PHONE 216J
SPEARMAN, TEXAS
Windell Reneau
Dutch Preston

NO WAITING

We have the CARS, TRUCKS, and PICKUPS . . . See us for a NEW model . . . any make, any color
New Cars Carry Guarantee and Service

NEW 1949 MODELS

1949 CHEVROLET, Aero Tudor loaded	
1949 CHEVROLET, Styline Deluxe 4 door	
1949 Dodge 6 Passenger Clb. Cpe, heater, tan color	
1949 Dodge half-ton pickup. 4 speed	\$1615.00
1949 Chevrolet Clb. Cpe loaded, green	
1949 Chevrolet Fleetline, 4 door loaded, Black	
1949 DODGE three-quarter ton pickup, list	
1949 PLYMOUTH, 4 door, Special Deluxe, Blue at list	
1949 CHEVROLET Styleline, Deluxe 4 door	
1949 PLYMOUTH, 4 door, Green, at LIST	
1949 BUICK, Dynaflo, loaded	\$2850

1939 FORD	1946 DODGE COUPE, Loaded	
1939 INTERNATIONAL PICK-UP 4-Speed transmission, clean	Radio and heater	\$695
1946 FORD TUDOR A honey, loaded	1935 CHEVROLET 2-door, fair	\$95
1941 DODGE PICKUP	1949 CHEVROLET, 1/2 ton Pickup Radio, heater	\$1375
1941 DODGE, 1/2-ton 4-wheel drive, stock rack, grain sd. 495	1935 DODGE, 4-door Fair	\$75
1941 DODGE HALF TON Strockrite Grain Sides	1936 CHEVROLET 2-door	\$125
1948 WILLYS 800 miles	MODEL A FORD A real buy	\$75
1940 FORD PICKUP	1937 CHEVROLET COUPE	\$100
1948 PLYMOUTH 2-door, Grey, clean	1946 DODGE CPE. Loaded	\$995
1940 CHEVROLET	1942 FORD TUDOR Radio and Heater	\$695

— YOU'RE ALWAYS WELCOME TO SEE THE LATEST —

We Sell More Cars Than Anyone In This Territory — There Must Be A Reason

COLLINGSWORTH

AUTO SALES

"The Working Man's Auto Exchange"
TIP COLLINGSWORTH, Owner

206 E. Brillhart PERRYTON, TEXAS Phone 66 Residence Phone 484-W

The Lesson I learned from Susie

The other night we had cabbage for supper. My wife is a swell cook, and she'd done an especially good job on the cabbage. I took a heaping big plateful for myself and passed it over to Susie. Susie is our little four-year-old.

"Have some cabbage, honey?" I asked her.

"Nah-h-h-h," she said, "I don't like cabbage."

"Why, Susie," her mother spoke up, "have you ever eaten cabbage?"

"Nah-h-h-h, I never did eat any of it—I just don't like cabbage!"

Well, that set me to thinking. Every time I go down to my Co-op, the boys there ask me to use Co-op Motor Oil. For years now, I've been using another brand of oil and I always thought it was the best, so I always told them "No, I don't like Co-op oil." You know, when Susie pulled that stunt about the cabbage, it hit me like a ton of bricks—how did I know whether I liked Co-op oil or not, I'd never tried any.

I was startin' some plowing the very next day, so I order out my first barrel of Co-op Solvent Refined Oil, and I can truthfully say that I have never used a better motor oil. And I know why, too. It's made in a farmer owned refinery for use on farms, to specifications that will meet the heaviest farming uses. From now on, you'll find nothing in the crankcase of my tractor, pick-up, and car but CO-OP SOLVENT REFINED MOTOR OIL!

By the way, Susie likes cabbage now. She tried it.

Consumers Sales Co.

CONTROLLED QUALITY, PRICE,
& CONSTRUCTION

PIPE FOR SALE

All sizes 1-2 inch through 2 inches, Both black and galvanized. Prepaid freight on quantity orders.

TRI CITY PLUMBING COMPANY

Phone 2210, Borger, Texas

Plumbing . . . and Service Work

WE HAVE AVAILABLE NOW

- American Standard Bathroom fixtures (Colored and White)
- Pipe and Fittings
- Odin Kitchen Ranges
- Service and Repair Work
- Free Estimates On Plumbing, Building and Cabinet work

Just Arrived, Mountain air Air Conditioners. All sizes.

City Plumbing Co.

PHONE 216J
SPEARMAN, TEXAS
Windell Reneau
Dutch Preston

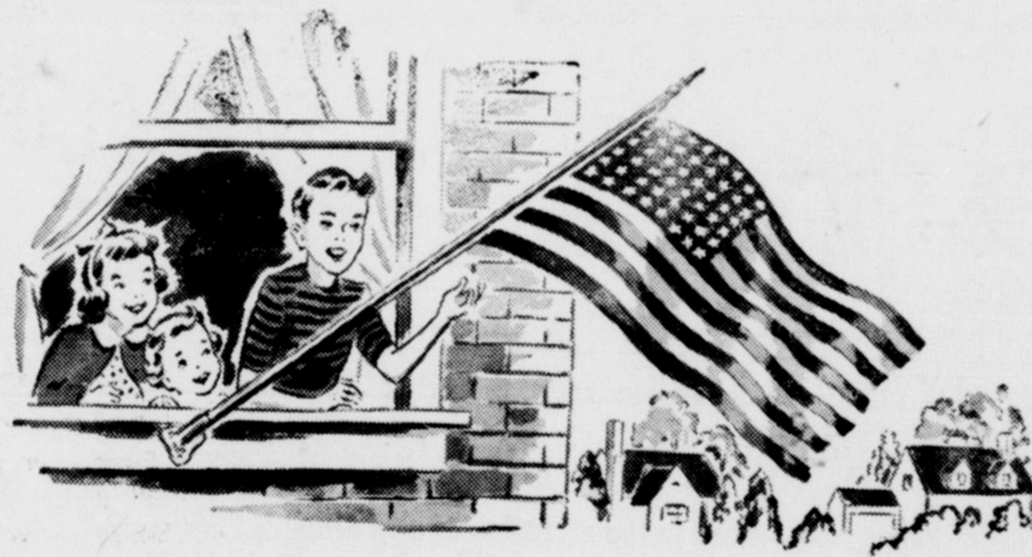


Independence Day

Most Stores of Spearman will be Open Monday July 4th

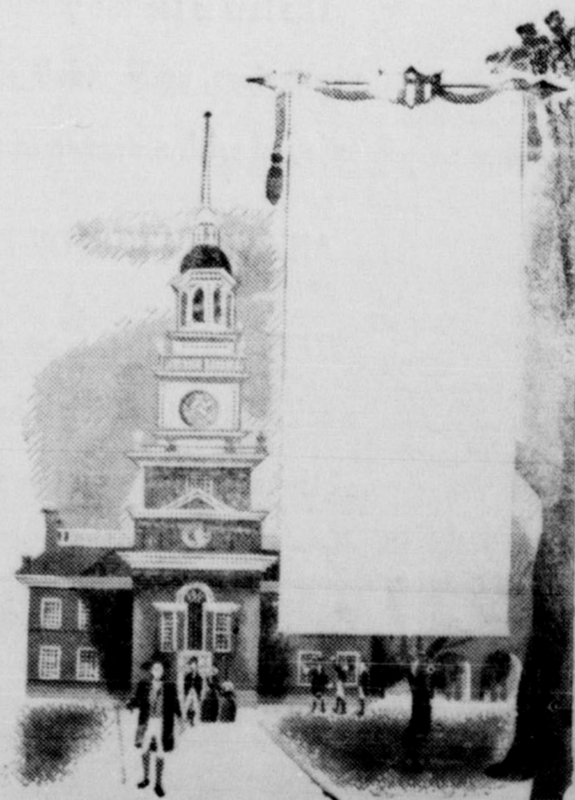
... Birthday of our nation, when the doctrine of man's inalienable right to "Life, Liberty and the Pursuit of Happiness" was proclaimed 173 years ago.

With these words the Declaration of Independence created a new nation as of July 4, 1776. Ever after the highest hope of this nation has been the perpetuation of its people's right to freedom which can benefit mankind. Often we have a challenge to one or more of those freedoms; and we have succeeded in supporting the forty-six whose signatures first declared it vital that people may "assume among the powers of the earth the separate and equal station to which the laws of Nature and Nature's God entitle them."



This "INDEPENDENCE DAY" Advertisement sponsored by the following Business Firms and Individuals . . .

- | | | |
|--------------------------------|---------------------------------|---|
| ● Jess Davis Store | ● "66" Service Station | ● Spearman Dry Goods Co. |
| ● McClellan Chevrolet Co. | ● Boxwell Bros. Funeral Home | ● Spearman Drug Co. |
| ● Sid Clark Barber Shop | ● Jim Neely Men's Store | ● Boxwell Bros. Hardware and Furniture Co. |
| ● Western Auto Associate Store | ● Spearman Electric Co. | ● Spearman Hardware |
| ● Tyson-Ellis Hardware Co | ● R.L. McClellan Grain Co. | ● W.L. Russell, Jr. Dry Goods and Groceries |
| ● Pattison Motor Supply | ● Foxworth-Galbraith Lumber Co. | ● Consumers Sales Co. |
| ● Bills Radio Service | ● White House Properties | ● First State Bank |
| ● B. and C. Equipment Co. | ● Berry's Cleaners | ● Equity Exchange |
| ● Cut Rate Grocery and Market | ● Cates Grocery and Market | ● Hansford County V.F.W. |
| ● Corner Service Station | ● Corner Drug Store | ● Campbell Tailor Shop |



The Spearman Reporter

Successors to the Hansford Headlight Published Thursday of each week in HANSFORD COUNTY at SPEARMAN, TEXAS

WILL J. MILLER, EDITOR AND PUBLISHER

Entered as second class matter on November 21, 1919, at the postoffice at Spearman, Texas, under the Act of March 3, 1879.

In Hansford and adjoining counties, One Year, \$2.50
Out of Hansford and adjoining counties, One year \$3.00

CLASSIFIED ADVERTISING
First insertion, 4c per word, 2c a word for every issue thereafter
Card of Thanks, 4c per word. Display rates on request

NOTICE TO THE PUBLIC—Any erroneous reflection upon any reputation or standing of any individual, firm or corporation that may appear in the columns of The Spearman Reporter will be corrected when called to the attention of the management!

Don't Name It! by "Honest" Bill Miller

Lloyd Campbell, former skipper of the First National Bank of Spearman and a good Texan with all the characteristics of the state, has certainly fallen from grace after spending 15 or 18 years in Kansas. Lloyd and Mrs. Campbell were here this week visiting with friends, after having completed the harvest of their grain near Perryton. Among the conservative comments Lloyd made, he also told a whopper. He tells about an airplane from Texas radioing ahead to Kansas to clear a spot to land a plane with 5000 people. Of course the Kansas Yankees knew that even a Texas plane would not hold 5000 people but they went ahead and cleared a spot and the plane landed. Then out of the plane came a steady stream of little people no larger than 2 feet tall. One of the airport attendants asked the crewman where all them midgets came from. The crewman said them's not midgets, that's Texans with all the hot air and bragging dehydrated from 'em.

And I guess that Texans are the biggest braggars in the world and Hansford county is the biggest bragging section of Texas. We always have the biggest wheat crops and the tallest elevators and the meanest storms and the prettiest wimmen of any and all the world.

And I reckon that the newspapers of Texas are the biggest braggars and no doubt the newspaper of Hansford county is the biggest liar in Texas.

which brings me down to the point of making a painful correction. Last week while getting the general story for the harvest comments, this writer tried to get every elevator operator to estimate just who had the biggest

that only summer fallowed land was making any sort of outstanding production. . . and that this was not a bumper crop year. . . so you have the dehydrated facts. . . and let's forget the whole thing.

Ray Stephens, skipper of the Baptist church of Spearman has appointed the country editor as a sort of one man publicity committee to bring the facts to members of the church. The facts we want these members to know at this time is that the deacons and Ray have undertaken the big job of lifting the mortgage on the church on or by the last day of July. The church owes in the neighborhood of \$21,000.00. It is financed over a period of years, but our preacher and our deacons feel like we should get rid of this indebtedness while we have a good price for wheat and at least above normal production. This writer does not know whether the majority of the wheat producers will have their gain harvested and the government loan thru the regular channels by the time the deadline is set or not. . . but we do know that we should by all means pay this indebtedness off this year. And we sure hope that we can make the grade by the deadline set by our church leaders.

If you are a member of the Baptist church. . . or a friend of the church and can give pretty liberally. . . let's all stretch the matter a point and give the country editor sumpin really BIG to brag about. . . and we won't even have to exaggerate the truth. Just lift this indebtedness on or before the last day of July, and we can have another accomplishment to our credit. . . let's not dehydrate our efforts in this campaign. . . let's really go to town.

Incidentally this writer has promised to keep mum about the new Methodist church until the organization gets ready to move into the beautiful new home. However, we had the opportunity to see the new pews and the altar as they were being installed Monday of this week. Boy, I'm not gonna dehydrate these facts. . . they are out of this world. The altar was designed by Rev. R.S. Watkins. and if you think I'm exaggerating just slip down to the church and take a look-see.

EARLY 4th

A fourth of July in style is written about the late Clayton McCrea. Hansford County pioneer, in an old letter to Dr. J. C. Jones.

"Just what kind of a fourth do you have on the Palo Duro now? I'll bet a chip with a hole in it, nothing like our Palo Duro 4ths

of 40 years, with our picnics, fish fries, baseball, horse races, and Oh Boy, THE EATS. My tongue slobbers for them days that's gone forever." (By the splendors of Solomon). We didn't have to figure points to eat. You just tanked up and piled in some more until you fell by the wayside and you stoted home. And I just bet you don't have the good old time ranch dances - remember the dance in the loft of Hado barn, then at Zula, George Spiveys and then one at the Cator ranch. Don't remember any dance at the VZ although they may have had one there and we always had the EATS. "Them days are gone forever" and there you are.

Well that's about all; hadn't intended to be so windy but when I get wound up, it's just got to bust out or explode. Don't think I'd know the old Palo Duro now for the creek to be bare of alfalfa, cattle, and horses just don't seem to hang fire. Do you folks run any cattle now or has the nesters got everything. They now style themselves as wheaties and is all the creek in that class?

I am sending you a little doggerel that I thought of the nester; I was going to tell you about the Palo Duro when I first hit it. There were only four dugouts and a stockade from the mouth of the creek to its head and just six men residents of the county. There was the 777 Ranch (white house), old Paddy O'Neil rock faced dug-out; the Zulu Stockade and the old picket house Tyler's all gone, possibly the rock wall of old Paddy's Dugout may be yet standing.

You folks own the spot. The first house permanent built in the Panhandle was the Zulu Stockade or store. There was no Fort Elliot then. It was built in 1875. The Adobe Walls Fight was June 1874 and da whole lot more that wouldn't interest you and of the first public school taught on the Canadian River at old Tascosa in 1885 by yours truly, and the Big Killing there March 21, 1886, and I got mixed in it. Officially only 4 killed; two wounded; take it from me son, there was a hot time in the old town that night. Now I'm signing off; you all, and the Mrs. is doing the writing, and I'll not butt in any more. With best ever to you all.

Your old timer,
Old Man McCrea

The landing of the NESTER ON THE PALO DURO:

The breaking waves dashed high on a low and grassy shore. The cotton woods against the stormy sky

Their giant branches tossed And the heavy night hung dark and dour
The hills and water o'er
When a band of nesters
Snagged their panas

On the wild Palo Duro Shore. Not as conquerers, weary nesters, came. But to tear up the soil in the cow land of the free. Days, months, years, ages Shall pass away on that Fair Palo Duro Shore. Yet, all the nesters left Are dusters forever more.

The average person forms an opinion by adding to a small measure of information a dash of imagination and a large quantity of prejudice, shaking well with emotion.

Not every lawsuit is worth the time involved in having it decided.

The woman down the street says her son doesn't have any trouble learning to play the saxophone except with the neighbors.

There has not been a single day since the world began when the sun was not shining; the trouble has been with our vision.

Eyes set too close together may mean a mean disposition, but lips set too far apart are sure to get you in trouble.

A mosquito doesn't bite, it stings.

A gardener in baseball is an out fielder.

Bargain

We have a nice stock of 1000 x 2200
Bushel Butler Grain Bins in stock
at reduced prices

WHITE HOUSE PROPERTIES
SPEARMAN TEXAS

FOLKS

We are sorry that we cannot handle your wheat as you cut it. We are doing everything possible to do this -- but we cannot control our box car supply.

More than half of the storage space we have available for your use is at our local elevators but we are dependent on box cars for the balance.

WE STILL HAVE PLENTY OF ROOM IN WHICH WE CAN STORE YOUR WHEAT BUT WE MUST HAVE BOX CARS TO MOVE THE WHEAT TO IT.

A few cars are being received each day but we have only been able to fill about twenty percent of our terminal space because of this scarcity of cars.

EQUITY

CITY OF SPEARMAN

LEO DACUS, City Manager

Warning

Wide Spread disregard for the ordinances of the City of Spearman relative to the sale of fireworks, and relative to explosion of fireworks in this city, has been called to the attention of city officials . .

SO THE PUBLIC MAY KNOW

There is ordinances on the statute books of this city prohibiting the sale and explosions of fireworks within the city limits of Spearman.

The only exception, which is in line with state laws, is for the sale of fireworks by proclamation of the City Council, and then for not more than 2 days in succession.

The law is for the purpose of providing wholesome participation of youngsters, under adult supervision, so that certain holidays may be enjoyed with a degree of pleasure by youngsters.

ANY VIOLATION OF THIS Ordinance will be subject to fine.

THIS WARNING is to inform both those who sell and explode fireworks that city officials have no recourse other than the enforcement of the ordinances on the statute books of the city.

Make that Extra
PAY YOUR TAXES



You can do it
with this
Kitchen
Sensation

The All-New 1940

When you can put an entire kitchen space, you can make almost any room Pureaire fits anywhere! Easy and attractive, long-lasting. Complete! Range, oven, refrigerator, drawers. Odorless! Whisks out cooking odors. Priced right! A lot for the money. Write for FREE Brochure showing and floor plans.

KILMAN and BATES
2373 North Main
Ft. Worth, Texas
Gentlemen:
Please send free Brochure showing floor plans.

NAME _____
ADDRESS _____

WHITE HOUSE PROPERTIES
SPEARMAN TEXAS

FOR 20 YEARS, SYMBOL OF QUALITY

to 20, 1940
HANKS
of expres-
banks and ap-
fine people of
man who were
derate during
th of our son
ruly you gave
AT
moving care and
AT
he
had had been
community. Your
athy has been a
to us in our
richest blessings
you.
Mrs. J.A. Barton
Wheeler, Texas
at
today seems to
planes into the
the cost of
of the ground.
more enjoyable
ed to enjoy it.
TEXAS
NSFORD:
MAXY
ELECTION
IDENT QUALI-
S OF THE City of
own taxable prop-
and who have
same for taxa-
that an election
the City of Spear-
the 9th day of
re proposition and
re particularly set
resolution adopted
mission on the
ie, 1949, ordering
hich is as follows:
LUTION
Commission of the
an, Texas Calling
the proposition of
of \$24,000.00 rev-
of the cost of plan-
airing, establish-
g, constructing, o
airport or air ma-
or the site there
buildings and othe
ental to the oper-
e City Commissi-
Spearman, Texas,
seable to issue U
aid city for the pu
er mentioned;
SOLVED BY TE
SION OF THE CI
AN, TEXAS:
election be held
Spearman, Texas,
of July, 1949,
the following pr
be submitted:
City Commission
Spearman, Texas,
issue bonds of t
sum of \$24,000
ally in such inst
be fixed by the
the maximum ma
more than tw
om their dates, b
at a rate not to
) and one half
sum, for the pur
and acquirin, e
eloping, constru
g, and airport o
facility, or the
cludin buildings
ies incidental b
ereof, to be issu
with and secu
provided in A
46d - 22, includ
1 Civil Statute
5, as amended,
conditioned th
roof shall never
o demand paym
ion out of funds
ised by taxatio
dge of the net r
operation of sa
ir navigation f
at all bonds sha
see that the p
st, are payable
venues of such
igation facility
said election b
e City Hall, Sp
hin said City,
named persons
ted directors
o wit:
aney, Presiding
ter, Judge
V. Crawford, C
skins, Clerk,
said election
er the provi
Title 22, of th
utes of 1925, s
uly legally qual
own taxable p
and who have
same for taxa
led to vote.
ballots for sa
written or pri
llowing:
e Insurance C
Bonds."
The Insurance
oter shall ma
k or black pe
re expressions
other as the
the proportio
substantial co
on signed by
City and att
retary shall s
e of said ele
given in acc
704, Revised
5 amended, T
ed and direc
said notice
all and at tw
within said
fteen days pr
for holdin
ll also cause
lished on the
f two success
aper of gene
hed within
ate of the fi
not less than
to the date

HANKS of expressions of appreciation from the people of Spearman, Texas, who were so generous during the election of July 15, 1949.

THE STATE OF TEXAS: COUNTY OF HANSFORD: CITY OF SPEARMAN: I, the undersigned, City Secretary of the City of Spearman, Texas, do hereby certify that the above and foregoing is a true, full and correct copy of a resolution adopted by the City Commission of the City of Spearman, Texas, (and of the minutes pertaining thereto) on the 15th day of June, 1949, calling an election on the issuance of \$24,000.00 Airport Revenue Bonds, which resolution is of record in the minutes of said City Commission.

Executed Under My Hand and seal of said City, this 15th day of June, 1949. Leo Dacus, City Secretary, City of Spearman, Texas.

NOTICE TO LAND OWNERS Minnie A. Peterson, a widow, Dorothy P. Edwards and husband, Talbert Edwards, Henry M. Peterson and wife, Theo H. Peterson, Mary B. Peterson, a feme sole, Agnes A. Grosvenor, a widow, Luella P. Stein and husband, Vincent Stein, Carrie M. Edwards and husband, Edgar Edwards, and Carl W. Peterson and wife, Mary R. Peterson, C. S. McGarragh, E. T. Jensen, Mrs. Mary A. B. Ducoron, Gertrude Llewellyn, Dorothy S. Ainsworth, Florence A. White, Albert G. Higgins, James P. Pearson, G. A. Shallberg, E. T. Jensen, Katherine Watson Atkins, John Basel Watson, Ardo W. Mitchell, Genevieve B. Sweeney, Fred L. Mitchell, Robert C. Mitchell, Leon W. Mitchell, Francis M. Johnson, Carolyn A. Getz, Lloyd E. Kennedy; Mrs. May Wilkes Crowe, James B. Langston, S. P. Jackson, K. K. Jackson, August Paulsen, Ester Paulsen Houser, Margaret Moody, and The Norwegian Luther an Church of America; Non-residents of Hansford County, Texas. You are hereby notified that the undersigned jury of freeholders, acting under and by virtue of an order of the Commissioners Court of Hansford County, Texas, will on the 9th day of July A. D. 1949, proceed to lay out and survey a road, 100 feet in width, the

center line of such proposed road being described by field notes as follows: Beginning at a point on the Texas-Oklahoma State line, same being the North line of Section 7, Block 1, Public School Land and 660 feet West of a State Line concrete marker; THENCE, South 4963.9 feet, more or less, through said Section 7; THENCE, Continuing South 11,713.0 feet more or less, along the West lines of Sections 241, 242, and 243 and the East lines of Sections 240, 239, and 238, Block 2, G. H. and H. R. R. Co. Survey; THENCE, Southwesterly around a curve to the right whose central angle is 15 degrees 28' with radius of 2,864.9 feet for a distance of 773.3 feet; thence, South 15 degrees 28' West for a distance of 970.0 feet; thence, Southeasterly around a curve to the left whose central angle is 46 degrees 26' with radius of 1,432.7 feet for a distance of 1,160.8 feet; thence, South 30 degrees 58' East, 393.4 feet more or less, through the east portion of Section 238, Block 2, G. H. and H. R. R. Co. Survey; THENCE, Continuing South 39 degrees 58' East, 894.4 feet more or less, through the Southwest portion of Section 243, Block 2, G. H. and H. R. R. Co. Survey; THENCE, Continuing South 39 degrees 58' East, for a distance of 1,463.4 feet; thence around a curve to the left whose central angle is 40 degrees 32' with radius of 1,432.7 feet for a distance of 1,013.3 feet; thence South 71 degrees 30' East for a distance of 3,545.9 feet, more or less, through Section 244, Block 2, G. H. and H. R. R. Co. Survey; THENCE, Continuing South 71 degrees 30' East 156.8 feet; thence, around a curve to the right whose central angle is 14 degrees 16' with radius of 2,864.9 feet for a distance of 713.3 feet; thence South 57 degrees 14' East for a distance of 3,545.9 feet, more or less, through Section 235, Block 2, G. H. and H. R. R. Co. Survey; THENCE, Continuing South 71 degrees 30' East for a distance of 1,621.6 feet; thence around a curve to the left whose central angle is 10 degrees 03' with radius of 5,729.7 feet for a distance of 125.1 feet, more or less, through Section 284, Block 2, G. H. and H. R. R. Co. Survey; THENCE, Continuing around a curve to the left whose central angle is 10 degrees 03' with radius of 5,729.7 feet for a distance of 879.9 feet; thence South 67 degrees 17' East for a distance of 1,157.4 feet; thence, around a

curve to the right whose central angle is 26 degrees 20' with radius of 2,864.9 feet for a distance of 1,316.7 feet; thence, South 40 degrees 57' East for a distance of 2,955.8 feet; thence, around a curve to the left whose central angle is 49 degrees 02' with radius of 1,432.7 feet for a distance of 546.8 feet, more or less, through Section 298, Block 2, G. H. and H. R. R. Co. Survey; THENCE, Continuing around a curve to the left whose central angle is 49 degrees 02' with radius of 1,432.7 feet for a distance of 579.0 feet; thence, South 89 degrees 59' East for a distance of 4,237.3 feet; thence, around a curve to the right whose central angle is 90 degrees 02' with radius of 383.1 feet for a distance of 600.2 feet; thence, South 0 degrees 03' West for a distance of 4,852.2 feet, more or less, through and between Sections 5, 6, and 25, Block P. H. and G. N. R. R. Co. Survey to the North-east corner of Section 7, Block P. H. and G. N. R. Co. Survey and the end of this survey. Same being approximately nine miles North of Gruver in Hansford County, Texas, all situated in Hansford County, Texas and along which may run through, or along

the section lines of certain lands owned by you, and will at the same time proceed to assess the damages incidental to the opening of said road, when you may present to us a statement in writing of the damages, if any, claimed by you. Witness our hands this 4th day of June AD 1949. F. R. Wallin, E. M. McClellan, Anson Ward, William F. D. Ebling, Roy Thomas. No. 27-4t-c CITATION BY PUBLICATION THE STATE OF TEXAS TO: John Allen Dray, Lafa G. Burke and Hallie P. Hunter, whose respective places of residence, if living, are unknown, and if any of said persons be deceased the unknown heirs, their heirs and legal representatives respectively of said persons who may be deceased, whose respective places of residence are unknown; GREETING: You are commanded to appear and answer the plaintiff's petition at or before 10 o'clock A. M. of the first Monday after the expiration of 42 days from the date of issuance of this citation, the same being Monday the 25th day of July, A. D., 1949, at or before 10 o'clock A. M. before the Honorable District Court of Hansford County, at the Court House in Spearman, Texas. Said Plaintiff's petition was filed on the 8th day of June, 1949. The file number of said suit being 575. The names of the parties in said suit are: Ottamay Cooke, joined by her husband, Jack A. Cooke, as Plaintiffs and John Allen Dray, Lafa G. Burke and Hallie P. Hunter, whose respective places of residence, if living, are unknown, and if any of said persons be deceased, the unknown heirs, their heirs and legal representatives of said persons who may be deceased whose respective places of residence are also unknown, as Defendants. The nature of said suit being substantially as follows, to-wit: A suit in Trespass to Try Title, for title and possession, rents, damages removal of cloud from title, writ of restitution, costs, general and special relief, of and concerning Lot No. 2 in Block No. 26, Original Town of Spearman, situated in Hansford County, Texas. 1949. Given under my hand and seal of said court, at office in Texas, this 8th day of June A. D., 1949. Fred J. Hoskins Clerk District Court, Hansford County Texas. By Deputy 27-4t-c

tion. Except as otherwise provided in said Article 704, as amended, the manner of holding said election shall be governed by the Laws governing general elections. Adopted and Approved this 15th day of June, 1949. C. A. Glibner, Mayor, City of Spearman, Texas. ATTEST: Leo Dacus, City Secretary, City of Spearman, Texas.

THE STATE OF TEXAS: COUNTY OF HANSFORD: CITY OF SPEARMAN: I, the undersigned, City Secretary of the City of Spearman, Texas, do hereby certify that the above and foregoing is a true, full and correct copy of a resolution adopted by the City Commission of the City of Spearman, Texas, (and of the minutes pertaining thereto) on the 15th day of June, 1949, calling an election on the issuance of \$24,000.00 Airport Revenue Bonds, which resolution is of record in the minutes of said City Commission.

Executed Under My Hand and seal of said City, this 15th day of June, 1949. Leo Dacus, City Secretary, City of Spearman, Texas.

NOTICE TO LAND OWNERS Minnie A. Peterson, a widow, Dorothy P. Edwards and husband, Talbert Edwards, Henry M. Peterson and wife, Theo H. Peterson, Mary B. Peterson, a feme sole, Agnes A. Grosvenor, a widow, Luella P. Stein and husband, Vincent Stein, Carrie M. Edwards and husband, Edgar Edwards, and Carl W. Peterson and wife, Mary R. Peterson, C. S. McGarragh, E. T. Jensen, Mrs. Mary A. B. Ducoron, Gertrude Llewellyn, Dorothy S. Ainsworth, Florence A. White, Albert G. Higgins, James P. Pearson, G. A. Shallberg, E. T. Jensen, Katherine Watson Atkins, John Basel Watson, Ardo W. Mitchell, Genevieve B. Sweeney, Fred L. Mitchell, Robert C. Mitchell, Leon W. Mitchell, Francis M. Johnson, Carolyn A. Getz, Lloyd E. Kennedy; Mrs. May Wilkes Crowe, James B. Langston, S. P. Jackson, K. K. Jackson, August Paulsen, Ester Paulsen Houser, Margaret Moody, and The Norwegian Lutheran Church of America; Non-residents of Hansford County, Texas. You are hereby notified that the undersigned jury of freeholders, acting under and by virtue of an order of the Commissioners Court of Hansford County, Texas, will on the 9th day of July A. D. 1949, proceed to lay out and survey a road, 100 feet in width, the

center line of such proposed road being described by field notes as follows: Beginning at a point on the Texas-Oklahoma State line, same being the North line of Section 7, Block 1, Public School Land and 660 feet West of a State Line concrete marker; THENCE, South 4963.9 feet, more or less, through said Section 7; THENCE, Continuing South 11,713.0 feet more or less, along the West lines of Sections 241, 242, and 243 and the East lines of Sections 240, 239, and 238, Block 2, G. H. and H. R. R. Co. Survey; THENCE, Southwesterly around a curve to the right whose central angle is 15 degrees 28' with radius of 2,864.9 feet for a distance of 773.3 feet; thence, South 15 degrees 28' West for a distance of 970.0 feet; thence, Southeasterly around a curve to the left whose central angle is 46 degrees 26' with radius of 1,432.7 feet for a distance of 1,160.8 feet; thence, South 30 degrees 58' East, 393.4 feet more or less, through the east portion of Section 238, Block 2, G. H. and H. R. R. Co. Survey; THENCE, Continuing South 39 degrees 58' East, 894.4 feet more or less, through the Southwest portion of Section 243, Block 2, G. H. and H. R. R. Co. Survey; THENCE, Continuing South 39 degrees 58' East, for a distance of 1,463.4 feet; thence around a curve to the left whose central angle is 40 degrees 32' with radius of 1,432.7 feet for a distance of 1,013.3 feet; thence South 71 degrees 30' East for a distance of 3,545.9 feet, more or less, through Section 244, Block 2, G. H. and H. R. R. Co. Survey; THENCE, Continuing South 71 degrees 30' East 156.8 feet; thence, around a curve to the right whose central angle is 14 degrees 16' with radius of 2,864.9 feet for a distance of 713.3 feet; thence South 57 degrees 14' East for a distance of 3,545.9 feet, more or less, through Section 235, Block 2, G. H. and H. R. R. Co. Survey; THENCE, Continuing South 71 degrees 30' East for a distance of 1,621.6 feet; thence around a curve to the left whose central angle is 10 degrees 03' with radius of 5,729.7 feet for a distance of 125.1 feet, more or less, through Section 284, Block 2, G. H. and H. R. R. Co. Survey; THENCE, Continuing around a curve to the left whose central angle is 10 degrees 03' with radius of 5,729.7 feet for a distance of 879.9 feet; thence South 67 degrees 17' East for a distance of 1,157.4 feet; thence, around a

curve to the right whose central angle is 26 degrees 20' with radius of 2,864.9 feet for a distance of 1,316.7 feet; thence, South 40 degrees 57' East for a distance of 2,955.8 feet; thence, around a curve to the left whose central angle is 49 degrees 02' with radius of 1,432.7 feet for a distance of 546.8 feet, more or less, through Section 298, Block 2, G. H. and H. R. R. Co. Survey; THENCE, Continuing around a curve to the left whose central angle is 49 degrees 02' with radius of 1,432.7 feet for a distance of 579.0 feet; thence, South 89 degrees 59' East for a distance of 4,237.3 feet; thence, around a curve to the right whose central angle is 90 degrees 02' with radius of 383.1 feet for a distance of 600.2 feet; thence, South 0 degrees 03' West for a distance of 4,852.2 feet, more or less, through and between Sections 5, 6, and 25, Block P. H. and G. N. R. Co. Survey to the North-east corner of Section 7, Block P. H. and G. N. R. Co. Survey and the end of this survey. Same being approximately nine miles North of Gruver in Hansford County, Texas, all situated in Hansford County, Texas and along which may run through, or along

the section lines of certain lands owned by you, and will at the same time proceed to assess the damages incidental to the opening of said road, when you may present to us a statement in writing of the damages, if any, claimed by you. Witness our hands this 4th day of June AD 1949. F. R. Wallin, E. M. McClellan, Anson Ward, William F. D. Ebling, Roy Thomas. No. 27-4t-c CITATION BY PUBLICATION THE STATE OF TEXAS TO: John Allen Dray, Lafa G. Burke and Hallie P. Hunter, whose respective places of residence, if living, are unknown, and if any of said persons be deceased the unknown heirs, their heirs and legal representatives respectively of said persons who may be deceased, whose respective places of residence are unknown; GREETING: You are commanded to appear and answer the plaintiff's petition at or before 10 o'clock A. M. of the first Monday after the expiration of 42 days from the date of issuance of this citation, the same being Monday the 25th day of July, A. D., 1949, at or before 10 o'clock A. M. before the Honorable District Court of Hansford County, at the Court House in Spearman, Texas. Said Plaintiff's petition was filed on the 8th day of June, 1949. The file number of said suit being 575. The names of the parties in said suit are: Ottamay Cooke, joined by her husband, Jack A. Cooke, as Plaintiffs and John Allen Dray, Lafa G. Burke and Hallie P. Hunter, whose respective places of residence, if living, are unknown, and if any of said persons be deceased, the unknown heirs, their heirs and legal representatives of said persons who may be deceased whose respective places of residence are also unknown, as Defendants. The nature of said suit being substantially as follows, to-wit: A suit in Trespass to Try Title, for title and possession, rents, damages removal of cloud from title, writ of restitution, costs, general and special relief, of and concerning Lot No. 2 in Block No. 26, Original Town of Spearman, situated in Hansford County, Texas. 1949. Given under my hand and seal of said court, at office in Texas, this 8th day of June A. D., 1949. Fred J. Hoskins Clerk District Court, Hansford County Texas. By Deputy 27-4t-c

tion. Except as otherwise provided in said Article 704, as amended, the manner of holding said election shall be governed by the Laws governing general elections. Adopted and Approved this 15th day of June, 1949. C. A. Glibner, Mayor, City of Spearman, Texas. ATTEST: Leo Dacus, City Secretary, City of Spearman, Texas.

THE STATE OF TEXAS: COUNTY OF HANSFORD: CITY OF SPEARMAN: I, the undersigned, City Secretary of the City of Spearman, Texas, do hereby certify that the above and foregoing is a true, full and correct copy of a resolution adopted by the City Commission of the City of Spearman, Texas, (and of the minutes pertaining thereto) on the 15th day of June, 1949, calling an election on the issuance of \$24,000.00 Airport Revenue Bonds, which resolution is of record in the minutes of said City Commission.

Executed Under My Hand and seal of said City, this 15th day of June, 1949. Leo Dacus, City Secretary, City of Spearman, Texas.

NOTICE TO LAND OWNERS Minnie A. Peterson, a widow, Dorothy P. Edwards and husband, Talbert Edwards, Henry M. Peterson and wife, Theo H. Peterson, Mary B. Peterson, a feme sole, Agnes A. Grosvenor, a widow, Luella P. Stein and husband, Vincent Stein, Carrie M. Edwards and husband, Edgar Edwards, and Carl W. Peterson and wife, Mary R. Peterson, C. S. McGarragh, E. T. Jensen, Mrs. Mary A. B. Ducoron, Gertrude Llewellyn, Dorothy S. Ainsworth, Florence A. White, Albert G. Higgins, James P. Pearson, G. A. Shallberg, E. T. Jensen, Katherine Watson Atkins, John Basel Watson, Ardo W. Mitchell, Genevieve B. Sweeney, Fred L. Mitchell, Robert C. Mitchell, Leon W. Mitchell, Francis M. Johnson, Carolyn A. Getz, Lloyd E. Kennedy; Mrs. May Wilkes Crowe, James B. Langston, S. P. Jackson, K. K. Jackson, August Paulsen, Ester Paulsen Houser, Margaret Moody, and The Norwegian Lutheran Church of America; Non-residents of Hansford County, Texas. You are hereby notified that the undersigned jury of freeholders, acting under and by virtue of an order of the Commissioners Court of Hansford County, Texas, will on the 9th day of July A. D. 1949, proceed to lay out and survey a road, 100 feet in width, the

center line of such proposed road being described by field notes as follows: Beginning at a point on the Texas-Oklahoma State line, same being the North line of Section 7, Block 1, Public School Land and 660 feet West of a State Line concrete marker; THENCE, South 4963.9 feet, more or less, through said Section 7; THENCE, Continuing South 11,713.0 feet more or less, along the West lines of Sections 241, 242, and 243 and the East lines of Sections 240, 239, and 238, Block 2, G. H. and H. R. R. Co. Survey; THENCE, Southwesterly around a curve to the right whose central angle is 15 degrees 28' with radius of 2,864.9 feet for a distance of 773.3 feet; thence, South 15 degrees 28' West for a distance of 970.0 feet; thence, Southeasterly around a curve to the left whose central angle is 46 degrees 26' with radius of 1,432.7 feet for a distance of 1,160.8 feet; thence, South 30 degrees 58' East, 393.4 feet more or less, through the east portion of Section 238, Block 2, G. H. and H. R. R. Co. Survey; THENCE, Continuing South 39 degrees 58' East, 894.4 feet more or less, through the Southwest portion of Section 243, Block 2, G. H. and H. R. R. Co. Survey; THENCE, Continuing South 39 degrees 58' East, for a distance of 1,463.4 feet; thence around a curve to the left whose central angle is 40 degrees 32' with radius of 1,432.7 feet for a distance of 1,013.3 feet; thence South 71 degrees 30' East for a distance of 3,545.9 feet, more or less, through Section 244, Block 2, G. H. and H. R. R. Co. Survey; THENCE, Continuing South 71 degrees 30' East 156.8 feet; thence, around a curve to the right whose central angle is 14 degrees 16' with radius of 2,864.9 feet for a distance of 713.3 feet; thence South 57 degrees 14' East for a distance of 3,545.9 feet, more or less, through Section 235, Block 2, G. H. and H. R. R. Co. Survey; THENCE, Continuing South 71 degrees 30' East for a distance of 1,621.6 feet; thence around a curve to the left whose central angle is 10 degrees 03' with radius of 5,729.7 feet for a distance of 125.1 feet, more or less, through Section 284, Block 2, G. H. and H. R. R. Co. Survey; THENCE, Continuing around a curve to the left whose central angle is 10 degrees 03' with radius of 5,729.7 feet for a distance of 879.9 feet; thence South 67 degrees 17' East for a distance of 1,157.4 feet; thence, around a

curve to the right whose central angle is 26 degrees 20' with radius of 2,864.9 feet for a distance of 1,316.7 feet; thence, South 40 degrees 57' East for a distance of 2,955.8 feet; thence, around a curve to the left whose central angle is 49 degrees 02' with radius of 1,432.7 feet for a distance of 546.8 feet, more or less, through Section 298, Block 2, G. H. and H. R. R. Co. Survey; THENCE, Continuing around a curve to the left whose central angle is 49 degrees 02' with radius of 1,432.7 feet for a distance of 579.0 feet; thence, South 89 degrees 59' East for a distance of 4,237.3 feet; thence, around a curve to the right whose central angle is 90 degrees 02' with radius of 383.1 feet for a distance of 600.2 feet; thence, South 0 degrees 03' West for a distance of 4,852.2 feet, more or less, through and between Sections 5, 6, and 25, Block P. H. and G. N. R. Co. Survey to the North-east corner of Section 7, Block P. H. and G. N. R. Co. Survey and the end of this survey. Same being approximately nine miles North of Gruver in Hansford County, Texas, all situated in Hansford County, Texas and along which may run through, or along

the section lines of certain lands owned by you, and will at the same time proceed to assess the damages incidental to the opening of said road, when you may present to us a statement in writing of the damages, if any, claimed by you. Witness our hands this 4th day of June AD 1949. F. R. Wallin, E. M. McClellan, Anson Ward, William F. D. Ebling, Roy Thomas. No. 27-4t-c CITATION BY PUBLICATION THE STATE OF TEXAS TO: John Allen Dray, Lafa G. Burke and Hallie P. Hunter, whose respective places of residence, if living, are unknown, and if any of said persons be deceased the unknown heirs, their heirs and legal representatives respectively of said persons who may be deceased, whose respective places of residence are unknown; GREETING: You are commanded to appear and answer the plaintiff's petition at or before 10 o'clock A. M. of the first Monday after the expiration of 42 days from the date of issuance of this citation, the same being Monday the 25th day of July, A. D., 1949, at or before 10 o'clock A. M. before the Honorable District Court of Hansford County, at the Court House in Spearman, Texas. Said Plaintiff's petition was filed on the 8th day of June, 1949. The file number of said suit being 575. The names of the parties in said suit are: Ottamay Cooke, joined by her husband, Jack A. Cooke, as Plaintiffs and John Allen Dray, Lafa G. Burke and Hallie P. Hunter, whose respective places of residence, if living, are unknown, and if any of said persons be deceased, the unknown heirs, their heirs and legal representatives of said persons who may be deceased whose respective places of residence are also unknown, as Defendants. The nature of said suit being substantially as follows, to-wit: A suit in Trespass to Try Title, for title and possession, rents, damages removal of cloud from title, writ of restitution, costs, general and special relief, of and concerning Lot No. 2 in Block No. 26, Original Town of Spearman, situated in Hansford County, Texas. 1949. Given under my hand and seal of said court, at office in Texas, this 8th day of June A. D., 1949. Fred J. Hoskins Clerk District Court, Hansford County Texas. By Deputy 27-4t-c

tion. Except as otherwise provided in said Article 704, as amended, the manner of holding said election shall be governed by the Laws governing general elections. Adopted and Approved this 15th day of June, 1949. C. A. Glibner, Mayor, City of Spearman, Texas. ATTEST: Leo Dacus, City Secretary, City of Spearman, Texas.

THE STATE OF TEXAS: COUNTY OF HANSFORD: CITY OF SPEARMAN: I, the undersigned, City Secretary of the City of Spearman, Texas, do hereby certify that the above and foregoing is a true, full and correct copy of a resolution adopted by the City Commission of the City of Spearman, Texas, (and of the minutes pertaining thereto) on the 15th day of June, 1949, calling an election on the issuance of \$24,000.00 Airport Revenue Bonds, which resolution is of record in the minutes of said City Commission.

THE STATE OF TEXAS: COUNTY OF HANSFORD: CITY OF SPEARMAN: I, the undersigned, City Secretary of the City of Spearman, Texas, do hereby certify that the above and foregoing is a true, full and correct copy of a resolution adopted by the City Commission of the City of Spearman, Texas, (and of the minutes pertaining thereto) on the 15th day of June, 1949, calling an election on the issuance of \$24,000.00 Airport Revenue Bonds, which resolution is of record in the minutes of said City Commission.

Executed Under My Hand and seal of said City, this 15th day of June, 1949. Leo Dacus, City Secretary, City of Spearman, Texas.

NOTICE TO LAND OWNERS Minnie A. Peterson, a widow, Dorothy P. Edwards and husband, Talbert Edwards, Henry M. Peterson and wife, Theo H. Peterson, Mary B. Peterson, a feme sole, Agnes A. Grosvenor, a widow, Luella P. Stein and husband, Vincent Stein, Carrie M. Edwards and husband, Edgar Edwards, and Carl W. Peterson and wife, Mary R. Peterson, C. S. McGarragh, E. T. Jensen, Mrs. Mary A. B. Ducoron, Gertrude Llewellyn, Dorothy S. Ainsworth, Florence A. White, Albert G. Higgins, James P. Pearson, G. A. Shallberg, E. T. Jensen, Katherine Watson Atkins, John Basel Watson, Ardo W. Mitchell, Genevieve B. Sweeney, Fred L. Mitchell, Robert C. Mitchell, Leon W. Mitchell, Francis M. Johnson, Carolyn A. Getz, Lloyd E. Kennedy; Mrs. May Wilkes Crowe, James B. Langston, S. P. Jackson, K. K. Jackson, August Paulsen, Ester Paulsen Houser, Margaret Moody, and The Norwegian Lutheran Church of America; Non-residents of Hansford County, Texas. You are hereby notified that the undersigned jury of freeholders, acting under and by virtue of an order of the Commissioners Court of Hansford County, Texas, will on the 9th day of July A. D. 1949, proceed to lay out and survey a road, 100 feet in width, the

center line of such proposed road being described by field notes as follows: Beginning at a point on the Texas-Oklahoma State line, same being the North line of Section 7, Block 1, Public School Land and 660 feet West of a State Line concrete marker; THENCE, South 4963.9 feet, more or less, through said Section 7; THENCE, Continuing South 11,713.0 feet more or less, along the West lines of Sections 241, 242, and 243 and the East lines of Sections 240, 239, and 238, Block 2, G. H. and H. R. R. Co. Survey; THENCE, Southwesterly around a curve to the right whose central angle is 15 degrees 28' with radius of 2,864.9 feet for a distance of 773.3 feet; thence, South 15 degrees 28' West for a distance of 970.0 feet; thence, Southeasterly around a curve to the left whose central angle is 46 degrees 26' with radius of 1,432.7 feet for a distance of 1,160.8 feet; thence, South 30 degrees 58' East, 393.4 feet more or less, through the east portion of Section 238, Block 2, G. H. and H. R. R. Co. Survey; THENCE, Continuing South 39 degrees 58' East, 894.4 feet more or less, through the Southwest portion of Section 243, Block 2, G. H. and H. R. R. Co. Survey; THENCE, Continuing South 39 degrees 58' East, for a distance of 1,463.4 feet; thence around a curve to the left whose central angle is 40 degrees 32' with radius of 1,432.7 feet for a distance of 1,013.3 feet; thence South 71 degrees 30' East for a distance of 3,545.9 feet, more or less, through Section 244, Block 2, G. H. and H. R. R. Co. Survey; THENCE, Continuing South 71 degrees 30' East 156.8 feet; thence, around a curve to the right whose central angle is 14 degrees 16' with radius of 2,864.9 feet for a distance of 713.3 feet; thence South 57 degrees 14' East for a distance of 3,545.9 feet, more or less, through Section 235, Block 2, G. H. and H. R. R. Co. Survey; THENCE, Continuing South 71 degrees 30' East for a distance of 1,621.6 feet; thence around a curve to the left whose central angle is 10 degrees 03' with radius of 5,729.7 feet for a distance of 125.1 feet, more or less, through Section 284, Block 2, G. H. and H. R. R. Co. Survey; THENCE, Continuing around a curve to the left whose central angle is 10 degrees 03' with radius of 5,729.7 feet for a distance of 879.9 feet; thence South 67 degrees 17' East for a distance of 1,157.4 feet; thence, around a

For Sale or Trade

- 1948 DODGE TRUCK 2 1/2 ton 170 inch W. B. Like new with saddle tanks, dual carburetors and grain bed
- 1949 DODGE TRUCK 1 1/2 ton 170 inch W. B. 2 speed axle, booster brakes and reinforced frame. Custom Cab.
- 1949 DODGE TRUCK 1 1/2 ton. 152 inch W. B. booster brakes, reinforced frame and single speed.
- 1939 G. M. C. TRUCK FAIR CONDITION

Mathews Motor Co.



The most Beautiful BUY of all!



"Hold Everything"

until you get hold of the best



Insist on getting these EXTRA VALUES exclusive to Chevrolet in its field!

WORLD'S CHAMPION VALVE-IN-HEAD ENGINE
the extra efficient power plant that's setting the trend for the industry.

FISHER BODY STYLING AND LUXURY
found elsewhere only on higher priced cars.

CENTER-POINT STEERING
giving maximum steering ease without fatigue or "car wander" and four...

CERTI-SAFE HYDRAULIC BRAKES
(with Dual-Life Rivetless Brake Linings)
assuring swifter, safer stops for you and your family.

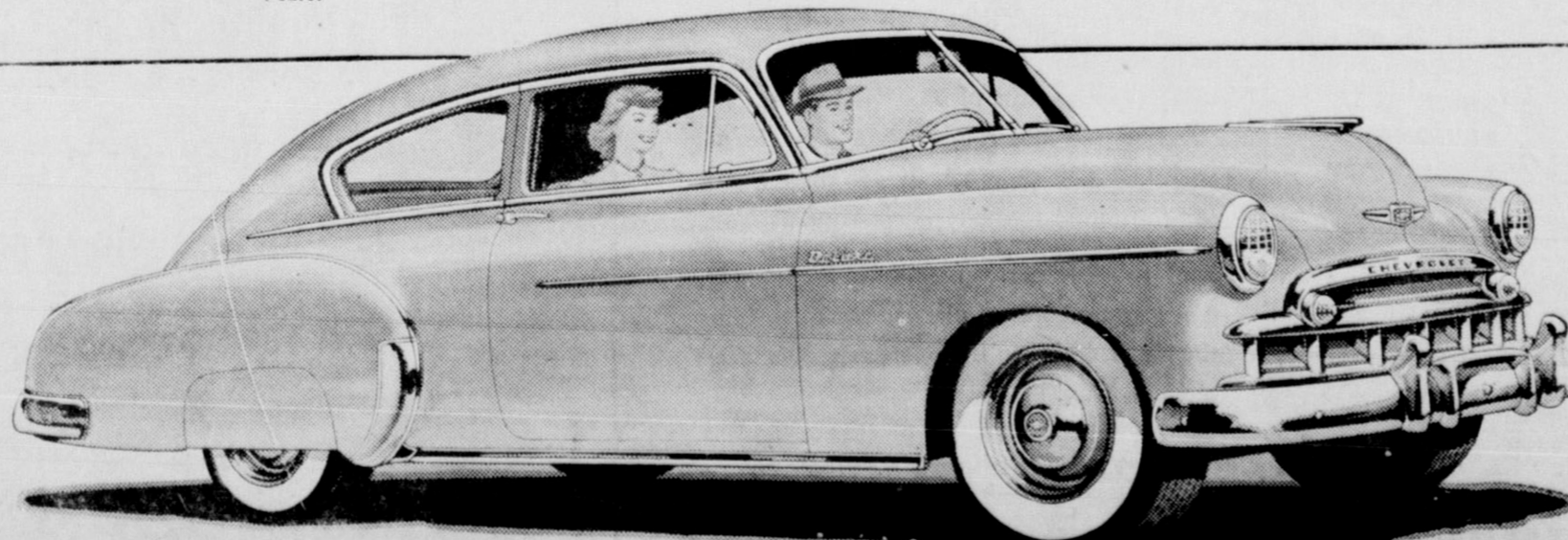
LONGEST, HEAVIEST CAR IN ITS FIELD,
with WIDEST TREAD, as well giving more room, more riding-comfort, more road-steadiness and safety.

5-INCH WIDE-BASE WHEELS
(with Extra Low-Pressure Tires)
the widest rims in the entire low-price field, providing greater ride-stability.

FISHER UNISTEEL BODY CONSTRUCTION
with steel welded to steel all around you for maximum solidity, quietness and safety.

CURVED WINDSHIELD with PANORAMIC VISIBILITY
supplying that extra vision which means extra safety, exclusive to Chevrolet in its field.

EXTRA ECONOMICAL TO OWN—OPERATE—MAINTAIN
and bringing you more when you trade; for Chevrolets are most wanted —new or used!



McClellan Chevrolet Co. Spearman, Texas

Gruver Motor Company Gruver, Texas

JOHN FURBACH

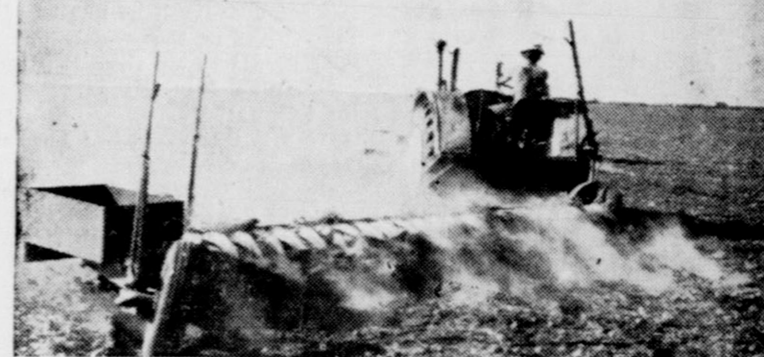
417 Polk Street

AMARILLO - TEXAS



Finest Quality
Diamonds - Watches
Gifts - Jewelry
Hamilton - Longines
Watch Agency

ONE MAN and a KRAUSE one-way



Plow MORE with LESS POWER

A Krause One-Way, by actual field test, has less draft than most other one-way plows. That means more plowing with less power. And in addition a Krause gives you a uniformly level seedbed... cuts through heavy stubble and weeds to give you a chopped-up mulch that is near perfect for topsoil protection... gives you a perfect summer-fallowing tool. You gain many other advantages, too, with a Krause. Check all the features. Compare. Talk to your neighbors who use Krause plows. If you do, it'll be Krause for you.

KRAUSE one-way

McClellan Krause Company

AERIAL SPRAYING

Spray those weeds before harvest and market clean wheat

Aerial Spray Service

Phone 2-9301

Box 848, Amarillo

A. D. (Rabbit) Hare

Joe Whittington

NEED A HOME—FARM BUILDING?

HERE'S YOUR BIG OPPORTUNITY!

Get the Details on Army Camp BUILDINGS 25'x25'

WE'LL TAKE YOUR ORDER RIGHT ON THE SPOT!



Or Our Local Representative

L. S. & C. A. McLain

Will be on hand to take your order. SEE HIS SAMPLE BUILDING THESE BUILDINGS ARE BEING SUPPLIED BY

Dismantling Camp Shelby, Hattisburg, Miss.

