



Former Mayor Coy Palmer and former councilmen Roscoe Nelson shown here with Mayor Ralph Blodgett were presented resolutions of appreciation for their service to the city at the regular city meeting Monday night.



Mayor Ralph Blodgett, right, is shown here with former councilman Richard Holton. Holton was presented a resolution of appreciation for his work for the city at the Monday night city meeting.

City Hall News

At the regular city council meeting held Monday at 8 p.m. at City Hall, resolution was passed in appreciation of the service of outgoing mayor Coy Palmer, and councilmen, Troy Sloan, Richard Holton, and Roscoe Nelson.

The council also read a resolution that they will present to the Jaycee Wives thanking them for their Crosswalk Patrol at the elementary school.

Don Wirsdoffer presented Mayor Ralph Blodgett with a check for \$135.10 from the Spearman Swim Team. The team made this money at the recent Swim-a-Thon held here. The money will go toward expenses of the pool.

Minutes of the previous regular and special meeting were approved.

Sheriff R. L. McFarlin was present to discuss the speeding emergency vehicles in the city. He stated that he had informed his deputies not to speed, that they would get to their destination in about the same time if they obeyed the speed limits, and asked for the co-operation of city employees in this matter.

Also discussed was the following of fire trucks to fires by citizens, which is against state law. Citizens should remain at least 500 feet from the fire for safety and to allow emergency vehicles easy access to fire or accidents. If citizens continue to follow fire trucks, action will be taken.

The council passed a resolution granting a homestead exemption of \$3,000 of assessed value of ad valorem taxes for persons 65 or older.

Stop signs on 11th street were discussed, and the commission voted to pass an ordinance calling for placing 4 way stop signs on 11th and Townsend, 11th and Bernice, a yield sign on Linn Drive, and placing stop signs on 9th and Hwy. 207 and 9th and Roland.

The city expects to receive \$11,699.00 from revenue sharing and decided that \$8,000.00 will be used for financial administration and \$3,699.00 for the park capital outlay.

Bills were discussed and approved for payment. City manager Mark Neff gave his report on systems, taxes, and cash position.

The council agreed to send 3 persons to the training school for firemen at Texas A&M. Richard Holton, Ralph Blodgett and the Rotary Club stated that they would take care of these expenses.

The new water well was discussed. The well has been drilled and gearhead installed and work on the transmission lines is being started.

The council will meet at 1 p.m. Thursday to canvass election returns from the revenue bond election held on Tuesday, June 15.

'76 America's 200th - '76 Hansford County's 100th

The Spearman Reporter

VOLUME 67, NO. 31

THE SPEARMAN REPORTER, SPEARMAN, TEXAS 79081

THURSDAY, JUNE 17, 1976

396-7

Spearman voters set a new record for a large bond issue, as they voted overwhelmingly for the gas and water bond issue Tuesday of this week. The bond issue carried 396-7, in favor of the bond issue. This was a vote of confidence for the city, and Mayor Ralph Blodgett. Troy Sloan was Election Judge.

Editor Billy Miller of Spearman, was the first to vote in the bond election Tuesday. His friend Pat Cates was the last one to vote!

HARVEST BEGINS

Speartex Grain received their first load of wheat for 1976 Tuesday afternoon.

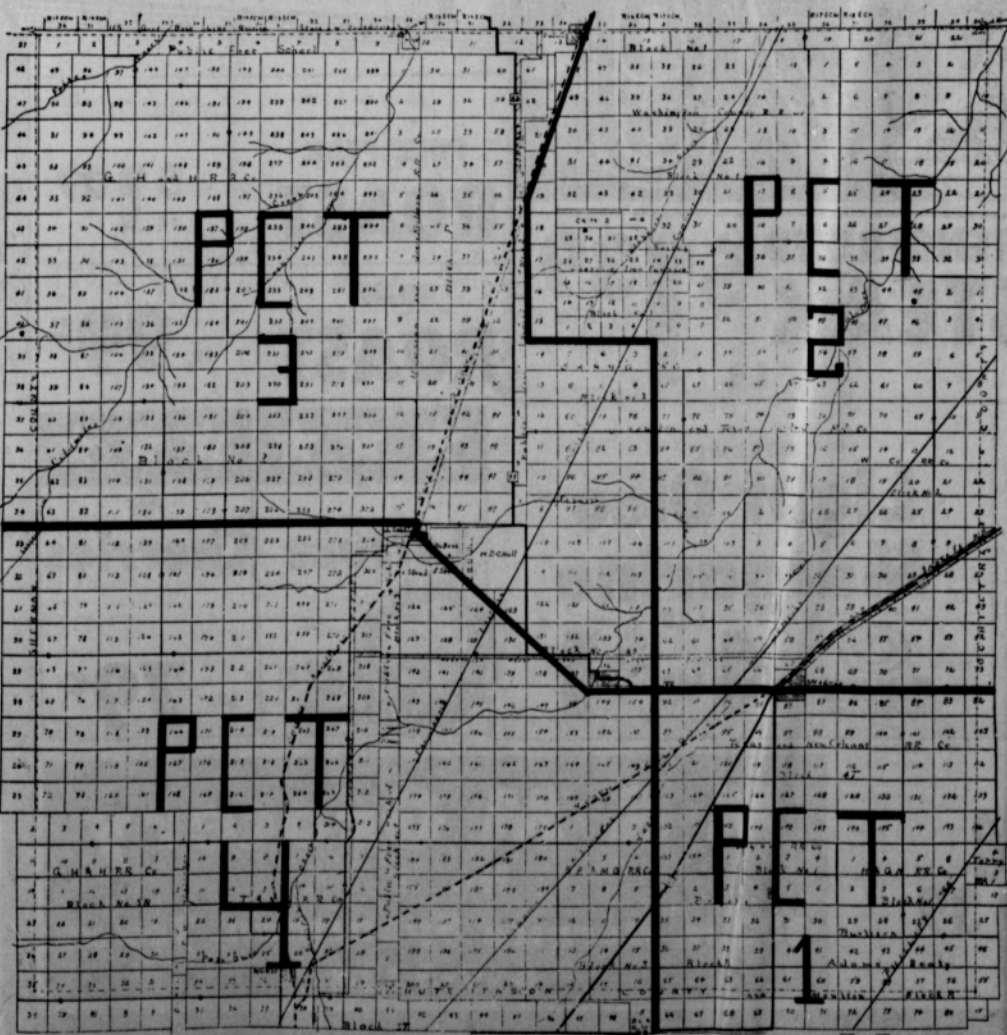
The wheat was harvested by Sid Beck. The test weight was .63 and the moisture content was 10.9.

Dr. Earl Novak delivered the first load of wheat to the new 4-Tex Grain Co. Sunday.

Redistricting Proposal Presented

To Commissioner's

HANSFORD COUNTY TEXAS



Attorneys for Ruth Gurfory of Gruver and other Gruver Citizens appeared Monday morning before the Hansford County Commissioners' Court in Spearman.

Seldon Hale and Tommy Gurfory presented a new proposal for redistricting the Commissioner's Precincts in Hansford County which would place approximately equal numbers of citizens in each of the four commissioner's precincts.

The proposed plan calls for the division of Spearman in half geographically. The south half of Spearman would be located in Precinct #1, and the North half would be in Precinct #2.

Gruver would also be divided in half geographically. The north half of Gruver would be located in Precinct #3 along with Bernstein, Hitchland and Old Hansford. The south half of Gruver would lay in Precinct #4 along with Morse.

Under the proposed plan as submitted by the attorneys, the East-West boundary lines would run from the east side of the county westerly and through Spearman, then to Old Hansford and along the highway through Gruver, and westerly from Gruver to the West side of the county. The North-South boundary line would run from the East side of Hitchland, South through Old Hansford (just west of Old Hansford), and continuing South to the County line.

The plan, as submitted, is similar to the original Precinct lines, but balances the populations in each of the four precincts.

Hale and Gurfory stated that the present system of determining the Commissioner's Precincts is unconstitutional because:

1. The population varies between approximately 1,100 citizens in Precinct #2, to 1,800 citizens in Precinct #4;
2. The two northern Precincts are not contiguous connected with the respect-

ive portions of Spearman; 3. The lack of proper notice constituted an invalid inaction of the present Commissioner's Precincts.

After presenting their proposed plan to the Commissioner's Court, the attorneys for the Gruver citizens agreed to let the Commissioners study the proposal and determine whether it has merit.

Both men stated to the Court that if the Commissioners were unwilling to accept the alternate proposal, they would pursue their remedy in District Court.

The law suit filed on behalf of the Gruver people is still pending in the 84th District Court and has been modified to include various Constitutional issues.

Howard Osborne Rites Held

Howard Lawrence Osborne, 51, died June 13, 1976 in Oklahoma City.

Services were held at 10:00 A.M. June 16, 1976 in the Church of Christ at Olustee, Oklahoma. Burial was in the Olustee Cemetery by the Tims Funeral Home of Altus.

Mr. Osborne had lived in the Olustee area most of his life. He was a member of the Olustee Church of Christ. He was a Veteran of World War II.

He was preceded in death by his first wife Jho in May of 1956. Survivors include his widow, Monia, a son, Larry, a daughter, Mrs. Denice Sadler, both of Altus, his mother and father, Mr. and Mrs. Grady Osborne of Olustee, three brothers, James A. (Slim) of Gruver, Texas; Bill, of Spearman, Texas; Virgil of Smyre, Texas; one sister, Mrs. Norma Drury, of Olustee and two grandchildren.

Commissioner Court Meets

The county commissioners had a long, busy session at the court house in Spearman, Monday. The minutes were read by Commissioners Renner, and approved by all commissioners and Judge Lee, who were present.

The bills were paid, and the treasurer's report reviewed.

The commissioners received no bids on re-roofing the jail roof, and this was tabled. Also, no one appeared from the rodeo committee to discuss the rodeo grounds with the commissioners.

Seldon Hale and Tommy Gurfory presented the proposed changes for redistricting the county.

Chalmers Porter appeared before the commissioners to ask once again that he be appointed to the hospital board. Commissioner Venneman volunteered to place Mr. Porters name in nomination to dispose of the matter, but the motion died for lack of a second.

Hospital News

Patients in Hansford Hospital are Frank Garrison, Juanita Tercero, Arlisa Kennell and daughter, Colleen Jeffries, Susie Hand, Ella Hull and Elizabeth Beck.

Dismissed were James Fairchild, Glenna Price, Myrtle Filer, Agnes Hutchison, Lois Miller, Jesus Avila, Stella Garcia and son, Sharon Pearson, Rose Baker, Luther Ryan and Arthur Monk.

KIDS Summer Schedule

The KIDS Summer Schedule will include "T" ball, track, and tennis. All those participating in "T" ball will meet Monday, Tuesday, Thursday and Friday at Esta Park from 4 to 5 p.m., this includes boys and girls.

Girls track will meet Friday from 5 to 6 p.m. A new session of tennis begins on June 22 for boys and girls. Tennis will be played from 5 to 6 p.m. at the tennis courts. For more information call 2462 or 3002.

The commissioners appointed Wayne Edwards and Max Baggerly to serve on the Hospital Board, Roy Thomas and President of the Hospital Board, Everett Vanderburg resigned the past week.

Equipment was purchased for the court reporter, and the court approved a typewriter and maintenance contract for the tax office.

The LL Dodges of Spearman will journey to Amarillo Thursday to watch the Gold Sox.

Wade Tackitt Services Today

Funeral services will be held today (Thursday) at 3 p.m. at Faith Lutheran Church for Merel Wade Tackitt, who died Monday morning, June 14 at his home, at 434 S. Bernice, Rev. Victor Andersen will officiate with burial in Hansford Cemetery under the direction of Boxwell Brothers Funeral Home here.

Mr. Tackitt was born September 5, 1905 at Texola, Okla. He had lived in Spearman since 1920 and was a retired restaurant operator.

He married Dorothea Nicdean Dec. 22, 1928 at Perryton.

He was a member of the First United Methodist Church. Survivors include the widow Dorothea, two daughters, Anita Pulchini of Redding, Calif.; Alberta Nobles of Spearman; three sisters, Sybil Jones of Perryton, Waneeta Lancaster of Florence, Colo., Irene Sumrall of Beaver, Okla., two brothers, Felix of Boise, Idaho, and Allen of Farmington, N. M. and 4 grandchildren.

Jimmy Largent Drowns in Austin

Word was received Saturday in Spearman of the drowning of Jimmy Largent, 35, son of Floyd Largent and Mrs. Freddie Largent, both of Spearman.

Two other persons drowned also in Lake Travis in Austin.

Largent was a graduate of Winters High School.

At news time the bodies of the three victims had not been recovered. Mrs. Freddie Largent and daughter Pam went to Austin Tuesday.

Be sure to purchase a ticket from the Firemen for the miniature fire truck and from Hansford County Station Master's Museum for a handmade quilt and afghan to be given away July 4th.

County Agent's Report

Texas Livestock producers are operating under a new set of regulations aimed at eradicating bovine brucellosis.

The regulations were adopted by the Texas Animal Health Commission at a hearing in Austin, April 15, points out Jim Kuykendall, county agent for the Texas Agricultural Extension Service.

The regulations combine federal guidelines of the Animal and Plant Health Inspection Service of the U.S. Department of Agriculture. Federal officials were contemplating a quarantine on Texas breeding cattle if the regulations had not been accepted.

A portion of the regulations deal with the vaccination of heifer calves using the Strain-19 brucella abortus vaccine, explains Kuykendall. Vaccination is recommended to increase the immunity of breeding animals in areas where brucellosis has been a problem. Beef heifers should be officially vaccinated between the ages of 90 to 210 days and dairy heifers, 60 to 180 days.

Free vaccine for calfhood vaccination is available in limited quantities but is to be used only in herds having problems with brucellosis. Producers wishing to start a vaccination should contact their local veterinarian.

At a recent hearing in Austin, numerous producers stressed the importance of continued research and adequate financing to improve methods for diagnosis and control of brucellosis, adds Kuykendall.

A copy of the new brucellosis eradication regulations will soon be available for reference at the County Extension office.

CONTROLLING APHIDS IN GARDENS - Aphids are odd looking little insects with two tube-like structures on the end of their back that resemble exhaust pipes. They come in almost all colors--red, yellow, green, black, purple--and can play havoc with a vegetable garden, says Kuykendall.

Aphids, often called plant lice, vary in length from 1/16 to 1/4 of an inch and may have wings. They damage plants by sucking juice from leaves, stems

and fruit and can also transmit diseases to plants. Aphids will attack plants of any size and at any stage of growth--from seedlings to mature plants at harvest. Since aphid numbers can increase rapidly, garden crops should be checked at frequent intervals.

Plants infested with aphids may look wilted, and the ends of leaves may curl up and look yellowish. Heavy infestations of aphids can cause severe plant losses.

Diazinon, dimethoate, endosulfan, malathion and naled are all effective insecticides to treat for aphids.

Before applying any insecticide, make sure it is safe to use on the crops in your garden and follow instructions to the "T".

Mosquito season is almost here and that means the danger increases for sleeping sickness in horses.

Jim Kuykendall, County Agent for the Texas Agricultural Extension Service, says that one of the most serious diseases carried by mosquitoes is equine encephalitis, or sleeping sickness.

There are three kinds of equine encephalitis--western (WEE), eastern (EEE) and Venezuelan (VEE). Eastern and western encephalitis are the most common.

In 1975, 674 cases of WEE and 55 cases of EEE were diagnosed by U.S. Department of Agriculture laboratories. Also, an additional 105 cases of WEE and 40 cases of EEE were diagnosed by state and public health labs. VEE was a problem in Texas in 1971, but since that time no cases have been diagnosed in the U.S.

VEE has a complex natural history with many hosts and it is not known which of these hosts may exist and harbor the virus in Mexico or in the U.S. Since the virtual disappearance of the disease, vaccination against it has declined considerably, notes Kuykendall.

Therefore, if the virus were to reenter this country, it could spread rapidly since most of the horse population is not vaccinated against it.

Kuykendall encourages horse owners to have their horses vaccinated for all three types of equine encephalitis as soon as possible. Taking the time now to have your horses vaccinated can save a lot of heart-break in the future.

WHITE GRUB CONTROL - White grubs have been causing heavy damage to lawn grasses in Texas this spring. However, control has been difficult due to insecticide resistance and improper timing and methods of insecticide application.

Homeowners searching for an effective control method have been inquiring about the use of a bacteria, *Bacillus popilliae*, used to control Japanese Beetles. This bacteria is also known as "milky spore disease" and is sold under a trade name of *Doom* or *Japdemec*. Whether or not milky spore disease will control white grubs in Texas lawns has not been completely determined.

Research has determined that many of the bacteria used for insect control are very specific as to which insects they will control, explains Kuykendall. The white grubs that are doing most of the damage to lawn grasses are of a different species than the Japanese beetle which is controlled by the milky spore disease.

Texas Agricultural Experiment Station entomologists have found that six months after treatment the bacteria treated plots has as many grubs as the untreated plots. However, they were quick to point out that additional information would be required before determining whether or not the bacteria will control white grubs in Texas lawns.

Kuykendall notes that research entomologists will continue to look at the performance of this bacteria as well as other species of bacteria and even some strains of viruses as control measures for white grubs.

Whales cannot breathe under water.

Hansford Golf Club Partnership June 19-20

Entry Fee: \$40.00 Per Team
 Qualified by Lowest Handicap
 Happy Hour - Before Dinner
 STEAK DINNER - SATURDAY - 7:00 P.M.
 Activities After Dinner
 Free Practice Round (Friday)
 TEE OFF TIMES:
 Saturday: 8:00 a.m. - 2:00 p.m.
 Sunday: Shot Gun Start
 2nd-3rd Flight - 9:30 a.m.
 1st - Championship - 2:30 p.m.
 Gift Certificates Awarded

This advertisement sponsored by:



YOUR HARVEST HEADQUARTERS

CONSUMERS SALES

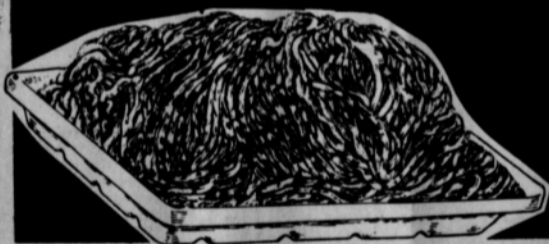
Phone 659-2012
 421 W Kenneth Av. Oil - Gas - Tires - Batteries

SPECIALS FOR: THURS., JUNE 17 THRU SAT., JUNE 19, 1976

Pop Pleasin' Prices

REMEMBER DAD'S DAY We will be open Fathers Day

GROUND CHUCK



79c LB.

Corn 'n Cob



2 EARS FOR 23c

PIKES PEAK ROAST \$1.09 LB.

RUMP ROAST .99c LB.



BEEF LIVER

39c LB.

YELLOW PEACHES 3 FOR \$1 16 OZ.

SHURFINE COFFEE -ANY GRIND- 1 LB. \$1.19

TENDERIZED STEAK \$1.39 LB.

SHURFINE Mixed Vegetables 16 OZ. 3 FOR 89c

IMPERIAL Light Oleo Margarine 1 LB. 4 FOR \$1

Lettuces 25c LB.
Cherries 79c LB.

BONELESS ROLLED ROAST \$1.29 LB.

SLICED SLAB BACON \$1.39 LB.

M & M Grocery No. 1 202 N. Bernice Spearman, Texas 659-3234

Organic Vs. Inorganic Gardening

Organic gardening or farming has increased sharply in recent years, with the high interest being generated by few facts and mostly fiction. Jim Kuykendall, county agent for the Texas Agricultural Extension Service, discusses some of the concepts of organic gardening.

First of all, organic gardening or farming enthusiasts reject the use of synthetic pesticides and fertilizers. Therefore, organic farmers should be informed of limited pest control measures and potential fertility problems.

Marketing could be a big issue as far as organic farming is concerned. A market must be established before the crop is grown, points out Kuykendall.

Regulatory laws to protect the commercial organic farmer and their patrons do not exist and are not possible as it is impossible to detect whether or not fruit or vegetables have been grown organically or inorganically. So, fraudulent marketing is easily accomplished.

In addition to pest control and fertility problems, the organic farmer is also confronted with the same problems encountered by inorganic producers--soil and water management, site selection, bed preparation, land leveling, depth of planting, and frequency and quantity of watering.

It is a scientific fact that organically grown fruits and vegetables are no more nutritious than those grown inorganically. The chemical in plants such as vitamins, carbohydrates and proteins are identical whether the plants are grown organically or inorganically, explains Kuykendall.

Insect pests and plant diseases annually cause billions of dollars worth of damage to crops throughout the world. Losses from diseases alone are estimated at more than \$25 billion. In the U.S., all pests annually reduce crop yields by almost 30 per cent, yet this country produces more than 300 billion pounds of food a year. Such a high level of production would be impossible by organic farming methods.

Organic farming does have a number of virtues and may be feasible on a small scale, points out Kuykendall. However, it could hardly shoulder the responsibility for producing the massive amount of food needed in both this country and abroad.

Grants In Aid, Locally

To what extent has Hansford County been sharing in the billions of dollars of Federal funds that are distributed annually by the government through grants-in-aid?

Of the \$48.2 billion handed out by Washington in the past fiscal year, including \$6.1 billion in revenue sharing grants, how much has reached the local area?

On the basis of Treasury Department figures and a state-by-state analysis of them made by the Tax Foundation, a non-profit organization that keeps track of government taxation and spending Hansford County received a relatively small share.

An estimated \$4,008,000 was earmarked for local purposes during the year under a variety of aid programs.

Throughout the State of Texas as a whole, the grants totaled \$2,198,000,000, the Tax Foundation reports.

They were awarded for such needs as education, welfare, health, job training, urban renewal, food stamps, road construction and the like.

The amounts, it is explained, represent only grants-in-aid and revenue sharing and do not include general Federal expenditures in local areas for goods and services.

Also considered in the study is how much these benefits cost the communities that receive them. They are paid for in whole or in part, by the portion of their income and excise taxes that goes into the aid programs.

Hansford County's contribution to them in the past year was approximately \$4,669,000, according to

a breakdown of the Tax Foundation's figures. The statewide total amounted to \$2,501,000,000. These costs are exclusive of matching funds.

In 20 of the states the contributions exceeded the aid that was received. Two states broke even. The others ended up ahead of the game.

The tax burden fell most heavily on residents of Florida. They paid \$1.46 for each dollar of aid received. Best off were taxpayers in Alaska, who paid only 42 cents per dollar of aid.

No attempt is made to balance the grants and the costs, it is pointed out. The awards are determined by a community's needs and requirements.

INFORMATION FOR VETERANS

The Veterans Administration today reminded former servicemen and women that lost documents should not deter them from seeking VA benefits for which they may be eligible.

Jack Coker, VA Regional Office Director in Waco, said, "We have found that some veterans who cannot locate their birth or marriage certificate are not applying for benefits because they believe these documents are absolutely necessary."

Coker said, "We have trained benefits counselors in each of our 58 regional offices who will assist veterans and their dependents

on the question of eligibility," he said.

For example, VA will accept a certified statement instead of an original birth or marriage certificate when needed to establish eligibility, provided it is the first marriage for both the veteran and spouse and the VA required formal documentation in support of eligibility claims for compensation and education benefits for veterans, widows and orphaned children.

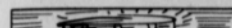
VA's liberalized rules also allow acceptance of a certified statement documenting the birth of a veteran's child or as proof of age and relationship in disability cases.

Coker said, "The VA urged veterans and their dependents have any question concerning eligibility

for benefits to contact the nearest Veterans Administration regional office, veterans county service officer, or a representative of one of the local veterans organizations.

\$1000 Winner

Mrs. Ted Godfrey of Spearman was a \$1000 winner in the Ideal's Cash King Game this week. A picture of Mrs. Godfrey will be in Sunday's paper.



Lash seven quart size cans in a circle. Pad the circle and cover with a piece of carpet for a different kind of foot-stool.

"A hero is one who knows how to hang on one minute longer."

Norwegian proverb

ATTENTION---CATTLE PRODUCERS

THURSDAY, JUNE 10, THE "ACTION" BEGAN AT 10:00 AM AND WE SOLD \$798 CATTLE AND CALVES THROUGH THE ARENA.

WE ARE NOW TAKING CONSIGNMENTS DAILY FOR THE LAST TWO THURSDAYS IN JUNE. WHEN YOU DECIDE WHAT WEEK YOU WOULD LIKE FOR US TO MARKET YOUR CATTLE, LET US KNOW AS SOON AS POSSIBLE.

GEN. MGR. -- LLOYD GOODNER (RES. PHONE 405-423-6601)
CATTLE DEPARTMENT - LLOYD GOODNER & RAYMOND CHOATE

YOUR CATTLE AUCTION WITH "ACTION" EVERY THURSDAY

TEXHOMA LIVESTOCK COMMISSION CO., INC.

P.O. BOX 70, TEXHOMA OKLAHOMA 73949
Phone 405-423-3251 or 405-423-3241 or 405-423-2031.

Prices Good In Perryton's United Super Market!

QUANTITY RIGHTS RESERVED **U** PRICES GOOD THRU JUNE 19TH

SHOP UNITED SUPER THRIFTY

UNITED SUPER MARKETS

LIGHT CRUST
FLOUR
5 LB. BAG
49¢

PEPSI-COLA
• GATORADE
• NESTEA
12 OZ. DIET OR REGULAR
6 FOR 99¢
24 CAN CASE
\$3.80

ALL GRINDS FOLGER'S COFFEE 1 LB. \$1.59 2 LB. \$3.17 3 LB. \$4.74

GOLDEN RIPE
BANANAS
19¢ LB.

BONITA CHUNKS
TOP WAVE FOR CASSEROLES!
6 1/2 OZ. CAN **39¢**

CASSEROLE PINTO
BEANS
2 LB. PKG. **44¢**

DELIGHT SOLID
OLEO **4** 1 LB. PKGS. **\$1**
PILLBURY SWEETMILK OR BUTTERMILK

BISCUITS **8** 8 OZ. CANS **\$1**

FINE FARE PEANUT
BUTTER
SMOOTH OR CRUNCHY
\$1.69
LARGE 40 OZ. JAR

FINE FARE SALTINE
CRACKERS
1 LB. BOX **39¢**

FINE FARE WHITE
HOMINY
CUT GREEN
BEANS DEL HAVEN
SWEET
PEAS DEL HAVEN
5 303 CANS **\$1**

FINE FARE SALAD
DRESSING PINT JAR **39¢**

FINE FARE FABRIC
SOFTENER GAL. JUG **79¢**

FINE FARE
BLEACH HALF GAL. **39¢**

FINE FARE LIQUID
DETERGENT 22 OZ. BTL. **49¢**

"SHOP UNITED'S FARM FRESH PRODUCE"

CALIF. EXTRA LARGE
APRICOTS LB. **49¢**

FLORIDA SWEET
CORN LARGE FULL EARS **8** FOR **\$1**

YELLOW
ONIONS NEW CROP LB. **12¢**

CALIF. LONG WHITE
POTATOES LARGE SIZE LB.

Teen-agers Attend Camp

Eight teens from the Spearman area participated in Encounter, the annual week-long youth lecture-ship and camp held on the campus of Lubbock (Texas) Christian College June 6-12.

Activities included Bible studies, chapel services, chorus and recreational activities.

Speakers included Bobby Hise of Albuquerque, N.M.; Barrie Cox, Amarillo, Tex.; John Paul Blankenship and Carl Cope, both of Lubbock, Tex., and John Rice, Hale Center, Texas.

The program is designed for persons between 12 and 18 years old. The teens live in dormitories at Lub-

bock Christian College and are supervised by college-age counselors. This year's program under the direction of Lubbock Christian College Admissions Director John King, drew 620 young people from Texas, Oklahoma, Kansas, New Mexico, Colorado, Arizona, Louisiana, and Alabama.

Those attending were Leann Biles, 104 Wanda; Chris Bodey, 723 Cotter Dr.; Carrie Clark, 1115 Linn Dr.; Dalene Godfrey, 1119 S. Archer; Debbie and Sherry Greene, Box 5; Pam Largent, 716 Cotter Dr.; and Lisa Sheets, 610 E. Kenneth.

MARKETS

Wheat	\$3.41
Milo	\$4.30
Com	\$2.80

Fireworks Fund Donations

The following people have made donations to the Chamber of Commerce for the 4th of July Fireworks fund: Don Scheil, E-Z Products, Old Hansford H. D. Club, R. L. McFarlin, Massad's Department Store, JoAnn Farr, N. F. Renner, A-1 Automotive, Chambers, J. C. Jackson, Rho Rho, Town & Country Demonstration Club, Xi Zeta, Junior Lusby 'Cats', Gordon's Drug, Berry Cleaners, Cares Men's and Boy's Wear, J. L. Brock Agency, P. A. Lyon Jr., Hansford Abstract Company, Spearman Reporter, The Gift Box, Edhel P. Coolston, Hutchison and Pearson,

Yancey Machine and Welding, Spearman Super Service, Speartex Grain Co., Brown, Graham & Co., H. & H. Water Well Service, Inc., First State Bank, B & B Farm Industries, Excel Chevrolet-Olds, and York Electric.

Rotary Club News

The Spearman Rotary Club met Monday, June 14th at Martin's Steak Garden. Presiding over the meeting was President, Junior Lusby. Mary Brock and Debra Brown, accompanied by Wilma Clark on piano, presented the program with several bi-centennial numbers.

The R.Y.D.E. Auction raised approximately \$6500.00 Sunday. Guest, Kenneth McKay of Perryton issued an official invitation to the Spearman Rotary Club to participate in a joint installation of officers banquet with the Perryton Rotary. The banquet will be held July 1st at the Perryton Club. Guests present were Kenneth McKay of Perryton, Mary Brock, Debra Brown and Wilma Clark all of Spearman. Members present were Carrie Marie Berry, Junior Lusby, Ed Gomer, Bob Pearson, Don Wirsdorfer, Jack McWhirter, Pete Fisher, John Hutchison, J. L. Brock, F. J. Copeland, Mark Neff, Peyton Gibson, Elizey Vanderburg, Coy Palmer, John Lynn, Jim Brown and Ed Freeman.

Next meeting will be June 21st at Martin's Steak Garden.

Hansford Lodge Meets

Hansford Lodge #1040 A. F. & A. M. met Monday, June 14th in the Hansford Lodge Hall with Dan Farley, Worshipful Master presiding. Elective officers for Hansford Lodge #1040 A. F. & A. M. for the 1976-77 Masonic Year resulted in: Worshipful Master - George L. Young; Senior Warden - Cecil Batton; Junior Warden - Henry H. Herring; Treasurer - Tommy Russell; and Secretary - Cecil R. Bigges. Appointive officers will be announced at a later date. Date for installation of all officers of Hansford

Lodge #1040 A. F. & A. M. has been set for Friday, July 9, 1976 at 7:30 p.m. at the Lodge Hall. John R. Collard, Jr., Past Worshipful Master, Past District Deputy Grand Master, and Past Grand Master of the Most Worshipful Grand Lodge of Texas will be the Installing Officer. J. E. Taylor was Election Worshipful Master for the above elected officers of Hansford Lodge #1040 A. F. & A. M. of Texas. We do receive that James E. Reed, formerly of Spearman is in Riverside Hospital in Corona, Calif. Next meeting will be June 28th in the Hansford Lodge Hall.

Fly's wings vibrate 330 times a second.

Swimming Lessons

Swimming lessons will begin at the pool on Monday June 21st. Your child must be 4 years old and able to stand in the shallow water of the pool. This first session of lessons will end on July 2nd. The second session of lessons will begin July 5th and end July 16th. Pool fees will be as follows: \$5.00 for one child; \$7.50 for two children and \$10.00 for three or more children. For mothers interested in having their young child learn water adjustment there will be a class in the July session beginning on the 5th. Children in this group will be in the age group from 6 months old to three years old. The mother must be with the child for these lessons. For further information contact Connie Head at 659-3055.

United Presbyterian News

"What is Prayer?" is the subject of the Bible Study Wednesday, June 16 at the First Presbyterian Church at 8:00 p.m. United Presbyterian Men will have a men's prayer breakfast on Thursday, June 17 at 6:30 a.m. in the church fellowship hall. Lay Renewal Prayer Group will meet Thursday, June 17 at 8:00 p.m. at the home of Mr. and Mrs. Larry N. Holk. "Godspell" the musical depicting the Gospel according to St. Matthew, will be presented by the New York touring company Thursday, June 17, at 8:00 p.m. at the Amarillo Civic Center. Vacation Church School of First Presbyterian and Faith Lutheran Churches will end with a picnic following the morning session on Friday, June 18, at 11:30 a.m. Sunday, June 20 is Father's Day. Fathers are encouraged to attend the adult Sunday School class at the First Presbyterian Church at 9:00 a.m. "Our Father is Lord of the Sabbath" will be the subject of Pastor Ed Freeman's sermon at the service for the public worship of God at 11:00 a.m. Synods of the Sun and Red River will have a Joint Leadership School June 20-26 at Trinity University San Antonio, Texas. Vacation Church School Sharing Program will be held at 10:15 a.m. Sunday, June 20 at Faith Lutheran Church.

Two County Accidents Investigated

The Texas Highway Patrol investigated two accidents on rural highways in Hansford County during the month of May, 1976, according to Sergeant C. E. Henderson, Highway Patrol supervisor of this area. These crashes resulted in no persons killed and no persons injured. The rural traffic accident summary for this county during the first five months of 1976 shows a total of 16 accidents resulting in two persons killed and seven persons injured. The rural traffic accident summary for the 60 counties of the Lubbock Department of Public Safety Region for May, 1976, shows a total of 617 accidents resulting in 14 persons killed and 268 injured, as compared to May, 1975, with 524 accidents resulting in 17 persons killed and 310 persons injured. This was seven less accidents, three less killed and 42 less injured in 1976 at the same period of time. The 14 traffic deaths for the month of May, 1976, occurred in the following counties: Two each in Parker, Wichita, Donley, and Randall; and one each in Kent, Palo Pinto, Casson, Hartley, Potter and Wheeler.

Community Chorus Practicing

Community Chorus practicing on "I Love America" for the 4th of July celebration has five more rehearsals at the Spearman High School Auditorium at 7:30 p.m. Dates of the rehearsals are Monday, June 14; Monday, June 21; Thursday, June 24; Monday, June 28; and Thursday, July 1. It is imperative that all members who have been singing in the choir attend these last five rehearsals.

Prices Good In Perryton's United Super Market!

MARKETS FOR FIXIN'S!

COME CELEBRATE OUR BICENTENNIAL BONUS BONANZA FILL YOUR CARD AND GET 1000 extra S&H Green Stamps



BONELESS TURBOT FILLETS FRESH FROZEN **LB. 98c**

"UNITED'S TRU-TENDR BEEF!"

ROUND OR RIB STEAK **LB. \$1.09**

BONELESS SHOULDER ROAST **LB. \$1.09**

CUBED STEAK **WASTE FREE LB. \$1.79**

CHUCK STEAK **BLADE CUT LB. 78c**

U.S.D.A. CHOICE BEEF BONELESS BRISKETS

7 to 15 LB. AVG.

CRY-O-VAC PACKER TRIMMED

LB. 89c

GARY'S CORN DOGS

10 COUNT PACKAGE \$1.69

FINE FARE AMERICAN OR PIMENTO CHEESE SINGLES

12 OZ. PKG. \$1.09

HORMEL'S BLACK LABEL BACON

1 LB. PKG. \$1.69

"SHOP UNITED'S 86' DAIRY CASE SPECIALS!"

UNITED ICE ASSORTED CREAM **HALF GAL. 86c**

GIBSON SOUR CREAM **3 8 OZ. CRTNS. 86c**

GIBSON WHIPPING CREAM **3 8 OZ. CRTNS. 86c**

GIBSON COTTAGE CHEESE **24 OZ. CRTN. 86c**

EAGLE BRAND MILK **TALL CAN 59c**

WE RESERVE THE RIGHT TO LIMIT QUANTITIES

PRICES GOOD THRU' JUNE 19TH

GILLETTE "GOOD NEWS" DISPOSABLE RAZORS	SAVAGE COLOGNE OR AFTER SHAVE	PEPTO-BISMOL	EDGE SHAVE CREAM
REG. 25¢ VALUE 17c	5 1/2 OZ. YOUR CHOICE \$1.49	12 OZ. \$1.39	ALL 89c

"FROZEN FOODS"

JENO'S PIZZA **79c**

DINNERS **59c**

BIRDSEYE ORANGE **3 12 OZ. CAN \$1.19**

AWAKE **3 12 OZ. CAN \$1.19**

GORTON'S FISH FILLETS **REG. \$1.19 14 OZ. PKG. 98c**

UNITED SUPER MARKETS

WE GIVE S&H GREEN STAMPS



IDEAL'S assistant manager Harley Cornelison is shown here with Leonard DeArmond who won \$100 last week in Ideal's Cash King game.

MDA Fund Drive Approved

The Muscular Dystrophy Association (MDA) has once again met the high standards set by the U.S. Civil Service Commission for the Government's Combined Federal Service Campaign and, for the 19th consecutive year, has been approved for participation in this fund raising drive. Ms. Naida Yost, President of the Greater Plains Chapter of the national voluntary health agency reported today. She noted that "only 13 other agencies have been approved to participate in the 1976-1977 campaign, which will be conducted in the fall at all Federal installations for civilian and military personnel to raise funds for accepted voluntary agencies."

In making the announcement, Mrs. Yost said, "The money raised through MDA's involvement in the Government's drive will help expand our patient and community services programs and the Association's worldwide research efforts."

"MDA spends approximately 80 percent of its income on direct program services," Mrs. Yost continued. "We are particularly proud that the Association remains unique among the nation's voluntary health agencies in providing all of its services free of charge with no means test required or service fees requested of patients and their families."

"MDA's programs are unparalleled in the voluntary health agency field," she said. "We offer a wide range of free medical, recreational, vocational, and educational services through the Association's 234 Chapters nationwide. MDA also maintains a network of 161 hospital-affiliated clinics which provide diagnosis, treatment, orthopedic aids and counseling to patients and their families."

MDA sponsors ten university-based research/clinical centers in the United States and in England, where experts in muscle

disease research are seeking the causes of and cures for the wide range of neuromuscular diseases covered by the Association's programs. In addition, the voluntary health agency supports more than 300 individual research projects in the U.S. and in 17 foreign countries.

"On behalf of the patients we serve, I would like to express the Association's gratitude for the outstanding support we have received from Federal employees in past campaigns. MDA's fight against muscular dystrophy and related disorders has been significantly advanced by the generosity of Federal employees and members of the armed forces," Mrs. Yost said.

MDA receives most of its support from contributions to its Annual Appeal, Carnivals Against Muscular Dystrophy project, and Jerry Lewis Labor Day Telethon which this year will be broadcast in the Pampa viewing area by station KFDA channel 10 from 10:30 P.M., September 5 to 5:30 P.M., September 6.

Highway Department To Eliminate Jobs

AUSTIN -- Some 600 jobs in the State Department of Highways and Public Transportation will probably be eliminated by Sept. 1, 1976, Engineer-Director Luther DeBerry said today.

The new cutbacks follow earlier layoffs last fall in the department's efforts to shape leveling-off revenues to meet rising costs of highway work. Since Sept. 1, 1975, some 2,250 jobs have been eliminated.

"Our dollar simply buys a significantly less actual highway construction and maintenance than it did a few years back. That means fewer projects and fewer projects mean fewer employees," DeBerry said.

The number of department employees has been declining since a 1972 peak when many Interstate Highway construction projects were underway. For some time, not all vacancies created by retirements or resignations were filled. Last year, however, layoffs were required to balance obligations against revenues.

Statewide, the department's work force has dropped from about 20,000 persons in 1972 to 14,850 by Sept. 1, 1976. DeBerry said it may be necessary to eliminate 800 other jobs next year unless additional revenues are made available to offset inflation.

If this cutback is necessary, jobs will be trimmed across the range of department positions, including professional as well as non-professional workers.

Funds for highway development are derived chiefly from state and federal taxes associated with the use of a motor vehicle. During the 1960's the growth in vehicle ownership and in motor fuel tax collections was sufficient to offset effects of inflation.

In the early 1970's however, inflation reached double-digit proportions, while revenues available to the department continued at about the same rates and, later, the rate of growth began to decline.

Meanwhile, costs soared for highway construction

and maintenance. It took \$3.22 in 1974, for example, to accomplish the same highway construction that cost \$1 in 1964.

"It is ironic that we must reduce our forces, laying off experienced people when a huge backlog of work remains to be done," DeBerry said.

Trading Stamps Changed

Saturday, June 26th, is the deadline which has been set to redeem your Buccaneer trading stamps at the Spearman Buccaneer Gift Center. Following this date, Blue Star Western Stamps will be offered in place of the Buccaneer Stamps at most of the stores now offering the Buccaneer Stamps.

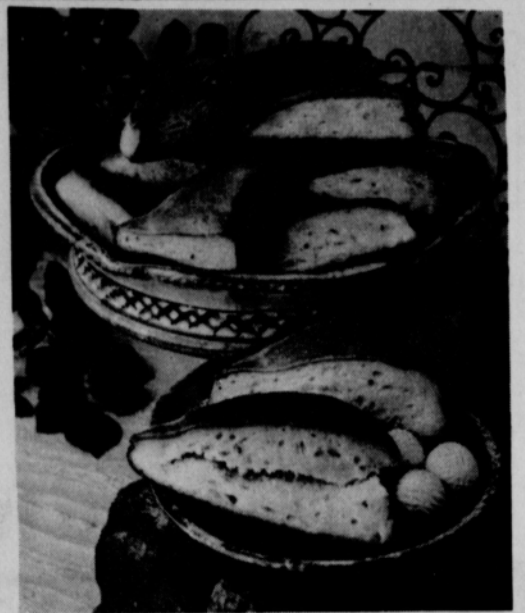
Buccaneer stamps can be redeemed after the 26th deadline in the Amarillo Buccaneer Stamp Center and can always be redeemed by mail.

The old-time recipe for this sweet bread calls for 12 eggs. But an authority on Mexican food told us that today a Mexican cook would never use this number. Frankly, these buns are so ravishingly good made with only three eggs that we didn't miss the nine we left out. However, to obtain the proper texture, we did up the butter.

SWEET ANISE BUNS
 1/2 cup warm water, 105 to 115 degrees
 2 packages active dry yeast
 1/2 cup sugar
 1/2 teaspoon salt
 1 tablespoon anise seed
 1/2 cup butter or margarine, melted
 3 eggs, at room temperature
 3/4 to 4/5 cups flour
 1 egg yolk
 2 tablespoons light corn syrup

In a large bowl sprinkle the yeast over the water and stir until dissolved. Add sugar, salt, anise seed, butter, the whole eggs and 2 cups of the flour. Beat until smooth. Stir in enough additional flour to make a soft dough. Turn out onto a lightly floured surface; knead until smooth and elastic — 8 to 10 minutes. Place in greased bowl; turn to grease top. Cover; let rise in warm draft-free place until doubled in bulk — about 1 hour.

Punch down dough. On a floured pastry cloth with a floured stockinet-covered rolling pin roll out to a 12-inch square. Cut into four 6-inch



MEXICAN BREAD—These sweet anise buns have interesting flavor and great texture.

Beat together egg yolk and corn syrup until blended; generously brush over triangles. Bake in a preheated 350-degree oven for 15 to 20 minutes. Serve warm (or reheat) with butter. Makes 16.

squares. Cut each square into 4 triangles. Place, well apart, on greased cookie sheets. Cover; let rise in warm draft-free place until doubled in bulk — about 1 hour.

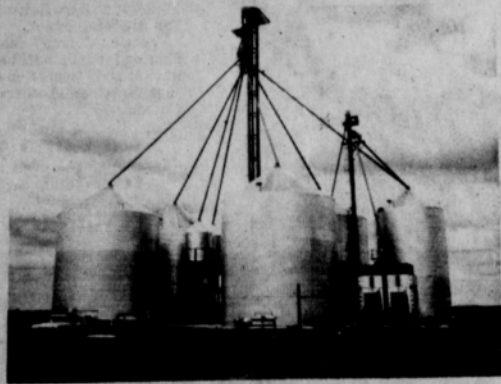
COME OUT TODAY AND MEET OUR NEW SALESMAN... George Young EXCEL CHEV.-OLDS. CO.



SPEARMAN

659-2541

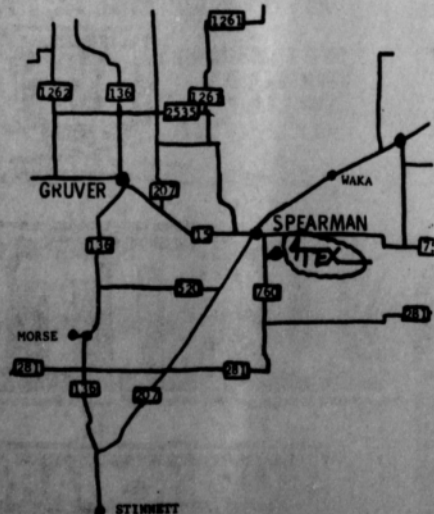
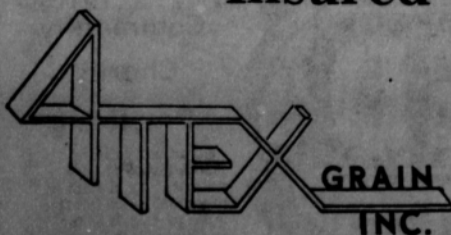
GEORGE YOUNG



We will be ready to Receive Your Wheat Crop

Yes!! We have completed our new elevator and will be receiving this year's wheat crop.

- Bonded
- Licensed
- Insured



5 miles south on FM760
 HARRIETT SHUFELDT - MANAGER

GERALD JOHNSTON
 ELEVATOR
 SUPERINTENDENT

OPEN 24 HOURS

OPEN 24 HOURS

ALLSUP'S
 CONVENIENCE STORES

FILL YOUR SHOPPING NEEDS AT ALLSUP'S

PRICES GOOD THURSDAY THRU SATURDAY, JUNE 17-19, 1976



B-B-Q CHICKEN

\$1.99

SHURFINE BOLOGNA 12 OZ. **79c**

SHARP SHREDDED 4 OZ. Cheddar Cheese **59c**

REGULAR GRIND Folgers Coffee **\$1.49**

BAKERITE SHORTENING **\$1.49**

REMEMBER ALLSUP'S HAS "THE COOLEST DRINK AROUND"!
ICEE EA. **15, 20 & 30c**

TRY IT AT YOUR NEXT PARTY!
Party Ice 10 LB. BAG **49c**

WILSON'S 12 OZ. **Franks** **89c**

FEMINE NAPKINS **KOTEX** REG. 12s **89c**

BATHROOM TISSUE **CHARMIN** **99c**

HOT COOKED FOODS

- BBQ CHICKEN
- BBQ RIBS
- HOT LINKS
- MILD LINKS
- BURRITOS
- CORN DOGS
- GERMAN SAUSAGE
- BULK BBQ BEEF
- BBQ BEEF SANDWICHES



305 W. KENNETH

305 W. Kenneth



Part of the crowd on hand Sunday afternoon on Main Street for the Rotary Youth Drive Enterprise (RYDE) auction is shown here. The Rotary Club raised approximately \$6500.00 for their youth work in Hansford County from the auction. This is the second year the Rotarians have had the auction.



THIS HANDMADE QUILT held by Mrs. Harold Shaver will be given away at a drawing held July 4 at the Spearman Fireworks display. The quilt is a 9 patch, and was made by Mrs. Virgil Hull of Spearman. A \$1 donation to the Hansford County Stationmaster's Museum entitles you to the drawing. A handmade afghan will also be given away.



Linda Crawford, director of Hansford Co. Stationmaster's Museum located at 30 S. Townsend is shown here with a handmade afghan that will be given away at a drawing July 4 at the Spearman Fireworks display. The afghan is red, white and blue and was made by Mrs. Ellzey Vandenberg. A \$1 donation to the Hansford County Stationmaster's Museum makes you eligible for the drawing. A handmade quilt will also be given away.

Remember The Harley Sadler Tent Shows?

LUBBOCK--For the four decades prior to 1947, almost any member of a small community in the Southwest knew that the raising of a large, brown canvas tent signified the arrival of Harley Sadler and his famous, much loved tent shows. People no longer instantly recognize the gable tent, but the meaning of it is still the same. The erection of the 110 x 55 foot tent adjacent to the Texas Tech University Ranching Heritage Center signifies that the New Harley Sadler tent shows are opening soon. Scheduled to begin on June 28, the new shows are a combination of vaudeville, melodrama and music. The plays, honoring the actor-manager Sadler

whose tent shows entertained farmbelt communities of the Southwest in the early part of this century, are part of Lubbock's Bicentennial Celebration. Approximately 30 students of the Texas Tech department of speech and theatre arts will comprise the company of actors. The raising of the tent last weekend was a systematic operation, reminiscent of the original shows, according to boss canvasser, Stephen Maher. The first step was to lay out the four large sections of canvas and lace them together. Next poles were placed at right angles to the edges of the canvas, and stakes were hammered into the ground. Step-by-step instructions guided the 25 workers in lifting the tent and placing

the two A-frame poles which support the center of the tent. Because of the location of the A-frame supports, no poles will block the audience's view of the onstage action. In six hours the ceiling of the tent had been lifted and secured. The length of one side of a truck parked under the tent will fold down to form the stage. Side walls will be installed in the tent, and 150 orchestra seats and bleachers for 400 more persons will be moved in to accommodate the audience. Most of the lighting will be placed behind the proscenium, and front lighting may be added to the A-frame pole situated above the stage. Also inside the tent, flats will be arranged to provide

dressing rooms for the actors. Many audience members may remember Toby, the ragged hayseed character made famous by Harley Sadler and other tent performers. Toby reflected the views of some rural Americans between 1900 and 1947, as his country virtues continually triumphed over city evils. The original Harley Sadler tent shows provided many towns with rare and exciting entertainment. According to columnist Hy Gardner, such entertainment is again in vogue, offering a touch of nostalgia. Tickets for the tent shows may be obtained at the University Theatre box office, open from 9 a.m. until 5 p.m. on weekdays, and 9 a.m. till 12 noon on weekends. Ticket prices are \$3 for orchestra seats, \$1.50 for general admission, and half price for Tech students in either section.

Bullock Reports On State Taxes

AUSTIN--Comptroller Bob Bullock said Thursday that the state earned \$602.7 million in revenues during April, the eighth month of fiscal year 1976, while spending \$492 million. The April totals brought total revenues during the fiscal year to date to \$4.1 billion, the Comptroller said in his monthly financial statement, while year-to-date expenditures climbed to \$4.4 billion. Bullock noted that his new system of depositing tax receipts directly to the Treasury resulted in a net increase of \$57.4 million in the state's cash position at the end of April. Revenues during fiscal year 1976 are running 17 percent ahead of fiscal year 1975, said the Comptroller, while expenditures are about 22 percent higher than fiscal year 1975 expenditures. He said the motor vehicle

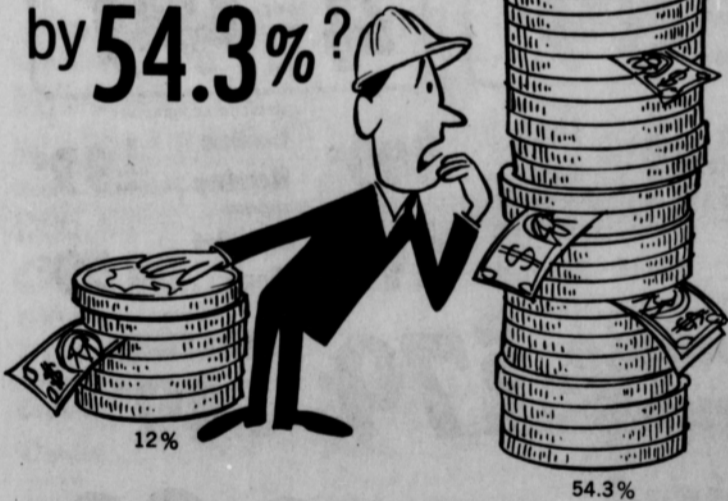
sales tax is yielding 25 percent more revenue than during the same period a year ago, while the sales tax is yielding 14 percent more. Bullock added that state land income from rents, royalties and sales jumped 102 percent during April over April, 1975, income.

The tallest basketball player of all time was Amil Rached of Brazil who was 7 feet 7-5/8 inches tall. Lord, who shall we go to? You have the message of eternal life. John 6:69

High blood pressure won't "just go away." It can lead to heart attack, stroke and other heart diseases. See your doctor and follow his advice. Save your heart. Ask your Heart Association and give Heart Fund.

HOW WOULD YOU REACT

if we told you your fuel bill would increase by **54.3%**?



Probably about the same way we reacted when our fuel bill increased 54.3% from April 1975 compared to April 1976. During that same period of time, our residential electric customer experienced only a 12% increase per average residential kilowatt hour due to higher fuel costs. Unfortunately, fuels needed to generate electricity are not going to get any cheaper in the foreseeable future. We are facing increased prices in most phases of our business, and we're doing our budgeting as carefully as most of our customers are. Our primary objective is to provide dependable electric service, and we're doing it as economically as possible.

COMMUNITY PUBLIC SERVICE
Your Electric Light & Power Company
An Equal Opportunity Employer

MOO!
The world lifetime record yield of milk is 334,292 pounds by a Holstein cow named College Ormsby Burke.

Overseas Employment
TOOLPUSHERS DRILLERS
DERRICKMEN
DIESEL AND DIESEL
ELECTRIC RIG MECHANICS
Must have experience for the above classifications.

Major US drilling contractor operating world wide, land and offshore solicits qualified applicants. Interviews will be held by Mr. Hubert M. Pittman from 8:30 am to 3:00 pm.

Please call for appointment:

Monday, June 21, 1976
Amarillo, Texas
Howard Johnsons West (806) 355-9171
2801 Hwy I-40 W. 1 mi. SW on I-40 At Georgia St. & Julian Blvd, Exit

Tuesday, June 22, 1976

Levelland, Texas
Levelland Motel (806) 894-7335
304 College Ave. 8 blks. NE on 385

Wednesday, June 23, 1976

Lamesa, Texas
The Plainsman (806) 872-2118
9 Blks. South on 87 and 180

If unable to interview, please contact

Santa Fe Drilling Company

A Division of Santa Fe International Corp.
P. O. Box 1946 Odessa, Texas 79760
(915) 362-0241
an equal opportunity employer m/f



Get Your New Car Here, Now Is The TIME, And We'll Guarantee, You Won't Lose A DIME.
*72 Chrysler New Yorker, S.B.A. Automatic--\$1850
*74 Monte Carlo, S.B.A. Automatic, Nice---\$3850

Excel Chev.-Olds. Co.

Remember Your Dad!

FATHERS DAY

LEISURE SUITS

25% OFF

Cates Mens & Boys

ATTENTION

Farmers Stockmen
PANHANDLE LIVESTOCK COMMISSION CO.

Would like to announce a change in sale date. Auction will be held every Friday, starting March 5th, 11:00 A.M. C.S.T. If you have any consignments or need information on special sales, contact Bill Blackmore, 338-3378, H.W.Y. 54 NE Guymon. Home phone 349-2583.



Taylor-Coates Vows Exchanged

In a simple and lovely ceremony performed Sunday afternoon, June 6, in the Firelight Room of the Fellowship Hall of the Gruver Baptist Church, vows were exchanged by Donna Gail Taylor and Galen Joe Coates of Spearman with the Reverend John Denton, minister of the church, officiating.

The bride, a 1976 graduate of Gruver High School, is the daughter of Mr. and Mrs. Dewey Taylor of Gruver and the groom, the son of Mr. and Mrs. Ken E. Coates of Perryton.

The single ring ceremony took place before the fireplace setting marked by a large white basket of spring flowers of various hues. The young bride chose a white dotted Swiss gown embellished with spring flowers with which she wore a wristlet corsage of white daisies, carnation, and bridal wreath.

Special guests for the ceremony and the reception which followed later at the home of the bride's parents included Mr. and Mrs. W. J. Willmon, Mr. and Mrs. Fred Brownlee, Allison and Leslie, all of Borger; Mr. C. E. Willmon, grandfather of the bride from Stratford; Mrs. Mae Shaul, grandmother of the groom from Spearman; Darla Sue Taylor, sister of the bride from Goodwell, Oklahoma; Kenneth Taylor and Cherral Washburn of Gruver.

The reception table at the Taylor home was laid with white lace highlighted by a centerpiece of yellow tea roses. Mrs. Rod Washburn and her daughter, Cherral, presided at the serving table which featured a white wedding cake embellished with yellow roses. Punch and coffee completed the refreshments.

Following a short wedding trip the young couple will be at home at 505 Oklahoma Street in Spearman. Mr. Coates, who is a graduate of the A Iva, Oklahoma High School, is employed by the Hansford Implement in Spearman.



Lady Arrowhead Donna Cook CB'er of the month Spearhead Breakers CB Meets

The Spearhead Breakers C.B. Club had its monthly meeting Thursday night

June 3rd at 8:00 P.M. in the Home Demonstration Club Room. President Sidewinder called the meeting to order and Secretary Penny Candy read the minutes. Lucky Louie gave a very good treasurers report.

Spearhead Breakers will have a booth at the Panhandle Break at Borger July 10 & 11. The club members are selling tickets for a Mobil C. B. to be given away at the Break the 11th. The tickets are only \$1.00 and you do not have to be present to win. The club members are also selling C. B. Handle lists for only \$1.00. The list is eight (8) pages long. If you want to buy a C. B. handle list you may contract one of the following: Three-Time Loser at the Fina Station; Lady Arrowhead at 201 S. Endicott; Gypsy Rose at 1112 S. Bernice; or Penny Candy at 715 S. Bernice.

Lady Arrowhead was elected to be chairman of the ways and means committee. Also elected to serve on the committee were Snow Byrd, Gypsy Rose and Gypsy Mama.

Awards were presented to

the following club members: Channel Peep-Snow Byrd-Diddle Stick-Traction-Bull Shipper-Fuse box-Fastest Trigger-Red Road Runner-Early Bird-Twist Off-Bleed Over-Cave Man-Ratchet Jaw-Gypsy Mama-Channel Hog and Chocolate Bar.

The door prize was won by Pipeliner.

The club would like to give a special thanks to everyone who donated decorations and material toward the building of the float.

Lady Arrowhead was elected C.B. for the month of June. She has really done a lot for the club and is a very devoted club member.

We had four new members to join: Three-time-loser, Rex Cook, Diesel, James Owens; Roaring Thunder, Linda Owens; and Moetus, Michael Owens.

The meeting was adjourned and refreshments were served to the following club members: Cave Man-Jim Thomas; Penny Candy-Penny Thomas; Sidewinder-Phillip Stumpf; Daisy Mae-Carol Stumpf; Twist-Off-Ben Cook; Lady Arrowhead-Donna Cook; Pipeliner-Roy Russell; Gypsy Rose-Brenda Russell; Red Road Runner-

Red Byrd; Snow Byrd- Jean Byrd; T-Bird, Twila Byrd; Wild Willie-W. C. Crouch, Sr.; Gypsy Mama-Betty Crouch; Screwdriver-Harold Frost; Ginger Snap- Joyce Frost; Traction- John Schaffer; Barefoot-Sylvia Schaffer; Lucky Louie-Louis Miesner; Little Cowboy-Greg Miesner; Penthouse-Bill Watts; Rough Rider-Mike Watts; Chatter Box-Debbie Crouch; Mama Road Hawk-Carmon Laird; Sea Dragon-Sam Abston; Country Girl-Peggy Robinson; Classy Chick-Shirley Messer; Fusebox-Tim York.

The next meeting will be July 1st 8:00 p.m. at the Home Demonstration Club Room.

A wiener roast was enjoyed by club members May 28, on the Willie Seitz Ranch.

Our Heritage of Faith

notes from Faith Lutheran Church

Vacation Church School is nearing its end. The Presbyterians and the Lutherans have worked jointly in this activity for their youth. This week the children have been studying the word, "Shalom." Shalom is a Hebrew word which has countless meanings such as, Hello, Good-bye, peace, health, good life and etc. The children learn by talking and doing many activities together. We have excellent teachers and material so this week is proving to be a good one for all those involved. We will have a Vacation Church School program Sunday the 20th at Faith and we will have our morning service of worship at 9:00 instead of the usual 9:30.

Sunday the 20th we will have Luther League at 2:00. This meeting is being held so we can collect the money for the stationary and plan a couple of activities for the rest of the summer.

On the behalf of the campers, Pastor Andersen and Bruce we wish to thank the church for their support of us by sending us to Bible camp. Special thanks go to the FLCW and the Men's organization for their extra gift. Camp proved to be a real Christian experience. We hope and pray the church will continue their support in this area.

Coming up Sunday is Father's Day. It is to be a day that Father's are to be honored. It is not surprising that we call God, our Father, for Fathers represent love, strength, loyalty, security, and respect. God our Father is the example for all earthly fathers to follow.

If you have no home of worship we invite you to Faith. Our morning worship is at 9:30 and Sunday School is at 10:30. This Sunday however, worship will be at 9:00 and we will have a Vacation Church School program at 10:15 at Faith.

DATE	HI	LO
JUNE 8	84	59
JUNE 9	90	61
JUNE 10	96	64
JUNE 11	98	68
JUNE 12	95	53
JUNE 13	97	50
JUNE 14	90	66

PLAY CASH KING... \$80000 IN CASH PRIZES... PICK UP YOUR FREE TICKETS

the home of THRIFF-T-Prices

PRICES EFFECTIVE THRU SATURDAY, JUNE 19, 1976. NONE SOLD TO DEALERS. LIMIT RIGHTS RESERVED.

MON. - SAT. 8:00 - 8:00
SUNDAY 10:00 - 7:00
123 W. KENNETH

OUR CHECKERS DON'T HAVE TO "REMEMBER" EVERY ADVERTISED PRICE! ALL REDUCED ITEMS ARE... "SPECIALLY MARKED" FOR YOUR PROTECTION.

Father's Day is JUNE 20

U.S.D.A. CHOICE BUTCHER BLOCK BEEF	U.S.D.A. CHOICE BUTCHER BLOCK BEEF	U.S.D.A. CHOICE BUTCHER BLOCK BEEF
Sirloin Steak	Charcoal Steaks	Chuck Steak
BEEF LOIN	BONELESS SHOULDER CUTS	BONELESS 7-BONE CUTS
\$1.49	\$1.29	\$1.19
LB.	LB.	LB.
U.S.D.A. CHOICE BUTCHER BLOCK BEEF	U.S.D.A. CHOICE BUTCHER BLOCK BEEF	U.S.D.A. CHOICE BUTCHER BLOCK BEEF
T-Bone Steaks... \$1.89	Shoulder Roast... \$1.29	Cube Steaks... \$1.69

You are cordially invited to a couple's shower honoring Vicki Biddy and Robert Archer June 19th, Centennial '76 between the hours of 7:30 P.M. to 9:00 P.M. in the home of Mr. & Mrs. L. M. Womble 1018 Blodgett Drive Spearman, Texas Hosts - Messrs. & Mmes. L. M. Womble Louis Lemons Don Schumann A. E. Lusby, Jr. Ronnie Lusby P. A. Lyon, Jr. Joey Woolley Bob Cluck

CAMELOT TOMATO CATSUP LIMIT-3 WITH \$5.00 OR MORE PURCHASE 3 99¢ 14-OZ. BTLs.

MEADOWDALE WHOLE TOMATOES 3 89¢ 16-OZ. CANS

CAMELOT TOMATO SAUCE 5 79¢ 8-OZ. CANS

MEADOWDALE Salad Dressing 59¢ 32-OZ. JAR

MEADOWDALE CUT GREEN BEANS 4 89¢ 16-OZ. CANS FOR

CAMELOT CREAM OR WHOLE KERNEL GOLDEN CORN 4 99¢ 16-OZ. CANS FOR

CAMELOT Sweet Peas 3 89¢ 16-OZ. CANS

CAMELOT Sliced Beets 4 99¢ 16-OZ. CANS

CAMELOT WHOLE Green Beans 4 41¢ 16-OZ. CAN

CAMELOT Garden Spinach 4 99¢ 16-OZ. CANS

MEADOWDALE Blackeye Peas 3 31¢ 16-OZ. CAN

CAMELOT Golden Hominy 5 99¢ 15-OZ. CANS ENRICHED

CAMELOT CAMELOT Flour 59¢ 5-LB. BAG

CAMELOT Tomato Soup 5 79¢ 16-OZ. CANS LIMIT-4 WITH \$5.00 OR MORE PURCH.

CAMELOT Sliced Pineapple 2 99¢ 28-OZ. CANS

CAMELOT PINK Grapefruit Juice 2 89¢ 46-OZ. CANS

CAMELOT Fruit Cocktail 2 69¢ 16-OZ. CANS

CAMELOT, ALL FLAVORS Canned Pop 8 \$1.00 LIMIT-4 WITH \$5.00 OR MORE PURCHASE.

ALL FLAVORS CAMELOT, ALL FLAVORS

Camelot 5 99¢ 3.5-OZ. BOXES

Cat Food 6 89¢ 6 1/2-OZ. CANS

CAMELOT Pure Honey 59¢ 5-OZ. JAR

CAMELOT White Vinegar 1 27 \$1.00 GALLON

LADY CAMELOT WHITE OR ASSORTED Bath 2 69¢ 5-ROLL PEGS.

CAMELOT TALL KITCHEN Trash Bags 1 \$1.00 CTH. OF 15

No Freedom For Arthritics

The celebration of Freedom Week this month will be an all too painful experience for the 20 million Americans still suffering the oppression of arthritis.

"When arthritis strikes, prompt and proper care from a qualified physician is essential to prevent crippling and disability," said Darold Barnum, Vice President of the national health agency's West Texas Chapter.

He pointed out that over five million Americans have rheumatoid arthritis which usually attacks between the ages of 20 and 50, although it can even begin in infancy.

Today, effective treatment is available to help victims of rheumatoid arthritis gain a measure of freedom on their own two feet -- not on crutches or in a wheelchair," Mr. Barnum continues.

He emphasized the importance of understanding the "revolution" in arthritis treatment, and suggested that patients with rheumatoid arthritis send for a free booklet published by The Arthritis Foundation.

"Rheumatoid Arthritis - A Handbook for Patients" is available from the agency's West Texas Chapter, 3701 North Big Spring St., Midland, Texas 79701.

Couple Honored On Anniversary

A surprise 5th wedding anniversary party was given Saturday, June 12th at the County Barn for Gary and Dana Farles.

The serving table was decorated in red, white and blue and was centered with a white cake with blue flowers and lettering and accented with a bride and groom. Refreshments of sandwiches, chips, dips, cake, coffee and punch were served.

Games and visiting were also enjoyed by Honorees, Mr. and Mrs. Gary Farles and Kara and guests, Mr. and Mrs. Jimmy McLeod, Mr. and Mrs. Rick Harrison, Mr. and Mrs. Jeff Platt, Mr. and Mrs. Vance Snider, Mr. and Mrs. Charlie Jines, Mr. and Mrs. Jim Morley, Mr. and Mrs. Dan Farles, Mrs. Iva Tigrett, Mrs. Ruth Tigrett and Tracy and Mr. Boe Carroll.

Health and Beauty Aids!

CAMELOT Buffered Aspirin 69¢ BTL. OF 100

CAMELOT STRAWBERRY RINSE OR Strawberry Shampoo 2 \$1 16-OZ. BTLs.

CAMELOT REG. OR SUPER Sanitary Napkins 1 43 \$1.00 PG. OF 6

CHEER DETERGENT KING SIZE 16-OZ. BOX \$1.94

JOY LIQUID DETERGENT 13-OZ. BTL. 86¢



THE SEARCHLIGHTERS

OF DENVER, COLORADO

Searchlighters To Perform Here

The Searchlighters of Denver, Colorado, will be singing Gospel music

sunday, June 20 at 7:30 p.m. at the Union Church. The public is cordially

invited to attend. The Searchlighters will also be sharing their testi-

mony and music at the Full Gospel Business Men's Fellowship meeting Monday evening at 8 p.m. on June 21 at Martin's Steak Garden. The Searchlighters are sharing the excitement of knowing Jesus Christ everywhere they go. They sing Gospel music from the heart because they sing it from personal experience. Their own story makes the songs they sing more meaningful. Dennis and Pattie Bankson started life together as professional singers. Each relate their personal experiences, and the tragedy of two people searching for life in the make belief world of the entertainer. They not only share the miracle of rebirth in Jesus Christ, but also share the fact that the power of God can free people from the bonds of alcoholism and drug addiction. You will be challenged and inspired as they share how God changed their marriage, their lives, and the lives of their four children. God always seems to put a new song in the hearts of his people. The Psalmist David wrote with a spiritual anointing, as the music flowed from his heart to the

Lord. So it is with the Searchlighters. God is moving in a special way in these last days, and many are being blessed and drawn to Christ through their music. You will enjoy the unique, mellow sound of the Searchlighters, showing people everywhere that Christ is a living reality. He is the only way, the truth, and the life. He can change your life and make it worth living. They know because it happened to them.

Arts & Crafts Guild News

The Arts & Crafts Guild met Friday, June 11th at Martin's Steak Garden with Mrs. F. J. Daily as hostess. Delicious refreshments were enjoyed by guest, Mrs. Lester McLean and by members, Mesdames: G. Irrett Allen, Ned Turner, Bruce Sheets, Nolan Holt, Guy Fuller, F. J. Hoskins, W. L. Russell, Clay Gibner, Pope Gibner, P. A. Lyon and Deta Blodgett. Next meeting will be June 18th with Mrs. Guy Fuller as hostess.

Spearman Swim Team News

The Spearman Swim Team traveled to Garden City, Kansas on Saturday June 12th. They competed with five other teams, coming out 4th in overall points with 60 1/2 points. The individual results are as follows: Jill McLean-8 & under girls-25 freestyle-6th place; Tuwana Byrd-11 & 12 girls-50 freestyle-4th place; Christy West-13 & 14 girls-50 freestyle-1st place; Carey Bridges-13 & 14 boys-50 freestyle-5th place; Leslie Platt-15-18 girls-100 freestyle-6th place; Jed Miesner-15-18 boys-100 freestyle-2nd place. Christy West-13 & 14 girls-Bacstroke-3rd place; Carey Bridges-13 & 14 boys-Bacstroke-6th place. Jed Miesner 15-18 boys-Butterfly-3rd place. Stacey Thomas-11 & 12 girls-Breaststroke-5th place; Kelli Bynum-13 & 14 girls-Breaststroke-5th place. Stacey Thomas-11 & 12

Texhoma Livestock Commission Report

Dear Cattlemen: The receipts at the Texhoma Livestock Com. Co., yesterday June 10th were 3788 cattle and calves. The sale began at 10:00 A.M., with a very sluggish market. Prices were somewhat lower than last week. The depressed fat market this week kept some pressure on feeder steers and heifers. We did not have the quality of stocker cattle for replacements that we had the week before and not as much demand for the plainer kinds. Stocker steer and heifer calves were both \$2.00 to \$4.00 lower. Feeder steers were \$2.00 lower and feeder heifers \$1.00 to \$1.50 lower. Packer cows were \$2.00 lower and not enough bologna bulls were in the offering to test the market. Stocker steers were selling from \$42.00 to \$44.75; stocker heifers from \$35.00 to \$38.50. Feeder steers were selling from \$41.00 to \$43.75; feeder heifers from \$38.50 to \$40.00. Cows were selling from \$26.00 to \$30.00 per cwt. Some representative sales as follows:

Eastern Star Has Meeting

Open Installation of Officers for Spearman Chapter #721, O.E.S. for the year 1976-77 was held at Hansford Lodge Hall, Saturday, June 12th. The Holy Bible and Square and Compasses were placed on the Altar by Marjorie Collard, Conductress and Nina Hendricks, Associate Conductress. Call to Order was given by Coy Palmer, Worthy Patron, followed by the Lord's Prayer, Pledge of Allegiance and the National Anthem, being given by the audience. Fay Palmer, Worthy Matron, welcomed all present and introduced the distinguished guests, which included Ama Powers, member of the Founders Day Committee; W. T. Powers, member of the Champion of Freedom Committee; Marjorie Collard, member of the American Heritage Committee; and John R. Collard, Jr., member of the Champions of Freedom Committee, all of District II, Section I, Grand Chapter of Texas O.E.S.

The Worthy Matron then introduced the installing officers for the evening. Joyce Lackey, who in turn introduced her assistants, which included Elsie Mathews, Installing Chaplain; Mary Brock, Installing Marshal; Deta Blodgett, Installing Secretary; and Coy Palmer, Installing Organist. Installation ceremonies followed with the following officers being installed: Judith Black, Worthy Matron; Don Hendricks, Worthy Patron; Marjorie Collard, Associate Matron; John R. Collard, Jr., Associate Patron; Lynanne Maize, Secretary; Mary Hutton, Conductress; Nina Hendricks, Associate Conductress; Virus Wilbanks, Chaplain; Wilma Clark, Organist; Louie Jane Sampson, Adah; Betty Uptergrove, Ester; Sandy Russell, Martha; Thelma Scott, Electa; Roy Lee Uptergrove, Warder; and Ceril Batton, Sentinel.

The newly installed Worthy Matron, Judith Black, then introduced her family, which included her husband, Jerry Black, Mr. and Mrs. B. A. Byers, and close friends, Mr. and Mrs. Le Roy McCalman, all of Spearman. The officers then introduced their families and guests. The Conductress, Mary Hutton and Associate Conductress, Nina Hendricks then escorted the Junior Past Patron, Fay Palmer and Junior Past Patron, Coy Palmer, to the East where the Worthy Matron presented them with a gift from the chapter.

A lovely reception hosted by Ethel Byers, Jewell McCalman and Lonita Sparks followed the installation. The reception table was laid with a yellow and white knit cloth. The centerpiece was a cake, with a large Eastern Star Emblem in the center, surrounded by tiny red rose buds. Crystal punch bowl and cups completed the table setting. Punch, coffee, cake, nuts, and mints were served to approximately forty present.

Next meeting will be July 9th with Mr. and Mrs. Jimmy Greene as hosts. Mr. and Mrs. W. B. Seitz returned from Colorado Springs, Colorado, where they attended the funeral of her brother-in-law, Lieutenant Colonel J. W. Postelwitz, which was held Thursday.

Next meeting will be July 9th with Mr. and Mrs. Jimmy Greene as hosts.

Next meeting will be July 9th with Mr. and Mrs. Jimmy Greene as hosts.

Next meeting will be July 9th with Mr. and Mrs. Jimmy Greene as hosts.

Next meeting will be July 9th with Mr. and Mrs. Jimmy Greene as hosts.

Next meeting will be July 9th with Mr. and Mrs. Jimmy Greene as hosts.

Next meeting will be July 9th with Mr. and Mrs. Jimmy Greene as hosts.

WIN UP TO \$1,000!!! NOW... NO PURCHASE NECESSARY!

U.S.D.A. CHOICE BUTCHER BLOCK BEEF Pot Roast BONELESS BEEF CHUCK \$1.09

FRESH, EXTRA LEAN Ground Chuck IN 3-LB. PKG. OR MORE. \$1.09

CASH KING YOU CAN WIN UP TO \$1,000 CASH! \$1,000 WINNER LOLA ARMENTROUT Garden City, Ks NEW \$100 WINNERS Mrs. R. M. Norsworthy, Meade, Kansas Cora Meekins, Borger, Texas Ida Mae McCown, Borger, Texas Irvie Smith, Pampa, Texas Joe Dishman, Plainview, Texas Rozell R. Jennings, Amarillo, Texas Georgia Prentice, Pampa, Texas Pat Sanderfur, Pampa, Texas Leonard DeArmond, Spearman, Texas SHOP IDEAL FOR SUPERLATIVE SAVINGS. 7-DAYS A WEEK. WE WELCOME FOOD STAMP CUSTOMERS.

JUNE IS DAIRY MONTH MEADOWDALE MARGARINE 24c

FARM-FRESH Box-O-Chicken CONTAINS: 3-BREAST QUARTERS, 2-LEG QUARTERS, 2-WINGS AND 2-GIBLETS. 3 TO 4 LB. AVG. 44c

FAIRMONT Whipping Cream 43c

Country Style Ribs \$1.39

ICE CREAM 89c

MEADOWDALE HICKORY SMOKED Pork Steaks \$1.39

FROZEN FOODS MEXICAN DINNERS 59c

Sliced Bacon \$2.69

IT'S TIME FOR IDEAL'S SALAD BOWL BONANZA! MIX OR MATCH YOUR FAVORITES FROM THESE PALATE PLEASING VARIETIES: CALIF. GREEN LEAF LETTUCE RED LEAF LETTUCE ROMAINE LETTUCE BUTTER LETTUCE SALAD BOWL LETTUCE 3 BUNCHES \$1.00

Orange Juice 59c

Avocados 2 FOR 85c

Green Onions 2 BUNCHES 29c

Congratulations To The Dodgers 1976 Little League Champions

Dodgers - 11 Wins
No losses for Season



Dodger players on
All-Star Team:

- Derek Cooper
 - Steve Tindell
 - Calvin Pearson
 - Ricky Torres
 - Jan Hartsell
- All-Star Coaches are:
James Umphress
Lawrence Tindell

Members of the Dodgers Major league team are: (L. to R. 1st row) Walter Esquibel, Ross Bulls, Felix Sandovall, Lupe Rentina, Ricky Torres and Dereck Scott Cooper. Second row: Charlie Salgado, Janford Hartsell, Preston Harold Taylor, Steve Widener, Stephen Tindell and Calvin Pearson. Third row: Lawrence Tindell, coach, and James Umphress, Manager.

TEAM SPONSOR:
The Spearman Reporter

**Daco Lease &
Well Service**
Spearman, Texas

**Gruver
State Bank**

Speartex Grain Co.
Spearman, Texas

**Four Sevens
Tractor Inc.**
MASSEY-FERGUSON SALES AND SERVICE
TRACTORS - COMBINES
COMPLETE LINE OF EQUIPMENT
PHONE 659-3248
SPEARMAN, TEXAS

Jr. Lusby Cats
823-6971 Canadian
659-2146 Spearman



CONOCO
HI PLAINS CONOCO
SPEARMAN, TEXAS
PHONE 659-3555

JOHN DEERE
Hansford Implement
Spearman, Texas

**Lil' Lynx
Shoppe**
Spearman, Texas

**WARDROBE
CLEANERS**

**DRILLING
BAKER & TAYLOR
COMPANY**
Spearman, Texas

York Electric
Spearman, Texas
659-3625
WE DO ALL TYPES OF
ELECTRICAL WIRING
WE WANT YOUR BUSINESS

THE SPEARMAN REPORTER
We are proud of our Little League
Dodgers, that we sponsored, and
we are proud of our town...

**ELLSWORTH
OIL COMPANY**


Boxwell Bros.
Spearman, Texas

THE HANSFORD PLAINSMAN
We are proud of our town, for
voting YES, in the Tuesday
bond issue...