

# The Spearman Reporter

THIRTY-THIRD YEAR. —NO. 40

THE LYNX PAGE

FOUR PAGES THIS WEEK

## RAIN DRENCHES HANSFORD COUNTY MONDAY

### LION CLUB - TEACHER PICNIC POSTPONED

Due to the weather Tuesday of this week, Boss Lion Joe Hatton postponed the Lions Club barbecue-picnic, featuring ladies night and entertaining the teachers of the Spearman school. The picnic will be held next Tuesday October 1st.

Regular meeting of the Lions club will be held at noon next Tuesday. The club failed to meet this Tuesday, since the regular meeting was cancelled for the picnic.

### MCCLELLAN HAS MANY VISITORS

Among the visitors to see the new 1941 Chevrolet at the official opening program last Saturday Sept. 21st. Bill McClellan registered two visitors from Drummond, Oklahoma, several from Borger, Stinnett, Canyon, Perryton, Booker, Beaver, Alvarillo, La Junta, Colorado, Alva, Okla., Stratford, Kermit, Mineral Wells and Fritch, Texas. In the opening day gift contest the first prize was awarded Dan Cluck, the second prize went to Garrett Allen and the third prize went to Marvin Garves of Waka.



1941 Ford Super Deluxe Fordor sedan. Like the rest of the new Ford line, it is larger, easier riding, and more beautiful outside and in.

### REVIVAL AT GRUVER BAPTIST BEGINS MONDAY SEPT. 30

The Gruver Baptist Church begins a two weeks revival on Monday Sept 30th Rev. Kenneth A. Marshall of Dalhart will be the preacher. Brother Marshall, before going to the pastorate at Dalhart was engaged in evangelistic work in Oklahoma. He is a forceful and interesting preacher. If you hear him once, you will be sure to come again. This will be an old-fashion gospel meeting featuring old-fashion gospel preaching and singing. The pastor assisted by a number of musicians and the choir will lead the singing. This is the kind of meeting you will enjoy. A cordial invitation is extended to all the residents of Hansford county to attend these services.

### MONDAY MOISTURE MEASURES NEAR FOUR INCHES

Rainfall that measured from an estimated 4 inches north and East of Spearman to a recorded 2.2 inch at Morse, brought relief from drouth conditions in Hansford county, when it fell Monday afternoon and night. The official record of Fred W. Brandt for Spearman showed a total precipitation of 2.10 inches at Spearman. Reports coming to Spearman indicated the heaviest rainfall fell North and East of Spearman with estimates varying from 3 to 4 inches. The rain at Gruver measured a scant .78 inch, but reports coming in indicate the moisture was heavier North and West of Gruver with portions of the county between Gruver and Morse receiving no precipitation. The Coy Holt ranch was perfectly dry Tuesday morning, and East of Morse there was little rainfall recorded. The rain was slight South of Spearman, and little rain was reported on the Willie Seitz farm near McKibben. More moisture was reported near Bernstein and at Hitchland. Oslo community reported near 2 inches of moisture. The rain Northeast extended to Beaver, according to reports in the papers.

## Annual Meeting For Hansford Farm Loan

An interesting feature of the annual meeting of the Hansford National Farm Loan Association, held at the Lyric Theatre in Spearman, Texas, was a program of motion pictures in natural colors shown under the auspices of the Federal Land Bank of Houston.

The pictures were made by A. C. Williams, president of the bank, and included a variety of subjects. Included in the showing were scenes from West Texas rodeos, pictures of 4-H Club boys and girls who have won state-wide recognition of their work; a picture tour of farm kitchens improved according to State Extension Service standards

views of the Tarrant county and Caldwell county farm homemakers' markets and a mattress making demonstration. While the pictures were being shown, an explanatory talk was made by Woody Varner of the Federal Land Bank. Mr Varner is a former A. and M. student and was Cadet Colonel and valedictorian of the class of 1940.

Other features of the entertainment program included short talks by Sid Powers, of P.C.A. Amarillo; Tom Etter, of the SCS and Percy Powers of the Farm Security Administration. At the business session, which was presided over by A. F. Barkley, president of the association, report of the progress and activity of the association for the past 12 months was made by P. A. Lyon, secy-tres of the Association, and such report showed a very substantial improvement in the affairs of the Association over the report of last year. Sid Lackey and Coy Holt were re elected directors of the association, each to serve for a three year term, and these, together with A. F. Barkley, D. L. McClellan and L. W. Rosenbaum constitute the Board of Directors of the Association.

### WPA REPORT FOR HANSFORD COUNTY

All WPA projects operating in Texas are now working on a bi-weekly pay roll basis. The wage scale being arranged so as to give 13 months to the year. Each worker is allowed to work only 120 hours every four weeks. For the past period of 4 weeks the local WPA Sewing Room had 11 workers, 522 garments were made using 1,049 yards of material. The garments produced at this period included 200 trousers, and 150 shirts, for boys and men, dresses for women and girls and 88 infant garments. The workers are happy having exceeded their goal of doubling production. Not only have they exceeded in the quantity of the garments produced, but the quality is of the best grade.

### ELECT OFFICERS AT BAPTIST CHURCH

Officers and teachers to serve at the Baptist church and Sunday school were elected at the regular services Sunday Sept. 22nd. Carl Hutchison was elected supt. Dan Gill assistant, Miss Okla Mae Lawrence was elected BTU director, Don Gross was elected associate BTU director, Mrs T. R. Shirley, WMU director, Mrs May Jones treasurer and Mrs Sybl Jones church clerk.

for re-organization, following the adjournment of the stockholders meeting, and the following officers were chosen:

A. F. Barkley, president, D. L. McClellan, vice-president, P. A. Lyon, secretary-treasurer, E. N. Richardson, acting secretary-treasurer.

The following members of the Association were appointed to act as members of the Loan Committees C. A. Gibner, L. S. McClellan and A. F. Barkley; and Homer Allen A. L. Jackson and R. D. Tomlinson were appointed as alternate members of the Loan committee.

No better barometer reflecting the improved conditions of Hansford county can be found than the annual report submitted by Secy-tres, P. A. Lyon at the Tuesday annual meeting. The loan activity report showed only 2 loans made during the past year, for a total of \$5,600.00 while ten farm loans were liquidated for a total of \$44,600.00.

Two commission loans were made for a total of \$6,200.00 and 7 commission loans were liquidated for a total of \$20,400.00. The report showed that the Hansford organization with a paid in capital of less than \$65,000.00 had assumed the servicing responsibility of 418 loans aggregating a total of \$1,741,860.00. Of this number 242 were Federal land bank loans, 174 were commission loans and 2 were purchase mortgages. The outstanding feature of the entire report was the fact that only 35 of the Association endorsed loans were delinquent at the time of the report.

### J. D. WILBANKS WINS FIRST PLACE WITH TENMARQ WHEAT

J. D. Wilbanks, young Hansford county farmer, who lives with his parents, Mr and Mrs Jay Wilbanks, 3 miles east of town received the following letter for winning first place with his wheat at the first annual wheat show, held recently at the Tri-State Fair, Amarillo:

Mr J. D. Wilbanks Spearman Texas I should like to take this means of informing you that your sample of Tenmarq wheat entered in the Milling and Baking Contest at the Tri-State Fair won first place.

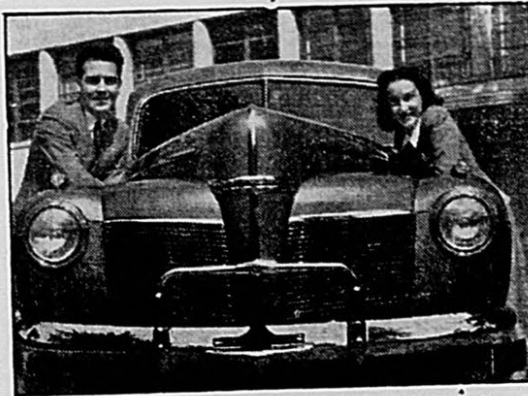
Mr J. M. Hatton, your county agent at Spearman has our check for \$10, which our organization is very pleased to give you for growing high quality wheat and for having entered and placed in the contest.

I, occasionally, get into the Spearman territory and I hope that I might be able to contact you on one of these trips.

May I congratulate you for entering a very high quality wheat sample in the Tri-State fair and for having the honor of winning the first place in the first milling and baking contest ever held in the history of the Tri-State Fair.

Frederic T. Dines, Director, Texas Wheat Improvement Association.

Friends in Spearman received information this week that little Byron Neal, 6 pound son of Mr and Mrs Leonard Jamison was born at the St. Anthony hospital Amarillo.



The Mercury-8 for 1941 adds extra roominess and easier, softer riding and beauty to a power that has already made Mercury cars famous.

## FORDS FOR 1941 ARE LARGER, BEAUTIFUL OUTSIDE AND IN AND SOFTER RIDING

The new Ford line is released for public inspection in this city at the R. W. Morton Ford Garage Friday morning Sept. 27. There has been a lot of advance discussion of changes. And changes there are, starting off with a considerable increase in size for the Ford V-8's Deluxe and Super Deluxe.

Designers have taken full advantage of increased wheelbase and overall lengths to give added spaciousness, and Ford engineers have worked right up from bigger tires through to luxury seat cushions and new softer springs for the solid enhancement of riding comfort.

A new four-cylinder truck and commercial car engine is part of the economy features included in the Ford working line.

The wheelbase of these big new Deluxe and Super Deluxe Ford V-8's is longer and the overall length greater. The designers have taken advantage of this extra overall to increase the inside body length both in foot room and seating width. In fact the front seat of the sedan is 7 inches wider than last year. The head room is greater and the window area, already large in previous Ford cars, is even larger this year.

Running boards have practically disappeared from sight, due to the width of the new bodies. But they are there to step off when the doors are opened.

The 85 horsepower V-8 engine is still unique as it is in the only eight cylinder car in the low price field. These new Fords have lower transmission gear ratios thus hiking up the get-away.

In addition to beauty both inside and outside the Ford engineers emphasize the greatly improved ride in all 1941 models. This extra riding comfort starts with two inches longer wheelbase and a new electrically welded X type frame. This new frame structure is 100 percent more rigid, making the body now mounted on big rubber cushions still quieter in service. The springs, front and rear, with their increased effective length, have a balanced action eliminating any pitching, and give the easiest kind of ride. The rear seat cushions are two inches farther ahead of the rear spring and axle, which further improves the riding qualities.

The four lever-type hydraulic shock absorbers now have a more sensitive adjustment to match

the new softer acting springs. The new improved ride stabilizer, connected by swinging shackles to the front axle, minimizes side sway and improves steering.

Super Deluxe cushions are unusually comfortable since luxury type individual coil springs are used. Over these is a thick pad of tate treated curled hair which gives a softness only associated with expensive cars in the past.

The new Fords have big 12-inch hydraulic brakes, for quick smooth action and long service. The emergency, or parking brake, is on the rear wheels and operated by a steel cable. The brake lever is under instrument panel at the left of the driver. The new hood lock knob is located under the instrument panel near the brake lever. This protects the engine, battery and accessories from theft.

Among the refinements which are new this year on all models are the speed lines on the side of both front and rear fenders, the new hidden gasoline filler cap electric light on the luggage compartment lid which automatically lights whenever the lid is raised if the car lights are on, ventilating front windows, a new wide tempered glass one piece rear window, radio grilles in all cars, twin windshield wipers with speed control, twin sun visors, fender top parking lamps and to-spoke clear vision comfort-type steering wheels. There is a center front license plate on the Super Deluxe.

### MRS ERNEST WILBANKS IN OKLAHOMA HOSPITAL

Mrs Ernest Wilbanks is recovering at the St. Vincent hospital Oklahoma City this week from a major operation. Mr and Mrs Robert Wilbanks, Mr and Mrs Gilbert Wilbanks of San Angelo, and Mr and Mrs Arnold Wilbanks of Lubbock were in Oklahoma City to visit with their mother the past week-end. Robert reports that a letter received Wed. of this week states Mrs Wilbanks is doing nicely, and the family feel encouraged.

Bro. Berry from Perryton conducted the baptismal services at the Christian church at Spearman Sunday week.

### MR AND MRS T. R. SHIRLEY ATTEND LOCKER SCHOOL

Mr and Mrs T. R. Shirley, of Spearman, and W. M. Deck of Ochiltree county were among the more than 150 delegates who attended the school for locker plant managers held at Plainview on Monday Sept. 23. Mr Shirley made a detailed report of the Spearman locker program, and the cooperative organization sponsoring the plant.

Shirley was carried away with the new locker movement, and the growth of the locker food plant industry as it is beginning to take form over the nation. He stated that the delegates to the school learned many new methods of processing and preserving food, vegetables and fruits. This portion of the school was under the management of a group of specialists from College Station, and reflected the very best talent available for choosing, grading processing food. Attending the meeting were some 20 home demonstration agents and ten county agents of the Plainview district. The total enrollment for the school was more than 150 delegates from over the state of Texas.

Plainview was the first Texas city to install a food locker plant, and has been instrumental in the movement for the past few years.

Shirley stated this week that all indications point to a real improvement and economy in food and food preservation as result of the interest being manifested by farmers and citizens of Texas, as the locker plant movement grows in size and efficiency.

### NEW BODY SHOP OPENED ACROSS FROM CITY HALL

Ray McCammond, who has had considerable experience in automobile body repair work, and painting cars, has opened a shop in the Sinclair service station building across the street from the City Hall, and invites the public to give him a chance to do their work. McCammond has lived in this section for several months and comes here after working a number of years in the body department of the Chrysler motor company of Las Anamas, Colorado. He states that he has the latest improved equipment, and will guarantee all his work.

### IRON HORSE KELLY WINS SALES PRIZE

Iron Horse Kelly, who used to carry half the opposing football team with him when he started out for a touchdown for the local Lynx team, is still headed for the goal and making yardage.

Reports coming to Mr Schnell of the local Community Public Service Co show that Oran Ross won a free trip to Galveston with all expenses paid as result of a sales contest. Mr Kelly sold the largest amount of electric refrigerators of anyone in the Pecos, Texas territory. He will go to Galveston for a two weeks trip, all expenses paid. The article did not say so, but we rather imagine that Iron Horse will take his wife and baby for the trip too.

### COMING ATTRACTIONS ELLIS THEATRE PERRYTON, TEXAS

Sept. 26-27 "No Time For Comedy" with James Stewart & Rosalind Russell.  
Sept. 28 "The Gay Caballero" with Cesar Romero and Shella Ryan.  
Sept. 29-30 "Rhythm On The River" with Bing Crosby, Mary Martin and Basil Rathbone.  
March of Time Sept. 29-30.





**By Wiley Padan**

**ROBERT STACK** IS BUILDING A HIGH SPEED "MYSTERY" MOTOR BOAT FOR A HOBBY.

**MARGARET SULLAVAN** READ FIFTEEN BOOKS BETWEEN SCENES ON "THE STORM" SET!

**JAMES STEWART** IS TEACHING MARGARET SULLAVAN HOW TO FLY. HE IS A SKILLFUL PILOT.

**ROBERT YOUNG** PLANS TO RAISE ARABIAN HORSES FOR A HOBBY.

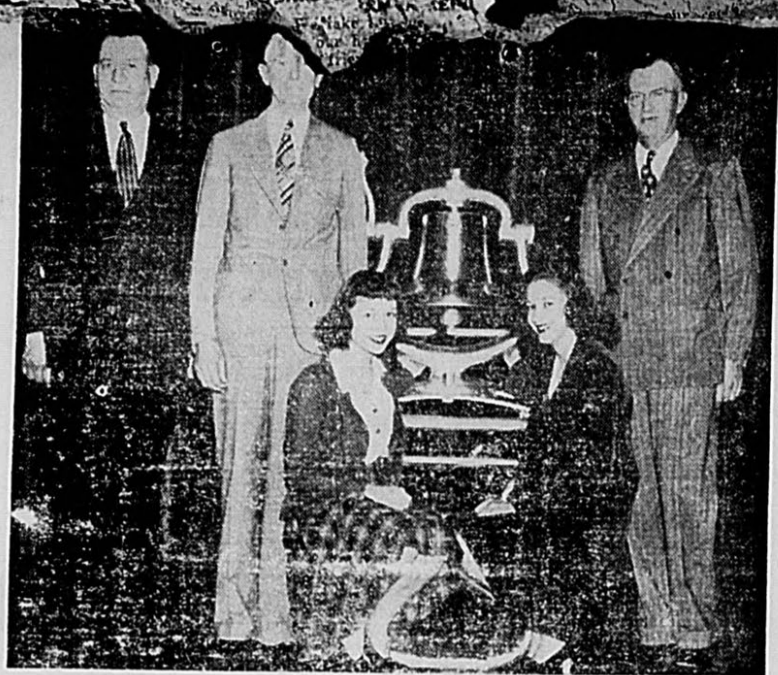
**ROBT YOUNG AS FRITZ MARBERG**

**MARGARET SULLAVAN AS THE STORM**

**JAMES STEWART AS THE STORM**

**ROBERT STACK AS THE STORM**

NEW YORK, N. Y.—"IT'S TRUE! that Robert Stack recently won first place in the Southern California Open Skeet Shooting Tournament with a perfect score," says Wiley Padan. "James Stewart demonstrated another of his hobbies on the set of 'The Mortal Storm' by tuning up sixteen wineglasses with a pitcher of water, then using the rubber tip of a lead pencil as a 'tone producer,' played a number of selections for the enjoyment of those present. Another interesting fact is about the scene where James Stewart fights six Storm Troopers. In the excitement of the battle, Margaret Sullivan received a violent punch in the stomach delivered by Stewart, purely by accident; and Irene Rich received a cut on the arm when she fell against one of the sharp buckles of a Trooper's uniform!"



Officials of District One Football Conference of Texas High Schools accept "Victory" bell from the Santa Fe Railway to be awarded the winner of the district which embraces Amarillo, Borger, Lubbock, Pampa and Plainview. The bell remains in possession of the winning team as long as they are champions. The 300-pound trophy was presented by Miss Jean Gillies, daughter of J. A. Gillies, general manager Santa Fe Western Lines, and Miss Alice Mayne, daughter of Earl Mayne office engineer of the company. Left to right: W. A. McIntosh, superintendent of Borger schools and conference chairman; C. M. Rogers, Amarillo school superintendent; Misses Gillies and Mayne; and General Manager Gillies.

**CITATION BY PUBLICATION THE STATE OF TEXAS**

To the Sheriff or any Constable of Hansford County—Greetings:

YOU are hereby commanded to summon Raymond, otherwise known as R. S., Allred, Betty, otherwise known as Bettie, Fortune, T. E. Fortune, Monnie Jones, A. M. Jones, Thos. Simerly, Mrs G. A. Morrison, feme sole, J. M. Chadwick, J. W. Chadwick, W. A. Bonner, Shearson Bonner, A. C. Rubey, Edna Rollins Stanford, W. C. Stanford, Ida Yearwood, feme sole, whose respective places of residence if living, are unknown, and if any be deceased, the unknown heirs, their heirs, and legal representatives respectively of each deceased person, also unknown heirs, their heirs and legal representatives of Mrs G. A. Morrison, deceased, Lula B. Bisbing, deceased, and Edward F. Rollins, deceased, respectively, Southwest National Bank of Commerce of Kansas City, Mo., but if it be defunct, the unknown stockholders, their heirs and legal representatives, respectively of such defunct corporation, by making publication of this Citation once in each week for four consecutive weeks previous to the return day hereof, in some newspaper published in your County if there be a newspaper published therein but if not then in the nearest County where a newspaper is published to appear at the next regular term of the District Court of Hansford County to be holden at the Court House thereof, in Spearman, Texas, on the 4th Monday of October, 1940 the same being the 28th day of October 1940 then and there to answer a petition filed in said Court on the 24th day of September 1940 in a suit numbered on the docket of said Court No. 394, wherein Roy C. Chase is Plaintiff and all of the living persons, and unknown heirs, their heirs, and legal representatives of any of such deceased persons, and Southwest National Band of Commerce of Kansas City, Mo., and if defunct, the unknown stockholders, their heirs, and legal representatives, respectively of such defunct corporation, as above named are Defendants, and a brief statement of plaintiff's cause of action, being as follows: A suit in trespass to try title, for removal of cloud, for rents, damages, costs of suit, and for writ of restitution, for involving the south 240 acres of survey 1, Block 1, Cert. 7, Cherokee Furnace Co. lands in Hansford County, Texas, plaintiff also pleading five and ten years statute of limitation.

Herein Fall Not but have before said Court, at its next regular term, this writ with your return thereon, showing how you have executed the same.

Given under my hand and seal of said Court, at office in Spearman, Texas on this 24th day of Sept. 1940. Fred J. Hoskins, Clerk, District Court, Hansford County, Texas.

**NO-MAN'S LAND HISTORICAL SOCIETY WILL MEET**

Monday October 7 is the date set for the sixth annual meeting of the No-Man's Land Historical Society on the campus of Panhandle A. and M. College as guests of the Museum Club and College.

This year marks the sixth birthday of this organization of "Old Timers" who settled this

**frontier in No-Man's Land from 1885 to 1900, and on through the years have helped build the country we now call our own.**

The entire student body and guests of the day will meet on the campus lawns for the barbecue and entertainment at noon. An exhibit of photography and art work done by amateur photographers of the Panhandle will be on display in the college library all day, some of the best works of Paul Cherry, amateur photographer of Tyrone, J. K. Sproles and Ralph White, photographer winners of Guymon and others will form most of the exhibit.

Several hundred Old Timers and their guests are expected to be present. Registration will start at 9 a. m. in Hughes Strong building on the campus. Any information relative to the meeting should be directed to Lester Harris, Custodian of the Museum, Goodwell, Okla.

**RED CROSS QUOTA FOR HANSFORD COUNTY IS DOUBLED FOR 1941**

Anticipating the drain on the resources of the organization in servicing the population of the Nation called for selective draft training, national Red Cross officials have set up their budget for 1941 calling for a double quota from every chapter in the nation. The quota not only calls for membership increase but every other department of the national organization calls for increased activities.

O. A. Hill, district supervisor of the Red Cross spent Thursday of last week in Spearman discussing the problems of the organization with the local chapter officials. Present at the meeting were Mr and Mrs T. A. Lyon, county chapter president, R. L. McClellan, directors, Bruce Sheets G. P. Gibner, C. A. Gibner and Will Miller.

Bruce Sheets was re-elected to serve as membership chairman for the 1940-41 drive which opens in this county Armistice day and closes Thanksgiving. The quota for dollars and cents calls for 500 members for 1941. Mr Sheets praised his helpers who have been so efficient during the past two years, and stated that he felt sure the Hansford county public would respond to the increased membership.

It was revealed in the report submitted to the supervisor that the Hansford chapter was overdrawn at the bank and was in need of additional funds. This is due to the fact that the chapter has financed the Red Cross Nurse for school children, and has depleted the reserve funds for this chapter. An effort will be made by membership chairman Sheets to secure a large number of extra donations during the coming campaign. It is hoped that the local finances can be built up from a few donations that are larger than the regular one dollar membership fee. In view of the fact that half the money secured remains in Hansford county, the local fund may be built to a sufficient amount to take care of any emergency situation that may happen in this county.

Director Hill spent several hours explaining the national situation to local people. He stated that the bulk of the emergency funds contributed for foreign relief were available for emergency use. He was emphatic in stating that none of the contributions made by American citizens would go to help the German

**—NO 1.**

wheat submitted in the contest 8 of the best specimens were selected from the entire field, and sent to mills for making baking tests. Of the original 8 contenders, four were from this county, and were placed J. D. Wilbanks, 1st; John R. Collard, 2nd; Geo. Stewart, 3rd; W. F. C. Etling 5th. The No. 4 winner Tab Womble of Hutchinson county, who is considered a member of the Spearman trade territory.

As result of the contest it became officially known that Hansford county has produced more certified seed wheat during the last 3 years than any other county in Texas.

He stated that the policy of the Red Cross was to award funds only where the Red Cross had supervision of its distribution. Since the German officials refuse this privilege, the funds available cannot be used for Germany or any of the conquered nations. At the present the Red Cross is in the midst of a large emergency relief program for the English people. Shipping records reveal that not a single cargo of relief merchandise has been sunk by the German aggressor nation during the entire war.

Locally people will be called on to enter into the national program to provide knitted sweaters and other clothing for the nations soldiers and for England relief.

every farm paper in the nation during the next two weeks. Thus the work of the local county agent and members of the Hansford county agricultural association who have been preaching wheat improvement for the past 3 years, will be a means of gaining favorable publicity

**Used Car**

**... PRICES GREATLY REDUCED FOLLOWING 1941 NEW CHEVROLET ANNOUNCEMENT**

We have some very attractive prices on an Excellent Variety of clean OK Late Model Used Cars.

1937 Chev. Town Sedan. High Lustre New grey two-tone paint. Completely reconditioned new tires—

1937 Ford Fordor. Rings & inserts. Excellent blue paint. Clean as a new car—

1936 Chev. Deluxe Sedan. Priced to sell—

1936 Chev. Std. Town Motor OK. Upholstery new. You can see the excellent care, new paint—

1936 Chev. Std. C. Ford Motor overhauled. New 6 ply tires, ready to go—

1934 Chev. Std. Coach neat little job—

1934 Chev. Std. Town New rings. Good paint—

1933 Ford Tudor. New and inserts—

1932 Chev. Coach—

We Have Some Good Trucks and Pickups Sale.

- OWNER'S LIFETIME SERVICE POLICY**
- COMPLETE COVERAGE** for Service Work Parts and Labor Minimum \$500.00
- FREE MONTHLY INSPECTION**
- USED CARS AND TRUCKS**
- DON'T FORGET that all these fine Used Cars carry our OK Guarantee and Life Time Service Policy.**
- 1940 Chevrolet Special Deluxe coupe \$100. In extra equipment. A beautiful car **\$625.00**
- 1940 Chevrolet Special Deluxe Two-tone town sedan. Deluxe radio—and all the trimmings. Tiptop in every way (Demonstrator a \$1,000.00 car) only **\$725.00**
- 1939 Chevrolet Deluxe G. coupe. You will not find a cleaner, better, and nicer 39' model **\$540.00**
- 1938 Chevrolet Deluxe C. New rings & pins. NEW synthetic beige paint **\$450.00**
- 1938 Chev. Deluxe Town Sedan. New Rings & pins New brake linings. 4 Firestone Imperial Rayon Cord Tires, only **\$465.00**

**McClellan Chevrolet**

**Fall Merchandise**

NEW FALL AND WINTER CLOTHING IS ARRIVING DAILY—MATCHED MERCERIZED ARMY Twill Suits, Sweaters, Jackets, and Fall Footwear JUSTIN BOOTS—We have many satisfied customers who have learned the beauty and economy of JUSTIN BOOTS, famous the world over.

WE INVITE YOU TO COME IN AND SEE THE NEW Merchandise—Whether You Are Ready to Buy—or just Want To Look.

**W.L. RUSSELL**

DRY GOODS GROCERIES

**It Won't Be Long Now**

Until you will need to check up on your winter heat. Get Rid of those old Out Moded Heaters—and replace them with A FLOOR FURNACE or a modern attractive economical GAS heater. We have a large variety of heaters with an equally large assortment of attractive prices.

**DON'T BE OLD-FASHION—Doll up your home for comfort, beauty and economy. YOU SPEND at least 1-3 of your life in your home.—SPEND a portion of your income to make your home more peasant and livable.**

ASK US FOR ATTRACTIVE TERMS ON THE NATIONALLY ADVERTISED AND PROVEN COLEMAN FLOOR FURNACE AND OIL HEATER

**Main Furniture Store**

**The Santa Fe's 80th Birthday**

The Santa Fe was born September 17, 1860, in a tiny, one-story brick building in Atchison, Kansas. There thirteen men met to form "The Atchison and Topeka Railroad Company," with Cyrus K. Holliday, founder of Topeka, Kansas, as its first President.

**Beginnings**

Cyrus Holliday envisioned a great railroad that would supplant the slow and dangerous traffic over the old Santa Fe Trail—a railroad reaching deep into the prairies, piercing the mountains, ever serving and growing with the Southwest.

Those were stern, hard times on the raw frontier. The drought of 1860, the Civil War and the post-war chaos, prevented construction until November, 1868, when ground was broken at Topeka. On June 28, 1869, the first Santa Fe train was operated from Topeka to Carbondale. The line was extended to Emporia in August of 1870.

**Westward**

Settlement quickened along the new right-of-way, as Santa Fe's land and immigration department pushed surveys west of Emporia. The rails reached Newton in July, 1871, and Hutchinson, Great Bend, Larned, Dodge City and the Colorado line in 1872.

**San Diego, Galveston, Chicago**

After 1876, many branch lines were constructed in Kansas. Settlers poured in. The main line was projected across New Mexico, Arizona and California. Colonization continued westward into those states and into Texas and Oklahoma. Santa Fe, New Mexico, was reached in 1890; San Diego, California, in 1885; Galveston, Texas, in 1886, and Chicago in 1887. Thousands of tourists followed the early settlers. The Santa Fe became the outlet for the innumerable products of a vast Southwestern area.

**Today**

Today, with 41,000 employees and 13,414 miles of track, the Santa Fe directly serves Illinois, Iowa, Missouri, Kansas, Oklahoma, Texas, New Mexico, Colorado, Arizona and California.

**The Santa Fe and the Southwest**

Down through the years the Santa Fe has endeavored to develop Cyrus Holliday's dream—a great pioneer's dream of that swift, sure transportation without which no frontier, no matter how rich, can hope to fulfill its destiny. In that effort we have marched shoulder to shoulder with the people of the Southwest, in good times and bad, in friendship and understanding.

On our 80th birthday, we of the Santa Fe pledge a continuation of the service ideals of its founders.

**Efford**  
PRESIDENT

**The Santa Fe's 80th Birthday**

The Santa Fe was born September 17, 1860, in a tiny, one-story brick building in Atchison, Kansas. There thirteen men met to form "The Atchison and Topeka Railroad Company," with Cyrus K. Holliday, founder of Topeka, Kansas, as its first President.

**Beginnings**

Cyrus Holliday envisioned a great railroad that would supplant the slow and dangerous traffic over the old Santa Fe Trail—a railroad reaching deep into the prairies, piercing the mountains, ever serving and growing with the Southwest.

Those were stern, hard times on the raw frontier. The drought of 1860, the Civil War and the post-war chaos, prevented construction until November, 1868, when ground was broken at Topeka. On June 28, 1869, the first Santa Fe train was operated from Topeka to Carbondale. The line was extended to Emporia in August of 1870.

**Westward**

Settlement quickened along the new right-of-way, as Santa Fe's land and immigration department pushed surveys west of Emporia. The rails reached Newton in July, 1871, and Hutchinson, Great Bend, Larned, Dodge City and the Colorado line in 1872.

**San Diego, Galveston, Chicago**

After 1876, many branch lines were constructed in Kansas. Settlers poured in. The main line was projected across New Mexico, Arizona and California. Colonization continued westward into those states and into Texas and Oklahoma. Santa Fe, New Mexico, was reached in 1890; San Diego, California, in 1885; Galveston, Texas, in 1886, and Chicago in 1887. Thousands of tourists followed the early settlers. The Santa Fe became the outlet for the innumerable products of a vast Southwestern area.

**Today**

Today, with 41,000 employees and 13,414 miles of track, the Santa Fe directly serves Illinois, Iowa, Missouri, Kansas, Oklahoma, Texas, New Mexico, Colorado, Arizona and California.

**The Santa Fe and the Southwest**

Down through the years the Santa Fe has endeavored to develop Cyrus Holliday's dream—a great pioneer's dream of that swift, sure transportation without which no frontier, no matter how rich, can hope to fulfill its destiny. In that effort we have marched shoulder to shoulder with the people of the Southwest, in good times and bad, in friendship and understanding.

On our 80th birthday, we of the Santa Fe pledge a continuation of the service ideals of its founders.

**Efford**  
PRESIDENT



**Own PHOTO**

It Yours  
AT  
STUDIO

**TURKEYS FOR GIVING**

Two months from now will be marketing of 1940 turkeys. Information there is carry over of turkeys. At the present there is approximately pounds of turkeys in these birds are mov-

It is going to de- finished turkey this to be able to dis- turkeys at a reason- to the producers. Un- Texans have not the quality tur- are capable of pro- of the Texas tur- will range turkeys and late summer the feed well depleted and the not have sufficient feed and especially During the growing consume large quan- and as a result quite often heavily with parasites. In some case of inferior qual- turkey, a penalty of bird has been set. It of us to see that the market this year are addition and ready for at the time they are

ould be taken to buy able products to fight parasites and other if you are in doubt as of a medicine ask any agent. water is an essential raising of any type. ing mash see to it water containers are at least once a day and necessary, as the mash the water and causes If you are interested as for home mixed can secure these from any agent.

ber Xmas time if you mber of small under birds that are not start on a fattening These birds should be growing mash until a and then put on a diet and marketed for holidays. marketing, be sure to the breeding stock.

for all cars  
Class Shop—Perryton

**BLDG NEWS**

about a 2 inch rain community Monday night. Kenney and Mrs. J. were Perryton visi-

700 pounds. Has a bar on left shoulder Has Heart on Willie Seitz. ltp

**OSLO NEWS**

Morning worship at the Oslo Lutheran Church next Sunday, Sept. 29, 19th Sunday after Trinity, will begin at 11 a. m. Sermon Theme: "Jesus Speaks the Word of Release." Luke 13: 10-17.

The Sunday school will meet at 10 a. m.

The confirmation class will meet at the church at 9:30 a. m. on Saturday.

The Teachers' Training Class will meet at the parsonage at 8 p. m. on Tuesday.

The Adult Class will meet at the Robert Alexander home at 8 p. m. on Wednesday.  
H. C. Hjortholm, pastor

**NEWS ITEMS**

The moving picture film, The Ministry of the Printed Word, was shown at the Oslo Church under the auspices of the Brotherhood last Sunday evening. Another film which pictured the activities of the Luther League Convention at Los Angeles in June of last year was shown at the same time. Both films proved interesting. The first film showed the activities of Augsburg Publishing House, located at Minneapolis, Minn., and owned and operated by the Synod to which the Oslo church belongs. It gave all who saw it a better appreciation of the amount of skilled labor and costly material that goes into the publishing of a well-bound and well printed book, magazine or smaller tract.

Selma Dahl visited with her friend, Marjorie Hoge at Amarillo last week. She returned last Sunday. Her sister Betsy who has discontinued her studies at Clifton came home with her.

Emma Hill has been working at the Pete Dahl home for the past two weeks. Mrs Pete Dahl is rapidly regaining strength after her operation.

Those from Oslo who attended the box supper at the Gruver School last Friday evening other than the pupils who attend the school were Rosalie Posten Agnes Bredeken James Stedje, Jack Christofferson and Pastor and Mrs Hjortholm. The selections played by the newly organized Gruver Band proved to be the main attraction. Louise Knutson played a flute solo in one of the numbers by the band. The sum of \$163.00 was realized from

tors Monday.  
Mrs J. F. Simm and Kenneth called in the J. Kenney home on Saturday.

Mrs R. Blodgett and Mr and Mrs Mearl Beck, Mr and Mrs Ed Uptergrove, Della Beth and Kathleen Kenney, and Mr and Mrs O. Williams Verna Kenney and the children attended the Tri-State fair in Amarillo Thursday.  
Helen and Maxine Kenney and Nadine Deck visited Kathleen Kenney Sunday.

R. C. Bennett, Dalhart, was a caller in the Kenney home Tuesday.

Harvey Morse and Floyd Morse attended the Fair in Amarillo Thursday.



**GIVE!**  
AMERICAN RED CROSS

the sale of the many beautiful baskets which had been brought. This money will be used for the extra curricular activities of the school during the year.

Johnny Dahl drove to Amarillo last Sunday to bring his sisters, Selma and Betsy home.

Prospects for fall wheat pasture here are very good, provided the present indication for rain materialize very soon.

Picture Framing, Daley Glass Shop Perryton.

**R. V. Converse Says:**

Since the rain you can hear talk of the wonderful things that are to happen in the Panhandle next year. It is being reported that Roosevelt thinks he is indispensable as President to our well being as a Nation.

When we are so low on presidential timber that there is only one man who can fill the office of president, then it is time to get busy and produce one.

It is being estimated that we as a nation are to spend about 12

There is also talk of increasing the borrowing limit of the government to 60 billion then we can all have government bonds to pay for. The writer is wondering why there is so much ink being wasted telling us how much we are to be oppressed and how much we should sacrifice if the group that is running things in Washington are so smart that there is no one than can fill their places you know Herbert Hoover had the same idea.

The big boom is just getting started and you can soon look for increased price in everything that you have to buy. Gas has already taken an advance. Other things will follow. Wheat is expected to show a profit to the producer over the loan before election. After election it may re-lapse into a loss.

Mrs Converse will return from her trip to New York and the Pacific coast the last of the week and there is one bachelor that

**ANNOUNCING**

This will inform the public that I have opened body shop for the repair and painting cars. I have had several years experience in this class work, and have the latest modern equipment to do this specialized work.— All Work is Guaranteed.—Prices are Reasonable.—If you have work of this kind it will pay you to check with  
**LOCATED at the Sinclair Station Across Street From City Hall.**

**RAY McCAMMOND**

**Get Ready FOR WINTER**

**Are You Ready For Winter?**

Unless you plan to put your car up for the rest of the winter—and who does these days—you'll need winter auto supplies and service. Consumers has one of the largest stocks of automobile accessories and equipment in the state, and our service is unsurpassed. Call on us for an estimate on service. Compare our prices on batteries, chains, anti-freeze, or any accessory you want. You'll find them low. Consumers customers are always within their operating budget because they know the damages that can be done to auto parts unless their cars are serviced for the changing seasons. Winter is right ahead. Now is the time to have your car serviced for the cold days. Oil should be changed, battery serviced, anti-freeze added, and all parts greased.



**LOOK**

**STOP HERE TODAY FOR A COMPLETE A-1 CHECK UP**

Have a worry-free winter of driving this year, with every precaution taken against cold weather hazards. If you're wise you'll play safe against winter now instead of waiting for the first cold wave, because things happen fast in cold weather! Drive in today and let us get your car all set; it won't take but a few minutes and you needn't worry about our prices. Snow, sleet and freezing temperatures can be taken in stride with one of our complete winter check-ups.

**save**

**YOUR DEPARTMENT STORE FOR HOME NEEDS—Featuring QUAKER OIL BURNING HEATERS**

The first oil burning space heater was a revolution—and it bore the name of QUAKER—the Quaker mfg. Co. has devoted 52 years exclusively to warm air heating—Get the Leader—Get the best. The kerosene burning heater that has proven its economy and efficiency during the past 5 years in this section.

**CONSUMERS SALES CO.**

A cooperative farmer owned organization vitally interested in the welfare of Hansford county.

**ANTI-FREEZE**  
In Your Radiator Means guaranteed motor protection for your car. Drain your radiator now.

**CO-OP**  
Guaranteed TIRES for winter and for SAFETY!

**LUBRICATION**  
For Winter is important to your car. It makes for easier starting and better driving performance.

**A HEATER**  
Is a necessity for comfortable winter driving. We install them free of charge if you get yours here.

**DO NOT RENT A COLD STORAGE LOCKER**

sell you a nice beef, quarter of beef, Pork  
Prices for this class of food fully processed are remarkably low.

**pearman  
Equity  
Exchange**

T. R. SHIRLEY, Mgr.

# NEVER KNEW!!!

By H. T. Elmo

**THE CROW INDIANS SHOW RESPECT TO THEIR SISTERS BY NOT TALKING TO THEM!!**

**IN AUSTRALIA A MAN SCRUPULOUSLY AVOIDS HIS MOTHER-IN-LAW AND DOES NOT EXCHANGE WORDS WITH HER UNLESS IT IS NECESSARY.**

**THE EGYPTIANS WERE THE FIRST TO USE MARRIAGE RINGS DURING THE WEDDING CEREMONY...**

**IN NEW SOUTH WALES ONLY MARRIED MEN WERE PERMITTED TO EAT DUCK!!**

**THE CUSTOM OF REMOVING SHOES IN SACRED PLACES DATES BACK TO PRE-HISTORIC TIMES!!**

**IN INDONAVY, WEDDING NEARLY-MARRIED CO. & J. F. PRESENT A SILVER FOX TO EACH OTHER ON THEIR WEDDING DAY. THEY BELIEVE THE FOX IS A SYMBOL OF GOOD FORTUNE!!**

**THE ANCIENT CHALDEANS, IGNORANT OF THE HEALTHY VIRTUES OF DRUGS EXPOSED THEMSELVES TO THE OPEN ROADS, HOPING THAT SOME PASSERBY WOULD KNOW HOW TO CURE THEM!!**

**IN PARTS OF GREENLAND GLOVES ARE MADE FROM THE HAIR OF DECEASED RELATIVES AS A SYMBOL OF RESPECT!!!**

**THE EARLY PHARMACISTS OF ITALY USED A CHURCH BELL INSTEAD OF A MORTAR AND PESTLE TO POUND MEDICINES, IN THE BELIEF THAT IT WOULD CURE THE PATIENT QUICKER!!**

**THE ARABS WELCOMED THEIR GUESTS BY POURING MELTED BUTTER ON THEIR HEADS TO REFRESH THEM!!**

**IN ENGLAND AT ONE TIME ABOUT FIFTY CLASSES OR CASTES OF PEOPLE BEFORE REACHING THE COMMONER.**

**IN FRANCE EVERYONE ATE WITH HIS FINGERS UNTIL THE 17th CENTURY!!**

**THE EARLY KINGS OF FRANCE USED MONOGRAMS AS SIGNATURES ON DOCUMENTS BECAUSE THEY WERE NOT ABLE TO WRITE!!**

**IN THE ALEUTIANS ISLANDS WHEN A BLUE FOX DIES, THE NATIVE ESKIMOS BURY THE ANIMAL WITH A BONNET HELD TO ITS HEAD SO IT WON'T CATCH COLD ENROUTE TO PARADISE!!**

**IT IS CONSIDERED SACRILEGIOUS BY THE HANUMAN TRIBES OF INDIA TO WEAR GARMENTS NOT MADE OF COTTON, WHICH THEY CONSIDER A HOLY PLANT AND ACTUALLY WORSHIP!!**

**IN SOME PARTS OF ENGLAND, IT IS CUSTOMARY TO WEAR A FULL DRESS SUIT EVEN FOR BREAKFAST!!!**

**THE ANCIENT ROMANS CALLED THE INHABITANTS OF NORTHERN EUROPE "TROUSERED BARBARIANS" BECAUSE THEY WORE TROUSERS!!! THEY BELIEVED TROUSERS WERE MEANT ONLY FOR SAVAGES!!**

**FRESH WATER FISH LIVE 250 FT. BELOW SEA LEVEL IN DEATH VALLEY CAL THE LOWEST AND HOTTEST POINT IN NORTH AMERICA!! FISHES ARE ALSO FOUND IN ALPINE LAKES OVER 15,000 FT. ABOVE SEA LEVEL!!!**

**THE WOMEN OF ITALY DURING THE 17th CENTURY ALWAYS SWAM BEFORE ENTERING THE WATER FOR A SWIM IN THE MAREMMA MARITIMA PROVINCE!!**

**CHRISTOPHER COLUMBUS DISCOVERED THE CACAO BEAN AND WAS THE FIRST WHITE MAN TO DRINK CHOCOLATE!!!**

**INDOOS OF RANGOON BAPTISE THEIR NEW CLOTHES BY SOAKING THEM IN A HOLY RIVER AND THEN WEARING THEM—NARROWING WET!!**

**IN CHINA TODAY DRIED CATERpillARS ARE SOLD AT THE MARKET PREPARED FOR EATING IN VARIOUS WAYS!!**

**THE PRIMITIVE MAN HEATED WATER BY DROPPING STONES IN IT!! HOT**

**THE ROMANS USED THEIR NAPKINS TO WRAP DELICACIES FROM THE TABLE AFTER THE MEAL...**

**BEFORE RE-ENTERING THEIR HOMES, THE ANCIENT HEBREWS ALWAYS WASHED THEIR HANDS UPON RETURNING FROM A FUNERAL.**

## Coming Clean! . . . by Sp

**MARGUERITE OF NAVARRE**  
YOUTHFUL WIFE OF FRANCE'S POPULAR KING . . . A BRIGHT LIGHT OF THE DARK AGES SHE THAT SHE WASHED HER HANDS AT LEAST TWICE

**SORRY MAM I THOUGHT IT WAS APRIL!**

**GIRLS AT A FASHIONABLE 17th CENTURY FRENCH SCHOOL WERE ALLOWED ONE SET OF UNDIES, ONE PAIR OF STOCKINGS AND TWO HANKIES A MONTH. ONE FOOT-BATH A MONTH AND THREE COMPLETE BATHS A YEAR WAS THE LIMIT!**

**TODAY THE FIRST ESSENTIAL TO BEING WELL GROOMED IS A THOROUGH SOAP AND HOT WATER BATH**

## Coming Clean! . . . by Sp

**WHEN CLOTHES GOT DIRTY IN THE DAYS OF "GOOD KING CHARLES", WOMEN SENT THEM TO BE DYED A DARKER SHADE - RATHER THAN TO A LAUNDRY!**

**RAIN! MY HANKY WILL BE RUINED!**

**THOS. JEFFERSON**  
COULD HAVE CONDUCTED A BEAUTY COURSE . . . JUDGING FROM A LETTER TO HIS 11th OLD DAUGHTER . . . 1783. HE SAID "NOTHING IS SO DISGUSTING TO OUR SEX AS A SLOGAN ABOUT CLOTHES" IF IT'S FULL, IT'S DIRTY!" PREVAILS

**RENAISSANCE LADIES USUALLY OWNED BUT ONE ORNATE HANDKERCHIEF - AND NEVER THOUGHT OF LAUNDERING IT!**

**NIGHTGOWNS FIRST SAW GENERAL USE AMONG THE TUDOR NOBLES, BUT WERE MADE OF SILK, VELVET OR FUR, AND FEW EVER OWNED MORE THAN ONE AT A TIME.**

**HOW CAN I SLEEP WHEN THAT FUR KEEPS TICKLING?**

**SILENCE, WINDBAG! DOST THYSELF A RADIO ANNOUNCER?**

**FOR THE RECORD**

Copyright, 19... by Kay Features, Inc. Great Britain Rights Reserved

## COMMENTS

commentators re- ally changed. Then think the au- thorities we will be safe—time and will power will be on our side, and we will be able to create an invincible military de- fense that will discourage any potential invader.

The talk that is going on in Washington is war talk. THE shadow of war and the possi- bilities of our actual participation in war, dominates everything in the government. Some of that talk deserves the thoughtful at- tention of every American. Ac- cording to one school of thought—and it is an influential school—the destroyer trade marked simply the beginning. England, if she survives the winter, will next need modern fighting ships and crews to operate them. She will need our Army and Navy fighting planes, along with their pilots. This school thinks we will of necessity give them to her. It is clearly a very different mat- ter for a government to supply a belligerent power with the tools of war than for a private industry to sell them to her.

It is said that the country could be up to its neck in war and yet not legally formally de- clare war!

While in theory, it is almost undramatic criticism of the method of consum- ing—almost no criti- cism—of help- ing. While in theory, it is almost undramatic criticism of the method of consum- ing—almost no criti- cism—of help- ing. While in theory, it is almost undramatic criticism of the method of consum- ing—almost no criti- cism—of help- ing.

WAR RELIEF  
GIVE!  
AMERICAN RED CROSS

## Winter Is Just Around The Corner

As a logical conclusion your gas bill will increase during the winter months. WE KNOW THAT NATURAL GAS IS ECONOMICAL for heating and cooking, and we know that you realize it is the most convenient and cleanest fuel known to man- kind.

WE WANT YOU TO GET ALL THE GAS YOU PAY FOR—It might be a good idea to check your gas appliances, detect any leak that might cause unnecessary expense.

SPEARMAN GAS CO.

WHEN IN NEED OF OFFICE SUPPLIES, CALL 10  
THE SPEARMAN REPORTER

# SAVE MONEY this FALL PAINT SALE!

For Limited Time Only... ACT NOW!

FALL SPECIAL NO. 1  
SHERWIN-WILLIAMS  
SEMI-LUSTRE WALL FINISH  
98¢ QT.  
OR \$2.98 A GALLON  
SAVE OVER 65¢ A GAL.



Biggest feature of our gigantic Fall Paint Sale is Sherwin-Williams famous Semi-Lustre Wall Finish. This outstandingly beautiful, durable wall finish washes so easily! It's a labor-saving boon on kitchen and bathroom walls, woodwork through- out the house!

FALL SPECIAL NO. 2  
SHERWIN-WILLIAMS  
MAR-NOT VARNISH  
Versatile, 3-purpose varnish for (1) furniture (2) woodwork (3) floors.  
SAVE OVER \$1.00 A GAL.  
\$1.19 QT.  
OR \$3.95 GAL.

FALL SPECIAL NO. 3  
SHERWIN-WILLIAMS  
FLOOR ENAMEL  
Rich-looking... choice  
75¢ A GAL.  
98¢ OR \$2.98 GAL.

BORROW A COPY of our amazing Sherwin-Williams Paint and Color Style Guide. Phone us, we'll deliver it to your home. There will be no cost or obligation.

SHERWIN-WILLIAMS PAINT HEADQUARTERS

White House Lumber Co.  
Phone 50  
Pete Smith, Mgr

# Announcing the big

# NEW FORD 1941 FORD

In some years, some cars take a big jump ahead. *The Ford does that for 1941.*

It has jumped ahead in size. It's the *biggest Ford* we've ever built, *inside and out.* It's *wider.* It has a *longer wheelbase.* Its seating room is *wider* by as much as 7 inches. It has *new wide doors* and *semi-concealed running boards.*

You'll notice also a new beauty, achieved by a skilful blending of mass with *longer flowing lines.* *Larger windshield and windows* give bet- ter vision all around.

One of its biggest advan- tages is the *new soft ride.*

New, slower-action springs give a slow, gentle, gliding movement. A *newly designed stabilizer* helps absorb road shocks, and maintains bal- ance on sharp curves and in cross winds.

*More rapid acceleration* to match its familiar speed and power makes this new Ford an even livelier car to drive.

These are only a few of this new car's outstanding features. It represents all the rich experience gained in building more than 28 mil- lion motor cars.

Any Ford dealer can give you many good reasons for making this your 1941 car.



Get the Facts and You'll Get a Ford!

## GRUVER NEWS

The Gruver chapter of the PTA gave an informal reception for the school faculty. As part of the program, Mr. Bush, the new superintendent of the schools, installed the incoming new PTA officers. The new officers are as follows: Mrs. Arthur Evans, pres. Mrs. Bill Lowe, vice-president, Mrs. E. H. Taber, secretary, Mrs. Buster Cator, treasurer, Herbert Hughes, program chairman, Miss Kathleen Hodge, parliamentarian. Committee chairmen Mrs. P. H. Westerfield, Mrs. Gay Fletcher, and Mrs. Mart Hart. Following the program refreshments were served. A large number of par- ents were present.

Last Friday a box supper was held at the school house in the interest of the football team and the purchase of a radio and re- cording machine. There were a large number of beautifully de- corated boxes auctioned off by J. C. Harris and Herbert Hughes. Everybody had a lot of fun and the fund received better than \$160.00.

A number of Gruver citizens are at home recuperating after spending some time in various hospitals. Miss Elizabeth Spivey has made a good recovery from an appendicitis operation. Mrs. L. H. Gruver is at home and we hope well on the way to re- covery. Mrs. Wesley Maupin is back home after spending some days at an Amarillo hospital. She is however, confined to her bed.

The Gruver community received a nice rain last Monday night but as far as we can gather it did not reach very far in any direction. Many of our farmers are planting their wheat however, in th hopes that they will receive the needed moisture.

Mrs. Mary Fletcher left this week for a trip to California in- cluding a visit to Yosemite and the Red Woods country. She will

be accompanied by her mother, Mrs. Childers and her sister, Sal- ly, both of Dalhart.

METHODIST—Church news: The pastor Rev. William Ar- thur Cox will preach at both ser- vices Sunday. He and Mrs. Cox and family have recently return- ed from a two weeks vacation. Sunday school will meet at 10 a. m. and the League at 7:30 p. m.

BAPTIST—Church news: The pastor will preach at both services Sunday in preparation for the revival which begins on Monday night. Sunday school at 10 a. m. We have a class room and a place for every age. BTU at 7:30 p. m. Our church is com-

fortable both summer and win- ter because of our air-condition- ing and circulating heat. BE SURE (AND ATTEND THE CHURCH OF YOUR CHOICE SUNDAY!

## CONSTIPATION

Aderika in the famous Silver color bottle contains 3 laxative ingredients to give a more gen- erally Balanced Result on both bowels, and 5 carminatives to soothe and warm upset stomach and so ease gas pressure. Relief is prompt, usually two hours or Less! Spearman Drug Co and Hale Drug Co.

## DEMPSTER TILLING, DAMMING and DEEP FURROW SEEDING MACHINE

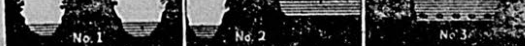


COME in and see this tested and proved machine that is turning misfortune into fortune for wheat farmers through the new system of farming that greatly decreases the weather gamble.

SAVE MONEY by buying this one machine instead of several. Save time, labor and fuel by doing several jobs in one operation. Go right into the stubble field immediately after harvest with the DEMPSTER as shown above—cultivate, form furrows and dam in one operation, leaving ground in perfect condition to catch and hold moisture in subsoil. (Note No. 1 below). Later you level ridges and prepare an excellent seed bed, leav- ing layer of trash on top to prevent soil-blowing. (Note No. 2 below). Then, with machine as shown below you deposit seed on a wide 6-in. moist seed bed, covering seed uniformly with a layer of moist soil. (Note No. 3 below).

Ideal for summer fallow, seeding row crops, for spring wheat planting, for contour farming.

COME IN and see this all-purpose machine. (38-D-15)



R. L. McClellan Grain Co.

