

FOR 30 YEARS

Devoted entirely to the upbuilding of a community which stands for education and citizenship.

The Spearman Reporter

SUPREME
-in circulation
-in advertising
-in reader inter
-in service
-in school inter

VOLUME XXX

SPEARMAN, HANSFORD COUNTY, TEXAS, THURSDAY, JULY 22, 1937

NUMBER

DON'T NAME IT

By HONEST BILL

Hot weather and Hoppers . . . not such to write about . . . but never-the-less, subjects that are uppermost on the minds of most people of this section.

After about three weeks of talking County agent Joe Hutton has most people Hopper minded. It's not the heat either. Even the city dad's are getting worried . . . the hoppers have stripped the leaves off the city park near the telephone office. Local people are fighting to keep flower gardens and trees from damage.

A letter directed to all wheat producers, sent out this week by county agent Hutton is asking county wide cooperation in the fight against the pesky critters. Main man at the Foxworth lumber yard is afraid we have waited too long. Said we should have been fighting hoppers the past 3 weeks. . . he thinks now that we should close up the stores and enlist every available male inhabitant and go after em tooth and poison nails.

Floyd Wilbanks Sr. seems to be sorta of the opinion of Main man. He said we should have started the enthusiasm of fight three weeks back. In explaining the lack of interest, Wilbanks said he believed the people had become so discouraged fighting dust and drouth that they were becoming calloused . . . and did not care much what happened . . . admitted he care much himself, but in the next breath he was purchasing lime to mix with arsenic to keep the hoppers off his trees and lovely flower garden at his Spearman home.

It's the same all over the country . . . we talk about ourselves and would "dry-crack" anyone else that said things about us. Floyd Wilbanks Sr. is no more discouraged than the rest of us . . . and that's not much . . . we still got to fight . . . and a couple of trillion grass-hoppers are not going to take it out of us. Let's all line up next week . . . and if it seems necessary and practical . . . suppose the store-keepers close up their place of business and get out on the firing line and battle the hoppers to a glorious death . . . death to the hoppers.

One suggestion made by Bob Douglas, city clerk, was to the effect that the Santa Fe R. R. be asked to run their torch engine over the road in this county and cremate the hoppers in the ditches and along the right-of-way with the fire. We understand the torch engine can absolutely destroy with fire all vegetable and life for some 100 feet on each side of the engine. It is used primarily to burn and kill out weeds and grass along the right-of-way and surely it would kill a million or so hoppers . . . and from the terrible tales that are being spread about this section . . . the steel rails of the railroad are not safe with hoppers holding conventions on them. Fact is some wheat farmer of the county has already started the story that hoppers were responsible for the train wreck last week end.

Last week this writer featured a story in the Panhandle Herald telling of a hopper that lived 27 hours after his head was cut off. Thought it was something unusual but found out that it was not. Dr. G. P. Grout, agricultural teacher at Panhandle knows all about such things . . . and tried to explain em to the writer, but can't reproduce his explanation. He informs the writer that a turtle will live three or four days after his head has been amputated, and a frog will sit up and wink at you for a couple of weeks after his hind legs have been amputated, fried, eaten and digested. And if you want some rather interesting information read the story in the Monday Dallas News headed "Stubborn, Inconsistent, Noisy Frogs". Seems a Dallas man is making a fortune out of frogs. He informs us that a female frog will lay some 18,000 to 20,000 eggs a season, and today frogs are selling at 41c per, wholesale. However it takes 2 years to bring a frog to the market. This time plus the heavy investment, and the disease known as "red" - See No. One on back page.

Fire Department Complete Volunteer Organization

Spearman's volunteer fire department has been brought up to its full membership strength and organized into a state chartered department, according to fire chief R. D. Chamberlain. The full membership consists of the following members:

R. D. Chamberlain, fire chief, C. V. Main, secretary, W. L. Meek, Treasurer, R. L. McClellan, Marlon Close, F. O. Crawford, F. E. Mitts, Leo Dacus, E. A. McCracken, F. H. Pratt, Earl Pittman, Tommie Bruce, A. L. Schnell, Leland Close and E. C. Womble. All members are elected to the organization, and a waiting list is being kept so that vacancies may be filled as they occur.

The department abiding by State regulations, are paid \$1.00 for each run made to a fire between the hours of 6 a. m. and 8 p. m. They collect \$1.50 for each fire run made between the hours of 8 p. m. and 6 a. m. A payment of fifty cents is made firemen for practice runs, which are limited to the number provided by the State Insurance Laws, two per month.

Funeral Services Held For Infant Girl

Funeral services were held Friday July 16 at the home of Mr. Raney for Anita Mae DeArmond, infant daughter of Mr. and Mrs. Albert DeArmond.

Anita Mae was born July 3, 1937 and passed this life in an Amarillo hospital July 15, 1937. Rev. A. F. Loftin officiated at the services, interment followed in the Holt cemetery.

Train Wreck Ties Tracks For Eighteen Hours

The West bound Santa Fe noon train wrecked at 1:30 last Thursday, July 15. Seven cars were derailed, three cars and content of wheat were badly damaged. Four of the cars were re-railed and started enroute to the consignee without much damage to cars or contents. Three cars of wheat were sold as salvage on the right of way. Wrecking crews repaired the damage and released the track for traffic by 8 a. m. Friday morning July 16. Three cars immediately behind the engine and two freight cars and a coach behind the wrecked wheat cars brought the size of the train to 13 cars. Station Agent Campfield declares the Santa Fe is not superstitious and does not attribute the '1937' to causing the wreck. He also declares that Hoppers were not responsible. The theory of railroad men is that there developed a sun-warp in the rails just after the engine and 3 cars had passed the damaged portion of the track.

Band School Will Likely Open About July 26th

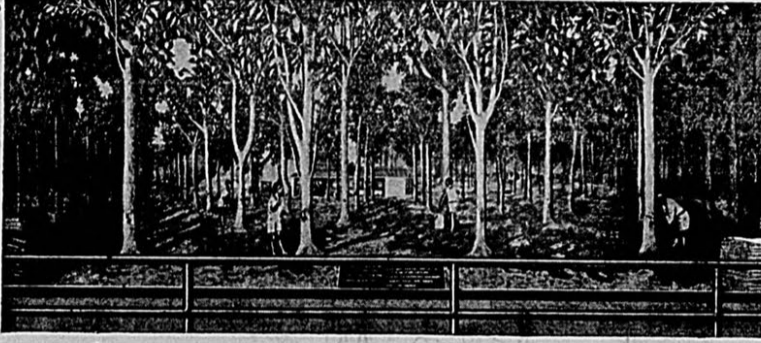
Up to press hour the Reporter had not heard from bandmaster Ferguson relative to the coming 6 weeks band school. Since some 30 students have signed up for the course and others are waiting until the time is definitely known, the writer assumes the band school will start about July 26 or 28th.

Donkey Ball Game Is Arousing Interest

Much interest is being manifested in the Donkey softball game to be staged at the softball grounds the night of July 28th. Farmers of this area headed by Otis Paterson and Rusty Baker will attempt to play the crack softball players of Spearman. The game is scheduled as a night contest, and a well lighted field will be provided by the sponsors of the contest. The contest is sponsored by the Lion club of Spearman. Justice Oakes of the Smooth Mouth ball club is begging for a chance to enter his players in the contest, and Lion Bill Hutton, manager of the Lion tribe, declares he will use the entire team during the play. A tentative line up . . . or should we say donkey-up will be Dave Hester, 2nd base, the Kid Ooley, 1b, Stetson, 3b, Hix Wilbanks, ss, Edgar Womble, lf,

An Open Letters To Wheat Producers From County Agent

Rubber Plantations Diorama Outstanding at 1937 Great Lakes Exposition



Complete in every detail with the distant roar of lions, the incessant chattering of innumerable jungle birds and the steady rhythmic throb of the tom tom, the huge diorama at the Firestone Plantations in Liberia, West Africa, is one of the most outstanding displays at the Great Lakes Exposition this year. Pure latex actually flows from genuine rubber trees which have been shipped directly to Cleveland from darkest Africa. Mechanical natives demonstrate the various operations necessary to collect, coagulate and ship the crude rubber to Firestone Factories all over the world.

Exposition this year. Pure latex actually flows from genuine rubber trees which have been shipped directly to Cleveland from darkest Africa. Mechanical natives demonstrate the various operations necessary to collect, coagulate and ship the crude rubber to Firestone Factories all over the world.

County Judge, Barkley, Explains New Tax Program

The following bill (H. B. 456) authorizing partial payment of delinquent taxes was passed by the regular session of the 45th Legislature.

Sec. 1. On and after July 1, 1937, taxpayers owing delinquent State and county taxes, covering both real estate and personal property, shall be permitted to pay such delinquent taxes in partial payments under a system which shall be hereinafter provided for.

Sec. 2. The Assessor and Collector of Taxes of each county of this State shall create and establish a partial payment or installment account system whereby all delinquent taxpayers desiring to pay their taxes under the provisions of this Act may do so.

Sec. 3. All payments received by the Assessor and Collector of Tax shall be due and payable within the provisions of this Act in twenty (20) months from the date of July 1, 1937, such payments being due and payable in ten (10) equal installments.

Sec. 4. If after paying one or more installments, the delinquent taxpayer pays no further installment or installments for a period of four (4) months, all of the remaining installments of said delinquent taxes shall become due and payable and it will thereupon become the duty of the County Attorney or District Attorney or Criminal District Attorney in counties where there is no County Attorney to institute suit for the collection thereof.

Sec. 5. The Assessor and Collector of Taxes shall accept partial payments made by a taxpayer in any sum, provided, however, that no sum shall be less than One Dollar (\$1) and that no partial payment account will be opened for delinquent taxes which total less than Ten Dollars (\$10).

Sec. 6. When any delinquent taxpayer shall have paid into such installment account a sum of money sufficient to pay the taxes owed by him for the earliest unpaid year upon one of the lots or tracts of land owned by him, together with the amount of penalty and interest then provided by law, the Assessor and Collector of Taxes shall withdraw from the special fund hereinafter provided for such sum and shall apply the same upon payment of said delinquent taxes, penalty, and interest, if any and issue such taxpayer a redemption receipt therefor. Thereafter such taxpayer may continue to make equal monthly installments into such trust fund until all of the delinquent taxes owed by him shall have been paid.

Sec. 7. All of such installments paid by such delinquent taxpayers shall immediately become the property of the State of Texas and the respective county where the assessed property is situated or located, in such proportion as is necessary to satisfy the taxes, penalty and interest delinquent and due to each, and the taxpayer shall in no event be entitled to a refund thereof, or to any portion of the same.

Sec. 8. In the event the taxpayer for whom the installment or partial payment account was originally opened sells the particular property upon which said installments are to be applied, the Assessor and Collector of Taxes may, in his discretion, immediately apply upon the taxes, penalty, and interest delinquent upon such property, the amount of installments already received.

Sec. 9. All funds or money covering delinquent State and county taxes, received by the Assessor and Collector of Taxes under the provisions of this Act shall immediately be placed in a special account with the County Treasurer of the respective county involved, and shall be held in escrow in such account until such time as the Assessor and Collector of Taxes shall notify said County Treasurer that at least one year's taxes have been paid on an individual account, thereby permitting said County Treasurer to remit to the Assessor and Collector of Taxes the amount or amounts so specified said funds then to be distributed to the State and county proportionately in the same manner as all other collections.

Sec. 10. The books, records, and accounts maintained by the Assessor and Collector of Taxes for the purpose of carrying out the provisions of this Act shall at all reasonable times be subject to examination by the State Comptroller of Public Accounts and the respective County Auditors in their official capacity, in the same manner as all other collection systems now provided for by law.

Sec. 11. The provisions of this bill shall not apply to ad valorem or personal property taxes of any city, town or independent school district, or any political subdivision of the State unless & until the governing body thereof shall pass an ordinance or resolution providing that the provisions of this bill shall apply to ad valorem taxes of such city, town, or independent school district, or any political subdivision of the State.

Sec. 12. The Comptroller of Public Accounts shall prescribe suitable forms to be used by the Assessor and Collector of Taxes for noting thereon the payment of taxes in installments. He shall also prescribe suitable forms for Sec No. 4 on back page.

Sec. 13. The Assessor and Collector of Taxes shall immediately be placed in a special account with the County Treasurer of the respective county involved, and shall be held in escrow in such account until such time as the Assessor and Collector of Taxes shall notify said County Treasurer that at least one year's taxes have been paid on an individual account, thereby permitting said County Treasurer to remit to the Assessor and Collector of Taxes the amount or amounts so specified said funds then to be distributed to the State and county proportionately in the same manner as all other collections.

Sec. 14. The books, records, and accounts maintained by the Assessor and Collector of Taxes for the purpose of carrying out the provisions of this Act shall at all reasonable times be subject to examination by the State Comptroller of Public Accounts and the respective County Auditors in their official capacity, in the same manner as all other collection systems now provided for by law.

Sec. 15. The provisions of this bill shall not apply to ad valorem or personal property taxes of any city, town or independent school district, or any political subdivision of the State unless & until the governing body thereof shall pass an ordinance or resolution providing that the provisions of this bill shall apply to ad valorem taxes of such city, town, or independent school district, or any political subdivision of the State.

Sec. 16. The Comptroller of Public Accounts shall prescribe suitable forms to be used by the Assessor and Collector of Taxes for noting thereon the payment of taxes in installments. He shall also prescribe suitable forms for Sec No. 4 on back page.

Sec. 17. The Assessor and Collector of Taxes shall immediately be placed in a special account with the County Treasurer of the respective county involved, and shall be held in escrow in such account until such time as the Assessor and Collector of Taxes shall notify said County Treasurer that at least one year's taxes have been paid on an individual account, thereby permitting said County Treasurer to remit to the Assessor and Collector of Taxes the amount or amounts so specified said funds then to be distributed to the State and county proportionately in the same manner as all other collections.

Sec. 18. The books, records, and accounts maintained by the Assessor and Collector of Taxes for the purpose of carrying out the provisions of this Act shall at all reasonable times be subject to examination by the State Comptroller of Public Accounts and the respective County Auditors in their official capacity, in the same manner as all other collection systems now provided for by law.

Sec. 19. The provisions of this bill shall not apply to ad valorem or personal property taxes of any city, town or independent school district, or any political subdivision of the State unless & until the governing body thereof shall pass an ordinance or resolution providing that the provisions of this bill shall apply to ad valorem taxes of such city, town, or independent school district, or any political subdivision of the State.

Sec. 20. The Comptroller of Public Accounts shall prescribe suitable forms to be used by the Assessor and Collector of Taxes for noting thereon the payment of taxes in installments. He shall also prescribe suitable forms for Sec No. 4 on back page.

Sec. 21. The Assessor and Collector of Taxes shall immediately be placed in a special account with the County Treasurer of the respective county involved, and shall be held in escrow in such account until such time as the Assessor and Collector of Taxes shall notify said County Treasurer that at least one year's taxes have been paid on an individual account, thereby permitting said County Treasurer to remit to the Assessor and Collector of Taxes the amount or amounts so specified said funds then to be distributed to the State and county proportionately in the same manner as all other collections.

Sec. 22. The books, records, and accounts maintained by the Assessor and Collector of Taxes for the purpose of carrying out the provisions of this Act shall at all reasonable times be subject to examination by the State Comptroller of Public Accounts and the respective County Auditors in their official capacity, in the same manner as all other collection systems now provided for by law.

Sec. 23. The provisions of this bill shall not apply to ad valorem or personal property taxes of any city, town or independent school district, or any political subdivision of the State unless & until the governing body thereof shall pass an ordinance or resolution providing that the provisions of this bill shall apply to ad valorem taxes of such city, town, or independent school district, or any political subdivision of the State.

Sec. 24. The Comptroller of Public Accounts shall prescribe suitable forms to be used by the Assessor and Collector of Taxes for noting thereon the payment of taxes in installments. He shall also prescribe suitable forms for Sec No. 4 on back page.

MASS MEETING TO DISCUSS FARM BILL AT AMARILLO JULY

Farmers of Texas, deter that some action should be without delay on the new bill now before Congress making elaborate plans for large regional mass meeting der the auspices of the Texa ricultural Association.

The first of these meeting be held in Amarillo, Wedn July 28. This mass meeting be for Districts 1, 2 and 3 "The primary purpose of meetings," President Lucas, TAA says, "is to give farme opportunity to discuss the bill fully and to demonstra Congress that there is a vital NOW for the legislation."

The principal speakers at of the mass meetings will Donald Kirkpatrick, counse the American Farm Bureau eration; Geergo Chance, le Brazos Valley cotton farme active in legislative matte TAA; Cliff Day, organizati rector of the TAA, and Lucas.

Hot Weather and Dust Storms Feature Weeks Weather

Temperature ranging fro low as 98 degrees Monday o week to a high of 105 de Friday of last week, togethe a couple of man size dusts tured the weather offeri the week. Plowed groun harvesting of wheat has completed furnished materi the duster.

Lightning Strikes Lester McLain Home Monday

Lightening striking the of Lester McLain in the side of Spearman did little age. The house caught on and when Mr. McLain coul phone the fire departme broke into the fire with an easily extinguished the f The fire caught between weather boarding and plast the North side of the kitche McLain said he smelled th but could not locate it unt smoke fogged thru into kitchen.

City Buys New Pumping Equipment

In the regular session o city commissioners held M the council authorized the chase of a pump unit for the city wells. The unit was at \$395. f.o.b. factory. ever, the pump was purcha p, saving to the city tax r since city clerk Robert D secured the unit for \$355. ered.

Mr. and Mrs. Delon Kirk Spearman were Sunday supper guests of Mrs. J. R.

Mrs. George Winter and son, Vinson, Oklahoma a sister Mrs. Summer of Mo. Friday afternoon guests o Jim Ownbey.

Mr. and Mrs. Eck Lee an ily and Norma Hall went to rillo last Tuesday.

Mr. and Mrs. Delon Kirk visited Mr. Edgar Brittain in Stinnett Sunday.

Mr. and Mrs. Ray Platt were A. W. O. L. for four days last week, and our city reporter investigated. Platt stated Monday morning, that they had made a short business trip to Weslaco, Texas, down in the Valley. We learned that they traveled 2,600 miles, ate a venison dinner in Old Mexico, chased wild turkeys near Brady, Texas, took in the Fort Worth Fiesta at Ft. Worth, the Pan American Exposition at Dallas, and incidentally did complete what ever business they planned. Gosh, if the Platts ever take a vacation, they will likely consider a trip to Europe as a Rush affair.

WANTED LAND—in fee also list of oil leases as we have buyer for both. Buyer prefers western part of the county. Write Olive M. Childers, 417 Amarillo Building, Amarillo Texas.

Billy Miller spent the week end in Panhandle visiting with friends. Softball, July 28th.

Despite discouraging reports of individual wheat operators relative to a small per acre yield, the most conservative estimate of Hansford's wheat production this year goes above a half million bushels of grain. Up to Thursday morning of this week approximately 194 cars of the 1937 crop had been either shipped or scheduled for shipment. The distribution, allowing for estimates was as follows: Spearman 92 cars, McKibben 21 cars, Morse 13 cars, Gruber 61 cars, Bernstein 7 cars. Elevator operators estimate the crop is largely harvested yet many fields that were green are still being combined.

Mrs. Edna Moore of Gainaville and Oklahoma City is visiting her daughter Mrs. H. E. Campfield.

Main Furniture Home Furnishings

A small admission price of 10c and 25c will be charged. The proceeds will be split between the Lion club and the company furnishing the lights and donkeys.

Hansford County Refuses To Become Involved In Ochiltree Beer Fight

According to newspaper information Ochiltree county is DRY. This resulting from the fact that the Seventh Court of Civil Appeals reversed District Judge E. J. Pickens' ruling that the election March 20th in which drys polled a plurality of 107 votes, was void.

Seems as though the wets have some sort of a writ of appeal pending . . . and shipments of beer apparently is going forth regularly. Leastwise one truck load of beer consigned to the Sherzer Produce Co., of Perryton

HOLT NEWS

BLODGETT NEWS

and Mrs. Dan Jackson and Joyce, left Sunday morning for El Paso, Texas for a sight-seeing trip and to look at a farm near El Paso.

and Mrs. Elmer Bartlett Sunday afternoon for Sulphur Springs. Mrs. Bartlett is a sister of Mrs. H. H. Stephen, they spent the past several days here. They plan to make a home at Ft. Cobb.

a Coble of Amarillo was a guest of Holt.

ses Maudie and Merle Holt Monday guests of Mr. and Mrs. O. C. Holt of Hereford.

family reunion with a one day dinner featured was held in the home of Mr. and Mrs. Ben Holt at Holt.

large dining room was fully decorated at which a large dining table was laid for guests: out of town guests included Mrs. O. C. Holt of Hereford, Mr. and Mrs. Pete Kirk and Mrs. Bobby Kirk, Misses Helen and Merle Holt of Houston, Mrs. Pendergraft, Tonkawa, Mrs. Wren Loftin of Prineville, Ore.

Mrs. A. D. Reed, Margaret Alline and Dickie Beck were visiting in the Blodgett home Tuesday evening.

Dickie Beck of Spearman is spending the week with Margaret Alline Reed.

Helen and Mary Beth Austin were callers in the Blodgett home Tuesday evening.

Mrs. Darwin Tricker was a guest of Mrs. J. F. Sim Wednesday.

Knox Popkin and children called at the Blodgett home Friday morning.

Ralph Blodgett was a Sunday evening visitor in Spearman.

Mrs. Ralph Blodgett, Mrs. O. D. Gowen and P. D. called at the Brainard Ranch on Johns Creek Friday evening.

Mr. and Mrs. L. W. Austin, Helen and Mary Beth, Mr. and Mrs. Campbell parents of Mrs. Austin attended the Elzey Rodeo on Wolf creek Thursday.

Mrs. Ralph Blodgett, Mrs. Ruth Gowen and baby called in the J. F. Simm home Sunday morning.

Mrs. L. W. Austin, Helen, Mary Beth and Mr. and Mrs. Campbell went to Hereford Monday to visit Mrs. Campbell's mother who lives there. They will return Friday.

and Mrs. J. B. Patterson and Mrs. Patterson's uncle and his wife, Mr. and Mrs. J. F. Sim, Mr. and Mrs. A. D. Reed and Margaret Alline, Mrs. Mearl Beck, Mrs. O. D. Gowen, and baby, Mrs. Ralph Blodgett and Mr. and Mrs. E. S. F. Brainard.

LOST—one tire East of Spearman Thursday evening. Finder please get in touch with Mrs. R. C. Birdwell.

ATTENTION

Floors finished economically and efficiently see—D. E. Bradford.

Uncle Jim Says



"Green manure crops cut production costs and pay good dividends on thousands of Texas farms."

REPORT OF CONDITION OF

FIRST STATE BANK

Spearman, in the State of Texas, a member of the Federal Reserve System, at the close of business on June 30, 1937, is reported in accordance with calls made by the State Banking Commission of Texas, and the Federal Reserve bank of this district.

ASSETS	
Cash and Discounts	\$181,623.42
Drafts	491.15
United States Government obligations, direct and fully guaranteed	36,076.56
U.S. bonds, stocks, and securities	72,616.68
Real Estate	\$5,000.00
Equipment and Fixtures	\$1,800.00
Loans with Federal Reserve bank	6,800.00
Loans with other banks, and cash items in process of collection	53,244.25
Real Deposit Insurance Corporation	130,298.11
TOTAL ASSETS	\$520,944.17
LIABILITIES	
Deposits of individuals, partnerships, and corporations	\$359,746.37
Deposits of individuals, partnerships, and corporations	2,015.22
County, and municipal deposits	69,974.52
Deposits of other banks, certified and officers' checks, etc.	2,179.54
Deposits declared but not yet payable, and amounts set aside for dividends not declared and for accrued interest on capital notes and debentures	2,500.00
Total of Items 14 to 18 inclusive:	
Secured by the pledge of loans and investments	\$ 42,000.00
Not secured by the pledge of loans and investments	391,915.65
Total Deposits	\$433,915.65
Capital Account:	
Common stock 250 shares, par \$100.00 per share	\$ 25,000.00
Surplus	\$ 12,500.00
Undivided profits—net	\$ 7,289.72
Total Capital Account	\$ 44,789.72
TOTAL LIABILITIES	\$481,205.37
Memorandum: Loans and Investments Pledged To Secure Liabilities	
U.S. bonds, stocks, and securities	\$ 42,000.00
Total Pledged (excluding rediscounts)	42,000.00
TOTAL PLEDGED	\$42,000.00
J. R. COLLARD, as President, and L. B. CAMPBELL, as Cashier of said Bank, each of us, do solemnly swear that the above is true to the best of our knowledge and belief.	
J. R. COLLARD, President	
L. B. CAMPBELL, Cashier	
CERTIFICATE—	
C. A. GIBNER	
P. B. HIGGS	
H. B. HART	
Directors	
of Texas, County of Hansford, ss:	
Subscribed and sworn to before me this 14th day of July A. D. 1937.	
W. J. MILLER, Notary Public, Hansford County, Texas.	

Harvest Special

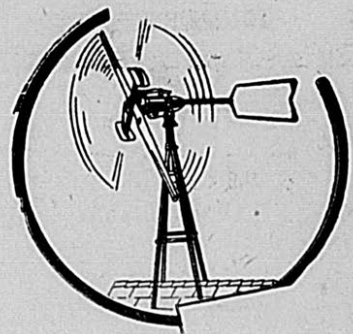
Close Out Sale On All 1937 Model Philco Battery Set Radios:--

We are overstocked with 1937 model Philco Battery set Radios and are listing 80 Radios at prices that will move this merchandise.



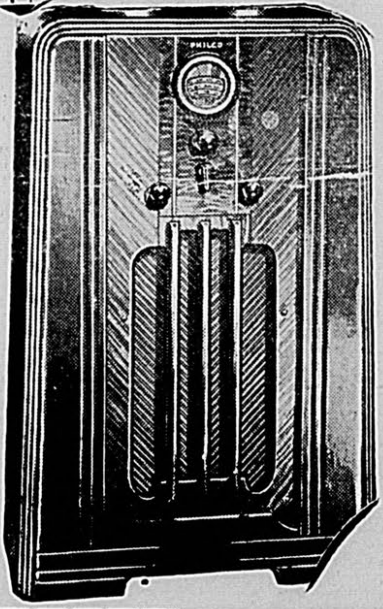
FOREIGN RECEPTION

Here's the amazing new Philco Color Dial that actually names and locates foreign stations in color... with 50% greater separation between stations. You tune by name easily, quickly, accurately!



Cabinet Models Complete With Batteries and Wind Charger

69.50



NOW yours with this new PHILCO FARM RADIO

Here's a battery-operated Philco that gives you big-city radio performance! Fine American reception—including daytime reception of the big network programs through short-wave stations. Programs from foreign countries, too—twice as many of them! See and hear it—judge for yourself!

SPECIAL

2 Volt Battery Sets 1937 Model Philco's.

Complete with Batteries

29.50



Table Models 1937 Philco - complete with batteries and Wind Charger...

52.50

LINDSEY'S
BORGER, TEXAS

CLASSIFIED ADS

FUNERAL SERVICE

CARVER FUNERAL CHAPEL
 Telephone 500 109 N. Main
AMBULANCE SERVICE
 Dignified, Sympathetic Service
BORGER TEXAS

MEDICAL

E. E. GOWER M. D.
 Room 205
 McLain Building
 Phone res. 98 Office 33

DR. J. P. POWELL
 Eye Ear Nose & Throat
SPECIALIST
 Glasses fitted, Tonsils and
 Adenoids Removed
 Wednesday August 4
 Office Dr. J. E. Gower

C. H. DUNLAP
 Registered Optometrist
 Have Your Eyes Tested
 E. 5th St. Borger, Texas

TRANSFER
SPEARMAN-AMARILLO
FRED M. MIZAR
 Truck Line
 SPEARMAN PHONE 112
 AMARILLO PHONE P851

TAILORING
Campbell Tailor Shop
 Odorless Dry Cleaning—
 Made to Measure
 \$20.00 and up
Phone 113

CAFE


GIVE YOUR WIFE A VACATION
 When hot weather makes home
 thing and baking a tiresome
 duty take your wife to
 us for dinners. It's vaca-
 tion for her, a pleasing
 meal for both of you, and
 so economical.

BURL'S CAFE

CHANGE TO SUMMER OIL

Is the time to change to
 summer grades of oils. Also let
 wash and grease and recom-
 mend your car for the hot weather.
HILLIPS 66
 Luther Glover, Agt.

ING GARDENERS
 We have a complete stock of bulk
 seeds for your Spring gar-
 den and will meet or beat any
 all mail order catalogue
 prices. See me first before you

K. SNIDER PRODUCE

HOME OF FOOD GAINS
 We strive to offer you the best
 quality food products at the most rea-
 sonable prices. It is with this aim and
 the assurance of the most cour-
 teous and conscientious service
 that we solicit your business.
PHONE 3 - WE DELIVER
F. W. BRANDT & CO.

NOTICE
 This will inform the public
 that the R. L. McClellan Grain
 Co., cannot and will not make
 free delivery of merchandise. We
 are not in a position to give this
 accommodation to customers.
R. L. McCLELLAN GRAIN CO.

LOOK WHAT WE OFFER
 A full line of Chevrolet Cars
 and Trucks, genuine Chevrolet
 repair parts, Delco Radios for city
 or farm homes. Gates Tires and
 Tubes and many other standard
 lines of merchandise, seat covers,
 auto accessories and supplies. And
 it will cost you nothing to come
 in and look at them.
McCLELLAN CHEVROLET CO.
INC. Ask for a Demonstration
PHONE 20

DENTIST

DR. F. J. DAILY
 DENTIST
 X-RAY
 McLain Building Phone 156
 SPEARMAN TEXAS

HANSFORD LODGE NO. 1040
 Regular Communications
 Second Monday of each
 Month at 8:30
 Visitation Welcome.
CLAUDE PARKER, W. M.
FLOYD MITTS, Secretary

FARMERS LET US SERVE YOU

Take a tip from the United
 States Government. A number of
 the great ships and airplanes of
 the Navy are serviced with Sin-
 clair motor oil and fuel. IT MUST
 BE GOOD to get this attention
 year after year. Let us sell your
 fuel for your power farming ma-
 chinery, perfect delivery service.
 Reasonably priced.
FRANK HARDIN
SINCLAIR AGENT

GLASS

For Your House
 or Car
 All Kinds—All Sizes
DALEY GLASS
SHOP
 Perryton, Texas

CHEAP BULK

Oils, 25c per gallon.
DAVIS BROS. — Phone 107

SCREEN DOORS, WINDOWS
 Need repairing at this time. Let
 us estimate the cost of needed re-
 pairs PAINT up your home in-
 side and out. We can give you fi-
 gures on cost that will astonish
 you, for reasonable cost that this
 need improvement can be made.
Foxworth - Galbraith Lmb. Co.

IF THE RAIN STOPS FALLING

You will want to complete the
 preparations of your land for
 planting food and row crops. Let
 us aid you with your repairs for
 tractors, your planters or listers
 SEE us for good buys in tractors
 listers and planters.
SPEARMAN HARDWARE

FOR YOUR COMPLETE PROTECTION
 Against leakage, substitution,
 dilution or short measure we re-
 commend you buy oil in Refinery
 Sealed Containers.
 "Oil Right With Champlin Oil"
DAVIS BROS. — Phone 107

YARD OR GARDEN WORK
 Anyone wanting yard or garden
 work done call the Spearman
 Reporter, Phone 10.

Important

This year last year and in the
 years before the CONSUMERS
 SALES CORPORATION have led
 the parade of values in fuel and
 lubricants for farm and city con-
 sumption. We buy our products in
 bulk of the best quality and do
 not require enormous purchases,
 to secure advantageous prices.
 You will always get REAL
 VALUE here whether it is gaso-
 line, oil, Firestone tires, batteries
 tubes, or other auto accessories.
CONSUMERS SALES CORP.

STOP
 At the Conoco Service Station
 for the Fastest and Most cour-
 teous service in town. All conven-
 iences. Special equipment for
 greasing cars.
Raymond Kirk, manager
PHONE 133

HOME OF FOOD BARGAINS
 We strive to offer you the best
 quality foods at the most rea-
 sonable prices. It is with this aim and
 the assurance of the most cour-
 teous and conscientious service
 that we solicit your business.
PHONE 3 - WE DELIVER
F. W. BRANDT & CO.

NOTICE
 This will inform the public
 that the R. L. McClellan Grain
 Co., cannot and will not make
 free delivery of merchandise. We
 are not in a position to give this
 accommodation to customers.
R. L. McCLELLAN GRAIN CO.

LOOK WHAT WE OFFER
 A full line of Chevrolet Cars
 and Trucks, genuine Chevrolet
 repair parts, Delco Radios for city
 or farm homes. Gates Tires and
 Tubes and many other standard
 lines of merchandise, seat covers,
 auto accessories and supplies. And
 it will cost you nothing to come
 in and look at them.
McCLELLAN CHEVROLET CO.
INC. Ask for a Demonstration
PHONE 20

GOODYEAR TIRES AND TUBES AND AUTO ACCESSORIES
 Real quality merchandise with
 a quarter of a century manufac-
 turing experience. See us now for
 Summerizing your cars. Get our
 prices on Tractor tires.
R. E. LEE OIL CO.

REAL BARGAINS

In floor coverings. We have a
 limited number of drop patterns
 in Congoleum rugs, reduced in
 price from \$8.95 to 7.15. Prices
 are going up. BUY NOW.
Main Furniture-Home Furnishings

GET YOUR MAGNETO REPAIR WORK NOW

We are asking farmers who an-
 ticipate magneto repair work to
 bring in their work at this time.
 And the repairs will be made and
 the magneto delivered later when
 you are ready to use the magneto.
 This will help us, and will save
 delay for you.
DELON KIRK BATTERY SHOP

Local Girl Makes Good!
 I should worry, I should care,
 I should marry a millionaire.
 He should die. I should cry,
 Then I'd marry my regular guy.
 —Hollis Post-Herald

SPEARMAN REPORTER PHONE 10

R. V. CONVERSE SAYS:—

It is reported that Italians
 mined a million tons of iron in the
 last half of 1936 from the island
 of Elba, which was Napoleon's
 place of exile.

Hansford County has sustained
 a great loss in the trees just north
 of Spearman along the high-
 way. The hoppers have completely
 stripped them of leaves. This
 will probably mean the loss of the
 trees.

England has granted indepen-
 dence to Egypt and has stopped
 police activities in that country.
 Now they have a big crime wave.
 A great many people do not like
 to be decent citizens unless they
 are compelled.

The other day the House of
 Rep. made an appropriation of
 five thousand dollars to Mrs.
 Allie Rankin. Mrs. Rankin was in-
 jured when a house constructed
 by WPA workers collapsed.

President Roosevelt is still in
 the lead in his battle for correc-
 tion of the Supreme Court prac-
 tices and now the Supreme Just-
 ices are playing politics. No won-
 der the big boys are opposed to
 fifteen judges if nine can stir
 up such a big muss. What would
 fifteen do?

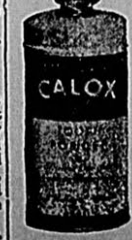
The only thing that is the mat-
 ter with this country is that we
 have not learned how to make all
 the new inventions work, and
 then divide the product of the
 machine so that we can all bene-
 fit some degree of fairness.
 Yours,
R. V. Converse.

Courteous and Conscientious Service at all Times

Wilson Funeral Home AND FLOWER SHOP

Phones—Day, 44; Night 62 Spearman

MAKE YOUR TEETH shine like the stars!



CLEAN AND WHITEN TEETH
 with Calox, the Oxygen tooth powder which penetrates to
 the hidden crevices between the teeth. Pleasant, Refresh-
 ing, Protects the gums and is economical to use.

TRY CALOX AT OUR EXPENSE
 What Calox will do for your teeth is easily demonstrated by
 you in your own home at our expense. Simply fill in the
 coupon with name and address and mail it to us. You will re-
 ceive absolutely free a test can of CALOX TOOTH POWDER, the
 powder more and more people are using every day.

FREE TRIAL COUPON
 McKeason & Robbins, Inc., Fairfield, Conn.
 Send me a 30 day trial of CALOX TOOTH POWDER at no
 expense to me. I will try it.
 Name.....
 Address.....

International Sunday School Lesson

By Dr. J. E. Nunn

Topic—God Prepares A people.
 Scripture Lesson: Ex. 12:21-28.

Ex. 12:21. Then Moses called
 for all the elders of Israel, and
 said unto them, Draw out, and
 take you lambs according to your
 families, and kill the passover.
 22. And ye shall take a bunch
 of hyssop, and dip it in the blood
 that is in the basin, and strike
 the lintel and the two side-posts
 with the blood that is in the basin
 and none of you shall go out of
 the door of his house until the
 morning.

23. For Jehovah will pass
 through to smite the Egyptians;
 and when he seeth the blood upon
 the lintel and on the two side-
 posts, Jehovah will pass over the
 door, and will not suffer the des-
 troyer to come in unto your
 houses to smite you.

24. And ye shall observe this
 thing for an ordinance to thee
 and thy sons forever.
 25. And it shall come to pass
 when your children say unto you,
 What mean ye by this service?
 27. That ye say, It is the sacri-
 fice of Jehovah's passover, who
 passed over the houses of the peo-
 ple of Israel in Egypt, when he
 smote the Egyptians, and deliv-
 ered our houses. And the people
 bowed the head and worshipped.

28. And the children of Israel
 went and did so: as Jehovah had
 commanded Aaron so did they.

Golden Text:—The Lord thy God hath chosen thee to be a people for possession—Deut. 7:6.

Introduction
 Between our last lesson and this
 one great calamity after another
 had fallen as the judgment of
 God upon the land of Egypt and
 the Egyptian people because of
 Pharaoh's refusal to let the chil-
 dren of Israel go. The more Phar-
 aoh resisted the command of God
 he hardened his heart the more,
 an experience repeated every-
 where in the hearts of men who
 assume that same stubborn atti-
 tude toward the Almighty. One
 last judgment is now to fall upon
 the land, the worst of all the
 judgments, namely, the death of
 the first born in every Egyptian
 family, "from the first born of
 Pharaoh that sitteth upon his
 throne even unto the firstborn
 of the maid-servant that is be-
 hind the mill, and all the first-
 born of cattle." In this lesson we
 come closer to the heart of our
 Christian gospel than in almost
 any other Old Testament passage.

The whole of God's provision for
 our salvation through Christ is
 prefigured. The passover's rela-
 tion to the Lord's Supper also
 gives it added interest to the
 Christian.

Jehovah's Life-Line in Israel
 One phrase in the chapter
 should have our careful atten-
 tion. Jehovah doth make a distinc-
 tion between the Egyptians and
 Israelites. A line of demarcation
 is drawn by the hand of God: on
 the one side of the life-line, death
 would reign, on the other side of
 the line, redemption and protec-
 tion would be experienced. The
 question naturally arises: On what
 ground did God make such a dis-
 tinction between Egyptians and
 Israelites? One thing is sure, the
 basis of judgment was not that of
 intellectual attainments, nor of
 wealth, nor of royalty nor of per-
 sonal ability or achievement. It

Israelites were God's chosen peo-
 ple, whom he purposed to redeem
 from the others the Egyptians were
 resisting God's purposes and in-
 flicting terrible punishment upon
 those of his love and choice. The
 difference between the Egyp-
 tians and the Israelites was also
 in the lives of these people: for
 the Egyptians that night, before
 the destroying angel appeared,
 were conducting themselves no
 differently from any other time,
 whereas the Israelites by faith ex-
 pecting deliverance, were found to
 gether in prayer, and worship and
 readiness to go out.

God's Instructions Regarding the Passover Feast.
 Chapter 12 introduces us to the
 first legislation in the Hebrew na-
 tion, and the first sacrificial in-
 stitution of which we have any
 details, the sacrifice which typi-
 fies more than any other that
 great and perfect sacrifice made
 by the Lord Jesus Christ when
 he was here on earth. It was such
 an important institution that, in
 instituting it, God ordained that
 from this time on the Hebrew peo-
 ple should date the beginning of
 the new year from it. Four days
 before the night when the destroy-
 ing angel was to pass over Egypt,
 and the Israelites were to be al-
 lowed to go out, every Hebrew
 household was to choose a lamb
 without blemish, a male a year
 old, from the sheep, or from the
 goats, one lamb for each home.
 Thus we discover that the first
 ordinance of the Jewish religion
 was a domestic service. And this
 arrangement is divinely wise.
 Never was a nation truly pros-
 perous or permanently strong
 which did not cherish the sancti-
 ties of home. Ancient Rome failed
 to resist the barbarians not be-
 cause her discipline had degener-
 ated but because evil habits in the
 home had ruined her population.

Saved By The Blood Ex. 12:23
 The blood of a slain lamb, life
 forfeited in sacrifice, sprinkled on
 the door posts of a Hebrew home
 of faith, was God's divinely pro-
 vided protection of his people in
 the hour in which every firstborn
 of every home in Egypt would
 be slain unless the blood was thus
 applied. So the blood of Christ be-
 lieved in as God's sacrifice for our
 sins, forever saves us from God's
 judgments of sin and wrath to
 come. We are safe only under the
 blood of Christ. Every Christian
 knows far more of the meaning
 of the atoning blood than the
 Hebrew of the days of the exodus
 ever could; but whatever be our
 difficulties in this great mystery,
 all God asked is simple faith in
 believing what he has said, that
 "the blood of Jesus Christ his Son
 cleanses us from all sin."

The Feast of the Unleavened Bread. Ex. 12:18-19.
 All during the particular week
 immediately following the pas-
 sover, the Hebrew people were
 forbidden to eat any bread in
 which there was the slightest in-
 termixture of leaven, some what
 like our yeast. Because leaven in-
 volved fermentation, and fermenta-
 tion meant corruption, to pre-
 vent the eating of any bread
 in which leaven was intermixed,
 symbolically set forth the separa-
 tion and consecration which ought
 to characterize the life which the
 Israelites, and the redeemed
 children of God, were to live. The
 perfect explanation of the mean-
 ing of the feast of unleavened
 bread for the Christian is found
 in the writings of the apostle
 Paul. For our passover also hath
 been sacrificed, even Christ;
 wherefore let us keep the feast
 not with the leaven of malice and
 wickedness but with the unleaven-
 ed bread of sincerity and truth. As
 the paschal lamb sets forth Christ
 our passover slain for us in order
 to bring us pardon, peace and new
 life, the feast of unleavened
 bread was designed to prefigure
 the holiness of the new life and
 the fellowship with God which
 characterizes the redeemed.

Christ our Passover
 For even Christ our Passover is
 sacrificed for us. The first pas-
 sover was instituted at a time when
 the Hebrew people were in bond-
 age. Christ was afforded a man-
 kind for sins when all mankind
 was in a great bondage, to the
 power of sin and Satan; the first
 passover was instituted at the
 hour when God was about to re-
 deem Israel from the bondage of
 Egypt; by the sacrifice of Christ
 our passover, as the Lamb of God,
 men are made free from the pow-
 er of sin redeemed by his precious
 blood; by the blood of the animal
 sacrificed in the first passover,
 the Hebrew people, employing the
 blood as Christ had directed were
 saved from the destructive power
 of the angel that passed over
 Egypt, by the blood of Christ ap-
 propriated by us, we escape that
 was not based on superior natural
 greater outpouring of God's wrath
 in the judgment to come.

The Passover And the Lord's Supper.

The Lord's Supper bears a
 close resemblance to the ancient
 Hebrew feast. It was on the night
 of the Passover that the supper
 was instituted. . . Both these or-
 dinances are retrospective: the
 first looked back to the mighty
 deliverance from Egypt; the 2nd
 looks backward to the advent of
 the Messiah in humiliation when
 he died the just for the unjust,
 that he might bring us to God.
 Both are prospective: the Pass-
 over commemorated redemption
 from a pitiless tyranny, from the
 weary brick-kilns, and the hiss of
 the task-master's cruel lash. It
 meant, too, introduction into the
 Land of Promise, the peaceful en-
 joyment of home and rest. He
 brought them out that he might
 bring them in. The Lord's Supper
 commemorates redemption
 from the greater despotism of sin
 and from all sin's frightful con-
 sequences and introduction into
 and establishment in the inheri-
 tance which is unending and in-
 alienable.

GEE, MA, MY
 HAIR LOOKS
 SWELL NOW!



Mothers who found Fom-ol a thrill-
 ing hair treatment for themselves
 now insist on its use for the children
 —and for Dad, too! Fom-ol is a
 amazing foaming oil show
 poo, superfine and non-irri-
 tating to the most tend-
 skin. Fom-ol takes dirty, un-
 kempt, sickly hair and leaves
 it clean and glowing healthy.
 Fom-ol is so economical; a
 little goes a long way. Ask
 your druggist for the regu-
 lar 50c size. Or, write for a
 generous trial bottle, enclos-
 ing 10c to cover packing and
 postage.

More than a shampoo—a treatment
CLAIROL, Inc.
 132 W. 46th St., New York
 I enclose 10c for one trial size
 bottle of Fom-ol.
 Name.....
 Address.....
 City..... State.....

Nancy Hart's HOME NEWS

Fancy breads and rolls always
 are greeted with cheers whether
 they appear in the picnic basket
 or on the luncheon or tea table,
 so the summer hostess who mas-
 ters the art of making these good-
 ies may rest in the assurance of
 being prepared for impromptu
 snacks.

Quick breads and refrigerator
 rolls come in the category of
 summer short-cuts because they are
 distinctly labor saving foods. They
 are easy to make and give a large
 return for the time and effort
 spent in making them.

Whenever bread-stuffs are to
 take an important part in the
 meals it's quite necessary to keep
 in mind their food value. All bread
 is energy food because its chief
 ingredient—flour—is of rich cal-
 oric value. The yeast breads are
 good sources of vitamin B but
 the quick breads made with eggs
 milk and molasses add mineral
 salts and additional calories.

Frequently a raisin or nut
 bread takes the place of cake or
 other sweet in a luncheon menu.
 A vegetable salad accompanied by
 raisin bread sandwiches and fol-
 lowed by a dessert of fresh fruit
 is indeed adequate and no one
 notices the lack of cake or cook-
 ies.

Children and adults who are
 too thin find these breads an ex-
 cellent means of increasing the
 calories in their diets since an ex-
 tra amount of butter can be car-
 ried most appetizingly by the
 slices of bread.

Brown Bread
 One egg, 1 1-2 teaspoons salt,
 1-3 cup granulated sugar, 1-2 cup
 molasses, 2 1-2 cups graham flour,
 1-2 cup cornmeal, 1 cup white
 flour, 2 cups buttermilk or sour

milk, 2 teaspoons soda, 1 cup
 seeded raisins.

Beat egg until light with sugar
 and salt. Add molasses and mix
 well. Mix raisins with white flour.
 All graham flour and cornmeal
 to first mixture and add one cup
 of sour milk. Mix thoroughly.
 Add soda to remaining sour milk
 and add to first mixture. Add
 floured raisins and beat hard for
 a few seconds. Turn into oiled
 and floured pans and bake 50
 minutes in a moderately hot oven
 (375 degrees F.).

This bread makes delicious
 sandwiches filled with cream
 cheese.

To prevent a chicken from be-
 coming black and smoky during
 singeing, hold it over plain wrap-
 ping paper.

Interior decorators are using
 electric switch plates to harmo-
 nize with draperies or the tone of
 the room. Almost every color of
 the spectrum as well as transpar-
 ent can be had—so it's very easy
 to carry out the color scheme of
 any room to the last detail. Fabrics
 to match or blend with the
 draperies are placed beneath the
 transparent plates so that their
 pattern shows through most ef-
 fectively. A piece of the material
 left from making summer slip-
 covers placed under the plate pulls
 the furniture and walls of the
 room together with striking ef-
 fect.

After you've given the porch
 furniture its last coat of paint for
 the season, boil the bristles of
 the paint brush in vinegar before
 putting it away. This will remove
 every trace of paint and the brush
 will be like new. Even brushes
 which have been badly neglected



I'M A NEW WOMAN - THANKS TO PURSANG

Yes, Pursang contains, in properly
 balanced proportions, such proven
 elements as organic copper and iron.
 Quickly stimulates appetite and aids
 nature in building rich, red blood
 even in cases of simple anemia. When
 this happens, energy and strength
 usually return. You feel like new.
 Get Pursang from your druggist.

Ride The Bus

For safety, convenience and comfort. Modern
 Passenger and Express Service
ROUND TRIP DAILY
 From Amarillo to Liberal Kansas. Cheap rates
PANHANDLE STAGES INCORPORATED
 Station at Spearman Drug Co.

SOCIETY

Elizabeth Ann Miller—Call 10

DORCAS SOCIETY

The Dorcas Missionary Society met in the home of Mrs. C. L. Schell, Thursday July 15 for their regular Missionary on Africa.

A very interesting lesson was given by Mesdames: Moore, Hill, Close and Yates.
The society will have a Food and Home-made ice cream sale Saturday July 24 in the Tice building 1st door south of Platt's Pharmacy. For the purpose of buying new song books for the church. The next meeting will be in the home of Mrs. Adrain Moore, Thursday July 22, for the regular Bible lesson beginning the Book of John. Every body welcome.

CARD OF THANKS

We wish to thank the many people who helped during our recent hour of sorrow. May God bless each and everyone of you. Mr. and Mrs. Albert DeArmond.

AUSTIN VISITOR

Miss Oscilee Loftin, daughter of Rev. and Mrs. A. F. Loftin, Seton Infirmary, Austin, Texas, is visiting in Spearman for an extended vacation.

BIDS OPEN

Notice is hereby given that bids will be received on or before August 9, 1937, by Morse Independent School District for the operation of school buses for the 1937-1938 term. The board reserves the right to reject any and all bids.

Bids are to be filed with R. F. Womble, Secretary of the school Board.
Signed A. E. Henderson, president.

Main Furniture-Home Furnishings
A NEW WAY OUT
by Ellis Parker Butler

Said Statesman A to statesman Z: "What can we tax that is not paying?"

We're taxing every blessed thing. Here's what our people are defraying:

"Tariff tax, income tax,
Tax on retail sales,
Club tax, school tax,
Tax on beers and ales.

"City tax, county tax,
Tax on obligations,
War tax, wine tax,
Tax on corporations.

"Brewer tax, sewer tax,
Tax on motor cars,
Bond tax, stock tax,
Tax on liquor bars.

"Bridges tax, check tax,
Tax on drugs and pills,
Gas tax, ticket tax,
Tax on gifts and wills.

"Poll tax, dog tax,
Tax on money loaned.
State tax, road tax,
Tax on things owned.

"Stamp tax, land tax
Tax on wedding rings,
High tax, low tax,
Tax on everything!"

Said statesman A to statesman Z "That is the list, a pretty bevy; No thing or act that is untaxed; There's nothing more on which to levy."

Said statesman Z to statesman A "The deficit each moment waxes; This is no time for us to fail; we will decree A Tax On Taxes."

—New Mexico Tax Bulletin.

SUNSHINE NEEDLE CLUB

The Sunshine Needle Club met in the home of Mrs. Ernest Archer on Tuesday.

The minutes were read by Mrs. Olen Chambers. No business was transacted the hostess served dainty refreshments to the following members Mrs. Adrain Moore, Dub Hanners, Lafe DeArmond, Olin Sheets and Olen Chambers.
The club will meet with Mrs. Dub Hanners next week.

JUNIOR LADIES CLASS

The Junior Ladies Bible class of the Church of Christ which was organized July 14th in the home of Mrs. Ernest Archer, met with Mrs. Olen Chambers Wednesday. The following officers were elected: Mrs. Lilly teacher, Mrs. Rube Howell, assistant, Mrs. Lafe DeArmond, secretary and Mrs. Ernest Archer treasurer.

After an interesting lesson the business meeting was held. Attending were Mrs. Lafe DeArmond, Olin Sheets, Lilly, Rube Howell, Lelan Close, J. B. Ayres, Heabel Ooley, Ernest Archer, Miss Allen and the hostess.

Vincent Lockhart, Amarillo, visited Bill Hutton last Monday.

Churches...

CATHOLIC CHURCH

Catholic services will be held at the District court room at Spearman each third Sunday of the month. Father Andrews from Borger will officiate. Services begin at 10:30 a. m.

CHRISTIAN CHURCH

At both services, 11: a. m. and 8:30 p. m. the minister is discussing the answers the Christ gave to the questions and problems which confront mankind. They are as old as the human race and will continue to be as long as mankind continues to live. The Christ spoke for all time. You ought to be interested. Come and listen. You will be helped. Bible School at 10 a. m. and Junior Christian Endeavor at 8 p. m.
JAMES TODD, minister.

Presbyterian Church

Sunday School 9:45 a. m., preaching 11 a. m. Theme "Behold Thy Son"

Young peoples Vesper services 7 p. m. The Presbyterian church will unite with the Methodist for the evening services. Wm Albert Smith as their guest preacher. Everyone is invited to attend these services.

Church of Christ

T. R. LILLIE, minister
Bible study Sunday morning at 10 o'clock. The message Sunday morning at 11 o'clock will be "Why I am a Member of the Church of Christ." The message Sunday evening at 8:30 o'clock will be "The Ark versus the Church." Young peoples meeting Sunday evening at 7:15 o'clock. Ladies Bible classes Wed. evening at three o'clock. Prayer meeting Wednesday evening at 8:30 p. m. The public is invited to attend all these services.

BLANCHE ROSE WALKER

The Blanche Rose Walker missionary society of the First Baptist Church met Wednesday afternoon in the home of Mrs. Watt Huffstutter.
After a very interesting lesson on "Europe Christ or Chaos" led by Mrs. Loftin, a lovely two course plate was served to Mesdames: Moore, Williams, Brandt, Edwards, Cooke, Loftin, Van Cleave, Miss Altha Groves and the hostess.

LOCKET CIRCLE

The Locket circle of the First Baptist church met in the home of Mrs. Dan Gill.
Mrs. Fred Hoskins led the lesson on "Pyrene Ministry".
After the interesting lesson refreshments were served to Mesdames: P. M. Maize, Bill Gandy, Francis Cone, Frank Hardin, Dan Gill and Fred Hoskins.

MARY MARTHA'S

Last Wednesday the Mary Martha Missionary Society met with Mrs. C. A. Gibner Mrs. Lloyd Campbell led the lesson. Mrs. Douglas had the devotional and Mrs. Steed had "Spiritual Cultivation."
Delicious refreshments were served to Mesdames: Beck, Bob Douglas, Hale, Dally, Miller, Hatton, Steed, Lee, Chambers, Hutcheon, Campbell and two visitors Mrs. Pope Gibner of El Paso and Winfred Lewis of Shamrock.

LEAGUE MEETING

Louise Linn, Martha Deon Kirk, R. L. McClellan, Virginia and Paul Buchanan, Eileen Tompkins, Florence Holton, Billy Hitchcock and Mrs. Neely and Mrs. Hitchcock of the Methodist Epworth League left Monday for Goodwell, Okla, where they will take a weeks course in Bible study and vacation.

ENJOY PICNIC

Monday night five families enjoyed a delightful outing and picnic on the Palo Duro Creek.
The ones who went were Dr. and Mrs. Gibner, Mr. and Mrs. Clay Gibner, Mr. and Mrs. Pope Gibner, Dr. and Mrs. Fred Dally, and Mr. and Mrs. Delon Kirk.

LOST—Half grown tan shepherd and Collie pup. White feet and tip of tail white. Small reward. Call R. L. Porter.

Mrs. W. J. Miller and daughter were accompanied to Pampa Sat. by Mrs. Van Earle Steed and sister, Mrs. Lewis of Shamrock. They returned home Sunday.

Spearm...

BELLE B...

Mrs. H...
hostess to members of Bennett Missionary society at her home Wednesday afternoon. The lesson, "Spiritual Cultivation" was led by Mrs. H. P. Bailey, Mrs. John Bishop read an interesting paper on "Christian Social Relations". Following the lesson the hostess served refreshments to Mesdames, Sid Clark R. L. McClellan, P. A. Lyon, John Bishop, H. P. Bailey and the hostess's mother Mrs. Moore.

SNAPDRAGON CLUB AT EARL RILEY HOME

Mrs. A. F. Hardin was leader of the Snap Dragon Flower club Monday evening July 19th. When the members met at the home of Mrs. Earl Riley for a lesson "Timely Suggestions for August." Refreshments were served to Mesdames: Crooks, W. S. McNabb, A. F. Hardin, J. E. Gerber, Lafe DeArmond, Rex Sanders and the hostess.

MRS BALEY HOSTESS TO LOTTIE MOON CIRCLE

Mrs. R. L. Baley was hostess to members of the Lottie Moon circle of the Baptist missionary society at the regular meeting held Wednesday afternoon.

Mrs. Carl Hutchison led the lesson "Bible Study". Those present were Mesdames: Carl Hutchison, W. L. Meek, D. W. Hazlewood, Rex Sanders and the hostess.

Mr. and Mrs. I. P. Baggerly, met Mrs. Baggerly's mother, Mrs. Ellie Reimnuth at Amarillo, Thursday, bringing her to Spearman for a visit. Mrs. Reimnuth lives in Oklahoma and was enroute home from a trip to Calif.

Stratford To Storm City Monday July 26th

August 2nd and 3rd Stratford is planning a big celebration.

A rodeo, with many good cash prizes, parade, three dances, music furnished by the Waikiki Melody Boys, baseball games, band contests, and airplane stunts are only part of the many features of these two big days.

The American Legion is presenting the "Hazel Hurd Players" in their big tent show. Remember the date August 2 - 3.

Monday July 26th at 4:30 a delegation from Stratford will storm Spearman and make other announcements.

Bring your Quilts and Blankets and wash them the Helpy Selly way, along with your regular washing.

Our charges are reasonable, Plenty of Hot Water at all times.

Your Business is Appreciated
O. C. RANEY
Laundry located North of My home.

Prison Reforms Seem Very Necessary

"Texas has taken one major forward step in seeking to improve that system by Gov. Allred's volunteer parole plan. This plan is one whereby parolees from the state penitentiary are placed in the custody of a representative board of citizens in their own home counties. These boards seek employment on relief for their parolees in order that the men may not drift back into the channels of crime.

Recently, the federal government sent a crew of WPA workers to our state prison, under the direction of a member of the U. S. Attorney General's staff to find out the system of release in this state and to compare it with

Texas, Thur...

the fur... day 19...

receipts, reports and for any other purpose necessary in carrying out the provisions of this Act.

Sec. 13. All laws and parts of laws in conflict with the provisions of this Act are hereby expressly repealed in so far as the same are in conflict with the provisions hereof.

Sec. 14. It is further provided that in case any section, clause, sentence, paragraph or part of this Act shall for any purpose or reason be adjudged by any Court of competent jurisdiction to be invalid, such judgment shall not affect, impair, or invalidate the remainder of this Act. But shall be confined in its operation to the section, clause, sentence, paragraph or part thereof directly involved in the controversy in which said judgment shall have been rendered.

Sec. 15. The fact that millions of dollars of delinquent taxes are now due to the State of Texas and the various counties therein, and

Main Furniture-Home Furnishings

A DOUBLE TREAT TWIN-DIP SUNDAE!



Here's a new fountain thrill... two sundaes in one! Choose any two ice cream flavors and have them topped with your two favorite fruits or flavors. A double treat sure to please. Follow the crowd. Come in and enjoy this new fountain sensation. **ONLY 15¢**

SPEARMAN DRUG CO.

W. R. Finley, who has been visiting in Ft. Worth came home Monday night.

Envelopes to Match
HAMMERMILL BOND
for Letterheads

ORDER FROM US

SPEARMAN REPORTER PHONE 10

DR. POWELL—Eye, Ear, Nose and Throat specialist will be at Dr. Gower's office, Wednesday Aug. 4. Glasses Fitted, Tonsils and adenoids removed.

others, and then to seek and possibly suggest a new plan of prison system in this country.

Week-End Specials

- FOLGER'S Coffee two pounds for 55c
- CORN, Pure Cream, no. 2 can 10c
- K. C. BAKING POWDER, 25 oz. 17c
- PEACHES, gallon 45c
- SOAP FLAKES, Blue Barrel, qt. size 32c
- SHREDDED WHEAT, per package 11c
- POTTED MEAT, 3 cans, 10c
- SHORTENING, 4 lb. carton, 55c
- BLACKBERRIES, per gallon, 45c

Baggerly Grocery Store

Journal, clipped from our Press Bulletin, shows how we have been fighting for years against the large electric power concerns on their excessive rates, and costs. Also we try consistently to sock-em with taxes of every kind... yet with all this accumulation the average annual cost of electricity as secured from a survey of 20,000,000 homes shows the expense of \$33.84 per home. Yet we spend in pure and simple tax, the amount of \$30. per year on cigarettes, if we average smoking 1 package per day. The main thing we should think about in our politicians of the future is something that the politicians seldom ever do anything about, and that is the cost of the government.

For example we learn from this journal that out of every \$100.00 collected in taxes for the old age pension, something like \$25. is spent for clerk hire and working personnel to enforce the pension laws. Obviously this is entirely too much, since the collection of the taxes should and perhaps does come under another expense head.

NUMBER 1
—Continued from page 1—
leg" keeps the frog culture a more or less limited business.

Wish every citizen of Texas Another item in this month's

Extra Safe

COLLECTING LIQUID RUBBER ON FIRESTONE PLANTATIONS IN LIBERIA
An ever-increasing supply of rubber comes from these plantations. Savings made by controlling raw materials and by more efficient manufacturing and distribution make extra value possible at no extra cost.

BECAUSE in Firestone Standard Tires —

YOU GET EXTRA PROTECTION AGAINST BLOWOUTS — eight extra pounds of rubber are added to every 100 pounds of cord by the Firestone patented Gum-Dipping process. By this process every cord in every ply is saturated with liquid rubber. This counteracts internal friction and heat that ordinarily cause blowouts.

YOU GET EXTRA PROTECTION AGAINST PUNCTURES—because under the tread are two extra layers of Gum-Dipped cords.

YOU GET EXTRA PROTECTION AGAINST SKIDDING—because the tread is scientifically designed.

YOU GET LONGER NON-SKID MILEAGE because of the extra tough, long-wearing tread.

Before leaving on your vacation trip, join the Firestone SAVE A LIFE Campaign by equipping your car with a set of new Firestone Standard Tires—today's top tire value.

PRICES AS LOW AS \$6.40

FIRESTONE AUTO RADIO 6 All-Metal Tubes — 8" Dynamic Speaker. Save up to \$10.00 \$39.95 Includes antenna and control head Custom Built Dash Mounting Available	SEAT COVERS Covers \$1.69 up Covers & Saddens \$3.69 up	BATTERIES ASK ABOUT OUR "HARBOR" PRICE HOME FANS 8" — 4-Blade Fan \$1.29
--	--	---

More Than 2,000 Other Auto Supply Items For Every Car Need

DON'T RISK YOUR LIFE ON SMOOTH WORN TIRES DO YOU KNOW

THAT last year highway accidents cost the lives of more than 38,000 men, women and children? That a million more were injured? That more than 40,000 of these deaths and injuries were caused directly by punctures, blowouts and skidding due to unsafe tires?

At right is a section cut from a smooth worn tire, with non-skid protection worn off. Tires in this condition are liable to punctures, blowouts and skidding.

At left is section cut from a new Firestone tire. Note the thick, non-skid protection which skidding wears off. Blowouts and skidding are prevented. Come in and see a demonstration.

JOIN THE Firestone Save a Life Campaign To-Day

Firestone

Consumers Sales Co