

# The Spearman Reporter

THIRTY-THIRD YEAR. NO. 36

SAMPLE COPY SPEARMAN, TEXAS THURSDAY, AUGUST 29, 1940

EIGHT PAGES THIS WEEK

## Schools Will Open Monday, Sept. 2

## Hansford County Fair Is Sept. 6 & 7

Time has come for our most consideration about the Hansford county wide fair. All organizations and individuals are welcome and expected to help make the fair bigger and better than last year. You may enter anything you wish but only the divisions listed will be awarded money prizes, the cash prizes are given by the Chamber of commerce and any merchant that wants to give merchandise for part prizes will be appreciated.

Prizes will be given to each individual scoring the highest in each division as listed. Each entry - 5 points  
Each blue ribbon - 5 points  
Each red ribbon - 3 points  
Each white ribbon - 2 points

Renovated garments—\$1.00  
Sack articles of garments—\$1.00  
Chickens—\$1.00  
Turkeys—\$1.00  
Handicraft—\$1.00

1. wood  
2. clay  
3. leather  
Embroidery—50  
cut work articles  
buffet sets  
pillow slips  
luncheon sets

Knitting—\$5.00  
afghan  
dress or suits  
bed spreads  
Crochet—\$1.00

Continued on Page 3.

### First Meeting of PTA

### Second Week in October

Mrs. Fred Hoskins stated this week that the first meeting of the Spearman PTA will be the second week in October. The latter part of this week an Executive meeting will be held.

### DEBT PAID IN FULL

This will notify the public that one Joe E. Brown Jones, has paid in full one 15 cent debt to one assistant of the Spearman Reporter, Paul Loftin. Paid with a nice GREEN 40 lb. watermelon. As an added feature to the next Spearman Celebration Bro. Jones has challenged Bro. None Woman Nall, of Guymon to a Chip Pickin' contest, winner take all.

### MAN LYNX TO PLAY

### GAMES THIS SEASON

The schedule for the season is—  
Sept. 13, Higgins, here  
Sept. 20, Canadian, here  
Sept. 27, Dumas, here  
Oct. 4, White Deer here  
Oct. 18, Phillips there  
Oct. 25, Panhandle, there  
Nov. 1, Perryton, here

## New Congressman from Shamrock

Worley, Shamrock attorney, former member of the representatives, was the choice of this district to them in the United States of Representatives.

Heated Deskin Wells, of more than 6,000 votes giving him in the first primary about the same number was greatly assisted by the younger generation that for Mr. Worley Goes to Washington. Most of the members were in the teen age group young to vote. Gene Jones the retiring member of the district was appointed to the Court of



GENE WORLEY

## County Budget Set At \$63,150.00

The approved budget for Hansford county has been set for \$63,150.00. This includes an estimate of delinquent tax collections for this year.

The assessed value of Hansford county will be about \$4,300,000, a slight decrease over last year, since there is not as many cows in the county as last year when wheat pasture was so good.

The tax rate of 90% for the county and \$1. for Precinct 1 will be the same as last year. The state tax has been reduced this year from 77¢ to 69¢. This makes the county state and county rate \$1.59 and the Precinct 1 rate \$1.69. Precinct 1 has a higher rate because of the independent road dist. No Delinquent Debt.

Hansford county has no delinquent debt. All of the bonds have been paid when due and enough money has been provided for in the budget to take care of them for another year. Hansford county owes \$31,000.00 of this \$19,000.00 is for the courthouse and furniture. These bonds will be paid off in four years. Precinct 1 has a bonded debt of \$76,000.00 of this amount the State has assumed \$36,000.00 on one of the bonds and about \$18,000 on the other bond. This leaves only \$22,000.00 due on bonds for Precinct one.

**Bonded Debts of Precincts.**  
Precinct 1.—\$5,500. of which \$4,300 was used for the bridge between here and Kimball community. Precinct 2.—\$1,748, for machinery. Precinct 3.—\$3,150 for machinery. Precinct 4.—\$1,748 for machinery.

**How Budget will be Spent**  
Pay on debt \$13,125  
Jury fund 1,071  
Road and bridge 19,150  
General fund 18,614  
Jail and courthouse 2,300  
This leaves a total of near 9 thousand dollars for emergencies and other expenditures.

**How 90¢ Rate will be Spent**  
General fund .25  
Road and bridge .30  
Int. for courthouse .15  
Courthouse and Jail .05  
Contingent fund .15  
Precinct 1 has an added 10¢ for the Spearman Ind. Road Dist.

### COUNTY COURT MONDAY

The fall term of Hansford county court will open Sept. 2. Judge Barkley says that there will be probably half dozen civil cases but no criminal cases.

### Four New Solo Members At the Flying Club

Arnold Richardson, O. V. Walker, Wilson (buck) Buchanan, and Wilda Stewart, members of the Spearman flying club last week successfully passed their solo work. This brings the total to 6, Jess Edwards and P. D. Brockus completed their work last week.

J. C. Harris, Gruver, is a new member of the club.

### Weather

A cold front weather man of Spearman stated that we had received the large amount of .03 inch of rain. He also stated it has been hot today. It was hot yesterday. It will be hot tomorrow. We need a four inch rain from Canada to Houston and we had a slight dirt storm Saturday. Tuesday night was the coolest night so far this August.

### RICHARD CRAIG OF MAIMI ELECTED STATE REPRESENTATIVE

### Dollar Week At Reporter

Beginning Monday Sept. 2nd., The Spearman Reporter can be purchased for the unbelievable price of only \$1.00 per year. Last August when this bargain was presented for one day only over 100 people took advantage of this liberal offer. In making the offer good for an entire week the management hopes to add at least 200 new members to the Reporter family. Under no consideration will the time be extended. Just one week from Sept. 2. to 7th inclusive.

### BOYER MAKES STATEMENT

PERRYTON—Representative Max Boyer of Perryton, issued a statement today in which he expressed appreciation to the friends and supporters throughout the Panhandle who worked for him during the recent campaign in connection with his race for State Senator. "The many fine friends I became associated with in the campaign which just closed afforded me an opportunity to more clearly know the type of people who live in the Panhandle. There are no alibies or excuses which I have to make for our defeat. I ran the kind of a race that I have always conducted and if I were running again, I would act the same way as I did in this campaign. As a citizen, I shall continue to observe closely all legislative activity in Austin. I wish I had the time and money to personally thank each friend who did his bit for me."

### EQUITY QUITS GROCERY BUSINESS

T. R. Shirley, manager of the Spearman Equity announced this week that they would close out their supply of grocery items at a very reduced price and from here on they would concentrate on the selling of grain, coal, etc. He also announced that about 70 lockers were available for rent and that he would be glad to rent them to the first 70 people that came into the store.

### Visitors Inspect new White House Home

Nearly 300 persons visited the new modern home just completed by the White House Lbr. Co. of this city. The new home has five rooms, and the bath is lighted with the new fluorescent fixtures. One of the closets is cedar lined. Mr. and Mrs. Pete Cluck have rented the new home.

### LUNCH ROOM OPENS TUESDAY

Mrs. Paul Roach, manager of the PTA lunch room, announces that the first meals will be served Tuesday at noon. Prices of last year will be followed.

### WORKING FOR BEST COUNTY FAIR



MISS PEARL LOCKE

Completing her second year here soon, Miss Pearl Locke, has been an untiring worker for the betterment of Hansford county women. She started, and was successful in the first county fair, and this year promises to be better than the initial trial.

Hansford county HD clubs are now on par with the older clubs of Texas, in membership, ability, and work accomplishments.

She has built up the 4-H clubs equally as well as her ladies clubs.

### BAND ENROLLMENT STARTS MONDAY

Fred P. Rattan, director of the Spearman independent school district band, announced this week that enrollment in the beginners band would start Monday, Sept. 2.

Parents are urged to have the musical instruments that their child will play before the second week of school.

Director Rattan said, "The success of the band here is credited to the loyal support of every patron of the school, without their help your band would be just another high school band."

### BOB CRAWFORD WINS CONSTABLE RACE OVER ROBERT WILBANKS

In the feature race of the recent democratic second primary election, Bob Crawford won easily from Robert Wilbanks for constable of Precinct 1.

Neither candidate was on the first primary ballot. The race resulted from each receiving 4 votes, so county demo. chairman, Lee McClellan just put both of their names on the ballot this time.

The job will probably pay about \$5.00 per year.

## Amarillo Man Elected State Senator

Defeating Max Boyer of Perryton, leader in the first primary election, Grady Hazelwood, Amarillo, was elected in the second primary to serve the voters of this senatorial district as their next state senator. Boyer was defeated by nearly 3,000 votes.

Hazelwood announced his candidacy only six weeks before the first primary election and received 38% of the votes. His slogan was "No one urged me to run for this office, therefore I will not be hamstrung with political obligations if elected." This slogan seemed to please the people.

He carried the biggest voting box in this county by 5 votes over Boyer.

Curtis Douglass, Panhandle, was defeated by Boyer and Hazelwood in the first 'go round.'



GRADY HAZELWOOD

Monday morning at 9:00 a.m. the Spearman Independent school Dist. will open its doors for the 1940-41 term of school. Supt. J. E. Gunn announced that the high school students would meet in the study hall at 9:00 a.m. and that the students of the grade department would meet in the auditorium at the same time.

The following list of instructors will see to it that children receive their part of the knowledge. Superintendent J. E. Gunn. Principal of the high school Fred P. Rattan. Principal of the grade school M. W. Graves.

**Primary department**  
Mrs. C. E. Campbell  
Mrs. Mary Skinner  
Miss Sannie Roach  
Miss Sannie Sparks  
Mrs. Paul Loftin  
**Elementary department**  
Miss Mary Gantt  
Miss Essa Todd  
Miss Okla Mae Lawrence  
Mr. Odell Washington  
**High school department**  
Mrs. J. B. Caldwell  
Miss Ethel Deakin  
Miss Jaunita Hughes  
Mrs. Carl Edd Wilbanks  
Mr. M. C. Jackson  
Mr. N. G. Powell

### SATURDAY LAST DAY FOR WHEAT CROP INSURANCE

If you have not already signed your application for Crop Insurance you only have 2 days left as Saturday, Aug. 31 is the last day.

In view of the prospects at the present time, Crop Insurance should be given your very careful consideration.

### Gruver Defeats Jays Sunday

In a baseball game last Sunday the Spearman Blue Jays were soundly thrashed by the more experienced Gruver team by a score of 25 - 8.

This Sunday at the local park the Jays will seek revenge over their rivals and their victory will be helped along with the umpiring of Preach Loftin, he calls em likes he sees them for Spearman.

### Dollar Day At Borger Tuesday Sept. Third

Merchants of Borger are offering people of Hansford county a big savings Tuesday Sept. 3 in their annual pre-fall sale and Dollar Day specials.

### Christian Revival Starts Sept. First

Citizens of Hansford county are invited to attend a series of revival services to be conducted by Rev. Lawrence W. Bridges at the Christian church beginning Sunday Sept. 1st.

Many special services will be featured throughout the meeting with the young people and adults. Family night will also be a feature of the meeting.

### Plemons Masonic Lodge Invites Hansford Members

Friday, Aug. 30 at the Plemons Masonic lodge, work will be done in the Masters Degree. All Master Masons in good standing are invited to attend this meeting.

### COMING ATTRACTIONS ELLIS THEATRE PERRYTON, TEXAS

Aug. 29-30 "Pride and Prejudice" with Greer Garson, Mary Boland and Maureen O'Sullivan.  
Aug. 31 "I Married Adventure" with Mrs. Martin Johnston.  
Preview Aug. 31, "Those Were The Days" with William Holden and Judith Barrett.

EARMAN

Published Thursday of Each Week ANHANDLE PUBLISHING COMPANY, INC.

BILL MILLER, Editor and Manager Paul Loftin, Assistant Editor and Foreman

Entered as second class matter on November 21, 1919, at the post-office at Spearman, Texas, under the Act of March 3, 1879.

All Subscriptions Must Be Paid In Advance \$1.50 per year - 80c 6 months - 50 3 months

CLASSIFIED ADVERTISING

First insertion 2c per word, 1c per word for every issue thereafter. Card of Thanks 10c per line. Display rates on request.

NOTICE TO THE PUBLIC—Any erroneous reflection upon the reputation or standing of any individual, firm or corporation that may appear in the columns of The Spearman Reporter will be corrected when called to the attention of the management.

THE AMERICAN'S CREED

I believe in the United States of America, as a government of the people, by the people, and for the people; whose just powers are derived from the consent of the governed; a democracy in a republic; a sovereign nation of many sovereign states. A perfect Union. One and inseparable; established upon those principals of freedom, equality, justice and humanity for which American patriots sacrificed their lives and fortunes.

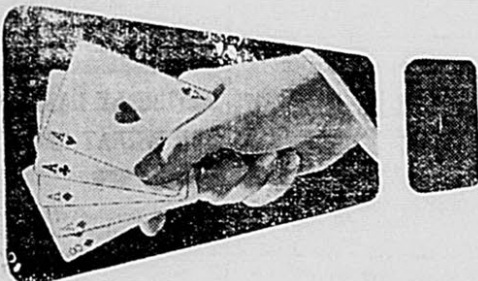
I therefore believe it is my duty to my country to love it, to support its constitution, to obey its laws, to respect its flag, and to defend it against all enemies.—(The American's Creed, by William Tyler Page, was adopted by an Act of Congress, April 6, 1918.

HAPPY ENDING

The boss called Jones into his office and looked at him severely. "Jones, yesterday I told you to place an advertisement in the paper for a stenographer who must be strong on grammar, didn't I?"

"Yes, sir," stammered Jones. "Well, this advertisement says 'glamour.'" "I'm sorry, sir." "That's all right, Jones, we all make typographical errors now and then. Show Miss Vogue in."

CINCH



double cinch



A Double cinch for you if you buy your used car from the proven quality of the McClellan Chev. OK Used Cars. We stand behind our guarantee on every used car that we sell carrying the same.

McClellan Chev. Co.



THERE is no gift that will please more than your photograph. They are the most personal of all gifts. Everyone will welcome a really good picture of you to be kept among their prized possessions.

Phone today for an appointment

J.D.'s Studio

Texas Queen in Hollywood Love



Louise Foote of Abilene, the Texas Queen of Queens of 1939, is shown in a love scene with Don Castle of Houston, who has played in such MGM pictures as "Rich Man Poor Girl," "Love Finds Andy Hardy," "Thunder Afloat," "Northwest Passage," and other feature pictures. Miss Foote, who was awarded the movie test as the Queen of Queens, was directed in the test by Fred Wilcox. The 1940 Queen of Queens, to be selected at the State Fair of Texas, will also be awarded a trip to Hollywood and a screen test.

High School Schedule

8:45 to 9:50

English III—Caldwell Study Hall—Jackson English II—Powell H. E. I—Hughes P. Geo.—Deakin B. Keeping—Wilbanks Typing—Gunn

9:50 to 10:50

English I—Jackson Biology—Powell H. E. III—Hughes Alg. II—Deakin Study hall—Rattan

10:50 to 11:15

Choral—Caldwell English II—Powell P. Geo.—Deakin World Hist.—Wilbanks Sr. Band—Rattan Study hall—Gunn

NOON

English IV—Caldwell Hist III—Jackson Gen Sc.—Powell H. E. III—Hughes

Alg. I—Deakin Study hall—Wilbanks Typing—Gunn Manual Training—Washington

1:45 to 2:45

English IV—Caldwell Study hall—Jackson H. E. II—Hughes Gen Math—Deakin Grade Band—Rattan Typing—Gunn

2:45 to 3:45

English III—Caldwell Hist III—Jackson Study hall—Powell H. E. II—Hughes Alg. I—Deakin Shorthand—Wilbanks Tex Hist.—Rattan

Mr and Mrs Bill Miller and family are vacationing in Pilot Point this week.

Printing Call 10

School Opens Sept. 2



Prepare now for your Fall and Winter food supply.

We still have plenty of lockers for rent.

Store your surplus fryers, beef pork, lamb fruits, vegetables, etc. see us for instructions on preparing these foods for cold storage.

SPEARMAN EQUITY EXCHANGE

Regulations

Supply of Vitamin B

Is Important to Health

Some of the aches and pains which have been chasing themselves up and down the physical framework of human beings for many years might disappear if people paid more attention to the amount of vitamin B they are getting.

To be more specific, it's really vitamin B-one, called thiamin, which is causing so much discussion in nutrition circles these days, says Miss Julia Outhouse, professor of nutrition, at the University of Illinois. This elusive-sounding substance is found most prominently in whole-grain cereals, so it might behoove more people to see that they have whole wheat bread, or oatmeal, or graham muffins for breakfast. Vegetables and fruit contribute somewhat to the vitamin B-one supply, as do nuts and legumes and pork.

While eating vitamin B-one in generous amounts does not absolutely guarantee that one's individual ailment will disappear, still physicians have proved that certain types of neuritis are due to a lack of the substance. Two examples are the neuritis of pregnancy and the neuritis of chronic alcoholism. Pains and numbness accompanying several diseases have been dramatically relieved within a few days by this B-one. Furthermore, doctors believe that the pain, numbness and muscle weakness which accompany many diseases are merely variations with one cause—lack of thiamin.

All physical difficulties, of course, cannot be attributed to one specific source, but it might be a good idea for people who feel "all dragged out" and incapable of a full day's work to see if they haven't been getting a "little too little" of vitamin B-one, says the nutrition authority.

Thiamin-deficient persons often are the victims of such digestive disturbances as ulcers, constipation, loss of tone of the digestive tract and lack of appetite. Authorities, also, are finding that there seems to be a close relationship between lack of thiamin in the diet and the ailment edema, and also between lack of thiamin and heart disease.

Mr and Mrs C. A. Robertson are vacationing this week in Colorado and visiting their boys who live in Denver.

Planing Wood With a Press Wood surfaces can be planed to a smooth finish on the drill press with a rotary planer. It is a die-cast disk with three high-speed tool-steel cutting knives and fits into the chuck of any powered woodworking drill press. Any size plank that can be moved on the drill press table can be planed two feet by eight inches in 25 to 30 seconds. Blades are adjusted with feeler gauges so they extend .002 below the center face of cutter body and it is recommended that the drill press depth gauge be set to take a cut one thirty-second of an inch or lighter, says Popular Mechanics Magazine. A patented set-screw arrangement holds the cutting blades securely, so it is impossible for them to get out of adjustment while in operation.

AUSTIN.—While migratory bird hunting were few, the excess of the Texas Game and Fish Commission regulations with the new regulations get them confused.

The greatest conflict to come from the state on duck and doves. Under federal regulations, Texas confirms, may now start at sunset end at 4 p.m. Dove start shooting at sunset quit at sunset.

The bag limit on executive secretary has been cut from remains 10 on doves the limit on geese is of 4, as it was last year.

Back to School

SEPTEMBER 2

We wish all the students and teachers and profitable school year.

SEE US AT ANY TIME FOR FHA REPAIR YOUR HOME

We have recently finished one new FHA Spearman and expect to start two more today for details.

White House Lbr.

THIS IS IMPORTANT

YOUR LAST 3 DAYS to buy the world's most famous tire AT THESE RECORD LOW SALE PRICES!

THE GREAT GOOD YEAR "G-3" ALL-WEATHER TIRE

Reduced to—and nationally advertised all year at—the amazingly low price of

\$1.99 6.00-16 SIZE With your old tire

BUT NOW—FOR THE FIRST AND ONLY TIME THIS YEAR

in spite of the general rise of tire prices in July—we offer you the great Goodyear All-Weather at this special pre-Labor Day Sale price.



\$9.99 8.00-16 SIZE

"FIRST-AND-ONLY" SALE PRICES 5.25 or 5.50-17 \$9.25 6.25 or 6.50-16 12.25 4.75 or 5.00-19 7.55 5.25 or 5.50-18 8.45

LOW PRICES on other guaranteed Goodyear Tires—as low as \$5.15

WRITTEN LIFETIME GUARANTEE They make good or We



Price (with your old tire) for "G-3" All-Weather or Rib Tread

Cash prices with your old tire OTHER SIZES PRICED IN PROPORTION White sidewalls slightly higher

R. E. LEE OIL CO

# COUNTY FAIR

Continued from Page 2

**AUSTIN.**—While migratory birds were few, the execution of the Texas Game Law by sportsmen to beget them confused.

The greatest contest to come from the duck and doves. Texas confirms, may now start at sunset at 4 p.m. Dove start shooting at sunset at sunset.

The bag limit on executive secretary has been cut from 10 on down to 4, as it was last year.

second place, \$2.00, as third place, \$1.00.

**Canned fruits (quarts only)**

apples  
peaches  
peaches  
plums  
strawberries  
other variety

**Canned vegetables (quarts only)**

squash  
beets  
tomatoes  
string beans  
peas (snapped or shelled)  
asparagus  
rhubarb  
greens  
corn (pints only)  
okra (pints only)  
english peas (pints only)  
carrots (pints only)  
other variety

**Pickles (quarts only)**

beets  
cucumbers  
green tomatoes  
watermelon  
dill pickles  
peach pickles  
sweet pickles  
chow chow (pints only)  
bread butter (pints only)  
any fruit pickle

**Perserves (pints only)**

apple  
cherry  
plum  
grape  
strawberry  
mint  
peach butter

Mrs. H. M. Shedeck, Supt.—1940 Hansford county HD agent

- Exhibits should portray approved practices of home making as done by home demonstration club women under the supervision of a county exhibits committee.
- Exhibits should be set up by the county exhibits committee.
- Exhibits should be in and furnished by Sept 5, 1940 at 6:00 p.m.
- Prizes will not be given unworthy articles.
- All canned products must be packed in round or square glass-top jars. tops may be screw or clamp.
- All entries should be made between 9:00 a.m. and 6:00 p.m. Thursday, Sept. 5, 1940.
- Judging begins at 9:00 a.m. Fri. Sept. 6, 1940.
- No article will be given a place unless there are as many as three in the same class.

**1940 FAIR LIST, 4-H GIRLS**  
Superintendent—Mrs R. B. Hayes  
Mrs Tom Dozier

**Canned products**

1 qt. snap beans  
1qt. canned tomatoes or 1 pt. tomatoe juice  
1 pt. carrots.  
1 qt. canned beets  
1 pt perserves  
2 glasses of jelly any kind  
1 qt. canned peaches of cherries  
1 qt. canned pears or plums

**Clothing division**

Mattress cover or chair bottom  
Sewing box  
Educational toy for child or gift telling whom and why, grooming jacket  
School dress, play suit, or smock (10-12) cotton.  
School dress, play suit, or smock (13-20) cotton.  
Purse or scarf (10-12)  
Purse or scarf (13-20)  
Slip  
Pot holder  
Cup towel or hand towel  
Kitchen apron (10-12)  
Bedspread  
Pillow case, scarf or napkin  
Clothing storage accessories (10-12) (2)  
Clothing storage accessories (13-20) (2)  
Scrap book, charm and personality (10-20)  
Clothing, garden, or poultry demonstrators record and history.  
Clothing, garden or poultry co-operator's record and history.  
Poultry

Girl receiving highest total scores \$3.00 premium  
Girl receiving second highest total scores \$2.00 premium  
Girl receiving third highest total scores \$1.00 premium

4-H Girls Educational exhibits will be judged as county wide exhibits  
4-H club placing first \$5.00  
4-H club placing second \$4.00  
4-H club placing third \$3.00

**RULES AND REGULATIONS**

4-H GIRLS DEPARTMENT  
Mrs R. B. Hayes, Supt, and Mrs Tom Dozier —for 1940

- All girls contesting in this department must be between the ages of 10 and 20 years and a member of regularly organized club, conducted under the supervision of a home demonstration agent, working under the Extension service.
- Each girl must do her own work. She must can her own products and do her own sewing.
- All canned products must be packed in round or square glass top jars. Tops may be with screw or clamps.
- Prizes will not be given on unworthy articles.
- All articles must be properly labeled.
- Labeling: Use 4-H labels, having name of product, name of exhibitor, name of club, name of county, place in center on plain side of jar 1/4 inch from bottom.
- Labels must be typed and printed with waterproof ink.
- Labeling clothing: From a piece of white domestic cut label, 1 1/2 by 2 1/2 inches—turn down 1/2 inch around edges. Print with ink type. Labels should show name of exhibitor, name of club, name of county and age of girl. Sew this label in neck of dresses, aprons etc., on wrong side.
- All girls exhibits, please put them up on Sept 5th, between 8:00 and 6:00.
- Judging beginning at 9:00 a.m. September 6th.
- There must be three articles in the same class before prizes are given.

**Early Blackbull**

long fiber bin

forget your Gold

get-acquaintance

Ask your gro

Schumacher and

arriving. In

ask for Aunt Je

**FOR FHA REP**

**PORTER GRAIN**

**SEED CO.**

Direct

hemurgic Show

products counts as one  
prizes will be  
place, \$3.00, as sec-  
the limit on geese is  
of 4, as it was last year.

All educational exhibits as country organizations will be placed as first place \$5.00, second place \$4.00 and as third place \$3.00. All Educational Exhibits must be put up on Sept. 5th beginning at 8:00 and all individual entries must be in and all checked not later than 5:00 p.m. Sept 5th. Judging will begin Sept. 6th at 9:00 a.m.

**RULES AND REGULATIONS**  
Women's HD Clubs

Products will be judged and placed in classed according to quality. Ribbons will be given as individual entry recognition. Premiums will be awarded those girls receiving the greatest total scores made on the following bases

Each entry-5 points  
Each Blue Ribbon-5 points  
Each Red Ribbon-3 points  
Each White Ribbon-2 points

**A NEW MOISTURE CONSERVATION SYSTEM OF WHEAT, SMALL GRAIN and ROW CROP FARMING!**

Reduces the Weather Gamble!

**DENPSTER TILLING, DAMMING and DEEP FURROW SEEDING MACHINE**

THE most diversified, practical, money-making machine the wheat farmer can buy! Enables you to follow the new system of farming that greatly decreases the weather gamble. With machine as shown above you go right into the stubble field immediately after harvest—cultivating, forming furrows and damming in one operation, and land is ready to catch and hold moisture. Later in the season you can level ridges and prepare excellent seed bed with trash on top to prevent soil blowing. Then, with machine as shown below you do an ideal job of seeding depositing seed in wide 8-in. moist seed bed and covering with moist soil.

Also ideal for summer fallow; for seeding row crop; for spring wheat planting; for contour farming.

(Above) No. 1 Ground ready to catch and hold moisture.  
No. 2 Ridges leveled for excellent seed bed.  
No. 3. Ideal planter job. (28-17-14)

**COME IN AND SEE IT!**

**R. L. McClellan Grain Co.**

**WAR RELIEF**

**GIVE!**

AMERICAN RED CROSS

**Time to GET READY FOR SCHOOL**



Headquarters for all school supplies—Here are complete supplies for your child.

Get the best supplies for your school-age child so that he or she will not be handicapped in school. A quick glance at the few items we have will convince you that the Spearman Drug is the place to come for complete and economical purchase of all school needs.

**Spearman Drug Store**  
—AIR CONDITIONED FOR YOUR COMFORT—  
— PHONE 12 The REXALL Store —

# SPECIAL!

**For 1 WEEK - Starting Monday, Sept. 2 and Ending Saturday, Sept. 7 at 6 P.M.**

## The Spearman Reporter

**For 1 year for only**

# SUBSCRIBE NOW!

**\$1 DOLLAR**

**se Lbr.**

**ANT**

**DAYS**

THURSDAY

**PREVENT EYESTRAIN**

your child a chance to

Often, a child's retarded and in school is traceable and eye strain on eyes as a result of concentrated study. Sometimes there is no evidence of eyestrain. Parents safe! A 20 minute check can assure you of your child's eyesight.

Examination.

**DR. POWELL**  
In Spearman  
September 11th  
Dr. Gowers Office

NEWS

Lutheran Church will picnic next Sunday, Sept. 9, at the James ranch south of Symon. There will be an open devotional service at 11:00 a. m. The Luther league and the Sunday school will serve ice cream and all. Everyone is welcome.

NEWS ITEM

Mr and Mrs Emil Knutson and children returned last Thursday evening from their vacation trip to New Mexico and Colorado. They stayed for a few days in a cabin on a large ranch near Bayfield Colo. There they fished for mountain trout and hiked over the mountains. They returned with appetites for fish appeased and a good coat of tan as evidence of their week of outdoor life. While on the trip with her par-

ents, Amy Knutson had the misfortune of falling from a horse and breaking her left leg above the knee. As a result she was forced to spend the last part of her vacation in the hospital. She came with her parents in their car without any mishap.

Pastor and Mrs Hjortholm and Genevieve Ilson returned on Wednesday of last week from Clifton, Texas, where they went to attend the Circuit Meeting of the Texas Circuit of N.L.C.A. which was held Aug. 18-21. Miss Olsen represented the Oslo Luther league at the League rally on Sunday evening. On their return trip they called on Miss Ruth Voigt, who lives with her parents at Fort Worth. Miss Voigt taught school last year at the Oslo community. She has been attending T.C.U. this summer and expects to teach music next year. Miss Jones, a sister of Mrs Cla-

rence Johnson, who lives at Denton, Okla, has been a guest in the Johnson home for the past few days.

Mrs Reuben TeBeest and son, Gerald, and Miss Ruth TeBeest and her mother called at the Stedje home last Thursday afternoon. Pastor and Mrs Hjortholm also called at the same time.

The Stedje boys and Mrs Stedje have sold the cattle which they purchased last fall. The Consignment was made of 240 yearling heifers of very good quality and weight, and was delivered at Gruber by truck last Monday.

Pastor and Mrs Hjortholm were callers at the Pete Dahl home last Friday afternoon. Mrs Dahl is now rapidly recovering from the effects of her recent operation.

Miss Jones, Mrs Johnson and Amelia, and the Pastor and Mrs Hjortholm were callers at the Emil

Knutson home last Friday afternoon. Walter Vincent and Bobby Alexander called to see Amy Arline the same afternoon.

Tilly Posten left last Friday by car for Clifton, Texas, to spend a few days at his home there. He expects to bring his sister, Rosalie with him when he returns. She will teach the Doyle school during the coming year.

Mr and Mrs Henry Moen returned last Saturday from their vacation trip to S. Dakota. They report that they had a very pleasant time.

The teachers and officers of the Oslo Lutheran Sunday school met at the church last Monday evening to make plans for the coming Sunday school year.

Mrs Johnson, her sister, Miss Jones, Mrs Clara Stedje, Marie Stedje and Mrs Emil Knutson were guests at the parsonage last

Monday afternoon.

The Luther league of the Oslo church met last Sunday afternoon at the John Dahl home. The program topic was, "The Movies." It was discussed by Marie Stedje, Jodie Knutson, Louise Knutson, and Mrs Hjortholm. Genevieve Olsen gave a report on the Luther league rally held Aug. 18 at Norse Texas. At the business meeting, plans were made for the picnic to be held at the James ranch next Sunday. The League and the Sunday school plan to serve ice cream during the afternoon to all who attend. After the business meeting lunch was served and a social hour followed.

BLODGETT NEWS

Mr and Mrs Jim Fryer, St Augustine Florida, and Mrs Sudith

Haney, Wellington, Kansas, visited Mrs J. M. Blodgett last Sunday. Mrs Fryer is a sister of Mrs Blodgett.

Kathleen Kenney, Ruby Lamb, Betty Hester, and Georgia Thompson spent Monday evening with Elnora Close. They enjoyed a bicycle ride and a slumber party.

Mr and Mrs E. S. Uptergrove were recent visitors in the Blodgett home.

Mrs John Kenney, J. M., and Kathleen and Mrs Ralph Blodgett attended the Perryton celebration Thursday.

Opal Beck spent Thursday with Mrs J. M. Blodgett.

Mr and Mrs J. F. Simms visited in the Blodgett home Saturday. Thadine Deck was in Perryton Thursday.

Mrs Mose Lamb, Ruth and Joyce visited Mrs John Kenney Sat. Dick Tice and Mr Riggs were

callers in the Kenney home Sunday morning. Ralph Blodgett called on the County Agents office in Perryton.

Mrs Mary Walstad, a recent visitor of Mrs Blodgett.

FOR SALE: 1 Chester See H. H. Crooks.

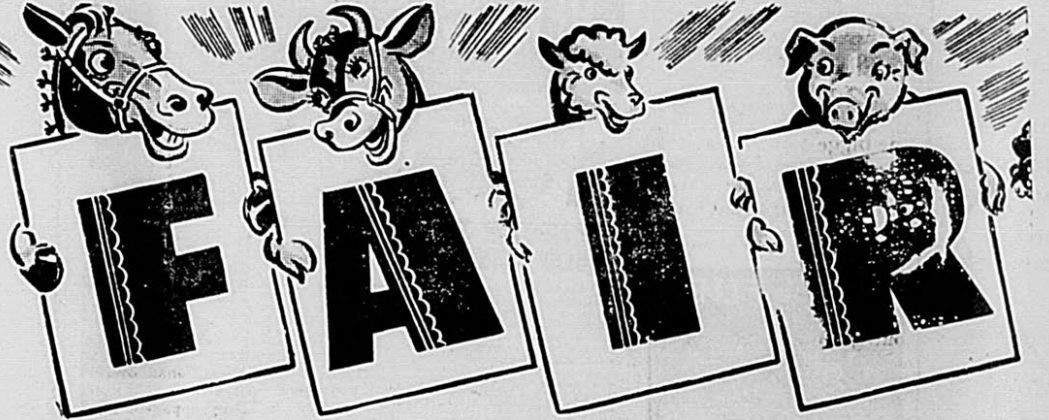


Tell your friends—Dollars the Spearman Reporter 2p 7.

# BIGGER AND BETTER THAN EVER



# County



FRI. SAT. SEPTEMBER 6-7, 1940

IN THE OLD CORNER  
DRUG STORE BLDG.



This Ad Sponsored By These Men And Business Organizations

Foxworth Galbraith Lumber Co.  
White House Lumber Co.  
Spearman Reporter  
Davis Oil Co.  
W. B. Johnson Grain Co.  
Spearman Drug Co.  
R. E. Lee Oil Co.  
Community Public Service Co.

Consumers Sales Co.  
McClellan Chevrolet Co.  
R. L. McClellan Grain Co.  
Sheriff office  
First State Bank  
Western Auto Store  
Burl's Cafe  
T. D. Sansing, attorney

Spearman Equity Exchange  
Judge Barkley  
Spearman Dry Goods Co.  
Main Furniture Co.  
Marvin Chambers, Postmaster  
J. D.'s Studio  
Hansford Abstract  
Spearman Hardware Co.

Converse Says:

Congressman Mr Craig of Miami who defeated Mr Mullins of Stratford for state representative is a very likeable young man, and appears to be qualified for the office for which he has been nominated. Mr Worley will have another race before his election as there is an attorney at Borger running for congress on the Republican ticket, and with world conditions as unsettled as they are, this race might develop into a real interesting affair. There is scarcely a day passing that the writer has not heard someone expressing the opinion that Willkie will be the next President, and there may be a great deal of support in the 18th congressional district for the nominee on the Republican ticket.

It seems as though the big boys are slow to take Government contracts on which profits are limited this is resulting in considerable delay in our defense program and may be a big boost in wealth con-



now to the Spearman for only \$1.00.

The Security of Our Great Nation is Still in Its SOIL!

This bank believes that it can contribute no greater service to this community, or to the nation at large, than by cooperating to the utmost of our ability with our FARMERS.

Although our bank isn't the biggest in the county by a great deal, we are equipped to give the same careful attention to everyone—big enough to serve all, small enough to serve YOU.

We are eager to extend our guidance and support to your problems.

First State Bank

Attend County fair, Sept. 6-7
School opens, Sept. 2nd.

School

Opens Monday, Sept. 2nd.

HANSFORD COUNTY STUDENTS WILL BE TRAINED TO PROTECT THEIR INTERESTS IN FUTURE YEARS. THEIR TRAINING IS CALLED EDUCATION

This business firm features an educational campaign which should suggest PROTECTION of your interests TODAY and for future years.

We provide the protection—it is called—INSURANCE

YOU PROVIDE the modest fee that insures you against loss of property by fire, hail, wind and other hazards. It can and will give you protection against the hazard of traffic while you are driving your car. SEE US TODAY.

Hansford Abstract Co.

P. A. Lyon, Manager

Wonder What an Auto Graveyard Thinks About



This striking illustration occupies a prominent position in the latest highway safety booklet published by The Travelers Insurance Company and entitled "Death Begins at 40."

scription. This issue is going to have a great deal of support in the very near future because the American boys are to be asked to sacrifice jobs and careers for military service. It seems strange to the writer that the owners of vast fortunes can be so brainless as to expect the youth of America to make such sacrifices as are necessary to defend our government without expecting those who benefit financially during wars to make some sacrifices in a financial way.

Yours R. V. Converse

Boyer Thanks Friends

Max Boyer, wishes to thank his friends in Hansford county that stood by him through the recent election in which he was defeated for state senator. Bill Miller, Campaign manager for Max also says thanks.

WORLEY MAKES STATEMENT

Eugene Worley, who piled up a surprising lead of approximately 7,000 votes over Deskins Wells of Wellington to win the Democratic nomination for Congress in the 18th district, left Monday for an undisclosed destination to recuperate from an infected foot and get a few day rest before making a swing over 28 counties to thank voters for their support in the run off primary.

"The credit is due to my friends, not myself," he declared. "It took the united efforts of hundreds of loyal supporters all over the district to put me over and I want them to know I shall always remember their kindness. I wish to compliment my opponent and his supporters on the clean, high

type campaign they conducted and say to them that I hold nothing but the kindest feeling for them all."

"To say that I am grateful to the voters of Hansford county would be putting it mildly. I shall devote my full time from now until Congress convenes in thoroughly familiarizing myself with all pending legislation. I also plan a trip over the entire district before January and will appreciate the people calling my attention to any local problems they might have. In short, I hope to be of any possible service to the people of this district and want, more than anything else, their full and complete cooperation because the hardest part of being a good congressman is yet to come.

"With the help of all people,

Spot news

Dollar week at the Spearman Reporter from Sept. 2 to 7.

Effective Sept. 2

- Shampoo and Set .50¢
Set .35¢
Vita Fluff or Lov shampoo and set .60
Eye brow and lash dye .60
Dress or Fitch shampoo and set .60

Hays Beauty Shop Mrs. A. A. Britton
Bertha's Beauty Shop Colleen Busbee

Everything You Need For SCHOOL

We are prepared to equip your boy or girl for school.

We have received a major part of our new fall merchandise and invite you to see us for your dry good needs.

W. L. RUSSELL
Dry Goods—Groceries—Fresh Meats

SCHOOL OPENS SEPT. SECOND
Attend County Fair September 6-7

Together with the river... all of us require, I will do my best for all the people and all people alike."

Railroad Fares Reduced For Labor Day

Especially reduced fares to aid travel over the Labor Day weekend are planned by the Texas Railroad, H. C. Vincent, general passenger agent of the Santa Fe Railroads announced today. A roundtrip coach fare for the price of a one way coach fare plus 25 cents, to and from any points served in Texas and Louisiana is to be the basis of the holiday travel.

These tickets will be sold for all trains scheduled to arrive at destinations from Aug. 31 to noon of Sept. 2, with return to the starting point limited to midnight Sept. 4.

J. E. Southwood, Panhandle Pioneer Dead

Judge J. E. Southwood, beloved Carson county pioneer, died at 10:25 Sunday morning in an Amarillo hospital. Funeral services

were held... Mr. Southwood in Hansford county acquainted with near timer of this county.

Alexander and Club

Win Olin Culberson of Edna chosen state railroad commissioner and James P. Alexander of Wichita chief justice of the Supreme court in the second primary held Saturday. Culberson had a 50,000 lead and Alexander had a 40,000 lead.

Miss Mona Hale and Miss Blanche Nielson of Fort Wayne, Ind. Who have been visiting in the S. B. Hale home returned home last week.



BORGER MERCHANTS OFFER MANY MONEY SAVING



VALUES Tuesday, Sept. 3

Visit our stores Dollar Day and save more on home and family needs.

BORGER MERCHANTS ASSOCIATION

Thank You

I want to express my appreciation to the people of this district for the opportunity given me to serve you as your next Representative. Especially do I want to thank those whose loyalty and confidence was shown by the work done in my behalf.

It is my desire to serve this district so that my record will justify the confidence you have placed in me.

Richard Craig



We rarely count the blessings

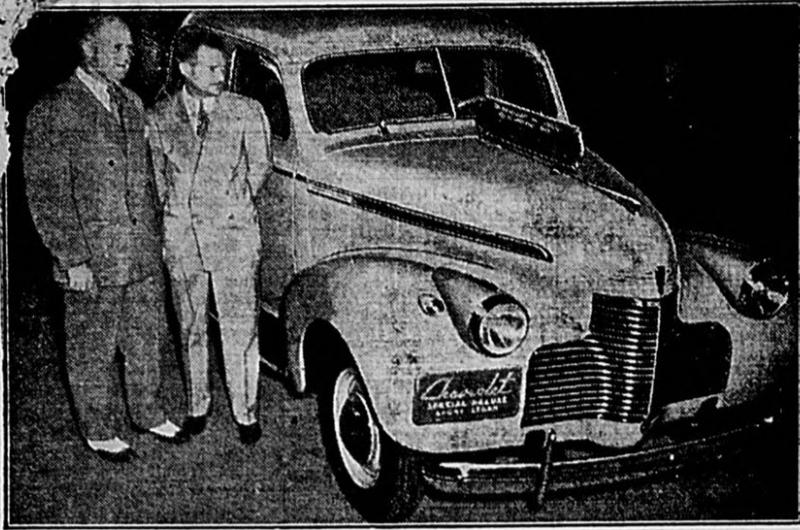
There's a servant in your home waiting to bring you joy and comfort at your call. Stop for a moment and consider whether you are making good use of the good thing he has to offer.

NATURAL GAS is always waiting, always willing to serve you in the kitchen, bath, laundry,—all over the house. Enjoy home comfort—Put your servant to work—

County fair, Sept. 6-7
School starts Sept. 2nd.

Spearman Gas Co.

## Who'll Win Millionth 1940 Chevrolet?



This car, the one millionth 1940 model built by Chevrolet in this year when demand for its product has shattered many records, is to be awarded to the winner of a nationwide contest, and may become the property of an owner of an old Chevrolet right here in town. Chevrolet, whose all-time production is now nearing 16,000,000, is conducting a search for the one millionth Six produced after the introduction of the valve-in-head six-cylinder Chevrolet in 1929. To the owner of that car, or of the closest approach thereto—as specified in rules obtainable at all Chevrolet dealers—the company will present this up-to-the-minute model, plus a trip to the New York World's Fair, where the car is being displayed in the General Motors Building. In the photo are W. J. Graveson (left), Atlantic Coast regional manager for Chevrolet, and Wilbur Shaw, three-time winner of the Indianapolis Speedway race, who was a visitor at the Fair on the day of the car's arrival there.

ie, Joyce Dulaney, Thora Gene Edwards, June and Wyman Edwards, Bob Stewart, Mr Hildon of Amarillo, Ted Stewart of Hobbs, N. M., Joe and Carl Ogden of Le Fores, Francis Jones and James McNutty, Mr and Mrs Walter Gillispie and children Nell and Sue, Ben and Jack of Morse.

### COULDN'T FINISH WHAT HE HAD STARTED

Uncle Ezra was ignorant, but he was smart enough to know it and honest enough to admit it.

Aunt Eliza had noticed him being occupied all by himself over in a corner by the fireplace. He was working with a stub pencil and a piece of paper. Suddenly he looked up happily.

"Doggone," he exclaimed, "if I ain't learned to write."

Auntie got up and looked over the scrawled lines across the paper.

"What do it say?" she asked.

"I don't know," replied Uncle Ezra, puzzled. "I ain't learned to read yet."

### Coming Clean! . . . by Squier



## Amarillo Wants Spearman Band At Tri-State Fair

W. J. Beechler of Amarillo, good will chairman for the Amarillo Chamber of Commerce, was here Tuesday in behalf of the Tri-State Fair. It is his desire to get the Spearman high school band to play one day at the Fair.

All bands will be provided with free lunch the day they attend the fair which will be held Sept. 16 to 21.

As the fair lost about \$7,000 last year, an admission charge will be made this year. Adults will pay 25 cents, but there will be no charge for car parking inside the grounds.

Oscilee Loftin, visited in the home of Mr and Mrs Paul Loftin Monday.

### COMMUNITY PARTY

The families living in the Medlin Community met at the school house Wednesday night Aug. 21, for one of our community parties.

The Medlin club women were in need of extra cash, so they met each guest at the door with a rule and measured their foot charging 1c per inch, this stunt netted them

\$5.07.

Games and '42' were engaged by both children and adults.

Ice cream and cake were served to the following families:

Walter Davis, E. W. McJunkin, Frank Davis, Walter Van Cleave, Tom Allen, Tom Windom, Virgil Hull, O. L. Williams, Mrs Kiff White and children, Kiff Jr. Frank-

WHEN IN NEED OF OFFICE SUPPLIES, CALL 10

THE SPEARMAN REPORTER

ANNUAL EASY

Super-Value

# SALE

OFFERING AMERICA'S BIGGEST DOLLAR-FOR-DOLLAR WASHER VALUES

New 1940 EASY at a \$30 saving

Your money never before bought so many luxury features . . . so much EASY quality . . . as in this Super Value Special. Built to sell for \$99.95, it's yours at a saving of \$30.00. Compare it with any washer selling for \$99.95 or more and you'll know what we mean when we say it's America's biggest dollar-for-dollar washer value.

### Full of Plus Features

Turbolator 3-zone washing action . . . Perma-protected washing surfaces that stay satin-smooth . . . giant capacity tub . . . 3-way safety wringer with instant roll-stop . . . chip-proof white enamel . . . quiet lifetime motor that never needs oiling . . . safety overload switch . . . EASY quality construction throughout.

Smashing \$99.95 Value

MATCH IT FEATURE FOR FEATURE WITH ANY OTHER \$99.95 WASHER

**\$69<sup>95</sup>**

Other Models \$49.95 up



Wicker Laundry Basket and 30 Boxes Granulated Soap INCLUDED With every washer purchased



LIMITED QUANTITY-DON'T DELAY

## Extending Congratulations to TEACHERS and STUDENTS

This firm is proud of the representative student body attending the schools of Hansford county. We feel that you are fortunate in having a splendid Board of Trustees that provide a very capable teaching staff, and arrange for the exceptionally good equipment of our schools.

### WE ARE JUST AS PROUD OF THE SERVICE

We are able to render wheat producers in this county in the capacity of dealers for the 77 Case Farming Units. Let us also talk Dempster Grain Drills to the wheat producers of this county.

## R.L. McClellan Grain Company

## Students . . .

In seeking higher lights in your educational journey, you should by all means be assisted by the BEST of LIGHT in your home or study. Tell your parents that you would like to have one of the many styles of student lights available for you at-



## HOWDY - School Children

You probably know that it takes lots of plenty of time, and just a bit of native ability make the honor roll in school.—It has years of constant study, research and experimenting to produce a Leader in gas and oil for American Market.

—THE LEADER IS CONOCO PRODUCTS

Just as one pal to another we are going to tell that Leadership is worth the effort.—Be a leader in school and tell Dad and Mom to use the gas oil that has established leadership.

## W.B. Johnston Grain Co.



## Sport Headquarters

That's why the great majority of Spearman will come to our store. They know that they the best sport goods at the least cost. Official equipment for all games and sports.

TENNIS RAQUETS, VOLLY BALL SETS, CLUBS—SUPPLIES, FOOTBALL EQUIPMENT, BASEBALL NEEDS, PING PONG NEEDS, COMPLETE SPORTS ITEMS FOR EVERY SPORT KNOWN.

## Western Auto Store

Paul Wilson, owner

## Congratulations

To the Spearman school children and the excellent corp of teachers and instructors.

FOR THE BEST LAUNDRY WORK IN SPEARMAN

Tell mother to try the Helpy-Selfy Laundry.

## Helpy-Selfy Laundry

Mrs C. A. Robertson, owner

# CLASSIFIED ADS

**EYES**  
EXAMINED  
GLASSES  
FITTED  
G. P. Gibner  
Spearman

**D. SANSING**  
Attorney and Counselor  
at Law  
General Practice  
Office in Court House  
SPEARMAN, TEXAS

**DR. F. J. DAILY**  
DENTIST  
X-RAY  
Fair Building Ph. 158  
SPEARMAN, TEXAS

**GLASS**  
All Cars—installed while  
wait. Safety or plate glass  
to factory patterns.  
Mirrors Re-Silvered  
**KEY GLASS SHOP**  
146 Perryton

**M. Tatum**  
Milton Tatum  
**TATUM & TATUM**  
Attorneys At Law—  
Dalhart, Texas

**Campbell**  
**Sailor Shop**  
—Dri-Sheen Cleaning—  
Suits Made to Measure  
\$20.00 and up.  
**Phone 113**

**E. GOWER, M. D.**  
Room 205  
McLain Building  
Res. 98 Office 53

**DR. J. P. POWELL**  
Eye, Ear, Nose, Throat  
**SPECIALIST**  
Glasses fitted, Tonsils and  
Adenoids removed.  
In Spearman  
Wednesday, Sept. 11  
Office Dr. J. P. Gower

**BEAT THE HEAT**  
EAT WITH  
**BURL'S CAFE**

Westerfield  
**TRUCK LINE**  
Amarillo to Spearman  
Connections to all points!  
Phone 195

**INCOME TAX REPORTS  
PREPARED.**  
All required blanks on file.  
**BOYER & ARCHER**  
Attorneys at Law  
Ph. 300 PERRYTON

**TYPEWRITER & ADDING  
MACHINE SALES AND  
SERVICE.**  
Regular trips made to  
Spearman each month  
For appointments  
Phone. 140  
**Borger Typewriter Exchange**  
Borger, Texas

**H. H. STEPHEN**  
Gen Contracting repair work,  
Painting, Plan service.  
Free estimates.  
Let us help you plan for efficiency.  
Rt. A., Spearman, Texas

**GET YOUR ROOF FIXED NOW**  
Call either Lumber Co. for  
E. L. Killian, expert roofer, con-  
tractor and builder. All work  
guaranteed. No job too small  
none too large.

**FOR CLUB CALVES**  
Steel-cut Northern yellow corn  
chop, soft chewy Northern  
white oats, select rolled barley,  
mineralized Sugared Schumacher  
meal and cubes, peanut and  
soybean meal, cottensed meal  
and cubes, mineralized salt, etc.  
Phone 175. We deliver any-  
where.  
R. L. Porter Grain and Seed Co.

**LOOK WHAT WE OFFER**  
A full line of Chevrolet Cars  
and Trucks, genuine Chevrolet  
repair parts, Delco Radios for  
city or farm homes. Gates Tires  
and Tubes and many other stand-  
ard lines of merchandise, seat  
covers, auto accessories and sup-  
plies. And it will cost you nothing  
to come in and look at them.  
**McCLELLAN CHEVROLET CO.  
INC., Ask for a Demonstration!**  
Phone 29

**SEE ME for your building work.**  
Contract, or day work. Esti-  
mates free. Cabinet work a  
specialty. Call White House  
Lbr. Co.—John Bannister.

**IT'S IN THE NAVY NOW—**  
That genuine best of all lubri-  
cants and most economical gaso-  
line. Check your government sta-  
tistics—you will find that Sin-  
clair products are used in the  
Navy air service of the govern-  
ment, largely to an exclusion of  
other products. IT HAS TO BE  
Good to satisfy Uncle Sam.  
Drive in at either of the two  
local service stations and fill-up  
with Sinclair gas and oil.  
**HARDIN GRAIN CO.**

**HANSFORD LODGE NO. 1040**  
Regular Communications  
Second Monday of each  
Month at 8:00.  
Visitors Welcome.  
Paul Loftin, Secretary  
Otis Patterson, W. M.

**NEEDED SUGGESTIONS**  
Rakes, hoes, lawn brooms, gar-  
den paws, lawn mowers. Come  
in today and make your selec-  
tions. For repair work, see our  
mechanical department.  
**SPEARMAN HARDWARE**

**CHURCH OF CHRIST**  
Schedule of activities for the  
Church of Christ: Bible study,  
10 a. m.; Preaching 11:00 a. m.  
Communion Services 11:45 a. m.  
Evening Services 8 p. m.  
Ladies Bible class every Wed.  
3 p. m. A cordial invitation is  
services.

Enjoy Laundry Work with  
Raney's and save. There is  
Plenty of hot water. Use our  
Delivery service.  
**RANEY'S**  
Help-Yourself Laundry. Your  
Business is always appreciat-  
ed here.

Couple want to rent modern fur-  
nished apartment of home. Sept.  
1st. Call 10.

Rev. and Mrs. A. F. Loftin who  
have been visiting their new grand  
daughter Hazel Holt, returned to  
Estelline.

**GOLD MEDAL**—Once a year  
this fine kitchen-tested flour is  
offered at a big saving. Ask your  
grocer about the sale of freshly  
milled Gold Medal flour. We be-  
lieve the time is right to lay in  
your winter supply. Ask us for  
new low prices on Quaker's Ful-  
o-pep and Schumacher feeds,  
Jemima poultry oats and Dairy  
Ration. Fancy re-cleaned pasture  
rye seed.  
R. L. Porter Grain and Seed Co.

**USED CAR**  
ON THE SPOT  
**SALE**

Every car must go at  
**SACRIFICE prices!**  
**HURRY! HURRY!**  
Get them while they last.

—1931  
Chevrolet 2-Dor  
Was \$110.00  
IS—\$59.00

—1937  
Chevrolet Pickup  
Was \$340.00  
IS—\$278.00

—1933  
Plymouth 2-Dor  
Was \$125.00  
IS—\$99.00

—1929  
Ford c. 16" T. and wh.  
Was \$75.00  
IS—\$39.00

**R. W. Morton**  
"Here's the Spot"  
Authorized  Dealer

**Ride The Bus**  
For —SAFETY— CONVENIENCE—ECONOMY  
—Let Us Help You Plan Your Vacation Trip—  
Direct Connections For All America  
**DAILY SCHEDULES**  
**Panhandle Trailways**  
SPEARMAN DRUG CO., Agents

**What's New in  
Cooking**  
by  
Gertrude Dent

**Like Mother Used To Make**

**MOST** women really and truly  
like to cook... If not for the  
immediate pleasure they get out of  
mixing, stirring, baking, and so on,  
then surely from the ultimate  
pleasure of feeding their families  
so well that mother is known as  
the "best cook ever."

How to get that extra flavor into  
a broiled steak, how to make an  
apple pie, and what to serve  
with both are vital things to  
mother, as well as to the fam-  
ily. There's a heap of satis-  
faction in a reputation as a good  
cook! Modern equipment with  
which to work helps to earn that  
title for you, and keeps your pitch  
of enthusiasm high, as well.

There's the matter of a conven-  
ient and efficient range, for ex-  
ample, to take the guesswork out of  
cooking for you. Modern electric  
ranges provide accurate, uniform  
heat in ovens, deep well cookers,  
and surface units, too, to insure  
perfect results in cooking and bak-  
ing. They're speedy, efficient, and  
so easy to use that they encourage  
even the amateur cook to learn  
new things to do and how to do  
them.

To achieve an unusual and dain-  
ty effect with a party cake, frost  
the sides of a round layer cake  
with delicately tinted icing, and  
sprinkle generously with coconut.  
Place a large, lace paper doilie  
over the top of the cake. Sprinkle  
generously with Confectioners'  
sugar, then carefully remove the  
doilie. You'll have a lovely lacey  
pattern of white on the delicate  
brown of your cake.

When you must "keep dinner  
waiting" and have baked potatoes  
on the menu, keep them dry  
and mealy in spite of delays.  
In this way: when the pota-  
toes are done, cut each one  
lengthwise, half  
way through. Return to the electric  
oven to keep warm. This permits

**FARM  
TOPICS**  
U. S. HAS 'SLUMS'  
IN RURAL AREAS  
Serious Conditions Shown  
By Housing Survey.

A department of agriculture sur-  
vey of almost 600,000 farm houses  
scattered through 46 states discloses  
that many families live in houses  
as bad as, or worse than, those  
found in city slums. Only 14 per  
cent had water piped into the house.  
In many cases the water supply was  
inadequate and insanitary. Only 9  
per cent of the houses surveyed had  
indoor toilets. Many of them had  
no toilet facilities whatever, even of  
the most primitive sort. As a re-  
sult, in some rural areas as high as  
80 per cent of the school children  
are infected by hookworm. More  
than 25 per cent of the houses had  
no screens to keep out disease-  
carrying insects. Forty per cent  
were unainted.

Serious conditions in rural housing  
have not attracted as much atten-  
tion as city slums, and compara-  
tively little has been done to al-  
leviate them, says the Farm Security  
administration. But the FSA, in  
connection with its program for re-  
habilitating low-income farm fam-  
ilies, has had to face the rural hous-  
ing problem. It has built or direct-  
ed the building of more than 12,000  
houses in the last few years.  
In an effort to find good but cheap  
housing materials as well as plans  
and construction methods, the FSA  
has done considerable experiment-  
ing. It has tried conventional lum-  
ber houses of many different kinds,  
steel houses, adobe houses, native  
stones, brick, and even cotton in  
one or two cases.  
No final appraisal of these experi-  
mental houses will be made by FSA  
engineers until they have been thor-  
oughly tested under actual living  
conditions. Meanwhile, the engi-  
neers point to their simply con-  
structed and planned lumber houses  
as the best low-cost rural housing  
ever developed.

**Thanks V. Gerence**  
Deskin Wells expresses his  
thanks to the people of Hansford  
county for their help in the con-  
gressional race.  
I wish to take this means of  
thanking my friends who stood  
by me so loyally during the con-  
gressional campaign. Due to the  
fact that I have spent all my  
money I had saved and still have  
bills to pay, it will be impossible  
for me to even write you a person-  
al letter at the present time. I  
take this means of thanking you  
and I want each and every one  
of you to know that even in  
this time of stress it warms my  
heart to think of your consid-  
eration and your support. To  
those who voted for me whom I  
had not met personally, I also  
extend my thanks to you for your  
confidence in me and your con-  
fidence in me and your confidence  
in those who do know me. I  
am always grateful to you.

**Congratulations**  
Students of Hansford County schools, and the  
fine instructors who have made it possible for this  
county to earn an enviable reputation for educa-  
tional work. We wish both the students and in-  
structors the best of success during the coming  
school year.  
**F. H. A. LOANS**  
**Foxworth-Galbraith  
Lumber Co.**  
Roy Jones, manager

**For SCHOOL**  
Shop with an eye to the  
benefit of your kiddies.  
The cheapest place in  
town to trade—  
**Cates & Son**  
OPENS SEPT. 2

**With the LEAST of handling FREIGHT moves  
FASTER.. SAFER.. MORE DEPENDABLY. These are  
a few of the many advantages of SHIPPING**

**Santa Fe**  
A. T. S. F.  
48304

It is more efficient to handle once than to handle twice.  
Especially is this true with freight shipments where fast, safe,  
dependable service is desired. Santa Fe can serve shippers  
efficiently, due to our vast network of trans-continental and  
southwestern lines that link 12 of our nation's great states  
from California to Chicago and from Colorado to the Gulf of  
Mexico, enabling you to ship by one line, "SANTA FE ALL  
THE WAY."

think of Santa Fe  
Freight Service as a  
delivery service capable  
of handling all of  
your shipping  
problems

**Santa Fe**

Summer's slipping by—but  
there is still time to enjoy  
a scenic vacation trip via  
SANTA FE. Let us furnish  
details and folders TODAY!

For assistance with your travel or shipping  
problems—CALL  
H. L. Heard, Agent  
Spearman, Texas

1077  
★ WE FAVOR ADEQUATE PREPAREDNESS FOR NATIONAL DEFENSE ★

# SOCIETY

All items received after 5 p. m. Wednesday, will be held over until the following week!

## DELPHINIUM FLOWER CLUB

Monday afternoon members of the Delphinium Flower Club met in the home of Mrs R. B. Archer for their regular meeting. Mrs E. N. Richardson, ed the lesson on "Arranging Flowers for Fun." Mrs P. A. Lyon won first place in the flower arranging contest with a bouquet of Morning Glories. Mrs Hix Wilbanks won second place.

Present were: Mesdames Freeman Barkley, John Bishop, Marvin Chambers, Vester Hill, Sid Clark, P. A. Lyon, E. N. Richardson, C. W. Smith, Hix Wilbanks, and the hostess Mrs Archer.

The next meeting will be in the home of Mrs E. N. Richardson, Sept. 9.

## SPEARMAN HD CLUB

The Spearman Home Demonstration club met in the home of Mrs W R Finley. After a short business meeting was held a very interesting and helpful demonstration on Lines and Designs was conducted by Miss Locke.

Refreshments were served to Mesdames R. L. McClellan, A. L. Easley, Roy Jones, J. W. Davis, F. W. Maize, B. G. Garnett, W. A. Ellsworth, and Miss Locke, and the hostess.

Next meeting with Mrs Easley

## HAPPY HOMES CLUB

Mrs F. K. Bannister was hostess to the Happy Homes Club on Thursday, Aug. 22. Meeting was called to order by the president

## Motor Car 'Adventuring' Taxes Resourcefulness

Not until he is better equipped to meet emergencies will the motor traveler be able to enjoy the more distant touring objectives successfully, according to veterans who know from experience that nothing is more important in motor adventuring than resourcefulness. They see in the present lack of ingenuity and experience in outdoor life the principal barrier to more extensive motoring on the beaten track.

With an experience kit no better equipped than the average car's tool kit, today's tourist often is badly licked before he starts out. He asked before he starts out. He asked before he starts out. He asked before he starts out.

## Wishing to dispose of his dog for a while, as he was going into the country, a man went to the local S. P. C. A. center.

"Could you sell this dog for \$20,000?" he asked.

"But, man, no dog's worth that much," was the reply of the amazed agent.

But the other insisted. Some weeks later he returned and, asking about his dog, was told it had already been bought.

"Do you really mean you got cash?" he inquired.

"Well, not exactly," said the agent. "You see, I exchanged it for two \$10,000 cats."—Stray Stories.

## Isolation

Teacher (questioning class after lesson on preservation of food)—Mary, tell me one way of preserving meat.

Mary—Putting it in ice, teacher.

Teacher—What do we call that?

Mary—Isolation, teacher.

## USE OF CUFFS



He—Cuffs on men's trousers are going out of style.

She—Cuffs on the ears are still in style with the fresh ones.

## Don't Mind Her

The professor's secretary saw a magnificent blonde carrying some papers enter the office smiling sweetly.

"Listen, you," snarled the jealous secretary, "if you try to muscle in on my territory I'll plant you among the potatoes."

"Oh, don't mind me," answered the other. "I'm only the professor's wife."

## Gruver Methodist Revival

Large crowds have been attending the revival services at the Gruver Methodist church. We have been having a happy time and joyous singing under the able direction of Rev. W. M. Culwell. The children and young people's services are being well attended.

The services will conclude Sunday night.

The sermon subjects Sunday are "Knocking at the Door," and "An Adequate Dynamic."

## LOTTIE MOON CIRCLE

The Lottie Moon Circle met Wednesday afternoon in the home of Miss Altha Groves.

Those present were Mesdames Doyel, Kirk, Studebaker, Womble and the hostess Miss Groves.

## WOMAN'S COUNCIL

The Woman's Council of the First Christian Church met in the home of Mrs Hix Wilbanks on Wednesday, Aug. 28.

The lesson from the 8th chapter of Acts was led by Mrs Sarah Graves. A very interesting discussion was enjoyed by all present.

Those present were Mesdames Homer Allen, Bert Briler, Frank Dressen, Sarah Graves, Hix Wilbanks, S. H. Graves, Robertson, and A. N. Meadows.

The Womans Council will meet in the church next week and the lesson will be led by Mrs Bert Briley.

One week only, Spearman Reporter \$1.00 per year, sale ends Saturday, Sept. 7 at 6 p.m.

# Burrans Bros. Grocery

For the best quality in meats and groceries, try Burrans. We carry a fine line of fresh vegetables.

Congratulations to teachers and pupils alike on the opening of school Sept. 2nd. County Fair Sept. 6-7

## buy now !!

We have just received our winter line of new, modern furniture. Come in today and let us show you the new furniture. We also have a good line of Floor Furnaces.

Congratulations to students and instructors of Hansford County Schools.

# Main Furniture Co.

You Can Save By Buying at Home

and two songs were sung, followed by the prayer. After a short business session, Miss Locke gave a lesson on line and design. At the close of the meeting refreshments were served to Mesdames: Archa Morse, C. E. Kiker, C. H. Newcomb, Lizzie Benningfield, Cecil Crawford, G. C. Newcomb, Pearl Locke, the hostess and a guest Mrs W. A. Van Cleave.

## MISSIONARY SOCIETIES HOLD JOINT MEETING

The women of the Methodist church met at the church Wednesday afternoon for the organization of the Women's Division of Christian Service, the successor to the Women's Missionary Society. The pastor, Rev. W. B. Swim, convened the meeting and led the worship service. Mrs Swim was elected temporary secretary. The object and purpose of the organization were stated.

Officers were elected for both the Belle Bennetts and the Mary Marthas. They are; for the Belle Bennetts: President, Mrs R. L. McClellan; Vice pres., Mrs John Bishop; Recording Sec., Mrs P. A. Lyon; Corresponding Sec., Mrs W. R. Finley; Treasurer, Mrs R. N. Jones; Local Treas., Mrs Sid Clark; Sec of Missionary Work, Mrs W. B. Swim; Sec of Bible Study, Mrs H. P. Bailey; Sec of Christian Social Relations and Local Church activity, Mrs L. W. Matthews; Sec of Literature and Publicity, Mrs Robert Meek; Sec of Supplies, Mrs H. H. Jones, Sec of Student's work, Mrs J. L. Redus; Sec of Children's work, Mrs Dillard Keim.

Officers of the Mary Marthas are: Pres. Mrs J. E. Gunn; Vice Pres., Mrs Gene Richardson; Rec.

Sec., Mrs O. C. Holt; Cor. Sec., Mrs F. B. Schubert; Treas, Mrs Freeman Barkley; Sec. of Miss. Education, Mrs Ben Beck; Sec. of Christian social relations, Mrs R. E. Lee; Sec. of young women's and girl's work, Mrs F. J. Daily; Sec. of Student's Work, Mrs Odell Washington; Sec of childrens work Mrs Woodroe Gibner; Sec. of Literature, Mrs Bruce Sheets; Sec. of Supplies, Mrs Clay Gibner.

The two groups will meet at the church Sept. 4, at 3:00 p.m. for the installation services and a social meeting. Mrs Bruce Sheets and Mrs P. A. Lyon are the program committee for this meeting and Mesdames G. P. Gibner, Robert Meek, Ben Beck and Jonas Spitzer are hostesses.

The charter membership roll will be held open for two weeks until Sept. 12. Present Wednesday afternoon were Rev. and Mrs W. B. Swim, Mesdames: Bruce Sheets, Odell Washington, Freeman Barkley, John Berry,

IMPRESSIONS COUNT  
A CAREFULLY CLEANED HAT IS A GOOD START FOR EVERY MAN!

You'll take your hat off to the way your clothes cleaned.

TEACHERS AND STUDENTS

We invite you to try our cleaning and pressing vice as only the Dri-Sheen process can do it. Member school opens Sept. 2nd.

**Campbell Tailor Sho**

A step ahead in cleaning the Dri-Sheen way.  
PHONE 113 WE DEL

County Fair Sept. 6-7

WAR RELIEF

GIVE!

AMERICAN RED CROSS

Time to GET READY FOR SCHOOL

2ND ANNIVERSARY

We now have twice the stock for your selection.

Our store is full of the biggest, most attractive selection of merchandise that we have ever stocked.

School needs for the youngest tot to the smart Miss off to college.

Dressess

We have never before stocked so many lovely dresses—all the latest in color and design—and prices to fit any budget.

Every shape & color

Costume Jewelry

Complete Selection

MEN—we also have the most complete stock for Boys & Men in Spearman—come in today and let us show you

**Spearman Dry Goods Co**

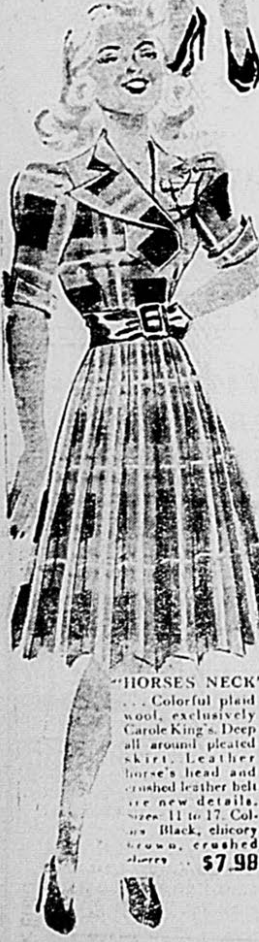
Roy Russell

# READ ABOUT Carole King

JUNIOR CLASSICS AND GET ALL THE FASHION NEWS!



"COLOR SALUTE"  
... Vivid fine wale corduroy skirt topped by wool crepe blouse. Sizes 11 to 17. Colors: Kickoff red, Anchor blue, brass hat, navy. \$6.50



"HORSES' NECK"  
... Colorful plaid wool, exclusively Carole King's. Deep all around pleated skirt. Leather horse's head and crushed leather belt are new details. Sizes 11 to 17. Colors: Black, chery brown, crushed blue. \$7.98

**Spearman Dry Goods Co.**  
ROY RUSSELL

Save 50¢ by renewing your subscription to the Reporter for only \$1.00.