

You Name It

From the den of the poison pen

Gordon Cummings, the air conditioner man, tells us that on December 20, 1979 at 4:10 p.m. he hooked a 13 lb. 7 oz. channel cat at Lake Meredith and landed him at about 5:30 p.m. after better than an hour battle. The graph along the top of the page shows how he finds his fish. The fish are circled, and we must admit that Gordon does believe in all types of scientific fishing gear. Anyway, we thought our readers might enjoy looking at a graph with fish on it. I guess this is the same way they find oil with their seismograph machines.

I very seldom release any of my trick formulas, but in case you are suffering from a gasoline shortage, here is my own Baptist drip, moonshine formula to make alcohol with. First get your milo, corn stubble, garbage, coffee grounds, newspaper or whatever you want to use. Grind as fine as possible. Add 1 gallon of water for every three pounds of stock (dry matter basis). Add first enzyme. Heat to about 200 degrees, maintain for about 20 minutes. Cool to about 170 degrees, add second enzyme, stir constantly for about one hour. At this point, you have converted the starch or cellulose to sugar. Cool to 90 degrees, add yeast, maintain temperature (no need to stir now) for two days. At this point, you have converted the sugar to about a 12% alcohol solution. Draw off liquid, heat to a temperature above 170 degrees (alcohol vaporizing temperature) and 212 degrees (water vaporizing temperature) in a distilling column. Alcohol vapor comes out the top, liquid water drains to the bottom (more or less). Cool alcohol vapor, which then changes to a liquid, catch in jug, can, or your old car's gas tank, and put the pedal to the metal!

The Spearman Reporter

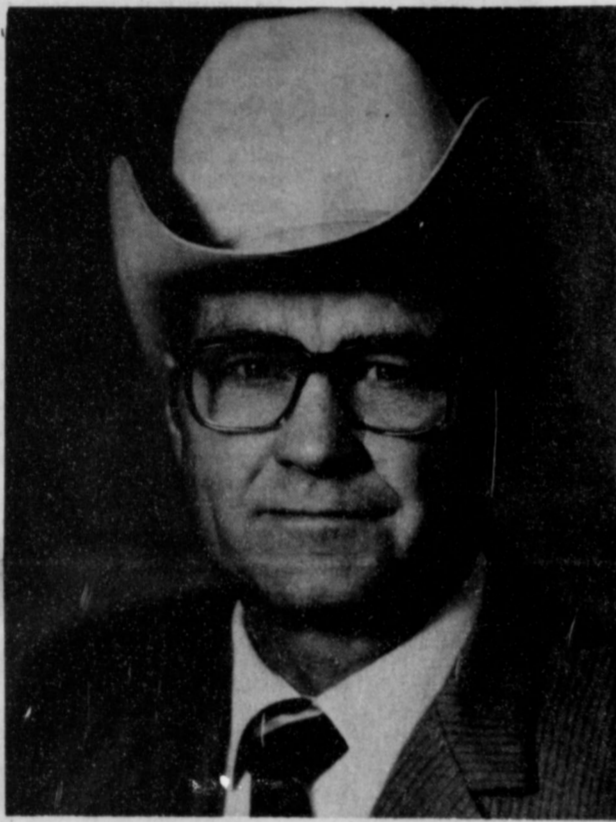


VOL. 71, NO. 12

THE SPEARMAN REPORTER, SPEARMAN, TEXAS 79081

THURSDAY, JANUARY 31, 1980

McCathern Officially Files For State Senate



Gerald McCathern, who announced his intentions to run for State Senator from District 31, on September 19, has now made it official by sending in his

filing fee to the state Democratic headquarters. McCathern, farmer and rancher, from Hereford, has

(continued on page 2)

Graveside Services Held

Graveside services were held Tuesday at 3 p.m. in the Holt Cemetery for I.P. (Ike) Vernon, 66, of Spearman. Rev. Don Wirsdorfer of the First Christian Church here officiated. Arrangements were under the direction of Boxwell Brothers Funeral Directors of Spearman. He was born June 19, 1913 in Nara Visa, N.M. He had lived in the Spearman area since 1926. He was a veteran of World War II, and a retired barber. He is survived by a daughter, Phyllis Farrington, three brothers; H.J. and J.P. of Spearman, Richard of Springdale, Calif.; two sisters, Bernice Brown and Buena Lyon of Spearman.

Bank Deposits Up 4 Million

Deposits in the two Hansford County banks at the end of 1979 totaled \$47,402,000. Deposits in First State Bank at the end of the year totaled \$31,255,000 as compared to deposits of \$27,571,000 at the end of 1978. Deposits in Gruver State Bank at the end of 1979 were \$16,147,000 compared to deposits at the end of 1978 at \$16,525,000. The First State Bank of Spearman loans totaled

\$17,538,000 compared to \$16,487,000 at the end of 1978. Loans at the Gruver State Bank at the end of 1979 were \$11,684,000 as compared to \$10,277,000 at the end of 1978. Interstate Savings and Loan Association of Perryton with a branch office in Spearman has deposits exceeding \$42.6 million and loans total more than \$44.6 million. In the loan department, more than \$41.3 million is in first mortgage loans.

Total resources of the First State Bank at the end of 1979 were listed as \$35,690,000 as compared to \$31,044,000 at the end of 1978, up over \$4 million. Total resources of the Gruver State Bank at the end of 1979 were listed at \$19,504,000 as compared to those of a year ago of \$18,396,000. A record wheat crop at fairly good prices, good cattle prices and a continuing strong oil and gas industry accounts for the rise in deposits in the country.

Sheriff Releases Statistics For 1979 Cruse Returned Here For Forgery

Sheriff R.L. McFarlin has released the following statistics for the year of 1979:
1979 Arrests
Theft by Check 157; Fugitive arrests 9; Possession of Marijuana 11; Public Intoxication 7; Assault 6; Theft 11; Probation Violation 5; Burglary 4; Possession of Controlled Substance 4; Bond Forfeiture 2; Forgery 2; DWI 2; Rape 2; Disturbance of Peace 2; Violation of Federal

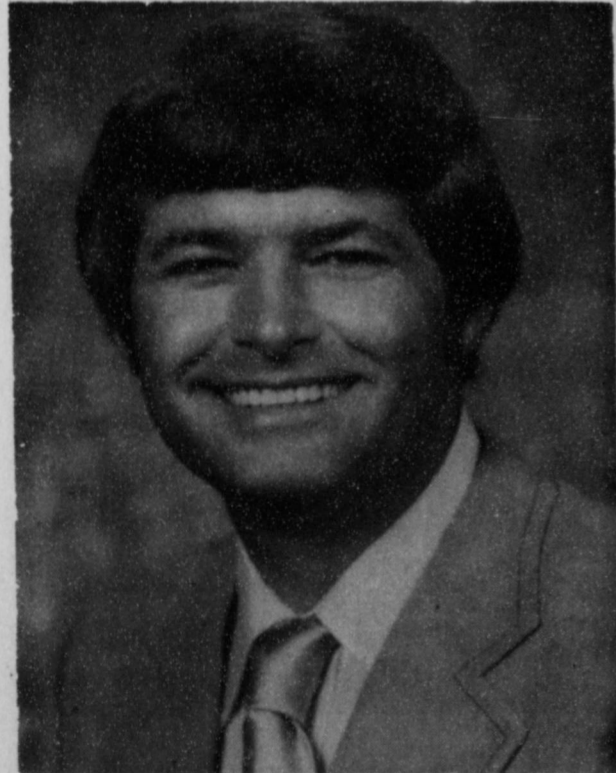
Probation 1; Illegal Alien 1; Interference with child custody 1; Protective custody 1.
TOTAL ARRESTS 223

1979 Recovered Property
Approximate value \$61,692.49
1979 - Theft by Check
Restitutions and money returned to merchants \$8,526.45

Sheriff R.L. McFarlin reports that James Cruse, 39, who has been wanted by the Hansford County Sheriff's Dept. for the past two years on a charge of forgery, was apprehended in Aztec New Mexico and has been returned to Hansford County by

Sheriff's deputies. The alleged forgery occurred on Nov. 8, 1978 at Consumer's Sales Co. Cruse is presently being held in the Hansford County Jail in lieu of \$5,000.00 bond. This case will be presented to the Hansford County Grand Jury.

Gibner and McLain are honored here!



Jim McLain, better known as Mr. YMCA, was honored Saturday night by the Chamber of Commerce, when he was named "Citizen Of The Year."



Mr. and Mrs. Clay Gibner are shown here with his "Citizen of the Decade" award presented at the Chamber of Commerce banquet Saturday night.



Ray Gibson is shown here with his wife and daughter, Cheryl, as he displayed his "Employee of the Year" award.

Some 300 persons braved the cold, snowy weather Saturday night, January 26 to attend the annual Chamber of Commerce banquet held at the Spearman High School cafeteria. The Celebrate group, under the direction of Travis Angel, entertained early arrivals in the auditorium before the banquet. A delicious meal of steaks, baked potatoes, green beans, salad, etc. was enjoyed by those attending. The guest speaker was Edward O. Daniel, humorist from

Arlington. Rev. Russell Pogue, pastor of the First Baptist Church, was the master of ceremonies. Rev. David Nuckels, Assembly of God pastor, gave the invocation. The highlight of the evening was the naming of the "Citizen of the Year". Mayor Ralph Blodgett, the recipient last year, presented the award to Jim McLain. Jim has spent his lifetime in Spearman, he graduated from Spearman High School, went away to college, and returned to

join the business community. In presenting the award, Blodgett said it was given to Jim for his most outstanding work in the Chamber of Commerce and even more his persistent and inspiring leadership in making the YMCA a reality. "He is Mr. YMCA", according to Blodgett. He also stated that people cannot imagine the time and energy Jim has devoted to this project. A special award "Citizen of the Decade" was presented to Clay Gibner. In presenting the

award, Mayor Blodgett stated that Mr. Gibner is the history of the area. Mr. Gibner, long time banker in Spearman, has been instrumental in most of the projects in Spearman including the new airport. Ralph mentioned the trip that he, Clay and J.L. Brock made to Washington to discuss the plight of the farmer's in the area, and said that Clay was up bright and early every morning, wanted three full meals a day, and had more energy than the younger ones on the trip. Blodgett stated

that Clay's own personal philosophy which has served him well during his lifetime, is "You don't demand respect, you earn it." Clay Gibner has certainly lived up to this philosophy. Other awards given during the evening, was an award to Mrs. Mildred Chamberlain, naming her a Goodwill Ambassador for the Chamber of Commerce and for the Senior Citizens. The Rotary Club "Employee of the Year" award was given to Ray Gibson, longtime employee at Cut Rate Thriftway.

John R. Collard, Jr. and Pete Fisher presented the award to Gibson. Byrnie Callaway presented the Women's Division "Member of the Year" award to Altha Townsend. The outgoing Chamber of Commerce president Gerald Heinrich turned over the gavel to incoming president L.E. Thomas, Jr. Guests from Pampa, Guymon, Perryton, Dalhart, Dumas, Borger, Amarillo and Gruver attended the banquet along with local people.

The Spearman F.H.A. Girls served the meals. Decorations were by the Women's Division of Chamber of Commerce. The high school cafeteria ladies helped prepare the good and the steaks were cooked by the members.

MARKETS

Wheat	3.83
Milo	3.90
Corn	2.59
Soybeans	5.68

Sentences

Sheriff R.L. McFarlin reports that John Michael Evans age 18 and Lin Mark Crooks age 24 were sentenced in the 84th District Court by Judge J.E. Blackburn to 10 years in the Texas Department of Correction in Huntsville on charges of Auto Theft and Escape. These men will be transported later in the week by Sheriff's Deputies to Huntsville.

Shamrock To Market Gasohol In Panhandle



Bob Heard (left) vice president-Sales for Diamond Shamrock and Bill Nelson, executive vice president, Texas Wheat Producers Association discuss the merits of marketing Gasohol in the Texas Panhandle. Heard grew up in Spearman and is a graduate of Spearman High School. His father, the late Hobbs Heard was the Santa Fe Railway agent here for many years, as well as city alderman.

Amarillo, Texas--January 23, 1980--Gasohol will be available at Diamond Shamrock service stations in the Texas Panhandle on or before April 1, 1980. Bob Heard, vice president-Sales, made the announcement in Amarillo this morning stating: "The new product will be sold at participating Diamond Shamrock outlets in Amarillo, Dumas, Dalhart, Canyon, Hereford, Hartley, McLean, Spearman, Sunray, and other Texas Panhandle towns."

Diamond Shamrock's Premium Quality Unleaded Gasohol will be blended at its McKee refinery located in Moore County near Dumas. At this time, the alcohol used in this blend will be purchased from one of the leading fuel alcohol suppliers in the nation. The new golden colored Gasohol pump will identify participating Diamond Shamrock service stations. Heard advises, "This new, higher-octane premium quality motor fuel can be charged on the Diamond Shamrock credit card."

"Gasohol" is a blend of motor fuel that is 90% gasoline and 10% alcohol. Ethanol in Gasohol is produced by fermenting and distilling agricultural crops produced in this area such as corn, wheat, grain sorghum, and sugar crops. Since American farmers grow new crops each year, Gasohol is a RE-NEWABLE motor fuel. Gasohol is primarily recommended for use in cars manufactured after 1975 and it requires no changes, modification or adjustments to the engine and will not harm the catalytic converters. Gasohol is a higher octane unleaded premium grade gasoline which pays dividends in better engine performance and life. Some of the advantages are:

1. Gasohol, as a result of higher octane value, reduces engine knock and ping.
 2. Gasohol reduced pollutant emissions of carbon monoxide and hydrocarbon exhaust which is especially important to our environment.
 3. Gasohol's cleaner burning characteristics cut harmful rust, varnish, carbon deposits and soot buildup, which may cause irritating engine "after run." (Due to the cleaning action, it may be necessary to replace your fuel filter after the first or second tank of Gasohol, an expenditure of approximately \$5.00.)
 4. Gasohol protects against fuel freeze-up.
 5. Gasohol reduces friction--lengthens engine life.
- Heard further stated that "Every gallon of Gasohol we use helps strengthen the American farmer who contributes so much to our economy and our well being. This also helps our national security and economy by reducing our dependence on imported oil and by increasing our nation's self-sufficiency."

McCATHERN ANNOUNCES (continued from page 1)

"I believe that it is time to start seeking new methods of securing finances to support our educational system. We must maintain the best educational system possible for our youth, and to do so, we must be able to compete with other states and industries with equal salaries, equal facilities, and the latest teaching aids. However, we can't afford to bankrupt our property owners by continually increasing property taxes to finance our educational system. There are other means of financing available, and I feel we should immediately begin looking for answers to this grave problem, whether it would be some form of sales tax where everyone would share in the burden of responsibility, or perhaps diverting more of the oil and gas royalties received by the state from wells on state-owned property to our primary and secondary educational program."

"I certainly feel that water will be one of the major problems for our district in the 1980's. Ground water is fast depleting, and if we are to keep our municipal needs supplies, our industrial areas growing, and our agricultural industry prospering, we are going to have to start a crash program to build water storage facilities in the form of small surface dams all over our district. We must pursue with greater effort our water importation program, and I am committed to this effort."

"Much can be done on a state level to encourage and expedite alternate energy production facilities, including alcohol, wind, and solar. I am committed to take a leadership role in seeing that the state of Texas would offer tax incentives, research programs, and less red tape to make these energy sources a reality."

"The most important aspect of my platform will be that I pledge to be an extension of the wishes of the people of our district. In order to stay close to the people and close to the problems, I will incorporate town hall meetings on a regular basis as well as to establish scheduled conference telephone calls with our county and city commissioners during the legislative session to keep them informed about pending legislation and to seek their advice

concerning this legislation. McCathern has worked extensively in his community district, and state. He is past chairman of the Agricultural Committee of the Deaf Smit County Chamber of Commerce voted outstanding farmer in Deaf Smith County in 1968. He served as a Vice-President of the Texas State National Farmers Organization, Secretary of the Texas Grain Sorghum Producer Board, a Director of the U.S. Feed Grains Council, and past delegate of the American Agriculture Movement.

McCathern is a member of the Deaf Smith County Chamber of Commerce, the Kluge Shrine, Masons, Farmer Union, American Agriculture Movement of Texas, Texas Corn Growers Association, and Texas Wheat Growers Association. He is a charter member and director of the National Organization of Raw Material (N.O.R.M.).

McCathern is the author of "From the White House to the Hoosier", the only book written about the American Agriculture Movement.

McCathern is married to the former Bonnie Trawick of Lubbock. They have three children: Mike, 27; Kathleen, 23; and Kolleen, 14. He and his family are members of the First Baptist Church of Hereford.



Today's complex computers follow certain principles developed in the 1830's by English mathematician Charles Babbage.



American mathematician John von Neumann is responsible for development of the system providing for storage of computer programs in computer memories.

LYRIC THEATRE

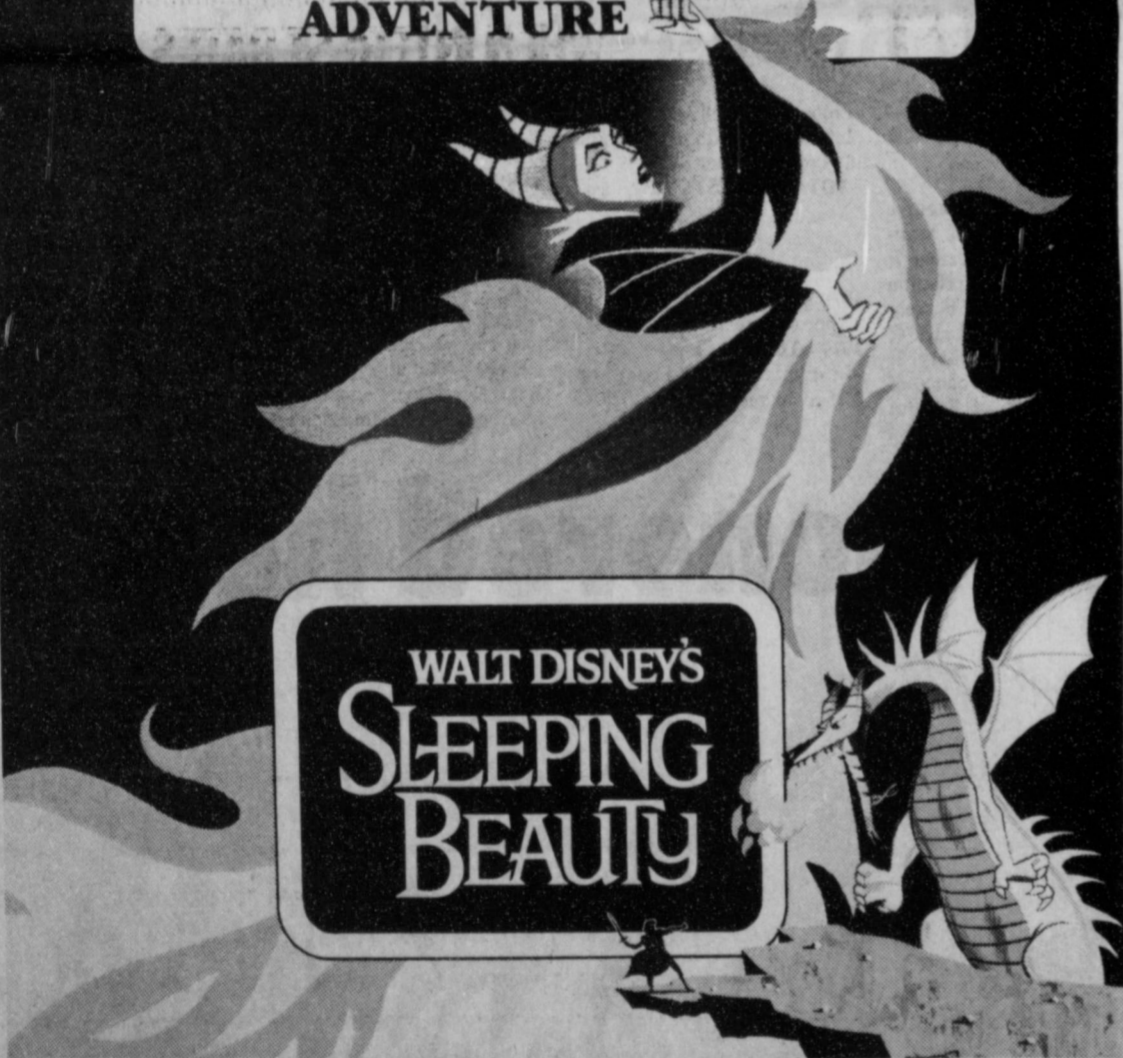
Phone 806-659-2812

ONE SHOW AT 7:30 P.M.
SUNDAY, MONDAY, TUESDAY,
WEDNESDAY, AND THURSDAY

TWO SHOWS AT
7:00 P.M. AND 9:00 P.M.
FRIDAY & SATURDAY

NOW SHOWING

A WONDROUS ANIMATION
SPECTACLE ABLAZE WITH
ADVENTURE



WALT DISNEY'S
SLEEPING
BEAUTY

TECHNICOLOR® TECHNICOLOUR® ©1979 Walt Disney Productions, Re-Released by BUENA VISTA DISTRIBUTION CO. INC.

JANUARY 30 THROUGH FEBRUARY 5



ME CAISTE
DEL CIELO
(ALMA CHICANA)

CORNELIO REYNA
LOLA BELTRAN
ROBERTO FLACO
GUZMAN
ANGELICA CHAIN
MANOLIN
A COLORES

PELEculAS MEXICANAS

SUNDAY

FEBRUARY 3

AT

2:00 P.M.

NOTICE

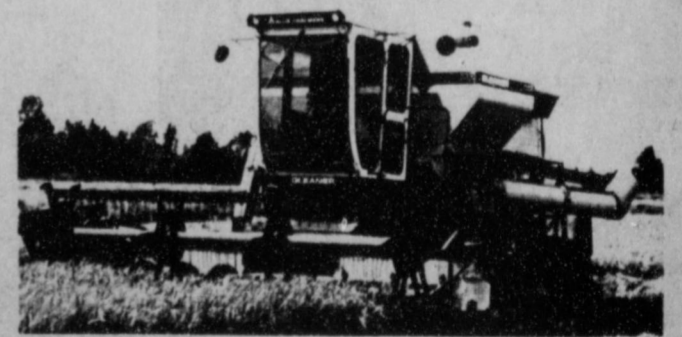
OCHILTREE EQUIPMENT

is now under the new ownership and management of

Gerald Calliham

208 N. Main*Perryton

Gerald and Nancy Calliham are pleased to be your Allis-Chalmers dealers and are looking forward to serving your farm equipment needs.



ALLIS-CHALMERS

CALLIHAM

ENGINE

208 MAIN

SERVICE

PERRYTON

WANTED ADS

CAPROCK MONUMENT CO.

Dealers of Georgia Granite, Georgia Marble, Colored Granite, & Bronze.

represented by

BOXWELL BROS. FUNERAL HOME

519 S. EVANS
659-3802

Call Viola Graves at 3446 for details on Special Trailways SPRING TOURS 10-4tc

MISCELLANEOUS FOR SALE

MFF steel bins and buildings. All sizes 25% off thru Feb. 1. Phone Terry Hays 806-377-6115. 9-7tc

FOR SALE-1977 Plymouth station wagon, extra clean, low mileage. Call 733-2525, Gruver. 11-3tc

FOR SALE-1977 Palomino tent trailer. Extra clean. Phone 733-2525, Gruver. 11-3tc

Decorator cakes & cookies for parties, special or just at home, Call Debbie at 3986 or call 3328. 48S-rtm

FOR SALE-1966 Chevrolet bobtail. 15 ft. bed with hoist. Call 659-3342. 10s-4tp

FOR SALE-Hegari hay. 659-3508. 10-8tc

REAL ESTATE FOR SALE

MAYFIELD REAL ESTATE
Commercial building for sale or lease approx. 1800 sq. ft. on Stinnett highway. *****
House for sale 705 Wilbanks, 3 bedrooms, 2 baths, double car garage with elec. door, fenced yard. Can buy on several financial plans. *****
Trailer House lot, with all utilities on Industrial Rd. Owner will finance. *****
John Mayfield - Broker
435-6528 Salesperson Ruby Lair 659-3436 or 659-2188

HOUSE FOR SALE: 4 bedrooms, 2 baths, garage apartment, excellent condition. 118 S. Townsend. call 659-3529. 10-8tc

FOR RENT

FOR RENT: Large 3 bedroom, 2 bath, redecorated. Deposit required. Inquire 303 Davis St. 9-rtm

WANTED

WANTED TO BUY-Need cylinder heads for six cylinder OH200 TEO Irrigation motors. Head No. 880A5. Joel Stavio, Gruver, Texas. Phone 806-339-8142. 12-2tp

LOST

LOST-Class of 1981 Spearman High School ring, purple stone with number 66, H.N. engraved inside. Reward. Call 3315 or 3384. 11-rtm

LOST-Black and gray spotted female cowdog puppy from 1108 S. Bernice. Call 3374. 11s-3tc

HELP WANTED

The City of Spearman has an opening for a dispatcher. Shift work. Apply at Police Department. 10-rtm

Career Insurance Sales Opportunity

I need an outstanding individual to sell and service established insurance accounts. Generous guarantee plus commission during 2 year Training period. No travel and approx. 120 hours of company paid training. Must be honest and willing to work hard. Call Melvin Bradley 659-3133 office, or 659-3869. 1S-rtm

Part time work. We need a person acquainted with the Spearman area to advise us of proposed residential building projects. If interested write: P.O. Box 1108, Amarillo, Texas 79105 for application. 11S-2tc only

BUSINESS OPPORTUNITIES

"\$56.00 Weekly Guaranteed. Work 2 hours daily at home. (\$178.00 - 1 hour) Free Brochure C 46 - Rt. 4 Box 1441Q Odessa, Tx. 79763" 10S-4tp

CARD OF THANKS

THANKS
A special thanks goes to my boss Pete Fisher and to all members of the Rotary Club for selecting me as the 1979 Employee of the Year. I consider this a great honor. Thanks again. Raye Gibson



By 1940, the National Assn. of Advertising Publishers reports, eight of the nation's ten largest cities supported metropolitan shopping guides.

Valentine facts & fancies

Does Cupid Wear Cologne?
Greek mythology doesn't give a clue, but odds are that as Valentine's Day approaches, Cupid, that amorous little fellow, will be spraying fragrances rather than shooting arrows at lovers.

Scent and sex appeal are often inseparable. For centuries poets have proclaimed the erotic influence of fragrance on males. In Tolstoy's "War and Peace" it was love at first "scent" for Pierre and Princess Helene. The book notes that when she leaned forward, he became aware of the scent on her body.

Men aren't the only ones aroused by fragrance. A recent survey indicates that women are even more receptive. It's no wonder then that 50 percent of men's colognes and after shaves are bought by the fairer sex. What sort of fragrances do women prefer? It probably depends on the man they're buying for. If he's fun loving and playful, yet cool and confident, he might respond to something like Denim, the fragrance "for the man who doesn't have to try too hard."

Help Cupid out this Valentine's Day. Make the air in which he's flying a little more fragrant.

Offered Exclusively By EMMETT R. SANDERS, REALTOR



Brick apartment house in top condition; 100% occupancy with waiting list; has four furnished units; great investment. Shown by appointment only, do not disturb occupants. *****

Small tract just west of Spearman, surface only, contains 31.7 acres. Call for details. *****

880 acres near Spearman, good pullman soil, about 523 acres irrigated, 240 acres dry farmland, and 117 acres grass. Two 8 inch wells on natural gas pump about 2, 100 gpm; underground pipe; fenced; some highway frontage. Price below \$750 per acre, with good loan assumption possible. *****

Reduced in Price, Dwelling and store building, small detached apartment on wide lot, ideal for professional office dwelling combined. *****

4 bedroom, 1 1/2 story stucco home, nice condition, near grade school; storm shelter basement; large corner lot. Ideal for large family, low budget. Shown by appointment, exclusively. *****

EMMETT R. SANDERS REALTOR
659-2516
659-2501 (night)
34S-rtm

Political Announcements

This newspaper is authorized to announce the candidacy of the following candidates for public office, subject to the action of the voters in the May Primary Election:

- FOR SHERIFF: JIM IVEY, R.L. McFARLIN, FOR COUNTY ATTORNEY: JOHN L. HUTCHISON
- FOR STATE SENATE: 31st DISTRICT: BILL SARPALIUS, GERALD McCATHERN
- FOR STATE REPRESENTATIVE: TIVE TEXAS64TH DISTRICT: J.W. "BUCK" BUCHANAN

The Spearman Lynx had their best game of the year here Tuesday night, as they blasted the Boys Ranch Roughriders 58-46 behind the 16 point shooting of Jimmy Ladd and Steve Shields hit 13 points for the Lynx! In the JV game the Spearman boys won 61-56!

The girls game with Guymon was cancelled, but the Lynettes and Lynx will host River Road here Friday, with games beginning at 4 p. m. in the afternoon. Plan to come out and watch the local teams in action.

***** BOYS RANCH 9 24 27 46 *****
SPEARMAN 20 27 39 58
BR-Mark Landers, 12; Mike Vanite, 11; 5-
Jimmy Ladd, 16; Steve Shields, 13.
Spearman JV 61, Boys Ranch 56

FOR DEAD STOCK REMOVAL

Call your local used cow dealer
Toll Free 1-800-692-4043
7 Days a Week Service

TEXAS PRESS MEMBER 1979 ASSOCIATION

PUBLICATION (USPS 509-660)
SPEARMAN, TEXAS 79081
Box 458 659-3434
Published Weekly at 213 Main Street Spearman, Texas 79081
Owner-Publisher William M. Miller
Editor Faye Lynch
Second Class postage paid at Spearman, Texas
ANY ERRONEOUS REFLECTION UPON THE CHARACTER OF ANY PERSON OR FIRM APPEARING ON THESE COLUMNS WILL BE GLADLY AND PROMPTLY CORRECTED UPON BEING BROUGHT TO THE ATTENTION OF THE MANAGEMENT.
SUBSCRIPTION RATE: Hanford, adjoining counties, combination with the Hanford Plainsman, \$10.46.
Other points, \$14.40.

SILVER COINS WANTED

1964 And Before
2.50 for each quarter
5.00 for each 1/2 dollar
12.00 for each silver dollar (1935 And Before) -
1.00 for each dime
Half Dollars - 1965 - 1970 - \$1 each
Franky Hill Phone A/C 806 273-3718

Insulate Your Home & Save On Energy Costs

Stay Warm For Less
Wood Fiber Insulation
Call for Free Estimate
PeeWee's Service
307 Drosson 659-2811

Moose Lodge 2212 BINGO
Every Wed. night 7:45 p.m.
Must be 21 years old. Everyone Welcome 6-rtm

Marvin Sursa Roofing
Hot Roofing, Shingles 878-3046
Stinnett, Tx. 10-8tp

BUYING GOLD COINS U.S. SILVER COINS SILVER DOLLARS & COIN SETS

Paying Top Prices CASH
Call George Rook at Spearman Auto Supply
659-2588 representing Star Investments.

HOUSE FOR SALE

3 bedroom, 2 full baths on corner lot. Call 659-2174 or 659-3425. 6-rtm

For The Ultimate In STORM DOORS

Custom Built, Designed, And In Colors To Fit Your Home....
Contact Howard Moyer at
Only Aluminum Industries
Guymon, Okla. 114 W. 1st 405-338-6966 or 73942 338-6170

GORDON'S SEWER SERVICE

All kinds of plumbing repairs, new and residential. Serving Spearman, Gruver and surrounding counties. Call 659-3849
24 Hour service

VIRGINIA WHITE REALTOR
1106 Wilmeth-A FANTASTIC DREAM HOME with extraordinary features! formal living room, big den with fireplace, large GAMEROOM, 3 bdrms., 2 1/2 baths, special kitchen built-ins, beautiful carpet & draperies. MUCH MORE! CALL FOR APPOINTMENT!

1114 Bernice-Beautiful 3 bdrm.-Large living w/woodburning fireplace. Drive-by-you'll want to call to see inside! 9% loan can be assumed.

714 Gibner-DON'T SQUEEZE THE KIDS-move into this extra large 4 bdrm. home with 2 living areas both w/woodburning fireplaces. Great storage, 3 baths. Assume 7 1/2% loan. You can't beat that.
121 S. Endicott-4 room house & 2 mobilhomes on 150' lot. GOOD INCOME PROPERTY.
316 N. Hoskins-4 bdrm. 2 baths. Good buy. Call for details.
MAIN ST.-COMMERCIAL BLDG. CALL FOR DETAILS

EXCLUSIVELY WITH VIRGINIA WHITE REALTOR 659-3841

India's Wildlife

"Good resolutions are simply checks that men draw on a bank where they have no account." Oscar Wilde

WHEN INTEREST RATES ADD UP, YOU NEED A NEIGHBORHOOD PROFESSIONAL MORE THAN EVER.

Low Down Payments

Are Large Down Payments keeping you from your needed new home. Come See us FOR INFORMATION ABOUT 0 to 5% DOWN PAYMENTS.

We are about to finish Construction of our new home. This 3 bedroom brick home has all Built ins, 2 full baths, Double Garage, & Fireplace. It could be "Yours"

Need a place to keep horses or other livestock? Call us for more information about the listing we have for a 4 bedroom house on 26 acres.

Three Bedroom brick large kitchen, fenced back yard. Low 20's

We have the right lot to fit any need. Both commercial & Residential lots lots available.

Century 21 Golden Spread Realty
2 BEDROOM HOUSE To be moved!
Daryl Wynn 658-4528
Broker
JERRY GEE 659-3664
Sales Associate
Ronnie Hoover 659-3696
Sales Associate
EACH OFFICE INDEPENDENTLY OWNED & OPERATED
806 659-2557

Hanford County Planned Parenthood
26S. Haney 659-2483
Spearman Mon.-Fri.
Call for an appointment, 30S-rtm

SERVICES

SERVICE: Pits cleaned, wet or dry. Dragline or loader. Also, dozer, grader, carry-all service. Lee Roy Mitchell, 806-733-2384, Gruver, Texas 79040.

Pee Wee's Plumbing Service
Roto-roter, Acoustical Ceilings. Blown insulation in walls and ceilings. Appliance Service, used appliances for sale. 659-2811 or 659-3781. 20-rtm

KIRBY SALES & SERVICE.
New & reconditioned vacuum cleaners. Claude Newell, 912 S. Bernice. 8-rtm

Alcoholic Anonymous meeting 8 p.m. Friday, Home Demonstration Club building. 305 N. Bernice. Phone 733-2170 for information. ***

Al-Anon meetings 8 p.m. Friday, Home Demonstration Club building, 305 N. Bernice in back room. Phone 659-3181 for information. Ask for Al-Anon.

NOTICE

Wallace Monument Co. Monuments, Curbing, Grave Covers
Local Representative LEONARD JAMESON
20-rtm

Make your car upholstery and carpet look like new with our commercial size steam cleaner.
Let us clean it or rent our cleaner.
FREE ESTIMATE for steam cleaning. Willis Friesen, 1125 S. Drake, Spearman, or John Allen, 623 S. Bernice, Spearman.

SNOOPY'S DAY SCHOOL
Open 7 a.m. to 7 p.m. Mon-Fri. Sat 8 a.m. to 5 p.m. Phone 659-3328. 48-rtm

MONUMENTS

Save 20% to 30% Agents and Undertakers Commission
ALVA MONUMENT CO. Alva, Okla. 51-rtm only

MEDICAL INSURANCE BILLING SERVICE

Will bill all types of medical insurance - Hospitalization, Out Patient, Medicare, Medicaid, Major Medical and yearly billings.
Ten years experience. Contact Eileen Sutherland at 30 1/2 S. Barkley.

NEW STEAM SHAMPOOER with brushes

Rental \$8.95 per day. Available at 716 Cotter Drive after 4 p.m. and Saturdays and Sundays. Regular Steam Rinse & Vac Shampooer, \$5.95 per day at Gordon's Drug and after 4 p.m. and Saturdays and Sundays at 716 Cotter Drive.

Rotary Club News

John R. Collard, Jr. spoke to the Spearman Rotary Club Monday noon, January 28, in the Garden Room of the Cattleman's Restaurant, about the Defensive Driving Course offered by the Hansford County Underwriters Association.

The Defensive Driving Course is an eight-hour classroom course designed to improve driver skills and attitudes, especially in emergency situations. This is a must in Hansford County because of the many accidents, almost all of which were avoidable. It was voted by the Rotary Club to sponsor the course to be offered Thursday, February 21 and Tuesday, February 26, from 6:00 to 10:00 p.m. at the Hansford County Library, with John R. Collard, Jr. as the instructor. Via lectures, displays and films, students learn to recognize accidents in the making and the defensive action necessary to avoid them. Studies indicate that DDC graduates are indeed safer drivers.

The State Board of Insurance was so convinced of DDC's effectiveness in preventing accidents that it approved a 10% discount on automobile insurance to drivers who complete the training. Good for three years, the discount applies to bodily injury, property damage, medical payments and collision coverages issued by rate-regulated companies operating in Texas.

For most drivers, this means between \$17 and \$32 in savings each year. And, what's more, the discount may be renewed simply by retaking the Defensive Driving Course.

Who is eligible? The principal driver of each family automobile must complete the course for the discount to apply to each vehicle. Motorists receiving credit for high school driver education, however, cannot receive an additional 10% for taking the DDC course. Only one driving training course credit is allowed at a time! DDC is the perfect way to continue receiving your insurance discount even after you've passed the age limit on high school driver training credit.

Motorcycle operators who take the DDC course plus the two-hour DDC Motorcycle Supplement are eligible to receive a 10% reduction on their motorcycle insurance as well as on their car insurance. The same provisions described above apply to the motorcycle insurance discount.

Community singing was led by Ed Freeman. Ronnie Hoover led in the pledge of allegiance to the flag of the U.S.A. Robert Elliott led in the prayer of invocation.

It was voted to give \$100 from the Rotary Club on Robin Denham's expenses as a Continental Singer.

Eschol Blankenship is chairman for the Diamond Jubilee Sweetheart Celebration on Friday, February 15 at the First United Methodist Church fellowship hall.

Michael Schnell was appointed chairman to get as many members and their wives to go to the Rotary District Convention at Big Springs on April 24-26.

It was moved to raise the monthly dues of Rotary to \$20. It was moved to donate \$400 to the YMCA.

Brice Palmer was appointed chairman of the annual Rotary Auction. Robert Elliott will be the vice-chairman.

Members present Monday noon were Jim Benson, Eschol Blankenship, Roy Bulls, Archie Burress, Durane Castleberry, John R. Collard, Jr., Robert Elliott, Pete Fisher, Ed Freeman, Ed Garner, Ronnie Hoover, John Hutchison, David McClellan, Jack McWhirter, Jim Murray, Frank Oglesby, Mike Schnell, Jim Shirley, Len Simpson, Gary Sims, Jerry Taylor and Don Wirsdorfer.

Members absent were J.L. Brock, Kim Brock, Kerry Henton, Edwin Limbocker, Junior Lusby, Brice Palmer and Tim Woodington. 75.86% of the membership were present.

Arts & Crafts Guild News

The Arts and Craft Guild met Friday, Jan. 25 in the home of Deta Blaggett. Those attending were Mmes: Garrett Allen, F.J. Dally, Pope Gibner, Fred Hoskins, P.A. Lyon, Sr., Ned Turner and Bill Russell.

The next meeting will be Friday, February 1 in the home of Mrs. Fred Dally.

Girl Scout News

Girl Scout Troop #42 met Friday, January 25 at the Girl Scout hut. The girls played games for their World Games Badge.

Refreshments were served by Mary Ann Evans to: Sheila Brand, Angela Gaither, Becky Hamilton and leader Georgie Gaither.

The next meeting will be February 1 at the Girl Scout Hut.

Bowling News

HIGH INDIVIDUAL GAME	
Millie Craig	204
Donna (sub.)	207
HIGH INDIVIDUAL SERIES	
Peggy Prentice	550
HIGH TEAM GAME	
Anthony Electric	830
HIGH TEAM SERIES	
Frank Oil	2406
STANDINGS	
Daley's	45-27
Dee's Gill	42½-29½
Anthony Electric	40½-31½
Bettys	39½-32½
Frank Oil	39-33
George Lease Service	39-33
Big A Spreader	37-35
Fausset & Sons Conoco	37-35
Kirby	37-35
Ranger Bowl	36½-35½
Bull Rogers	33-39
Otis Engineering	30-42
Smith Rentals	27-45
Whits Pharmacy	21-51

BULLETIN

The United Methodist Youth will be showing a short film on Sunday, Feb. 3 at 7 p.m. at the First United Methodist Church.

The film is entitled "Jill" and is approximately 30 minutes in length. It is the story of a young woman coping with terminal illness.

Any contributions received will go towards the youth ski trip.

Groundhog Supper Planned

The United Methodist Women will be having their annual Groundhog Supper on Saturday, Feb. 2 at the First United Methodist Church Fellowship Hall. Serving hours are from 5:30 to 7:30 p.m.

Tickets will be \$4.00 for adults and \$2.00 for children under 12 years of age.

The menu will include pork chops, ribs, sausage, liver and onions, green beans, cabbage slaw, sweet potatoes, applesauce, biscuits with gravy, homemade pie, tea and coffee.

The UMW issues a cordial invitation to all to come out and eat with them Feb. 2 at this annual event.

Adult Spanish Course Begins Tonight

The Adult Conservational Spanish Course being offered jointly by Frank Phillips College and Spearman Independent School District will have the first session Thursday night, Jan. 31 at 7 p.m. in Room 105 at the high school.

Anyone wishing to take the course should be at this first session. Additional information may be obtained from Supt. James Cunningham at the high school.

4-H Leathercraft Project

Enroll now in the 4-H leathercraft project scheduled to begin February 9.

The project group is open to all youth age 9-19 regardless of race, sex, socio-economic level or national origin.

Leaders for the group will be Larry Porter and experienced teen leaders.

Supplies and project materials are required for all participants. For more information contact Peggy Winegarner, County Extension Agent, by calling 659-2030 or 733-2901, or stopping by the County Extension office located in the Courthouse.



Serve these delicious inexpensive dishes over crunchy Chinese noodles.

Immunization Clinic Feb. 4

An immunization clinic offering vaccines that give protection against several childhood diseases will be held Feb. 4 at the Spearman Elementary School, 511 S. Townsend from 2 to 4 p.m.

Protection is against polio, diphtheria, lock jaw, whooping cough, measles, rubella and mumps.

There will be no charge.

Hospital News

Patients in Hansford Hospital are Santiago Terceiro, Angela Bynum, Patsy Walters, Shane Sumner, Linda Jarvis, Sue Kiss, Dempsey Spann, Sarah Wright, R.B. McKnight, Carolyn Hunter and Greg Miesner.

Dismissed were Ray Donahue, Goldie Bowling, Sharon Till, Betty Lemons, Anna Stepp, Mattie Dyer, Anna Vela, Billie Close, Walter McDade, Kubah Gandy, Charlotte Murrell, Teresa Scroggs, Irene Snider, Ora Vanlandingham, Lilly Love and Bill Whitson.

Peggy's Pointers

Individual eating habits may be the reason for overweight and obesity.

It's true that the only way to lose weight is to cut down on calories consumed—but many times changing eating habits makes it easier to cut down calories.

First, know what and when you eat. An "eating diary" is one way to do this. List in detail every food and drink you put in your mouth (including amounts and how it was cooked), the time of day and what you were doing over a 24-hour period. Then look at the record and analyze it.

Figure total calories. Remember you must reduce calories by 500 daily to lose one pound a week, and to lose two pounds a week, reduce daily calorie intake by 1,000.

Check your weight and post it on a graph. Set a realistic goal based on losing one to two pounds a week. Record weight every two to three days, being sure to weigh at the same time each day.

Look at your eating patterns—when and where you ate. Did you eat when you were bored, angry, tired or happy? Following these preliminary steps, you are ready to embark on a new venture to control your own eating habits.

Here are some suggestions: --Always eat sitting down in the same place at home.

--Try to leave several bites on your plate at the end of the meal.

--Serve your plate in the kitchen with small portions and avoid seconds.

--Have someone else put away leftovers at end of the meal.

--Serve food on a slightly smaller plate and spread food out so portions look larger.

--Eat slowly and enjoy eating. Put your fork down after each bite until you have finished chewing.

--Shop for groceries after a meal—never when you are hungry.

VARSITY BOYS

SPEARMAN	47
CANADIAN	46
James Pierce	5

49 Kindergarten Students Register

Elementary school principal Allen Alfrod announced this week that 49 students have registered to begin kindergarten in the fall of 1980. If anyone has a child who will be 5 years old on or before Sept. 1, 1980 and has not registered, Alfrod ask that you please contact him at the Spearman Elementary School.

Students who have registered include Regina Kay Abston, Charles Fay Arnold, Roman Leon Arnold, David Brian Archer, Vanessa Biggs, Gregory

Brian Black, Paul Glen Buschman, Mark Alan Chandler, David Brain Costes, Melinda Shea Crawford, Braden Clark Delozier, Ernest Ojeda, Jeffrey Wayne Glibreath, Michelle Ann Garnett, Michael Wayne Garrard, Sammy Wayne Graham, Joey Wayne Hargrove, James Patrick Healey, Gustavo Hernandez, Daniel Edward Herrington, Terry Dustin Irlbeck, Cory Glen Lesly, Dustin Lesly, Jill Marie Lusby, D'eora Martin, Teddie Dee Mayfield, Charles Curtis McGill, Laura Beth

Pearson, Cody Scott Pipkin, Randie Renee Renner, Barbara Kay Ring, Daniel Rios, Sylvia Rosales, Sophia Salgado, Russell Leroy Shaver, John Michael Sterling, Sara Kristine Sanders, Landon Carter Swan, Tracy Jo Tigrett, Sonya Frances Tindell, Clayton Cauffman Umphress, Justin Edward Upchurch, Veronica Rosales, Lorie Mishel Wattier, Crystal Dawn West, Michelle Renee Whitefield, Kevin Burton Williams, Christian Lee Woodington and Julie Dawn Wright.

Dayton Edwards	
Wayne Meek	4
Kyle Beedy	6
Steve Shields	
Lynn Vernon	9
Stephen Tindell	4
Mike Dennis	10
Kyle Brack	
Jimmy Ladd	9
SPEARMAN	42
PERRYTON	87

James Pierce	0
Dayton Edwards	0
Wayne Meek	0
Kyle Beedy	4
Steve Shields	8
Lynn Vernon	4
Monte George	9
Stephen Tindell	2
Mike Dennis	2
Kyle Brack	9
Jimmy Ladd	9

CHINESE STYLE TUNA
Cook 1/3 cup sliced green onions with 1/8 tsp. ginger in 2 Tbsp. butter. Stir in a 19-oz. can of Campbell's Chunky Vegetable Soup, an 8-oz. can of pineapple chunks, drained; 2 tsp. cornstarch, 1/2 tsp. soy sauce, a tsp. vinegar. Heat; stir until thickened. Mix in a 7-oz. can of drained tuna. Makes 3 1/2 cups, 3 servings.

QUANTITY RIGHTS RESERVED

UNITED Supermarkets Perryton, Texas

PRICES GOOD THRU FEB. 2

PLAY BINGO

PUFF FACIAL TISSUE WHITE & ASST. 200 CT. **59¢**

HI DRI BATHROOM TISSUE WHITE 4 ROLL PKG. **69¢**

COMET CLEANER ERA HEAVY DUTY LIQUID **GIANT SIZE 3c OFF 21 OZ. 49¢**

DETERGENT 64 OZ. **\$2.79**

DETERGENT IVORY LIQUID DISH 22 OZ. **98¢**

DETERGENT BOLD 49 OZ. **\$1.59**

FABRIC SOFTENER FINE FARE 1/2 GAL. **59¢**

PAPER TOWELS HI DRI JUMBO ROLL **2 FOR 89¢**

BAKE-RITE WHIP 42 OZ. **\$1.29**

EGGS GRADE "A" EXTRA LARGE **63¢**

COOKIES 6 BTL. CTN. 32 OZ. **\$1.89 PLUS DEP.**

FINE FARE MACARONI & CHEESE DINNERS 4 FOR \$1.19

CREAMER 16 OZ. JAR **\$1.39**

TOASTIES 18 OZ. BOX **89¢**

POUCH MIXES *YELLOW CORNBREAD *WHITE CORNBREAD *BISCUIT *PANCAKE **4 FOR 89¢**

SAUCE 10 OZ. BTL. **98¢**

BEANS 15 OZ. CAN **3 FOR \$1**

PICKLES 32 OZ. *WHOLE KOSHER DILL *WHOLE PROCESS DILL *WHOLE HAMB. DILL **89¢**

DELICIOUS APPLES 3 LB. BAG **98¢**

VALENCIA 4 LB. BAG **98¢**

ORANGES YELLOW NO. 1 MILD **12¢**

CUCUMBERS LONG GREEN SLICERS EA. **19¢**

POTATOES NO. 1 RUSSET BAKER SIZE LB. **19¢**

DAIRY FOODS

BELL SOUR CREAM OR DIPS 8 OZ. **49¢**

BELL COTTAGE CHEESE 12 OZ. **69¢**

FINE FARE SOFT OLEO 1 LB. TUB **59¢**

Xi Zeta Sorority Met

Xi Zeta Sorority met Thursday, January 24 in the home of Charlotte Jackson with President Mary Dixon calling the meeting to order with the opening ritual.

The club discussed a meeting held with Perryton January 15 to discuss the Area Convention which will be held in October, 1981.

A discussion was also held on the Valentine Ball which will be February 9 at the Borger Country Club.

The program was on Aerobic Dancing given by Cindy Schneider. All member participated. Cindy will be instructing a class in this at the "Y" starting the first week in February for six weeks.

Those present were: Mary Dixon, Cindy Schneider, Donita Lusby, Linda Butt, Phyllis Collins, Sheryl Meek, Sharon Cook, Cynthia DeArmond, Charlotte Jackson, Mary Ann

Lasater, Judy Nelson, Lynna Renner, Kari Schuman, Hazel Shieldknight, Verna Strawn, Linda Veneman, and Jackie Pearson.

The next meeting will be February 14 at the Library for the CPR review.

Presbyterian Church News

Helen Etter was elected as a commissioner to the Synod of the Sun from Palo Duro Union Presbytery for 1980. The Synod meets April 17-19 at Arlington, Texas and September 29-October 1 at Fort Worth, Texas. The Synod of the Sun is the United Presbyterian Church Synod which covers the states of Texas, Oklahoma, Arkansas, and Louisiana.

There is a Sunday Church School class for everyone every Sunday at 9:45 a.m. at the First Presbyterian Church. Every class has a loving, concerned teacher with an interesting, practical, well-prepared Bible lesson.

"There's Healing in Communion" will be the subject of Pastor Edward D. Freeman's meditation for the Communion Service on Sunday, February 3 at 11:00 a.m.

Dr. Thelma Adair, a former moderator of the United Presbyterian General Assembly and a former professor of Child Psychology at New York University, will speak at the First Presbyterian Church of Wichita Falls, Texas on Sunday, February 3 at 11:00 a.m. and 7:30 p.m., 12:00 noon and 7:30 p.m. on Monday, and 7:30 p.m. on Tuesday and Wednesday. Dr. Adair is a dynamic person and speaker.

There is a warm Christian welcome awaiting you at every service and activity of the First Presbyterian Church.

FISH CHUN HO

Cook 1/8 tsp. each onion salt, crushed thyme leaves in 1 Tbsp. butter. Stir in one 19-oz. can of Campbell's Chunky Vegetable Soup, 1/2 lb. of white fish fillets, cut in pieces, 1/2 cup fine noodles. Bring to boil; reduce heat. Simmer 10 min.; stir. Makes 3 1/2 cups, 2 servings.

Servitors Club Met

The Servitors met for a short business meeting after the joint meeting with the Twentieth Century Club with President Stephanie Brock presiding.

The nominating committee read candidates for the offices which will be voted on in February.

It was announced that the Volley Ball Tournament will be March 27-28-29.

Five new members of the club are: Kay Schneider, Alicia Mahaney, Judy Schell, Susan Castleberry, & Eva Mae Reger.

Members present were: Mary Baker, Debbie Benton, Stephanie Brock, Michelle Davis, Candy Delozier, Patty Hudson, Laura Mackie, Susan Pearson, Cindy Schneider, Holly Simpson, Donna Thomas, Gayle Thomas, Shelia Watley, Linda Winegarner, Gaye Woolley, Kay Schneider & Alicia Mahaney.

The next meeting will be February 21 at the B&B Freindship room.

Meet Held

A joint meeting of the Spearman Federated Women's Clubs was held January 24, 1980 at 7:30 p.m. in the First Christian Church.

Mrs. Tommy Russell, president of Twentieth Century Club welcomed members & guests. Mrs. Joe Close, president of Spearman Study Club, led members in the Collect. The prayers were given by Gail Thomas.

Mrs. Kim Brock, president of Servitors, introduced the special entertainment "Celebrate" from Spearman High School under the direction of Mr. Travis Angel.

Mrs. Brock introduced guest speaker Mrs. Scott Whorten of Stratford the Director of Top of Texas Junior Clubs. Mrs. Whorten talked on the need for enthusiasm of individual club members. She also discussed some guidelines for reporting and some differences in Junior and General clubs.

The Federation Song was led by Mrs. Kim Brock who accompanied on her guitar.

Servitors presented a skit on "Enthusiasm" which they had written themselves. Members participating were Linda Winegarner, Michele Davis, Debbie Benton, Cindy Schneider and Gaye Woolley.

Hostesses Mmes: O.C. Holt, Tom Sutton, Kim Brock, Andy Watley, Joe Close and Terry Schneider served refreshments to guests; Mrs. Scott Whorten, Leanne Josephson, Karen Cartwell and Gail Brelard; to Twentieth Century Club members: Mmes: Michael Holt, Cecil Biggers, Tommy Russell, J.R. Stump, C.U. Pope, Russell Pogue, C.A. Kleeberger, Harold Shaver, Ed Freeman, Deta Blodgett, L.L. Anthony, John Trindle, P.A. Lyon and Woodville Jarvis; to Spearman Study Club members: Marilyn Wilson Francis Biles, and Barbara Collier; and to Servitors members: Susan Pearson, Candi Delozier, Mary Baker, Michele Davis, Gaye Woolley, Hollie Simpson, Donna Thomas, Gail Thomas, Patti Hudson, Kay Snider, Linda Winegarner, Debbie Benton, Cindy Schneider and Laura Mackie.

You are cordially invited to

a bridal shower honoring

Christi West

bride-elect of David Hezt

Friday, February 8, 1980

7 to 8 p.m.

First Christian Church

Hostesses: Mmes.

Harold Howerter
Don Smith
Walter Spoonemore
Paul Reimer
John Sutterfield

Irvin Davis
J.L. Brock
J.D. McCoy
Kerry Henton
Earl Novak

12-2c

Golden Spread Center News

Thursdays are crafts day at the Golden Spread Center. There are a lot of people who are enjoying doing crafts. Lu Howerter wrote a little poem about it:

Crafts are fun, crafts are jolly,
The group all come and laugh
by golly.

Now isn't that worth a lot,
When such a happy bunch
you've got?

Call a neighbor or a friend,
bring someone
And come to the meeting to
join in the fun;

Leave behind the cares of the
day,
Come and learn and laugh
and play.

Arts and crafts are every Thursday from 10:00 a.m. to 5:00 p.m. with time out at noon for a covered dish luncheon. Right now they are working on seed pictures for the bazaar in connection with Hansford Days. Soon they will be working on other arts and crafts projects.

Friday, February 1, there will be table games from 2:00 until 5:00 p.m.

Monday, February 4 will be progressive pitch. People wanting to learn the game are especially invited but this does not exclude the fanatic pitchers, who are needed to help the newcomers at the game to learn how.

Tuesday, February 5 there will be a covered dish dinner at 6:30 p.m. Women of the Moose will be assisting with the supper. Table games will be enjoyed throughout the evening. There will be a nurse present to take your blood pressure.

Ruby Lair will drive the Golden Spread Center's vanbus on Wednesday, February 6 from 9:00 a.m. until 12:00 noon, picking up the sixty plus bunch to take them shopping, on errands, and to meet appointments. People needing transportation should call the Golden Spread Center on Tuesday and get your name on the list.

The philosophy of the Golden

Spread Center is based on the belief that aging is a normal developmental process, recognizing both the variation that older adults bring to this state of their lives, and that they, as all people, have certain basic needs and wants. The Golden Spread Center, located at 14 S. Haney, emphasizes the positive aspects of aging and the aged and takes on the function of a social utility. The Golden Spread Center is open Monday through Friday from 9:00 a.m. to 5:00 p.m. and is open to anyone who is fifty-five years of age or older without discrimination as to sex, color, race, national origin, ethnic background, religion, church membership, denominational preference, political party, or handicap.

Extension Club

The Spearman Home Extension Club met Friday, January 25 in the home of Mrs. W.H. Tarbox. The meeting was opened with the reading of the RHDA prayer by all the members. The devotional was then given by Mrs. Tarbox from Proverbs. Roll call was answered by "A Gift I Did Not Finish For Christmas". Secretary Mrs. Tarbox read the minutes of the last meeting.

The demonstration for the program was given by Mrs. B.J. Garnett on "Be A Surt Shopper About Consumer Complaints". Altha Groves read from World Book encyclopedia some interesting facts about Iran. This gave all the members a better understanding of the people, their customs, schooling, livelihood and way of life in general. It was noted that Iran was called Persia and is famous for the beautiful Persian Rugs.

The hostess Mrs. Tarbox served refreshments to Mmes: B.J. Garnett, W.V. Hull, Ed Hutton, W.A. Ellsworth and Altha Groves.

The next meeting will be Friday, February 8 in the home of Altha Groves.

WIN 1200 EXTRA S&H GREEN STAMPS



GROUND BEEF BLADE CUT	FRESH FAMILY PACK LB.	\$ 39
CHUCK STEAK 7 CUT	UNITED TRUTENDOR BEEF LB.	\$ 49
RANCH STEAK ROUND BONE CUT	UNITED TRUTENDOR BEEF LB.	\$ 79
SWISS STEAK	UNITED TRUTENDOR BEEF LB.	\$ 98
RIB STEAK	UNITED TRUTENDOR BEEF LB.	\$ 98
BEEF RIBS NAVEL CUT	UNITED TRUTENDOR BEEF LB.	\$ 98
SIRLOIN STEAK CENTER CUT	UNITED TRUTENDOR BEEF LB.	\$ 2 19
T-BONE STEAK	UNITED TRUTENDOR BEEF LB.	\$ 2 89



ARMOUR STAR HAMS BONELESS FULLY COOKED 2-4 LB. AVG. LB.	COUNTRY PRIDE BAKING HENS GRADE "A" 5-7 LB. AVG. LB.	DAK COOKED HAM 4 OZ. PKG.	KRAFT VELVEETA CHEESE FOOD LB.
\$ 1 79	69	98	1 49

FOIL MIX • BROWN GRAVY • TACO • SPAGHETTI SAUCE • CHILI	EA.	29
PLAIN CHILI 19 OZ. CAN		98
TAMALES 15 OZ. CAN	2 FOR	1
MACARONI • RONI-MAC • ELBO MACARONI • LONG SPAGHETTI 24 OZ.		89
TOMATOES 16 OZ. CAN	3 FOR	1
SAUCE 8 OZ. CAN	5 FOR	1



MORTON DINNERS • CHICKEN • WESTERN • MT. LOAF • SAL. STEAK • TURKEY • SPAG. & MT.	49
SARA LEE CAKES • ORANGE • COCONUT • GERMAN CHOC. • CHOCOLATE • BANANA • APPLE WALNUT	1 19
COLE GARLIC BREAD BUTTERED	89
BELL SHERBET ASST. FLAVORS 1/2 GAL.	1 39



What's a Nite-Liter?

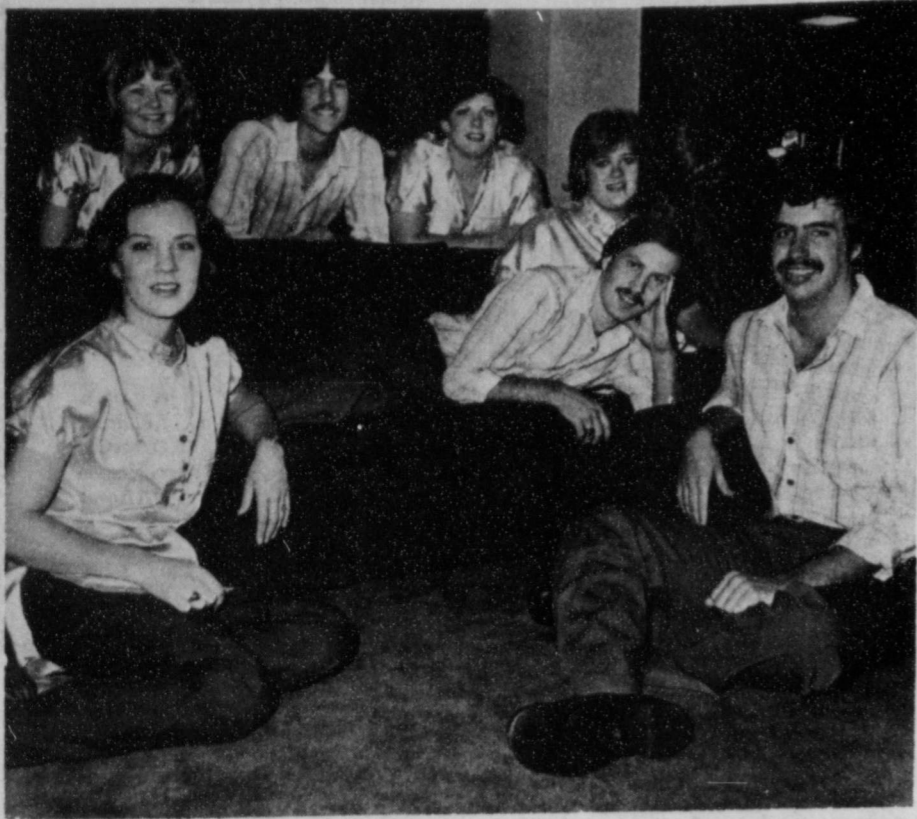
Get one and you'll SEE!

The Nite-Liter encircles your house with up to a 100-yard diameter of light, giving you added visibility after dark. Well lighted walkways mean less of a chance of stumbling over unseen objects, and brightly illuminated property has added protection against vandalism. The on-at-dusk, off-at-dawn Nite-Liter costs just pennies per night. To get the Nite-Liter for your home, just give us a call.

COMMUNITY PUBLIC SERVICE
Your Light & Power Company



McMurry Music Group To Perform



McMurry Phoenix Singers will perform here Feb. 1. Shown left to right, Dina Wyatt, Levelland; Joe Peacock, LaPorte; Celietta Wofford, Albuquerque; on couch, Cindy Holden, Abilene; Lynn Maison, Houston; On Floor, Dianna Hokanson, Dumas and Steve Davenport, Uvalde.

Wofford of Albuquerque, Lynn Maison of Lafayette, La., Joe Peacock of LaPorte and Steve Davenport of Uvalde.

Two McMurry College pop music groups, the Jazz Ensemble and Phoenix, will join to perform in Spearman as part of their spring tour.

McMurry is a four year liberal arts college in Abilene. The 55-year-old institution is owned by the Northwest Texas and New Mexico Conferences of the United Methodist Church.

The tour begins with a Childress High School performance Thursday morning, Jan. 31, followed by a performance for the Pampa kick-off dinner for the McMurry Annual Fund at 7 p.m. Thursday.

The musicians perform again at 10 a.m. Friday at Spearman High, in the afternoon at Canadian High and that evening at Shamrock's First United Meth-

odist Church. They conclude with a performance at the Sunday morning worship service at St. Luke's UMC in Lubbock.

Fry's Jazz Ensemble will swing through a repertoire ranging from the jazz classic "String of Pearls" through "I'm Popeye the Sailor Man" to the rock favorite "MacArthur Park."

Phoenix will sing "Staying Alive" as well as "Tennessee Waltz," the film hit "Goodbye Girl" and Freddy the Frog's success "Rainbow Connection." Like the jazzmen, Pearce's "Phoenix" has a total of more than 15 songs on tap.

Phoenix singers include Cindy Holden of Abilene, Dianna Hokanson of Dumas, Celietta

burg of Roscoe, Holly Davis of Odessa and Van Hayes of Snyder.

Agricultural News

TIME TO CONSIDER BORER CONTROL

Although it's the middle of winter, now is one of the best times for farmers to control a damaging summertime insect, the southwestern corn borer, a specialist with the Texas Agricultural Extension Service advises.

The corn borer overwinters in the old stubble that is left in corn fields after harvest, noted Dr. Carl Patrick, Extension area entomologist. If this stubble is destroyed by the first of February, enough cold weather will generally follow to assure a good kill of overwintering borers, he said.

During the growing season, having fed on the leaves, the borer burrows down into the root area of the stalk and girdles the stalk in such a manner that it makes it very susceptible to lodging. In the fall, rain, wind, or an extended harvest period may cause considerable lodging of these girdled plants.

"The major yield reduction of corn from southwestern corn borer infestations results from this lodging, however, the burrowing along during the growing season does cause some yield reduction," Patrick said.

A number of insecticides are labeled for southwestern corn borer control, but application must be timed properly and even at that results have been very erratic, the Extension entomologist said. Many farmers may not have the time or be able to determine just exactly when this control application of insecticide is due.

"So we need to consider some viable alternatives to making this rather difficult and not always effective decision," Patrick said. "One alternative is attacking this pest during the winter when we know where it is and attacking it when timing, to a certain degree, is not that important just so that we get it done before a particular date. This is the time of year that we need to be doing this."

Corn stubble is the major overwintering site of the southwestern corn borer, so farmers can concentrate their efforts on the stubble, the Extension entomologist said. Many pests overwinter in several sites or hosts and we don't have the ability to restrict our efforts to a particular location, Patrick noted.

The southwestern corn borer is a tropical pest but its overwintering site, it's quite capable of withstanding the Texas Panhandle winter even though there may be rather harsh weather some years. Disturbing the stubble during the winter and exposing these overwintering borers to the winter weather, we eliminate many of the problems with southwestern corn borer during the growing



Sleet, snow and icy roads greeted Spearman, Gruver and Morse residents the past week, as we have it all! This wagon, at the Stationmaster's Museum in Spearman, was covered with snow! Also, the wooden Indian at the museum had a blanket on!

season, the entomologist said. This is especially true if this stubble is destroyed over a large area.

"If they are reduced to very low numbers at the start of the season, we don't have as many to cause problems later on in the summer."

"The stubble should be destroyed by the first of February, allowing enough cold weather to follow to assure a good kill of the overwintering borers. This can be accomplished by double disking and deep plowing," Patrick advised.

"For those concerned about soil erosion, Dr. Tom Archer, research entomologist, Texas Agricultural Experiment Station, Lubbock, indicates that shredding the stalks to ground level prior to Feb. 1 will result in high mortality of the borers. Norris Daniels, research entomologist, Texas Agricultural Experiment Station, Amarillo,

has indicated that plowing or chiseling to disturb corn crowns as late as April will kill borers."

"Whatever you do don't allow the stubble to remain undisturbed, for if you do you are assuring that you will have an adequate supply of southwestern corn borers for the next corn growing season," the entomologist warned.



Old English, or Anglo-Saxon, was spoken in Britain from about 449 A.D. to 1100.



The body is made up of about 60 percent water.

"A man has not seen a thing who has not felt it." Henry David Thoreau



A thermometer is an example of an analog computer in which one quantity is measured in terms of another quantity.

WINTER USED CARS & TRUCKS



Convenient



available to qualified time buyers

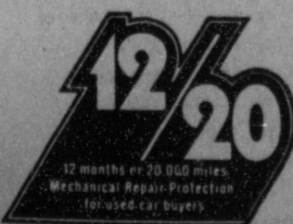
- 79 CHEVY DIESEL - Custom Deluxe, 14,000 miles, air conditioning, white\$7,450
- 79 GMC TANDEM TRUCK - 6,000 miles, Hendrickson suspension, Tradewind 20' bed, Sierra Grande cab, 366, 5 & 2, Michelins\$22,850
- 79 GMC 1/2 TON 4X4 - Sierra Grande, 12,000 miles, 400, automatic, pwr steering & brakes, air conditioning, AM-FM tape\$6,500
- 78 CHEVY 1/2 TON - Bonanza, loaded, brown & White..\$4,500
- 78 CHEVY DIESEL - Silverado, loaded, power windows & door locks, white\$6,500
- 78 GMC CABALLERO - Laredo, tilt, cruise, AM-tape two-tone blue\$4,750
- 78 GMC 1/2 TON - Sierra Grande, loaded, white\$4,500
- 78 DODGE 3/4 TON 4X4 - V-8, 4 speed, white\$4,750
- 78 GMC 1/2 TON - Sierra Classic, tilt, cruise, AM-FM tape, pwr windows & door locks,\$5,250
- 78 CHEVY 3/4 TON 4X4 - Scottsdale, automatic, 400, air cond., silver\$5,500
- 78 CADILLAC - El Dorado, loaded, Michelins, pastel yellow\$8,950
- 77 FORD 1/2 TON - Ranger, sporty, AM-FM tape, stripes, mags, black.....\$4,750
- 77 GMC 1/2 TON - Sierra Classic, loaded, 2-tone grn \$4,500
- 77 CADILLAC - Coupe DeVille, loaded, AM-FM-CB, leather seats, nice, white\$6,950

CHECK OUT THESE SPECIALS!

- 76 PONTIAC - Grand Prix LJ, 60/40 seat, loaded, metallic brown & buckskin\$4,250
- 76 FORD - Country Squire wagon, power 60/40 seat, pwr windows & door locks, AM-FM tape, blue ...\$3,450
- 76 CHEVY 1/2 TON - Cheyenne, loaded, met. blue ...\$3,250
- 76 GMC 1 TON - 350 V-8, 4 speed, air, red & wh...\$3,750
- 76 FORD 1/2 TON - V-8, 4 speed, power steering & brakes, pastel blue\$3,250
- 76 OLDS - Delta Royale 4 dr., power windows & door locks, AM-tape, white & burgundy\$3,450
- 76 TOYOTA 1/2 TON - long bed, 5 speed, air, white ..\$3,250
- 76 FORD 1/2 TON 4X4 - automatic, power steering & brakes, radial mud & snow tires, white.....\$3,950
- 76 GMC 3/4 TON - Sierra Grande, loaded, new tires, metallic brown.....\$3,250
- 76 CHEVY CREW CAB - Scottsdale, loaded, AM-FM tape, Michelins, red & white\$4,750
- 75 FORD 1/2 TON - Ranger, loaded, yellow & white ..\$2,950
- 75 FORD - Mustang Fastback, Michelins, economical V-6, 4 speed, air cond., metallic blue\$2,950
- 75 FORD 3/4 TON - Custom, automatic, power steering & brakes, air cond.\$3,250
- 75 PONTIAC - Grandville Brougham 4 dr, loaded, silver & burgundy\$2,750
- 75 CHEVY 1/2 TON - Cheyenne, loaded, pastel green and white\$3,450

- 74 CHEVY - Caprice 4 dr, loaded, AM-FM tape Michelins, tan and white\$2,150
- 74 CHEVY BOBTAIL GRAIN TRUCK - 16' bed & hoist, 350, 4 & 2, 19,000 miles\$8,950
- 74 FORD - Galaxy 500 2 dr., loaded, low mileage, bronze.....\$1,500
- 73 FORD 1/2 TON - automatic, air, pastel grn & wh \$1,750
- 73 BUICK - Electra 4 dr., clean car, met. blue ..\$1,500
- 73 FORD - Torino 4 dr., great work car, lt blue . \$ 800
- 73 OLDS - Toronado, loaded, burgundy & white ...\$1,250
- 73 MERCURY - Montego 4 Dr, low mileage, bronze ..\$1,650
- 72 FORD - LTD Brougham 4 dr, clean & dependable, silver and white\$1,150
- 72 PONTIAC - Grandville 2 dr., clean, Michelin tires, loaded, white & black.....\$1,150
- 71 MERCURY - Montego 2 dr., good school car, maroon and white\$ 450
- 71 MERCURY - Marquis 4 dr., good work car, pastel green & white\$ 450
- 70 OLDS - 4 dr., good work car, gold & white ...\$ 450

Many of our used autos qualify for an MIC 12 month/20,000 mile extended warranty. Check it out!



HERGERT



"... where SERVICE is the KEY!"

SOUTH HWY 207

[806]659-3721

SPEARMAN, TEXAS

Spearman Music Club History

SPEARMAN MUSIC CLUB HISTORY
January 22, 1980
By Mrs. Russell Townsend

In February, 1956, Virginia Cates picked up the telephone and called a number of people, and as a result of this telephoning the Spearman Music Club was organized with six (6) members. The charter members were: Helen Watson (Pres.), Beuna Lyon, Virginia Cates, Rubyjo Wilbanks, Gloria Knox and Kathleen Sutton. We added to this membership seven (7) others for the first years work.

In 1957-58 we were federated with the National & State Federation of Music Clubs with Mrs. Johnny Fagan (Dist. Pres. from Borger giving the orientation. We added seven (7) new members to our roll. Our outstanding program was the exchange program with Gruver. 1958-59 we started our study course program with Our American Music the course. The International Relations Program on Mexico with music decorations and film by Mr. J.L. Baine from Pampa was enjoyed very much by all who attended. Our husbands were guests. A special program by Mrs. Marjory Urban, pianist, student at the Amarillo Music Conservatory was presented, with the Gruver Music Club as special guest. The public was invited.

Among the outstanding programs for 1959-60 were the Opera selections given by Mrs. Evelyn Reed, Mrs. Lucille Moore, James Ramsey and Mark Lynn. Chamber Music was furnished by members of the Borger Music Club. The Texas Composers program was given by Dr. Houston Bright, Canyon, Texas. The International program by Mrs. Eika Hembree, native of Japan, who lived in Dumas, was also enjoyed by all.

1960-61 Mrs. Alexander from Gruver gave the International Program on her trip to India with a talk, costumes and films.

In 1961-62 we gave programs on well known composers Ethelbert Nevin, Irving Berlin and McDowell. We were fortunate to have Mrs. Sally Johnson join our club and organize our club choral in earnest. This choral club did several things for the club and outside organizations.

In 1962-63 we had grown to a membership of 23 with 14 associate members who have given us their loyal support through the years. We were honored to have on our International Program, Miss Tina Hellstrom from Sweden. She made her home with Mr. & Mrs. Cecil Crawford and was studying with the Perryton Animal Clinic. She gave a question and answer program and sang for us. Our program for husbands was outstanding with the Panhandle A & M Choir entertaining. Supper was served before the program to members & husbands, associate members & husbands and guests. The American Music Program was a surprise to all as nothing listed was performed.

1963-64 the Opera Program, 'In the Gingerbread Castle' based on the Opera Hansel & Gretel was one of the best. We also gave this program for the Sorority. We hosted the District Convention under the capable leadership of Mrs. Virginia Cates, Pres. and Mrs. Virginia

Yows (Dist. Pres.). All those who attended felt this was an outstanding convention since a major change had been made. This change was a one (1) day instead of a two (2) day convention in our district.

1964-65 we opened the year with a very informative skit called Operation Federation. All programs were given by local talent.

1965-66 our Folk Music Program was given by Pampa High School girls who called themselves "The Climbers". We went Christmas Caroling at Pioneer Manor, which was a new experience for us. Our exchange student, Gere Overland from Norway, gave the Christmas program. He told of Christmas customs in his home land and sang carols in his native language. We voted to have a project would support a music library in our High School Library.

Through the years we have used our children, school children, band and choir students. Also, local talent have been kind to help us many times.

District presidents have honored us each year with their presence and encouragement.

At least two (2) members from the club have attended District Conventions each year.

Grass Roots opera programs given by members of the club were: The Barber of Seville - 1957-58; Sweet Betsy from Pike - 1958-59; Hansel & Gretel - 1963-64. Miss Elsie Ruth Porter Miss Jenny Lynn Massad and Travis and Charlotte Angel have also favored us with opera selections.

Mrs. Ruth Hutton, area artist, has given 2 inspirational programs on Music and Arts.

Mrs. Mary Lee, associate member, has graciously shared her world travels with us in talks and films.

We have had all the problems in lack of members, planning interesting programs, etc. through the first 10 years. But

'we feel that we have made much progress and have been an asset to help bring the spiritualizing force of music to the inner life of the community.

Although the next 10 years brought much the same problems - attracting members, planning interesting programs, seeking to keep music alive in the community, we feel we have made inroads to this effect.

We did host another District Convention (11th). First one was the 3rd. I believe this one was under the guidance of our current president, Audrey Leighnor.

We continued to use our exchange students in programs and have been honored in having students from Brazel, Sweden and South Vietnam.

The Club Chorus has presented programs to the Lion's Club, Rotary Club, 20th Century Club, Golden Spread Center, presented Christmas Concerts and sang at eh lighting of the Community Christmas Tree in 1978.

Through the years we have had cultural programs, fun programs, educational programs, even some we felt were a disaster.

We continue striving to promote music in the community and we feel we can help attain this goal with our Music Scholarship, which we give each year.

Music, the universal language of mankind, is also a form of beauty at its best. As language differs among peoples, so does the language of music differ with time, place, background and experience; but if it is true music, it strikes a responsive chord.

Let us strive to keep this kind of music alive in our community.

I would like to close with this poem, whose author is unknown:

How many of us ever stop to think

Of music as a wondrous magic link
With God; taking sometime the place of prayer,
When words have failed us 'neath the wright of care?
Music, that knows no country, race or creed;
But gives to each according to his need.

County Agen. News

Layton Barton
Co. Extension Agen (Agri.)

The Texas Animal Health Commission is currently proposing changes for Texas brucellosis (bangs disease) control plan. These proposed changes would be to bring Texas into compliance with proposed National Brucellosis Control plans in the near future.

I currently have two publications on the proposed new regulations. These publications are available in the County Extension office located in the basement of the Courthouse.

There will also be six public hearings for the purpose of allowing public comment on the proposed plan. The list of dates, locations and times for the hearings are as follows:

9 a.m., February 1, Knowlton Community Room, 1314 Fredericksburg Road, San Antonio.

9 a.m., February 1, Harvey Hall, 2000 Front Street, Tyler.

9 a.m., February 5, District Courtroom, County Courthouse, San Angelo.

9 a.m., February 6, Gould Sales Arena, Tri-State Fair Grounds, 3300 East 10th Street, Amarillo.

9 a.m., February 7, W.E. Boswell Senior High School, Bosell Road, Ft. Worth.

9 a.m., February 11, Houston Livestock Show & Rodeo, Exposition Center, 2000 South Loop West, Houston.

Written comments are also invited, and may be sent to Dr. John W. Holcombe, Executive Director, Texas Animal Health Commission, P.O. Box 12966,



"Member of the Year" honoree Altha Townsend is shown here with outgoing Women's Division of Chamber of Commerce president Emma Collins, Byrnic Callaway and the new president, Sandy Heinrich.

Austin 78711. Written and oral comments will be accepted up to and including February 29. The Texas Animal Health Commission proposed to conduct a final hearing and adopt these regulations on February 29, in Austin. The time and place for the open meeting will be announced at a later date by publishing same in the Texas Register.

Beef producers will soon have an opportunity to vote in a referendum on a Beef Research and Information Order. To vote, a producer must register between January 28 and February 6, 1980 at their local Agricultural Stabilization and Conservation Service (ASCS) office. Voting will be February 19-22. All cattle producers would be affected by the order and each individual (cow-calf operator, stocker-grower, feeder, daily operator, etc.) who owned cattle in 1979 is eligible to register and vote.

Copies of an information sheet from the USDA, and a question and answer sheet on voting procedures for the Referendum are also available in the Extension office.

Arrests Made

Sheriff R.L. McFarlin reports that Pete Mata Padilla, Jr., age 30, from Sunray, was arrested by the Dumas Sheriff's Dept. on a warrant from Hansford County for burglary of the Harold Boyd farm and the Archie Nelson farm. The value of the stolen items was \$4,000.00. Padilla is presently being held in the Hansford County jail in lieu of \$5,000.00 bond. Also arrested in Dumas in connection with the farm thefts were Tommy Wayne Miller, age 34 of Dumas and David Nelson Lewis, age 23, also of Dumas. Miller and Lewis have been released on \$3,500.00 bond each. This case will be presented to the Hansford County Grand Jury.

Grain Reserve Interest Charges Waived

WASHINGTON, Jan. 23 -- Secretary of Agriculture Bob Bergland announced today that farmers who placed corn in the grain reserve program between Oct. 22 and Jan. 7 will be eligible for waiver of the first year's interest charges. Oct. 22 was the date that immediate entry of 1978 and 1979 crops was authorized. Jan. 7 was the day new reserve rules became effective.

To qualify for the interest waiver, farmers affected by the new announcement must contact their county office of the Agriculture Stabilization and Conservation Service to sign a new reserve agreement. Interest that will be waived is that which accrued beginning Jan. 7. Interest that accrued before Jan. 7 will still be owed by the farmer. Bergland said today's decision was made as a matter of equity for those farmers who earlier had placed grain in the reserve. On Jan. 7, as one of the moves in response to suspension of grain sales to the USSR, first-year interest on grain in the reserve program had been waived.

Arrests Made

Sheriff R.L. McFarlin reports that Pete Mata Padilla, Jr., age 30, from Sunray, was arrested by the Dumas Sheriff's Dept. on a warrant from Hansford County for burglary of the Harold Boyd farm and the Archie Nelson farm. The value of the stolen items was \$4,000.00. Padilla is presently being held in the Hansford County jail in lieu of \$5,000.00 bond. Also arrested in Dumas in connection with the farm thefts were Tommy Wayne Miller, age 34 of Dumas and David Nelson Lewis, age 23, also of Dumas. Miller and Lewis have been released on \$3,500.00 bond each. This case will be presented to the Hansford County Grand Jury.

Written comments are also invited, and may be sent to Dr. John W. Holcombe, Executive Director, Texas Animal Health Commission, P.O. Box 12966,



Fine pearls are obtained from an inedible oyster of the genus *Meleagrina* that lives in warm parts of the Pacific. Edible oysters never produce valuable pearls.

GUYMON, OKLAHOMA-CATTLE AUCTION MARKET - NEWS - LETTER

GREETINGS TO ALL CATTLE PRODUCERS

THE REGULAR FRIDAY AUCTION WAS HELD IN GUYMON, OKLAHOMA LAST FRIDAY JANUARY 25TH AT THE PANHANDLE LIVESTOCK COMMISSION CO., A LIGHT RUN OF CATTLE AND CALVES SOLD THROUGH THE ARENA. A GOOD NUMBER OF BUYERS AND SELLERS WERE PRESENT TO TAKE IN THE ACTION. ALL CLASSES OF CATTLE SOLD ON A STEADY TO HIGHER MARKET.

PACKER COWS SOLD \$2.00 TO \$3.00 HIGHER. SELLING FROM \$44.00 TO \$50.00 PER CWT. BOLOGNA BULLS SOLD FOR A TOP OF \$61.00 PER CWT. STEER AND HEIFER CALVES SOLD ON A STEADY MARKET. FEEDER STEERS AND HEIFERS SOLD ON A \$2.00 HIGHER MARKET THAN THE PREVIOUS WEEK.

FOR A CONSIGNMENT OR FOR ANY INFORMATION YOU MIGHT NEED CONCERNING ONE OF OUR REGULAR FRIDAY AUCTIONS GIVE US A CALL HERE AT THE GUYMON YARDS 405-338-3378 AND ASK FOR BILL BLACKMORE.

PANHANDLE LIVESTOCK COMMISSION CO.

Guymon, Okla. • 405-338-3378 • P.O. Box 879

26 WEEK MONEY MARKET

(182 Day Maturity)

CERTIFICATES OF DEPOSIT

RATE **11.846%**

Thursday, Jan. 31 through Wednesday, Feb. 6, 1980

Minimum deposit \$10,000 Federal regulations require substantial Interest Penalty for early withdrawals

NATIONAL BANK

OF PERRYTON, TEXAS

FDIC

A FULL SERVICE BANK

COOL SAVINGS FROM...

WE RESERVE THE RIGHT TO LIMIT PRICES EFFECTIVE JAN. 31 - FEB. 2, 1980
SPECIALS GOOD WHILE SUPPLY LASTS! LIMITED SUPPLY!

ALLSUP'S \$00.00 TO \$200.00

ALLSUP'S MONEY ORDERS

19¢

ORANGE CONCENTRATE

BRIGHT & EARLY

6 oz. FROZEN

5 FOR \$1

NEW! FRESH BREWED

FOLGER'S COFFEE

39¢

12 OZ. CUP

BORDEN'S ASSORTED

DIPS 8 OZ. CTR.

59¢

IMPERIAL SUGAR 5 LB. BAG

\$1.29

BORDEN'S ICE CREAM SANDWICHES OR HUTTY

BUDDIES 8 CT. PKG.

89¢

GIANT SIZE TIDE

\$1.49

RATH'S ALL MEAT

FRANKS 12 OZ. PKG.

99¢

SHURFINE VANILLA

WAFERS 10 oz. PKG.

29¢

RATH'S HICKORY SMOKER/SMOXY MAPLE

BACON 1 LB. PKG.

\$1.59

COOKED FOOD SPECIAL OF THE WEEK

ROAST BEEF ON BUN 99¢ EACH

Lynxettes win first half of 1-AA play

Lynxettes win first half in District 1-AA conf. play. The Spearman Lynxettes defeated the classy Perryton Rangerettes 50-41 at Perryton Friday night in a really outstanding game. In fact, the Lynxettes hit 20 of 22 free throws to ice the game, and fine Perryton girls never did give up, as they continually put pressure on the Lynxettes. The Lynx boys lost to the fine Ranger team, and this gave the Rangers the first half win in district 1-AA boys play.

In the girls game, Kendra Burke had a fantastic night, with a total of 22 points to lead the Lynxettes. Nancy Wilson hit 10 points, and had a record number of rebounds for the Lynxettes!

The final score was 50-41: This gave the Lynxettes the first half of district 1-AA play, and they will have several tough games ahead of them the 2nd half. The Lynxettes have already defeated 2-AA winner Childress by some 10 points in a previous game during the Canadian tournament.

BULLETIN: The Lynxette game with Guymon was cancelled Tuesday night because of icy roads in the Guymon area. The Boys Ranch - Spearman boys game was played (unless it was cancelled late Tuesday evening). See reports of game in other part of this paper.

VARISITY GIRLS

SPEARMAN	43
CANADIAN	26
C Shields	9
K Burke	16
N Wilson	4
B McCloy	6
T Maize	6
V Hagerman	2
M Martin	2
P Short	2
LA Gibner	2
M Reed	2
S Greene	2
K Ford	2

VARISITY GIRLS

SPEARMAN	60
DALHART	47
Connie Shields	16
Kenda Burke	12
Nancy Wilson	3
Bonnie McCloy	3
Tammie Maize	14
Val Hagerman	4
Mary Martin	5
Patti Short	4
Lea Ann Gibner	2
Margaret Reed	2
Sherry Greene	2
Kamala Ford	2

9th GIRLS

SPEARMAN	33
DALHART	32
S. Davis	9
C. Young	4
J. Reed	4
L. Paul	4
C. Sullivan	0
J. Davis	5
Jean Davis	2
S. Ooley	2
T. Bowling	3
SPEARMAN	24
PERRYTON	38
S. Davis	2
C. Young	0

J. Reed	2	S. Greene	7	C. Melton	
T. Paul	2	K. Hagerman		K. G'	
C. Sullivan	0	J. Eaton	6	K. Hagerman	10
Jan Davis	7	M. Reed	3	SPEARMAN	38
Jean Davis	7	K. Ford	6	SUNRAY	25
S. Ooley	2	SPEARMAN	30	K. Ford	
T. Bowling	2	CANADIAN	40	J. Eaton	12
B TEAM GIRLS		K. Ford	2	M. Reed	12
SPEARMAN	32	S. Greene	4	M. McIntyre	2
DALHART	38	M. Reed	4	T. Baker	2
T. Baker	2	M. McIntyre	2	S. Greene	8
M. McIntyre	8	J. Eaton	6	C. Melton	
		T. Baker	2	K. Hagerman	

Connie Shields	6
Kendra Burkd	22
Nancy Wilson	10
Bonnie McCloy	
Tammie Maize	
Valerie Hagerman	
Mary Martin	8
Pattie Short	2
Lea Ann Gibner	2



Brown: U.S. won't sell arms to China.
Klutznick sworn in as Commerce Dept. Secretary.

Goodwill Ambassador Mildred Chamberlain is shown here with Mayor Ralph Blodgett. Mrs. Chamberlain was presented with a silver tray at the banquet Saturday night.

Evans Arrested For Theft

Sheriff R.L. McFarlin received a report early on Friday the 25th day of January 1980, that a Turbo Charger, valued at \$600.00, had been taken from a truck belonging to S.B. Sheets of Spearman. The truck was parked near the John Deere lot. Kevin Locke Evans was arrested Sunday, January 27, by Sheriff McFarlin and Spearman City Patrolman, Bo DeArmond. Evans was arraigned before Justice of the Peace, Peter Vernon and bond was set at \$3,000.00. This will be turned over to the Grand Jury.

CCC Will Buy Corn

Commodity Credit Corporation has announced intentions to purchase corn to help offset the effect of export restrictions to the Soviet Union.

The offer must be in Kansas City Commodity Office by 4:00 p.m. C.S.T., February 4, 1980.

Bids must be for 5,000 bushels or more of same class, grade and quality. The corn must be in an approved U.G.S.A. warehouse or be delivered to an approved warehouse within 30 days of notice of acceptance by C.C.C.

Offer Bid Sheet and additional information is available at the Hansford A.S.C.S. Office, 223 Main Street. If interested, come by and visit with our loan clerks.

Starr In Jail Here

Sheriff R.L. McFarlin reports that James Paul Starr formerly of Spearman, who has been wanted by the Hansford County Sheriff's Department for the past year on a charge of Solicitation of Capital Murder, has been returned to Hansford County from Houston on a Grand Jury indictment issued October 2, 1978. Starr is presently being held in the Hansford County Jail.

RETAIL SALES UP NEW YORK -- It was a merrier Christmas than expected for the nation's retailers. Sales at some stores rose more than the rate of inflation and all retail chains reported increases despite the weakening economy. Overall sales appeared to be up by about 7 to 9 percent in December from the corresponding month in 1978.

Agriculture Department: exports level still at record.



HAVE you purchased your Lynx-Ranger pancake tickets for the big game to be here in Spearman February 12!

Lion Club's Pancake Supper

Feb. 12, 1980 5 - 7 P.M.
Spearman Jr. High Cafeteria
Sponsored by Spearman Lions Club

SPEARMAN LIONS CLUB
"PANCAKE SUPPER"
February 12, 1980 - 5:00 to 8:00 P.M.

- | | |
|---|---|
| Cashiers/Greeters: | Bobby Snider, Dick Elbert, James Cunningham, Ray Ingle, Roy Jones |
| Ticket Sales: | Eugene Yarbrough, S. J. Hall, Billy Miller |
| Secure Sausage, Mix, Butter & Syrup: | James Cunningham, Steve Krug, Ray Ingle |
| Secure Drink Supplies: | Alton Ellsworth, Butch Baker |
| Secure Plates, Cups, & Napkins: | Doug Connelly, Bobby Snider |
| Cook Sausage: | Oscar Donnell, J. W. Gibner, T. R. Robertson |
| Cook Pancakes: | C. A. Gibner, Everett Tracy, Dick Hudson, Earl Goodheart |
| Mix Batter: | Russell Pogue, Steve Krug |
| Serve Sausage: | Burl Buchanan, Claude Newell, Richard May |
| Serve Pancakes: | Doug Connelly, Doug Steger, Don Reed |
| Butter & Syrup on Tables: | Ben Woodington, Elbre Hickerson, Layton Barton |
| Clean Tables: | Robert Queener, Warren Proctor, John Trimmell, Cecil Biggers |
| Serve Drinks: | R. L. Kleeberger, Martin Chandler, Steve Holton |
| General Clean-up after completion-help as needed: | Butch Baker, Jimmy Jackson, Jack Oakes, Gerald Heinrich, Troy Sloan |

This advertisement sponsored by:

Golden Spread Sales Co.

412 Collard

659-3776

Spearman

How to cope with the high cost of heating:



If you're frustrated by the high cost of heating, a Kero-Sun portable kerosene heater gives you low cost heat for only pennies an hour. Heats with almost 100% efficiency for 30 hours on less than 2 gallons of clean-burning, safe kerosene. Every Kero-Sun is thoroughly safety-tested. Each has a battery-powered igniter, so you need no matches to light it and each has an automatic shut-off - in case of tip-over. There's no smoke, no odor, and you need no chimney installation. This may be the winter when a Kero-Sun portable heater is your only way to handle the high cost of heating.

Sports Tally, Inc.
Spearman - 717 W. 7th St 7th St. 659-3878
Berger - 1320 W. Wilson 273-7011



THE ONE-STOP FARM INSURANCE POLICY

COMPETITIVE RATING

In Today's Cost Conscious World Geared Toward FARMS & RANCHES

WE'LL WORK FOR YOU TO GET THE BEST COVERAGE AT THE BEST PRICE

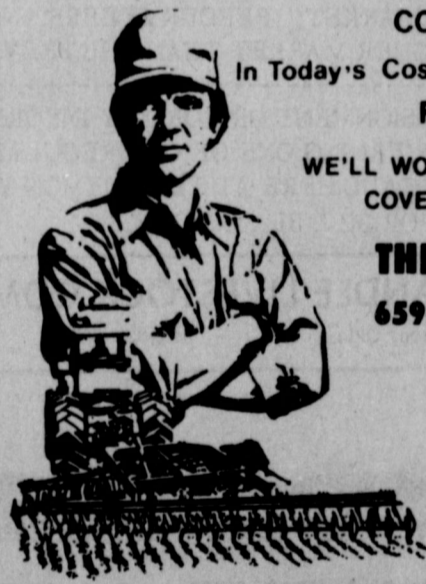
THE HANSFORD AGENCY

659-3888 659-3914

Burl Buchanan

Ask About The New Rating Possibilities On Our FARMERS-RANCHOWNERS Policy. Information Is FREE, The Price Is FAIR And The Coverage

YOU CAN'T AFFORD TO BE WITHOUT MAY WE QUOTE YOU?



only applicable to qualifying customers

SKI SALE

Olin Mark IV, Mark II, Dynastar Skis-20% off

Dolomite and San Marco Boots-25% off

Hanson Esprit \$105.00

Ski Clothes, 30 to 50% off

PRO SPORT CENTER

319 N. Main

806-396-2062

Stratford, Texas