



**WEATHER**

June 1	57	44
June 2	77	48
June 3	91	50
June 4	87	52

# BAILEY COUNTY JOURNAL

'The Community of Opportunity-Where Water Makes the Difference'

20¢

Volume 21, No. 22

12 Pages Today

Published Every Sunday at Muleshoe, Bailey County, Texas 79347

Sunday, June 5, 1983

## Around Muleshoe

Dr. Jerry Gleason, local veterinarian, will conduct a rabies clinic for dogs and cats at the Lazbuddie High School Agricultural Building on Wednesday, June 8 from 2 p.m. until 5 p.m. Sleeping sickness vaccines for horses will also be available at this clinic.

The First United Methodist Church's Vacation Church School will begin on June 6 and continue through June 10, from 9 until 11:30 a.m. For further information you may call either Pam Zwickey at 272-5002 or Sue Barron at 272-5334.

The Texas Migrant Council will be registering children from six weeks to six years of age on June 9, 10 from 8:30 to 11:30 a.m. and from 1 p.m. until 3 p.m. each day. The Migrant Council is located at 101 East Avenue B in Muleshoe.

Information that is needed to register includes: immunization records, birth certificates, social security numbers, annual income, and proof of income.

Gary R. Gunter from Muleshoe son of Mr. and Mrs. John Gunter received a master's degree in agricultural economics at Texas A&M University's spring commencement exercises. A total of 3,135 degrees were awarded, including 2,698 bachelor's, 344 master's and 93 doctorates.

The Muleshoe Texas Department of Health office is combining its well-child and immunization clinics. Children may be brought for immunizations (shots) and well-child services any Tuesday. Clinic registration will be from 8:30 a.m. to 10:30 a.m. and 1:00 p.m. to 3:00 p.m. No appointment is necessary.

All formerly made appointments are cancelled by this change. You will need to bring your child in on Cont. Page 2, Col. 2



**MEMORIAL LOT GETS FACELIFT**--Several students from the Muleshoe High School Art classes and their instructor, Sandi Chitwood came to the aid of the Rotary and Kiwanis Clubs recently after they requested a new design for the Mule Memorial display case. Raul Garcia, a student, was in charge of and designed the display. New shingles were also put on the case to increase it's new look. Several citizens were on hand early Friday morning for the official ceremonies.

## Bailey County Attorney Receives Bar Suspension

On April 21, 1983 Linda Guelker, Bailey County Attorney, was issued an order of suspension before the Grievance Committee of District Number 13 of the State Bar of Texas for certain acts of professional misconduct on her part resulting from a law suit filing on which the Statute of Limitations had run. The suspension was for 12 months, with the last nine months of the suspension probated.

Linda Guelker, formerly associated with the firm of Thompson, Thomas and Brown in Muleshoe had served several months as Bailey County Attorney Pro Tem until June 28, 1982 when she was unanimously approved by the Bailey County Commissioner's Court to serve out the term of County Attorney. One other application was submitted to the court at the time; however, Ms. Guelker was the only applicant appearing personally before the court to request the

appointment.

In November, 1982 Ms. Guelker ran in the General Elections as a write-in candidate and was elected over her only opponent by a margin of 858 votes.

The professional misconduct complaint came about after a suit was filed in the 286th Judicial District Court of Hockley County, Texas in which Ms. Guelker was charged with fabricating a clerk's file mark, including a deputy clerk's signature after a Statute of Limitations had expired.

The Grievance Committee charged that in view of testimonies given and evidence presented, the file mark and signature was not a true and legitimate stamp placed on the original document.

The Grievance Committee ordered that Ms. Guelker's license to practice law in the State of Texas should be suspended for a period of twelve months, with the last nine months to be probated, effective May 21, 1983.

Cont. Page 2, Col. 2

## St. Clair's Store Begins Quitting Business Sale

When St. Clair's Department Store opens for business at 9 a.m. on Wednesday, June 8, they will begin the final edition of 53 years of business in the Muleshoe Trade Area by the St. Clair families.

Johnny and Deborah St. Clair, owners have recently informed the Journal that they will begin their Quitting Business Sale on Wednesday, June 8 at 9 a.m. signifying the end of a long-standing family tradition.

I.L. St. Clair, Johnny's grand father established the store in 1930 in a small 20 by 40 foot building where Western Drug now is located. The St. Clair family lived in the back of the variety store building.

Then, in 1932 St. Clair's expanded, moving into a portion of the old bakery building; however, the residence was still maintained in the rear of store building. The store was doubled in size in 1937 and by 1940 additional expansions were needed.

The St. Clair's moved again in 1940 and at the same time, in-

corporated a department store with their variety business.

In the year of 1948, Lowell Irvin and Dorothy St. Clair returned to Muleshoe.

Cont. Page 2, Col. 1

## Justice Court Has It's Share Of 'Speeders'

Activity in Justice Court for the period from May 23 to May 30 indicated a total of 48 new filings for violations and disposal of 15 previous cases, according to Jack Bates, Justice of the Peace.

Of the cases filed, 32 of the 48 were for speeding violations; four for over allowed gross weight; two for defective mufflers and one each on the following violations: no lease on file, failure to display ID cards, no MVI, expired license plates, defective tail lamps, no mud flaps, no drivers license, driving on wrong side of road, failure to report an accident and no Cont. Page 2, Col. 5

## Fireworks Ordered For July Event

Once again on July 4th the skies of Muleshoe will be ablaze with a giant fireworks display. The tentative order for this year's fireworks has been made, and it will feature over two hundred shells and a total of 87 different varieties of shells. The Muleshoe Chamber of Commerce and Agriculture will be holding a garage sale on Saturday, June 25 at the old Western Auto building on Main Street to help raise the necessary funds for the July 4th Celebration. Anyone interested in contributing merchandise other than clothing to the garage sale is encouraged to contact the Chamber.

Registration is now open for clubs and organizations interested in sponsoring a booth at the Civic Center on the 4th of July. To register, interested groups are required to pay a \$10.00 entry fee at the time of sign-up. The sign-up must be done in person at the Chamber office in City Hall.

The Bailey County 4-H Club will be sponsoring a Bar B-Q supper in the New City Park this year, instead of the Omelet Rodeo. There will also be a carnival in the park sponsored by the Muleshoe Rotary Club.

Parade entry forms have been mailed to over one Cont. Page 2, Col. 1

# Mule Memorial Gets Face Lift For Summer

\*\*\*

\*\*\*

## Bingo Games Planned In August Here

The Bailey County Commissioner's Court met in a special session on Wednesday, June 1 in their regular meeting place in the Courthouse, beginning at 10 a.m.

Following a meeting with a representative of the Alpha Zeta Pi organization, the Court granted to them authority to lease the Bailey County Coliseum on a given date in August at the rate of \$175 per night, depending upon the acquisition of a bingo license by the organization.

The County Commissioners also adopted a new fiscal year for the County which will end on September 30 of each calendar year, with the first one ending in September, 1983. The fiscal year for the County had previously been from January to December; however the Court felt the need for change so that the fiscal year would coincide with tax records and levies.

The Court also granted

## Church Of Christ Plans Bible School

The well known "Sesame Street" character "Cookie Monster" will be visiting the Muleshoe Church of Christ Vacation Bible School.

The theme this year will be "Growing With Jesus." Classes will be available for children 2 years old through Junior High. Instruction will run from 9:30 a.m. through 11:30 a.m. along with a puppet presentation each day.

On June the 8 at 8 p.m. at the Muleshoe Church of Christ we will have a "VBS" program and open house for all VBS students Cont. Page 2, Col. 8

## Poker Championship Will Benefit Arthritis Foundation

Plans are now underway for the very first Annual West Texas Poker Championship, scheduled for June 18, 1983 in the Lubbock Civic Center Ballroom.

The premier event is being sponsored by the West Texas Arthritis Foundation and Miller Lite Beer, and is open to all women and men who are 19 years and older.

Entry fee for the Poker Championship is \$100 and is tax deductible, since it is a donation to the West Texas Arthritis Foundation. Prizes will be awarded to all finalists with prize drawings being held at the end of rounds one and two. Souvenirs will be given to all entrants.

Now for the clincher: Grand Prize for the winner of the championship will be three days and four nights in Las Vegas, Nevada (dinner show included) courtesy of the MGM Grand Hotel; two roundtrip first class airfares and \$2,500 to \$5,000 stake waiting for the winner at the MGM Casino Bank. The amount of the stake will be subject to the number of entries in the tournament.

The game scheduled for the West Texas Championship will be a "two card Hold'em" (Las Vegas Poker). The format includes three rounds with a single elimination. The player with the most chips

## Civic Clubs, Students Others Work Together

The scenery surrounding the National Monument to the Mule, or better known as "Old Pete" has undergone a complete renovation within the past few days, thanks to two Muleshoe Civic Clubs, the Boy Scouts of Muleshoe and the art class students of Muleshoe High School under the direction of Mrs. Sandi Chitwood.

In early April and for sometime prior to that, a need was seen to have clean-up, paint-up, fix-up work done on the stone marquee just behind the Mule Monument. Members of the Kiwanis Club and the Rotary Club contacted Ms. Chitwood with a request that her students submit designs for the new billboard.

Sketches of various proposed insignia were presented at later Rotary and Lions meetings, with a

combination of several different ideas decided upon. The end result is a map of points of interest in Muleshoe and various photos of some of the mentioned placed furnished by Adrian's Photography.

In addition to the new sketch which now adorns the stone monument, members of the Civic Clubs worked into the night on Thursday to re-cover the top portion of the memorial sign with new wood shingles, doing away with the old, broken and worn out ones.

Raul Garcia, a high school art student, was the coordinator of the project and was responsible for the ultimate design. Ideas came from Holly Oakes, the Muleshoe Emblem was designed by Mark Moton, and another emblem in the left hand corner was drawn by Kelly Bayless and Joni Sudduth. The last two weeks of school was spent in devotion to this project according to Mrs. Chitwood.

Now, also on any given day, travelers and Muleshoe citizens can view with pride the flight of "Old Glory" and the Texas Flag, which was donated by the Kiwanis.

The Muleshoe Boy Scouts will be raising and lowering the flags each Cont. Page 2, Col. 5

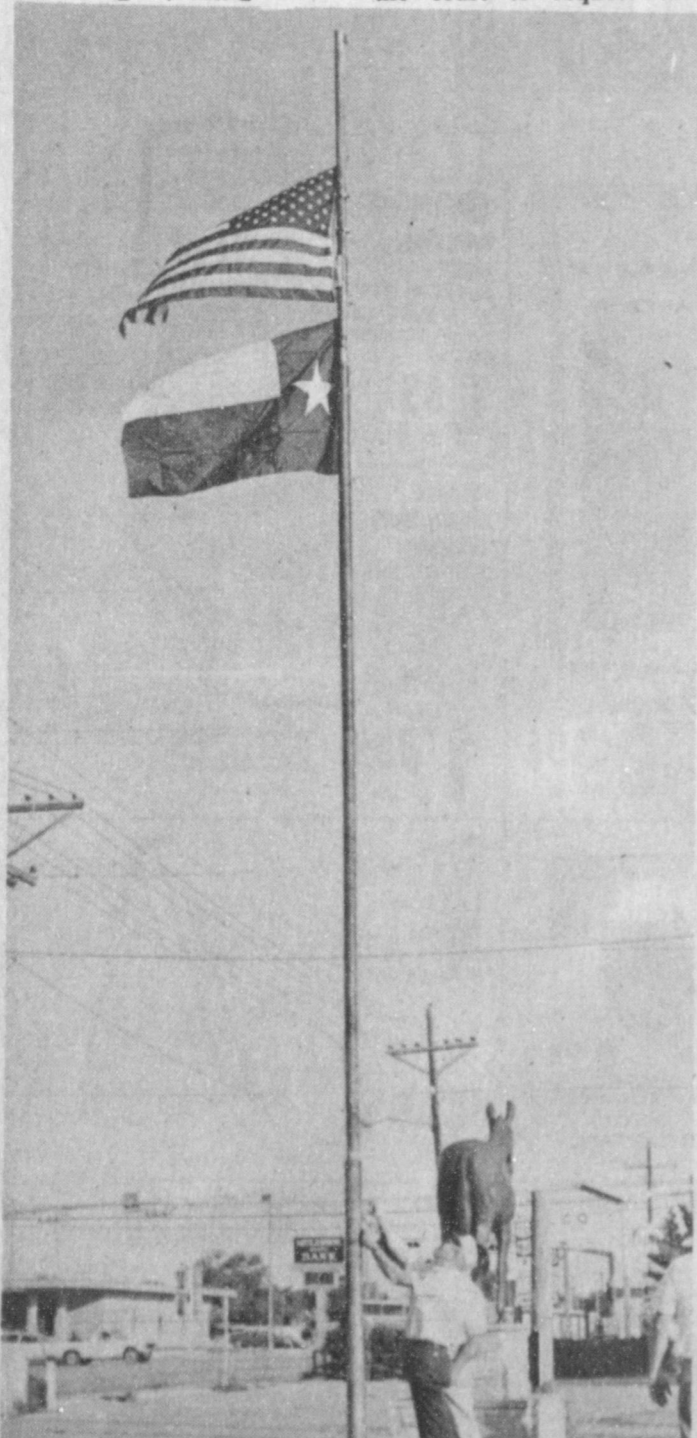
## This Week's Baseball Lineup

For the week of June 6, Muleshoe Youth Baseball's schedule will include on Monday, the 6th, the K-Bars vs. Vets, Lion Vs. Mustangs, Ginners Vs. U-Bars, Bears Vs. F-Ball, Maroon Vs. Orange, and Blue Vs. Green.

On June 7 the schedule includes games between the Sox and the K-Bars, Lazbuddie Vs. Lions, D.B. Vs. Ginners, Lazbuddie Vs. Bears, Gold Vs. Maroon and Lazbuddie Vs. Blue.

Thursday, June 9, the K-Bars will meet the Lions, Sox Vs. Vets, Ginners Vs. Bears, D.B. Vs. U-Bars, Maroon Vs. Blue and Gold Vs. Orange.

On Friday, June 10 the schedule will include the Mustangs Vs. Lazbuddie, Lions Vs. Sox, F-Balls Vs. Lazbuddie, Bears Vs. D.B., Green Vs. Lazbuddie and the Blue Vs. Gold.



**FLAGS WILL FLY OVER MEMORIAL**--The Muleshoe Boy Scouts and the Kiwanis Club of Muleshoe are responsible for new flags of Texas and of the United States for the flag pole at the Memorial. The Boy Scouts will raise and lower the flag each day during the summer months. The Kiwanis donated the flags to the memorial site.



**LAZBUDDIE FFA OFFICERS ELECTED**--Officers for the 1983-84 school year for Lazbuddie High School Future Farmers of America were recently elected. These young men will serve during the coming school year. From left-back: Sean Mason, Tony Waddell, Lee Scott. From left-front: Aaron Hargett, Todd Daniels and Ralph Gonzales. Scott is the president of the organization.

## Help A Youth And Earn Tax Credit

Do you need summer labor in your business but can't afford it? Hiring a qualified youth could help you taxwise and could also help the youth earn some income.

Calendar-year taxpayers may claim a tax credit on their 1983 federal income tax return for 85 percent of the first \$3,000 in wages paid to qualifying youth employees for any 90-day period between May 1 and Sept. 15, says Dr. Ashley Lovell.

This opportunity for helping youth and helping your business is the "Qualified Summer Youth Employee" provision of the Tax Equity and Responsibility Act of 1982, says Lovell, an economist with the Texas Agricultural Extension Service, Texas A&M University System.

To qualify for the tax credit, the youth employee must:

- Perform services during the period noted above.

### July...

Cont. from Page 1

hundred area clubs and organizations. Any group which has not received an entry form may pick one up at the Chamber office. Instead of a single theme for this year's parade, entrants are being asked to decorate a float depicting a phrase from the song "America." The deadline for entering the parade is Friday, June 24.

### St. Clair's

Cont. from Page 1

shoe, where Irvin became the manager of St. Clairs with the elder St. Clair beginning his retirement.

By 1959 Irvin St. Clair had eliminated the variety store portion of the business, selling it out. At that time, the department store was expanded into its present 100 foot store front.

In 1977, after their return from Dallas and completion of college, Johnny and Deborah St. Clair, son of Irvin and Dorothy, took over the management of St. Clairs in 1974 with Johnny in the managers spot. Then, in 1981, Johnny and Deborah purchased St. Clair's from his father, Irvin St. Clair and through 1983 have enjoyed 53 total years of business in the Muleshoe area.

Johnny spoke for the St. Clair family when he stated: "We'd like to thank all of our loyal customers for their continued patronage throughout the years."

### Bingo...

Cont. from Page 1

well, recently appointed County Attorney Pro Tem, who will serve during Linda Guelker's leave of absence.

Other items taken care of by County Commissioners on Wednesday included the authorization of the purchase of a new typewriter for the District Clerk and representatives of the MH/MR Center met with the Court to give a yearly report on the number of patients served through that facility from the Bailey County area.

In regard to the erection of a sign at the Bailey County Coliseum, Commissioners requested that representatives of the Rotary and Lion's clubs of Muleshoe to acquire sketches and designs for the proposed sign and then submit them to the court for discussion.

Other routine county business was taken care of prior to adjournment of the meeting.

**COMPUTER SYSTEMS**  
by Micro Mike's, Inc.

Designed Especially for Farm and Farm Related Businesses

(Texas A & M Software Available at no Charge)

**272-4266**

AMERICAN VALLEY INVESTMENTS

--Be age 16 or 17.

--Be a member of an economically disadvantaged family.

--Not have previously worked for the employer.

A designated local agency, the Texas Employment Commission (TEC), is responsible for certification of the youth's age and family economic status, notes Lovell. This information must be certified before the youth begins work. The employer will keep the approved certificate on file as a basis for completing IRS Form 5884, the jobs credit form.

To be classed as a member of an "economically disadvantaged family," the TEC will determine whether the youth's family an-

### County Attorney

Cont. from Page 1

Also recorded in the complaint was the stipulation that Ms. Guelker was to surrender her law license and permanent bar card to the Clerk of the Supreme Court of the State of Texas.

In a called meeting of the Bailey County Commissioner's Court on May 23, Linda Guelker formally requested a three month leave of absence from her duties as County Attorney. She also requested that the Court accept Michael R. Caldwell, a local attorney, to serve as County Attorney Pro Tem during her absence. Both requests were granted by the Court

### Muleshoe...

Cont. from Page 1

the Tuesday nearest to your former appointment. If you have any questions concerning this new scheduling, please feel free to come by the clinic or call 272-5561.

State Comptroller Bob Bullock has announced that Phillip Land from his Lubbock Field Office will be at the Bailey County Courthouse in the County Commissioner Courtroom on Tuesday, June 14, 1983 from 2:00 p.m. to 4:00 p.m. A comptroller's representative is available to assist local residents at the courthouse the second Tuesday of each month.

nual income, based on the six months before the month of the hiring date, is 70 percent or less of the Bureau of Labor Statistics lower living standard.

Assuming an hourly wage of \$4 and with the first \$3,000 of wages qualifying for tax credit, the business could obtain 750 hours of labor from a qualifying youth, says Lovell. From the employer's tax benefit standpoint, the \$4 hourly wage provides an income tax credit of \$3.40, with the remaining wage of 60 cents deductible as a labor expense on Schedule C or Schedule F. The business cannot claim the entire \$4 as labor expense but only the difference between the \$4 and the \$3.40 tax credit.

If a business cannot use all of the jobs credit in 1983, the excess can be carried back three years and forward 15 years, up to

### Justice...

Cont. from Page 1

and it was ordered that the salary in question be paid to Caldwell during the leave of absence. Caldwell will handle Ms. Guelker's civil cases as well.

Ms. Guelker offered to tender her resignation as County Attorney, after a full explanation of the circumstances surrounding her suspension; however, according to reports from individual commissioners, Ms. Guelker's offer was not considered.

In a Friday news conference with Linda Guelker, she told the Journal that despite the Grievance Committee's determination of the matter at hand, "I did nothing wrong. My only mistake was in not being able to present any physical evidence to substantiate my position."

"Under these circumstances, the Grievance Committee had little choice in their decision," Guelker stated.

Ms. Guelker further stated that she emphatically denied any misconduct on her part in the matter in question and agreed to the Grievance Committee's actions only to be able to resolve the matter.

She expressed her anxiety to resume her duties as County Attorney as well as her private practice as soon as the probation expires on August 22, 1983.

the tax liability limit for each year.

For more information on the Summer Youth Employee program and the accompanying tax credit, or advice on how to list your job openings and obtain referrals of qualified vouchered youth, call your local Employment Commission office, suggests Lovell. Refer to IRS Form 5884 or contact your tax advisor for additional details regarding the jobs credit provisions.

### Sarpalius Fights Farm Worker's Compensation

State Senator Bill Sarpalius spent the last few remaining hours of the 68th legislative session fighting against a bill which would adversely affect Texas farmers.

"The farmers of this state are already plagued with serious financial difficulties. It would be extremely unfair to impose additional hardships on our farmers by passing a bill which would force them to pay a lot of money, which some of them do not have," Senator Sarpalius said.

The Senator's filibuster forced final defeat of the bill.

Justice...

Cont. from Page 1

In the cases disposed of, Bates reported seven speeding tickets paid, two over allowed gross weight and one each on the following: no lease on file; no motor carrier authority; operating unregistered in Texas and failure to stop at stop sign.

### Memorial...

Cont. from Page 1

day, morning and evening, during the summer months.

A spokesman for the group stated that we (Muleshoe) now has something at the memorial that they can be proud of. The memorial and sketches show a lot of talent and work and also show that today's youth are still just as proud of their heritage as anyone has ever been.

Other students who had a part in helping with sketches and ideas included Rob Donaldson, Rod Munschmidt, Terry Graves, Holley Oakes, Raul Garcia, Hector Garcia, Mark Moton, Joni Suddeth, Joey Cox, Kelli Bayless, Martha Flores and Leroy Flores.

On May 31, officers from the Sheriff's department arrested Ruben Gloria in connection with an alleged burglary involving the taking of corn from the Charm Energy Corporation near Progress. Gloria's bond was set at \$5,000.

### Sheriff...

Cont. from Page 1

County.

On May 31, Brandon Dee Hall was arrested and sent to County Court on alleged charges of Driving with license suspended. He received a seven day jail sentence plus \$150 fine and court costs in connection with the incident.

On May 31, officers from the Sheriff's department

arrested Ruben Gloria in connection with an alleged burglary involving the taking of corn from the Charm Energy Corporation near Progress. Gloria's bond was set at \$5,000.

## 4-H Scholarship Fund Increased

Cont. from Page 1

Bailey County 4-H'ers will participate in 4-H Roundup where Scholarships totaling \$332,500 will be awarded by the Texas 4-H Youth Development Foundation to 68 outstanding 4-H members during State 4-H Roundup June 7-8 at Texas A & M University.

"The monetary value of these scholarships represents one of the largest 4-H scholarship programs in the nation," points out H.T. "Tom" Davison, the Foundation's executive director and also a 4-H and youth specialist with the Texas Agricultural Extension Service. "The scholarships range in value from \$500 to \$6,000."

Davison says the Foundation arranges for donors for the scholarships and presents them in the donors' names. 1983 donors include the following:

--Raymond Dickson Foundation, Hallettsville.

--Texas 4-H Foundation's Memorial Fund, College Station.

--Texas 4-H Foundation's Annual Fund, College Station.

--Texas Farm Bureau, Waco.

--Texas 4-H Foundation's C.J. Davidson Endowment, College Station.

--Pioneer Hi-Bred International, Plainview.

--Texas Grain and Feed Association, Fort Worth.

### Poker Championship

Cont. from Page 1

The second round will be held from 4 p.m. until 6 p.m. and will be narrowed down to seven tables, with a maximum of seven players per table. Again each player begins with \$10,000 in chips.

Finals for the Championship will be played from 7 p.m. until 10 p.m. June 18 with one table of winners from the second round. Each player will begin with \$50,000 in chips for the final round.

Those wishing to participate should pre-register using entry forms or by contacting the West Texas Arthritis Foundation at 1926 34th Street in Lubbock, Texas 79411, phone AC806/747-5125. Upon receipt of an individual's donation, a tournament entry pass will be mailed to that entry, plus one guest pass.

Remember the date of June 18, 1983 in the Lubbock Civic Center Ballroom. Check in time will be at 12 noon that day.

--Houston Livestock Show and Rodeo, Houston.

--Fort Worth Exposition and Fat Stock Show, Fort Worth.

--Word and Patricia Sherrill, Midland.

--Texas 4-H Foundation's Floyd D. Lynch Endowment, College Station.


VBS...

Cont. from Page 1

and their families. All parents and relatives are urged to come to this event. Classrooms will be visited and a puppet show and Cookie Monster will be a part of the program.

Over 250 students have pre-enrolled and more are signing up each day. To enroll or for further information contact the church office 272-3070 or John Boor 272-4653.

On Friday, June 10 a picnic for all vacation bible school students will be held. Students are to bring their own brown bag lunch and the Church will furnish the drink and cookies.



**ROBERT D. GREEN, INC.**  
2400 West American Blvd.  
MULESHOE, TEXAS 79347

OLDSMOBILE — BUICK — PONTIAC — GMC

**TERRY YELL**  
Sales Representative

Business Phone 806 272-4588  
505 762-2772

Home Phone 806 272-4948

## Statement Of Nondiscrimination


"Bailey County Electric Cooperative Association has filed with the Federal Government a Compliance Assurance in which it assures the Rural Electrification Administration that it will comply fully with all requirements of Title VI of the Civil Rights Act of 1964, and the Rules and Regulations of the Department of Agriculture issued thereunder, to the end that no person in the United States shall, on the ground of race, color, or national origin, be excluded from participation in, be denied the benefits of, or be otherwise subjected to discrimination in the conduct of its program and the operation of its facilities. Under this Assurance, this organization is committed not to discriminate against any person on the ground of race, color, or national origin in its policies and practices relating to treatment of beneficiaries and participants including rates, conditions and extension of service, use of any of its facilities, attendance at and participation in any meetings of beneficiaries and participants or the exercise of any rights of such beneficiaries and participants in the conduct of the operations of this organization."

"Any person who believes himself, or any specific class of individuals, to be subjected by this organization to discrimination prohibited by Title VI of the Act and the Rules and Regulations issued thereunder may, by himself, or a representative, file with the Secretary of Agriculture, Washington, D.C. 20250; or the Rural Electrification Administration, Washington, D. C. 20250; or this organization; or all; a written complaint. Such complaint must be filed not later than 90 days after the alleged discrimination, or by such later date to which the Secretary of Agriculture or the Rural Electrification Administration extends the time for filing. Identity of complainants will be kept confidential except to the extent necessary to carry out the purposes of the Rules and Regulations."

summer bonus

# BONANZA

End-of-model rebates up to \$4,600 and a finance waiver offer to March 1, 1984 on new 40- to 228-hp John Deere 40 Series Tractors



There's no need for you to assign your PIK certificates to buy a new farm tractor now. Not if you take advantage of special end-of-model offers on John Deere 40 Series Tractor.

Between June cash rebates up to \$3,200 (see chart) and your trade-in, you'll likely cover downpayment. Then if you're a qualified buyer and finance with John Deere, finance charges will be waived to March 1, 1984. Or you can take an additional cash rebate in lieu of waiver up to \$1,400.\* But you must act during June to take advantage of offers at this level.

One other reminder. We're discounting from tractor list prices that date back to 1981 on the 40 Series.

So get the new 40 Series tractor you need now. But hold onto PIK certificates and still get a new tractor for Investment Tax Credit plus first-year depreciation to help shield income in 1983.

Come on in soon. We're ready and willing to deal on the new tractor of your choice.

Model	Cash Rebate on Purchase	June '83 Cash Rebate in Lieu of Waiver	Maximum Rebate
228-hp 8640	\$3,200	\$1,400	\$4,600
179-hp 8440	3,000	1,100	4,100
180-hp 4840	2,700	1,000	3,700
155-hp 4640	2,300	900	3,200
130-hp 4440	1,700	700	2,400
110-hp 4240	1,500	600	2,100
90-hp 4040	600	550	1,150
80-hp 2940	1,400	400	1,800
70-hp 2640	900	350	1,250
60-hp 2440	400	300	700
50-hp 2240	100	250	350
40-hp 2040	100	200	300

[Offer subject to tractor availability]

\*Maximum rebates on 40 Series tractors include a bonus for cash purchase, for financing with John Deere without waiver, or financing where you choose. Leases not eligible for cash rebates. Availability of John Deere financing subject to approval of credit. These offers may be reduced in value or withdrawn at any time.

## CARQUEST AUTO PARTS STORES

# SUMMER SALE

Look for the Qualified Counterman

**Hollywood Rally Clock**  
Quartz, timer/ alarm. Easy mount. Batteries not included. #355 REB

Sale Price \$15.95  
Less Mfg. Mail-in Rebate -3.00

Your Cost **12.95**

**AUDIOVOX**  
Cordless Telephone  
700' range! Is also intercom. Solid state, easy to install. #AT-20

**99.95**

**GARRITY**  
Portable Light  
Perfect for house, patio, boat or camper. Battery not included. #4001

**4.95**

**Hygrade Jiffy Carburetor Kits**  
Includes all parts to restore carb performance/improve mileage.

FREE trouble shooting guide with purchase

As Low As **4.88**

**VALVOLINE**  
Automatic Transmission Fluid  
Dexron II or Type FA #341, 347

**1.29** qt.

**I CAN HELP**  
GOT A PARTS PROBLEM?  
Ask a Qualified Counterman. Only CARQUEST has them.

**3.19**

Good at all participating CARQUEST Auto Parts Stores thru July 4, 1983.

# Muleshoe Auto Parts

272-4596      217 N. First      Muleshoe

CARQUEST: the Right Place to buy auto parts. Right Parts • Right Price • Right Advice.

AMERICAN VALLEY INVESTMENTS

## Dent-Rempe

1516 W. American      272-4296

We Will Be Closed Monday, June 6  
& Tuesday, June 7  
Preparing For The Sale

# St. Clair's

After 53 Years Of Service,  
We're Closing Our Store.

## QUITTING BUSINESS SALE!

ON ENTIRE STOCK  
OF MERCHENDISE

STARTING WEDNESDAY, JUNE 8

### LADIES

Miss Elaine Lingerie

Tex-Sheen Lingerie

Playtex

Danskins

Mr. Beau

Hanes Hosiery

Salem

Lady Arrow

Wrangler

Graff

That's Me!

Lee

### SHOES

Red Wing

Nike

Adidas

SAS

Justin

Naturalizer

Bass

Nunn Bush

Daniel Green

10

20

30

40

50%

OFF

### CHILDREN'S

Health Tex

Garanimals

Weather Tamer

### MENS & BOYS'

Campus

Wrangler

Lee's

Arrow

Spire

Robert Bruce

Jaymar

Sewell

Walls

Big Smith

Tom Sawyer

All-Fixtures &  
Equipment Will Be Offered  
At Close-Out Prices June 8th

No Charges

No Layaways

No Exchanges

All Sales Final

## Prospective Payment System Goes Into Effect

The President recently signed into law legislation which he had proposed to the Congress to provide a new payment system for hospitals, under Medicare. That new system is called Prospective Payment and likely will go into effect on October 1.

Under the new system, Medicare will set its payment rates in advance rather than paying hospitals, after-the-fact, for whatever costs they incur in treating Medicare inpatients.

The new "prospective" rates will vary according to a patient's diagnosis, but payment for a given diagnosis will be the same for all hospitals, adjusted for local labor costs. The new system will not change Medicare's benefits for individuals, and the high quality standards will be maintained.

Under the present system, hospitals have no real incentive to deliver efficient service. In fact, as Congress recognized, the incentives are backwards. The current system actually rewards excessive costs and inefficiency because it pays virtually whatever the hospital asks.

Also, the present system has led to wide variations in what Medicare pays for similar treatment. For example, Medicare payments for treating a heart attack can average \$1,500 at one hospital and \$9,000 at another, with no apparent difference in quality.

Medicare's present pay-on-demand reimbursement system has been an important factor in causing health care costs to soar, and that hurts every American. As the administration realized, it is time for Medicare to become part of the solution to health care inflation, and cease being part of the problem.

Under the new "prospective" payment system, with uniform Medicare rates set in advance, hospitals will be induced to operate efficiently. If a hospital's costs are lower than the prospective rates,

the hospital can keep the difference. If, however, its costs are higher than the rates, the hospital will absorb the difference. Hospitals will be prohibited from billing Medicare patients for costs of covered services above the prospective rates, except for existing deductibles and coinsurance.

Probably the most important aspect of this new plan is to provide the incentive for hospitals to take action on their own. Prospective payment does not tell hospitals what to do, but it does finally put the incentive for better management and cost-effective quality care where it belongs, at the hospital level. The hospitals themselves will act to become more efficient, and that will benefit all health care consumers, not just Medicare beneficiaries.

Hospital capital costs will be treated separately from the new prospective system, and special provisions will also be made for hospitals where costs are higher due to medical education costs. Special reimbursement will be allowed for the small number of special cases in which costs far exceed the prospective rate for reasons outside the hospital's control.

A diagnosis-based system was chosen because it offers the best opportunity for inducing cost savings in hospital services without diminishing the quality of care afforded Medicare beneficiaries.

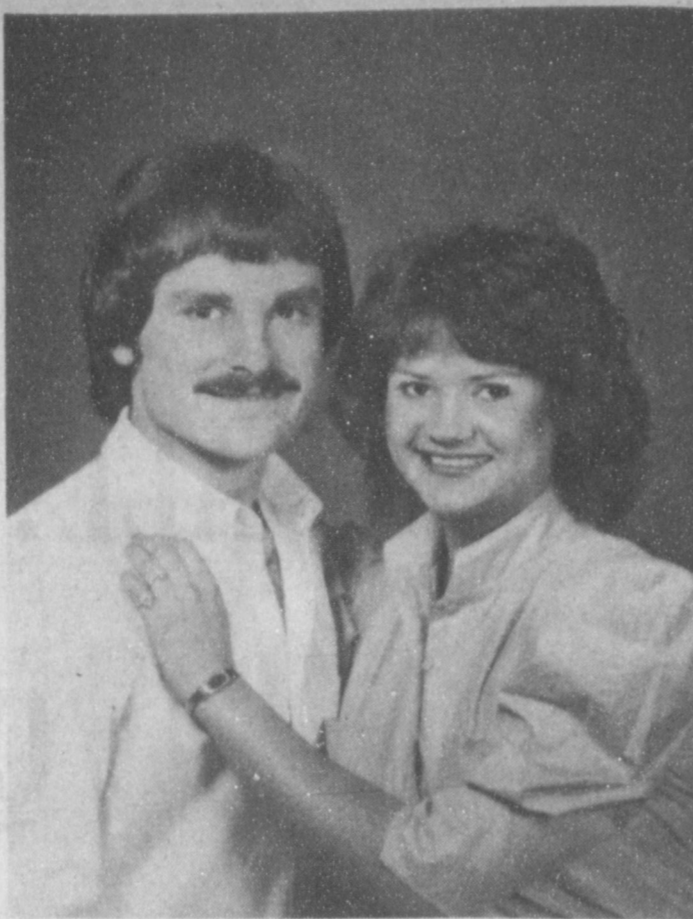
The new system will use 467 "diagnosis related groups" (DRGs) to classify illnesses and treatments. Different rates will be set for each DRG, so that a hospital treating more difficult conditions will be paid accordingly.

In developing the new system, demonstration programs were used since 1972 to try out prospective payment. We found that it works and that it provides the needed incentive to hold down hospital costs while continuing to provide the best health care.

A new system for Medicare reimbursement to hospitals had become necessary because the high inflation in health care costs were, and are, threatening not only the Medicare program, but potentially also the quality of care and access to care for all Americans. It was imperative that the government act to bring health inflation under control, and we firmly believe this new system is a crucial step toward that goal.

## In Fashion

The business woman will include at least one suit in her summer wardrobe. One attractive suit shown was a collarless jacket and easy walking skirt with spaced inverted pleats. A fine handkerchief linen shirt from a choice of soft summer colors would complement this porcelain off-white, silk linen suit.



**ENGAGEMENT ANNOUNCED**—Mr. and Mrs. C.C. Matthews, Jr. of Lazbuddie announce the engagement and approaching marriage of their daughter, Angela to Lance Dunn, son of Mrs. Joe Stanley of Post and Darrell Dunn of Lubbock. The bride elect is a 1980 graduate of Lazbuddie High School and attended South Plains College and Texas Tech. She is presently employed at Plains National Bank in Lubbock. Dunn is a 1980, graduate of Post and is currently a senior at Texas Tech. He is employed at Dunlap's in Lubbock. Vows will be exchanged Saturday, August 6 at 8 p.m. in the First Baptist Church of Lazbuddie.

## Stress Effects Families Not Just Individuals

"Stress affects entire families, not just individuals," said Dr. Robert Fetsch in a speech this week to Texas Agricultural Extension Service home economists.

According to Fetsch, a human development and family relations specialist with the Kentucky Cooperative Extension Service, the key to mastering family stress is flexibility.

The highly stressed family is tense, rigid and inflexible when it comes to adjusting rules or expectations, so it can't respond to a "pile up" of changing family events, said Fetsch.

Most families know that unexpected events such as moving to another city, the serious illness of a child, or loss of a job are stressful.

But many don't realize that even pleasant unexpected events such as a relative's surprise visit or the long-awaited birth of a baby can create stress as well.

"Stress is a natural part of life which cannot be avoided, but planning family coping strategies for expected events can eliminate some pressure," emphasized Fetsch.

He suggested that controlling negative attitudes by viewing unexpected events optimistically, trying to analyze and understand them, or utilizing one's religious beliefs are effective in reducing stress.

Families must learn flexibility, or to act in a way different from their usual style in certain situations, stated Fetsch. For example, highly stressed family members might work off their tensions by playing ball together on a Saturday afternoon rather than doing their regular household

## Try Smoke Seafood For Change of Pace

If you're looking for a delicious change of pace in your outdoor cooking this season, try smoke-cooking seafood. This is an excellent method of preparing drum, shark, mackerel, jack or other plentiful fish or shellfish.

Preparing smoked seafood is not a difficult process involving a lot of special equipment, according to Annette Reddell Hegen, seafood consumer education specialist with the Texas Agricultural Extension Service, Texas A&M University System.

You will need a charcoal, gas or electric grill with a cover or hood, charcoal briquets if using a charcoal grill, one pound of hickory or other hardwood chips (available at most grocery stores), salt, water, vegetable oil, fish, two large bowls and a basting brush. An oven thermometer is helpful, but not a necessity.

With these things in hand, you're ready to start. If the fish is frozen, thaw it first under cold running water. Mix one gallon of cold water with one cup of salt and stir until dissolved. Marinate fish in this brine -- 30 minutes for pan-dressed fish or one-half inch fillets, 45 minutes for one-inch thick fillets or steaks. Soak chips in two quarts of water.

Now you're ready to start the fire. If using charcoal, use fewer briquets than for an average broiling fire, and when the coals are red, spread them sparsely over the bottom of the grill. If using a gas or electric grill, set the temperature on low.

Next, cover ceramic or charcoal with one-third of the wet chips which will produce smoke and reduce the temperature. Low heat is a must.

When the fish have soaked the prescribed amount of time, drain and pat dry. Grease the grill well, adjust it four to six inches above the heat, and place the fish on the grill, skin side down. Baste the fish, and keep the oil handy for occasional basting during cooking. Be sure the fish does not dry out! Add soaked chips as needed.

Cooking times vary with the temperature inside the grill, type of grill, weather, amount of moisture in the chips, and the distance of

## Cannister Deliveries Starting

The Muleshoe Youth Baseball team members will be making deliveries of the Show 'n Store cannisters they sold starting Monday, June 5. "Sales of the cannisters were high due to the outstanding support of the community and hard work of the baseball team members. Over three thousand cannisters were sold," said Betty Bush.

A team from each league selling the most cannisters will be given a party by the Muleshoe Youth Baseball, Inc. The winners will be announced Friday, June 16. Extra amounts of each product have been ordered for any interested person wishing to buy. Four different products can be bought. They include popcorn, snack mix, California mix, and hard candy. The reusable cannisters of translucent polystyrene and have colored lids.

The baseball league will be delivering the cannisters from Monday, June 5 to Wednesday, June 14. You may contact your team member or Betty Bush for your order.

## TOPS Club

TOPS Club chapter Tx. No. 34 met Thursday, May 19 at 6:30 p.m. in the community room of Bailey County Electric with 14 members and a visitor, Helen Schmitz, present.

Clara Crain, co-leader, called the meeting to order. The TOPS pledge was recited and the fellowship song sung.

A discussion was held on a new cover for the club scrap book. Johnnie Ivy volunteered to make a new cover.

Aurora Mata was named best loser for the week. First runner up was Rose Sain and Laverne James was second runner up.

The meeting was dismissed with the singing of the goodnight song.

## WHO KNOWS

1. When was the famous pirate, Captain Kidd, hanged?
2. In what year was the first formal observance of Memorial Day made?
3. Who wrote the poem which appears on the Statue of Liberty?
4. Quote one of its most popular lines.
5. Who wrote "Captain Courageous"?
6. Of the 50 states, which has the highest elevation?

## Answers to Who Knows

1. May 23, 1701.
2. 1868.
3. Emma Lazarus.
4. "Give me your tired, your poor, Your huddled masses yearning to breathe free."
5. Rudyard Kipling.
6. Alaska, Mount McKinley, 20,320 feet.

the fish from the source of heat.

At 150-175 degrees, it will take about an hour for half-inch fillets to cook, but if the temperature increases to 250 degrees, the cooking time reduces to about 20 minutes. When done, the fish will turn a golden brown on the surface and will flake easily.

It is more economical to smoke more fish than you will use for one meal, says Hegen. Freeze the excess by cooling thoroughly in the refrigerator, wrapping tightly in a moisture and vapor-proof paper and storing at zero degrees. To reheat, wrap the thawed fish tightly in foil and place in an oven at 300 degrees for 15 to 20 minutes.

For a set of free seafood recipes, write the Texas Agricultural Extension Service at P.O. Box 158, Post Aransas, Texas 78373.

## BIBLE VERSE

"Watch therefore: for ye know not what hour your Lord doth come."

1. Who gave the above warning?
2. To whom was he speaking?
3. About what event was he speaking?
4. Where may these words be found?

## Answers to Bible Verse

1. Jesus Christ.
2. To his twelve disciples.
3. The coming of Christ to judgment.
4. Matthew 24:42.

## RECIPE

**By Sarah Anne Sheridan**  
As most homemakers know, rice is so versatile and acceptable, and is also economical and delicious.

### Almond Chicken with Rice

- 3 c cooked rice
- 1/2 c sliced mushrooms
- 1/2 c almonds blanched
- 3 T salad oil
- 1 clove garlic cut
- 1 t salt
- 1 c cubed bamboo shoots (canned)
- 1/2 c thinly sliced water chestnuts (canned)
- 1 c thinly sliced celery
- 1 c diced cold chicken
- 2 T liquid 1 tablespoon each from bamboo shoot and water chestnuts cans

Brown almonds in 1 tablespoon oil. Set aside. With a table fork, mash garlic into salt in skillet. Add 1 tablespoon oil and then bamboo shoots and mushrooms. Brown lightly. Add liquid. Cover tightly. Cook over low heat 5 minutes. Add water chestnuts, celery and 1/2 of the almonds. Just heat through. Celery and chestnuts should remain crisp.

Make gravy by mixing 2 teaspoons cornstarch, dash salt, 1/2 teaspoon sugar, 4 tablespoons water and 4 teaspoons soy sauce. Cook until liquid thickens and is smooth. Garnish with green onions and almonds. Serve with hot fluffy cooked rice.

It's easy to play for votes being generous giving away the taxpayers' money.

## West Plains Medical Clinic and Hospital announce the new general practice of

Dr. Jack McCarty D.O.

Starting June 6, 1983

at 708 S. First Muleshoe.

272-4524

Clinic Hours:

Mon.-Tues.-Wed.-Fri.

9:00-12:00 P.M. — 2:00-5:00 P.M.

Thur.-Sat.

9:00-12:00 P.M.

Patients will register in his office.

## Hobby Club

The Muleshoe Hobby Club met Thursday, June 2 in the community room of the Muleshoe State Bank with 18 members and one visitor, Midget Sells of Houston, present.

Sammie Etheridge, president, presided over the meeting. Minutes of the previous meeting were read and approved. Several articles were on display. Bernice Amerson drew the hostess gift, a towel set.

A demonstration was given by two 4-H girls, Donae Parker and Shelly Sain. The girls were accompanied by Rose Sain.

Dubbed as the "Strippers" showed how to re-finish old, but usable furniture by stripping off the old finish, sanding it and applying a new finish -- thus restoring useful pieces to their original beauty.

Having won the district contest the girls are to attend the State A&M 4-H Round Up on June 7-9.

Coffee and punch were served by the hostess, Ruth Bass. The next meeting will be June 16 with Opal Robison as hostess.

Those present included Sammie Etheridge, Myrtle Chambless, Nan Gattin, Ruth Bass, Mae Loyd, Myrtle Wells, Edith Fox, Ethel Julian, Ola Epperley, Francis Bruns, Fidel Shaffer, Verna Dement, Allie Barbour, Midget Sells, Elsie Allen, Janie Williams, Blanche Awbrey, Bernice Amerson, Mabel Caldwell and Vickie Hendricks.

## Bailey County Journal

Published March 11, 1983. Published by Muleshoe Publishing Co., Inc. Every Sunday at 304 W. Second. 2nd 400, Muleshoe, Texas 79402. Second Class Postage paid at Muleshoe, Texas 79402.

MEMBER 1983 TEXAS PRESS ASSOCIATION

L.B. Hall President  
James Wright Vice President  
Shirley Farmer News  
Felicity Harris Society  
Clara Williams Advertising  
Sammie Hall Bookkeeper

Muleshoe Journal and Bailey County Journal Bailey and surrounding counties. 12¢ Muleshoe Journal and Bailey County Journal Elsewhere. 15¢

Advertising rate card on application

<p><b>TOOL VALUE OF THE MONTH</b></p> <p>Push Release Ratchet <b>6.99</b> White Supplies Last</p> <p>Master MECHANIC 19-Pc. 3/8-In. Drive Socket Set 13 standard and metric sockets. ratchet more MMB-19AFM Quantities Limited</p>	<p><b>BARGAIN OF THE MONTH</b></p> <p>Rubbermaid <b>5.88</b> White Supplies Last</p> <p>Hamper &amp; Laundry Basket It's a laundry basket, too. Chocolate almond blue 2988 19-1. Quantities Limited</p>	<p><b>HARDWARE VALUE OF THE MONTH</b></p> <p>Master ELECTRICIAN <b>7.99</b> White Supplies Last</p> <p>Indoor/Outdoor 100-Ft. Extension Cord Heavy duty grounded cord for power tools, electric lawn mowers, appliances, etc. 240705 Quantities Limited</p>
--	---	---

**Fry & Cox, Inc.**  
401 S. 1st Muleshoe 272-4511

# Rugged Savings on Hard Working Fashions for Men!

Men's Wrangler® Denim Boot Jeans **15<sup>88</sup>**

Reg. \$18. Wrangler® jeans are still winning the West in 100% cotton "NoFault™" denim for no wrinkling or shrinking. Five pocket boot styling in sizes 28-42 regular or slim fit.

Men's Western Boots  
**\$49<sup>88</sup> and \$59<sup>88</sup>**  
Acme western boots made of leather with fine quality construction in sizes 7-12.

**Wrangler**  
321 Main Muleshoe

**Anthony's**  
C. R. ANTHONY CO.

### Creative Woman

By Sheryl Borden

On June 7 and 11, viewers of "The Creative Woman" show will see a demonstration on painting adobe in oil by area artist, LaWanda Calton from Portales. Mrs. Calton will explain about preparing the board, talk about different mediums, where she gets her sources for subject matter and share other tips for painting in oils.

Laura Jacobs, Extension Agent from Farwell, Texas will explain uses for ground pork. Think about all the menus served at home that call for ground meat. Ms. Jacobs suggests we try something different for a change -- maybe ground pork. Ground pork is lean, loaded with protein and

many B Vitamins and it's not high in calories. Several recipes will be prepared.

On June 9 Connie Moyers, Marketing Representative with Southwestern Public Service Co. in Clovis will do a festive foods presentation. Besides preparing many recipes from the company's Festive Food booklet, Ms. Moyers will discuss buying features and safety features of many small electrical appliances -- which might be possible gift ideas.

"The Creative Woman" show is produced and hosted by Sheryl Borden for KENW-TV. The show airs at 12:30 p.m. on Tuesdays and Thursdays and at 2:00 p.m. on Saturdays on KENW-TV. Viewers can request copies of printed materials offered on the show by calling on the toll-free telephone lines. The numbers are: New Mexico: 1-800-432-2361 out-of-state: 1-800-545-2359 and Portales and Roosevelt County: 562-2112.



**READING RODEO**-A total of 68 students, enrolled in the summer reading program "Reading Rodeo" watched a film Wednesday morning at the Muleshoe Public Library. Kristi Spies and her horse "Hollywood Jr." made their appearance at the library and Kristi answered questions about the care of horses. Linda Lopez, an employee at the library is signing up students for the reading program which will continue six weeks ending July 13.

### Courthouse News

**MARRIAGE LICENSE**  
Charles Lee Steinbock, Littlefield and Belinda Kaye Richardson, Maple

William Auther Nickell, Mangum, Okla. and Barbara Diane Sliger, Muleshoe

**COUNTY COURT**  
Luis Vega Order of Dismissal

Ronald Jacobson Order of Discharging Defendant from Misdemeanor Probation

Willie Martin James, III Order of Dismissal  
Luticia Daniel Theft \$30 days jail \$100 fine

**WARRANTY DEEDS**  
Nancy Cordelia Cochran to Elias Noe Anzaldua and wife, Viola B. Anzaldua -- The (N.90) of Lots Numbers (1) and (2), and the (E24) of the (N.90) of Lot Number (3), in Block Number (36) Original Town of Muleshoe, Bailey County, Texas.

Barrett Produce Company to Elias Noe Anzaldua and wife, Viola B. Anzaldua -- A 300 feet by 380 feet tract of land out of Section Number (54), Block Y, WD & FW Johnson's Subdivision No. 2, in Bailey County, Texas.

Gilbert Castorena and wife, Sylvia Castorena to Mike Perez and wife, Mary Francis Perez -- All of Lot Number (19) and the (W10) of Lot Number (20), in Block Number (24), Country Club Addition to the Town of Muleshoe, Bailey County, Texas.

Gerry G. Pierce and wife, Sherry Jan Pierce to Veterans' Land Board of Texas -- a 20,000 acre tract out of the (NE/4) of the (NW/4) of Section (53) Block Y, WD&FW Johnson Subdivision Number (2), in Bailey County, Texas.

Doris Jean Kelton to Carroll Wayne Kelton -- 150 acres out of Labor 21, League 186, Swisher County School Land, Bailey County, Texas.

H.J. Leal and wife, Irma S. Leal to Domingo Davila and wife, Maria M. Davila -- All of Lots (9), (10), (11) and (12), Block (38), Original Town of Muleshoe, Bailey Texas.

**DISTRICT COURT**  
Southwestern Public Service Co. VS Randolph Johnson, et al Judgment

Before the Grievance Committee, District No: 13 The State Bar of Texas Complaint Against Linda Guelker Order of Suspension

### NEW VEHICLES

Tommy D. Whatley, 1983 Ford PU, Muleshoe Mtr. Co., Inc., Lola Fay Richerson, 1983 Ford 2dr, Muleshoe Mtr. Co., Inc., Clifton Finley, 1983 Merc 4dr, Muleshoe Mtr. Co., Inc., Irrigation Pumps & Power, Inc., 1982 Ford Flat, Muleshoe Mtr. Co., Inc., Eagleton Engineering, 1983 Ford 4dr, Muleshoe Mtr. Co., Inc., Michael Richardson, 1983 Ford PU, Muleshoe Mtr. Co., Inc., Irrigation Pumps & Power, Inc., 1983 Chev Sub, Robert D. Green, Inc., Margie Silguero, 1983 Olds 2 dr, Robert D. Green, Inc., Tom Waldrep, 1983 Chev PU, Robert D. Green, Inc., Woodrow H. Lambert, 1983 Buick 4 dr, Robert D. Green, Inc., Sharron K. Angeley, 1983 Buick 4dr, Robert D. Green, Inc., Dave Marr, Jr., 1983 Chev Sub, Robert D. Green, Inc., Richard Hawkins, 1983 Olds 4dr, Robert D. Green, Inc.

### LATEST ARRIVALS



Stephanie Kathryn Calhoun

Lt. and Mrs. D.T. Calhoun are the proud parents of a daughter, Stephanie Kathryn, born May 31 at Cannon Air Force Base, Clovis, N.M.

The young lady weighed six pounds 12 ounces and was 18 and a half inches long. She is the couple's first child.

Grandparents are Mr. and Mrs. Allen Calhoun of Goliad, Mr. and Mrs. Mickey Sowder of Goodland and Ms. Opal Ruth Sowder and Ms. Katherine Cole, both of Muleshoe.

Lt. Calhoun, USMC is adjutant at Camp Fuji, Japan where Mrs. Calhoun and daughter will join him later this summer.

### BIBLE VERSE

"If any man will come after me, let him deny himself, and take up his cross, and follow me."

- Who made the above statement?
- To whom was he speaking?
- Upon what occasion?
- Where may this statement be found?

### Answers to Bible Verse

- Jesus Christ.
- To his disciples, and particularly to Peter.
- Following Peter's confession of Christ.
- Matthew 16:24.

## 4-H Scholarship To Be Awarded At Roundup

What do you have if you assemble 1,600 4-H'ers in the form of a clover leaf? You have a gigantic clover leaf full of vim and vigor.

That's exactly what will happen at Texas A&M University June 7 during the opening of the annual Texas 4-H Roundup. Some 1,600 4-H youth who will be participating in a host of contests and other events will assemble on Kyle Field to form a huge clover leaf in celebration of the 75th anniversary of the beginning of the 4-H program in Texas.

The effort should provide an avalanche of pictures that will find their way into a mass of publications during the remainder of 1983.

### Second Tax Payment Due June 15

Some wage earners and other individuals who have income other than wages may be required to make estimated tax payments, the Internal Revenue Service says.

Generally, if you have income, with no tax withheld, of more than \$500 and you expect to owe at least \$300 on this year's return, you are liable for filing a declaration of estimated tax and for making payments.

Just like withholding by employers, the IRS says, estimated taxes are paid in advance of the actual tax return, Form 1040, due for the year. Estimated taxes are normally paid in four installments.

For 1983, the four estimated tax installment dates are: April 15, 1983; June 15, 1983; September 15, 1983; and January 16, 1984.

points out George McArthur, a 4-H and youth specialist with the Texas Agricultural Extension Service, Texas A&M University System. The Extension Service is the parent organization of 4-H, a program for youth between the ages of 9 and 19.

Along with the 75th anniversary celebration, Roundup activities June 7-8 will feature the traditional State 4-H Food Show, State 4-H Project Show and competition in 39 different contest areas.

The State 4-H Food Show is held the first day followed by a special assembly at 6:45 p.m. in Rudder Auditorium. Five individuals and businesses will be honored at the assembly for their long-time support of 4-H, and 68 outstanding 4-H members will be awarded scholarships totaling more than \$332,000.

Contests ranging from method demonstrations in agronomy and clothing to public speaking and livestock judging will command attention the second day of Roundup. 4-H'ers competing in these contests must have won at the county and district level to qualify for state competition, says McArthur. Roundup contest winners will be recognized at a special assembly that evening at 8 o'clock.

The State 4-H Project Show will be open for viewing beginning at 10 a.m. June 8 in G. Rollie White Coliseum. The show provides an opportunity for 4-H'ers to demonstrate their expertise in certain project areas which they have developed over the years, notes the 4-H specialist.

A special luncheon on June 8 will honor 28 outstanding 4-H adult volunteer leaders from across

Texas who have been selected from the 14 Extension Service districts.

According to McArthur, the annual Texas 4-H Roundup is a highlight in the lives of many 4-H'ers.

### In Fashion

Vacation separates include shorts and the new, gathered miniskirts. The outfit is completed with a choice of cotton knit tops. The V-neck in color bands or pencil stripes is a favorite among many.

When shopping for summer sunglasses, the color of the frame should complement your complexion. Frames of metallic, black and blue look great on blonds and the fair-skinned. Red should not be worn with ruddy or sallow complexions.

### Nursing Home News

By: Joy Stancell

Friday Ora Roberts, Bonnie Hurd, Ruby McCamish, Lois Ethridge, Alma Henley, Clara Rickert attended the AARP meeting at the Civic Center Fri. Our thanks to Helen Free and J.C. Shanks for helping us.

Fri. afternoon the residents gathered in the Day Room for a Devotional. Lois Ethridge, Perlle Briscoe and Lucy Whisenhunt lead us in several songs.

Children from the First Baptist Church came to sing to the residents Sun. afternoon.

Lesla Johnson came Wed. morning to have musical Therapy with the residents.

Abraham Garcia was visited by several family members Wed.

Ruby McCamish attended a family gathering at Frank and Melba McCamish's Monday.

Cleo Bellar went out with her husband Mark Bellar Wed.

Cordelia Cochran was visited by Jewell Strong Wed. Mrs. Strong took her on an outing.

Rosemary Pool's son Mike from Denver Colo. has been here visiting.

Clara Rickert went out with her son and daughter-in-law Mr. and Mrs. Dale Rickert of Clovis, Monday.

Ethel Whisenhunt was visited by Lucey Whisenhunt Friday.

Barbara Case was visited by Maud Kersey and Mrs. R.L. Hobb Wed.

Marie Engram was visited by Nelda Merriott, Jeff Whately, Maud Kersey, Stacey Campbell, Borge of Sweden, Norman Head, Jessie Robinson, Mr. and Mrs. Tim Campbell, Scott Campbell, Wilma Waddle, Jerry Hutton.

Maggie Daniell was visited this week by Joy and Mr. Daniell.

ited this week by Joy and Mr. Daniell.

Maggie Bruns was visited by Ruth Briscoe and Francis Bruns.

Alva Shofner was visited by Zora Mae Bellar Mr. and Mrs. J.T. Shofner, Melba Bratcher Tuesday.

Bertie Hendrix was visited by John Boor Wed.

Gwyn Murry lead our Exercise Class this week while Minnie Singleterry is on vacation.

Our thanks to Edith St. Clair to sent the nursing home a beautiful bouquet in memory of her sister Cleo Gooch.

### West Plains Medical Center

**ADMITTED**  
May 31-Grace Marbury, Mae Provence, Carolina Dulin, Jeff Wild, Lena Steelman and Jeffrey Snell

June 1-Craig Foster, Janna Wuerflein, Margaret Lewis and Mark McGuire

June 2-Martha Gonzales and Lavada Bullock

**DISMISSED**  
May 31-Polly Birdsong, Allie Browning, Irene Hutton and Cliff Griffiths (transferred)

June 1-Pearlie Chisolm, Chris Caldwell, Peggy Dodd, Effie Jennings, Lilla Hickman, Jeffery Snell, Jeff Wild and Stella Mendoza

June 2-Irvin Smith, Sally Schuster and Mark McGuire

### 'Drv Doc'

### To Stand At King Ranch

One of the nation's best known cutting horse stallions, Dry Doc, has been purchased by King Ranch of Kingsville, Texas.

The announcement was made Thursday, May 26, by Stephen J. "Tio" Kleberg, King Ranch General Manager.

Dry Doc who won the National Cutting Horse Association Futurity in 1971, was purchased from Houston banker and businessman, Forrest S. Warren and from M.L. Chartier of Fairhaven, Michigan.

The horse will become a part of the King Ranch battery of stallions that includes two-time NCHA Open World Champion, Mr. San Peppy, and Peppy San Badger (Little Peppy) a Reserve World Champion.

The three stallions share two Futurity Championships and two NCHA Derby victories among them, and all were ridden to these victories by Buster Welch, the storied trainer and rider who serves as consultant to the King Ranch Cutting Horse program.

Kleberg said the purchase of Dry Doc is a part of King Ranch's on going commitment to cutting and to its customers.

**Tears & More Tears**  
A woman feels much better after a good cry-- especially if it brought her what she wanted in the first place.

-Journal, Washington, Ia.

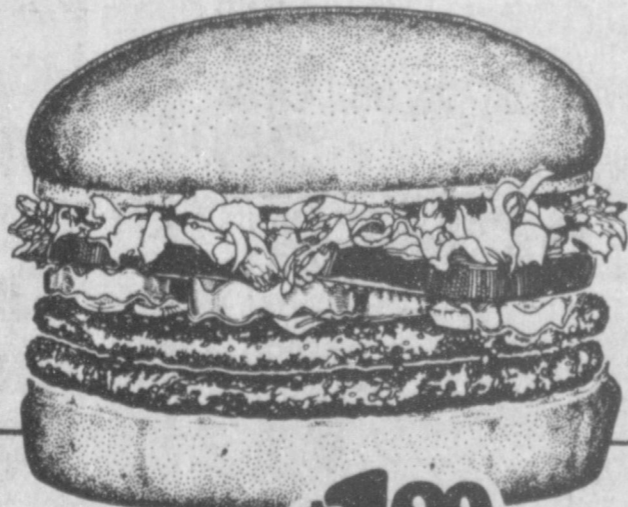
### New Shipment Iron Toys

**Special**  
**For Father's Day**  
Wildlife, Inc.  
Birds - 25% Off  
Bridal Selections  
For Kelly Bayless

### Antiques & Junk

109 S. First

272-5275



**Big \$1.89**  
**'Beltbuster'**  
sale!

**This Monday, June 6th thru Sunday, June 12th.**

Dairy Queen announces a really big sale on a really big burger -- the Beltbuster. It's a full half-pound of 100% pure beef. And it's 100% delicious because it's made to your order, hot and fresh -- with your choice of lettuce, tomatoes, pickles and onions.



"Dairy Queen just keeps on getting better."



EVERY DAY LOW PRICES



### Quaker State Motor Oil

- Deluxe 10W40 ..... 1.04 QT.
- Super Blend 10W30 ..... 1.00 QT.
- Deluxe 20W50 ..... 1.04 QT.
- Sterling 10W40 ..... 1.18 QT.
- 30W Heavy Duty ..... 93° QT.



### PENNZOIL MOTOR OIL

- 10W30 ..... 1.03 QT.
- 10W40 ..... 1.07 QT.
- 20W50 GT Performance .. 1.07 QT.
- 30WT ..... 96° QT.

**Complete line of Fram Oil and Air Filters also available.**

**Public Utility Commission of Texas**



**Consumer Update**

This column was prepared by Lora E. Rutledge, Manager of Consumer and Information Services for the Texas Public Utility Commission.

Does it really do any good to complain about incorrect utility bills? Does it really have any impact if you call the utility or the PUC and complain about poor service?

Does anyone at the PUC really read letters from consumers about high rates or sloppy service?

The answer to all three questions is "yes," but the real question that should be asked here is how can a consumer complain effectively. The following is a short course on how you can complain in a way that will achieve positive results:

(1) Decide what you want to accomplish in complaining. Do you just want to vent your frustration about high rates? Do you want your telephone fixed? Do you want to make sure you're being charged the proper rate? Be specific in stating your complaint.

(2) Decide to whom you want to complain. We have found that the majority of successful complainers try the utility first. Perhaps the utility's computer messed up and charged the wrong rate or a service representative miscalculated a deposit. Any number of things could be the answer to your problem.

(3) If you cannot obtain satisfaction from the utility, ask the utility to whom you should address your complaint (under PUC rules the utility is required to give you our address).

What do we do with the complaints and

inquiries we receive? Much of what we do depends on the type of complaint. But we will acknowledge your complaint and we will try to get you some help if you are having a specific problem such as disconnected service or an inaccurate bill.

In most cases, we contact the utility and ask for a written report on its investigation of your complaint. We want utilities to respond effectively to complaints, and the reports help us determine how well the utility has responded to your complaint.

Last year the Consumer Affairs Office received and acted on more than 12,000 complaints and inquiries. As a result of our actions, more than \$250,000 was returned to utility customers in credits or refunds. Hundreds of Texans obtained essential utility services that they had not been receiving. Many who had given up on having a service problem resolved finally got the repairs they were entitled to. We can't always resolve a complaint to your full satisfaction, but we do listen, and we will do our best to help make your complaint count.

So, increase your chances of making your complaint effective. Be specific, contact the utility, and then contact the PUC. Our mailing address for complaints or inquiries is:

Public Utility Commission of Texas  
Consumer Affairs  
7800 Shoal Creek Blvd.,  
Suite 400N  
Austin, TX 78757  
The Consumer Affairs telephone number is (512) 458-0223 or 458-0227 (512-458-0221 TTY for the deaf).

**Natural Gas Well Found**

**Near Miami**

Pioneer Production Corporation announced today the completion of a natural gas discovery well in Roberts County, Texas, 19 miles northwest of the city of Miami.

Pioneer Production is the oil and gas exploration and production subsidiary of Pioneer Corporation (NYSE).

The well, the Payne No. 1, flowed at a rate of 1.2 million cubic feet of gas per day through an 11/64-inch choke, with a flowing tubing pressure of 1,736 pounds per square inch (psi). During testing, a shut-in tubing pressure of 2,345 psi was reported.

Drilled to a depth of 9,878 feet, the well is completed in the Upper Morrow formation with perforations from 9,164 to 9,172 feet. It is approximately four miles south of a five-well Upper Morrow field that has produced over 30 billion cubic feet of gas.

Pioneer Production Corporation is the operator and owns a 50 percent working interest in the Payne No. 1.

Westland Oil Development Corporation owns the remaining 50 percent.

Pioneer Production and Westland hold leases on approximately 3,600 acres in the prospect area. Drilling of a confirmation well is scheduled to begin shortly after mid-year. Pioneer Production will be the operator and will own 50 percent of that well.

**'Blended fire ants' effective treatment for sting allergies**

COLLEGE STATION — A concoction that could be called "blended fire ants" may be as effective as venom in controlling severe reactions to the insect's painful sting, say Texas A&M University researchers.

Tests on 71 patients of varying ages, most with a history of severe allergic reaction to stings from the imported fire ant, indicate for the first time that medication produced from blended whole body extract is as effective as extract from the venom, said Dr. Barry Paull.

**Sherman Inman Won Stamps This Week.**



SHURFINE LIQUID BLEACH

**69¢**

1 GAL. JUG

REFRESHING COCA-COLA

6 BTL. CTN.

**\$1.89**

PLUS DEPOSIT 32 OZ.

SHURFINE FRUIT COCKTAIL

**59¢**

16 OZ. CAN

SHURFINE BARLETT HALVES PEARS

**59¢**

16 OZ. CAN

**FRESH FROM THE FARM PRODUCE**

CARROTS CALIFORNIA CELLO 1 LB. PKG.	29¢	SQUASH STRAIGHT NECK YELLOW LB.	39¢
POTATOES CALIFORNIA LONG WHITE 10 LB. BAG	\$1.79	MUSHROOMS BSKT. GOURMET'S DELIGHT	98¢
LIMES LARGE SIZE PERSIAN LB.	79¢	ROMAINE CALIFORNIA LARGE HEAD EACH	59¢
PEARS WASHINGTON BARLETT LB.	59¢	ONIONS CALIFORNIA RED SWEET LB.	39¢

CALIFORNIA SUNKIST ORANGES 3 LBS. **\$1.00**

CALIFORNIA TREE RIPENED PEACHES LB. **69¢**

**2ND BIG WEEK!!!!**  
Join up now for **Shurfine's summer**

ALL VEGETABLE SHURFINE SHORTENING

**\$1.39**

48 OZ. CAN

**DOUBLE STAMPS**

BEANS SHURFINE CUT GREEN	3	18 OZ. CANS	\$1
BEETS SHURFINE SLICED	3	16 OZ. CANS	\$1
CORN SHURFINE WHL. KERNEL/CRM. STYLE	3	17 OZ. CANS	\$1
SPINACH SHURFINE LEAFY	3	15 OZ. CANS	\$1
PEAS SHURFINE BH SWEET	3	17 OZ. CANS	\$1
POTATOES SHURFINE WHL./SLI. FISH	3	16 OZ. CANS	\$1
SAUERKRAUT SHURFINE TANGY	3	16 OZ. CANS	\$1
PEACHES SHURFINE YC SLI. YC HLVS.	2	16 OZ. CANS	\$1
TOMATOES SHURFINE WHOLE PEELED	2	16 OZ. CANS	\$1
SAUCE SHURFINE TOMATO	4	8 OZ. CANS	\$1
SAUCE SHURFINE SLOPPY JOE	15	15 OZ. CAN	79¢
PEPPER SHURFINE BLACK	8	8 OZ. CAN	\$1.29
MILK SHURFINE EVAPORATED	2	13 OZ. CANS	89¢
APPLESAUCE SHURFINE WHOLE SHURFINE GLASS	25	25 OZ. JAR	69¢
JUICE SHURFINE APPLE	64	64 OZ. BTL.	\$1.69
PRESERVES SHURFINE APRICOT	18	18 OZ. JAR	99¢
JELLY SHURFINE GRAPE	18	18 OZ. JAR	79¢
PICKLES SHURFINE HANSEL/JEGER SLICED DILL	18	18 OZ. JAR	79¢
PICKLES SHURFINE FRESH PAK KOSHER POLISH	32	32 OZ. JAR	\$1.19
CATSUP SHURFINE TOMATO	32	32 OZ. BTL.	99¢
MUSTARD SHURFINE TANGY	32	32 OZ. JAR	79¢
DRESSING SHURFINE SALAD	32	32 OZ. JAR	79¢
DINNERS SHURFINE MACARONI & CHEESE	4	7 1/2 OZ. BOXES	\$1
CRACKERS SHURFINE SALTINE	16	16 OZ. BOX	59¢
CANDY SHURFINE ASSORTED	2	PKGS.	\$1

**Clearance Sale**

New Stock Weekly! Hanging Baskets, Tool For The Best Garden Or Flower Bed, Get Your Bedding Plants Now!

**Kristy's Plants**

703 W. Ave. J 272-5134

**STORE ADDRESS:**  
515 W. AMER. BLVD.  
272-4406



PRICES EFFECTIVE JUNE 6 THRU JUNE 11, 1983  
LIMIT RIGHTS RESERVED

# Sale!

Look For Extra  
Bonus  
Tags In Store

ALL GRINDS  
**FOLGER'S  
COFFEE**

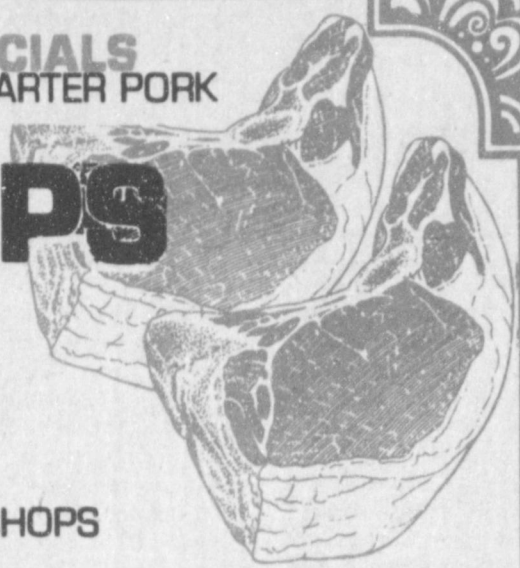
**\$2.19**

SHURFINE  
COFFEE  
**CREAMER**  
1 LB. CAN  
\$1.19  
16 OZ. JAR

QUALITY MEAT SPECIALS  
HORMEL SUPER SELECT LEAN TRIM QUARTER PORK  
LOINS OR FAMILY PACK

**PORK CHOPS**

**\$1.69**



LB.

9-11 CHOPS

BONELESS HALF OR WHOLE FULLY COOKED

**SHURFRESH  
HAMS**

**\$1.99**

LB.

**BACON** SHURFRESH SLICED 1 LB. PKG. **\$1.49**

**MEATS** SHURFRESH ASSTD. SLICED LUNCHEON 8 OZ. PKG. **69¢**

**SAUSAGE** SHURFRESH PURE PORK 1 LB. ROLL **\$1.09**

**PORK CHOPS** HORMEL S S CENTER CUT LOIN LB. **\$1.99**

**BRISKET** HEAVY GRAIN FED BEEF-WHOLE IN THE BAG 7-12 LB. AVG. LB. **\$1.19**

**PORK CHOPS** HORMEL S S WAFFER THIN BREAKFAST LB. **\$2.09**

**FRANKS** SHURFRESH MEAT 12 OZ. PKG. **99¢**

**PORK RIBS** COUNTRY STYLE-LOTS OF MEAT LB. **\$1.69**

**BOLOGNA** SHURFRESH SLICED 12 OZ. PKG. **\$1.19**

SON WED. & SAT.

- FOIL** SHURFINE ALUMINUM 12x25 ROLL **59¢**
- BAGS** SHURFINE GARBAGE 30 CT. PKG. **89¢**
- BAGS** SHURFINE SANDWICH W/LOCK TOP 2 80 CT. PKGS. **89¢**
- NAPKINS** SHURFINE ASSTD. PAPER 140 CT. PKG. **69¢**
- BRIQUETS** ENERGY CHARCOAL 10 LB. BAG **\$1.49**
- DETERGENT** SHURFINE POWDERED ALL PURPOSE OR BLUE 49 OZ. BOX **\$1.59**
- SHEETS** SHURFINE FABRIC SOFTENER 40 CT. BOX **\$1.39**
- PELLETS** SHURFINE WATER SOFTENER 40 LB. BAG **\$2.99**
- SWABS** SHURFINE COTTON 180 CT. BOX **89¢**

**FROZEN FOODS & DAIRY**

- MILK** BORDEN'S HI-PRO 1/2 GAL. CTN. **99¢**
- DRINK** BORDEN'S FRUIT 1/2 GAL. CTN. **89¢**
- NOVELTIES** BORDEN'S ASSTD. 24 CT. PKG. **\$1.79**
- BISCUITS** SHURFRESH SWBIM 6 8 OZ. CANS **\$1**
- MARGARINE** SHURFRESH QUARTERS 3 16 OZ. PKGS. **\$1**
- CHEESE** SHURFRESH HALFMOON COLBY 10 OZ. PKG. **\$1.39**
- CHEESE** SHURFRESH HALFMOON CHEDDAR 10 OZ. PKG. **\$1.39**
- CHEESE** SHURFRESH SHREDDED MOZZARELLA 8 OZ. PKG. **\$1.19**
- CHEESE** SHURFRESH COTTAGE 24 OZ. CTN. **\$1.19**
- ICE CREAM** SHURFRESH ASSORTED 1/2 GAL. SQ. CTN. **\$1.29**
- CORN** SHURFINE FROZEN MINI ON THE COB 8 EAR PKG. **\$1.19**
- LEMONADE** SHURFINE FROZEN REGULAR 4 6 OZ. CANS **\$1**
- LEMONADE** SHURFINE FROZEN PINK 4 6 OZ. CANS **\$1**
- TOPPING** SHURFINE FROZEN WHIPPED 8 OZ. BOWL **59¢**
- PEAS** SHURFINE FROZEN GREEN 2 10 OZ. PKGS. **\$1**
- POTATOES** SHURFINE FROZEN KRINKLE CUT 32 OZ. PKG. **99¢**

SHURFINE  
**PORK & BEANS**

**4 \$1**

16 OZ. CAN

GENERIC PAPER  
**TOWELS**

**39¢**

JUMBO ROLL

SHURFINE WATER/OIL PAK  
**CHUNK TUNA**

**79¢**

6 1/2 OZ. CAN

GRANULATED  
**SHURFINE SUGAR**

**\$1.39**

5 LB. BAG

SHURFINE INSTANT  
**TEA**  
3 OZ. JAR **\$1.59**

## WTSU Orientation Sessions To Help Freshmen

Five orientation sessions at West Texas State University in June and July will provide the opportunity for beginning freshman students to ask questions and to become acquainted with campus.

For the first freshman orientation session on Friday, June 10, 192 students who plan to enter WTSU as freshmen in the fall semester have registered, said Dr. Bob Stout, associate director of the University Counseling and Testing Center which sponsors the annual summer orientation sessions.

Other dates are Friday, June 24; Thursday, June 30; Saturday, July 9; and Monday, July 25.

Students and their parents may check in and receive orientation materials beginning at 7:30 a.m. each of the mornings at the WTSU Activities Center.

At 8 a.m. in the Activities Center Ballroom, students will be introduced to WTSU through four sessions featuring administrators and staff members discussing student life, registration, academic regulations and costs, including financial aid. Parents also will attend an orientation session during the morning.

Following a lunch break, students will receive academic advisement at 1:15 p.m. at the Classroom Center where they will meet with faculty members in their areas of academic interest to plan a fall semester course schedule.

While the students participate in academic advisement, parents will tour the campus.

A Reception at 2:30 p.m. at the Activities Center will bring parents and students together again to visit with members of the WTSU administration, faculty and staff.

Before three of the orientation sessions, interested students may take College Level Examination Program tests to gain academic credit.

The CLEP tests will be administered at 8 a.m. in the Classroom Center on June 9, 23 and July 8. Credit is available in English, math, biology, history and government. Students may take one to four tests at a cost of \$25 for the first test and \$22 for each additional test.

Students should be invited to orientation sessions

by letter from the WTSU registrar's office after their records have been evaluated and they have been accepted to attend WTSU, said Stout. Interested students also must register in advance to take the CLEP exams.

The session on July 9 will be the first Saturday orientation session, said Stout.

"We wanted to see if we could attract more people who may work or may not be able to attend during our other times," said Stout.

Five orientation sessions in 1982 attracted 801 beginning freshman students to campus which were among the largest group of preregistered freshmen in seven years.

Additional information concerning the orientation program may be obtained from Stout at the University Counseling and Testing Center.

## Accent On Health

Texas Department of Health  
Robert Bernstein, M.D., Commissioner

A person with an obvious medical problem most likely will see a physician, but a person with high blood pressure (hypertension) may feel well even with this life-threatening condition—and therein lies the problem.

May is National High Blood Pressure Month, and it is an appropriate time to visit your family physician for a blood pressure check.

Undetected, high blood pressure is a major medical problem associated with heart disease, kidney disease, and stroke.

In a recent Texas Behavioral Risk Factor Survey, it was found that 87 percent of adult women and 81 percent of men have had a blood pressure check within the year. "But," said Dr. Clift Price, Associate Commissioner for Personal Health Services of the Texas Department of Health (TDH), "only one-fourth of Texans with hypertension have their blood pressure adequately controlled." Dr. Price said the prevalence of high blood pressure increases with age and that it is almost twice as frequent in blacks.

Detecting high blood pressure early is important, since it can be treated.

"In milder hypertension, weight reduction to ideal levels and modest dietary

**COMPARE! COMPARE! COMPARE!**  
Anthony's Low Prices.

Jr. Chic™, Lee™, Levi's® Jeans

**24<sup>88</sup>** each

Three famous jeans...one terrific everyday low price! Choose from Lee®, Chic™ by H.I.S.®, or Levi's® California Straights™ and Super Straights™, all in 100% cotton denim. Available in junior sizes 3-15.

**Anthony's**  
C. R. ANTHONY CO.

**n-Save**

TY AND SERVICE



## STORE HOURS:

MON.-SAT. 8:00-9:00

SUN. 9:00-7:00

# Houston Show Scholarship Fund Programs Increased

The Houston Livestock Show and Rodeo today announced major funding increases in its annual and endowment scholarship programs, already renowned as the largest of their kind in the world.

At the organization's annual meeting in the Astro-hall, Show President E. Norwin Gerhart announced that the amount awarded for annual scholarship grants would be increased 33 percent. He also announced that the Show was donating \$750,000 to its endowment scholarship program from residual funds made available due to the fantastically successful 50th Anniversary Show in 1982.

"We are increasing the amount of our four-year, \$6,000 scholarship awards to \$8,000 each, while our one-year, \$1,500 awards will be increased to \$2,000 each," said Gerhart. "The increase is inclusive, covering all our scholarship winners, regardless of classification." Any remaining semesters will be funded at the same rate as new awards. Cost of this increase is \$563,750, and brings the Show's commitment to this phase of the scholarship program to some \$2.2 million. "That's the Show's multi-million dollar pledge to those students already in school, as well as to the new award recipients this year," noted Gerhart.

## System Developed To Improve Crop Spraying

A new system has been developed to increase the effectiveness and efficiency of aerial application of pesticides. It all involves a spray deposit analysis system that accurately measures an aircraft's spray pattern, says Henry O'Neal, an agricultural engineer with the Texas Agricultural Extension Service, Texas A&M University System.

The new system was developed by the U.S. Department of Agriculture, and O'Neal is working with the Texas Agricultural Aviation Association in its testing. A total of 14 testing sessions are being conducted this spring throughout Texas to help aerial applicators analyze their spray patterns. Spray patterns have traditionally been measured with a card or paper pattern test that depends on a visual check. However, the new system provides precise measurements of spray patterns, says O'Neal.

"This system is actually an automated quantitative

possible." The funding increase announcements were the highlights of the membership meeting, where plans for the 1984 Show, including new events and rules changes, also were explained. Eight new members of the Show's Board of Directors were elected today also.

New events for the livestock show include a miniature horse show, sanctioned by the American Miniature Horse Association, a dairy goat competition and a Longhorn Cattle sale. The Show is again the site of the National Cutting Horse Association World's Championship Finals. NCHA action begins on February 16; other livestock and horse show events begin February 18; all events conclude on March 4.

Rules changes center on the junior livestock show market animal competition. "These rules changes will be implemented for 1984 Show and are designed to clarify some existing rules, as well as strengthening the structure and relevancy of these market divisions," said Gerhart.

At the 1984 Show, a three judge system will be used in judging the market steer show, making Houston the first livestock show in Texas to use this method.

A new carcass contest is being implemented in the junior steer, lamb and barrow shows. "We will require all first and second place class winners in these three divisions to enter the carcass competition. Rules will require that these top animals be of a highly acceptable quality grade after slaughter," noted Gerhart. "We'll have top meat graders and scientists to make the final grade determination before any premiums are awarded. This emphasizes our Show's continuing commitment to market quality and to the best return for the consumer's food dollar."

Additionally, rules changes state that a junior exhibitor found in violation of any of the livestock show rules would be barred forever from showing at Houston. The ban would extend to any member of his family as well. Also, after slaughter, if an animal shown by a junior exhibitor is found to have been tampered with or al-

tered, all sale money for the animal would be withheld. "Implementation of these rules will assure the integrity and standards of excellence that are the hallmarks of our Houston Show," Gerhart said. Notification of all rules changes will be made well in ad-

# 75th Anniversary Will Highlight State 4-H Meet

H.T. "Tom" Davison, who has dedicated most of his career to the Texas 4-H program, is assuming the reins of that program on June 1.

Davison, a 25-year veteran of the Texas Agricultural Extension Service, the parent organization of 4-H, has been named state 4-H program leader. The position was recently vacated by Dr. John Pelham, who joined the Missouri Extension Service.

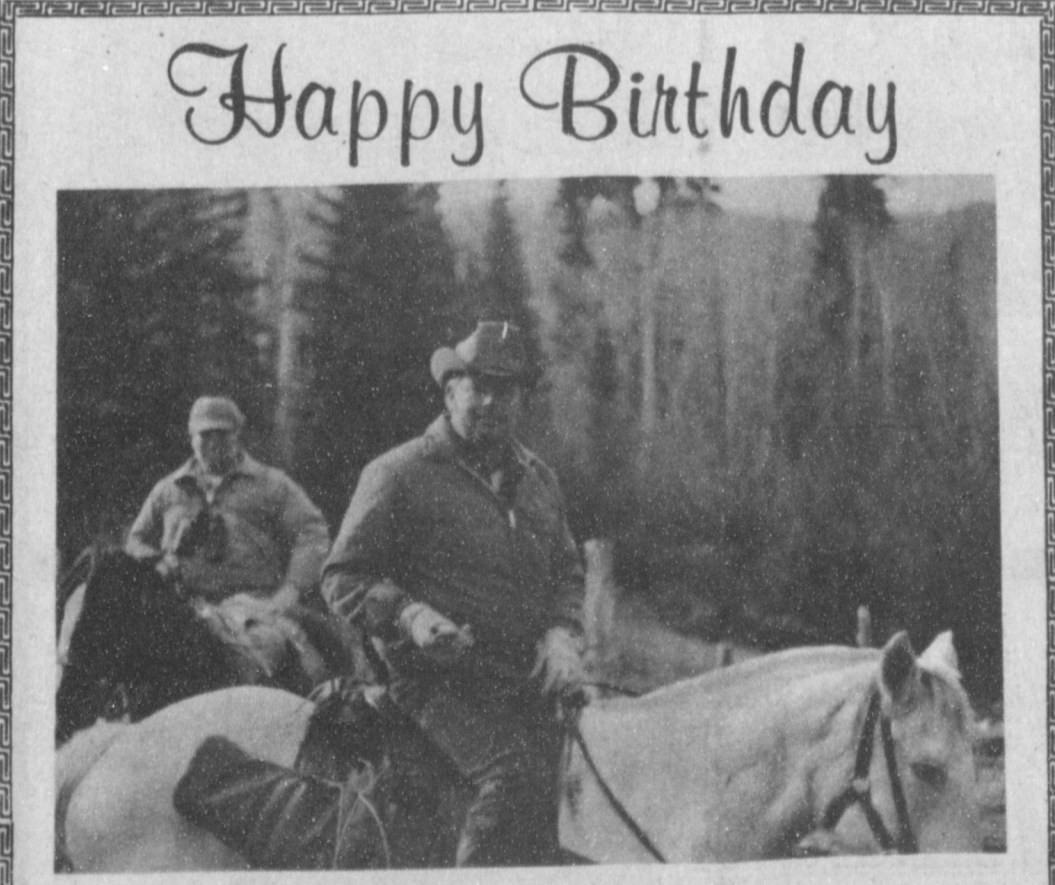
Davison joined the 4-H staff in 1965 and has had major responsibilities in the 4-H awards and recognition program, record book training and donor relations. In 1967 he took on the added responsibility of serving as executive director of the Texas 4-H Youth Development Foundation, the service organization for 4-H that works to obtain private support for the youth program.

Davison began his Extension Service career in 1958 as an assistant county agent in Hidalgo County where he provided leadership for the 4-H program. He transferred to Floyd County in 1963 to give leadership to agricultural programs.

"We are extremely pleased and proud to have Mr. Davison head up our 4-H program in Texas," said Dr. Zerle L. Carpenter, Extension Service director. "He has demonstrated a commitment to 4-H throughout his career and has worked long and hard to improve various programs and to gain support from the private sector. Many of the awards programs and scholarships now available to 4-H members are a direct result of his dedication and hard work."

Through Davison's efforts over the past years, the annual budget of the 4-H Foundation to support 4-H programs now exceeds one-half million dollars. These funds go to support 13 major program areas plus the Texas 4-H Center at Brownwood. The Texas 4-H scholarship program now totals almost \$350,000 and is the largest in the nation.

Davison has been coordinator of the Texas 4-H Shooting Sports program, one of the newest and fastest growing programs in the state. Organized in 1976, the program now boasts more than 6,000 4-H members and almost 500 volunteer leaders.



## Happy Birthday

Happy 40th Birthday  
To a horse somewhere in Colorado.  
Just be thankful you didn't  
get 40 in the Colorado pen!

vanance of entry deadlines.

Elected for their first terms to the Board of Directors were Leroy "Sonny" Bahner, George A. De Montrond, III, David G. Eller, James J. Janke, Willard Mercier, Dr. David E. Mouton, Bill Scholtfeldt and Robert H. Smith, III.

The Rodeo Parade is scheduled for Saturday, February 18, with the opening rodeo performance set for Wednesday, February 22. All events conclude on March 4, 1984.

# Soybean Outlook Clouded With Surplus

Despite some price strengthening as a spinoff from PIK (the government's payment-in-kind program), a continuing large surplus is clouding the outlook for soybeans, says a Texas Agricultural Extension Service economist.

"Texas soybean growers will likely receive between \$5.50 and \$6.50 per bushel for their 1983 beans-

slightly above last year's price," predicts Johnny Feagan. "And the state's Epting Service Conducted At Claude

Services for Mrs. Ida M. Epting, 95, of Hope, Ark. were conducted in the First Methodist Church in Claude with the Rev. George Price, pastor, officiating.

Interment was in the Claude Cemetery under the direction of Smith Fox Funeral Home of Pahrhandle. Mrs. Epting died Friday, May 27 in Hope, Ark.

She was born Oct. 27, 1887, in Hill County, Texas and married Tom Epting on March 20, 1904 in Hill County. He predeceased her in death in 1958. She lived in Conway from 1926, until 1956, when she moved to Claude, where she lived until 1972, moving from there to Hope.

Survivors include two sons, Alton Epting of Muleshoe and J.B. Epting of Oroville, Calif.; two daughters, Mrs. Lela Whiteside of Lake Tahoe, Calif. and Mrs. Tommie Byrd of Hope, Ark.; two brothers, Jim Evans of Sanger and Taylor Evans of Waco; one sister, Jessie Edwards of Paducah; eight grandchildren; 14 great grandchildren; and three great great grandchildren.

## Wayland College Still Has Summer Camp Openings

A limited number of openings are still available in this summer's Flying Queens and Pioneer basketball camps at Wayland Baptist University.

Six weeks of intensive training for youngsters through high school age who will not be participating in varsity sports next year will begin with the first Flying Queens camp June 13-18. Subsequent girls' camps are scheduled for June 20-25 and June 27-July 2, while the Pioneer camp for boys will also feature three sessions: July 10-15, July 17-22, and July 31-Aug. 5.

Registration for the Flying Queens camp is \$125 per girl, \$50 of which is paid as a deposit with the remainder due on the opening day of the session. The fee covers room and board, insurance, tuition, entertainment and a personalized camp T-shirt. Enrollment is limited to 135 campers each week and is open on a first-come, first-served basis.

Under the direction of former Flying Queen player and coach Cathy Wilson, the camp will also feature other highly successful college and high school coaches as well as members of the Flying Queens basketball team.

Registration for the Pioneer camps is also \$125 per youngster for resident campers and \$75 for commuters. A \$25 deposit is due at the time of application, and campers will be

soybean acreage will likely be down sharply from the 920,000 acres harvested in 1982 when the crop sold for \$125 million."

Soybean prices have improved some due to the high farmer participation in PIK regarding feed grains, cotton and rice. (Soybeans are not included in PIK.) The high percentage of land to be idled under PIK will reduce total soybean production over the U.S. by about 8 percent since some farmers have double-cropped with soybeans in the past. Under PIK, this practice is not allowed, notes Feagan.

The economist expects

## Former Area Resident Dies At Wellington

Services for Mrs. H.L. "Roxie" Lowry, 78, of Wellington were held at 2 p.m. Saturday, June 4 at the First United Methodist Church in Wellington.

Burial was under the direction of Kilsco Funeral Home in Wellington. Mrs. Lowry died Monday in the Collingsworth County General Hospital following a lengthy illness.

She had lived in the Progress and Needmore communities from 1931 to 1946. During her residency in the Muleshoe area her husband, H.L. "Possum" was County Commissioner for six years.

Survivors include her husband; one daughter, Mrs. Imogene Williams of Sacramento, Calif.; one son, Boyd Neal Lowry of Stephenville; four sisters, Mrs. Ruth Thompson of South Gate, Calif., Mrs. L. C. Sweat of Wellington, Mrs. Aldah Taylor and Mrs. Madelene Vaughn, both of Arlington; two brothers, Polk Young of Arlington and Henry Young of Portales, N.M.; five grandchildren and six great grandchildren.

She was the sister of the late Tye Young of Muleshoe.

**Ellis Funeral Home**  
Pre-Need Funeral Needs  
Price Is Frozen At Time Of Purchase & Guaranteed  
272-4574 Muleshoe

soybean exports to remain soft during the year and increase only about 2 percent. However, 45 percent of this nation's soybeans sales could be to the European Economic Community during the 1982-83 marketing year, with another 20 percent going to Japan.

Feagan sees some slight improvement in soybean oil prices if economic conditions improve in the U.S. and Europe. However, increased soybean crushings in the South American countries will increase the competition for U.S. oil and meal products.

"An increase in livestock and poultry feeding could spark an increase in domestic soybean use," says Feagan, "as prices improve for meat products and competing feed prices increase."

The final price that farmers get for their beans hinges on a number of factors, according to Feagan. These include the total size of the crop both in the U.S. and abroad, weather conditions, the amount of double cropping, strength of the U.S. dollar abroad, marketing patterns of PIK products, and margins in livestock and poultry feeding.

### NOTES--- COMMENTS

Most workers will accept a raise if offered one.

A housewife who runs her house is always busy.

The greatest asset of any community is its youth.

Advertising properly done costs no one anything.

Definition: Self-control--something we tell our children they should have.

Kindness has never yet done anyone serious harm.

# ANNOUNCING

the opening of a new business in Muleshoe on  
Monday, June 6, 1983

## Strictly Business Professional Services

is not only able to handle all of your accounting, tax, and typing needs, but also offers depreciation schedules, amortization schedules, personal data sheets, notary public, and copying service. If your business requires other services, let us know and we will expand to fulfill those needs.

Our friendly staff and the excellent quality of our work is sure to please you. Come by to get acquainted and let us be of service to you.

HOURS:  
8 a.m. - 5 p.m.  
Monday through Friday



Strictly Business  
Professional Services

213 E. Ave. B

Muleshoe

272-5117

A&M  
Five Point  
\$10.59  
HI PROTEIN  
DOG FOOD  
• A 26% crude protein dog food.  
• Formulated for hard working dogs.  
• For peak conditioning and performance.



32 OZ. - 6 PK. BOTTLES  
**DR. PEPPER**  
**\$1.89**

**SHURFINE SUGAR** PURE GRANULATED  
**SHURFINE SUGAR**  
**\$1.39**  
5 LB. BAG

**ShurFine All-American SUMMER SALE**  
2nd BIG WEEK

**SHURFINE SHORTENING** ALL VEGETABLE  
**SHURFINE SHORTENING**  
**\$1.39**  
3 LB. CAN

**Folgers MOUNTAIN GROWN FOLGER'S COFFEE**  
**\$1.99**  
1 LB. CAN

**ASSORTED FLAVORS SHURFRESH ICE CREAM**  
**\$1.29**  
1/2 GAL. SQCTN.  
**BAG ICE AVAILABLE**

**SHURFINE CUT GREEN BEANS**  
**\$1.00**  
3 16 OZ. CAN

**SHURFINE WH. KERNEL/CR. STYLE GOLD CORN**  
**\$1.00**  
3 17 OZ. CAN

**CALIFORNIA TREE RIPENED PEACHES**  
**69c**  
LB.  
**CALIFORNIA SUNKIST ORANGES** 3 LB. **\$1.00**  
**CALIFORNIA GOLDEN CARROTS** 1 LB. PKG. **29c**

**CALIFORNIA LONG WHITE POTATOES** 10 LB. BAG **\$1.79**  
**LARGESIZE PERSIAN LIMES** LB. **79c**  
**WASHINGTON BARTLETT PEARS** LB. **59c**  
**STRAIGHT NECK YELLOW SQUASH** LB. **39c**  
**GOURMETS' DELIGHT MUSHROOMS** BASKET **98c**  
**WATERMELONS** **\$2.79** EACH  
**CALIFORNIA SWEET RED ONIONS** LB. **39c**

**SHURFINE OIL/WATER PACK LIGHT CHUNK TUNA**  
**79c**  
6 1/2 OZ. CAN

**ASSORTED FLAVORS JENO'S FROZEN PIZZA**  
**99c**  
10 OZ. PKG.

**TOTAL GROCERY SAVERS**

**SHURFINE PORK & BEANS** 4 16 OZ. CANS **\$1.00**  
**SHURFINE GREEN LEAFY SPINACH** 3 15 OZ. CANS **\$1.00**  
**SHURFINE EARLY HARVEST SWEET PEAS** 3 17 OZ. CANS **\$1.00**  
**SHURFINE WHOLE PEELED TOMATOES** 2 16 OZ. CAN **\$1.00**  
**GENERIC PAPER TOWELS** JUMBO ROLL **39c**  
**SHURFINE INSTANT TEA** 3 OZ. JAR **\$1.59**  
**SHURFINE EVAPORATED MILK** 2 13 OZ. CANS **89c**  
**SHURFINE YEL. CLING SLI/HLV. PEACHES** 2 16 OZ. CANS **\$1.00**  
**ARMOUR VIENNA SAUSAGE** 2 5 OZ. CANS **\$1.00**  
**LONG GRAIN COMET RICE** 28 OZ. BOX **98c**  
**KIT KAT / MILK CHOC / WHATCHAMACALLIT HERSHEY BARS** 10 CT. PKG. **\$2.39**

**JOHNSON'S LEMON FAVOR** 14 OZ. CAN **\$1.49**  
**BORDEN'S ICE CREAM** 1/2 GAL. ROUND CARTON **\$1.59**  
**BORDEN HI-PRO MILK** 1/2 GAL. **99c**  
**BORDEN ASSORTED FLAVORS FRUIT BARS** 4 pk. **\$1.39**  
**BORDEN 24 OZ. COTTAGE CHEESE** **\$1.29**

**HEAVY GRAIN FED BEEF BONELESS ROUND STEAK** LB. **\$1.99**  
**HEAVY GRAIN FED BEEF ROUND STEAK** LB. **\$1.79**

**HEAVY GRAIN FED PACKER TRIM BEEF BRISKET** LB. **\$1.19** WHOLE IN THE BAG  
**SHURFRESH QUALITY SLICED BACON** 1 LB. PKG. **\$1.49**

**SHURFRESH BONELESS COOKED HALF HAMS** OR WHOLE LB. **\$1.99**  
**EXTRA LEAN-CHUCK QUALITY GROUND BEEF** LB. **\$1.69**  
**SHURFRESH QUALITY MEAT FRANKS** 12 OZ. PKG. **99c**  
**SHURFRESH QUALITY SLICED MEAT BOLOGNA** 12 OZ. PKG. **\$1.19**

**SHURFRESH BREAKFAST PORK SAUSAGE** 1 LB. ROLL **\$1.09**  
**SHURFRESH ASST. SLICED LUNCH MEAT** 6 OZ. PKG. **69c**  
**SHURFRESH SLICED COOKED HAM** 5 OZ. PKG. **\$1.39**  
**USDA GRADE A SHURFRESH BAKING HENS** LB. **63c**

**FROZEN FOOD SPECIALS**

**SHURFINE FROZEN REG/PINK LEMONADE** 4 6 OZ. CANS **\$1.00**  
**SHURFINE FROZEN WHIPPED TOPPING** 8 OZ. BOWL **59c**  
**SHURFINE FROZEN MINI CORN ON THE COB** 8 EAR PKG. **\$1.19**  
**SHURFINE FROZEN SWEET PEAS** 2 10 OZ. PKGS. **\$1.00**  
**SHURFINE FROZEN CRINKLE CUT POTATOES** 32 OZ. PKG. **99c**

**FRESH DAIRY SPECIALS**

**SHURFRESH QUARTERED MARGARINE** 3 1 LB. PKGS. **\$1.00**  
**SHURFRESH BTRMLK/SWTMLK BISCUITS** 6 8 OZ. CANS **\$1.00**  
**SHURFRESH HALFMOON CHEDDAR OR COLBY CHEESE** 10 OZ. PKG. **\$1.39**  
**SHURFRESH SHREDDED MOZZARELLA** 8 OZ. PKG. **\$1.19**  
**SHURFRESH COTTAGE CHEESE** 24 OZ. CTN. **\$1.19**  
**WELCH'S GRAPE JUICE** 64 OZ. JUG **\$2.49**

12 OZ. SHURFINE POP. ASSORTED FLAVORS 6/\$1.00  
16 OZ. SHURFINE SLICED BEETS 3/\$1.00  
16 OZ. SHURFINE IRISH POTATOES, WH/SLI 3/\$1.00  
16 OZ. SHURFINE SAUERKRAUT 3/\$1.00  
GAL. SHURFINE LIQUID BLEACH 69c  
10 LB. ENERGY CHARCOAL BRIQUETS 1.49  
32 OZ. SHURFINE MUSTARD 79c  
32 OZ. SHURFINE SALAD DRESSING 79c  
140 CT. SHURFINE PAPER NAPKINS, ASST 69c  
80 CT. SHURFINE SANDWICH BAGS, LOCK TOP 2/89c  
30 CT. SHURFINE GARBAGE BAGS 89c

12x25 SHURFINE ALUMINUM FOIL 59c  
49 OZ. SHURFINE POWDERED DETERGENT, AP/BL 1.59  
40 CT. SHURFINE FABRIC SOFTENER SHEETS 1.39  
40 LB. SHURFINE WATER SOFTENER PELLETS 2.99  
16 OZ. SHURFINE COFFEE CREAMER 1.19  
7 1/2 OZ. SHURFINE MAC & CHEESE DINNERS 4/1.00  
25 OZ. SHURFINE APPLESAUCE 69c  
16 OZ. SHURFINE FRUIT COCKTAIL 59c  
16 OZ. SHURFINE BARTLETT PEARS, HALVES 59c  
64 OZ. SHURFINE APPLE JUICE 1.69  
8 OZ. SHURFINE TOMATO SAUCE 4/1.00

15 OZ. SHURFINE SLOPPY JOE SAUCE 79c  
18 OZ. SHURFINE APRICOT PRESERVES 99c  
18 OZ. SHURFINE GRAPE JELLY 79c  
16 OZ. SHURFINE HMBGR. SLICED DILLS 79c  
32 OZ. SHURFINE DILL PICKLES, KSH/ POL/ PLN 1.19  
32 OZ. SHURFINE TOMATO CATSUP 99c  
16 OZ. SHURFINE SALTINE CRACKERS 59c  
4 OZ. SHURFINE CANDY, PPRMINT TWISTS 2/1.00  
5 1/2 OZ. SHURFINE CANDY, STRLIGH MINTS 2/1.00  
9 OZ. SHURFINE CANDY, ORANGE SLICED 2/1.00  
8 OZ. SHURFINE BLACK PEPPER 1.29

**AT AFFILIATED FOODS INC. MEMBER STORE**  
Thrifty McSever

**SERV-ALL THRIFFTWAY**  
We're proud to give you more!

**PRICES EFFECTIVE JUNE 5-11, 1983**  
WE RESERVE THE RIGHT TO LIMIT QUANTITIES  
**WE ACCEPT FOOD STAMPS**

STORE HOURS:  
8:00 A.M. to 8:30 P.M. - Mon. thru Sat.  
9:00 A.M. to 7:00 P.M. Sun.

401 W. American 272-4739

**EDITORIAL**

**The Tax Cut Fight**

The reason behind present efforts to repeal tax cuts, and indexing is that the nation can't afford to continue running up huge federal deficits. As projected now, they are indeed huge. And if they continue over a period of years, they could trigger another round of inflation and rising interest rates.

The Reagan Administration doesn't think this will happen. It believes the tax-cut stimulus and indexing (which doesn't begin until 1985) will save the average American enough money to continue the present expansion of the private economy, and produce a long-term sustained growth period for the U.S. economy.

If correct, this expanding economy, and higher profits would mean greatly increased tax revenues for the treasury--thus lowering projected deficits, which were calculated last December when the economy was at its lowest point.

One can thus say there is a good case on both sides of this issue, that only time will determine who is right. But on another issue in this debate, confusion can be cleared up now.

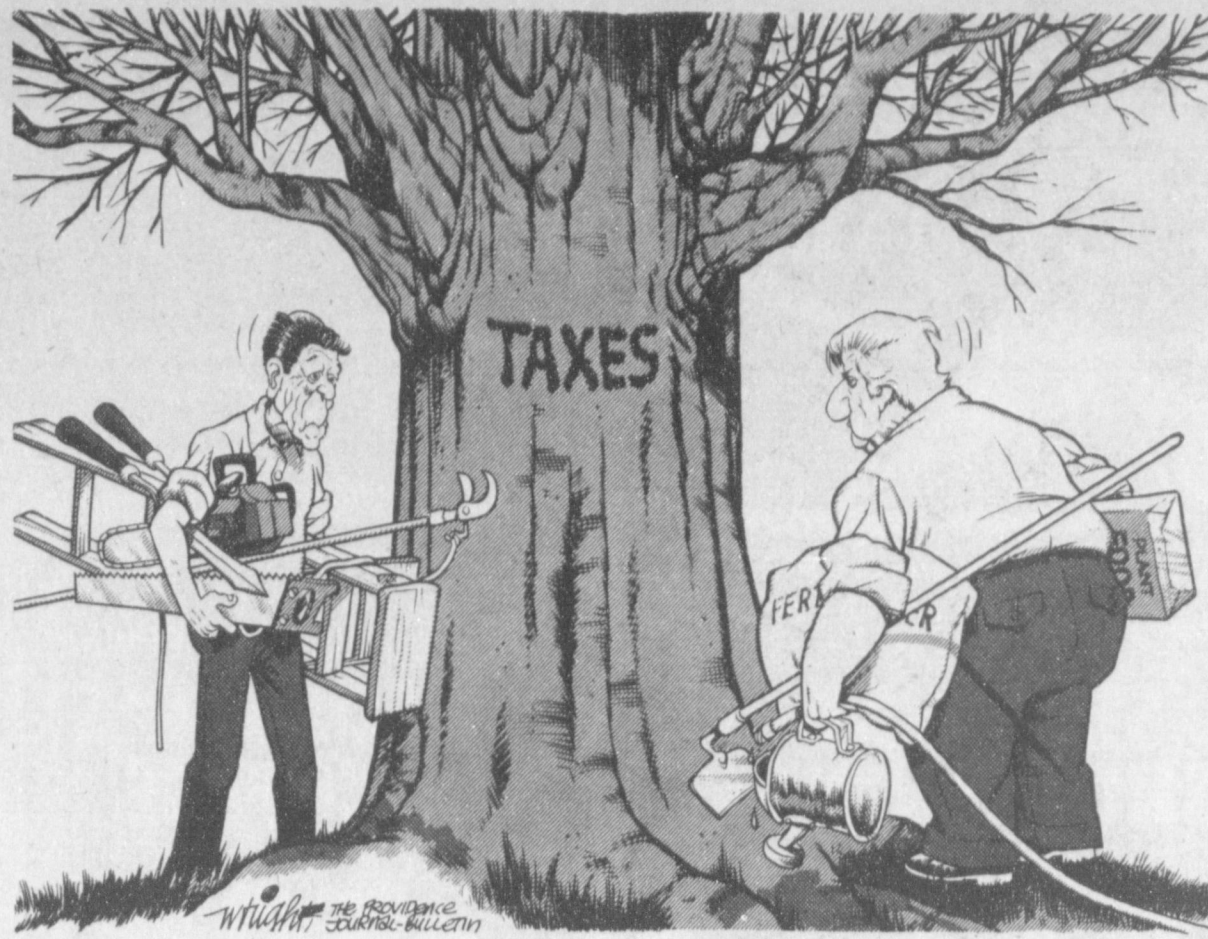
That concerns claims that the tax cut and tax indexing are a sop to the rich. Untrue. A study by the Heritage Foundation shows that the third-year tax cut of 10 percent, due July 1, would benefit primarily lower and middle income families. Over the next four years Americans would realize \$175 billion in tax savings and almost three-fourths of that saving would go to families earning \$49,000 or less. (Families in which more than one member work often earn thirty or forty thousand dollars a year.)

The study also shows that tax indexing--which keeps those with rising incomes from going into higher brackets automatically by taking into account inflation--would provide about 80 percent of its benefits to families earning \$49,000 or less.

So the fat cats or big-rich are not to be the primary beneficiaries of the ten percent tax cut projected, nor of indexing. Middle income, lower middle income and lower income tax families will enjoy the lion's share of these benefits.

That's why President Reagan promises to veto any congressional legislation which repeals the tax cuts. He expects a recovering economy to sharply reduce the size of today's projected deficits, is convinced the tax cuts will do much to fuel the economic recovery.

Whether he's right or not in this forecast, it's good to keep in mind demagogic claims that the rich will be the primary beneficiaries of the third round of tax cuts are just what they are. What Congress would almost certainly do with money saved by repealing the tax cuts is spend as much of it as they could expanding domestic welfare programs.



**CAPITOL UPDATE**

*John Tower*  
U.S. SENATOR for TEXAS  
WASHINGTON, D.C. 20510



After weeks of protracted debate, the Senate finally passed its version of the first Budget Resolution for the coming fiscal year. Unfortunately, it is seriously flawed, failing to meet the most basic requirements for a responsible federal budget.

It provides insufficient funding for our program to restore our national defense capability. During the past two years, we have begun to make up for the serious neglect of our national security during the 1970s, a neglect which led to an alarming deterioration of our capability in comparison to that of the Soviet Union.

This year, President Reagan asked for an increase which amounted to 10 percent after inflation. He did so because that level of funding for this year would allow us to pay for our modernization effort in a cost-effective way, rather than stretching our programs over a longer time so that they ultimately are more expensive.

The Senate not only rejected that increase, but it also rejected the 7.1 percent increase which would barely fund the minimum requirements for continuing to progress in this vital area.

Second, this budget resolution calls for unacceptably high increases in taxes. The revenue figures called for in the Senate resolution would require an additional \$75.6 billion in taxes over the next three years. Reaching this level of taxation would require at least a cap on the amount of the July tax cut and a repeal of indexing. To repeal indexing would put wage earners in a position of facing ever-higher tax brackets because of inflation. Both of these steps are completely unacceptable.

In passing the economic recovery package which included July's tax cut and future tax indexing, we made a promise to the American people, a promise they expect us to fulfill. Even if the Congress should vote to break this promise, the President is pledged to veto any tax legislation which voids the promised tax relief. This means that the tax portion of the Budget Resolution is not only irresponsible, but also meaningless, because it is clear to everyone that a Presidential veto on this subject could not be overridden in Congress.

Finally, the Budget Resolution calls for \$47.3 billion more in spending for domestic programs over three years than the President requested. It was the uncontrolled growth of this kind of spending which caused the serious deficit crisis which we are facing now. In fact, previous Administrations even referred to most domestic spending programs as "uncontrollable."

For the past two years, we have made some progress in getting control over the rate at which spending for domestic programs has grown, but we have not come so far that we can consider the problem solved. Increases of the magnitude called for in the Senate resolution actually reverse the trend we have begun.

We will not compromise our obligations to elderly Americans, the disabled and those most needy in our society, but the American people have made clear their mandate that we control the size, scope and cost of government.

This Budget Resolution fails to do that, or to meet our other basic obligations as a government. Fortunately, this resolution is not binding. I fear that its shortcomings will defeat the purpose of having a budget resolution, but even so, we must not let its flaws be enacted into law through the appropriations process.

**NEWS NOTES**

**AFTER-SCHOOL JOBS**

**NEW YORK --** After-school jobs for teenagers may do more harm than good, says Laurence Steinberg, a social ecologist at the University of California, Irvine. The article is in the June issue of *McCall's* magazine.

**CHIMP'S ART**

**NEW YORK --** The 200 drawings made by a chimpanzee are on a par with a kindergarten's smears, but Columbia University thinks they are worth \$25,000 and has gone to court to retrieve them.

**PILOTLASS PLANE**

**LONDON --** Failure of the oxygen system may have knocked out the three-man crew of a W. German executive jet that flew 1,600 miles off course across Northern Europe and crashed into the ocean, aviation experts said.

**THE SPRUCE GOOSE**

**LONG BEACH, CALIF. --** The Spruce Goose, the colossal wood airplane Howard Hughes built, flew once and hid for three decades, was unveiled recently in a spectacular new home.

**INTEGRATION & CITIES**

**MADISON, WIS. --** All cities with more than 100,000 blacks have a long way to go to achieve an adequate level of integration a census-data study by Karl Tauber, a sociology professor at the University of Wisconsin, indicated.

**MOSCOW & ART**

**MOSCOW --** More than 100 works of abstract art, a style discouraged by Soviet authorities, went on display in the Soviet capital recently after a thorough review by the Communist Party.

**Budget Roulette**

It's helpful to understand what has been going on, between Congress and the President, concerning the fiscal 1984 budget in recent months.

In effect, the struggle has been something like a confrontation to see who blinks first. President Reagan doesn't like horrible deficits. But he has proposed the worst series in history.

He believes Congress must get domestic overspending under control. He believes the only chance to force Congress to face the music is to confront members with this unpleasant forecast. But will such huge deficits abort the economic recovery?

Many influential members of Congress, including some in the president's own party, think Mr. Reagan should accept lesser defense spending and new taxes, or repeal of tax benefits, to reduce the unacceptable size of impending deficits.

The crunch and climax of the battle of wills and philosophies is developing as this is written. The outcome will not be clear for several more weeks, or even months, because of the long congressional process.

But it should be kept in mind that neither the president nor fiscally conservative members of Congress, Republicans and Democrats, like the idea of the huge impending deficits.

Reagan wants Congress to reduce their size, in the national interest, by curbing domestic overspending. In this Congress that seems very unlikely (or perhaps in any Congress, where fiscal discipline has been lacking for some twenty years.)

Time may be on the side of Democrats. If deficits abort recovery, it could be Reagan and Republicans who will most likely suffer at the polls.

**WASHINGTON NOTES**

**GLENN WEALTHIEST**

Sen. John H. Glenn Jr., of Ohio is the wealthiest of the six Democratic candidates for their party's presidential nomination. The former astronaut earned well over a million dollars last year from investments.

fering from significant safety problems despite its excellent record since President Reagan fired 11,400 striking controllers in August, 1981.

**CREDIT CARD FRAUD**

More than \$1 billion is lost each year to credit card fraud, with banks, merchants and consumers bearing the cost of an explosion in card counterfeiting and unauthorized use of account numbers, a Senate Banking subcommittee was told recently.

**BID-RIGGING**

The Justice Department has opened multistate investigations into collusive bidding by water and sewer and electrical contractors.

**COUNTS VISITS**

Vietnam veterans have made more than 369,000 visits to Veterans Administration hospitals for illnesses that could have been caused by Agent Orange, the VA said recently in its first report on the chemical's possible effect on American soldiers in Southeast Asia.

**RATES VARY**

The price of natural gas--the country's most popular heating fuel--varies by more than 300 percent across the country, according to a survey by the National Association of Regulatory Commissioners released recently.

**AIR SAFETY**

The National Transportation Safety Board reported recently that the nation's air traffic control system is suf-

**GILCO DRILLING COMPANY, INC.**  
TEST HOLES  
DOMESTIC  
SMALL IRRIGATION WELLS  
701 E. GRANT WAYNE GILLIAM 266-8650  
MORTON

**PROFESSIONAL LAWN SERVICE**  
272-5632  
272 5602  
VERTICAL THATCHING  
ROTARY MOWERS EDGING  
REEL MOWER SWEEPER  
WEED EATER TRIMMING  
FERTILIZER APPLICATION

**SHOOK TIRE & SERVICE**

**LEE POLYESTER**

SIZE	SUGGESTED EXCHANGE PRICE	SALE PRICE
P165-13	\$36.95	\$26.00
P195-14	43.95	29.95
P205-14	45.95	32.95
P215-14	47.95	34.95
P215-15	49.95	35.95
P225-15	51.95	36.95
P235-15	55.95	39.95

FET: \$1.50-2.79 WHITEWALL

**LEE GS RADIAL**

SIZE	SUGGESTED EXCHANGE PRICE	SALE PRICE
P155-13	\$49.95	\$31.00
P165-13	51.95	35.00
P185-14	58.95	41.00
P195-14	59.95	42.00
P205-14	63.95	44.00
P215-14	67.95	46.00
P205-15	65.95	46.00
P215-15	69.95	47.00
P225-15	71.95	48.00
P235-15	77.95	51.00

FET: \$1.44-2.86 WHITEWALL

**LEE ALL WEATHER**

Steel Belted Radials

SIZE	SUGGESTED EXCHANGE PRICE	SALE PRICE
P155x13	\$57.95	\$34.00
P185x14	69.95	45.00
P195x14	70.95	46.00
P205x14	75.95	48.00
P215x14	79.95	49.00
P205x15	77.95	49.00
P215x15	82.95	52.00
P225x15	85.95	54.00
P235x15	91.95	57.00

FET: \$1.51-2.90 WHITEWALL

**PREMIUM HIGHWAY RIB LIGHT TRUCK TIRE**

**\$46<sup>95</sup>**

700-15 TL 6 Ply  
FET: '3.06

ROCKET Wheels As Low As \$25

**PEACE OF MIND** Complete Road Hazard Protection

Ask about it at Shook.

Prices good thru June 11, 1983

**FREE MOUNTING!**

301 North First • 272-3420  
Manager: Don Taylor

**Alignment**

- Set toe-in
- Inspect tires
- Adjust caster and camber

**\$11.99**  
Most American Cars

**Shocks**

**Heavy Duty**

**MONROE**

- Lifetime Warranty
- Installation Available

**\$16.99**  
Each

**Battery**

**24 Month**

- Group 24
- 300 Cold cranking amps
- 45 Amp hours
- Hard rubber case
- 42 Plates

**\$29.95**  
Plus exchange battery

**Brake Service**

**Front Disc**

- Pack front bearings
- Turn rotors
- Replace front disc pads

**\$59.99**  
Most American Cars

**The LEGISLATIVE REPORT**

by **Gib Lewis, Speaker**

Texas House Of Representatives

**AUSTIN --** Some of the most significant legislation of this session was acted upon by both houses last week and is rapidly headed for final passage into law.

For openers, the House gave final approval to one of the toughest measures against the drunk driver of any state in the nation.

Senate Bill 1, by Sen. Bill Sarpaluis of Hereford, and cosponsored in the House by Rep. Terral Smith of Austin and myself, passed the House by a vote of 142 to 3.

The bill was significantly amended in the House committee to make it even tougher on drunk drivers than the measure approved by the Senate earlier.

Because it was amended in the House, the Senate must now agree to those changes.

However, I predict the Senate will agree to the House changes and the bill will be headed to Governor Mark White's desk for signing into law in short order.

The Senate also approved last week a House bill and constitutional amendment proposal allowing courts to garnish wages for the payment of child support on parents who fail, or refuse, to make those payments.

The proposal, by Rep. Rene Oliveira of Brownsville, will go to the voters statewide in November for approval.

The House has also passed one of the most important "Sunset" bills of this legislative session.

The bill, by Sen. Kent Caperton of Bryan, and sponsored in the House by Rep. Elton Bomer of Montalba, continues the Public Utility Commission of Texas as an agency of the state.

Both the House and Senate made significant changes in the structure and operating rules of the commission all designed to benefit the consumers by giving them greater input into its electric and telephone rate making procedures.

The House, like the Senate, refused to amend the bill to allow for the election of the three commission members who are not appointed by the governor.

There has been some discussion of the possibility Gov. Mark White will veto the bill because it doesn't provide for an elected commission.

However, I feel the measure is such a good consumer oriented bill that the Governor will reconsider and sign it into law.

The Senate also finally passed and sent to the Governor a measure by Rep. Pete Laney of Hale Center which will allow nonviolent offenders to serve from six months to one year in community restitution centers where they would be required to work and pay restitution to the victims of their crimes.

This bill is a major part of a package of prison reform legislation aimed at ending prison overcrowding in Texas while, at the same time, addressing the need to guarantee crime victims that they will be compensated for their losses.

# AID TO MILLIONS CLASSIFIED ADS



## DEADLINE FOR CLASSIFIED ADS IS TUESDAYS AND FRIDAYS 11:00A.M

**CLASSIFIED RATES**  
 1st Insertion Per Word...\$1.15  
 Minimum Charge...\$2.30  
 2nd Insertion Per Word...\$1.13  
 Minimum Charge...\$2.00  
**CARD OF THANKS**  
 Per Word...\$1.20  
**CLASSIFIED DISPLAY**  
 \$1.70...per column inch  
**BLIND AD RATES**  
 50% more  
**DEADLINES**  
 11 a.m. Tues. for Thurs.  
 11 a.m. Fri. for Sun.  
**WE RESERVE THE RIGHT TO CLASSIFY REVISE OR REJECT ANY AD. NOT RESPONSIBLE FOR ANY ERROR AFTER AD HAS RUN ONCE.**

**TO PLACE YOUR WANT ADS CALL 272-4536**  
 Garage Sale Ads Must Be Pre-Paid.

### 1. PERSONALS

**OPENING FOR** summer in licensed group day care home. Call Dianne Allison 272-3304. 1-22s-6tc

**ARTISTIC NEEDLE INSTRUCTION.** Instructor *Nelda Hunt*. 925-6634. Call for information on needle classes & all types of handwork. 1-21t-4tp

**SISTER SOPHIA** Palm reader, spiritual healer, reader advisor. Can help advise in all problems luck, health, happiness, marriage, success, financial. Will help you overcome all your problems. Come, call, or write. 799-9124. Send self addressed, stamped envelope to: 2263 34th St., Lubbock, Tx 79411. 1-12t-24tp

**PIZZA HUT, doesn't promise its MANAGERS the world... Just a SECURE, REWARDING part of it**  
 By joining forces with one of the world's leaders in the rapidly expanding restaurant industry.  
 So, if you are a career-minded High School grad with the facility for figure work/record keeping, possess the ability to train and supervise others on a day-by-day and long range basis, and have the aptitude necessary for quality control, we'd like to talk with you about a Management position in one of our restaurants.  
**EXCELLENT SALARY & BENEFITS PACKAGE** (including DENTAL insurance)  
**PERFORMANCE BONUS.**  
 Please call our Manager at 272-4214 to arrange for an appointment Mon.-Fri. 10 a.m.-11 a.m.  
*An equal opportunity employer*

### 3. HELP WANTED

**BOOKKEEPING** Position available at Valley Grain Products, Inc. Only experienced persons need apply. No phone calls, please. 3-20s-tfc

**WANTED: POSTING** Clerk-Proficiency on 10-key a must. If not, please do not apply. Some typing, mostly with figures. Must be fast and accurate on both. Paid vacation, group health. Farmer County Cattle Co., Hwy. 60, Bovina, Texas. Contact Jeanette Walling, 806-225-4400. 3-20t-tfc

I'm looking for a mature person who has genuine concern for people and a sincere desire to help the American consumer make money and save money. Start part time with potential earnings \$300-\$1000 a month. Train for management income potential \$50,000 plus. For an appointment call 965-2730. 3-22t-2tp

**WANTED:** The Muleshoe Chamber of Commerce and Agriculture is accepting applications for the position of Secretary through Friday, June 10. Applicants preferred with typing and bookkeeping skills. 3-22s-1tc

**MULESHOE POLICE** Department Accepting applications for Secretary: Requirements: Must type 60 WPM or better; Previous secretarial experience; Able to learn dispatching duties; Residency requirement. Apply in person only, NO PHONE CALLS 215 E. Avenue B, Muleshoe Equal Opportunity Employer. 3-22t-3tc

**MULESHOE POLICE** Department accepting applications for Dispatcher. Require mature and responsible individual. Must be able to type and work evening and midnight shifts, Residency requirement. Apply in person only. Monday thru Friday, 8 a.m. to 5 p.m., 215 E. Avenue B. (NO PHONE CALLS PLEASE). Equal Opportunity Employer. 3-22t-3tc

**WORK AND TRAVEL FREE!** Cruiseships and airlines need help, all occupations. For information call: 602-998-0426 Ext. 722. 3-21s-3stp

### 8. REAL ESTATE FOR SALE

**FOR SALE:** 3 bedroom, 2 full bath, patio, den with fireplace, kitchen with complete built-ins. Lots of trees on 1 acre. Call 272-3318. 8-22s-tfc

**FOR SALE BY OWNER:** 3 bedroom, 1 bath, large kitchen, dining room. Large den with corner fireplace, sliding patio doors. Approximately 1650 sq. ft. Very reasonable. Call after 6 p.m. 272-3576. 8-20s-tfc

**EXTRA NICE** 3-1/4-1. New carpet, paneling through out. Screened in patio. Call 4541 or 5671 after 5:00 p.m. Ask for Debby. 8-13t-tfc

**IDEAL 90'** lot for mobile home or double wide mobile home and 50' lot, 2 and 3 BR houses. 272-4732 days, 272-4827 nights and weekends. 8-10t-tfc

**FOR SALE BY OWNER:** 3 br, 2 bath brick home. Fireplace, carpeted garage. Beautiful yard & covered patio. Close to high school. 272-3402 or 272-3839. 8-19s-tfc

**HOUSE FOR SALE:** To be moved. Approx. 900 sq. ft. 965-2303. 8-21t-4tp

**MUST MOVE SOON - PRICE REDUCED FOR QUICK SALE-** by owner, 3 bedroom, 1 bath home. Located on corner lot, fenced back yard, storm windows, siding and much more priced in mid 20's. Assumable 10% loan. Call 272-5193, 522 W 8th. 8-22t-4tc

**HOUSE FOR SALE:** 2350 sq. ft. 3 bedroom, 2 baths, formal living room, den with fireplace, dining room, kitchen, laundry room with sewing center, basement, double car garage, patio, storage shed, 2 lots. Located 1 1/4 mile east from Earth, Texas on hwy 70. Call (806) 257-3785. 8-14s-tfc

**KREBBS REAL ESTATE**  
 If it's Real Estate you want, we have it or can get it.  
 -Appraisals-  
 Tele. 272-3191-office and residence  
 8-16s-tfc

**SMALLWOOD REAL ESTATE**  
 Phone 272-4838  
 P.O. Box 602  
 Muleshoe, Texas 79347

3 Bedroom, Brick, 2 bath Living Room, Den, Fireplace, 2 Car Garage Fenced back yard.

3 Bedroom, 2 Bath, Brick, Refrigerated air, Fenced back yard, 1 Car Garage

23,000 sq. feet Brick, 3 Bedrooms, 2 Bath, Living room, Den with fireplace, 2 Car Garage, Nice

Country living, Stucco, 3 Bedroom, 1 & 1/2 bath, Central heat, Refrigerated air, 2 Car Garage, Storm Cellar, Fruit trees, and Grape Vines.

2 Bedroom, Small down payment \$152.00 MO., New Paint.

2 Bedroom, 2 Bath Duplex for rent. 8-14s-stfc

Life would be very simple if more people were willing to be themselves.

### 8. REAL ESTATE FOR SALE

**FOR SALE:** 3 bedroom house, 2 baths, patio, carport. Call 272-4085. 8-14t-tfc

### TOWN and COUNTRY Real Estate

**INVEST FOR THE future.** Commercial building located downtown on Main Street.

Country Club addition with Elegance you can afford. 3-2-2 brick ref. air, fireplace and much more.

Gracious living in this spacious 2-2-2 fireplace in excellent condition located in Lenau Additions finest area.

Super neighborhood 3-2-1 brick home with 2 living areas just waiting for you.

Need an office at home? 2-1 1/2 offers just that plus RV shed in rear moderately priced.

Large kitchen with lots of storage. 3-2 carport, modest area great for growing family.

**PLACE YOUR LISTINGS WHERE THE ACTION IS! CALL US.**

John W. Smith  
 806/272-5335  
 223 East Ave. B  
 Muleshoe, Tx 79347  
 8-22s-tfc

**AMERICAN VALLEY INVESTMENTS REALTORS**

**HOMES-**

VA/FHA APPRAISAL--has been provided. New Home. Extra Nice. 3 Bedrooms, 1 1/2 Bath, Double Car Garage. Fireplace. Cathedral Beamed Den.

**COUNTRY LIVING - CITY CLOSE --** Beautiful Home and Barn. Located near City on 32 Acres. Land and Home Priced Separately.

**TRADE COUNTRY HOME FOR CITY HOME-** Beautiful 3 Bedroom Home, 1 1/2 Bath, Double Car Garage. Located on 15 Acres West of City. Planted in Alfalfa. Barns, Corrals, Fruit Trees. Lots of Extras. Will trade for home in Muleshoe or Farwell.

**LESS THAN \$20,000 --** 3 Bedroom, 1 Bath. Large Fenced Yard.

**PRICED RIGHT --** 3 Bedroom, 1 Bath. Fenced Yard. \$12,500.00.

\*\*\*\*\*

**CUSTOM-BUILT HOMES**

City or Country  
 Your Plans or Ours

\*\*\*\*\*

**Farms-**  
 Interested in an All Weather Runway, Lots of Hanger Space, 5000 sq. ft. Office Space? Interested in buying something Worth the Money? Let's look at this one.

Small Acreage close to Town. Railroad Frontage. Good Well. Lots of Depreciation.

8 Acres at Progress. Good Well. Planted in Jose Wheat Grass. Lots of Pens, Barns, and Good House Well.

640 Acres. 6 Wells. 2 Electric Valley Pivots. 6 Side-rolls. Ideal for Grazing Operation.

\*\*\*\*\*

**VETERANS LAND PROGRAM**

Low Interest-----40 Years  
 \$20,000.00-----5% Down  
 No Long Waiting List!

\*\*\*\*\*

272-4266

Thursie Reid-----272-3142  
 Karen Harris-----272-5183  
 Lucille Harp-----272-4693  
 Rex Harris - Broker John Craig - Builder

8-22s-stfc

### 9. AUTOMOBILES FOR SALE

**FOR SALE:** 1974 Honda 750 low miles, vetter fairing, back, white with black and gold trim. New tires, new mufflers. Call 272-3538 after 7:00 p.m. 15-22s-4tc

**FOR SALE:** 1980-F150 Ford 1 ton P.U. 4WD-w/automatic. Lock out holes, AM-FM 8 track, Mag wheels, dual exhaust. Black and Silver. \$7,000. 51,000 miles. Call 272-5317, after 6 p.m. 9-tfc

### 8. REAL ESTATE FOR SALE

**JIMMIE CRAWFORD REAL ESTATE & INS.**  
 1725 W Ave E  
 Muleshoe, Texas  
 Phone 272-3666

4-2-2 with fireplace in Richland Hills.

3-1 1/2 with carport in Lenau Addition.

3-2-2 with assumable loan in Parkridge Addition.

2-1 with carport on Ave B

3-1 1/4-2 with den and office by High School.

2-2 Trailer House on 5 acres at Progress.

8-17s-stfc

### BINGHAM & NIEMAN REALTY

116 E. Ave. C  
 272-5285\*\*\*272-5286

**JUST LISTED -** 3-1/4-2 home, corner lot, Cent. A&H, built-ins, nice carpet, fenced yard. Buy Equity & Assume...

**IMMACULATE -** 3-2-2 (carport) Brick home, approx. 1800 sq. ft. of living area decorated in earth tones, Cent. A&H, built-ins, fireplace, abundant storage, & a beautifully landscaped yard...

3-2-2 Brick, Cent. heat, fenced yard, approx. 4 yrs. old, immaculate condition. Only \$43,500!!

**NICE COUNTRY GROCERY** plus 2-1-1 home & an approx. 24'x30' barn all on 1 acre, located on Fm.-Mkt. Crossroads - \$40,000...

**RICHLAND HILLS -** 3-1 1/4-2 Brick, built-ins, fireplace, fenced yard. Nice location & priced to sell...

**LENAU ADD. -** 3-1-1 home, freshly painted interior, new roof, nice patio, fenced yard. A good buy!!!

**PARKRIDGE-3-2-2** Brick, Cent. A&H, built-ins, sunken den with fireplace, only 4 yrs. old. Buy equity & Assume!!!

**LENAU ADD. -** 3-1 plus 1 car carport on corner lot, nice earth tone carpets, fenced yard. Let's look today...

**RICHLAND HILLS -** 3-1 1/4-1 Brick, Cent. A&H, built-ins, close to school. **PRICE REDUCED FOR QUICK SALE!!!!**

**HIGH SCH. -** 3-2-2 Brick, built-ins, fireplace, isolated m... room, loads of closet and storage space, plus storm cellar!

**RICHLAND HILLS-3-1 1/4** Brick, built-ins, fireplace, very nice, & reasonably priced...

**"WE APPRECIATE YOUR BUSINESS"**

George & Dianne Nieman  
 8-22s-stfc

**FOR SALE:** 1972 Honda SL-350. On-off road bike. Call 272-5282 or 272-5531. 15-21t-4tc

**FOR SALE:** 1975 Volkswagen Rabbit. Good condition. Call after 5 p.m. 272-4903. 9-19t-8tc

### 10. FARM EQUIP FOR SALE

**FOR SALE:** Combine 995 new Holland. 22 ft. header V-8 gas engine. Hydrostat, air cond. Good machine. \$7500.00 Phone 806-364-3500, Hereford, Tx. 10-22s-4tc

**FOR SALE:** Avenger 3-Wheel hoe hands with spray tanks attached. Call First National Bank 272-4515. 10-21t-tfc

### 11. FOR SALE OR TRADE

**FOR SALE:** Pickup shell from 1973 Ford Ranchero. White. Like new. Roll outside windows, locking rear windows. Call 272-3297, after 5:00 p.m. 9-22s-4tp

69 FORD CAMPER SPECIAL. Self contained, fully loaded. Sleeps 6. 927-5423. 15t-9-tfc

### 8. REAL ESTATE FOR SALE

**WANTED:** Used Honey Extractor. 272-4536. tfc

**ALEX'S TIRE SERVICE** For service 24 hours a day telephone 272-5012 or Mobile 965-2242. 224 East Fourth Street, Muleshoe, Tx. 79347. 15-5s-stfc

**PRICE REDUCED -** 3-2-2 home on 1 acre, loads of storage, built-ins, & located on pavement close to town!!!

**RICHLAND HILLS -** 3-1 1/4-1 Brick, built-ins, Cent. A&H, fenced yard, close to school, & REASONABLY PRICED...

**HIGH SCH. -** 3-1 1/4-1 Brick, Cent. A&H, built-ins, beautifully decorated, immaculate condition, plus nice storage bldg. Don't Miss This One!!!

**LENAU ADD. -** 3-1-1 home on corner lot, work, & storage area, utility room, fenced yard, & an ideal garden area...

**CLOVIS HWY. -** PRICE REDUCED-3-1 home & 2-1 home on approx. 4.4 acres, fenced, sprinkler system. Nice little truck or stock farm!!!

**COUNTRY CLUB-3-1/4-2** Brick, Cent. A&H, built-ins, & nice fenced yard..

4 Bdrm., 1 bath home on 5.3 acres, 5 hp. sub. pump, irrig. pipe, tractor & equip., & approx. 28'x30' barn!!!

**CLAYS CORNER -** 3 bdrm. home on approx. 3.5 acres on Hwy. 214...

4-1 1/4-2 home, totally remodeled in earth tones, Cent. A&H, and only \$39,600!!!

4 homes (2 bdrm. - 1 bath), excellent rent property. **PRICED TO SELL!!!**

**HIGH SCH. -** 3-1 1/4-2 Brick, Cent. A&H, built-ins, fireplace, fenced yard, insulated storage bldg., & Much More...

We also have a good selection of farms & commercial property listed. Check with us for details on these listings.

### HONEY FOR SALE

Nick Landers  
 334 W. Ave. J.  
 272-3096  
 15-5t-tfc

### PIANO FOR SALE

Wanted: Responsible party to assume small monthly payments on spinet/console piano. Can be seen locally. Write: (include phone number) Credit Manager, P.O. Box 478 Lockhart, TX 78644-0478. 12-21t-6tp

### 12. HOUSEHOLD GOODS

**WE BUY USED FURNITURE AND APPLIANCES**  
 CALL 272-3030  
**HARVEY BASS APPLIANCE**  
 15-5t-tfc

### 15. MISCELLANEOUS

**GARDENER'S:** Use our Special Plant Food - designed specifically for Special Gardeners. Baker Farm Supply, 1532 West American, 272-4613. 15-12s-tfc

**NEED YOUR lawn mowed?** Call 272-3845. 15-22s-2tp

**FRANK'S REFRIGERATION APPLIANCE & SERVICE: PARTS & REPAIR**  
 315 W. 3rd. Ph. 272-3822  
 15-5t-tfc

**WANTED:** Used Honey Extractor. 272-4536. tfc

**ALEX'S TIRE SERVICE** For service 24 hours a day telephone 272-5012 or Mobile 965-2242. 224 East Fourth Street, Muleshoe, Tx. 79347. 15-5s-stfc

**REMODELING-** Sears top of the line complete set of Oak kitchen cabinets. New Pre-finished, includes all hardware, valance and filler strips. 10 ft. Contoured butcher block counter top. Call nights, 272-4903. 12-22s-stfc

**FEED YOUR TREES** Use Pecan and Fruit Tree Food from Baker Farm Supply. 1532 West American, 272-4613. 15-12s-tfc

**WANTED TO BUY:** Several baby prairie dogs. Will pay \$10.00 each. 124 W. 6th, 272-3354. 15-21t-4tp

**HOME REPAIRS.** F.M. Saldana Construction. Licensed and bonded plumber. Specialize in cement, carpenter work, remodeling, painting, acoustical ceilings. 272-4955. 15-16s-tfc

### 16. LIVESTOCK

**HEREFORD** Hereford, Texas

**CATTLE COMM. CO.**  
**First Sale**  
**June 14th**  
 Weekly Cattle Auction  
 Every Tuesday

### 16. LIVESTOCK

**HEREFORD** Hereford, Texas

**CATTLE COMM. CO.**  
**First Sale**  
**June 14th**  
 Weekly Cattle Auction  
 Every Tuesday

5 miles Southwest of Hereford  
 Box 1804 357-2272

16-22s-2tcts Steve Hodges Mgr.

**STORAGE ROOMS FOR RENT**  
 \$25.00-\$30.00  
**TED BARNHILL**  
 272-4903  
 15-14s-stfc

**FOR SALE: METAL BOXCARS.** Excellent storage. Call Bennett Trucking Co. Clovis, N.M. 505-763-5501 9 a.m. - 5 p.m. Also for all your house and heavy hauling, call us. 15-22s-5tpts

**REPOSSESSED SIGN!** Nothing down! Take over payments \$58.00 monthly. 4"x8" flashing arrow sign. New bulbs, letters. Hale Signs. Call FREE 1-800-626-7446, anytime. 15-22s-2tp

**CONCERNED** about someone's drinking **HELP IS AVAILABLE** through Al-Anon Call 272-2350 or 965-2207 or come to visit Tuesday nights, 8:30 p.m. at 1116 W American Boulevard, Muleshoe. 1-18s-tfc

### 17. SEED AND FEED

**FOR SALE:** Cottonseed with 90% germ, treated with Vitatex and Capitan. Phone 925-6421. 17-18t-tfc

### TOO LATE TO CLASSIFY

**FOR SALE:** 82 Ford Club Cab P.U. Loaded, 19,000 miles. 60 gallon propane tank. \$9,500. 272-3921. ttc-21t-tfc

**FOR SALE:** 100 tons of Oat Hay. Call 946-3664. If no answer 272-3342. ttc-22s-tfc

6 Family Garage Sale. 520 W 5th St. Friday-Sunday, June 3-5. Lots of clothes and miscellaneous. ttc-22t-1tp

### AFTER DEADLINE???

You can call 272-4536 until 5:30 p.m. on Friday and Tuesday and get your WORD AD in TOO-LATE-TO CLASSIFY in the next issue!!! Tuesday for Thursday and Friday for Sunday

### 16. LIVESTOCK