

## White cane day, is sight conservation day for Lions

YOUR PRECIOUS GIFT OF SIGHT

It is difficult for those of us who are fortunate enough to enjoy good eyesight to realize the tremendous handicap which is imposed upon a blind person. The tragedy of blindness is impressive when it strikes someone near and dear to us. We become aware of the importance of preventing blindness and of making urgent efforts to help restore vision to those unfortunate people who are relegated to a world of darkness.

In recent years, tremendous strides have been made by medical science in preventing and in curing blindness due to certain causes. Newly developed surgical techniques require the use of eye tissue which can be grafted or transplanted from a normal eye to a diseased or injured eye.

### CORNEAL TRANSPLANTATION (KERATOPLASTY)

1. Penetrating: The cornea or front "window-pane" of the eye can become cloudy from injury or disease thereby shutting out light and resulting in poor vision or blindness. This opaque window can be replaced by a clear healthy one and sight is restored in many instances.

2. Non-Penetrating (Lamellar): If the cornea (window-pane) is cloudy in only the outer part of its thickness, this section can be replaced by a partial thickness of clear healthy cornea to improve or restore sight. This operation does not involve complete removal of the cornea but only the layers clouded or diseased. It is

valuable not only in aiding vision but also for replacing corneas suffering from active disease which disable the patient. Corneal disease (keratitis) is common today especially from viruses (fever-blister type) for which no medicine will help.

### VITREOUS IMPLANTATION AND TRANSPLANTATION

The bulk of the eye (in back) is filled by a jelly-like material called vitreous. Loss of this substance in persons with complicated detachment of the retina (when the photo-sensitive layer peels off like wall paper) may often be helped by implanting (or injecting) healthy vitreous together with a sealing operation. This method may prevent blindness or often restore sight to a blind person.

In some other cases of blindness due to cloudiness of the vitreous fluid from hemorrhages caused by injury or disease, the cloudy "muddy" gel can be withdrawn and clear healthy vitreous can be transplanted, restoring vision in some cases.

### THE EYE BANK PROGRAM

#### What is an Eye Bank?

It is an organization formed to collect human eyes and to distribute them to hospitals where a cornea is needed for grafting or transplantation. It also stores the vitreous fluid for use in retinal detachment operation or transplantation.

#### How are eyes obtained?

Eyes are removed from persons after death who have generously authorized this use

while living. What donated eyes can be used?

Any eye from any age person can be used. Even those who have had a cataract operation or a corneal transplantation.

#### Does sex, color or creed matter?

No. All religions have approved the procedure.

#### Does removal of eyes mar the appearance of the body?

No. Enucleation (removal) of eyes is carefully done and modern morticians close the eyes skillfully so that they appear normal.

#### Can eyes be donated if the donor wears eyeglasses?

Yes. This does not affect the use of the healthy clear corneal tissue.

#### Who will get the eyes?

Eyes cannot be designated for a specific person. They are used for the next patient on an eye surgeon's list. In the event a patient is not available within the time limit needed to use the fresh tissue, the cornea and vitreous are preserved and stored for later use or shipped elsewhere (they have even been sent to foreign countries). If a donated eye is diseased or

cannot be used for grafting, it is carefully studied in research to help find causes and cures for blindness.

#### Is there a charge for eyes?

No. Eye Banks furnish eyes free to patients and hospitals needing them. They are never bought or sold.

#### How may eyes be donated?

By signing a donor form, notifying your next of kin of your desire and by informing your family physician of your action. They should not be willed, as they must be removed shortly after death, before the will is read. This program can easily be expanded to friends and relatives of our members.

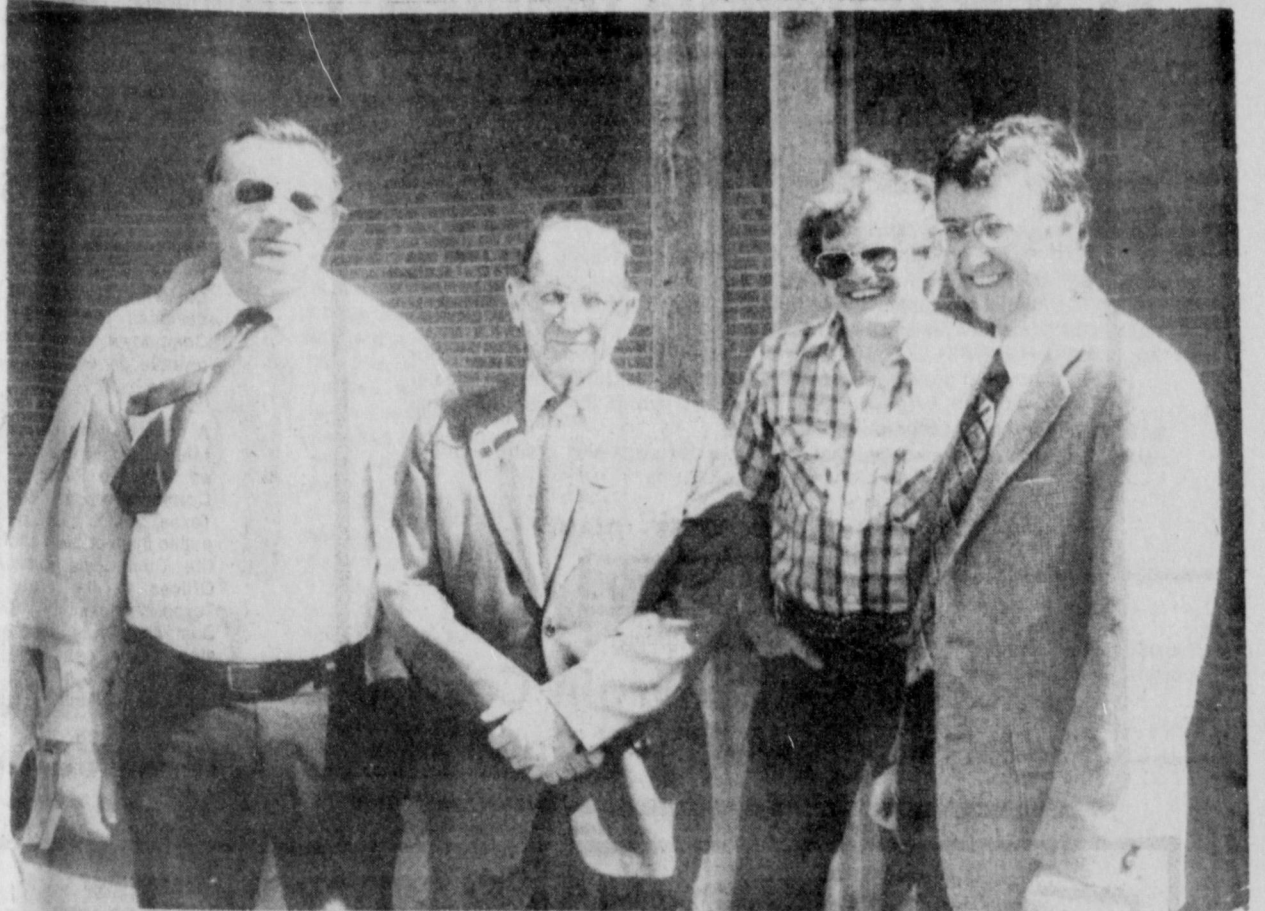
#### How does the Eye Bank work?

The Eye Bank must be notified immediately after death (day or night) by relatives or the family physician. The Bank then takes care of all arrangements with no delay.

#### FOR INFORMATION:

On Corneal Transplants, Contact your local Lions Club or the office below.

Hi-Plains Eye Bank Inc.  
OFFICE: 2200 West Seventh,  
Amarillo, Texas 79105, P.O.  
Box 1110, Phone 806-373-4004.



LIONS (Buck) Newell, Lion Young, Lion Snider and Lion Oakes "show off" their bright eyes, even with the dust blowing here Tuesday! Lion Young brought the program at the Tuesday noon Lions Club, about the "Eye Bank" sponsored by the Lions Clubs of this area! The Club will have their "WHITE CANE DAY" this Saturday, and all this month, to help get donations for the Eye program! Be sure and donate to this worthy cause!

# The Spearman Reporter

VOL. 71, NO. 19

THE SPEARMAN REPORTER, SPEARMAN, TEXAS 79081

THURSDAY, MARCH 20, 1980

## John P. Armes announces candidacy



JOHN P. ARMES

Mr. John P. Armes, of Gruver, has authorized the Spearman Reporter to announce his candidacy for Commissioner of Precinct #3, Hansford County, in the Democratic primary.

Mr. Armes is a farmer and rancher and has lived in Hansford County for the past 24 years. He has lived in Precinct #3 for 20 years.

Mr. Armes is married to the

former Jean Crable and has two daughters - Mrs. David Fletcher, of Gruver, and Darla, a student in Gruver High School; two sons - David who is married to the former Kelly Harper, of Spearman and Justin. He also has two step children - Mrs. Connie Clother, and Steve Crable.

Mr. and Mrs. Armes are members of the United Methodist Church of Gruver. He is finishing his sixth year on the Board of Trustees, Gruver School District, but is retiring April 5th. He has been on the Board of the Hansford County Stock Show for approximately 8 years. He is also on the Board of Directors of the Equity Elevator.

Mr. Armes has been particularly interested in the youth of the county and has always participated in and been concerned with their activities. He has always given generously of his time and means to help any worthwhile organization.

In announcing his candidacy, Mr. Armes stated that he is aware of the extreme responsibility of the County Governing body. He has been a tax payer for many years and pledges himself to keep local taxes as low as possible, consistent with adequate management. He is aware of the need to pay salaries to attract and hold efficient employees and officials. He further states that he is concerned with the responsibility and operation of the hospital.

Mr. Armes is knowledgeable concerning the new taxing assessment requirements and is aware of the confusion during this transition period. He would expect to cooperate with the new tax assessment board and

## Economic Study On Alcohol

Five Board members of Northwest Texas Grain Products Cooperative attended a meeting in Washington, D.C., Monday and Tuesday, March 3-4, to hear a preliminary economic feasibility report regarding a cooperative processing plant which would produce alcohol as its primary product. They were Tommy Harbert, President, Jim Dowdy and Jimmy Wells of Dumas, R.C. Porter of Spearman and Marion Garland of Sunray.

The report, covering both economic and technical aspects, of a grain alcohol plant was prepared for a number of mid-states cooperatives. Northwest Texas Grain Products Coop purchased rights to utilize the study in their planning. The study was conducted by Arthur D. Little, Inc., an internationally known consulting firm, headquartered in Cambridge, Mass.

"This initial report was very favorable," Mr. Tommy Harbert said. "We will present a refined report of the information we received to our Board and members, so that we can determine if and how soon we should proceed to contract for a site specific study."

The overall study was based made every effort to keep the taxes fair and equitable.

It is Mr. Armes' intention to contact as many voters as possible between now and the Democratic Primary. He will sincerely appreciate any effort and influence by the voters on his behalf.

on technical knowledge that exists and is available today for a non-specific location. Particulars for the later site specific study will relate to locations and gains to be utilized from this area.

"In some ways this additional report was far more optimistic about producing alcohol from cereal grains," Mr. Harbert said. "But, in other ways it raises questions that deserve further study. However, it looked much better than we anticipated."

"In addition, a great degree of success and profit for our cooperative members, rests with the successful passage of the four-cent subsidy now being considered by Congress. This bill would extend the present four-cent subsidy up to 1992," Harbert said.

While in Washington, members of the Coop and other Texas farmers visited with the Texas Delegation to urge their support of the continuing subsidy.

"It appears that the vote by Congress on the subsidy will occur the last of this month. If that vote is in our favor," Harbert said, "Then we will proceed with our site specific study very quickly."

The actual oral presentation by Arthur D. Little, Inc., concerned basic distillation, engineering, size efficiencies and similar facts regarding a grain alcohol plant. The report also included grain analysis, composition, and the secondary by-products, distillers dried grains.

"We feel," Harbert said,

"that with the passage of the four-cent extension subsidy we are going to go to a site specific study with membership approval within a very few weeks."

### MATTIE RUTH GRIGSBY SERVICES HELD

Mrs. Mattie Ruth Grigsby of Spearman, 74, died Tuesday in an Amarillo hospital.

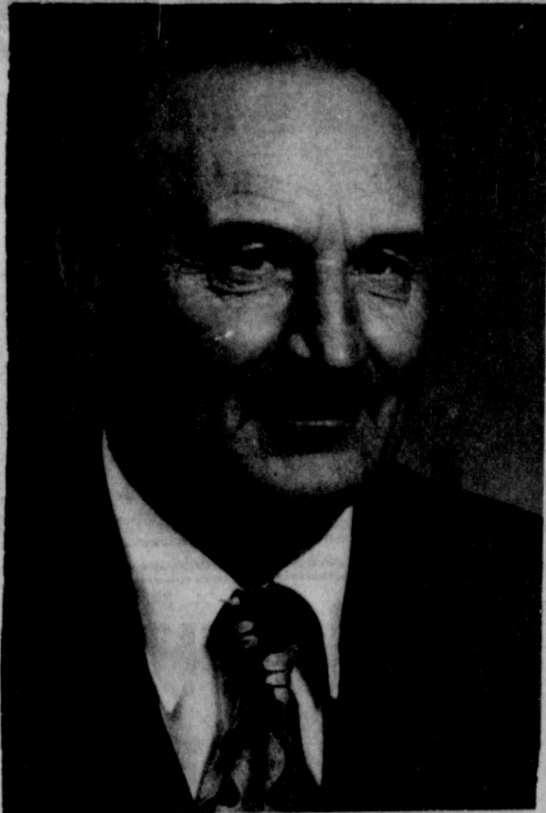
Services were held at 2:30 p.m. Thursday in the First Baptist Church here. The Rev. Russell Pogue, pastor, and the Rev. Frank Oglesby, pastor of First United Methodist Church officiating. Burial was in Hansford Cemetery by Boxwell Brothers Funeral Directors.

Mrs. Grigsby was born in Madison, Mo., and moved to Spearman in 1921. She was a member of First Baptist Church. She married Cap Richardson in 1923 in Spearman. He died in 1959. She married Pate Grigsby in 1964 in Spearman. He died in 1979.

Survivors include three sisters Mrs. Norma McCarty of Wichita Falls, Mrs. Mable Edwards and Mrs. Dot Jenkins, both of Spearman.

SPECIAL WEATHER BULLETIN: The wind will blow today, and chance of rain tonight!

## Webb Announces Candidacy For State Representative



J. T. WEBB

J. T. Webb, former county official in both Ochiltree and Roberts counties, has announced that he is a candidate for State Representative of the 64th District. He will be running in the May Democratic Primary.

Webb, currently a resident of Miami, served one term as an Ochiltree County Commissioner, from 1973 through 1976. In the early 1950's, he served a

See WEBB Page 4

# Annual Junior Livestock Show March 21-22

The annual Hansford County Junior Livestock Show and Sale has been scheduled for March 21 and 22 in the County Barn at Gruver.

Events will begin with the weigh-in Friday morning at 8:30 a.m. according to Layton Barton County Extension Agent.

The show will begin at 2 p.m. Friday with lambs, with market hogs to follow the lambs. On Saturday at 8:30 a.m. the steer show is scheduled to begin.

At 11 a.m. Saturday registration for the Judging Contest will be held and the Judging Contest is scheduled for 12 noon.

At 6 p.m. Saturday the presentation of awards and sale is set to begin.

Hansford County 4-H youth exhibiting the show this year include Steers, Chad Clawson, Ty Williams, Trevor Williams, Todd Williams, Mepdy Gam-

mon, Roy Don Gammon, Chad Logsdon, Dennis Hartranft, Kristi Burton, Tracy Saltzman, Christi Burton, Debbie Burton, Rex Shook, Brent Wagner all of Gruver and Shanna Reid of Spearman.

4-H youth showing breeding gilts are Doug Garrett, Durward Cator, Tina Cator, Debbie Burton, Christie Burton, Dee Virden and Mepdy Gammon, all of Gruver, Curt Porter and Wayne Groves of Spearman.

4-Hers showing market hogs will be Mepdy Gammon, Bret Hobbs, Clay Hobbs, Raymond Barber, Dee Virden, Clay Smith, Sissy Smith, Rodney Dale Clawson, Debbie Burton, Christie Burton, Scott Haggard, Tina Cator, Marshall Cator, Durward Cator, Melanie Morris, Chris Morris, and Ken Prachar, Hunter Novak, Kurt Spoonmore, Pam Porter, Curt Porter, Tammy Nollner, Wayne Groves, Anne Marie Jarvis,

Will Jarvis, Cindy Dowdy, Cayla Eaton, Johnnie Eaton, Lynette Williams, Doug Hoheritz and Angie Francis all of Spearman.

4-H Lamb exhibitors will be Mepdy Gammon, Roy Dan Gammon, Tracy Logsdon, Davonna Cator, Loyd Cator, Debbie Burton, Christie Burton, Donnie Hartranft, Monty Hawkins, Scott Henderson, Brian DeCamp, Chris Morris, Melanie Morris, Cindy Hartranft, Tina Cator, Durward Cator, Marshall Cator, Scott Haggard, Clay Barkley, Cliff Barkley, Greg Haight, Dale Red, all of Gruver and Will Jarvis, Anne Marie Jarvis, Monte Beck, Lynette Williams, Brooks Beck, Edward Beck, Ken Prachar, Chad Guthrie, Kim Nelson, Kevin Nelson, JoAnne Odegaard, Tiki Jackson all of Spearman.

Spearman FFA will have 75 entries in the show this year according to Herman Boone, ag

instructor. There will be 7 steers, 22 lambs, 43 barrows and 3 gilts.

Showing steers will be Ron Clark, Angus; Clay Ried, Crossbreed; Rex Reid, Crossbreed; Tracy Vernon, Angus; Karl Smith, Crossbreed; Scott Strawn, Crossbreed; and Shelly Strawn, Crossbreed.

Showing lambs will be Ron Clark, Suffolk; Roger Close, Suffolk; Cam Collingsworth, Suffolk; Brad Guthrie, Suffolk; Jan Hartsell, crossbreed; Danny Jones, Suffolk; Kermit Mahanay, Suffolk; Kerry McMullan, Dorset; Jeff Nicholson, Hampshire; Greg Odegaard, Hampshire; Toby Phillips, Hampshire; Charlie Salgado Suffolk; James Scroggs, Hampshire; Scott Strawn, Suffolk; Shelly Strawn, Crossbreed; Shane Sumner, Hampshire; Gary Thomas, Suffolk; Ricky Torres, Suffolk; Cole Umphress, Hampshire; Anselmo

Vela, Suffolk; John Weakley, Dorset; and Richard Weakley, Hampshire.

FFA members showing breeding gilts will be Tracy Vernon, Duroc; Clay Reid, Hampshire; and Greg Meisner, Duroc.

FFA market barrow exhibitors include Shawn Swenn, Lori Swenn, and Alvin Byers, showing Chester White; Billy Underwood, Greg Mesner, Steve Tindell, Steve Widener, Hank Sutterfield, Mike Dixon, Tracy Vernon, Jimmy Snider, Robert Breeden, Wayne Cook showing Durocs; Kermit Mahanay, Sam Nitschke, Ed Whitefield showing Yorkshire; Dayton Edwards, Roger Buchanan, Clay Reid, Andy Francis, Eddie Clements, Cary Collingsworth, James Scroggs, Jack Crowl and Mike Owens showing crossbreeds; Scott Davis, Jerry Ross and Jimmy Nicholson showing Spots; Ron Clark, Todd Ware,

Steve Francis, Mike Cudd, David Pearson, Van Hamilton, Clint Graves, Dennis Randall, Robert Cantu, Melvin Willis, Mary Martin, Greg Odegaard, Troy Queen, Jay Pack and Rory Sheppard showing Hampshires.

Gruver FFA exhibitors are Scott Dahl, Shelly Lackey and Chris Cooper showing steers; Todd Williams, Ty Williams, Scott Dahl showing heifers.

Breeding Gils exhibitors are Jody Bradford, Cross; Kristi Holt, Russell Tiner, Spot; Rhonda Boone, Duroc; Roy Don Gammon, Hamp; Beau Robinson, Hamp, Scott Henderson, Hamp.

Showing Barrows, crossbreeds are Scott Atwood, Mike Barber, Brian Sparks, Don Dillow, Beau Robinson, Scott Henderson.

Phillip Fry will be showing a Chester Barrow; James Heddins, a Spot Barrow; Eldon

Sparks, Darin Winger, York Barrow; Mike Grotegut, Shelly Lackey, Larry Lackey, Kyle Williams, Rhonda Jo Boone, Wayne Davis, Jim Martin, Tom Brandvik, Durock Barrows, Jody Bradford, Todd Winders, Don Hartranft, Bart Stevens, Alan Gilbreath, Roy Don Gammon, Ty Williams, Rex Shook, Sammy McLain, Russell Tiner, Todd Williams, Rickey Renteria, Steve Hansen, and Robert Renteria.

Showing lambs will be Kyle Williams, Joel White, Tom Brandvik, James Red, Russell Tiner and James Heddins, Suffolk; Randy Washburn, Rhonda Jo Boone, Hamp; and Scott Atwood and Scott Dalh, Dorsets.

Judges for the show this year are Dr. John McNeil, Amarillo, Sheep; Larry Tackitt, Happy, Swine, and Joe Lewis, Larned, Kansas, Steers.

## Charles Lieb Services Held

Services were held at 3 p.m. Tuesday at the Morse School Auditorium for Charles Ernest Lieb, 91, who died Saturday in Hansford Hospital. The Rev. T.F. Pittman, pastor of Primitive Baptist Church, officiated. Burial was in Lieb Cemetery by Minton-Chatwell Funeral Directors of Borger.

Mr. Lieb, born in Stevens County, was a longtime rancher and farmer in the Pringle Community. He was a Hutchinson County resident 80 years. He and his wife, Ruby, were married in 1911.

Survivors include his wife; two sons, A.A. "Dean" Lieb and W.M. "Pete" Lieb, both of Stinnett; and six grandchildren.



# if you haven't planted **CONTI-SEEDS** this is your year!

The thinking, planning and decision making that goes on before you buy your seed is one of the most important steps in your production program. And that's where Conti-Seeds<sup>SM</sup> growers take the lead.

There is a Conti-Seeds<sup>SM</sup> high-yielding hybrid right for your soil and growing conditions. And there is a Conti-Seeds<sup>SM</sup> dealer who can help you select the best hybrid for your individual growing program.

Make this year your best year for corn and grain sorghum production with Conti-Seeds<sup>SM</sup> hybrids.

why settle for less - plant

## **CONTI-SEEDS**

Your Conti-Seeds<sup>SM</sup> Dealer Is

**Continental Grain Co.**

733-2481

Gruver, Tx.

### Statement Of Intent To Change Rates

General Telephone Company of the Southwest, in accordance with the Rules of the Public Utility Commission of Texas, hereby gives notice of the Company's intent to implement a new schedule of rates in Texas effective April 1, 1980.

The proposed changes in rates will affect all customer classes and are designed to increase the Company's gross annual revenue derived from local service by 37%.

A complete set of revised rate schedules has been filed with the Public Utility Commission at Austin, Texas, and is available for public inspection in each of the Company's Business Offices in the State of Texas. A summary of the Company's rate filing has also been sent to the Mayor's Office of each affected municipality.

**GTE**  
GENERAL TELEPHONE

## PUBLIC NOTICE

In accordance with the regulations of the Public Utility Commission of Texas, Community Public Service Company announces the Company's intent to change the Panhandle, Central, and Northeast divisions' rates effective March 28, 1980. It is estimated that the rate change will furnish a 17.69% increase in gross revenue.

A complete copy of the requested rate schedule is on file with the Public Utility Commission at Austin, Texas and with all cities served by Community Public Service Company in its Panhandle, Central, and Northeast divisions and is available for inspection during normal business hours at each business office of Community Public Service Company in your area.

**COMMUNITY PUBLIC SERVICE**  
An investor-owned, tax paying Electric Light and Power Company

Moose Lodge 2212  
**BINGO**  
Every Wed. night  
7:45 p.m.  
Must be 21 years old.  
Everyone Welcome  
6-rtn

### INSURANCE

LIFE • HEALTH • AUTO  
FARM • HOME  
MOBILE HOMES  
Elroy Wisian  
501 E. Kenneth  
659-3875

Offered Exclusively By  
**EMMETT R. SANDERS,**  
REALTOR



Brick apartment house in top condition; 100% occupancy with waiting list; has four furnished units; great investment. Shown by appointment only, do not disturb occupants.

Small tract just west of Spearman, surface only, contains 31.7 acres. Call for details.

Reduced in Price, Dwelling and store building, small detached apartment on wide lot, ideal for professional office dwelling combined.

4 bedroom, 1 1/2 story stucco home, nice condition, near grade school; storm shelter basement; large corner lot. Ideal for large family, low budget. Shown by appointment, exclusively.

**EMMETT R. SANDERS**  
REALTOR  
659-2516  
659-2601 (nights)  
345-rtn

### TO GIVE AWAY

FREE PUPPIES, half border collie, half German shepherd. 659-2213. 18-5tc

TO GIVE A WAY - Dogs & puppies, 659-3272, 18-rtn

TO GIVE AWAY: Pretty, very gentle part persian cat. Needs a good home, female, black about 8 mo. old. Call 733-2445 in Gruver. 19-1tc

A. and A. Gas Leak Survey, Inc. Commercial, Residential, and Irrigation, GAS LEAK DETECTION Call: 659-3519 anytime, 659-3019 after 5 p. m.

Average American wage rate up 8.7% in 1979.

Come join in the Hansford County Junior Livestock Show, Friday & Saturday, March 21 & 22 at the Gruver County Barn.

### NOTICE

The deadline for filing applications for residential homestead exemptions in the Spearman Independent School District is March 31, 1980. These exemptions are available to all resident home owners. An additional exemption is available to those home owners who were 65 years of age or over on January 1, 1980.

Applications must be filed before April 1 of each year with the school tax office. Forms are available at the tax office at 403 East 11th Street, or call 659-2116.



# Ford puts its money where the mileage is.

MAKE YOUR BEST DEAL ON ONE OF OUR POPULAR HIGH MILEAGE 1980'S AND FORD WILL SEND YOU A CHECK FOR UP TO \$500.

**\$500**  
ON THUNDERBIRD



Receive a check for \$500 when you buy a new Thunderbird. Beautifully redesigned for 1980. And powered by a new, efficient 4.2 liter engine.

**\$300**  
ON FAIRMONT



Receive a check for \$300 when you buy a new 1980 Fairmont. Room for five, high mileage and a practical price have helped make Fairmont one of America's best-selling mid-size cars.

## BEST C.A.F.E.

Ford has the best Corporate Average Fuel Economy of any major U.S. car maker. C.A.F.E. is the government's measure of auto companies' progress in gas mileage each year. It is an average using the EPA rating system and projected 1980 total model year car sales mix as submitted to the U.S. government in December, 1979.

Only Ford among the major U.S. companies ranks first on this basis.

Remember, C.A.F.E. is an average, so consult EPA ratings for individual car's mileage.

\*1980 EPA ratings for comparison. Your mileage may differ depending on speed, distance and weather. Actual highway mileage will probably be lower.

## HURRY!

Take delivery between Feb. 11, 1980, and March 22, 1980, and receive a check directly from Ford Motor Company, or apply an equal amount to your down payment. Offer good at Ford Dealers only on new 1979 and 1980 Thunderbirds and Fairmonts, including dealer-owned demonstrators.

OFFER EXPIRES  
MARCH 22.

## FORD'S FUEL ECONOMY CELEBRATION.

Joe Trayler Ford

321 Main

659-2829

Spearman, Tx.

WE RESERVE THE RIGHT TO LIMIT  
PRICES EFFECTIVE MARCH 17-29, 1980  
SPECIALS GOOD WHILE SUPPLY LASTS - LIMITED SUPPLY

## TWO BIG WEEKS!

# Save into Spring SALE

SHURFRESH BUTTERMILK SWEETMILK  
**BISCUITS**  
7 8 OZ. CANS \$1.00

SHURFRESH HALFMOON COLBY  
**LONGHORN CHEESE**  
10 OZ. PKG. \$1.09

SHURFRESH QUARTERS  
**MARGARINE**  
2 1 LB. PKGS. 79¢

SHURFINE CUT  
**GREEN BEANS**  
3 16 OZ. CANS \$1.00

SHURFINE  
**FLOUR**  
5 LB. BAG 69¢

SHURFINE CREAM STYLE/WHOLE KERNEL  
**GOLDEN CORN**  
5 17 OZ. CANS \$1.00

SHURFINE  
**TOMATO SAUCE**  
6 8 OZ. CANS \$1.00

SHURFINE ELECTRIC PERK REGULAR  
**COFFEE**  
1 LB. CAN \$2.39

SHURFINE SALTINE  
**CRACKERS**  
2 16 OZ. BOXES \$1.00

SHURFINE  
**FRUIT COCKTAIL**  
2 18 OZ. CANS 89¢

SHURFINE  
**SPINACH**  
3 15 OZ. CANS \$1.00

SHURFINE GROUND  
**BLACK PEPPER**  
4 OZ. CAN 79¢

BORDEN'S HI-PROTEIN  
**MILK**  
1 GAL. CTN. 99¢

**COOKED FOOD SPECIAL**  
Brisket Sandwich each 99¢

ALLSUP'S ASSORTED  
**ICE CREAM**  
1/2 GAL. HD. CTN. \$1.39

BORDEN'S  
**SOUR CREAM**  
8 OZ. CTN. 59¢



# WANT ADS

**CAPROCK MONUMENT CO.**

Dealers of Georgia Granite, Georgia Marble, Colored Granite, & Bronze.

represented by

**BOXWELL BROS. FUNERAL HOME**

519 S. EVANS  
659-3802

**Eller's Plumbing & Sewer Service.**  
Call 882-4505 or 659-3697  
18-rtm

## MISCELLANEOUS FOR SALE

**FOR SALE:** nice school or 2nd car 77 skylark 2 dr. buick AC & cruise economical V6 3200.00 659-3436  
18-3tp

**FOR SALE:** Formal dining room suite, 1 leaf table, 8 chairs, \$900.00. Call after 5 p.m. Betty Elbert, phone 3996.  
18S-2tc

Decorator cakes & cookies for parties, special or just at home. Call Debbie at 3986 or call 3328.  
48S-rtm

**FOR SALE:** Clean 69 Ford Ranger, A-C, Auto., New tires. Call after 3:00 659-3956.  
17-rtm

**FOR SALE:** 1979 Yamaha 400 YZ 109 N. Hazelwood after 6 p.m.  
18S-rtm

**FOR SALE:** 1974 Kawasaki, 250 cc Enduro, \$400. Good condition. Call 659-3336 after 5 p.m.  
19-2tp

**FOR SALE:** 1977 Silverado Chevrolet Pickup. 350 motor, cruise, tilt, dual tanks. Good condition. Reasonable price.  
733-2112.  
19-1tc

**FOR SALE:** 77 Chevrolet, 4 dr., Impala, very clean, good gas mileage. Call 659-2497 or 2829.  
19-rtm

**FOR SALE:** Starcraft Camper, 72 model. Will sleep 6 adults. Call 435-6146 after 6:30 p.m. Excellent condition.  
19-2tp

**FOR SALE:** To be moved, small diner and contents. Call 659-2526 First State Bank, Spearman, Tx. Ask for Larry.  
19-3tc

**FOR SALE:** 1978 Yamaha 500 Enduro. Like new. Call after 4:00 p.m. 733-2853.  
19-1tc

**FOR SALE:** 1974 Ford Bronco. Call 659-3962.  
19-rtm

**REPOSSESSED STEREO,** Panasonic, with thruster speakers, only \$399! **SPEARMAN ELECTRONICS.** Phone 3858, Spearman.  
rtm-c

**FOR SALE:** 1977 Caprice 4-door Chevrolet. Call 659-2338 or 659-3434. New tires etc.  
17-rtm

## REAL ESTATE FOR SALE

**FOR SALE:** Brick Veneer House 729 Cotter Drive. 2 bedrooms, 2 bath. Nice size living room with fireplace. Glassed in sunroom. Double car garage. Priced furnished or unfurnished. Telephone 3371.  
17-rtm

## MAYFIELD REAL ESTATE

For Sale on Stinnett highway, metal commercial building on large lot.

House for sale 705 Wilbanks, 3 bedrooms, 2 baths, double car garage with elec. door, fenced yard.

John Mayfield - Broker  
435-6528 Salesperson Ruby Lair 659-3436 or 659-2188

John Mayfield - Broker  
435-6528 Salesperson Ruby Lair 659-3436 or 659-2188

**HOUSE FOR SALE:** Extra lot, sundeck, fireplace, large utility, storage shed, possible 3 bedroom, 2 bath call 659-2416 or 2117.  
18S-rtm

## HELP WANTED

**HELP WANTED:** Full time employee for irrigation farm in Gruver area. Experiences and references required. House furnished 733-2866.  
18-4tc

The City of Spearman is taking applications for a dispatcher, Relief shift. Apply at Police Dept.  
18-rtm

**NEED TRUCK DRIVER:** Local Hauling, must have commercial licenses. Must have good driving record. Call 659-3642 - Clois Baker after 7:00 p.m.  
17-rtm

## Political Announcements

The Spearman Reporter is authorized to announce the candidacy of the following candidates for public office, subject to the actions of the voters in the May Primary Election:

For Sheriff  
**JIM IVEY**  
**R.L. McFARLIN**

For County Attorney  
**JOHN L. HUTCHISON**  
**CECIL R. BIGGERS**

For State Senate, 31st District  
**BILL SARPALIUS**  
**GERALD McCATHERN**

For State Representative 64th District  
**J.W. "BUCK" BUSHANAN**  
**R.C. PORTER**  
**GLENN HARRIS**  
**J.T. WEBB**

Commissioner, Precinct #3  
**JOHN ARMES**

**CITY ELECTION**  
**ALDERMAN**  
**ED GARNER**

The City of Spearman is accepting applications for outside laborer. Apply at City Hall.  
19-2tc

**HELP WANTED:** Apply Buster's Aerial Dusters, Plains Shopping Mall, 659-3648.  
19-3tc

## BUSINESS OPPORTUNITIES

Have a highly profitable and beautiful Jean Shop of your own. Featuring the latest in Jeans, Denims and Sportswear. \$16,500.00 includes beginning inventory, fixtures and training. You may have your store open in as little as 15 days. Call any time for Mr. Wilkerson 501-329-8326.  
19-1tp

**\$356. Weekly Guaranteed.** Work 2 hours daily at home. (\$178. - 1 hour) Free Brochure - C46, Rt. 4 Box 1441Q, Odessa Texas 79763.  
13-rtm

**AN ESTABLISHED OHIO OIL CO.** OFFERS plenty of money plus cash bonuses, fringe benefits to mature lubricants Sales Representatives in the Spearman area. Lubricants sales experience and knowledge of mechanical equipment helpful but not required. Retirees looking for a second career are welcome to apply. Regardless of experience, write J. Spoons, The American Lubricants Co., Box 696 Dayton, Ohio 45401.  
17-1tc

## WANTED

**WANT TO LEASE** 360 to 640 acres of grass land within a 60 mile radius of Stinnett. Call 878-2946.  
18S-2tc

**WANTED:** Extra Good 13 1/2 to 14 ft. steel bed for truck - with or without hoist. A.W. Jones Tel. 405-938-2243.  
18S-2tp

**Priced To Sell**

Beautifully decorated with plush carpet, coordinating drapes and fixtures. 3 bedroom brick, 1 1/4 baths, good storage. Large garage, extra large lot fenced. Large sunny kitchen and dining room with parquet floor and handy pantry. See at 315 S. Endicott. Call 659-3972 after 4.

**For The Ultimate In STORM DOORS**

Custom Built, Designed, And In Colors To Fit Your Home....

Contact Howard Moyer at  
**Only Aluminum Industries**

Guymon, Okla. 114 W. 1st 405-338-6966 or 73942 338-6170

**FOR DEAD STOCK REMOVAL**

Call your local used cow dealer  
Toll Free **1-800-692-4043**  
7 Days a Week Service

**VIRGINIA WHITE** Realtor

1114 Bernice - Equite buy lovely 3 bedroom, 1 1/2 baths, fireplace, storage galva

714 Gibner - Elegant home w/4 bedrooms, 3 baths, study+living room-both w/fireplaces, great storage.

1106 Wilmeth - A FANTASTIC DREAM HOME w/ extraordinary features! living room + den w/fireplace, GAMEROOM, 2 1/2 baths, beautiful carpet & draperies.

721 Wilbanks - NEW HOME w/ 3 bedrooms, fireplace, double garage, fenced.

101 Wanda - OPPORTUNITY KNOCKS - see this 3 bedroom, 1 1/2 baths, fireplace, priced to sell.

121 Endicott - GOOD RENTAL PROPERTY. 211 Main - Office or retail building.

EXCLUSIVELY WITH VIRGINIA WHITE REALTOR 659-3841

**ROOM TO ROAM** - 4 bedrooms, 3 baths, 2 story home on 26.34 acres. Many other improvements.

**BELOW 20** - 3 bedrooms, 1 bath, large kitchen & dining area, good condition, in good location.

**GOOD INVESTMENTS** 2 bedrooms, 1 bath, large lot for commercial use.

**OWNER WILL CARRY** 3 bedrooms, 1 1/2 bath, mobile home on 50 x 140 lot.

**COMMERCIAL & RESIDENTIAL LOTS** Build a new home or start a new business on one of these prime lots.

If you missed our open house, drop in or give us a ring to see this beautiful new, 3 bedroom brick home.

**RONNIE HOOVER** 659-3696 Sales Associate

**DARYL WYNN** 658-4528 Broker

**Century 21**  
GOLDEN SPREAD REALTY

**WE'RE THE NEIGHBORHOOD PROFESSIONALS™**  
Licensed Trademark of Century 21 Real Estate Corporation, Pringd USA.  
© 1978 Century 21 Real Estate Corporation. Equal Housing Opportunity  
Each office is independently owned and operated.

**SPEARMAN, TEXAS** 659-2557

## Notice To Voters

In November, 1979, each registered voter was mailed a "white" Voter Certificate. These were (according to law) sent as "non-forwardable" mail. If you have moved and/or changed your mailing address in the past two years, your card was returned to the Registrar of Voters at the County Tax Office in the Courthouse. To receive a corrected Voter Certificate, you must come by the Tax Office and sign a change of address card. This is the only way your name may be reentered on the active voter list.

If you are not sure your name is on the Active Voter List, call 659-2371 or 3994.

Helen Dry  
Registrar of Voters

**TEXAS PRESS**  
MEMBER 1980 ASSOCIATION

PUBLICATION (USPS 509-660)  
SPEARMAN, TEXAS 79081  
213 Main Box 458 659-3434  
Published Weekly at 213 Main Street  
Spearman, Texas 79081

Owner-Publisher ..... William M. Miller  
Editor ..... Faye Lynch

Second Class postage paid at Spearman, Texas  
ANY ERRONEOUS REFLECTION UPON THE CHARACTER OF ANY PERSON OR FIRM APPEARING ON THESE COLUMNS WILL BE GLADLY AND PROMPTLY CORRECTED UPON BEING BROUGHT TO THE ATTENTION OF THE MANAGEMENT.

**SUBSCRIPTION RATE:** Hansford, adjoining counties, combination with the Hansford Plainsman, \$10.40.

Other points, \$14.40.

Lloyd's of London began in a coffee house run by Edward Lloyd when merchants pledged on paper to make good any loss.

**NORTHERN NATURAL GAS COMPANY** is accepting bids for Janitorial Services for the District Office located 9 miles south and 7 miles east of Spearman on Hwy 281. The office will need to be cleaned twice a week. This includes running vacuum cleaner, dusting all furniture; cleaning ash trays, ladies restroom, coffee room, and emptying waste baskets each visit.

TWICE a year the following will be done:  
Clean and wax all woodwork and paneling.  
Clean all windows and window shades.

If requested, Northern will furnish all cleaning supplies.

Submit written bid to: Northern Natural Gas Company  
Mr. C. A. Ellison  
Star Route #1 Box 27-A-  
Spearman, Texas 79081

Bids must be in this office by March 31, 1980.

**N** Northern Natural Gas Company

**or added home security, what's better than a watchdog, brighter than a flashlight, and more dependable than a super hero**

**The Nite-Liter**

gives extra protection to your home, by encircling your property with up to a 100-yard diameter of light. Brightly lighted property is less subject to vandalism, and also means no more stumbling in the dark. Dependable, on-at-dusk, off-at-dawn outdoor lighting costs just pennies per night. To get the added safety and security of the Nite-Liter for your home, just give us a call.

**COMMUNITY PUBLIC SERVICE**  
Your Electric Light & Power Company

## SERVICES

**SERVICE:** Pits cleaned, wet or dry. Dragline or loader. Also, dozer, grader, carry-all service. Lee Roy Mitchell, 806-733-2384, Gruver, Texas 79040.

**Pee Wee's Plumbing Service** Roto-roter, Acoustical Ceilings. Blown insulation in walls and ceilings. Appliance Service, used appliances for sale. 659-2811 or 659-3781.  
20-rtm

**KIRBY SALES & SERVICE.** New & reconditioned vacuum cleaners. Claude Newell, 912 S. Bernice.  
8-rtm

Alcoholic Anonymous meeting 8 p.m. Friday, Home Demonstration Club building, 305 N. Bernice. Phone 659-3381 or 733-2170 for information.

Al-Anon meetings 8 p.m. Friday, Home Demonstration Club building, 305 N. Bernice in back room. Phone 659-3381 for information. Ask for Al-Anon.

**NOTICE**  
**Wallace Monument Co.** Monuments, Curbing, Grave Covers  
Local Representative  
**LEONARD JAMESON**  
Spearman, Texas  
20-rtm

Make your car upholstery and carpet look like new with our commercial size steam cleaner.  
Let us clean it or rent our cleaner.  
**FREE ESTIMATE** for steam cleaning. Willis Friesen, 1125 S. Drake, Spearman, or John Allen, 623 S. Bernice, Spearman.

**SNOOPY'S DAY SCHOOL** Open 7 a.m. to 7 p.m. Mon-Fri. Sat 8 a.m. to 5 p.m. Phone 659-3328.  
48-rtm

**MONUMENTS**  
Save 20% to 30%  
Agents and Undertakers Commission  
**ALVA MONUMENT CO.**  
Alva, Okla.  
51-rtm tonly

## MEDICAL INSURANCE BILLING SERVICE

Will bill all types of medical insurance - Hospitalization, Out Patient, Medicare, Medicaid, Major Medical and yearly billings.  
Ten years experience.  
Contact Eileen Sutherland at 30 1/2 S. Barkley.

## ELECTROLUX

Roy Nichols  
**SALES-SERVICE-SUPPLIES**  
We service all makes 311 Bryan, Phone 273-7421 Berger, Texas 79007  
17S-4tpOnly

## NEW STEAM SHAMPOOER with brushes

Rental \$8.95 per day. Available at 716 Cotter Drive after 4 p.m. and Saturdays and Sunday. Regular Steam Rinse & Vac Shampooer, \$5.95 per day at Gordon's Drug and after 4 p.m. and Saturdays and Sundays at Freddie Largent's, 716 Cotter Drive.



MEXICAN DINNER

SACRED HEART CHURCH

901 S. Roland

MARCH 23, 1980

11:30 to 2:30

Come eat and enjoy live Spanish music.  
(Carry out orders available. Call 659-2166 after 10 a.m. to place orders.)

**Golden Spread Center News**

Thursday, March 20 is the First Day of Spring, tra-la, and all the arts and crafts people will be gathered at the Golden Spread Center from 10:00 a.m. to 5:00 p.m. to work on all kinds of arts and crafts items that depict birds and flowers and all the other signs of Spring in making saleable items for the annual Golden Spread Club bazaar in connection with the Hansford Round-Up. There will be a break at noon to fatten up all the arts and crafts people with a covered-dish luncheon.

Fifteen Golden Spread Club members will leave the Center on Friday morning, March 21, at 8:00 a.m. to go shopping in Amarillo and eat at Furr's Cafeteria.

Four Golden Spread Board members will attend the PRPC, Dept. of Aging Workshop on Volunteerism and Fund Raising for Senior Citizens Centers on Friday, March 21 at 9:00 a.m. in Berger at the Senior Citizens Center, 930 Illinois.

Table games will be played at the Golden Spread Center on Friday afternoon, March 21, from 2:00 to 5:00 p.m.

Progressive Pitch and other table games will be played on Monday, March 24, from 2:00 to 5:00 p.m.

There will be a game evening on Tuesday, March 25 at 6:30 p.m. at the Golden Spread Center.

Nina Hendricks will be driving the Golden Spread Center's van-bus on Wednesday, March 26 from 9:00 a.m. to noon picking up the sixty plus bunch to take them shopping, on errands, and to meet appointments. People needing transportation should call the Golden Spread Center (3521) on Tuesday and get your name on the list.

Golden Spread Center is located at 14 S. Haney and is open Monday through Friday, from 9:00 a.m. to 5:00 p.m. There are puzzles and table games of every kind and description, magazines, books, a color TV, a piano, a pool table, snacks, and there are always some good conversationalists around. Pearl Pierce, the full-time director, has a good listening ear and is a wise counselor who is knowledgeable in all programs concerning the aging. Edna Hays is the telephone reassurance worker who calls shut-ins daily and encourages them to live up to their full potential. Darla Moyer is the youth assistant and custodial coordinator who lends beauty and youth to the atmosphere after school hours. Marv Hendrickson is the talented, inspiring Arts and Crafts in-

structor on Thursdays. Golden Spread Center is open to everyone who is fifty-five years of age or older without discrimination as to sex, color, race, ethnic background, national origin, religion, church membership, denominational preference, political party, or handicap.

**Rho Rho Sorority Meeting Held**

Rho Rho Sorority of Beta Sigma Phi met in regular session Thursday, March 13. Sherry Moore was our hostess in her home. The officers met earlier for lunch at The Bulls Inn. The new members came at 1 p.m. for some more work on their training. The 1:30 meeting was opened by Karen Blodgett. A short business meeting was held. The party for this Saturday night, the 15th, was discussed and a count made of all whom were going. It's the buffet dinner, then show at the Country Squire Dinner Theatre at the Villa Inn.

We had a grand surprise of another box of candy being passed! Our next meeting will be the election of new officers. Founder's Day was discussed. Refreshments of blackberry cream cheese pie, iced tea and fresh pineapple were served by Sherry. Then all of us went to the lovely unique home of Charlene Bulls. She gave the program for Janie Henton. It was on colors, home decorating. We all enjoyed touring her lovely home and she gave a very interesting program. As we left Charlene gave each of us a fragrant candle perfume stick.

Those attending were Sherry Moore, Karen Blodgett, Marilyn Cline, Candi Boxwell, Delinda McLaughlin, Janie Henton, Judy Hutchison, Gaye Woolley, Sheri McWhirter, Kim Vanderburg, Shelly Beedy, Gina Davis, Lisa Pipkin, Linda Brown, Ginger Pittman, Susan Pearson, Jody Rex, Karen Schnell, JoLinda Hutchison, Gayle Smith, Linda Sanders, Brenda Shieldknight, Joan Brown, and Stephanie Brock.

Class of '40 Planning Reunion

The Class of 1940 of Spearman High School is planning a class reunion on July 12, 1980. Anyone knowing any members of that class and their addresses are asked to contact Verna Gail Keim, 2706; Buena Lyon, 3462, or Virginia Head, 3055.

**Clark Aerial Spraying**

Spearman

**Clark Bridges - 659-2065 nights**

Office to be open soon -

**Spearman Music Club Meets**

Spearman Music Club met at First Baptist Church on Tuesday, March 11 at 7:30 p.m. for "A Time to Feature Pete Ilich Tchaikovsky."

The club collect was prayed by the whole group assembled. Janie Kunselman gave the story of the hymn-of-the-month, "Light of the World, We Hail Thee", and it was sung by the Club Chorus.

Dana Schnell gave the study in the Life of Tchaikovsky in interesting detail. Her presentation was a fascinating study in the life of the composer.

Anne Sanders presented a piano solo, "Pathetique" Symphony, No. 6.

Dee Taylor sang "Pilgrim's Song", accompanied by Bonita Reimer.

Bonita Reimer sang "The Lord Is My Shepherd", accompanied by Anne Sanders.

Anne Sanders on the organ and Bonita Reimer on the piano played a duet, "Concerto in Bb minor".

Marites Anolin, Teresita Manese, and Rosemarie Rivera presented three numbers, "No Man Stands Alone", "I Am a Gift of Love", and "You'll Never Walk Alone".

Anne Sanders played "Romero and Juliet" as a piano solo.

Betty Freeman led the business meeting. Altha Townsend reported that our Founder's Day contribution will place us on the roll of honor. This is for projects for the National Federation of Music Clubs. The official call for the Texas Federation of Music Clubs sixty-fifth annual convention in Dallas was read. The convention will be March 26-8 at the Northpark Inn. Hansford

**Rotary Club News**

Round-Up was discussed. Anne Sanders was appointed to study nominations to West Texas State University Award for Distinguished Service.

An international touch was added as Marites Anolin, Teresita Manese, and Rosemarie Rivera served a typical Filipino dish to the members and guest.

Members present were Charlotte Angel, Marites Anolin, Betty Freeman, Fran Glass, Janie Kunselman, Eddie Largent, Bonita Reimer, Rosemarie Rivera, Anne Sanders, Dana Schnell, Dee Taylor, Altha Townsend, and Jackie Womble. Guests present were Beth Dorth and Teresita Manese.

Jerry Taylor, administrator of Hansford County Hospital, spoke to the Spearman Rotary Club, Monday noon, March 17, in the garden room of the Cattleman's Restaurant, and told them about all the new and sophisticated heart monitoring equipment that are a part of the good health care in our local hospital.

He demonstrated how a temporary pacemaker works. Hansford Hospital is the best hospital north of Amarillo and the only small hospital in this part of the state that can provide this type of care. There are four doctors on the staff who can put in a temporary pacemaker that will work until a permanent pacemaker can be installed.

Perryton, Berger, and Dumas hospitals are not equipped to do this.

Visiting Rotarian was Joe Sutphen of Berger.

Members present were Bill Baker, Jim Benson, Eschol Blankenship, Roy Bulls, Archie Burruss, Durane Castleberry, John R. Collard, Jr., Robert Elliott, Pete Fisher, Ed Freeman, Ed Garner, Kerry Henton, Ronnie Hoover, John Hutchison, Junior Lusby, David McClellan, Frank Oglesby, Jim Shirley, Lenis Simpson, Gary Sims, Jerry Taylor and Tim Woodington.

Members absent were J.L. Brock, Kim Brock, Eddy Limbocker, Jack McWhirter, Jim Murray, Brice Palmer, Michael Schnell and Don Wirsdorfer. Attendance percentage was 73.33%.

Community singing was led by Ed Freeman. John Hutchison led in the pledge of allegiance to the USA flag. Robert

**Men's Prayer Breakfast**

Presbyterian Men will have their monthly prayer breakfast on Thursday, March 27 at 6:30 a.m.

There is a warm, Christian welcome awaiting everyone who attends any of the services and activities of the First Presbyterian Church.

Eighteen people attended the covered-dish dinner and social evening for young adults last Sunday evening at the home of Dr. and Mrs. Glenn Blodgett.

**Extension Club**

The Spearman Home Extension Club met Friday, March 14 in the home of Mrs. B.J. Garnett. Mrs. Garnett presided over the meeting and gave the devotional from essays. Roll call was answered by "An Outdoor Furnishing I'd Like To Have". Those present were Mmes: W.V. Hull, Ethel Ellsworth, W.H. Tarbox, and Altha Groves and agent Peggy Winegarner and the hostess Mrs. Garnett.

Minutes of the previous meeting were read and the treasurer's report was given.

All members are to take sandwiches to the Stock Show March 21-22.

The program was given by Peggy Winegarner on "Outdoor Furnishing".

The next meeting will be Friday, March 28 in the home of Mrs. Ethel Ellsworth.

**Girl Scout News**

Girl Scout Troop #42 met Friday, March 14 at the Girl Scout Hut. The girls began working on Mother's Day gifts. Angela Gaiter served refreshments to Becky Hamilton, Mary Ann Evans, Shelia Brand and leader Georgie Gather.

The next meeting will be held Friday, March 28 due to no school Friday, March 21.

Duncan says spring gas outlook good.

**Sign Of The Times**

"TWO BUY" license plate on a car in Spearman is certainly a sign of the times.

With the high cost of living, many couples are finding it necessary to have two incomes to make ends meet.

With the present high interest rates, many young couples are finding themselves priced out of the market as far as homes, automobiles, etc. are concerned.

This personalized license plate on a late model car in Spearman tells the story in two simple words.

**Happy Anniversary**

Janie Kunselman's parents, Mr. and Mrs. C.F. Goff of Boise City, Okla. celebrated their fiftieth wedding anniversary Sunday, March 16, 1980.

Janie Kunselman, Mrs. Gwen Steen, Tulsa, Okla. and Mrs. Carolyn Skyrock, Brea, California, and brothers Clayton Goff and Jeff Goff, Guymon, Okla. and Dr. Clinton Goff, Salem, Oregon hosted the reception.

A host of friends and relatives attended this happy occasion.

**Arts & Crafts Guild Meets**

The Arts and Craft Guild met Friday, March 14 in the home of Mrs. P.A. Lyon, Sr. Those attending were: Mmes: Fred Daily, Bill Gandy, C.A. Gibner, Pope Gibner, Fred Hoskins, Bill Russell, Joe Traylor and Ned Turner.

**Webb-from page 1**

term on the Roberts County Commissioners Court.

He maintains farming interests in Ochiltree County, south of Perryton, and is also an oil field contractor, representing independent oil producers in completing and producing oil and gas wells in Moore, Hutchinson, Hansford, Ochiltree, Roberts and Hemphill Counties.

Webb was born in Grayson County then moved to Reagan County, where he completed all his public school grades, graduating from Reagan County High School.

He attended Texas Christian University, Fort Worth, on a football scholarship, having his education interrupted by military service during World War II.

Webb served over three and one-half years in the Army Air Corps training command, during which time he spent six months at West Texas State, Canyon, in the college training detachment.

After the war, he returned to West Texas State to continue his college education, marrying Lois Flowers, daughter of an Ochiltree/Roberts county pioneer couple, who he had met during his WT training detachment period.

Webb has now resided for 31 years in the district which he wishes to serve in the State Legislature.

"I feel strongly for county government," Webb said in announcing his candidacy, "and my efforts will be directed toward regaining control for local entities."

"I am well acquainted with procedures in Austin and feel that I am well qualified to serve the 64th district as State Representative," Webb concluded.

**UNITED ONE STOP**

Perryton, Texas

**PLAY UNITED'S FULL BOOK BINGO AND WIN! 1200 EXTRA S & H GREEN STAMPS!**

**RAINBO ROMAN MEAL HOT DOG BUNS 8 CT. 73¢**

**KEEBLER ZESTA SALTINE CRACKERS 2 LB. BOX \$1.29**

**JIF PEANUT BUTTER CREAMY OR CRUNCHY 28 OZ. \$1.69**

**HUNT'S KETCHUP 32 OZ. BTL. 79¢**

**UNITED HOMOGENIZED MILK 1/2-GAL. 89¢**

**ADMIRATION COFFEE 1 LB. CAN \$2.59**

**MIRACLE WHIP SALAD DRESSING QT. JAR 99¢**

**GRAPEFRUIT TEXAS RUBY RED 5 FOR \$1**

**POTATOES RUSSET ALL PURPOSE 10 LB. BAG 89¢**

**SALAD RED OR GREEN LEAF LETTUCE 3 BUNCHES 99¢**

**FRESH SMOBALL CAULI-FLOWER HEAD 99¢**

**VALENCIA ORANGES 4 LB. BAG \$1**

**LIQUID PLUMBER 32 OZ. BTL. 89¢**

**MEAL TIME DRY DOG FOOD 25 LB. BAG \$5.89**

**ZEE NAPKINS 60 CT. 33¢**

**KRAFT DRESSING 8 OZ. 59¢**

**KRAFT BARBECUE SAUCE 18 OZ. 69¢**

**KRAFT GRAPE JELLY 32 OZ. 89¢**

**KRAFT MAC. & CHEESE DINNERS 7 1/2 OZ. 79¢**

**LIGHT CRUST FLOUR 5 LB. BAG 59¢**

**DR. PEPPER REG. 32 OZ. BTL. 6 BTL. CTN. \$1.89 PLUS DEP.**

**RICH 'N READY DRINK \*ORANGE \*FRUIT PUNCH GAL. JUG 89¢**

**BAKE SERVE 'N STORE STONWARE THIS WEEK'S FEATURE 2 qt. Souffle only \$4.99 with minimum \$10 purchase Reg. \$9.99**



# Pampa Annual Antique Show & Sale Set Frances Hudson To Retire Bowling News

The 20th Century Cotillion Study Club will hold their 18th annual Antique Show & Sale the 28th, 29th and 30th of March, 1980, at M.K. Brown Auditorium in Pampa, Texas. The show will be open Friday and Saturday from 10:30 a.m. until 6:00 p.m.

Tickets to the Antique Show & Sale may be obtained at the door for \$1.50 donation. Advanced tickets may be obtained for \$1.00 until March 27th from Collectors' Corner in Pampa or from any club member. Opportunity Plan, Inc. will

receive all proceeds from the sale. OPI is a student loan program which assists students throughout the Panhandle area with financial assistance in continuing their education. Students attend the college of their choice. There are presently over 100 college and technical vocational schools attended by students participating in this program.

The offices of Opportunity Plan, Inc. are located in Canyon, Texas. OPI president, Mr. Milton (Buff) Morris, states that money used for operations of OPI are raised independently of

the funds secured for student loans so that every dollar given to assist in this program goes to the students. As of March 1, 1980, OPI has a capital value of \$1,300,000 and has assisted approximately 4,200 students. At present about 380 students are receiving loans.

The 20th Century Cotillion Division of OPI has a capital value of over \$30,800 and has supported 71 students through the plan amounting to loans of \$186,956. Students from 27 area towns and 2 foreign countries have used funds from this division.

**Editor's Note.** We are rerunning this story about Mrs. Frances Hudson's RETIREMENT due to the fact that there was a SLIGHT error in the story in Sunday's paper as we stated that she received her Master's Degree in 1974, which should have been 1974. Mrs. Hudson must certainly have found the long sought "Fountain of Youth" if she received a degree in 1874.



F R A N C E S H U D S O N

Mrs. Frances Hudson, Home Ec teacher in the Spearman high school systems, announced this past week that she was planning to retire, after 22 years of teaching. Frances graduated from Spiro, Oklahoma High school, in 1936. She attended Oklahoma State University, and received her bachelors degree in 1942. She received her Masters from Texas Tech, in 1974.

Mrs. Hudson began her teaching career at Davenport, Oklahoma, and then taught at Steigler, Oak Lodge, Monroe and McAlester, Oklahoma before coming to Spearman. She has taught in the Spearman schools for 17 years. Mrs. Hudson is a member of Delta Kappa Gamma educational

sorority; member of T.S.T.A., Hansford County teachers association; American Home Ec Association; Vocational Home Ec teachers of Texas and American Vocational association!

## Xi Zeta Sorority Met

Xi Zeta Sorority met Thursday, March 13 in the country home of Cynthia DeArmond with President Mary Dixon calling the meeting to order. The club received an official communication from International concerning the 50th Anniversary of Beta Sigma Phi. A discussion was held on the Hansford Roundup. XiZeta will sponsor the Miss Hansford Contest.

The election of the 1980-81 officers was held. They are as follows: President - Mary Lou Mathews, Vice President-Linda Butt, Recording Secretary-Sharon Cook, Corresponding Secretary-Donita Lusby, Treasurer-Carolyn Gressett, Ways and Means Co-Chairmans-Hazel Shieldknight, Jackie Pearson, and Mary Ann Lasater.

The Float committee was also elected and the chairman is Sheryl Meek. After the business meeting, the program was given by Mary Dixon. She read a humorous article about dieting from the Cosmopolitan magazine. It was entitled "The Art of Staying Fat" by Richard Smith.

The next meeting will be March 27 in the home of Jackie Pearson.

"He who borrows sells his freedom." German Proverb

<b>HIGH INDIVIDUAL GAME</b>	
Ruth McFaully	190
<b>HIGH INDIVIDUAL SERIES</b>	
Dean McElroy	553
<b>HIGH TEAM GAME</b>	
Ranger Bowl	856
<b>HIGH TEAM SERIES</b>	
Fauset - Sons Conoco	2475
<b>STANDINGS</b>	
Deis Gill	63 1/2-37 1/2
Anthony Electric	60-40
Betty's	58-42
Daley's	58-42
Fausset & Sons Conoco	56-44
Ranger Bowl	53 1/2-46 1/2
Big A Spreader	53-47
Kirby	51-49
George Lease Service	51-49
Fronk Oil Company	50-50
Otis Engineering	44-56
Bull Rogers	44-56
Smith Rentals	38-62
Whits Pharmacy	26-74

## Bridge Club

The Blue Monday Bridge Club met Monday, March 17 in the home of Mrs. Fred Daily. Those attending were members Mmes: Deta Blodgett, Pope Gibner, Gwenfred Lackey, Sam Graves, Bill Seitz, Vester Hill and guests, Mrs. Leonard Jameson and Mrs. Johnny Lackey.

High was won by Mrs. Seitz and second high by Mrs. Johnny Lackey.

The hostess, Mrs. Daily included the St. Patrick's Day theme in serving refreshments with green mints and lime green punch and carried the theme out with Shamrock decorated tally pads and napkins.

The next meeting will be March 31 in the home of Mrs. Sam Graves.

You are Cordially invited to a Bridal shower honoring Margaret Hill bride elect of Jeff Becker Thursday, March 20 in the Fellowship Hall of First Christian Church from 7:30 to 8:30 p.m.

Hostesses: Betty Davis, Gwen Smith, LaRee Booth, Mary Brock, Faye Wirsdorfer, Lorene Kunselman, Donna Sheets, Jean West, Judy Hergert, Nita Bynum, Sandy Russell

## Shower Honors Bride-Elect

Mrs. Alan Cooksey, nee Lillian Ralston, was honored with a Wedding shower March 15 in the home of Mrs. LaRue Whitefield.

The table covered with a beige ecru cloth held an Ivy centerpiece in a wicker basket. Guests were served cookies and punch.

The guests registered at a table as they came in the Bride's Book.

Lillian wore her wedding corsage and the hostesses presented her mother, Mrs. Reba Hunter, and Alan's mother, Mrs. Edna Lou Cooksey, with white silk carnation corsages.

The hostess gift was a Mix Master.

Other special guests were Lillian's grandmothers, Mrs. Susie Sursa of Stinnett and Mrs. Evelyn Hunter of Amarillo. Other out of town guests were from Texhoma.

The hostesses for the shower

were: Juanita Pierce, Frances Pipkin, Ruthie McCoy, LaRue Whitefield, Juanita Paul, Debra Harbison, Bessie Ward, Jeanie Crane and Janice Mayfield. The couple now reside in Goodwell, Oklahoma.

## "Welcome To Our World"

Mr. and Mrs. Ricky Howard are the proud parents of their new daughter, Rebecca Jo, weighing 9 lbs. 13 1/2 oz. and was 21 inches long. She was born on March 5th at 2:02 p.m. here at Hansford County Hospital. She was also welcomed by her two brothers, Joshua, age 3 and Jacob, age 1 1/2.

Her maternal grandparents are Mr. and Mrs. L.C. Owens of Spearman.

Her paternal grandparents are Delvin Howard of Stratford, Texas and Claudette Howard of Broken Arrow, Okla.

## Wrangler Kids

# The Bunkhouse

210 S. Main 659-2476 Spearman, Texas

Jeans and Sportswear

Sizes 4 to 14 Girls & Boys

Western Wear or Fashion Jeans

also for the Summer Days

Terry and Denim Shorts with matching Tops

(you'll like the prices)

Three Great Days of BASKETBALL!

NATIONAL WOMEN'S INVITATIONAL TOURNAMENT THURSDAY FRIDAY SATURDAY MARCH 20 21 & 22

Outstanding college teams from over the nation

AMARILLO CIVIC CENTER

GAME TIMES: Thur. and Fri. - 3:45, 5:30, 7:30 and 9:00 PM. Saturday - 1:30, 2:45, 6:00, 7:45 (high school All Stars), and 9:00 PM

All Star High School Girls Game Saturday, Mar. 22, 7:45

DAILY ADMISSION: prices include all the games played on that day. Thu. 2.50, students 1.50; Fri. 2.50, students 1.50; Sat. 3.50, students 2.50.

Come and Spend the Weekend!

# FOOD SHOPPING!

WE GIVE DOUBLE S&H GREEN STAMPS! SATURDAY \*PRICES IN THIS AD GOOD THRU SATURDAY, MARCH 22

<b>WILSON'S CERTIFIED BOLOGNA</b>	MEAT	LB.	\$1.39
<b>CHEESE</b>	AMERICAN SINGLES	12 OZ. PKG.	\$1.29
<b>TURKEY</b>	COUNTRY PRIDE SMOKED GRADE "A" 8-10 LB. AVG.	LB.	\$1.39
<b>SAUSAGE</b>	UNITED COUNTRY STYLE	LB.	89¢

<b>SWIFT'S TENDER LEAN PORK CHOPS</b>	CENTER CUT	LB.	1.69
<b>BACKBONE</b>	PORK	LB.	98¢

<b>SWIFT'S TENDER LEAN PORK CHOPS</b>	QUARTER LOIN	LB.	\$1.09
<b>SWIFT'S TENDER LEAN PORK LOINS</b>	14-17 LB. AVG. HALF OR WHOLE	LB.	\$1.09
<b>SWIFT'S TENDER LEAN PORK ROAST</b>	BOSTON BUTT	LB.	98¢

<b>SWIFT'S TENDER LEAN SMALL PORK SPARE RIBS</b>	LB.	\$1.19	
<b>BONELESS EXTRA LEAN STEW</b>	CUBES OF BEEF	LB.	\$1.98

<b>GLADIOLA POUCH MIXES</b>	WHITE & YELLOW CORNBREAD PANCAKE & BISCUIT	5 FOR	\$1.00
<b>SWIFT VIENNA SAUSAGE</b>	5-OZ. CAN		39¢
<b>RANCH STYLE CHILI</b>	19-OZ. CAN		98¢
<b>OLD EL PASO TACO SAUCE</b>	8-OZ. CAN		59¢
<b>OLD EL PASO ENCHILADA SAUCE</b>	10-OZ. CAN		33¢

<b>FROZEN FOODS</b>			
<b>MORTON FRIED CHICKEN</b>	2 LB. BOX		\$1.98
<b>BRIGHT &amp; EARLY IMITATION ORANGE DRINK</b>	12 OZ.		39¢
<b>FISHER BOY FISH STICKS</b>	16 OZ. BOX		98¢

**TONY'S PIZZAS** 20¢ OFF ALL FLAVORS AND SIZES

**DAIRY FINE FARE SWEETMILK OR BUTTERMILK 10 CT. BISCUITS** 6 FOR \$1.00

<b>HEALTH &amp; BEAUTY AIDS</b>			
<b>SINUTAB STRESS CAPS</b>	24 CT.		\$1.98
<b>TOOTH PASTE</b>	REG. OR MINT 9 OZ.		\$1.09
<b>TOOTH BRUSHES</b>	PEPPERMINT *SOFT *MID. *HARD	3 FOR	\$1.00

<b>BELL BUTTER-MILK</b>	1/2 GAL.		89¢
<b>BELL WHIPPING CREAM</b>	8 OZ.		49¢

**UNITED Supermarkets** Perryton, Texas. PRICES GOOD THRU SAT., MAR. 22. QUANTITY RIGHTS RESERVED.



**1979 Showmanship Recipients**

- |              |                  |
|--------------|------------------|
| STEERS ..... | 1. Phil Orman    |
|              | 2. Ron Clark     |
|              | 3. Rex Shook     |
| LAMBS .....  | 1. Greg Odegaard |
|              | 2. Russell Tiner |
|              | 3. Scott Atwood  |
| SWINE .....  | 1. Larry Lackey  |
|              | 2. Rhonda Boone  |
|              | 3. Todd Williams |

- |                                       |                    |          |
|---------------------------------------|--------------------|----------|
| 1980 Donor of Steer Showmanship Award | First State Bank   | Spearman |
| 1980 Donor of Lamb Showmanship Award  | Double D Ag Center | Gruver   |
| 1980 Donor of Swine Showmanship Award | Gruver Lbr. Co.    | Gruver   |

**1980 Bookkeepers & Auctioneers**

- |                        |                          |
|------------------------|--------------------------|
| Jimmy Greene, Spearman | Orville Latham, Spearman |
| Weldon Green, Gruver   | W. B. Dickenson, Olton   |
| Mack Hoel, Gruver      | Melvin Bradley, Gruver   |
| Carol Bostick, Gruver  |                          |

**GRAND CHAMPS  
1979**

- |                             |                    |
|-----------------------------|--------------------|
| Sam Boone, Spearman FFA     | Steer              |
| Curt Porter, Spearman 4-H   | Barrow             |
| Scott Henderson, Gruver 4-H | Lamb               |
| Rhonda Boone, Gruver 4-H    | Gilt               |
| Scott Dahl, Gruver FFA      | Heifer             |
| Chad Logsdon, Gruver 4-H    | High Gaining Steer |

**Import practices**

AUSTIN, Texas (Spl.) — A University of Texas study shows not all U.S. companies would be affected the same if a foreign country were to restrict its crude oil exports to America. That is because the importing practices of the major U.S. oil companies vary widely.

UT Austin's Institute for Constructive Capitalism reports, for example, that Occidental and Amerada Hess import more than 75 per cent of their crude, while Standard of Ohio imports none. Nor does the imported crude come from one place. Phillips Petroleum, for example, draws 70.8 per cent of its imports from Nigeria; Exxon, 40.1 per cent from Saudi Arabia.

**UT leaders**

AUSTIN, Texas (Spl.) — Top positions in leading national organizations of forestry and law have been taken over by University of Texas professors.

Dr. Stephen H. Spurr, professor in the Lyndon B. Johnson School of Public Affairs and in the Department of Botany, has become president of the Society of American Foresters, a 23,000-member group of professional foresters.

Jerre S. Williams, who holds the John B. Connally Chair of Civil Jurisprudence in the Law School, is new president of the Association of American Law Schools. Its membership is made up of the more than 130 law schools in the U.S.

Come join in the Hansford County Junior Livestock Show, Friday & Saturday, March, 21 and 22, at the Gruver County Barn.

QUANTITY RIGHTS RESERVED



PERRYTON, TEXAS

PRICES GOOD THRU MARCH 26TH



## KIMBERLY-CLARK TRUCKLOAD SALE!

 <p><b>BATH TISSUE</b> 4 PACK <b>59¢</b></p>	 <p><b>JUMBO ROLL</b> <b>2 FOR 89¢</b></p>	 <p><b>30 CT.</b> <b>\$1.79</b></p>	 <p><b>30 CT.</b> <b>\$1.79</b></p>	 <p><b>KOTEX TUBE TAMPONS</b> REG. OR SUPER 30 CT. <b>\$1.69</b></p>	 <p><b>KOTEX BELTLESS MAXI-PADS</b> 30 CT. <b>\$1.79</b></p>	 <p><b>KLEENEX DISPOSABLE DIAPERS</b> WITH ELASTIC 18 CT. <b>\$2.39</b></p>
	 <p><b>200 CT. BOX</b> <b>59¢</b></p>			 <p><b>SUPER DRY DIAPERS</b> NEWBORN 30's <b>\$2.29</b></p>	 <p><b>EXTRA ABSORB.</b> 24 CT. <b>\$2.59</b></p>	

Our Congratulations To Those Participating in the 4-H and FFA Junior Livestock Show

**HANSFORD COUNTY Junior Livestock Show & Sale**

March 21-22, 1980

Welcome to the Biggest & Best Junior Livestock Show in the Panhandle!



Clubs and Chapters Participating in the Show

- Gruver FFA    Morse 4-H
- Gruver 4-H    Spearman FFA
- Spearman 4-H

**Annual Junior Livestock Show and Sale**

To be held in Gruver, Friday & Saturday

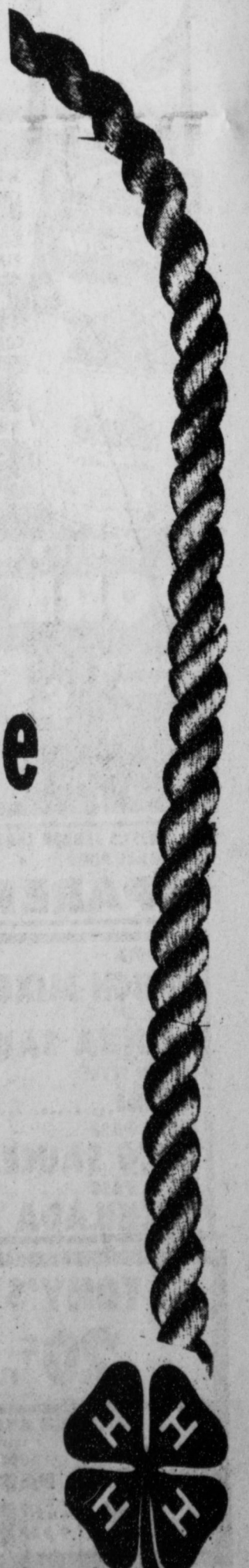
**Gruver Farm Supply**

Roy Byrd

We Salute Today's Youth ...Tomorrow's 'Agri-Leaders'!

515 Main

733-2427





### City of Spearman

P.O. Box 37 Phone 659 2524  
Spearman, Texas 79081

#### PROCLAMATION

"TWENTIETH DECENNIAL CENSUS OF THE UNITED STATES"

APRIL 1, 1980

TO THE CITIZENS OF SPEARMAN, TEXAS:

WHEREAS, the Twentieth Decennial Census fo the United States will be conducted beginning April 1, 1980; and

WHEREAS, all the inhabitants of the City of Spearman are to be enumerated in this census; and

WHEREAS, the information collected in the census serves many useful purposes, among which are apportionment of representation in Congress and other legislative bodies, measurement of the economic well-being of communities and their inhabitants, allotment of certain Federal and State tax revenues and other financial aid to States, determination of future needs for public services, and numerous other useful purposes; and

WHEREAS, the accuracy and completeness of the census for the City of Spearman will determine its population rank among other communities of the country;

NOW, THEREFORE, I, C. RALPH BLODGETT, MAYOR of the City of Spearman, do hereby proclaim April 1, 1980 as CENSUS DAY in Spearman, and do urge all citizens to cooperate fully during the month of April with those who are charged with the responsibility of this most important work.

IN WITNESS WHEREOF, I have hereunto set my hand and caused to be affixed the great seal of the City of Spearman, Texas.



*C. Ralph Blodgett*  
Mayor C. Ralph Blodgett

### Defensive Driving Course Planned

The Hansford County Association of Insurance Agents is sponsoring a Defensive Driving Course to be held Thursday evening, March 20 from 6 until 10 p.m. in the Fellowship Hall of the First Christian Church and Thursday evening, March 27 will be the second session. This is an eight hour course and the charge is \$15.00. Upon completion of the course, you will be eligible for a ten percent reduction on your auto insurance premium for a period of three years.

### SS Representative Schedule

A representative of the Pampa Social Security will be in Spearman on Thursday, April 10, April 24, May 8, May 22 and June 12 and June 26 from 10 to 11:30 at the Senior Citizens Center, 14 S. Haney.

This is a new place for the representative as heretofore they have been at the Hansford County Courthouse.

This individual will be glad to assist you in filing an application for Social Security Retirement, Survivors, Disability, Medicare, or Supplemental Security Income benefits.

### NWIT Tickets Available

The Spearman Chamber of Commerce has tickets for the National Women's Invitational Tournament in Amarillo March 20 thru 22. Contact the chamber office for more information.

### BIBLE VERSE

"I am not ashamed of the gospel of Christ: for it is the power of God unto Salvation."

1. Who made the above declaration?
2. To whom was he writing?
3. Where was he at the time?
4. Where may this verse be found?

- Answers To Bible Verse
1. Paul the Apostle.
  2. The believers in Christ.
  3. In Corinth.
  4. Romans 1:16.

### Five State Shorthorn Show & Sale Set

The Five State Shorthorn Association has announced plans for their Annual Show and Sale to be held March 22, 1980 at the Texas County Fairgrounds in Guymon, Oklahoma. Ron Gooch of Clarendon, Texas, President of the Association, states, "The 5-State Show and Sale does provide people in the area with an outstanding opportunity to evaluate and analyze top quality Shorthorn Cattle."

Shorthorn Breeding Stock and Commercial Shorthorn Bulls will be consigned to the event from throughout the 5-State area. Shorthorn Breeders always make a top consignment to this annual sale as cattle have been purchased on a nation wide basis.

F.A. Heckendorf, Castle Rock, Colorado, currently serving as Vice-President of the American Shorthorn Association, will serve as judge for the show which will start at 9:30 A.M. on Saturday, March 22. The activities for the weekend

will kick off with the arrival of cattle on Friday, March 21. A banquet is scheduled for 7:00 at K-Bob's Steak House in Guymon. Everyone is invited for the social event and a short business meeting that will follow.

Any inquiries about the sale should be directed to Alan K. Sears, Sales Manager, 8288 Hascall Street, Omaha, Nebraska, 68124.

#### Explanation

"I know why we shouldn't despise our enemies," said little Mary. "All right," said the teacher, "tell us."

"Well, we ought to like what we've made."

#### Fitting

In a Massachusetts cemetery there is a gravestone with the following inscription: "Here lies Dentist Smith, filling his last cavity."



What actually happens on March 20--the day that spring arrives?

The sun shines exactly half of the 24-hour day and the other half is night. Generally speaking, on that day the earth's axis is perpendicular to the plane of the earth's orbit.

The tilt of the earth moving from one area to another is caught when the earth's axis stands perpendicular to the plane of its orbit around the sun--and if the earth did not lean, or tilt, then there would be no seasons. Night and day would be of equal length and our weather would be affected.

Winters would not be as cold and summers not as hot, if indeed there was much of what we know as seasonal weather at all.

## AUCTION

LIQUIDATION OF

Trash 'N Treasures Shop

IN DUMAS

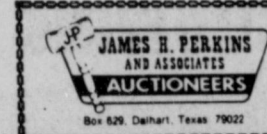
SATURDAY, MARCH 22, 1980

1:00 p.m.

Location: Dumas Community Center-16th & S. Maddox Ave.-Dumas, Texas

ENTIRE STOCK of this unique import store: Furniture, Jewelry, Fixtures, Figurines, Baskets, Bronze, Wood, Doll Furniture, Miniatures, etc. A wealth of fine items from the Far East, around the world!

Terms: Cash. All announcements made day of Auction will have priority over all previous announcements.



The Professional Auctioneers!  
James H. Perkins  
Dumas, Texas  
Danny J. Perkins  
Dumas, Texas

# BUILDING A BETTER TOMORROW..

## WITH THE YOUTH OF TODAY



### Support The 1980 Junior



## Livestock Show and Our Youth by your Attendance



LIVESTOCK SALE  
SATURDAY AT  
6:00 P.M.

A SALUTE TO  
OUR COMMUNITY.

In Backing All Of Our 4-H  
and F.F.A. Activities!  
We Are Proud To Be A Part.

Friday, March 21 & Saturday, March 22

COUNTY SHOW BARN  
Gruver, Texas

## HANSFORD IMPLEMENT

Phone: 659-2568 "Your John Deere Dealer"  
Hansford County







**HANSFORD COUNTY  
JUNIOR LIVESTOCK SHOW AND SALE**

**Buyers of Grand Champions  
1979**

B & B Farm, Ind., Spearman..... Steer  
H & H Water Well, Spearman..... Barrow  
Hansford Imp., Spearman..... Lamb

**Buyers of Reserve Grand Champions**

Hansford Imp., Spearman..... Steer  
Gruver State Bank, Gruver..... Barrow  
Dee Allen, Spearman..... Lamb

**Junior Livestock Auction 1979 Buyers**

The following list of firms and individuals purchased one or more animals at the 1979 Junior Livestock Auction, promoting our most important crop — youth.

Hansford Imp., Spearman  
H & H Water Well, Spearman  
B & B Farm Ind., Spearman  
Dee Allen, Spearman  
Gruver State Bank, Gruver  
Gruver Equity, Gruver  
Sparks Bros., Gruver & Spearman  
Jon Hart, Gruver  
Hitch Grain, Hitchland  
Williams Bros. Hogs, Gruver  
Texhoma Livestock, Texhoma  
Bill Logsdon, Gruver  
Flying M Farms, Gruver  
D.G.C., Gruver  
First State Bank, Spearman  
Caprock Ind., Gruver  
Continental Grain, Gruver  
Carter Crawford, Spearman  
Jerry Williams, Gruver  
Lynn Hart, Gruver  
E. A. Williams, Gruver  
Spearman Super Service, Spearman  
Hi Plains Auto, Spearman  
Dean Cluck, Gruver  
L. L. Anthony, Spearman  
H & H Livestock, Gruver  
Bunkhouse, Spearman  
Gruver Farm Supply, Gruver  
Frank Pittman, Morse  
Dan Ralston, Spearman  
Henderson Livestock, Gruver  
Gruver Farm Supply, Gruver  
Spearman Vet Clinic, Spearman

Tucker Water Well, Spearman  
James Hargis, Spearman  
Charles Reid, Morse  
James Cunningham, Spearman  
Murrell Dowdy, Spearman  
Max Clawson, Gruver  
Billy Britt Jarvis, Spearman  
Verlin Beck, Spearman  
Albert Clark, Spearman  
Berry Grain Co., Waka  
Glen Mackie, Spearman  
Billie Heiskell, Dalhart  
Bob Meek, Spearman  
Robert Dahl, Gruver  
Melvin Bradley, Spearman  
Veda Fern Lackey

Alma Gruver, Gruver  
Tommy Saltzman, Gruver  
Jane Meek, Spearman  
C. H. Clawson, Gruver  
Van Bradford, Gruver  
B & B Sales, Spearman  
Berry Cleaners, Spearman  
Walter A. Spoonemore, Spearman  
James & Deanna Kenney, Spearman  
Jimmy & Tammy Kenney, Spearman  
Floyd Shook, Gruver  
Farmers & Ranchers Supply, Gruver

Nite & Day Beauty Salon, Gruver  
Excel Chevrolet, Spearman  
KRDF — FM, Spearman  
Hergert's Pontiac, Spearman  
Vina Hawpe, Sunray  
Cator, Sunray  
Southwestern Public Service, Gruver  
Cardiff Broadcasting, Spearman  
Schaeffer, Gruver

**Board of Directors**

**Officers**

Chairman..... Lynn Davis  
Vice Chairman..... John Armes  
Secretary..... Layton Barton  
Treasurer..... Carl Kunselman  
Assistant Treasurer..... Norma Jean Mackie

**Directors**

Geo. C. Lowe, Jr., Gruver  
Glen Ray Mackie, Spearman  
Buddy Murrell, Gruver  
Bobby Nollner, Spearman  
Charles Reid, Morse  
Bill Strawn, Spearman  
Raymond Walker, Gruver  
Jerry Williams, Gruver

**Vocational Agriculture Teachers**

Herman Boone..... Spearman  
Oran Burton..... Gruver  
Burt Williams..... Spearman

**Extension Service**

Layton Barton..... Spearman

**1980 Department Superintendents**

STEERS..... Bobby Nollner, Bill Strawn, D. A. Cator  
SHEEP..... Charles Reid, Carl Kunselman, Jerry Williams  
SWINE..... Glen Ray Mackie, Charles Eaton, Raymond Walker

**Judges**

Sheep..... Dr. John McNeill, Amarillo  
Swine..... Larry Tackitt, Happy  
Steers..... Joe Lewis, Larned, Kansas

**Prizes and Premiums**

**For Lambs, Swine, and Steers**

Placing for each class: Presented to all animals that sell IN SALE AUCTION..... Ribbons  
CHAMPIONS..... Rosette  
RESERVE CHAMPIONS..... Rosette  
GRAND CHAMPIONS..... Trophy  
RESERVE GRAND CHAMPIONS..... Trophy

These placings apply to all steer, lamb, and swine classes.

- 1980 Donor of Grand Champion Trophy — Steer  
Gruver State Bank..... Gruver, Texas
- 1980 Donor of Reserve Champion Trophy — Steer  
Gruver Ford..... Gruver, Texas
- 1980 Donor of Grand Champion Trophy — Swine  
Hansford Co. Parts & Supply..... Gruver, Texas
- 1980 Donor of Reserve Champion Trophy — Swine  
Spearhead Pork Producers..... Spearman, Texas
- 1980 Donor of Grand Champion Trophy — Lamb  
Dairy Queen..... Gruver & Spearman, Texas
- 1980 Donor of Reserve Champion Trophy — Lamb  
J. L. Brock Insurance Agency..... Spearman, Texas
- 1980 Donor of Grand Champion Trophy — Gilt  
Davis Oil Co..... Spearman, Texas
- 1980 Donor of Reserve Champion Trophy — Gilt  
Equity Elevators..... Spearman, Texas

1980 Donor of Grand Champion Trophy — Heifer  
M & M Grocery..... Gruver & Spearman, Texas

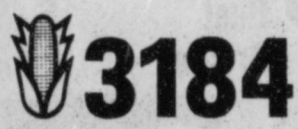
1980 Donor of Reserve Champion Trophy — Heifer  
Gruver Farm Supply..... Gruver, Texas

1980 Donor of High Gaining Steer Award  
Federal Land Bank..... Spearman, Texas

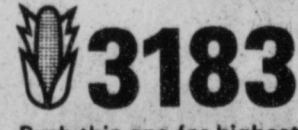
1980 Donor of Animal Husbandry Award  
Hansford County Farm Bureau..... Spearman, Texas



**plant 'em both**



This hybrid's record for consistency has made it one of the most popular hybrids on the High Plains. In 77 comparisons over the last four years against competitive hybrids, 3184 has shown an average yield of 183.7 bu./A. with a yield advantage of 14.3 bu./A. over competitors. Bred with outstanding drought tolerance, 3184 can adjust ear size and kernel depth to match growing conditions. And strong stalks keep 3184 standing straight for speedy harvest. It's just what High Plains farmers need in a dependable, high-yielding corn hybrid. And its maturity makes it a good companion for 3183.



Push this one for highest yields! In 43 comparisons on the High Plains in 1979, this hybrid averaged 192.1 bu./A. A sampling of yields from 1979 includes 216 bu./A. for Sheldon Rapp at Hooker, Oklahoma... 210.4 bu./A. for Larry Kemp of Muleshoe... and 196.7 bu./A. for Doyle Underwood at Dimmitt, Texas. 3183 has demonstrated very good standability and ear retention in this area. Excellent drought tolerance helps 3183 maintain outstanding consistency year after year. And it has been especially impressive on gray soils. Plant 3183 along with 3184. Spread genetic risks and get top performance, too.



**PIONEER**  
BRAND  
SEEDS

Pioneer Hi-Bred International, Inc.  
Southwestern Division

Be sure to ask your Pioneer corn dealer about the Pioneer Poll on Grain Transportation.

The Limitation of Warranty and remedy appearing on the label is part of the terms of sale.

Pioneer is a brand name; numbers identify varieties. \*Registered trademark of Pioneer Hi-Bred International, Inc.

Starts Monday, March 24

**EVERYTHING GOES**  
at our —  
**CLOSING OUT**

*Sale*

All Merchandise Marked Down

**20%** to **80%**

Includes Both Ladies & Junior Sizes

Bargains Galore!

Don't Miss It!

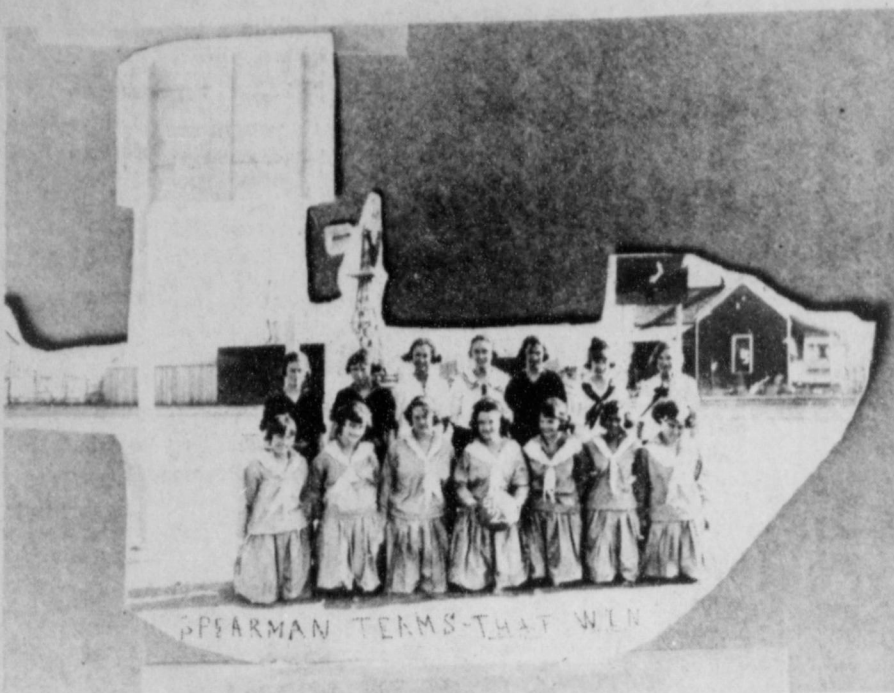
Closed Friday and Saturday, March 21 & 22 To Prepare For Sale.

We will Re-Open In The Mini-Mall In The Near Future!

**Betty's**

211 S. Main





ANOTHER ITEM OUT OF THE PAST that will be in the general history in the upcoming Hansford County History Book is shown here. This is the high school basketball team of 1923. Shown front row, left to right, Mattie Ruth

Berner, Gail Little, Mae Raney, Winnie Davis, Pauline Lowe, Susie Pierce, Eva Cator. Back row, l to r, Ruth Prutsman, Toots Hays, Myrtle Davis, Lorene Morton, Bernice Burran, Opal Cline, Lucile Matze and Blanch Archer. Coach was Nannie Holland.

**County History Book News**

The Hansford County History Book will be a book with a little bit of everything in it. It will contain all aspects of the history of Hansford County. Because many people have someone who is extra special to them the Hansford County Historical Comm. is making tribute pages available for interested persons to purchase. Tribute pages can be written about any living relative or friend. Tributes will express feeling about this person, tell about this person's accomplishments, and tell why this person is special or of special importance in a family's history. These pages are an excellent way to surprise parents or a sister or brother by writing a tribute and sharing with others how loved ones have influenced others. So slow down now and tell your loved one how much you love them in the Hansford County History Book. This is your chance to tell others who read the story now and in the future about this person. Tribute pages are available for a quarter page (60 words with 2 photos, depending on photo size) for \$45.00; a half page (300 words with 3 photos; depending on size of photo) for \$80.00, and a full page (1000 words with up to 3 photos, depending on size) for \$150.00. To purchase these special pages, please contact the Stationmasters House Museum at 659-3008, or come by 30 S. Townsend 1 o'clock through 5 Tuesday through Saturday.

**BASEBALL**

By Pete Fritchie

SARASOTA, FLA. -- The Chicago White Sox have almost doubled the usual number of exhibition games played during spring training. And eight of the games this year are free of charge B squad games.

It's a great opportunity for kids and others caught in the inflation spiral to see Major League baseball. The Sox had planned to play fifteen games in Sarasota (home games) during March and April.

By splitting their squad and using a B squad, they are playing 23. When the A squad is on the road the B squad will play either at the home park in Sarasota (Payne Field) or at the Allyn Field training complex or in Bradenton. Other clubs are doing some of the same but few are playing so many games. Sox play continues this year until April 8.

The Sox have one of the best training locales in Florida. Payne Field is in the middle of town and often sold out. The Allyn Field training area is a good one, with many fields and easy access and plenty of parking.

Sarasota is one of the two fastest growing cities in Florida--with many retired people from the Midwest living here. How the Red Sox must think about that these days--they formerly trained here and moved away!

**ABOUT YOUR HOME**

By April Rhodes

Mature pecan trees can be fertilized in most areas in March.

Easter is less than a month away so remember the cute little pastel-dyed chicks and ducks are alive--not toys for tots. Unless parents have a place to raise these pets, don't buy them.

When buying crystal, hold it up to the light, if you see diamondlike flashes it is quality crystal.

It's best not to salt meats and vegetables until after cooking when using a microwave oven.

**Piano Tuning**

and Repair  
Stewart Speers  
Nationally Required  
Technician of  
Borger, Texas

I will be in Spearman and Gruver, March 27th-thru 30th. I would welcome the opportunity to service your piano.

All work is guaranteed. Tuning fee is \$40.00.

Call  
The Music Box  
1-274-6581  
Borger, Texas

**AGRICULTURE**

Installing insulation, storm windows, solar heating and other devices can reduce the energy used to heat and cool your home. These expenditures can also reduce your federal income tax bill if you qualify for the residential energy credits.

There are two kinds of residential energy credits available to individuals: a home energy conservation credit for money spent on equipment to conserve energy in your personal residence; and a renewable energy resource credit for alternate energy sources such as solar, wind or geothermal devices. These are available to both renters or owners of a dwelling, provided they actually pay for the items.

Probably the most common ways to save energy are to install storm or thermal windows and doors, insulate the roof, floors, walls, and then the outside of your hot water pipes and water heater. Or you might spend a little more money modifying your furnace to burn fuel more efficiently, or adding an automatic set back thermostat to save energy when you're not at home.

The money you spend for these types of components is eligible for the energy conservation credit. You are entitled to a credit of 15 percent of the first \$2,000 you spend on these components -- that's a maximum of \$300. The credit is based on the cost of items installed after April 19, 1977, and before Jan. 1, 1986. The \$2,000 limit applies

to each new principal residence. But remember, in order for your home to qualify, it must have been built or substantially completed before April 20, 1977.

Some persons might install alternate energy equipment, such as solar collectors, windmills, or geothermal devices which are eligible for the renewable energy sources credit. This is 30 percent of the first \$2,000 and 20 percent of the next \$8,000. Unlike the energy conservation credit, this may be claimed for equipment installed in your personal residence no matter when it was built.

Certain items are specifically excluded from the residential energy credit. For example, drapes, carpeting, wood paneling and exterior siding may have an insulating effect, but are primarily structural or decorative. Other items that are not eligible for the credit include wood or peat burning stoves, heat pumps, fluorescent lights, and hydrogen fueled equipment.

You compute the residential energy credit on Form 5695, "Energy Credits" and enter the credit on line 45 of your Form 1040. You may not claim the credit on Form 1040A.

For more information, see the free IRS Publication 903, "Energy Credits For Individuals." It can be ordered by mail using the order form in the tax package, or by calling the IRS number listed in the phone book. If more convenient, it can be picked up at most IRS offices.

Administration assisting women register for draft.

**Opening a firm? Have enough cash**

AUSTIN, Texas (Spl.) -- If you're going to open a small business, you ought to have enough money on hand to run it for at least 18 months, a University of Texas lecturer

says. Dr. George Eddy, who teaches a management course on small business, says persons are "asking for trouble" if they have less than that as start-up capital. He cautions that bankers don't like unpleasant surprises such as a client "running in at the end of the month saying he needs more

money to meet the payroll." In Dr. Eddy's course, each student must make a detailed feasibility study about starting a "for-real" business. Some of the analyses have proved so favorable that several students have gone into business for themselves, he reports.

**GUYMON, OKLAHOMA-CATTLE AUCTION MARKET - NEWS - LETTER**

GREETINGS TO ALL CATTLE PRODUCERS

LAST FRIDAY A TOTAL OF 1461 CATTLE AND CALVES SOLD THROUGH THE ARENA ON A \$2.00 TO \$3.00 PER CWT LOWER MARKET. A VERY LARGE CROWD OF BUYERS AND SELLERS WERE ON HAND FOR LAST FRIDAYS AUCTION.

PACKER CWOS SOLD \$2.00 LOWER SELLING FROM \$42.00 TO \$50.00 PER CWT. BOLOGNA BULLS SOLD FOR A TOP OF \$63.25 PER CWT. STEER AND HEIFER CALVES SOLD ON A \$2.00 TO \$3.00 PER CWT LOWER MARKET AND FEEDER CATTLE OF ALL CLASSES SOLD \$1.00 TO \$2.00 LOWER.

FOR NEXT FRIDAY MARCH 21ST. WE ARE EXPECTING A GOOD RUN OF CATTLE OF ALL CLASSES. IF YOU WOULD LIKE TO CONSIGN CATTLE OR FOR MORE INFORMATION GIVE US A CALL HERE IN GUYMON AT THE PANHANDLE LIVESTOCK COMMISSION COMPANY. THAT NUMBER IS 405-338-3378. MY HOME PHONE IS 405-349-2254.

**PANHANDLE LIVESTOCK COMMISSION CO.**

Guymon, Okla. 405-338-3378 P.O. Box 879

**Ideal FOOD STORES**

PRICES EFFECTIVE THRU MARCH 26, 1980. QUANTITY RIGHTS RESERVED. NO SALES TO DEALERS.

BAR-S SKINLESS MEAT  
**Franks 89¢**  
12-OZ. PKG.

STEFFEN'S -- ALL FLAVORS  
**Ice Cream \$1.36**  
LIMIT 2 1/2-GAL. 1/2-GAL. CTN.  
Steffen's Bars \$1.19  
12-CT. PKG.

GREEN MARKET STREET  
**Strawberries 73¢**  
CALIFORNIA PINT

U.S. #1 YELLOW  
**Onions 2 LBS 19¢**  
PLANTATION RIPE  
**Pineapple 69¢**  
LARGE  
**Yellow Squash 25¢**  
TENDER CRISP  
**Cabbage 2 LBS 23¢**

CALIFORNIA NAVAL  
**Oranges 23¢**  
L.B.

**Pork**  
YOUR CHOICE 98¢  
FRESH  
**Pork Chops \$1.39** RIB CENTER CUTS L.B.  
**Pork Chops \$1.49** LOIN CENTER CUTS L.B.  
**Pork Loins 98¢** 14-17 LB. AVG. WHOLE ONLY L.B.  
PORK BOSTON CUTS  
**Shoulder Roast 98¢** L.B.  
FRESH FAMILY PACK  
**Pork Steak 98¢** L.B.  
SIRLOIN END  
**Pork Roast 98¢** L.B.  
FRESH MARKET MADE  
**Pork Sausage 98¢** L.B.

**Long tapes**

SHOWBOAT  
**Pork & Beans 25¢**  
LIMIT 4  
14 1/2-OZ. CAN

LAY'S POTATO CHIPS OR  
**Fritos 76¢**  
LIMIT 2  
ALL FLAVORS 9 3/4" SIZE  
HUNT'S  
**Ketchup 82¢**  
LIMIT 2 WITH \$5.00 OR MORE PURCHASE  
32-OZ. BTL.  
HUNT'S  
**Tomato Juice 63¢**  
LIMIT 3  
46-OZ. CAN

**SHOP IDEAL...WHERE THERE'S MORE VALUE IN**



### Gift Of Life Campaign

Eschol Blankenship today announced that the Gift of Life Campaign will be held March 16 through March 31 to distribute educational material and organ donor information and receive contributions for the Kidney Foundation of the Texas Panhandle.

Eschol Blankenship stated that 14 million Americans suffer from kidney disease and 54,000 people die each year from kidney and kidney related diseases despite major advances in medical science. At present, over 200 persons have kidney failure and must sustain life by the use of a kidney machine in West Texas.

Much can be done to treat kidney patients through drugs, diet, therapy and the artificial kidney machine, but the hope of life for thousands is a chance for a transplant of a healthy kidney. Over 4,000 people in Texas need a transplant, but only one out of 10 dialysis patients have a related donor. With the many advances science has made in blood testing, tissue typing and organ preservation kidneys can be successfully transplanted from non-related donors or a cadaver donor. The organ donor program is a top priority of the Kidney Foundation because it is estimated that if just 10 per cent of all Americans would make arrangements to donate their kidneys, there would be enough to meet the patients needs.

The Kidney Foundation of the Texas Panhandle is an Affiliate of the National Kidney Foundation. The Foundation is a voluntary health agency and

services all cities from Lubbock to the top of the Panhandle of Texas.

Another priority of the Kidney Foundation is patient services offered include information and referral services, help with insurance and Social Security claims, medical alert jewelry, Bloodplan Insurance, emergency transportation, transportation to transplant center, patient packets, emergency financial assistance, patient visitation teams and a lending library.

Blankenship said he feels this campaign deserves the attention and support of every concerned citizen and asks that anyone interested in volunteering to help make this event successful to contact Eschol Blankenship or the Kidney Foundation at 355-8913, 2710 CivicCircle, Amarillo, Texas 79109

#### SBA SCHEDULE REMINDER

LUBBOCK-The Small Business Administration representative, Charlie Dunn, is scheduled to meet with farmers, ranchers and agricultural related businesses to explain the SBA Disaster Loan Program for losses caused by the snowstorm and high winds of October 30 and 31, 1979, as follows:

Thursday: March 20, 1980; Clayton, New Mexico 9:00 a.m. to 3:00 p.m. Union County ASCS Office.

Carter is criticized by Arabs on resolution.

### IRS Allows Energy Credit

"Thought for Food" is the theme for Agriculture Day 1980, sponsored by the non-profit Agriculture Day Foundation to salute agri-business and to make the non-farming consumer aware of agriculture's importance. Ag Day 1980 is scheduled for March 20th.

"Ag Day's purpose is to make the 96 percent of the American population that doesn't farm, aware of the challenges facing agriculture and the impact agriculture has on all our lives," according to James I. Scott, national Ag Day chairman and vice-president of the Agriculture Day Foundation. "Consumers must be made aware of pressing farm issues, such as inflation, fuel shortages and environmental pressures, because these issues affect each individual's life."

Although only four percent of the American population actually farms, four out of 10 working Americans are involved in the food and fiber production and distribution chain. Agri-business is the nation's largest employer. The assets of American agriculture, \$790 billion annually, are nearly equal to the total assets of all the stocks listed on the New York Stock Exchange.

"Ag Day gives the American food-buying public the opportunity for a better understanding of what the industry of agriculture has done, and must continue to do, to maintain the abundance of food in America," according to James L. "Jim" Lindsey, president of the Southwestern Division of Pioneer Hi-Bred International, Inc.,

a supplier of planting seed to farmers. The Southwestern Division serves Texas, New Mexico and Oklahoma.

"This year's theme for Ag Day, 'Thought for Food,' is particularly appropriate," Lindsey said. "If egg prices had increased at the same rate as transportation costs since 1958, eggs would cost more than \$3.40 a dozen today. And if milk prices had increased at the same rate as housing costs during the last 20 years, milk would now cost \$4.50 a gallon. "So in spite of rising food expenditures, food is still a bargain," Lindsey said. "When consumers understand the facts about agri-business, they will realize that America's agriculture is the most scientifically advanced, efficient and plentiful in the world. The purpose of Ag Day is to bring these facts before the public."

Agriculture Day was created in 1973 by The Miller Publishing Company, a Minneapolis-based publisher of business magazines for agriculture. Since then, Ag Day has grown into a national observance, with numerous events to give the non-farming consumer a chance to learn about the world's most productive agri-business industry.

#### MARKETS

Wheat	\$3.52
Milo	3.80
Corn	2.49
Soybeans	5.13

Militants reportedly ready to give up captives.

### SMILES

**The Reason**  
BML-You brag about your ability to judge people by their dress. What about that little blonde over on the beach?

SN -- Insufficient evidence.

**The Fatalist**  
Londoner-I went bald, so I spent a small fortune on hair restorer.

Scotchman-When I went bald I sold my brush and comb.

**Positive**  
"Are you sure your wife knows I'm going home with you for dinner tonight?"

"Knows? I should say so! This morning I argued with her about it for half an hour."

**One Way**  
"Are you saving any money since you started your budget system?"

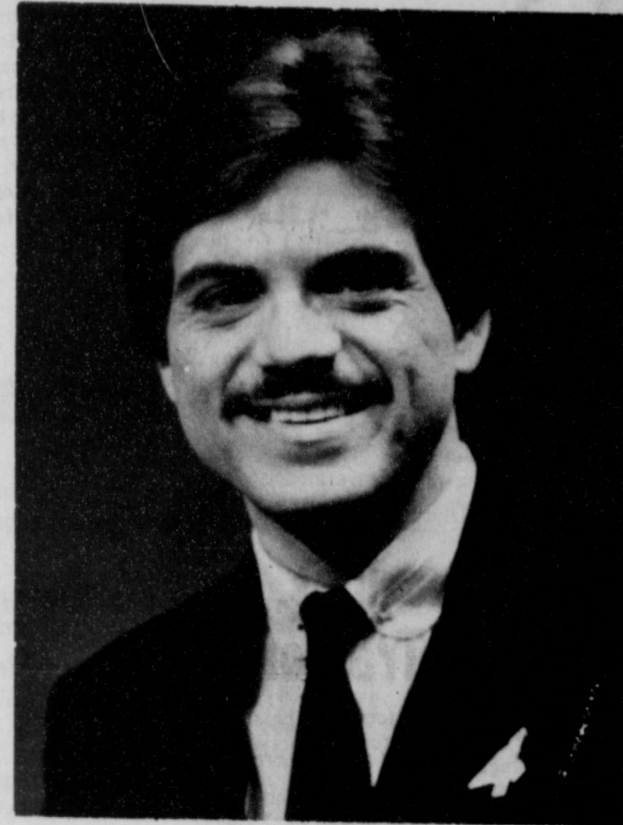
"Sure, by the time I get it straightened out every evening, it's too late to go anywhere."

**Hurray**  
Sunday School Teacher: "Now children, you must never do anything in private that you wouldn't do in public."

Sammy: "Hurray! No more baths."

**Honest Answer**  
When the teacher asked a little boy who was late for

## KAMR Weather Man To Present Seminar Here



Gene Key

Gene Key, of television station KAMR in Amarillo will be in Spearman on March 25 at 7:30 p.m. in the high school auditorium to present a Weather Seminar. He is also bringing with him a Civil Defense man from Amarillo.

Key will explain the new radar equipment at KAMR which enables the station to isolate any county in severe weather.

There will also be a film on tornadoes and severe weather occurrences.

The public is invited to attend this informative seminar.

Hansford County has a network of Weather Watchers who faithfully and voluntarily watch the clouds and report severe weather for safety of county residents.

County and school officials urge everyone to go to the seminar and also you are reminded that it is time to get your FM radio batteries ready for the coming severe weather months. KRDF-FM Spearman has an emergency generator which they use in case of power failure and you can tune in to them for weather updates, alerts, etc.

### Hospital News

Patients in Hansford Hospital are Anita Garrard, Charlotte Auldman, Sandra Collins, Bennie Brandvik, Connie Garcia, Sheila Douglas and daughter, Rosalie Grotegut, Doris Meyer, Lora Bridges, Grace Archer, Nell Cummings, Teresa Lopez, Cleta Casdorff, Cheryl Moore O.D. Behne Maria Vargas, Larry Silva, Elwanna Eaton, Debbie Benton, Tom Sutton and Monty Jackson.

Dismissed were Burt Hatch, Kenneth Virden, Christy Burton, Ellen Monroe, Clint Irwin, Shannon Holton, Jack McWhirter, Paul Lopez, James Haskins, Martin Rasor, Oscar Rojas, Pete Herrera, Lawrence Wilbanks, Glen Lackey, Kim George and son, Caroline Russell and son, Mattie Dyer, John Lieb, Sat Gupta and Krystal Collins.

### CCC CORN PURCHASES

CCC has announced intentions to purchase corn to help offset the effect of export restrictions to the Soviet Union. Under the provisions of the purchase program all potential sellers of corn, including producers with corn currently under price support loan, are encouraged to offer corn for sale. This will be on bid basis. If you are interested in the above please contact your local ASCS office for more information.

**Life**  
Life is just an everlasting struggle to keep money coming in and teeth and hair and vital organs from coming out. -Breeze, Brookley, Ala.

# Specials

**YOUR CHOICE, \$1.09**

ASSORTED **Pork Chops** \$1.09 LB.

PORK LOIN **Country Style Ribs** \$1.09 LB.

RIB HALF SLICED **Pork Loins** \$1.09 LB.

SIRLOIN END **Pork Chops** \$1.09 LB.

**YOUR CHOICE, \$1.19**

BONELESS **Pork Steak** \$1.19 LB.

FRESH SHOULDER SLICES **Pork Lean & Meaty Spare Ribs** \$1.19 LB.

BONELESS **Pork Shoulder Roast** \$1.19 LB.

BAR-S HICKORY SMOKED **Sliced Bacon** \$1.19 1-LB PKG.

## Have Lower totals at Ideal Foods

KOUNTY KIST WHOLE KERNEL

### Golden Corn

27¢

17-OZ. CAN LIMIT 3

NORTHERN ASSORTED

### Bath Tissue

83¢

4-ROLL PKG. LIMIT 2 WITH \$10.00 OR MORE PURCHASE PLEASE

HEALTH AND BEAUTY AIDS SPECIALS

GLEEM **Toothpaste** 99¢ 7-OZ. TUBE LIMIT 2

REGULAR OR UNSCENTED **Sure Deodorant** \$2.39 6-OZ. CAN

REFRESHING **Pepsodent Toothbrush** 69¢ EACH

HI-DRI **Paper Towels** 45¢ JUMBO ROLL

NORTHERN ASSORTED **Napkins** 3 99¢ 60 ct. pkg.

MEA DOWDA LE **Syrup** 73¢ 32-OZ. BTL

POST **Grapenuts** \$1.23 24-OZ. BOX

FOLGER'S ALL GRINDS **Coffee** \$10.18 3-LB. CAN

LIPTON **Instant Tea** \$1.99 3-OZ. JAR

CA MELOT **Apple Butter** 71¢ 28-OZ. JAR

LUNCHEON MEAT **Spam** \$1.18 12-OZ. CAN

NABISCO - ALL VARIETIES **Bag Snacks** 73¢ 5 TO 7-OZ. BAG

LIQUID DISH **Dawn Detergent** 99¢ 22-OZ. BTL

VLASIC HAMBURGER **Sliced Dills** 68¢ 32-OZ. JAR

LADY VICTORIA

Fine Crystal Stemware

Imported from France

FEATURED THIS WEEK

4 Champagne Glasses

FOR ONLY \$5.99 per set with each \$3.00 purchase

Regular Price \$6.99 per set

Water Pitcher FOR ONLY \$4.99 with each \$3.00 purchase

Regular Price \$5.99

FRESH DAIRY

CAMELOT COLBY OR MILD

**Farbest Margarine** 36¢ 1-LB. PKG. LIMIT 2 WITH \$10.00 OR MORE PURCHASE PLEASE

**Camelot Longhorn** \$1.18 10-OZ. PKG. LIMIT 2 WITH \$5.00 OR MORE PURCHASE PLEASE

MERRICO **Cinnamon Rolls** 63¢ 9 1/2-OZ. TUBE

STEFFEN'S **Buttermilk** 83¢ 1/2-GAL. CTR.

FROZEN FOOD

MEADOWDALE **Orange Juice** 66¢ 12-OZ. CAN LIMIT 2

BANQUET **Meat Pies** 28¢ 8-OZ. BOX LIMIT 4 WITH \$10.00 OR MORE PURCHASE PLEASE

GREEN GIANT **Nibbler Corn** 79¢ 6-ear BAG

DOWNY FLAKE **Waffles** 73¢ 12-OZ. PKG.

In order to better serve our Spearman clients our firm has opened a branch office in Spearman.

Office Hours-Every Wednesday from 9 to 5 located in the Pittman-Shieldknight Building.

Born, Hooten, Jones & Gardiner

Certified Public Accountants

Phone 659-2396

Call for appointments at any time.

17S-4tc

### Beginner Sewing Classes

TIME: MONDAY Mornings 9:00 - 12:00 OR Monday Evenings 7:00 - 10:00 - First Class starts on April 7, 1980 - 6 lessons of 3 hours

FEE: \$40.00 includes patterns and complete instructions for making a wrap skirt, a pullover top, a plaid shirt, and tailored slacks. Classes will also cover measuring & fitting, choosing suitable fabrics, sewing techniques & shortcuts.

**TAUGHT BY: Janie Henton**

**PLACE: Kaleidoscope - 715 W. 7th Spearman**

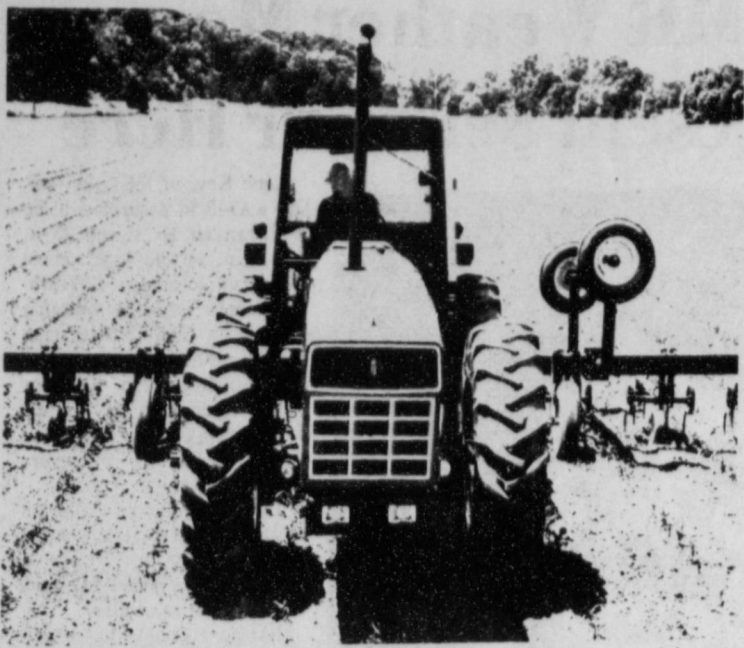
**CALL 2080 or come by the Kaleidoscope for more information and to sign up for classes**

STORE FOR YOU!....

Ideal Food Stores

Food Stamps Buy More At Ideal...





Primarily for the big row-crop farmer, the new four-wheel drive models can match most any row width or spacing requirement.

## Definitely Different Describes New Four-Wheel Drive Tractor

AS EVERY farmer knows who's been to a dealer's new model openhouse there are new tractors... and there are new tractors.

We must admit, after seeing the new 3388 and 3588 4-wheel drive models being introduced by International Harvester, they really are new tractors.

Farm magazine editors were given a chance in January to kick the tires, look under the hood and drive what IH officials call, "a breakthrough in row-crop tractor design," during a special showing in Phoenix. The editors found the new tractor models striking in appearance and unique in several other ways. The 130 hp 3388 and the 150 hp 3588 are almost identical in dimensions, with just over an inch difference in length and height. The "2+2's", as the tractors are called, are 4-wheel drive, hinged in the middle, with an unusual, long, "jet fighter" appearance caused by the engine placement up front in an enclosed cowling, with the cab placed back in the rear section.

Whether the unique design of IH's new "2+2" tractors will set the style for all large row-crop tractors in the future is yet to be seen. The 2+2 tractor design does have many use-

ful features not found in the standard row-crop tractor in its horsepower range.

Operating the new tractor gives the feeling of the larger dual-wheel 4-wheel drive monsters, but it is very maneuverable and should prove to be about as versatile as the manufacturer claims. At the Phoenix showing, the 2+2 tractors were hooked up to nearly every kind of tool a farmer would ever use and there were no problems handling them. Heavy rains in the Phoenix area had made the cotton farm where the demonstration was held almost boggy, giving the tractors a chance to show the advantages of a 4-wheel drive row-crop tractor.

No doubt when farmers see the 2+2 tractor and IH competitors get a look at it, comments on its appearance won't all be complimentary. The engine is mounted far forward, ahead of the front axle, giving the tractor a definite snout-nosed appearance. The cab, or "control center", is in the rear section behind the hinge.

The design is unique. A major advantage claimed by IH is better traction and even weight distribution provided by the design. With the engine far forward there's no need for

extra weights. Weight distribution between sections is 54 percent front and 46 percent rear. Ballast can be added to the rear section.

IH officials told editors at the Phoenix meeting their new tractors were designed to fit the needs of farmers who require high horsepower and need a tractor for row-crop work as well as for other jobs on the farm. The new tractors are expected to fill the requirements of farmers who need a large horsepower 4-wheel drive tractor in addition to a large row-crop tractor.

The 2+2 tractors were designed to fit virtually any farming or ranching

operation, Stanley F. Lancaster, IH vice president told the editors at Phoenix. He is general manager of IH's Agricultural Equipment Group-North American Operations. He said the new tractors were developed because IH believes high horsepower, two-wheel drive types are reaching their limits in usable drawbar power because of traction and stability limitations.

Major pluses listed by IH officials for their new tractors include:

1. Four-wheel drive capabilities give the tractor the ability to conditions that would be off limits to a conventional tractor. The farmer can

get the jump on spring plowing and disking, plant at the optimum time, pull well in mud or snow.

2. With the control center positioned behind the articulation joint, the operator is afforded excellent visibility of rear-mounted equipment, as well as to the front, left and right.

3. The engine forward concept assures balanced weight distribution and traction.

4. Front axle oscillation permits full ground contact of all four wheels over uneven fields.

5. Hydrostatic power steering and a turning radius of 15 ft., 9 in. for both models provides good maneuverability.

The Series 88 tractors come standard-equipped with a "Power Shift Torque Amplifier" transmission, allowing "on-the-go" shifting. Of the 16 forward and 8 reverse speeds, a 3 mph ground speed gear is ideal for proper pto use with trailing equipment such as forage harvester, and round and square balers.

### MARKET HOG RULES

1. Barrows and open gilts may be exhibited in the Market Hog Show.
2. Each exhibitor may enter only one hog in the show. Each exhibitor will be allowed to weigh one hog and one hog only for market class.
3. Hogs must have been owned continuously by the exhibitor prior to December 1, 1979.
4. Exhibitors are urged to familiarize themselves with the schedule of arrival, weighing, ear tagging, sifting, judging and sale of all hogs.
5. Weighing of all hogs will be done under the direction of the superintendent and assigned to the proper weight class.
6. All hogs must weigh within the range of 190 pounds to 250 pounds.
7. Hogs will be shown in classes as breeds. Four animals will make a class. Breeds with less than 4 animals will be placed in another class by the show superintendent. Breeds with as many as 8 hogs will be divided into a light and heavy weight class.
8. Seventy-five percent of swine will be sold at auction. Maximum is fifty hogs. Only ribbon winning hogs will be auctioned.
9. Entry fee will be \$2.00 per head.
10. Three Showmanship Trophies will be awarded.
11. Any drug to be administered should be checked for its period or time of withdrawal and a drug cannot be given to any animal within this withdrawal period.

Gruver FFA Morse 4-H  
Gruver-4H Spearman FFA  
Spearman 4-H



### THIS IS ONE BREAK OUR CUSTOMERS DON'T DESERVE.

"When a storm knocks down a line it can put thousands of people out of contact with the world. That's where I come in...twenty-four hours a day. As I tell my friends, 'When a line comes down, they get me up. But I don't mind it. It makes me feel I'm an important part of providing the best telephone service possible. That's why I'm proud to be one of the people General Telephone is talking about when they say 'We GTE keep you talking.'"



James R. Sartor, Lineman, Plano, Texas. One of the 100,000 GTE professionals who are working to bring you better and more efficient telephone service.

## Meet our \$2,000 Bake-Off cooking contest winner.

She had a little help from a friend...



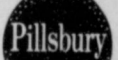
### Hungry Jack Biscuits.

With a little help from Hungry Jack® Biscuits, Mrs. Helen Novak of Fontana, California, one of the 1980 Bake-Off® cooking contest winners, took off with \$2,000.

Here's your chance to try that winning recipe and save 12¢. We think you'll find that it's easy to bake like a winner when you bake with Hungry Jack® Biscuits.



Satisfies the heartiest appetites.



Mrs. Helen Novak, 1980 Bake-Off® cooking contest winner.

#### \$2000, 1980 Bake-Off® cooking contest recipe

#### Puffy Chili Rellenos

Zesty and attractive—for the Mexican food enthusiast.

- 2 (3-oz.) cans whole green chilies
- 8 oz Kraft Natural Monterey Jack or Cheddar Cheese
- 10-oz. can Hungry Jack® Refrigerated Big Flaky Biscuits
- 3 eggs separated
- 1/4 teaspoon salt
- 8 1/2-oz. bottle chunky taco sauce

Heat oven to 375° F. Grease cookie sheet. Cut chilies lengthwise to make 10 pieces. Remove seeds and ribs. Rinse and drain. Cut cheese into ten 3x1/2x1/4-inch pieces. Wrap each piece of cheese with a chili.

Separate dough into 10 biscuits; press or roll

each to a 5-inch circle. Place 1 chili-wrapped cheese piece in each biscuit. Fold dough over piece of cheese; pinch to seal. Form each into a finger-shaped roll; place seam-side-up on prepared sheet.

Bake at 375° F. for 10 to 12 minutes or until light golden brown. While rolls are baking, prepare topping in small bowl; beat egg whites until stiff. Fold in slightly beaten egg yolks just until blended. Continue baking 12 to 15 minutes or until golden brown. In small saucepan, heat taco sauce. Serve hot chili rellenos topped with sauce. 10 servings.

TIP: To make ahead prepare cover and refrigerate up to 2 hours; bake as directed.

Save 12¢ **12¢**

on your next purchase of two 10-biscuit or two 5-biscuit size cans of Hungry Jack® Biscuits (any flavor).

**12¢**

STORE COUPON



To The

## Hansford County Livestock Show

### Congratulations

To Our Young Exhibitors



TO BE HELD IN GRUVER  
FRIDAY, MARCH 21 &  
SATURDAY, MARCH 22

LET'S ALL ATTEND!

Now there are 3  
2+2 tractors

- 3788—466 cu. in. turbo diesel, 170 PTO hp\*\*
- 3588—466 cu. in. turbo diesel, 150 PTO hp\*
- 3388—436 cu. in. turbo diesel, 130 PTO hp\*

# North Plains International, Inc.

HWY. 207 SOUTH

SPEARMAN



**CALF RULES**

1. Steers must weigh at least 900 and not more than 1300 pounds on the date of the show.
2. All Angus, Hereford, British Crosses and other crosses will be shown together and divided as equally as possible into four classes according to their weight.
3. Any steer showing more than normal fill on show day as determined by show officials at weighing time will not be allowed to show.
4. All steers must have been owned by the exhibitor prior to the fall weigh-in.
5. No exhibitor may enter more than one steer in the show. Exhibitor will weigh steers June 30, 1979. Steers may be weighed in as family groups and if so tagged will be eligible to be shown by any family member. Steers will be tagged with Texas Steer Validation Tags. If tag is lost out of the ear, exhibitor must notify their adult supervisor in order to obtain replacement tag. Steers may be purebred, grade, or crossbred, but only steer calves may be entered.
6. All steers will be weighed on June 30, 1979 between 7:00 a.m. and 10:00 a.m. at Barnes Feedlot, 1 mile east of Spearman.
7. A trophy will be awarded to the steer with the highest daily gain. Gain will be computed from the date of weigh-in until the date of the show.
8. Only individual ribbon winners will sell in the steer auction.
9. 75% of steers will sell — maximum of 40 steers.
10. Any steer found to be unruly by the board on the date of the show will not be allowed to show. Steers will be sifted for this.
11. The number of each class to sell will be determined on percentage basis.
12. Three Showmanship Trophies will be awarded.
13. There will be an entry fee of \$3.00 per head.
14. Unethical fitting of steers will be prohibited. Unethical fitting within the meaning of this rule will be deemed to consist of any method altering the natural conformation of any part of the animal's body, evidenced by the presence of abnormal tissue or foreign substance.

**SHEEP RULES**

1. Lambs must weigh 75 pounds on the date of the show. Lambs cannot weigh over 120 pounds on date of show.
2. All lambs will be weighed and divided into weight groups on the date of the show.
3. All lambs must be on feed by December 1, 1979.
4. Lambs will be classified to their show class by sheep superintendent on the date of the show.
5. Lambs will be slick sheared within 2 weeks of the show. Adult advisors will assist in making arrangements for lambs to be shorn at a location in the county.

6. Wether and ewe lambs can be shown, but only open ewe fat lambs.
7. Each exhibitor can show only one lamb.
8. Only 75% of lambs will sell. Maximum of 40 will sell. Only ribbon winning lambs will be auctioned.
9. Three Showmanship Trophies will be awarded.
10. Entry fee of \$1.50 per head will be charged.
11. Any drug to be administered should be checked for its period or time of withdrawal and a drug cannot be given to any animal within this withdrawal period.

**HANSFORD COUNTY**

MARCH 21, 22, 1980

NOTICE OF SALE OF RURAL LAND

The heirs of Fred O. Moyes, Deceased, desire to sell the following Ochiltree County land:

Section 30, Block 11, W. Ahrenbeck and Bros., Ochiltree County, Texas, containing 320 acres, more or less.

This land is located approximately three miles north and one mile west of Perryton, Texas, and has no improvements. It is presently devoted to a dryland farm operation under an agricultural lease that extends through the 1980 wheat harvest. Sellers own one-half of the minerals which they will reserve for at least twenty years.

Additional information on the terms of the sale and bidding instructions may be obtained from Otis C. Shearer, Lemon, Close, Atkinson, Shearer & McCutcheon, P. O. Box 348, Booker, Texas 79005, telephone (806) 658-4545, up to March 27, 1980, which is one day prior to the scheduled date of sale.

**South African Ambassador To Be In Amarillo**

The South African Ambassador to the United Nations, Mr. J.A. Eksteen, will be in Amarillo on Thursday, March 20, 1980. He will speak at 7:00 p.m. in the Multipurpose Room on the second floor of the Amarillo Public Library, Central branch, 413 E. 4th. The speech is open to the public free of charge. Mr. Eksteen's visit to Amarillo is being sponsored by the Amarillo Council on International Affairs.

Ambassador Eksteen was born in the Transvaal region of South Africa in 1942. He earned a Masters degree in Political Science before joining the Department of Foreign Affairs in 1964. He served as Head of the United Nations/South West Africa Sections of the Foreign Affairs Department and participated in the proceedings before the International Court of Justice in the South West Africa cases in 1966. The Ambassador

also served in the South African Embassy in Washington and was a member of South African delegations to international conferences for the negotiation of patent and telecommunications treaties. In 1978, he served as a Western Member of the U.N. Security Council on the future of South West Africa/Namibia. Mr. Eksteen was appointed Ambassador Extraordinary and Plenipotentiary and Permanent Representative of South Africa

to the United Nations in August, 1979.

The Ambassador will be honored at a reception given by the Amarillo Chamber of Commerce and the Amarillo Council on International Affairs. He will also be the featured guest at a luncheon for Council members on Friday, March 21, 1980. Anyone interested in joining the Council should contact Doak Bishop at 372-5671 or write to P.O. Box 31718, Amarillo, Texas 79120.

**The Future of This Nation Rests on ...**

**Youth in Agriculture**

**THE 4H CLUBS AND FUTURE FARMERS OF AMERICA NEED YOUR SUPPORT!**

**ATTEND...**

**The Hansford County Junior Livestock Show and Sale**

**Friday & Saturday, March 21 & 22**

**Gruver, Texas**

**The Spotlight Is On**


**The Annual**

**Junior Livestock**


**Show & Sale**



**4-H**



**Hansford County**



**First State Bank**

**SPEARMAN, TEXAS 79081**

**First State Bank**

30 SW Court      659-2526      Spearman, Texas





### Tennis results

Spearman Tennis team, standing l to r, Sonya Ooley, Denice Blackburn, Kelly Shaver, Jane Flowers, Carla Tucker, and Susan Davis. Kneeling, l to r, Jay Pack, Darren Goodheart, Carey Bodey, Kyle Beedy, and Wayne Meek.

In the Canadian Tennis Tournament held March 15, Carey Bodey and Kyle Beedy won first place beating all their opponents in straight sets.

Wayne Meek played Bohannon of White Deer for third place, and was defeated 6-4, 7-6.

Carla Tucker and Susan Davis played Satterwhite and Mywear of White Deer for third place and were defeated 6-1, 6-3.

Jane Flowers played Christy Rogers from Canadian for third place and was defeated 6-3, 6-2. Jane had previously beaten the number one seed of the tournament 7-6, 1-6, 6-1.

Kelly Shaver, Darren Goodheart, Jay Pack, Sonya Ooley and Denice Blackburn were defeated in their first match.

#### Spearman Tennis

##### LYNX-LYNXOTTER RELAYS (Mixed)

TEAM TOTALS—1. Perryton 132, 2. Springtown 124, 3. Granger 86, 4. White Deer 75, 5. Spearman 62, 6. San Antonio 57, 7. White Deer 44, 8. San Antonio 37, 9. White Deer 34, 10. Granger 30, 11. White Deer 28, 12. Springtown 25, 13. Granger 22, 14. White Deer 20, 15. Springtown 18, 16. Granger 15, 17. White Deer 12, 18. Springtown 10, 19. Granger 8, 20. White Deer 6.

100 MILE RELAY—1. Perryton 2:04.2, 2. Springtown 2:11.5, 3. Granger 2:18.8, 4. White Deer 2:26.1, 5. Spearman 2:33.4, 6. San Antonio 2:40.7, 7. White Deer 2:48.0, 8. San Antonio 3:05.3, 9. White Deer 3:12.6, 10. Granger 3:20.0, 11. White Deer 3:27.3, 12. Springtown 3:34.6, 13. Granger 3:42.0, 14. White Deer 3:49.3, 15. Springtown 3:56.6, 16. Granger 4:04.0, 17. White Deer 4:11.3, 18. Springtown 4:18.6, 19. Granger 4:26.0, 20. White Deer 4:33.3.

MILE RELAY—1. Perryton 1:08.1, 2. Springtown 1:15.4, 3. Granger 1:22.7, 4. White Deer 1:30.0, 5. Spearman 1:37.3, 6. San Antonio 1:44.6, 7. White Deer 1:51.9, 8. San Antonio 2:04.5, 9. White Deer 2:11.8, 10. Granger 2:19.1, 11. White Deer 2:26.4, 12. Springtown 2:33.7, 13. Granger 2:41.0, 14. White Deer 2:48.3, 15. Springtown 2:55.6, 16. Granger 3:02.9, 17. White Deer 3:10.2, 18. Springtown 3:17.5, 19. Granger 3:24.8, 20. White Deer 3:32.1.

#### Girls Division

TEAM TOTALS—1. Spearman 171, 2. Perryton 124, 3. San Antonio 117, 4. Granger 108, 5. White Deer 101, 6. White Deer 94, 7. White Deer 87, 8. White Deer 80, 9. White Deer 73, 10. White Deer 66, 11. White Deer 59, 12. White Deer 52, 13. White Deer 45, 14. White Deer 38, 15. White Deer 31, 16. White Deer 24, 17. White Deer 17, 18. White Deer 10, 19. White Deer 3, 20. White Deer 0.

100 MILE RELAY—1. Spearman 2:17.1, 2. Perryton 2:24.4, 3. San Antonio 2:31.7, 4. Granger 2:39.0, 5. White Deer 2:46.3, 6. White Deer 2:53.6, 7. White Deer 3:00.9, 8. White Deer 3:08.2, 9. White Deer 3:15.5, 10. White Deer 3:22.8, 11. White Deer 3:30.1, 12. White Deer 3:37.4, 13. White Deer 3:44.7, 14. White Deer 3:52.0, 15. White Deer 3:59.3, 16. White Deer 4:06.6, 17. White Deer 4:13.9, 18. White Deer 4:21.2, 19. White Deer 4:28.5, 20. White Deer 4:35.8.

100 MILE HURDLES—1. Oden Perryton 1:17.7, 2. Granger Perryton 1:25.0, 3. Burke Spearman 1:32.3, 4. Perryton 1:39.6, 5. Oden Perryton 1:46.9, 6. Granger Perryton 1:54.2, 7. Burke Spearman 1:61.5, 8. Perryton 1:68.8, 9. Oden Perryton 1:76.1, 10. Granger Perryton 1:83.4, 11. Burke Spearman 1:90.7, 12. Perryton 1:98.0, 13. Oden Perryton 2:05.3, 14. Granger Perryton 2:12.6, 15. Burke Spearman 2:19.9, 16. Perryton 2:27.2, 17. Oden Perryton 2:34.5, 18. Granger Perryton 2:41.8, 19. Burke Spearman 2:49.1, 20. Perryton 2:56.4.

MILE RELAY—1. Spearman 1:07.5, 2. Granger 1:14.8, 3. Perryton 1:22.1, 4. Oden Perryton 1:29.4, 5. Spearman 1:36.7, 6. Granger 1:44.0, 7. Perryton 1:51.3, 8. Oden Perryton 1:58.6, 9. Spearman 2:05.9, 10. Granger 2:13.2, 11. Perryton 2:20.5, 12. Oden Perryton 2:27.8, 13. Spearman 2:35.1, 14. Granger 2:42.4, 15. Perryton 2:49.7, 16. Oden Perryton 2:57.0, 17. Spearman 3:04.3, 18. Granger 3:11.6, 19. Perryton 3:18.9, 20. Oden Perryton 3:26.2.

MILE RELAY—1. Perryton 1:08.1, 2. Springtown 1:15.4, 3. Granger 1:22.7, 4. White Deer 1:30.0, 5. Spearman 1:37.3, 6. San Antonio 1:44.6, 7. White Deer 1:51.9, 8. San Antonio 2:04.5, 9. White Deer 2:11.8, 10. Granger 2:19.1, 11. White Deer 2:26.4, 12. Springtown 2:33.7, 13. Granger 2:41.0, 14. White Deer 2:48.3, 15. Springtown 2:55.6, 16. Granger 3:02.9, 17. White Deer 3:10.2, 18. Springtown 3:17.5, 19. Granger 3:24.8, 20. White Deer 3:32.1.

## Track Schedule

The 1980 Track Schedule for Spearman Schools has been released.

Beginning March 1 the junior high boys, and 9th grade boys will go to Boys Ranch and the varsity boys will go to Stinnett. On March 7 & 8 the junior high, 9th grader and varsity boys will all go to Panhandle.

On March 14 & 15 Spearman will host a track meet, March 21 & 22 varsity girls and varsity boys will travel to White Deer.

On March 28 & 29 the junior high girls will go to White Deer, the junior high boys to Sunray and varsity boys and girls to Canadian.

This District Track Meet will be held for junior high boys and girls at Perryton.

April 11 & 12 the varsity boys will be competing at Guymon.

### UT attracts Merit Scholars

AUSTIN, Texas (Spl.) — Giant strides have been made at The University of Texas at Austin in the number of National Merit Scholars it has attracted.

For 1979-80, UT enrolled 190 such scholars — an increase of 57 per cent over the previous year. The increase moved UT Austin from 26th to 15th place nationally.

UT ranks third in Texas (behind Rice and Texas A&M) in the number of Merit Scholars. UT has been an institutional sponsor (that is, providing financial support) for National Merit Scholars only since 1978.

In addition, UT ranks first in Texas in the National Achievement Scholarship Program for Outstanding Negro Students.

Come join in the Hansford County Junior Livestock Show, Friday & Saturday, March 21 & 22, in the Gruver County Barn.

### Head in clouds

AUSTIN, Texas (Spl.) — A woman student at The University of Texas has reason to have her head in the clouds.

Charlotte Smith is one of 10 women in the nation accepted for jet pilot training in the U.S. Air Force. A physics major, she is a cadet in the UT Austin Air Force ROTC, where she is deputy commander of the John H. Payne Squadron.

It is no coincidence that she is interested in flying. Her father is a career Air Force pilot. She hopes eventually to become a flight instructor. Under Air Force rules, she is barred from flying combat missions.

### City Receives Sales Tax

The City of Spearman received a check from the State Comptroller for \$22,059.21 for the period ending Feb. 28, 1980. This sales tax rebate compares to \$14,614.23 for the same period last year.

Total 1980 payments to date to the City are \$40,561.59 as compared to \$29,555.92 up some 37% according to the State Comptroller's office.

The City of Gruver received a check of \$6,578.54 for this period compared to \$3,128.67 for the same period in 1979. Total payments in 1980 to the City of Gruver are \$9,419.16 as compared to \$5,325.74 showing a 76% increase according to the State Comptroller's figures.

# 99¢ SALE

## The Dude

Drop on in for a Dude. Texas tastin' good™. Golden chicken-fried meat, lettuce, tomato, done up fancy on a toasty bun. The Dude. For the Good Times™ and a great price.

**This Monday March 17 thru Sunday March 23 only.**

**Dairy Queen**

Offer good only at Texas Dairy Queen Trade Association Participating Stores

**HOWDY PARDNER**  
Let's All Go To The Junior Livestock Sale and Show!

**COUNTY SHOW BARN**

**Double D Ag Center**

Gruver, Texas

## Friday & Saturday

**HANSFORD COUNTY**

Clubs and Chapters

Participating in the Show

**Gruver FFA**  
**Gruver-4H**

**Morse 4-H**  
**Spearman FFA**

**Spearman 4-H**

**County Barn**

Gruver, Texas

**PROGRAM**

Friday  
March 21, 1980

Weighing will begin on the following schedule  
8:00 a.m. - 10:00 a.m. Swine & Sheep  
10:00 a.m. - 12:00 noon Steers

Show Schedule — Friday, March 21, 1980

1:45 p.m. Grand Opening of Show  
All Directors, Ag Teachers, County Agent, FFA Chapter Presidents, 4-H Club Chairman, FFA Sweetheart, report to arena

2:00 p.m. Lamb Show Starts  
Swine Show will follow completion of Lamb Show

From approximately 10:00 p.m. until 7:00 a.m. Saturday, barn will be locked with no one in barn besides night watchman.

Saturday  
March 22, 1980

8:30 a.m. Pens and stalls must be clean and rubbish removed

8:30 a.m. Judging of Steers

11:00 a.m. Registration of Livestock Judging Contest

12:00 noon Livestock Judging Contest

6:00 p.m. Floor prices will be auctioned  
Presentation of Livestock Judging awards, Showmanship Trophies and Top Gaining award

Immediately following presentation of awards the auction sale of lambs, swine and steers. Sell in order: 1 lamb, 1 swine, 1 steer, etc.