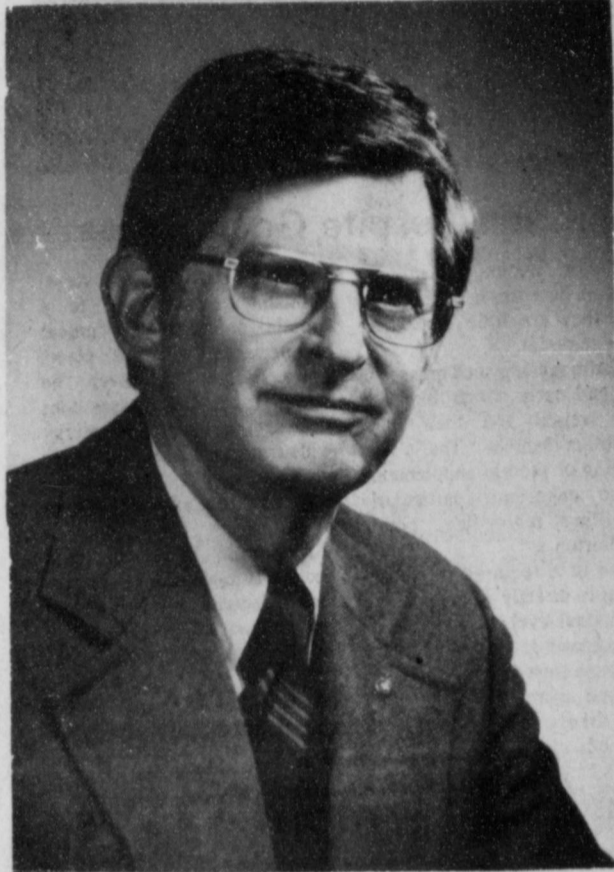


# Rotary District Governor Visits Here



J. Davis Armistead

"Let Service Light the Way" is the theme selected by Rotary International's theme for this year, selected by International president James L. Bomar, according to District 573 Governor J. Davis Armistead, in his address to the Spearman Rotary Club on Monday, November 12, at noon in the garden room of the Cattleman's Restaurant.

Governor Armistead said that Rotarians are torchbearers carrying the light to the dark places of the world. As Rotarians we need to become involved in programs and share our fellowship, we need to light the way for new members.

Rotarians need to light the way in their own business and profession. He needs to lead the way in ethical practices in every day life. This is the basis upon which Rotary has been built.

Rotarians need to guide young people into useful services and careers. Rotarians need to help the old, the young, and the poor.

Rotarians take the torch to the poor countries with the 3-H program—Health, Hunger, and Humanity. Rotary International is a catalyst for irradiating polio in the world. Rotary's program in this area started last

week in the Philippine Islands. Rotary is in 153 countries of the world and is 850,000 strong. Rotarians speak in thirty-nine different languages.

Rotary grew out of a thought in the mind of Paul Harris in 1905, and pioneered in the civic movement and has encircled the earth. Wherever we go, Rotary emphasizes "Service Above Self" and service to all humankind.

Rotary International is governed by fifteen directors, a president and a secretary. It is organized into 378 districts. There are 3000 members in District 573.

Governor Armistead commended the local Spearman Rotary Club for all its service to the community and the world in its many service projects and challenged them to pick a worthy seventy-fifth anniversary project.

Rotary is a respected, dynamic organization throughout the world. Let's be torchbearers to dispel doubt, greed, and ignorance in our community and throughout the world.

Dr. J. Davis Armistead is a native of Sulphur Springs, Texas and a veteran of World War II, has been actively engaged in the practice of optometry in

Lubbock, Texas since July 5, 1949. He was graduated from West Texas State University, did graduate work at Texas Technological University, and received his doctor of optometry degree from Southern California College of Optometry. He has done advance graduate study at the University of Houston, Southern California College of Optometry, and in graduate seminars in Chicago, San Diego, New York, and Honolulu. He has participated in professional surveys in Colleges of Optometry in Chicago and Toronto, Canada, at the Eye Hospital in London, England, and at clinics in Moscow and Leningrad in the Soviet Union.

He and his wife are the parents of two children, Ann and David. Ann is married to Robert Dan Thompson III and lives in Lubbock with her husband and two sons, ages three and five. She is a graduate of TCU and has a master's degree from Texas Tech in food and nutrition. She is a dietetic consultant and college teacher. David, a graduate of Texas Tech is married to Suzanna Weiner of Midland. He has done graduate executive training in East Burklyn, Vermont, and is president of Advance Management Associates, Inc., in Sausalito, California.

J. Davis has been a member of Lubbock Downtown Rotary

Club since 1949; and has served as president, vice-president, several terms as a member of the board of directors, as well as on various committees. He is presently on senior active status with almost 30 years membership in this club.

Active in both civic and church affairs, Davis has served the First United Methodist Church as chairman of the Administrative Board, chairman of the Council on Ministries, church school superintendent, and as chairman of various commissions. His family has been twice selected as Church Family of the Year. He is a member of the Chamber of Commerce, past president of the South Plains Council of the Boy Scouts of America and recipient of the Scout Silver Beaver Award. He is past president of the Knife and Fork Club, and past president of the Lubbock Cerebral Palsy Center.

His involvement in professional organizations include membership in the South Plains Optometric Society, Texas Optometric Association, American Optometric Association, Southwest Contact Lens Society, Professional Advancement Program, and the Vision Foundation. He has been chosen Outstanding Optometrist of the Year by the members of the Texas Optometric Association.

He was appointed by Governor Smith to the Board of

Regents of the University of Houston in 1971, and was re-appointed by Governor Briscoe to a second term which extends to 1983. Also, he serves on the board of directors of West Texas Savings Association. His current hobby is the operation of a stock and crop farm in central Texas.

Visiting Rotarians Monday noon were J. Davis Armistead of Lubbock, A. B. Talley of Canadian, and J. E. Jackson of Borger. Other guests were Cora Armistead of Lubbock, and Marjorie Collard, Alva Garner, Charlene Bulls, Helen Oglesby, Dee Taylor, and Susan Castleberry of Spearman.

Members present Monday noon were Jim Benson, Eschl Blankenship, Roy Bulls, Archie Burress, Durane Castleberry, John R. Collard, Jr., Robert Elliott, Pete Fisher, Ed Freeman, Ed Garner, Kerry Henton, Ron Hoover, John Hutchison, Junior Lusby, Jim McLain, David McClellan, Jack McWhirter, Frank Oglesby, Brice Palmer, Michael Schnell, Jim Shirley, Len Simpson, Gary Sims, Jerry Taylor, and Tim Woodington.

Members absent were J. L. Brock, Kim Brock, Edwin Limbocker, Jim Murray, Vance Snider, and Don Wirsdorfer.

The Spearman Lynx will travel to Dalhart Friday night for the last Dist.

game of the year for the Lynx. The game will be played at 7:30 p. m. Be sure and back the Lynx at Dalhart!

7th Grade & 8th  
DALHART T 5:00--6:30

9th Grade

DALHART H 5:00

Jr. Varsity

DALHART H 7:00

## Hospital News

Patients in Hansford Hospital are Andrea Barrera, Kim Cuck, Jesus Holguin, Deette Cates, Ernestine Salgado, Margie Barkley, Darla Moyer, Walter Porter, Eddie Martin, Maria Cruz, Opelia Vela, Gienna McMullan, A. F. Cook, Charles Little, Winnie Allen, Gertie Archer and Carma Dorton.

Dismissed were Jason Holton, Mickey Fanning, Rachel Burch, Gaye Woolley and daughter, Pauling Harris, Murrell Dowdy, Cleo Denman, Faye Hickerson, Clark Winkler, Jane Dawson and Melvin Willis.

# District 1 4-H Gold Star Banquet Held

Karen Kenney, daughter of Mr. and Mrs. Byron Kenney of Spearman, was among the 4-H'ers honored at the Gold Star Banquet in Amarillo Saturday, Nov. 3.



Karen Kenney

U. S. Representative Jack Hightower, D-Texas, told the audience that the Gold Star Award is a good starting point in achieving success in life.

"If you have hitched your wagon to a star, you've made the first step, the congressman said. "But it's not enough to wish upon a star," he cautioned.

Having decided upon your goals, you have to make plans, find out what is necessary to attain the goals, and work hard to achieve them, he said.

The 4-H program is such good training for life's experiences, because it includes all these elements, Hightower said.

And he urged both the youths and the adults in the audience to keep these ideas in mind as we cope with national problems.

"We are beginning to understand that our natural resources are finite," Hightower said. "The main thing we've had is not just our natural resources, but we've had that desire...for achievement. We must not lose that when the going gets tough."

"This is not the time to throw in the towel. You didn't do that in 4-H and we mustn't do that as a people."

"We're not a people that run up against a little adversity and quit. We're going to reach that star."

Guests were welcomed to the banquet by Mrs. W. W. Barker of the Rita Blanca Electric Cooperative in Dalhart. Jerry Kiser of Moore county, chairman of the district 4-H council, was master of ceremonies. Entertainment was provided by Johnny Davis, singer and recording artist from Canadian and a former 4-H member and officer.

Other 4-H'ers on the program were Sherilyn Walker and Mark Jack, Donley County; Michelle Sursa, Hutchinson County; Nancy Neusch, Potter County; Phylcia Rowland, Deaf Smith County, and Bobby Christian, Moore County.

The Gold Star Awards were presented by Mrs. Sus Farris and Paul Gross, district Extension agents.

# The Spearman Reporter

VOL. 71, NO. 1

THE SPEARMAN REPORTER, SPEARMAN, TEXAS 79081

THURSDAY, NOVEMBER 15, 1979

## Variety Show Director Arrives

Jim Horne is a traveling variety show director. He arrived in Spearman on Monday and hundreds of people met him on Tuesday evening at he "Meet the Director" party in the old Beedy furniture store building in the North Plains Shopping Center. He is the director for Spearman's "Fruitcake Review", a joint project of the Chamber of Commerce and the Y.M.C.A. A native of Austin, Texas, where his mother still lives, he produces and directs his shows all over the country—to benefit local charities.

Jim has just come from northern Kentucky where he directed "The Cotton Follies of 1979" for the benefit of the Redwood School for Cerebral Palsy in Fort Mitchell, Kentucky.

In Austin, Jim studied keyboard and choral music in hopes of becoming a church musician. While attending Texas Chris-

tian University, however, his ambitions took a new course when a beginning acting class led to a performing arts scholarship in theatre.

Since completing his bachelor of arts degree at the University of Pittsburgh, Jim has pursued a somewhat diverse career. Besides work with Jerome H. Cargill Productions, he has performed in numerous musical comedy and dinner shows, and has written and directed several original cabaret reviews.

Horne, 26, is a professional director with the Jerome H. Cargill Theatrical Agency of New York City. He arrived in Spearman carrying the script, the musical score, the costumes and the know-how to produce two evenings of entertainment, Friday, November 30 and Saturday, December 1.

The only thing he didn't bring with him is that unknown ingredient, the amateur talent needed to cast the show.

"I'm amazed at the interest and enthusiasm for the Fruitcake Review here," Horne said. "It's the first time I've had such a large cast to work with." People who were unable to meet Jim at the "Meet the Director" party Tuesday evening, are asked to drop in at the Old Beedy furniture store building in the North Plains Shopping Center at any time and meet him and talk over with him what you would like to do for the "Fruitcake Review."

The Fruitcake Review cast will number 150 people from all over Hansford County. Horne said his usual casts average 80-90 people.

Part of the "Meet the Director" party was tryouts. Rehearsals began on Wednesday morning and are continuing every day until curtain time for dancers, singers, instrumentalists, actors, comics and special ty acts. Rehearsals for different acts will be on different days

and are arranged to meet the busy schedules of busy people who are involved in the Fruitcake Review.

"People around here are really talented," Horne said, "and that makes my job easy and fun. Putting on these shows is an education for me. With every show, I learn more about show business."

"The Cargill concept was hard to understand, at first. But it has been exciting to write my own show, assemble musical scores and select appropriate costumes."

Cargill has a morgue of costumes and a library of musical scores for its roster of directors.

"Time management is the key to this work," he said. The show is ready after just three weeks rehearsal. People are asked to try to set aside as much time as possible for these three weeks and then it will be all

over and people can go back to their normal routine.

Fruitcake Review, Now That's Entertainment, is Spearman's answer to Broadway. The general theme of the show is a potpourri of variety entertainment that makes it visually interesting. Horne has been on the road with his shows for two years. The general format stays the same, but the show goes through constant changes.

Joy McCormack is general chairperson of this year's Fruitcake Review. Mary Lou Wyson is her co-chairperson.

Show times will be at 8:00 p.m. on Friday, November 30 and Saturday, December 1 at Spearman High School Auditorium.

Horne is ambitious. He says he has a split personality. Part of him wants to do original musical comedy, and part of him wants to do drama. What he is doing now is good training for either, he believes.

## Community Thanksgiving Service Sunday

The annual Community Thanksgiving Service, sponsored each year by the Spearman Ministerial Alliance, will be held Sunday, Nov. 18 at 7 p.m. in the Union Church.

Rev. Russell Pogue, of the First Baptist Church, will be

delivering the sermon.

There will be congregational singing, and an offering taken, one half of which will go to the local welfare program and one half to be retained by the Ministerial Alliance for their

expenses.

All the churches in the community are participating in the service, and everyone is urged to come and join in this community thanksgiving program Sunday, Nov. 18.

## MARKETS

Wheat	4.06
Milo	4.25
Corn	2.81
Soybeans	5.62

## Show Nov. 17

4-H'ers will match foods-and-nutrition expertise against each other in the Hansford County 4-H Food Show November 17.

About 45 youth will compete in senior and junior divisions, according to Mrs. Peggy Winegarner, County Extension Agent.

Entries will be on public display from 11:30 a.m. - 12 noon at the Methodist Church Fellowship Hall in Spearman.

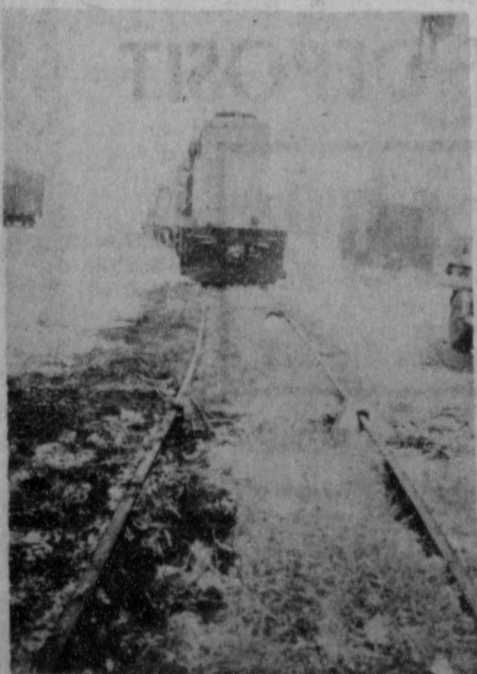
Senior-division entrants are ages 14-19, while junior-division youth are ages 9-13.

For each contest, each 4-H entrant will compete in one of four classes, including main dish, side dish, breads and desserts, or snacks and beverages.

"Because the foods and nutrition program focuses on nutrition, each contestant will have to demonstrate what she or he knows about nutrition, meal planning, food buying and meal service, as well as preparation techniques," Mrs. Winegarner explains.

Hansford County 4-H Food Show is sponsored by the Texas Agricultural Extension Service, The Texas A&M University System and the Morrison Milling Company of Denton, Texas.

Educational activities conducted by the Texas Agricultural Extension Service are open to all persons regardless of race, color, national origin, sex or religion.



This Santa Fe engine actually "sunk in the mud" in Spearman during the blizzard on Saturday morning. WE arrive just as the engine was driven back up on the tracks!



New Seventh Day Adventist pastor, Tony Gonzalez, recently assumed his duties here. He is from California, attended Seminary Andrews University, Michigan and did work on his master's degree in science and public health at Loma Linda University, Calif. He stated that he and his wife, Rosie, really like Spearman and appreciate the friendliness of the people here.

# CATTLE **Cover Your cattle** Brock Insurance Agency

## COVERAGE against Blowing Snow. Blizzards

659-2514 Spearman

### FDA Approves Use of Albendizol

WACO -- The Food and Drug Administration has approved a drug to control the deadly liver fluke parasite which afflicts cattle, according to Carrol Chaloupka, president of the Texas Farm Bureau.

Chaloupka said Senator John Tower's office has just notified him that Albendizol, a drug that has been used to control the liver fluke in foreign countries, has been cleared by FDA for use in this country.

The TFB's beef division has been heavily involved in the efforts to get approval of the drug ever since the FDA outlawed the only available control method, another drug known as Hexachlorethane.

When that action was taken

earlier this year, cattlemen in infested areas were left with no means to control the liver flukes, which cause severe weight loss in cattle, and can eventually kill them.

The liver fluke is a small parasite that is carried by snails, deposited on grass, and ingested by cattle. The hot, humid Texas Gulf coast is a prime breeding ground for the parasite, and as many as 3 million head of cattle may be infected. Humans are protected from the parasite by USDA inspections in packing plants.

The FDA will allow the use of Albendizol, a liquid drench, under veterinary supervision. The veterinarian will be required to issue prescriptions

and keep records on the use of the drug.

Albendizol will be marketed by the Smith Kline Company, and should be available for use very soon, Chaloupka said. Only three states -- Texas, Florida, and Oregon -- are approved for the drug at this time. Other states may make application to use it.



TO SAVE HOT WATER, wait until you have a full load of dishes before using the dishwasher.

### Membership In TFB At All Time High

WACO -- Membership in the Texas Farm Bureau now stands at 249,210 member families, an all-time high, according to Carrol Chaloupka, Dalhart, president of the state's largest general farm organization.

The TFB gained 21,131 members in the fiscal year ending Oct. 31, Chaloupka said. A total of 205 of the 213 organized county Farm Bureaus in Texas showed an increase, he said.

The state farm leader said the gain marked the 26th consecutive year for the Texas Farm Bureau to show an increase. The TFB is now the third largest state Farm Bureau in the nation, behind Indiana and Illinois. Texas Farm Bureau is affiliated

nationally with the American Farm Bureau Federation which has some 3.1 million member families organized in all states except Alaska.

Chaloupka explained that only farmers and ranchers who receive at least 50 percent of their income from agricultural production can vote on organization policies or hold office.

"Other members -- landowners, those involved in agribusiness, and others who live in rural areas -- are strong supporters of agriculture in our dealings with the Legislature and with Congress," he said.

He added that the TFB is in the process of identifying members' commodity interests in an effort to strengthen service, legislative, and commodity programs.

The ten largest counties, in terms of membership size, are: Harris, McLennan, Fort Bend, Van Zandt, Fayette, Wharton, Ellis, Brazos, Bell, and Nacogdoches.

### You Ask Questions and Answers DISHWASHERS

Question: I have a new dishwasher. How can I get the best results from it?

Answer: Water temperature in the dishwasher should be at least 140 degrees, because hot water helps remove greasy soils and properly dissolve the detergent. Scrape dishes and load soiled surfaces so that they face the spray, and always use fresh, dry dishwasher detergent.

Question: What is causing rust spots on my stainless steel flatware?

Answer: According to the home economists at Whirlpool Corporation, one of the leading manufacturers of home appliances, allowing salty or acidic foods such as mayonnaise, vinegar, fruit juices or salad dressing to remain on flatware can damage the stainless steel finish and cause the rusting of the steel underneath. To prevent this, rinse flatware or use the Rinse Hold Cycle on your dishwasher.

MONEY-SAVING TIP: On chilly evenings, open your dishwasher door after use, and let hot air in the machine out to help warm up your kitchen.

### Cattle May Need Protein Despite Good Grass

Despite plenty of grass in pastures throughout the county, the seasonal decline in forage quality is beginning to set in.

This means that cattlemen should start thinking about providing some protein supplementation, say Layton Barton, County Agent with the Texas Agricultural Extension Service, Texas A&M University System.

All warm-season grasses lose protein rapidly with the onset of cool nights and the season's first frost. Digestibility of these grasses also drops. As these changes occur, the amount of nutrition that grazing animals get also declines, says Barton. In high rainfall areas (30 inches

or more annually), summer grasses deteriorate to the point that they are little more than filler material.

Cattle grazing such grasses in fall and early winter begin to lose weight and their body condition declines. That's why feeding of protein supplements is so important, particularly regarding rebreeding, points out Barton.

The time required for rebreeding is directly related to the nutritional level and body condition of cows at calving. If cows must use stored body fats due to delayed winter feeding, they will likely take longer to rebreed.

Once grass growth stops, animals are subjected to a protein deficient diet unless supplementation takes place, notes Barton. However, the energy content of grasses does not vary drastically, so energy will not become a limiting factor until cold weather increases the body heat requirements of livestock.

A protein block or liquid protein supplement would provide adequate protein during the fall months before cold weather hits, contends Barton. Once grasses deteriorate due to cold weather, heavier protein supplementation will be needed.

### Urban Vote For Amendment Shows Consumers Support Small Farms

WACO -- Passage of a constitutional amendment providing a state guaranteed loan program for small, beginning farmers is, according to the Texas Farmers Union, a sign that "urban consumers understand the importance of protecting a family farm system of agriculture."

TFU President Jay Naman said his organization, which was the most vocal in promoting passage of Proposition 3 on the November 6 ballot, has held the belief for years that "the general public wants government programs that help the 'little guy' survive and are opposed to having Texas agriculture fall into the grips of corporate, foreign and absentee ownership."

"The passage of the Family Farm Security Act funding proposal by voters in Houston, Dallas, and other large metropolitan areas," said Naman, "confirms a belief that Farmers Union has always had. The consumer fully endorses the family farm as opposed to giant, vertically integrated agribusiness that would do all the producing, processing and pricing much like the oil companies."

"What the public is disgusted with," he continued, "is doling out millions in low-interest loans and price supports to huge operators with unlimited assets who don't need the help, but who always seem to be first in line to get their checks."

The Farmers Union has historically sought federal farm programs that put limits on the size of farming operations that receive benefits. That position

has, on several occasions, split Farmers Union apart from other farm organizations and is the basis of a current rift between many Texas cotton farmers and corporate cotton interests in California and Arizona who are collecting millions annually in government payments and subsidized water for irrigation.

"We are pleased that the legislature and the voters of Texas saw fit to pass the Family Farm Security Act, said Naman. "It is designed to aid the small farmer, and especially the young farmer who must compete with speculators and developers who are driving land prices beyond the ability of a young family to generate financing. Our state lawmakers know that we must replace old farmers with young farmers or else lose the family farm to a growing corporate intrusion."

"Our state has passed a progressive program for rural Texas. With a majority of the referendum vote coming from urban areas, it's a clear indication that consumers want a future of abundant food and fiber produced by small, independent businessmen who are residents of Texas and stewards of her land and natural resources."

BRIDGE LUNCHEON: The public is invited to a BRIDGE LUNCHEON in Gruver, Nov. 16th at the First Christian Church. The bridge luncheon is sponsored by the Alpha Mu Psi of Gruver. The luncheon will be held from 12:00 noon until 5:00 p. m. It will cost \$5.00 if you play bridge, and \$4.00 if just eat lunch.

Following a popular trend, homeowners are using gloss paints not only in living and dining areas but to cover the outside of the house. A new scrubable, dirt-resistant, semi-gloss latex from Pittsburgh Paints literally breathes to accommodate sudden temperature changes without cracking.

The Statue of Liberty probably has the biggest mouth in the world: it's three feet wide.

The Egyptian pyramids were faced with marble at one time. The Greek Parthenon was once painted.

### DO YOU KNOW?

That many major fast food chains are now offering drinks in pint and quart size foam cups?

That "big" drinks mean you pay less per ounce for your favorite beverage and you can finish your meal before you finish your "big drink"?

## LYRIC THEATRE

Phone 806-659-2812

ONE SHOW AT 7:30 P.M.  
SUNDAY, MONDAY, TUESDAY,  
WEDNESDAY, AND THURSDAY

TWO SHOWS AT  
7:00 P.M. AND 9:00 P.M.  
FRIDAY & SATURDAY

NOW SHOWING

### "AUDIENCES WILL SIMPLY CHERISH 'BREAKING AWAY'."

Richard Schickel, TIME MAGAZINE

"One of the most funny, totally unique film experiences of this or any other year... you'd be dead wrong to miss it."  
Rex Reed, VOGUE MAGAZINE



"A surprisingly fresh and free-spirited comedy."  
Bruce Williamson, PLAYBOY MAGAZINE

"Funny, exciting and wonderfully well-acted."  
Charles Champlin, LOS ANGELES TIMES

## BREAKING AWAY

20th Century-Fox Presents A PETER YATES FILM "BREAKING AWAY"  
DENNIS CHRISTOPHER DENNIS QUAIN DANIEL STERN and JACKIE EARLE HALEY  
also starring BARBARA BARRIE PAUL DOOLEY introducing ROBYN DOUGLASS  
Produced and Directed by PETER YATES Written by STEVE TESICH Music Adapted by PATRICK WILLIAMS  
Conducted by LIONEL NEWMAN COLOR BY DeLUXE READ THE WARNER BOOK

NOVEMBER 14 THRU NOVEMBER 20

### PELECLAS MEXICANAS



### A COLORES

ANTONIO AGUILAR  
FLOR SILVESTRE  
JAIME FERNANDEZ  
ADRIANA ROEL  
ELEAZAR GARCIA  
'CHELELO'

EL ALAZAN y el ROSILLO

SUNDAY NOVEMBER 18 AT 2 P.M.

## 26 WEEK MONEY MARKET

(182 Day Maturity)

## CERTIFICATES OF DEPOSIT

RATE ..... **11.945%**

Thursday, Nov. 15 through Wednesday, Nov. 21, 1979

Minimum deposit \$10,000 Federal regulations require substantial Interest Penalty for early withdrawals

FDIC



NATIONAL BANK

OF PERRYTON, TEXAS



# WANT ADS

**CAPROCK MONUMENT CO.**  
Dealers of Georgia Granite, Georgia Marble, Colored Granite, & Bronze.  
represented by  
**BOXWELL BROS. FUNERAL HOME**  
519 S. EVANS  
659-3802

## MEDICAL INSURANCE BILLING SERVICE

Will do all types of medical insurance billing - Hospitalization - Out Patient - Medicare - Medicaid - Major Medical and yearly billings.  
Ten years experience.  
Call Eileen Sutherland  
659-2289 from 1-5 P.M. or come by 30 1/2 S. Barkley. 1-rtn

## MISCELLANEOUS FOR SALE

**FOR SALE:** Miscellaneous store fixtures, shelving, counters and display racks. 659-2226 or 659-3221.

**FOR SALE:** 12 Hesston Head 44-rtn Hunters. Call 806-882-4270 or 4457.  
52S-2tp

**FOR SALE:** 2 sets 5 row roll-a-cone pickup attachments. Contact Roy McClellan, 659-2626 or 659-2156.  
52S-2tc

Decorator cakes & cookies for parties, special or just at home. Call Debbie at 3986 or call 3328. 48S-rtn

## REAL ESTATE FOR SALE

**MAYFIELD REAL ESTATE**  
22 West 3rd two story house, 2 bedrooms, utility room, furniture, two 50 ft. lots.

Commercial building for sale or lease, approx. 1800 sq. feet on Stinnett highway.

John Mayfield - Broker  
435-6528 Salesperson Ruby Lair 659-3436 or 659-2188.

**TEXAS COUNTY INVESTMENTS**  
140 acres farm land adjacent to Hardesty.  
320 acres excellent wheat land Southeast Texas County Hotel Dale in Guymon  
3 acre commercial at Optima Reservoir

**SPRAGINS REAL ESTATE**  
Guymon, Okla.  
405-338-7211 or 338-8289  
52-4tc

**FOR SALE:** 3 bedroom house, workroom, 1 1/2 baths, lots of closet space on 100' x 150 lot, includes 2 bedroom home on back of property. 106 S. Bernice 659-2766.  
52S-rtn

Offered Exclusively By **EMMETT R. SANDERS, RFLTOR**  
**R REALTOR**

Brick apartment house in top condition; 100% occupancy with waiting list; has four furnished units; great investment. Shown by appointment only, do not disturb occupants.

Small tract just west of Spearman, surface only, contains 31.7 acres. Call for details.

Immaculate 3 bedroom brick home, nice southeast location, bath and half, carpeted, fenced yard, attached garage, by appointment.

Reduced in Price, Dwelling and store building, small detached apartment on wide lot, ideal for professional office dwelling combined.

Near new 3 bedroom brick home, 2 baths, luxury carpet, nice drapes, energy-saver fireplace, dishwasher, disposal, self-cleaning oven, refrigerated air, fenced yard, double garage with opener - all this and nice SE location too. By appointment, exclusively.

**EMMETT R. SANDERS REALTOR**  
659-2516  
659-2601 [nights]  
34S-rtn

Old house FOR SALE. Must be removed. Useable wood. Best offer. 117 N. Endicott. Call 659-3123.  
1-1tp

**FOR SALE:** 4 bedroom, 1 1/2 story stucco home, nice condition, near grade school; storm shelter basement; large corner lot. Ideal for large family, low budget. Shown by appointment, exclusively, Emmett R. Sanders, Realtor, 659-2516, nights 659-2601.  
51-rtn tonly

**Century 21**  
Excellent income property, 2 bedroom home, with 3 trailer hook-ups on lot. \*\*\*\*  
Commercial Lots on Highway 207. \*\*\*\*  
Residential Lots Zoned for Mobile Homes. \*\*\*\*  
14 x 80 Mobilehome, 3 bedroom. \*\*\*\*  
Double Wide 24' x 53' carpet throughout, 1 1/2 bath. \*\*\*\*  
**GOLDEN SPREAD REALTY**  
659-2557  
Ronnie Hoover, Sales Associate, 659-3696  
Daryl Wynn, Broker, 658-4528  
42S-rtn

## WANTED

Will do baby sitting in my home. 659-2927.  
42S-rtn

11-month old needs playmate. Prefer to babysit 10-month to 24-month old on regular basis. Drop-ins welcome. Beth Ayres 3123.

## HELP WANTED

## WANTED IMMEDIATELY

Production Foreman  
Production Clerk  
Transpetco 1 needs a first class Production Foreman and Production Clerk for its Spearman office.  
Duties will be in conjunction with a CO2 enhanced oil recovery project initially involving 65 wells.  
Call 659-2790 or 659-2016 for an appointment.  
52-rtn

**HELP WANTED:** Maid, must be dependable, phone 659-3737 Nursanickel Motel, Spearman. 51-rtn

Up to \$220 weekly, taking short phone messages at home. 713-762-3105, extension No. 535.

Evening LVN needed. Shift differential. Apply in person between 9 to 5, Senior Village Nursing Home, Perryton. 44-rtn

## FOR RENT

**FOR RENT:** Office Building, call 659-2719, after 5 p. m. rtn-c

## LOST

**LOST:** 2 Heifers, weighed 3301, 13 miles East of Spearman. Red marks on left hip. 659-2786 or 2367.  
50-rtn

**LOST:** 7 head mixed steers and heifers, 600 lbs. Laying down H on left hip, green ear tag in left ear. Call 659-2100 or 659-3227.  
52-rtn

**LOST:** Small calico kitten. Lost on Cotter Dr. Call 2189.  
52-rtn

**LOST:** 7 mixed steers, northeast of Spearman. Branded M with bar under on left hip. Weight approximately 570 lbs. 659-2147 or 659-2800.  
52S-3tc

## CARD OF THANKS

I would like to thank my friends for their prayers, flowers, cards, and all the nice things that were done for me while I was in Hansford Hospital and in Amarillo in the hospital.  
Your kindness will always be appreciated.  
Mrs. Ella Hull

## GARAGE SALE

**4 FAMILY GARAGE SALE** - Saturday, Nov. 17 from 10 a.m. to 4 p.m. at the Home Demonstration Clubroom.  
1-1tp

**GARAGE SALE** - 1112 Townsend, Saturday & Sunday, queen size mattress and box springs, children's good clothes.  
1-2tc

**GARAGE SALE** - Nov. 15 & 16 starting at 8:30. 704 Lee Drive. 1-1tc



**Big T Training Stable**  
Introducing 1975 AQHA Chestnut Stallion  
Height 15'2", wt. 1200 lbs.  
Also gentle break & train horses. Call 405-888-4295.  
or 806-822-4295 43-8tc

**FOR SALE:** Honda street Motorcycle, 1,400 miles-180 CC Automatic starter, Turn signal lights, priced right. Ask for Mr. Salazar at TG&T  
TG&Y, or phone 659-3741 or home phone 659-3501.

**For sale:** 24 inch boys 10 speed bicycle. Excellent condition must see to appreciate. Call 659-3741, Mr. Salazar, home after 6 p. m., 659-3501.

For The Ultimate In **STORM DOORS**  
Custom Built, Designed, And In Colors To Fit Your Home....  
Contact Howard Meyer at  
**Only Aluminum Industries**  
Guymon, Okla. 73942 114 W. 1st 405-338-6966 or 338-6174

**PUBLIC NOTICE**  
Pursuant to TEX. REV. CIV. STAT. ANN. art. 1446c, Section 43, High Plains Natural Gas Company hereby gives notice of its intention to raise residential and commercial rates in the unincorporated portions of Ochiltree and Hansford Counties, effective November 29, 1979 to:

**MONTHLY USE**  
0-1 MCF \$3.50  
2-1200 MCF 77.4¢ mcf plus intracompany charge  
over 1200 MCF 72.4¢ mcf plus intracompany charge

The intracompany charge is established for High Plains transmission system by the Railroad Commission of Texas. It is currently \$1.3255/mcf plus 95% or less 100% of the amount by which High Plains' weighted average cost of gas is more or less than \$1.045/mcf.  
Information concerning the proposed change can be obtained from the High Plains Natural Gas Company office at 109 South Main Street, Canadian, Texas phone (806) 323-6464 or by contacting the Director of Gas Utilities Division, Railroad Commission of Texas, P.O. Drawer 12967, Austin, Texas, 78711, (512) 445-1146.

HIGH PLAINS NATURAL GAS COMPANY

**TEXAS PRESS ASSOCIATION**  
MEMBER 1979  
PUBLICATION (USPS 509-660)  
SPEARMAN, TEXAS 79081  
213 Main Box 458 659-3434  
Published Weekly at 213 Main Street Spearman, Texas 79081  
Owner-Publisher ..... William M. Miller  
Editor ..... Faye Lynch  
Second Class postage paid at Spearman, Texas  
ANY ERRONEOUS REFLECTION UPON THE CHARACTER OF ANY PERSON OR FIRM APPEARING ON THESE COLUMNS WILL BE GLADLY AND PROMPTLY CORRECTED UPON BEING BROUGHT TO THE ATTENTION OF THE MANAGEMENT.  
SUBSCRIPTION RATE: Hansford, adjoining counties, combination with the Hansford Plains-



**GOOD EQUITY BUY:** 3 bdrms., 1 bath. OWNER PRIDE STANDS OUT-EXCELLENT CONDITION 9% Interest Rate on assumption. Mid 20's. Call for appointment.

**GOOD GRIEF CHARLIE BROWN!** all this for so little! 3 huge bdrms., 2 baths, 2 living areas. NEAR ELEMENTARY SCHOOL. Mid 30's. Assumption possible. By appointment only.

**FAMILY SIZE!** 2 large living areas with woodburners. Gourmet kitchen, 4 huge bedrooms, 3 baths. CONVENIENT TO SCHOOLS. PRESTIGIOUS LOCATION.

**WHY RENT?** Buy this 4 room house on Endicott and let the two rental mobilhomes included make your payments. On 150' corner lot, storage bldgs., big garden area, much more. See today.

**OLDER HOME WITH LOTS OF SPACE** on corner lot. 4 bedrooms, 2 baths, fenced, large storage house. Mid 20's. Great possibilities. Call for appointment.

**COMMERCIAL BUILDING-MAIN ST.** Did house a barbershop (furnishings go with sale) on one side and a beauty shop on one side. SPACIOUS. PRICED TO SELL. CALL!

EXCLUSIVELY WITH VIRGINIA WHITE REALTOR 659-3841

# EARL'S TV

Ph. 659-2121

## 5th Anniversary Sale

November 15th thru 24th  
Layaway Now for Christmas

106 E. Kenneth Spearman

### BLACK & WHITE TV COMPACTS

9" Model LO91L 99.95  
12" Model L120 99.95

Model K 2520P 650.00 W/T

### NEW 1980 ZENITH COLOR TV

19" TABLE MODEL  
featuring dependable ELECTRONIC VIDEO GUARD TUNING  
79.95

Full Remote SL 2549E 924.95

### YOU BE THE VIDEO DIRECTOR

VR9000W 1095.00  
New Programmerable VCR

**KIRBY SALES & SERVICE**  
New & reconditioned vacuum cleaners. 912 S. Bernice. 659-2797.

**CUSTOM HAY Baling** - 16 x 18 bale. Jerry D. Virden, Box 595, Gruver, Texas. 733-2236.  
27-rtn

Make your car upholstery and carpet look like new with our commercial size steam cleaner.  
Let us clean it or rent our cleaner.  
FREE ESTIMATE for steam cleaning, call 435-5289 or 659-2952.  
Willis Friesen  
39S-rtn

**SNOOPY'S DAY SCHOOL**  
Open 7 a.m. to 7 p.m. Mon-Fri. Sat 8 a.m. to 5 p.m. Phone 659-3328.  
48-rtn

**BILL BURGER'S BARBER SHOP**  
Now Open  
Tuesday thru Saturday  
Hours 8:30 - 6:00  
On Mondays & After Hours  
Call 2915

**MONUMENTS**  
Save 20% to 30%  
Agents and Undertakers  
Commission  
**ALVA MONUMENT CO.**  
Alva, Okla.  
51-rtn tonly

Will mend or build barb wire or electric fence. Call 659-3868.  
52-4tp

**CUSTOM SWATHING & BALING**, Fred Mayfield, 659-3342, Harvey Whitefield, 659-3332 or 659-2315.  
52-8tc

### October Wedding Unites Couple



The bride is a graduate from Spearman High School and is employed by Panhandle Eastern Pipeline Co. at the Sneed plant North of Fritch.

Out of town guests included Mrs. Jan Womble, Amarillo; Delorus Crump, Clarendon; Mr. and Mrs. Gary Cline, and Mrs. Jack Cline of Fruitland, N.M.; Lisa Cline of Farmington, N.M.; Mr. and Mrs. Fred Cox, Borger; Essie Robertson, Memphis, Texas; Jayne Godfrey, Abilene; Jan Beasley, Amarillo; Mrs. C. D. Riggins, Perryton; Mr. and Mrs. Dale Hooper, Amarillo and Deana Messer, Clayton, N.M.

Wedding vows were exchanged by Leslei Elizabeth Alexander and Loyd Dean Messer, October 27, 1979 in the First Baptist Church, Spearman with Keith Bryant, interim minister, First Baptist Church of Morse, officiating.

Parents of the couple are Mrs. Gretchen Alexander, Spearman, Texas and Mr. and Mrs. L. D. Messer of Hedley, Texas.

The altar was decorated with two baskets of gladioli and carnations in white with pale blue bows and a candelabra holding white candles and greenery and blue and white bows. Pale blue and white bows with greenery decorated the pews.

"Time In A Bottle" and "Evergreen" were played by organist Myrna Biggers and sung by soloist Jo Cox. Mrs. Biggers played the traditional wedding march.

The bride, given in marriage by her uncle, Gary Cline of Fruitland, N.M., wore a wedding gown designed by Eddythe Vincent for Alfred Angelo Originals. The gown was made of Sheerganza and Re-embroidered Lace. It had a wedding-band collar, a camisole bodice and a bib effect was created on the bodice by handclipped lace medallions. The charming sleeves had a shepherdess look and was also trimmed in matching Re-embroidered Lace. The A-line skirt had medallions applied throughout. The complete hemline was made of circular flounces of Sheerganza edged with Re-embroidered Lace trim. The gown was chapel length and had a soft and feminine look in the skillful combination of fabric, ruffles and little jewel trim. The bridal bouquet was silk flowers in shades of pale blue, royal blue and white, with velvet and lace streamers in the same colors.

For the traditional something blue, she wore a blue garter,

something new was the wedding dress, something old was her grandmother's pearls. She wore a sixpence in her shoe that her grandmother, Mrs. Jack Cline brought from England.

Maid of honor, Becky Alexander, sister of the bride, wore a floor length pale blue dress with draped sleeves in royal blue velvet and a royal blue velvet panel down the front of the dress. She carried a bouquet similar to the bride's of silk flowers in shades of blue and white.

The groom wore a pale blue tuxedo, and the best man, Darrell Messer, son of the groom, wore a pale blue tuxedo with royal blue lapels. The ushers, Randy Karlin of Gruver, and Rick Alexander, brother of the bride, wore dark blue tuxedos.

Mrs. Alexander chose for her daughter's wedding, a floor length skirt with a blouson blouse in a plum color with pale blue flowers scattered over all.

The mothers and grandmothers of the bride and groom each wore silk flower corsages in the bride's colors of blue and white.

At the reception immediately following the ceremony, the bride's table and the groom's table were covered in linen and lace tablecloths over pale blue. There were pairs of silver candle holders with pale blue candles and bows on each table.

The bride's and bridesmaid's bouquet were also placed on each table during the reception. Serving at the bride's table were Jan Beasley, Jayne Godfrey and Lisa Cline. Serving at the groom's table were Bobbie Green, Andrea Maddox and Nikki Jones. Linda Jarvis and Jean Close assisted with the reception.

After a short honeymoon trip to Amarillo, the couple are at home at Rt. 3, Gruver, Texas where the groom is employed by Dean Cluck.

### Delta Kappa Gamma holds area conference

Over 180 members attended the Area XI Conference of Delta Kappa Gamma, held October 13 in Dumas. Representing the local organization, Eta Alpha, at the conference were Bernice Beck, Leona Bechthold, Charlotte Bergin, Flora Champion, Wilma Clark, Juanita Gustin, Florence Lee Hance, Aleeyne Kirksey, Vireta Knight, and Annie Love.

Eta Alpha "stole the show" with an original "Tic Tac Dough" skit using questions on membership. Charlotte Bergin wrote the skit, and Bernice Beck and Vireta Knight took part in the show. Wilma Clark, music coordinator, led the singing and was her own accompanist.

Lugenia Carter, Area XI coordinator, presided at the conference; while Mary Rowlette, president of Alpha State, gave an inspirational address, "To-

gether We Build," in which she gave her creed of life and a challenge to all chapter members for the new year.

Buzz sessions were held on the following: Scholarship, World Fellowship, Location of State Headquarters, and Presidents of Chapters and Councils.

The November meeting of the Eta Alpha Chapter of Delta Kappa Gamma is set for Nov. 17 at 6 p.m. in South Elementary building. A covered dish dinner will be served with husbands and other guests invited.

Hosting the occasion will be Ruby Unruh, chairwoman, Rita Castle, Alice Ann Knox, Nellie Knox, Karen Bennett, Margaret Langford, and Darlene Day.

### Lackey's Return To City

Mr. and Mrs. Johnny Lackey, former residents of Spearman, who have made their home in Sunray for the past 17 years, have moved back to Spearman.

The Lackey's purchased the Jack Kemper residence at 612 S. Evans.

Their daughter, Mrs. S. B. Sheets, Jr. and family live in Spearman.

### Historical Committee Meets

The Hansford County Historical Survey Committee, Inc. met in regular session Friday, Nov. 9 in the Library. In the absence of President Fred Groves, Juanita Pierce opened the meeting with the reading of the minutes of the last meeting which were accepted as read.

In the absence of Clementene Renner, Ruby Saltness gave the treasurer's report which was also accepted as read.

R. L. McClellan gave a report on a letter from Mrs. Peterson who is interested in getting a historical marker for the Oslo community.

A Hansford Co. History Book report was given by Ruby Saltness. She said 510 stories have been submitted and 503 books sold. The Commission would like to remind everyone that the book can be given as a Christmas present. We have

gift certificates that are available for \$35.00 plus tax.

The Book Committee is now working on the history of the businesses. They are also working on memorial pages and tribute pages. Anyone can buy a tribute page for anything they wish to have printed in the book-for example a poem. Hansford County has many artists. Maybe you would like a work of art printed in the book. A person may purchase 1/4, 1/2, 3/4 or a full page for what they would like. Maybe you would like your family tree printed. A grandson report card may not be history now but years from now, it will be a photo of heirlooms.

The meeting was closed by Francis Kilgore. The next meeting will be December 14 at 2:00 p.m. at the Library. These are open meetings and anyone interested is invited to attend. Those attending the meeting were Johnny Lee, Francis Kilgore, R. L. McClellan, Ruby Saltness and Jaunita Pierce.



**DOUBLE YOUR MONEY BACK GUARANTEE**

**SHANK PORTION Smoked Hams FULLY COOKED**

WATER ADDED 89¢ LB.

**HUMP PORTION FULLY COOKED Smoked Hams**

WATER ADDED 98¢ LB.

**SHOULDER FRESH PICNIC Pork Roast**

6 TO 8 LBS. AVERAGE WHOLE 69¢ LB.

**RODEO BUCKBOARD FULLY COOKED Boneless Hams**

WHOLE WATER ADDED \$1.69 LB. HALVES \$1.79

**SNOW HILL Baking Hens**

5 TO 7 LBS. AVERAGE 49¢ LB.

**Boneless Chuck Roast** U.S.D.A. CHOICE BUTCHER BLOCK BEEF \$1.69 LB.

**Pork Steak** FRESH PORK SHOULDER ARM SLICES 98¢ LB.

**Pork Loin Roast** FRESH CENTER RIB CUTS \$1.39 LB.

**Rib Roast** U.S.D.A. CHOICE BUTCHER BLOCK BEEF \$1.98 LB.

**Pork Sausage** JIMMY DEAN PURE (2-LB. \$2.57) 1-LB. PKG. \$1.29

**IDEAL HAS EVERYTHING FOR YOUR..**

# Thanksgiving

PRICES EFFECTIVE THRU NOV. 22, 1979. QUANTITY RIGHTS RESERVED.

**LOOK Steel Siding Special**

**Free Bonus** One Week

Only Nov. 12 Thru Nov. 18. With every Siding Job we will install Storm Windows or Blow in Rock Wool Insulation in the Attic. At no Charge To The Homeowner.

INSULATION And Steel Siding Installed NOTHING Down - Low Monthly Payments.

Eliminate Painting of your overhang. Install Suffit System.

STEEL Or VINYL SIDING

Call Borger 273-2696 or Send In r t To:

**M. Kline**

Mail To M. Kline  
P. O. Box 1541  
Borger, Texas 79007

Name: \_\_\_\_\_  
Address: \_\_\_\_\_ ST. City \_\_\_\_\_  
Phone: \_\_\_\_\_  
Best Time To Call: \_\_\_\_\_

Exterior Walls: Wood  Stucco   
Asbestos Siding   
Other Material

**RED RIPE Cranberries**

1-LB. BAG 39¢

**FRESH CRISP Celery**

2 39¢ STALKS

**Sweet Potatoes** 29¢ LB.

**Yellow Onions** 2 29¢ LBS.

**Texas Red Grapefruit** 5 \$1 FOR

**THANKSGIVING - 6" POT Mums** EA \$4.98

**Brown 'n' Serve Rolls**

12-CT. PKG. 32¢ LIMIT 3

**Gold Medal Flour**

5 84¢ LB. BAG LIMIT 1

**OCEAN SPRAY JELLIED OR WHOLE Cranberry Sauce** 15-OZ. CAN 43¢

**BORDEN'S CONDENSED Eagle Brand Milk** 14-OZ. CAN 73¢

**KRAFT Marshmallow Creme** 7-OZ. JAR 39¢

**AURORA ASSORTED Bath Tissue** 2-ROLL PKG. 53¢

**DEL MONTE Fruit Cocktail** 17-OZ. CAN 48¢

**DEL MONTE Pear Halves** 16-OZ. CAN 51¢

**VLASIC WHOLE Sweet Pickles** 16-OZ. JAR 83¢

**BETTY CROCKER "SUPER MOIST" Layer Cake Mix** 18 1/2-OZ. BOX 65¢

**WELCH'S GRAPE JAM OR BRUCE Grape Jelly** 32-OZ. JAR 86¢

**Cut Yams** 48-OZ. CAN 89¢

**Del Monte Green Beans**

WHOLE GREEN BEAN 16-OZ. CAN 34¢ LIMIT 3

**SHOP IDEAL...WHERE THERE'S MORE VALUE IN**

## Cub Scout Committee Meeting

The Cub Scout Committee met Tuesday, Nov. 6 in the home of Cub Master Jim Beeson. Those present were Hillous and Lulu Hargrove, Bill and Jody Harnish, Rusty and Judy Tindell, Maria Pacheco, Sharon Swan, and Charlotte Jackson, and Host Jim and Linda Beeson.

The committee elected Rusty Tindell as Assistant Cubmaster and Hillous Hargrove-photographer.

A budget committee was appointed. They are: Jim Beeson, Bill Harnish, Judy Tindell, Charlotte Jackson and Maria Pacheco.

The Christmas Party will be December 11 at 7:00 p.m. It will be a covered dish supper. A committee was named to work out the details. They are: Linda Beeson, Charlotte Jackson, Sharon Swan and Jody Harnish.

The February Pack Meeting will be The Pinewood Derby. A committee was appointed to

take care of the details of the Meet. They are: Jim Beeson, Fred Groves, Bill Harnish and Rusty Tindell. The District Pinewood Derby will be held here in Spearman in March. The Spearman Cub Scout Pack 579 will host six area towns at this meet.

Linda Beeson and Judy Tindell attended the Adobe Walls District Roundtable at Borger at Thursday, Nov. 8.

The Akela's Kiva will be Saturday, Nov. 17. It will include the Cub Scout Leadership Development Training, and will be held in Borger. Judy Tindell and Sharon Swan encourage all other den leaders to attend.

The Cub Scout Den #4 met Tuesday, Nov. 6 at the Boy Scout Room with Mickel Hargrove as denner. The meeting was opened with the Flag Ceremony. Segments for participation in the Pushmobile Races in Pampa were given out. The boys then made Draft

### Stoppers for doors.

Refreshments were served by Keith Clark to: James Tindell, Lance Harnish, Danin Irlbeck, Pete Mauk, Mickel Hargrove and leaders Judy Tindell, Jody Harnish and Judy Irlbeck.

### Thank You

The Board of Directors and members of Golden Spread Center wish to thank the following for the sustaining membership dues. These people have been added to the list that was in last Thursday's paper.

R.C. Fisher, Jewel Turner, Ned Turner, Rev. Ed Freeman, Shorty Clements, Thriftway, Hickerson Jewelers.

A thank you also to Mr. and Mrs. Robert Crawford of Gruver for their donation.

The money is used for operating expenses of the Center.

"Silence is the most perfect expression of scorn."

## Keyes Collector Show & Sale Set

The Keyes Collectors Club, of Keyes, Okla. is sponsoring a Collector Show & Sale, flea market, arts, and crafts, included, on Nov. 24-25 at the Cimarron County Fair Building, Boise City, Okla.

Hours will be from 9 to 6 Saturday and from 9 to 4 Sunday.

Tables may be reserved at \$10 per table for the entire show by contacting Dick Clifford, Box 45, Keyes, Okla. 73947, phone 405-546-2941 or 546-4681.

Admission is 50 cents, good for both days. All children under 12, accompanied by parents, admitted free. Admission stubs entitle holders to participate in bi-hourly drawings.

"A diamond with a flaw is better than a common stone that is perfect."

Chinese Proverb

"When in doubt, tell the truth."

American Cancer Society



It takes 100 years for the leaning Tower of Pisa to increase its inclination by one foot.

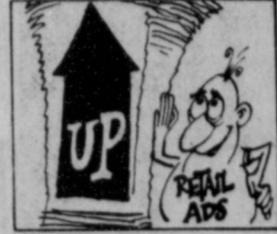


Oily hair should be washed every two to three days; dry hair every five to six days.



### THE PLEDGE

I, do solemnly swear to give up smoking or help a friend give up smoking for the Great American Smokeout, November 15. I promise not to smoke for 24 hours (and maybe longer), or to help a friend quit."



Over 95 percent of all lung cancer patients are smokers.

## Hart-Richardson Vows Exchanged



Miss Kelley Hart became the bride of Trace Richardson on Saturday, November 3, in the First Christian Church of Gruver, Texas. Reverend Rom Fuller, pastor of the United Methodist Church, performed the double ring ceremony.

Parents of the couple are Mr. and Mrs. Lynn Hart of Gruver and Mr. and Mrs. Donnie Richardson of Vega.

A heart shaped candleabra towered the center of the altar with spiral candleabras on each side. Two large baskets of dusty pink gladiolas and white mums completed the setting for the lovely ceremony.

The music was provided by Mrs. Barbara Richardson, aunt of the groom, Vega, on the harp and Mrs. Joann Andrews, cousin of the bride, singing "You Needed Me", "The Wedding Song", and "The Lord's Prayer". The organist was Mrs. Dean Shrader.

At seven o'clock the westminister Chimes were sounded on English bells rung by Mrs. Richardson and Mrs. Joann Andrews.

The bride, given in marriage by her parents and escorted down the candle lighted aisle by her father, wore a formal candlelight gown of chiffon and French Alencon lace. The high neckline featured a wedding band collar covered in pearl scattered lace and edged with strings of pearls. The yoke of English net adorned with strings of pearls created a sunburst effect. Pearl encrusted lace appliques bordered the yoke and were sprinkled over the bodice to a slightly raised waistline. Sheer bishop sleeves were gathered to lace covered cuffs which closed with loops and covered buttons. The flowing bias cut skirt draped into a chapel length train. Her waltz length veil of imported illusion was edged with scalloped Alencon lace and attached to a Juliet headpiece of English net accentuated with strings of pearls. She carried a cascade bouquet of dusty pink rose buds and burgundy color mums with baby's breath atop a white Bible carried by the bride's mother on her wedding day.

The bride carried out the traditional something old, a great, great, grandmother's pin; something new, pearl and diamond earrings, a gift from the groom; something borrowed, a pearl necklace belonging to her new mother-in-law; a blue garter, and a sixpence from Ireland in her shoe.

The bride presented the mother with a rose as she and her father approached the altar. After the vows were exchanged the couple lit a unity candle given to them by her grandparents. During the recessional the bride and groom paused to present the groom's mother with a rose.

Miss Kim DuBose, from Abernathy, was maid of honor. Bridesmaids were: Miss Terri Hart, sister of the bride, Miss Julie Barkley and Teresa Chisus all of Gruver.

Larry Richardson, cousin of the groom, of Vega, served as best man. Groomsmen were: Bret Richardson and Trent Richardson, brothers of the groom, and Keven Hart, brother of the bride. Ushers were Bill Grulhkey, cousin of the groom, Amarillo, and Scotty Cook of Vega.

Candlelighters were Miss Brandy Richardson, sister of the groom, and Miss Jlyn Richardson of Vega.

The maid of honor and the bridesmaids wore floor length dresses designed of siesta chiffon with spaghetti straps on the shoulder covered with a sheet chiffon cape, all of burgundy color. Each carried a snifter with a burgundy candlelight arrangement and velvet ribbon streamers to match. The candlelighters carried out the other chosen color of the bride and wore floor length dresses of dusty pink and burgundy floral chiffon, fashioned with an empire waist and a velvet tie.

The groom was dressed in a formal tuxedo of light gray with gray velvet lapels, gray ruffled shirt and bowtie. The other men in the wedding party wore tuxedos which consisted of the light gray jackets, charcoal gray pants, matching ruffled shirt and gray bowties.

Mother of the bride was dressed in a floor length chiffon dress of burgundy color. The mother of the groom wore a green floral chiffon formal.

Special guests included grandparents of the groom, Mrs. Edna Richardson and Mr. and Mrs. Cruce Richardson, all of Amarillo. Mrs. J. M. Hart and Mr. and Mrs. Oscar Dahl, grandparents of the bride, all of Gruver.

Miss Susan Ablard, of Garland, Tex. registered some 200 guests.

A reception followed in the fellowship hall. The bride's table was covered with a satin tablecloth accented with large velvet, burgundy bows on the skirt. The lovely tiered wedding cake towered high above a colored fountain with streamers draped to two side cakes topped with candleabras. The towering cake, beautifully decorated with orchids, dusty pink roses and baby's breath, was topped with a bouquet of roses and greenery arranged in a vase designed from the bride's wedding gown of pearls and lace. This was a masterpiece created by Mrs. Josephine Gruver.

The groom's table was handsomely decorated with brown and beige colors. The chocolate cake was designed for the groom and his family. Clever seed bags were authentic looking, with seed spilling from the bags. RICHARDSON was spelled out in old English writing across the cake. Wheat tied in brown net was displayed on the table and replaced the traditional rice bags.

Servers at the reception were Laurie Dahl, Suzanne Hart, Brenda Dahl, Paula Carrol, and Bonnie Harris.

For going away, the bride chose a plaid wool skirt and vest ensemble.

Following a honeymoon in Acapulco, Mexico, the couple will be at home near Vega.

# TURKEYS

**HONEYCREST YOUNG TOM — 16 TO 24 LBS. AVERAGE**

**63¢ LB.**

**RALSTON PURINA U.S.D.A. GRADE "A" TOM — DEEP BASTED**

**79¢ LB.**

We have a good selection of U.S.D.A. Grade "A" Butterball and Honeyauckle Turkeys, Turkey Roast, Smoked Turkeys, Ducks and Hams available for your holiday needs.

<p><b>HONEYCREST</b></p> <p><b>Hen Turkeys</b> ..... 10 TO 14 LB. AVERAGE <b>69¢</b></p> <p><b>HORMEL BLACK LABEL</b></p> <p><b>Sliced Bacon</b> ..... 1-LB. PKG. <b>\$1.49</b></p>	<p><b>RALSTON PURINA U.S.D.A. GRADE "A"</b></p> <p><b>Hen Turkeys</b> ..... 10 TO 14 LB. DEEP BASTED <b>85¢</b></p> <p><b>HORMEL LITTLE SIZZLERS PORK</b></p> <p><b>Link Sausage</b> ..... 12-OZ. PKG. <b>98¢</b></p>
---	---

## Dinner

**Ideal WILL BE OPEN 9 A.M. 'TIL 1 P.M. Thanksgiving Day**

**Crisco Shortening**

PURE VEGETABLE

**3 \$1.88**

1-LB. CAN LIMIT 1

**Folger's Coffee**

ALL GRINDS

**\$2.96**

1-LB. CAN LIMIT 1

**Golden Corn**

GREEN GIANT WHOLE KERNEL OR CREAM STYLE

**29¢**

17-OZ. CAN LIMIT 3

## THE TIMELESS BEAUTY OF FINE STAINLESS TABLEWARE

FOLLOW THIS WEEKLY SCHEDULE

SALE ITEMS	SALE PRICE	REGULAR PRICE
12-1/2" x 19" BLENDED	49¢	69¢
12-1/2" x 19" BLENDED	49¢	69¢
12-1/2" x 19" BLENDED	49¢	69¢
12-1/2" x 19" BLENDED	49¢	69¢
12-1/2" x 19" BLENDED	49¢	69¢
12-1/2" x 19" BLENDED	49¢	69¢
12-1/2" x 19" BLENDED	49¢	69¢
12-1/2" x 19" BLENDED	49¢	69¢
12-1/2" x 19" BLENDED	49¢	69¢
12-1/2" x 19" BLENDED	49¢	69¢
12-1/2" x 19" BLENDED	49¢	69¢

**SAVE OVER 40%**

**ONE OF THE WORLD'S FINEST QUALITY FLATWARES NOW AT A PRICE YOU CAN AFFORD ONLY AT IDEAL**

<p><b>FRESH DAIRY</b></p> <p><b>KRAFT PHILADELPHIA Cream Cheese</b></p> <p>8-OZ. CTN. <b>62¢</b> LIMIT 2</p> <p>MARGARINE QUARTERS <b>54¢</b></p> <p><b>Kraft Parkay</b> ..... 1-LB. PKG. <b>54¢</b></p> <p><b>PILLSBURY Crescent Rolls</b> ..... 6-OZ. PKG. <b>59¢</b></p> <p><b>CAMELOT GRADE "A" Butter</b> ..... 1-LB. QTYE. <b>\$1.59</b></p> <p><b>CAMELOT Cottage Cheese</b> ..... 24-OZ. CTN. <b>\$1.09</b></p>	<p><b>FROZEN FOODS</b></p> <p><b>BIRDSEYE DESSERT TOPPING Cool Whip</b></p> <p>8-OZ. TUB <b>52¢</b> LIMIT 2</p> <p><b>RHODES Dinner Rolls</b> ..... 24-CT. PKG. <b>49¢</b></p> <p><b>CAMELOT Corn-on-the-Cob</b> ..... 6-EAR. PKG. <b>89¢</b></p> <p><b>PET RITZ DEEP DISH Pie Shells</b> ..... 2-CT. PKG. <b>73¢</b></p> <p><b>ALL FLAVORS — FAIRMONT DELUXE Ice Cream</b> ..... 1/2-GAL. BUNNY CARTON <b>\$1.49</b></p>
---	---

<p><b>FINAL NET</b></p> <p><b>Hair Spray</b></p> <p><b>\$1.99!</b></p> <p>8-OZ. BTL.</p>	<p><b>TOOTHPASTE</b></p> <p><b>Aqua Fresh</b></p> <p><b>69¢</b></p> <p>2.7-OZ. TUBE</p>	<p><b>DRY OR NORMAL CONDITIONER</b></p> <p><b>Claïrol Shampoo</b></p> <p><b>\$1.59</b></p> <p>10-OZ. BTL.</p>
--	---	---

**STORE FOR YOU!...**

**Food Stamps Buy More At Ideal...**

**IDEAL FOOD STORES**

# Thanksgiving Preaching Mission Planned

The First United Methodist Church will be having a Thanksgiving Preaching Mission, November 18-20. Dr. Claus H. Rohlfs will be the preacher for the mission.

Dr. Rohlfs was born April 26, 1921 in Innien, the State of Schleswig-Holstein, West Germany, and came to the United States with his mother and three sisters on September 11, 1931. His father had preceded the family in June of 1929.

He and his wife reside in Dallas, and have four children, a daughter and three sons.

He has served a number of pastorates in Texas. He presently serves as Professor of Church Administration, Director of Field Education and Director of Course of Study School, Perkins School of Theology at SMU. He is also serving as chairperson of the Division of Chaplains and Related Ministries and vice-president of the Board of Higher Education and Ministry of the United Methodist Church.

The Sunday services will be at 11 a.m. and 7 p.m. Monday and Tuesday services will be at 7:00 p.m.

There will be Rap Sessions in Fellowship Hall following the evening services.

Nursery Care will be provided for all services.

Travis Angel, Choir Director of the church, will be leading the music for the Thanksgiving Preaching Mission.

Everyone is cordially invited to attend any or all of these services.



Dr. Claus H. Rohlfs

## Presbyterian Church News

There is a Sunday Church School class for everyone every Sunday at 9:45 a.m.

"The Sufficient Christ" will be the subject of Pastor Edward D. Freeman's sermon at the service for the public worship of God on Universal Bible Sunday, November 18 at 11:00 a.m.

Presbyterians will join with their Christian brothers and sisters from all the churches in a Union Thanksgiving Service on Sunday, November 18 at 7:00 p.m. at the Union Church. The Rev. Russell Pogue will preach the sermon.

Amarillo Presbyterian Children's Home will have their annual banquet on Tuesday, November 20 at 6:30 p.m.

There is a warm, Christian welcome awaiting anyone who attends any of the services and activities of the First Presbyterian Church.



Lake Superior is 1290 feet deep in one part.

## Annual Bazaar December 1

Attention Children of all ages the time is coming quickly for the First Christian Church Bazaar. Saturday, December 1 at 10 a.m., this event will happen in Spearman. Lots of gift items for various price ranges will be offered - come early it goes fast.

Lots of members are busy making crafts for this annual event. The bakes goods will be done at the last minute, if you want something after Thanksgiving, call Betty Jean Davis at 3188.

Some things to keep in mind are our tote painting, dolls, Christmas ornaments and chance items. The crewel clock and doll can be seen at the Gift Box after November 19. We're counting on your turn out for our event.



In 20th Century-Fox's "BREAKING AWAY," DENNIS CHRISTOPHER stars as Dave.

## the great american smokeout Thanksgiving Dinner

The annual Union Church Thanksgiving dinner will be served Thursday, Nov. 15 in the church annex. Serving will be from 11:30

a.m. to 1:30 p.m. The cost of the meal this year will be \$4.00 for adults, and children from 6 to 12 \$2.50.

## FGBMFI Elects Officers

Spearman chapter of the Full Gospel Business Men's Fellowship International had its annual election of officers Monday, November 12 in connection with their monthly dinner and inspirational meeting.

All of the incumbent officers were re-elected to office for

another year. They are president, Wes Whitaker; vice-president, Larry Holt; secretary, Keith Bateman; treasurer, Jack McWhirter.

Wes Graham of Oklahoma City was the speaker and he challenged the local members to get out and invite people to

their monthly meetings. Wes sang a group of sacred numbers. A former tenor in a barbershop quartet, his lyric tenor thrilled all those in attendance.

"Jealousy and love are sisters." Russian Proverb

"No one can build his security upon the nobleness of another person." Willa Cather

## Arts & Crafts Guild News

The Arts and Craft Guild met Friday, November 9 in the home of Mrs. F. J. Hoskins. Those present were Mmes Garrett Allen, Guy Fuller, P. A. Lyon, Sr., Ned Turner, Deta Blodgett and hostess Mrs. Hoskins.

The next meeting will be Friday, Nov. 16 in the home of Mrs. P. A. Lyon, Sr.

## Moose Plan Hobo Supper

Moose Lodge members and guests are invited to a "hobo supper" Saturday, Nov. 17 from 6:45 until 8 p.m. at the Moose Lodge hall.

Cost of the meal is \$1.00, and stew, cornbread, crackers, coffee and tea will be served. Everyone is to bring their own bowl and spoon.

TAKE A DAY OFF FROM SMOKING  
NOVEMBER 15, 1979



Come by and See The SELF-Programming Microwave

## EARL'S TV 5th Anniversary Sale

November 15th thru 24th

Layaway Now for Christmas

TBFM 21UF with Ice Maker

\$559.95 W/T

106 E. Kenneth Spearman Ph. 659-2121

**BORGER**

**Sports Tally**

**INC.**

**SPEARMAN**

Do you save old Christmas Cards?

Well ... here's your chance to show them off and win a prize while you're at it!!!

**"Christmas Card Contest"**

Gift Certificates given away for:

1. Oldest - \$50
2. Most Unusual - \$25
3. Prettiest - \$10

Cards will be on display at both stores from Dec. 2nd thru the 18th.

Winners announced Dec. 22nd at 6 p.m.

(you do not have to be present to win.)

Borger  
North Parr Shopping Center  
Borger, Texas

Spearman  
717 W. 7th  
Spearman, Texas

Beginning Nov. 26 we will stay OPEN 9 a.m. - 9 p.m. 'Til Christmas

Layaway Now  
FREE GIFT WRAPPING

enter our

## HELP WANTED

- Shop Foreman
- Mill Maintenance Personnel
- Bunk Reader
- Other positions open.

## HANSFORD FEEDYARDS

2 miles east, 1 mile north of Spearman, Texas  
Phone 806-659-2577 days,  
Night Jim Canada, 806-396-5924 or  
Bobby Cator 806-948-4460

**Beltone**

HEARING TESTS · HEARING AIDS  
SERVICE ON ALL MAKES

In-the-Ear Aids • Eyeglass models  
Behind-the-Ear Aids • Body Aids

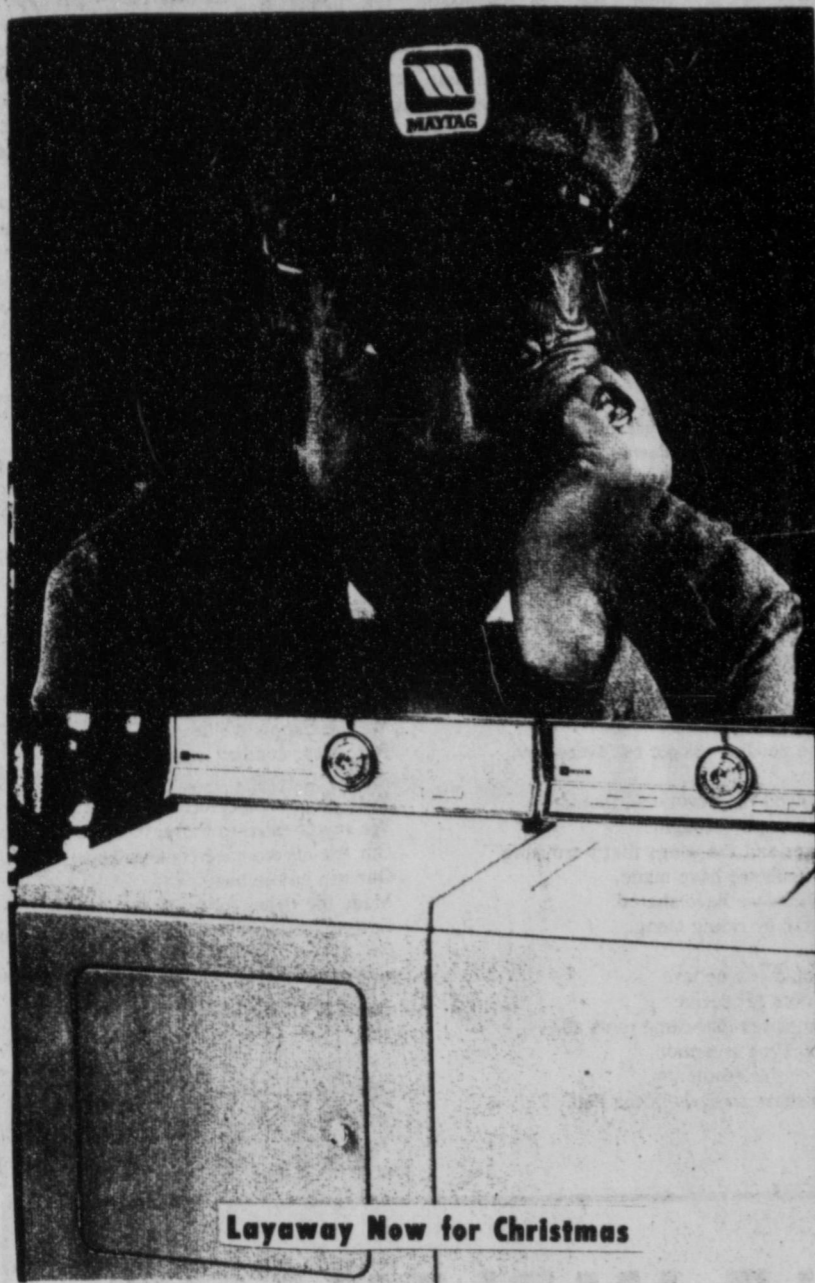
ASK ABOUT THE EXCLUSIVE Beltone Certified Hearing  
Service Plan that helps keep your aid working.

FREE ELECTRONIC HEARING TEST  
IN YOUR HOME OR OUR OFFICE

Nov. 20th  
ASK TO SEE  
A. W. McGinnas  
Certified Hearing Aid  
Specialist

**Beltone** HEARING AID SERVICE  
GOLDEN SPREAD HOME  
14 S. Haney, Third Tuesday

Amarillo Medical Arts Center  
28 B Medical Drive  
Amarillo, Tx. 79106



Layaway Now for Christmas

DE 409 \$469.95 Reg. A 408 \$589.95 Reg.  
 Sale **389.98** W/T Sale **489.95** W/T

**5th Anniversary Sale**

106 E. Kenneth **EARL'S TV** Ph. 659-2121  
 Spearman



Miss Bitsy Buzzard was one of the featured Strippers at the directors party for the Fruit Cake Revue held here last night!



Sex and violence, and Hanky Panky will not be allowed around here, according to "Hard Hearted Hannah" who appeared in person in Spearman last night as a part of the "Fruitcake Revue" directors party!

**CARQUEST AUTO PARTS STORES**

**ANNUAL TOOL SALE... NOW!**

CARQUEST is proud to offer at substantially reduced prices, these hand tools from Proto - a company in business for nearly 75 years - providing the American working man with quality products with a reputation for dependability and performance.

Johnny Rutherford says, "Go with the Pros! See your CARQUEST Auto Parts Stores."



**CHALLENGER 3/8" DRIVE-20 PIECE SOCKET SET**  
 Sug. List \$78.33  
**NOW 39.95**  
 SAVE 49%  
 #2127  
 9 standard sockets 3/8" to 7/8"  
 7 deep sockets 3/8" to 3/4"  
 5/8" spark plug socket, 3" and 6" extensions, Ratchet, Steel box.

**CARQUEST HEAVY DUTY HACK SAW PLUS 10 FREE BLADES**  
 Sug. List \$14.28  
**ONLY 6.79**  
 SAVE 52%  
 #7229FP  
 Rigid flat frame, pistol grip handle. Accepts 10" and 12" blades at 4 angles w/out flexing. 12" 24-tooth blades.

**MULTI-GROOVE PLIERS**  
 Sug. List \$6.67  
**JUST 4.49**  
 SAVE 30%  
 #32-42  
 Chrome plated, all purpose tool. Handles nuts and bolts up to 13/16" square or hexagonal. Pipes up to 3/4"

**KEY RING SCREWDRIVER**  
 Sug. List \$1.16  
**NOW 75c**  
 SAVE 35%  
 #100  
 One of the handiest tools you'll ever own. Hundreds of daily uses.

**CHALLENGER 7-PIECE HEXAGONAL BIT SET**  
 Sug. List \$28.31  
**ONLY 17.99**  
 SAVE 36%  
 #1490A  
 3/8" drive, includes steel organizer box.

**CHALLENGER 5-PIECE PUNCH & CHISEL SET**  
 Sug. List \$12.78  
**JUST 9.49**  
 SAVE 25%  
 #99A  
 Drives pins. Shears rivets and bolts. Spots for drilling. Vinyl roll-up kit.

**12-PIECE METRIC SOCKET SET**  
 Sug. List \$30.66  
**NOW 14.80**  
 SAVE 51%  
 #2400MA  
 3/8" drive. 8 mm to 19 mm sockets. Handy steel tray.

**CHALLENGER 6-PIECE SCREWDRIVER SET**  
 Sug. List \$19.79  
**ONLY 9.04**  
 SAVE 54%  
 #7505FP  
 3 standard blades and 3 Phillips blades in vinyl pouch.

**LEVER-WRENCH PLIERS**  
 Sug. List \$6.97  
**ONLY 5.49**  
 SAVE 21%  
 #5093  
 Four tools in one. Powerful hand vise. Clamp. Pipe wrench. Pliers. Straight jaws. Applies holding pressure up to one ton.

**12" ADJUSTABLE WRENCH**  
 Sug. List \$14.65  
**NOW 10.69**  
 SAVE 27%  
 #4072  
 Rugged I-beam construction. Jaw Capacity 1-5/16"

**6" COMBINATION SLIP-JOINT PLIERS**  
 Sug. List \$4.35  
**JUST 2.99**  
 SAVE 31%  
 #3126G  
 Heavy chrome plate. Combines wire cutter and dual range gripping of fasteners, wires and tubing up to 1"-diameter. Plastic grip.

Good at all participating CARQUEST Auto Parts Stores through Nov. 30, 1979.

**Hi-Plains Auto Supply, Inc.**



118 N. Main 659-2506

Spearman

WE KNOW WHAT YOU MEAN WHEN YOU'RE TALKING PARTS.

**Thanksgiving Preaching Mission**

Sunday, November 18, - Tuesday 20

**SUNDAY SERVICES**

**11:00 A.M. And 7:00 P.M.**

**MONDAY & TUESDAY 7:00 P.M.**

Dialogue (RAP) Sessions in Fellowship Hall Following The Evening Services.

Nursery Care Provided For All Services



**Dr. Claus H. Rohlf**  
 Professor Of Church Administration  
 S.M.U., Perkins School Of Theology

**Travis Angel**

**Choir Director**

**Song Leader**

**First U.M.C. Spearman**

**First United Methodist Church**

**Spearman, Texas**

Listen to the regular Sunday morning worship services each Sunday at 11 a.m. on KRDF-FM

## Ferrell's Enjoy Autumn Tour

Mr. and Mrs. Elden Ferrell have just recently returned from the Tour Autumn in New England and Eastern Canada. On Sept. 24 they left Amarillo aboard the Trailways Silver Eagle Motorcoach, with 41 aboard including the driver, for a day's travel through the center of our great USA. They arrived in Springfield, Mo. for a night at Howard Johnson's Motor Lodge. The second day they continued on through the heart of the country to St. Louis, one of the oldest settlements on the mighty Mississippi River. After noon they went to Indianapolis to spend the night.

On the 3rd day they traveled across Indiana into Detroit, the city that played an important part in putting the world on wheels, then into Canada, where they spent the night at the Holiday Inn, Windsor, Ontario. On the 4th day they went to Niagara Falls, early arrival allows time to see the falls before sunset, the falls are especially pretty after sunset. The night was spent at Sheraton Foxhead.

On the 4th day they went through Toronto, and alongside the beautiful river, the St. Lawrence, and into Montreal, the International city with a

population of over 2 million. They stayed two nights in Montreal and toured the city, and the mountain, where they viewed Montoba, Canada. They all rode the subway train and enjoyed it very much.

On the 7th day they traveled through the picturesque countryside of Southern Quebec, all to soon to arrive at Quebec, the only walled city on the continent north of Mexico. The narrow winding cobblestone streets, the old stone buildings gay with pastel-tinted rooftops, the delightful French atmosphere completely charmed them. They spent two nights at the Chateau

Frontenac and on the 8th day sightseeing took them through the historic villages on the north bank of the St. Lawrence river and a visit to Sainte Anne De Beaupre, the world famous shrine, also Cyclorama. They viewed the world's largest painting which is 45 ft high and 360 ft in circumference of the City of Jerusalem on the day of the Crucifixion.

On the 9th day they left their French speaking friends behind and traveled across Maine to Augusta for overnight accommodations at the Holiday Inn. Maine is the Pine Tree state and Augusta is the capitol. Before leaving Augusta they visited the capitol building and then traveled to New Hampshire viewing the gorgeous scenery.

On the 11th day they traveled through the White Mountains and saw the covered bridge which was built in 1876, then to Montpelier and Barre for visit to the rock of ages quarry, and on to Boston for two nights. They toured the historic and cultural city, including the Bunker Hill monument, Old North Church, Old Ironsides in the navy yard, old North Building.

The 13th day, leaving Boston they traveled through Providence and across Connecticut, a state of beautiful hills, lakes and lovely old towns. They arrived in New York where they spent two nights at the Barbizon Plaza. While in New York they visited the Empire State Building, Statue of Liberty, China Town, Central Park, the famous

Cathedral of St. John, the Divine.

On the 15th day they traveled to Philadelphia where they visited Independence Hall, the Besy Ross home and then traveled to Washington, D.C. where they spent two nights at the Ramada Inn. They toured the capitol, the White House, Arlington Cemetery, visited Mt. Vernon, the John F. Kennedy Center for Performing Arts. The group had their picture made with the capitol in the background. They also visited the two Jima Memorial.

On the 17th day traveled through snow which was so heavy it broke tree limbs off. This was the first snow this early in a century. They drove across the Blue Ridge Parkway

to Monticello, the home of Thomas Jefferson.

The 18th day took the group through Blue Ridge Mountains and the foothills of the Smoky Mountains and through Bristol where the main street is bisected by the Virginia-Tennessee State Line. They spent the night at the Hyatt Regency in Knoxville, Tenn.

On the 19th day they had a pleasant morning drive through the scenic 'Cumbering Mountains to Nashville where they toured the Grand Ole Opry House, the Tennessee Capitol building and the Parthen Building. They continued on to Memphis where they spent the night.

On the 20th day they left Memphis, crossed into Arkan-

sas over the Mississippi River, and spent the night at Fountainhead Lodge, Okla., where they had a memorable farewell dinner and program. Mr. Ralph Bynum of Amarillo presented group pictures to each of the travelers.

On the 21st day they traveled across Oklahoma and back to Texas to end the tour. They said goodbye to the many friends they had made and after 21 days of vacation are happy to be home. Had interesting experiences;

The port at Glasgow, Scotland, was originally only two feet deep at low tide. Determined to share England's trade with America, the people there kept dredging until great ocean liners could reach the city's heart.



### Put an end to stumbling in the dark, with Leased Floodlighting.

If your business activities continue after dark, Leased Floodlighting can help you. Well lighted entrances, stairways, loading docks and parking areas can mean added safety to you and your employees. Property is protected, too, since brightly lighted areas are less subject to vandalism. On-at-dusk, off-at-dawn Leased Floodlighting for businesses directs a beam of light where you need it, and costs just pennies per night. If you'd like to get the added safety and security of Leased Floodlighting for your business, just give us a call.



**COMMUNITY PUBLIC SERVICE**  
Your Electric Light & Power Company



### GUYMON, OKLAHOMA-CATTLE AUCTION MARKET - NEWS - LETTER

GREETINGS TO ALL CATTLE PRODUCERS

ON NOVEMBER 9TH, A TOTAL OF 1597 CATTLE AND CALVES WERE SOLD THROUGH THE ARENA AT OUR REGULAR FRIDAY LIVESTOCK AUCTION HERE AT THE PANHANDLE LIVESTOCK COMMISSION COMPANY IN GUYMON, OKLAHOMA. A GOOD ATTENDANCE OF BUYERS AND SELLER WERE ON HAND FOR THE AUCTION. ALL CLASSES OF CATTLE SOLD ON A STRONG TO HIGHER MARKET.

PACKER COWS SOLD \$5.00 HIGHER SELLING FROM \$45.00 TO \$55.00 PER CWT. PREG AND BLOOD TESTED COWS SOLD FROM \$465.00 TO \$680.00 PER HEAD. COW AND CALF PAIRS SOLD UP TO \$800.00 PER PAIR. STEER AND HEIFER CALVES SOLD ON A VERY ACTIVE TO STRONG MARKET. STEER CALVES WEIGHING FROM 300 TO 400 LBS. SOLD FROM \$75.00 TO \$90.00 PER CWT.

NEXT FRIDAY, NOVEMBER 16TH, WE ARE EXPECTING A GOOD RUN OF CATTLE OF ALL CLASSES. IN THE CONSIGNMENTS NEXT WEEK THERE WILL BE APPROXIMATELY 400 HEIFERS WEIGHING 350 LBS. ALL ONE BRAND. THERE WILL ALSO BE 100 STEER AND HEIFER CALVES FROM BOOKER TEXAS AND WE ARE EXPECTING APPROXIMATELY 500 PREG AND BLOOD TESTED COWS FOR THIS SALE PLUS MANY MORE CONSIGNMENTS. FOR MORE INFORMATION CONTACT BILL BLACKMORE AT 405-338-3378.

**PANHANDLE LIVESTOCK COMMISSION CO.**  
Guymon, Okla. • 405-338-3378 • P.O. Box 879

**The Trip**  
We All Remember  
That day in September  
When into the Bus we climbed,  
Forty-one people  
From Five different states  
Even two Okies they didn't seem to mind.

With Bill as our driver,  
The Kirklands for our guide,  
A New Silver Eagle was our Bus.  
Eager to go  
New friends to know  
We started our luggage and us.

We went on our way  
Twenty-one States we saw  
The District of Columbia and Canada, too.  
Saw unusual sights,  
Took pictures of them,  
Had interesting experiences; most to us were new.

Niagara was stupendous,  
The foliage gorgeous,  
Plenty of food we found along the way,  
We loved the fruit stops,  
The little gift shops,  
And the goodies passed out every day.

We enjoyed the devotional thoughts,  
The philosophy brought,  
The jokes and the songs that were sung,  
New friends we have made,  
Good times we have shared,  
Like a family riding along.

And would you believe  
It was ours to receive  
Some surprises that came to us all --  
A champagne reception,  
A visit to the Parthenon,  
A snowstorm so early in the Fall?

From East to West  
Our driver is best,  
Our escorts give us the greatest care,  
With them as a guide  
We are happy to ride  
Across the country most anywhere.

With pleasant memories  
We say farewell to these,  
Our friends we have come to know.  
Our trip on the bus  
Made life richer for us,  
Getting home will be good; but it was so nice to go:



## PANHANDLE IMPLEMENT

Presents

# THE MOST ADVANCED DESIGN 4-WHEEL DRIVE TRACTORS CASE EVER BUILT

**4490**

213 eng. hp\* (158 kW);  
PTO hp\* 174 (130 kW)

**4890**

300 eng. hp\* (223 kW);  
PTO hp\* 252 (188 kW)

**4690**

256 eng. hp\* (191 kW);  
PTO hp\* 219 (163 kW)



\*mfr's ratings

- New advanced design solid state selective steering (front, rear, coordinated, crab steer).
- New fingertip steering selection and amazing electronic sensing.
- New "executive-office-on-wheels" Silent Guardian cab.
- New Case CON TROL hydraulics — best of both open and closed center systems.

- New styling, road speed, PTO, braking.
- Great for tillage — works sidehills and row crops the way most 4-wheelers can't.
- Built strong for rapid farming.
- We're not like those bend-in-the-middle models.

We're the Tractor Specialist

**PANHANDLE IMPLEMENT CO.**



710 N. MAIN

• PERRYTON •

435-6508





# ALLSUP'S

CONVENIENCE STORES

Some of these items may not be available in the Gruver store.

## OPEN THANKSGIVING

ALLSUP'S HAS ALL THE FIXIN'S FOR A DELICIOUS THANKSGIVING DINNER!

**WE RESERVE THE RIGHT TO LIMIT! PRICES EFFECTIVE NOVEMBER 15-17, 1979 SPECIALS GOOD WHILE SUPPLY LASTS! LIMITED SUPPLY!**

 <p><b>BALLARD'S BISCUITS</b> BUTTERMILK OR SWEETMILK 10 \$1.00 9 OZ. CANS</p>	<p><b>THRIFT KING TOWELS</b> 39¢</p> <p><b>SHURFINE TUNA</b> 59¢ 9 1/2 oz. can</p>	 <p><b>ALLSUP'S ASSORTED ICE CREAM</b> \$1.29 1/2 GAL. RD. CTN.</p>
--	--	---

 <p><b>MAMA'S COOKIES</b> ..... 2 PKGS. \$1.00</p>	<p><b>CRISCO SHORTENING</b> 3lb. can \$1.99</p> <p><b>SHURFINE CRANBERRY SAUCE</b> 16 oz. can 39¢</p>	 <p><b>BROWN 'N SERVE ROLLS</b> 12 CT. PKGS. 2 89¢</p>
---	---	---

 <p><b>PEPPERIDGE FARM STUFFING MIX</b> ..... 8 OZ. BOX 79¢</p>	 <p><b>PRESTONE ANTI-FREEZE</b> ..... GAL. JUB. \$3.39</p>	 <p><b>FOLGER'S FLAKED COFFEE</b> ..... 13 OZ. CAN \$2.69</p>
 <p><b>BORDEN'S DIPS OR SOUR CREAM</b> ..... 8 OZ. CTNS. 2 98¢</p>	 <p><b>BORDEN'S COTTAGE CHEESE</b> ..... 12 OZ. CTN. 69¢</p>	 <p><b>BEST MAID WHOLE DILLS</b> SHURFINE SUGAR 5 lb. bag \$1.09</p>
 <p><b>BEST MAID WHOLE DILLS</b> SHURFINE CORN CREAM STYLE OR WHOLE KERNEL 4 FOR \$1.00</p>	 <p><b>BORDEN'S WHIPPING CREAM</b> 1/2 PT. 59¢</p>	 <p><b>BORDEN'S FUDGE OR FROSTY POPS</b> ..... 24 CT. PKG. \$1.19</p>

 <p><b>SHURFRESH TURKEYS</b> SELF-BASTING 10-22 LBS. AVG. 69¢</p>	<p><b>KRAFT DRESSING</b> FRENCH, CREAMY, CUCUMBER AND THOUSAND ISLAND 8 oz. bottle 29¢</p>	 <p><b>BORDEN'S EGG NOG</b> 99¢</p>
--	--	--



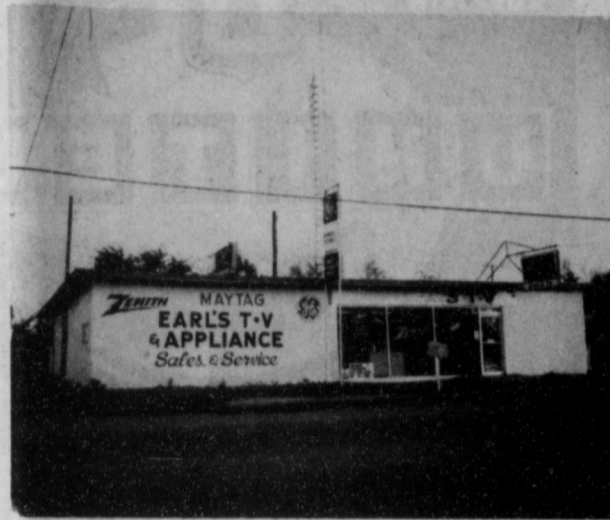
ISABEL MARTINEZ is pictured above with the trophy that he won in an Oklahoma City Marathon over the past week-end. Isabel runs and trains in Spearman, and averages 35 miles running per week. He works for Permian, here. The race in Oklahoma City was approximately 10 miles long. He resides at 216 S. Archer, in Spearman.



In 20th Century-Fox's "BREAKING AWAY," Dave (DENNIS CHRISTOPHER), lower right, as bike racer in the midst of stiff competition.



In 20th Century-Fox's "BREAKING AWAY," Dave (DENNIS CHRISTOPHER) is not the young man he seems to be to Katherine (ROBYN DOUGLASS).



Earl, the Pearl, Goodheart will celebrate his 5th Anniversary starting today. Be sure and check on the many startling Anniversary bargains now available!

## NOTICE!

Alpha Mu Psi members wish to invite you to play bridge and lunch with us this Friday, Nov. 16th, at our annual Bridge Luncheon, taking place this year at the First Christian Church in Gruver. We will be having it from 12:00 noon to 5:00 p.m., and we hope you will join us in the good fun and delicious food. The tickets are \$5.00 to eat lunch and play bridge; but, if you are a non-bridge player and don't want to miss out on our scrumptious variety of food, you may eat with us for \$4.00. Tickets can be purchased from an Alpha Mu Psi member, or you can pay at the door when you arrive Friday. If you have any questions, you may call Rita Williams at 733-2759.

Alpha Mu Psi's planned trick-or-treating event for Meals on Wheels was postponed a week because of the lack of electricity on the proposed date, Oct. 31st. However, the delay didn't seem to matter to the people of Gruver. Alpha Mu Psi is proud to report that they collected around \$1900.00. If anyone missed out and would still like to give to Meals on Wheels, please take your contributions to City Hall in Gruver.

**MR. FARMER::** We hope that you get top yields and prices for your Milo! To aid you in your harvest needs, we have the following grain trucks in stock - rigged and ready to work for you!

**Two 1980 GMC Tandems**  
Hendrickson Suspension, 366, 5 and 2, 22 ft. beds, gallon hoists.

**Two 1980 - One 1979 GMC Bobtails**  
18 foot Midwest beds, 9.00 rubber, 366, 5 and 2

**One 1980 - Two 1979 GMC Bobtails**  
16 Foot Midwest beds, 350, 4 and 2

We also have six cab-chassis GMC trucks that we can rig to your specifications.

**WE HAVE JUST TRADED FOR**  
3 Very Nice Used Tandem Trucks

**Only 25**  
**1979 Models Left!**  
Special closeout allowances on any 79 Model in stock!

*We have approximately 40 new GMC pickups in stock. Call or drop by today.*

Better hurry . . . they won't last long!

Pick up your FREE Ice Scraper and 1980 Lox Graham Calendar



# HERGERT

Pontiac, Buick, GMC

"The Best For Sales, Service & Body Shop"

WE APPRECIATE YOUR PATRONAGE!!



S. Hwy. 207      806-659-3721      Spearman, TX

**Extension Clubs**

The Spearman Home Extension Club met Friday, Nov. 9 in the home of agent Peggy Winegarner with President Mrs. B. J. Garnett calling the meeting to order. The devotional was given by Mrs. Tarbox. The roll call was answered by "Old Wives Tales About Microwave Ovens." Those answering the roll were: Mmes. B. J. Garnett, Eldon Ferrell, A. D. Reed, W. V. Hull, Viola Hutton, Bertha Tarbox and guest Mrs. J. W. Brown and Hostess Peggy Winegarner.

Minutes of the last meeting were read by the secretary Mrs. Tarbox and approved. The treasurer's report was given by Mrs. A. D. Reed.

Mrs. Ellsworth invited the club members to her home for the Christmas Party Dec. 4. The members will exchange gifts.

The program was a demonstration by Agent Peggy Winegarner on Microwave cooking. She cooked a complete meal including Roast Beef, Broccoli casserole and cake in the oven. The meal was served to the members and was enjoyed very much. The hostess then graciously showed all present her lovely home. The meeting was enjoyed very much by all.

The next meeting will be the Annual Luncheon at the Clubroom on Nov. 27.

The Old Hansford Home Extension Club met Tuesday, Nov. 6 in the home of Maylyn Schubert with President Susan Delk presiding. The devotional was given by Mrs. Schubert from the Book "The Greatest of These Is Love." Roll call was answered by "Old Wives Tales about Microwave Ovens." The minutes of the last meeting were read and approved and the treasurer's report was given by Lou Howerter.

The members were reminded about the Bake Sale at Gordon's Drug Nov. 14.

Committee reports were given. The Council report was given by Mary Brown. She announced that the Annual Luncheon will be Nov. 27 at the Clubroom at 7:00 p.m.

The program was a demonstration of using the Microwave oven by agent Peggy Winegarner. She showed how to make several foods in the Microwave which were served to those present.

Those attending were: Louise Archer, Mary Brown, Ethel Byers, Susan Delk, Lou Howerter, Margaret Nelson, Ruth Reardon, Margaret Shedeck, Cora Smith, guest Joyce Noble, agent Peggy Winegarner and hostess Maylyn Schubert.

The next meeting will be the Annual Luncheon Nov. 27. The next regular meeting will be in the home of Cora Smith for a Christmas Party December 4. The Club will reveal secret pals at this meeting.

**Rho Rho Sorority Meets**

Rho Rho met Nov. 8th for a wet-rainy day meeting at Janie Henton's lovely home. Karen Blodgett, president, opened the meeting by leading all in the opening ritual. The business meeting was then held and the February Valentine Ball discussed.

The program was given by Delinda McLaughlin who had as her guest speaker, Judy Nelson. Judy has given several programs for the sorority in the past and her reviews are always looked forward to since she makes them so interesting. She gave a talk on the book "Anita Bryant's Story". It was very informative.

A "pop in" guest, Verna Strawn from Xi Zeta sorority came to discuss the Valentine Ball.

Secret sisters were then revealed and this year each girl gave the one who given her gifts throughout the year a gift in appreciation. Names were then drawn for new secret sisters for the coming year.

All joined in the closing ritual and prayer.

Hot cider and popcorn nuggets were enjoyed by Karen Blodgett, Gina Davis, Gayle Smith, Linda Brown, Judy Hutchison, Karen Schnell, Janie Henton, Lisa Pipkin, Jody Rex, Sherry Moore, Shelly Beedy, Ginger Pittman, Teresa Hargis and her new daughter Kacee; Brenda Shieldknight, Linda Sanders, Joan Brown, Dixie Smith, Delinda McLaughlin, Kim Vanderburg, Sheri McWhirter, Candy Boxwell, Debbie Clements, Susan Pearson and Stephanie Brock and her baby girl.

The next meeting will be the Annual Luncheon at the Clubroom on Nov. 27.

The Old Hansford Home Extension Club met Tuesday, Nov. 6 in the home of Maylyn Schubert with President Susan Delk presiding. The devotional was given by Mrs. Schubert from the Book "The Greatest of These Is Love." Roll call was answered by "Old Wives Tales about Microwave Ovens." The minutes of the last meeting were read and approved and the treasurer's report was given by Lou Howerter.

**Golden Spread Club Meets**

Fourteen Golden Spread Club members made a trip in the Golden Spread Center's van bus on Thursday, November 8 for a visit to the Senior Citizens Center at Laverne, Oklahoma. Those making the trip were Eva Boyd, Mildred Chamberlain, Verna Finley, Edna Hays, Verna Hutchison, Addie Novak, Pearl Pierce, Eleanor Reed, Souie Sampson, Mae Schaul, Joyce Shieldknight, Dorathea Tackett, Jewell Thomas, and Dora Womble.

Two trips this week were cancelled because of lack of interest at this time: the trip to the Cattleman's Restaurant on Monday and to Oklahoma City to the Cowboy Hall of Fame and Zoo on Wednesday.

Today, Thursday, November 15, there will be Arts and Crafts from 10:00 a.m. to 5:00 p.m. with a break for a covered-dish luncheon at noon.

Table games and pool will be the order-of-the-day on Friday, November 16.

The Belltone representative will be at the Golden Spread Center Tuesday, November 20 from 9:00 a.m. to 1:00 p.m.

There will be a covered dish dinner at 6:30 p.m. on Tuesday, November 20 with games following. Spearman Music Club will assist the dinner. Hostesses will be Verna Hutchison, Louie Sampson, and Joyce Shieldknight.

Helen Etter will drive the Golden Spread Center's van bus on Wednesday, November 21 from 9:00 a.m. to 12:00 noon picking up and depositing the sixty plus bunch for shopping, errands, and to meet appointments. People needing transportation should call the Golden Spread Center on Tuesday (3521) to get your name on the list.

**Peggy's Pointers**

**FIREPLACE SAFETY MEASURES**

Neglect and careless fireplace use often result in injury or a serious fire hazard.

Use the following "tips" to reduce the threat of accidental burns and fires:

- 1) Never use flammable liquids to start the fire.
- 2) Avoid excessive amounts of newspaper to build roaring fires in the fireplace. It's possible to ignite spot deposits inside the chimney by overbuilding a fire.
- 3) Charcoal is great for steaks, but never burn it in a fireplace. Burning charcoal gives off deadly amounts of carbon monoxide, so use it outdoors -- never in a fireplace.
- 4) Keep a metal or glass screen in front of the fireplace to catch flying embers. Flying embers can easily ignite carpet, furniture and other combustible items in the room.
- 5) Make sure no flammable materials hang down from or decorate the mantel. A spark

from the fireplace can ignite such materials and cause a fire.

6) Always make sure the fireplace fire is out before retiring at night, and, never, never close the damper with hot ashes in the fireplace. With the damper closed, hot ashes build up heat and may flare up and ignite the room while the family sleeps.

7) Use man-made logs according to directions on the package. Never break apart a man-made log as a means of quickening a fire.

8) Check both the chimney and the fireplace for defects and potential problems every couple of years, especially if the fireplace receives constant use during the winter.

Loose or fallen brick, cracked or broken flue lining, excessive soot accumulation and obstructions in or near the chimney are among the defects commonly found.

Serve cranberries -- even leftover cranberry sauce -- with a new "flare".

Combine them with spareribs -- an American favorite traditionally served plain broiled or

barbecued. Try this recipe, and give your family a delicious treat.

**CRANBERRY SPARERIBS**

- 3 to 3 1/2 pound spareribs, side or country style
- 1 teaspoon salt
- 1/4 cup dark brown sugar
- 3 tablespoons all-purpose flour
- 1/8 teaspoon dry mustard
- 1/8 teaspoon ground allspice
- 2 1/2 tablespoons vinegar
- 1 tablespoon lemon juice
- 1 cup water
- 1 can cranberry sauce

Place ribs on broiler rack (trim off fat, if necessary). Broil until brown. Turn to brown second side.

Remove from rack, and pour off drippings. Return ribs to broiler pan (without broiler rack).

In saucepan, mix salt, sugar, flour, mustard, allspice. Add remaining ingredients. Cook and stir until slightly thickened.

Pour over ribs in pan. Cover. Bake at 375 degrees F. for one hour, uncovering pan last 15-20 minutes of the cooking time.

Serves four.

**Social Security News**

A new "gimmick" promoted to reduce an employer's social security tax liability also will reduce the social security protection provided to employees, Howard Weatherly, Social Security Branch Manager in Pampa said recently.

Under this plan, an employee's gross pay is reduced by the amount of social security taxes he or she would pay. Then, the employer pays the employee's share of the tax as well as his own, but the tax bill is reduced because gross pay is lower.

The plan supposedly does not harm the employee because take home pay is not reduced and may be even slightly higher than before.

The rub is that the value of future social security protection is reduced. This is because social security benefits are figured from a worker's gross earnings, not take home pay.

When a person applies for retirement or disability benefits or when survivors of a deceased

worker apply, all of the earnings over the working lifetime are considered when benefits are figured.

There is no way of getting around the fact that lower earnings will mean lower future benefits than would have otherwise been paid, Weatherly said.

People can get more information about how social security benefits are figured at the Pampa Social Security Office, location at 1541 North Hobart St. The telephone number 669-3381.



The AMA points out that contrary to popular belief, shaving does not affect the texture, color or rate of hair growth.

**Bible Readings**

Keep the Bible with you. Read the Bible. That's the slogan for the 39th Interfaith National Bible Week, November 18-25, 1979.

Sunday, November 18: Morning, Psalm 23; evening, 2 Timothy 2:1-15

Monday, November 19: Morning, Psalm 121; evening, 1 Corinthians 13

Tuesday, November 20: Morning, Isaiah 40:1-8; evening, 2 Peter 1:12-21

Wednesday, November 21: Morning, Psalm 139:1-24; evening, Matthew 5:1-11

Thursday, November 22: Morning, Psalm 100; evening, Hebrews 11:1-10

Friday, November 23: Morning, Exodus 20:1-17; evening, Mark 4:3-20

Saturday, November 24: Morning, Psalm 1; evening, John 20:24-31

Sunday, November 25: Morning, Ecclesiastes 3:1-8; evening, Romans 8:24-39

**PLAY... BLACK-OUT**

**UNITED BINGO**

Supermarkets Perryton Texas

QUANTITY RIGHTS RESERVED

UNCLE BEN'S STUFF 'N SUCH

STUFFING MIX 6 OZ. 59¢

RITZ CRACKERS 16 OZ. BOX 89¢

CARNATION EVAPORATED MILK TALL CAN 39¢

SUGARY SAM CUT YAMS NO. 3 SQUAT CAN 59¢

KARO CORN SYRUP CRYSTAL WHITE RED LABEL 32 OZ. \$1.09

SCHILLING'S BLACK PEPPER 4-OZ. 89¢

**BOUNTY JUMBO ROLL PAPER TOWELS 59¢**

UNCLE BEN'S STUFF 'N SUCH

CARNATION MILK

SUGARY SAM YAMS

KARO CORN SYRUP

**HILLS BROTHERS COFFEE ALL GRINDS 1 LB. CAN \$2.79**

**ELLIS HALVES & PIECES 6 OZ. PECANS 89¢**

**UNITED GRADE A EXTRA LARGE EGGS 69¢**

**OCEAN SPRAY CRANBERRY SAUCE 16 OZ. 39¢**

**COCA COLA 32 OZ. 6 BTL. \$1.59 PLUS DEP.**

**BELL WHIPPING CREAM 8 OZ. CRTNS. 31¢**

**BOLD-3 DETERGENT 84 OZ. BOX \$2.69**

**DISHWASHING DETERGENT 13' OFF LABEL 22 OZ. 89¢**

**DAWN LIQUID 18" x 37 1/2" 79¢**

**REYNOLDS ALUMINUM FOIL 140 COUNT 59¢**

**VIVA PRINT NAPKINS 16 OZ. BTL. 79¢**

**DOMINO LIQUID BROWN SUGAR 12 OZ. CELLO BAG 39¢**

**CANDY • PEPPERMINT CHOPPED STIX • STARLITE MINTS • ORANGE SLICES • DAIRY BUTTERSCOTCH**

**DELICIOUS RED OR GOLDEN APPLES 39¢**

**WASHINGTON D'ANJOU PEARS 79¢**

**RUSSET ALL PURPOSE POTATOES 10 LB. BAG 79¢**

**OCEAN SPRAY CRANBERRIES 1 LB. CELLO BAG 59¢**

**CELERY GREEN PASCAL STALK 33¢**

join the great **american smokeout NOV 15** American Cancer Society

**For Thanksgiving Or Christmas... Cured and Smoked Fully cooked - ★ Turkeys**

**MAC-DYE Packing Company** Highway 15 West - Booker, Texas 79005

KENNETH MCGABE 658-4647 LARRY DYE 658-4656

CUSTOM RETAIL WHOLESALE U. S. INSPECTED #2962

Federal Inspection for Your Protection

# Story Of Cynthia Ann Parker To Be Aired

Your local radio station KEYE-AM in Perryton will air this radio drama on Sun., Dec. 2, at 8 p.m. Sharon Garrison Ellzey, Pres. & Gen. Mgr. of KEYE, has a copy of the tape on hand—she might allow a reviewer to hear the program in advance. Her number: 435-5458. I will supply you a photo of Cynthia Ann Parker & her baby on request. Would appreciate receiving a copy of any story you print. Thanks, Frieda Werden, Producer, KUT

Legendary Texan Cynthia Ann Parker will be the subject of a half-hour radio drama released this fall by KUT-FM radio in Austin. The drama may be heard on KEYE Sunday, Dec. 2 at 8 p.m. Through the distribution facilities of the Longhorn Radio Network, "Cynthia Ann Parker: This Woman Called Naduah" will be sent free of charge to every radio station in Texas, for airing during November and December. Interested listeners should call their favorite local stations

for dates and times. Cynthia Ann Parker was captured by Comanches when she was nine years old, then recaptured by whites 24 years later. The play is the pilot for a proposed series of radio dramas about women in Texas history, covering characters from the Spaniards' Indian translator Angelina, through the Republic, the Civil War, the temperance, antilynching, suffrage and black movements, to 1960s blues singer Janis Joplin. Funds for the pilot and planning the series were provided by the Texas Committee for the Humanities and the National Endowment for the Humanities. The first 144 listeners to write in with a page of comments on the program will be sent a free Cynthia Ann Parker t-shirt, with a picture of Cynthia Ann Parker and her baby Topasannah. Send name, address, information about when and where you heard the program, your comments to "Women of Action," KUT-FM, P.O. Box 7158, Austin, TX 78712.

"Cynthia Ann Parker: This Woman Called Naduah" was written by O'Henry award winner Anne Leaton of Ft. Worth, an internationally known radio dramatist. Consultant on Indian life and history was anthropologist Dr. William Newcomb, author of *The Indians of Texas*. The play was produced by Frieda Werden and directed by Richard Mills. Leila Lustig composed original music for the production. Vocalist Tina Marsh creates the wail of Cynthia Ann Parker in mourning. Texas folklorist and humorist John Henry Faulk plays "Mr. Parker." Quanah Parker, Cynthia Ann's famous Indian son, is played by Bill Morrison Davis; and other cast members are Cliff Haby, Timothy Miller, Oliver Handley, John L. Martin and Kevin Boyle. Cynthia Ann Parker was a pioneer girl living in Parker's Fort, near the present-day town of Marlin, when she was captured in the first Indian raid on a white settlement in Texas.

The year was 1836, and she was nine years old. Several attempts to ransom her were refused by her adoptive Indian parents, and by the girl herself when she was old enough to make a decision. She grew up to be a respected Comanche woman, married a chief and bore three children—the eldest of whom became Chief Quanah Parker. In 1880, Sul Ross's rangers rounded up a Comanche band near Ft. Worth, killing all the warriors they could. One of the Indians held up a baby to show she was a woman. When the rangers saw her blue eyes they took her with them. This was Cynthia Ann Parker, now a woman called Naduah. Though she wanted nothing so much as to go back to her Comanche family Naduah and her baby daughter Topasannah were forcibly detained by their white relations. The whites taught her to spin, and Naduah made cloth and tanned hides for the Confederates throughout the War. Then in 1867, Topasannah died. Naduah starved

and grieved herself to death, cutting herself with a knife across the breast. She had lost everything meaningful from her life. KUT's new radio play depicts Cynthia Ann Parker from the viewpoints of the men around her: her son Quanah; a white descendant of the Parker clan; two traders who try to ransom her; and the male relatives who kept her with them against her will. Each of the men knows something about Cynthia Ann, or about Naduah—but none of them knows more than a fragment of who she really was or what it was like to be a woman torn between twoarring cultures. Though Cynthia Ann is present in several scenes of the play, she never speaks. She is dealt with, and talked about, but her true feelings emerge only in her mourning wail on the death of her daughter. "Cynthia Ann Parker: This Woman Called Naduah" was produced in the KUT-FM studios, in the Communication Center of The University of Texas at Austin.



Broadcasters are subject to the Fairness Doctrine that in essence states they are obligated to provide for airing controversial issues of public importance with reasonable opportunity of all points of view.

"Veracity is the heart of morality." Huxley



The Bahamas comprise about 3,000 low islands and rocky islets.



Resident Woman of the Month

## Davis celebrates 103rd birthday

She celebrated her 103rd birthday Tuesday. Hettie Davis is the oldest resident at Senior Village, the only one who can look back over more than a century of life. Hettie Gertrude Bryan was born November 6, 1876 in Ashley County, Ark. as the third of seven children. She married Walter Davis when she was 18-year-old, in Mist, Arl. on June 19, 1902. They were married some 62 years before Walter died in 1964. The couple raised six children who were: Willard and Jimmie Davis of Spearman, Cornelia Phillips of Denver, Colo., Zella Close of California, Eileen Mack of Amarillo, and the late Woodie Davis of Spearman. In addition, Hettie has 17 grandchildren, 37 great-grandchildren, and 12 great-great-grandchildren. Before moving to Senior Village some two years ago, Hettie

lived alone in her home in Spearman, where she enjoyed quilting and gardening. She grew everything from tomatoes and onions to blackeyed peas, and attributed her good health to the outdoors. She has also always loved to cook, with one of her favorite meals being roast beef and brown gravy with a custard for dessert. Bright and alert, she was full of smiles when honored with a tea on her birthday Tuesday. Red Cross Volunteers Kay Allison, Peaches Goldsberry and Ruby Akers helped with the occasion. Guests who were present included Annie McGary, Edna Hays, Marie Weckesser, Grace Kirk, J. W. Davis, Babe Pendergraft, Rosa Lee Butt, Hazel Clement, Jettie Davis, Willard Davis, Mrs. Fred Brandt, Melba Jackson, Betty Davis, Gwendolyn Smith, and Carrie Russell.

### Board Meets

Golden Spread Center Board met Monday, November 12 at 5:00 p.m. The meeting opened with prayer by the Rev. Edward D. Freeman. Those present were Wanda Brown, Colene and Orvil Brummett, Pete Fisher, Ed Freeman, Frances Loftin, Marsha Murphy, Addie Novak, Pearl Pierce, and Thelma Scott. The Minutes of the October 8 meeting were read and corrected.

### Shop Early, Mail Early

It is not too early to remind all to SHOP EARLY and MAIL EARLY. In fact, all packages bound for overseas address must be mailed not later than Monday, November 12th. Christmas is ONLY seven weeks away. Regular surface transportation mail to friends, relatives and members of the Armed Force with foreign country addresses must be mailed by Monday, November 12th if the sender desires before Christmas delivery.

The Financial Report was accepted. Outstanding bills were read and ordered paid. The House committee reported on leaks, the need of insulation in the electric outlets. It was emphasized that the van-bus was given to us by the Panhandle Region Planning Commission to use for all people sixty years of age or older and for all their needs. Insurance on the van-bus and on the building was discussed. It was pointed out to the Yard committee that there were tree limbs that needed to be picked up. It was also pointed out that there was a problem with people driving over the back yard. The meeting had just adjourned when the lights went out and people had to grope to the door to find the way to their cars.



The baboon is the largest of the monkeys.



The larger the doors and windows of a home, the greater the chance of heat loss in winter, or heat gain in summer.

# WIN 1000 EXTRA S&H GREEN STAMPS

<b>FRESH GROUND BEEF</b>	<b>FAMILY PACK</b>	<b>LB.</b>	<b>\$1.18</b>
<b>RIB STEAKS</b>	<b>UNITED'S TRUTENDR</b>	<b>LB.</b>	<b>\$1.69</b>
<b>UNITED'S SAUSAGE</b>	<b>COUNTRY STYLE</b>	<b>LB.</b>	<b>89¢</b>
<b>UNITED'S TRUTENDR CHUCK ROAST</b>	<b>BLADE CUTS</b>	<b>LB.</b>	<b>\$1.19</b>
<b>JIMMY DEAN'S SAUSAGE</b>	<b>1 LB. BAG</b>	<b>\$1.19</b>	
	<b>2 LB. BAG</b>	<b>\$2.37</b>	

**This week's special**  
2 QT. SAUCEPAN with Cover **\$6.99** only (with minimum \$10 purchase)

**FINE FARE GRADE A TURKEYS SELF BASTING**  
10 TO 22 LB. AVG. **68¢**

<b>COUNTRY PRIDE GRADE A 5 TO 7 LB. AVG. HENS</b>	<b>58¢</b>	<b>FARMLAND BONELESS FULLY COOKED 3 LB. CAN HAM</b>	<b>\$4.98</b>
---	------------	---	---------------

<b>SWIFT'S TENDER LEAN WHOLE OR HALF PORK LOINS</b>	<b>1.19</b>	<b>KRAFT CHEESE FOOD 2 LB. BOX VELVEETA</b>	<b>2.59</b>
---	-------------	---	-------------

<b>BAKER'S ANGEL FLAKE COCONUT</b>	<b>25' OFF 14 OZ.</b>	<b>\$1.19</b>
<b>FISHER SPANISH RAW PEANUTS</b>	<b>12 OZ.</b>	<b>69¢</b>
<b>FINE FARE GARDEN SWEET PEAS</b>	<b>17 OZ. CAN</b>	<b>2 FOR 69¢</b>
<b>FINE FARE GOLDEN CORN</b>	<b>W.K. OR CREAM STYLE 16 OZ.</b>	<b>3 FOR 1</b>
<b>DEL MONTE SWEET PICKLES</b>	<b>12 OZ. GERKINS</b>	<b>89¢</b>
<b>DEL MONTE PINEAPPLE JUICE</b>	<b>46 OZ.</b>	<b>89¢</b>

<b>ALKA-SELTZER</b>	<b>SINUS SPRAY SINE-OFF</b>	<b>ONYMENT MUCITRACIN</b>
<b>25 CT. 98¢</b>	<b>1/2 OZ. 98¢</b>	<b>1/2 OZ. \$1.19</b>

**— MANAGER'S SPECIAL —**  
**CONTADINA TOMATOES 39¢**  
14 1/2-OZ. CAN

<b>PET RITZ PUMPKIN PIE 24 OZ.</b>	<b>79¢</b>	<b>BELL 8 OZ. DIPS OR SOUR CREAM</b>	<b>45¢</b>
<b>PET RITZ DEEP DISH PIE SHELLS 2 CT.</b>	<b>69¢</b>	<b>BELL 16 OZ. HALF &amp; HALF</b>	<b>49¢</b>
<b>JENO'S SAUSAGE HAMBURGER PIZZA CHEESE PEPPERONI</b>	<b>89¢</b>	<b>BELL EGG NOG QT.</b>	<b>79¢</b>

**CRUM REAL ESTATE**  
Nadine Crum---Broker  
665 Acres  
12 miles S. of Perryton

a. 543 acres in cultivation  
b. 122 acres grass  
c. Improvements  
d. Seller will finance with 29% dn.


Exclusive with Crum Real Estate  
**CALL 435-5414**

**UNITED Supermarkets**  
Perryton, Texas  
QUANTITY RIGHTS RESERVED

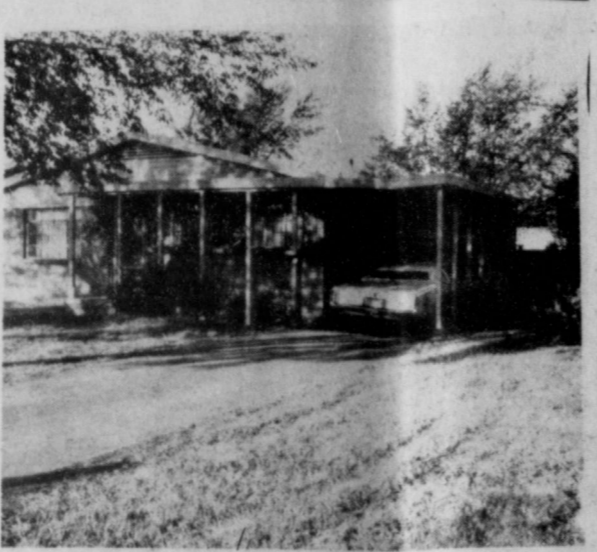


**Century 21<sup>®</sup>**  
**Golden Spread Realty**  
**Spearman (806) 659-2557**

Perryton (806) 435-5444	Ronnie Hoover 659-3696	Bud Aylett 435-2109	Booker (806) 658-4528
	Rex Hoover 658-4883	Christine Aylett 435-2109	
	Barbara (B.J.) Hoover 658-4868	Violet Igoy 435-5775	
	Daryl E. Wynn, Broker - 658-4775		



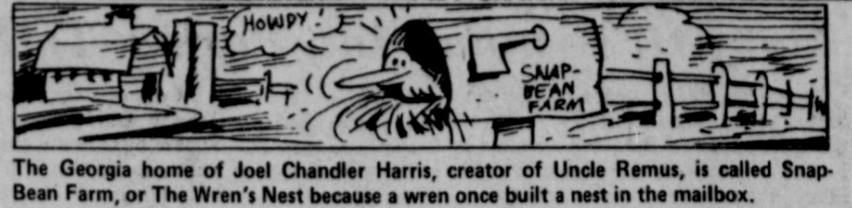
**JUST BUILT:**  
3 bedrooms, 2 baths, with large living room for entertaining. Priced to sell!




**3-BEDROOMS**  
with large back yard. Close to Elementary!

**Call Us**

**WE'RE THE NEIGHBORHOOD PROFESSIONALS.<sup>™</sup>**  
© 1978 Century 21 Real Estate Corporation. Licensed Trademark of Century 21 Real Estate Corporation. Printed USA. Each office is independently owned and operated. Equal Housing Opportunity. CENTURY 21 "21 Reasons Why" brochure at participating offices.



The Georgia home of Joel Chandler Harris, creator of Uncle Remus, is called Snap-Bean Farm, or The Wren's Nest because a wren once built a nest in the mailbox.



According to the AMA, some 70 percent of Americans have foot problems.

**Thanksgiving**

"While the earth remaineth, seedtime and harvest, and cold and heat, and summer and winter, and day and night shall not cease."  
 Genesis 8:22

The harvest each year should remind us of God's great promise to man. This promise was made right after the great flood, from which only Noah and his Ark survived. Just prior to the flood, all men lived so evilly that it grieved the Lord that he had made man on the earth.

**THANKSGIVING '79**

*We stand ready to serve you this harvest, as in the past....*

**North Plains Electric Co-Op**

SERVING THE HANSFORD COUNTY AREA....

**PLEASE CONSERVE ENERGY**

**Get \$5.00 back on the world's best-fitting jeans**



*chic by*  
**h.i.s.**

Why are we giving you the world's best offer on the world's best fitting jeans?  
 Because we're sure that once you've worn a pair of Chic jeans by h.i.s. you'll never buy another brand. No matter what your shape or size, perfectly proportioned Chic Jeans can fit you—front to back, top to bottom.  
 It's an easy \$5, too. Come in for details and your \$5 rebate form and send it to h.i.s. along with the size ticket and sales slip from this store. h.i.s. will send you \$5. And that's a deal you can't afford to pass up.  
 Offer valid November 19, 1979 through January 2, 1980.

**BAKERS DEPT. STORE**  
 216 S. Main  
 NEWSPAPER MAT AD FOR REBATE OFFER  
 659-3213

67-Dean Schaffer



65-Greg Hazelwood



50-Ray Ortega



55-Walter Esquibel



68-Melvin Willis



42-Anselmo Vela



**During this Harvest-Thanksgiving Time We Join in Saluting Our Fine Lynx Football Players**

**Hand H Water Well Service**

Gruver Hwy
659-2242  
Spearman