

SCOTT STRAWN and GENE CUDD with Grand Champion Steer, purchased by Hansford Implement, Spearman, Texas.



JODY BRADFORD, Grand Champion hog, purchased by B. AND B. (Ralph Blodgett) of Spearman, Texas!



SCOTT HENDERSON and RICHARD HOLTON with Grand Champion Lamb purchased by H. and H. Water Well Service, Spearman!

COURTESY
SPEARMAN
FFA

Livestock prices up in Hansford county!



The Hansford County Junior Livestock Show held last weekend in Gruver brought in \$73,531.81 for 4-H and FFA exhibitors in the county.

The Grand Champion Lamb was shown by Scott Henderson, 4-H member of Gruver. The lamb weighed 110 lbs. and was purchased by H and H Water Well Service for \$6.50 per lb. for a total of \$715.00.

The Grand Champion Swine was shown by Jody Bradford, Gruver FFA, and was sold to B & B Farm Industries for \$4.00 lb. total of \$976.50 for the 244 lb. animal.

Scott Strawn of Spearman FFA exhibited the Grand Champion Steer. The steer weighed 1285 lbs. and was purchased by Hansford Implement for \$2.75 lb. for a total of \$3,533.74.

Reserve Champion Lamb was shown by Lynette Williams, 4-H, and was purchased by Canadian Production Credit for \$4.50 lb. for a total of \$481.50. The animal weighed 107 lbs.

Mike Grotgert, Gruver FFA, showed the Reserve Champion Swine which weighed 249 lbs. and was bought by Monte Cluck for \$4.00 lb. total price \$996.00.

The Reserve Champion Steer was shown by Ty Williams, 4-H exhibitor. His steer weighed 1220 lbs. and was purchased by H & H Water Well for \$1.75 per lb. for a total of \$2,135.00.

Tracy Logsdon, 4-H member, showed the Breed Champion Dorset Lamb which weighed 102 lbs. and was sold to Gruver State Bank for \$5.00 lb. for a total of \$510.00.

Sam Nitschke, Spearman FFA, showed the Breed Champion York. It weighed 250 lbs. and was sold to H & H Water Well for \$1.50 lb. for a total of \$375.00.

Tracy Vernon, Spearman FFA, showed the 1st Place Lt. Wt. Steer, weighing 1115 lbs. Speartex Grain bought the steer for \$1.50 per lb. for a total of \$1672.50.

Christie Burton, 4-H exhibitor, showed the Reserve Breed Champ Dorset Lamb weighing 98 lbs. DGC Feeders purchased the lamb for \$3.50 a lb. for a total of \$343.00.

Shawn Sween, Spearman FFA, exhibited the Breed Champion Chester, weighing 229 lbs. Spearman Veterinarian Clinic purchased the animal for \$1.50 lb. for a total of \$343.50.

Ronnie Clark, Spearman FFA, showed the 1st Place Med. Wt. Steer weighing 1140 lbs. Lazy J. Cattle Co. paid \$1.40 lb. for a total of \$1596.00 for the steer.

Cliff Barkley, 4-H member, showed the 1st place, Lt. Wt. Med. Wool Lamb weighing 100 lbs. Gruver Farm Supply purchased the animal for \$4.50 lb., total of \$450.00.

Jerry Ross, Spearman FFA, showed the Breed Champion Spot, weighing 250 lbs. It was purchased by Hansford Implement for \$1.10 lb. for a total of \$275.00.

Scott Dahl, Gruver FFA, showed the 2nd Place Lt. Wt. Steer weighing 1080 lbs. Hansford Implement was the buyer at \$1.00 a lb. for a total of \$1080.00.

The 1st Place Med. Wt. Med.

Wool Lamb was shown by Richard Weakley, Spearman FFA, weighing 105 lbs. Gruver Farm Supply was the buyer, paying \$3.00 lb. for a total of \$315.00.

Clay Reid, Spearman FFA showed the Breed Champion Cross, weighing 250 lbs. First State Bank was the buyer at \$2.10 lb. for a total of \$525.00.

Earl Smith, Spearman FFA, showed the 2nd Place Med. Wt. Steer, weighing 1155 lbs. Tico, Inc. purchased the steer for 95 cents for a total of \$2097.25.

Shelly Strawn, Spearman FFA, exhibited the 1st Place Hvy. Wt. Med. Wool lamb weighing 120 lbs. Speartex Grain was the buyer at \$4.75 per lb. for a total of \$570.00.

Darin Winger, Gruver FFA, showed the Reserve Breed York Swine, weighing 242 lbs. Caprock Industries was the buyer at \$3.00 lb. for a total of \$726.00.

Reid Reid, Spearman FFA, showed the 2nd Place Med. Wt. Steer weighing 1210 lbs. First State Bank was the buyer at \$1.10 lb. for a total of \$1331.00.

Monty Hawkins, 4-H member, showed the 2nd Place Lt. Wt. Dorset Lamb, weighing 89 lbs. Caprock Industries was the buyer, paying \$3.00 lb. for a total of \$267.00.

Phillip Fry, Gruver FFA, showed the Reserve Breed Chester Swine, weighing 238 lbs. Continental Grain was the buyer, paying \$1.50 lb. for a total of \$357.00.

Chris Cooper, Gruver FFA, showed the 2nd Place Hvy. Wt. Steer, weighing 1300 lbs. North Plains International was the buyer, paying \$1.10 lb. for a total of \$1430.00.

John Weakley, Spearman FFA, showed the 2nd Place Hvy. Wt. Dorset, weighing 100 lbs. Moose Lodge bought the animal for \$3.50 lb. for a total of \$350.00.

Tammy Nollner, 4-H, showed the Reserve Champion Spot, weighing 231 lbs. Cattleman's Restaurant was the buyer, paying \$3.75 lb. for a total of \$866.25.

Todd Williams, 4-H member, showed the 3rd Place Lt. Wt. Steer, weighing 1115 lbs. Shapley Farms was the buyer, paying \$1.30 lb. for a total of \$1449.50.

Clay Barkley, 4-H, showed the 2nd Place Lt. Wt. Med. Wool Lamb, weighing 91 lbs. It sold to Double D Ag. for \$5.00 lb. for a total of \$455.00.

Rhonda Jo Boone, Gruver FFA, showed the Reserve Champion Lt. Duroc, weighing 236 lbs. Caprock Industries paid \$1.90 lb. for a total of \$448.40.

Chad Logsdon, 4-H, showed the 3rd Place, Med. Wt. Steer, weighing 1200 lbs. Van Roach Cattle Co. paid \$1.15 lb. for a total of \$1380.00.

Karla Latta, 4-H, showed the 2nd place Med. Wt. Med. Wool Lamb, weighing 106 lbs. Nick Holt was the buyer paying \$4.75 lb. for a total of \$450.50.

Scott Atwood, Gruver FFA, showed the Reserve Breed Champ. Cross, weighing 250

The Spearman Reporter

VOL. 71, NO. 20

THE SPEARMAN REPORTER, SPEARMAN, TEXAS 79081

THURSDAY, MARCH 27, 1980

It was purchased by Rod Barkley for \$1.70 lb. total \$425.00.

Kristi Holt, 4-H member, showed the 3rd Place Med. Hvy. Steer, weighing 1250 lbs. DGC Feeders was the buyer at \$1.00 lb. total \$1250.00.

Tiki Jackson, 4-H, showed the 2nd Place Hvy. Med. Wool Lamb, weighing 118 lbs. First State Bank was the buyer paying \$4.25 lb. total \$501.50.

Alan Gilbreath, Gruver FFA, showed the Reserve Breed Hamp. Swine, weighing 228 lbs. Tony Harper paid \$3.25 lb. for a total of \$741.00.

Shelly Lackey, Gruver FFA, showed the 3rd Place Hvy. Wt. Steer, weighing 1207 lbs. Caprock Industries was the buyer at \$1.20 lb. for a total of \$1544.40.

Scott Atwood, Gruver FFA, showed the 3rd Place Lt. Wt. Dorset, weighing 97 lbs. Gumfory Insurance paid \$3.00 lb. for a total of \$291.00.

Tina Cator, 4-H, showed the 1st Place Lt. Wt. Cross Swine weighing 243 lbs. Bort Insurance Agency paid \$1.50 lb., total \$364.50.

Roy Don Gammon, 4-H, showed the 4th Place Lt. Wt. Steer, weighing 1080 lbs. Wayne Shook purchased the steer at \$1.05 lb. for a total of \$1134.00.

Brian De Camp, 4-H, showed the 3rd place Hvy. Wt. Dorset, weighing 100 lbs. Bill Logsdon paid \$4.00 for a total of \$400.00.

Eldon Sparks, Gruver FFA, showed the 2nd Place Lt. Wt. York, weighing 237 lbs. Willard McCloy paid \$2.10 lb. for a total of \$497.70 and donated the animal to Girls Town.

Shelly Strawn, Spearman FFA, showed the 4th Place Med. Wt. Steer, weighing 1120 lbs. Caprock Industries paid \$1.40 lb. for a total of \$1568.00.

DeVonna Cator, 4-H, showed the 3rd Place Lt. Wt. Med. Wool Lamb, weighing 97 lbs. Preston Smith paid \$4.75 lb. for a total of \$460.75.

Slavin Sparks, 4-H, showed the 2nd Place Hvy. Wt. York, weighing 247 lbs. Leon Hobbs paid \$2.10 lb. for a total of \$518.70.

Trevor Williams, 4-H, showed the 4th Place Med. Hvy. Steer, weighing 1270. Boots Williams paid \$1.10 for a total of \$1397.00.

Debbie Burton, 4-H, showed the 3rd Place Med. Wt. Med. Wool Lamb, weighing 105 lbs. Nick Holt paid \$4.25 lb. for a total of \$446.25.

Rex Shook, 4-H, showed the 4th Place Hvy. Wt. Steer, weighing 1275. Ron Williams paid \$1.15 lb. for a total of \$1466.25.

Rhonda Jo Boone, Gruver FFA, showed the 3rd Place Med. Hvy. Med. Wool, weighing 107 lbs. Continental Grain paid \$3.50 lb. for a total of \$374.50.

Kurt Spoonemore, 4-H, showed the 2nd Hvy. Wt. Duroc, weighing 247 lbs. H & H Water Well was the buyer, paying \$1.60 per lb., total \$395.20.

Clay Reid, Spearman FFA, showed the 5th Lt. Wt. Steer, weighing 1045 lbs. Buyers were B & B Farm Industries, H & H Water Well Service, and Hansford Implement, paying \$1.20 lb., total \$1254.00, donating the steer to Girls Town.

Ronnie Clark, Spearman FFA, showed the 3rd Hvy. Wt. Med. Wool Lamb, weighing 114 lbs. Spearman Equity paid \$3.50 lb., total \$399.00.

Dayton Edwards, Spearman FFA, showed the 2nd Lt. Wt. Cross Swine, weighing 243 lbs. Anthony Electric paid \$1.80 lb., total \$437.30.

Chad Clawson, 4-H, showed the 5th Med. Wt. Steer, weighing 1160 lbs. Pat Holt was the buyer paying \$1.00 lb., \$1160.00.

Greg Haight, 4-H, showed the 4th Lt. Wt. Dorset, weighing 91 lbs. Gruver State Bank paid \$4.50 lb., total \$409.50.

Todd Williams, Gruver FFA, showed the 2nd Lt. Wt. Hamp., weighing 226 lbs. Hansford Parts & Supply paid \$1.80 lb. Total \$406.80.

Brent Wagner, 4-H, showed the 5th Med. Wt. Steer, weighing 1240 lbs. Zay Gilbreath paid \$1.20 lb., total \$1488.00.

Kerry McMullan, 4th Hvy. Wt. Dorset, weight 103 lbs., R. L. Uptergrove paid \$3.75 lb., total \$386.25. The animal was donated to Boys Ranch.

Roy Don Gammon, Gruver FFA, showed the 2nd Hvy. Wt. Hamp. weighing 250 lbs. Rita Williams paid \$1.70 lb. for \$425.00.

Christie Burton, 4-H, showed the 5th Hvy. Wt. Steer, weighing 1295 lbs. Pat Holt paid \$1.10 lb., total \$1424.50.

Russell Tiner, Gruver FFA, showed the 4th Lt. Wt. Med. Wool Lamb, weighing 100 lbs. First National Bank, Borger, paid \$5.00 lb., total \$500.00.

Vance Morris paid \$3.00 lb., total \$315.00.

Jackie Sparks, 4-H, showed the 3rd Place Lt. Wt. Duroc, weighing 233 lbs. Gruver State Bank paid \$2.10 lb. total \$489.30, donating the animal to Girls Town.

Scott Strawn, Spearman FFA, showed the 4th Place Med. Hvy. Med. Wool Lamb, weighing 110 lbs. Speartex Grain paid \$5.00 lb., total \$550.00 and donated the lamb to Children's Home.

Raymond Barber, 4-H, showed the 3rd Place Hvy. Wt. Duroc, weighing 245 lbs. Panhandle Training Center paid \$1.80 lb., total \$441.00.

Kermit Mahanay, Spearman FFA, showed the 4th Place Hvy. Wt. Med. Wool Lamb, weighing 117 lbs. Norman Phillip Construction Co. paid \$4.75 lb. total \$555.75, and donated the animal to Girls Town.

Mike Barber, Gruver FFA, showed the 3rd Place Lt. Wt. Swine weighing 244 lbs. Stan Ziegler paid \$1.70 lb., total \$414.80.

Scott Haggard, 4-H, showed the 5th Place Lt. Wt. Med. Wool Lamb, weighing 97 lbs. Gruver State Bank paid \$5.00 lb., total \$485.00.

Scott Haggard also showed the 3rd Place Hvy. Wt. Swine, weighing 246 lbs. Zay Gil-

breath was the buyer paying \$2.00 lb. total \$492.00.

Gary Thomas, Spearman FFA, showed the 5th Place Med. Wt. Med. Wool Lamb, weighing 105 lbs. Bill Strawn was the buyer, paying \$3.50 lb., total \$367.50, and donating the lamb to Girls Town.

Lynette Williams, 4-H, showed the 3rd Place Lt. Wt. Hamp. Swine, weighing 237 lbs. Gruver Equity paid \$1.70 lb., total \$402.90.

Jan Hartsell, showed the 5th Place Med. Hvy. Med. Wool Lamb, weighing 107 lbs. The Bunkhouse paid \$3.75 lb., total \$401.25.

Jay Pack, Spearman FFA, showed the 3rd Place Hvy. Hamp. weighing 250 lbs. Britt Jarvis paid \$1.70 lb., total \$425.00.

Loyd Cator, 4-H, showed the 5th Place Hvy. Wt. Med. Wool, weighing 115 lbs. Delbert McCloy paid \$4.25 lb., total \$488.75.

Steve Widner, Spearman FFA, showed the 4th Place Lt. Wt. Duroc, weighing 230 lbs. Hi Plains Auto paid \$2.20 lb., total \$506.00.

Sally Holt, 4-H, showed the 6th Place Lt. Wt. Med. Wool Lamb, weighing 99 lbs. Hansford Parts & Supply paid \$5.00.

Continued on Classified Page!

Two Shot Here

Glenn Ray Bradford, 58 years old, of Spearman, Texas, apparently shot Felix Sandoval here Sunday morning. Bradford then turned the 9 MM pistol on himself, and committed suicide. The double shooting happened at 3:30 a.m. Sunday morning on Archer street. Sheriff's officers stated that there was no obvious motive for the double shooting. Sandoval was shot in the foot and abdomen, with a hollow point 9MM bullet. He is in stable condition at this time, in an Amarillo hospital.

Bradford Services Held

Glenn Ray Bradford, 58, died Sunday. Graveside services were held at 11 a.m. Tuesday in Hansford Cemetery with the Rev. Don Wirsdorfer, pastor of the First Christian Church, officiating. Arrangements were by Boxwell Brothers Funeral Directors.

Mr. Bradford had been a lifetime resident of Hansford County and was an Army veteran of World War II. Survivors include an aunt, Mrs. Fay Klutts of Spearman and an uncle, Lawrence Wilbanks, also of Spearman.

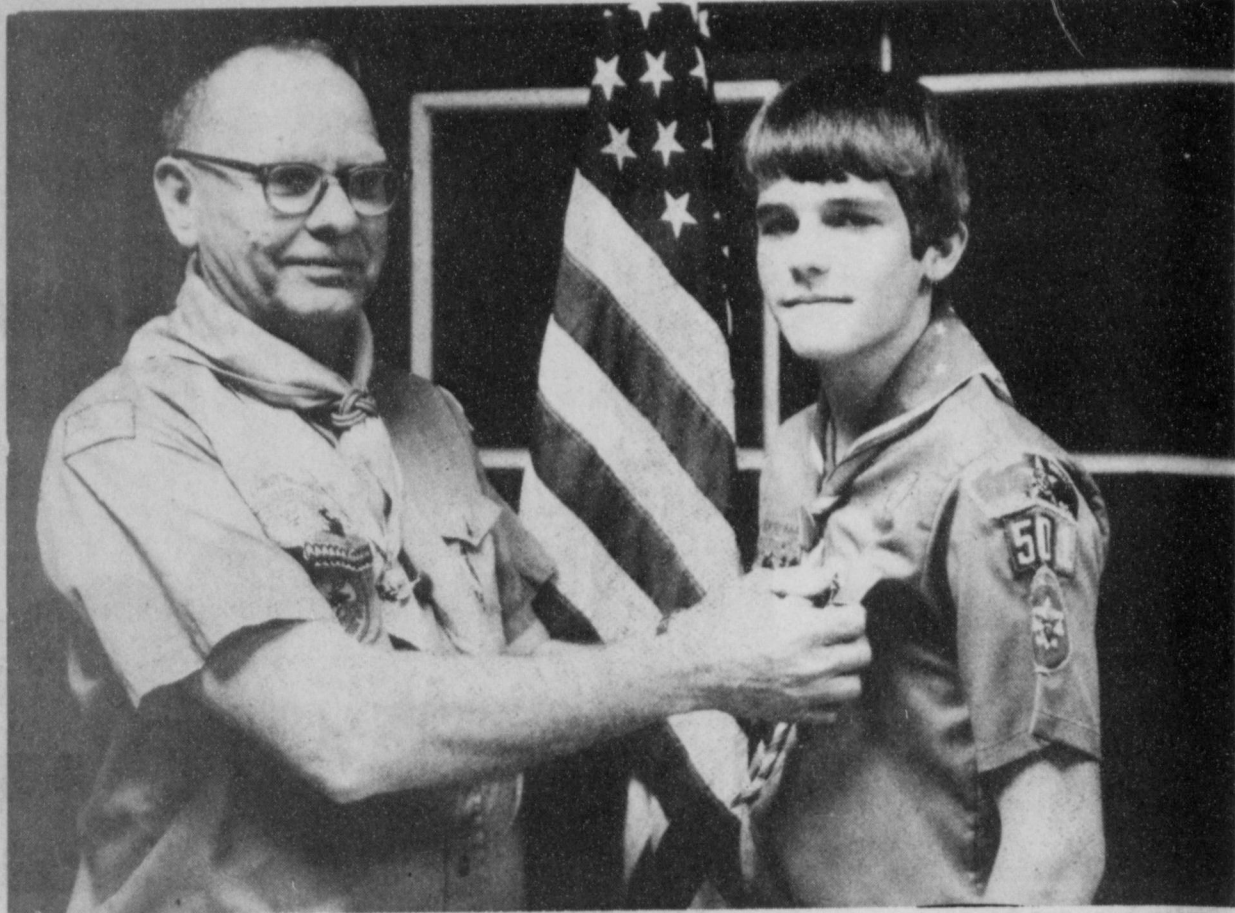
Markets

Wheat	\$3.47
Milo	\$3.80
Corn	2.49
Soybeans	4.92

IDEAL GROCERY manager, Steve Krug, invites everyone in to see his new "remodeling and stocking" of the Ideal store in Spearman; which, includes JEANS "N" THINGS! Also, Steve and the folks at IDEAL are having Coke prices special starting Today (Thursday) to help celebrate the in store remodeling!



The Eagle Has Landed



HARRY STUMPF pins the EAGLE SCOUT award on MIKE DIXON!

A large delegation was on hand at the Scout banquet held in Sacred Heart Parish Hall Monday evening. The banquet was one of the finest Scouting affairs ever staged in the Panhandle of Texas.

Scouts from Troop 551, under Scoutmaster Dwight Sumner and Troop 558, under Wayne Cummings were honored, along with their parents and friends of scouting.

Highlight of the evening was the awarding of Eagle Scout to Mike Dixon, son of Mr. and Mrs. Perry Dixon of Spearman.

Burton Schubert, an Eagle Scout introduced Mike during the ceremonies, and Harry Stumpf, long time scout leader had the honor of presenting Mike with the Eagle award.

Mike Dixon joined Scouts on March 6, 1976 and passed his tenderfoot on May 10, 1976.

Special awards Mike has earned include Scout Camp Mile Swim, July, 1977, TLD, 1977, National Jamboree, 1977, Staff TLD, 1978; Philmont High Adventure, August 1978, and World Jamboree, 1979.

Mike is sixteen years old and has worked for his Eagle Scout Award for a little over four years.

Scout dignitaries on hand for the award included Randy Janzen, Committeemen Harold Howerter, Bob Farr, Burton Schubert, and District Executive Lehman Holder.

Also present was Jim Beeson, Cub Master for the local troop, Scoutmaster Fred Groves and Larry Trospor of troop 578.

During the evening a special award to scouting was given to Emmett Sanders, who has worked with scouting in the area, and also special mention was made of Dr. R. L. Kleeberger who has assisted in giving Scouts their physicals and assisting the program in every way possible.

Scout Troop 551 is sponsored by the Lions Club and Troop 558 is sponsored by the First Christian Church.

Scouts receiving awards were Shawn English, Tenderfoot & Home Repairs; Kenny Bullard, Atomic Energy; Todd Martin, Canoeing & Hiking.

Merit Badges were given to Gary Thomas, Nick Wirsdorfer, Andy Gonzales, Noe Gonzales and Greg Farr.

Skill awards went to Noe Gonzales, Andy Gonzales, Jeff Vanlandingham, Norman Hill, Karl Bynum, Chad Guthrie, Shannon Scroggs, John Kelly and Andy Gonzales.

People who have helped finance scouting in Spearman include Carl Archer, Max Baggerly, John R. Collard, Jr., Roy Bullis, Baker & Taylor, Everett Tracy, Dick Elbert, C. A. Gibner, Gerald Heinrich, Jimmy Shieldknight, Ralph Blodgett, Rotary Club, Lions Club, Richard Holton, Dr. R. L. Kleeberger.

Silver Beaver Scouts Dee Jackson, Joe Traylor are always available when help is needed.

Commissioners Meet

Hansford County Commissioners Court met in regular session Monday, March 24. Minutes of the previous meeting were read and approved and the treasurer's report was given.

Commissioners reappointed 3 members to the Hansford Hospital. They are Max Baggerly, Bill Etling and Jimmy Vernon.

They also agreed to allow the Retail Merchants Committee to plant a Christmas tree on the courthouse lawn.

The bond of deputy sheriff, Gary Evans, was approved.

The Board of Equalization for industrial taxpayers was set for July 7.

Commissioners passed an order to hold the Proposed Revenue Sharing Hearing on April 14.

Carson County Square Museum Having Special Exhibition

The Carson County Square House Museum is pleased to announce the opening of a special Bicentennial exhibition on costumes organized and produced by the Smithsonian Institution Traveling Exhibition Service. The exhibition will be on display April 1st through April 30th. "Suiting Everyone" attempts to illustrate the key factors that led to the mass production and merchandising of clothing in America and shows how the availability of clothing for "all of the people" has affected our social relationships.

Subtitled "The Democratization of Clothing in America," the exhibition compares the economic and class distinctions made evident by the personally-made clothes of the Colonial Period, with the wide range of fabrics, styles and prices available today making most Americans well-dressed.

This development has been possible due to a number of causes: the availability of fabrics; the creation of new tools and machinery; the increase in manpower due to

immigration, the reorganization of the manufacturing process, and the growth of new merchandizing techniques. The exhibition brings together the historical and industrial factors which have led to the current state of clothing industry in the United States. It examines the events that have given us the freedom of choice in what we now wear.

Claudia Kidwell, Associate Curator of the Division of Costume and Furnishings of the Smithsonian, and organizer of "Suiting Everyone," points out several important features of the exhibition. Her research uncovered the fact that the first ready-made clothing in America was for men, not women. Tailors began to spend their spare time making up advance orders in the 1850's. Proportional sizing for men was undertaken long before similar sizing for women was developed and used. Other important aspects of the exhibition are details of the many machines and inventions that helped "democratize" the industry.

ONE MINUTE SPORTS QUIZ

1. Who won the Doral Open Golf tournament?
2. Joanne Carner is known in what sport?
3. Phil Niekro pitches for what pro team?
4. Elvin Hayes plays pro basketball for what team?
5. Who was named UPI's basketball Coach of the year?

Answers To Sports Quiz

1. Ray Floyd
2. Atlanta Braves
3. Ladies golf
4. Washington Bullets
5. Ray Meyer, DePaul

Once in a while we cling to the idea that men will, some day, be able to live with each other peacefully.



Harry Stumpf, MIKE DIXON and Peggy and Carl Archer! We are all proud of Mike and the local Scout troops! Mr. and Mrs. Archer are Grandparents of Mike Dixon!

Invitation for bids

Hansford Hospital

One (1) 100 KV generator (125 KVA) may be seen at 707 S. Roland, Spearman, Texas. Bids due by April 17, 1980.

INVITATION FOR BIDS
Hansford Hospital

Bids are being accepted for one (1) house - 2 bedrooms, stucco finish. May be seen at 701 S. Evans, Spearman, Texas. House to be moved by July, 1980 by successful bidder. Bids due April 17, 1980.

INVITATION FOR BIDS
HANSFORD HOSPITAL

Bids are being accepted for drapes for Hansford Hospital, Spearman Texas. All drapes must be of material certified to be fire retardant. Proof of fire retardancy must be furnished by the material manufacturer. All drapes should have laminated energy saving features or insulated lining. Bids for drapery hardware will also be accepted. Bids will be accepted for 13 cubicle curtains, white in color with 20" of nylon mesh at the top for air circulation. Curtains must also meet fire retardant standards. All interested bidders should contact Hansford Hospital during normal business hours (Monday thru Friday 8:00 A.M. to 5:00 P.M.).

BIDS ARE DUE APRIL 17, 1980.

NOTICE OF SALE OF RURAL LAND

The heirs of Fred O. Moyes, Deceased, desire to sell the following Ochiltree County land:

Section 30, Block 11, W. Ahrenbeck and Bros., Ochiltree County, Texas, containing 320 acres, more or less.

This land is located approximately three miles north and one mile west of Perryton, Texas, and has no improvements. It is presently devoted to a dryland farm operation under an agricultural lease that extends through the 1980 wheat harvest. Sellers own one-half of the minerals which they will reserve for at least twenty years.

Additional information on the terms of the sale and bidding instructions may be obtained from Otis C. Shearer, Lemon, Close, Atkinson, Shearer & McCutcheon, P. O. Box 348, Booker, Texas 79005, telephone (806) 658-4545, up to March 27, 1980, which is one day prior to the scheduled date of sale.

"NOTICE OF HEARING"

"Hansford County Hospital District, 707 S. Roland, Spearman, Texas 79081, for Hansford County Hospital District and Hansford Convalescent Center, 707 S. Roland, Spearman, Texas 79081, represented by Alexis J. Fuller, Jr., P.O. Box 1588, Austin, Texas 78767 (THFC File #AH79-1212-003) is scheduled to appear at a hearing at 9:00 a.m. on June 3, 1980, in the offices of the Texas Health Facilities Commission, 1600 West 38th Street, Suite 305, Jefferson Building, Austin, Texas, to present evidence in support of the application for a Certificate of Need to construct a 54-bed skilled nursing facility and to renovate the hospital. The nursing facility, which will contain 19,194 sq. ft., will be attached to the hospital by an enclosed corridor. Physical therapy, respiratory therapy, speech therapy and occupational therapy will be offered; dietary services will be shared with the hospital. Renovation of 1,806 square feet in the hospital will add an additional operating room, enlarge the laboratory, and emergency room, add a medical records office, and renovate the kitchen/cafeteria. The Commission shall render a decision on the application no later than the ninetieth day from the date of publication of this notice.

A request to become a party to the application may be made by filing a sworn affidavit with the Commission using the format prescribed by Commission Rule no later than 5:00 p.m., May 1, 1980, and by forwarding a copy by certified mail, return receipt requested, to the applicant and all other parties."

Note: If no request to become a party or petition for hearing is timely filed with the Commission, the Commission may proceed without a hearing on the application for a Certificate of Need at any time after May 1, 1980, upon written request by the applicant.

WANT ADS

CAPROCK MONUMENT CO.

Dealers of Georgia Granite, Georgia Marble, Colored Granite, & Bronze.

represented by

BOXWELL BROS. FUNERAL HOME

519 S. EVANS
659-3802

Hansford County
Planned Parenthood
26S. Haney
659-2483
Spearman
Mon.-Fri.
Call for an appointment.
30S-rtn

SERVICES

SERVICE: Pits cleaned, wet or dry. Dragline or loader. Also, dozer, grader, carry-all service. Lee Roy Mitchell, 806-733-2384, Gruver, Texas 79040.

Fee Wee's Plumbing Service Roto-rooter, Acoustical Ceilings. Blown Insulation in walls and ceilings. **Appliance Service**, used appliances for sale. 659-2811 or 659-3781. 20-rtn

KIRBY SALES & SERVICE. New & reconditioned vacuum cleaners. Claude Newell, 912 S. Bernice. 8-rtn

Alcoholic Anonymous meeting 8 p.m. Friday, Home Demonstration Club building, 305 N. Bernice. Phone 659-3381 or 733-2170 for information. ***

Al-Anon meetings 8 p.m. Friday, Home Demonstration Club building, 305 N. Bernice in back room. Phone 659-3381 for information. Ask for Al-Anon. 19-3tc

NOTICE
Wallace Monument Co. Monuments, Curbing, Grave Covers
Local Representative
LEONARD JAMESON
Spearman, Texas
20-rtn

Make your car upholstery and carpet look like new with our commercial size steam cleaner. Let us clean it or rent our cleaner. **FREE ESTIMATE** for steam cleaning. Willis Friesen, 1125 S. Drake, Perryton or John Allen, 623 S. Bernice, Spearman.

SNOOPY'S DAY SCHOOL Open 7 a.m. to 7 p.m. Mon-Fri. Sat 8 a.m. to 5 p.m. Phone 659-3328. 48-rtn

MONUMENTS Save 20% to 30% Agents and Undertakers Commission
ALVA MONUMENT CO.
Alva, Okla.
51-rtn tonly

MEDICAL INSURANCE BILLING SERVICE
Will bill all types of medical insurance - Hospitalization, Out Patient, Medicare, Medicaid, Major Medical and yearly billings. Ten years experience. Contact Eileen Sutherland at 30 1/2 S. Barkley.
ELECTROLUX Roy Nichols SALES-SERVICE-SUPPLIES We service all makes 311 Bryan, Phone 273-7421 Borger, Texas 79007 175-4tp/sonly

INSURANCE
LIFE • HEALTH • AUTO FARM • HOME
2 BILE HOMES
Iroy Wisian
1 E. Kenneth
659-3875

NEW STEAM SHAMPOOER with brushes

Rental \$8.95 per day. Available at 716 Cotter Drive after 4 p.m. and Saturdays and Sunday. Regular Steam Rinse & Vac Shampooer, \$5.95 per day at Gordon's Drug and after 4 p.m. and Saturdays and Sundays at Freddie Largent's, 716 Cotter Drive.

Eller's Plumbing & Sewer Service. Call 882-4505 or 659-3697 18-rtn

MISCELLANEOUS FOR SALE

2-FAMILY YARD SALE: 727 Cotter Drive, Sat., March 29, 9 a.m. - 2. Clothes, baby items, toys, misc. 19S-2tp

Decorator cakes & cookies for parties, special or just at home. Call Debbie at 3986 or call 3328. 48S-rtn

FOR SALE: 1976 Tornado, excellent condition, too small for our family. Richie Fletcher 733-2817, Gruver, Texas. 19S-4tp

FOR SALE: 1979 Yamaha 400 YZ 109 N. Hazelwood after 6 p.m. 18S-rtn

FOR SALE: 1978 Ford Lariat, Pickup fully loaded. Phone 659-3689. 19S-3tc

FOR SALE: One queen, and one full size bed. Call 659-3629. 20-2tc

FOR SALE: Sears chest freezer, Montgomery Ward refrigerator-freezer, 26" bicycle, all in good condition, new trailer house, on Hwy 759, 4 miles E. of Spearman. 20-4tp

FOR SALE: 77 Chevrolet, 4 dr., Impala, very clean, good gas mileage. Call 659-2497 or 2829. 19-rtn

FOR SALE: To be moved, small diner and contents. Call 659-2526 First State Bank, Spearman, Tx. Ask for Larry. 19-3tc

REPOSSESSED STEREO, Panasonic, with thruster speakers, only \$399! **SPEARMAN ELECTRONICS.** Phone 3858, Spearman. rtn-c

FOR SALE: 1977 Caprice 4-door Chevrolet. Call 659-2338 or 659-3434. New tires etc.!

FOR SALE: 1974 Ford Bronco. Call 659-3962. 19-rtn

FOR SALE: 1970 Grand Western Mobile Home, 14 x 65. One Owner -- Single occupancy since New. Mobile Home -- \$8,500.00 (including Kitchen Stove and Refrig.) 25 Ft. (paved and guttered) lot. Front 30 Ft. concrete. To be sold together or separate. Ona McClenagan 733-2110 20-4tp

REAL ESTATE FOR SALE
FOR SALE: Brick Veneer House 729 Cotter Drive. 2 bedrooms, 2 bath. Nice size livingroom with fireplace. Glassed in sunroom. Double car garage. Priced furnished or unfurnished. Telephone 3371. 12-rtn

FOR SALE: 3 Bedroom Home. Lots of storage space. Call 659-2881. 20-4tp

MAYFIELD REAL ESTATE
For Sale on Stinnett highway, metal commercial building on large lot. *****
House for sale 705 Wilbanks, 3 bedrooms, 2 baths, double car garage with elec. door, fenced yard. *****
Three bedroom, 1 bath house for sale in Greene Acres.

John Mayfield - Broker 435-6528 Salesperson Ruby Lair 659-3436 or 659-2188

John Mayfield - Broker 435-6528 Salesperson Ruby Lair 659-3436 or 659-2188

Priced to sell - Beautifully decorated with plush carpet, coordinating drapes and fixtures. 3 bedroom brick, 1 1/2 baths, good storage. Large garage, extra large lot fenced. Large sunny kitchen and dining room with parquet floor and handy pantry. See at 315 S. Endicott. Call 659-3972 after 4. 20-rtn

HOUSE FOR SALE: Extra lot, sundeck, fireplace, large utility, storage shed, possible 3 bedroom, 2 bath call 659-2416 or 2117. 18S-rtn

TO GIVE AWAY

FREE PUPPIES, half border collie, half German shepherd. 659-2214. 18-5tc

HELP WANTED

Cook's helper wanted. 6 a.m. to 2 p.m. shift. Apply at Cattleman's Restaurant. 19S-rtn

HELP WANTED- Apply Buster's Aerial Dusters, Plains Shopping Mall, 659-3648. 19-3tc

NEED TRUCK DRIVER- Local Hauling, must have commercial licenses. Must have good driving record. Call 659-3642 - Clois Baker after 7:00 p.m. 17-rtn

HELP WANTED - Full time employee for irrigation farm in Gruver area. Experiences and references required. House furnished 733-2866. 18-4tc

BUSINESS OPPORTUNITIES

\$356. Weekly Guaranteed. Work 2 hours daily at home. (\$178. - 1 hour) Free Brochure - C46, Rt. 4 Box 1441Q, Odessa Texas 79763.

Own your own highly profitable blue jean or fashion shop for \$16,000. Call any time: Fashion Flair 1-704-753-4048. 20-1tp

Have a highly profitable and beautiful Jean Shop of your own. Featuring the latest in Jeans, Denims and Sportswear. \$16,500.00 includes beginning inventory, fixtures and training. You may have your store open in as little as 15 days. Call any time for Mr. Loughlin (612) 835-1304. 20-1tp

Auto Parts & Accessories

National Auto Salvage of Pampa and Amarillo has the largest inventory of used auto parts in this area. In Pampa, 665-3222 or 665-3962. In Amarillo 373-9099 or 373-8933. 20-8tc

FOR RENT

FOR RENT: Modern 3 bedroom home, 3 miles south of Morse. Call 659-2554 or 659-2444. 19S-6tc

Notice

I will not be responsible for any bills but my own.
Ivan Vernon Boatwright 20-2tp

Hard work still represents the main essential of success in life.

Wouldn't it be nice if public speakers really knew what they talked about?

BE A MONEY MAKER
\$450 Minimum will get you the Best Returns!
(Compounded Semi-Annually)
Guaranteed Term Rate 355-7702
Ross Investment Service
Postal #7223
Amarillo, Texas 79109

Political Announcements

The Spearman Reporter is authorized to announce the candidacy of the following candidates for public office, subject to the actions of the voters in the May Primary Election:

For Sheriff
JIMIVEY R.L. McFARLIN

For County Attorney
**JOHN L. HUTCHISON
CECIL R. BIGGERS**

For State Senate, 31st District
**BILL SARPALUS
GERALD McCATHERN**

For State Representative 64th District
**J.W. "BUCK" BUCHANAN
R.C. PORTER
GLENN HARRIS
J.T. WEBB**
Commissioner, Precinct #3

**JOHN ARMES
CITY ELECTION ALDERMAN
ED GARNER**

CARD OF THANKS

We would like to express our sincere appreciation to all our friends and neighbors who were so thoughtful during the recent loss of my father, Van Petree. Thanks for the food, plants, cards and memorials. God bless each of you.
The Bob Hohertz's

Remember that you can never beat a man at his own game, unless it is your game too.

There comes a time, in the life of every man and woman, when there is work to be done.

CALF SHOW FROM PAGE 1

total \$495.00.
Christy Burton, 4-H, showed the 4th Place Hwy. Wt. Duroc, weighing 250 lbs. Melvin Bradley paid \$1.60 lb., total \$400.00.

Gregg Odgaard, Spearman FFA, showed the 6th Place Med. Wt. Med. Wool Lamb, weighing 106 lbs. June Barkley paid \$4.00, total \$424.00 and donated the animal to Children's Home.

Roger Buchanan, Spearman FFA, showed the 4th Place Lt. Wt. Cross Swine, weighing 243 lbs. Hi Plains Auto paid \$2.20 lb., total \$534.60.

Mendy Gammon, 4-H, showed the 6th Place Med. Hwy. Med. Wool Lamb, weighing 109 lbs. T Shirt Explosion paid \$5.00, total \$545.00.

Debbie Burton, 4-H, showed the 4th Place Hwy. Wt. Cross Swine, weighing 250 lbs. Consumers Sales paid \$2.10 lb., total \$525.00.

Julie Latta, 4-H, 6th Place Hwy. Wt. Med. Wool, weighing 120 lbs. DGC Feeders paid \$4.75 lb., total \$570.00.

Marshall Cator, 4-H, showed the 4th Place Lt. Wt. Hamp. weighing 237 lbs. Caprock Industries paid \$2.10, total \$497.70.

Edward Beck, 4-H, showed the 7th Place Lt. Wt. Med. Wool Lamb, weighing 75 lbs. Speartex Grain paid \$5.00 lb., total \$375.00. The animal was donated to the Children's Home.

Mendy Gammon, 4-H, showed the 4th Place Hwy. Wt. Hamp. Swine, weighing 250 lbs. Tommy Saltzman paid \$1.60 lb., total \$400.00, and donated the animal to Girls Town.

Hanes Scroggs, Spearman FFA, showed the 7th Place Med. Wt. Med. Wool Lamb, weighing 102 lbs., Perry Dixon paid \$4.00, total \$408.00.

Mike Dixon, Spearman FFA, showed the 5th Place Lt. Wt. Duroc, weighing 238 lbs. Speartex paid \$2.40 lb., total \$571.20, and donated the animal to Children's Home.

Holly Holt, 4-H, showed the 7th Place Med. Hwy. Med. Wool Lamb, weighing 113 lbs. NCT paid \$4.50 lb., \$508.50.

Stephen Tindell, Spearman FFA, showed the 5th Place Hwy. Wt. Duroc, weighing 248 lbs. Hergert Motor paid \$2.00 lb., for \$496.00.

BOSS LION RAY INGLE announced at the Lions Club meeting Tuesday that the girls town facilities in Borger were burned to the ground over the week-end and anyone wishing to donate to girls town should get in touch with a member of the local Lions Club.

'CITY MEETING'
The entire city council was present at the meeting held here last night (Tuesday March 25, 1980). The pledge and invocation was given. The minutes of regular city council meeting on March 11, 1980 were approved.

The consideration of sealed bids for the purchase of one thirty-two thousand (32,000) pound GVW truck cab and chassis was tabled.

The city approved a bid by Lippan, of Aspermont, for sealcoating some 50 plus blocks of pavement in the city of Spearman!

The city manager was authorized to place bid for approximately five thousand four hundred feet of two inch water line from state hwy (airport road) to the municipal waste treatment facility.

The council authorized the Mayor to enter into contract with a financial advisor concerning Certificates of Obligation for the airport and construction of a Fire station.

On April 7th a special meeting to canvass-Ballots and swear in new council members will be held. The council approved purchases of several new emergency medical equipment needs.

An executive session was held for discussion of Police Chief applications under article 6252-17-G VTCS.

Total money on the Certificates of Obligation on the airport and fire station are approximately; Fire Station 80,000, and airport 120,000.

Danny Jones, Spearman FFA, showed the 8th Place Lt. Wt. Med. Wool Lamb, weighing 100 lbs. North Plains International paid \$3.75 lb., total \$375.00.

James Scroggs, Spearman FFA, showed the 5th Place Hwy. Wt. Cross Swine, weighing 250 lbs. Hergert Motor paid \$1.50 lb., total \$375.00.

Brooke Holt, 4-H, showed the 8th Place Med. Wt. Med. Wool Lamb, weighing 105 lbs. Caprock paid \$4.50, total \$472.50.

Johnnie Eaton, 4-H, showed the 5th Place Lt. Wt. Hamp. Swine, weighing 235 lbs. R. L. Uptergrove paid \$2.10 lb., total \$493.50.

Shane Sumner, Spearman FFA, showed the 8th Place Med. Hwy. Med. Wool Lamb, weighing 109 lbs. Spearman Auto Supply paid \$3.75, total \$408.75.

Rex Shook, Gruver FFA, showed the 5th Place Hwy. Wt. Hamp Swine, weighing 244 lbs. Caprock paid \$2.10 lb., total \$512.40.

Melanie Morris, 4-H, showed the 8th Place Hwy. Wt. Med. Wool Lamb, weighing 115 lbs. Henderson Real Estate paid \$4.00, total \$460.00.

Tracy Vernon, Spearman FFA, showed the 6th Place Lt. Wt. Duroc, weighing 225 lbs. Bernice Brown paid \$1.60 lb., total \$360.00.

Doug Hohertz, 4-H, showed the 6th Place Hwy. Wt. Duroc, weighing 250 lbs. Sparks Bros. Drilling, paid \$2.10, total \$525.00.

David Pearson, Spearman FFA, showed the 6th Place Lt. Wt. Hamp. Swine, weighing 238 lbs. High Plains Conoco paid \$2.00 lb., total \$476.00.

Rory Sheppard, Spearman FFA, showed the 6th Place Hwy. Wt. Hamp. Swine, weighing 250 lbs., North Plains International paid \$2.00 lb., total \$500.00.

Larry Lackey, Gruver FFA, showed the 7th Place Lt. Wt. Duroc, weighing 240 lb. Cecil Ralston paid \$2.10, total \$504.00 and donated the animal to Boys Ranch.

Hank Sutterfield, Spearman FFA, showed the 7th Place Hwy. Wt. Duroc, weighing 242 lbs. First State Bank paid \$3.25 lb., total \$786.50.

TEXAS PRESS ASSOCIATION
MEMBER 1980
PUBLICATION (USPS 509-660)
SPEARMAN, TEXAS 79081
213 Main Box 458 659-3434
Published Weekly at 213 Main Street Spearman, Texas 79081
Owner-Publisher William M. Miller
Editor Faye Lynch
Second Class postage paid at Spearman, Texas
ANY ERRONEOUS REFLECTION UPON THE CHARACTER OF ANY PERSON OR FIRM APPEARING ON THESE COLUMNS WILL BE GLADLY AND PROMPTLY CORRECTED UPON BEING BROUGHT TO THE ATTENTION OF THE MANAGEMENT.
SUBSCRIPTION RATE: Hansford, adjoining counties, combination with the Hansford Plainsman, \$10.40.
Other points, \$14.40.

FOR DEAD STOCK REMOVAL
Call your local used cow dealer
Toll Free 1-800-692-4043
7 Days a Week Service

For The Ultimate In STORM DOORS
Custom Built, Designed, And In Colors To Fit Your Home....
Contact Howard Moyer at
Only Aluminum Industries
Guymon, Okla. 114 W. 1st 405-338-6966 or 73942 338-6170

Moose Lodge 2212 BINGO
Every Wed. night 7:45 p.m.
Must be 21 years old.
Everyone Welcome 6-rtn

VIRGINIA WHITE Realtor
714 Gibner - Elegant home w/4 bedrooms, 3 baths, study+living room-both w/fireplaces, great storage.
721 Wilbanks - NEW HOME w/ 3 bedrooms, fireplace, double garage, fenced.
101 Wanda-OPPORTUNITY KNOCKS-see this 3 bedroom, 1 1/2 baths, fireplace, priced to sell.
121 Endicott - GOOD RENTAL PROPERTY. 211 Main - Office or retail building.
EXCLUSIVELY WITH VIRGINIA WHITE REALTOR 659-3841

ROOM TO ROAM - 4 bedrooms, 3 baths, 2 story home on 26.34 acres. Many other improvements.
BELOW 20 - 3 bedrooms, 1 bath, large kitchen & dining area, good condition, in good location.
GOOD INVESTMENTS 2 bedrooms, 1 bath, large lot for commercial use.
OWNER WILL CARRY 3 bedrooms, 1 1/2 bath, mobile home on 50 X 140 lot.
COMMERCIAL & RESIDENTIAL LOTS Build a new home or start a new business on one of these prime lots.
If you missed our open house, drop in or give us a ring to see this beautiful new, 3 bedroom brick home,
RONNIE HOOVER 659-3696 Sales Associate
DARYL WYNN 658-4528 Broker
Century 21 GOLDEN SPREAD REALTY
WE'RE THE NEIGHBORHOOD PROFESSIONALS!
SPEARMAN, TEXAS 659-2557

Shower Honors Margaret Hill

Margaret Hill, bride-elect of Jeff Becker, was honored with a bridal shower in the Fellowship Hall of the First Christian Church Thursday, March 20. The table was covered with a lace cloth underlaid with blue and featured a centerpiece of blue silk flowers in a wicker basket. The guests were served assorted cookies and punch from a crystal punch bowl which was flanked by two crystal candelabras with white candles. Guests registered at the registry table in the Bride's

book. The table was adorned with a bud vase of blue silk flowers. Margaret's corsage was blue carnation and the hostesses presented her with an electric skillet and two place settings of her selected dishes. Anita Sumner assisted her in opening her gifts. Hostesses were: Betty Davis, Gwen Smith, LoRee Booth, Mary Brock, Faye Wirsdorfer, Lorene Kusejman, Donna Sheets, Jean West, Judy Hergert, Nita Bynum and Sandy Russell.

Servitors Club Met

Servitors met at the B & B Room, March 20 at 7:30 p.m. The meeting was opened with the program given by Nell Patterson, a talented sculpturist on Bronze Sculpturing. President Stephanie Brock called the meeting to order and lead the prayer. The roll call was answered by 16 members on "My Favorite Art." The minutes of the last meeting were read and approved. Leaflets on "Crusade Against Inflation" were given to members and they were asked to fill them out and send them in. The Volleyball Tournament for April 10, 11, 12 was discussed and various committees reported and members signed up for work assign-

ments. The District meeting was discussed. Michele Davis, Stephanie Brock, and Laura Mackie were going to Amarillo to represent Servitors. The raffle made by Patty Hudson and won by Stephanie Brock. The hostesses were Cheryl Gibson and Michele Davis. Members present were: Mary Baker, Debbie Benton, Stephanie Brock, Candi DeLozier, Patti Hudson, Laura Mackie, Holly Simpson, Donna Thomas, Gayle Thomas, Gave Woolley, Kay Snider, Judy Schell, Eva Mae Reger, Cindy Schneider, and one guest Denise Donnell. Members absent were: Sheila Watley, Linda Winegarner and Susan Castleberry. The next meeting will be April 17 at the B & B Rooms at 7:30 p.m. with Gayle Thomas and Patti Hudson as hostesses.

Census Teams Begin April 7

Census teams will fan out the night of April 7 searching for people in this area who have no fixed address, Bill Soule Manager of the 1980 census office for this area, said today. Crew leaders will take their teams into charity-type missions, allnight theaters, hostels, bus stations, parks, campsites, motor-home overnight parks, and other places where "floaters" are likely to be found. This is in an effort to see that no one is missed in the 1980 Census of Population and Housing.

"It's essential to find everybody," the manager said. "Fixed address or no, everybody counts in our society. It is especially important to find everyone who may be in trouble. We have to know what kinds of problems the people face in each area. Our society makes substantial sacrifices to help those who need help of one kind or another. It would be tragic if we couldn't direct that help to those areas that most need it. "And no one has anything to fear by answering the census

questions, because the Census Bureau does not divulge information about a particular individual, family, or household. We're the Nation's fact-finder, but the only facts we reveal are totals, averages, percentages, and trends, figures in which no one can be identified." Those persons with no fixed address are counted as part of the population of the place where they are found.

Presbyterian Church News

Presbyterian Men will have their monthly prayer breakfast on Thursday, March 27 at 6:30 a.m.

Coordinating Council of Palo Duro Union Presbytery will meet at Grace Presbyterian Church, Lubbock on Friday and Saturday, March 28-29.

Dr. Eric Carlson will present a slide-show and lecture entitled "Our Expanding Knowledge of God's Universe" on Saturday, March 29 at 7:30 p.m. in the Perryton High School auditorium.

There is a Sunday Church School class for everyone every Sunday at 9:45 a.m.

"My Debt to Jesus Christ" will be the subject of Pastor Edward D. Freeman's sermon at the service for the public worship of God on Palm Sunday, March 30, at 11:00 a.m.

Presbyterian Men will join with other men in the community in the interdenominational men's prayer breakfast on Wednesday, April 2 at 6:30

a.m. in the garden room of the Cattleman's Restaurant. Bob Boxwell will be the speaker.

There is a warm Christian welcome awaiting anyone who attends any of the services or activities of the First Presbyterian Church.

Bowling News

HIGH INDIVIDUAL GAME	
LaVonia Nuchols	231
HIGH INDIVIDUAL SERIES	
LaVonia Nuchols	586
HIGH TEAM GAME	
Kirby	925
HIGH TEAM SERIES	
Kirby	2509
STANDINGS	
Anthony Electric	64-40
Dee's Gill	62 1/2-41 1/2
Betty's	62-42
Daley's	61-43
Fausset & Sons Conoco	59-45
Ranger Bowl	57 1/2-46 1/2
Big A Spreader	54-50
Fronk Oil Company	54-50
Kirby	54-50
George Lease Service	52-55
Otis Engineering	44-60
Bull Rogers	44-60
Smith Rentals	35-69
Whits Pharmacy	26-78

Golden Spread Center News

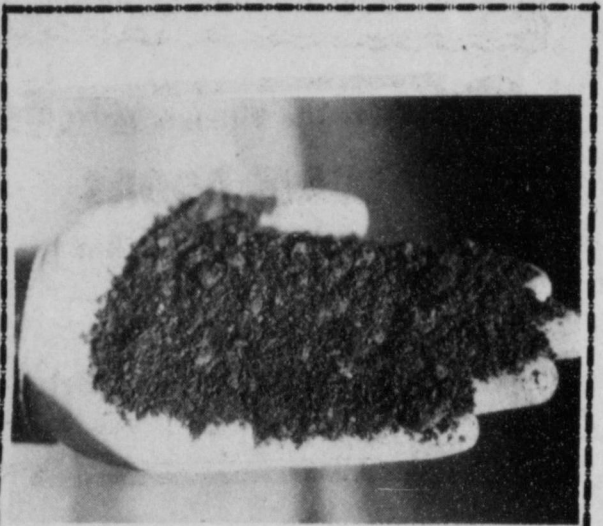
Mary Hendrickson will be feeding great ideas for making beautiful arts and crafts creations to all who gather at the Golden Spread Center on Thursday, March 27, from 10:00 a.m. to 5:00 p.m. There will be a break at noon for a bounteous feast of good, nourishing food, called a covered-dish luncheon. Table games will be played on Friday, March 28 from 2:00 to 5:00 p.m. at the Golden Spread Center.

Pitch and other games will be played at the Golden Spread Center on Monday, March 31 from 2:00 to 5:00 p.m. United Methodist Women will be serving at the covered-dish dinner on Tuesday, April 1 at 6:30 p.m. Golden Spread Club hostesses will be Deta Blodgett, Ora Sanders, and Jewell Turner. The evening will be spent in playing table games.

Ruby Lair will be driving the Golden Spread Center's van-bus on Wednesday, April 2 to

pick up the sixty plus bunch from 9:00 a.m. to 12:00 noon taking them on errands, shopping, and to meet appointments. People needing transportation should call the Golden Spread Center (3521) on Tuesday and get your name on the list.

Golden Spread Center is located at 14 S. Haney and is open Monday through Friday from 9:00 a.m. to 5:00 p.m. There is always something going on there. There are always people with whom one can talk. There is an abundant supply of table games and puzzles, reading materials, a color TV, sewing machine, pool table, and a piano. It is open to all people fifty-five years of age or older without discrimination as to sex, color, race, ethnic background, national origin, religion, denominational preference, church membership, political party, or handicap.



The nutrient (fertilizer) requirements as you all know, differ with crops, but the one thing they all respond to is the condition (tilth) of the soil. With good tilth, water efficiency is improved and less tillage is required. * This is where compost comes in. Call today and schedule your application.

* For a copy of a two year study presented to the American Society of Agronomy, please call us.

Hansford County Compost
 Phone: 806-659-3970
 Spearman, Tx.
 OFFICE: 727 Wilbanks, Spearman
 PLANT LOCATION: Gruver, Texas

Energy Ernie says make your home ENERGY CHECKED
 for more COMFORT and ECONOMY from your energy dollar.

The HOT WATER SYSTEM in the ENERGY CHECKED HOME is designed to use energy as efficiently as possible. Water heaters are located close to points of use, such as laundry room, kitchen and bathroom. This saves heating energy, because the shorter the travelling distance of hot water, the less chance it has of cooling before being used. The Energy Checked water heater also has thick tank insulation. We also recommend an energy efficient thermostat setting of 130 degrees. To save money on your utility bill, make your home an Energy Checked Home. Just call us for a quick inspection to qualify your present or remodeled home as Energy Checked, or look for the Energy Checked sign on a new home.

SHOP UNITED'S COUPON
 PRICES GOOD THRU MARCH 29
 QUANTITY RIGHTS RESERVED
 ONE ITEM PER COUPON ONLY

VALUABLE COUPON 10c FINE FARE GOLDEN CORN CREAM STYLE OR WHOLE KERNEL 10c OFF WITH THIS COUPON GOOD AT UNITED SUPERMARKETS THRU APRIL 2, 1980	OLD EL PASO 8-OZ. CAN TOMATO SAUCE... 5 FOR \$1	FOLGER'S COFFEE 1 LB. \$2.89 2 LB. \$5.77
VALUABLE COUPON 10c FINE FARE GREEN BEANS FRENCH STYLE OR CUT 10c OFF WITH THIS COUPON GOOD AT UNITED SUPERMARKETS THRU APRIL 2, 1980	FRISKIES *MEAT *CHICKEN *LIVER 25 1/2 OZ. CAN DOG FOOD... 3 FOR \$1	KRAFT MACARONI & CHEESE DINNERS 7 1/2 OZ. BOX FOR \$1
VALUABLE COUPON 10c FINE FARE SALTINE CRACKERS 1 LB. BOX 10c OFF WITH THIS COUPON GOOD AT UNITED SUPERMARKETS THRU APRIL 2, 1980	LOG CABIN SYRUP 36 OZ. BTL. \$1.79	MILNOT MILK 13 OZ. CAN TALL CAN \$0.39
VALUABLE COUPON 10c FINE FARE WHOLE TOMATOES 16 OZ. 10c OFF WITH THIS COUPON GOOD AT UNITED SUPERMARKETS THRU APRIL 2, 1980	LOG CABIN TEA 3 OZ. JAR \$1.49	UNITED POTATO CHIPS 8 OZ. \$0.69
VALUABLE COUPON 5c FINE FARE TOMATO SAUCE 8 OZ. 5c OFF WITH THIS COUPON GOOD AT UNITED SUPERMARKETS THRU APRIL 2, 1980	FRISKIES DOG FOOD 3 FOR \$1	MILNOT MILK 13 OZ. CAN TALL CAN \$0.39
VALUABLE COUPON 10c FINE FARE FLOUR 5 LB. BAG 10c OFF WITH COUPON GOOD AT UNITED SUPERMARKETS THRU APRIL 2, 1980	FRISKIES DOG FOOD 3 FOR \$1	MILNOT MILK 13 OZ. CAN TALL CAN \$0.39
VALUABLE COUPON 5c FINE FARE MACARONI & CHEESE DINNERS 7 1/2 OZ. BOX 5c OFF WITH THIS COUPON GOOD AT UNITED SUPERMARKETS THRU APRIL 2, 1980	FRISKIES DOG FOOD 3 FOR \$1	MILNOT MILK 13 OZ. CAN TALL CAN \$0.39
VALUABLE COUPON 5c FINE FARE EVAPORATED MILK TALL CAN 5c OFF WITH THIS COUPON GOOD AT UNITED SUPERMARKETS THRU APRIL 2, 1980	FRISKIES DOG FOOD 3 FOR \$1	MILNOT MILK 13 OZ. CAN TALL CAN \$0.39
VALUABLE COUPON 10c FINE FARE KETCHUP 32 OZ. 10c OFF WITH THIS COUPON GOOD AT UNITED SUPERMARKETS THRU APRIL 2, 1980	FRISKIES DOG FOOD 3 FOR \$1	MILNOT MILK 13 OZ. CAN TALL CAN \$0.39
VALUABLE COUPON 10c FINE FARE SUGAR 5 LB. BAG 10c OFF WITH THIS COUPON GOOD AT UNITED SUPERMARKETS THRU APRIL 2, 1980	FRISKIES DOG FOOD 3 FOR \$1	MILNOT MILK 13 OZ. CAN TALL CAN \$0.39

SAVE 50% and more on BAKE-SERVE STORE STONWARE	MR. COFFEE FILTERS 50 CT. \$0.39	SCHILLING BLACK PEPPER 4 OZ. \$0.89
THIS WEEK'S FEATURE \$1.19	FOLGER'S INSTANT COFFEE 10 OZ. JAR \$4.59	KEEHLER ZESTA CRACKERS REG. OR UNSALTED 1 LB. BOX \$0.69
SAVE 50% and more on BAKE-SERVE STORE STONWARE	KRAFT BARBECUE SAUCE ALL FLAVORS 18 OZ. BTL. \$0.69	KEEHLER ZESTA CRACKERS REG. OR UNSALTED 1 LB. BOX \$0.69
SAVE 50% and more on BAKE-SERVE STORE STONWARE	RANCH STYLE BEANS 15 1/2 OZ. CAN 3 FOR \$1	KEEHLER ZESTA CRACKERS REG. OR UNSALTED 1 LB. BOX \$0.69

DELICIOUS APPLES 3 LB. BAG \$1.00	BELL PEPPERS 3 LG. CRISP PODS FOR \$0.48
NAVAL LG. SUNKIST ORANGES 4 LBS. \$1.00	CELLO BAG CARROTS 16 OZ. FOR \$0.48
RUSSET ALL PURPOSE POTATOES 10 LB. BAG \$0.79	

Cub Scout News

Cub Master Jim Beeson and several of the Cub Scout leaders will be attending a leaders Pow Wow in Perryton March 29.

This session will be for the Adobe Walls Council and included all of the Oklahoma Panhandle & Eastern Texas Panhandle.

Cub Scout Den #2 met Tuesday, March 18 in the home of Sharon Swan to work on their Regatta boats and went to the Dairy Queen for refreshments.

The next meeting will be in the home of Sharon on Tuesday, March 25.

Cub Scout Den #4 met Tuesday, March 18 and went on a tour of the Station Master's House Museum and then returned to the Boy Scout Room for refreshments which were served by James Tindell.

Those attending were: James Tindell, Mckel Hargrove, Lane Parker, Rob Howerter, Lance Harnish, Pete Mauk, Keith Clark, and leaders Judy Tindell and Jody Harnish.

The next meeting will be Tuesday, March 25 at the Boy Scout Room with Lance Harnish furnishing refreshments.

Men's Prayer Breakfast

Bob Boxwell, local mortician and active layman in the First Christian Church, will be the speaker at the interdenominational men's prayer breakfast on Wednesday, April 2, at 6:30 a.m. in the garden room of the Cattleman's Restaurant.

Hospital news

Patients in Hansford Hospital are Steven Tindell, Tammy Stevens, Georgianne Washington, Lillie McBroom, Monty Jackson, Cecelia Randall, Addie Novak, Ella Parks, Herminia Aguilar and daughter, Nancy Martin, Grace Lyon, Teresa Lopez, Cleta Casdorff, Grace Archer, Nell Cumming, Mattie Dyer, Dorothy Wyatt, Ora Vandlingham, Maurine Etling, Jo Copeland, Anson Ward, Ned Turner, Connie Gibson, True Leatherman, and Margaret Evans of Gruver.

Dismissed were Arnold Robertson, George Brown, Tammy Garcia, Javier Vasquez, Rose Bruning, Laura Bridges, Margaret Nickerson, Terry Curtis, Donnie Garcia and daughter, Keith Winegarner and Terry Hartranft.

Arts & Crafts Guild Meets

The Arts and Craft Guild will meet Friday, March 28 in the home of Mrs. Ned Turner.

Square Dance Club Meets

Boots and Slippers Square Dance Club will be dancing tonight, March 27th, at the Golden Age Center in Gruver with Murry Beasley from Oklahoma calling starting at 8:00 PM, come join us.

Lilly Hunley Baptist Young Women Met

The Lilly Hunley Study Group met Wednesday, March 19 at the First Baptist Church with President JoDell Tigrett presiding.

Mrs. Russell Pogue presented the introduction to the study. The group is beginning on Baptists Beliefs.

Hostess Charlotte Martin served refreshments to: JoDell Tigrett, Trish Cook, Jo Linda Hutchison, Cheri Jarvis, Mary Baker, Cora Queener and Imogene Pogue.

The next meeting will be the general meeting of the church Wednesday, April 2.

4-H Club News Agriculture News

"4-H Potpourri - A Mix of Good Things" is the weekend workshop to be held at the Texas 4-H Center on April 19 and 20. 4-H adult and teen leaders from Hansford County are invited to participate in one of the four training sessions that will be offered, according to County Extension Agent Peggy Winegarner.

Participants may elect training in "4-H Dog Care and Training," "Creative Arts," "Photography," or "4-H Record Books." Each session will be led by experienced 4-H leaders, Extension Agents, and/or specialists. For further information and registration details, interested persons may contact the Hansford County Extension office in the Courthouse or phone 659-2030 or 733-2901. Educational programs conducted by the Texas Agricultural Extension Service serve people of all ages regardless of socio-economic level, race, color, sex, religion, or national origin.

Rye is called "the grain of poverty" because it thrives on poor soils.

by Layton Barton

The dust is beginning to settle after the Hansford County Stock Show which climaxed the stock season for Hansford County 4-H'ers.

We were extremely proud of all the 4-H'ers for their hard work and efforts during the year. We would like to thank all the parents and leaders who helped not only at the County Show but all others in preparing the animals for show. Without their help we could not possibly get through.

LANDSCAPING & GARDEN SEMINAR

Homeowners and home gardeners will have the opportunity to gain valuable information on landscaping and garden planning on Wednesday, April 2, at 1:30 p.m. at the Extension Homemakers Clubroom in Spearman. Everett Janne, Landscaping Specialist, and Dr. Roland Roberts, Area Vegetable Specialist, will be presenting the program on Home Landscaping and Garden Plan-

ing. This should be an excellent opportunity to learn about adaptable varieties for this area and care of them.

IRRIGATION WORKSHOP

With the high cost of irrigation fuel, depleting water resources, and depressed farm prices, it is imperative that irrigation farmers have their irrigation wells operating as efficiently as possible.

Irrigation farmers will have the opportunity to learn how to make their wells more efficient as well as see how on April 7th at 10:00 a.m. at the County Barn in Spearman. Leon New, Area Irrigation Engineer will be on hand for a joint meeting for Hansford and Ochiltre County irrigation farmers. Leon will be presenting a program on well efficiency and then will actually measure a well to test its efficiency.

This should be an excellent opportunity for farmers to learn how to measure their wells to make them more efficient. GREENBUGS IN WHEAT

We are beginning to see a large number of planes in the air spraying for greenbugs in wheat and a rapid buildup of them. However, the cool temperatures and snow received will help reduce greenbug reproduction and activity.

Greenbugs can reproduce at temperatures of 55 to 95 degrees F. At 55 degrees the natural enemies of greenbugs reproduce slowly, allowing a rapid buildup of the greenbugs. Temperatures of 40 to 50 degrees or less reduce greenbug activity. Continuous temperatures of 20 degrees F. or below for 7 days or longer can reduce populations by 90 percent or more. However, it is very unlikely to see these temperatures for that long this time of year.

Several factors should be considered when using insecticides, such as: vigor of plant, time of year, moisture, stage of growth, and presence or absence of parasites and predators such as lady bugs. Wheat under irrigation can usually withstand larger populations of greenbugs than dry land. The following is a reliable guide in determining the need for treatment of greenbugs in wheat. Plant Height inches 3-6, No. Greenbugs per linear ft. 100-300; Plant Height inches 4-8, 200-400 greenbugs; Plant Height 6-16, 300 to 800 greenbug per linear ft.

When wheat is stressed from lack of moisture, however, much smaller populations may warrant treatment. For a list of recommended chemicals for treatment check with the Extension office or your local aerial applicator. Be sure to read and follow label directions on chemicals used. Educational programs conducted by the Texas Agricultural Extension Service serve people of all ages regardless of socio-economic level, race, color, sex, religion, or national origin.

Rotary Club News

Chalmers Porter, Republican candidate for state representative from the 64th district, spoke Monday noon to Spearman Rotary Club on the subject, "A Christian Farmer Looks at Politics," in the garden room of the Cattleman's Restaurant.

He testified to the fact that he was a Christian and proud to be one. He asked, "Why should he run for state representative from this district?" In reply he said that a few friends had asked him to consider running.

After thinking and praying about it, he felt that there was no reason why he shouldn't run and that to run was in fulfillment of his civic duty.

Porter feels that there should be a limit set on the number of years that a person can serve in any public office.

The sixty-fourth district is heavily agricultural and that someone elected from this district needs to be well acquainted with the problems farmers and agri-business face.

He said that he had just completed twelve years as a school board member, a period in which he had seen local authority being eroded away by the federal and state governments.

What is involved in running? Well, one thing it means speaking to many groups. He said that if he were elected, he was going to do his best to represent this district to the best of his ability. If he is not elected, he was not going to spend any time pining for the job.

Who can contribute to campaigns? He read the whole list from the state department of the State of Texas and it included labor unions and corporations who may not give to a campaign. He said he would not accept a contribution of over \$25 from any person.

He feels that the two biggest problems facing our nation today are inflation and energy.

The state of Texas is not allowed to spend more than it has. The United States government needs to get on that same basis.

He said he favors Initiative and Referendum.

He feels that the legislature doesn't need to meet every year. It probably could get all of its business done by meeting every other year.

If elected, Porter said that he would be busy learning all that he could about the job.

He felt that this district was tailor-made to have a Gasohol plant and that there needed to be more enabling and encouraging legislation. Our district has an abundance of grain and the feedlots to use the bi-products.

Visiting Rotarian was Frank Hall of Pampa. Chalmers and Betty Porter were also guests.

Members present Monday noon were Bill Baker, Jim Benson, Eschol Blankenship, J. L. Brock, Kim Brock, Archie Burress, Durane Castleberry, John R. Collard, Jr., Robert Elliott, Pete Fisher, Ed Freeman, Kerry Henton, Ronnie Hoover, John Hutchison, Eddy Limbocker, Junior Lusby, David McClellan, Jack McWhirter, Frank Oglesby, Michael Schnell, Len Simpson, Gary Sims, Jerry Taylor, Don Wirsdorfer, and Tim Woodington.

Members absent were Roy Bulls, Ed Garner, Brice Palmer and Jim Shirley. Attendance percentage was 88.67%.

Community singing was led by Ed Freeman. The pledge of allegiance to the USA flag was led by Jim Murray. The prayer of invocation was given by Robert Elliott.

Ministerial Alliance Meets

Spearman Ministerial Alliance will meet on Tuesday, April 1 at 9:30 a.m. at the Church of the Brethren in Waka. Archie Burress will lead devotions.

According to folklore, it's good luck to carry your new baby upstairs before you carry him downstairs.

Large advertisement for 'FINE FARE - A - RAMA' featuring various meat products (steak, spareribs, catfish, chicken, bologna, liver, franks), dairy products (milk, margarine, cottage cheese, sour cream, donuts, potatoes), and household items (bleach, pizza, juice, biscuits). Includes numerous '10c OFF' coupons and a 'UNITED Supermarkets' logo.

Advertisement for 'Clark Aerial Spraying Spearman' with contact information: Clark Bridges - 659-2065 nights, Office to be open soon.

CITY & TOWN NOTES

The City Council of Spearman, Texas met in regular session in Council Chambers of City Hall Feb. 26, 1980 at 7:30 p.m. Mayor C. Ralph Blodgett presiding. Aldermen present: Pittman, Nicholson, Loftin, Beedy. Aldermen Absent: Cudd. Also present were City Manager Len Simpson, Administrative Assistant, Jim Murray Fire Chief, Ronnie Antalek, EMS Director, Ed Williams. Visitors: James Cunningham. Pledge and Invocation The pledge of allegiance to our flag was led by Beedy followed by the invocation given by Mayor Blodgett. Consideration of approval of minutes of regular city council meeting of Feb. 12, 1980. Motion was made by Beedy to approve the minutes of regular city council meeting of February 12, 1980 as written. Second by Nicholson. Motion carried. Consideration of resurfacing tennis courts. Motion was made by Loftin to spend \$4,000.00 to resurface the tennis courts at the Spearman High School. Second by Nicholson. Motion carried. Consideration of placing for bids seal coat for streets. Motion was made by Beedy to place for bids seal coat for streets. Second by Nicholson. Motion Carried. Executive Session: For the Discussion of Police Department Personnel. Motion was made by Pittman that council go into executive session for the purpose of discussing police personnel. Second by Loftin. Motion carried. At 8:10 p.m., Mayor Blodgett called for an executive session under Article 62-52 Section 17G of Vernon's Civil Statutes. At 8:45 Mayor Blodgett declared the meeting open and stated that no action was taken and no vote was made. Only police personnel had been discussed. Meeting dates for the month of March were set for the 11th and 25th. Motion was made by Nicholson to adjourn. Mayor Blodgett pronounced the meeting adjourn ed.

Charlotte Jackson Named Mental Health Chairperson

Ms. Charlotte Jackson of Spearman was named Mental Health Chairperson announced John Stevens, President of the Mental Health Association in Texas. "The Bellingranger Chairperson is a vital part of making our organization work," said Stevens. The Mental Health Association in Texas is a voluntary citizens organization, funded entirely by private contributions. The association needs the donations from the Bellingranger in order to continue its work. "This year the Association's

major goal is to improve the care for the discharged long term mentally disabled," said Stevens. The association is promoting self-help groups for former patients and for families of persons with mental health problems. The association is also working to see that housing opportunities are available in communities for discharged patients. For free information about mental health topics contact: Mental Health Association in Texas, 103 Lantern Lane, Austin, Texas 78731, 512-459-6584.

Peggy's Pointers

Make basic repairs before cosmetic work when remodeling your home. A new paint job or other cosmetic work can, with a small investment, spruce up an old home. However, basic improvements must come first. Don't forget to do the following: Correct termite damage or structural defects before closing up the walls. Add electrical wiring as necessary before closing up the walls -- it is easier now than later. Run all ductwork for heating and air conditioning before the walls are closed. Fit or replace the roof before installing new drywall or plaster inside so that roof leaks will not damage the new interior work. Fix the subfloor where partitions were removed, and properly prepare otherwise, before carpeting or installing a finished tile floor. Replace all rotted exterior wood before the outside of the house is painted. Put new drywall over old bad plaster or fix the plaster before applying paper or paint.

SECURE BUILDING PERMITS Don't forget to secure a building permit now that it's home fix-up time again. Building permits are generally needed to: --Build an attachment to the house, such as a room, carport, garage or patio. --Build a swimming pool. --Install an underground lawn sprinkler system. --Build a wall more than four feet high. It is the consumer's responsibility to secure the permit if he is doing the project himself. Obtaining a permit required filing an application accompanied by a construction plan. If contracting the project, check to see if the contractor will secure the permit. In addition, don't forget to check with an insurance agent about additional coverage for home improvements.

Sunbelt population grows most in 70s.

Bridge Club

The Short Bridge Club met Tuesday, March 18 in the home of Lois Gibner. Those attending were Rosa Lee Butt, Mary Cornelius, Frances Cudd, Doris Ellison, Elizabeth Holton, Barbara McClellan, Ruth Skinner, hostess Lois Gibner and guests Betty Poreter. High was won by Mary Cornelius, and second high by Lois Gibner and traveling by Doris Ellison. The next meeting will be Tuesday, April 1 in the home of Virginia Head.

Ladies Duplicate Bridge Club met Monday, March 17 in the home of Helen Etter. Those attending were members: Verna Strawn, Irene Baker, Glenda Guthrie, Betty Porter, Rosa Lee Butt, Sheryl Meek, Elizabeth Holton, Judy Nelson, Charlotte Pearson and guests: Frances Cudd, Sonya Godfrey and Ruth Skinner. High was won by Judy Nelson and Charlotte Pearson and second high by Glenda Guthrie and Sonya Godfrey. The next meeting will be Monday, April 21 in the home of Rose Lee Butt.

Salt was used before recorded history to preserve and season food.



BLAZING BICEPS—Well-armed Arnold Schwarzenegger is ready to protect anyone's honor - especially his own - as stalwart Handsome Stranger in "The Villain," which opens 3-26 at the CVRIC Theatre. The rollicking western from Columbia Pictures also stars Kirk Douglas and Ann-Margret.

Servitors Planning 2nd Annual Volleyball Tournament

Servitors invites everyone to their 2nd Annual Volleyball Tournament, April 10, 11, 12 at the Spearman Varsity Gym. Games will begin at 7:00 p.m. each night. Everyone is urged to come eat homemade sloppy joes, pies, cakes, etc....Best of all, come watch the local and out of town teams battle for the most wanted 1st place trophies donated by DACO, INC. & SPEARMAN ELECTRONICS. Be sure to come see Spearman's "Dreaded" GENERAL STORE and "FEARLESS" FIRST STATE BANK teams.

Come out and cheer on the Spearman Teams!!!! All money made at this tournament will be donated to various organizations and for Servitors many projects.

- Money made at last year's tournament was donated to the following:
- 1) Recessa Baby for local Heart Association-\$180.00
 - 2) YMCA-\$250.00
 - 3) Meals on Wheels;\$180.00
 - 4) Golden Spread Center-\$50.00
 - 5) Book Pledge for Library-\$30.00
 - 6) Kindergarten Books - \$50.00
 - 7) Community Assistance-\$75.00
 - 8) TEWC Scholarship-\$15.00
 - 9) CPR Clinic-\$10.00
 - 10) American Heart Association-\$50.00
- Other businesses to donate trophies are:
- 2nd place - High Plains Auto Kalliedescope
 - 3rd place - Schneider Welding & Sack's 3rd Ave.
 - Consolation - Bunkhouse & Kidstuff
- To enter contact: Debbie Benton at 659-3568

Dr. Eric Carlson To Lecture In Perryton

Dr. Eric Carlson, senior astronomer and director of education at the Adler Planetarium in Chicago, Illinois, will present a slide show and lecture entitled "Our Expanding Knowledge of God's Universe" in the Perryton High School auditorium on Saturday, March 28, at 7:30 p.m.

In addition to his duties at the Planetarium, Dr. Carlson gives five or six lectures annually across the United States. Since 1976 he has written the article on astronomy for the World Book Encyclopedia yearbook. He was in charge of one of the two ships that went into the Pacific a few years ago to research the total eclipse of the sun. He also co-authors highly technical articles in international magazines.

However, Saturday night's lecture in Perryton with slides is designed for lay people. It will include such recent photographs as those taken by Voyager II on a fly-by of Jupiter and Saturn (the latter on September 7, 1979), as it came to within a million miles of each planet, transmitting pictures such as were never dreamed possible.

Dr. Carlson received his bachelor's and master's degrees in Religion from the University of Missouri at St. Louis. His doctorate in astronomy he received from Northwestern University in Evanston, Illinois.

Not only is Dr. Carlson an expert in his field of astronomy, he is also a deeply spiritual person who is inspiring in his mediation of the wonder and majesty of the Universe. Ordinarily, Dr. Carlson receives a considerable honorarium for his lectures. This program, however, he is giving to the community in honor of his wife's parents, Prof. and Mrs. W. Clark Elzey, who live on the family ranch on Wolf Creek in Ochiltree County. His travel expenses are underwritten by the First United Methodist Church and the First Christian Church of Perryton. No charges will be made for the lecture, but an opportunity will be provided for a free-will offering to help defray the expenses of travel and of renting the auditorium.

PSU To Host

Annual Scholastic Contest

Panhandle State University will host the tenth annual scholastic contest on April 16, 1980. These contests are for high school students from the area including schools in Colorado, Kansas, Texas, New Mexico and Oklahoma.

Subject areas for the contest include: BUSINESS - Bookkeeping I, Typewriting I and II, Shorthand I; SCIENCE - Biology, Chemistry I, Advanced Chemistry, Physics, and Earth Science. MATH - Algebra II, Geometry, and Mathematical Analysis. INDUSTRIAL ARTS - Mechanical Drawings, Beginning Hand Woodworking, Advanced Hand Woodworking, Wood Turning, General Information Concerning Woodworking, and Arc and Gas Welding.

Awards will include a \$150 fee scholarship to the first place winner in each subject. This scholarship will apply toward books and tuition at PSU for the first year the winner enrolls at PSU. All students will be rated as Superior, Excellent, Good, Fair, or Poor. Each person rated

Superior will receive a certificate for his or her achievement. Over fifty-five (\$5) invitation will be mailed out to area schools by March 22, and any school who would like to enter some of the events is welcome. Entry deadline is Wednesday, April 9. Contact the area of interest to enter any of the contests. Although the deadline is April 9, any substitutions may be made at a later date.

Right or Wrong
Gus--Your wife's diction is perfect when she talks.
Bill--So is her contradiction.

Lucky Man
"Father, what is a convalescent?"
"A patient who is still alive, son."

You can't make money without risking something but you won't make money every time you take a chance.

WE RESERVE THE RIGHT TO LIMIT PRICES EFFECTIVE MARCH 24-29, 1980 SPECIALS GOOD WHILE SUPPLY LASTS - LIMITED SUPPLY

SECOND BIG WEEK!

Save into Spring SALE

 BORDEN'S COTTAGE CHEESE 12 OZ. CTN. 79¢	 BORDEN'S ASSORTED ICE CREAM 1/2 GAL. HD. CTN. \$1.59
 SHURFRESH BUTTERMILK SWEETMILK BISCUITS 8 OZ. CANS \$1.00	 SHURFRESH HALFMOON COLBY LONGHORN CHEESE 10 OZ. PKG. \$1.09
 DELSEY TISSUE 4 ROLL PK. 89¢	 SHURFINE CUT GREEN BEANS 3 16 OZ. CANS \$1.00
 SHURFINE FLOUR 5 LB. BAG 69¢	 SHURFINE CREAM STYLE/WHOLE KERNEL GOLDEN CORN 5 17 OZ. CANS \$1.00
 SHURFINE TOMATO SAUCE 6 8 OZ. CANS \$1.00	 SHURFINE ELECTRIC PERK REGULAR COFFEE 1 LB. CAN \$2.39
 SHURFINE SALTINE CRACKERS 2 16 OZ. BOXES \$1.00	 SHURFINE SUGAR 5 LB. \$1.59
 SHURFINE FRUIT COCKTAIL 2 16 OZ. CANS 89¢	 SHURFINE GROUND BLACK PEPPER 4 OZ. CAN 79¢
 BORDEN'S BUTTER MILK 1/2 GAL. CTN. 99¢	 SHURFRESH QUARTERS MARGARINE 2 1 LB. PKGS. 79¢
 MIRACLE WHIP 32 OZ. 99¢	 SHURFINE SPINACH 3 15 OZ. CANS \$1.00

221 BUSHELS

WELL, YOU HAVE HEARD OF GOOD CORN YIELDS, BUT THIS IS THE KING OF ALL, FUNK G-4507. 221 BUSHELS DRY CORN PER ACRE AVERAGE ON 380 ACRES PRODUCED BY L. V. WOODY ON W. L. PRICE FARM IN SHERMAN COUNTY. YES, THAT IS RIGHT, 221 BUSHELS DRY CORN ON 380 ACRES. ALSO, THIS G-4507 HAS MADE 202 BUSHEL AVERAGE ON 814 ACRES. G-4507 IS THE KING, BUT FROM OUR NEW COMPREHENSIVE BREEDING PROGRAM, WE HAVE BRED TWO SUPER KINGS - G-4673 and G-4519. SPREAD YOUR RISK AND TRY ALL THREE. THESE TWO - G-4673 AND G-4519 HAVE OUT YIELDED ALL OTHERS IN TEST PLOTS.

Speartex Grain
659-3711
Spearman

The Outhouse
Waka 435-5304
435-5377



Aubrey Rasor
733-2238
Gruver

Gary Cowley
435-4909
Perryton

Texas Corn Grower Shoots For High Yields

"For me, improving on last year's yield is the biggest challenge," says Art Noack.

Near Dumas, in the Texas Panhandle, the Moore County corn grower keeps a sharp eye on ways to improve his farming operation, a 2,500-acre enterprise split among corn, wheat and grain sorghum.

Improving his bottom line—the profit and loss figure—concerns Noack most. The escalating costs of irrigation, labor, equipment and agricultural chemicals are forcing growers like Noack to push their crops for bigger yields in order to stay ahead of inflation.

One of the nation's most successful corn growers, Noack placed third in the National Corn Growers Association contest in 1978 with an average yield of 249.48 bushels per acre, missing the national championship by less than two bushels per acre. And last year he grew 814 acres of corn that averaged 202 bushels per acre, in spite of a hail storm that severely damaged corn on 118 acres. Where hail didn't fall, his crop hit a fantastic 221 bushels per acre.

A modern farm manager and experimenter, he closely watches the development of new hybrids to see how they perform in the Texas Panhandle's high winds and dry weather. Each year, Noack plants several new corn hybrids from different seed companies to evaluate their yield potential on the farm. To date, one hybrid has stood out above all others. Last year he planted 95 percent of his total corn acreage to Funk's G-4507. "It's not in my better judgment to plant so much of one hybrid, but I've challenged G-4507 with other hybrids and it has always been my best yielder," he says.

The hybrid performed well under various stresses last year. Even though a hot, dry summer limited soil moisture supplies, water and nutrients flowed to the cob for grain fill when they were needed, Noack says. Strong stalks and firm roots kept fields of G-4507 from

lodging after winds gusting up to 50 miles per hour swept through Noack's farm in late August.

Hybrid selection is only one reason Noack has achieved near-record corn yields. His crop management includes top-notch insect and weed control, fertilization, irrigation and tillage programs.

Shortly after harvesting is completed in late September or early October, Noack begins preparing for the next season's crop. He shreds stalks in the field, disks twice, chisel plows, spreads 150 lbs of 18-46-0 dry fertilizer, disks again, beds up the soil and injects anhydrous ammonia into the beds at a rate supplying 150 to 160 lbs of actual nitrogen to each acre. Another 25 to 40 lbs of actual nitrogen is added as liquid fertilizer through Noack's irrigation system. He applies nitrogen at the lower rate where corn is planted following wheat.

Occasionally, he'll spread manure purchased from local feedlots at various ratios depending on the soil's needs and the price of commercial fertilizer.

All field preparation is completed by late February so preplant irrigation can begin. Planting begins around April 10 and is usually completed by May 1. Noack plants two rows of corn 18 inches apart on the sides of 40-inch beds, separated by 22-inch wide water furrows. The plant population ranges between 28,000 and 28,500 seeds per acre. "I like to give each plant plenty of room so it can get up and form a canopy as quickly as possible," he says. "Each plant can stand moisture stress better if it is given some room."

Irrigation begins when the crop is 15 inches tall; changes in humidity, temperature and wind conditions forced Noack to irrigate seven times to ensure good yields.

"I have made 190-bushel corn on three waterings with G-4507," Noack says. "But I try to give the crop whatever it needs in moisture and nutrients

to maximize its yield potential."

To control problem weeds, Noack applies Aatrix to most of his corn acreage; where Johnsongrass is a problem, he'll apply Eradicane and Aatrix. Applications of Dual and Eradicane successfully suppressed his sandbur population last year.

The Texas corn grower scouts each field for insects, a program that has paid off in improved pest control. Frequent consultations with his employees help him reach maximum potential from his insecticide, herbicide and fertilizer applications.

"I'm not content with my own opinion. I always rely on feedback from my field personnel. There's too much tied up in a crop to make mistakes," Noack says.

Harvesting begins at his Dumas-area farm when the field moisture is 30 percent. Even with this early start, the last corn Noack combined had dropped to 18 percent moisture. "Harvesting went a little later than I like to see, but that wasn't any fault of G-4507. It has excellent threshability. I didn't have any problem with ear droppage," he says. "The hybrid has been my highest yielder the last five years. I plan to stick with it until something better comes along."

In Fashion

Skirts and printed shirts will be popular spring attire.

The traditional black and white will be featured in spring ensembles. The linen look jacket dress features a white dress topped with black fitted jacket.

Worry has never solved a problem and never will; if you are worrying, try doing something about your problem.

Local girls enter Cinderella Girl Pageant

The Cinderella Girl Pageant is well underway. Upsilon Phi has received 38 entrants this year. Hosting the show will be Lois Rozier, president of the Xi Lambda chapter of Beta Sigma Phi.

Seventeen tots have chosen to enter. They are Traci Brillhart, daughter of Mr. & Mrs. Joe Brillhart, sponsored by First Bank & Trust Co.; Melanie Brown, daughter of Mr. & Mrs. Gwyn Brown, sponsored by Taylor Drug; Holly Boone of Follett, daughter of Mr. & Mrs. Don Boone, sponsored by Hair Fantastic; Amanda Carlisle, daughter of Mrs. Leisa Carlisle, sponsored by Easley Ford Inc.; Ashlei Coulter, daughter of Mr. & Mrs. Donny Coulter, sponsored by Coulter Oil Co.; Kimberly Dumas, daughter of Mr. & Mrs. Terry Dumas, sponsored by Harevey's Electric; Melissa Curry, daughter of Mr. & Mrs. Alan Curry, sponsored by Tri C Oil; Sherry Graham of Canadian, daughter of Mr. & Mrs. Bruce Graham, sponsored by the Kwik Stop; Kathy Hoover of Booker, daughter of Mr. & Mrs. Rex Hoover, sponsored by B.J. Place; Kelly Jones of Booker, daughter of Mr. & Mrs. Tom Jones, sponsored by Frank Oil Co.; Trena Lauthan of Follett, daughter of Darlis Laubhan, sponsored by Bell's Department Store; Lacey Miller, daughter of Mr. & Mrs. Joseph Miller, sponsored by Panhandle Weld Rite; Billie Jo Moore of Spearman, daughter of Mr. & Mrs. Terry Moore, sponsored by L.P. Bud Moore Drilling Contractor; Brandy Neas, daughter of Mr. & Mrs. Dwayne Armstrong and Tom Neas, sponsored by Alexander Oil Field Service Inc.; Georgene Osborne, daughter of Mr. & Mrs. Thad Osborne, sponsored by Schwalk Floor Covering & Glass; Joanna Redelsperger of Follett, daughter of Mr. & Mrs. Arlen Redelsperger, sponsored by City Drug; and Misty Savage of Spearman, daughter of Mr. & Mrs. D.M. Savage, sponsored by Betty's.

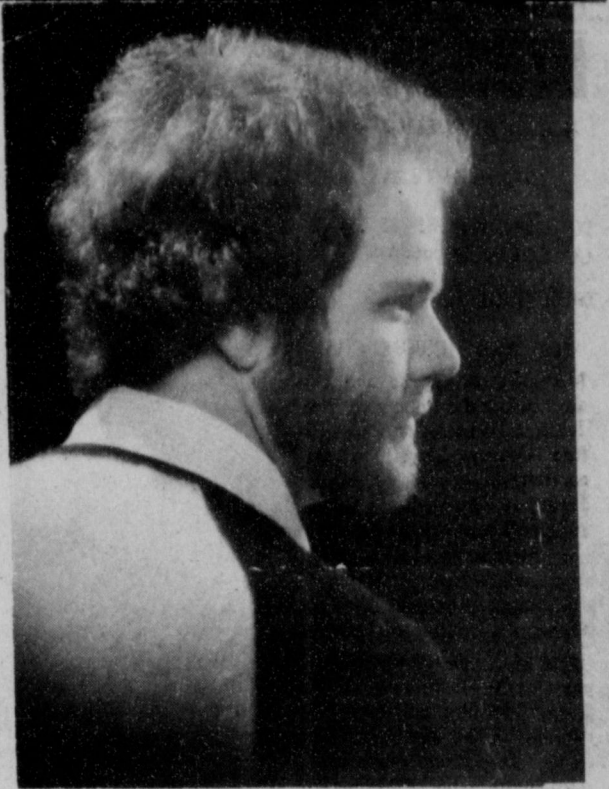
There are five miniature

daughters of Mr. & Mrs. Gene Phillips, sponsored by Club Cafe; Donna Wilson, daughter of Mr. & Mrs. Ogden Wilson, sponsored by Western Co.; Shannon Hargues, daughter of Mr. & Mrs. Jimmy Hargues, sponsored by Hargues Big A Spreader; and Dee Etta Denham of Booker, daughter of Mr. & Mrs. Marvin Denham, sponsored by Denham Pumping.

Admission fee to the Cinderella Girl Pageant will be \$2.00 for adults, \$1.50 for students, and those under six get in free. Usherettes for the April 4th and 5th performances at the Perryton High School auditorium at 7 p.m. will be Velora Wilson, Teresa Rodawalt, Sherrie Coulter and Sandy Sampson.

There are nine participants in the Cinderella Miss division. They are April Abston of Spearman, daughter of Mr. & Mrs. Samuel Abston, sponsored by A & A Gas Leak Survey; Vieta Eisenman, daughter of Mr. & Mrs. Larry Eisenman, sponsored by Perryton Motor; Linda Evans of Spearman, daughter of Mr. & Mrs. James Edward Evans, sponsored by Gordon's Drug; Jennifer Hutton, daughter of Mr. & Mrs. Tom Hutton, sponsored by Morrison Trucking; Stacey Morris, daughter of Mr. & Mrs. Dave Morris, sponsored by Lloyd Jones; Jana Pittman of Spearman, daughter of Mr. & Mrs. Bill Pittman, sponsored by Mathews Trucking; Denise Rojas of Spearman, daughter of Mr. & Mrs. Oscar Rojas Jr., sponsored by Jr. Lusby's Cats; Tammy Savage of Spearman, daughter of Mr. & Mrs. Don Savage, sponsored by Betty's Jr. Shop; and Cindy Hargrove, daughter of Mr. & Mrs. Arlie Hargrove, sponsored by the Guy's & Gal's Boutique.

There are six contestants in the Cinderella Teen Group. They are Tatum Barton of Booker, daughter of Mr. & Mrs. A.L. Barton, sponsored by Triple M Motel; Dione Miller of Booker, daughter of Mr. & Mrs. Allen Miller, sponsored by Born, Hooten, Jones, & Gardner; Brenda Pennington of Booker, daughter of Mr. & Mrs. Jimmy Pennington, sponsored by B.J.'s Place; Kim Phillips,



New Manager For General Telephone

General Telephone Company has named Bill Lowery as Central Office Foreman at Perryton, according to O'Neal Philley, Customer Service Manager.

In his new capacity Lowery is responsible for telephone switching equipment at Perryton and surrounding communities served by the Company. A native of Fox, Oklahoma, Billy began his telephone career as a Central Office repairman at Dalhart, Texas, in 1971. He since has served as equipment installer and testboardman at Guymon.

He graduated from Plainview High School at Griggs, Oklahoma, and attended Oklahoma State Tech in Okmulgee.

Lowery, his wife Connie Elaine, and two children will reside in Perryton.

Make friends whenever you have the opportunity; your enemies will make themselves.

Wilmoth in American Art Who's Who

Amarillo artist Ernest Wilmoth II has been included in the latest edition of Who's Who in American Art to be published in the summer of 1980. Who's Who in American Art includes an authoritative source of information on living artist, key art administrators, critics, collectors, dealers, patrons, scholars, and writers. The '80 publications will represent the 14th edition of the publication.

The artist holds a Bachelor of Fine Arts degree from Northern Arizona University, which he received in the fall of 1976. In June of 1979 he was elected with life membership as a Fellow of the Royal Society of Arts, Great Britain. In the past the artist has donated numerous works of art for organizational benefit auctions to such organizations as: Multiple Sclerosis, Muscular Dystrophy, and the Childrens Rehabilitation Center. Additionally, he has donated a memorial painting which hangs on permanent display in the Hansford County Library.

Wilmoth's work is in collections in Arizona, Colorado, Indiana, Michigan, Oklahoma, Tennessee, and Texas. He is represented by The Canyon Art Gallery, Canyon, Texas; Cross Galleries, Fort Worth, Texas; and The Hanging Tree Gallery of Midland, Texas.

National Evangelism Workshop Set

First Christian Church (Disciples of Christ) of Amarillo will be the host of NEW80 (National Evangelism Workshop) May 5-7. More than 20 speakers will be at the workshop to demonstrate evangelistic techniques for the various members and ministers of the Disciples of Christ Churches nationwide.

Kenneth L. Teegarden, General Minister and President of the Disciples of Christ, will be among the noted speakers and William W. Hannah, Executive Secretary of the Department of Evangelism and Membership of the Division of Homeland Ministries of the Disciples of Christ. He was organizing minister of a racially integrated congregation in Cleveland, Ohio, which averaged 20 percent growth per year during his 12-year ministry.

A highlight of the workshop will be presentations on the "how to" of evangelism, led by 10 pastors from among the fastest-growing Christian churches during the past five years. The registration fee is \$45. Further information is available from First Christian Church of Amarillo, 3001 Wolflin, Amarillo, Texas 79109; National Evangelism Workshop 2323 Broadway, Lubbock, Texas 79401; or Disciples of Christ churches in your area.

One of the tragedies about a college education is that many graduates will not know what to do for a livelihood after commencement.

"Only the bold get to the top." Publilius Syrus

Re-Elect CLARK MIRES

Absentee Voting thru April 1st



School Election Sat. April 5th

Vote

Vote

Spearman School Board of Trustees

Clark Mires Is The MOST Qualified Candidate:

- ★ 1. The only incumbent seeking Re-election
- ★ 2. Has attended 151 out of 154 meetings while serving on your present board for 6 years.
- ★ 3. A 3 year officer on your present board
- ★ 4. Past President of Area School Board Association
- ★ 5. Former School employee in Texas For 11 years (1963-1974)
- ★ 6. Will have a child in each of our 3 schools in 1980-81.
- ★ 7. A PROVEN supporter of every school program.
- ★ 8. A PROVEN supporter of the Lowest possible Taxes.
- ★ 9. If re-elected, will be senior member of board

★ He is the only Proven Candidate ★

Our present board does not need 3 changes

Re-Elect Clark Mires

Pd. For by Supporters of Clark Mires

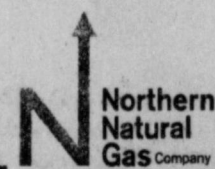
NORTHERN NATURAL GAS COMPANY is accepting bids for Janitorial Services for the District Office located 9 miles south and 7 miles east of Spearman on Hwy 281. The office will need to be cleaned twice a week. This includes running vacuum cleaner, dusting all furniture; cleaning ash trays, ladies restroom, coffee room, and emptying waste baskets each visit.

TWICE a year the following will be done:
Clean and wax all woodwork and paneling.
Clean all windows and window shades.

If requested, Northern will furnish all cleaning supplies.

Submit written bid to: Northern Natural Gas Company
Mr. C. A. Ellison
Star Route #1 Box 27-A
Spearman, Texas 79081

Bids must be in this office by March 31, 1980.

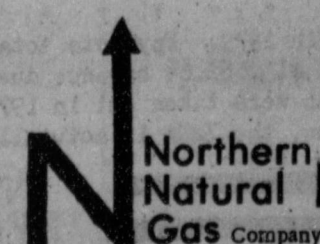


MAINTENANCE PERSON

REGULAR FULL TIME EMPLOYEE

NORTHERN NATURAL GAS COMPANY will take applications on TUESDAY, APRIL 1st, and WEDNESDAY, APRIL 2,

1980, between the hours of 9 A.M. and 3 P.M., for regular full time maintenance person. Apply at the Spearman District office, 8 miles south and 7 miles east of Spearman, Texas. Typical job duties are: facility clean up, assisting with overhauls of large internal combustion gas compressor engines, maintenance of vessels and towers all phases of pipeline repair, and some rotating shift work relieving regular operating crew during vacations or illness, etc. Pre-employment test will be given for the maintenance person job on Friday, April 11, 1980 at 7:00 P.M. at the Spearman High School and Saturday, April 12, 1980 at 9:00 A.M. at the Home Demonstration Bldg., 305 N. Bernice, Spearman, Texas for all persons that have completed an application. Northern Natural Gas Company is a major diversified energy company offering an attractive salary, and has an excellent benefit program. Equal opportunity employer.



LEGAL NOTICE

NOTICE BY PUBLICATION

STATE OF TEXAS

TO ALL WHOM IT MAY CONCERN, Respondent,

GREETINGS:

YOU ARE HEREBY COMMANDED to appear and answer before the Honorable 84th Judicial District Court, Hansford County, Texas, at the courthouse of said county in Spearman, Texas, at or before 10 o'clock a.m. of the Monday next after the expiration of 20 days from the date of service of this citation, then and there to answer the petition of DAVID GENE FLETCHER and DEBRA FLETCHER, Petitioners, filed in said court on the 27th day of February, 1980, against JANA HULL, Respondent, and said suit being number 2723 on the dock of said Court, and entitled "In the Interest of Laura Jene Hull, a child," the nature of which suit is to request the termination of the parent-child relationship and to adopt the child. Said child was born the 19th day of August, 1978 in Houston, Texas.

The Court has authority in this suit to enter any judgment or decree in the child's interest which will be binding upon you, including, but not necessarily limited to, the termination of the parent-child relationship, the determination of paternity, and the appointment of a conservator with authority to consent to the child's adoption. Issued and given under my hand and seal of said Court at Spearman, Texas, this 14th day of March, 1980.

Marie H. Gould
Clerk of the District Court
of Hansford County, Texas

He's the best physician that knows the worthlessness of the most medicines.
-Benjamin Franklin.

If the mythical man from another planet came to visit the earth he would probably go back at the first opportunity.



Under the direction of State Extension Horticulturist Everett Janne, Dr. and Mrs. Doug Steger (shown here) developed a landscape plan for their home in Hansford Hills. Janne will be speaking in

Spearman at the Homemaker's Clubroom April 2 at 1:30 p.m. on home landscaping. Dr. Roland Roberts, Area Vegetable Specialist will also give timely information on home gardening.

Landscape-Garden Seminar Set

A landscape and gardening seminar has been set for Wednesday, April 2, at 1:30 p.m. at the Extension Homemakers Clubroom in Spearman, according to Hansford County Extension Agents Layton Barton and Peggy Winegarner.

Everette Janne, Landscape Horticulturist, and Dr. Roland Roberts, Area Vegetable Specialist, will present the program.

Dr. Roland Roberts will be offering timely information on garden planning including varieties, planting dates, location, and fertilization.

Educational programs conducted by the Texas Agricultural Extension Service are open to all persons regardless of age, race, sex, socio-economic level, creed, religion, or national origin. The program is free of charge.

Anti-inflation plans focus on budget.

Hooker FFA Pig Sale Set

The Hooker FFA Alumni, a non-profit organization interested solely in the promotion of agricultural youth, is announcing their fifth semi-annual baby pig sale to be held at the Bus Barn, April 26 in Hooker, Okla.

Junior judging contest is scheduled for 11 a.m.; winner to receive free registered gilt with second through tenth places receiving buyers certificates of up to \$50. The sale will begin at 1 p.m. A concession stand will be provided by the Alumni ladies. A veterinarian will be on the premises. Consignors will be members of the Hooker FFA Chapter, with the exception of a few select guest consignors.

The physician is only nature's assistant.
-Galen.

Think It Over
If you are wrong, you can't afford to argue and if you are right, what's the use?
-Republican, Toronto.

Usually
The trouble with good advice is that it usually interferes with our plans.
-Chronicle, San Francisco.

Proof
Never question your wife's judgment-look who she married.
-Afterburner, Cecil Field.

Sweet Oblivion
Perhaps if we could forget our troubles as easily as our blessings we would live better.
-Tribune, Oskaloosa, Ia.

Stefan Kramar Watercolor Workshop Set

Stefan Kramar, internationally known artist, will be in Spearman during the week of March 31-April 4 teaching a course in watercolor at the Hansford Library. In the course, the students first begin with a "paint-a-long" in which Stefan will demonstrate a portion then the students will paint the same portion. After the first painting, the students are free to paint a subject of their choice.

On Friday at 1:30 Stefan has a critique of the weeks work and the session is open for the public interested in meeting Stefan and seeing his student's work. There will be over twenty students from Spearman, Perryton, Gruver and Guymon.

Stefan grew up in Racine, Wisconsin, and later graduated from Wisconsin Academy of Art

with a degree in illustrations. He entered the commercial art field at Schuster's Department Store in Milwaukee, but enlisted into the paratroopers in 1942 shortly afterward and married Mary who aids him during the workshop. The youngest master sergeant in the 82nd Airborne Division, he fought from Normandy to the Belgian Bulge. He returned with the Bronze Star with two clusters, the Presidential Citation, and the Purple Heart.

In 1947 he and Mary settled in Amarillo, where they still live. Employed at the McCormick Advertising in Amarillo, he left to become a free-lance artist in 1954.

He has been awarded the Printer's Ink Silver Medal of the AFA-AAW and won awards in

such shows as the American Watercolor Society, the American Artists Professional League, and the Texas Watercolor Society. In all, has won well over 40 national and regional awards.

Most of Stefan's painting depict the Panhandle and Surrounding country, from his experience as a cowboy. He now teaches art watercolor classes in Amarillo College.

G. William Miller, Treasury Secretary:

"We are not going to continue and assume that our job is not only to act powerfully today, but to follow up, to refine and make it work."

BIBLE VERSE

"I am he that liveth, and was dead; behold, I am Alive for evermore... and have the keys of hell and death."

1. Who made the above statement?
2. To whom was he speaking?
3. Where was the author at the time?
4. Where may this statement be found?

Answers

1. Jesus Christ
2. To John the Apostle in a vision
3. John was a prisoner on the Isle of Patmos
4. Revelation 1:18

if you haven't planted CONTI-SEEDS this is your year!

The thinking, planning and decision making that goes on before you buy your seed is one of the most important steps in your production program...And that's where Conti-Seeds™ growers take the lead.

There is a Conti-Seeds™ high-yielding hybrid right for your soil and growing conditions. And there is a Conti-Seeds™ dealer who can help you select the best hybrid for your individual growing program.

Make this year your best year for corn and grain sorghum production with Conti-Seeds™ hybrids.

why settle for less - plant

CONTI-SEEDS

Your Conti-Seeds™ Dealer Is

Continental Grain Co.

733-2481

Gruver, Tx.

THE YOUNG MENS CHRISTIAN ASSOCIATION HANSFORD COUNTY FAMILY

YMCA

P.O. Box 4 - 501 S. Hazelwood St. - Spearman, Texas - 806-659-2591

FINANCIAL STATEMENT FROM BEGINNING IN 1977

1977-78

TOTAL INCOME		\$29,288.27
EXPENDITURES		
Fund Raising.....	\$4,440.44	
Utilities.....	835.88	
Building Renovations.....	6,468.40	
Miscellaneous.....	787.29	
Equipment Purchase.....	9,500.00	
TOTAL.....		\$22,132.01
NET BEGINNING '79.....		7,156.26

1979 & Jan-Feb 1980

INCOME		
Memberships.....	\$24,513.00	
Contributions.....	12,745.50	
Vending & Concessions.....	8,221.13	
Youth Center.....	3,252.93	
Programs.....	21,662.28	
Miscellaneous.....	491.50	
Fruitcake Revue & Auction...	9,761.03	
Vacation Drawing.....	7,550.00	
Rent on Building.....	540.00	
TOTAL.....		\$95,893.63
EXPENSES		
Admin. Salary & Benefits....	\$17,169.96	
Dues.....	190.00	
Conferences.....	174.96	
Fitness Center.....	12,348.85	
Vending & Concessions.....	5,906.72	
Programs.....	19,043.38	
Utilities & Telephone.....	4,321.60	
Postage & Shipping.....	246.50	
Insurance.....	602.24	
Const. Note, Prin. & Int....	11,310.36	
Vacation Drawing.....	2,550.00	
Miscellaneous.....	900.83	
Cleaning Supplies.....	242.52	
Office Supplies.....	1,096.76	
National YMCA Fair Share....	1,661.31	
Construction & Renovation...	48,471.28	
TOTAL.....		\$126,234.27
*BANK NOTES.....		32,500.00
*PAST DUE.....		7,690.00
		(\$ 5,530.64)

A \$25,000.00 note was taken out in 1979. Payments totalling \$11,310.36 have been made on this note, leaving a \$13,687.64 balance due and \$5,655.18 due in August 1980. Two short-term notes were taken out in 1979 for \$7,500.00, both are past due, plus interest. Thus, the YMCA is actually \$5,530.64 in the red.

WE'RE IN THE PEOPLE BUSINESS



WE'RE IN THE PEOPLE BUSINESS



It has been about fourteen months since the YMCA officially became an agency in Hansford County. Therefore, the Board felt it should bring everyone up to date on the finances and concept of the YMCA.

The YMCA Board of Directors, which is unpaid volunteers, decided in 1978 to work toward two important steps simultaneously. (1) To develop programs. (2) To renovate and add to the old community building in Spearman.

This was an unusual step, because traditionally a new agency waits from four to ten years after it has been accepted in a community to solicit funds for constructing a facility. The YMCA Board of Directors felt there would be acceptance right away and that residents would financially support a family centered facility and construction from the beginning. This has created a greater financial burden on the YMCA and a strain on financial management this first year. Seventy-five thousand dollars for construction the first year is quite a burden.

Four sources of income are available to the YMCA to pay bills, insurance premiums, utility costs, equipment purchases and upkeep, office supplies, staffing, etc. They are: (1) Membership Dues (2) Sustaining Contributions (3) Program Fees (4) Special Events.

When setting the membership dues, fitness center dues and program fees, the Board sought to keep them within reach of most everyone, yet anticipating an excellent resident-member ratio to bring in the funds necessary to balance the operating budget. Comparing Hansford County YMCA's facilities, programs, staff, etc., with other YMCAs, we rate at the low end on costs to resident.

The citizens who were seeking an agency with which to relate finally choose the YMCA for four reasons: (1) The structure of the YMCA is a grass roots organization which leaves to the local community decisions on fund raising, program priorities, facilities, etc. The local YMCA is totally autonomous. (2) There are 135 years of experience in youth work, adult and family programming in the YMCA Movement, which is available to the

local YMCA, through a network of consultants in finances, programs, corporate planning, etc. (3) No directives are sent down from the National Movement to local YMCAs. Local YMCAs need merely to abide by the basic purpose, report statistics and pay a fair share support for the consultative and connectional relationship to the National Board. (4) The purpose, goals and objectives of the YMCA fit in with the Board's concept of developing the whole person in body, mind and spirit.

Before the YMCA came to Hansford County, a few programs existed for youth and adults. Now, with the YMCA, many youth programs have come under the sponsorship of the YMCA, several adult programs have been expanded, a number of adult programs have been rejuvenated and a new fitness center created.

Without memberships, without program fees, without contributions, without support of special events, none of the facilities, programs or professional management would be possible.

We solicit your continued support and encourage everyone to come join with us in your YMCA.

CONSTRUCTION AND RENOVATION AND EQUIPMENT COST BREAKDOWN

1977-78

BUILDING RENOVATION.....	\$6,468.40
EQUIPMENT PURCHASES.....	9,500.00

\$15,968.40

1979 - Jan/feb 1980

BUILDING RENOVATION.....	48,471.28
EQUIPMENT PURCHASES.....	10,885.11

\$59,356.39

TOTAL.....\$75,324.79

Alcohol Plant Decision Set

Five directors of the North-Texas Grain Products Cooperative returned recently from Washington, D.C., where, with representatives of five other coops, they viewed a presentation of a general feasibility study on plants to convert grain to fuel alcohol, which is used in the manufacture of the popular gasoline extender, "gasohol."

The study was prepared over a four month period by Arthur D. Little Company, of Cambridge, Massachusetts, the largest organization of its kind in the world. The presentation was preceeded by remarks of a representative of A.D. Little Co. to the effect that they seldom had encountered an assignment in which the results exceeded their expectations to the extent that this one did, and that they had no hesitancy in recom-

mending that the cooperatives involved proceed in planning to build such plants.

After meeting with representatives of Martin Ryan Haley, a public relations and governmental relations firm; Bill Leavitt Associates, the project management firm on the national level; and with their Representative and Senators, the directors returned home, very encouraged and highly enthusiastic about an early presentation of this information to their members. Such a meeting has been set for Thursday evening, April 10th, in Dumas. Members will be notified as to exact time and place.

In the meantime, the board has continued to meet with representatives of finance groups, as well as engineering and construction firms, and

expect on April 10th to present firm estimates to the members on costs of plant construction, money, and equity requirement. Representatives of A.D. Little Co. will be on hand to present the refined feasibility study to the membership, and the decision will then be made by all present on whether to go ahead with construction plans. If the decision is affirmative, a permanent board of directors will then be elected, by-laws adopted, etc.

The present board of directors are unanimous in their conviction that this project should be implemented as soon as possible, and state that they are happy to see so much interest from other groups, companies and corporations in building alcohol plants. The feeling is that every plant built will serve to further strengthen

the price structure throughout agriculture, with participation directly in fuel manufacture through the cooperative yielding still further benefits to members, financially.

Acceptance of new memberships in the Coop will be terminated prior to the meeting April 10th, and the local temporary directors, R.C. Porter and Dwayne TeBeest, urge any farmer who thinks he might be interested in joining the program to contact one of them for details in the next few days.

Approximately 65 farmers from the Hansford County area are already involved, out of a total membership of about 300.

The way to have good government is to have honest voters, as well as honest officials.

About Sun Rooms

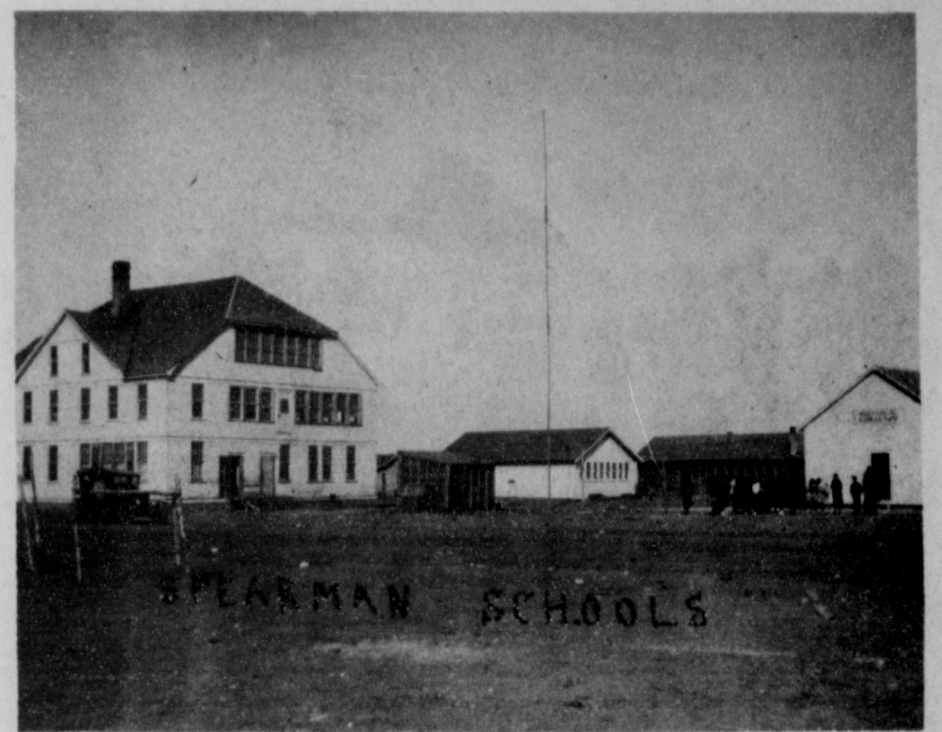
A number of economy-minded homeowners have built sun rooms in recent years. They help heat homes and reduce fuel bills. A recent report from California indicated a sun room project there had almost eliminated heating bills, at modest cost.

Here are basic considerations and advantages of a sun room: The sun room should ideally face south. A dark brick floor collects shortwave sun heat that comes through a wall of thermal-pane windows. Since brick-reflected heat rays are long wavelength rays, they can't penetrate the thermal windows to escape. Thus heat collects rapidly in the sun room.

To aid circulation, the sun room is often a step lower than the rest of the house. Then the hot air rises and moves into the house and pushes cold air into the sun room. Satisfactory circulation can thus be more easily achieved, without resort to pumps, pipes and fans. This is a vitally important point, on which outside advice is often helpful.

Since there are several government financial aids for such projects, and because they reduce monthly fuel bills, the cost of building a sun room (some, doing much of the work themselves, have built them for as little as \$4,000) is often quickly recoverable. And one is also reducing demand for imported oil in the process!

Many highway fatalities can be avoided if motorists will be courteous in their driving and obedient to traffic signs.



A far cry from the present Spearman schools is the early 1920 scene of Spearman schools. The school was moved to Spearman from Old Hansford.

Meet The Candidates Night Set

The Spearman Chamber of Commerce is sponsoring a "Meet the Candidates" night, Tuesday, April 1, 7:00 p.m. at the Spearman High School Auditorium.

Invitations have been mailed to all the candidates for city, county, school board, state and U.S. Congressmen. Each candidate will be given 5 minutes to tell the voters of Spearman and Hansford County as to why they should be elected. There will be a question and answer period after all of the candidates have spoken.

Door prizes will be given. We hope you will make plans to attend this "Meet the Candidate" night.

Extension Clubs

The Serendipity Home Extension Club met in the home of Sharon Archer, Friday, March 21. The meeting was called to order by President Linda Sanders. Roll call was answered by 6 members on "A Gadget I Use the Mosts."

Minutes of the previous meeting were read and approved and treasurer report given. Members voted for the Tasting Tea for money making project of council.

The luncheon was discussed. It will be May 1st at the Home Demonstration Clubroom. The menu will consist of Barbequed Chicken, roast, ham, Green Bean Casserole, scalloped potatoes, carrot dish, Broccoli Casserole, tossed salad, lots of jell-o salads, relish plates and many desserts. Tickets will sell for \$3.00 for Adults & \$1.00 6-12 under 6 free.

Everyone took their sandwiches to the Stock Show held March 21-22. Meeting adjourned. The hostess served a delicious cake to members: Linda Sanders, Debbie Benton, Mary Baker, Gayle Smith, Kay Loomis, and one guest Laura Mackie. Members absent: Susan Poole, Linda Winegarner, Cathy Gaffard.

The next meeting will be in the home of Gayle Smith. The Happy Homes Extension Club met Tuesday, March 18 in the home of Wanda Reed. The devotional was given by Wanda and roll call was answered by "My Favorite Kitchen Gadget."

Several upcoming events were discussed. The program, "Organization of Kitchen Drawers" was given by Wanda Reed.

The hostess, Wanda Reed, served refreshments to: Adalyn Barnes, Joyce Byers, Rose Cummings, Grace Johnson, Nan Nicholson and Patty Shepard. The next meeting will be Thursday, April 3 in the home of Adalyn Barnes.

Golden Spread Center News

Sheriff R.L. McFarlin spoke to the Golden Spread Club members Tuesday, March 18 about con games that are prevalent in Hansford County preying on senior citizens. The covered dish dinner was at 6:30 p.m. with part of it furnished by the Spearman Ministerial Alliance and Imogene Pogue acting as hostess. Fifty people were in attendance.

Before the dinner, Joan McClellan took everyone's blood pressure.

Sheriff McFarlin said that there were many con games but the three biggest ones at present were (1) Insurance Fraud, (2) Repair Racket, and (3) Lightning Rod Racket. He said that it was best to deal with local people. Write down the license plate number of anyone wanting to sell you a service. Ask to see their permit from the Chamber of Commerce. Beware of strangers.

Throughout the evening there were twelve tables of dominoes, forty-two, pitch and skip-bo.

Pitch and other table games will be played on Monday, March 24 from 2:00 to 5:00 p.m.

There will be a game evening on Tuesday, March 25 at 6:30 p.m.

Nina Hendricks will be driving the Golden Spread Center's van-bus on Wednesday, March 26, from 9:00 a.m. to noon, picking up the sixty plus bunch taking them shopping, on errands, and to meet appointments. Anyone needing transportation should call the Golden Spread Center (3521) on Tuesday and get your name on the list.

Marv Hendrickson will be instructing and inspiring people in the arts and crafts on Thursday, March 27, from 10:00 a.m. to 5:00 p.m. The projects they are working on will all be sold at the annual bazaar on the Saturday of the Hansford Round-Up Days. There is a covered-dish luncheon break at noon.

Games will be enjoyed by all who gather on Friday, March 28 from 2:00 to 5:00 p.m.

Golden Spread Center is for everyone who if fifty-five years of age or older without discrimination as to sex, color, race, ethnic background, national origin, religion, church membership, denominational preference, political party, or handicap.

Provoking Thought

Sign in a country cemetery: "All persons are forbidden to pick flowers from any but their own graves."

-Record, Columbia, S.C.

Scouts Participate in Nationwide Good Turn

The Adobe Walls Council, Boy Scouts of America, will participate in the 1980 Census Nationwide Good Turn on March 8-22.

More than 1,000 Cub Scouts, Boy Scouts, and Explorers will be knocking on front doors throughout 15 counties to deliver red, white, and blue leaflets explaining the 1980 census and its importance to the federal government. The official 1980 census questionnaires are expected to arrive at individual homes about March 28. The nationwide Census Day is April 1.

"Distribution of the leaflets will be handled differently by members of the three Scouting divisions," said Joe Chambers, scout executive. "Cub Scouts will distribute leaflets in their own neighborhoods. Boy Scouts will handle distribution within the area of the Adobe Walls Council but will include areas further from their homes than Cub Scouts. Explorers will

handle the outlying areas."

The leaflets to be distributed feature an American flag design on the cover. Inside, they include an explanation of how the census will be taken mostly by mail, a description of the confidentiality made to each citizen, and a listing of some of the benefits the community may receive as a result of the statistical information compiled.

Each unit that participates will receive a special certificate. "We are indeed proud to have been asked to participate in this national public education effort by the U.S. Bureau of the Census," Chambers said.

True

Opportunities might be more easily recognized if they didn't so often come disguised as hard work.

-Press, Grand Rapids.

IT PAYS TO PLANT

Paymaster

GR 1138

A Full Season Greenbug Fighter!

- ★ A full season hybrid adapted to conditions with good fertility and moisture supply
- ★ A "powerful emerger" with good standability
- ★ Threshes easily
- ★ Produces high-test weight grain
- ★ Good tolerance to anthracnose, MDMV and most foliar diseases
- ★ Good stress tolerance

Paymaster hybrids have been tested and proven successful in your area.

B & B FARM INDUSTRIES, INC.
BOX 638
SPEARMAN, TEXAS
659-2551

The statement of limited warranty and liability on each Paymaster bag is a condition of sale.

GUYMON, OKLAHOMA-CATTLE AUCTION MARKET - NEWS - LETTER

GREETINGS TO ALL CATTLE PRODUCERS

OUR REGULAR FRIDAY LIVESTOCK AUCTION WAS HELD HERE IN GUYMON OKLAHOMA AT THE PANHANDLE LIVESTOCK COMMISSION COMPANY. A GOOD RUN OF CATTLE AND CALVES WAS OFFERED FOR THE AUCTION LAST FRIDAY WITH A GOOD ATTENDANCE OF BUYERS AND SELLERS ON HAND FOR THE DAYS AUCTION.

PACKER COWS SOLD \$1.00 PER CWT LOWER SELLING FROM \$44.00 TO \$52.00 PER CWT. BOLOGNA BULLS SOLD STEADY SELLING FOR A TOP OF \$63.50 per cwt. STEER AND HEIFER CALVES SOLD ON A STEADY TO \$3.00 LOWER MARKET AND FEEDER CATTLE SOLD ON A STEADY TO \$1.00 LOWER MARKET.

FOR MAKING A CONSIGNMENT OR FOR MORE INFORMATION ON ONE OF OUR REGULAR LIVESTOCK AUCTIONS GIVE US A CALL HERE AT THE GUYMON YARDS OUR PHONE NUMBER IS 405-338-3378.

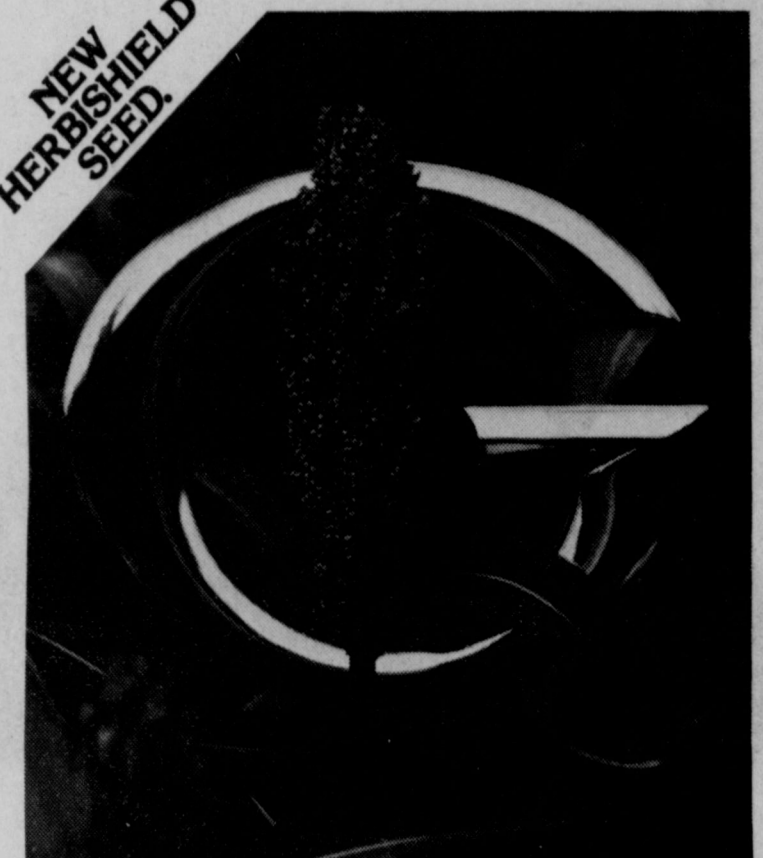
PANHANDLE LIVESTOCK COMMISSION CO.

Guymon, Okla.

405-338-3378

P.O. Box 879

NEW HERBISHIELD SEED



Look to the G for leading over-all performance.

Year after year, growers come back to Funk's G-522DR.

Why? Because it performs consistently. Through good years and bad, disease pressure or drought.

And now, G-522DR is available as HERBISHIELD seed, so you can use MILOCEP[®] herbicide for tough, highly effective control of both weeds and grasses.

All across the sorghum belt, G-522DR yields are impressive, topping major competitors time and again.

G-522DR is resistant to downy mildew. Head smut, too. And has resistance to Strain A of Maize Dwarf Mosaic Virus (MDMV-A), and tolerance to northern leaf blight. It's tropically adapted for extra weatherability. Develops sturdy stalks. Stands uniform. And produces high-quality golden-bronze grain.

Its wide adaptation and medium maturity make G-522DR easy to manage, a wise addition to most sorghum programs. Plant G-522DR this year. Chances are, you'll come back.

G-522DR, HERBISHIELD or regular. Setting a new pace in sorghum:



Funk's is a brand name. Numbers identify varieties.

The limitation of warranty and remedy on the tag attached to each bag of Funk's G Hybrids, sold in a part of the terms of sale thereof.

Bicep[®] and Milocep[®] are registered trademarks of CIBA-GEIGY Corporation.

We really want to be part of your sorghum program.

Speartex Grain
Spearman 659-3711

Aubrey Rasor
Gruver 733-2238

The Outhouse
Waka 435-5304
435-5377

Gary Cowley
Perryton
435-4909

History Book To Tell Stories Of Businesses

Just as the produce that flows from the far, mine or forest is the lifeblood of a community, then the businesses that serve these areas are its bones and brawn. Part of the book on the history of Hansford Co. will tell of these enterprises that grew up to serve the people in each town and its surrounding area. No advertisements will be accepted. Instead, space will be sold to let the history of your business be told, as follows:

One full page - 1400 words of copy and one photo, or 1225 words with two photos, or 1050 words and three photos depending on photo size.

ing on size of photo.

Quarter pages are also available.

Old time businesses should tell when their business came into being, why they wanted to establish their business in the county, how long they remained in business and what their contribution to the growth and development of the county has been.

New businesses should tell why they chose to go into business in Hansford Co. and how they feel growth and development in the county in the past has provided an opportunity for the business to succeed as well as how their business has promoted further progress for the county.

UIL Spring Meet Set For Lubbock

LUBBOCK--The 1980 University Interscholastic League (UIL) Region 1 Spring Meet for AAAA and AA conferences will be held April 16-19 and April 23-26 at Texas Tech University. Most events will be conducted Friday and Saturday of those periods.

Dr. Ray A. Purkerson, professor of education, is director-general of the meets.

Participants in literary, speech, drama, track and field, golf and tennis will vie for positions in the state UIL meet to be held in Austin in late April and early May.

The AA and AAA girls golf matches and the AA one-act play will begin competition April 17. Finals of the golf matches will take place the following day.

Also on the 18th will be AAAA one-act play, literary and speech competition, preliminaries and finals of girls track field, and opening round action of girls tennis. April 19 will feature preliminaries and finals of girls track and the closing rounds of girls tennis.

Following a four-day break, competition will resume with the Boys AA and AAAA golf match April 24. Opening rounds of boys tennis and preliminaries and finals of boys track will begin April 25. Finals of both the tennis and track events will be April 26.

Both boys and girls track and field events along with all

literary, speech and drama competition will take place on the Texas Tech campus.

Boys and girls golf will be held at the Meadowbrook Municipal Golf Course at Mackenzie State Park. Tennis competition is scheduled for the Lubbock Municipal Tennis Center.

VOLUNTARY EMBARGO

The Carter administration has asked U.S. companies not to export to the Soviet Union an estimated \$20 million in products relating to the Summer Olympics. The action was intended to show U.S. displeasure with continuing Soviet military involvement in Afghanistan, the administration said.



JEFF LACKEY (the Jet) flies over a hurdle at a recent track meet!



Devlyn McLain, Gruver; Sherry Greene, Spearman; and Margaret Garcia of Gruver receive awards during annual Spearman track meet!

Jim Jones places first in decathlon

Jim Jones of West Texas State soared 13-3 in the pole vault despite gusty winds, then staved off Charleson Steinbock's bid in the 1,500 meter run to capture first place in the South Plains College Spring Decathlon recently in Leveland.

Jones, a sophomore from Spearman, total 6,373 points in the gruelling two day event, leading almost from the outset. He is the son of Mr. and Mrs. Hershel Jones of Spearman. Jones piled up 817 points in the pole vault, and also earned 721 points in the 110 meter high hurdles.

In the two days, Jones posted the best performance in three events and was equal-first in a fourth. It was his first decathlon competition.

He was second in the discus with 561 points, and 3rd in the 1,500 meter run with 422 points.

White Deer Track Results

Spearman Girls placed second with 111 points in the White Deer Track Meet held last weekend.

In the 440 Relay, Spearman was first with 51.7.

Lee Ann Gibner, Spearman, was 3rd in the 880 with 2:41.0.

Kenda Burke was 1st in 100 Hurdles with 15.2, and Lee Ann Gibner was 3rd with 16.1.

In the 100 Sherry Greene was 1st with 11.9. Sherry was also first in long jump, 16-6-3/4. Kenda Burke was 3 in the high jump.

Spearman was second in the mile relay with 4:20.1.

In the triple jump, Sherry Greene was 33-10-1/2.

Kenda Burke was 2nd in Shot Put.

Canadian team won the meet, Groom was 3rd, Stinnett 4; White Deer 5; Follett, 6; Phillips 7; Texline 8; Vega, 9; River Road 10 and Hartley, 4.

In the Boys Division, Spearman placed 6th. Panhandle was first, Vega, 2nd; Phillips, 3; Stinnett, 4; and Sanford-Fritch 5. Groom, 7; Follett, 8; River Road 9; Canadian 10; White Deer, 11; Hartley, 12; and Texline 13.

In the 120 HH Brack, of Spearman was 3rd with 15.6, and he was first in the 330 IH, with 42.7, Lackey of Spearman was 2nd in 330 IH with 43.2.

In the 440 yd Relay, S. Tindell, M. George, A. Francis and D. Randall were 7th.

In the 120 HH K. Brack was 3rd, J. Lackey 4, and M. George 6.

Dennis Randall was 5th in the 100 yd dash.

Andy Francis was 5th in the 440 yd. dash.

In the 330 yd. IH, K. Brack was 1st, J. Lackey 2nd, and Dennis Randall 8th.

In the 220 yd dash Dennis Randall was 8th.

In the Mile Relay, M. George, M. Blanton, J. Morley, and A. Francis had a time of 3:47.2.

Stephen Tindell was 6th in long jump.

Jimmy Haden was 7th in Discus. Mike Dennis tied for 6th place in the High Jump.

In the Pole Vault Doug Fuhertz was 5th and Jamie Julls was 6th.

The next meet will be in Canadian Saturday.



The word "nobility" comes from the Latin nobilis. It means to be known to be notable or to be worthy of notice.

Every GTE consultant comes with these four special features:

When you call one of our business consultants to help plan a phone system, they put a full team on the field.

If needed, they'll call in their *communications industry specialists* (1) for their expertise in industrial applications. Or they'll bring in new *equipment trainers* (2) to show your staff how to use the new system. If you're putting up a new structure, their *building specialist* (3) will be there to help.

And then, of course, there will be the *installer/repairman* (4) to make sure everything goes in right and keeps working right.

In other words, when you talk to our Communications Consultant, you're talking to a whole team. Call them today and make an appointment for a comprehensive survey of your business telephone needs.

We keep you talking.



Nature, time, and patience are the three great physicians.

-H.G. Bohn.



SMITH, WESSON & SCHWARZENEGGER...Gingham-clad Ann-Margret sizes up handsome stranger Arnold Schwarzenegger as he shows her his six-shooter in "The Villain," the rollicking western from Columbia Pictures, which opens 3-26 at the LYRIC Theatre.

JOBLESS & BENEFITS

The Senate has voted overwhelmingly to make it harder for some jobless Americans to get long-term unemployment benefits in hard economic times. The legislation is a relatively painless way to save more than \$300 million a year in federal spending.

CLERKS, TYPISTS NEEDED

General clerks and clerk-typists are the workers most in demand, according to the latest job bank openings listed by the Department of Labor. The department survey disclosed 402,309 permanent, full-time jobs available across the country in January, the latest month for which figures are available.

NOTICE

The deadline for filing applications for residential homestead exemptions in the Spearman Independent School District is March 31, 1980. These exemptions are available to all resident home owners. An additional exemption is available to those home owners who were 65 years of age or over on January 1, 1980.

Applications must be filed before April 1 of each year with the school tax office. Forms are available at the tax office at 403 East 11th Street, or call 659-2116.

LYRIC THEATRE

PHONE 806-659-2812

ONE SHOW AT 7:30 P.M.

SUNDAY, MONDAY, TUESDAY, WEDNESDAY, NN

TWO SHOWS AT 7:00 P.M. AND 9:00 P.M. FRIDAY & SATURDAY

NOW SHOWING

KIRK DOUGLAS
ARNOLD SCHWARZENEGGER
FOSTER BROOKS

ANN-MARGRET
RUTH BUZZI
MEL TILLIS
PAUL LYNDE

...the fastest fun in the west!



COLUMBIA PICTURES presents A RASTAR-MORT ENGELBERG Production A HAL NEEDHAM Film KIRK DOUGLAS · ANN-MARGRET
ARNOLD SCHWARZENEGGER in "THE VILLAIN" starring FOSTER BROOKS · RUTH BUZZI · JACK ELAM · STROTHER MARTIN
ROBERT TESSIER · MEL TILLIS Guest Star (PAUL LYNDE) Music by BILL JUSTIS Executive Producer PAUL MASLANSKY Written by ROBERT G. KANE
Produced by MORT ENGELBERG Directed by HAL NEEDHAM Production Services by RASTAR FILMS, INC. RASTAR PG PARENTAL GUIDANCE SUGGESTED
SOME MATERIAL MAY NOT BE SUITABLE FOR CHILDREN

MARCH 26th Through APRIL 1st



Usted tiene una cuenta pendiente con JORGE LUKE on LA HORA DEL JAGUAR

PELECULAS MEXICANAS

Jorge Luke, Leticia Perdigón, Christa Linder y Wally Barron

LA HORA DEL JAGUAR

con René Casados, Ignacio de Rubin, Queta Lavat, Carlos Rotzinger

Dirección Alfredo B. Cavanna

SUNDAY MARCH 30 AT 2 P.M.