



Bob Bouton, of Dumas; Flo Messall Phillips Public Relations lady, and Everett Tracy presented the program at Lions Club in Spearman Tuesday. The Club was delighted to hear this charming lady, and also glad for Bob to visit us for dinner.



TOP THREE IN PAGEANT: Teresa Wakefield was named Miss Wheatheart of the Nation Monday evening and the other scholarship winners of the 33rd annual pageant include (right) Jennifer McLain, Miss Hansford County, and (left) Kathy Rich, Miss Perryton. Ms. Wakefield receives a \$1,000 college scholarship while the Spearman beauty has been awarded a \$500 scholarship and Perryton's favorite receives a \$250 scholarship. One of the best crowds in years attended the Miss Wheatheart pageant.

# The Spearman Reporter

VOLUME 70, NO. 40

THE SPEARMAN REPORTER, SPEARMAN, TEXAS 79081

THURSDAY, AUGUST 16, 1979

## Voters Approve Bond Issue

Voters in Hansford County in Saturday's referendum approved the issuance of \$1.4 million in bonds for hospital improvements and a convalescent care wing with a vote of 419 for the issue and 271 against.

Voters also approved Proposition 1 which gives the hospital board the authority to allow a tax at the maximum rate not to exceed 75 cents per \$100 assessed valuation, with a vote of 424 for and 267 against.

Voters in Spearman which consisted of Precinct No. 1, 2, 5 and 6 approved the increase of tax rate by 320 to 164 against. Voters in Gruver, precincts No. 3, 4 and 7 were against the increase with a vote of 88 against and 83 for, and in Morse

21 voted for the tax increase and 15 against.

On Proposition 2, for the purpose of issuing \$1.4 million in bonds, Spearman voted 322 for and 164 against. Gruver voters voted 78 for the bond issue with 91 against and in Morse 19 voted for the issue and 16 against.

Hansford Hospital board of directors met Monday evening and canvassed the ballots. The official vote was 424 for Proposition 1, with 267 against; and for Proposition 2, 419 were for and 271 were against.

The regular meeting of the Hansford Hospital board will be Thursday night when they are expected to hire an architect and get started on the project.

## Orville Walker Services Held

Graveside services for Orville Vane Walker, Sr., 88, were held at 11 a.m. Monday in Gruver Cemetery. The Rev. Tom Fuller, pastor of United Methodist Church, officiated. Arrangements were by Boxwell Brothers Funeral Home of Spearman.

Mr. Walker died at Hansford Hospital early Friday morning.

Mr. Walker, born in Bosworth, Mo., moved to Hansford County in 1902. He was a

farmer and was Deputy Sheriff of Hansford County from 1944 to 1970.

He and his wife, Alice Spivey, were married in 1916 in Texoma. He was a member of Spiritualist Alliance and Woodmen of the World.

Survivors include his wife; three sons, Orville V. Walker, Jr., Roy Walker and Ross Walker, all of Gruver; nine grandchildren and 11 great-grandchildren.

## School Budget Of \$2,080,617 Approved

The board of trustees for the Spearman ISD met Thursday, August 13.

They met with YMCA representative Jim Benson who requested use of the gymnasium for activities during the school year. No action was taken. The board will meet again to discuss the rules and regulations for the YMCA program.

Authorization to pay bills was given. Trustees approved the 1979-80 official budget in the amount of \$2,080,617.

Resignations of Jim Hester, Cindy Sweeney, Patty Harris and Patsy Malone were accepted, and the board hired Lynette Campbell as a 3rd grade teacher, Deborah Mayhew as 2nd grade teacher, E. C. Jenkins, assistant coach and health, Mrs. E. C. Jenkins, speech and drama, Lee Ann Josephson,

homemaking, and Janie Kunselman as homebound teacher.

The board approved the depository contract with First State Bank of Spearman and employed Mason-Hinton for audit of 1978-79.

Prices for meals in cafeteria were set at 35 cents for breakfast, and lunch prices of 70 cents for kindergarten through 4th grade; 75 cents for 5th thru 8th, 80 cents for grades 9 through 12, faculty \$1.25 and guests \$1.75.

Bids were accepted for Borden's to provide milk and Mead's for bread for the school district.

The board passed a resolution to contract exclusively with Hansford County appraisal District for appraisal services.

Football tickets for the 1979 season will go on sale Monday at the school business office.

## Football Tickets On Sale Monday

Season tickets for Spearman Lynx home games will go on sale Monday, Aug. 20.

The first home game will be against Stratford on Sept. 7 at 8 p.m. in Lynx Stadium. Other home games will be Tulia on

Sept. 28; Guyton, on Oct. 12; Perryton, Oct. 26 and Boys Ranch, Nov. 9.

Tickets may be obtained at the school business office at Spearman High School.

## YMCA Planning Volleyball & Basketball Leagues

The Hansford County YMCA announces registration for individuals and teams interested in volleyball and basketball. A team representative or an individual may stop by the YMCA at 501 S. Hazelwood to enroll.

Competition will begin the first week in September. The number of teams, nights and other arrangements will be made at meetings of representatives the week of August 27.

Plans are for competition as follows: Women's A League Volleyball for the experienced player. Women's B League Volleyball for the less experienced. Men's A League, Men's B League for volleyball. In addition, a Men's Basketball League will be formed. If enough interest is shown there can also be a co-educational recreation volleyball league. Teams may have to be limited. So enroll early. Time is limited, as the season will be the months of September and October only in this first round of competition.

### MEN'S FLAG FOOTBALL

If enough interest is shown, a Men's Flag Football League will be organized, with play at the old lynx stadium on either Saturday or Sunday afternoons. If you are interested, please enroll as a team or individually at the YMCA. Competition to begin after the middle of September.

### WOMEN'S SLOW PITCH SOFTBALL TOURNAMENT

The six teams competing in the YMCA Slow Pitch Softball League will have a double elimination tournament beginning Monday, August 20. The competition will continue each evening beginning at 7:00 on Tuesday, Thursday, Friday. The championship game will be at 8:00 Friday, August 24. The match-ups for Monday evening are: Odds & Ends by Sports Tally vs Red Hots by First State Bank; Junior Lusby Cats vs Firettes by Volunteer Fire Dept.; John Deere Does by Hansford Implement vs Bottoms Up by Spear Tex. Games are at 7:00, 8:00 and 9:00 Monday evening.

### MEN'S SLOW PITCH TOURNAMENT

Tonight (Thursday) and tomorrow night the semi-finals of the Men's Slow Pitch Softball League Tournament will be held. Games begin at 7:00 both nights. The championship game for the men will begin at 8:00 on Friday, August 17.

### MEMBERSHIP INFORMATION ABOUT THE YMCA

The YMCA has a Membership Information brochure available outlining the goals and objectives of the Hansford County YMCA, rates for join-

## Commissioner's Meeting

Hansford County Commissioners met Monday, August 13 in regular session.

Minutes of the previous meeting were approved as well as the treasurer's report. Bills were ordered paid.

They voted to send Helen Dry, Tax Assessor, to a Tax Seminar in Austin.

An order was passed to publish a notice of budget hearing and proposed use of Revenue Sharing Fund.

They approved funding of \$150 monthly for H & S Ambulance. Previous funding had been \$100.

Commissioner's approved the county treasurer's quarterly report.

Discussion was held on a feasibility study for heating and cooling the courthouse with architects Shiver, Megert and Associates. No action was taken at this meeting.

Salaries of some county employees were adjusted, conforming with longevity policy of the county.

They passed an order to request return of lateral tax fund from the state for 1979 which will amount to \$17,065.00

## Texas A Major Target For Foreign Land Investment

According to preliminary totals, Texas is the leading target of foreign investors in U. S. farm land, Tony T. Dechant, President of the National Farmers Union, reported here today.

Speaking at the County Barn, at a session sponsored by Farmers Union county organizations of the Northern Panhandle area, Dechant said that about 9% of the foreign investments in U. S. farm land involved Texas properties and that a majority of the acquisitions have taken place during the past three or four years.

Dechant said the alien investment information is based on the first returns under the Foreign Agricultural Investment Disclosure Act. Foreign investors, who had an interest in U. S. farm land as of February 1, 1979, when the law became effective, were required to disclose such holdings to the

county ASCS Office in which the land is situated. Investors acquiring an interest in U. S. farm property after February 1, or hereafter, have 90 days within which to make the disclosure.

"Farmers Union was instrumental in persuading Congress to approve the Disclosure Act last October," Dechant said, "because people have a right to know the truth about the invasion of foreign capital. We maintained that once the people have the facts, they can determine whether the legislature should impose restrictions."

The Farmers Union official observed that in several states a Reporting or Disclosure Law was the initial step preceding state legislation to limit corporate or alien farm ownership.

Dechant termed the influx of foreign capital into U. S. agriculture "un-needed, disruptive

and destabilizing."

"Of course, there has been a capital crunch of varying severity for several years, but the real problem is a lack of farm income," he explained. "If farmers had decent farm income, there would be no problem obtaining necessary borrowed funds for production purposes."

Dechant said that a recent general accounting office (GAO) spot survey of 148 counties in 10 states also revealed some disturbing data on alien investment in Texas agriculture.

The average price paid by foreign investors for Texas farm land was about \$250 an acre higher than the average paid by domestic purchasers in the same counties, he related.

An alarming percentage of the alien owners—about 20%—were in the process of changing land use, GAO reported, for

example, from range land to cropland in Texas.

Only about 12% of the foreign investors, reported in the GAO study, participated in USDA Soil Conservation activities and other farm programs.

Dechant said that the GAO Report reveals that a high proportion of foreign purchases is being concealed through the notorious Caribbean Tax Haven, the Netherlands Antilles. The report says that about 36% nationally and about 40% of Texas transactions are so handled, to conceal ultimate ownership and to obtain a virtual federal tax-free status.

### MARKETS

Wheat	\$3.87
Milo	4.45
Corn	2.94
Soybeans	6.15
Barley	2.14

## Boys Ranch Rodeo to spark Labor Day

At Cal Farley's Boys Ranch, nearly 300 pint-sized cowboys are getting ready for their thirty-fifth annual Boys Ranch Rodeo, a traditional Labor Day weekend event.

In anticipation of record-setting crowds for the two performances on September 2 and 3, the Ranch rodeo arena has enlarged general admission sections that will accommodate an extra 1,500 people. Most sections of the arena have been covered to provide for the comfort of the rodeo guests.

Another added attraction will be Texas-sized barbecue beef plates that will be prepared and sold by the boys for only \$2.00.

About 150 boys will be contestants in the rodeo. They will compete in bareback bronc riding, and also be trying for the best time on Brahma bulls, steers, calves and stick horses. It is the only rodeo of its kind in the nation, as the only contestants are the boys riding professional rodeo stock under

ing, what the facilities and programs are available for each type of membership, etc. If you would like one of these come by the YMCA at 501 S. Hazelwood or call 659-2591 and one will be mailed to you.

Charter Memberships to the Hansford County YMCA are now available. One needs to get a membership application card, complete the information and arrange for payment. YMCA memberships are good for one year from the date of purchase. Fees are: \$25 for youth, \$35 for adults, \$45 for families and \$50

for the Fitness Center per person, plus a youth, adult or family membership.

The YMCA is still working toward completing the youth center and fitness center, but you are welcome to come by and see the progress and take out your membership. Those memberships purchased prior to the actual opening of the facility will have an anniversary date the day the facilities are open. So we encourage you to determine the type of membership in which you are interested and sign up anytime now.

## Lesly Remains In Critical Condition

Monte Lesly remains in critical condition in an intensive care unit at St. Anthony's Hospital in Amarillo following injuries he received in a two-vehicle wreck August 7 in northern Hutchinson County.

Bobby Wyrick, the driver of the other vehicle, was also injured but has been released from Hansford Hospital.

## Soccer Team To Play Dumas

The Spearman Soccer Team will play the Chile Dumas Team Saturday, August 18 at 4 p.m. on N. Snider.

There are sixteen members on the team and they began playing about a month ago. Juan Avila is the coach and the assistant is Manuel Gomez. Captain of the team is Andres Vargas.

So far the team has played three games, they have lost two, to Chile Dumas and to Berger, and have tied Garden City.

Everyone is invited to the game Saturday evening.

## Hospital News

Patients in Hansford Hospital are Mamie Dry, Nikki Jones, Herlanda Hernandez and daughter, Claudia Barton and son, Richard Butler, Eddie Rogers, Dora Wombie, Lawrence Willbanks, Tony Villines, Ruby Lieb, Faye Hickerson, Ruth Gumfory and Andrew Bort.

Dismissed were David Hext, Myrna Biggers and daughter, Deborah Tidwell, Elwanna Eaton, Frey Porter, Margie Barkley, Nancy DeLuna and Herbert Kirk.

Mr. and Mrs. Jimmy Hester returned Monday from Stillwater where they had been the past ten days staying with their grandchildren while their parents, Mr. and Mrs. Larry Plank of Stillwater, and Mr. and Mrs. Tony Hester of Lubbock went to Hawaii.

R. C. A. rules. The rodeo is also a reunion for the approximately 3,000 boys who have lived at the Ranch since 1939.

"The sinner who spends and gives away is better than the devotee who begs and lays by." Sadi



## Free & Reduced Price Guidelines For School Meals

Children from families whose income is at or below levels shown on the attached scale are eligible for free and reduced price meals. If children are eligible for free meals, they are also eligible for a free extra carton of milk, if served at a time other than the lunch hour. The reduced price for lunch and breakfast is 10 cents. If your income is greater than those shown, but you have unusually high medical bills or shelter costs in excess of 30% of your income, or special education expense due to the mental or physical condition of a child, or disaster or casualty losses, your children may still be eligible.

The school children of parents or guardians who become unemployed are eligible for free or reduced price meals and milk during the period of unemployment, provided that the loss of income causes the family income during the period of unemployment to be at or below the levels shown on the attached scale.

In certain cases, foster children are also eligible for these benefits. If you have foster children living with you and you wish to apply for such meals and milk for them, please notify us or indicate it on the application.

All children are treated the same regardless of ability to pay. In the operation of child feeding program, no child will be discriminated against because of race, sex, color, or national origin.

Applications for free and reduced price meals may be made anytime during the school year and forms are available in the school offices.

### LUNCHROOM PRICES & TICKET INFO

Due to the rise in food cost, labor and all other items necessary in the operation of the school lunchrooms, prices will be increased this year. Elementary lunches will be 70 cents and tickets may be purchased for 1 week for \$3.50; 2 weeks for \$7.00; and 20 days for \$14.00. In the Jr. High lunches will be 75 cents and tickets may be purchased for 1 week for \$3.75; 2 weeks for \$7.50; and 20 days

for \$15.00. In the High School lunches will be 80 cents and tickets may be purchased for 1 week for \$4.00; 2 weeks for \$8.00; and 20 days for \$16.00.

School personnel lunches will be \$1.25 and guest lunches will be \$1.75. Breakfast prices for all students will be 35 cents and tickets may also be purchased

for the breakfast program. Tickets for the Elementary students will be sold on registration day in the all-purpose room, August 24th from 8:30-10:30 a.m.

Family Size	Free Meals	Reduced-Price Meals
1	\$0 - 4,590	\$ 4,590 - 7,160
2	0 - 6,040	6,040 - 9,420
3	0 - 7,490	7,490 - 11,680
4	0 - 8,940	8,940 - 13,940
5	0 - 10,390	10,390 - 16,200
6	0 - 11,840	11,840 - 18,470
7	0 - 13,290	13,290 - 20,730
8	0 - 14,740	14,740 - 22,990
Each Additional Family Member	\$1,450	\$2,260

### Peggy's Pointers

Peggy Winegarner  
Co. Extension Agent (H.E.)  
Hansford County

Your requests for information on use of microwave ovens in home food preservation has prompted the following on BLANCHING FRESH VEGETABLES IN MICROWAVE OVENS.

1. PREPARE VEGETABLE by washing, peeling, slicing or dicing as you normally would.
2. MEASURE only 1 pound or about 1 quart of vegetable per batch into recommended casserole.
3. ADD WATER as given in chart. DO NOT ADD SALT.
4. Cover casserole. SET POWER AT HIGH OR COOK SETTING.
5. TIMING FOR ONLY 1/4 TO 1/2 TIME GIVEN ON FRESH VEGETABLE COOKING CHARTS, STIRRING WELL AFTER HALF OF BLANCHING TIME AND AFTER BLANCHING.
6. PLUNGE INTO ICE WATER IMMEDIATELY to prevent further cooking. Spread on paper towels, blotting with additional towels to remove excess moisture.
7. PACKAGE in freezing containers, labeling amount and date. Note: Pint-size freezer

containers most closely resemble the size boxes used for packaging commercially frozen vegetables. If this size container is used for freezing, reconstituting is easy by following cooking instructions in the Frozen Vegetables Cooking Chart in your microwave cookbooks.

Your microwave oven can help you enjoy harvest time all year long! You will notice that blanching times of vegetables are not much different than same times given in conventional blanching information. However, conventional blanching usually involves a certain amount of time to bring large, heavy pots of water to boil and also a steamy kitchen. The "cool cooking" convenience of the microwave oven—and indeed some time savings—are advantages.

### REASONS WHY FRUIT FLOAT

- If your home canned fruits aren't picture perfect—check your technique. Did you:
1. Use overripe fruit
  2. Pack fruit too loose
  3. Use too heavy syrup
  4. Process too long
  5. Process at too high temperature

For more information on home food preservation, call or come by the County Extension office (Courthouse basement). Bulletins are available free of

charge. Phone : 659-2030 or 733-2901. We serve people of all ages regardless of race, color, national origin or religion.

### WTSU fall registration set

WTSU—Fall semester registration at West Texas State University will be Aug. 29 in the WTSU Activities Center.

The registration opens at 8:40 a.m. and concludes at 7:20 p.m.

Classes begin Aug. 30, and will end with final examinations from Dec. 13 through 19. The last day to register and pay fees is noon Sept. 8. The University holidays include Labor Day, Sept. 3, and Thanksgiving recess from noon Nov. 21 through Nov. 24.

For tentative enrollment, the student must bring his WTSU ID or his social security card so he may obtain an ID. Full admission requires the student complete the few guidelines listed the current general catalog, including receipt in the Registrar's Office of the high school or college transcripts and/or college entrance examination scores.

## Cut Your Utility Bill In Half--With Fans

COLLEGE STATION—Toss out your air conditioner and cool off with fans?

Absurd? Not if you want to slash your utility bill in half in some Texas areas.

Air conditioning accounts for up to 50 percent of all home energy used in some areas of Texas, says Dr. Jane Berry, a housing and home furnishings specialist.

Here are two types of fans to start with -- in deciding which will do the best job in your home:

**CIRCULATING FANS**  
Circulating the air inside the home makes you feel cooler because it speeds up evaporation of moisture from the skin. These fans "help" air conditioning -- or work alone.

Fans for this job include standard table-top fans, "box" fans that sit on the floor or a

flat, steady surface, and the old-time ceiling fan.

**VENTILATING FANS**  
Use ventilating fans without air conditioning -- they need open windows.

Fans that ventilate do two things: they exhaust hot, stagnant indoor air to the outdoors, and they bring cooler outside air into the house. They're most effective at night -- or at times when outdoor air is cooler than air inside the home.

To use a ventilating fan, place it in an open window and seal up space around it. Also, shut windows near it for maximum drawing power. Then open a few windows on the opposite side of the area to be ventilated -- that may be just one room or the entire house.

**WHY FANS?**  
Texas is rediscovering the fan.

Many Texas residents already report that using the "right" fan lets them run air conditioners at higher settings -- or simply turn them off -- and still stay comfortable.

Research says that a fan makes an air-conditioned room feel six to eight degrees cooler.

Fans use only about 150 watts of electricity or less, while a typical room air conditioner uses about 860 watts.

### Tri-State fair parade

Tri-State Fair Parade  
Marching bands, floats, military units and horses will be a part of the big parade that will open the 1979 Amarillo Tri State on Monday, September 17.

The parade will begin at 11th and Polk Streets in Downtown Amarillo at 10:00 a.m.,

according to John Kuhn, Parade Chairman. The theme of this year's parade is "Energy-Past, Present and Future".

Cash awards of \$100 each plus trophies will be presented to the three float entries that carry out the parade theme of past, present and future. Trophies will also be awarded in nine other categories to best overall entry, military, equestrian, band, ROTC, civic and non-profit, youth, agriculture (adult) and agriculture (youth). Awards will be presented at the fairgrounds on the outdoor stage at 7:00 p.m., Monday, September 17.

Entries must be submitted to the fair office no later than September 1, 1979. For entries or additional information, write or contact Amarillo Tri State Fair, P.O. Box 31087, Amarillo, Texas 79120.

HERGERT'S HAS IT ALL,  
New cars, used cars,  
new pickups, trucks,

**SPECIALS GOOD WHILE SUPPLY LAST'S! LIMITED SUPPLY!!**

**SHOP ALLSUP'S AND SAVE!**



**ALLSUP'S**  
CONVENIENCE STORES

**PRICES EFFECTIVE AUGUST 16-18, 1979**

NOW OPEN IN Gruver Watch for our Grand OPENING

**WE RESERVE THE RIGHT TO LIMIT!**

## BACK-TO-SCHOOL SALE

QUARTERS SHURFRESH MARGARINE

**2 79¢**

16 OZ CTNS

BUTTERMILK SWEETMILK SHURFRESH BISCUITS

**6 79¢**

8 OZ CANS

ASSORTED FLAVORS SHURFINE POP

**6 \$1 00**

12 OZ CANS

<p>CAMPBELL'S TOMATO SOUP NO. 1 CAN</p> <p><b>25¢</b></p>	<p>WHOLE PEELED SHURFINE TOMATOES 10 OZ. CANS</p> <p><b>3 \$1 00</b></p>	<p>KRAFT MIRACLE WHIP 32 OZ. JAN</p> <p><b>99¢</b></p>
<p>KLEEMEX FACIAL TISSUE 100 CT. BOXES</p> <p><b>3 99¢</b></p>	<p>SHURFINE WK CS GOLDEN CORN 17 OZ. CANS</p> <p><b>3 \$1 00</b></p>	<p>CREAMY CUCUMBER FRENCH THOUSAND ISLAND KRAFT DRESSINGS 8 OZ. BTL.</p> <p><b>3 \$1 00</b></p>
<p>SUNSHINE CHOCOLATE FUDGE COOKIES 16 OZ. PKG.</p> <p><b>79¢</b></p>	<p>AFFILIATED TYPING PAPER 100 CT. PKG.</p> <p><b>59¢</b></p>	<p>RATH'S PURE PORK SAUSAGE 1 LB. ROLL</p> <p><b>79¢</b></p>
<p>FISH STICKS 8 OZ. CTN.</p> <p><b>59¢</b></p>	<p>QUALITY AND SAVINGS FROM SHURFINE AND ALLSUP'S!</p>	<p>SMOKE MAPLE HICKORY SMOKE RATH'S BACON 1 LB. PKG</p> <p><b>\$1 19</b></p>
<p>DELICIOUS SHURFRESH BACON 1 LB. PKG.</p> <p><b>99¢</b></p>	<p>PURE CRISCO 3 LB. CAN</p> <p><b>\$1 99</b></p>	<p>SHURFRESH MEAT BOLOGNA 12 OZ. PKG.</p> <p><b>99¢</b></p>
<p>SHURFINE BATHROOM TISSUE 4 ROLL PKG.</p> <p><b>79¢</b></p>	<p>ALL VEGETABLE CRISCO OIL 16 OZ. BTL.</p> <p><b>99¢</b></p>	<p>BORDEN'S HI-PROTEIN MILK 1 GAL. CTN.</p> <p><b>89¢</b></p>
<p>ALL PURPOSE SHURFINE FLOUR 5 LB. BAG</p> <p><b>69¢</b></p>	<p>CHUNK STYLE SHURFINE TUNA 6 1/2 OZ. CAN</p> <p><b>69¢</b></p>	<p>BORDEN'S ASSO. PREMIUM ICE CREAM 1/2 GAL. DR. CTN.</p> <p><b>\$1 49</b></p>

ALL GRINDS SHURFINE COFFEE

**\$2 29**

1 LB. CAN

AFFILIATED FILLER PAPER

**59¢**

200 CT. PKG.

GRANULATED SHURFINE SUGAR

**\$1 19**

5 LB. BAG



Because of The DEALS we've made on our New Pontiacs, Buicks, & GMC's we have Traded for Too many NICE low mileage used cars & trucks!!

### WE HAVE ON HAND--

- 8-78 Model Cars & Trucks
- 9-77 MODELS
- 5-76 MODELS
- 6-75 MODELS
- 5-74 MODELS
- 10-73 MODELS

(We have many older MODELS Too numerous to mention that would make excellent work or school cars & trucks, )

### WE ARE GOING TO MOVE THEM AT A PRICE YOU ARE GOING TO LIKE!!

We know that the way we are trading that we're going to get a lot more traders, and we have to Make Room for Them.

We still have one of the best SELECTIONS OF PONTIACS, BUICKS, & GMC'S In the PANHANDLE..... But it won't LAST LONG

When you are ready to buy, give us a chance! You'll see why we are one of the best trading dealerships in the Panhandle.

**HERGERT**  
Pontiac, Buick, GMC

"The Best For Sales, Service & Body Shop"

WE APPRECIATE YOUR PATRONAGE!!

S. Hwy. 207

808-858-3721

Spearman, TX



# WANTED ADS

## CAPROCK MONUMENT CO.

Division of George Grimes, George Grimes, Colored Grimes, & Brown

represented by

## BOXWELL BROS. FUNERAL HOME

519 S. EVANS  
659-3802

Hansford County Planned Parenthood  
265. Haney  
659-2483  
Spearman  
Mon.-Fri.  
8 a.m. to 12 noon  
30S-rtm

## SERVICES

**SERVICE:** Pits cleaned, wet or dry. Dragline or loader. Also, dozer, grader, carry-all service. Lee Roy Mitchell, 806-733-2384, Gruver, Texas 79040.

**Fee Wee's Plumbing Service**  
Roto-roofer, Acoustical Ceilings, Blown Insulation in walls and ceilings. **Appliance Service**, used appliances for sale. 659-2811 or 659-3781.  
20-rtm

**NEW STEAM SHAMPOOER**  
with brushes  
Rental \$8.95 per day. Available at 716 Cotter Drive after 4:00 p.m. and Saturdays and Sundays. Call 659-3437. Regular Steam Rinse & Vac Shampooer, \$5.95 per day at Gordon's Drug and after 4:00 p.m. and Saturdays and Sundays at 716 Cotter Drive.

**NOTICE**  
Wallace Monument Co., Monuments, Curbing, Grave Covers  
Local Representative  
**LEONARD JAMESON**  
659-3406  
20-rtm

Alcoholic Anonymous meeting 8 p.m. Friday, Home Demonstration Club building. 305 N. Bernice. Phone 659-3181 for information.

Al-Anon meetings 8 p.m. Friday, Home Demonstration Club building. 305 N. Bernice in back room. Phone 659-3181 for information. Ask for Al-Anon.

**KIRBY SALES & SERVICE**  
New & reconditioned vacuum cleaners. 912 S. Bernice. 659-2797.  
19-rtm

**CUSTOM HAY Baling**-16 x 18 bale. Jerry D. Virden, Box 595, Gruver, Texas. 733-2236.  
27-rtm

Make your car upholstery and carpet look like new with our commercial size steam cleaner.  
Let us clean it or rent our cleaner.  
**FREE ESTIMATE** for steam cleaning, call 435-5289 or 659-2952.  
Willis Friesen  
39S-rtm

**Hay Baling and Stacking.**  
806-669-6610; 806-669-2961.  
35-25p

Custom swathing or baling. Johnny Steffen, 405-888-4241.  
38S-4tc

**CUSTOM SWATHING & Baling, HAND STACKING.**  
Harvey Whitefield, 659-3332, Fred Mayfield, 659-3342, Jim Sursa, 659-2774.  
39-10tc

## MISCELLANEOUS FOR SALE

**FOR SALE-**CB 750K Honda, only 9,000 miles. Many extras. Must sell. 659-2697.  
39-4tc

**FOR SALE:** 68 Ford Galaxy 500. Call 659-2121.  
40-1tc

**COOKWARE -** Stainless Steel, Waterless, Multi-ply. Home demonstration kind. Still in box. Normally costs \$499. Selling for \$185. 1-303-591-1331.

**FOR SALE:** 1971 Mobile Home 14' x 65' 3 Bedroom - 2 Bath  
Furnished- Dishwasher, washer & Dryer - Refrigerator Central Air & Heat- Must sell Call 733-2907  
38S-4tp

**FOR SALE-**Innerspring, Mattress and Box Springs. Practically new. Queen size. Call 659-2614.  
40-2tc

**FOR SALE:** 1974 Ford Maverick Power Steering, Air, Phone 3875.  
39-3tc

**FOR SALE:** AKC Black Labrador Retriever puppies. Have had shots and been wormed. \$50. 659-3962.  
40-4tc

**RABBITS FOR SALE-**Breeders, fryers and pets. 9 N. Brandt. 659-2855.  
40-4tc

**FOR SALE-**Seed wheat, certified TAMU Caprock. Also TAMU Caprock in bulk. Stands good, yields good. C. Yanke, 948-5696.  
38S-12c

Reduce safe & fast with GoBese capsules & E-Vap 'water pills' Spearman Drug.  
39-4tp

**ONE DAY ONLY 5 Family Garage Sale.** Real good buys. Saturday, Aug. 18th - 9 a.m. to 6 p.m. 716 Cotter Dr.  
40-1TP

**GARAGE SALE:** Vacuum Cleaner, dishes, baby clothes. 901 Townsend. Friday 17th & Saturday 18th, 8-4.  
40-1tp

**THREE FAMILY GARAGE SALE-**Friday, Saturday, Aug. 17 & 18 at Waka, south end of Greever St. Clothing, furniture, ceramics, stereo speakers in very good condition. Many other items.  
40-1tp

"Must have someone with good credit to assume low balance on current model organ in excellent condition. Organ has one finger play, magic fingers, two keyboards, full 13 note pedal board, drums, rhythms, and all extras. Call Mr. Page person to person, collect at 214-296-0820.  
40-2tc

## REAL ESTATE FOR SALE

**FOR SALE-Well** located business building in Spearman. Bob Holloway, 435-5771 or 435-4131  
37S-rtm

**FOR SALE:** 2 acres of land with 25 ft. x 30 ft. shop located in East part of Spearman on good highway. \$6,000. Phone 659-3854.  
38-6tc

**FOR SALE BY OWNER-**spacious, 3 year old home, 3 bedrooms, 2 baths, double car garage, fully carpeted, central heat, refrigerated air, garbage disposal, dishwasher, built in range and oven. Generous closets and storage. Very clean.  
716 Steele Drive  
659-3622 or 659-3317  
38S-rtm

**MAYFIELD REAL ESTATE**  
22 West 3rd two story house, 2 bedrooms, utility room, furniture, two 50 ft. lots.  
Commercial building for sale or lease, approx. 1800 sq. feet on Stinnett highway.  
John Mayfield-Broker  
435-6528 Salesperson Ruby Lair 659-3436 or 659-2188.  
40-1tc

**HOUSE FOR SALE:** Reduced for quick sale by owner. 2 large bedrooms, brick fireplace, large kitchen and 6 ft. wood fence. New Lawn & garden area. Go by 706 Cotter or call 659-2132 or 3317.  
41-rtmc

**HOUSE FOR SALE:** Living room, kitchen, 1 bath, utility, 2 bedrooms, workshop or possible 3rd bedroom, remodeled. 908 S. Haney. Call 3576 or 3321.  
40-8tc

**FOR SALE BY OWNER-**3600 sq. ft home with 4 bedrooms, (isolated master), 3 baths, 2 woodburners, 2 living areas. Also has large storage building, garden area, many trees and shrubs. Many other interesting features, 714 Gilmer Drive, phone 659-2429.  
35-rtm

**FOR SALE:** 3 bedroom, 2 bath, stucco house, 523 W 3rd. Chuck Steele. 659-3510.  
32-rtm

## HELP WANTED

**HELP WANTED-**One elevator superintendent. House and utilities furnished. Call 733-5067.  
36-rtm

**HELP WANTED-**Three elevator men. Call 733-5067.  
36-rtm

**HELP WANTED-**Service station manager. House and utilities furnished. Salary negotiable. Must be willing to live 21 miles from town. Apply at Spearman Super Service, Inc., Spearman, Tx.  
38S-4tc

**SCHOOL BUS DRIVER NEEDED.** Spearman ISD. Contact Eddy Clemmons, Spearman High School 659-2584 or James Cunningham, 659-3233.  
39-rtm

Applications are now being accepted for the position of Dog Catcher. Apply at the Spearman Police Dept.  
40-rtm

**HELP WANTED-**Maintenance personnel. Apply Caprock #2.  
40-4tc

## LEGAL NOTICE

**NOTICE BY PUBLICATION**  
State of Texas  
To JACK EDWARD WATKINS, Respondent, GREETINGS:  
YOU ARE HEREBY COMMANDED to appear and answer before the Honorable 84th JUDICIAL DISTRICT COURT, Hansford County, Texas, at the courthouse of said county in Spearman, Texas, at or before 10 o'clock a.m. of the Monday next after the expiration of 42 days from the date of service of this citation, and there to answer the petition of MARY DELLA HANSON, Petitioner, filed in said Court on the 7th day of August, 1979, against JACK EDWARD WATKINS, Respondent, and said suit being number 2666 on the docket of said Court, and entitled "In the interest of JACK EDWARD WATKINS III and DARWIN KENNETH WATKINS, children," the nature of which suit is a request for Change of Names. Said child, JACK EDWARD WATKINS was born the 22nd day of June, 1964, in Eureka, Kansas; and said child, DARWIN KENNETH WATKINS was born the 31st day of August, 1967, in Omaha, Nebraska.

The Court has the authority in this suit to enter any judgment or decree in the children's interest which will be binding upon you, including, but not necessarily limited to, change of names of above listed children. Issued and given under my hand and seal of said Court at Spearman, Texas, this 7th day of August, 1979.  
Marie H. Gould  
Clerk of the District Court of Hansford County, Texas  
By Amelia C. Johnson, Deputy  
40-1tc

I would like to thank everyone for their kindness and visits, cards, flowers and telephone calls and especially to Dr. Manese and the nurses while I was in the hospital.  
Estela Cummings  
40-1tc

**TOO LATE TO CLASSIFY**  
**FOR SALE BY OWNER:** 1973 Chevrolet Caprice Classic Hard top. Power Brakes, Steering & Seats. Air cond., 8 track tape player. Priced right to sell. See at 311 N. James or call 659-3944.  
40-1tc

**Just in Time For Back to School Giant Yard Sale**  
Fri. Aug. 17, Sat. Aug. 18 and Sun. Aug. 19 9 a.m. to 6 p.m.  
311 N. James  
Loads of men and boys clothes, furniture, tv, clothes of all sizes for the whole family. Will take stamps.  
40-1tc

Full time or part time help, need transportation. McKibben Equity. 659-2194.  
40-rtm

According to a study made by Dr. Harvey Lehman of the University of Ohio, the best years of an athlete's life are between ages of 27 and 29.  
Try Hergert Motors for your used car... They are selling cheap today!  
40-1tc

Offered Exclusively By  
**EMMETT R. SANDERS,**  
REALTOR



Brick apartment house in top condition; 400% occupancy with waiting list; has four furnished units; great investment. Shown by appointment only, do not disturb occupants.  
\*\*\*\*\*  
3 Residential Lots, choice southwest location, each 115 ft. wide.  
\*\*\*\*\*  
Small tract just west of Spearman, surface only, contains 31.7 acres. Call for details.  
\*\*\*\*\*  
Immaculate 3 bedroom brick home, nice southeast location, bath and half, carpeted, fenced yard, attached garage, by appointment.  
\*\*\*\*\*  
Reduced in Price, Dwelling and store building, small detached apartment on wide lot, ideal for professional office-dwelling combined.  
\*\*\*\*\*  
**EMMETT R. SANDERS**  
REALTOR  
659-2516  
659-2601 (nights)  
34S-rtm

**For The Ultimate In STORM DOORS**  
Custom Built, Designed, And In Colors To Fit Your Home....  
Contact Howard Meyer at  
**Only Aluminum Industries**  
Guyton, Okla. 114 W. 1st 405-338-6966 or 73942 338-6178

**B.L. Gordon Plumbing Co.**  
Ph. 659-3849 or 659-3671

Licensed plumber, roto-roofer service, ditching service, any kind of plumbing repairs. Serving Hansford and surrounding counties.  
24 hour service.

**ATTENTION DERRICK HANDS!**  
SAVE THOSE SACKS  
Will pay 10¢ for clean cottonseed hull sacks in good condition.  
Wrap in bundles of 25.  
Call 659-2559

**EQUIPMENT OPERATORS**  
For oil Field Service Work, must be 21 years of age. Openings in Perryton and Pampa, Texas. Guaranteed Salary, Fringe Benefits, Insurance, Retirement Plan, Paid Vacation.  
For more information contact  
Halliburton Services  
822 E. Brillhart Ave.  
Perryton, Texas  
Equal opportunity employer- M/F  
38S-4tc

Try Hergerts for a change of luck....  
**FALL FOLIAGE TOURS**  
Check with Trailways Agent Mrs. Sam Graves, 659-3446 for all arrangements for Fall Foliage Tours.  
39-8tc

FR WEARS MANY FACES

# LYRIC THEATRE

Phone 806-659-2812  
**ONE SHOW AT 7:30 P.M.**  
SUNDAY, MONDAY, TUESDAY, WEDNESDAY, AND THURSDAY  
**TWO SHOWS AT 7:00 P.M. AND 9:00 P.M.**  
FRIDAY & SATURDAY  
**NOW SHOWING**

# Love at First Bite

**Dracula,**  
your favorite pain  
in the neck is about  
to bite your  
funny bone.  
George Hamilton,  
Susan St. James



**AUGUST 15 THROUGH AUGUST 21**

**TEXAS PRESS**  
MEMBER 1979 ASSOCIATION  
PUBLICATION (USPS 509-660)  
SPEARMAN, TEXAS 79081  
213 Main Box 458 659-3434  
Published Weekly at 213 Main Street  
Spearman, Texas 79081  
Owner-Publisher.....William M. Miller  
Second Class postage paid at Spearman, Texas  
ANY ERRONEOUS REFLECTION UPON THE CHARACTER OF ANY PERSON OR FIRM APPEARING ON THESE COLUMNS WILL BE GLADLY AND PROMPTLY CORRECTED UPON BEING BROUGHT TO THE ATTENTION OF THE MANAGEMENT.  
SUBSCRIPTION RATE: **Hansford**, adjoining counties, combination with the **Hansford Plainman**, \$10.40.  
Other points, \$14.40.

**VIRGINIA WHITE**  
Realtor  
NEW LISTING-EXTRA NICE AND CLEAN 3 bedrooms, 1 bath, central heat and air conditioning, utility room, fenced yard, STORM CELLAR. Priced right, high 20's.  
INVEST! Invest! In this CLEAN 2 bdrm. home, located on 3 lots W/3 trailer hook-ups, 2 rental trailer houses. Large storage bldg. NICELY LANDSCAPED. Low 20's. By appointment only. CALL TODAY.  
EXCLUSIVELY WITH VIRGINIA WHITE REALTOR 659-3841

**NOTICE OF MEETING**  
Notice is hereby given that the Board of Equalization of the Spearman Independent School District will meet at 2:00 P.M. on Thursday, August 30, 1979 at the High School Building in Spearman, Texas, for the purpose of hearing evidence presented by taxpayers concerning the 1979 tax values.  
Orville Latham  
By Direction

**HOLIDAY DRIVE-IN**  
PHONE 806-659-3922  
ONE SHOW ONLY EACH EVENING  
SHOW STARTS AT DUSK  
**NOW SHOWING**

Jaclyn Smith  
Charles B. Pierce's  
**THE BOOTLEGGERS' ANGEL**  
CHARLIE'S FAVORITE ANGEL  
JACLYN SMITH  
PAUL VOSSLO  
DENNIS FEMPLE  
SLIM PICKENS  
A HOWCO INTERNATIONAL PICTURES RELEASE

**AUGUST 15 THROUGH AUGUST 21**  
**PELICULAS MEXICANAS**  
**EL LLANTO DE LOS POBRES**  
NUEVAS Y HERMOSAS CANCIONES DE CORNELIO REYNA EN UNA HISTORIA TIerna Y DOLOROSA.  
C.R. FILMS & FILMADORA CHAPULTEPEC. S.A. PRESENTAN A:  
**CORNELIO REYNA**  
YOLANDA OCHOA  
RICARDO CARRION  
RENE CARDONA  
UN HOMBRE SENCILLO Y NOBLE QUE LE HARA COMPARTIR SUS SUEÑOS Y TRISTEZAS.  
ACTUACION ESPECIAL DE **MARITA REYNA**  
UNA PRODUCCION DE **PEDRO GALINDO**  
DIRECCION POR **RUBEN GALINDO**  
**SUNDAY, AUGUST 19 AT 2 P.M.**





**Presbyterian Church News**

It was good to have Connie O'Mara back from Nebraska and Raymie Porter from Israel last Sunday. Roger Anderson certainly challenged us to "glorify God."

Congratulations to Steve Donnell and Denise Mills as they exchange marriage vows on Saturday, August 18 at the First United Methodist Church of Fritch.

There is a Sunday Church School class for everyone every Sunday at 9:45 a.m. There is good Christian fellowship and good Christian teaching from God's Word.

"Be Made New in Mind and Spirit" will be the subject of Pastor Edward D. Freeman's sermon at the service for the public worship of God on Sunday, August 19 at 11:00 a.m.

If you are new to Spearman and/or have not yet found a church home, why don't you try out the warm, caring, sharing fellowship at the First Presbyterian Church?



To those who are dissatisfied or oppressed by the circumstances under which they live, the Bible has something important to say: It tells that you can take the bruises, like the bounty, with contentment when you know the living Christ.

**Double Ring Ceremony Unites Couple**



Sheila Gay Cochran and Arthur Lynn Chappell were united in marriage in a double ring ceremony at 2:00 P.M., July 28, 1979 in the Spearman Church of Christ. Howard Bybee, Minister of the Gruver Church of Christ, officiated at

the ceremony, performed before an Arch Candelabra decorated with greenery and flanked with potted daisy mums. Parents of the couple are Mr. and Mrs. Robert Cochran, Spearman and Mr. and Mrs. Sherman Chappell, Bryan, Tex-

as. Providing the music for the ceremony was an uncle of the bride, Bud Davis, an aunt, Mrs. Charlotte Taylor, cousins, Terri and Debbi Taylor all of Bartlesville, Okla. They sang "Follow Me," "Whither Thou Goest," "Wedding Song," "Wedding March," "Devoted to You" and "Annie's Song." Terri Chappell of Bryan, registered the guests.

Tina Cochran, sister of the bride, served as Maid of Honor and Patti Chappell, sister of the groom, served as Bridesmaid.

The bride, given in marriage by her father, was beautiful in a floor length organza dress trimmed with lace and seed pearls. Her fingertip illusion veil fell from a lace head piece. Her bouquet was cascading white and yellow carnation and baby breath tied with white ribbons.

The bride carried out the tradition of something old: her diamond earrings made from her mothers engagement ring; something new: a necklace given to her by the groom; something borrowed: a penny put in her shoe from Leo Shuler; and a blue garter.

Her attendants were dressed alike in yellow satin floor length dresses with yellow lace capelet. They carried white and yellow daisy mum bouquets and wore nosegays in their hair.

Candlelighter's were Robert J. Cochran, brother of the bride and Randy Chappell of Bryan, brother of the groom. James Bishop of Bryan, served the groom as best man and Thomas Norman was groomsman. Ushers were Robert Cochran, Randy Chappell and Donny Chappell.

Immediately following the ceremony a reception was held

in the fellowship room. The brides table was covered with a white lace cloth over blue with small bunches of daisy mums tied with yellow ribbon decorating the corners of the table. The three tiered wedding cake, made by a special friend, Donna Wood, served as the centerpiece. Kim George served punch from a cut glass punch bowl, while Donna Wood served the cake. Eva Mae Reger served the grooms cake from a table covered with white over blue, with a centerpiece of white and blue carnations in a crystal bowl.

For her going away trip the bride made a dress from white eyelet trimmed with blue. It was an off the shoulder sun dress with a ruffle and the neck and hem.

After a wedding trip to Raton, New Mexico, the couple are at home at 602 Pease #B, Bryan, Texas.

The bride was a 1975 graduate of Spearman High School and a 1978 graduate of Texas A&M University. She is employed by the Caldwell School District.

The groom was a 1977 graduate of Bryan High School and is employed by Batten Construction Co.

Grandmothers present included the brides great grandmother, Gertrude Beck, Bartlesville, Okla., grandmother, Mildred Davis, Bartlesville and Gertrude Cochran, Boise City, Okla.

Out of town guests included Becky Davis, Bud Davis, Mr. & Mrs. Terrel Taylor, Terri, Debbi, Toby and Greg all of Bartlesville, Okla.; Jessie Bushong, Tulsa, Okla.; Mr. & Mrs. Reid Homsley, Rowdy, Perry & Coy Taylor from Ozona, Texas;

Mr. & Mrs. Richard Batten, Jodi, Bryan, Texas; Jeff McWhiter, Bryan; Mr. & Mrs. Charles Cochran, Mr. & Mrs. Tommy Cochran, Billi, Debbie and Bob, Keyes, Oklahoma; Mrs. Winnie Collins, Mrs. Elsie Sellers, Boise City, Okla.; Jerry Lee and Mrs. Jack Lee, Amarillo, Texas.

**Catholic sale set**

There will be a garage sale August 17 & 18 at Sacred Heart Parish Hall from 9 to 5 each day.

Proceeds from the sale will go to the Catholic Church Building Fund.

**Arts & Crafts Guild News**

The Arts & Craft Guild met Friday, August 10 in the home of Mrs. Joe Traylor.

Attending were members, Mmes. Guy Fuller, F. J. Hoskins, C. A. Gibner, Pope Gibner, Bruce Sheets, Ned Turner, Bill Gandy and a guest, Carrie Marie Berry.

The next meeting will be Friday, Aug. 17 in the home of Mrs. Bill Russell.

**Welcome Tea Planned**

The Servitors Club is sponsoring a welcome tea for all teachers and administrative personnel of Spearman schools and their spouses.

The tea will be Friday, August 22, at B & B Farm Industries from 7 to 8:30 p.m.

Mr. and Mrs. Louis Flowers and Mr. and Mrs. Jack McMullan invite you to share in the joy of the marriage uniting their children Pamela Sue and Jay Scott This celebration of Love will be Saturday, the eighteenth of August at two o'clock in the afternoon People's Chapel Perryton, Texas

**Wedding Announced**

Mr. and Mrs. Calistro Vela of Gruver are proud to announce the marriage of their son Lucio to Sara DeLa Cruz, daughter of Mrs. Angelita DeLa Cruz of Waka. The couple were married August 10. Lucio is a 1979 graduate of Spearman High. They are presently living in Spearman.

**History books available**

The Hansford County Historical Commission has received many family story and pictures. We appreciate your response to our project and look forward to your continued support. We hope that by having already written your story you will be willing to help anyone who might be having problems writing their story. We would encourage you to contact any persons you may know whose story should be in the book, including any relatives or friends who presently live in the county or have lived here at one time.

Was it difficult to write your story in the 500 word limit? Do you have still more history that you would like to see published?

If so, please consider purchasing additional space in the form of additional history pages, tribute pages, or memorial pages. A full page would allow you up to 1575 words of extra copy. Tribute pages are an excellent way to surprise a living loved one to show how much they mean to you. Memorials pay honor and respect to a loved one who has passed away. For information on these pages, please contact one of the area representatives listed below.

The Hansford County History Book will be printed one time only. And only the number of books ordered prior to publication will be printed. Many people will want to buy one for each of their children so that each will have one to share with his own family some day. Remember, too, that the book is an excellent gift—a one-of-a-kind gift that cannot be outgrown! If you have a special upcoming occasion such as a high school graduation, wedding anniversary or birthday, remember gift certificates are available. The pre-publication price is \$35.00, plus \$1.75 sales tax. If you want your copy mailed, please add \$2.25 per copy for postage and handling.

475 histories have been submitted.

"If you watch a game, it's fun. If you play it, it's recreation. If you work at it, it's golf." Bob Hope



PRICES EFFECTIVE THRU AUGUST 22, 1979. QUANTITY RIGHTS RESERVED. NO SALES TO DEALERS.

STORE HOURS Monday - Saturday 8 A. M. - 9 P. M. Sunday 10 P. M. - 7 P. M.

DEL MONTE **Catsup** 32-OZ. BTL. **82¢** LIMIT 2

Add A Touch of Charm To Your Kitchen With

**Crowning Touch** PORCELAIN ENAMEL COOKWARE **Save Over 40%** ONLY **99¢** PER COOKWARE STAMP WITH EACH \$3.00 PURCHASE

DEL MONTE CUT **Green Beans..** 16-OZ. CAN **32¢** LIMIT 4

DEL MONTE **Fruit Cocktail..** 17-OZ. CAN **51¢** LIMIT 3

FAIRMONT POP FOODS Ice Milk Bars 24 CT. BOX **\$1.69**

FAIRMONT ROUND ALL FLAVORS Ice Cream 1/2-GAL. CTR. **\$1.34**

ANOTHER FIRST FROM IDEAL **Coupon Exchange!** BECAUSE WE REALLY WANT TO HELP YOU SAVE MORE ...

**FROZEN FOODS!** ALL-MEXICAN VARIETIES **Patio Dinners 64¢** 12 1/2-OZ. BOX LIMIT 4

Grape Juice	WELCH'S	16-OZ. CAN	86¢
Fried Chicken	BANQUET	1.5 LB. BAG	\$2.23
White Bread	RHODES	2.1 LB. BAG	59¢
CAMELOT DINNERS Mac & Cheese		4 7 1/2-OZ. BOXES	93¢
CAMELOT CHUNK Light Tuna		6 1/2-OZ. CAN	63¢
ORANGE BREAKFAST MIX Tang Drink		27-OZ. CAN	\$1.99
BUTTERED Log Cabin Syrup		24-OZ. BTL.	\$1.27
GLAD Sandwich Bags		150-CT. BOX	67¢

**BACK TO**

**JERRY KERN HAIR CUTTING SPECIALIST** coming to Spearman, Monday, July 9 and every Monday thereafter. Jerry's basic study was in Amarillo and then in Houston to study with advanced cutters from Houston and New York. For the latest in high fashion cuts and perms visit Jerry at Bull's Head The "N" Place Call 359-2695 for your appointment now.

U.S.D.A. CHOICE BUTCHER BLOCK BEEF **Round Steaks \$1.98** LB. FULL SLICES BEEF ROUND **Sirloin Steaks \$2.09** LB. **T-Bone Steak \$2.98** LB. BEEF LOIN U.S.D.A. CHOICE BUTCHER **Chuck Steak \$1.18** LB. BLADE CUTS BEEF CHUCK **Swiss Steak \$1.78** LB. ASSORTED PORK LOIN **Pork Chops \$1.28** LB. CENTER CUT PORK **Pork Chops \$1.79** LB. CENTER CUT PORK **Loin Chops \$1.89** LB.

RODEO SKINLESS MEAT Franks	12-OZ. Pkg.	98¢
RODEO SLICED MEAT Bologna	12-OZ. Pkg.	\$1.49
FRESH RIBS ATTACHED Fryer Breasts	3.6 LB. Pkg.	\$1.09
FRESH THIGHS OR Drumsticks	U.S.D.A. GRADE "A" 1 LB.	98¢
GORTON'S Fish Sticks	2-LB. Pkg.	\$2.49
CUDAHY BAR -S- Bacon	1-LB. Pkg.	\$1.09
WILSON CERTIFIED SLICED Bacon	2-LB. Pkg.	\$2.77
WILSON'S WESTERN STYLE Smoked Sausage	1 LB. RANDOM WEIGHT	\$1.98

**SHOP IDEAL...WHERE THERE'S MORE VALUE IN**



You are cordially invited to  
a bridal shower honoring  
Lori McAdams  
bride-elect of Mark Franklin  
Monday, August 20, 1979  
B & B Farm Industries  
Friendship Room  
7:30 to 8:30 p. m.  
Hostesses:  
June Tucker Claudine Clark  
Emma Lou Collins Betty Morris  
Carolyn Gressett Beth Fox  
Jody Robertson Pat Denham  
JoNell Grayson Pam Edwards  
40-2tp

**Peggy's Pointers**

Be "energy smart" with utility records, especially in buying or selling a home. They give a quick picture of a home's energy usage, and they tell you about local utility rates.

**IDEA FOR SELLERS**  
If you're selling your home, consider making a summary sheet about your utility costs for prospective buyers.

**IDEA FOR BUYERS**  
It's easy to make a summary sheet using past utility bills. Just write down two figures for each month during the past year—the amount of electricity and gas used and the total cost each month.

Electricity amounts appear on your monthly bill as "kilo-watt hours," and gas amounts appear on your bill as "cubic feet" or "therms."

Energy consumption reflects your home's energy-conserving features, the heating and cooling facilities and the energy-use habits of your family.

**IDEAS FOR BUYERS**  
If you're buying a home, ask questions about utility costs and amounts of energy used.

Ask if you can see copies of past utility bills.

If that isn't possible, ask for an estimate of energy amounts used and cost.

Ask about the energy-use habits of family members and the appliances in the home, especially those that will stay with the house.

Also ask about any energy-saving features of the home, such as insulation, caulking, window types, heating and cooling features and any others that may exist.

Also notice window expo-

sure--west-facing windows need special protection from the afternoon sun in the summer.

**NEW HOME BUYERS**  
New-home buyers may have more difficulty estimating utility costs.

Ask your real estate agent or builder for information, or ask others already living in the neighborhood. Call the utility companies to obtain specific rate information.

**MAKE 'ENERGY CHECK-UP'**  
Once in a home, keep accurate records of utility costs and energy amounts you use.

Read electric and gas meters once a month.

Read them even more often if you want to check the effectiveness of any "energy changes" you make--such as a new appliance, a new energy-saving feature or a new energy-use habit.

Put down the information on your calendar or some other handy place.

Then you're ready to compare and make changes that will save energy and money as needed.

Also, this system is helpful in solving any billing problems that may arise.

Board of Higher Education and Ministry of the United Methodist Church was speaker at the ceremony.

Dr. Thomas Kim, McMurry president, conferred honorary doctorates on the Reverend Jess Douglass Wofford, of Albuquerque, and the Reverend C. B. Melton, currently based in Lubbock.

McMurry College is a four year liberal arts institution owned and operated by the Northwest Texas and New Mexico Conferences of the United Methodist Church.

Ms. Bates was given a B.S. degree with a major in Business Education.

She is the daughter of Rev. & Mrs. H. O. Abbott formerly of Spearman.

**Conservation is everyone's business**

Conservation of natural resources is everyone's business. And education is the key to broad public interest and participation in meaningful conservation programs.

Developing a 4-H nature trail is a good first step toward promoting public awareness of conservation concerns, says Peggy Winegarner, County 4-H Program Coordinator with the Texas Agricultural Extension Service, Texas A&M University System. The trail serves as an outdoor museum where participants can observe natural resource features firsthand, often with the aid of self-guide ma-

terials or the assistance of a trail leader.

4-H projects and activities encourage young people 9-19 to develop leadership talents in conservation action programs. 4-H members learn-by-doing to appreciate the social and economic values of natural resources, and to identify and apply appropriate conservation methods.

The national 4-H conservation of natural resources program offers girls and boys practical opportunities to do something about air and water pollution, waste disposal, soil and forest conservation, and the maintenance of fish and wildlife populations, explains Mrs. Winegarner.

The program is conducted by the Extension Service and supported by John Deere, which provides a full schedule of awards for participating 4-H members, clubs and counties.

Awards include six \$1,000 scholarships at the national level, an expense-paid trip to the National 4-H Congress in Chicago for one winner in each state, and medals of honor for four members per county.

Also, \$50 cash award goes to one county in each state reporting the most outstanding 4-H conservation program. Ten clubs per state and four clubs per county are eligible for certificates of recognition.

Winners are selected by the Extension Service and awards are arranged by the National 4-H Council.

More information on the 4-H conservation of natural resources program is available from the County Extension office says Mrs. Winegarner.

**No Drying Necessary For Crop Loans**

Farmers who grow corn and sorghum will no longer have to dry the grain to become eligible for government farm-stored loans under a program announced today by Secretary of Agriculture Bob Bergland.

Bergland said today's decision would save farmers both energy and money.

Any producer in compliance with feed grain program provisions will be eligible to apply for such corn and sorghum loans.

Loan applications and program details are available at county offices of the department's Agricultural Stabilization and Conservation Service.

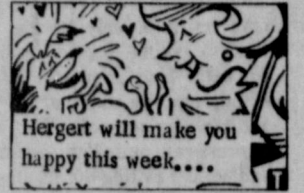
Under a pilot program begun last October, farmers in 28 counties in 10 states have been eligible for these loans. Today's action expands this program nationwide.

Farm-stored loans on high moisture corn and sorghum will be issued at the loan rate in effect for the county where the crop is stored. However, for every one percent that the moisture level exceeds the department's "dry grain factor," loans will be reduced 1.2 percent. The "dry grain factor" for corn is 15.5 percent; for sorghum it is 14.0 percent.

Drying grain with conventional fuels -- liquid petroleum gas and natural gas -- uses large amounts of energy. Since much

of the corn and sorghum stored on farms is fed to livestock, drying of these grains is not essential as the moisture does not adversely affect the commodities for feed purposes. Making loans available on high-moisture or acid-treated corn and sorghum eliminates the drying requirement, resulting in a less energy-intensive alternate technology that still preserves the crop for the feed use intended.

The program is part of the department's overall effort, coordinated through the Office of Energy, to use existing agencies and authorities to encourage the conservation of fossil fuels by using renewable sources of energy or alternative energy-conserving technologies wherever possible.



Hergert will make you happy this week....

When your dog rolls over his back and wags his tail, he may be communicating more than a desire to be stroked. Some animal behaviorists say the dog is offering you an expression of extreme trust and love by exposing his vital and vulnerable parts.

**It's the kids that count**

**STARTING SCHOOL... A BIG STEP FOR CHILD AND PARENTS**

You can do a number of things to get your child off to a good start in kindergarten:

1. Arrange for an appointment with your family physician or local health clinic to receive required immunizations before starting school. His vision should be thoroughly tested and he should have a dental examination, too.

2. Attend a planned get-acquainted program or kindergarten roundup before your child is to begin school. This allows you and your child to meet the teacher, and it gives the child a "preview" of the world that awaits him.

3. Walk with your child to the school building a few times before the school year begins. Stress safety.

4. Review with your child his name, address and telephone number. Even if he knows them perfectly.

In spite of all his enthusiasm, your child may have a few misgivings about starting school. Encourage him to talk about school and ask him if there are things he has questions about.

Teachers care about kids. Help them. Get involved in your school.

**HANSFORD COUNTY UNIT**

TEXAS STATE TEACHERS ASSOCIATION—P.R.  
316 West 12th, Austin, Texas 78701

Please send me more information about starting school

Name \_\_\_\_\_

Address \_\_\_\_\_

City \_\_\_\_\_ State \_\_\_\_\_ Zip \_\_\_\_\_

**PLAY** **Gunn Bros. Stamp** **And Get 1,000**  
**Gunn-Ho** EXTRA GUNN BROS. STAMPS. FOR DETAILS SHOP YOUR NEAREST IDEAL FOOD STORE.

**Cheer Detergent** \$1.43 **Cheer** \$1.19 **COCA COLA MIX-N-MATCH** \$1.19  
**FRESH DAIRY**  
KRAFT 1/2 MOON CHEDDAR COLBY **Cheese \$1.78**  
Singles \$1.63 Biscuits 5 for 89¢ Half & Half 2 for 73¢ Sour Cream 1.59  
A FAMILY FAVORITE **Cracker Jacks 3 for 35¢**  
DEL MONTE **Sweet Peas 16-oz. can 34¢**  
DEL MONTE **Pear Halves 16-oz. can 53¢**  
WHITE CLOUD ASST. **Bath Tissue 4 roll pack 89¢**  
PILLSBURY PLUS ALL FLAVORS **Cake Mix 10-oz. box 63¢**

**SCHOOL WITH IDEAL SPECIALS**  
"See Ideal For Your School Supply Needs"  
ELMER'S **Glue 4-oz. bottle 47¢**  
COMPOSITION SPIRAL **Note Book 49-ct. book 93¢**  
NOTE BOOK **Filler Paper 200-ct. pack 68¢**  
ob. **Tampons 30-ct. box \$1.68**  
Colgate **Toothpaste 8-oz. tube \$1.29**  
SECRET ANTI-PERSPIRANT **Deodorant 4-oz. spray \$1.39**  
REACH **Tooth Brush 69¢**

**TEXAS VINE RIPE Cantaloupe 19¢**  
CALIFORNIA **Nectarines 35¢**  
FRESH COLORADO **Corn 6 ears 79¢** SANTA ROSA **Plums 1.39**  
COLORADO RUSSET **Potatoes 10 lb. 99¢** FRESH COLORADO **Cabbage 15¢**

**STORE FOR YOU!... Ideal FOOD STORES Food Stamps Buy More At Ideal...**

Hey! It's out of the bag! Is having a store wide SALE 10% OFF - 70% ONLY AUG 16, 17, 18 ONLY  
**SACKS THIRD AVE SPEARMAN TEX**



### New law affects frontage roads

Two-way frontage roads along Interstate Highway 40 in the Texas Panhandle, outside the city limits of Amarillo, will be the only roads in the area affected by House Bill 1421 passed during the 66th State Legislature.

The bill, which was signed by the governor on June 11 and becomes effective August 27, provides that frontage road traffic shall yield the right-of-way to traffic entering an on-ramp and leaving an off-ramp on controlled access highways.

Signs are being changed now, and drivers should heed new sign arrangements as they encounter them, according to A.J. McKee, Amarillo District Engineer of the State Department of Highways and Public Transportation (SDHPT).

McKee said IH 40 frontage roads within Amarillo's city limits are one-way with frontage road traffic already having to yield to exiting freeway traffic. An extra lane is provided for exiting freeway traffic at IH 40 and Western and at the Canyon Expressway and 45th Avenue and neither exiting nor frontage

road vehicles need to yield. The monitoring of the merging traffic control will continue at these ramp sites, McKee said.

YIELD AHEAD and YIELD signs will have to be erected and some striping work will have to be done on IH 40 frontage roads outside the city limits of Amarillo before August 27 to comply with the new state law.

The district engineer explained that where the frontage road carries traffic in both directions, ramp traffic both entering and leaving the controlled access highway crosses opposing streams of traffic on the frontage road.

The wise motorist should be alert for any changes in signs on the frontage road he or she may drive regularly and should be aware that all ramp traffic will legally have the right-of-way over frontage road traffic after August 27, 1979.

The motorist should also be aware when using freeway ramps that other drivers may not be aware of this law change and may overlook the new signs.

### Senior citizens day at fair

There will be something for everyone to see and enjoy at the 1979 Amarillo Tri State Fair, September 17-22. Livestock, horses, poultry, rabbits, textiles, foods, free entertainment, product exhibits, art show, a midway of rides and shows, and first class entertainment in the coliseum each day by top country-western artists.

A special day has been set aside for all senior citizens in the area. On Thursday, September 20, any senior citizen will be admitted to the fair free of charge by presenting a Medicare Card. At 1:30 p.m. on

Thursday, a program of free entertainment will be provided in the coliseum for the benefit of all senior citizens in attendance.

All senior citizens in the Tri State Area are invited to attend the fair and the special entertainment as guests on Thursday, September 20.



### Notice

FLOWERS TRUST is hereby giving notice that any or all persons found on land owned by the Trust will be filed on and prosecuted unless they can show written permission signed by Bryant and Eldon Flowers,

TRUSTEES FOR FLOWERS TRUST

Any home, new or old, can be an Energy Checked Efficiency Home, for year-round energy savings.



Would you like to stop worrying about whether your home is using energy efficiently? Just make sure your current home, or your new home, qualifies as Energy Checked. The Energy Checked Home must meet energy efficiency requirements, such as adequate insulation, caulking, weatherstripping, and have an efficient water heating system. Other Energy Checked features include insulated ductwork, double-pane or storm windows, and energy efficient appliances. For savings on your utility bill, why not make your home an Energy Checked Efficiency Home, the next time you build, buy or remodel. For information on the Energy Checked Home, just give us a call.

COMMUNITY PUBLIC SERVICE  
Your Electric Light & Power Company

# TG&Y family centers

## SHOP TG&Y your time and money will be well spent



sparkling Perrier® Mineral Water from France!

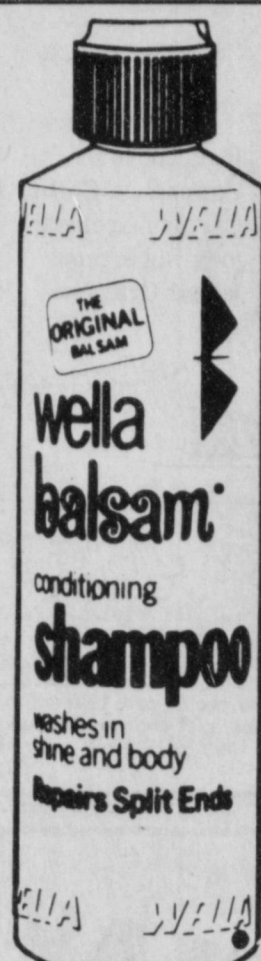
Enjoy the elegance of sparkling carbonated Perrier® Mineral Water imported from a natural spring in France. For a fresh taste, add a simple twist of lime to a mixer. 23 oz. size.

2 \$1  
Btls.



Alcohol 16 oz. bottle. Loads of uses, every medicine cabinet should be well stocked!

Limit 3  
.17



Wella Balsam® gives your hair a soft and luxurious look and touch. 16 oz.

Limit 2  
1.27



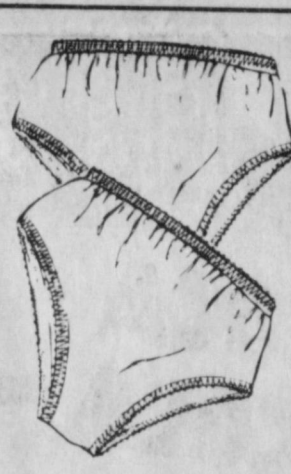
Toni® Wave Kit Lightwaves one-step soft perm. Styling system complete with shaping rods.

3.97



Cascade® for sparkling clean dishes. Lets you set a lively table. 50 oz. King size.

1.47



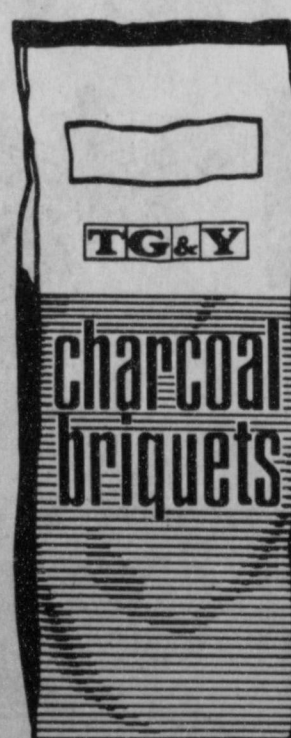
Ladies' Bikini Panty in sizes 5-6-7 and dainty colors of White and assorted pastels.

3 \$1  
For



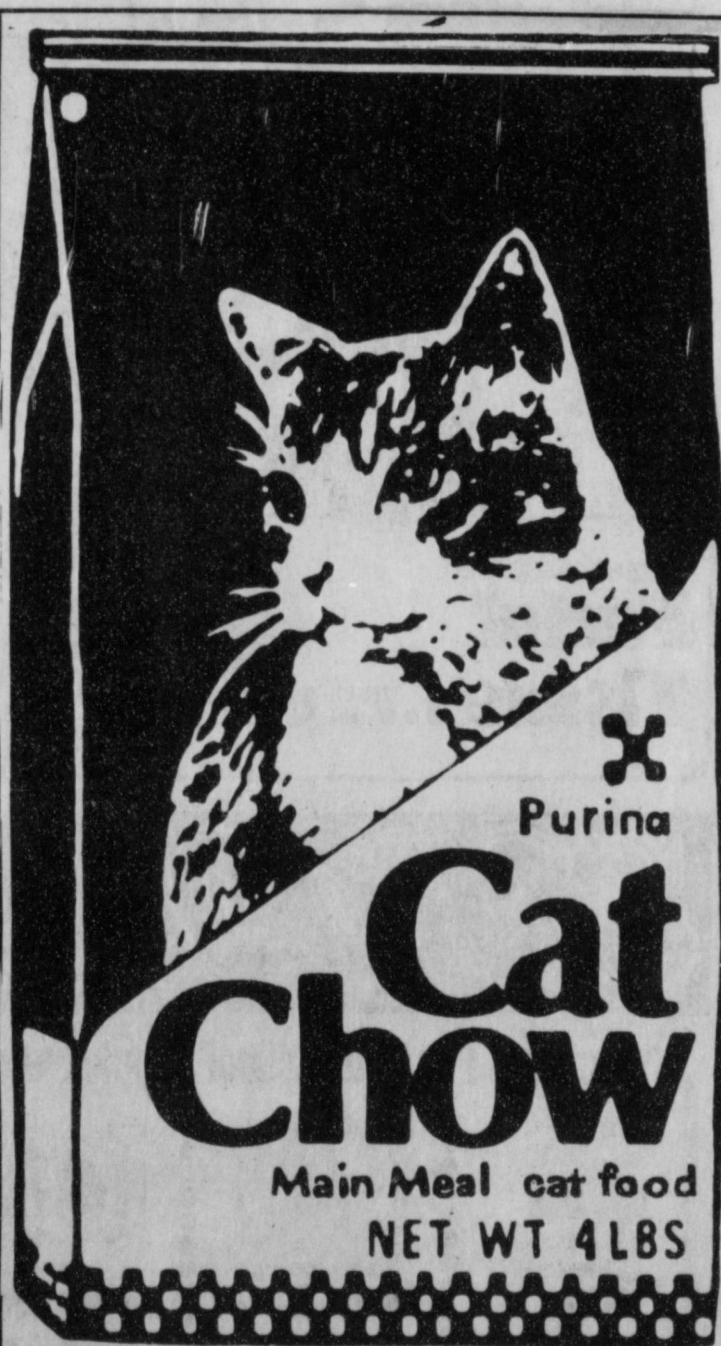
Gatorade® the perfect thirst quencher! Replaces what your body loses with heavy exercise. And it tastes great! 32 oz. jar, a real buy.

2 \$1  
Cans



Charcoal 10 lb. bag, easy starting, doesn't give off a foul taste! Enjoy the great outdoors!

Limit 2  
.88



Purina

# Cat Chow

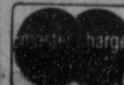
Main Meal cat food  
NET WT 4LBS

Your cat will love the great taste of Purina®, and it's good for him!

Purina® Cat Chow your cat will really dance for his dinner when you serve him Cat Chow. He'll love the taste! Economical 4 lb. bag.

Limit 2  
1.67

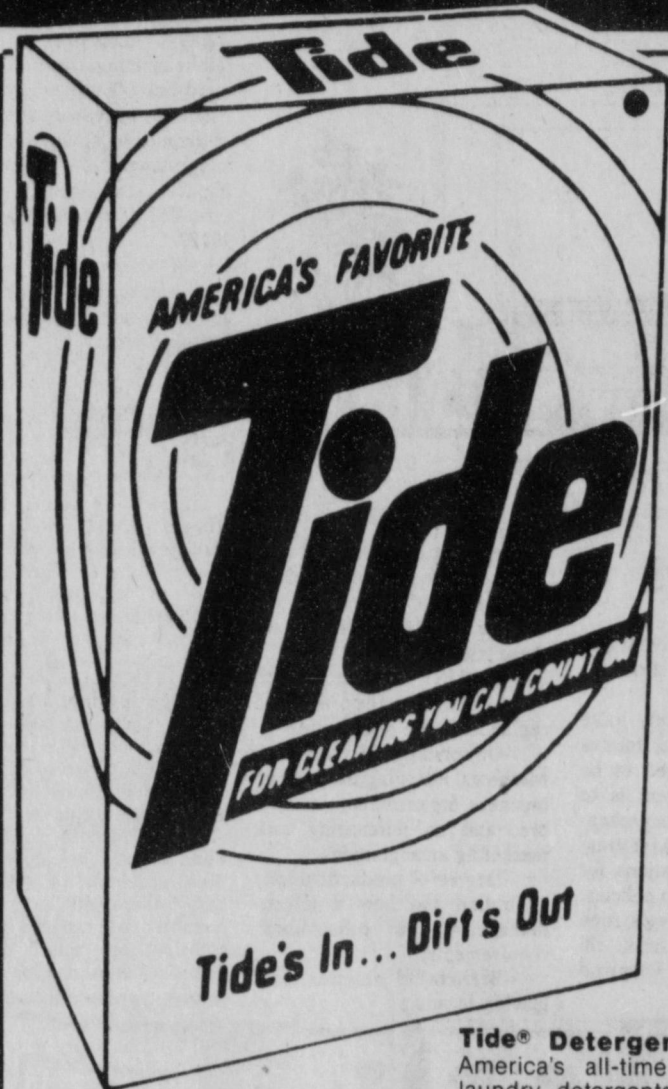
PRICES GOOD ONLY AT T. G. & Y. FAMILY CENTER  
521 HWY. 207 SOUTH SPEARMAN, TEXAS 689-3742





**T.G.&Y.**  
family centers

**SAVE BIG...**  
buy these nationally  
advertised brands now!



**Tide® Detergent** One of America's all-time favorites in laundry detergents. Big 49 oz. size.

Limit 2 **1.37**



**Pepsi-Cola®** Be sure you have enough on hand. Big 2-liter size in No Return bottle.

Limit 2 **.74** Ea.



**Purina® Variety Menu Meal Cat Food** Give your cat a nutritious meal it will love. 6 oz. can.

Limit 5 Cans **51.00**



**TG&Y Turbo Hair Dryer** Features 3 heat settings and 2 speed settings. UL Approved. #R/105

Limit 1 **4.99**



**Spray 'n Wash®** America's most popular laundry soil and stain remover. 16 oz. size.

Limit 2 **.88** Ea.



**Rave® Hair Spray** Extra hold style, for longer holding time. 4 oz. non-aerosol mist.

Limit 2 **.88**



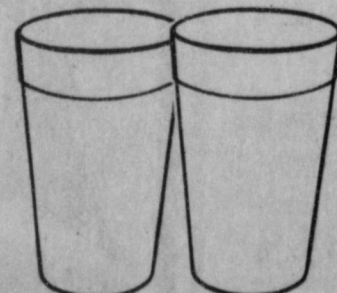
**Nestea® Instant 100% of tea** goodness per 3 oz. jar.

Limit 2 **1.47** Ea.



**Hi-Dri® Paper Towels** 85 sq. ft. two-ply roll.

Limit 3 For **3 1.00**



**Plastic Tumblers** 30 oz. size, assorted colors.

For **4 1.00**



**Vaseline® Baby Powder** 24 oz. family size.

Limit 2 **.88** Ea.

**CITATION BY PUBLICATION**

THE STATE OF TEXAS  
TO: MRS. JACK PRITCHETT, JACK WILLARD PRITCHETT JR., MICHAEL WAYNE PRITCHETT AND REBECCA HOPE PRITCHETT, their unknown heirs, legatees, devisees and assigns, Defendant, Greeting:

YOU (AND EACH OF YOU) ARE HEREBY COMMANDED to appear before the Special Commissioners Court in eminent domain of Hansford County at the Courthouse thereof, in Spearman, Texas, by filing a written answer at or before 10 o'clock A.M. of the first Monday next after the expiration of forty-two days from the date of the issuance of this citation, same being the 1st day of October A.D. 1979, to Plaintiff's Petition filed in said court, on the 13th day of August A.D. 1979, in this cause, numbered 515 on the docket of said court and styled HANSFORD COUNTY HOSPITAL DISTRICT, Plaintiff, vs. MRS. JACK PRITCHETT, et al., Defendant.

A brief statement of the nature of this suit is as follows, to-wit:

A proceeding in eminent domain to acquire the fee simple interest in the following tract or tracts of land for the purpose of building an extended health care facility and/or for hospital purposes. Said tract or tracts known as:

All of Lot Number Three (3), Block Number Two (2), Reeves Addition to the City of Spearman, Hansford County, Texas, as shown by the recorded plat thereof.

If this citation is not served within ninety days after the date of its issuance, it shall be returned unserved.

The officer executing this writ shall promptly serve the same according to requirements of law, and the mandates hereof, and make due return as the law directs.

Witness, Marie H. Gould, Clerk of the County Court(s) of Hansford County, Texas.

Issued and given under my hand and the seal of said court at Spearman, Texas, this the 14 day of August A.D. 1979.

Marie H. Gould Clerk, County Court Hansford County, Texas.

40-4tc

**ZANE NEWTON AND CHRISTY WERE OUTSTANDING SAUTURDAY**

Zane Newton started for the West at half-back and helped win the game at Childress Saturday night, while his queen Christy Collier cheered from the sidelines. Some 25 people from Spearman attended the game.

**RAINS IN AREA**

A good shower, .80 fell in Spearman late Tuesday evening as heavy clouds produced booming showers in Hansford County. Spearman received .65 about 6 p. m., and some .15 more fell in the night Tuesday and Wed. It is cloudy Wednesday morning as we go to press.

Need a change of pace? Try one of Hergerts used cars.....

**NOTICE OF REDISTRICTING**

Changes in Commissioners Precincts and Justice of Peace Precincts to comply with the decision of the 7th Court of Civil Appeals order that Hansford County Commissioners Precincts should be contiguous, has involved redrawing precinct lines.

The plan set forth in the order passed by the Commissioners Court on July 23, 1979, requires moving only 27 rural people from one district to another and joins the portions of Spearman formerly designated as parts of Commissioners Precincts 2 and 3 with the former disconnected rural portions of Hansford County. All Spearman and Gruver residents will continue to vote in their present voting precincts.

The following parcels of land are moved into Commissioner Precinct 2 from Precinct 1: Sections 5, 32, 38, 57, 68, and 87, Block 4T, T & NO RR Co. Survey.

Commissioner Precinct 3 will have the following sections added: Section 9, Block 2 SA & MG RR Co. Survey, Sections 97, 98, 99, 100, 101, 102, Block 4S, H & TC Survey, also Sections 1 and 2, Block 4T, T & NO RR Co. Survey, and removed from old Commissioner Precinct 2. Also added to Precinct 3 are Sections 4, 33, 37, 58, and the North 1/4 of Section 67, Block 4T, T & NO Survey, and same are removed from Precinct 1.

Precinct 4 is not changed.

The redrawing of Commissioners Precincts necessitates a change in Voting Precincts. The following changes in Voting Precinct boundaries are made to concur with Commissioners Precincts: Section 9, Block 2, SA & MG RR Co. Survey, and Sections 97, 98, 99, 100, 101, Block 4S, H & TC RR Co. Survey are added to Voting Precinct 3 and removed from Voting Precinct 2.

Section 102, Block 4S, H & TC RR Survey (previously published as SA & MG Survey, July 26, 1979) and Sections 1, 2, 4, 33, 37, 58, and the North 1/4 of Section 67, Block 4T, T & NO RR Survey are included in Voting Precinct 5 polling place in the County Agriculture Barn in Spearman.

Voting Precinct 6, with the Spearman High School a polling place, is changed to include Sections 5, 32, 38, 57, 68, and 87, Block 4T, T & NO RR Co. Survey with the portion of Spearman previously designated as Precinct 6.

Voting Precincts 4, 7, and 9 are not changed.

This redrawing of Precinct lines was established in this manner to comply with former 84th Judicial District Judge Max Boyer's order that the Commissioners Precincts be redrawn to comply with the "One man, one vote" principal, held to be the Law of the Land by the U. S. Supreme Court and to comply with the 7th Court of Civil Appeals judgement that Commissioners Precincts be contiguous.

As an additional benefit, the redrawing further makes the precinct populations more evenly divided. Precinct one will have 1,501, Precinct two-1,509, Precinct three-1,493, and Precinct four will have 1,476 based on the 1976 County Census conducted by the Commissioners Court.

The Commissioners and Justice of Peace Precincts are to be effective January 1, 1980. The Voting Precincts are to be effective March 1, 1980, the beginning of the voting year.

Roy L. McClellan  
Hansford County Judge 38-3tc

**SPEARMAN TRADING POST**

Open For Business  
**MONDAY**

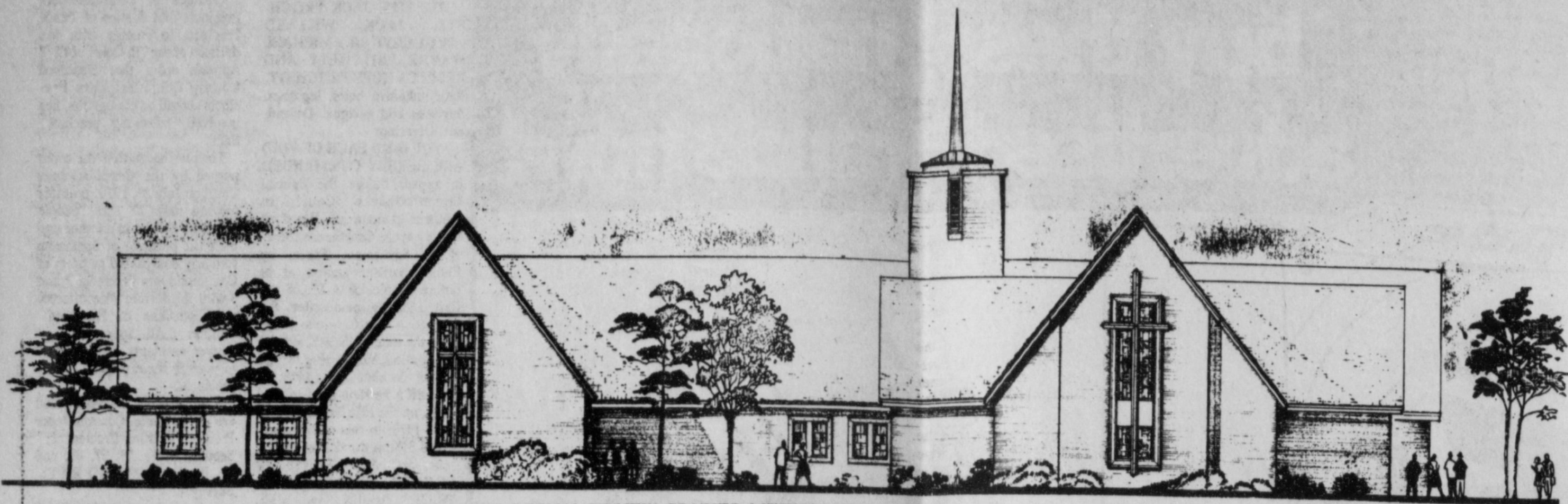
with retail furniture, new and used, collectors items and Case parts. at the R.L. McClellain Implement building

203 Collard  
Spearman, Texas

PRICES GOOD ONLY AT T. G. & Y. FAMILY CENTER  
521 HWY. 207 SOUTH SPEARMAN, TEXAS 689-3742







ARTIST DESIGN OF NEW GRUVER METHODIST CHURCH FACILITY

--Social and economic characteristics of farm operators and owners.

Bergland said the department is compiling a series of background issue papers with basic facts and statistics outlining the major questions involved in structure. These will be printed and distributed during September and October, he said.

Critical areas where solid, factual information is lacking will be identified, Bergland said. He said a research agenda will be developed for these areas, and studies done by the department, universities, foundations and other groups.

Bergland said anyone who wants to comment at any of the public meetings should sign up in advance. Those who want to comment, but cannot attend one of the meetings, may send their suggestions to the project coordinator, Structure of Agriculture, USDA, Washington, D.C. 20250.

All comments, whether written or oral, will be recorded and given careful consideration, Bergland said.

**PSYCHOLOGY**

Experts on human behavior tell us that motorists and motorcyclists who curb their first impulse to show annoyance or aggression on the road are more likely to find it progressively easier to share the road.

Operating their respective vehicles in accordance with the law, and with courtesy and common sense, can also reduce the almost 175,000 motorcycle accidents a year, says the Motorcycle Safety Foundation. The majority of those accidents are collisions with other vehicles, and 70 percent of multi-vehicle collisions are caused by the driver of the car or truck involved.

**USDA Schedules Public Meetings**

Secretary of Agriculture Bob Bergland today announced the 10 cities where public meetings will be held in November and December to obtain comments and suggestions on the economic and social issues affecting the structure of American agriculture and rural life.

They are: Nov. 27--Montpelier, Vt.; Nov. 28--Fayetteville, N.C.; Nov. 29--Huntsville, Ala.; Dec. 4--Sioux City, Iowa; Dec. 5--Sedalia, Mo.; Dec. 6--Wichita Falls, Texas; Dec. 11--Bould-

er, Colo.; Dec. 12--Spokane, Wash.; Dec. 13--Fresno, Calif.; Dec. 18--Lafayette, Ind.

Bergland and other top USDA officials will attend each meeting.

The public meetings are part of the "national dialogue on agricultural structure" Bergland announced in March.

"We are at a point in our history where a broad-based public discussion of the issues that shape national policies is needed to promote the kind of

agriculture and rural living this nation wants for the future," Bergland said.

"The forces that have shaped American agriculture as we know it today need to be re-examined. Our intent is to develop the most comprehensive package of factual information and recommendations for use in proposing future policies, especially new farm legislation when the current farm bill expires in 1981," Bergland said.

He said the term "structure" is difficult to define in precise terms. However, he said he broadly defined it as these issues:

--Number and sizes of farms, and how they vary by region and type of operation.

--Ownership and control of resources, including the form of business organization, its tenure, and its purchasing and marketing arrangements.

--Degree of production specialization and how it affects managerial and technological requirements.

--Barriers to entering and leaving farming.

**RANGER BOWL**

605 N. Main

Perryton, Texas

435-4331

Rondal and Randy Schell, new owners of the Ranger Bowl invite you to come over to visit us.

The following schedule is for the fall leagues. Contact Rondal or Judy, 659-2201 or call Ranger Bowl 435-4331 for further information.

			Starting Dates
SUNDAY	2:00 p.m. Junior	Mixed	Sept. 9
	7:00 p.m. Mixed		
MONDAY	12:30 p.m. Women	Men	Aug. 27
	7:30 p.m. Men		
TUESDAY	6:30 p.m. Women	Mixed	Sept. 4
	9:00 p.m. Mixed		
WEDNESDAY	9:00 a.m. Women	Mixed	Sept. 5
	6:30 p.m. Mixed	Men	
	9:00 p.m. Men		
THURSDAY	6:30 p.m. Women	Mixed	Sept. 6
	9:00 p.m. Mixed		
FRIDAY	7:30 p.m. Mixed	Jackpot	Sept. 7
	9:30 p.m. Jackpot		
SATURDAY	2:00 p.m. Junior		Sept. 8



PRICES GOOD THROUGH SAT. AUG. 18

**UNITED Supermarkets** Perryton, Texas

**WIN UP TO \$2000 CASH!**

**\$200,000 IN CASH PRIZES**

QUANTITY RIGHTS RESERVED

**MORTON DINNERS** 49¢

- \*SPAGHETTI & MT. BALLS
- \*TURKEY \*BEAN & FRANK
- \*CHICKEN \*SALS. STEAK
- \*WESTERN \*MT. LOAF

**DOWNY FABRIC SOFTENER** 32 OZ. BTL. 8¢ OFF REG. PRICE **98¢**

**TIDE** HOME LAUNDRY SIZE 171 OZ. BOX **\$4.79**

**GLAD BAGS** LARGE KITCHEN HEAVY WEIGHT 10 CT. BOX **98¢**

**AIRWICK CARPET FRESH** 9 OZ. CAN **\$1.09**

**LIGHTCRUST FLOUR** 5 LB. BAG **59¢**

**COCA COLA** 6 BTL. 32 OZ. CTN. **\$1.69 PLUS DEP**

**UNITED MELLORINE** ASST. FLAVORS 1/2 GAL. **69¢**

**CALIFORNIA YELLOW MEAT PEACHES** 3 LBS. **\$1**

**RED GRANDE NECTARINES** 3 LBS. **\$1**

**CARROTS** 16 OZ. CELLO BAG **4 FOR \$1**

**YELLOW MILD ONIONS** LB. **10¢**

**GLADIOLA POUCH MIXES** \*PANCAKES \*BISCUITS \*CORNBREAD **5 FOR \$1**

**KEEHLER COOKIES** \*FRENCH VANILLA CRM. \*CHOCOLATE CRM. \*PITTER PATTY 16 OZ. BOX **89¢**

**FINE FARE SALTINE CRACKERS** 1 LB. BOX **49¢**

**FINE FARE SOUP** CHICKEN NOODLE 10 OZ. CANS **4 \$1**

**BELL CHOCOLATE MILK** 3 LB. **59¢**

**COUNTRY STYLE OLEO SOLIDS** 3 LB. **\$1.39**

**BELL WHIPPING CREAM** 8 OZ. CTN. **39¢**



## 4-H Programs Offer Variety

**4-H Programs offer Variety**  
Young people with a desire to learn more about their world have the opportunity to participate in a fast-growing organization—4-H.

The 4-H program offers a variety of activities for youth between the ages of 9 and 19, points out Peggy Winegarner, County 4-H Program Coordinator with the Texas Agricultural Extension Service, Texas A&M University System.

Young people can get involved in project groups, special interest groups or service groups that appeal to their interests.

While 4-H meetings cover a variety of subjects and activities and are held periodically, project groups work on one specific subject and last only as long as the project lasts.

Project subjects may include gardening, foods, raising and caring for an animal, safety and clothing. These project groups are usually directed by a volunteer leader, explains Mrs.

Winegarner. Special interest groups are a vital part of the 4-H program and may deal with such subjects as wood science, leatherwork, etiquette and babysitting. These group studies help youth learn more about the world in which they live and help them to better adapt to changing environments.

Service groups work to help improve the community and may engage in fund-raising projects for the needy and disadvantaged or work on neighborhood beautification or with underprivileged youth.

The 4-H and youth program is a good way to get involved in today's world, believes Mrs. Winegarner. For more information on this action-oriented, learning-by-doing organization, contact the County Extension office.

4-H clubs, projects and activities are open to all youth, age 9-19 without regard to race, color, sex, national origin, or religion.

Arts and crafts, including wood carving, will be the order of the day on Thursday, August 16, beginning at 10:00 a.m. until as long as anyone wants to work. The group will break at noon for a covered-dish luncheon.

Table games and pool are bill of fare on Friday, August 17 from 2:00 to 5:00 p.m.

There will be a couples van-bus trip to Perryton to eat at K-Bobs on Monday, August 20. Don and Bertha Spoonemore will be driving. Sorry, no singles! Just couples! If you would like to go you had better get your names on the list before it is completely filled up.

The Golden Spread Center is open every day Monday through Friday from 9:00 a.m. to 5:00 p.m. Pearl Pierce is the full-time director who is knowledgeable in all programs for the aging. She is a pleasant conversationalist and a good counselor. The Center also has a good supply of reading materials and a color TV. Anyone 55 years of age or older is invited and encouraged to drop in at the Center anytime that it is open.

Golden Spread Club is an educational, social, and benevolent organization open to all citizens who are fifty-five years of age or older without discrimination as to sex, race, color, ethnic background, national origin, religion, denominational preference, political party, or handicap.

Golden Spread Club members with birthdays in the month of August were honored at a Birthday Party Tuesday, August 14 at 6:30 p.m. Table games and birthday party games were played and enjoyed by all.

Wanda Brown drove the Center's van-bus on Wednesday, August 15 to take the sixty and over bunch shopping, on errands, to the doctor, dentist, beauty parlor, and you name it from 9:00 a.m. to 12:00 noon.

service; Brice Palmer, director of community service; Jim Benson, attendance.

Greg Hazelwood, Dayton Edwards, and Kyle Beedy all talked about their experiences at Camp RYLA (Rotary Youth Leadership Activities). All three speakers expressed their thanks to the Rotary Club for sending them and encouraged them to keep up the program. They all felt it was the most inspirational and fun camp that they had ever attended.

Greg Hazelwood said that the speakers were all great. He especially liked Max Sherman, president of West Texas State University; Bill Landis of Merrill-Lynch; and T.J. Patterson of Texas Tech. He said that the main thing he got out of the camp was, "Don't be average; anyone can be average."

Dayton Edwards said that if the Rotary Club could send the whole school to camp, America would be a better place to live. He also emphasized that all the speakers were great. His favorite was Tom Amason, former pro-footballer, who heads the camp.

Kyle Beedy said that he enjoyed the speakers but some of it went over his head, but in the small cabin sessions counselors were able to make clear these points. He said that leadership involves several important steps. First, one has to have goals, then a plan, desire, confidence, and persistence.

Guests at Rotary Monday noon were Paul, Betty and Greg Hazelwood, Dayton Edwards, Brad and Kyle Beedy; Elmo Hill of Amarillo, a guest of Junior Lusby; and Jim Murray, a guest of Lenis Simpson.

Members present were Jim Benson, Eschol Blankenship, Roy Bulls, Durane Castleberry, John R. Collard, Jr., Robert Elliott, Pete Fisher, Ed Freeman, Kerry Henton, John Hutchinson, Eddy Limbocker, Junior Lusby, Jack McWhirter, Brice Palmer, Michael Schnell,

Jim Shirley, Lenis Simpson, Jerry Taylor.

Members absent were: J.L. Brock, Kim Brock, Archie Burrell, Ed Garner, Jim McLain, Frank Oglesby, Coy Palmer, Gary Sims, Vance Snider, Don Wirsdorfer, Tim Woodington.

Next weeks program will be supplied by the Frenchy McCormick Dinner Theatre from the Amarillo Hilton Inn.

## Farm Tax Provisions For 1979

**COLLEGE STATION** --- In planning their income tax strategies for 1979, farmers and ranchers should consider new tax provisions.

Numerous changes due to the 1978 Revenue Act can affect income tax planning, points out Dr. Ashley Lovell, economist with the Texas Agricultural Extension Service, Texas A&M University System.

For example, owners of single-purpose livestock, poultry or horticultural structures are eligible for investment credit beginning with tax years ending after Aug. 15, 1971. This includes buildings used to breed chickens or hogs, produce milk from dairy cattle, and produce feeder cattle or pigs, broiler chickens and eggs. The investment credit rate is 10 percent on fully qualifying items, including up to \$100,000 of used property in any tax year.

According to Lovell, the law also allows a 10 percent investment credit for rehabilitation of existing buildings used in all types of businesses, except residential. Expenditures must have been made after Oct. 31, 1978 on buildings in use for at least 20 years. Of course, it's important to depreciate rehabilitation costs.

As a result of the Revenue Act, cost-sharing payments af-

ter Sept. 30, 1979 from conservation programs may be excluded from gross income. These programs qualify: Emergency Conservation, Agricultural Conservation, Great Plains Conservation, Rural Clean Water, Rural Abandoned Mine, Water Bank, Resource Conservation and Development, Forestry Incentive and Small Watershed. Also included are certain state conservation programs.

Before deciding to exclude income from those programs from gross income, Lovell encourages investigation of basis adjustment, investment credit, depreciation, impact upon recipient's income, and recapture provisions under the 1978 Revenue Act. Also, determine the necessity for timing the receipt of such payments.

Farmers and ranchers should also take a look at the Energy Act of 1978

The city of Spearman purchased a new street sweeper, at their regular meeting held

here last night. All councilmen and the Mayor were present. Other activities included discussion of hangars at the airport, paying the first part of the airport financing, and other projects. Complete details in Sunday paper....

Spearman Mayor Ralph Blodgett has been appointed to Gov. Bill Clements' Mayors' Advisory Committee.

The 50-member panel, chaired by Jerry Hodge of Amarillo, was formed earlier this year to give input to the governor on problems and issues affecting Texas cities and towns.

Jerry McClure of Borger and Bob Wayland of Plainview are also on the committee.

Blodgett, who was elected mayor in 1976, said he wants to represent any issue of interest to Panhandle cities and towns on the committee.

"I would like to hear from other cities and towns, so that we can have input into the governor's office," he said.

He said he will continue to support original jurisdiction for the cities in the setting of utility rates.

"I believe we'll have a good rapport with Gov. Clements," Blodgett said. "I believe he is sympathetic to the feelings of most cities, particularly the small ones."

## Hargis Teaching At Believers Cottage

The Rev. Claude Hargis, pastor of the Rhema Bible Church in Darmstadt, Germany, will be teaching at the Believers Cottage on Friday, August 17 at 8:00 p.m.

## Golden Spread Center News

Golden Spread Club members with birthdays in the month of August were honored at a Birthday Party Tuesday, August 14 at 6:30 p.m. Table games and birthday party games were played and enjoyed by all.

Wanda Brown drove the Center's van-bus on Wednesday, August 15 to take the sixty and over bunch shopping, on errands, to the doctor, dentist, beauty parlor, and you name it from 9:00 a.m. to 12:00 noon.

## Rotary Club

Eschol Blankenship was elected vice-president of the Spearman Rotary Club at their meeting Monday noon, August 13 in the Garden room of the Cattleman's Restaurant. Other new officers are Michael Schnell, director of vocational

## GUYMON, OKLAHOMA-CATTLE AUCTION MARKET - NEWS - LETTER

GREETINGS TO ALL FRIENDS AND CATTLE PRODUCERS

FRIDAY AUGUST 10TH A TOTAL OF 719 CATTLE AND CALVES WERE SOLD THROUGH THE ARENA.

PACKER COWS SOLD ON A \$2.00 TO \$3.00 HIGHER MARKET SELLING IN A PRICE RANGE OF \$45.00 TO \$53.00 PER CWT. BOLOGNA BULLS SOLD \$2.00 HIGHER SELLING FOR A TOP OF \$65.00 PER CWT. STEER AND HEIFER CALVES SOLD STEADY TO HIGHER. STEER CALVES WEIGHING FROM 300 TO 450 LBS SOLD FROM \$78.00 TO \$95.00 PER CWT. A FEW LIGHT WEIGHT STEER CALVES SOLD UP TO \$125.00 PER CWT. HEIFER CALVES WEIGHING FROM 300 TO 400 LBS SOLD FROM \$70.00 TO \$90.00 PER CWT.

FOR INFORMATION OR DETAILS ON ONE OF OUR REGULAR FRIDAY AUCTIONS GIVE US A CALL HERE IN GUYMON AT THE PANHANDLE LIVESTOCK COMMISSION CO. THAT NUMBER IS 405-338-3378 OR AFTER HOURS CALL 405-349-2254. THE NEXT AUCTION WILL BE HELD AT 11:00 A.M. AUGUST 17th. BE WITH US FOR THIS EVENT.

PANHANDLE LIVESTOCK COMMISSION CO.  
Guymon, Okla., 73942 • 405-338-3378 • P.O. Box 879

# BINGO

## 40,000,000 S&H GREEN STAMPS PRIZES

**WIN UP TO 5 BOOKS S&H GREEN STAMPS**

**ODDS CHART**  
Odds stated are good for thirty days after promotion begins. Odds will be revised weekly thereafter to indicate prizes still available and will be posted in participating stores.  
Odds Effective Aug. 8, 1979

Prize	Number of Prizes	Odds for 1 Store	Odds for 13 Stores	Odds for 26 Stores
\$2,000	13	134,254 to 1	10,327 to 1	5,164 to 1
1,000	28	62,322 to 1	2,795 to 1	2,397 to 1
200	85	20,533 to 1	1,579 to 1	790 to 1
100	164	10,642 to 1	819 to 1	409 to 1
50	249	7,009 to 1	539 to 1	270 to 1
25	515	3,389 to 1	261 to 1	130 to 1
10	928	1,881 to 1	145 to 1	72 to 1
5	1,891	1,032 to 1	79 to 1	40 to 1
2	17,419	100 to 1	8 to 1	4 to 1
55¢ Bk.	1,052	1,850 to 1	128 to 1	64 to 1
35¢ Bk.	1,941	899 to 1	69 to 1	35 to 1
25¢ Bk.	3,184	548 to 1	42 to 1	21 to 1
15¢ Bk.	6,369	274 to 1	21 to 1	11 to 1
Total	33,638	52 to 1	4 to 1	2 to 1

<b>ROUND STEAK</b> UNITED TRUTENDR BEEF LB. <b>\$1.49</b>	<b>FRANKS</b> TYSON'S CHICKEN 12 OZ. PKG. <b>69¢</b>
<b>RIB STEAK</b> UNITED TRUTENDR BEEF LB. <b>\$1.49</b>	<b>BOLOGNA</b> TYSON'S CHICKEN 12 OZ. PKG. <b>79¢</b>
<b>BEEF RIBS</b> HAVEL CUTS LB. <b>69¢</b>	<b>BREASTS</b> COUNTRY PRIDE SPLIT FRYER LB. <b>98¢</b>
<b>SPARE RIBS</b> SWIFT'S TENDER LEAN PORK UNDER 3 LB. AVG. LB. <b>\$1.29</b>	<b>DRUMSTICKS OR THIGHS</b> COUNTRY PRIDE GRADE A LB. <b>89¢</b>
<b>PORK LOIN</b> SWIFT'S TENDER LEAN *HALF *WHOLE LB. <b>\$1.19</b>	<b>GROUND BEEF</b> FRESH FAMILY PACK LB. <b>\$1.19</b>

<b>CORN</b> FINE FARE GOLDEN *WHOLE KERNEL *CRM. STYLE 3 17 OZ. CANS <b>89¢</b>	<b>TOOTH PASTE</b> GLEEM II HEALTH & BEAUTY 5 OZ. TUBE 20¢ OFF <b>79¢</b>
<b>BEANS</b> FINE FARE PORK & GOLDEN SWEET CREAM STYLE CORN 3 FOR <b>89¢</b>	<b>ALLREST</b> 24 CT. BOX <b>\$1.19</b>
<b>TOMATOES</b> FINE FARE WHOLE 3 16 OZ. CANS <b>\$1.19</b>	<b>POINTMENT</b> DESITIN 2 1/2 OZ. TUBE <b>98¢</b>
<b>BUTTER</b> FINE FARE PEANUT *CREAMY *CRUNCHY 18 OZ. JAR <b>79¢</b>	

**FROZEN FOOD**

**MRS. SMITH'S PECAN PIE** 8" PIE **\$1.89**

**TOPPING** FINE FARE WHIPPED 9 OZ. CTN. **49¢**

**JUICE** FINE FARE ORANGE 12 OZ. CAN **69¢**

**UNITED Supermarkets** Perryton, Texas. PRICES GOOD THROUGH SAT. AUG. 18. QUANTITY RIGHTS RESERVED.

## CARQUEST AUTO PARTS STORES


### CAR CARE SAVINGS-OF-THE-MONTH

**HASTINGS DENSITE OIL FILTER**  
Exclusive depth-type filtering medium for superior filtering action. Money-back guarantee from manufacturer. #T115A, #T196, #T222, #T224, #T225 \*Rts Most U.S. Cars.




**1.99**

**CARQUEST MOTOR OIL**  
CARQUEST HD30 WT. meets or exceeds all manufacturers' new car warranty requirements. A product of Ashland Oil Co.



**59¢** qt. Limit 1 case per customer.

**BERRYMAN CHEMTOOL CARBURETOR FUEL CLEANER**  
Cleans carburetor, PCV Valve, Automatic choke, linkage. Dissolves gum and varnish instantly. 15 oz. aerosol spray.



**1.82** #8100B

**B-D JACK RABBIT PUMP AND SPRAYER**  
No need to crawl under your car. Jack Rabbit pumps out dirty oil. Also pumps gas and water. Even sprays.



**1.85** #J50-1500

**HI-PLAINS AUTO SUPPLY, INC.**  
118 N. Main  
Spearman - 659-2506

WE KNOW WHAT YOU MEAN WHEN YOU'RE TALKING PARTS.



# Farmers Union Threatens Lawsuit Due To Export Limits

DENVER--The Farmers Union charged today that the federal government has "suspended" sales of grain to the Soviet Union and demanded that the price support loan rate for wheat and corn be raised immediately to 90 percent of parity in accordance with Section 1002 of the Food and Agriculture Act of 1977.

In a statement issued simultaneously in Denver, Colorado, and Washington, D. C., Tony T. Dechant, National President of the Farmers Union, declared that the Farmers Union is contemplating legal action to compel the government to raise the price support loans under terms of the law, or to cease its restriction against additional sales of corn and wheat to the USSR.

Ninety percent of parity would be \$5.38 a bushel for wheat and \$3.75 a bushel for corn. Average prices received by farmers in the U. S. in July were \$3.95 for wheat and \$2.73 for corn.

Dechant noted that Section 1002 of the 1977 Act provides that "Whenever the President or any other member of the Executive Branch of the federal government causes to be suspended, based upon a determination of short supply, the commercial export sales of any commodity (wheat, corn, grain sorghum, soybeans, oats, rye, barley, rice, flaxseed and cotton) to any country or area with which the United States otherwise continues commercial trade, the Secretary of Agriculture shall, on the day the

suspension is initiated, set the loan level for such commodity... at 90 per centum of the parity price for the commodity."

"This isn't a question of whether the President has authority under the Export Administration Act or the five-year Russian grain agreement to limit shipments when supplies are deemed to be short," he explained. "But the law is clear that when there is such interference on the grounds that supplies are short, the support rate must at once be lifted to 90 percent of parity."

Dechant said it is obvious from the legislative history of Section 1002 that it was not the intent that this should be applicable only when there is a total embargo on shipments of a commodity.

He noted that the House Agriculture Committee report on the farm bill, said in its reference to the language of Section 1002, that the provision is intended to apply whenever the suspension is made "directly or indirectly."

The Committee Report also explains that "This provision is intended to discourage embargoes or the suspension of export sales by the Executive Branch of government. It does not, of course, prevent such action where an overriding national interest exists. However, the Committee feels that if the public interest is served by such drastic and disruptive action, then the public not just grain producers, should pay for that public policy."

Section 1002 was proposed

originally in the House Agriculture Committee by Rep. Glenn English (Okla.) who termed it necessary "to protect producers from government interference with the export of American wheat."

Originally, the English amendment was to require a raise in supports to 100 percent of parity and this was the provision when the bill went to the House floor.

Rep. Tom Foley (Wash.), Chairman of the House Agriculture Committee and manager of the bill, said in presenting the bill to the House that the price support adjustment would be required "if the Executive Branch of the federal government should suspend or cause suspension of exports."

The House approved the English provision and it was later scaled down in conference committee to 90 percent of parity. The conference committee report declares that "The provision is to be operative whenever any member of the Executive Branch causes to be suspended--based on a determination of short supply--the commercial export sales of any of the above-named commodities."

"There is no question that the Executive Branch has suspended grain sales to the Soviet Union because of concern about supply conditions," Dechant explained. "In making his announcement on August 1 following the consultations, Secretary Bergland explicitly reported the quantity limits imposed by the U. S. on grain

sales and further stated that any consideration of increasing those limits would be delayed to October. In Bergland's own words, 'By that time, we will have more precise information on the size of this year's corn and other feed grain crops.'"

Dechant added that it is common knowledge from trade sources that the Soviet Union wants to buy more grain in the fourth year of the grain agreement, which begins October 1, than it has so far been given permission to purchase.

### PEGGY'S POINTERS

Peggy Winegarner  
Co. Extension Agent (H.E.)

Pickle the extra okra from your home garden or roadside vegetable stand that you do not freeze or use fresh.

Pickled okra is a favorite for many Texas Families and adds zest to meals.

Select tender pods which are uniform in size. Wash thoroughly to prepare for pickling.

Here's how to pickle okra:  
DILLED OKRA

3 pounds uncut and washed young okra pods

Celery leaves

6 small hot red peppers

Cloves of garlic

Large heads of dill and stems, or 1/2 teaspoon dill seed per pint

1 quart water

1 pint white vinegar

1/2 cup salt

Pack okra into hot pint jars with a few celery leaves, pod of pepper, clove of garlic and head

of dill or dill seed in each jar. Make brine of water, vinegar and salt. Heat to boiling. Pour over okra.

Process in boiling water bath by placing in a large kettle of boiling water to which a little cold water--about one cup--has been added to lower the temperature only slightly.

The kettle should have a rack to hold the jars off the bottom and be deep enough for the water to come over the jars one to two inches with a remaining head space of one to two inches. It should also have a tight-fitting lid.

Process the okra for 20 minutes. Start to count processing time as soon as hot jars are placed in actively boiling water.

Remove jars and place on a rack to cool out of draft. The next day after processing, remove rings. Wash and dry jars and store in cool place.

Note: The okra will be shriveled immediately after removal from the water bath, but after several days will absorb the liquid and become plump once again.

## Jerry Lewis Telethon Set For Sept. 2-3

The 14th annual Jerry Lewis Labor Day Telethon Against Muscular Dystrophy will be broadcast in the Panhandle by KFDD-TV, Channel 10, September 2-3.

Originating from Las Vegas, the TV spectacular is held to benefit the medical service and research programs of the Muscular Dystrophy Association (MDA). The 21 1/2 hour entertainment marathon will be carried by a "Love Network" of more than 200 TV stations in the continental U.S., Hawaii, Alaska, and Puerto Rico. Ed McMahon will again serve as Jerry Lewis' anchorman.

Last year the Telethon produced a record \$29 million for the national health agency's work, and was seen by an estimated 88 million persons--indicating that nearly 50 percent of the households with TV sets in the U.S. turned on the show.

Joel Rogosin, the show's

producer promises that this year's Telethon will be bigger and better than ever before. Mr. Rogosin said, "Jerry's worked most of the year on some great ideas and we're so excited that we've decided to call it the All-New Jerry Lewis Telethon. The enthusiasm and interest in this production is contagious. Knowing that the lives of thousands of people with muscular dystrophy and related neuromuscular diseases may be saved by what we're doing inspires us to push as hard as we can to make this the finest spectacular television viewers have ever seen."

KFDD will "cut away" from the network show approximately every hour to present first-hand reports of MDA activities in the Panhandle area supported by proceeds from the Telethon and other of the agency's fund-raising events. MDA maintains a clinic at Northwest Texas Out-Patient Clinic, oper-

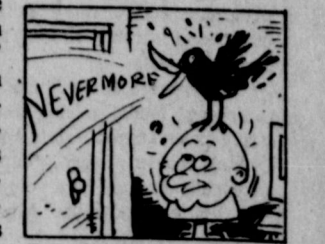
ates a summer/winter camp for children with muscular dystrophy and related neuromuscular diseases at the Episcopal Church Conference Center.

## Huichinson Pioneer's Meet Set

The 38th Annual Hutchinson County Pioneer's All Day Meeting will be held August 19, 1979, beginning at 10 a.m. at the Stinnett High School Cafeteria, Stinnett, Texas.

You, your family and friends are reminded to bring a basket dinner and enjoy a free program and a day of visiting.

The Hutchinson County Pioneer Association sponsors the meeting. Lex Board is chairman, Hugo Rimer, vice chairman and Mrs. J. C. Matney is secretary-treasurer.



### NOTICE OF BUDGET HEARING

Hansford County Commissioners Court will have a hearing on the 1980 budget in their regular meeting room, Spearman, Texas on Monday, September 10, 1979, at 10:00 a.m.

You have the privilege of expressing written or oral comments at this meeting. A copy of the proposed budget may be obtained at the County Judge's office, Spearman, Texas.

The following is a summary of the entire budget and proposed use of the Revenue Sharing Fund:

#### PROPOSED SUMMARY OF RECEIPTS AND DISBURSEMENTS

	Budget Bal. 1-1-80	Receipts	Disbursed	Budget Bal. 12-31-80
Jury	10000.00	25000.00	28300.00	6700.00
General	5000.00	508800.00	499850.00	13950.00
Cemetery	2500.00	12000.00	12000.00	2500.00
Road & Bridge Precinct 1	2500.00	123452.36	125600.00	352.36
2	2500.00	125452.36	127800.00	152.36
3	2500.00	118452.37	120700.00	252.37
4	2500.00	114452.36	116450.00	502.36
Road & Bridge Improvement Precinct 1	2000.00	15000.00	16000.00	1000.00
2	2000.00	16000.00	17000.00	1000.00
3	2000.00	12000.00	13900.00	100.00
4	2200.00	11000.00	13000.00	200.00
Revenue Sharing	15000.00	90000.00	103360.00	1640.00
Total	50700.00	1171609.45	1193960.00	28349.45
Less Unspent 1979 Income		45000.00		
Total Actual Proposed Receipts		1126609.45		

#### DISBURSEMENTS OF REVENUE SHARING FUND

Libraries	9000.00
Museum	3360.00
Road Improvement	20000.00
Agriculture Barn Maintenance	10000.00
Courthouse Imp. & Repair	40000.00
Sheriff's Car Trade	6000.00
Deputies Car Maintenance	15000.00
Total	103360.00

*Roy L. McClellan*  
Roy L. McClellan  
Hansford County Judge

# WELCOME STUDENTS

# Welcome Teachers

## GLAD TO SEE YOU!

We Salute The New And Returning Teachers!

Someone who shapes tomorrow.  
Someone who kindles and makes grow.  
Someone who shares knowledge... and dreams.  
Someone whose greatest joy is to watch a child's mind expand and flower.

## Off to School they Go

School Days Mean SAFE DRIVING DAYS

## COOP FUELS

"Best Deal In The Country"

# Consumers Sales Co.

"Best Deal In The Country."