

HANSFORD CO. LIBRARY
120 MAIN
SPEARMAN, TEXAS 79081



Hot Harvest Hits Hansford

The Spearman Reporter

VOL. 71, NO. 33

THE SPEARMAN REPORTER, SPEARMAN, TEXAS 79081

THURSDAY, JUNE 26, 1980

The temperature is going up, and interest is going down at First State Bank in Spearman. At 3 p. m. Tuesday, the temp. hit 105! It was 106 at 3:20 and climbing! Ray Ingle, V. P. of the bank, said it was 113 in Spearman on July 25, 1978!

JUST A REMINDER!

THE BLIZZARD OF 57" HIT ON SATURDAY, MARCH 23, AND LASTED THROUGH MONDAY, MARCH 25. ALL LIGHTS AND OTHER COMMUNICATIONS WERE OUT FROM 5 MINUTES PAST 7 ON SATURDAY UNTIL EARLY MONDAY MORNING. 12 INCHES OF SNOWFELL IN THE SPEARMAN, GRUVER, AND MORSE AREAS OVER THE WEEK-END.

Dryland Wheat Harvest

Wheat harvest in Hansford County is underway as far as dryland wheat is concerned. Reports of some cutting being done Sunday and Monday and elevators reported Tuesday that trucks were coming with the 1980 crop pretty steady throughout the day. One elevator reported 19 trucks before noon Tuesday. Wheat prices have climbed a few cents in the past week coming from \$3.35 last week to \$3.42 this week. John Pipkin and his son Richard Pipkin were one of the first to bring in some dryland wheat and they reported a good test weight and a yield of approximately 33 bushels an acre from dryland wheat. Irrigated wheat in the county for the most part is not quite ready for harvest.



RICHARD PIPKIN, on the left, and JOHN PIPKIN, on the right, were the first ones to deliver a load of wheat in the Spearman area this year. The wheat went to SPEARTEX GRAIN, in Spearman! The wheat was making 33 bushels, testing 61, and had 13.8 moisture. It was dry land wheat!

Dial 659-????

Spearman residents who have been accustomed to dialing only the last four numbers of local phone numbers will have to add the prefix 659 in order for calls to go through. According to General Telephone Service, changes in equipment to meet current and future telephone services needs make it necessary for all Spearman telephone customers to dial ALL SEVEN DIGITS.

The weather hit 107 in Spearman Tuesday, and was 90 at 10 p. m. last night!

Jimmie Hester Services Held

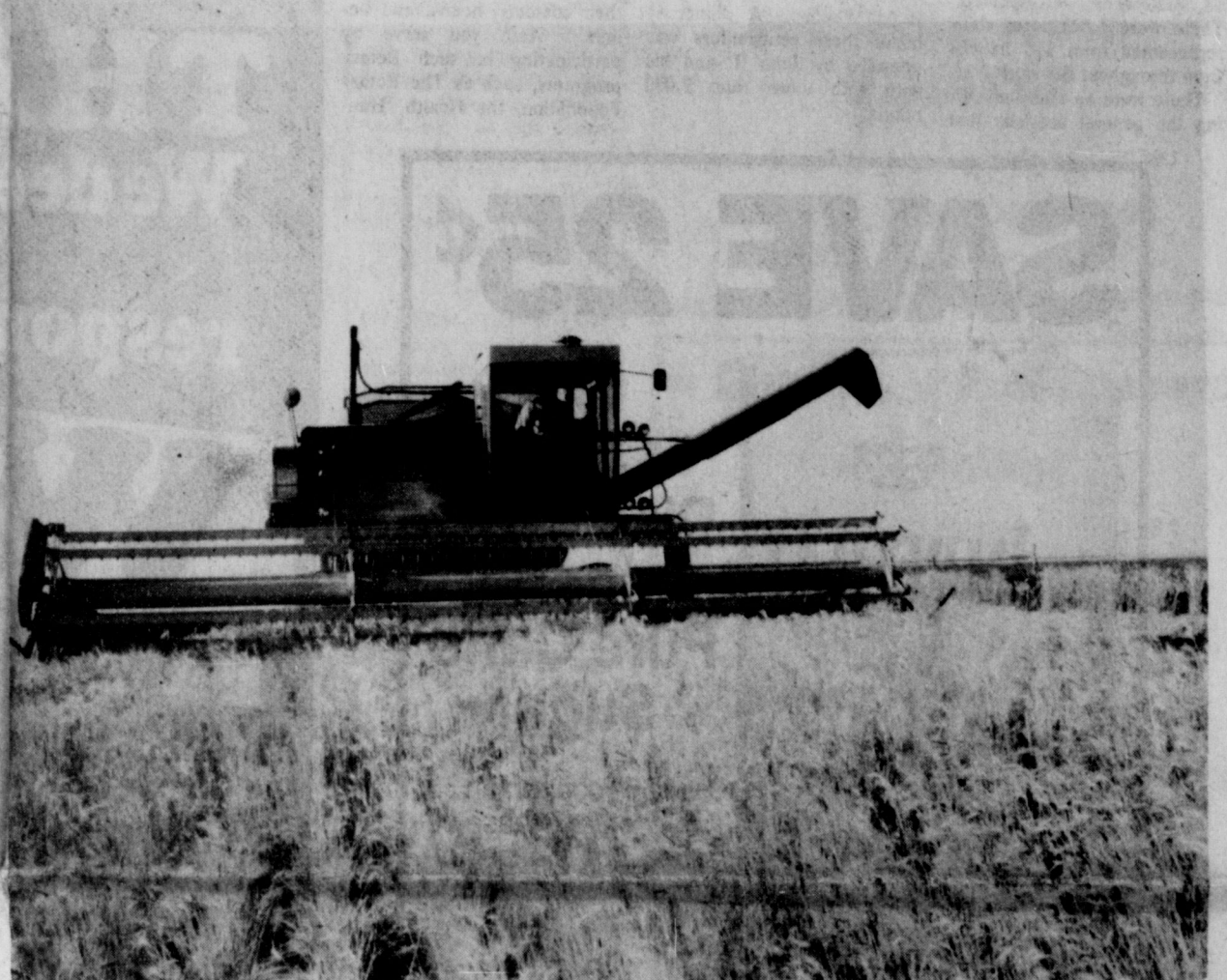
Memorial services for E. H. "Jimmie" Hester, 73, were held at 3 p. m. Monday in First Christian Church, with the Rev. Don Wirsdorfer, pastor, officiating. Burial was in Hansford Cemetery by Boxwell Brothers Funeral Directors. Mr. Hester died Saturday at his home. He was born in Snyder and had lived in Spearman 32 years. He was an elder, member and past treasurer of the First Christian Church. He retired in 1976 from the U.S. Postal Service in Spearman.

He married Caia Koechel on June 29, 1930 in Purcell, Okla. Mr. Hester was past president of the Spearman Chamber of Commerce and the Spearman

Shrine Club. He was past master of the Hansford Lodge 1040 AF & AM. Survivors include his wife; two sons, Tony Hester of Lubbock and David Hester of Amarillo; a daughter Paulede Plank of Stillwater, Okla.; a sister, Mrs. Velma Baze of Snyder, and three grandchildren.

MARKETS

| | |
|----------|--------|
| WHEAT | \$3.42 |
| MILO | \$4.42 |
| CORN | \$2.80 |
| SOYBEANS | \$5.06 |
| BARLEY | \$2.12 |



HARVEST TIME -- Among the very first swaths cut through Hansford County wheat fields was this combine reaping the golden heads on the Newell Allen place this week.



FIRST STEP TO MARKET -- This load of golden grain, among the first cut in the county, was ready to be hauled from the harvesting site by Jerry Pat Davis.

Wind energy tower at Wilbanks



J. D. Wilbanks is pictured above, checking the wind velocity of the anemometer, which was installed at his home, 3 miles East of Spearman, by the Wind Energy Lab, Wichita State University, Wichita, Kansas. Some 15 of these towers have been installed in the mid-west, and 2 of them are in Texas. One at Kerrick, and one at the Spearman location. Others are in Moreland, Oklahoma, Colorado, Nebraska and Kansas. The wind velocity survey will be taken each week for 2 years by Mr. Wilbanks. The anemometer reading will give average wind speed daily,



weekly and monthly. J. D. Wilbanks home was selected because the anemometer tower could be located on a grassy area within walking distance of the Wilbanks home. After the 2 year survey is finished, the information on wind energy will be made available to anyone interested in the records!

Former Resident Services Held

Memorial services for Randall Barton McKnight, age 62, who died Saturday in Amarillo were held at 2 p. m. Monday in the N. S. Griggs Pioneer Chapel, conducted by Chaplain of the Veterans Hospital, Robert Field. Burial was in Llano Cemetery.

Mr. McKnight, of 4210 Danbury, formerly lived in Spearman where he was an independent trucker. He was a member of the Moose Lodge in Spearman, a veteran of World War II. He is survived by two daughters, Sandi McKnight of Dallas, Ginger Mayronne of Amarillo, a son, Randall McKnight, Jr. of

Dallas, and a brother, Jack McKnight of Bryan, and four grandchildren.

Agent Resigns

Layton Barton, Hansford County Agent since November, 1978, will be leaving July 1 for Oklahoma City where he will become the managing editor of a new livestock publication.

Barton came here from Panama. This newspaper, along with residents of Hansford County which he has served, wish him well in this new venture.

Jim Beeson suffers heart attack

Scoutmaster Jim Beeson, of Spearman, suffered a heart attack in La Junta, Colorado, Saturday evening at 10:00 p. m. He was rushed to the hospital and put in intensive care where he is improving daily. On Tuesday evening of this week, his mother thought that he would be moved from the intensive care unit at the hospital.

He was on a scout outing with several Spearman scouts when he became ill Saturday.

Hospital News

Patients in Hansford Hospital are Robin Loveless, Larue Whitefield, Guy Remy, Linda Gordon and daughter, Robert Akin, Billy Rairdon, Eva Pierce, Troy Lucas, Anson Ward, Connie Steger and son, Claude Newell, Pat White, Thelma Tindell and Alice Walker.

Dismissed were Brent Ramsey, L. K. Garrett, Mark Allen Parker, Dee Haskins, Flossie Boyd, Jessie Faries, Karen Cotter and son, Rex Ralston, Andrea Bayless and son, Grace Johnson and Reba Hunter.

Rotary Club Plans Installation

Announcements: Installation of new officers will be hosted by Perryton Rotary Club on Tuesday, July 1 at the Perryton Club beginning at 7:30 p.m. The Rotary year is from July 1 - June 30 each year. New officers for the Spearman Rotary Club to be installed include: Eschol Blankenship, president; Robert Elliott, vice president; Don Wirsdorfer, secretary-treasurer. Board members to be inducted are: John R. Collard, immediate past president; Dr. David McClellan and Ed Freeman, members-at-large; Jack McWhirter, Mike Schnell, Gary Sims and Eddie Limbocker.

The Rotary Board will meet on Thursday, July 3rd in John R. Collard's office.

The program for June 23 was presented by John R. Collard, who reported on the recent trip to the 75th Anniversary Convention of Rotary International in Chicago, Illinois. Chicago is the home of Rotary Club Number One, as it was the first Rotary Club in the world.

The convention was held in McCormick Place Center for the 18,700 Rotarians who attended. There were 5,522 local clubs represented from 110 nations throughout the world.

There were so many attending the general sessions that

giant TV screens were provided on closed-circuit systems to allow everyone present to view the speakers and other programs presented.

A delegate, like John R., could be awe-struck by the very magnitude of the convention; like feeding those masses in 30 minutes, transporting delegates from hotels to the convention site in short order and the like.

Opportunities for meeting fellow Rotarians from throughout the world were abundant.

John R. recalled meeting a man several times from Persia, another from England and others from all parts of the world. The international scope of the convention was evident in the daily newspaper published in four languages, English, French, Spanish and Japanese. Also, a tour guide for Chicago was published in seven languages for the visitors.

The Rotary Foundation is the cornerstone for raising money for Rotary International projects throughout the world.

One special honor, for those contributing \$1,000 or more to the foundation is becoming a Paul Harris Fellow. A dinner to honor these contributors was attended by John R. and his wife with more than 2,000 others.

To help Rotarians become acquainted with the work of clubs throughout the world, special highlights were presented daily via motion pictures. Through this, one could observe the great work done in local communities by local clubs for the benefit of recipients.

One special highlight was the address by the incoming Rotary International President, Rolf J. Klarich from Finland. His theme for 1980-81 Rotary year is "Take Time to Serve."

Among the things the president said were: "You serve your club and all its members when you take time to attend meetings, work on committees, and promote Rotary's ideals through club projects and activities. You serve your business or profession when you take time to carry out your job responsibilities. You serve all the members of your community when you take time to participate in the development of quality services for youth, the elderly, the disabled, and the needy. As you travel, you serve by taking time to learn about people from other countries and their customs, needs, and beliefs. And, you serve by participating in such Rotary programs, such as The Rotary Foundation, the Health, Hum-

ger and Humanity Program and World Community Service."

Call Goes Out For "Worm" Samples

The "S.O.S." call is going out to all stockmen over the state—that's "Send, Oh Send" any worm samples found in livestock wounds.

The reason for the appeal is that worm samples are coming in slowly to the USDA Screwworm Eradication Laboratory at Mission and prime screwworm season is at hand, points out Layton Barton, County Agent with the Texas Agricultural Extension Service, Texas A&M University System.

The only way for officials of the screwworm program to successfully attack the flesh-eating pest is to first identify worm samples as positive and to know locations of all possible cases through ranchers' reports. Then some recently developed insecticide pellets can be air-dropped to kill adult

flies followed by an air-drop of sterile screwworm flies, explains Barton.

The insecticide pellets, known as the Screwworm Adult Suppression System (SWASS), quickly reduce populations of wild screwworm flies in an area. This enables sterile flies which are then dropped to "do their thing." Female screwworm flies that mate with sterile males produce eggs that will not hatch—and the females usually mate only once.

Since sterile flies are no longer air-dropped routinely in Texas, it's especially imperative for stockmen and pet owners to check their animals closely on a regular basis and to submit any worms that may be found in wounds, emphasizes Barton. With most of the screwworm eradication fight now being

conducted 100 miles or more south of the border in Mexico, individual stockmen are now the first line of defense against this destructive pest.

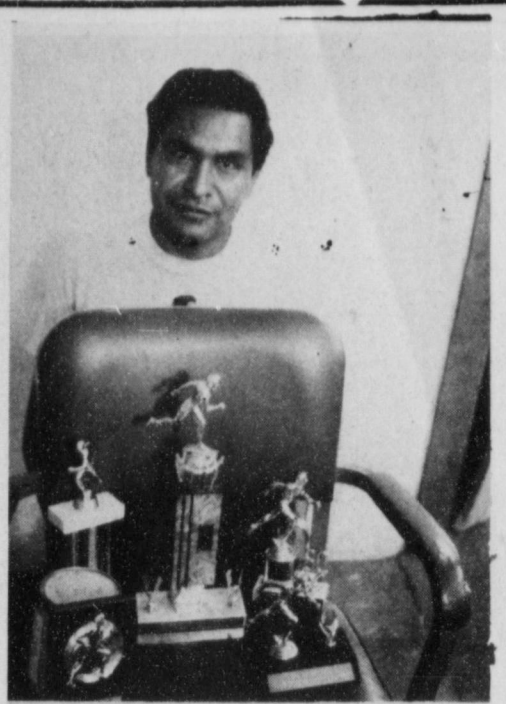
Only one positive case of screwworms has been confirmed in the United States this year so far, that one being in Coleman County, Texas, in April. However, unless everyone keeps their guard up and submits worm samples as soon

as possible, it could be a costly summer.

Worm samples can be sent to the Mission Lab in postage-free mailing kits available from veterinarians and the county Extension office, adds Barton.

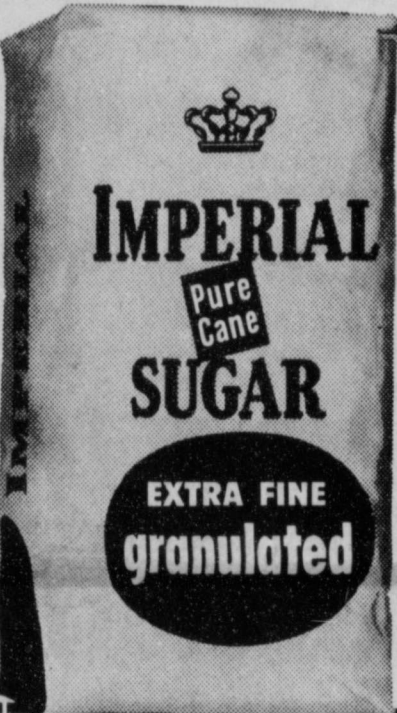


You should give the motorcyclist plenty of room.



ISABEL MARTINEZ of Spearman is pictured above with 5 of the trophies he has won for running events. He is planning to enter the 4th of July Mini-Marathon in Spearman.

SAVE 25¢



On Quick Dissolving Imperial Pure Cane Sugar

Use this coupon on your next purchase of a 5-lb. or 10-lb. bag of Imperial Pure Cane Granulated Sugar.

25¢ **SAVE 25¢** 25¢

on your next purchase of a 5-lb. or 10-lb. bag of Imperial Pure Cane Granulated Sugar

TO THE RETAILER: Imperial Sugar Company will redeem this coupon for face value plus 7¢ handling when submitted as part payment for purchase of a 5-lb. or 10-lb. bag of Imperial Granulated Sugar. Any other use constitutes fraud. Invoices proving purchase of sufficient stock to cover coupons must be furnished upon request. Any sales tax must be paid by consumer. Void if taxed, prohibited or when presented by outside agency or broker. Cash value 1/20 of 1¢. Mail coupons to: Imperial Sugar Company, P.O. Box 1195, Clinton, Iowa 52732.

IMPERIAL Pure Cane SUGAR 72100 100667

25¢ Coupon expires July 31, 1980. Offer limited to one coupon per purchase. STORE COUPON 25¢

THANKS FOLKS...

We deeply appreciate your terrific response to our biggest sale ever...

Wall To Wall

EVERYTHING MUST BE SOLD!

Crowds are jamming their way in for this great sale now going on!

Store Fixtures AND EQUIPMENT FOR SALE

Buy ALL or ANY PART AT BIG SAVINGS COME IN AND LOOK AT THE PRICE TAGS TODAY.

QUITTING BUSINESS SALE

ENTIRE STOCK SACRIFICED!

Entire Stock Turquoise Jewelry

- Rings
- Earrings
- Necklaces
- Watch Bands

1/2 off regular price

EVERYTHING MUST GO!

It nearly breaks our hearts to see our Merchandise GO ON SALE at the ridiculously low prices you see advertised here! But our ENTIRE STOCK MUST BE SOLD in the shortest possible time! SO WE GAVE THE ORDERS! CLEAR THE SHELVES! CLEAR the Stockrooms! CLEAR out Everything! Strip the Store to the Bare Walls. WE WANT ACTION... SELL OUR inventory... Even IF WE SUFFER A LOSS... FORGET PROFITS and give the People of this community Real Bargains... We know they'll respond to an Honest, Legitimate QUITTING BUSINESS SALE!

" Summer Clearance Sale"

30% Discount

- Lady Wrangler Jeans
- Washington Dee-Cee Overalls
- Summer Shirts and Shorts

Boys & Girls Fashion Denims 1/2 price
Knit Shirts and Shorts 30%

Mens Manhattan & Wrangler Summer Shirts-
Ten Dollar Special \$ 10.00
One Rack Wrangler Suits \$ 52.50

Bargains for the entire Family at
The Bunkhouse

210 Main Spearman, Texas

THE GUYS & GALS BOUTIQUE



BY MAIN PERRYTON



WANTED ADS

CAPROCK MONUMENT CO.

Dealers of Georgia Granite, Georgia Marble, Colored Granite, & Eronze.

represented by

BOXWELL BROS. FUNERAL HOME

519 S. EVANS
659-3802

Hansford County
Planned Parenthood
265. Haney
659-2483
Spearman
Mon.-Fri.
Call for an appointment:
30S-rtm

SERVICES

SERVICE: Pits cleaned, wet or dry, Dragline or loader. Also: Bozer, grader, carry-all service. Log Roy Mitchell, 806-733-2384, Greer, Texas 79040.

Fee Wee's Plumbing Service
Roto-roter, Acoustical Ceilings. Blows insulation in walls and ceilings. Appliances Service, used appliances for sale. 659-2811 or 659-3781. 20-rtm

KIRBY SALES & SERVICE.
New & reconditioned vacuum cleaners. Claude Newell, 912 S. Bernice. 8-rtm

MONUMENTS
Save 20% to 30%
Agents and Undertakers
Commission
ALVA MONUMENT CO.
Alva, Okla.
51-rtm only

NOTICE
Wallace Monument Co.
Monuments, Curbing,
Grave Covers
Local Representative
LEONARD JAMESON
Spearman, Texas
20-rtm

NEW
STEAM SHAMPOOR
with brushes

Rental \$8.95 per day. Available at 716 Cotter Drive after 4 p.m. and Saturdays and Sunday. Regular Steam Rinse & Vac Shampooer, \$5.95 per day at Gordon's Drug and after 4 p.m. and Saturdays and Sundays at Freddie Largent's, 716 Cotter Drive.

SNOOPY'S DAY SCHOOL
Open 7 a.m. to 7 p.m. Mon-Fri.
Sat 8 a.m. to 5 p.m. Phone
659-3328. 48-rtm

Tune-up, repairs and overhauls on all small gas motors, lawn mowers, rotary tillers and boat motors. Reed's Repair, 209 S. Indiana, Perryton, Texas, 435-2947. 29S-rtm

A. and A. Gas Leak Survey, Inc.
Commercial, Residential, and Irrigation,
GAS LEAK DETECTION
Call:
659-3519 anytime
659-3019 after 5 p. m.

Custom swathing and baling, hand stacking, call Fred Mayfield at 659-3342 or Harvey Whitefield at 659-3332. 30S-rtm

FOR PAINTING OR PAPERING
your home or office call Debbie or Teresa for experienced help. S & H Remodelings, Phone 659-3328. If no answer call 3986 or 3576. 30S-rtm

MISCELLANEOUS
FOR SALE
FOR SALE-Hume reel John Deere 24 ft. 1976 right hand drive, six bat. Call 806-948-5696 32S-2tc

IRRIGATION ENGINES FOR SALE-Two 702 GMC's, 1-HT 413 Chrysler, 1 set of twin HT413 Chryslers, 1-534 Ford. All engines completely rebuilt and ready to go. Hi-Plains Auto Supply. 659-2506. 23-rtm

FOR SALE: used red carpet in good shape. Some furniture and antiques. 322 S. Drexsen, 659-3329. 31-rtm

FOR SALE: 1968 Layton self contained camping trailer, good condition. \$3000.00 Nell Morley, 319 Archer, 659-2929. 30-rtm

FOR SALE: Starcraft Roll-up Camper. Like new inside and out. Sleeps 8. Double Dinette. Please call after 7:00 p.m. 733-5019. 32-4tc

FOR SALE: 1976 GMC Pickup Sierra, 55,000 miles, 350 engine \$1995; 1976 Chevy Scotsdale, 454 engine, 1 owner \$2150. 1977 Blazer Chyan, 40,000 miles \$4795; 1975 Chevy Chyan Blazer, 58,000 miles, 1 owner \$3795; 1973 Blazer Chyan 55,000 miles \$2895. Call K-Brooks Motor Co. 948-5591 Day or Night. 27S-rtm

FOR SALE: Tanglewood component stereo, AM-FM, 8 track, recorder, cassette, turntable, with set of large speakers. Like new. Call Marsha 3858 or 3950. 32-2tc

PIANO IN STORAGE

Beautiful spinet-console stored locally. Reported like new. Responsible party can take at big saving on low payment balance. Write Joplin Piano, Inc., Joplin, Missouri 64801. 33-1tp

FOR SALE: 7 ft. Pool table with new balls, new cover and cue-sticks good condition \$300. Call 3737 or can be seen at Nursanickel Motel. 32S-2tc

FOR SALE: Used 10' x 55' trailer, 5 rooms, furnished, extras. \$2500. See Carolyn Davidson or phone 659-2724 after 4 p.m., anytime Saturday or Sunday. 32S-rtm

FOR SALE: King size bed frame, foundation, and Tex-foam mattress. No headboard. Good condition. Phone: 3334. 32S-3tc

FOR SALE: 12' x 50' bedroom furnished house trailer. \$4500. Lastron trihull walkthru windshield, 15 ft., 75 horsepower Evinrude. For more information call 659-2409. 32S-2tc

AUTOS FOR SALE

The following vehicles are available at these prices:
Jeeps-\$59.50
Cars-\$48.00
Trucks-\$89.00

Call for information (602) 941-8060, Ext. #518. 33-4tpOnly

FOR SALE: Air Compressor (Electric 1/4 Motor). Lawn Mower. 8 in. table saw. Work bench. Other items included. 109 South Barkley 33-4tp

REAL ESTATE FOR SALE

FOR SALE: 3 bedroom house, carpeted, all rooms paneled. Nice back yard with garden, storage room. Reasonably priced. Call 659-3326 for information. 33-1tc

MAYFIELD REAL ESTATE

For Sale on Stinnett highway, metal commercial building on large lot. *****

Three bedroom, 1 bath house for sale in Greene Acres.

John Mayfield - Broker
435-6528 Salesperson Ruby Lair 659-3436 or 659-2188

FOR SALE: 3 bedroom brick, 1 1/2 baths, good storage, fenced. Double car garage. Beautifully decorated, plush carpet, matching drapes. 315 S. Endicott. Call 659-3972 after 4:00. 21-rtm

Trees more than 4,000 years old can be found in California's Inyo National Forest.

WANTED

I'm Kathy Archer and I'm taking a few more children from ages 18 months to 7 yr. olds. 3186. 32-4tp

WANT work for 2 truck for wheat harvesting or other harvesting phone 293-2712, Plainview, Texas 31S-4tc

Cleaning and maintenance person needed. Contact First State Bank, 659-2526.

WANTED: Tractor Driving (Rev. Thomason 402 E. 2nd,) name is on bottom of screen door. 33S-4t

Would like to rent or lease 2 or 3 bedroom house in or near Spearman. Call 659-2330, ask for Monnie. 33-rtm

HELP WANTED

HELP WANTED:
Full and part time
help wanted in
Allsups in Spearman,

TRUCK DRIVER NEEDED
Must have commercial license. Must have good driving record call after 7:00 Billy Baker 659-3642. 31S-rtm

BUSINESS OPPORTUNITIES

If you have a good eye for what is happening in your county, you might enjoy part time employment as a construction reporter. For an application write to P.O. Box 1108, Amarillo, Texas 79105. 32S-2tc

LOST

MISSING STEERS: 435 LB. Mixed Steers branded connected CH over bar on left shoulder. Yellow ear tag in right ear. Call 659-2068, or 659-3203, Harold Crooks. 31S-rtm

LEGAL NOTICE

PUBLIC NOTICE

The Legal Services Corporation is a private, non-profit organization established by Congress to provide financial support for legal assistance to poor people in civil matters. In the near future the Corporation will be allocating limited funds to establish new programs, or expand existing programs, to serve eligible clients in various unserved counties throughout the United States.

Counties in Texas under consideration for this purpose include: Andrews, Armstrong, Briscoe, Carson Childress, Collin, Collingsworth, Cottle, Crane, Dallam, Dickens, Donley, Ellis, Floyd, Foard, Garza, Gray, Grayson, Hall, Hamilton, Hansford, Hardeman, Hartley, Haskell, Hemphill, Hutchinson, Kaufman, Kent, King, Knox, Lipscomb, Loving, Montague, Moore, Motley, Ochiltree, Oldham, Reagan, Roberts, Rockwall, San Saba, Sherman, Stonewall, Throckmorton, Upton, Ward, Wheeler, Winkler.

Proposals to provide such services are invited from all interested groups. Such proposals and completed grant application materials must be received by the Corporation on or before Friday, July 25, 1980.

Grant application forms and additional information may be obtained by written request to:
Regional Director
Legal Services Corporation
Denver Regional Office
1726 Champa Street, Suite 500
Denver, CO 80202

The public will have an opportunity to discuss the proposals, and the subject of legal services generally, at an open meeting in or near each service area under consideration unless it would be impractical to do so. The time and place of such meetings will be announced at a later date. In all circumstances, the views of all interested persons and groups are earnestly requested and will be carefully considered.

AVISO PUBLICO

La Corporacion de Servicios Legales es una organizacion privada de fines no lucrativos establecida por el Congreso para proporcionar apoyo financiero para la asistencia legal en asuntos civiles a personas sin recursos. En un futuro cercano, la Corporacion adjudicara fondos limitados para establecer nuevos programas, o expandir los ya existentes, para servir la clientela elegible en varios condados de los Estados Unidos, que hasta ahora no han sido servidos.

Condados en el estado de Texas bajo consideracion para tales fondos son:

Andrews, Armstrong, Briscoe, Carson, Childress, Collin, Collingsworth, Cottle, Crane, Dallam, Dickens, Donley, Ellis, Floyd, Foard, Garza, Gray, Grayson, Hall, Hamilton, Hansford, Hardeman, Hartley, Haskell, Hemphill, Hutchinson, Kaufman, Kent, King, Knox, Lipscomb, Loving, Montague, Moore, Motley, Ochiltree, Oldham, Reagan, Roberts, Rockwall, San Saba, Sherman, Stonewall, Throckmorton, Upton, Ward, Wheeler, Winkler.

Se invitan formularios de solicitud de todo grupo interesado. Propuestas y solicitudes deben ser remitidas a la Corporacion no mas tarde del 25 de Julio, 1980.

Informacion adicional y formularios de solicitud pueden ser obtenidos de:

Regional Director
Legal Services Corporation
Denver Regional Office
1726 Champa Street, Suite 500
Denver, CO 80202

El publico tendra oportunidad de discutir las propuestas y los servicios legales en general, en una reunion publica. El lugar y la hora donde se llevara a cabo esta reunion se dara a conocer a su debido tiempo en la region bajo consideracion para recibir los servicios. En la junta publica se consideraran los puntos de vista de todas las personas y grupos interesados.

LEGAL NOTICE

Hansford County Commissioners Court will receive bids until 4:00 P.M., Friday, July 11, 1980 on one Copy Machine for the District and County Clerk's office. Bids will be opened July 14, 1980 at the regular Commissioners Court meeting.

Specifications are available at the County Judge's office or the County Auditor's office in Hansford County Courthouse.

Delivery date is to be no later than September 1, 1980.

The Court reserves the right to accept or reject any or all bids.

Roy L. McClellan
Hansford County Judge

33-2tcOnly

CARD OF THANKS

We thank you friends and family for your labor during the time of literally picking up the pieces. Such western, pioneering spirit we've heard of but never before experienced. Such hard work, unselfishness, and sympathetic understanding - you'll surely be rewarded of God. Folks standing by in this physically and spiritually exhausting time has helped tremendously in giving courage to face the future. Thank you sounds so meager, but our hearts are full of thankfulness.

The Wesley Jarvis family
The E.N. Pack family
The W. Jarvis family



One fourth of the body's bones are in the feet.



Computation shows that a mature apple tree with about 100,000 leaves transpires, or evaporates, about 96 gallons of water a day.

PHYSICAL FITNESS

By Bill Toomey,
Executive Director,
AAU-Penn Mutual
Masters Sports

Exercise Participation On The Rise

The signs of increased physical activity are everywhere, but runners and joggers are its most pervasive symbol. Today they appear daily in nearly every street, neighborhood, and park in the country.

The number of adult runners has grown from a handful in 1960 to now well over 17 million. Tennis has added 10 million players in the past five years, and racquetball has grown from an obscure sport to a popular activity with 3.1 million players.

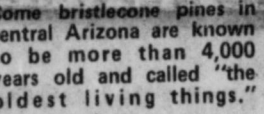
The intensity of exercise has risen along with the rate of participation. One of every six adult Americans invests an average of 300 minutes a week in vigorous physical exercise.

One of the most striking features of the growth of participation in exercise and sports is the number of women, middle-aged and elderly involved.

In several activities, including bicycling, tennis, and swimming, the number of women participants equals or exceeds the number of men, and their rate of participation is growing faster in many sports.

The nationwide AAU-Penn Mutual Masters Sports Program offers athletes and non-athletes a way to get involved in competition well into their forties and beyond.

For information on Masters Sports programs in your community, write: AAU-Penn Mutual Masters Sports, P.O. Box 1982, Philadelphia, PA 19107.



Some bristlecone pines in central Arizona are known to be more than 4,000 years old and called "the oldest living things."

Wisconsin State Fair will celebrate its 125th year July 31 to August 10.

For free information on more Summer Fun, write the Greater Milwaukee Convention and Visitors Bureau, Dept. P, 756 N. Milwaukee St., Milwaukee, WI 53202.

Marilyn's Cake Decorations & Supplies

Ass't Party Favors
12 for \$1.00

Tennis Girl
Wilton Minatures
Mini Donald Duck pan
Wilton Toddler
Tulip party cups
GUYMON, OKLAHOMA

246 Circle Dr.
338-5747

Offered Exclusively By
EMMETT R. SANDERS,
REALTOR



Brick apartment house in top condition; 100% occupancy with waiting list; has four furnished units; great investment. Shown by appointment only, do not disturb occupants.

Small tract just west of Spearman, surface only, contains 31.7 acres. Call for details.

Reduced in Price, Dwelling and store building, small detached apartment on wide lot, ideal for professional office dwelling combined.

4 bedroom, 1 1/2 story stucco home, nice condition, near grade school; storm shelter basement; large corner lot, ideal for large family, low budget. Shown by appointment exclusively.

PRICE REDUCED-Like new 3 bedroom brick, double garage, fenced yard, fireplace, carpets, dishwasher, disposal, self cleaning oven, nice SE location.

Three bedroom, 2 bath, nice older home with fireplace, large kitchen, storm cellar, attached garage with opener, greenhouse, toolhouse, other outbuildings, plus rental unit at rear, near churches and downtown, shown by appointment.

EMMETT R. SANDERS
REALTOR
659-2516
659-2601 (nights)
34S-rtm

For The Ultimate In STORM DOORS
Custom Built, Designed, And In Colors To Fit Your Home....
Contact Howard Moyer at
Only Aluminum Industries
Guymon, Okla. 114 W. 1st 405-338-6966 or 73942 338-6170

NEW HOME - 3 bedroom, 2 baths, 2 car garage Fire Place, 6 foot wood fence.

NEW LISTING - 4 bedroom 2 baths, double garage with fenced back yard.

Century 21 GOLDEN SPREAD REALTY
WE'RE THE NEIGHBORHOOD PROFESSIONALS!
© Licensed Broker of Century 21 Real Estate Corporation, Franchised USA.
© 1978 Century 21 Real Estate Corporation. Equal Housing Opportunity.
Each office is independently owned and operated.

RONNIE HOOVER 659-3696
Sales Associate

DARYL WYNN 658-4528
Broker

SPEARMAN, TEXAS 659-2557

TEXAS PRESS ASSOCIATION
MEMBER 1980
PUBLICATION (USPS 509-660)
SPEARMAN, TEXAS 79081
213 Main Box 458 659-3434
Published Weekly at 213 Main Street
Spearman, Texas 79081
Owner-Publisher William M. Miller
Editor Faye Lynch
Second Class postage paid at Spearman, Texas
ANY ERRONEOUS REFLECTION UPON THE CHARACTER OF ANY PERSON OR FIRM APPEARING ON THESE COLUMNS WILL BE GLADLY AND PROMPTLY CORRECTED UPON BEING BROUGHT TO THE ATTENTION OF THE MANAGEMENT.
SUBSCRIPTION RATE: Hansford, adjoining counties, combination with the Hansford Plainman \$15.00.
Other points, \$20.00.

According to the U.S. Dept. of Energy, the most efficient driving speed range is usually between 35 and 45 miles per hour.

FOR DEAD STOCK REMOVAL
Call your local used cow dealer
Toll Free **1-800-692-4043**
7 Days a Week Service

★ Carports ★ Patio Covers
★ Awnings
Write or Call Howard Moyer At
Only Aluminum Industries
114 West 1st Guymon
Call 405-338-6966 or
338-6170 after 6 p.m.

VIRGINIA WHITE
Realtor 659-3841

ASSUME \$50,000. \$50 pym., 3 bdrms, 1 bath, cen. heat, carpet, etc.

FAMILY LIVING: 4 bdrms, 2 baths, 2 living areas. Call today. Priced 40's.
NEW HOME- 3 bdrms, 2 baths, fireplace, fenced yard, built-in appliances.
ELEGANT- 4 bdrms, 3 baths, 2 living areas, 2 fireplaces, excellent location.
COMMERCIAL BLDG. on Main-good for offices, retail, barbershop.
FOUR room house. Good rental property.

News Of Interest To Women

Ralph Bort's Celebrate 50th Anniversary



MR. AND MRS. RALPH BORT

The fiftieth wedding anniversary of Mr. and Mrs. Ralph Bort was observed in Gruver Sunday, June 1, 1980. The former Beulah Ben Ownbey and Albert Ralph Bort were married in Gruver June 1, 1930 and have lived continuously in Gruver since.

Ralph is a banker by profession and has extensive agribusiness interests. Beulah was a teacher in the Gruver school system at the time of her marriage, but retired at the close of the 1934 school term to devote most of her time, energy and interest to a family she hoped to have of her own.

The Borts have two daughters: Barbara Jean and Peggy Lou, both of whom graduated from Gruver High School and Southern Methodist University in Dallas. Ralph and Beulah are still active in the business, civic, social and church activities of their home town. They have been richly blessed with good health and are young at heart.

Del and Barbara Cluck, daughter Nanette and son Brad of Gruver; Jim and Peggy Jones and sons Bort, Cliff, Lee and Carson of Hillsborough, California hosted the Sunday festivities honoring their parents and grandparents. They began with a breakfast at the El Vaquero Coffee Shop at 8:00 a.m., with not too many making the early hour; but later sixty five of the Bort relatives attended church together at the Gruver Methodist Church.

Immediately following the Church Service, there was a turkey dinner at the El Vaquero Dining Room for the sixty nine relatives, and the friends from Burk Burnett and Friona, Texas and Iberia, Missouri in attendance.

From 2:00 until 5:00 p.m. there was a reception in the Fellowship Hall of the Gruver Methodist Church. It was catered by Josephine Gruver, a local lady of artistic renown, assisted by Shirley Lowe. The serving table was covered with a white satin cloth draped at intervals and tied with ribbon and net bows enhanced with pale yellow rosebuds and baby breath.

Brass coffee and punch services were at the ends of the table, and in the center was one of Josephine's large original cake creations featuring an overlay of creamy roses with antique gold leaf trim (all edible). The uppermost layer was supported by graceful cupids and topped with a miniature bouquet of pale yellow roses, gold leaves and baby breath. Two golden and white floral arrangements in crystal bowls, a gift of Mrs. Dick Murrell, and the late Mr. Murrell graced the mid-centers of the table. And flanking the serving area were fifty golden yellow roses on twin pedestals, a gift from the Bort daughters and their families.

The floral arrangement in the three-sectional candelabrum on the registration table were a gift from Mrs. Bort's sisters, Ona Faye Watkins of Gruver and Mary Lamb Smith and husband Jack Smith of Amarillo. The numerous other flowers throughout the fellowship hall were gifts from friends.

Presiding at the refreshment table during the receiving hours were Mrs. S.R. Cluck, Mrs. Dayton Barkley, Mrs. Buddy Murrell, Mrs. Don Hudson,

Mrs. Vivian Cluck, Mrs. Kenneth Irwin, Mrs. Donnie Thoreson, Mrs. Gene Fletcher and Mrs. Mark Irwin of Gruver. Of the more than four hundred guests who registered, many were from out of town. Friends came from Amarillo, Borger, Booker, Burk Burnett, Canadian, Canyon, Claude, Dumas, Fritch, Friona, Hitchland, Lubbock, Morse, Paducah, Pampa, Perryton, Pringle, Spearman, Stinnett, Stratford, Sunray, Tulla and Vernon, Texas; Iberia, Missouri; and Guyton, Norman, Optima and Texhoma, Oklahoma.

Alternating at the guest register were Mrs. John Irwin of Amarillo, Miss Nanette Cluck, Mrs. George Odom and Mrs. Mark Irwin of Gruver. Relatives present to share in the fellowship were Harold and Mabel Bort, Sarcoxie, Missouri; Clarence and Ada Bort, Burlingame, California; Don and Anne Bort and daughter Crystal Morgan Hill, California; Jean and Elizabeth Johnston, Geary and Mary Spencer, Winfield, Kansas; Harley and Ruth Messmer, Carl and Norma Eggert, Kenny and Brenda Shipley and sons Britt and Brady, Norwich Kansas; Pete and Carla Leroux, Cheney, Kansas; Mrs. Ray (Florence) Hawley, Darrell and Mary Ann Hawley and children Karen, Wayne and Ann of Augusta, Kansas; Edgar and Lula Hawley, Wichita, Kansas; Mrs. Sedden (Clara) Irwin, Iberia, Missouri; John and Gloria Bort and daughter Diane, Dallas, Texas; A.C. Bort III, John and Janie Irwin and sons Jase and Jeff, Coy and Jessie Ownbey, Amarillo, Texas; Ray and Edna Ownbey, Eual and Jean Chisum, Stinnett, Texas; Mrs. Arthur (Cuma) Bort, An drew and Jeanette Bort; Ona Faye Watkins; Kenneth and Janet Irwin, George and Debbie Odom and sons Grant and Kenton, Mark and Pat Irwin and sons Kyle of Gruver.

On Saturday evening May 31, Kenneth and Janet Irwin hosted a delicious dinner for sixty one of the family clan in their spacious garage, followed by a visiting session in their beautiful backyard. They also provided the picnic setting for the pot-luck supper late Sunday evening with the food provided by the Ralph Bort families and several gracious neighbors.

The entire week-end was a time of continuous fun, feasting and fellowship with family guests ranging in age from six months to eighty seven years.

Arts & Crafts Guild Meets

The Arts and Crafts Guild met in the home of Mrs. Pope Gibner Friday, June 20.

Refreshments were served to the following: Mmes. Garrett Allen, F. J. Daily, Guy Fuller, Clay Gibner, P. A. Lyon, Sr., Bill Russell, Bruce Sheets, Ned Turner, Joe Traylor, and one guest, Marina Gaunder.

The next meeting will be in the home of Mrs. C. A. Gibner Friday, June 27th.

— The German Volk Fest is July 12 and 13.

Our Heritage of Faith... notes from Faith Lutheran Church

June 25th is a very special day to the Lutheran church because on this day 450 years ago the Augsburg Confession was publicly presented to the Holy Roman Emperor, Charles V. The Emperor had ordered a meeting between the Catholics and the Lutherans in hope of bringing about peace in his kingdom. The Lutherans were ordered to present their case in written form and the Augsburg Confession was the statement that they produced. It is a softly worded document which holds to the central teachings of the church and plays down the differences between the Catholics and Lutherans. The authors wanted to bring about peace and unity in the church but it did not accomplish its goal. It did make a strong impression on many and it soon became the doctrinal standard of the Lutheran Church. It influenced many at the time in the other protestant religions and it still has its effect today. Even as we celebrate the birth of this document the Lutherans and Catholics are once again talking about the joint faith in Jesus Christ that they share. It is hoped that the Augsburg Confession, a document that had such a central role in the Lutheran split from Roman Catholicism, can serve as the document of unity it was

intended to be. The theme of unity from this Sunday's sermon comes from Galatians 3:23-29. We invite you to join us this Sunday. Everyone is welcome. Our worship services are held at 9:30 with Sunday School at 10:30.

Open Tennis Tournament Planned

Alpha Mu Psi is sponsoring an open tennis tournament July 11th, 12th & 13th. The men's doubles & women's doubles tournament will have A, B & C divisions. Participants must be high school age or older, & the entry deadline is July 9th. Call 733-2860 or 733-2219 to enter.



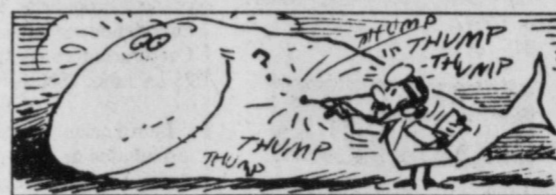
The U.S. Army adopted olive-drab for winter service uniforms in 1902.

— Beautiful lakefront grounds host Festa Italiana July 25 to 27.



August Wedding Is Planned

Mr. and Mrs. Roy Frisbie of Amarillo, announce the engagement of the daughter, Jeannine, to Chris Bradley, son of Mr. and Mrs. Melvin Bradley of Spearman and formerly of Gruver. An August wedding is planned.



A whale's heart beats only nine times a minute.

About 60 Elizabethan songs can be found in Shakespeare's plays.

PRICES GOOD THRU JUNE 28

QUANTITY RIGHTS RESERVED

PLAY UNITED'S FULL BOOK BINGO AND WIN! 1200 EXTRA S & H GREEN STAMPS!

EVERYBODY WINS!

UNITED EGGS 49¢ DOZEN MEDIUM

RICH & READY DRINK ORANGE PUNCH GAL. JUG 89¢

BELL LUXURY ICE CREAM ASS'T ROUND 1 1/2 GAL. \$1.59

HUNT'S WHOLE TOMATOES 14 1/2 OZ. 3 FOR \$1

MAXWELL HOUSE COFFEE 2 LB. CAN \$5.37 1 LB. CAN \$2.69

PEACHES CALIF. YELLOW MEAT 49¢ LB.

DeVille CAPRI HAND PAINTED STONEWARE COLLECTION

| | | |
|---|-----------|--------|
| FORMULA 409 CLEANER TRIGGER SPRAYER | 22 OZ. | 89¢ |
| KLEENEX EXTRA ABSORBENT DIAPERS ZEE LUU | 24 CT. | \$2.59 |
| NAPKINS CYCLE 1, 2 & 4 | 100 CT. | 49¢ |
| DOG FOOD | 5 LB. BAG | \$1.39 |

| | | |
|---------------------|------------|--------|
| SPAM LUNCHEON | 12 OZ. | \$1.19 |
| BOUNTY PAPER TOWELS | JUMBO ROLL | 69¢ |

| | | |
|-------------------------|--------|-----------|
| BORDEN EAGLE BRAND MILK | 14 OZ. | 89¢ |
| DRINK MIX PACKETS | 6 | 35¢ |
| WOLF HOT DOG SAUCE | 10 OZ. | 4 FOR \$1 |
| ELLIS BEEF STEW | 24 OZ. | 99¢ |

| | | |
|------------------------|----------------|--------|
| CHEERIOS CEREAL | 15 OZ. BOX | \$1.19 |
| IVORY LIQUID DETERGENT | 22 OZ. 13¢ OFF | 89¢ |

| | | |
|---------------------------|------------------|-----|
| VALENCIA ORANGES | 4 LB. BAG | 96¢ |
| GREEN OR RED LEAF LETTUCE | 3 BUNCHES | 96¢ |
| YELLOW SWEET CORN | 6 EARS | 96¢ |
| RED ONIONS | CALIF. SWEET LB. | 39¢ |

Farr's Renew Wedding Vows On 25th Anniversary



In celebration of their 25th anniversary, Mr. and Mrs. Bob Farr renewed their wedding vows on Friday, the 6th of June at the Sacred Heart Church. Present were their children, Barbara Jo, Julie, Greg, and Tami and Randy Janzen, with their son, Phillip. Friends of the couple also attended the ceremony.

Saturday, the 7th of June, the children of the couple held a barbeque at the home of Tami and Randy Janzen. Guests were the Brad Farr's of Denver, Colorado, the Butch Andersons of Lakin, Kansas; Mary Beth Farr of Denver, Colorado, Rev. Ray Crosier, Rose Rivera and Ray Ortega.

Bob and Joan were married June 6, 25 years ago in Lakin, Kansas.



Wedding Announced

Mr. and Mrs. Slim Cates announce the marriage of their son, Gary Charles Cates, to Pamela Sue Causey, daughter of Mr. and Mrs. Calvin Stewart of Denver City, Texas, May 24, 1980.

They plan to make their home in Spearman. Gary is manager of Cates Men & Boys Wear and Pamela is manager of Sears Stores in Perryton and Spearman.

Hansford County Library News

Kids are really diving into Sports Splash, the Summer Reading Program at the Hansford County Library. 140 children have enrolled in the six-week program, and more are signing up each day.

Sports books are very much in demand this summer, and the library has a good variety of them. The children's sports books can be picked out of a rubber raft on display at the library.

The library "track" is popular this summer. When the children read five books they qualify to place track shoes on the track. As they read more books, they move their shoes along the track. Kyla Nelson has already read over 50 books, and she insisted I make the track longer. She has big reading plans this summer!

There are 70 track shoes up on the library track at this time.

The Tuesday morning film programs have been fun for everyone. Each week I try to show at least one sports film and a cartoon. We've seen several good films, including ones on sky diving, skateboarding, and skiing. Game time follows the film showing. We've played sport charades, had book-stacking and ostrich-running relays, and had a javelin throw with straws. David Mc Guire was our champion javelin thrower with Junior Ochoa and Jeff Williamson runners-up. Maria Vela proved to be a very good hula-hooper during a demonstration last Tuesday.

The boys and girls may come to the library at any time to check out books of their choice. Texas State Library certificates will be awarded to those children who read at least 10 books during the Sports Splash program.

We've been having a lot of fun with Sports Splash at the

library this summer. The children are keeping their reading skills up and having fun while doing it. Come join our library reading team!

Rita Curits, Librarian.

The Greater Milwaukee Open Golf Tournament is July 7 to 13.

The Riverfront Stage of the Performing Arts Center is the site of the Alewives Jazz Festival, July 7 to August 1.

Local Women Attend Human Relations Seminar

WTSU -- Each weekday, for about two weeks, 31 persons gathered between 2 p.m. and 2:30 p.m. in the snack bar of the West Texas State University Student Union Building.

The time each day was more than a break from the stuffy summer heat during the 3 1/2 hour class. The students were "relating."

The 31 elementary, junior high school, high school and college level teachers, a nursing school instructor and a school nurse from 14 communities in the Panhandle and South Plains area, participated in the Human

Relations Education Seminar.

Students said they became a "close knit group" and became acquainted with each class member in their "eye-ball-to-eye-ball, knee-to-knee" communication in the graduate seminar. Dr. Jack Nance, associate professor of education, instructed the class from 12:30 p.m. to 3:50 p.m. daily from June 3-18.

Through role-playing, films and group dynamics, the students said they learned more about themselves and others, how to deal with conflict, how to deal with administrators, col-

leagues and students, and how to be more honest with themselves through self-analysis and interaction with others.

"We learn more about principals - spelled p-a-i-s," laughed one class member.

Several class members said they never had experienced a similar opportunity to learn about human relations. The students, who are earning master's degrees at WTSU, said the course has been personally and educationally beneficial and could prove beneficial to any person. They earned three semester credit hours.

Students enrolled in the class are from Amarillo, Canyon, Lockney, Odessa, Hart, Gruver, Lubbock, Spearman, Pampa, Plainview, Borger, Phillips and Abernathy.

WTSU residence halls became home for the weeks for students from outlying towns. For those students, human relations extended beyond class time. One student said she had become "good friends" with several of her classmates and dormitory neighbors.

Participants from Gruver are Patsy Dawson and Glenda Renner.

Historical Committee Met

The Hansford Co. Historical Commission met at the Library, June 20. President Fred Groves opened the meeting with the reading of the minutes by Jaunita Pierce and a treasure report given by Clementine Renner. Both were accepted as read.

A report on the museum was given by Ruby Saltness. She reported 65 persons toured the museum during the month of May. The museum will have a film shown once each week as soon as a projector is available. These film will be on various cultural themes, that may be shown to special interest groups. There will be an open house showing with everyone invited to attend.

There are two new display cases set up at the museum that you are invited to come by and see. One is the candy case from the school house store, with a display of Kirk articles. The other is a case in the kitchen with articles from the Close families and some depression glass.

The museum needs mens clothing during the period of 1900 to 1925.

There will be an executive committee meeting in the month of July. This meeting will be to set up rules and regulations for the Historical Commissioners.

The history book copy will be here for proof reading next Monday or Tuesday. Judy Cotten, the book consultant, will be here one week later to show us how to lay out the book. We expect to get the finished book by the first part of December.

The book committee was very pleased at the response to the art work for the history book. All drawings have been sent to West Texas University in care of Dr. Peterson, professor of recent history, to be judged. He will choose a first, second and third for each division. If there is room the book committee will use second and third place winners elsewhere in the book.

The flag poles for sale have arrived and Oslo expects to get the marker soon and have it all set up. The flag poles were donated to the Oslo Community by the Norwegian Society of Dallas.

Mrs. Clementine Renner gave a report on the Old Timers Reunion held during the celebration. There were 58 persons signed up and every one had a fine time visiting.

Those attending the historical meeting were: R. L. McClellan, Gwenfred Lackey, Clementine Renner, Grace Lyon, Fred Groves, Christine Brandvik, Francis Kilgore, Jaunita Pierce, Ruby Saltness, S. J. Hall and Jenny Blankenship.

Reception Honors Mr. and Mrs. Frank Lewis



The twenty-fifth wedding anniversary of Mr. and Mrs. Frank Lewis of Morse was celebrated Sunday at a reception in their home, hosted by their children Van and Linda Lou Lewis.

The former Mildred Booth married Frank Lewis in Lesley, Texas on June 4, 1955. The couple has lived in Morse for 18 years. Mr. Lewis is a teacher in the Spearman school system. Mrs. Lewis is employed by the U.S. Post Office where she serves as postmaster of Morse.

The couple are members of the First Baptist Church and Lewis is a 23 year member of Lions Club.



Engagement Announced

Mr. and Mrs. Billy Joe Byrd of Gruver, have announced the engagement and approaching marriage of their daughter, Mary Diane, to Lynn Ray Boyd, son of Mr. and Mrs. Harold Boyd of Gruver.

The wedding date has been set for July 24 at 7 p.m. in the Gruver Church of Christ.

Diane will be a Senior of Gruver High School in the coming school year. Lynn is a 1978 graduate of Gruver High and is presently engaged in farming with his father.

Presbyterian Church News

How long has it been since you were in a good Bible study? There is one every Sunday for every age group at 9:45 a.m. at the First Presbyterian Church.

The Rev. Carter McKemy will be the guest preacher at the First Presbyterian Church on Sunday, July 20 at 11:00 a.m.

Presbyterian Men will join with all the men of Spearman in the interdenominational men's prayer breakfast on Wednesday, July 2 at 6:30 a.m. in the garden room of the Cattleman's Restaurant.

You will always feel welcomed at the First Presbyterian Church.

- Microwave Safe
- Oven-to-table convenience
- Dishwasher and Freezer Safe

The Capri Stoneware Collection is perfect for any occasion - from family meals to special dinner parties, and yet so practical. Choose one of these elegant patterns, or mix and match, and build a complete set at budget savings prices. Each week a different place setting piece will be offered at only 79¢ each with every \$5.00 purchase. A beautiful array of matching serving pieces, including a large pedestal Sugar and Creamer, to help you complete your set will be available at very special savings throughout our program. This exclusive saving offer is one way we can say thank you for shopping in our stores.

1980 Copyright JMP Marketing Inc.

JUST FOLLOW THIS SCHEDULE AND SAVE!

| | |
|-----------------|----------------|
| JUNE 15-JUNE 22 | DINNER PLATE |
| JUNE 23-JUNE 29 | DESSERT DISH |
| JUNE 30-JULY 6 | COFFEE CUP |
| JULY 7-JULY 13 | SAUCER |
| JULY 14-JULY 20 | BREAD & BUTTER |

BIG SAVINGS ON ELEGANT SERVING PIECES!

| | | | |
|--------------------------|--------|-----------------------|--------|
| 2 1/2 Qt. Biscuits | \$4.99 | Salt & Pepper Shakers | \$4.99 |
| 2 1/2 Qt. Cereal Bowls | 4.99 | Covered Butter Dish | 1.99 |
| 2 Jumbo Mugs | 4.99 | Gray Biscuit Tray | 6.99 |
| Covered Sugar Bowl | 4.99 | 12 Chop Plate | 6.99 |
| Covered Creamer | 4.99 | Coffee Server | 11.99 |
| 5 1/2 Qt. Vegetable Bowl | 4.99 | Governor Casserole | 13.99 |
| Large vegetable bowl | 5.00 | | |

THIS WEEK
DESSERT DISH
each place setting piece

Only **79¢**

WITH EVERY \$5.00 PURCHASE

DOUBLE STAMPS SATURDAY
WITH
\$2.50 OR MORE
PURCHASE
EXCLUDING
CIGARETTES

COUNTRY PRIDE
FRYER BREASTS
LB.
98¢

UNITED'S
TRUTENDR
BEEF
GUARANTEED TENDER

BLADE CUT CHUCK
ROAST
7-BONE CUT SHOULDER
ROAST
BONELESS SHOULDER
ROAST
BEEF
RIBS
EXCELLENT FOR BBQ
LB. **88¢**

COUNTRY PRIDE
DRUMSTICKS OR THIGHS
LB.
88¢

GARY'S SUPER
DOGS
5 CT. PKG.
98¢

DECKER
BACON
VACUUM PACK
SLICED SLAB
LB. **88¢**

FINE FARE WAFER THIN
LUNCH MEATS
• HAM
• CHICKEN
• TURKEY
• BEEF
• CORNED BEEF
PKG. **49¢**

HEALTH & BEAUTY AIDS
RAVE Polish Remover 4 oz. \$3.99
RAVE Soft Perm Kit Refill \$2.99
Q-TIPS Cotton Swabs 300s \$1.99
POND'S Cold Cream 3.5 oz. \$1.99
POND'S Dry Skin Cream 3.5 oz. \$1.99

TEXSUN GRAPEFRUIT JUICE 46 OZ. **69¢**
ELLIS VIENNA SAUSAGE 5 OZ. **3 FOR \$1**
FINE FARE CRACKERS 1 LB. BOX **49¢**
GATORADE THIRST QUENCHER • LEMON-LIME • ORANGE 32 OZ. **49¢**

NEW!
LOOK FOR THIS TAG OF SAVINGS!
TEMPORARY PRICE REDUCTIONS!!
WE VALUE YOU... OUR CUSTOMER!

MANAGER'S SPECIALS
PEPSI COLA
REG. or DIET
32 OZ. BTL. 6 BTL. CTN.
\$1.79 PLUS DEP.

FROZEN FOODS
JENO'S ASS'T. FLAVORS PIZZA 11 OZ. **89¢**
COUNTRY TIME REG. OR PINK LEMONADE 12 OZ. **49¢**
MORTON'S CHOC. JELLY GLAZED DONUTS 9 OZ. **49¢**

DAIRY FOODS
MEADOWLAKE SOFT MARGARINE 1 LB. TUB **59¢**
MINUTE MAID CHILLED PUNCH REG. OR PINK LEMONADE 1 GAL. **79¢**
PLAIN'S SOUR CREAM & DIPS 8 OZ. **2 FOR 89¢**

UNITED Supermarkets
Perryton, Texas
QUANTITY RIGHTS RESERVED
PRICES GOOD THRU JUNE 28

Commissioners To Confer With City On Fire-Fighting

The agenda for the Monday meeting of the Hansford County Commissioners Court was mostly a routine procedure including bids, county road crossing permits and further discussion of the proposal from the City of Spearman regarding fire-fighting procedures and equipment. County Judge Roy McClellan reported his discussion with Spearman City Manager Jim Murray regarding the fire-fighting issues. Following a discussion, it was decided to counter the city's proposals with one of their own. It should be emphasized that this is an amicable negotiation. Basically, it involves the city fighting fires out in the county beyond the Spearman city limits and a proposal from the city that the county share in the purchase of some equipment that would upgrade fire-fighting capacities for both city and county.

Two representatives of Phillips Petroleum Company -- from the Amarillo office -- appeared in regard to a permit to cross county roads with pipelines in the southeast part of the county. The Phillips representatives assured the court that, when engineers appeared on the scene to make the crossings, one of the two men present Monday would contact Commissioner Garland Head, whose precinct is involved, before work was begun.

The permit was granted. Considering the matter of an assistant custodian for the courthouse complex, commissioners agreed to employ the woman who has been fulfilling that capacity under the CETA training program. The CETA training schedule is for so many months then the trainee involved is subject to employment where training has been underway or must seek employment elsewhere.

The commissioners agreed, first, that an assistant custodian was certainly needed. Then they were in full accord that the CETA trainee be offered the job. The hourly wage she earned under the training program would be continued at present but, benefits provided under the program for regular employees of the county -- hospitalization, retirement and other programs -- would constitute a considerable raise in earnings.

Members of the court agreed to authorized an advertising for bids for a copying machine for the clerk's office.

The remainder of the session was devoted to routine matters of county administration.

Ground Water Data Evaluated

AUSTIN--A key activity of the Texas Department of Water Resources is the collection and evaluation of ground water data for both quantity and quality.

Historically, the Department and its predecessor agencies have measured water wells annually, to determine the number of feet below land surface of the water level, and have collected data on the quality of water in wells. Currently, water level measurements are made in a Statewide network of carefully selected 6,800 wells and water quality is determined in over 1,000 wells each year.

Personnel of the Department's data collection and evaluation section of the Data and Engineering Services Division measure the water levels in all but 1,500 of the 6,800 wells. Personnel of the three underground water conservation districts in the High Plains of Texas provide the Department with the measurements of about 1,500 of the wells in their respective areas.

The data are stored in the Texas Natural Resources Information System from where it is made available to the public and

other State agencies. In addition, Department personnel use the data to answer individual inquiries, and to support the Planning and Development Division staff who continuously update State water planning and projections.

The information is essential in the Department's delineation of the extent of groundwater formations, and determination of the occurrence and the availability of the water.

Some 50 of the 3,300 water-level monitoring wells which are serviced by TDWR staff are equipped with continuous water-level recorders. These wells are strategically located around the state, and the continuously recorded data are correlated with the annual measurements.

Department personnel measure the water level by coating the first 30 or so feet of a steep tape with blue (builders) chalk and then lowering the tape down the well bore. Upon retrieval of the tape from the well the wetted portion of the chalk is noted and subtracted from the total footage lowered into the well to determine the number of feet from land

surface to water.

The once-a-year measurement of the wells is done from mid-November through March, normally a period of lowest stress on the aquifers.

For more than 30 years, the Department and its predecessor agencies have collected samples from wells to determine the quality of the groundwater.

Among properties routinely determined are concentrations of calcium, silica, magnesium, nitrate, bicarbonate, sodium, sulfate, chloride, fluoride, pH (acidity-alkalinity), total dissolved solids, and temperature. The number of wells sampled has now grown to over 5,600, with about 1,000 sampled each year.

An important data collection activity concerning the State's surface water supplies is sampling of suspended sediment in the major streams of the State. At some 28 stream gaging stations, a water sample is taken every day of the year. Part-time "samplers" in the local area each day lower a one-half pint bottle, usually from a highway bridge, into the stream to a depth of about one foot below the surface of the water. The samplers accumulate the bottles of water for about a two-month period, at

which time a Department staff person picks up the samples and brings them to the sedimentation laboratory located in Austin. In the laboratory, each sample is filtered and the weight of the material collected on the filter is determined.

From this value, the amount of suspended sediment per unit volume of water is calculated.

The sedimentation data are fed into a computer to calculate the tonnage of suspended sediment passing a given point each day. This information is valuable for planners, State or otherwise, in planning a water storage reservoir or other surface water facility, since the amount of sediment a stream carries into a reservoir or lake determines the long-range capacity of the water supply facility. This data collection program has been conducted for over 50 years--the last 20 or 22 by personnel of the Department or its predecessors.

In addition to the ground water and sediment data col-

lected, the Department of Water Resources also collects an extensive amount of evaporation data.

The Department maintains and services 45 stations around the state. Most of these are located near reservoirs and other water facilities where operating personnel help the Department in servicing the instruments.

Equipment at each station includes a Class "A" National Weather Service evaporation pan from which the quantity of water evaporating each day is calculated. In addition, an anemometer (instrument to measure the wind speed) is connected to an odometer-type counter to measure what is termed wind-run...the cumulat-

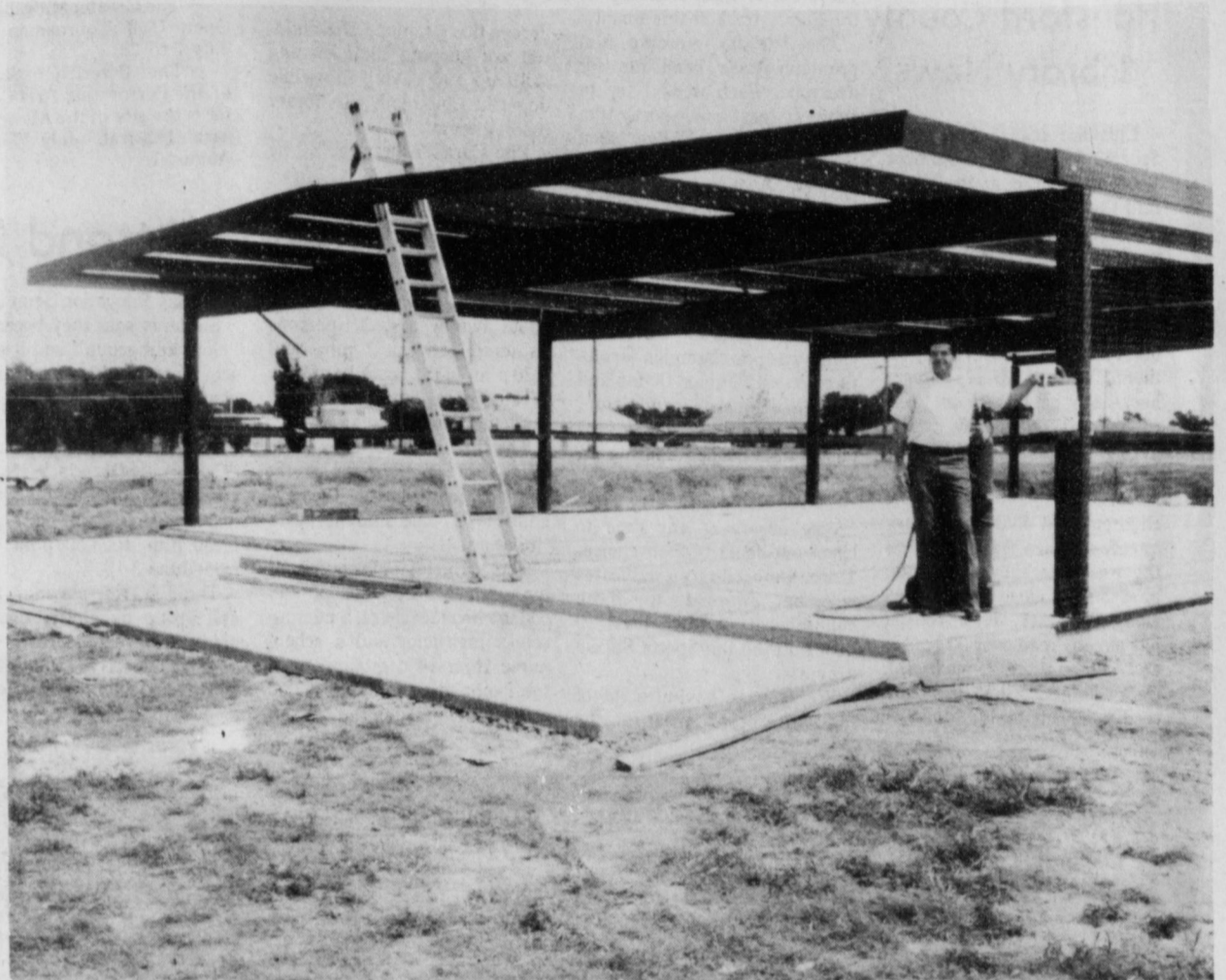
ive amount of wind that passes the point. Rain and temperature (maximum and minimum) gages complete the installation.

Wind movement, temperature, and relative humidity directly impact the evaporation rate.

These data are essential to planning and designing water storage and open conveyance facilities.

Another important facet of the Department's water data collection and evaluation program is the extensive use of well loss compiled and catalogued in the agency.

Water well drillers working in the State are required by State Statute to submit logs of wells they drill to the Department for use in its evaluation activities.



THE NEW HANSFORD ASCS office is being constructed in Spearman. The new building will be 2300 square feet, and should be done in July or August, according to Martin Chandler, ASCS manager! Martin is pictured above, getting ready to help "weld" on the new building!

POOL-INTAIRDRIL

WANTED!

For immediate and future openings with Major Oilfield drilling and workover contractor.

Oilfield Personnel for overseas employment in the following positions: (Land and Offshore)

- Superintendents [drilling & workover]
- Toolpushers [drilling & workover]
- Drillers and Assistant Drillers
- Workover Operators
- Rig and Diesel Mechanics
- Rig Electrician [SCR experience desired]
- Air Package Supervisors
- Air Drillers

28 DAYS ON - 28 DAYS OFF
GOOD OPPORTUNITY FOR PROMOTION
 WITH
RAPIDLY GROWING COMPANY
GOOD PAY - GOOD BENEFITS

Call or write:
POOL-INTAIRDRIL
 P. O. Box 4271
 Houston, Texas 77210

Out of Texas Call 1-800-231-3488
 In Texas Call 713-790-4999
 Ask for Employment Representative

An Equal Opportunity Employer M F

POOL-INTAIRDRIL

To complete all telephone calls in Spearman you must...

Dial All Seven Digits

Changes in equipment to meet current and future telephone service needs make it necessary for all Spearman telephone customers to dial ALL SEVEN DIGITS when placing local calls or the call will not go through.

GTE
GENERAL TELEPHONE

GOOD NEWS FROM...

WE RESERVE THE RIGHT TO LIMIT PRICES EFFECTIVE JUNE 26-28, 1980
 SPECIALS GOOD WHILE SUPPLY LASTS - LIMITED SUPPLY

COCA-COLA

\$1.49 SINGLE CAN 29¢

| | |
|--|---|
| BORDEN'S FRUIT DRINK GAL. 89¢ | SHURFINE CREAM STYLE CORN 69¢ |
| CHICKEN OF THE SEA TUNA 6 1/2 oz. CAN 69¢ | BORDEN'S BUTTERMILK ... 1/2 GAL. CTN. \$1 19 |
| ALLSUP'S ASSORTED ICE CREAM 1/2 GAL. RD. CTN. \$1 39 | ROXY DOG FOOD .. 7 FOR \$1. |
| KRAFT MIRACLE WHIP 32 oz. 89¢ | CLOVER CLUB REG. 99° POTATO CHIPS .. 7 1/2 OZ. PKG. 69¢ |
| SHURFINE SPINACH .. 4 FOR \$1. | SHURFINE TOMATOES .. 3 FOR \$1. |

COOKED FOOD SPECIAL OF THE WEEK

BAR-B-QUE RIBS 3.49 LB.

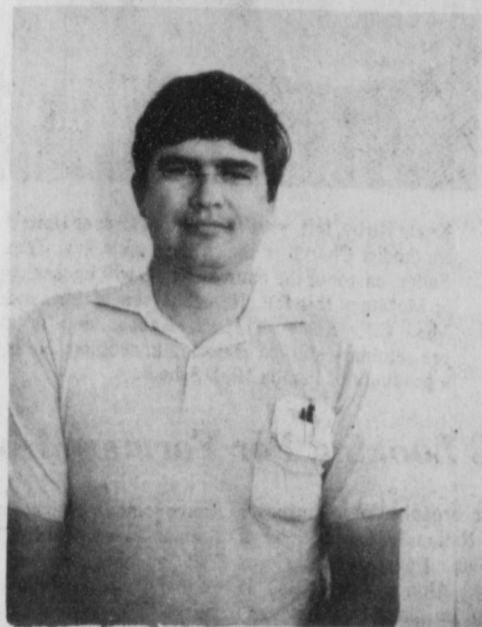


SPEARMAN
659-2514

BROCK
AGENCY

It's **INSURANCE**
HAIL **TIME**

Rodeo Time In Pampa



New District Conservationist Here

Monnie Edwards, new district conservationist for Hansford County Soil and Water Conservation District began his duties here Monday, June 16. He replaces Warren Proctor and moved here from Littlefield.

Edwards is from Wheeler, and has a degree in agriculture from West Texas State University. He has previously worked as soil conservationist in Cleburne, Stanton, Dimmitt, and Temple. Monnie and his wife, Marilyn are looking for a place to live in Spearman.

Swim Team News

The Spearman Swim Team traveled to Lakin, Kansas this past Saturday for a meet in the West Kansas Swim League. There were eleven teams entered in the meet. The team did well, with many of the swimmers placing seventh, just out of the point counting finishes. Points being for the first six places. There was marked improvement for all those who went to the meet. Individual results is as follows:
Girls Open 500 Free - Marietta Davis, 6th; Girls 9-10 Free Relay - 5th; Boys 11-12 50 Free, Nick Wirsdorfer, 5th; Boys 15-18 100 Free - Gary Thomas, 5th; Boys 15-18 Backstroke - Gary Thomas, 3rd; Curt Davis, 5th; Boys 11-12 Breaststroke - Nick Wirsdorfer, 4th; Girls 13-14 Breaststroke - Greg Farr, 6th; Boys 11-12 100 Free - Nick Wirsdorfer, 3rd; Girls 13-14 200 Free - Robbie Heinrich, 5th; Girls 15-18 200 Free - Stacey Thomas, 4th; Marietta Davis, 6th; Boys 15-18 200 Free - Gary Thomas, 3rd; Curt Davis, 5th; Greg Farr, 6th.
The swim team travels to Ulysses, Kansas this coming Saturday for a meet. The community can be proud of the efforts of these young people. They represent Spearman well wherever they go.

Steer Validation Set

All Hansford County 4-H and FFA members who will be showing steers at any show in Texas this coming year, must have them validated during the month of June. Validation for all show steers in Hansford County is set for Monday, June 30, at 9:00 a.m. at Val Winger's pens in Gruver. These pens are located on the left side of the road approximately 1 mile west of Gruver on the Stratford Highway. Validation of steers this year will include: weighing, ear tagging, photographing, and nose printing of the steers. Cost of the validation will be \$1.75 per steer payable at the time of validation. Anyone who will be showing steers this coming year either at the fall or spring shows including the Hansford County Show in March, must have their steers validated at this time to be eligible to show. If anyone has any questions concerning the validation or needs further information contact the County Extension office at 659-2136 or 733-2901.

Red Cross Bloodmobile In Gruver July 15th

The Red Cross Blood-Mobile will be in Gruver July 15th at the Baptist Church Activity Building from 9:00 A.M.-2:30 P.M. The Hansford County Red Cross Blood-mobile chairman is Mrs. Preston Smith of Spearman. The Gruver chairman is Mrs. Ruby Lea Mitchell. It takes approximately 45 minutes to 1 hour to give blood,

so you may call for an appointment. Spearman residents may call Mrs. Harry Stumpf at 659-2109 and those in the Gruver community can call Rosalie Cator at 733-2317 or Fran Maupin at 733-2564. There will be a booth at the 4th of July celebration in the City Park where you can make an appointment.



Patrick Swayze and four members of his gang skate-dance as they invade a roller rink to try for the championship in "SKATETOWN U.S.A." The roller-disco comedy, opening 6-26 at the Holi Day.

The great French writer Emile Zola and the great French painter Paul Cezanne were boyhood friends.

Plans are complete for the 34th Annual Top O' Texas Rodeo to be held in Pampa, July 10 - 12 with performances at 8:00 p.m.
Beutler Stock Producers of Elk City, Oklahoma, are returning to Pampa to produce this years rodeo. Clem McSpadden, former senator from Oklahoma, will be at the microphone once again this year to describe the action in the arena.
The "Country Critters" the U.S. Air Force Western Band from Lackland Air Force Base in San Antonio, will cue the Rodeo Events. The "Critters" will also give a 30 minute concert at 7:30 p.m. before each rodeo performance and will also give concerts in various shopping areas in Pampa each afternoon on Rodeo days.
Hank Thompson and his western band will play for the rodeo dances on Friday and Saturday nights, July 11 and 12. The dances will be held in the improved Clyde Carruth Pavilion and will begin at 9:00 p.m. each night.

Two of the Nation's leading bullfighters and funnymen, Quail Dobbs and Ted Kimzey, will once again be on hand for each performance, with some of their top specialty acts for your entertainment.
Entries for PRCA and GRA members will open July 3, at 12:00 noon and close July 7 at 11:00 a.m. To enter call the Central Entry Office (800) 525-7157. Local entries will be taken at the Rodeo Office in the Chamber of Commerce from 9:00 a.m., June 30 until July 3, 5:00 p.m.
The rodeo parade will be held Saturday, July 12 at 10:30 a.m. featuring entries from all areas of the Panhandle.
An Amateur Jackpot Double Muggin event will be offered, with an entry fee of \$30.00 plus a \$5.00 stock charge. Entry fees will be split 40%, 30%, 20%, and 10%.
The Kid Pony Show, with events for children through age fifteen, will be held Monday, Tuesday and Wednesday evenings, July 7, 8 and 9 at 7:00 p.m. Entries will open June 30 at 9:00 a.m. at the Rodeo Headquarters in the Chamber office. Children in that age range are invited to participate. General Admission tickets for the rodeo performance may be purchased from various Pampa Merchants or the Rodeo office. Reserved seats may be secured by calling (806) 669-3241 or by writing to Box 1942, Pampa, Texas 79065.

Fireworks Stand Opens June 28

Rho Rho sorority will be having a Fireworks Stand on Hwy 207. The stand will open June 28 and will be open from 2:30 to 9 p.m. from June 28 thru 30th, and then will be open from 2:30 to 11 p.m. July 1 thru 3, and on July 4th, they will be open 11:00 a.m. until 8 p.m.



WIDEWALK SALE

9 A.M. - 5 P.M.
SATURDAY, JUNE 28th

1/2 OFF

OR MORE

SPECIAL TABLES - \$1.00 - \$2.00 - \$3.00 - \$5.00
Vals. To \$3.99 - \$6.99 - \$10.99

Free Helium Balloons Given Away By the Hush Puppy Dog

So Come Early For Best Selection
- Don't Miss It! -

435-3628 PERRYTON

ESTATE SALE

Public Auction

Saturday, June 28, 1980

Auction on Furnishings starts at 10 a.m.
House Sale will begin at 11:30 a.m.

Location: 1001 S. Harvard in Perryton, Texas



Beautiful 3 Bedroom Brick Home, bath & 3/4, living room, family room, kitchen, single car garage. Fenced Backyard with nice landscaping. This house is well insulated. All storm windows and doors.

Furnishings (some antiques)

| | |
|---|---|
| <ul style="list-style-type: none"> 2 Sofas 3 Large chairs 3 Rockers 1 Dinette table with 5 chairs 4 End tables, hutch 3 Beds with mattresses and dressers | <ul style="list-style-type: none"> 1 Frigidaire frost-proof refrigerator 1 19-Inch Color TV with table 1 Black & White TV 1 White antique sewing machine [excellent] 1 New compact vacuum sweeper 1 Maytag washer-dryer combination |
|---|---|

Also selling [A lifetime of collectibles] china, dishes, glassware, jewelry, pots and pans, linens and many miscellaneous articles.
TERMS: House - 10% down, paid on date of sale on the house. The balance due on acceptance of a merchantable title. Escrow forfeited for non-performance of contract. Taxes and insurance will be pro-rated to the day of closing. Possession on acceptance of title and closing. The seller reserves the right to reject any and all bids.

Furnishings & Collectibles: All cash, plus sales tax at the day of sale.

Monnie Cook Estate Seller

Sole Conducted by—

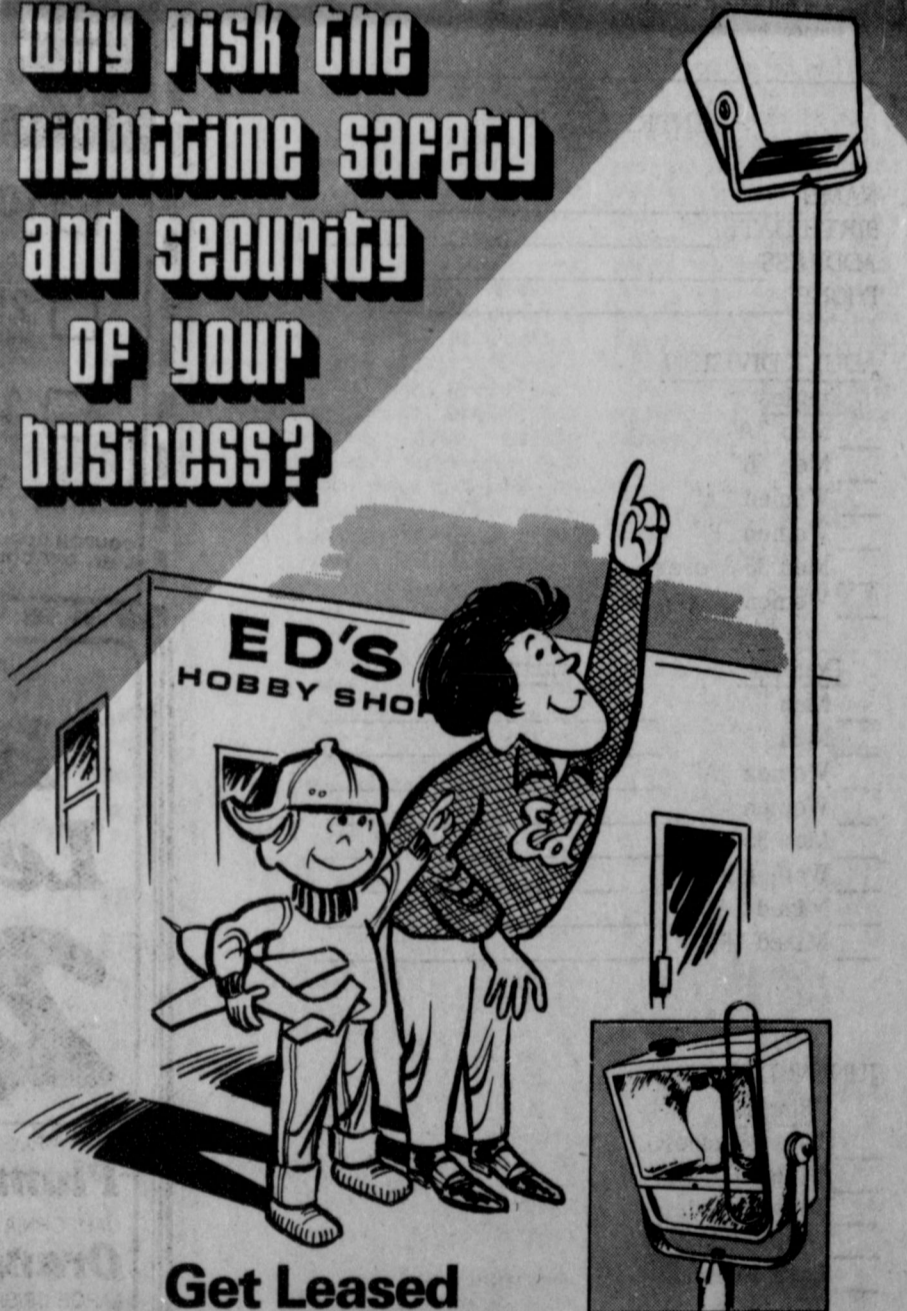


GOLDEN SPREAD REALTY
401 S. Main
Perryton, Texas 79070

Please call for
Appointment 435-5444

"We're here for you"


Why risk the nighttime safety and security of your business?



Get Leased Floodlighting for pennies per night.

You worked hard all your life so that you could start your own business. Now that it's yours, you want everything to go right. Leased Floodlighting for businesses can give you the added safety and security you need by illuminating your property at night. Highly visible storefronts mean less chance of vandalism. And well lighted stairways, loading docks, entrances and exits can give you and your employees an extra measure of safety. On-at-dusk, off-at-dawn Leased Floodlighting costs just pennies per night. To get Leased Floodlighting for your business, just give us a call.

COMMUNITY PUBLIC SERVICE
Your Electric Light & Power Company



Spearman Open Tennis Tournament Set

SPEARMAN OPEN
ENTRY BLANK
July 31 - Aug. 3

LOCATION: Spearman High School Tennis Courts

DETAILS: Play in the Junior Division will begin Thursday, July 31, at 9:00 a.m. and continue Friday if necessary. If we are unable to play on Thursday because of weather, we will begin on Friday, August 1, at 9:00 a.m. The Adult Division will begin Saturday, August 2, at 9:00, and continue through Sunday. Feel free to call and find out if you are one of the first matches, but do it no earlier than Wednesday. (Sheila Watley 806-659-3970)

ENTRIES: You may enter as many as three events, but only two age divisions. If you enter three events be prepared to play your matches back to back. If there are not enough entries in one age division you will be put in the next division. The tournament director will have the last decision in placing players in "A" or "B" divisions. Please send any seeding information that you might have.

FEE: Entry fee is \$4.50 per person per event.

RULES: No-ad scoring will be used to the Semi-finals. 9 point tie breaker will also be used at 6--6.

PLEASE FILL OUT THE ENTRY BLANK BELOW AND SEND WITH ENTRY FEE NO LATER THAN TUESDAY, JULY 29.

Sheila Watley
727 Wilbanks
Spearman, Texas 79081

ENTRY BLANK

NAME _____
BIRTH DATE _____
ADDRESS _____
PHONE _____

ADULT DIVISION

Singles
Men "A" _____
Men "B" _____
Women "A" _____
Women "B" _____
Men 35 & over _____
Women 35 & over _____

Doubles

Men "A" _____
Men "B" _____
Women "A" _____
Women "B" _____
Men 35 _____
Women 35 _____
Mixed "A" _____
Mixed "B" _____

Partner

JUNIOR DIVISION

Singles
Boys 18 under _____
Girls 18 under _____
Boys 16 under _____
Girls 16 under _____
Boys 14 under _____
Girls 14 under _____
Boys 12 under _____
Girls 12 under _____

Doubles

B 18 _____
G 18 _____
B 16 _____
G 16 _____
B 14 _____
G 14 _____
B 12 _____
G 12 _____

Partner

PLEASE CHECK THE EVENTS YOU WANT TO ENTER AND FILL IN YOUR PARTNER'S NAME FOR THE DOUBLES. REMEMBER TO GO BY YOUR AGE AS OF SEPT. 1, 1980 TO PLACE YOURSELF IN THE JUNIOR DIVISION!

Bank-fishing At Optima Permitted As Of July 1

The U.S. Army Corps of Engineers has approved bank-fishing from the shores of Lake Optima beginning July 1.

This is for bank-fishing only. That was the information furnished this week by the corps to the folks at the Sports Tally headquarters for sporting equipment, particularly fishing gear in Spearman.

The authorization marks another milestone in the history of Lake Optima, created by the massive earthen dam located on the North Canadian River in Texas County, Oklahoma, some four miles northeast of Hardisty.

The lake is one of three created as a flood control project and is operated in conjunction with Fort Supply and Canton lakes. Main purpose of the operation has

been for maximum flood control downstream to Oklahoma City. It is also a unit in the upstream system of lakes that are a part of the main control plan for the Arkansas River in the states of Arkansas and Oklahoma.

The total project controls the runoff from 2,341 square miles of drainage area above the Optima dam.

The project that included construction of Lake Optima was authorized by the Flood Control Act of 1936. At that time stated purposes of the project were flood control, water supply, recreation, fish and wildlife. Three things intervened: the depression, World War II and the Korean conflict.

In 1936, when authorization came, recreation was a moot point. It was not in the

depression era budgets of most people. When construction finally began in 1966 -- 30 years after authorization -- folks had a different life style.

But the Corps of Engineers had much more clout by this time, too. The corps controlled the pattern of life for most inland lakes in the U.S. including construction of boat and fishing piers and lakeside boat houses.

Exercise of this control, in many areas, ran head-on into the new lifestyle of the more affluent American. This is not an indictment of the Corps of Engineers. It is rather, evidence of a lack of precedent. After all, prior to World War II, there were only two recreation-capacity lakes in the entire state of Texas.

Times have changed.

Administration of these lake areas has changed, too. Authorization of bank-fishing at Lake Optima is a part of that change. Apparently, it has been a matter of time and experience in proving recreation and fishing are compatible with the serious purposes of flood control and water supply. Suffice it to say, much joy at the prospect of bank fishing is in evidence even before official public announcement of the authorization. One member of the corps who wished to remain anonymous, noted that he and several colleagues would probably be found "in mufti" on the banks of Optima watching the "bobbers."

Come July 1, happiness is being a disciple of Isaac Walton.



Kevin Kirby, left, youth director of Gruber United Methodist Church is shown here with Rev. Tom Fuller, pastor of the church. Kevin will be senior at McMurry this fall. He is the son of Mr. and Mrs. C.E. Kirby of Hays, Kansas and is a pre-seminary student majoring in religion. He is a graduate of Pampa High School.

Proposed Changes In Federal Energy Program

Proposed changes in the federal "Emergency Building Temperature Restrictions" program (EBTR) would give building managers greater flexibility in conserving energy, it was announced by the U.S. Department of Energy today.

Under an alternate plan, building owners would be permitted to cool their buildings to 74 degrees Fahrenheit, rather than the present 78 degrees. In winter the temperature could be upped to 68 degrees, rather

than the current 65 degrees. The proposed regulations would permit a building manager to use an alternate plan, if that plan would achieve an energy savings equal to that resulting from full compliance with the current regulations. The current regulations remain in force until final rules are published this summer.

Actions that could be taken include reducing lighting wattage, changing hours of build-

ing operations, installing insulation and weatherization, among others. The proposed regulations were published in the Federal Register on May 27, 1980. A 30-day public comment period ends on June 26, 1980.

Other changes and clarifications would affect senior citizens' centers, schools, work place show and changing rooms, and circumstances where workers who are required to wear special or protective

clothing may be endangered by the temperature regulations.

Further information about the proposed changes may be obtained by writing EBTR Office (CE), Department of Energy, P.O. Box 35228, Dallas, Texas 75235. The telephone number is 214-767-7777.

General information about the program may be obtained by telephoning the toll-free emergency conservation service hotline number in Washington, D.C., at 1-800-424-9122.

CCC Looking For Former Members

For organizational purposes the National Association of Civilian Conservation Corps Camps Alumni (NACCCA) is trying to locate about two million former members and those who were connected or affiliated with the Civilian Conservation Corps (CCC) during the 1930's and 1940's. Hundreds of thousands of CCC vets now living, have not heard of and about NACCCA. Of the 26,000 contacted thus far, 20%

have joined. Our attitude still remains very positive, and with all pitching in and sharing equally, we can build a fine large CCC Veterans organization that will be a significant force for good in this nation. Anyone interested in further information can contact NACCCA Headquarters, 7900 Sudley Rd., Suite 418, Manassas, Va. 22110. Or in Texas write Dr. C. W. Smith, P.O. Box 6AA, San Antonio, Tex. 78201.

FOOD STORES

PRICES EFFECTIVE THRU JULY 2, 1980. QUANTITY RIGHTS RESERVED. NO SALES TO DEALERS.

MON. - SAT.
8 a.m. - 9 p.m.

SUN.
10 a.m. - 7 p.m.

| | | |
|---|---|---|
| <p>GET UP TO 300 GUNN BROS. STAMPS</p> <p><input type="checkbox"/> 100 FREE STAMPS WITH \$10.00 TO \$19.99 IN PURCHASES</p> <p><input type="checkbox"/> 200 FREE STAMPS WITH \$20.00 TO \$29.99 IN PURCHASES</p> <p><input type="checkbox"/> 300 FREE STAMPS WITH \$30.00 OR MORE IN PURCHASES</p> <p>WITH THIS COUPON</p> <p>COUPON GOOD THRU JUNE 28, 1980. LIMIT ONE COUPON PER CUSTOMER.</p> | <p>FRESH FROZEN Fryer Breasts... 98¢ RIBS ATTACHED IN 5-LB. BOXES</p> <p>CENTER CUT RIB Pork Chops... \$1.39</p> <p>BAR-S SKINLESS Meat Franks... 79¢ 12-OZ. PKG.</p> <p>BAR-S SLICED Meat Bologna... 98¢ 12-OZ. PKG.</p> | <p>FRESH Ground Beef 1.19 FAMILY PACK 3-LB. PKG. OR MORE</p> <p>FRYER THIGHS... OR Drumsticks 59¢ FRESH FROZEN IN 5-LB. BOXES</p> <p>EXCELLENT FOR QUICK MEALS Cube Steaks... \$2.49 EXTRA LEAN BONELESS Beef Stew... \$1.98</p> <p>MOYEHEDA, PIMENTO Cheese Spread... \$1.19 7-1/2 OZ. CTN.</p> <p>BAR-S SLICED Meat Bologna... \$1.19 1-LB. PKG.</p> |
|---|---|---|

Long tapes

| | | |
|--|--|--|
| <p>FRESH CRISP Head Lettuce 29¢ LB.</p> <p>SANTA ROSA Plums... 63¢ CALIFORNIA ORANGES... \$1.09 LARGE CRISP GREEN BELL PEPPERS... 49¢ TENDER SWEET GOLDEN CORN... 5 LBS 99¢</p> <p>Juicy Sweet Nectarines 69¢ LB.</p> | <p>Crisco Shortening 2.03 3-LB. CAN LIMIT 1</p> <p>WE GLADLY ACCEPT U.S.D.A. FOOD STAMPS</p> | <p>REGULAR OR JALAPENO Ranch Style Beans 34¢ 15-OZ. CAN</p> <p>Jell-O ALL FLAVORS 3.79 3-OZ. BOXES</p> |
|--|--|--|

SHOP IDEAL... WHERE THERE'S MORE VALUE IN

YMCA News

Z-93 DANCE SATURDAY, JUNE 28

There will be a dance, by Z-93 on Saturday, June 28. The junior high youth will dance from 7:00 - 9:45 p.m. and the high school and older set from 10:00 - 12:00 Midnight. The dance will be at the YMCA and cost is \$3.00 per person.

FOURTH OF JULY CELEBRATION

Age groupings for the various contest for the Old Fashioned Fourth of July Celebration have been established. Registration of contestants will begin at 9:30 a.m. on July 4 and again fifteen minutes before each event, for late registrants.

SACK RACES (10:00) 8 & Under, 9 - 12 - 17, 18 & Older. Teams

SKILLET TOSS (1:45) 13 - 17 and 18 & Older. Teams

THREE-LEGGED RACE (11:30) 8 & Under, 9 - 12, 13 - 17, 18 & Older. Teams

WATER BALLON TOSS (12:30) 8 & Under, 9 - 12, 13 - 17, 18 & Older. Teams

INNER TUBE RELAY (1:15) 8 & Under, 9 - 12, 13 - 17, 18 & Older. Teams

KITE DECORATING & FLYING (2:00) 12 & Under, 13 - 17 & Older

One contest will be for general decorating. Second how the decorations appear in the air.

FLAG FOOTBALL (2:00) 13 & Older TEAMS ONLY

Presentation of awards will be at the Fireworks Show at about 9:15 p.m. at Lynx Stadium.

Teams wishing to compete should contact either Carolyn Cummings or Sheri McWhirter, so plans can be made for team competition.

Swimming pool will open at 1:00 on the Fourth and remain open until 7:30, with recreational swimming the entire day.

Watermelon feed at Slide Park beginning at 7:30.

Fireworks begin at Lynx Stadium at about 9:45 p.m.

BALL GAME SCHEDULE

Thursday, June 26th Men's Softball

7:00 p.m. - Agco vs Thriftway

8:30 p.m. - Baker & Taylor vs Henton's

10:00 p.m. - North Plains vs Tico

Friday, June 27th Jr. Babe Ruth

7:00 p.m. Junior Babe Ruth plays Laverne in Spearman.

Monday, June 30th Women's Softball

7:00 p.m. - John Deere Does vs Sacks Odds & Ends

8:30 p.m. - 1st State Red Hots vs Jr. Lusby Cats

Tuesday, July 1st Men's Softball

7:00 p.m. - North Plains vs Henton's

8:30 P.M. - Tico vs Agco

10:00 p.m. - Thriftway vs Baker & Taylor

HANSFORD COUNTY LEAGUE SCHEDULES

Thursday, June 26th

Dodgers vs. Rangers in tee ball and Pirate Cubs vs Astros in baseball (Gruver).

Astros vs Mets in tee ball and Giant A's vs Dudes in baseball (Spearman)

Friday, June 27th

Orioles play the Phillies in tee ball in Gruver

Blue Sox and Cards play tee ball in Spearman

Tigers play the Panthers in Spearman

Monday, June 30th

Orioles play the Phillies in Gruver in tee ball and Panthers vs Angels

Blue Sox play the Cards in Spearman

Tuesday, July 1st

Tigers play Cards in Tee ball and Giant A's play Pirate Cubs baseball (Gruver)

Dodgers play Mets in tee ball and Dudes play Astros in baseball (Spearman)



Ron Palillo grows a beard and a new image as a tough gang member in "SKATETOWN U.S.A." The roller disco comedy, opening 6-24 at the H-Heddy

The name xylophone is from the Greek words meaning "wood tones."

The Twelve Days Of Harvest

On the first day of Harvest My true love said to me, with our kids to help he wouldn't need me.

On the second day of Harvest the kids laughed with glee, 'cause the chicken chores and milking chores would now be up to me.

On the third day of Harvest my husband said to me, "Help tie the tarp down, run this half load into town, pick up some salt blocks and then check the cattle, 'cause we're too busy."

On the fourth day of Harvest they gave a broken part to me, said, "Try the co-op in town, every implement dealer, just keep driving until you find the right pulley."

On the fifth day of Harvest my husband said to me, "We're moving to the other field, you bring the pickup, fill up the gas tanks and the water jugs, put in the fuel box, a can of bolts with nuts and locks, better bring our dinner and this time don't forget the iced tea."

On the sixth day of Harvest my daughter called to me, "The elevator's tied up and I can't get unloaded. Take the old Chevy truck, make sure it's gassed up, check the oil and battery and get over to the west field in a hurry."

On the seventh day of Harvest my husband said to me, "We're going to bring some wheat in, will you clean out the north bin?" Then they set up the auger and left me scooping breathlessly.

On the eighth day of Harvest my husband gave a list to me, "Don't know if this belt will last, better get to town fast. I need another reel slat, filter and bearing. Bring it by the field. Throw in an extra scoop and don't forget the goop that makes the chains run free."

On the ninth day of Harvest at eleven-thirty, the clutch went out on the combine and he called on the CB: Said: "Find the heavy log chain, get the Ford tractor and come pull me."

On the tenth day of Harvest my true love snapped at me as I handed tools up to him, very nervously.

On the eleventh day of Harvest the whole crew said to me, "Want to fill the gas tanks while we eat, take home this load of wheat, and bring back one wrench, another water jug, and a spray bomb for the sweat bees."

On the last day of Harvest my husband grinned at me "If everything goes right, we should be done by midnight." and "Aren't you glad you didn't have to help, Pee Wee?"



Until the early Middle Ages, the ivory and gold statue of Olympian Zeus—one of the seven Wonders of the Ancient World—stood in a shrine in Greece.

College Workshop Planned

Now there is a chance to find out everything you always wanted to know about college but have been hesitant to ask. Amarillo College is offering a free workshop to give you an opportunity to find out more about what college can mean to you. The first session will be held on July 14, from 7:00 to 10:00 p.m. A second pre-school session will be offered August 18. Both sessions will be held in the Oak/Acorn Room of the college union, located on the Washington Street Campus of Amarillo College.

The workshops will answer questions concerning improving chances for college success through proper goal setting and motivation, establishing rapport with instructors and basic study techniques such as note-taking, examsmanship and reading comprehension. Any interested person may call Student Services Offices at 376-5111, Extension 2310 for further information.

As Rob Mills, workshop coordinator, says, "Try it, you'll like it."

Worthy Matron Mona Slater Installed



Open Installation for Spearman Chapter #721, Order of the Eastern Star was held June 7, 1980. A Musical Prelude, played by Organist Wilma Clark. Presentation of the Holy Bible, Kimberly Slater; Square and Compass, Amanda Bryant. The meeting was called to order by John R. Collard, Jr., Worthy Patron. The meeting being called to order, the officers entered the Chapter Room. Conductress, Myrna Biggers, opened the Holy Bible. The Invocation was given by John R. Collard, Jr. who also led the group in the Pledge of Allegiance to our Flag, followed by the singing of our National Anthem led by organist, Wilma Clark.

Mary Arnold, Worthy Matron, welcomed everyone attending, then introduced the Installing Officers.

Mary Arnold - Installing Officer; Mary Margaret Faylor - Installing Marshall; Frances Stewart - Installing Chaplain; Virus Wilbanks - Installing Secretary; Wilma Clark - Installing Organist.

Mary declared a short recess to prepare for the Installation Ceremony.

Mary Arnold, Installing Officer, called the meeting to order, instructing the Installing Marshall to invite the officers to be installed to enter the Chapter Room. They are the following: Worthy Matron - Mona Slater; Worthy Patron - Don E. Hendricks; Associate Matron - Myrna Biggers; Associate Patron - Cecil Biggers; Secretary - Lynanne Maize; Treasurer - Thelma Scott; Conductress - Mary Arnold; Associate Conductress - Nina Hendricks; Chaplain - Millie Craig; Marshall - John R. Collard, Jr.; Organist - Wilma Clark; Adah - Louie Jane Sampson; Ruth - Geardine Lovinggood; Esther - Jessie Faires; Martha - Betty Uptergrove; Electa - Marjorie Collard; Warden - Cyril Batton; Sentinel - Roy Lee Uptergrove.

After a very impressive ceremony, Mary Arnold, Installing Officer, instructed the Installing Marshall, Mary Margaret Faylor, to declare the officers for the 1980-81 year duly installed.

Closing of the Holy Bible, Mary Arnold, Jr., Past Matron. The closing ode "God Be With You" sang in unison.

Wilma Clark sang a beautiful solo enjoyed by everyone.

The candlelight setting for this beautiful ceremony was the Worthy Matron colors of red, white and gold. Each Star point officer was presented a flower appropriate to her star point color. The new Worthy Matron's address held everyone present spellbound, it was beautiful. She then thanked her installing officers, presenting them gifts.

The Associate Conductress, Nina Hendricks presented the Jr. Past Matron, Mary Arnold, Jr., Past Patron, John R. Collard, Jr., in the East where they were presented gifts from their officers and the Spearman Chapter.

Mona dedicated her years as Worthy Matron to her God and Savior, her husband, Cecil Slater, her children and to her Sisters and Brothers of Spearman Chapter #721, Order of the Eastern Star. Her theme, Love One Another; Emblem, the Holy Bible; Flower, Red Rose.

Mona introduced her family, her husband, Cecil Slater; son and family Steven, Kathy, Scott, Kimberly and Kevin Slater; son, Mike Slater; Sue Slater and children, Amanda, Madella and Melinda; Sister, Audrey Spencer; Brother Larry Brockelman.

Spearman guests present:

Jeanine Innis, John R. Jr. and Marjorie Collard; Byrna and Regina Biggers; Melissa and Melanie Hutton; Thelma Scott; Lynanne Maize; Minnie Jones; Millie Craig; Wilma Clark; Inez Holland; Virus Wilbanks, Louie Jane Sampson, Don and Nina Hendricks, Jerry and Geraldine Lovinggood, Roy Lee and Betty Uptergrove, Dorothy Longley, Jessie Faires, Beverly Sutton, Don Wirsdorfer, Cyril, Mrs. John R. Collard, Mrs. R. E. Townsend, Mae Shaull, Ruth Caro.

Out of town guests attending were Hoot and Mary Arnold, Gruver; Audrey Spencer, Canon City, Colo.; Danny and Harriette Williams, Booker; Charley and Clara Spencer, Crane, Texas; William B. and Harriett Robb, Del Rio, Texas; Larry Brockelman, Baytown, Texas; Bud and Mary Margaret Faylor, Borger; Medford and Francis Stewart, Borger and Gena Radcliff, Borger.

Mona thanked everyone for attending. After the Mizpeth Benediction, given in unison, the officers had their retiring dinner.

The reception was held in the dining hall. The tables were covered with cloths the color of the five star points. The serving table was covered with a white cloth with red lace cover. Cut glass stems with red roses accented the tables. Sandwiches, relishes, nuts, mints, cake, punch and coffee were served. Jeannine Innis ladled the punch, Kathy Slater at the coffee service.

The next stated O.E.S. meeting will be July 7, 7:30 P.M. at Masonic Hall.

MANAGING YOUR MONEY

GOLD

Of the many investment options available today, gold is one alternative hedge against inflation.

For those who have made the decision to purchase gold, gold coins offer one of the easiest, most portable and most flexible means of owning the precious metal at this time.



The Gold Coins of Mexico offer a broad range in size from the 50 peso Centenario, weighing more than one ounce of gold, down to the 2 peso piece which is often turned into beautiful jewelry.

These coins are among the most popular bullion coins in the world. As with all gold coins, the purchase price includes a premium to cover minting and distribution. For a free brochure on these coins, write: The Gold Coins of Mexico, Information Center, Grand Central Station, P.O. Box 1812, New York, N.Y. 10017, or see a coin dealer.

Just about the ultimate in modern, spacious air travel accommodations today are available aboard this Boeing 747.



ASSORTED... PORK LOIN

Pork Chops

\$1.09

LB.



RODED HICKORY SMOKED

Sliced Slab Bacon

RANDOM WEIGHTS

89¢

....LB.

| | | | | | |
|--|--------|--|--------|--|--------|
| LOIN Pork Chops..... 1 LB. | \$1.49 | HORMEL WRANGLERS Smoked Franks..... 1 LB. | \$1.89 | HORMEL BLACK LABEL Sliced Bacon..... 1 LB. | \$1.49 |
| SMOKED SAUSAGE Hormel Kolbase..... 12-OZ. Pkg. | \$1.49 | HORMEL LITTLE SIZZLERS Link Sausage..... 12-OZ. Pkg. | 89¢ | SMOKED CENTER CUT Ham Slices..... 1 LB. | \$1.79 |

have lower totals



Tomato Catsup

32-OZ. BTL. . .LIMIT 2

83¢



Tide Detergent

\$1.58

GIANT 49-OZ. BOX . . .LIMIT 2

HEALTH AND BEAUTY AIDS SPECIALS

CAREFREE

Panty Shields

30-CT. BOX

\$1.49

MENNEN

Baby Magic Shampoo

7-OZ. BTL.

99¢

MENNEN LOTION

Baby Magic

16-OZ. BTL.

\$2.19

| | | |
|------------------------|---------------------------------|---------------|
| DETERGENT | Ivory Liquid..... 22-OZ. BTL. | 97¢ |
| LIPTON | Family Tea Bags..... 24-CT. BOX | \$1.63 |
| HELLMAN'S | Real Mayonnaise..... 32-OZ. JAR | \$1.47 |
| CAMELOT CREAMY/CRUNCHY | Peanut Butter..... 12-OZ. JAR | 72¢ |
| HI-DRI | Bath Tissue..... 4-ROLL Pkg. | 73¢ |
| NABISCO | 'Nilla Wafers..... 12-OZ. BOX | 79¢ |
| STA-PUFF | Fabric Softener..... 17-OZ. CAN | \$1.33 |
| GLAD...LAWN... | Clean-Up Bags..... 6-CT. BOX | \$1.29 |

SIX FLAGS OVER TEXAS



Discount Tickets to Six Flags

We've arranged to make special discount tickets to SIX FLAGS Over Texas available for you and your family. So when you take your gang to SIX FLAGS this year, you can save time and money by buying your tickets here.

EXCITING ATTRACTIONS

In 1980 Six Flags Over Texas is celebrating its 20th Anniversary Season with even more "fantastic" reasons for your visit.

The celebration is headlined with the addition of a brand new two million dollar Conroy Island style wooden roller coaster, "Judge Roy Scream, the Awe West of the Pecos." The "Judge" features a 65-foot plunge at a 50-degree angle, creating the sensation of dropping straight down. The new coaster covers more than 2,500 feet of track with speeds up to 50 miles per hour.

FREE SUPERSTAR CONCERTS FOR PARK GUESTS*

REG. \$9.95

\$8.99

DISCOUNT PRICE

FRESH DAIRY

KRAFT HALFMOON, CHEDDAR, LONGHORN OR COLBY

Cheese

10-OZ. PKG. . .LIMIT 2

\$1.23

Margarine BLUE BONNET . . .LIMIT 3 . . .48¢

Cottage Cheese STEFFEN'S . . .12-OZ. CTR. . .62¢

Cream Cheese KRAFT PHILADELPHIA . . .8-OZ. Pkg. . .71¢

FROZEN FOODS

Jeno's Pizza

ALL FLAVORS 13-OZ-10-INCH

86¢

Ice Cream DAIRY BELL ALL FLAVORS . . .HALF GAL. . .\$1.28

Orange Juice MINUTE MAID . . .2 8-OZ. CANS . . .89¢

Egg Noodles PEAM BRAND . . .2 8-OZ. Pkg. . .\$1.00

STORE FOR YOU!...



Food Stamps Buy More At Ideal...

Company Plans Phase-Out Of Township Of Phillips

The nearby city of Phillips is being put to sleep—as a city.

Some cities die for the lack of life's blood: population, commerce, civic interest. Others suffer a more violent demise from weather damage, crippling fiscal recessions or other encroachments.

--But in the case of Phillips, it is sort of a planned corporate euthanasia.

That was the word of an official of Phillips Petroleum Company out of the Amarillo office.

In the developing years, it was the pattern of the petroleum industry for the work force to be domiciled around the production center like flies swarming honey. The huge refining complex of Phillips Petroleum Company at the township bearing the Phillips name was no exception. In fact, for years it was one of the boasts of the company that it provided modern, low-cost housing for its refinery employees lining the orderly streets that comprised the site of the city of Phillips.

Then, in the post-war era, there came a time when the company decided to discontinue this program. Dwellings were offered to their tenants first, then to any purchaser at what was considered a bargain price. Most were sold under the program.

Then, somewhere along in 1977-78, expansion plans for the Phillips installations demanded more room and the residential sites were the only possibility. In 1973, Phillips had surrendered its lease on the Whittenburg lands south from Whittenburg Street running in front of the high school complex.

Land in the Bunavista area was offered at a bargain price along with a moving subsidy and some 150-160 residences were moved.

Then came the disastrous explosion of Jan. 20, 1979.

A half-year later, with most of the claims amicably settled, the company is seeking to phase out the township in the interests of both safety and the demand for expansion room. Some 400 to

500 more houses will move to the Bunavista site.

The company official said, Monday, there was no problem in moving another 400 to 500 residences. There was a clause in the purchase contract that has been ignored through the years by both the company and purchasers. It stipulated that, within 90 days after the house had been paid for, it would be moved from Phillips land. (This land is either company owned or under perpetual lease agreement, except for the Whittenburg tract surrendered from lease in 1973.)

The company spokesman said that, despite certain problems, there had been no battle in reaching accord with the two churches in the community: Baptist and Methodist -- both heavily damaged in the January, 1979 explosion. It develops the problem is with the school system.

He said Baptists foresee no problem in relocating. The Methodists do but they think it has been resolved. There is no need for another Methodist Church in Borger, so the congregation at Phillips has been considering the acceptance of the company settlement and, in turn, settling it on Methodist work in Borger, according to the Phillips official.

He cited a cost of almost \$4,000 per pupil to instruct each student in the Phillips school system. He also stated the company had conferred with Borger school officials and the entire Phillips student body could be accommodated with the addition of a small number of elementary teachers.

Officials of the Phillips Independent School District have maintained ever since the explosion when the possibility of such issues first presented themselves, that it was not that simple. Their first rebuttal to the company is that, despite a small student body, the quality of instruction is not impaired and in some instances -- born out by cases of record -- able to supply certain unusual students

with a quality of instruction and a degree of personal attention that the Borger system would not even attempt.

This has been stipulated as a reason for some student transfers to the Phillips system even before the explosion created the present pressures.

Too, because of state imposed guidelines, some of the students, because of domicile locations, would have to transfer to Stinnett schools rather than Borger schools and parents are opposed to this on the basis of the danger of extended travel without the quality of education at Stinnett being impugned.

Based strictly on legal stipulations, it seems most likely the Phillips company will succeed in phasing out the township. There is no little sentiment involved other more practical factors not withstanding.

Destined for demise under the company program is a football team strong in tradition and proud in record. Hand in hand with this are other academic accomplishments and programs that have indisputably produced leaders in various fields of endeavor in the area.

Then, aside from the school and church life, there has been a community spirit that will leave a somber shadow of loss over the Magic Plains once the community is no longer.

Thus the death of a city appears certain.

Its funeral is destined to be a rouser!

Soccer Team

Spearman Soccer will play Saturday, June 28th at 5:00 p.m. at Spark's field which is located on North Snider. Spearman will be playing against the Borger Rowdies. So don't miss the action! This game is dedicated to the public for all the support given in the past...

Water reaches its greatest density at 39.2°F. (4°C.).

Mosquitoes Pose Health Hazard As Well As Nuisance

Rainy weather, standing water and that familiar pest, the mosquito, add up to a problem which affects the health and well-being of man and his domestic animals all across Texas.

It's the female mosquito whose painful bite during feeding not only causes discomfort but also can transmit to man and animals a number of organisms causing serious disease, explains Layton Barton, County Agent with the Texas Agricultural Extension Service, Texas A&M University System.

Diseases carried to humans by mosquitoes include encephalitis, yellow fever and malaria. Encephalitis and occasionally malaria still are important diseases in Texas.

Among animals, a major problem in mosquito-borne diseases is heartworm in dogs. This and other diseases transmitted by the pesky insect can cause loss of property values and production efficiency and even prove fatal to animals.

Effective mosquito control is often a complex, expensive task requiring the cooperative efforts of individual homeowners as well as organized groups, communities and local and state government. Mosquito control personnel may be required on an extended basis, and communities may wish to establish an areawide approach to the problem. The Texas Department of Health can provide information on establishing a mosquito control district.

But there is much the individual can and should do around the home, emphasizes Barton. The first thing to do is eliminate their breeding sites. Standing water from rain showers provides excellent breeding grounds for mosquitoes.

Mosquitoes can lay eggs wherever standing water is available for a week or longer, says Barton. Old tires, tin cans, birdbaths, roadside ditches, rain gutters, temporary water

containers and swampy places all can hold enough water to enable mosquitoes to breed.

Empty out old tires and place them where they cannot collect additional water, suggests Barton. Flatten and discard tin cans. Change the water in birdbaths every week. Clean out rain gutters, remove temporary water containers, and see that rain barrels and water storage tanks are tightly covered. Drain standing water from ditches and swampy areas.

If there is standing water that serves as a breeding site but cannot be drained or eliminated, treatment with a larvicide will be necessary, notes Barton.

One of the most effective larvicides is No. diesel oil with a biodegradable spreader, applied at a rate of 20 gallons for each surface acre of water, or about 6 ounces per 100 square feet of surface.

Abate, malathion or Dursban applied to standing water at rates indicated on their labels also are effective larvicides. However, read labels carefully to determine the hazards these insecticides pose to persons applying them and to fish and animals that may use the water, cautions Barton.

Control of adult mosquitoes offers the most immediate

relief. Inside the home, aerosol bombs containing pyrethrin offer quick knockdown of adult mosquitoes. However, the killing effect of pyrethrin is short-lived, so frequent applications will be necessary to control adult mosquitoes inside the house. The "pest strip" offers effective indoor control for long periods. One pest strip for each average size room is necessary to control mosquitoes.

Persons who are active where mosquitoes are a problem should use repellents, advises Barton. These will protect you from biting mosquitoes for from one to three hours, depending upon your type of activity.

Adult mosquitoes around the home can best be controlled by space or residual treatments of insecticides such as malathion, Dibrom, methoxychlor or Dursban, suggests Barton. Space treatments, generally fogs, have little residual activity and require repeating at frequent intervals. Use such treatments during the cool hours of the night or early morning and when wind velocity is less than five miles an hour.

Residual treatments applied as mists or sprays to resting sites of adult mosquitoes give longer-lasting control than

space treatments. Apply these to vegetation, eaves of roofs, under porches, and similar shaded areas where adult mosquitoes rest by day.



Miss Emma M. Nutt broke the male monopoly on telephone company jobs when she was hired as an operator for the Telephone Dispatch Company in Boston on September 1, 1878.

Men's Prayer Breakfast Set

Keith Bateman who farms southwest of Gruver will be the speaker at the interdenominational men's prayer breakfast on Wednesday, July 2 at 6:30 a.m. in the garden room of the Cattleman's Restaurant. This is for all men.

NEWS BRIEFS: Beedy Furniture will continue their fabulous SALE this week, and until they sell to the BARE WALLS! Check with BRAD for further information! REEDS FAMILY SHOES is having a big SALE that will continue through this week also! T. G. & Y. is having a fantastic fabric SALE THIS WEEK! HAPPY BIRTHDAY to Nursanickel Motel and SPORTS TALLY! Sports Tally is having a big Anniversary Sale this week!

LYRIC THEATRE

PHONE 806-659-2812

ONE SHOW AT 7:30 P.M.
SUNDAY, MONDAY, TUESDAY,
WEDNESDAY, THURSDAY

TWO SHOWS AT
7:00 P.M. AND 9:00 P.M.
FRIDAY & SATURDAY

Roger Moore is "ffolkes" the man who loved cats, ignored women and is about to save the world

JAMES MASON ANTHONY PERKINS
MUSIC BY MICHAEL PARKS DAVID HEDISON
DIRECTED BY ANTHONY M. PELICANI
PG PARENTAL STRONG CAUTION SUGGESTED
SOME MATERIAL MAY BE INAPPROPRIATE FOR CHILDREN

JUNE 25 THROUGH JULY 1

PELECUAS MEXICANAS

SUNDAY
JUNE 29
AT 2 P.M.



Hugo Stiglitz
Hector Bonilla
A COLORES
MARTHA NAVARRO - JORGE RUSSEK
JULIAN BRAVO - ARSENIO CAMPOS
presentacion especial: RAMON BENEDEZ
CARLOS LOPEZ BOCTEZUMA
CARLOS EAST - RICARDO CORTES
CLASA-MOHME, Inc.

HOLIDAY DRIVE-IN

ONE SHOW EACH EVENING
STARTING AT DUSK

The Rock and Roller Disco Movie of the Year!

PG

No want want search of a dream... a dream called California.

JUNE 29

Color by MOVIELAB • A Cinema 77 Film
Released by AMERICAN INTERNATIONAL
RESTRICTED

JUNE 26 THROUGH JUNE 28

THROUGH JULY 2

659-3878
717 W 7th
Spearman, Tx.

1st Anniversary SALE

Beginning June 30th thru July 5th
Entire Stock 25% off
(except Guns, Ammunition & Shoes)

ANNIVERSARY
July 2nd Only
Entire Stock 40% off
(except Guns, Ammunition & Shoes)

We will be closed July 4th