

Lisa Johnson



Teresa Cudd



Allena Gould



Lynda Rodriguez



The Spearman Reporter

VOL. 71, NO. 29

THE SPEARMAN REPORTER, SPEARMAN, TEXAS 79081

THURSDAY, MAY 29, 1980



Bonnie McCloy



Carla Tucker



Kathy Hagerman



MORE THAN A HALF-FOOT OF RAIN! --- This picture of hail and rain taken at the entrance to Hansford Cemetery just minutes before press time made it seem much more but . . . 6.44 inches of rainfall have been recorded since the Spring downpours began in April. And there are four more days in may to top the total for May, '79.

Josie Evans Services Held

Memorial services for Mrs. Josie Evans, 76, who died Monday in Spearman were held at 2:30 p.m. Tuesday in the First United Methodist Church of Gruver with the Rev. Tom Fuller, pastor, officiating. Burial was in Gruver Cemetery by Boxwell Brothers Funeral Directors of Spearman.

Mrs. Evans was born in Hansford County. She was a member of First United Methodist Church, Golden Agers Club, Grandma Canasta Club and United Methodist Women. She married Arthur Evans in 1925 in Tulsa, Okla. He died in 1972.

Survivors include two sons, Ted and Gary Evans, both of Gruver; six grandchildren and three great-grandchildren.

MARKETS

WHEAT	\$3.53
MILO	\$4.25
CORN	\$2.70
SOYBEANS	\$4.94

Hansford Roundup Days

Youth Avert Near Tragedy

Spearman Volunteer Fire Department Cadets, Robby and Kenneth Schaffer averted a near tragedy at their home, by taking quick action which had been learned through this unique youth program of the local fire department.

The family was cleaning the garage and yard area, Sunday. Some of the trash was being burned. A wind came up and before it could be extinguished, sparks blew onto the cedar shingles of the garage roof. Kenneth spotted the smoke billowing out of the upper windows of the garage, which are to their dorm. The next glance by Kenneth spotted flames on the roof.

Kenneth immediately scaled to the roof and Robby ran to

connect the garden hose and began spraying water onto the roof. When Kenneth reached the roof he noticed how the wind began spreading the fire across from shingle to shingle. He ripped the shingles off as water was being sprayed by Robby, and in minutes brought the fire under control.

Chief Ronnie Antalek was called. The chief came by the home and inspected the situation and found the boys had done the right things at the right time.

Had the boys not had the training as firemen, the dry cedar roof of the garage would have blazed out of control in a matter of minutes.

The cadet program is sponsored by the local Volunteer Fire Department, under the

direction of Chief Antalek.

Indeed, this is a case of young men participating in a learning program that paid dividends.

The parents, John and Sylvia Schaffer want to thank the local Volunteer Fire Department and Chief Antalek for making this program available to young men in Spearman.

Farewell For Burress Family

There will be a farewell potluck dinner honoring the Archie Burress family given by the Spearman Ministerial Alliance on Friday, June 6, at 7:00 p.m. at the Assembly of God. This is for the families of all the clergy.

Hansford Roundup Days on May 30 & 31 has lots of entertainment scheduled. There should be something for everyone, from carnival for the young, parade, dances, old timer's reunion, fiddler's contest and many other activities.

Friday events include the carnival and a Free Teen Dance with Z-93, co-sponsored by Moose Lodge & Y.M.C.A. at the "Y". Junior high dance will be from 8 until 10 and high school and older will be from 10 until 12.

Saturday is the big day with the 4-H Pride of the Panhandle Horse Show at the Oscar Archer Arena, sidewalk sale, Golden Spread Center Bazaar and the Bake-Off all set for 9 a.m.

The Old Timer's Reunion sponsored by the Hansford County Historical Commission will be held at the Joe Trayler Ford building at 9:30 a.m. and the Bake-Off judging also at that time.

The parade which is being sponsored this year by the Rotary Club will form at 10 a.m. and is scheduled to leave the shopping center at 11:00 a.m.

At 11:30 a.m. the Lions Club will sponsor entertainment on the Court House lawn.

At 12 noon American Ag will serve Barbecue. Tickets are \$5.00 for adults and \$3.00 for children 10 and under.

The Fiddlers Contest will be held at 1 p.m. and the Moose Lodge will have games for children.

Rho Rho will have Bingo at 1:30 p.m.

Booths that will be set up on the Court House lawn are: Lemonade-Baker & Taylor Women; Ice Cream-Servitors & Lions Club; Baked Goods-National Guard Women's Auxiliary and Home Demonstration Clubs; Soft Drinks-Rebekahs; Nachos & Frito Pie-Assembly of God Youth and Dill Pickles-Youth Group.

Other booths are: Ice Cream--in front of John Hutchison's office by the Spearman Study Club and Snow Cones-Firettes.

After the fiddlers contest there will be more entertainment.

The carnival will be going during the afternoon. At 7:30 p.m. the Miss Hansford County Pageant will be held at the High School Auditorium, sponsored by Xi Zeta. At 9 p.m. a dance will be held at the Moose Lodge for members and guests. "Country Cookin'" will be playing, \$10.00 a couple. Terry & Edgar Womble, Pete Vera and Jerry Delano are the entertainers.

Miss Hansford Pageant

The Miss Hansford Pageant will be held Saturday, May 31 at 7:30 p.m. in the Spearman High School Auditorium, sponsored by Xi Zeta.

There are 19 contestants entered in the pageant this year.

The contestants and their sponsors are Allena Gould, Moose Lodge; Lisa Johnson, Caprock Industries; Carla Tucker, First State Bank;

Shelly Strawn, Speartex Grain; Teresa Cudd, Sports Tally; Stacey Cook, Sacks 3rd Ave.; Cammye Gee, Buster's Aerial Dusters; Michele Graham, Spearman Drug; Kathy Hagerman, Spearman Auto Supply; Jana McCoy, Lion's Club; DeNae Baker, Bker's Club; DeNae Baker, Bker's Dept. Store; Bonnie McCloy, Hansford Implement; Cindy Heard, Gruver State Bank; Lynda Rodriguez, Berry's Cleaners; Shelly Gale Sparks,

Sparks Brothers; Pam Porter, Sandy's Beauty Shop; Eddie Clemmons, Thriftway Grocery; Angela Lesly, North Plains Implement; and Tammy Donahue, H & H Water Well Service.

An added attraction this year are escort couples, 4 to 5 years old. There are 16 couples, and they are Billie Jo Moore and Tyce Hergert, sponsored by Equity; Malissa Thomas and Dustin Loomis, Daco; Brandi

Blodgett and Grady Cline, B & B Farm Industries; Arin Adams and Roman Arnold, Nursanickel; Leslie Latta and Russell Shaver, Gift Box; Tommi Latta and Matt Eakin, Bunkhouse; Regina Abston and Sammie Graham, Gordon's Drug; Melody Hutton and Jon Sterling, A-1 Automotive; Shea Crawford and Troy Brown, Crawford Imp.; Randi Renner and Rex Ralston, Consumers; Melissa Baker and Kyle Pearson, Spear-

man Grain; Sara Sanders and Matt Archer, Spearman Safety Glass; Laura Pearson and Cody Pipkin, Louis Schnell Electric; Tracy Jo Tigrett and Chris Woodington, Nelson's Builders Supply; Mika McLain and Cody Barkley, Double D-Ag; and Julie Wright and Mark Chandler, Cochran Trucking.

Emcee for the pageant will be Debra Clawson, former Miss Hansford County from Gruver. Miss Clawson will also sing during the pageant.

Contestants will do a routine to the song "Making It" and escorts will do a routine to "Ma, He's Making Eyes At Me."

The new Miss Hansford County will receive a plaque and a \$100 gift certificate from Lady Fair. The first runner-up will receive a plaque and a \$50.00 gift certificate from Baker's Dept. Store. Miss Congeniality will receive a plaque. All beauty contestants will be presented a \$10 gift certificate from J.G.'s.

Miss Hansford County 1980 will be crowned by Jennifer McLain, reigning Miss Hansford County.

The winning escort couple will each receive a \$25.00 gift certificate from Kid's Stuff, with other escort entries receiving a small gift and all will be crowned.

Beauty contestants have been feted with coke parties at Spearman and Gruver schools and a luncheon May 24th at the Nursanickel Motel banquet room.

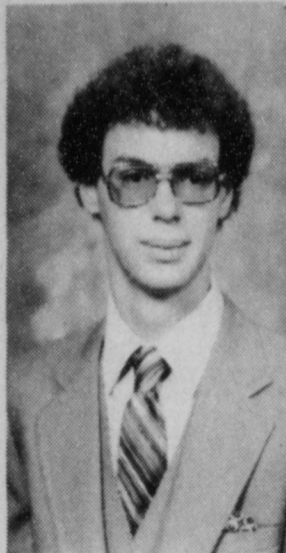
Miss Hansford County contestants and escort couples will all be in the Hansford Roundup Days parade Saturday morning.

Beauty contestants have been feted with coke parties at Spearman and Gruver schools and a luncheon May 24th at the Nursanickel Motel banquet room.

Miss Hansford County 1980 will be crowned by Jennifer McLain, reigning Miss Hansford County.

Tickets for the pageant are \$1.50 for adults and 75 cents for children.

**Jay Comegys
Awarded
Scholarship**



Jay Comegys is the recipient of a \$200 scholarship from the Spearman Music Club. Jay plans to use the scholarship towards a music degree at Hardin-Simmons University.

**BIBLE SCHOOL
PLANNED**

The United Methodist, First Christian, Presbyterian, and Lutheran churches will be having bible school June 2 thru 6 from 9 a. m. to 11:30 for children ages 3 thru 6th grade. Children 3 thru kindergarten will meet at the Methodist Church, First grade thru 4th grade will meet at the First Christian Church and grades 5 & 6 will meet at the Lutheran Church. Everyone is invited.

**County Oil
Production Noted**

Dallas -- The eighth consecutive year of production at the maximum efficient recovery rate in nearly all of Texas' fields once again pushed the state's output of crude oil and condensate above the one-billion barrel mark. The total of 1,006,845, 138 barrels included almost 980-million barrels of crude oil and just over 28-million barrels of condensate, according to figures compiled by Texas Mid-Continent Oil & Gas Association.

The billion-barrel level of crude and condensate production is one that has been achieved each year since 1965. However, a downward production trend continued for the seventh consecutive year since Texas production peaked in 1972.

Last year's production level showed a drop of more than 60.1-million barrels from the 1978 figure and was almost 284-million barrels below the 1972 figure. Nevertheless, production in 1979 pushed the all-time cumulative total since 1889 to more than 44.7-billion barrels of crude oil and condensate.

The following table indicates the amount and percentage of decline in Texas crude oil production annually in recent years:

Edwin L. Cox, president of the Dallas-based Association, notes that the decline in production in 1979 corresponds to a drop of nearly 54-million barrels in Texas' reserves of crude oil. The decline to 7,636,084,000-barrels compares with proved reserves of more than 10.1-billion barrels as recently as 1975.

Although not pessimistic about the future of the Texas petroleum industry, Cox is concerned about impediments to production, most of them the result of policies of the federal

government. The Dallas independent producer cited environmental overkill and the "regulatory and tax burdens" of the so-called windfall profit tax as problems the industry is having a tough time overcoming.

"The Texas oil and gas industry supports the goal of a healthy environment. But, at the same time, we have to pursue a national goal of adequate energy supplies," Cox says.

Cox said the \$227-billion excise tax on producers' income resulting from crude price decontrol could have been used better for enhanced recovery projects and deep drilling.

"The oil and gas industry in Texas will contribute a sizeable portion of this transfer of capital from private industry to the federal government," he warned.

Hansford County, which has had recorded production since 1937, last year produced 418, 189 barrels of crude oil and condensate at the rate of 1,146 barrels per day. Production in 1979 boosted Hansford County's production total through the end of the year to 29,558, 750 barrels.

In 1979, 22 counties produced more than 10-million barrels of crude oil, a decrease of two counties from 1978; a decrease of four from 1977, and five from 1976.

In Fashion

Hats are being rediscovered. Hats from straw boaters and felt fedoras to cotton sunhats and variations on the Stetson theme are seen.

**Time Treatment
For Elm Leaf
Beetle Control**

Elms, particularly Siberian elms, can be severely damaged by the elm leaf beetle unless control measures are taken.

Most of the elm trees in Hansford County are Siberian elm but are mistakenly labeled Chinese elms according to Layton Barton, County Extension Agent with the Texas Agricultural Extension Service.

The foliage of elm trees around homes are often heavily damaged by midsummer.

Barton says that elm leaf beetle egg are now present on the leaves of the elm trees. The eggs are deposited in groups of five to twenty-five and they hatch within a few days after being deposited. The small black hairy larvae (worms) then begin to skeletonize the tree's leaves.

After two to three weeks of feeding the larvae migrate to the trunk and completes the pupal stage which requires from seven to fourteen days, to change from larvae to adults. Several generations of elm leaf beetles are produced each year in the High Plains.

To protect elm trees, apply to the soil 15% granular disulfoton in late May or early June when the eggs are hatching. Spread granules uniformly from trunk to dripline on all sides of the tree. Work into the soil and water thoroughly. Use 2.5 ounces per inch of trunk diameter. One application should protect trees all summer.

When using any pesticide, always follow label directions.

Gromyko, Muskie to have talks.

Study made for permanent Olympics in Greece.

Tractor Performance Management

Efficient tractor operation can save money, energy and wear and tear on tractors. In the field, all driven tractor tires slip, but too much slip is costly and can be corrected, points out Layton Barton, county agent with the Texas Agricultural Extension Service, Texas A&M University System.

Barton says a certain amount of wheel slip is inevitable due to field conditions and tire-tread designs, and is even necessary to protect tractor transmissions from excessive stress.

For efficient operation, re-

commended range for wheel slip is between 10 and 15 percent, with 15 percent ideal. Wheel slip on average farms is about 25 percent and often goes unnoticed, notes Barton.

Wheel slip is calculated by dividing actual tractor ground speed by instrumental ground speed taken from engine RPM. On two-wheel drive tractors, wheel slip is the front wheel RPM divided by rear wheel RPM multiplied by 100.

Barton reminds that every-time wheels slip, fuel is burning to produce power that never

reaches the drawbar. Reducing wheel slip saves fuel and reduces tire wear by 40 percent if wheel slip is cut by 10 to 20 percent. On four-wheel drive tractors, reducing slip can save up to \$1,000 in tire wear.

Wheel slip can be solved by shifting gears; switching to dual, triple or radial tires; adding ballast; and properly adjusting tillage equipment. By gearing down to reduce slip, farmers can do the job just as fast and cut fuel usage, points out Barton.

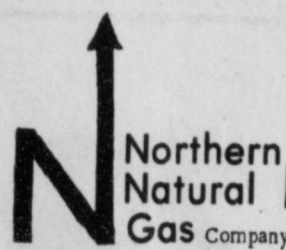
Several companies make monitors which calculate tractor performance, adds Barton.

NEWS VIEWS

G. William Miller, Treasury Secretary, on Chrysler Corp. loan: "If the plan were not approved, the nation's third largest automobile manufacturer would have exhausted its funds by the end of this month."

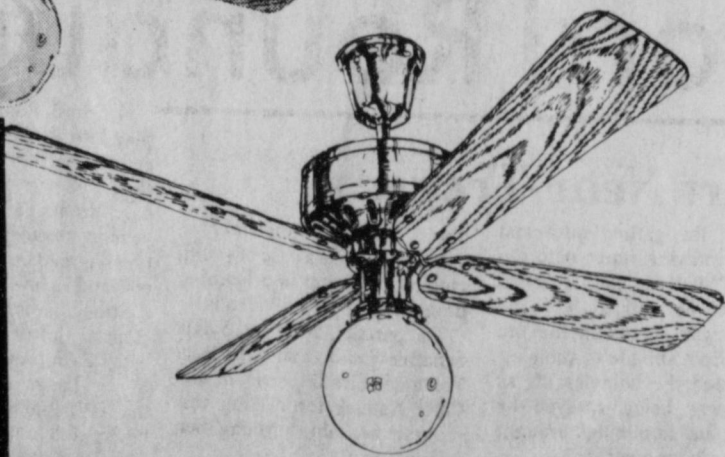
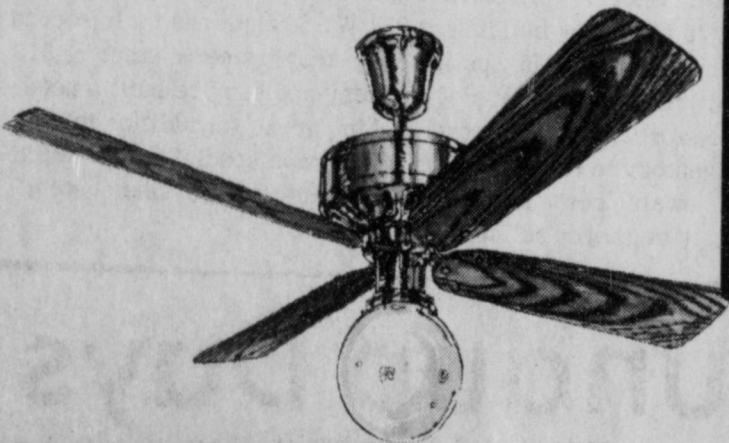
MAINTENANCE PERSON
REGULAR FULL TIME EMPLOYEE

Northern Natural Gas Company will take applications on Wednesday, June 4, 1980, between the hours of 9 A.M. and 3:00 P.M. for regular full time maintenance person. Apply at the Sunray Office, 3 miles south of Sunray, Texas. Typical job duties are: facility clean up, assisting with overhauls of large internal combustion gas compressor engine, maintenance of vessels and towers, all phases of pipeline repair, and some rotating shift work relieving regular operating crew during vacations or illness, etc. Pre-employment test will be given for the maintenance person job on Friday, June 6, 1980 at 7 P.M. and Saturday, June 7, 1980 at 9:00 A.M. at the Spearman High School in Spearman, Texas for all persons that have completed an application. Northern Natural Gas Company is a major diversified energy company offering an attractive salary, and has an excellent benefit program. Equal opportunity employer.



**Air Conditioning Costs
Cut Sharply As You
Decorate.....**

WITH
**LINDSEY'S
Ceiling
FANS!**



**Choice
of
Many
Styles**

Some with
Globe Lights;
Some with
4 Beautiful
Tulip Lamps

Keep Electric Air Conditioning Bills Down...Circulate the Cool Air...Variable Speeds on Motors Let You Circulate at Any Speed You Prefer!

COLOR SELECTION, TOO

Prices
From..... **\$139⁹⁵**

Lindsey Furniture Co.

910 N. Main

Use Your Lindsey Credit

THANKS

The Dairy Queens of Gruver and Spearman say "Thanks" to all of you for supporting us in the past.

Russell and Tracie Bland are our new partners and will be managing the Spearman Store.

Tindle Ramon will be managing the Gruver store this summer with the help of Donnetta Finley

We want to continue to serve you with the best service and quality food, at the lowest possible prices.

Thank you for coming to the Dairy Queen

See you at the Hansford County Celebration May 31



Russell Bland
Frank Pittman
Bill Pittman

WANT ADS

CAPROCK MONUMENT CO.

Dealers of Georgia Granite, Georgia Marble, Colored Granite, and Bronze.

represented by

BOXWELL BROS. FUNERAL HOME

519 S. EVANS
659-3802

Hansford County Planned Parenthood
26S. Haney
659-2483
Spearman
Mon.-Fri.
Call for an appointment
30S-rtn

SERVICES

SERVICE: Pits cleaned, wet or dry. Dragline or loader. Also, dozer, grader, carry-all service. Lee Roy Mitchell, 806-733-2384, Gruver, Texas 79040.

Fee Wee's Plumbing Service
Roto-rooter, Acoustical Ceilings. Blown Insulation in walls and ceilings. Appliance Service, used appliances for sale. 659-2811 or 659-3781.
20-rtn

KIRBY SALES & SERVICE.
New & reconditioned vacuum cleaners. Claude Newell, 912 S. Bernice.
8-rtn

MONUMENTS
Save 20% to 30%
Agents and Undertakers
Commission
ALVA MONUMENT CO.
Alva, Okla.
51-rtn tonly

NOTICE
Wallace Monument Co.
Monuments, Curbing,
Grave Covers
Local Representative
LEONARD JAMESON
Spearman, Texas
20-rtn

NEW STEAM SHAMPOOER
with brushes
Rental \$8.95 per day. Available at 716 Cotter Drive after 4 p.m. and Saturdays and Sunday. Regular Steam Rinse & Vac Shampooer, \$5.95 per day at Gordon's Drug and after 4 p.m. and Saturdays and Sundays at Freddie Largent's, 716 Cotter Drive.
48-rtn

SNOOPY'S DAY SCHOOL
Open 7 a.m. to 7 p.m. Mon-Fri. Sat 8 a.m. to 5 p.m. Phone 659-3328.
48-rtn

Tune-ups, repairs and overhauls on all small gas motors, lawn mowers, rotary tillers and boat motors. Reed's Repair, 209 S. Indiana, Perryton, Texas, 435-2947.
29S-rtn

A. and A. Gas Leak Survey, Inc.
Commercial, Residential, and Irrigation.
GAS LEAK DETECTION
Call:
659-3519 anytime
659-3019 after 5 p. m.
26-8tc

Roof staining and painting. Call 659-3804.
28-8tc

LAWN MOWER REPAIR:
Tuneups, overhauls, etc. Call 3894.
28S-3tp

MISCELLANEOUS FOR SALE

FOR SALE: 1972 Fiat Spider. Good shape, \$2000. Also model 1100 shotgun, brand new with reloader and accessories \$300. 50 calibre T-C Hawkins and accessories, \$150. Call 2472.
27-5tc

HELP WANTED

Cook's helper wanted. 6 a.m. to 2 p.m. shift. Apply at Cattleman's Restaurant. 19S-rtn

MANAGEMENT POSITION

We are now taking applications for the position of manager of the Gruver Dairy Queen. Experience in restaurant work preferred but not necessary. Must be willing to work long hours and supervise people. We will pay excellent salary to the right person. Please contact either Russell Bland 659-3324 or Bill Pittman 659-3731 or 659-2847 at night.
26-rtn

WANTED: Year around farm hand. House furnished. Contact T. W. Bayless, 103 Eting, Gruver, Texas. Phone (806) 733-2619.
28S-2tp

ALL STEEL BUILDINGS, straight walls, 50' x 88' by 14'. One 24' x 15' double sliding door, one steel walk door. \$15,993.00 ERECTED. Ask about slant wall and grain bins too. 405-423-7526, Texhoma. 26S-8tc

NOTICE

I am not responsible for any debts other than my own. Steve George.
29-1tc

WANTED

WANTED: Lawns to mow. Call 659-2788 or 3820.
28S-9tc

NOTES, COMMENTS

Friendships are usually built slowly.

Kindness has never yet done anyone serious harm.

Time is our most valuable asset; use it carefully.

Planning your work is good, but doing it is much better.

The half-truth is more dangerous than the big lie.

Experts are like ordinary people—they seldom agree.

Envy and jealousy eat out one's soul and warp one's personality.

Simple things and simple people are often the great among us.

The newspaper without any mistakes has never been published.

Everyone has his good points, if you are interested in finding them.

Politicians who appeal to your selfish interests are seeking your vote.

It might not have occurred to you but summer is only a few weeks away.

The truth seems to elude the grasp of mankind despite the long and historic pursuit.

Few persons can be as tiresome as the individual obsessed with a sense of humor.

There are people in the world who read the Bible to see if it agrees with them.

Too many people know all the answers and too few have sense enough to know they don't.

It has been finally proven, a few million times, that it is harder to keep one's mouth closed than open.

Many a remark, said in haste and forgotten by the speaker, remains in the heart of the listener for years.

What has become of the ancient and respected doctrine that people should earn what they enjoy?

The man who is willing to live according to his principles should not object when others do the same.

TEXAS PRESS
MEMBER 1980 ASSOCIATION
PUBLICATION (USPS 509-660)
SPEARMAN, TEXAS 79081
213 Main Box 458 659-3434
Published Weekly at 213 Main Street
Spearman, Texas 79081
Owner-Publisher William M. Miller
Editor Faye Lynch
Second Class postage paid at Spearman, Texas
ANY ERRONEOUS REFLECTION UPON THE CHARACTER OF ANY PERSON OR FIRM APPEARING ON THESE COLUMNS WILL BE GLADLY AND PROMPTLY CORRECTED UPON BEING BROUGHT TO THE ATTENTION OF THE MANAGEMENT.
SUBSCRIPTION RATE: Hansford, adjoining counties, combination with the Hansford Plainsman \$15.00.
Other points, \$20.00.

Golden Gleams
The man of true greatness never loses his child's heart.
-Mencius.
There would be no great ones if there were no little ones.
-George Herbert.
The nearer we come to great men the more clearly we see that they are only men.
-Jean de la Bruyeres.
None think the great unhappy, but the great.
-Edward Young.

For The Ultimate In
STORM DOORS
Custom Built, Designed, And In Colors To Fit Your Home....
Contact Howard Moyer at
Only Aluminum Industries
Guymon, Okla. 114 W. 1st 405-338-6966 or 73942 338-6170

VIRGINIA WHITE
Realtor 659-3841
New home-3 bedrooms, 2 baths, cathedral ceiling, fireplace.
Elegant home-4 bedrooms, 3 baths, study-living room, 2 fireplaces.
NEW LISTING-FAMILY LIVING!! 4 bdrms, 2 baths, 2 living areas. Big lot. Good school location. Call today, priced low 40's.
Commercial bldg. on Main St.

FOR DEAD STOCK REMOVAL
Call your local used cow dealer
Toll Free 1-800-692-4043
7 Days a Week Service

Offered Exclusively By
EMMETT R. SANDERS, REALTOR
R REALTOR
Brick apartment house in top condition; 100% occupancy with waiting list; has four furnished units; great investment. Shown by appointment only, do not disturb occupants.
Small tract just west of Spearman, surface only, contains 31.7 acres. Call for details.
Reduced in Price, Dwelling and store building, small detached apartment on wide lot, ideal for professional, office dwelling combined.
4 bedroom, 1 1/2 story stucco home, nice condition, near grade school; storm shelter basement; large corner lot. Ideal for large family, low budget. Shown by appointment, exclusively.
EMMETT R. SANDERS REALTOR
659-2516
659-2601 [nights] 34S-rtn

She Isn't
Woman isn't happy unless she has an abundance of clothes to leave off.
-Coast Guard Magazine.
Or Vice Versa
A hospital is a place where people who are run down wind up.
-Reporter, Kanawha, Ia.
Variety Needed
A wife ceases to be willing to listen to reason when she hears the same one too often.
-Courier, Waterloo.

★ **Carports ★ Patio Covers**
★ **Awnings**
Write or Call Howard Moyer At
Only Aluminum Industries
114 West 1st Guymon
Call 405-338-6966 or 338-6170 after 6 p.m.



One of the biggest factors when buying a home is energy cost.

Keep yours low with an ENERGY CHECKED HOME.

A newly built home bearing the Energy Checked Sign means that home was constructed with energy efficiency in mind. Energy features include insulation in walls and ceilings, and caulking and weatherstripping around doors and windows. Appliances and heating and cooling systems have been selected for top energy efficiency. These and other energy saving features are built right in to give you lower utility bills year after year.

Buying an older home can be a utility saver too, if that home has qualified as Energy Checked. When requested, our representatives inspect older homes for energy improvements. Homes are checked for the same energy saving features required in a newly built Energy Checked Home. Just look for the Energy Checked Sign when buying an older home, for year round energy savings.

COMMUNITY PUBLIC SERVICE
Your Electric Light & Power Company

NEW HOME - 3 bedroom, 2 baths, 2 car garage Fire Place, 6 foot wood fence.
NEW LISTING - 4 bedroom 2 baths, double garage with fenced back yard.
Century 21 GOLDEN SPREAD REALTY
DARYL WYNN 658-4528 Broker
RONNIE HOOVER 659-3696 Sales Associate
WE'RE THE NEIGHBORHOOD PROFESSIONALS!
SPEARMAN, TEXAS 659-2557

1930 1980

The children and grandchildren of
Mr. and Mrs. Ralph Bort
request your presence at
a Reception
honoring their parents and grandparents
on their Fiftieth Wedding Anniversary

Sunday, June first
from two until five p.m.

Gruver United Methodist Church
Gruver, Texas

We are compiling a scrapbook which recalls memories of our parents' first 50 years of marriage. Would you please write of an event which you have shared with them, and either mail it or bring it to them. We believe a reminder of pleasant occasions they have shared would be a treasured gift; and they request that there be no other.

28-2tp

You are cordially invited
to a wedding shower honoring
Miss Debra Wood
bride elect of Mr. Ted Ira Harbour

Saturday, May 24
from 2:30 to 4 p.m.

at the B & B Friendship Room

Selections at Gift Box, General Store & Sacks

Hostesses:

Lee Ann Josephson
Kim Vanderburg
Linda Sanders
Eva Mae Reger
Teresa Villines

Debbie Benton
Gina Davis
Teresa Kirk
Maudine Patterson
Lori Scroggs

Shirley Harbour
28-2tp

Ministerial Alliance

Spearman Ministerial Alliance will meet on Tuesday, June 3 at 9:30 a.m. at the Union Church. Archie Burress will lead devotions.

Study Club met

The Spearman Study Club met Monday, May 12 in the B & B Friendship Room for installation of officers for 1980-81. The theme of the installation was "Spice of Life." New officers installed were Hester Crawford - President; Barbara Collier - Vice President; Edith Chandler - Treasurer; Dee Taylor - Secretary; Virginia Young - Parliamentarian.

After the installation, a Scavenger hunt was held for members attending.

The Club voted to donate \$10.00 to the Chamber of Commerce Christmas tree fund and \$25.00 to the 4th of July fire works fund.

A committee was selected for the Hansford Round-up float.

The Study Club will sponsor a home-made ice cream booth to be located in front of John Hutchison's office, during the morning hours of the Hansford Round-up to be held May 31.

Members attending were Patty Sheppard, Dana Schnell, Barbara Collier, Virginia Young, Hester Crawford, Eulalia Blankenship, Edith Chandler, Trudie Schneider, Linda Close and Dee Taylor.

This will be the last meeting of the summer.

Bridge Club

The Blue Monday Bridge Club met Monday, May 26 in the home of Mrs. Gwenfred Lackey.

Mrs. Sam Graves won high and Mrs. Hill won second high. Delicious refreshments of "Snacks" and dessert were enjoyed by members Mmse, Bill Seltz, Vester Hill, Sam Graves, Deta Blodgett, Lester McLain, Major Lackey, Pope Gibner, F. J. Daily and hostess Gwenfred Lackey.

The next meeting will be next fall in the home of Mrs. Major Lackey.

Serendipity Met

Serendipity met May 16th in the home of Cathy Gafford at 2:00 p.m. Linda Winegarner called the meeting to order. Roll call was answered by 5 members on "How to keep children safe in my care."

Minutes of the April 18th meeting was read and approved. Treasurer reported that the luncheon was a success. Members were asked to volunteer to work at the Bake-off, May 31st. Suggestions for programs were discussed for next year. Letters from Chamber of Commerce were discussed. It was decided to donate \$10.00 each to the Christians tree & July 4th fireworks fund. Council Delegate reminded all members to be at the Spring Cleaning Day, Monday, May 19th at 9:00 a.m. and bring paint brushes, etc.

The program was given by Peggy Winegarner on "Child Safety in Cars."

Members present: Hostess, Cathy Gafford, Mary Baker, Debbie Benton, Winegarner, and Gayle Smith. Members absent: Linda Sanders, Kay Loomis, Sharon Archer and Susan Poole.

Arts & Crafts Guild Meets

The Arts & Crafts Guild met Friday, May 23 in the home of Mrs. F. J. Daily with Mrs. Bill Gandy as hostess.

Members present were Deta Blodgett, Mmes. Garrett Allen, Guy Fuller, P. A. Lyon, Fred Hoskins, Joe Trayler, Bill Russell, Clay Gibner, F. J. Daily, Ned Turner and Bill Gandy.

The next meeting will be Friday, May 30 in the home of Deta Blodgett.

Pate To Speak At Prayer Breakfast

Johnny Pate, who works at High Plains Conoco and is an active layman in the Assembly of God, will be the speaker at the interdenominational men's prayer breakfast on Wednesday, June 4 at 6:30 a.m. in the Garden Room of the Cattleman's Restaurant. This is open to all men.

Servitors Club Met

Servitors met May 15th, 1980 at Boxwell Bros. Funeral Home at 6:45 p.m. with Bob Boxwell giving the program. After the program, questions were answered and members then returned to the B & B Building for the regular business meeting. President Stephanie Brock called the meeting to order. Minutes of the April 17th meeting were read and approved. The treasurer reported bills had been paid and showed a balance of \$900.00.

Three guests were present Carolyn Close, Linda Hiller & Regina Gordon. Donna Thomas reported on State Convention held in Amarillo, April 24-26. Members attending were Donna Thomas, Linda Winegarner, Michelle Davis & Laura Mackie. Laura modeled in Fashions for fun and won 2nd at State, Patti Hudson made the pantsuit she modeled.

It was decided to have our secret sister party August 10th at the home of Candi Delozier at 3:00 p.m. Denise Donnell reported on the float. Special committees and times to work on the float were assigned. May 28th & 29th at 7:30 are workdays for the float at Mackies Barn.

A letter from the YMCA was read concerning the July 4th funfest. Members voted to sell ice cream at the funfest. It was voted to donate \$50.00 to the fireworks fund & also \$25.00 to the Christmas tree fund.

Patti Hudson is in charge of organizing the ice cream sale for the Hansford Roundup, May 31st members are to take their ice cream to the court house at 12:30 p.m.

A thank you letter was read from Mr. Wayne Pierce of Perryton. Members voted to work out details on donating gifts in the name of the program speakers at our June meeting.

Servitors trip to "Texas" was discussed. Details and reservations will be made at a later date. The meeting was then turned over to Michele Davis. The various committees & chairpersons were announced. It was decided to have our June planning meeting Thursday, June 19th at the First Christian Church at 7:30 p.m.

President Stephanie Brock installed the 2 year term officers: President: Michele Davis; 1st vice president- Gayle Woolley; 2nd vice president- Stephanie Brock; 3rd vice president- Laura Mackie; Treasurer- Patti Hudson; Recording Secretary- Debbie Benton; Corresponding secretary- Donna Thomas; Parliamentarian- Candi Delozier- Meeting adjourned. The raffle was made by Gaye Woolley and won by Kay Snider.

Debbie Benton, on behalf of servitors members, presented Stephanie Brock with a gift for all her hard work and patience as president.

Members enjoyed a delicious jello dessert and fruit punch served by the hostesses Laura Mackie and Mary Baker. Members present were Debbie Benton, Stephanie Brock, Susan Castleberry, Michele Davis, Candi Delozier, Denise Donnell, Patti Hudson, Eva Mae Reger, Cindy Schneider, Kay Snider, Donna Thomas, Gail Thomas, Sheila Watley, Linda Winegarner, Gaye Woolley, Cheryl Gibson & 3 guests Carolyn Close, Linda Hiller & Regina Gordon. Members absent were Alicia Mahaney, Judy Schell.

Suzy Steele Signs With PSU

Suzy Steele of Channing, Texas has signed a letter of intent to play women's basketball at Panhandle State University, Goodwell, Oklahoma.

Coach Dennis Caryl, Head Women's Basketball Coach, says this about Suzy: "We feel that Suzy is going to be an asset to us at PSU. She is a diamond in the rough and we feel that she will develop into an excellent player here at PSU."

Suzy is 5 ft. 11 in. and totaled 210 points last season which is 10.4 per game. She had a total of 267 rebounds and this is 16.25 per game. Besides that, Suzy had 30 interceptions and 50 blocked shots last season.

She was the Most Valuable Player at Channing High School last season. Suzy's father is employed at the Boys Ranch.

She is the daughter of Mr. and Mrs. Chuck Steele, former residents of Spearman.

Mrs. Sue Morman, Jamie and Micki Jo; Mr. and Mrs. Don Sutherland and girls, Shay and Gay all of Amarillo were week-end guests in the home of their mother and grandmother, Mrs. Eileen Sutherland and Mrs. I. R. Tompkins.

If Any "Pa, what's a sinking fund?"

"A place, my son, where they hide the profits from the stockholders."

Art Students To Exhibit

Art students of Mrs. L. M. Womble will exhibit their work at the Home Demonstration Clubroom on Sunday, June 1, from 2 p.m. until 5 p.m. Everyone is invited to view the pictures.

Students having work in the show are Tommy Rodgers, Bob Tolleson, Reverend Ed Freeman, Stephanie Crossland, Wanda Reed, Margaret Reed, Joyce Vanderburg, Sondra Younger, Kate Gidley, Dorothy Lusby, Lee Schubert, Barbara Taylor, Kim Nelson, Kyla Nelson, Teresaa Miesner, Cindy Holton, Chad Guthrie, Tisha Pearcy and D'Lynn Orr.

Study Club Has Picnic

The Spearman Study Club met Monday, May 5, 1980 at Womble Park for the annual picnic for members and their families. Those attending were Barbara Collier, Eulalia Blankenship, Hester Crawford, Dana Schnell, Virginia Young, Frances Biles, Marilyn Wilson, Trudy Schneider, Edith Chandler, Patty Sheppard and Dee Taylor.

After the picnic supper, Mr. and Mrs. Holland presented a program on their barbwire collection.

Installation of officers will be held Monday, May 12 at 7:00 P.M. at B & B Friendship Room.

Attraction Miss Howler: "Did my voice fill the drawing room?"

Mr. Bluntly: "No, it filled the refreshment room and the conservatory."

Leslie Ann Groves Awarded Certificate

DALLAS, TEXAS -- Leslie Ann Groves was awarded her Associate of Practical Theology and Leadership Certificate this week at Christ For The Nations Institute in Dallas.

Leslie Ann formerly of Spearman, is the daughter of Mr. and Mrs. Harold Groves, now of Tulsa, Okla.

Christ For The Nations Institute has emerged as one of the fastest growing charismatic training schools in the nation. Founded 10 years ago by the late Reverend Gordon Lindsay and his wife, Dr. Freda Lindsay who is now president, the two-year Bible Institute enrolled approximately 1,400 students the last school year.

The Institute is but one facet of the over-all operation of Christ For The Nations, Inc. Annually, it sponsors seminars, retreats, writers' workshops and tours in an effort to develop awareness as well as Christian workers who can benefit existing church programs. Additionally, it has helped build more than 5,500 native churches in 118 nations; a literature outreach which has distributed and sold over 30 million books in 58 languages, and an Israeli outreach of sharing Jesus the Messiah with both Jews and Arabs. Both the Headquarters and Institute are located on a 75-acre campus in metropolitan Dallas.

Presbyterian Church News

In the church calendar, Sunday, June 1 is Trinity Sunday.

There is a Sunday Church School class for everyone every Sunday at 9:45 a.m. with a concerned teacher with an interesting, well-prepared lesson.

"A Living Hope of the Hereafter" will be the subject of Pastor Edward D. Freeman's sermon at the service for the public worship of God on Sunday, June 1 at 11:00 a.m. The sacrament of the Lord's Supper will be celebrated.

Presbyterians join with Christians, Lutherans, and Methodists in a Vacation Church School for all children from age four through sixth grade, Monday through Friday, June 2-5,

from 9:00 a.m. to 11:30 a.m. Presbyterian Men will join with other men in the community in a men's prayer breakfast on Wednesday, June 4 at 6:30 a.m. in the Garden Room of the Cattleman's Restaurant.

There is a warm, Christian welcome awaiting you at every service and activity of the First Presbyterian Church.

WEIGHT LOSS & CANCER

Overweight breast cancer patients might improve their survival chances in the face of the disease if they lost weight, Dr. N.F. Boyd, a Canadian medical scientist suggested. Studies showed a markedly higher rate of long-term survival after surgery among breast cancer patients who weighed less than 140 pounds than was true of comparable patients who weighed more.

PRICES GOOD THRU MAY 31

UNITED Supermarkets

QUANTITY RIGHTS RESERVED

EVERYBODY WINS! PLAY UNITED'S FULL BOOK BINGO AND WIN! 1200 EXTRA \$ & GREEN STAMPS!

COCA COLA 32 OZ. BTL. 6 BTL. CTN. \$1.89 PLUS DEP.

CRISCO SALAD OIL 48 OZ. BTL. \$2.09

SPILLMATE PAPER TOWELS JUMBO ROLL \$5.99

DETERGENT 72 OZ. \$1.89

BLEACH 1/2 GAL. 48¢

BLEACH 61 OZ. BOX \$1.39

SOFTENER 40 CT. \$1.49

RED DELICIOUS APPLES WASH. EXTRA FANCY LB. 49¢

WASH. D'ANJOU PEARS LB. 49¢

YELLOW OR ZUCCHINI SQUASH LB. 39¢

CELLO BAG CARROTS 16 OZ. 2.38

NO. 1 RUSSET POTATOES 5 LB. BAG 69¢

ALPO BEEF FLAVORED DINNER DOG FOOD 50 LB. BAG \$9.99

DEL MONTE CUT GREEN BEANS 17 OZ. 3 FOR 1

DEL MONTE CORN WHOLE KERNEL OR CREAM STYLE 17 OZ. 3 FOR 1

DEL MONTE PEAS GARDEN SWEET 17 OZ. 3 FOR 1

HUNT'S TOMATO SAUCE 8 OZ. CAN \$1.51

ADMIRATION COFFEE 1 LB. \$2.69

HI-C FRUIT DRINKS 46 OZ. CAN \$1.59

Spring Dance Recital May 29

Teresa's Dance Studio will present its annual Spring Recital Thursday, May 29 at 7:00 P.M. at the High School Auditorium. This year's recital is entitled "Going Places" and will feature dances from scenes entitled "Way Out West," "By the Sea," "Disneyland," "Viva La France," "Way Down Yonder in New Orleans," and "Studio 54." There will be 140 students from Spearman, Gruver, Perryton, Morse, Sunray and Booker performing in this year's recital. They are: April Abston, Regina Abston, Jan Allen, Kathy Augustine, Michelle Augustine, Michelle Augustine, Eva Babbs, Micheal Babbs, Mary Lou Baker, Stephanie Baxter, Jasmine Bravo, Melissa Beck, Kay Beeson, Monica Blackburn, Adrian Blackburn, Sara Blackburn, Brandie Blodgett, Buffie Blodgett, Traci Brillhart, Katina Brock, Cam Butts, Lisa Collins, Jan Crawford, Kelli Crawford, Melissa Curry, Tonya Curtis, Kimberly Dumas, Kristin Dunnihoo, Shelly Dunnihoo, Cayla Eaton, Johnnie Eaton, Kim Elbert, Vicci Elbert, Taydee Elliot, Linda Evans, Margie Evans, Anissa Everson, Kara Faries, Meli Floyd, Joy Gafford, Michelle Garnett, Mechelle Graham, Carrie Ann Guthrie, Jennifer Hart, Jana Hawkins, Brooke Holt, Holly Holt, Paige Holt, Sally Holt, Eddie Clemmons, Shannon Holton, Franklin Howell, Pam Hughes, Anna Hutchison, Melannie Hutton, Melissa Hutton, Anne Marie Jarvis, Teresa Kee, Melissa Kelley, Leslie Larkey, Laci Lasater, Mendy Lasater, Jill Lusky, Alexis Johnson, Holly Lovett, Leslie Latta, Julie Latta, Tommie Latta, Misha Lesly, Rhonda Mathews, Robin Mathews, Cori Meyer, Holly Mey-

er, Loree Morris, Billy Moore, Colleen McCormack, Melissa McLain, Kellie McWhirter, Jill McLain, Mika McLain, Kim Nelson, Kyla Nelson, Cinda Novak, Stephanie Olsen, Keeley Orman, Traci Orman, Carrie Pearson, Laura Pearson, Ginger Pearson, Elizabeth Pipkin, Leslie Platt, Jana Pittman, Paige Pittman, Anne Potts, Jeanne Potts, Mindy Prater, Randie Renner, Cindy Riggs, Denise Rojas, Julie Rousser, Kayla Russell, Robin Rutz, Olivia Salgado, Bandi Schneider, Sara Sanders, Suzanne Sanders, Michele Savage, Misty Savage, Tammy Savage, Melissa Schumann, Melodie Schumann, Tonya Sexton, Maleea Shaver, Ashly Shieldknight, Haley Shieldknight, Carly Shieldknight, Christa Sims, Angela Sintas, Jennifer Sintas, Deanna Smith, Nikki Strawn, Shelly Strawn, Jennifer Sturdivan, Britney Taylor, Gayla Taylor, Bonnie Thompson, Tracy Tigrrett, Carla Tucker, Diana Turner, Cinda Turner, Jennifer Turner, Holly Venneman, Shari Vernon, Tammy Welch, Shara Wilkinson, Jane Ann Wirsdorfer, Tiffany Womble, Jessica Woolley, Kristi Wright, Melanie Wright, Jennifer Yarbrough. Admission to the recital is free, so everyone is invited to attend.

INFLATION SLOWED

Inflation at the wholesale level has slowed down in April, as prices rose 0.5 percent, the smallest amount in 11 months and far less than March's 1.4 percent surge, the government said.

Golden Spread Center News

Golden Spread Center will be a bee-hive of activity on Thursday and Friday, May 29-30, as all available hands show up to clean-up the Center and to set up displays of all the arts and crafts and white elephants for sale at the annual bazaar.

Golden Spread Center's annual bazaar will be all day Saturday, May 31 from 9:00 a.m. to 5:00 p.m. Thousands of beautiful handcraft items will be on display all made by the hands of senior citizens of Hansford County. This will be in connection with Hansford Round-Up Days. Golden Spread Center is at 14 S. Haney, just a very short block west of Court House square at the corner of Kenneth and Haney.

There will be an afternoon of table games on Monday, June 2 from 2:00 to 5:00 p.m.

There will be a covered-dish supper on Tuesday, June 3 at 6:30 p.m. and an evening of table games. One of the nurses from the Panhandle Home Health Services will be there to take your blood pressure.

Ruby Lair will be driving the Golden Spread Center's vanbus on Wednesday, June 4, from 9:00 a.m. to noon, picking up the sixty-plus bunch, taking them shopping, on errands, and to meet appointments. People needing transportation should call the Golden Spread Center (3521) on Tuesday and get your name on the list.

Arts and Crafts for fun will be the order of the day on

Thursday, June 5 from 10:00 a.m. to 5:00 p.m. There will be a break at noon for a covered-dish luncheon. Come and make some of the beautiful things for yourself now and just pay for the materials used.

There will be an afternoon of table games on Friday, June 6 from 2:00 to 5:00 p.m.

Golden Spread Center is for all people fifty-five years of age or older without discrimination as to sex, color, race, ethnic background, national origin, religion, denominational preference, church membership, political party, or handicap.

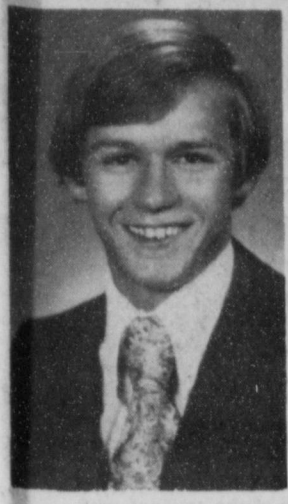
Cuban Failure

The wild scramble to get out of Cuba by thousands of refugees (and opportunists) shows clearly the extent of the failure of the Communist regime in Cuba. The U.S. should be constantly publicizing this proof of failure in all its propaganda and diplomatic efforts.

Washington should also long ago have requested that other western hemisphere nations accept their share of Cuban refugees. The U.S. could airlift them to the various countries. Only if Cubans flee to many countries will the exodus reflect the failure of Communism.

Otherwise, Communists will claim the refugees are primarily opportunists seizing an opportunity to migrate to America, which all underprivileged people constantly seek to do.

Boone Receives Law Degree



Billy Boone, son of Mr. and Mrs. Kermit Boone of Gruver graduated from Texas Tech School of Law at the University Center Theater on May 10, 1980, Lubbock, Texas. He graduated with honors being in the top five out of a class of 125. He is a member of the Texas Law Review and has had two cases published in the Texas Law Review book which is on display at the Capitol in Austin. Billy, a 1973 graduate of Gruver High School, will be moving to Abilene after taking his bar exam in July and joining the David Hooper law firm.

Capt. Bryan Receives Award

Ft. Lewis, Washington--During a 9th Aviation Battalion awards ceremony on April 30, 1980, Captain Hugh M. Bryan was awarded the United States Army Aviation Broken Wing Award. The Broken Wing Award is awarded those Army Aviators who demonstrate a high degree of professional aviation skill while actually recovering an aircraft from an in flight failure or malfunction necessitating an emergency landing. Cpt. Bryan received the award for successfully landing, without damage, a UH-1 Helicopter with a co-pilot and two technical observers aboard while on a maintenance test flight, after experiencing loss of engine power. Cpt. Bryan is the son of Mr. and Mrs. Joe Dan Bryan of Spearman, Texas. He

and his wife, the former Charlene Chambers of Jonesboro, reside in Spanaway, Washington. Charlene is the daughter of Charles Chambers and Oleen Mitchell of Gatesville, Texas.

Hospital News

Patients in Hansford Hospital are Ophelia Vela, Kubah Gandy, Ben Vaughn, Harvey Ivey, Henry Babitzke, L. D. Staggs, Mildred Chamberlain, Hattie Mackie, Maurine Eiting, Edward Scarborough, Becky Kelp, Jerry White, Milton Brown, Lawrence Wilbanks, Kathy Gochenour, Louis Olivias.

Dismissed were Della Lopez and daughter, Lin Sturm, Ora Sanders, Jeremy Knudson, Knox Pipkin, Maria Pontillo, Chuck Smith, Edna Briley and Dorothy McElroy.

EMS Plans Education Booth During Roundup

H & S Emergency Medical Services will be setting up a booth Saturday, May 31 at 9:30 AM in front of the Cable TV office to promote public education on the emergency medical services available to this community. This booth will include free blood pressure checks, pamphlets, magazines, and after the parade there will be demonstration on CPR and choking victims. Tickets will be available for the weekend trip to Las Vegas being raffled off by the H & S EMS and the

Volunteer Fire Department. The proceeds will go to finish the interior of the new fire station. There will be trained EMT's at the booth to answer any questions you might have. There will be someone showing films of the high school CPR classes held recently. The ambulance service is sponsoring a float in the parade and some of these students completing the CPR classes will be on the float demonstrating life saving techniques.

Rifle Shoot Successful

This past Sunday, approximately seventy-five shooters and spectators gathered to test their skills. The rifle matches were divided into two classes, Hunting rifles with scopes of not more than 6 power and heavy barreled varmint-type rifles with scopes of 6-power or higher. The range was approximately 105 yards and all the shooters wanted to use the Bench rest table and sand bags which were made available. There were several shooters wanting to shoot with open sights and several that wanted to shoot off-hand - that is, without any means of supporting the rifle, but the latter two ideas were among the minority at this shoot.

In the hunting rifle class, also called sporter class, Dave Carthel of Gruver won the first match, with Sam Gruver taking the next two similar matches in a row. The heavy barrel or Varmint class shot next with Don Carthel being the first winner and Jimmy Cotter being the winner of the second match. There was a fourth shooting match of the sporter class rifle using a power scope or less in which Don Dillow took the prize. All of these men were from Gruver.

There were three muzzle loading matches with Cecil and Steve Slater sharing the winners with Sue Sterling. The muzzle-loaders were fired at 50 yards using a bench-rest which consisted of a table and several sand bags. As expected, they were among the most interesting to see and hear.

The .22 rifle category caused enough interest to fill 3 matches with one woman being among the winners. Bo Robinson, a

high school student shared honors and a cash prize with Tim Stedje and Judy Fenhaus. All three were the winner of the .22 rifle bench rest class. The .22 pistol created 4 matches with 3 of the 4 being off hand or free standing position. A female shared honors with two of the better shots in the off hand position at 25 yards. Mary Shook, Joe Robinson and Kim Cluck won the off-hand shoot while Kim Cluck also won the .22 pistol Bench Rest at 50 yards.

The pistol matches drew the largest crowds with two women sharing honors with 5 men. There were 4 classes to enter. The first was 25 yard off-hand and 25 yard bench rest. There was also a 50 yard off-hand and bench rest shooting matches.

The scores in no way indicate the number of individuals present. They represent those who have practiced more than the rest and as a standard range is set up the winners lists will expand to include the many shooters who were a little "rusty." The large pistol shot at 25 yards off-hand was won by the two organizers of the shoot, Joe Robinson and Jim Sterling. The 50 yard off-hand was won by Coletta Walker and Royce Mathews borrowed a pistol to win this match the second go around. The 50 yard bench rest was won by Wade Dahl and also by Joe Robinson who tried out his new 30 Herritt.

This list is only the 1st place winners because money was paid to the winners. The other shooters were close and will no doubt bring up their scores. There was a great turnout, and we hope to see more people at the next shoot.

OF BARGAINS

DOUBLE S&H GREEN STAMPS SATURDAY
with
\$2.50 or More Purchase
(Excluding Cigarettes)

TURKEY 10 - 14 LB. **59¢**
ROAST BONE IN **1.79**
STEAK BONELESS FAMILY **1.79**
STEAK CUBE **1.69**
STEAK WASTE FREE **2.29**
SAUSAGE PATTIES 12 OZ. PKG. **1.49**

SWIFT'S PREMIUM PROTEN CRY-O-VAC BEEF BRISKET
1.29

GROUND BEEF FAMILY PACK **1.29**
LIVER BEEF SKINNED & DEVEINED **59¢**

FINE FARE BACON REGULAR OR THICK SLICED **98¢**

NABISCO PREMIUM CRACKERS 1 LB. **69¢**
SUNBEAM COOKIES ASST. FLAVORS **4 FOR 1**

SCHILLING BLACK PEPPER 4 OZ. CAN **98¢**
SCHILLING MEAT TENDERIZER *NON-SEASONED 7 OZ. *SEASONED 5.75 OZ. **89¢**
RAGU SPAGHETTI SAUCE *REGULAR *COMBINATION *EXTRA THICK & ZESTY 32 OZ. **1.49**
MUSTARD FINE FARE 24 OZ. **49¢**

DAIRY FOODS
FINE FARE OLEO QTRS. LB. **39¢**
FINE FARE SWEETMILK & BUTTERMILK BISCUITS 8 FOR 1 **81¢**
KRAFT ORANGE JUICE 32 OZ. **69¢**

HEALTH & BEAUTY AIDS
REVLOX FLEX BALSAM SHAMPOO CONDITIONER *OILY *PROTEIN *TINT *BLEACH 16 OZ. **1.39**
NO NONSENSE PANTY HOSE *EX. BODY *OILY *REG. 16 OZ. **1.59**
SHEER-TO-THE-WAIST **99¢**

FROZEN FOODS
FINE FARE PIZZA *CHEESE *SAUSAGE *HAMMURD *PEPPERONI **89¢**
STILWELL STRAWBERRIES 16 OZ. BAG **99¢**
UNITED ASST. ICE CREAM 1/2 GAL. **1.19**

PRICES GOOD THRU MAY 31
UNITED Supermarkets
QUANTITY RIGHTS RESERVED

You'll want to remember how they look today



A professional 8x10 color portrait for **88¢**
All ages welcome - babies, adults, and families! Choose from our selection of scenic and color backgrounds. We'll select poses, and additional portraits will be available with no obligation. Satisfaction always, or your money cheerfully refunded.

THESE DAYS ONLY:
WED. THURS. FRI. SAT.
MAY: 28 29 30 31
DAILY: 10 AM. - 8PM.
HIGHWAY 207 SOUTH, SPEARMAN
TG&Y
88¢ per sitting. No charge for additional group subjects. One special per person. Backgrounds may occasionally change. Remember, children must be accompanied by parent.

Questionnaires Determine State Of Agriculture

What's the state of Texas agriculture in 1980? That will be determined from information provided by many Texas farmers and ranchers in a questionnaire from the Texas Crop and Livestock Reporting Service over the next few weeks. A select number of producers will also be interviewed.

Information gathered through these questionnaires and interviews provides the basis for determining acreage devoted to various crops and midyear livestock numbers, points out Layton Barton, County Agent with the Texas Agricultural Extension Service, Texas A&M University System.

Resulting crop and livestock reports developed from these surveys provide a dependable unbiased picture of Texas Agriculture, says Barton. Estimates derived from these reports serve as tools for farmers and ranchers in working out their planting, breeding, feeding, storing, producing and market-

ing plans. Farm organizations and legislatures use this data in planning agricultural programs, explains Barton. The estimates are also used in establishing various government program acreage and payment levels to farmers for the state and county.

Extension Service economists and private firms use this information as a basis for advising farmers and ranchers. Accurate statistics make the job of forecasting more reliable and useful.

All this means that farmers and ranchers are encouraged to promptly and accurately complete the survey forms. These estimates can only be as accurate as the responses, and producers have a big stake in the outcome.

As always, individual farm and ranch information will be kept strictly confidential, and only state and county summaries become part of the final published reports, adds Barton.

American farmers face uphill fight

COLLEGE STATION — The American farm family is facing an uphill fight for survival, and a Texas A&M University historian concedes that much of the battle has been lost in the last 30 years as once proud rural values have eroded.

The pace of agriculture has shifted to an urban perspective, said Dr. David Schob. With that shift has been a mass exodus from the rural communities.

But the farm life of old isn't dead, Schob says. "The farmer is just in for an uphill fight." Farmers once thought they were different than their city brothers. Now that the farmer is part of the American consumer scene, he often finds it easier to buy what he needs, rather than grow it.

Prior to 1914, the American farmer was largely self-sufficient, yet today 75 percent of his inputs are supplied from sources other than his farm.

Horses tested for horse sense

COLLEGE STATION — Texas A&M University researchers have found that some horses appear to have a lot more horse sense than others.

Dr. Gary Potter and his team are putting a special group of experimental horses through a set of laboratory tests of pulling levers and transversing complex mazes.

"We need to know early in their lives which horses are likely to learn and which aren't," said Potter, a champion horseman and professor in Texas A&M's Department of Animal Science.

Since some show and performance colts are valued at well over \$20,000 each, the scientists want to be able to define objectively what learning ability is in a horse instead of relying on chance.

The tests are some of the first ever given to gauge horses' learning ability.

Study for high-speed rail travel sought.



This display is only some of the arts and craft items to be sold Saturday, May 31 at the Golden Spread Center annual bazaar during Hansford Roundup Days. Members of the center have been busy for several months making the items.

Students speak to support system of free enterprise

COLLEGE STATION — Led by the only Rhodes Scholar from a Texas college or university this year, 18 Texas A&M University students are involved in an unusual experiment — speaking out in defense of the free enterprise system.

Under the sponsorship of the Texas A&M Center for Education and Research in Free Enterprise, an economic think-tank, the students have made presentations to civic and business groups throughout Texas.

In addition to their speaking engagements, members of the group are also writing a series of essays which they plan to compile into a book discussing the morality of free enterprise, inflation, the minimum wage and other economic topics.

The group is headed by William Altman, a graduate last fall from Texas A&M in electrical engineering who received a Rhodes Scholarship and will begin study in September at Oxford University in Cambridge, England.

Historians say the first lending library in America was founded by Benjamin Franklin.

New grass found for shaded sites

COLLEGE STATION — Researchers at Texas A&M University say they have found a grass that grows in the shade of a tree, normally the most barren part of a Texas homeowner's yard.

Although the most widely used warm season grass for shaded sites is St. Augustine, the researchers at Texas A&M's Department of Soil and Crop Sciences found it may not be the best grass after all.

While no final recommendations can be made, all supportive information suggests that a grass called tall fescue has excellent potential where there is adequate irrigation, especially in warm, humid regions.

During the three year analysis, the Texas A&M scientists found that the tall fescue grass took root readily and grew without any significant problems if irrigated.

The trouble with politics today isn't politics, but calculating men who use politics for their own selfish ends.

Wholesale inflation slowed in April.



AUSTIN — Former Texas Attorney General John Hill, who lost the 1978 gubernatorial race to Republican Bill Clements, was back in the headlines last week after winning a multi-million dollar damages lawsuit against the nation of Iran.

A Dallas federal court ruled Electronic Data Systems Corporation (EDS) was entitled to collect \$19.2 million in damages from the government of Iran for a breach of a computer services contract.

Ironically, EDS is owned by H. Ross Perot, who heads up Gov. Clements' task force against narcotics trafficking. Perot, by the way, is the hero-organizer of last year's commando raid into Iran to free Americans (his employees) held in Tehran prisons.

Hill apparently has been building more than his private law practice since his '78 political defeat. A recent Texas Monthly magazine poll showed that 52 percent of Texans now prefer him over Clements (48 percent) in a governor's race.

In the Iranian lawsuit,

Hill lead a team of four lawyers who first secured an attachment on Iranian funds in New York banks.

He told one reporter last week he believes the Mexican government is liable for damages to Texas beaches from the Ixtoc I oil spill under provisions in the Sovereign Immunities Act.

Clements Blasts Carter

Clements predicted President Jimmy Carter will lose Texas votes because of a U.S. Justice Department decision to seek integration of city and suburban school districts in Houston.

The motion to seek inter-district integration "will be a catastrophe" in Clements' opinion, and will work against Carter and for his projected Republican opponent, Ronald Reagan, at the polls in November.

Goldberg Blasts Clements

The Governor himself drew political fire last week from Texas Democratic Party Chairman Billy Goldberg of Houston, who said Clements was trying to hand-pick the new Speaker of the House.

Goldberg said Clements "has been using every amount of force available to his high office" to support speaker candidate Rep. Gib Lewis of Fort Worth.

Clements retorted Goldberg was "babbling utter nonsense," but a lobbyist told reporters Clements had boosted Lewis at a lunch for legislators.

New Speaker Candidate

A new candidate for the 1981 House Speaker race emerged last week: Rep. Craig Washington, D-Houston, who claims he can become the first black ever elected to that chair if Bill Clayton steps down because of Brilab woes.

According to Washington, if the speaker election were held today, front-runners Lewis and Rep. John Bryant, D-Dallas, would only receive about 50 votes each (short of the necessary 76 votes majority) . . . and Washington would win on the second ballot.

Washington said he entered the race because of the lack of a moderate candidate, but other theories are floating about the Capitol halls. One guess is that Washington is holding the black legislative bloc until it can throw the race decisively to Lewis or Bryant (receiving a few committee chairmanships in return). A second scenario paints Washington as a spoiler, stalling both Bryant and Lewis candidacies until Clayton can clear himself of Brilab and solidify his chair.

Clayton Unruffled

If Clayton is indicted this month on allegations he accepted a bribe, his political hopes depend on whether he can obtain an early trial and quickly run the course to a "not guilty" verdict before fall. The magnitude of the trial itself may prevent its early end, and Clayton has said he will step down before the general election if he isn't cleared by then.

Thus, the speaker's race gets hotter every week, but Clayton is the only major character who remains consistently cool. Last week, rumors leaked out to the Capitol press corps that Clayton was meeting with a host of lobbyists in his office behind the House Chamber, and reporters gathered outside his door to check out the anonymous news tip.

When Clayton came out to talk to his secretary, he saw the journalists and invited them inside his office to see for themselves. Only a few state representatives were present in the second-floor office.

One reporter asked if they could "look out on the ledge," and Clayton quietly smiled, "Be my guest."

AG Opinion

In a legal opinion issued last week, Atty. Gen. Mark White ruled the Texas Department of Health is prohibited by the doctrine of *Meayers v. Walker* from purchasing supplies from a business wholly or partially owned by a member of the Board of Health.

Program trains Tarleton nurses for rural medicine

STEPHENVILLE — Ninety percent of the graduates from a new nursing program at Tarleton State University end up in small-town hospitals — just where project coordinators want them.

The two-year associate degree program operates under the philosophy that if students from small towns are taught nursing at a small-town univer-

sity, perhaps they'll decide to live and work in a small town, where they're needed most.

Two graduating classes later, Tarleton's program seems to be making some dents in the face of severe professional nurse shortages. Of the 36 nurses who have completed the program, 31 are now working in small hospitals.

According to a recent poll, 25 million Americans, or about 11 percent, run or jog regularly.



The whaleboat was developed from the Viking type of boat construction.



The pessimist would be happy to "have a good day," if he could only find one.

WE RESERVE THE RIGHT TO LIMIT PRICES EFFECTIVE MAY 29-31, 1980
SPECIALS GOOD WHILE SUPPLY LASTS - LIMITED SUPPLY

SAVE MORE AT...

GREEN GIANT CUT GREEN BEANS
16 OZ. CANS **389¢**

GREEN GIANT WHOLE KERNEL GOLDEN CORN
17 OZ. CANS **389¢**

REFRESHING

COCA-COLA
6 PACK CANS **\$1.49** SINGLE CAN **29¢**

BORDEN'S FRUIT DRINK
GAL. **89¢**

BORDEN'S COTTAGE CHEESE
12 OZ. CTN. **79¢**

BORDEN'S PREMIUM ALL NATURAL ICE CREAM
1/2 GAL. RD. CTN. **\$1.89**

COOKED FOOD SPECIAL OF THE WEEK
HOT OR COLD
HAM & CHEESE SANDWICH \$1.19

ROXEY DOG FOOD
CAN **15¢**

LAUNDRY DETERGENT GIANT TIDE
BOX **\$1.59**

Your SLICE of Hickerson's birthday cake...

For our First Anniversary in our new store We are offering 25 percent off anything on display, including watches, rings, other things of beauty similar to those shown here -- and the selection is even greater.

25% off!

Friday and Saturday ONLY!

Hickerson Jewelers

721 W. 7th
SPEARMAN, TEXAS
659-3566

'Moonraker,' Starring Roger Moore as 007, Most Ambitious, Expensive of Bond Films

(Advance Production Feature)

Needless to say the Albert R. Broccoli production "Moonraker," eleventh in Ian Fleming's legendary series is the most ambitious and expensive ever made.

It is directed by Lewis Gilbert from an original screenplay by Christopher Wood. The eleventh in the series of Ian Fleming 007 adventures, the Albert R. Broccoli Franco-British co-production stars Roger Moore as James Bond, Lois Chiles, Michael Lonsdale and Richard Kiel who returns as "Jaws." Music is by John Barry with lyrics by Hal David

and Shirley Bassey performs the title song. The production is designed by Academy Award-winner Ken Adam. Released by United Artists, "Moonraker" was filmed at Studio de Boulogne, Epinay and Billancourt in Paris and on locations in Venice and Rio de Janeiro. It opens **JUNE 1 AT THE HOLIDAY DRIVE-IN.**

Bond aficionados everywhere have, understandably, come to expect only the best and Christopher Wood's original and inventive screenplay demanded just that.

No less than three major Parisian studios, Boulogne, Billancourt and Epinay (the latter was used to create the incredible \$500,000 space center which historically became France's largest-ever set) were used to house production designer Ken Adam's "miracle" settings. Locations included the ancient canals of Venice, the steaming jungles of Central America and the once-lost city of Tikal; the exotic splendour of Rio de Janeiro, the thunderous waterfalls

of Iguacu on the Brazil-Argentine border and—outer space.

The latter was the responsibility of a team of around 100 special effects experts working from London's Pinewood studios and shipping "top secret" equipment to France by high security methods almost worthy of a 007 storyline.

Latest in the line-up of Bond heroines is the green-eyed statuette Texan brunette Lois Chiles who previously featured in "The Great Gatsby" and "Death on The Nile."

Joining an equally long list of villains is French actor Michael Lonsdale playing the megalomaniac baddie Hugo Drax. He, until now, was perhaps best known for his role as the brilliant detective whose tall order task was to abort the murderous plans of the hired assassin in "The Day Of The Jackal."

Speaking of tall orders the 7'2" American actor Richard Kiel returns, by public demand, to reprise the steel-toothed villain "Jaws" the part he made

famous in the last one, "The Spy Who Loved Me." Completing the list of major undesirables is Chang, an oriental ruffian played by Japanese actor Toshiro Suge.

But the "beasts" are far outnumbered by "beauties" led by "Story of O" stunner Corinne Cléry who has the French female lead.

Then there's dusky-eyed beauty Emily Bolton as the mysterious Manuela; pint-sized enchantress Blanche Ravalec as the delightful Dolly; lovely Lizzie Warville as a ravishing Russian mistress; and Adela Fatima, as a magnificent mulatto-Samba Queen.

The "Bond Beauties," headed by gorgeous 19-year old Polish model Irka Bochenko (she is the "Blonde Beauty"), are a team of sexy starlets hand picked from more than 250 girls rounded up from the Beauty Agencies of France.

For the eighth time the Bond theme music is composed by Award winner John Barry.

Richard Kiel Back Again as 'Jaws'

Richard Kiel made the part of "Jaws," the 7'2" steel-toothed villain, whose bite is much worse than his bark in "The Spy Who Loved Me," internationally famous. By public demand the man who has been heralded as the modern day Boris Karloff reprises the role in "Moonraker."

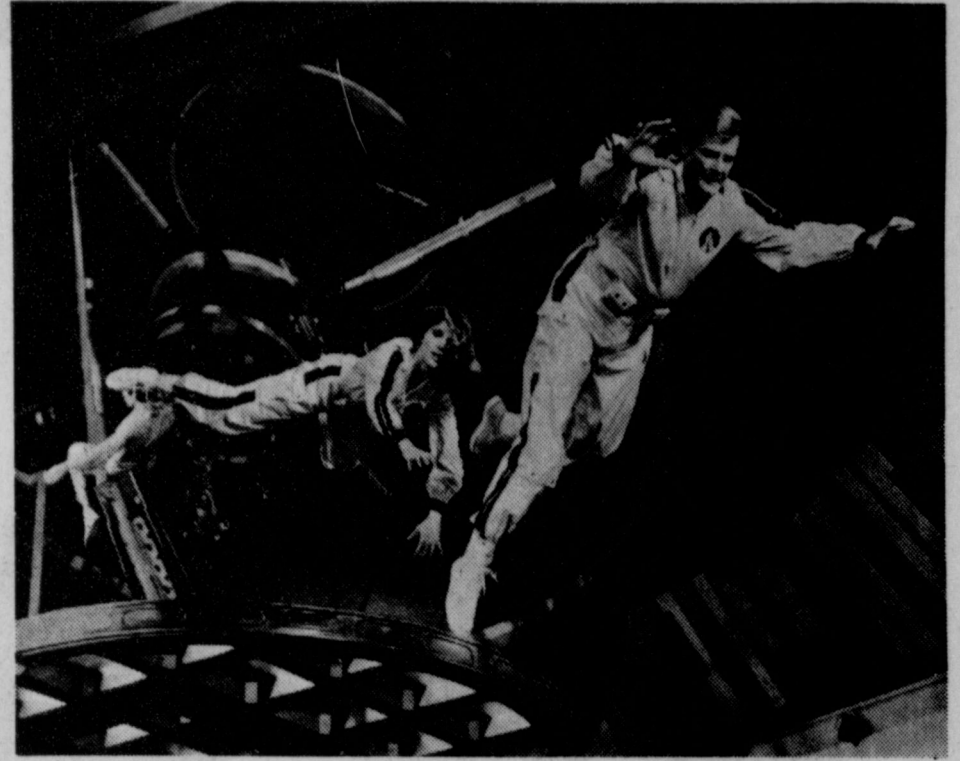
Kiel, who is as tall sitting down as many people are stand-

ing up, weighs in at around 315 pounds. He is a former cemetery plot salesman from Detroit, Michigan, who also worked as "bouncer" in a night-club which quickly grew to become the best behaved establishment for miles around. During the filming of the latest 007 adventure his petite wife Diane gave

birth to a 6½ pound bouncing baby son, Bennett Jackson. "Moonraker" is directed by Lewis Gilbert from an original screenplay by Christopher Wood. The eleventh in the series of Ian Fleming 007 adventures, the Albert R. Broccoli Franco-British co-production stars Roger Moore as James Bond, Lois Chiles, and Michael Lonsdale. Music is by John Barry with lyrics by Hal David and Shirley Bassey performs the title song, and the production is designed by Academy Award-winner Ken Adam. Released by United Artists, "Moonraker" was filmed at Studio de Boulogne, Epinay and Billancourt in Paris and on locations in Venice and Rio de Janeiro. The picture is now playing at the Theatre.



HEADING FOR WILD NEW LIFE — Three mild guys suddenly concocting an outrageous plan to get richer and happier in a hurry are depicted by artist Al Hirschfeld in this scene from "Going In Style." Those gifted stars of the comedy are George Burns (center), Art Carney (right) and Lee Strasberg. The Warner Bros. release, which opens at the Theatre, was written for the screen and directed by Martin Brest. The laugh adventure was produced by Tony Bill and Fred T. Gallo, with Leonard Gaines as executive producer. *Mat 2-B*



Still M-2 — Out of this world in the latest 007 adventure, Holly Goodhead (Lois Chiles) and James Bond (Roger Moore) appreciate the gravity of their situation in "Moonraker," a United Artists release opening **JUNE 1 AT THE HOLIDAY DRIVE-IN.**

LYRIC THEATRE

PHONE 806-659-2812

ONE SHOW AT 7:30 P.M.
SUNDAY, MONDAY, TUESDAY,
WEDNESDAY, THURSDAY

TWO SHOWS AT
7:00 P.M. AND 9:00 P.M.
FRIDAY & SATURDAY



MAY 28 THROUGH JUNE 3

PELECUAS MEXICANAS

SUNDAY
JUNE 1
AT 2 P.M.

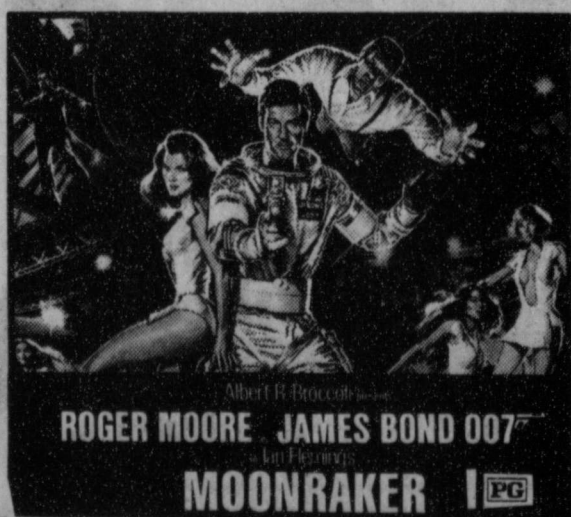


HOLIDAY DRIVE-IN

ONE SHOW EACH EVENING
STARTING AT DUSK



MAY 29 THROUGH 31



JUNE 1 THROUGH 4

HANSFORD ROUNDUP

Spearman
Friday
May 30
Teen Dance
Saturday



All of us at Clark Aerial Spraying say "Welcome" to the Roundup

4-H Pride of the Panhandle Horse Show Parade

Old Timers Reunion

Street Entertainment

Home Made Ice Cream

Bingo

Games

Bar-B-Que

Bake-Off

Miss Hansford County Pageant

Carnival

Bazaar

May 30 & 31
Spearman, Tx.

Western Dance
(Country Cookin)

Clark Aerial

Office located Hwy. 207

Spearman

Across From Patton Motel

Phone 659-2344



Spraying Service

Satisfaction

Clark Bridges
Home 659-2065

B SPEARMAN
659-2514

**BROCK
AGENCY**

H's
**INSURANCE
HAIL TIME**



Chris Woodington and Tracy Jo Tigrett



Sara Sanders and Matt Archer



Mika McLain and Cody Barkley



Randie Renner & Rex Ralston



Mark Chandler and Julie Wright



Melody Hutton and Don Sterling



Malissa Thomas and Dustin Loomis

Ideal
FOOD STORES

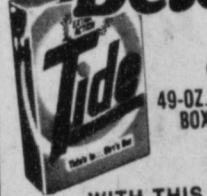
PRICES EFFECTIVE THRU
MAY 31, 1980. QUANTITY RIGHTS
RESERVED. NO SALES TO
DEALERS.

MON. -SAT.
8 a.m. -9 p.m.
SUN.
10 a.m. -7 p.m.

**SUPER
COUPON**

AMERICA'S FAVORITE

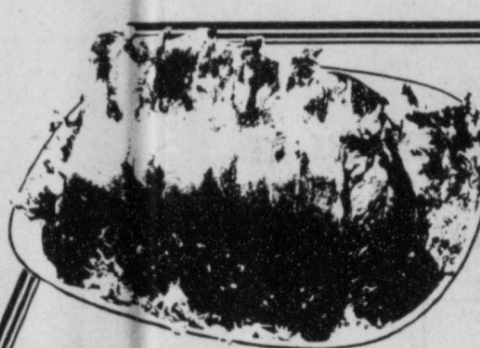
**Tide
Detergent**



49-OZ.
BOX
144

WITH THIS COUPON AND \$10.00
PURCHASE.

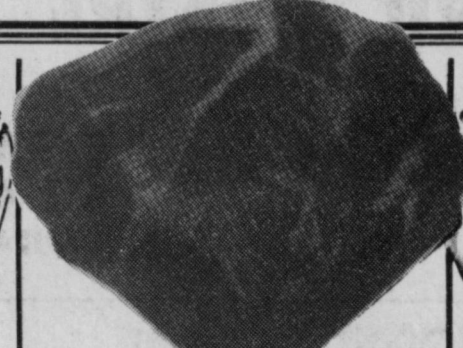
LIMIT ONE COUPON PER CUSTOMER
COUPON GOOD THRU MAY 31, 1980.



SIRLOIN END

Pork Roast

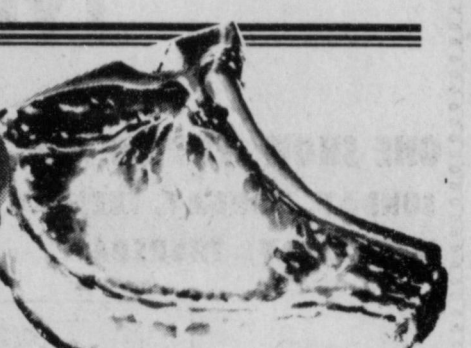
LB. **98¢**



U.S.D.A. BUTCHER BLOCK BONELESS

Chuck Roast

LB. **\$1.69**



CENTER CUT RIB

Pork Chops

LB. **\$1.39**

U.S.D.A. CHOICE - BONELESS

Chuck Steak LB. **\$1.79**

EXTRA LEAN - BONELESS

Beef Stew LB. **\$1.98**

U.S.D.A. CHOICE - BONELESS

Shoulder Steaks LB. **\$1.98**

EXCELLENT FOR COOKOUTS - FRESH

Ground Chuck LB. **\$1.79**



Long tapes

FRESH CRISP
Cucumbers

5 FOR **\$1**

SWEET JUICY

Calif. Oranges 5-LB. **\$1.19**

U.S. NO. 2

Russet Potatoes 20-LB. **\$1.99**

CALIFORNIA

Red Onions LB. **49¢**

LARGE RIPE

Avocados EA. **69¢**

FRESH - TENDER
**Golden
Corn**

5 EARS **89¢**



**A&W
Root Beer**
\$1.16

6-PACK CTN.
12-OZ.
CANS



HI-DRI
**Paper
Towels**

42¢

JUMBO
ROLL

LIMIT
3



**Premium
Crackers**

68¢

1-LB.
BOX

LIMIT
2



TEXSUN...PINK
**Grapefruit
Juice**

72¢

48-OZ.
CAN

LIMIT
2

SHOP IDEAL...WHERE THERE'S MORE VALUE IN

Escort Contestants Show a Variety of Moods



Regina Abston and Sammy Graham



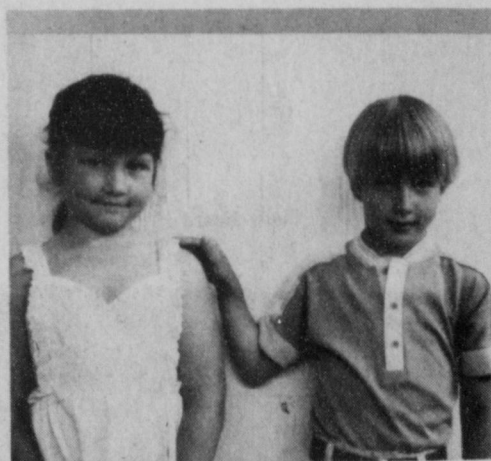
Matt Eakin and Tommi Latta



Roman Arnold and Arin Brown



Shea Crawford and Troy Brown



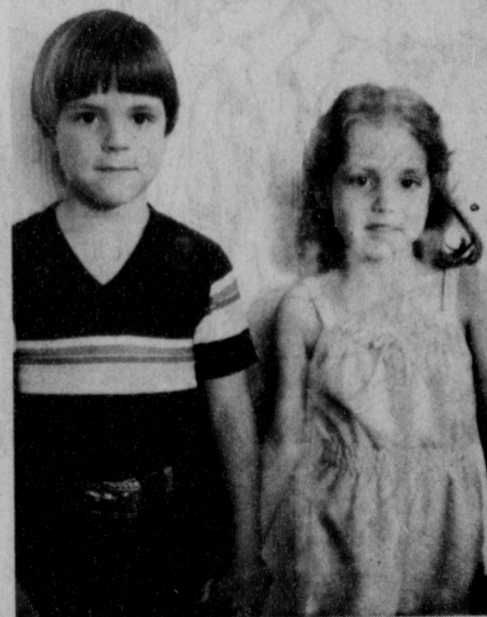
Laura Pearson and Cody Pipkin



Melissa Baker and Kyle Pearson



Grady Cline and Brandi Blodgett



Russel Shaver and Leslie Latta



Billie Jo Moore and Tyce Hergert



HUDSON'S THIF-T-PAK
Fryers
48¢
LB. 3 TO 5 LBS. AVERAGE

U.S.D.A. GRADE 'A' FRYER THIGHS or Drumsticks LB. **98¢**

CENTER CUT LOIN Pork Chops.....LB. **\$1.49**

HICKORY SMOKED SLICED
Sliced Slab Bacon
89¢
RANDOM WEIGHTS LB.

RODEO SLICED — MEAT Bologna 12-OZ. PKG. **\$1.09**

SKINLESS MEAT Rodeo Franks 15-OZ. PKG. **89¢**

RODEO BUCKBOARD — FULLY COOKED
Boneless Whole Hams
7 TO 9 LBS. AVERAGE
\$1.29 HALVES **\$1.39**

have lower totals

100 YEARS OF BAKING SUCCESS
GOLD MEDAL Flour
86¢
5-LB. BAG LIMIT 1

ALL PURPOSE ENRICHED FLOUR

ALL FLAVORS — DAIRYBELLE
Ice Cream ... \$1.28
1/2-GAL. CTR.

HUNT'S SLICED OR Peach Halves 29-OZ. CAN **66¢**

HUNT'S Tomato Sauce 2 15-OZ. CANS **73¢**

HUNT'S Tomato Paste 3 8-OZ. CANS **89¢**

DELICIOUS ChunKing Noodles 5-OZ. CAN **62¢**

SUPER MOIST — BETTY CROCKER Layer Cake Mix 18 1/2-OZ. BOX **78¢**

ALL FLAVORS Hawaiian Punch Drink Mix 48-OZ. CAN **69¢**

PECAN SANDIES OR RICH 'N' CHIPS Keebler Cookies 12-OZ. PKG. **93¢**

ALL VARIETIES — 9 LIVES Cat Food 3 5-OZ. CANS **88¢**

FRESH DAIRY

CAMELOT — GRADE 'A' **Medium Eggs**
46¢
DOZ. LIMIT 2

Cheez Whiz 8-OZ. CAN **89¢**

Miracle Margarine 1/2 LB. **73¢**

American Singles 1/2 LB. **\$1.62**

FROZEN FOODS

ALL VARIETIES MEXICAN **Patio Dinners**
73¢
12-OZ. PKG. LIMIT 3

Glazed Donuts 1/2 DOZ. **89¢**

Cook-In-Bags 2 1/2 DOZ. **86¢**

Orange Juice 3 1/2 GAL. **95¢**

KELLOGG'S Rice Krispies 16-OZ. BOX **\$1.21**

CAMELOT Chocolate Chips 24-OZ. BAG **79¢**

HEALTH AND BEAUTY AID SPECIALS

REGULAR OR SUPER HOLD AQUA NET **Hair Spray** 10-OZ. CAN **86¢**

BIC Butane Lighter 2 FOR **\$1**

INTENSIVE CARE Vaseline Lotion 16-OZ. BOTTLE **\$1.29**

STORE FOR YOU!...

Ideal FOOD STORES

Food Stamps Buy More At Ideal...

Miss Hansford Contestants



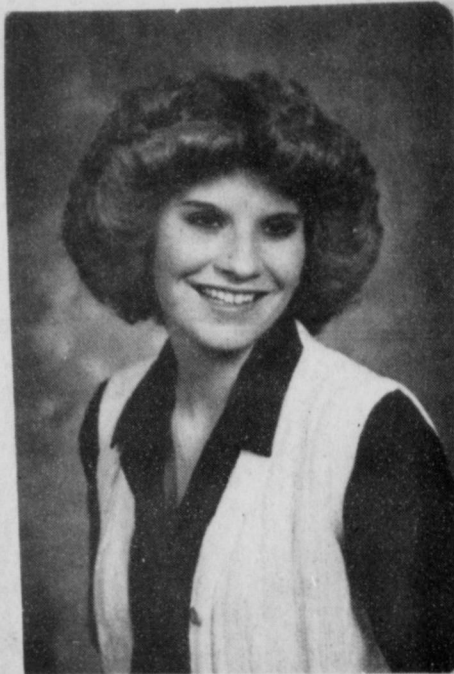
Denae Baker, Pam Porter



Cindy Heard



Cammye Gee, Angela Lesly, Michelle Graham



Jana McCoy



Shelly Sparks



Stacey Cook, Shelly Strawn, Eadie Clemmons

To The Graduate

June, 1980, is to be the first month of post-school life for millions of young Americans. Since they enter the stage of life at a time when there is much printed and spoken abuse of their country and its government, a word about this country is in order.

Our constitutional republican form of government has survived in its present form longer than any other in the world. The founding fathers of the nation, when they established the system, were far ahead of their time. They built a system flexible enough to change with changing times.

There are imperfections in the system and injustices in government and governing, but taken as a whole, the average citizen in the United States has something closer to an equal chance, economically and socially, than in any other major country. That is saying much for America, because we are a melting-pot nation of many races and religions.

We are an experimental nation in this sense. At our beginning two hundred years ago, many sophisticated European scholars and philosophers predicted the idealistic principles and laws on which the new republic had been founded and would operate could not possibly survive; they felt a country composed of so many divergent nationalities and beliefs could not coalesce into a united nation.

Looking back on history, what has been the record? It is not perfect, but the people of this country have built the richest nation in the world, a nation of individual freedom for all, a nation which has never lost a war, a nation which constantly seeks to improve itself, to uplift the disadvantaged.

We have a long way to go, yet, but that is not a bad start. Every newly-graduated young citizen should not casually accept these many blessings without a sense of thanksgiving and appreciation for the efforts and accomplishments of those who have gone before—who have done so much for all those starting out in 1980.

Average
If at first you don't succeed you're like most other people.
-Spotlight, San Diego.

Honest
Yawning may be bad manners, but it's an honest opinion.
-Winnipeg Free Press.

U.S. to watch 4,500 pieces of orbiting debris.

ITT earnings up for first quarter.

Bald Eagle sightings have increased.

Chrysler seeks money again.



SIDEWALK SALE

to be held this Saturday in Spearman, Texas

Don't miss any of the many bargains at the following

_____ places in Spearman _____

<u>Scratch Pad</u>	<u>Spearman Drug</u>	<u>JG's</u>	<u>Bakers</u>	<u>Massads</u>
<u>Gift Box</u>	<u>Bunkhouse</u>	<u>Sacks</u>	<u>Kids Stuff</u>	
<u>Cates</u>	<u>Spearman Electronics</u>	<u>Reeds</u>		
<u>Sports Tally</u>	<u>Kaleidoscope</u>	<u>Lady Fair</u>		