

# The Spearman Reporter

CHRISTMAS  
Joy

THE SPEARMAN REPORTER, HANSFORD COUNTY, THURSDAY DEC. 25, 1958

Vol. 51, No. 3



## Christmas Blessings

At Christmas time, we wish for you all the spiritual blessings of the season. May your heart and home be filled with happiness supreme, and may the radiance and wonder of this holy time be with you and yours throughout the coming year.

## Hansford Hospital Bonds To Be Voted On January 10th, 1959

Tuesday, December 16th, the Commissioners Court met and called an election to be held January 10th, for the purpose of voting a total of \$275,000.00 for the construction of a new county hospital in Spearman, and a new clinic for Gruver. The court received a petition signed by more than 10 percent of the qualified tax payers of the county, requesting that the bond election be called to build the new hospital and clinic.

## Fire At J. D. Wilbanks Thursday, December 18th.

A fire broke out on the J. D. Wilbanks farm, Thursday, at 2:00 P. M., in an apartment near the home of J. D.'s. The small apartment, located about 50 feet from the main house, was quickly brought under control by the Fire Department, and although there wasn't too much fire damage, the smoke was bad. The fine Spearman Fire Department has answered many fire calls this year, and have been doing an excellent job.

## Welfare Ass'n. Meeting Held

The Spearman Welfare Association met December 12, 1958. Those attending were Mr. and Mrs. E. A. Grever, Rev. O. L. Bryant, Rev. Don Cox, John Brown, Woodrow Gibner, Alton Ellsworth, Robert Stark, Barbara Fain, Johnnie C. Lee, H. R. Hartman, Johnny P. Vernon, and Merle Washington. The topic of discussion was Christmas baskets for needy families. This group was elected officers for the coming year of 1959. President, Mr. H. R. Hartman, Vice-President, Johnny P. Vernon, and Sec. and Treas. Merle Washington.

## Lynx Winning Streak Broken

Spearman's Jynxing Lynx boys lost their first game of the season last week, in the Gruver tournament, to Gruver. The Greyhounds jumped into an 18 point lead over the undefeated Lynx team, but the Lynx refused to give up, and almost caught the Greyhounds, finally losing by 7 points. Most sport fans feel that this loss will strengthen the team, as it is almost impossible to go thru undefeated in this district. In fact, it has never been done in the history of the school. We still think here at the Reporter, that the Lynx will win the district championship round robin play off.

## HOSPITAL NEWS

The following persons are medical patients at the Hansford County Hospital: Mrs. Ina Allen of Gruver; Winifred Arey of Spearman; Archie Morse of Spearman; Mrs. Josephine Gruver of Gruver; Mrs. Mary Gruver of Gruver; and W. C. Maupin of Gruver.

## Income Tax Information

**TAX-MAN SAM SEZ**  
The new card Form 1040-A is a mighty tempting way to file an easy tax return for folks with less than \$10,000 gross income. A lot of taxpayers do not like to read tax instructions. However, reading the tax information booklet you get in the mail just after Santa Claus has visited you can prove mighty profitable. It will probably pay you to read the tax instruction booklet carefully before you decide on whether to file a simple Form 1040-A, if you are eligible, or to use a regular Form 1040 and take the deductions that are allowed on the Form 1040 that cannot be taken on the Form 1040-A.

## Paving Progr'm

The State Highway Department will spend near \$1,400,000.00 during 1959 to reconstruct existing highways in 12 Panhandle and South Plains counties. The projects were announced recently by the State Highway Commission as part of a \$20 million road rehabilitation program for the coming year over the state.

Commission Chairman Marshall Formby said the program will involve 390 projects, with work to be done in 1959. "We must always have programs of this type," Formby said, "in order to keep our present highways in the best possible state of repair until they can be rebuilt completely."

"The volume of traffic generated by Texas' 4,300,000 vehicles is tremendous and a road rehabilitation program helps to increase the carrying capacity of the road. One of the most important aspects of the program is that the work done on these highways will make them safer. R. V. Converse, of Spearman, is a member of the Governor's special safety committee, incidentally, and although we didn't get to talk with him as to how this would help the safety in Spearman, widening and re-surfacing definitely should make the highway safer.

The entire highway project for Spearman, calls for widening pavement, and surfacing State Highway 15 in Spearman from the south city limits to the north city limit, \$94,000.00.

## Sunray Boys And Texline Girls Win Big Gruver Tournament!

The Sunray boys won the finals of the Gruver tournament, in an over-time thriller beating Gruver, 47-46. Sunray was a slight favor to win the tournament, but as the touney drew to a close Saturday night, the Greyhounds were a slight favorite to win the big championship game.

The most surprising team of the tournament, was the Spearman girls. They weren't given a chance to beat the fabulous Gruver Girls, last weeks winner of Spearman tournament. However, in a semi-final game, the hustling Spearman girls downed the favored Gruver girls by three points to go into the finals. However, the Lynxettes lost in the finals by two points to Texline in an over-time thriller. Sports fans in Spearman think now, that the Spearman girls have one of the better girls teams in the school's history.

Biggest disappointment of the tourney, was the un-defeated Spearman boys, who were beaten by the Gruver boys in a semi-final game. However, only one time in history has a Spearman team ever won the Gruver tournament; and a Gruver team has never won the Spearman tournament.

Basketball promises to be outstanding in the county this year, with Morse, Gruver, and Spearman all having good teams. Next game for the fine Lynx team will be with Texline, on December 30th. This should be a real thriller, and the Spearman girls will get a chance to even the score with Texline for beating them in the thriller at the Gruver tournament. Plan to attend these holiday games!

## Drive In To Close

J. D. Wilbanks announced this week, that the Drive-In Theatre, will close Saturday December 20th and will re-open January 2nd; and will be open for week-end operation only during the winter. Shows will be shown on Friday Saturday and Monday. No show during the winter on Tuesday, Wednesday and Thursday.

**WANTS TOO MUCH**  
The luxuries of today make it hard for a man to keep his earnings capacity.

**LIFE'S LIKE THAT**  
Half of the people of the world have the things that make the other half miserable.

## Shrine Dance Held Dec. 20th.

The annual Shrine club dance for members and invited high school and college students was held at the Memorial building in Spearman Saturday evening, Dec. 20th. The West Texas College Orchestra provided the music, and all reported an excellent dance and good holiday social event.

## PREDICTION FOR 1959

The Reporter crystal gazer comes up with the following predictions for the coming year. The hospital bond will pass and a new hospital building or Spearman Clinic or Gruver will be constructed and equipped during 1959.

The First State Bank will move into a brand new modern bank building with drive-in facilities and comfortable home for the steadily increasing patrons. The City Hall has out-grown its present home and we predict that a new modern office home and fire department will be constructed at a location near the present site of the city hall.

The Masonic Temple of Spearman is entirely inadequate for the growing membership and we predict a Masonic temple with a full basement for dining and recreation facilities will be built in Spearman during 1959.

There is a great possibility that a competitive pipe line to take care of natural gas may be built into Hansford county during 1959. And the price of gas at the well gate may increase from 15 cents to 22 cents per unit. There will likely be a new unit built to process waste material from natural gas.

## Doyle Robertson Home For Christmas.

M-Sgt. Doyle Robertson, Air Force Recruiter for the Spearman area will be on Christmas leave from the 22nd of December to the 30th of December 1958.

Anyone desiring information about the Air Force call the Air Force Recruiting Headquarters in Amarillo "Collect". The number is DRake 2-6587.

## Chamber Reports Good Resolution For New Year

Property owners of Spearman who are interested in the growth of our city should resolve to list their property at a reasonable price so that the city may continue to grow.

If you wanted to build a business structure in this city and did not own your own lot, you would find the prices of business property is prohibitive. There is no question but what owners should receive a handsome profit should they desire to sell business lots, but the prices asked in some instances are entirely prohibitive.

The same applies to close-in residential lots. We suggest that the Equalization Board begin to list tax owners according to the price they place on their property available for sale. We feel sure the income from taxable property in Spearman would more than double.

## Highway Patrol Record For Dec.

1. Rural accidents investigated by Texas Highway Patrolmen in the Amarillo District during November, 1958. Does not include accidents in cities over 2,500 population or accidents investigated by other agencies.)

A. Number of Persons Killed 8  
B. Number of Persons Injured 77  
C. Estimated Property Damage \$140,397.00

2. Location of accidents during November, 1958.

A. State and Federal Highways  
B. Farm to Market Roads  
C. County Roads  
D. Small Towns (under 2,500 population)  
E. Principal Violations as Causative factors in November Accidents.

A. Speeding  
B. Driving While Intoxicated  
C. Improper Passing  
D. Failure to Grant Right of Way  
E. Miscellaneous Violations

In October the Principal Violations causing accidents were:

1. Number of Traffic Accidents Investigated 157  
2. Total Number of Traffic Arrests 1186  
A. Speeding Arrests 687  
B. D. D. I. Arrests 31  
3. Total Number of Warnings for Hazardous Violations 3711  
4. Total Number of Safety Responsibility Demand Orders Served 47  
5. Hours Worked; 5473 Day Hours; 3149 Night Hours.  
6. Miles Traveled; 114,582.  
J. W. Blackwell, Captain  
Texas Highway Patrol  
Amarillo, Texas

**PRACTICAL TEST**  
An education is only half the problem—the student must learn how to use it after he gets it.

## GOLDEN WEDDING ANNIVERSARY OF MR. AND MRS. SAM MALONE IS TO BE CELEBRATED SUNDAY DEC. 28TH.

Spearman Folk will be delighted to learn of the following news event of a social honoring Rev. and Mrs. Sam Malone of Seminole, Texas. We received the wire announcing this Golden Wedding event just as we were going to press Tuesday of this week.

Friends from Seminole and West Texas are invited to attend The Golden Wedding Anniversary honoring the Rev. and Mrs. Sam Malone pioneers of West Texas. The open house will be held Sunday afternoon December 28, 2:00 to 6:00 p. m. at the Baptist church. Five children will be present to aid in the program honoring the highlights and moments in the past of this wonderful couple. Both church members and many from the newspaper

fraternity who have been associated with the honorees, will be present. Guests will include members of couples associated with the Malones for the past 48 years in his ministry. He was pastor of the Baptist church at Spearman, during the time the membership constructed their beautiful brick home. Brother Malone taught journalism and bible at Hardin-Simmons College. Mrs. Malone worked in religious and charity work. She is the former Georgia Jenkins, daughter of Dan Jenkins, First Sheriff of Floyd County, Rev. Malone is the son of Robert Malone of Taylor county. Dr. T. M. Blakemore of Hardin Simmons College will attend. All guests are invited to attend a reunion following the sermon.

## Train De-railed In Spearman Friday Night -- Blocks Road.

SPEARMAN BAND MEMBERS MAKE ALL REGION BAND This past week, the annual all-regional band festival was held at Pampa, Texas. Two bands participated in the festivities.

One of the bands was made up of the best members of AAA-AAAA bands in this region; including Amarillo, Pampa, Hereford, Borger, and others. This band was under the direction of A. Clyde Roller of the Amarillo Symphony.

The other band was made up of the choice members from B-AA bands in this region; including Perryton, Spearman, Dalhart, Dimmitt, Memphis, and others. This band was under the direction of Dr. Ted Krager of West Texas State College. This band the one in which Spearman members participated, played the following numbers: Allerselen, Hands Across the Sea, Fanfare and Scenario, Badinage for Brasses, and French National Defile, March.

The members from the Spearman Band that made it include: Larry Kingsley, Bass; Teddy Sparks, Oboe; Roy Wederbrook, cornet; Charles Traylor, baritone; Dick Kirk, clarinet; Anita Holt, saxophone; and Jerry Sparks, clarinet. Out of these members, four were selected as candidates for the All-State band. These include: Larry Kingsley, Teddy Sparks, Jerry Sparks, and Charles Traylor. Charles Traylor, Spearman's first chair baritone player, was one of the two players selected from the AA and AAAA band to go to Lubbock for the final All-State band tryouts. This is indeed an honor, and we want to wish Charles the best of luck in his tryout. Another player that should receive special recognition is Larry Kingsley, who made 1st chair bass in the All-Region band.

## Troop 602 And Troop 603 Girl Scout News

Brownie Troop 602 and 603 met together in the home of Mrs. Bill Stone, 311 South Drossen, December 19th for their Christmas party. Both troops and their leaders went caroling. We sang Christmas carols at the hospital and at the following residences: Tom Sutton, Dave Hester, Dub Black and Mrs. W. A. Simmons.

We enjoyed going caroling very much. We returned to Mrs. Stone's home and had refreshments of Santa Claus cakes and cranberry punch. Those enjoying the delicious refreshments were the following Brownies and Leaders: Mary Heaton, Danna Slaughter, Penny Gaither, Betty Randall, Gayle Ann Gable, Leslie Crooks, Barbara Kitchens, Mary Jane Beck, Dorcas Collard, Mary Sue Flemmons, Karan Kay Huse, Pat Massad, Nancy McCollough, Suzie Patterson, Linda Spoonmore, Debbie Standifer, Karan Stone, Margaret White, Mrs. Joyce Crooks, Mrs. Stanley Slaughter, Mrs. Bertha Spoonmore and Mrs. Bill Stone.

We Brownies wish our leaders, "A Very Merry Christmas and a Happy New Year."

By Barbara Kitchens

## This Weeks Reporter Printed On Tuesday December 22nd.

As you know as you read this issue of the Reporter, it has been printed two days early. This so per, which will have to be published one day early, since January 1, 1959 fall on Thursday, our press day.

because of lack of time. We trust we can make up for the shortage of news and features with an excellent coverage of the holiday activities in next weeks newspaper, which will have to be published one day early, since January 1, 1959 fall on Thursday, our press day.

## OFF THE BLOTTER

(EDITOR'S Note) The following arrest and statistical report furnished by the Hansford County Sheriff's Department, Highway Patrol and City Fire and Police Departments covers the period from last week to Thursday noon. Events of journalistic consequence will appear in detail elsewhere in this edition.)

CITY POLICE	
Wrecks	3
Tickets	10
Drunks	2
No. Fires	0
SHERIFF'S DEPARTMENT	
Drunks	3
Civil Papers Served	3

## Joel Lackey Is New President Of Shrine Club

Joel Lee Lackey, who has served as First Vice President of the Hansford Shrine club during 1958 was installed as new President of the organization at a regular meeting held in VFW Hall Thursday night of last week. Robert Schnell is the retiring president, who will remain a member of the official family for another year. Noble J. L. Brock was elected Secretary-Treasurer of the organization and assumed his duties Thursday evening.

The retiring Secretary-Treasurer is James P. Lee, who was elected as First Vice President of the Shrine club. Noble John R. Collard, Jr., reported on the Shrine Circus sponsored by the organization this summer. Final reports show that more than \$900.00 was netted by the organization for the fund to provide shoes for underprivileged children.

Members of the organization present discussed the possibility of the Blue Lodge Masonic organization building a new Temple in Spearman. All present expressed the desire to build an independent Temple for us of the Lodge and allied organization, rather than to build a two story building with rental property on the ground floor and the lodge quarters on the second floor.

Nobel R. E. Lee provided the delicious meal of barbecued steaks, potato salad and stewed apricots, plus a fine coconut cake for dessert. He was assisted by Noble C. A. Gibner.

Members of the organization volunteered to decorate the Memorial Building Saturday morning for the annual Shrine club dance.



### Don't Name It

All I want for Christmas is our Big Yallar cat. And that is exactly what I will get Eddie Faye has the world beat for getting Christmas presents for her old man. Some three weeks ago our Yallar cat "Pinkie got hit by a car. He was in terrible shape with a broken jaw and innards all jarred around. However, he was still alive, and Eddie Faye jumped in our car and took him to Dr. Dill at the animal hospital in Borger. It's a long story, and we almost lost "Pinkie". But this week he returned home worth \$64.00 more dollars than he did before he went to Borger. Eddie Faye, who is Scotch, just couldn't see that \$64.00 wasted so she informed me that this was her Christmas present to me. So my Christmas is all taken care of. I can't think of a thing to buy Eddie Faye but I may give her a gift certificate on the animal hospital, so if Pinkie gets sick again, we will all be even.

Next to Pinkie I would like to have my new Linotype operator to report for duty so I could stop and think a little for the holidays. It looks like that will happen, and I shore hope he does not get discouraged with the week

I am leaving the back shop in after this very busy Christmas season. Fortunately for him I did have to give the Linotype a good cleaning last week end. In my hurry I let a mat fall in the assembly line and our big machine was out of order for the last day of last weeks newspaper. That was the reason that many of the important stories had only small heads. But we got the machine all apart and cleaned and operating again last Friday afternoon. I will sure consider it a real Christmas present when I can get off this linotype seat and get back into circulation.

Our family will spend the holidays at home in Spearman. We do not like to drive in the heavy traffic that we have during the holidays, and besides that we cannot think of a better place to enjoy Christmas than right here at home. Unless Eddie Faye gets busy and buys some Christmas groceries, it looks like we will be available to be guests at some home for the Christmas dinner. I would like to take this opportunity to thank the business men of the county for the splendid Christmas advertising the paper has enjoyed. Let me assure you that I would not have hustled so hard to make a bit of money if I had not wanted to help out an Uncle—Uncle Sam, who insists on taking all I have right after Christmas to pay my taxes. I hope I won't be owing him so much money next year—and I can breeze thru the Christmas season without working 12 hours

a day for weeks at a time. Let me urge each of you who read these comments to support the hospital bond election so we can provide hospital facilities to grow with the growth of our county.



#### ENGAGEMENT ANNOUNCED

The engagement of Miss Beverly Ann Burger to Billy Lackey is announced by her parents, Mr. and Mrs. Walter A. Burger. The bride-elect was graduated from Seguin High school and is a Senior student at North Texas State College in Denton. She is a member of Alpha Delta Pi Sorority, Alpha Lambda Delta and Alpha Chi scholastic societies, Psi Chi, physiology society and

Kappa Delta Po education society. Mr. Lackey, son of Mr. and Mrs. M. W. Lackey of Spearman, is a graduate of Spearman High school and of North Texas State College. He is a member of Sigma Nu, social fraternity and Alpha Lambda Pi accounting fraternity. He is currently in the Navy, stationed at San Diego, California. The date of the wedding will be announced later.

#### Knox Parr Will Retire January 1

James Knox Parr, district agent for the Texas Agricultural Extension Service since February 1942, is retiring effective December 31.

Parr, a native of Hillsboro, is a graduate of Texas A. & M. College where he majored in animal husbandry and minored in Agricultural engineering. He has been an employee of the Extension Service since February 1935 when he was appointed county agricultural agent for Gaines county.

In 1927 he was transferred to the same position in Garza county where he served until 1932 and was transferred to Fisher county. In 1933 he was named county agent of Taylor county and served there until his transfer to the headquarters staff as district agent for extension District 1, the Palestine district. In 1939 Parr was elected secretary-treasurer of the Texas County Agricultural Agents Association and the following year was elevated to the presidency of the Association. In 1942 he was named worthy chief of the Texas Chapter of Epsilon Sigma Phi, honorary extension organization.

He moved to Amarillo in 1942 when the district Extension Service officers were moved from College Station to the field. State extension officials said no successor to Parr had been named.

People wouldn't have such a hard time keeping up with expenses if they didn't have to keep up with their neighbors.

### Washington News Letter From Your Congressman Walter Rogers

December 19, 1958  
TO THE PEOPLE OF THE 18TH DISTRICT:  
WHAT DO YOU WANT FOR CHRISTMAS?

This is the question that is asked thousands upon thousands of times throughout the Christian world at this time of each year. If it could be precisely and definitely answered each time it is asked, we would all escape much worry and concern and Christmas shopping would be made much easier. This, of course, refers to the material things of life and is associated with the practice of exchanging gifts at Christmas. I have often wondered what the answer to this question would be if the people of the world were told that they would be granted one wish for Christmas, and that the majority vote would control as to what would be requested. Certainly the people in the United States would unanimously wish for an everlasting peace within the lives of men could be dedicated to practice and efforts envisioning better ways of life for all—a peace, everlasting, so that man could utilize his God-given talents to the fullest without the constant annoying fear of armed conflicts, chaos and destruction. We, in his country, are so much more fortunate than so many others

throughout the world that it hardly behooves us to talk for anything for ourselves. We know that the peace which we have so long sought would provide the open door through which the underprivileged throughout the world might seek and find the benefits and the good things of life that we in this country enjoy. And, we would hope that the vote of those throughout the world, whether they be Christians or otherwise, would be cast for that gift of gifts.

I wonder what the people of Russia would vote for by the term "people of Russia". I mean the common man. I suspect that he, too, if allowed to speak his own mind, would vote

with us. I wonder what the people of Red China would say if they had the opportunity to freely and openly cast their vote on such an issue. It is my feeling that their first concern would be to vote for a restoration of the traditional Chinese family life that is being taken away from them by the new "communist" system—a system that constitutes each individual human being as nothing more than a cog in an industrial machine—a machine controlled by those in power with regard only for the exercise of their power and with a total disregard to human relationship.

I wonder how the people who are in those countries would vote, and I wonder how the people who are in those countries tries now tottering on the fence between the fire and the communist world would vote. To me, it would be the greatest Christmas gift of all times if God's children on this earth could be



#### Ownbey Guests Here For Xmas. Holidays

Guests in the home of Mr. and Mrs. Robert J. Ownbey home this week to welcome their new children were Mrs. Lena Stephenson of Campo, Colo., Mrs. Ownbey's mother; Mrs. Ella Paine of Booker, Texas and Miss Mittie Hill, Olton, Texas, both sisters of Mrs. Stephenson.

Also visiting with them were Mrs. Francis Phillips and Mrs. Maudie Denton of Albuquerque, New Mexico; and Mrs. Lois Inke of Follett, all nieces of Mrs. Stephenson. Mrs. Phillips also visited the Phillips' family in this area and returned to whom she is related.

The visit was especially poignant in as much as Mrs. Ownbey's Grandfather and Grandmother Hill of Lipscomb had taken these three girls and three other members of their family to live with them when their mother, a sister of Mrs. Stephenson, Mrs. Paine and Miss Hill, died leaving six small children homeless.

Professional card sharks really enjoy meeting an amateur who knows all about the game.

GULF WHOLESALE  
W. A. Ellsworth  
Spearman, Texas

## WANT TO TALK TERMS?

Now is the time!



you'll never get more value!

1. Bonus loadspace body
2. Bigger, safer windshield
3. Floating ride cab
4. Widest seat of any
5. Easier to service
6. Lively, economical



### B & C EQUIPMENT

Main St. Spearman, Texas OL 9-2351

INTERNATIONAL TRUCKS

Best Wishes



for the Holiday Season

With sincere gratitude for the warm friendships which we have enjoyed, we extend greetings of the season to all of you, whose good will and loyalty we count among our most cherished possessions. May the holidays find you in hearty good health, surrounded by devoted family and friends.

R. E. LEE OIL COMPANY

Mary and Eck, Russell, John, Don, Jerald and Dennis Spearman, Texas

### SEASONS Greetings



We extend to all our sincere wishes for a warm-hearted Yuletide. May your holidays be bright as the lights on the tree... rich in peace, contentment and the presence of friends and loved ones... and radiant with the glory that shines over all during this joyous season.

CAMPBELL CONSTRUCTION

Spearman, Texas

# Round up



## THRIFT STAMP

PANHANDLE FURNITURE MART  
CUT RATE GROCERY  
ORANGE DISC SERVICE

ADVERTISEMENT SP  
Bank  
Drug  
Store  
Furniture  
Comple  
Hardware  
Mrs. John Bishop  
Auto Store  
gerly  
Super Ser  
and Sparky  
Kleeberger, M  
ord Implemen  
M. Dealer  
H. Motor Co  
sible Agency  
G. Humble  
Prompt Service  
Boxwell Bro  
Flower Sho  
earman Equity  
J. Copeland  
Consumers Sales  
ester Hill  
Orange Disc S  
Good Gulf Product  
White House Lu  
Ed Hutton  
Deana May's B  
Cosmetologist — I  
Gordon's Corn  
Gordon Parrish  
R. L. McClellan  
Case Dealers  
D. E. Hackley  
Hansford Im  
Gene Cudd, Mc  
Ideal Grocer  
Bill Stone, Man



ADVERTISEMENT SPONSORED BY

Bank

Drug Store

Furniture Mart.

Furnishing Complete

Hardware

Mrs. John Bishop

Auto Store

Mergerly

Super Service

and Sparky

Kleeberger, M. D.

Implement Company

M. Dealer

H. Motor Company

Mobile Agency

G. Humble Service

Prompt Service

Boxwell Bros. Funeral Home

Flower Shop — Spearman

Spearman Equity Exchange

J. Copeland

Consumers Sales Company

Wester Hill

Orange Disc Service Station

Good Gulf Products

White House Lumber Co.

Ed Hutton

Deana May's Beauty Shop

Cosmetologist — Deana May Douglas

Gordon's Corner Drug

Gordon Parrish

R. L. McClellan and Sons

Case Dealers

D. E. Hackley, D. O.

Hansford Implement Company

Gene Cudd, Manager

Ideal Grocery

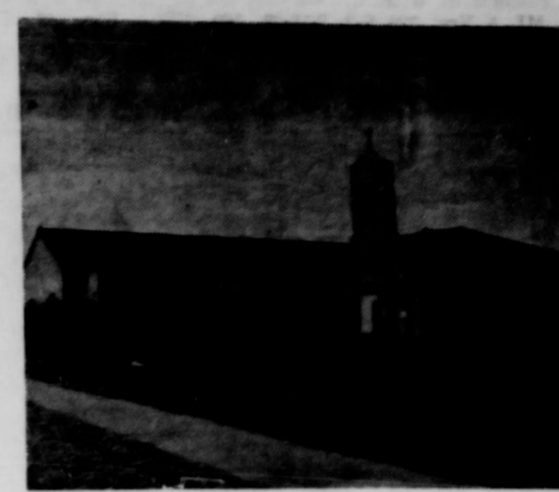
Bill Stone, Manager



First Christian Church



Apostolic Faith Church



First Methodist Church

COUNTY CHURCH DIRECTORY

<b>FIRST BAPTIST CHURCH — GRUVER</b>	
Rev. E. G. Purvis, Pastor	
Sunday School	9:45 a. m.
Preaching Service	11:00 a. m.
Training Union	7:00 p. m.
Preaching Service	8:00 p. m.
Wednesday Prayer Service	8:00 p. m.
<b>UNION FULL GOSPEL CHURCH — SPEARMAN</b>	
Rev. Calvin Springer, Pastor	
Sunday School	10:00 a. m.
Morning Worship	11:00 a. m.
Bible Classes, Sunday	6:45 p. m.
Evening Worship	7:30 p. m.
Wednesday Bible Study	7:30 p. m.
<b>FIRST CHRISTIAN CHURCH — SPEARMAN</b>	
Rev. J. Donald Cox, Pastor	
Sunday School	9:45 a. m.
Morning Worship	11:00 a. m.
Youth Meetings	6:00 p. m.
Evening Worship	7:30 p. m.
Wednesday: Choir Practice	7:30 p. m.
<b>MORSE METHODIST CHURCH — MORSE</b>	
Sunday School	10:00 a. m.
Morning Services	11:00 a. m.
M. Y. F.	6:30 p. m.
Evening Worship	7:30 p. m.
<b>ASSEMBLY OF GOD — SPEARMAN</b>	
Rev. E. W. Way	
Sunday School	10:00 a. m.
Morning Worship	11:00 a. m.
Evening Worship	8:00 p. m.
Mid Week Services, Wednesday	8:00 p. m.
<b>FIRST CHRISTIAN CHURCH — GRUVER</b>	
Rev. Weston, Pastor	
Sunday School	9:45 a. m.
Morning Worship	11:00 a. m.
Evening Worship	7:00 p. m.
1st Wed. Monthly Fellowship	7:30 p. m.
<b>FIRST METHODIST CHURCH — SPEARMAN</b>	
Bro. J. Waid Griffin, Minister	
Church School	9:45 a. m.
Morning Worship	11:00 a. m.
Methodist Youth Fellowship	6:30 p. m.
Evening Worship	7:30 p. m.
Womens Society of Christian Service, Wednesday	3:00 p. m.
Mid Week Services Wed.	7:00 p. m.
Choir Rehearsal	7:30 p. m.
<b>CHURCH OF CHRIST — SPEARMAN</b>	
David E. Parker, Preacher	
Bible Class	10:00 a. m.
Communion	11:00 a. m.
Preaching	11:15 a. m.
Worship	7:00 p. m.
Monday: Mens Training Class	7:30 p. m.
Wednesday, Ladies Bible Class	9:30 a. m.
Wednesday, Midweek Bible Classes	8:30 p. m.
<b>MORSE BAPTIST CHURCH — MORSE</b>	
Rev. Herbert Hughes, Supply Pastor	
Sunday School	9:45 a. m.
Worship	11:00 a. m.
Training Union	7:30 p. m.
Worship	8:00 a. m.
Mid Week Service Wednesday	7:00 p. m.
<b>CHURCH OF CHRIST</b>	
North of City Park	
Gruver, Texas	
R. Elmer Adcock, Evangelist	
Lords Days:	
Bible Study	10:00 a. m.
Worship	10:30 a. m.
Worship	7:00 p. m.
Week Days:	
Bible Study, Wednesday	8:00 p. m.
Ladies Classes, Thursdays	
Senior Ladies	2:15 p. m.
(Small Children Cared For)	
Junior Ladies	3:00 p. m.
<b>GRUVER METHODIST CHURCH — GRUVER</b>	
Rev. Patterson	
Sunday School	9:45 a. m.
Morning Services	11:00 a. m.
Methodist Youth Fellowship	6:45 p. m.
Evening Services	7:30 p. m.
Wednesday Prayer Service	7:30 p. m.
Wednesday Choir Practice	8:30 p. m.
Thursday W. S. C. S.	2:30 p. m.
Wesley Circle, Thursday	10:00 a. m.
<b>SACRED HEART CATHOLIC CHURCH — SPEARMAN</b>	
Father M. J. Mathison, Pastor	
MASSES	
Sundays	10:00 a. m.
Weekdays (Mon. Tues. Fri. Sat.)	7:30 a. m.
First Friday of Month	8:00 a. m.
Holy Days of Obligation	8:00 a. m.
<b>FIRST BAPTIST CHURCH — SPEARMAN</b>	
Bro. O. L. Bryant, Pastor	
Sunday School	9:45 a. m.
Morning Worship	10:35 a. m.
Training Union	6:30 p. m.
Evening Worship	7:30 p. m.
Wednesday Mid-Week Prayer Hour	8:00 p. m.
Wednesday Choir Rehearsal	8:45 p. m.
Officers, Teachers Inter. GA & RA	7:00 p. m.
<b>OSLO LUTHERAN CHURCH</b>	
(18 miles NW of Gruver)	
Robert Cordes, Pastor	
Sunday School	9:45 a. m.
Adult Bible Class	9:45 a. m.
Worship Service	11:00 a. m.
Brotherhood 1st and 3rd Thursday, 7:30 p. m.	
Ladies Aid 1st Thursday of month 2:00 p. m.	
<b>APOSTOLIC FAITH CHURCH — SPEARMAN</b>	
Mrs. E. A. Groover, Pastor	
Sunday School	10:30 a. m.
Preaching Service	11:30 a. m.
Sunday Evening Service	7:30 p. m.
Thurs. Fast and Prayer Service	8:00 a. m. to 2:00 p. m.
Thursday Evening Prayer Meeting	7:30 p. m.

THE SON OF GOD

Matthew 1:18-21— "Now the birth of Jesus Christ was on this wise: When as his mother Mary was espoused to Joseph, before they came together, she was found with child of the Holy Ghost. Then Joseph her husband being a just man, and not willing to make her a publick example, was minded to put her away privily. But while he thought of these things, behold the angel of the Lord appeared unto him in a dream, to take unto thee Mary thy wife; for that saying, Joseph, thou son of David, fear not which is conceived in her is of the Holy Ghost. And she shall bring forth a son, and thou shalt call his name JESUS; for he shall save his people from their sins."

Thus was born the Son of God. Born of a virgin, who wrapped him in swaddling clothes and laid him in the manger, because there was no room in the Inn.

Never in the history of man had a birth been announced by angels, as God gave a great light in the heavens to lead the shepherds who had heard the glad tidings. "Be not afraid, for behold, I bring you good news of a great joy, which will come to all the people. For to you is born this day in the city of David a Savior who is Christ the Lord."

The son of the Most High God, though just a baby, was acknowledged by wise men, prophets, and kings. Never would the world be the same. For the Son of God was to grow to manhood and bring to mankind his wonderful truths.

Living as a man in his world, he taught as one having authority; he had compassion on all who came to him; he cured the sick; he healed the cripple; he gave hearing to the deaf; he gave sight to the blind; he raised the dead. Thus in this world, God gave peace to body and soul, through his son. His great gift of love.

No, the world has never been the same. As this is the season of giving, we exchange gifts with loved ones and friends. Would that they express a love, its true meaning. Let us never forget in our giving that God gave to the needy this greatest of all gifts.

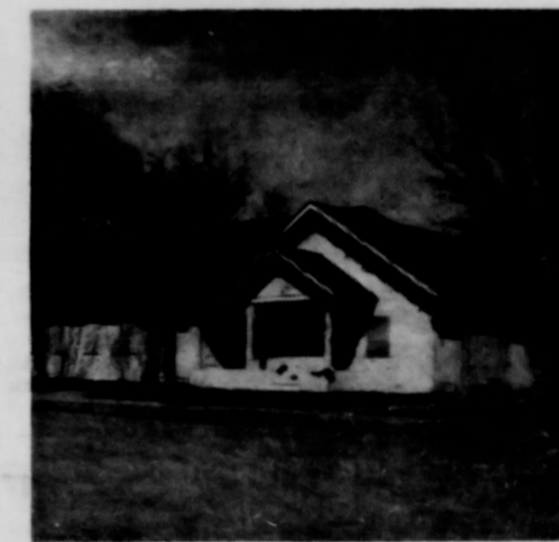
"For God so loved the world that he gave his only begotten son, that whosoever believeth should not perish, but have eternal life."

As we say "Thank You" to loved ones for our gifts, let us also say "Thanks for your son, for your love, for your care and understanding. While we were strangers, you gave us your son." This was a personal gift to everyone. Truly God's son was the gift that has changed the world, as well as mankind.

W. T. WINSLOW



Assembly of God Church



Church of Christ



Sacred Heart Catholic Church



First Baptist Church



Union Full Gospel Church



## Lease Record Take-Off.

10-7-58 J. M. Huber Corp. E. Garrison et ux R O&GL Sec. 10 Blk. 3, GH&H.  
 10-17-58 Oil Development Co. of Texas, Coline Oil Corp. O & G L 5 Yrs. 480 E-2 & SW-4 Sec. 164, Blk. 45, B&TC.  
 9-15-58 Robert G. Gray et ux Horizon Oil & Gas Co. O & G L 9-15-63 160 NW-4 Sec. 43, Blk. R AB&M \$8.40  
 8-4-58 H. C. Glass Gulf Oil Corp. Assignment 320 S-2 Sec. 60, Blk. R AB&M.  
 9-15-58 E. N. Richardson, The Texas Company Assignment 160 SE-4 Sec. 6, Blk. 4T, T&NO \$1.65.



## KEEPING CHRISTMAS

by Henry Van Dyke

Are you willing to forget what you have done for other people, and to remember what other people have done for you; to ignore what the world owes you, and to think what you owe the world; to put your rights in the background, and your duties in the middle distance, and your chances to do a little more than your duty in the foreground; to see that your fellow-men are just as real as you are, and try to look behind their faces to their hearts, hungry for joy, to own that probably the only good reason for your existence is not what you are going to get out of life, but what you are going to give to life; to close your book on complaints against the management of the universe, and look around you for a place where you can sow a few seeds of happiness--are you willing to do these things even for a day? Then you can keep Christmas.



FULL REHEARSAL FOR THE BIG DAY... Robert wanted Nick, the dog, to have dinner with him at his private table, but Dad and Mom were not enthusiastic until Robert demonstrated that Nick's table manners are impeccable. He did it with a dress rehearsal, which you see here. Nick seems to be enjoying nonchalantly an after dinner cigarette.

## 'Lord of Misrule,' 'Hodening Horse' Make Noel Jollier

A DIFFERENT playtime observance for your Christmas festivities is the game "Lord of Misrule."  
 When your guests have all arrived and have been greeted by the music of the minstrels and the song of the carolers, it is time for the most honored guest of the evening to arrive. With much fanfare the "Lord of Misrule" is announced. He enters with great pomp and ceremony and takes his place at the master of ceremonies for the evening.

The Lord of Misrule comes to us from the Tudor courts where he was elected annually to reign over the Christmas festivities. His word, during the festivities, was law, and the ridiculous commands he laid upon the guests had to be obeyed.

At your party, the Lord of Misrule will command each guest to do his bidding. He may call for singing, dancing, pantomime, imitations and stunts of all kinds. Failure to do the bidding of the Lord of Misrule results in the payment of a forfeit. And here another unusual note may be injected. The forfeit, instead of being paid to the Lord of Misrule may be paid to another Christmas character, the "hodening horse."  
 It was the custom in Kent, England, for young men to go from house to house with the hodening horse, an imitation of a horse's head attached to a long stick. Two lads, forming the body of the horse, were hidden from view by a covering of cloth, resembling horse's skin. The hodening horse was accompanied by paraders who rang the bells throughout the town and begged for money or food.



ALLERGIC TO WHISKERS... Not all little boys who love Santa Claus this time of year have a sublime trust in the old gent. This young man obviously got the wrong message somewhere else.

## Chemical Solution Protects Christmas Trees From Flames

To keep your Christmas tree which is still a hazard even with electric lights, select your tree four to six days before you intend to decorate it. Then weigh the tree and buy one-fourth as many pounds of ammonium sulfate as the tree weighs. This chemical is available in most stores that sell seeds and fertilizers.

For each pound of ammonium sulfate use 1 1/2 pints of water to make the fireproofing solution. Mix the solution in something tall and narrow that will hold the tree upright. Then saw off the tree diagonally so as to give a large-cut surface. Set the tree in the solution in a cool place, away from the direct sunlight, and leave it there until most of the solution is absorbed.

## You Can Make a Big Christmas Candle

You can make a big, long-burning candle to fit into your Christmas decorations if you have a number of odds and ends of partly burned candles around the house. Melt them and pour into cardboard containers and remold. Use ice cream cartons, oatmeal containers or others. Use plain cord for a wick. When the wax is beginning to set, tie the wick to a pencil and suspend it in the wax. Let set hard, remove carton and there is a nice candle for your table.

## 1 B. C. and 1 A. D. Were Not a Year Apart

According to our calendar, one would naturally assume that between the year 1 B. C. and the year 1 A. D. there should be a year called zero. As a matter of fact, no such year exists, as far as historians are concerned, and the year 1 A. D. follows directly after the year 1 B. C.

A person born in 1 B. C. would not be five years old at 1 A. D. but would be four years old when one is calculating data in that period. When adding B. C. and A. D. years, it is necessary to always subtract one to compensate for the year zero omitted between 1 B. C. and 1 A. D.

## Why Christmas Candles?

On Christmas Eve the Christ Child wanders all over the earth seeking deserving people--people who are kind and thoughtful of others, and people who have loving hearts. Lighted candles are placed in the windows by such people so that He may not stumble and fall. In the course of His search He visits every candle and but, no matter how rocky and rough His path may be.

10-23-58 Humble O & R Co. C. W. Hull et ux R O&GL 160 NE-4 Sec. 64, Blk. 4T, T&NO.  
 10-23-58 Humble O & R Co. John D. Cotter R OG&ML 200 SW-4 & S-40 A of NW-4 Sec. 63, Blk. 4T, T&NO.  
 10-23-58 Humble O & R Co. Omar Cotter et ux R OG&ML 200 Same as above.  
 9-24-58 J. A. Willey et ux Pan American Pet. Corp. OG&ML 10 Yrs. 160 NW-4 Sec. 130, Blk. 2, GH&H \$5.50.  
 10-22-58 Horizon Oil & Gas Co. Phillips Petroleum Co. Assignment SE- & E-2 NE-4 Sec. 274, Blk. 2, GH&H.  
 9-15-58 Humble O & R Co. C. G. Clement et ux R OG&ML 320 S-2 Sec. 60, Blk. R AB&M.  
 4-8-58 J. R. Barnhill Jr., The Texas Co. Tr. of Lease Sec. 179, Blk. 45, H&TC.  
 5-5-58 J. R. Barnhill, Jr., The Texas Co. Tr. of Lease Sec. 180, Blk. 45, H&TC.  
 7-28-58 J. C. Harris et ux The Texas Co. OG&ML 5 Yrs. Lot 1, Blk. 6, Cooper Add. Gruver, Tex.  
 7-28-58 Gruver Elevators, Inc. The Texas Co. OG&ML 2-16-63 Lots 1 to 8-12 to 16 & W 70' Lots 9-10, W 70' & N. 20 ft. of E 70' Lot 11, Blk. 3, All Lots 1-2-15 & 16, Blk. 4, Cooper Add. Gruver, Texas \$3.50.  
 3-30-58 Roy Furr Fenner Tubbs Assignment Sec. 150, Blk. 45, H&TC.  
 8-13-58 Skelly Oil Co. Sterling P. M. Jackson et al R OG&ML N-2 - SE-4 Sec. 25, Blk. P. H&GN.  
 7-28-58 Etiling Inc. The Texas Co. OG&ML 5 Yrs. Lots 4, 5, 6, 7, & 8 Blk. 4, Cooper Add. Gruver, Texas.  
 8-28-58 C. C. Heath et ux The Texas Co. OG&ML 5 Yrs. Lots 10, 11, 12, 13, 14, & 15 Blk. 5, Cooper Add. Gruver Texas.  
 7-28-58 A. Guy Cooper et al The Texas Co. OG&ML 2-16-61 All Blks. 1 & 2 Lots 1, 2, 3, 4, 5, 9, & 16 Blk. 5; Lots 3, 9, & 10 Blk. 4 Cooper Add. Gruver, Texas.  
 9-25-58 Geo. Andrew Gochnaur et ux Walter Caldwell OG&ML Sec. 34, Blk. 3, GH&H 500Ac.  
 10-19-58 Walter Caldwell Horizon Oil & Gas Co. Assignment Sec. 34, Blk. 3, GH&H.  
 11-13-58 Sinclair Oil & Gas Co. Ida Zander R. O&GL Sec. 62, Blk. R AB&M.  
 9-29-58 Jackson Trust The Shamrock Oil & Gas Corp. O & G L NE-4, Sec. 37, Blk. P. H&GN \$5.50.  
 9-29-58 Jackson Trust The Shamrock Oil & Gas Corp. O & G L NW-4, Sec. 37, Blk. P. H&GN \$5.50.  
 9-29-58 Jackson Trust The Shamrock Oil & Gas Corp. O & G L NW-4, Sec. 37, Blk. P. H&GN \$5.50.  
 9-29-58 Jackson Trust The Shamrock Oil & Gas Corp. O & G L NW-4, Sec. 37, Blk. P. H&GN \$5.50.  
 10-10-58 Mae W. Patten et al The Texas Company OG&ML 5 Yrs. 320 N-2 Sec. 178, Blk. 45, H&TC \$17.60.  
 10-10-58 Phillips Petroleum Company W. L. Pearson et ux R OG&ML W-2 Sec. 274, Blk. 2, GH&H.  
 11-26-58 Humble Oil & Refining Co. Mary Marguerite Smith R O&GL 320 W-2 Sec. 193, Blk. 45, H&TC.  
 10-24-58 Ida Wilmeth et al P. A. Lyon, Jr., OG&ML 5 Yrs. 6-243 out of the SE-4 of SE-4 of SE-4 Sec. 66 Blk. 4T, T&NO \$3.50.  
 11-26-58 P. A. Lyon, Jr., Gulf Oil Corporation Assignment 6-243 out of the SE-4 of SE-4 of SE-4 Section 66, Blk. 4T, T&NO.  
 10-24-58 R. L. McClellan et al P. A. Lyon, Jr., OG&ML 5 Years 422-93 Sec. 66, Blk. 4T, T&NO \$24.20.

## LET'S FACE IT

Remember, you can't expect to win the game of life today with hits you made yesterday.

By Royce Fields  
 THE JOLLY SANTA, ringing his bell in an appeal for contributions for the needy, grinned his thanks as Dick Slater dropped a bill into the kettle. The donation was a salute, not only to the Yuletide spirit, but to Dick's own good fortune. He had a home, a lovely wife named Jean, and a better reproduction of himself named Pete. What more could a man want?

One other thing made this a great day for Dick. He was on his way to fulfill a dream. While they were still engaged, he had bought a strand of simulated pearls for Jean. Somehow the feeling had grown on him that, until he could replace the phoney baubles with a string of real ones, he wouldn't be a success in the eyes of his dark-haired, brown-eyed Jean.

"Put this card on the outside of the package," he told the clerk who wrapped his gift. On the card he had written: TO A REAL PEARL--A STRING OF THEM!

It was beginning to get dark when Dick got off the train in suburban Roseville where he lived. He started to walk briskly toward his home, two blocks away. Happy in the glow of having at last realized his cherished dream, he didn't see the figure lurking in the dark alley till the man stepped out and thrust the gun into his abdomen.

## Feeding Small Number of Steers Unprofitable

College Station, Dec.—Cattlemen in the High Plains of Texas who feed less than 100 steers at a time are not likely to get much "extra" income for their work.

Based on a 20-year study at the Big Spring Field Station a margin of profit of at least four cents a pound is required to give an income equal to the average price paid for farm labor. And that doesn't include the risk in feeding steers.

From the study the Texas Agricultural Experiment Station, in cooperation with the U. S. Department of Agriculture has prepared a guide for cattlemen in the high plains to use in determining whether feeding steers is a profitable alternative to the cash market for grain sorghum under various feed-livestock, cost-price situations.

AS THE DARKNESS cleared away, Dick became aware that he was in a hospital. Gradually, he realized Jean and little Pete were beside him and little "Oh Dick!" Jean half sobbed, half laughed. "I've been scared! The doctor says you only have a slight concussion, though, and you're going to be all right!"



The thief merely stepped back and brought the heavy gun crashing down on his victim's head.

"I had a present for you, Jean," he began.  
 "I know. Foolish," his wife cut in. "and you almost lost your life trying to save it."  
 "But it was the string of real pearls I've always wanted you to have, Jean. You know how much it meant to me."  
 "Yes, I've known the silly obsession you've had about my wearing simulated pearls," Jean said almost sternly. "It never seemed to occur to you that my husband and little Pete were the real pearls in my life!"

"Well, this is going to be a bum Christmas for you," Dick said glumly. "and I thought it would be the best yet."  
 "It's going to be," Jean told him. "Look!"

She put her arm under his shoulder and lifted him to a sitting position. In one corner of the room was a beautiful little Christmas tree. Piled high under it were the gifts he and Jean had wrapped for little Pete. Jean went over and brought back two of the packages. One was her present to him--a watch he had wanted. The other package... Suddenly, he recognized it--the pearls!

"Yes," Jean said, "my pearls. When the police caught the thief, he hadn't time to open them even."

## Best Wishes for Christmas

At this joyful season, may there come to every heart a glad renewal of the warming spirit of peace and good will. May we all be richly blessed with enduring hope and love, as we rededicate ourselves to the glorious message of the first Christmas.

**Joy at CHRISTMAS**

To our many good friends and neighbors, we send a special greeting at this wonderful season of the year. Heartily, we wish for all a holiday time glowing with happiness... packed with fun and festivity. And to all we say a most sincere "Thank You" for your patronage throughout the year.

**DAVIS OIL CO.**  
 Spearman, Texas

**Season's Greetings**

REDDY KILOWATT  
 Your Electric Servant

Reddy Kilowatt and all employees of Community Public Service join in wishing you the happiest of Holidays.

Reddy will be on the job as usual during the Holidays to light your tree, brighten your home and lighten your household chores.

May you enjoy the best of everything in the New Year--including more and better electrical living!

**COMMUNITY PUBLIC SERVICE**  
 LIGHT POWER

**Best Wishes for Christmas**

At this joyful season, may there come to every heart a glad renewal of the warming spirit of peace and good will. May we all be richly blessed with enduring hope and love, as we rededicate ourselves to the glorious message of the first Christmas.

**HANSFORD IMPLEMENT CO.**  
 Spearman, Texas

**Christmas**

It's Christmas and we take pleasure for you and a very joyous holiday!

**ANTHONY**  
 L. L. AN  
 Spearman

The Norwood... Moved to y

The above floor plan is a bedroom home of d the convenience, comfort and at such a low, low **NORTH PLAIN** Stinnett, Texas

**FUN**  
**WIT**

(1) Safety Pro Up to \$10.  
 (2) Earn 3 1/2%  
 (3) Ready Wh

Funds Rec Divid

Safety of your Inv Federal Savings permanent agent

Current J

Open

AMARILLO BAY  
 W. W. B. AMAR

Continued: Please send me Name Address City

**Amar**  
 407 W. S



**NATIONAL VIEWS & NEWS**



**KICK-OFF AT DAM**

**TOP BRASS** at ground breaking ceremony for \$75 million conservation project near Carlyle, Ill., are: (standing l. to r.) Sen. E. M. Dicksen, Ill.; Dewey Short, Asst. Sec. of the Army; Cong. C. W. Versell, Ill.; Maj. Gen. W. A. Carter, Chief of the Corps of Engrs.; and Col. C. B. Schweizer, Dist. Engr., St. Louis. E. E. Hazlet, Kaskaskia River Valley Assn., sits with daughter on tractor. Cong. Melvin Price of Ill. is in operator's seat. (CNS PHOTO)

**"YOU PROBABLY WONDER** why I called this meeting." In Surrey, England, pugnacious pooch stands dog watch over puzzled porkers. (UPI PHOTO)



**NO WALL FLOWER**, pert Bobbi Wisenbaker perches prettily at Miami Beach, Fla. Obviously, Bobbi is all set to get into the swim of things. (UPI PHOTO)

**FOR RENT-**

Trailer space B. A. Byers, OL 9-6101, 512 Hazlewood No. 2-21-p

**YOU SAVE \$34.00**

This is an advertisement. We have only two brand new typewriters, tables and carrying cases left. We sell you the typewriter for \$69.00 and give you a new desk, and throw in the carrying case. A saving of \$34.00 We've not had these in for a week yet, and they are half gone. The first two customers coming in can buy these at this big Christmas saving.

**THE SPEARMAN REPORTER**

The trouble with learning lessons the hard way is that it's usually the wrong people who get the experience.

**WANTED:** Ironing \$1.50 mixed bundles. 1008 S. Haney or phone 5626 50-6TP

**WANTED—Good used piano.** See Loy Hiller at Pringle. No. 2, -24-p.

**FOR SALE—In good condition:** one 1955 Gleaner-Baldwin Combine. Raddle type. One 1956 Gleaner Combine, Raddle type. Jack Pierson, Lavern, Okla.

**CARD OF THANKS**  
May we extend our heartfelt thanks to all for your many expressions of sympathy during the loss of our Father. We are truly grateful. May God bless each of you.  
Mr. and Mrs. Richard Holton  
Mr. and Mrs. Dale Davidson.

**FOR SALE—boys 20" Bicycle.** \$15.00 Willis Sheets. 225 Snide St. No. 2 1-4-p

**FOR SALE—Female Pomeranian puppy.** \$35. 113 West 2nd. No. 2, 2-4-p

**WANTED—Man for profitable** Rawleigh business in Lipscomb County. Products well known. Real opportunity. See Milton Brown, Spearman or write Rawleigh's Dept. TXL-30-119 Memphis, Tenn. No. 2 1-4-p

**LOST—A red female Dachshund puppy.** If found contact Bobby Nollner or call 2781 before 6:00 p. m. No. 2 1-4-p

**WANTED TO RENT—Irrigated** farm land. Twelve years experience in irrigation farming. Harold Saltzman, Box 523, Gruver, Texas. No. 52 8-4-p

**LOST**  
One solid Chocolate colored Weimier dog with leather collar. If seen or found please inform Bruce H. Sheets. No. 2 rtn -c

**FOR SALE—Three bicycles.** 20", 24", 26". Call Ernest Wilmet. No. 1, 2-4-p

**WANTED—Water hauling,** see Perry Sheets or Olin Sheets. No. 1 2-4-p

**MOVING**

CALL **BRUCE & SON**  
VAN AND STORAGE COMPANY  
Local and Long Distance  
MODERN EQUIPMENT  
CALL COLLECT  
Perryton 5-5601  
Borger 4-2229  
Pampa 4-6887

**FAMILY IRONING—\$150 per** dozen. Phone 4731. No. 3, 4-4-p

**PERRYTON NURSERY AND LANDSCAPE**

service has a complete line of Nursery stock. We also have a large selection of wind-break seedlings. American Elms, Chinese Elm, Honey Locust, Ash, Russian Olive, Mulberry, Osage Orange and Red Cedar. Let us shear and spray your evergreens. Call us collect. GE 5-5354. Roy Mcartney, Owner, Perryton Nursery, Perryton, Texas. No. 47 rtn

**WE ARE — Experts in installing** linoleums. Let us figure your next job. Free estimates. We do cabinet tops, floor linoleums, congwallis. We stock linoleums up to 17' wide, stink frames, metal films etc.  
**DEALERS IN PERRYTON**

**For the life of your car GO GULFI**



**Looking for Service Try Orange Disc Service!**  
ALTON ELLSWORTH  
Phone 2201

**WANTED**

**CESSPOOL DRILLING**  
36 in. to 8 ft. DIAMETER UP TO 70 FT. DEEP  
ALSO PIER AND BELL HOLE DRILLING  
Phone EV 3-1361  
Amarillo Drilling Co.

**CONSTRUCTION**

**IRRIGATION WELL SERVICE**  
Pull and Set Pumps (All Makes)  
Pump and Bowl Repairs  
Clean Out Holes  
Gear Head Repairs  
**B & C EQUIP. CO.**  
Phone OL 9-2351  
Spearman, Texas

**ALTERATIONS**

**MENDING RUBE'S Boot Shop**  
415 Davis St. Spearman

**BULBS. PLANT THEM NOW.** SPEARMAN HARDWARE!

**FOR SALE—**

5000 Atlas Sorghum Bundles. Archie Correll, Telephone General 5-1453, 1314 South Easton St., Perryton, Texas. No. 1-41-c

**Landscaping supplies**

For trees, Shrubbery, Flowers. Anything in the Nursery line. I have the Stark Brothers Agency. Phone OL 9-6731

**E. E. Williams**

**A. L. Wilson, Jr.**  
REPRESENTING

**South Coast Life, Health, Accident**

**SAVINGS PLANS MORTGAGE CANCELLATION**  
PHONE OLIVE 9-5031  
SPEARMAN, TEXAS

**Sand-Gravel-Calechi Hauling**

**Wholesale-Retail "CALL Doc."**

**Campbell Construction Company**  
Olive 9-7771  
Spearman, Texas

**ANTHONY ELECTRIC**

★ Industrial and Oil Field Wiring  
★ Commercial and House Wiring  
★ Contracting and Repairs  
**L. L. ANTHONY**  
Phone OL 9-3361  
413 S. Barkley St. Box 727  
Spearman, Texas

**MACIAS Construction Co.**

Homes under construction in South Spearman.

**G. I., FHA Loans**

See Us For Your Building Needs  
**ALEC MACIAS**  
1029 DRESSIN  
PHONE OL 9-5846  
Spearman, Texas  
TRACTOR WITH SCOOP AND FRONT-END LOADER AND DUMP TRUCK  
1602 SOUTH MAIN  
PERRYTON, TEXAS  
Phone GE 5-4531

**MOTOR WISE**



**A. & G. Humble Service**

**WYATT ADKINS RAYMOND GILLEY**



**MEDICINE**

**Dr. D. E. Hackley**  
OSTEOPATHIC PHYSICIAN AND SURGEON  
304 MAIN ST.  
Office Hours: Week Days 9-12 and 1-5  
Saturday: 9-12  
Office Phone — Residence Phone 4581 3601

**Dr. Reese Nowlin**

OPTOMETRIST  
OFFICE HOURS  
9 to 12 a. m. 1 to 5 p. m.  
Saturday 9-11  
Phone 5481  
No. 10 SW 2nd Avenue  
Perryton, Texas

**R. L. Kleeberger**  
M. D.

Physician and Surgeon  
Medicine, Surgery and Obstetrics  
Hours: 9:12 a. m. 2-5 p. m.  
CLOSED ALL DAY THURSDAY AND SATURDAY AFTERNOON  
Phones: office 5781  
Res. 2161  
16 S. W. Court St.  
Daily Bldg.  
Spearman, Texas

**Dr. F. J. Dally**

DENTIST  
No. 16 S. W. Court St.  
Phone 3501  
Spearman, Texas

**SANFORD HOSPITAL AND CLINIC**

Perryton, Texas  
Phones 2821 or 2831  
**ROY K. SANFORD, M. D.**  
Pediatrics  
**J. BLUFORD JOHNSON, M. D.**  
General Surgery  
**O. U. MONROE, M. D.**  
Obstetrics - General Practice

**INSURANCE**

**E. C. GREENE**  
★ Real Estate  
★ Loans  
★ Insurance  
Phone 4261 — Box 145  
Spearman, Texas

**B. M. A. INSURANCE**

**E. K. SNIDER**  
Spearman, Texas

**AMBULANCE FLOWER**

Number Dial 2751  
SPEARMAN, TEXAS

**Boxwell Bros.**

Funeral Home and Flower Shop  
Day — Night Phone 2751  
SPEARMAN, TEXAS

**C. and J. Drilling Company**

SLIM CATES... BUD JACKSON  
Featuring irrigation well drilling and domestic wells for windmills and small pumps.  
TELEPHONES  
OLive 9-4736 OL 9-8286

GLASS REPLACEMENT  
Body Shop and Painting  
**R. L. (Smoky) Huse**  
Spearman, Texas

**Hansford Lodge**  
1040  
A. F. & A. M.

Regular Communication 2nd and 4th Monday of each Month  
Raymond Kirk, W. M.  
A. L. Wilson, Secretary



**Christmas Wishes**

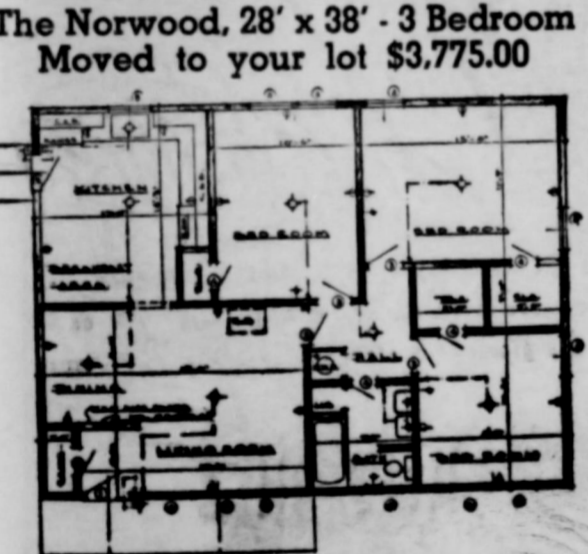
It's Christmas time again... and we take pleasure in wishing for you and your loved ones a very joyous holiday... glowing with

**ANTHONY ELECTRIC**

**L. L. ANTHONY**  
Spearman, Texas

**The Norwood, 28' x 38' - 3 Bedroom**

Moved to your lot \$3,775.00



The above floor plan of The NORWOOD, our special 3 bedroom home of distinction, will give you an idea of the convenience, comfort and beauty of this fine home... and at such a low, low price!

**NORTH PLAINS READY - BUILT CO.**  
Stinnett, Texas Doc Alexander BR 3-7971

**FUNDS PLACED WITH US ARE:**

- (1) Safety Protected—Each Account Insured Up to \$10,000.00
- (2) Earn 3 1/2% per Annum
- (3) Ready When Needed

Funds Received by the 10th Will Receive Dividends for the Full Month

Safety of your Investment insured up to \$10,000 by the Federal Savings and Loan Insurance Corporation, a permanent agency of the United States Government.

Current Annual Dividend Rate 3 1/2%

Open your account by mail

AMARILLO SAVINGS & LOAN ASSOCIATION  
20 W. 8th, Amarillo, Texas

Continued:  
Please send me all details regarding an account with you.  
Name \_\_\_\_\_  
Address \_\_\_\_\_  
City \_\_\_\_\_ State \_\_\_\_\_

**Amarillo SAVINGS & LOAN ASSOCIATION**  
407 W. 8th Phone DR4-8022

**Wedding Announced**

Charlotte Martin, Daughter of Mr. and Mrs. Elvin Martin of Spearman, became the wife of Jerry Floyd of Spearman in a ceremony at Clayton New Mexico, Monday December 22, 1958.

**SAFETY FIRST**  
Drive careful during the year-end holidays—take it easy in 1958 so you can be alive in 1959.

**BUSINESS OPPORTUNITY MAN OR WOMAN**  
Responsible person from this area, to service and collect from cigarette dispensers. No selling. Car, references, and \$392.50 to \$1975.00 investment necessary. 7 to 12 hours weekly nets excellent monthly income. Possible full-time work. For local interview give phone and particulars. Write International Sales & Mfg. Co., Inc. P. O. Box 1236, Oklahoma City, Okla. No. 3, 1-4-p.

**FOR SALE—One and one-half** lots 75ft. by 100 ft. Fixtures for two trailers—\$800 at 218 S. Archer. No. 3, 2-4-p.

**STRAYED—700 lb. White face** steer. Branded quarter circle, slash L, left hip - notify R. E. Lee. No. 3, 3-t-e.

**FOR SALE—Or trade: \$1500** equity in 1957 38 Ft. Bulltrite Trailer house for furniture appliances, or equity in car. Payments \$66. Call Union 8-2561 Miami. Kay Mayo. No. 3, 1-4-p.

**WILL KEEP—Children for** working mothers. Mrs. Brown, East 4th at Hoskins. No. 3, 3-4-p.

**GYCOLOGY SEZ**



THERE'S SOMETHING ABOUT CHRISTMAS THAT MAKES ME WANT TO BE EVERYBODY'S FRIEND

A MERRY CHRISTMAS AND A HAPPY NEW YEAR TO EVERYONE

**Collard Jr.**  
INSURANCE REAL ESTATE FARM LOANS  
407 DAVIS ST. DO BRYANT SPEARMAN TEXAS

**BULBS. PLANT THEM NOW.** SPEARMAN HARDWARE!



**GREETINGS**  
This is the time of year when we take account of our assets. Among them all, we find none nearly so valuable as the confidence and good will of our patrons. To them go our hearty thanks and warmest holiday wishes.

**BRUCE PONTIAC**  
Spearman, Texas



**NOTICE OF ELECTION FOR THE ISSUANCE OF HOSPITAL BONDS**

THE STATE OF TEXAS  
COUNTY OF HANSFORD  
TO THE RESIDENT QUALIFIED ELECTORS OF HANSFORD COUNTY, TEXAS, WHO OWN TAXABLE PROPERTY IN SAID COUNTY, AND WHO HAVE DULY RENDERED THE SAME FOR TAXATION:

TAKE NOTICE that an election will be held on the 10th day of January 1959, in Hansford County, Texas, to determine whether or not bonds shall be issued by said County in the amount of TWO HUNDRED SEVENTY-FIVE THOUSAND DOLLARS (\$275,000.), for the purpose of providing funds for the enlarging of the present County hospital by establishing, constructing and equipping additional county hospital buildings and for all other necessary permanent improvements in connection therewith, as authorized by the Constitution and laws of the State of Texas, particularly Section 9, Article 8, of the Constitution, and Chapter 1, Title 22, and Chapter 5, Title 71, Revised Civil Statutes of 1925, as amended, and whether or not a tax sufficient to pay the interest on said bonds and to provide a sinking fund sufficient to pay the principal thereof at maturity, shall be levied on all taxable property within said county; and

(25) years from the date thereof and for the purpose of providing funds for the enlarging of the present County hospital by establishing, constructing and equipping additional county hospital buildings and for all other necessary permanent improvements in connection therewith, as authorized by the Constitution and laws of the State of Texas, particularly Section 9, Article 8, of the Constitution, and Chapter 1, Title 22, and Chapter 5, Title 71, Revised Civil Statutes of 1925, as amended, and whether or not a tax sufficient to pay the interest on said bonds and to provide a sinking fund sufficient to pay the principal thereof at maturity, shall be levied on all taxable property within said county; and

WHEREAS, this Court, upon due advice and investigation, has ascertained and determined that said petition is signed by more than ten per cent (10%) of the resident qualified property tax-paying voters of Hansford County, Texas, who have duly rendered their property for taxation and that such petition should be granted, and that the election as prayed for in such petition should be ordered; therefore,

BE IT ORDERED BY THE COMMISSIONERS' COURT OF HANSFORD COUNTY, TEXAS:

That an election be held in said County on the 10th day of January, 1959, which date is not less than fifteen (15) nor more than thirty (30) days from the date of the adoption of this order, at which election the following proposition shall be submitted to the qualified electors who own taxable property in said County and who have duly rendered the same for taxation, for their action thereupon:

"SHALL the Commissioners' Court of Hansford County, Texas, be authorized to issue the bonds of said County in the amount of TWO HUNDRED SEVENTY-FIVE THOUSAND DOLLARS (\$275,000.), to become due and payable serially and not exceeding twenty-five (25) years from their date, bearing interest at a rate not exceeding FOUR AND THREE FOURTHS PER CENTUM (4-3/4%) per annum, payable annually or semi-annually as may be determined and fixed by the Commissioners' Court of Hansford County, Texas, for the purpose of providing funds for the enlarging of the present County hospital by establishing, constructing and equipping additional county hospital buildings and for all other necessary permanent improvements in connection therewith; and shall the Commissioners' Court of Hansford County, Texas, be authorized to levy assess and collect annually, while said bonds or any of them are outstanding, a tax upon all taxable property in said County sufficient to pay the interest on said bonds and to provide a sinking fund for their redemption at maturity, pursuant to authority conferred by the Constitution and laws of the State of Texas, particularly Section 9 of Article 8 of the Constitution, and Chapter 1, Title 22 and Chapter 5, Title 71, Revised Civil Statutes of 1925, as amended?"

WHEREAS, a petition has been duly presented to the Commissioners' Court of Hansford County, Texas, wherein the petitioners, alleging themselves to represent more than ten per cent (10%) of the resident qualified property tax-paying voters of Hansford County, Texas, who have duly rendered their property for taxation, and praying this Court to order that an election be held in said County to determine whether or not bonds of said County shall be issued in the total principal sum of TWO HUNDRED SEVENTY-FIVE THOUSAND DOLLARS (\$275,000.00) bearing interest at a rate not to exceed FOUR AND THREE FOURTH PER CENTUM (4-3/4%) per annum, and to mature serially not exceeding twenty-five

The said election shall be held under the provisions of the Constitution and laws of the State of Texas, particularly Section 9, Article 8 of the Constitution, and Chapter 1, Title 22, and Chapter 5, Title 71, Revised Civil Statutes of 1925, as amended, and all persons who are legal voters of said Hansford County, Texas, and who are resident property taxpayers of said County, and who have duly rendered their property for taxation, shall be entitled to vote at said election.

IT IS FURTHER ORDERED that the ballot for said election shall be prepared in sufficient number and in conformity with Chapter 6, V.A.T.S. Election Code,

PRECINCT NUMBER	VOTING PLACE	PRESIDING JUDGE
1.	Courthouse Spearman, Texas	E. J. Copeland
2.	R. D. Tomlinson Residence Kimball Community	R. D. Tomlinson
3.	Gruver Elevator, Gruver, Texas	L. E. Morrison
4.	Schoolhouse, Gruver, Texas	Herbert Hughes
5.	Hitchland Elevator, Hitchland, Texas	Mrs. H. J. Dondlinger
6.	Panhandle Eastern Office New Hope Community	J. F. Hogner
7.	School House, Oslo Community	Gordon Stedje
8.	Phillips Plant Phillips Plant Site	Dale Lewis
9.	Schoolhouse, Morse Texas	Willard McCloy
10.	Schoolhouse, Spearman, Texas	C. Ralph Blodgett

**SPECIAL CANVASSING BOARD:**

Elzie Vanderburg  
Joe Traylor  
John Bishop

**THE MANNER OF HOLDING**

said election shall be governed by the General laws of the State of Texas regulating General Elections.

A COPY of this order, signed by the County Judge of said County, and certified to by the County Clerk of said County, shall serve as proper and sufficient notice of such election.

NOTICE of said election shall be given by posting and publication of a copy of this order, at the top of which shall appear the words "NOTICE OF ELECTION FOR THE ISSUANCE OF HOSPITAL BONDS". Said notice shall be posted in each of the election precincts of the County of Hansford, and at the County Courthouse, not less than fourteen (14) full days prior to the date on which said election is to be held, and be published on the same day in each of two successive weeks in a newspaper of general circulation in Hansford County, Texas, and published in the County of Hansford, the first of said publications to be not less than fourteen (14) days prior to the date set for said election.

as amended, and that printed on such ballot shall appear the following:

**OFFICIAL BALLOT**  
"FOR THE ISSUANCE OF HOSPITAL BONDS AND THE LEVY OF TAXES IN PAYMENT THEREOF."  
"AGAINST THE ISSUANCE OF HOSPITAL BONDS AND THE LEVY OF TAXES IN PAYMENT THEREOF."

EACH VOTER shall mark out with pen or pencil one of such expressions, thus leaving the other as indicating his vote on the proposition.

THE POLLING PLACES and Presiding Officers of said Election shall be, respectively, as follows:

PRECINCT NUMBER	VOTING PLACE	PRESIDING JUDGE
1.	Courthouse Spearman, Texas	E. J. Copeland
2.	R. D. Tomlinson Residence Kimball Community	R. D. Tomlinson
3.	Gruver Elevator, Gruver, Texas	L. E. Morrison
4.	Schoolhouse, Gruver, Texas	Herbert Hughes
5.	Hitchland Elevator, Hitchland, Texas	Mrs. H. J. Dondlinger
6.	Panhandle Eastern Office New Hope Community	J. F. Hogner
7.	School House, Oslo Community	Gordon Stedje
8.	Phillips Plant Phillips Plant Site	Dale Lewis
9.	Schoolhouse, Morse Texas	Willard McCloy
10.	Schoolhouse, Spearman, Texas	C. Ralph Blodgett

none voted "NO".

PASSED AND APPROVED, this 16th day of December 1958.  
s - Johnnie C. Lee, County Judge, Hansford County, Texas  
s - Joe Day, Commissioner, Precinct Number 1  
s - J. E. Vernon, Commissioner, Precinct Number 2  
s - B. W. Renner, Commissioner, Precinct Number 3  
s - Weldon Green, Commissioner, Precinct Number 4

IN WITNESS WHEREOF, I have hereunto signed my name officially and affixed the seal of the Commissioners' Court of Hansford County, Texas, this 16th day of December, 1958, pursuant to authority given by law and the above order of the Commissioners' Court of said County.

Johnnie C. Lee  
County Judge, Hansford County, Texas

ATTEST:  
Sada C. Hoskins  
County Clerk and Ex-Officio Clerk of the Commissioners' Court of Hansford County, Texas  
(Com. Court Seal)

Mealtimes is when the kids sit down to continue their eating.

The memories that seem to last the longest with a certain type of people are the shortcomings of their acquaintances.

Fear of being found out keeps a lot of people on the straight and narrow path.

**NEWS**  
County Home  
Demonstration Agent  
Texas A.M. College  
Extension Service

**MERRY CHRISTMAS**  
The Home Demonstration Agent of Hansford County wishes you a very Merry Christmas. It has been a pleasure to be your Home Demonstration Agent the past year. Your cooperation has been splendid. May this truly be a Merry Christmas for each of you.

**EAT LIVER ONCE A WEEK**  
For variety and food value include liver on the menu at least once a week, suggests extension specialists. Beef, pork lamb and veal liver are all exceptional sources of essential food nutrients. Pork liver is especially high in iron.

The need for iron varieties at different ages and under different conditions is emphasized. During infancy, adolescence and pregnancy it is especially high. A deficiency of iron in the diet may result in nutritional anemia. It is generally believed that the iron of animal foods is more available to the human body than that of vegetable foods. Only a portion of the iron in food is absorbed in the body; therefore, it is important that a good supply of oysters, eggs, vegetables, dried fruits whole grain or enriched bread and cereals be included in meals.

Utilize the distinctive flavor of liver to advantage by combining it with other foods, such as bacon, mushrooms, tomatoes, onions, potatoes, carrots and parsley.

**HOUSEHOLD HINT**  
Simple, but festive deserts during this season include small cups of custard which have been well chilled and decorated with candied fruit. Serve with slices of fruit cake.

**RECIPE OF THE WEEK**  
Are you wondering how to make that leftover turkey appealing to your family? Mrs. Jack Johnson, Morse, Texas, shares with us one of her favorite recipes.

**TURKEY PIE**  
4 cups cubed cooked turkey  
1 cup chopped celery  
1 cup bread crumbs  
2 tablespoons minced parsley  
2 teaspoons salt  
4 boiled eggs chopped  
2 cups turkey broth  
Alternate turkey, celery crumbs and parsley in layers in 2 quart casserole. Add eggs and salt to turkey broth; mix thoroughly and pour over turkey. Bake in moderate oven 350 degrees about 45 minutes until mixture doesn't adhere to knife. Cover with drop biscuits. Serve 6 to 8.  
Drop Biscuit  
1 cup sifted enriched flour  
1/2 t. baking powder  
1-4 teaspoon salt  
2 tablespoons shortening  
3-4 cup milk  
Drop by teaspoon on top of mixture.

**LETTERS TO SANTA:**  
Dear Santa—  
I want a doll and a buggy. My sister wants a doll too. Come to our school December 23. How are you Santa?  
Your Friend,  
Paula Diggs

Dear Santa—  
Please bring me a 16 inch lady doll with lots of clothes, a pogo stick, some dishes, also a bingo game, skates, a stuffed animal, jewelry box and a ring. I have been a good girl  
With lots of love  
Judy Reising

Dear Santa Claus—  
I have been pretty good this year. I am nine years old. I would, please bring me a speedometer, a bicycle, a bike and a bicycle bell.  
Thanks a lot, Yarn  
Don Kelly, Morse, Tex.



**Peace on earth**

A Child was born, and there came to earth  
glad tidings of great joy... of Peace on Earth, Good  
Will to Men. As the Star of Bethlehem shone on  
that Holy Night, may the true spirit of Christmas shine upon  
you and yours at this glorious season.

**RUSSELL'S**  
Spearman, Texas

**CHRISTMAS JOY**

May the joyous message of the Babe of Bethlehem once more shine brightly in your heart... and, as you celebrate Christmas with your loved ones, may you experience deeply and fully all the blessings of the Day. May its happiness abide with you and yours through all the years to come.

**CHAMBERS DRY GOODS**  
Spearman, Texas

**Holy Night**

"And there were in the same country shepherds abiding in the field, keeping watch over their flock by night. And lo, the angel of the Lord came upon them, and the glory of the Lord shone round about them." Across the ages the story of Christmas lives on eternally. Let us all rejoice in its glorious promise of peace and enduring good will.

**FLOYD'S LOCKER**  
Spearman, Texas

**SEASONS GREETINGS**

May you rediscover during this festive season all of the high-hearted joys and good cheer of an old fashioned Yuletide, complete with friendships warmly renewed and old times happily remembered... abounding in all the good things of life.

No holiday season would be complete for us without a sincere expression of thanks to our loyal patrons for their confidence and good will. We hope that we may continue to serve you all in 1959.

**MASSAD'S**  
Spearman, Texas



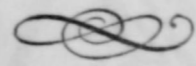
ar Santa Claus  
have been pretty  
r. I am nine years old,  
uld, please bring me  
shoulder pads to fit  
speedometer, a book  
e and a bicycle bell.  
Thanks a lot. Yours  
Don Kelly, More



# Christmas Joy and Blessings



*"And they came with haste, and found Mary, and Joseph, and the Babe lying in a manger." In the hush of a Holy Night, He was born, bringing to earth a joyous promise of Peace and Good Will to all mankind. And now, as the bells ring out the glad tidings, age-old yet ever new, another Christmas dawns. Hope is strengthened, courage fortified, faith renewed. Hearts and spirits are bright with the shining wonder of the Day.*



To all our friends, our greetings and good wishes! May you hear the wonder of Christmas in each dearly cherished carol... see its magic in each gaily decked tree... feel its infinite joy deeply in your heart. And, as you hark to the words of the sacred story, may the blessings of His message surround you and those you hold dear, at Christmastide and through all the days to come.

## MACIAS CONSTRUCTION CO.

Alex Macias  
1029 Dressen St.  
Spearman  
Phone OL 9-5846

Office  
1602 South Main  
Perryton  
Phone GE 54531

reason  
of an  
ships  
mem-  
life.  
or us  
loyal  
We  
959.