

DON'T MISS THE

CHRIST FOR ALL CRUSADE IN CITY CHRIST FOR ALL CRUSADE IN CITY

Christ For All Crusade

SPEARMAN HIGH SCHOOL AUDITORIUM



HEAR ROY GUSTAFSON — associate Evangelist with Billy Graham

November 10 - November 21

EVENINGS 7:30 P.M.

SUNDAYS 3:00 P.M.

This Advertisement Sponsored By:

Horizon Oil and Gas Company

CHRIST FOR ALL CRUSADE IN CITY CHRIST FOR ALL CRUSADE IN CITY

CHRIST FOR ALL CRUSADE IN CITY CHRIST FOR ALL CRUSADE IN CITY

CHRIST FOR ALL CRUSADE IN CITY CHRIST FOR ALL CRUSADE IN CITY

CONGRATULATIONS...

To Coach Don Seymour And His Staff And the 1965 LYNx Football Team
We are proud of your 6-4 season, and the way you played every game during the season.

We are especially proud of the ten Seniors who played their last game Friday evening of last week.



- | | |
|--------------------------------------|-------------------------------------|
| 44 Rennie Berry, End, 137 lbs. | 85 James Schnell, Q. B., 160 lb. |
| 60 Harrel Adkinson, Tackle, 185 lb. | 52 Glenn Blodgett, Tackle, 166 lb. |
| 60 Mart Brillhart, Guard, 151 lb. | 63 Phillip Renner, Guard, 157 lb. |
| 51 Skipper Robinson, Center, 163 lb. | 55 Carl Kunselman, Center, 138 lb. |
| 64 Lynn Buzzard, Guard, 152 lb. | 65 Ronald Gray, Guard, 135 lb. |
| 72 Randy Moore, Tackle, 175 lb. | 75 Ronnie Gilbert, Tackle, 175 lb. |
| 86 Harley Reeves, End, 160 lb. | 16 Mike Babbs, End, 124 lb. |
| 10 Dave Clement, Q. B. 144 lb. | 11 harles Shieldknight, QB, 173 lb. |
| 20 Kenneth Schufeldt, H. B., 162 lb. | e40 Hal Shufeldt, H. B., 160 lb. |
| 31 Clayton Cochran, F.B. 170 lb. | 30 Jerry Holton, F. B., 180 lb. |
| 33 Larry Bulls, H. B 151 lb. | 22 Gary Cates, H. B., 127 lb. |

Hansford Grain Company

The First State Bank

Cates Men And Boys Store

Spearman Hardware

Horizon Oil And Gas Company

Spearman Reporter

White House Lumber Company

Junior Lusby Cats

Spearman Super Service

Equity

H. And H. Water Well Service

Anthony Electric

"Better Food For Less"

FEAST YOUR EYES ON THESE TASTE-TANTALIZING

IDEAL THANKSGIVING GOODIES

FOOD STORES

YOUR FRIENDS AT IDEAL HAVE PLANNED FOR MONTHS TO SATISFY YOUR EVERY NEED . . . AND SAVE YOU A PRETTY PENNY TOO!

Choose From This Year's Finest Turkey Crop at Ideal . . .

TOP FROST U.S.D.A. GRADE "A" PLUMP, TENDER

TURKEYS

PLUMP TENDER TOMS
18 To 24-Lb. Average

39¢

Lb.

PLUMP HENS
12 to 14-Lb. Avg.

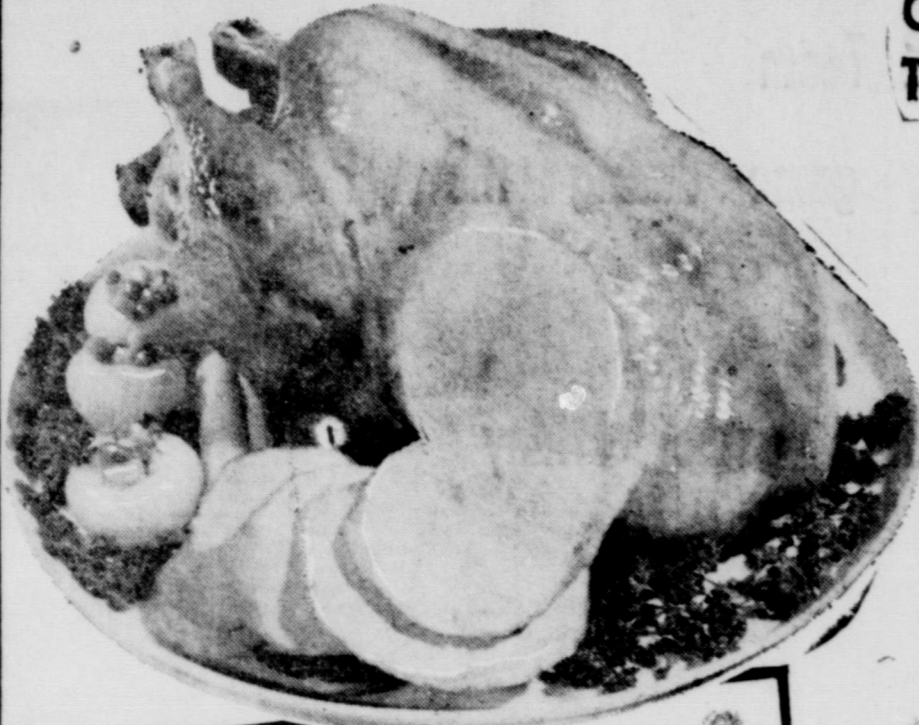
45¢

Lb.

SHOP AHEAD FOR THE HOLIDAY . . . IDEAL WILL BE CLOSED THANKSGIVING DAY

THESE PRICES EFFECTIVE NOW THRU NOVEMBER 24th.

Limit Right Reserved



FOR ELEGANT HOLIDAY ENTERTAINING

RIVERSIDE ROLLED AND TIED
Boneless Turkey Roast Lb. **99c**

HONEY SUCKLE
Turkey Roast 2 1/2-Lb. Pkg. **\$3.29**

HONEY SUCKLE Ready To Heat & Serve 2-Lb. Pkg. **\$1.99**

SWIFT'S PREMIUM OVEN READY

TENDER BAKING HENS

5 To 7-Lb. AVERAGE

Lb. **39c**

TOP FROST OVEN READY

LONG ISLAND DUCKS

4 To 6-Lb. AVERAGE

Lb. **49c**

IDEAL ALSO FEATURES A COMPLETE LINE OF U.S.D.A. GRADE "A" GEESSE, CAPONS, AND ROASTERS FOR YOUR HOLIDAY FEASTING.

CUDAHY PURE
Pork Sausage
1-Lb. Roll **49c**

WILSON CERTIFIED
Sliced Bacon
1-Lb. Pkg. **79c**

COUNTRY KITCHEN CRANBERRY
Dessert
10-Oz. Ctn. **39c**

FOOD CLUB PITTED
Large Ripe Olives 1 Tall Can **39c**

TOWIE THROWN MANZANILLA
Stuffed Olives 6-oz. Jar **49c**

TOWIE
Salad Cherries 10 1/2-oz. Jar **39c**

GAYLORD WHOLE
Spiced Peaches No. 2 1/2 Can **29c**

MUSSELMANS SPICED
Apple Rings 1 1/2-oz. Can **35c**

BILOXI BAY—FOR STUFFING OR STEW
Cut Small Oysters 3 8-oz. Cans **\$1.00**

SWANSON
Chicken Broth 14-oz. Can **19c**

FOR STUFFING — HERB SEASONED
Kelloggs Croutettes 7-oz. Pkg. **39c**

SHILLINGS PURE GROUND
Cinnamon 4-oz. Can **59c**

SHILLINGS
Poultry Seasoning 1/2-oz. Pkg. **19c**

SHILLINGS
Vanilla Extract 8-oz. Btl. **59c**

SOUTHERN STYLE
Baker's Coconut 4-oz. Can **29c**

KRAFT MINATURE
Marshmallows 10-oz. Pkg. **29c**

SPECIAL LABEL
Hershey Dainties 12-oz. Pkg. **39c**

SMUCKER'S STRAWBERRY
Preserves 12-oz. Jar **39c**

FOR SALADS OR COOKING
Kraft Oil Quart **59c**

HEAVY DUTY
Alcoa Wrap 18-in. Roll **69c**

KRAFT EXTRA SHARP
Cracker Barrel Cheese 10-oz. Pkg. **53c**

KRAFT — 6 FLAVORS
Whipped Cream Cheese 4-oz. Cup **29c**

IMPERIAL
Margarine 1-Lb. Ctn. **43c**



OCEAN SPRAY FRESH

Cranberries

1-Lb. Bag

23¢

FRESH, CRISP

Pascal Celery

Lb.

10¢

PORTA RICAN
SWEET YAMS

2 Lbs. **25¢**

EXTRA FANCY
RED ROME APPLES

2 Lbs. **29¢**

FOOD CLUB STRAINED
CRANBERRY SAUCE 5 300 Cans **\$1.00**

GOLDEN WHOLE KERNEL
NIBLET'S CORN 5 12-oz. Cans **\$1.00**

HELLMAN'S SPIN BLEND
SALAD DRESSING Quart Jar **59c**

OLD FASHIONED
LONGHORN CHEESE 10-oz. Pkg. **39c**

KRAFT PHILADELPHIA BRAND
CREAM CHEESE 8-oz. Pkg. **29c**

IDEAL FOR CEREAL OR COFFEE
HALF & HALF PINT Ctn. **25c**

BETTY BAKER
CALIFORNIA DATES 1-Lb. Pkg. **49c**

GUITTARD SWEET OR SEMI-SWEET
CHOCOLATE CHIPS 6-oz. Pkg. **19c**

SPECIAL LABEL PANTRY SIZE
DREAM WHIP 8-oz. Pkg. **69c**

VARIETY CREME, FUDGE SAND, OR DUTCH CHOC.
SUPREME COOKIES 3 Pkgs. **\$1.00**

IDEAL ASSORTED FLAVORS
FLAVOR RICH ICE CREAM 1/2-Gal. Ctn. **79c**

Chase and Sanborn COFFEE 1-LB. CAN **69c**
DRIP and REG. GRIND

FREE LUSTROWARE NYLON

CUTTER SPATULA

WITH IDEAL MAILER COUPON NO. 3 AND \$5.00 OR MORE PURCHASE.

Collect a Full set of Teflon Protecting Nylon Kitchen Tools FREE with Ideal Mailer Coupons.

KRAFT SALAD DRESSING

MIRACLE WHIP

QUART JAR **44¢** WITH \$5.00 OR MORE PURCHASE

FAIRMONT'S FRESH

WHIPPING CREAM

1/2-PINT CARTON **29¢**

FROZEN PUMPKIN OR MINCE

BANQUET PIES

4 20-oz. Pkgs. **\$1.00**

QUICK FROZEN

TOP FROST VEGETABLES

9-Oz. Cut Green Beans
10-Oz. Brussel Sprouts
10-Oz. Broccoli Spears
10-Oz. Baby Limas

4 Pkgs. **\$1.00**

TOP FROST FROZEN
Raspberries 10-oz. Pkg. **29c**

IDEAL'S
Stuffin' Bread 1-Lb. Loaf **19c**

MEYERS — ALL VARIETIES, BROWN & SERVE
Dinner Rolls 2 Pkgs. **49c**

IDEAL'S
Tem Tee Rolls 25c Pkg. **23c**

IDEAL'S GERMAN
Chocolate Cake 98c Size **89c**

IDEAL'S BROWN AND SERVE
Dinner Rolls 2 Pkgs. of 12 **25c**

IDEAL'S
Dinner Rolls Pkg. of 12 **16c**

IDEAL'S
Parkerhouse Rolls Pkg. of 9 **19c**

Listerine, Micrin or Cepacol
ANTISEPTIC
Your Choice 14-oz. Btl. **69c**

For Quick Relief
ANACIN
PKG. Of 100 **99c**

Thursday, November 18, 1965, Vol. 56 No. 51 Spearman, Hansford County, Texas

